

PARTS MANUAL

**ELECTRIC
N25XMDR3, N30XMR3, N40XMR3
(C470)
N50XMA3 (C471)**

CUSTOMER EDITION

HYSTER

CLICK HERE TO **DOWNLOAD** THE COMPLETE MANUAL

- Thank you very much for reading the preview of the manual.
- You can download the complete manual from: www.heydownloads.com by clicking the link below



- Please note: If there is no response to CLICKING the link, please download this PDF first and then click on it.

CLICK HERE TO **DOWNLOAD** THE COMPLETE MANUAL

HOW TO FIND THE DESIRED PART NUMBER

WHEN THE PART NUMBER AND THE NEXT HIGHER ASSEMBLY IS NOT KNOWN:

1. Determine the function and application of the part required. Turn to the Sections Page. Choose the general area of reference most likely to include the part.
2. Turn to the section you chose. Use the Section Table of Contents to determine the assembly which would normally contain the part required. Then locate the part on the assembly breakdown page.

WHEN THE PART NUMBER IS NOT KNOWN AND THE NEXT HIGHER ASSEMBLY IS KNOWN:

3. Determine the assembly the required part is used on. Turn to the Table of Contents (Page i).
4. Locate the assembly the required part is used on and turn to the page indicated for that assembly. Then locate the part on the assembly breakdown page.

WHEN THE PART NUMBER IS KNOWN:

5. Use the Numerical Index (Page 12-1) to find the part number. Turn to the page listed and locate the part as indicated by the item number.

GENERAL:

The assembly breakdowns include part numbers, descriptions, quantities required, keys and footnotes to help in selecting correct parts.

6. Parts Supersession Information. Part numbers that have this history will be displayed in the parts list in the order that they were superseded (from oldest to newest). The superseded part numbers will be shown with a line through them.

Five periods in the PART NO. column (.) indicate that the part is either *Not Serviced Separately* or there is a reference to another figure. A figure reference is denoted by a pointing hand followed by a figure number in the DESCRIPTION column (☞ Figure 10)

7. Keys are used to show two or more similar assemblies, RH and LH assembly parts, etc. Select the appropriate key, "A", "B", "C", "D", or "E" and the corresponding quantity column to find the required parts. Two periods in the QTY column (..) indicate that the part is not used for that assembly.
8. Indented descriptions under the DESCRIPTION column are used to indicate assemblies and

subparts of assemblies. In the example on the previous page, *BEARING CAP* (Item 2) is a subpart of the major assembly *CASE*.

9. Quantities shown are for one assembly. The quantities of the subpart *BEARING CAP* are indicated as two and two. This means two per *CASE* assembly.
10. Serial number breaks identify the most current parts information and are shown as follows:
 - **S/N D001H2628**
Indicates last serial number affected.
 - S/N D001H2629** →
Indicates the first serial number affected.
 - S/N D001H1553** ↔ **S/N D001H3291**
Indicates a range of serial numbers affected.

ECN numbers for pending serial numbers are shown to allow for the inclusion of the most current parts information and are identified as follows:

→ **S/N Pending Per ECN 63243**

Indicates a pending serial number for last unit affected.

S/N Pending Per ECN 63243 →

Indicates a pending serial number for first unit affected.

Date breaks are used to indicate when a change occurred but a subsequent serial number break was not recorded. This is an arbitrary date usually based on the ECN release and are identified as follows:

→ **D/B 3/00**

Indicates that a change occurred sometime within that month for the item affected.

D/B 3/00 →

Indicates that a change occurred sometime within that month for the item affected.

D/B 3/00 ↔ **D/B 4/00**

Indicates a range of production dates of the item affected.

Contact your local dealer for Hyster lift trucks for serial number information for items with a ECN or a date break.

ORDERING PARTS:

When ordering replacement parts, give the unit serial number, part number, name of part and quantity required.

For any further information on parts, service, or ordering, consult your local dealer for Hyster lift trucks.

HOOD AND COVERS

ITEM	PART NO.	DESCRIPTION	QTY
1	2310970	Hinge (Standard)	1
1	2306030	Hinge (Freezer)	1
2	1457027	Frame (Door)	1
3	2307934	Screw	1
4	2034639	Washer	1
5	269200	Nut	1
6	1457257	Cover (12 in. Battery Compartment)	1
6	1457258	Cover (14 in. Battery Compartment)	1
6	1455970	Cover (16 in. Battery Compartment)	1
	16712	Screw	8
	15152	Lockwasher	8
	2031173	Clip	4
7	1455985	Cover	1
	17178	Capscrew	3
	18515	Washer	3
8	1474896	Cushion	1
	18460	Capscrew	2
	15154	Lockwasher	2
	15127	Washer	2
	2035767	Clip	2
9	1468017	Cushion	1
	1474743	Rivet	4
10	a 18497	Capscrew	1
11	a 216895	Static Strap	1
12	a 18515	Washer	2
13	a 15155	Lockwasher	1
14	a 15055	Nut	1
15	2303911	Roller (12 in. Battery Compartment)	5
15	368022	Roller (14 in. Battery Compartment)	5
15	2302952	Roller (16 in. Battery Compartment)	6
16	2305895	Cover (12 in. Battery Compartment)	2
16	2303689	Cover (14 in. Battery Compartment)	2
17	2306123	Plate (12 in. Battery Compartment)	2
17	2303803	Plate (14 in. Battery Compartment)	2
17	2302926	Plate (16 in. Battery Compartment)	2
17	2303359	Plate (16 in. Battery Compartment)	2
18	b 18497	Capscrew (0.5 and 1 in. Spacer)	2
18	b 18508	Capscrew (1.5 and 2 in. Spacer)	2
18	b 18513	Capscrew (2.5 and 3 in. Spacer)	2
19	b 2306205	Spacer (0.5, 1.5, and 2.5 in. Spacer)	1
20	b 2306243	Tube (Except 0.5 in. Spacer)	1
21	15155	Lockwasher	2
22	15055	Nut	2
23	a 2305060	Padlock	2
24	d 16836	Capscrew (Except 3 in. Spacer)	2
24	d 18498	Capscrew (3 in. Spacer)	4
25	d 2302703	Spacer Bar	1
25	d 2302703	Spacer Bar	2
26	d 2309538	Tube Spacer	1
26	d 2309538	Tube Spacer	2
27	15055	Nut	2

SECTION 2 ELECTRICAL SYSTEM

DESCRIPTION	PAGE
BATTERY CONNECTOR	2-24
CONTACTOR PANEL	
"E" CONSTRUCTION	2-12
"EE" CONSTRUCTION	2-14
ELECTRICAL ARRANGEMENT	
C470, C471	2-2
ELECTRICAL COMPONENTS	2-22
LIFT CONTACTOR	2-20
MAIN WIRE HARNESS	2-28
MULTI-FUNCTION CONTROL HANDLE ASSEMBLY	
→ S/N C470N02127A → S/N C471N01522A	2-6
S/N C470N02128A ↔ S/N C470N02321A S/N C471N01523A ↔ S/N C471N01525B	2-8
S/N C470N02322A → S/N C471N01526B →	2-10
POWER STEER CONTACTOR	
→ S/N C470N02386B → S/N C471N01527B	2-16
TRACTION CONTACTOR	2-18
WIRE HARNESS	
HYDRAULIC CONTROL	2-26

MULTI-FUNCTION CONTROL HANDLE ASSEMBLY
(S/N C470N02322A →) (S/N C471N01526B →)**KEY:****A: Without Three Function Switches****B: With Three Function Switches**

ITEM	PART NO.	DESCRIPTION	QTY	
			A	B
	a 1554722	Control Handle (C470)	1
	c 1554724	Control Handle (C471)	1	..
1	1524674			
	1524666	Switch	2
2	1524674			
	1524666	Switch (Horn)	1	1
3	1524669			
	4027459	Button	1	1
4	1524670	Button	1	3
5	1539723	Housing (Top)	1	1
6	1539724	Printed Circuit Board	1	1
7	1539726	Housing (Bottom)	1	1
8	1624194	Boot	1	1
9	1506737	Kit-Detent	1	1
	b 1583604	Kit-Clamp (10 Degree Clamp Kit)	1	1
	b 1548614	Kit-Handle	1	1

FOOTNOTES:**a** Four Function Hydraulics**c** Two and Three Function Hydraulics**b** Not Illustrated

LIFT CONTACTOR**KEY:****A: "E" Construction****B: "EE" Construction**

ITEM	PART NO.	DESCRIPTION	QTY	
			A	B
	1456859	Contactors	1
	1460319	Contactors (Lift)	1	..
1	2034484	Contact Assembly (Fixed)	2	2
2	2035396	Contact Assembly (Moving)	1	1
3	1458450	Cover	1	..
3	2034483	Cover	1
4	383977	Screw and Washer Set	2	2
5	1458451	Return Spring	1	..
5	2304334	Spring	1
6	1460748	Coil and Frame	1	..
6	2306344	Coil and Frame	1
7	2305096	Insulator	2
8	2304652	Screw	2
9	2302583	Shroud	1
10	383981	Base	1	1
11	1456865	Shield	2
12	2034488	End Cap	1	1
13	Plunger	1	..
14	2310691	Kit-Switch	1	..
14	2052148	Contact (Auxiliary)	1	..
14	2052149	Plunger	1	..
14	2052150	Screw	2	..
	383983	Kit-Contactor	1	1

3

DRIVE UNIT

POWER STEER ARRANGEMENT
(→ S/N C470N01789Z) (→ S/N C471N01512Z)

ITEM	PART NO.	DESCRIPTION	QTY
1	1457139	Knob	1
2	2045473	Bushing	1
3	1457137	Steering Wheel	1
4	15135	Washer	1
5	190930	Snap Ring	1
6	1486469	Bracket	1
7	1483516	Bracket	1
8	2303164	Screw	1
9	15154	Lockwasher	1
10	15054	Nut	1
11	18515	Washer	2
12	15155	Lockwasher	2
13	15055	Nut	2
14	15056	Nut	2
15	15156	Lockwasher	1
16	16085	Capscrew	3
17	15156	Lockwasher	5
18	376203	Capscrew	3
19	2042519	Steering Pump (☞ Figure 4-3).....	1
20	16549	Fitting	1
21	16547	Fitting	1
22	16540	Connector	2
23	16330	Capscrew	2
24	177949	Lockwasher	2
25	2047133	Steering Motor (☞ Figure 4-6).....	1
26	222400	Fitting	2
26	16485	O-Ring	1
27	380699	Sprocket	1
28	221777	Washer	1
29	17422	Locknut	1
30	1510655	Hose Assy (Med-High Pressure)	2
31	16556	Fitting (Elbow)	1
32	110178	Fitting	1

HYDRAULIC STEER MOTOR
(→ S/N C470N01789Z) (→ S/N C471N01512Z)

ITEM	PART NO.	DESCRIPTION	QTY
	2047133	Steering Motor	1
1	2307241	Screw	4
2	2304993	Flange	1
3	2309310	Seal	1
4	2309903	Washer	1
5	2307574	Seal	1
6	2307384	Seal	1
7	2305959	Bearing	1
8	2304353	Needle Bearing	1
9	2048454	Woodruff Key (for Tapered Shaft)	1
10	2048455	Housing	1
11	2305510	Drive Gear	1
12	2311711	Seal	3
13	2309765	Plate	1
14	2302574	Kit-Gear	1
15	2303998	End Cap	1
16	2308606	Screw	7
17	222442	Fitting	1

5

BRAKE/ACCELERATOR SYSTEM

BRAKE PEDAL AND OPERATOR SENSING SWITCH**KEY:****A: Before 6/02****B: After 6/02**

ITEM	PART NO.	DESCRIPTION	QTY	
			A	B
1	1498078	Floormat Assembly	1	1
1	1498075	Floormat	1	1
1	1460328	Floorplate	1	1
2	2032119	Switch	1	1
3	1473819	Floorplate	1	1
4	2304627	Hose	1	1
5	2308077	Hose	1	1
6	1457172	Master Cylinder (☞ Figure 5-5).....	1	1
6	2305783	Master Cylinder (☞ Figure 5-5).....	1	1
7	18513	Capscrew	2	..
8	1463593	Bolt	1	1
9	1463586	Bushing	1	1
10	372650	Pin	1	1
11	1457122	Brake Pedal	1	1
12	15055	Nut	2	..
13	15155	Lockwasher	2	..
14	15172	Washer	1	1
15	15200	Cotter Pin	1	1
16	1457180	Pad	1	1
17	1512440			
	302399	Nut	1	1
18	1607437	Clamp	1	1
	a 2046308	Clamp (Wire)	1	1

FOOTNOTES:**a** Not Illustrated

CLICK HERE TO **DOWNLOAD** THE COMPLETE MANUAL

- Thank you very much for reading the preview of the manual.
- You can download the complete manual from: www.heydownloads.com by clicking the link below



- Please note: If there is no response to CLICKING the link, please download this PDF first and then click on it.

CLICK HERE TO **DOWNLOAD** THE COMPLETE MANUAL

KEY:**A: 24 Volt****B: 36 Volt**

ITEM	PART NO.	DESCRIPTION	QTY	
			A	B
	2041866	Pump	1	..
	2041868	Pump	1
1	2303239	Retaining Ring	1	1
2	1371741	Seal	1	1
3	2308872	Flange	1	1
4	1371744	Back-Up Ring	4	4
5	1371743	Seal	4	4
6	Bushing	2	2
7	2052235	O-Ring	2	2
8	Pump Body	1	1
9	Idler Gear	1	1
10	Drive Gear	1	1
11	1376425	End Cover	1	1
12	2310978	Bolt	4	..
12	2308497	Bolt	4
	ab 1460539	O-Ring	2	2
	1371746	Kit-Seal	1	1

FOOTNOTES:**a** Included in Seal Kit 1371746**b** Not Illustrated

7

MAST-TWO STAGE LIMITED FREE-LIFT

SECTION 8

MAST-THREE STAGE FULL FREE-LIFT

DESCRIPTION	PAGE
CHAINS, PINS, AND ANCHORS	
THREE STAGE FULL FREE-LIFT	8-14
CYLINDER INSTALLATION	
THREE STAGE FULL FREE-LIFT	8-16
FREE-LIFT CYLINDER	
N30XMR3, N35XMR3, N40XMR3, N25XMDR3 STANDARD	8-22
FREE-LIFT MANIFOLD	
THREE STAGE FULL FREE-LIFT - N30XMR3, N35XMR3, N40XMR3, N25XMDR3 STANDARD	8-12
HEADER HOSE	
TWO AND THREE STAGE - N30XMR3, N35XMR3, N40XMR3, N25XMDR3 STANDARD	8-6
HOSE ARRANGEMENT	
5.5 IN MAST	8-8
6.9 IN. MAST	8-10
LIFT LIMIT SWITCH	
THREE STAGE FULL FREE-LIFT	8-24
MAIN LIFT CYLINDER	
THREE STAGE FULL FREE-LIFT - N30XMR3, N35XMR3, N40XMR3, N25XMDR3 STANDARD	8-18
MAIN LIFT CYLINDER ASSEMBLY	
(NS040-050AF)	8-20
OUTER, INTERMEDIATE, AND INNER	
THREE STAGE FULL FREE-LIFT - N30XMR3, N35XMR3, N40XMR3, N25XMDR3 STANDARD	8-2

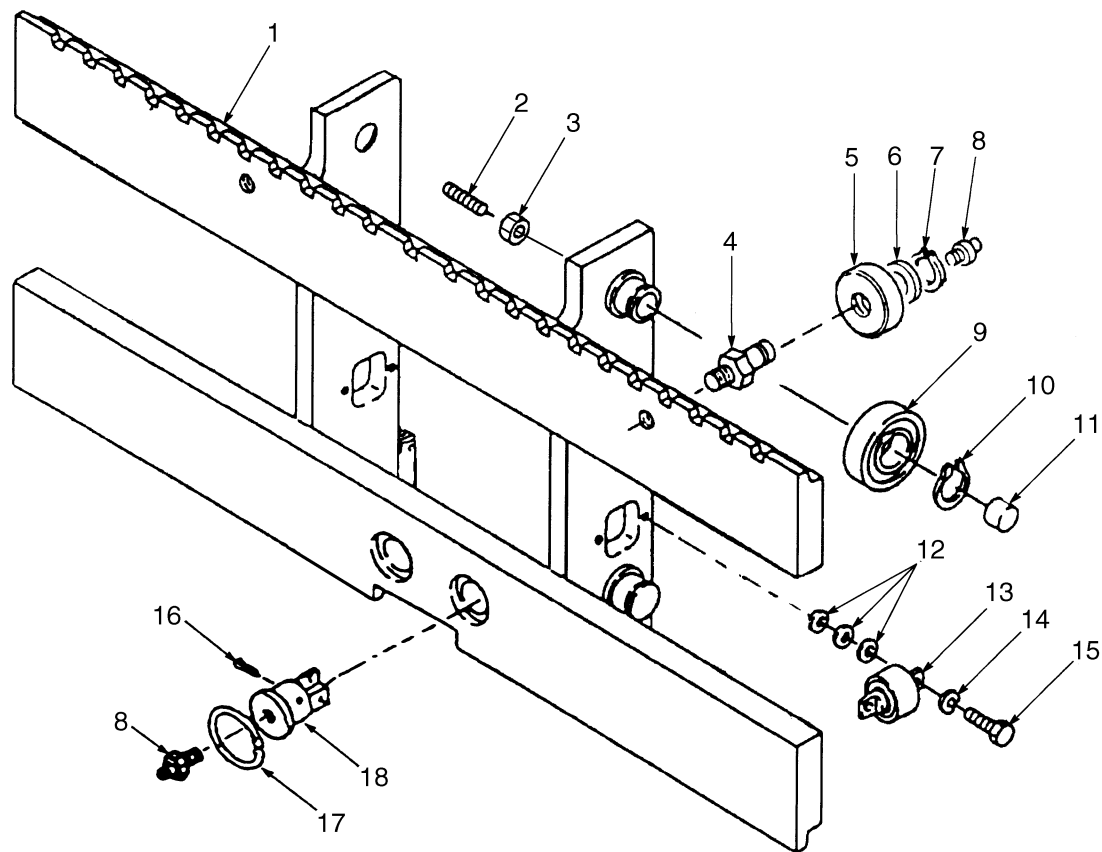
**HOSE ARRANGEMENT
6.9 IN. MAST**

ITEM	PART NO.	DESCRIPTION	QTY
1	201783	Fitting	2
1	1500830	Manifold	1
2	14586	T-Fitting	1
3	2307423	Bracket	1
4	292508	Capscrew	2
5	239503	Nut	2
5	292681	Lockwasher	13
6	2305027	Hose Assy	1
7	2307631	Hose Assy	2
8	2034863	Hose Assy	1
9	2056744	Hose Assy	1
10	16447	Fitting	4
11	2035309	Hose Assy	2
12	2308943	Retainer	2
13	388049		
	292682	Lockwasher	4
14	287854	Capscrew	4
15	2055948	Tube	1
16	1501076	Cable Assy	2
17	16460	Fitting	1
18	2303674	Hose Sheave	1
18	1344820	Snap Ring	1
18	15133	Washer	1

**MAIN LIFT CYLINDER ASSEMBLY
(NS040-050AF)**

ITEM	PART NO.	DESCRIPTION	QTY
	2046273	Cylinder Assy (95/217 in.)	1
	2046274	Cylinder Assy (107/249 in.)	1
	2046275	Cylinder Assy (119/279 in.)	1
1	1310370	Rod Wiper	1
2	1356752	Rod Seal	1
3	1355409	Gland	1
4	59229	O-Ring	1
5	2311984	Spacer (95/217 in.)	1
5	2306388	Spacer (107/249 in.)	1
5	2305372	Spacer (119/279 in.)	1
6	2046288	Rod (95/217 in.)	1
6	2046290	Rod (107/249 in.)	1
6	2044294	Cylinder Rod (119/279 in.)	1
7	257913	Check Valve	1
8	39348	O-Ring	1
9	297531	Washer	1
10	187388	Snap Ring	1
11	335012	Back-Up Ring	1
12	334156	Rod Seal	1
13	1356751	Wear Ring	1
14	1356748	Piston Ring	1
15	2044278	Tube Wldmt-Cylinder (95/217 in.)	1
15	2044279	Tube Wldmt-Cylinder (107/249 in.)	1
15	2044281	Tube Wldmt-Cylinder (119/279 in.)	1
17	2307856	Hyd Velocity Fuse	1
17	16485	O-Ring	1
	186061	Lubricant	AR

**CARRIAGE (FIGURE 9-3)
STRADDLE — N50XMA3**



BP170030

CARRIAGE
INNER FRAME – N30-40XMR3

ITEM	PART NO.	DESCRIPTION	QTY
1	1479089	Frame (Rear) (Single Reach)	1
1	1494332	Frame (Rear) (Double Reach)	1
2	1476622	Bushing	2
3	1479251	Valve Block	1
4	1502990	Bracket	1
5	2308558	Spacer	2
6	2305275	Roller (3.1 in.)	2
6	2309266	Roller (3.0 in.)	2
6	2309614	Roller (2.9 in.)	2
7	2308542	Washer	2
8	2309514	Load Roller	6
9	2311941	Snap Ring	6
10	2044514	Retaining Ring	2
11	16041	Grease Fitting	12
12	2310327	Side Roller	2
13	292683	Lockwasher	4
14	292527	Capscrew	4
15	2310773	Wear Plug	2
15	296131	Nut	2
16	2048271	Hose Assy	2
17	2047808	Hose Assy	2
18	110322	Clamp	4
19	16539	Fitting	4
20	14591	Plug	4
21	292507	Capscrew	2
22	1517512	Bracket	1
23	292680	Washer	13
24	16456	Fitting	2
25	132861	Capscrew	2
26	b 1487212	Sheave	1
26	c 1553935	Sheave	1
27	2306377	Shim (0.125 in.)	2
28	2305581	Shim (0.030 in.)	2
29	b 12898	Snap Ring	1
29	c 12898	Snap Ring	3
30	320157	Washer	4
31	136703	Capscrew	2
32	292681	Lockwasher	10
33	2304805	Hose Clamp	4
34	296379	Washer	2
35	287817	Capscrew	7
36	292501	Capscrew	7
37	320156	Washer	1
38	1495182	Plate	2
39	316834	Nut	1
40	239503	Nut	2
41	1502991	Check Valve	1
42	2046919	Valve Block	1
43	16556	Fitting (Elbow)	2
44	16574	Fitting	2

INTEGRAL TILT ASSEMBLY
N25XMDR3, N30-40XMR3

ITEM	PART NO.	DESCRIPTION	QTY
	1476619	Tilt Carriage	1
	1491573	Tilt Carriage (Double Reach)	1
1	1495883	Washer	2
2	4028369	Washer	2
3	4028368	Screw	2
4	4028362	Screw	2
5	4028367	Screw	2
6	1495884	Hook	2
7	1496018	Frame	1
8	1495890	Pin	2
9	1495882	Bushing	2
10	1495871	Bushing	2
11	1495900	Cylinder Assy	1
12	1518883	Housing	2
13	1514225	Wear Ring	2
14	1513981	Cylinder Rod Assembly	2
15	1514222	O-Ring	2
16	1514223	Back-Up Ring	2
17	1513982	Bushing	2
18	1518881	Snap Ring	2
18	1514228	Lockring (Alternate Part)	2
19	1514226	Seal	2
20	1514224	Wiper	2
21	1495929	Frame	1
22	4028365	Screw	1
23	4028361	Screw	2
24	287817	Capscrew	2
25	292680	Washer	2
26	1495599	Plate	2
27	1492291	Pin	2
	1518884	Kit-Seal (Tilt Cylinder)	1

SIDE-SHIFT ASSEMBLY
C471 (S/N C471N01523A →)

ITEM	PART NO.	DESCRIPTION	QTY
	2063095	Side-Shift Carriage	1
1	Bearing (Upper)	2
1	Bearing (Upper)	2
2	1551530	Cylinder (4")	1
2	1551302	Kit-Seal	1
2	1551304	Retainer	2
3	Bearing (Lower)	2
3	Bearing (Lower)	2
4	Nut	4
5	Lower Hook	2
6	221775	Washer	4
7	Capscrew	4
8	1551296	Label	2
9	1551297	Kit-Fork Stop	1
10	1551299	Reducer	2
11	1551300	Roll Pin	2
12	201766	Fitting	2
12	16483	O-Ring	2
13	2306077	Hose Assy	2
14	162155	Fitting	2
14	16484	O-Ring	2
	1551290	Kit-Lower Hook	1
	1580622	Bearing Set (Upper)	1
	1580623	Kit-Bearing (Lower)	1

LIGHT AND FAN ASSEMBLY

ITEM	PART NO.	DESCRIPTION	QTY
	2036504	Light and Fan Assy	1
1	2045594	Lens	1
2	Housing	1
3	1363016	Lens	2
4	1364444	Bezel	2
5	2309223	Reflector	2
6	1302258	Bulb	2
7	2045608	Socket	2
8	1516735	Nut	4
9	1464067	Dc-Dc Converter	1
10	1464085	Fan (12 Volt)	1
11	1464093	Switch	1
12	1464094	Switch	1
13	1471697	Kit-Hardware	1
13	1486513	Bracket (Short)	1
13	1486515	Bracket (Long)	2
13	138573	Washer	4
13	220446	Screw	4
14	1500283	Wire Harness	1
	a 2033612	Strap Clamp	3
	a 1516737	Fuse (8 Amp)	1

FOOTNOTES:**a** Not Illustrated

AMBER STROBE LIGHT

ITEM	PART NO.	DESCRIPTION	QTY
1	2034636	Strobe Light	1
1	1520506	Bulb	1
1	1586999	Lens	1
2	2035661	Guard	1
3	2044494	Bracket	2
4	18473	Capscrew	4
5	15152	Lockwasher	6
6	15154	Lockwasher	4
7	15054	Nut	4
8	16729	Screw	2
9	1301727	Clamp	6
10	2037188	Wire Harness (Brake Switch)	1
11	2036891	Wire Harness (Light)	1
12	1305672	Pin	1
13	1389587	Diode	1
14	2037348	Resistor	1
15	2033612	Strap Clamp	3
16	1498268	Bracket	1
	1500376	Wire Harness (Y Adapter) (Required with Strobe Light and Working Lights)	1

NUMERICAL INDEX (continued)

PART NO.	PAGE	ITEM	PART NO.	PAGE	ITEM	PART NO.	PAGE	ITEM	PART NO.	PAGE	ITEM
	8-11	1		8-17	1		8-15	5	296165	8-7	14
	8-13	9	257913	8-18	8	292654	6-17	15	296167	7-11	22
201784	6-9	23		8-21	7	292680	2-4	45		7-15	18
213100	9-6	7	259747	10-10	1		6-23	17	296216	6-21	24
214364	7-11	10		10-11	1		6-23	20		9-27	39
	7-15	7	265787	7-8	7		7-5		296225	8-7	12
216895	1-3	11	266277	2-24	2		7-15	9	296379	6-21	25
	2-4	40	269200	1-3	5		8-13	13		6-21	29
218006	5-3	3	275493	2-29	33		9-15	23		6-23	22
220277	5-3	33	275494	2-29	37		9-19	23		6-23	26
220283	6-11	2	275498	2-29	36		9-25	25		9-11	40
220361	6-17		275661	1-9	16		9-27	45		9-15	34
220363	2-24	6	280313	6-4	38	292681	3-7	28		9-19	34
	6-11	12	286082	4-17	4		4-5	29	296420	6-21	16
220446	10-15	13		4-19	6		6-21	3		6-23	16
220473	2-3	12	286097	4-17	11		6-23	3		7-3	10
220735	2-3	13		4-19	10		7-11	9		8-3	11
220953	1-7	15	287817	6-21	15		7-11	21	296423	10-9	4
221059	5-3	25		9-11	7		7-15	10	296426	7-3	17
221357	5-3	5		9-15	35		7-15	19		8-3	21
221520	3-7	9		9-19	35		8-7	13		8-7	8
	3-7	12		9-25	24		8-11	5	296431	3-11	16
221623	1-7	3		9-27	44		8-13	7		10-3	14
221638	7-3	18	287851	6-19	11		8-13	16	297530	7-8	8
	7-13	5	287854	6-21	18		9-9	28	297531	8-18	12
	8-3	22		6-23	18		9-11			8-21	9
221767	5-3	28		7-7	5		9-15	32		8-22	8
221771	10-9	3		8-11	14		9-19	32	297538	8-22	6
221775	1-7	4		8-17	5	292682	4-5	17	297649	7-7	1
	7-13	6	292501	2-3	21		8-11	13	300937	10-9	2
	10-5	6		3-13	24	292683	3-7	38	302020	2-13	14
221777	4-3	28		6-23	15		3-15			2-15	14
	5-3	6		7-3			9-6	14	302398	6-9	17
222400	4-3	26		7-15	8		9-15	13	302399	5-9	17
	4-5	26		8-13	12		9-19	13	309062	8-22	4
222442	4-13	17		9-15	36	292685	3-11	11	310253	3-7	22
	6-24	4		9-19	36	292687	3-7	31	313828	10-3	4
	6-24	9	292502	7-5		293704	10-3	13		10-3	6
222673	10-19	7	292507	9-15	21	293780	3-23		316834	9-15	39
	10-20	7		9-19	21	293781	6-21	17		9-19	39
227556	10-10	1	292508	8-11	4	296012	3-13	6	317731	8-15	3
	10-11	1		8-13	6		3-23		317733	8-15	3
230882	9-9	22		9-9	27	296015	3-13	1	318707	3-3	11
	9-11	38		9-11	11		3-13	7		3-13	12
239503	3-13	5	292513	7-3	9	296020	3-13	3		3-15	
	7-11	11		8-3	12	296030	3-13	8		3-17	11
	8-11	5	292514	4-5	16	296131	7-3	4	318709	3-13	13
	8-13	8	292527	9-15	14		9-6	3		3-13	22
	9-15	40		9-19	14		9-15	15	320155	6-9	19
	9-19	40	292529	3-7	37		9-19	15	320156	6-21	20
246001	9-6		292530	3-15		296137	3-7	32		6-23	20
248212	8-7	26	292600	8-7	32	296159	9-20	48		7-5	

CLICK HERE TO **DOWNLOAD** THE COMPLETE MANUAL

- Thank you very much for reading the preview of the manual.
- You can download the complete manual from: www.heydownloads.com by clicking the link below



- Please note: If there is no response to CLICKING the link, please download this PDF first and then click on it.

CLICK HERE TO **DOWNLOAD** THE COMPLETE MANUAL