

PARTS MANUAL

**YARD MASTER
HR45-48EC
(A228)**

CUSTOMER EDITION

HYSTER

CLICK HERE TO **DOWNLOAD** THE COMPLETE MANUAL

- Thank you very much for reading the preview of the manual.
- You can download the complete manual from: www.heydownloads.com by clicking the link below



- Please note: If there is no response to CLICKING the link, please download this PDF first and then click on it.

CLICK HERE TO **DOWNLOAD** THE COMPLETE MANUAL

HOW TO USE THE ILLUSTRATED PARTS MANUAL

This parts manual describes and illustrates assemblies, subassemblies, and detail parts needed for service replacement.

The different constructions are indicated by keys and footnotes. The callouts correspond to descriptions found on the next page.

The diagram illustrates the layout of the parts manual with the following sections and callouts:

- 1:** TABLE OF CONTENTS
- 2:** SECTIONS
- 3:** UNIT CODE G160 EUROPE
- 4:** HYSTER logo
- 5:** SECTION 11 NUMERICAL INDEX
- 6:** TRANSMISSION HOUSING (S/N G160-2628)
- 7:** KEY: A: Diesel, B: Gasoline and LPG
- 8:** ITEM, PART NO., DESCRIPTION columns
- 9:** QTY A, B columns
- 10:** TRANSMISSION HOUSING (S/N G160-2628)

SECTION 11 NUMERICAL INDEX

PART NO.	PG	ITEM	PART NO.	PG	ITEM	PART NO.	PG	ITEM
138	5-9	31	5-17	42	16481	6-25	3	6-7
139	5-13	31	7-13	8	6-25	4	16882	9-7
12921	3-12	10	1-4	45	6-26	53	16883	6-25
14269	5-5	8	5-9	16	6-26	65	16982	7-5
			5-13	16	10-3	16		8-5
				16	6-26	48	16989	9-5
				23	6-11	3		6-25
				42	16484	6-11	9	17051
				34		6-13	101	9-5
				13		6-25	7	17061
				10		6-25	8	17151
				21		6-25	11	3-11
				27		9-7	7	17775
								6-25
								22

SECTIONS

- 1
- 2
- 3
- 4
- 5
- 6
- 7
- 8
- 9
- 10
- 11

TRANSMISSION HOUSING (S/N G160-2628)

ITEM	PART NO.	DESCRIPTION	QTY A	QTY B
		Transmission	1	1
		Transmission	1	1
		Case	2	2
1	2023418	Bearing Cap	4	4
2	296426	Washer	1	1
3	293692	Capscrew	2	2
4	2021390	Cover	4	4
5	1371656	Collar Pin	1	1
6	2021329	O-Ring	4	4
7	2021915	Plug	22	22
8	2021675	Housing	39	39
9	2021336	Pin	1	1
10	287860	Capscrew	1	1
11	292682	Lockwasher	8	8
12		Hydraulic Pump (see Figure 6-6)	8	8
13		Gasket	1	1
14	2021345	Capscrew	1	1
15	214364	Washer	1	1
16	296418	Temperature Switch	9	9
17	2021388	Breather	9	9
18	2021389	Dipstick	2	2
19	2021383	Capscrew	3	3
20	292515	Nut	3	2
21	136692	Capscrew	4	4
22	292527	Capscrew	4	4
23	292531	Lockwasher	4	4
24	292683	Capscrew	1	1
25	293637	Capscrew	1	1
26	296420	Washer	1	1
	996403	Transmission Kit (Include Item 7)		
	996405	Transmission Kit (Include Item 14)		

This Parts Manual is divided into 11 major sections which are listed above. Quick reference can be made by placing the right thumb on the tab of the desired section, bending the bottom edge of the manual, and turning the pages to the corresponding tab.

©2001 HYSTER COMPANY See Service Manual for service procedures. 3-15

HP990135

HOOD AND FENDERS

ITEM	PART NO.	DESCRIPTION	QTY
1	1472155	Fender	1
2	1472157	Fender	1
3	1471127	Bolt	12
4	1472158	Washer	24
5	1468174	Nut	12
6	1472159	Support	2
7	1472165	Bolt	8
8	a 1468907	Washer	8
8	b 1469191	Washer	8
9	1470955	Nut	8
10	1472166	Support	2
11	1472167	Mirror	2
12	292504	Capscrew	8
13	1472204	Nut	8
14	a 1469191	Washer	10
15	1472205	Support	2
16	1472206	Cover	1
17	1472208	Cover	1
18	a 1472209	Cover	1
18	b 1519073	Cover	1
19	1472210	Cover	1
20	1472211	Plate	1
21	287854	Capscrew	6
22	1468893	Nut	6
23	1469149	Washer	10
24	a 1468946	Bolt	4
24	b 1471127	Bolt	4
25	a 1470942	Nut	4
25	b 1468174	Nut	4
26	a 320162	Washer	4
26	b 1472158	Washer	4
27	1468223	Nut	8
28	1472216	Baffle	2
29	287816	Capscrew	30
30	1476421	Washer	30
31	1472217	Washer	30
32	1468262	Nut	32
33	1472218	Handle	4
34	a 1469000	Bolt	8
34	b 296011	Capscrew	8
35	1472220	Lock	2
36	a 292501	Capscrew	2
36	b 296289	Capscrew	2
37	1472222	Gas Spring	2
38	a 1469692	Bolt	4
38	b 1519076	Axle	4
39	1472224	Plate	2
40	a 1468138	Bolt	6
40	b 1473132	Bolt	6
41	a 1472225	Bracket	1

CABIN
(S/N A228001510 →)

ITEM	PART NO.	DESCRIPTION	QTY
1	1472312	Cover	1
2	1519729	Cover	1
3	292500	Capscrew	6
4	320157	Washer	6
5	1472415	Washer	6
6	1472326	Cover	6
7	1488024	Bracket	1
8	1472318	Bolt	8
9	1519848	Bolt	2
10	1519849	Nut	1
11	1519850	Nut	3
12	1519851	Box	1
13	1469043	Bolt	4
14	1468937	Bolt	2
15	1472285	Nut	6
16	1519852	Hook	1
17	296289	Capscrew	2
18	1519854	Nut	2
19	1491187	Anti-Slip Tread	1
20	1519857	Plate	1
21	1519858	Rivet	2
22	1472317	Catch	1
23	1519859	Plate	1
24	1519860	Support	1
25	1518998	Bolt	2
26	320157	Washer	2
27	316835	Nut	1
28	1479704	Cap	2
29	1519863	Plug	2
30	1482819	Vent	2
31	1520041	Sliding Window	1
32	1520042	Front Window	1
33	1531397	Sealant	1
34	1531397	Sealant	1
35	1520044	Window	1
36	1520045	Window	1
37	1531397	Sealant	1
38	1531397	Sealant	2
39	1520118	Wiper Motor	1
40	1520119	Wiper Motor	1
41	1520120	Reservoir	1
42	1469027	Bolt	2
43	1519943	Nut	2
44	1520121	Tube	1
45	1520122	Fitting	2
46	1520123	Wiper Arm	1
47	1520124	Wiper Blade	1
48	1472302	Wiper Blade	1
49	1520125	Wiper Arm	1
50	1519945	Wire Harness	1

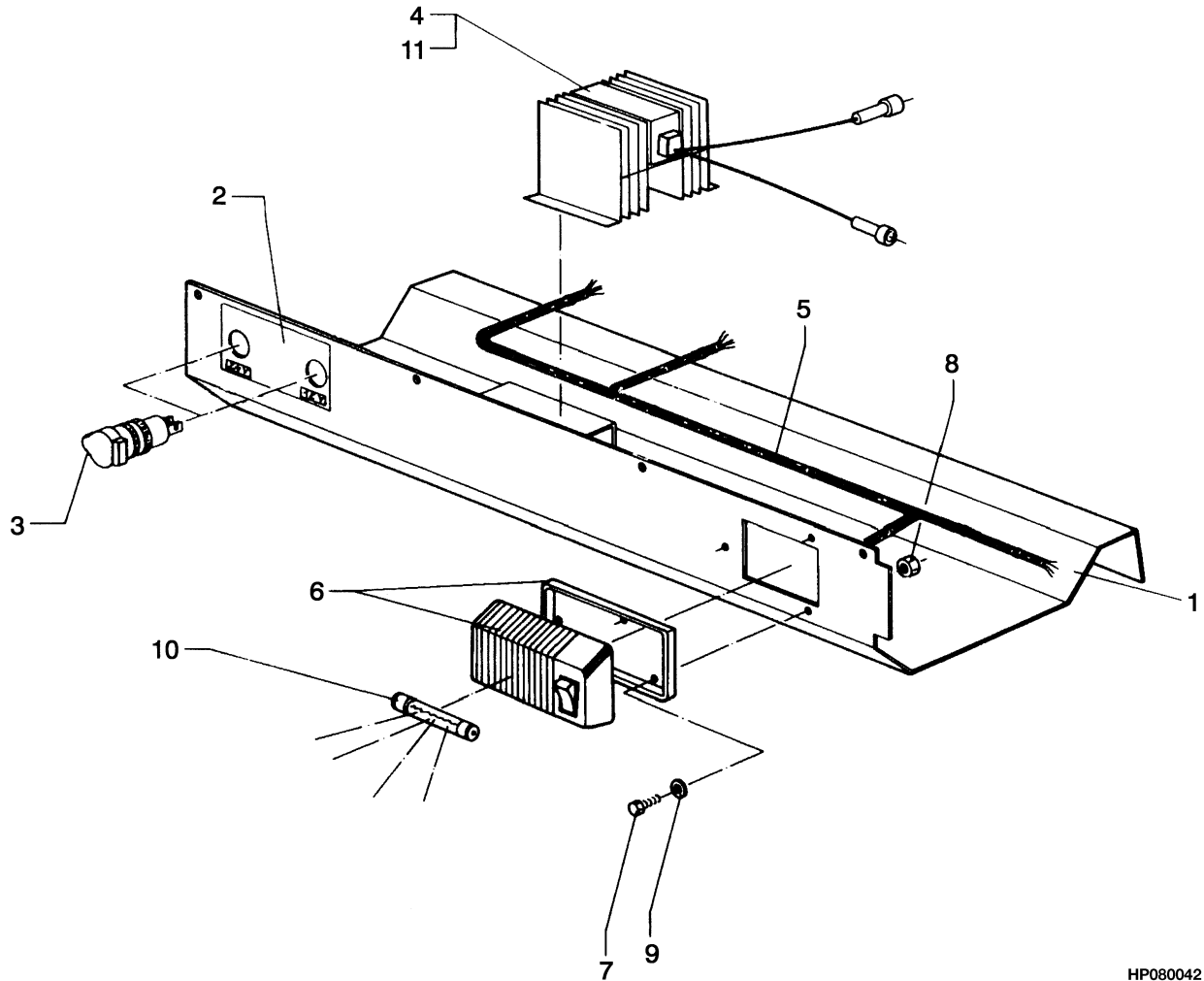
SEAT
(S/N A228O01510 →)

ITEM	PART NO.	DESCRIPTION	QTY
1	1520126	Seat-Full Suspension	1
2	2047608	Capscrew	4
3	1468223	Nut	4
4	1520128	Plug	1
5	1521147	Kit-Seat Belt (Not Illustrated)	1

ENGINE AND ATTACHING PARTS

ITEM	PART NO.	DESCRIPTION	QTY
1	1472526	Support	1
2	1472553	Support	1
3	292581	Capscrew	4
4	1468213	Washer	4
5	1472557	Support	2
6	296024	Capscrew	6
7	1472558	Support	2
8	1472559	Spacer	2
9	1472560	Spacer	4
10	1472561	Bolt	2
11	1472562	Washer	2
12	1472563	Nut	2
13	1472564	Cable	1
14	1468946	Bolt	4
15	292683	Lockwasher	4
16	320162	Washer	2
17	1472565	Support	1
18	1469334	Bolt	2
19	293779	Lockwasher	2
20	1472566	Spring	1
21	1472567	Plate	2
22	1472568	Clamp	1
23	1472569	Fitting	1
24	1472750	Oil Seal	1
25	1472514	Hose	4
26	1468150	Collar	15
27	1472572	Bolt	1
28	1469303	Bracket	1
29	1472573	Bolt	2
30	1472574	Plate	1
31	1468109	Bracket	4
32	1468223	Nut	9
33	1472575	Washer	8
34	1472576	Nut	8
35	1472577	Support	1
36	1468946	Bolt	2
37	292683	Lockwasher	2
38	1472578	Plate	1
39	1472204	Nut	2
40	1472580	Joint	2
41	1472581	Plate	1
42	1472582	Bolt	1
43	292682	Lockwasher	1
44	1472583	Plate	1
45	1472523	Clamp	3
46	1472585	Manifold	1
47	1472514	Hose	2
48	1472588	Engine Assy	1
49	1472589	Spacer	1
50	1472590	Fan	1
51	1472591	Support	1

WIRING ROOF PLATE (FIGURE 4-5)
(S/N A228O01501 ↔ S/N A228O01509)



HP080042

ITEM	PART NO.	DESCRIPTION	QTY
1	1472272	Plate	1
2	1472273	Label	1
3	1472274	Connector	2
4	1472275	Converter	1
5	1472276	Wire Harness	1
6	1472277	Dome Light	1
7	1472278	Bolt	3
8	1472279	Nut	3
9	320154	Washer	3
10	1472281	Bulb	1
11	1472282	Converter	1

CONSOLE
RIGHT HAND (S/N A228001510 →)

ITEM	PART NO.	DESCRIPTION	QTY
1	1520206	Plate	1
2	296159	Capscrew	2
3	1469078	Washer	2
4	1519866	Nut	2
5	1520208	Socket	3
6	1520209	Switch (20 or 40 Foot Selection)	1
7	1520210	Adhesive	1
8	1472483	Switch (Spreader Width)	1
9	1520211	Switch (Twistlock)	1
10	1520212	Range Selector	1
11	1469264	Switch (Twistlock)	1
12	1520213	Adhesive	1

FUSE PLATE
(S/N A228O01510 →)

ITEM	PART NO.	DESCRIPTION	QTY
1	1520220	Plate	1
2	1469246	Bolt	10
3	1469245	Housing	10
4	1472366	Seal	10
5	1468937	Bolt	12
6	1469243	Spacer	6
7	1472365	Washer	6
8	1520257	Cap	6
9	1520258	Plate	1
10	1520260	Module	1
11	1520261	Diode	2
12	1520262	Fuse (5 Amp)	5
13	1520263	Fuse (7.5 Amp)	3
14	1520264	Fuse (10 Amp)	9
15	1520265	Fuse (15 Amp)	6
16	1520266	Fuse (20 Amp)	3

**CLUTCH
FORWARD AND SECOND**

ITEM	PART NO.	DESCRIPTION	QTY
1	1390857	Axle	1
2	1390813	O-Ring	1
3	1390814	Piston Ring	3
4	1390815	Stud	2
5	239503	Nut	2
6	1390816	Shim (0,406 mm)	1
6	a 1392413	Shim (0,610 mm)	1
6	a 1392414	Shim (0,787 mm)	1
6	a 1390817	Shim (0,991 mm)	1
6	a 1392415	Shim (1,194 mm)	1
6	a 1390864	Shim (1,397 mm)	1
6	a 1392416	Shim (1,600 mm)	1
6	a 1392417	Shim (1,803 mm)	1
6	a 1392418	Shim (2,007 mm)	1
6	a 1392419	Shim (2,21 mm)	1
6	a 1392420	Shim (2,388 mm)	1
6	a 1392421	Shim (2,591 mm)	1
6	a 1392422	Shim (2,794 mm)	1
7	1390818	Thrust Washer	1
8	1390819	Thrust Washer	1
9	1390820	Gear	1
10	1390821	Thrust Washer	2
11	1390822	Thrust Washer	1
12	1390823	Roller Set	1
13	1390824	Washer	1
14	1390825	Shim	2
15	1390826	Piston	2
16	1390827	Seal	2
17	1390828	Thrust Washer	1
18	1390829	Thrust Plate	1
19	1390830	Seal	2
20	1390831	Spring	2
21	1390832	Wear Ring	4
22	1390833	Ring	2
23	1390834	Wear Ring	2
24	1390835	Sleeve	1
25	1390836	Snap Ring	1
26	1390837	Sleeve	1
27	1390838	Snap Ring	1
28	1390839	Snap Ring (2,489 mm)	2
28	a 1385055	Snap Ring (2,388 mm)	2
28	a 1385054	Snap Ring (2,311 mm)	2
28	a 1385056	Snap Ring (2,21 mm)	2
28	a 1385057	Snap Ring (2,108 mm)	2
29	1390840	Thrust Washer	1
30	1475318	Gear	1
31	1390890	Needle Cage	1
32	1390850	Ring	3
33	1390892	Disk Carrier	1
34	1390854	Friction Disk (External)	20

TRANSMISSION VALVE ATTACHING PARTS

ITEM	PART NO.	DESCRIPTION	QTY
1	1390953	Gasket	1
2	1466944	Cover Plate	1
3	1390955	Gasket	1
4	1390956	Plate	1
5	1500221	Screw	11
6	1390958	Washer	11
7	1390959	Gasket	1
8	1390960	Plate	1
9	1390961	Gasket	1
10	1470519	Bolt	5
11	1390958	Washer	5
12	1469115	Bolt	11
13	1390958	Washer	11
14	1500214	Capscrew	1
15	1390958	Washer	1
16	1390900	Plug	1
17	1390901	O-Ring	1

SPEED SENSOR

ITEM	PART NO.	DESCRIPTION	QTY
1	1475357	Cap	1
2	1391022	Plug	1
3	1391021	O-Ring	1
4	1475358	Sensor	1
5	1391020	Sealing Ring	1
6	383412	Shim (1,549 mm)	1
6	a 383413	Shim (1,422 mm)	1
6	a 383414	Shim (1,194 mm)	1
6	a 383415	Shim (0,991 mm)	1
6	a 383416	Shim (2,007 mm)	1
6	a 383417	Shim (0,508 mm)	1
6	a 383418	Shim (0,305 mm)	1
6	a 383419	Shim (0,203 mm)	1
6	a 383420	Shim (1,600 mm)	1
6	a 383421	Shim (1,803 mm)	1
7	1466967	Sleeve	1

FOOTNOTES:**a** Optional

**SECTION 6
DRIVE AXLE**

DESCRIPTION	PAGE
DIFFERENTIAL	6-4
DRIVE AXLE	6-2
PLANETARY DRIVE	6-6
UNIVERSAL SHAFT	6-8

CLICK HERE TO **DOWNLOAD** THE COMPLETE MANUAL

- Thank you very much for reading the preview of the manual.
- You can download the complete manual from: www.heydownloads.com by clicking the link below



- Please note: If there is no response to CLICKING the link, please download this PDF first and then click on it.

CLICK HERE TO **DOWNLOAD** THE COMPLETE MANUAL

HAND PUMP
(S/N A228O01510 →)

ITEM	PART NO.	DESCRIPTION	QTY
1	1472878	Hand Pump	1
2	1472886	Kit-Seal	1
3	1469837	Fitting	1
4	1469841	Fitting	1
5	1470379	O-Ring	1
6	1470430	Fitting	2
7	1470431	Fitting	2
8	1472887	Fitting	1
9	1472670	Fitting	1

PARK BRAKE CYLINDER

ITEM	PART NO.	DESCRIPTION	QTY
1	1472836	Brake Assembly	1
2	1472837	Brake Carrier	1
3	1472838	Brake Disk (Brake)	1
4	1472839	O-Ring	2
5	1472840	Bolt	12
6	1472841	Bleeder Valve	1
7	1472842	Dust Cap	1
8	1472844	Brake Pad	2
9	1472845	Lockring	1
10	1472846	Spring	1
11	1472848	Nut	1
12	1472849	Stud	1
13	1472850	Cover	1
14	1472852	Ring	1
15	1472853	Piston	1
16	1472855	Pin	1
17	1472857	Bolt	2
18	1472858	Nut	2
19	1472859	Cotter Pin	2
20	1472860	Kit-Seal	1
21	1472400	Magnet	2
22	1472861	Shim	3
23	1472862	Bolt	2
24	1472863	O-Ring	1

PARK BRAKE CIRCUIT

ITEM	PART NO.	DESCRIPTION	QTY
1	1472915	Tube	1
2	1472916	Tube	1
3	1471975	Flange	4
4	1472918	Clamp	18
5	293799	Capscrew	22
6	1468262	Nut	30
7	1470502	Fitting	8
8	1468126	Fitting	1
9	1468223	Nut	6
10	1468150	Collar	7
11	1472919	Tube	1
12	1472920	Fitting	1
13	1468637	Fitting	1
14	1470068	Fitting	2
15	1472921	Clamp	4
16	1472922	Plate	6
17	1472923	Bolt	2
18	1472924	Tube	1
19	1468129	Fitting	1
20	1472925	Tube	1
21	1468106	Bracket	2
22	296001	Capscrew	2
23	1472927	Plate	2
24	1468101	Hose	2
25	1472928	Plate	1
26	1471973	Hose	1
27	1472930	Tube	2
28	1472931	Fitting	1
29	1470498	Fitting	2
30	1468137	Bracket	6
31	293798	Capscrew	6
32	1472932	Hose	1
33	1468127	Fitting	2
34	1472933	Tube	1
35	1472934	Tube	1
36	1472935	Tube	1
37	1468111	Bracket	6
38	1391035	Screw	3
39	1472936	Fitting	1
40	1472937	Hose	1
41	1472938	Hose	1
42	1468080	Fitting	1
43	1469791	Fitting	1
44	1472939	Plate	1
45	1470590	Fitting	1
46	1470469	Hose	2
47	1468152	Collar	4
48	1470862	Hose	2
49	1472940	Hose	5
50	1472941	Hose	1
51	1468132	Fitting	3

**COOLING
BRAKE OIL**

ITEM	PART NO.	DESCRIPTION	QTY
1	1473109	Radiator	2
2	1473110	Shroud	1
3	1473111	Motor	1
4	1473112	Kit-Seal	1
5	1473113	Fan	1
6	1470622	Bolt	2
7	287854	Capscrew	10
8	1468893	Nut	16
9	1473122	Frame	1
10	1473123	Bolt	6
11	1469149	Washer	8
12	1470627	Plug	4
13	1460625	Cover	4
14	1468338	Fitting	2
15	1468638	Fitting	2
16	1473114	Washer	1
17	1469846	Bolt	1
18	1470666	Fitting	1
19	1470561	Seal	1
20	1469787	Fitting	2
21	1473115	Flange	1
22	1468080	Fitting	1
23	1468135	Fitting	1
24	1469839	Valve	1
25	1468078	Fitting	3
26	1468265	Fitting	1
27	1473126	Fitting	2
28	1469670	O-Ring	2
29	1473127	Hose	1
30	1473117	Hose	1
31	1469790	Hose	1
32	1470824	Hose	1

RETURN CIRCUIT

ITEM	PART NO.	DESCRIPTION	QTY
1	1472929	Hose	1
2	1468203	Bolt	4
3	1470938	Bolt	4
4	1468947	Nut	4
5	1472945	Tube	1
6	1472946	Tube	1
7	1468126	Fitting	3
8	1472937	Hose	2
9	1468095	Fitting	1
10	1468139	Fitting	1
11	1472948	Tube	1
12	1468106	Bracket	10
13	296001	Capscrew	1
14	1468262	Nut	1
15	1472942	Hose	1
16	1468124	Fitting	1
17	1472953	Tube	1
18	1472944	Hose Assy	1
19	1472921	Clamp	2
20	1472922	Plate	2
21	1469692	Bolt	2
22	1468643	O-Ring	2
23	1468223	Nut	2
24	1472961	Fitting	1
25	1468136	Fitting	1
26	1472962	Valve	1
27	1468093	Fitting	2
28	1472942	Hose	1
29	1469822	Hose	1
30	1470556	Fitting	1
31	1472964	Hose	1
32	1468149	Fitting	1
33	1468095	Fitting	1
34	1472965	Hose	1
35	1518383	Tube	1
36	Park Brake Valve (☞ Figure 8-13).....	1
37	Oil Tank (☞ Figure 9-14).....	1
38	Hydraulic Filter (☞ Figure 9-12).....	1
39	Control Valve (☞ Figure 9-7).....	1
40	Hand Pump (☞ Figure 7-3).....	1
41	a 296000	Capscrew	2
42	a 1468108	Nut	2

FOOTNOTES:

a S/N A228O01505 ↔ S/N A228O01509

ELECTRO VALVE PARK BRAKE
(S/N A228O01510 →)

ITEM	PART NO.	DESCRIPTION	QTY
1	1469199	Support	1
2	1675287	Solenoid Valve	1
3	1469133	Seal	1
4	1520299	Coil	1
5	1470443	Block	1
6	1468264	Fitting	2
7	1468265	Fitting	1
8	1468351	Plug	1
9	1470444	Fitting	1
10	1468135	Fitting	1
11	1469141	Fitting	1
12	1469198	Plug	2
13	1469837	Fitting	1
14	293758	Capscrew	4
15	1470628	Plug	4

**SECTION 10
BOOM**

DESCRIPTION	PAGE
BOOM CABLE SUPPORT	
HR-48-EC	10-34
BOOM HEAD	10-30
CYLINDER ATTACHING PARTS	
HR-45-EC	10-20
HR-48-EC	10-36
DAMPENING CYLINDER	10-45
DAMPENING CYLINDER ATTACHING PARTS	10-40
DAMPENING CYLINDER WITH BEAM	10-42
DERRICKING CYLINDER	10-44
DERRICKING CYLINDER ASSEMBLY	10-38
ELECTRICAL CIRCUIT	
HR-45-EC	10-14
HR-48-EC	10-22
END BOOM	
HR-45-EC	10-16
HR-48-EC	10-26
END BOOM CABLE SUPPORT	
HR-48-EC (S/N A228O01501 ↔ S/N A228O01509)	10-32
HYDRAULIC CIRCUIT	
HR-45-EC	10-6
HR-48-EC	10-2
HYDRAULIC TUBING	
HR-48-EC	10-10
INTERMEDIATE BOOM	
HR-48-EC	10-24
MAIN BOOM	10-28
MAIN BOOM CABLE SUPPORT	
HR-45-EC	10-18

HYDRAULIC TUBING
HR-48-EC

ITEM	PART NO.	DESCRIPTION	QTY
1	1471991	Hose	1
2	1469678	Fitting	1
3	1471992	Hose	1
4	1518383	Tube	1
5	1518382	Tube	1
6	1518381	Tube	1
7	1468126	Fitting	4
8	1468125	Fitting	3
9	1468124	Fitting	3
10	1471970	Hose	1
11	1471997	Hose	1
12	1471998	Hose	1
13	1468637	Fitting	1
14	1471999	Tube	1
15	1472000	Tube	1
16	1472001	Tube	1
17	1472002	Tube	1
18	1472003	Tube	1
19	1472004	Tube	1
20	1468103	Fitting	3
21	1468104	Fitting	3
22	1468129	Fitting	3
23	1472005	Tube	1
24	1472006	Tube	1
25	1472007	Tube	1
26	1472008	Hose	2
27	1472009	Hose	2
28	1472010	Hose	2
29	293799	Capscrew	34
30	1471975	Flange	7
31	1468262	Nut	48
32	1472012	Flange	7
33	296001	Capscrew	14
34	1468106	Bracket	7
35	1468132	Fitting	1
36	1468135	Fitting	1
37	1468142	Coupling (Male and Female 1/2)	1
38	1472014	Plug	1
39	1468094	Fitting	1
40	1468136	Fitting	1
41	1468144	Coupling (Male and Female 3/4)	1
42	1468145	Plug	1
43	1468093	Fitting	1
44	1468337	Fitting	1
45	1472015	Fitting	1
46	1472016	Plug	1
47	1472017	Flange	6
48	1471969	Plate	1
49	Park Brake Valve (☞ Figure 8-13).....	1

CYLINDER ATTACHING PARTS
HR-45-EC

ITEM	PART NO.	DESCRIPTION	QTY
1	1495272	Cylinder Assy	1
1	1547165	Gland	1
2	1472150	Support	1
3	1472097	Bolt	8
4	292682	Lockwasher	8
5	1472152	Bracket	1
6	1495273	Kit-Seal	1

BOOM HEAD

ITEM	PART NO.	DESCRIPTION	QTY
1	1472053	Boom Head	1
2	1471099	Washer	2
3	136985	Capscrew	4
4	1471134	Bolt	2
5	1468379	Gasket	2
6	1472061	Pin	1
7	1472062	Pin	1
8	1472063	Pin	1
9	1472064	Pin	1
10	292601	Capscrew	2
11	1566475	Pin	2
12	1472068	Bushing	2
13	1472069	Pin	1
14	292546	Capscrew	2
15	1470116	Grease Fitting	2
16	1468269	Washer	2
17	1469265	Bolt	3
18	1468223	Nut	3
19	1468175	Cover	2
20	Cylinder (Dampening) (☞Figure 10-20).....	1

MAIN FRAME

ITEM	PART NO.	DESCRIPTION	QTY
1	Rotator Assembly (☞Figure 11-11).....	1
2	Side-Shift Cylinder (☞Figure 11-8).....	1
2	1332284	Pin	2
2	1332285	Spacer	2
2	302408	Locknut	2
3	a 1473461	Bracket	1
3	b 1473470	Chain	1
4	Valve (☞Figure 11-10).....	1
5	Extension Cylinder (☞Figure 11-12).....	2
6	6990056	Bracket	2
6	1473464	Pin	4
6	6996099	Washer	4
6	6996194	Cotter Pin	4
7	Wear Pads (☞Figure 11-2).....	2
8	6996295	Bolt	12
8	6996296	Lockwasher	2
9	6990052	Strip	4
10	a 1461219	Kit-Bumper (☞Figure 11-3).....	2
10	b 6990051	Cover	4
11	6990053	Bumper	2
11	1473465	Kit-Seal	12
12	Twist Lock Cylinder (☞Figure 11-17).....	2
13	Twist Lock (☞Figure 11-15).....	2

FOOTNOTES:**a** S/N A228O01501 ↔ S/N A228O01509**b** S/N A228O01510 →

**HYDRAULIC SPREADER CONNECTION
HR-48-EC**

ITEM	PART NO.	DESCRIPTION	QTY
1	1468078	Fitting	3
2	1468077	Fitting	1
3	1475258	Fitting	1
4	1470888	Fitting	1
5	1469678	Fitting	1
6	1475265	Hose	1
7	1470556	Fitting	1
8	1475260	Fitting	2
9	1468385	Fitting	1
10	1475261	Clamp	2
11	1472522	Clamp	2
12	1468150	Collar	5
13	1475266	Hose	1
14	1468069	Hose	1
15	1475264	Fitting	1
16	1475267	Hose	1
17	1471035	Fitting	2

ROTATOR ASSEMBLY

ITEM	PART NO.	DESCRIPTION	QTY
1	Rotator Motor (☞Figure 11-7).....	1
2	6996014	Bolt	4
3	a 6990199	Key	4
4	6996036	Bolt	3
5	Box (Indicator Light) (☞Figure 11-18).....	1
6	6996304	Arm	4
7	6996303	Switch	2
8	6996305	Bolt	8
9	6996306	Gland	4
10	1473467	Bolt	36
11	1473468	Nut	72
12	302404	Locknut	72
13	1473469	Bolt	36
14	1473470	Chain	1
15	1473471	Carriage	1
16	6996028	Roll Pin	16
17	6996014	Bolt	24
18	6990288	Pad (Nylon)	8
19	a 6996021	Screw	12
19	b 1519036	Bolt	12
20	b 1519037	Key	4
21	6990290	Housing	4
22	a 6996310	Bolt	24
22	b 293714	Capscrew	24
22	a 6996311	Nut	24
22	b 302405	Locknut	24
23	6990289	Plate	8
24	a 1473472	Ring	1
24	b 1519040	Ring Gear	1
25	a 1473473	Rotator (Top)	1
25	b 1519041	Rotator	1
26	a 1519042	Washer	1
27	6990281	Cover Plate	1

FOOTNOTES:**a** S/N A228O01501 ↔ S/N A228O01509**b** S/N A228O01510 →

TWIST LOCK
(S/N A228O01510 →)

ITEM	PART NO.	DESCRIPTION	QTY
1	6990007	Pin	4
2	6990008	Housing	2
3	6996028	Roll Pin	8
4	6990294	Pin	4
5	6996082	Sensor	4
6	6990293	Bracket	4
7	6990291	Bracket	4
8	6996027	Spring	4
9	6990011	Pin	4
10	6990012	Crank (RH)	4
11	6996015	Ball Joint	4
12	6996016	O-Ring	8
13	6996018	Washer	8
14	6996028	Roll Pin	4
15	6990013	Collar	4
16	6999001	Bearing (Upper)	4
17	6999002	Bearing (Lower)	4
18	6996017	Spring	16
19	6996019	Bushing	4
20	6990014	Sleeve	4
21	6990015	Twistlock	4
22	6996020	Pin	4
23	6996021	Screw	4
24	6996022	Lockwasher	4
25	6990016	Tie Rod	2
26	6996023	Bolt	16
27	6996022	Lockwasher	4
28	6990017	Key	4
29	6996478	Bolt	8
30	6996186	Bolt	4
31	6996296	Lockwasher	4
32	6996007	Nut	4
33	6996319	Spring	4
34	6990292	Sleeve	4
35	6996026	Screw	8
36	6996318	Bolt	8
37	6996419	Clamp	4
38	6996420	Washer	4
	6999005	Kit-Twistlock	1
	6999004	Kit-Twistlock	1
	6999001	Bearing	1
	6999002	Bearing	1
	6999003	Kit-Sleeve	1

AIR CONDITIONER

ITEM	PART NO.	DESCRIPTION	QTY
1	1473116	Air Conditioner	1
2	1473118	Kit-Pulley	1
3	1473119	Support	1
4	1473120	Connector	1
5	1473121	Connector	3
6	1473124	Radiator	1
7	1468914	Connector	1
8	1468366	Pin	3
9	1473125	Plug	1
10	1473128	Support	1
11	296043	Capscrew	3
12	1473123	Bolt	4
13	1470955	Nut	4
14	1469149	Washer	4
15	1391035	Screw	4
16	293780	Lockwasher	4
17	1473130	Nut	4
18	1473131	Washer	4
19	1473132	Bolt	2
20	1468262	Nut	4
21	1469027	Bolt	2
22	1469238	Breaker	1
23	1473133	Breaker	1
24	1469315	Relay	2

NUMERICAL INDEX (continued)

PART NO.	PAGE	ITEM	PART NO.	PAGE	ITEM	PART NO.	PAGE	ITEM	PART NO.	PAGE	ITEM
1472098	10-37	17	1472163	10-8	57	1472261	1-7	14	1472301	2-9	6
1472100	10-37	18	1472165	1-5	7	1472262	4-7	1	1472302	2-9	7
1472102	10-37	20	1472166	1-5	10	1472263	4-7	2		2-13	48
1472103	10-37	21	1472167	1-5	11	1472264	4-7	5	1472303	2-9	8
1472104	10-37	22	1472204	1-5	13	1472265	4-7	6	1472304	2-9	9
1472105	10-37	26		3-3	24	1472266	4-7	7	1472305	2-9	10
1472106	10-37	28		3-5	39	1472267	4-7	9	1472306	2-9	11
1472107	10-39	1	1472205	1-5	15	1472268	4-7	10		2-9	30
1472108	10-37	30	1472206	1-5	16	1472270	1-9	2	1472308	2-9	13
1472109	10-37	31	1472208	1-5	17	1472271	1-9	1	1472309	2-9	14
1472110	5-5	6	1472209	1-5	18	1472272	4-9	1		2-14	52
	10-37	32	1472210	1-5	19	1472273	4-9	2	1472310	2-9	15
1472111	10-37	33	1472211	1-5	20	1472274	4-9	3	1472311	2-9	16
1472112	10-37	34	1472213	10-29	36	1472275	4-9	4	1472312	2-9	17
1472113	10-39	4	1472216	1-5	28	1472276	4-9	5		2-13	1
	10-43	4	1472217	1-5	31	1472277	4-9	6	1472313	2-9	18
1472114	10-37	40		3-11	35	1472278	4-9	7	1472314	2-9	19
1472115	10-40	1	1472218	1-5	33	1472279	4-9	8	1472315	2-9	20
1472116	10-40	2	1472220	1-5	35	1472281	4-9	10	1472316	2-9	21
1472117	10-40	8	1472222	1-5	37	1472282	4-9	11	1472317	2-9	22
	10-45	7	1472224	1-5	39		4-11	14		2-13	22
1472118	10-39	14	1472225	1-5	41	1472283	4-2	1	1472318	2-9	23
	10-43	5	1472226	1-6	42	1472284	4-2	2		2-13	8
1472119	10-40	9	1472227	2-7	1		4-25	17	1472319	2-9	24
1472121	10-39	23	1472228	2-7	2	1472285	1-6	47	1472320	2-9	25
	10-43	13	1472229	2-7	3		2-13	15	1472321	2-9	26
1472122	10-39	24	1472230	2-7	4		2-18	9		7-5	11
	10-43	14	1472231	1-7	1		2-41	21	1472322	2-9	27
1472123	10-40	13	1472232	2-7	6		4-2	4		2-25	2
1472124	10-40	14	1472233	2-7	11		4-5	4	1472323	2-9	28
1472130	10-45	9	1472234	2-7	12		4-12	13	1472324	2-15	1
1472140	10-7	1	1472235	2-7	13		4-20	12	1472325	2-15	2
1472141	10-15	1	1472236	2-7	14		4-20	16	1472326	2-9	31
1472143	10-15	3	1472237	1-7	2		4-25	14		2-13	6
	10-23	3	1472238	2-7	18	1472286	4-2	5		2-26	11
1472144	10-17	1	1472239	2-7	19		5-44	13		2-29	23
1472145	10-15	5	1472240	2-7	20	1472287	4-2	6		2-45	14
	10-23	6	1472242	2-7	21		4-22	8		7-3	11
1472147	10-17	3	1472243	2-7	22	1472288	4-2	9	1472327	2-9	34
1472150	10-21	2	1472245	2-7	23	1472289	4-2	10	1472328	2-9	35
1472152	10-21	5	1472246	2-7	24		9-31	3		2-22	3
1472153	10-40	12	1472248	2-7	25	1472290	2-2	1	1472329	2-9	36
1472154	1-2	1	1472249	2-7	28	1472291	2-2	2	1472330	2-9	37
1472155	1-5	1	1472250	2-7	32	1472292	2-2	5	1472331	2-9	38
1472157	1-5	2	1472251	2-7	33		9-26	4	1472332	2-9	41
1472158	1-5	4	1472252	2-7	34	1472293	2-2	6	1472333	2-9	42
	1-5	26	1472254	2-7	36	1472294	2-2	10	1472334	2-9	43
	2-7	16	1472255	2-7	39	1472296	2-9	1	1472335	2-9	44
1472159	1-5	6	1472256	2-7	40	1472297	2-9	2	1472337	2-9	46
1472160	10-8	54	1472257	3-12	8	1472298	2-9	3	1472338	2-9	47
1472161	10-8	55	1472258	1-7	10	1472299	2-9	4	1472339	2-9	48
1472162	10-8	56	1472259	1-7	12	1472300	2-9	5	1472340	2-9	49

CLICK HERE TO **DOWNLOAD** THE COMPLETE MANUAL

- Thank you very much for reading the preview of the manual.
- You can download the complete manual from: www.heydownloads.com by clicking the link below



- Please note: If there is no response to CLICKING the link, please download this PDF first and then click on it.

CLICK HERE TO **DOWNLOAD** THE COMPLETE MANUAL