

PARTS MANUAL

**H80-H120FT
(R005)**

CUSTOMER EDITION

HYSTER

CLICK HERE TO **DOWNLOAD** THE COMPLETE MANUAL

- Thank you very much for reading the preview of the manual.
- You can download the complete manual from: www.heydownloads.com by clicking the link below

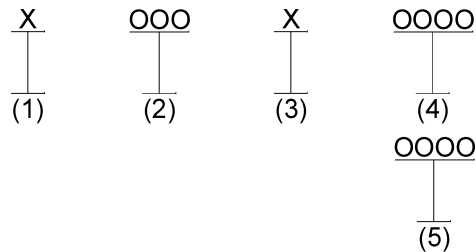


- Please note: If there is no response to CLICKING the link, please download this PDF first and then click on it.

CLICK HERE TO **DOWNLOAD** THE COMPLETE MANUAL

TABLE OF CONTENTS (continued)

DESCRIPTION	PAGE
KUBOTA DIESEL - (3.8L)	2-59
INNER MAST	
THREE STAGE FULL FREE-LIFT	13-10
INNER MAST AND FREE-LIFT	
THREE STAGE FULL FREE-LIFT (→ 4/2013)	13-12
THREE STAGE FULL FREE-LIFT (4/2013 →)	13-16
INSTRUMENT CLUSTER	5-54
INTAKE AIR FUEL MODULE	
GM 4.3L GASOLINE	3-40
INTEGRAL SIDE-SHIFT CARRIAGE ASSEMBLY	
CHAIN ANCHOR GROUPS	14-48
THREE STAGE FULL FREE LIFT	14-44
TWO STAGE FULL FREE LIFT	14-40
TWO STAGE LIMITED FREE-LIFT	14-36
INTERMEDIATE MAST	
THREE STAGE FULL FREE LIFT	13-6
L	
LABELS	
EXTERIOR	1-36
HYDRAULIC CONTROL LABELS - MINI LEVER MODULES	1-42
HYDRAULIC CONTROL LABELS - CONTROL LEVER	1-44
INTERIOR	1-40
LIFTING EYES	
GASOLINE AND DIESEL	14-60
LIGHTS	
WORK, REAR DRIVE, AND BRAKE/TAIL - WITH OVERHEAD GUARD	5-26
WORK, REAR DRIVE, AND BRAKE/TAIL - WITH CAB	5-28
LOAD BACK REST EXTENSION	1-50
LOAD WEIGH ELECTRICAL	5-50
LPG CONVERTER	
GM 4.3L LPG - PSI OPTION	4-25
LPG LOCK OFF	
GM 4.3L - PSI OPTION	4-26
LPG REGULATOR AND MIXER	
GM 4.3L - PSI OPTION	4-24
LPG TANK BRACKET	
GM 4.3L - SWING OUT, DROP DOWN (1/2013 →)	4-34
GM 4.3L - SWING OUT (→ 1/2013)	4-38
GM 4.3L - SWING OUT (1/2013 →)	4-42
SWING OUT, DROP DOWN (→ 1/2013)	4-30
M	
MAIN LIFT	
THREE STAGE FULL FREE-LIFT	13-20
MAIN LIFT CYLINDER	
THREE STAGE FULL FREE LIFT	13-24
MANUAL HYDRAULIC CONTROLS AND CONTROL VALVES	15-7

IDENTIFICATION OF MAST SERIAL NUMBERS

- (1) and (2) The first letter and number indicates the mast unit code.
- (3) The second letter indicates the plant of manufacture.
- (4) The four or five digit number indicates the production sequence number of the mast.
- (5) Carriage travel in millimeters stamped just below the serial number.

Mast Group identification consists of mast unit code (1) and (2) plus carriage travel (5).

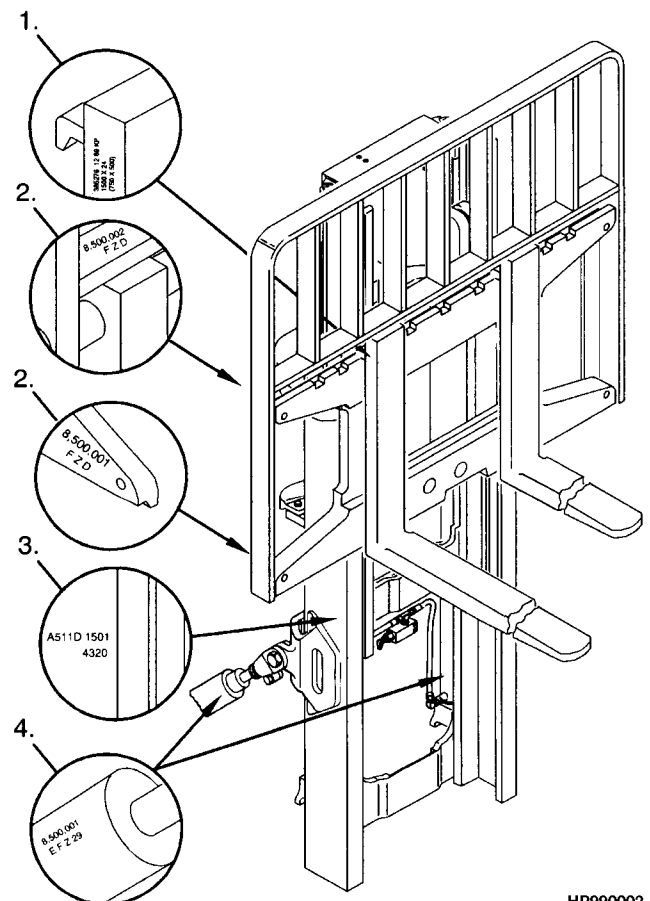
For pending production sequence numbers contact your local dealer for Hyster lift trucks.

LIFT EQUIPMENT IDENTIFICATION

1. Fork part number, capacity rating, plant code letter, and date of manufacture are stamped approximately six inches below the top of most forks.
2. The carriage group number is stamped on the right hand side of the top crossmember (pin type) or on the back of the right hand end of the bottom crossmember (hook type). A date code has two letters in line with or below the carriage group number.
3. The mast identification number has a unit code, a letter indicating the plant of manufacture, and a serial number. Underneath the production sequence number is a four digit number that indicates the carriage travel in millimeters.
4. Tilt and lift cylinder group numbers are stamped on the cylinder shell.

Always refer to the group, serial, or part number when ordering service parts.

Modification of masts and carriages by SPED (Special Products Engineering Department) are identified by a model prefix code beginning with the letter "S". contact your dealer for Hyster lift trucks for information on these assemblies.

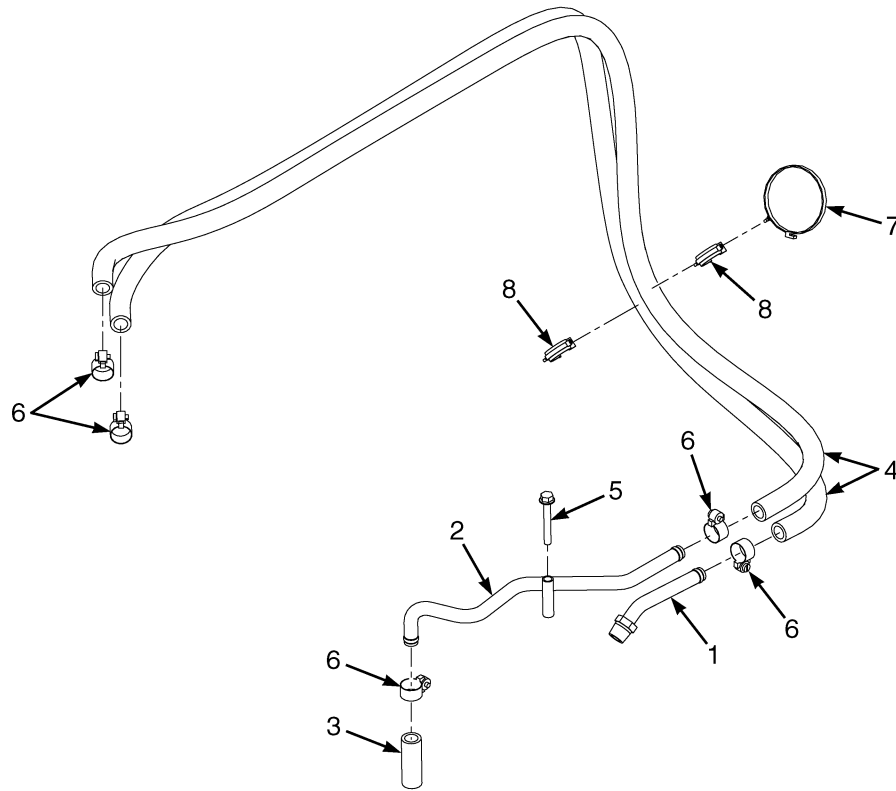


HP990002

HOOD ASSEMBLY

ITEM	PART NO.	DESCRIPTION	QTY
	4016242	Hood (Non-Vented) (Gas, LPG w/ OHG)	1
	4016244	Hood (Vented) (Gas, LPG, w/ OHG)	1
	4016241	Hood (Non-Vented) (Diesel w/ OHG) (Gas, LPG, Diesel w/ Cab)	1
	4016243	Hood (Vented) (Diesel w/ OHG) (Gas, LPG, Diesel w/ Cab)	1
1	4016102	Hood (Vented)	1
1	4015889	Hood (Non-Vented)	1
2	4025271	Hood Reinforcement	1
3	1460477	Nut	6
4	1528778	Capscrew	6
5	1608879	Capscrew	4
6	364868	Nut	8
7	1500912	Clip	1
8	1537551	Nut (Clip) (Clip Connector)	1
9	296149	Capscrew	1
10	329069	Nut	2
11	1585581	Bumper (Hood)	2
12	1527880	Capscrew	8
13	1567821	Hinge	2
14	302381	Dowel	1
15	1534417	Capscrew	8
16	1564263	Handle	1
17	1527876	Capscrew	2
18	1590488	Seal	1
19	1676377		
	4087449	Hood Liner	1
20	1590370	Latch	1
21	1527878	Capscrew	4
22	1584142	Link	1
23	1304971	Fastener	4
24	1530221	Clip	2
25	1616379	Plug (Yellow)	1
26	1530243	Insert	4
27	1584654	Striker Bolt	1
28	1583611	Capscrew	2
29	1528889	Capscrew	6
30	4031944	Grommet	1
31	1460477	Nut	4
32	296029	Capscrew	4
33	1347045	Fastener	8
34	4014557	Gas Spring (w/o Cab)	2
34	4014557	Gas Spring (RH w/ Cab and Semi/Full Suspension Seats)	1
34	1563497	Gas Spring (RH w/ Cab and Non-Suspension Seat)	1
34	4011395	Gas Spring (LH w/ Cab) (Lift and Latch with all Seat Types)	1
35	1563369	Ball Stud (w/o Cab)	4
35	1563369	Ball Stud (w/ Cab)(RH)	2
35	4011397	Ball Stud (w/ Cab)(LH)	2
36	329069	Nut	2
37	4009730	Blanket	1
38	1613246	Crossmember	1
	1581869	Adhesive	AR

**HEATER HOSE (FIGURE 1-7)
GAS**



BP120852

ITEM	PART NO.	DESCRIPTION	QTY
1	1570597	Tube	1
2	4619710	Tube	1
3	158269	Hose	1
4	2071001	Hose (Heater)	2
5	1510116	Capscrew	1
6	130845	Clamp	5
7	1502061	Clamp (Swivel Tie)	1
8	1569465	Clamp (Swivel) (Swivel)	2

FULL SUSPENSION SEAT
MANUAL AND ELECTRO-HYDRAULIC — SWIVEL AND NON SWIVEL – SHEET 1 OF 3

ITEM	PART NO.	DESCRIPTION	QTY
	4603382	Seat-Full Suspension (Vinyl) (Non-Swivel)	1
	4603383	Seat-Full Suspension (Cloth) (Non-Swivel)	1
	2101604		
	4603384	Seat-Full Suspension (Vinyl) (Swivel)	1
	2101605		
	4603385	Seat-Full Suspension (Cloth) (Swivel)	1
1	b 1703900	Kit-Cushion (Seat and Back, Cloth)	1
1	b 1703903	Kit-Cushion (Seat and Back, Vinyl)	1
2	b 1703901	Kit-Cushion (Back Cushion, Vinyl)	1
2	b 1703898	Kit-Cushion (Back Cushion, Cloth)	1
2	Back Cushion	1
2	Screw	2
3	b 1703902	Kit-Seat Cushion (Vinyl)	1
3	b 1703899	Kit-Seat Cushion (Cloth)	1
3	Seat Cushion	1
3	Spring	2
3	Cotter Pin	2
4	b 1703892	Kit-Weight Adjuster	1
4	Knob	1
4	Bushing	1
4	Washer	1
4	Pin	1
5	b 1703893	Kit-Service (Front Panel) (Non Swivel)	1
5	Front Panel	1
5	Socket Head Capscrew	2
5	Roll Pin	1
5	b 1703894	Kit-Service (Front Panel) (With Swivel)	1
5	Front Panel	1
5	Knob	1
5	Socket Head Capscrew	1
5	Roll Pin	2
6	b 1703904	Kit-Seat Rail (With Swivel)	1
6	4043082	Kit-Seat Rail (Non Swivel)	1
6	Locking Rail	1
6	Slave Rail	1
6	Bolt	4
6	Nut	4
7	b 4013095	Wire Harness	1
	bc 1470155	Information Case (Kit)	1
	bc 4027341	Bracket (Angle Controller)	1
	bc 4046492	Lever Spring Pull	1
	b 1563208	Sensor (Operator Presence)	1
	a 4036586	Kit -Seat Suspension without Swivel	1
	a 4036587	Kit -Seat Suspension with Swivel	1

**ARMREST ASSEMBLY
MINI-LEVER MODULES**

ITEM	PART NO.	DESCRIPTION	QTY
	4005010	Armrest (Slider for Mini Lever) (Assembly)	1
1	1661511	Armrest (Slider)	2
2	1655865	Handle (Slider)	2
3	227157	Screw	4
4	4007052	Bracket Wldmt	1
5	296360	Washer	4
6	313828	Nut	4
7	1531558	Insert	3
8	296165	Capscrew	2
9	4004775	Bracket	1
10	316826	Nut	1
11	320160	Washer	1
12	1650640	Washer	2
13	4007319	Spacer	1
14	18738	Capscrew	1
15	296360	Washer	2
16	313828	Nut	2
17	18462	Capscrew	1
18	18471	Capscrew	1
19	4007318	Spacer	1
20	4004776	Cover Plate	1
21	169874	Nut	2
22	4603492	Cover (Outer)	1
23	2062875	Capscrew	5
24	4603493	Cover (Inner)	1
25	Mini-Lever Module (☞Figure 5-31, ☞Figure 5-32).....	1
26	296380	Washer	2
27	296166	Capscrew	2

LABELS
HYDRAULIC CONTROL LABELS – CONTROL LEVER

ITEM	PART NO.	DESCRIPTION	QTY
1	2070296 4034931	Lens with label (Hoist)	1
2	2070297 4034932	Lens with label (Tilt)	1
3	4034933	Lens with label (Reach)	1
4	4034934	Lens with label (Swing)	1
5	4034935	Lens with label (Load Stabilizer)	1
6	4034936	Lens with label (Scoop)	1
7	4034937	Lens with label (Upender)	1
8	4034938	Lens with label	1
9	4034939	Lens with label (Clamp)	1
10	4034940	Lens with label (Rotate)	1
11	2070306 4034941	Lens with label (Side-Shift)	1
12	4034942	Lens with label	1
13	4034943	Lens with label (Park Brake Release)	1

FLOOR PLATES AND COVERS
SHEET 2 OF 2**KEY:****A: With Cab****B: Without Cab**

ITEM	PART NO.	DESCRIPTION	QTY	
			A	B
1	2098330	Cover (Steering Column Upper)	1	1
2	2065666	Cover (Steering Column Lower)	1	1
3	1567328	Cover Plate	1	1
4	1529428	Seal	1	1
5	1480237	Nut	3	3
6	1583611	Capscrew	3	3
7	1530135	Grommet	1	1
8	2065667	Clip	2	2
9	2027655	Screw	2	2
10	1595782	Seal (Foam)	1	1
11	2089201	Seal (LH)	1	1
12	2089202	Seal (RH)	1	1
13	a 2021395	Cap	2	2
14	1710007	Capscrew	4	5
15	1531001	Insert	5	5
16	1307737	Fastener	1	..
17	1573597	Dash Panel (Manual Hydraulics)	1	1
17	1573598	Dash Panel (Electronic Hydraulics)	1	1
18	2070975	Cup Holder	1	1
19	2070726	Panel (Single Brake)	1	1
19	2076204	Panel (Dual Brake)	1	1
20	1688244	Cover (Assembly)	1	1
21	1587872	Cover	1	1
22	1588247	Screw	3	3
23	353206	Retaining Ring	3	3
24	320158	Washer	3	3
25	1590332	Trim Seal	1	1
26	1603285	Trim Seal	2	2
27	1603893	Seal (LH)	1	1
28	1603959	Seal (RH)	1	1
29	2067475	Cover (Rear Crossmember)	1	1
30	2107958	Tail Light Base (LH)	1	1
31	2107957	Tail Light Base (RH)	1	1
32	1531558	Insert	4	4
33	1586495	Capscrew	4	4
34	1540643	Capscrew	3	3
35	1531001	Insert	3	3
36	a 1347045	Fastener	6	6

FOOTNOTES:**a** Located Top of Counter Weight

**CAB ASSEMBLY WITH STEEL DOORS
WITHOUT AIR CONDITIONING – LEFT HAND DOOR**

ITEM	PART NO.	DESCRIPTION	QTY
	1670241	Cab (Without A/C)	1
	1647414	Door (LH)	1
1	316835	Nut	1
2	1393472	Ball Stud	1
3	1647456	Plug (screw Type)	2
4	1474709	Block	2
5	Insert	1
6	1647454	Liner (LH Interior)	1
7	1647455	Seal (Upper LH Door)	1
8	1647451	Latch (Door)	1
9	1647452	Seal (Door Latch)	1
10	1647453	Lever	1
11	1647458	Seal (Lower LH Door)	1
12	296229	Capscrew	2
13	1393479	Door Handle	1
14	1647457	Retainer	5
15	1490966	Screw	1
16	1689908	Door Key	1

**CAB ASSEMBLY WITH STEEL DOORS
WITH AIR CONDITIONING – SHEET 3 OF 3**

ITEM	PART NO.	DESCRIPTION	QTY
	4027708	Cab (With A/C)	1
1	Headliner Assembly (☞Figure 1-47).....	1
2	4004148	Relay Dome Light	1
3	1359562	Fan Assembly (☞Figure 1-46).....	1
4	1647439	Seal	1
5	1647440	Wire Harness (Cab)	1
6	1647443	Liner (Foam)	1
7	1583611	Capscrew	4
8	1536813	Handle (Grab)	1
9	1636647	Shim	AR
10	1589787	Seal	2
11	4040607	Seal	2
12	1566853	Capscrew	8
13	1370949		
	1528888	Nut (Shoulder)	2
14	1636853	Shim	AR
15	1593845	Sleeve	1
16	1661564	Bracket (Heater Hose)	1
17	4005634	Cover	1
17	1635652	Cover	1
18	2090695	Fastener	6
19	1510126	Screw (Button Head)	3

CAB ASSEMBLY WITH STEEL DOORS
WITH AIR CONDITIONING – CONDENSER AND ATTACHING PARTS (SHEET 1 OF 2)

ITEM	PART NO.	DESCRIPTION	QTY
	4027708	Cab (With A/C)	1
1	302048	Screw	10
2	4048764	Cover (Condenser)	2
3	4044155	Condenser Assembly (☞ Figure 1-44).....	1
4	4048761	Spacer	2
5	4048755	Washer	4
6	4048756	Bolt	6
7	4048763	Guard	1
8	1474710	Insert	2

**CAB ASSEMBLY WITH STEEL DOORS
HEADLINER ASSEMBLY**

ITEM	PART NO.	DESCRIPTION	QTY
	1670241	Cab (Without A/C)	1
	4027708	Cab (With A/C)	1
1	1647459	Headliner	1
2	1491220	Screw	2
3	1393528	Dome Light	1
4	1393527	Bulb	1
5	1491466	Fastener	2
6	1647456	Plug (screw Type)	5

**EXHAUST SYSTEM
OVERHEAD EXHAUST LWB**

ITEM	PART NO.	DESCRIPTION	QTY
1	4030620	Exhaust Pipe	1
2	4031293	Bracket Wldmt	1
3	30372	Clamp	4
4	4024571	Heat Shield	1
5	4025092	Plate	1
6	4027330	Locknut	4
7	18515	Washer	4
8	1480237	Nut	3
9	1510113	Capscrew	6
10	1696451	Bracket	1
11	1527880	Capscrew	3
12	4032888	Gasket	1
13	1393879	Nut	4
14	1664474	Overhead Exhaust	1
15	1664478	Exhaust Pipe	1
16	1510117	Capscrew	3
17	1668428	Cover	1
18	2103428	Muffler	1
19	1582222	Locknut	2
20	320158	Washer	2
21	30372	Clamp	2
21	30374	Clamp (Alternate)	2
22	4050187	Exhaust Pipe	1
23	1708540	Screw	2

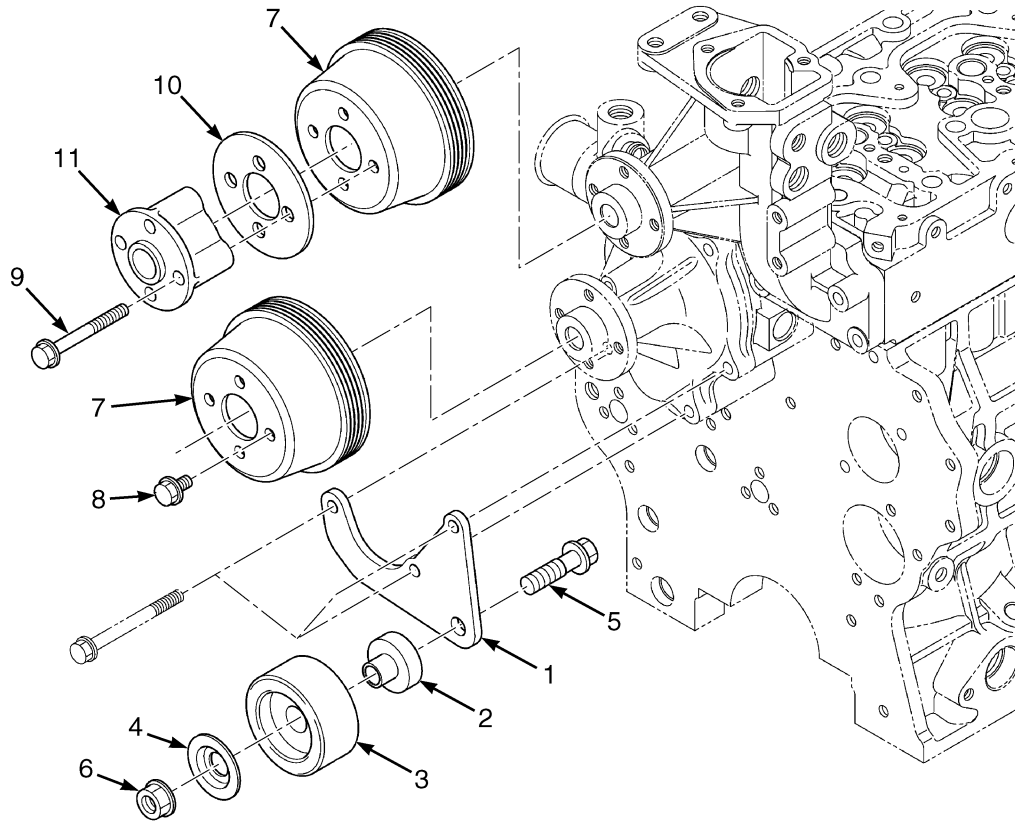
COOLING
KUBOTA DIESEL – WITHOUT EXTERNAL OIL COOLER

ITEM	PART NO.	DESCRIPTION	QTY
1	2102313	Radiator	1
2	1352140	Radiator Cap	1
3	4000086	Bracket	1
4	1529787	Isolator	4
5	1530243	Insert	4
6	1527881	Capscrew	4
7	1393879	Nut	1
8	4610149	Radiator Hose	1
9	119236	Clamp	4
10	4616119	Radiator Hose	1
11	2099479	Fan (18" Composite)	1
12	1566505	Capscrew	4
13	296418	Washer	4
14	4042107	Collar	1
15	1643342	Reservoir	1
16	1581024	Hose	1
17	369815	Clamp	2
18	1663877	Hose	1
19	345453	Outlet (Reservoir)	1
20	345454	Cap	1
21	336550	Bushing	1
22	4612849	Shroud (Upper) (☞Figure 2-9).....	1
22	4612850	Shroud (Lower) (☞Figure 2-9).....	1
23	302024	Screw	4
24	320154	Washer	4
25	1535257	Nut	4
	a 1693705	Clip	2

FOOTNOTES:

a Not Illustrated

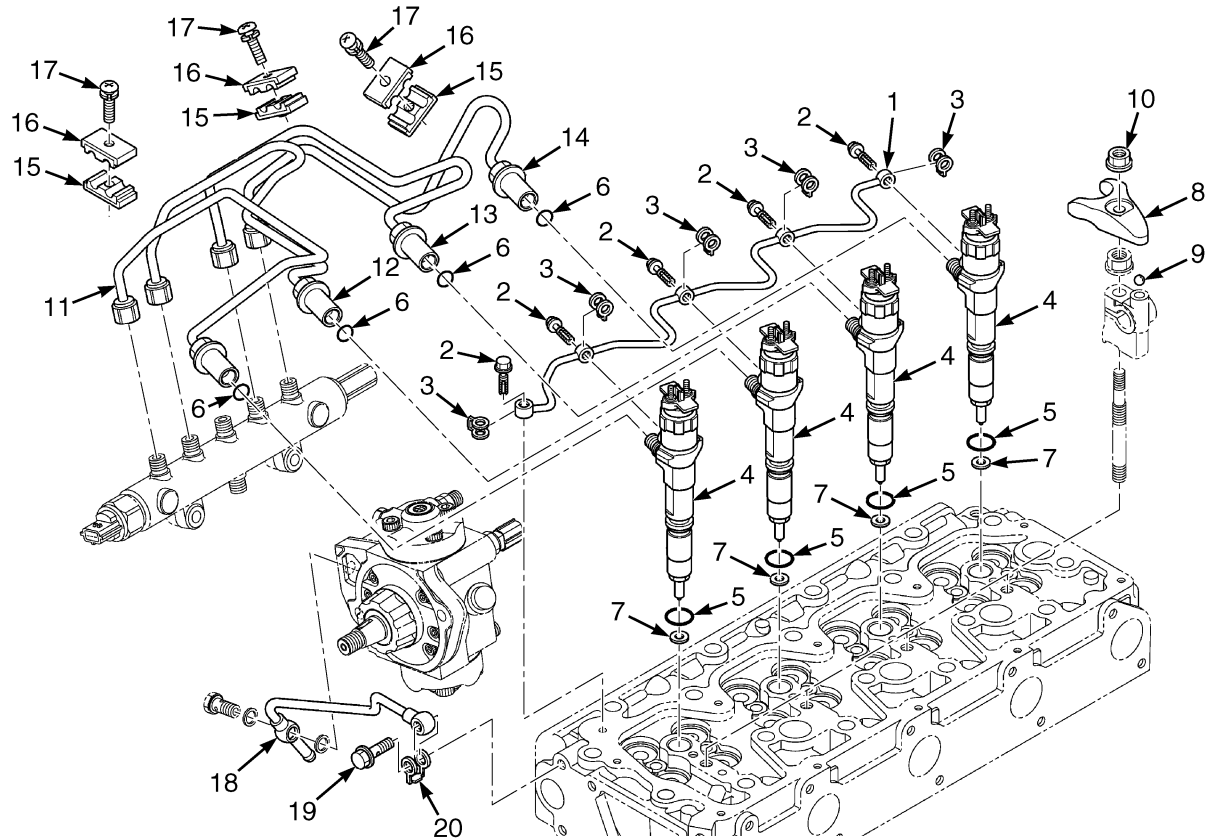
**FAN PULLEY (FIGURE 2-13)
KUBOTA DIESEL — (3.6L, 3.8L)**



BP090490

ITEM	PART NO.	DESCRIPTION	QTY
	4607571	Engine Assy-Diesel (3.8L)	1
	4615470	Engine Assy-Diesel (3.6L)	1
	4042325	Pulley Assembly (Idle)	1
1	4042326	Plate	1
2	4042327	Shaft	1
3	4042328	Pulley	1
4	4041916	Cover (Tensioner)	1
5	4041922	Bolt	1
6	4041964	Nut	1
7	4042071	Fan Pulley	2
8	4041992	Bolt	4
9	4042043	Bolt	4
10	4042106	Washer	1
11	4042107	Collar	1

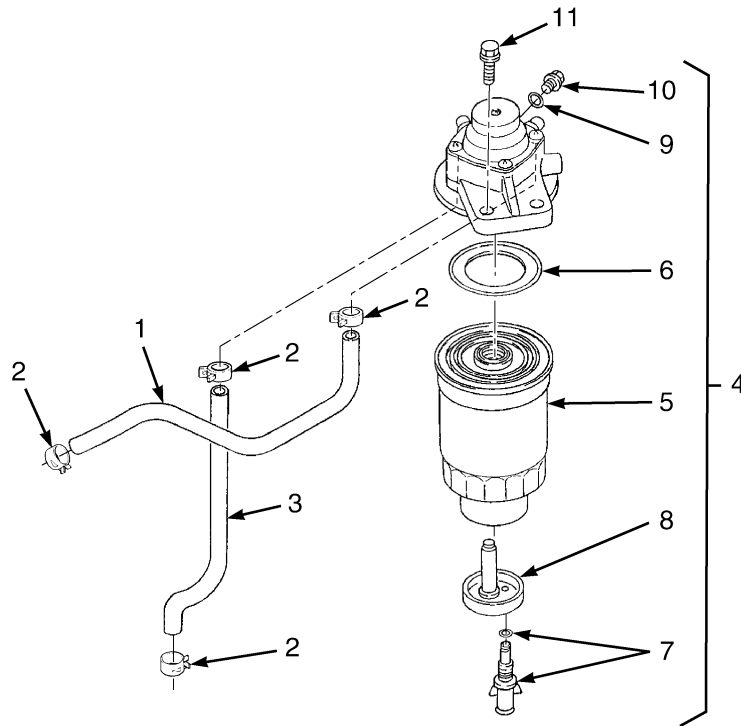
**INJECTION PIPE (FIGURE 2-28)
KUBOTA DIESEL — (3.8L)**



BP090500

ITEM	PART NO.	DESCRIPTION	QTY
	4607571	Engine Assy-Diesel (3.8L)	1
1	4042241	Pipe Assy (Over Flow)	1
2	4042242	Bolt	5
3	4042243	Gasket	5
4	4042264	Injector	4
5	4054619	O-Ring	4
6	4042265	O-Ring	4
7	4042266	Packing (Gasket)	4
8	4042267	Clamp	4
9	4042268	Ball	4
10	4042138	Nut	4
11	4041946	Pipe (Injection)	1
12	4042270	Pipe (Injection)	1
13	4042271	Pipe (Injection)	1
14	4042272	Pipe (Injection)	1
15	4042273	Clamp	3
16	4042274	Clamp	3
17	4042275	Screw	3
18	4042276	Pipe	1
19	4042244	Bolt	1
20	4042226	Gasket	1

**FUEL FILTER (FIGURE 2-37)
KUBOTA DIESEL — (3.6L)**



BP090540

ITEM	PART NO.	DESCRIPTION	QTY
	4615470	Engine Assy-Diesel (3.6L)	1
1	4050927	Tube Assembly	1
2	4050929	Clamp	4
3	4050937	Tube Assembly	1
4	4050930	Fuel Filter	1
5	4050931	Element	1
6	4050932	Gasket	1
7	4050936	Drain Valve	1
8	4050935	Plug	1
9	4050934	O-Ring	1
10	4050933	Plug	1
11	4041932	Bolt	2

**TURBOCHARGER
KUBOTA DIESEL – (3.8L)**

ITEM	PART NO.	DESCRIPTION	QTY
	4607571	Engine Assy-Diesel (3.8L)	1
1	4042063	Turbocharger	1
2	4042064	Gasket	1
3	4042065	Bolt	2
4	4041946	Nut	2
5	4041995	Bolt	3
6	4042068	Flange (Muffler)	1
7	4042069	Gasket	1
8	4042070	Bolt	3
9	4042067	Bolt	2
10	4042072	Bolt (Stud)	4

**CAMSHAFT AND IDLE GEAR SHAFT
KUBOTA DIESEL – (3.6L, 3.8L)**

ITEM	PART NO.	DESCRIPTION	QTY
	4607571	Engine Assy-Diesel (3.8L)	1
	4615470	Engine Assy-Diesel (3.6L)	1
1	4042134	Tappet	8
2	4042135	Push Rod	8
3	4042136	Camshaft Assembly (3.8L)	1
3	4042307	Camshaft Assembly (3.6L)	1
4	4042138	Ball	1
5	4042139	Gear (3.8L)	1
5	4042310	Gear (3.6L)	1
6	4042140	Key	1
7	4042141	Stop	1
8	4041992	Bolt	2
9	4042194	Shaft (Idle Gear)	2
10	4042195	Pin	2
11	4042196	Collar (Idle Gear)	2
12	4042197	Collar	2
13	4042198	Bolt	6
14	4042199	Idler Gear (3.8L)	1
14	4042314	Idler Gear (3.6L)	1
15	4042225	Bushing	1
16	4042202	Idler Gear (3.8L)	1
16	4042315	Idler Gear (3.6L)	1
17	4042225	Bushing	1
18	4042145	Gear Pulser (3.8L)	1
19	4042040	Screw (3.8L)	4

**BAFFLE AND ATTACHING PARTS
KUBOTA DIESEL – LONG WHEEL BASE**

ITEM	PART NO.	DESCRIPTION	QTY
1	4056528	Baffle	1
2	4056527	Baffle	1
3	1329271	Clip	2
4	4025666	Trim	1
5	1614687	Strip Seal	1

COOLING
GASOLINE AND LPG – WITH INTERNAL OIL COOLER

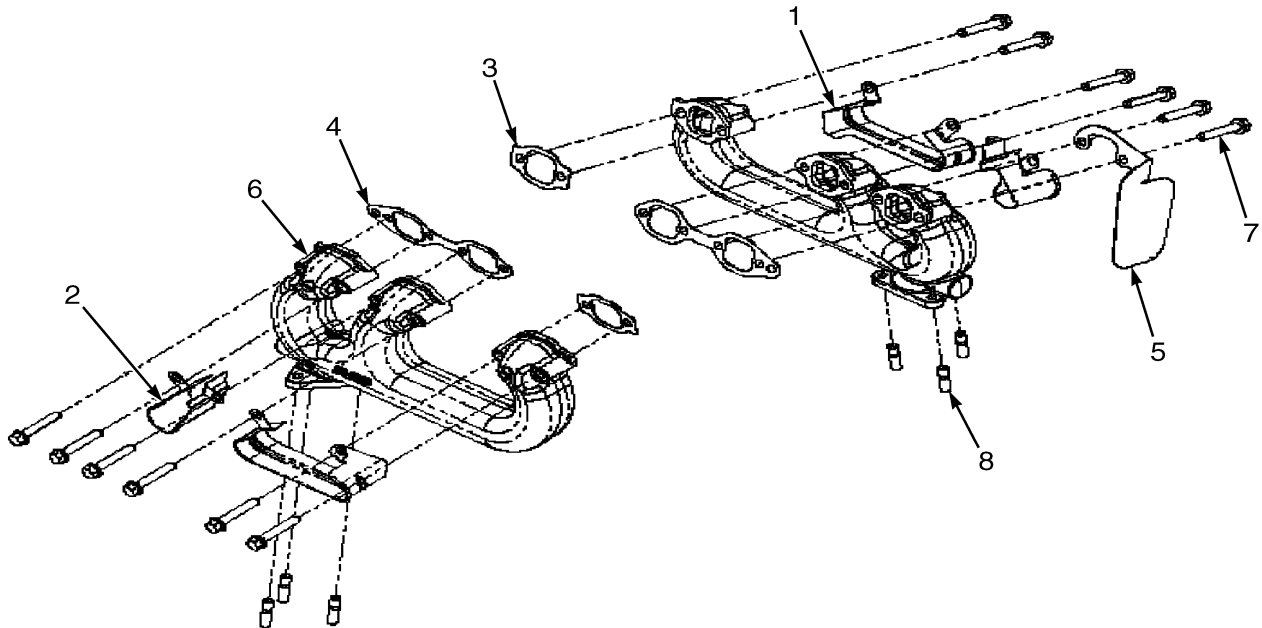
ITEM	PART NO.	DESCRIPTION	QTY
1	1529787	Isolator	4
2	1530243	Insert	4
3	b 4000086	Bracket (Radiator)	1
3	c 1699135	Bracket Wldmt	1
4	1527881	Capscrew	4
5	1352140	Radiator Cap	1
6	2102313	Radiator	1
7	119236	Clamp	3
8	1329271	Clip	2
9	2099479	Fan (18" Composite)	1
10	296418	Washer	4
11	1566505	Capscrew	4
12	1453247	Spacer	1
13	2102984	Radiator Hose (Lower)	1
14	2098883	Shroud	1
14	2098884	Shroud (Lower, Not Illustrated) (☞Figure 3-4, ☞Figure 3-5).....	1
15	369804	Clamp	1
16	2072819	Radiator Hose (Upper)	1
17	302024	Screw	4
18	320154	Washer	4
19	1535257	Nut	4
20	369815	Clamp	2
21	1581024	Hose	1
22	345455	Outlet Assembly	1
22	345453	Outlet (Reservoir)	1
23	345454	Cap	1
24	336550	Bushing	1
25	1663877	Hose	1
26	1643342	Reservoir	1
27	4003844	Screen (Alternate Part)	1
	a 1531404	Sensor (Low Coolant Level)	1
	a 14385	Fitting	1

FOOTNOTES:

- a** Not Illustrated
b One Piece Design

- c** Three Piece Design

**EXHAUST MANIFOLDS (FIGURE 3-14)
GM 4.3L LPG AND GASOLINE — PSI OPTION**



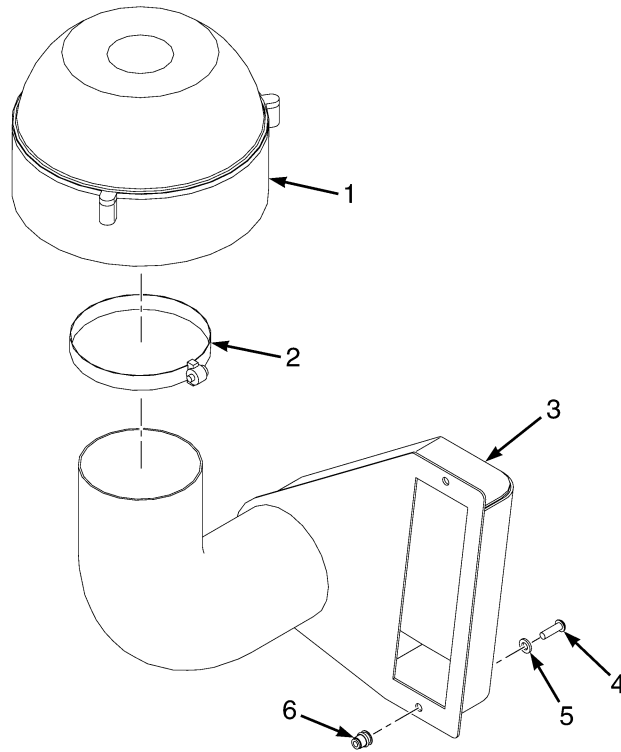
BP090459

ITEM	PART NO.	DESCRIPTION	QTY
	4615531	Engine Assy-LPG	1
	4615533	Engine Assy-LPG (Heavy Duty)	1
	4615530	Engine Assy-Gas	1
1	1316488	Shield	2
2	1316487	Shield	2
3	4040272	Gasket	2
4	4040273	Gasket	2
5	1529010	Heat Shield	1
6	4040274	Exhaust Manifold (Standard)	2
6	4040281	Exhaust Manifold (Heavy Duty, LPG)	2
7	1383257	Bolt	12
8	4580092	Stud	6
	4033440	Stud	6

4

FUEL SYSTEM

**PRE-CLEANER AND MOUNT (FIGURE 4-5)
DIESEL ENGINE — WITH AIR CONDITIONING**



BP130327

ITEM	PART NO.	DESCRIPTION	QTY
1	2102887	Pre-Cleaner	1
2	1678215	Clamp	1
3	4019931	Air Duct	1
4	353144	Capscrew	2
5	1506738	Washer	2
6	1531558	Insert	2

FUEL SYSTEM
KUBOTA DIESEL – (3.8L)

ITEM	PART NO.	DESCRIPTION	QTY
1	4024565	Fuel Sender (Diesel)	1
2	192306	Fitting	2
3	17314	Fitting	1
4	16190	Drain Valve (Shutoff)	2
5	12855	Fitting	1
6	1584171	Cover	1
7	1371159	Fuel Sender	1
8	1571662	Tube	1
9	1638500	Tube	1
10	16134	Fitting	2
11	1527881	Capscrew	2
12	353000	O-Ring	2
13	1528893	Quad Ring	1
14	187129	Hose	1
15	1527876	Capscrew	3
16	168718	Clamp	14
16	166857	Clamp (Optional Clamp)	14
17	209266	Clamp	1
18	1566420	Nut (Foldover)	3
19	4024527	Water Separator	1
19	4047982	Water Separator Mounting Head	1
19	4047983	Sensor Drain	1
19	4612789	Water Separator Fuel Filter	1
20	1527885	Capscrew	2
21	4026040	Fitting	2
21	1460477	Nut	2
23	1579809 222443	Fitting	2
24	187142	Hose	1
25	4025710	Bracket	1
26	4032744	Lift Pump	1
27	124359	Clamp	1
28	1527880	Capscrew	2
29	1480237	Nut	3
30	4617767	Fuel Filter	1
31	271862	Hose	1
32	1316496	Clamp	1
33	274334	Hose	1
34	1616829	Hose	1
35	231502	Hose	1
36	4032490	T-Fitting	1
37	1551632	Hose	1
38	1543842	Clamp	1
39	1543691	Clamp (Swivel)	1
40	1543698	Clamp (Swivel)	2
41	1606544	Clamp	1

**THROTTLE CABLE ASSEMBLY
KUBOTA 3.6L DIESEL**

ITEM	PART NO.	DESCRIPTION	QTY
1	4621757	Throttle Cable	1
2	1609374	Bracket	1
3	4047914	Bellcrank	1
4	1538782	Push Rod Assembly	1
5	1527879	Capscrew	2
6	1480237	Nut	2
7	1399802	Bolt	1
8	4048086	Bearing	2
9	126	Pin	1
10	1517361	Locking Ring Cotter Pin	2
11	320156	Washer	2
12	1307884 1514429	Nut	2
13	302400	Nut	1
14	4038429	Bracket	1
15	4047925	Bracket	1
16	4038427	Spacer	1
17	4047924	Plate	1
18	1527876	Capscrew	1
19	1512440 302399	Nut	1
20	128263	Pin	1
21	302422	Roll Pin	1
22	1502066	Clamp (Swivel)	1
23	1562088	Clip	1
24	1644398	Clamp (Swivel)	1
25	1502061	Clamp	1
26	1542440	Clamp (Swivel)	3

LPG TANK BRACKET
GM 4.3L – SWING OUT (→ 1/2013)

ITEM	PART NO.	DESCRIPTION	QTY
	1664035	Lpg Tank Bracket	1
1	1664009	LPG Tank Bracket	1
2	1398099	Plug	4
3	1581898	Washer	1
4	1581583	Capscrew	1
5	101809	Relief Valve	1
6	1534675	Fitting (Bulkhead)	1
7	1656325	Latch	1
8	1649565	Plate	1
9	296156	Capscrew	4
10	1584083	Bracket Wldmt	1
11	1525451	Fitting	1
12	1581579	Capscrew	1
13	1568853	Thrust Washer	1
14	184451	Ball Bearing	2
15	1568839	Washer (Pivot)	1
16	34507	Snap Ring	1
17	1534672	Ring	1
18	1615956	Pin	1
19	1528903	Spring	1
20	4029538	Washer	1
21	4029920	Washer	1
22	4032291	Washer	1
23	1525459	Pin (Alignment)	1
23	4029506	Pin (Alignment)	1
24	1581739	Nut	2
25	1581733	Capscrew	2
26	1613749	Strap	1
27	1613755	Latch	1
28	1664059	Striker Latch Weldment	1
28	1682752	Striker (Alternate Part)	1
29	1655328	Shim (Use with 1655300)	1
30	1586013	Capscrew	6
31	1656903	Bracket	1
32	2076168	Hose Assy	1
32	4609648	Hose Assy	1
33	16134	Fitting	1
33	16134	Fitting	2
33	16863	Fitting (Alternate Part)	1
34	16863	Fitting	1
34	14358	Fitting	1
35	2071517	Sleeve	1
36	97999	Fitting	1
37	2072298	Hose Assy	1
38	4032292	Spacer	1
39	4031146	Capscrew	1
40	1688803	Shim	AR
	a 246108	Sealant	AR
	a 1687376	Sealant (Alternate Part)	AR
	a 1687377	Activator (Alternate Part)	AR

THROTTLE PEDAL ASSEMBLY AND ATTACHING PARTS

MONOTROL (S/N R005V02609K →)

ITEM	PART NO.	DESCRIPTION	QTY
	4051938	Pedal Assy (Monotrol)	1
1	2074702	Pedal	1
2	1340470	Pad	1
3	2072782 4634485	Wire Harness	1
4	Connector Assembly (To Cowl Harness)	1
4	1489655	Connector (4 Way)	1
4	1330416	Connector (Secondary Lock)	1
4	1531312	Terminal	4
5	Switch (Reverse)	1
6	Switch (Forward)	1
7	220428	Screw	4
8	53162	Lockwasher	4
9	16865	Nut	4
10	325699	Spring	2
11	4040523	Washer (Bonded)	2
12	15931	Lockwasher	2
13	16708	Screw	2
14	1500912	Clip	1
15	1582464	Fastener	1
16	360387	Loctite	AR
17	302437	Roll Pin	1
18	4031769	Isolator (Throttle Pedal)	1
19	2063842	Sensor (Hall Throttle Position) (To Cowl Harness)	1
20	296378	Washer	2
21	1564752	Capscrew	2
22	b 1654411	Throttle Plate	1
22	c 4051924	Base Assembly (Throttle)	1
22	4615964	Molding	1
23	1524267	Bushing	1
24	1654754	Shaft	1
25	1530971	E-Ring	1
26	1654156	Shim	AR
27	1527879	Capscrew	3
28	1530311	Screw (Stop)	1
29	329069	Nut	1
30	251099	Loctite	AR
31	1582301	Spring (Inner)	1
31	a 1582303	Spring (Inner)	1
32	1582300	Spring (Outer)	1
32	a 1582302	Spring (Outer)	1

FOOTNOTES:

a Kubota 3.6L Engine Only
b → S/N R005V02608K

c S/N R005V02609K →

BATTERY CABLES
GM 4.3L GASOLINE AND LPG – PSI OPTION

ITEM	PART NO.	DESCRIPTION	QTY
1	a 2072157	Battery Cable (Positive)	1
1	b 2093470	Battery Cable (Positive)	1
1	1357268	Battery Cable (Red)	AR
2	a 1536304	Boot	1
2	bc 204223	Boot	1
3	a 148792	Terminal	1
3	bc 148795	Terminal	1
4	806426	E-Ring	1
5	1566146	Boot	1
6	1474893	Clamp	1
7	1590173	Boot	1
8	153070	Clamp	1
9	296380	Washer	2
10	1382472 1502543	Nut (Flange)	2
11	1527880	Capscrew	2
12	1682835	Spacer	1
13	1632294	Bracket	1
14	1527879	Capscrew	3
15	1309993	Screw	1
16	2093469	Battery Cable (Negative)	1
16	16078	Battery Cable	AR
17	148789	Terminal	1
18	1564044	E-Ring	1
19	806426	E-Ring	1
20	153070	Clamp	1
21	1529366	Capscrew	1
22	1566420	Nut (Foldover)	1
23	1628118	Clamp	1
24	1527876	Capscrew	1
	c 264134	Loctite	AR

FOOTNOTES:

a G and LP
b GS and LGS

c Not Illustrated

LIGHTS
WORK, REAR DRIVE, AND BRAKE/TAIL – WITH OVERHEAD GUARD

ITEM	PART NO.	DESCRIPTION	QTY
1	2056824	Brake/Backup Light (Stop, Turn, Tail, And Back-Up)	2
1	a	Tail Light Bracket	2
2	2056826	Reflector (Tail)	2
3	1565125	Screw	4
4	2098083	Work Light (Rear) (Halogen)	1
4	2107382	Head/Work Light (Rear) (LED) (LED)	1
5	2098082	Bulb (Halogen)	1
6	1654013	Strobe Light Assembly	1
7	1560447	Grommet (RH Tail Light)	1
8	1560448	Grommet (LH Tail Light)	1
9	1537551	Nut (Clip)	4
10	2098085	Work Light (LH Front) (Halogen)	1
10	2107384	Head/Work Light (LH Front) (LED)	1
11	2098084	Work Light (RH Front) (Halogen)	1
11	2107383	Head/Work Light (RH Front) (LED)	1
12	1539584	Grommet	1
13	1565076	Bracket Wldmt	1
14	1302024	Guard (Strobe Light)	1
15	1586759	Capscrew	2
16	1586428	Nut	2
17	1531001	Insert	2
18	1586495	Capscrew	2
19	2101861	Wire Harness (Lights) (☞ Figure 5-51).....	1

FOOTNOTES:

- a** For Tail Light Base Please see Floor Plates and Covers Sheet 2 of 2

ITEM	PART NO.	DESCRIPTION	QTY
	a 1358504	Bolt (Adjustment Bolt)	1

FOOTNOTES:

a Not Illustrated

STARTER
GM 4.3L LPG AND GASOLINE – PSI

ITEM	PART NO.	DESCRIPTION	QTY
1	2109666	Dust Shield	1
2	1463910	Capscrew	2
3	1640531	Starter	1
4	1640818	Bracket (Heat Shield)	1
5	264148	Nut	2
6	1677876	Bolt	2
7	292668	Nut	1

**MINI-LEVER CONTROLS
WITH ARMREST – THREE FUNCTION****KEY:****A: Without Directional Control Switch****B: With Directional Control Switch**

ITEM	PART NO.	DESCRIPTION	QTY	
			A	B
1	4601093	Mini-Lever Assembly	1	..
1	c 4601265	Mini-Lever Assembly	1	..
1	a 4601097	Mini-Lever Assembly	1	..
1	b 4601099	Mini-Lever Assembly	1	..
1	4601101	Mini-Lever Assembly	1
1	c 4601103	Mini-Lever Assembly	1
1	a 4601105	Mini-Lever Assembly	1
1	b 4601107	Mini-Lever Assembly	1
2	Lever Position 1	1	1
2	2110791	Lever (Single Function)	1	1
3	Lever Position 2	1	1
3	2110791	Lever (Single Function)	1	1
3	a 2110793	Lever (With Override)	1	1
4	Lever Position 3	1	1
4	2110791	Lever (Single Function)	1	1
4	c 2110792	Lever (Clamping)	1	1
5	2108249	Plug	1	1
6	2111799	Armrest (Without Push Buttons)	1	1
6	ac 4603439	Armrest (With Push Buttons)	1	1
7	2111769	Cushion (Armrest)	1	1
8	1709587	Nut	5	5
9	1698449	Capscrew	6	6
10	4605336	Wire Harness	1	1
11	c 1704528	Push Button (Position 3)	1	1
11	b 1704528	Push Button (Position 2 and 3)	2	2
11	a 1704528	Push Button (Position 2)	1	1
12	c 1705359	Cover (Push Button)	1	1
12	b 1705359	Cover (Push Button)	1	1
13	1704529	Wire Harness (Forward/Reverse Switch in the MLM) (Push Buttons)	1	1
14	4605337	Printed Circuit Board	1	1
15	2111800	Cover (Bottom Armrest)	1	1
16	4601120	Plug	1	1
17	2111770	Horn Button	1	1
18	2110943	Switch (Directional Control)	1
19	2110942	Plug (Directional Control Switch)	1	..
20	1698449	Capscrew	8	8

FOOTNOTES:**a** Return to Set Tilt**c** With Clamping**b** Three Function Clamp with Return to Set Tilt

WIRE HARNESS
ALTERNATOR TO BATTERY DISCONNECT SWITCH – KUBOTA 3.8L DIESEL

ITEM	PART NO.	DESCRIPTION	QTY
	4613466	Wire Harness (Alternator to Battery Disconnect Switch)	1
1	Connector Assembly (Engine Harness)	1
1	4613828	Connector	1
1	1302908	Connector Lock (Secondary Lock)	1
1	Plug	2
1	1302909	Wire Seal	1
2	1582218	E-Ring	1
3	Connector Assembly (Diode Pack)	1
3	1489656	Connector (4-Way)	1
3	1489657	Connector (Secondary Lock)	1
3	1363886	Terminal (Socket)	4
4	2094490	Kit-Diode	1
5	275493	Conduit	AR
6	Connector Assembly (Alternator Field)	1
6	181045	Connector Body	1
6	134810	Terminal	1
7	Connector Assembly (Alternator Excite)	1
7	181046	Connector Body	1
7	1542937	Terminal	1
8	Connector Assembly (Disconnect Switch Link)	2
8	181045	Connector Body	1
8	134810	Terminal	1
9	Connector Assembly (Disconnect Switch Link)	2
9	181046	Connector Body	1
9	1542937	Terminal	1
10	1582218	E-Ring	2

WIRE HARNESS
ELECTRONIC CONTROL VALVE – THREE FUNCTION

ITEM	PART NO.	DESCRIPTION	QTY
	2060198	Wire Harness (Control Valve)	1
1	Connector Assembly (Vehicle System Manager)	1
1	1525564	Connector	1
1	1330438	Terminal (Socket)	9
1	1330439	Plug	3
1	1525564	Connector	1
1	1500913	Connector	1
2	1402815	Clip	4
3	Connector Assembly (2A Tilt)	1
3	1531162	Connector	1
3	1562649	Seal	2
3	1402814	Terminal	2
4	190383	Boot	4
5	Connector Assembly (2B Tilt)	1
5	1531162	Connector	1
5	1562649	Seal	2
5	1402814	Terminal	2
6	Connector Assembly (3B Auxiliary 1)	1
6	1493435	Connector (2-Way)	1
6	1562649	Seal	2
6	1402814	Terminal	2
7	Connector Assembly (3A Auxiliary 1)	1
7	1493435	Connector (2-Way)	1
7	1562649	Seal	2
7	1402814	Terminal	2
8	Connector Assembly (Lift)	1
8	1490242	Connector (2 Way)	1
8	1330438	Terminal (Socket)	2
8	1490243	Connector	1
9	Connector Assembly (Lower)	1
9	1490242	Connector (2 Way)	1
9	1330438	Terminal (Socket)	2
9	1490243	Connector	1

**WIRE HARNESS
ENGINE – KUBOTA 3.8L DIESEL**

ITEM	PART NO.	DESCRIPTION	QTY
38	1330283	Terminal	4
38	1323581	Plug	1
39	4039364	Relay	1
40	Connector Assembly (Engine Control Module-V01)	1
40	4024084	Connector	1
40	4028286	Terminal	31
40	4028287	Plug	49
41	Connector Assembly (Interface Module)	1
41	4023785	Connector	1
41	4028287	Plug	29
41	4028286	Terminal	27
42	Connector Assembly (Engine Control Module-E01)	1
42	4023784	Connector	1
42	4028287	Plug	40
42	4028286	Terminal	40
43	Connector Assembly (F/W Separator)	1
43	4028289	Connector	1
43	4036068	Connector Lock (Secondary Lock)	1
43	4036069	Terminal	2
43	4036070	Wire Seal	2
44	Connector Assembly (Feed Pump)	1
44	1308259	Connector Body	1
44	314775	Terminal	2
45	1530964	Clip	1
46	Connector Assembly (Fuel Level)	1
46	1476077	Connector	1
46	1323576	Terminal	2
47	Connector Assembly (Canbus Terminal)	1
47	1484557	Connector (2 Socket)	1
47	1484558	Connector (Secondary Lock)	1
47	1463139	Terminal	2
48	1547847	Resistor	1
49	137852	Strap Clamp	1
50	Connector Assembly (Grid Heater)	2
50	148614	E-Ring	2
50	1520864	Boot	2
51	Connector Assembly (Air Temp)	1
51	4029337	Connector	1
51	4616920	Terminal	2
51	1476599	Seal	2
52	1602431	Fuse Holder	1
53	Connector Assembly (RH Chassis Harness)	1
53	1541988	Connector (8 Pin)	1
53	1541989	Connector (Secondary Lock)	1
53	1463138	Terminal Pin	8
54	Connector Assembly (RH Chassis Harness)	1
54	1330413	Connector (8 Pin)	1
54	1330418	Connector (Secondary Lock)	1
54	1330437	Terminal (Pin)	6
54	1363885	Terminal (Pin)	2

CLICK HERE TO **DOWNLOAD** THE COMPLETE MANUAL

- Thank you very much for reading the preview of the manual.
- You can download the complete manual from: www.heydownloads.com by clicking the link below



- Please note: If there is no response to CLICKING the link, please download this PDF first and then click on it.

CLICK HERE TO **DOWNLOAD** THE COMPLETE MANUAL

WIRE HARNESS
RIGHT HAND CHASSIS – GM 3.4L GAS/LPG AND KUBOTA 3.8L DIESEL

ITEM	PART NO.	DESCRIPTION	QTY
26	1323579	Seal	7
26	1327164	Seal	1
26	1521989	Terminal	7
27	Connector Assembly (Power Distribution Module)	1
27	1521185	Connector	1
27	1521188	Lock	1
27	1323579	Seal	8
27	1330281	Terminal	5
27	1521989	Terminal	3
28	Connector Assembly (Hood Switch/Keyswitch)	1
28	1490242	Connector (2 Way)	1
28	1490243	Connector (Secondary Lock)	1
28	1330438	Terminal (Socket)	2
29	Connector Assembly (Endcap)	1
29	1626727	Connector	1
30	Connector Assembly (Alternate Horn Button)	1
30	1490242	Connector (2 Way)	1
30	1490243	Connector (Secondary Lock)	1
30	1330438	Terminal (Socket)	2
31	Connector Assembly (Endcap)	1
31	1626727	Connector	1
32	Connector Assembly (Bus Terminal 2)	1
32	1489656	Connector (4-Way)	1
32	1489657	Connector (Secondary Lock)	1
32	1330438	Terminal (Socket)	4
33	Connector Assembly (Endcap with Resistor)	1
33	1525577	Connector (With Resistor)	1
34	1509890	Clip	3
35	Connector Assembly (Hydraulic Temperature)	1
35	1402868	Connector	1
35	1323576	Terminal	2
36	1587778	Clip	1
37	1402815	Clip	2
38	1699754	Conduit	AR
39	Connector Assembly (Endcap)	1
39	1541988	Connector (8 Pin)	1
39	1484377	Plug	8
40	Connector Assembly (To MLM Harness)	1
40	1541991	Connector	1
40	1541992	Connector (Secondary Lock)	1
40	1463139	Terminal	5
40	1484377	Plug	3
41	Connector Assembly (To Seat Harness)	1
41	1531973	Connector	1
41	1531974	Connector (Secondary Lock)	1
41	1463139	Terminal	4
41	1484377	Plug	2
42	Connector Assembly (Backup Alarm)	1
42	1490242	Connector (2 Way)	1
42	1490243	Connector (Secondary Lock)	1

**WIRE HARNESS (ALTERNATE)
RIGHT HAND CHASSIS – KUBOTA DIESEL (3.6L)**

ITEM	PART NO.	DESCRIPTION	QTY
	4626458	Wire Harness	1
1	Connector Assembly (Endcap)	1
1	1480187	Connector	1
1	1480188	Connector (Secondary Lock)	1
1	1330439	Plug	2
2	Connector Assembly (ACC 1)	1
2	4047664	Connector	1
2	1546697	Connector (Secondary Lock)	1
2	1554359	Terminal	2
3	Connector Assembly (Vehicle Systems Manager)	1
3	1525570	Connector	1
3	1530037	Connector (Secondary Lock)	1
3	1463139	Terminal	9
3	1484377	Plug	3
4	Connector Assembly (Vehicle Systems Manager)	1
4	1525569	Connector	1
4	1530037	Connector (Secondary Lock)	1
4	1463139	Terminal	2
4	1484377	Plug	10
5	Connector Assembly (Vehicle Systems Manager)	1
5	1525568	Connector	1
5	1530037	Connector (Secondary Lock)	1
5	1463139	Terminal	7
5	1484377	Plug	5
6	Connector Assembly (Vehicle Systems Manager)	1
6	1525567	Connector	1
6	1530037	Connector (Secondary Lock)	1
6	1463139	Terminal	9
6	1484377	Plug	3
7	Connector Assembly (Vehicle Systems Manager)	1
7	1525563	Connector	1
7	1500913	Connector (Secondary Lock)	1
7	1330438	Terminal (Socket)	8
7	1363886	Terminal (Socket)	4
8	Connector Assembly (To Cowl Harness)	1
8	1489655	Connector (4 Way)	1
8	1330416	Connector (Secondary Lock)	1
8	1330437	Terminal (Pin)	4
9	Connector Assembly (To Cowl Harness)	1
9	1493428	Connector (12-Way)	1
9	1500913	Connector (Secondary Lock)	1
9	1330438	Terminal (Socket)	10
9	1484377	Plug	2
10	275496	Conduit	AR
11	275497	Conduit	AR
12	Connector Assembly (Vehicle Systems Manager)	1
12	1525567	Connector	1
12	1529046	Connector (Secondary Lock)	1
12	1463139	Terminal	3
12	1484377	Plug	9

**WIRE HARNESS
TRANSMISSION – SINGLE SPEED**

ITEM	PART NO.	DESCRIPTION	QTY
	2085943	Wire Harness (Transmission)	1
1	Connector Assembly (To RH Chassis Harness)	1
1	1623280	Connector	1
1	1623281	Connector	1
1	1463138	Terminal Pin	10
1	1484377	Plug	2
2	1402816	Clip	1
3	1509888	Clip	2
4	Connector Assembly (Temperature)	1
4	1402868	Connector	1
4	1323576	Terminal	2
5	Connector Assembly (Clutch Forward/Reverse 1)	1
5	1490242	Connector (2 Way)	1
5	1490243	Connector	1
5	1330438	Terminal (Socket)	2
6	Connector Assembly (Forward/Reverse 1 Pressure)	1
6	1603021	Connector	1
6	1603236	Connector (Secondary Lock)	1
6	1548517	Terminal (Socket)	3
6	1548519	Seal	3
7	Connector Assembly (Turbine Shaft RPM)	1
7	1546673	Connector	1
7	1323576	Terminal	3
8	Connector Assembly (Tail Shaft RPM)	1
8	1558156	Connector	1
8	1323576	Terminal	4
9	1509890	Clip	1
10	1402813	Clip	1
11	Connector Assembly (To RH Chassis Harness)	1
11	1530960	Connector	1
11	1530961	Connector (Secondary Lock)	1
11	1463138	Terminal Pin	4
11	1484377	Plug	2
	a 1500912	Clip	2
	a 1582464	Fastener	2

FOOTNOTES:**a** Not Illustrated

**TRANSMISSION COOLING LINES
GASOLINE AND LPG WITH STANDARD RADIATOR**

ITEM	PART NO.	DESCRIPTION	QTY
1	2108677	Hose	2
2	222503	Fitting	1
2	16485	O-Ring	1
3	130845	Clamp	4
4	1673198	Fitting	1
4	16484	O-Ring	1
5	1562648	Clip	2
6	1527879	Capscrew	6
7	1480237	Nut	6
8	2090425	Heat Shield	1
9	4014164	Shield	1
10	1502066	Clamp (Swivel)	2
11	1542436	Clamp (Swivel)	2
12	222512	Fitting	1
12	16485	O-Ring	1
13	1691525	Adapter	1
14	222504	Fitting	1
14	16485	O-Ring	1

TRANSMISSION
SINGLE SPEED – SECTION 2 OF 2

ITEM	PART NO.	DESCRIPTION	QTY
	1703472	Transmission Assy (T139) (High Pressure)	1
	4039980	Transmission Assy (Wet Brake) (T149)	1
1	1636640	Gasket	1
2	148962	Capscrew	4
3	292680	Washer	6
4	1627453	Shield (Lower)	1
5	1622887	Baffle	1
6	1624408	Shield (Upper)	1
7	292516	Capscrew	4
8	292682	Lockwasher	10
9	1638799	Carrier	1
10	1553403	O-Ring	2
11	1525677	Stator	1
11	1525679	Support	1
11	1516826	Bushing	1
12	16682	O-Ring	1
13	1544218	Sealing Ring	1
14	136985	Capscrew	4
15	44310	Ball Bearing	1
16	1541556	Sprocket (Driving)	1
17	1544216	Bearing	1
18	1544217	Oil Seal (Torque Converter)	1
19	145481	O-Ring	1
20	43209	Ball Bearing	1
21	1529890	Sprocket (Driven)	1
22	44307	Ball Bearing	1
23	1615804	Snubber	2
24	303100	Roll Pin	4
25	1494750	Chain (Drive Pump)	1
26	303150	Dowel	4
27	1579809		
	222443	Fitting	1
28	233693	Fitting	1
29	1636644		
	1636639	Converter Housing (Torque Converter)	1
30	1624406	Dipstick Tube	1
31	1624401	Dipstick	1
32	1632741	Breather	1
33	136681	Capscrew	2
34	292681	Lockwasher	2
35	1699141	Cover Plate (Converter Housing)	1
36	4020588	Transmission Filter	1
37	1558515	Fitting	1
38	1589792		
	235691	Fitting	8
39	1515654	Temperature Sensor	1
40	292522	Capscrew	2
41	1627465	Screen	1
42	1550572	Spring	1
43	188210	Fitting	1

TRANSMISSION
DUAL SPEED – SECTION 1 OF 2

ITEM	PART NO.	DESCRIPTION	QTY
	4039981	Transmission Assy (2 Speed)(T150) (High Pressure)	1
1	1636630	Transmission Housing	1
2	292682	Lockwasher	14
3	292515	Capscrew	14
4	233693	Fitting	1
5	384279 293741	Capscrew	2
6	1660500	Solenoid Valve	1
7	222444	Fitting	1
8	1654004	Yoke	1
9	1654651	Flange Head Capscrew	1
10	86229	Seal	1
11	1545546	Fitting	1
12	2070263	Pressure Transducer	1
13	1589792 235691	Fitting	3
14	1570360	Gasket	1
15	1541231	Sensor (Input Speed, TISS)	1
16	292500	Capscrew	2
17	292680	Washer	2
18	1541232	Sensor (Output Speed, TOSS)	1
19	1646886	Clutch Pack (Reverse) (☞Figure 6-17).....	1
20	1646884	Clutch Pack (Input/Forward-Low) (☞Figure 6-15).....	1
21	1646885	Clutch Pack (Forward-High) (☞Figure 6-16).....	1
22	44306	Ball Bearing	1
23	1585750	Gear (Idler)	1
24	43209	Ball Bearing	2
25	1547447	Oil Seal	1
26	1638793	Gear (Output)	1
27	1636645	Spacer	1
28	1525686	Nut	1
29	213099	Snap Ring	1
30	44309	Ball Bearing	1

**REVERSE CLUTCH
DUAL SPEED TRANSMISSION**

ITEM	PART NO.	DESCRIPTION	QTY
	1646886	Clutch Pack (Reverse)	1
1	Seal	3
2	43207	Ball Bearing	3
3	1639862	Shaft	1
3	4025491	Shaft (Alternate Part)	1
4	Seal	1
5	Seal	1
6	2085129	Piston	1
7	1581108	Spring	1
8	1581098	Spring	1
9	1581099	Spring Guide	1
10	1581100	Snap Ring	1
11	Conical Plate	1
12	Friction Plate	9
13	Separator Plate	8
14	1537449	Pressure Plate (6.0 mm)	1
15	Seal	1
16	1537450	Snap Ring	1
17	124603	Ball Bearing	1
18	1581107	Snap Ring	1
19	1537459	Snap Ring	1
20	1639863	Gear	1
	1652269	Kit-Clutch Pack Plates/Seals	1
	1651852	Kit-Clutch Pack Plates	1
	1595425	Kit-Clutch Pack Seals	1

**DIFFERENTIAL
WET BRAKE**

ITEM	PART NO.	DESCRIPTION	QTY
	2099764	Drive Axle (11.2 Overall Ratio)	1
	2099761	Drive Axle (12.8 Overall Ratio)	1
	2099762	Drive Axle (13.7 Overall Ratio)	1
	2099763	Drive Axle (15.2 Overall Ratio)	1
1	1623593	Bolt	2
2	1627793	Nut	2
3	1627794	Seal	2
4	1623590	Snap Ring	2
5	1623591	O-Ring	2
6	1623592	Bearing	2
7	1641362	Bushing	2
8	1623817	Bevel Gear (12.8 Overall Ratio)	1
8	1627925	Gear and Pinion (13.7 Overall Ratio)	1
8	1627927	Gear and Pinion (15.2 Overall Ratio)	1
8	1623575	Bevel Gear (11.2 Overall Ratio)	1
9	1623578	Bolt	12
10	1623580	Thrust Washer	2
11	1623581	Gear	2
12	1623587	Thrust Washer	4
13	1623586	Pinion	4
14	1623584	Pin	2
15	1623585	Dowel	3
16	1623583	Pin	1
17	1623579	Differential Carrier	1
18	1623582	Retainer	1
19	1623574	O-Ring	1
20	1623573	Bearing	1
21	1623572	Spacer	1
22	1627788	Shim (0.10 mm)	1
22	1627789	Shim (0.15 mm)	1
22	1627790	Shim (0.25 mm)	1
22	1641361	Shim (0.50 mm)	1
23	1627791	Plug	1
24	1623568	Cover	1
25	1627792	Bolt	8
26	1623553	Spacer (5.0 mm)	1
26	1623554	Spacer (5.1 mm)	1
26	1623555	Spacer (5.2 mm)	1
26	1623556	Spacer (5.3 mm)	1
26	1623557	Spacer (5.4 mm)	1
26	1623558	Spacer (5.5 mm)	1
26	1623559	Spacer (5.6 mm)	1
26	1623560	Spacer (5.7 mm)	1
26	1623561	Spacer (5.8 mm)	1
26	1623562	Spacer (5.9 mm)	1
26	1623563	Spacer (3.02 mm)	1
26	1623564	Spacer (3.04 mm)	1
26	1623565	Spacer (3.06 mm)	1
26	1623566	Spacer (3.08 mm)	1
26	1623567	Spacer (3.00 mm)	1

KEY:**A: 11.25 Overall Ratio****B: 12.80 Overall Ratio**

ITEM	PART NO.	DESCRIPTION	QTY	
			A	B
18	1672693	Sleeve	1	1
19	2022352	Tapered Roller Bearing	1	1
20	2050732	Lockwasher	1	1
21	2050733	Nut	1	1
22	1672069	Oil Seal	1	1
23	1684429	Yoke	1	1
24	1683530	End Plug	1	1
25	1677255	Yoke	1	1
26	1594314	Universal Joint	1	1
27	1329286	Capscrew	8	8

FOOTNOTES:**a** Not Included with Input Pinion Carrier Assembly

**STEERING COLUMN ASSEMBLY
DIESEL**

ITEM	PART NO.	DESCRIPTION	QTY
	4611791	Steering Column	1
1	4038672	Kit-Support	1
2	Support	1
3	Spacer	4
4	Joint	1
5	Nut	2
6	Washer	2
7	Screw	2
8	4038673	Kit-Shaft (Upper)	1
9	Shaft Assembly (Upper)	1
10	Housing Assembly	1
11	4038674	Kit-Nut	1
12	Nut	2
13	4038675	Kit-Shaft (Lower)	1
14	Shaft Assembly (Lower)	1
15	Pin	1
16	4038676	Kit-Contact	1
17	Contact Assembly (Horn)	1
18	Screw	4
19	Fastener	1
20	Connector	1
21	4038677	Kit Pivot (Lower)	1
22	Bolt (Pivot)	2
23	Bushing	2
24	Nut	2
25	4038678	Kit-Gas Spring	1
26	Gas Spring	1
27	Pin	1
28	Pin	1

BRAKE LINKAGE
DUAL PEDAL (WET BRAKE) – EARLY PRODUCTION

ITEM	PART NO.	DESCRIPTION	QTY
1	1646439	Reservoir	1
1	2077604	Tank	1
1	2314223	Reservoir	1
1	1645381	Diaphragm	1
1	1646397	Cap	1
2	1510126	Screw (Button Head)	1
3	2021353	Holder	1
4	1699992	Mount	1
5	1307884		
	1514429	Nut	1
6	4011940	Capscrew	1
7	2092888	Hose	1
8	222491	Fitting	1
8	16481	O-Ring	1
9	1375391	Pin (Rod End)	1
10	1351689	Locking Cotter Pin	1
11	1556475	Bumper	1
12	1534871	Bolt	1
13	239503	Nut	1
14	244540	Bushing	2
15	1585575	Bushing	2
16	1527879	Capscrew	4
17	1594950		
	4053949	Plate	1
18	1568256	Brake Pedal (RH)	1
19	12929	Snap Ring	1
20	206	Woodruff Key	2
21	1568076	Spring (RH)	1
22	1568077	Spring (LH)	1
23	1570300	Pad	1
24	1701771	Inching Pedal (Left Hand)	1
25	1578922	Crank	1
26	1688503	Mount	1
27	302398	Locknut	1
28	1683486	Sensor (Brake Position) (Late Production)	1
28	1547849	Sensor (Brake Position) (Early Production)	1
28	1564526	Clip (Key Hole) (Early Production)	1
28	1500912	Clip (Early Production)	1
29	1553897	Capscrew	2
30	292668	Nut	1
31	1704901	Capscrew	1
32	1527876	Capscrew	1
33	2092613	Cylinder Block	1
34	233683	Fitting	1
34	16487	O-Ring	1
35	222509	Fitting	1
35	16481	O-Ring	1
36	166857	Clamp	4
37	117989	Hose	1
38	1590033	Transducer (Brake Pressure)	1

**PARK BRAKE ASSEMBLY
MANUAL WITH TWO CABLES – DANA**

ITEM	PART NO.	DESCRIPTION	QTY
1	4039377	Parking Brake (Without Cab)	1
1	4039378	Parking Brake (With Cab)	1
2	4039370	Parking Brake Lever (Without Cab)	1
2	4039371	Parking Brake Lever (With Cab)	1
3	1701768	Screw	2
4	296378	Washer	2
5	1683486	Sensor (Brake Position)	1
6	4011940	Capscrew	4
7	2092506	Parking Brake Cable (RH)	1
8	2092505	Parking Brake Cable (LH)	1
9	1326653	Clamp	3
10	1528778	Capscrew	3
11	1527880	Capscrew	1
12	1398062	Nut (Fold Over)	1
13	1637399	Bracket	1
14	1375391	Pin (Rod End)	2
15	1351689	Locking Cotter Pin	2
16	1626353	Bracket	1
17	1510113	Capscrew	2

HYDRAULIC SUPPLY AND RETURN

ITEM	PART NO.	DESCRIPTION	QTY
1	4001029	Hydraulic Filter (☞Figure 10-2).....	1
2	2068337	Pressure Switch (With Electronic Monitoring Package)	1
3	2083335	Dipstick	1
4	1570264	Fitting	1
4	16484	O-Ring	1
5	4627552	Hose	1
6	1502007	Hose Clamp	2
7	1582161	Breather	1
7	16486	O-Ring	1
8	2081865	Surge Tank	1
9	296016	Capscrew	2
10	1617083	Spacer	1
11	1382472		
	1502543	Nut (Flange)	2
12	1617585	Strainer	1
12	18909	O-Ring	1
13	1527983	Hose Clamp	4
14	2079736	Hose (Tank Suction)	1
15	119236	Clamp	2
16	2098326	Tube	1
17	1527879	Capscrew	3
18	1473888	Fitting	1
18	280154	O-Ring	1
19	ace 4602289	Gear Pump (41.3 cc) (☞Figure 10-3).....	1
19	d 4602290	Gear Pump (46.5 cc) (☞Figure 10-3).....	1
19	b 4602291	Gear Pump (51.6 cc) (☞Figure 10-3).....	1
19	f 4602292	Gear Pump (32.5 cc) (☞Figure 10-3).....	1
20	264159	Adhesive	1
21	1566890	Adapter	1
21	16983	O-Ring	1
22	2079735	Hose (Pump Section)	1
23	1564515	Capscrew	2
24	2088916	Hose Assy	1
25	1473898	Fitting	1
25	280154	O-Ring	1
25	16486	O-Ring	1
26	369804	Clamp	2
27	2105639	Hose Assy (Return Line)	1
28	1612214	Fitting	1
	g 1382472		
	1502543	Nut (Flange)	4

FOOTNOTES:

- | | | | |
|----------|---|----------|---|
| a | H100-120FT Gasoline and LPG Low Displacement | e | H80-90FT Gasoline and LPG Standard Displacement |
| b | H100-120FT Gasoline, LPG and Diesel Standard Displacement | f | H80-90FT Low Displacement |
| c | H80-120 Diesel Low Displacement | g | Not, Illustrated,(filter mounting) |
| d | H80-90FT Diesel Standard Displacement | | |

HAND LEVERS
FOUR FUNCTION – WITH DETENTED LEVERS

ITEM	PART NO.	DESCRIPTION	QTY
1	1665748	Bracket	1
2	1527879	Capscrew	4
3	316834	Nut	1
4	320156	Washer	1
5	1670677	Plate (Detent)	1
6	1527878	Capscrew	1
7	1583611	Capscrew	2
8	175861	Spring	1
9	302428	Roll Pin	1
10	1542546	Lever	1
11	1564747	Bushing	10
12	306113	Pin (Selector)	1
13	1670196	Shaft	1
14	320161	Washer	3
15	1662420	Link	4
16	1517361	Locking Ring Cotter Pin	8
17	309109	Pin	8
18	2099397	Lever (Auxiliary Two and Three)	1
19	2099395	Lever (Auxiliary One)	1
20	2099394	Lever (Tilt)	1
21	2099393	Lever (Lift)	1
22	1517395 4038182	Knob	4
23	1586627	Capscrew	3
24	1346752	Washer	3
25	2063991	Isolator	3
26	Hydraulic Control Valve (☞Figure 10-8).....	1
27	2070655	Lens (Blank)	1

**VALVE ASSEMBLY, AUXILIARY ONE AND TWO
MANUAL CONTROL VALVE – THREE AND FOUR FUNCTION**

KEY:**A: Three Function****B: Four Function**

ITEM	PART NO.	DESCRIPTION	QTY	
			A	B
1	1670431	Valve Section (Spool Section) One or Two	1	1
2	1670533	Valve Section (Spool Section) One	1
3	16706	Screw	2	2
4	188515	Plate	1	1
5	1580147	Kit-Seal (Auxiliary Functions)	1	1
6	1578713	Plug Assembly	1	1
6	77441	Plug	1	1
7	77442	Spring	1	1
8	77443	Poppet	1	1
9	Seal Plate	1	1
10	320289	Spring Seat	1	1
11	188517	Spring	1	1
12	1581859	Spool End	1	1
13	1560681	Cap	1	1
14	4628746			
	1578705	Capscrew	2	2
15	1578714	Plug Assembly	1	1

**ELECTRO HYDRAULIC POPPET VALVE
THREE AND FOUR FUNCTION**

ITEM	PART NO.	DESCRIPTION	QTY
1	1699590	Poppet Valve	1
2	1629163	Nut	1
3	1578710	Coil	1
4	1629160	Tube (Solenoid)	1
5	1629165	Spring	1
6	1699591	Poppet Valve	1
7	1586020	Sleeve	1
8	1629200	Kit-Valve (Lift)	1
9	1629163	Nut	1
10	1629162	Coil	1
11	1629161	Tube Assy (Solenoid)	1
12	1629164 1657846	Spring	1
13	1629158	Poppet Valve	1
14	1586279	Kit-Seal (Electro Hydraulic Poppet Valve)	1

TILT HOSES

ITEM	PART NO.	DESCRIPTION	QTY
1	1487061	Fitting	1
1	265787	O-Ring	1
1	16484	O-Ring	1
2	1488464	Fitting	1
2	265787	O-Ring	1
2	1487097	Fitting	1
3	2103985	Hose Assy	1
4	2103982	Hose Assy	1
5	2075859	Hose Assy	1
5	4604826	Hose Assy	1
6	2088913	Hose Assy	1
7	1487063	Fitting	4
7	265787	O-Ring	1
7	16483	O-Ring	1
8	1480237	Nut	2
9	1605479	Hose Clamp (Dual Hose)	2
10	1473887	Fitting	1
10	265731	O-Ring	1
10	16484	O-Ring	1
11	1487095	Fitting	1
12	1586627	Capscrew	2
13	1502066	Clamp (Swivel)	1
14	1502059	Clamp (Swivel)	1

MAST
TWO STAGE LIMITED FREE LIFT – CARRIAGE

KEY:**A: H80-90FT****B: H100-120FT**

ITEM	PART NO.	DESCRIPTION	QTY	
			A	B
	2035667	Carriage (48 in.)	1	..
	2035669	Carriage (60 in.)	1	..
	2035671	Carriage (54 in.)	1
	2035672	Carriage (60 in.)	1
1	1388092	Carriage Wldmt (48 in.)	1	..
1	1388094	Carriage Wldmt (60 in.)	1	..
1	1387447	Carriage Wldmt (54 in.)	1
1	1387448	Carriage Wldmt (60 in.)	1
2	1500744	Stubshaft	6	6
3	1387285	Chain Anchor	2	..
3	1387286	Chain Anchor	2
4	327591	Pin	2	..
4	339932	Pin	2
5	15222	Cotter Pin	2	2
6	1581896	Nut	4	4
7	1465072	Snap Ring	6	6
8	1399224	Spacer	2	2
9	126765	Shim	24	24
10	1511883	Load Roller ("B") (104.44/104.18)	6	6
10	1511882	Load Roller ("A") (103.68/103.42) (Alternate)	6	6
10	1511884	Load Roller ("C") (105.20/104.94) (Alternate)	6	6
11	15224	Cotter Pin	2	2

MAST

TWO STAGE FULL FREE LIFT – INNER MAST AND FREE LIFT (→ PENDING PER ECN 15482602)

H80-90FT

ITEM	DESCRIPTION 1 2 3 4	LIFT HEIGHT TO BOTTOM OF FORKS	
		3025 mm (119.1 in.)	3625 mm (142.7 in.)
		Mast Group Number	B753 3025
	Mast Assy	2071931	2071937
1	Inner Mast	1573809	1573815
22	Chain	337189	339897

H100-120FT

ITEM	DESCRIPTION 1 2 3 4	LIFT HEIGHT TO BOTTOM OF FORKS	
		2765 mm (108.9 in.)	3365 mm (132.5 in.)
		Mast Group Number	B754 2765
	Mast Assy	2071969	2071975
1	Inner Mast	1573809	1573815
22	Chain	386885	337189

KEY:

A: H80-90FT

B: H100-120FT

ITEM	PART NO.	DESCRIPTION	QTY	
			A	B
	b	Mast Assy	1	1
1	b	Inner Mast	1	1
2	1500744	Stubshaft	2	2
3	1581582	Capscrew	1	1
4	178119	Clamp	1	1
5	1581566	Nut	1	1
6	221628	Capscrew	2	2
7	297649	Ring	2	2
8	161003	Nut	2	2
9	2088450	Bracket (Two Piece Wedge)	2	..
9	2088451	Bracket (Two Piece Wedge)	2
9	a 1694479			
	4057049	Clamp (One Piece Formed Bracket)	1	..
9	a 1694480			
	4057050	Clamp (One Piece Formed Bracket)	1
10	1399203	Load Roller ("A") (126.75/126.49)	2	2
10	1399204	Load Roller ("B") (127.51/127.25)	2	2
10	1399205	Load Roller ("C") (128.27/128.01)	2	2
11	126765	Shim	12	12
12	1465072	Snap Ring	2	2

MAST**TWO STAGE FULL FREE LIFT – HEADER HOSE AUXILIARY TUBE EXTENSIONS (STANDARD CARRIAGE)****KEY:****A: H80-90FT — Three Function****B: H80-90FT — Four Function****C: H100-120FT — Three Function****D: H100-120FT — Four Function**

ITEM	PART NO.	DESCRIPTION	QTY			
			A	B	C	D
1	2093653	Tube Assy	1	1
1	2093657	Tube Assy	1	1
2	2093654	Tube Assy	1	1
2	2093658	Tube Assy	1	1
3	2093655	Tube Assy	1
3	2093659	Tube Assy	1
4	2093656	Tube Assy	1
4	2093660	Tube Assy	1
5	1692933	Bracket (RH and LH Bolt On)	1	2	1	2
6	1527883	Capscrew	2	4	2	4
7	816591	Fitting	2	4	2	4
8	1528580	Fitting	1	2	1	2
9	1550425	Fitting	1	2	1	2

**MAIN LIFT CYLINDER
THREE STAGE FULL FREE LIFT**

H80-90FT

ITEM	DESCRIPTION 1 2 3 4	LIFT HEIGHT TO BOTTOM OF FORKS				
		4365 mm (171.9 in.)	4665 mm (183.7 in.)	4900 mm (192.9 in.)	5200 mm (204.7 in.)	5500 mm (216.5 in.)
		Mast Group Number	B751 4365	B751 4665	B751 4900	B751 5200
	Cylinder Group Number	8509701	8509703	8509704	8509706	8509708
	Cylinder Assy	2073852	2073854	2073857	2073856	2073859
1	Tube Wldmt- Cylinder	2073888	2073890	2073891	2073893	2073895
2	Cylinder Rod	2037856	2037857	2037858	2037859	2037860

H100-120FT

ITEM	DESCRIPTION 1 2 3 4	LIFT HEIGHT TO BOTTOM OF FORKS				
		4087 mm (160.9 in.)	4387 mm (172.7 in.)	4640 mm (182.7 in.)	4940 mm (194.5 in.)	5240 mm (206.3 in.)
		Mast Group Number	B752 4087	B752 4387	B752 4640	B752 4940
	Cylinder Group Number	8509801	8509803	8509804	8509806	8509808
	Cylinder Assy	2073912	2073914	2073915	2073917	2073919
1	Tube Wldmt- Cylinder	2073932	2073934	2073935	2073937	2073939
2	Cylinder Rod	2037841	2037842	2037844	2037845	2037846

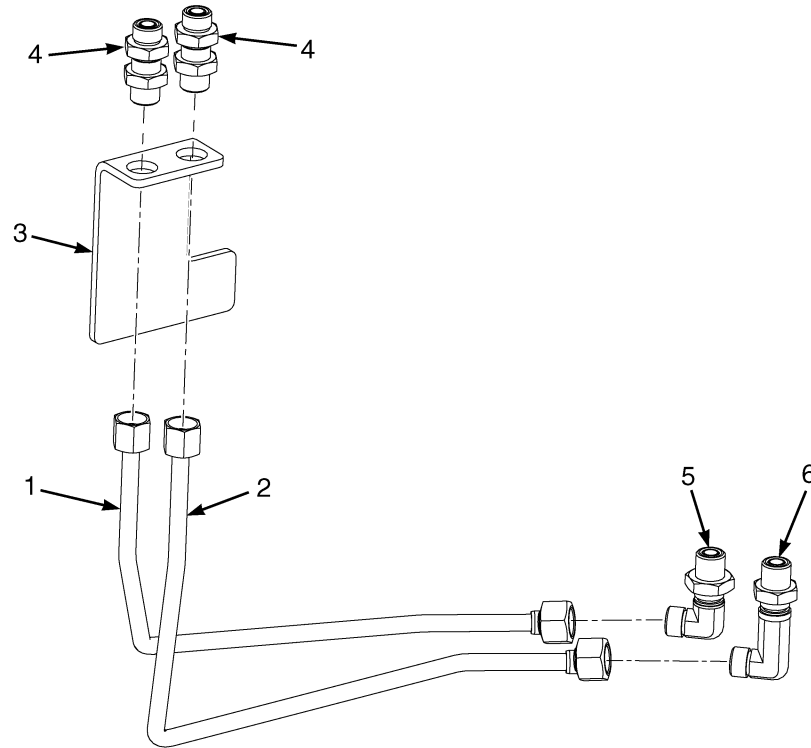
KEY:

A: H80-90FT

B: H100-120FT

ITEM	PART NO.	DESCRIPTION	QTY	
			A	B
	d	Cylinder Assy	2	2
1	d	Tube Wldmt-Cylinder	1	1
2	d	Cylinder Rod	1	1
3	2033243	Gland	1	..
3	2033299	Gland	1
4	215425	Wear Ring	1	..
4	215301	Wear Ring	1
5	1383066	Rod Wiper	1	..
5	1383068	Rod Wiper	1
6	270077	Rod Seal	1	..
6	201829	Rod Seal	1
7	638249	Back-Up Ring	2	..
7	638250	Back-Up Ring	1

**HEADER HOSE AUXILIARY TUBE EXTENSIONS (FIGURE 14-2)
TWO STAGE FULL FREE- LIFT — INTEGRAL SIDE-SHIFT CARRIAGE**



BP000711

KEY:

- A: H80-90FT — Four Function**
- B: H100-120FT — Four Function**

ITEM	PART NO.	DESCRIPTION	QTY	
			A	B
1	2093661	Tube Assy	1	..
1	2093663	Tube Assy	1
2	2093662	Tube Assy	1	..
2	2093664	Tube Assy	1
3	1647864	Bracket	1	1
4	816591	Fitting	2	2
4	265731	O-Ring	2	2
4	816593	Locknut	1	1
5	1528580	Fitting	1	1
5	265731	O-Ring	2	2
5	816593	Locknut	1	1
6	1550425	Fitting	1	1
6	265731	O-Ring	2	2
6	816593	Locknut	1	1

HEADER HOSE AUXILIARY TUBE EXTENSIONS WITH QUICK DISCONNECTS TWO STAGE LIMITED FREE-LIFT – STANDARD CARRIAGE

KEY:

- A: H80-90FT — Three Function**
B: H80-90FT — Four Function
C: H100-120FT — Three function
D: H100-120FT — Four Function

ITEM	PART NO.	DESCRIPTION	QTY			
			A	B	C	D
1	2093179	Tube Assy	1	1
1	2093183	Tube Assy	1	1
2	2093180	Tube Assy	1	1
2	2093184	Tube Assy	1	1
3	2093181	Tube Assy	1
3	2093185	Tube Assy	1
4	2093182	Tube Assy	1
4	2093186	Tube Assy	1
5	1692933	Bracket (RH and LH Bolt On)	1	2	1	2
6	1527883	Capscrew	2	4	2	4
7	1708365	Bulkhead	2	4	2	4
8	816593	Locknut	2	4	2	4
9	1377953	Quick Disconnect Fitting	2	4	2	4
10	1377954	Fitting	2	4	2	4
11	1473887	Fitting	2	4	2	4
11	265731	O-Ring	1	1	1	1
11	16484	O-Ring	1	1	1	1
12	1708368	Dust Cover	2	4	2	4
13	1529016	Fitting	2	4	2	4
14	a 1708373	Bracket	1	1	1	1
15	ab 2111754	Valve	1	..	1	..
15	a 2111755	Valve	1	..	1
15	a 4010971	Check Valve	2	4	2	4
15	a 4010972	Valve	1	1	1	1
16	a 1487095	Fitting	2	4	2	4
16	a 265731	O-Ring	2	2	2	2
17	a 1486737	Fitting	2	4	2	4
17	a 1527813	O-Ring	1	1	1	1
17	a 16481	O-Ring	1	1	1	1
18	a 1527885	Capscrew	2	2	2	2
19	a 292505	Capscrew	2	2	2	2
20	a 1512440					
	302399	Nut	2	2	2	2
21	a 110178	Fitting	1	1	1	1
21	a 16483	O-Ring	1	1	1	1
22	a 4604565	Hose Assy	1	2	1	2
23	a 4604566	Hose Assy	1	1	1	1
24	a 4604568	Hose Assy	1	..	1
25	a 1614069	Hose	1	1	1	1
26	a 2046871	Fitting	1	1	1	1
27	a 1527979	Hose Clamp	4	4	4	4

FOOTNOTES:

a Electronic Hydraulic Control Option Only

b Not Illustrated

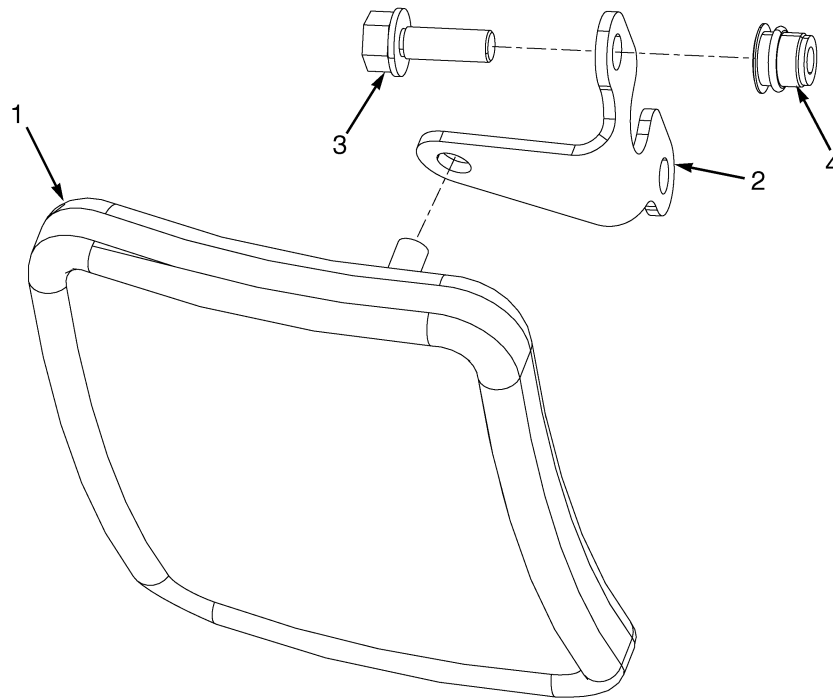
HEADER HOSE AUXILIARY TUBE EXTENSIONS WITH QUICK DISCONNECTS TWO STAGE FULL FREE-LIFT – ATTACHMENT CARRIAGE

KEY:**A: H100-120FT — Three Function****B: H100-120FT — Four Function**

ITEM	PART NO.	DESCRIPTION	QTY	
			A	B
1	2093665	Tube Assy	1	1
2	2093666	Tube Assy	1	1
3	2093667	Tube Assy	1
4	2093668	Tube Assy	1
5	1692931	Bracket (Bolt-On) (RH)	1	1
6	1692932	Bracket (Bolt-On) (LH)	1
7	1527884	Capscrew	2	4
8	136692	Nut	2	4
9	1708365	Bulkhead	2	4
10	816593	Locknut	2	4
11	1377953	Quick Disconnect Fitting	2	4
12	1377954	Fitting	2	4
13	1473887	Fitting	2	4
13	265731	O-Ring	1	1
13	16484	O-Ring	1	1
14	1708368	Dust Cover	2	4
15	1529016	Fitting	2	4
16	a 1708373	Bracket	1	1
17	ab 2111754	Valve	1	..
17	a 2111755	Valve	1
17	a 4010971	Check Valve	2	4
17	a 4010972	Valve	1	1
18	a 1487095	Fitting	2	4
18	a 265731	O-Ring	2	2
19	a 1486737	Fitting	2	4
19	a 1527813	O-Ring	1	1
19	a 16481	O-Ring	1	1
20	a 1527885	Capscrew	2	2
21	a 292505	Capscrew	2	2
22	a 1512440			
	302399	Nut	2	2
23	a 110178	Fitting	2	2
24	a 4604565	Hose Assy	1	2
25	a 4604566	Hose Assy	1	1
26	a 4604568	Hose Assy	1
27	a 1399093	Hose Assy	1	1
28	a 1527979	Hose Clamp	2	2
29	a 1502059	Clamp (Swivel)	1	1
30	a 1502066	Clamp (Swivel)	1	1

FOOTNOTES:**a** Electronic Hydraulic Control Only**b** Not Illustrated

**DUAL MIRRORS (FIGURE 14-23)
WITH CAB**



HP000896

ITEM	PART NO.	DESCRIPTION	QTY
1	4009488	Mirror	2
2	1579412	Bracket	2
3	1583611	Capscrew	4
4	1531557	Insert	4

SECTION 15 FIELD CONVERSION KITS

DESCRIPTION	PAGE
ADD ON TELEMETRY KITS	15-9
ADD-ON OPTION KITS	15-7
CARRIAGE LOCKOUT ROD	
CLASS III AND IV	15-6
DIRECTIONAL CONTROL	15-6
HOSE GROUPS	
THREE STAGE FULL FREE-LIFT	15-5
TWO STAGE FULL FREE-LIFT	15-4
TWO STAGE LIMITED FREE-LIFT	15-3
MANUAL HYDRAULIC CONTROLS AND CONTROL VALVES	15-7
MINI-LEVER HYDRAULIC CONTROLS AND CONTROL VALVES	15-6
RED SEAT BELT	15-6
START OPTIONS	15-2
SWIVEL SEATS	15-2
WIDE TREAD AND DUAL TREAD TIRES	15-2

NUMERICAL INDEX (continued)

PART NO.	PAGE	ITEM	PART NO.	PAGE	ITEM	PART NO.	PAGE	ITEM	PART NO.	PAGE	ITEM
	5-75	1		5-106	17	1347043	2-5	19	1363885	5-97	54
	5-75	18		5-106	18		2-9	17	1363886	5-67	3
	5-75	20		5-108	57		3-13	29		5-105	7
	5-76	22		5-111	1	1347045	1-5	33		5-111	7
	5-79	9		5-112	17		1-55	36		5-117	7
	5-80	23		5-112	18		2-5	20		5-123	3
	5-80	25		5-113	42		2-9	18		5-123	7
	5-80	27		5-114	46		3-13	30		5-123	9
	5-80	30		5-117	1	1350215	1-53	20		5-125	10
	5-83	1		5-118	17	1351178	3-13	31	1367150	1-29	7
	5-83	19		5-118	18	1351682	5-29	11		1-29	10
	5-84	21		5-119	42		5-71	10	1371149	4-13	12
	5-84	23		5-120	46	1351689	9-3	9	1371159	4-13	5
	5-87	1	1330450	3-33	6		9-7	23		4-15	3
	5-87	8	1330453	3-45	5		9-9	10		4-19	7
	5-87	9	1330917	1-37	28		9-13	29	1374288	3-39	5
	5-89	1	1330919	1-37	27		9-17	10		3-39	30
	5-89	10	1330920	1-37	21		9-21	10	1374289	3-39	10
	5-89	11	1331341	3-33	26		9-29	15	1374293	3-39	19
	5-95	12		3-39	7		9-31	7	1374297	3-35	2
	5-96	27	1331990	11-8	15	1352140	2-17	2	1374298	3-35	8
	5-105	7		13-3	11		3-7	5	1374299	3-35	7
	5-105	9	1331991	11-8	15	1352603	5-72	29	1374301	3-35	6
	5-107	28		12-8	15		5-76	25	1374313	3-33	15
	5-107	30		12-12	15		5-80	29		3-35	25
	5-107	32		13-3	11		5-84	25	1374315	3-35	19
	5-108	42		13-13	7		5-101	16	1374317	3-35	18
	5-108	52		13-17	7	1354165	1-37	12	1374319	3-45	1
	5-108	53	1333001	1-46	1	1354171	1-37	4	1374320	3-45	4
	5-111	7	1333002	1-46	1	1356947	1-16	6	1374326	3-35	21
	5-111	9	1333003	1-46	1	1357266	5-12	1	1375391	9-3	8
	5-113	24	1333004	1-46	1		5-12	1		9-7	22
	5-113	26	1334423	5-36	4	1357268	5-12	1		9-9	9
	5-113	37	1335129	1-37	24		5-12	1		9-13	28
	5-114	43	1335137	1-41	8		5-17	1		9-17	11
	5-117	7	1335497	5-36	8		5-19	16		9-21	9
	5-117	9	1335499	3-33	16		5-21	11		9-29	14
	5-119	24	1337197	5-54	7	1357533	5-12	2		9-31	6
	5-119	26	1338223	3-45	2	1358504	5-37		1375487	7-5	6
	5-119	37	1339963	3-35	20	1359562	1-59	10	1375676	1-37	9
	5-120	43		3-39	23		1-61	3	1375797	5-63	1
	5-120	48	1340470	4-45	12		1-73	10		5-63	6
	5-123	1		4-49	2		1-75	3	1377103	3-35	39
	5-127	5	1345014	5-43	4		1-93		1377107	3-35	23
	5-129	5	1345190	11-15	13	1360178	3-35	33	1377110	3-31	3
1330439	5-63	11	1345684	8-13	21	1360507	11-15	3	1377750	3-26	2
	5-87	1	1345690	5-92	20	1360529	11-3	9	1377792	3-39	18
	5-92	16	1345939	1-37	10		13-21	17	1377793	3-39	16
	5-101	15	1346752	10-9	23	1361302	12-19	4	1377794	3-39	17
	5-101	16		10-11	14		13-29	4	1377953	14-13	9
	5-105	1		10-13	24	1362049	1-23			14-17	9
	5-105	2		10-15	15	1362058	1-23			14-22	9

NUMERICAL INDEX (continued)

PART NO.	PAGE	ITEM	PART NO.	PAGE	ITEM	PART NO.	PAGE	ITEM	PART NO.	PAGE	ITEM
1550193	12-4	39		9-9	29	1560255	2-25		1563224	1-23	7
	12-8	21		9-13	7	1560447	5-27	7	1563225	1-23	8
	12-12	21		9-17	15	1560448	5-27	8	1563227	1-23	5
1550194	12-4	39		9-21	29	1560671	1-9	2	1563351	1-19	1
	12-8	21	1554085	6-8	1	1560678	5-9	12	1563369	1-5	35
	12-12	21	1554086	6-8	1		5-31	6		1-5	35
1550195	13-14	31	1554359	5-106	17	1560681	10-21	15	1563497	1-5	34
	13-18	31		5-108	54		10-23	13	1563841	5-25	8
	13-30	17		5-108	58	1560692	5-108	55	1564035	5-42	1
1550196	13-14	31		5-111	2		5-114	44	1564036	5-42	
	13-18	31		5-112	17		5-120	44	1564037	5-42	
	13-30	17		5-113	42	1561027	5-93	22	1564042	5-42	
1550197	10-47	13		5-114	47	1561117	5-124	4	1564044	5-13	2
	11-4	23		5-117	2		5-124	7		5-17	18
	12-3	12		5-118	17	1561147	5-91	1	1564263	1-5	16
	13-22	25		5-120	42	1561559	14-51	2	1564392	4-20	5
1550198	10-47	13		5-120	47	1561749	14-54	1	1564515	10-3	23
	11-4	23	1554814	5-44	4	1561755	14-51	2	1564526	9-3	24
	12-3	12	1554815	5-45	2	1561759	5-21	6		9-9	28
	13-22	25	1554902	5-23	18		5-53	11	1564747	10-9	11
1550199	12-4	36		5-25	17	1561871	4-11	25		10-11	5
1550384	11-4	29		5-54	10		5-9	20		10-13	11
1550385	12-4	24	1556475	9-3	10		5-11	10		10-15	5
1550386	11-4	30		9-7	10	1562088	4-29	23	1564752	4-47	14
1550387	12-4	25		9-9	11		5-19	5		4-49	21
1550425	12-24	11		9-13	11		5-21	5	1565076	5-27	13
	12-27	9		9-17	7		5-23	10		5-29	13
	13-34	25		9-21	11		5-48	5		14-51	
	13-37	9	1556623	5-9	7	1562353	1-37	26	1565125	5-27	3
	14-3	6		5-99	16	1562492	8-7	11		5-29	3
	14-4	6	1556794	7-6	42	1562493	8-7	13	1565195	3-3	10
	14-9	11	1556799	7-11	7	1562496	8-7	16	1565324	7-9	
	14-11	11	1556800	7-11	1	1562501	8-7	21	1565325	7-9	4
1550561	6-29	3	1557546	3-13	25	1562505	8-7	25	1565327	7-9	2
1550567	6-16	45	1557651	8-17	4	1562509	8-7	1	1565407	1-87	11
	6-27	42	1557737	2-25	2	1562648	1-16	2		4-24	9
1550572	6-15	42		3-3	5		6-3	6	1565453	2-25	5
	6-27	40	1558156	5-127	8		6-5	5		3-3	7
1551303	10-49	10	1558219	1-9	16		8-3	7	1565832	3-19	5
1551632	4-19	37	1558226	5-101	14	1562649	5-87	3	1565962	1-53	4
1551665	4-13	3	1558515	6-15	37		5-87	5	1565964	1-53	5
1551839	8-4	3		6-27	36		5-87	6	1566116	5-72	24
1552141	3-39	3	1558807	3-33	11		5-87	7		5-75	20
1552853	6-10	8	1559567	5-38	3		5-89	3		5-80	25
1553269	3-19	12	1559695	3-42	2		5-89	5		5-84	21
1553403	6-12	25		5-36			5-89	6	1566117	5-72	25
	6-15	10	1559922	5-36	3		5-89	7		5-76	21
	6-27	26	1559923	5-36	5		5-89	8		5-80	26
1553541	4-10	15	1559924	5-36	6		5-89	9		5-84	22
1553897	5-48	8	1559925	5-36	7	1563208	1-25		1566146	5-12	1
	9-3	23	1559928	5-5	9	1563216	1-19	5		5-12	1
	9-7	7	1559973	10-21	18	1563217	1-19	6		5-17	5

NUMERICAL INDEX (continued)

PART NO.	PAGE	ITEM	PART NO.	PAGE	ITEM	PART NO.	PAGE	ITEM	PART NO.	PAGE	ITEM
2062535	10-49	8	2070655	10-13	27			13-17			12-11
2062587	4-10	18		10-15	10			13-33	2071975		12-3
2062875	1-33	19	2070726	1-55	19	2071876		13-3			12-7
	1-35	23	2070975	1-55	18			13-7			12-11
2063017	3-25	2	2070996	1-57	12			13-11	2072080		13-8 24
2063842	4-47	12	2071001	1-15	4			13-13			13-8 24
	4-49	19		1-16	1			13-17	2072082		13-8 24
2063991	10-9	24	2071094	8-17	2			13-33			13-8 24
	10-11	15	2071181	4-47	1	2071878		13-3	2072083		13-8 24
	10-13	25	2071261	4-8	3			13-7			13-8 24
	10-15	16		14-57	1			13-11	2072085		13-8 24
2064554	8-14		2071501	5-21	11			13-13			13-8 24
	9-3		2071517	4-17	5			13-17	2072087		13-8 24
	9-7			4-32	44			13-33			13-8 24
	9-10			4-35	44	2071898		13-3	2072127		12-4 26
	9-14			4-39	35			13-7			12-4 26
	9-18			4-43	35			13-11	2072133		12-4 26
	9-22		2071647	1-14	1			13-13			12-4 26
2064929	14-57	3	2071745	11-3				13-17	2072157		5-17 1
2065666	1-55	2		11-7				13-33	2072202		3-13 9
2065667	1-55	8		11-15		2071900		13-3	2072298		4-17 10
2065745	5-5	22	2071750	11-3				13-7			4-39 37
2065889	12-20			11-7				13-11	2072819		3-5 28
	13-30			11-15				13-13			3-7 16
2065965	4-10	4	2071756	11-3				13-17	2073197		1-37 30
2066482	5-54	12		11-7				13-33	2073257		12-19 1
2066483	5-54	4		11-15		2071901		13-3			13-29 1
2066484	5-54	5	2071818	11-3				13-7	2073259		13-29 1
2066485	5-54	3		11-7				13-11	2073261		13-29 1
2067188	4-10	6		11-15				13-13	2073263		12-19 1
2067475	1-55	29	2071824	11-3				13-17			13-29 1
2067476	4-3	18		11-7				13-33	2073265		13-29 1
2067574	7-5	11		11-15		2071903		13-3	2073626		12-19 1
	7-9	1	2071830	11-3				13-7			13-29 1
2068337	10-3	2		11-7				13-11	2073630		13-29 1
	10-5	6		11-15				13-13	2073632		13-29 1
2068342	5-23	11	2071871	13-3				13-17	2073634		12-19 1
2068343	5-25	9		13-7				13-33			13-29 1
2068344	5-23	11		13-11		2071905		13-3	2073636		13-29 1
	5-25	9		13-13				13-7	2073768		9-27 17
2069381	5-60	1		13-17				13-11	2073852		13-25
2069431	5-54	4		13-33				13-13	2073854		13-25
2069454	1-9	6	2071873	13-3				13-17	2073856		13-25
2069951	2-25	6		13-7				13-33	2073857		13-25
	3-3	6		13-11		2071931		12-3	2073859		13-25
2070147	6-9	4		13-13				12-7	2073888		13-25 1
2070223	1-9	5		13-17				12-11	2073890		13-25 1
	14-50	2		13-33		2071937		12-3	2073891		13-25 1
2070263	6-10	3	2071874	13-3				12-7	2073893		13-25 1
	6-22	5		13-7				12-11	2073895		13-25 1
	6-25	12		13-11		2071969		12-3	2073912		13-25
	6-29	14		13-13				12-7	2073914		13-25

CLICK HERE TO **DOWNLOAD** THE COMPLETE MANUAL

- Thank you very much for reading the preview of the manual.
- You can download the complete manual from: www.heydownloads.com by clicking the link below



- Please note: If there is no response to CLICKING the link, please download this PDF first and then click on it.

CLICK HERE TO **DOWNLOAD** THE COMPLETE MANUAL