

PARTS MANUAL

**H170FT, H175FT36, H190FT
(B299)**

CUSTOMER EDITION

HYSTER

CLICK HERE TO **DOWNLOAD** THE COMPLETE MANUAL

- Thank you very much for reading the preview of the manual.
- You can download the complete manual from: www.heydownloads.com by clicking the link below



- Please note: If there is no response to CLICKING the link, please download this PDF first and then click on it.

CLICK HERE TO **DOWNLOAD** THE COMPLETE MANUAL

TABLE OF CONTENTS (continued)

DESCRIPTION	PAGE
OIL PAN	
CUMMINS QSB 3.3L DIESEL	2-64
GM 5.7L LPG	3-26
KUBOTA DIESEL	2-23
OIL PUMP	
GM 5.7L LPG	3-28
OIL SEPARATOR	
KUBOTA DIESEL	4-11
OPERATOR COMPARTMENT PLATFORM	1-2
OUTER MAST	
THREE STAGE FULL FREE-LIFT - F80 MAST SERIES	13-2
THREE STAGE FULL FREE-LIFT - F90 MAST SERIES	13-20
TWO STAGE LIMITED FREE-LIFT - F80 MAST SERIES	12-2
TWO STAGE LIMITED FREE-LIFT - F90 MAST SERIES	12-14
OUTLET SECTION	
THREE AND FOUR FUNCTION	11-28
OVERHEAD GUARD	1-24
P	
PARK BRAKE ASSEMBLY	10-14
PISTON AND CRANKSHAFT	
KUBOTA DIESEL	2-34
POWER DISTRIBUTION MODULE	6-60
PULLEY SYSTEM	
INCLUDES ALTERNATOR AND STARTER - GM 5.7L LPG	3-12
PUMP DRIVE	7-22
R	
RADIATOR ASSEMBLY	
CUMMINS QSB 3.3L	2-56
KUBOTA DIESEL	2-6
RADIATOR MOUNTING	
CUMMINS QSB 3.3L DIESEL	2-54
GM 5.7L LPG	3-4
RAIN TOP	14-8
REMOTE KEY SWITCH	6-62
REVERSE CLUTCH AND FIRST SHAFT	
THREE SPEED TRANSMISSION - REV1, RANGE 1	7-16
ROCKER ARM ASSEMBLY	
GM 5.7L LPG	3-20
ROCKER ARM SHAFT	
KUBOTA DIESEL	2-30
S	
SEALED ALTERNATOR AND MOUNTING	
CUMMINS QSB 3.3L DIESEL	6-26
SEAT ATTACHING PARTS	
NOT INCLUDED WITH SEAT - SHEET 4 OF 4	1-62
SEAT BELT SWITCH ADAPTER	
4/2014 →	6-63

PUBLICATIONS

Every new lift truck is provided with an OPERATING MANUAL. This manual has information that the operator must know for inspection and operation of the lift truck.

SERVICE MAINTENANCE MANUALS, which provide service and overhaul procedures, and PARTS

MANUALS with complete replacement part identification, are available at a nominal fee from your Hyster dealer to assist users in effectively maintaining Hyster lift trucks in a safe, useful condition. See the list below for information on ordering specific publications for this model lift truck.

PUBLICATION	HYSTER PART NUMBER
Operating Manual.....	4053616
Service Manual (Complete).....	4053653
Parts Manual.....	4053645

HOOD ASSEMBLY
(→ S/N B299V01533L)

ITEM	PART NO.	DESCRIPTION	QTY
1	1675474	Seal	2
2	1664290	Hood (LH) (With Overhead Guard)	1
2	1687414	Hood (LH) (With Cab)	1
3	287816	Capscrew	4
4	362030	Handle	2
5	1476421	Washer	4
6	1581565	Nut	4
7	1650477	Sound Liner (LH)	1
8	1663631	Sound Liner (LH)	1
9	1650479	Sound Liner (LH) (With Overhead Guard)	1
9	4000085	Liner (LH) (With Cab)	1
10	1615395	Seal	1
11	313828	Nut	4
12	1563369	Ball Stud	4
13	4014557	Gas Spring	2
14	1527880	Capscrew	18
15	1678274	Hinge	2
16	1480237	Nut	8
17	1375391	Pin (Rod End)	4
18	1351689	Locking Cotter Pin	4
19	1531557	Insert	8
20	1678273	Hinge (Base)	2
21	1460477	Nut	4
22	317594	Motor Mount	4
23	1356113	Washer	4
24	1527886	Capscrew (DSL)	4
24	1527887	Capscrew (LPG)	4
25	1695899	Hood Support	1
26	1669446	Hinge (Base)	2
27	1639723	Hinge	2
28	1484643	Spacer (DSL Option)	2
29	1585581	Bumper (Hood)	6
30	320157	Washer	8
31	1593335	Nut	10
32	1664273	Hood (RH) (With Overhead Guard)	1
32	1687416	Hood (RH) (With Cab)	1
33	1610906	Seal	1
34	1687401	Side Plate Wldmt (RH)	1
35	1687388	Hood Support (Without Air Conditioning)	1
35	4062586	Hood Support (With Air Conditioning)	1
36	1687399	Side Plate Wldmt (LH)	1
37	1663612	Sound Liner (LH)	1
38	1707278	Bracket	2
39	1530019	Screw	6
40	325182	Nut	4
41	1527877	Capscrew	2
42	1531558	Insert	4
43	1502543	Nut (Flange)	2
44	1688045	Seal	2
45	1688046	Seal (With Cab)	2

**CAB
ATTACHING PARTS**

ITEM	PART NO.	DESCRIPTION	QTY
1	d 4040162	Cab (Steel Doors) (☞Figure 1-12).....	1
1	c 4040163	Cab (Steel Doors) (☞Figure 1-13).....	1
2	4601386	Grommet	2
3	1359562	Fan Assembly	1
4	1583611	Capscrew	2
5	1613734	Bracket	1
6	1531557	Insert	2
7	1463912	Nut	4
8	292678	Lockwasher	4
9	1565125	Screw	4
10	1574301	Plug	8
11	1527880	Capscrew	4
12	1668633	Striker	2
12	4054030	Striker (Alternate Part)	2
13	1669114	Bolt	2
14	1650145	Hose Assy	2
15	1581739	Nut	2
16	1502543	Nut (Flange)	4
17	325182	Nut	3
18	1527877	Capscrew	3
19	1646922	Reservoir	1
19	1635026	Cap	1
19	1705156	Pump (Windshield Washer, 12V)	1
20	1494888	Plug	4
21	4005192	Bracket	1
22	226458	Capscrew	10
23	1586436	Nut	2
24	320166	Washer	10
25	4041403	Seal	2
26	1589787	Seal	2
27	1599415	Plug	1
28	a 1690977	Bolt	2
29	a 1528888	Nut (Shoulder)	2
	b 129563	Strap Clamp	AR

FOOTNOTES:

- a** For use with Kubota diesel option
b Not Illustrated

- c** With Air Conditioning
d Without Air Conditioning

**CAB
WINDOW WIPER SYSTEM**

ITEM	PART NO.	DESCRIPTION	QTY
	c 4040162	Cab (Steel Doors)	1
	b 4040163	Cab (Steel Doors)	1
1	1656008	Wiper Motor (Rear)	1
2	1393505	Wiper Arm (Rear)	1
3	1656017	Wiper Blade (Rear)	1
4	1393511	Grommet	3
5	1656016	Hose	1
6	1656011	Trim (Rear)	1
7	1709620	Cover (Front Wiper)	1
8	1709619	Wiper Motor (Front)	1
9	1656014	Trim (Front Window)	1
10	1709621	Wiper Blade (Front)	1
11	1623369	Wiper Arm (Front)	1
12	1474704	Grommet	1
13	1647424	Connector	2
	a 1647446	Connector (washer hose)	1

FOOTNOTES:**a** Not Illustrated**b** With Air Conditioning**c** Without Air Conditioning

CAB
AIR CONDITIONING SYSTEM – SHEET 1 OF 2

ITEM	PART NO.	DESCRIPTION	QTY
1	1527876	Capscrew	3
2	4047738	Guard (Hose)	1
3	1510116	Capscrew	1
4	1326653	Clamp	1
5	1360538	Tube Assy	1
6	1531557	Insert	1
7	110322	Clamp	1
8	4620472	Hose Assy (Condenser/Compressor)	1
9	4620471	Hose Assy (Condenser/Compressor)	1
10	4620473	Hose Assy (Heater/Compressor)	1
11	4620476	Hose Assy (Heater/Air Conditioner Drier Assembly)	1
12	128408	Clamp	2
13	1502061	Clamp	4
14	4047716	Hose	1
15	78286	Clamp	2
16	4620474	Hose Assy (Compressor/Condenser)	1
17	4620475	Hose Assy (Compressor/Condenser)	1
18	4046966	Bracket	1
19	1543842	Clamp	1
	a 1701099	Grommet	1

FOOTNOTES:

a Not Illustrated

FULL SUSPENSION SEAT
MANUAL AND ELECTRO-HYDRAULIC — SWIVEL AND NON SWIVEL – SHEET 1 OF 4

ITEM	PART NO.	DESCRIPTION	QTY
	4603382	Seat-Full Suspension (Vinyl) (Non-Swivel)	1
	4603383	Seat-Full Suspension (Cloth) (Non-Swivel)	1
	4603384	Seat-Full Suspension (Vinyl) (Swivel)	1
	4603385	Seat-Full Suspension (Cloth) (Swivel)	1
1	b 1703900	Kit-Cushion (Seat and Back, Cloth)	1
1	b 1703903	Kit-Cushion (Seat and Back, Vinyl)	1
2	b 1703901	Kit-Cushion (Back Cushion, Vinyl)	1
2	b 1703898	Kit-Cushion (Back Cushion, Cloth)	1
2	Back Cushion	1
2	Screw	2
3	b 1703902	Kit-Seat Cushion (Vinyl)	1
3	b 1703899	Kit-Seat Cushion (Cloth)	1
3	Seat Cushion	1
3	Spring	2
3	Cotter Pin	2
4	b 1703892	Kit-Weight Adjuster (☞Figure 1-29).....	1
5	b 1703893	Kit-Service (Front Panel) (Non Swivel) (☞Figure 1-29).....	1
5	b 1703894	Kit-Service (Front Panel) (With Swivel) (☞Figure 1-29).....	1
6	b 1703904	Kit-Seat Rail (With Swivel)	1
6	4043082	Kit-Seat Rail (Non Swivel)	1
6	Locking Rail	1
6	Slave Rail	1
6	Bolt	4
6	Nut	4
7	b 4013095	Wire Harness	1
	bc 1470155	Information Case (Kit)	1
	bc 4027341	Bracket (Angle Controller)	1
	bc 4046492	Lever Spring Pull	1
	b 1563208	Sensor (Operator Presence)	1
	a 4036586	Kit -Seat Suspension without Swivel (☞Figure 1-29).....	1
	a 4036587	Kit -Seat Suspension with Swivel (☞Figure 1-29).....	1

FOOTNOTES:

- a** Also Includes Tether and 1703891 Kit-Recliner on Sheet 2 **c** Not Illustrated
- b** Included with seat

**MINI LEVER MODULE LABELS
HYDRAULIC CONTROL FUNCTIONS**

ITEM	PART NO.	DESCRIPTION	QTY
1	2102640	Label	1

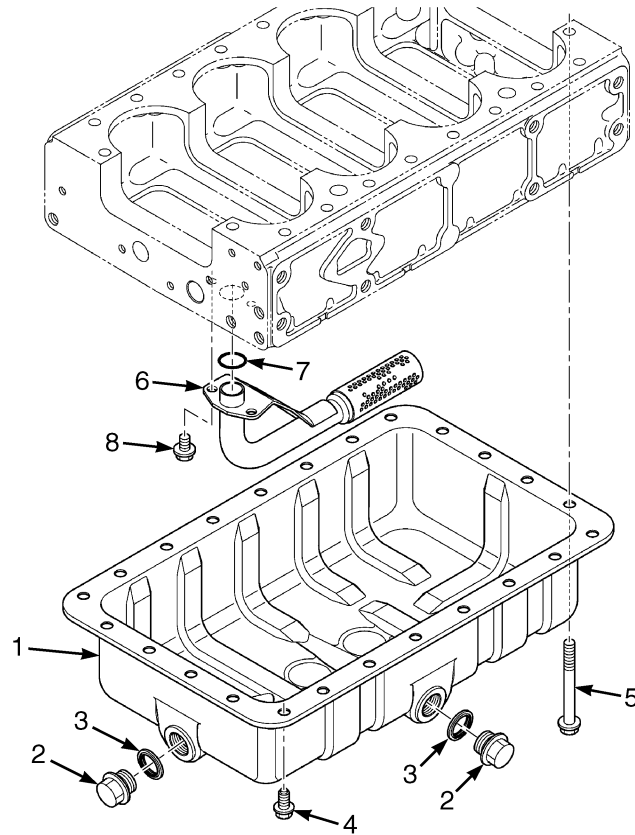
**SECTION 2
ENGINE ASSEMBLY - DIESEL**

DESCRIPTION	PAGE
VIBRATION DAMPER	
CUMMINS QSB 3.3L DIESEL	2-85
WATER OUTLET CONNECTION	
CUMMINS QSB 3.3L DIESEL	2-79
WATER PUMP	
KUBOTA DIESEL	2-37
WATER PUMP AND PULLEY	
CUMMINS QSB 3.3L DIESEL	2-76
WATER PUMP FLANGE AND THERMOSTAT	
KUBOTA DIESEL	2-36
WIRE HARNESS BRACKET	
KUBOTA DIESEL	2-45

**DIESEL PARTICULATE FILTER
ASSEMBLY – KUBOTA DIESEL**

ITEM	PART NO.	DESCRIPTION	QTY
	4616558	Diesel Particulate Filter	1
1	4054794	Bracket	1
2	4054795	Bracket	1
3	4041932	Bolt	4
4	4042108	Nut	4
5	4041944	Bolt	4
6	4054796	Bracket	1
7	4054812	Sensor (Differential Pressure)	1
8	4054747	Bolt	2
9	4054817	Hose Clamp	3
10	4054816	Tube	1
11	4042033	Hose Clamp	1
12	4054815	Tube	1
13	4054813	Pipe	1
14	4054814	Pipe	1
15	4054809	Sensor (Thermo, 0)	1
16	4054810	Sensor (Thermo, 1)	1
17	4054811	Sensor (Thermo, 2)	1
18	4054763	Bolt	8
19	Muffler (☞ Figure 2-6).....	1

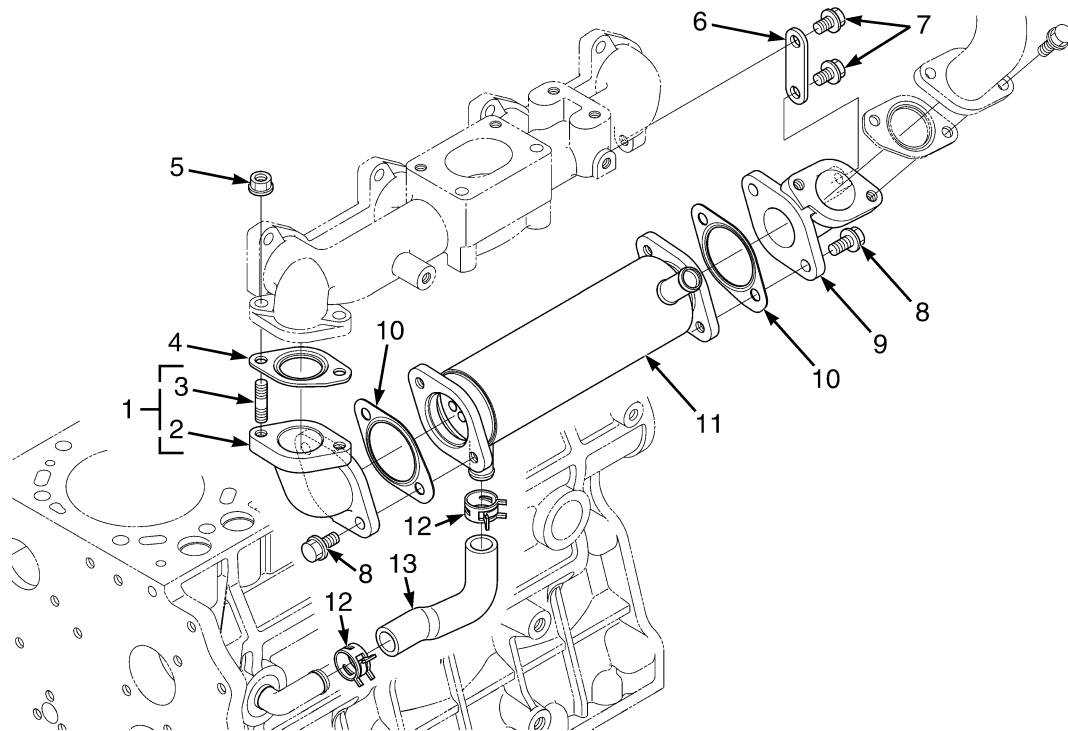
**OIL PAN (FIGURE 2-12)
KUBOTA DIESEL**



BP090479

ITEM	PART NO.	DESCRIPTION	QTY
	4611460	Engine Assy-Diesel (V3800)	1
1	4041936	Oil Pan	1
2	4041938	Drain Plug	2
3	4041939	Packing (O-Ring)	2
4	4041940	Bolt	20
5	4041941	Bolt	4
6	4042213	Strainer (For Oil Pan)	1
7	4042214	O-Ring	1
8	4042035	Bolt	2

**EGR COOLER (FIGURE 2-28)
KUBOTA DIESEL**



BP090605

ITEM	PART NO.	DESCRIPTION	QTY
	4611460	Engine Assy-Diesel (V3800)	1
1	4054755	Flange (Assembly)	1
2	4054756	Flange	1
3	4054757	Stud	1
4	4042082	Gasket	1
5	4051050	Nut	2
6	4054761	Bracket (EGR Cooler)	1
7	4042035	Bolt	1
8	4054759	Bolt	4
9	4054760	Flange	1
10	4042150	Gasket	2
11	4054758	Cooler (EGR)	1
12	4042015	Hose Clamp	1
13	4054762	Tube	1

**COOLING SYSTEM
CUMMINS QSB 3.3L DIESEL**

ITEM	PART NO.	DESCRIPTION	QTY
1	1567674	Hose	1
2	369815	Clamp	2
3	1643342	Reservoir	1
4	1684273	Cap	1
4	345453	Outlet (Reservoir)	1
4	345454	Cap	1
4	336550	Bushing	1
5	1684256	Hose	1
6	2107843	Seal	1
7	1352140	Radiator Cap	1
8	369804	Clamp	3
9	2104193	Radiator Hose (Lower)	1
10	1547845	Clamp	2
11	2103919	Radiator (☞ Figure 2-37).....	1
12	2107844	Seal	1
13	2104194	Radiator Hose (Upper)	1
14	369815	Clamp	1
15	1567674	Hose	1
16	302023	Screw	4
17	1694527	Seal	2
18	2108592	Baffle	1
19	2107592	Baffle	1
20	1480237	Nut	2
20	1527880	Capscrew (Not Illustrated)	2
21	1665556	Clamp	4
22	1665700	Hose	2
23	2102847	Tube	1
24	2102846	Hose	1
25	1666557	Clamp	2
26	1535257	Nut	4
27	1704313	Shroud	1
28	197066	Washer	4
29	1531557	Insert	2
30	1510113	Capscrew	2
31	119236	Clamp	1
32	1689881	Sensor (Coolant Level)	1

**TURBOCHARGER
CUMMINS QSB 3.3L DIESEL**

ITEM	PART NO.	DESCRIPTION	QTY
	4622254	Engine Assy-Diesel (QSB 3.3L)	1
1	4023964	Stud	4
2	1691987	Nut	4
3	1691988	Gasket	1
4	1691989	Connector	1
5	1691990	Gasket	1
6	Turbocharger	1
7	1691806	Clamp	1
8	1691822	Seal	1
9	1691823	Pipe	1
10	1513191	Fitting	1
	1692003	Kit-Turbocharger and Gasket	1

**AIR INTAKE MANIFOLD
CUMMINS QSB 3.3L DIESEL**

ITEM	PART NO.	DESCRIPTION	QTY
	4622254	Engine Assy-Diesel (QSB 3.3L)	1
1	1691839	Capscrew	2
2	1691840	Capscrew	6
3	1691645	Intake Manifold	1
4	1691838	Connector (Air Intake)	1
5	1513191	Fitting	1
6	1691577	Gasket	1
7	1691835	Capscrew	4

**COOLING SYSTEM
GM 5.7L LPG**

ITEM	PART NO.	DESCRIPTION	QTY
1	4603551	Radiator (Assembly)	1
1	4038256	Radiator	1
1	4038262	Oil Cooler	1
1	4038264	Drain Valve	1
1	4038265	Nut	2
1	4038266	Bolt	8
1	4038267	Bolt	4
2	4012589	Baffle	1
3	320154	Washer	2
4	1535257	Nut	2
5	302023	Screw	2
6	1531404	Sensor (Low Coolant Level)	1
6	246108	Sealant	AR
7	1600414	Shroud	1
8	119236	Clamp	3
9	2096559		
	4626267	Hose	1
10	4604127	Hose (Upper)	1
11	369804	Clamp	1
12	1384699	Clamp	1
13	4011212	Baffle	1
14	1527880	Capscrew	2
15	1480237	Nut	2
16	1551663	Clip	2
17	4045490	Baffle	1
18	4008947	Seal	2
19	4012590	Baffle	1
20	1643342	Reservoir	1
21	1684273	Cap	1
21	345453	Outlet (Reservoir)	1
21	345454	Cap	1
21	336550	Bushing	1
21	1684256	Hose	1
22	1567674	Hose	1
23	369815	Clamp	2
24	178899	Radiator Cap	1
25	4015802	Seal	2

PULLEY SYSTEM
INCLUDES ALTERNATOR AND STARTER – GM 5.7L LPG

ITEM	PART NO.	DESCRIPTION	QTY
	4604273	Engine Assy-LPG	1
	4622284	Engine Assy-LPG (Heavy Duty)	1
1	221545	Capscrew	1
2	15917	Lockwasher	1
3	1305165	Washer	1
4	1377750	Pulley	1
5	34811	Screw	3
6	2063017	Pulley (Water Pump)	1
7	2090051	V-Belt (Serpentine 6 Rib Micro)	1
8	1527879	Capscrew	4
9	4019125	Tensioner	1
10	1460477	Nut	4
11	4019122	Bolt	2
12	4019124	Fan Pulley	1
13	1534017	Alternator	1
14	302326	Nut	1
15	1554814	Spacer	1
16	1636803	Bracket (Alternator)	1
17	1578619	Stud	1
18	1578617	Stud	2
19	4019033	Bracket	1
20	2083634	Shaft	1
21	4019035	Ball Bearing	1
22	4019036	Spacer	1
23	4019034	Ball Bearing	1
24	4019038	Snap Ring	1
25	15906	Lockwasher	1
26	292559	Capscrew	1
27	1578620	Stud	2
28	4019016	Bracket	1
29	4019029	Bolt	2
30	4019039	Starter	1
	a 320157	Washer	1
	a 1527885	Capscrew	1
	a 1528482	Capscrew	1

FOOTNOTES:

a Not Illustrated

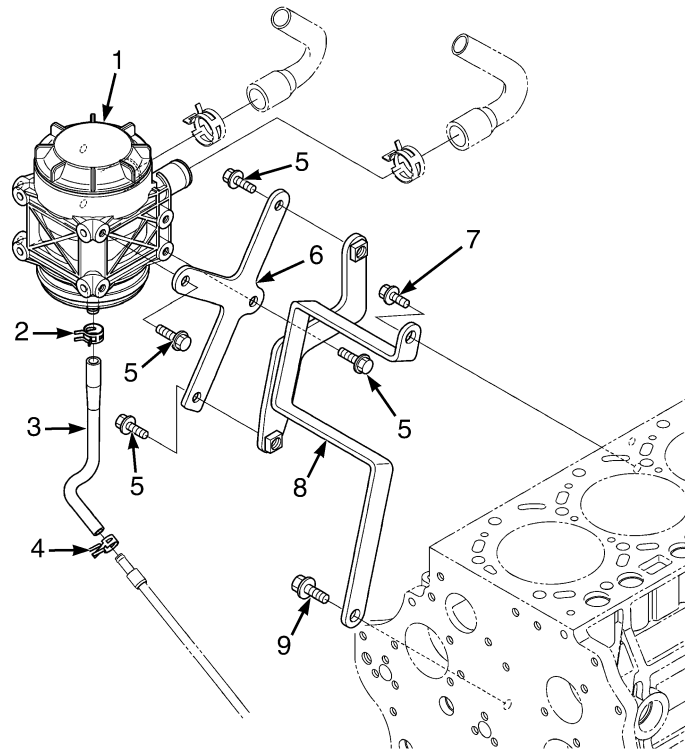
**CYLINDER BLOCK
GM 5.7L LPG**

ITEM	PART NO.	DESCRIPTION	QTY
	4604273	Engine Assy-LPG	1
	4622284	Engine Assy-LPG (Heavy Duty)	1
1	1390761	Kit-Piston Ring	8
1	1390765	Kit-Piston Ring (0.020 O/S)	8
1	4047043	Kit-Piston Ring (0.005 in O/S) (Heavy Duty Engine)	1
2	1390759	Kit-Piston with Pin (Standard)	8
2	1390760	Kit-Piston with Pin (0.020 O/S)	8
2	1627183	Kit-Piston with Pin (0.005 in O/S)	8
3	324052	Piston Rod	8
4	289344	Bolt	16
5	4018183	Bearing	8
6	1330450	Nut	16
7	1374313	Plug	1
8	Engine Block	1
9	1335499	Pin	4
10	1634927	Dipstick Tube	1
11	4018189	Stud	AR
12	1635634	Dipstick	1
13	1450556	Seal	1
14	388313	Nut	1
15	375575	Bolt	2
16	388364	Stud	2
17	4018188	Housing	1
18	4018182	Plug	5
19	1500884	Gasket	1
20	388364	Stud	1
21	159971	Plug	8
22	375571	Pin (Fly Wheel Dowel)	1
23	4018191	Crankshaft	1
24	1390771	Kit-Crankshaft Bearing	5
25	7882	Woodruff Key	2
26	1358895	Sprocket	1
27	4018202	Seal	1
28	263842	Bolt	10
29	1358026	Plug	4

SECTION 4 FUEL SYSTEM - DIESEL

DESCRIPTION	PAGE
AIR INTAKE	
CUMMINS QSB 3.3L DIESEL	4-12
KUBOTA DIESEL	4-2
BREATHER AND SEPARATOR PIPES	
KUBOTA DIESEL	4-10
FUEL CAP	
DIESEL	4-24
FUEL FILTER	
CUMMINS QSB 3.3L DIESEL	4-16
FUEL FILTER PLUMBING	
CUMMINS QSB 3.3L DIESEL	4-18
FUEL INJECTION PUMP	
CUMMINS QSB 3.3L DIESEL	4-20
FUEL PUMP PLUMBING	
CUMMINS QSB 3.3L DIESEL	4-22
FUEL RAIL	
KUBOTA DIESEL	4-7
FUEL SYSTEM	
CUMMINS QSB 3.3L DIESEL	4-14
KUBOTA 3.8L DIESEL	4-4
INJECTION PIPE	
KUBOTA DIESEL	4-8
INJECTOR HARNESS	
KUBOTA DIESEL	4-9
OIL SEPARATOR	
KUBOTA DIESEL	4-11
SUPPLY PUMP	
KUBOTA DIESEL	4-6
THROTTLE PEDAL ASSEMBLY AND ATTACHING PARTS	
MONOTROL PEDAL	4-28
STANDARD PEDAL	4-26
WATER SEPARATOR	
CUMMINS QSB 3.3L DIESEL	4-17

**OIL SEPARATOR (FIGURE 4-8)
KUBOTA DIESEL**



BP090600

ITEM	PART NO.	DESCRIPTION	QTY
	4611460	Engine Assy-Diesel (V3800)	1
1	4042028	Separator (Crankcase Breather Filter)	1
1	4047237	Kit-Filter Element	1
2	4042032	Hose Clamp	1
3	4042031	Tube (Oil Return)	1
4	4042033	Hose Clamp	1
5	4041944	Bolt	4
6	4054771	Bracket	1
7	4041992	Bolt	1
8	4054772	Bracket	1
9	4042034	Bolt	1

5

FUEL SYSTEM-LPG

**THROTTLE PEDAL ASSEMBLY AND ATTACHING PARTS
MONOTROL PEDAL**

ITEM	PART NO.	DESCRIPTION	QTY
1	4051938	Pedal Assy (Monotrol)	1
1	2074702	Pedal	1
2	1340470	Pad	1
3	2072782 4634485	Wire Harness	1
4	Connector Assembly (To Cowl Harness)	1
4	1489655	Connector (4 Way)	1
4	1330416	Connector	1
4	1531312	Terminal	4
5	Switch (Reverse)	1
6	Switch (Forward)	1
7	220428	Screw	4
8	53162	Lockwasher	4
9	16865	Nut	4
10	325699	Spring	2
11	4040523	Washer (Bonded)	2
12	15931	Lockwasher	2
13	16708	Screw	2
14	1500912	Clip	1
15	1582464	Fastener	1
16	360387	Loctite	AR
17	302437	Roll Pin	1
18	4031769	Isolator (Throttle Pedal)	1
19	2063842	Sensor (Hall Throttle Position) (To Cowl Harness)	1
20	296378	Washer	2
21	1564752	Capscrew	2
22	4051924	Base Assembly (Throttle)	1
22	4615964	Molding	1
23	1524267	Bushing	1
24	1654754	Shaft	1
25	1530971	E-Ring	1
26	1654156	Shim	AR
27	1527879	Capscrew	3
28	1530311	Screw (Stop)	1
29	329069	Nut	1
30	251099	Loctite	AR
31	1582301	Spring (Inner)	1
32	1582300	Spring (Outer)	1

**ENGINE ELECTRICAL SYSTEM
CUMMINS QSB 3.3L DIESEL**

ITEM	PART NO.	DESCRIPTION	QTY
1	2099799	Battery Cable (Negative) (☞Figure 6-18).....	1
2	2093220	Battery Cable (☞Figure 6-18).....	1
3	1529366	Capscrew	2
4	296380	Washer	2
5	2106665	Battery Cable (Negative) (Fused 200A) (☞Figure 6-18).....	1
6	1501896	Contacto r	1
7	2046866	Capscrew	2
8	1565407	Nut	2
9	2099800	Battery Cable (Positive, Contacto r)	1
10	1669570	Bracket (ECM)	1
11	1480237	Nut	7
12	1527879	Capscrew	3
13	2103224	Wire Harness (ECM) (☞Figure 6-40).....	1
14	2004005	Strap Clamp	1
15	1703318	Shield (Starter)	1
16	2110986	Wire Harness (Alternator) (D) (☞Figure 6-58).....	1
16	2110989	Wire Harness (Sealed Alternator) (DS) (☞Figure 6-57).....	1
17	1691441	Bracket Wldmt (Fuel Pump Shield)	1
18	1527879	Capscrew	2
19	296166	Capscrew	2
20	1480237	Nut	2
21	1543698	Clamp (Swivel)	1
22	1543842	Clamp	1
23	1500912	Clip	2
24	1582464	Fastener	2
25	1528778	Capscrew	1
26	1678123	Bracket (Harness)	1
27	2106666	Battery Cable (100 Amp Fuse) (Fused 100A) (☞Figure 6-18).....	1
28	1394001	Alternator (Sealed) (☞Figure 6-12).....	1
29	1529257	Sensor (Air Flow Restriction)	1
30	2111098	Battery Cable (Positive) (D) (☞Figure 6-18).....	1
30	2111099	Battery Cable (Positive) (DS) (☞Figure 6-18).....	1
30	1590368	Terminal	1
31	176454	Clamp	2
32	1528778	Capscrew	2
33	1510115	Capscrew	4

BATTERY CABLES
KUBOTA DIESEL – STANDARD

ITEM	PART NO.	DESCRIPTION	QTY
1	1529366	Capscrew	2
2	296380	Washer	2
3	2093220	Battery Cable (Negative)	1
3	806426	E-Ring	2
3	1564044	E-Ring	1
4	4614233	Battery Cable (Negative)	1
4	148789	Terminal	1
4	148796	Terminal	1
4	148783	Terminal	1
4	806426	E-Ring	1
5	176455	Clamp	2
6	292683	Lockwasher	3
7	4034828	Capscrew	3
8	1502543	Nut (Flange)	2
9	1540805	Cap	2
10	1663747	Bracket	1
11	1643937	Start Battery Wet	2
11	1399332	Start Battery Wet	2
12	1480237	Nut	1
13	1544157	Clip	1
14	4015631	Battery Tray (Tray)	1
15	1460477	Nut	3
16	1527884	Capscrew	3
17	2065745	Link (Battery Hold Down)	2
18	1527879	Capscrew	3
19	4614232	Battery Cable (Positive)	1
19	148786	Terminal	1
19	148792	Terminal	1
19	148798	Terminal	1
19	4045322	Ring Terminal	1
19	1474893	Clamp	1
19	1536304	Boot	1
19	321158	Boot	1
19	1566146	Boot	1
19	1595774	Boot	1
19	4044099	Boot	1

IMPACT SENSOR

ITEM	PART NO.	DESCRIPTION	QTY
1	1535166	Bracket	1
2	1500912	Clip	2
3	2100710	Fastener	1
4	2079281	Wire Harness (Impact Sensor)	1
5	1489655	Connector (4 Way)	1
6	1330416	Connector	1
7	1330437	Terminal (Pin)	4
8	1489656	Connector (4-Way)	2
9	1489657	Connector	2
10	1330438	Terminal (Socket)	8
11	1561759	Clamp (Swivel)	2
12	1542439	Clamp (Swivel)	2
13	1502055	Clamp (Swivel)	1
14	287851	Capscrew	2
14	320157	Washer	2
15	2079843	Sensor (Impact)	1
16	1489655	Connector (4 Way)	1
17	1330416	Connector	1
18	1330433	Terminal	4
19	1502053	Clamp (Swivel)	1

CLICK HERE TO **DOWNLOAD** THE COMPLETE MANUAL

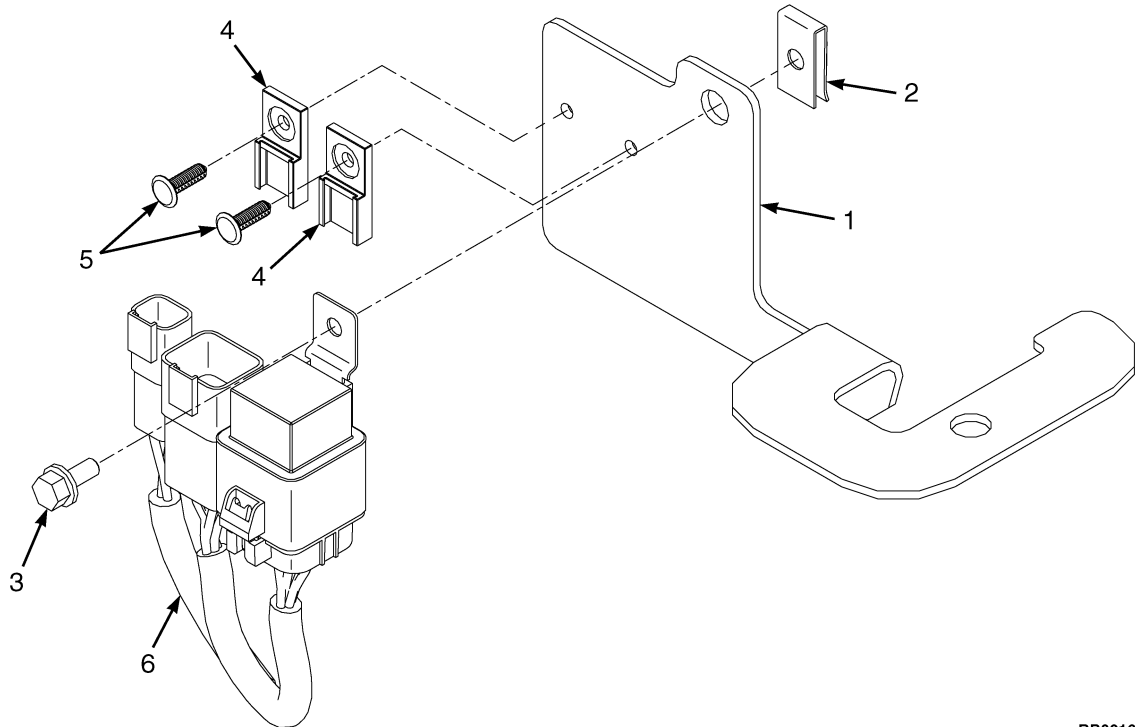
- Thank you very much for reading the preview of the manual.
- You can download the complete manual from: www.heydownloads.com by clicking the link below



- Please note: If there is no response to CLICKING the link, please download this PDF first and then click on it.

CLICK HERE TO **DOWNLOAD** THE COMPLETE MANUAL

SEAT BELT SWITCH ADAPTER (FIGURE 6-32)
(4/2014 →)



BP081695

ITEM	PART NO.	DESCRIPTION	QTY
1	4081689	Bracket	1
2	1566420	Nut (Foldover)	1
3	1693371	Capscrew	1
4	1500912	Clip	2
5	1582464	Fastener	2
6	4620434	Wire Harness (Seat Belt Switch Adapter)	1
6	1493465	Connector (2 Pin) (Seat Belt Switch Harness)	1
6	1330414	Connector (Secondary Lock)	1
6	1363885	Terminal (Pin)	2
6	4047669	Connector (RH Chassis Harness)	1
6	1514598	Connector (Lock)	1
6	866401	Terminal	4
6	4030503	Connector (Relay)	1
6	1330283	Terminal	4
6	1323581	Plug	1
6	4039364	Relay (With Diode)	1

**WIRE HARNESS
ELECTRONIC CONTROL VALVE – FOUR FUNCTION**

ITEM	PART NO.	DESCRIPTION	QTY
	2058909	Wire Harness (Control Valve)	1
1	Connector Assembly (Vehicle System Manager)	1
1	1525564	Connector	1
1	1330438	Terminal (Socket)	12
1	1500913	Connector	1
2	1402815	Clip	4
3	Connector Assembly (2A Tilt)	1
3	1531162	Connector	1
3	1562649	Seal	2
3	1402814	Terminal	2
4	190383	Boot	6
5	1493447	Connector (4A Auxiliary 2)	1
5	1562649	Seal	2
5	1402814	Terminal	2
6	1493447	Connector (4B Auxiliary 2)	1
6	1562649	Seal	2
6	1402814	Terminal	2
7	Connector Assembly (2B Tilt)	1
7	1531162	Connector	1
7	1562649	Seal	2
7	1402814	Terminal	2
8	Connector Assembly (3B Auxiliary 1)	1
8	1493435	Connector (2-Way)	1
8	1562649	Seal	2
8	1402814	Terminal	2
9	Connector Assembly (3A Auxiliary 1)	1
9	1493435	Connector (2-Way)	1
9	1562649	Seal	2
9	1402814	Terminal	2
10	Connector Assembly (Lift)	1
10	1490242	Connector (2 Way)	1
10	1330438	Terminal (Socket)	2
10	1490243	Connector	1
11	Connector Assembly (Lower)	1
11	1490242	Connector (2 Way)	1
11	1330438	Terminal (Socket)	2
11	1490243	Connector	1

**WIRE HARNESS
LIGHTS WITH OVERHEAD GUARD**

ITEM	PART NO.	DESCRIPTION	QTY
	2101861	Wire Harness (Lights)	1
1	Connector Assembly (Harness Attachment)	1
1	1525566	Connector	1
1	1500913	Connector	1
1	1330438	Terminal (Socket)	3
1	1484377	Plug	9
2	Connector Assembly (RH Chassis)	1
2	1514597	Connector	1
2	1514598	Connector	1
2	1484709	Terminal (Pin)	4
3	Connector Assembly (RH Front Work Light)	1
3	1490242	Connector (2 Way)	1
3	1490243	Connector	1
3	1363886	Terminal (Socket)	2
4	Connector Assembly (RH Rear Signal)	1
4	1531486	Connector	1
4	930591	Connector	1
4	1330355	Terminal	4
4	1330356	Seal	1
4	1482668	Plug (Cavity Plug)	2
4	1476108	Wire Seal	3
5	Connector Assembly (Strobe)	1
5	1484557	Connector (2 Socket)	1
5	1484558	Connector	1
5	1463139	Terminal	2
6	Connector Assembly (Rear Work Light)	1
6	1490242	Connector (2 Way)	1
6	1490243	Connector	1
6	1363886	Terminal (Socket)	2
7	Connector Assembly (RH Rear Signal)	1
7	1531486	Connector	1
7	930591	Connector	1
7	1330355	Terminal	4
7	1330356	Seal	1
7	1482668	Plug (Cavity Plug)	2
7	1476108	Wire Seal	3
8	Connector Assembly (LH Front Work Light)	1
8	1490242	Connector (2 Way)	1
8	1490243	Connector	1
8	1363886	Terminal (Socket)	2

WIRE HARNESS
RH CHASSIS – GM 5.7L AND KUBOTA ENGINES (→ 4/2014)

ITEM	PART NO.	DESCRIPTION	QTY
34	Connector Assembly (To MLM Harness)	1
34	1541991	Connector	1
34	1541992	Connector (Secondary Lock)	1
34	1463139	Terminal	5
34	1484377	Plug	3
35	Connector Assembly (Endcap)	1
35	1541988	Connector (8 Pin)	1
35	1484377	Plug	2
36	Connector Assembly (To Transmission Harness)	1
36	1525567	Connector	1
36	1529046	Connector (Secondary Lock)	1
36	1463139	Terminal	12
37	Connector Assembly (Ignition Fuse)	1
37	1602431	Fuse Holder	1
37	1498045	Fuse (7.5 Amp)	1
38	Connector Assembly (Battery Fuse)	1
38	1602431	Fuse Holder	1
38	1498045	Fuse (7.5 Amp)	1
39	Connector Assembly (Endcap)	1
39	1525573	Connector	1
40	Connector Assembly (Impact Sensor)	1
40	1489656	Connector (4-Way)	1
40	1489657	Connector (Secondary Lock)	1
40	1330438	Terminal (Socket)	4
41	Connector Assembly (Power Distribution Module)	1
41	1521183	Connector	1
41	1521188	Lock	1
41	1323579	Seal	7
41	1327164	Seal	1
41	1330281	Terminal	4
41	1521989	Terminal	3
42	Connector Assembly (Power Distribution Module)	1
42	1521184	Connector	1
42	1521188	Lock	1
42	1323579	Seal	6
42	1327164	Seal	1
42	1330281	Terminal	5
42	1521989	Terminal	2
42	1402888	Seal	1
43	Connector Assembly (Horn)	1
43	1476064	Connector	1
43	1476109	Connector Lock	1
43	1330356	Seal	2
43	1330355	Terminal	3
43	1476108	Wire Seal	1
44	Connector Assembly (Power Distribution Module)	1
44	1521186	Connector	1
44	1521188	Lock	1
44	1327164	Seal	1
44	1323579	Seal	7

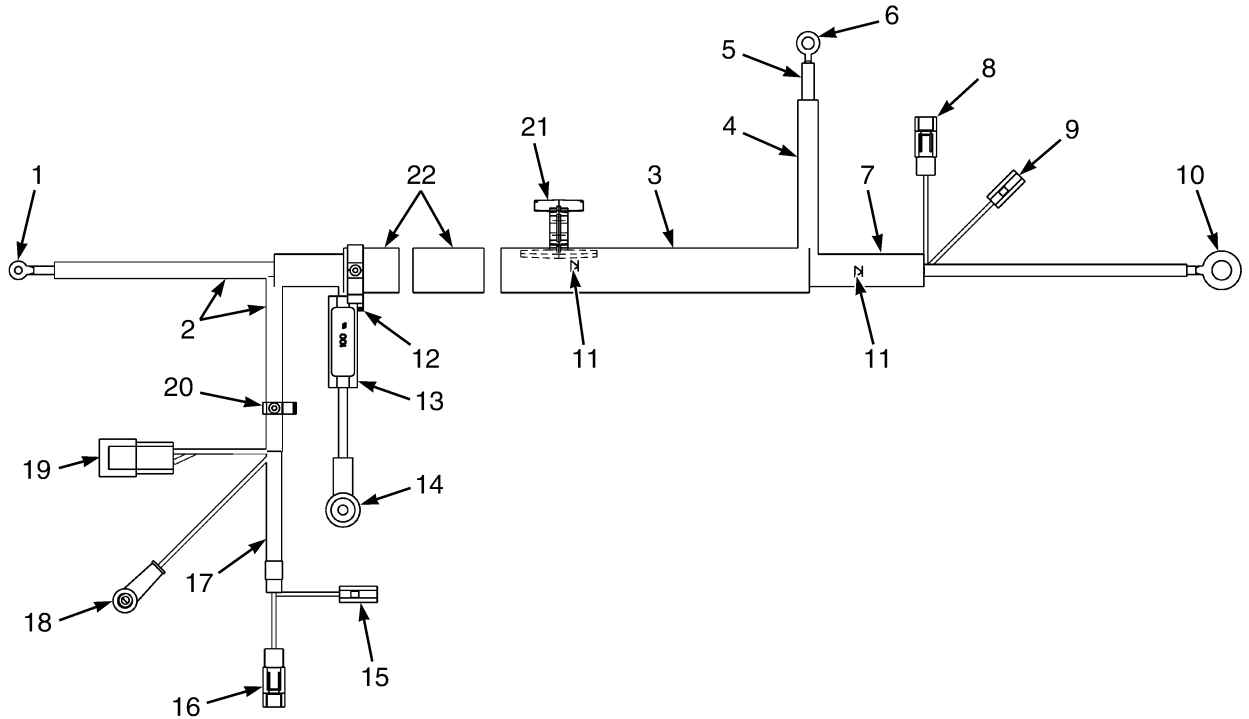
WIRE HARNESS
RH CHASSIS – GM 5.7 AND KUBOTA 3.8L-WITH SEAT BELT SEQUENCE MODULE

ITEM	PART NO.	DESCRIPTION	QTY
	4635138	Wire Harness (RH Chassis)	1
1	Connector Assembly (Vehicle System Manager)	1
1	1525563	Connector	1
1	1500913	Connector	1
1	1330438	Terminal (Socket)	8
1	1363886	Terminal (Socket)	4
2	Connector Assembly (To Cowl Harness)	1
2	1489655	Connector (4 Way)	1
2	1330416	Connector	1
2	1330437	Terminal (Pin)	4
3	Connector Assembly (To Cowl Harness)	1
3	1493428	Connector (12-Way)	1
3	1500913	Connector	1
3	1330438	Terminal (Socket)	11
3	1484377	Plug	1
4	Connector Assembly (Vehicle System Manager)	1
4	1525567	Connector	1
4	1529046	Connector (Secondary Lock)	1
4	1463139	Terminal	3
4	1484377	Plug	9
5	Connector Assembly (Vehicle System Manager)	1
5	1525569	Connector	1
5	1529046	Connector (Secondary Lock)	1
5	1463139	Terminal	3
5	1484377	Plug	9
6	275496	Conduit	AR
7	275497	Conduit	AR
8	1540388	Conduit	AR
9	1534282	Clip	4
10	275495	Conduit	AR
11	Connector Assembly (Hydraulic Solenoid)	1
11	1490242	Connector (2 Way)	1
11	1490243	Connector	1
11	1330438	Terminal (Socket)	2
12	275493	Conduit	AR
13	Connector Assembly (Endcap)	1
13	4047669	Connector	1
13	1330439	Plug	4
14	Connector Assembly (Accessory Two)	1
14	1632865	Connector	1
14	1514603	Connector	1
14	1330439	Plug	1
14	1554359	Terminal	3
15	1620149	Clip	2
16	275498	Conduit	AR
17	Connector Assembly (To Engine Harness)	1
17	1541991	Connector	1
17	1541992	Connector (Secondary Lock)	1
17	1463139	Terminal	8
18	Connector Assembly (To Engine Harness)	1

WIRE HARNESS
RH CHASSIS – CUMMINS QSB 3.3L DIESEL

ITEM	PART NO.	DESCRIPTION	QTY
56	1402816	Clip	2
57	Connector Assembly (Endcap)	1
57	1541988	Connector (8 Pin)	1
57	1484377	Plug	8
58	Connector Assembly (MLM Harness)	1
58	1541991	Connector	1
58	1541992	Connector (Secondary Lock)	1
58	1463139	Terminal	5
58	1484377	Plug	3
59	Connector Assembly (Seat Harness)	1
59	1531973	Connector	1
59	1531974	Connector (Secondary Lock)	1
59	1463139	Terminal	4
59	1484377	Plug	2
60	1509890	Clip	2
61	1699754	Conduit	AR

**WIRE HARNESS (FIGURE 6-56)
SEALED ALTERNATOR — KUBOTA DIESEL**



BP081365

ITEM	PART NO.	DESCRIPTION	QTY
	4614312	Wire Harness (Alternator)	1
1	806424	E-Ring (Alternator Ground)	1
2	1673486	Sleeve	AR
3	1540388	Conduit	AR
4	275494	Conduit	AR
5	222523	Heat Shrink	AR
6	148615	E-Ring (Starter B+)	1
7	275497	Conduit	AR
8	Connector Assembly (Disconnect Switch Link)	1
8	181045	Connector Body	1
8	134810	Terminal	1
9	Connector Assembly (Disconnect Switch Link)	1
9	181046	Connector Body	1
9	1542937	Terminal	1
10	806428	E-Ring (Engine Ground)	1
11	1310109	Rectifier	2
12	4034685	Clip	1
13	4616487	Battery Cable	1
14	Connector Assembly (Alternator B+)	1
14	148614	E-Ring	1
14	1520864	Boot	1
15	Connector Assembly (Alternator Excite)	1
15	181046	Connector Body	1
15	1542937	Terminal	1
16	Connector Assembly (Alternator Field)	1
16	181045	Connector Body	1

7

TRANSMISSION

TRANSMISSION ASSEMBLY
THREE SPEED – SHEET 1 OF 2

ITEM	PART NO.	DESCRIPTION	QTY
	4010141	Transmission Assy (Three Speed)	1
1	1707735	Converter Housing	1
2	1655515	Plug	3
3	1707736	O-Ring	1
4	1707737	Spacer	1
5	1655452	Ball	1
6	1655453	Spring	1
7	1655454	Retainer	1
8	1655455	Snap Ring	1
9	1612863	Adapter	1
10	1556992	Transmission Filter	1
11	1655460	Plug	2
12	1557008	O-Ring	2
13	1707738	Dipstick And Breather	1
14	330514	Screen	1
15	330513	Gasket	1
16	330502	Pin	2
17	1311544	Drain Plug	1
18	1624368	Plug	2
19	1612905	O-Ring	1
20	1655466	Spool	1
21	1655467	Spring	1
22	1556918	Plug	1
23	16486	O-Ring	1
24	1655468	Plug	1
25	1530732	O-Ring	1
26	1556910	Capscrew	2
27	1655456	Sensor (Temperature)	1
28	1655469	Sensor (TISS)	1
29	1311552	Plug	1
30	1655457	Support (Stator)	1
31	1590532	Lockwasher	6
32	1655458	Screw	6
33	1655459	Plug	2
34	60653	O-Ring	2
	1709808	Kit-Gasket	1

**CONTROL VALVE
THREE SPEED TRANSMISSION**

ITEM	PART NO.	DESCRIPTION	QTY
	4015130	Valve Assembly Assembly	1
1	1557009	Capscrew	10
2	1655633	Sensor (Valve Pressure)	5
3	1655639	Plug	5
4	87281	O-Ring	1
5	4024031	Spring	5
6	4015133	Spool	5
6	4015134	Pin	5
7	1655636	Gasket	1
8	1655638	Capscrew	10
9	4015132	Solenoid	5
9	1324792	O-Ring	1
9	1324790	Retainer	2
10	4015131	Valve	1
11	Plug	1
12	14595	Plug Assembly	1
12	199524	Plug	1
13	16484	O-Ring	1
14	1655634	Gasket	1
15	1655635	Cover (Control Valve)	1
16	1590532	Lockwasher	10

STEER AXLE

ITEM	PART NO.	DESCRIPTION	QTY
	a 1677244	Steering Axle	1
	b 4047112	Steering Axle	1
1	230421	Bearing Cup	2
2	153715	Bearing Cone	2
3	153717	Wear Sleeve	2
4	153716	Seal	2
5	a 4028881	Spindle (RH)	1
5	b 4047111	Spindle (RH)	1
6	1696278	Steering Axle (Frame)	1
7	266733	Seal	2
8	266728	Seal	2
9	39678	O-Ring	2
10	1527883	Capscrew	2
11	185856	Shim (0.005 in.)	3
12	185857	Shim (0.007 in.)	3
13	185858	Shim (0.020 in.)	3
14	1563858	Shim (0.002 in.)	3
15	4009736	Bearing Cap Assembly	1
15	266735	Bearing Cap	1
15	1374823	Bearing Set	1
16	135657	Bearing Cone	2
17	135658	Bearing Cup	1
18	13957	Grease Fitting	2
19	293628	Capscrew	6
20	12929	Snap Ring	8
21	1673481	Pin	2
22	1673482	Pin	2
23	1692130	Seal	8
24	1673444	Tie Rod (Assembly)	2
25	1671760	Bushing	1
26	13957	Grease Fitting	2
27	293688	Capscrew	8
28	292685	Lockwasher	8
29	2108963	Steering Cylinder (☞ Figure 9-5).....	1
30	15225	Cotter Pin	2
30	15226	Cotter Pin (Optional)	2
31	69029	Cap	2
32	53641	Wheel Nut (Spindle)	2
33	1383775	Washer	2
34	153835	Bearing Cone	2
35	1603898	Wheel Hub	2
36	1393348	Wheel Stud	12
37	153834	Bearing Cup	2
38	230324	Bearing Cup	2
39	129499	Wear Sleeve	2
40	230325	Bearing Cone	2
41	129498	Seal	2
42	a 4028880	Spindle (LH)	1
42	b 4047110	Spindle (LH)	1
43	320159	Washer	2
44	1388829	Dust Cap	2

**SECTION 10
BRAKE SYSTEM**

DESCRIPTION	PAGE
BRAKE COOLING SYSTEM	
SINGLE AND DUAL PEDAL	10-2
BRAKE PEDAL	
DUAL PEDAL	10-12
SINGLE PEDAL	10-10
BRAKE PEDAL MOUNTING	10-8
BRAKE VALVE ASSEMBLY	10-6
PARK BRAKE ASSEMBLY	10-14

**BRAKE PEDAL
SINGLE PEDAL**

ITEM	PART NO.	DESCRIPTION	QTY
1	1530311	Screw (Stop)	2
2	329069	Nut	2
3	1705083	Brake Pedal	1
4	1570298	Rubber Pad	1
5	2056600	Nut	2
6	1673266	Capscrew	1
6	886893	Capscrew	1
	2064554	Loctite	AR

HYDRAULIC SUPPLY AND RETURN

ITEM	PART NO.	DESCRIPTION	QTY
1	2105284	Hose (Four Function) (Aux Lowering Return)	1
1	2105640	Hose (Three Function) (Aux Lowering Return)	1
2	130845	Clamp	4
3	222493	Fitting	2
3	16484	O-Ring	1
4	2108203	Hose Assy (To Hydraulic Control Valve)	1
5	1473888	Fitting	2
5	280154	O-Ring	1
6	1516197	Fitting	1
7	1542439	Clamp (Swivel)	1
8	1561759	Clamp (Swivel)	2
9	2108205	Hose Assy (To Hydraulic Control Valve)	1
10	1516205	Fitting	1
11	1487058	Fitting	1
12	2107240	Unloader Valve (☞Figure 11-2).....	1
13	17775	Fitting	1
13	16486	O-Ring	1
14	78776	Hose Hyd	1
15	2108521	T-Fitting (Return Line)	1
16	119236	Clamp	1
17	2108562	Hose (Return Valve)	1
18	2108561	Hose (Return Filter)	1
19	1624905	Strainer	1
19	18909	O-Ring	1
20	1624904	Strainer	1
20	16984	O-Ring	1
21	369804	Clamp	4
22	2082241	Hose (Suction Large)	1
23	2108142	Hose (Suction)	1
24	1566890	Adapter	1
24	16983	O-Ring	1
25	1568199	Adapter (Suction)	1
25	16487	O-Ring	1
26	2098595	Gear Pump (☞Figure 11-3).....	1
27	15158	Washer	2
28	15135	Washer	2
29	1636808	Capscrew	2
30	169787	O-Ring	1
31	2108332	Hose Assy	1
32	1502054	Clamp	1
33	1695993	Capscrew	4
34	369804	Clamp	3
	264159	Adhesive	1

HYDRAULIC FILTER

ITEM	PART NO.	DESCRIPTION	QTY
1	1708697	Cap	1
1	1705549	O-Ring	1
1	Spring	1
2	4001034	Hydraulic Filter Bowl Assembly	1
3	Filter Element	1
4	a 2068337	Pressure Switch	1
	1708691	Kit-O-Ring	1
	4001001	Kit-Filter Element and Cap Seal	1

FOOTNOTES:

a With Electronic Monitoring Package

**ELECTRO HYDRAULIC POPPET VALVE
THREE AND FOUR FUNCTION**

ITEM	PART NO.	DESCRIPTION	QTY
	1699590	Poppet Valve	1
1	1629163	Nut	1
2	1578710	Coil	1
3	1629160	Tube (Solenoid)	1
4	1629165	Spring	1
5	1699591	Poppet Valve	1
6	1586020	Sleeve	1
	1590113	Poppet Valve (Lift)	1
7	1629163	Nut	1
8	1629162	Coil	1
9	1629161	Tube Assy (Solenoid)	1
10	1657846	Spring	1
11	1629158	Poppet Valve	1
12	1586279	Kit-Seal (Electro Hydraulic Poppet Valve)	1

TILT CYLINDER AND MAST INSTALLATION

ITEM	PART NO.	DESCRIPTION	QTY
1	1690917	Capscrew	2
2	1683473	Rod End	2
3	1581854	Washer	2
4	1690919	Nut	2
5	a 2082991	Tilt Cylinder (RH) (☞ Figure 11-17).....	1
5	b 2082992	Tilt Cylinder (RH) (☞ Figure 11-17).....	1
6	1673898	Bushing	2
7	1611572	Pin	2
8	16001	Grease Fitting	4
9	1615240	Capscrew	4
10	1581564	Lockwasher	4
11	241079	Anchor	4
12	1611579	Bushing	4
13	1611580	Snap Ring	4
14	1611571	Pin (Mast Mounting)	2
15	293730	Capscrew	4
16	a 2090748	Tilt Cylinder (LH) (☞ Figure 11-17).....	1
16	b 2090749	Tilt Cylinder (LH) (☞ Figure 11-17).....	1
17	1683501	Pin (Tilt)	2
18	1690084	Bushing	2

FOOTNOTES:**a** 5° Forward/6° Back**b** 5° Forward/9° Back

OUTER MAST
TWO STAGE LIMITED FREE-LIFT – F90 MAST SERIES
W/INTEGRAL SIDESHIFT CARRIAGE

ITEM	DESCRIPTION 1 2 3 4	LIFT HEIGHT TO BOTTOM OF FORKS	
		4500 mm (177.2 in.)	5500 mm (216.5 in.)
		Mast Group Number	A683 4500
	Mast Assy (Includes Carriage)	4621498	4621499
1	Outer Mast	4083237	4083240

W/INTEGRAL SIDESHIFT CARRIAGE/FORK POSITIONER

ITEM	DESCRIPTION 1 2 3 4	LIFT HEIGHT TO BOTTOM OF FORKS	
		4500 mm (177.2 in.)	5500 mm (216.5 in.)
		Mast Group Number	A683 4500
	Mast Assy (Includes Carriage)	4621501	4621502
1	Outer Mast	4083237	4083240

W/STANDARD CARRIAGE 1 AUXILIARY HOSE

ITEM	DESCRIPTION 1 2 3 4	LIFT HEIGHT TO BOTTOM OF FORKS	
		4500 mm (177.2 in.)	5500 mm (216.5 in.)
		Mast Group Number	A683 4500
	Mast Assy (Includes Carriage)	4621504	4621505
1	Outer Mast	4083237	4083240

W/STANDARD CARRIAGE 2 AUXILIARY HOSES

ITEM	DESCRIPTION 1 2 3 4	LIFT HEIGHT TO BOTTOM OF FORKS	
		4500 mm (177.2 in.)	5500 mm (216.5 in.)
		Mast Group Number	A683 4500
	Mast Assy (Includes Carriage)	4621507	4621508
1	Outer Mast	4083237	4083240

**CARRIAGE
F90 MAST SERIES****KEY:****A: Standard Carriage (Hook Type)****B: Side-Shift Carriage (Without Fork Positioner)****C: Side-Shift Carriage (With Fork Positioner)**

ITEM	PART NO.	DESCRIPTION	QTY		
			A	B	C
	4621573	Carriage	1
	4621574	Carriage	1	..
	4621575	Carriage	1
1	4000410	Sideshift Cylinder	1	1
1	4008836	Kit-Seal	2	2
2	4005985	Pin	2	2
3	4005986	Ring	4	4
4	4000417	Bushing	4	4
5	1536981	Hook (Lower)	2	2
6	4000415	Washer	4	4
7	4000416	Screw	4	4
8	1536982	Grease Fitting	2	2
9	1536983	Pad (Upper)	2	2
10	4057983	Side-Shift Carriage	1	1
11	4058426	Carriage (Frame)	1	1
12	4621579	Carriage (Base)	1	1	1
13	4018283	Stubshaft	8	8	8
14	4000358	Bushing	8	8	8
15	4000425	Ring	8	8	8
16	4000359	Roller	8	8	8
17	4000379	Screw	8	8	8
18	4000429	Nut	8	8	8
19	1529203	Locknut	2	2	2
20	1565280 15233	Cotter Pin	4	4	4
21	1529201	Pin	2	2	2
22	127543	Chain	AR	AR	AR
23	1529202	Chain Anchor	2	2	2
24	4005887	Pin	2	2	2

**CARRIAGE
F80 MAST SERIES****KEY:****A: Standard Carriage (Hook Type)****B: Side-Shift Carriage (Without Fork Positioner)****C: Side-Shift Carriage (With Fork Positioner)**

ITEM	PART NO.	DESCRIPTION	QTY		
			A	B	C
	2111501	Carriage (Standard) Assy	1
	2111502	Carriage (Side-Shift) (Without Fork Positioner) Assy	1	..
	4000374				
	2111503	Carriage (Integral Sideshift with Fork Positioner)	1
1	4000410	Sideshift Cylinder	1	1
1	4008836	Kit-Seal	1	1
2	4005985	Pin	2	2
3	4005986	Ring	4	4
4	4000417	Bushing	4	4
5	1536981	Hook (Lower)	2	2
6	4000415	Washer	4	4
7	4000416	Screw	4	4
8	1536982	Grease Fitting	2	2
9	1536983	Pad (Upper)	2	2
10	4000412	Side-Shift Carriage (Lower Plate)	1	1
11	4000413	Carriage (Side Plate)	1	1
12	4000374	Carriage	1	1	1
13	4018283	Stubshaft	2	2	2
14	4000358	Bushing	4	4	4
15	4000425	Ring	4	4	4
16	4000359	Roller	4	4	4
17	4000379	Screw	4	4	4
18	4000429	Nut	4	4	4
19	1565280				
	15233	Cotter Pin	2	2	2
20	1529201	Pin	1	1	1
21	127543	Chain	AR	AR	AR

INNER MAST
THREE STAGE FULL FREE-LIFT – F90 MAST SERIES
WITH INTEGRAL SIDE-SHIFT CARRIAGE

ITEM	DESCRIPTION 1 2 3 4	LIFT HEIGHT TO BOTTOM OF FORKS	
		5450 mm (214.6 in.)	5900 mm (232.3 in.)
		Mast Group Number	A684 5450
	Mast Assy	4621537	4621538
1	Inner Mast	4084244	4084247

WITH INTEGRAL SIDE-SHIFT CARRIAGE/FORK POSITIONER

ITEM	DESCRIPTION 1 2 3 4	LIFT HEIGHT TO BOTTOM OF FORKS	
		5450 mm (214.6 in.)	5900 mm (232.3 in.)
		Mast Group Number	A684 5450
	Mast Assy	4621540	4621541
1	Inner Mast	4084244	4084247

WITH STANDARD CARRIAGE/ONE AUXILIARY HOSE

ITEM	DESCRIPTION 1 2 3 4	LIFT HEIGHT TO BOTTOM OF FORKS	
		5450 mm (214.6 in.)	5900 mm (232.3 in.)
		Mast Group Number	A684 5450
	Mast Assy	4621543	4621544
1	Inner Mast	4084244	4084247

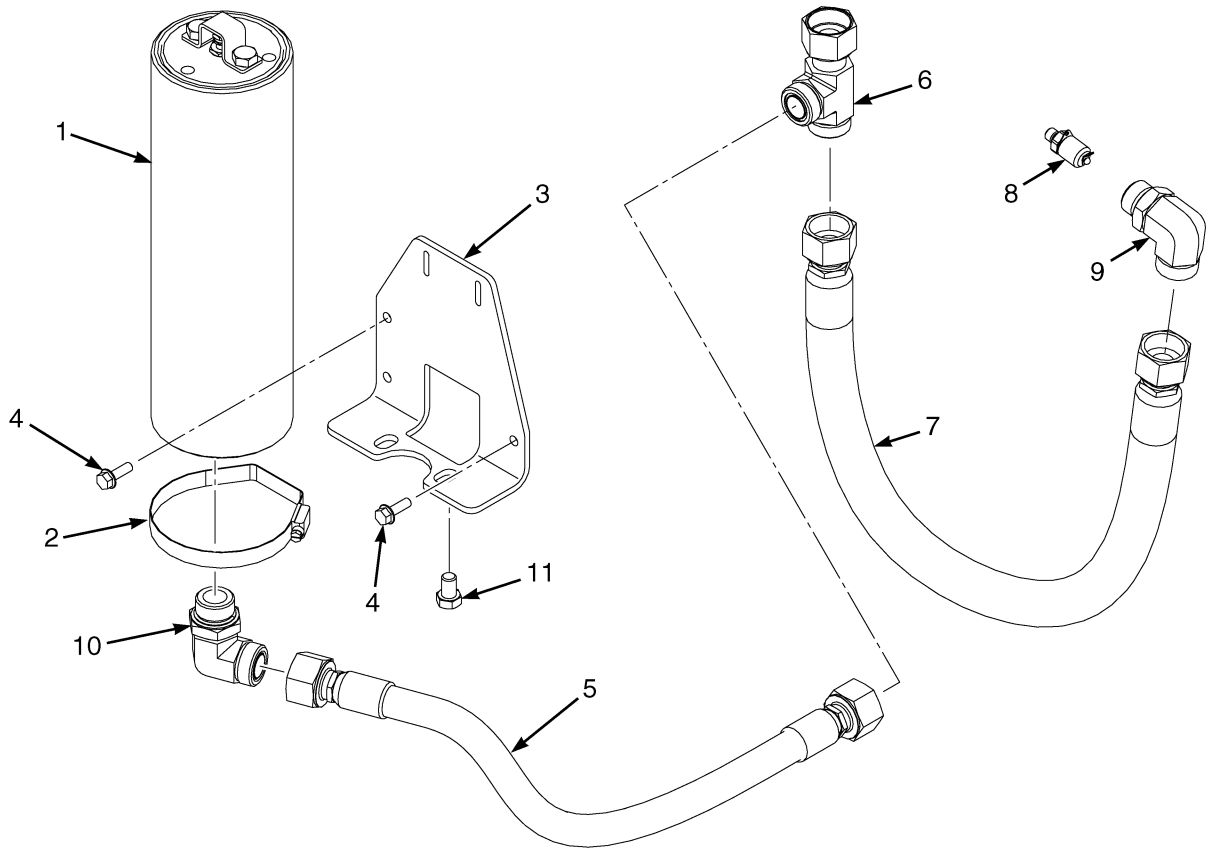
WITH STANDARD CARRIAGE/ONE AUXILIARY HOSE WITHOUT LOWER BACKREST

ITEM	DESCRIPTION 1 2 3 4	LIFT HEIGHT TO BOTTOM OF FORKS	
		5450 mm (214.6 in.)	5900 mm (232.3 in.)
		Mast Group Number	A684 5450
	Mast Assy	4621552	4621553
1	Inner Mast	4084244	4084247

**AUXILIARY FUNCTION HOSES
THREE STAGE FULL FREE-LIFT****KEY:****A: Three Function****B: Four Function**

ITEM	PART NO.	DESCRIPTION	QTY	
			A	B
1	1502809	Hose Clamp	1	2
2	1399243	Clamp	1	2
3	2108066	Hose Assy	1
4	2108067	Hose Assy	1
5	2108064	Hose Assy	1	1
6	2108065	Hose Assy	1	1
7	1473887	Fitting	1	2
8	1473897	Fitting	1	2
9	1527879	Capscrew	1
10	251994	Clamp	1
11	1480237	Nut	1

ACCUMULATOR (FIGURE 14-6)



BP000464

ITEM	PART NO.	DESCRIPTION	QTY
1	1651275	Accumulator	1
2	1611564	Clamp	1
3	1698184	Bracket	1
4	1510113	Capscrew	3
5	2108691	Hose Assy	1
6	1487099	Fitting	1
7	4604703	Hose Assy	1
8	2061646	Fitting (Diagnostic)	1
9	1594869	Fitting	1
10	1487075	Fitting	1
11	16642	Capscrew	2

**SECTION 15
FIELD CONVERSION KITS**

DESCRIPTION	PAGE
ADD ON OPTION KITS	15-2
ADD ON TELEMETRY KITS	15-4
BRAKE AND INCHING PEDAL CONVERSION	15-2
E-HYDRAULIC CONTROL CONVERSION KITS	15-3
LIGHT CONVERSION KITS	15-3
MISCELLANEOUS CONVERSION KITS	15-3
SEAT CONVERSION KITS	15-2

NUMERICAL INDEX (continued)

PART NO.	PAGE	ITEM	PART NO.	PAGE	ITEM	PART NO.	PAGE	ITEM	PART NO.	PAGE	ITEM
	6-127	43		6-127	43		6-76	26		6-97	7
	6-128	45		6-128	46		6-85	3		6-99	4
	6-131	2	1330283	6-63	6		6-95	1		6-99	8
1329150	6-95	10		6-87	47		6-97	1		6-101	1
	6-97	11	1330355	6-93	4		6-99	1		6-101	3
	6-102	20		6-93	7		6-101	2		6-101	11
	6-108	20		6-99	6		6-107	2		6-102	18
	6-114	20		6-103	43		6-113	2		6-102	22
	6-120	20		6-109	43		6-116	55		6-102	26
	6-126	20		6-115	43		6-119	2		6-102	30
1329151	6-69	2		6-121	31		6-125	2		6-103	40
	6-95	9		6-122	44		6-129	60		6-107	1
	6-95	10		6-127	31		6-131	7		6-107	3
	6-97	10		6-128	44		6-132	1		6-107	11
	6-97	11		6-141	4		6-137	20		6-108	18
	6-102	20	1330356	6-93	4		6-141	16		6-108	22
	6-102	21		6-93	7	1330438	6-51	2		6-108	26
	6-108	20		6-103	43		6-53	10		6-108	30
	6-108	21		6-109	43		6-67	3		6-109	40
	6-114	20		6-115	43		6-67	6		6-113	1
	6-114	21		6-121	44		6-67	9		6-113	3
	6-120	21		6-127	44		6-67	16		6-113	11
	6-126	21		6-141	6		6-67	17		6-114	18
1329152	6-69	2	1330414	1-25	10		6-68	18		6-114	22
	6-102	21		6-62	3		6-68	19		6-114	26
	6-108	21		6-63	6		6-68	20		6-114	30
	6-114	21		6-79	2		6-68	26		6-115	40
	6-120	20		6-116	55		6-71	7		6-117	56
	6-120	21		6-129	60		6-71	15		6-119	1
	6-126	20		6-137	19		6-72	23		6-119	3
	6-126	21		6-141	15		6-72	25		6-119	11
1330281	6-69	2	1330415	6-55	5		6-72	27		6-120	22
	6-95	9		6-132	1		6-72	30		6-120	26
	6-97	10	1330416	4-29	4		6-72	33		6-120	27
	6-102	21		5-9	4		6-75	19		6-121	31
	6-103	41		6-53	6		6-76	21		6-121	41
	6-103	42		6-53	17		6-76	23		6-125	1
	6-104	45		6-101	2		6-76	27		6-125	3
	6-108	21		6-107	2		6-76	30		6-125	11
	6-109	41		6-113	2		6-78	4		6-126	22
	6-109	42		6-119	2		6-81	1		6-126	26
	6-110	45		6-125	2		6-81	8		6-126	27
	6-114	21	1330417	6-95	1		6-81	9		6-127	31
	6-115	41		6-97	1		6-83	1		6-127	41
	6-115	42	1330418	6-85	3		6-83	10		6-129	61
	6-116	45		6-99	1		6-83	11		6-131	8
	6-120	21	1330433	6-53	18		6-85	18		6-132	3
	6-121	42	1330437	1-25	11		6-86	26	1330439	6-81	1
	6-121	43		6-53	7		6-93	1		6-101	13
	6-122	46		6-55	5		6-95	4		6-101	14
	6-126	21		6-62	3		6-95	6		6-104	47
	6-127	42		6-72	29		6-97	4		6-104	49

NUMERICAL INDEX (continued)

PART NO.	PAGE	ITEM	PART NO.	PAGE	ITEM	PART NO.	PAGE	ITEM	PART NO.	PAGE	ITEM
	6-49	18	1598504	1-63	9	1603367	6-65	7	1612530	8-5	11
	14-3	6	1599415	1-25	3	1603898	9-9	35		8-7	33
1586627	1-23	4		1-27	27	1605068	3-9	5	1612710	7-23	13
	6-45	4	1600414	3-3	7	1605069	3-9	15	1612711	7-23	12
	11-31	5	1602430	6-67	10	1605479	11-31	4	1612863	7-9	9
	14-6	3	1602431	6-88	60	1605770	6-51	7	1612870	7-20	7
1586629	1-4	3		6-88	61		11-36	3	1612905	7-9	19
	2-17	21		6-103	37	1605990	1-23	8		7-11	9
	3-14	8		6-103	38		3-14	10	1613734	1-27	5
	6-55	2		6-104	54	1606267	8-11		1614156	5-13	17
1586630	1-16	5		6-109	37	1606270	8-11		1614788	11-35	9
1586759	6-47	10		6-109	38	1606271	9-15		1614790	11-35	2
	6-49	15		6-110	54	1606274	9-15		1614792	11-35	
1589397	1-69	6		6-115	37	1606544	4-5	32	1614945	11-4	6
1589417	1-69	7		6-115	38		4-15	10	1615240	11-33	9
1589787	1-27	26		6-116	54		6-5	14	1615395	1-7	10
1590033	10-7	13		6-117	57		6-11	34		1-12	48
1590113	11-15	3		6-121	35		6-21	5	1615757	1-23	10
	11-17	3		6-121	37		6-51	4	1615758	1-23	20
	11-23			6-121	38	1606735	6-51	6	1615817	3-13	19
1590173	6-31	1		6-122	54	1607634	1-21	22	1615818	3-13	22
1590368	6-13	30		6-127	35	1607745	6-86	28	1616013	6-65	8
1590397	3-9	9		6-127	37	1608204	1-21	29	1616054	10-3	16
1590399	3-9	8		6-127	38	1608413	1-23	15	1616483	1-55	10
1590532	7-9	31		6-128	54	1608414	1-23	17	1616484	1-55	7
	7-19	16		6-129	62	1608622	9-2	2	1617081	1-55	11
	7-20	5		6-131	4	1608654	1-21	18	1617082	1-55	9
1590977	4-5	1	1602432	6-67	11		1-23	13	1617487	7-3	9
	4-15	24	1602433	6-67	12		1-39	18	1617601	6-26	7
1591666	3-9	13	1602835	3-14	2		1-41	26	1618481	11-4	7
1591716	7-3	12	1602836	3-14	11	1608667	1-21	21	1618485	11-4	3
1591717	7-3	5	1603021	6-51	3	1608669	1-21	26	1618586	8-11	10
1591719	7-3	4		6-68	21	1608671	1-21	19		9-15	6
1591720	7-3	10		6-68	22	1608673	1-21	25	1618589	8-11	11
1591721	7-3	3		6-68	23	1608857	6-67	14		9-15	4
1593331	6-29	15		6-68	24	1609047	1-15	1	1620149	6-101	15
1593335	1-7	31		6-68	25	1609048	1-15	9		6-107	15
	1-11	31		6-71	13	1609049	1-15	2		6-113	15
1593341	14-13	5		6-75	12	1610852	4-5	23		6-119	16
1594029	3-14	1		6-86	32	1610906	1-7	33		6-125	16
1594137	9-11	6	1603236	6-51	3		1-11	47		6-134	21
1594869	11-36	3		6-68	21	1611065	9-11	8	1622945	12-27	7
	14-7	9		6-68	22	1611564	14-7	2		13-38	16
1595774	6-33	19		6-68	23	1611571	11-33	14		13-41	20
	6-36	10		6-68	24	1611572	11-33	7		13-43	7
	6-39	24		6-68	25	1611579	11-33	12	1623050	6-85	3
1597451	6-55	8		6-71	13	1611580	11-33	13		6-99	1
1597854	3-9	6		6-75	12	1612314	7-20	3	1623155	14-3	2
1597959	1-23	12		6-86	32	1612421	11-35	12	1623280	6-67	5
1597960	1-21	24	1603286	2-17	25	1612422	11-35	12	1623281	6-67	5
1598063	8-2	4		3-15	7	1612423	11-35	12		6-131	6
1598220	1-25	3		7-5	12	1612424	11-35	12	1623369	1-37	11

NUMERICAL INDEX (continued)

PART NO.	PAGE	ITEM	PART NO.	PAGE	ITEM	PART NO.	PAGE	ITEM	PART NO.	PAGE	ITEM
4019012	3-17	11	4019090	3-17	14	4023529	5-6			6-88	53
	3-21	3		5-5	14	4023530	5-6			6-88	55
4019013	3-17	11	4019091	3-17	17	4023531	5-5	15	4028287	6-88	52
	3-21	3		5-5	17	4023567	6-25	1		6-88	53
4019014	3-25	8	4019092	5-5	44	4023568	2-61	1		6-88	55
4019015	3-17	10	4019093	5-5	1		6-25	3	4028289	6-87	43
4019016	3-13	28	4019094	3-17	16	4023719	6-85	16	4028302	4-5	26
	3-17	25		5-5	16	4023784	6-88	52	4028336	1-3	1
4019017	3-17	27	4019095	5-5	5	4023785	6-88	55	4028633	6-87	36
4019018	5-5	41	4019096	5-5	2	4023934	6-134	22		6-87	42
4019019	5-5	39	4019097	5-5	9	4023937	12-27	16	4028634	6-86	28
4019020	5-5	40	4019098	5-5	6		12-29	15	4028642	9-5	1
4019021	3-19	18	4019099	5-5	18		13-43	16	4028880	9-9	42
4019022	3-19	17	4019100	5-5	8	4023938	12-27	30	4028881	9-9	5
4019023	3-19	16	4019101	3-17	15		13-43	30	4029113	6-85	15
4019026	3-17	22	4019102	5-6		4023939	12-27	31	4029116	6-86	33
4019027	3-17	22	4019103	5-5	31		13-43	31		6-87	35
4019028	3-17	20	4019104	5-5	34	4023940	13-31		4029117	6-85	15
4019029	3-13	29	4019105	5-5	27	4023944	13-45	6		6-86	33
4019034	3-13	23	4019106	5-5	28	4023945	13-45	16		6-87	35
4019035	3-13	21	4019107	5-5	29	4023946	13-45	5	4029153	4-3	10
4019038	3-13	24	4019108	5-5	32	4023947	12-31	17	4029337	6-86	21
4019039	3-13	30	4019109	5-5	35		13-45	17	4029383	6-86	35
4019040	3-19	23	4019111	3-17	12		13-47	17	4029384	6-86	33
4019042	3-19	28	4019112	3-17	7	4023948	12-31	15	4029387	6-86	20
4019043	3-17	23	4019113	3-17	6		13-45	11	4029451	10-15	14
	3-19		4019114	3-17	9		13-47	15	4030503	6-63	6
4019044	3-19		4019115	3-17	3	4023950	12-4	11		6-87	47
4019047	3-19	9	4019116	3-17	8	4023951	12-29	5	4031207	1-41	23
4019048	3-19	2	4019117	5-5	24	4023952	12-29	12	4031365	6-85	14
4019049	3-19		4019118	5-5	21	4023953	12-29	9	4031366	6-86	25
	6-9	7	4019119	5-5	21	4023954	12-29	11	4031497	6-85	19
4019050	3-19		4019120	5-5	25		12-31	11	4031756	2-9	6
4019052	3-19	10	4019121	5-5	23		13-45	14	4031769	4-29	18
4019053	3-19	13	4019122	3-13	11		13-47	11		5-9	18
4019056	3-19	5	4019124	3-13	12	4023964	2-73	1	4031940	2-11	18
4019058	3-19	11	4019125	3-13	9	4024031	7-19	5	4031944	1-23	21
4019059	3-17	23	4019126	3-19	1	4024084	6-88	53	4032001	6-29	9
4019060	3-17	23	4019128	3-19	22	4024527	4-5	35	4032014	2-11	13
4019061	3-17	23	4019140	14-8	3	4024909	4-5		4032417	2-11	6
4019079	3-17	23	4019141	14-8	5	4025912	2-5	30	4032419	2-11	4
4019080	3-17	23	4019173	3-19	21	4026040	4-5	33	4032490	4-5	19
4019081	3-19	26	4019174	3-19	1	4026085	4-5	34	4032744	4-5	30
4019082	3-19	27	4019175	3-19	19	4026787	2-11	8	4032888	2-11	12
4019083	5-6		4019176	3-19	4	4026830	2-9	15	4033055	6-41	2
4019084	5-5	26	4020962	2-17	31	4026954	2-9	7	4033056	6-41	4
4019085	3-19	20	4020963	2-17	29	4027155	1-4	1	4033057	6-41	3
	5-5	43	4022349	2-17	20	4027330	2-11	11	4034685	6-133	12
4019086	5-5	45	4022959	9-7	7	4027341	1-57		4034828	1-49	11
4019087	3-17	15	4022961	9-7	6	4027764	6-86	22		6-33	7
4019088	5-5	42	4023450	9-2	5	4027765	6-87	37		6-35	6
4019089	5-5	19		9-5		4028286	6-88	52	4035678	6-19	11

CLICK HERE TO **DOWNLOAD** THE COMPLETE MANUAL

- Thank you very much for reading the preview of the manual.
- You can download the complete manual from: www.heydownloads.com by clicking the link below



- Please note: If there is no response to CLICKING the link, please download this PDF first and then click on it.

CLICK HERE TO **DOWNLOAD** THE COMPLETE MANUAL