

PARTS MANUAL

**E45Z, E50Z, E55Z, E60Z, E65Z
(G108)**

CUSTOMER EDITION

HYSTER

CLICK HERE TO **DOWNLOAD** THE COMPLETE MANUAL

- Thank you very much for reading the preview of the manual.
- You can download the complete manual from: www.heydownloads.com by clicking the link below



- Please note: If there is no response to CLICKING the link, please download this PDF first and then click on it.

CLICK HERE TO **DOWNLOAD** THE COMPLETE MANUAL

HOW TO FIND THE DESIRED PART NUMBER

WHEN THE PART NUMBER AND THE NEXT HIGHER ASSEMBLY IS NOT KNOWN:

1. Determine the function and application of the part required. Turn to the Sections Page. Choose the general area of reference most likely to include the part.
2. Turn to the section you chose. Use the Section Table of Contents to determine the assembly which would normally contain the part required. Then locate the part on the assembly breakdown page.

WHEN THE PART NUMBER IS NOT KNOWN AND THE NEXT HIGHER ASSEMBLY IS KNOWN:

3. Determine the assembly the required part is used on. Turn to the Table of Contents on Page i.
4. Locate the assembly the required part is used on and turn to the page indicated for that assembly. Then locate the part on the assembly breakdown page.

WHEN THE PART NUMBER IS KNOWN:

5. Use the Numerical Index on Page 12-1 to find the part number. Turn to the page listed and locate the part as indicated by the item number.

GENERAL:

The assembly breakdowns include part numbers, descriptions, quantities required, keys and footnotes to help in selecting correct parts.

6. Five periods in the PART NO. column (.) indicate that the part is either *Not Serviced Separately* or there is a reference to another figure. A figure reference is denoted by a pointing hand followed by a figure number in the DESCRIPTION column (☞ Figure 10)
7. Keys are used to show two or more similar assemblies, RH and LH assembly parts, etc. Select the appropriate key, "A", "B", "C", "D", or "E" and the corresponding quantity column to find the required parts. Two periods in the QTY column (..) indicate that the part is not used for that assembly.
8. Indented descriptions under the DESCRIPTION column are used to indicate assemblies and subparts of assemblies. In the example on the

previous page, *BEARING CAP* (Item 2) is a subpart of the major assembly *CASE*.

9. Quantities shown are for one assembly. The quantities of the subpart *BEARING CAP* are indicated as two and two. This means two per *CASE* assembly.
10. Serial number breaks identify the most current parts information and are shown as follows:
 - ⇒ **S/N D001H-2628**
Indicates last serial number affected.
 - S/N D001H-2629** ⇒
Indicates the first serial number affected.
 - S/N D001H-1553 ⇔ S/N D001H-3291**
Indicates a range of serial numbers affected.

ECN numbers for pending serial numbers are shown to allow for the inclusion of the most current parts information and are identified as follows:

- ⇒ **S/N Pending Per ECN 63243**
Indicates a pending serial number for last unit affected.
- S/N Pending Per ECN 63243** ⇒
Indicates a pending serial number for first unit affected.

Date breaks are used to indicate when a change occurred but a subsequent serial number break was not recorded. This is an arbitrary date usually based on the ECN release and are identified as follows:

- ⇒ **D/B 3/00**
Indicates that a change occurred sometime within that month for the item affected.
- D/B 3/00** ⇒
Indicates that a change occurred sometime within that month for the item affected.
- D/B 3/00 ⇔ D/B 4/00**
Indicates a range of production dates of the item affected.

Contact your local dealer for Hyster lift trucks for serial number information for items with a ECN or a date break.

ORDERING PARTS:

When ordering replacement parts, give the unit serial number, part number, name of part and quantity required.

For any further information on parts, service, or ordering, consult your local dealer for Hyster lift trucks.

FRAME**KEY:****A: 27.55 in. Battery Compartment****B: 33.38 in. Battery Compartment****C: 39.96 in. Battery Compartment**

ITEM	PART NO.	DESCRIPTION	QTY		
			A	B	C
1	1465530	Cowl.....	1	1	1
2	1457084	Floorplate.....	1	1	1
3	1457089	Floorplate.....	1	1	1
4	15176	Washer	8	8	8
5	17105	Bolt	2	2	2
6	15056	Nut	2	2	2
7	15156	Lockwasher.....	2	2	2
8	1356377	Plug	2	2	2
9	c 136692	Nut	6	6	6
10	c 292682	Lockwasher.....	6	6	6
11	c 1397924	Plate	2	2	2
12	136985	Capscrew.....	2	2	2
13	292529	Capscrew.....	2	2	2
14	292683	Lockwasher.....	2	2	2
15	216877	Nut	2	2	2
16	18494	Capscrew.....	1	1	1
17	1397909	Fender (LH)	1	1	1
17	a 1397910	Fender (LH)	1	1	1
18	b 1397926	Fender (RH).....	1	1	1
18	ab 1397927	Fender (RH).....	1	1	1
19	1340222	Cover	1	..
19	1340224	Cover	1
19	2023868	Cover	1
20	325521	Cover	1	1	1
21	1493955	Plate	1	1	1
22	1493957	Plate	1	1	1
23	1509942	Pin	2	2	2
24	296249	Capscrew.....	2	2	2
25	296421	Washer	2	2	2
26	1397885	Side Cover (LH).....	1
26	1397886	Side Cover (LH).....	..	1	..
26	1397887	Side Cover (LH).....	1
27	1397893	Side Cover (RH)	1
27	1397894	Side Cover (RH)	1	..
27	1397895	Side Cover (RH)	1
28	320162	Washer	2	2	2
29	169874	Nut	1	1	1
30	c 292682	Lockwasher.....	2	2	2
31	c 136692	Nut	2	2	2
32	c 361973	Spacer	16	16	16
33	b 1483375	Spacer	2	2	2
34	b 136681	Capscrew.....	4	4	4
35	b 320158	Washer	4	4	4

OVERHEAD GUARD**KEY:****A: 27.55 in. Battery Compartment****B: 33.38 in. Battery Compartment****C: 39.96 in. Battery Compartment**

ITEM	PART NO.	DESCRIPTION	QTY		
			A	B	C
1	1386696	Overhead Guard (86.0 in. Overall Height).....	1
1	1386697	Overhead Guard (86.0 in. Overall Height).....	..	1	..
1	1386698	Overhead Guard (86.0 in. Overall Height).....	1
1	1386699	Overhead Guard (88.4 in. Overall Height).....	1
1	1386700	Overhead Guard (88.4 in. Overall Height).....	..	1	..
1	1386701	Overhead Guard (88.4 in. Overall Height).....	1
1	1489179	Overhead Guard (90.5 in. Overall Height).....	1
1	1489180	Overhead Guard (90.5 in. Overall Height).....	..	1	..
1	1489181	Overhead Guard (90.5 in. Overall Height).....	1
1	1452953	Overhead Guard (Plate Type Without Operator Compartment Light).....	1
1	1452954	Overhead Guard (Plate Type Without Operator Compartment Light).....	..	1	..
1	1452955	Overhead Guard (Plate Type Without Operator Compartment Light).....	1
2	320161	Washer	16	16	16
3	1343990	Capscrew.....	6	6	6
4	293651	Capscrew.....	4	4	4
5	1390182	Nut	10	10	10
6	1343647	Handle	1	1	1
7	329067	Screw.....	2	2	2
8	1363916	Plug	12	12	12
9	1363917	Plug	4	4	4

**FULL SUSPENSION SEAT
SHEET 2 OF 2**

ITEM	PART NO.	DESCRIPTION	QTY
	1489167	Seat Assembly (Fabric)	1
	1489166	Seat Assembly (Vinyl).....	1
1	1467523	Boot Kit.....	1
2	1467524	Roller and Bearing Kit	1
3	1467525	Bumper and Stop Kit	1
4	1467526	Bearing Shaft Kit	1
5	1467527	Weight Adjuster Indicator Kit	1
6	1467531	Recliner Knob.....	1
7	1467529	Suspension Spring Kit.....	1
8	1470160	Scissor Assembly	1
9	1483828	Shock Absorber.....	1

2

ELECTRICAL SYSTEM

**CONTROL PANEL
CONTACTOR HYDRAULIC**

ITEM	PART NO.	DESCRIPTION	QTY
1	1535303	Heat Sink	1
2	320157	Washer	12
3	292681	Lockwasher.....	8
4	296011	Capscrew.....	8
5	1542433	Contacto Panel (☞ Figure 2-5)	1
6	198956	Washer (Copper)	2
7	1364262	Fuse (40 Amp).....	1
8	1364270	Label (Fuse-40 Amp).....	1
9	1520933	Suppression Module	2
10	114312	Strap Clamp.....	2
11	292681	Lockwasher.....	4
12	136681	Capscrew.....	4
13	1537132	Spacer	2
14	1556484	Fan.....	2
15	227145	Screw.....	8
16	1541956	Bracket.....	1
17	320156	Washer	7
18	293779	Lockwasher.....	2
19	293796	Capscrew.....	2
20	1383681	Nut	2
21	2066260	Terminal Block	1
22	320154	Washer	2
23	302024	Screw.....	2
24	292667	Nut	2
25	1540667	Plug	2
26	1539808	Bracket.....	1
27	1549407	Controller	1
28	320158	Washer	2
29	292681	Lockwasher.....	2
30	176640	Capscrew.....	2
31	292680	Lockwasher.....	3
32	292501	Capscrew.....	3
33	1533593	Traction Controller (☞ Figure 2-3)	1
34	1540668	Contacto Panel (☞ Figure 2-8)	1
35	325809	Fuse (325 Amp).....	1
36	359819	Label (Fuse-325 Amp).....	1
37	320159	Washer	4
38	292682	Lockwasher.....	4
39	292513	Capscrew.....	1
40	1514072	Power Cable	1
41	1514076	Power Cable	1
42	1514057	Power Cable	1
43	2056631	Wire Harness.....	1

**WIRE HARNESS
MAIN**

ITEM	PART NO.	DESCRIPTION	QTY
	2060547	Wire Harness.....	1
1	2035275	Connector.....	2
2	1330421	Connector.....	3
3	1330427	Secondary Lock.....	3
4	1330419	Connector.....	2
5	1330424	Secondary Lock.....	2
6	1330420	Connector.....	4
7	1330426	Secondary Lock.....	3
8	1351070	Connector.....	1
9	1351076	Seal.....	1
10	1498185	Connector.....	1
11	1330412	Connector.....	1
12	1330417	Lock.....	1
13	1484557	Housing (Socket).....	1
14	1484558	Retainer (Socket).....	1
15	1508206	Connector.....	2
16	1508211	Connector.....	2
17	1508212	Connector.....	1
18	1525561	Seal.....	12
19	1524541	Cover.....	1
20	2046547	Plug.....	1
21	1532664	Secondary Lock.....	1
22	137852	Strap Clamp.....	1

SECTION 4 STEERING SYSTEM

DESCRIPTION	PAGE
GEAR PUMP	4-12
SHIFT LEVER	4-4
STEERING AXLE	4-16
STEERING CONTROL UNIT	4-6
STEERING CYLINDER	4-10
STEERING HYDRAULIC	4-8
STEERING MOTOR	4-14
STEERING POD	4-2
TIRE AND WHEEL	
STEER WHEEL	4-18

SECTION 5 BRAKE/ACCELERATOR SYSTEM

DESCRIPTION	PAGE
ACCELERATOR	5-16
ACCELERATOR PEDAL.....	5-18
BRAKE	5-6
BRAKE PEDAL LINKAGE	5-2
BRAKE SWITCH HARNESS.....	5-20
MASTER CYLINDER	5-4
PARK BRAKE	
SEAT ACTUATED	5-14
PARK BRAKE LINKAGE	
LEVER ACTUATED	5-8
SEAT ACTUATED	5-12

6

HYDRAULIC SYSTEM

**HYDRAULIC PUMP
19 CC**

ITEM	PART NO.	DESCRIPTION	QTY
	1343827	Hydraulic Pump	1
1	2303239	Retaining Ring.....	1
2	Seal	2
3	1377253	Flange	1
4	2309481	Pin	4
5	Seal	2
6	Back-Up Ring	2
7	O-Ring	2
8	1376425	Cover	1
9	1377254	Bolt	4
10	Housing	1
11	Idler Gear	1
12	Drive Gear	1
13	Bearing Block	2
14	a 1510058	Key	1
	1376427	Flange Kit (Includes Items 1-2, 4).....	1
	1377252	Flange Kit (Includes Items 1-4).....	1
	1371746	Seal Kit (Includes Items 2, 5-7)	1

FOOTNOTES:

a Not Illustrated

TILT CYLINDER

KEY:

A: 5° Forward

B: 10° Forward

ITEM	PART NO.	DESCRIPTION	QTY	
			A	B
	1366081	Tilt Cylinder.....	1	..
	1366085	Tilt Cylinder.....	..	1
1	1366083	Tube.....	1	..
1	1366086	Tube.....	..	1
2	1338744	Gland.....	1	1
3	1338740	Rod.....	..	1
3	1366082	Rod.....	1	..
4	1383062	Wiper Ring.....	1	1
5	1381082	Seal.....	1	1
6	154375	Back-Up Ring	1	1
7	46388	O-Ring.....	1	1
8	2302899	Nut.....	1	1
9	1338741	Piston	1	1
10	39374	O-Ring.....	1	1
11	2044370	Seal (Piston).....	1	1
	1492644	Seal Kit (Includes Items 4-7, 10-11)	1	1

CLICK HERE TO **DOWNLOAD** THE COMPLETE MANUAL

- Thank you very much for reading the preview of the manual.
- You can download the complete manual from: www.heydownloads.com by clicking the link below



- Please note: If there is no response to CLICKING the link, please download this PDF first and then click on it.

CLICK HERE TO **DOWNLOAD** THE COMPLETE MANUAL

7

MAST-TWO STAGE LIMITED FREE-LIFT

**LIFT
TWO STAGE LIMITED FREE-LIFT**

E45-55Z

ITEM	DESCRIPTION 1 2 3 4	LIFT HEIGHT TO BOTTOM OF FORKS			
		2093 mm (82.4 in.)	2992 mm (117.8 in.)	3292 mm (129.6 in.)	3392 mm (133.5 in.)
		Mast Group Number	B507 2093	B507 2992	B507 3292
1	Chain	197345	180057	223389	129361

E45-55Z (CONT.)

ITEM	DESCRIPTION 1 2 3 4	LIFT HEIGHT TO BOTTOM OF FORKS			
		3492 mm (137.5 in.)	3792 mm (149.3 in.)	4092 mm (161.1 in.)	4292 mm (169.0 in.)
		Mast Group Number	B507 3492	B507 3792	B507 4092
1	Chain	986599	1301870	1342079	246994

E60-65Z

ITEM	DESCRIPTION 1 2 3 4	LIFT HEIGHT TO BOTTOM OF FORKS					
		2559 mm (100.7 in.)	2759 mm (108.6 in.)	2859 mm (112.6 in.)	2959 mm (116.5 in.)	3059 mm (120.4 in.)	3159 mm (124.4 in.)
		Mast Group Number	B562 2559	B562 2759	B562 2859	B562 2959	B562 3059
1	Chain	1342380	1342381	1342121	1342382	1342123	1342383

E60-65Z (CONT.)

ITEM	DESCRIPTION 1 2 3 4	LIFT HEIGHT TO BOTTOM OF FORKS					
		3259 mm (128.3 in.)	3359 mm (132.2 in.)	3659 mm (144.1 in.)	3859 mm (151.9 in.)	3959 mm (155.9 in.)	4059 mm (159.8 in.)
		Mast Group Number	B562 3259	B562 3359	B562 3659	B562 3859	B562 3959
1	Chain	1342384	1342126	1342393	1342388	1342133	1342389

ITEM	PART NO.	DESCRIPTION	QTY
1	a	Chain	2
2	Cylinder (RH) (☞ Figure 7-4, ☞ Figure 7-5)	1
3	Cylinder (LH) (☞ Figure 7-4, ☞ Figure 7-5)	1
4	15211	Cotter Pin.....	2
5	1514866	Pin	2
6	1369357	Chain Anchor (E45-55Z).....	2
6	1369356	Chain Anchor (E60-65Z).....	2
7	131358	Snap Ring.....	2
8	1333382	Washer (0.060 in.)	2
9	292532	Capscrew.....	2
10	296422	Washer	4
11	323090	Spacer	2

**CARRIAGE
SIX ROLLER
TWO STAGE LIMITED FREE-LIFT**

KEY:

A: E45-55Z

B: E60-65Z

ITEM	PART NO.	DESCRIPTION	QTY	
			A	B
	1371662	Carriage Assembly (38.5 in.)	1	..
	1371663	Carriage Assembly (38.5 in.)	1
1	1359325	Frame	1	..
1	1359326	Frame	1
1	1345264	Stubshaft.....	6	6
2	1345219	Load Roller.....	6	6
3	12891	Snap Ring.....	6	6
4	1345263	Shim (0.020 in.).....	AR	AR
5	366116	Spacer.....	2	2
6	1369345	Chain Anchor (Dual Hole)	2	..
6	1504009	Chain Anchor (Single Hole).....	2	..
6	1369344	Chain Anchor (Dual Hole)	2
6	1504011	Chain Anchor (Single Hole).....	..	2
7	1345352	Pin	2	2
8	131358	Snap Ring.....	4	4
9	1514866	Pin	2	2
10	15211	Cotter Pin	2	2

**OUTER MAST
THREE STAGE FULL FREE-LIFT****E45-55Z**

ITEM	LIFT HEIGHT TO BOTTOM OF FORKS									
	DESCRIPTION				4310 mm (169.7 in.)	4460 mm (175.6 in.)	4610 mm (181.5 in.)	4760 mm (187.4 in.)	4910 mm (193.3 in.)	5060 mm (199.2 in.)
	1	2	3	4						
	Mast Group Number				B508 4310	B508 4460	B508 4610	B508 4760	B508 4910	B508 5060
1	Outer Mast				1341004	1341005	1341006	1341007	1341008	1341010

E45-55Z (CONT.)

ITEM	LIFT HEIGHT TO BOTTOM OF FORKS									
	DESCRIPTION				5360 mm (211.0 in.)	5510 mm (216.9 in.)	5660 mm (222.8 in.)	5810 mm (228.7 in.)	5960 mm (234.6 in.)	6110 mm (240.6 in.)
	1	2	3	4						
	Mast Group Number				B508 5360	B508 5510	B508 5660	B508 5810	B508 5960	B508 6110
1	Outer Mast				1341010	1341013	1341014	1341015	1341016	1341017

E45-55Z (CONT.)

ITEM	LIFT HEIGHT TO BOTTOM OF FORKS								
	DESCRIPTION				6260 mm (246.5 in.)	6410 mm (252.4 in.)	6560 mm (258.3 in.)	6710 mm (264.2 in.)	6860 mm (270.1 in.)
	1	2	3	4					
	Mast Group Number				B508 6260	B508 6410	B508 6560	B508 6710	B508 6860
1	Outer Mast				1341019	1341020	1341021	1341022	1341024

E60-65Z

ITEM	LIFT HEIGHT TO BOTTOM OF FORKS									
	DESCRIPTION				4118 mm (162.1 in.)	4268 mm (168.0 in.)	4418 mm (173.9 in.)	4568 mm (179.8 in.)	4718 mm (185.7 in.)	4868 mm (191.7 in.)
	1	2	3	4						
	Mast Group Number				B563 4118	B563 4268	B563 4418	B563 4568	B563 4718	B563 4868
1	Outer Mast				1341004	1341005	1341006	1341007	1341008	1341010

**MAIN CYLINDER
THREE STAGE FULL FREE-LIFT
RIGHT HAND**

E45-55Z (CONT.)

ITEM	DESCRIPTION 1 2 3 4	LIFT HEIGHT TO BOTTOM OF FORKS					
		5360 mm (211.0 in.)	5510 mm (216.9 in.)	5660 mm (222.8 in.)	5810 mm (228.7 in.)	5960 mm (234.6 in.)	6110 mm (240.6 in.)
		Mast Group Number	B508 5360	B508 5510	B508 5660	B508 5810	B508 5960
	Cylinder Group Number	8600462	8600463	8600464	8600465	8600466	8600467
	Lift Cylinder	1341549	1341550	1341551	1341552	1341553	1341554
1	Shell	1355618	1355622	1355627	1355631	1355635	1355639
2	Rod	1355616	1355620	1355624	1355629	1355633	1355637

E45-55Z (CONT.)

ITEM	DESCRIPTION 1 2 3 4	LIFT HEIGHT TO BOTTOM OF FORKS				
		6260 mm (246.5 in.)	6410 mm (252.4 in.)	6560 mm (258.3 in.)	6710 mm (264.2 in.)	6860 mm (270.1 in.)
		Mast Group Number	B508 6260	B508 6410	B508 6560	B508 6710
	Cylinder Group Number	8600468	8600469	8600470	8600471	8600472
	Lift Cylinder	1341555	1341556	1341557	1341558	1341559
1	Shell	1355644	1355648	1355652	1355656	1355707
2	Rod	1355641	1355646	1355650	1355654	1355705

E60-65Z

ITEM	DESCRIPTION 1 2 3 4	LIFT HEIGHT TO BOTTOM OF FORKS					
		4118 mm (162.1 in.)	4268 mm (168.0 in.)	4418 mm (173.9 in.)	4568 mm (179.8 in.)	4718 mm (185.7 in.)	4868 mm (191.7 in.)
		Mast Group Number	B563 4118	B563 4268	B563 4418	B563 4568	B563 4718
	Cylinder Group Number	8600555	8600556	8600557	8600558	8600559	8600560
	Lift Cylinder	1341608	1341609	1341610	1341611	1341612	1341613
1	Shell	1355731	1355735	1355739	1355743	1355747	1355752
2	Rod	1355729	1355733	1355737	1355741	1355745	1355749

**FREE-LIFT CYLINDER
THREE STAGE FULL FREE-LIFT**

ITEM	PART NO.	DESCRIPTION	QTY	
			A	B
15	2013088	Seal	1	..
15	309062	Seal	1
16	2013089	Back-Up Ring	1	..
16	637565	Back-Up Ring	1
	1358969	Seal Kit (Includes Items 8-16)	1	..
	1356662	Seal Kit (Includes Items 8-16)	1

FOOTNOTES:

a Refer to Table

SECTION 9

MAST-TWO STAGE FULL FREE-LIFT

DESCRIPTION	PAGE
CARRIAGE	
SIX ROLLER	
TWO STAGE FULL FREE-LIFT	9-20
FREE-LIFT	
E45-55Z	
TWO STAGE FULL FREE-LIFT	9-8
E60-65Z	
TWO STAGE FULL FREE-LIFT	9-10
FREE-LIFT CYLINDER	
TWO STAGE FULL FREE-LIFT	9-17
HEADER HOSE	
TWO STAGE FULL FREE-LIFT	9-22
INNER MAST	
TWO STAGE FULL FREE-LIFT	9-4
MAIN LIFT	
TWO STAGE FULL FREE-LIFT	9-6
MAIN LIFT CYLINDER	
LEFT HAND	
TWO STAGE FULL FREE-LIFT	9-13
RIGHT HAND	
TWO STAGE FULL FREE-LIFT	9-15
OUTER MAST	
TWO STAGE FULL FREE-LIFT	9-2

**FREE-LIFT
E60-65Z
TWO STAGE FULL FREE-LIFT**

ITEM	DESCRIPTION 1 2 3 4	LIFT HEIGHT TO BOTTOM OF FORKS				
		2560 mm (100.8 in.)	2660 mm (104.7 in.)	2760 mm (108.7 in.)	3060 mm (120.5 in.)	3160 mm (124.4 in.)
		Mast Group Number	B564 2560	B564 2660	B564 2760	B564 3060
1	Tube	1345308	1345309	1345310	1345313	1345314
2	Chain	1342370	1369326	1342373	1342376	1342377

ITEM	DESCRIPTION 1 2 3 4	LIFT HEIGHT TO BOTTOM OF FORKS				
		3260 mm (128.3 in.)	3360 mm (132.3 in.)	3460 mm (136.2 in.)	3560 mm (140.2 in.)	3660 mm (144.1 in.)
		Mast Group Number	B564 3260	B564 3360	B564 3460	B564 3560
1	Tube	1345315	1345316	1345317	1345318	1345319
2	Chain	1342377	1342378	1342116	1342379	1342380

ITEM	PART NO.	DESCRIPTION	QTY
1	a	Tube	1
2	a	Chain	2
3	1380036	Fitting.....	1
3	16485	O-Ring.....	1
4	287837	Capscrew.....	2
5	316826	Nut	2
6	178119	Clamp	2
7	296028	Capscrew.....	1
8	320159	Washer	3
9	136985	Capscrew.....	1
10	1354956	Fitting.....	1
10	16485	O-Ring.....	1
11	154355	Spring	1
12	356505	Washer	1
13	1360387	Clamp	1
14	1354967	Bracket.....	1
15	1354902	Spacer	4
16	292530	Capscrew.....	2
17	320161	Washer	6
18	300937	Nut	4
19	296426	Washer (Hardened)	2
20	60137	Nut	2
21	1369356	Chain Anchor.....	2
22	1514866	Pin	2
23	15211	Cotter Pin.....	2
24	1378690	Crosshead	1
25	1379683	Chain Sheave Assembly.....	2
25	1378693	Sheave	1
25	37752	Snap Ring.....	1
25	1378699	Bearing.....	1
26	1360544	Chain Guard	2

**CARRIAGE
SIX ROLLER
TWO STAGE FULL FREE-LIFT**

KEY:

A: E45-55Z

B: E60-65Z

ITEM	PART NO.	DESCRIPTION	QTY	
			A	B
	1371660	Carriage Assembly	1	..
	1371661	Carriage Assembly	1
1	1359245	Frame	1	..
1	1359246	Frame	1
1	1345264	Stubshaft.....	6	6
2	1345219	Load Roller.....	6	6
3	12891	Snap Ring.....	6	6
4	1345263	Shim (0.020 in.).....	AR	AR
5	366116	Spacer.....	2	2
6	1369345	Chain Anchor (Dual Hole)	2	..
6	1504010	Chain Anchor (Single Hole) (Optional)	2	..
6	1369344	Chain Anchor (Dual Hole)	2
6	1504012	Chain Anchor (Single Hole) (Optional)	2
7	317735	Pin	2	2
8	131358	Snap Ring.....	4	4
9	1514866	Pin	2	2
10	15211	Cotter Pin	2	2

**INTERMEDIATE MAST
NO. 1
FOUR STAGE FULL FREE-LIFT**

E45-65Z

ITEM	DESCRIPTION 1 2 3 4	LIFT HEIGHT TO BOTTOM OF FORKS				
		5450 mm (214.6 in.)	5754 mm (226.5 in.)	6058 mm (238.5 in.)	6364 mm (250.6 in.)	6670 mm (262.6 in.)
		Mast Group Number	C515 5450	C515 5754	C515 6058	C515 6364
1	Intermediate No. 1 Mast	1370223	1370224	1370225	1370226	1370227
20	Chain	135619	88436	164474	88441	223389

E45-65Z (CONT.)

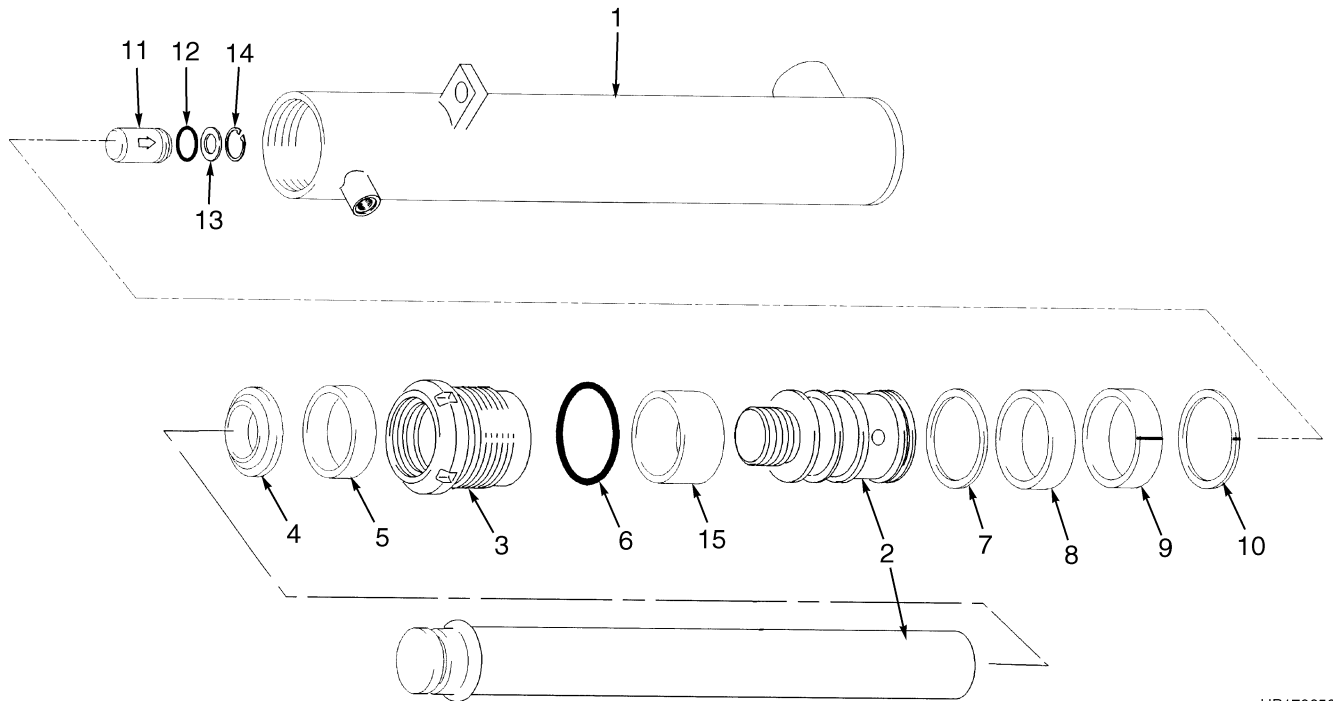
ITEM	DESCRIPTION 1 2 3 4	LIFT HEIGHT TO BOTTOM OF FORKS			
		6977 mm (274.7 in.)	7274 mm (286.4 in.)	7583 mm (298.5 in.)	7886 mm (310.5 in.)
		Mast Group Number	C515 6977	C515 7274	C515 7583
1	Intermediate No. 1 Mast	1370228	1370229	1370230	1370231
20	Chain	320076	135588	180176	344150

ITEM	PART NO.	DESCRIPTION	QTY
1	a	Intermediate No. 1 Mast	1
1	1345216	Stubshaft	2
2	1333396	Load Roller	2
3	58901	Snap Ring	4
4	129387	Shim (0.020 in.)	AR
5	215212	Bearing Strip	2
6	131716	Shim (0.020 in.)	AR
7	104506	O-Ring	4
8	60137	Nut	2
9	296426	Washer (Hardened)	2
10	1369357	Chain Anchor	2
11	1333399	Load Roller	2
12	304526	Snap Ring	2
13	1381917	Chain Sheave Assembly	2
14	1381913	Sheave	1
15	37752	Snap Ring	2
16	1378699	Bearing	1
17	1514866	Pin	2
18	15211	Cotter Pin	2
19	335661	Spacer	2
20	a	Chain	2

FOOTNOTES:

a Refer to Table

**MAIN CYLINDER (Figure 10-7)
LEFT HAND
FOUR STAGE FULL FREE-LIFT**



HP170650

E45-65Z

ITEM	DESCRIPTION 1 2 3 4	LIFT HEIGHT TO BOTTOM OF FORKS				
		5450 mm (214.6 in.)	5754 mm (226.5 in.)	6058 mm (238.5 in.)	6364 mm (250.6 in.)	6670 mm (262.6 in.)
	Mast Group Number	C515 5450	C515 5754	C515 6058	C515 6364	C515 6670
	Cylinder Group Number	8602703	8602704	8602705	8602706	8602707
	Lift Cylinder	2308869	2307263	2308031	2304616	2311126
1	Tube	1379003	1379004	1379005	1379006	1379007
2	Rod	1379033	1379034	1379035	1379036	1379037
15	Spacer	----	----	----	2065130	2065131

**HEADER HOSE
FOUR STAGE FULL FREE-LIFT**

40-65Z

ITEM	DESCRIPTION 1 2 3 4	LIFT HEIGHT TO BOTTOM OF FORKS				
		5450 mm (214.6 in.)	5754 mm (226.5 in.)	6058 mm (238.5 in.)	6364 mm (250.6 in.)	6670 mm (262.6 in.)
		Mast Group Number	C515 5450	C515 5754	C515 6058	C515 6364
1	Hose	1479233	1479234	1479235	1479236	1479237
21	Cable	1372063	1372064	1372065	1372066	1372067

40-65Z (CONT.)

ITEM	DESCRIPTION 1 2 3 4	LIFT HEIGHT TO BOTTOM OF FORKS			
		6977 mm (274.7 in.)	7274 mm (286.4 in.)	7583 mm (298.5 in.)	7886 mm (310.5 in.)
		Mast Group Number	C515 6977	C515 7274	C515 7583
1	Hose	1479238	1479239	1479240	1479241
21	Cable	1372068	1372069	1372070	1372071

KEY:

A: Three Function

B: Four Function

ITEM	PART NO.	DESCRIPTION	QTY	
			A	B
1	a	Hose	1	2
2	1360507	Clamp	2	4
3	1353530	Clamp	2	4
4	292502	Capscrew	2	4
5	1360386	Clamp	2	4
6	313805	Nut	6	12
7	300937	Nut	3	6
8	1360549	Spacer	2	4
9	1494017	Sheave	4	8
10	1370508	Stubshaft	1	2
11	1345190	Washer	2	4
12	292535	Capscrew	1	2
13	1360548	Stubshaft	1	2
14	1343990	Capscrew	1	2
15	1370319	Hose Guard (LH) (Outer)	1	2
16	1370379	Hose Guard (LH) (Inner)	1	2
17	1370579	Stubshaft	2	4
18	1370377	Roller	4	8
19	1370376	Spacer	4	8
20	1370158	Idler	2	4
21	a	Cable	2	4
22	15127	Washer	6	12
23	1370580	Spring	2	4

**INTEGRAL SIDE-SHIFT
CARRIAGE
TWO AND FOUR STAGE FULL FREE-LIFT**

KEY:

A: E45-55Z (B509) Two Stage Full Free-Lift

B: E60-65Z (B564) Two Stage Full Free-Lift

C: E45-55Z (C515) Four Stage Full Free-Lift

ITEM	PART NO.	DESCRIPTION	QTY		
			A	B	C
	1486179	Side-Shift Carriage (38 in.).....	1
	1486189	Side-Shift Carriage (38 in.).....	..	1	..
	1486181	Side-Shift Carriage (38 in.).....	1
1	1488999	Frame (38 in.) (Inner).....	1
1	1488965	Frame (38 in.) (Inner).....	..	1	..
1	1489001	Frame (38 in.) (Inner).....	1
2	1489010	Frame (38 in.) (Outer).....	1	..	1
2	1488974	Frame (38 in.) (Outer).....	..	1	..
3	2043528	Cylinder Assembly (☞ Figure 11-4).....	1	..	1
3	2043529	Cylinder Assembly (☞ Figure 11-4).....	..	1	..
4	2043531	Bearing (Upper) (38 in.).....	2	..	2
4	2043532	Bearing (Upper) (38 in.).....	..	2	..
5	2043533	Bearing (Lower) (38 in.).....	2	..	2
5	2043534	Bearing (Lower) (38 in.).....	..	2	..
6	2043530	Hook (Lower).....	2	2	2
7	226458	Capscrew.....	4	4	4
8	296426	Washer (Hardened).....	4	4	4
9	1401746	Pin.....	2	2	2
10	18832	Cotter Pin.....	2	2	2
11	302487	Pin.....	1	1	1
12	16041	Lube Fitting.....	2	2	2
13	317735	Pin.....	2	2	2
14	1369345	Chain Anchor (Dual Hole).....	2	..	2
14	1504010	Chain Anchor (Single Hole).....	2	..	2
14	1369344	Chain Anchor (Dual Hole).....	..	2	..
14	1504012	Chain Anchor (Single Hole).....	..	2	..
15	131358	Snap Ring.....	4	4	4
16	1514866	Pin.....	2	2	2
17	15211	Cotter Pin.....	2	2	2
18	1345219	Load Roller.....	6	6	..
18	1333399	Load Roller.....	6
19	1345263	Shim (0.020 in.).....	28	28	..
19	129387	Shim (0.020 in.).....	28
20	366116	Spacer.....	6	6	..
20	366115	Spacer.....	6
21	12891	Snap Ring.....	6	6	..
21	58901	Snap Ring.....	6
22	1498326	Shim.....	AR	AR	AR

**AUXILIARY TUBES
FOUR STAGE FULL FREE-LIFT
FOUR FUNCTION GROUP**

ITEM	PART NO.	DESCRIPTION	QTY
	1518235	Kit (Auxiliary Tube Extension)	1
1	1517450	Tube Assembly	1
1	1517451	Tube Assembly	1
2	1517441	Tube Extension Bracket.....	1
3	16447	Fitting.....	2
4	14760	Nut.....	2
5	16693	Fitting.....	2
6	1381765	Tube Assembly	1
7	1381766	Tube Assembly	1
8	1390365	Hose	1
9	1390366	Hose	2
10	16483	O-Ring	2
11	1483663	Quick Disconnect	2
12	1483664	Quick Disconnect Nipple	2
13	1483661	Dust Cap	2
14	16933	Fitting.....	2
	1518219	Quick Disconnect Kit (Includes Items 10-14)	2

STROBE LIGHT**KEY:****A: Rear Mount****B: Top Mount**

ITEM	PART NO.	DESCRIPTION	QTY	
			A	B
1	1382130	Strobe Light	1	1
2	1526082	Lens (Amber).....	1	1
3	1309775	Bulb	1	1
4	1364285	Plate	1	..
5	1364588	Wire Harness (Light).....	1	1
6	136749	Capscrew.....	2	..
7	239503	Nut	2	..
8	292681	Lockwasher.....	2	..
9	136704	Capscrew.....	..	4
10	313828	Nut	4
11	320157	Washer	1
12	164488	Clamp	1
13	1302024	Guard.....	1	1
14	220504	Screw.....	2	2
15	197067	Washer	4	4
16	15152	Lockwasher.....	2	2
17	15052	Nut	2	2
18	1364548	Bracket.....	..	2
19	1367645	Grommet.....	1	1
20	1305382	Grommet (Plate Type Overhead Guard).....	..	1
21	1306271	Electrical Fitting	2	2

NUMERICAL INDEX (Continued)

<u>PART NO.</u>	<u>PG</u>	<u>ITEM</u>	<u>PART NO.</u>	<u>PG</u>	<u>ITEM</u>	<u>PART NO.</u>	<u>PG</u>	<u>ITEM</u>	<u>PART NO.</u>	<u>PG</u>	<u>ITEM</u>
1341214	7-5	1	1341588	8-28			8-16	1	1342419	8-20	2
1341215	7-5	1	1341589	8-28		1342122	8-16	1	1342420	8-20	2
1341218	7-5	1	1341590	8-28		1342123	7-9	1	1342421	8-20	2
1341220	7-5	1	1341591	8-28			8-16	1	1342422	8-20	2
1341221	7-5	1	1341592	8-28			8-20	1	1342423	8-20	2
1341222	7-5	1	1341608	8-24		1342124	8-16	1	1342424	8-20	2
1341223	7-5	1	1341609	8-24		1342126	7-9	1	1342471	9-5	1
1341395	7-12		1341610	8-24			8-16	1	1342472	9-5	1
1341398	7-12		1341611	8-24		1342127	8-16	1	1342473	9-5	1
1341399	7-12		1341612	8-24		1342128	8-16	1	1342474	9-5	1
1341400	7-12		1341613	8-24		1342129	8-16	1	1342476	9-5	1
1341403	7-12		1341614	8-24		1342130	8-16	1	1342477	9-5	1
1341406	7-12		1341615	8-24		1342133	7-9	1	1342478	9-5	1
1341408	7-12		1341616	8-24		1342370	9-11	2	1342479	9-5	1
1341432	7-12		1341617	8-24		1342373	9-11	2	1342480	9-5	1
1341435	7-12		1341618	8-24		1342375	8-20	1	1342481	9-5	1
1341436	7-12		1341619	8-24		1342376	8-20	1	1342482	9-5	1
1341437	7-12		1341641	8-28			9-11	2	1343452	6-22	44
1341440	7-12		1341642	8-28		1342377	8-20	1	1343537	4-3	35
1341443	7-12		1341643	8-28			9-11	2	1343572	4-3	34
1341445	7-12		1341644	8-28		1342378	8-20	1	1343573	4-3	1
1341481	7-15		1341645	8-28			9-11	2	1343574	4-3	32
1341518	7-15		1341646	8-28		1342379	8-20	1	1343577	4-5	1
1341542	8-24		1341647	8-28			9-11	2	1343578	4-5	2
1341543	8-24		1341648	8-28		1342380	7-9	1	1343579	4-5	3
1341544	8-24		1341649	8-28			8-20	1	1343593	4-5	5
1341545	8-24		1341650	8-28			9-11	2	1343594	4-5	9
1341546	8-24		1341651	8-28		1342381	7-9	1	1343595	4-3	18
1341547	8-24		1341652	8-28			8-20	1	1343598	4-5	4
1341549	8-24		1341714	8-8	1	1342382	7-9	1	1343607	4-3	3
1341550	8-24		1341715	8-8	1		8-20	1	1343630	5-3	19
1341551	8-24		1341716	8-8	1	1342383	7-9	1	1343647	1-13	6
1341552	8-24		1341717	8-8	1		8-20	1	1343827	6-3	32
1341553	8-24		1341718	8-8	1	1342384	7-9	1		6-9	
1341554	8-24		1341719	8-8	1	1342387	8-16	1		6-11	8
1341555	8-24		1341720	8-8	1	1342388	7-9	1	1343989	8-20	21
1341556	8-24		1341721	8-8	1		8-16	1	1343990	1-13	3
1341557	8-24		1341722	8-8	1	1342389	7-9	1		1-29	2
1341558	8-24		1341723	8-8	1	1342391	8-20	1		10-25	14
1341559	8-24		1341724	8-8	1	1342393	7-9	1	1345190	7-22	9
1341575	8-28		1341725	8-8	1	1342407	8-20	2		8-38	12
1341576	8-28		1341726	8-8	1	1342408	8-20	2		9-24	29
1341577	8-28		1341727	8-8	1	1342409	8-20	2		10-25	11
1341578	8-28		1341728	8-8	1	1342410	8-20	2	1345199	8-38	8
1341579	8-28		1341729	8-8	1	1342411	8-20	2		9-24	10
1341580	8-28		1341730	8-8	1	1342412	8-20	2	1345204	8-38	9
1341582	8-28		1341731	8-8	1	1342413	8-20	2		9-24	11
1341583	8-28		1342079	7-9	1	1342414	8-20	2		10-14	37
1341584	8-28		1342116	9-11	2	1342415	8-20	2	1345216	7-3	2
1341585	8-28		1342119	8-20	1	1342416	8-20	2		7-5	2
1341586	8-28		1342120	8-16	1	1342417	8-20	2		8-4	2
1341587	8-28		1342121	7-9	1	1342418	8-20	2		8-8	2

CLICK HERE TO **DOWNLOAD** THE COMPLETE MANUAL

- Thank you very much for reading the preview of the manual.
- You can download the complete manual from: www.heydownloads.com by clicking the link below



- Please note: If there is no response to CLICKING the link, please download this PDF first and then click on it.

CLICK HERE TO **DOWNLOAD** THE COMPLETE MANUAL