

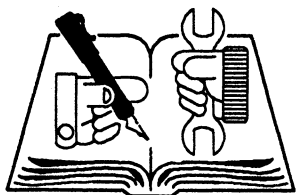
PARTS MANUAL

CHALLENGER

H40-50-60XL

H2.00-2.50-3.00XL

(B177)



Hyster Easy Language Program

CUSTOMER EDITION

CLICK HERE TO **DOWNLOAD** THE COMPLETE MANUAL

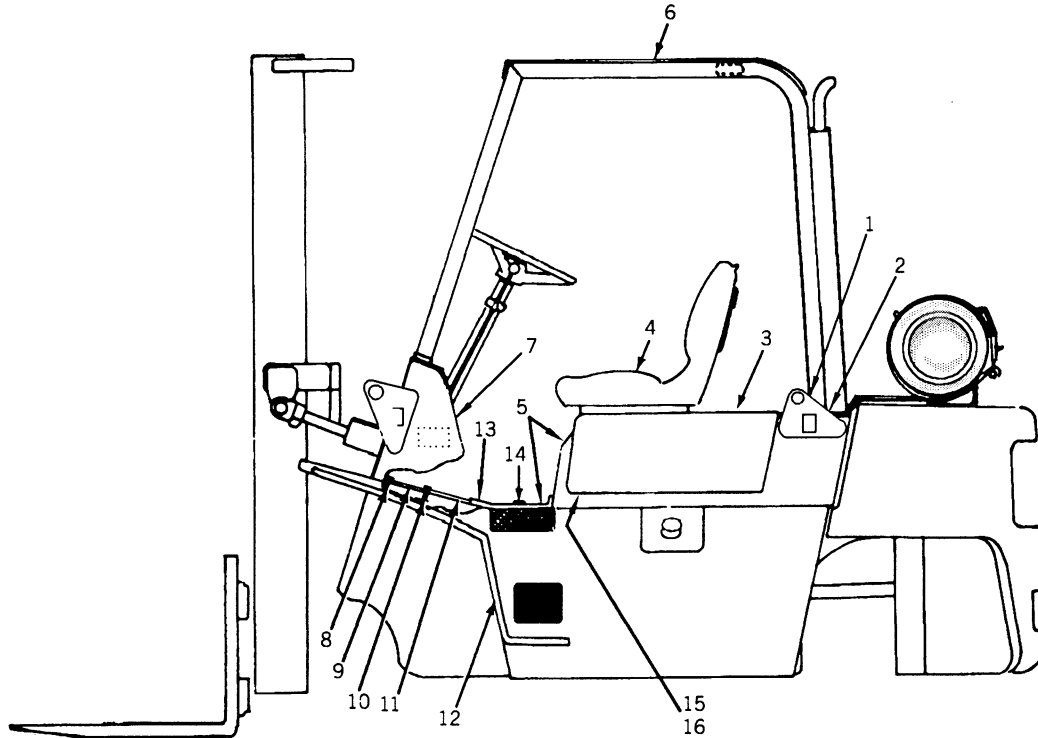
- Thank you very much for reading the preview of the manual.
- You can download the complete manual from: www.heydownloads.com by clicking the link below



- Please note: If there is no response to CLICKING the link, please download this PDF first and then click on it.

CLICK HERE TO **DOWNLOAD** THE COMPLETE MANUAL

COWL/PLATES-FLOOR

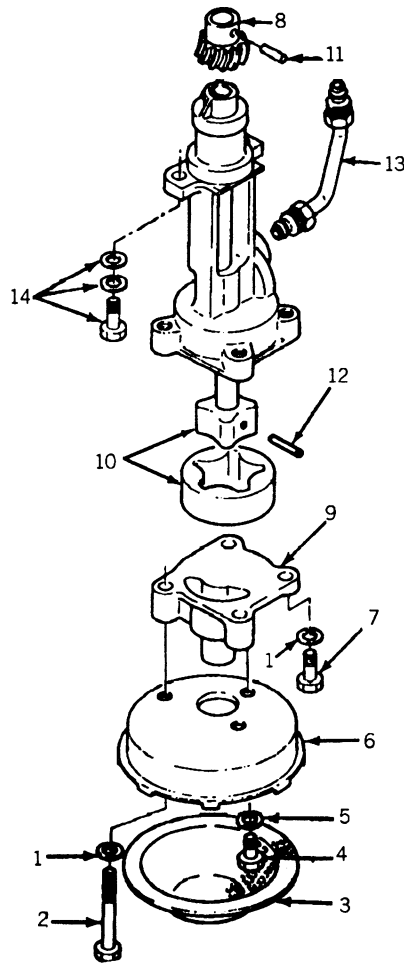


REF NO	HYSTER PART NO	NAME OF PART				QTY
		1	2	3	4	
1	\$ 1303637					11
2	292528					4
2	292683					4
2	216877					2
3					1
						SEE 1A06
4					1
						SEE 1A08
5	1320917					1
5	* 1324253					2
6	1320619					1
7	308112					1
7	308111					1
8	329067					4
9	1324510					1

REF NO	HYSTER PART NO	NAME OF PART				QTY
		1	2	3	4	
10	177590					1
10	320157					2
10	137122					1
10	15212					3
11	313815					1
12	& 329051					1
12	& 329052					1
13	1320724					1
14	329067					4
15	* 364926					1
16	* 246788					6
						* LOW NOISE
						\$ STANDARD EXHAUST
						& WIDE WHEEL

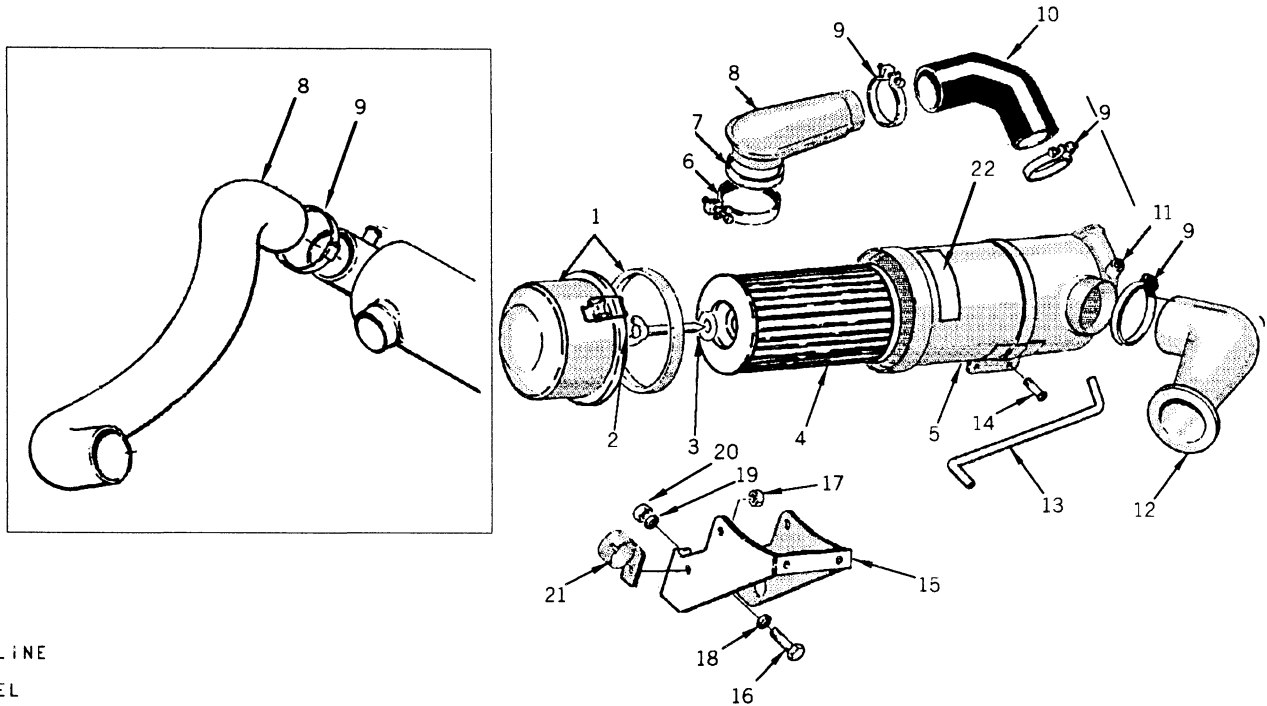
PUMP-OIL

DIESEL



REF NO	HYSTER PART NO	NAME OF PART	QTY	REF NO	HYSTER PART NO	NAME OF PART	QTY
	1329314	PUMP-OIL	1	9	388277	ROTOR	1
1	292681	LOCKWASHER	6	10	324254	PIN	1
2	388278	BOLT	2	11	324256	PINION-DRIVE	1
3	324260	SCREEN	1	12	324255	PIN	1
4	324262	BOLT	1	13	1329315	PIPE	1
5	292681	LOCKWASHER	1	14	324263	BOLT	2
6	324261	CASE	1	14	324259	WASHER	2
7	287805	CAPSCREW	2	14	292681	LOCKWASHER	2
8	324257	COVER	1				

FILTER-AIR



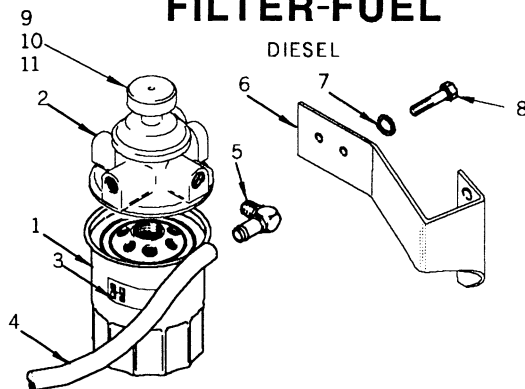
KEY
 A-GASOLINE
 B-LPG
 C-DIESEL

REF NO	HYSTER PART NO	NAME OF PART	QTY		
			1	2	3
	1302234	FILTER-AIR	1	1	..
	1303722	FILTER-AIR	1
1	1300915	PAN-DUST	1	1	..
1	1300916	SUPPORT	1	1	..
1	389822	COVER	1	1	..
2	324405	BOLT	1	1	1
3	324406	WASHER	1	1	1
4	326483	FILTER	1	1	1
5	324400	COVER	1	1	1
5	CASE	1	1	1
6	326511	CLAMP	1	1	..
6	119236	CLAMP	1
7	314797	SEAL-DUST	1	1	..
8	314787	DUCT-AIR INLET	1	1	..
8	1320875	DUCT-AIR	1
9	326512	CLAMP	2
9	119236	CLAMP	..	2	3
10	314788	HOSE	1	1	..

REF NO	HYSTER PART NO	NAME OF PART	QTY		
			1	2	3
11	313837	CAP-END	1
11	168718	CLAMP	1
12	316699	SILENCER	1
13	324708	PIPE	1	1	..
14	316678	SCREW	2
15	372209	BRACKET	1	1	..
15	313833	BRACKET	1
15	+ 355071	BRACKET	1
16	324721	BOLT	4	4	..
17	326504	NUT	1	1	1
18	320159	WASHER	2
19	292681	LOCKWASHER	2
20	239503	NUT	2
21	1309896	CLIP-HOSE	2	2	..
22	326490	DECAL	1
22	326490	DECAL	1	1	..

+ SAFETY

FILTER-FUEL

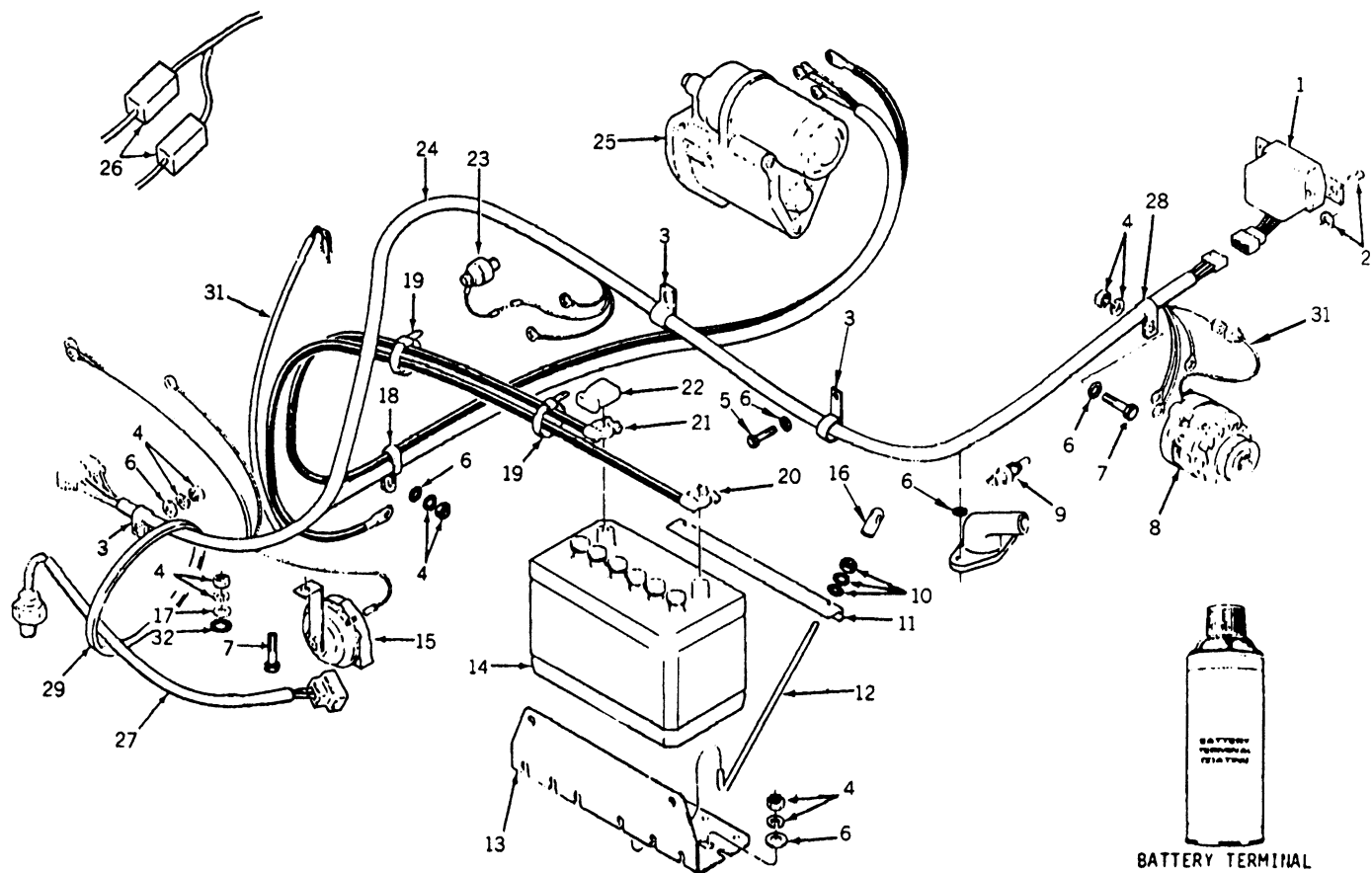


REF NO	HYSTER PART NO	NAME OF PART	QTY		
			1	2	3
	1327898	FILTER	1	1	..
1	1330033	KIT-CARTRIDGE	1	1	..
2	HOUSING	1	1	..
3	1324473	LABEL	1	1	..
4	1301601	HOSE	1	1	..
5	222480	FITTING	1	1	..
6	1320876	BRACKET	1	1	..

REF NO	HYSTER PART NO	NAME OF PART	QTY		
			1	2	3
7	293780	WASHER	2
8	176640	CAPSCREW	2
9	1330035	SENSOR	1
10	1330036	PLUG	1
11	1330037	GASKET	1

ELECTRICAL

DIESEL

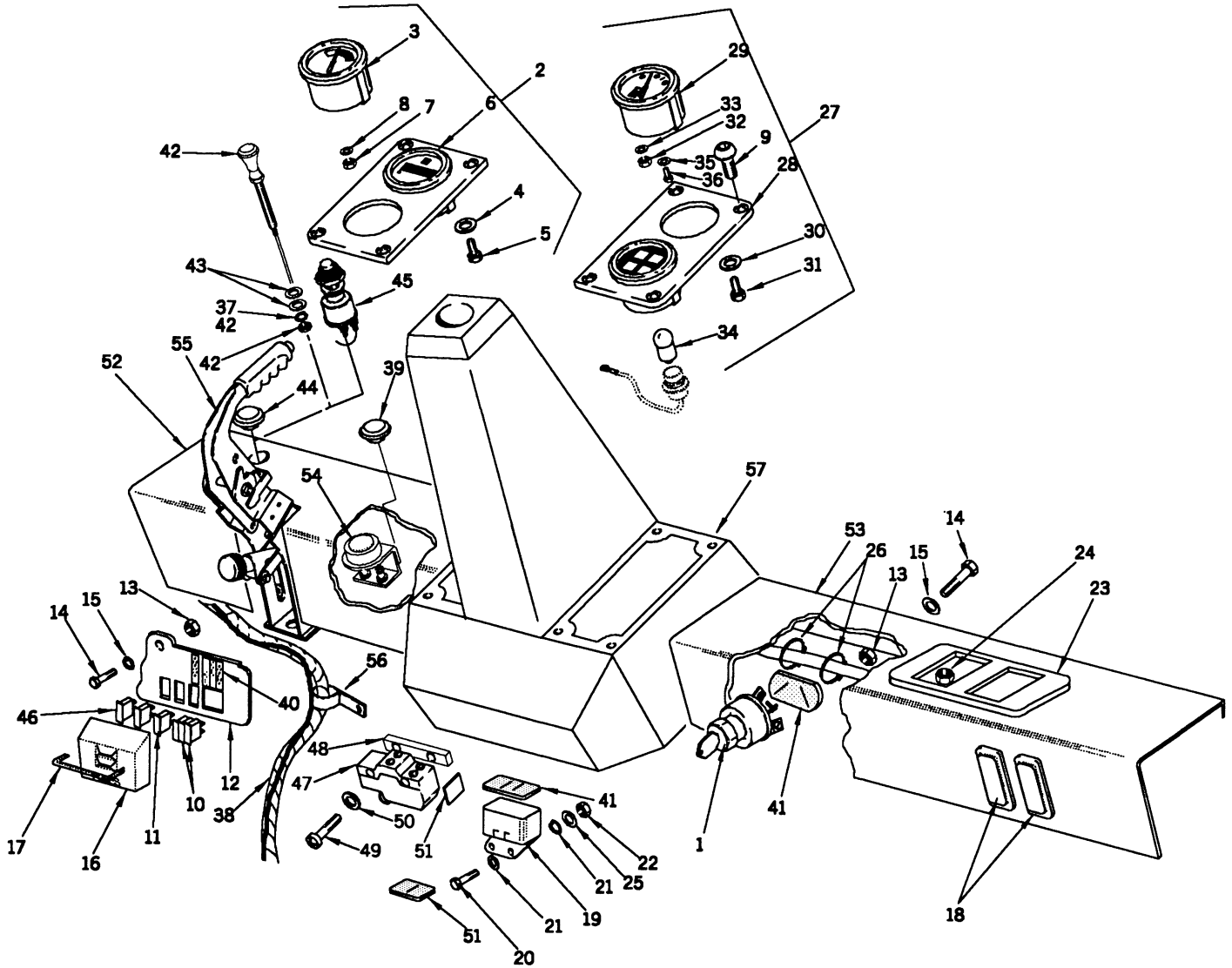


BATTERY TERMINAL COATING
PART NO. 178296

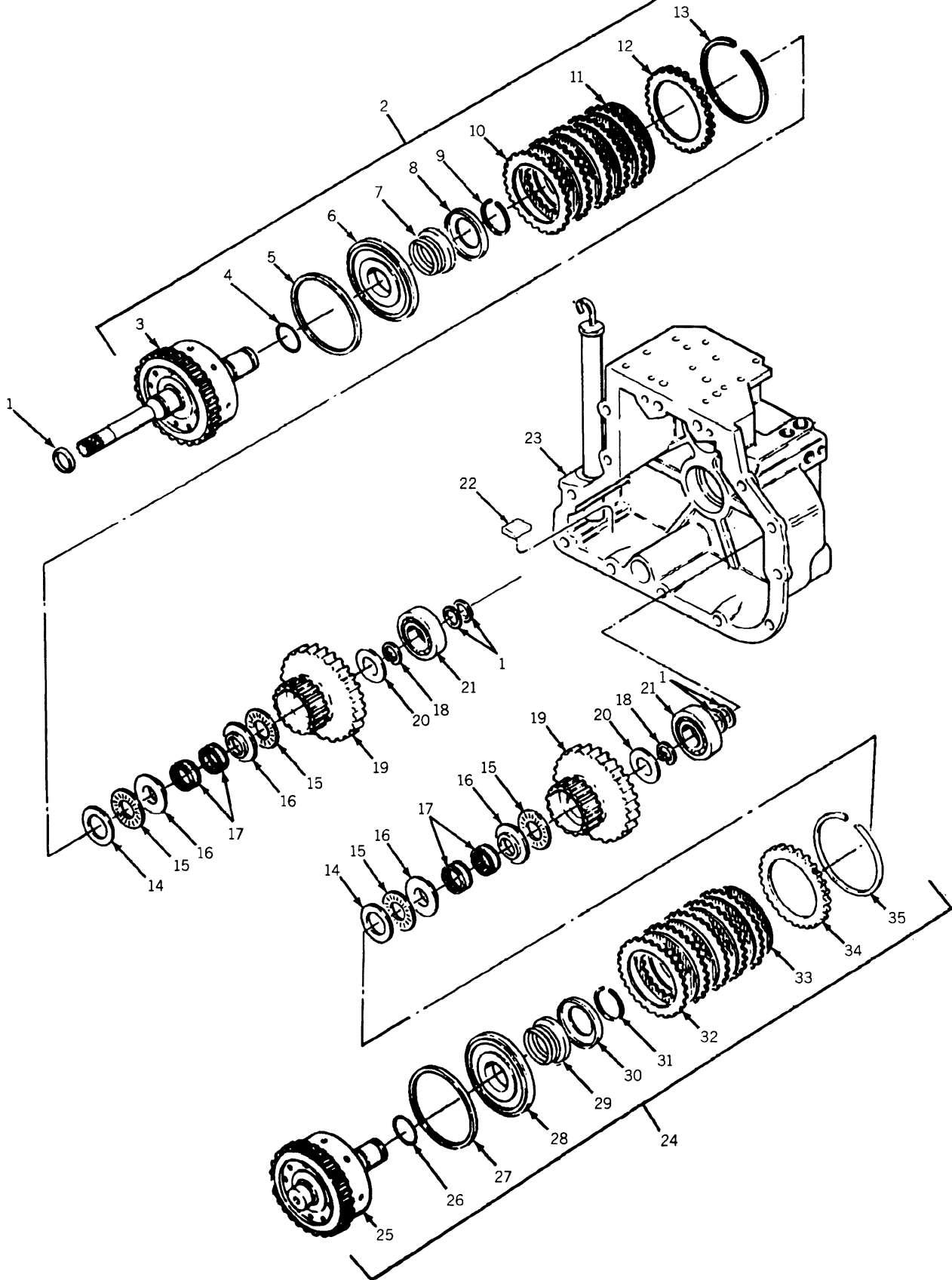
REF NO	HYSTER PART NO	NAME OF PART	QTY	REF NO	HYSTER PART NO	NAME OF PART	QTY
1	314760	REGULATOR	1	16	1326939	CAP	2
2	222036	RIVET #84	2	17	332755	WASHER	1
2	320156	WASHER	2	17	% 15175	WASHER	1
3	1324415	CLAMP	2	18	129684	CLAMP	1
4	292681	LOCKWASHER	7	19	137852	CLAMP	4
4	239503	NUT	7	20	309156	CABLE-BATT NEG	1
5	287805	CAPSCREW	2	21	317683	CABLE-BATT POS	1
6	320157	WASHER	5	22	257241	COVER	1
7	136749	CAPSCREW-METRIC	2	23	SWITCH-PRESSURE	1
8	ALTERNATOR	1		SEE 1B06		
9	1320939	SENDER	1	24	1324430	HARNESS	1
9	273338	SEALANT-THREAD	AR	25	STARTER	1
10	136687	NUT	2		SEE 1F10		
10	320156	WASHER	2	26	# 181045	CONNECTOR	2
10	292680	LOCKWASHER	2	27	# 1324391	HARNESS	1
11	286767	RETAINER-BATT	1	28	124297	CLAMP	1
12	309124	LINK	2	29	# 137852	CLAMP	2
13	309150	TRAY	1	30	@ 1324392	HARNESS	1
13	% 1314389	TRAY-BATTERY	1	31	* 1324477	HARNESS	1
14	148405	BATTERY-WET	1	32	296381	WASHER	1
14	% 177897	BATTERY-DRY	1				
14	% 286770	BATTERY-WET	1				
14	% 286756	BATTERY-DRY	1				
15	371071	HORN	1				

@ FORWARD/REVERSE SHIFT LEVER
% OPTIONAL
MONOTROL
* WITH POWER BRAKES

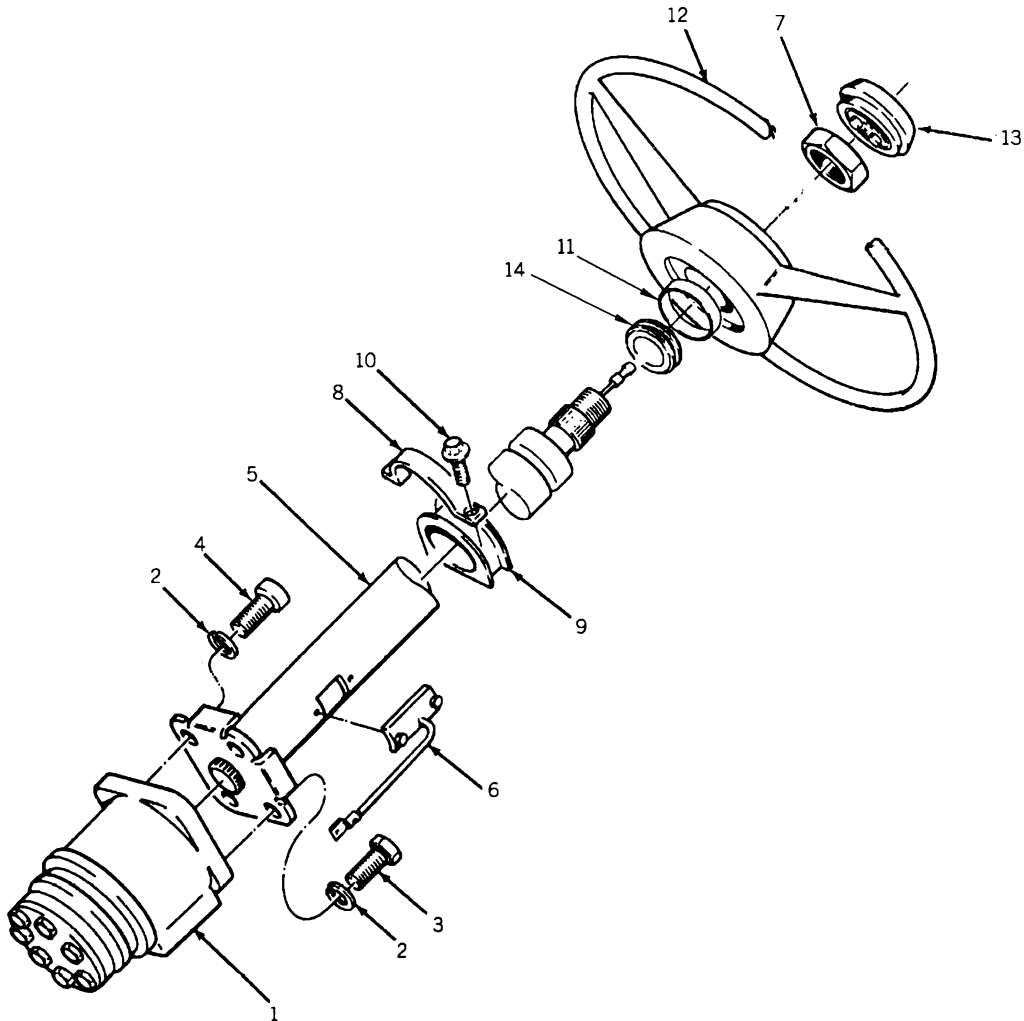
PANEL-INSTRUMENT



CLUTCH-FORWARD/REVERSE



STEERING



REF NO	HYSTER PART NO	NAME OF PART	QTY
1	PUMP	1
		SEE 2C05	
2	LOCKWASHER	4
3	CAPSCREW	1
4	CAPSCREW	3
5	COLUMN-STEERING	1
6	TERMINAL	1
7	NUT	1

REF NO	HYSTER PART NO	NAME OF PART	QTY
8	BRACKET	1
9	GROMMET	1
10	SCREW	2
11	1324293	SEAL	1
12	1327895	WHEEL-STEERING	1
13	371666	BUTTON-HORN	1
14	1320628	GROMMET	1

CLICK HERE TO **DOWNLOAD** THE COMPLETE MANUAL

- Thank you very much for reading the preview of the manual.
- You can download the complete manual from: www.heydownloads.com by clicking the link below

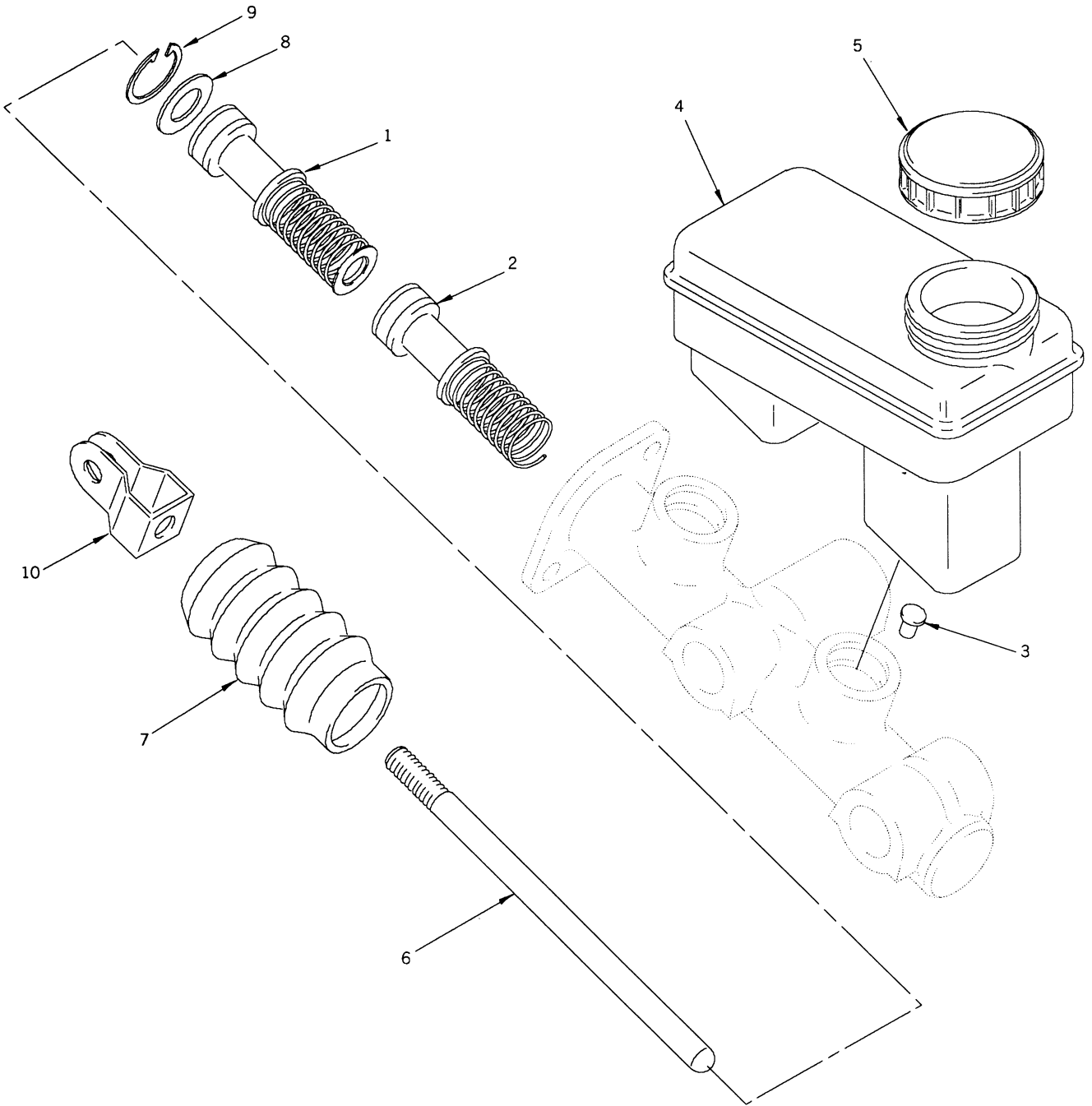


- Please note: If there is no response to CLICKING the link, please download this PDF first and then click on it.

CLICK HERE TO **DOWNLOAD** THE COMPLETE MANUAL

CYLINDER-MASTER

NON POWER BRAKE



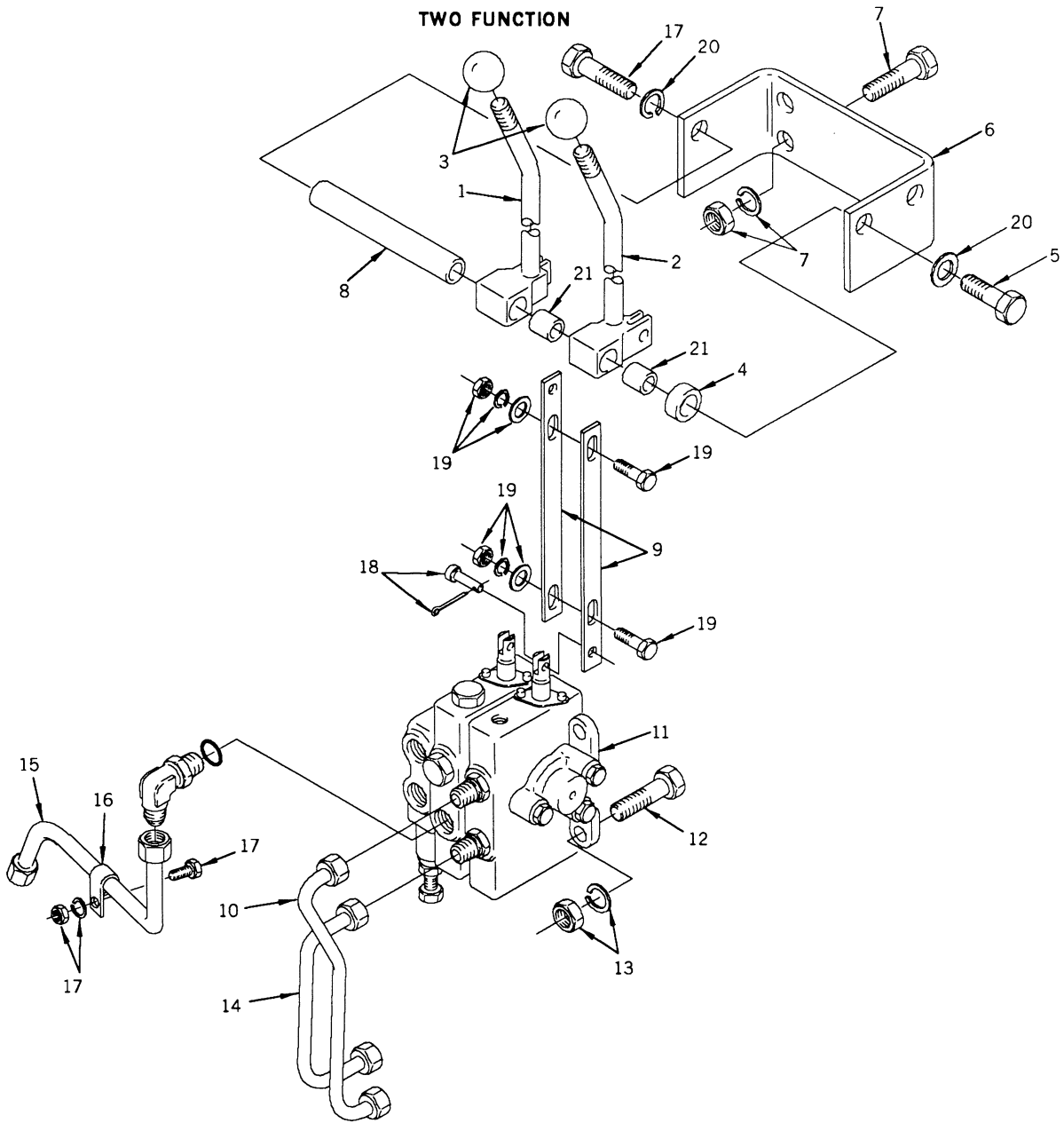
REF NO	HYSTER PART NO	NAME OF PART	QTY
	1327887	CYLINDER-MASTER	1
1	1324026	PISTON	1
2	1324027	PISTON	1
3	1324029	PIN	1
4	1324028	RESERVOIR	1
5	1324048	CAP	1
6	1324039	ROD	1

REF NO	HYSTER PART NO	NAME OF PART	QTY
7	1324040	COVER	1
8	1324041	WASHER	1
9	1324042	RING-SNAP	1
10	1324035	CLEVIS	1

NOTE: USE SEAL KIT 1324045

VALVE-ATTACHING PARTS

TWO FUNCTION

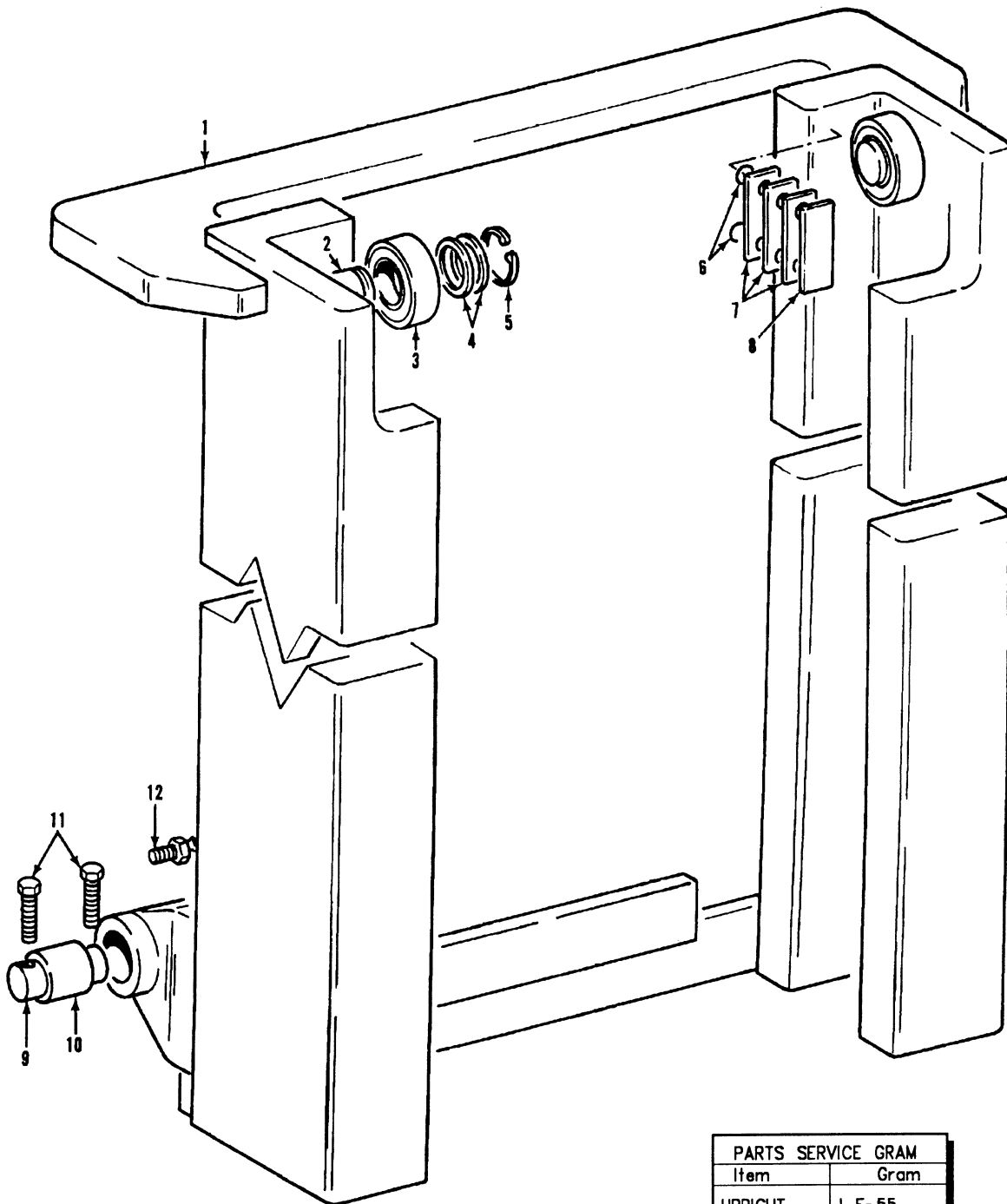


REF NO	HYSTER PART NO	NAME OF PART	QTY	REF NO	HYSTER PART NO	NAME OF PART	QTY
1	1324350	LEVER-LIFT	1	13	136692	NUT	3
2	1324352	LEVER-TILT	1	14	1324354	TUBE	1
3	308993	KNOB	2	15	362532	TUBE	1
4	1309475	COLLAR	1	16	166285	CLAMP	1
5	136681	CAPSCREW-METRIC	2	17	292681	LOCKWASHER	1
6	1309491	BRACKET-MTG	1	17	136681	CAPSCREW-METRIC	1
7	292501	CAPSCREW	4	18	309109	PIN	4
8	1305174	SHAFT-PIVOT	1	18	15200	PIN-COTTER	4
9	1324380	PLATE	4	19	308980	BOLT	4
10	1324355	TUBE	1	19	320156	WASHER	4
11	VALVE SEE 2E10	1	19	292680	LOCKWASHER	4
12	287860	CAPSCREW	3	19	136687	NUT-METRIC	4
13	292682	LOCKWASHER	3	20	292681	LOCKWASHER	2
				21	306599	BUSHING	2

UPRIGHT

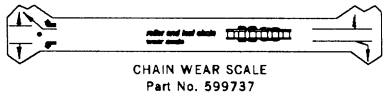
371000 386000 SERIES

OUTER

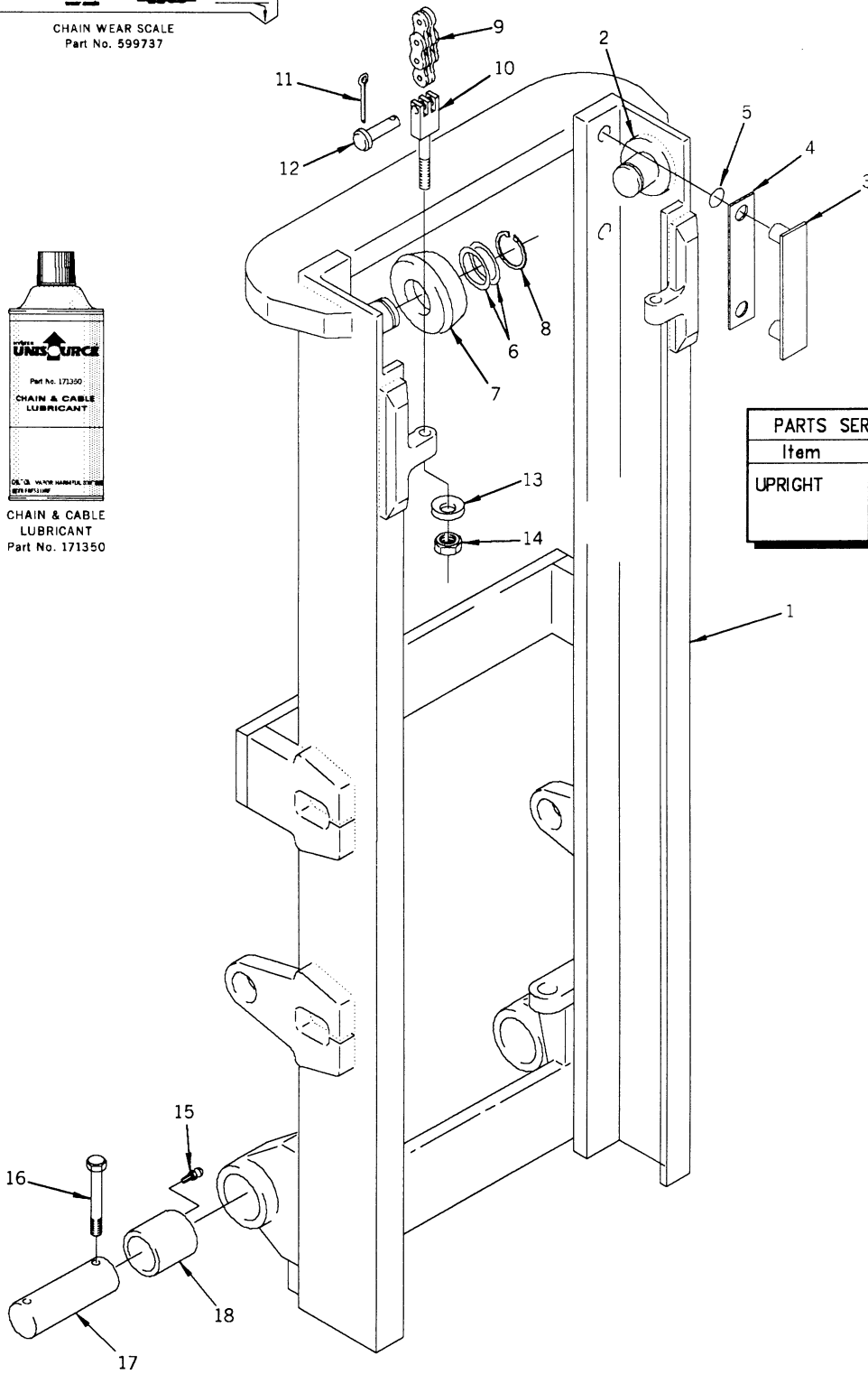


PARTS SERVICE GRAM	GRAM
Item	Gram
UPRIGHT	1-F-55 CURRENT REVISION

UPRIGHT OUTER



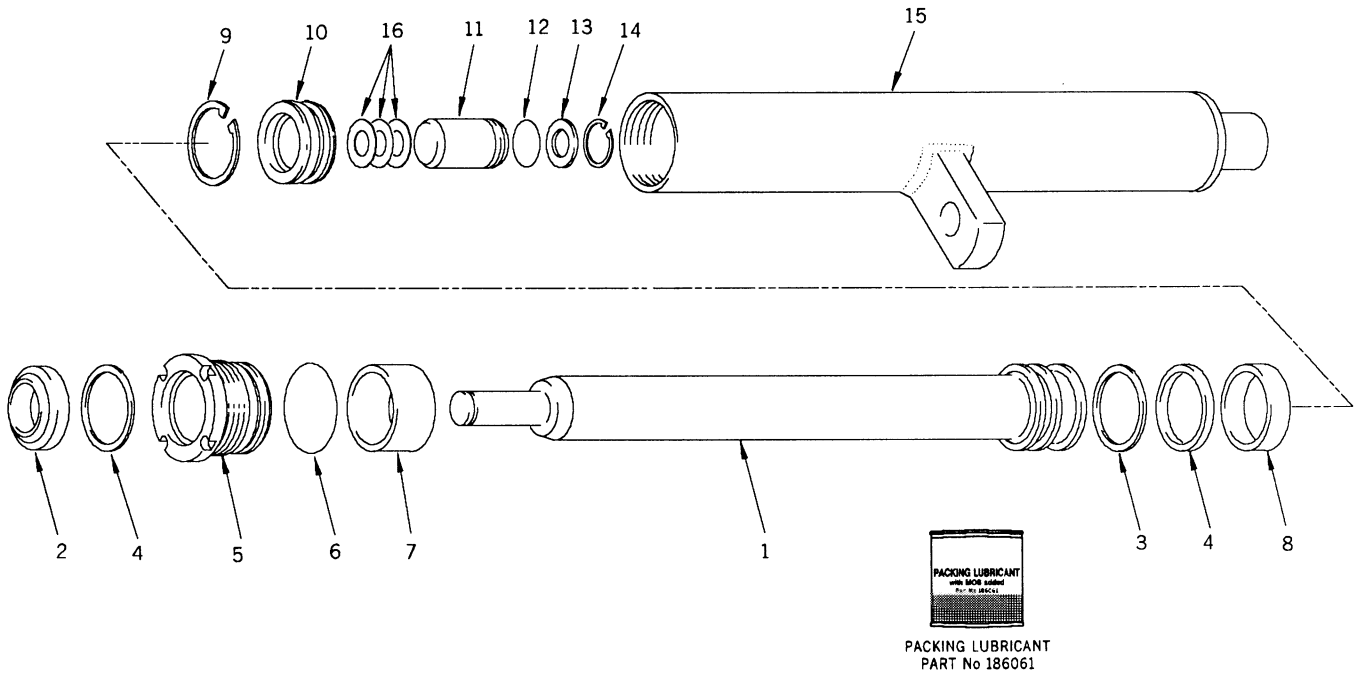
CHAIN & CABLE
LUBRICANT
Part No. 171350



PARTS SERVICE GRAM	
Item	Gram
UPRIGHT	1-F-55 CURRENT REVISION

CYLINDER-LIFT

MAIN



H40-50XL (H2.00-2.50XL)

REF NO	NAME OF PART 1 2 3 4	LIFT HEIGHT TO BOTTOM OF FORK				QTY
		4260 MM 167.5 INCH	4710 MM 185.5 INCH	5010 MM 197.0 INCH	5460 MM 215.0 INCH	
	CYLINDER-LIFT	337562	337564	337565	388058	2
1	ROD	337499	337501	337502	388119	1
7	SPACER	337505	337505	1
15	SHELL	337484	337486	337487	388094	1

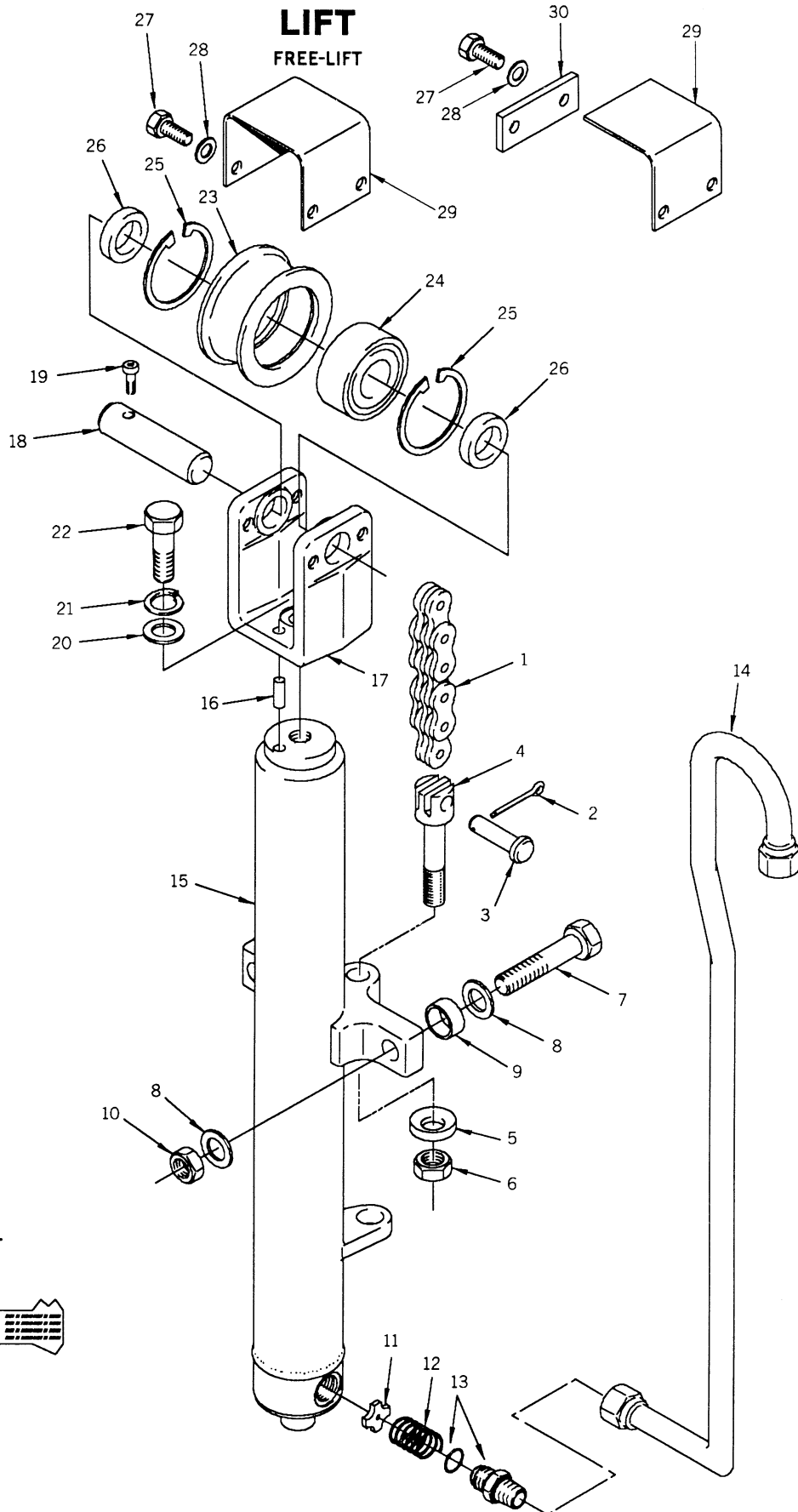
H60XL (H3.00XL)

REF NO	NAME OF PART 1 2 3 4	LIFT HEIGHT TO BOTTOM OF FORK				QTY
		4000 MM 157.5 INCH	4450 MM 175.0 INCH	4750 MM 187.0 INCH	5200 MM 204.5 INCH	
	CYLINDER-LIFT	337568	337570	337571	388060	2
1	ROD	337499	337501	337502	388119	1
7	SPACER	337506	337506	337507	337507	1
15	SHELL	337484	337486	337487	388094	1

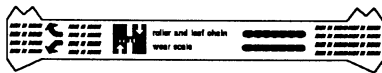
REF NO	HYSTER PART NO	NAME OF PART 1 2 3 4	QTY
	+	CYLINDER-LIFT	2
1	+	ROD	1
2	% 636854	WIPER	1
3	% 335012	RING-BACK-UP	2
4	% 334156	SEAL	2
5	380925	RETAINER	1
6	% 301991	SEAL	1
7	+	SPACER	1
8	% 334155	RING-WEAR	1
9	58916	RING-SNAP	1
10	1310339	PISTON	1

REF NO	HYSTER PART NO	NAME OF PART 1 2 3 4	QTY
11	297530	VALVE-CHECK	1
12	% 265787	O-RING	1
13	297531	WASHER	1
14	187388	RING-SNAP	1
15	+	SHELL	1
16	386682	SHIM	AR
16	386683	SHIM	AR
16	386684	SHIM	AR
+ SEE CHARTS ABOVE			
% INCLUDED IN SEAL KIT 337268			

LIFT FREE-LIFT



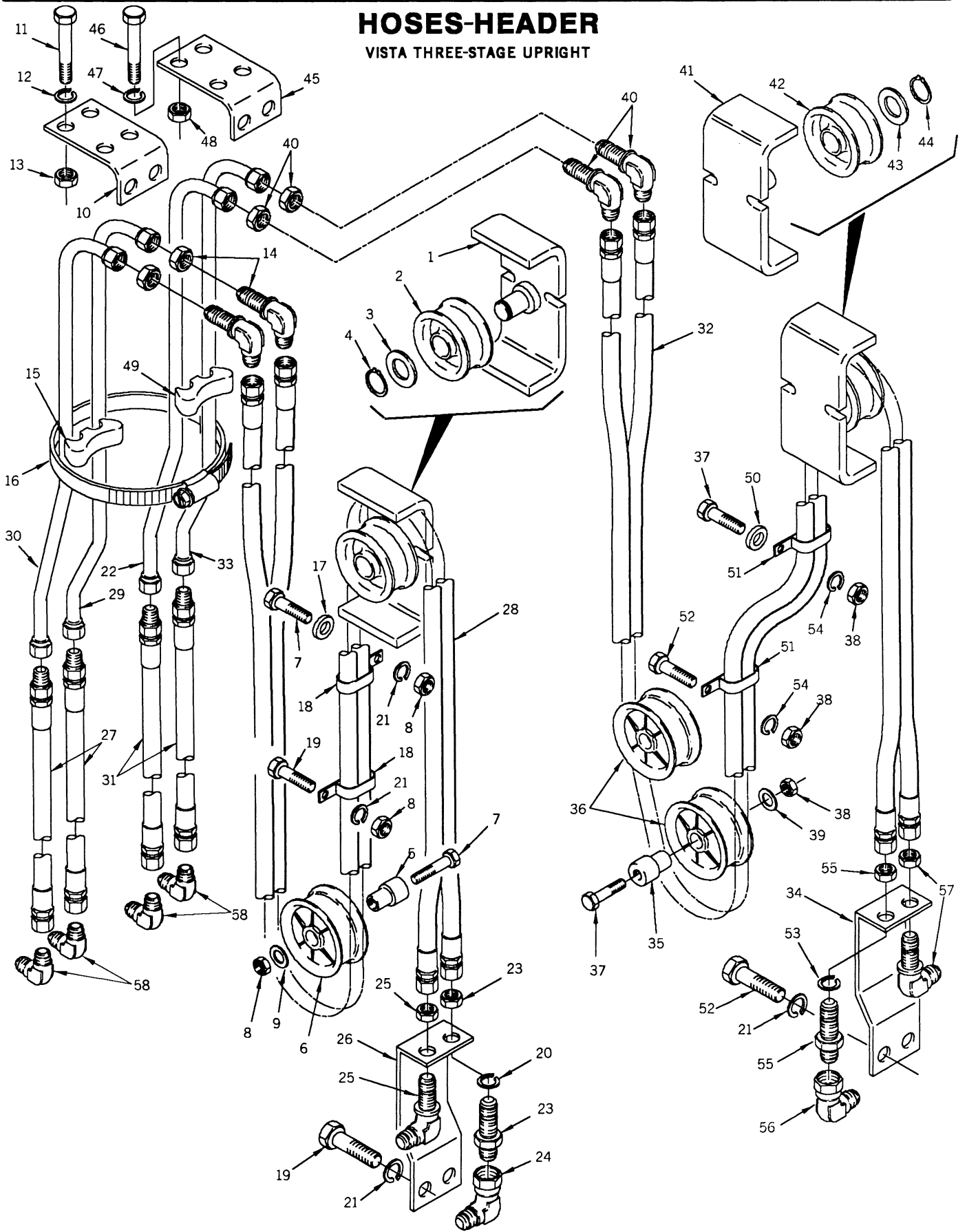
CHAIN AND CABLE LUBRICANT
Part No. 171350



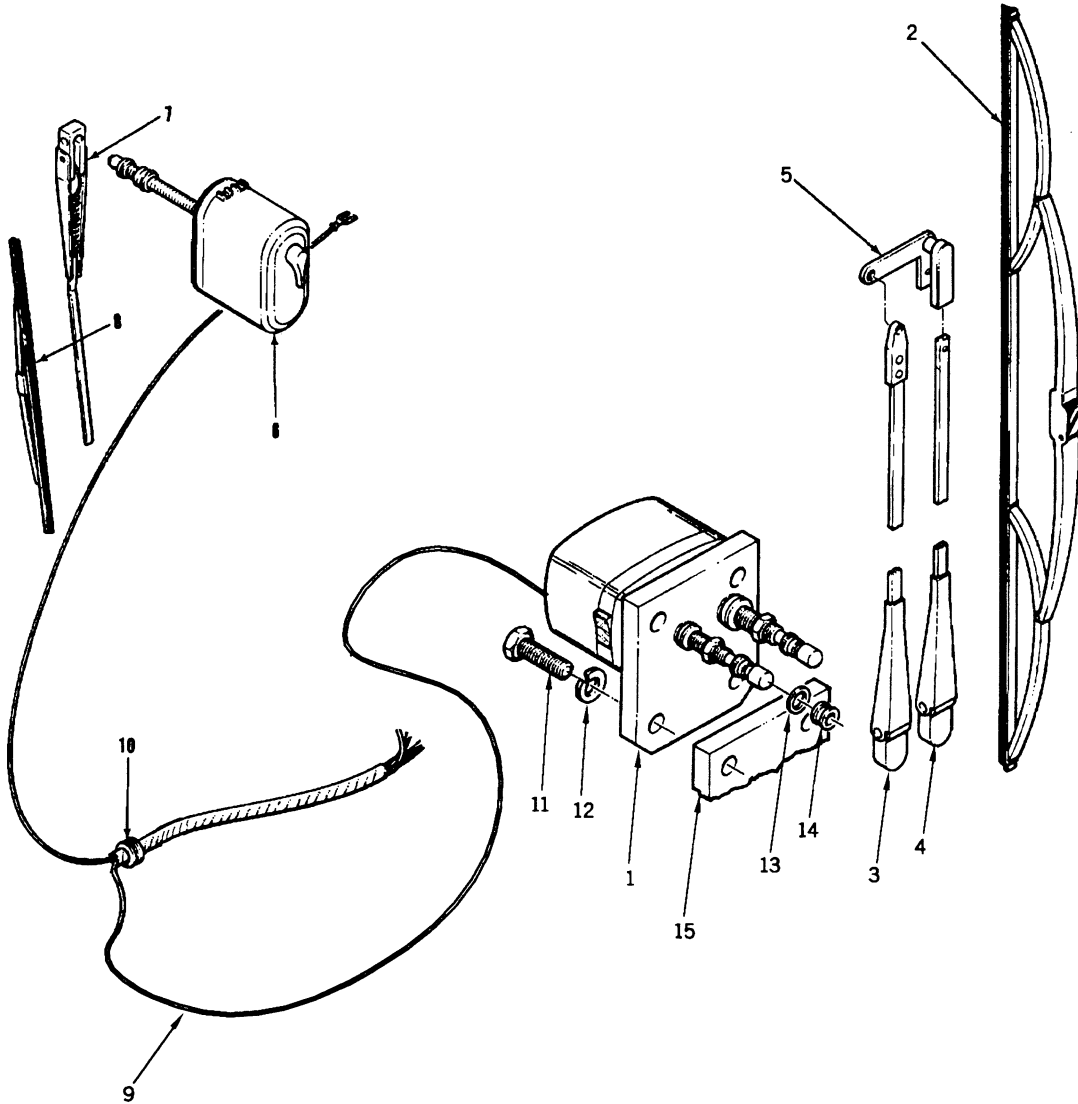
CHAIN WEAR SCALE
Part No. 599737

HOSES-HEADER

VISTA THREE-STAGE UPRIGHT



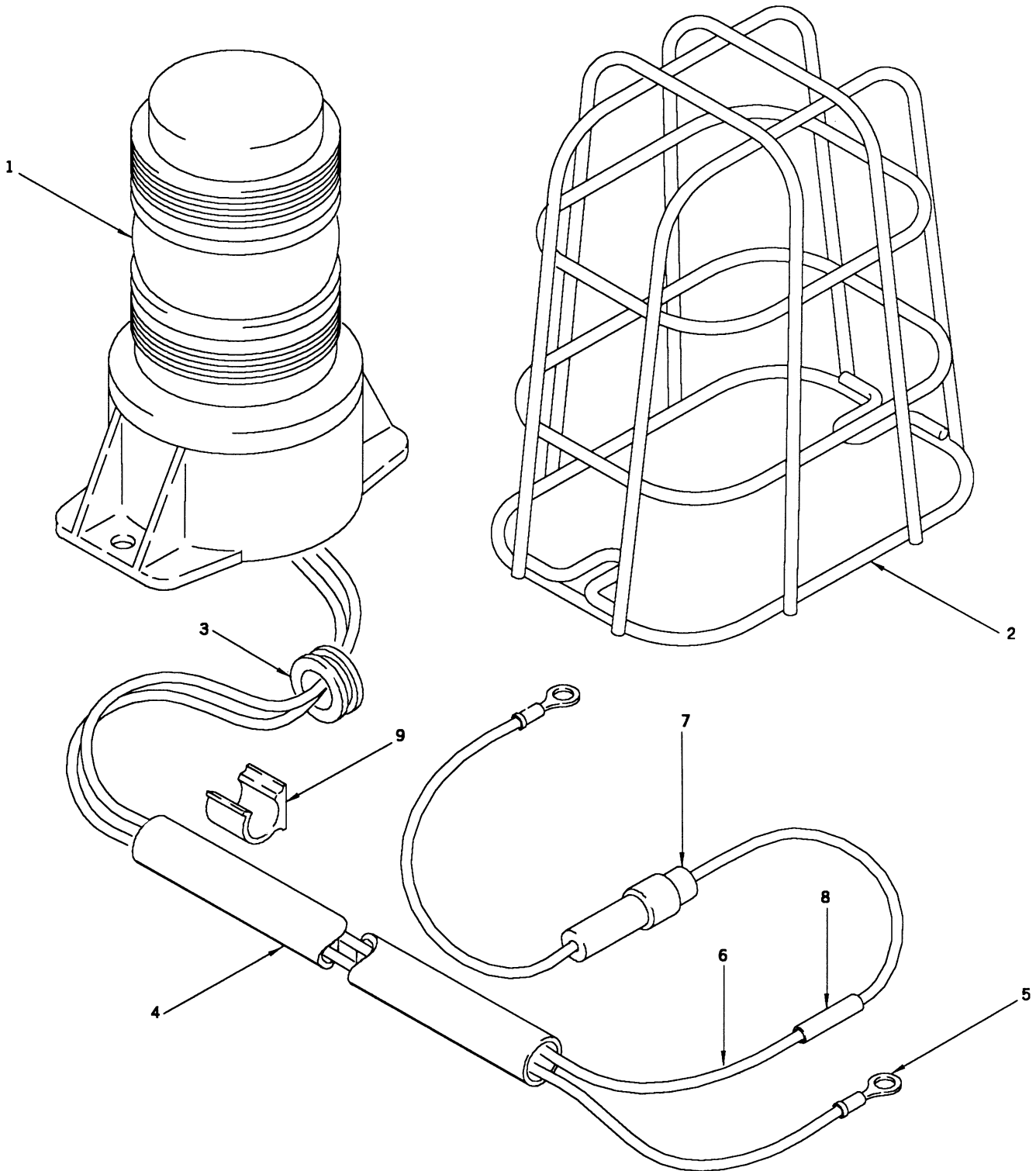
WIPER



REF NO	HYSTER PART NO	NAME OF PART	QTY
1	365333	MOTOR-WIPER	1
2	365334	BLADE-WIPER	1
3	1324502	ARM-WIPER	1
4	1324503	ARM-GUIDE	1
5	365331	BRACKET-WIPER	1
6	1317481	MOTOR-WIPER	1
7	3047448	ARM	1
8	365305	BLADE-WIPER	1

REF NO	HYSTER PART NO	NAME OF PART	QTY
9	1327886	WIRE	1
10	26283	GROMMET	2
11	292513	CAPSCREW	2
12	292682	LOCKWASHER	2
13	15134	WASHER	2
14	91946	GROMMET	2
15	1327871	PLATE	1

LIGHT-STROBE



REF NO	HYSTER PART NO	NAME OF PART	QTY
	1306577	KIT-STROBE	1
1	1307508	LIGHT-FLASHING	1
2	1302024	GUARD-LIGHT	1
3	328389	GROMMET	3
4	275494	CONDUIT	AR
5	1306578	WIRE	1

REF NO	HYSTER PART NO	NAME OF PART	QTY
6	1306579	WIRE	1
7	335850	WIRE-FUSED	1
7	53124	FUSE-10 AMP	1
8	1152830	CONNECTOR	1
9	241878	CLAMP-ADHESIVE	5

INDEX-NUMERICAL

PART NO	PAGE	REF NO	PART NO	PAGE	REF NO	PART NO	PAGE	REF NO	PART NO	PAGE	REF NO	PART NO	PAGE	REF NO
157001	4B12		178899	1B05	4	190073	3A10	8	200170	1D06	58	215211	3D04	8
157554	1G02	19		1C02	22	190383	1F04	3	200172	1D06	58	215430	3B14	12
157704	1D07	26	180137	3B04			1F08	14	200659	2B06	20		3D14	11
160653	4B07		180217	3B04			1F14	55		2B07	26	215924	3B14	11
160773	1D07	26	180598	2E04	35	190580	3B14	5	201752	2E04	51		3D14	10
161003	3A08	12		2E06	35		3D14	4	201766	2E08	25	216529	1F08	22
	3A10	6	181045	1F03	27		3D14	14		2E08	26	216877	1A05	2
	3B04	14		1F05	26	190673	3C01	8	201808	1D06	46		1D06	11
	3B08	7		1F08	46		3E01	8		2E04	3		2E08	22
161004	3A08	11	181046	1F14	43	190757	2E07	22		2E06	3		4B02	32
	3A10	7	181766	2B06	24	190887	3D13	14		2E06	48	218599	2B04	13
161006	3A08	3		2B07	30	191077	3B12		202617	2C05		220434	1E03	15
161882	4B08		182319	3B12		191805	1D06	43	203071	2C06	9	220656	2D06	15
161889	4B07		182376	3B12	5	193161	2D03	13	203230	2D06	8	220932	1E03	3
161890	4B07			3D12	5	193239	2E04	8		2E04	42	221149	3B12	26
162155	2E04	50	182377	3B12	6		2E06	7		2E06	43		3D12	19
	2E06	9		3D12	6		2E12	32		4A10	18	221342	1D06	2
	2E06	49	185806	1G02	36		2F02	27		4A10	51	221460	1F14	57
162836	1E01	20	186061	3A09	14	193609	4B08			4B02	15	221524	1F14	52
	1E02	24		3D13	16	194172	1A10	11	203367	3D13	13	221550	2B04	37
163970	2C04	7		3D14	15	194590	3B12		203901	2E04	11	221617	2B08	18
164259	1F08	23	186304	1G02	1		3D12		204223	1F04	13	221733	1A08	15
164639	2C04	11	186505	4C04	26	194608	3B12			1F08	12	221771	1A07	4
164801	4B02	34	186858	3A08			3D12		204829	1D13	5		2B04	29
166285	2E09	16	187388	3A09	12	194647	3D12		204830	1D13	6	221773	2B04	13
	2E12	42		3B13	14	195417	4B08		204831	1D13	9	221877	2D05	34
	2F02	39		3B14	2	195436	4B12		204835	1D13	16	222029	1A08	2
166587	2E04	49		3D14	2	195453	4B12		204837	1D13			4C02	20
166857	1D06	48	188486	2E10	37	195769	1B03	20	205120	2E10	12	222030	1A08	2
	2D03	8		2E14	51		1B04	21		2E10	29	222036	1F05	2
	2E04	6		2F03	53	196193	1D13			2E14	12		1F08	31
	2E06	4	188516	2E10	32	196297	1D06	2		2E14	25	222123	2A06	20
	4B02	18		2E14	14	197038	1D06	59		2E14	42		2D04	16
168718	1B05	5		2E14	45	197040	1D06	61		2F03	12	222163	3B12	29
	1C02	13		2F03	14	197513	2D05	21		2F03	25		3D12	22
	1C02	21		2F03	46	197514	2D05	22		2F03	42	222381	2E12	37
	1D06	41	188517	2E10	17	197515	2D05	19	205121	2E10	8		2F02	36
	1D07	6		2E10	33	197516	2D05	20		2E10	20	222392	3B10	8
	1D11	11		2E14	15	197519	2D05	2		2E10	25	222443	2A12	34
169690	1D06	35		2E14	30	197523	2D05	6		2E14	8		2B06	15
172654	1D06	55		2E14	46	197524	2D05	7		2E14	21		2B07	21
173247	1D06	52		2F03	15	197526	2D05	23		2E14	27	222476	1D07	35
	1F03	6		2F03	30	197527	2D05	31		2E14	38	222480	1D11	5
	1F04	15		2F03	47	197528	2D05	33		2F03	8	222484	2E04	13
	1F08	36	188518	2E10	34	197530	2D05	27		2F03	21	222492	2E04	52
	1G02	56		2E14	16	197531	2D05	26		2F03	27	223029	4C02	23
173690	1D06	42		2E14	47	197534	2D05	4		2F03	38		4C04	27
174209	4B07			2F03	16	197535	2D05	9	205123	2E10	13	224570	2B08	16
174214	4B07			2F03	48	197537	2D05	21		2E10	30	224571	2B08	15
175347	1D06	40	188519	2E10	21	197538	2D05	22		2E14	13	225550	3A10	8
175861	2E12	11		2E10	35	197550	2D05	23		2E14	26	226580	1F14	4
	2F02	9		2E14	17	198429	2D05	17		2E14	43	226589	1F14	11
176640	1D11	8		2E14	34	198433	2D05	14		2F03	13	226857	3B12	23
	4B02	15		2E14	48	198435	2D05	18		2F03	26		3D12	16
177459	3D10	2		2F03	17	199109	1F04	12		2F03	43	226986	2C04	21
177590	1A05	10		2F03	34	199319	2C05	28	209417	2D04	37	227131	1G02	5
177897	1F05	14		2F03	45	199320	2C05	29	210183	2C06	8		1G02	31
	1F08	5		2F03	48	199563	1A06	18	214364	2D04	27	227177	4C04	22
178119	3D06	6	189338	1F14	51	199851	2C06	6	215211	3A04	8	227180	4B11	2
	3D10	24	190073	3A08	4	199882	2E06	14		3B04	3	227210	1E01	33

CLICK HERE TO **DOWNLOAD** THE COMPLETE MANUAL

- Thank you very much for reading the preview of the manual.
- You can download the complete manual from: www.heydownloads.com by clicking the link below



- Please note: If there is no response to CLICKING the link, please download this PDF first and then click on it.

CLICK HERE TO **DOWNLOAD** THE COMPLETE MANUAL