

PARTS MANUAL

**CHALLENGER
H1050HD-CH, H1150HD-CH
(E117)**

CUSTOMER EDITION

HYSTER

CLICK HERE TO **DOWNLOAD** THE COMPLETE MANUAL

- Thank you very much for reading the preview of the manual.
- You can download the complete manual from: www.heydownloads.com by clicking the link below



- Please note: If there is no response to CLICKING the link, please download this PDF first and then click on it.

CLICK HERE TO **DOWNLOAD** THE COMPLETE MANUAL

TABLE OF CONTENTS (continued)

DESCRIPTION	PAGE
REAR WIPER EXTENSION	4-47
SIDE CONSOLE - SHEET 1 OF 2 (→ S/N E117E01553C)	4-62
SIDE CONSOLE - SHEET 2 OF 2 (→ S/N E117E01553C)	4-66
SIDE CONSOLE - SHEET 1 OF 3 (S/N E117E01554C →)	4-68
SIDE CONSOLE - SHEET 2 OF 3 (S/N E117E01554C →)	4-72
SIDE CONSOLE - SHEET 3 OF 3 (S/N E117E01554C →)	4-76
STAIR LIGHT	4-38
STEERING COLUMN	4-50
SWITCHES - HYDRAULIC LEVERS	4-36
TRANSMISSION - T36000 SERIES	4-29
TRANSMISSION - T40000 SERIES	4-30
UNDERFLOOR (→ S/N E117E01553C)	4-52
UNDERFLOOR (S/N E117E01554C →)	4-54
WINDOW WASH PUMPS	4-100
WIRING ACCESSORIES	
ELECTRONIC CONTROL MODULE	4-98

SECTION 1
FRAME

DESCRIPTION	PAGE
AIR CONDITIONING SYSTEM	1-38
ARMREST ASSEMBLY	
SEAT	1-36
CAB ATTACHING PARTS	1-14
CAB FLOORMATS	1-24
CAB MOUNT	1-12
CAB PANELS	1-28
CAB SOUND REDUCTION	1-25
CONDENSER	1-42
COUNTERWEIGHT	1-10
COVERS	1-2
DOOR ATTACHING PARTS	1-16
FLOORPLATES, STEPS, AND RAILS	1-4
HEATER AND AIR CONDITIONER ASSEMBLY	1-48
HEATER AND AIR CONDITIONER MOUNT	1-44
HEATER ASSEMBLY	1-46
HEATER HOSE ARRANGEMENT	1-40
LABELS	1-56
MAIN WINDOW ASSEMBLY	
STEEL DOORS	1-22
MIRRORS	
FRONT FENDER	1-8
PIVOT ARM ASSEMBLY	1-34
SEAT ASSEMBLY	
AIR	1-32
MECHANICAL	1-30
STEEL DOOR	
LEFT HAND	1-20
RIGHT HAND	1-18
TRAINING SEAT	1-58
UNDERFLOOR COVER MOUNT	1-26
WINDOW INSTALLATION	1-50
WINDOW WIPER SYSTEM	
SHEET 1 OF 2	1-52
SHEET 2 OF 2	1-54

**STEEL DOOR
LEFT HAND**

ITEM	PART NO.	DESCRIPTION	QTY
	1553405		
	1667219	Kit-Door LH (Cab)	1
1	1558440	Door	1
2	1515337	Seal	5
3	1558446	Latch	1
4	296229	Capscrew	2
5	1558302	Plate	1
6	1558303	Washer	1
7	1493308	Bolt	1
8	1495438	Cover	1
9	1468321	Washer (Plastic)	1
10	287816	Capscrew	1
11	1558300	Cap	1
12	1493397	Cover (Capscrew Head)	3
13	316834	Nut	3
14	1506738	Washer	3
15	1559691	Latch (Door Holder)	1
16	1495456	Washer (Special)	1
17	1495454	Seal	1
18	1558447	Piston Rod (Connector)	1
19	1558305	Lock	1
20	1558307	Screw	3
21	1558299	Bulk Seal	4
22	1558442	Window (Door) (Lower)	1
23	1558443	Seal (Lower LH)	1
24	1495372	Seal	1
25	1495431	Seal	1
26	1495371	Handle (Push Button)	1
27	1593629	Key (For Cab Door Grip)	1
28	1558441		
	1644794	Window (Main) (☞ Figure 1-10).....	1
28	1542548	Shim (Rubber)	1
28	1483226	Latch (Sliding Window)	1
29	1558294	Seal	AR
30	1623270		
	1692918	Kit-Repair Sliding Window (Sliding Window)	1
31	1558445	Seal (Upper LH)	1
32	1558444	Sliding Window (Door) (Upper)	1

**SEAT ASSEMBLY
MECHANICAL**

KEY:

A: Fabric Cover

B: Vinyl Cover

ITEM	PART NO.	DESCRIPTION	QTY	
			A	B
	1488000	Seat-Full Suspension	1	..
	1488002	Seat-Full Suspension	1
1	1482798	Seat-Full Suspension (With Armrest)	1
1	1482954	Seat-Full Suspension (With Armrest)	1	..
2	1482972	Seat Cushion	1
2	1482973	Seat Cushion	1	..
3	Seat Belt	1	1
4	1482974	Kit-Bracket (RH)	1	1
5	1482957	Seat Back Cushion Assy, Cloth	1
5	1482958	Seat Back Cushion Assy, Vinyl	1	..
6	1482959	Kit-Back Pan	1	1
7	1482960	Armrest (LH)	1	1
8	1482969	Kit-Bracket (LH)	1	1
9	1615066	Kit-Operator Presence System	1	1
10	1482970	Kit-Recliner	1	1
11	1482971	Kit-Seat Pan	1	1
12	1482996	Kit-Bracket	1	1
13	1482976	Kit-Knob	1	1
14	1482978	Kit-Lever (Slider)	1	1
15	1483001	Kit-Suspension Boot	1	1
16	1483007	Kit-Housing (Upper)	1	1
17	1483012	Kit-Bumper	1	1
18	1483015	Kit-Spring	1	1
19	1483020	Tape	1	1
20	1483024	Gas Spring	1	1
21	1483027	Kit-Housing (Lower)	1	1
22	1483030	Kit-Bearing	1	1
23	1483032	Arm	1	1
24	1483034	Knob	1	1
25	1483037	Kit-Service Susp Scissors	1	1
26	1482991	Kit-Service Mech Susp Seat	1	1
27	1482993	Kit-Plate (Adapter)	1	1
28	1482998	Kit-Seat Rail	1	1
29	1687037	Kit-Weight Adjuster	1	1
30	1571627	Armrest Assembly (Pivot Arm) (☞Figure 1-17).....	1	1
31	1476584	Cover (Capscrew Head)	4	4
32	1558035	Lockwasher	4	4
33	136681	Capscrew	4	4
34	1571623	Armrest (☞Figure 1-18).....	1	1

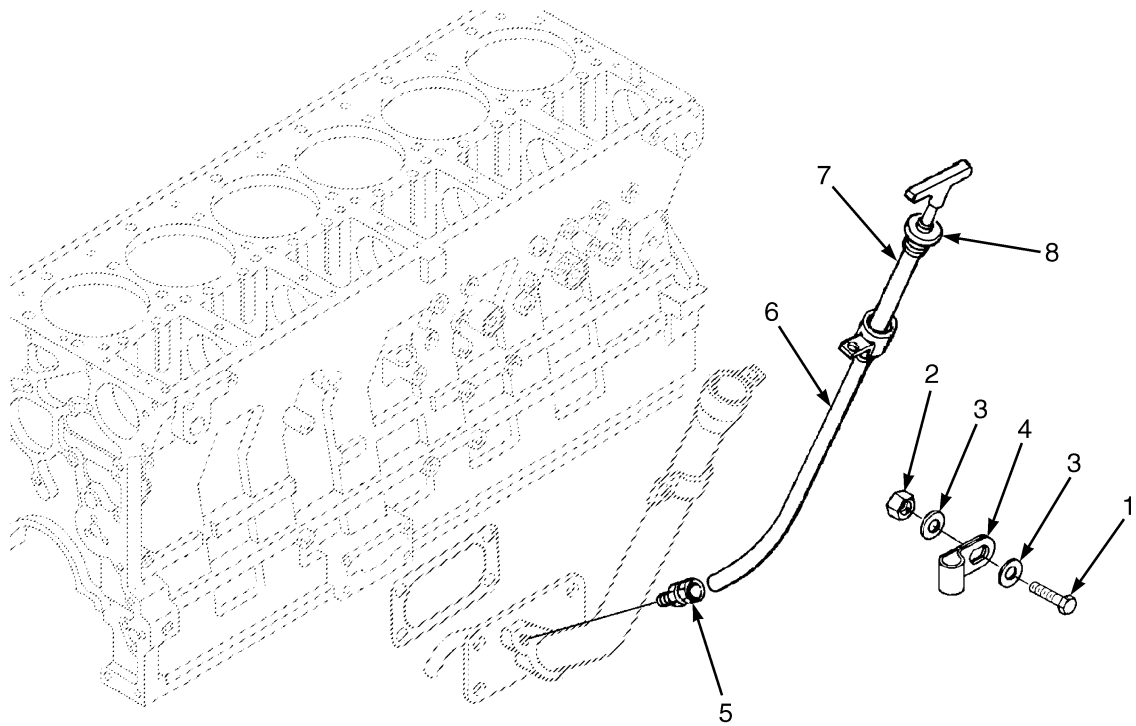
WINDOW INSTALLATION

ITEM	PART NO.	DESCRIPTION	QTY
1	1493328	Clip Window	1
2	1498341	Seal	1
3	1493397	Cover (Capscrew Head)	5
4	136687	Nut	5
5	1498342	Washer	5
6	1493324	Window (Rear) (Curved)	1
7	1393465		
	1493321	Seal (Profile)	AR
8	1393466	Seal (11.5 ft.)	1
9	1493322	Adhesive	AR
10	1493320	Window (Tempered) (Curved Front)	1
11	1493329	Cover	3
12	1498343	Clip (Roof)	3
13	1468321	Washer (Plastic)	3
14	136687	Nut	9
15	1498339	Sealant (Top)	AR
16	1515337	Seal (Top)	AR
17	1558024	Window (Skylight) (Top)	1
	1498750	Kit-Seal	1

**SECTION 2
ENGINE ASSEMBLY**

DESCRIPTION	PAGE
AIR FILTER ASSEMBLY	2-98
AIR FILTER SYSTEM	2-96
AIR INLET CONNECTION	2-50
AIR OUTLET CONNECTION	2-52
AIR TRANSFER CONNECTION	2-54
BREATHER PLUMBING	2-37
CAM FOLLOWER LEVER	2-8
CAMSHAFT	2-10
COOLANT HEATER STARTING AID	2-38
COOLING	2-92
CORROSION RESISTOR	2-84
CRANKSHAFT	2-19
CRANKSHAFT MAIN BEARINGS	2-20
CYLINDER BLOCK	2-4
CYLINDER BLOCK PLUMBING	2-15
CYLINDER HEAD	2-6
CYLINDER LINER	2-14
DRIVE PULLEY	
AIR COMPRESSOR	2-36
WATER PUMP	2-66
DRIVE TRAIN	
FRONT	2-42
ENGINE ASSEMBLY	2-3
ENGINE CONTROL SYSTEM	2-26
ENGINE MOUNT	2-90
EXHAUST	2-94
EXHAUST MANIFOLD	2-76
FAN	2-72
FAN DRIVE	2-46
FLYWHEEL	2-48
FLYWHEEL HOUSING	2-34
FRONT ENGINE SUPPORT	2-43
FRONT GEAR COVER	2-32
GEAR HOUSING	2-22
IDLER GEAR	2-24
INLET CONNECTOR	
AIR COMPRESSOR	2-49
INTAKE MANIFOLD	2-74
LIFTING BRACKET	2-56
NOISE PANEL	2-99
OIL COOLER WATER PLUMBING	2-86
OIL FILLER ARRANGEMENT	2-61
OIL FILTER	2-60
OIL FILTER AND COOLER HEAD	2-58
OIL LEVEL GAUGE	2-21
OIL PAN	2-30
OIL PUMP AND ATTACHING PARTS	2-28
PISTON AND CONNECTING ROD	2-16
PISTON COOLING NOZZLE	2-18

OIL LEVEL GAUGE (FIGURE 2-13)



HP091470

ITEM	PART NO.	DESCRIPTION	QTY
	1518636	Engine Assy-Diesel (290 HP)	1
	1518635	Engine Assy-Diesel (330 HP)	1
1	1533716	Capscrew	1
2	1521860	Nut	1
3	1515906	Washer	2
4	1513776	Clip	1
5	1512873	Connector	1
6	1533717	Tube (Oil Gauge)	1
7	1533718	Dipstick	1
8	1533722	Filler Cap	1

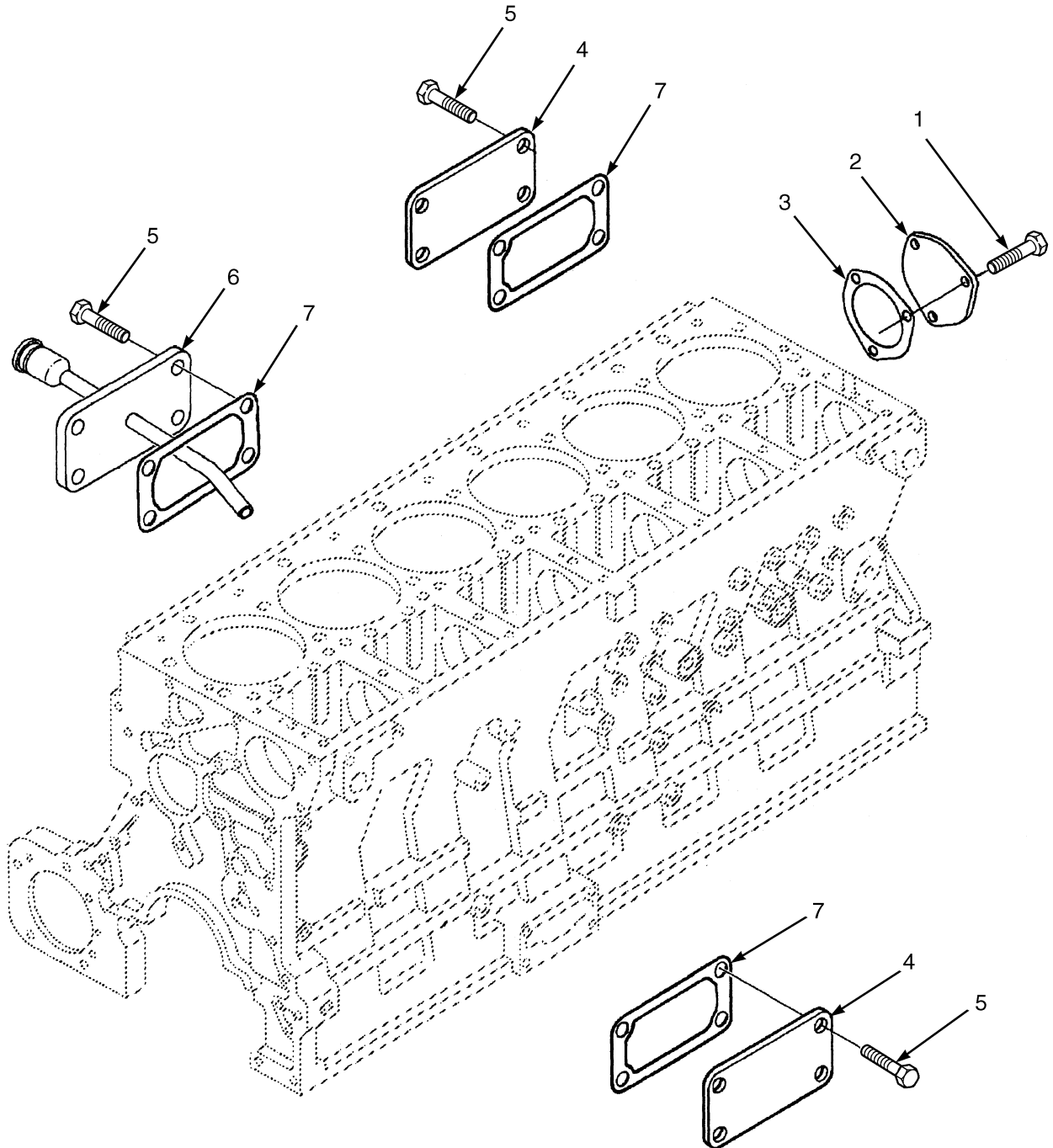
OIL PAN

ITEM	PART NO.	DESCRIPTION	QTY
	1518636	Engine Assy-Diesel (290 HP)	1
	1518635	Engine Assy-Diesel (330 HP)	1
1	1513121	Gasket	1
2	Oil Pan	1
3	1513116	Plug	1
4	1511952	Fitting	1
5	1513115	Plug	2
6	1513114	Gasket	2
7	1513122	Capscrew	32
8	1513117	Capscrew	11
9	1512525	Washer	1
10	1513119	O-Ring	1
11	1513118	Retainer	1
12	1513120	Tube (Suction)	1

VIBRATION DAMPER

ITEM	PART NO.	DESCRIPTION	QTY
	1518636	Engine Assy-Diesel (290 HP)	1
	1518635	Engine Assy-Diesel (330 HP)	1
1	1515691	Screw	5
2	1515692	Crankshaft Pulley	1
3	1512598	Damper	1
4	1512602	Plate	1

OIL FILLER ARRANGEMENT (FIGURE 2-37)



HP091076

ITEM	PART NO.	DESCRIPTION	QTY
------	----------	-------------	-----

STARTER MOTOR

ITEM	PART NO.	DESCRIPTION	QTY
	1518636	Engine Assy-Diesel (290 HP)	1
	1518635	Engine Assy-Diesel (330 HP)	1
1	1587865	Starter (290 HP)	1
1	1533735	Starter (330 HP)	1
2	1587864	Capscrew	3

TURBOCHARGER PLUMBING

ITEM	PART NO.	DESCRIPTION	QTY
	1518636	Engine Assy-Diesel (290 HP)	1
	1518635	Engine Assy-Diesel (330 HP)	1
1	1512753	Screw	2
2	1513426	Fitting	1
3	1513429	Fitting	2
4	1512588	O-Ring	1
5	1513430	O-Ring	1
6	1513435	Gasket	1
7	1588229	Hose	1
8	1597812	Connector	1

ENGINE MOUNT

ITEM	PART NO.	DESCRIPTION	QTY
1	a 1539562	Mount (RH)	1
1	b 1524513	Mount (RH)	1
2	18602	Capscrew	8
3	292581	Capscrew	2
4	296430	Washer	2
5	18635	Capscrew	1
6	293651	Capscrew	4
7	302402	Locknut	4
8	221358	Locknut	3
9	1548305	Bracket	2
10	1548306	Mount	1
11	a 1388252	Mount (LH)	1
11	b 1473395	Mount (LH)	1
12	159367	Mount	2
13	159368	Washer	2
14	18631	Capscrew	2

FOOTNOTES:**a** 290 HP Engine**b** 330 HP Engine

3

FUEL SYSTEM

FUEL FILTER PLUMBING

ITEM	PART NO.	DESCRIPTION	QTY
	1518636	Engine Assy-Diesel (290 HP)	1
	1518635	Engine Assy-Diesel (330 HP)	1
1	1515711	Hose	1
2	1512739	Fitting	1
3	1512740	O-Ring	1

**CONTROL PANEL
AIR CONDITIONER**

ITEM	PART NO.	DESCRIPTION	QTY
	1558046	Control Panel (Air Conditioning)	1
1	a	Decal	1
2	1566208	Switch (Air Conditioner)	1
3	1640800		
	1566210	Knob (Fan Switch)	2
4	1566211	Knob (Potentiometer)	1
5	1566212	O-Ring	1
6	1566213	Washer	1
7	a	Plate (Mounting)	1
8	1566205	Switch (Fan Speed)	1
9	1566206	Nut	1
10	1566207	Potentiometer	1
11	1566209	Wire Harness	1

FOOTNOTES:

a Not Service Separately

**WIRE HARNESS
CHASSIS**

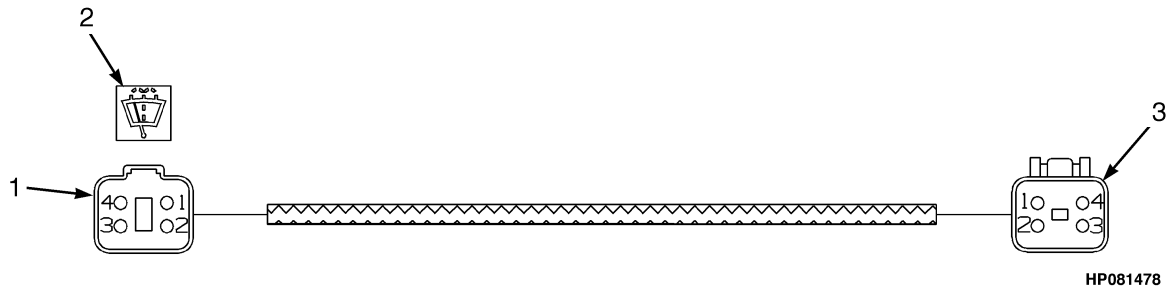
ITEM	PART NO.	DESCRIPTION	QTY
	1599351	Wire Harness (Chassis)	1
1	1489655	Connector (4 Way)	1
2	1489657	Connector	5
3	1363886	Terminal (Socket)	12
4	1330438	Terminal (Socket)	69
5	1493448	E-Ring	5
6	1484383	Heat Shrink	14
7	1569984	Terminal (Ring)	1
8	1493456	Ring	1
9	1493455	Ring	3
10	1493443	Heat Shrink (Heatshrink)	3
11	1323586	Connector	1
12	1323576	Terminal	2
13	1493430	Connector (6 Way Housing)	2
14	1502924	Retainer	2
15	1489656	Connector (4-Way)	5
16	1493433	Housing (Socket)	1
17	1493434	Terminal (Socket)	9
18	1569973	Connector Body (6-Way)	1
19	1502627	Connector (Socket)	1
20	1490242	Connector (2 Way)	4
21	1490243	Connector (Secondary Lock)	4
22	1484598	Terminal	5
23	1484651	Cover	5
24	1484397	Connector (3-Way)	2
25	1463194	Connector (Secondary Lock)	2
26	1569974	Terminal	6
27	1569975	Seal	6
28	1493431	Housing (Socket) (60-Way)	1
29	1493432	Retainer (Socket) (60-Way)	1
30	1463141	Terminal (Socket)	45
31	1495142	Plug	1
32	1495143	Plug	1
33	1507725	Terminal (Gold)	22
34	1518112	Terminal (Socket) (Gold)	2
35	1493444	Terminal	1
36	1493445	Cover (Socket Terminal)	1
37	1493457	Ring	2
38	1516237	Heat Shrink (Red)	1
39	1493435	Connector (2-Way)	2
40	1493436	Terminal (Socket)	6
41	1479109	Seal	6
42	1493428	Connector (12-Way)	1
43	1500913	Connector	1
44	1607801	Terminal (Ring)	2
45	1301720	Connector Body	1
46	1484375	Terminal	1
47	1493447	Connector	1
48	1493465	Connector (2 Pin)	3
49	1493438	Cover	2

**WIRE HARNESS
SWITCHES – HYDRAULIC LEVERS**

ITEM	PART NO.	DESCRIPTION	QTY
	1547278	Wire Harness (Switches)	1
1	1484555	Switch (10-Way)	5
2	1484556	Terminal	14
3	Decal (Pile Slope)	1
4	1570617	Label (Horn Switch) (Horn)	1
5	Decal (Side-Shift)	1
6	Decal (Slew LH)	1
7	Decal (Slew RH)	1
8	1493428	Connector (12-Way)	1
9	1500913	Connector	1
10	1330438	Terminal (Socket)	11
11	1330439	Plug	1
	a 1493450	Heat Shrink	1

FOOTNOTES:**a** Not Illustrated

**WIRE HARNESS (FIGURE 4-25)
REAR WIPER EXTENSION**



ITEM	PART NO.	DESCRIPTION	QTY
	1545170	Wire Harness (Rear Wiper)	1
1	Connector Assembly (Side Console)	1
1	1489655	Connector (4 Way)	1
1	1330416	Connector (Secondary Lock)	1
1	1330437	Terminal (Pin)	4
2	1570644	Label (Rear Wash/Wipe Switch) (Washer And Wiper)	1
3	Connector Assembly (Rear Wiper Motor)	1
3	1489656	Connector (4-Way)	1
3	1489657	Connector	1
3	1330438	Terminal (Socket)	4

**WIRE HARNESS
ARMREST**

ITEM	PART NO.	DESCRIPTION	QTY
	1545176	Wire Harness (Armrest)	1
1	1484554	Connector	1
2	1330438	Terminal (Socket)	6
3	1463141	Terminal (Socket)	36
4	1484377	Plug	7
5	1570608	Label (Front) (Front)	2
6	1570611	Label (Front Wiper) (Front Wiper Switch)	1
7	1484555	Switch (10-Way)	7
8	1484556	Terminal	30
9	1570614	Label (Wash) (Front Washer)	1
10	1570609	Label (Roof) (Roof)	1
11	1570612	Label (Rear/Roof Wash Wipe) (Rear Washer)	2
12	233141	Terminal	5
13	1570610	Label (Rear) (Rear)	1
14	1506885	Ring	1
15	1500925	Connector	1
16	1352603	Secondary Lock	1
17	1330437	Terminal (Pin)	14
18	1570613	Label (Twist Lock) (Twist Lock)	1
19	Decal (Extend And Retract)	1
20	Decal (Hydraulic Stop)	1
21	1493465	Connector (2 Pin)	1
22	1330414	Connector (Secondary Lock)	1
23	1493459	Ring	1
24	1490242	Connector (2 Way)	1
25	1490243	Connector (Secondary Lock)	1
26	1506881	Cap (Nut)	1
27	1506883	Clip (Ring)	1
28	1493450	Heat Shrink	7

WIRE HARNESS
SIDE CONSOLE – SHEET 2 OF 2 (→ S/N E117E01553C)

ITEM	PART NO.	DESCRIPTION	QTY
	1545175	Wire Harness (Side Console)	1
1	129887	E-Ring	2
2	1500928	Switch (2-way)	1
3	1484394	Crimp Ferrule	2
4	1561756	Cover (Lower) (Park Brake Switch)	1
5	1567676	Cover (Upper) (Park Brake Switch)	1
6	1570606	Strap Clamp (Black)	1
7	1484598	Terminal	14
8	1484651	Cover	14
9	Connector Body	1
10	1484716	Terminal	17
11	1490245	Clip	3
12	1490242	Connector (2 Way)	2
13	1490243	Connector (Secondary Lock)	2
14	1363886	Terminal (Socket)	5
15	1493465	Connector (2 Pin)	1
16	1484650	Connector (Socket)	1
17	1330438	Terminal (Socket)	83
18	1330439	Plug	57
19	1500927	Clip	6
20	1570605	Housing (Pin)	2
21	1484397	Connector (3-Way)	3
22	1330426	Connector	3
23	Decal (Manual)	1
24	1330415	Connector	3
25	1330437	Terminal (Pin)	31
26	Decal (Aud)	1
27	206026	E-Ring	2
28	1484681	10 Way Fuse Box	4
29	1484682	Secondary Lock (Fuse Box)	4
30	1489957	Connector (1-Way) (1-Way)	44
31	1490250	Terminal (2-Way) (2-Way)	6
32	1496884	Terminal (3-Way) (3-Way)	4
33	1490249	Connector (1-Way) (1-Way)	7
34	1389479	Terminal	10
35	1493430	Connector (6 Way Housing)	1
36	1502924	Retainer (6-Way)	1
37	1493428	Connector (12-Way)	3
38	1500913	Connector	3
39	1570622	Label (1234) (1,2,3,4)	1

CLICK HERE TO **DOWNLOAD** THE COMPLETE MANUAL

- Thank you very much for reading the preview of the manual.
- You can download the complete manual from: www.heydownloads.com by clicking the link below



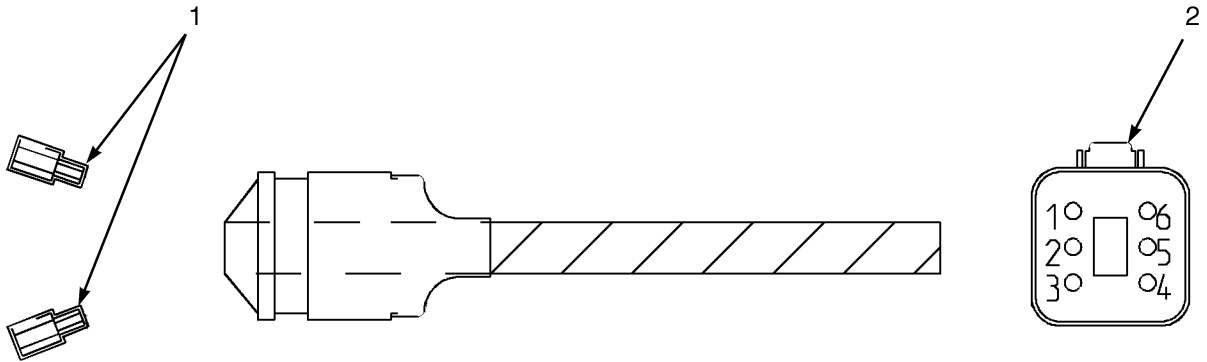
- Please note: If there is no response to CLICKING the link, please download this PDF first and then click on it.

CLICK HERE TO **DOWNLOAD** THE COMPLETE MANUAL

WIRE HARNESS
SIDE CONSOLE – SHEET 3 OF 3 (S/N E117E01554C →)

ITEM	PART NO.	DESCRIPTION	QTY
	1583986	Wire Harness (Side Console) (☞Figure 4-35, ☞Figure 4-36).....	1
1	Connector Assembly (Undercab)	1
1	1484650	Connector (Socket)	1
1	1330439	Plug	5
1	1330438	Terminal (Socket)	25
1	1363886	Terminal (Socket)	1
2	1500927	Clip	1
3	Connector Assembly (Range Solenoids)	1
3	1570605	Housing	1
3	1330415	Connector	1
3	1330437	Terminal (Pin)	3
4	Connector Assembly (Automatic)	1
4	1484397	Connector (3-Way)	1
4	1330426	Connector	1
4	1330438	Terminal (Socket)	3
5	Connector Assembly (Idle Validation Switch)	1
5	1493430	Connector (6 Way Housing)	1
5	1529052	Connector	1
5	1330438	Terminal (Socket)	6
6	Connector Assembly (Hydraulic Relays 1)	1
6	1493428	Connector (12-Way)	1
6	1500913	Connector	1
6	1330438	Terminal (Socket)	12
7	Connector Assembly (Hydraulic Relays 2)	1
7	1493428	Connector (12-Way)	1
7	1500913	Connector	1
7	1330439	Plug	2
7	1330438	Terminal (Socket)	10
8	Connector Assembly (Manual And Automatic Switches)	1
8	206026	E-Ring	2
9	Connector Assembly (Manual)	1
9	1484397	Connector (3-Way)	1
9	1330426	Connector	1
9	1330438	Terminal (Socket)	3
9	1570605	Housing	1
9	1330439	Plug	3
10	Fusebox 1	1
10	1484681	10 Way Fuse Box	1
10	1484682	Secondary Lock	1
10	1496884	Terminal (3-Way)	2
10	1489957	Connector (1-Way)	6
10	1389479	Terminal	6
11	Fusebox 3	1
11	1484681	10 Way Fuse Box	1
11	1484682	Secondary Lock	1
11	1496884	Terminal (3-Way)	1
11	1490250	Terminal (2-Way)	2
11	1489957	Connector (1-Way)	10
11	1490249	Connector (1-Way)	2
11	1389479	Terminal	1

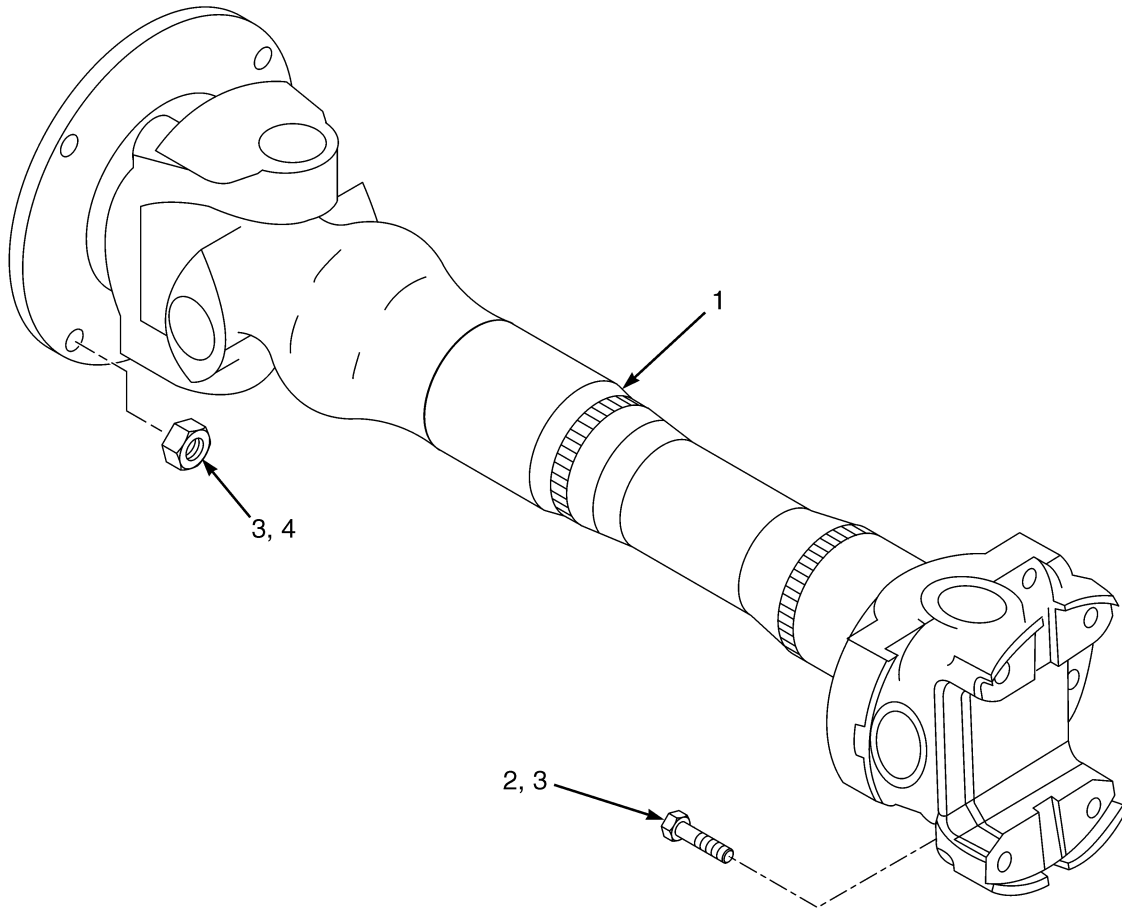
**WIRE HARNESS (FIGURE 4-40)
POWER PILE SLOPE**



HP081980

ITEM	PART NO.	DESCRIPTION	QTY
	1676816	Wire Harness (Power Pile Slope)	1
1	Connector Assembly (Valve Power Pile Slope)	1
1	2003181	Pin	2
2	Connector Assembly (Harness Power Pile Slope)	1
2	1529052	Connector	1
2	1330438	Terminal (Socket)	2
2	1493430	Connector (6 Way Housing)	1
2	1330439	Plug	4

UNIVERSAL SHAFT (FIGURE 5-2)



KEY:

A: T36000 Series Transmission

B: T40000 Series Transmission

ITEM	PART NO.	DESCRIPTION	QTY	
			A	B
1	1550775	Drive Shaft	1	..
1	1518631	Drive Shaft	1
1	b 1564597	Universal Joint	1	..
1	1564595	Universal Joint	1
1	a 1564598	Universal Joint Kit	1	..
1	1564596	Universal Joint (Kit)	1
2	177051	Capscrew	4	4
3	264134	Loctite	AR	AR
4	303111	Nut	4	4

FOOTNOTES:

a Drive Axle

b Transmission

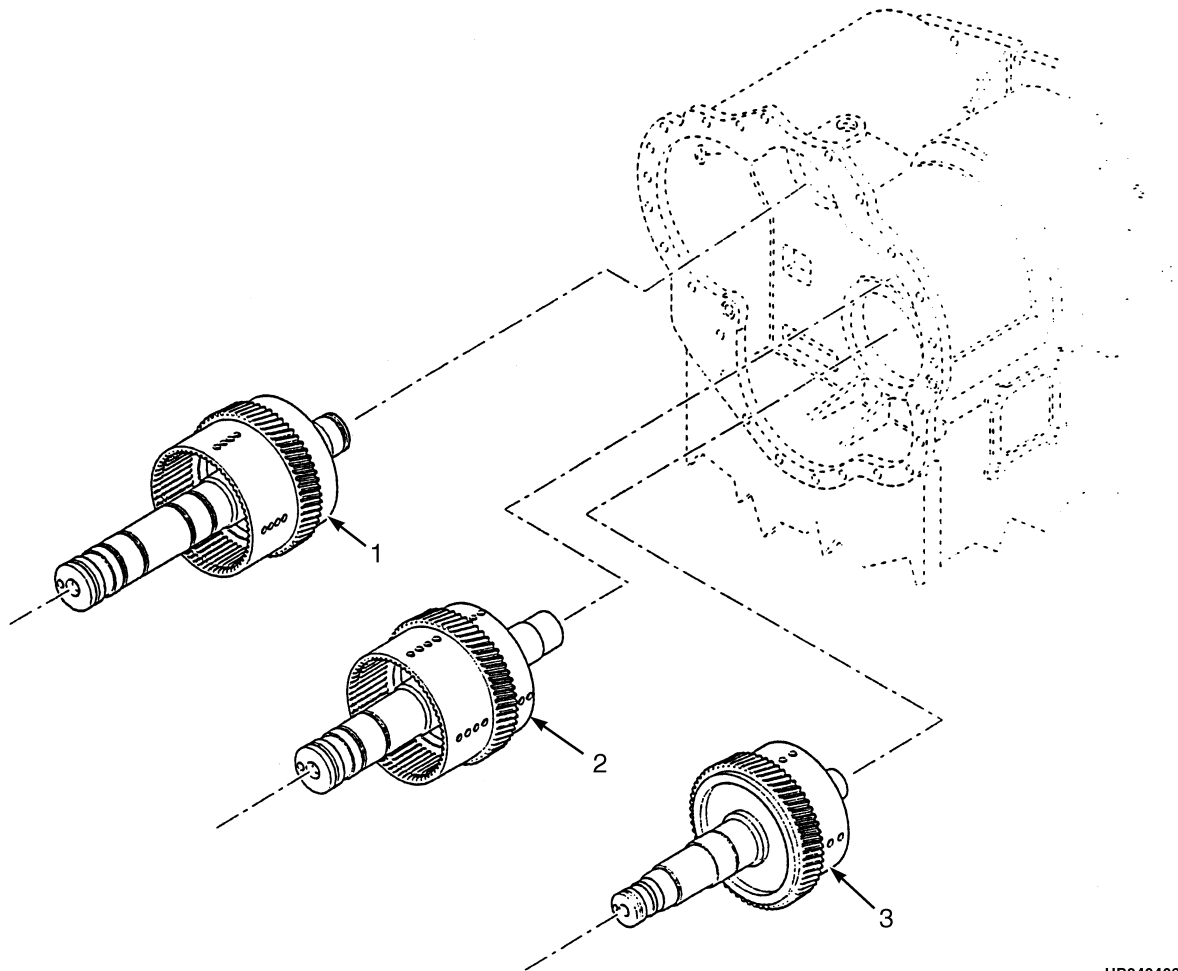
CLUTCH
LOW SPEED – C290, 36000 SERIES

ITEM	PART NO.	DESCRIPTION	QTY
	1479149	Transmission Assy	1
1	1389246	Stud	4
2	1471363	O-Ring	1
3	1389253	Cap (Rear)	1
4	221710	Nut	4
5	15157	Lockwasher	4
6	1389125	Plug	2
7	1389247	Shim (0.004 in.)	AR
7	1389248	Shim (0.007 in.)	AR
7	1389249	Shim (0.010 in.)	AR
7	1389250	Shim (0.020 in.)	AR
8	1556985	Piston Ring	1
9	1391630	Shaft	1
10	1389234	Bearing (1st Clutch)	1
11	1391631	Gear (Third Speed, Driven) (3rd Speed)	1
12	1392493	Bearing Cone (Front)	1
12	1392494	Bearing Cup (Front)	1
13	1389236	Spacer	1
14	1389235	Ring	1
15	1391133	Spacer	1
16	348486	Ring	1
17	1389218	Retaining Ring	1
17	1566656	Spring	1
18	1389218	Retaining Ring	1
19	330577	Spring	1
20	1389174	Snap Ring	1
21	1389224	Backplate	1
22	1389176	Separator Plate	10
23	1389177	Friction Disk	10
24	1389239	Piston	1
25	330623	Kit-Clutch Pack Plates	1
26	1389228	Piston Seal (Piston)	1
27	1389245	Bearing (Rear)	1
28	1391134	Thrust Washer	1
29	1389220	Bearing	1
30	1391629	Gear (1st Speed)	1
31	330612	Ring	1
32	1389219	Bearing	1

**WHEEL AND DRIVE PLATE
C290, 36000 SERIES**

ITEM	PART NO.	DESCRIPTION	QTY
	1479149	Transmission Assy	1
1	1389186	Hub (Turbine)	1
2	1389187	Snap Ring	1
3	1389153	Snap Ring	1
4	1384795	Stator	1
5	1389188	Spacer	1
6	1389189	Snap Ring	1
7	1389190	Bearing (Impeller)	1
8	1389191	Hub (Impeller)	1
9	1389192	O-Ring	1
10	1389193	Impeller	1
11	1399194	Hose	1
12	1389195	Screw	8
13	1389196	Turbine	1
14	1389197	O-Ring	1
15	1492667	Cover (Impeller)	1
16	15157	Lockwasher	24
17	18557	Capscrew	24
18	1389200	Bearing	1
19	1389201	O-Ring	1
20	1389154	Washer	1
21	1389153	Snap Ring	1
22	304527	Snap Ring	1
23	1389202	Hub	1
24	1389203		
	1708941	Capscrew	10
25	1389204	Screw	5
26	1492675	Kit-Drive Plate Torque Conv (Assembly)	1
27	1389207	Back-Up Ring	1
28	1389208	Capscrew	14

TRANSMISSION (FIGURE 5-21)
C330, 40000 SERIES — FORWARD, REVERSE, SECOND AND FOURTH CLUTCH SHAFT



HP240403

ITEM	PART NO.	DESCRIPTION	QTY
	1562112	Transmission Assy	1
1	1504258	Shaft (Forward)	1
2	1504259	Shaft (Reverse and Second)	1
3	1504260	Shaft (Third and Fourth)	1

TRANSMISSION
C330, 40000 SERIES – SECOND AND REVERSE CLUTCH SHAFT

ITEM	PART NO.	DESCRIPTION	QTY
	1562112	Transmission Assy	1
1	1471361	Piston	1
2	1389228	Piston Seal (Outer Piston)	1
3	330623	Kit-Clutch Pack Plates (Inner Piston)	1
4	330579	Retainer	1
5	1566656	Spring	1
6	330577	Spring	1
7	382269	Snap Ring	1
8	1566651	Friction Disk (Inner Clutch)	8
9	1389176	Separator Plate (Outer Clutch)	8
10	1389224	Backplate	1
11	1389174	Snap Ring	1
12	1504263	Piston	1
13	1504264	Seal (Inner Piston)	1
14	1389179	Seal (Outer Piston)	1
15	1566651	Friction Disk (Inner Clutch)	14
16	1389176	Separator Plate (Outer Clutch)	14
17	1389175	Plate (Clutch Disc Backing)	1
18	1315604	Ball	1
19	1389180	Spring	1
20	1389174	Snap Ring	1
21	1504265	Spring	1
22	1504266	Retainer	1
23	1566652	Retaining Ring	1
24	1504268	Bearing Cone (Driven Gear)	2
25	1504269	Cup (Driven Gear)	2
26	1504270	Ring (Locating, Driven Gear)	2
27	1566652	Retaining Ring	1
28	1504272	Ring (0.0035/0.00346 in.) (Reverse Clutch Gear)	AR
28	1504273	Ring (0.0034/0.0033 in.) (Reverse Clutch Gear)	AR
28	1504281	Ring (0.0032/0.0031 in.) (Reverse Clutch Gear)	AR
28	1504282	Ring (0.003 in.) (Reverse Clutch Gear)	AR
28	1504284	Ring (0.073/0.071) (Reverse Clutch Gear)	AR
29	1504290	Bearing (Front, Second and Reverse Shaft)	1
30	1504291	Ring (Front Bearing Retainer)	1
31	1566652	Retaining Ring	1
32	1504292	Hub (Clutch Disc)	1
33	1389230	Snap Ring	1
34	1389231	Retaining Ring	1
35	1389232	Ring	1
36	1504288	Ring (Piston Shaft)	3
	1566717	Kit-Seal	1

TRANSMISSION
C330, 40000 SERIES – REGULATING VALVE AND CHARGE PUMP

ITEM	PART NO.	DESCRIPTION	QTY
	1562112	Transmission Assy	1
1	1389306	Coupling	2
2	1389307	Retainer	2
3	1389308	Gasket	2
4	1492687	Sleeve	1
5	1390052	Fitting	2
6	1389303	O-Ring	2
7	1566704	Charge Pump	1
8	Body	1
9	330647	Seal (Shaft)	1
10	330646	Spring	2
11	382300	Bearing (With Thrust Plate)	2
12	1504397	Shaft (Driven)	1
13	1504396	Shaft (Drive)	1
14	1389297	Bearing (With Thrust Plate)	2
15	1389293		
	1492688	Gasket	1
16	1389281	Regulator	1
17	330642	Seal (Pump Drive Shaft Oil)	1
18	1389291	Snap Ring	1
19	1389290	Retainer (Piston Spring)	1
20	1389289	Spring (Safety Valve Piston)	1
21	14591	Plug	2
22	1391636	Piston (Safety Valve)	1
23	Body	1
24	1389286	Spool (Valve Regulator)	1
25	1389285	Spring (Inner Valve)	1
26	1389284	Spring (Outer Valve)	1
27	1389283	Cup (Spring Retainer)	1
28	1389282	Snap Ring	1
29	18588	Capscrew	2
30	15158	Washer	2
31	130625	O-Ring	1
32	15156	Lockwasher	4
33	1492689	Screw	2
34	18545	Capscrew	2
35	1471363	O-Ring	1
	1566717	Kit-Seal	1

**DIFFERENTIAL CARRIER
WET BRAKE**

ITEM	PART NO.	DESCRIPTION	QTY
	1518589	Drive Axle (290 HP Engine)	1
	1636226	Drive Axle (290 HP Engine) (Alternate Part)	1
	1563869	Drive Axle (330 HP Engine)	1
	1636227	Drive Axle (330 HP Engine) (Alternate Part)	1
1	1483741	Locknut	1
2	221567	Screw	8
3	88587	Washer	8
4	1565380	Flange	1
4	1565377	Screw	4
5	1565378	Deflector	1
6	1473719	Brake Disk (Brake)	1
7	208631	Washer	1
8	1314255	Oil Seal	1
9	293654	Capscrew	8
10	296422	Washer	8
11	1565379	Adapter (Brake)	1
12	1355346	Pin (Inner and Outer)	4
13	268980	Washer	4
14	1332805	O-Ring (Inner and Outer)	4
15	1332801	Pin	2
16	1561604	Brake Assembly (Park Brake) (☞ Figure 8-3).....	1
17	Joint	1
18	Spacer	1
19	79482	Bearing Cone (Outer)	1
20	79483	Bearing Cup (Outer)	1
21	1483744	Cage (Pinion)	1
21	1483778		
	1618349	Bearing Cup (Inner)	1
21	1483788	Washer	4
21	79483	Bearing Cup	1
22	1483745		
	4032737	Kit-Spacer	2
23	1483778		
	1618349	Bearing Cup (Inner)	1
23	4054948	Bearing Set (Includes Cup and Cone) (Alternate Part)	1
24	1483779		
	1618351	Bearing Cone (Inner)	1
24	4054948	Bearing Set (Includes Cup and Cone) (Alternate Part)	1
25	Bevel Pinion	1
26	1507104	Shim	1
26	1483780	Shim (0.005 in.)	4
26	1483781	Shim (0.008 in.)	3
26	1483782	Shim (0.020 in.)	4
27	1483783	Bearing	1
28	163874	Lockring	1
29	280582	Screw	1
30	132476	Nut	1
31	1483784	Differential Carrier	1
32	1483785	Plug	1
33	Capscrew	1

**SECTION 7
STEERING SYSTEM**

DESCRIPTION	PAGE
STEERING AXLE AND ATTACHING PARTS	7-8
STEERING AXLE ASSEMBLY	7-10
STEERING COLUMN	7-6
STEERING COLUMN AND ATTACHING PARTS	7-2
STEERING COLUMN ASSEMBLY	7-4
STEERING CONTROL VALVE	7-14
STEERING CYLINDER	7-12

STEERING AXLE ASSEMBLY

ITEM	PART NO.	DESCRIPTION	QTY
	1479043	Steering Axle Assembly	1
1	1482333	King Pin	2
2	1482364	Bushing	2
3	1482335	Bushing	4
4	1482334	Bushing	4
5	1482348	Cover	4
6	1482350	Grease Fitting	6
7	296088	Capscrew	12
8	293761	Capscrew	4
9	1482363	Plate	2
10	1482353	Bolt	2
11	1482354	Bearing	2
12	1482355	Snap Ring	4
13	1482331	Steer Axle	1
14	1482365	Bushing	2
15	1482347	Tie Rod	2
16	1482362	Setscrew	8
17	1482361	Ring	4
18	1482360	Ring	4
19	1482358	Cover	2
20	1482332	Spindle	2
21	1482336	Disk	2
22	1482337	Disk	2
23	1482356	Plug	4
24	296010	Capscrew	24
25	1482352	O-Ring	4
26	1482345	Nut	2
27	1482357	Sealing Ring	4
28	1482351	Cover	2
29	296023	Capscrew	2
30	1482346	Ring	2
31	1482344	Thrust Washer	2
32	1482342	Bearing	2
33	1482338	Wheel Hub (Wheel)	2
34	1482341	Bearing	2
35	1482339	Ring	1
36	1482340	Sealing Ring	4
37	1482343	Ring	2
38	1495186	Sealing Ring	4

BRAKE SYSTEM

ITEM	PART NO.	DESCRIPTION	QTY
1	1557799	Hose Assy	1
2	1470852	Fitting	3
3	1483901	By-Pass Valve (Thermo By-Pass)	1
4	136750	Capscrew	2
5	1557798	Hose Assy	1
6	16815	Capscrew	4
7	15156	Lockwasher	7
8	190757	Clamp (Split Half)	2
9	169787	O-Ring	1
10	1487099	Fitting	1
11	1557795	Hose Assy	1
12	16597	Capscrew	3
13	1557747	Filter Head (Filter)	1
13	1694210	Indicator , Bypass (Pressure Switch)	1
14	1486759	Fitting	1
15	1557791	Hose Assy	1
16	1557792	Hose Assy	1
17	1486740	Fitting	4
18	1557788	Hose Assy	1
19	1557787	Hose Assy	1
20	1486749	Fitting	4
21	1557789	Hose Assy	1
22	1487063	Fitting	1
23	1557790	Hose Assy	1
24	1486741	Fitting	1
25	1557786	Hose Assy	1
26	1557785	Hose Assy	1
27	1557784	Hose Assy	1
28	1557793	Hose Assy	1
29	1557794	Hose Assy	1
30	1557797	Hose Assy	1
31	1487100	Fitting	1
32	1390702	Hydraulic Filter (Brake)	1
33	1487078	Fitting	1
34	292533	Capscrew	4
35	284521	Washer	8
36	71368	Mount	8
37	302402	Locknut	4
38	302400	Nut	2
39	1532244	Bracket (Filter Mounting)	1
40	1300165	Spacer	2
42	1557800	Hose Assy	1
43	119236	Clamp	2
44	1473889	Fitting	2
45	1533656	Clamp	8
46	1560006	Cover Plate (Cover)	8
47	1533662	Lockwasher	16
48	292521	Capscrew	16
49	1557812	Hose Assy	1
50	1557811	Hose Assy	1
51	1473895	Fitting	1

BRAKE VALVE ASSEMBLY

ITEM	PART NO.	DESCRIPTION	QTY
	1556343	Brake Valve Assembly	1
1	1525805	Brake Valve	1
2	1487208	Spacer	1
3	1480674	Roller	1
4	296012	Capscrew	2
5	327591	Pin	1
6	15212	Cotter Pin	1

**HYDRAULIC SUPPLY AND RETURN
SHEET 2 OF 2**

ITEM	PART NO.	DESCRIPTION	QTY
1	1486741	Fitting	1
2	1486772	Fitting	4
3	1473887	Fitting	4
4	1473895	Fitting	1
5	1557816	Hose Assy	1
6	1557814	Hose Assy	1
7	1557815	Hose Assy	1
8	1557813	Hose Assy	1
9	1376831	Clamp	4
10	1557821	Hose Assy	1
11	292540	Capscrew	6
12	1533660	Clamp	2
13	1557809	Hose Assy	1
14	1557819	Hose Assy	1
15	1557818	Hose Assy	1
16	1557810	Hose Assy	1
17	1533646	Clamp	8
18	1533648	Plate (Cover)	8
19	1533661	Lockwasher	24
20	132861	Capscrew	8
21	1557756	Strap (Static)	6
22	1533647	Clamp	16
23	1533649	Cover Plate	16
24	214364	Capscrew	14
25	1557808	Hose Assy	1
26	1557807	Hose Assy	1
27	1543533	Steering Cylinder (☞ Figure 7-6).....	1
28	1560006	Cover Plate (Cover)	8
29	1533662	Lockwasher	18
30	292521	Capscrew	16
31	1533657	Clamp	12
32	1533834	Bolt (Stacking)	10
33	1533654	Plate (Locking)	5
34	1384547	Clamp	4
35	1557835	Hose	2
36	1391432	Clamp	3
37	320161	Washer	8
38	302402	Locknut	8
39	246001	Capscrew	2
40	1533659	Clamp	2
41	1560007	Cover Plate (Cover)	4
42	1487068	Fitting	1
43	1527818	O-Ring	1
44	16484	O-Ring	1
45	321487	Clamp	1

**CONTROL VALVE ASSEMBLY
LIFT AND TILT**

ITEM	PART NO.	DESCRIPTION	QTY
	1581131	Hydraulic Control Valve	1
1	1581496	Valve (Lift/Tilt)	1
2	1579708	Relief Valve (Main)	1
3	1579709	Relief Valve (Pilot)	1
4	1579710	Spring (Shunt Valve)	1
5	1579711	Plug	1
6	1579712	Kit-Seal	1
7	1579713	Plug	2
8	1579714	Kit-Seal	1
9	1579738	Relief Valve (250 Bar)	1
10	1579739	Plug	1
11	1579714	Kit-Seal	1
12	1579740	Check Valve	1
13	1579714	Kit-Seal	1
14	1581498	Check Valve (Common)	1
14	1581499	Seal	1
15	1579716	Check Valve (Section)	2
16	1579717	Spool Actuator	1
17	1579718	Kit-Seal	1
18	1579719	Kit-Spring	1
19	1579722		
	1637042	Plug	1
20	1579723	Seal	1
21	1579741	Plug	1
22	1579742	O-Ring	1

FLOW AMPLIFIER

ITEM	PART NO.	DESCRIPTION	QTY
	384427	Flow Valve	1
1	1315792	Valve	2
2	O-Ring	1
3	O-Ring	1
4	O-Ring	1
5	1316030	Plug	1
6	Seal	1
7	1315791	Plug	1
8	1315790	Relief Valve	1
9	1316027	Fitting	1
10	Housing	1
11	1316028	Check Valve	1
12	1315796	Fitting	1
13	1316026	Fitting	1
14	1316031	Spring	1
15	1315797	Spring	2
16	1315794	Stop	2
17	1315798	Spring	2
18	1315784	Spring Washer	2
19	1315783	Screw	2
20	371961	Capscrew	16
21	1315785	Spring Washer	16
22	1315786	Cover	1
23	O-Ring	4
24	1316025	Fitting	2
25	O-Ring	4
26	Plate	1
27	1315793	Stop	1
28	1315799	Spring	1
29	1316029	Plug	1
30	1315795	Spring	2
31	O-Ring	1
32	O-Ring	2
33	1315787	Cover	1
34	Plate	1
35	1316032	Spring	1
	1315782	Kit-Seal	1

**MANIFOLD
MAIN**

ITEM	PART NO.	DESCRIPTION	QTY
	1556354	Manifold (Main)	1
1	1578735	Cartridge Valve	1
2	1569838	Fitting (0.6 mm)	1
3	1473887	Fitting	1
4	1583959	Hydraulic Control Valve (3-Way)	2
4	1578738	Restrictor (0.9 mm)	2
5	1474922	Check Valve	1
5	1502552	Kit-Seal	1
5	119630	Channel-Outer	2
6	1578737	Valve (Park Brake) (3-Way)	1
6	1580806	Solenoid (Park Brake)	1
7	1569842	Pressure Valve (50 Bar)	1
8	1569841	Pressure Valve (190 Bar)	1
9	1569836	Relief Valve (280 Bar)	1
10	1569840	Valve (205-165 Bar)	1
11	1569837	Fitting (2.5 mm)	1
12	1578736	Hydraulic Filter	1
12	1636864	Kit-Seal (Hydraulic Filter)	1
12	1606096	Filter Element	1
12	1606097	O-Ring	1
13	1486740	Fitting	5
14	1473888	Fitting	3
15	1473927	Quick Disconnect Fitting (For Hydraulic Pressure Test Port)	3
	a 1473884	Plug	14
	a 1578541	Plug	2
	a 1578739	Capscrew	2
	a 1578740	O-Ring	2

FOOTNOTES:**a** Not Illustrated

TILT CYLINDER AND ATTACHING PARTS

ITEM	PART NO.	DESCRIPTION	QTY
1	1473888	Fitting	4
2	1521148	Tilt Cylinder (☞ Figure 9-22).....	2
3	1597600	Bushing (Spherical)	2
4	304564	Snap Ring	2
5	1590809	Pin	4
6	302156	Setscrew	4
7	1565129	Keeper	4
8	320165	Washer	4
9	292560	Capscrew	4
10	1581357	Tilt Indicator (RH)	1
11	1561675	Capscrew	2
	1560204	Label (Color)	1

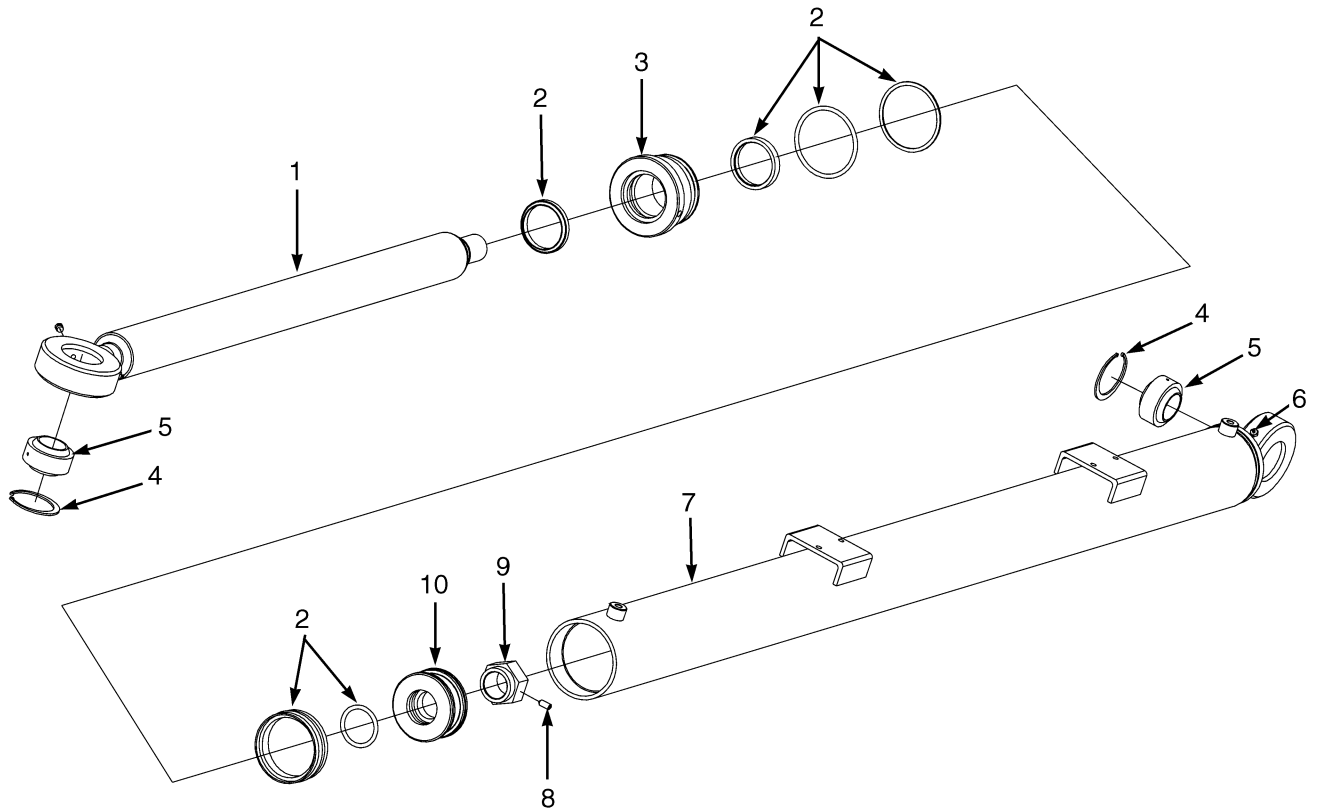
SECTION 10
MAST-TWO STAGE LIMITED FREE-LIFT

DESCRIPTION	PAGE
LIFT CYLINDER	10-10
12650 MM (498.0 IN.) LIFT HEIGHT	10-12
MAST ASSEMBLY	
WITH GANTRY CARRIAGE (→ S/N E117E01520C)	10-2
WITH GANTRY CARRIAGE (S/N E117E01521C →)	10-6

LIFT CYLINDER**KEY:****A: 7010 mm (275.9 in.) Lift Height****B: 9754 mm (384.0 in.) Lift Height**

ITEM	PART NO.	DESCRIPTION	QTY	
			A	B
	1519331	Cylinder Assy	1
	1519328	Cylinder Assy	1	..
1	1566913	Valve	1	1
2	Wear Band	2	2
3	Piston Seal	1	1
4	1566897	Piston	1	1
5	1566906	O-Ring	1	1
6	1566912	Screw	1	1
7	1566898	Spacer	1	1
8	1568309	Tube Wldmt-Cylinder	1	..
8	1566901	Tube Wldmt-Cylinder	1
9	1568308	Piston Rod	1	..
9	1566899	Piston Rod	1
10	Back-Up Ring	1	1
11	O-Ring	2	2
12	Wear Band	2	2
13	Rod Seal	1	1
14	1566896	Bearing	1	1
15	Wiper	1	1
16	Back-Up Ring	1	1
17	O-Ring	1	1
18	1566900	Rod End	1	1
	1567926	Kit-Seal	1	1

**CYLINDER (FIGURE 11-5)
POWER PILE SLOPE**



HP020306

ITEM	PART NO.	DESCRIPTION	QTY
	1462115	Cylinder (Power Pile Slope)	1
1	6990168	Piston Rod	1
2	6999013	Kit-Seal	1
3	6990132	Gland	1
4	6996157	Snap Ring	2
5	6996173	Ball Joint	2
6	1329443	Fitting	4
7	6990167	Tube Wldmt-Cylinder	1
8	302100	Setscrew	1
9	1329448	Nut	1
10	6990130	Piston	1

TIRES AND WHEELS
DRIVE AND STEER – 18.00 X 33 X 36 PLY

KEY:**A: Drive Tire****B: Steer Tire**

ITEM	PART NO.	DESCRIPTION	QTY	
			A	B
1	887424	Pneumatic Tire (Tubeless)	4	2
1	1580944			
	4045710	Pneumatic Tire (Tubeless)	4	2
1	1580946	Pneumatic Tire (Tubeless)	4	2
2	887372	Wheel Assy Assembly	4	2
3	Base	4	2
4	885175			
	4025234	Flange	4	2
5	1490304	Spacer Band	4	2
6	889803	Valve	4	2
7	160279			
	4046362	Extension	4	2
8	1471572	Wedge Band	4	2
9	885115	O-Ring	4	2
10	1562010	Ring	2
11	1568101	Wheel Nut	48
12	1579165	Wheel Clamp	48

**SECTION 14
NUMERICAL INDEX**

PART NO.	PAGE	ITEM	PART NO.	PAGE	ITEM	PART NO.	PAGE	ITEM	PART NO.	PAGE	ITEM
12480	10-3	7		5-21	13		5-43	11	18588	5-3	38
	10-7	5		5-39	8	16481	9-35			5-7	7
12921	7-9	16		5-41	8	16483	5-9	22		5-65	29
14385	5-9	30		5-65	30		5-33	15	18602	2-91	2
	5-33	24		9-3	30		5-33	29		9-3	37
14591	5-7	19		10-3	14		5-43	22	18622	5-3	22
	5-65	21	15159	5-17	6	16484	3-3	25	18631	2-91	14
14594	5-9	6		5-19	19		5-27	11	18635	2-91	5
	5-33	14		5-51	22		5-31	12	18909	9-9	42
	5-33	28		5-63	10		5-33	46		9-21	17
	5-43	39	15160	9-3	36		5-43	5	30374	5-3	16
14595	5-23	13	15200	3-17	11		5-67	4	35504	5-9	29
	5-43	4	15212	8-7	26		5-67	12		5-33	25
15002	4-5	5		8-13	6		5-67	27	39373	9-21	4
15060	9-29	9	15244	11-3	37		9-7	44		9-21	8
	9-31	8		11-7	5		9-10	67	39756	9-21	29
15115	2-97	18	15248	7-9	12		9-35		71368	2-95	9
15134	2-97	17	15316	5-23	3	16485	5-27	8		8-3	36
	3-3	23		5-43	38		5-27	17	79482	6-3	19
15152	4-5	41		6-7	2		5-69	3	79483	6-3	20
15155	5-23	7		6-9	2		5-69	11		6-3	21
	5-33	9		8-11	22		5-69	18	79976	5-7	9
	5-43	12	15370	5-23	2	16486	5-27	39		5-57	25
15156	2-93	14		5-43	34		5-31	3	86007	6-4	54
	5-3	41	15483	8-11	6	16547	5-9	27		6-7	7
	5-7	31		10-4	44	16597	5-3	40	88587	6-3	3
	5-7	33		10-8	43		5-33	36	100154	5-31	8
	5-9	28		11-11	28		5-33	44	100792	4-5	16
	5-27	38		11-14	56		8-3	12	110931	10-4	56
	5-33	37	15860	5-23	11		11-13	25		10-8	55
	5-33	43		5-28	49	16693	4-5	37	110932	10-4	57
	5-65	32		5-43	3	16794	11-11	17		10-8	55
	5-67	16		5-51	25		11-13	47	110933	10-4	58
	5-67	35		5-57	23	16798	2-93	24		10-8	55
	8-3	7	15882	9-4	68	16813	9-3	31	112989	2-93	23
	9-3	7	15894	5-17	8	16815	8-3	6	119055	2-93	36
	11-13	24		5-51	19		9-3	10	119236	8-3	43
15157	5-3	12	16001	10-4	45	16830	10-3	13	119630	9-33	2
	5-9	14		10-8	44	17215	2-93	5		9-37	5
	5-15	5		11-11	24	17764	9-3	8	126095	4-5	44
	5-23	16		11-13	2	17765	5-3	36	127045	2-93	25
	5-25	16	16006	10-4	63	18099	11-13	28	127852	1-40	6
	5-33	22		10-8	60	18545	5-7	34	128408	11-4	41
	5-37	22	16080	7-3	15		5-65	34		11-7	24
	5-43	32	16085	5-39	9	18549	2-93	13		11-11	23
	5-57	27	16155	1-40	5	18554	9-9	32		11-14	53
	9-4	71	16187	4-5	51	18557	5-25	17	129563	1-39	12
15158	5-3	39	16374	5-23	8	18558	5-37	23		1-39	22
	5-21	1		5-33	8		9-4	72		1-40	4

NUMERICAL INDEX (continued)

PART NO.	PAGE	ITEM	PART NO.	PAGE	ITEM	PART NO.	PAGE	ITEM	PART NO.	PAGE	ITEM
	4-29	6		4-70	28	1484611	4-45	1		4-64	56
	4-30	8		4-73	1		4-70	32		4-81	11
	4-64	65		4-73	2	1484650	4-67	16		4-82	20
	4-69	18		4-73	3		4-77	1		4-82	21
1484377	4-51	4		4-73	4	1484651	4-27	23		4-82	22
	4-55	8		4-73	5		4-41	5		4-82	23
	4-57	4		4-73	13		4-53	7		4-85	11
	4-64	48	1484557	4-51	1		4-55	2		4-86	20
	4-69	14		12-11	10		4-55	3		4-86	21
	4-74	18	1484558	4-51	2		4-55	7		4-86	22
1484383	4-27	6		12-11	10		4-63	21		4-86	23
	4-29	14	1484592	4-43	13		4-67	8		4-93	6
	4-30	16		4-45	1	1484654	4-53	16		4-93	7
	4-38	2		4-51	9		4-55	9		4-93	8
	4-43	4	1484593	4-43	14		4-63	30		4-93	9
	4-45	3		4-45	1		4-70	32		4-93	10
	4-45	7		4-51	10	1484655	4-53	17		4-93	11
	4-61	10	1484594	4-43	15		4-55	9	1484684	4-64	53
1484394	4-39	6		4-45	1		4-63	31		4-93	4
	4-51	5	1484595	4-43	16		4-70	32		4-93	12
	4-61	8		4-45	1	1484656	4-45	5	1484685	4-53	2
	4-67	3		4-63	33		4-53	18		4-55	1
	4-78	17		4-70	32		4-55	9		4-63	40
1484395	4-100	2	1484596	4-43	17		4-63	34		4-69	14
	4-100	3		4-45	1		4-69	12		4-74	19
	4-100	4		4-51	11		4-69	13		4-74	20
1484396	4-100	2	1484597	4-43	18		4-70	32	1484686	4-53	3
	4-100	3		4-45	1		4-73	15		4-55	1
	4-100	4		4-51	12		4-73	16		4-63	41
1484397	4-27	24		4-53	19	1484662	4-64	47		4-69	14
	4-63	28		4-55	9		4-74	18		4-74	19
	4-67	21		4-63	35	1484664	4-64	50		4-74	20
	4-70	30		4-70	32		4-69	14	1484687	4-59	4
	4-70	30	1484598	4-27	22	1484665	4-74	19	1484708	4-63	32
	4-73	17		4-41	4	1484666	4-53	1		4-70	32
	4-77	4		4-43	1		4-55	1	1484709	4-63	45
	4-77	9		4-53	6	1484675	4-63	11		4-74	19
1484554	4-57	1		4-55	2		4-73	3	1484714	4-59	11
1484555	4-37	1		4-55	3	1484676	4-64	62		4-82	19
	4-57	7		4-55	7		4-69	17		4-86	14
	4-63	8		4-63	20	1484677	4-78	18		4-89	15
	4-73	1		4-67	7	1484681	4-67	28		4-93	2
	4-73	2	1484599	4-43	2		4-77	10	1484715	4-34	5
	4-73	4	1484600	4-43	3		4-77	11		4-59	6
	4-73	5		4-45	3		4-78	12		4-81	10
	4-73	6		4-45	7		4-78	13		4-85	10
	4-73	13	1484608	4-43	19	1484682	4-67	29	1484716	4-67	10
1484556	4-37	2		4-46	10		4-77	10		4-78	18
	4-57	8	1484609	4-43	9		4-77	11	1484717	4-64	52
	4-63	10		4-46	9		4-78	12		4-81	1
	4-69	17	1484610	4-43	20		4-78	13		4-85	1
	4-70	26		4-46	10	1484683	4-59	7	1484719	4-43	8

CLICK HERE TO **DOWNLOAD** THE COMPLETE MANUAL

- Thank you very much for reading the preview of the manual.
- You can download the complete manual from: www.heydownloads.com by clicking the link below



- Please note: If there is no response to CLICKING the link, please download this PDF first and then click on it.

CLICK HERE TO **DOWNLOAD** THE COMPLETE MANUAL