

# **PARTS MANUAL**

---

**B80ZHD (B257)  
B60ZHD (B262)**

**CUSTOMER EDITION**

---

***HYSTER***

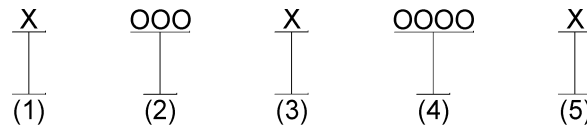
CLICK HERE TO **DOWNLOAD** THE COMPLETE MANUAL

- Thank you very much for reading the preview of the manual.
- You can download the complete manual from: [www.heydownloads.com](http://www.heydownloads.com) by clicking the link below



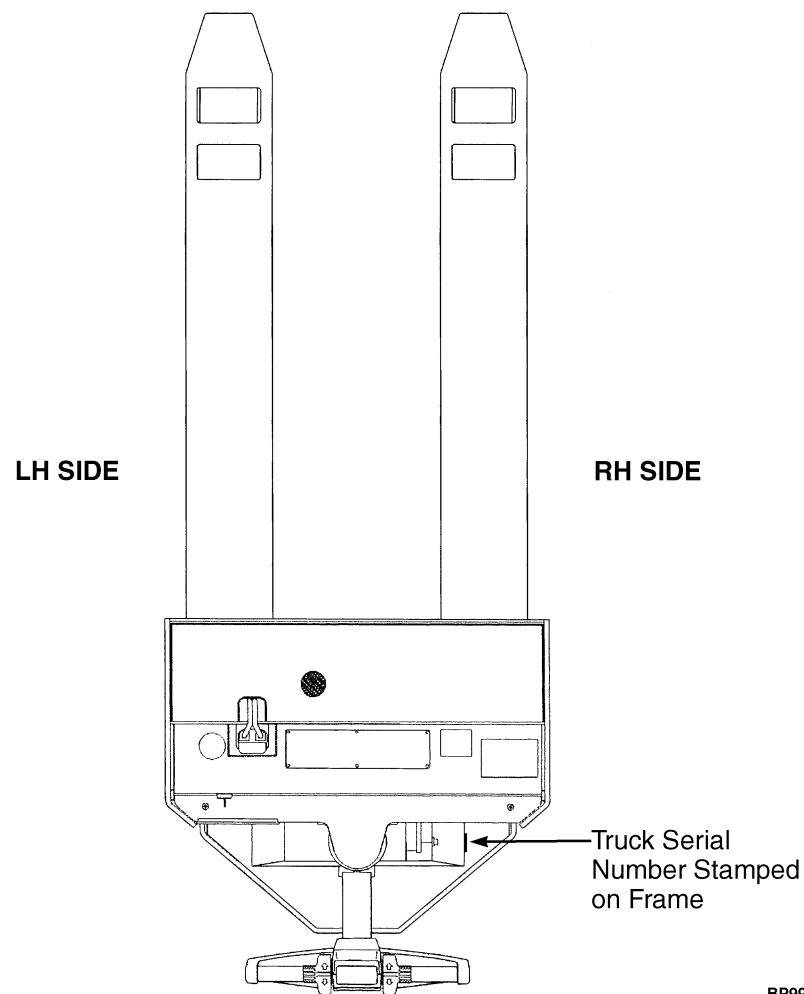
- Please note: If there is no response to CLICKING the link, please download this PDF first and then click on it.

CLICK HERE TO **DOWNLOAD** THE COMPLETE MANUAL

**IDENTIFICATION OF TRUCK SERIAL NUMBERS**

- (1) and (2) The first letter and three numbers indicate the truck unit code.
- (3) The second letter indicates the plant of manufacture.
- (4) The four or five digit number indicates the production sequence number of the truck.
- (5) The final letter indicates the year of manufacture starting with "A" in 1957, 1980, and 2003. The letters "I", "O", and "Q" will not be used.

For pending serial numbers contact your local dealer for Hyster lift trucks.

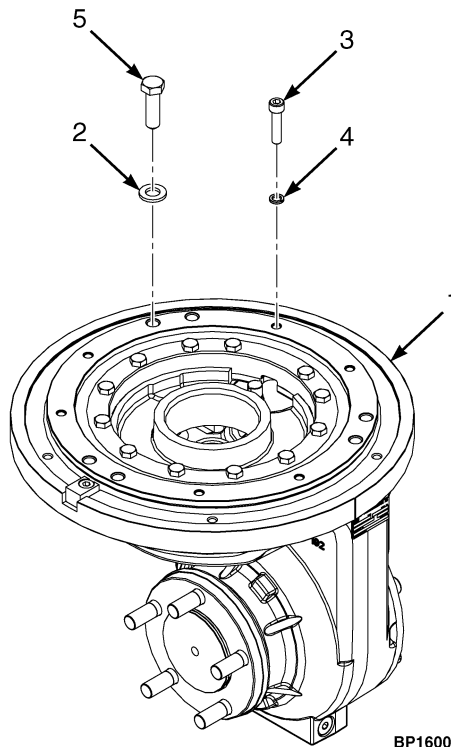


BP990006

Parts referred to in this book as right or left hand parts are in accordance with the illustration above.



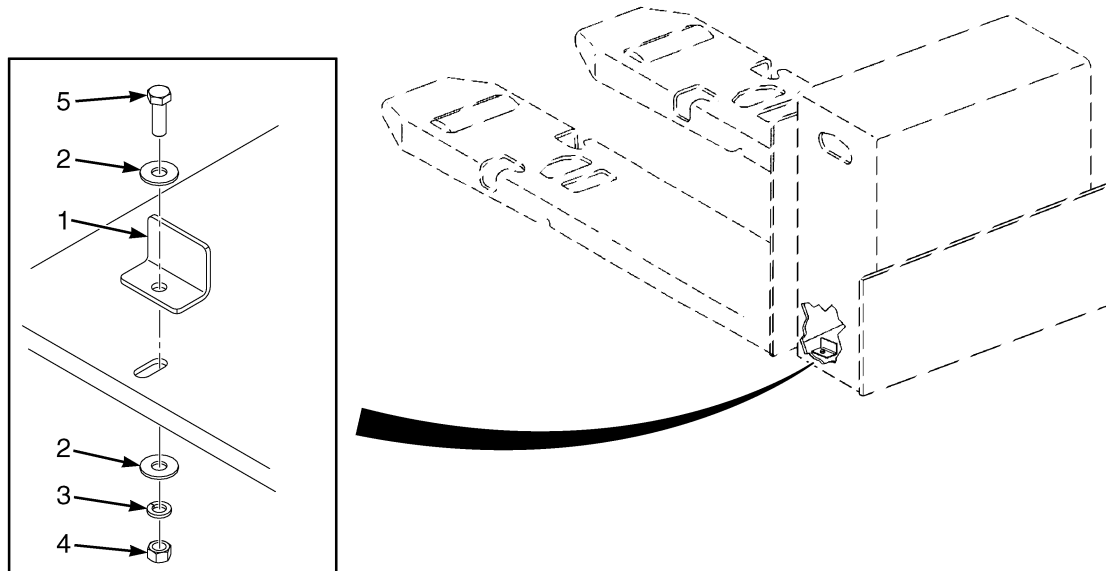
**MASTER DRIVE UNIT ASSEMBLY AND ATTACHING PARTS (FIGURE 1-8)  
MANUAL STEERING**



BP160099

ITEM	PART NO.	DESCRIPTION	QTY
1	4086730	Master Drive Unit Assembly .....	1
1	.....	Steering Parts (☞ Figure 1-9).....	1
1	.....	Carrier (☞ Figure 1-10).....	1
1	.....	Housing (☞ Figure 1-11).....	1
1	.....	Drive (☞ Figure 1-12).....	1
1	.....	Output (☞ Figure 1-13).....	1
1	.....	Turntable Bearing (☞ Figure 1-14).....	1
2	1581852	Washer .....	6
3	296013	Capscrew .....	6
4	293780	Lockwasher .....	6
5	293647	Capscrew .....	6

**BATTERY RETENTION (FIGURE 1-17)  
GALVANIZED**



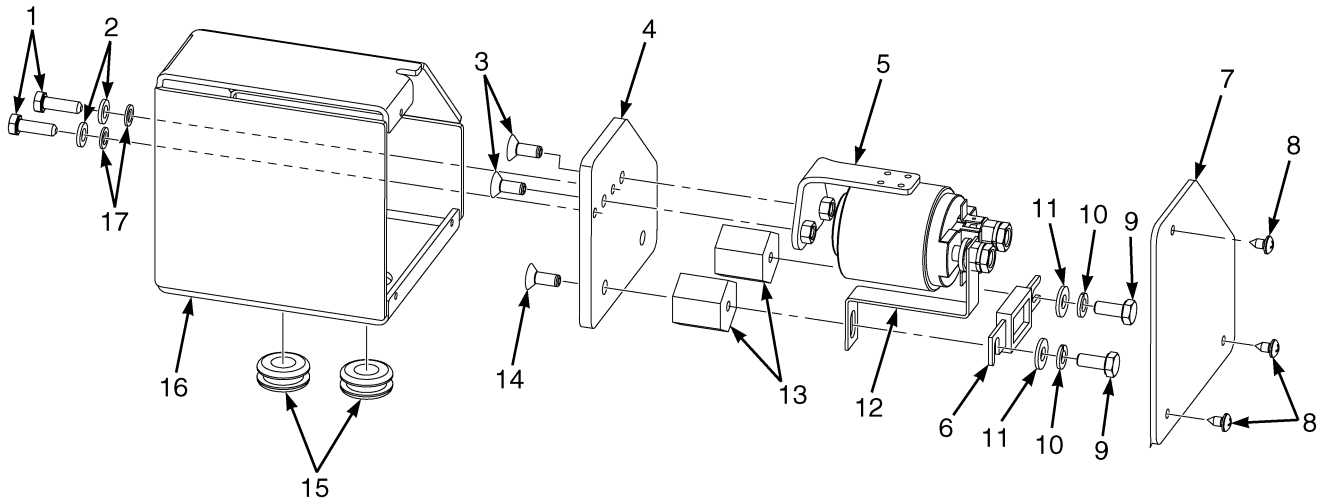
BP121173

ITEM	PART NO.	DESCRIPTION	QTY
1	2080657	Bracket .....	2
2	15178	Washer .....	4
3	15158	Washer .....	2
4	15058	Nut .....	2
5	18588	Capscrew .....	2

## SECTION 2 ELECTRICAL SYSTEM

DESCRIPTION	PAGE
AUXILIARY CONTROL BOX AND GRAB RAIL ASSEMBLY .....	2-4
BATTERY DISCONNECT .....	2-9
CONTROL MODULE .....	2-10
DASH DISPLAY .....	2-8
EE CONTACTOR ASSEMBLY .....	2-11
ELECTRICAL SYSTEM .....	2-2
HEATER INSTALLATION .....	2-6
WIRE HARNESS	
ADVANCED COAST CONTROL - MANUAL STEERING .....	2-33
ADVANCED COAST CONTROL - POWER STEERING .....	2-34
HANDRAIL .....	2-31
HEATER .....	2-42
MANUAL STEERING .....	2-12
MANUAL STEERING - ALTERNATE PART, PAGE 1 OF 2 .....	2-16
MANUAL STEERING - ALTERNATE PART, PAGE 2 OF 2 .....	2-18
MICRO SWITCH - TILLER SWITCH INSTALLATION .....	2-38
MICRO SWITCH - HEATER INSTALLATION .....	2-39
POWER STEERING .....	2-20
POWER STEERING - ALTERNATE PART, PAGE 1 OF 2 .....	2-24
POWER STEERING - ALTERNATE PART, PAGE 2 OF 2 .....	2-28
RF TERMINAL .....	2-40
SIDE GLIDE .....	2-32
STROBE LIGHT .....	2-44
THERMOSTAT .....	2-43
TILLER HANDLE - COMPOSITE HANDLE, MANUAL STEERING .....	2-35
TILLER HANDLE - METAL HANDLE, POWER STEERING .....	2-36

**EE CONTACTOR ASSEMBLY (FIGURE 2-7)**



BP080523

ITEM	PART NO.	DESCRIPTION	QTY
1	292501	Capscrew .....	2
2	320156	Washer .....	2
3	296215	Capscrew .....	2
4	2094189	Plate .....	1
5	2079891	Contactora (24V, 150 Amp) .....	1
6	1331362	Fuse (400 Amp) .....	1
7	2094188	Cover .....	1
8	227177	Screw .....	3
9	16378	Capscrew .....	2
10	15154	Lockwasher .....	2
11	15127	Washer .....	2
12	2094190	Buss Bar .....	1
13	2054558	Insulator .....	2
14	18865	Capscrew .....	2
15	2094089	Grommet .....	2
16	2094187	Enclosure Box .....	1
17	296379	Washer .....	2

**WIRE HARNESS  
POWER STEERING**

ITEM	PART NO.	DESCRIPTION	QTY
	4629665	Wire Harness (Power Steering) .....	1
1	.....	Connector Assembly (CPS088 Pump Coil) .....	1
1	1532219	Connector .....	1
2	.....	Connector Assembly (CPS014 Audible Alarm) .....	1
2	1490242	Connector (2 Way) .....	1
2	1490243	Connector .....	1
2	1597773	Terminal .....	2
3	.....	Connector Assembly (CRP108 Handrail Harness) .....	1
3	1530960	Connector .....	1
3	1530961	Connector (Secondary Lock) .....	1
3	1484377	Plug .....	1
3	1463140	Terminal (Pin) .....	5
4	.....	Connector Assembly (CRP013 Visible Alarm) .....	1
4	1493465	Connector (2 Pin) .....	1
4	1330414	Connector (Secondary Lock) .....	1
4	1531312	Terminal .....	2
5	.....	Connector Assembly (CPS046 Sped) .....	1
5	1525580	Connector .....	1
5	1502626	Connector .....	1
5	1597773	Terminal .....	6
5	1330439	Plug .....	2
6	4044070	Cap .....	1
7	.....	Connector Assembly (CPS121 Acc Harness) .....	1
7	1484557	Connector (2 Socket) .....	1
7	1484558	Connector .....	1
7	1463141	Terminal (Socket) .....	2
8	.....	Connector Assembly (CPS003 Trac Enc) .....	1
8	1508211	Connector (4 Way) .....	1
8	1597839	Receptacle Contact 20-22 AWG .....	4
8	2060555	Wire Seal .....	4
9	.....	Connector Assembly (CPS001 Temperature Sensor) .....	1
9	1508206	Connector (2 Way) .....	1
9	1597839	Receptacle Contact 20-22 AWG .....	2
9	2060555	Wire Seal .....	2
10	.....	Connector Assembly (CPS800 Proximity Switch) .....	1
10	1547629	Connector (3 Way) .....	1
10	1597839	Receptacle Contact 20-22 AWG .....	3
10	2060555	Wire Seal .....	3
11	.....	Connector Assembly (CRP119 Regen Switch) .....	1
11	1561559	Connector (2 Pin) .....	1
11	1561755	Connector (Secondary Lock) .....	1
11	1463140	Terminal (Pin) .....	2
12	.....	Connector Assembly (CPP001 Donut Coast) .....	1
12	2033695	Connector .....	1
12	2302852	Pin .....	2
13	.....	Connector Assembly (CPP115 Tiller Harness) .....	1
13	2309812	Plug .....	1
13	2302852	Pin .....	7
14	.....	Connector Assembly (CRP105 Elec Brk) .....	1
14	1561559	Connector (2 Pin) .....	1

CLICK HERE TO **DOWNLOAD** THE COMPLETE MANUAL

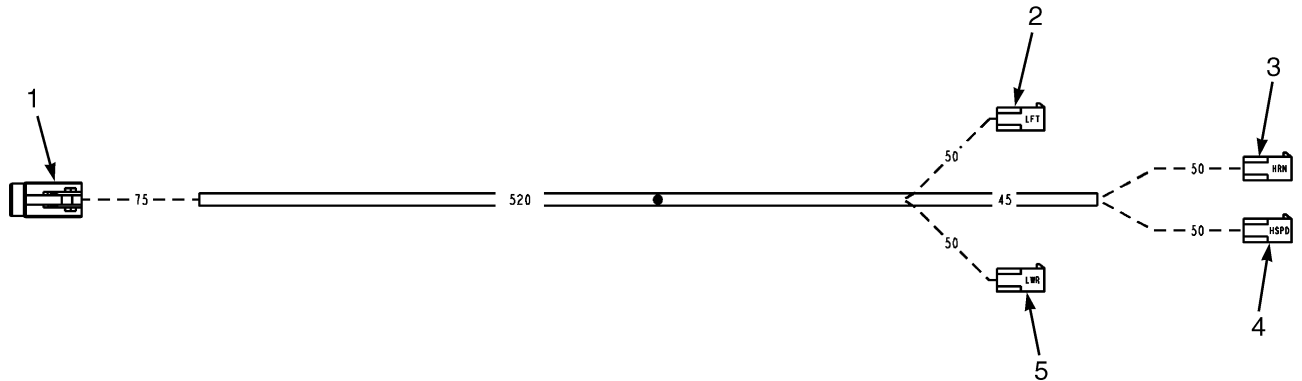
- Thank you very much for reading the preview of the manual.
- You can download the complete manual from: [www.heydownloads.com](http://www.heydownloads.com) by clicking the link below



- Please note: If there is no response to CLICKING the link, please download this PDF first and then click on it.

CLICK HERE TO **DOWNLOAD** THE COMPLETE MANUAL

**WIRE HARNESS (FIGURE 2-14)  
HANDRAIL**



BP081019

ITEM	PART NO.	DESCRIPTION	QTY
	2086329	Wire Harness (Handrail) .....	1
1	.....	Connector Assembly (To Main Harness) .....	1
1	1531973	Connector .....	1
1	1463137	Terminal .....	5
1	1531974	Connector .....	1
2	.....	Connector Assembly (To Lift Switch) .....	1
2	2302852	Pin .....	2
2	2033695	Connector .....	2
3	.....	Connector Assembly (To Horn Switch) .....	1
3	2302852	Pin .....	2
3	2033695	Connector .....	2
4	.....	Connector Assembly (To High Speed Switch) .....	1
4	2302852	Pin .....	2
4	2033695	Connector .....	2
5	.....	Connector Assembly (To Lower Switch) .....	1
5	2302852	Pin .....	2
5	2033695	Connector .....	2

**WIRE HARNESS  
RF TERMINAL**

ITEM	PART NO.	DESCRIPTION	QTY
	4629901	Wire Harness (RF Terminal) .....	1
1	.....	Ring Terminal (To Keyswitch +) .....	1
1	2037552	Terminal .....	1
2	.....	Ring Terminal (To + Battery Side of Connector) .....	1
2	2102929	Terminal .....	1
3	2033694	Fuse Holder .....	1
4	1322393	Fuse (4 Amp) .....	1
5	.....	Ring Terminal (Positive Contactor 1) .....	1
5	1369410	Terminal (Ring) .....	1
6	.....	Ring Terminal (Positive Key 2) .....	1
6	2303345	Terminal (Ring) .....	1
7	.....	Ring Terminal (Positive Key 1) .....	1
7	1369410	Terminal (Ring) .....	1
8	.....	Ring Terminal (To Controller B-) .....	1
8	1369424	Terminal .....	1
9	927286	Strap Clamp .....	4
10	.....	Ring Terminal (Negative B- 1) .....	1
10	1369410	Terminal (Ring) .....	1
11	.....	Ring Terminal (Negative B- 2) .....	1
11	2303345	Terminal (Ring) .....	1
12	.....	Ring Terminal (Positive Contactor 2) .....	1
12	2303345	Terminal (Ring) .....	1

**TILLER ARM ASSEMBLY  
METAL HANDLE – POWER STEERING****KEY:****A: Without Coast Control****B: With Advanced Coast Control****C: With Manual Coast Control**

ITEM	PART NO.	DESCRIPTION	QTY		
			A	B	C
1	4611102	Tiller Head Assembly (☞ Figure 3-5).....	1	..	..
1	4611104	Tiller Head Assembly (☞ Figure 3-5).....	..	1	..
1	4611103	Tiller Head Assembly (☞ Figure 3-5).....	..	..	1
2	4070411	Tiller Arm Assembly .....	1	..	1
2	4070409	Tiller Arm Assembly .....	..	1	..
2	4070862	Tiller Widmt .....	1	1	1
3	1530243	Insert .....	4	4	4
4	4071435	Bushing .....	2	..	2
4	4070622	Bearing .....	..	2	..
4	4070675	Rod Seal (Not Shown) .....	..	2	..
5	4009809	Strap Clamp .....	1	1	1
6	1450356	Plug .....	1	1	1
7	320157	Washer .....	4	4	4
8	296360	Washer .....	4	4	4
9	1527881	Capscrew .....	4	4	4
10	239503	Nut .....	1	1	1
11	296168	Capscrew .....	1	1	1
12	4040923	Ball Stud .....	1	1	1
13	4602216	Gas Spring .....	1	1	1
14	4060227	Control Module (CAN) .....	1	1	1
15	.....	Bracket .....	1	1	1
16	293795	Capscrew .....	2	2	2
17	320156	Washer .....	2	2	2
18	136687	Nut .....	2	2	2
	<b>a</b> 4629895	Wire Harness (Tiller Handle) .....	1	1	1

**FOOTNOTES:****a** Not Illustrated



**TILLER SWIVEL ASSEMBLY**  
**WITHOUT COAST CONTROL OR WITH MANUAL COAST CONTROL – MANUAL STEERING**

ITEM	PART NO.	DESCRIPTION	QTY
1	1378550	Capscrew .....	3
2	2043858	Cover (Tiller Swivel) .....	1
3	2303042	Locknut .....	1
4	2307321	Sleeve .....	2
5	2307654	Lockwasher .....	1
6	2110926	Swivel .....	1
7	2007882	Grease Fitting .....	1
8	2039895	Shaft .....	1
9	15227	Cotter Pin .....	1
10	2046785	Spacer .....	2
11	326307	Bearing Cone .....	2
12	326306	Bearing Cup .....	2
13	2071260	Capscrew .....	2
14	4080223	Shield (Center Cowl) .....	1
15	2089114	Center Support (Dash Panel) .....	1
16	292529	Capscrew .....	4
17	320162	Washer .....	8
18	292683	Lockwasher .....	4
19	216877	Nut .....	4
20	2046784	Shaft (Stand Off) .....	1
21	2042863	Key (Squared) .....	1
22	1460477	Nut .....	4
23	1527884	Capscrew .....	4
24	4061342	Plate .....	1

**LIFT LINKAGE**

ITEM	PART NO.	DESCRIPTION	QTY
1	2070336	Tube .....	1
2	2309185	Fitting (Elbow) .....	2
3	4042822	Pump And Motor (24V) (☞Figure 5-1).....	1
4	4613157	Hose .....	1
5	2077870	Fitting .....	1
6	2044152	Adapter .....	1
7	296003	Screw .....	1
8	296379	Washer .....	1
9	2076000	Bracket , Pump Mounting .....	1
10	16556	Fitting (Elbow) .....	1
10	16481	O-Ring .....	1
11	4604768	Support .....	2
11	4603980	Thrust Block .....	1
11	4607108	Bushing .....	1
12	4019940	Capscrew .....	4
13	4608003	Nut .....	7
14	4608629	Lockwasher .....	5
15	4604592	Trunnion .....	1
16	4015768	Capscrew .....	13
17	4613135	Shaft (Upper Link Pivot) .....	4
18	4607282	Link Assembly, Upper (Galvanized) .....	1
18	4604270	Link Assembly, Upper (Standard) .....	1
18	4607108	Bushing .....	2
19	296381	Washer .....	2
19	296380	Washer .....	1
20	136985	Capscrew .....	2
20	176640	Bolt .....	1
21	4604802	Cylinder Assy (☞Figure 5-2).....	1
22	4613131	Shaft , Lower Pivot .....	2
23	4604271	Rocker Arm Assembly, Standard .....	2
23	4607280	Rocker Arm Assembly, Galvanized .....	1
23	4607108	Bushing .....	6
24	4613136	Shaft (Lower Cylinder Pivot) .....	1
25	4613132	Shaft (Rocker Arm Pivot) .....	2
26	4603896	Shaft (Pull Rod Pivot) .....	2
27	310341	Pin .....	2
28	221721	Nut .....	4
29	4629515	Link , Yoke Assy (Standard) .....	1
29	4076664	Link , Yoke Assy (Galvanized) .....	1
29	4607108	Bushing .....	2
30	4604272	Link , Rear Assembly (Standard) .....	1
30	4608792	Link , Rear Assembly (Galvanized) .....	1
30	4616628	Link , Rear Assembly (Standard) (B262 Short Wheel Base Only) .....	2
30	4616629	Link , Rear Assembly (Galvanized) (B262 Short Wheel Base Only) .....	1
30	4607108	Bushing .....	2
31	2305246	Pin .....	4
32	4608636	Axle Shaft .....	2
33	4608589	Roller Assembly (Pallet Exit) .....	2
33	.....	Roller (Pallet Exit) .....	1
33	2037110	Bushing .....	2
34	13957	Grease Fitting .....	26



---

**SECTION 5  
HYDRAULIC SYSTEM**

---

<b>DESCRIPTION</b>	<b>PAGE</b>
HYDRAULIC POWER UNIT .....	5-2
LIFT CYLINDER ASSEMBLY .....	5-4

---

**CONVENIENCE TRAY  
BOLT-ON LOAD BACKREST****KEY:****A: Hang-On (With Bolt-On Load Backrest)****B: Bolt-On (With Bolt-On Load Backrest)**

ITEM	PART NO.	DESCRIPTION	QTY	
			A	B
1	2044923	Strap .....	1	1
2	2043148	Tray , Convenience .....	1	1
3	4609770	Bracket Wldmt (RH) .....	1	1
4	4609772	Bracket (RH) .....	1	1
5	1364272	Capscrew .....	4	4
6	320160	Washer .....	8	8
7	316826	Nut .....	8	8
8	4609732	Tray (Brace) .....	1	1
9	183782	Shoulder Screw (Shown) .....	4	..
9	162572	Capscrew (Not Shown) .....	..	4
10	4609771	Bracket (LH) .....	1	1
11	4611463	Washer (Black Nylon) (Shown) .....	4	..
11	1581557	Washer (Not Shown) .....	..	4
12	4609769	Bracket Wldmt (LH) .....	1	1
13	296173	Capscrew .....	4	4

CLICK HERE TO **DOWNLOAD** THE COMPLETE MANUAL

- Thank you very much for reading the preview of the manual.
- You can download the complete manual from: [www.heydownloads.com](http://www.heydownloads.com) by clicking the link below



- Please note: If there is no response to CLICKING the link, please download this PDF first and then click on it.

CLICK HERE TO **DOWNLOAD** THE COMPLETE MANUAL