



H2000系列2-3.5t

内燃平衡重式叉车

Counterbalanced Type Forklift Truck With Engine

零件目录

PARTS MANUAL

CLICK HERE TO **DOWNLOAD** THE COMPLETE MANUAL

- Thank you very much for reading the preview of the manual.
- You can download the complete manual from: www.heydownloads.com by clicking the link below

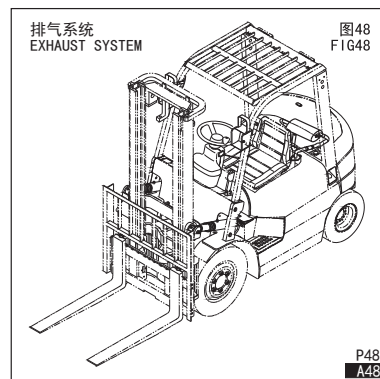
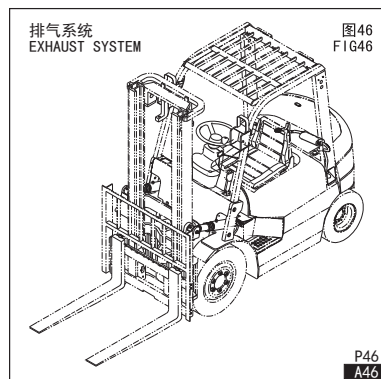
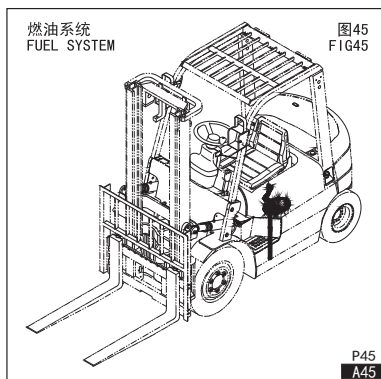
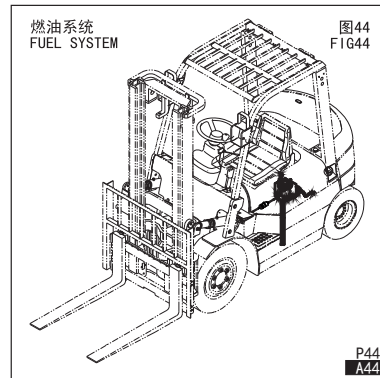
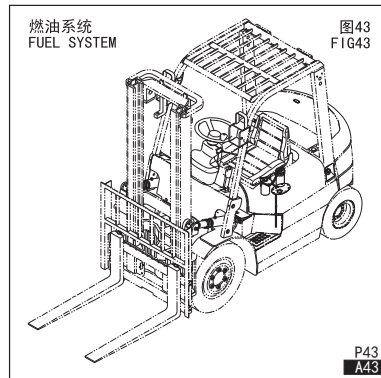
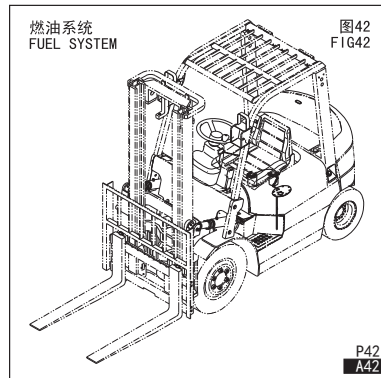
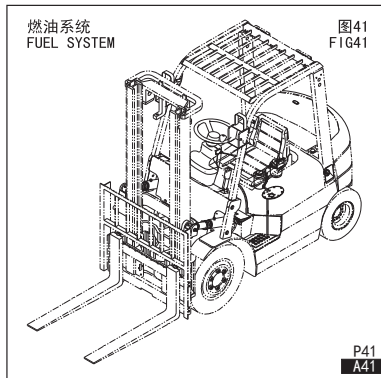
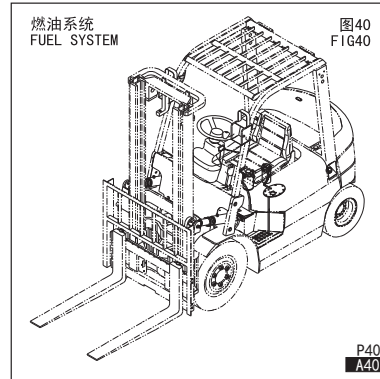
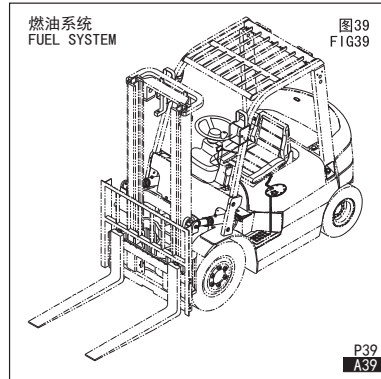
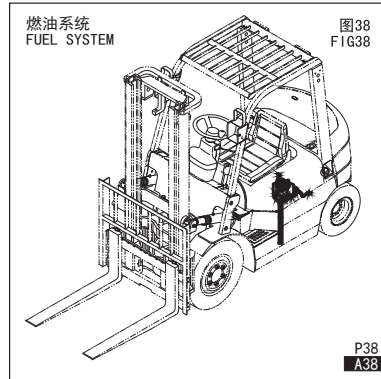
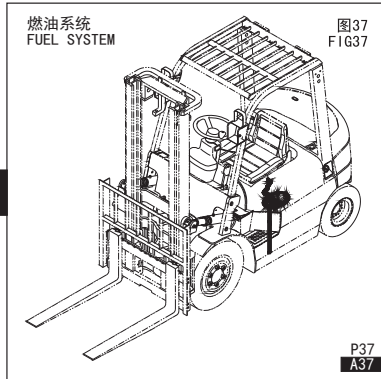


- Please note: If there is no response to CLICKING the link, please download this PDF first and then click on it.

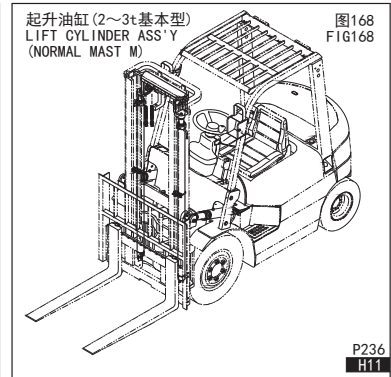
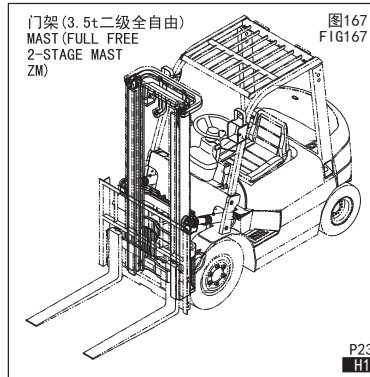
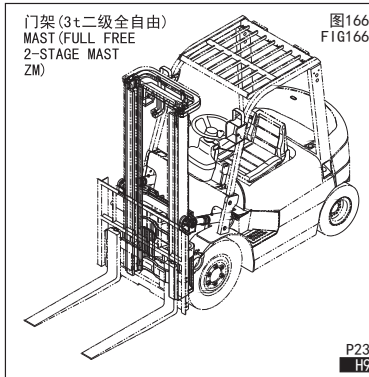
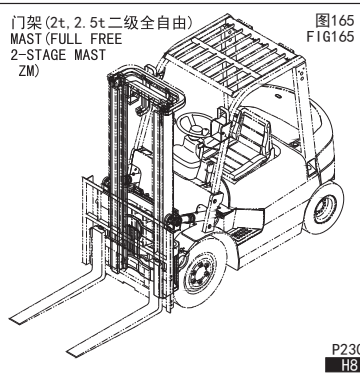
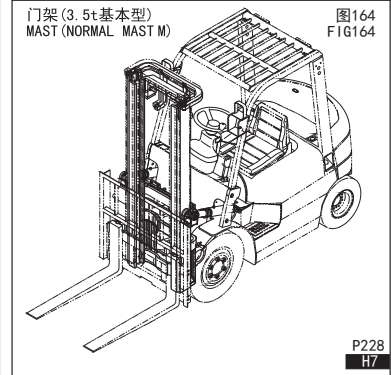
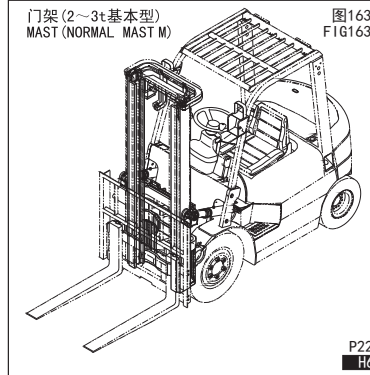
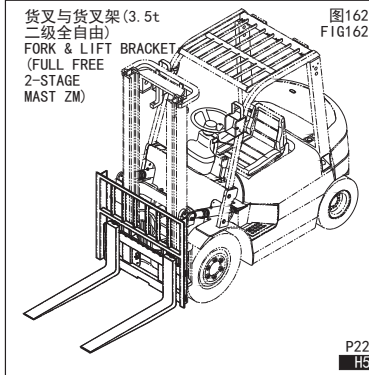
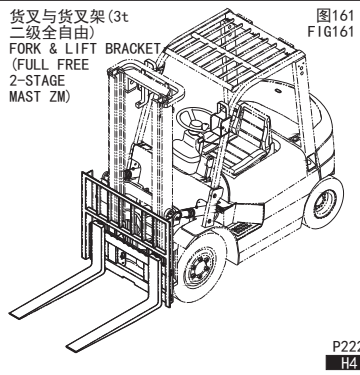
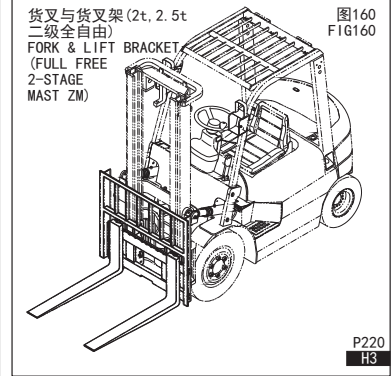
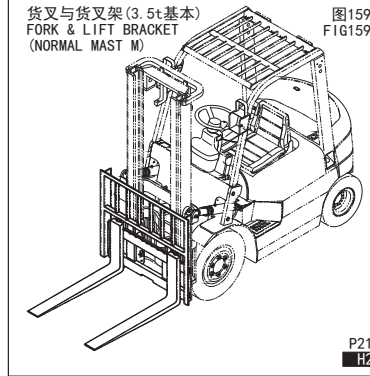
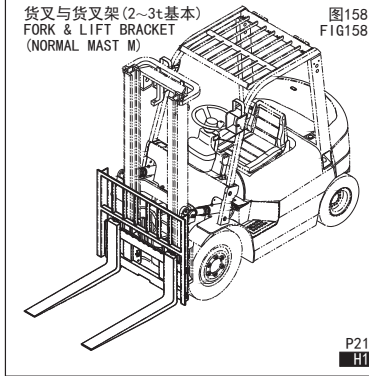
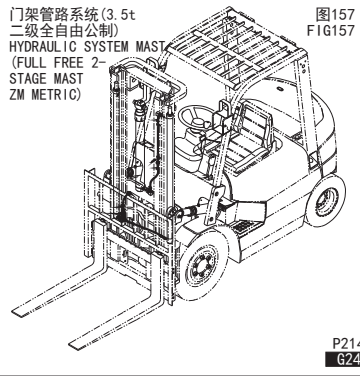
CLICK HERE TO **DOWNLOAD** THE COMPLETE MANUAL

目录 INDEX

A



目录 INDEX



G

H

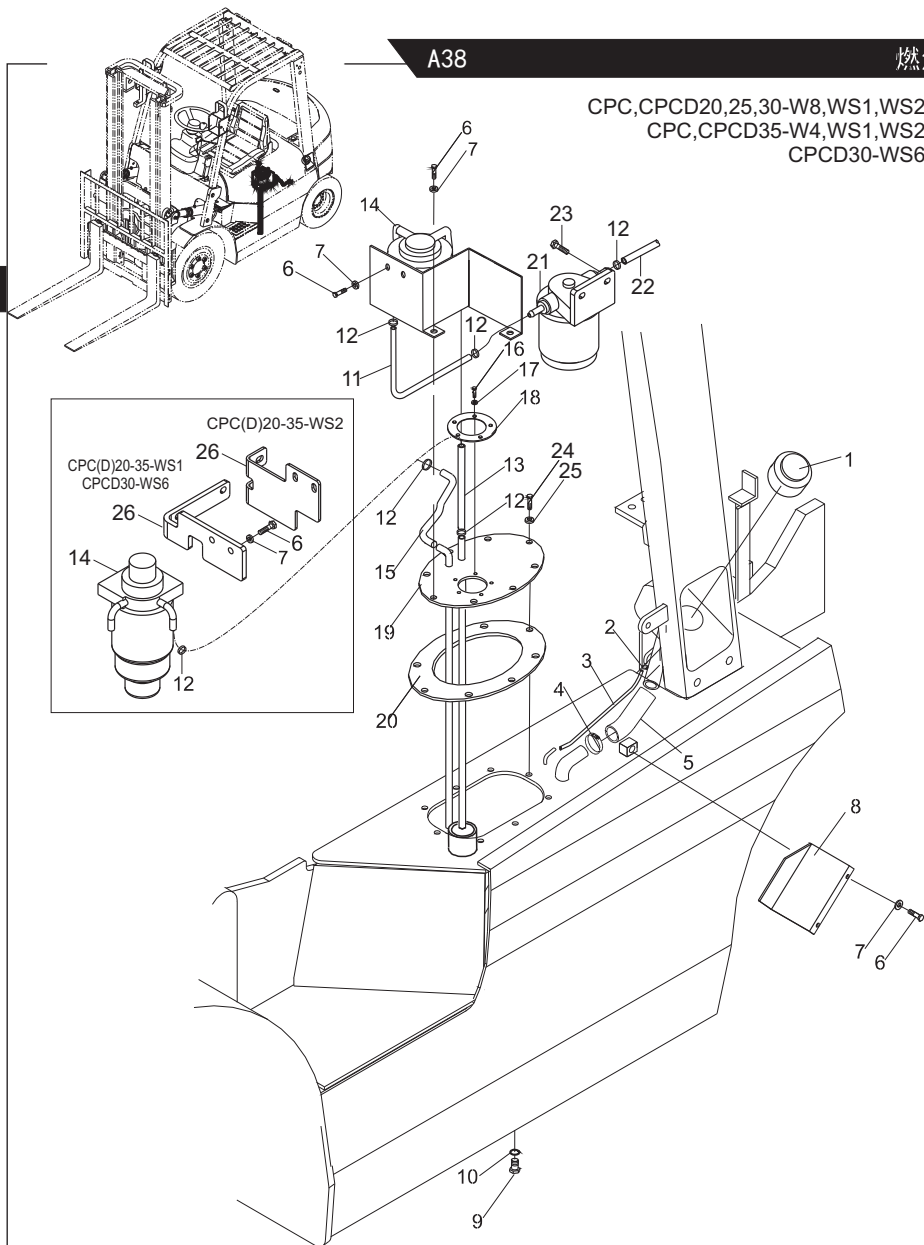
A38

燃油系统/FUEL SYSTEM

图38/FIG38

CPC,CPCD20,25,30-W8,WS1,WS2
CPC,CPCD35-W4,WS1,WS2
CPCD30-WS6

序号 Item No	图号 Part No	版本 Edition	零部件名称 Description	件数 Q'ty	备注 Remark
01	23452-22201	D00	Cap 加油盖	1	
02	Z4590-00019	00	Clip 双钢丝卡箍 \varnothing 19	2	
03	Z7100-13032	D00	Tube 燃油胶管 \varnothing 13 \times 320	1	GB/T24141.1 (3型A级)
04	Z4590-00065	00	Clip 双钢丝卡箍 \varnothing 65	2	
05	H24C2-22001	D00	Hose 加油胶管	1	
06	B0330-08020	00	Bolt 螺栓M8 \times 20	4	GB5783-86
07	B5050-00008	00	Washer 垫圈	8	GB93-87
08	H24C2-22011	D02	Plate 后挡板	1	
09	22197-52081	03	Plug 放油螺塞	1	
10	Z6700-03027	00	Washer 垫圈	30	JB982-77
11	Z7100-08036	D00	Hose 燃油胶管 \varnothing 8 \times 360	1	GB/T24141.1(3型A级) 其余 Etceteras
-	Z7100-08033	D00	Hose 燃油胶管 \varnothing 8 \times 330	1	GB/T24141.1(3型A级) CPC(D)20-30-W8 CPC(D)35-W4
12	Z4590-00014	00	Clip 双钢丝卡箍 \varnothing 14	8	
13	Z7100-08026	D00	Hose 燃油胶管 \varnothing 8 \times 260	1	GB/T24141.1(3型A级) 其余 Etceteras
-	Z7100-08019	D00	Hose 燃油胶管 \varnothing 8 \times 190	2	GB/T24141.1(3型A级) CPC(D)20-30-W8 CPC(D)35-W4
14	24662-22032	00	Sedimentor 燃油滤清器	1	
15	Z7100-06033	D00	Tube 燃油胶管 \varnothing 6 \times 330	1	GB/T24141.1 (3型A级)
16	B0330-05012	00	Bolt 螺栓M5 \times 12	5	GB5783-86
17	H43E2-43201	00	Washer 组合垫圈	5	
18	23642-20042G	D00	Packing 垫	1	
19	H25S2-20102	00	Cover, tank 盖板总成	1	
20	H24C2-22021	D04	Gasket 盖板垫	1	
21	H25S2-23011	00	Sedimentor 柴油滤清器	1	
22	Z7100-08027	D00	Hose 燃油胶管 \varnothing 8 \times 270	1	GB/T24141.1(3型A级) 其余 Etceteras
-	Z7100-08055	00	Hose 燃油胶管 \varnothing 8 \times 550	1	GB/T24141.1(3型A级) HG4-548-87 CPC(D)35- W4 CPC(D)20-30-W8
23	B0330-08025	00	Bolt 螺栓M8 \times 25	2	GB5783-86
24	B0330-10025	00	Bolt 螺栓M10 \times 25	8	GB5783-86
25	Z6701-01027	00	Washer 组合垫圈10(出口型)	8	GB982-77
26	G1D72-22001	00	Bracket 支架	1	CPC(D)20-35-WS2
-	G2E52-22001	03	Bracket 支架	1	CPC(D)20-35-WS1 CPCD30-WS6



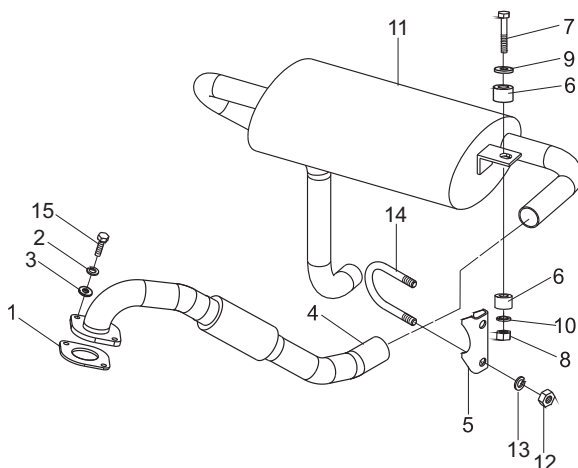
A48

排气系统/EXHAUST SYSTEM

图48/FIG48

CPC,CPCD20,25,30,35-Xc6,Q2,XC3,XC10

序号 Item No	图号 Part No	版本 Edition	零部件名称 Description		件数 Q'ty	备注 Remark
A	HRH9G32301	D01	Exhaust system	排气系统	1	其余 Etceteras 2t,2.5t
-	H9H32-30001	D01	Exhaust system	排气系统	1	其余 Etceteras 3t,3.5t
-	HRH9G32301	D01	Exhaust system	排气系统	1	其余 Etceteras 3t,3.5t
-	H9M32-30001	D02	Exhaust system	排气系统	1	CPC(D)20,25-XC10
-	HRHE912301	D02	Exhaust system	排气系统	1	CPC(D)30,35-XC10
-	HE912-30001	D02	Exhaust system	排气系统	1	CPC(D)30,35-XC10
-	HRHE912301	D02	Exhaust system	排气系统	1	CPC(D)30,35-XC10
-	HE912-30011	D02	Exhaust system	排气系统	1	CPC(D)30,35-XC10
01	A9G52-32001	01	Packing	法兰垫	1	
02	B5050-00010	00	Washer,lock	垫圈10	2	
03	B5111-00010	00	Washer	垫圈10	2	CPC(D)20-35- Xc6,Q2,XC3
04	H9G32-30201	02	Pipe ass'y	前排气管总成	1	其余 Etceteras
-	HE912-30201	01	Pipe ass'y	排气管总成	1	CPC(D)20-35-XC10
05	H24C2-32041	D00	Stopper	U型卡板	1	
06	22252-32241	00	Rubber	橡胶垫	4	
07	A22A2-32021	01	Bolt	螺栓	2	
08	B4016-00008	00	Nut	螺母M8	2	GB6184-86
09	22252-32251	00	Shim	垫片	2	
10	B5210-00010	00	Washer	垫圈10	2	GB96-85
11	H9H32-30201	D01	Muffler	消声器	1	2t,2.5t
-	H9M32-30301	D01	Muffler	消声器	1	3t,3.5t
-	H93C2-30901	D00	Muffler	灭火消声器	1	2t,2.5t
-	H93N2-30901	D00	Muffler	灭火消声器	1	3t,3.5t
-	E27C2-30201	D00	Muffler	净化消声器	1	CPC(D)20,25-Xc10
-	E25N2-30401	D00	Muffler	净化消声器	1	3t,3.5t
12	B4116-00008	00	Nut	螺母M8	2	GB6170-86
13	B5050-00008	00	Washer,lock	垫圈8	2	GB93-87
14	H24C2-32031	D00	U-bolt	U型螺栓	1	
15	B0110-10025	00	Bolt	螺栓M10x25	2	其余 Etceteras
-	B0330-10030	00	Bolt	螺栓M10x30	2	CPC(D)20-35-XC10



A

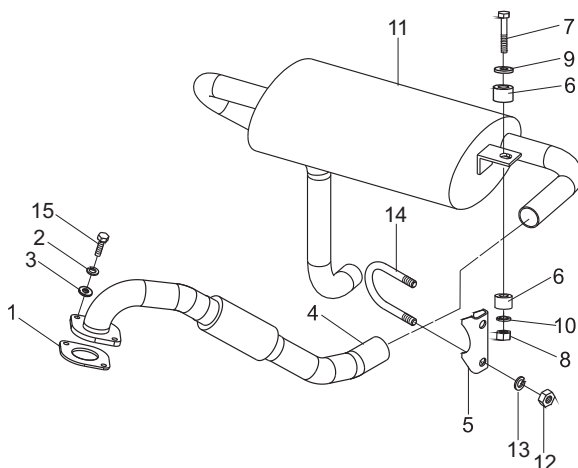
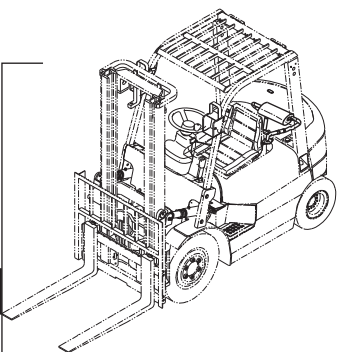
A58

排气系统/EXHAUST SYSTEM

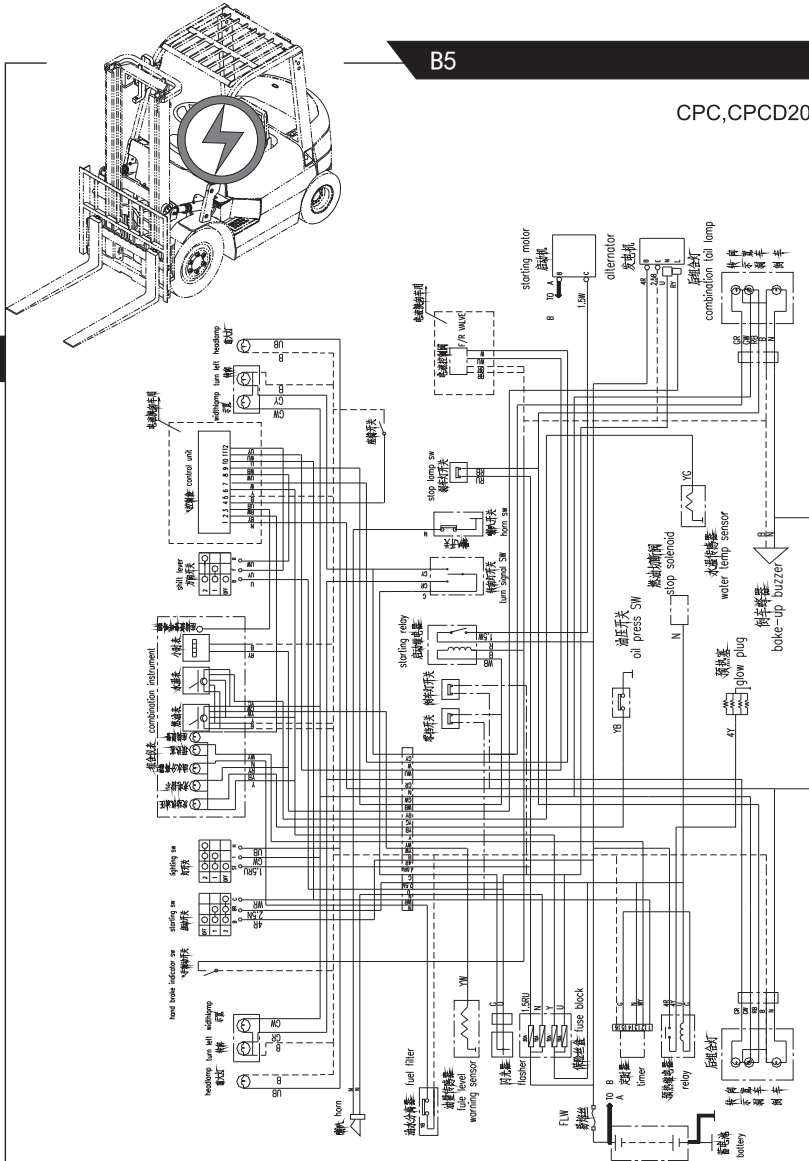
图58/FIG58

CPQD20,25,30,35-BF1

序号 Item No	图号 Part No	版本 Edition	零部件名称 Description		件数 Q'ty	备注 Remark
A	HRHS2M2301 HS2H2-30001	D00	Exhaust system	排气系统	1	2t,2.5t
-	HRHS2M2301 HS2M2-30001	D00	Exhaust system	排气系统	1	3t,3.5t
01	A9G52-32001	01	Packing	法兰垫	1	
02	B5050-00010	00	Washer,lock	垫圈10	2	GB93-87
03	B5310-00010	00	Washer	垫圈10	2	GB97.1-85
04	HS2M2-30101	01	Pipe ass'y	前排气管总成	1	
05	H24C2-32041	D00	Stopper	U型卡板	1	
06	22252-32241	00	Rubber	橡胶垫	4	
07	A 22A2-32021	01	Bolt	螺栓	2	
08	B4023-00008	00	Nut	螺母M10	2	GB6184-86
09	22252-32251	00	Shim	垫片	2	
10	B5210-00010	00	Washer	垫圈10	2	GB96-85
11	H9H32-30201	D01	Muffler	消声器	1	2t,2.5t
-	H9M32-30301	D01	Muffler	消声器	1	3t,3.5t
-	H93C2-30901	D00	Muffler	灭火消声器	1	2t,2.5t
-	H93N2-30901	D00	Muffler	灭火消声器	1	3t,3.5t
-	H2A22-30301	D00	Muffler	净化消声器	1	2t,2.5t
-	H2E22-30301	D00	Muffler	净化消声器	1	3t,3.5t
12	B4116-00008	00	Nut	螺母M8	2	GB6170-86
13	B5050-00008	00	Washer,lock	垫圈8	2	GB93-87
14	H24C2-32031	D00	U-bolt	U型螺栓	1	
15	B0330-10025	00	Bolt	螺栓M10x25	2	GB5783-86

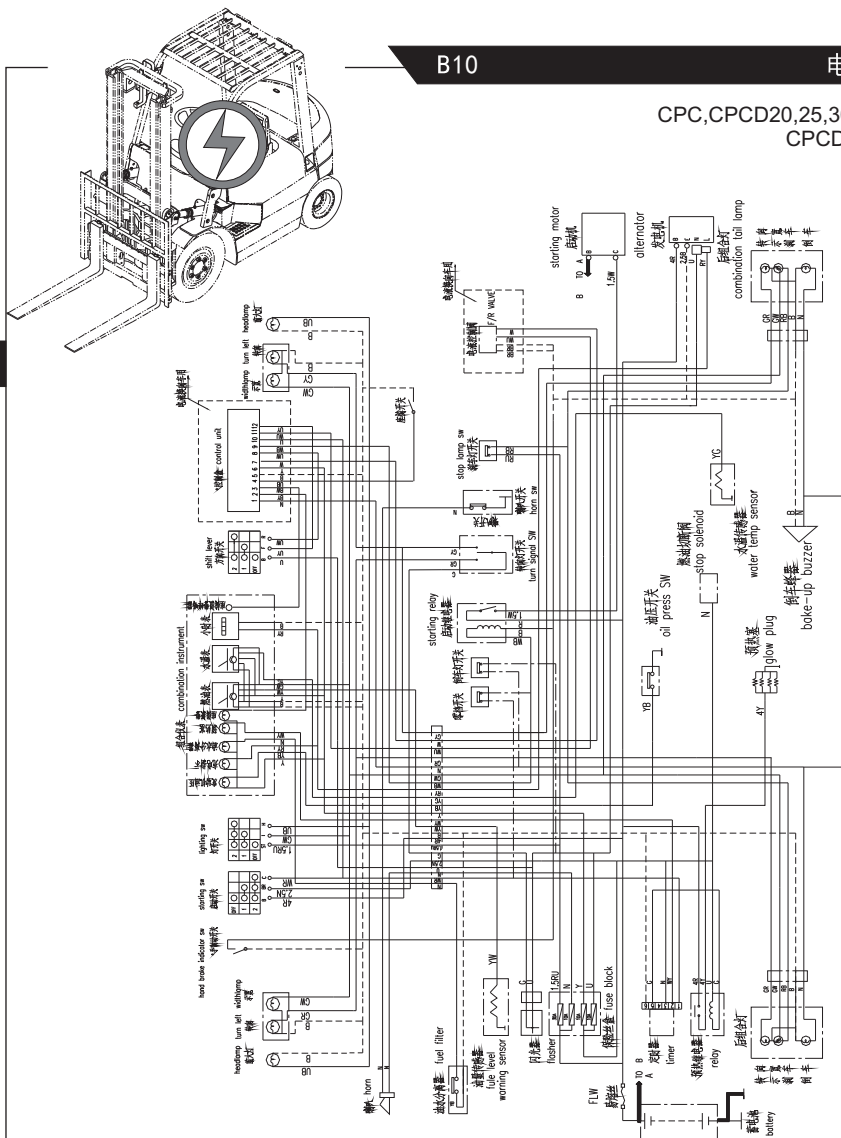


CPC,CPCD20,25,30,35-D2



序号 Item No	图号 Part No	版本 Edition	零部件名称 Description	件数 Q'ty	备注 Remark
27	B5050-00006	00	Washer,lock	垫圈6	4 GB93-87
28	B5310-00006	00	Washer	垫圈6	4 GB97.1-85
29	Z8421-18214	D02	Fule level sending unit	油量传感器	1
30	20162-42061G	D00	Cable(+)	电瓶引线(+)	1
31	A22A2-40400	D00	Cable(-)	电瓶引线(-)	1
32	D016-QW-80	D00	Battery	蓄电池	1
33	A22A2-40900	D00	Fusible link wire	易熔线	1
34	Z8510-120DZ	D01	Back buzzer	倒车蜂鸣器	1 DJB-12B
35	B1210-06016	00	Screw	螺钉M6x16	1 GB818-86
36	B5050-00006	00	Washer,lock	垫圈6	1 GB93-87
37	B4123-00006	00	Nut	螺母M6	1 GB6170-86
38	B5310-00006	00	Washer	垫圈6	1 GB97.1-85
39	HRA92A2401	00	Clip	电瓶正极引线卡	2 选用 Optional
40	D03DXQ01	D00	Flameout controller	电动熄火控制器	1
41	H24C2-40491	D00	Caution light	警示灯	1 选用 Optional
42	H24C2-40431	D00	Wiring harness,caution light	警示灯线束	1 选用 Optional
43	XH9-3MJ	D00	Caution light	警示灯	1 选用 Optional
44	H24C2-40492	D00	Caution light	警示灯	1 选用 Optional
45	H24C2-40432	D00	Wiring harness,caution light	警示灯线束	1 选用 Optional

CPC,CPCD20,25,30,35-Ku7
CPCD35-Ku12

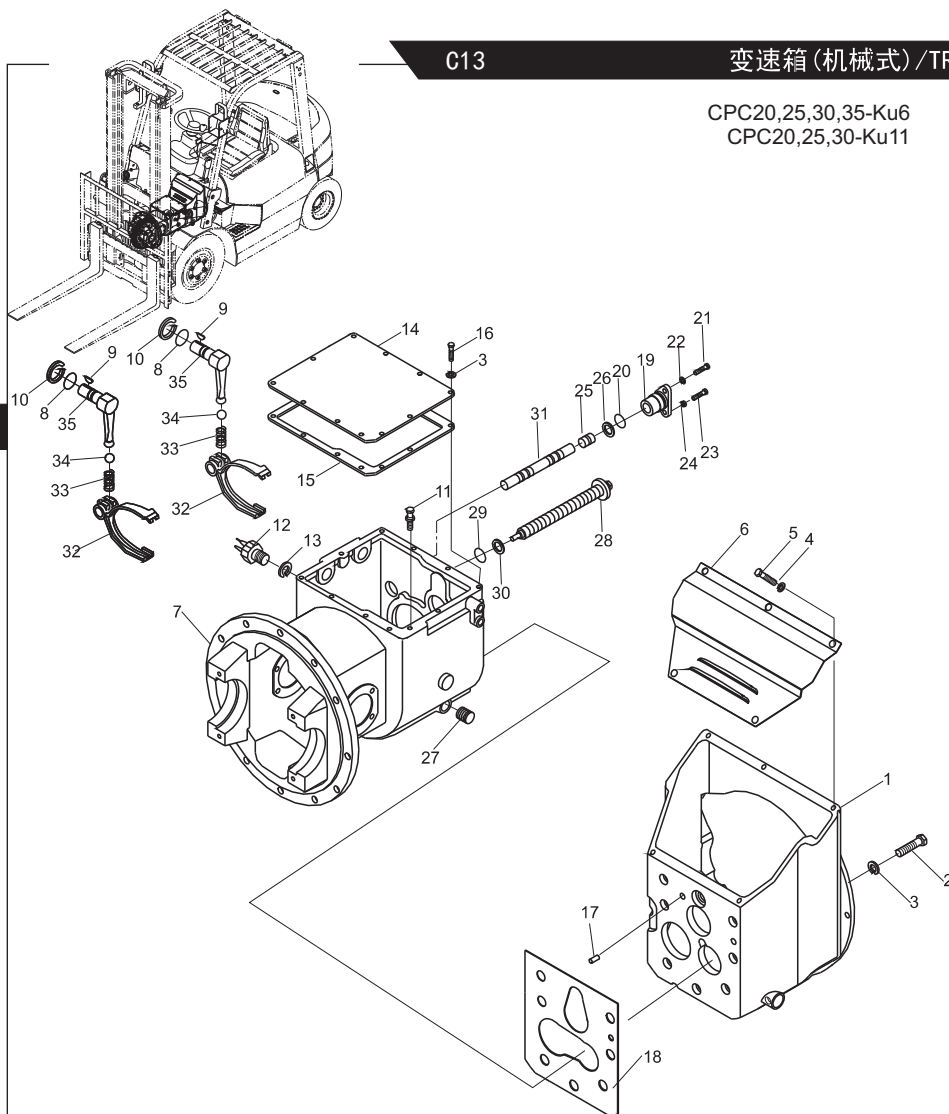


序号 Item No	图号 Part No	版本 Edition	零部件名称 Description	件数 Qty	备注 Remark
28	A73J2-40402A	00	Hand brake switch 手制动开关	1	选用件 Option
29	Z8421-18214	D02	Fuel level sending unit 油量传感器	1	
30	D016-QW-80	D00	Battery 蓄电池	1	6-QW-80
31	A23F2-40420	D00	Cable(+) 电瓶引线(+)	1	
32	A22A2-40400	D00	Cable(-) 电瓶引线(-)	1	
33	A22A2-40900	D00	Fusible link wire 易熔线	1	
34	HRA92A2401	00	Clip 电瓶正极引线卡	2	
35	Z8510-120DZ	D01	Back buzzer 倒车蜂鸣器	1	DJB-12B
36	B4116-00006	00	Nut 螺母M6	1	GB6170-86
37	HRH25S2421	D01	Principle diagram 电气线路图	1	
38	H24C2-40491	D00	Caution light 警示灯	1	选用件 Option
39	H24C2-40431	D00	Wiring harness,caution light警示灯线束	1	选用件 Option
40	XH9-3MJ	D00	Caution light 警示灯	1	选用件 Option
41	H24C2-40492	D00	Caution light 警示灯	1	选用件 Option
42	H24C2-40432	D00	Wiring harness,caution light警示灯线束	1	选用件 Option
43	D09JK211J	D00	Caution light switch 警示灯开关	1	选用件 Option

C13

变速箱(机械式)/TRANSMISSION (CLUTCH TYPE) (1/2)

图92/FIG92

CPC20,25,30,35-Ku6
CPC20,25,30-Ku11

序号 Item No	图号 Part No	版本 Edition	零部件名称 Description	件数 Q'ty	备注 Remark
01	H2A93-42011	D00	Clutch housing 离合器壳	1	
02	B0330-10030	00	Bolt 螺栓M10X30	7	GB5783-86
03	B5050-00010	00	Washer, lock 垫圈10	24	GB93-87
04	B5050-00006	00	Washer, lock 垫圈6	5	GB93-87
05	B0330-06012	00	Bolt 螺栓M6X12	5	GB5783-86
06	H24C3-42421	D02	Cover, case 离合器盖	1	
07	H24C3-42401	00	Case, transmission 机械变速箱壳	1	
08	Z6003-02202	00	O-ring 0形圈22X2.4	2	GB1235-76
09	Z4000-05019	00	Key, woodruf 半圆键5X19	2	GB1099-79
10	B6150-00022	00	Snap ring 挡圈22	2	GB894.1-86
11	22253-02063	D01	Air Breather 透气塞	1	
12	12003-42451	01	Switch, back-lamp 倒车灯开关	1	
13	12003-42461	01	Washer 垫片	1	
14	12003-42021	00	Case, cover 箱盖	1	
15	12003-42031	00	Gasket, case cover 箱盖垫片	1	
16	B0320-10016	00	Bolt 螺栓M10X16	10	GB5783-86
17	B3120-12022	00	Pin 销12X22	2	GB119-86
18	12003-42042	00	Gasket, clutch housing 垫片	1	
19	12003-42052	02	Supporter, arm shaft 轴臂	1	
20	Z6004-03503	00	O-ring 0形圈35X3.1	1	GB1235-76
21	B0320-08020	00	Bolt 螺栓M8X20	2	GB5783-86
22	B5050-00008	00	Washer, lock 垫圈8	2	GB93-87
23	B0320-10045	00	Bolt 螺栓M10X45	1	GB5783-86
24	B4123-00010	00	Nut 螺母M10	1	GB6170-86
25	12003-42061	01	Plug 塞	1	
26	Z6004-02004	00	O-ring 0形圈20X2.4	1	GB1235-76
27	22193-03001	01	Plug 堵塞	1	
28	11153-40041	01	Bolt, slide 滑动螺栓	1	
29	Z6004-02804	00	O-ring 0形圈28X3.5	1	GB1235-76
30	10113-40541	00	Washer 外齿弹性垫圈	1	

CLICK HERE TO **DOWNLOAD** THE COMPLETE MANUAL

- Thank you very much for reading the preview of the manual.
- You can download the complete manual from: www.heydownloads.com by clicking the link below



- Please note: If there is no response to CLICKING the link, please download this PDF first and then click on it.

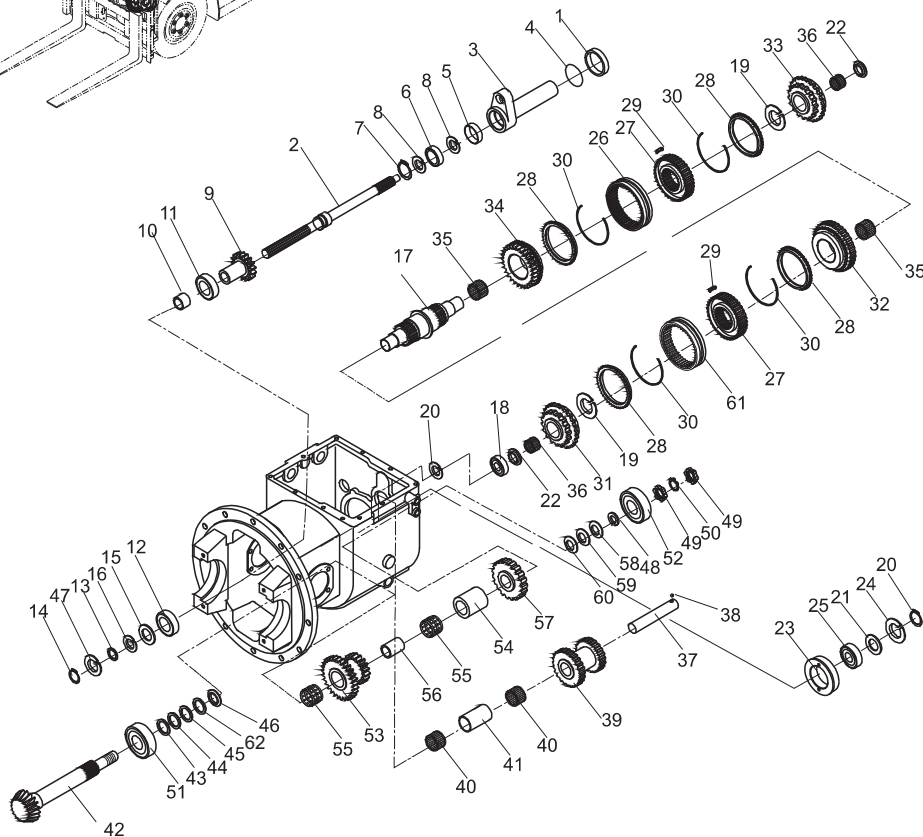
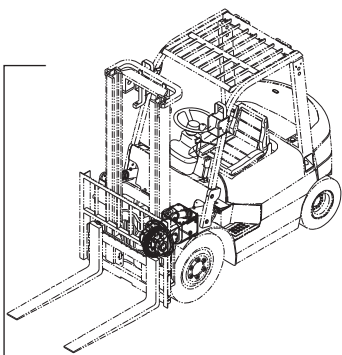
CLICK HERE TO **DOWNLOAD** THE COMPLETE MANUAL

C18

变速箱(机械式)/TRANSMISSION (CLUTCH TYPE) (2/2)

图97/F1G97

CPC20,25,30,35-D2,Xc6,Q2,XC3,XC10

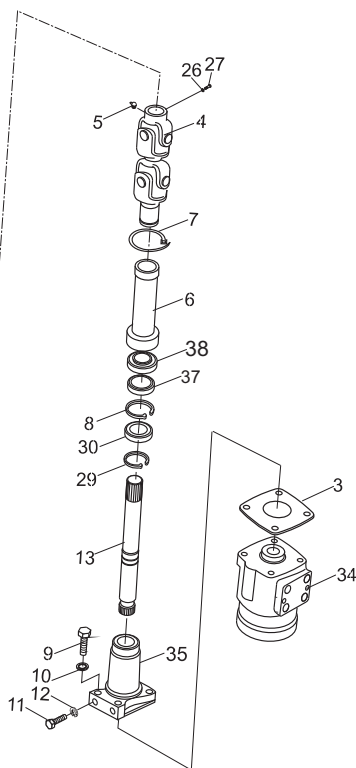
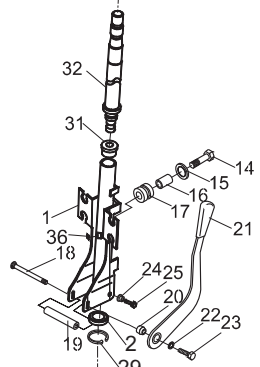
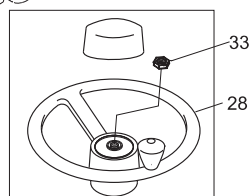
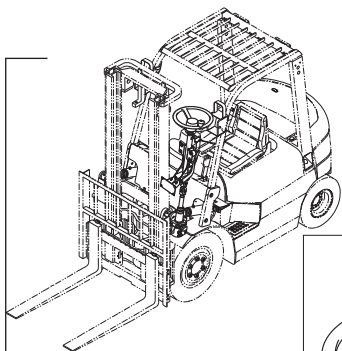


序号 Item No	图号 Part No	版本 Edition	零件名称 Description	件数 Q'ty	备注 Remark	
01	12003-42471	00	Collar	轴环	1	
02	12003-42081	D01	Shaft, main drive	主动轴	1	
03	12003-42102	D02	Retainer, bearing	轴承架	1	
04	Z6004-04204	00	O-ring	O形圈42 × 3.5	1	GB1235-76
05	03211-02501	D00	Seal, oil	油封	1	
06	Z-6005	00	Bearing	轴承6005	1	GB/T276-94
07	B6050-00047	00	Snap ring	孔用挡圈47	1	GB893.2-86
08	B6150-00025	00	Snap ring	轴用挡圈25	2	GB894.1-86
09	12003-42111	00	Gear, input	输入齿轮	1	
10	10113-40161	00	Spacer	隔套	1	
11	Z-6207	00	Bearing	轴承6207	1	GB/T276-94
12	Z-6207N	00	Bearing	轴承6207N	1	GB/T276-94
13	10113-40521	00	Spacer	隔圈	1	
14	B6150-00035	00	Snap ring	挡圈35	1	GB894.1-86
15	03006-06207	D00	Ring, thrust	止动环72/78.6	1	9243/35
16	10113-40171	00	Spacer	轴承垫圈	1	
17	12493-42091	00	Shaft, main	主轴	1	
18	Z-NJ306E	00	Bearing	轴承NJ306E	1	GB/T283-1994
19	N-1J01235-00Z	D00	Snap ring	弹簧挡圈	2	
20	B6150-00030	00	Snap ring	挡圈30	2	GB894.1-86
21	12003-42481	00	Spacer	隔圈	1	
22	12493-42131	00	Plate, thrust	止推摩擦片	2	
23	12493-42142	00	Retainer, bearing	轴承保持架	1	
24	B6050-00072	00	Snap ring	孔用挡圈72	1	GB893.2-86
25	Z-306	00	Bearing, ball	单列向心球轴承306	1	GB276-64
26	12493-42041	00	Gear sleeve	同步器齿套	2	
27	N-1J01271-01A	00	Gear hub	同步器齿毂	2	
28	N-1J01276-00A	00	Ring	一、二挡同步器齿环1/2	4	
29	D120-1J01092	00	Insert	同步器滑块	6	
30	N-1J01273-00A	00	Spring	同步器弹簧	4	

D1

转向系统/STEERING SYSTEM

图111/FIG111

CPC, CPCD20, 25, 30, 35
CPQ, CPQD20, 25, 30, 35

序号 Item No	图号 Part No	版本 Edition	零部件名称 Description	件数 Q'ty	备注 Remark
A	H24C4-10001	D13	Steering system 转向系统	1	
01	H24C4-10211	00	Column 转向管柱	1	
02	Z-61904-Z	00	Bearing 轴承61904-Z	1	GB/T276-94
03	H24C4-12231	01	Shim 调整垫	1	
04	H24C4-10301	D03	Gimbal 万向节总成	1	
05	Z2500-01010	00	Titting,grease 油杯 M10×1	1	JB/T7940.1-1995
06	H24C4-13011	00	Boot 护套	1	
07	ZD-04015	D00	Band 捆扎带 ZD4X150	1	
08	B6050-00037	00	Snap ring 挡圈37	1	GB893.1-86
09	B0230-10045	00	Bolt 螺栓 M10×45	4	GB5782-86
10	B5050-00010	00	Washer 垫圈10	4	GB93-87
11	B0530-12025	00	Bolt 螺栓M12x1.25x25	2	GB5786-86
12	B5050-00012	00	Washer 垫圈12	2	GB93-87
13	H24C4-12111	D08	Link 连接轴	1	
14	B0230-06035	00	Bolt 螺栓 M6×35	4	GB5782-86
15	A22A4-12121	D00	Washer 垫圈	4	
16	A22A4-12111	D00	Spacer 套管	4	
17	A22A4-12101	D00	Rubber 橡胶套	4	
18	H24C4-12301	00	Bolt (left) 螺栓(左旋)	1	
19	H24C4-12161	01	Spacer 套管	1	
20	H24C4-12311	00	Nut 螺母(左)	1	
21	H24C4-10501	01	Lever 手柄总成	1	
22	B5210-00010	00	Washer 垫圈10	1	GB96-85
23	H24C4-12321	00	Bolt 螺栓	1	
24	H24C4-12211	01	Washer 垫圈	2	
25	H24C4-12221	02	Bolt 螺栓	2	
26	B5050-00008	00	Washer 垫圈8	1	GB93-87
27	B0230-08035	00	Bolt 螺栓M8X35	1	GB5782-86
28	A22A4-11102	00	Handle Shaft Ass'y 方向盘总成	1	带 HEL I Subjoin HEL I
-	A22A4-11102A	00	Handle Shaft Ass'y 方向盘总成	1	不带 HEL I No HEL I

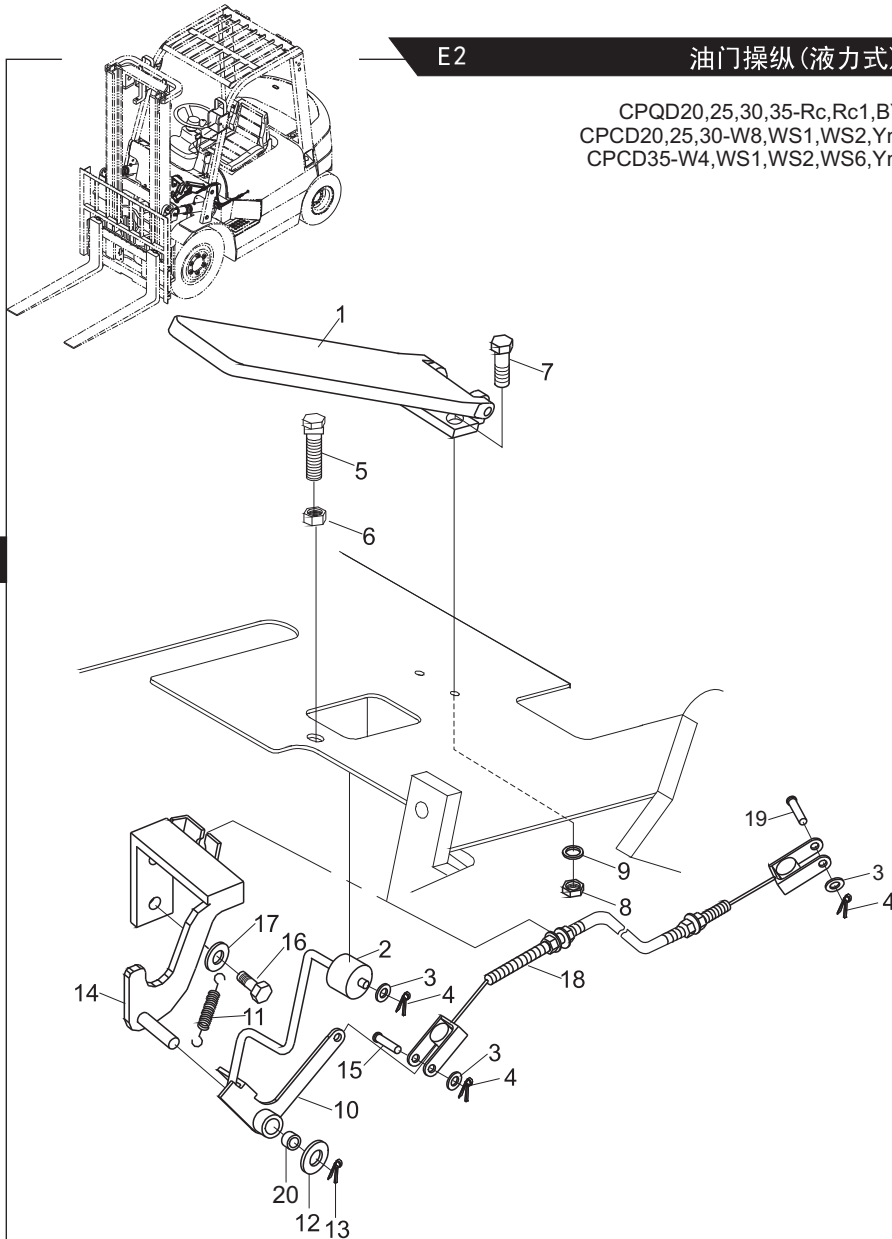
D

E2

油门操纵 (液力式)/ACCELERATOR PEDAL (TOR-CON TYPE)

图118/FIG118

CPQD20,25,30,35-Rc,Rc1,BY2
CPCD20,25,30-W8,WS1,WS2,Ym1
CPCD35-W4,WS1,WS2,WS6,Ym1

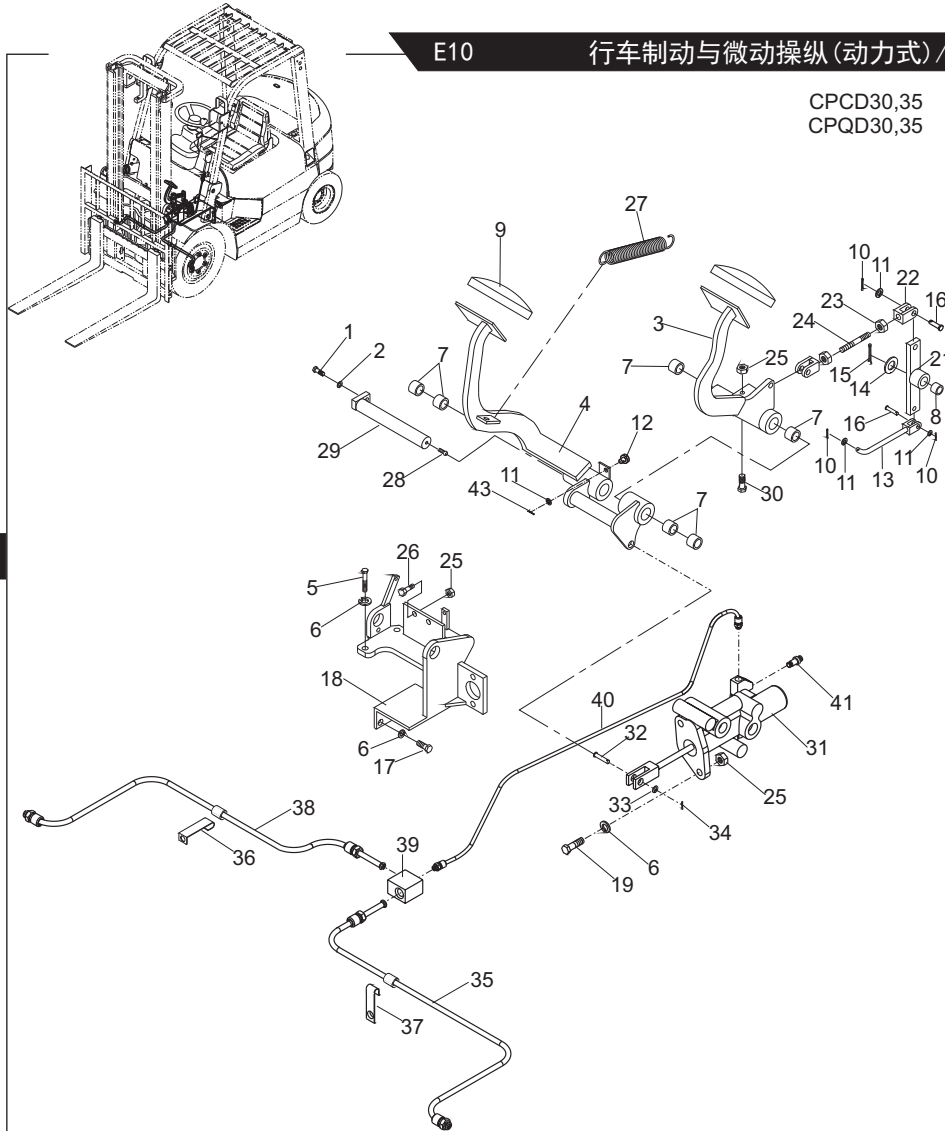


序号 Item No	图号 Part No	版本 Edition	零部件名称 Description		件数 Q'ty	备注 Remark
A	HRH24C5601 H24C5-60001	D04	Accelerator pedal	油门操纵装置	1	K21,K25
-	HRH24C5601 H25S5-60001	D04	Accelerator pedal	油门操纵装置	1	C240
-	HRH24C5601 H25T5-60001	D04	Accelerator pedal	油门操纵装置	1	4JG2
-	HRH2T95201 H2T95-20001	D00	Accelerator pedal	油门操纵装置	1	4TNE98
01	H24C5-60201	D01	Accelerator pedal ass'y	踏板总成	1	
02	H24C5-62021	00	Sheave	滚轮	1	
03	B5310-00006	00	Washer	垫圈6	2	GB97.1-85 K21,K25,4TNE98
		00			3	4JG2,C240
04	B3010-02020	00	Pin	开口销2×20	2	GB91-86 K21,K25,4TNE98
		00			3	4JG2,C240
05	25785-22111	D00	Bolt	螺栓	1	
06	B4216-00012	00	Nut	螺母M12×1.25	1	GB6171-86
07	B0330-06020	00	Bolt	螺栓M6×20	2	GB5783-86
08	B4116-00006	00	Nut	螺母M6	2	GB6170-86
09	B5050-00006	00	Washer,lock	垫圈6	2	GB93-87
10	H24C5-60311	D03	Bracket	连接轴架	1	
11	25785-22031	01	Spring	弹簧	1	
12	B5310-00010	00	Washer	垫圈10	1	GB97.1-85
13	B3010-3P220	00	Pin	销3.2×20	1	GB91-86
14	H24C5-60401	D00	Bracket	支架	1	
15	B3220-06016	00	Pin,axle	销轴B6×16	1	GB882-86 其余 Etceteras
-	B3220-06012	00	Pin,axle	销轴B6×12	1	GB882-86 4TNE98
16	B0330-10020	00	Bolt	螺栓M10×20	2	GB5783-86
17	B5050-00010	00	Washer,lock	垫圈10	2	GB93-87
18	H24C5-60502	00	Soft shaft	油门拉索	1	K21,K25
-	H25S5-60502	D00	Soft shaft	油门拉索	1	C240
-	H25T5-60502	03	Soft shaft	油门拉索	1	4JG2
-	H99Y5-20011	D00	Soft shaft	油门拉索	1	4TNE98
19	B3220-05012	00	Pin,axle	销轴B5×12	1	GB882-86 4JG2,C240
20	Z2131-01015	00	Bushing	钢背轴承1015	1	

E10

行车制动与微动操纵(动力式)/BRAKE & INCHING CONTROL (POWER BRAKE)

图126/FIG126

CPCD30,35
CPQD30,35

序号 Item No	图号 Part No	版本 Edition	零部件名称 Description	件数 Qty	备注 Remark
A	E23Z5-40021	D02	Brake & inching control 行车制动与微动操纵装置	1	
01	B0330-08020	00	Bolt 螺栓M8x20	1	GB5783-86
02	B5050-00008	00	Washer 垫圈8	1	GB93-87
03	H25S5-40401	D00	Inching pedal (Inc.07) 微动踏板(包含07)	1	
04	E26V5-40201	D00	Braking pedal (Inc.07) 制动踏板(包含07)	1	
05	B0330-10025	00	Bolt 螺栓M10x25	2	GB5783-86
06	B5050-00010	00	Washer 垫圈10	4	GB93-87
07	Z2031-02525	00	Bushing 钢背轴承2525	6	
08	Z2031-01625	00	Bushing 钢背轴承1625	1	
09	25595-42071	02	Mat,pedal 踏板垫	2	
10	B3010-03015	00	Pin 销3x15	4	GB91-86
11	B5310-00008	00	Washer 垫圈8	5	GB97.1-85
12	H25S5-43211	00	Nylon 尼龙顶轴	1	
13	22505-42001	D01	Link 连接杆	1	
14	B5310-00016	00	Washer 垫圈16	1	GB97.1-85
15	B3010-04025	00	Pin 销4x25	1	GB91-86
16	B3230-08030	00	Pin 销B8x30	3	GB882-86
17	B0330-10020	00	Bolt 螺栓M10x20	2	GB5783-86
18	E26V5-40301	D00	Bracket 支架	1	
19	B0530-10020	00	Bolt 螺栓M10x1.25x20	2	GB5786-86
20	E23Z5-40201	D03	Brake system (Inc.31-41) 制动管路系统 (包含31-41)	1	
21	H25S5-40701	D00	Roker(Inc.08) 摇臂(包含08)	1	
22	HRH25S5411 H25S5-42221	D00	Clevis 支耳M10-6H(左旋)	1	
-	HRH25S5411 H25S5-42211	D00	Clevis 支耳M10-6H(右旋)	1	
23	B4123-10010	00	Nut 螺母M10(左)	1	GB6170-86
24	23745-42031	D00	Rod 螺杆	1	
25	B4116-00010	00	Nut 螺母M10	4	GB6170-86
26	B0330-10030	00	Bolt 螺栓M10x30	1	GB5783-86
27	20155-30061	D02	Spring 拉簧	2	
28	Z2513-01010	00	Fitting grease 油杯90° M10x1	1	JB/T940.2-1995

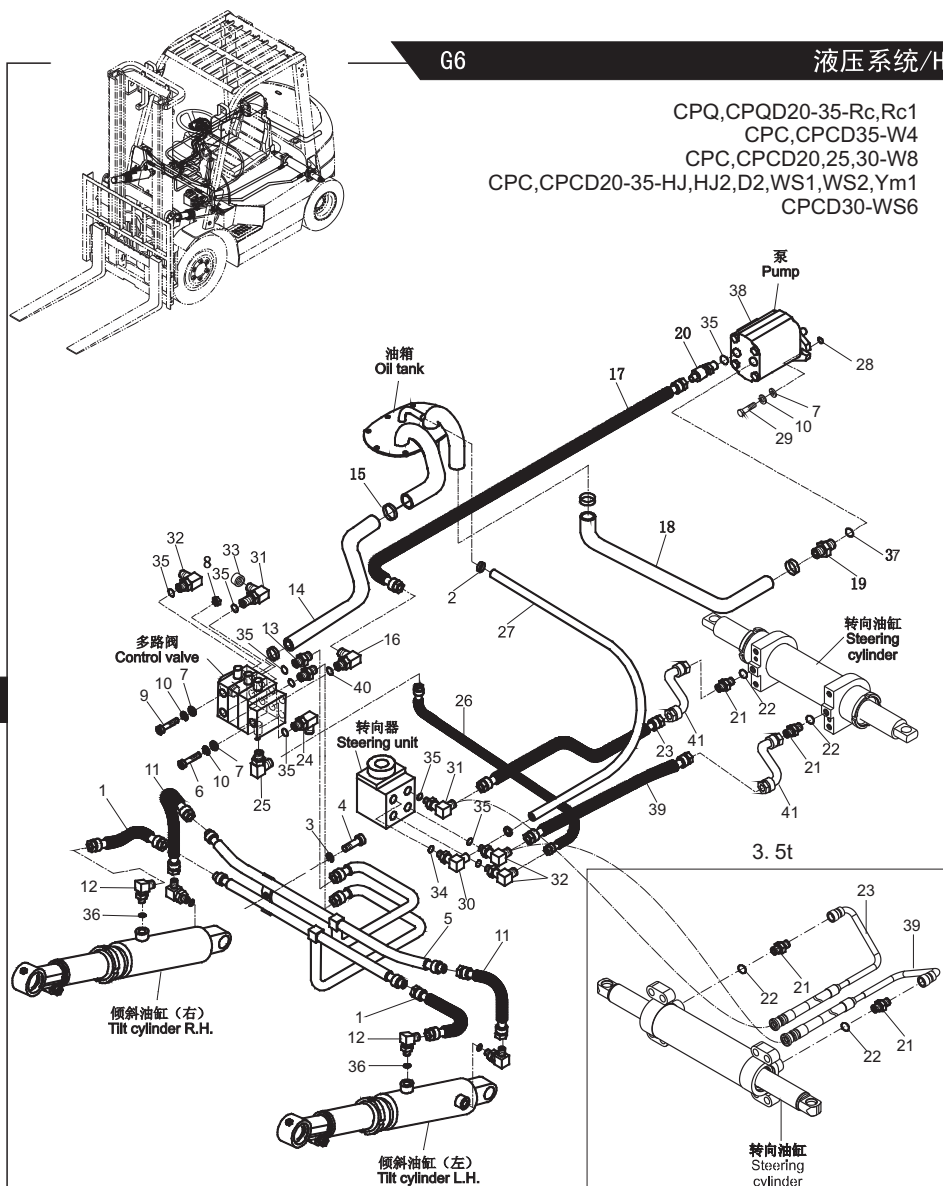
E

G6

液压系统/HYDRAULIC SYSTEM (EX-A)

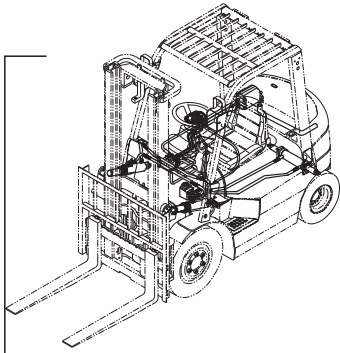
图139 / FIG139

CPQ, CPQD20-35-Rc, Rc1
CPC, CPCD35-W4
CPC, CPCD20, 25, 30-W8
CPC, CPCD20-35-HJ, HJ2, D2, WS1, WS2, Ym1
CPCD30-WS6



序号 Item No	图号 Part No	版本 Edition	零件名称 Description	件数 Q'ty	备注 Remark
A	HRE24C7601 E24C7-60002	D17	Hydraulic system 液压管路系统	1	2t, 2.5t
-	HRE24C7601 E24N7-60001	D17	Hydraulic system 液压管路系统	1	3t, 3.5t
01	E24C7-60271	D03	Hose H.P. 高压胶管总成	2	
02	Z4503-16025	00	Clip 喉箍16-25	2	
03	B5050-00006	00	Washer, lock 垫圈6	9	GB93-87
04	B0330-06025	00	Bolt 螺栓M6X25	2	GB5783-86
05	E24C7-60251	D00	Steel pipe ass'y 倾斜缸钢管总成	1	
06	B0530-10025	00	Bolt 螺栓M10X1.25X25	1	GB5786-86
07	B5310-00010	00	Washer 垫圈10	12	GB97.1-85
08	B4223-00010	00	Nut 螺母M10x1.25	4	GB6171-86
09	B0330-10040	00	Bolt 螺栓M10X40	4	GB5783-86
10	B5050-00010	00	Washer, lock 垫圈10	12	GB93-87
11	Z7801-0803614	D00	Hose H.P. 高压胶管	2	
12	JT8022-96051	01	Elbow(Inc.36) 直角接头(包括36)	4	
13	JT6021-20021	03	Nipple(Inc.35) 直通接头(包括35)	2	
14	H24C7-60231	D00	Hose 多路阀回油管	1	二至四片阀 Two to four-throw
-	H24C7-60241	D00	Hose 多路阀回油管	1	五片阀 Five-throw
15	Z4590-00045	00	Clip 双钢丝卡箍 \varnothing 45	8	
16	JT8022-34011	00	Elbow(Inc.40) 直角接头(包括40)	1	
17	Z7802-13117	00	Hose H.P. 高压胶管	1	
18	H24C7-60251	00	Hose 吸油管	1	CPCD30-WS6 CPC(D)35-WS1, WS2 CPC(D)20-30-WS1, WS2
-	H24C7-60261	00	Hose 吸油管	1	CPC(D)20-30-W8 CPC(D)35-W4 CPC(D)20-35-D2, HJ, HJ2 CPQ(D)20-35-Rc, Rc1
-	H2S97-62001	00	Hose 吸油管	1	CPC(D)20-35-Ym1
19	JT7021-10011	01	Nipple(Inc.39) 直通接头(包括39)	2	
20	E24C7-60291	01	Elbow(Inc.35) 齿轮油泵接头(包括35)	1	CPCD30-WS6 CPC(D)35-WS1, WS2 CPC(D)20-30-WS1, WS2
-	E24C7-60321	01	Elbow(Inc.35) 齿轮油泵接头(包括35)	1	其余 Etceteras
21	JT8025-96031	D00	Nipple 直通接头体	1	3t, 3.5t
-	JT6021-16261	02	Nipple(Inc.22) 直通接头总成(包括22)	1	2t, 2.5t
22	Z6006-01382	00	O-ring O型密封圈13.8X2.4	2	JIS B2401

G

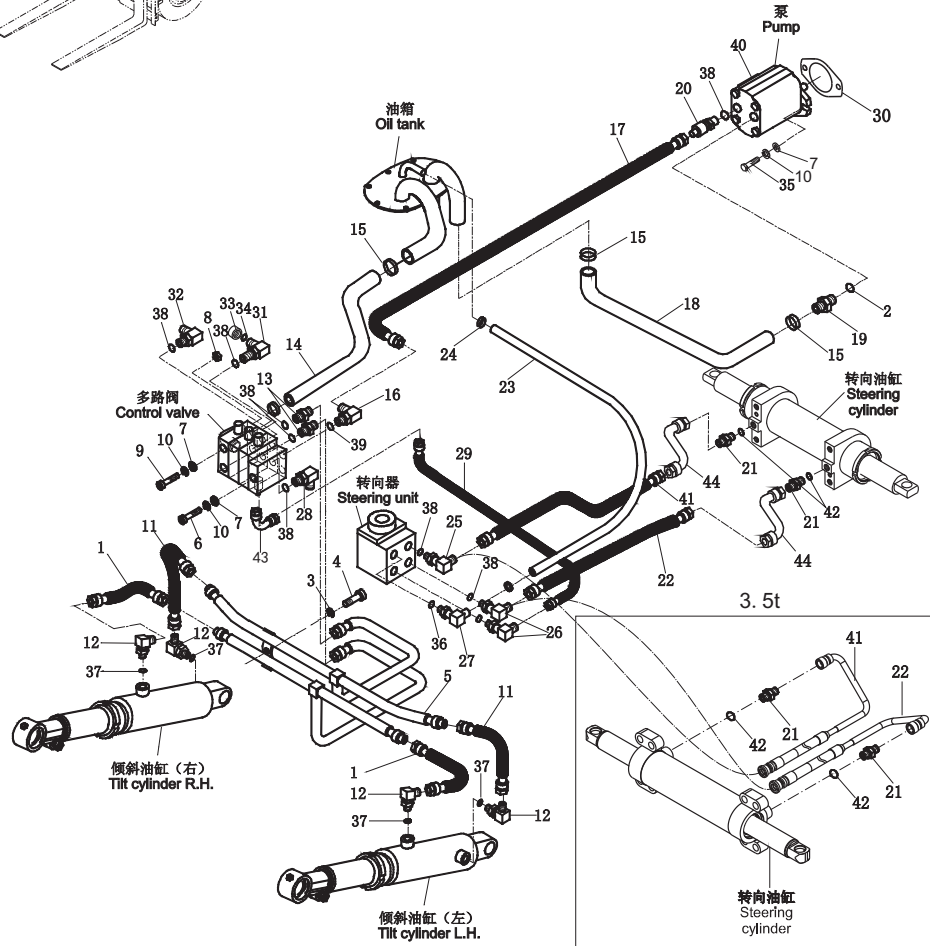


G10

液压系统/HYDRAULIC SYSTEM (EX-A)

图143/FIG143

CPC,CPCD20,25,30,35-Ku6
CPC,CPCD20,25,30-Ku11
CPCD20,25,30-Ku5



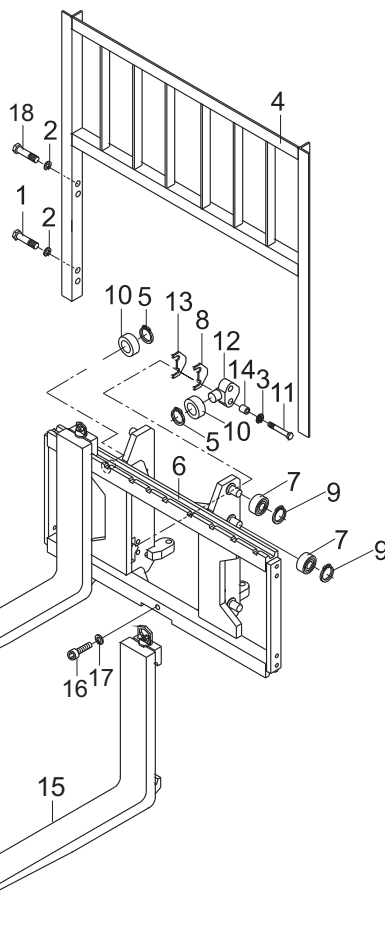
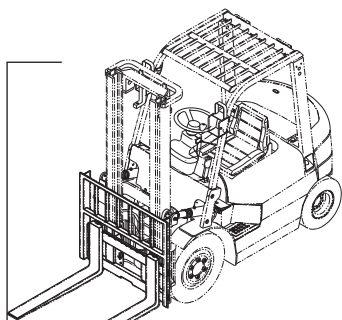
序号 Item No	图号 Part No	版本 Edition	零件名称 Description	件数 Qty	备注 Remark
A	HRE2B97601 E2B97-60001	D06	Hydraulic system 液压管路系统	1	2t
-	HRE2B97601 E2D97-60001	D06	Hydraulic system 液压管路系统	1	2.5t
-	HRE2B97601 E2F97-60001	D06	Hydraulic system 液压管路系统	1	3t,3.5t
01	E24C7-60271	D03	Hose H.P. 高压胶管总成	1	
02	Z6006-02873	00	O-ring 0型密封圈28.7x3.5	1	JIS B2401
03	B5050-00006	00	Washer,lock 垫圈6	9	GB93-87
04	B0330-06025	00	Bolt 螺栓M6X25	2	GB5783-86
05	E24C7-60251	D00	Steel pipe ass'y 倾斜缸钢管总成	1	
06	B0530-10025	00	Bolt 螺栓M10X1.25X25	1	GB5786-86
07	B5310-00010	00	Washer 垫圈10	12	GB97.1-85
08	B4223-00010	00	Nut 螺母M10X1.25	4	GB6171-86
09	B0330-10040	00	Bolt 螺栓M10X40	4	GB5783-86
10	B5050-00010	00	Washer,lock 垫圈10	12	GB93-87
11	Z7801-0803614	D00	Hose H.P. 高压胶管	2	
12	JT8022-96051	00	Elbow(Inc.37) 直角接头(包括37)	4	
13	JT6021-20021	03	Nipple(Inc.38) 直通接头(包括38)	2	
14	H24C7-60231	D00	Hose 多路阀回油管	1	二至四片阀 Two to four-throw
-	H24C7-60241	D00	Hose 多路阀回油管	1	五片阀Five-throw
15	Z4590-00045	00	Clip 双钢丝卡箍∅45	8	
16	JT8022-34011	00	Elbow(Inc.39) 直角接头(包括39)	1	
17	Z7802-13117	00	Hose H.P. 高压胶管13 II X1170	1	
18	H2B97-62004	01	Hose 吸油管	1	
19	JT7021-10011	01	Nipple(Inc.02) 直通接头(包括02)	1	
20	E24C7-60321	01	Elbow(Inc.38) 油泵接头(包括38)	1	
21	JT8025-96031	00	Nipple 直通接头体	2	3t,3.5t
-	JT6021-16261	02	Nipple(Inc.42) 直通接头总成(包括42)	2	2t,2.5t
22	Z7801-08178	D00	Hose H.P. 高压胶管8 I x1780	1	2t,2.5t
-	Z7801-08186	D00	Hose H.P. 高压胶管8 I x1860	1	3t
-	ERH24C7601 E24C7-64011	D01	Hose H.P. 高压胶管	1	3.5t
23	Z7300-13160	D00	Hose 低压胶管∅13X1600	1	
24	Z4503-16025	00	Clip 喉箍16-25	2	

G

H2

货叉与货叉架(基本)/FORK & LIFT BRACKET(NORMAL MAST M)

图159/FIG159

CPQ,CPQD35
CPC,CPCD35

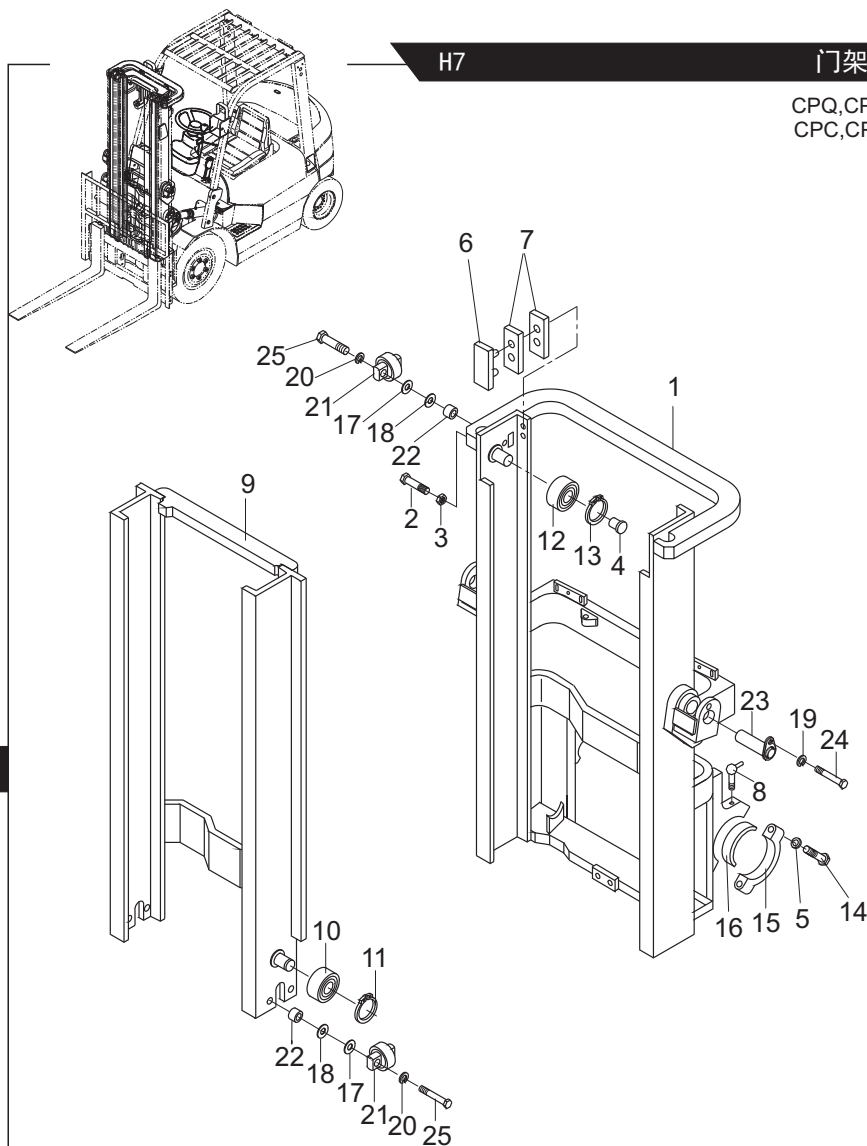
序号 Item No	图号 Part No	版本 Edition	零部件名称 Description	件数 Qty	备注 Remark
A	LH-1-30A	00	Fork & lift bracket 货叉与货叉架	1	
01	B0330-14030	00	Bolt 螺栓M14x30	4	GB5783-86
02	B5050-00014	00	Washer,lock 垫圈14	8	GB93-87
03	B5050-00016	00	Washer,lock 垫圈16	4	GB93-87
04	HRD30A8203 D28B8-20301A	00	Backrest 挡货架	1	标准 STD 宽1100
-	HRD30A8203 D30A8-20222	00	Backrest 挡货架	1	宽1200
-	HRD30A8203 D30A8-20442	00	Backrest 挡货架	1	宽1300
-	HRD30A8203 D30A8-20332	00	Backrest 挡货架	1	宽1350
05	B6150-00030	00	Snap ring 挡圈30	4	GB894.1-86
06	HRD30B8402 D30B8-31101	01	Lift bracket 货叉架	1	标准 STD 宽1100
-	HRD30B8402 D30B8-31301	01	Lift bracket 货叉架	1	宽1200
-	HRD30B8402 D30B8-31501	01	Lift bracket 货叉架	1	宽1300
-	HRD30B8402 D30B8-31401	01	Lift bracket 货叉架	1	宽1350
07	980811N	D02	End roller 主滚轮 \varnothing 119.2x55-34	6	
08	24609-42151	00	Shim 调整垫片1	AR	
09	B6150-00055	00	Snap ring 挡圈55	6	GB894.1-86
10	22198-22341	00	Retaining roller 滚轮 \varnothing 91.5	4	
11	B0430-16065	00	Bolt 螺栓M16x1.5x65	4	GB5785-86
12	24609-42131	D00	Shaft, side roller 侧滚轮轴	2	
13	24609-42161	00	Shim 调整垫片0.2	AR	
14	20037-42191	01	Spacer 垫块	4	
15	HRA32A8101	D04	Fork ass'y 货叉总成	2	
16	B8030-12020	00	Screw 螺钉M12x20	1	GB70-85
17	B5050-00012	00	Washer,lock 垫圈12	1	GB93-87
18	B0330-14025	00	Bolt 螺栓M14x25	4	GB5783-86

H

H7

门架(基本型)/MAST (NORMAL MAST M)

图164/FIG164

CPQ,CPQD35
CPC,PCPD35

序号 Item No	图号 Part No	版本 Edition	零部件名称 Description	件数 Q'ty	备注 Remark
A	LH-2-30A	00	Mast	1	门架
01	HRD30B8301	D15	Mast ass'y,outer	1	外门架总成 见选用件表 See op.parts
02	DD938-62011	D00	Screw	2	螺钉M10x45 GB77-85
03	B4123-00010	00	Nut	2	螺母M10 GB6170-86
04	DD938-62001	00	Shaft	2	限位轴
05	B5050-00016	00	Washer,lock	4	垫圈16 GB93-87
06	20028-32001*G	00	Slipper	2	限位滑块
07	20029-43231	00	Shim	0.5	调整垫片0.5
	20029-43231*1	00	Shim	1.0	调整垫片1.0
	20029-43231*2	00	Shim	AR	调整垫片1.0
08	Q700B01	00	Grease port	2	直通式滑脂嘴 ZBT33001.1-88
09	HRD30B8304	02	Mast ass'y,inner	1	内门架总成 见选用件表 See op.parts
10	980811N	D02	End roller	2	主滚轮 $\varnothing 119.2 \times 55-34$
11	B6150-00055	00	Snap ring	2	挡圈55 GB894.1-86
12	23658-33001	D01	Roller	2	滚轮2
13	B6150-00040	00	Snap ring	2	挡圈40 GB894.1-86
14	B0430-16070	00	Bolt	4	螺栓M16x1.5x70 GB5785-86
15	22018-30064	00	Cap	2	支座盖
16	D20B8-02001	00	Bushing	2	轴衬
17	REF404140 22548-34051	00	Shim	AR	调整垫圈
18	REF404140 22548-34061	00	Shim	AR	调整垫圈
19	B5050-00010	00	Washer,lock	2	垫圈10 GB93-87
20	B5050-00012	00	Washer,lock	8	垫圈12 GB93-87
21	23458-32051	00	Side roller	4	侧滚轮组II
22	23818-30071	D00	Spacer	8	垫块
23	HRH22A8309 H22A8-00201L	00	Pin axle	2	倾斜缸销轴
24	B0530-10020	00	Bolt	2	螺栓M10x1.25x20 GB5786-86
25	B0330-12040	00	Bolt	8	螺栓M12x40 GB5783-86

H

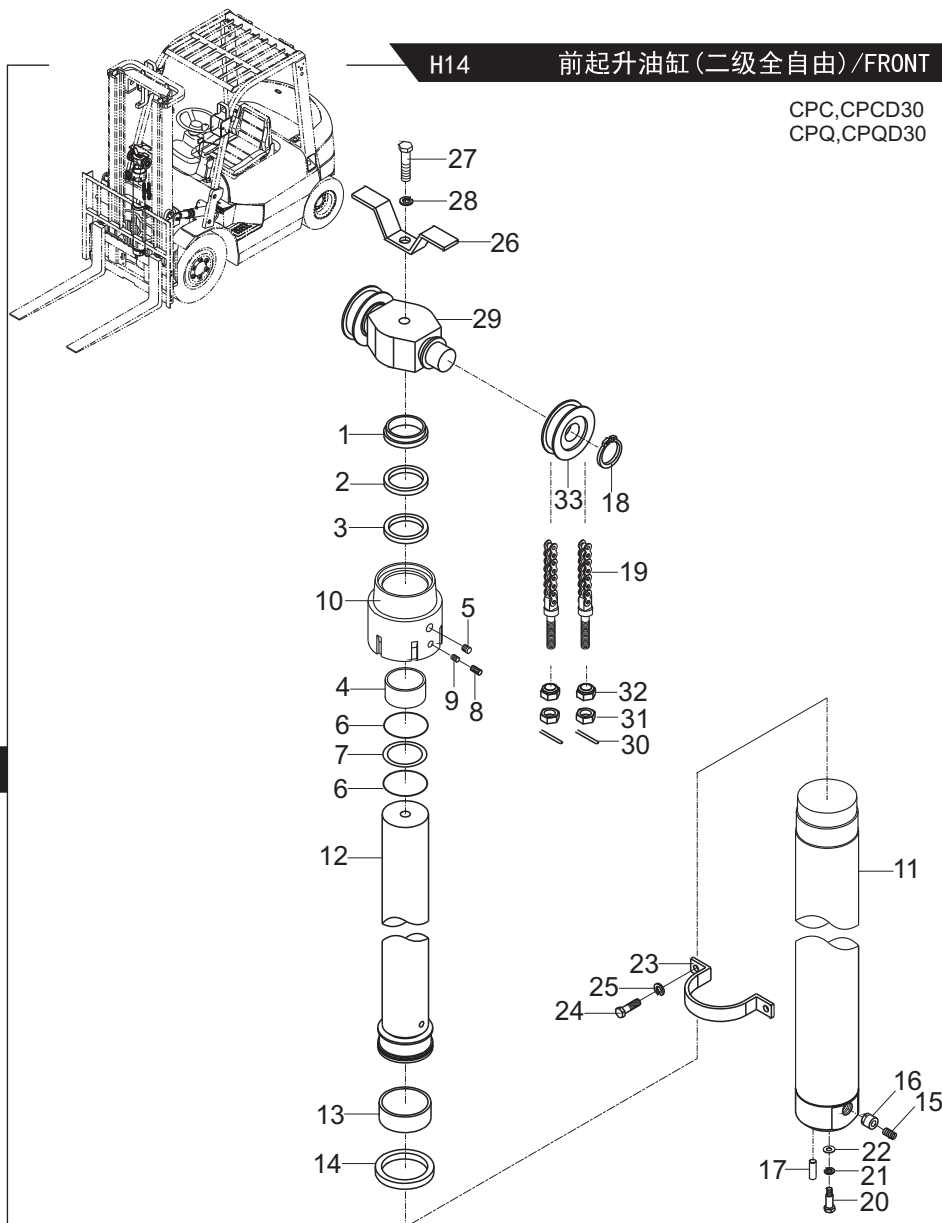
H14

前起升油缸 (二级全自由) / FRONT LIFT CYLINDER (FULL FREE 2 STAGE MAST ZM)

图171/FIG171

CPC, CPCD30
CPQ, CPQD30

前起升缸选用件 (二级全自由门架)
OPTIONAL PARTS FRONT LIFT CYLINDER (FULL FREE 2-STAGE MAST)



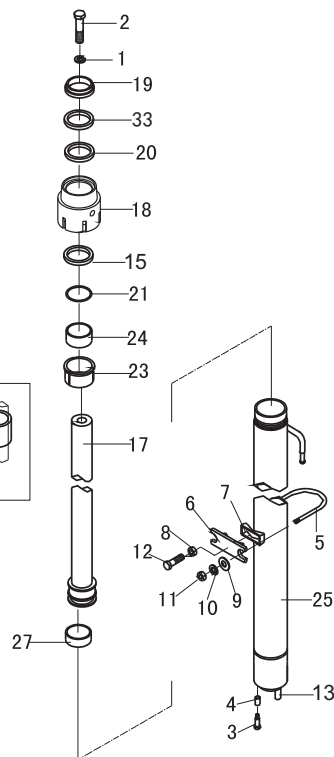
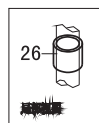
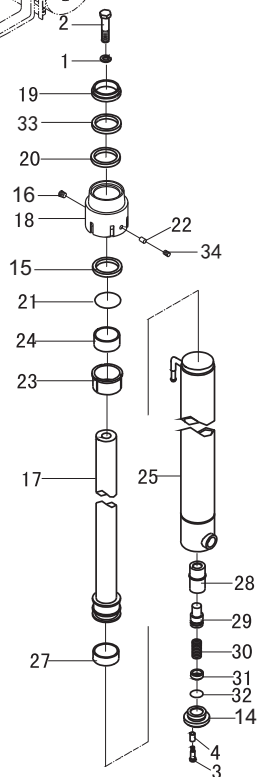
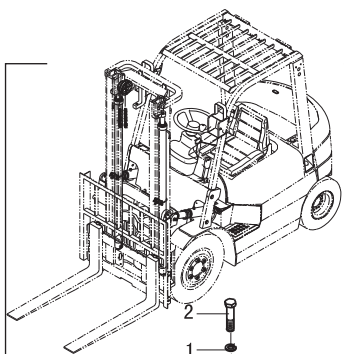
起升高度 LIFTING HEIGHT	前升降缸 LIFT CYLINDER	柱塞杆 POSITION ROD ASS' Y	前缸体 CYLINDER BODY	链条总成 CHAIN ASS' Y	备注 REMARKS
ZM 140	DL930 -50491	20038 -84190	DL930 -50691	HRLH1623011 -35	
200	-50301	-84010	-50501	-47	
225	-50311	-84020	-50511	-49	
250	-50321	-84030	-50521	-51	
270	-50331	-84040	-50531	-55	
275	-50341	-84050	-50541	-57	
300	-50351	-84000	-50551	-59	标准 (STD)
325	-50361	-84060	-50561	-63	
330	-50371	-84070	-50571	-65	
350	-50381	-84080	-50581	-69	
366	-50391	-84090	-50591	-71	
370	-50401	-84100	-50601	-73	
375	-50411	-84110	-50611	-73	
400	-50421	-84120	-50621	-81	
425	-50431	-84130	-50631	-85	
450	-50441	84140	-50641	-91	
475	-50451	-84150	-50651	-95	
500	-50461	-84160	-50661	-101	
550	-50471	-84170	-50671	-113	
600	-50481	-84180	-50681	-123	

H

H18

后起升油缸(二级全自由)/REAR LIFT CYLINDER(FULL FREE 2 STAGE MAST ZM)

图175/FIG175

CPC,CPD35
CPQ,CPQD35

序号 Item No	图号 Part No	版本 Edition	零部件名称 Description	件数 Q'ty	备注 Remark
A	HRDM930502	D02	Rear lift cylinder mount后起升油缸安装	1	
B	HRD30K0510	D02	Lift cylinder rear (Inc.14~34) 后起升油缸	2	见选用件表 See op. Parts
01	B5050-00016	00	Washer,lock 垫圈16	2	GB93-87
02	B0530-16035	00	Bolt 螺栓M16X1.5X35	2	GB5786-86
03	B0430-12030	00	Bolt 螺栓M12X1.25X30	2	GB5785-86
04	HRD20B8407 D20B8-42031	00	Sleeve 隔套	2	
05	HRD20B8404 D28B8-42521	D00	U-bolt U型螺栓	2	
06	D20B8-42041	00	Support 油缸支承块	2	
07	D20B8-42051	00	Spacer 调整块	2	
08	B4223-00010	00	Nut 螺母M10X1.25	4	GB6171-86
09	B5310-00010	00	Washer 垫圈10	4	GB97.1-85
10	B5050-00010	00	Washer,lock 垫圈10	4	GB93-87
11	B4223-00012	00	Nut 螺母M12X1.25	2	GB6171-86
12	B0530-12050	00	Bolt 螺栓M12X1.25X50	2	GB5786-86
13	B3120-10026	00	Pin 销B10X26	1	
14	H22N0-87071	D00	Seat 底座	1	
15	D30K8-54011	D00	Snap ring 挡片	1	
16	22518-40151	02	Plug 螺塞ZG1/4"	4	
17	HRD30K0511	D00	Piston R.H. 活塞杆总成(右)	1	见选用件表 See op. Parts
-	HRD30K0511	D00	Piston L.H. 活塞杆总成(左)	1	见选用件表 See op. Parts
18	D30K8-54021	00	Cap 导向套	2	
19	HRF339093 24459-42271	D00	Dust ring 防尘圈d45	2	
20	22570-53201	00	U-ring U型密封圈45x55x6	2	
21	Z6003-06803	00	O-ring O型密封圈68x3.1	2	GB/T1235-1976
22	D20B8-42341	D00	Plug 塞子	2	
23	D30K8-54031	00	Sleeve 衬套	2	
24	Z2114-04530	00	Bushing 钢背轴承4530	2	
25	HRD30K0514	D00	Cylinder R.H. 缸体(右)	1	见选用件表 See op. Parts
-	HRD30K0513	D00	Cylinder L.H. 缸体(左)	1	见选用件表 See op. Parts
26	HRD30K0515	D00	Spacer 调整套	2	见选用件表 See op. Parts

H

258

HELI

CLICK HERE TO **DOWNLOAD** THE COMPLETE MANUAL

- Thank you very much for reading the preview of the manual.
- You can download the complete manual from: www.heydownloads.com by clicking the link below



- Please note: If there is no response to CLICKING the link, please download this PDF first and then click on it.

CLICK HERE TO **DOWNLOAD** THE COMPLETE MANUAL