



H2000系列1-1.8t

内燃平衡重式叉车

Counterbalanced Type Forklift Truck with Engine

零件目录

PARTS MANUAL

HELI 安徽合力股份有限公司
ANHUI HELI CO., LTD.

CLICK HERE TO **DOWNLOAD** THE COMPLETE MANUAL

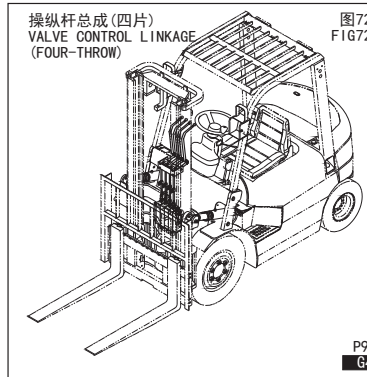
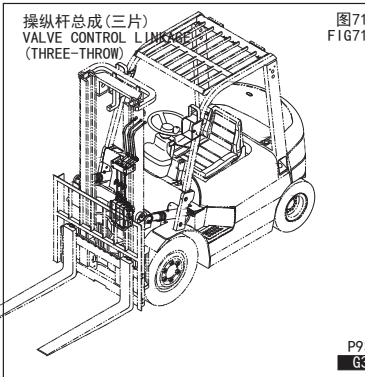
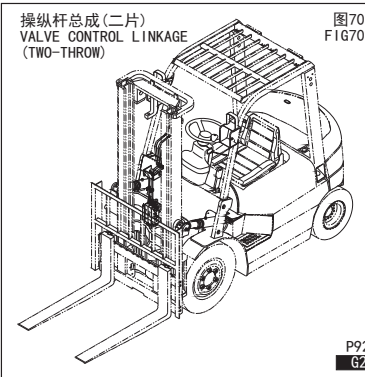
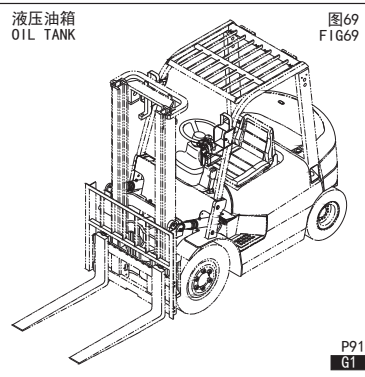
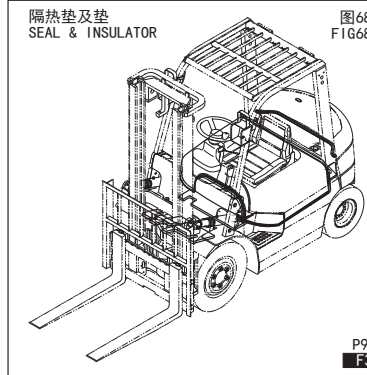
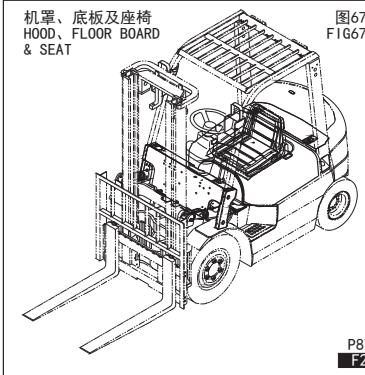
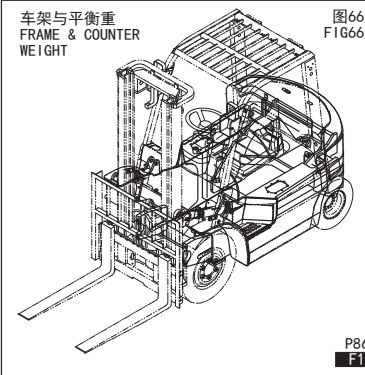
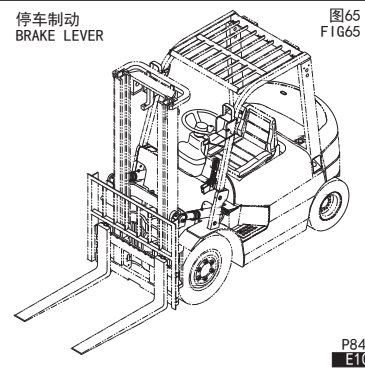
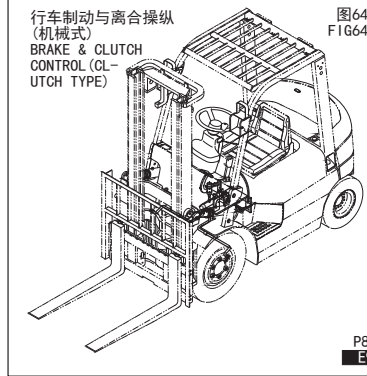
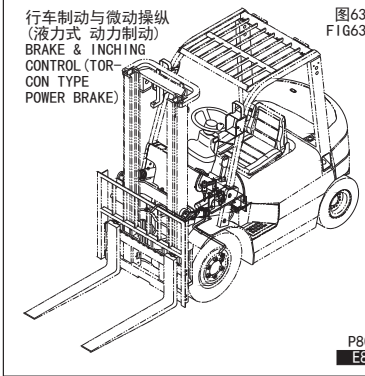
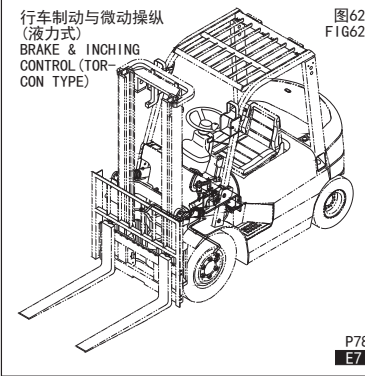
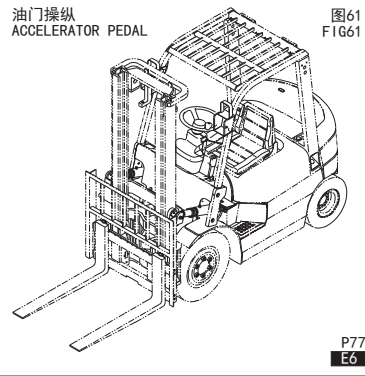
- Thank you very much for reading the preview of the manual.
- You can download the complete manual from: www.heydownloads.com by clicking the link below



- Please note: If there is no response to CLICKING the link, please download this PDF first and then click on it.

CLICK HERE TO **DOWNLOAD** THE COMPLETE MANUAL

目录 INDEX



E
F
G

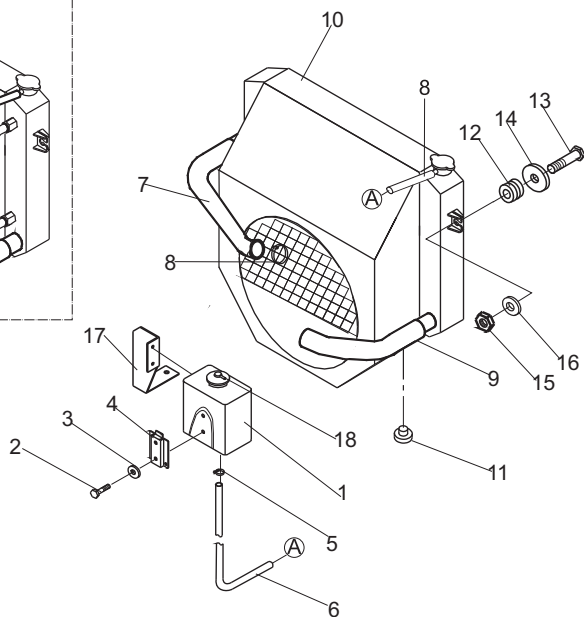
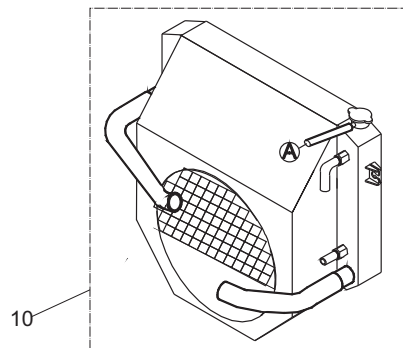
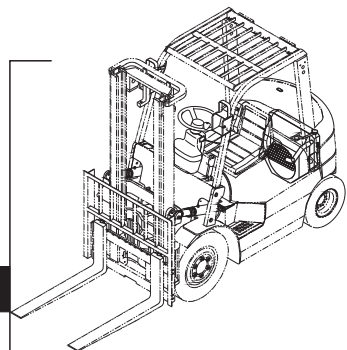
A8

冷却系统/COOLING SYSTEM

图8/F1G8

CPC,CPCD10,15,18-WS1

序号 Item No	图号 Part No	版本 Edition	零部件名称 Description	件数 Q'ty	备注 Remark
A	HRH15C2101 H15C2-10001	D08	Cooling system	冷却系统	1 CPC
-	HRH15C2101 H15D2-10001	D08	Cooling system	冷却系统	1 CPCD
01	H24C2-10201	00	Tank	副水箱	1
02	B1310-06016	00	Screw	螺钉M6x16	2
03	B5050-00006	00	Lock washer	垫圈6	2
04	H24C2-12011	01	Bracket	支架	1
05	Z4590-00014	00	Clip	双钢丝卡箍 φ 14	2
06	Z7500-08170	00	Hose	橡胶管 φ 8x1700	1
07	A15E2-12011	D00	Hose	进水管	1
08	Z4590-00045	00	Clip	双钢丝卡箍 φ 45	4
09	H15C2-12022	D02	Hose	出水管	1
10	H15C2-10201	D03	Radiator	水箱总成	1 标配 STD CPC
-	H15D2-10201	D03	Radiator	水箱总成	1 标配 STD CPCD
-	H15C2-10301	D00	Radiator	水箱总成	1 选配 Option CPC
-	H15D2-10301	D00	Radiator	水箱总成	1 选配 Option CPCD
11	A22A2-12001	00	Rubber	橡胶垫 I	2
12	A22A2-12031	00	Rubber	橡胶垫 II	2
13	A22A2-12041	00	Bolt	螺栓	2
14	22252-32251	00	Washer	垫片	2
15	B4023-00008	00	Nut	螺母M8	2 GB6184-86
16	B5310-00010	00	Washer	垫圈10	2 GB96-85
17	H15C2-12011	D01	Bracket	副水箱支架	1
18	Z7400-08020	00	Hose, vinyl	透明胶管 φ 8x200	1



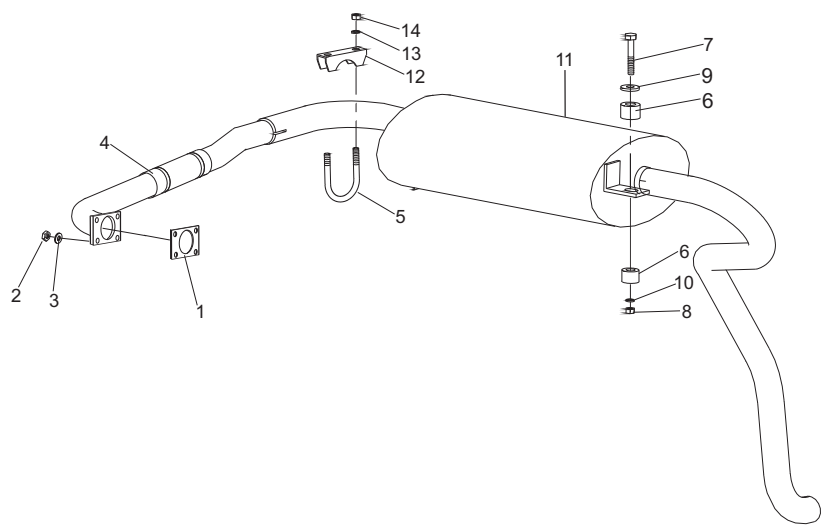
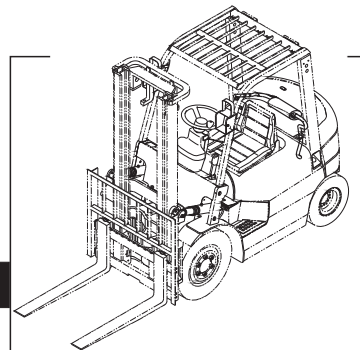
A18

排气系统/EXHAUST SYSTEM

图18/FIG18

CPC,PCPD10,15,18-WS1

序号 Item No	图号 Part No	版本 Edition	零部件名称 Description	件数 Q'ty	备注 Remark
A	H15C2-30001	D04	Exhaust system 排气系统	1	
01	25592-32011	00	Packing 垫片	1	
02	B4413-00010	00	Nut 螺母M10X1.25	4	GB6173-86
03	B5050-00010	00	Washer,lock 垫圈10	4	GB93-87
04	H15C2-30201	D02	Pipe ass'y 前排气管总成	1	
05	21191-03120G	D00	U-clamp 卡轴	1	
06	22252-32241	00	Rubber 橡胶垫	4	
07	A22A2-32021	00	Bolt 螺栓	2	
08	B4017-00008	00	Nut 螺母M8	2	GB6184-86
09	22252-32251	00	Shim 垫片	2	
10	B5050-00010	00	Washer,lock 垫圈10	2	GB93-87
11	HRH12C2302 H12C2-30201	00	Muffler 消声器	1	1t
-	HRH12C2302 H12M2-30201	00	Muffler 消声器	1	1.5t,1.8t
-	HRH12C2304 H12C2-30401	D00	Muffler 灭火消声器	1	选用Option 1t
-	HRH12C2304 H12M2-30401	D00	Muffler 灭火消声器	1	选用Option 1.5t,1.8t
-	E12M2-30201	D00	Muffler 净化消声器	1	选用Option 1.5t,1.8t
12	21191-03110G	D00	Stopper 卡板	1	
13	B5050-00008	00	Washer,lock 垫圈8	2	GB93-87
14	B4116-00008	00	Nut 螺母M8	2	GB6170-86

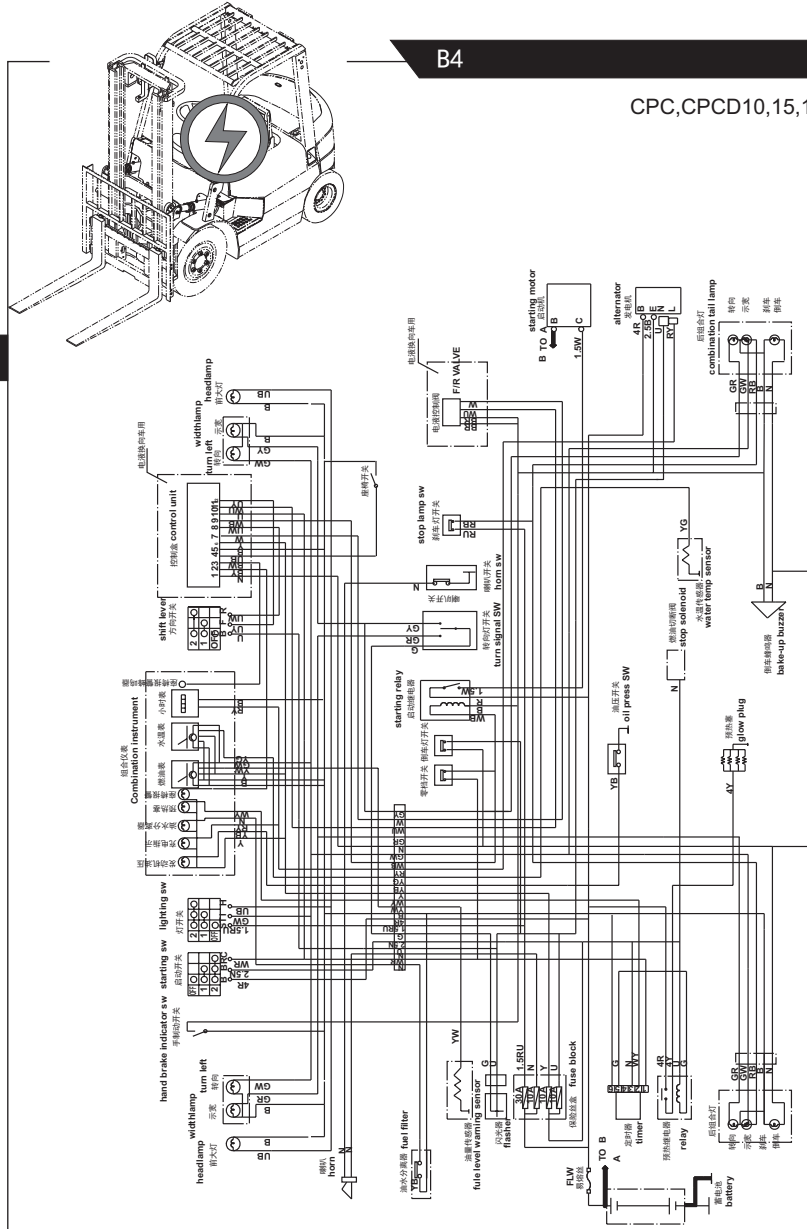


B4

电气系统/ELECTRIC SYSTEM

图24/FIG24

CPC, CPCD10, 15, 18-HJ, HJ2



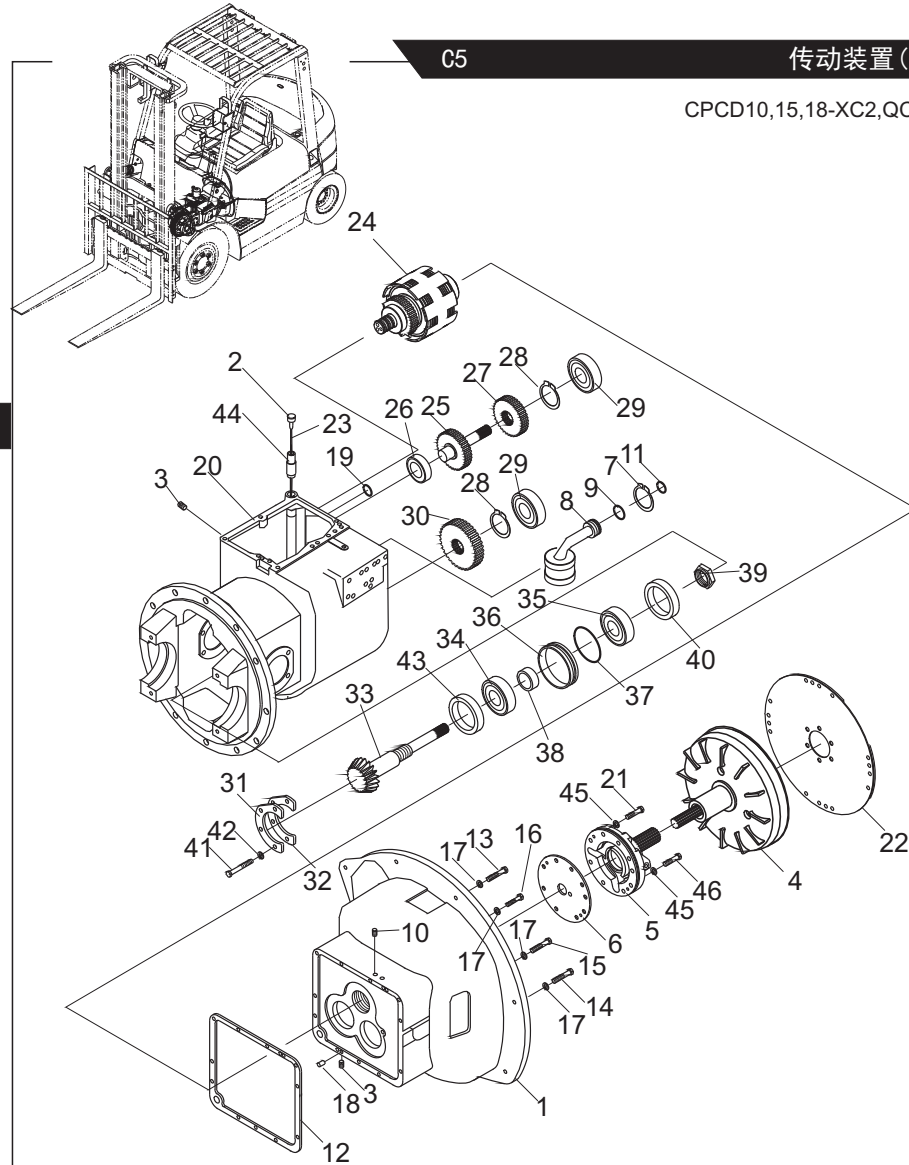
序号 Item No	图号 Part No	版本 Edition	零件名称 Description	件数 Q'ty	备注 Remark
28	D03HCKJ012	D00	Control box 中央控制盒	1	电液控制 Electric-hydraulic
29	B1210-06016	00	Screw 螺钉M6X16	4	GB818-85
30	B5050-00006	00	Lock washer 垫圈6	4	GB93-87
31	B5310-00006	00	Washer 垫圈6	4	GB97.1-85
32	D03HCKJ012Q	D02	Control box 中央控制盒	1	电液控制+全套OPS Electric-hydraulic
33	Z8421-18214	D00	Fuel Level warning sensor 油量传感器	1	
34	A23F2-40420	D00	Cable 电瓶引线(+)	1	
35	A22A2-40400	00	Cable 电瓶引线(-)	1	
36	D016-QW-80	D00	Battery 蓄电池	1	
37	A22A2-40900	D01	Fusible link wire 易熔线	1	
38	Z8510-120DZ	00	Back buzzer 倒车蜂鸣器	1	
39	B1210-06016	00	Screw 螺钉M6X16	1	GB818-85
40	B5050-00006	00	Lock washer 垫圈6	1	GB93-87
41	B4123-00006	00	Nut 螺母6	1	GB6170-86
42	B5310-00006	00	Washer 垫圈6	2	GB97.1-85
43	HRA92A2401	D01	Clip 电瓶正极引线卡	1	
44	5-82550-029-0	D00	Relay 继电器	1	
45	H24C2-40491	D00	Caution light 警示灯	1	选用 Option
46	H24C2-40431	D00	Cable, caution light 警示灯线束	1	选用 Option
47	XH9-3MJ	D00	Caution light 警示灯	1	选用 Option
48	H24C2-40492	D00	Caution light 警示灯	1	选用 Option
49	H24C2-40432	D00	Cable, caution light 警示灯线束	1	选用 Option
50	D09JK211J	D00	Switch, caution light 警示灯开关	1	选用 Option
51	H25S2-40401	D00	Rear worklight cable 后工作灯过渡线	1	选用 Option
52	AF932-40401WZ	D00	Control box 集成电路盒	1	机液控制+中性包装 Machine-hydraulic Neutral Packing
53	D03HCKJ012WZ	D00	Control box 中央控制盒	1	电液控制+中性包装 Electric-hydraulic Neutral Packing
54	D03HCKJ012QWZ	D00	Control box 中央控制盒	1	电液控制+全套OPS+中性 包装Electric-hydraulic OPS Neutral Packing

C5

传动装置(液力式)/DRIVE UNIT (TOR-CON TYPE)

图32/FIG32

CPCD10,15,18-XC2,QC



序号 Item No	图号 Part No	版本 Edition	零部件名称 Description	件数 Q'ty	备注 Remark
A	A81B3-80301	D00	Transmission case ass'y 液力变速箱总成	1	
01	22502-52113G	00	Case, tor-con 变矩器壳体	1	
02	12163-82232	D.2	Cap 加油口盖	1	
03	H25S3-84001	01	Plug 螺塞总成	1	
04	12163-80301G	00	Tor-con 变矩器	1	
05	15583-80221	02	Charging pump ass'y 供油泵总成	1	See Fig.35
06	15583-82201	00	Gasket 垫片	1	
07	B6150-00035	00	Snap ring 挡圈35	1	GB894-86
08	12163-82531	00	Strainer 滤油器(1)	1	
09	Z6004-03503	00	O-ring 0形圈35X3.1	1	GB1235-76
10	G0121-00011	D00	Plug 内六角螺塞1/4"	2	Q/ZB85-2
11	Z6004-02804	00	O-ring 0形圈28X3.5	1	GB1235-76
12	11243-82501	00	Gasket 垫片	1	
13	B0330-10080	00	Bolt 螺栓M10X80	1	GB5783-86
14	B0330-10055	00	Bolt 螺栓M10X55	3	GB5783-86
15	B0330-10050	00	Bolt 螺栓M10X50	1	GB5783-86
16	B0330-10030	00	Bolt 螺栓M10X30	4	GB5783-86
17	B5050-00010	00	Washer, lock 垫圈10	8	GB93-87
18	B3120-12020	00	Pin 销B12X20	2	GB119-76
19	Z6004-01502	00	O-ring 0形圈15X2.4	1	GB1235-76
20	15583-82591	D05	Case, mission 壳体	1	
21	B0330-08045	00	Bolt 螺栓M8X45	4	GB5783-86
22	13683-82021	00	Plate 弹性板	1	
23	12163-82421	00	Gasket 衬垫	1	
24	21182-52001	D01	Clutch, hydraulic 离合器总成	1	See Fig.36
25	12163-42201	00	Shaft, idler 惰轮轴	1	
26	Z-6206-2RS	00	Bearing 轴承6206-2RS	1	GB/T276-94
27	12163-42211	00	Gear, idler 惰轮	1	
28	B6050-00024	00	Snap ring 挡圈24	2	GB893.1-86
29	Z-6207	00	Bearing 轴承6207	2	GB/T276-94

C

CLICK HERE TO **DOWNLOAD** THE COMPLETE MANUAL

- Thank you very much for reading the preview of the manual.
- You can download the complete manual from: www.heydownloads.com by clicking the link below



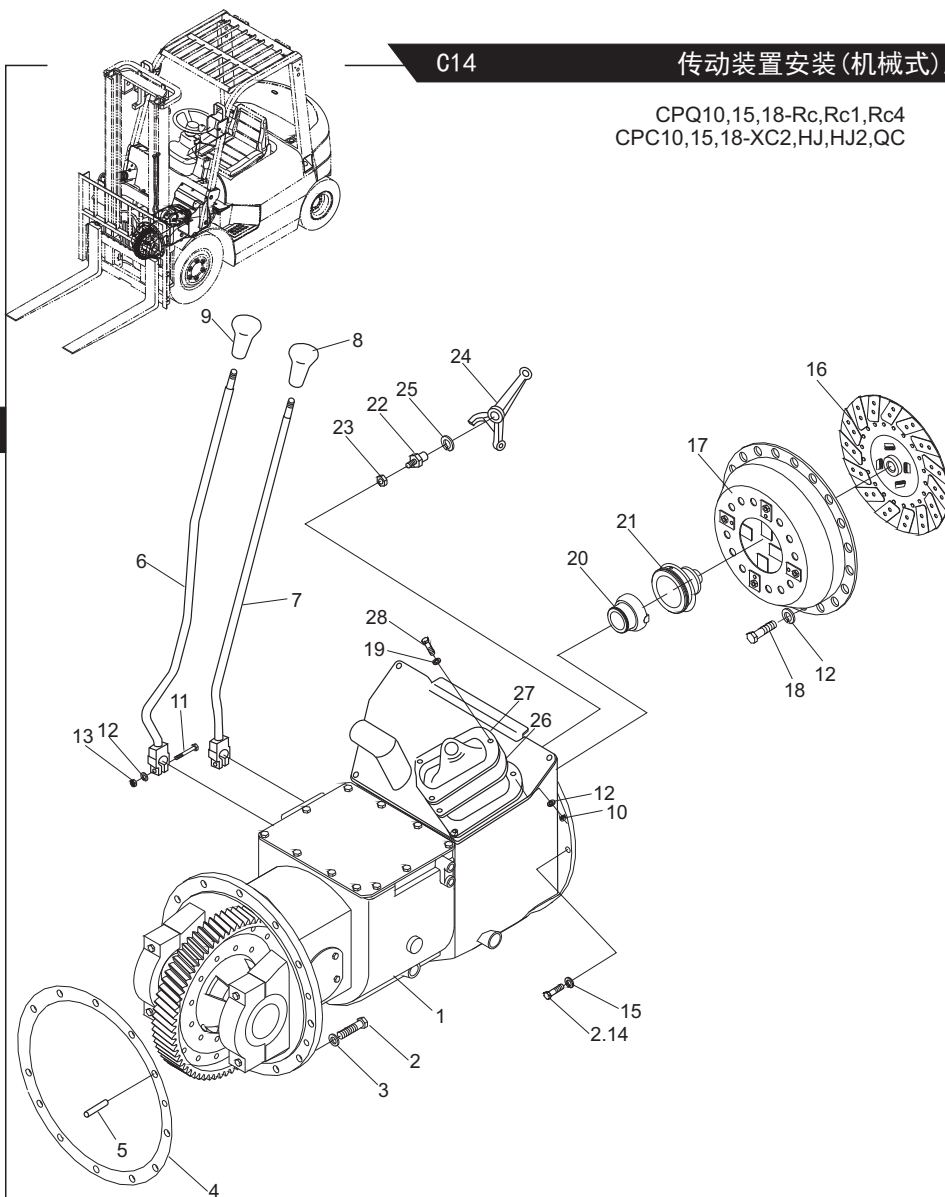
- Please note: If there is no response to CLICKING the link, please download this PDF first and then click on it.

CLICK HERE TO **DOWNLOAD** THE COMPLETE MANUAL

C14

传动装置安装(机械式)/DRIVE UNIT MOUNT (CLUTCH TYPE)

图41/FIG41

CPQ10,15,18-Rc,Rc1,Rc4
CPC10,15,18-XC2,HJ,HJ2,QC

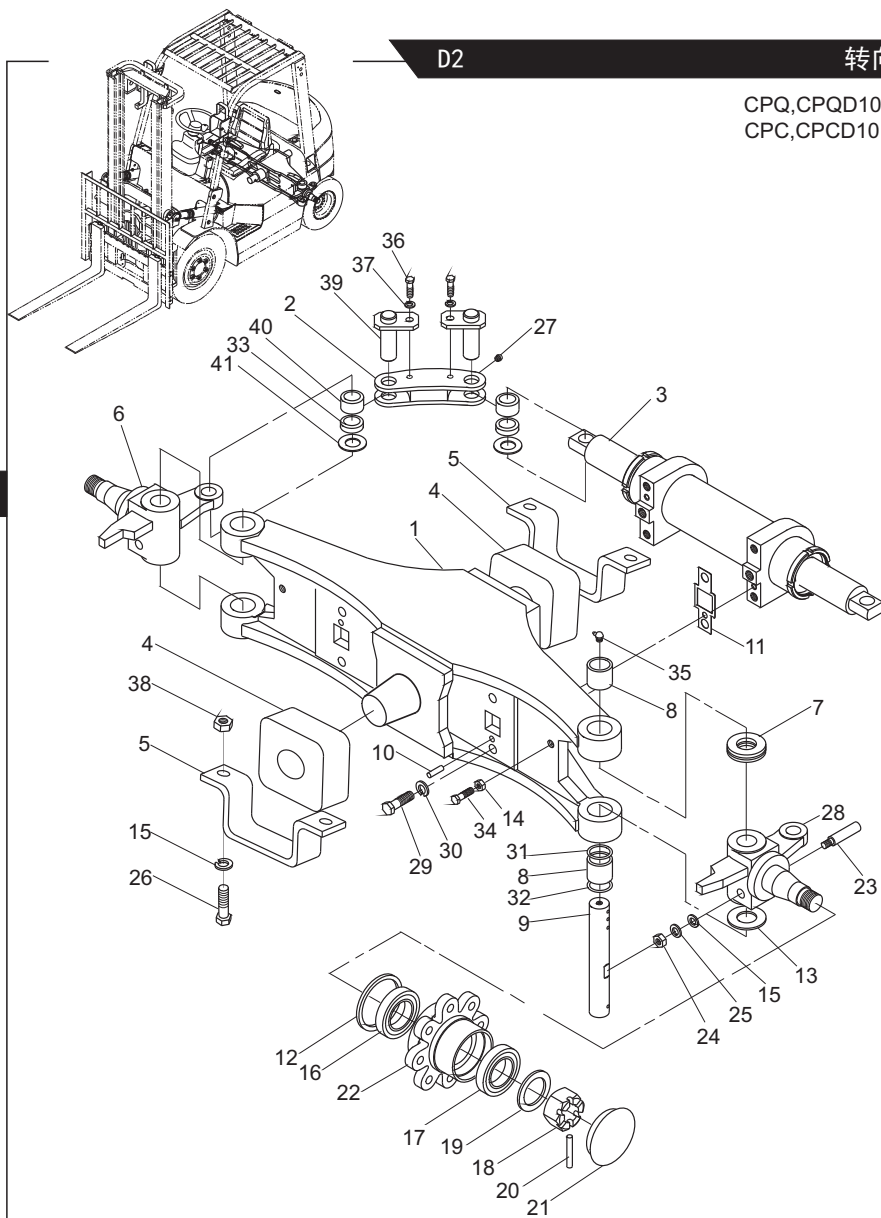
序号 Item No	图号 Part No	版本 Edition	零部件名称 Description	件数 Q'ty	备注 Remark
01	HRA0003401 11232-50001	D00	Drive unit 传动装置	1	
02	B0530-10035	00	Bolt 螺栓M10X1.25X35	12	CPC10-18-XC2,QC GB5786-86
				8	CPC10-18-HJ,HJ2 CPQ10-18-Rc,RC1,RC4
03	B5050-00010	00	Washer, lock 垫圈10	12	GB93-87
04	25592-52001	D00	Packing 垫片	1	
05	GB119-86	00	Pin, parallel 销B8X30	1	
06	A12A2-50221	D00	Lever, speed change 变速杆	1	
07	A12A2-50321	D00	Lever, direction change 换向杆	1	
08	A22A2-52002	D00	Knob, dirction 换向手柄	1	
09	A22A2-52022	D00	Knob, speed 变速手柄	1	
10	B4125-00008	00	Nut 螺母M8	2	GB6170-86
11	B0212-08035	00	Bolt 螺栓M8X35	2	GB5782-86
12	B5050-00008	00	Washer, lock 垫圈8	10	GB93-87
13	B4116-00008	00	Nut 螺母M8	2	GB6170-86
14	B0230-10035	00	Bolt 螺栓M10X35	9	GB5782-86
15	B5050-00010	00	Washer, lock 垫圈10	9	GB93-87
16	13453-10301	D00	Clutch disc Ass'y 离合器摩擦片总成	1	CPC10-18-XC2,QC
-	114A3-10201	D00	Clutch disc Ass'y 离合器摩擦片总成	1	CPC10-18-HJ,HJ2 CPQ10-18-Rc,RC1,RC4
17	13453-10402G	D00	Clutch cover 离合器压盘及盖总成	1	CPC10-18-XC2,QC
-	13553-10301A	D00	Clutch cover 离合器压盘及盖总成	1	CPC10-18-HJ,HJ2 CPQ10-18-Rc,RC1,RC4
18	B0330-08020	00	Bolt 螺栓M8X20	6	GB5783-86
19	B5310-00008	00	Washer 垫圈8	2	GB97.1-85
20	15533-12031G	D00	Retainer, bearing 分离轴承套筒	1	国产件Made in china CPC10-18-XC2,QC
-	13453-12021G	D00	Retainer, bearing 分离轴承套筒	1	国产件Made in china CPC10-18-HJ,HJ2 CPQ10-18-Rc,RC1,RC4
-	15533-12031	D00	Retainer, bearing 分离轴承套筒	1	进口件Imported CPC10-18-XC2,QC
-	13453-12021	D00	Retainer, bearing 分离轴承套筒	1	进口件Import CPC10-18-HJ,HJ2 CPQ10-18-Rc,RC1,RC4
21	Z-9688211	00	Bearing, thrust 分离轴承9688211	1	国产件 Made in china
-	15533-10301	D00	Bearing, thrust 分离轴承	1	进口件Import CPC10-18-XC2,QC
-	13453-12031	D00	Bearing, thrust 分离轴承	1	进口件Imported CPC10-18-HJ,HJ2 CPQ10-18-Rc,RC1,RC4
22	13073-12001	00	Pivot, clutch yoke 支撑螺栓	1	
23	B4216-00012	00	Nut 螺母M12X1.25	1	GB6171-86
24	10113-10122	00	Yoke, clutch 分离叉	1	
25	10113-10081	D00	Snap ring 弹性挡圈	1	
26	13453-12052	00	Cover dust 分离叉护罩	1	
27	13453-12062	00	Retainer, cover 压板	1	
28	B0330-08016	00	Bolt 螺栓M8H16	2	GB5783-86

C

D2

转向桥/STEERING AXLE

图53/FIG53

CPQ,CPQD10,15,18
CPC,PCPD10,15,18

序号 Item No	图号 Part No	版本 Edition	零件名称 Description	件数 Q'ty	备注 Remark
A	H24C4-30001	D06	Steering axle 横置油缸转向桥	1	
01	H12C4-30202	D02	Axle ass'y 转向桥总成	1	
02	HRH12C4302 H12C4-32041	D00	Link 连杆(左)	1	
-	HRH12C4302 H12C4-32051	D00	Link 连杆(右)	1	
03	H12C4-50301S	01	Steering cylinder ass'y 转向油缸总成	1	See Fig.55
04	H24N4-32451	02	Rubber 减震块	2	
05	H24N6-12142	02	Bracket 支架	2	
06	H12C4-30301	D00	Knuckle R.H. ass'y 右转向节总成	1	198905
07	Z-198905	00	Bearing 单列推力球轴承	2	GB290-82
08	Z-942/25	00	Bearing 滚针轴承942/25	4	
09	24234-32181	00	Pin,king 转向节主销	2	
10	B3120-08018	00	Pin 销8X18	2	GB119-86
11	H12C4-32111	D00	Shim 调整垫	4	
12	22574-32102	D00	Seal 骨架密封圈	2	
13	20114-30091	00	Shim 转向节调整垫	5	
14	B4218-00010	00	Nut 螺母M10X1.25	2	GB6171-86
15	B5050-00016	00	Washer,lock 垫圈16	2	GB93-87
16	Z-7208E	00	Bearing 轴承7208E	2	GB297-84
17	Z-7206E	00	Bearing 轴承7206E	2	GB297-84
18	B4218-00024	00	Nut 螺母M24X2	2	GB6171-86
19	B5310-00024	00	Washer 垫圈24	2	GB97.1-85
20	B3012-05045	00	Pin 销5X45	2	GB92-86
21	22194-32361	00	Cap 轮毂盖	2	
22	24234-32221	D00	Hub 转向轮毂	2	
23	G27Z4-32011	D00	Pin 紧定螺钉M12X30	2	
24	B4313-00012	00	Nut 螺母M12	2	GB6172-86
25	B5050-00012	00	Washer 垫圈12	2	GB93-87
26	B0230-16055	00	Bolt 螺栓M16X55	4	GB5782-86
27	Q700B06	00	Fitting grease 直通式滑脂嘴	4	ZBT33001.1-88
28	H12C4-30401	D00	Knuckle L.H. ass'y 左转向节总成	1	

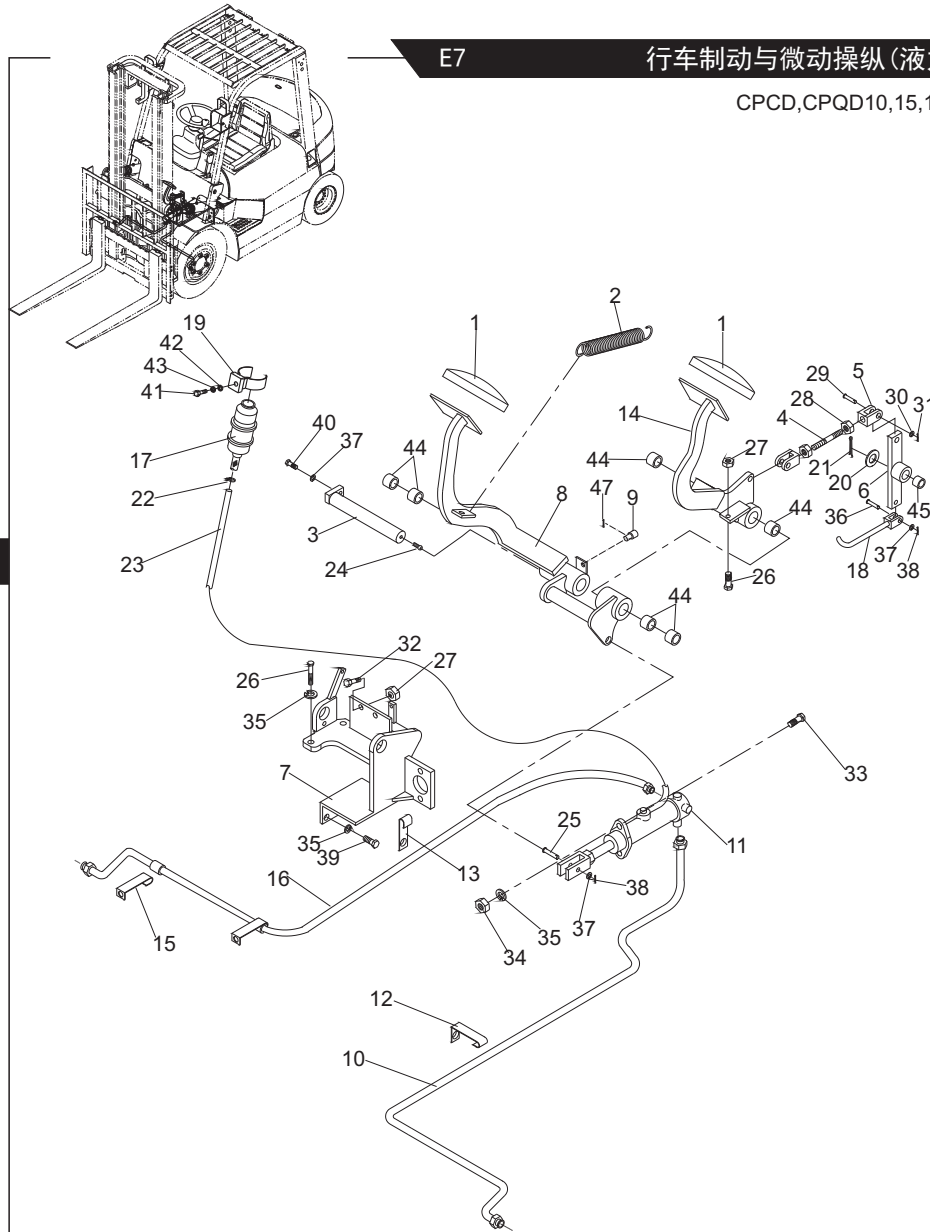
D

E7

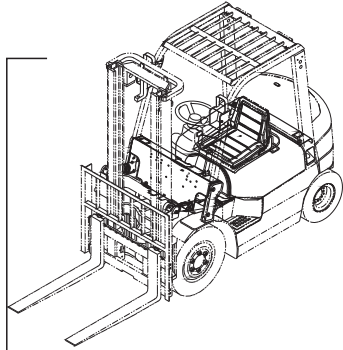
行车制动与微动操纵(液式)/BRAKE & INCHING CONTROL (TOR-CON TYPE)

图62/FIG62

CPCD,CPQD10,15,18



序号 Item No	图号 Part No	版本 Edition	零部件名称 Description	件数 Q'ty	备注 Remark
A	REF105264	D01	Brake & inching control 行车制动与微动操纵装置	1	
01	25595-42071	02	Pedal pad 踏板垫	2	
02	20155-30061	D02	Tension spring 拉簧	2	
03	25595-42182	00	Oil axle 油轴	1	
04	23745-42031	D00	Screw 螺杆	1	
05	REF339703	D00	Clevis 支耳	2	
06	21245-42021	D00	Rocker arm(Inc.45) 摇臂(包含45)	1	
07	21245-42001	D00	Bracket 支架	1	
08	25595-40212	D00	Braking pedal (Inc.44) 制动踏板(包含44)	1	
09	H25S5-43211	00	Nylon jacking 尼龙顶轴	1	
10	24235-42161	D00	Hose 油管总成	1	
11	25595-40302	01	Brake pump(Inc.46) 制动总泵(包含46)	1	
12	24245-42301	D00	Clip 管夹	1	
13	24245-42201	D00	Clip 管夹	1	
14	25605-40212	D00	Inching pedal (Inc.44) 微动踏板(包含44)	1	
15	24235-42201	D00	Clip 管夹	1	
16	24235-42181	D00	Hose 油管总成	1	
17	23775-42102	D00	Tank, reserve 储油罐	1	
18	22505-42001	00	Link 连接杆	1	
19	H24C5-32001	D00	Clip 夹箍	1	
20	B5310-00016	00	Washer 垫圈16	1	GB97.1-85
21	B3010-04025	00	Cottering 开口销4X25	1	
22	Z4690-00016	00	Clip 双钢丝卡箍	2	
23	Z7302-10090	D00	Hose 制动胶管L=900	1	
24	Q700B01	D00	Oil cup 直通式滑脂嘴	1	
25	B3220-08026	00	Pin 销轴8X26	1	
26	B0530-10045	00	Bolt 螺栓M10x1.25x40	3	GB5786-86
27	B4413-00010	00	Nut 螺母M10x1.25	3	GB6173-86
28	B4123-10010	00	Nut 螺母M10x1.25	1	GB6170-86
29	B3220-10032	00	Pin 销轴10X32	2	GB882-86

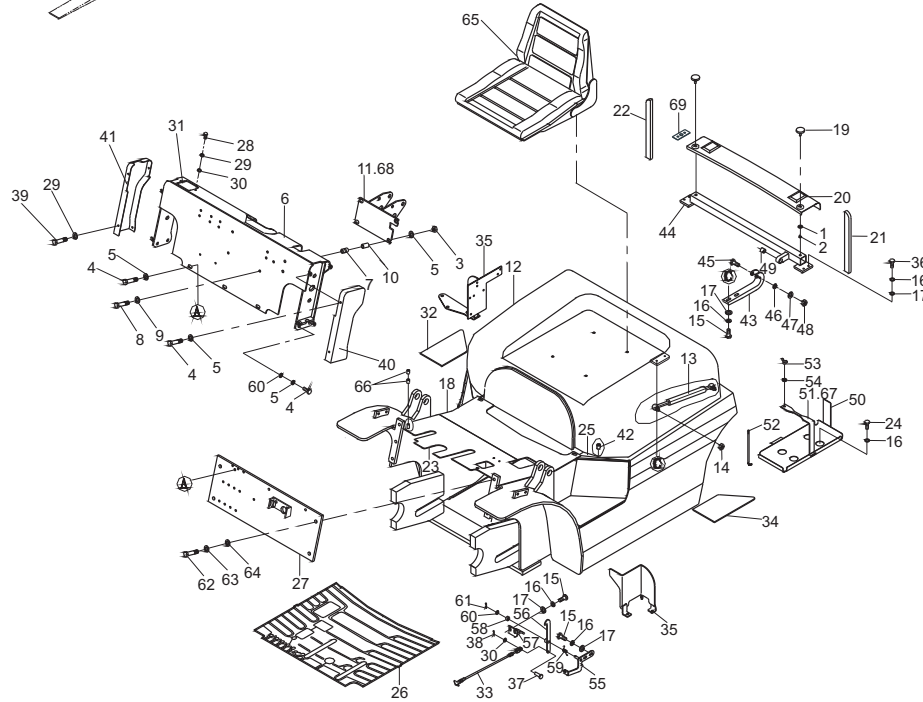


F2

机罩、底板及座椅/HOOD, FLOOR BOARD & SEAT

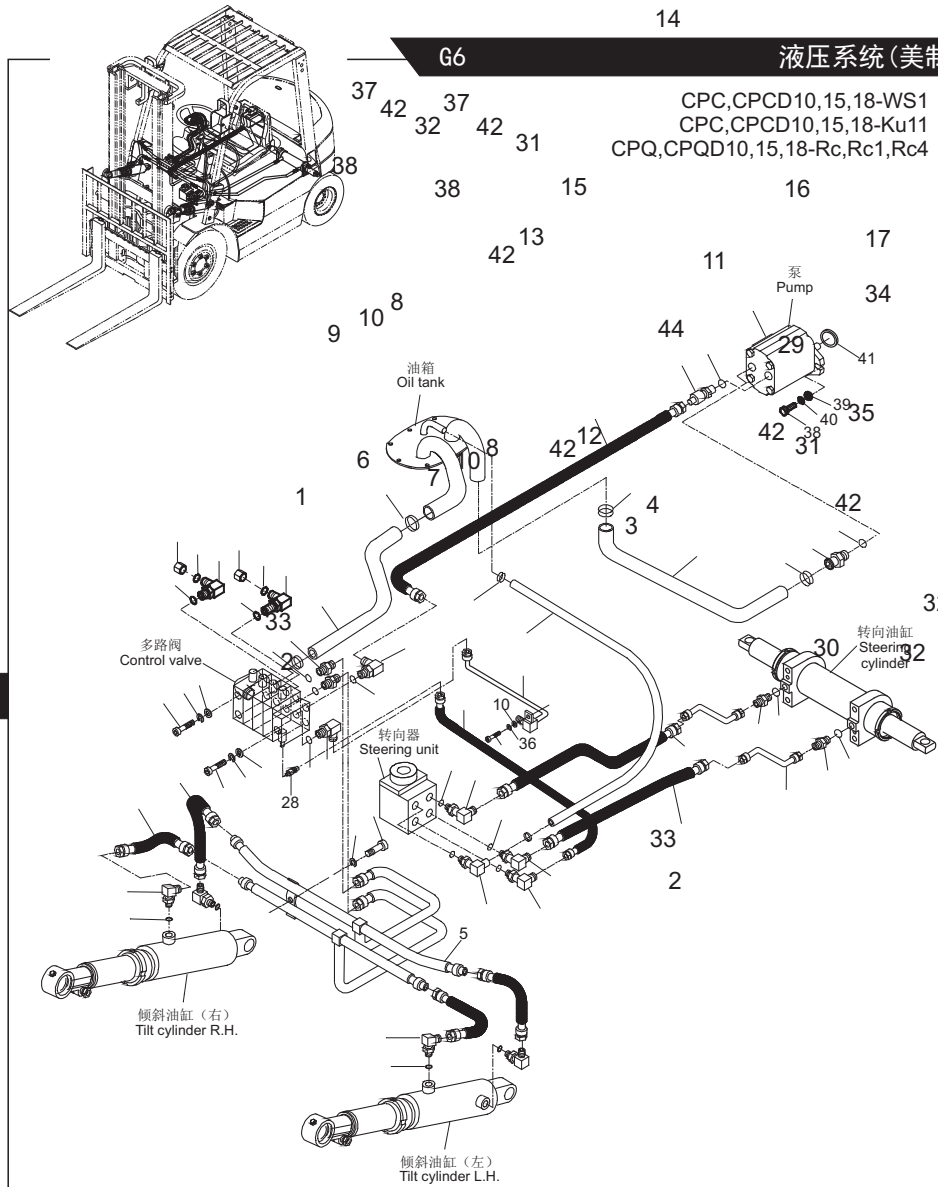
图67/FIG67

CPC, CPCD10, 15, 18
CPQ, CPQD10, 15, 18



序号 Item No	图号 Part No	版本 Edition	零部件名称 Description	件数 Q'ty	备注 Remark
26	HRH12C6508 H12D6-56001	D02	Gasket	底板垫	1 CPCD, CPQD
-	HRH12C6508 H12C6-56001	D02	Gasket	底板垫	1 CPC, CPQ
27	H12C6-40601	D04	Plate	前板总成	1
28	B1210-06016	00	Screw	螺钉M6X16	2 GB818-86
29	B5050-00006	00	Washer, lock	垫圈6	10 GB93-87
30	B5310-00006	00	Washer	垫圈6	3 GB97.1-85
31	H24C6-42072	D00	Box	工具箱	1
32	HRH26D6413 H26D6-42161	D01	Treadboard R.H.	踏板垫(右)	1
33	A24K6-40901	D02	Cable	拉索总成	1
34	HRH26D6413 H26D6-42151	D01	Treadboard L.H.	踏板垫(左)	1
35	H12C6-40501	D01	Board, elector element	电气板总成	1 CPQ(D)10~18
-	H11U6-40301	D02	Board, elector element	电气板总成	1 CPC(D)10~18- Ku11
-	H14U1-40201	D01	Board, elector element	电气板总成	1 CPC(D)10~18- HJ, HJ2, WS1
-	H83A6-40302	00	Board, elector element	电气板总成	1 CPC(D)10~18- Xc2, QC
-	H14U1-40201	D01	Board, elector element	电气板总成	1 CPQ(D)10~18- Rc1, Rc4
36	B0330-10025	00	Bolt	螺栓M10X25	4 GB5782-86
37	B3220-06015	00	Pin clevis	销B6X15	1 GB882-86
38	B3010-02010	00	Pin	销2X10	1 GB91-86
39	B1411-06010	00	Screw	螺钉M6X10	8 GB820-85
40	HRH26D6412 H26D6-42131	D00	Cap	护罩(左)	1
41	HRH26D6412 H26D6-42141	D00	Cap	护罩(右)	1
42	Z7400-08002	00	Pipe	套管Φ8X1X20	2
43	H24C6-42511	D01	Hinge	铰链	2
44	H12C6-40301	D02	Bracket	支架	1
45	A24K6-42411	D00	Bolt	螺栓	2
46	B5050-00006	00	Washer, lock	垫圈6	2 GB93-87
47	B5310-00006	00	Washer	垫圈6	2 GB97.1-85
48	B4313-00006	00	Nut	螺母M6	2 GB6172-86
49	A24K6-42421	D00	Bushing	衬套	2
50	11196-40001G	00	Battery box	电瓶箱体	1 CPQ(D)10~18

F



G6

14

液压系统(美制)/HYDRAULIC SYSTEM(SAE)

图74/FIG74

CPC,CPCD10,15,18-WS1
GPC,CPCD10,15,18-Ku11
CPQ,CPQD10,15,18-Rc,Rc1,Rc4

序号 Item No	图号 Part No	版本 Edition	14 19 36 零件名称 Description	件数 Qty	备注 Remark
A	E12C7-60001	D08	Hydraulic system 液压系统	1	其余 Etceteras
-	E11U7-60001	D05	Hydraulic system 液压系统	1	CPC(D)10-18-Ku11
01	E12C7-60401	D01	Hose H.P. 高压胶管	2	
02	Z6006-01082	00	O-ring O型密封圈10.8X2.4	4	JIS B2401
03	B5050-00006	00	Washer,lock 垫圈6	8	GB93-87
04	B0330-06025	00	Bolt 螺栓M6X25	1	GB5783-86
05	E24C7-60251	D00	Steel pipe ass'y 倾斜缸钢管总成	1	
06	Z7801-0803614	D00	Hose H.P. 高压胶管	2	
07	B0530-10025	00	Bolt 螺栓M10X1.25X25	1	GB5786-86
08	B5310-00010	00	Washer 垫圈10	3	GB97.1-85
09	B0530-10030	00	Bolt 螺栓M10X1.25X30	2	GB5786-86
10	B5050-00010	00	Washer,lock 垫圈10	5	GB93-87
11	JT8022-34011	01	Elbow(Inc.44) 直角接头(包括44)	1	
12	JT6022-22031	02	Elbow(Inc.42) 直角接头(包括42)	1	
13	JT6021-20021	03	Nipple(Inc.42) 直通接头(包括42)	2	
14	Z4590-00045	B.1	Clip 双钢丝卡箍Φ45	6	
15	H12C7-60231	B.1	Hose 多路阀回油管	1	二至四片阀用 Two to four-throw
-	H24C7-60241	B.1	Hose 多路阀回油管	1	五片阀用 Five-throw
16	Z4590-00022	D00	Clip 双钢丝卡箍Φ22	2	
17	Z7351-13140	00	Hose L.P. 低压胶管Φ13X1400	1	CPC(D)10,15,18-WS1 CPQ(D)10,15,18-Rc,Rc1,Rc4
-	Z7351-13150	00	Hose L.P. 低压胶管Φ13X1500	1	CPC(D)10,15,18-Ku11
18	H24C7-60251	D00	Hose L.P. 吸油管	1	CPC(D)10,15,18-WS1
-	H24C7-60261	D00	Hose L.P. 吸油管	1	CPQ(D)10,15,18-Rc,Rc1,Rc4
-	H11U7-62004	00	Hose L.P. 吸油管	1	CPC(D)10,15,18-Ku11
19	JT7021-10011	01	Nipple(Inc.43) 直通接头(包括43)	1	
20	Z7802-13117	D00	Hose H.P. 高压胶管13IIX1170	1	
-	Z7802-13135	D00	Hose H.P. 高压胶管	1	仅四片阀用 For four-throw
21	H14S7-10001	D00	Gear pump 齿轮油泵	1	CPQ(D)10-18-Rc CPC(D)10-18-HJ,H2,Ku11
-	H2F97-10001	D00	Gear pump 齿轮泵	1	CPQ(D)10-18-Rc1,Rc4
-	H15C7-10001	D00	Gear pump 齿轮油泵	1	CPC(D)10-18-WS1
22	E24C7-60321	00	Nipple 油泵接头	1	CPQ(D)10,15,18-Rc,Rc1,Rc4 CPC(D)10,15,18-Ku11
-	E24C7-60291	00	Nipple 油泵接头	1	CPC(D)10,15,18-WS1

G

98

HELI

CLICK HERE TO **DOWNLOAD** THE COMPLETE MANUAL

- Thank you very much for reading the preview of the manual.
- You can download the complete manual from: www.heydownloads.com by clicking the link below



- Please note: If there is no response to CLICKING the link, please download this PDF first and then click on it.

CLICK HERE TO **DOWNLOAD** THE COMPLETE MANUAL