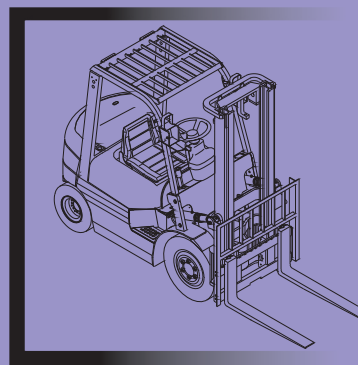


HELI

零件目录

L29-12:2012

h2000  
SERIES



# 零件目录

## parts manual

H2000系列 **1-1.8t**

内燃平衡重式叉车

Balanceweight Type  
Forklift Truck With Engine

安徽合力股份有限公司  
ANHUI HELI CO., LTD.

CLICK HERE TO **DOWNLOAD** THE COMPLETE MANUAL

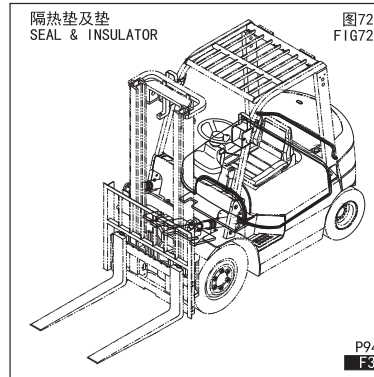
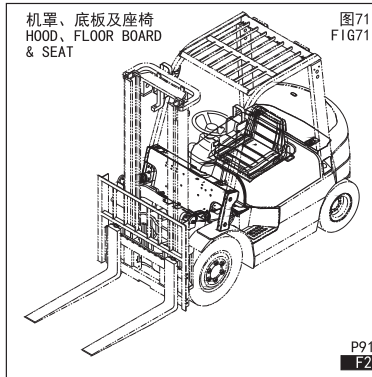
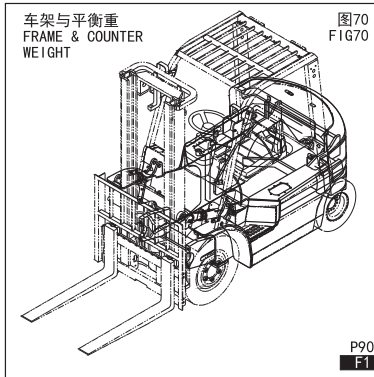
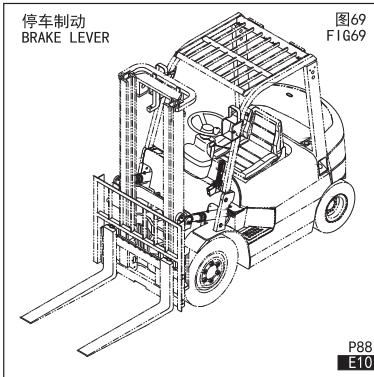
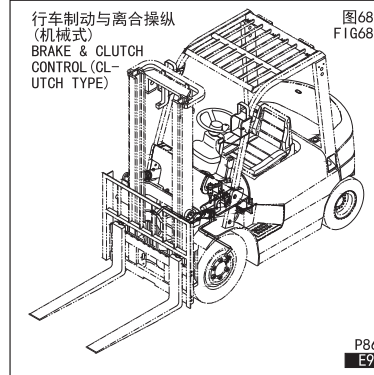
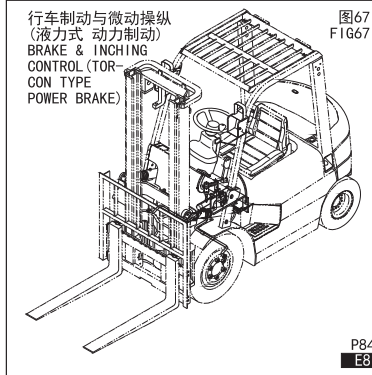
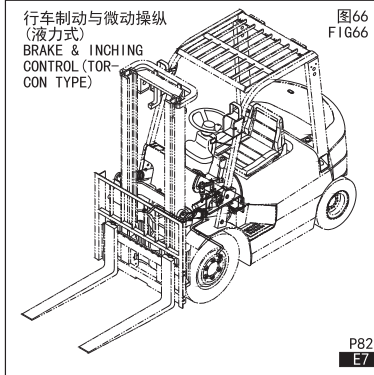
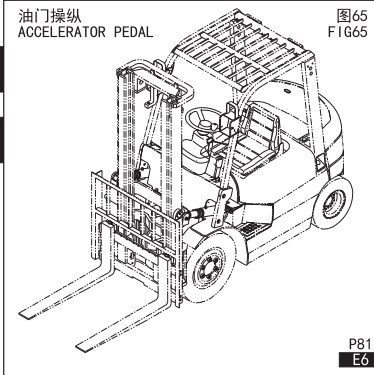
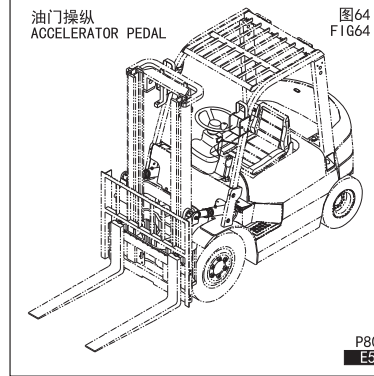
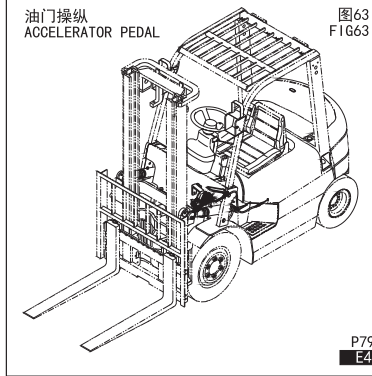
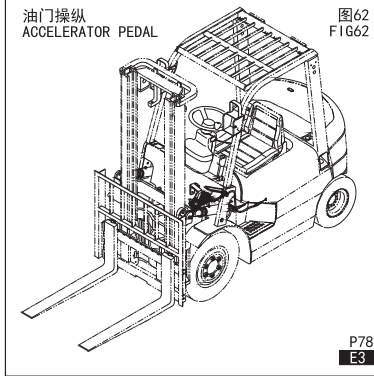
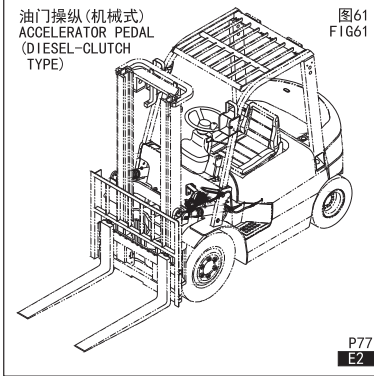
- Thank you very much for reading the preview of the manual.
- You can download the complete manual from: [www.heydownloads.com](http://www.heydownloads.com) by clicking the link below



- Please note: If there is no response to CLICKING the link, please download this PDF first and then click on it.

CLICK HERE TO **DOWNLOAD** THE COMPLETE MANUAL

# 目录 INDEX



E

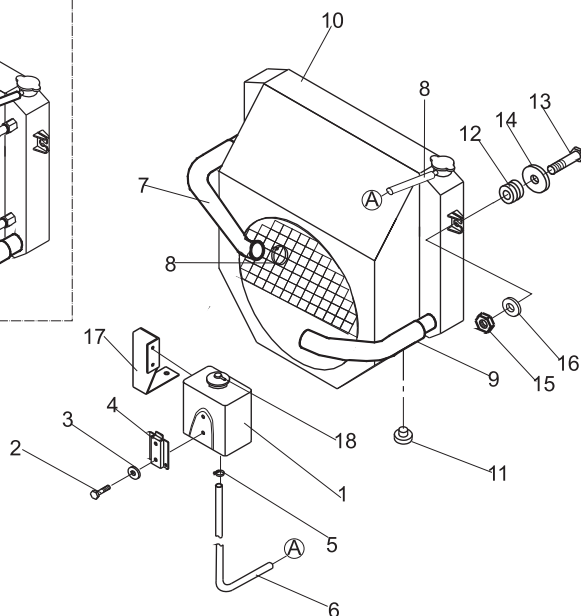
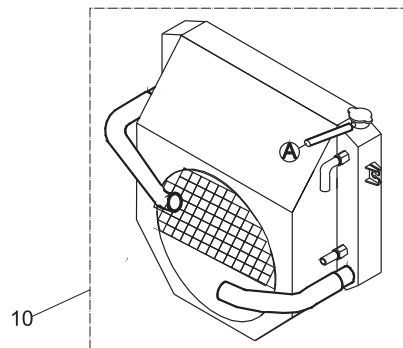
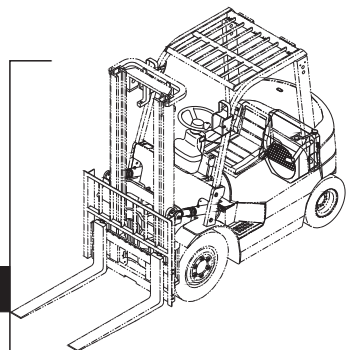
F

A8

## 冷却系统/COOLING SYSTEM

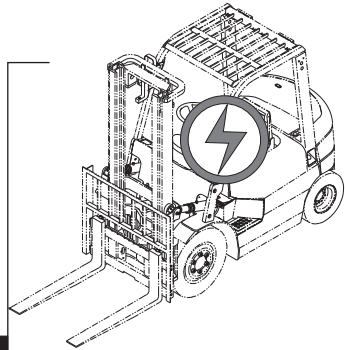
图8/F1G8

CPC,CPCD10,15,18-WS1,WS2



序号 Item No	图号 Part No	版本 Edition	零部件名称 Description	件数 Q'ty	备注 Remark
A	HRH15C2101 H15C2-10001	B.8	Cooling system	冷却系统	1 CPC
-	HRH15C2101 H15D2-10001	B.8	Cooling system	冷却系统	1 CPCD
01	H24C2-10201	B.1	Tank	副水箱	1
02	B1310-06016	B.0	Screw	螺钉M6x16	2
03	B5050-00006	B.0	Lock washer	垫圈6	2
04	H24C2-12011	B.1	Bracket	支架	1
05	Z4710-00010	B.0	Clip	钢带型弹性环箍	2
06	Z7500-08170	B.0	Hose	橡胶管 φ8x1700	1
07	A15E2-12011	B.0	Hose	进水管	1
08	Z4590-00045	B.0	Clip	双钢丝卡箍 φ45	4
09	H15C2-12022	B.3	Hose	出水管	1
10	H15C2-10201	B.3	Radiator	水箱总成	1 标配 STD CPC
-	H15D2-10201	B.3	Radiator	水箱总成	1 标配 STD CPCD
-	H15C2-10301	B.0	Radiator	水箱总成	1 选配 Option CPC
-	H15D2-10301	B.0	Radiator	水箱总成	1 选配 Option CPCD
11	A22A2-12001	D.1	Rubber	橡胶垫 I	2
12	A22A2-12031	D.1	Rubber	橡胶垫 II	2
13	A22A2-12041	D.4	Bolt	螺栓	2
14	22252-32251	D.1	Washer	垫片	2
15	B4023-00008	B.0	Nut	螺母M8	2 GB6184-86
16	B5310-00010	B.0	Washer	垫圈10	2 GB96-85
17	H15C2-12011	B.0	Bracket	副水箱支架	1
18	Z7400-08020	B.0	Hose, vinyl	透明胶管 φ8x200	1



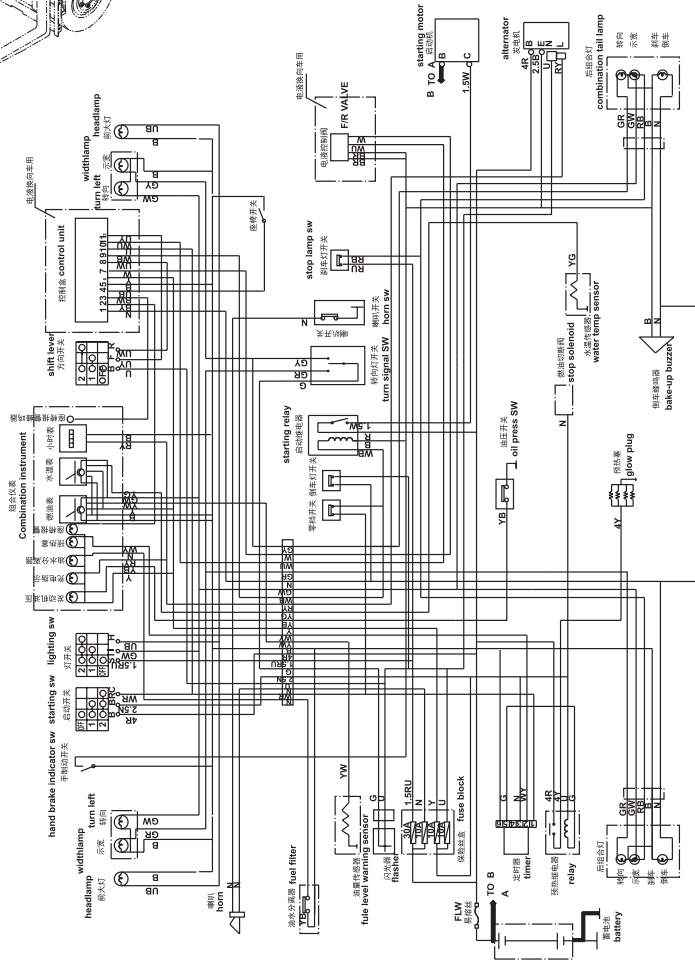


B4

电气系统/ELECTRIC SYSTEM

图24/FIG24

CPC,CPCD10,15,18-HJ,HJ2



序号 Item No	图号 Part No	版本 Edition	零部件名称 Description	件数 Q'ty	备注 Remark
29	B5111-00006	B.0	Washer 垫圈6	4	GB95-85
30	Z8421-18214	B.0	Fuel Level warning sensor 油量传感器	1	
31	A23F2-40420	B.0	Cable 电瓶引线(+)	1	
32	A22A2-40400	B.0	Cable 电瓶引线(-)	1	
33	D016-QW-80	B.1	Battery 蓄电池	1	
34	A22A2-40900	B.1	Fusible link wire 易熔线	1	
35	Z8510-120DZ	B.0	Back buzzer 倒车蜂鸣器	1	
36	B1210-06016	B.0	Screw 螺钉M6X16	1	GB818-85
37	B5050-00006	B.0	Lock washer 垫圈6	1	GB93-87
38	B4116-00006	B.0	Nut 螺母6	1	GB6170-86
39	B5111-00006	B.0	Washer 垫圈6	1	GB95-85
40	HRA92A2401	B.1	Clip 电瓶正极引线卡	2	
41	5-82550-029-0	B.0	Relay 继电器	1	
42	H24C2-40491	B.0	Caution light 警示灯	1	选用 Option
43	H24C2-40431	B.0	Cable, caution light 警示灯线束	1	选用 Option
44	XH9-3MJ	B.0	Caution light 警示灯	1	选用 Option
45	H24C2-40492	B.0	Caution light 警示灯	1	选用 Option
46	H24C2-40432	B.0	Cable, caution light 警示灯线束	1	选用 Option
47	D09JK211J	B.1	Switch, caution light 警示灯开关	1	选用 Option





CLICK HERE TO **DOWNLOAD** THE COMPLETE MANUAL

- Thank you very much for reading the preview of the manual.
- You can download the complete manual from: [www.heydownloads.com](http://www.heydownloads.com) by clicking the link below



- Please note: If there is no response to CLICKING the link, please download this PDF first and then click on it.

CLICK HERE TO **DOWNLOAD** THE COMPLETE MANUAL

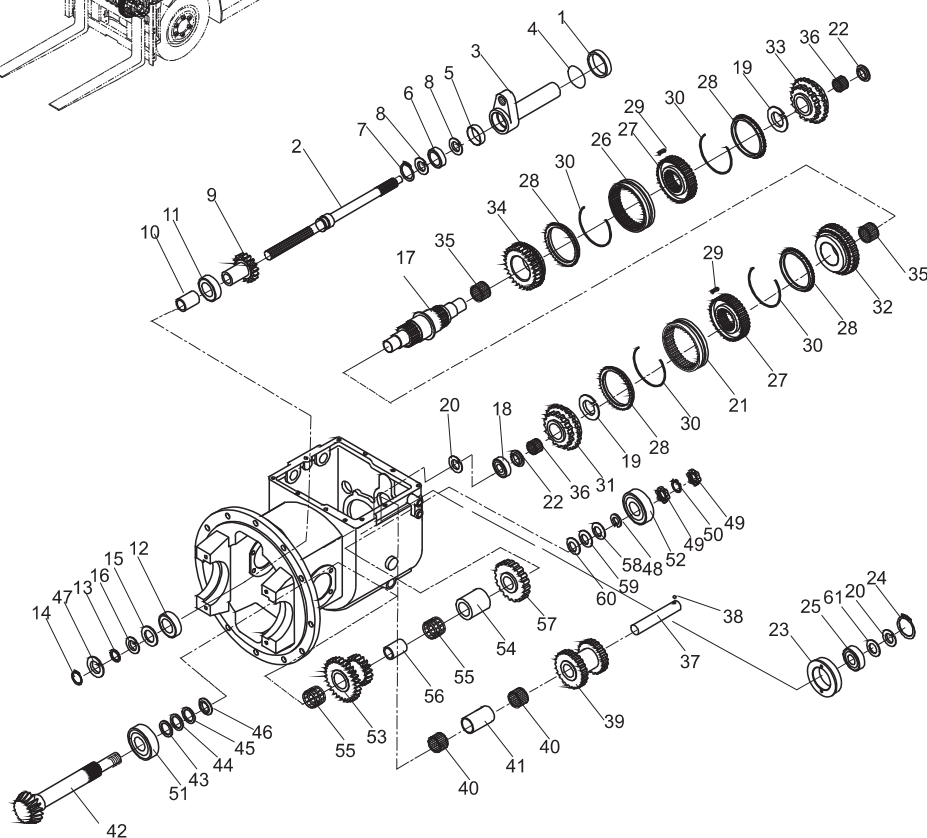
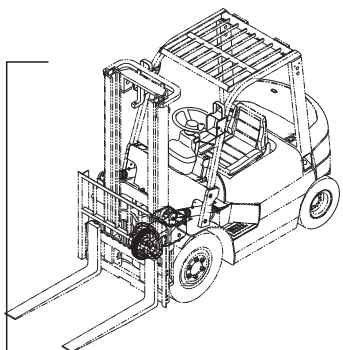
C16

## 变速箱(机械式)/TRANSMISSION (CLUTCH TYPE) (2/2)

图48/FIG48

CPQ10,15,18  
CPC10,15,18

序号 Item No	图号 Part No	版本 Edition	零部件名称 Description	件数 Q'ty	备注 Remark	
29	D20-1J01092	B.0	Insert	同步器滑块	6	
30	N-1J01273-00A	B.0	Spring	弹簧	4	
31	12493-42081	B.1	Gear, high speed	高速齿轮	1	
32	12493-42071	B.0	Gear, low speed	低速齿轮	2	
33	12493-42051	B.1	Gear, forward	前进档齿轮	1	
34	12493-42061	B.1	Gear, reverse	倒档齿轮	1	
35	N-1J01260-02A	B.0	Bearing, needle	滚针轴承	2	
36	12003-42251	B.1	Bearing, needle 无套圈有保持架滚针轴承		2	
37	12003-42261	B.0	Shaft, reverse idler	惰轮轴	1	
38	Z1505-00100	B.0	Ball, steel	钢球1/4 "	1	GB308-89
39	12003-42271	B.1	Gear, reverse idler	惰轮	1	
40	12003-42281	B.1	Bearing, needle	滚针轴承	2	
41	12003-42291	B.1	Spacer	衬套	1	
42	12083-42301	B.2	Shaft, output	输出轴	1	
43	12003-42311	B.1	Shim	垫片	1	
44	12003-42321	B.1	Shim	垫片	2	
45	12003-42331	B.1	Shim	垫片	2	
46	12003-42341	B.1	Plate, thrust	止推垫圈	1	
47	B6050-00080	B.0	Snap ring	挡圈80	1	GB893.1-86
48	20113-40251	B.1	Washer, spring	弹簧垫圈	1	
49	03192-00005	B.0	Nut	圆螺母M25H1.5	2	GB812-88 改制
50	B5512-00025	B.0	Washer, thrust	垫圈25	1	GB858-88
51	Z-7508	B.0	Bearing, taper roller 圆锥滚子轴承7508		1	GB297-64
52	Z-7605	B.0	Bearing, taper roller 圆锥滚子轴承7605		1	GB297-64
53	12003-42372	B.1	Gear, cluster	双连齿轮	1	
54	12003-42531	B.1	Spacer	衬套	1	
55	12003-42091	B.1	Bearing, needle	滚针轴承	2	
56	12003-42381	B.1	Spacer	衬套	1	
57	12003-42391	B.1	Gear, output	输出齿轮	1	
58	12003-42361	B.1	Plate, thrust	止推板	按需	



C



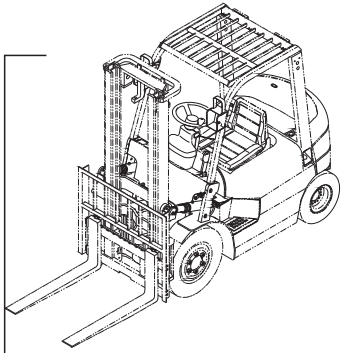
E3

## 油门操纵/ACCELERATOR PEDAL

图62/FIG62

CPC,CPCD10,15,18-XC2

序号 Item No	图号 Part No	版本 Edition	零部件名称 Description	件数 Q'ty	备注 Remark	
01	H24C5-60201	B.2	Accelerator pedal ass'y	踏板总成	1	
02	H24C5-60201	B.1	Sheave	滚轮	1	
03	B5310-00006	B.0	Washer	垫圈6	3	GB97.1-85
04	B3010-02020	B.0	Pin	销2x20	3	GB91-86
05	25785-22111	D.1	Bolt	螺栓	1	
06	B4216-00012	B.0	Nut	螺母M12x1.25	1	GB6171-86
07	B0330-06020	B.0	Bolt	螺栓M6x20	2	GB5783-86
08	B4116-00006	B.0	Nut	螺母M6	4	GB6170-86
09	B5050-00006	B.0	Washer,lock	垫圈6	2	GB93-87
10	H93C5-20201	B.2	Link,ass'y(Inc.23)	连接轴总成 (包含件23)	1	
11	25785-22031	D.1	Spring	弹簧	1	
12	B5310-00010	B.0	Washer	垫圈10	1	GB97.1-85
13	B3010-03020	B.0	Pin,cotter	销3x20	1	GB91-86
14	H83A5-20301	B.1	Bracket	支架	1	
15	A79A5-22001	D.4	Rod	拉杆	1	
16	B0330-10020	B.0	Bolt	螺栓M10x20	2	GB5783-86
17	B5050-00010	B.0	Washer,lock	垫圈10	2	GB93-87
18	20065-23000G	B.2	Flameout control unit	熄火操纵装置	1	
19	B1110-04016	B.0	Bolt	螺钉M4x16	2	B67-85
20	B5050-00004	B.0	Washer,lock	垫圈4	2	GB93-87
21	B1110-04010	B.0	Bolt	螺钉M4x10	1	GB67-85
22	3C53-00-09	B.1	Yoke	耳子	1	
23	Z2131-01015	B.0	Bushing	钢背轴承1015	1	

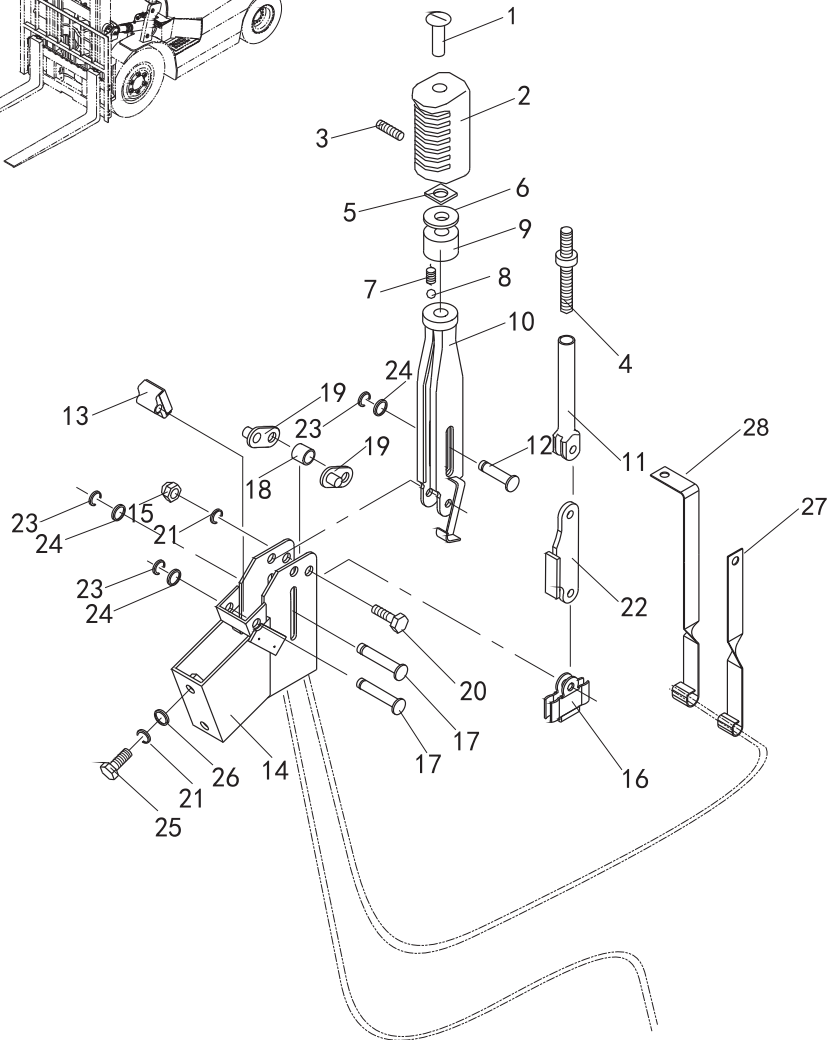


E10

停车制动/BRAKE LEVER

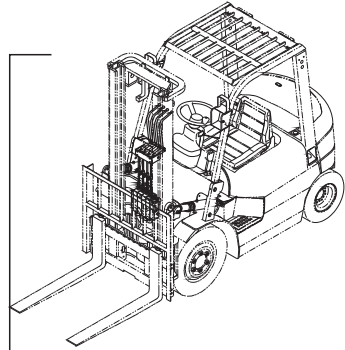
图69/FIG69

CPC,CPD10,15,18  
CPQ,CPQD10,15,18



序号 Item No	图号 Part No	版本 Edition	零部件名称 Description	件数 Qty	备注 Remark
A	REF105325G	B.2	Brake lever 停车制动装置	1	
B	HC214J5-50101	B.0	Brake(Inc.1-24)制动操纵器(包含1-24)	1	
-	HC214J5-50101A	B.0	Brake 手制动	1	带断电开关
01	THN-111	B.0	Over head 调节杆	1	
02	THN-110	B.0	Grip 手柄头	1	
03	B1830-04004	B.0	Screw 螺钉M4X4	1	GB80-85
04	THN-500	B.0	Screw rod 螺杆	1	
05	B7810-00008	B.0	Nut 方螺母M8	1	GB39-88
06	B5210-00008	B.0	Washer 大垫圈8	1	GB96-85
07	THN-200	B.0	Spring 弹簧1X5.5X10.8	1	
08	Z1510-G0060	B.0	Ball 钢球 $\varnothing 6$	1	GB308-64
09	THN-101	B.0	Seat 手柄座	1	
10	THN-060	B.0	Lever 闸把体	1	
11	THN-600	B.0	Rod 拉杆体	1	
12	B3220-08035	B.0	Pin 销B8X35	1	GB882-86
13	THN-098A	B.0	Stopper 限位块	1	
14	THN-050	B.0	Brcket 支架总成	1	
15	B7910-00010	B.0	Nut 螺母M10	1	GB923-88
16	21235-52171G	B.0	Bracket 挂线架	1	
17	B3220-08045	B.0	Pin 销B8X45	1	GB882-86
18	25785-52261	B.0	Washer 垫圈1	1	
19	THN-40-00	B.0	Plate 支撑板总成	2	
20	B0220-10045	B.0	Bolt 螺栓M10X45	1	GB5782-86
21	B5050-00010	B.0	Washer,lock 垫圈10	3	GB93-87
22	THN-900-00	B.0	Link 拉板总成	1	
23	B6250-00006	B.0	Washer 垫圈6	3	GB896-86
24	B5310-00008	B.0	Washer 垫圈8	6	GB97.1-85
25	B0220-10040	B.0	Bolt 螺栓M10X40	2	GB5782-86
26	B5310-00010	B.0	Washer 垫圈10	2	GB97.1-85
27	22495-55611	B.1	Pothook 手制动管托	1	CPCD,CPQD

E

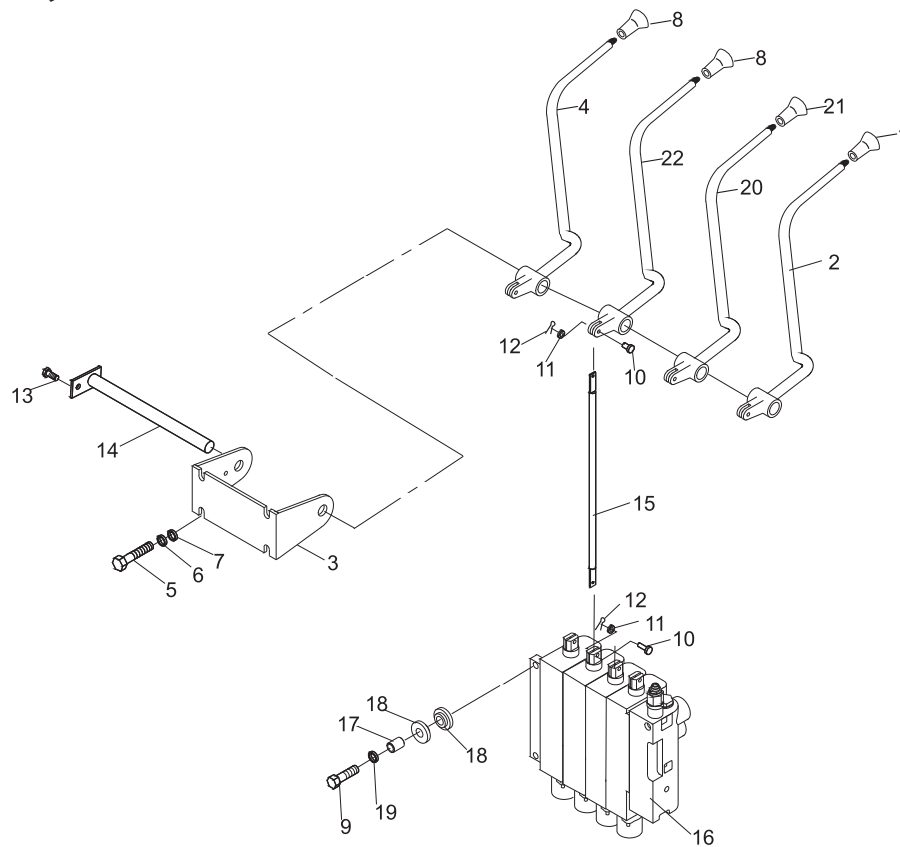


G4

操纵杆总成(四片)/VALVE CONTROL LINKAGE (FOUR-THROW)

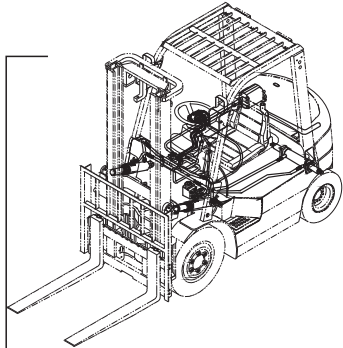
图76/FIG76

CPC, CPCD10, 15, 18  
CPQ, CPQD10, 15, 18



序号 Item No	图号 Part No	版本 Edition	零部件名称 Description	件数 Q'ty	备注 Remark
01	HRA22A7406 214A7-42001	D.1	Knob, lift	升降手柄	1
02	HRH24C7403 H24C7-40101	B.1	Lever, lift	升降阀杆	1
03	HRH24C7402 H24C7-42021	B.6	Bracket, valve lever	阀杆支架	1
04	HRH24C7403 H24C7-40401	B.1	Lever, fourth	第四片阀杆	1
05	B0230-08020	B.0	Bolt	螺栓M8x20	4 GB5782-86
06	B5050-00008	B.0	Washer, lock	垫圈8	4 GB93-87
07	B5310-00008	B.0	Washer	垫圈8	4 GB97.1-85
08	HRA22A7406 514A2-72401	D.1	Knob	手柄	2
09	B0330-10035	B.0	Bolt	螺栓M10x1.25x35	3 GB5783-86
10	22717-40061	B.1	Pin	销钉	8
11	B5050-00006	B.0	Washer	垫圈6	8
12	B3010-02016	B.0	Pin, cotter	销Φ2x16	8 GB91-86
13	B1210-06012	B.0	Bolt	螺钉M6x12	1 GB67-85
14	23647-40041	B.1	Shaft, valve	连接轴	1
15	H24C7-42001	B.1	Joint	连接杆	4
16	HRA20A7302 A12A7-30441	B.1	Contrl valve	多路阀	1 1t, 1.5t
-	HRA20A7302 A12G7-30441	B.1	Contrl valve	多路阀	1 1.8t
17	H24C6-42321	D.1	Coller	衬管 φ 13x1.2L=19	3
18	H24C7-42121	B.1	Rubber	减振垫	6
19	B5210-00010	B.0	Washer	大垫圈10	3 GB96-85
20	HRH24C7403 H24C7-40201	B.1	Lever, tilt	倾斜阀杆	1
21	HRA22A7406 214A7-42011	D.1	Knob, tilt	倾斜手柄	1
22	HRH24C7403 H24C7-40301	B.1	Lever, third	第三片阀杆	1

G

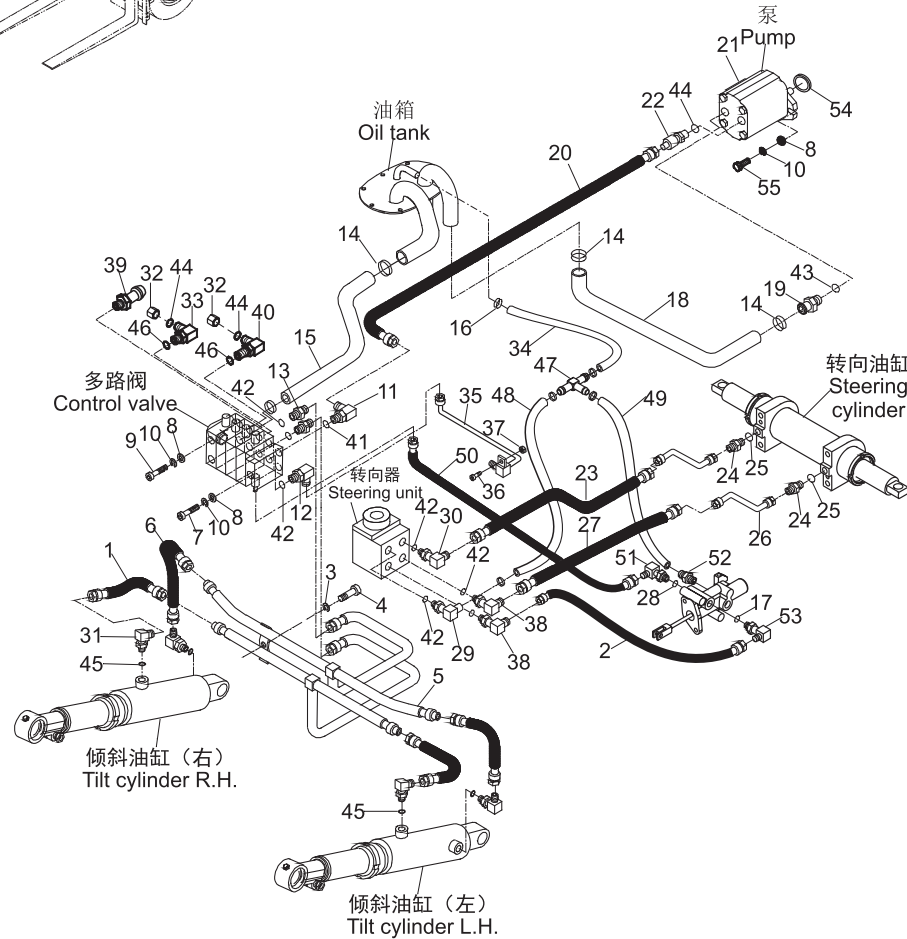


G8

液压系统(动力制动) / HYDRAULIC SYSTEM (POWER BRAKE)

图80/FIG80

CPCD10,15,18  
CPQD10,15,18



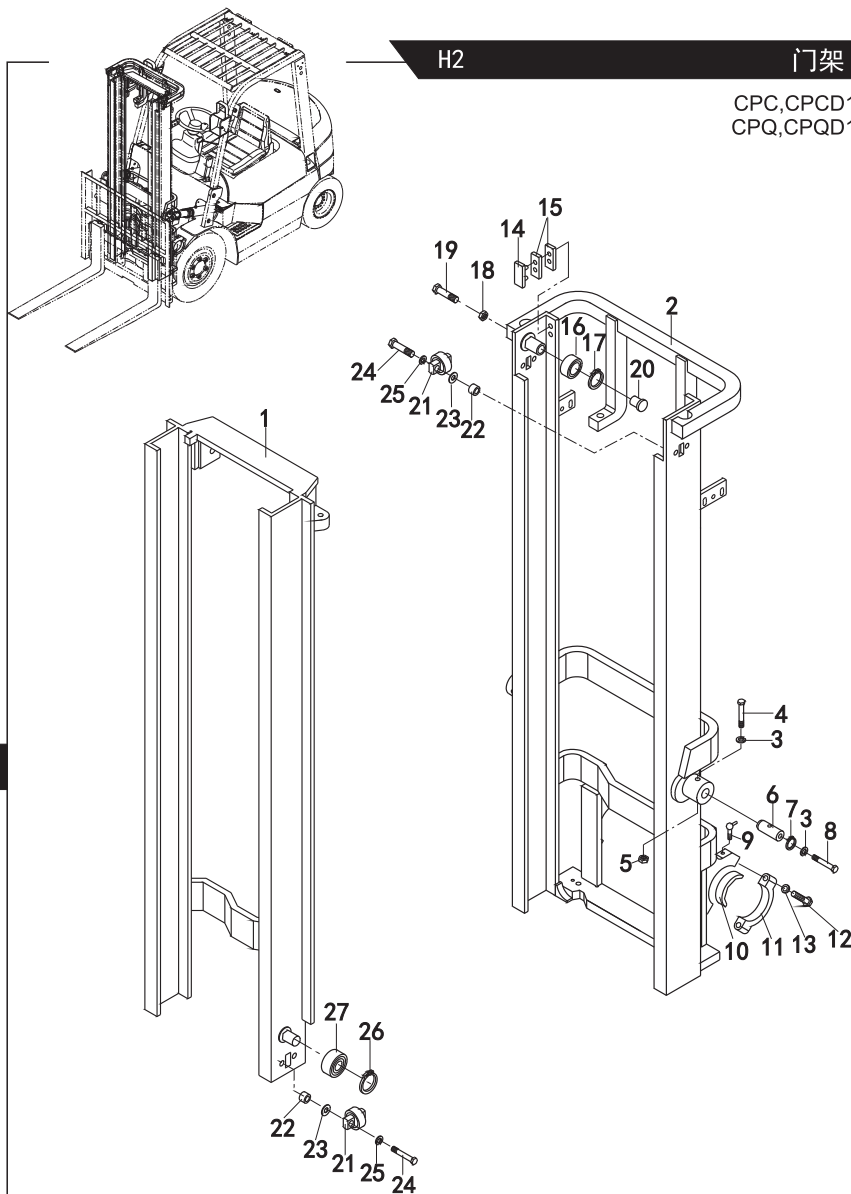
序号 Item No	图号 Part No	版本 Edition	零件名称 Description	件数 Qty	备注 Remark
29	JT6022-22041	B.0	Elbow(Inc.42) 直角接头(包括42)	1	三片阀用 Three-throw
30	JT6022-20031	B.2	Elbow(Inc.42) 直角接头(包括42)	1	四片阀用 Four-throw
31	JT7022-14021	B.1	Elbow(Inc.45) 直角接头(包括45)	4	五片阀用 Five-throw
32	22497-61010	B.0	Plug 堵头	2	三片阀用 Three-throw
				4	四片阀用 Four-throw
				6	五片阀用 Five-throw
33	JT6022-20061	B.1	Elbow(Inc.44,46)直角接头(包括44, 46)	1	三片阀用 Three-throw
				2	四片阀用 Four-throw
				3	五片阀用 Five-throw
34	Z7300-13043	B.0	Hose 胶管Φ13X430	1	
35	A12A7-60301	B.0	Steel pipe ass'y 升降缸钢管总成	1	
36	B0330-10025	B.0	Bolt 螺栓M10X25	1	GB5783-86
37	B4116-00010	B.0	Nut 螺母M10	1	GB6170-86
38	JT6022-20051	B.2	Elbow(Inc.42) 直角接头(包括42)	2	
39	JT6021-22131	B.1	Elbow 直角接头	1	四片阀用 Four-throw
40	JT6022-20071	B.1	Elbow(Inc.44,46)直角接头(包括44, 46)	1	三片阀用 Three-throw
				2	四片阀用 Four-throw
				3	五片阀用 Five-throw
41	Z6003-02402	B.0	O-ring 0型密封圈24X2.4	1	GB1235-76
42	Z6003-02202	B.0	O-ring 0型密封圈22X2.4	7	GB1235-76
43	Z6051-02804	B.0	O-ring 0型密封圈28X3.55	1	GB1235-76
44	Z6004-02202	B.0	O-ring 0型密封圈22X2.4	3	GB1235-76
				5	三片阀用 Three-throw GB1235-76
				7	四片阀用 Four-throw GB1235-76
				7	五片阀用 Five-throw GB1235-76
45	Z6003-01502	B.0	O-ring 0型密封圈15X2.4	4	GB1235-76
46	Z6004-01101	B.0	O-ring 0型密封圈11X1.9	2	GB1235-76
				4	三片阀用 Three-throw GB1235-76
				4	四片阀用 Four-throw GB1235-76
				6	五片阀用 Five-throw GB1235-76
47	E26V7-60201	B.1	Three way 三通接头	1	
48	Z7300-13100	B.0	Hose 胶管Φ13X1000	1	

G

H2

## 门架（基本型）/MAST (NORMAL MAST)

图84/FIG84

CPC,CPCD10,15,18  
CPQ,CPQD10,15,18CPC(D)10~18-HJ1,HJ2,WS1,WS2,Ku6,Ku11  
门架选用件表 Mast Optional Parts

起升高度 LIFTING HEIGHT	外门架总成 OUTER MAST	内门架总成 INNER MAST	备注 REMARK
M200	D12C8-30011	D12C8-30411	
225	-30021	-30421	
250	-30031	-30431	
270	-30041	-30441	
275	-30051	-30451	
300	-30001	-30401	标准 STD
325	-30061	-30461	
330	-30071	-30471	
350	-30081	-30481	
366	-30091	-30491	
370	-30101	-30511	
375	-30111	-30521	
400	-30121	-30531	
425	-30131	-30541	
450	-30141	-30551	
475	-30151	-30561	
500	-30161	-30571	
550	-30171	-30581	
600	-30181	-30591	

H

CLICK HERE TO **DOWNLOAD** THE COMPLETE MANUAL

- Thank you very much for reading the preview of the manual.
- You can download the complete manual from: [www.heydownloads.com](http://www.heydownloads.com) by clicking the link below



- Please note: If there is no response to CLICKING the link, please download this PDF first and then click on it.

CLICK HERE TO **DOWNLOAD** THE COMPLETE MANUAL