

41B ALPHABETICAL INDEX

AIR CLEANER.....	1C-12	FAN(Front).....	1D-13
AIR CLEANER MOUNTING.....	1C-13	BELT TIGHTENER.....	1D-13
ALTERNATOR.....	2B-20	DRIVE.....	1D-17
ASPIRATOR.....	1C-11	IDLER.....	1D-13
AUXILIARY VALVE CONTROL.....	2G-7,G-11	SUPPORT & GUARDS.....	1D-7
BATTERIES & CABLES.....	2B-15	FAN(Rear).....	1D-20
BATTERY BOX.....	2B-17	BELT TIGHTENER.....	1D-15
BEVEL GEAR SHAFT.....	1H-3	DRIVE.....	1D-19
BRAKES.....	1I-15	DRIVE SHAFT.....	1D-21
BRAKE CONTROL.....	1I-11	DRIVE TRAIN.....	1D-20
BRAKE CYLINDER(Safety Brake).....	1I-22	IDLER.....	1D-15
BRAKE DRUM.....	1H-4	FENDERS(Rear).....	1K-4
CAB.....	2C-13	FILTERS	
CAB HEATER VALVES.....	2C-14	ENGINE OIL(By-pass).....	1B-19
COMPRESSOR & MOUNTING.....	2C-19	TRANSMISSION OIL.....	1G-5
CONTROLS		STEERING OIL.....	1H-21,H-22
BRAKE.....	1I-11	FINAL DRIVE	
DOZER.....	2D-21	HOUSING.....	1G-21
ENGINE.....	1C-21	OUTBOARD BEARING & SEAL.....	1H-12
RIPPER.....	2G-7,G-9,G-11,G-13	PINION SHAFT.....	1H-4,H-5
STEERING.....	1I-7	SPROCKET SHAFT & GEAR.....	1H-7,H-9
TILT.....	2D-21	FLOOD LIGHT(Rear).....	2B-9,B-10
TRANSMISSION.....	1G-15	FLOOR.....	1K-5,K-7
CONTROL VALVE RETURN LINES		FUEL LINES.....	1C-5
(Dozer,Ripper,Tilt).....	2E-23,H-13	FUEL TANK.....	1C-3
COUNTERWEIGHT.....	2C-10	FUEL TANK GUARD.....	2C-13
COWL.....	1K-3	GAUGES	
CRANKCASE GUARDS.....	1J-3	AMMETER.....	2B-21
CYLINDER(Hydraulic)		ENGINE OIL PRESSURE.....	2B-23
DOZER.....	2D-17	ENGINE TEMPERATURE.....	2B-21
RIPPER.....	2F-23	FUEL LEVEL.....	1C-3
TILT.....	2D-7	HOUR METER.....	2C-4
CYLINDER MOUNTING & PIPING(Dozer).....	2D-15	TORQUE CONVERTER TEMPERATURE.....	2B-21
DECELERATING BRAKE.....	1I-13	TRANSMISSION HYDRAULIC PRESSURE.....	2B-24
DOZER OIL PUMP LINES.....	2E-7,E-9	TRANSMISSION OIL LEVER.....	1G-3
DRAWBAR.....	2C-9	TRANSMISSION LUBE OIL PRESSURE.....	2C-3
ELEMENTS		HOOD.....	1J-20
AIR CLEANER.....	1C-12	HOSE PARTS.....	2B-7
ENGINE FUEL FILTER.....	1B-14	HYDRAULIC TANK.....	1K-15,2E-17
ENGINE LUBE OIL FILTER.....	1B-14	HYDRAULIC TANK DRAIN LINE.....	2E-21
ENGINE OIL FILTER(By-pass).....	1B-19	HYDRAULIC TANK GUARD.....	1K-15
ENGINE WATER FILTER.....	1B-14	HYDRAULIC TILT.....	2D-1
HYDRAULIC TANK.....	2E-17	HYDRAULIC TILT PIPING.....	2D-13
STEERING OIL FILTER.....	1H-21,H-22	INPUT CLUTCH OIL RETURN.....	1E-15
TRANSMISSION OIL FILTER.....	1G-9	INSTRUMENTS.....	2B-21
ENGINE BREATHER HOSE.....	1B-14	LIGHTS	
ENGINE CONTROLS.....	1C-21	DASH.....	2B-21
ENGINE & MOUNTING.....	1B-13	HEAD.....	2B-3,B-5
ENGINE PRIMER.....	1D-4	REAR FLOOD.....	2B-9,B-10
ENGINE PROTECTION SYSTEM.....	1C-7	LIGHTS & WIRING.....	2B-3,B-5
ENGINE SIDE PLATES.....	1J-23	MAIN FRAME.....	1J-3
EXHAUST PIPE.....	1C-9	MAIN HOUSING.....	1G-21

CLICK HERE TO **DOWNLOAD** THE COMPLETE MANUAL

- Thank you very much for reading the preview of the manual.
- You can download the complete manual from: www.heydownloads.com by clicking the link below



- Please note: If there is no response to CLICKING the link, please download this PDF first and then click on it.

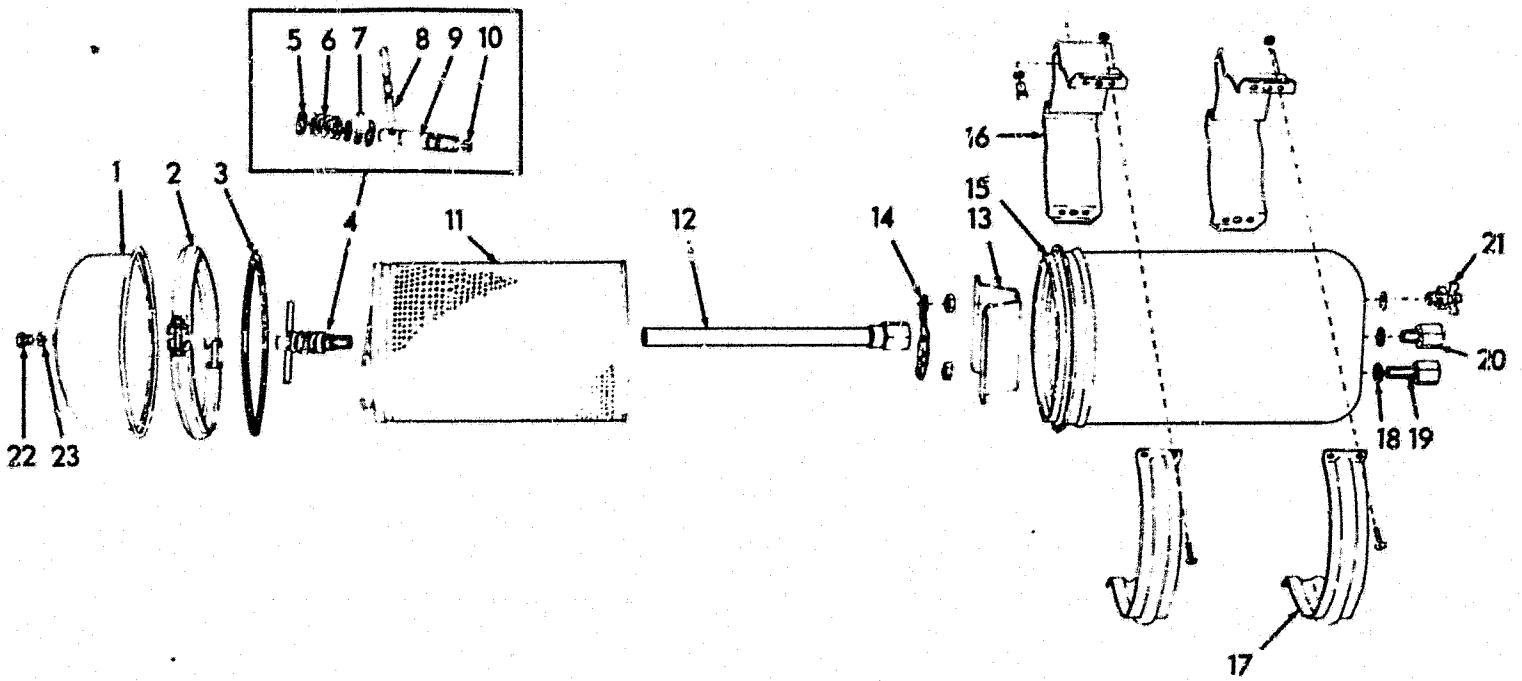
CLICK HERE TO **DOWNLOAD** THE COMPLETE MANUAL

NUMERICAL INDEX 0073110687

PART NO.	PAGE	PART NO.	PAGE	PART NO.	PAGE	PART NO.	PAGE	PART NO.	PAGE
70681611.....	36	70682170.....	193	70683639.....	73	70685891.....	157	70687046.....	29
70681652.....	103	70682175.....	149	70683650.....	94	70685894.....	94	70687056.....	29
70681652.....	105	70682212.....	149	70683653.....	93	70685895.....	94	70687242.....	134
70681671.....	165	70682214.....	183	70683659.....	93	70685907.....	121	70687259.....	44
70681683.....	165	70682215.....	183	70683675.....	103	70685912.....	121	70687354.....	165
70681693.....	227	70682218.....	212	70683675.....	103	70685912.....	7	70687355.....	165
70681694.....	227	70682218.....	7	70683693.....	103	70685934.....	144	70687394.....	165
70681699.....	210	70682220.....	207	70683704.....	215	70685935.....	146A	70687434.....	51
70681699.....	221	70682224.....	11	70683730.....	103	70685938.....	146	70687435.....	134
70681713.....	227	70682238.....	97	70683730.....	105	70685939.....	146	70687441.....	68
70681728.....	251	70682246.....	214	70683739.....	20	70685956.....	144	70687441.....	69A
70681730.....	251	70682268.....	33	70683739.....	20A	70685965.....	144	70687442.....	68
70681730.....	253	70682286.....	213	70683795.....	242	70685972.....	144	70687442.....	69A
70681733.....	251	70682358.....	94	70683818.....	17	70685975.....	144	70687443.....	62
70681733.....	253	70682541.....	107	70683963.....	228	70685976.....	144	70687443.....	69A
70681734.....	250	70682546.....	250	70684035.....	54	70685985.....	144	70687446.....	41
70681734.....	252	70682546.....	253	70684176.....	101	70685986.....	144	70687603.....	165
70681735.....	250	70682547.....	250	70684179.....	28	70685993.....	145	70687629.....	42
70681735.....	252	70682547.....	253	70684220.....	245	70685994.....	145	70687747.....	139
70681735.....	7	70682548.....	107	70684287.....	208	70685995.....	144	70687748.....	139
70681736.....	250	70682549.....	11	70684288.....	208	70685999.....	236	70687749.....	138
70681736.....	252	70682555.....	11	70684393.....	102	70685999.....	238	70687836.....	211
70681736.....	7	70682578.....	100	70684408.....	243	70686047.....	137	70687941.....	210
70681737.....	251	70682579.....	100	70684409.....	243	70686048.....	137	70687941.....	221
70681737.....	7	70682579.....	101	70684410.....	243	70686080.....	234	70688002.....	32
70681738.....	251	70682654.....	213	70684411.....	243	70686080.....	236	70688019.....	181
70681738.....	7	70682787.....	201	70684412.....	125	70686087.....	97	70688066.....	181
70681739.....	250	70682788.....	201	70684413.....	203	70686100.....	236	70688147.....	114
70681740.....	250	70682806.....	148	70684414.....	125	70686100.....	240	70688175.....	178
70681741.....	245	70682832.....	211	70684415.....	125	70686106.....	137	70688175.....	178
70681801.....	211	70682837.....	210	70684416.....	242	70686117.....	97	70688175.....	178
70681801.....	212	70682838.....	194	70684435.....	243	70686161.....	140	70688176.....	178
70681816.....	103	70682839.....	194	70684436.....	243	70686162.....	140	70688177.....	170
70681816.....	105	70682840.....	194	70684437.....	243	70686167.....	140	70688177.....	172
70681849.....	206	70682841.....	194	70684438.....	242	70686169.....	140	70688178.....	171
70681914.....	142	70682906.....	214	70684439.....	242	70686170.....	140	70688179.....	174
70681915.....	142	70682907.....	214	70684541.....	218	70686175.....	140	70688180.....	170
70681916.....	142	70682938.....	214	70684542.....	213	70686188.....	140	70688180.....	172
70681917.....	142	70682938.....	7	70684559.....	218	70686226.....	74	70688181.....	170
70681918.....	142	70682953.....	212	70684560.....	218	70686227.....	74	70688182.....	170
70681919.....	142	70682953.....	7	70684654.....	115	70686275.....	179	70688183.....	170
70681921.....	142	70682970.....	50	70684837.....	200	70686518.....	111	70688188.....	172
70681923.....	35	70682971.....	51	70684906.....	146	70686547.....	111	70688282.....	176A
70681933.....	142	70683068.....	20	70685214.....	201	70686547.....	7	70688282.....	176B
70681934.....	142	70683070.....	20	70685219.....	200	70686548.....	111	70688566.....	116
70681936.....	142	70683071.....	20	70685274.....	201	70686548.....	7	70688566.....	7
70681937.....	143	70683076.....	103	70685276.....	201	70686580.....	229	70688567.....	116
70681938.....	143	70683076.....	105	70685287.....	146	70686596.....	41	70688567.....	7
70681972.....	112	70683289.....	103	70685288.....	146	70686621.....	228	70688602.....	165
70682001.....	141	70683421.....	181	70685289.....	146	70686623.....	228	70688604.....	165
70682029.....	106	70683421.....	93	70685290.....	146	70686625.....	229	70688625.....	119
70682044.....	35	70683478.....	22C	70685291.....	146	70686639.....	228	70688631.....	119
70682054.....	106	70683545.....	45	70685292.....	146	70686640.....	229	70688638.....	117
70682055.....	106	70683619.....	73	70685295.....	140	70686681.....	45	70688638.....	7
70682056.....	176	70683620.....	66	70685296.....	140	70686716.....	45	70688673.....	117
70682063.....	206	70683620.....	76	70685311.....	201	70686720.....	45	70688673.....	7
70682064.....	206	70683621.....	60	70685335.....	246	70686741.....	45	70688674.....	116
70682065.....	207A	70683622.....	67	70685336.....	246	70686742.....	45	70688674.....	7
70682066.....	207A	70683622.....	72	70685347.....	181	70686743.....	45	70688675.....	116
70682081.....	141	70683622.....	74	70685498.....	79	70686744.....	45	70688675.....	7
70682084.....	141	70683623.....	76	70685501.....	103	70686751.....	153	70688849.....	200
70682094.....	149	70683625.....	65	70685532.....	17	70686752.....	153	70688997.....	189
70682109.....	82	70683627.....	59	70685557.....	191	70686814.....	46	70689129.....	27
70682127.....	167	70683629.....	60	70685558.....	191	70686821.....	21	70689159.....	198A
70682128.....	60	70683630.....	60	7068761.....	245	70686859.....	30	70689251.....	111
70682129.....	69	70683631.....	60	7068790.....	245	70686960.....	30	70689254.....	113
70682137.....	33	70683632.....	59	70688795.....	245	70686983.....	35	70689254.....	138
70682160.....	213	70683636.....	72	70688802.....	245	70686989.....	35	70689378.....	51
70682162.....	141	70683637.....	66	70688861.....	120	70686990.....	35	70689401.....	104
70682164.....	193	70683638.....	67	70688891.....	155	70687000.....	30	70689521.....	61

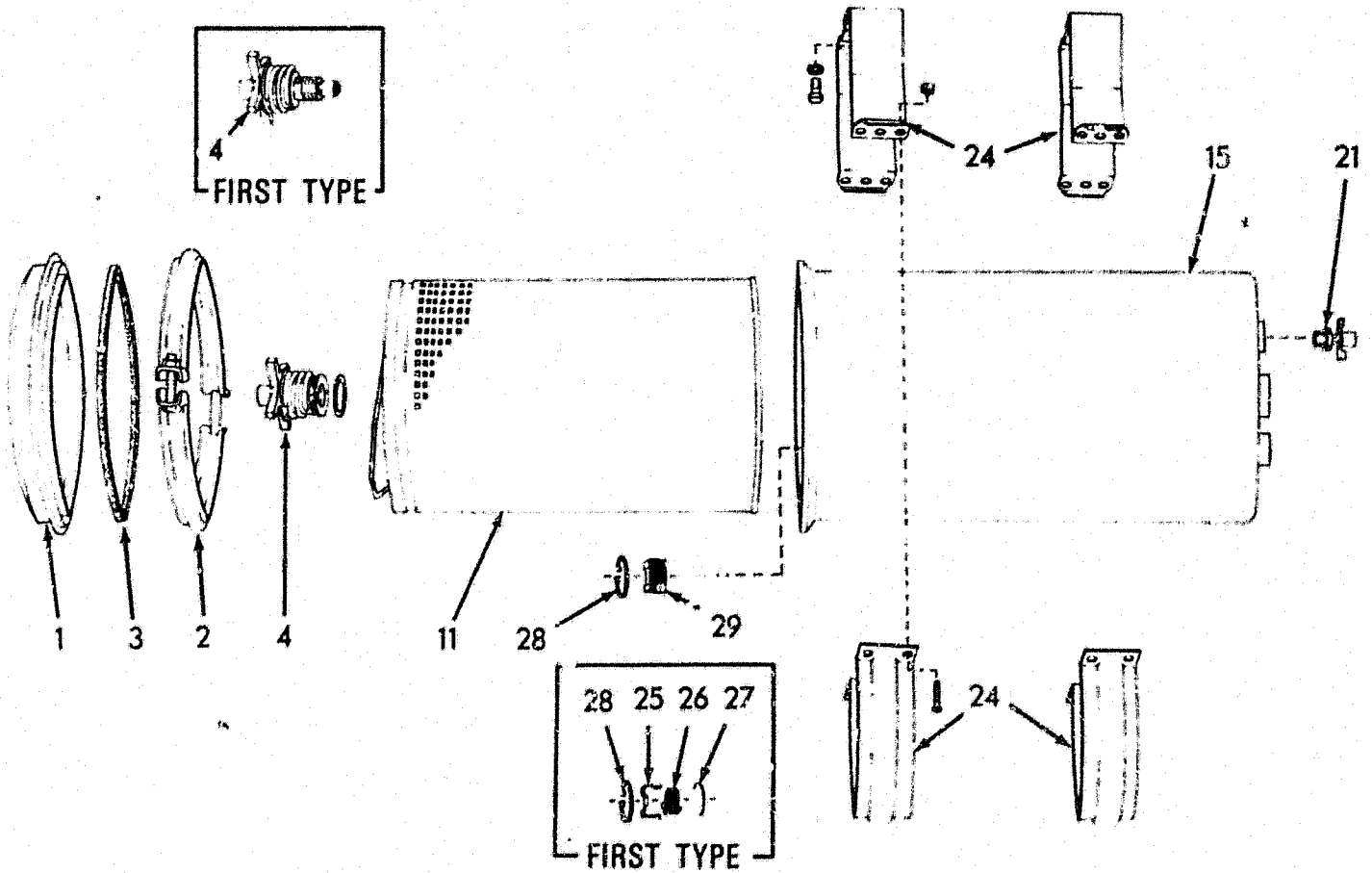
PART NO.	PAGE	PART NO.	PAGE	PART NO.	PAGE	PART NO.	PAGE	PART NO.	PAGE
70924192.....	252	70925459.....	217	70926707.....	61	70927305.....	201	70927456.....	60
70924193.....	217	70925470.....	6	70926707.....	82	70927305.....	210	70927457.....	60
70924193.....	227	70925482.....	131	70926715.....	249	70927305.....	220	70927462.....	79
70924193.....	235	70925483.....	107	70926774.....	149	70927308.....	56	70927463.....	79
70924200.....	214	70925483.....	201	70926785.....	201	70927308.....	85	70927466.....	79
70924200.....	217	70925498.....	131	70926820.....	249	70927309.....	46	70927471.....	227
70924200.....	250	70925613.....	28	70926828.....	209	70927310.....	117	70927474.....	39
70924200.....	252	70925616.....	173	70926829.....	209	70927311.....	129	70927476.....	97
70924270.....	242	70925617.....	89	70926840.....	219	70927311.....	213	70927479.....	148
70924274.....	218	70925617.....	91	70926854.....	209	70927311.....	233	70927479.....	149
70924408.....	6	70925634.....	226	70926857.....	201	70927312.....	29	70927484.....	271
70924416.....	115	70925634.....	29	70926904.....	137	70927312.....	85	70927488.....	194
70924433.....	163	70925638.....	241	70926905.....	137	70927313.....	82	70927510.....	19
70924623.....	134	70925640.....	240	70926912.....	97	70927314.....	144	70927530.....	123
70924676.....	59	70925641.....	84	70926975.....	91	70927314.....	201	70927536.....	130
70924696.....	242	70925651.....	52	70926979.....	6	70927314.....	259	70927541.....	147
70924774.....	243	70925651.....	9	70926980.....	6	70927328.....	149	70927541.....	176A
70924775.....	239	70925743.....	83	70927011.....	6	70927328.....	44	70927541.....	178
70924838.....	205	70925767.....	219	70927019.....	28	70927335.....	219	70927541.....	23
70924843.....	253	70925781.....	19	70927020.....	153	70927336.....	219	70927541.....	230
70924854.....	239	70925870.....	89	70927063.....	213	70927338.....	27	70927541.....	39
70924855.....	240	70925870.....	91	70927063.....	214	70927340.....	264	70927542.....	229
70924864.....	126	70925870.....	94	70927099.....	7	70927340.....	268	70927553.....	60
70924864.....	19	70925889.....	251	70927099.....	8	70927340.....	273	70927573.....	56
70924864.....	213	70925890.....	218	70927101.....	240	70927341.....	51	70927591.....	228
70924920.....	229	70925926.....	125	70927144.....	6	70927353.....	110	70927596.....	186
70924921.....	114	70925940.....	54	70927144.....	7	70927353.....	39	70927596.....	251
70924922.....	239	70925954.....	209	70927145.....	99	70927353.....	85	70927596.....	252
70924978.....	7	70925956.....	12	70927151.....	141	70927361.....	183	70927596.....	85A
70924978.....	8	70925964.....	29	70927154.....	171	70927367.....	97	70927597.....	231
70925034.....	128	70925983.....	59	70927154.....	173	70927373.....	44	70927599.....	171
70925058.....	191	70925983.....	60	70927155.....	171	70927373.....	45	70927599.....	173
70925058.....	29	70925983.....	81	70927155.....	173	70927376.....	69	70927619.....	206
70925065.....	29	70925996.....	41	70927157.....	37	70927376.....	9	70927619.....	207
70925069.....	239	70926011.....	21	70927157.....	40	70927379.....	7	70927619.....	207A
70925073.....	7	70926039.....	7	70927172.....	124	70927381.....	107	70927619.....	207B
70925074.....	7	70926039.....	8	70927172.....	213	70927381.....	182	70927619.....	208
70925074.....	8	70926156.....	251	70927172.....	213	70927381.....	219	70927652.....	81
70925081.....	239	70926156.....	253	70927173.....	230	70927381.....	37	70927653.....	121
70925094.....	12	70926178.....	69	70927173.....	231	70927381.....	99	70927653.....	121
70925108.....	166	70926178.....	69B	70927173.....	232	70927382.....	143	70927662.....	132
70925109.....	166	70926178.....	7	70927173.....	56	70927382.....	143	70927662.....	193
70925110.....	166	70926178.....	7	70927174.....	174	70927384.....	26	70927662.....	193
70925135.....	217	70926190.....	26	70927174.....	174	70927384.....	26	70927685.....	243
70925135.....	28	70926190.....	26	70927174.....	223	70927385.....	123	70927691.....	228
70925192.....	38	70926191.....	111	70927177.....	129	70927385.....	13	70927901.....	94
70925193.....	212	70926192.....	114	70927177.....	186	70927386.....	116	70927926.....	41
70925193.....	227	70926192.....	121	70927177.....	89	70927386.....	129	70928043.....	175
70925193.....	45	70926199.....	11	70927177.....	91	70927386.....	19	70928052.....	205
70925193.....	47	70926200.....	144	70927177.....	91	70927387.....	19	70928080.....	37
70925193.....	47	70926208.....	140	70927180.....	221	70927387.....	19	70928080.....	37
70925193.....	47	70926211.....	194	70927180.....	46	70927388.....	117	70928138.....	228
70925193.....	47	70926211.....	194	70927180.....	82	70927388.....	97	70928138.....	38
70925193.....	47	70926212.....	134	70927181.....	244	70927389.....	57	70928138.....	93
70925280.....	109	70926213.....	194	70927181.....	249	70927390.....	20	70928142.....	99
70925310.....	114	70926244.....	8	70927181.....	249	70927390.....	60	70928148.....	117
70925327.....	85	70926246.....	8	70927199.....	104	70927390.....	60	70928169.....	175
70925374.....	191	70926269.....	233	70927212.....	42	70927399.....	60	70928169.....	98
70925415.....	107	70926269.....	233	70927213.....	61	70927400.....	60	70928178.....	23
70925415.....	143	70926269.....	241	70927213.....	97	70927400.....	98	70928178.....	23
70925421.....	102	70926291.....	103	70927213.....	20	70927401.....	165	70928178.....	101
70925421.....	142	70926291.....	105	70927218.....	237	70927401.....	173	70928178.....	111
70925427.....	211	70926292.....	69	70927218.....	23	70927401.....	180	70928178.....	113
70925427.....	211	70926292.....	69D	70927218.....	230	70927401.....	20	70928178.....	124
70925427.....	212	70926339.....	37	70927219.....	18	70927424.....	54	70928178.....	126
70925428.....	54	70926356.....	242	70927219.....	227	70927424.....	60	70928178.....	183
70925428.....	54	70926397.....	219	70927219.....	27	70927424.....	69	70928178.....	20
70925429.....	211	70926527.....	138	70927225.....	179	70927424.....	81	70928178.....	213
70925429.....	212	70926557.....	134	70927262.....	128	70927445.....	89	70928178.....	215
70925431.....	132	70926566.....	143	70927264.....	12	70927445.....	91	70928178.....	217
70925431.....	133	70926697.....	70	70927264.....	191	70927445.....	91	70928178.....	217
70925431.....	221	70926697.....	71	70927266.....	85A	70927446.....	115	70928178.....	30
70925448.....	226	70926699.....	17	70927266.....	85A	70927453.....	19	70928178.....	39
70925449.....	226	70926707.....	135	70927285.....	6	70927453.....	42	70928178.....	44
70925449.....	226	70926707.....	135	70927285.....	6	70927453.....	56	70928178.....	45

HOSE ASSEMBLY NO. (See NOTE)	BULK HOSE (25' roll)	HOSE LENGTH (inches)	NIPPLE (#1 end)		Type	NIPPLE (#2 end)			SOCKET (both ends)
			Including SOCKET	NIPPLE only		Including SOCKET	NIPPLE only	Type	
70670164	70930413	8-7/8	70920849	70920302	A	70920864	70919082	E	70919075
70670376	70920795	50-1/2	70921855	70923263	L	70921855	70923263	L	70920973
70670763	70919196	22-3/4	70920847	70920301	A	70920862	70919194	E	70919143
70670764	70919196	84-1/4	70920847	70920301	A	70920862	70919194	E	70919143
70670765	70919196	93-1/2	70920847	70920301	A	70920847	70920301	A	70919143
70670766	70919196	61-3/4	70920847	70920301	A	70920862	70919194	E	70919143
70670767	70919196	101-3/4	70920847	70920301	A	70920862	70919194	E	70919143
70670768	70919196	78-3/4	70920862	70919194	E	70920862	70919194	E	70919143
70670772	70920728	73	70920843	70919467	C	70920875	70920232	E	70919282
70671174	70920982	21-1/2		70927144	J		70922937	L	70920986
70671788	70919196	59	70920847	70920301	A	70920847	70920301	A	70919143
70673591	70919196	77-7/16	70920847	70920301	A	70920847	70920301	A	70919143
70673604	70920982	20		70927144	J		70922937	L	70920986
70673605	70920982	34-1/2		70927379	K	70923202	70923264	L	70920986
70677754	70919156	25-1/2	70920850	70920303	A	70920858	70919080	B	70919076
70681735	70920795	24-3/4	70920953	70923251	E	70921866	70923254	J	70920973
70681736	70920795	21	70921866	70923254	J	70925073	70923262	K	70920973
70681737	70920794	23		70923253	J	70925074	70928571	K	70920972
70681738	70920794	28		70923253	J	70925074	70928571	K	70920972
70682218	70920794	50	70920933	70922834	B	70926039	70924978	L	70920972
70682938	70920794	23-1/2	70923904	70927099	J	70923506	70922894	L	70920972
70682953	70920794	72	70920933	70922834	B	70926039	70924978	L	70920972
70685912	70930443	19-1/4	70920849	70920302	A	70920849	70920302	A	70919075
70686547	70930445	16-1/4	70920852	70920344	A	70920867	70919277	E	70919281
70686548	70930445	22-3/8	70920852	70920344	A	70920882	70919278	D	70919281
70688566	70930445	57-1/2	70920852	70920344	A	70920867	70919277	E	70919281
70688567	70930445	32-1/2	70920852	70920344	A	70920874	70921042	E	70919281
70688638	70930444	36-1/4	70920850	70920303	A	70920865	70919081	E	70919076
70688673	70930445	45-1/8	70920852	70920344	A	70920874	70921042	E	70919281
70688674	70930444	62-3/4	70920850	70920303	A	70920865	70919081	E	70919076
70688675	70930444	50-1/4	70920850	70920303	A	70920865	70919081	E	70919076
70690072	70919196	16-7/8	70920847	70920301	A	70920862	70919194	E	70919143
70690168	70919196	15-1/8	70920847	70920301	A	70920847	70920301	A	70919143
70690824	70919196	27-3/4	70920847	70920301	A	70920862	70919194	E	70919143
70691792	70930445	23-7/8	70920852	70920344	A	70920882	70919278	D	70919281
70691793	70930445	20	70920852	70920344	A	70920874	70921042	E	70919281
70694566	70920794	47	70920944	70920978	A	70925074	70928571	K	70920972
70694572	70920794	42	70920944	70920978	A	70925074	70928571	K	70920972
70694596	70920794	128	70920944	70920978	A	70920952	70923186	E	70920972
70697724	70931159	20-15/16		70931167	J		70931172	K	70920973
70697725	70931158	22-13/16		70923253	J	70925074	70928571	K	70920975
70697730	70931158	27-13/16		70923253	J	70925074	70928571	K	70920975
70697731	70931160	24-1/2		70931164	J		70931166	K	70931162
70697732	70931160	26-7/16		70931164	J		70931166	K	70931162



LUBER-FINER DESIGN

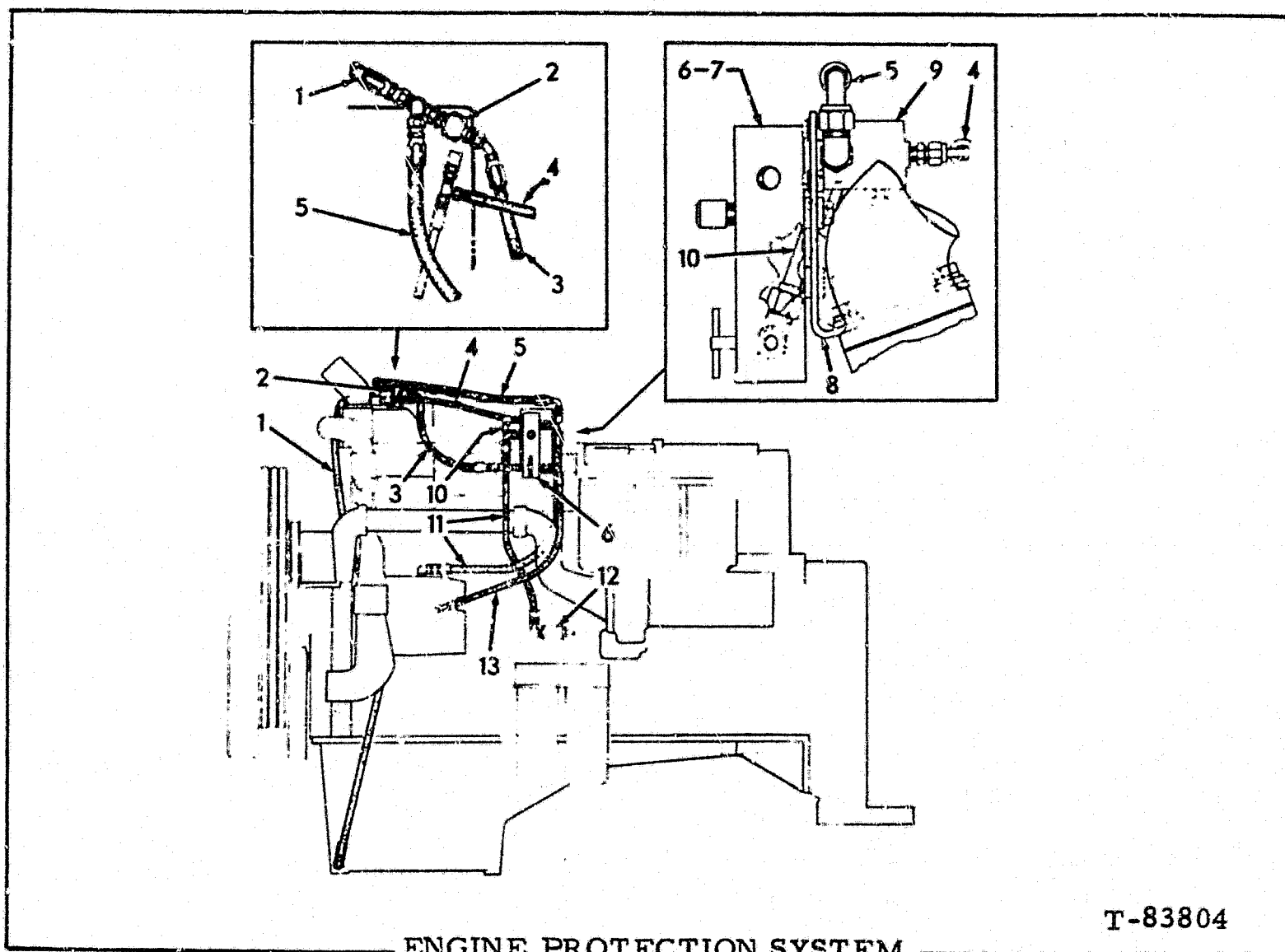
T-74660



FLEETGUARD DESIGN

T-76480

OIL FILTER (By-pass type)



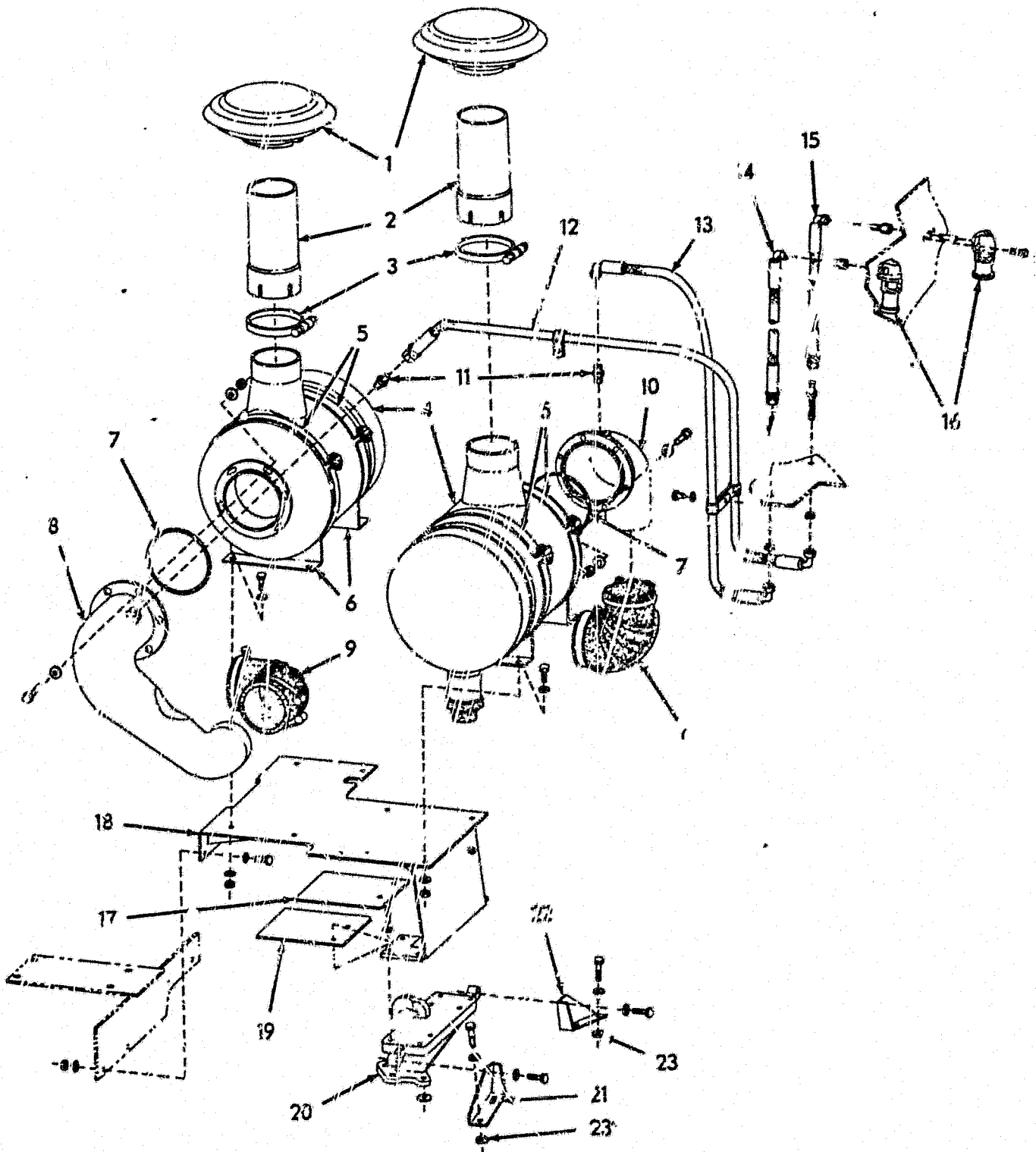
T-83804

ENGINE PROTECTION SYSTEM

USAGE: Special Equipment

ITEM	PART NO.	QTY.	DESCRIPTION
1	73111676	1	HOSE
	70921466	1	CONNECTOR, 1/2" tube, 3/4" taper thd.
	70921298	1	TEE, flare type, 1/2" tube, 3/4" str.thd.
	70919205	1	CONNECTOR, 1/2" tube, 1/4" taper thd.
2	73114202	1	SENSOR
	7091828	1	BUSHING, 3/4" to 1/2"NPT
3	73118783	1	HOSE
	70919205	2	CONNECTOR, 1/2" tube, 1/4" taper thd.
	70921298	1	TEE, flare type, 1/2" tube, 3/4" str.thd.
4	73132777	1	HOSE
	70926975	1	TEE, flare type, 1/4" tube, 7/16" str.thd.
	70919171	1	CONNECTOR, flare type, 1/4" tube, 7/16" str.thd.
5	73132620	1	HOSE
	70921279	2	ELBOW, flare type, 1/2" tube, 3/4" str.thd.
	70919205	1	CONNECTOR, 1/2" tube, 1/4" taper thd.
6	73114201	1	CONTROL ASSY. (Includes item 7)
	70922300	2	CAPSCREW, 3/8" x 3/4"
	70677006	4	WASHER
7	73130161	1	FILTER

(Continued)



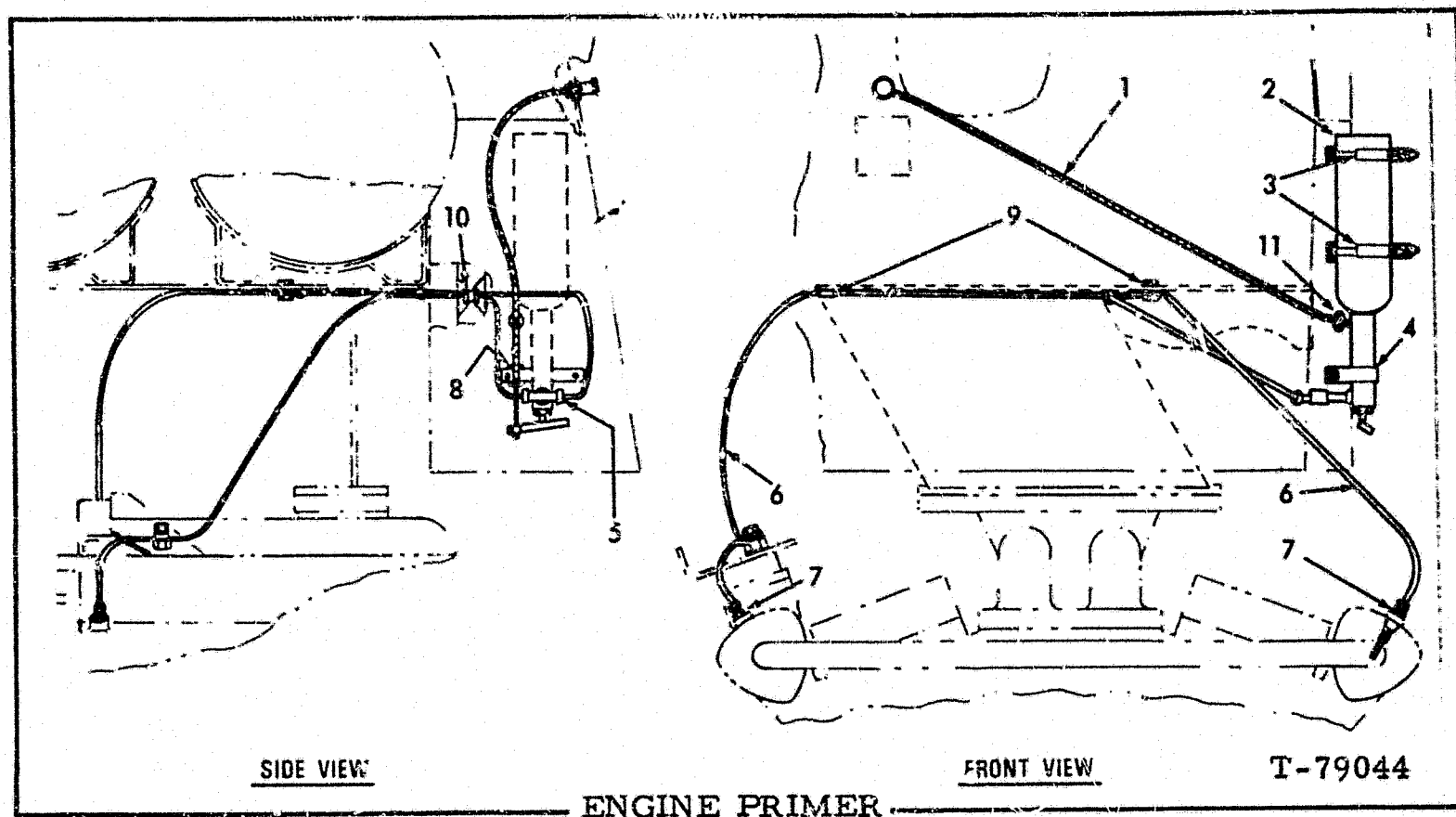
T-80697

AIR CLEANER MOUNTING

✓ USAGE: Tractor serial No. 75S03658 and up.

ITEM	PART NO.	QTY.	DESCRIPTION	
1	70197576	2	CAP ASSY. (Includes Clamp)	} Not used on units equipped with special aspirator
2	70695134	2	TUBE, intake	

(Continued)



USAGE: Special equipment

ITEM	PART NO.	QTY.	DESCRIPTION
1	70696034	1	CABLE ASSY., control (Includes lockwasher and mounting nut)
	70911115	2	WASHER, plain, U.S. std., 3/8"
2	73100082	1	TANK
3	70669359	2	CLAMP ASSY., tank supporting
4	70695999	1	BRACKET ASSY., valve
	70906820	1	SCREW, machine, #10-32 x 5/16" (cable attaching)
	70927338	2	CAPSCREW, 1/4"NC x 7/8"
	70910285	2	LOCKWASHER, 1/4"
	70911024	2	NUT, 1/4"NC
5	70689129	1	TEE, tube connecting
	70901470	1	NIPPLE, U.S. std., 1/8" x 2-1/2"
	70901763	1	COUPLING, straight, 1/8" x 13/16"
6	70695998	2	TUBE, valve to atomizer
7	70696025	2	JET (Double orifice)(Early units prior to approximately April 1978)
	73129301	2	JET (Single orifice)(Late units effective approximately April 1978)
	70912589	2	NUT, compression
	70911841	2	SLEEVE, compression
8	70690421	1	STOP ASSY., cable (Includes screw)
9	70640704	3	CLIP
	70927219	1	CAPSCREW, 1/2"NC x 3/4"
	70921175	1	CAPSCREW, 1/2"NC x 1"
	70928460	1	WASHER, plain
	70911028	1	NUT, 1/2"NC
10	70044810	1	GROMMET, 3/4" long
11	70023176	1	GROMMET, 1/2" long

NOTE: See PAINTING AND MARKING for transfer

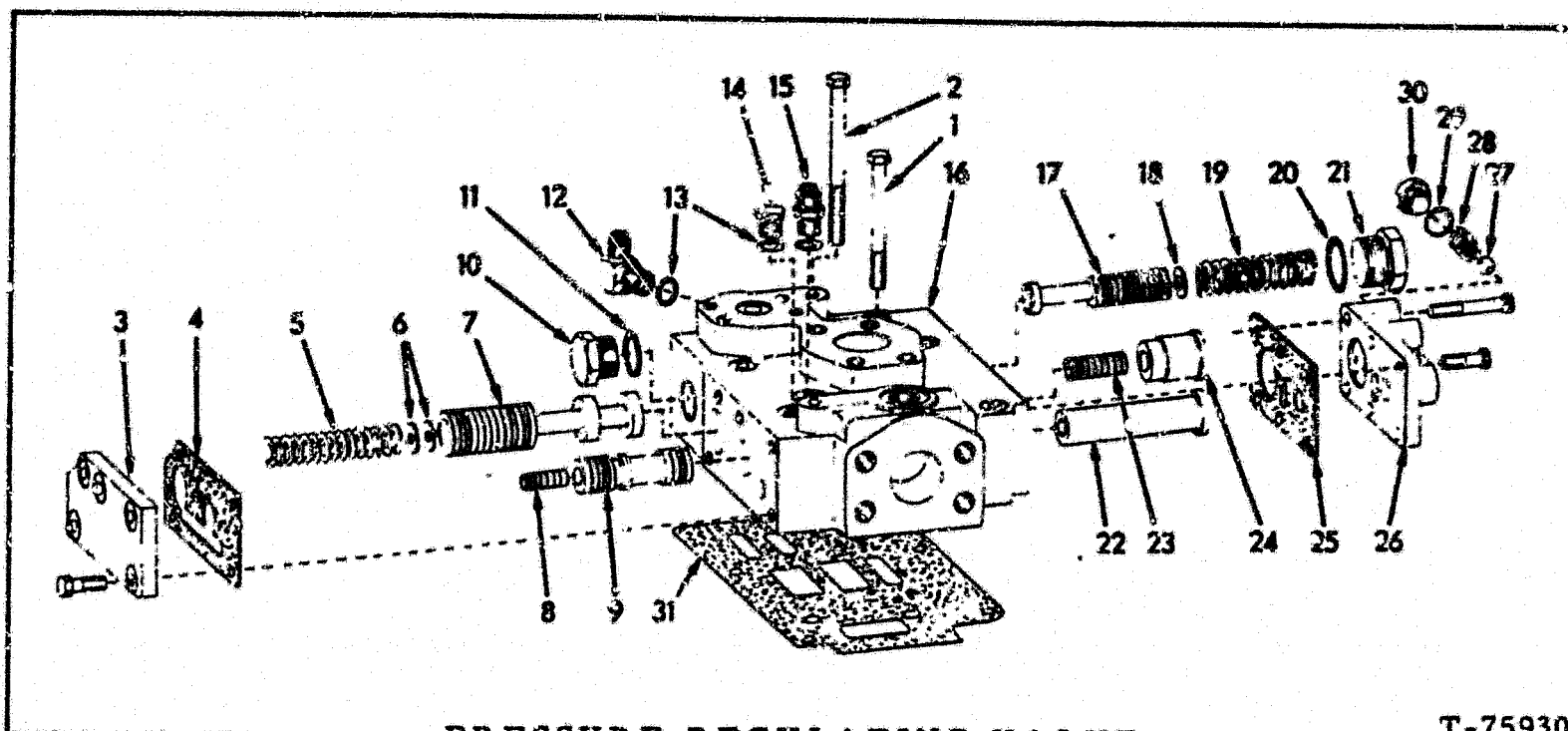
FRONT FAN AND BELT TIGHTENER (Continued)

ITEM	PART NO.	QTY.	DESCRIPTION
8	74390126	1	CAP
9	70913472	1	NUT
	70900820	1	WASHER
	70900812	1	PIN, cotter, 3/16" x 1-3/4"
10	70681447	1	BRACKET ASSY. (Includes items 11 and 12)
	70921266	1	CAPSCREW, 5/8"NC x 3-1/4"
	70929003	2	CAPSCREW, 5/8"NC x 5-1/4"
	70928060	1	CAPSCREW, 5/8"NC x 6"
	70927331	4	WASHER
11	70069521	1	PIN
12	70681446	1	SHAFT
13	70690420	1	BELT SET (Consists of 3 matched belts)
14	70690017	1	TIGHTENER ASSY. (Includes items 15 and 16)
	70911100	1	WASHER, plain, SAE., 5/8"
	70900806	1	PIN, cotter, 1/8" x 1"
15	70061114	1	BUSHING (Small)
16	70052669	1	BUSHING (Large)
17	70623195	1	BOOT
	70921912	1	CLAMP, hose, 1-1/16" x 2" diam.
	70921914	1	CLAMP, hose, 2-5/16" to 3-1/4" diam.
18	70654712	1	PIN
	70900806	1	PIN, Cotter, 1/8" x 1"
19	-----	1	FAN ASSY. (Reversible)(Includes items 20 thru 25) (Tractors prior to unit #03421. Order FAN 73107674)
	73107674	1	FAN (Pusher)(Tractor unit #03421 and up)
	73111678	1	FAN ASSY. (Reversible)(Serviced only as a unit) (Special equipment)
	70922763	6	CAPSCREW, 3/8"NC x 1" (Reversible Fan)
	70927157	6	CAPSCREW, 3/8"NC x 1-3/8" (Pusher Fan)
	70930370	6	WASHER
20	-----	8	BLADE (See NOTE below)
21	70673599	8	SPRING
22	70673598	1	COVER
	70926339	8	CAPSCREW, #10-24 x 5/16" (Includes lockwasher)
23	70919597	8	PIN
24	-----	1	HUB (See NOTE below)
25	73107124	8	WASHER
26	-----	1	DRIVE ASSY. (See D-17)

NOTE: Blade and Hub replacents require precision balancing. Return complete fan to HUBER REVERSIBLE FAN CO., 2103 Hershey Road, Erie, PA 16509

41B ALPHABETICAL INDEX

AIR CLEANER.....	1C-12	FAN(Front).....	1D-13
AIR CLEANER MOUNTING.....	1C-13	BELT TIGHTENER.....	1D-13
ALTERNATOR.....	2B-20	DRIVE.....	1D-17
ASPIRATOR.....	1C-11	IDLER.....	1D-13
AUXILIARY VALVE CONTROL.....	2G-7,G-11	SUPPORT & GUARDS.....	1D-7
BATTERIES & CABLES.....	2B-15	FAN(Rear).....	1D-20
BATTERY BOX.....	2B-17	BELT TIGHTENER.....	1D-15
BEVEL GEAR SHAFT.....	1H-3	DRIVE.....	1D-19
BRAKES.....	1I-15	DRIVE SHAFT.....	1D-21
BRAKE CONTROL.....	1I-11	DRIVE TRAIN.....	1D-20
BRAKE CYLINDER(Safety Brake).....	1I-22	IDLER.....	1D-15
BRAKE DRUM.....	1H-4	FENDERS(Rear).....	1K-4
CAB.....	2C-13	FILTERS	
CAB HEATER VALVES.....	2C-14	ENGINE OIL(By-pass).....	1B-19
COMPRESSOR & MOUNTING.....	2C-19	TRANSMISSION OIL.....	1G-5
CONTROLS		STEERING OIL.....	1H-21,H-22
BRAKE.....	1I-11	FINAL DRIVE	
DOZER.....	2D-21	HOUSING.....	1G-21
ENGINE.....	1C-21	OUTBOARD BEARING & SEAL.....	1H-12
RIPPER.....	2G-7,G-9,G-11,G-13	PINION SHAFT.....	1H-4,H-5
STEERING.....	1I-7	SPROCKET SHAFT & GEAR.....	1H-7,H-9
TILT.....	2D-21	FLOOD LIGHT(Rear).....	2B-9,B-10
TRANSMISSION.....	1G-15	FLOOR.....	1K-5,K-7
CONTROL VALVE RETURN LINES		FUEL LINES.....	1C-5
(Dozer,Ripper,Tilt).....	2E-23,H-13	FUEL TANK.....	1C-3
COUNTERWEIGHT.....	2C-10	FUEL TANK GUARD.....	2C-13
COWL.....	1K-3	GAUGES	
CRANKCASE GUARDS.....	1J-3	AMMETER.....	2B-21
CYLINDER(Hydraulic)		ENGINE OIL PRESSURE.....	2B-23
DOZER.....	2D-17	ENGINE TEMPERATURE.....	2B-21
RIPPER.....	2F-23	FUEL LEVEL.....	1C-3
TILT.....	2D-7	HOUR METER.....	2C-4
CYLINDER MOUNTING & PIPING(Dozer).....	2D-15	TORQUE CONVERTER TEMPERATURE.....	2B-21
DECELERATING BRAKE.....	1I-13	TRANSMISSION HYDRAULIC PRESSURE.....	2B-24
DOZER OIL PUMP LINES.....	2E-7,E-9	TRANSMISSION OIL LEVER.....	1G-3
DRAWBAR.....	2C-9	TRANSMISSION LUBE OIL PRESSURE.....	2C-3
ELEMENTS		HOOD.....	1J-20
AIR CLEANER.....	1C-12	HOSE PARTS.....	2B-7
ENGINE FUEL FILTER.....	1B-14	HYDRAULIC TANK.....	1K-15,2E-17
ENGINE LUBE OIL FILTER.....	1B-14	HYDRAULIC TANK DRAIN LINE.....	2E-21
ENGINE OIL FILTER(By-pass).....	1B-19	HYDRAULIC TANK GUARD.....	1K-15
ENGINE WATER FILTER.....	1B-14	HYDRAULIC TILT.....	2D-1
HYDRAULIC TANK.....	2E-17	HYDRAULIC TILT PIPING.....	2D-13
STEERING OIL FILTER.....	1H-21,H-22	INPUT CLUTCH OIL RETURN.....	1E-15
TRANSMISSION OIL FILTER.....	1G-9	INSTRUMENTS.....	2B-21
ENGINE BREATHER HOSE.....	1B-14	LIGHTS	
ENGINE CONTROLS.....	1C-21	DASH.....	2B-21
ENGINE & MOUNTING.....	1B-13	HEAD.....	2B-3,B-5
ENGINE PRIMER.....	1D-4	REAR FLOOD.....	2B-9,B-10
ENGINE PROTECTION SYSTEM.....	1C-7	LIGHTS & WIRING.....	2B-3,B-5
ENGINE SIDE PLATES.....	1J-23	MAIN FRAME.....	1J-3
EXHAUST PIPE.....	1C-9	MAIN HOUSING.....	1G-21



PRESSURE REGULATING VALVE

T-75930

USAGE: See E-5 and E-12.

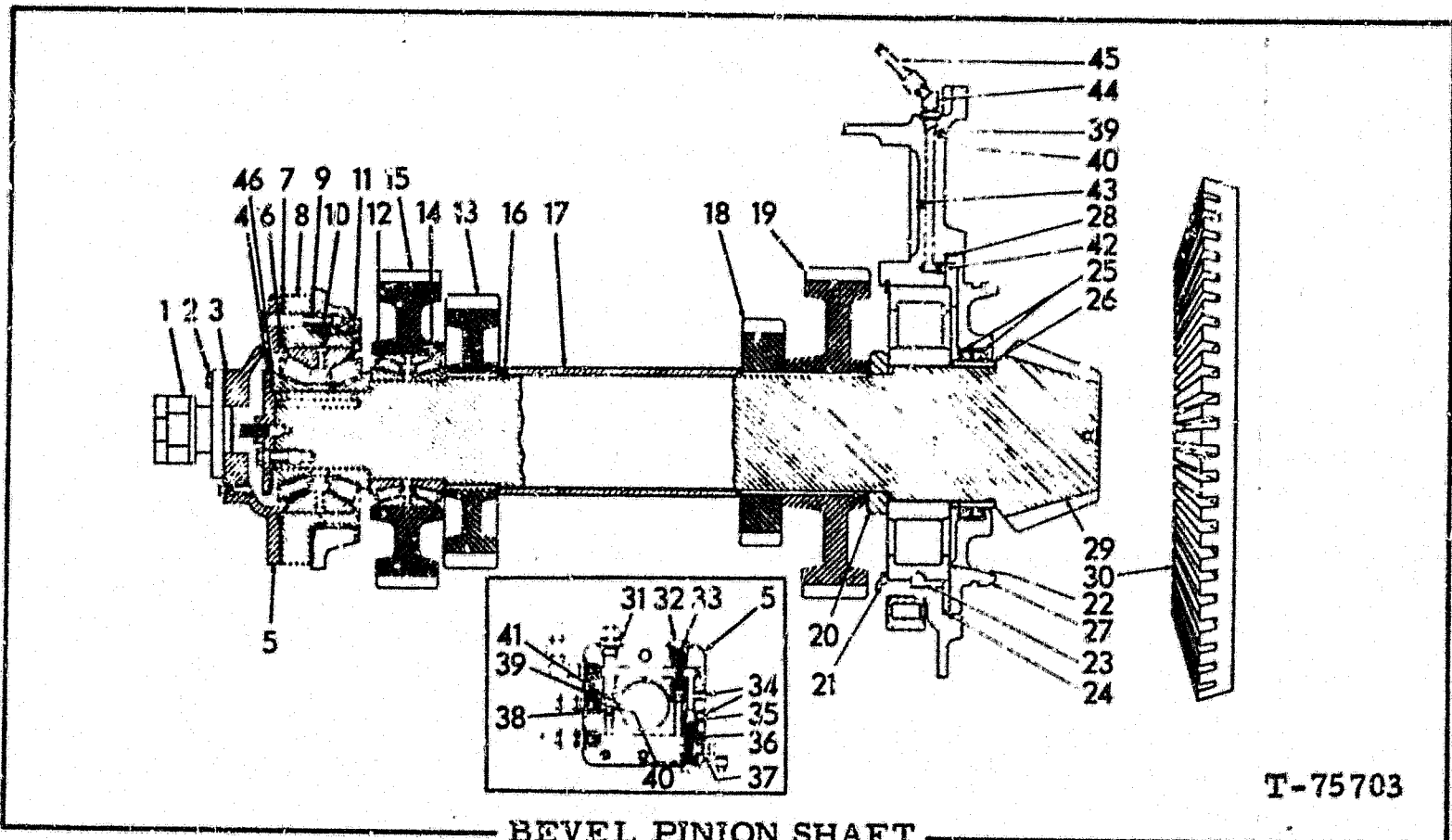
ITEM	PART NO.	QTY.	DESCRIPTION
-	70673030	1	VALVE ASSY. (Includes items 3 thru 30)
1	70919015	4	CAPSCREW, 3/8"NC x 3-1/2"
2	74054255	2	CAPSCREW
3	70673023	1	COVER
	70916271	5	CAPSCREW, 3/8"NC x 1"
4	70673027	1	GASKET
5	70673036	1	SPRING
6	{ 70676996	-	WASHER } Use as required
	{ 70925438	-	WASHER }
7	70673029	1	PISTON
8	70673032	1	PISTON
9	70684035	1	PISTON
10	70666076	1	PLUG
11	70930725	2	O-RING
12	70923540	1	ELBOW
13	70933475	3	O-RING
14	70925940	1	PLUG
15	70927424	1	CONNECTOR
16	-----	1	BODY
17	73039262	1	VALVE
18	70912298	1	WASHER

(Continued)

(Revised August 1983)

41B ALPHABETICAL INDEX

AIR CLEANER.....	1C-12	FAN(Front).....	1D-13
AIR CLEANER MOUNTING.....	1C-13	BELT TIGHTENER.....	1D-13
ALTERNATOR.....	2B-20	DRIVE.....	1D-17
ASPIRATOR.....	1C-11	IDLER.....	1D-13
AUXILIARY VALVE CONTROL.....	2G-7,G-11	SUPPORT & GUARDS.....	1D-7
BATTERIES & CABLES.....	2B-15	FAN(Rear).....	1D-20
BATTERY BOX.....	2B-17	BELT TIGHTENER.....	1D-15
BEVEL GEAR SHAFT.....	1H-3	DRIVE.....	1D-19
BRAKES.....	1I-15	DRIVE SHAFT.....	1D-21
BRAKE CONTROL.....	1I-11	DRIVE TRAIN.....	1D-20
BRAKE CYLINDER(Safety Brake).....	1I-22	IDLER.....	1D-15
BRAKE DRUM.....	1H-4	FENDERS(Rear).....	1K-4
CAB.....	2C-13	FILTERS	
CAB HEATER VALVES.....	2C-14	ENGINE OIL(By-pass).....	1B-19
COMPRESSOR & MOUNTING.....	2C-19	TRANSMISSION OIL.....	1G-5
CONTROLS		STEERING OIL.....	1H-21,H-22
BRAKE.....	1I-11	FINAL DRIVE	
DOZER.....	2D-21	HOUSING.....	1G-21
ENGINE.....	1C-21	OUTBOARD BEARING & SEAL.....	1H-12
RIPPER.....	2G-7,G-9,G-11,G-13	PINION SHAFT.....	1H-4,H-5
STEERING.....	1I-7	SPROCKET SHAFT & GEAR.....	1H-7,H-9
TILT.....	2D-21	FLOOD LIGHT(Rear).....	2B-9,B-10
TRANSMISSION.....	1G-15	FLOOR.....	1K-5,K-7
CONTROL VALVE RETURN LINES		FUEL LINES.....	1C-5
(Dozer,Ripper,Tilt).....	2E-23,H-13	FUEL TANK.....	1C-3
COUNTERWEIGHT.....	2C-10	FUEL TANK GUARD.....	2C-13
COWL.....	1K-3	GAUGES	
CRANKCASE GUARDS.....	1J-3	AMMETER.....	2B-21
CYLINDER(Hydraulic)		ENGINE OIL PRESSURE.....	2B-23
DOZER.....	2D-17	ENGINE TEMPERATURE.....	2B-21
RIPPER.....	2F-23	FUEL LEVEL.....	1C-3
TILT.....	2D-7	HOUR METER.....	2C-4
CYLINDER MOUNTING & PIPING(Dozer).....	2D-15	TORQUE CONVERTER TEMPERATURE.....	2B-21
DECELERATING BRAKE.....	1I-13	TRANSMISSION HYDRAULIC PRESSURE.....	2B-24
DOZER OIL PUMP LINES.....	2E-7,E-9	TRANSMISSION OIL LEVER.....	1G-3
DRAWBAR.....	2C-9	TRANSMISSION LUBE OIL PRESSURE.....	2C-3
ELEMENTS		HOOD.....	1J-20
AIR CLEANER.....	1C-12	HOSE PARTS.....	2B-7
ENGINE FUEL FILTER.....	1B-14	HYDRAULIC TANK.....	1K-15,2E-17
ENGINE LUBE OIL FILTER.....	1B-14	HYDRAULIC TANK DRAIN LINE.....	2E-21
ENGINE OIL FILTER(By-pass).....	1B-19	HYDRAULIC TANK GUARD.....	1K-15
ENGINE WATER FILTER.....	1B-14	HYDRAULIC TILT.....	2D-1
HYDRAULIC TANK.....	2E-17	HYDRAULIC TILT PIPING.....	2D-13
STEERING OIL FILTER.....	1H-21,H-22	INPUT CLUTCH OIL RETURN.....	1E-15
TRANSMISSION OIL FILTER.....	1G-9	INSTRUMENTS.....	2B-21
ENGINE BREATHER HOSE.....	1B-14	LIGHTS	
ENGINE CONTROLS.....	1C-21	DASH.....	2B-21
ENGINE & MOUNTING.....	1B-13	HEAD.....	2B-3,B-5
ENGINE PRIMER.....	1D-4	REAR FLOOD.....	2B-9,B-10
ENGINE PROTECTION SYSTEM.....	1C-7	LIGHTS & WIRING.....	2B-3,B-5
ENGINE SIDE PLATES.....	1J-23	MAIN FRAME.....	1J-3
EXHAUST PIPE.....	1C-9	MAIN HOUSING.....	1G-21



BEVEL PINION SHAFT

T-75703

USAGE: See E-20. Tractor serial No. 75S03671 and up. Also for prior units if transmission modification has been made to install larger Rear Pinion Bearing.

ITEM	PART NO.	QTY.	DESCRIPTION
1	-----	-	PUMP ASSY. (See F-20)
2	70921566	2	CAPSCREW, 5/16"NC x 1"
3	70672466	1	□GASKET
4	70676116	1	RETAINER
5	70191032	3	CAPSCREW, 1/2"NF x 1-1/4"
	73107710	1	RETAINER (If for first replacement on transmissions prior to #3D8250; also order items 8 and 11)
6	70922510	12	CAPSCREW, 1/2"NC x 2-3/4"
	70934660	1	□O-RING
7	70687441	2	SHIM (.005" thick)
	70687442	2	SHIM (.007" thick)
	70687443	2	SHIM (.020" thick)
8	73107709	1	SUPPORT (If for first replacement on transmissions prior to S/N #3D8250; also order items 5 and 11)
9	70657464	6	SHIM (.005" thick)
	70657465	6	SHIM (.007" thick)
	70657466	6	SHIM (.029" thick)
10	70934658	1	□O-RING
11	73107708	1	BEARING (Includes 1 cup, 2 rollers and 1 spacer) (If for first replacement on transmissions prior to S/N #3D8250; also order items 5 and 8)
12	73034873	2	SNAP RING
13	70657472	1	GEAR
14	70657469	1	BEARING (Includes 1 cup, 2 rollers and 1 spacer)
15	70657471	1	GEAR (Tractors prior to unit #03755)
16	73125211	1	GEAR (Tractor unit #03755 and up)
	70681103	1	PIN

(Continued)

CLUTCH AND SHAFT ASSEMBLY (First/Second Range)(Continued)

ITEM	PART NO.	QTY.	DESCRIPTION
15	70658187	8	PLATE, friction, inner (.014" off flat)
	70657967	8	PLATE, friction, inner (flat)
16	70673721	2	PLATE
17	73034873	2	RING, snap
18	73112267	2	PISTON
19	70699273	2	□RING
20	70683639	1	SHAFT ASSY. (Includes items 21 and 23 and hardware indented below)
	70186648	1	PLUG, pipe
	70919242	3	PIN, spring
21	70672493	2	RING, snap
22	70695623	1	HOUSING ASSY. (Includes Dowel Pins)
23	70695625	1	PIN, housing locating
24	74254663	2	RING, snap
25	70672490	2	VALVE
26	70672487	2	SLEEVE
27	73125167	2	RING
28	70658257	1	GEAR (Tractors prior to unit #03030)
	70697229	1	GEAR (Tractor unit #03030 and up)
29	70658238	1	SPACER
30	70658327	1	SPACER
31	70683619	1	BEARING
32	70067704	1	RING, snap

(Revised August 1983)

TRANSMISSION OIL FILTER LINES (Continued)

ITEM	PART NO.	QTY.		DESCRIPTION
		*	**	
2	-----	2	2	FILTER ASSY. (See G-9)
	70927353	-	8	CAPSCREW, 1/2"NF x 1-1/4"
	70920583	6	-	CAPSCREW, 1/2"NC x 1-1/2"
	70677008	6	-	WASHER
	70928188	-	8	WASHER
	70911028	6	-	NUT, 1/2"NC
3	70693984	1	-	BRACKET
	73110668	-	1	BRACKET
	70922475	3	3	CAPSCREW, 3/4"NC x 1-1/2"
	70914726	3	3	WASHER
4	70653551	1	1	HOSE (See HOSE PARTS)
	70922553	1	-	TEE, branch, adjustable, flare type, 1-1/4" tube, 1-5/8" str.thd. (Includes Washer, Nut and O-RING)
	70921235	1	-	O-RING
	70933670	-	1	TEE, adjustable, flare type, 1-1/4" tube, 1-5/16" str.thd.
	70925922	-	1	O-RING
5	70927312	2	2	CLIP
	70920582	2	2	CAPSCREW, 1/2"NC x 1-1/4"
	70928178	2	2	WASHER, plain
6	70652942	1	-	HOSE } See HOSE PARTS
	73110674	-	1	HOSE }
	70925327	1	-	TEE, run, adjustable, flare type, 1-1/4" tube, 1-5/8" str.thd. (Includes Washer, Nut and O-RING)
	70921235	1	-	O-RING
	70933670	-	1	TEE, adjustable, flare type, 1-1/4" tube, 1-5/16" str.thd.
	70925922	-	1	O-RING
7	-----	1	1	PUMP ASSY. (See G-4)
8	70652931	1	1	STEM
9	73107726	3	3	HOSE
	70927308	12	12	CLAMP
10	70653296	1	1	TUBE
11	70657514	4	4	CLIP
	70927353	4	4	CAPSCREW, 1/2"NF x 1-1/4"
	70677008	4	4	WASHER, plain
12	70673617	1	1	TUBE
13	70921118	2	2	FLANGE
	70920583	4	4	CAPSCREW, 1/2"NC x 1-1/2"
	70912441	4	4	LOCKWASHER, 1/2"
14	70923578	1	1	O-RING
15	70921117	2	2	FLANGE
	70925193	4	4	CAPSCREW, 7/16"NC x 1-3/8"
	70914678	4	4	LOCKWASHER, 7/16"
16	70925919	1	1	O-RING
17	70921558	2	2	FLANGE
	70920583	4	4	CAPSCREW, 1/2"NC x 1-1/2"
	70912441	4	4	LOCKWASHER, 1/2"

(Continued)

(Revised July 1979)

TRANSMISSION CONTROL LINKAGE

ITEM	PART NO.	QTY.	DESCRIPTION
1	70653000	1	GUIDE
2	70664074	1	GUIDE
3	70922300	4	CAPSCREW, 3/8"NC x 3/4"
	70930370	4	WASHER
4	70671451	1	PLATE
5	70928138	4	CAPSCREW, 1/4"NC x 5/8"
	70910285	4	LOCKWASHER, 1/4"
6	70690075	1	PLATE (Tractors prior to unit #03371)
	70699051	1	PLATE (Tractor unit #03371 thru #03548)
	73108287	1	PLATE (Tractor unit #03549 thru #03675)
	73111654	1	PLATE (Tractor unit #03676 and up)
7	70922763	6	CAPSCREW, 3/8"NC x 1"
	70677006	5	WASHER
	70683421	1	WASHER
8	70920582	2	CAPSCREW, 1/2"NC x 1-1/4"
9	70920583	3	CAPSCREW, 1/2"NC x 1-1/2"
	70677008	5	WASHER
10	70694116	1	COVER (With handle)(Tractors prior to unit #03371)
	70694117	1	COVER (Less Handle)(Tractors unit #03371 and up)
11	70920583	4	CAPSCREW, 1/2"NC x 1-1/2"
	70677008	4	WASHER
12	70629709	1	KNOB
13	70664125	1	LEVER ASSY. (Includes item 15)
14	70683659	1	CAPSCREW, 3/8"NC x 3"
	70930370	1	WASHER
	70903416	1	NUT, slotted, 3/8"NC
	70900802	1	PIN, cotter, 3/32" x 1"
15	70650712	2	BEARING
16	70921565	2	CAPSCREW
	70911034	2	NUT, jam, 3/8"NC
17	70640637	1	SPRING
18	70663600	1	LEVER ASSY. (Includes item 19)
19	70653319	2	BEARING
20	70664099	1	BOLT
	70928188	1	WASHER, plain (Use as required)
21	70902203	1	SETSCREW
22	70653570	2	ROD END
	70930370	2	WASHER
	70911041	2	NUT, 3/8"NF
23	70653007	1	ROD
	70911048	2	NUT, jam, 3/8"NF
24	70653008	1	ROD
	70911048	2	NUT, jam, 3/8"NF
25	70617932	8	ROD END (3/8"NF)
26	70683653	8	CAPSCREW, 3/8"NC x 1-1/2"
	70922465	8	WASHER
	70903416	8	NUT, slotted, 3/8"NC
	70900802	8	PIN, cotter, 3/32" x 1"

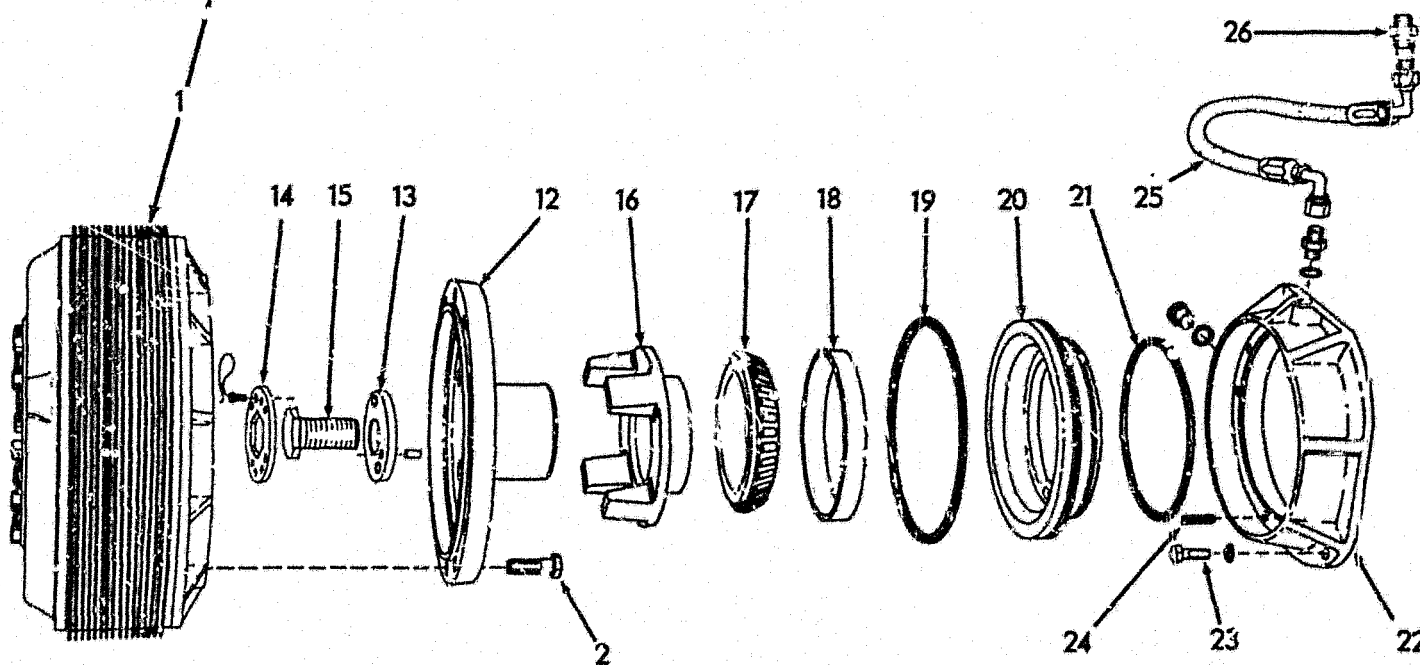
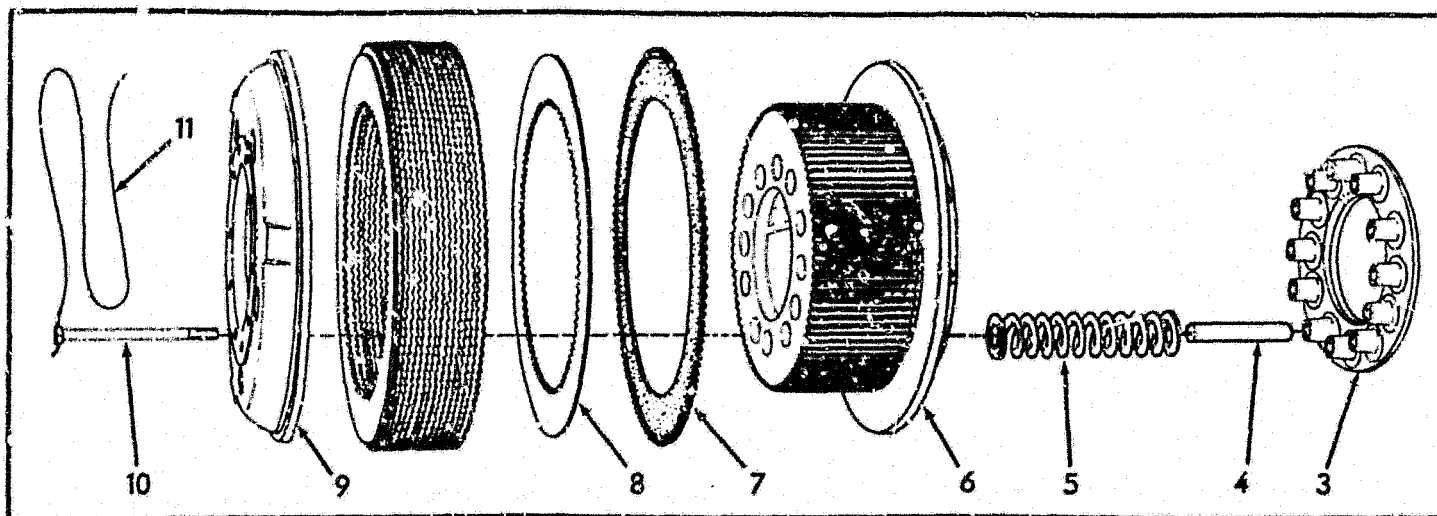
2 additional used
prior to unit
#03359, excluding
#03323, 03326,
#03342 and #03344
thru #03358

(Continued)

(Revised November 1978)

41B ALPHABETICAL INDEX

MOLDBOARD BRACES.....	2D-9	STEERING LEVERS & LINKAGE.....	1I-7
MOLDBOARDS		STEERING PUMP.....	1H-23,H-24
SEMI-U.....	2C-23	TOOLS.....	2C-11
STRAIGHT.....	2D-6	TOOL BOX.....	2C-11
MUFFLER.....	1C-9	TORQUE CONVERTER.....	1E-5
NUMERICAL INDFX.....	2G-17	TRACK.....	1J-17
OIL FILTER LINES(By-pass).....	1B-15	TRACK CARRIER ROLLER.....	1J-12
OSCILLATING BEAM.....	1J-5	TRACK FRAME.....	1J-7
PACKAGE PARTS.....	1B-11	TRACK IDLER.....	1J-13
PAINTING & MARKING.....	1K-19	TRACK RELEASE.....	1J-15
POWER ASSIST PUMP.....	2E-15	TRACK ROLLER.....	1J-9
PUMPS		TRACK ROLLER GUARDS.....	1J-11
DOZER.....	2E-11	TRANSMISSION	
POWER ASSIST.....	2E-15	ASSEMBLY.....	1E-20,I-3
SHIFT INHIBITING.....	1F-20	COUNTER SHAFT.....	1F-19
STEERING.....	1H-23	HOUSING & COVERS.....	1F-3
TRANSMISSION.....	1G-4	SHAFT, BEVEL PINION.....	1F-9
PUSH BEAMS.....	2D-9	SHAFT, DRIVE.....	1E-16
PUSHER FRAME(Dozer).....	2D-19	SHAFT, 1ST & 2ND RANGE.....	1F-13
QUICK FUELING.....	2C-5,C-7	SHAFT, FORWARD & REVERSE.....	1F-6
RADIATOR(Front).....	1D-9	SHAFT, 3RD RANGE.....	1F-14
GUARD.....	1J-21	TRANSMISSION CONTROL LINKAGE.....	1G-15
MOUNTING.....	1D-11	TRANSMISSION GUARDS.....	1J-3
PIPING.....	1D-6	TRANSMISSION OIL FILLER & DIPSTICK.....	1G-3
RADIATOR(Rear).....	1D-23	TRANSMISSION OIL FILTER LINES.....	1G-5
GUARD.....	1K-15	TRANSMISSION OIL PUMP.....	1G-4
SUPPORT.....	1D-23	TRANSMISSION TEST PANEL & LINES.....	1G-11,G-13
REAR SCREEN.....	2C-15	TRAVEL CONTROL VALVE.....	1F-21
RELIEF VALVE.....	2F-5	VALVES	
RIPPER MOUNTING FRAME.....	2F-21	BRAKES.....	1I-17
RIPPER PIPING.....	2G-3,G-5	DOZER CONTROL.....	2F-3,F-4,F-9
RIPPER TOOL BAR & LINKAGE.....	2F-19	DOZER TILT CONTROL.....	2F-3,F-4,F-7
ROPS MOUNTING BRACKETS.....	2C-17	RELIEF.....	2F-5
ROLL OVER PROTECTION FRAME(ROPS).....	2C-16	RIPPER CONTROL.....	2F-3,F-4,F-7
SAFETY BRAKE VALVE LINES.....	1I-19	SAFETY BRAKE.....	1I-21
SEAT.....	1K-13,K-17,K-23	SHIFT INHIBITING.....	1F-23
SEAT MOUNTING.....	1K-10,K-12	STEERING CONTROL.....	1I-3
SHIFT INHIBITING PUMP.....	1F-20	TORQUE CONVERTER PRESSURE REGULATING..	1E-13
SHIFT INHIBITING VALVE.....	1F-23	TRAVEL CONTROL(Transmission).....	1F-21
STARTER.....	2B-19	VALVE CONTROLS	
STEERING CLUTCHES.....	1H-13	DOZER.....	2D-21,E-3
STEERING FILTER LINES.....	1H-15,H-17	RIPPER.....	2G-7,G-9,G-11,G-13
STEERING CONTROL VALVE.....	1I-3	TILT.....	2D-21,E-3
STEERING CONTROL VALVE LINES.....	1I-5	VANDALISM PREVENTION PARTS.....	2C-21

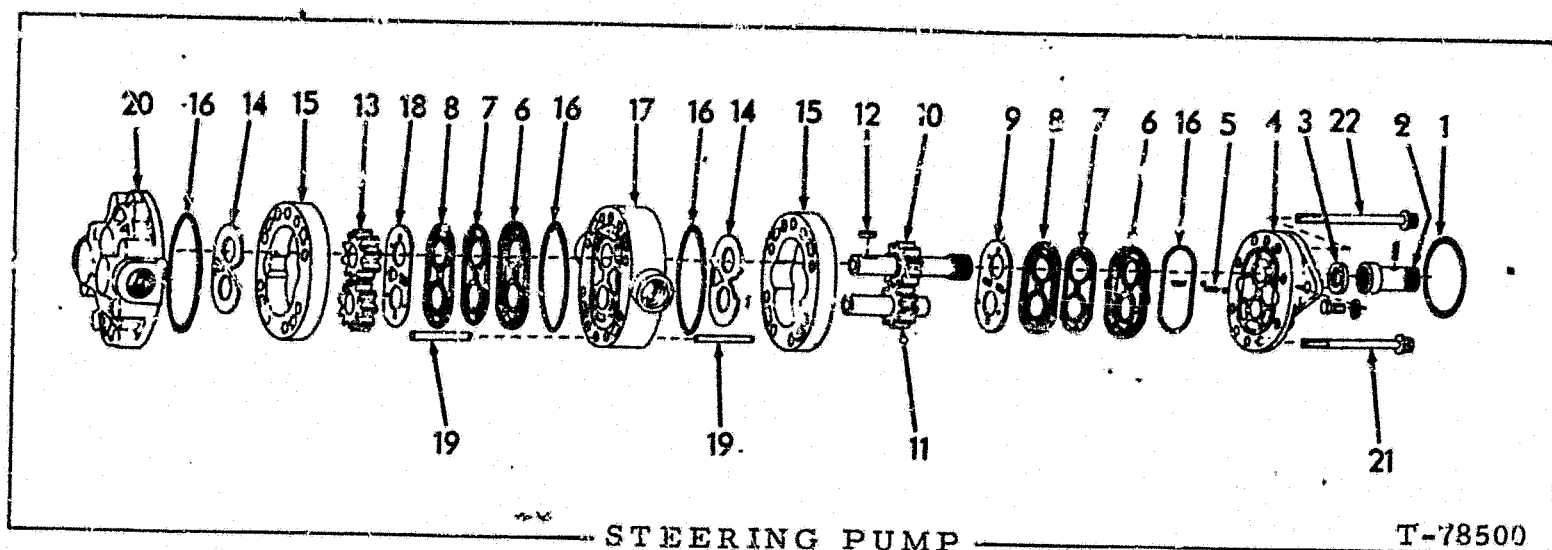


STEERING CLUTCHES

T-78497

ITEM	PART NO.	QTY.	DESCRIPTION
1	70094891	2	CLUTCH ASSY. (Includes items 3 thru 11)
2	70650812	36	BOLT, self-locking, 5/8" NC x 2"
3	70094714	2	PLATE
4	70095011	24	SPACER
5	70095568	24	SPRING
6	70094593	2	HUB
7	70094868	34	DISC (bi-metallic)
8	70094681	38	DISC (steel)
9	70094643	2	PLATE
10	70929080	24	CAPSCREW, drilled-hd., 1/2" NF x 6-7/8"
11	70952519	6	WIRE, locking, 1/16" x 39"
12	70095193	2	HUB

(Continued)



USAGE: Tractors prior to S/N 75S03693. See H-15

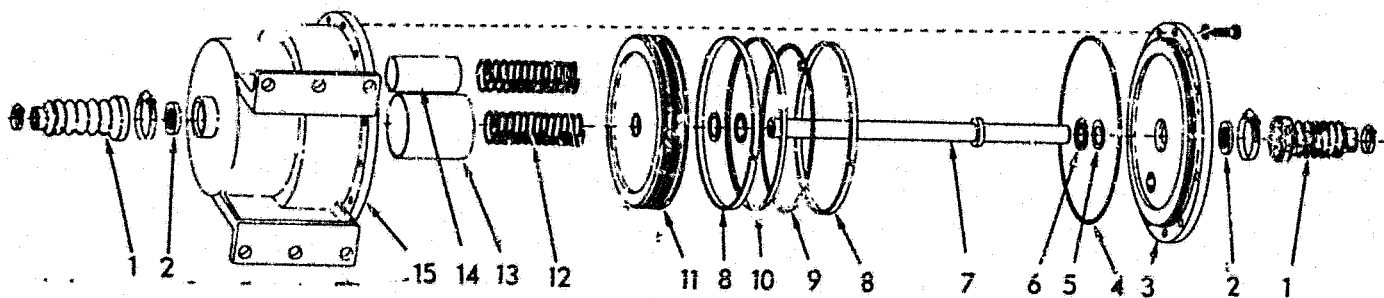
ITEM	PART NO.	QTY.	DESCRIPTION
-	70688147	1	PUMP ASSY. (Includes items 3 thru 22)
	70920583	2	CAPSCREW, 1/2" NC x 1-1/2"
	70926192	2	WASHER, plain
1	70925310	1	O-RING
2	70693566	1	ADAPTER ASSY. (Includes PIN indented below)
	70916937	1	PIN, spring, 1/4" x 1-1/4"
3	73119459	1	SEAL
4	70691548	1	PLATE ASSY. (Includes bushings)
5	70653916	1	SPRING
	70921085	1	BALL, steel, 13/32" diam.
6	70691553	2	SEAL
7	70691552	2	GASKET (thin)
8	70691554	2	GASKET (thick)
9	70653920	1	DIAPHRAGM
10	70691560	1	GEAR ASSY. (Includes shaft)
11	70691559	1	GEAR ASSY. (Includes shaft)
12	70691549	1	KEY
13	70691561	2	GEAR
14	70669996	2	PLATE
15	70691555	2	BODY
16	70933859	4	O-RING
17	70691557	1	PLATE ASSY. (Includes bushings)
18	70691550	1	DIAPHRAGM
19	70691558	4	PIN
20	70691556	1	PLATE
21	70930401	4	CAPSCREW, 12 pt. 3/8" NC x 5-1/2"
22	70930402	4	CAPSCREW, 12 pt. 3/8" NC x 5-3/4"

(Revised May 1979)

BRAKE CONTROLS (Continued)

ITEM	PART NO.	QTY.	DESCRIPTION
11	70685907	1	LEVER ASSY. (Includes item 12)
	70922510	1	CAPSCREW, 1/2"NC x 2-3/4"
	70912441	1	LOCKWASHER, 1/2"
	70911028	1	NUT, 1/2"NC
12	70671778	1	BUSHING
13	70652226	1	SHAFT
14	70631883	4	KEY
15	70690332	2	LEVER
	70922510	2	CAPSCREW, 1/2"NC x 2-3/4"
	70912441	2	LOCKWASHER, 1/2"
	70911028	2	NUT, 1/2"NC
16	70690260	2	BOOT
	70921912	2	CLAMP } Tractors prior to unit #03339
	70698979	2	BOOT
	70921916	2	CLAMP } Tractor unit #03339 and up
17	70690187	2	PAD
18	70921076	4	CAPSCREW, 3/8"NC x 1-1/4"
	70910287	4	LOCKWASHER, 3/8"
19	73111826	1	SPRING
20	70652225	1	SHAFT
21	70664077	1	RING
	70922510	1	CAPSCREW, 1/2"NC x 2-3/4"
	70912441	1	LOCKWASHER, 1/2"
	70911028	1	NUT, 1/2"NC
22	70664129	1	LEVER ASSY. (Includes items 23 and 24)
23	70664126	1	BUSHING
24	70671778	1	BUSHING
25	70664130	1	SPACER
26	70653665	1	BRACKET (Tractors prior to unit #03693)
	73114217	1	TUBE (Tractor unit #03693 and up)
	70920585	6	CAPSCREW, 1/2"NC x 1-3/4"
	70921556	6	CAPSCREW, 1/2"NC x 2"
	70677008	12	WASHER
27	{ 70666106	2	SHIM (.031" thick) } Use as required
	{ 70666107	3	SHIM (.062" thick) }
28	70652232	1	ROD
29	70671017	1	EYE
	70927653	1	NUT, jam, 5/8"NF
30	70668277	1	ANGLE
	70920583	2	CAPSCREW, 1/2"NC x 1-1/2" } Tractors prior
	70926192	2	WASHER, plain } to unit #03481
31	-----	1	CYLINDER ASSY. (See I-22)
	70920585	6	CAPSCREW, 1/2"NC x 1-3/4"
	70677008	6	WASHER, plain
32	{ 70670664	4	SHIM (.031" thick) } Use as required
	{ 70670665	6	SHIM (.062" thick) }
33	70068163	1	EYE
	70910345	1	NUT, jam, 5/8"NF
34	70652836	1	YOKE ASSY. (Includes item 35)
35	70096142	4	BUSHING
36	70652244	2	PIN
	70909808	2	PIN, cotter, 1/8" x 1-1/2"

(Revised March 1979)



AUTOMATIC SAFETY BRAKE CYLINDER

T-75999

USAGE: See I-11 and I-19)

ITEM	PART NO.	QTY.	DESCRIPTION
-	70676813	1	CYLINDER ASSY. (Includes items 1 thru 15)
1	70652241	2	BOOT
	70922660	2	CLAMP, hose, 13/16" to 1-1/2" diam.
	70921913	2	CLAMP, hose, 1-13/16" to 2-3/4" diam.
2	70623197	2	SEAL
3	70652360	1	COVER
	70920583	12	CAPSCREW, 1/2" NC x 1-1/2"
	70912441	12	LOCKWASHER, 1/2"
4	70925482	1	O-RING
5	70623489	2	WASHER
6	70623198	2	SEAL
7	70652235	1	SHAFT
8	70652238	2	GUIDE RING
9	70925498	1	O-RING
10	70652239	1	RING
11	70652214	1	PISTON
12	70095568	10	SPRING
13	70652237	1	TUBE
14	70652236	9	TUBE
15	70652190	1	HOUSING

TRACK ROLLERS (Continued)

ITEM	PART NO.	QTY.	DESCRIPTION
10	70690587	2	WASHER, thrust
11	70930307	8	SCREW
12	70666949	2	<input type="checkbox"/> SEAL ASSY. (Includes item 17)
13	70923584	2	<input type="checkbox"/> O-RING
14	70687747	2	CAP
15	70687748	2	RING, snap
16	70667270	1	SEAL KIT (Includes parts for one (1) roller only: items 8, 12 and 13)
17	70690648	-	RING SET, seal (Enables replacement of the rubber sealing washers without having to replace the steel sealing rings or the entire Seal Assy.) (Includes 2 sealing washers sufficient to service 1 Seal Assy.)

 Components of item 16

*2 additional (qty. 8) single-flange and 2 less (qty. 6) double-flanged rollers used effective Tractor S/N 75S03755.

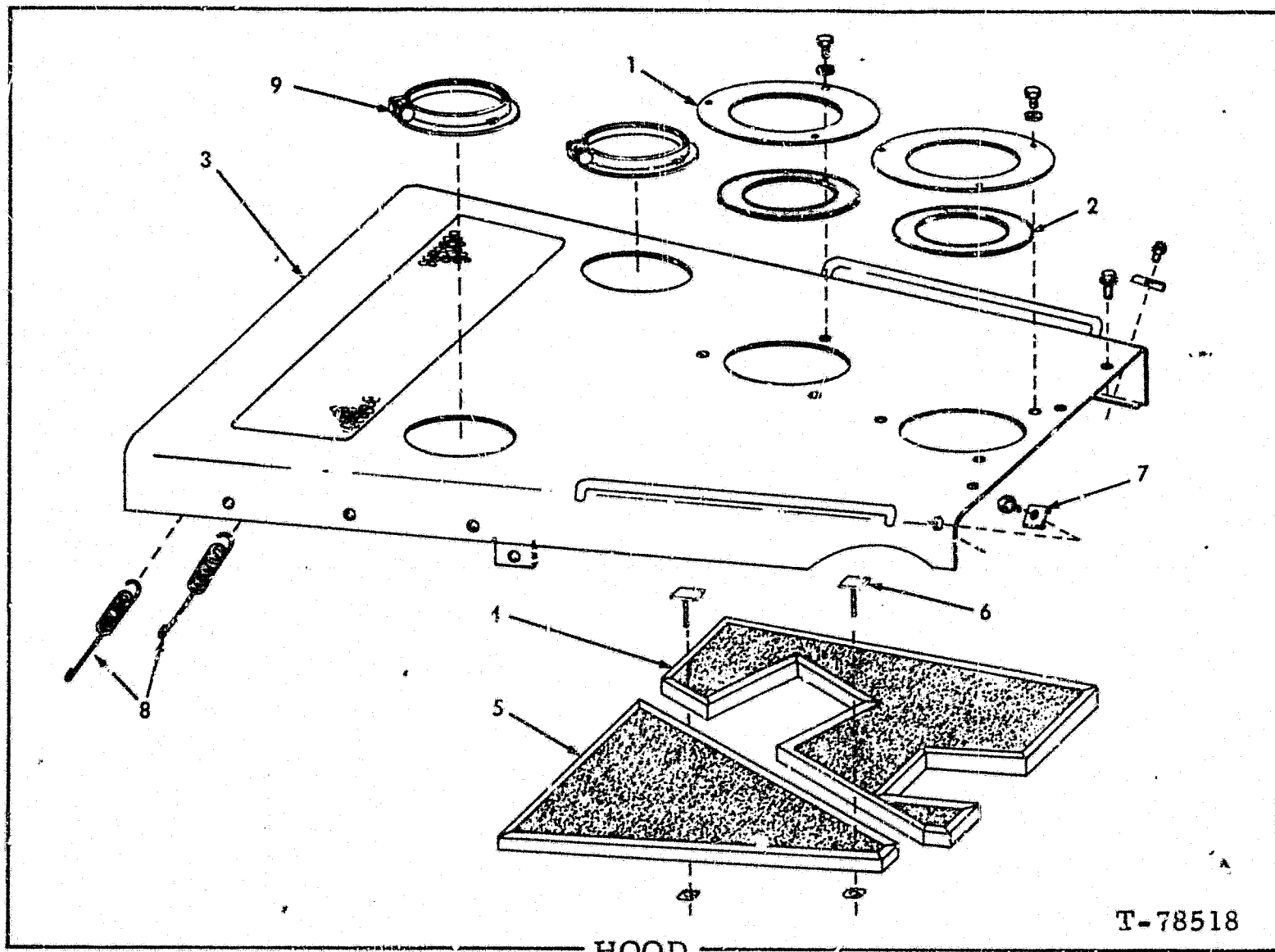
CLICK HERE TO **DOWNLOAD** THE COMPLETE MANUAL

- Thank you very much for reading the preview of the manual.
- You can download the complete manual from: www.heydownloads.com by clicking the link below



- Please note: If there is no response to CLICKING the link, please download this PDF first and then click on it.

CLICK HERE TO **DOWNLOAD** THE COMPLETE MANUAL



T-78518

HOOD

*Tractors prior to serial No. 75S03658
 **Tractor serial No. 75S03658 and up.

ITEM	PART NO.	QTY.	DESCRIPTION
		* **	
1	70690764	2 2	RING
	70927541	6 6	CAPSCREW, 1/4"NC x 3/4"
	70677004	6 6	WASHER, plain
2	70690765	2 2	RING
3	70690766	1 -	HOOD ASSY. } Each includes items 4 thru 6
	70698514	- 1	HOOD ASSY. }
	70648283	3 3	CAPSCREW
4	70690688	1 -	INSULATION
	70698513	- 1	INSULATION
5	70690657	1 -	INSULATION
	70698512	- 1	INSULATION
6	70690636	14 15	HANGER, insulation
7	70624416	2 2	CLIP
	70648294	2 2	CAPSCREW
8	70044245	2 -	SPRING (Tractors prior to unit #03462)
9	70694037	- 2	COLLAR ASSY. (Includes Clamp)

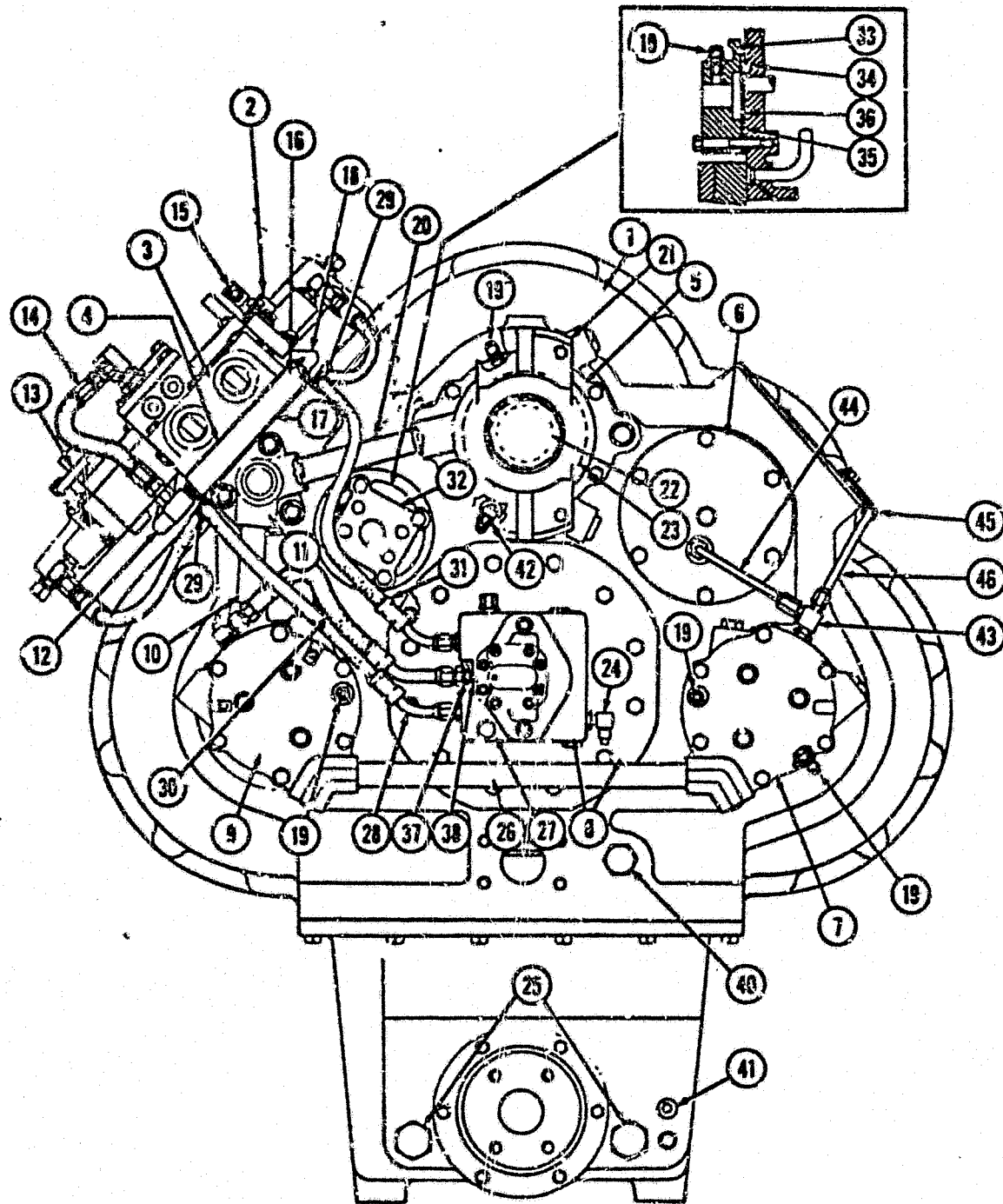
FLOOR (Continued)

ITEM	PART NO.	QTY.	DESCRIPTION
7	70690060	1	PLATE (Tractor prior to unit #03455)
	70690058	1	PLATE (Tractor unit #03455 and up)
	70920582	4	CAPSCREW, 1/2"NC x 1-1/4"
	70677008	4	WASHER, plain
8	70690077	1	CHANNEL
	70920583	4	CAPSCREW, 1/2"NC x 1-1/2"
	70920585	4	CAPSCREW, 1/2"NC x 1-3/4"
	70677008	8	WASHER, plain
9	70658703	1	ANGLE
	70920583	4	CAPSCREW, 1/2"NC x 1-1/2"
	70677008	4	WASHER, plain
10	70690070	1	PLATE
	70920582	4	CAPSCREW, 1/2"NC x 1-1/4"
	70677008	4	WASHER, plain
11	70690082	1	PLATE
	70922763	1	CAPSCREW, 3/8"NC x 1"
	70910825	2	WASHER, plain
	70910324	1	NUT, 3/8"NC
12	73122647	1	CHANNEL
	70920583	4	CAPSCREW, 1/2"NC x 1-1/2"
	70677008	4	WASHER, plain
13	70690080	1	CHANNEL (Tractor prior to unit #03332)
	70685891	1	CHANNEL (Tractor unit #03332 and up)
	70920583	2	CAPSCREW, 1/2"NC x 1-1/2"
	70920585	2	CAPSCREW, 1/2"NC x 2"
	70677008	4	WASHER, plain
14	70666102	2	SHIM (.031" thick)
	70666103	3	SHIM (.062" thick)
15	70690065	1	PLATE
	70920582	6	CAPSCREW, 1/2"NC x 1-1/4" } Two less used on tractor unit #03485 and up
	70677008	6	WASHER, plain
16	70690071	1	PLATE
	70920582	5	CAPSCREW, 1/2"NC x 1-1/4"
	70677008	5	WASHER, plain
17	70690052	1	STRIP
18	70690053	1	STRIP
19	70699158	1	MAT, floor
20	-----	2	SEAL (40 - 7/16" long) } Refer to item 30
21	-----	1	SEAL (5-1/8" long)
22	-----	1	SEAL (7" long)
23	-----	1	SEAL (19-5/8" long)
24	-----	1	SEAL (26-3/4" long)
25	-----	1	SEAL (15-5/8" long) } Refer to item 31
26	-----	1	SEAL (3-3/4" long)
27	-----	1	SEAL 9" long)
28	-----	6	STRIP (18-1/2" long)(Refer to item 32)
29	70691388	1	SEAL (40" long)(Cut to length)
30	70691996	-	SEAL (150" long) } Use as req'd. Cut to length
31	70691998	-	SEAL (100" long)
32	70691994	-	SEAL (150" long)
33	70694589	-	SEAL (125" long)

(Revised September 1979)

HYDRAULIC TANK AND REAR RADIATOR GUARD

ITEM	PART NO.	QTY.	DESCRIPTION
1	70681683	1	COVER
	70922763	13	CAPSCREW, 3/8"NC x 1" (10 less used on tractors unit #03370 and up)
	70677006	13	WASHER
	70921076	10	CAPSCREW, 3/8"NC x 1-1/4" } Tractor unit
	70677008	10	WASHER } #03370 and up
3	70681671	1	COVER
	70922763	4	CAPSCREW, 3/8"NC x 1"
	70677006	4	WASHER, plain
3	70687603	1	GRILL
	70922763	14	CAPSCREW, 3/8"NC x 1"
	70677006	14	WASHER, plain
4	70671730	1	COVER
	70922763	13	CAPSCREW, 3/8"NC x 1"
	70677006	13	WASHER, plain
5	70690196	1	DUCT
	70922763	14	CAPSCREW, 3/8"NC x 1" } Early units
	70677006	14	WASHER, plain } Late units
	70696576	1	DUCT (Not used on units equipped with CAB)
	70921076	6	CAPSCREW, 3/8"NC x 1-1/4"
	70677006	6	WASHER, plain
6	70696577	1	GRILL
	70921411	1	CAPSCREW, 5/8"NC x 1-1/2"
	70677010	1	WASHER, plain
	70922763	7	CAPSCREW, 3/8"NC x 1"
	70677006	7	WASHER, plain
7	70688602	1	COVER
	70922763	5	CAPSCREW, 3/8"NC x 1"
	70677006	5	WASHER, plain
8	70696967	1	COVER ASSY., right side } Each includes latch
	70687394	1	COVER ASSY., left side }
	70922763	6	CAPSCREW, 3/8"NC x 1"
	70677006	6	WASHER, plain
	70911026	6	NUT. 3/8"NC
9	70687355	2	BLOCK
	70922401	4	CAPSCREW, 1/4"NC x 1"
	70677004	4	WASHER, plain
10	70687354	-	SHIM, (block (Use as required))
11	70929804	4	BUMPER, cover
12	70652320	1	PLATE
13	70688604	1	COVER (Tractors prior to unit #03520)
	70699353	1	COVER (Tractor unit #03520 and up)
	70922300	2	CAPSCREW, 3/8"NC x 3/4"
	70922763	10	CAPSCREW, 3/8"NC x 1"
	70677006	12	WASHER
14	-----	1	TRIM (10") (Order item 15)
15	70694589	1	TRIM (125") (Use as required)



TRANSMISSION ASSEMBLY

T-78488

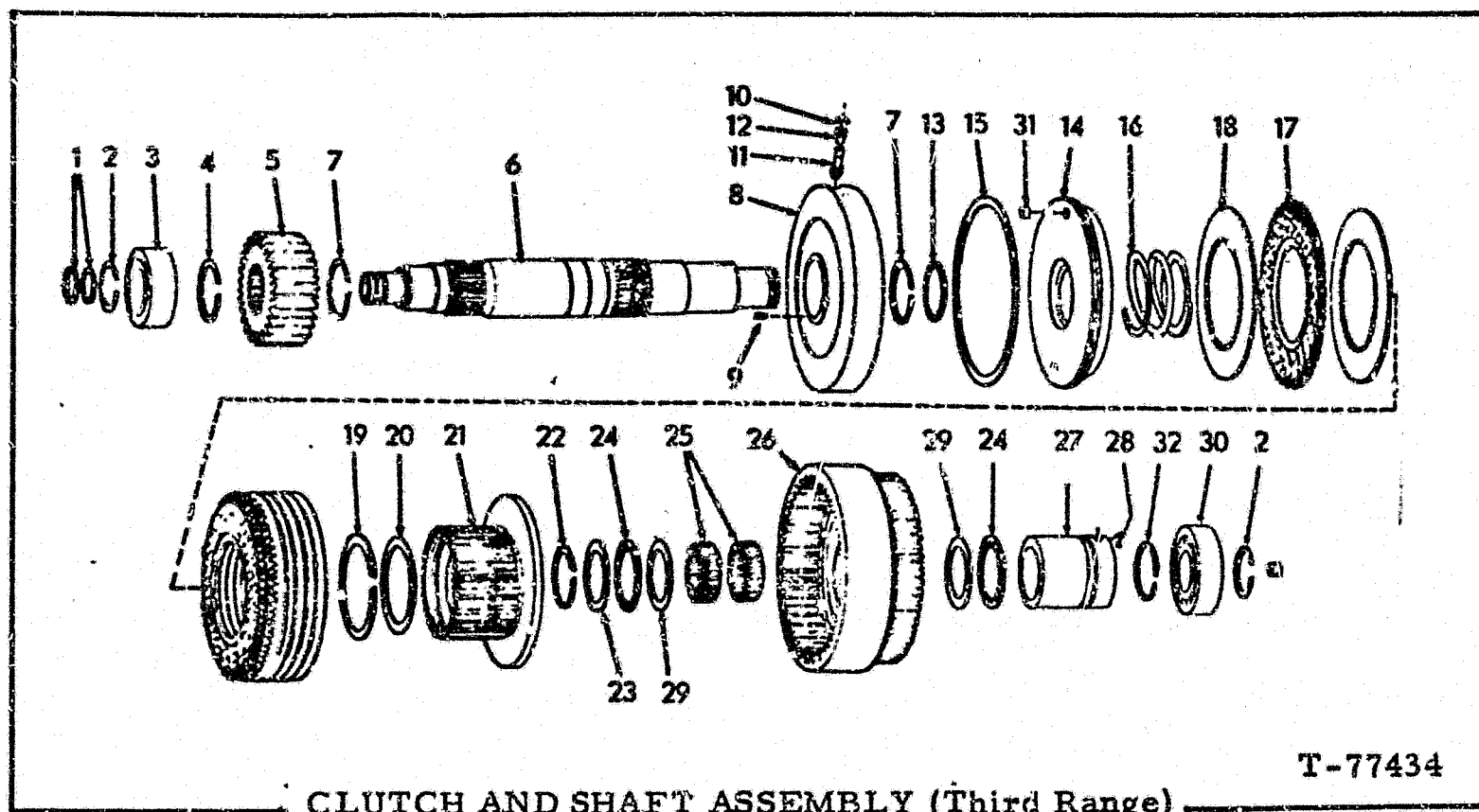
USAGE: Tractors S/N 75S03755 and up.

ITEM	PART NO.	QTY.	DESCRIPTION
1	73123795	1	TRANSMISSION (Includes items 2-38)
	70924676	19	CAPSCREW, 5/8"NC x 2"
	70912942	19	LOCKWASHER, 5/8"
2	-----	1	VALVE, control (See G-7)
	70927547	1	PLUG, 3/4"
	70933436	1	O-RING
	70928394	3	CAPSCREW, 3/8"NC x 3-3/4"
	70925428	2	WASHER
3	-----	1	VALVE, control (See F-21)
	70925940	1	PLUG, 7/16"
	70933475	1	O-RING
	70928394	7	CAPSCREW, 5/16"NC x 3-3/4"
	70920682	4	CAPSCREW, 3/8"NC x 5-1/2"

(Continued)

61A

(Added August 1983)



T-77434

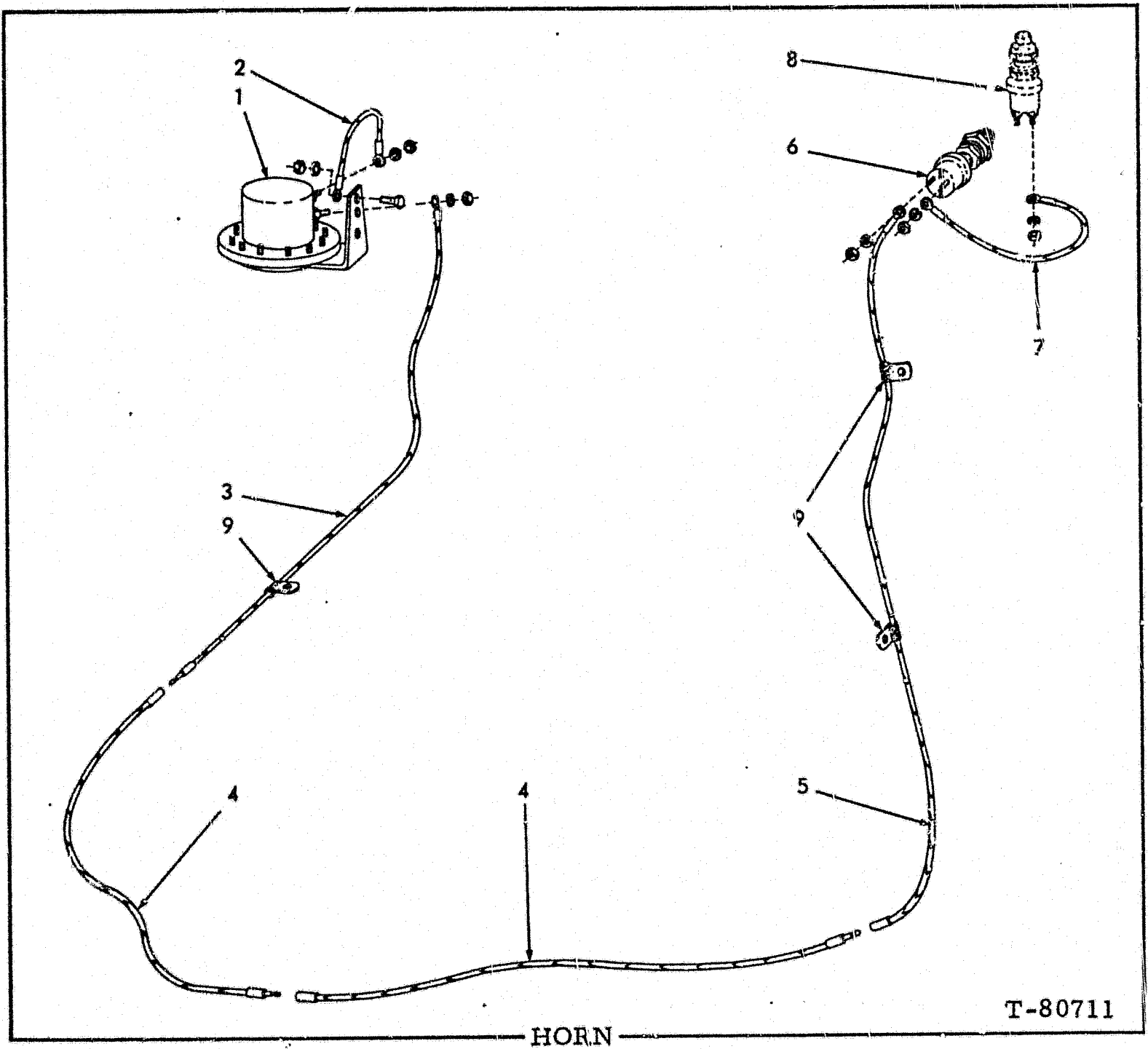
CLUTCH AND SHAFT ASSEMBLY (Third Range)

USAGE: Tractors S/N 75S03755 and up.

ITEM	PART NO.	QTY.	DESCRIPTION
-	73126847	1	CLUTCH (Includes items 1-32)
1	70696429	2	RING
2	70067704	2	RING
3	73126851	1	BEARING
4	70657447	1	RING, retaining
5	73125210	1	GEAR
6	73126854	1	SHAFT (Includes items 7-9)
	70186648	1	PLUG
	70919242	2	PIN, 1/8" x 3/8"
7	70672493	2	RING
8	70695624	1	HOUSING (Serviced as a unit)
9	70695625	1	PIN
10	74254633	1	RING
11	73130278	1	VALVE
12	70672487	1	SLEEVE
13	73125167	1	RING
14	73125174	1	PISTON (Includes items 31)
15	70699273	1	RING
16	70672494	1	SPRING
17	70657979	8	PLATE
18	70657967	8	PLATE
19	73034873	1	RING
20	70673721	1	PLATE
21	70658191	1	HUB
22	70672493	1	RING
23	70694220	1	WASHER (4.11" O.D.)
24	70658195	2	BEARING
25	70658197	2	BEARING
26	70697841	1	GEAR

(Continued)

(Added August 1983)

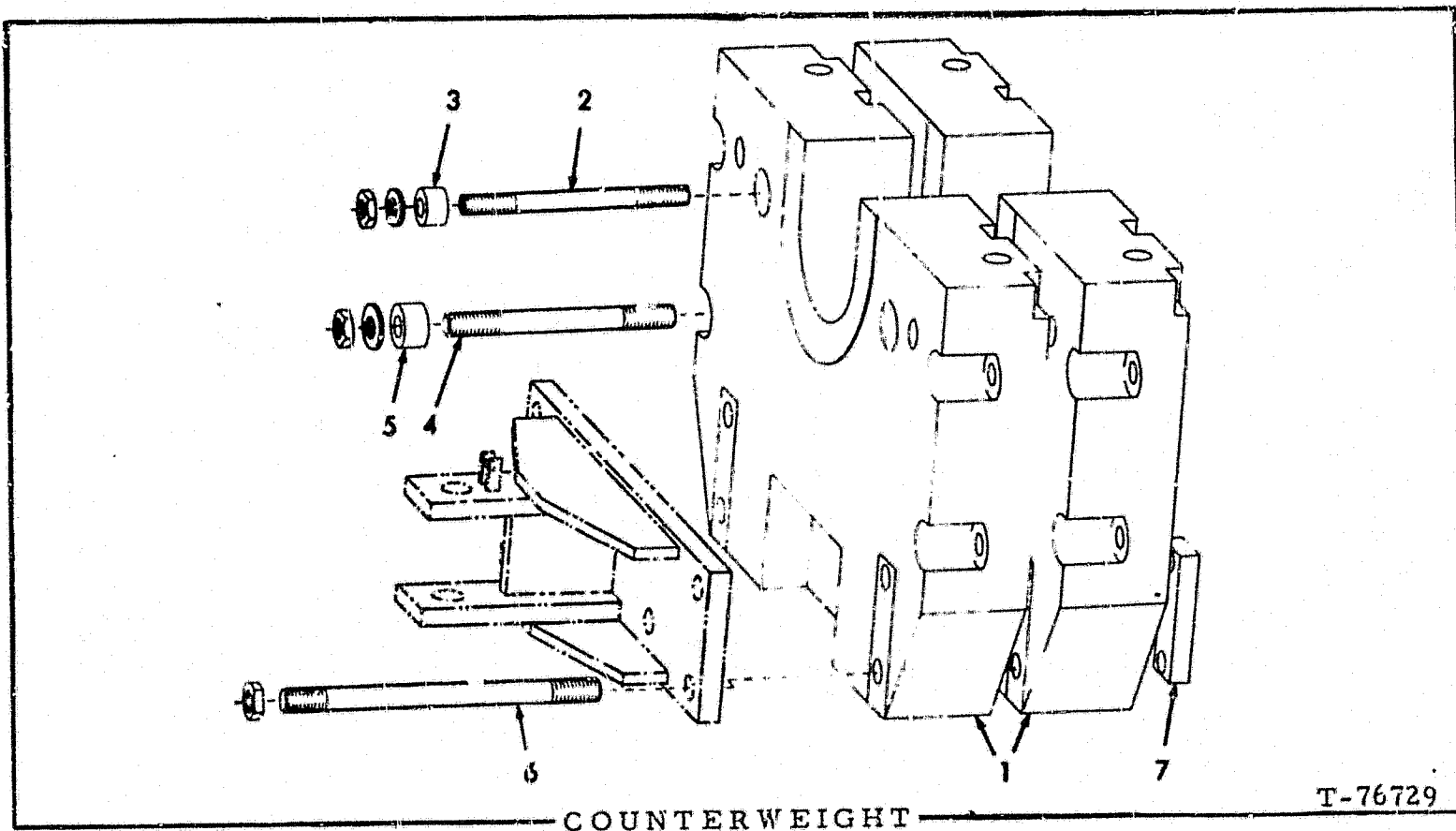


USAGE: Tractor serial No. 75S03589 and up

ITEM	PART NO.	QTY.	DESCRIPTION
1	73107839	1	HORN
	70927541	2	CAPSCREW, 1/4"NC x 3/4"
	70677004	2	WASHER
	70911024	2	NUT, 1/4"NC
2	70697529	1	CABLE, ground
	70909055	1	LOCKWASHER, internal tooth, #10
	70917415	1	NUT, #10-32NF
3	73117179	1	CABLE
	70909055	1	LOCKWASHER, internal tooth, #10
	70917415	1	NUT, #10-32NF
4	70671709	2	CABLE
5	70688282	1	CABLE
6	70240962	1	SWITCH
7	70095860	1	CABLE
8	-----	1	SWITCH (See B-5)
9	70639388	7	CLIP

INSTRUMENTS (Continued)

ITEM	PART NO.	QTY.	DESCRIPTION
8	-----	1	BASE ASSY. (Not serviced separately)
9	70074452	1	BULB, 6 candle power
	73115057	1	BULB, 3 candle power
10	70095267	1	LENS, clear
	73115058	1	LENS, blue
11	70095265	1	SPRING
12	70693636	1	COVER
13	70658534	1	AMMETER (Tractors prior to unit #03347)
	70696656	1	VOLTMETER (Tractor unit #03347 and up)
14	70658397	1	GAUGE, engine temperature (Tractors prior to unit #03347)
	70695982	1	GAUGE, engine temperature (Tractors unit #03347 and up)
15	70639313	4	CLIP
	70922300	1	CAPSCREW, 3/8"NC x 3/4"
	70677006	1	WASHER
16	70644883	3	CLIPS
17	70638216	1	GAUGE, torque converter temperature (Tractors prior to unit #03347)
	70695984	1	GAUGE, torque converter temperature (Tractor unit #03347 and up)
18	-----	1	GAUGE (See TRANSMISSION HYDRAULIC PRESSURE GAUGE)
19	-----	1	GAUGE (See TRANSMISSION LUBRICATING OIL PRESSURE GAUGE)
20	-----	1	GAUGE (See ENGINE OIL PRESSURE GAUGE)

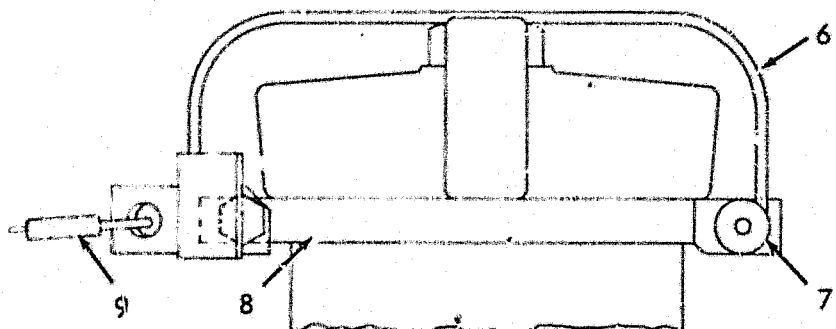


USAGE: Special equipment

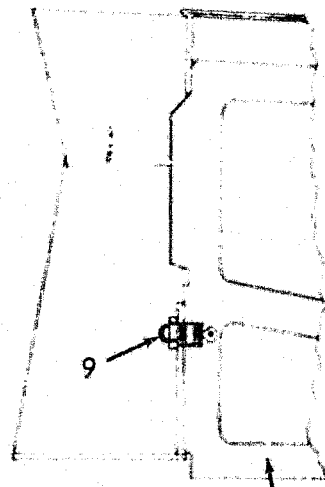
* Light type (10,000 lbs.)
 ** Heavy type (15,000 lbs.)

ITEM	PART NO.	QTY.		DESCRIPTION	
		*	**		
1	70671461	2	3	COUNTERWEIGHT	
2	70676041	4	-	STUD, upper (1-1/2" diam. x 19-1/2")	
	70682839	-	4	STUD, upper (1-1/2" diam. x 28-7/8)	
	70926211	4	4	WASHER	
	70928853	4	4	NUT, 1-1/2"NC	
3	70611388	4	4	BOSS, upper stud (Used on units without canopy)	
4	70663049	2	-	STUD, intermediate (1-3/4" diam. x 20")	
	70682840	-	2	STUD, intermediate (1-3/4" diam. x 29-1/4")	
	70926213	2	2	WASHER	
	70927488	2	2	NUT, 1-3/4"NC	
5	70676816	2	2	SPACER, intermediate stud (Used on units without canopy)	
6	70671619	4	-	STUD, lower (1-3/4" diam. x 25-1/2")	Used on units without canopy
	70682838	-	4	STUD, lower (1-3/4" diam. x 34-7/8")	
	70676040	4	-	STUD, lower (1-3/4" diam. x 27-1/2")	Used on units with canopy
	70682841	-	4	STUD, lower (1-3/4" diam. x 36-7/8")	
	70927488	4	4	NUT, 1-3/4"NC	
7	70676066	2	2	BLOCK, spacing (Used on units with canopy)	

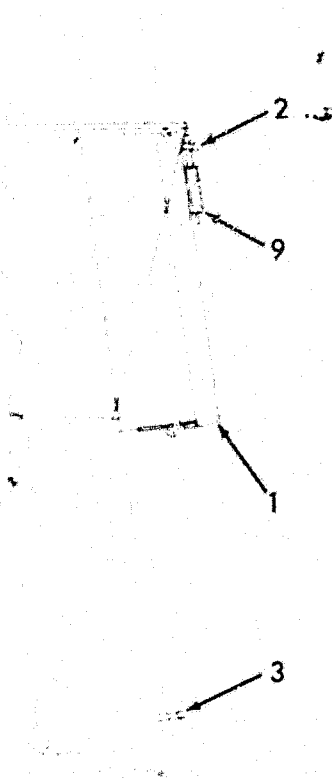
(Revised August 1977)



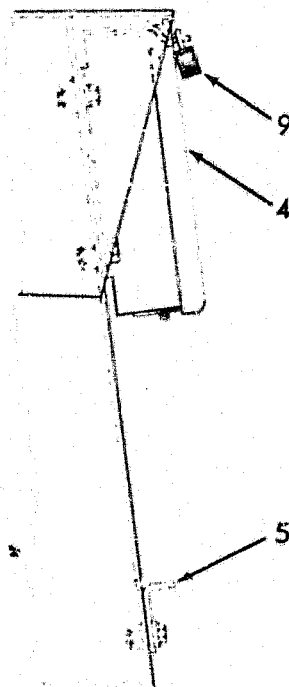
FUEL AND HYD. TANK FILLER CAP



RIGHT SIDE PLATE

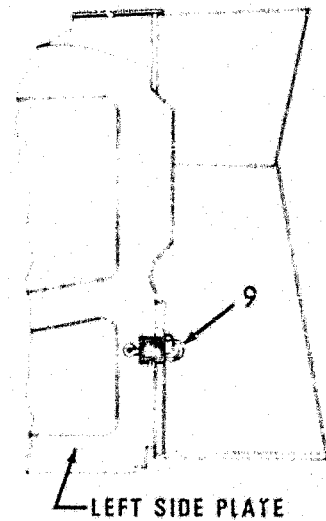


FIRST TYPE



SECOND TYPE

INSTRUMENT PANEL



LEFT SIDE PLATE

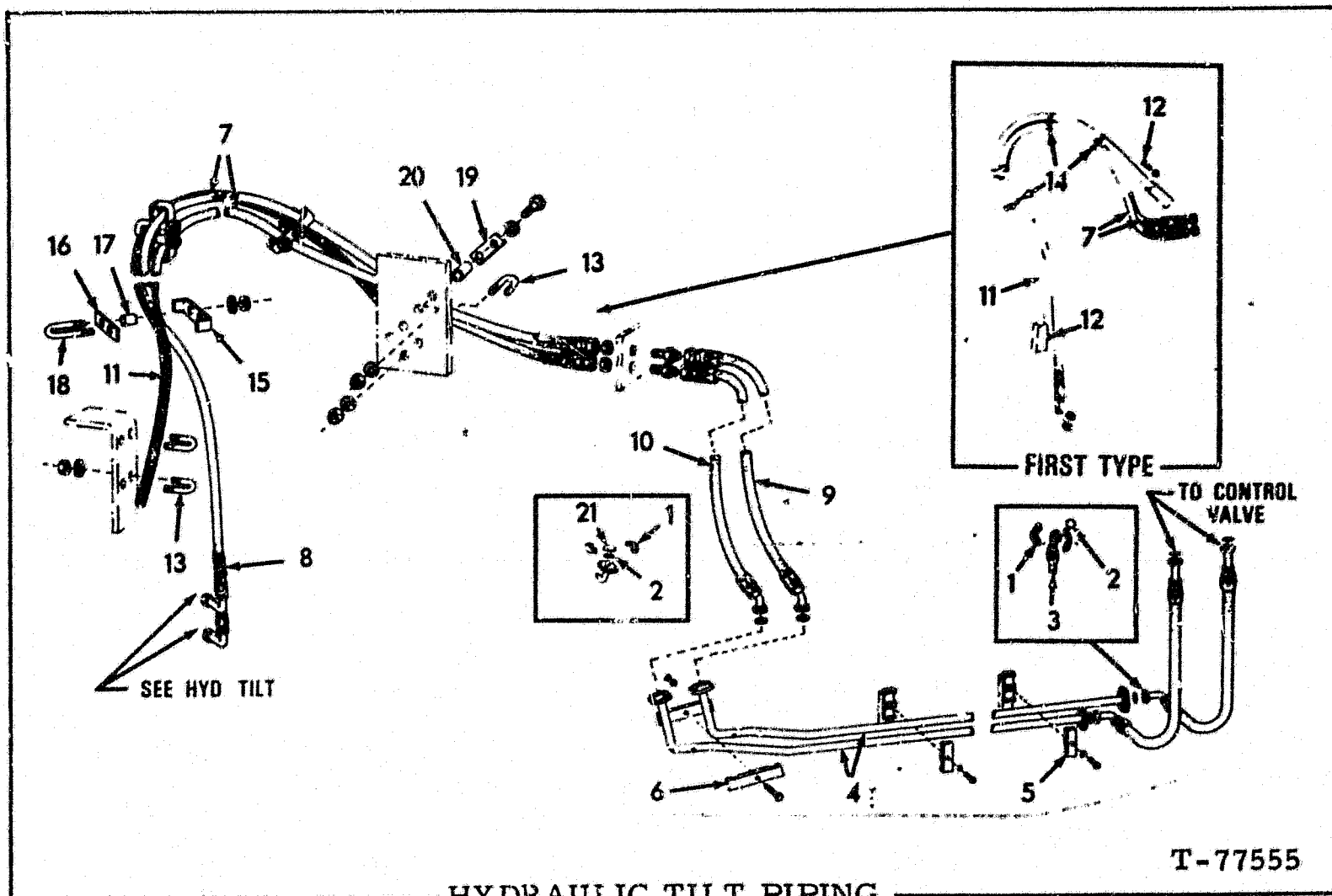
ENGINE SIDE PLATES

DOZER CYLINDERS (Continued)

ITEM	PART NO.	QTY.	DESCRIPTION
		* **	
12	73110369	1	1 SCREW, orifice adjustment(5/8"NC diam.)
	73116504	1	1 SCREW, orifice adjustment(7/8"NC diam.)
13	70050227	2	2 BUSHING
14	70664149	1	- HEAD } First type 5/8" Quick-Drop adjustment screw
	70664150	-	1 HEAD }
	73116501	1	- HEAD } Second type 7/8" Quick-Drop adjustment screw
	73116502	-	1 HEAD }
15	70927335	2	2 CAPSCREW, 5/8"NF x 6"
16	70927336	2	2 CAPSCREW, 5/8"NF x 7"
	70927381	4	4 LOCKWASHER, 5/8"
17	70668394	1	1 SEAL (First type 5/8" diam. adjustment screw)
	73116457	1	1 SEAL (Second type 7/8" diam. adjustment screw)
18	70668387	1	1 NUT (5/8"NC)
	73116456	1	1 NUT (7/8"NC)
19	70921206	1	1 O-RING
20	70921204	1	1 PLUG (Includes item 19)
21	70659086	1	1 NUT (First type)
	70929290	1	1 NUT, self-locking (Second type)
22	70659017	1	1 PIN } First type
23	70659046	1	1 RING }
24	73056729	2	2 WASHER
25	73061070	1	1 PISTON ASSY. (Includes item 25A)
25A	73058859	2	2 PLUNGER-GUIDE ASSY. (Includes 1 plunger (.340" diam.) 2 guides and item 25B)
25B	70923843	4	4 O-RING
26	73053434	1	1 O-RING
27	70926840	1	1 O-RING (rubber)
28	73053433	1	1 O-RING (teflon)
29	70925767	1	1 O-RING
30	70926397	1	1 O-RING
31	73062196	1	1 HEAD
32	73054073	1	1 O-PACKING ASSY.
33	73054488	4	4 O-SHIM (.030" thick)
34	73059354	1	1 PLATE
	70915987	4	4 CAPSCREW, 1/2"NC x 1-1/2"
	70904208	4	4 LOCKWASHER, 1/2"
35	73052942	1	1 O-WIPER
36	73056763	1	1 ROD (First type)
	73065135	1	1 ROD (Second type)(Includes item 37)(Refer to item 39)
37	70930927	2	2 BUSHING (Use with second type rod only)
38	73056488	1	1 REPAIR KIT (Consists of items 26 thru 30, 32, 33 and 35)
39	73069495	1	1 REPAIR KIT (Includes CLEVIS and Instructions sufficient to repair one ROD ASSY.)

□Components of item 38

(Revised May 1979)



T-77555

HYDRAULIC TILT PIPING

*Tractors prior to serial No. 75S03549
 **Tractor serial No. 75S03549 and up

ITEM	PART NO.	QTY.		DESCRIPTION
		*	**	
1	70921116	12	12	FLANGE
	70921076	24	24	CAPSCREW, 3/8"NC x 1-1/4"
	70910287	24	24	LOCKWASHER, 3/8"
2	70931753	6	6	O-RING
	70682938	2	-	HOSE
3	70697735	-	2	HOSE
	} See HOSE PARTS			
4	70693969	2	2	TUBE
	70921467	2	2	CAP, flare fitting, 1/4" tube
5	70698394	4	4	CLAMP
	70922510	1	1	CAPSCREW, 1/2"NC x 2-3/4"
	70677008	1	1	WASHER, plain
6	70682907	2	2	CLAMP
	70921598	1	1	CAPSCREW, 1/2"NC x 3"
	70677008	1	1	WASHER, plain
	70911028	1	1	NUT, 1/2"NC
7	70694596	2	-	HOSE ASSY.
	73111296	-	2	HOSE ASSY.
	} Each includes item 8. See Hose Parts			
8	70927063	2	2	UNION, flare type, 3/4" tube, 1-1/16" thd.
	70682246	2	-	GUARD
	73111295	-	2	GUARD

(Continued)

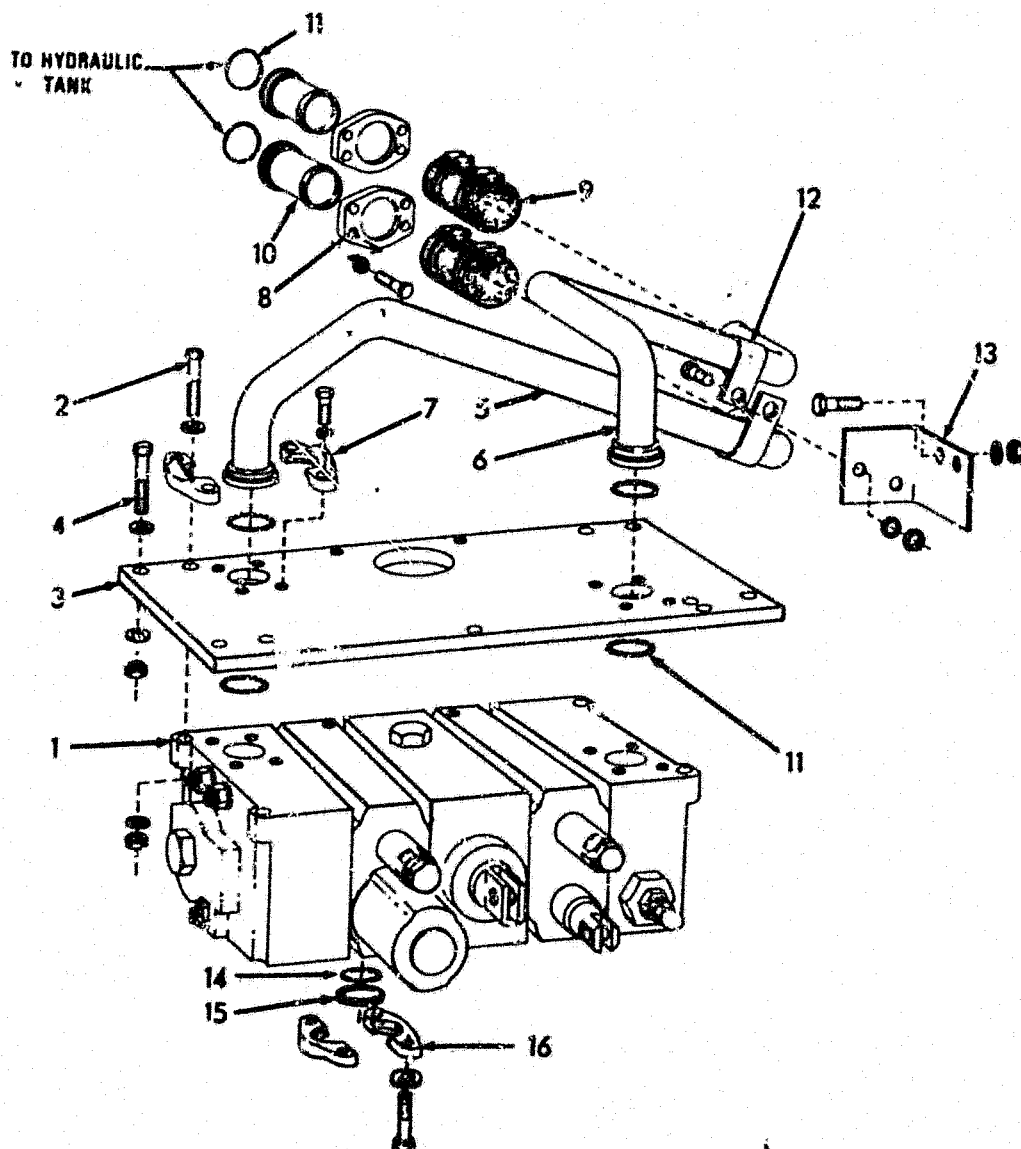
(Revised March 1979)

DOZER CONTROL VALVES

USAGE: Tractors S/N 75S03693 and up.

ITEM	PART NO.	QTY.	DESCRIPTION
1	70690087	1	GUIDE
	70922763	2	CAPSCREW, 3/8"NC x 1"
	70677006	2	WASHER
2	70690158	1	GUARD
	70920583	2	CAPSCREW, 1/2"NC x 1-1/2"
	70677008	2	WASHER
3	70090020	1	KNOB
4	73114401	1	LEVER ASSY. (Includes item 5)
5	70655215	6	BEARING
6	70668506	1	SHAFT
	70915797	1	PIN, spring, 3/16" x 1-1/4"
7	73114426	1	LEVER ASSY. (Includes item 5)
8	70655418	1	SHAFT
	70915797	1	PIN, spring, 3/16" x 1-1/4"
9	70690162	1	BRACKET
	70920585	4	CAPSCREW, 1/2"NC x 1-3/4"
	70677008	4	WASHER
	70911028	4	NUT, 1/2"NC
10	70653570	2	END
	70922465	2	WASHER
	70913528	2	NUT, lock, 3/8"NF
11	70655212	1	ROD
	70911041	2	NUT, 3/8"NF
12	70617931	1	ROD
	70911041	2	NUT, 3/8"NF
13	70078908	2	BOOT
	70921910	2	CLAMP, 7/16" to 25/32" diam.
14	70617932	10	END
	70923479	10	CAPSCREW, 3/8"NC x 1-1/2"
	70922465	8	WASHER
	70915891	10	NUT, elastic stop, 3/8"NC
15	73111573	1	PLATE
	70920583	3	CAPSCREW, 1/2"NC x 1-1/2"
	70922526	2	CAPSCREW, 1/2"NC x 2-1/2"
	70677008	5	WASHER
	70911028	2	NUT, 1/2"NC
16	70698710	2	SPACER
17	70641968	1	ROD
	70911041	2	NUT, 3/8"NF
18	70633955	1	ROD
	70911041	2	NUT, 3/8"NF
19	70617648	1	LEVER
	70920995	1	CAPSCREW, 3/8"NC x 2"
	70910287	1	LOCKWASHER, 3/8"
	70900367	1	NUT, 3/8"NC
20	73111649	1	SHAFT
	70905122	2	KEY, #7 woodruff, 1/8" x 3/4"
21	70208253	2	BEARING
22	70663947	1	BRACKET
	70920583	2	CAPSCREW, 1/2"NC x 1-1/2"
	70677008	2	WASHER

(Continued)



T-76019

CONTROL VALVES AND RETURN LINES

USAGE: Tractors prior to S/N 75S03693

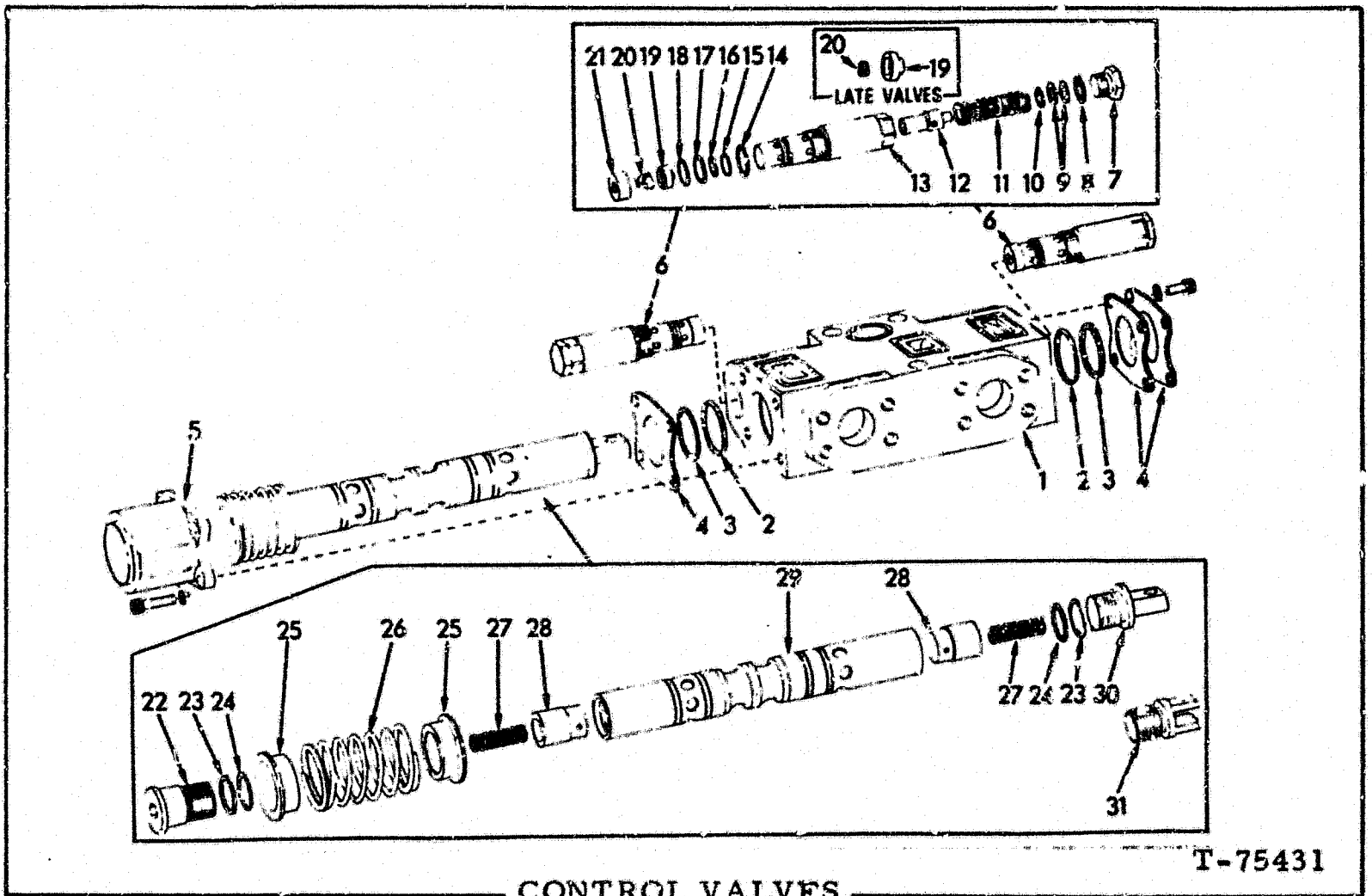
ITEM	PART NO.	QTY.	DESCRIPTION
1	70698190	1	VALVE ASSY. (For operating dozer, ripper and hydraulic tilt)(Tractors prior to unit #03648)
	73110107	1	VALVE ASSY. (For operating dozer, ripper and hydraulic tilt)(Tractors unit #03648 and up)
	70686080	1	VALVE ASSY. (For operating dozer, hydraulic tilt and optional "KELLEY" ripper)(Tractors prior to unit #03056)
	70696401	1	VALVE ASSY. (For operating dozer, hydraulic tilt and optional "KELLEY" ripper)(Tractor unit #03056 thru 03650)
	73110138	1	VALVE ASSY. (For operating dozer, hydraulic tilt and optional "KELLEY" ripper)(Tractor unit #03651 and up)
2	70921598	4	CAPSCREW, 1/2"NC x 3"
	70677008	4	WASHER
	70912441	4	LOCKWASHER, 1/2"
	70911028	4	NUT, 1/2"NC

See
F-3

(Continued)

41B ALPHABETICAL INDEX

AIR CLEANER.....	1C-12	FAN(Front).....	1D-13
AIR CLEANER MOUNTING.....	1C-13	BELT TIGHTENER.....	1D-13
ALTERNATOR.....	2B-20	DRIVE.....	1D-17
ASPIRATOR.....	1C-11	IDLER.....	1D-13
AUXILIARY VALVE CONTROL.....	2G-7,G-11	SUPPORT & GUARDS.....	1D-7
BATTERIES & CABLES.....	2B-15	FAN(Rear).....	1D-20
BATTERY BOX.....	2B-17	BELT TIGHTENER.....	1D-15
BEVEL GEAR SHAFT.....	1H-3	DRIVE.....	1D-19
BRAKES.....	1I-15	DRIVE SHAFT.....	1D-21
BRAKE CONTROL.....	1I-11	DRIVE TRAIN.....	1D-20
BRAKE CYLINDER(Safety Brake).....	1I-22	IDLER.....	1D-15
BRAKE DRUM.....	1H-4	FENDERS(Rear).....	1K-4
CAB.....	2C-13	FILTERS	
CAB HEATER VALVES.....	2C-14	ENGINE OIL(By-pass).....	1B-19
COMPRESSOR & MOUNTING.....	2C-19	TRANSMISSION OIL.....	1G-5
CONTROLS		STEERING OIL.....	1H-21,H-22
BRAKE.....	1I-11	FINAL DRIVE	
DOZER.....	2D-21	HOUSING.....	1G-21
ENGINE.....	1C-21	OUTBOARD BEARING & SEAL.....	1H-12
RIPPER.....	2G-7,G-9,G-11,G-13	PINION SHAFT.....	1H-4,H-5
STEERING.....	1I-7	SPROCKET SHAFT & GEAR.....	1H-7,H-9
TILT.....	2D-21	FLOOD LIGHT(Rear).....	2B-9,B-10
TRANSMISSION.....	1G-15	FLOOR.....	1K-5,K-7
CONTROL VALVE RETURN LINES		FUEL LINES.....	1C-5
(Dozer,Ripper,Tilt).....	2E-23,H-13	FUEL TANK.....	1C-3
COUNTERWEIGHT.....	2C-10	FUEL TANK GUARD.....	2C-13
COWL.....	1K-3	GAUGES	
CRANKCASE GUARDS.....	1J-3	AMMETER.....	2B-21
CYLINDER(Hydraulic)		ENGINE OIL PRESSURE.....	2B-23
DOZER.....	2D-17	ENGINE TEMPERATURE.....	2B-21
RIPPER.....	2F-23	FUEL LEVEL.....	1C-3
TILT.....	2D-7	HOUR METER.....	2C-4
CYLINDER MOUNTING & PIPING(Dozer).....	2D-15	TORQUE CONVERTER TEMPERATURE.....	2B-21
DECELERATING BRAKE.....	1I-13	TRANSMISSION HYDRAULIC PRESSURE.....	2B-24
DOZER OIL PUMP LINES.....	2E-7,E-9	TRANSMISSION OIL LEVER.....	1G-3
DRAWBAR.....	2C-9	TRANSMISSION LUBE OIL PRESSURE.....	2C-3
ELEMENTS		HOOD.....	1J-20
AIR CLEANER.....	1C-12	HOSE PARTS.....	2B-7
ENGINE FUEL FILTER.....	1B-14	HYDRAULIC TANK.....	1K-15,2E-17
ENGINE LUBE OIL FILTER.....	1B-14	HYDRAULIC TANK DRAIN LINE.....	2E-21
ENGINE OIL FILTER(By-pass).....	1B-19	HYDRAULIC TANK GUARD.....	1K-15
ENGINE WATER FILTER.....	1B-14	HYDRAULIC TILT.....	2D-1
HYDRAULIC TANK.....	2E-17	HYDRAULIC TILT PIPING.....	2D-13
STEERING OIL FILTER.....	1H-21,H-22	INPUT CLUTCH OIL RETURN.....	1E-15
TRANSMISSION OIL FILTER.....	1G-9	INSTRUMENTS.....	2B-21
ENGINE BREATHER HOSE.....	1B-14	LIGHTS	
ENGINE CONTROLS.....	1C-21	DASH.....	2B-21
ENGINE & MOUNTING.....	1B-13	HEAD.....	2B-3,B-5
ENGINE PRIMER.....	1D-4	REAR FLOOD.....	2B-9,B-10
ENGINE PROTECTION SYSTEM.....	1C-7	LIGHTS & WIRING.....	2B-3,B-5
ENGINE SIDE PLATES.....	1J-23	MAIN FRAME.....	1J-3
EXHAUST PIPE.....	1C-9	MAIN HOUSING.....	1G-21



T-75431

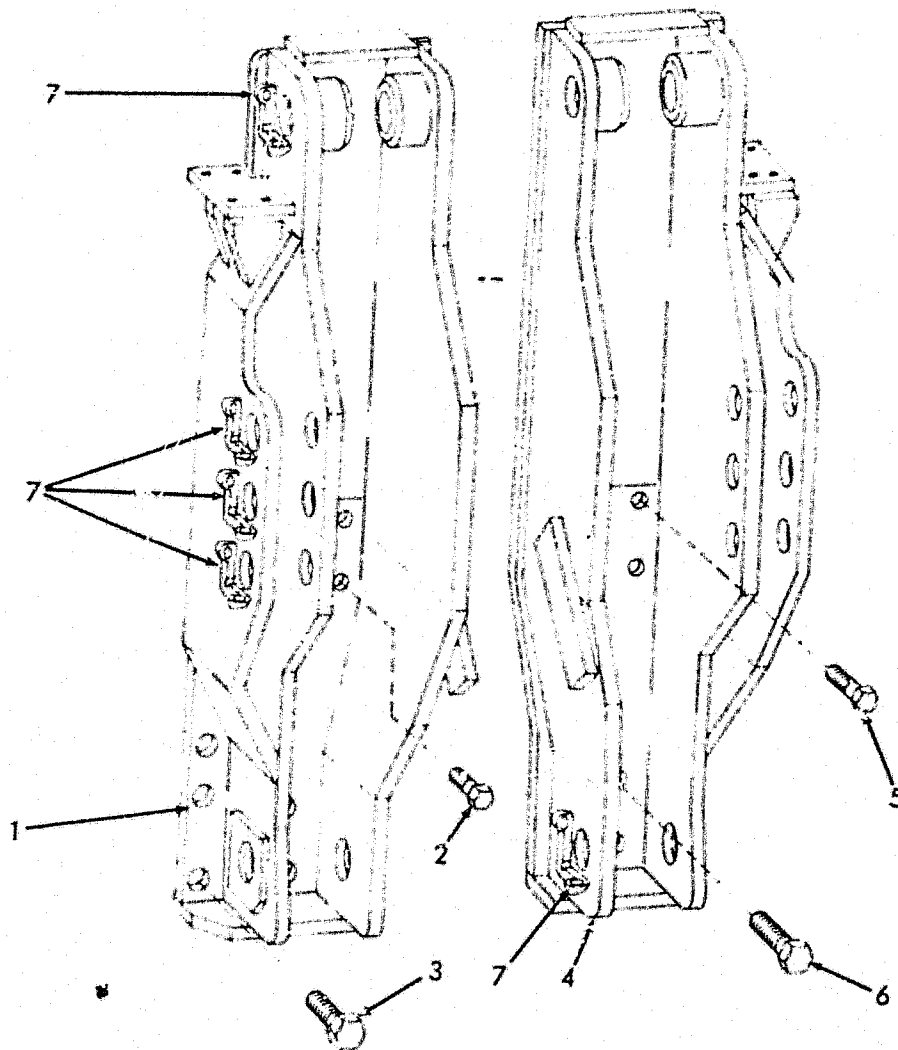
CONTROL VALVES

- *70685999 VALVE ASSY., tilt control
- ** { 70655655 VALVE ASSY., ripper control } See F-3
- { 70696400 VALVE ASSY., ripper control }
- ***73113041 VALVE ASSY., ripper control (See F-4)

ITEM	PART NO.	QUANTITY			DESCRIPTION
		*	**	***	
1	-----	1	1	1	HOUSING (Not serviced separately)
2	70923813	2	-	-	O-RING
	70923576	-	2	2	O-RING
3	70664462	2	-	-	RING
	70658284	-	2	2	RING
4	70664464	3	-	-	PLATE
	70658286	-	3	3	PLATE
5	70925192	4	4	4	CAPSCREW, skt-hd., 5/16"NC x 5/8"
	70904205	4	4	4	LOCKWASHER, 5/16"
6	70664456	1	-	-	CAP
	70658282	-	1	1	CAP
7	70926269	4	4	4	CAPSCREW, skt.-hd., 5/16"NC x 1-1/4"
	70904205	4	4	4	LOCKWASHER, 5/16"
6	70671986	2	2	-	VALVE ASSY., (2600 psi) (Not for Valve 70655655)
	70658466	-	2	-	VALVE ASSY., (2300 psi) (Not for Valve 70696400)
	73118773	-	-	2	VALVE ASSY., (2600 psi)
7	70658363	2	2	2	CAP

} Each includes items 7 thru 21

(Continued)



T-76008

RIPPER MOUNTING FRAME

ITEM	PART NO.	QTY.	DESCRIPTION
1	70685335	1	FRAME ASSY., left (Includes item 7)
2	70669426	4	CAPSCREW, 1-1/2" NF x 3-1/4"
3	70634076	5	CAPSCREW, 1-3/4" NF x 4-1/4"
4	70685336	1	FRAME ASSY., right (Includes item 7)
5	70669426	4	CAPSCREW, 1-1/2" NF x 3-1/4"
6	70634076	5	CAPSCREW, 1-3/4" NF x 4-1/4"
7	70647898	10	STOP, pin (Requires welding to install)

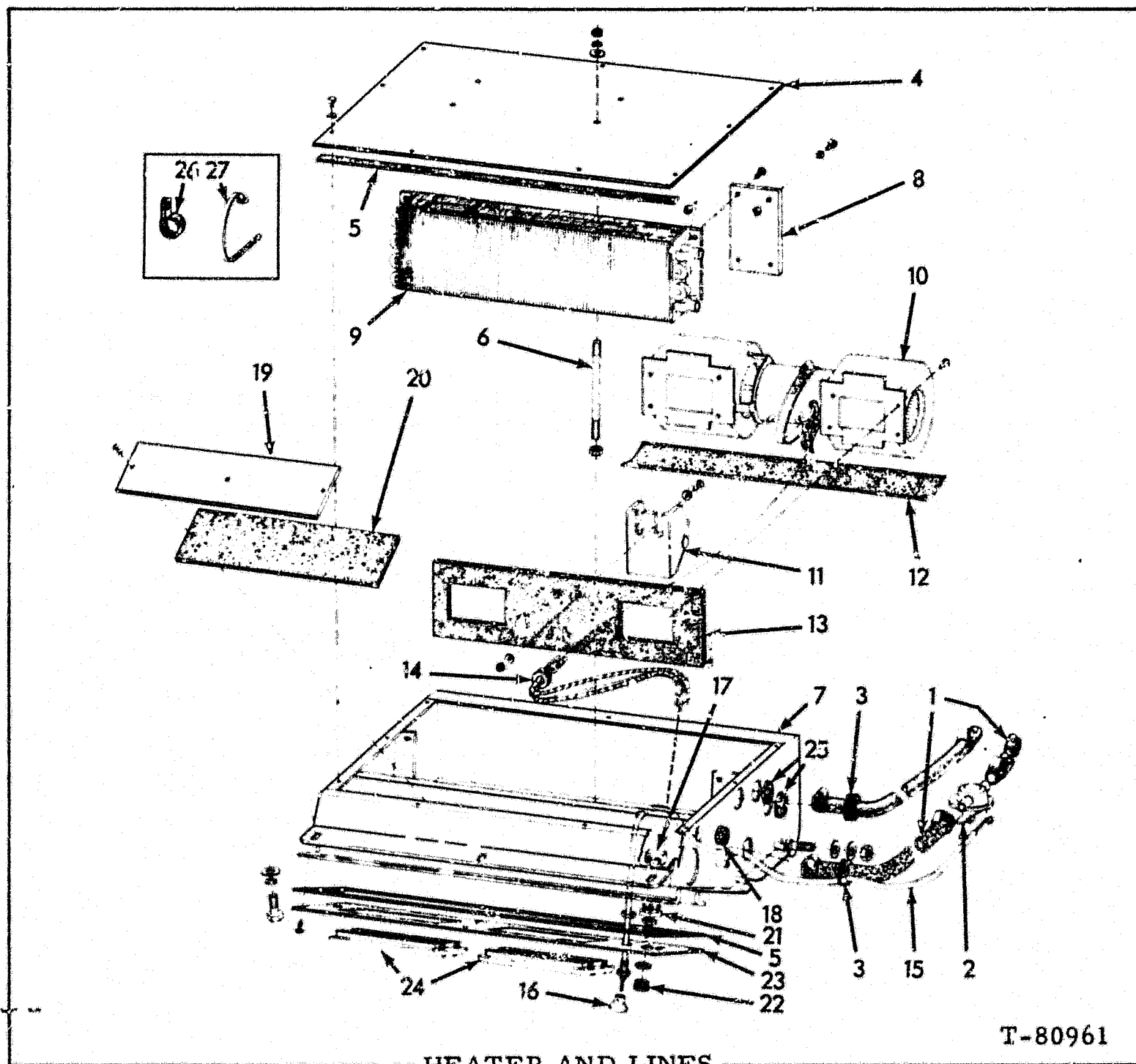
AUXILIARY VALVE CONTROLS (Continued)

ITEM	PART NO.	QTY.	DESCRIPTION
13	70606392	1	BEARING
14	70633955	1	ROD
	70910123	2	NUT, 3/8"NF
15	-----	1	VALVE ASSY. (See F-7)

SOUNDPROOFING

ITEM	PART NO.	QTY.	DESCRIPTION
1	73112282	1	SOUNDPROOFING, windshield, upper
2	73112284	1	SOUNDPROOFING, windshield, right
3	73112285	1	SOUNDPROOFING, windshield, left
4	73112283	1	SOUNDPROOFING, windshield, lower
5	73112280	1	SOUNDPROOFING, cowl extension, top
6	73112281	1	SOUNDPROOFING, cowl extension, bottom
7	73112278	1	SOUNDPROOFING, cowl extension, right
8	73112279	1	SOUNDPROOFING, cowl extension, left
9	73112268	1	SOUNDPROOFING, right side, top
10	73112270	1	SOUNDPROOFING, right side above window
11	73112272	1	SOUNDPROOFING, right side behind window
12	73112274	1	SOUNDPROOFING, right side below window
13	73112269	1	SOUNDPROOFING, left side, top
14	73112271	1	SOUNDPROOFING, left side above window
15	73112273	1	SOUNDPROOFING, left side behind window
16	73112275	1	SOUNDPROOFING, left side below window
17	73112286	1	SOUNDPROOFING, rear upper
18	73112287	1	SOUNDPROOFING, rear right
19	73112288	1	SOUNDPROOFING, rear left
20	73112289	1	SOUNDPROOFING, rear lower
21	73112290	1	SOUNDPROOFING, rear air box
22	73112291	1	SOUNDPROOFING, rear left mount
23	73112296	1	SOUNDPROOFING, roof front
24	73112294	1	SOUNDPROOFING, roof slope, right
25	73112292	1	SOUNDPROOFING, roof slope, front
26	73112295	1	SOUNDPROOFING, roof slope, left
27	73112293	1	SOUNDPROOFING, roof slope, rear
28	73112297	1	SOUNDPROOFING, roof center
29	73112298	1	SOUNDPROOFING, roof rear
30	73063488	25	BUTTON
31	73108357	5	SPACER
32	70696259	-	ADHESIVE (1 pint)

(Revised January 1979)



T-80961

HEATER AND LINES

ITEM	PART NO.	QTY.	DESCRIPTION
1	-----	3	HOSE (Refer to item 28)
	70921911	6	CLAMP, 11/16" to 1-1/4" diam.
2	73107263	1	VALVE, heat control
3	73107282	2	GROMMET
4	-----	1	COVER (Not serviced)
	70929915	9	SCREW, thrd. cutting #10-24NC x 3/4"
	70910243	9	WASHER
5	73114698	2	SEAL, 3/4" x 5/32" x 152" (Use as required)(Cut to proper length)
6	73114697	2	ROD
	70910287	2	LOCKWASHER, 3/8"
	70912597	2	WASHER
	70911026	4	NUT, 3/8"NC

NOTE: Item 6 (Double quantity required for units with Air Conditioning)

(Continued)

(Revised January 1979)

SP41/M

Fig.	N.Ordinazione	Q.tà	DENOMINAZIONE	PART NAME	DENOMINATION	BEZEICHNUNG	DENOMINACIONES
			SUPPORTO	SUPPORT	SUPPORT	TRAGWERK	SOPORTE
1	34609	1	Sopperto compl.	Support, compl.	Support compl.	Lager. Kpl.	Soporte compl.
2	34513	4	Boccola	Bush	Bague	Büchse	Buje
3	34600	10	Prigioniero (130 kgm)	Stud	Goujon	Stiftschraube	Esparrago
4	36711	10	Rosetta	Lockwasher	Rondelle	Scheibe	Arandela elástica
5	34396	10	Dado (390 kgm)	Nut	Ecrou	Mutter	Tuerca
6	34601	8	Prigioniero (75 kgm)	Stud	Goujon	Stiftschraube	Esparrago
7	36712	8	Rosetta	Lockwasher	Rondelle	Scheibe	Arandela elástica
8	30560	8	Dado (250 kgm)	Nut	Ecrou	Mutter	Tuerca
9	34602	2	Prigioniero (55 kgm)	Stud	Goujon	Stiftschraube	Esparrago
10	36713	2	Rosetta	Lockwasher	Rondelle	Scheibe	Arandela elástica
11	30561	2	Dado (140 kgm)	Nut	Ecrou	Mutter	Tuerca
12	34543	2	Perno	Pin	Axe	Polzen	Eje
13	1/34072/11	2	Ingrassatore	Fitting,grease	Graisseur	Schmiernippel	Engrasador
14	13905	2	Piastrina	Plate	Plaquette	Sicherungsplatte	Chaveta
15	1/55404/21	4	Vite	Screw	Vis	Schraube	Tornillo
16	1/05170/70	4	Rosetta elastica	Lockwasher	Rondelle frein	Sicherungsring	Arandela elástica
17	34512	4	Boccola	Bush	Bague	Buchse	Buje
18	34532	2	Distanziale	Spacer	Entretoise	Abstandbüchse	Separador

18794

Fig.	N.Ordinazione	Q.tà	DENOMINAZIONE	PART NAME	DENOMINATION	BEZEICHNUNG	DENOMINACIONES
			TUBAZIONI CIL. SOLLEVAMENTO	PIPINGS LIFTING	TUYAUTERIES de REVELAGE	LEITUNGEN HEBEN	TUBERIAS CIL. de ELEVACION
1	36266	2	Tubo flessibile	Hose	Tuyau souple	Schlauch	Manga
2	31530	4	Semi flangia	Split flanges	Demi-bride	Halbflansch	Brida
3	1/44640/80	2	Guarnizione	Gasket	Joint	Dichtring	Junta
4	1/13069/21	24	Vite	Screw	Vis	Schraube	Tornillo
5	1/05168/70	24	Rosetta elastica	Lockwasher	Rondelle frein	Sicherungsring	Arandela elás.
6	31530	2	Semiflangia	Split-flange	Demi-bride	Halbflansch	Brida
7	1/43075/20	8	Vite	Screw	Vis	Schraube	Tornillo
8	1/05168/78	8	Rosetta elastica	Lockwasher	Rondelle frein	Sicherungsring	Arandela elást.
9	1/44639/80	2	Guarnizione	Gasket	Joint	Dichtring	Junta
10	1/60436/21	1	Vite	Screw	Vis	Schraube	Tornillo
11	1/05166/70	1	Rosetta el	Lockwasher	Rondelle frein	Sicherungsring	Arandela elást.
12	1/26420/01	1	Rosetta	Washer	Rondelle	Scheibe	Arandela
13	36268	2	Tubo flessibile	Hose	Tuyau souple	Schlauch	Manga
14	36267	2	Tubo flessibile	Hose	Tuyau souple	Schlauch	Manga
15	36364	1	Tubazione	Pipe	Tuyau	Rohr	Tuberia
16	36368	1	Tubazione	Pipe	Tuyau	Rohr	Tuberia
17	36372	1	Tubaz.destra cilindro	Pipe right, cylinder	Tuyau droit du cylindre	Rohr rechts, für zylinder	Tubo de cilindro derecho
18	1/55410/21	8	Vite	Screw	Vis	Schraube	Tornillo
19	1/05170/70	8	Rosetta elastica	Lockwasher	Rondelle frein	Sicherungsring	Arandela elást.
20	1/44639/80	4	Guarnizione	Packing	Garniture	Packung	Junta
21	36295	1	Tubazione	Pipe	Tuyau	Rohr	Tuberia
22	36207	1	Tubazione	Pipe	Tuyau	Rohr	Tuberia
23	31437	8	Semiflangia	Split-flange	Demi-bride	Halbflansch	Brida
24	1/44637/80	2	Guarnizione	Gasket	Joint	Dichtring	Junta
25	36370	1	Tubazione sinistra cilindro	Cylinder left pipe	Tuyau gauche du cylindre	Rohr links, für zylinder	Tubo de cilindro izquierdo

ALPHABETIC INDEX

Relief Valve.....	2F-5
Ripper Mounting Frame.....	2F-21
Ripper Piping.....	2G-3, G-5
Ripper Tool Bar and Linkage.....	2F-19
Rops Mounting Brackets.....	2C-17
Roll Over Protection Frame.....	2C-16
Safety Brake Valve Lines.....	11-19
Seat.....	1 K-13, K-17, K-23
Seat Mounting.....	1K-10, K-12
Shift Inhibiting Pump.....	1F-20
Shift Inhibiting Valve.....	1F-23
Starter.....	2B-19
Steering Clutches.....	1H-13
Steering Filter Lines.....	1H-15, H-17
Steering Control Valve.....	1I-3
Steering Control Valve Lines.....	1I-5
Steering Levers and Linkage.....	1I-7
Steering Pump.....	1H-23, H-24
Tools.....	2C-11
Tool Box.....	2C-11
Torque Converter.....	1E-5
Track.....	1J-17
Track Carrier Roller.....	1J-12
Track Frame.....	1J-7
Track Idler.....	1J-13
Track Release.....	1J-15
Track Roller.....	1J-9
Track Roller Guards.....	1J-11
Transmission	
Assembly.....	1E-20
Counter Shaft.....	1F-19
Housing and Covers.....	1F-3
Shaft, Bevel Pinion.....	1F-9
Shaft, Drive.....	1E-16
Shaft, 1st and 2nd Range.....	1F-13
Shaft, Forward and Reverse.....	1F-6
Shaft, 3rd Range.....	1F-14
Transmission Control Linkage.....	1G-15
Transmission Guards.....	1J-3
Transmission Oil Filler and Dipstick.....	1G-3
Transmission Oil Filter Lines.....	1G-5
Transmission Oil Pump.....	1G-4
Transmission Test Panel and Lines.....	1G-11, G-13
Travel Control Valve.....	1F-21
Valves	
Brakes.....	11-17
Dozer Control.....	2F-3, F-4, F-9
Dozer Tilt Control.....	2F-3, F-4, F-7
Relief.....	2F-5
Ripper Control.....	2F-3, F-4, F-7
Safety Brake.....	11-21
Shift Inhibiting.....	1F-23
Steering Control.....	11-3
Torque Converter Pressure Regulating.....	1E-13
Travel Control(Transmission).....	1F-21
Valve Controls	
Dozer.....	2D-21, E-3
Ripper.....	2G-7, G-9, G-11, G-13
Tilt.....	2D-21, E-3
Vandalism Prevention Parts.....	2C-21

Fig.	N.Ordinazione	Qtá	DENOMINAZIONE	PART NAME	DENOMINATION	BEZEICHNUNG	DENOMINACIONES
			BIELLA INFER.	BOTTOM LINKAGE	BATI	LASCHE	BIELA INFERIOR
1	34570	1	Biella completa	Link, complet	Bielle complete	Pleuel, Kpl.	Biela completa
2	34513	4	Boccola	Bush	Bague	Buchse	Buje
3	34568	2	Distanziale	Spacer	Entretoise	Abstandstück	Separador
4	34675	2	Perno	Pin	Axe	Bolzen	Eje
5	1/34072/11	2	Ingrassatore	Grease nipple	Graisseur	Schmiernippel	Engrasador
6	1/55404/21	4	Vite	Screw	Vis	Schraube	Tornillo
7	1/05170/70	4	Rosetta elastica	Lockwasher	Rondelle frein	Sicherungsring	Arandela elástica
8	13905	2	Piastrina	Plate	Plaquette	Sicherungsplatte	Chaveta
9	1/55404/21	4	Vite	Screw	Vis	Schraube	Tornillo
10	1/05170/70	4	Rosetta elastica	Lockwasher	Rondelle frein	Sicherungsring	Arandela elástica
11	13905	2	Piastrina	Plate	Plaquette	Sicherungsring	Chaveta
12	1/34072/11	2	Ingrassatore	Grease nipple	Graisseur	Schmiernippel	Engrasador
13	34543	2	Perno	Pin	Axe	Bolzen	Eje
14	34565	2	Perno	Pin	Axe	Bolzen	Eje
15	1/34072/11	2	Ingrassatore	Grease nipple	Graisseur	Schmiernippel	Engrasador
16	13905	2	Piastrina	Plate	Plaquette	Sicherungsplatte	Chaveta
17	1/55404/21	4	Vite (10 Kgm)	Screw	Vis	Schrauber	Tornillo
18	1/05170/70	4	Rosetta elastica	Lockwasher	Rondelle frein	Sicherungsring	Arandela elástica

CLICK HERE TO **DOWNLOAD** THE COMPLETE MANUAL

- Thank you very much for reading the preview of the manual.
- You can download the complete manual from: www.heydownloads.com by clicking the link below



- Please note: If there is no response to CLICKING the link, please download this PDF first and then click on it.

CLICK HERE TO **DOWNLOAD** THE COMPLETE MANUAL