

EXPLORER 75 T

ENGINE

CRANKCASE.....	1
TIMING CASE.....	2
GUARD PLATE.....	3
CASING COVER.....	4
MONOBLOC ENGINE-GEARBOX CONNECTING FLANGE.....	6
SIDE PLUG FOR CYLINDER BLOCK.....	7
PLUG.....	8
CRANKSHAFT.....	10
CYLINDER - PISTON - CONNECTING ROD.....	12
CRANKSHAFT PULLEY.....	14
ENGINE FLYWHEEL.....	15
COUNTERWEIGHTS.....	17
CAMSHAFT.....	18
CYLINDER HEAD.....	20
OIL PAN.....	25
LUBRICATING OIL INTAKE LINE.....	26
FITTING FOR ENGINE OIL PRESSURE SWITCH.....	27
LUBRIC. OIL FILTER.....	28
LUBRICATION.....	30
LUBRICATION.....	33
LUBRIC. OIL COOLER.....	38
MECHANICAL ENGINE GOVERNOR.....	39
PLUG FOR MECHANICAL REGULATOR.....	41
FUEL FEED PUMP.....	42
INJECTION PUMP - INJECTOR.....	43
FUEL PIPES.....	45
FUEL FILTER.....	46
THERMO STARTER.....	47
WATER COOLING.....	50
COOLING WATER PUMP.....	52
WATER COOLING.....	55
WATER COOLING.....	56
COOLANT PUMP PULLEY.....	57
COOLANT PUMP DRIVEBELT.....	59
COOLING SYSTEM MANIFOLD.....	61
WATER COOLING -SEALING.....	65
WATER MANIFOLD COVER.....	66
INTAKE AND EXHAUST.....	69
INTAKE AND EXHAUST MANIFOLD GASKETS.....	73
EXHAUST SILENCER.....	78
EXHAUST SILENCER.....	81

CLICK HERE TO **DOWNLOAD** THE COMPLETE MANUAL

- Thank you very much for reading the preview of the manual.
- You can download the complete manual from: www.heydownloads.com by clicking the link below



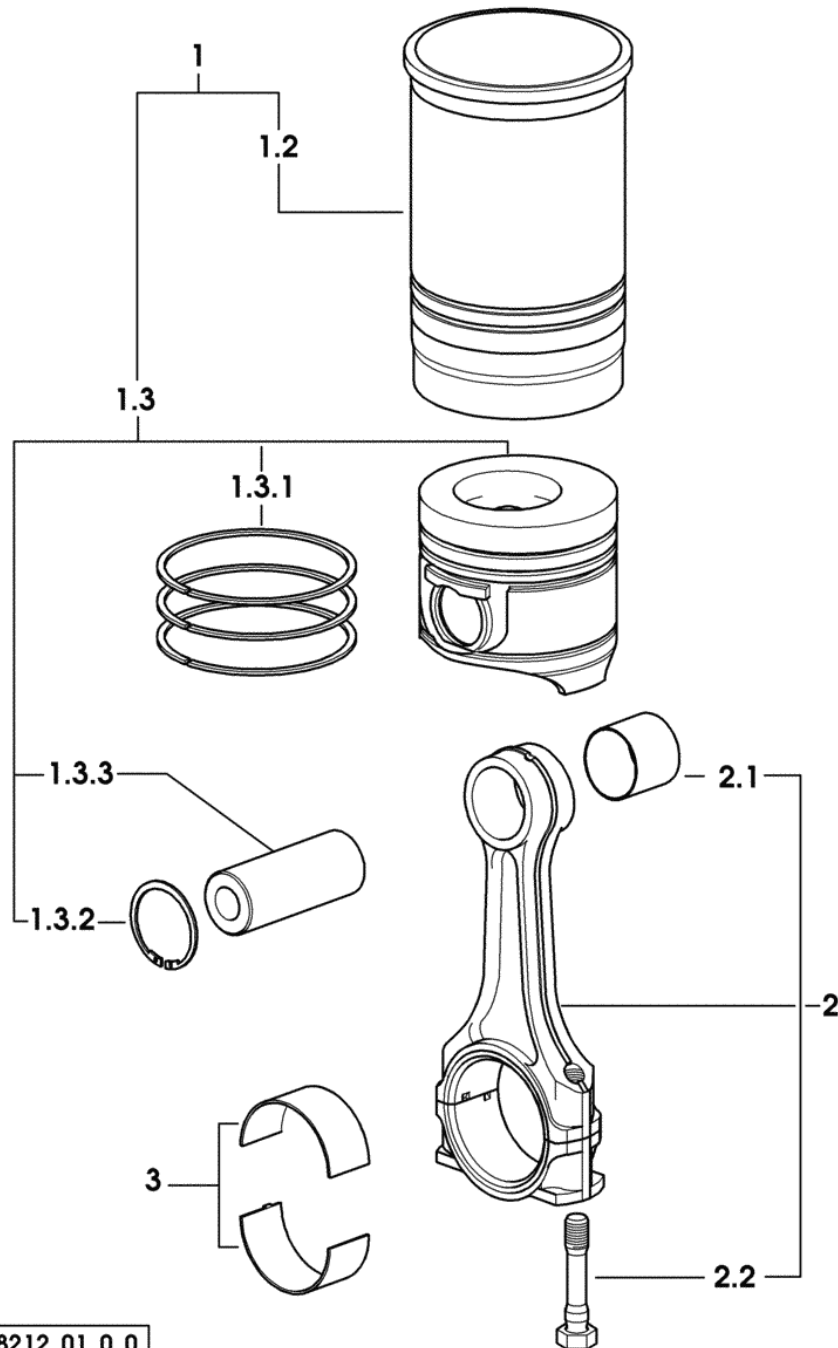
- Please note: If there is no response to CLICKING the link, please download this PDF first and then click on it.

CLICK HERE TO **DOWNLOAD** THE COMPLETE MANUAL

Section: ENGINE

CYLINDER - PISTON - CONNECTING ROD

Fig.	Code	QTY	Name
1	0.082.0065.A	4	piston cyl.assembly "A" - CLASS A
1	0.082.0065.B	4	piston cyl.assembly "B" - CLASS B
1.2	0.A12.2675.0	1	engine cylinder "A" - CLASS A
1.2	0.B12.2675.0	1	engine cylinder "B" - CLASS B
1.3	0.082.0060.A	1	complete piston "A" - CLASS A
1.3	0.082.0060.B	1	complete piston "B" - CLASS B
1.3.1	0.086.0052.6/10	1	piston ring set
1.3.2	2.1411.014.1	2	circlip 35
1.3.3	0.078.1236.0	1	piston pin
2	0.078.1220.3/30	4	engine connect.rod
2.1	2.1559.114.0/10	1	bushing 35x39x35
2.2	2.0399.213.0	2	screw m 12 p.1.25x61.5
3	0.065.1225.0	8	con.rod half bushing
3	0.065.1225.7	8	con.rod half bushing - mm 0.25
3	0.065.1225.8	8	con.rod half bushing - mm 0.50



Section: ENGINE
LUBRICATION

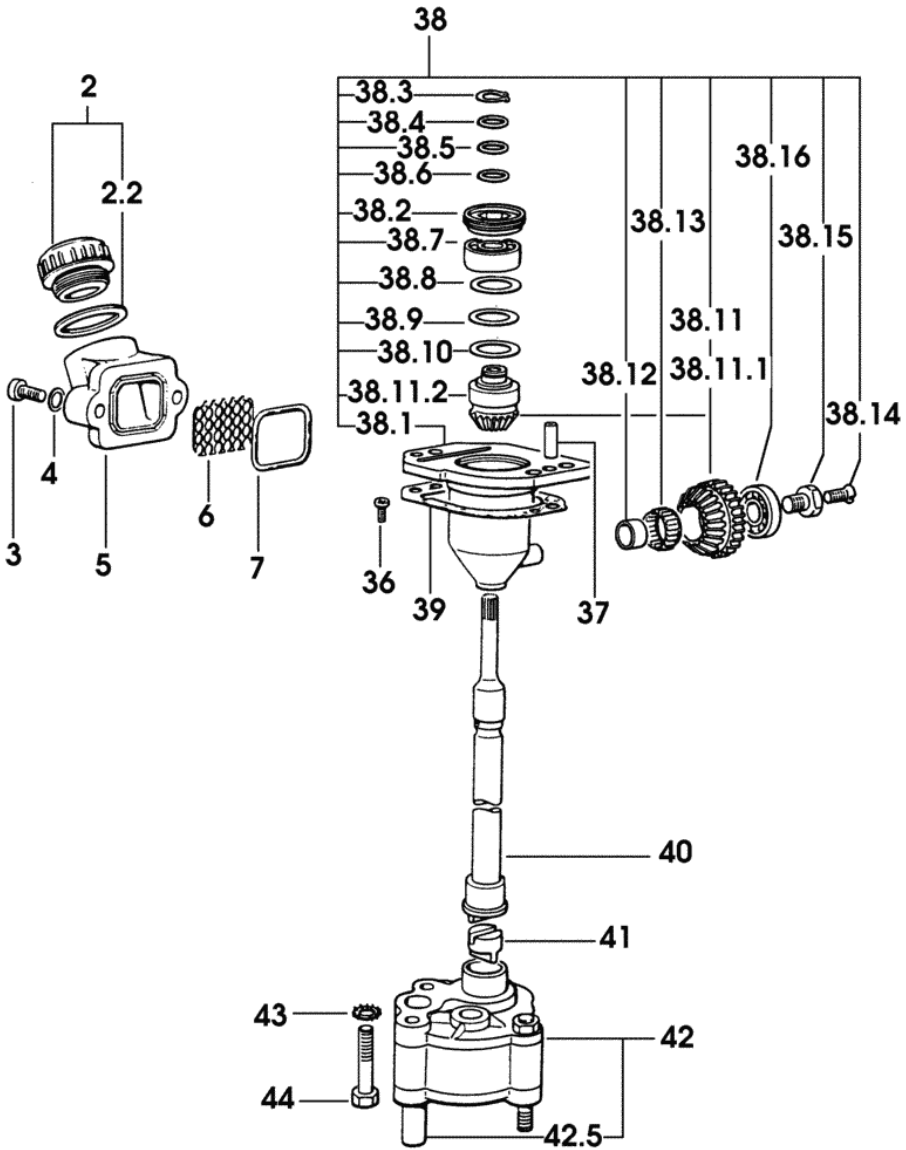
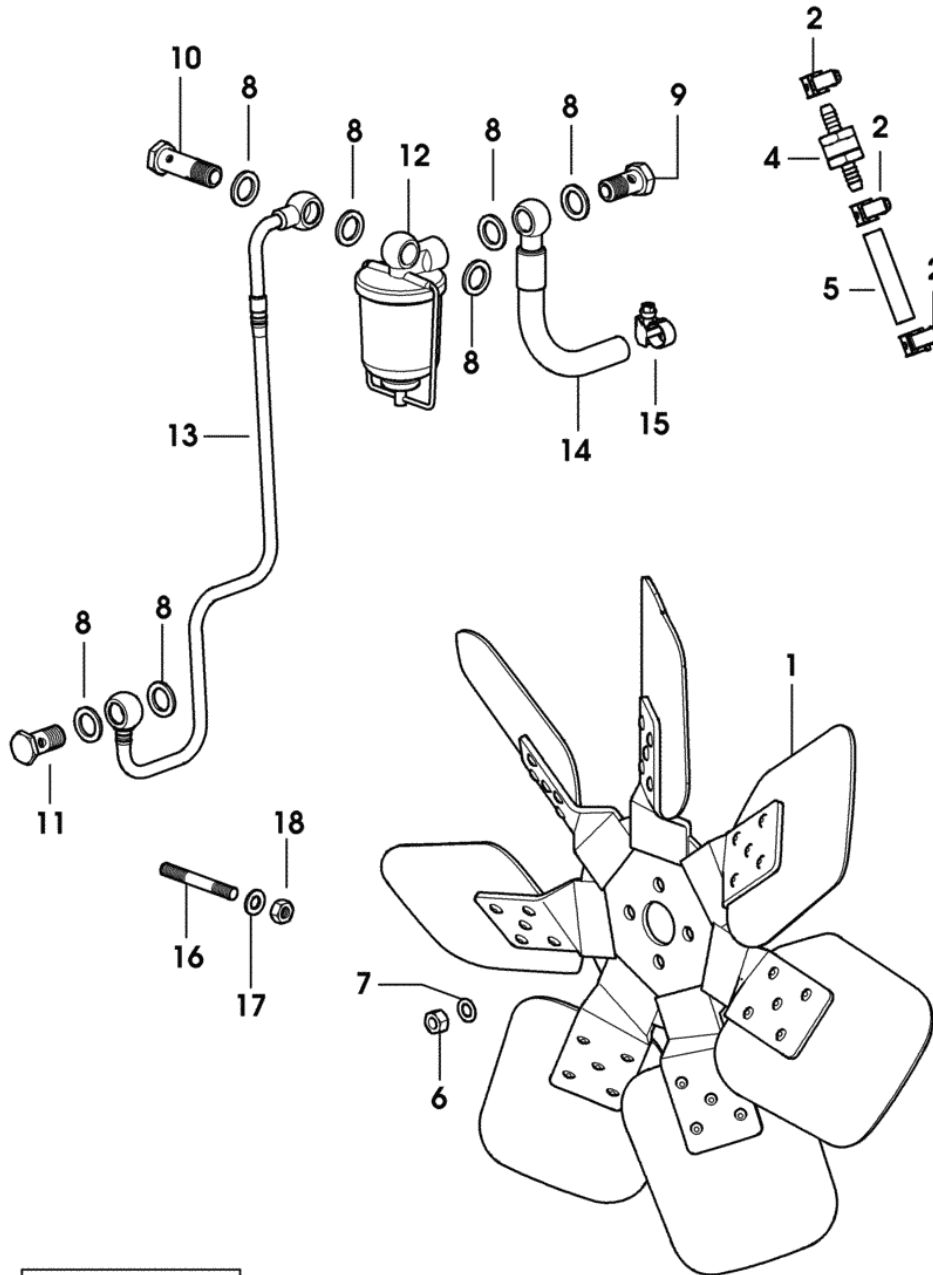


Fig.	Code	QTY	Name
2	0.041.1135.4	1	plug
2.2	2.1569.072.0	1	gasket 32x39.5x2
3	2.0312.205.2	2	screw m 8 p.1.25x18
4	2.1480.014.1	2	washer 8
5	0.013.0942.0/10	1	pipe union
6	0.013.1387.0	1	small mesh
7	2.1532.515.0	1	rubber ring
36	2.0169.005.2	2	screw m 6 p.1x12
37	2.1651.711.0	2	pin 8x14
38	0.013.1629.4	1	support
38.1	0.013.1629.3	1	support
38.2	2.1219.025.2/10	1	ring nut m 36 p.1.5
38.3	2.1410.057.1	1	circlip 15
38.4	2.1589.153.0	1	shim 15.2x19x1
38.5	2.1589.146.0	2	shim 15.2x19x0.15
38.6	2.1589.147.0	2	shim 15.2x19x0.1
38.7	2.2020.001.0	1	ball bearing 15x32x8
38.8	2.1589.148.0	1	shim 28.2x31.8x0.5
38.9	2.1589.150.0	2	shim 28.2x31.8x0.1
38.10	2.1589.151.0	2	shim 28.2x31.8x0.15
38.11	0.000.0000.1	0	not serviceable
38.11.1	0.065.1558.6/10	1	bevel gear
38.11.2	0.065.1559.0	1	sleeve
38.12	2.2680.020.0	1	snoulder 12x15x12
38.13	2.2725.016.0	1	roller cage 15x21x12
38.14	2.0342.007.6	1	screw m 4x25
38.15	2.0399.128.2/10	1	screw m 8 p.1
38.16	2.2030.002.0	1	ball bearing 12x28x8
39	0.065.1560.0/20	2	gasket
40	0.065.1569.0/40	1	shaft
41	0.065.1562.0/10	1	joint
42	0.010.5441.4/10	1	oil pump
42.5	0.065.1552.3/60	1	valve
43	2.1470.006.2	2	lock washer 10
44	2.0112.325.2	2	screw m 10 p.1.5x80

Section: ENGINE
WATER COOLING

Fig.	Code	QTY	Name
1	0.013.2754.0	1	rotor blade
2	2.6851.019.0	3	clamp 13-20
4	0.013.8464.4	1	valve
5	0.011.5937.0	0	tube
6	2.1011.305.2	4	nut m 8 p.1
7	2.1470.004.2	4	lock washer 8
8	2.1561.007.0	7	gasket 14,8x22.2
9	2.3332.004.1	1	pipe union m 14 p.1.5x27
10	2.3249.095.2	1	pipe union m 14 p.1.5x45
11	2.3339.357.2/10	1	pipe union m 14 p.1.5x28
12	2.4319.220.0	1	precleaner ↳ 585 => 585
13	0.013.6569.3	1	tube
14	0.007.6792.3	1	tube
15	2.6851.019.0	1	clamp 13-20
16	2.0439.205.0/10	2	stud bolt m 18
17	2.1310.004.2	2	flat washer 8.4x16
18	2.1011.405.2	2	nut m 8 p.1

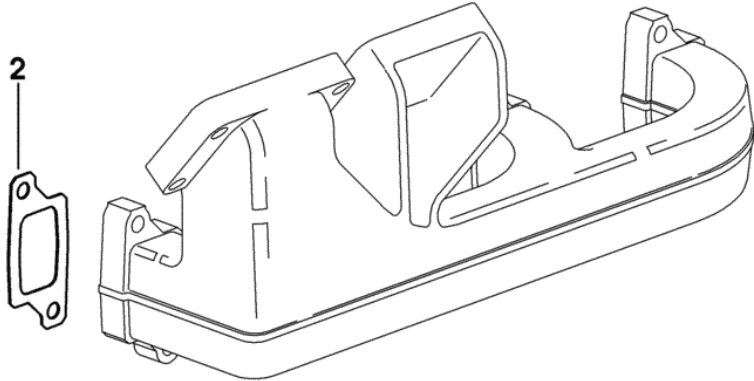
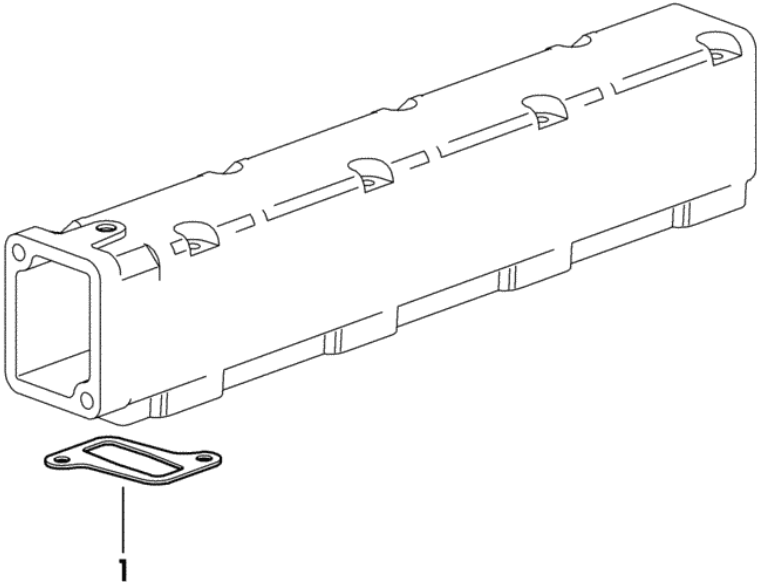


9_M6919_10_0_0

Section: ENGINE
INTAKE AND EXHAUST MANIFOLD GASKETS

9_33218_00_0_0

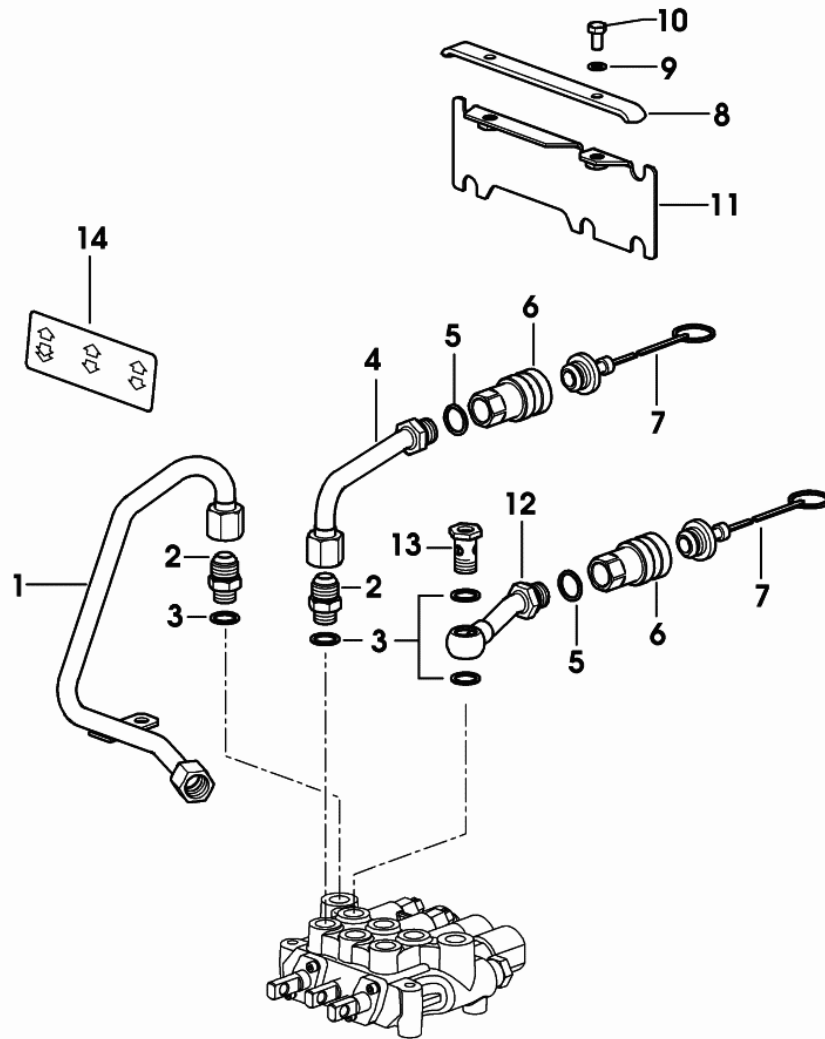
Fig.	Code	QTY	Name
1	0.011.1304.0/10	4	gasket
2	0.007.1445.0	4	gasket



Section: ACCESSORY

6-WAY AUXILIARY DISTRIBUTOR

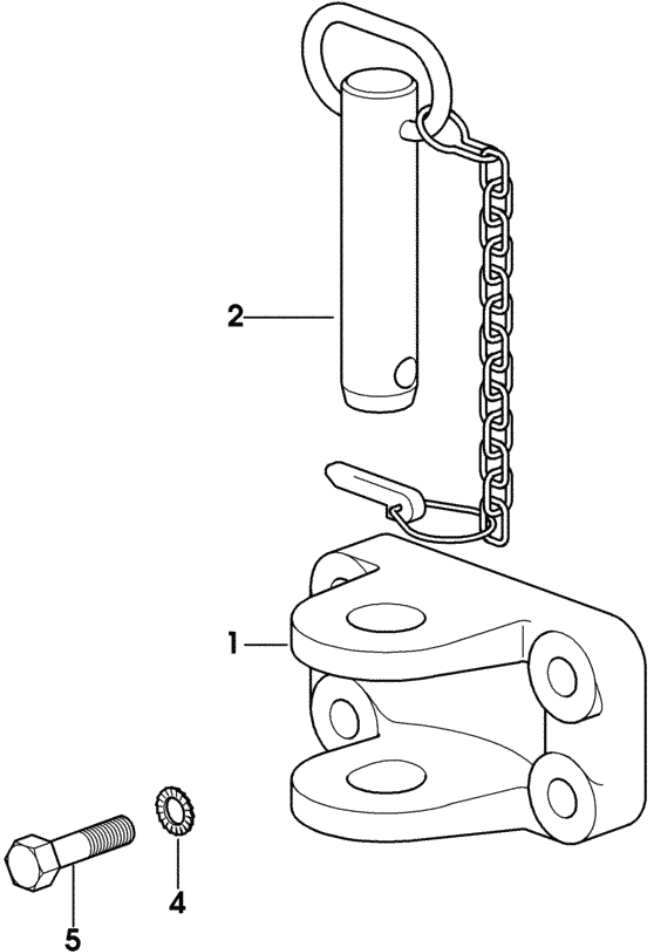
Fig.	Code	QTY	Name
1	0.014.2685.3/10	1	tube
2	2.3261.010.2	2	pipe fitting M18x1,5 7/8" 14
3	2.1560.014.0	4	gasket 18.2x24x1.5
4	0.008.8539.3/10	1	tube
5	2.1560.054.0	2	gasket 21x26
6	0.98308.50.3/10	2	coupling ☞ 646 => 646
7	0.013.7997.0	2	plug
8	0.008.8619.0	1	clamp
9	2.1470.004.2	2	lock washer 8
10	2.0112.205.2	2	screw m 8 p.1.25x16
11	0.008.8617.2	1	bracket
12	0.008.8542.3/10	1	tube
13	2.3335.008.2	1	pipe union m 18 p.1.5X32
14	2.9929.328.0	1	plate



9_C2788_26_0_0

Section: ACCESSORY
FRONT TOWING HITCH

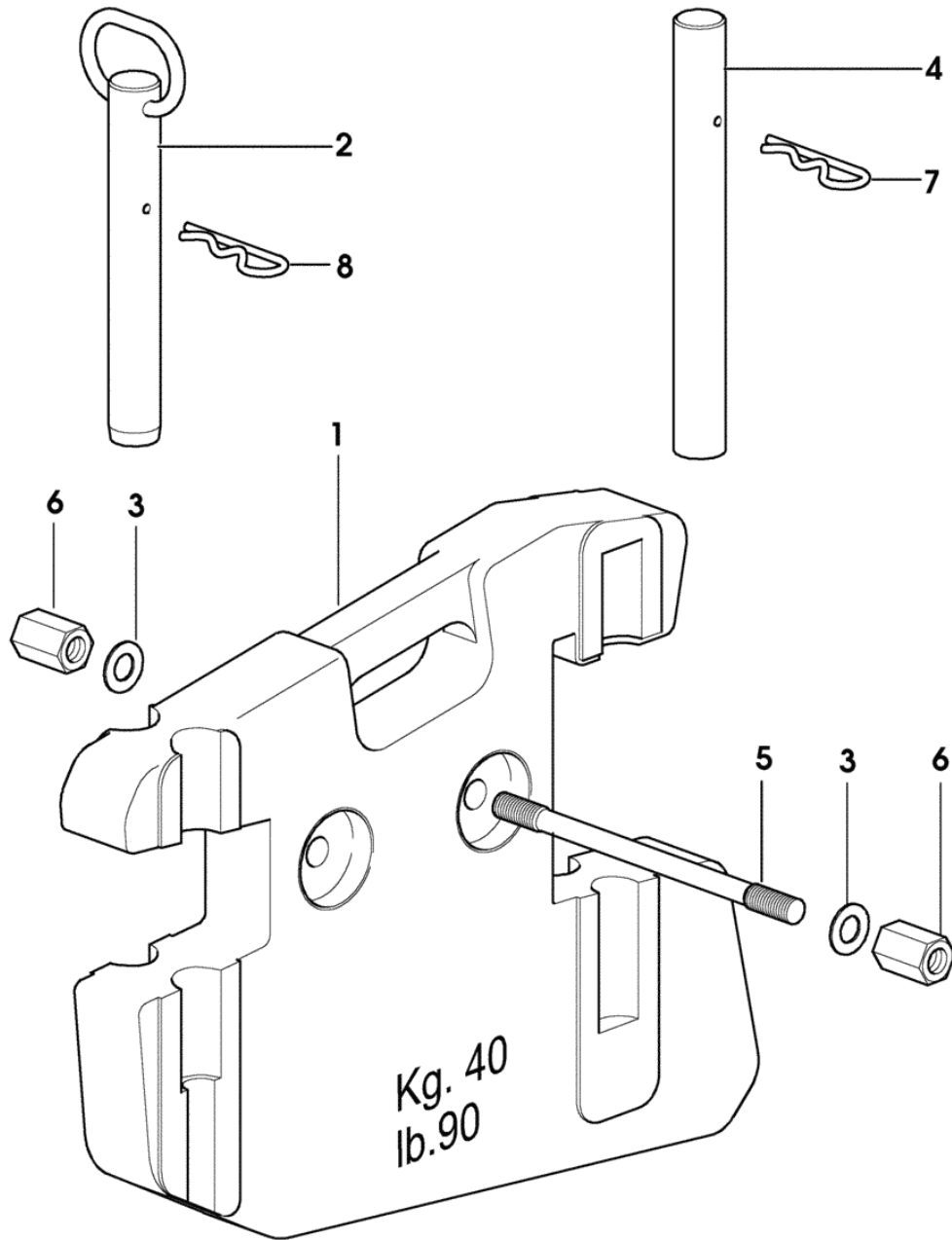
Fig.	Code	QTY	Name
1	0.013.5574.0	1	tow hook
2	0.96309.51.3	1	pin
4	2.1475.006.2	4	washer 17x32
5	2.0112.619.2	4	screw m 16 p.2x50



9_B9852_31_0_0

Section: ACCESSORY
FRONT BALLAST n. 4

Fig.	Code	QTY	Name
1	0.96929.40.0/20	4	ballast 40 Kg - lb 90
2	0.96928.51.2	1	pin
3	2.1310.009.2	4	flat washer 15x28
4	0.96930.50.0	1	pin
5	0.96930.51.0/10	2	rod
6	2.1099.065.1	4	special nut m 14
7	2.1699.084.2	1	roll pin 27
8	2.1699.084.2	1	roll pin 27



9_49052_51_0_0

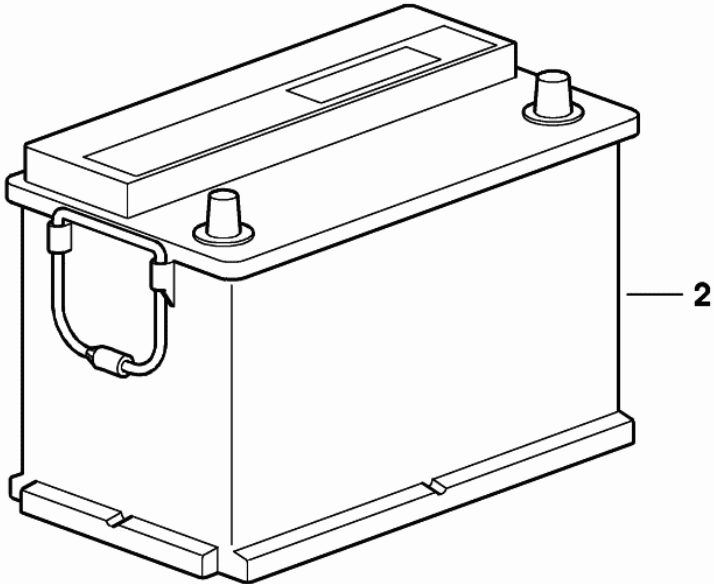
EXPLORER 75 T

LIGHTING SYSTEM

HEADLAMP FOR LEFT-HAND DRIVE.....	421
HEADLAMP FOR RIGHT-HAND DRIVE.....	422
REAR LIGHT.....	423
WARNING BEACON.....	425
PREARRANGEMENT FOR WARNING BEACON - WITH FOLD-DOWN ROPS.....	426
PREARRANGEMENT FOR WARNING BEACON - WITH FOLD-DOWN ROPS.....	426.1
PREARRANGEMENT FOR WARNING BEACON.....	427
LICENCE PLATE LIGHT.....	428
DASHBOARD BOX INSTRUMENT PANEL.....	429
BATTERY 12V 100Ah 450A.....	430
BATTERY 12V 100Ah 500A.....	431
STARTER.....	432
ALTERNATOR 65 A.....	433
ALTERNATOR MOUNTINGS 65A.....	434
ELECTRICAL EQUIPMENT FRONT.....	435
CENTRAL WIRING LOOM.....	436
CENTRAL WIRING LOOM.....	437
ELECTRICAL EQUIPMENT REAR.....	438
ELECTRICAL EQUIPMENT REAR.....	439
4WD - ENGAGEMENT CONTROL.....	441
SWITCH.....	442

Section: LIGHTING SYSTEM
BATTERY 12V 100Ah 450A

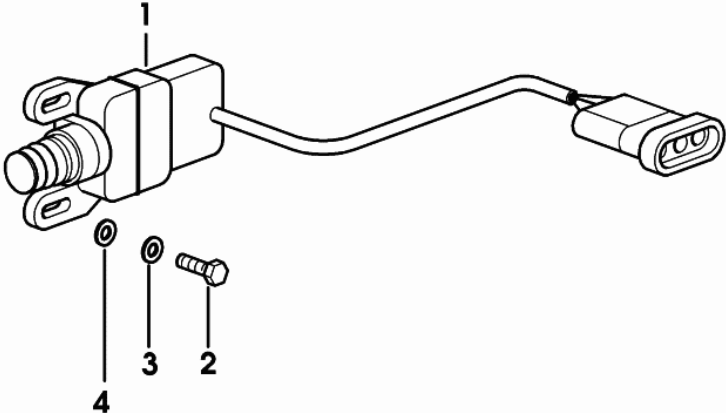
Fig.	Code	QTY	Name
2	2.9559.052.0	1	battery 12V 100Ah 450A



9_40584_10_0_0

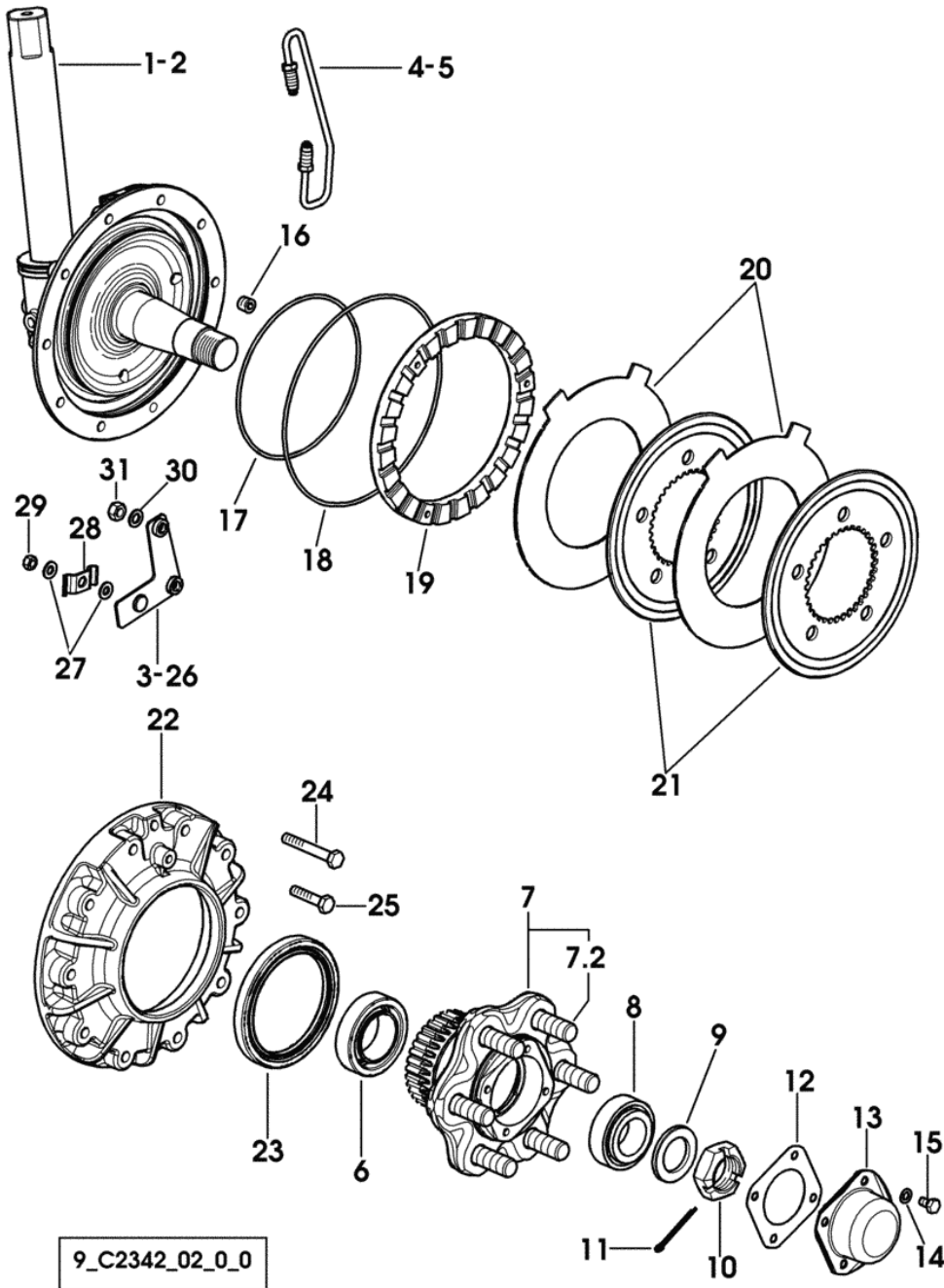
Section: LIGHTING SYSTEM
4WD - ENGAGEMENT CONTROL

Fig.	Code	QTY	Name
1	2.7659.096.0/10	1	switch
2	2.0332.205.2	2	screw m 4x14
3	2.1310.028.2	2	flat washer 4.3x9
4	2.1470.052.2	2	lock washer 4



9_62084_13_0_0

Section: FRONT AXEL
2WD - FRONT BRAKES



9_C2342_02_0_0

Fig.	Code	QTY	Name
------	------	-----	------

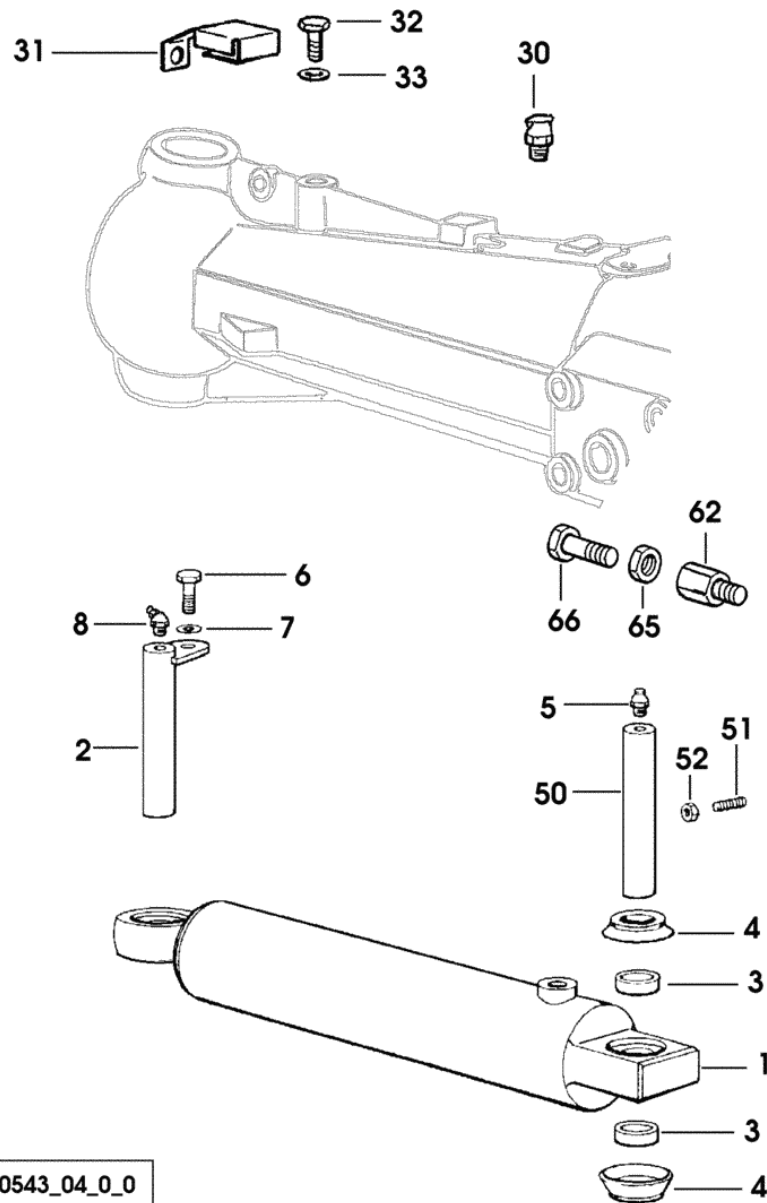
Notes:

-> 1142 X EXPLORER 75T -> 1131 X EXPLORER 85T -> 1160 X EXPLORER 95T

1	0.013.6956.3/10	1	axle shaft dx
2	0.013.6957.3/10	1	axle shaft sx
3	0.013.7896.3	1	plate sx
4	0.013.7916.3/10	1	tube
5	0.013.7914.3/10	1	tube
6	2.2999.488.0	2	bearing
7	0.013.8184.3/20	2	wheel hub
7.2	0.148.4737.0/20	6	small column m 20x68
8	2.2999.489.0	2	bearing
9	2.1599.228.0	2	snoulder 38x60x5
10	2.1029.008.2	2	special nut m 36 p.2
11	2.1690.516.2	2	split pin 5x50
12	0.001.2921.0	2	gasket
13	0.014.1169.0	2	small cover
14	2.1470.004.2	8	lock washer 8
15	2.0112.204.2	8	screw m 8 p.1.25x14
16	2.3130.002.1	4	plug 1/4 gas
17	2.1539.177.0	2	'o' ring 171.04x3.53
18	2.1539.118.0	2	ring 221.84x3.53
19	0.009.8420.0/10	2	piston
20	0.275.4351.0	4	disc
21	0.007.3191.0/10	4	brake disc
22	0.007.7754.0/20	2	cover
23	2.1529.056.0/10	2	'o' ring 110x140x13
24	2.0139.030.2	4	screw m 10 p.1.25x65
25	2.0132.211.7	16	screw m 10 p.1.25x45
26	0.013.7895.3	1	plate dx
27	2.1310.004.3	4	washer 8.4x17
28	0.008.9082.0	2	small plate
29	2.1011.105.2	2	nut m 8 p.1.25
30	2.1470.006.2	4	lock washer 10
31	2.1011.421.2	4	nut M10x1.25

Section: FRONT AXEL
4WD - POWER STEERING CYLINDER

Fig.	Code	QTY	Name
1	0.448.6342.4	2	jack ↳ 594 => 594
2	0.270.6350.2/30	2	pin
3	2.1579.739.0	8	spacer 21x25x10
4	0.270.6351.0	8	gasket
5	2.3820.105.2	2	lubricator m 10 p.1x7
6	2.0112.207.2	2	screw m 8 p 1.25x20
7	2.1470.004.2	2	lock washer 8
8	2.3821.303.2	2	lubricator m 10 p.1
30	0.135.4363.3/10	3	valve
31	0.270.4355.0	2	guard
32	2.0112.304.2	2	screw m 10 p.1.5x14
33	2.1310.006.2	2	flat washer 10.5x20
50	0.008.5388.0/10	2	piston pin
51	2.0399.050.2	2	screw m 10 p.1x30
52	2.1011.406.2	2	nut m 10 p.1
62	0.010.8798.0	2	spacer
65	2.1011.208.2	2	nut m 14
66	2.0119.228.2	2	screw m 14 p.2x40



9_40543_04_0_0

Section: FRONT AXEL
DIFFERENTIAL LOCK CONTROL

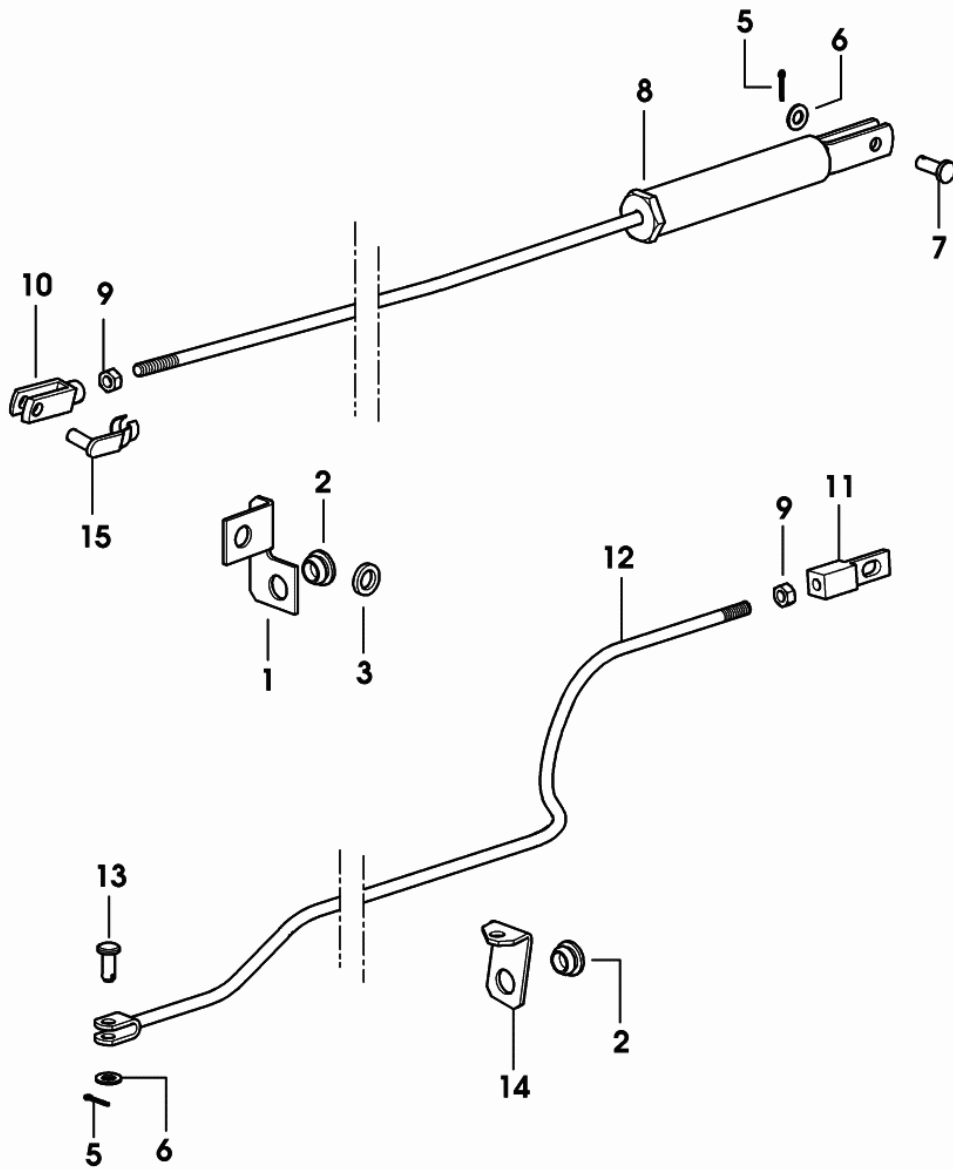


Fig.	Code	QTY	Name
1	0.255.6877.0	1	bracket
2	0.255.6858.0/10	2	rubber plug 18x5
3	2.1579.487.0	1	spacer 12.5x20x3.5
5	2.1690.206.2	2	split pin 2x16
6	2.1310.004.2	2	flat washer 8.4x16
7	2.1671.305.2	1	pin 8x22
8	0.255.6875.3	1	rod
9	2.1011.105.2	2	nut m 8 p.1.25
10	2.3510.014.2	1	fork
11	0.255.6880.0	1	tip
12	0.255.6879.2/20	1	rod
13	2.1671.304.2	1	pin
14	0.255.6878.0/20	1	plate
15	2.1673.007.2	1	small spring

EXPLORER 75 T

Section: FRONT AND REAR P.T.O.

Ref.: 241

P.T.O. - 2 SPEED TYPE

9_50836_06_0_0

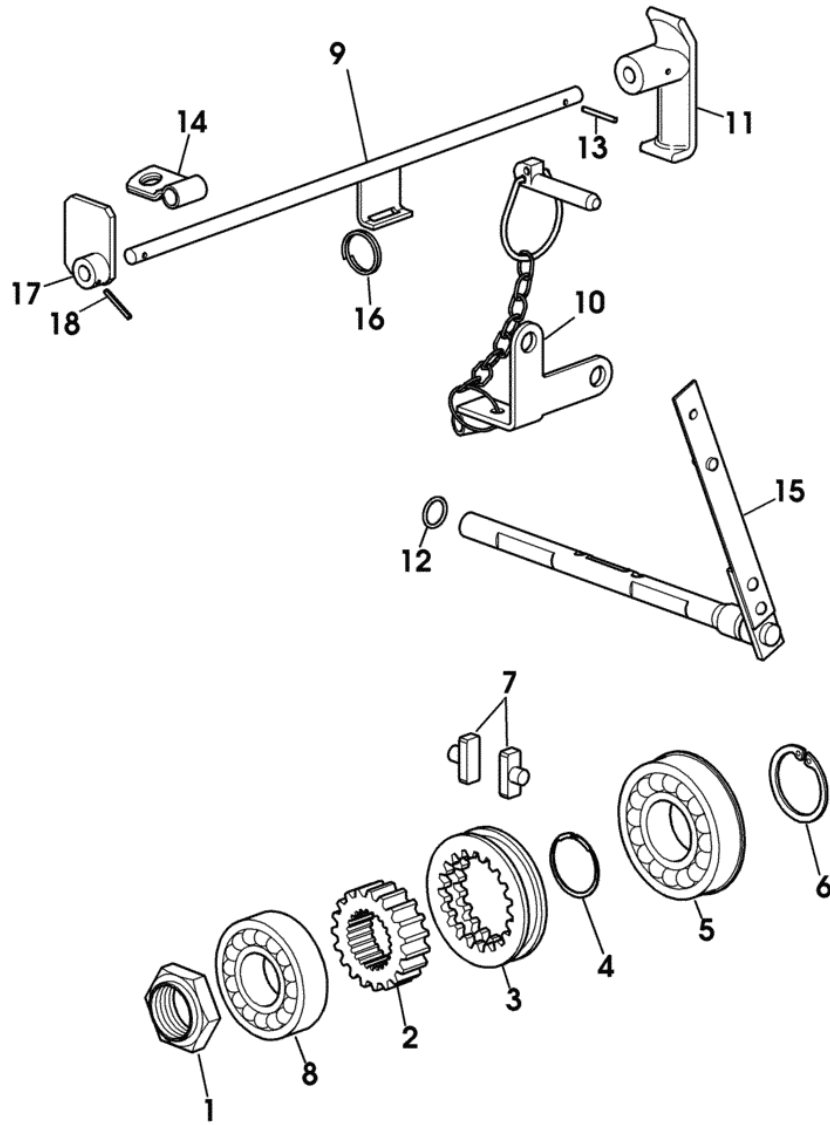
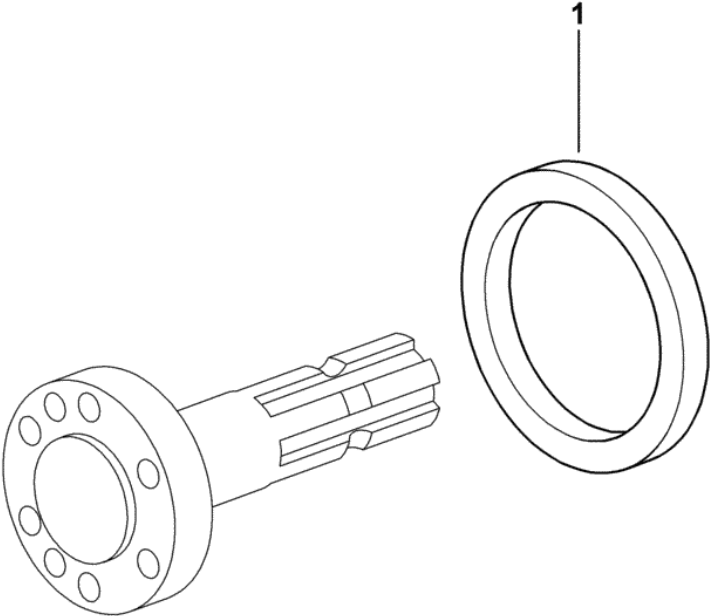


Fig.	Code	QTY	Name
1	0.255.3661.0	1	ring nut m 35x1.5
2	0.255.3455.0	1	hub z=19
3	0.255.3438.0/20	1	sleeve
4	2.1499.034.1	1	circlip 40x1.75
5	2.2062.012.0	2	ball bearing 40x90x23
6	2.1410.014.1	1	circlip 35
7	0.255.6463.0	2	shoe
8	2.2060.011.0	1	ball bearing 35x80x21
9	0.008.3316.2	1	rod
10	0.255.3665.3/10	1	split pin
11	0.257.6862.0	1	grip
12	2.1530.038.0	1	'o' ring 15.54x2.62
13	2.1630.212.9	1	roll pin 3x28
14	2.6859.078.0	1	clamp
15	0.007.3494.3/10	1	lever
16	2.4099.052.1	1	spring
17	0.008.3300.2	1	small plate
18	2.1630.211.0	1	roll pin 3x24

PTO - SEAL RING FOR INSERTED END SHAFT - STANDARD VERSION

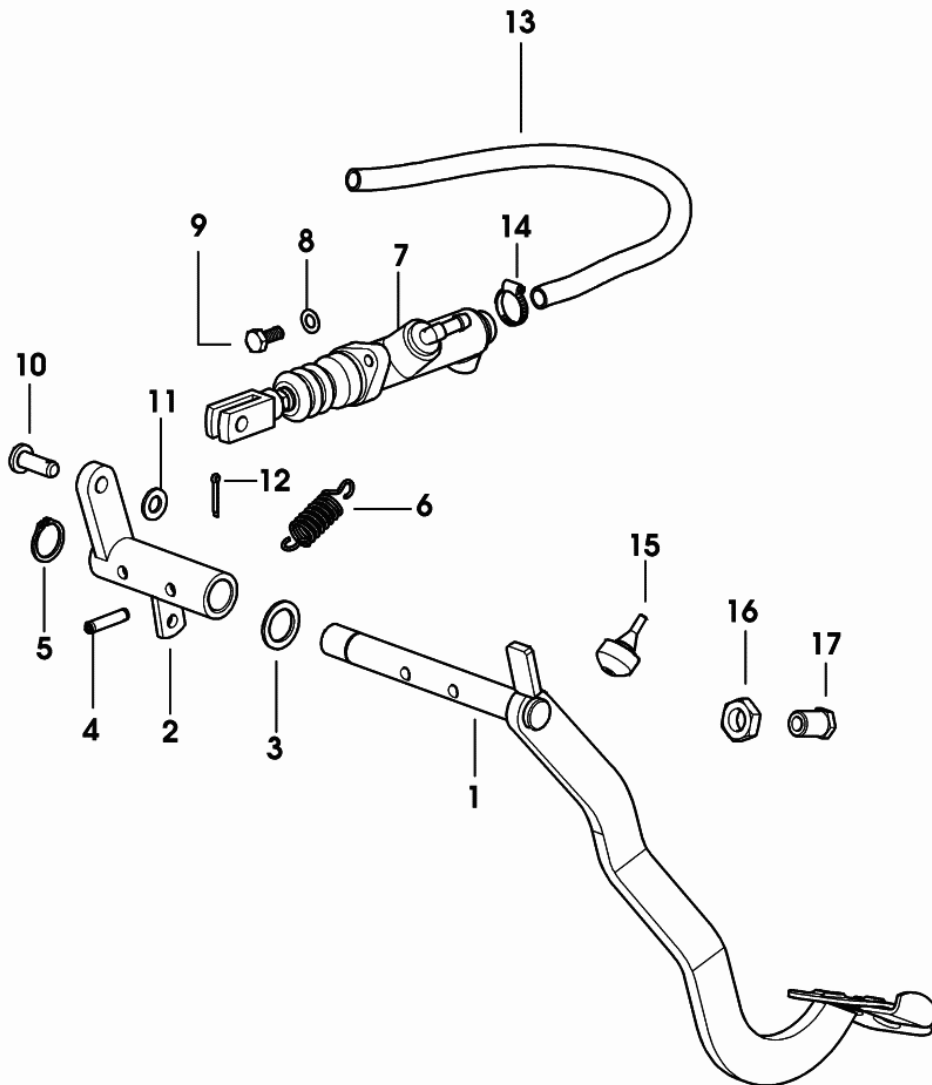
Fig.	Code	QTY	Name
1	2.1520.043.0	1	'o' ring 85x110x12



9_52636_03_0_0

Section: GEAR
CLUTCH CONTROL

Fig.	Code	QTY	Name
1	0.014.1528.3/10	1	pedal
2	0.014.1523.2/10	1	lever
3	2.1599.399.0	1	washer 20.5x31x2
4	2.1632.715.2	2	pin
5	2.1410.006.1	1	circlip 20
6	2.4049.161.2	1	spring 18x41x2
7	0.255.6538.4/50	1	pump ☞ 586 => 586
8	2.1470.004.2	2	lock washer 8
9	2.0112.206.2	2	screw m 8 p.1.25x18
10	2.1671.408.2	1	pin 10x30
11	2.1310.006.2	1	flat washer 10.5x20
12	2.1690.308.2	1	split pin 3.2x20
13	0.012.6343.0	0	tube
14	2.6857.019.0	2	clamp 14
15	0.010.1532.0	1	block
16	2.1011.509.2	1	nut m 16 p.1.5
17	0.012.5596.0/20	1	bushing



Section: GEAR

GEAR CHANGE BOX 5 SPEED SYNCRO POWER

9_54333_04_0_C

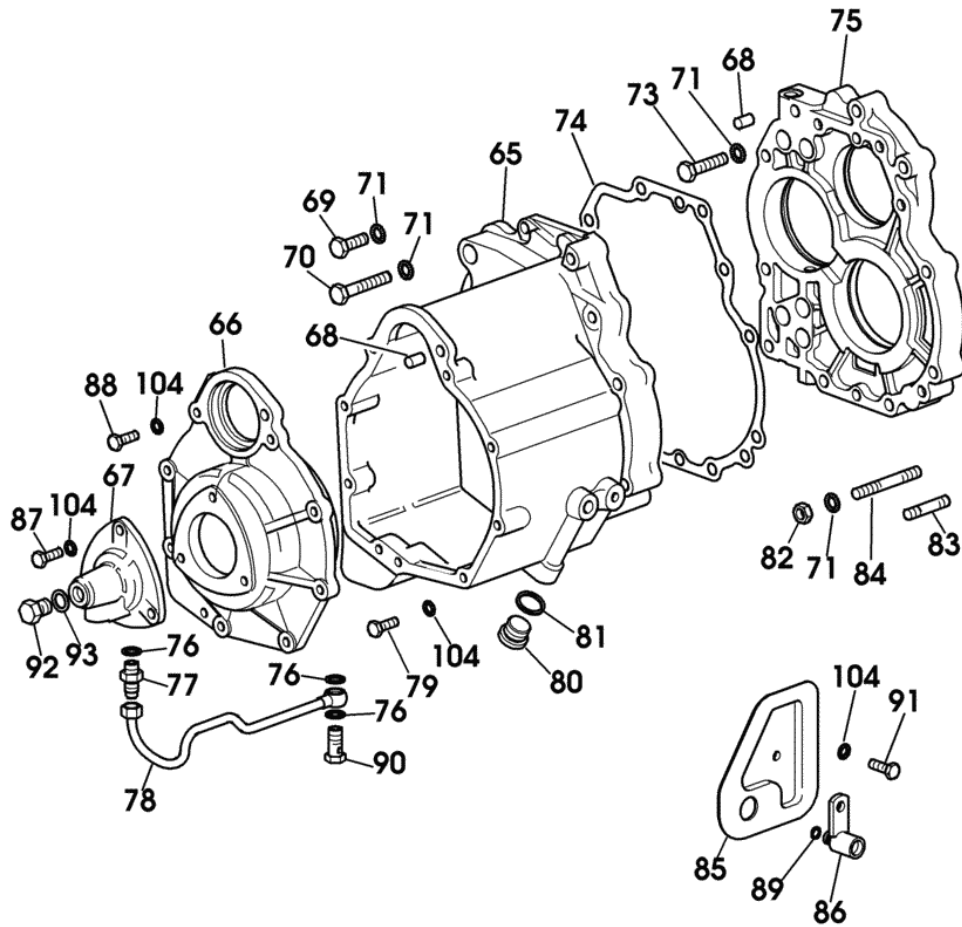
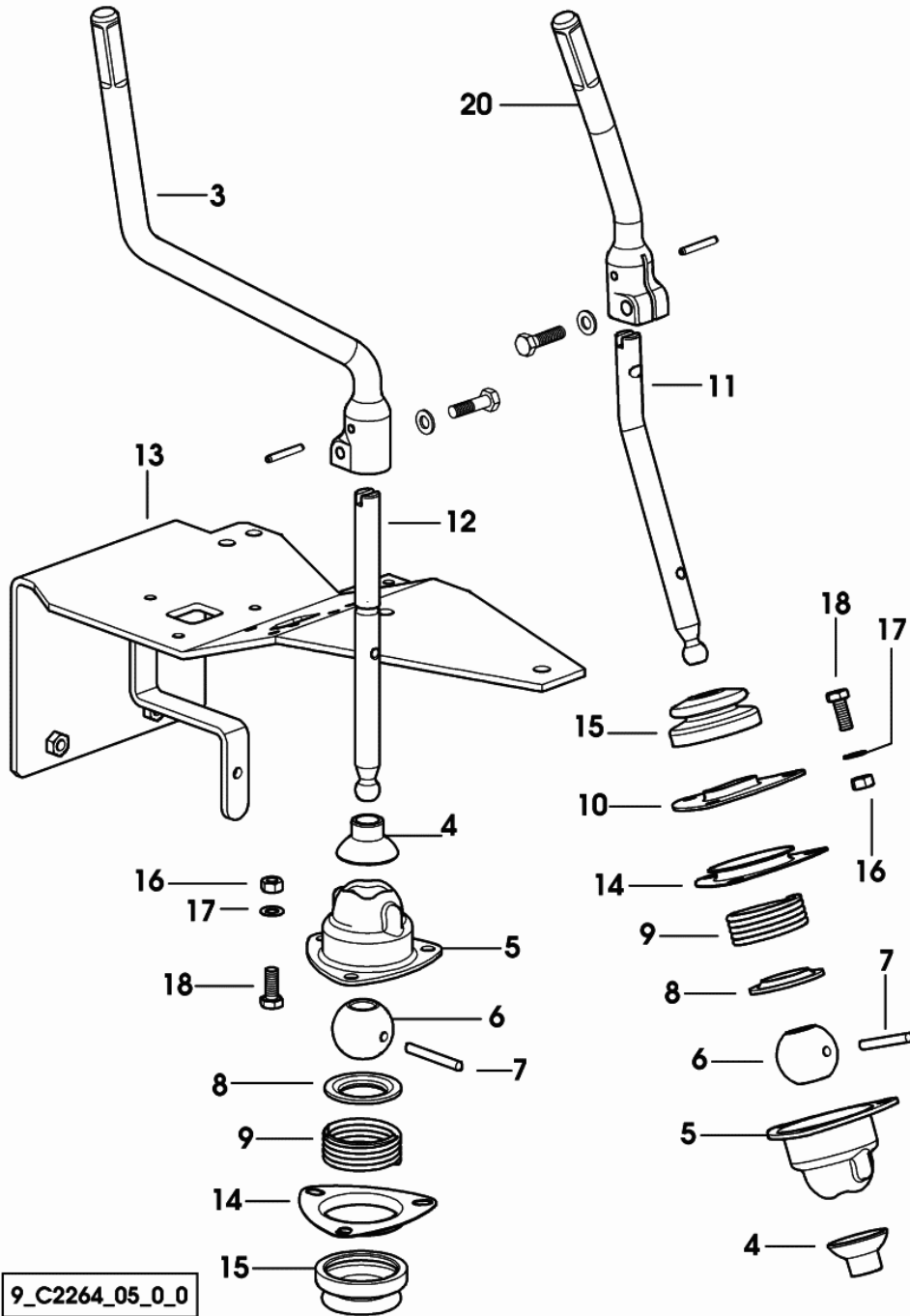


Fig.	Code	QTY	Name
65	0.007.3416.0/40	1	box
66	0.007.3415.0/20	1	cover
67	0.007.3417.0/10	1	manifold
68	2.1651.807.0	4	pin 10x16
69	2.0112.211.2	3	screw m 8 p.1.25x30
70	2.0112.321.2	3	screw m 10 p.1.5x60
71	2.1470.006.2	14	lock washer 10
73	2.0112.317.2	3	screw m 10 p.1.5x45
74	0.255.3356.0/10	1	gasket
75	0.007.3461.0/40	1	flange
76	2.1560.008.0	3	gasket 12.2x18
77	2.3339.453.2	1	pipe fitting m 12 p.1.25-1/2"
78	0.007.3544.3	1	tube
79	2.0112.211.2	6	screw m 8 p.1.25x30
80	2.3199.001.2	1	plug 1/2 gas
81	2.1560.017.0	1	gasket 22.2x27
82	2.1011.421.2	5	nut M10x1.25
83	2.0432.165.7	1	stud bolt m 10 p.1.5-1.25x50
84	2.0432.171.7	4	stud bolt m 10 p.1.5-1.25x80
85	0.007.3563.3	1	cover
86	0.007.3566.2	1	pipe union m 14 p.1.5
87	2.0112.209.2	3	screw m 8 p.1.25x25
88	2.0112.213.2	2	screw m 8 p.1.25x35
89	2.1530.014.0	1	'o' ring 7.66x1.78
90	2.3332.003.1	1	pipe union m 12 p.1.25
91	2.0112.205.2	1	screw m 8 p.1.25x16
92	2.3110.403.1	1	plug m 14 p.1.5
93	2.1560.010.0	1	gasket 14.2x20
104	2.1470.004.2	11	lock washer 8

Section: GEAR

GEARSHIFT LEVER - FOR TYPES WITHOUT UNDERDRIVE

Fig.	Code	QTY	Name
3	0.014.3052.0	1	gear lever
4	0.255.6466.0/10	2	guard
5	0.467.6412.0	2	support
6	0.255.6452.0	2	ball
7	2.1699.184.0	2	pin 6x52
8	0.255.6465.0	2	cup
9	2.4019.309.1/10	2	spring 51x40x4
10	0.290.6455.0/30	1	small plate
11	0.014.2174.0	1	lever
12	0.014.2173.0	1	gear lever
13	0.014.1800.3/10	1	support
14	0.255.6451.0/10	2	cap
15	0.159.6450.0	2	support
16	2.1011.105.2	6	nut m 8 p.1.25
17	2.1470.004.2	6	lock washer 8
18	2.0112.207.2	6	screw m 8 p 1.25x20
20	0.014.2670.0	1	lever

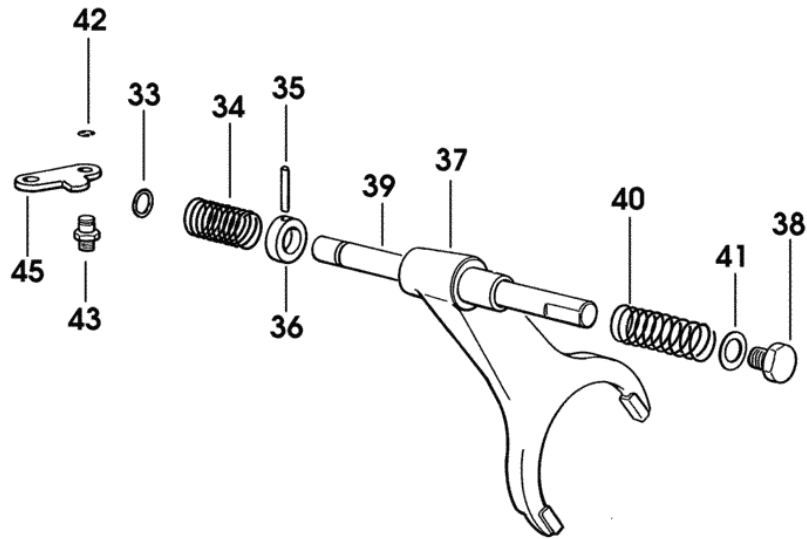


9_C2264_05_0_0

Section: GEAR

DIFFERENTIAL LOCK CONTROL

Fig.	Code	QTY	Name
33	2.1530.028.0	1	'o' ring 11.91x2.62
34	2.4019.339.1	1	spring 32x56.5x3.5
35	2.1631.415.2	1	roll pin 5x32
36	0.190.6858.0	1	stop
37	0.255.3541.0/40	1	fork
38	2.3110.405.1	1	plug m 18 p.1.5x15
39	0.255.3540.0/20	1	rod
40	2.4019.225.1	1	spring 28x79x4.5
41	2.1560.014.0	1	gasket 18.2x24x1.5
42	2.1430.008.7	1	circlip 7
43	2.1699.174.2/10	1	pin
45	0.135.6813.0/10	1	small lever



CLICK HERE TO **DOWNLOAD** THE COMPLETE MANUAL

- Thank you very much for reading the preview of the manual.
- You can download the complete manual from: www.heydownloads.com by clicking the link below

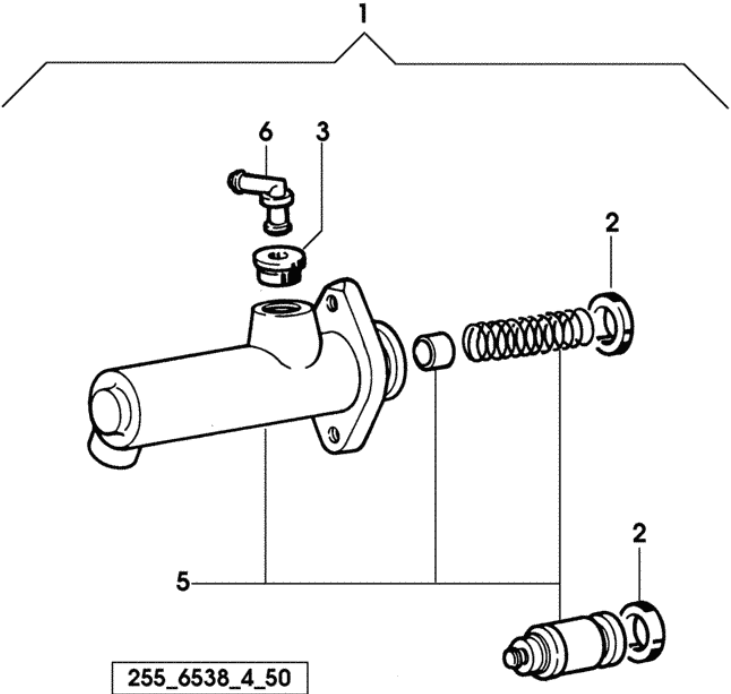


- Please note: If there is no response to CLICKING the link, please download this PDF first and then click on it.

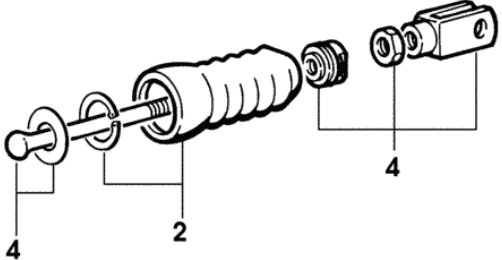
CLICK HERE TO **DOWNLOAD** THE COMPLETE MANUAL

Section: PARTS
PUMP-COMPONENTS

Fig.	Code	QTY	Name
1	0.255.6538.4/50	1	pump
2	0.255.6538.6	1	repair seal set
3	0.003.5099.0	1	rubber plug
4	0.255.6560.1	1	rod
5	0.000.0000.1	0	not serviceable
6	0.257.6691.1	1	coupling



255_6538_4_50



Section: PARTS
P.T.O. - CLUTCH-PARTS

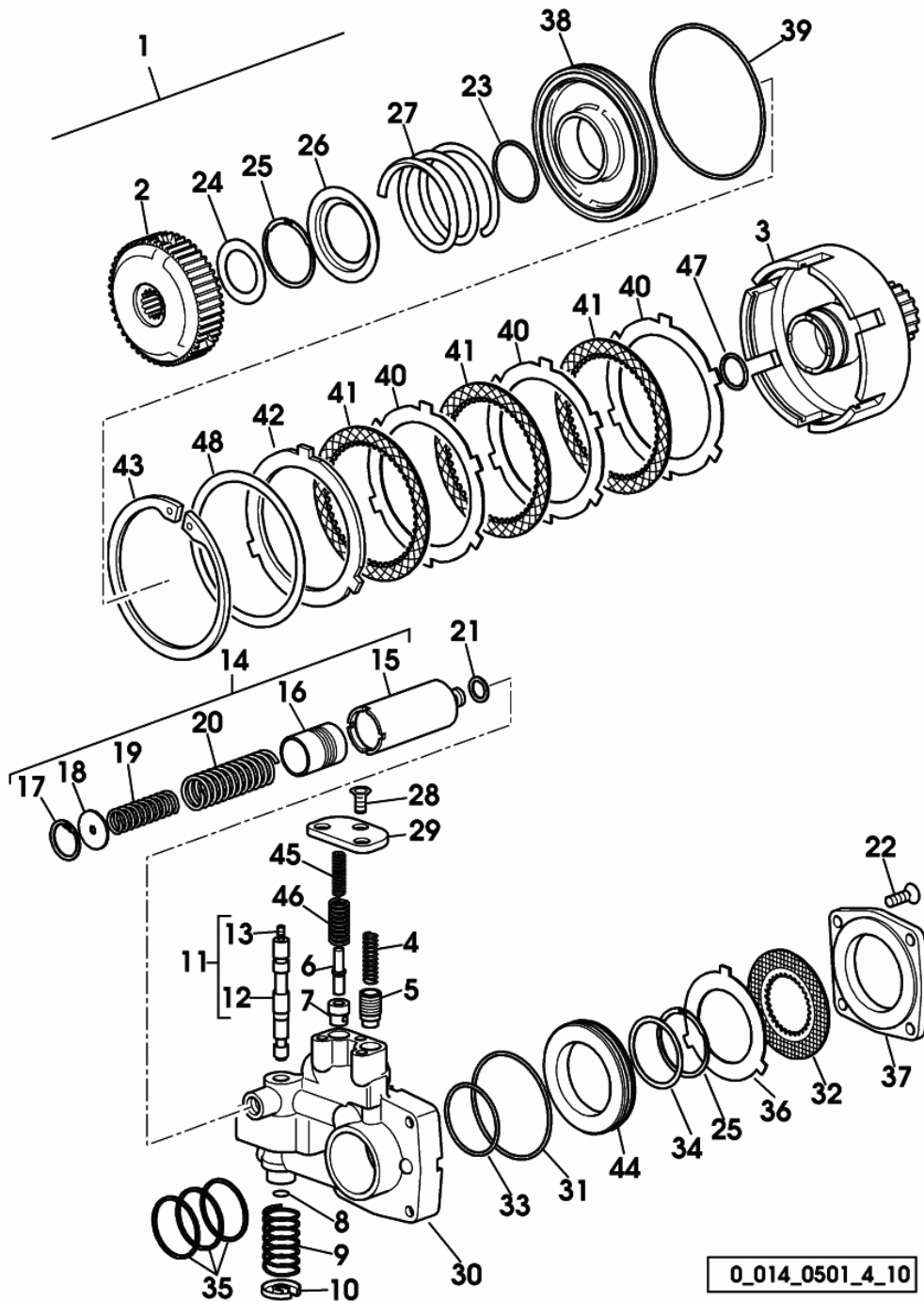
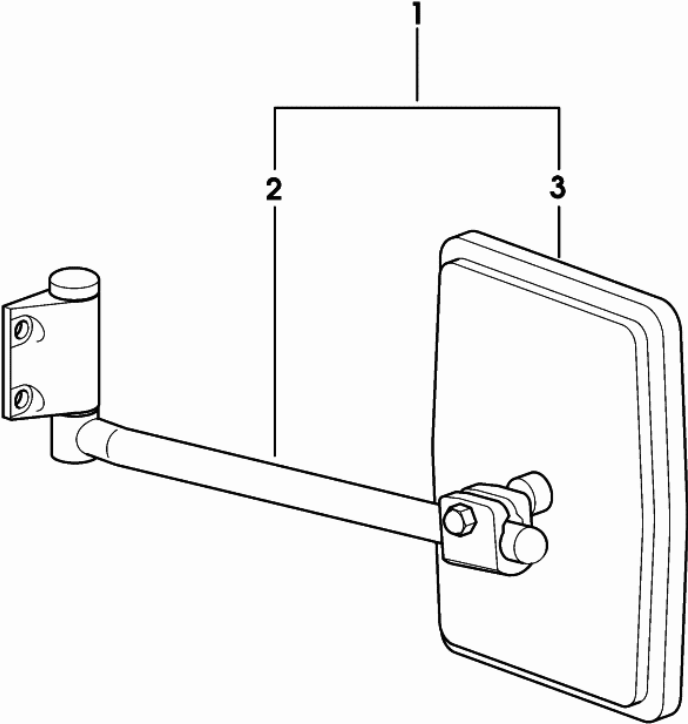


Fig.	Code	QTY	Name
1	0.014.0501.4/10	1	hydraulic pto clutch
2	0.445.3932.0/20	1	hub
3	0.255.3910.0/50	1	body
4	2.4019.312.1	1	spring 11.5x38x1.2
5	0.255.3920.0/10	1	valve
6	0.255.3968.0/10	1	small piston
7	0.255.3967.0/10	1	sleeve
8	2.1421.004.1	1	circlip b 12
9	2.4019.302.1/10	1	spring 28.3x45.3x1.8
10	0.255.3956.0	1	cup
11	0.255.3914.3	1	stem
12	0.000.0000.1	1	not serviceable
13	2.0512.001.7	1	screw
14	0.010.0526.4/10	1	accumulator
15	0.000.0000.1	1	not serviceable
16	0.010.0525.0	1	piston
17	2.1411.013.7	1	ring 32
18	2.1599.241.0	1	snoulder 6x31x2
19	2.4019.636.1	1	spring
20	2.4019.638.1	1	spring
21	2.1560.010.0	1	gasket 14.2x20
22	2.0342.305.2	4	screw m 8 p.1.25x20
23	2.1539.067.0	1	'o' ring 44.12x2.72
24	2.1599.415.0	1	snoulder 35x52x1
25	2.1419.027.1	2	circlip 48
26	0.255.3933.0	1	disc
27	2.4019.373.1	1	spring 79.5x61.5x6.5
28	2.0342.305.2	3	screw m 8 p.1.25x20
29	0.255.3919.0/10	1	plate
30	0.000.0000.1	1	not serviceable
31	2.1532.505.0	1	'o' ring 77.50x2.62
32	0.014.0360.2	1	disc
33	2.1532.150.0	1	'o' ring 61.60x2.62
34	2.1599.416.0	1	snoulder 50x58x1
35	2.1569.109.0	3	gasket 46x50x2
36	0.013.8983.0	2	disc
37	0.255.3926.0/10	1	cover
38	0.255.3938.0/40	1	piston
39	2.1539.064.0	1	'o' ring 120.33x2.62
40	0.013.9453.0	3	disc
41	0.255.3970.2	3	disc
42	0.255.3969.0/10	1	disc
43	2.1419.035.1	1	circlip 127
44	0.255.3922.0/40	1	piston D 84

Section: PARTS
REARVIEW MIRROR

Fig.	Code	QTY	Name
1	0.9234.147.4/10	1	rear view mirror dx
2	0.010.3564.2	1	rod
3	0.9233.183.3	1	rear view mirror



0.9234.147.4/10

Section: PARTS
HEADLAMP COMPONENTS

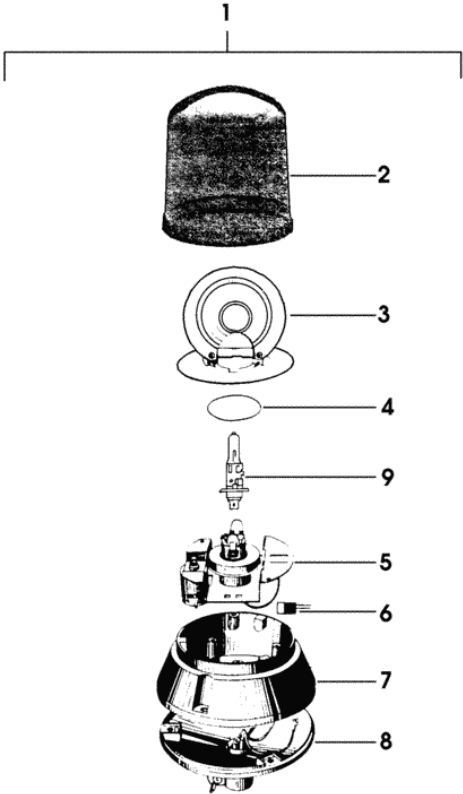
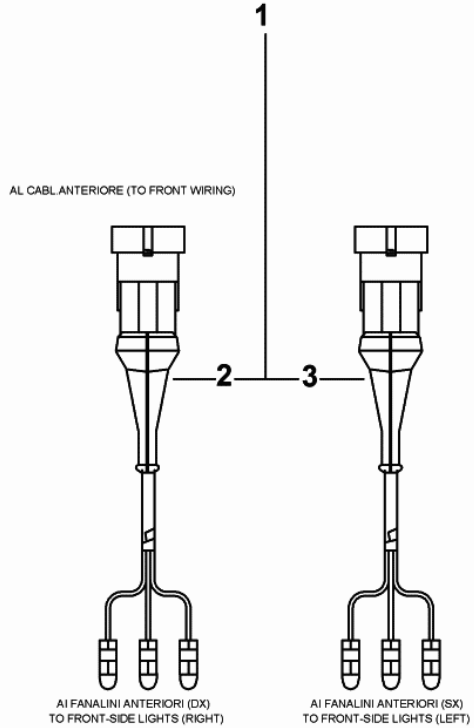


Fig.	Code	QTY	Name
1	0.009.6758.4/10	1	headlight
2	0.010.2846.0	1	light body
3	0.010.2846.1	1	headlamp reflector
4	0.010.2846.2	1	ring
5	0.010.2847.0	1	support
6	0.010.2847.1	1	cab. terminals
7	0.010.2847.2	1	frame
8	0.010.2848.0	1	support
9	0.010.2848.1	1	lamp 12V-55W-HALOGEN

Section: PARTS
ELECTRICAL SYSTEM

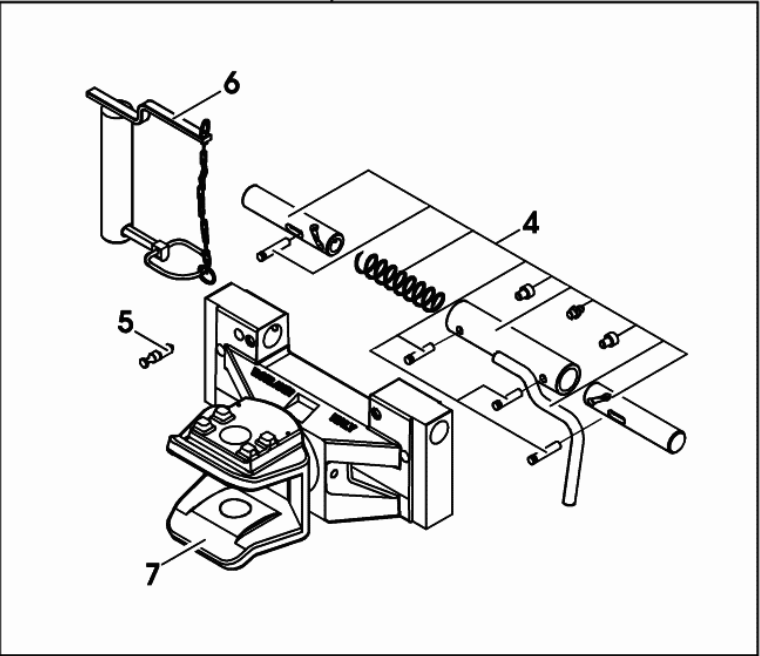
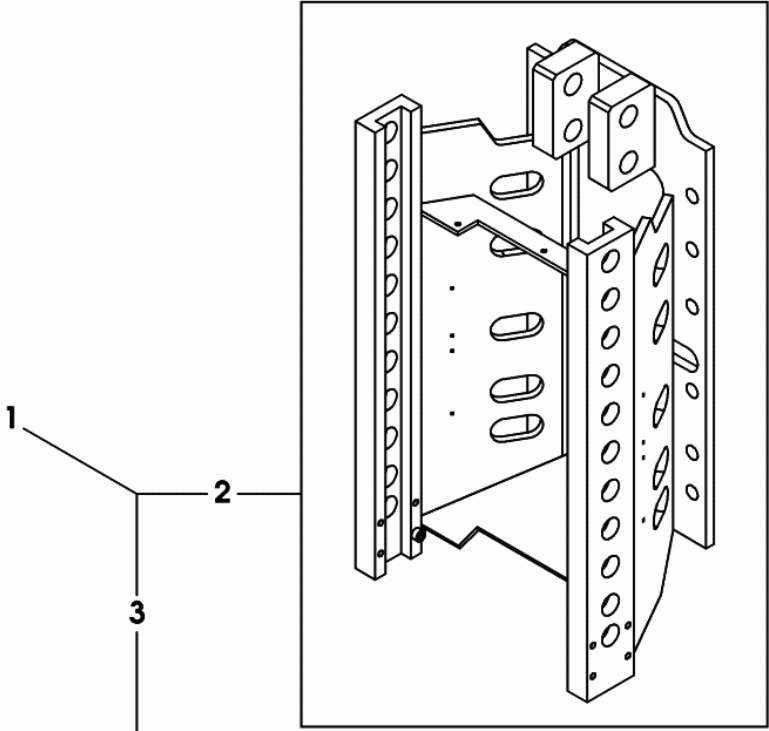
Fig.	Code	QTY	Name
1	0.014.1643.4	1	wire
2	0.900.0527.3	1	wire
3	0.900.0527.4	1	wire



0_014_1643_4

Section: PARTS
DRAWBAR COUPLING

Fig.	Code	QTY	Name
1	0.014.2979.4	1	tow hook
2	0.900.0388.3	1	chassis frame
3	0.900.0387.9	1	chassis frame
4	0.900.0307.0	1	part set
5	0.900.0307.1	1	smau pin
6	0.900.0388.0	1	pin
7	0.000.0000.1	0	not serviceable



0_014_2979_4

2WD CONTROL PIPES

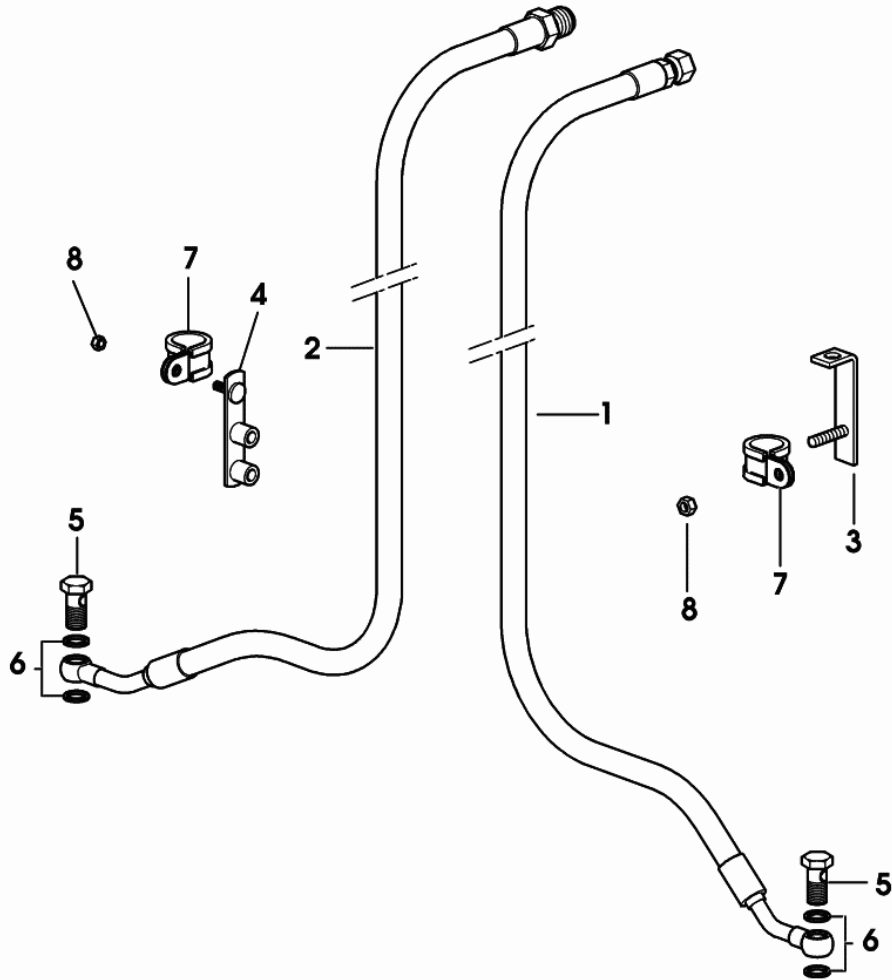


Fig.	Code	QTY	Name
1	0.014.3107.3	1	tube sx
2	0.014.3108.3	1	tube dx
3	0.178.6362.3	1	square
4	0.008.9663.2/10	1	bracket dx
5	2.3335.006.2	2	pipe union m 14 p.1.5
6	2.1560.010.0	4	gasket 14.2x20
7	2.6839.051.0	5	clamp 20/20
8	2.1011.103.2	2	nut m 6 p.1

9_C2363_03_0_0

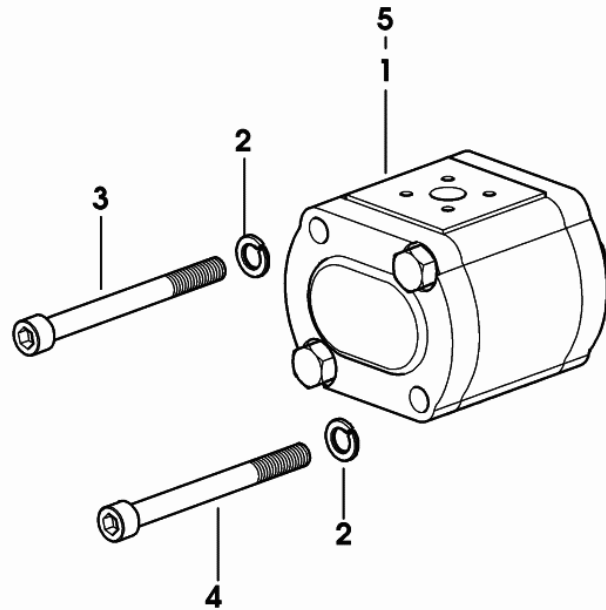
EXPLORER 75 T

Section: POWER STEERING - HYDRAULIC SYSTEM

Ref.: 295

OIL PUMP 14 cc dx

Fig.	Code	QTY	Name
1	2.4539.480.0	1	oil pump - BOSCH - 14cc ☞ 606 => 606
2	2.1474.010.2	2	spring washer 10
3	2.0169.018.2	1	screw m 10 p.1.5x105
4	2.0169.017.2	1	screw m 10 p.1.5x115
5	2.4539.490.0	0	oil pump - SAUER - 14cc ☞ 607 => 607

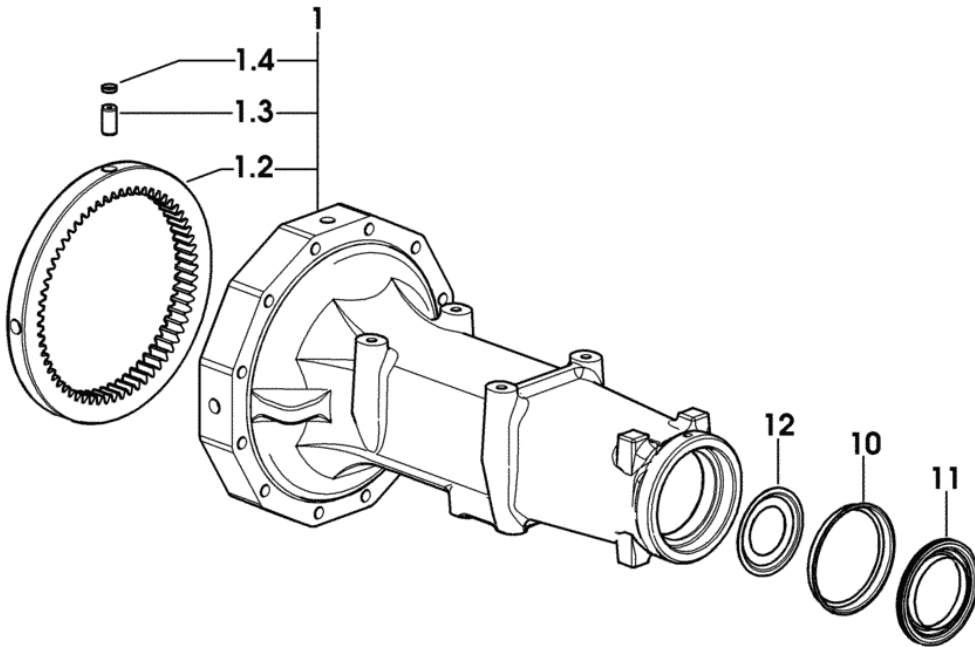


9_C2282_03_0_0

Section: REAR AXEL

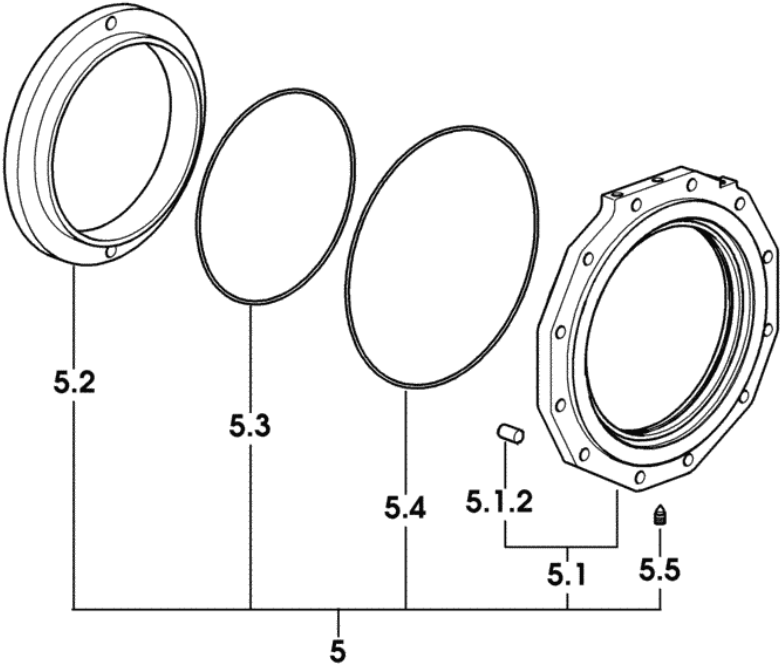
REAR AXLE

Fig.	Code	QTY	Name
1	0.255.4410.3/60	2	wheel support
1.2	0.255.4420.0/20	1	crown wheel
1.3	2.1699.259.0	4	pin 16x30
1.4	2.3171.006.4	4	plug 16
10	0.255.4450.0	2	cup
11	2.1569.104.0	2	'o' ring 80x118.2x12
12	0.255.4451.0	2	cup



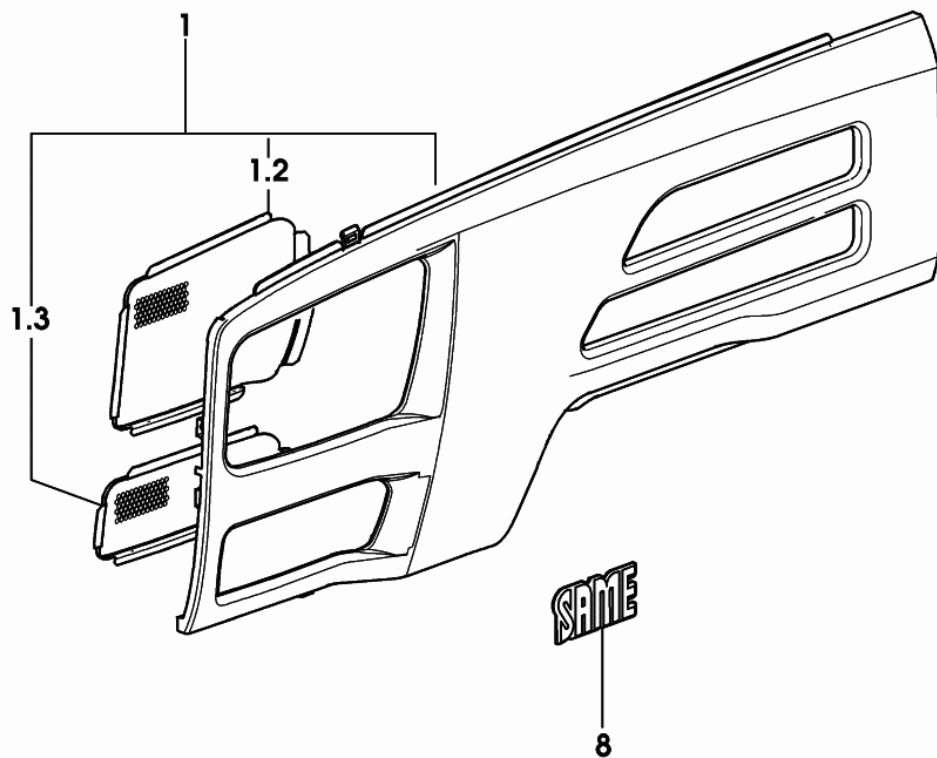
Section: REAR AXEL
REAR BRAKES

Fig.	Code	QTY	Name
5	0.000.0000.1	0	not serviceable
5.1	0.255.5430.3/80	1	box 1123 <- X EXPLORER 75 T 1022 <- X EXPLORER 75 TB 1141 <- X EXPLORER 95 TB
5.1	0.255.5430.3/90	1	box -> 1124 X EXPLORER 75T -> 1023 X EXPLORER 75TB X EXPLORER 85TB -> 1142 X EXPLORER 95TB
5.1.2	2.1699.190.0	2	pin 14x28
5.2	0.255.5448.0/20	1	piston
5.3	2.1539.180.0	1	'o' ring 228x3.53
5.4	2.1539.179.0	1	'o' ring 279x3.53
5.5	2.3139.013.7	1	plug



Section: BODY WORK
HOOD - LEFT SIDE PANEL

Fig.	Code	QTY	Name
1	0.013.6833.4/10	1	side panel sx
1.2	0.013.4076.0/10	1	grille
1.3	0.013.4081.0/10	1	grille
8	0.270.7228.2	1	plate SAME



9_C2372_04_0_0

Section: BODY WORK
COOLING SYSTEM

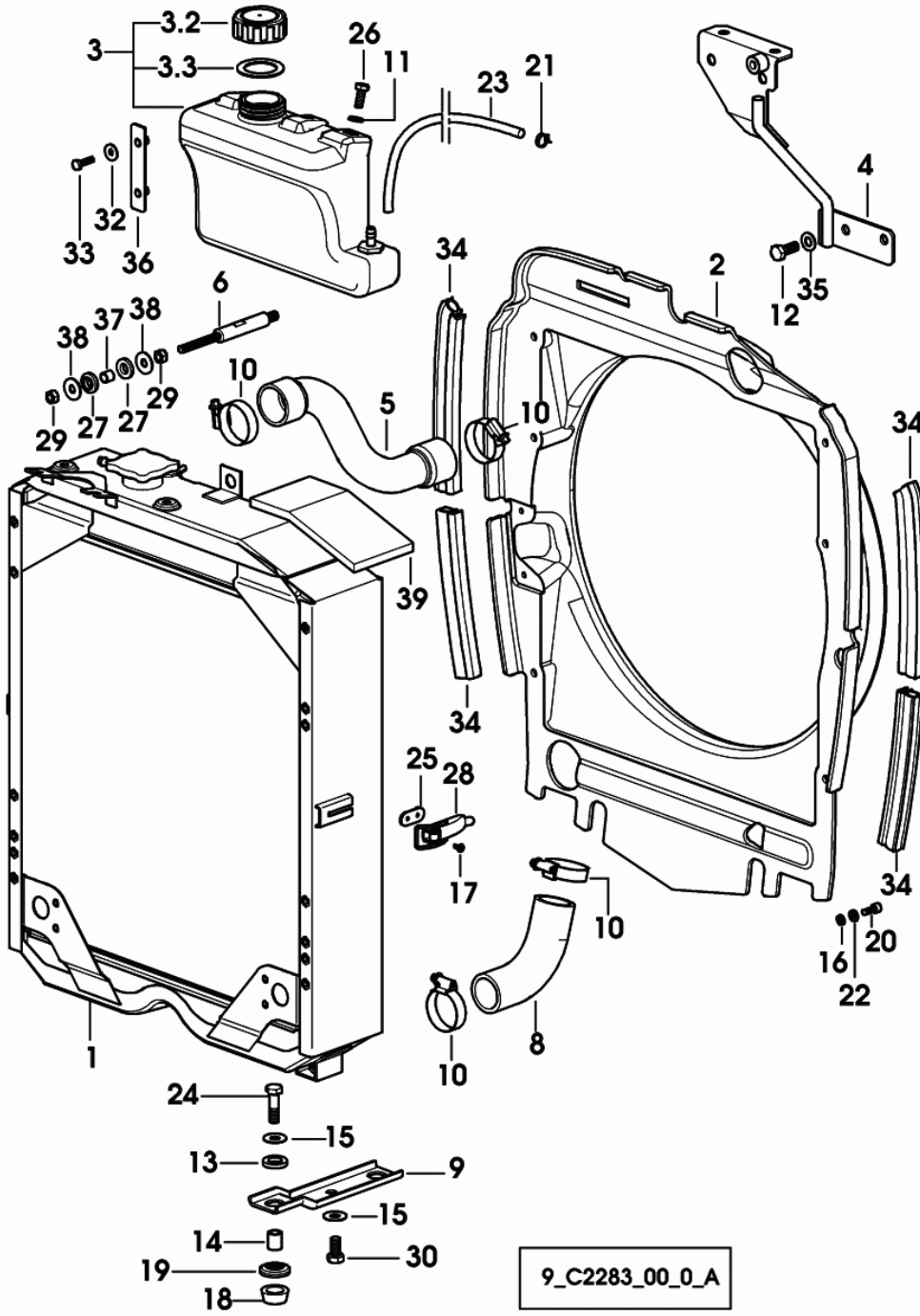
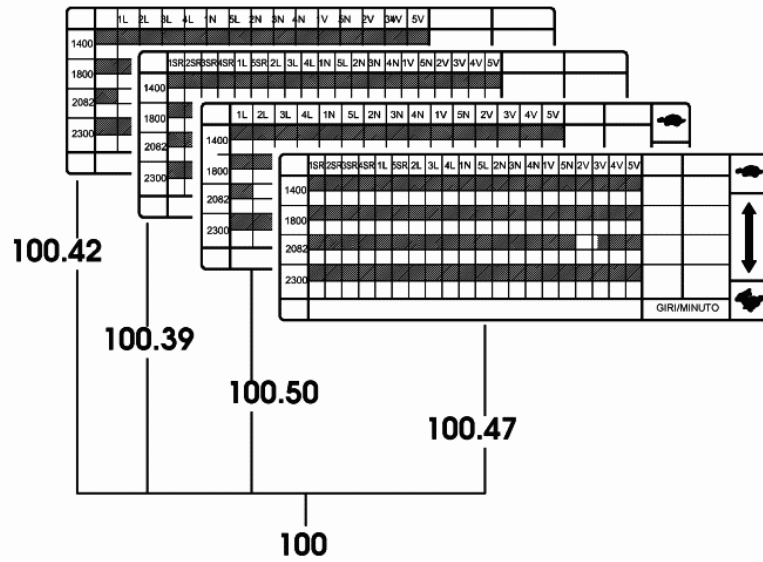


Fig.	Code	QTY	Name
1	0.013.5652.4/40	1	water cooler ☞ 614 => 614
2	0.013.5678.0/30	1	air duct hood
3	0.013.4947.4/30	1	cup
3.2	0.013.7584.0	1	plug
3.3	2.1569.215.0	1	gasket
4	0.013.5706.3/10	1	rod
5	0.013.5691.0/10	1	sleeve
6	0.014.0627.0/10	1	rod
8	0.013.4807.0/20	1	sleeve
9	0.013.5515.0	2	bracket
10	2.6851.005.0	4	clamp 40-60
11	2.1310.004.2	2	flat washer 8.4x16
12	2.0112.309.2	2	screw m 10 p.1.5x25
13	0.136.7387.0	4	rubber plug 15x27x5
14	2.1579.090.2	4	spacer 10.1x15x18
15	2.1599.044.2	6	snoulder 10.5x25.5x1.5
16	2.1310.002.2	6	flat washer 6.4x12.5
17	2.0332.202.2	4	screw m 4x8
18	0.136.7385.0	4	rubber plug
19	0.136.7384.0	4	cup
20	2.0312.104.2	6	screw m 6 p.1x16
21	2.6859.083.2	2	clamp
22	2.1470.002.2	6	lock washer 6
23	0.012.6457.0	0	tube
24	2.0112.313.2	4	screw m 10 p.1.5x35
25	0.008.9726.0	2	small plate
26	2.0114.207.2	2	screw m 8x20
27	0.013.5070.0/10	2	rubber plug
28	0.008.9632.0	2	clevis
29	2.1011.105.2	2	nut m 8 p.1.25
30	2.0112.307.2	2	screw m 10 p.1.5x20
32	2.1312.003.2	2	washer 6.6x18
33	2.0112.008.2	2	screw m 6 p.1x22
34	0.012.7147.0/10	1	gasket mm 510
35	2.1310.006.2	2	flat washer 10.5x20
36	0.014.2390.2	1	small plate
37	2.1549.044.2	1	spacer
38	2.1312.004.2	2	washer 9x24
39	0.014.2752.0	1	gasket

SPEED LABEL 25 MPH 13.6 R38 EXPORT U.S.A

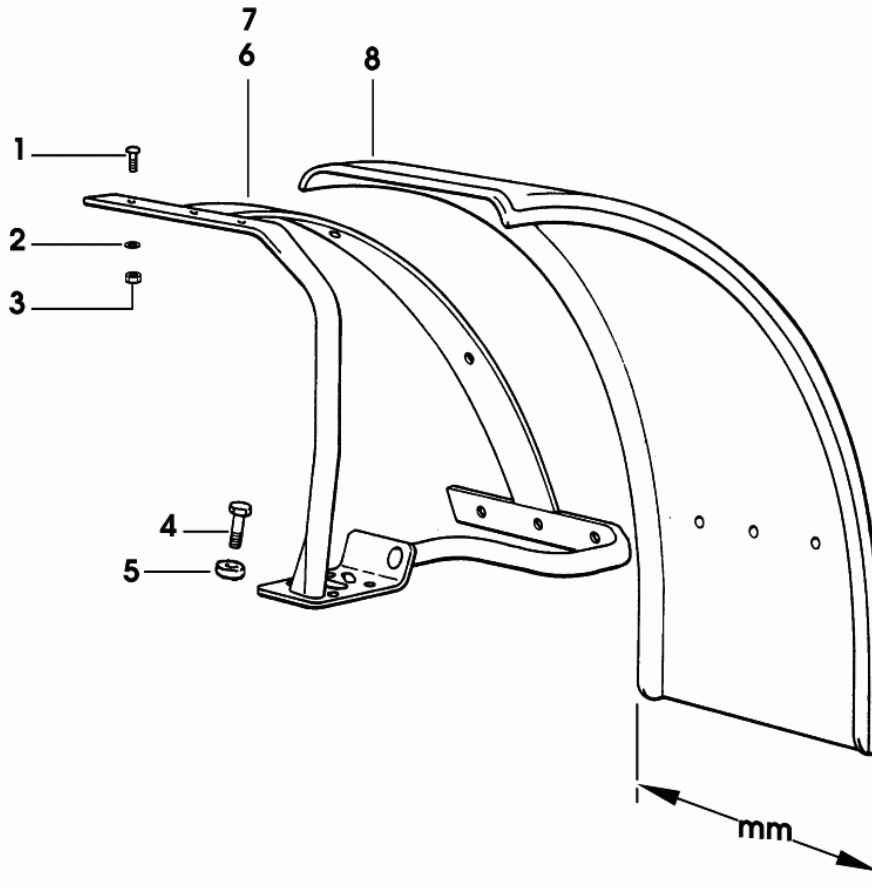
Fig.	Code	QTY	Name
100	0.000.0000.1	0	not serviceable
100.39	2.9939.126.0	1	plate 20 + 20
100.42	2.9939.129.0	1	plate 15 + 15
100.47	2.9939.134.0	1	plate 40 + 40
100.50	2.9939.137.0	1	plate 30 + 30



Section: BODY WORK

4WD - FRONT MUDGUARDS mm 400

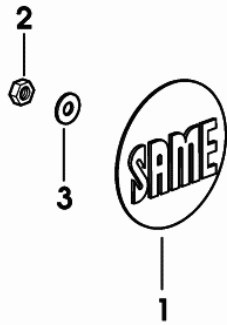
Fig.	Code	QTY	Name
1	2.0029.503.6	16	screw m 8x25
2	2.1470.004.2	16	lock washer 8
3	2.1011.105.2	16	nut m 8 p.1.25
4	2.0112.417.2	8	screw m 12 p.1.75x45
5	2.1599.484.2	8	spacer 13x26x4
6	0.290.7667.2	1	support sx
7	0.290.7666.2	1	support dx
8	0.202.7632.0/20	2	fender mm 400



Section: BODY WORK

BADGE FOR SPLASH GUARDS

Fig.	Code	QTY	Name
1	2.3199.102.0	2	small cover SAME
2	2.1011.103.2	2	nut m 6 p.1
3	2.1310.002.2	2	flat washer 6.4x12.5

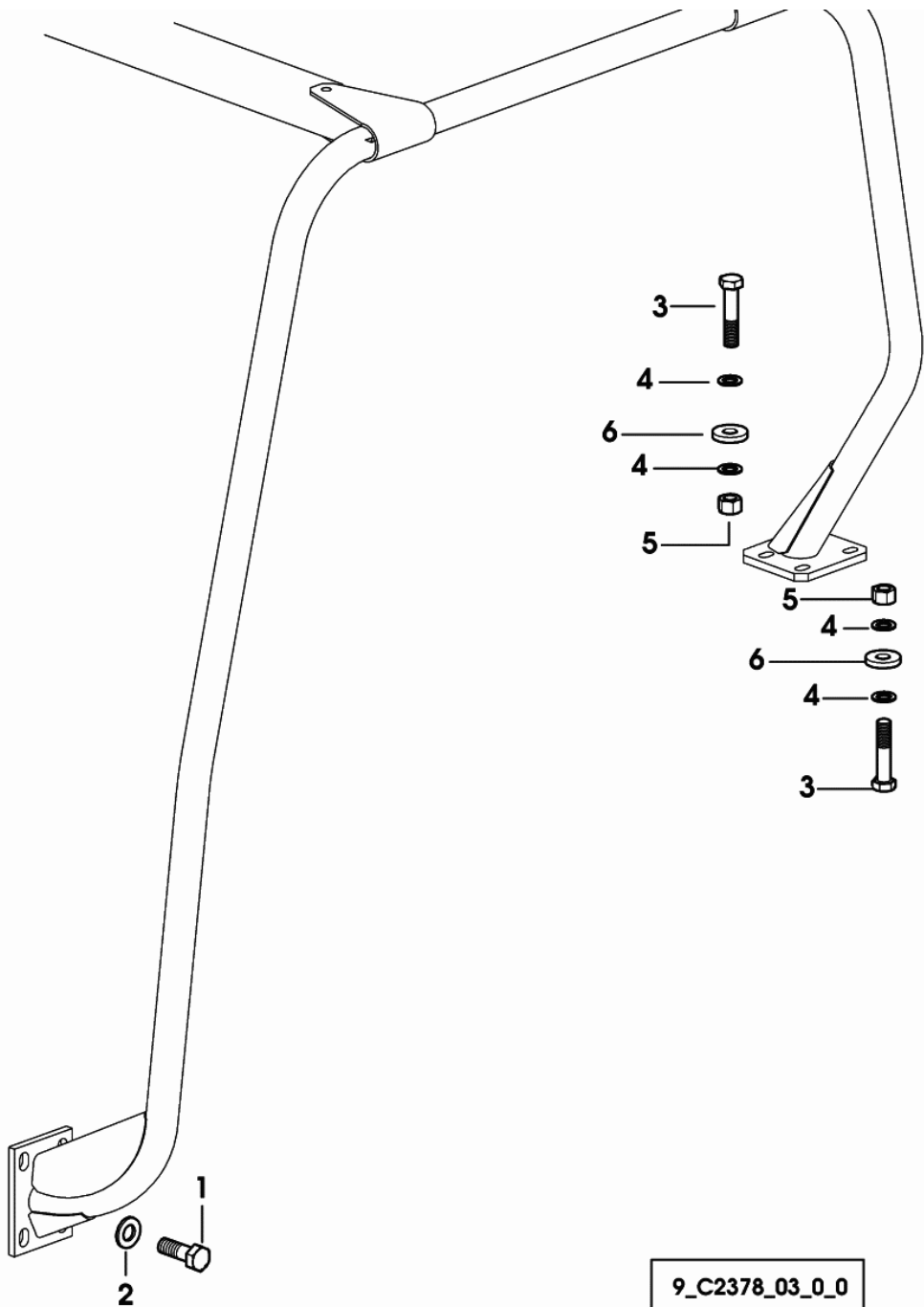
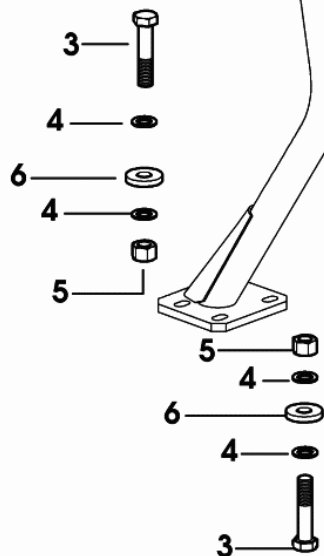


9_B2171_51_0_0

Section: BODY WORK

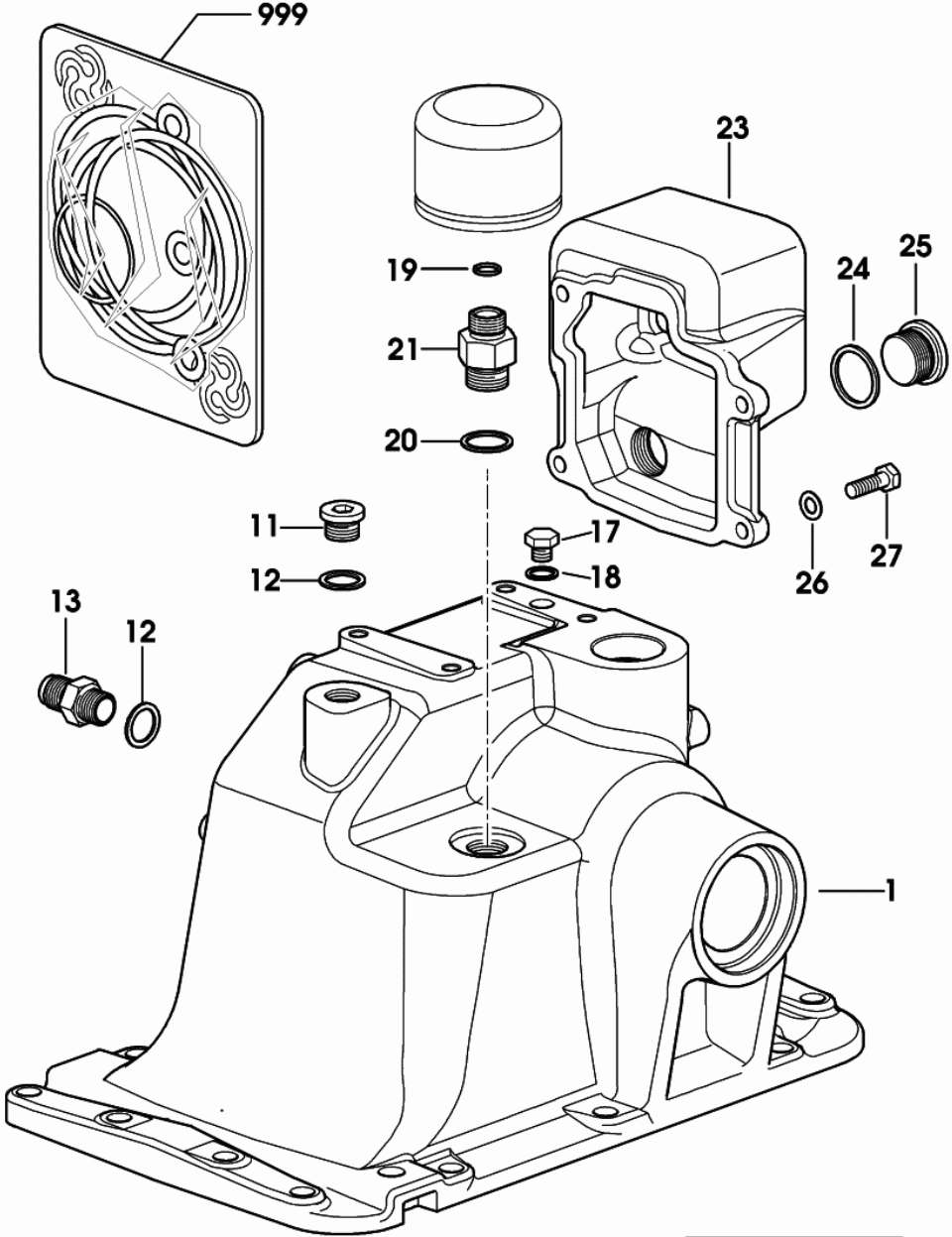
SAFETY ROLL BAR MOUNTINGS

Fig.	Code	QTY	Name
1	2.0112.617.2	8	screw m 16 p.2x45
2	2.1475.006.2	8	washer 17x32
3	2.0123.522.2	8	screw
4	2.1475.005.2	16	washer 15x27
5	2.1011.308.2	8	nut m 14 p.1.5
6	2.1549.624.2/10	8	spacer



Section: S.A.C.
S.A.C. CASE

Fig.	Code	QTY	Name
999	0.9123.014.6	1	seal ring kit
1	0.9123.110.0/10	1	hydraulics housing
11	2.3120.101.0	1	plug m 18 p.1.5
12	2.1560.014.0	2	gasket 18.2x24x1.5
13	2.3339.235.2	1	pipe fitting M 18 x 1" 1/16-12jic
17	2.3110.401.1	1	plug m 10 P.1X8
18	2.1560.006.0	1	gasket 10.5
19	2.1530.026.0	1	'o' ring 11.11x1.78
20	2.1560.017.0	1	gasket 22.2x27
21	2.3339.347.2	1	pipe fitting
23	0.9123.150.0	1	spacer
24	2.1560.021.0	1	gasket 28.3x34
25	2.3120.003.4	1	plug m 28 p.1.5
26	2.1470.004.2	4	lock washer 8
27	2.0112.209.2	4	screw m 8 p 1.25x25

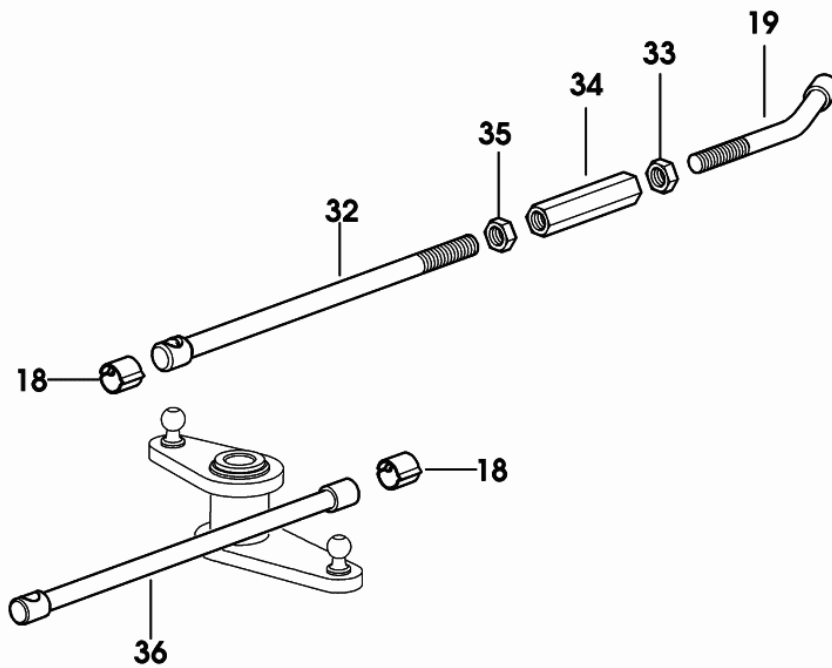


W9_50859_01_0_0

Section: S.A.C.

CONTROL TIE RODS AND LEVERS

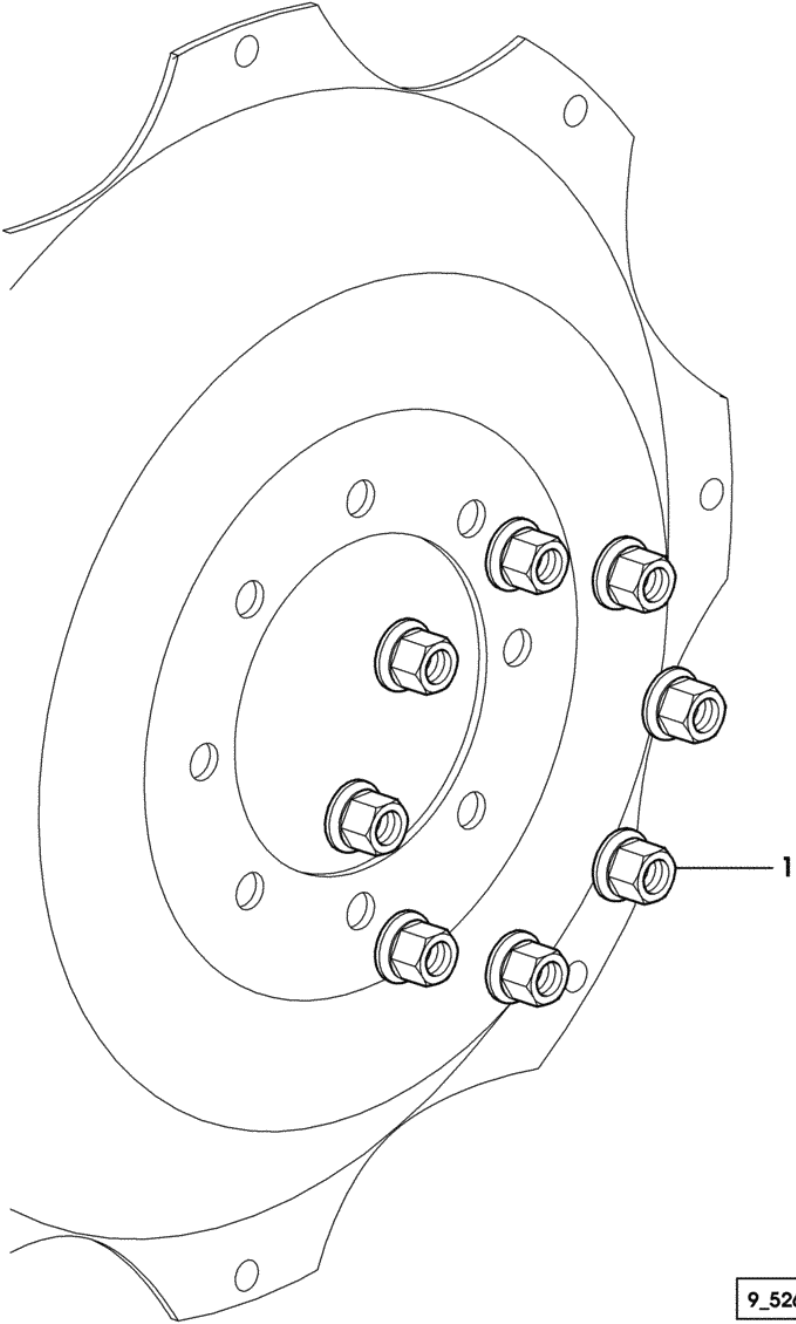
Fig.	Code	QTY	Name
18	0.257.6757.0	4	spring
19	0.014.3261.0/10	1	rod
32	0.014.5577.0	1	rod
33	2.1011.106.2	1	nut m 10 p.1.5
34	0.467.6663.2	1	sleeve
35	2.1019.018.2	1	special nut m 10 speciale
36	0.014.3727.0	1	rod



9_C2259_71_0_0

Section: WHEELS
REAR WHEEL BOLTS

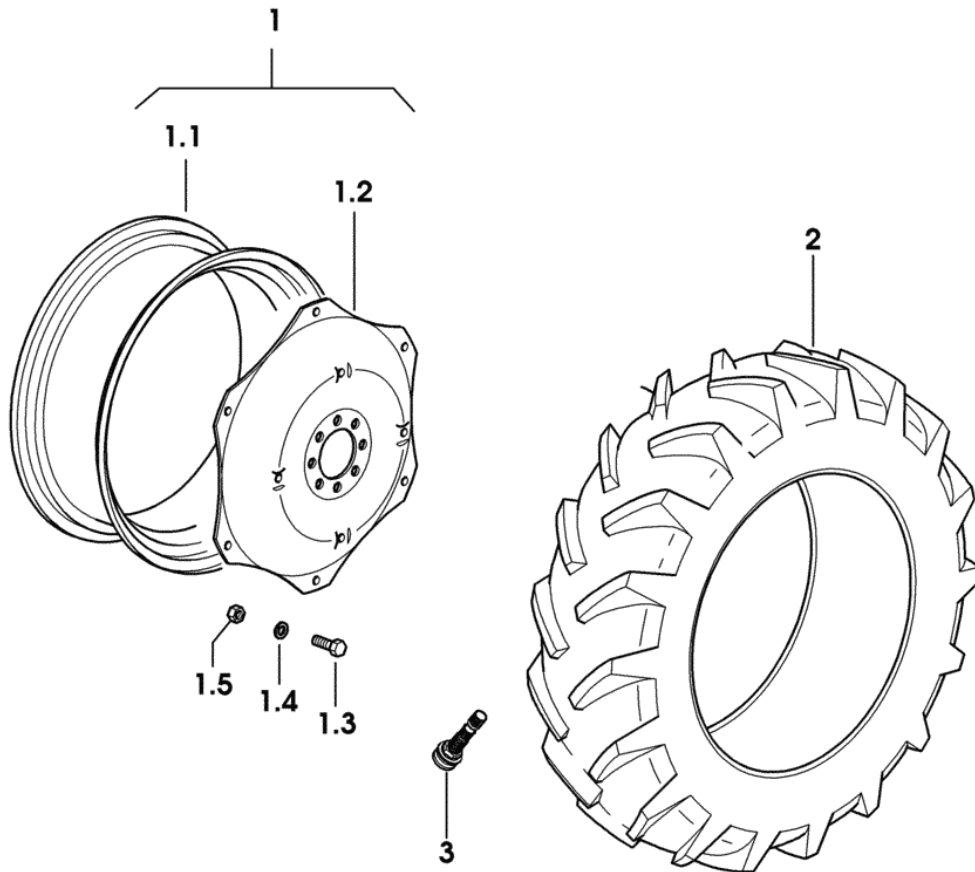
Fig.	Code	QTY	Name
1	2.1099.083.0/20	16	special nut m 20 p.1.5



9_52655_03_0_0

Section: WHEELS
WHEELS 13.6R-24" a8

Fig.	Code	QTY	Name
1	0.000.0000.1	0	not serviceable
1.1	0.012.3047.3	1	rim W 12x24" C/ST
1.2	0.010.9752.0	1	flange
1.3	2.0099.005.6	6	screw m 16 p.1.5
1.4	2.1499.019.6	6	conical washer 16.3x31.5
1.5	2.1019.059.6	6	nut m 16 p.1.5x16
2	2.4811.063.0	2	tyre 13.6R-24" a8
3	0.012.6364.0	2	valve



9_51155_22_0_0

CLICK HERE TO **DOWNLOAD** THE COMPLETE MANUAL

- Thank you very much for reading the preview of the manual.
- You can download the complete manual from: www.heydownloads.com by clicking the link below



- Please note: If there is no response to CLICKING the link, please download this PDF first and then click on it.

CLICK HERE TO **DOWNLOAD** THE COMPLETE MANUAL