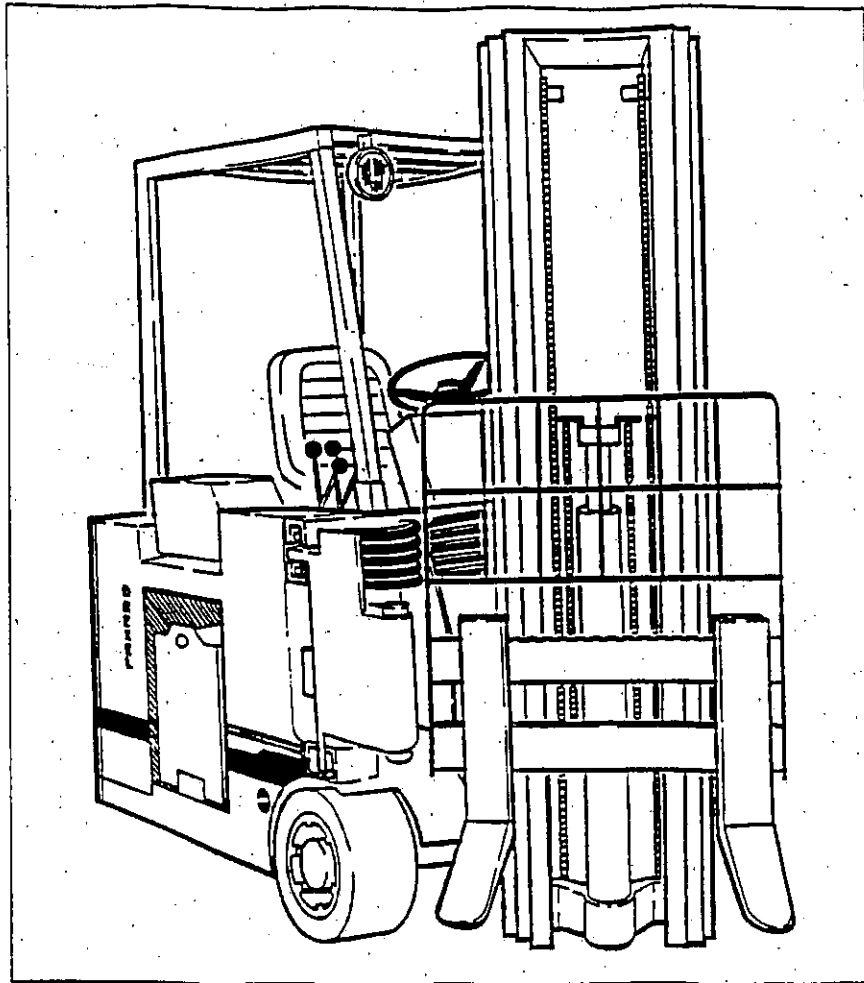


DREXEL SwingMast™ TRUCK MODELS SLT 22 AND SLT 30

7. PARTS BREAKDOWN



PART NUMBER TM 106

©DREXEL INDUSTRIES, INC. 1989

CLICK HERE TO **DOWNLOAD** THE COMPLETE MANUAL

- Thank you very much for reading the preview of the manual.
- You can download the complete manual from: www.heydownloads.com by clicking the link below



- Please note: If there is no response to CLICKING the link, please download this PDF first and then click on it.

CLICK HERE TO **DOWNLOAD** THE COMPLETE MANUAL

PARTS BREAKDOWN

List of Parts (Index)

<u>PART NUMBER</u>	<u>PAGE NO.</u>	<u>DESCRIPTION</u>
5423	7-37	Pivot Shaft
5438	7-37	Gasket
5442	7-121	Decal, Hydraulic Oil
6726	7-62	Nameplate
6840	7-29	Clip, Cable Retaining
7837	7-20	Cover, Hub
7837	7-22	Hub Cover
7978	7-43	Wheel, Steering
7979	7-43	Adapter, Horn
8800	7-121	Nameplate, FM
9235	7-37	Spacer
9236	7-37	Spacer
9237	7-31	Pivot Shaft Assy.
9750-R	7-121	Decal, Cylinder Warning
9933	7-82	Rod End
9933	7-84	Rod End
9934	7-31	Pin, Pivot
9934	7-116	Pin, Pivot
10145	7-107	Bushing
10147	7-107	Cam
10152	7-107	Insulator
10218	7-107	Gasket, Cover
10330	7-41	Bracket
10332	7-41	Bushing
10417	7-41	Lever Assembly
10418	7-41	Switch, Elec. Dir. Control
10441	7-39	Steering Wheel & Horn Assy.
10441	7-52	Steer. Wheel & Horn Assy.
10441	7-43	Steering Wheel Assembly
10459	7-106	Pedal, Foot
10581	7-14	Seat Bracket
10638	7-106	Roller
10639	7-106	Spacer
10651	7-14	Rod, Seat Retaining
10708	7-33	Bearing, Alum. Bronze
10708	7-31	Bearing, Alum. Bronze

PARTS BREAKDOWN

List of Parts (Index)

<u>PART NUMBER</u>	<u>PAGE NO.</u>	<u>DESCRIPTION</u>
25780	7-46	Filter, Hyd. Return
25780	7-81	Filter Assembly
25806	7-81	Filter Cartridge
25815	7-46	Adapter, Straight
25830	7-50	Fitting
25837	7-50	Coupling, Male Pipe Swivel
25840	7-50	Hose, Tri-Line
25841	7-50	Hose, Quad-line
25853	7-67	Fitting
25917	7-85	Push Rod
25950	7-60	Hydraulic Motor
25950	7-52	Motor, Hyd., S Series
25950	7-57	Hydraulic Motor
25952	7-60	Connecting Link, Spring Clip
25962	7-55	Fitting
25963	7-48	Flange Kit
25972	7-47	Tee, 9/16-18
25974	7-47	Hyd., Fit., Plug
25975	7-52	Motor
25975	7-45	Steering Unit
25984	7-84	Seal
25995	7-47	Reducer, Bushing
26260	7-91	Backing Plate
26261	7-91	Plug
26262	7-91	Cover Plate
26263	7-91	Pin, Grooved
26264	7-91	Washer, Spring
26265	7-91	Screw, Hex

PARTS BREAKDOWN

List of Parts (Index)

<u>PART NUMBER</u>	<u>PAGE NO.</u>	<u>DESCRIPTION</u>
37767	7-7	Front Cover Weld., Hyd. Control
37767	7-9	Front Cover Weldment, Hyd.
37780	7-7	Cover Weldment, Drive Motor
37780	7-9	Cover Weldment, Drive Motor
37782	7-11	Battery Connector Assembly
37782	7-11	Battery Connector Assembly
50362	7-121	Nameplate, Overhead Guard
50365-Y	7-121	Nameplate, Caution
50366-Y	7-121	Decal, Battery Information
50367-Y	7-121	Nameplate, Battery Information
50369	7-45	Kit, Seal, Includes Items 1,4,5 & 11
5039-1	7-35	Pin, Cyl.
5039-1	7-31	Pin, Cylinder
5039-1	7-116	Pin, Tilt Cylinder
50417	7-20	Seal, Lip
50420	7-20	Cup, Bearing, 3.6718 OD x .9375
50420	7-22	Cup, Bearing, Outer
50421	7-22	Cone, Bearing, Outer
50421	7-20	Cone, Bearing, 2.000 ID x 1.1930
50422	7-20	Lockwasher, #WH10
50422	7-22	Lockwasher, #WH10
50423	7-22	Locknut, Brg.
50423	7-20	Locknut, Brg.
50480	7-115	Spiral Wrap, 1/2"
50488	7-79	Brush & Spring Kit, 36V
50654	7-79	Pump
50655	7-79	Coupling
50656	7-79	Motor, Pump, 36V
50657	7-79	Gasket
50687	7-121	Decal, SwingMast
50698	7-77	Spring, Centering
50698	7-75	Spring, Centering
50749	7-121	Decal, "Drexel", Black
50889	7-79	Pump Motor, 24V
50895	7-1	Battery Spec., SLT-22
50935	7-117	Wire Assy. Group, 36V
50988	7-48	Elbow, 90°
51023-R	7-121	Decal, Warning, Battery

PARTS BREAKDOWN

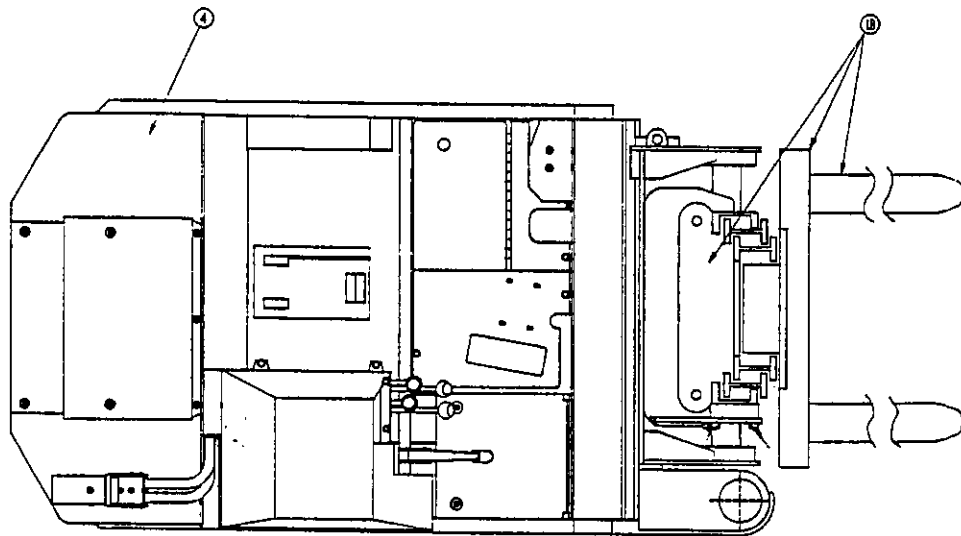
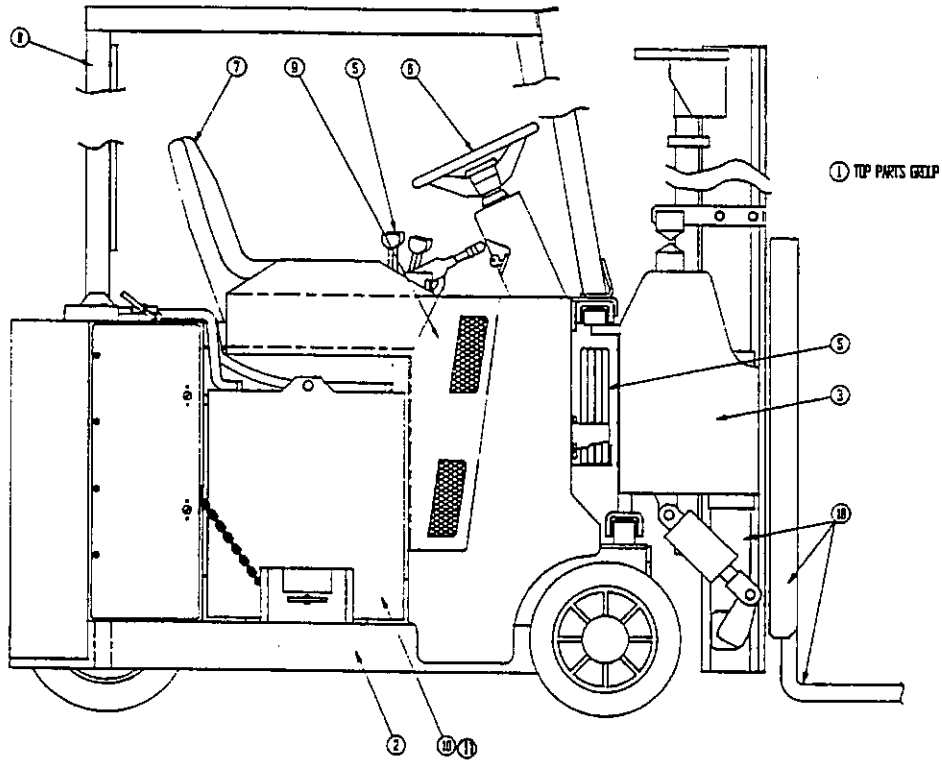
List of Parts (Index)

<u>PART NUMBER</u>	<u>PAGE NO.</u>	<u>DESCRIPTION</u>
MS35333-40	7-106	Lockwasher, Int. Tooth, 1/4
MS35333-40	7-107	Lockwasher, Int. Tooth, 1/4
MS35333-71	7-16	Lockwasher, Int. Tooth, #6
MS35333-71	7-98	Lockwasher, Int.
MS35338-43	7-101	Lockwasher, #10
MS35338-43	7-104	Lockwasher, #10
MS35338-43	7-98	Lockwasher, #10
MS35338-44	7-7	Lockwasher, 1/4
MS35338-44	7-67	Lockwasher, 1/4
MS35338-44	7-47	Lockwasher, 1/4
MS35338-44	7-96	Lockwasher, 1/4
MS35338-44	7-9	Lockwasher, 1/4
MS35338-45	7-7	Lockwasher, 5/16
MS35338-45	7-9	Lockwasher, 5/16
MS35338-46	7-90	Lockwasher, 3/8
MS35338-46	7-89	Lockwasher, 3/8
MS35338-46	7-93	Lockwasher, 3/8
MS35338-46	7-47	Lockwasher, 3/8
MS35338-46	7-31	Lockwasher, 3/8
MS35338-46	7-101	Lockwasher, 3/8
MS35338-46	7-12	Lockwasher, 3/8
MS35338-46	7-67	Lockwasher, 3/8
MS35338-46	7-18	Lockwasher, 3/8
MS35338-46	7-14	Lockwasher, 3/8
MS35338-46	7-104	Lockwasher
MS35338-48	7-35	Lockwasher, 1/2
MS35338-48	7-62	Lockwasher, 1/2
MS35338-50	7-35	Lockwasher, 5/8
MS35649-62	7-67	Nut, Hex, #6-32
36820-01	7-33	Bearing Pad, Nylatron
36820-02	7-33	Bearing Pad, Nylatron
37005-01	7-22	Wheel Assembly, Front, SLT-30
37005-02	7-22	Wheel Assembly, Front, SLT-30
37103-02	7-101	SCR Control Assy. Mod., EV-100
37137-02	7-93	Wire Harness, Master
37137-02	7-98	Wire Harness, Master
37137-02	7-119	Wire Harness, Master Truck
37173-00	7-107	Accelerator Switch Assy., EV-100
37175-05	7-7	Accelerator Module, EV-100

*Most Part Numbers are not
included in Index.*

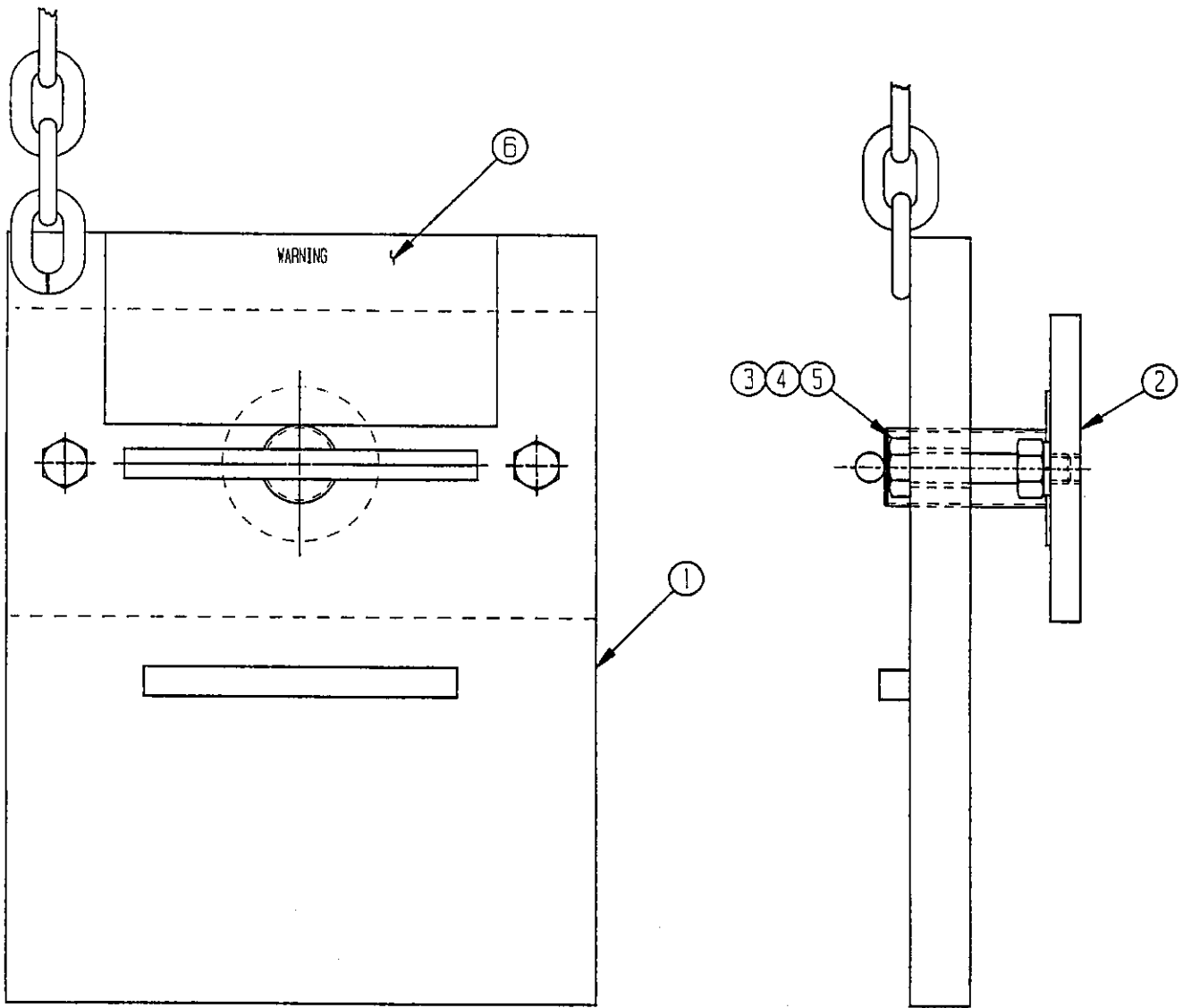
PARTS BREAKDOWN

TRUCK FEATURES, BASE UNIT, SLT-30, PART NO. 37250



PARTS BREAKDOWN

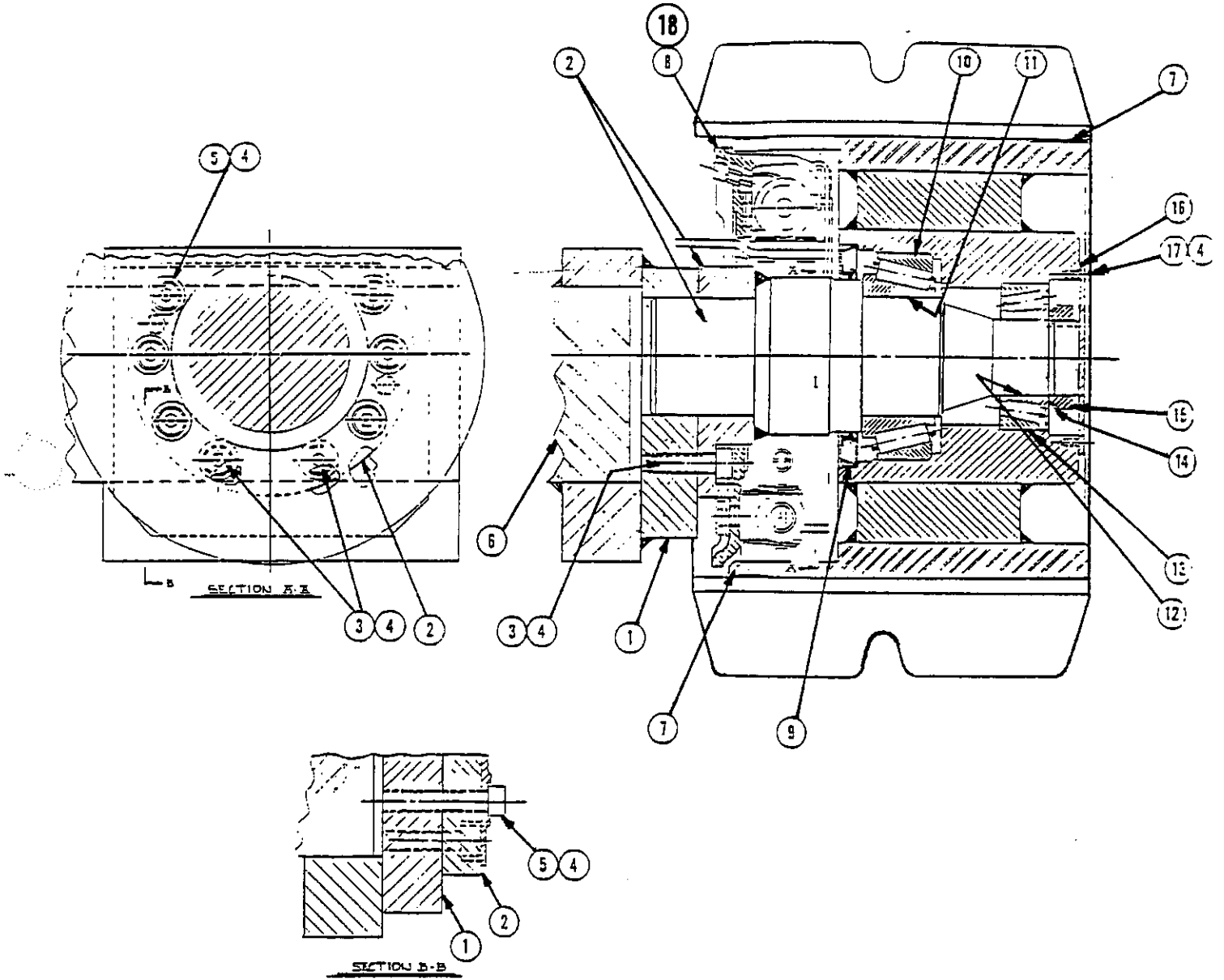
BATTERY RETAINER ASSEMBLY, PART NO. 31117



PARTS BREAKDOWN

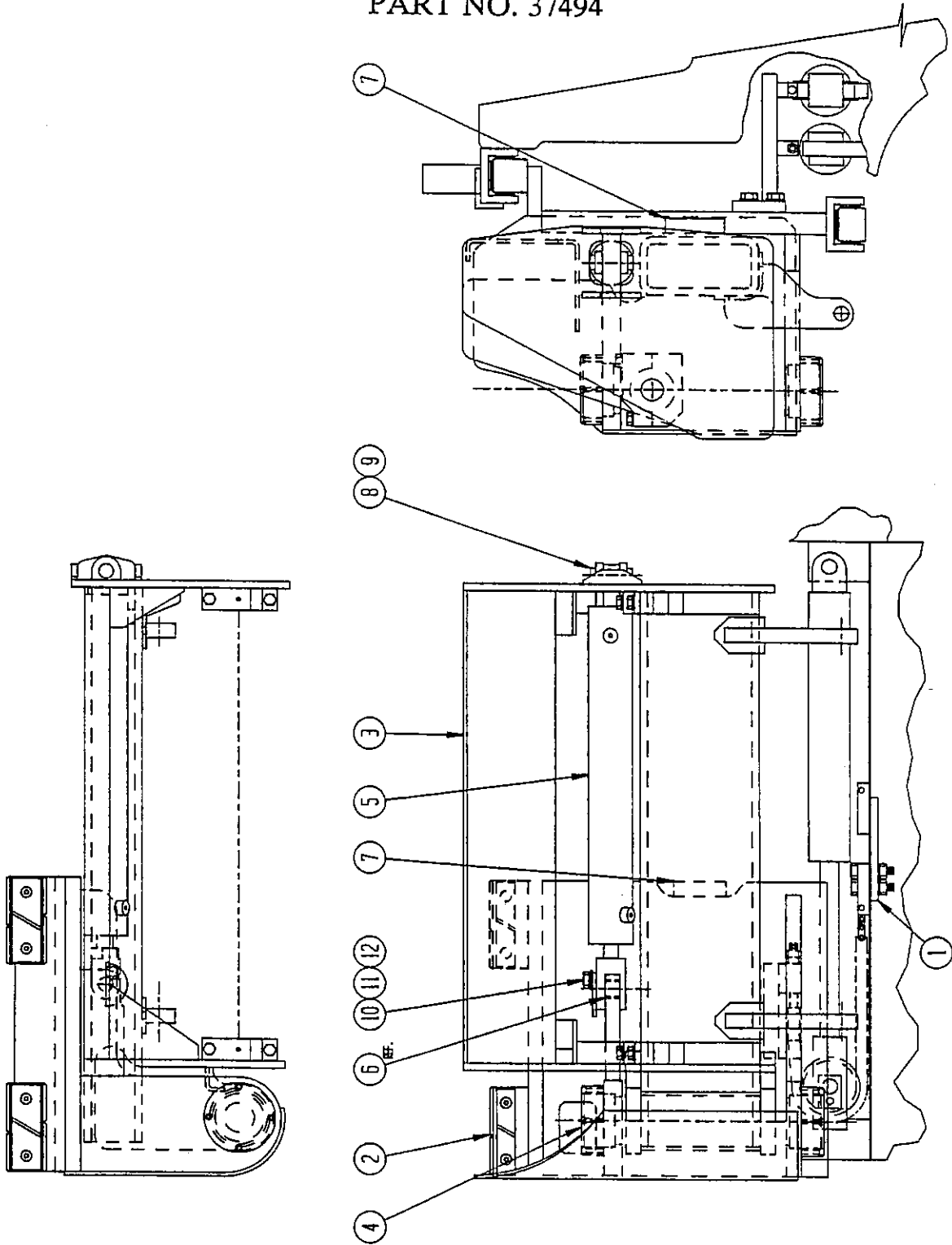
WHEEL ASSEMBLY, FRONT, PART NO. 37005-01 R.H.
PART NO. 37005-02 L.H.

(USED ON SLT-30 ONLY)



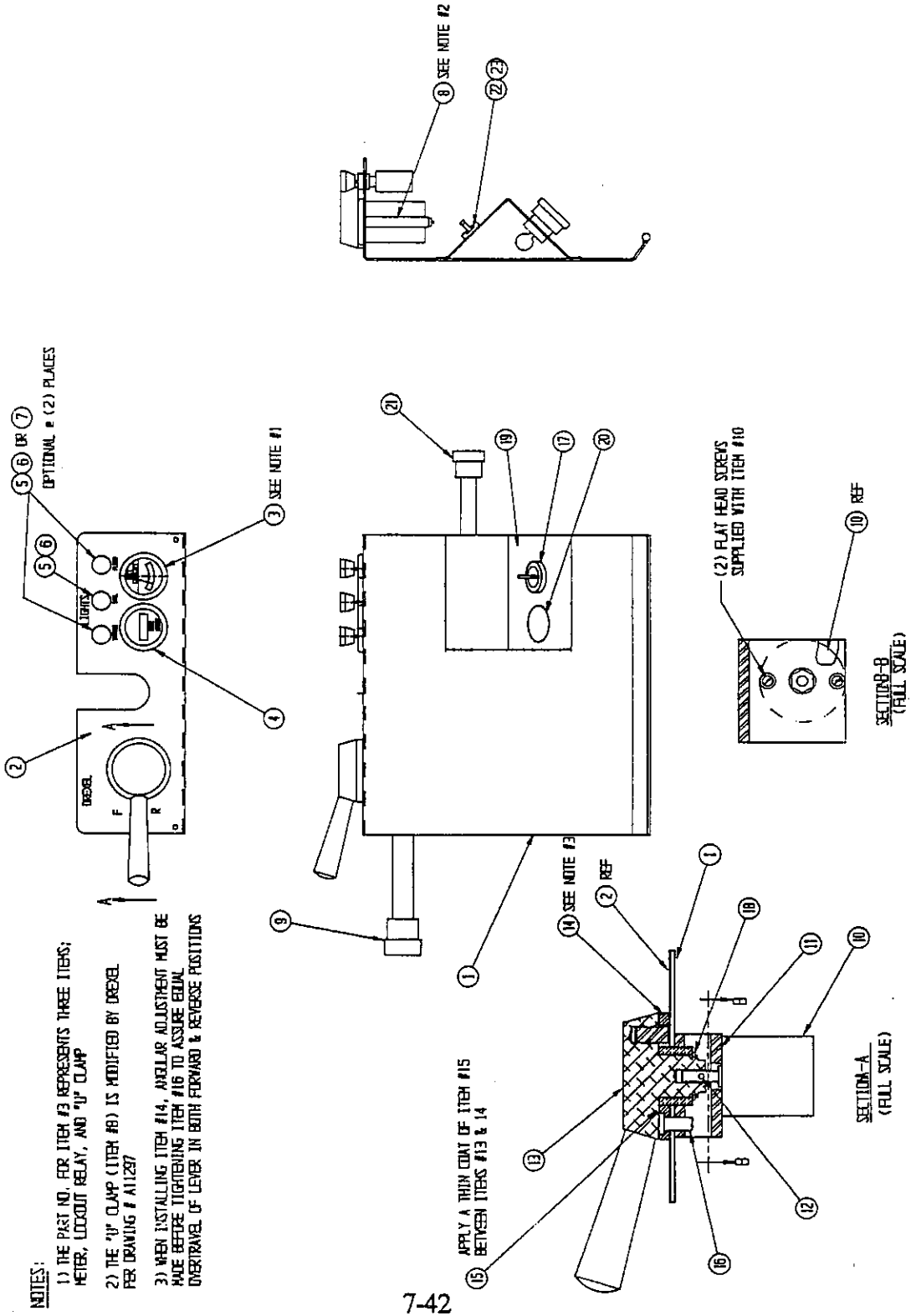
Date: 7-21-89

PARTS BREAKDOWN
PIVOT & SIDESHIFT ASSEMBLY,
PART NO. 37494



PARTS BREAKDOWN

CONTROL PANEL ASSEMBLY, ELECTRICAL, PART NO. 37677-01



CLICK HERE TO **DOWNLOAD** THE COMPLETE MANUAL

- Thank you very much for reading the preview of the manual.
- You can download the complete manual from: www.heydownloads.com by clicking the link below

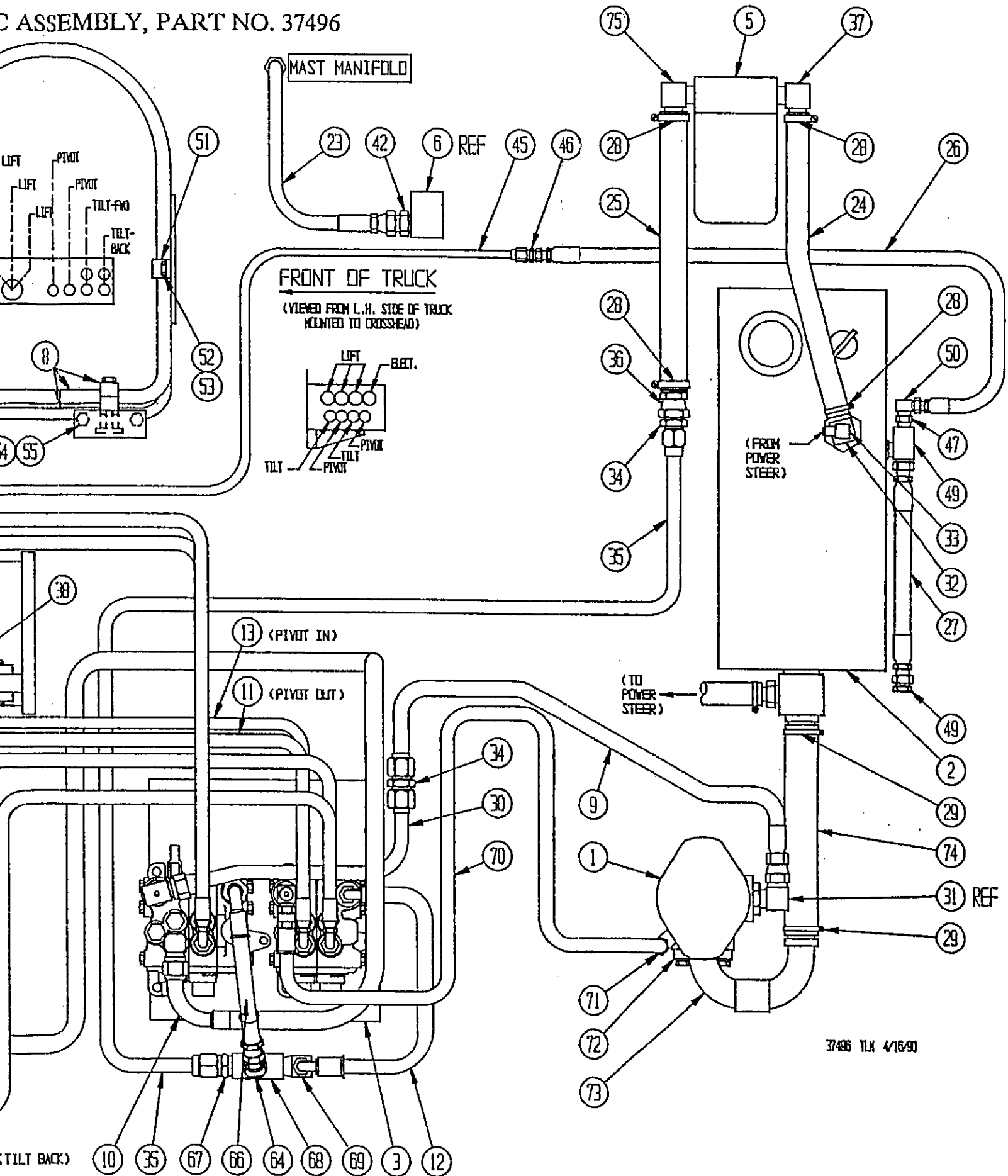


- Please note: If there is no response to CLICKING the link, please download this PDF first and then click on it.

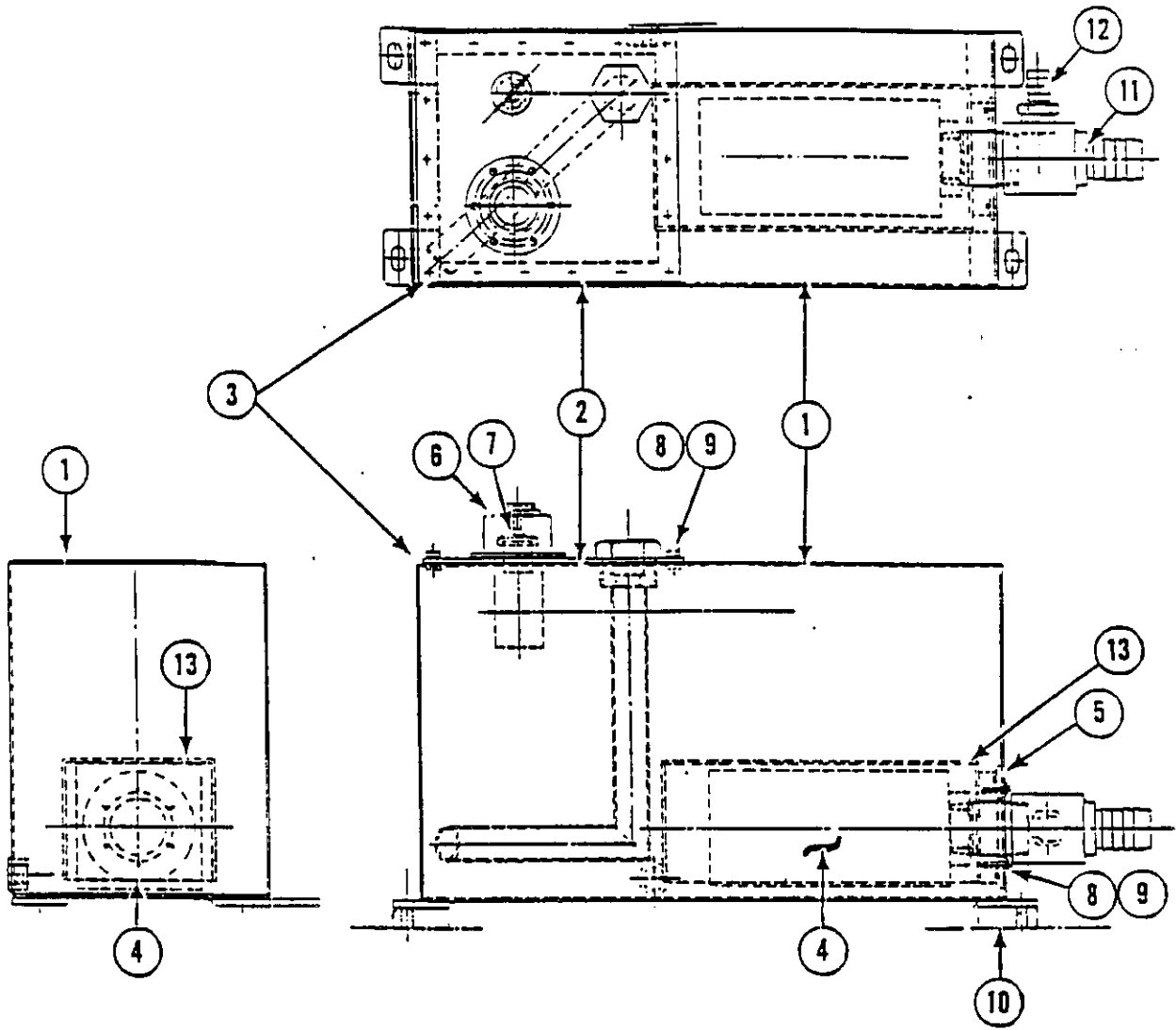
CLICK HERE TO **DOWNLOAD** THE COMPLETE MANUAL

PARTS BREAKDOWN

C ASSEMBLY, PART NO. 37496



PARTS BREAKDOWN
RESERVOIR ASSEMBLY, PART NO. 30154

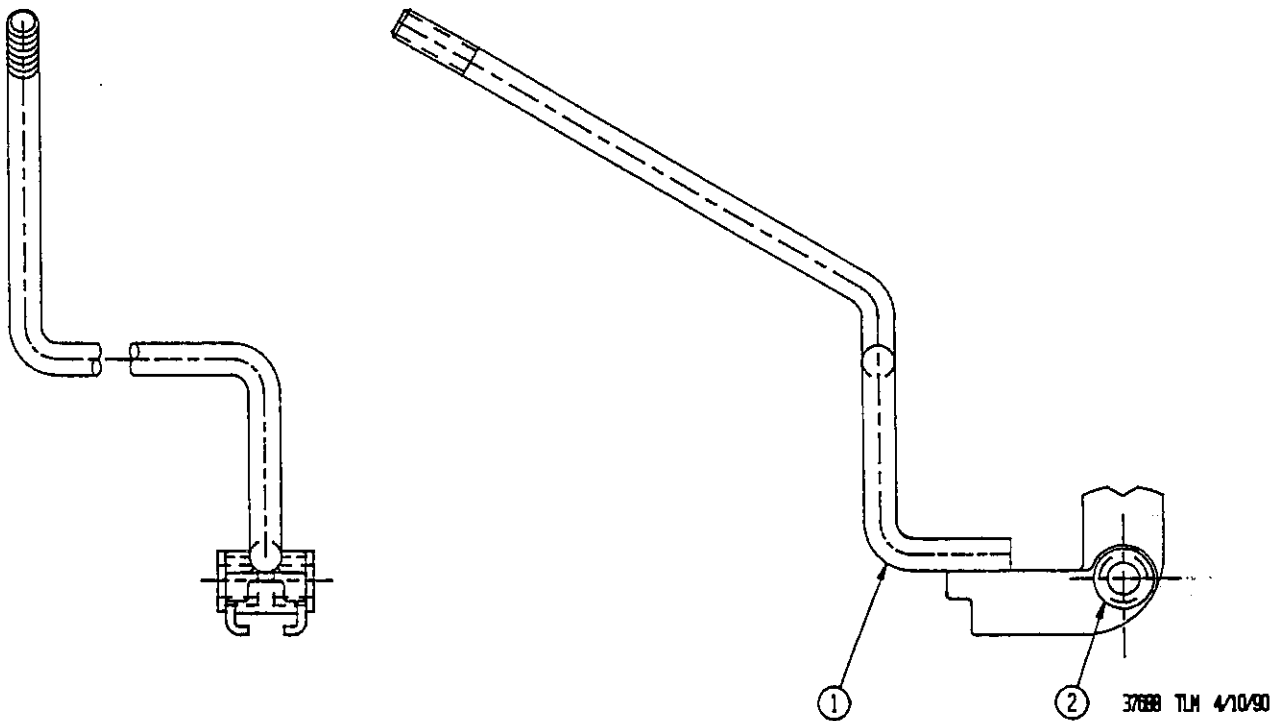


PARTS BREAKDOWN
HYDRAULIC PUMP, 36V, PART NO. 57001

<u>ITEM NUMBER</u>	<u>PART NUMBER</u>	<u>QTY.</u>	<u>DESCRIPTION</u>
1	28224	4	Screw, Cap
2	21152	1	Cover
3	21153	1	O-Ring
4	21154	1	Spring
5	21155	1	Plate Pressure
6	28225	12	Vanes
7	28226	1	Rotor
8	22057	1	Ring, 24V
9	22058	1	Ring, 36V
10	21159	1	O-Ring
11	22069	2	Pin
12	21161	4	Screw, Cap
13	21162	1	Body, Inlet
14	21163	2	O-Ring
15	21238	12	Vane
16	21337	1	Rotor
17	21311	1	Ring, 24V
18	21312	1	Ring, 36V
19	21239	2	Pin
20	21168	1	Plate, Pressure
21	21338	1	O-Ring
22	21170	1	Spring
23	21171	1	Body
24	21172	1	Seal Shaft
25	21173	1	Ring, Snap
26	21174	1	Bearing
27	21175	1	Shaft
28	21176	1	Ring, Snap
29	21177	1	Key

Date: 7-21-89

PARTS BREAKDOWN

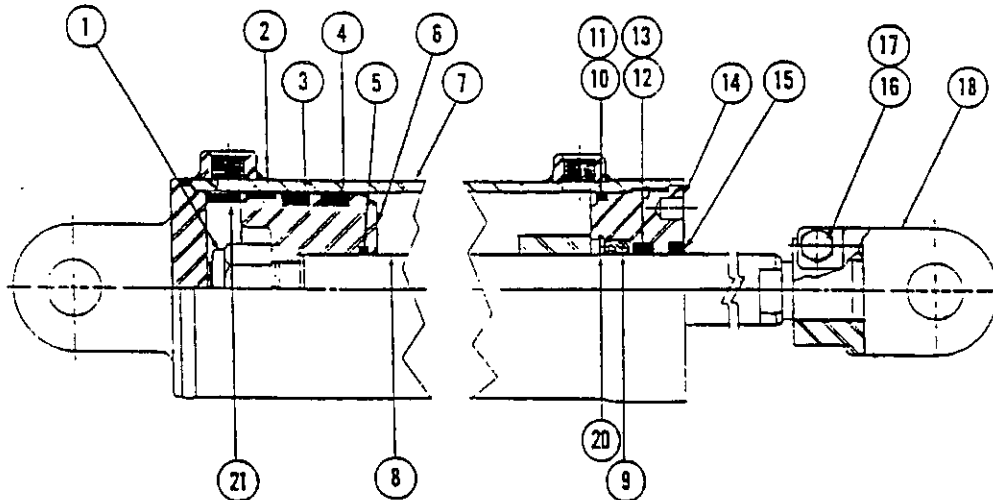


TILT HANDLE ASSEMBLY, PART NO. 37688

<u>ITEM NUMBER</u>	<u>PART NUMBER</u>	<u>QTY.</u>	<u>DESCRIPTION</u>
1	37741	1	Tilt Handle Weldment
2	10928	1	Bearing, Flanged

Revised On: 4-3-90

PARTS BREAKDOWN



TILT CYLINDER, PART NO. 30494

<u>ITEM NUMBER</u>	<u>PART NUMBER</u>	<u>QTY.</u>	<u>DESCRIPTION</u>
1	6982-1	1	Nut
2	25112	1	Bearing
3			NOT USED
4	28041	1	Seal
5	27732	1	O-Ring
6	28707	1	Piston
7	28708	1	Shell Assy.
8	28709	1	Rod
9	6982-9	1	Bearing
10	25116	1	O-Ring
11	25122	1	Ring, Back-Up
12	25984	1	Seal
13	25106	1	Ring, Nylon
14	6982-14	1	Retainer
15	6982-15	1	Ring, Wiper
16	MS16997-102	1	Capscrew, 3/8-16 x 1-3/4
17	MS51922-17	1	Locknut, 3/8-16
18	9933	1	Rod End
19	6982-20	1	Ring, Snap
20	29166	A/R	Kit, Service, Consists of Items 2,4,9,12,13 & 15

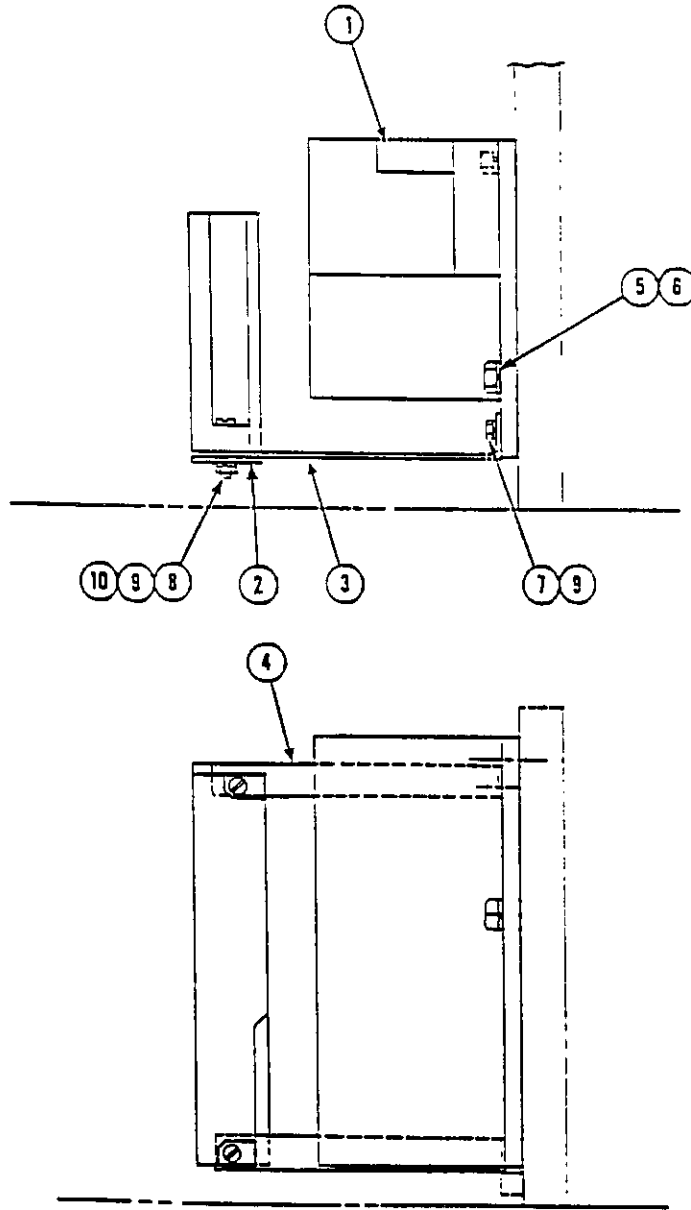
Revised On: 1-3-90

PARTS BREAKDOWN
ELECTRICAL ASSEMBLY, PART NO. 37495

<u>ITEM</u> <u>NUMBER</u>	<u>PART</u> <u>NUMBER</u>	<u>QTY.</u>	<u>DESCRIPTION</u>
1	52511	1	"LX" SCR Control Panel w/BDI
2	31093-04	1	Electric Panel Assy., EVC Modif.
3	37504-01	1	Intermediate Panel Assy.
4	37677-01	1	Control Panel Assy, SLT-22
5			NOT USED
6	25165	1	Connector, Battery, Grey
7	25602	1	Base Plate
8	37423	1	Wire Harness, SCR
9	37137-02	1	Wire Harness, Master
10	25070	1	Horn, 36V w/bracket
11	17177	3	Filter, Hash, 36V
12	23894	.25 oz.	Thermo Grease Compound
13	50915-1	3	Stud, 3/8-16 x 1-5/8
14	MS27183-14	3	Flatwasher
15	MS35338-46	3	Lockwasher, 3/8
16	MS35690-602	3	Nut, Hex, 3/8-16
17	30352-16	1	Power Cable, Pos.
18	30352-17	1	Power Cable, Neg.
19	30352-03	1	Cable Assy., TS1
20	30352-04	1	Cable Assy., TA1
21	30352-05	1	Cable Assy., TS3
22	30352-06	1	Cable Assy., TA2
23	30352-08	1	Cable Assy., A1
24	30352-09	1	Cable Assy., T2
25	30352-10	1	Cable Assy., Neg.
26	30352-11	1	Cable Assy., Pos.
27	30352-12	1	Cable Assy., P.S.+
28	30352-13	1	Cable Assy., P.S.-
29	30352-14	1	Cable Assy., PA1
30	30352-15	1	Cable Assy., PS2
31	51756	0	Contactor, SPST, 24V
32	28558	1	Single Mounting Bracket
33	37414-2	0	Schematic Elec. EV100, Unguided "LX"

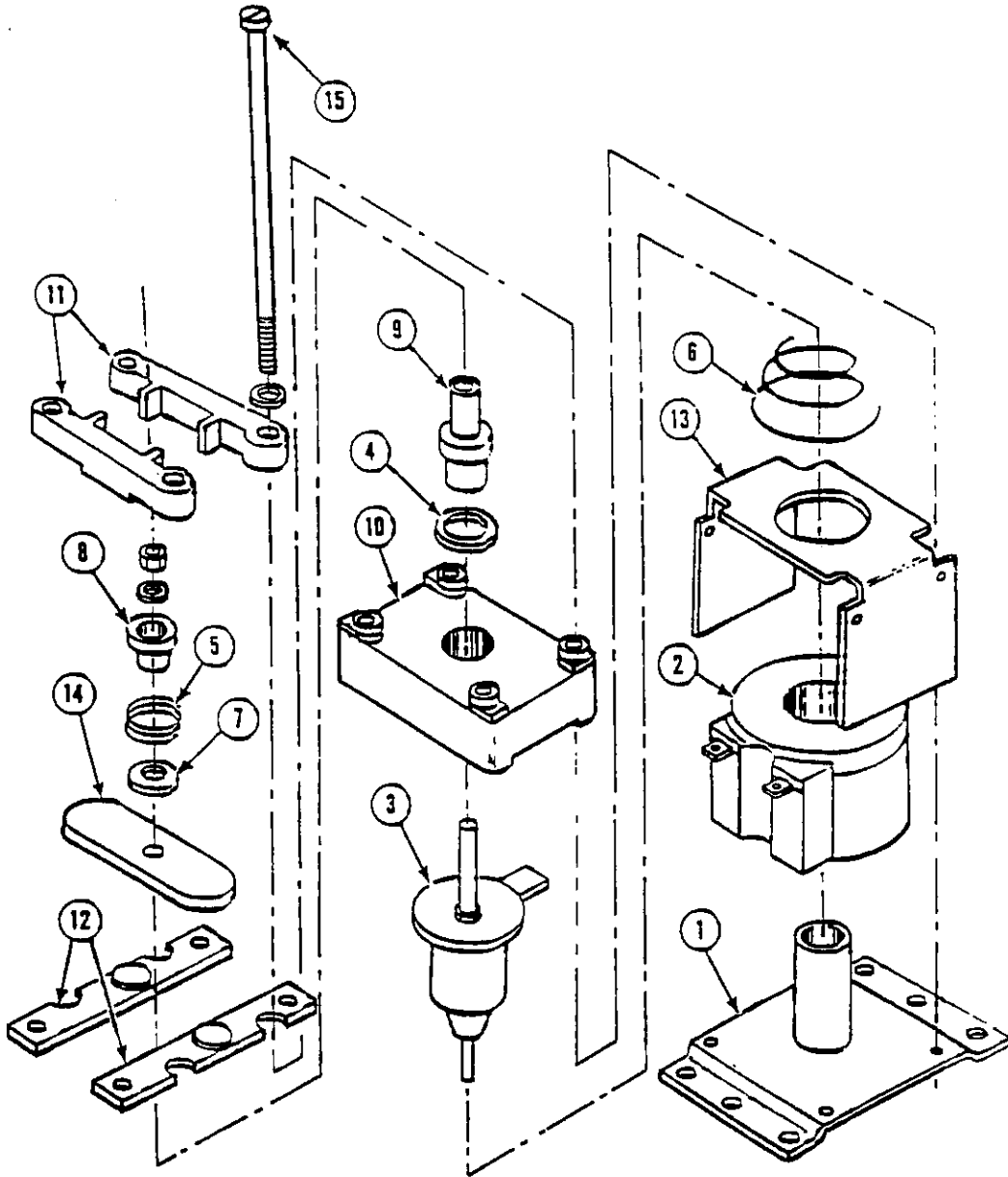
PARTS BREAKDOWN

EV-100 SCR CONTROL ASSEMBLY MODIFICATION,
PART NO. 37103-02



Date: 7-21-89

PARTS BREAKDOWN
CONTACTOR, PUMP, LINE, PART NO. 28889



Date: 7-21-89

9. SCR

While current is still flowing through 1REC, the control circuit sends a gate pulse to 2REC. The current stored in the capacitor then flows through 1REC in a direction opposite the battery current. This causes a zero net current in 1REC, and 1REC shuts off. The current continues to flow through 2REC and the motor circuit until the capacitor becomes fully charged negatively, and 2REC shuts off.

When the control circuit is charging the capacitor, current must continue flowing through the motor. The energy stored in the motor causes current to flow through 3REC and the motor. This is called flyback current, and it is produced by the motor's inductance.

The time for the next ON and OFF cycle to start is determined by the time it takes for the control card to oscillate. The frequency of oscillation is controlled by the potentiometer in the accelerator and automatic circuitry in the card. Slow speed is obtained with maximum resistance in the potentiometer. As the resistance in the potentiometer decreases, the speed of the motor increases. The SCR circuit is capable of delivering approximately 95% of full speed. For full speed operation, the 1A contactor is closed to apply the full battery voltage across the motor.

9.4 CONTROL FEATURES

9.4.1 Oscillator

The oscillator section of the card has two adjustable features and one fixed feature. The two adjustable features are the creep speed and the controlled acceleration. The creep speed can be adjusted by the creep trimpot on the card. The controlled acceleration is also adjusted by the C/A trimpot on the card. The C/A trimpot adjusts the percent on time of the oscillator from 0.5-second to 3.5-4.5 seconds. Top speed is fixed by card design, and is obtained with the accelerator potentiometer at minimum resistance.

9.4.2 Current Limit

This circuit monitors motor current with a sensor in series with the armature. The voltage detected across the sensor is fed back to the card so the current can be limited to a preset value. If heavy load currents are detected, this circuit overrides the oscillator and limits the average current to a value set by the C/L adjustment pot. The C/L setting is based on the maximum thermal rating of 1REC and the peak voltage on the capacitor.

9.4.3 Plugging

Slow-down is accomplished by providing a small amount of retarding torque for deceleration. The motor armature, driven by the inertia of the vehicle, acts as a generator. The generated current passes through 4REC and the sensor. The oscillator circuit regulates at a plug current limit level as set by the plug trimpot on the control card. The accelerator potentiometer input will modulate plugging current. With the accelerator potentiometer at minimum resistance, the plugging trimpot adjusts the plugging current from the maximum to the minimum current level.

9.4.4 Ramp Start

This feature provides full SCR torque to restart a vehicle on an incline. The memory for this function is the directional switch. When stopping the truck on an incline, the directional switch must be left in its original or neutral position. The accelerator potentiometer input will modulate the ramp start current.

CLICK HERE TO **DOWNLOAD** THE COMPLETE MANUAL

- Thank you very much for reading the preview of the manual.
- You can download the complete manual from: www.heydownloads.com by clicking the link below



- Please note: If there is no response to CLICKING the link, please download this PDF first and then click on it.

CLICK HERE TO **DOWNLOAD** THE COMPLETE MANUAL