



SLT Series E Base IPB SwingMast® Lift Truck

Illustrated Parts Breakdown (3500#)



Landoll Corporation
Drexel Division
1900 North Street
Marysville, KS 66508
U.S.A.

Telephone:..... (785) 562-5381
Fax:..... (785) 562-4853
Web: www.drexeltrucks.com

Base unit: 1419890 -b, 07/03

CLICK HERE TO **DOWNLOAD** THE COMPLETE MANUAL

- Thank you very much for reading the preview of the manual.
- You can download the complete manual from: www.heydownloads.com by clicking the link below



- Please note: If there is no response to CLICKING the link, please download this PDF first and then click on it.

CLICK HERE TO **DOWNLOAD** THE COMPLETE MANUAL

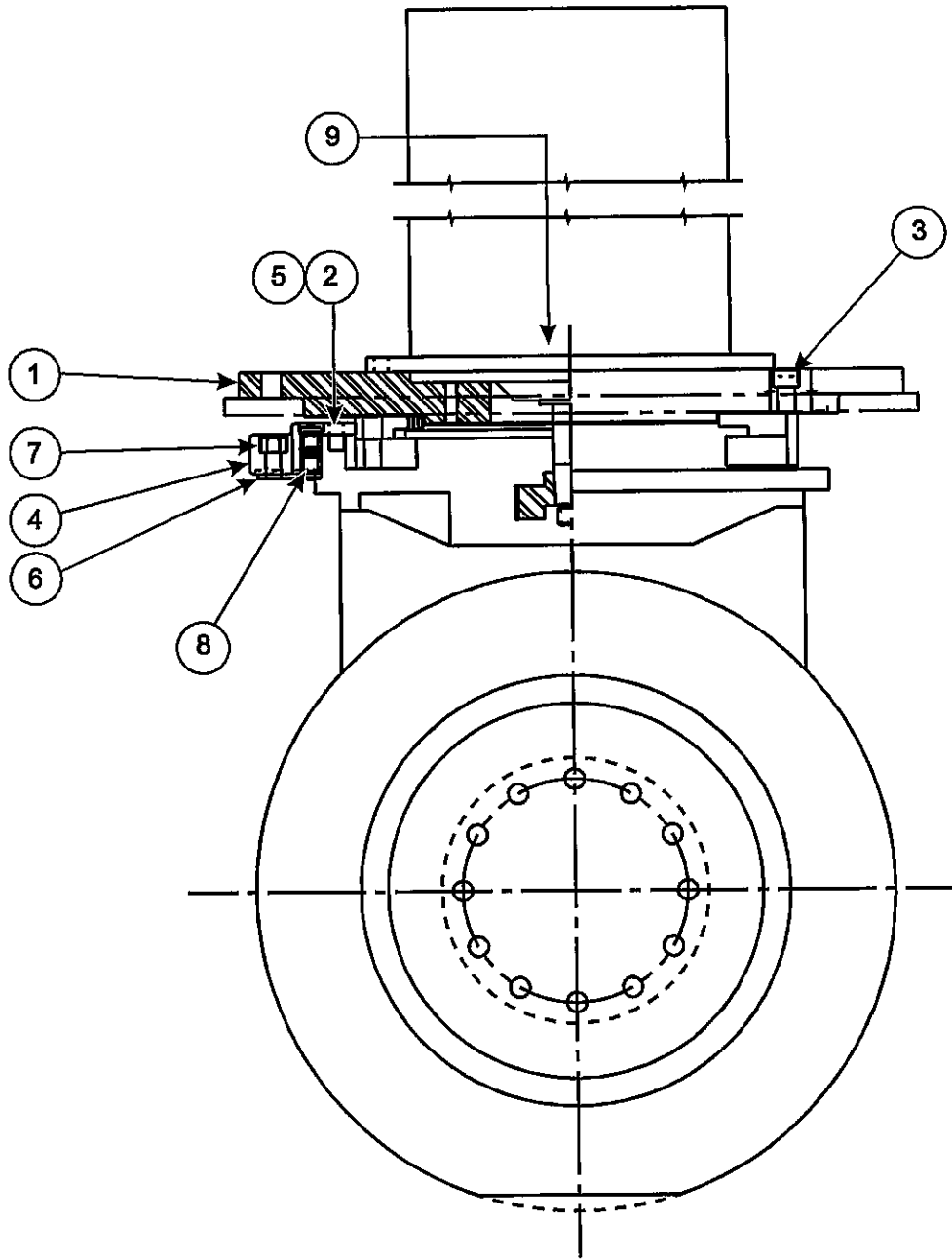
Frame Position and Installation, p/n: FR15-A

Item	Part No.	Qty.	Description
1	1414419	1	Frame Weldment, GE Controls
2	1CM24120ER	4	Screw, Hex Head, Class 8.8, M24 x 3.00-120
3	MS20002-16	4	Washer, Hardened
4	40DM24ER	4	Nut, Lock Hex Head, Class 10, M24 x 3.0
5	1402211	4	Flat Washer, 2.03" x 1.05" x 0.21" Thick

Drive Unit, Dual Chain, p/n: 1400695-A (continued)

Item	Part No.	Qty	Description
30	1402194	1	Roller Bearing Race
31	1402195	1	Spacer, M56 x 72 x 0.1
31	1402196	1	Spacer, M56 x 72 x 0.3
31	1402197	1	Spacer, M56 x 72 x 0.2
31	1402198	1	Spacer, M56 x 72 x 0.5
32	1402199	1	Housing
33	1402200	1	Spacer, M60 x 75 x 0.5
33	1402201	1	Spacer, M60 x 75 x 0.3
33	1402202	1	Spacer, M60 x 75 x 0.2
33	1402203	1	Spacer, M60 x 75 x 0.1
34	1402204	1	Roller Bearing Race
35	1402205	1	Roller Bearing, Tapered
36	1402206	1	Bevel Gear Set
37	1402207	1	Plug
38	1402208	1	Washer, Din 7603
39	7CM820ER	15	Screw, Socket Head, Class 10.9, M8 x 1.25 x 20
40	1402209	1	Cover
41	1410293	1	Nut, Slotted Round, with Insert, M20 x 1
42	1410295	1	Key, Woodruff, M6 x 9
43	1410294	1	O-ring, M5 x 70, 72 Shore, Nbr Rubber

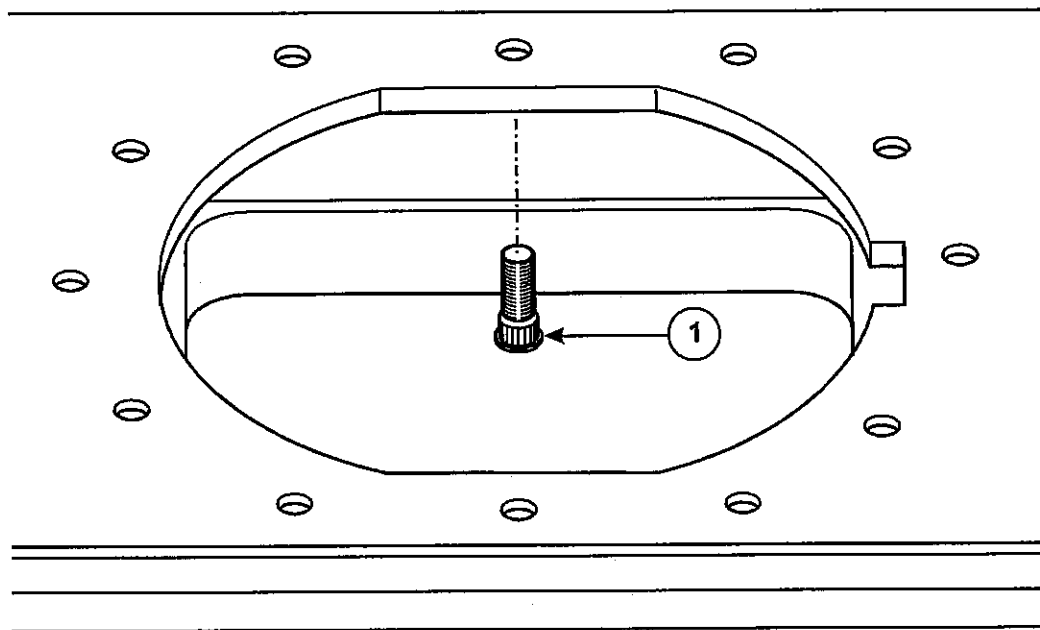
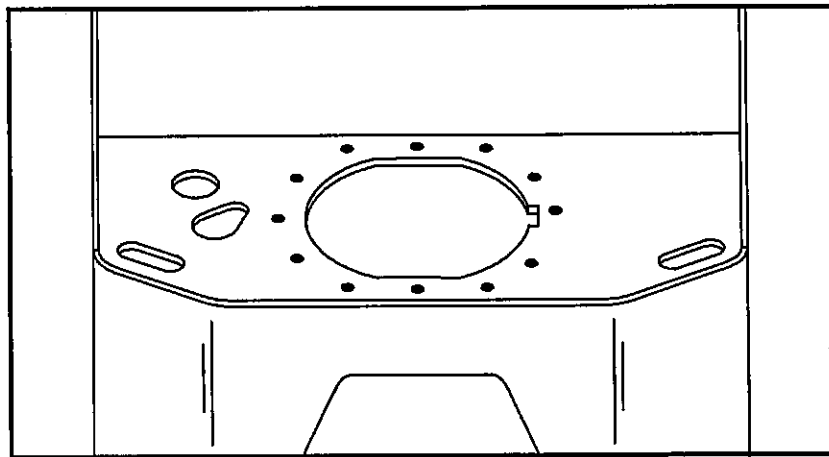
Figure 8-7: Drive Unit Sub-Assembly, DA8



Press Drive Plate Studs, DA14

Item	Part No.	Qty	Description
1	1400892	12	Wheel Stud

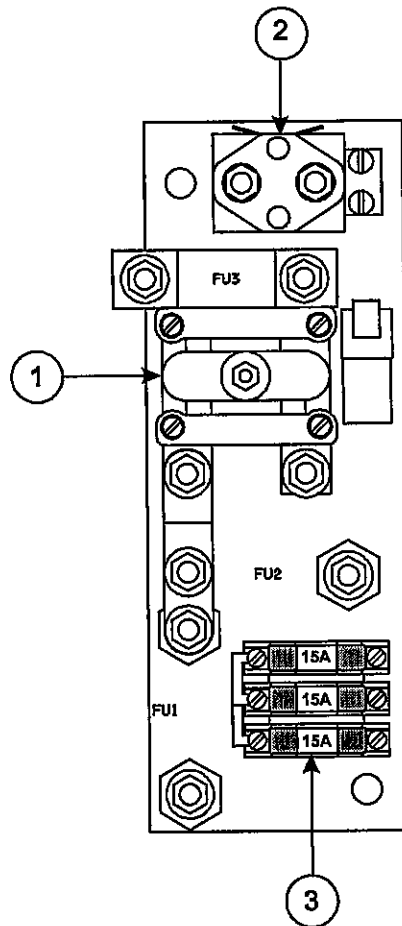
Figure 8-12: Press Drive Plate Studs, DA14



Contactor Panel, p/n: 1413294-A

Item	Part No.	Qty.	Description
1	1413716	1	Contacteur, 60 V, 300 A, SPNO
2	1413939	1	Contacteur, 80 A, SPNO
3	1401982	3	Fuse, 15 Amp, Ceramic Instrument

Figure 8-20: Contactor Panel, p/n: 1413294-A



Cable Installation, EL19-A

Item	Part No.	Qty	Description
1	1400926	1	Power Cable, Power Steering, Positive
2	1400927	1	Power Cable, Power Steering, Negative
3	51381-1	1	Boot, Battery Terminal, Black
4	51381-2	1	Boot, Battery Terminal, Red
5	1412466	1	Power Cable, Traction, S1
6	1412467	1	Power Cable, Traction, S2
7	1412469	1	Power Cable, Traction, Ta1
8	1412470	1	Power Cable, Traction, Ta2
9	51118-04	1	Spacer, Brass

Figure 8-24: Cable Installation, EL19-A

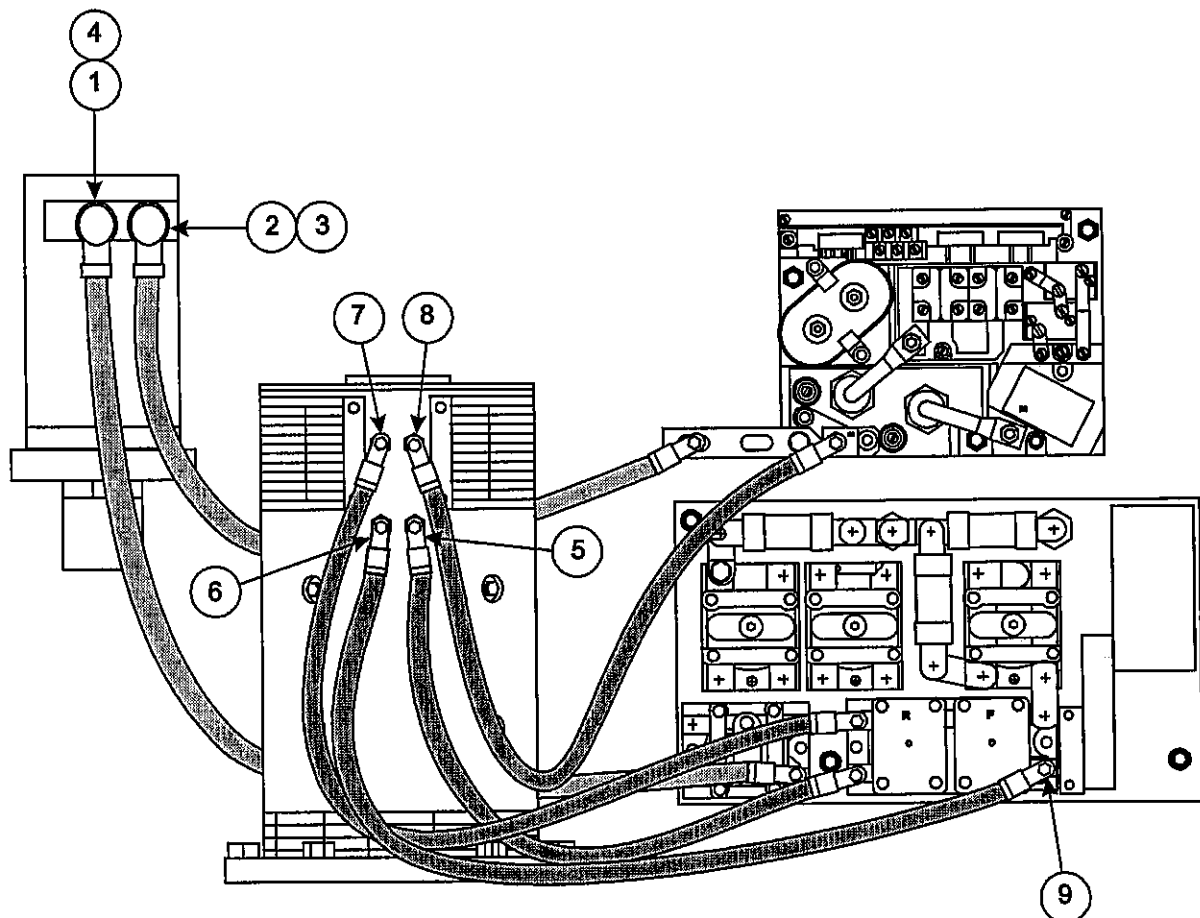


Figure 8-27: Fluids, FL1

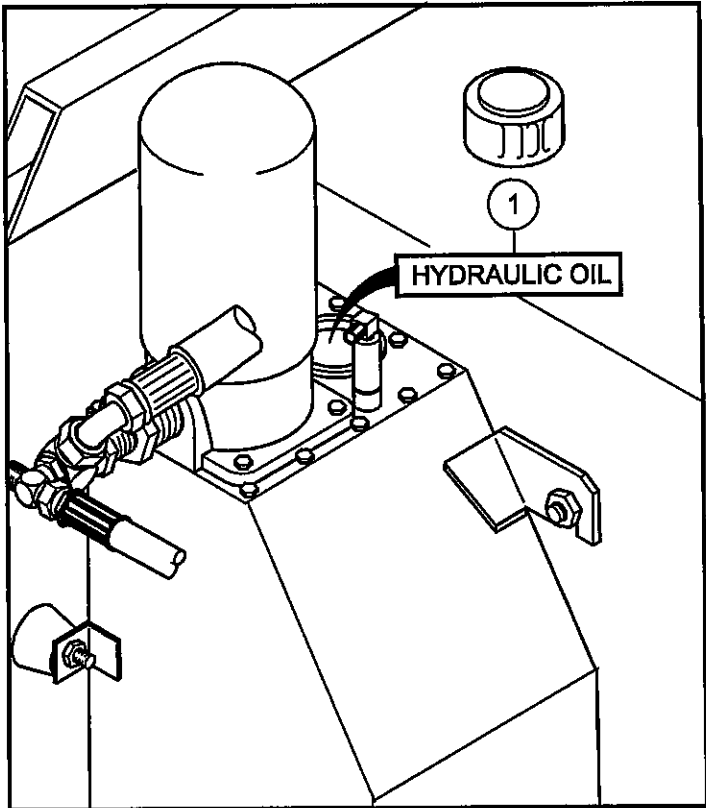
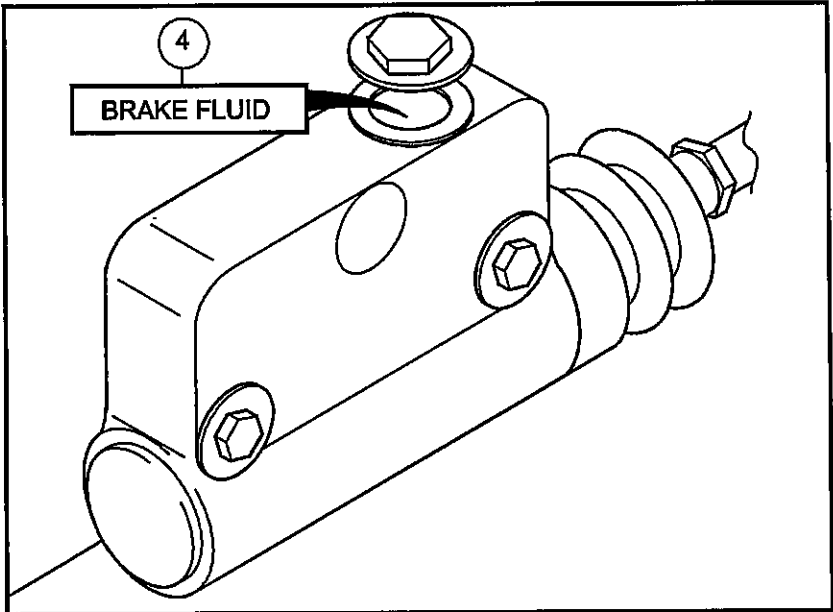


Figure 8-31: Hydraulic Tank Installation, HY6

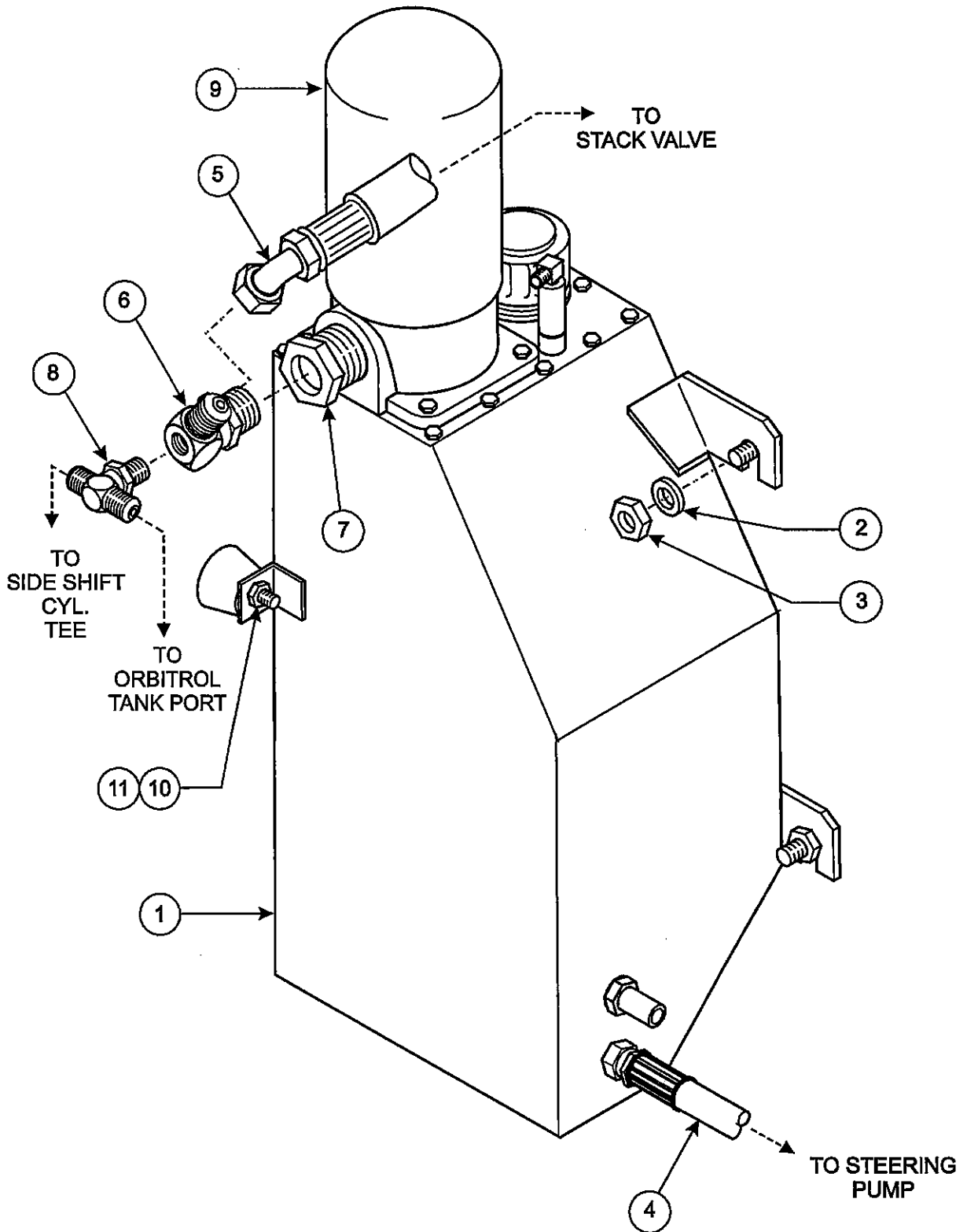
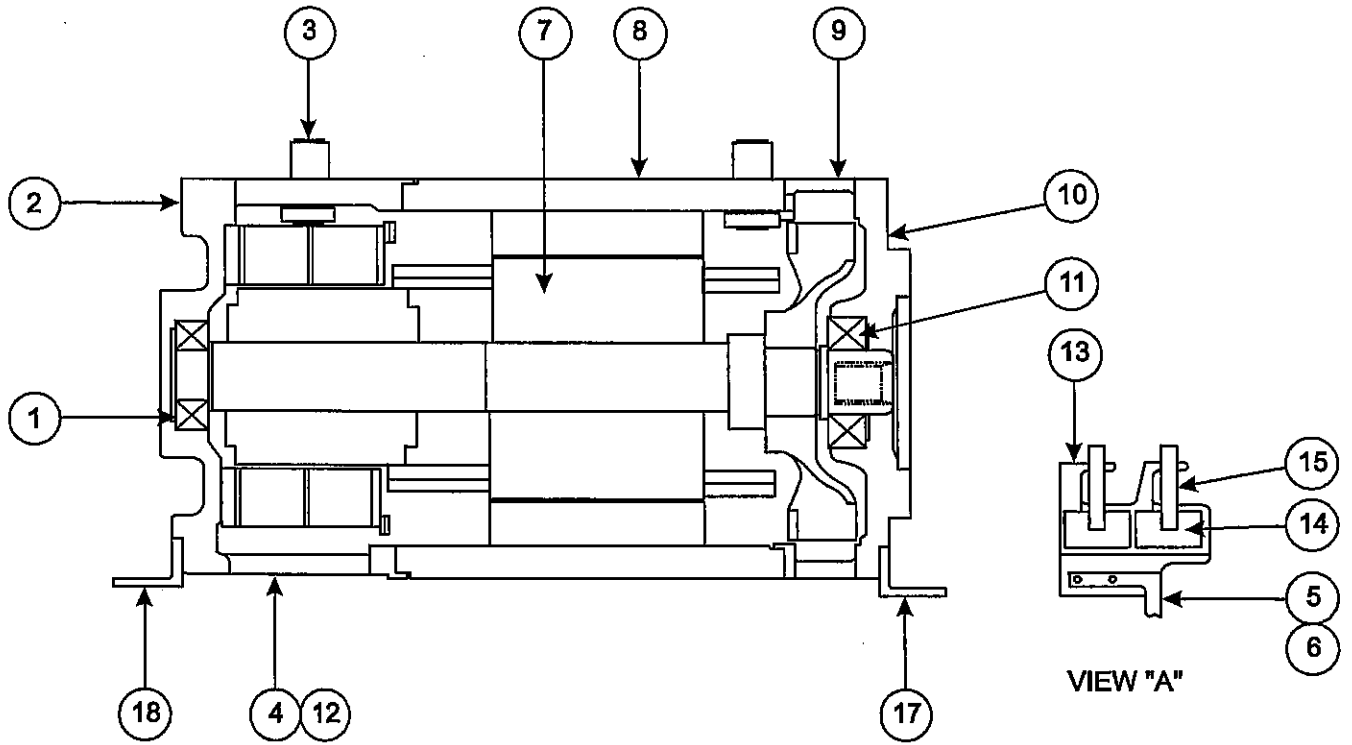


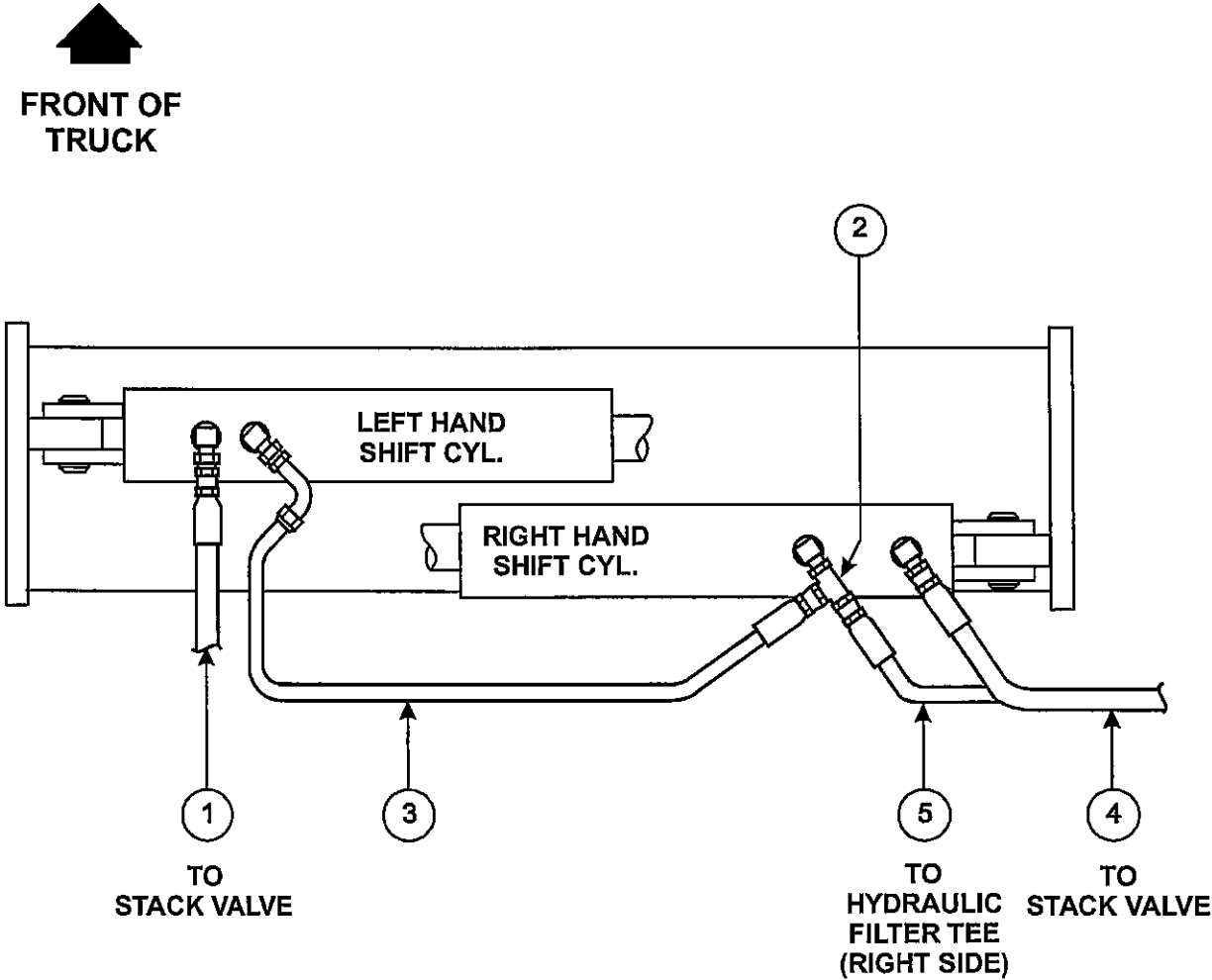
Figure 8-35: Main Motor Assembly, p/n: 1412771-A



Side Shift Hose, HY7

Item	Part No.	Qty	Description
1	1413173	1	Hose Assembly, #6
2	13K5	1	Run Tee, Swivel
3	1407966	1	Hose Assembly, #6, 37.00" OAL
4	51032-61	1	Hose Assembly, #6, 42.31" OAL
5	51032-54	1	Hose Assembly, #6

Figure 8-39: Side Shift Hose, HY7



Steering Pump, p/n: 51734

Item	Part No.	Qty	Description
1	1402562	1	Relief Valve Kit

Figure 8-48: Steering Pump, p/n: 51734

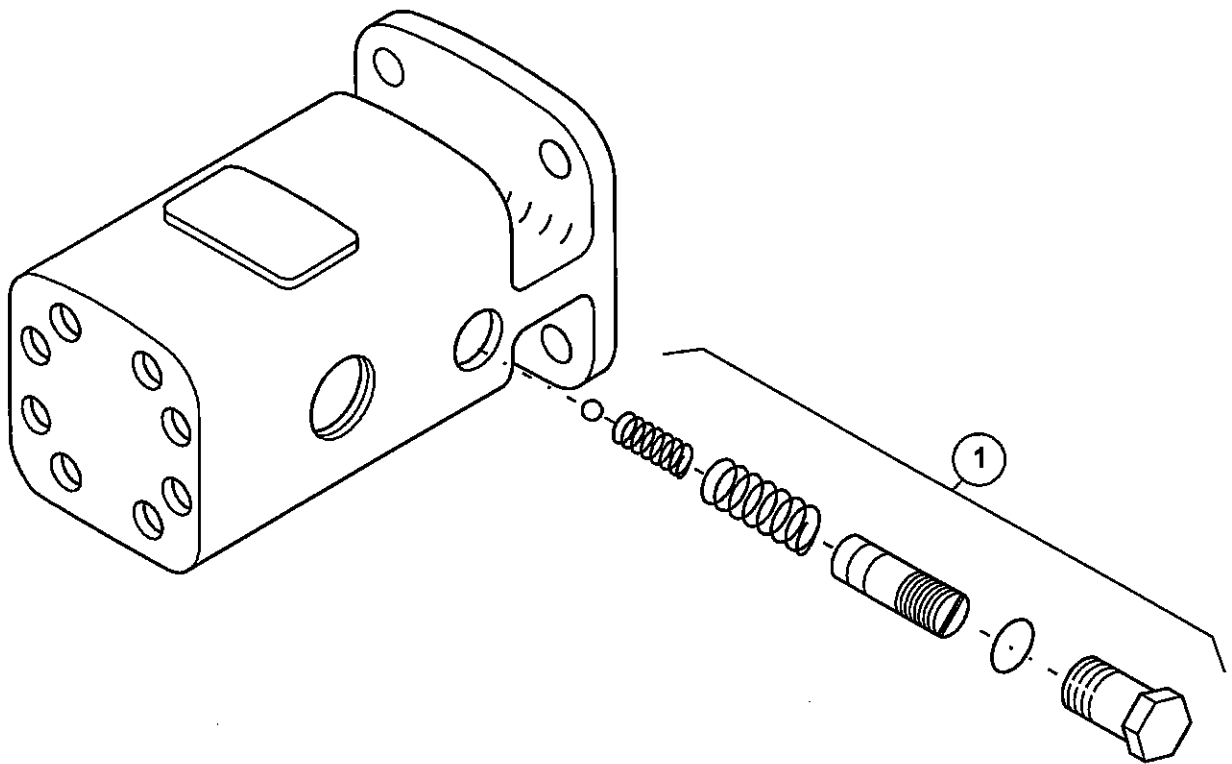
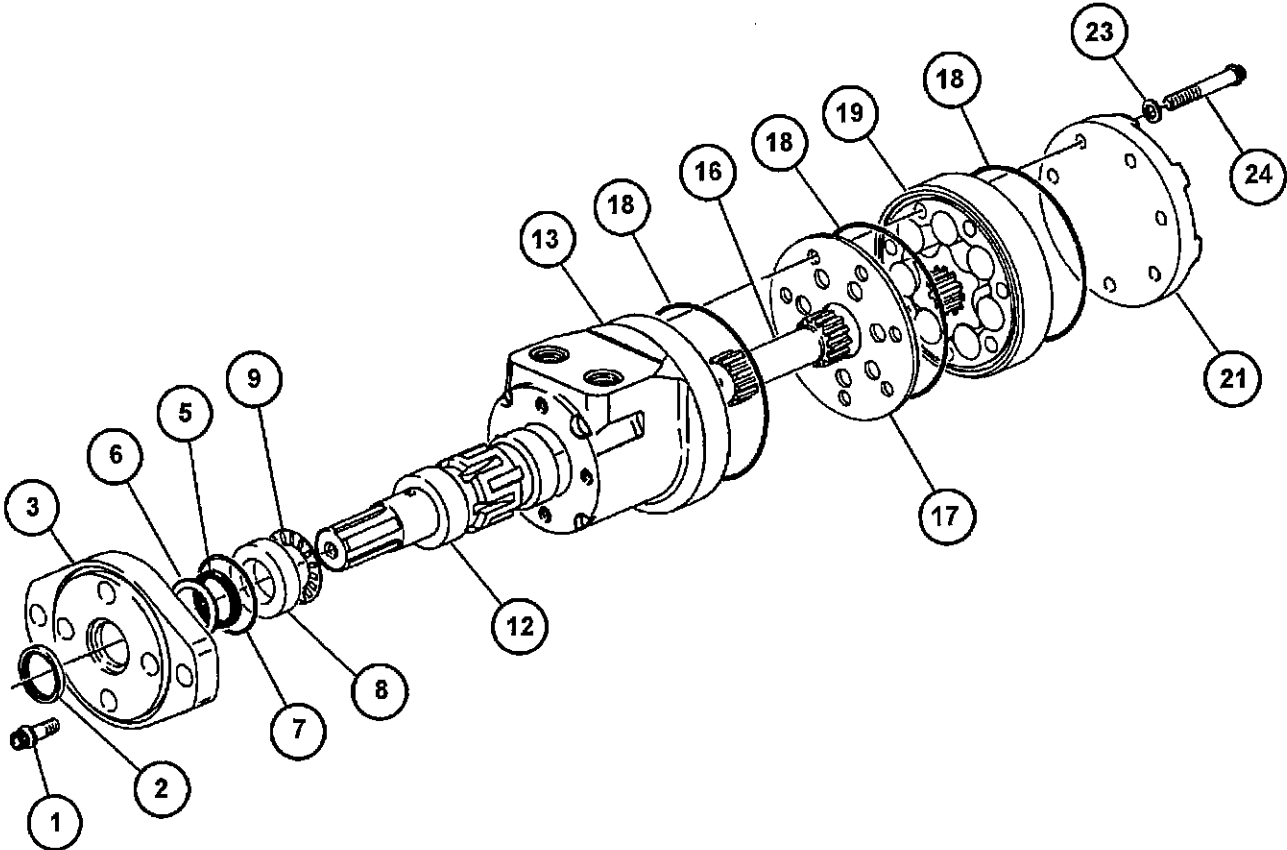


Figure 8-52: Steering Motor Assembly, p/n: 25950-A



CLICK HERE TO **DOWNLOAD** THE COMPLETE MANUAL

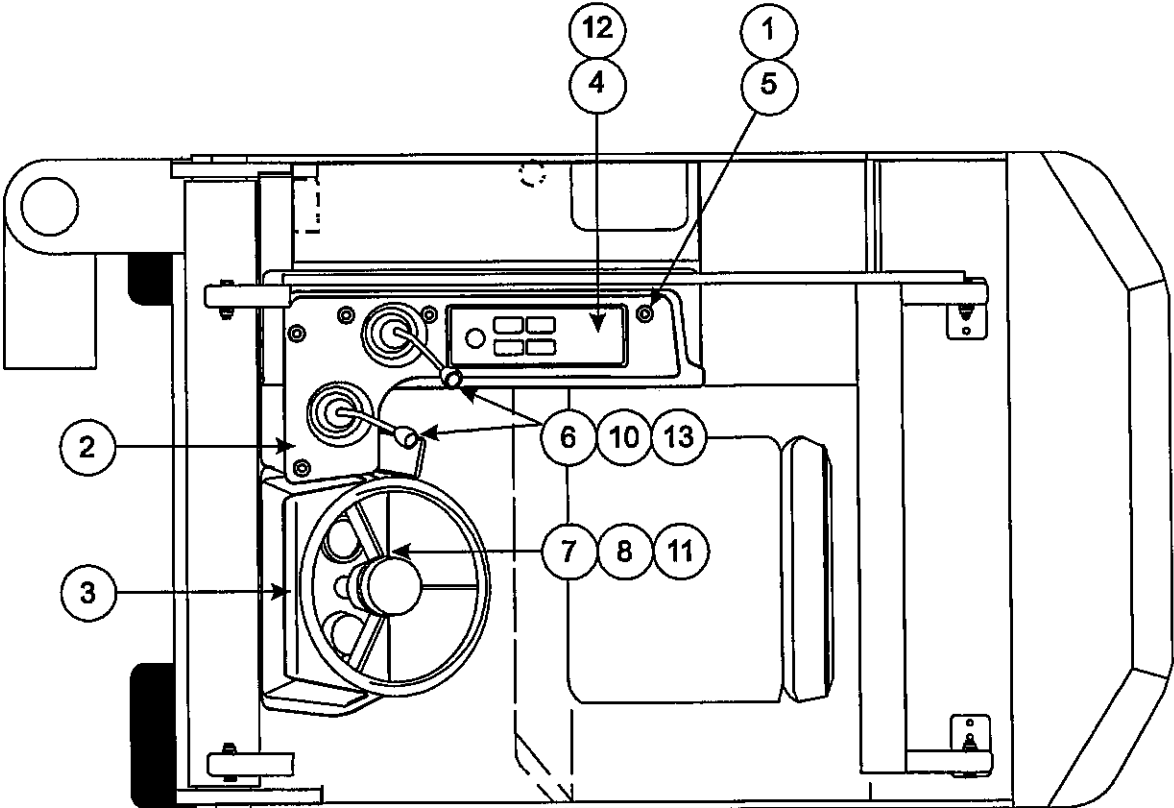
- Thank you very much for reading the preview of the manual.
- You can download the complete manual from: www.heydownloads.com by clicking the link below



- Please note: If there is no response to CLICKING the link, please download this PDF first and then click on it.

CLICK HERE TO **DOWNLOAD** THE COMPLETE MANUAL

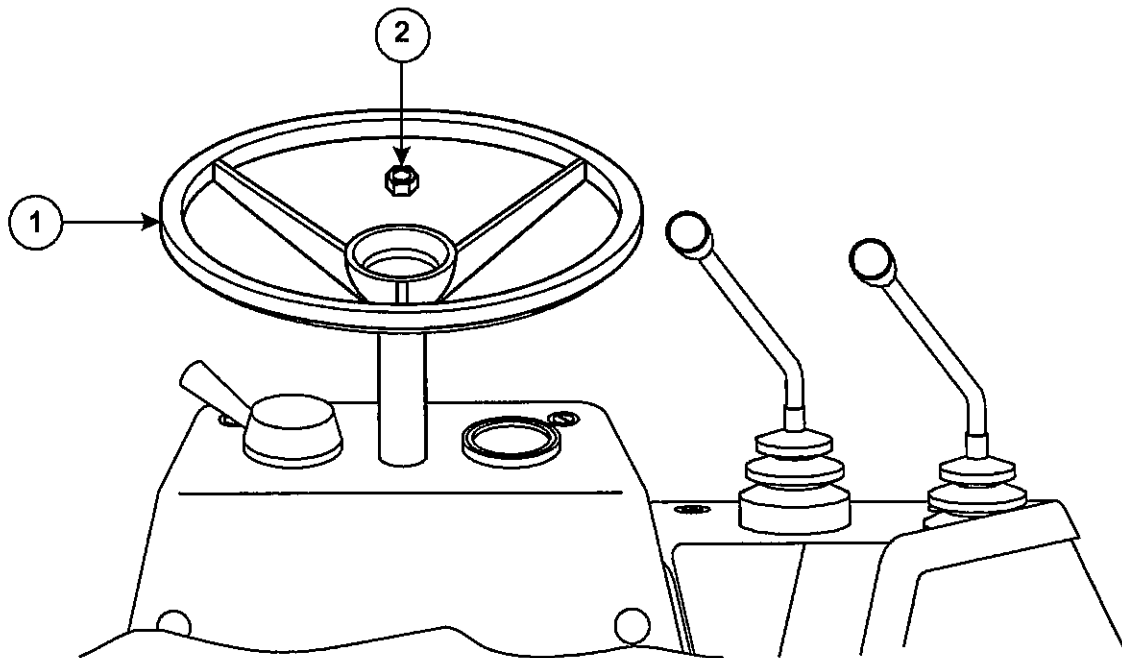
Figure 8-60: Instruments and Side Console Installation, ID3



Steering Wheel Installation, ID4-A

Item	Part No.	Qty	Description
1	2782247	1	Steer Wheel
2	664880	1	Nut, Handwheel

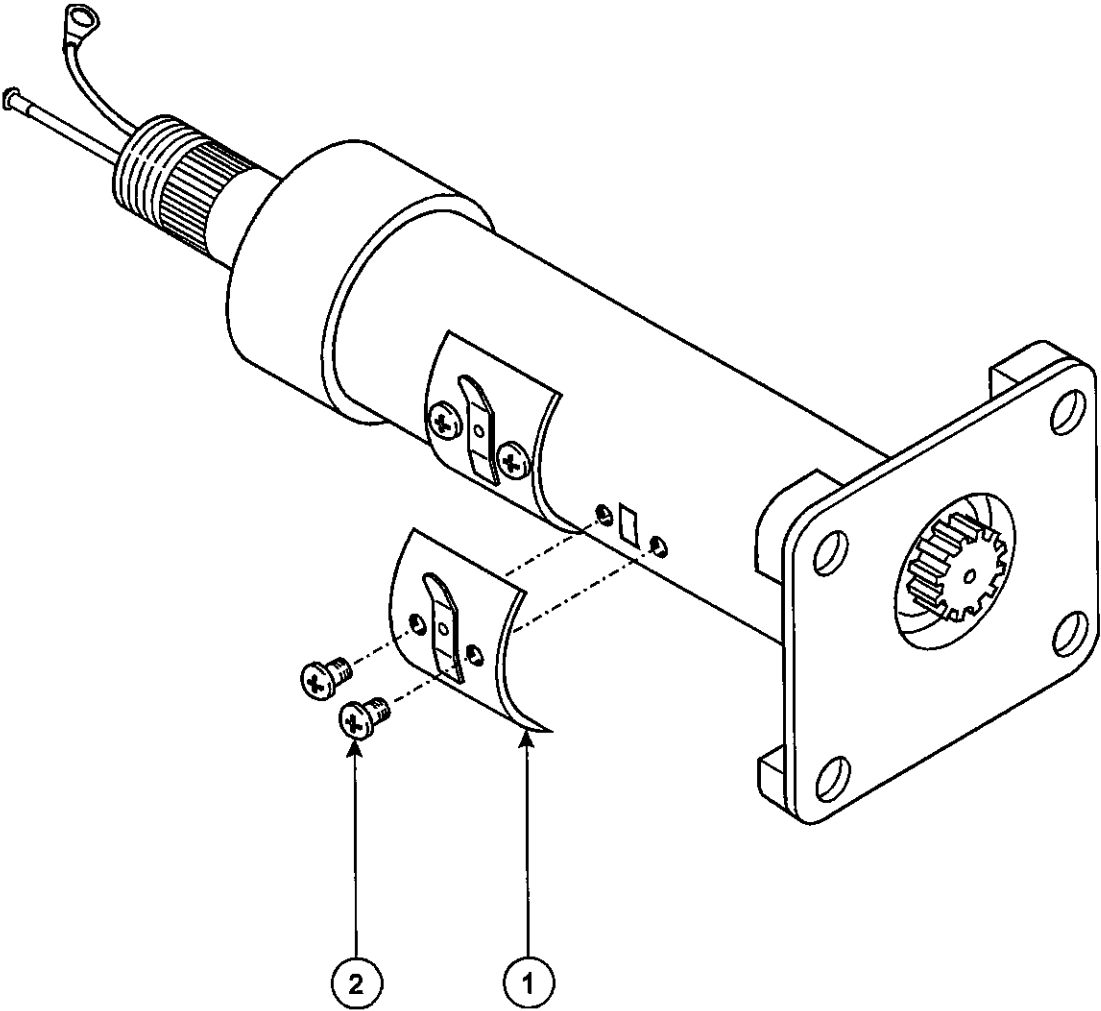
Figure 8-65: Steering Wheel Installation, ID4-A



Steering Column Assembly, p/n: 1400968-D

Item	Part No.	Qty	Description
2	1402567	1	Outer Tube Cap
3	25043	1	Brush Assembly, Horn
4	66G1004ER	2	Screw, Self Tapping, #10-32 x 0.25", Pan Head
5	25042	1	Ring
6	25041	1	Terminal and Wire, Char-Lynn #5380-2

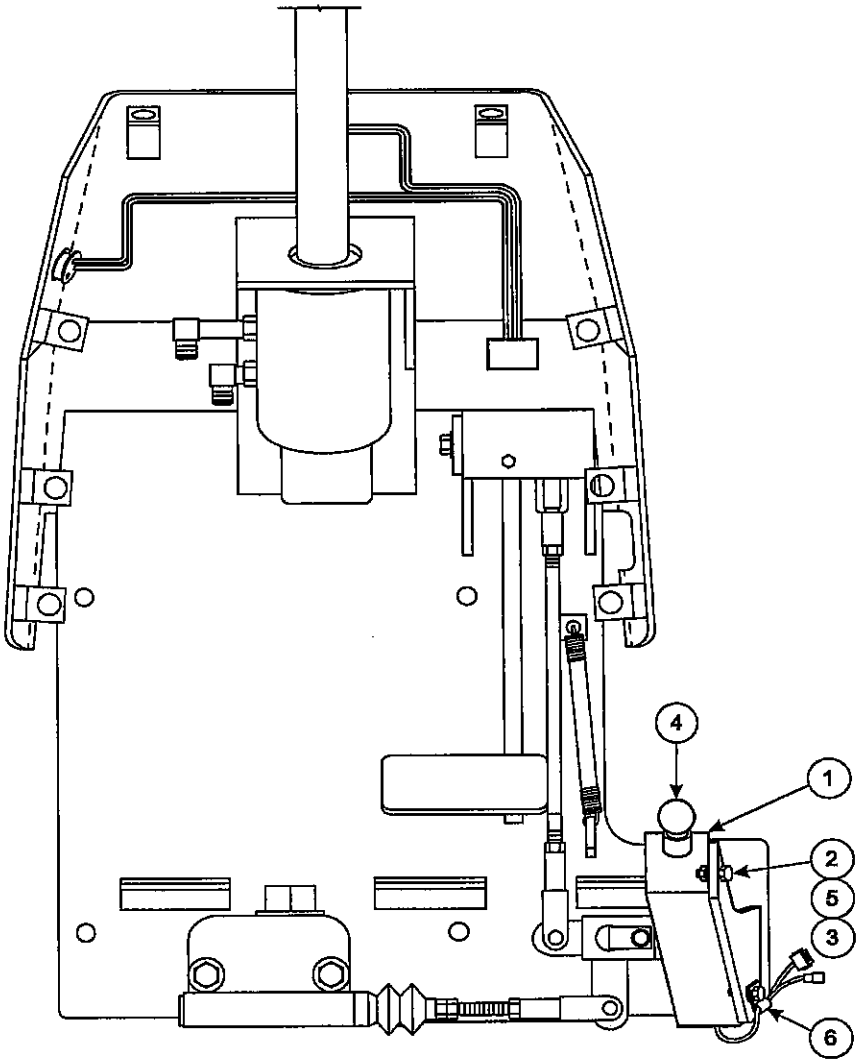
Figure 8-69: Steering Column Assembly, p/n: 1400968-D



Accelerator Unit Installation, EL15-A

Item	Part No.	Qty	Description
1	1401465	1	Accelerator Unit
2	1CM620ER	2	Screw, Hex Head, Class 8.8
3	1DM6ER	2	Nut, Hex Head, Class 8.8
4	1411050	1	Ball
5	6EM60ER	2	Lock Washer, Spring, M6
6	30H25	1	Clamp, Closed and Insulated

Figure 8-76: Accelerator Unit Installation, EL15-A



Seat Belt Installation, ST1-A

Item	Part No.	Qty	Description
1	52762	1	Seat Belt Assembly
2	1CM1025ER	2	Screw, Hex Head, Class 8.8
3	18EM1019ER	2	Washer, Flat, Hardened, M10
4	1DM10ER	2	Nut, Hex Head, Class 8.8

Figure 8-82: Seat Belt Installation, ST1-A

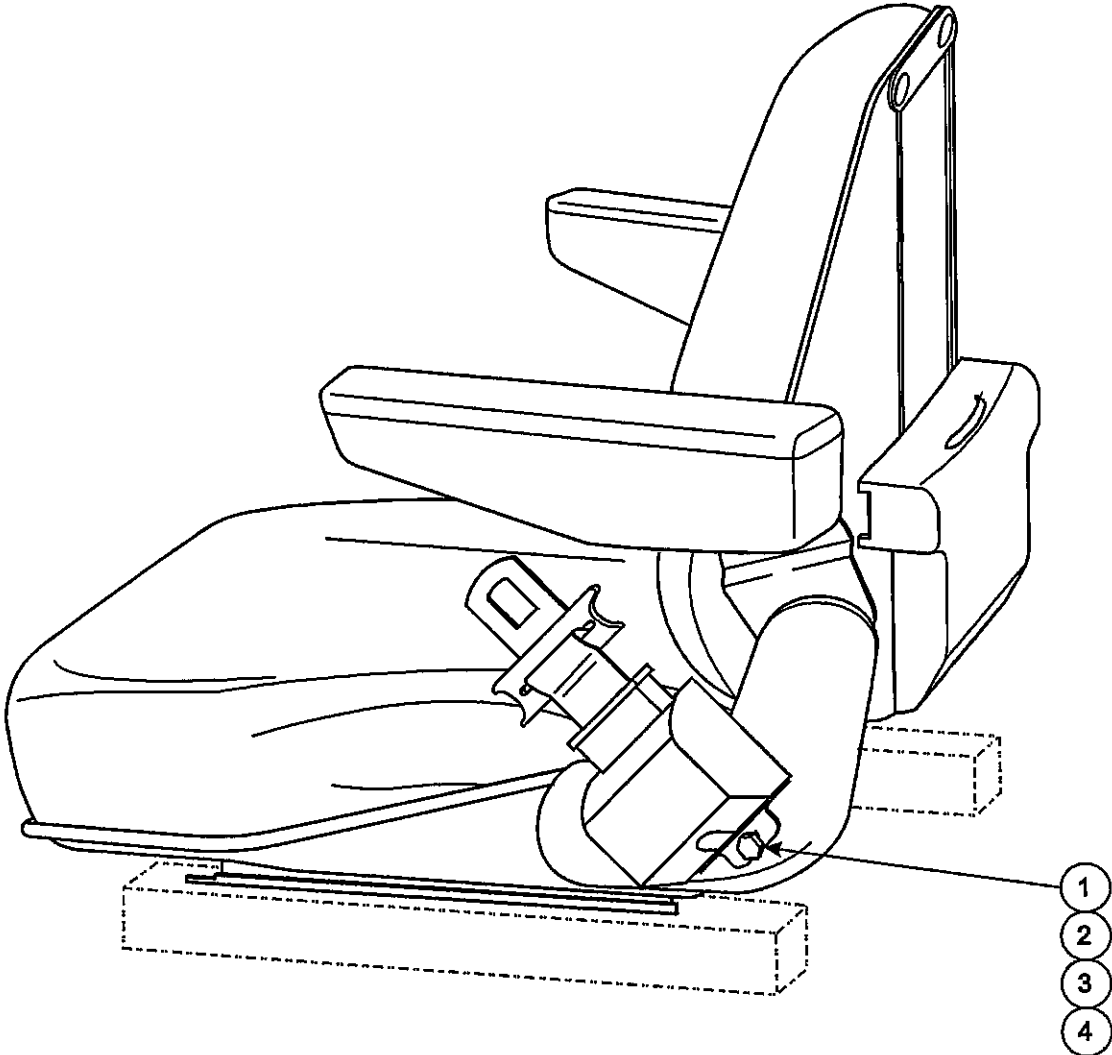


Figure 8-85: Lower Bar Installation, PS8-A

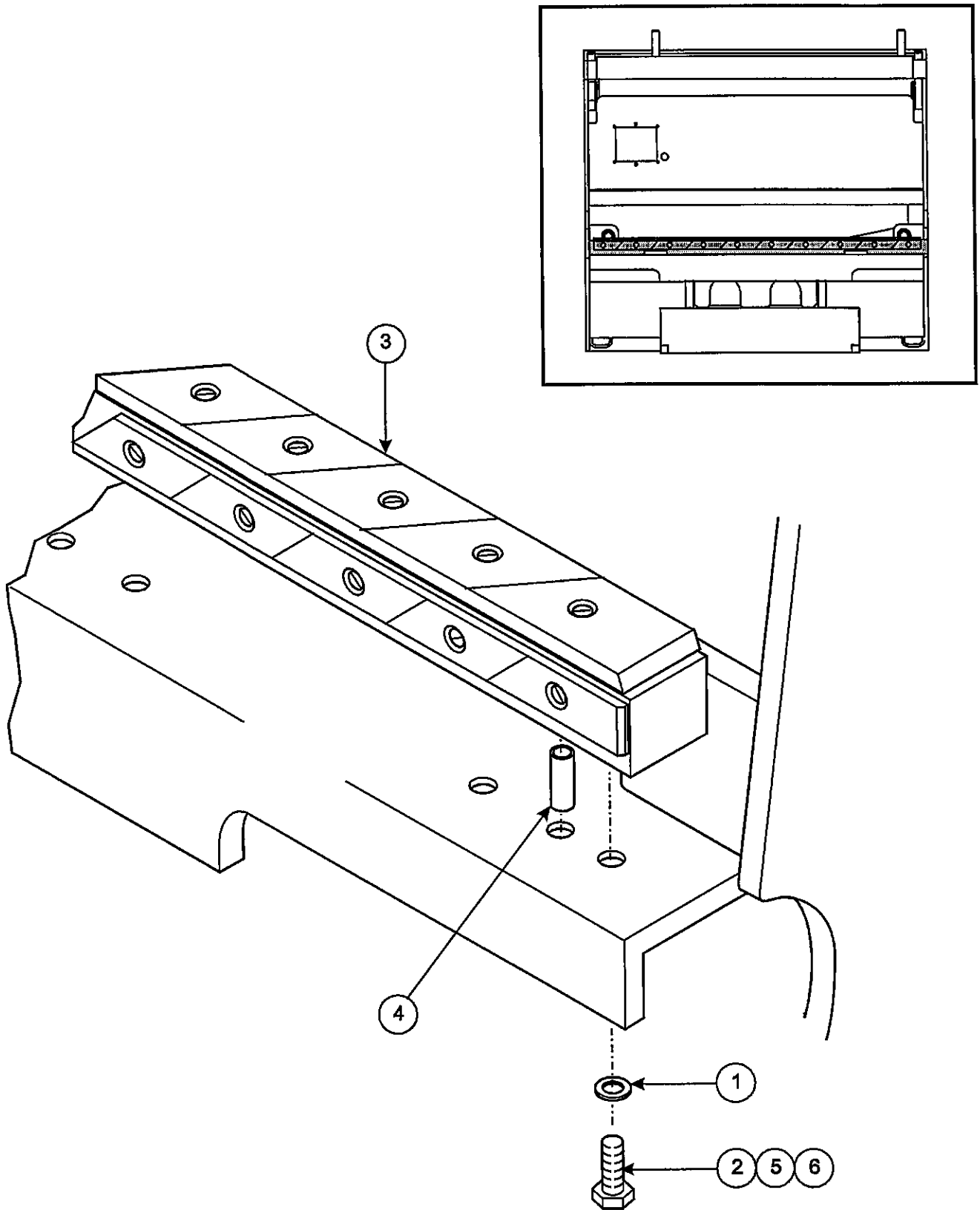


Figure 8-94: Pivot Arm Installation, PS2-A

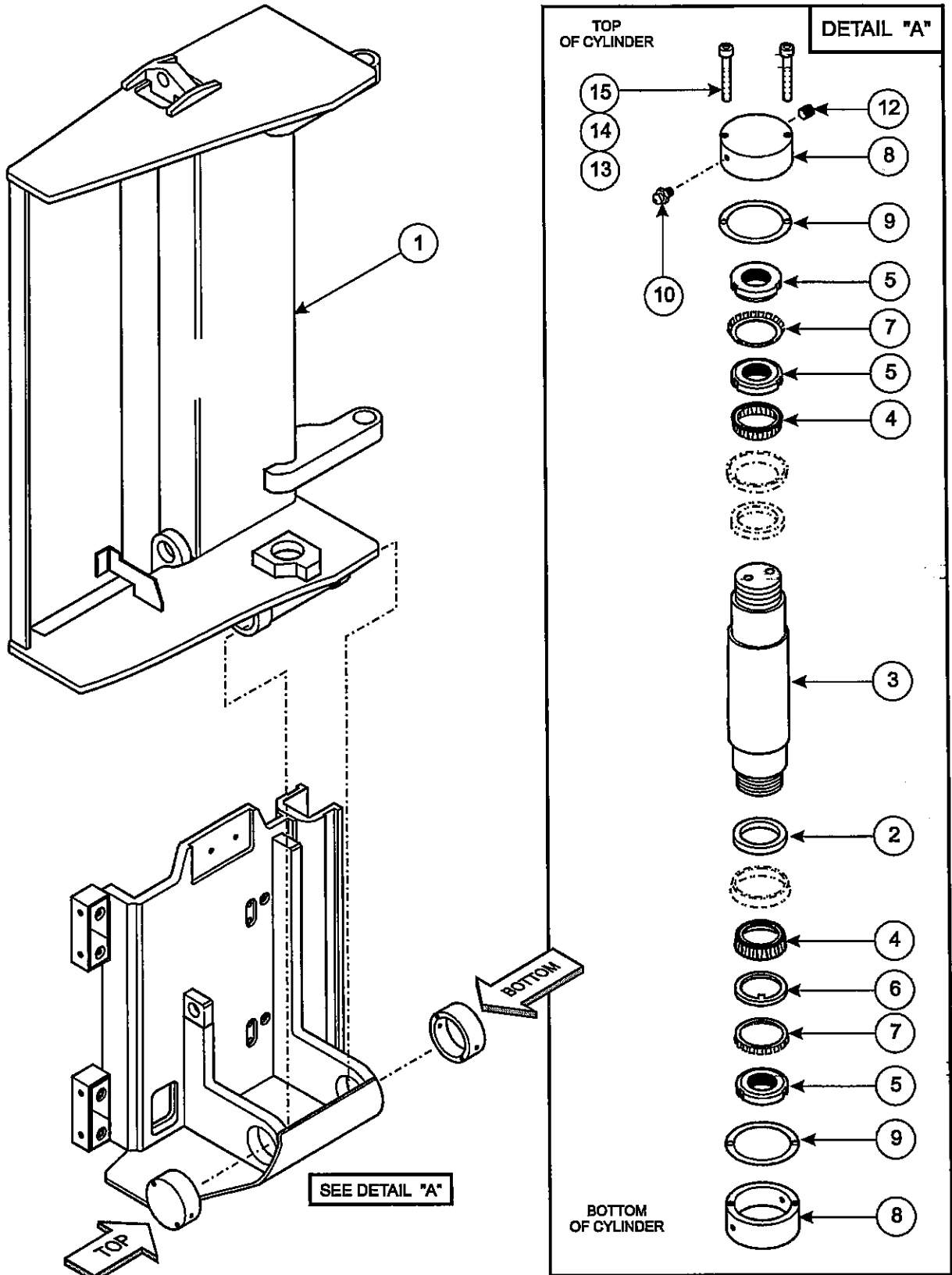
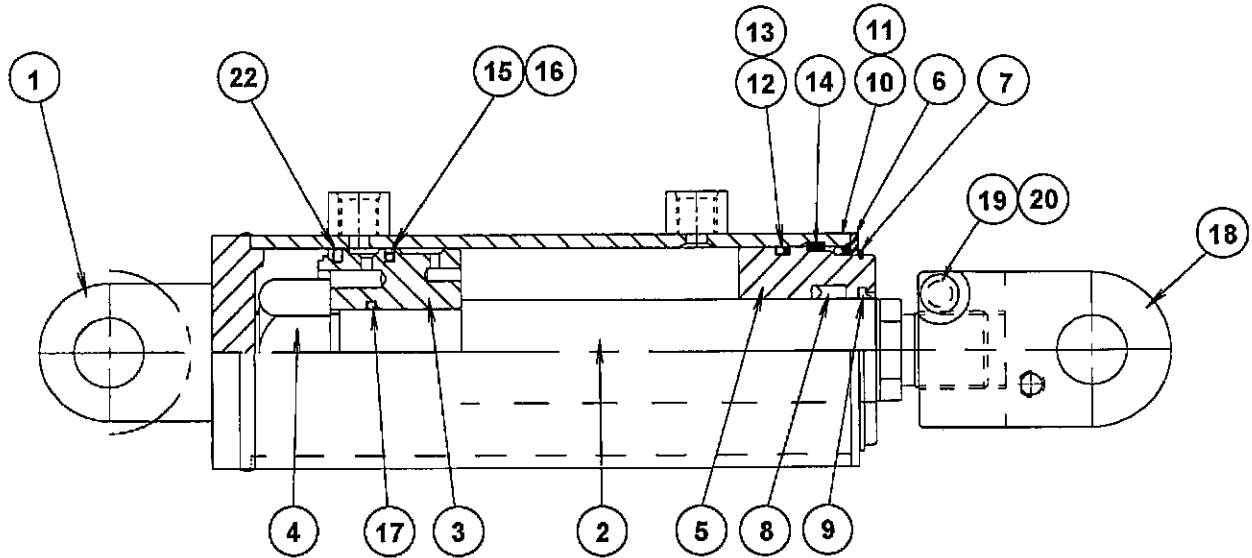


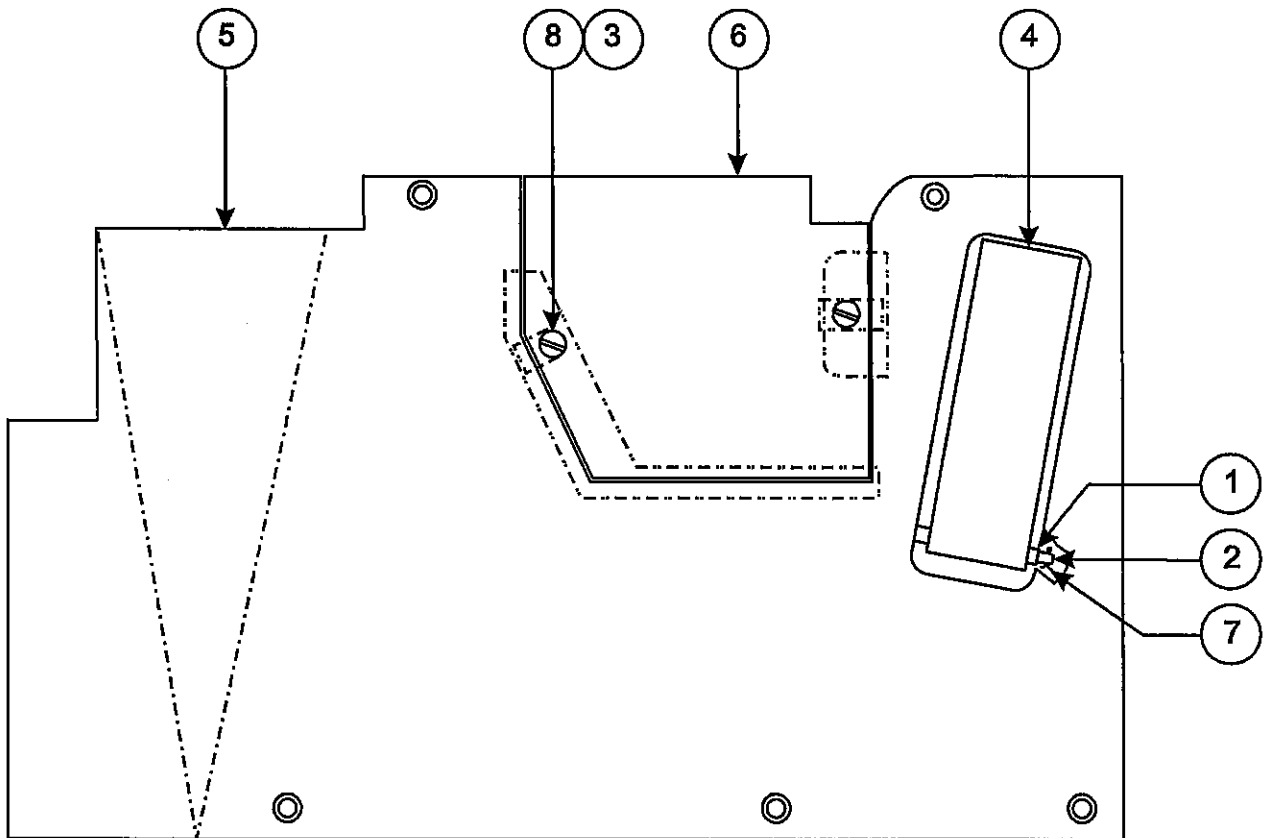
Figure 8-97: Pivot Cylinder Assembly, p/n; 1400601-A



Floor Plate Sub-Assembly, C02-A

Item	Part No.	Qty	Description
1	1400637	2	Spacer
2	1400939	1	Clevis Pin
3	1401012	2	Nut, U 8 mm x 1.25" Long
4	1412373	1	Pedal Accelerator
5	1422156	1	Floor Plate Weldment
6	1F312E	1	Pin, Cotter
7	1412376	1	Panel, Floor Plate
8	23GM820ER	2	Screw, Flat Head, Class 10.9

Figure 8-107: Floor Plate Sub-Assembly, CO2-A



CLICK HERE TO **DOWNLOAD** THE COMPLETE MANUAL

- Thank you very much for reading the preview of the manual.
- You can download the complete manual from: www.heydownloads.com by clicking the link below



- Please note: If there is no response to CLICKING the link, please download this PDF first and then click on it.

CLICK HERE TO **DOWNLOAD** THE COMPLETE MANUAL