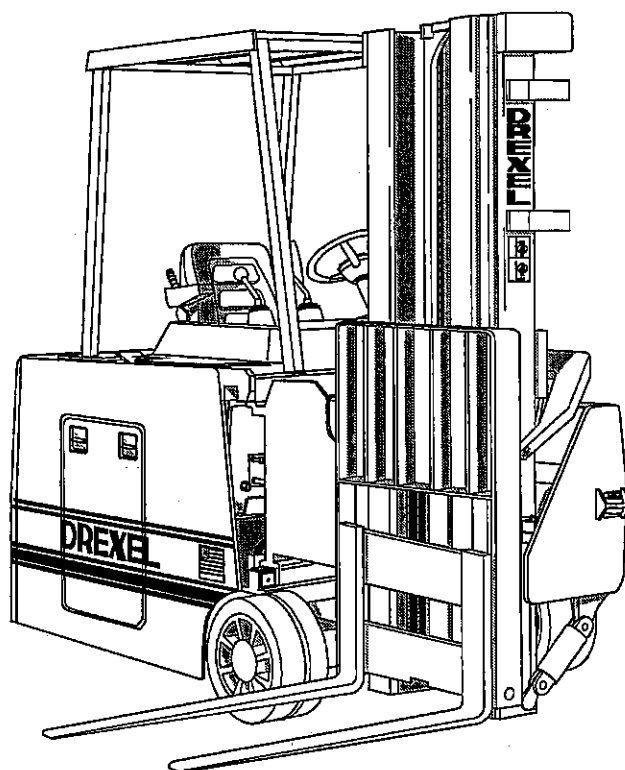




SLT Series E Portec Base IPB SwingMast® Lift Truck

Illustrated Parts Breakdown (3500#)



Drexel Industries LLC
331 Maple Avenue
Horsham, PA 19044-0983
U.S.A.

Telephone:..... (215) 672-2200
Fax:..... (215) 773-6765
Web: www.drexeltrucks.com

Base unit: 1419891 -a, 04/01

CLICK HERE TO **DOWNLOAD** THE COMPLETE MANUAL

- Thank you very much for reading the preview of the manual.
- You can download the complete manual from: www.heydownloads.com by clicking the link below



- Please note: If there is no response to CLICKING the link, please download this PDF first and then click on it.

CLICK HERE TO **DOWNLOAD** THE COMPLETE MANUAL

General

This section contains an illustrated parts breakdown (list) and drawings for the serviceable assemblies and components of the Standard **SLT30 "E" Auto-Guidance Series, 3500 Lb. SwingMast** lift trucks.

Abbreviations

The following abbreviations may be used in this Options IPB:

#nthe measurement of an inner diameter in 32nds of an inch; example, #10 hose is has an inner diameter of 10/32" or 5/16".

A/RAs required

Barb.....Barbed, a tapered hose nipple with ridges or "barbs" which keep the hose from slipping off.

Cl.....Class, used to specify yield strength of metric fasteners.

Cm.....centimeters

ExtExternal

Frk.....Fork, pronged electrical connector

FwdForward

Ga Gauge

Grd, GrGrade - when hardware lists a grade rating, it is important to maintain that rating when replacing parts.

HSHardened steel

Hex.....Hexagonal

ID, IDInner diameter or "identification" (tag or plate).

IPBIllustrated Parts Breakdown

JIC.....Joint Industrial Conference, an industry standard used to describe a fitting.

Lh, LH.....Left hand

mmmillimeters

MnMetric measurement; example, M8, M10, etc.). The number indicates the nominal diameter in millimeters

MtgMounting

n/sParts that are not shown but serviceable.

No.....Number

Nom.....Nominal, i.e., suitable for nearest practical dimension. For example, a washer suitable for a 5/16" screw has an inner diameter greater than 5/16", but its nominal dimension is 5/16."

NPTNational pipe thread

NPTF.....National pipe thread fine

NSS.....Not supplied separately (example, assemblies or collection of parts which cannot be purchased separately).

OALOverall length, usually the stretched-out length of a hose or cable (including fittings), or the height of an unextended mast.

OD, OdOuter diameter

ORBO-ring boss, usually on a fitting, a threaded end equipped with a groove or lip to hold an O-ring.

p/nPart number

REC.....Schematic designator for an SCR (example, 4 REC.)

RevReverse

Rh, RHRight hand

SCR.....Silicon controlled rectifier

Str.....Straight, usually to describe a hydraulic fitting (vs. elbow)

TermTerminal, electrical

w/.....with

w/out.....without

Phantoms / Reference Parts

Quantities for some parts may be labeled "Pht" (phantom) or "Ref" (reference). A phantom is an assembly which does not exist as a separate unit. A reference item is not officially part of the parent assembly, but is shown on the illustration to make it easier to locate and identify. A zero quantity may also be used to identify a reference item.

Task Groups/Assemblies

Task groups and/or assemblies are identified by a two-character letter code and a number suffix, example, OH389 or ET351. The letter codes are as follows:

COCovers

CTCounterweights

DADrive Axle and Wheels

EL.....Electrical System

FL.....Fluids and Lubricants

FRFrame

HYHydraulic System

IA.....Inspection and Adjustments

ID.....Identification, Decals and Paint

LWLoad Wheels

MA.....Mast

OH.....Overhead Guard, Instrument Panel, Controls

OPOptions (example, Fork Installation)

PBParking Brake

PSPivot and Shift System

SBService Brake

ST.....Seat

Items not manufactured by Drexel Industries, as well as some Drexel subassemblies, are identified by assembly part numbers (p/n:). These items are located immediately after to the task groups in which they are used.

Figure 8-7: Steer Idler Assembly, p/n: 1412460-A

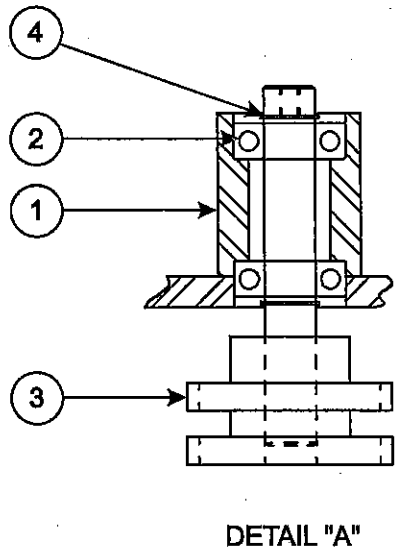
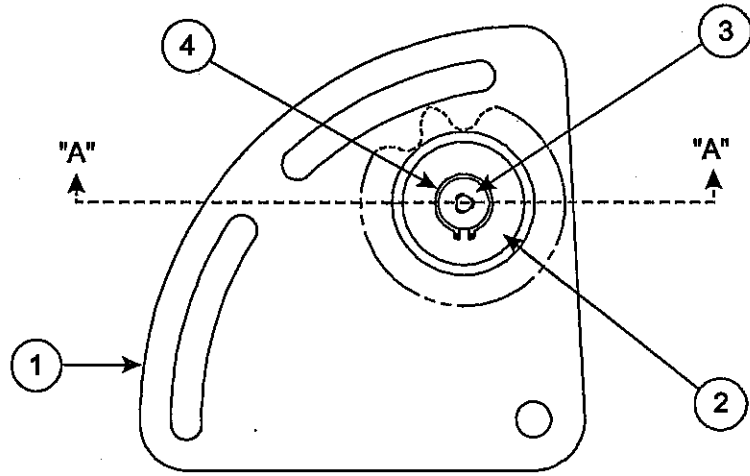
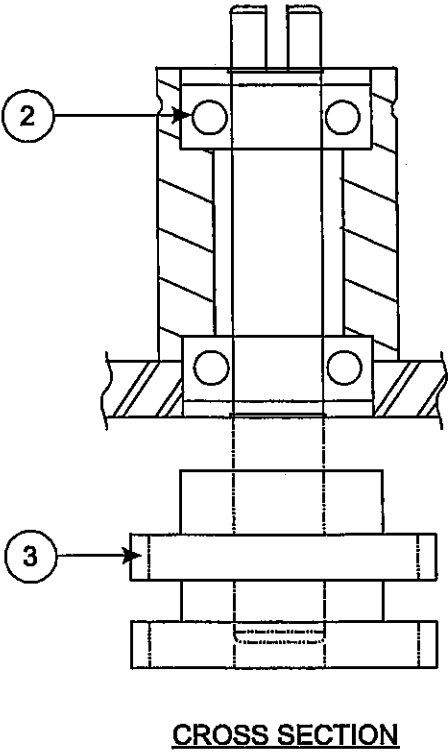
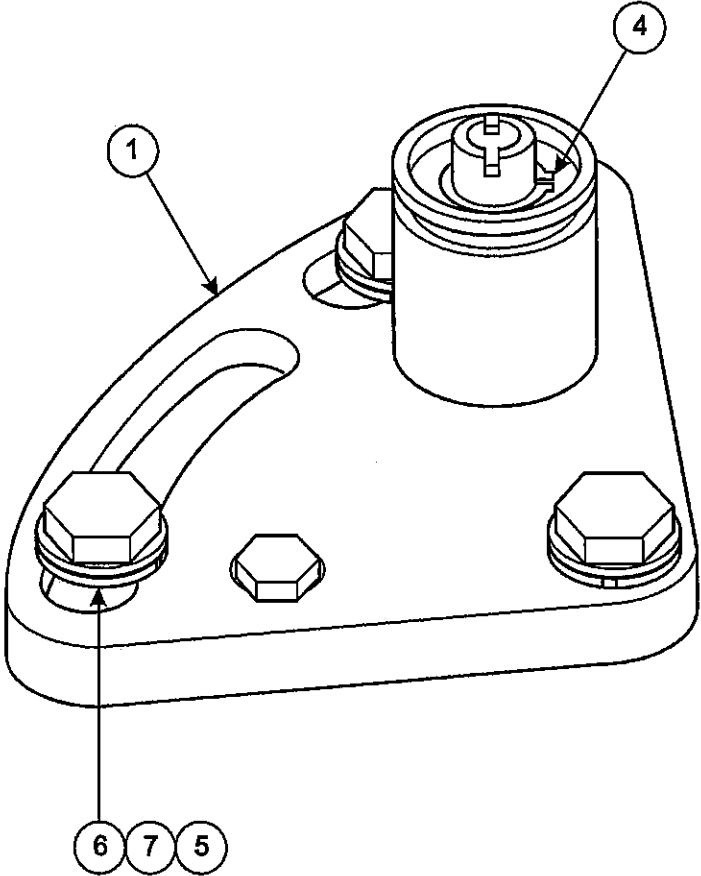
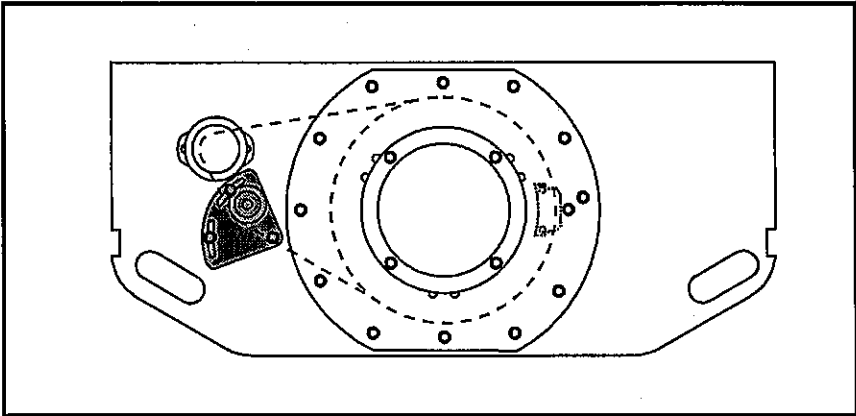


Figure 8-11: Steer Idler Installation, DA9



Load Wheel Installation, LW6

Item	Part No.	Qty	Description
1	50421	2	Cone, Bearing, Outer
2	50422	2	Lock Washer
3	50423	2	Nut, Lock
4	7837	2	Cover, Hub
5	77G1008E	8	Screw, Flat Head
6	1402294	1	Load Tire Installation
7	16F12	2	Plug, Pipe, Standard

Figure 8-15: Load Wheel Installation, LW6

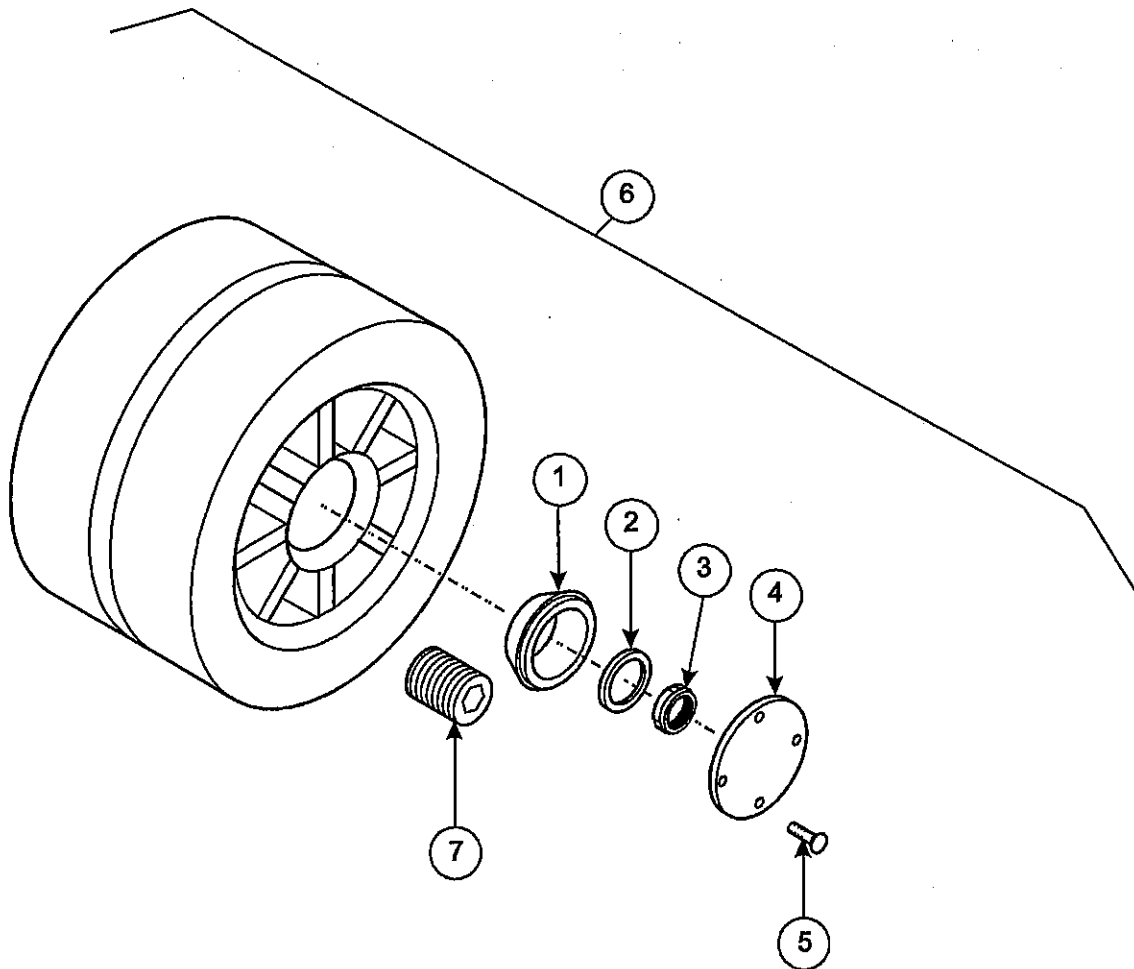


Figure 8-21: Portec Sensor Board Installation, EL23

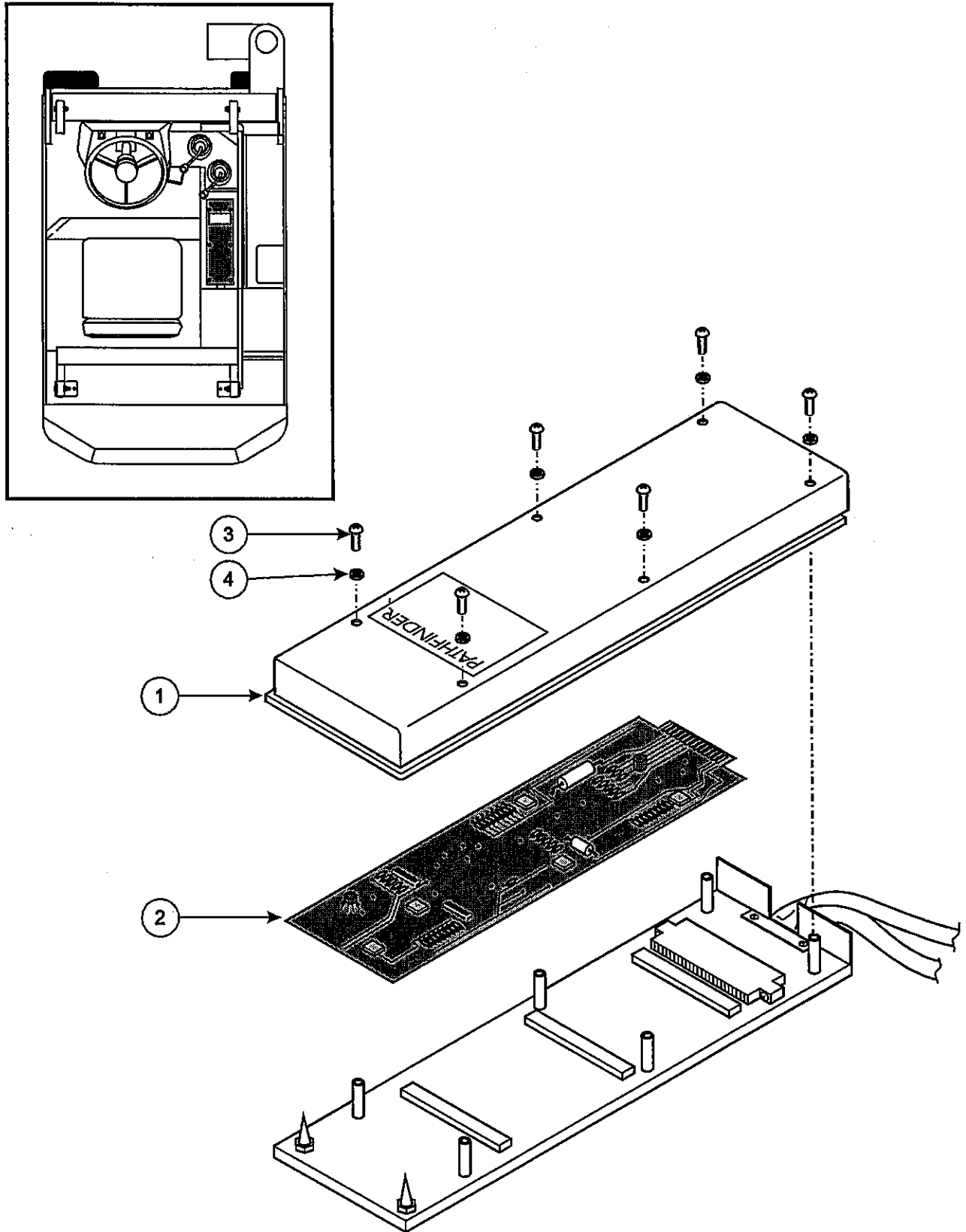
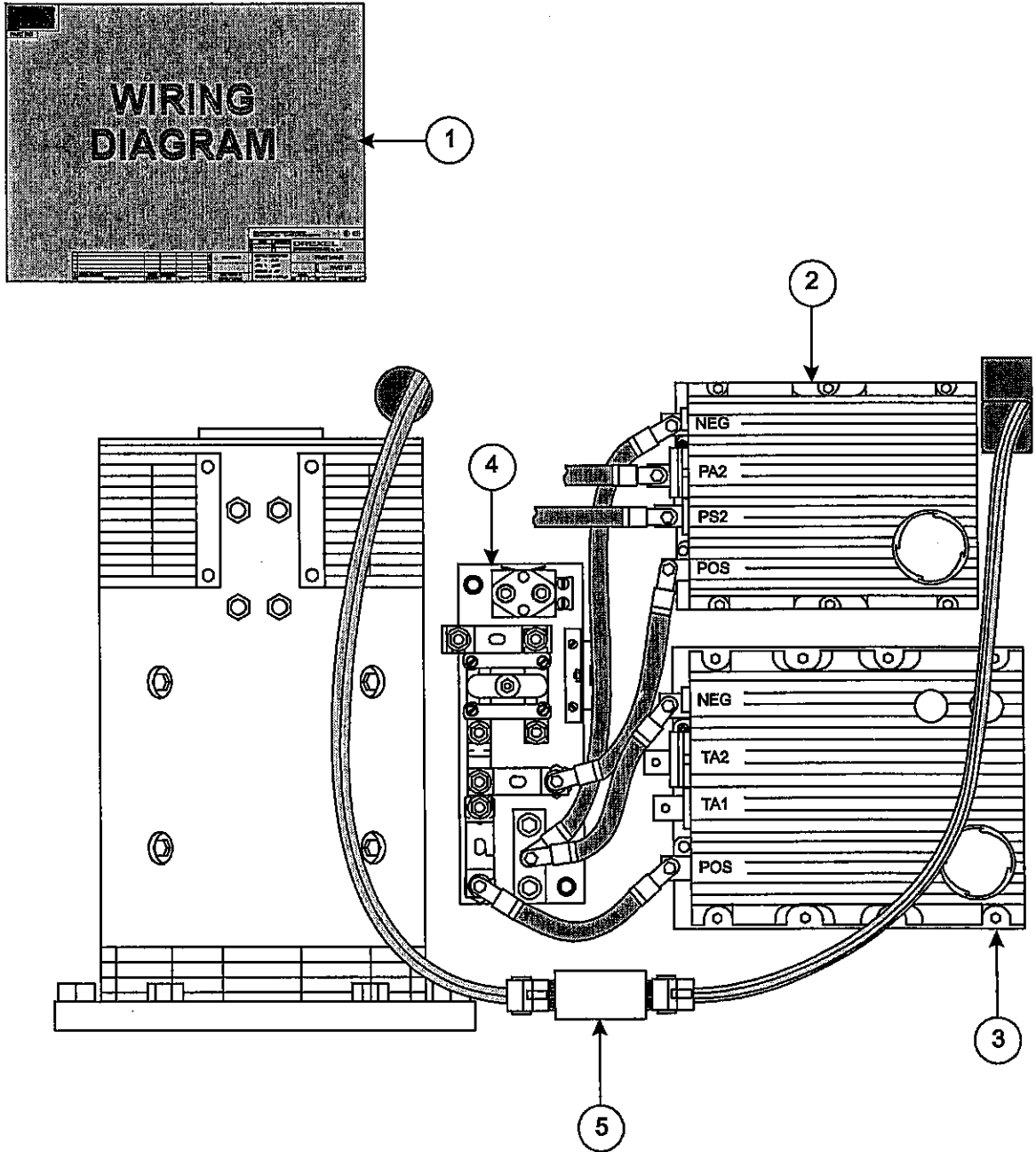


Figure 8-26: Controllers Installation, EL39-A



Ground Straps Installation, p/n: EL38-A

Item	Part No.	Qty.	Description
1	1CM1025ER	2	Screw Hex Head, Class 8.8 M10x1.5-25
2	18EM1019ER	2	Washer, Flat, H.s. M10
3	6719	2	Strap, Ground

Figure 8-34: Ground Straps Installation, p/n: EL38-A

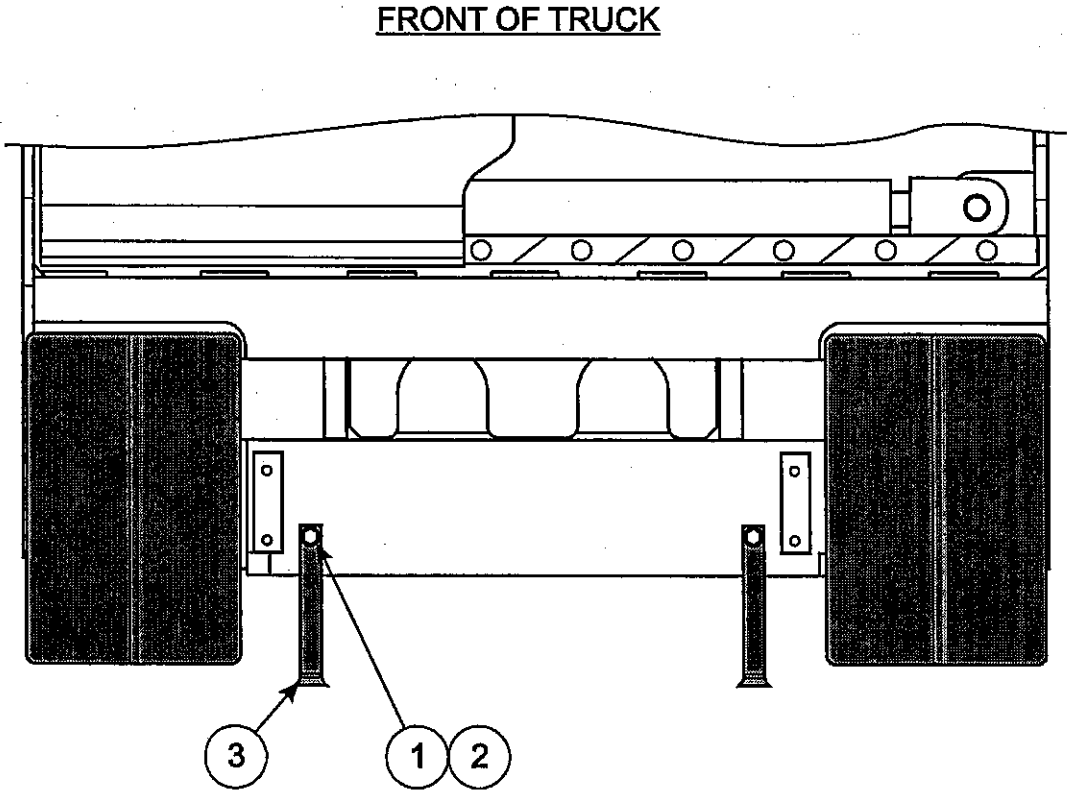


Figure 8-46: Umbilical Hoses Connect, HY46

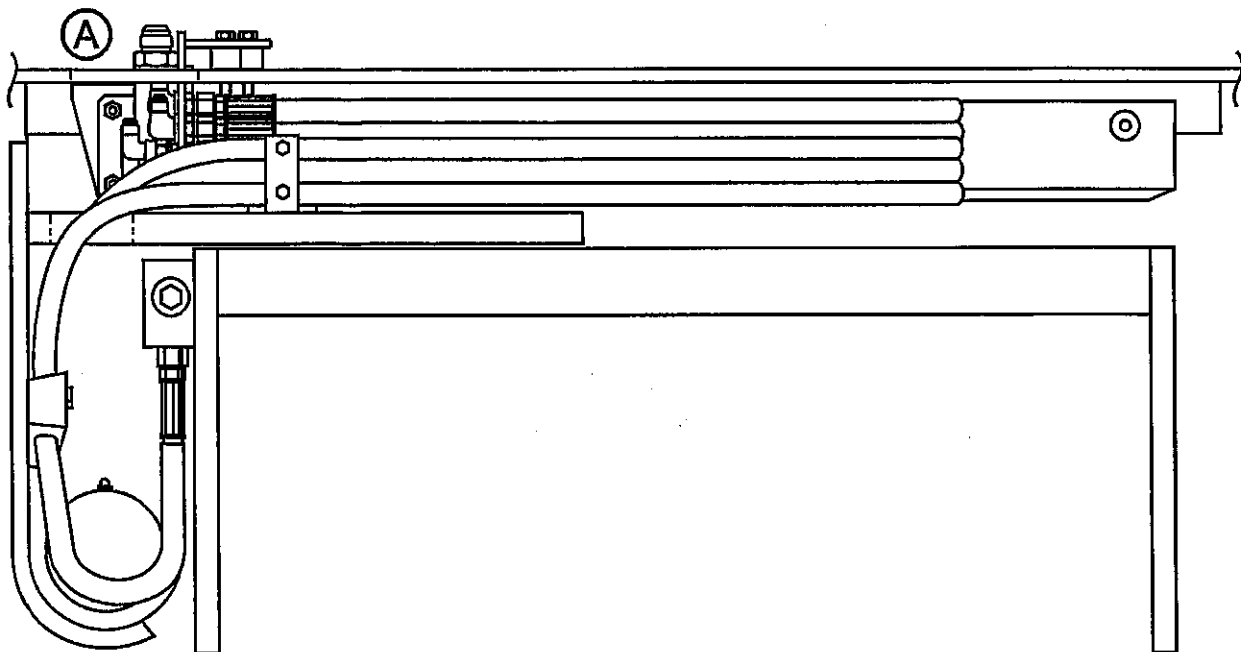
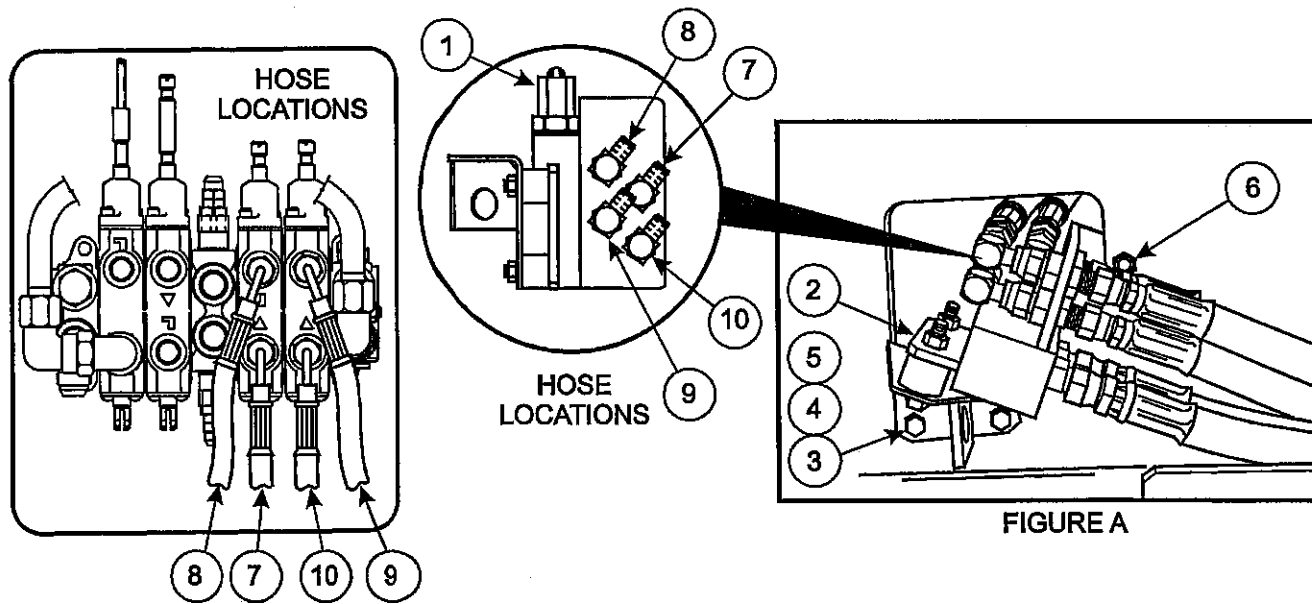


Figure 8-49: Portec Hoses Installation, p/n: HY45-B

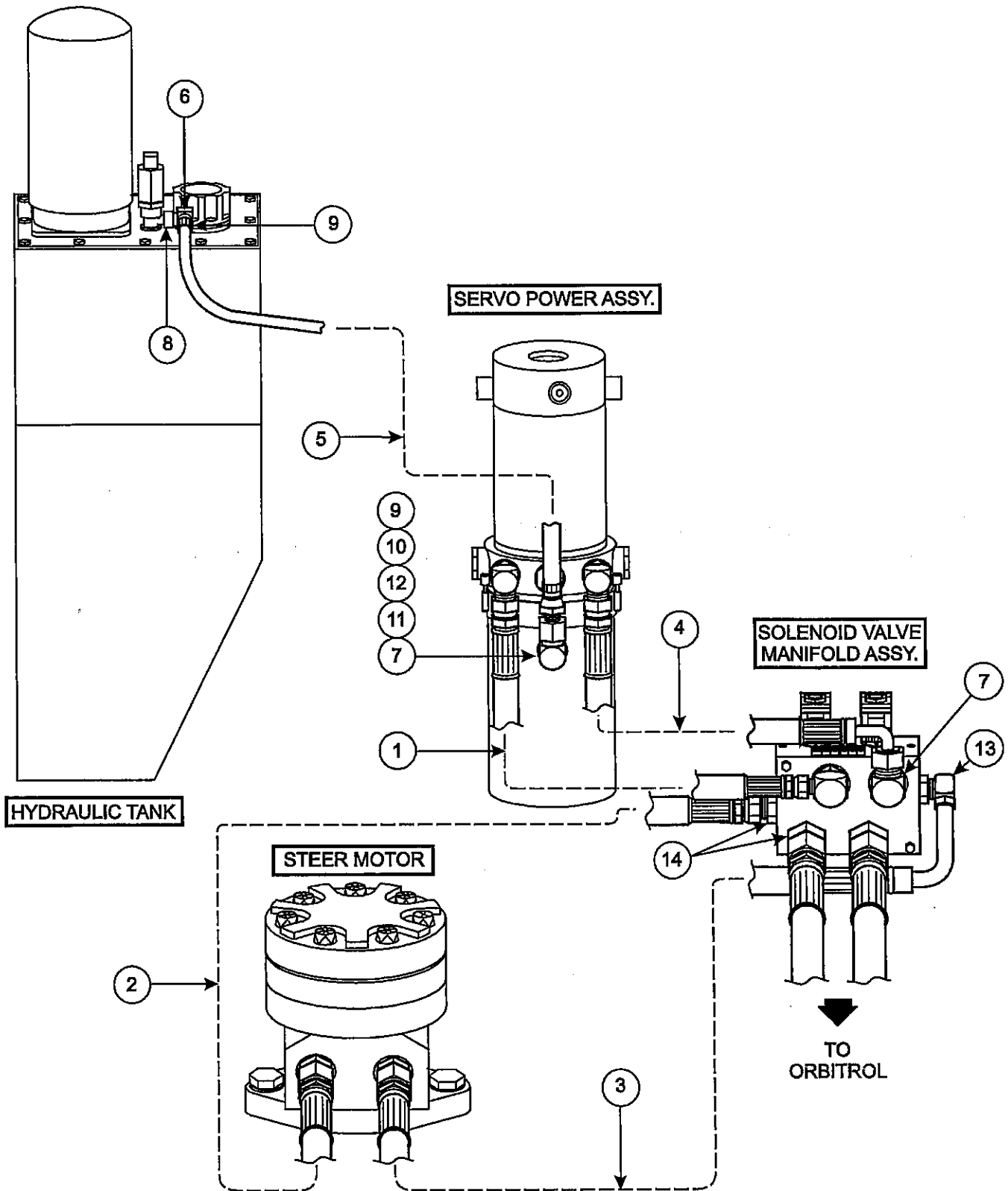
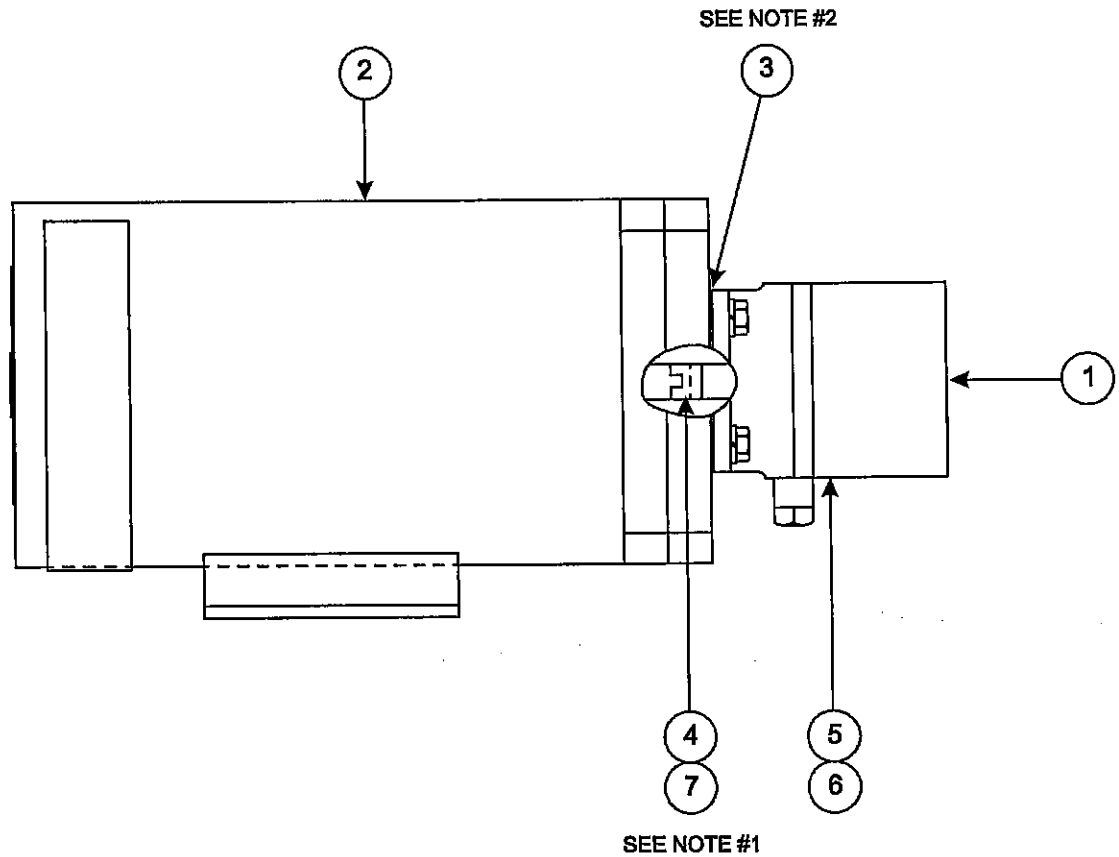


Figure 8-52: Pump and Motor Assembly, Steering, p/n: 1413444-A



NOTES:

1. MAKE SURE THAT OLDUM COUPLING (BETWEEN PUMP & MOTOR) IS LINED UP PROPERLY. CLEAN OUT OLD GREASE. GENEROUSLY COAT THE BEARING, MOTOR SHAFT SLOT & COUPLING WITH ITEM # 7 GREASE.
2. MAKE SURE THAT .031 THICK GASKET ITEM # 3 IS INSTALLED ON THE 4 BOLT MOUNT FLANGE BETWEEN PUMP & MOTOR END.

CLICK HERE TO **DOWNLOAD** THE COMPLETE MANUAL

- Thank you very much for reading the preview of the manual.
- You can download the complete manual from: www.heydownloads.com by clicking the link below



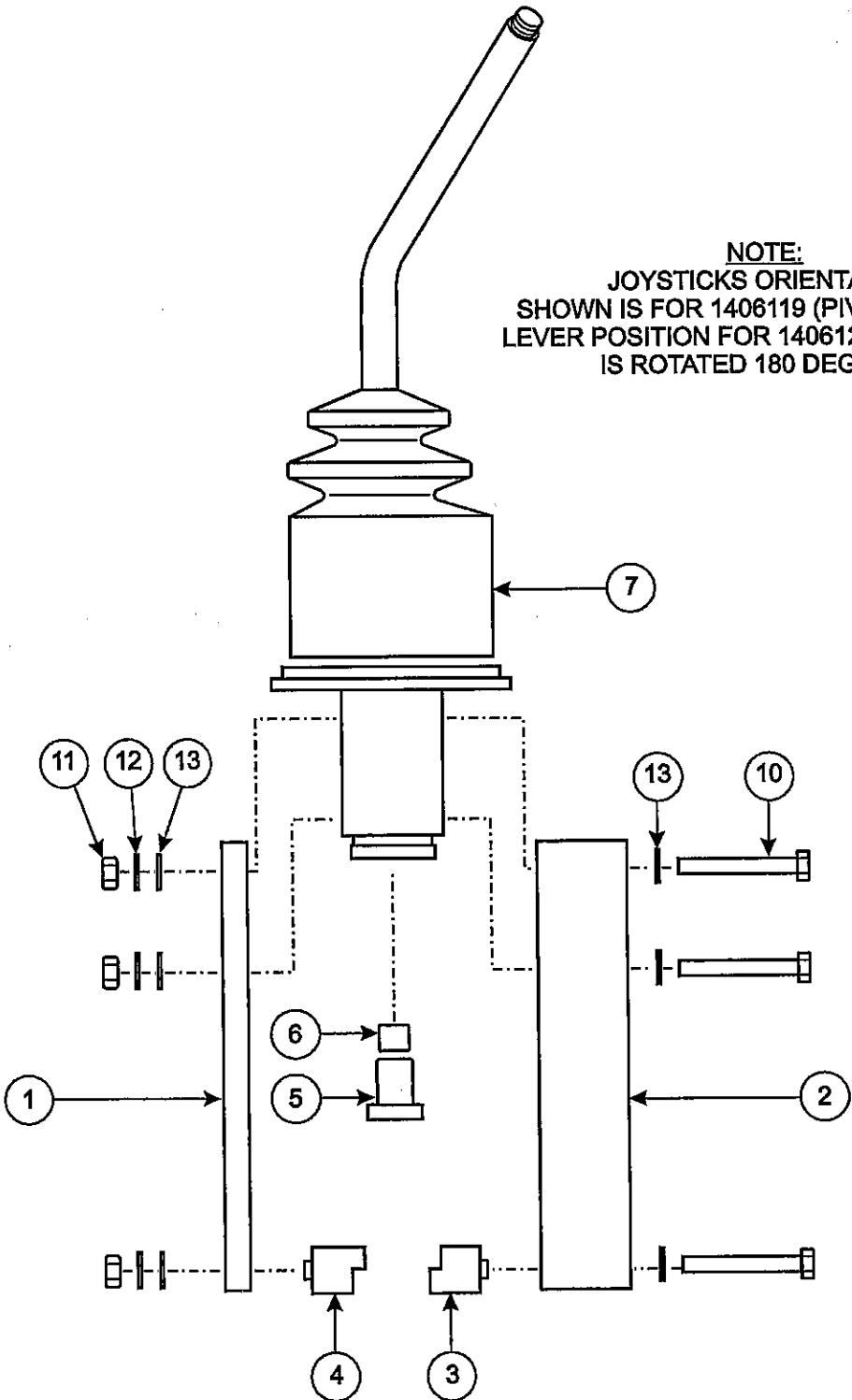
- Please note: If there is no response to CLICKING the link, please download this PDF first and then click on it.

CLICK HERE TO **DOWNLOAD** THE COMPLETE MANUAL

Control Valve Assembly, p/n: 1419760-A (continued)

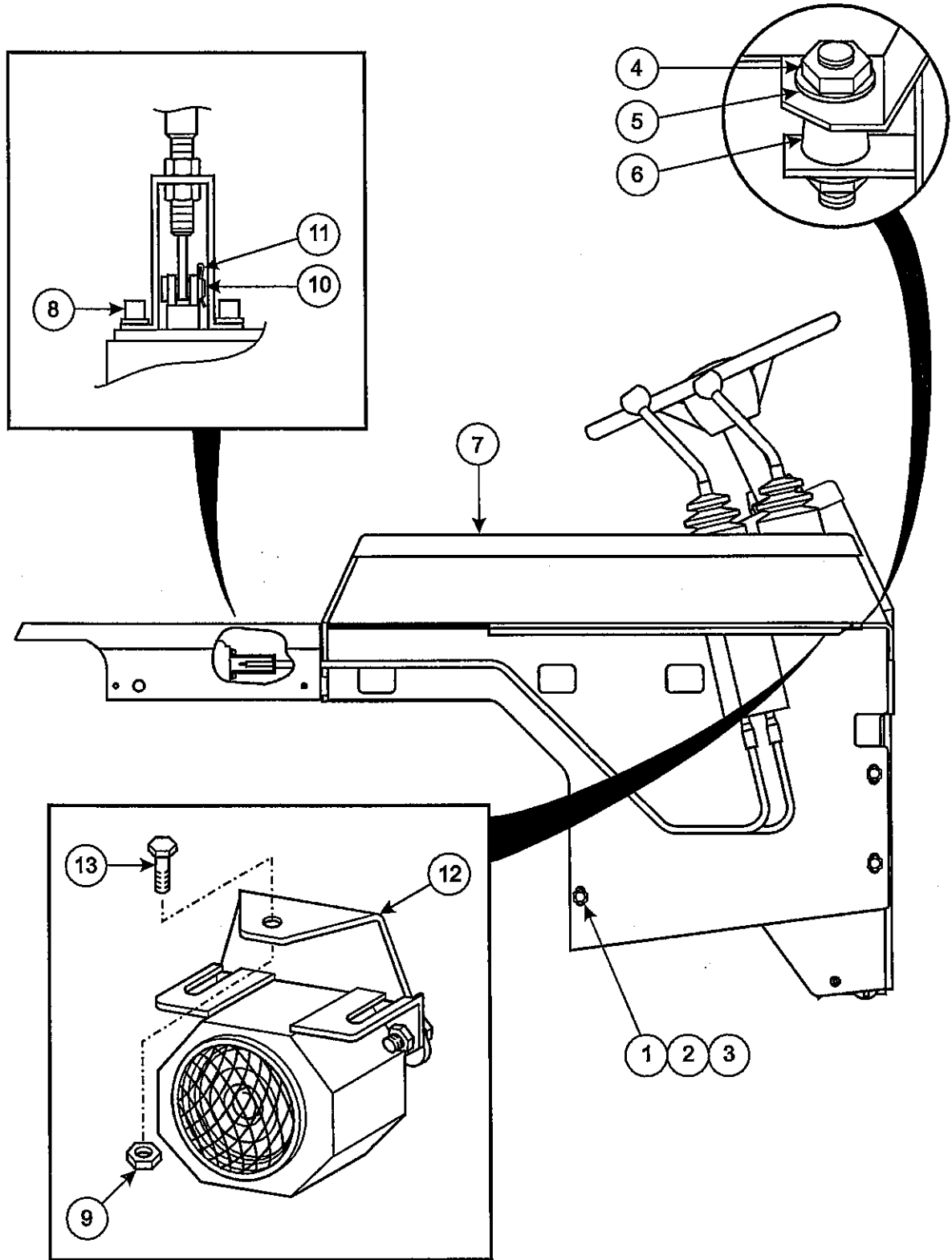
Item	Part No.	Qty.	Description
35.....	1401454	1	Spool, Non-serviceable
36.....	1421505	1	Mid-Inlet Section Assembly
37.....	1413791	1	Spool Section Assembly, Pivot
38.....	1413793	1	Spool Section Assembly, Tilt
39.....	1413794	1	Spool Section Assembly, Shift
40.....	1413795	1	Spool Section Assembly, Lift
41.....	1421504	2	Outlet Section Assembly
42.....	1412162	1	Spool, Tilt
43.....	1412161	1	Spool, Pivot
44.....	1400270-25	0	Seal Kit, includes preceding Items marked with an asterisk (*)

Figure 8-65: Joystick Assembly



NOTE:
JOYSTICKS ORIENTATION
SHOWN IS FOR 1406119 (PIVOT & SHIFT).
LEVER POSITION FOR 1406120 (LIFT & TILT)
IS ROTATED 180 DEGREES.

Figure 8-69: Side Console Installation, OH7



Operator Console Installation, OH6

Item	Part No.	Qty	Description
1	1DM12ER	4	Nut, Hex Head, Class 8.8
2	18EM1224ER	4	Washer, Flat, M12
3	1411116	1	Console Panel Assembly

Figure 8-73: Operator Console Installation, OH6

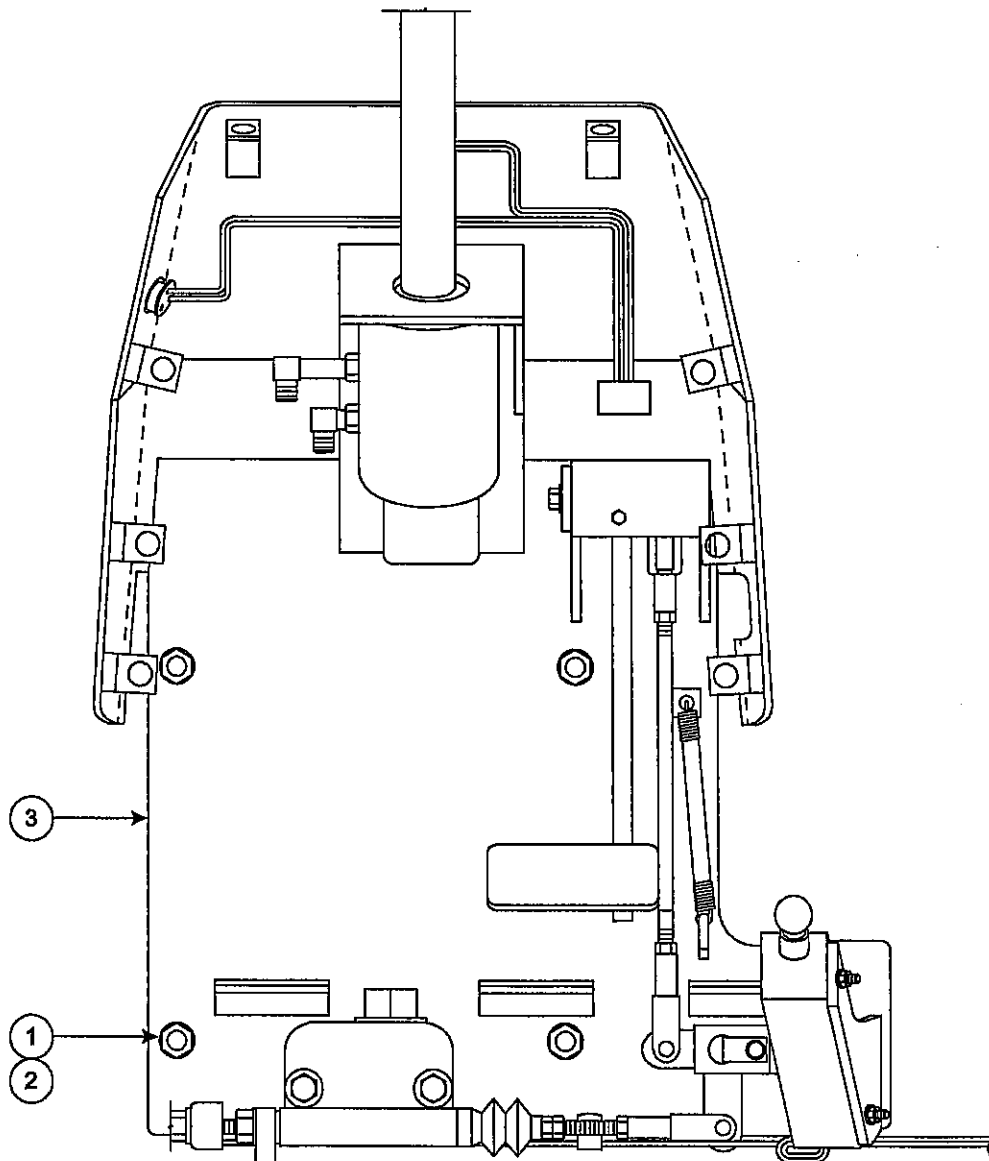


Figure 8-82: Master Cylinder Assembly, p/n: 1402557-C

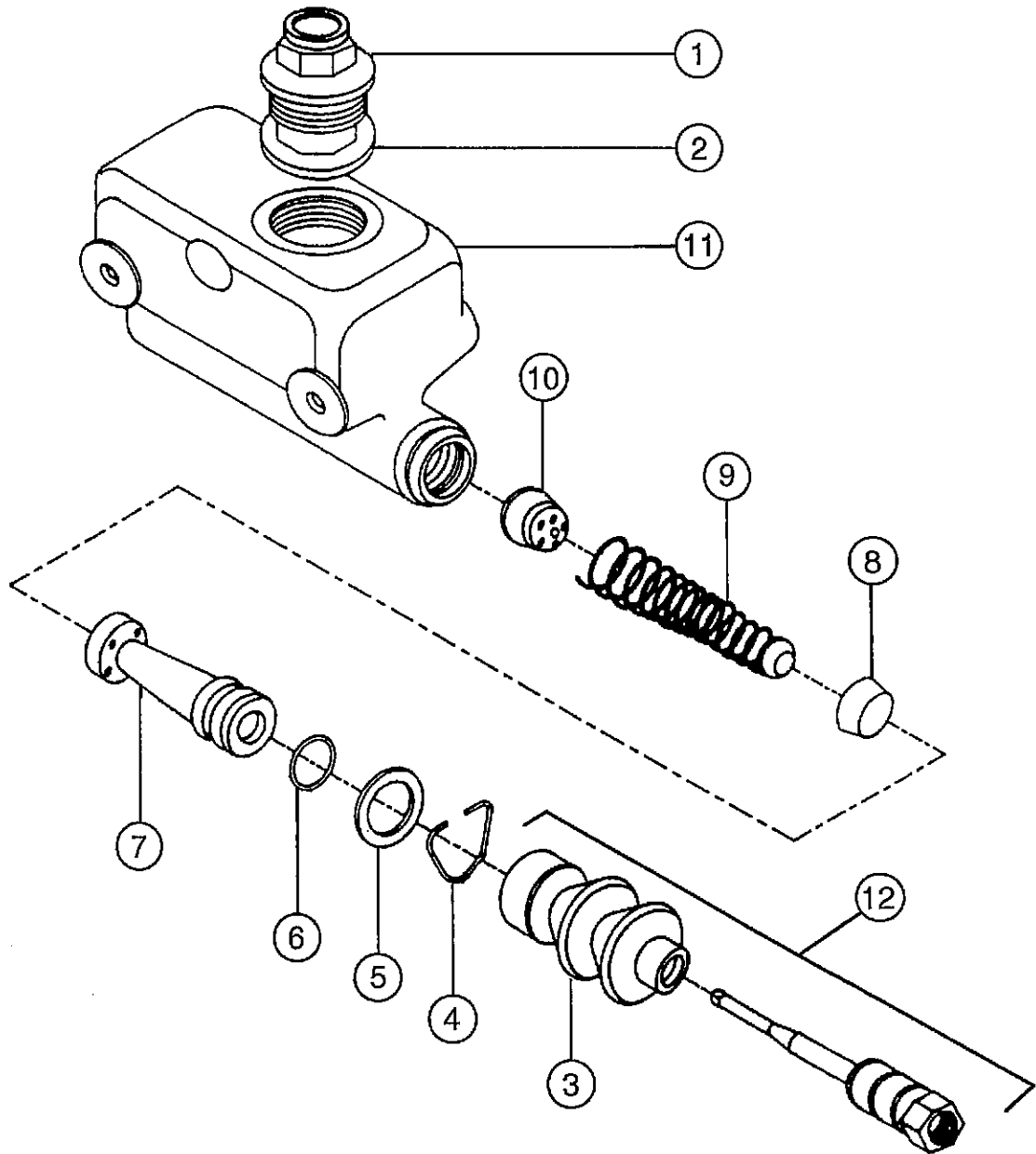


Figure 8-85: Parking Brake Sub-Assembly, PB1

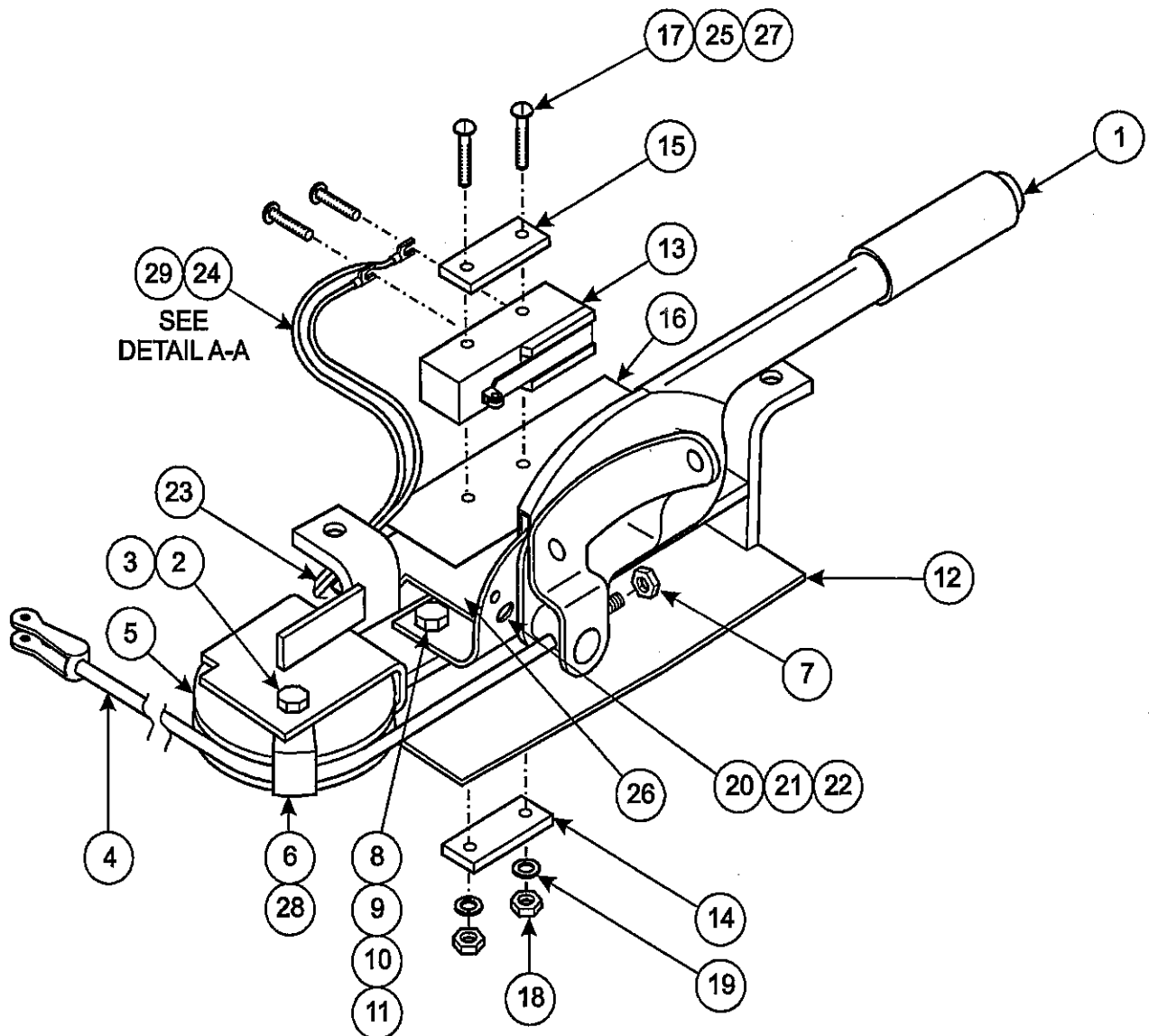
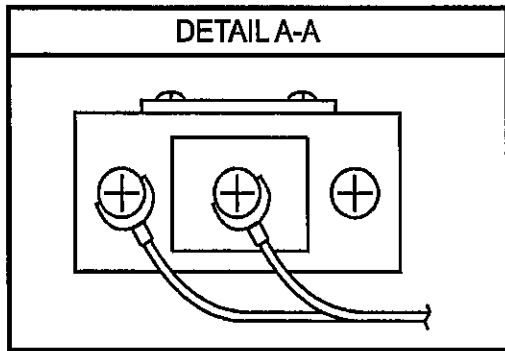


Figure 8-88: Brake Cable Assembly

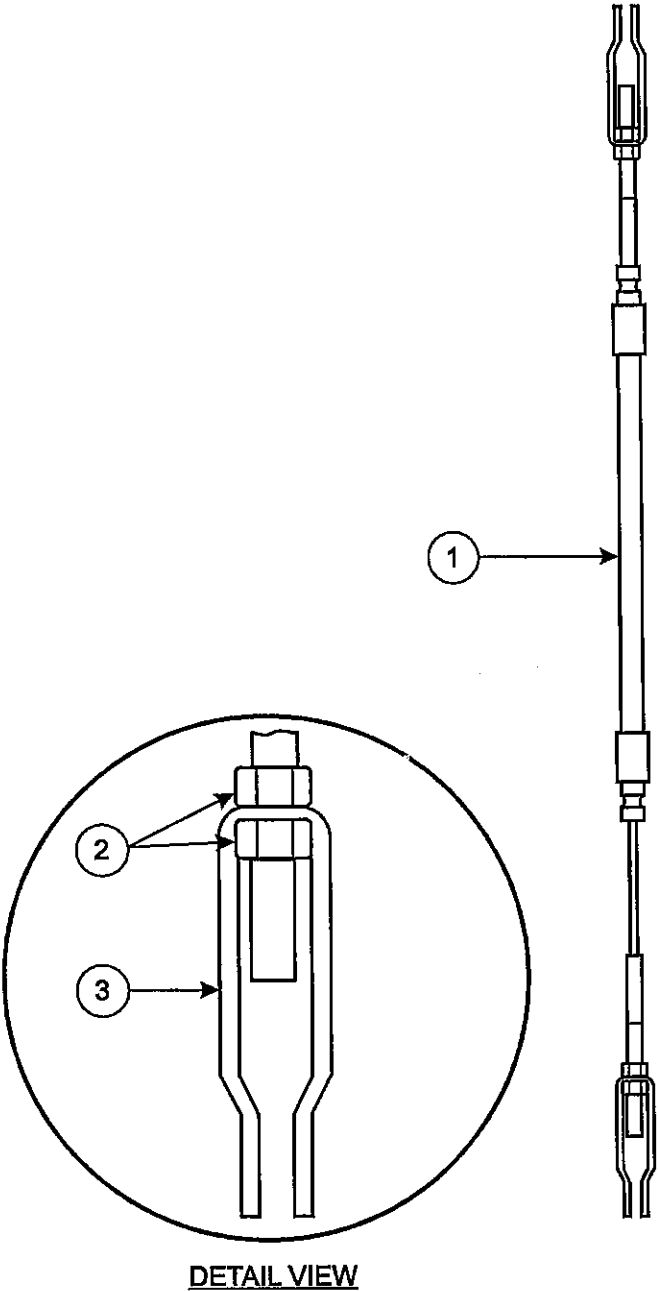


Figure 9-92: Equalizer Installation, PB7

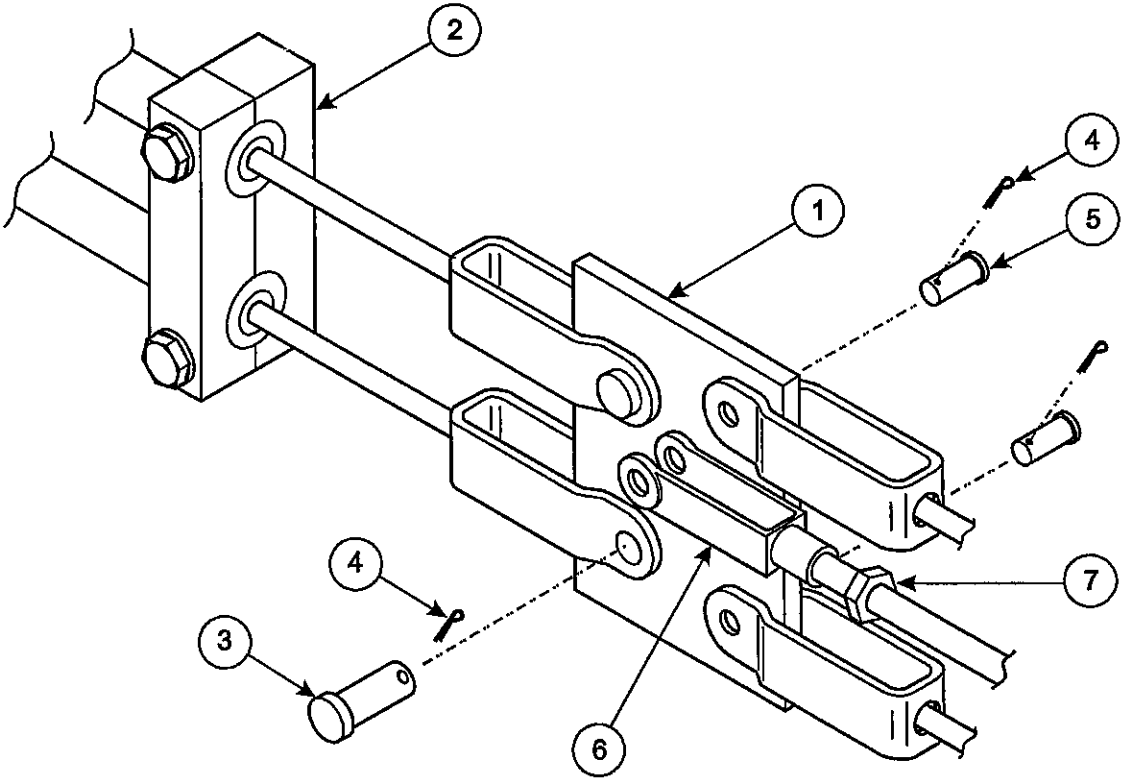
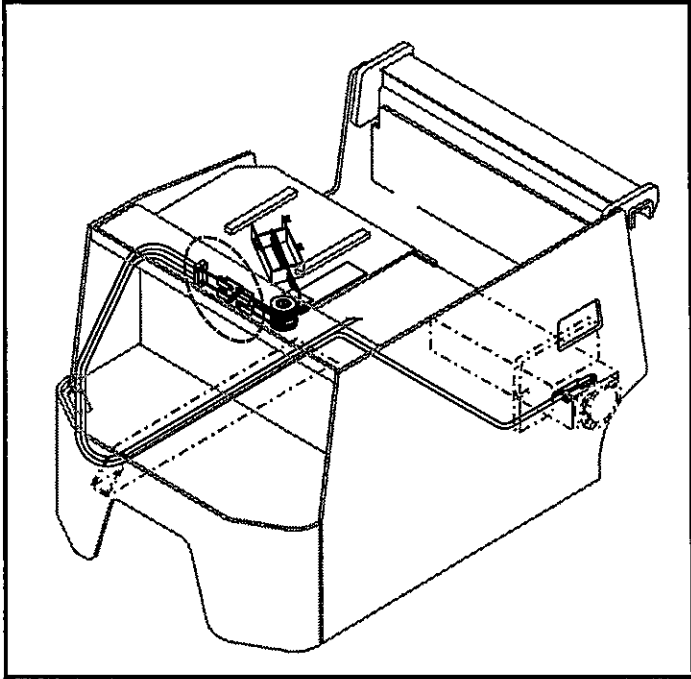


Figure 8-95: Pivot and Shift Installation, PS10

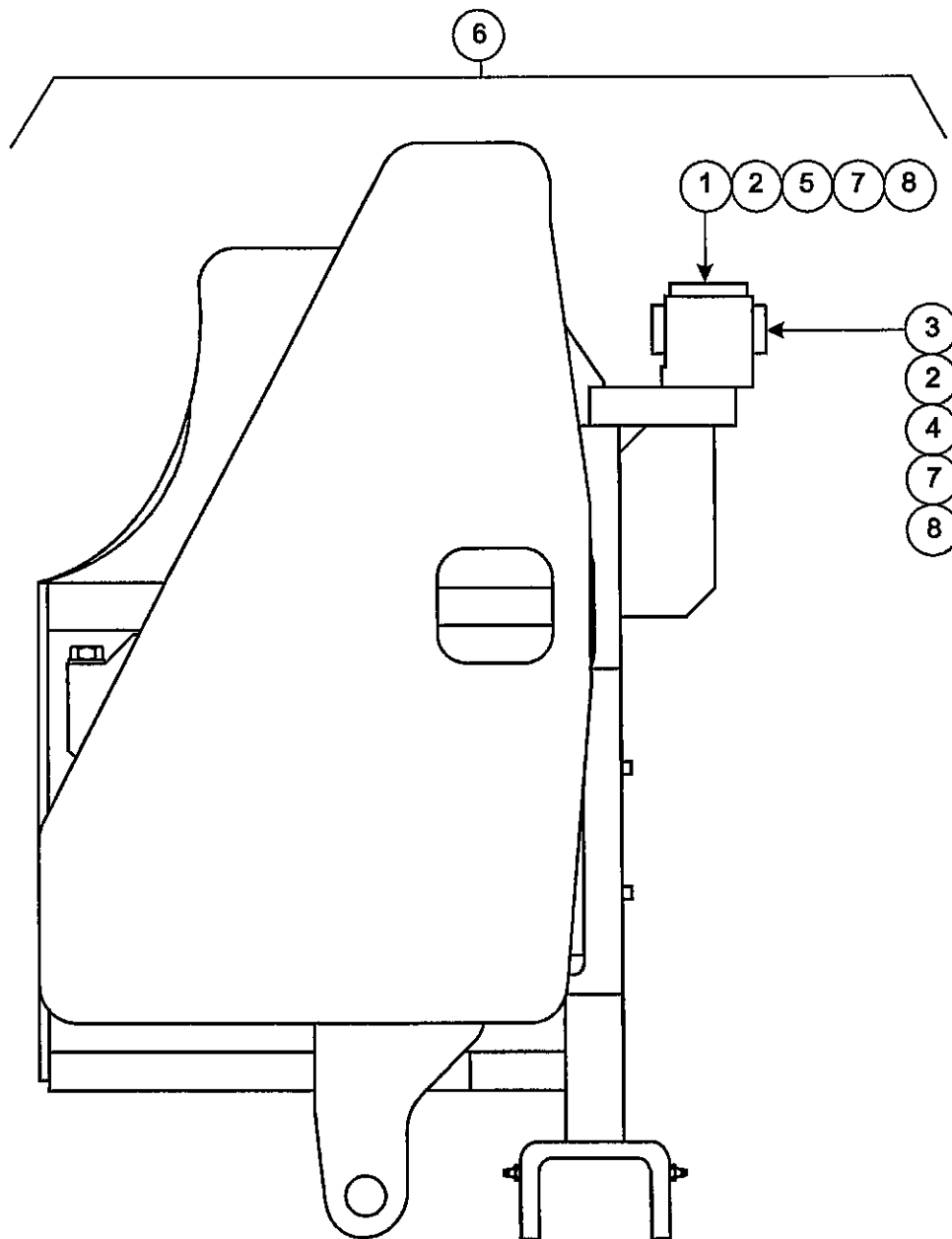


Figure 8-98: Shift Cylinder Sub-Assembly, PS9

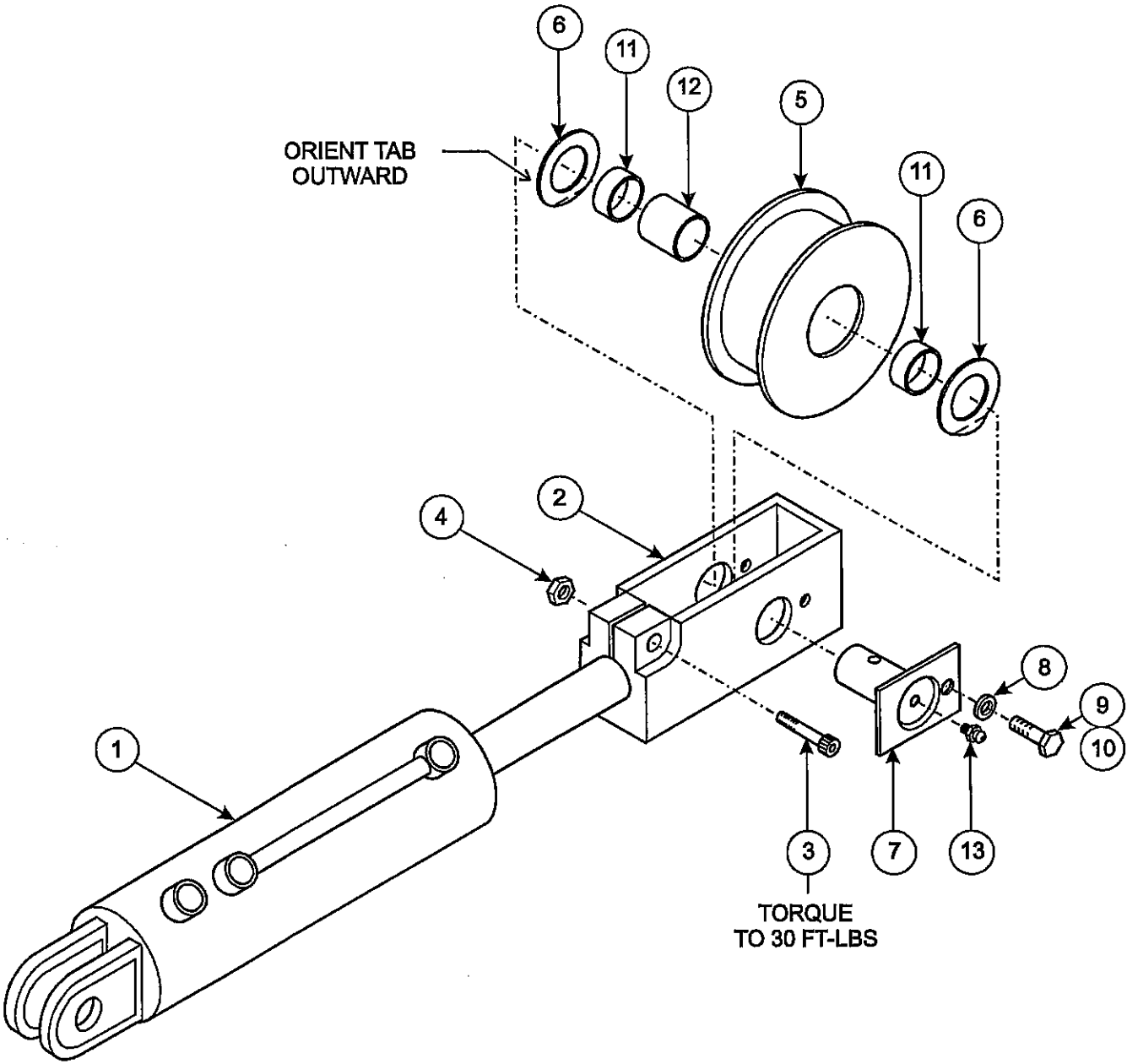


Figure 8-101: Cross Head Bearings Installation, PS1-A

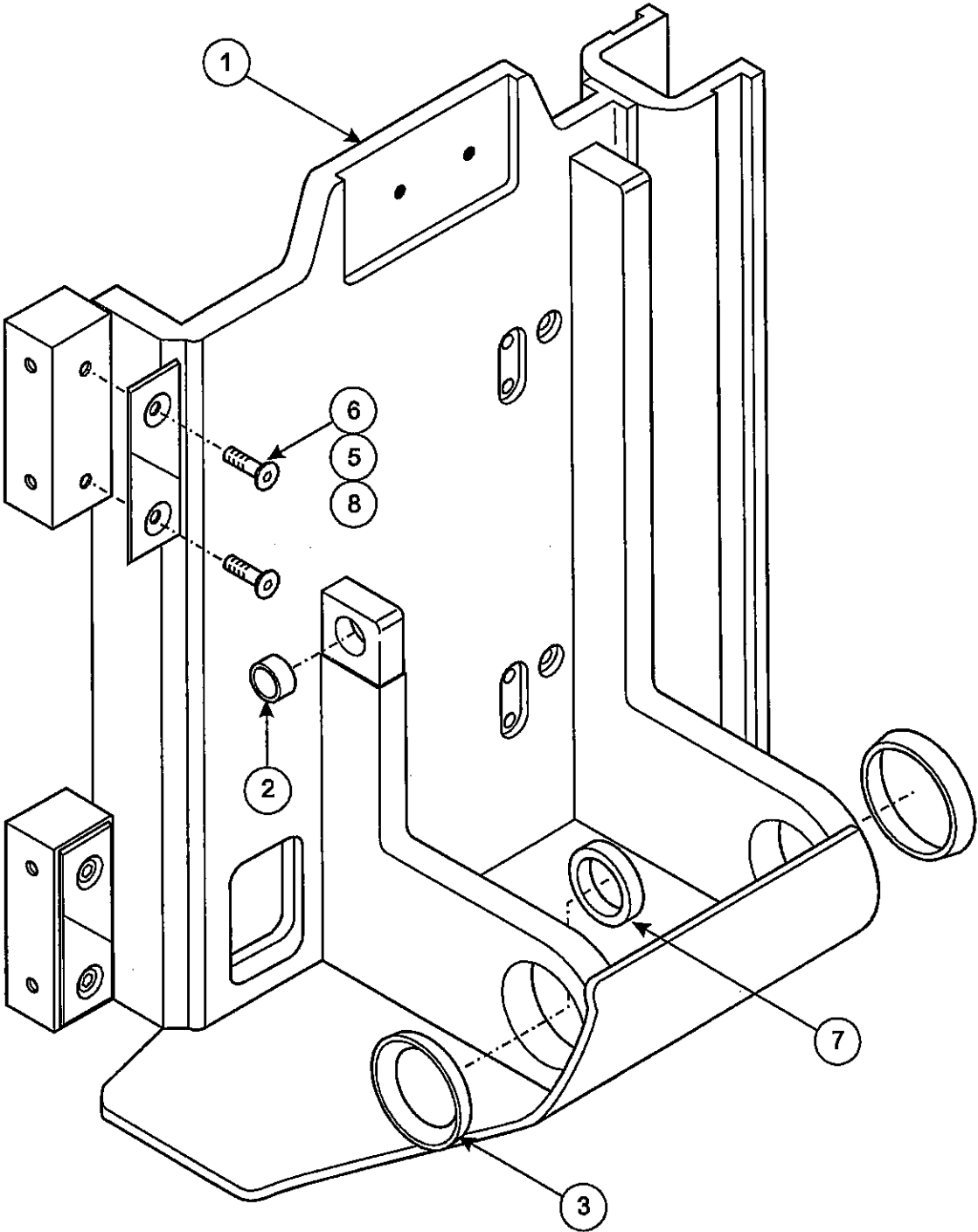


Figure 8-107: Tilt Cylinder Assembly, p/n: 1401224-A

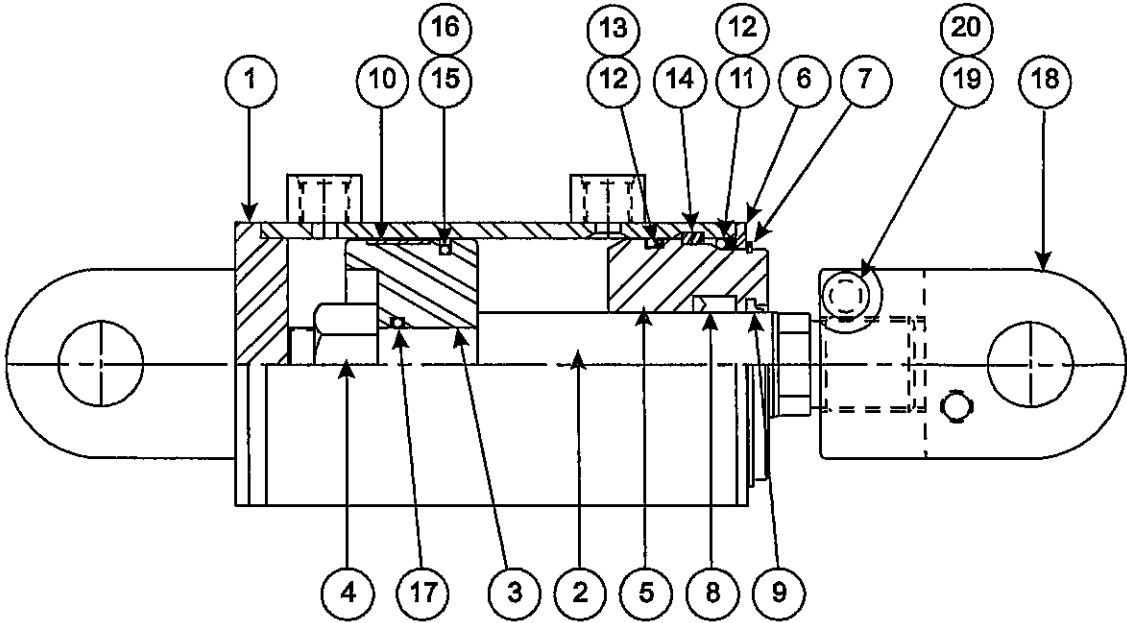


Figure 8-113: Rear Compartment Covers, CO1

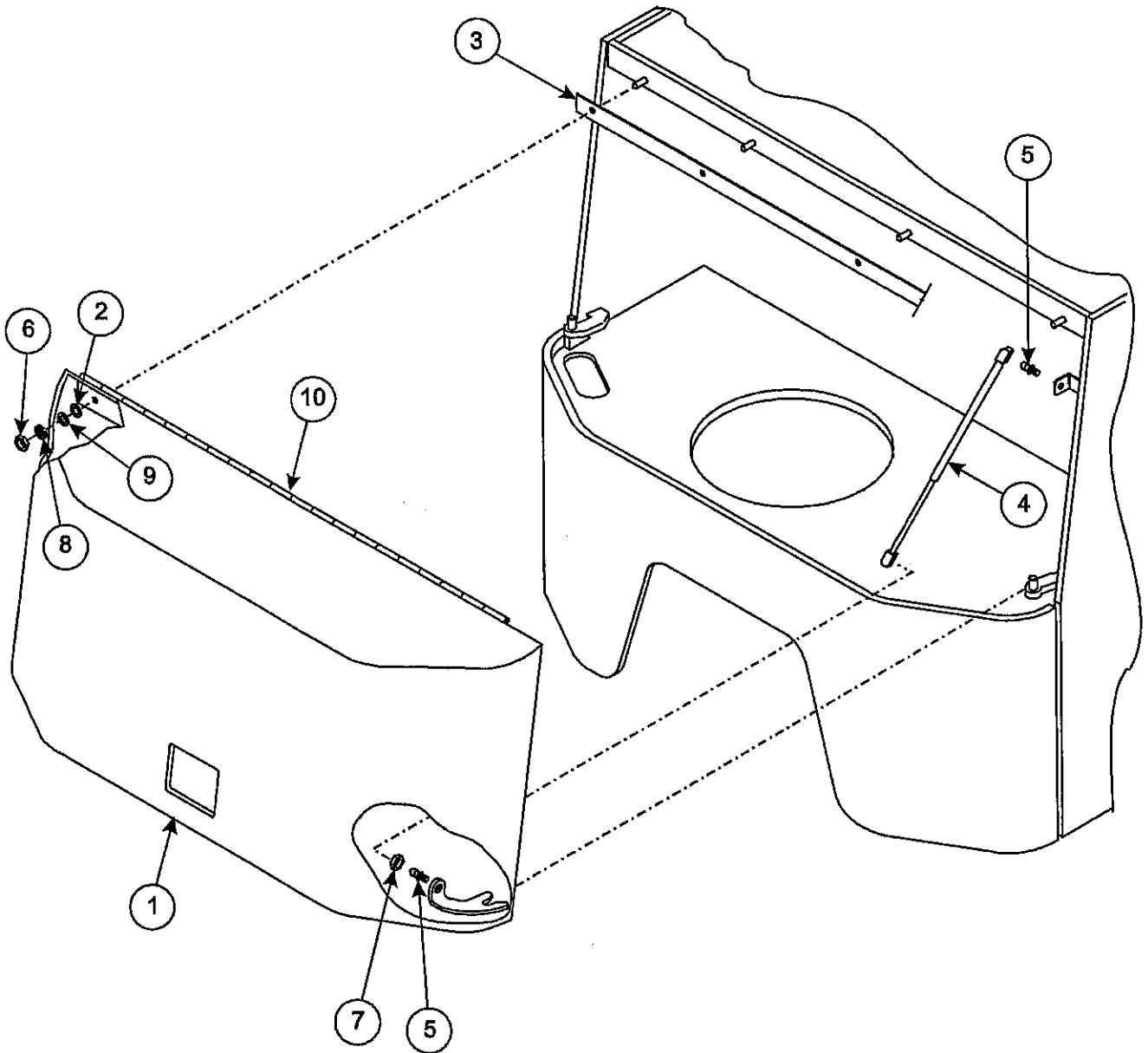
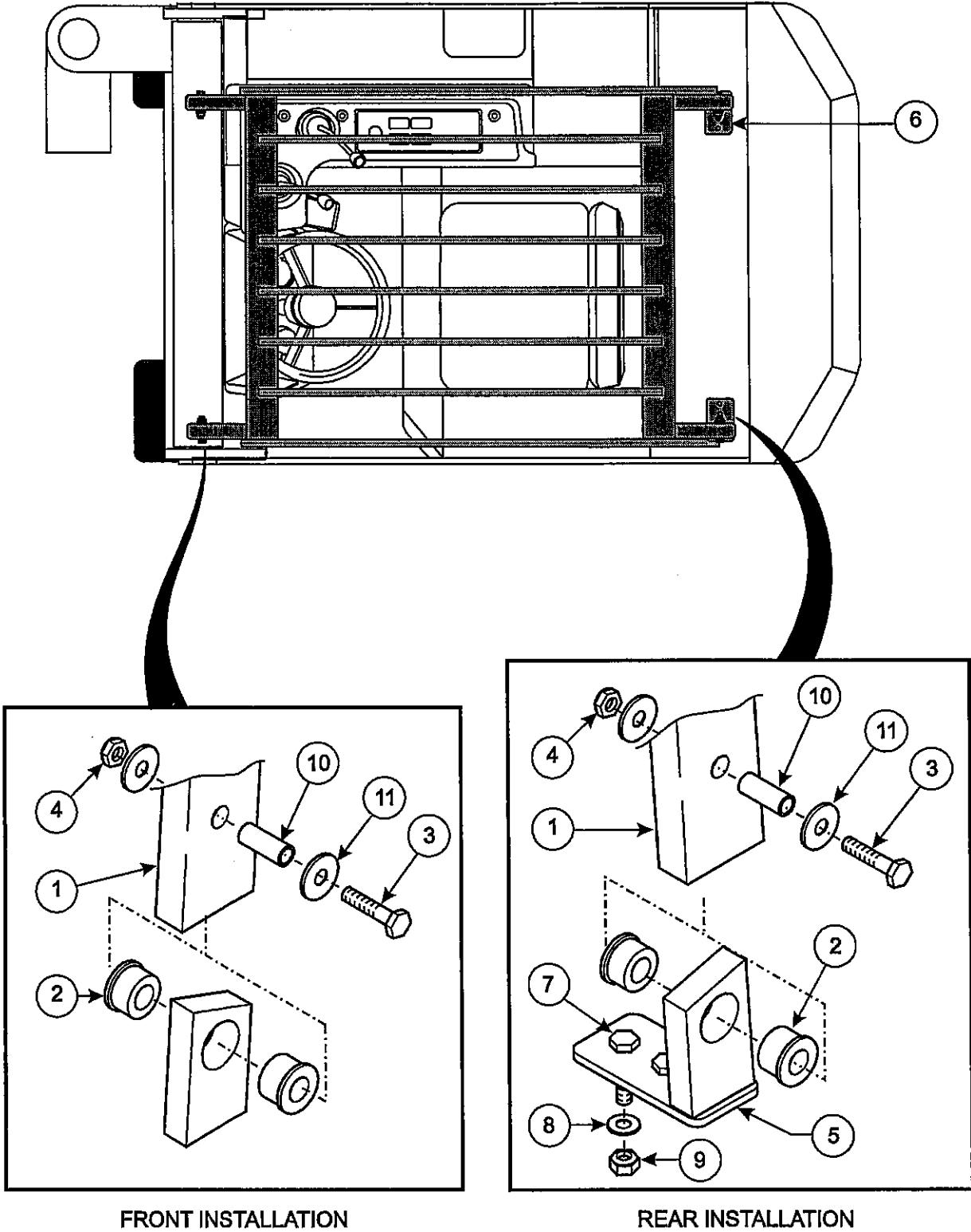


Figure 8-117: Overhead Guard Installation, OH1



FRONT INSTALLATION

REAR INSTALLATION

CLICK HERE TO **DOWNLOAD** THE COMPLETE MANUAL

- Thank you very much for reading the preview of the manual.
- You can download the complete manual from: www.heydownloads.com by clicking the link below



- Please note: If there is no response to CLICKING the link, please download this PDF first and then click on it.

CLICK HERE TO **DOWNLOAD** THE COMPLETE MANUAL