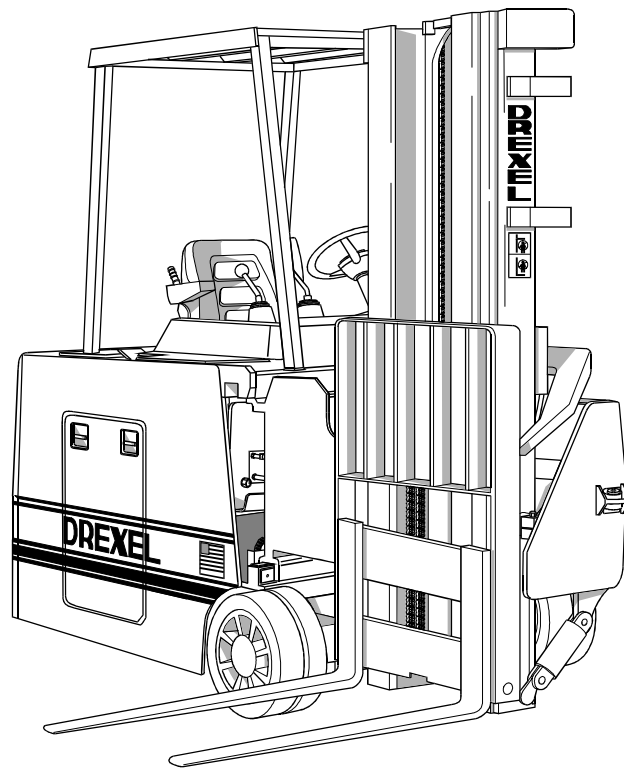


# SLT E Series Guided Base IPB SwingMast® Lift Truck

Illustrated Parts Breakdown (3500#)

---



**Drexel Industries LLC**  
331 Maple Avenue  
Horsham, PA 19044-0983  
U.S.A.

Telephone:..... (215) 672-2200  
Fax:..... (215) 773-6765  
Web: ..... [www.drexeltrucks.com](http://www.drexeltrucks.com)

Base unit: 1419868 -a, 04/01

CLICK HERE TO **DOWNLOAD** THE COMPLETE MANUAL

- Thank you very much for reading the preview of the manual.
- You can download the complete manual from: [www.heydownloads.com](http://www.heydownloads.com) by clicking the link below



- Please note: If there is no response to CLICKING the link, please download this PDF first and then click on it.

CLICK HERE TO **DOWNLOAD** THE COMPLETE MANUAL

## General

This section contains an illustrated parts breakdown (list) and drawings for the serviceable assemblies and components of the Standard **SLT30 “E Series” 3500 Lb. Auto-Guidance SwingMast** lift trucks.

## Abbreviations

The following abbreviations may be used in this Options IPB:

#n .....	the measurement of an inner diameter in 32nds of an inch; example, #10 hose is has an inner diameter of 10/32” or 5/16”.
A/R .....	As required
Barb .....	Barbed, a tapered hose nipple with ridges or “barbs” which keep the hose from slipping off.
Cl .....	Class, used to specify yield strength of metric fasteners.
Cm .....	centimeters
Ext .....	External
Frk .....	Fork, pronged electrical connector
Fwd .....	Forward
Ga .....	Gauge
Grd, Gr .....	Grade - when hardware lists a grade rating, it is important to maintain that rating when replacing parts.
HS .....	Hardened steel
Hex .....	Hexagonal
ID, ID .....	Inner diameter or “identification” (tag or plate).
IPB .....	Illustrated Parts Breakdown
JIC .....	Joint Industrial Conference, an industry standard used to describe a fitting.
Lh, LH .....	Left hand
mm .....	millimeters
Mn .....	Metric measurement; example, M8, M10, etc.). The number indicates the nominal diameter in millimeters
Mtg .....	Mounting
n/s .....	Parts that are not shown but serviceable.
No .....	Number
Nom .....	Nominal, i.e., suitable for nearest practical dimension. For example, a washer suitable for a 5/16” screw has an inner diameter greater than 5/16”, but its nominal dimension is 5/16.”
NPT .....	National pipe thread
NPTF .....	National pipe thread fine
NSS .....	Not supplied separately (example, assemblies or collection of parts which cannot be purchased separately).
OAL .....	Overall length, usually the stretched-out length of a hose or cable (including fittings), or the height of an unextended mast.
OD, Od .....	Outer diameter
ORB .....	O-ring boss, usually on a fitting, a threaded end equipped with a groove or lip to hold an O-ring.

p/n .....	Part number
REC .....	Schematic designator for an SCR (example, 4 REC.)
Rev .....	Reverse
Rh, RH .....	Right hand
SCR .....	Silicon controlled rectifier
Str .....	Straight, usually to describe a hydraulic fitting (vs. elbow)
Term .....	Terminal, electrical
w/ .....	with
w/out .....	without

## Phantoms / Reference Parts

Quantities for some parts may be labeled “Pht” (phantom) or “Ref” (reference). A phantom is an assembly which does not exist as a separate unit. A reference item is not officially part of the parent assembly, but is shown on the illustration to make it easier to locate and identify. A zero quantity may also be used to identify a reference item.

## Task Groups/Assemblies

Task groups and/or assemblies are identified by a two-character letter code and a number suffix, example, OH389 or ET351. The letter codes are as follows:

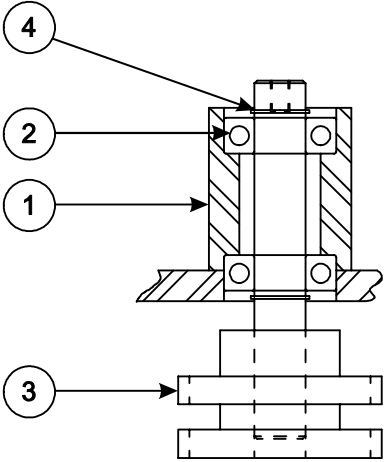
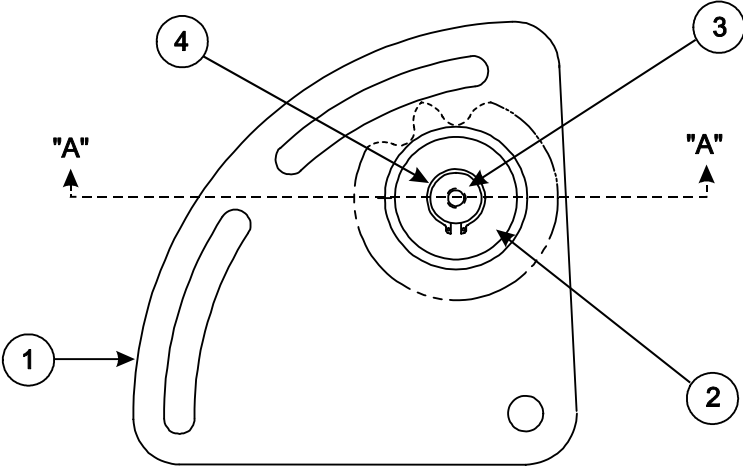
CO .....	Covers
CT .....	Counterweights
DA .....	Drive Axle and Wheels
EL .....	Electrical System
FL .....	Fluids and Lubricants
FR .....	Frame
HY .....	Hydraulic System
IA .....	Inspection and Adjustments
ID .....	Identification, Decals and Paint
LW .....	Load Wheels
MA .....	Mast
OH .....	Overhead Guard, Instrument Panel, Controls
OP .....	Options (example, Fork Installation)
PB .....	Parking Brake
PS .....	Pivot and Shift System
SB .....	Service Brake
ST .....	Seat

Items not manufactured by Drexel Industries, as well as some Drexel subassemblies, are identified by assembly part numbers (p/n:). These items are located immediately after to the task groups in which they are used.

# Drive Motor Installation, DA1

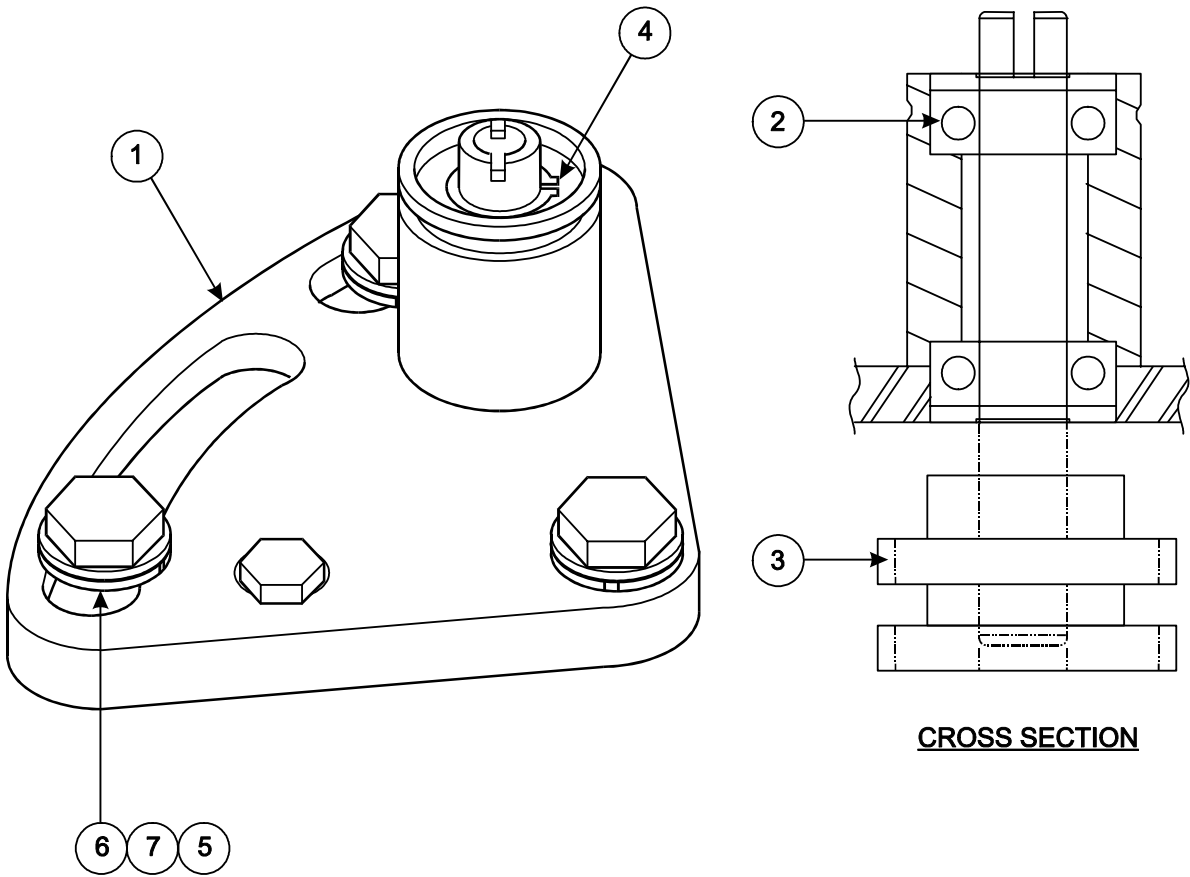
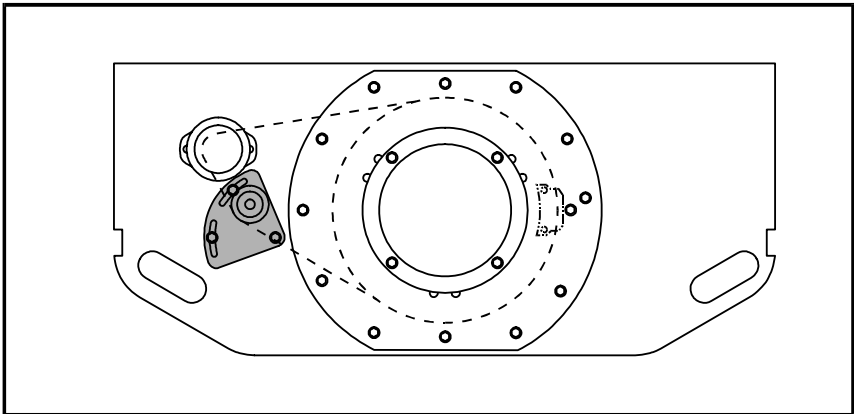
<b>Item</b>	<b>Part No.</b>	<b>Qty</b>	<b>Description</b>
1 .....	1402988.....	1 .....	O-ring, Polyurethane
2 .....	1400695.....	0.....	Drive Unit, Dual Chain
3.....	1400694.....	1.....	Screw, Hex Head, Class 8.8
4 .....	1415910.....	1 .....	Traction Motor Assembly
5 .....	1412460.....	1 .....	Steer Idler Assembly
6 .....	6EM100ER.....	4.....	Lock Washer, M10
7 .....	18EM1019ER.....	4.....	Washer, Flat, Hardened, M10
8 .....	1CM1035ER.....	4.....	Screw, Hex Head, Class 8.8

**Figure 8-6: Steer Idler Assembly, p/n: 1412460-A**



**DETAIL "A"**

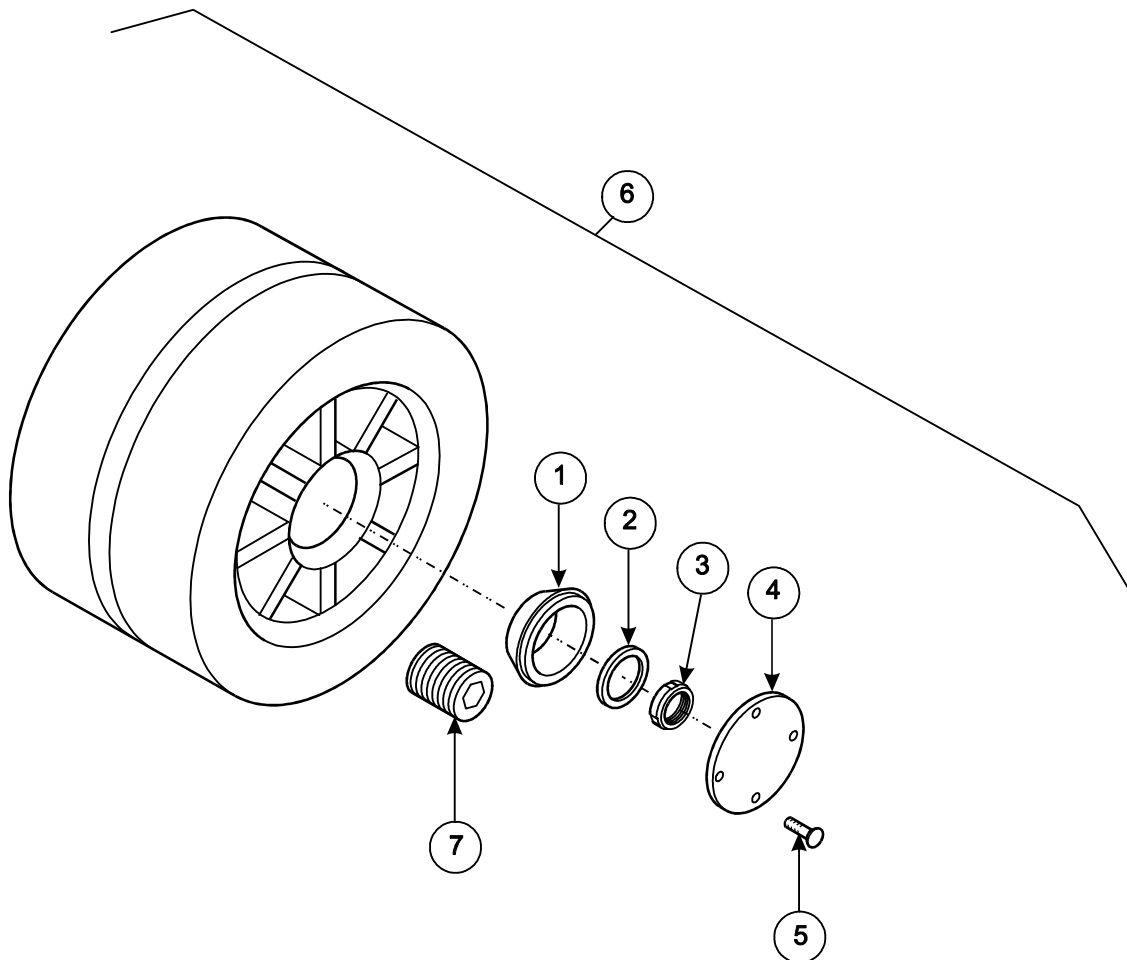
**Figure 8-10: Steer Idler Installation, DA9**



# Load Wheel Installation, LW6

Item	Part No.	Qty	Description
1	50421	2	Cone, Bearing, Outer
2	50422	2	Lock Washer
3	50423	2	Nut, Lock
4	7837	2	Cover, Hub
5	77G1008E	8	Screw, Flat Head
6	1402294	1	Load Tire Installation
7	16F12	2	Plug, Pipe, Standard

**Figure 8-14: Load Wheel Installation, LW6**





**Figure 8-20: Portec Sensor Board Installation, EL23**

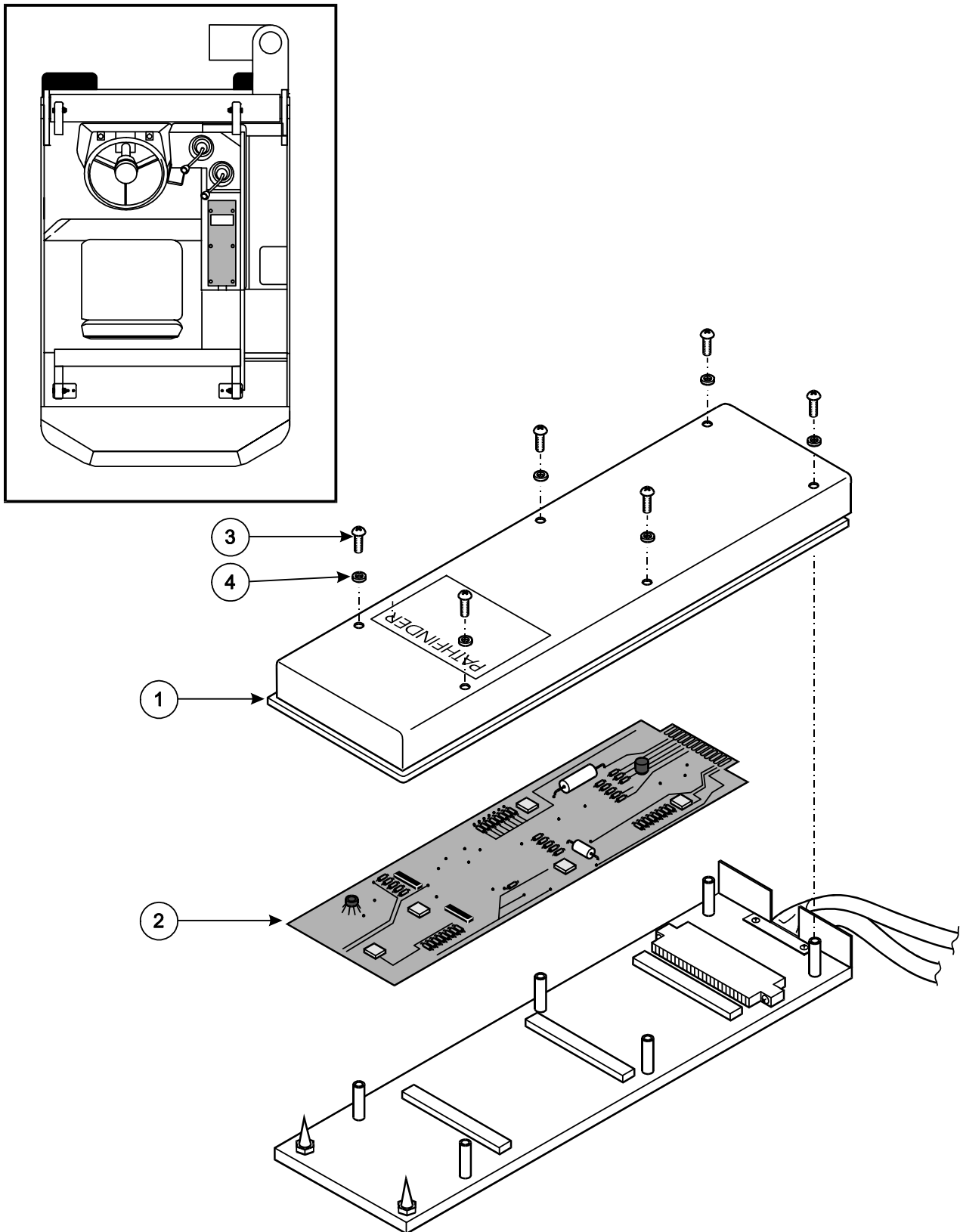
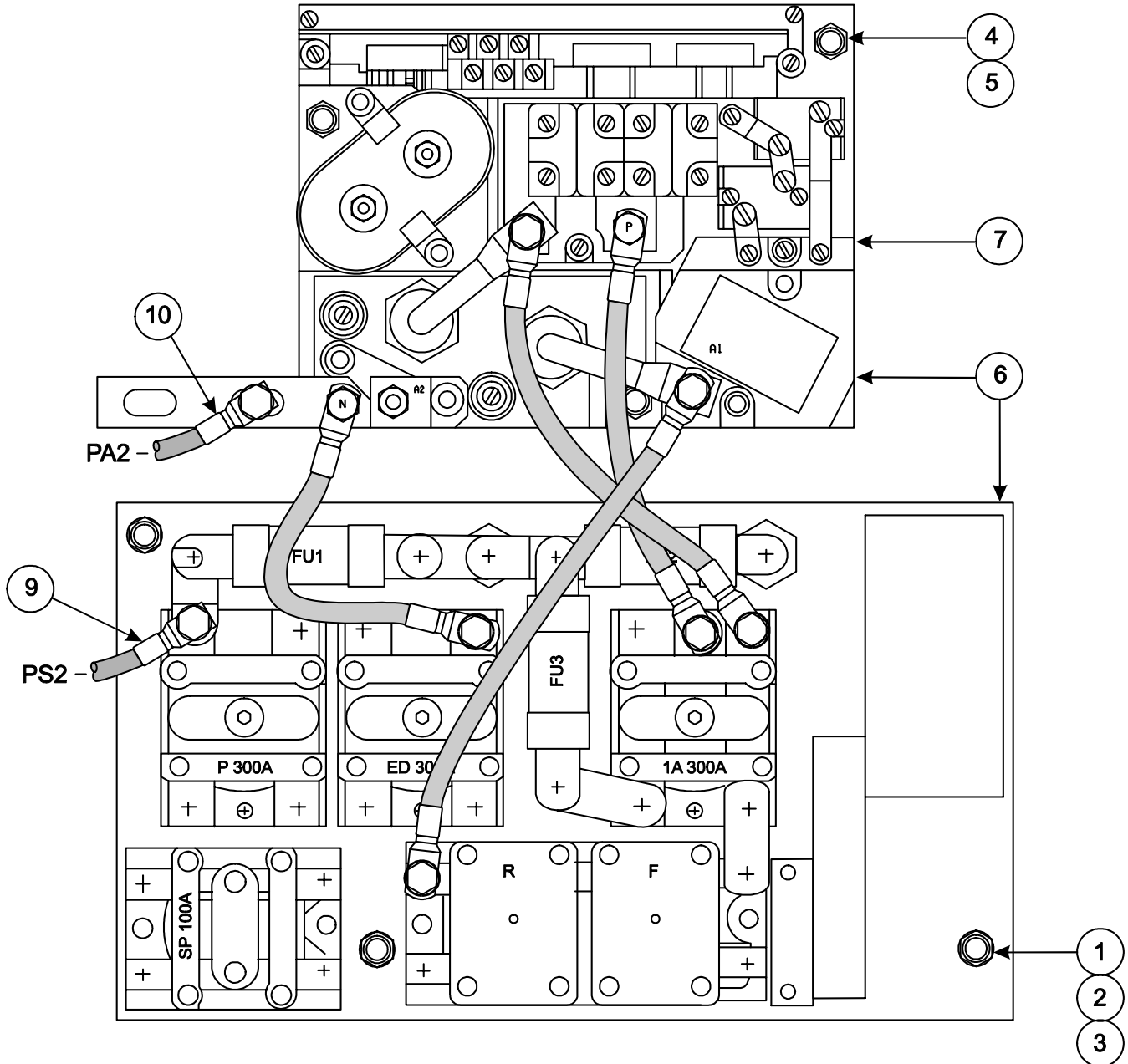




Figure 8-25: SCR Panel Installation, EL16 (sheet 1 of 2)

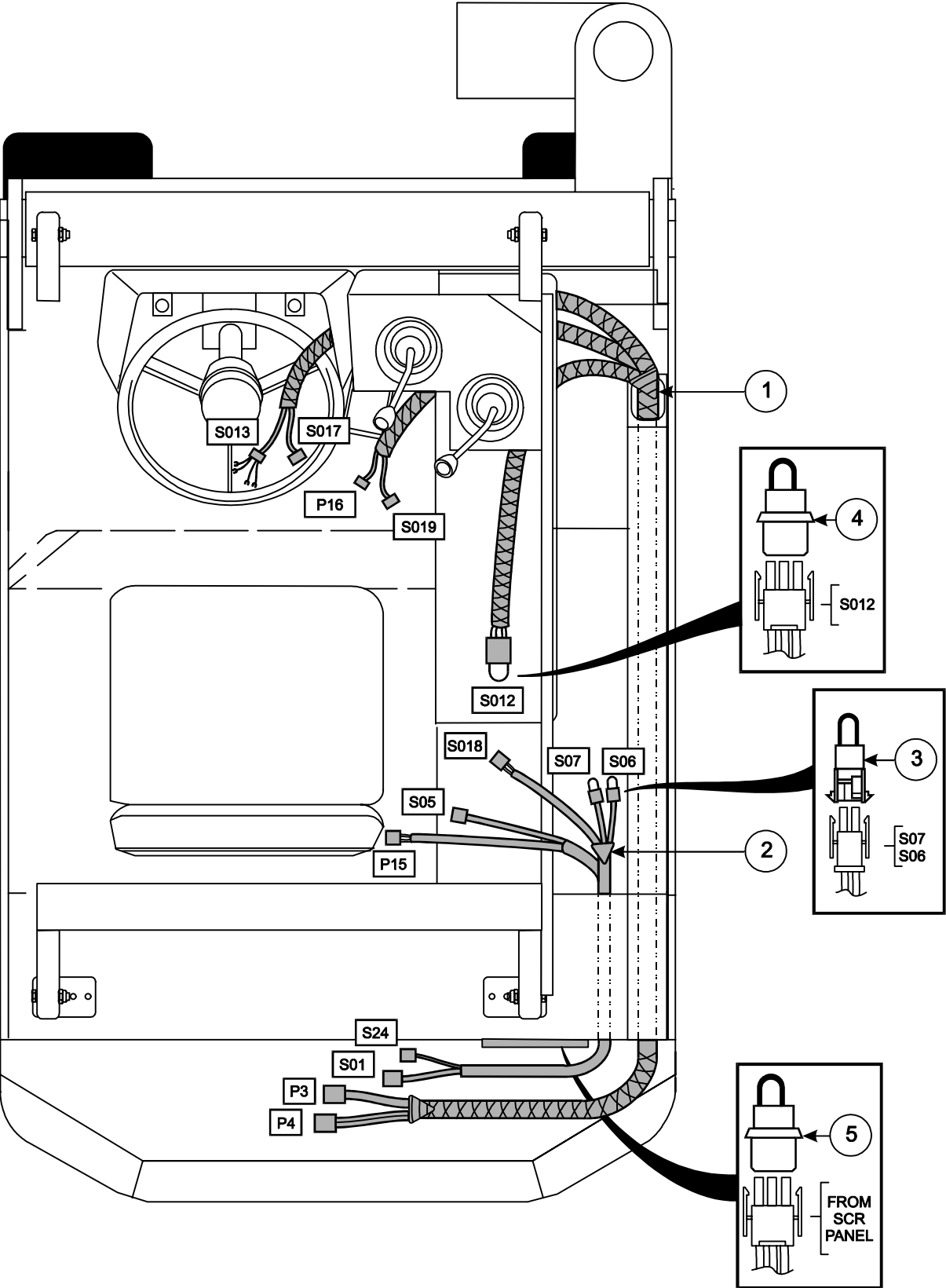


## Contactor, 300A, 36VDC, p/n: 28889-D

Item	Part No.	Qty	Description
1	28889-1	1	Base, Single Coil
2	28888-2	1	Coil, 36 VDC
3	28888-18	1	Frame, Magnet
4	21265	1	Spring, Return Blue
5	28888-3	1	Armature Assy
6	28888-9	1	Buss Base
7	28889-12	2	Buss, Double Contact
8	28889-11	1	Buss Clamp
9	28888-4	1	Bushing
10	28888-8	1	Tip Carrier, Movable
11	28889-15	1	Tip, Moveable
12	28888-7	1	Seat, Spring
13	21253	1	Spring, Moveable Tip, Red
14	21254	1	Retainer, Spring
15	1411334	1	Washer, Brass, Flat #10, 7/16" OD, 0.036" Thick
16	51D10E	1	Lock Nut, 10-32
17	86G856E	2	Screw, Pan Head, 0.164-32 x 3.5"
18	17E8E	2	Lock Washer, #8
19	25E8E	2	Washer, Flat, #8
20	28891	0	Suppressor, 300A Spno Contactor
21	28889-25	1	Kit, Contactor

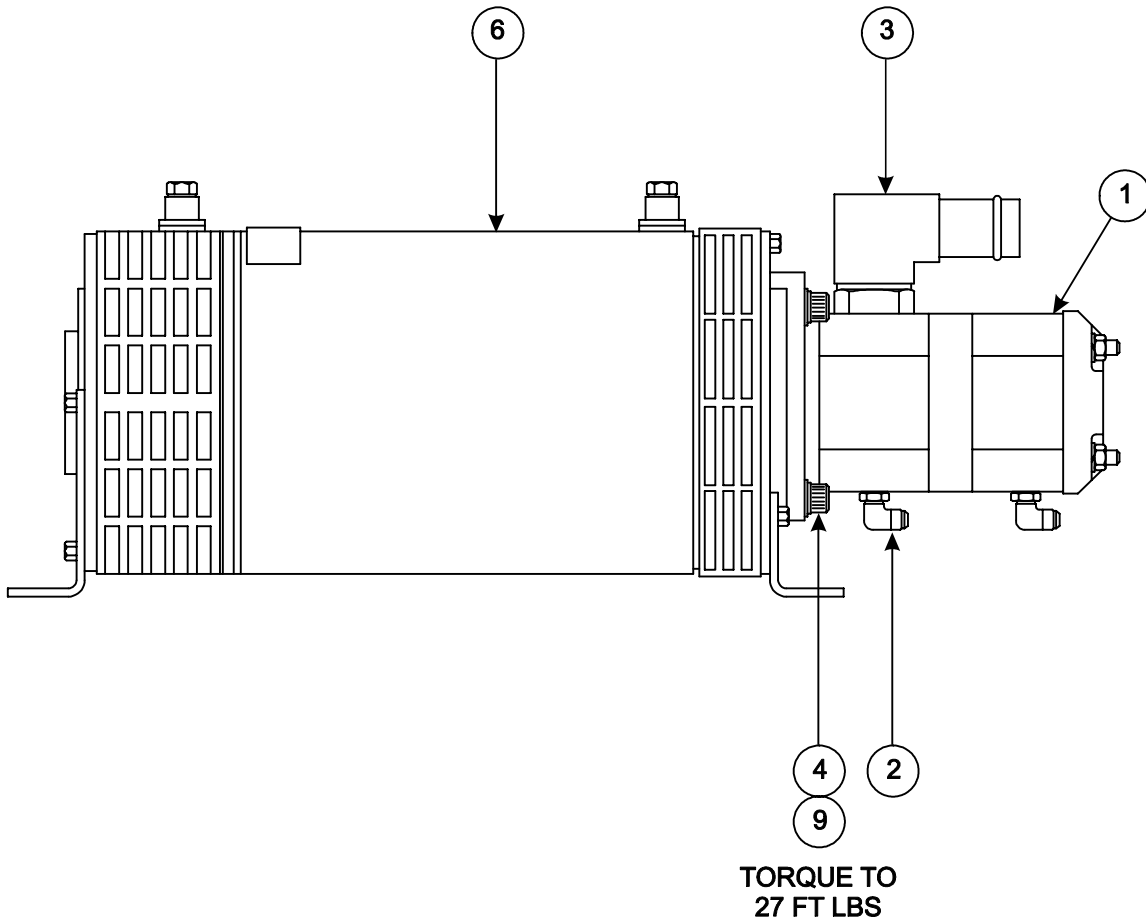
**Note:** See Figure 8-29: "Contactor, 300A, SPNO, p/n: 1401979-A" on page 8-97.

Figure 8-32: Wire Harness Installation, EL18

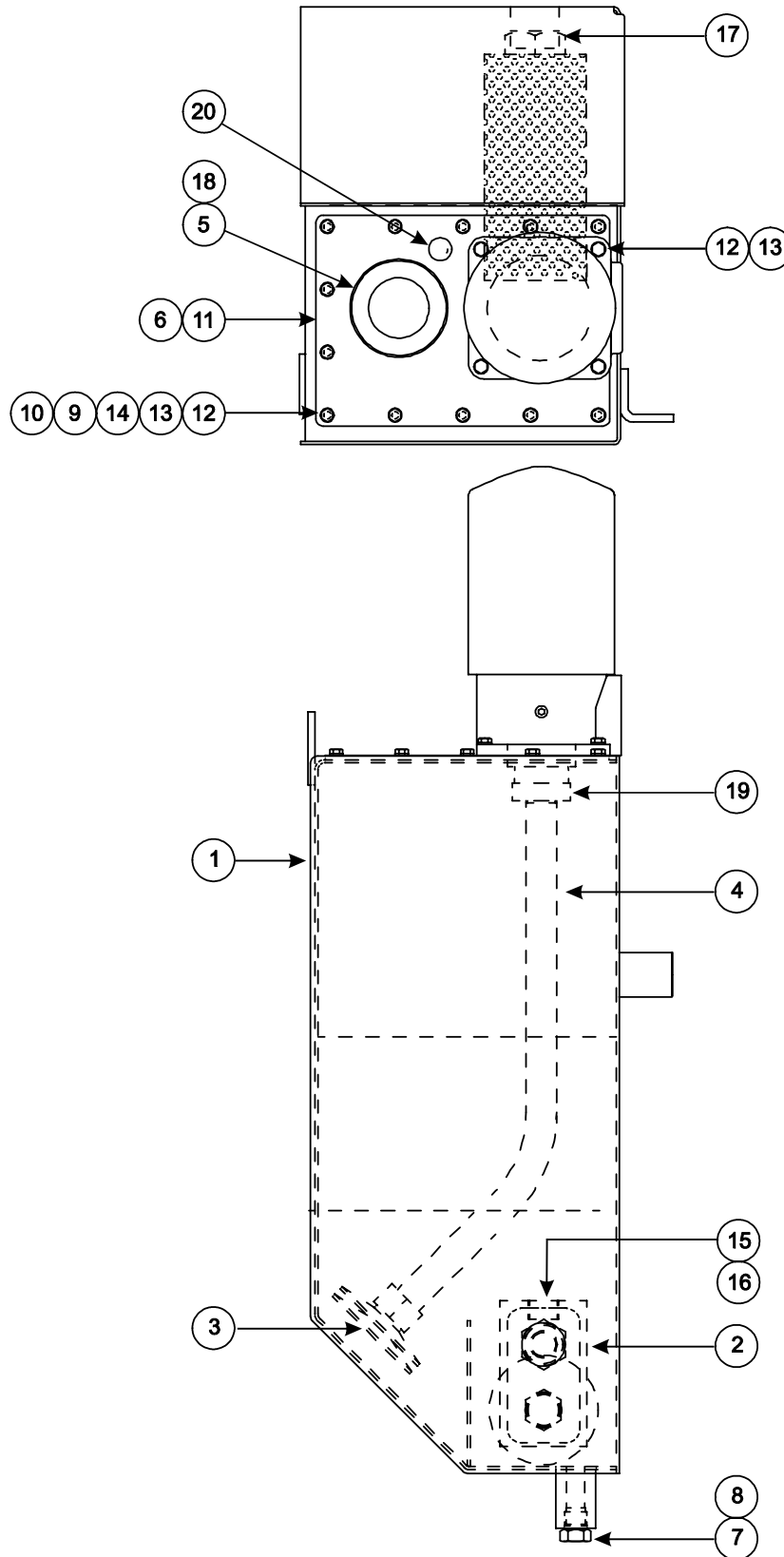




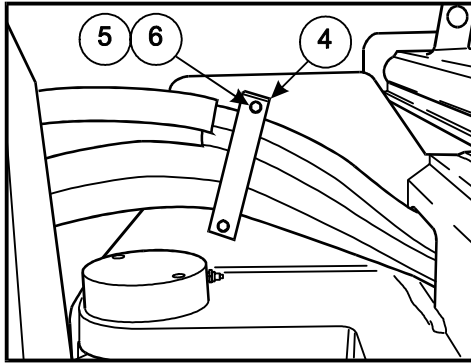
**Figure 8-39: Hydraulic Pump and Motor Assembly, p/n: 1411872-C**



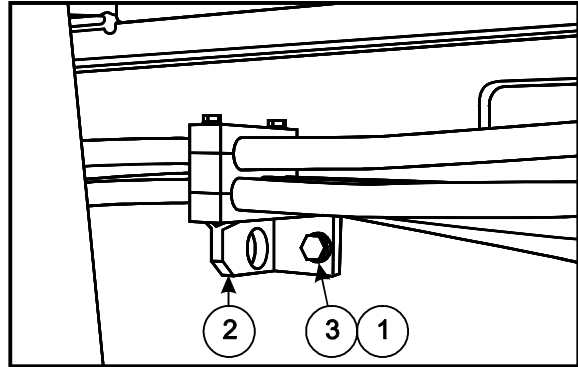
**Figure 8-42: Hydraulic Tank Sub-Assembly, p/n: HY44-C**



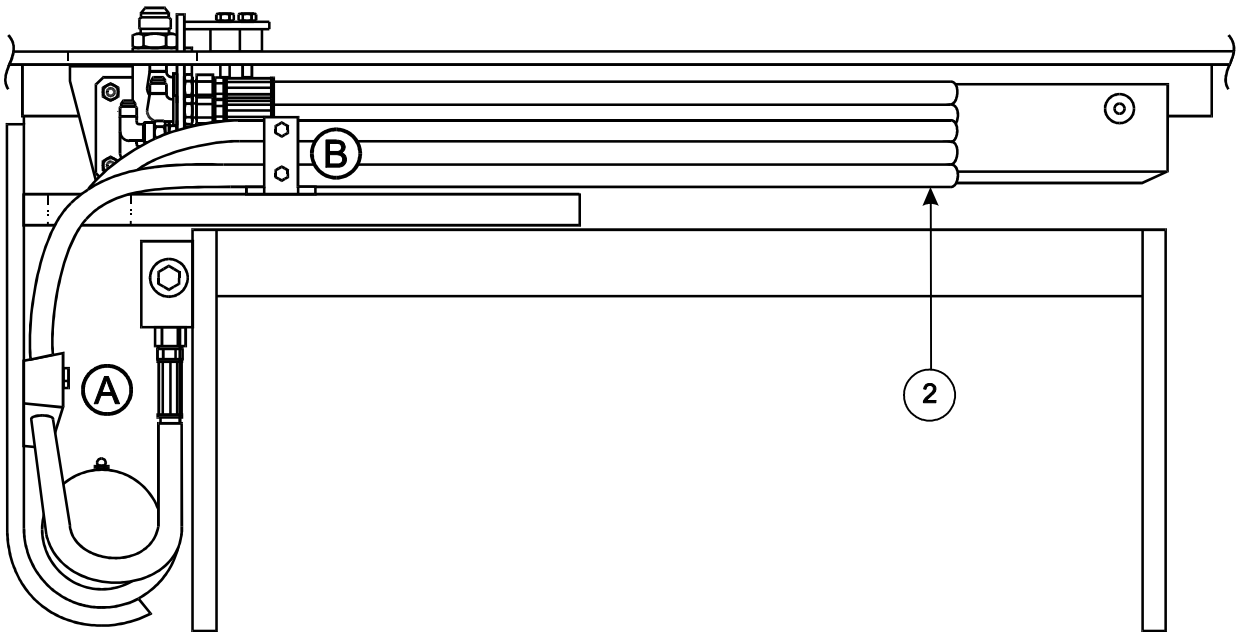
**Figure 8-45: Umbilical Assembly Installation, HY8**



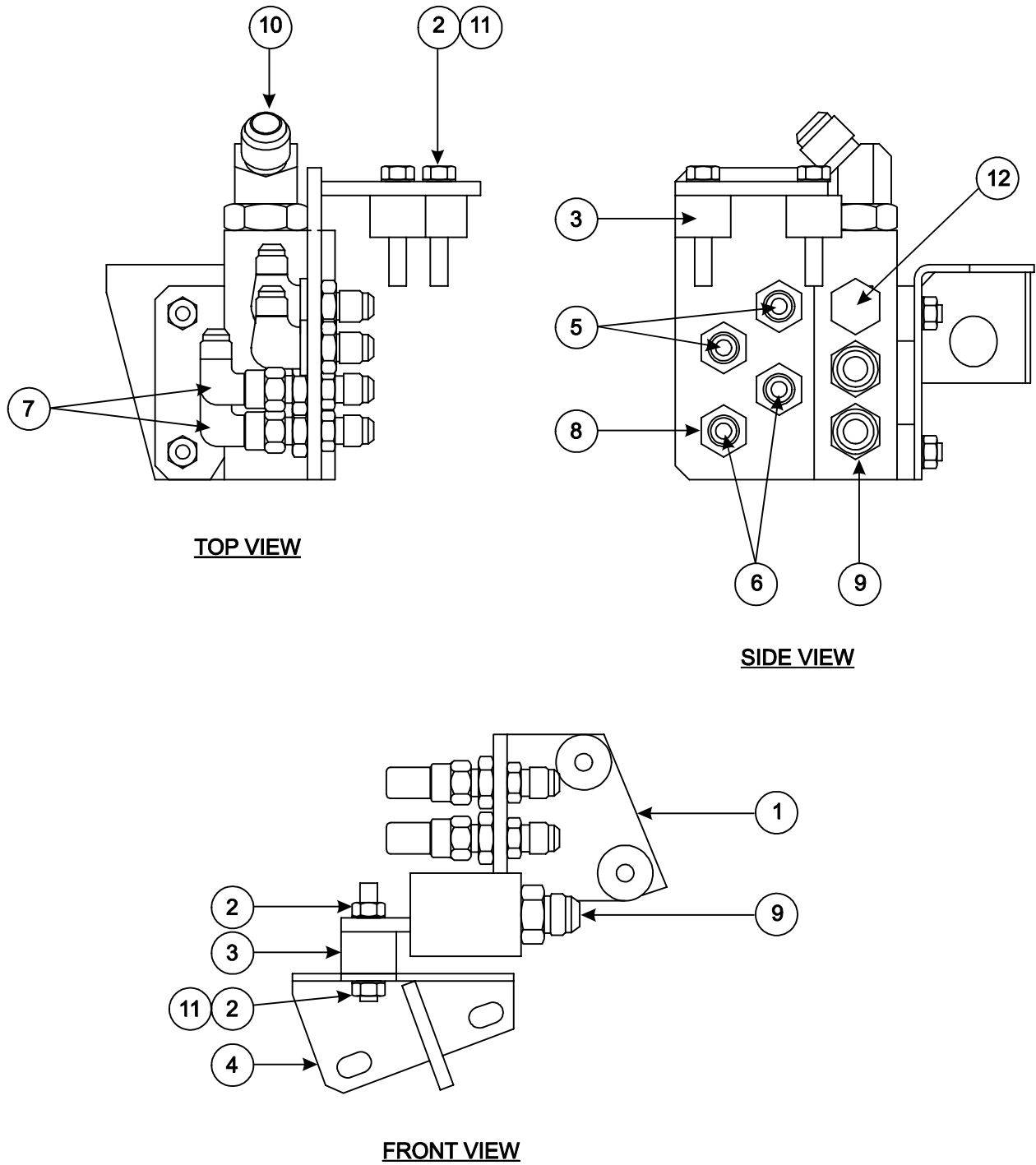
**FIGURE A**



**FIGURE B**



**Figure 8-48: Manifold Assembly, p/n: 1413172-C**





CLICK HERE TO **DOWNLOAD** THE COMPLETE MANUAL

- Thank you very much for reading the preview of the manual.
- You can download the complete manual from: [www.heydownloads.com](http://www.heydownloads.com) by clicking the link below



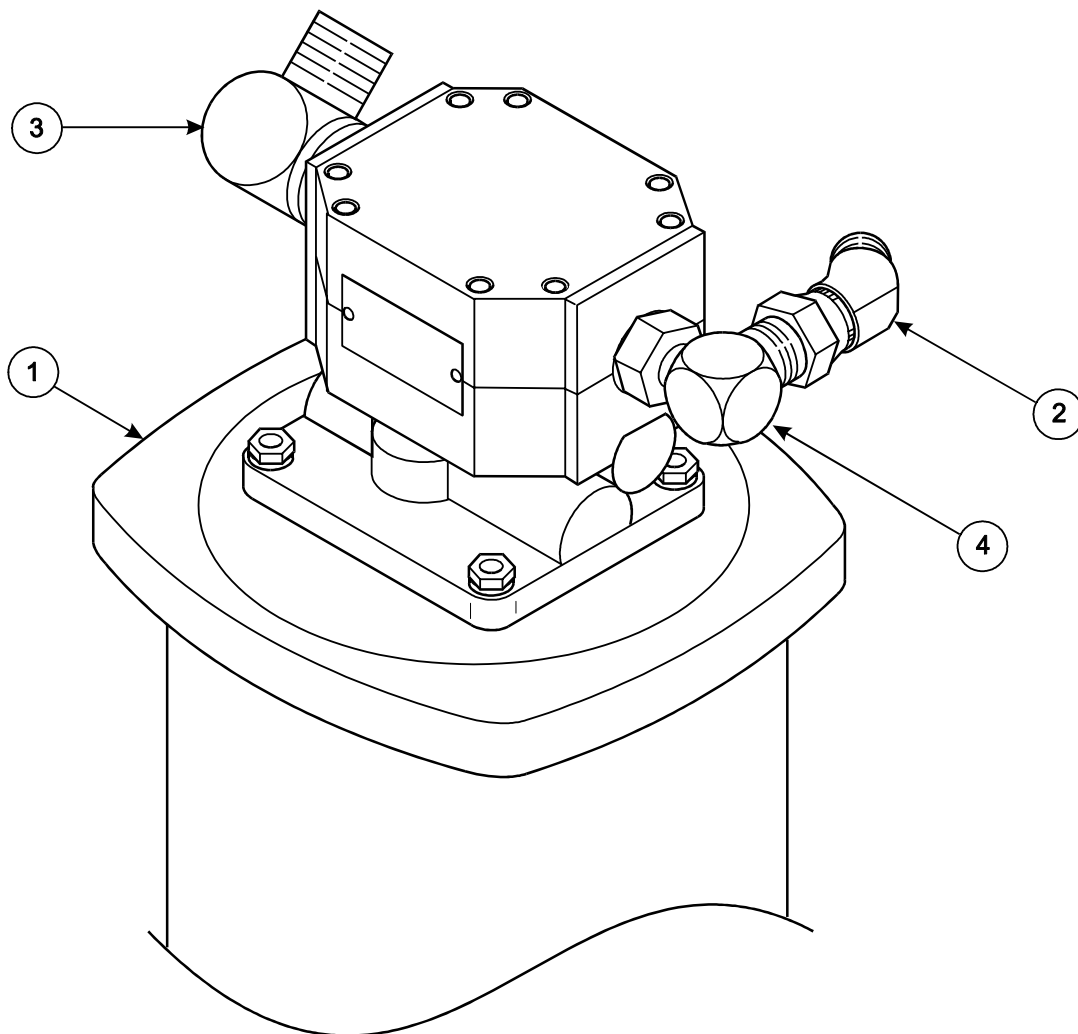
- Please note: If there is no response to CLICKING the link, please download this PDF first and then click on it.

CLICK HERE TO **DOWNLOAD** THE COMPLETE MANUAL

# Steer Pump/Motor Sub-Assembly, HY12

Item	Part No.	Qty	Description
1	1413444	1	Pump and Motor Assembly
2	12K6	1	Fitting, 45°, Swivel
3	17K6	1	Elbow, 90°, Standard
4	1300294	1	Male Connector, 90° Elbow

**Figure 8-54: Steer Pump/Motor Sub-Assembly, HY12**



**Figure 8-58: Steer Motor Sub-Assembly, HY21**

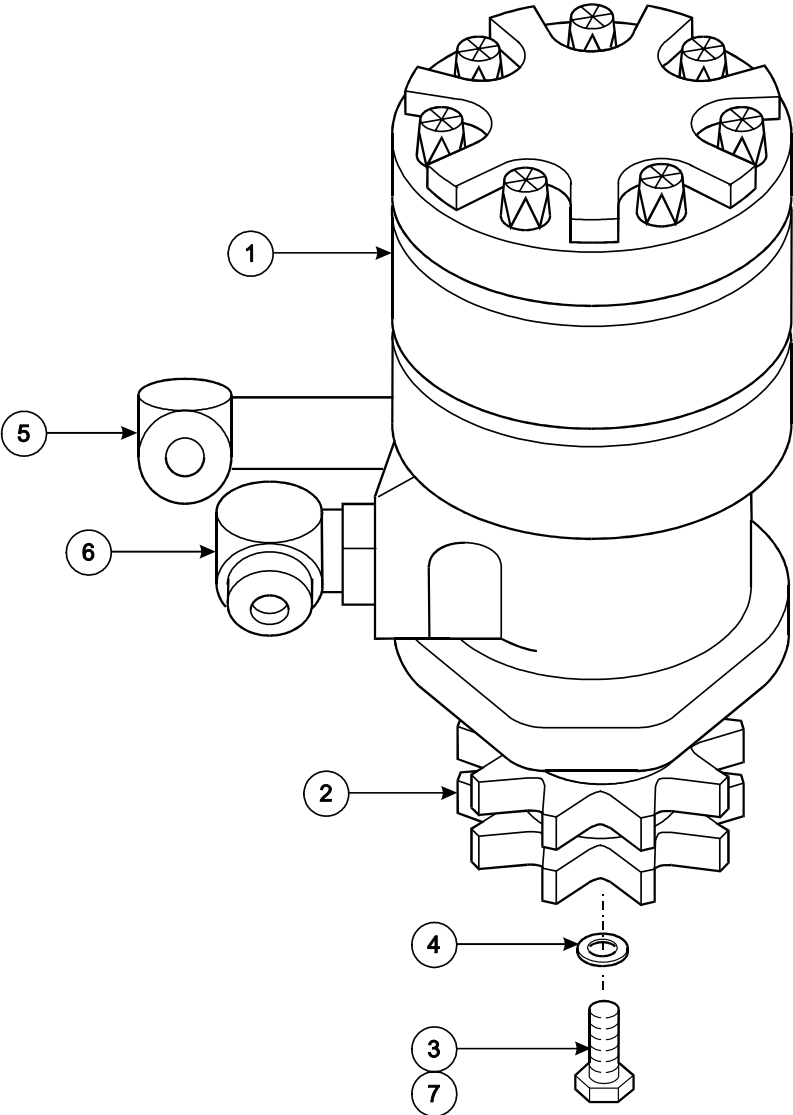
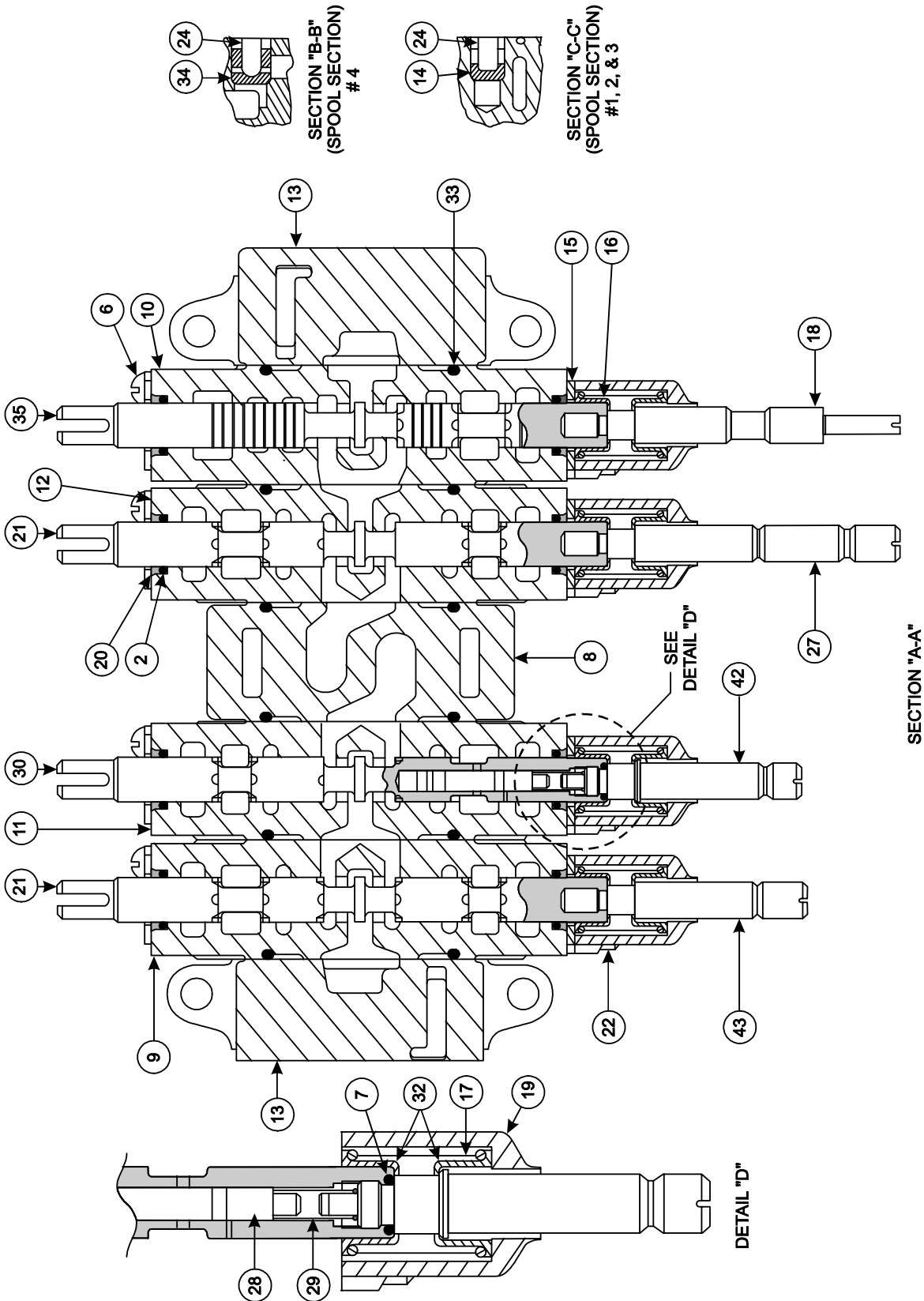


Figure 8-63: Control Valve Assembly Breakdown, p/n: 1413566-A (sheet 2 of 2)

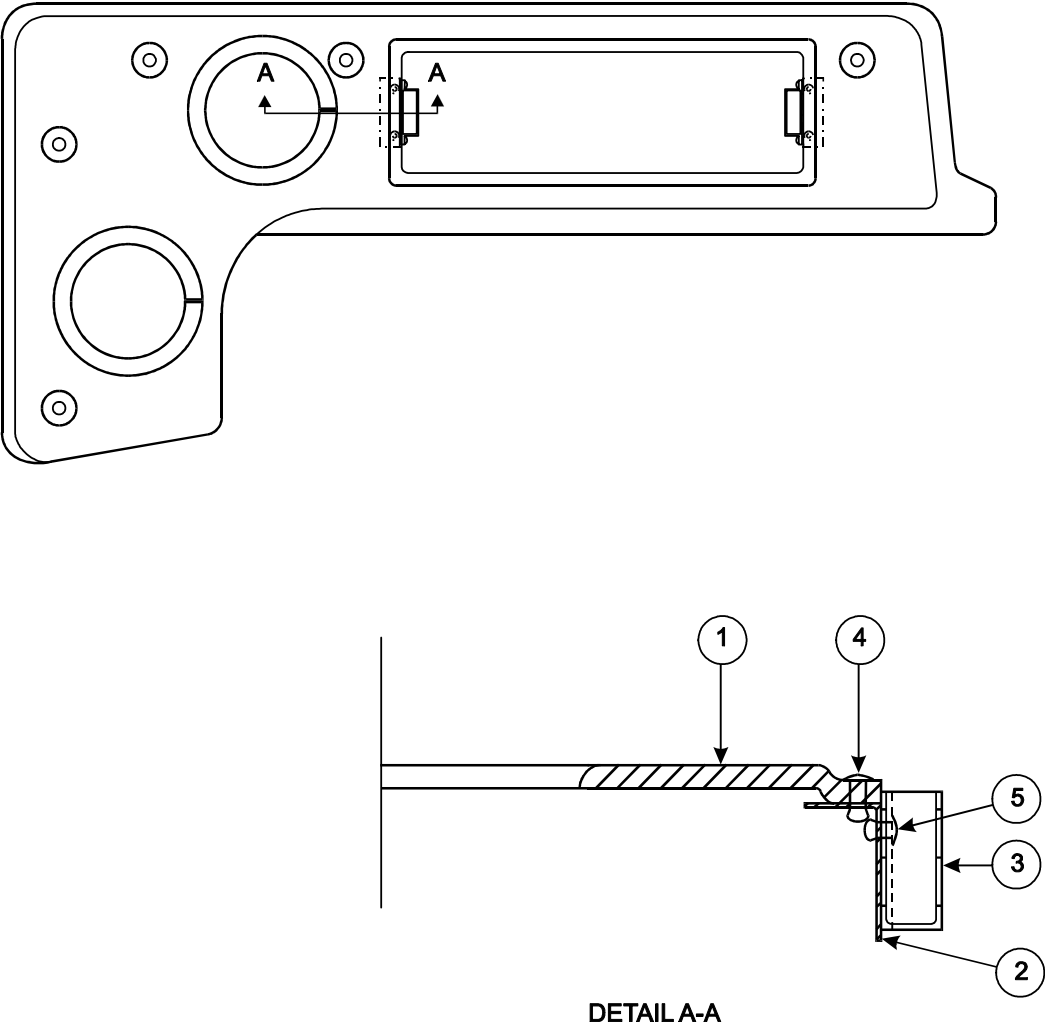




# Console Cover Sub-Assembly, OH9

Item	Part No.	Qty	Description
1	1401022	1	Cover, Side Console
2	1401840	2	Bracket, Mounting
3	1401838	2	Catch, Door Grabber
4	51365-1	4	Blind Rivet, 1/8" x 0.275" Long
5	51365-4	4	Rivet, Blind
6	1401867	A/R	Strip, Grommet

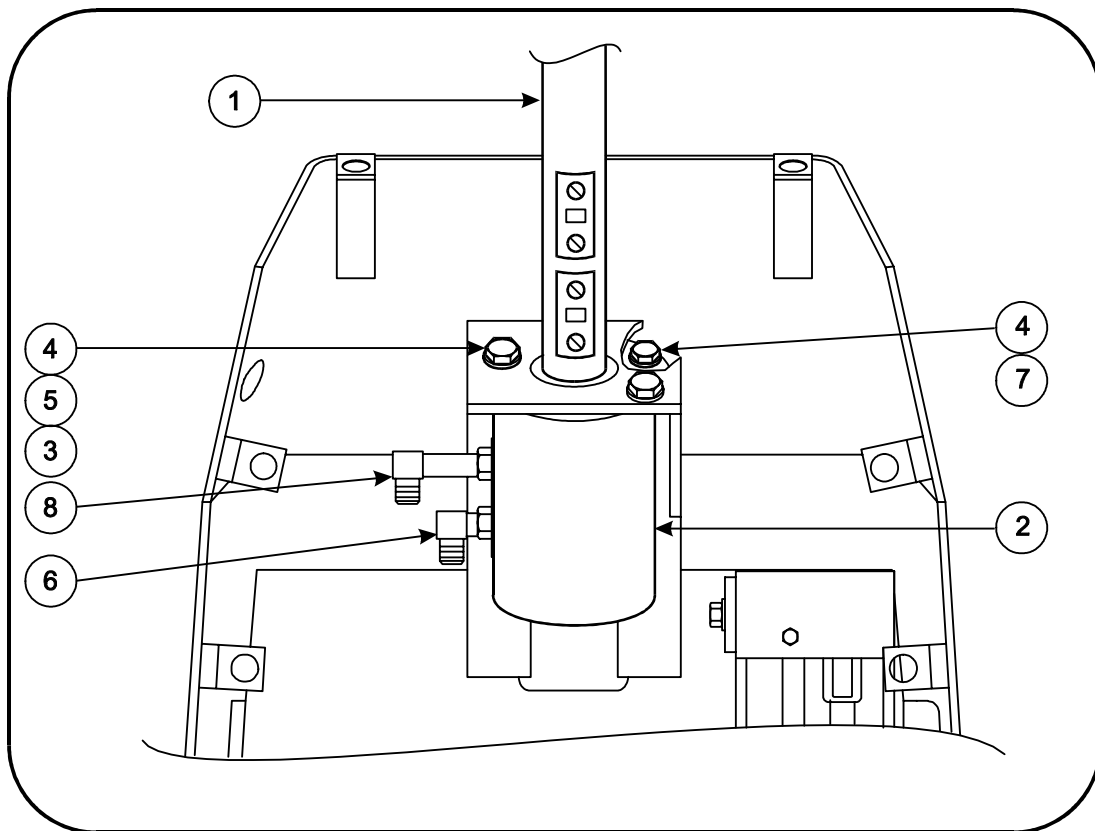
Figure 8-71: Console Cover Sub-Assembly, OH9



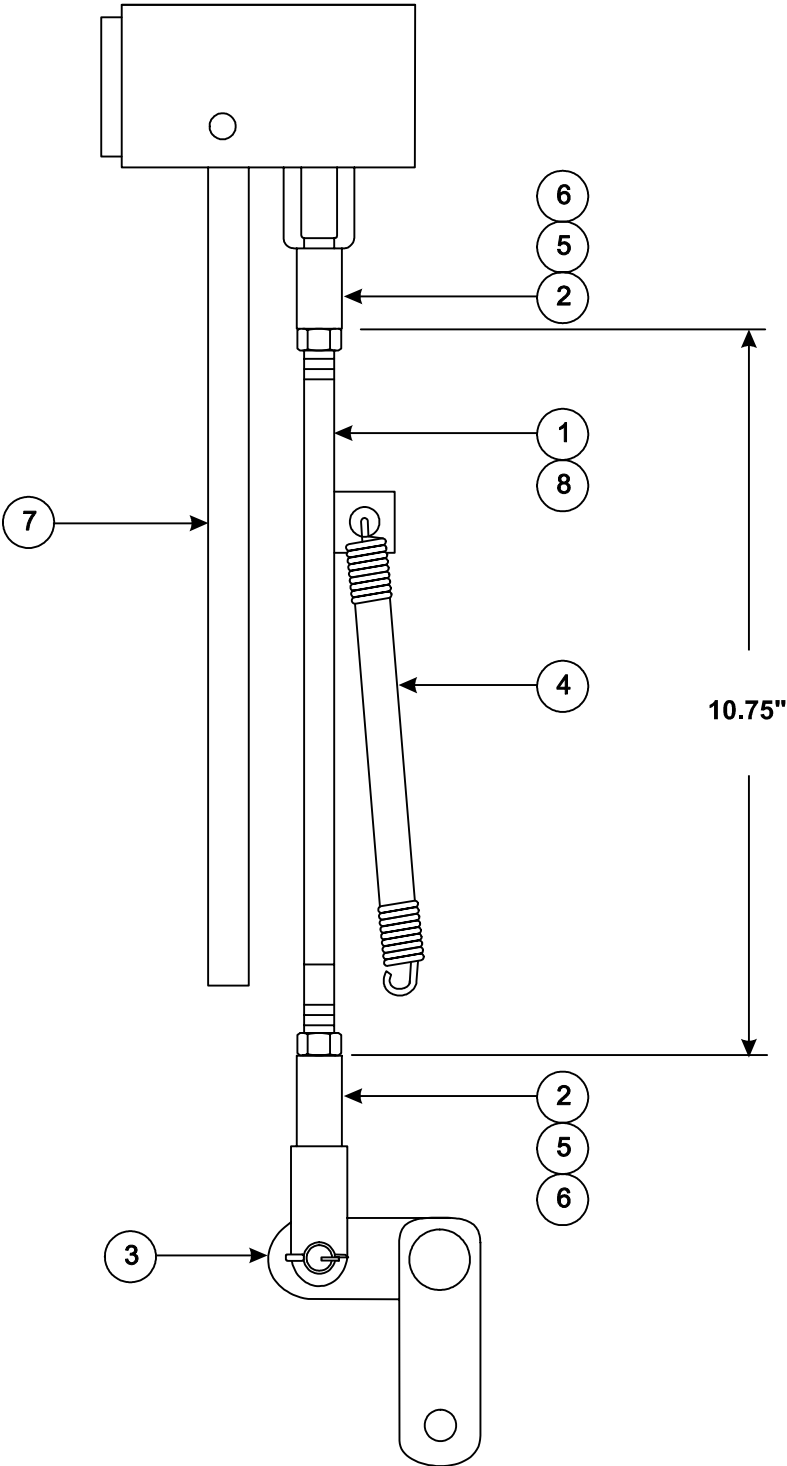
# Steering Column Installation, HY5

Item	Part No.	Qty	Description
1	1400968	1	Steering Column, 10"
2	25975	1	Steering Control Unit, 7.3"
3	1405194	2	Spacer
4	4E6E	4	Lock Washer, 0.375"
5	1C624ER	2	Screw, Hex Head, Grade 5
6	17K6	2	Elbow, 90°, Standard
7	1C616ER	2	Screw, Hex Head, Grade 5
8	1400548	2	Elbow, Extra Long

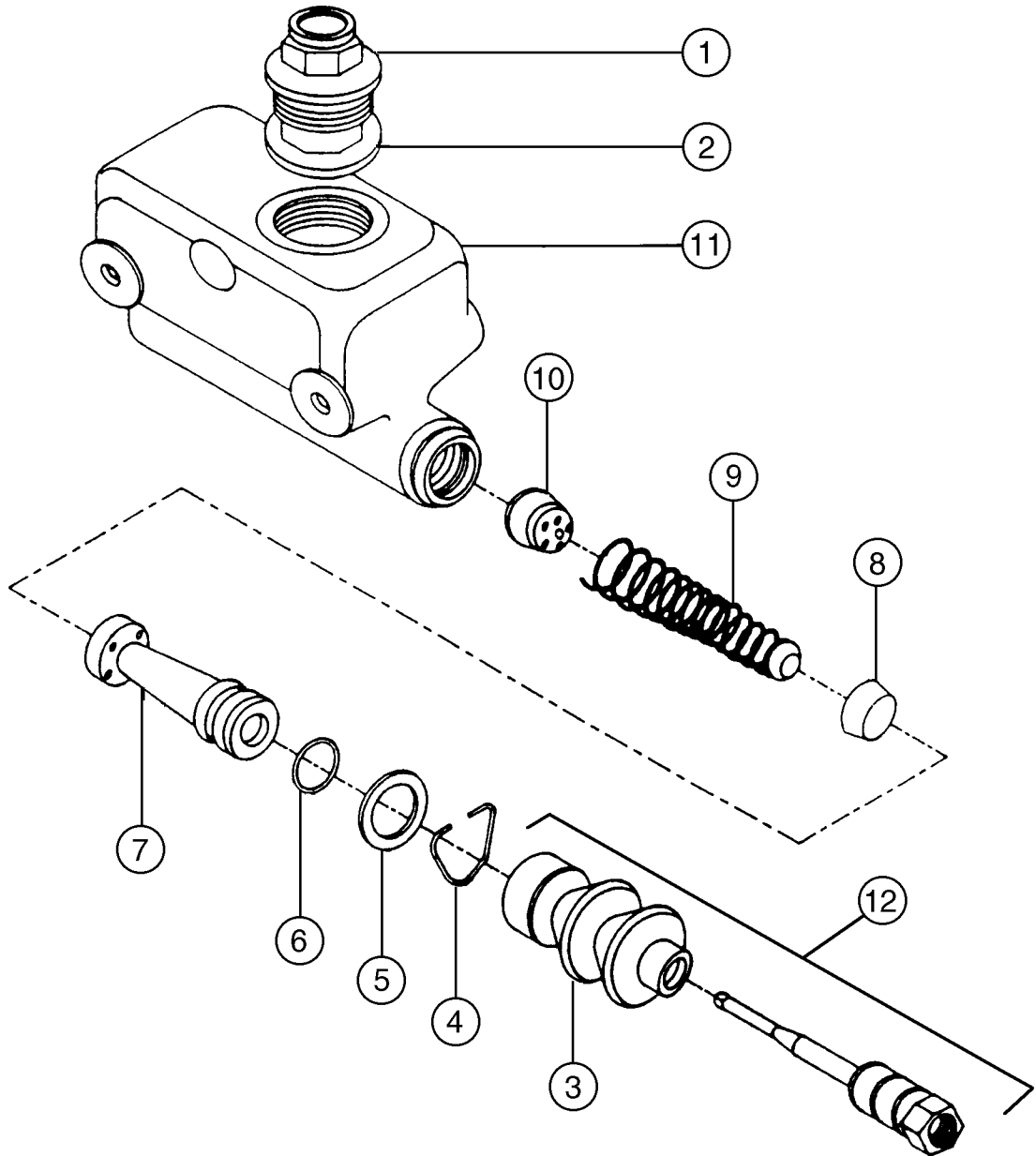
**Figure 8-75: Steer Column Installation, HY5**



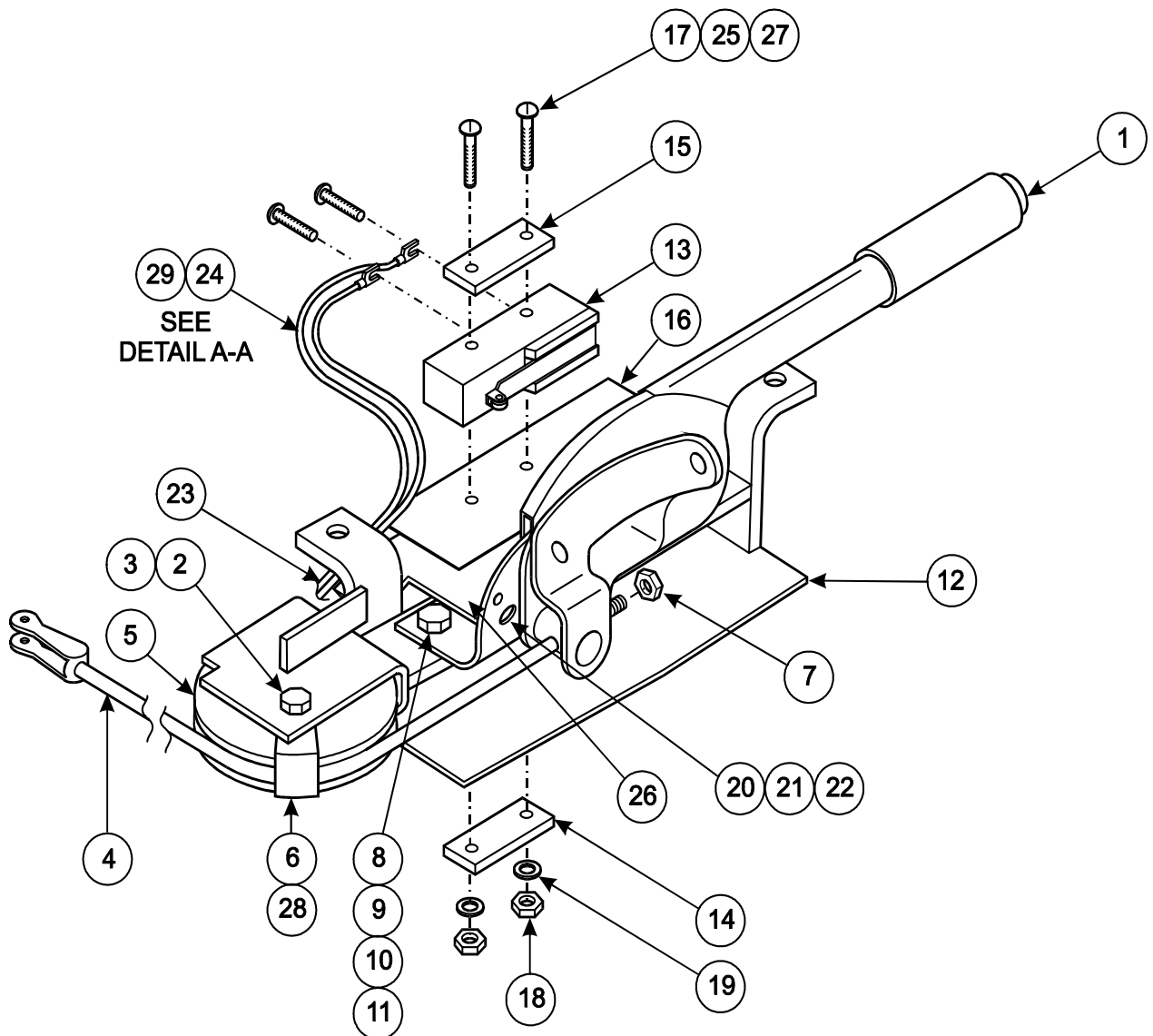
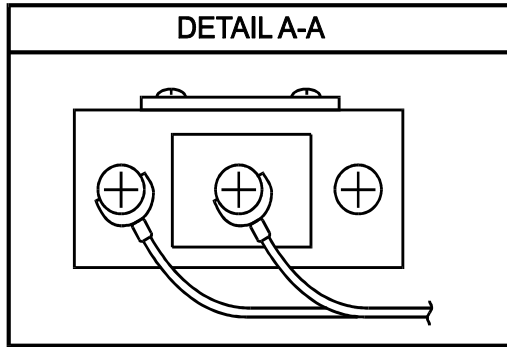
**Figure 8-80: Brake Weldment Assembly, SB2**



**Figure 8-83: Master Cylinder Assembly, p/n: 1402557-C**



**Figure 8-86: Parking Brake Sub-Assembly, PB1**



**Figure 8-89: Brake Cable Assembly**

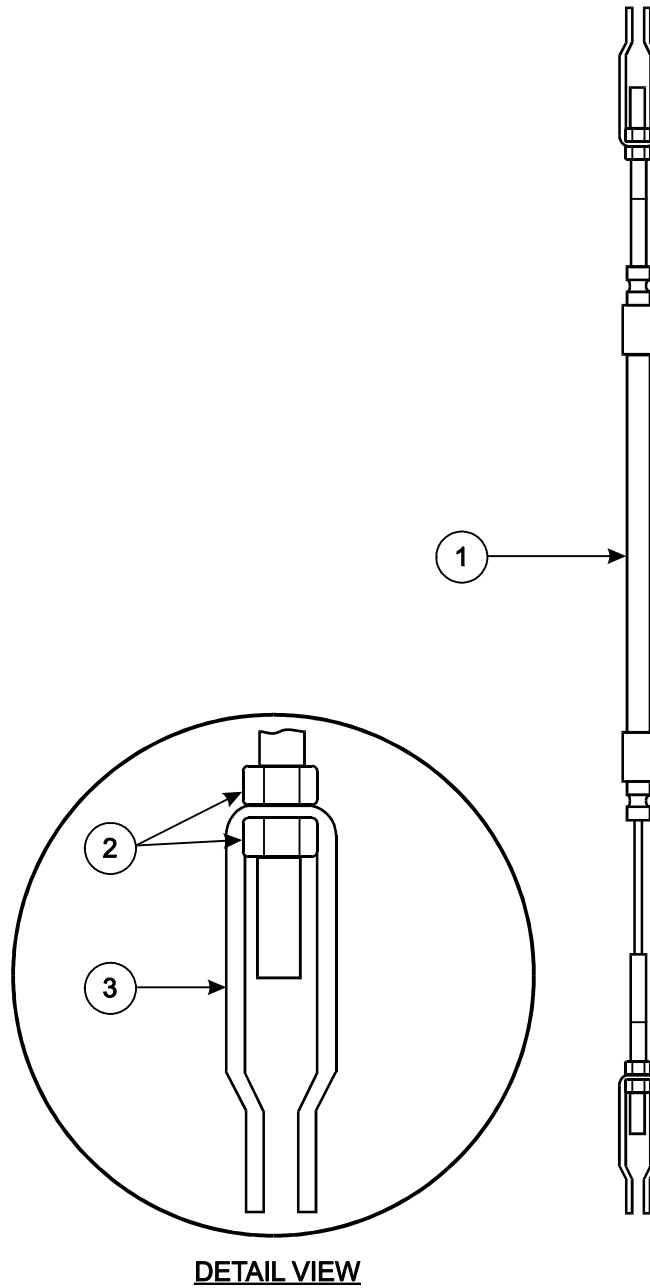
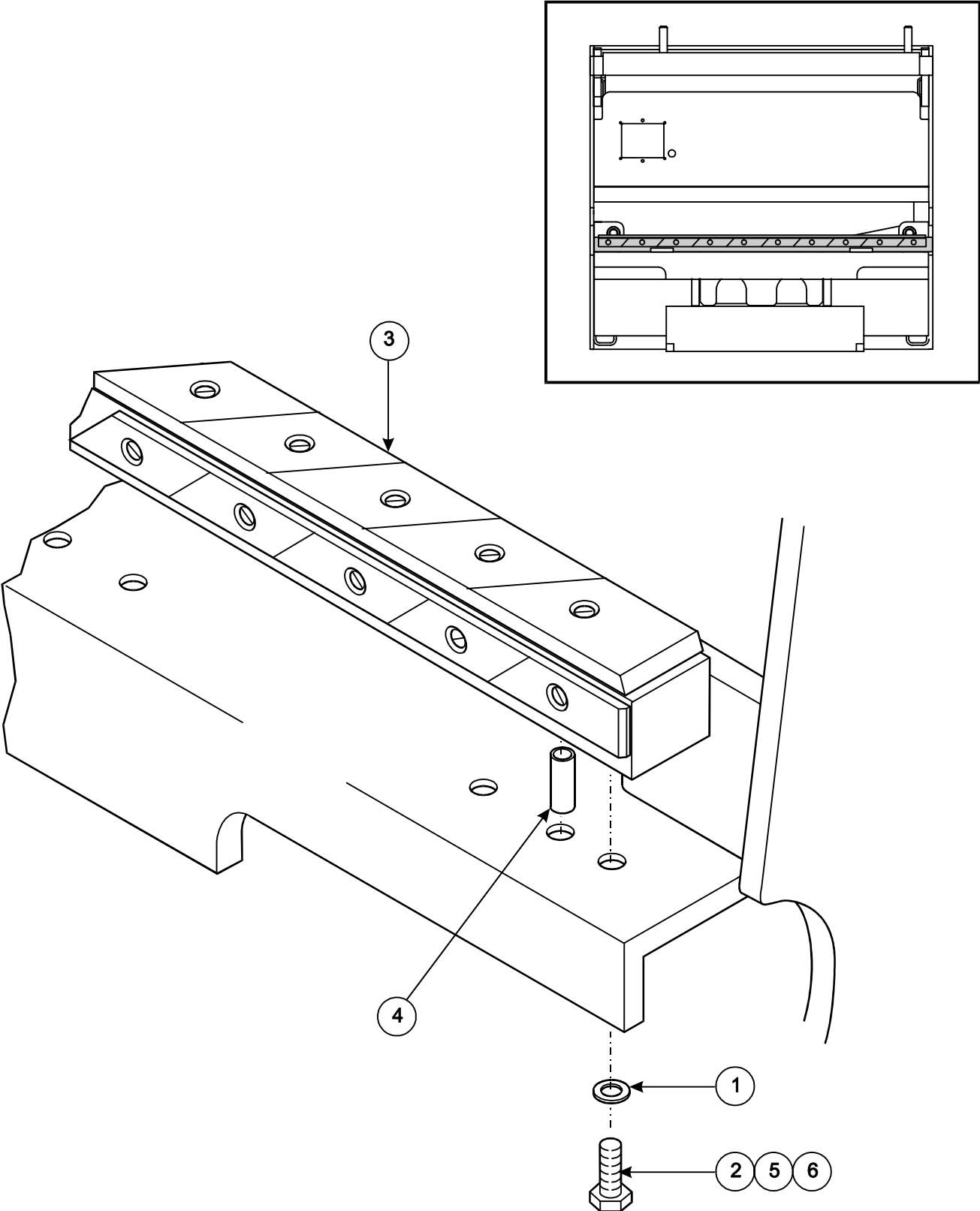


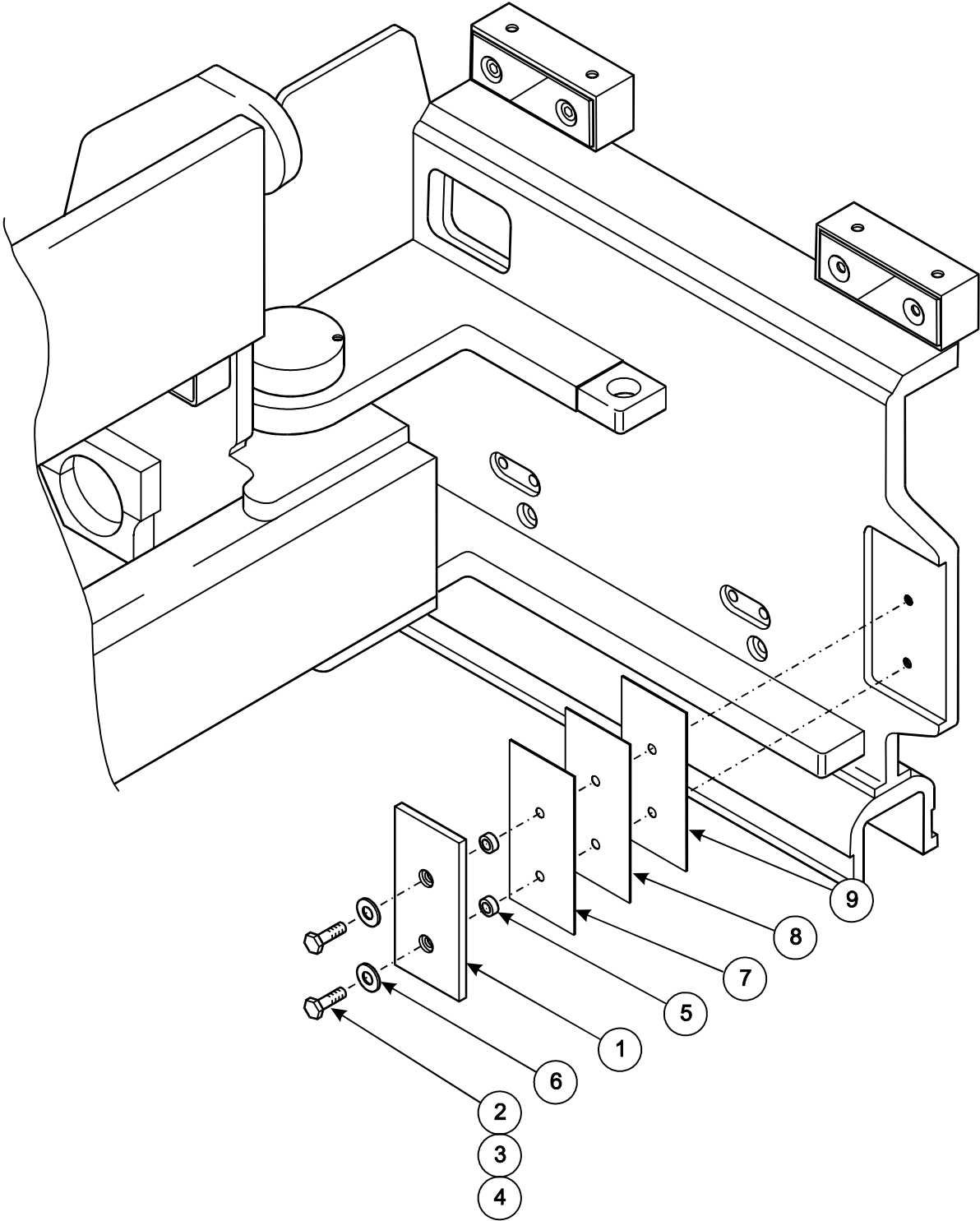
Figure 8-93: Lower Bar Installation, PS8



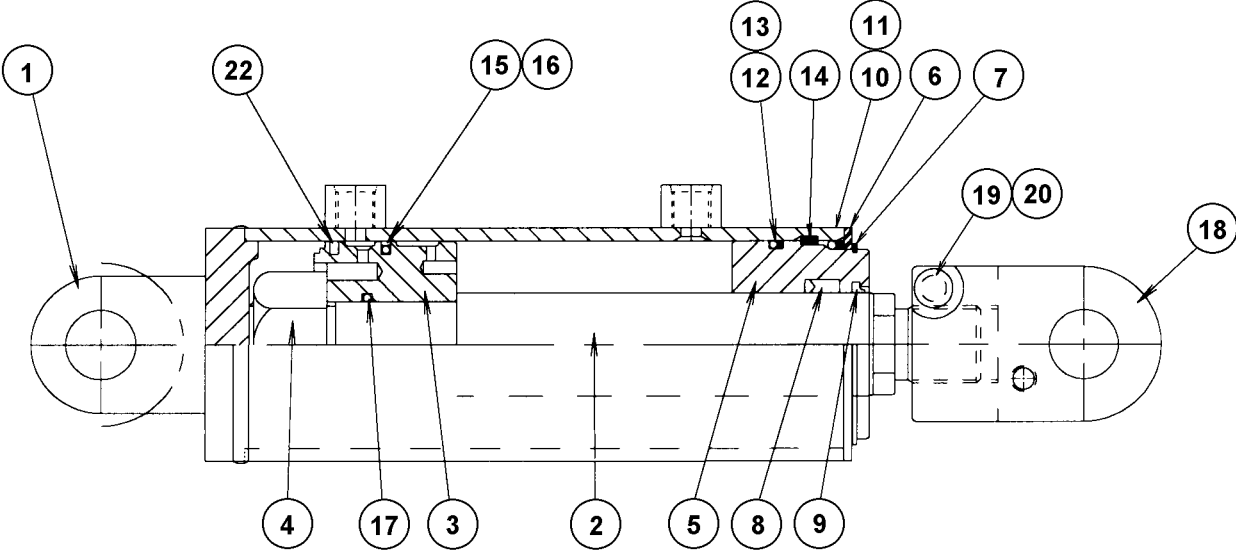




**Figure 8-102: Pivot Stop Pad Installation, PS3**



**Figure 8-105: Pivot Cylinder Assembly, p/n; 1400601-A**



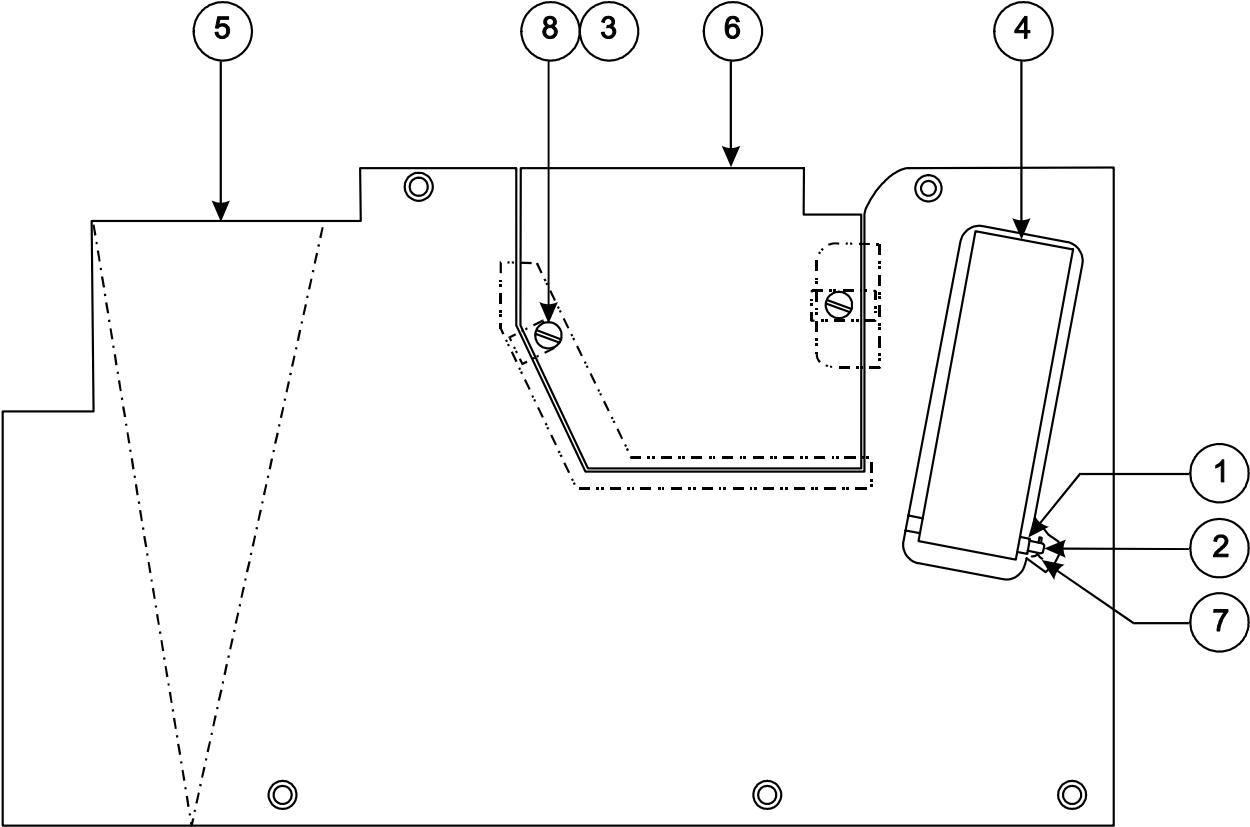




# Floor Plate Sub-Assembly, CO2

Item	Part No.	Qty	Description
1	1400637	2	Spacer
2	1400939	1	Clevis Pin
3	1401012	2	Nut, U 8 mm x 1.25" Long
4	1412373	1	Pedal Accelerator
5	1412374	1	Floor Plate Weldment
6	1F312E	1	Pin, Cotter
7	1412376	1	Panel, Floor Plate
8	23GM820ER	2	Screw, Flat Head, Class 10.9

**Figure 8-115: Floor Plate Sub-Assembly, CO2**



CLICK HERE TO **DOWNLOAD** THE COMPLETE MANUAL

- Thank you very much for reading the preview of the manual.
- You can download the complete manual from: [www.heydownloads.com](http://www.heydownloads.com) by clicking the link below



- Please note: If there is no response to CLICKING the link, please download this PDF first and then click on it.

CLICK HERE TO **DOWNLOAD** THE COMPLETE MANUAL