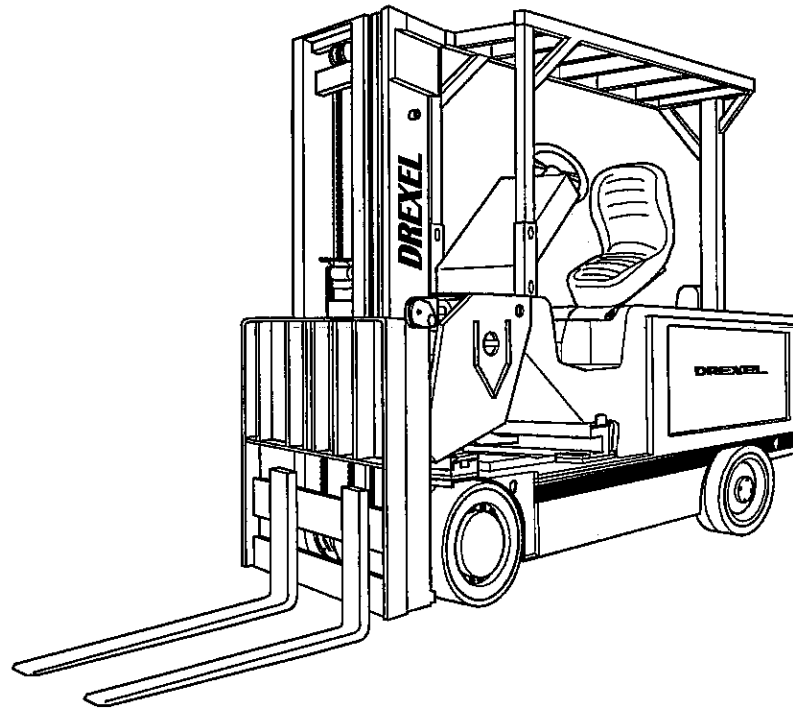




SL66 Series Base Unit IPB SwingMast® Lift Truck

Illustrated Parts Breakdown



Drexel Industries LLC
331 Maple Avenue
Horsham, PA 19044-0983
U.S.A.

Telephone:..... (215) 672-2200
Fax:..... (215) 773-6765
Web: www.drexeltrucks.com

Base unit: 16027-11, -e, 04/01

CLICK HERE TO **DOWNLOAD** THE COMPLETE MANUAL

- Thank you very much for reading the preview of the manual.
- You can download the complete manual from: www.heydownloads.com by clicking the link below



- Please note: If there is no response to CLICKING the link, please download this PDF first and then click on it.

CLICK HERE TO **DOWNLOAD** THE COMPLETE MANUAL

Figure 8-4: Drive Axle Assembly, p/n: 52993-C

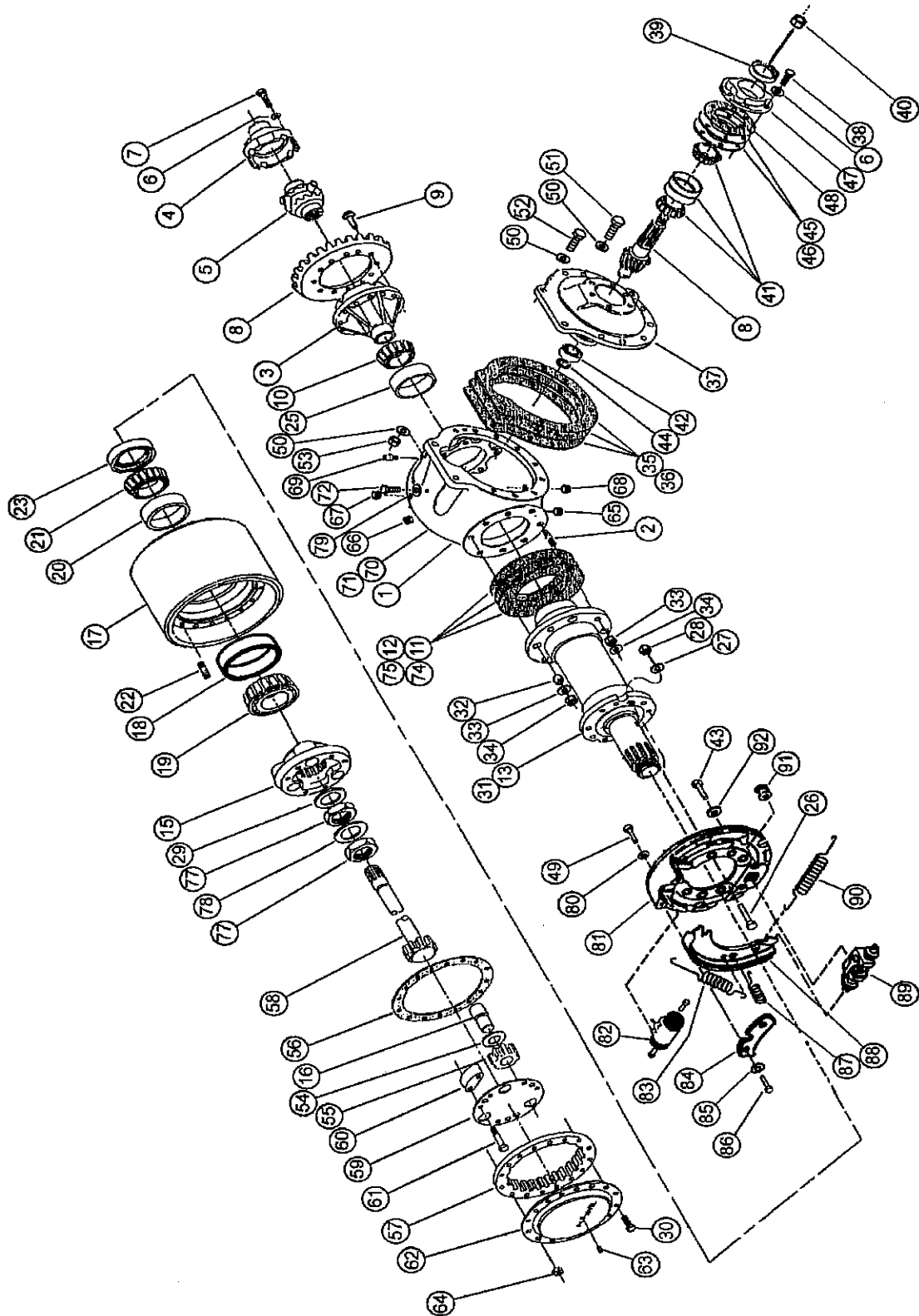
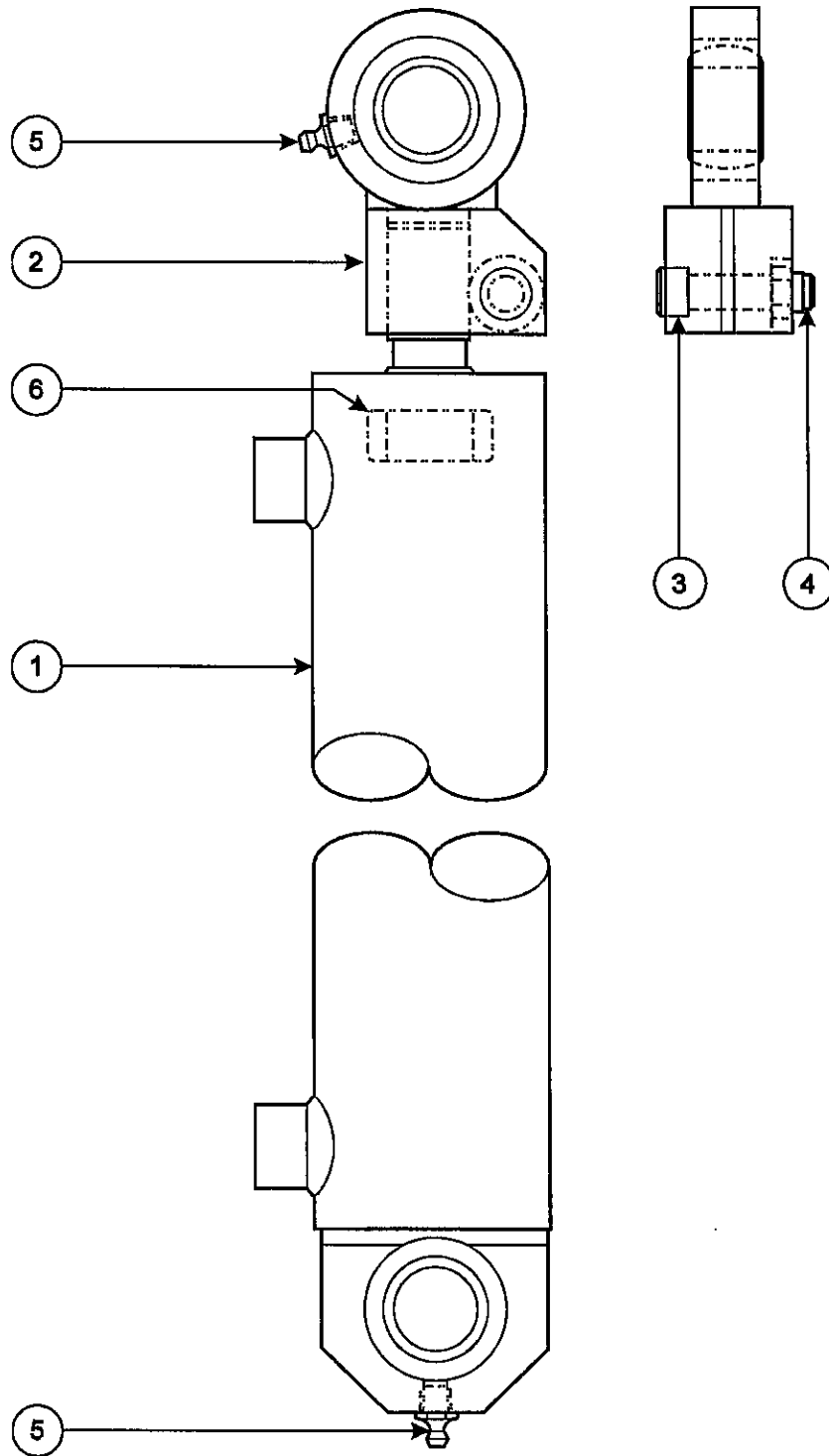


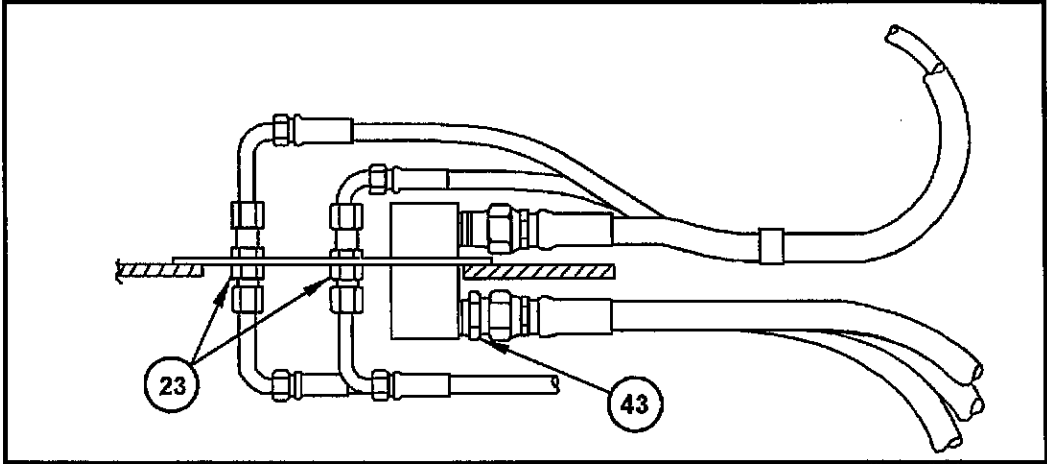
Figure 8-8: Steering Cylinder Assembly, p/n: 11171



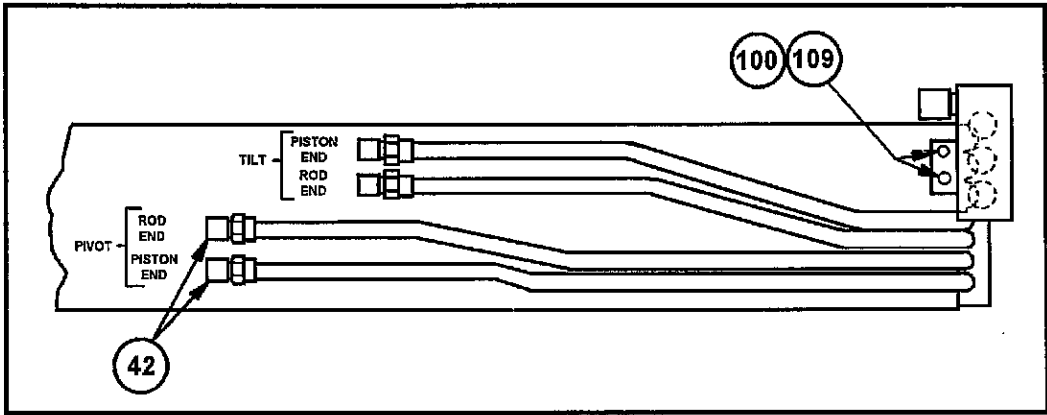
Service Brake System, p/n: 1413803-C

Item	Part No.	Qty	Description
1	1413595	1	Master Cylinder, 150 PSI Relief
2	1409427	1	Adapter Ring Weldment, Brake Cylinder
3	1C622ER	2	Screw, Hex Head, 3/8-16 x 1-3/8"
4	27E6ER	2	Washer, Flat, Nominal, 0.375" ID
5	61D6ER	5	Nut, Hex Head, Grade 5, 0.375-16
6	25E17E	3	Flat Washer, 0.375"
7	1409422	1	Brake Lever Arm Weldment
8	25022	1	Brake Pedal, with Pad
9			Not Used
10	1C520ER	1	Screw Hex Head, Grade 5, 0.312-18 x 1.25"
11	27E5ER	1	Flat Washer, Hardened, 5/16"
12	61D5ER	1	Nut, Hex Head, Grade 5, 0.312-18
13	25E27E	1	Washer, Flat, Nominal, 0.750"
14	1F316E	1	Pin, Cotter, 3/32" Diameter x 1" Long
15	23928	1	Yoke End
16	5507-57	1	Rod, Brake Adjustment
17	62D7ER	2	Nut, Hex Head, Grade 5, 0.438-20
18	1409466	1	Rod, Push, Brake Cylinder
19	29071	1	Boot
20	51410-1	1	Clevis Pin 0.438" Dia x 1.016"
21	1F412E	1	Pin, Cotter
22	25021	1	Spring, External
23	25025	1	Seal, Washer
24	25028	1	Fitting, Swivel
25	25026	1	Seal, Washer
26	25024	1	Fitting, Swivel
27	20265	1	Elbow, 90°
28	53085	A/R	Grease, Lithium, Hp Synthetic, Gredag
29	1410839	2	Adapter, Special for Brake Wheel Cylinder
30	1410768	2	Tube Assembly, Brake Line Front
31	20266	1	Straight, Union
32	20264	3	Union, Tee
33	1410769	1	Tube Assembly, Brake Line Cross Over, Front

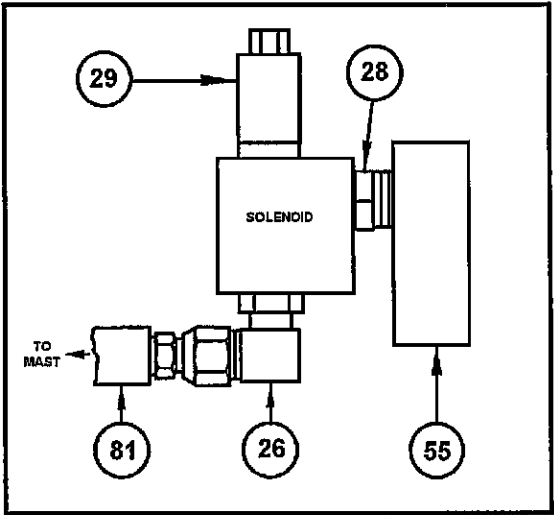
Figure 8-16: Hydraulic Assembly, p/n: 10550-05-N (sheet 2 of 4)



DETAIL A-A



DETAIL B-B



DETAIL C-C

ONLY USED FOR HOIST LIMIT MODIFICATION

Figure 8-23: Electric Motor, Pump, p/n: 9617-D

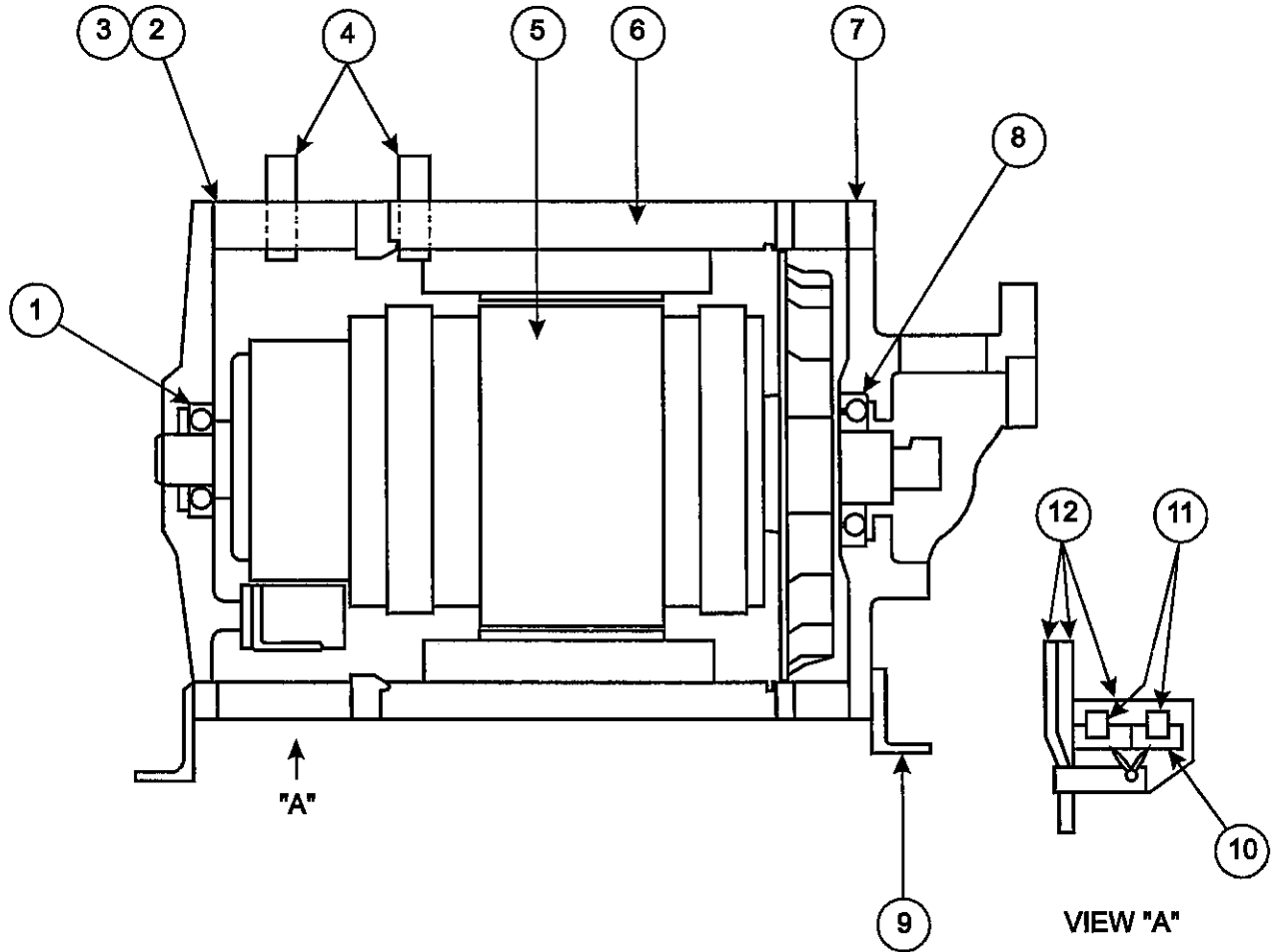
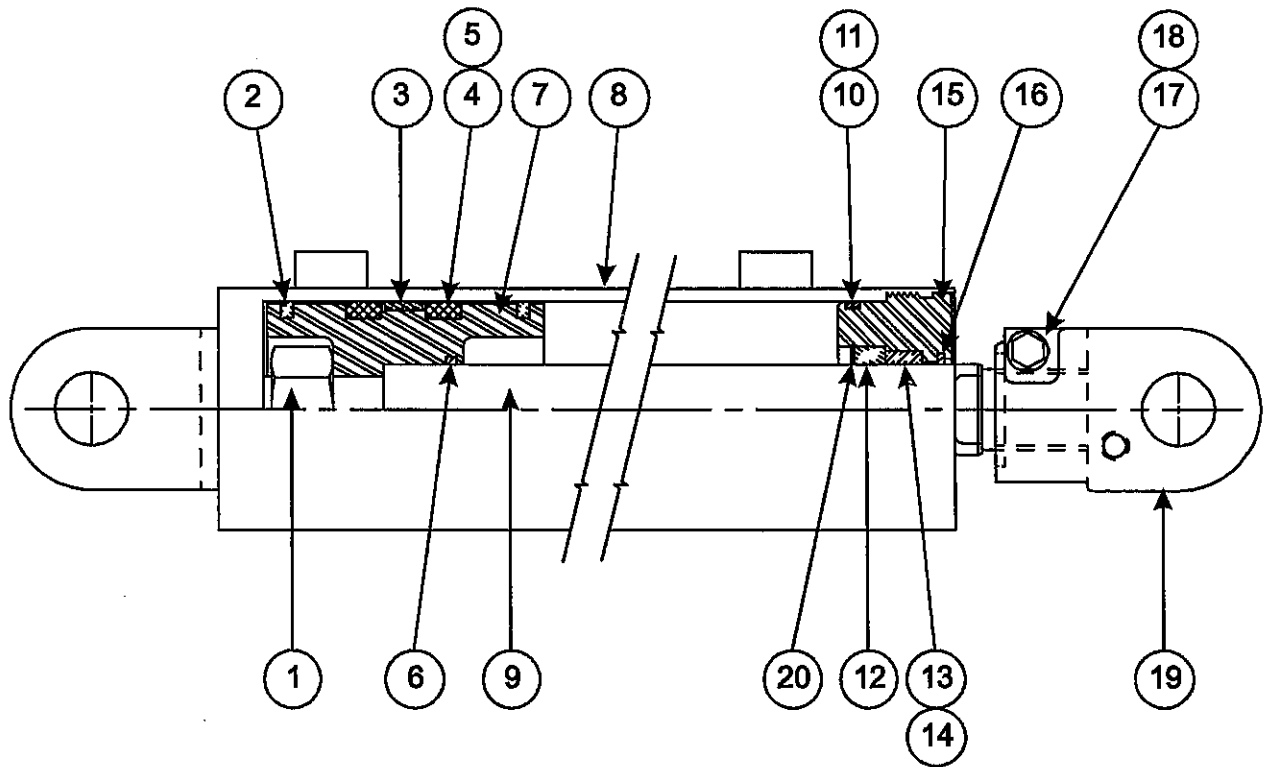


Figure 8-28: Shift Cylinder Breakdown, p/n: 6790-B



CLICK HERE TO **DOWNLOAD** THE COMPLETE MANUAL

- Thank you very much for reading the preview of the manual.
- You can download the complete manual from: www.heydownloads.com by clicking the link below



- Please note: If there is no response to CLICKING the link, please download this PDF first and then click on it.

CLICK HERE TO **DOWNLOAD** THE COMPLETE MANUAL

Figure 8-31: Mounting Panel Assembly, p/n: 16076-D

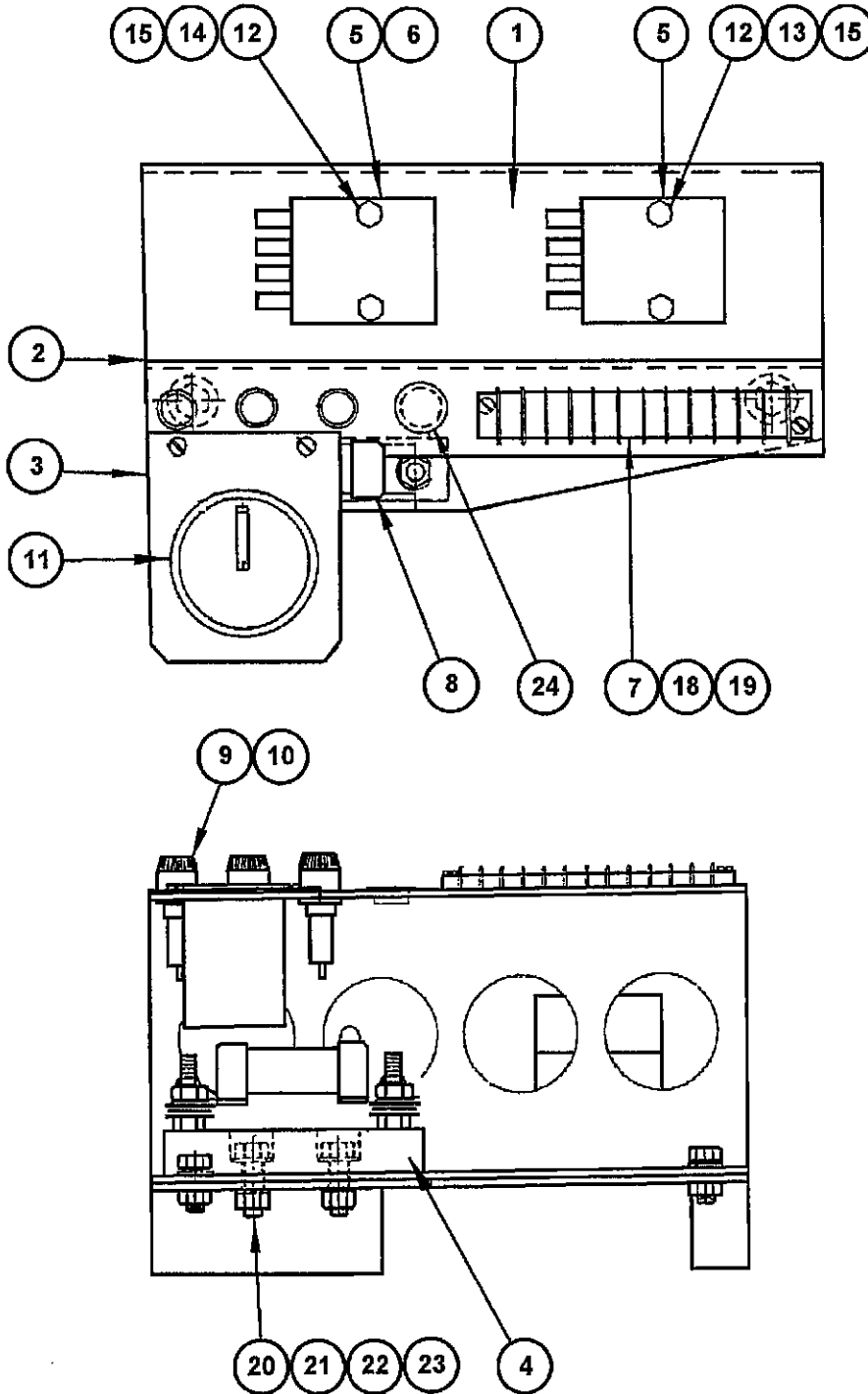


Figure 8-39: Top Assembly, Battery/Gate, p/n: 13401-07-S (sheet 3 of 4)

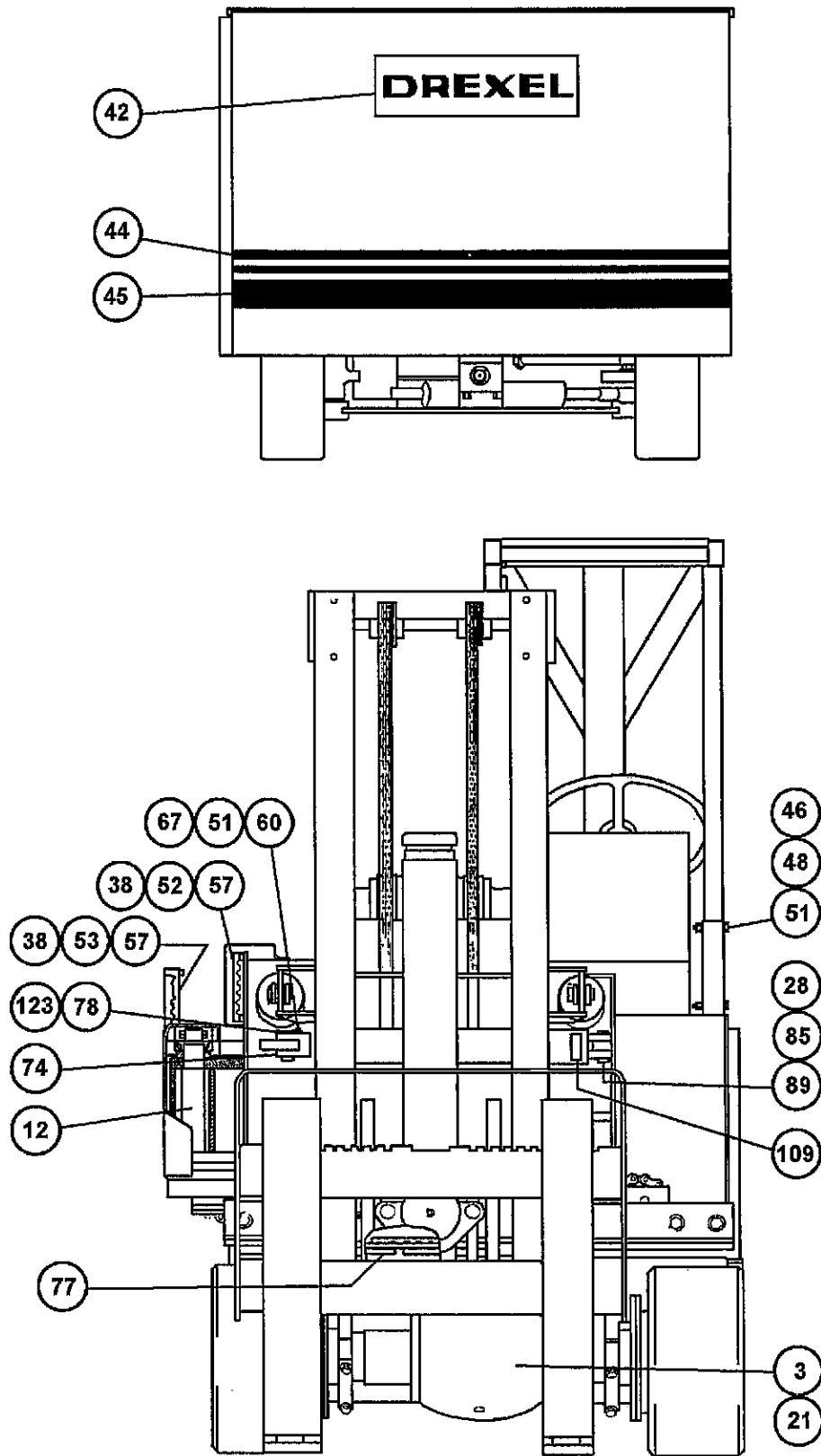


Figure 8-44: Umbilical Assembly, p/n: 10692-A

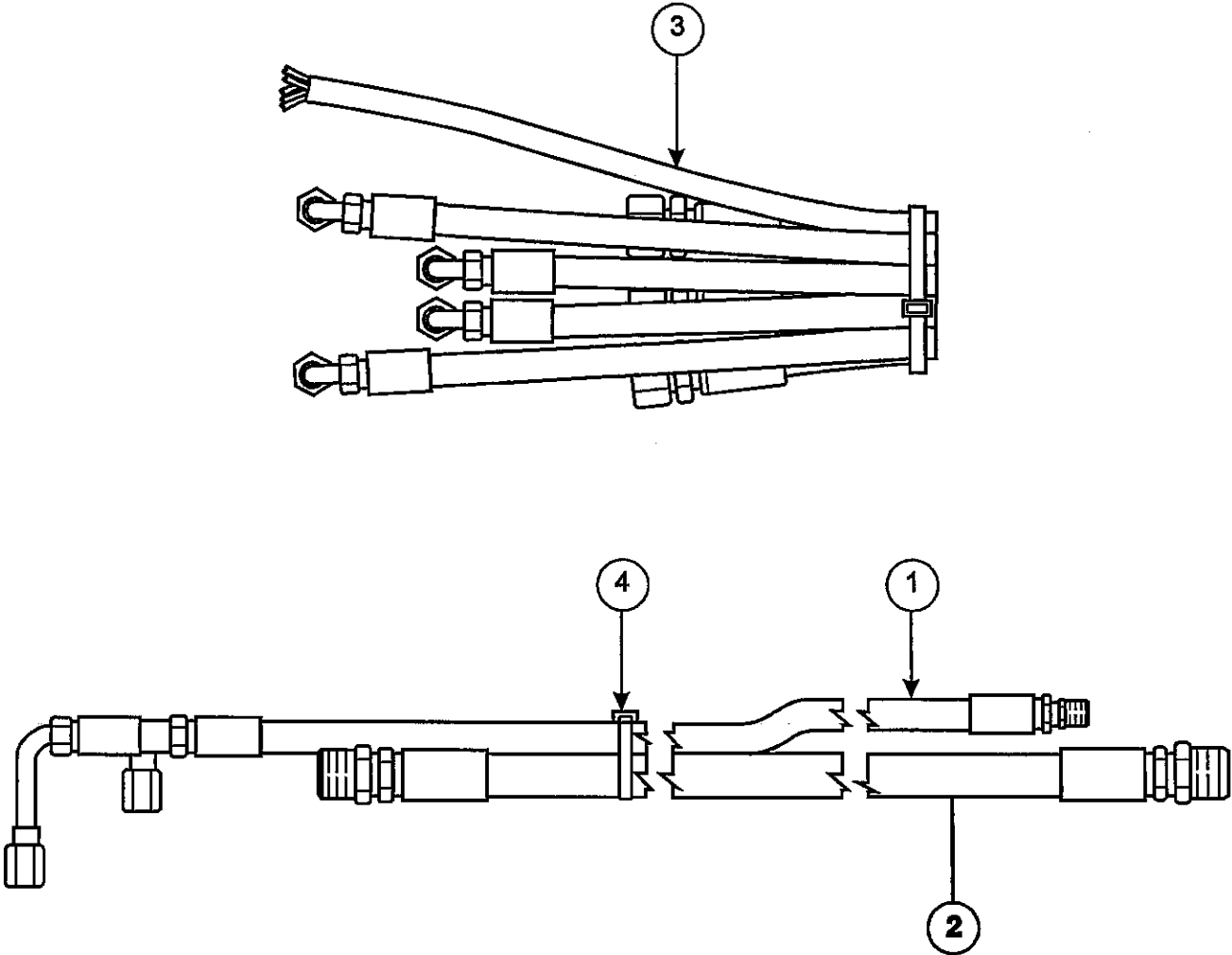
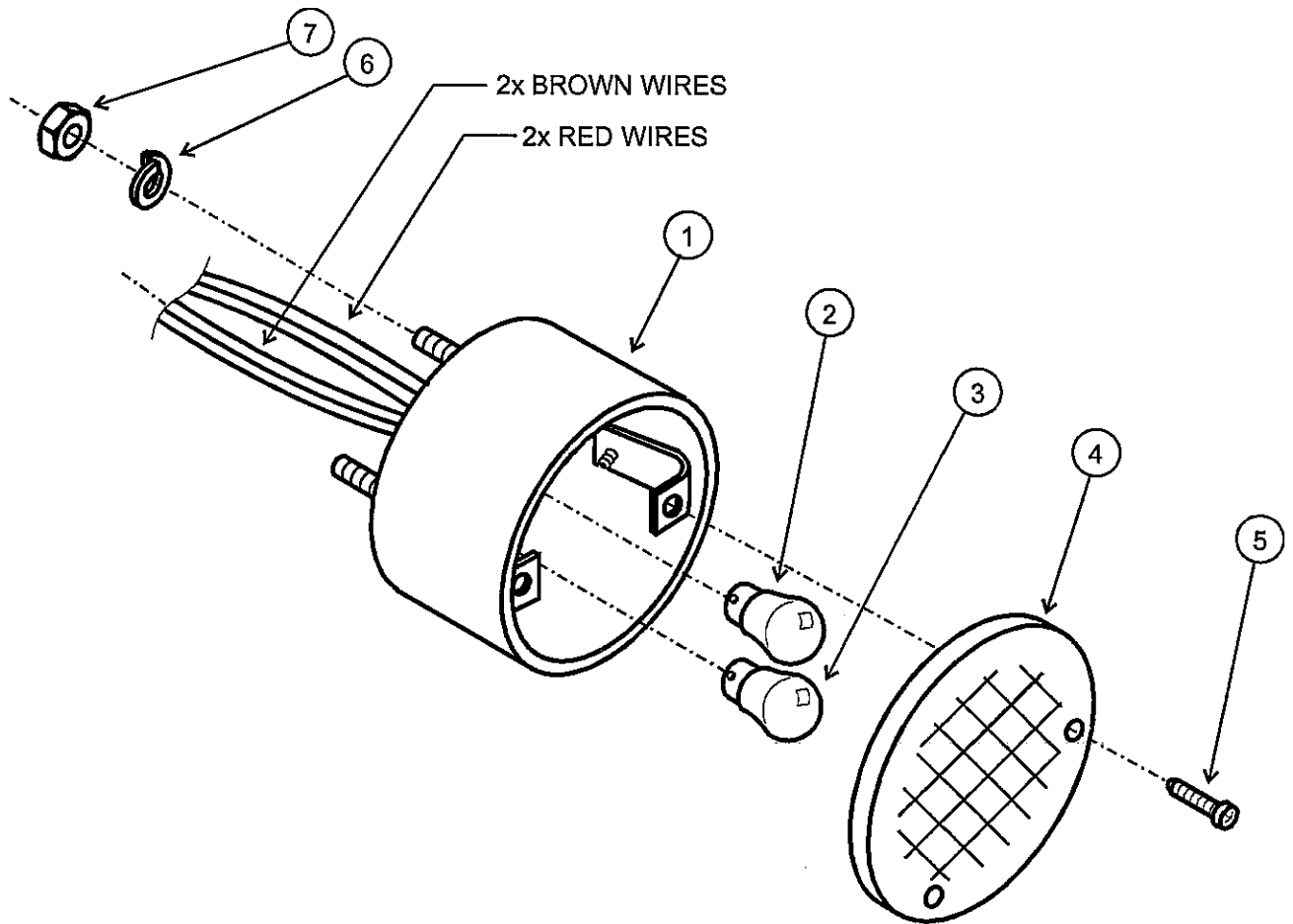


Figure 8-49: Tail Light, p/n: 25055-B



Operator Compartment, p/n: 13018-07-J

Item	Part No.	Qty	Description
0	1F412E	4	Pin, Cotter
1	16028	1	Raised Operator Compartment, 3.50" Higher
2	13020-01	1	Console, with Raised Battery Compartment
3	13522	1	Accelerator Assembly
4	10460	1	Floor Plate, LH
5	10549	1	Cover, Weldment
6	10543	2	Cap Saddle
8	11750-01	1	Reservoir Assembly
11	13095	1	Mounting Plate Terminal Strips
12	50454	Pht 1	Pump and Motor Assembly Power Steer.
13	1410602	Pht 1	Steering Wheel & Horn Button Assembly
15	10583	1	Cover, Master Cylinder Bracket
16	8879	2	Adapter, Brake Cylinder
17	6840	2	Clip, Retaining, Cable
18	10648	1	Door Latch Guide, Hydraulic Compartment
19	10649	1	Latch, Door, Hydraulic Compartment
20	1402690	1	Dash Panel Assembly, with Curtis Bdi and Wire Harness
21	16212	Pht 1	Panel Assembly, Key Switch
23	10665-04	1	Control Handle Weldment, Shift
24	10665-02	1	Control Handle Weldment, Tilt
25	10665-03	1	Control Handle Weldment, Pivot
26	10665-01	1	Control Handle Weldment, Lift
27	50382-03	Pht 1	Knob, Pivot
28	50382-01	Pht 1	Knob, Lift
29	50382-04	Pht 1	Knob, Shift
30	50382-02	Pht 1	Knob, Tilt
32	6930	1	Bracket, Switch
33	8874-1	1	Cable Assembly, 21-1/2" Long
35	10643	1	Tie Bar Weldment
36	20119	2	Board, Terminal
40	22065	1	Valve
41	23737	1	Valve, Control, 1-Spool, 3-Way, 3-Position
42	50870-01	1	Filter, Return Line, 10 Micron

Figure 8-57: Accelerator Switch Assembly, p/n: 13523-C

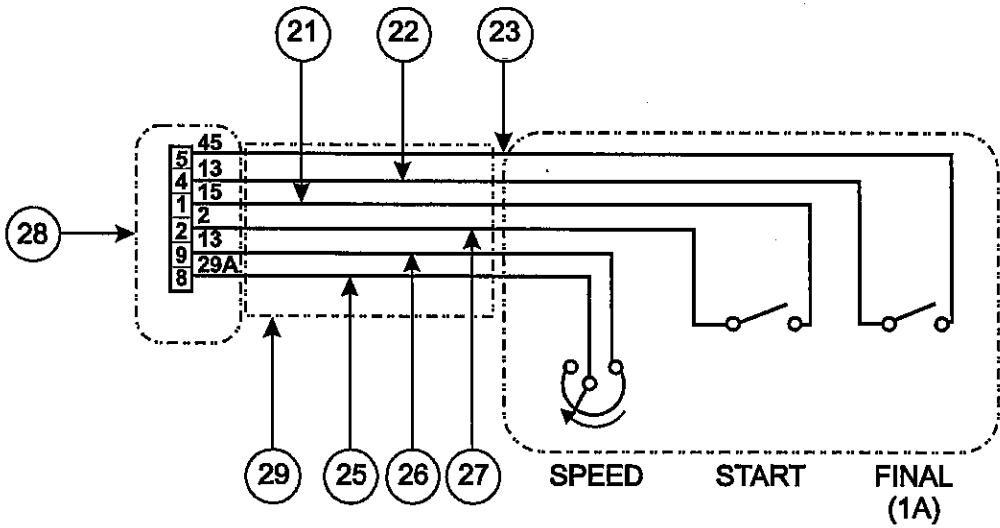
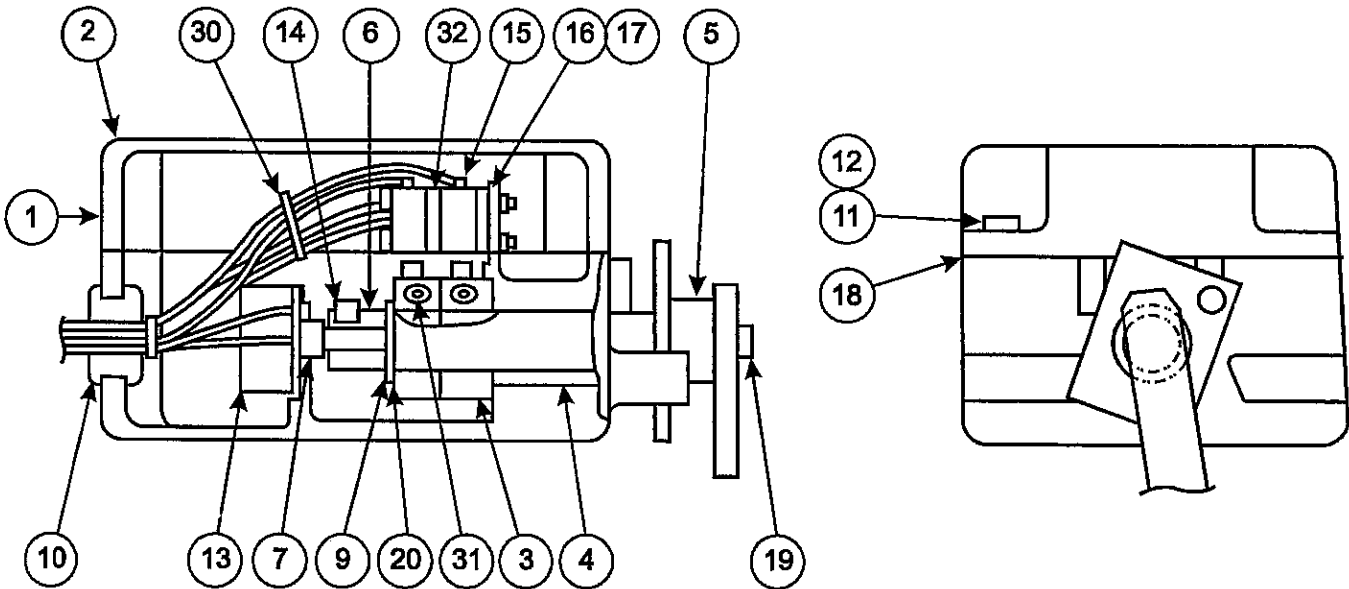


Figure 8-62: Steering Wheel and Horn Assembly, p/n: 50656-A

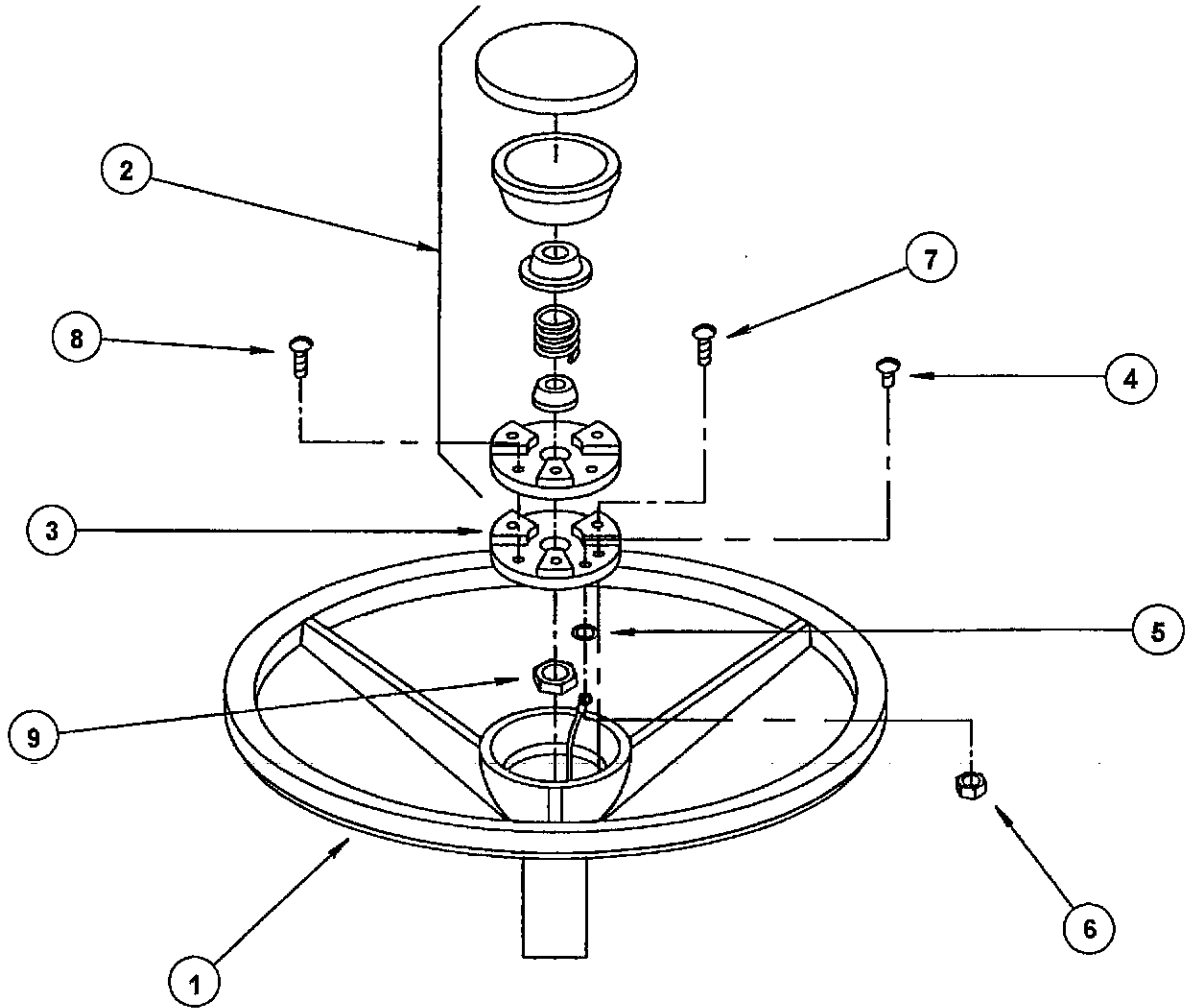
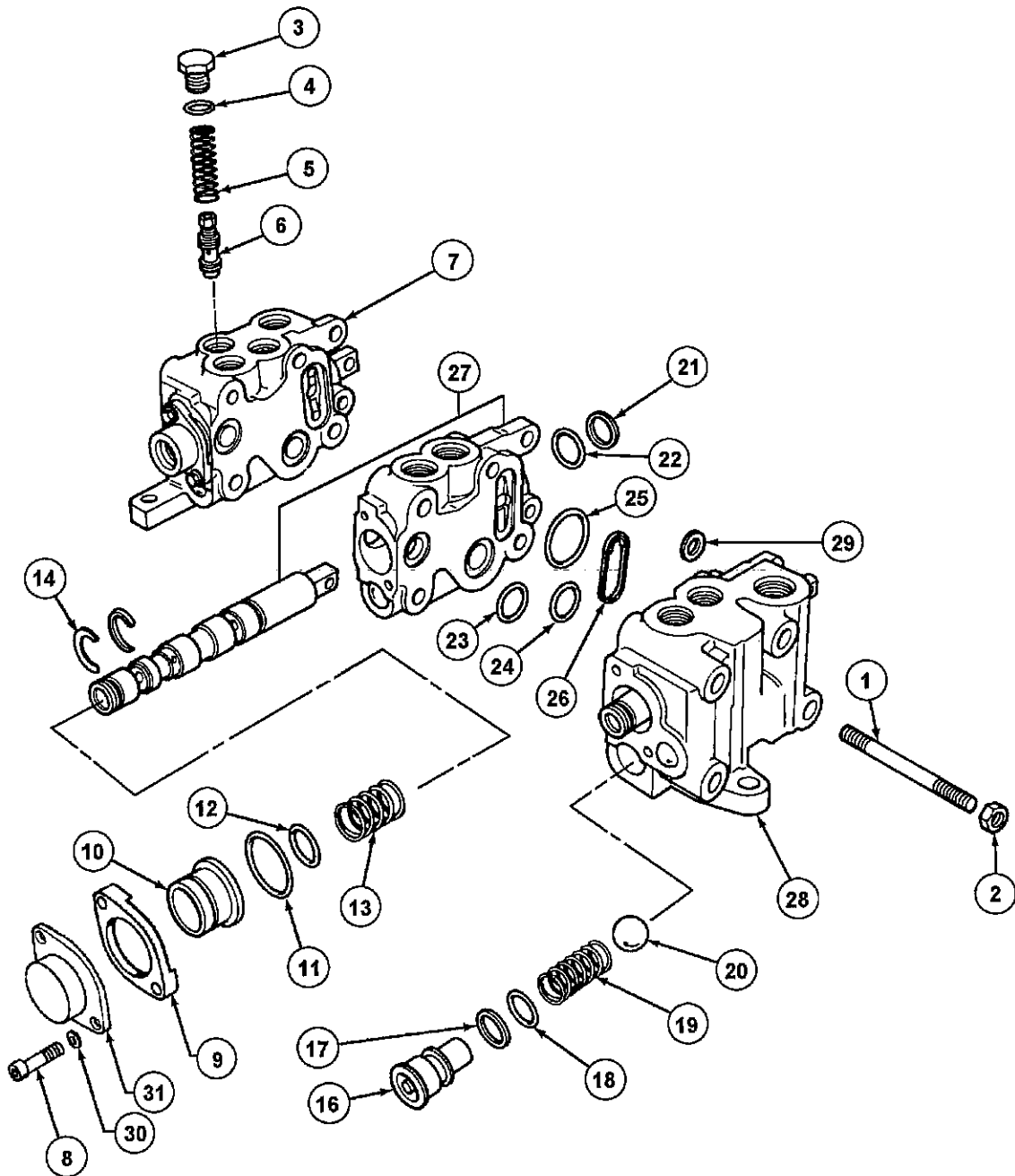


Figure 8-67: Control Valve, p/n: 22065-B



CLICK HERE TO **DOWNLOAD** THE COMPLETE MANUAL

- Thank you very much for reading the preview of the manual.
- You can download the complete manual from: www.heydownloads.com by clicking the link below



- Please note: If there is no response to CLICKING the link, please download this PDF first and then click on it.

CLICK HERE TO **DOWNLOAD** THE COMPLETE MANUAL