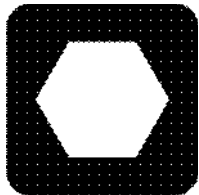


RT10/RT12

Parts Manual



CLICK HERE TO **DOWNLOAD** THE COMPLETE MANUAL

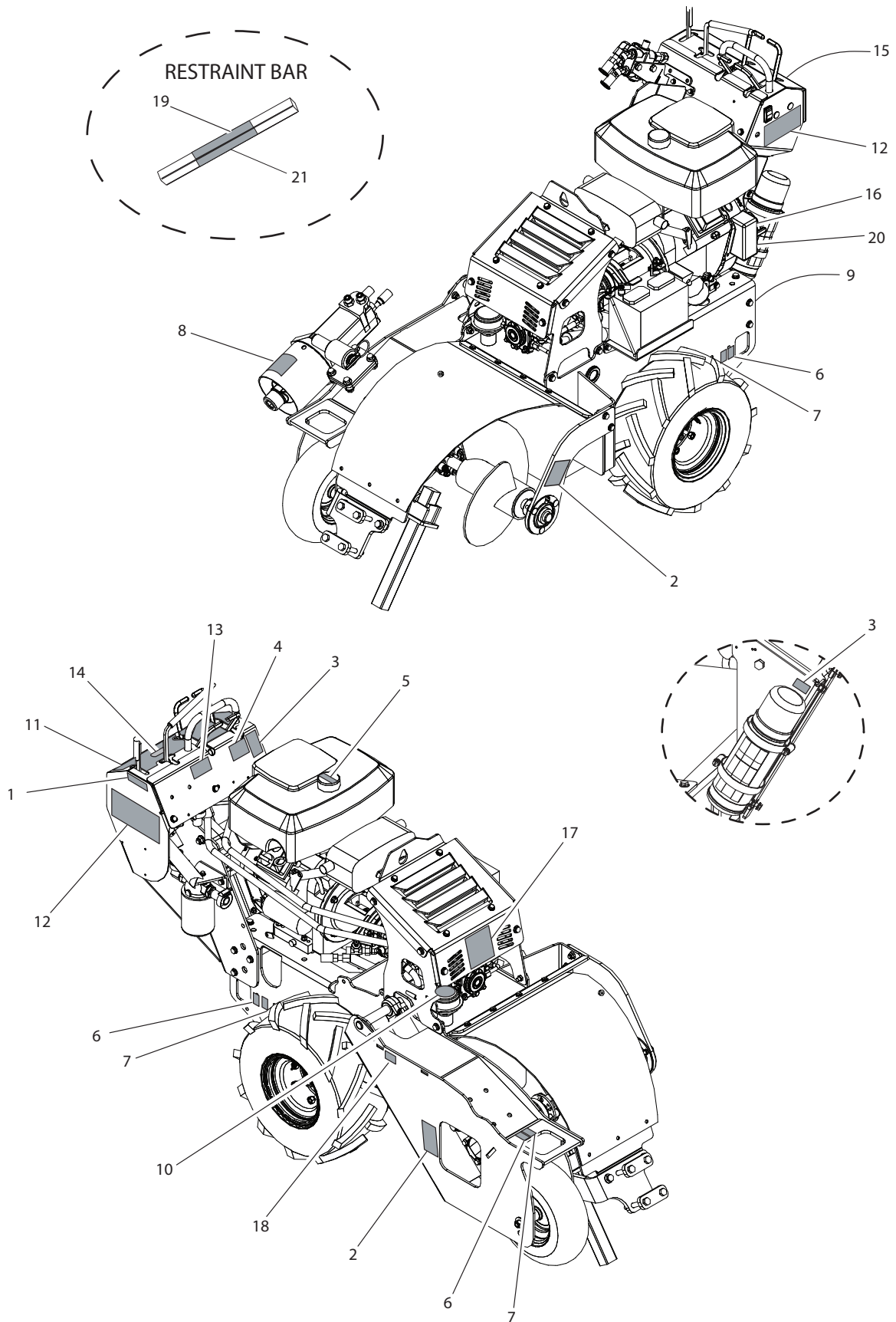
- Thank you very much for reading the preview of the manual.
- You can download the complete manual from: www.heydownloads.com by clicking the link below



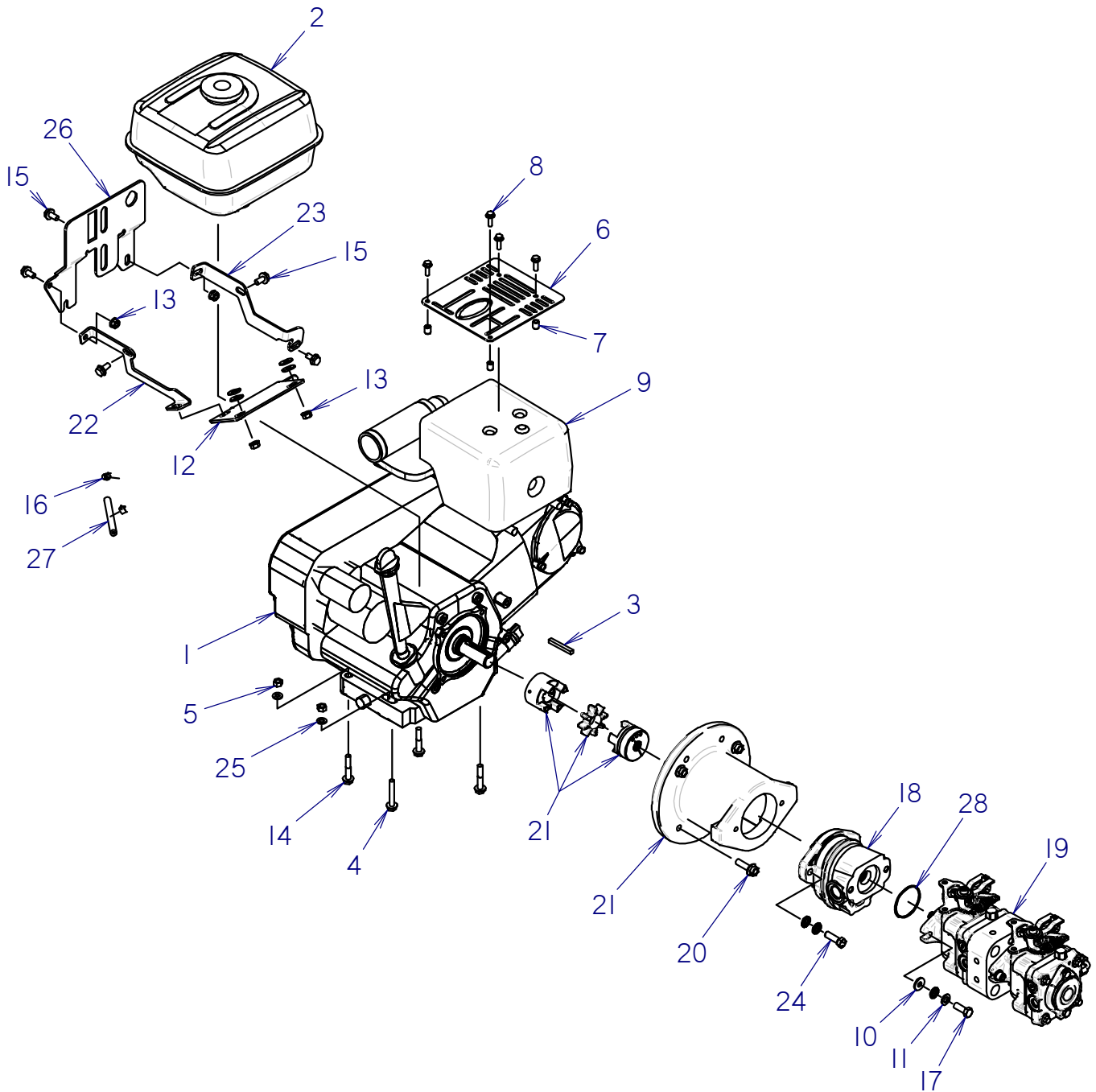
- Please note: If there is no response to CLICKING the link, please download this PDF first and then click on it.

CLICK HERE TO **DOWNLOAD** THE COMPLETE MANUAL

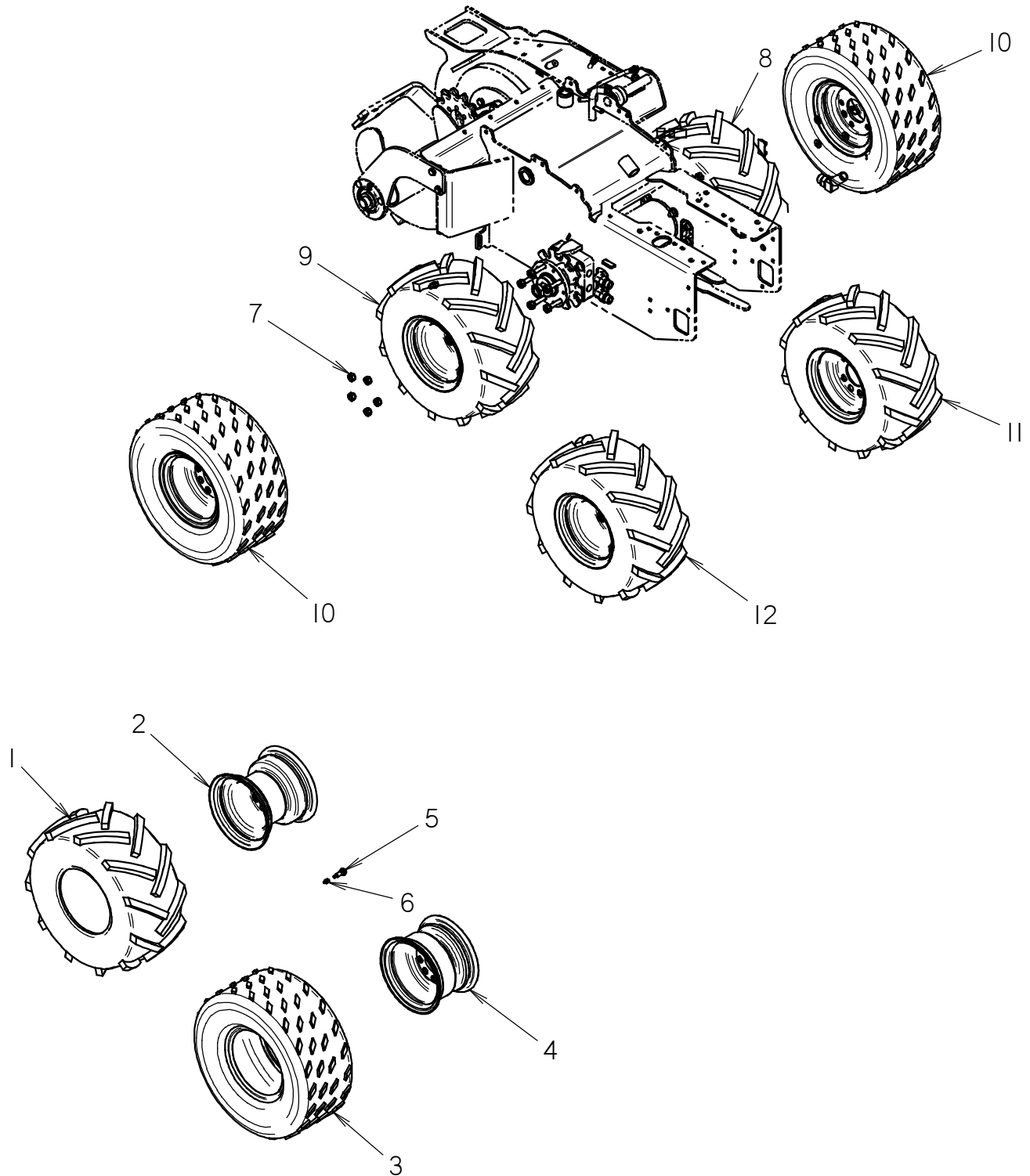
DECAL LOCATION RT12



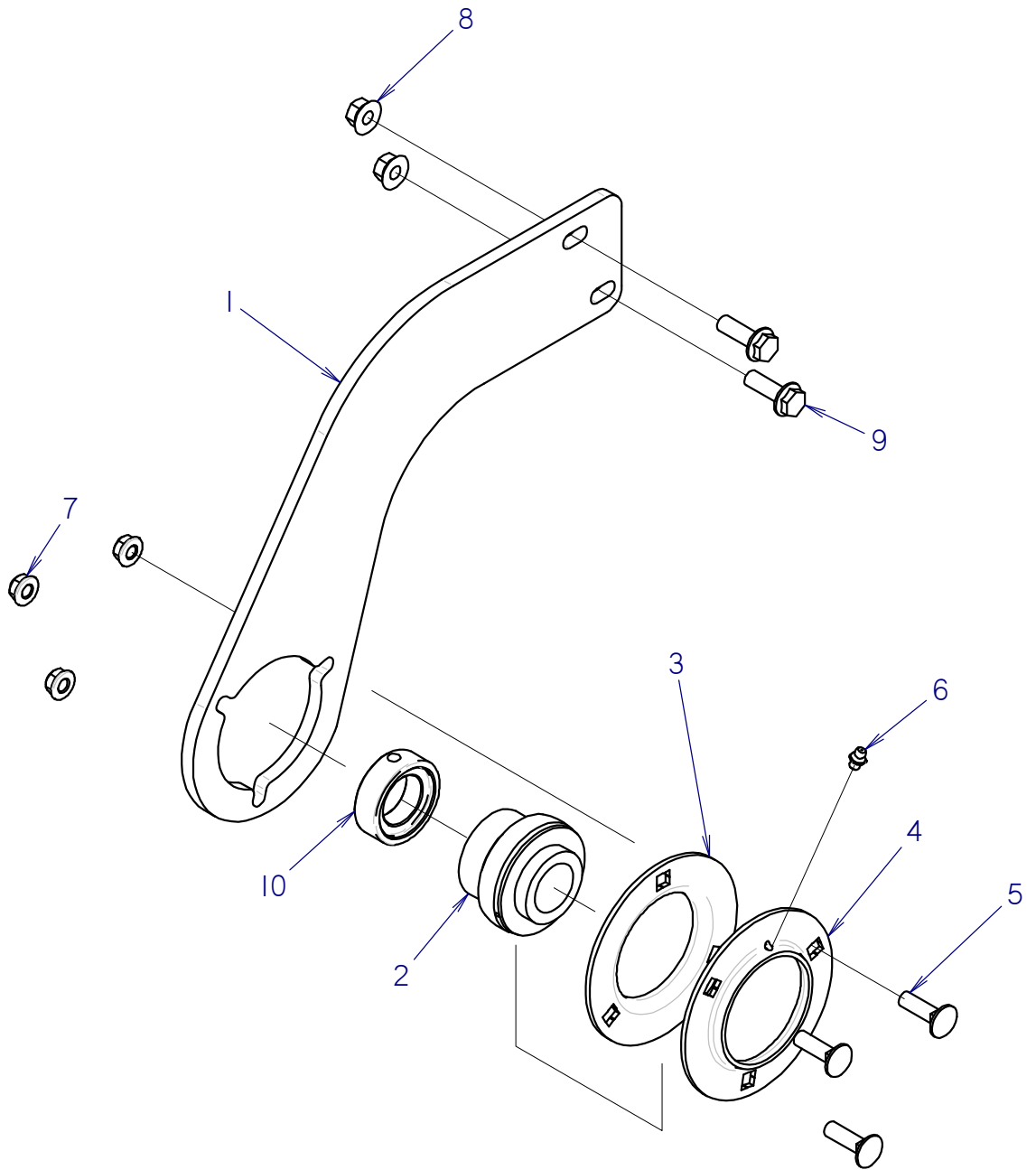
ENGINE ASSY RT12 HONDA



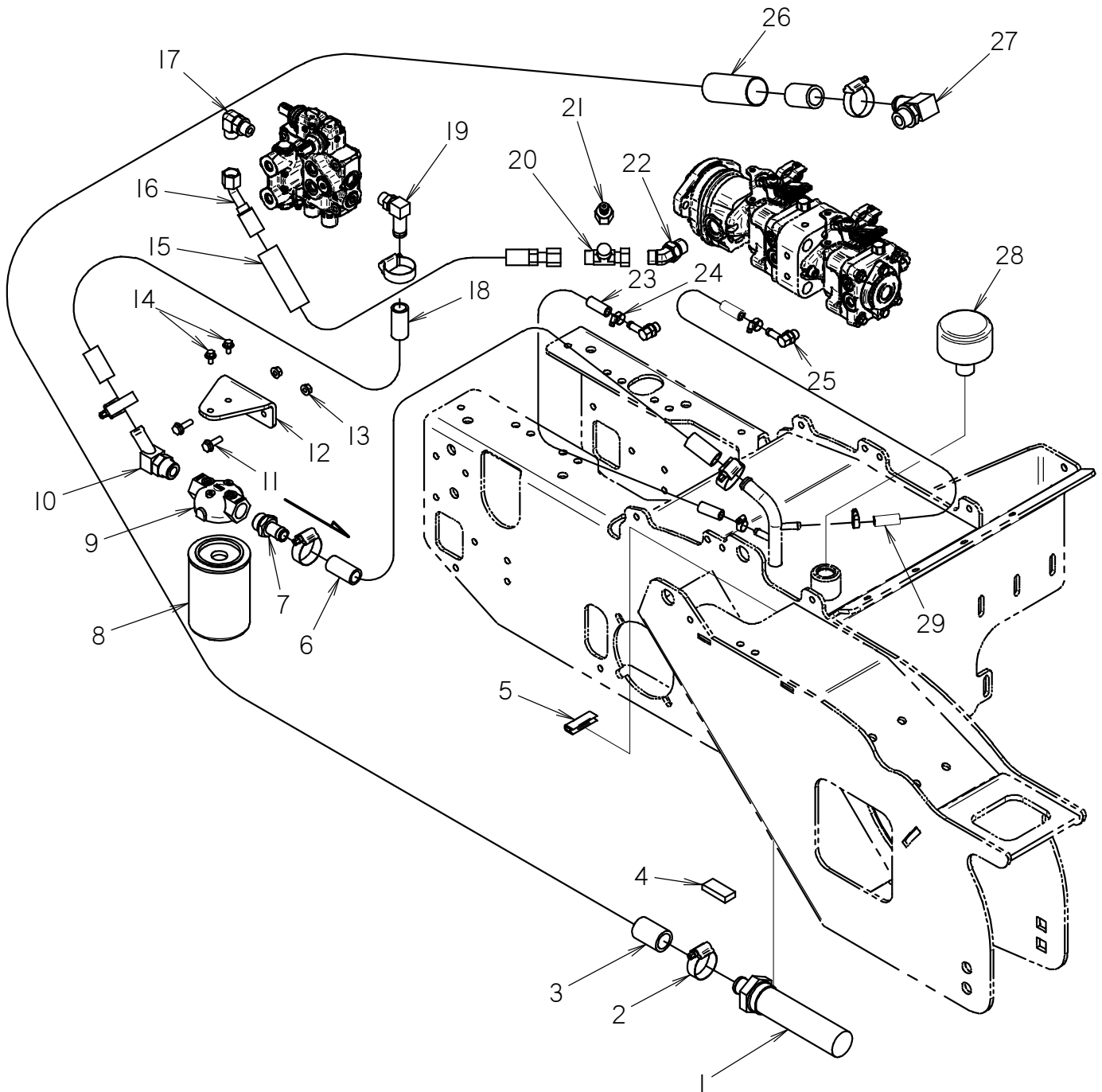
TIRE AND WHEEL



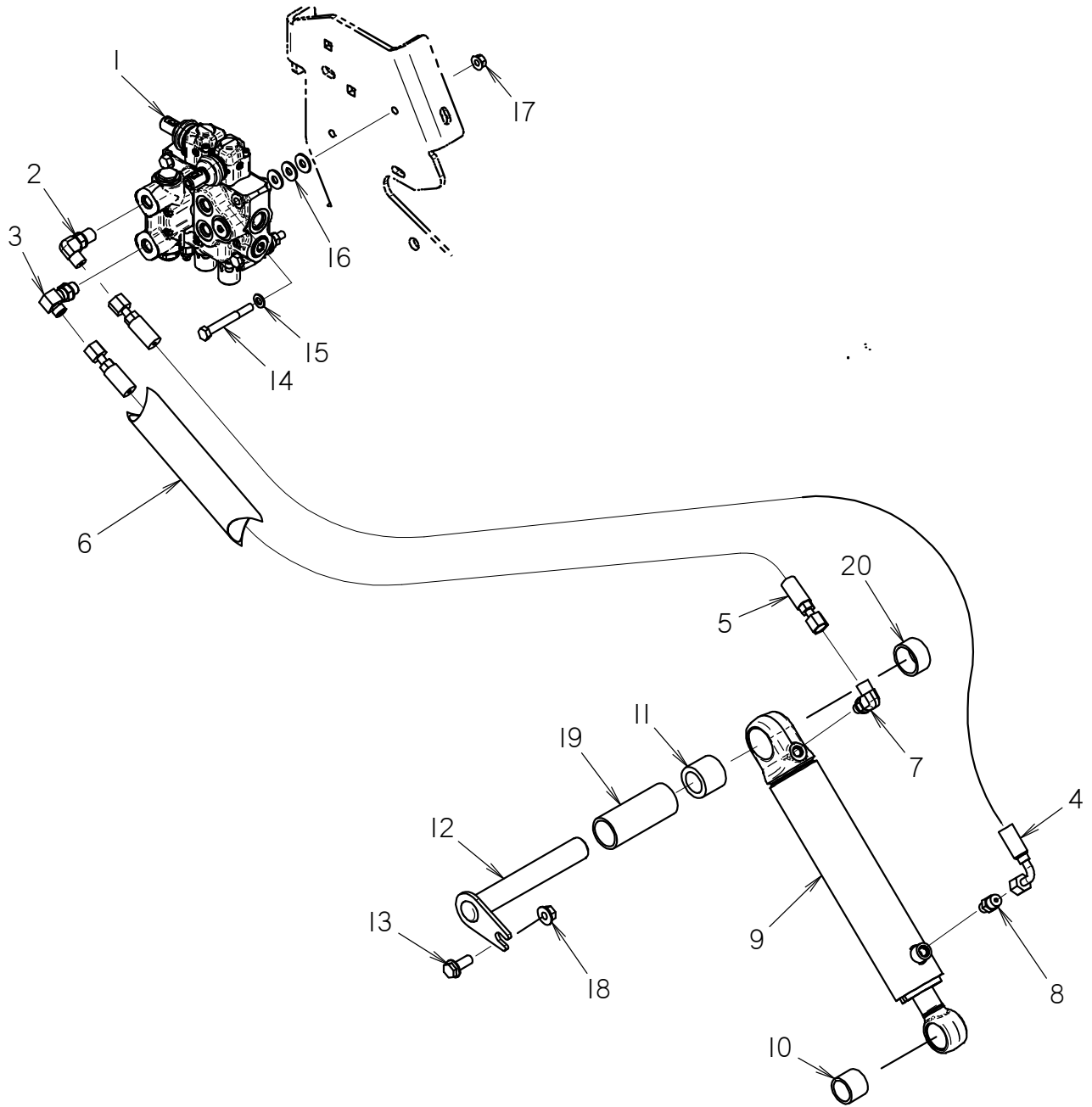
OUTBOARD BEARING



FILTER HYDRAULICS RT10



LIFT HYDRAULICS



CLICK HERE TO **DOWNLOAD** THE COMPLETE MANUAL

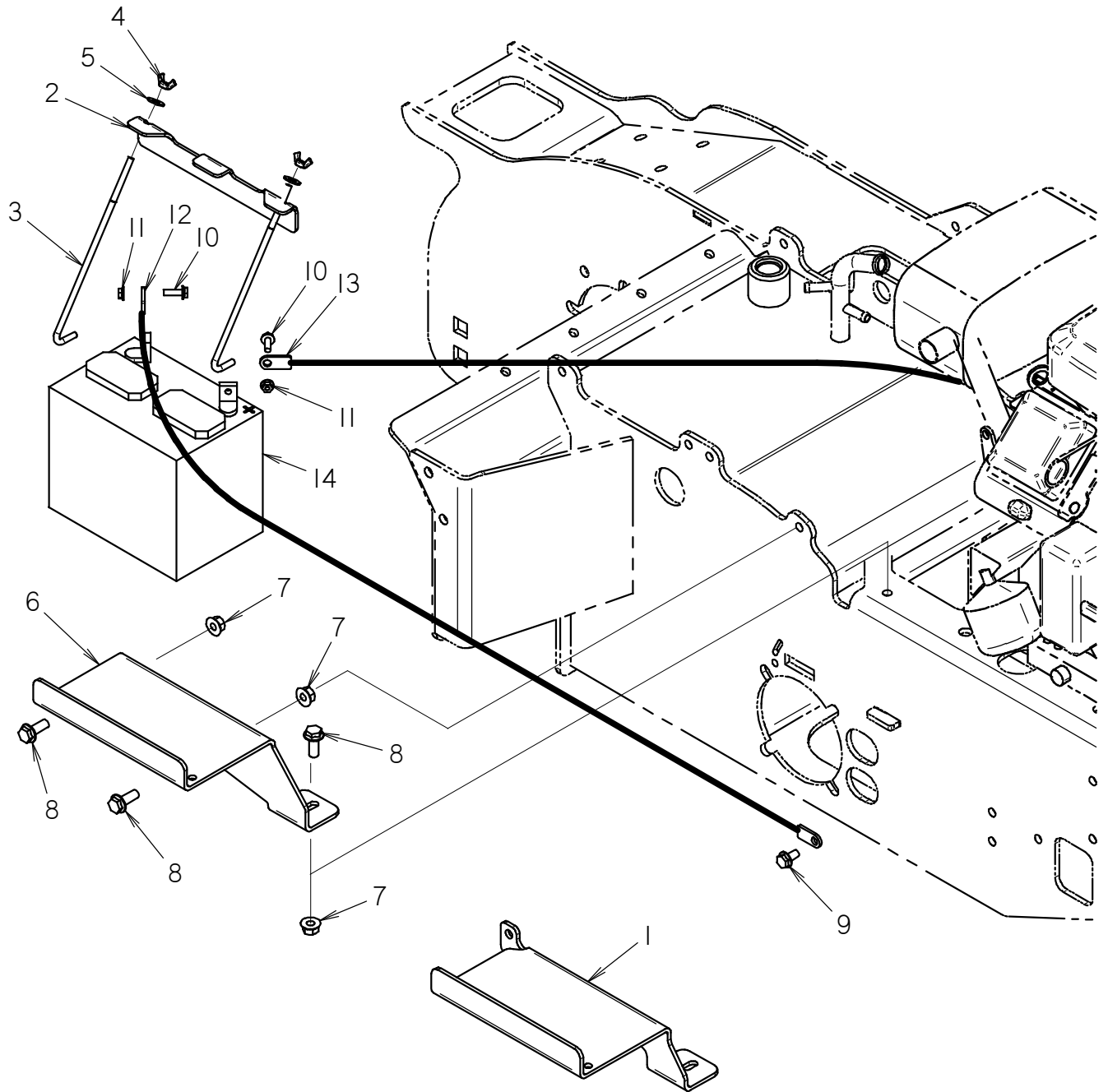
- Thank you very much for reading the preview of the manual.
- You can download the complete manual from: www.heydownloads.com by clicking the link below



- Please note: If there is no response to CLICKING the link, please download this PDF first and then click on it.

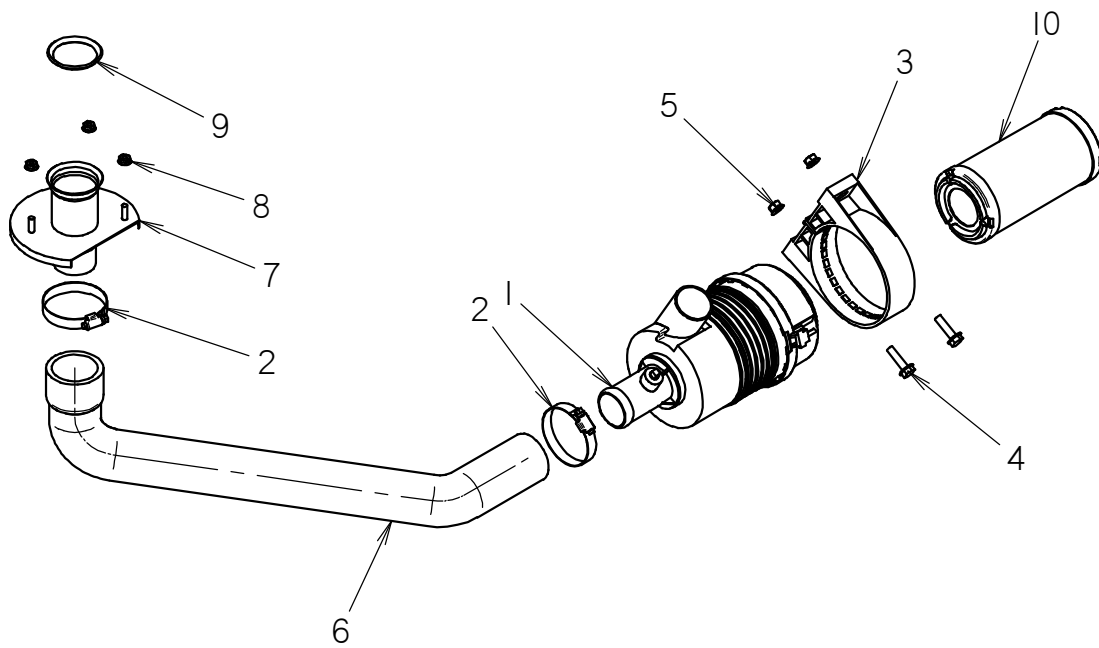
CLICK HERE TO **DOWNLOAD** THE COMPLETE MANUAL

BATTERY

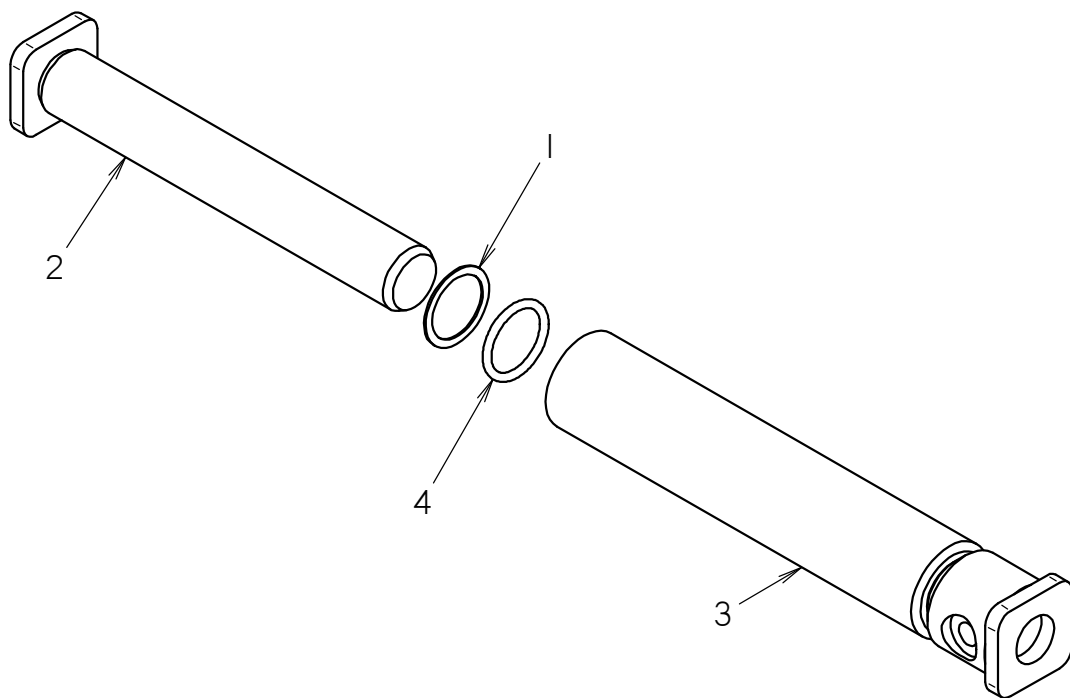


REMOTE AIR

RT10

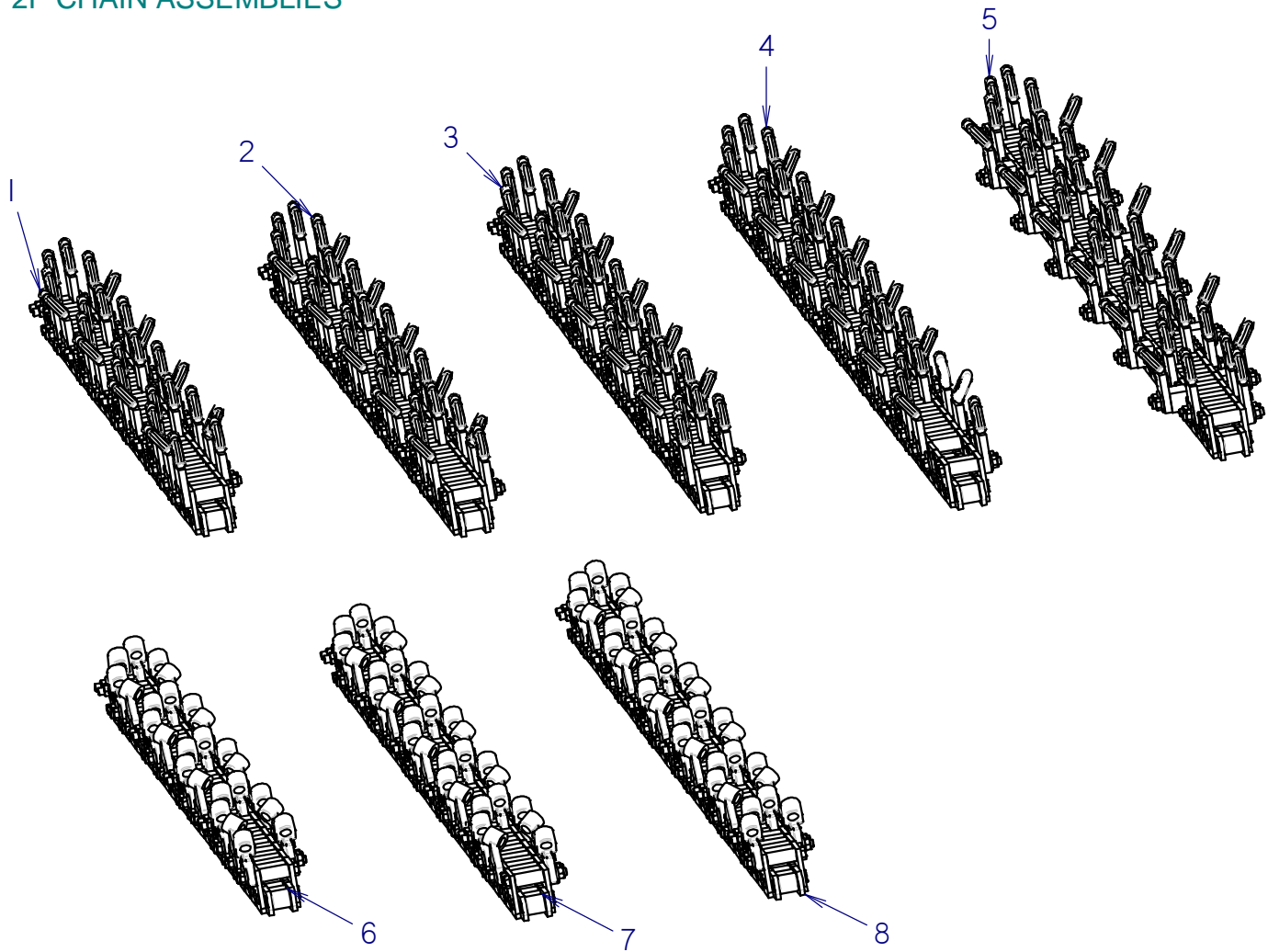


GREASE CYLINDER



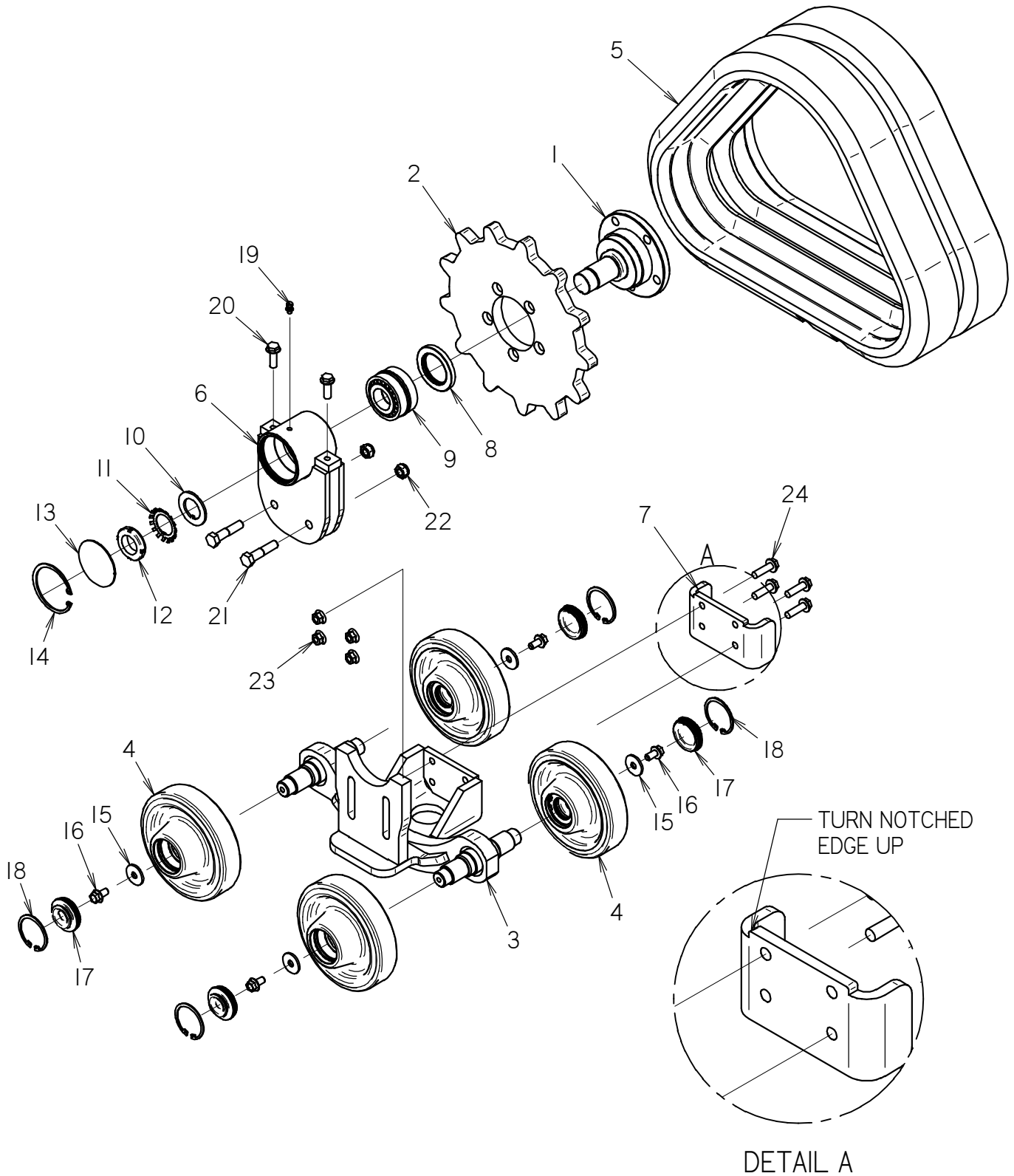
35K SHARK & ALLIGATOR CHAINS

2P CHAIN ASSEMBLIES



REPAIR	CHAIN ASSEMBLIES							
PART#	I37-223	I37-224	I37-225	I37-226	I37-227	I37-228	I35-I452	I35-I453
I35-I53I	0	0	1	0	0	1	0	0
I37-208	0	0	0	0	0	0	1	1
I37-210	0	1	0	0	1	0	1	1
I37-209	1	0	0	1	0	0	0	0
I36-I63	4	5	5	0	0	0	0	0
I36-I64	18	21	24	0	0	0	0	0
I36-I65	4	5	5	0	0	0	0	0
I35-637	0	0	0	4	5	5	6	6
I35-638	0	0	0	4	5	5	6	6
I35-639	0	0	0	18	21	24	27	27
I06-400	16	20	24	16	20	24	24	24
I05-098	36	42	44	36	42	44	54	30
I37-214	36	42	44	36	42	44	54	54
I37-212	16	20	24	16	20	24	24	24
I05-814	52	62	68	52	62	68	78	78
I36-029	0	0	0	0	0	0	0	12
I05-022	0	0	0	0	0	0	0	24

WHEEL TRACK ASSEMBLY BEGINS WITH DATE CODE



Torque Information

Tightening Guidelines

Values given on the following pages are a guide. Do not use these values if a different torque value or tightening procedure is given for specific application. Check tightness of fasteners periodically.

Shear bolts are designed to fail under predetermined loads. Always replace shear bolts with identical property class fasteners.

Fasteners should be replaced with the same or higher property class. If higher property class fasteners are used, tighten only to torque value of original fastener.

Make sure fastener threads are clean and that the threads are properly started. This will prevent them from cross threading or galling when tightened.

Lubed means cleaned, dry bolts lubricated with a standard, medium-viscosity machine oil. Lubricate all contact areas of the bolts and washers. Lubricating the bolts is the suggested torque method.

CLICK HERE TO **DOWNLOAD** THE COMPLETE MANUAL

- Thank you very much for reading the preview of the manual.
- You can download the complete manual from: www.heydownloads.com by clicking the link below



- Please note: If there is no response to CLICKING the link, please download this PDF first and then click on it.

CLICK HERE TO **DOWNLOAD** THE COMPLETE MANUAL