

# **JT10**

# **Parts Manual**



CLICK HERE TO **DOWNLOAD** THE COMPLETE MANUAL

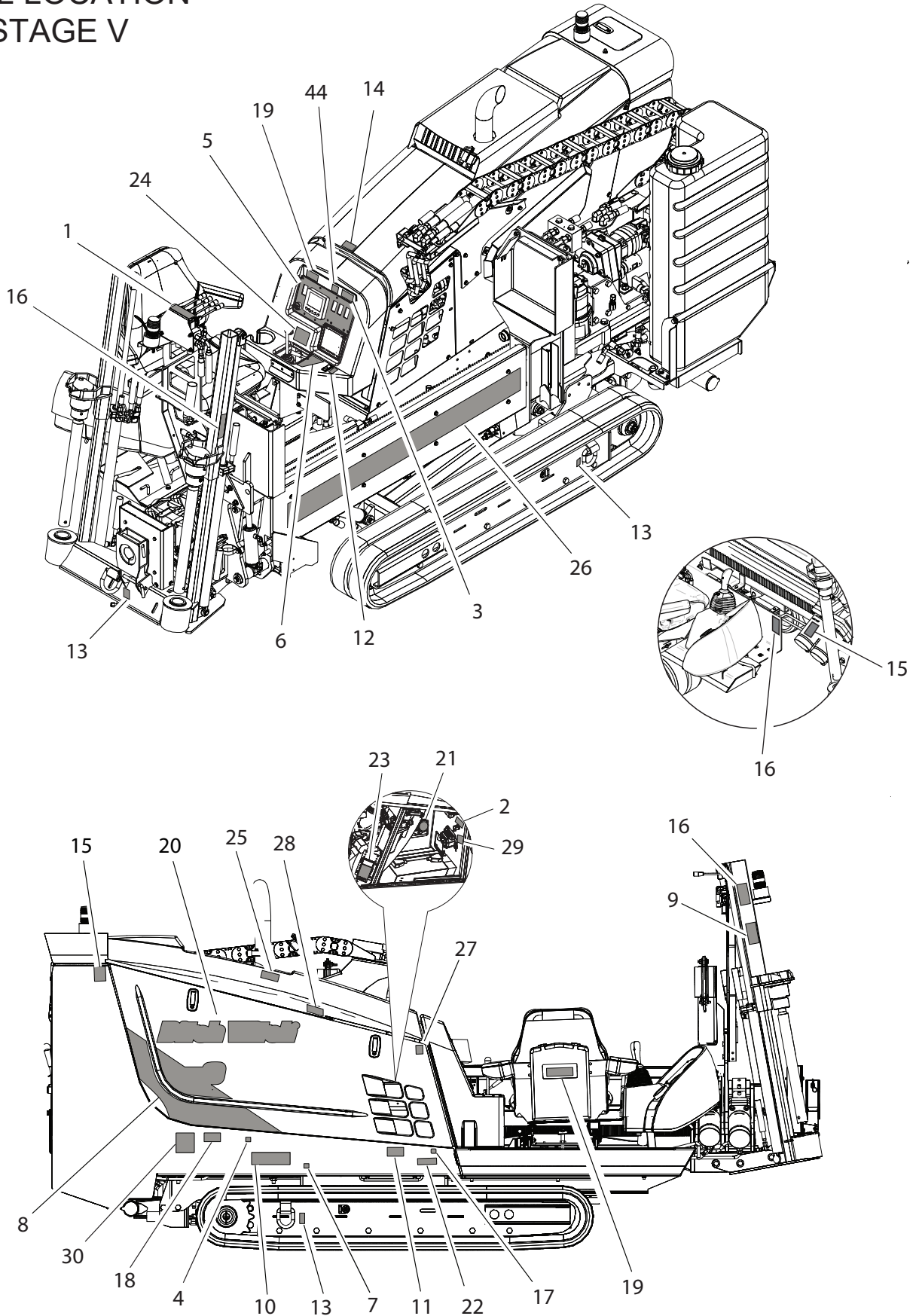
- Thank you very much for reading the preview of the manual.
- You can download the complete manual from: [www.heydownloads.com](http://www.heydownloads.com) by clicking the link below



- Please note: If there is no response to CLICKING the link, please download this PDF first and then click on it.

CLICK HERE TO **DOWNLOAD** THE COMPLETE MANUAL

# DECAL LOCATION JT10 STAGE V



# DECAL LOCATION

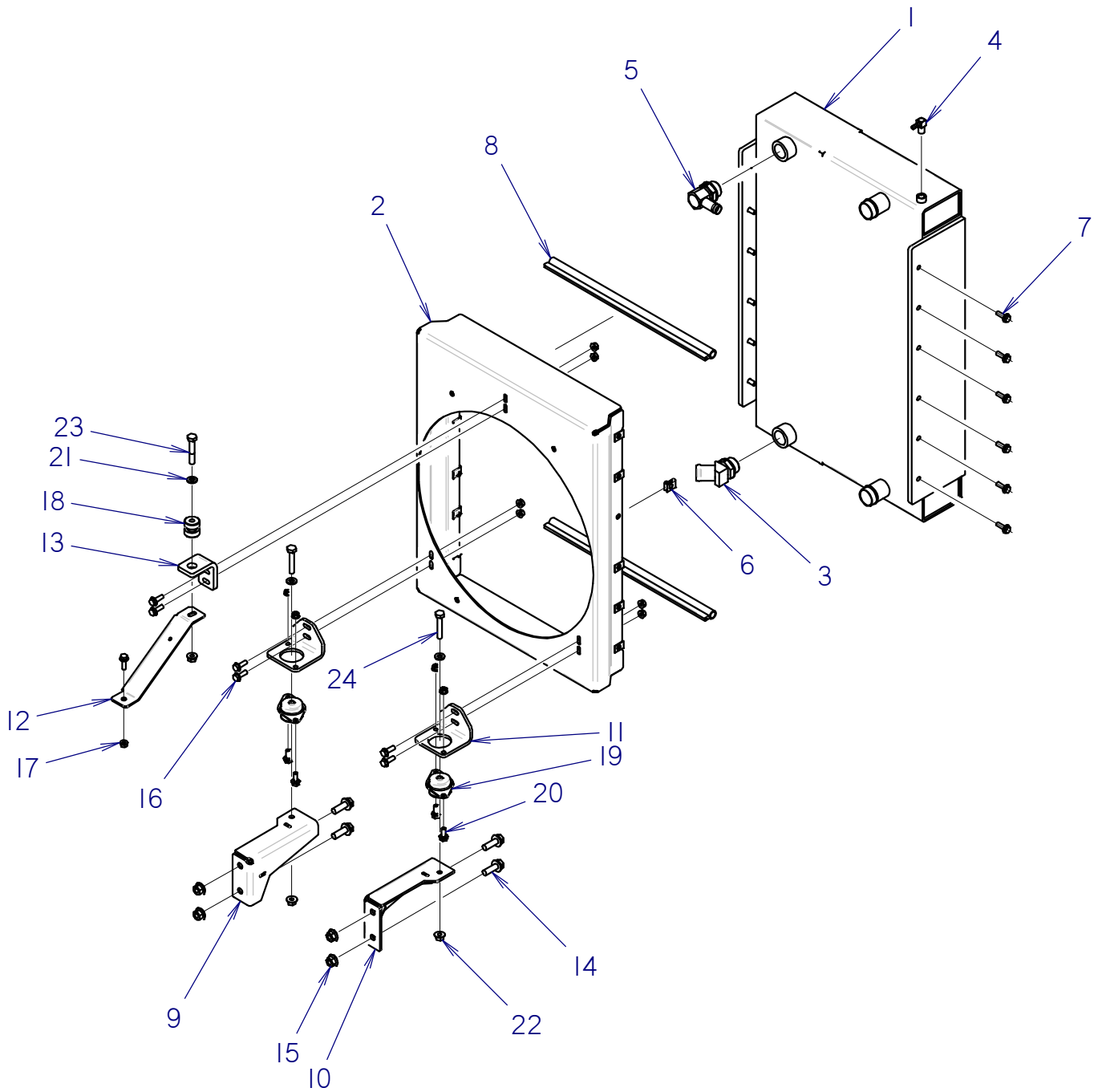
## JT10 LRC

REF NO.	PART NUMBER	QTY	DESCRIPTION	REMARKS
	270-7634		DECAL KIT - JT10	
1	700-071	1	STAKE DRIVER	
2	270-1452	1	FUSE BLOCK	
3	270-7135	1	JT9/JT10 SERVICE / LUBE CHART ISO	
4	270-1496	1	TRACK CONTROL	
5	270-5949	1	CONSOLE PANEL	
6	270-1498	1	DRILLING FLUID	
7	270-5497	1	THRUST AND ROTATE	
8	270-7307	1	JT10 MODEL ID	
9	700-075	1	DANGER WRENCH ISO	
10	270-2414	2	DANGER ELECTROCUTION ISO	
11	270-6968	1	NOTICE HYDRAULIC OIL LEVEL ISO	
12	270-4677	1	CARRIAGE CONTROL	
13	274-318	4	TIE DOWN LOCATION	
14	270-6773	1	PATENT	
15	270-4541	2	WARNING MOVING PARTS ISO	
16	270-1151	3	DANGER ROTATING SHAFT ISO	
17	270-5127	1	BATTERY	
18	270-7021	1	NOTICE OIL LEVEL ISO	
19	270-8434	1	DW LOGO 5.6" X 6.6"	
20	270-7355	1	GRAY LOGOTYPE	
21	700-063	1	HYDRAULIC OIL CAP	
22	700-116	1	TRACKER CONTROL	
23	270-5737	1	FUSE/RELAY PANEL	PLACE ON INSIDE OF BUSSMAN COVER
24	700-143	2	WARNING READ MANUAL ISO	
25	700-097	1	CAUTION HOT PARTS ISO	
26	270-7308	1	JT10 MODEL ID PIPEBOX	
27	274-291	1	SOUND POWER	SEE FOOTNOTE I
28	270-5742	1	WARNING EXPLOSION POSSIBLE ISO	
29	701-383	1	WARNING SLOPE PARKING ISO	
30	270-6858	1	DIESEL FUEL - ISO	
31	270-1271	2	THROTTLE CONTROL	
32	270-5131	1	BATTERY DISCONNECT SWITCH	
33	270-5496	1	GAUGE PANEL	
34	270-6964	1	NOTICE ELECTRICAL SYSTEM ISO	
35	270-5868	1	WRENCH CONTROL	
36	275-222	1	ENGINE STOP	
37	700-006	1	WARNING CYLINDER LOCK ISO	
38	270-6036	1	WARNING PRESSURIZED FLUID OR AIR ISO	
39	270-7792	1	OPERATOR MANUAL REPLACEMENT ISO	LOCATE INSIDE OF MANUAL BOX
40	270-8178	1	RED HI VIS 1.5" REFLECTORS	

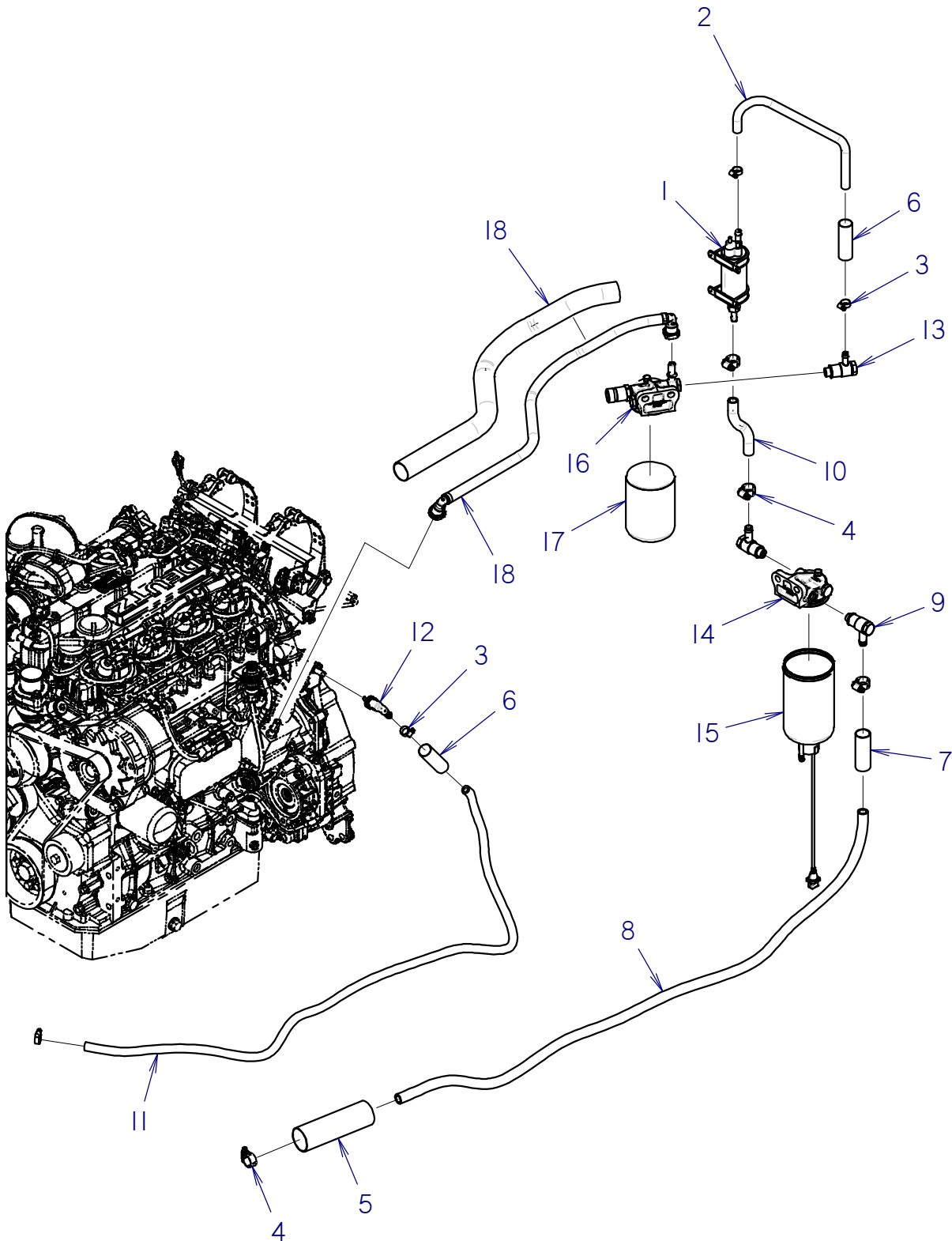
### FOOTNOTES

I. NOT PART OF KIT

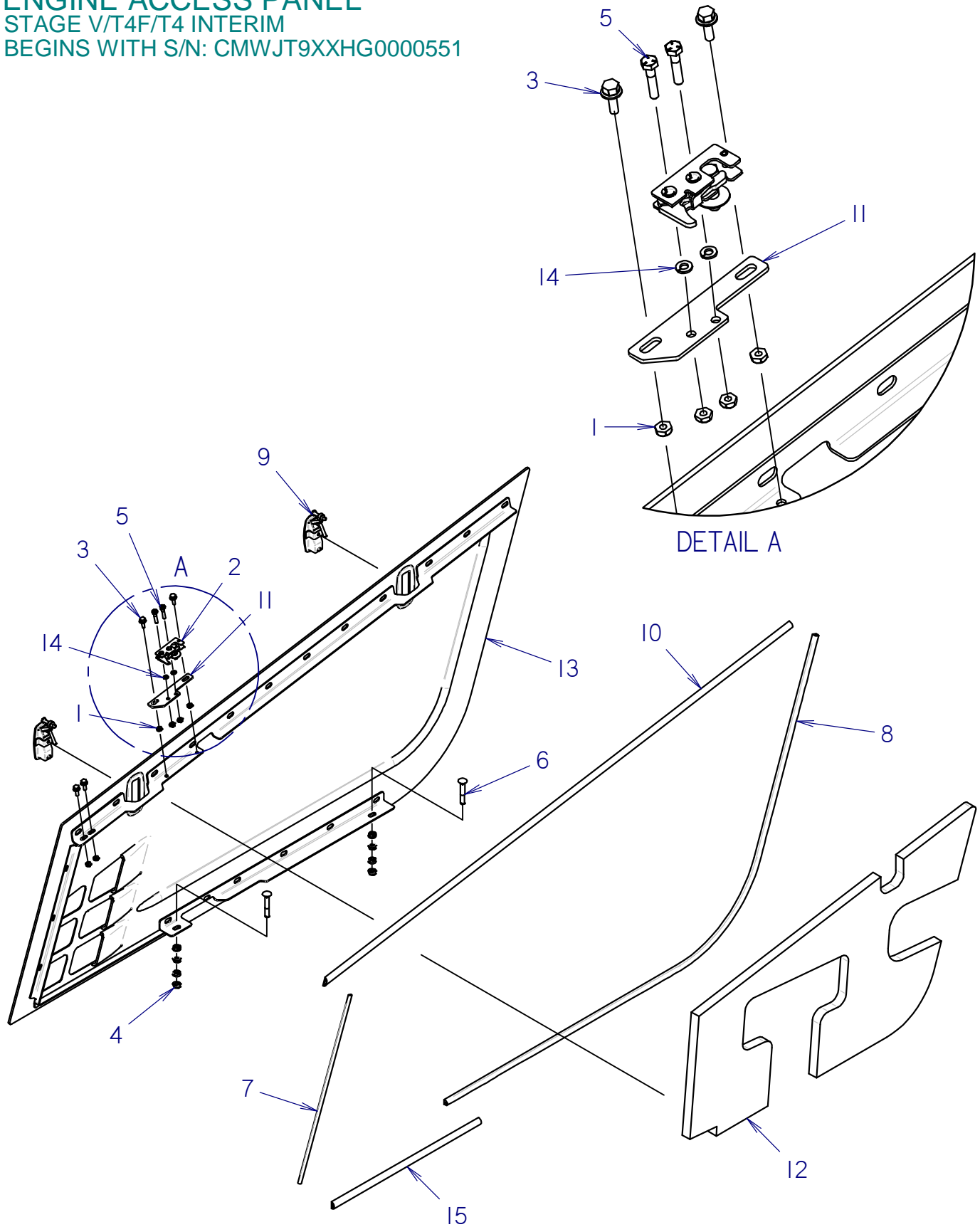
## COOLER MOUNTING - STAGE V



# FUEL SYSTEM - STAGE V

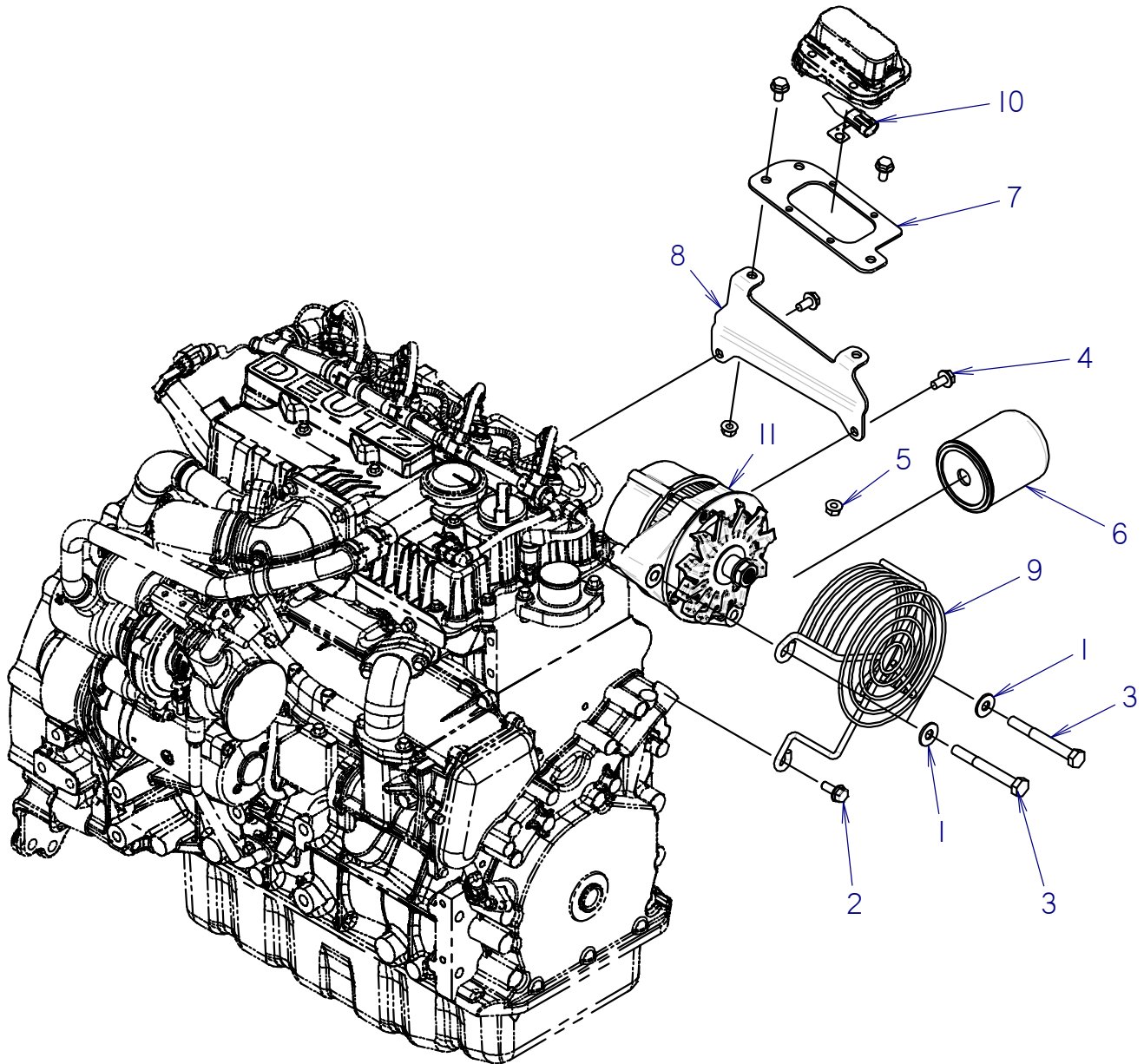


**ENGINE ACCESS PANEL**  
STAGE V/T4F/T4 INTERIM  
BEGINS WITH S/N: CMWJT9XXHG0000551



# ENGINE SERVICE PARTS

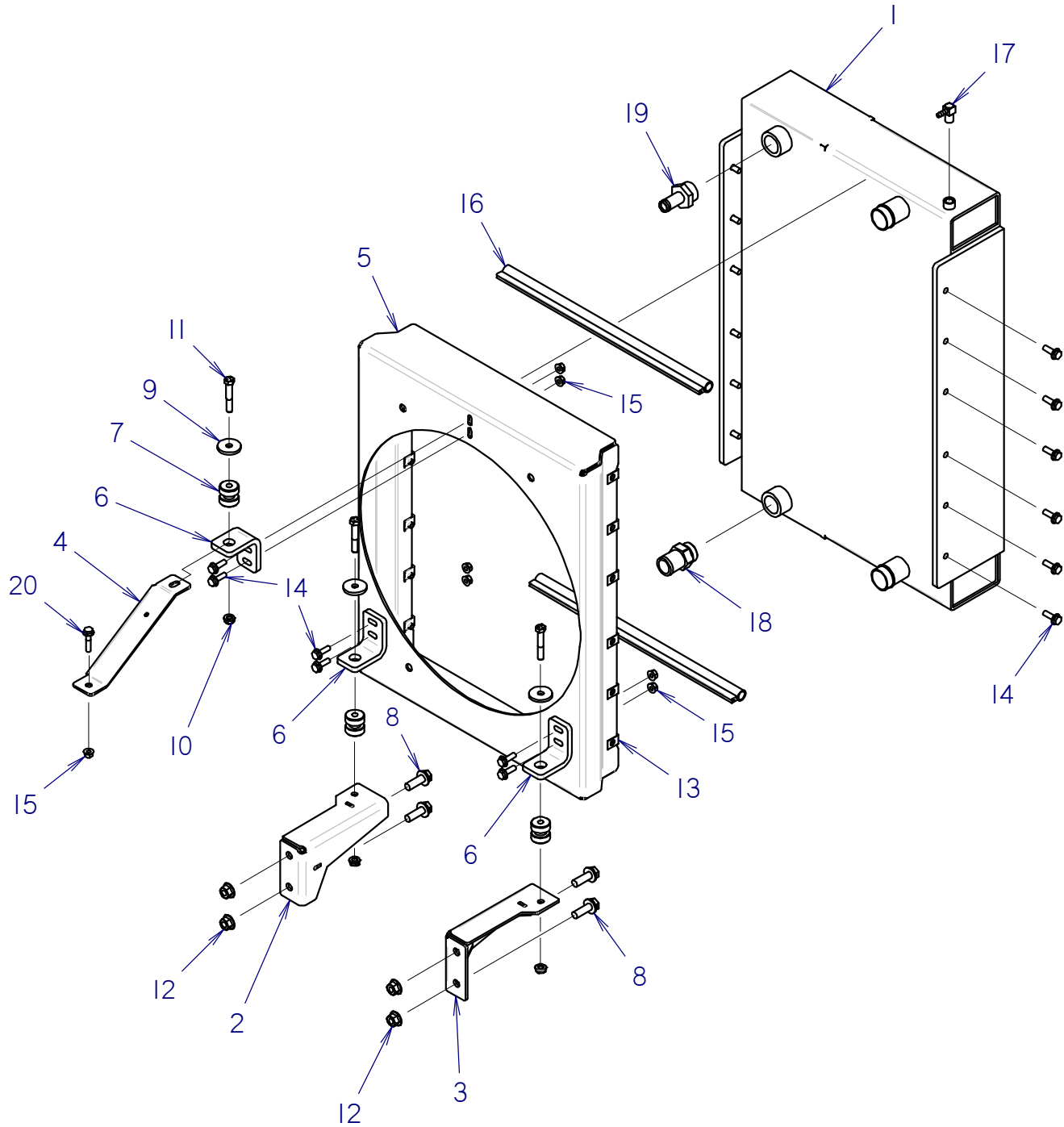
## T4



# COOLER MOUNTING

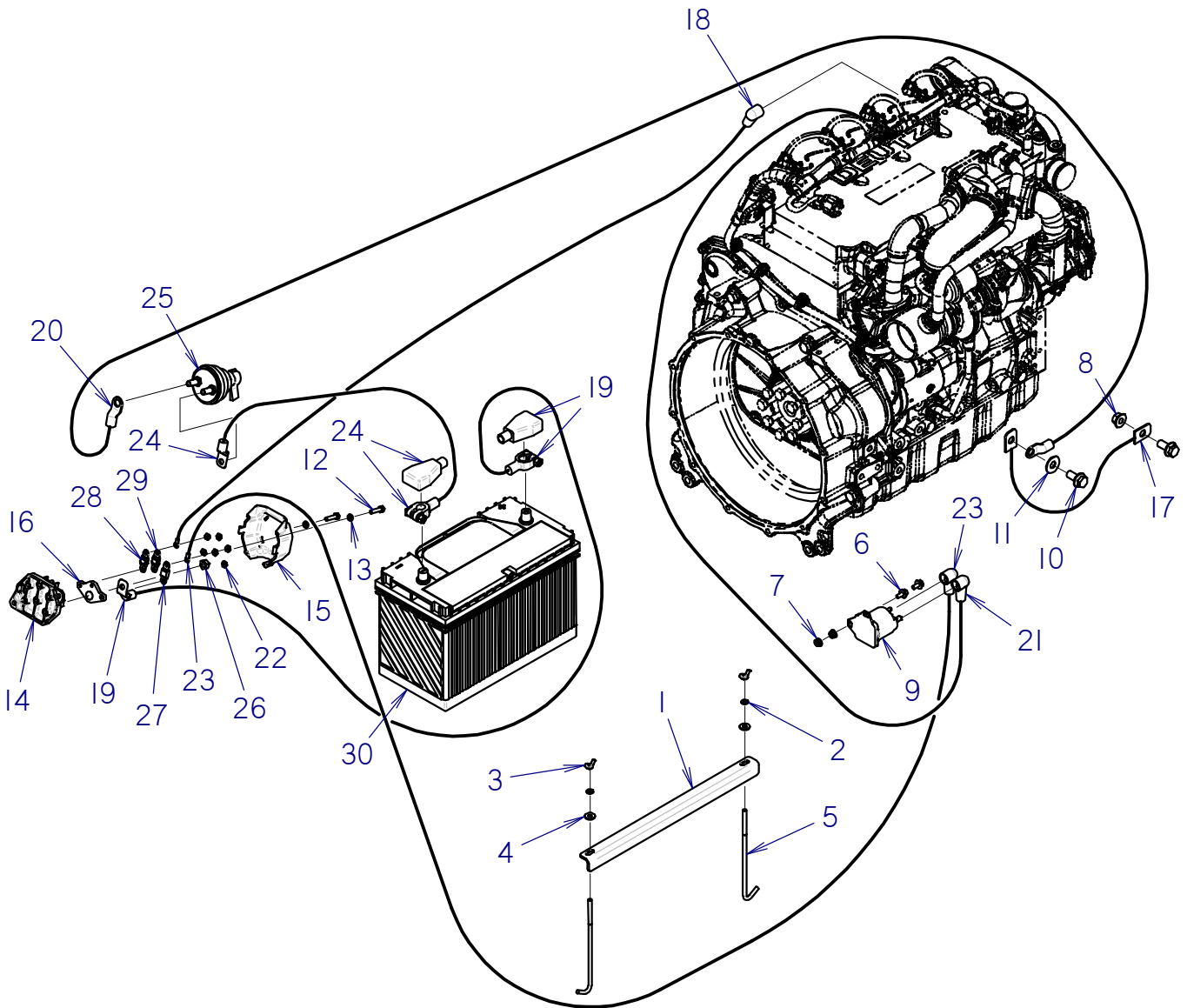
T4

ENDS WITH S/N: DWPJT10XTH0000045

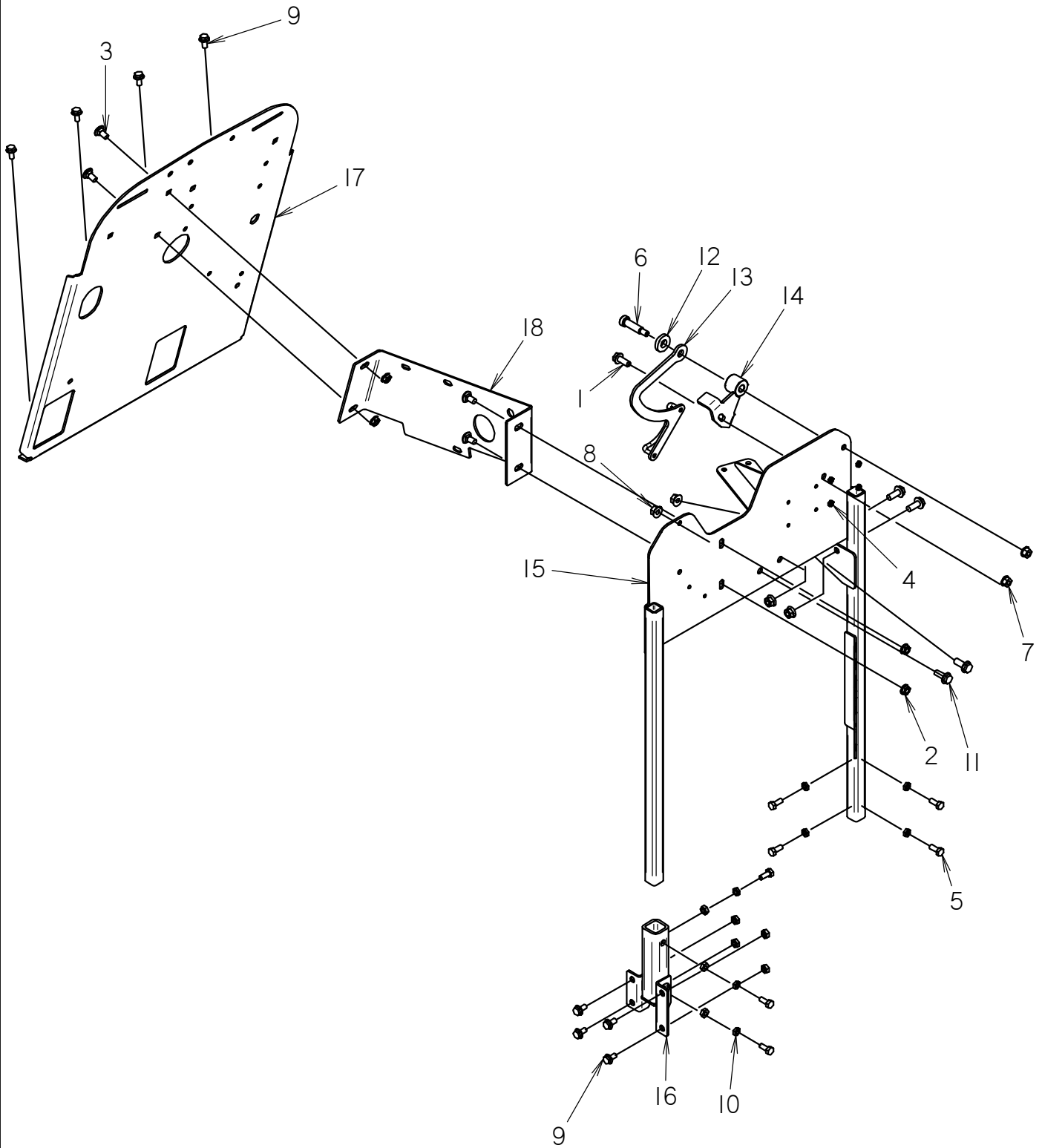


# BATTERY CABLES

## T4

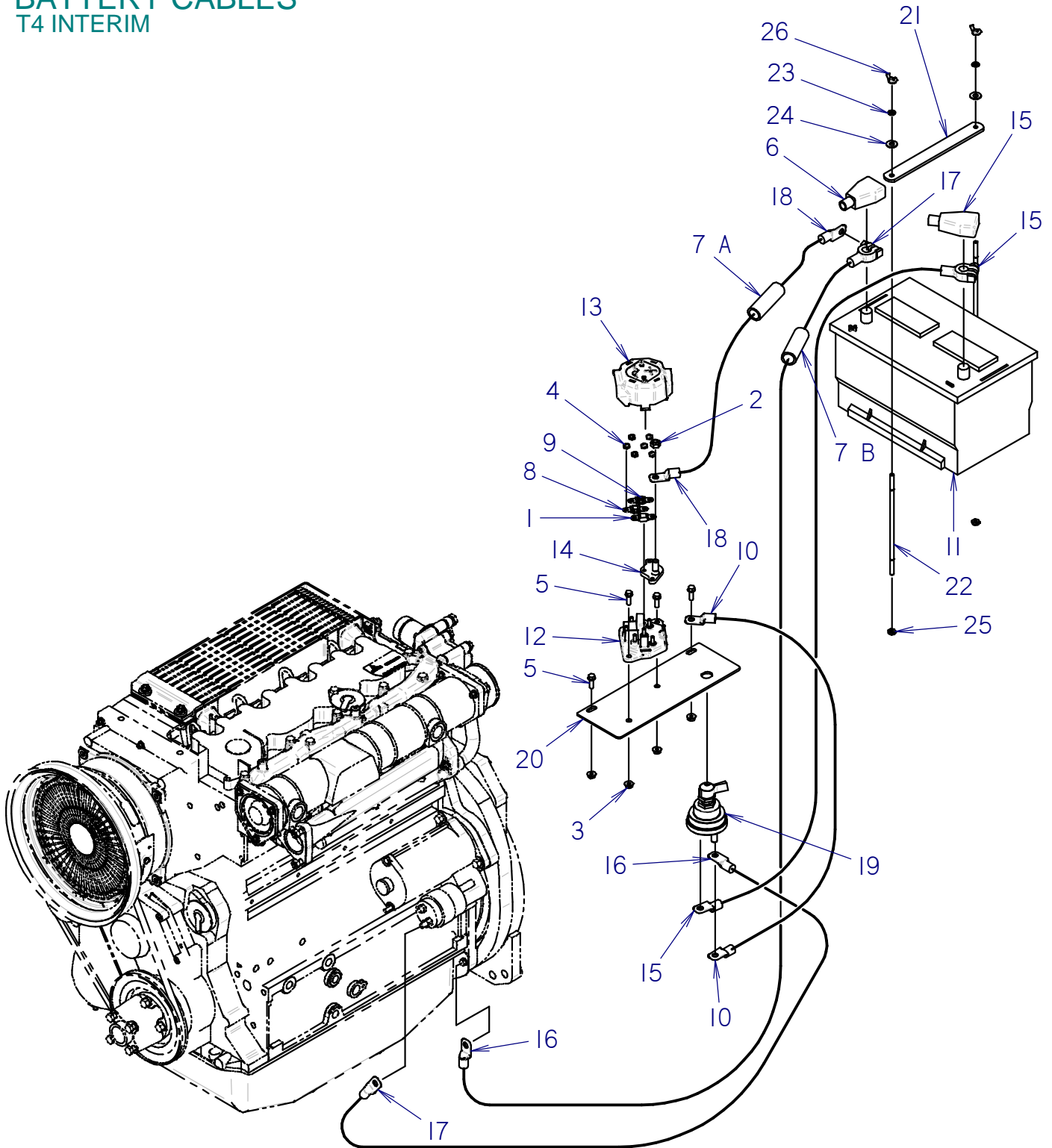


# FRONT ENGINE COVER T4

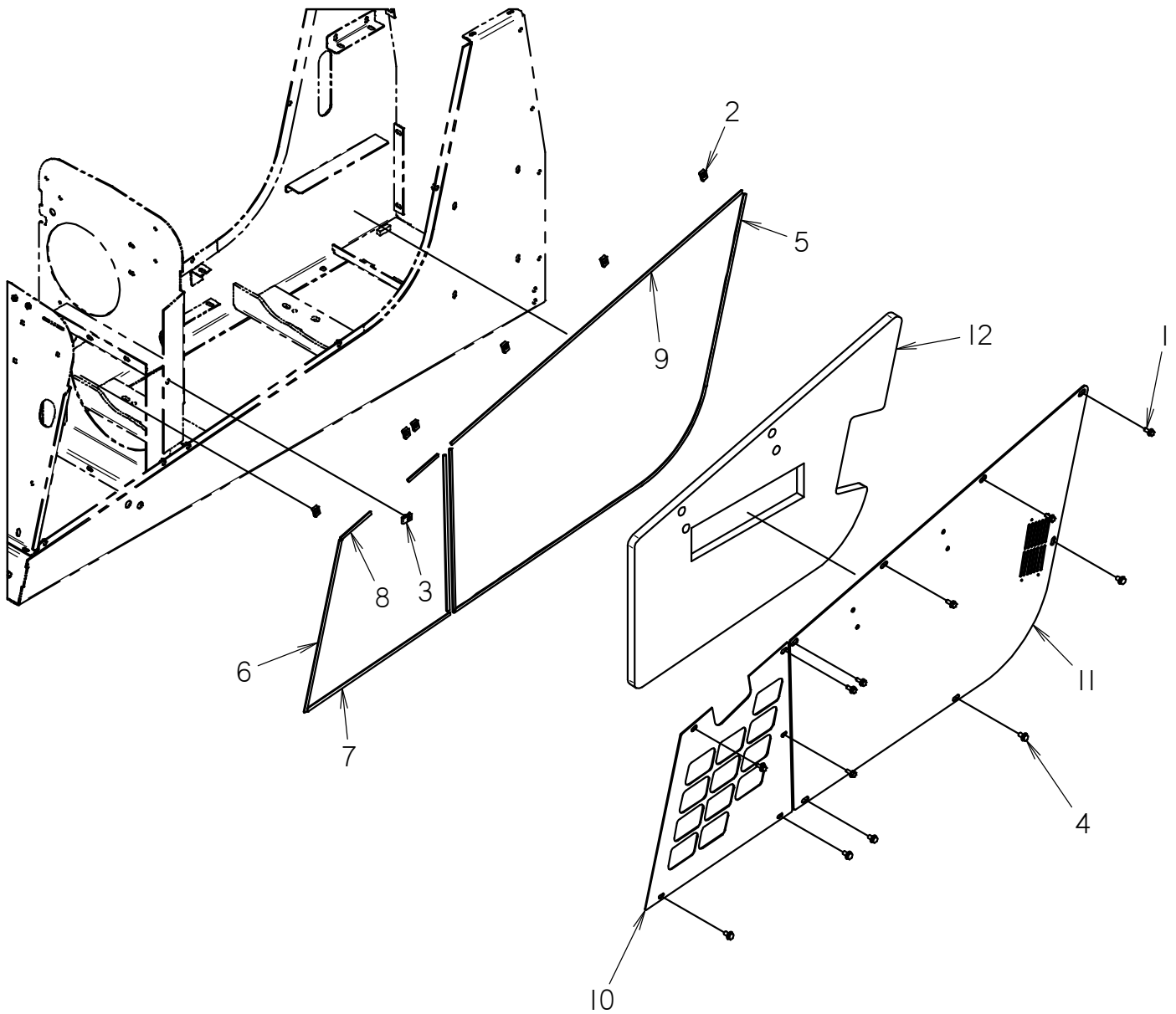




# BATTERY CABLES T4 INTERIM



# ENGINE ENCLOSURE T4 INTERIM





# DRILL FRAME

REF NO.	PART NUMBER	QTY	DESCRIPTION	REMARKS
1	301-1154	1	DRILL FRAME	
2	362-0028	2	PIPE GUIDE	SEE FOOTNOTE 1
3	107-870	2	PULL PIN (5 X 5")	
4	110-033	2	HAIR CLIP PIN (1/8" X 1/2")	
5	316-861	1	MOUNT	
6	106-333	4	SCREW (M12-1.75 X 40MM, 8.8)	
7	106-709	4	FLG LK NUT (M12-1.75)	
8	110-368	2	SNAPPER PIN (3/8" X 1-1/2")	
9	300-4489	1	COVER	
10	300-4491	1	COVER	
11	107-135	10	CLIP NUT (M8-1.25)	
12	106-991	10	FLG LK SCREW (M8-1.25 X 20MM)	
13	301-1148	2	RETAINER LINK	
14*	301-1145	2	RETAINER LINK	
15	105-271	4	SCREW (M10-1.50 X 40MM)	
16	105-894	4	LOCKNUT (M10-1.50, PRV TRQ, 10.9)	
17	300-4092	1	CYLINDER LOCK	
18	105-197	2	BOLT (1/4-NC X 1")	
19	105-078	2	NUT (1/4-NC)	
20	195-339	4	WING NUT (1/4-NC)	
21	215-1175	2	PROXIMITY SWITCH	
22	106-426	4	SCREW (M5-0.80 X 25MM, SOCI)	
23	105-284	4	WASHER (3/16")	
24	106-850	4	LOCKNUT (M5-0.80)	
25	301-8812	1	HOLD DOWN	
26	105-095	2	WASHER (1/4")	
27	306-765	2	J-HOOK	
28	301-8842	1	WRENCH COVER	SEE FOOTNOTE 2
29	106-558	2	CLIP NUT (M10-1.50)	SEE FOOTNOTE 2
30	106-497	2	FLG SCREW (M10-1.50 X 35MM)	SEE FOOTNOTE 2
31	302-3784	1	PROXIMITY SWITCH MOUNT	
32	106-848	2	FLG SCREW (M6-1.00 X 25MM)	
33	106-388	2	WASHER (M6)	
34	106-538	2	LOCKNUT (M6-1.00, PRV TRQ, 10.9)	
35	205-397	1	WHEEL CHOCKS	
36	107-193	3	SCREW (M6-1.00 X 16MM, BUT SOC)	
37	105-2930	2	LOCK RING	
38	362-3051	1	MANUAL HOLDER 3.25" X 12.5"	
39	110-981	6	BULK CABLE (1/16", SOLD PER FT)	
40	350-275	2	ALUMINUM SLEEVE (1/16")	
41	107-095	1	FLG SCREW (M8-1.25 X 16MM)	
42	106-386	1	FLG LOCKNUT (M8-1.25)	
43	220-2843	1	ESID TEST TOOL KIT	BEGINS WITH S/N

NOT SHOWN:

FOOTNOTES:

1. USE 362-1057 FOR FINE THREADED PIPE
2. S/N BREAK CMWJT9XFEF0000218

NOTE:

## JT10 SPINDLE DRIVE

BEGINS WITH S/N: DWPJT10XCM0001311

REF NO.	PART NUMBER	QTY	DESCRIPTION	REMARKS
1	158-881	1	MOTOR	
2	106-397	4	WASHER (M12, HARDENED)	
3	107-044	4	SCREW (M12-1.75 X 40MM, SOCI)	USE LOCTITE 242 OR EQUIVALENT
4	105-998	4	SCREW (M16-2.00 X 40MM)	TORQUE TO 140 FT-LBS, USE 242 LOCTITE OR EQUIVALENT
5	300-3284	1	HOSE CARRIER MOUNT	
6	300-3280	1	MANIFOLD BLOCK	
7	105-245	2	SCREW (M10-1.50 X 25MM)	
8	300-3823	2	EXTENSION BRACKET	
9	300-3825	2	MOUNT BLOCK	
10	300-3826	1	SLIDE	
11	154-097	1	CONNECTOR (08N-08J)	
12	300-3832	2	CAP PLATE	
13	106-570	4	SCREW (M8-1.25 X 60MM)	
14	106-386	4	FLG LOCKNUT (M8-1.25)	
15	105-1151	2	EXTENSION SPRING	
16	302-8460	1	WATER SWIVEL ARM	SEE FOOTNOTE 3
17	105-869	1	BOLT (1/2-NC X 2", SOCI)	SEE FOOTNOTE 3, USE LOCTITE 242 OR EQUIVALENT
18	150-6089	1	WATER SWIVEL	SEE FOOTNOTE 2 & 3
19	300-2342	1	SLIDING SPINDLE SHAFT	APPLY 256-666 GREASE TO SPLINES
20	106-865	1	NUT	
21	185-074	1	TANG LOCK WASHER (1.792")	
22	185-067	1	THRUST LOCKNUT (1.767-NF-18)	
23	106-081	6	SCREW (M10-1.50 X 35MM, SOCI)	TORQUE TO 55 FT-LBS, USE LOCTITE 242 OR EQUIVALENT
24	177-034	1	SHAFT SPACER	
25	400-1589	1	SAVER SUB (1.30-4, HI-FLOW)	SEE FOOTNOTE 1
26	107-223	2	SHLD BLT (M10 X 35MM, M8-1.25)	USE LOCTITE 242 OR EQUIVALENT
27	157-019	1	O-RING (139 D90)	
28	166-1006	1	GEAR BOX (1.78:1, ROTATION)	
29	154-381	2	PLUG (08S)	

**NOT SHOWN:**

300-2340	1	SAVER SUB JT922 (FINE THREAD)
400-2240	1	SAVER SUB (#200)
300-7767	1	SAVOR SUB (COARSE THREAD)

**FOOTNOTES:**

1. 300-2340 SAVOR SUB JT922 FINE THREAD, 400-2240 SAVOR SUB (#200) USED WITH POWER PIPE FORGED
2. INSTALL USING NICKLE THREAD SEALING TAPE (117-555) AND (500-1948) THREAD COMPOUND OVER THE NICKLE TAPE ON MALE THREADS
3. USE WATER SWIVEL KIT 500-5992 WHEN REPLACING SWIVEL OR SWIVEL ARM. KIT INCLUDES REF NO'S 16, 17 & 18.

**NOTE:**

# OPERATOR STATION

REF NO.	PART NUMBER	QTY	DESCRIPTION	REMARKS
1	300-3179	1	FLOOR PLATE	
2	300-3325	1	OPERATOR STATION MOUNT	
3	300-2672	1	SEAT MOUNT PLATE	
4	300-4029	1	SEAT BASE	
5	318-588	1	MANUAL COMPARTMENT	
6	106-386	2	FLG LOCKNUT (M8-1.25)	
7	106-391	4	WASHER (M12)	
8	105-894	2	LOCKNUT(M10-1.50, CL 10, PRV TRQ)	
9	300-3180	1	JOYSTICK MOUNT	
10	106-983	1	SCREW (M16-2.00 X 150MM, 10.9 FULL)	
11	300-2676	1	ADJUSTMENT WHEEL	
12	106-355	2	NUT, FLG (M16-2.00, CL10, ZC)	
13	106-469	4	FLG SCREW (M12-1.75 X 30MM)	
14	106-685	4	LOCKNUT (M12-1.75, CL 10, PRV TQ)	
15	215-799	1	VOLTAGE STAKE	
16	105-856	2	BOLT (1/4"-NC X 1 1/4")	
17	105-085	2	LOCKNUT (1/4"-NC, GR A, PRV TQ)	
18	300-3737	1	SPACER	
19	300-3733	1	STRIKER MOUNT	
20	105-151	1	LOCKNUT (7/16"-NC, GR A, PRV TQ)	
21	106-223	1	SHLD BLT (.675"X.700",7/16-NC)	
22	106-674	2	BOLT (M10-1.50 X 30MM,BUT SOC)	
23	362-1160	1	KNOB	
24	300-4007	1	SLIDE STOP	
25	106-162	6	FLG SCREW (M8-1.25 X 20MM, CL 8.8)	
26	106-535	2	SHLD BLT (M12 X 30MM,M10-1.50)	
27	300-4031	1	BRACKET	
28	105-835	2	CARRIAGE BOLT (3/8"-NC X 3/4")	
29	105-834	2	FLG LOCKNUT (3/8"-NC)	
30	116-525	2	BUMPER	
31	105-003	6	FLG LOCKNUT (5/16"-NC)	
32	105-799	5	FLG SCREW (M10-1.50 X 25MM)	
33	110-560	4	POP RIVET (3/16" X 1/2", ALUM)	
34	107-310	4	WASHER (#10)	
35	105-059	4	WASHER (7/16")	
36	117-1050	1	SEAT	
37	117-1047	1	LEFT AND RIGHT ARMREST BRACKETS	

**NOT SHOWN:**

(190-1731) UMBRELLA KIT (OPTIONAL)

**FOOTNOTES:**

1. REPLACEMENT SEAT SLIDES 105-2883

**NOTE:**

## ENGINE REAR ARCH AND COVERS

BEGINS WITH S/N: DWPJT10XKL0000977

REF NO.	PART NUMBER	QTY	DESCRIPTION	REMARKS
1	301-7998	1	REAR COVER BRACKET	
2	301-8012	1	ARCH	
3	303-1047	1	REAR ARCH COVER	
4	301-8277	1	REAR PANEL	
5	301-8275	1	PERFORATED GRILLE	
6	301-8387	2	BAFFLE	
7	117-558	1	LATCH, ADJUST LEVER (LOCKING)	
8	116-421	92	BULK EDGE (1/8", SOLD PER FT)	
9	117-915	1	CAM LOCK	
10	106-380	9	FLG LK SCREW (M8-1.25 X 16MM)	
11	106-381	4	FLG LK SCREW (M8-1.25 X 25MM)	
12	106-162	4	FLG SCREW (M8-1.25 X 20MM, GD8)	
13	106-386	9	FLG LOCKNUT (M8-1.25)	
14	106-551	2	CLIP NUT (M8-1.25)	
15	211-055	1	ANTENNA BULKHEAD CONNECTOR	
16	214-563	1	RED LED (12V DC)	
17	215-2726	1	STROBE LIGHT, AMBER (LED)	
18	215-1790	1	ROCKER SWITCH (ONI-OFF-ONI)	
19	214-961	1	KEY, PAIR	
20	215-2013	1	IGNITION SWITCH	USE REPLACEMENT KEY 105-1790 & 105-1791 BLK BOOT, KEY COVER
21	107-687	2	CLIP NUT M8-1.25, LONG, WIDE	

NOT SHOWN:

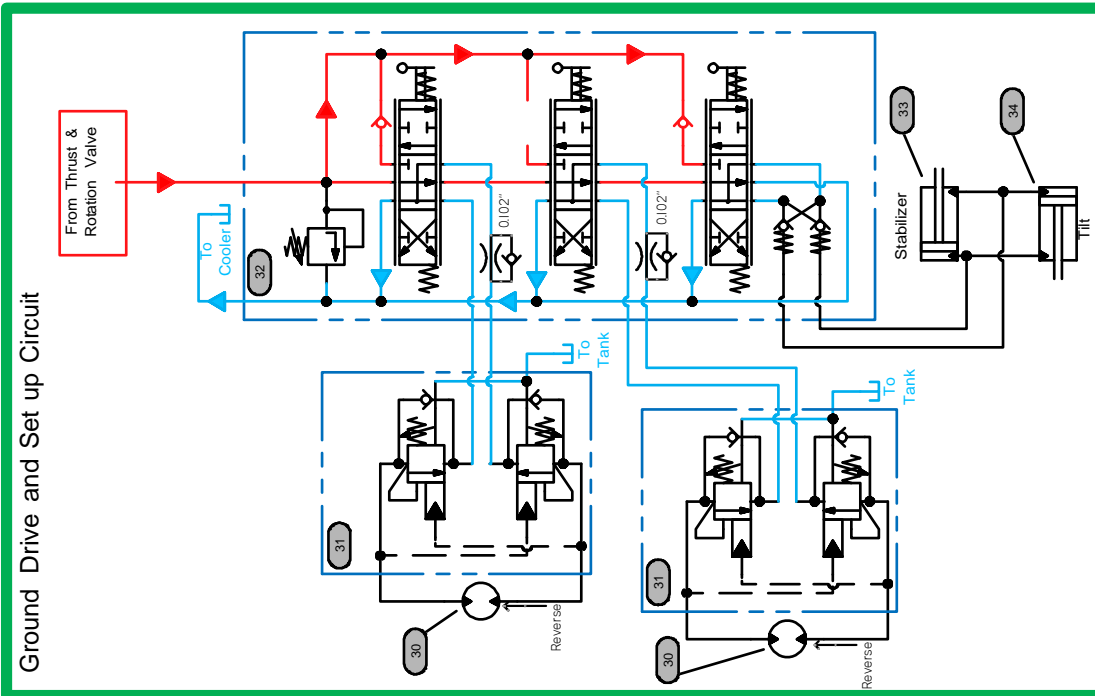
FOOTNOTES:

NOTE:

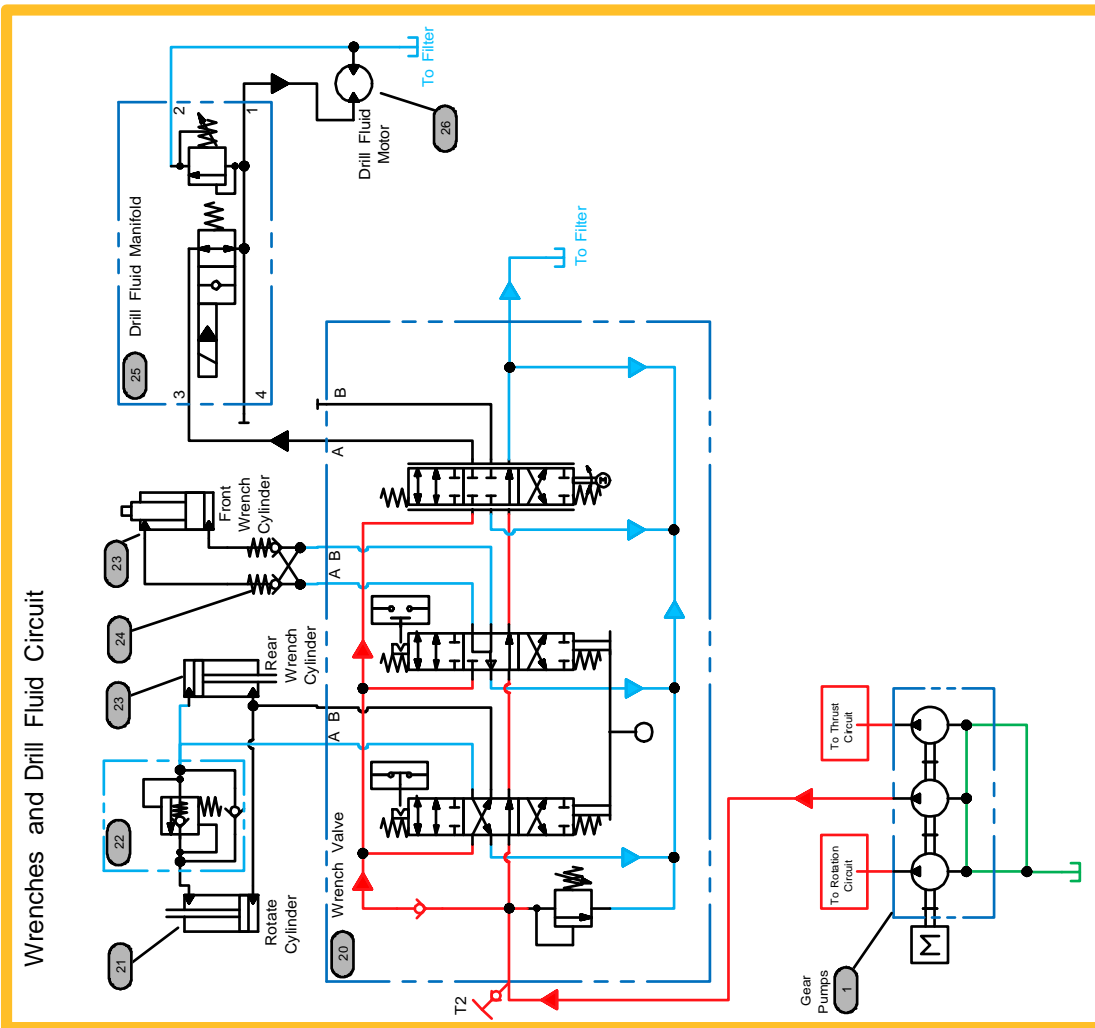
# HYDRAULIC SCHEMATIC

JT10

Ground Drive and Set up Circuit



Wrenches and Drill Fluid Circuit



# HYDRAULIC RESERVOIR

## T4

### BEGINS WITH S/N: DWPJT10XKH0000212

REF NO.	PART NUMBER	QTY	DESCRIPTION	REMARKS
1	105-214	6	FLG SCREW (#10-24 X .5")	
2	106-380	8	FLG LK SCREW (M8-1.25 X 16MM)	
3	106-386	4	FLG LOCKNUT (M8-1.25)	
4	111-021	1	BREATHER CAP (TANK)	567 LOCTITE
5	111-027	2	T-BOLT CLAMP (1.25" - 1.50")	
6	111-028	2	T-BOLT CLAMP (1.75"-2.00")	
7	115-135	1	REDUCER (O8N-O4NF)	
8	116-421	11	BULK EDGE (1/8", SOLD PER 1')	USE ONE @ 11"
9	116-421	5	BULK EDGE (1/8", SOLD PER 1')	USE ONE @ 5"
10	116-460	20	BULK HOSE (1", SOLD PER FT)	USE ONE @ 20"
11	116-588	26	BULK HOSE (1-1/2",SOLD PER FT)	USE ONE @ 26"
12	150-4033	1	INLET FITTING (24S-24H)	
13	150-4034	1	INLET FITTING (16S-16H)	
14	153-594	1	GASKET, FILL NECK CAP	
15	153-606	1	STRAINER BASKET	
16	153-607	2	FLANGE GASKET	
17	153-760	1	CAP, NON VENTED, LOCKING	
18	153-761	1	FLANGE	
19	155-004	1	S/O COUPLER (20S-20H)	
20	155-074	1	PLUG (O8S, SOC, FM)	
21	155-174	1	S/O COUPLER (12S-12H90)	
22	302-6128	1	TANK GUARD PLATE	
23	362-1814	1	HYDRAULIC TANK	
24	362-1863	2	LINER PAD (.25" THK)	
25	362-2781	2	LINER PAD (.25" THK)	

NOT SHOWN:

FOOTNOTES:

NOTE:

CLICK HERE TO **DOWNLOAD** THE COMPLETE MANUAL

- Thank you very much for reading the preview of the manual.
- You can download the complete manual from: [www.heydownloads.com](http://www.heydownloads.com) by clicking the link below



- Please note: If there is no response to CLICKING the link, please download this PDF first and then click on it.

CLICK HERE TO **DOWNLOAD** THE COMPLETE MANUAL

# HYDRAULIC COOLER BYPASS

## T4 INTERIM

REF NO.	PART NUMBER	QTY	DESCRIPTION	REMARKS
1	150-1282	1	HYDRAULIC OIL COOLER	
2	153-436	1	FLOW CHECK (16SF-16SF)	
3	116-460	9	BULK HOSE, (1",SOLD PER 1')	1 @ 9"
4	514-088	1	S/O COUPLER (16S-16H)	
5	111-027	2	T-BOLT CLAMP (1.25" - 1.50")	
6	150-1531	1	S/O BR TEE (16S-20H-16H)	
7	105-825	6	FLG LK BOLT (3/8-NC X 3/4)	
8	105-814	5	FLG LOCKNUT (3/8-NC)	
9	150-1970	1	RUN TEE (16S-16S-120)	
10	150-1975	1	HOSE (120FX45-22-3000)	

NOT SHOWN:

FOOTNOTES:

NOTE:

# GROUND DRIVE HYDRAULICS

## T4

### BEGINS WITH S/N: DWPJT10XJL0000883

REF NO.	PART NUMBER	QTY	DESCRIPTION	REMARKS
1	150-1314	2	GEROLER MOTOR	SEE FOOTNOTE 1 & 2
2	150-1488	2	COUNTERBALANCE VALVE	SEE FOOTNOTE 3
3	154-322	2	CONNECTOR (080-10S90)	
4	154-226	2	CONNECTOR (040-06S90)	
5	154-251	1	CONNECTOR (12S-12045)	
6	154-456	1	UN BR TEE (120FX-120-120)	
7	150-8595	1	3 SPOOL VALVE	
8	154-235	2	CONNECTOR (08S-08090)	
9	154-233	2	CONNECTOR (08S-080)	
10	154-269	1	CONNECTOR (12S-120)	
11	154-457	1	UNION (120-120FX90)	
12	106-386	3	FLG LOCKNUT (M8-1.25)	
13	117-687	1	ABRASION SLEEVE (1.75" X 83")	
14	117-719	1	ABRASION SLEEVE (1.75" X 36")	
15	105-1465	1	ABRASION SLEEVE (1.00" X 48")	
16	117-717	1	ABRASION SLEEVE (1.00" X 40")	
17	117-312	1	ABRASION SLEEVE (1.59" X 80")	
18	154-264	2	CONNECTOR (080-10S45)	
19	150-1959	1	CONNECTOR (040-040FX45)	
20	106-387	2	FLG LOCKNUT (M10-1.50)	
21	105-245	2	SCREW (M10-1.50 X 25MM)	
22	301-8436	1	MOUNT	
23	301-6542	1	MOUNT	
24	157-039	1	O-RING (O14 D90)	
25	106-380	2	FLG LK SCREW (M8-1.25 X 16MM)	
26	150-1174	1	VALVE	
27	150-1655	1	HOSE (080FX90L-84"-3000)	
28	157-902	1	HOSE (080FX90M-83"-3000)	
29	150-4048	1	HOSE (080FX90M-42"-3000)	
30	155-492	1	HOSE (080FX-39"-3000)	
31	150-2485	1	HOSE (120FX-84"-3000)	
32	159-540	1	HOSE (040FX90L-40"-3000)	
33	515-447	1	HOSE (040FX90S-48"-3000)	
34	150-1800	1	HYD LINE (1-08)	
35	150-1548	1	RETURN MANIFOLD	
36	150-6421	2	ORIFICE PLATE (1.02")	SEE FOOTNOTE 4
37	153-995	2	CONNECTOR (08S-08SF)	

NOT SHOWN:

#### FOOTNOTES:

1. SEAL REPAIR KIT P/N 500-510
2. DRIVE SHAFT ONLY P/N 500-1391
3. COUNTERBALANCE CARTRIDGE KIT (2 PER MANIFOLD) P/N 500-1304
4. ORIFICE ORIENTATION IS CRITICAL. THE SPRING END OF THE ORIFICE GOES TOWARDS THE 3 SPOOL VALVE {150-8595}

NOTE:

## ANCHOR VALVE SERVICE PARTS

REF NO.	PART NUMBER	QTY	DESCRIPTION	REMARKS
	150-1307	-	4 SPOOL MONOBLOCK DIRECTIONAL VALVE	
1	499-143	4	LEVER BOX KIT	
2	153-063	4	SPOOL BONNET AND CONTROL KIT	INCLUDES REF NO. 3 & 4
3	500-1373	4	SPOOL BONNET	
4	499-142	4	SPOOL CONTROL KIT	
5	157-218	8	O-RING ( D70)	
6	500-969	1	POWER BEYOND SLEEVE	
7	149-664	1	LOAD CHECK	

NOT SHOWN:

FOOTNOTES:

NOTE:

# PILOT PRESSURE & RETURN

REF NO.	PART NUMBER	QTY	DESCRIPTION	REMARKS
1	106-554	4	SCREW (M6-1.00 X 30MM, SOC)	
2	106-385	4	FLG LOCKNUT (M6-1.00)	
3	154-278	3	CONNECTOR (04S-040)	
4	150-3072	1	HYDRAULIC MANIFOLD	
5	154-252	1	CONNECTOR (04S-04090)	
6	106-389	2	WASHER (M8)	
7	106-561	2	LOCKNUT (M8-1.25,PRV TRQ,10.9)	
8	106-330	2	SCREW (M8-1.25 X 70MM)	
9	150-1289	1	HYDRAULIC MANIFOLD - PILOT PRESSURE	
10	154-233	1	CONNECTOR (08S-080)	
11	154-220	1	CONNECTOR (040-06S)	
12	106-162	4	FLG SCREW (M8-1.25 X 20MM, GD8)	
13	154-265	1	UNION RUN TEE (040FX-040-040)	
14	150-1959	1	CONNECTOR (040-040FX45)	
15	159-156	1	QDC ADAPTER (02-040F)	
16	150-1436	1	TRIPLE GEAR HYDRAULIC PUMP	
17	154-279	1	CONNECTOR (080-10S)	T4 INTERIM USE 154-264
18	117-218	1	ABRASION SLEEVE (1" X 52")	
19	117-209	1	ABRASION SLEEVE (1.00" X 90")	
20	118-062	1	ABRASION SLEEVE (1.00" X 62")	T4 INTERIM USE 117-702
21	150-1179	1	JOYSTICK	
22	154-963	1	HOSE (040FX45-24"-3000)	
23	157-324	1	HOSE (080FX90S-53"-3000)	T4 INTERIM USE 117-400
24	150-1636	1	HOSE (040FX45-90"-3000)	
25	515-030	1	HOSE (040FX90S-64"-3000)	T4 INTERIM USE 154-670
26	150-1548	1	RETURN MANIFOLD	

NOT SHOWN:

FOOTNOTES:

NOTE:

# HOSE CARRIER HYDRAULICS

REF NO.	PART NUMBER	QTY	DESCRIPTION	REMARKS
1	300-3363	1	BULKHEAD BRACKET	
2	154-291	2	BK CONNECTOR (100-10090BK)	
3	156-482	2	BK CONNECTOR (120-12090BK)	
4	105-600	8	CARRIAGE BOLT (3/8-NC X 1")	
5	105-047	8	LOCKNUT (3/8-NC)	
6	106-144	1	WASHER (1")	
7	154-148	1	BK CONNECTOR (08J-08J90BK)	
8	116-787	2	ABRASION SLEEVE (1.59" X 95")	
9	115-902	2	ABRASION SLEEVE (1.59" X 100")	
10	154-355	1	BK CONNECTOR (040-04090BK)	
11	105-1103	1	ABRASION SLEEVE (1.00" X 108")	
12	117-213	1	ABRASION SLEEVE (1.00" X 96")	
13	117-989	1	ABRASION SLEEVE (1.00" X 24")	
14	300-3361	1	BULKHEAD PLATE	
15	300-2025	1	HOSE CARRIER	
16	150-1532	1	HOSE (120FX-95"-3000)	
17	150-1532	1	HOSE (120FX-95"-3000)	
18	150-1533	1	HOSE (100FX-98"-3000)	
19	150-1533	1	HOSE (100FX-98"-3000)	
20	155-488	1	HOSE (040FX90-106"-3000)	
21	150-1534	1	HOSE (08JFX-95"-3000)	
22	515-249	1	HOSE (040FX-26"-3000)	

NOT SHOWN:

FOOTNOTES:

NOTE:

# WRENCH VALVE HYDRAULICS

## T4

REF NO.	PART NUMBER	QTY	DESCRIPTION	REMARKS
1	154-279	2	CONNECTOR (080-10S)	
2	150-1436	1	TRIPLE GEAR HYDRAULIC PUMP	
3	154-264	1	CONNECTOR (080-10S45)	
4	150-4012	1	HARDLINE (-20)	
5	157-039	1	O-RING (014 D90)	
6	117-713	1	ABRASION SLEEVE (1.00" X 76")	
7	117-695	1	ABRASION SLEEVE (1.00" X 56")	
8	150-1981	1	WRENCH VALVE	
9	515-303	1	HOSE (080FX90S-58"-3000)	
10	154-971	1	HOSE (080FX90S-78"-3000)	

NOT SHOWN:

FOOTNOTES:

NOTE:

## HYDRAULIC CYLINDERS (2.0" X 1.0")

REF NO.	PART NUMBER	QTY	DESCRIPTION	REMARKS
	151-094	-	CYL (2.0 X 1.0 X 2.0)	SEE FOOTNOTES 1 & 2
1	152-029	1	CYLINDER BARREL (2.0 X 2.0)	
2	153-007	1	CYLINDER ROD (1.00 X 2.0)	
	149-667	-	CYL (2.0 X 1.0 X 2.5)	SEE FOOTNOTES 1 & 2
1	149-761	1	CYLINDER BARREL (2.0 X 2.5)	
2	149-728	1	CYLINDER ROD (1.00 X 2.5)	
	151-027	-	CYL (2.0 X 1.0 X 3.0)	SEE FOOTNOTES 1 & 2
1	150-282	1	CYLINDER BARREL (2.0 X 3.0)	
2	150-414	1	CYLINDER ROD (1.00 X 3.0)	
	151-038	-	CYL (2.0 X 1.0 X 4.0)	SEE FOOTNOTES 1 & 2
1	150-290	1	CYLINDER BARREL (2.0 X 4.0)	
2	150-421	1	CYLINDER ROD (1.00 X 4.0)	
	151-039	-	CYL (2.0 X 1.0 X 5.0)	SEE FOOTNOTES 1 & 2
1	150-291	1	CYLINDER BARREL (2.0 X 5.0)	
2	150-422	1	CYLINDER ROD (1.00 X 5.0)	
	151-044	-	CYL (2.0 X 1.0 X 6.0)	SEE FOOTNOTES 1 & 2
1	150-294	1	CYLINDER BARREL (2.0 X 6.0)	
2	150-424	1	CYLINDER ROD (1.00 X 6.0)	
	151-031	-	CYL (2.0 X 1.0 X 8.0)	SEE FOOTNOTES 1 & 2
1	150-285	1	CYLINDER BARREL (2.0 X 8.0)	
2	150-417	1	CYLINDER ROD (1.00 X 8.0)	
	151-076	-	CYL (2.0 X 1.0 X 10.0)	SEE FOOTNOTES 1 & 2
1	152-017	1	CYLINDER BARREL (2.0 X 10.0)	
2	150-444	1	CYLINDER ROD (1.00 X 10.0)	
	149-668	-	CYL (2.0 X 1.0 X 12.0)	SEE FOOTNOTES 1 & 2
1	150-286	1	CYLINDER BARREL (2.0 X 12.0)	
2	149-729	1	CYLINDER ROD (1.00 X 12.0)	
3	150-772	1	CYLINDER HEAD (2.0 X 1.00)	
4	150-778	1	LOCK RING (2.0)	
5	150-775	1	CYLINDER PISTON (2.0 X 1.00)	
6	106-096	1	FLG BOLT (1/2-NC X 1-3/4"GD8)	SEE FOOTNOTE 3
7	157-022	1	O-RING (224 D90)	
8	155-732	1	BACKUP RING (224 D90)	
9	157-540	1	U-SEAL (1.000")	
10	157-537	1	WIPER SEAL (1.000")	
11	125-774	1	WEAR RING	
12	157-534	1	BACKUP RING (131 D90)	
13	157-018	1	O-RING (131 D90)	

**NOT SHOWN:**

259-100	U-SEAL INSTALLER (1" - 1.499")
259-235	1.00 ROD WIPER TOOL
259-239	WIPER/SEAL INSTALLER (2")
259-241	PISTON INSTALLER (2")
259-188	CYL HEAD SPANNER - TWO PIN

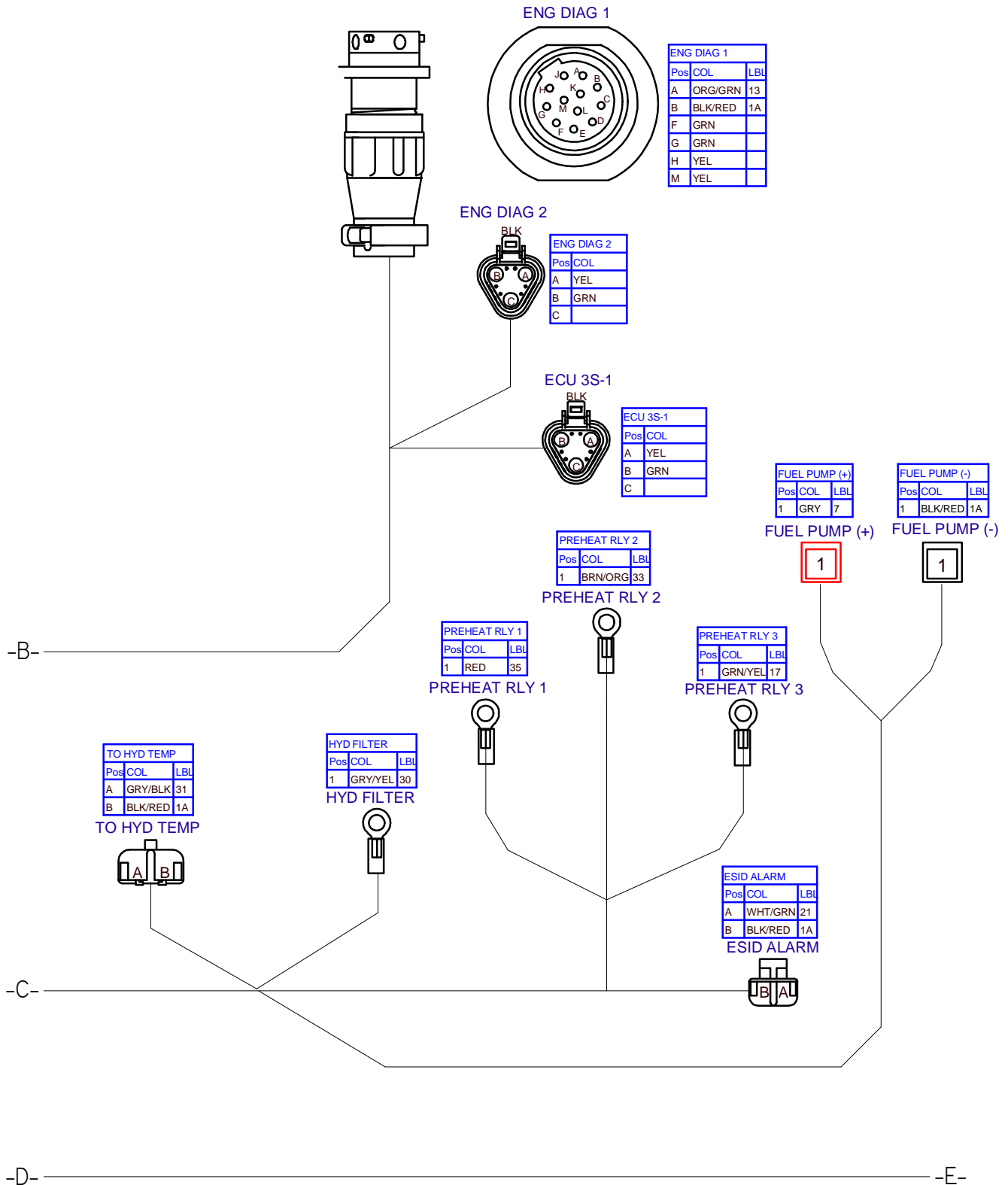
**FOOTNOTES:**

- REF. #1 & #2 ARE SPECIFIC TO EACH CYLINDER, REF. #3 THRU #13 ARE COMMON FOR ALL THE ABOVE LISTED CYLINDERS
- SEAL REPAIR KIT P/N: 190-165
- APPLY LOCTITE 277 OR EQUIVALENT, TORQUE TO 90-100 FT-LBS

**NOTE:**

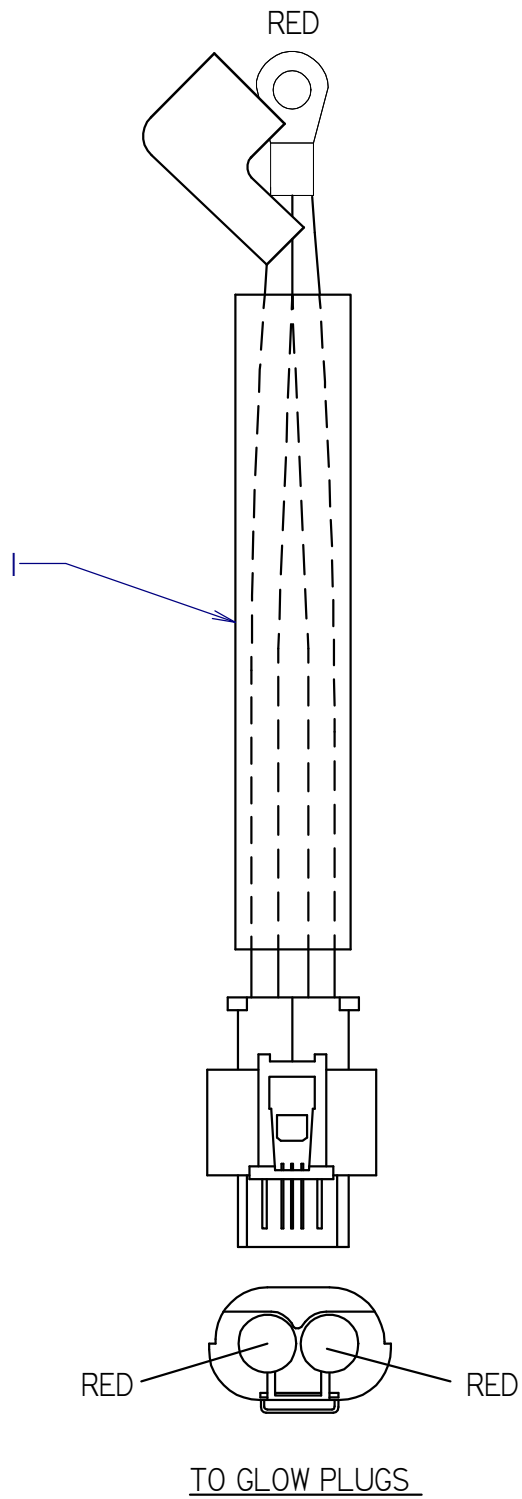
See loose-leaf schematic included with this manual.

# ELECTRICAL DIAGRAM JT10 STAGE V FRAME/ENGINE HARNESS



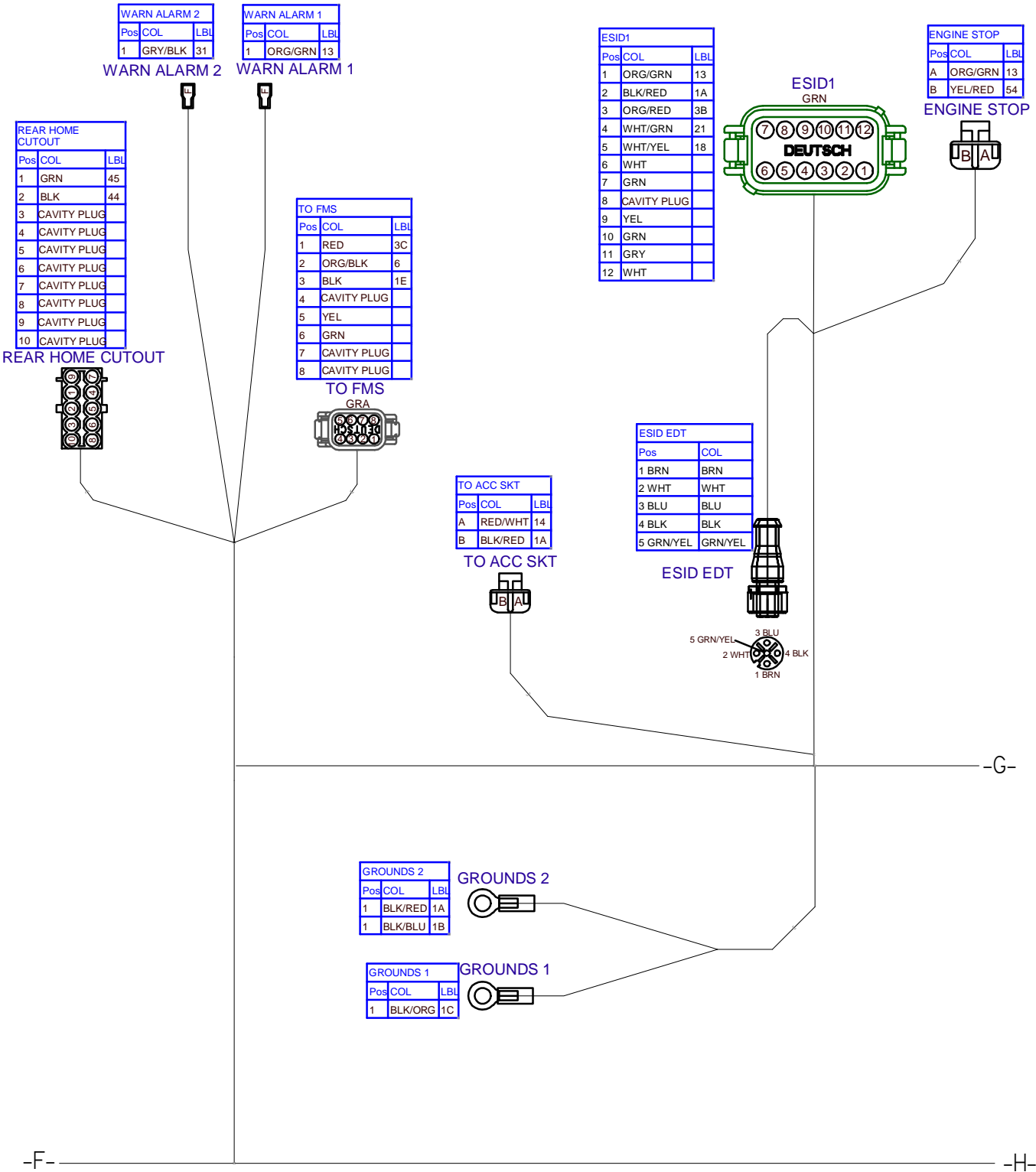
**ELECTRICAL DIAGRAM**  
T4F  
GLOW PLUG CABLE

TO GLOW PLUG CONTACTOR



# ELECTRICAL DIAGRAM

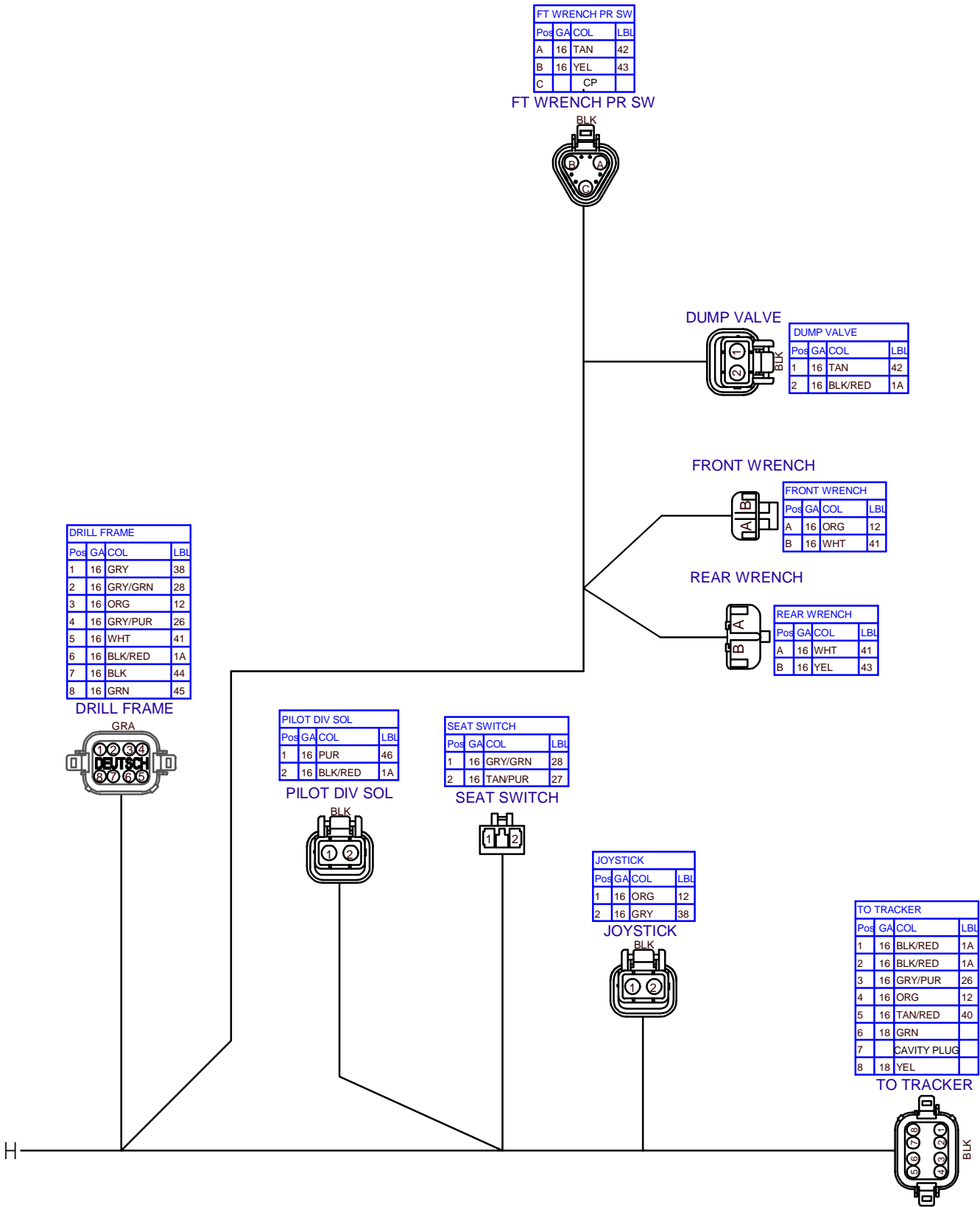
## T4F FRAME HARNESS BEGINS WITH S/N: DWPJT10XKL0000977



# ELECTRICAL DIAGRAM

## T4F - FRAME HARNESS

ENDS W/ SN: DWPJT10XPL0000977



# ELECTRICAL DIAGRAM

## T4F PIPELOADER HARNESS

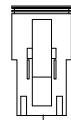
TO REAR HOME SWITCH

BLU (1A)      BLK (44)  
 BRN (41)



TO FUNCTION ENABLE SOLENOID

GRA/GRN (28)      BLK/RED (1A)

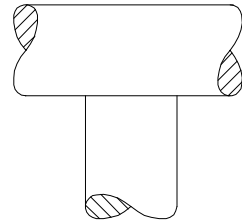
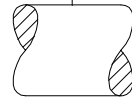
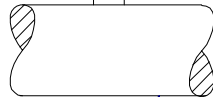
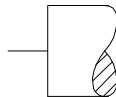


BLK/RED (1A)

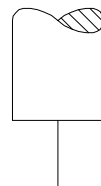


WHT (41)

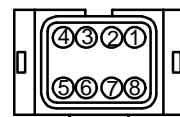
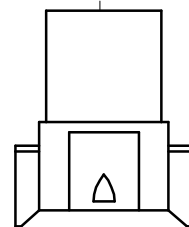
TO WATER SHUT-OFF SOLENOID



-A-



PIN #		PIN #	
1	GRA (38)	5	WHT (41)
2	GRA/GRN (28)	6	BLK/RED (1A)
3	ORG (12)	7	BLK (44)
4	GRN/PUR (26)	8	GRN (45)



TO ENGINE FRAME HARNESS

## ELECTRICAL SCHEMATIC

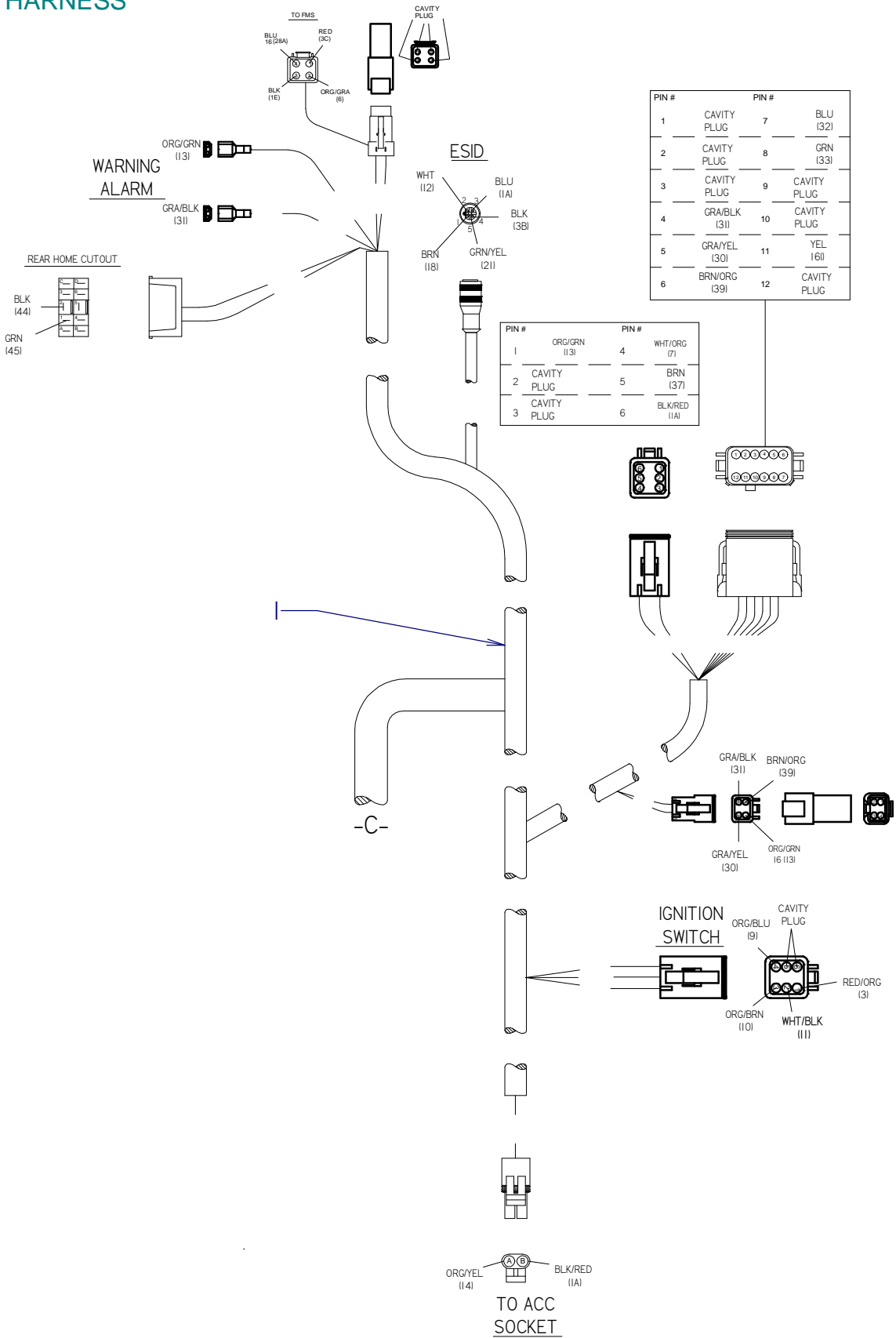
T4i

<b>Circuit Number</b>	<b>Wire Color</b>	<b>Function</b>
40	TAN/RED	Tracker and Tracker Control Key to Tracker Control Relay
41	WHT	Front Wrench Switch to Rear Wrench Switch and Mud Shut-off
42	TAN	Front Wrench Pressure Switch to Dump Valve
43	YEL	Rear Wrench Switch to Front Wrench Pressure Switch
44	BLK	Rear Home Switch to Rear Home Cutout Switch
45	GRN	Front Home Switch and Rear Home Cutout Switch to Slow Zone Relay
46	PUR	Slow Zone Relay to Pilot Diverter Solenoid

# ELECTRICAL DIAGRAM

## T4i

### FRAME HARNESS



PIN #	PIN #	PIN #
1	CAVITY PLUG	7
2	CAVITY PLUG	8
3	CAVITY PLUG	9
4	GRA/BLK (3II)	10
5	GRA/YEL (30I)	11
6	BRN/ORG (39I)	12
		BLU (32)
		GRN (33)
		CAVITY PLUG
		CAVITY PLUG
		YEL (16II)
		CAVITY PLUG

PIN #	PIN #	PIN #
1	ORG/GRN (13I)	4
2	CAVITY PLUG	5
3	CAVITY PLUG	6
		WHT/ORG (7I)
		BRN (37I)
		BLK/RED (11A)

# ELECTRICAL DIAGRAM

T4i

## PIPELOADER HARNESS

REF	PART			
NO.	NUMBER	QTY	DESCRIPTION	REMARKS
I	215-2188	I	PIPELOADER HARNESS	

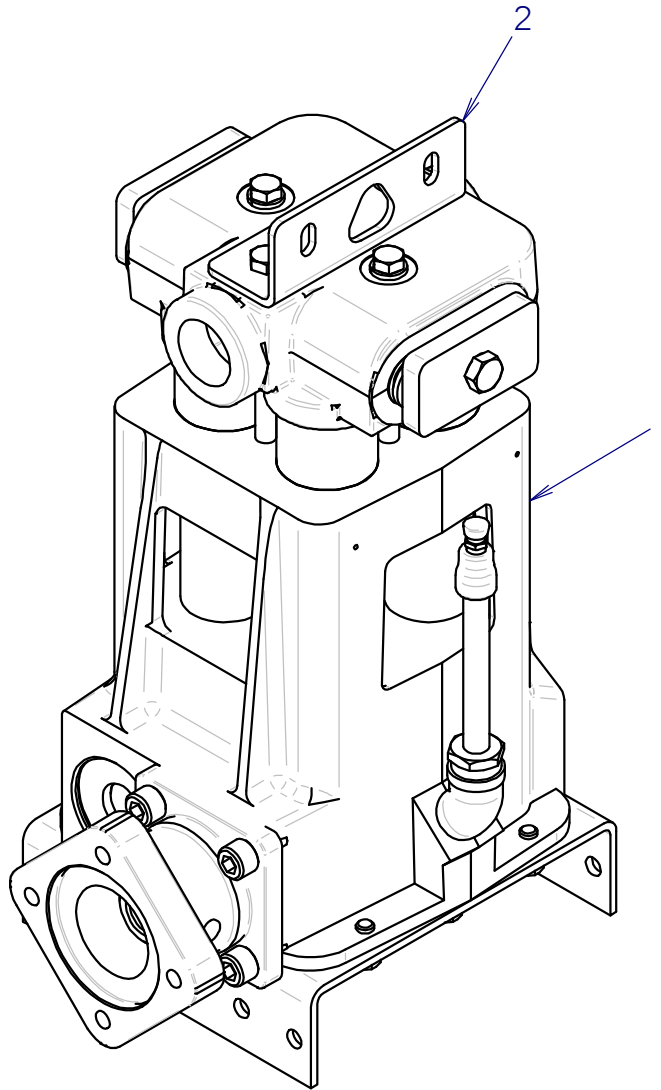
NOT SHOWN:

FOOTNOTES:

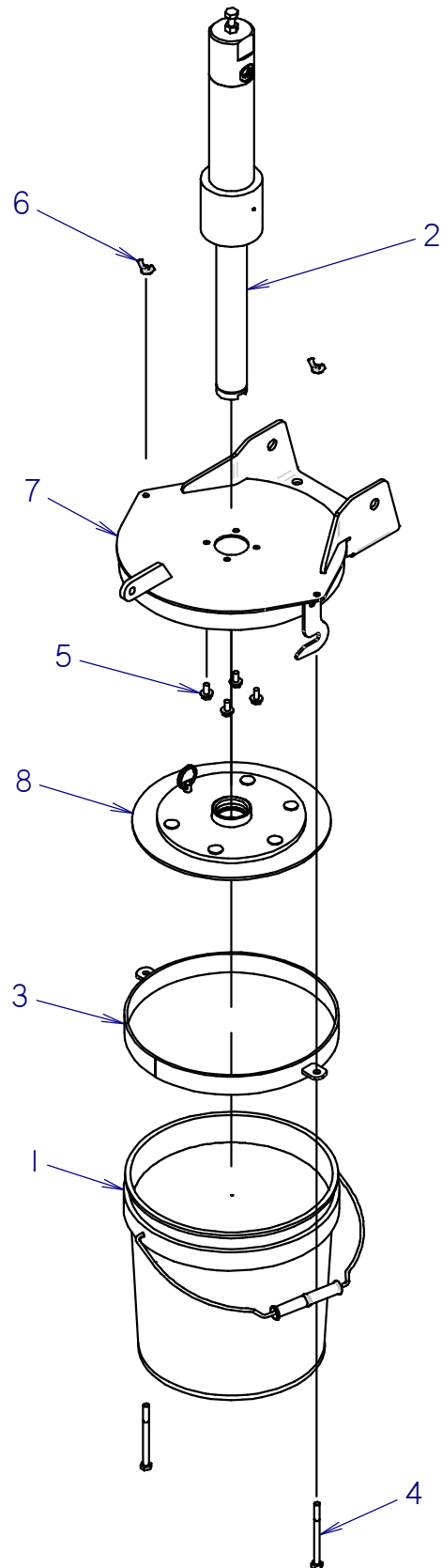
NOTE:



FLUID PUMP  
13 GPM  
SEE FOOTNOTE 1

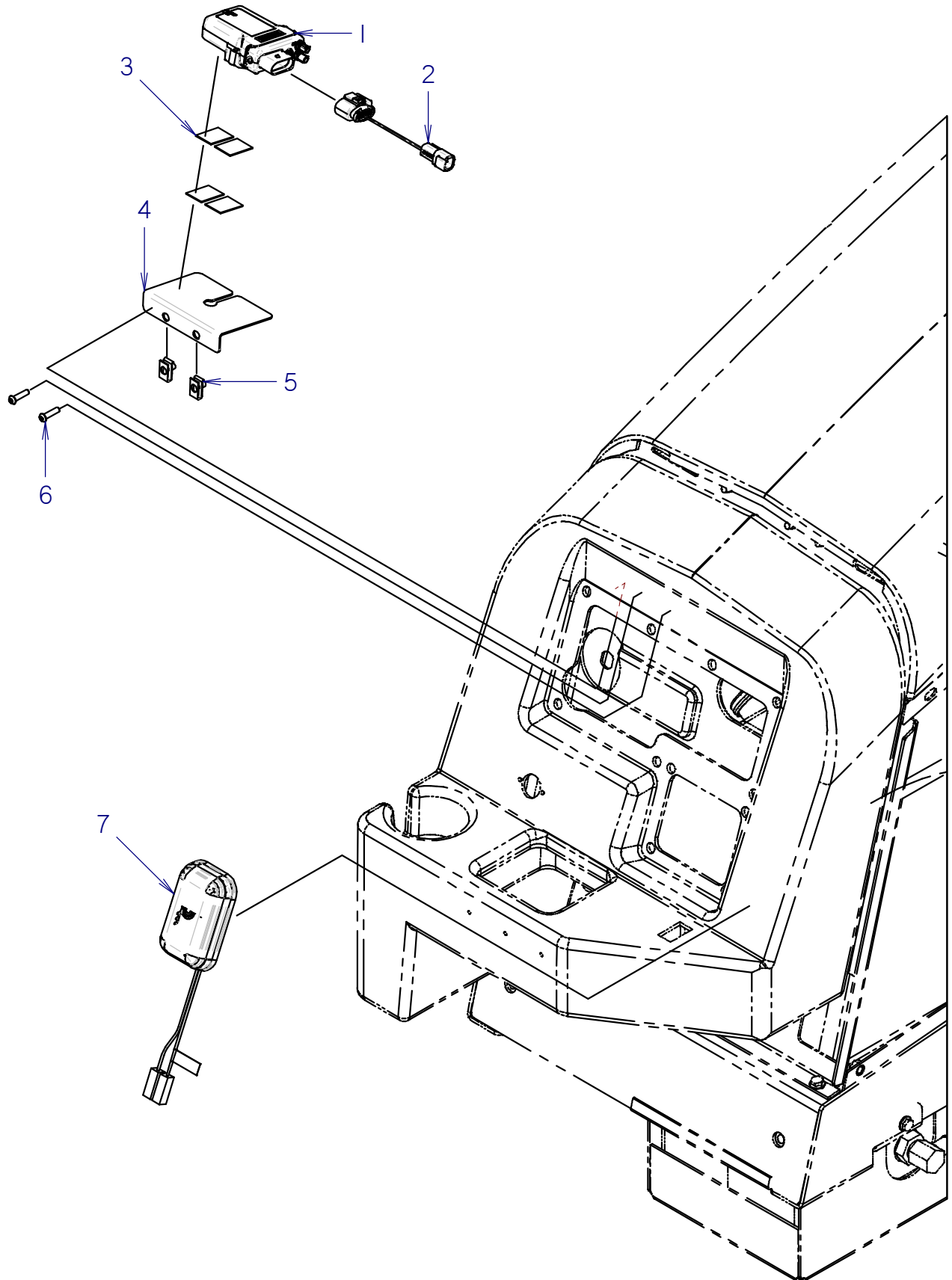


## AUTO LUBER ASSEMBLY

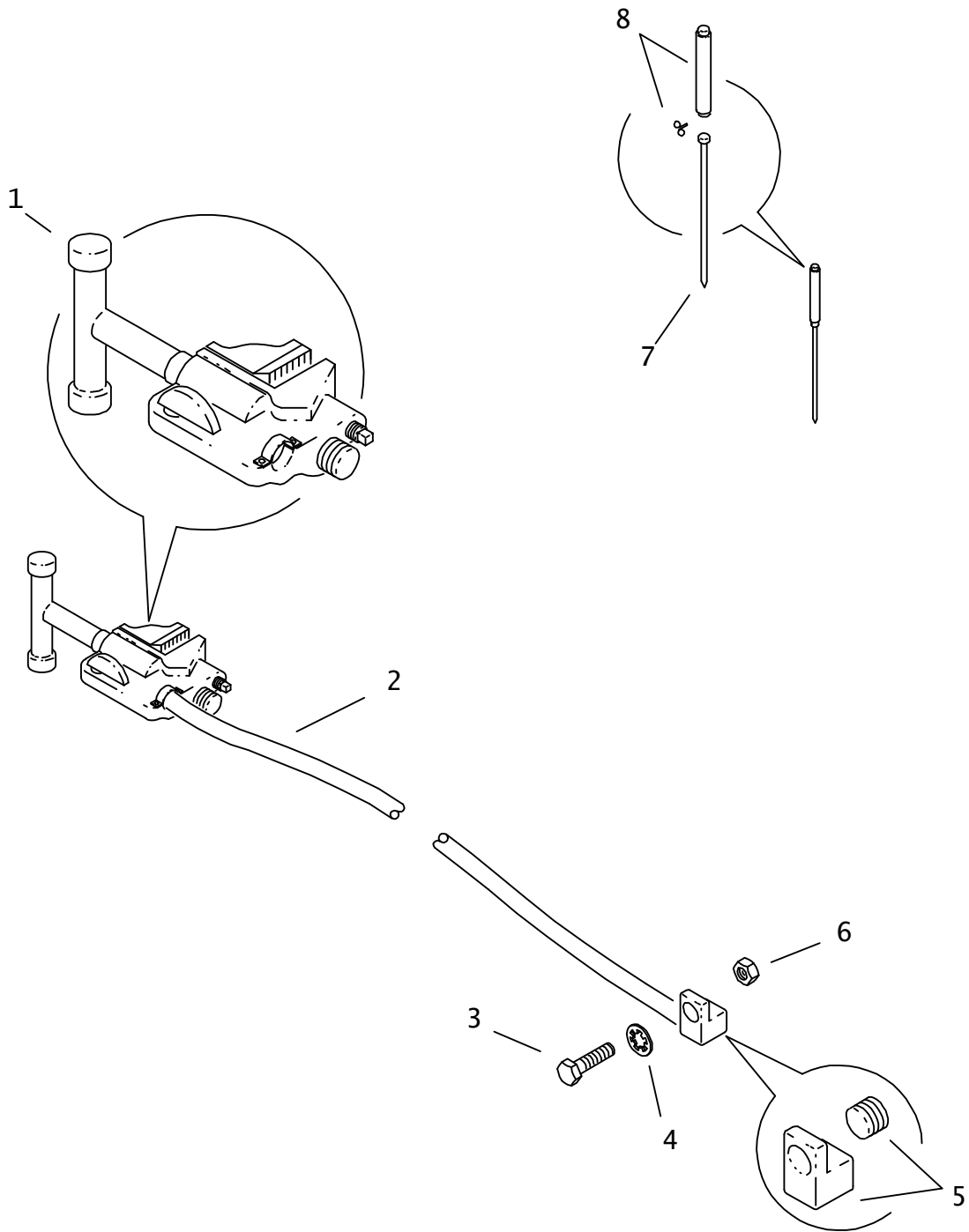


# CLM3000 GPS KIT

JT10 T4, JT10 S5



# GROUNDING CABLES



CLICK HERE TO **DOWNLOAD** THE COMPLETE MANUAL

- Thank you very much for reading the preview of the manual.
- You can download the complete manual from: [www.heydownloads.com](http://www.heydownloads.com) by clicking the link below



- Please note: If there is no response to CLICKING the link, please download this PDF first and then click on it.

CLICK HERE TO **DOWNLOAD** THE COMPLETE MANUAL