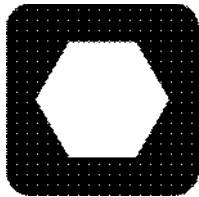


HT220

Parts Manual



CLICK HERE TO **DOWNLOAD** THE COMPLETE MANUAL

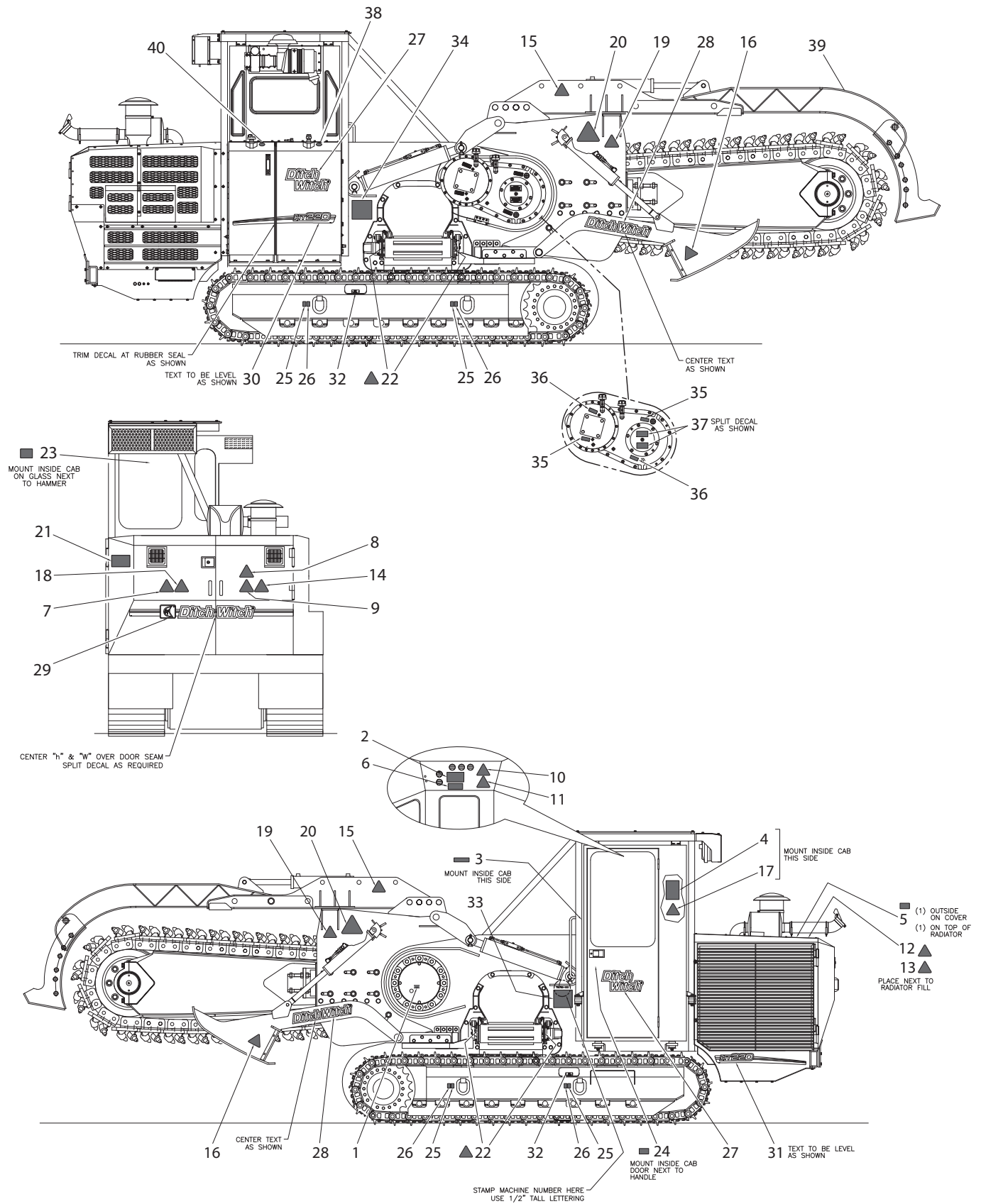
- Thank you very much for reading the preview of the manual.
- You can download the complete manual from: www.heydownloads.com by clicking the link below



- Please note: If there is no response to CLICKING the link, please download this PDF first and then click on it.

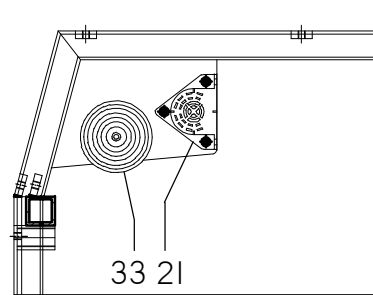
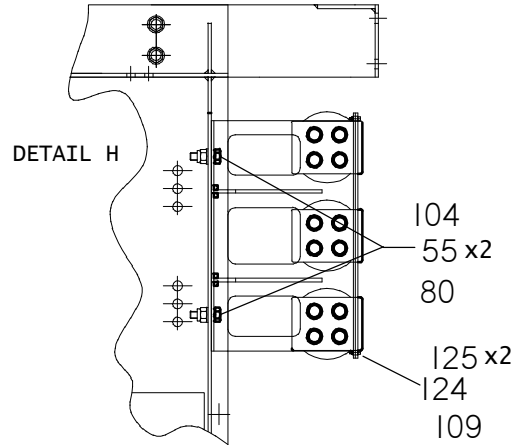
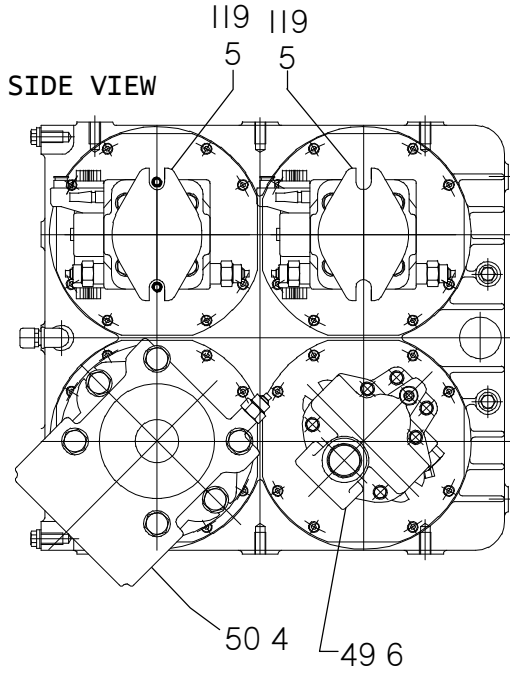
CLICK HERE TO **DOWNLOAD** THE COMPLETE MANUAL

DECAL LOCATION HT220 ISO FOREIGN



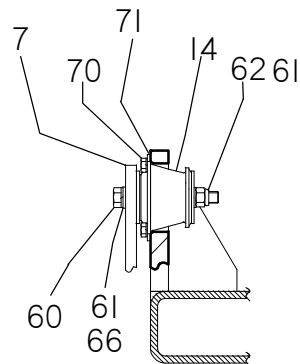
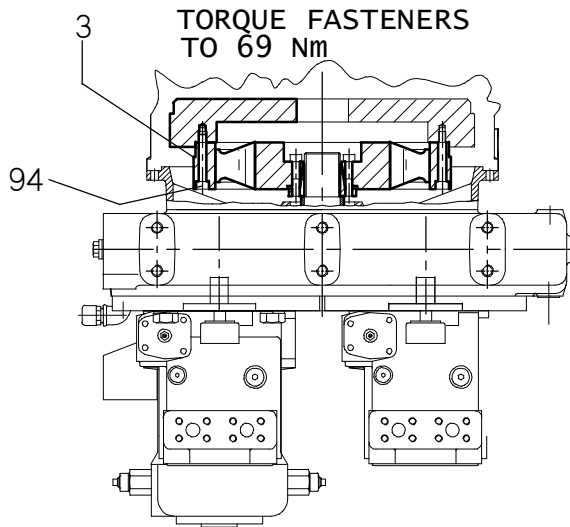
ENGINE INSTALLATION

HT220

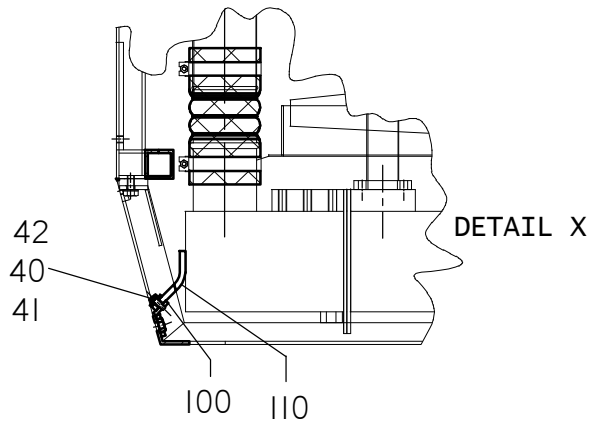


ASSEMBLED VIEW
HORN & BUZZER

DETAIL ASSEMBLY, PUMPS AND PUMD DRIVE

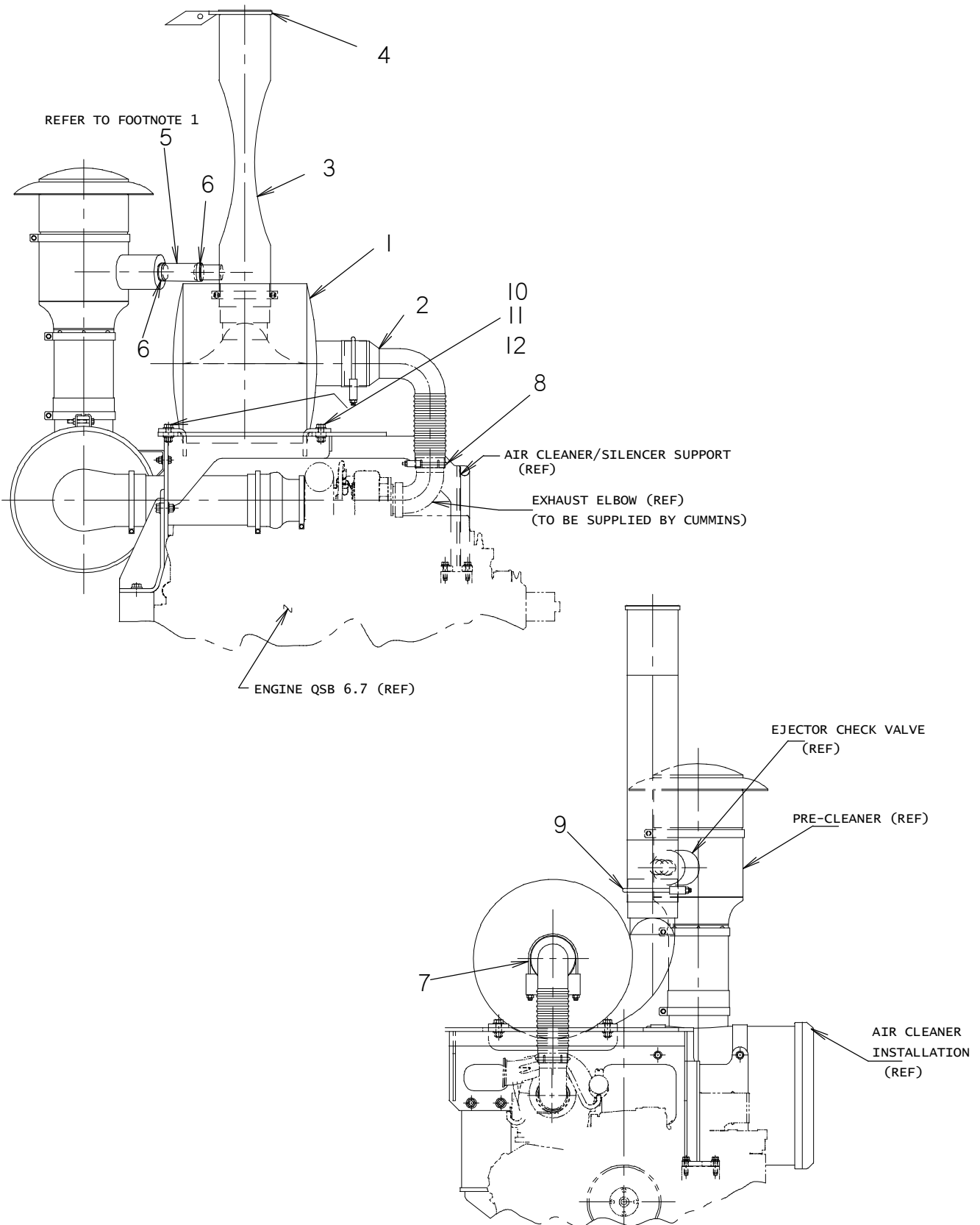


ASSEMBLED VIEW
ANTIVIBRATION MOUNT, ENGINE
(TYPICAL 4-PLACES)



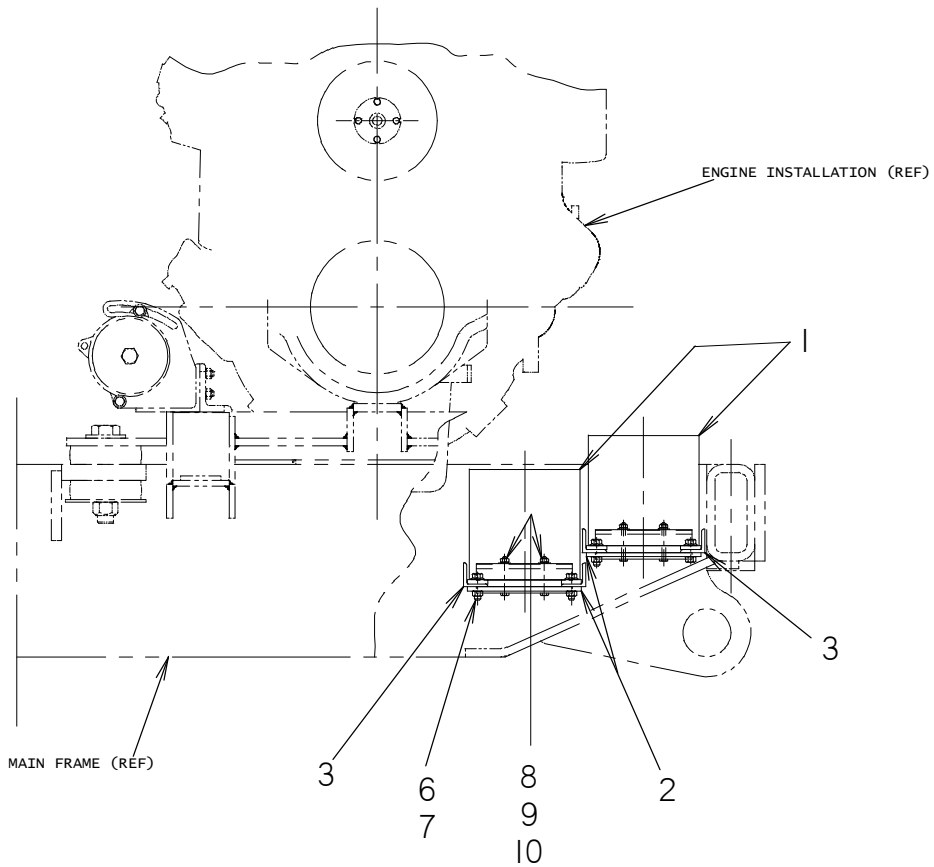
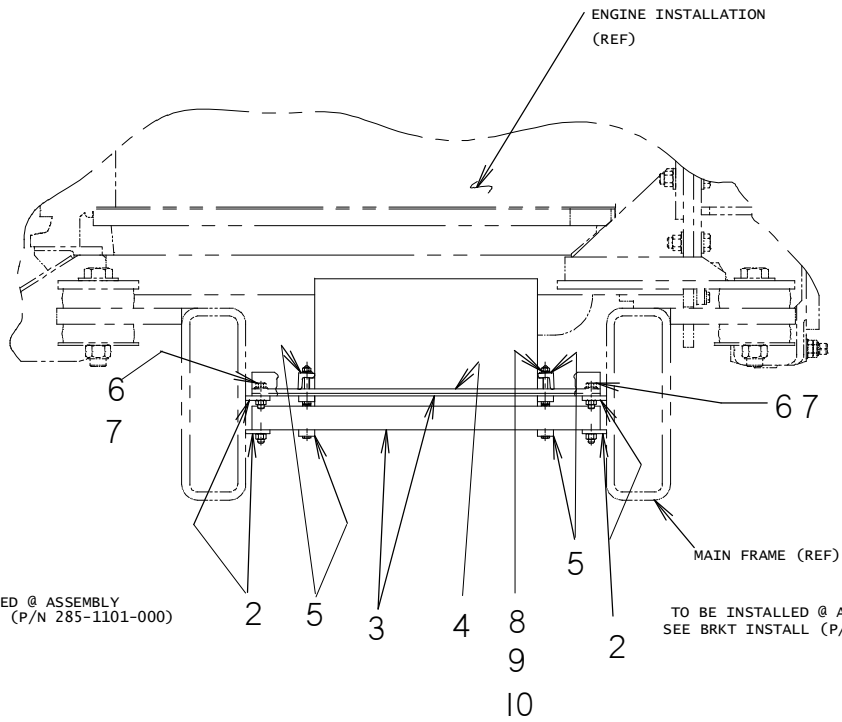
SILENCER ASSEMBLY

HT220
BEGINS WITH S/N CMWHT220J80000012

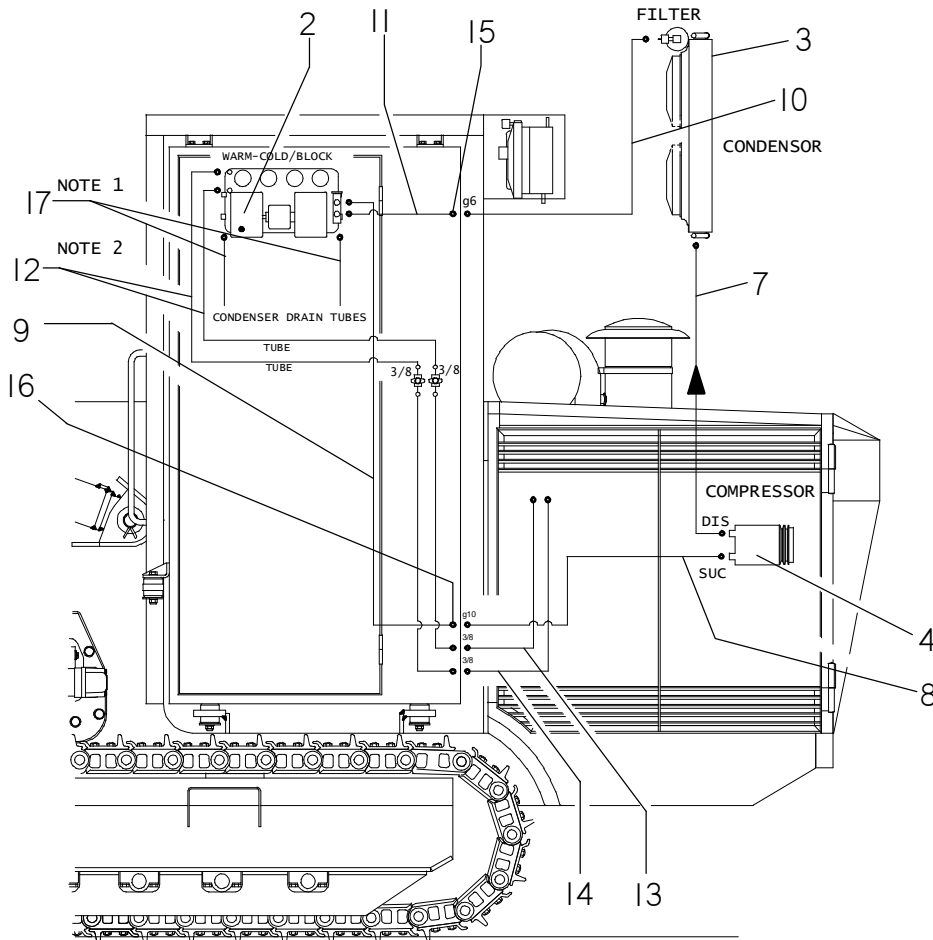
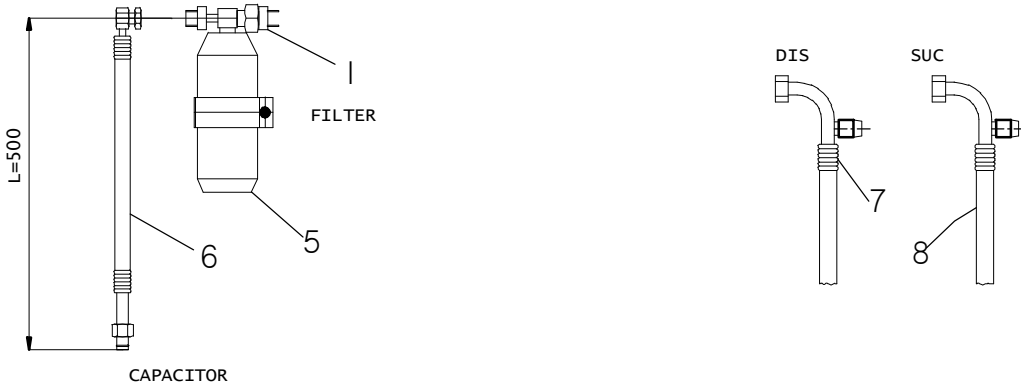


BATTERY INSTALLATION

HT220
BEGINS WITH S/N CMWHT220J80000012



CAB AIR CONDITIONER ASSEMBLY HT220

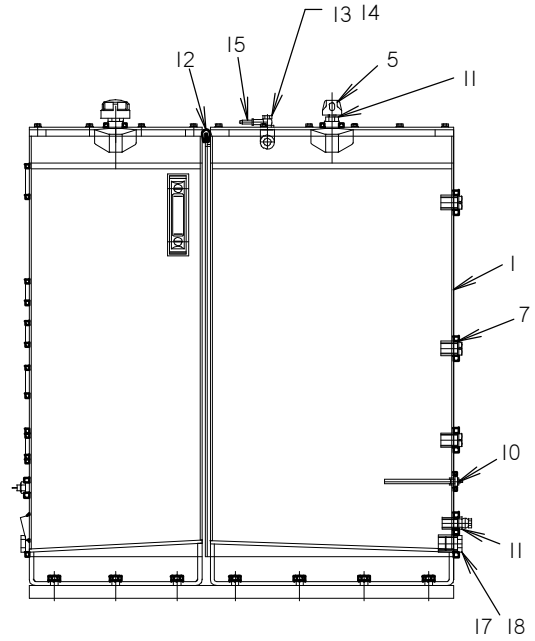
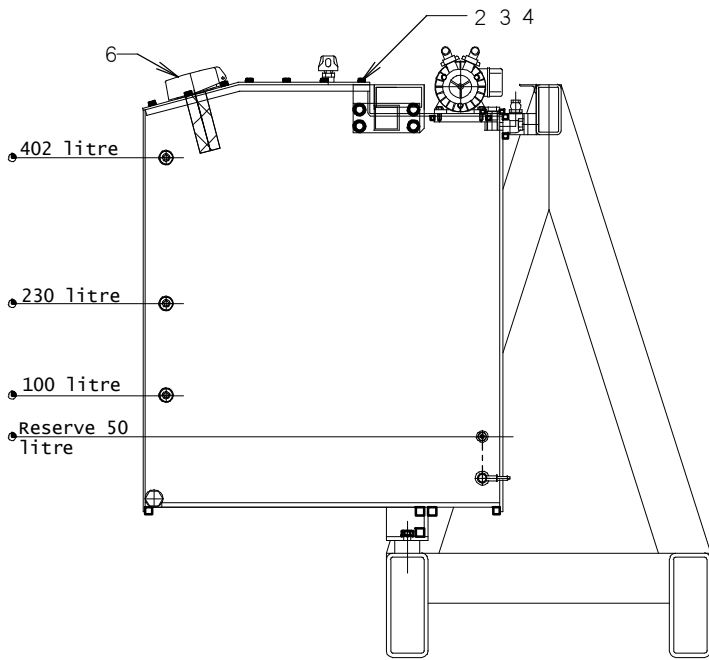


NOTE:

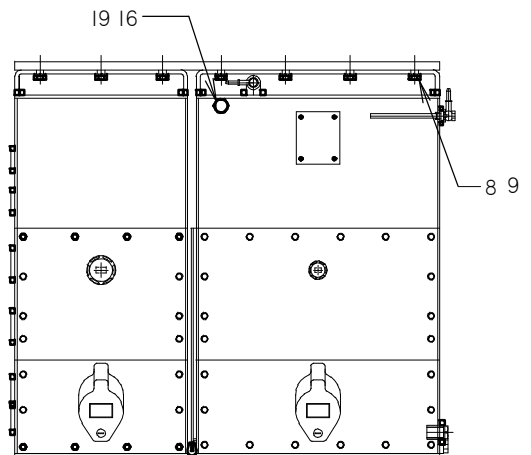
- 1- To CUT IN N° 2 PIECES Lg = 1 m
- 2- To CUT IN N° 2 PIECES Lg = 4,3 m

FUEL TANK ASSEMBLY HT220

SEAL LID WITH RED SILICONE
HEAT RESISTANT cod.50000087



TANK VOLUME 466 litres



CLICK HERE TO **DOWNLOAD** THE COMPLETE MANUAL

- Thank you very much for reading the preview of the manual.
- You can download the complete manual from: www.heydownloads.com by clicking the link below

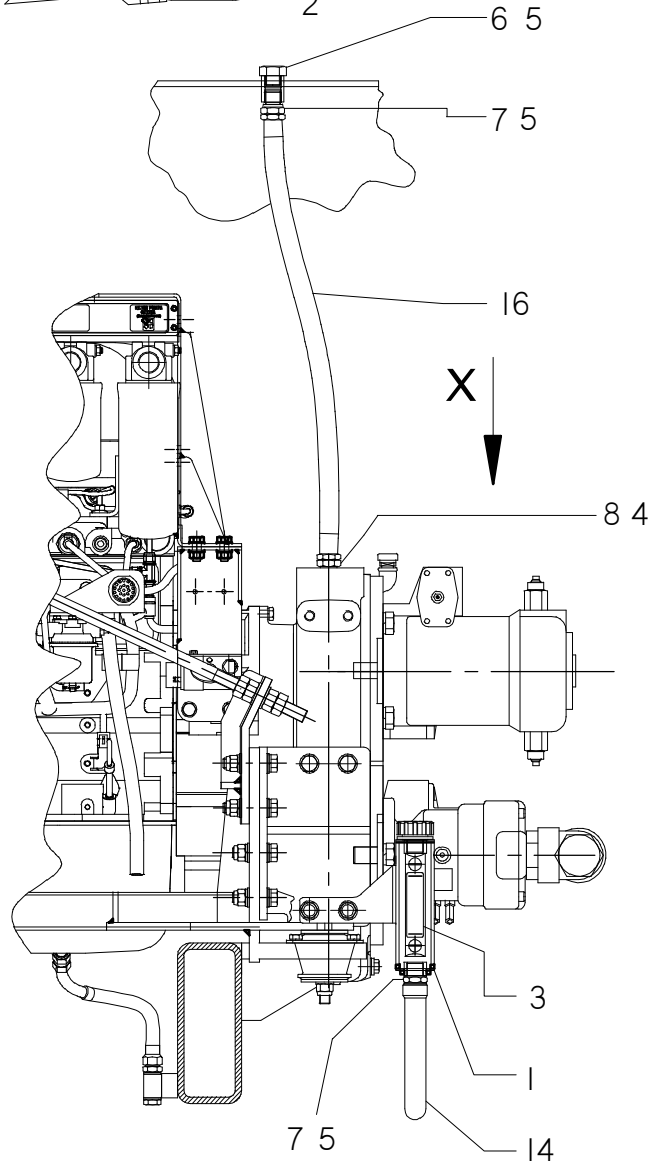
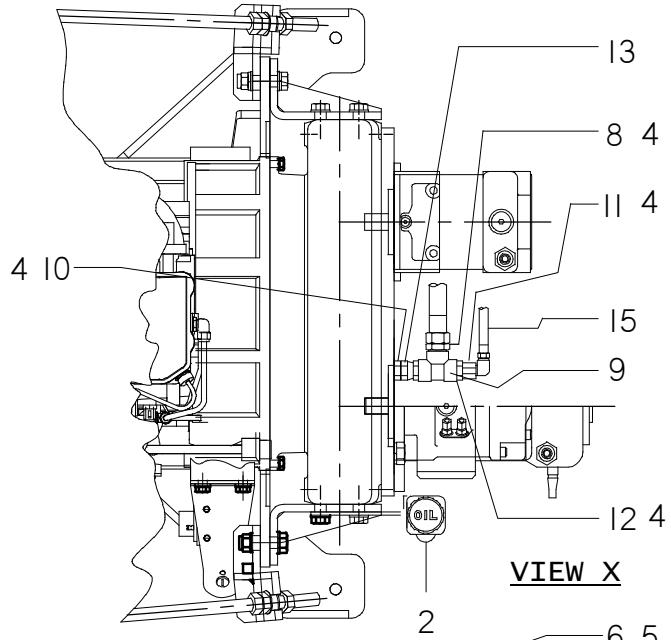


- Please note: If there is no response to CLICKING the link, please download this PDF first and then click on it.

CLICK HERE TO **DOWNLOAD** THE COMPLETE MANUAL

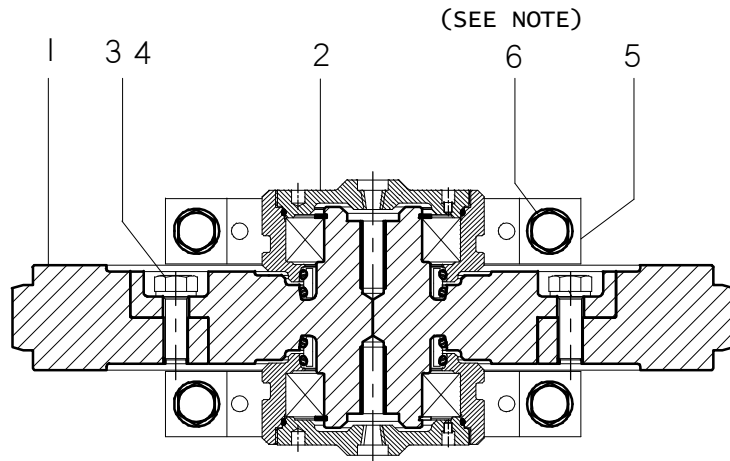
GEARBOX OIL LEVEL ASSEMBLY

HT220

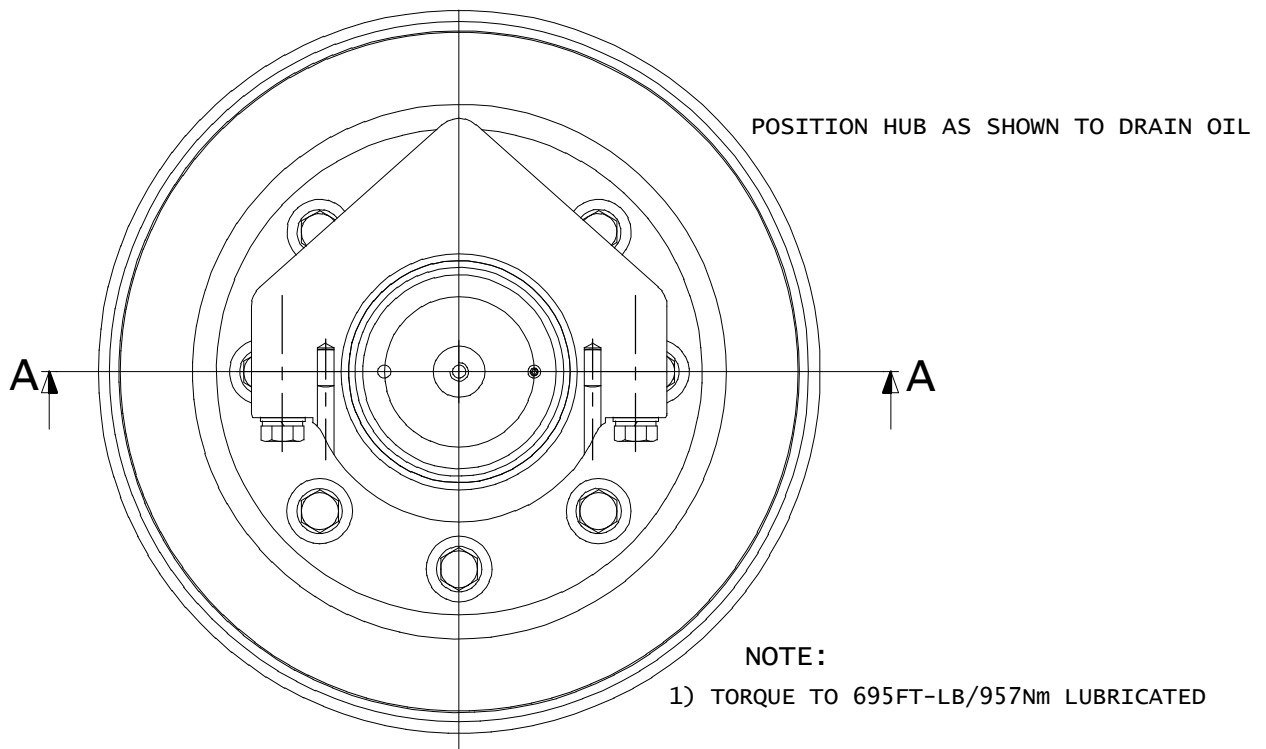


TAILWHEEL ASSEMBLY

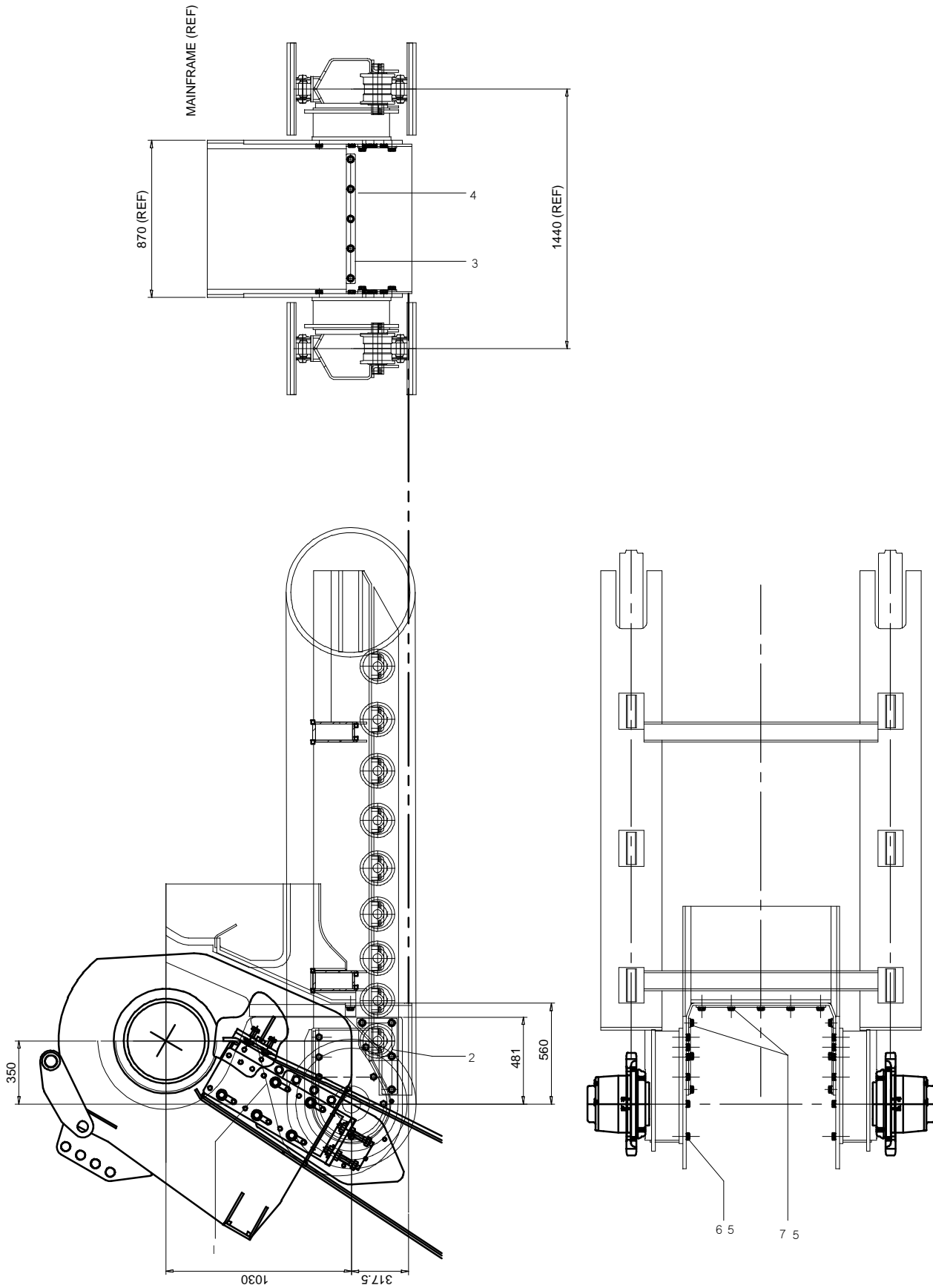
HT220



SECTION "A-A"



SCOOP ASSEMBLY HT220



TRUCK CONVEYOR INSTALLATION

HT220

BEGINS WITH S/N CMWHT220J80000012

| REF PART NO. | NUMBER | QTY | DESCRIPTION | REMARKS |
|--------------|------------|-----|-----------------------------------|---------|
| 1. | TS4907-050 | 1 | TRUCK CONVEYOR ASSEMBLY | |
| 2. | TS4907-032 | 1 | FRT SUPPORT, TRUCK CONVEYOR | |
| 3. | TS4907-031 | 1 | REAR SUPPORT, TRUCK CONVEYOR | |
| 4. | TS4907-033 | - | REMOVABLE STOP PLATE, FRT SUPPORT | |
| 5. | TS4907-034 | - | MOUNT PLATE, FRT SUPPORT | |
| 6. | TS4907-034 | 1 | PIN, REAR SUPPORT, TRUCK CONVEYOR | |
| 7. | 105-091 | 2 | LOCK WASHER (5/16") | |
| 8. | 106-949 | 18 | FLAT WASHER (3/4") HARDENED, F436 | |
| 9. | 105-953 | 10 | LOCKNUT (3/4-10 UNC) | |
| 10. | 105-400 | 3 | HHCS (5/8-11 UNC X 1-1/4") | |
| 11. | 108-222 | 3 | FLAT WASHER (5/8") HARDENED, F436 | |
| 12. | 105-385 | 3 | LOCK WASHER (5/8") | |
| 13. | 105-052 | 4 | HHCS (3/8-16 UNC X 1-1/4") | |
| 14. | 105-096 | 8 | FLAT WASHER (3/8") | |
| 15. | 105-047 | 4 | LOCKNUT (3/8-16 UNC) | |
| 16. | 105-320 | 8 | HHCS (3/4010 UNC X 2-1/4") | |
| 17. | 105-389 | 8 | LOCK WASHER (3/4") | |
| 18. | 105-095 | 2 | HHCS (5/16-18 UNC X 1") | |
| 19. | 105-117 | 2 | FLAT WASHER (5/16") | |

NOT SHOWN:

FOOTNOTES:

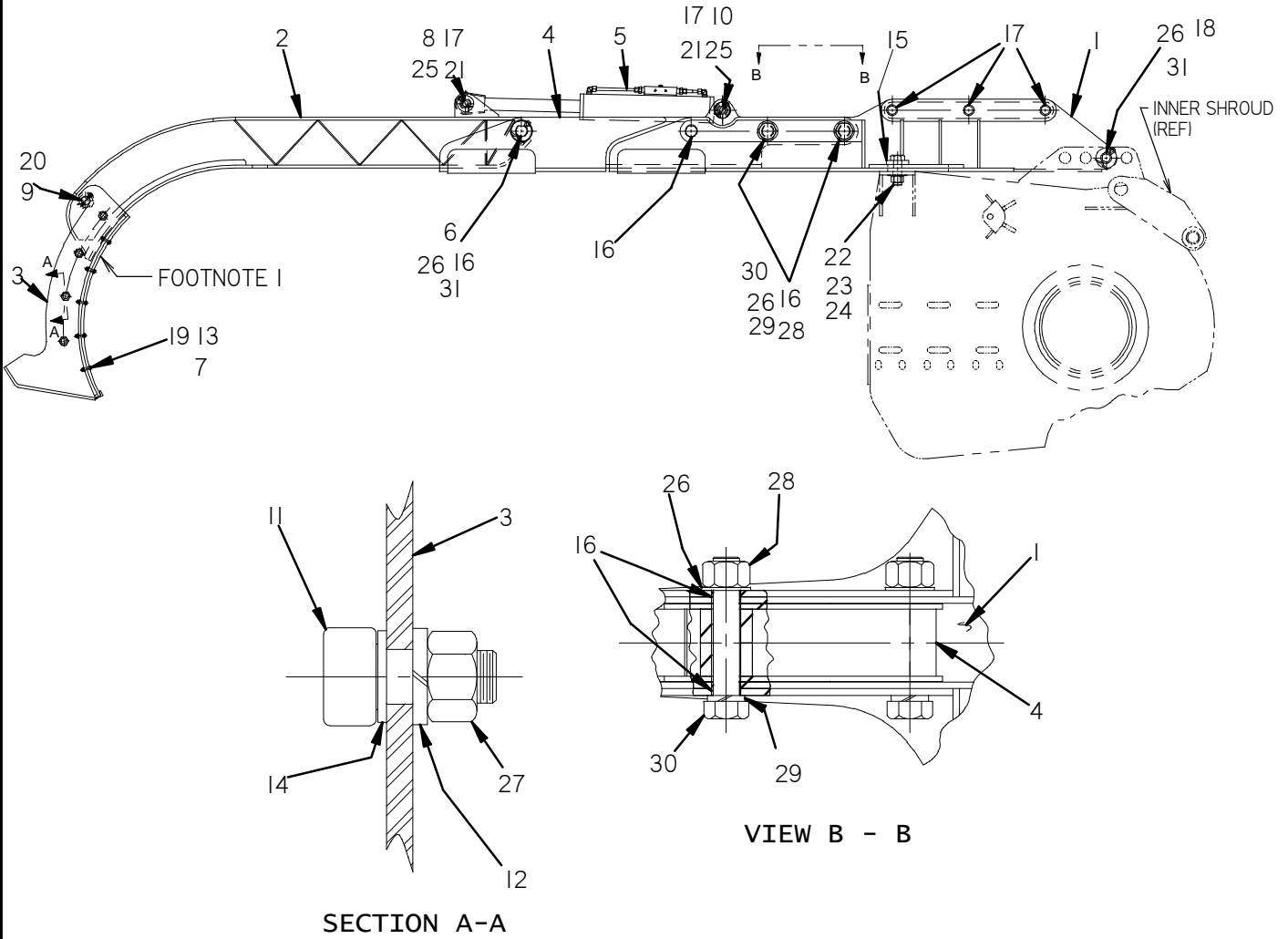
NOTE:

PARTS DISPLAYED FOR REF. ONLY:

20. ALL THREAD (3/4-10 UNC X 14-1/2") (5X)

TESMEC REF: 285-4907-000

CRUMBSHOE ASSEMBLY, 8' BOOM
 HT220
 BEGINS WITH S/N CMWHT220J80000012



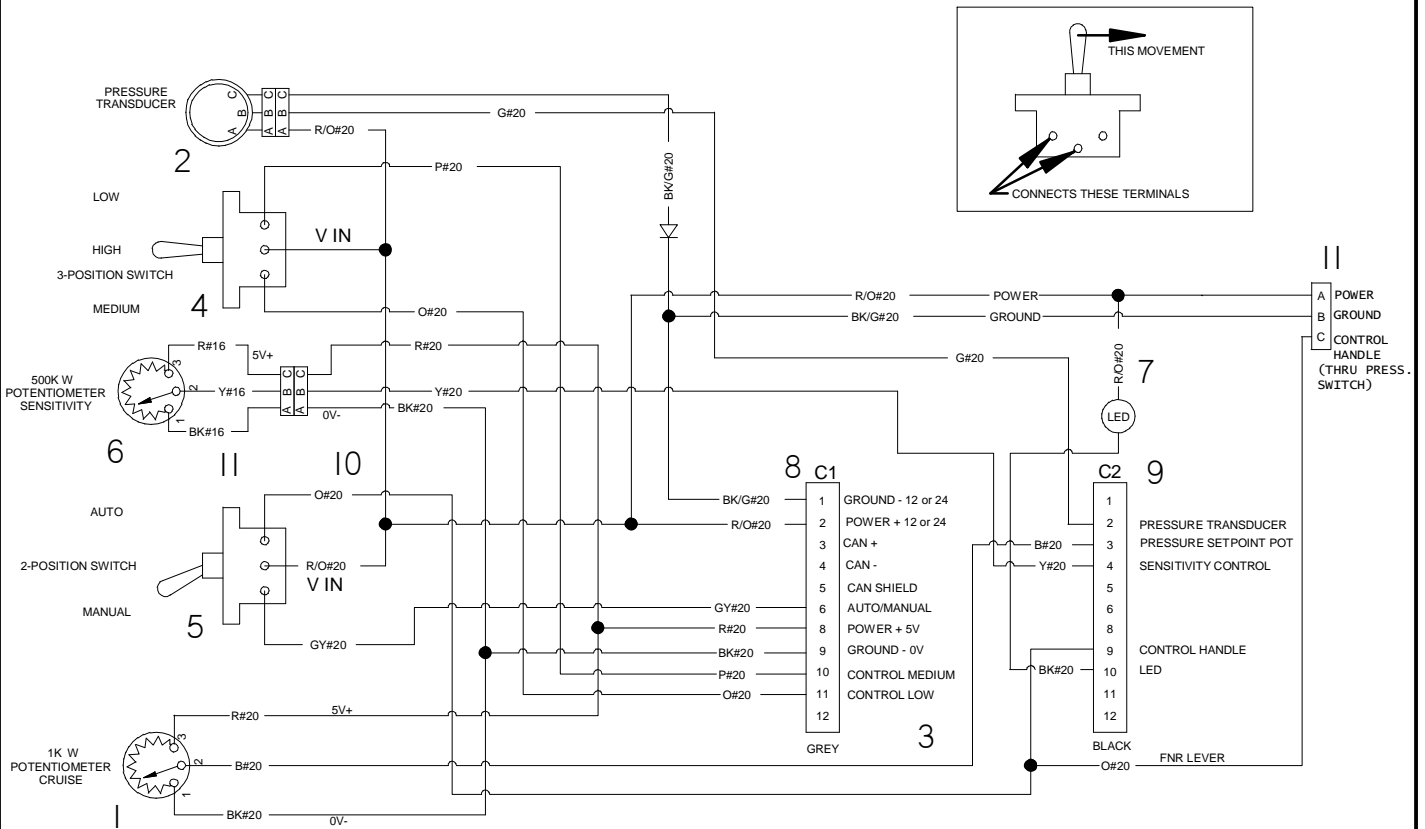
- NOTES:
1. BREAK ALL SHARP EDGES & CORNERS.
 2. ITEM #3 IS TO BE POSITIONED PROPERLY ON ITEM #2 BEFORE ADDING PIN ITEM #9
 3. WING PLATE IS 1" LESS THEN CUT WIDTH.

| CUT WIDTH | "A" |
|-----------|----------|
| 12" | 140-1076 |
| 14" | 140-1077 |
| 16" | 140-1078 |
| 18" | 140-1079 |

DIGITAL LOAD CONTROL SCHEMATIC

HT220

BEGINS WITH S/N CMWHT220J80000012



| LEGEND | |
|-----------------------|-----------------------|
| WIRE COLOR | B/Y #16 WIRE GA. SIZE |
| STRIPE COLOR | |
| IF OMITTED - NOT USED | |
| B-BLUE | DB-DARK BLUE |
| R-RED | PK-PINK |
| P-PURPLE | |
| O-ORANGE | |
| G-GREEN | |
| LG-LIGHT GREEN | |
| BK-BLACK | |
| BR-BROWN | |
| Y-YELLOW | |
| W-WHITE | |
| GY-GREY | |

CLICK HERE TO **DOWNLOAD** THE COMPLETE MANUAL

- Thank you very much for reading the preview of the manual.
- You can download the complete manual from: www.heydownloads.com by clicking the link below



- Please note: If there is no response to CLICKING the link, please download this PDF first and then click on it.

CLICK HERE TO **DOWNLOAD** THE COMPLETE MANUAL