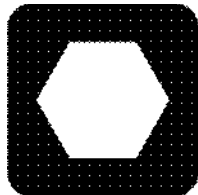


H1130 Plow

Parts Manual



CLICK HERE TO **DOWNLOAD** THE COMPLETE MANUAL

- Thank you very much for reading the preview of the manual.
- You can download the complete manual from: www.heydownloads.com by clicking the link below



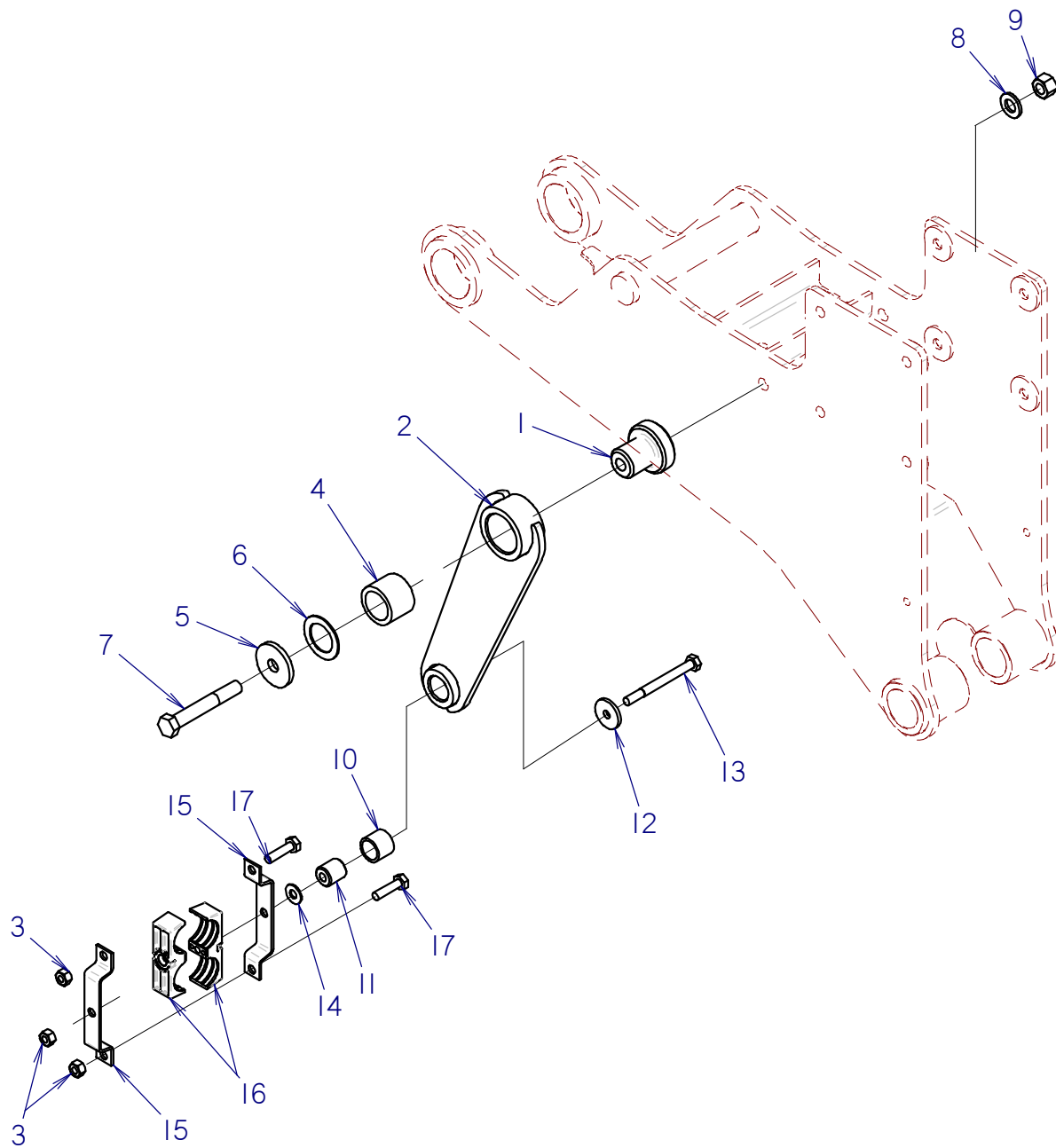
- Please note: If there is no response to CLICKING the link, please download this PDF first and then click on it.

CLICK HERE TO **DOWNLOAD** THE COMPLETE MANUAL

PLOW ATTACHMENTS

DRIVE HOSE CLAMP

H1130



VIBRATOR ASSEMBLY

H1130

REF NO.	PART NUMBER	QTY	DESCRIPTION	REMARKS
1	325-829	1	VIBRATOR FRAME	
2	166-620	2	COVER PLATE MACHINING	
3	105-536	4	DOWEL PIN (3/8" X 1-1/2")	
4	106-398	26	WASHER (M16, HARDENED)	
5	105-744	18	SCREW (M16-2.00 X 185MM)	
6	106-355	34	FLG NUT (M16-2.00, 10.9)	
7	106-341	4	SCREW (M16-2.00 X 70MM)	
8	125-526	4	BEARING (SPHERICAL ROLLER)	SEE FOOTNOTE 1
9	185-1002	1	RIGHT SHAFT ASSEMBLY	SEE FOOTNOTE 1
10	185-1001	1	LEFT SHAFT ASSEMBLY	SEE FOOTNOTE 1
11	115-498	2	EXTERNAL SNAP RING (2.165")	
12	315-731	2	BEARING RETAINER	
13	106-916	8	SCREW (M8-1.25 X 25MM, SOC)	
14	165-929	4	KEY (3/8" X 2-29/64")	
15	107-521	2	SCREW (M12-1.75 X 20MM)	
16	185-115	4	VIBRATOR WEIGHT	
17	110-111	1	SIGHT GAUGE (16S)	
18	312-760	3	PLATE	
19	106-806	12	FLG LK SCREW (M12-1.75 X 25MM)	
20	155-138	2	PLUG (16S)	
21	106-619	4	SCREW (M16-2.00 X 130MM, 10.9)	
22	152-150	1	PLUG, MAGNETIC (1-16S)	
23	106-074	8	SCREW (M16-2.00 X 60MM)	

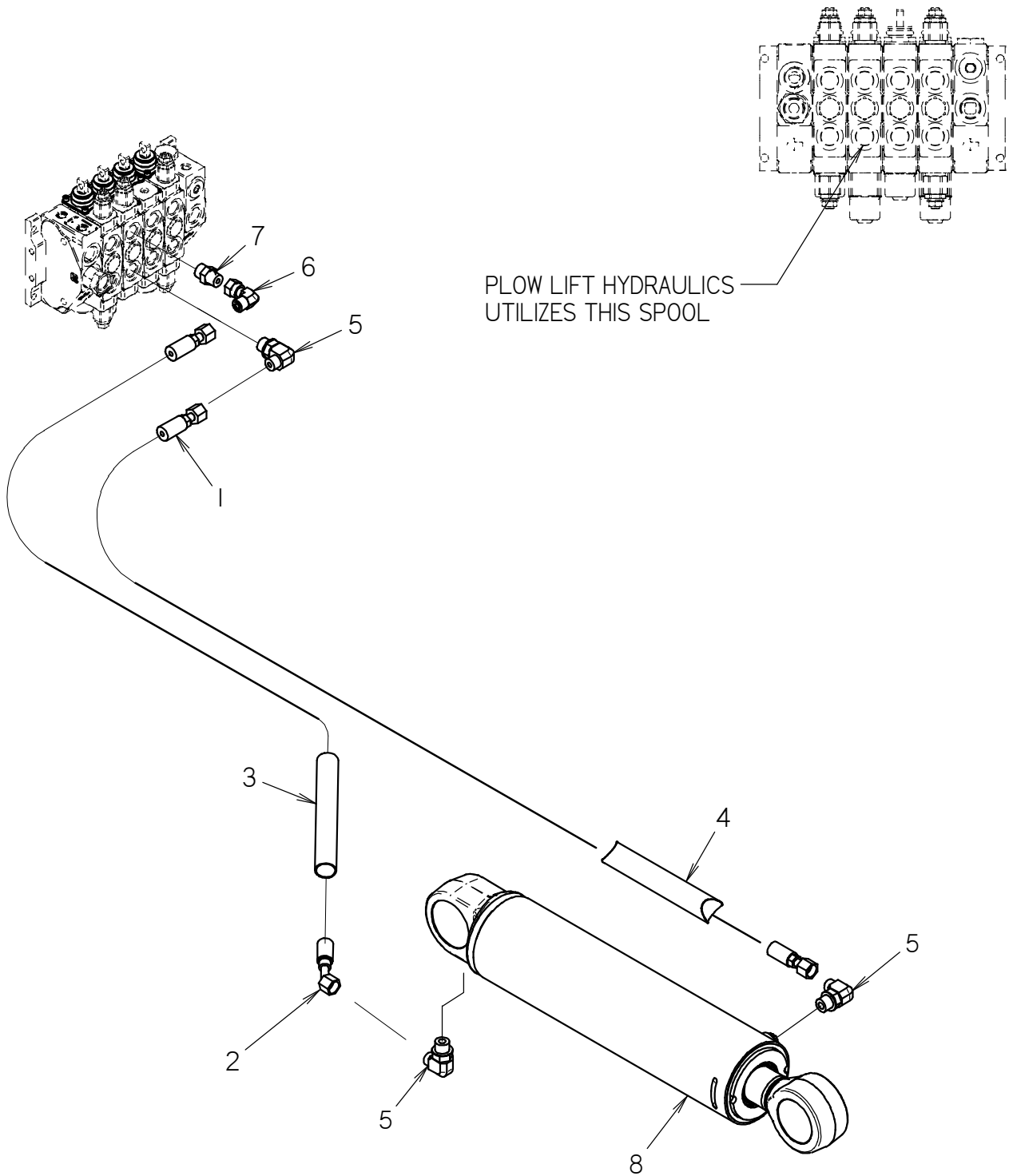
NOT SHOWN:

FOOTNOTES:

1. ASMLY KIT 190-186 - TAPERED BEARING ALIGNMENT PINS & BEARING DRIVER (SPECIAL TOOLS)

NOTE:

PLOW LIFT HYDRAULICS H1130



HYDRAULIC CYLINDERS (2.5" x 1.5")

REF NO.	PART NUMBER	QTY	DESCRIPTION	REMARKS
	149-676	-	CYL (2.5 X 1.5 X 2.5)	SEE FOOTNOTES 1 & 2
1	152-022	1	CYLINDER BARREL (2.5 X 2.5)	
2	149-731	1	CYLINDER ROD (1.50 X 2.5)	
	149-677	-	CYL (2.5 X 1.5 X 3.0)	SEE FOOTNOTES 1 & 2
1	152-005	1	CYLINDER BARREL (2.5 X 3.0)	
2	150-431	1	CYLINDER ROD (1.50 X 3.0)	
	149-678	-	CYL (2.5 X 1.5 X 4.0)	SEE FOOTNOTES 1 & 2
1	150-283	1	CYLINDER BARREL (2.5 X 4.0)	
2	150-434	1	CYLINDER ROD (1.50 X 4.0)	
	149-679	-	CYL (2.5 X 1.5 X 5.0)	SEE FOOTNOTES 1 & 2
1	149-810	1	CYLINDER BARREL (2.5 X 5.0)	
2	153-038	1	CYLINDER ROD (1.50 X 5.0)	
	149-680	-	CYL (2.5 X 1.5 X 6.0)	SEE FOOTNOTES 1 & 2
1	152-010	1	CYLINDER BARREL (2.5 X 6.0)	
2	153-003	1	CYLINDER ROD (1.50 X 6.0)	
	149-681	-	CYL (2.5 X 1.5 X 8.0)	SEE FOOTNOTES 1 & 2
1	150-295	1	CYLINDER BARREL (2.5 X 8.0)	
2	153-027	1	CYLINDER ROD (1.50 X 8.0)	
	151-200	-	CYL (2.5 X 1.5 X 10.0)	SEE FOOTNOTES 1 & 2
1	150-692	1	CYLINDER BARREL (2.5 X 10.0)	
2	150-416	1	CYLINDER ROD (1.50 X 10.0)	
	151-071	-	CYL (2.5 X 1.5 X 12.0)	SEE FOOTNOTES 1 & 2
1	152-015	1	CYLINDER BARREL (2.5 X 12.0)	
2	150-426	1	CYLINDER ROD (1.50 X 12.0)	
	151-035	-	CYL (2.5 X 1.5 X 16.0)	SEE FOOTNOTES 1 & 2
1	150-289	1	CYLINDER BARREL (2.5 X 16.0)	
2	150-419	1	CYLINDER ROD (1.50 X 16.0)	
	149-798	-	CYL (2.5 X 1.5 X 20.0)	SEE FOOTNOTES 1 & 2
1	149-762	1	CYLINDER BARREL (2.5 X 20.0)	
2	150-669	1	CYLINDER ROD (1.50 X 20.0)	
	151-090	-	CYL (2.5 X 1.5 X 24.0)	SEE FOOTNOTES 1 & 2
1	152-026	1	CYLINDER BARREL (2.5 X 24.0)	
2	150-447	1	CYLINDER ROD (1.50 X 24.0)	
3	150-768	1	CYLINDER HEAD (2.5 X 1.50)	
4	150-779	1	LOCK RING (2.5)	
5	150-986	1	CYLINDER PISTON (2.5 X 1.50)	INCL. MOLDED-ON WEAR RING
6	106-098	1	FLG BOLT (3/4-NC X 2", GD8)	SEE FOOTNOTE 3
7	500-031	1	O-RING (228 D90)	
8	157-021	1	BACKUP RING (228 D90)	
9	157-542	1	U-SEAL (1.500")	
10	157-539	1	WIPER SEAL (1.500")	

NOT SHOWN:

259-100	U-SEAL INSTALLER (1" - 1.499")
259-235	1.00 ROD WIPER TOOL
259-239	WIPER/SEAL INSTALLER (2")
259-241	PISTON INSTALLER (2")
259-188	CYL HEAD SPANNER - TWO PIN

FOOTNOTES:

- REF. #1 & #2 ARE SPECIFIC TO EACH CYLINDER, REF. #3 THRU #10 ARE COMMON FOR ALL THE ABOVE LISTED CYLINDERS.
- SEAL REPAIR KIT P/N: 190-170
- APPLY LOCTITE 277 OR EQUIVALENT, TORQUE TO 290-325 FT-LBS

NOTE:

CLICK HERE TO **DOWNLOAD** THE COMPLETE MANUAL

- Thank you very much for reading the preview of the manual.
- You can download the complete manual from: www.heydownloads.com by clicking the link below



- Please note: If there is no response to CLICKING the link, please download this PDF first and then click on it.

CLICK HERE TO **DOWNLOAD** THE COMPLETE MANUAL