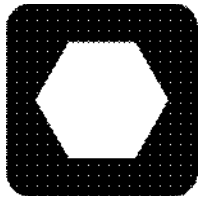


A820

Parts Manual



CLICK HERE TO **DOWNLOAD** THE COMPLETE MANUAL

- Thank you very much for reading the preview of the manual.
- You can download the complete manual from: www.heydownloads.com by clicking the link below



- Please note: If there is no response to CLICKING the link, please download this PDF first and then click on it.

CLICK HERE TO **DOWNLOAD** THE COMPLETE MANUAL

DECAL LOCATION

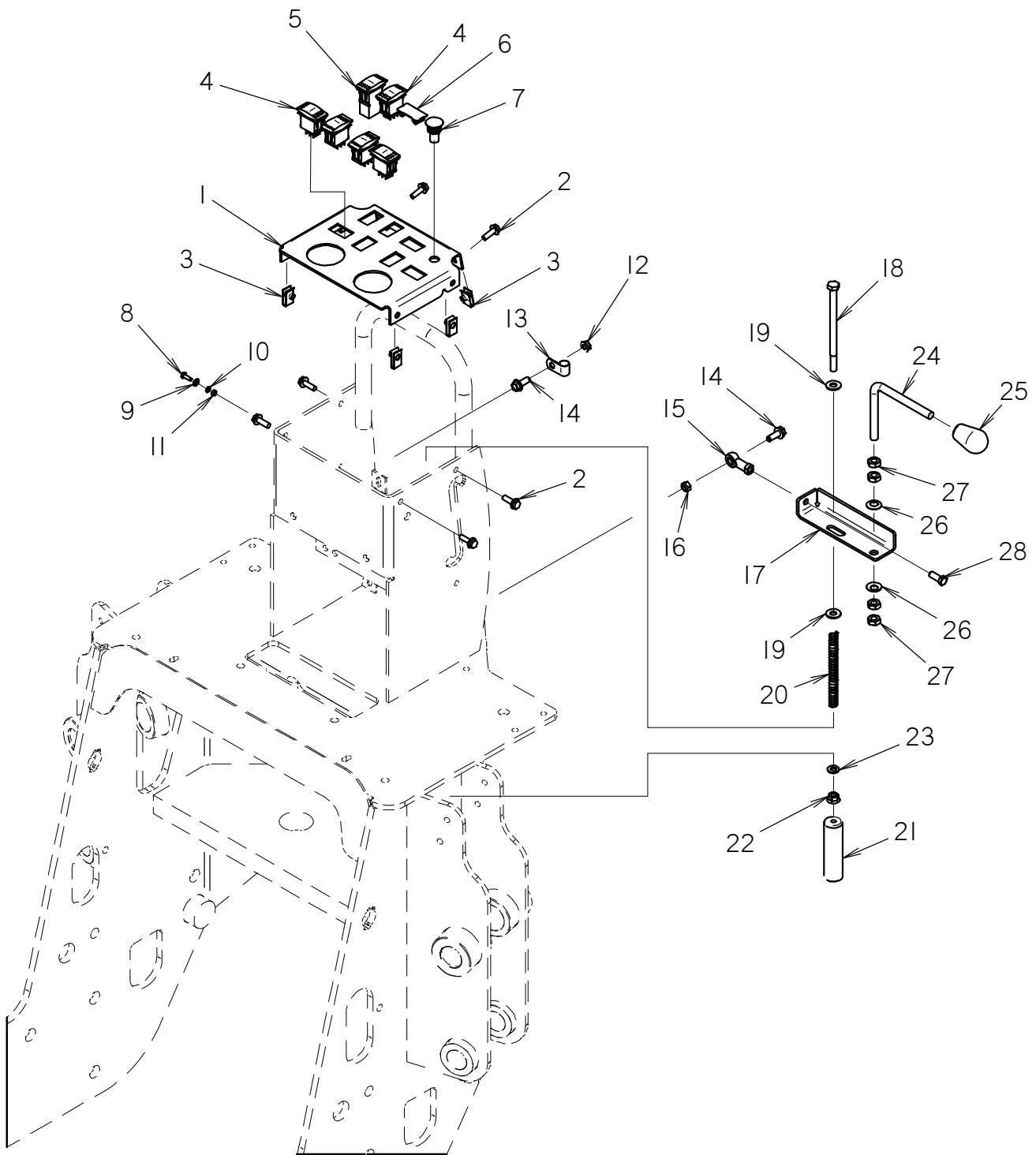
A820 T4

REF NO.	PART NUMBER	QTY	DESCRIPTION	REMARKS
	270-5545		A820 SERVICE DECAL KIT	
1	270-5005	2	LOGOTYPE	
2	270-5004	2	A820 MODEL ID	
3	274-318	2	TIE DOWN LOCATION	
4	275-184	2	WARNING MOVING PARTS	
5	275-326	2	WARNING CRUSHING WEIGHT	
6	270-5007	1	LOGO	
7	270-5430	1	BACKHOE CONTROLS OVERLAY	
8	700-153	1	BACKHOE LOCK/UNLOCK	

FOOTNOTES:

TOWER

A820 / T4



LIGHT KIT

A523/A820

REF NO.	PART NUMBER	QTY	DESCRIPTION	REMARKS
1	217-007	2	WORKING LIGHT (CLEAR, RECT)	
2	323-839	2	LIGHT MOUNT BRACKET	
3	106-724	4	FLG SCREW (M10-1.50 X 25MM)	
4	106-266	4	FLG NUT (M10-1.50)	
5	217-762	1	ROCKER SWITCH (SPDT)	

NOT SHOWN:

213-211 1 HARNESS, A523 LIGHT
 217-826 1 MINI RELAY (SPDT)

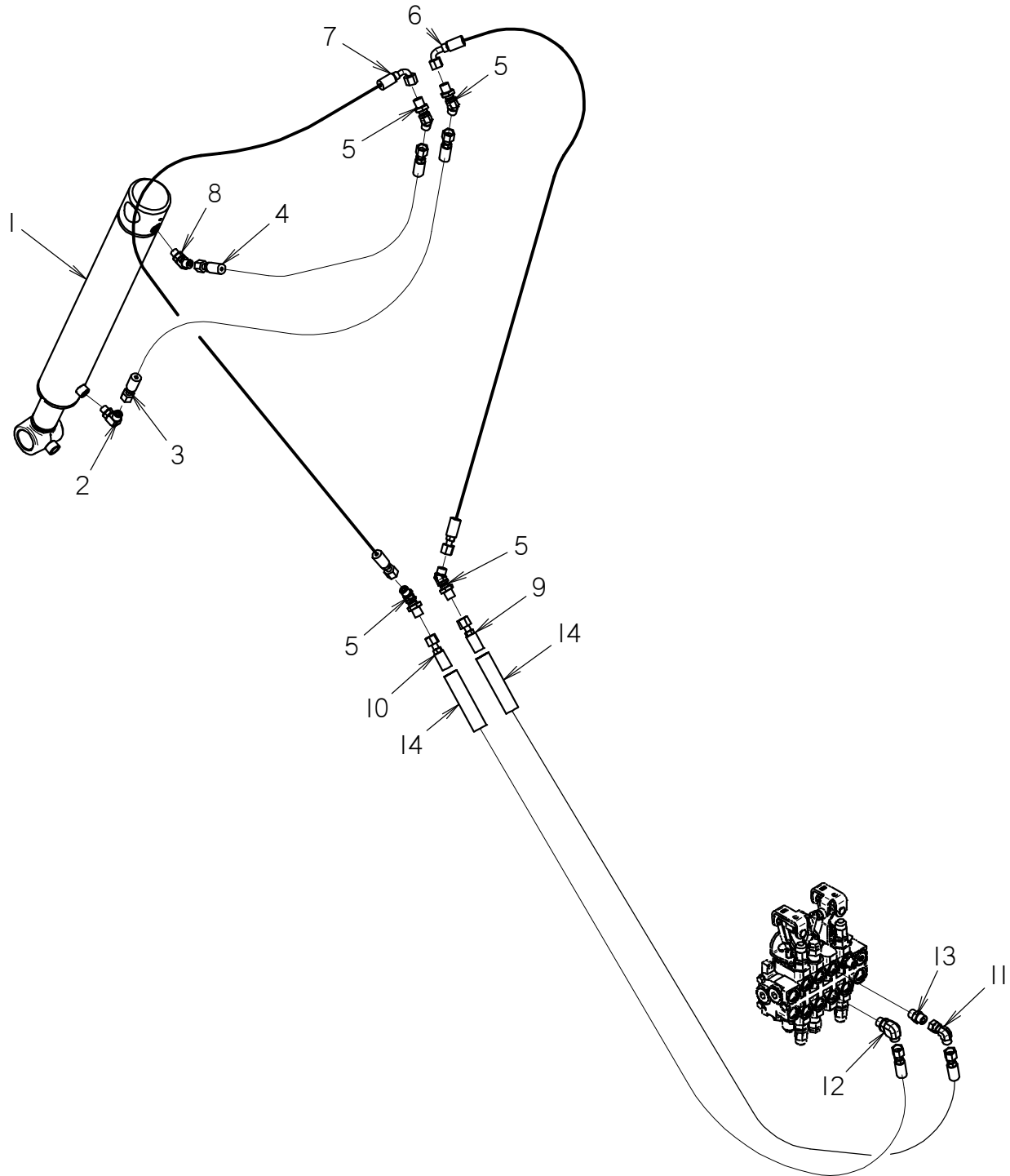
NOT SHOWN:

FOOTNOTES:

NOTE:

BUCKET HYDRAULICS

A820



VALVE HYDRAULICS

A820

REF NO.	PART NUMBER	QTY	DESCRIPTION	REMARKS
1	150-3440	1	HYD VALVE (DNCE50/3) INLET UNLOADER & LO	
2	154-276	2	CONNECTOR (O40-08S90)	
3	154-301	2	CONNECTOR (I05-100)	
4	515-257	1	HOSE (O40FX90S-54"-3000)	
5	515-257	1	HOSE (O40FX90S-54"-3000)	
6	117-323	1	ABRASION SLEEVE (1.25" X 37")	
7	150-3553	1	HOSE (I00FX-26"-3000)	
8	154-298	2	CONNECTOR (I05-10090)	
9	150-3661	1	HOSE (I00FX-10.5"-3000)	
10	159-899	1	HOSE (I00FX90-52"-3000)	REFER TO FOOTNOTE 1
11	515-644	1	HOSE (I00FX90-31"-3000)	REFER TO FOOTNOTE 1
12	154-323	1	CONNECTOR (O8S-10090)	
13	154-488	1	UN RUN TEE (I00FX-100-100)	REFER TO FOOTNOTE 1
14	154-325	1	UN BR TEE (I00FX-100-100)	
15	301-3016	1	VALVE MOUNT BAR	
16	106-724	4	FLG SCREW (M10-1.50 X 25MM)	
17	106-387	8	FLG LOCKNUT (M10-1.50)	
18	106-161	4	FLG SCREW (M6-1.00 X 20MM)	
19	106-353	4	FLG NUT (M6-1.00)	
20	154-227	4	CONNECTOR (O60-08S90)	
21	154-332	2	PLUG (I00)	
22	154-324	1	CAP (I00F)	
23	154-297	2	PLUG (O40)	
24	154-264	1	CONNECTOR (O80-10S45)	
25	150-1789	1	CONNECTOR (O80-080FX45)	
26	115-737	1	ABRASION SLEEVE (1.59" X 40")	
27	154-265	2	UNION RUN TEE (O40FX-O40-O40)	REFER TO FOOTNOTE 2

NOT SHOWN:

FOOTNOTES:

1. REFER TO RT80Q PARTS BOOK, "OIL COOLER HYDRAULICS" ID0264996.
2. PART OF SHIP KIT #190-1747 FOR USE WITH BFB/BACKHOE ASSEMBLY.

NOTE:

REFER TO O-RING CHART (800-301) IN BACK OF BOOK FOR REPLACEMENT OF O-RINGS.

Torque Information

Tightening Guidelines

Values given on the following pages are a guide. Do not use these values if a different torque value or tightening procedure is given for specific application. Check tightness of fasteners periodically.

Shear bolts are designed to fail under predetermined loads. Always replace shear bolts with identical property class fasteners.

Fasteners should be replaced with the same or higher property class. If higher property class fasteners are used, tighten only to torque value of original fastener.

Make sure fastener threads are clean and that the threads are properly started. This will prevent them from cross threading or galling when tightened.

Lubed means cleaned, dry bolts lubricated with a standard, medium-viscosity machine oil. Lubricate all contact areas of the bolts and washers. Lubricating the bolts is the suggested torque method.

CLICK HERE TO **DOWNLOAD** THE COMPLETE MANUAL

- Thank you very much for reading the preview of the manual.
- You can download the complete manual from: www.heydownloads.com by clicking the link below



- Please note: If there is no response to CLICKING the link, please download this PDF first and then click on it.

CLICK HERE TO **DOWNLOAD** THE COMPLETE MANUAL