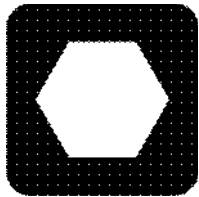


8020T

Parts Manual



CLICK HERE TO **DOWNLOAD** THE COMPLETE MANUAL

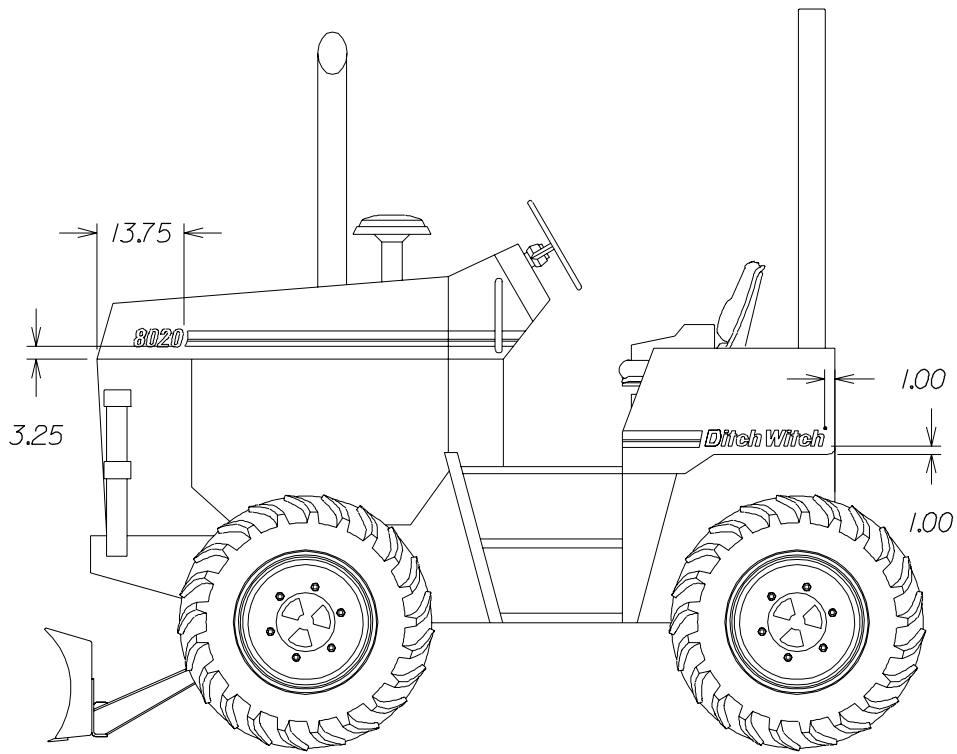
- Thank you very much for reading the preview of the manual.
- You can download the complete manual from: www.heydownloads.com by clicking the link below



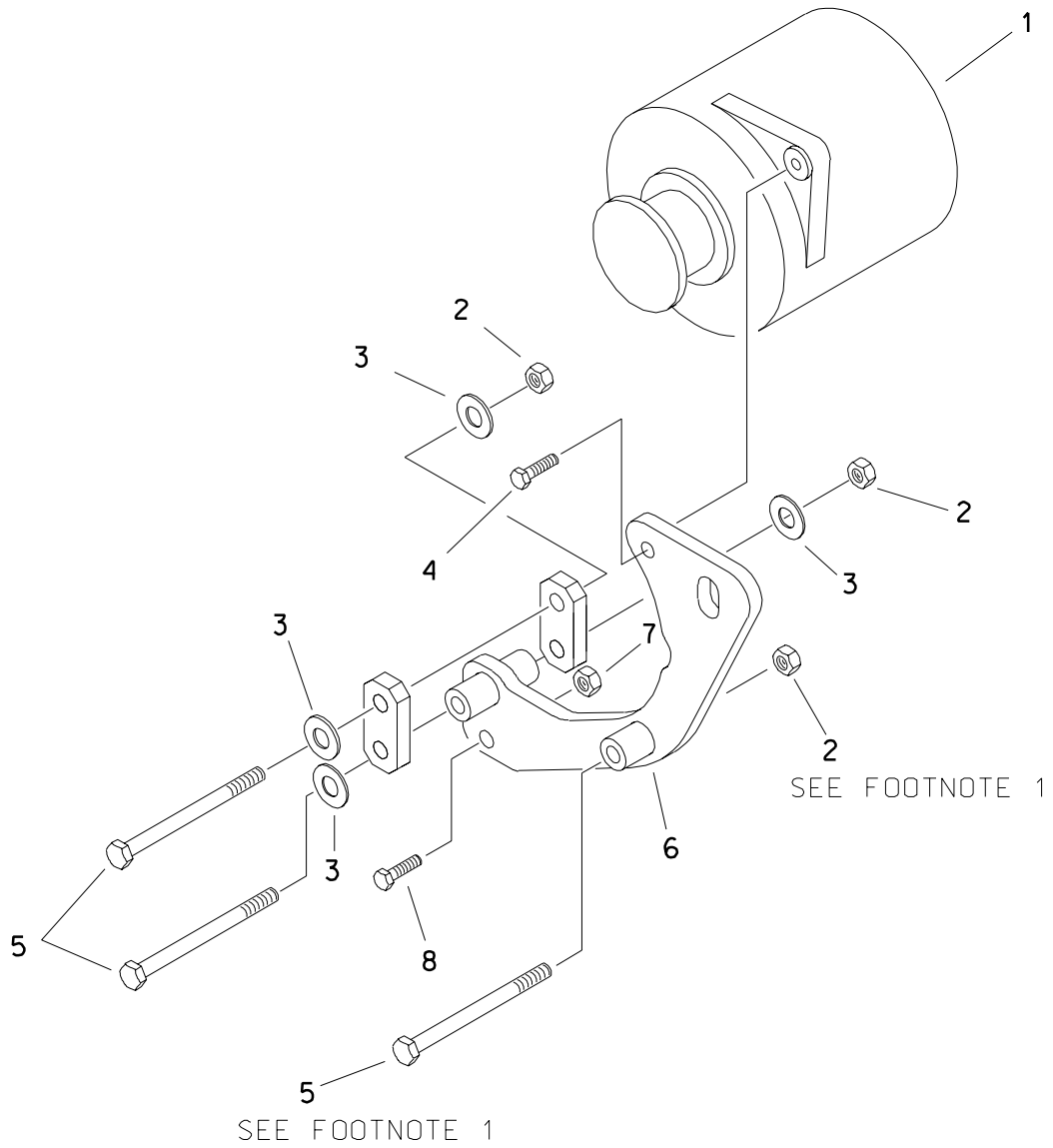
- Please note: If there is no response to CLICKING the link, please download this PDF first and then click on it.

CLICK HERE TO **DOWNLOAD** THE COMPLETE MANUAL

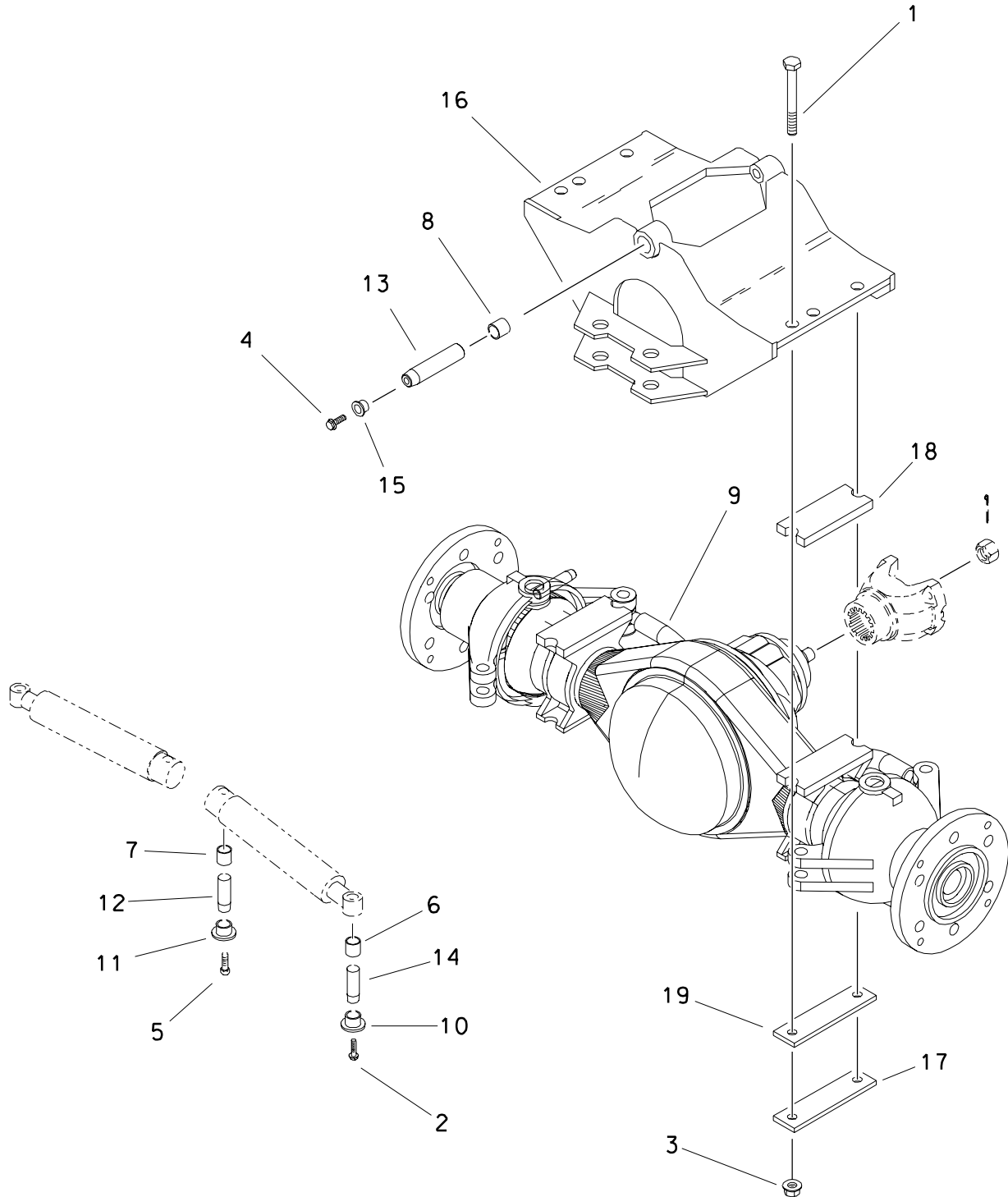
DECAL LOCATION 8020



ALTERNATOR BEGINS WITH S/N 5T0257



FRONT DIFFERENTIAL MOUNT

ROCKWELL
7520, 8020

MANUAL SHIFT TRANSMISSION

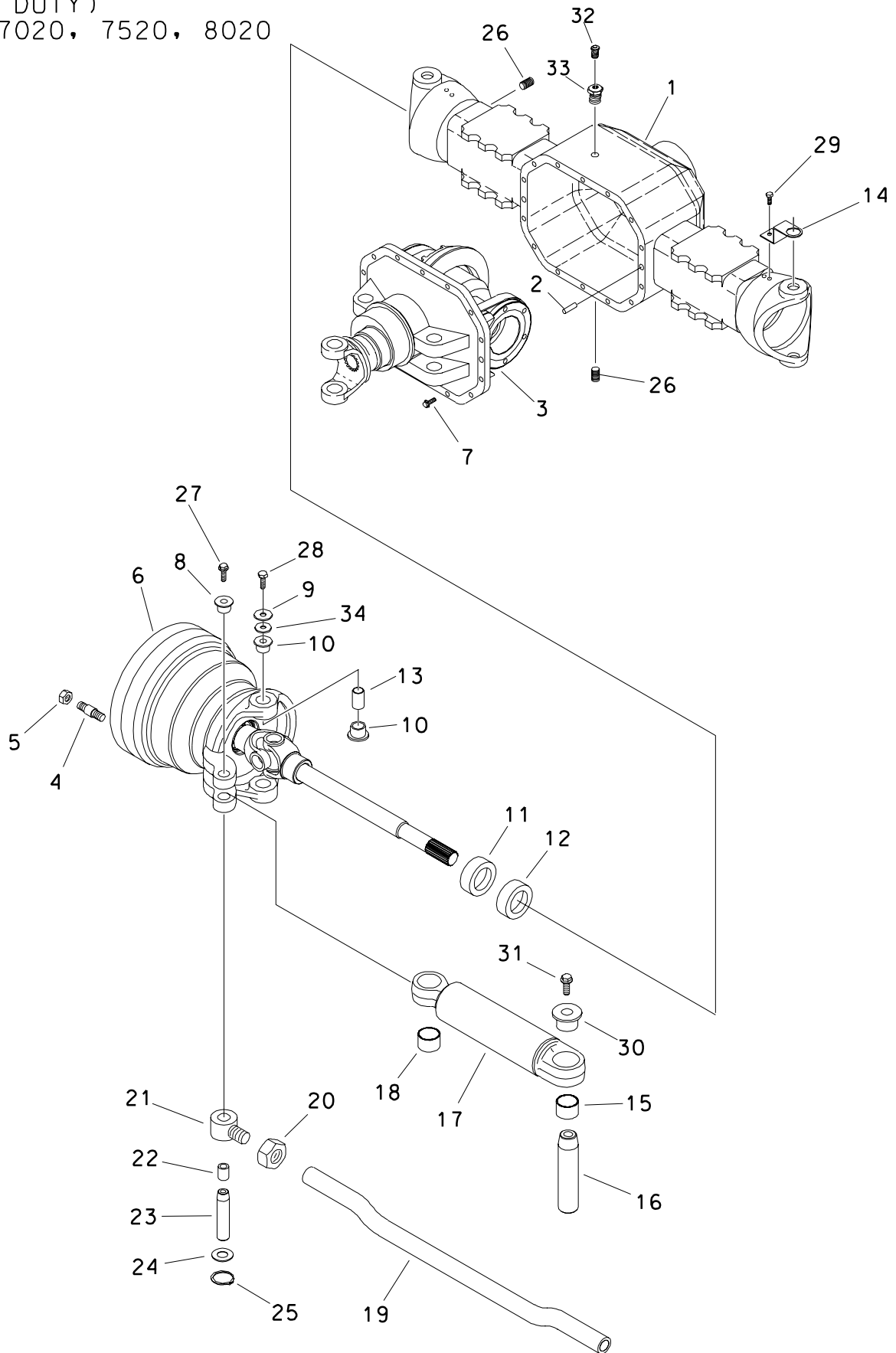
7020/8020 PLANETARY

REF NO.	PART NUMBER	QTY	DESCRIPTION	REMARKS
27.	184-069	1	KEEPER	
	105-115	1	JAM NUT (5/16-NF)	
28.	106-331	8	SCREW (M10-1.5 X 50MM)	
29.	169-035	1	TRANSMISSION CAP	
30.	125-040	1	BEARING (1.968")	
31.	169-039	1	BRAKE OUTPUT FLANGE	
32.	115-456	1	EXTERNAL SNAP RING (1.750")	
33.	163-092	1	BRAKE DISC	
34.	106-388	4	WASHER (M6)	8020 ONLY (GEAR BOX 166-124)
35.	125-107	2	BEARING (1.574")	
36.	157-609	2	INTERNAL SEAL	
37.	118-022	1	INTERNAL SNAP RING (3.150")	
38.	165-147	1	OUTPUT GEAR	
39.	326-060	1	WASHER (3/4")	
40.	155-795	1	O-RING (233 D70)	
41.	184-214	1	SEAL RETAINER	
42.	126-059	1	BEARING RACE (1.375")	
43.	167-181	1	OUTPUT SHAFT	
44.	115-211	1	PLUG (08N, SQ, MAG)	
45.	115-127	1	PIPE BUSHING (08N-02NF)	
46.	159-003	1	VENT PLUG (02N)	
47.	183-643	1	SHIFTER SHAFT	
48.	155-878	1	INTERNAL SEAL (.750")	
49.	115-545	1	EXTERNAL SNAP RING (.750")	
50.	331-381	1	SHIFT BRACKET	7020 ONLY (GEAR BOX 166-147)
51.	331-386	1	SPACER PLATE	7020 ONLY (GEAR BOX 166-147)
52.	106-640	2	BOLT (M6-1.00 X 20MM, BUT SOC)	8020 ONLY (GEAR BOX 166-124)

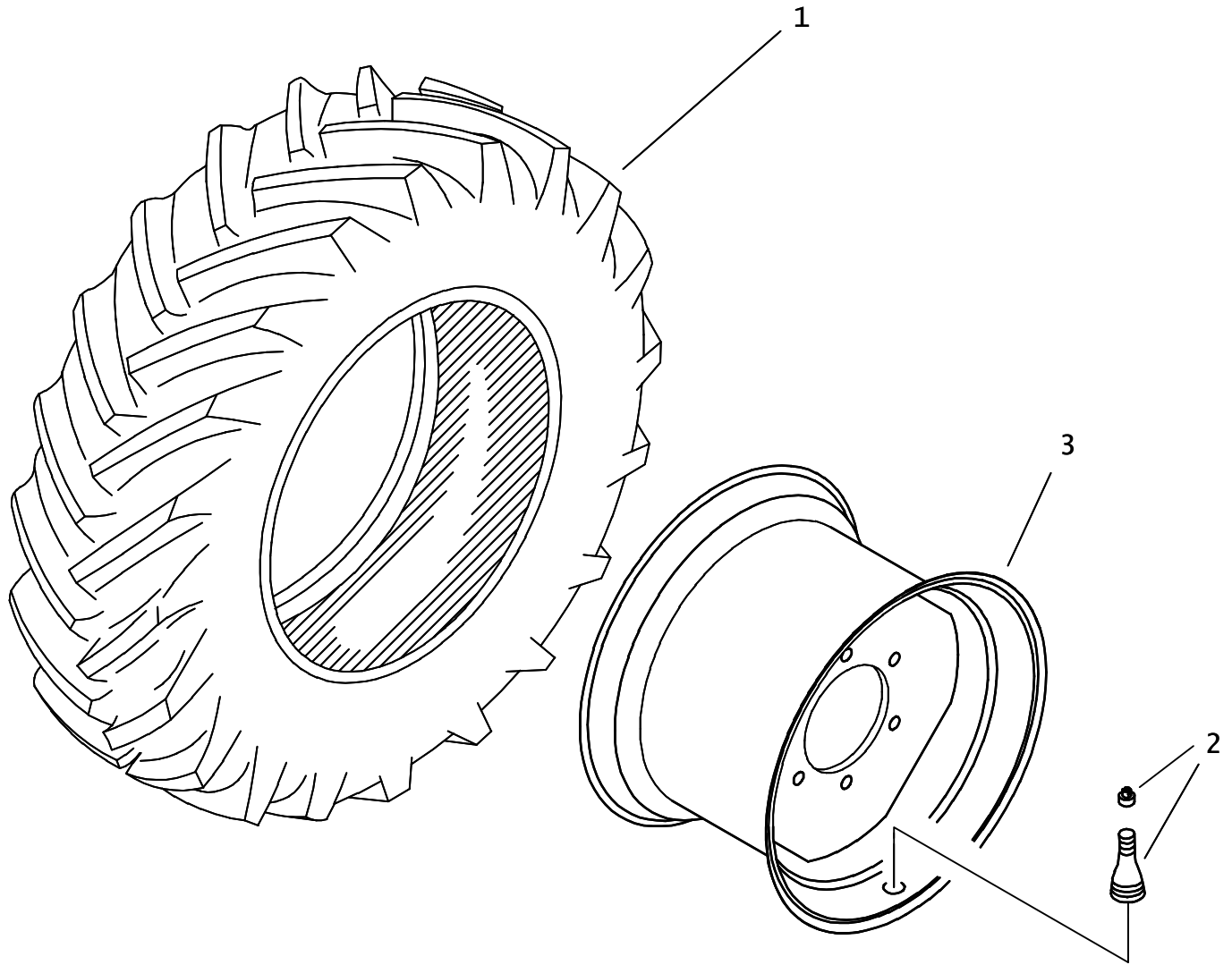
REAR STEERING PLANETARY DIFFERENTIAL

(HEAVY DUTY)

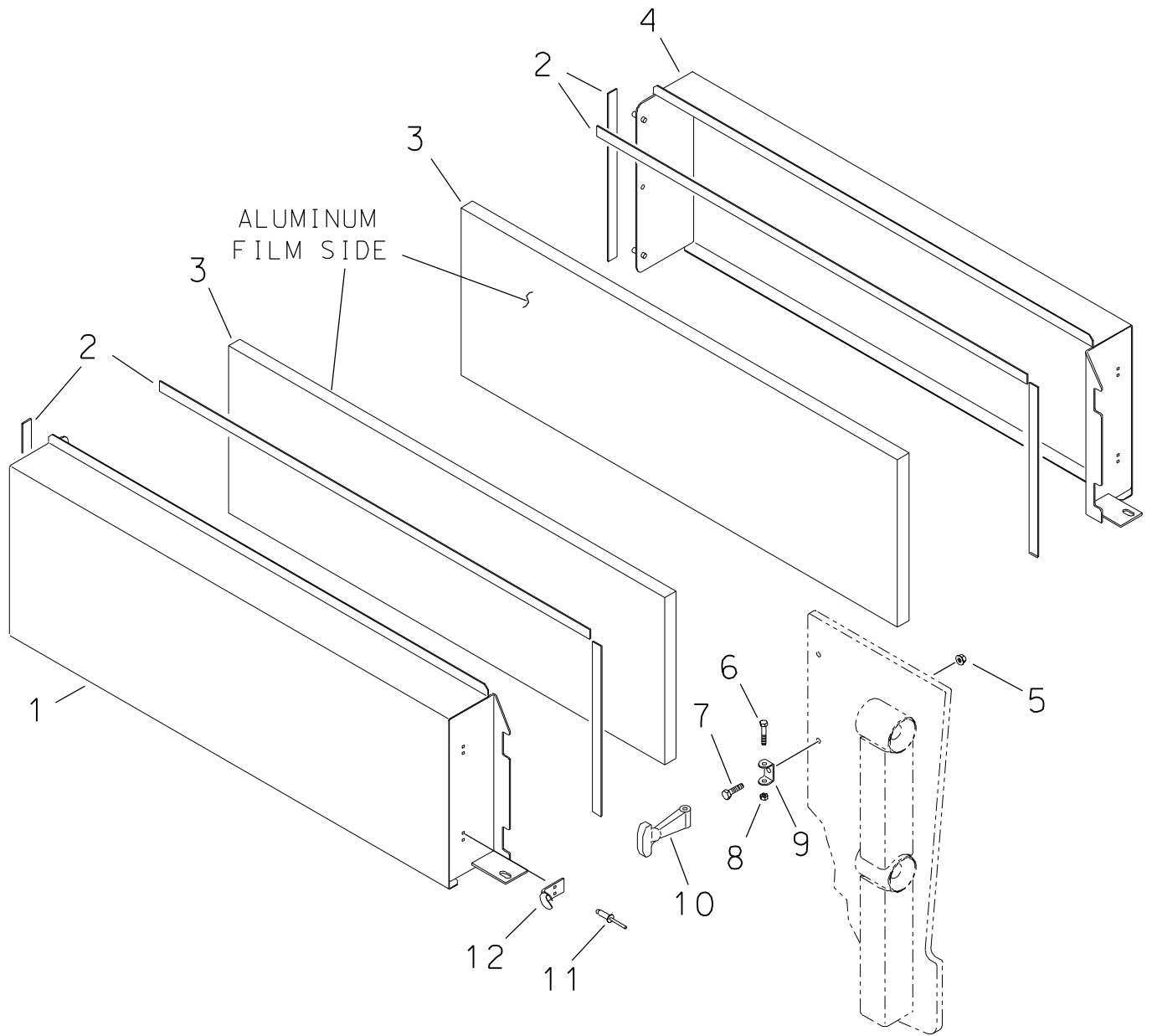
6520, 7020, 7520, 8020



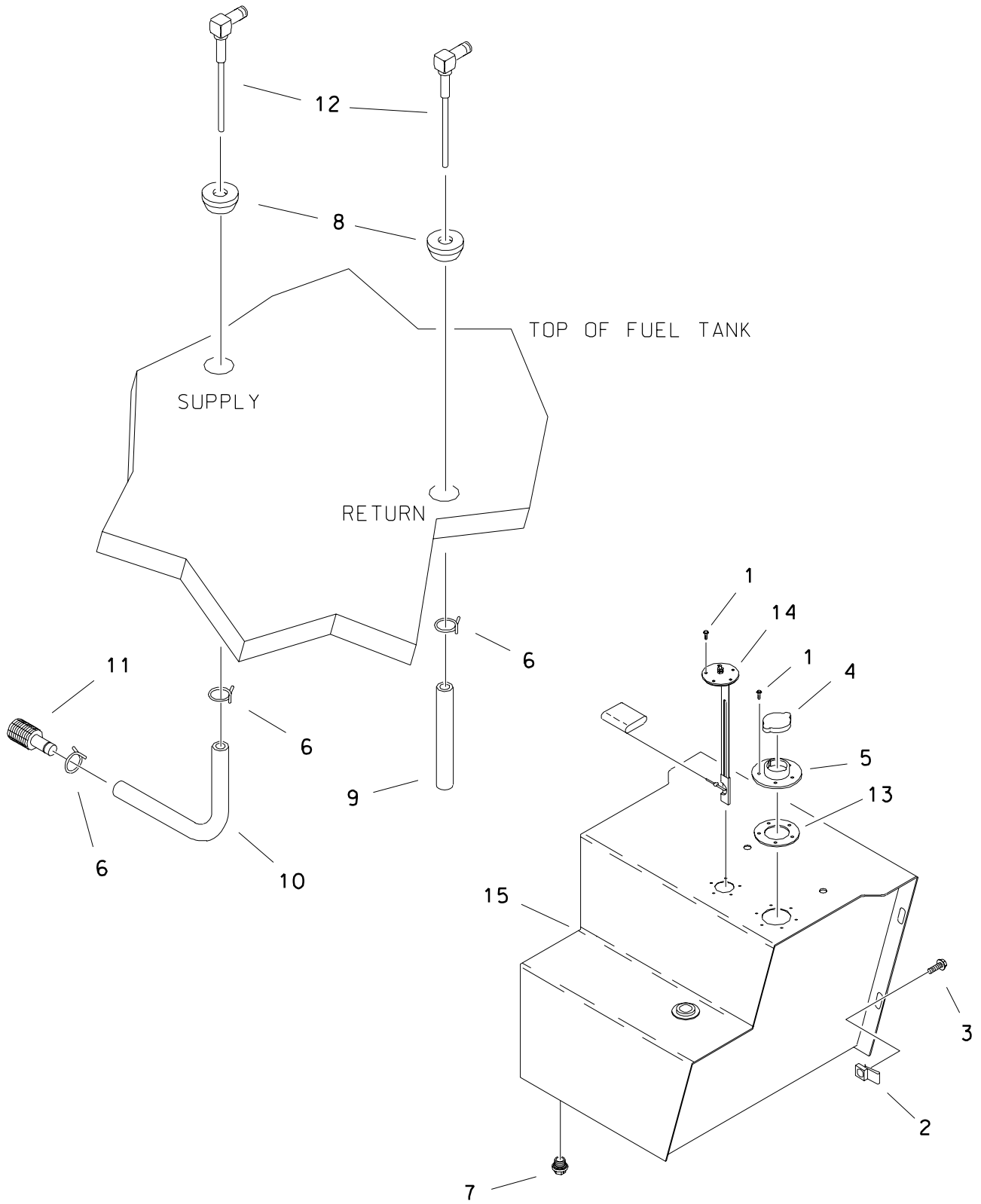
TIRE & WHEEL



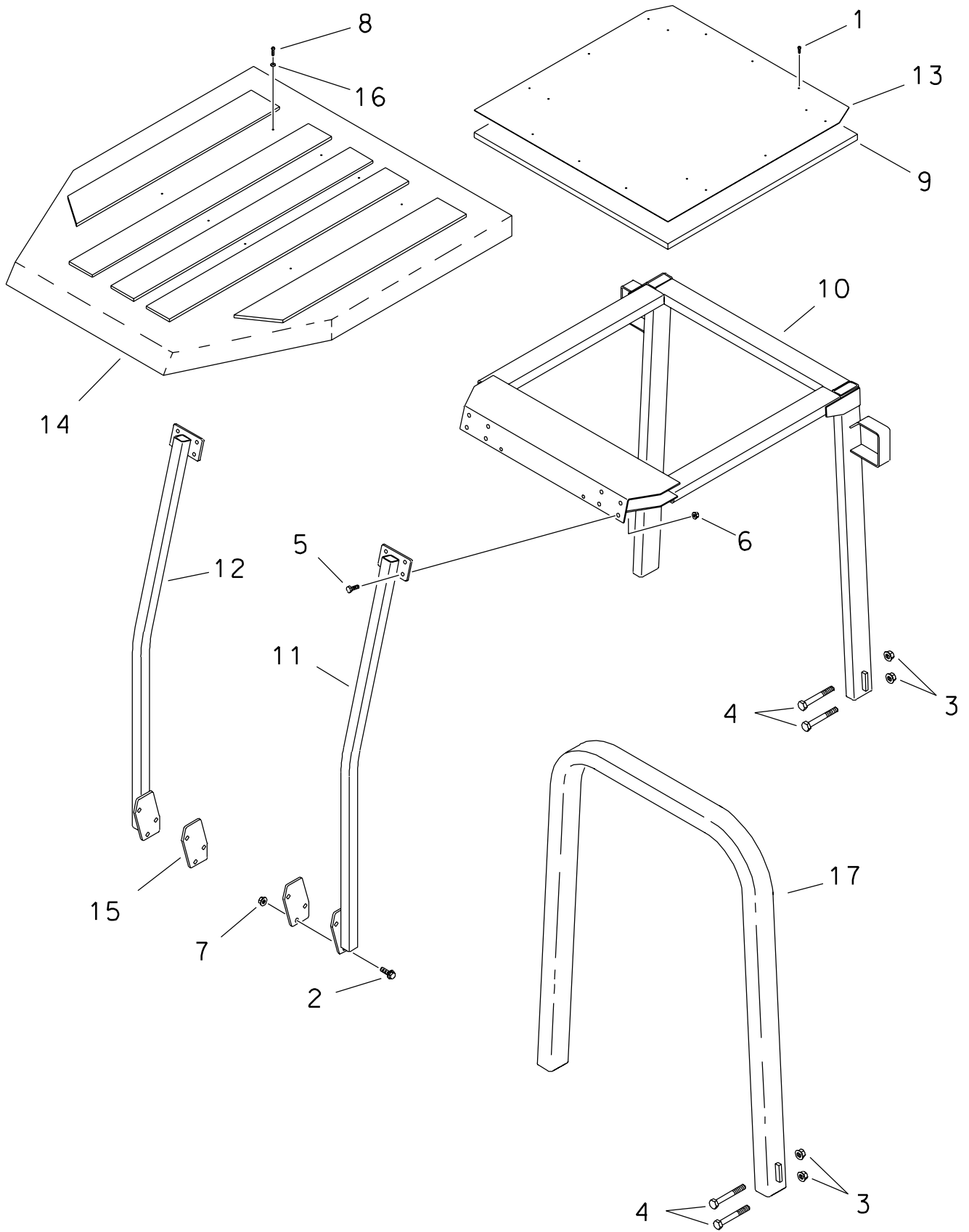
ENGINE COVERS QUIET PACKAGE



FUEL TANK



ROPS



CLICK HERE TO **DOWNLOAD** THE COMPLETE MANUAL

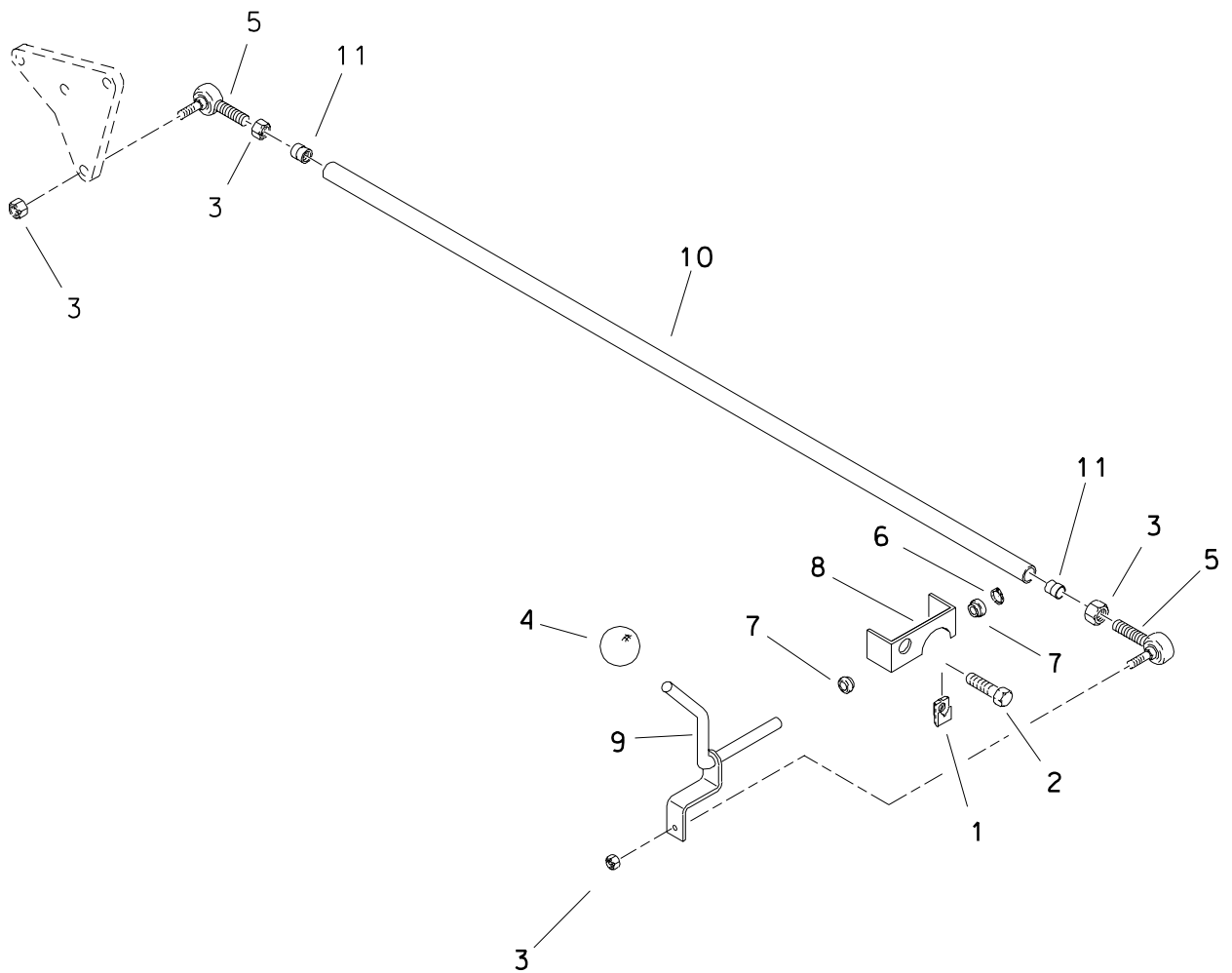
- Thank you very much for reading the preview of the manual.
- You can download the complete manual from: www.heydownloads.com by clicking the link below



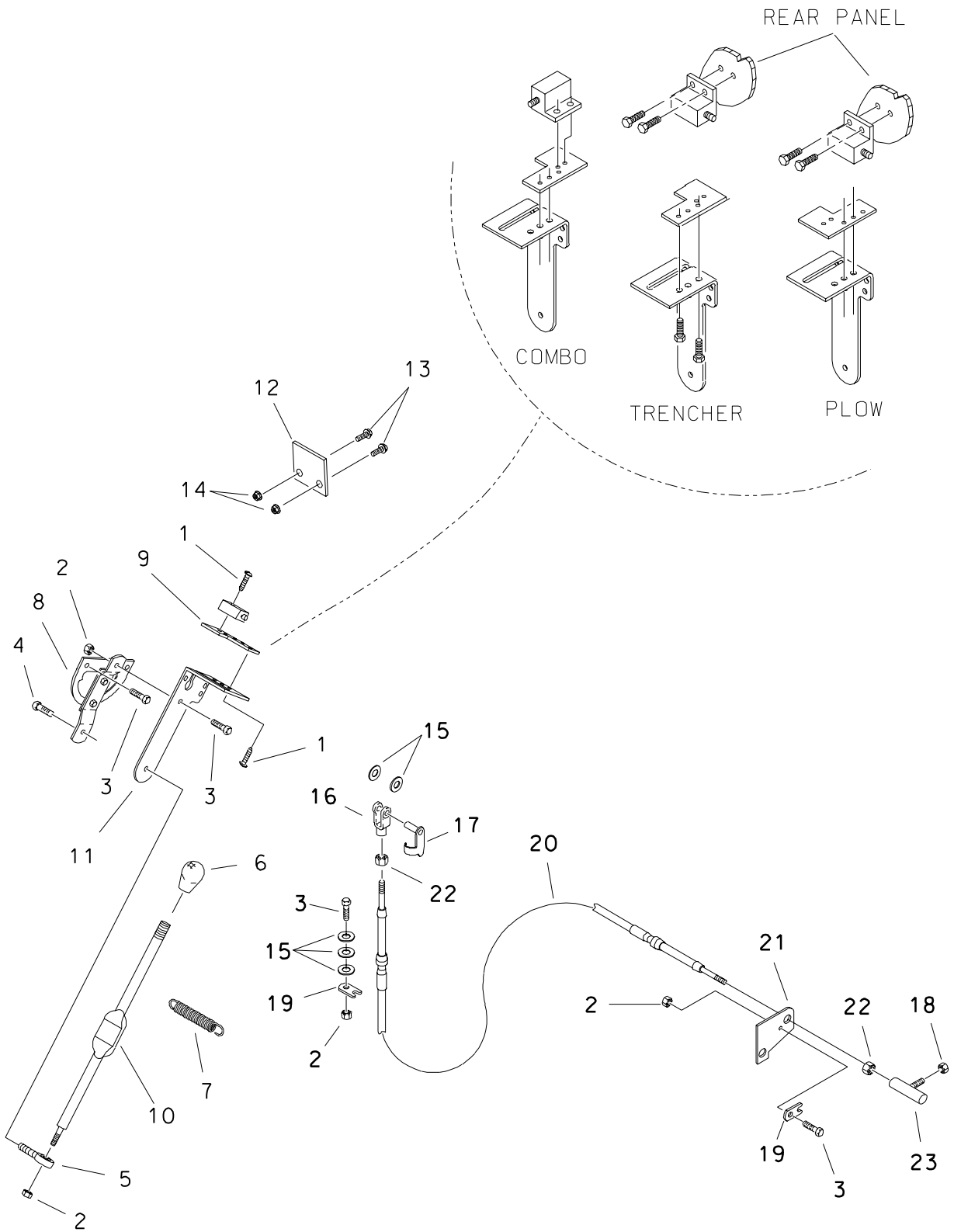
- Please note: If there is no response to CLICKING the link, please download this PDF first and then click on it.

CLICK HERE TO **DOWNLOAD** THE COMPLETE MANUAL

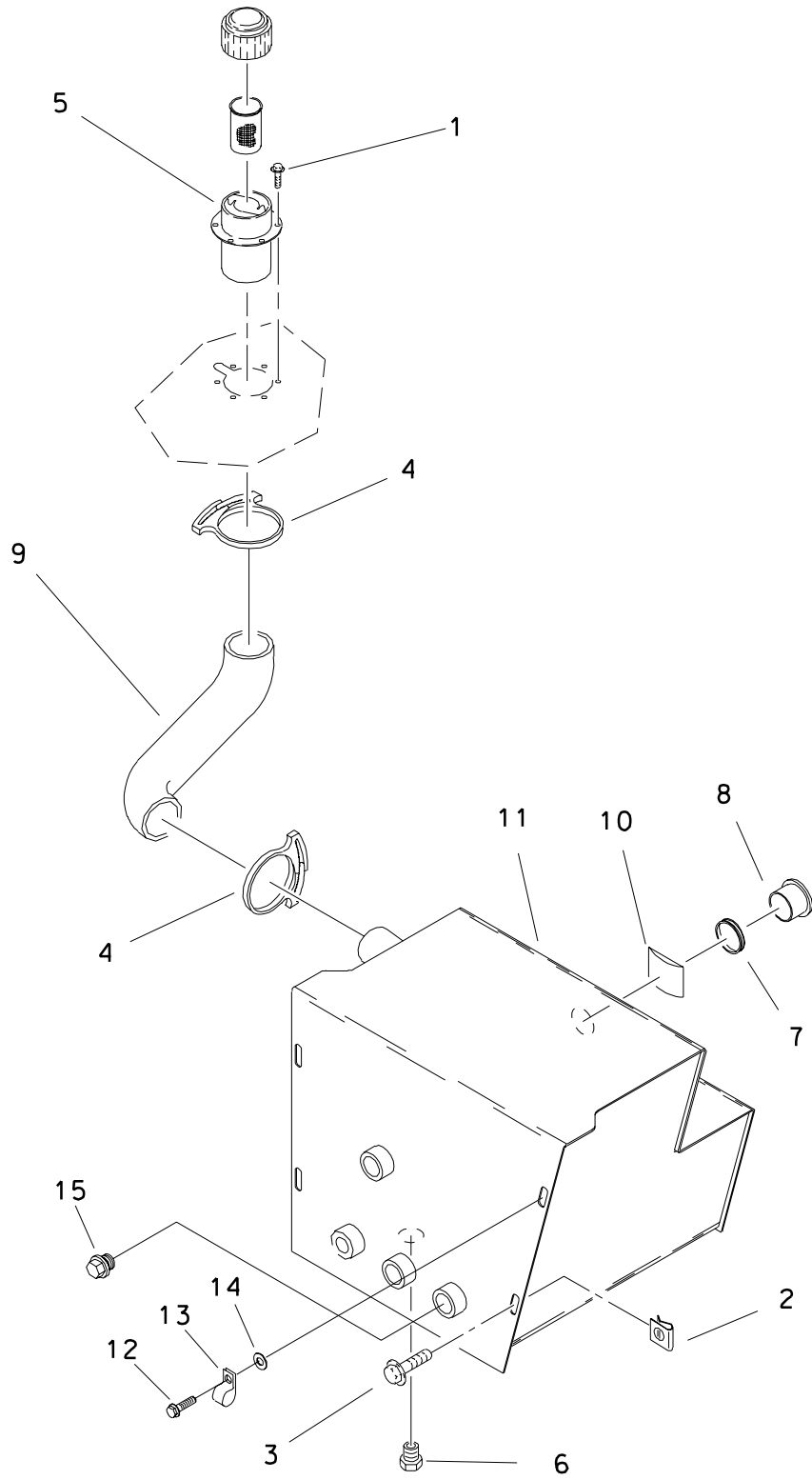
REMOTE CONTROL



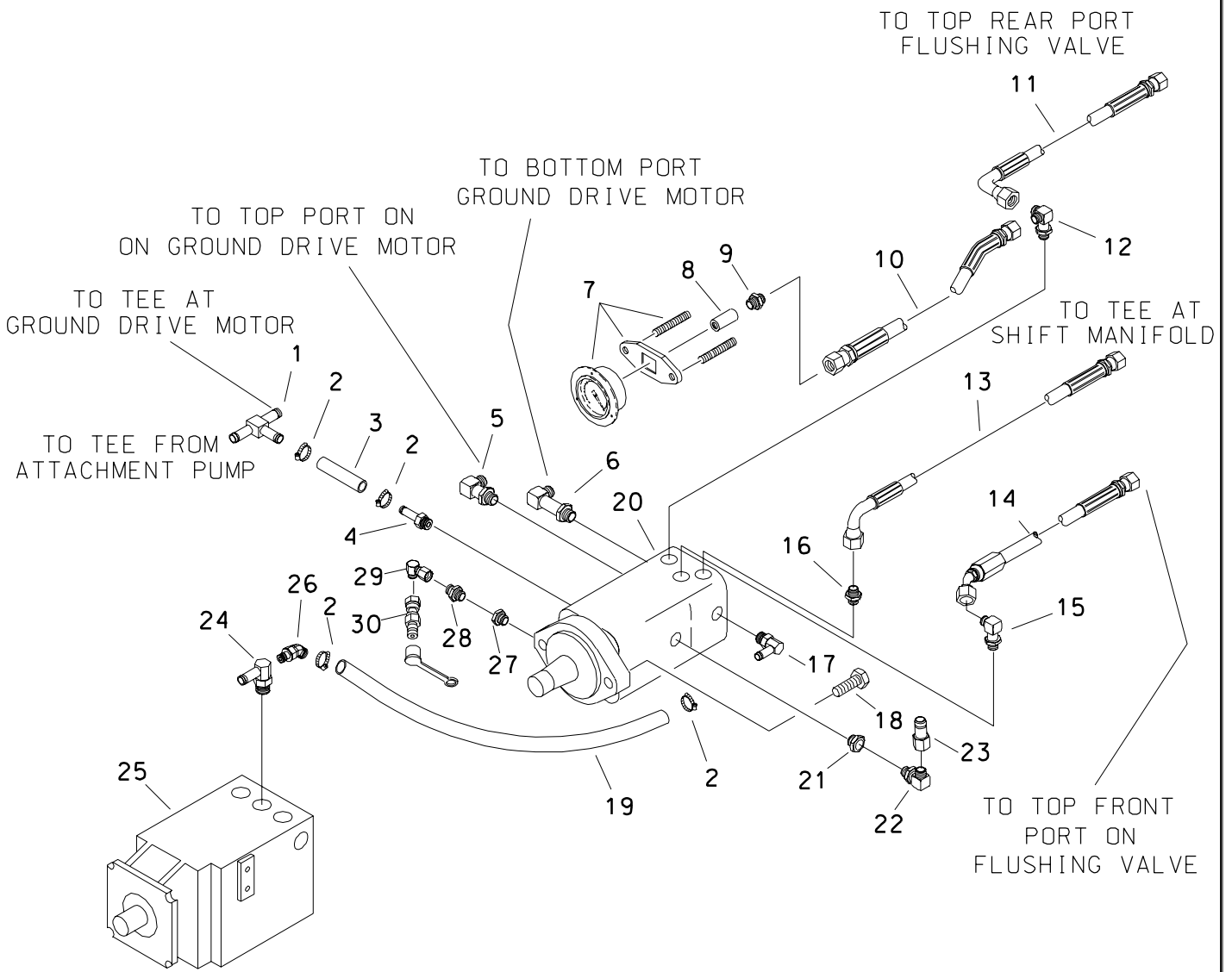
ATTACHMENT PUMP CONTROLS



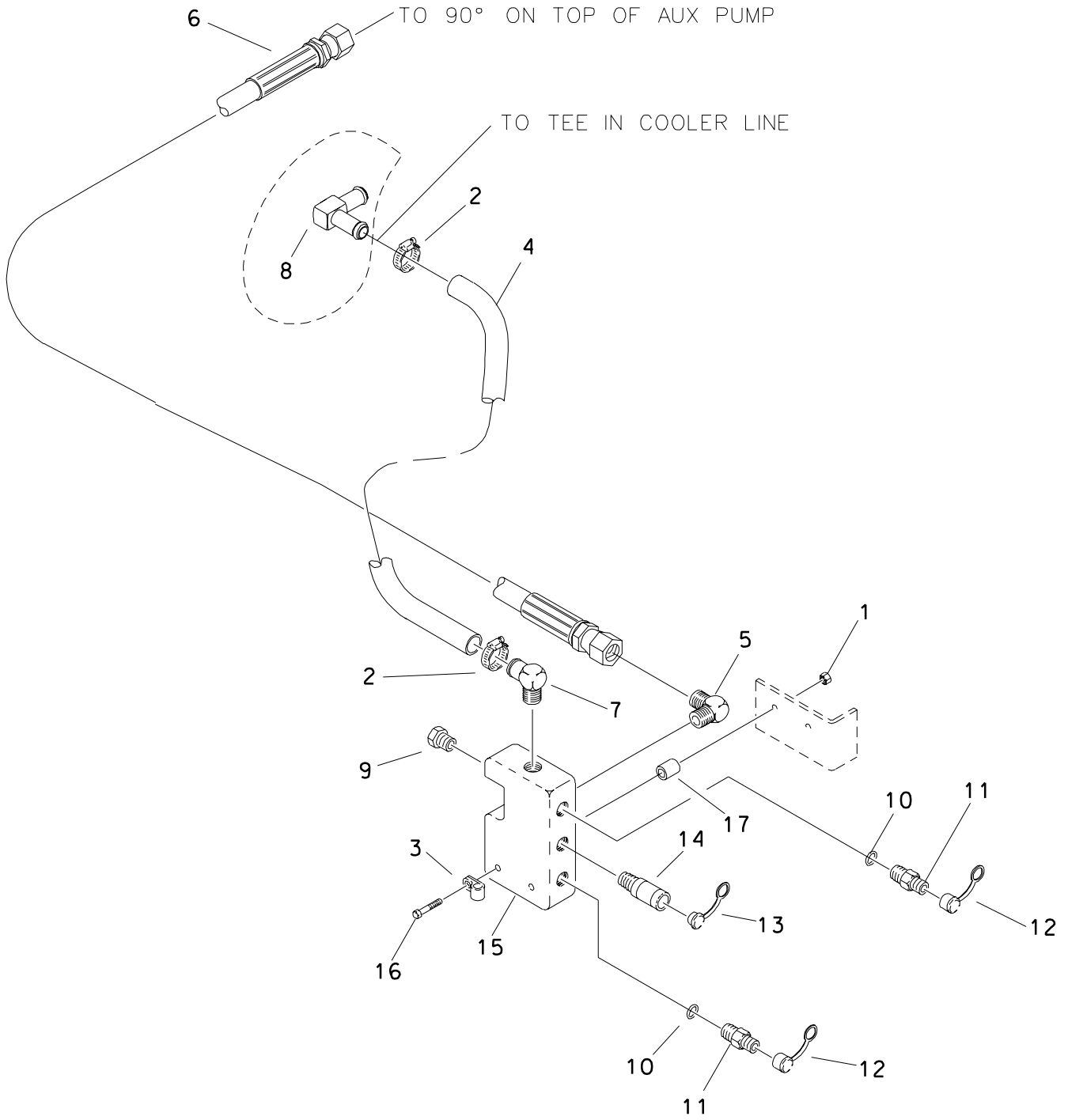
HYDRAULIC RESERVOIR



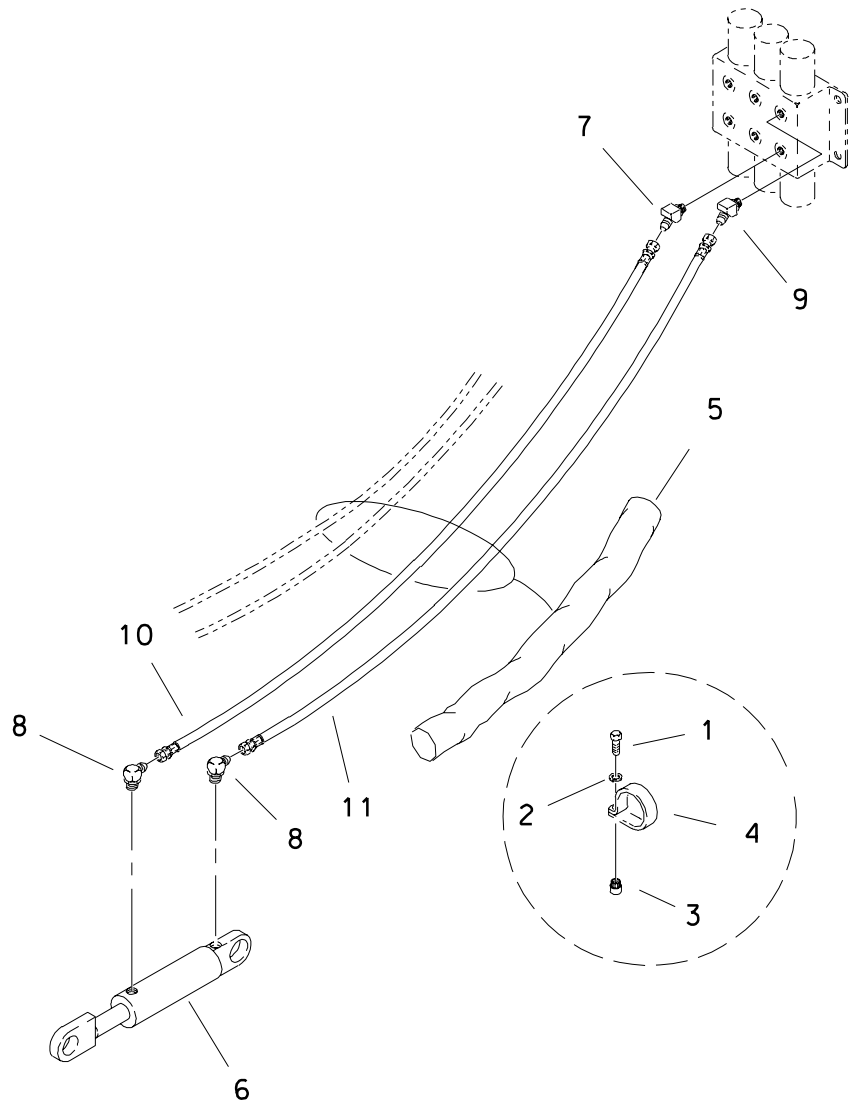
GROUND DRIVE PUMP



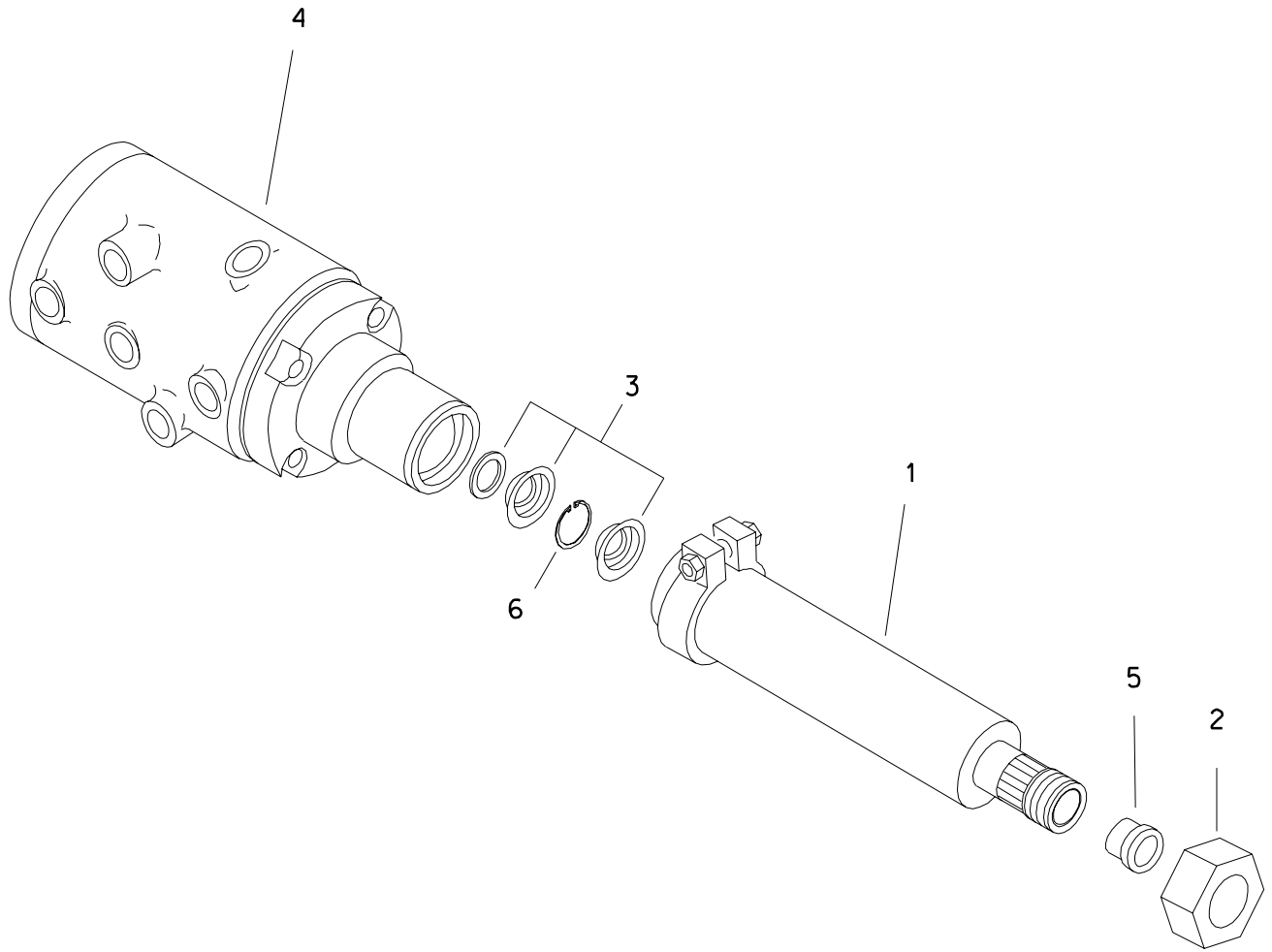
AUXILIARY MANIFOLD HYDRAULICS



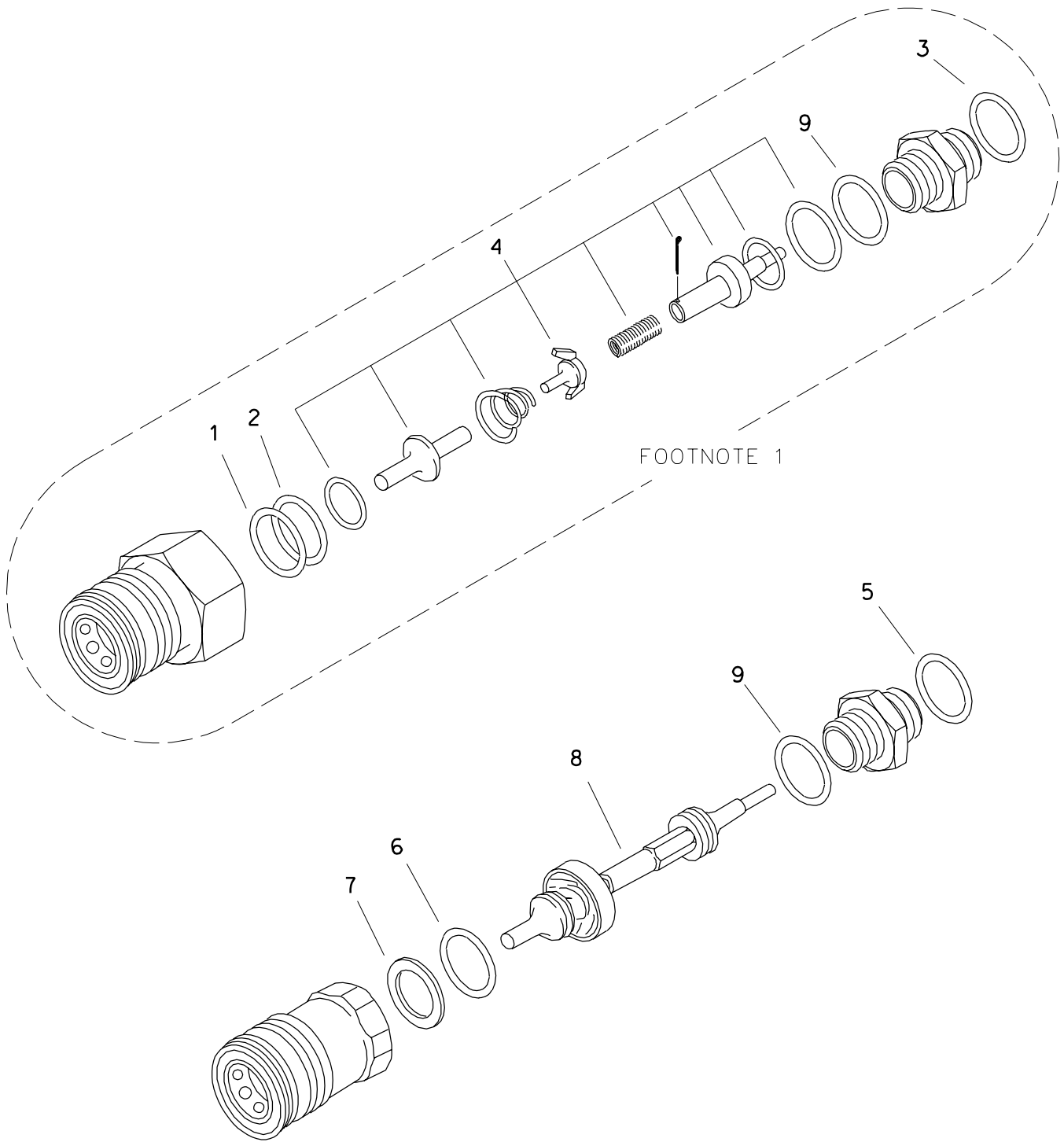
BFB LIFT HYDRAULICS



POWER STEERING VALVE

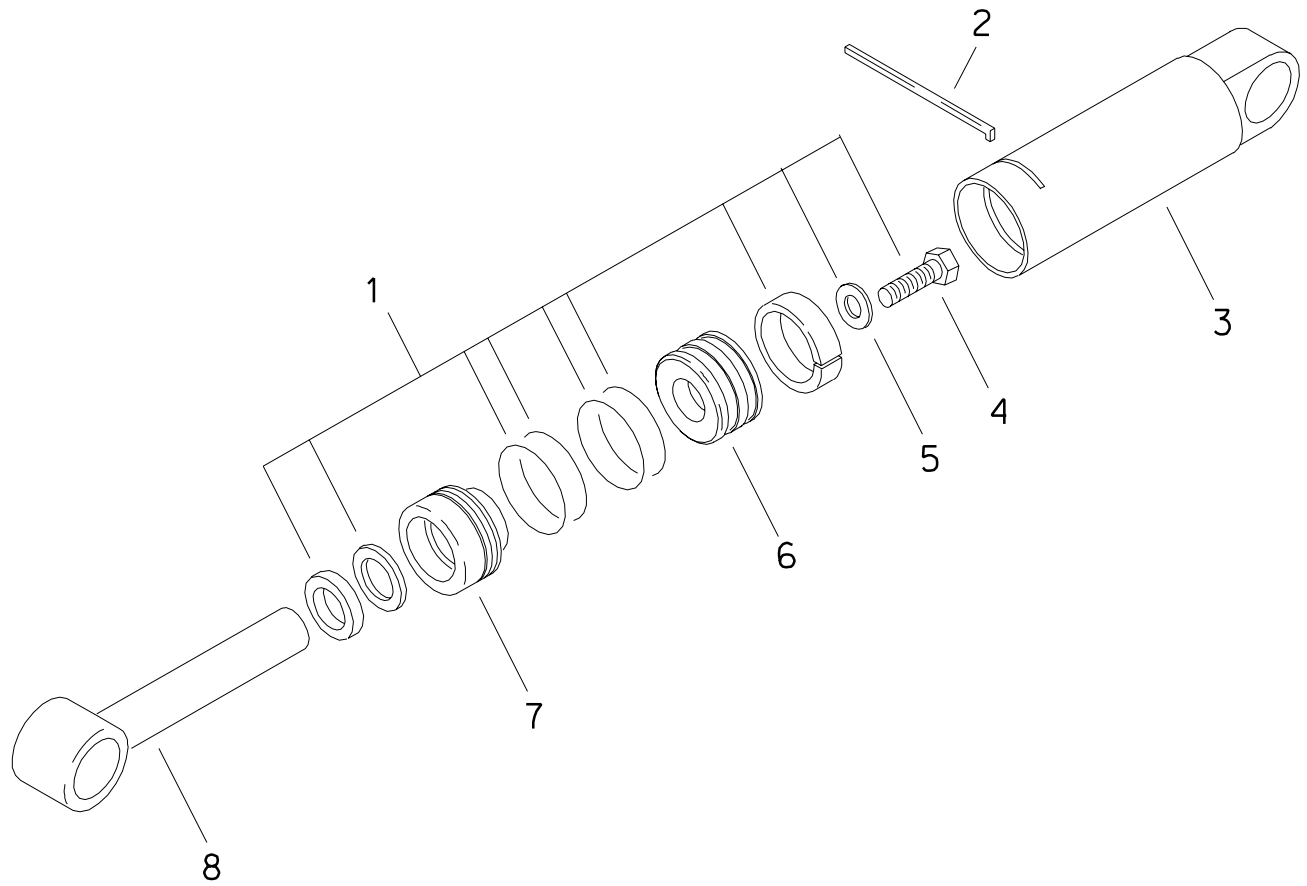


TRICK QUICK COUPLER



HYDRAULIC CYLINDER

3.5" X 1.75" X 8.0"



ELECT. DIAGRAM (FRAME)

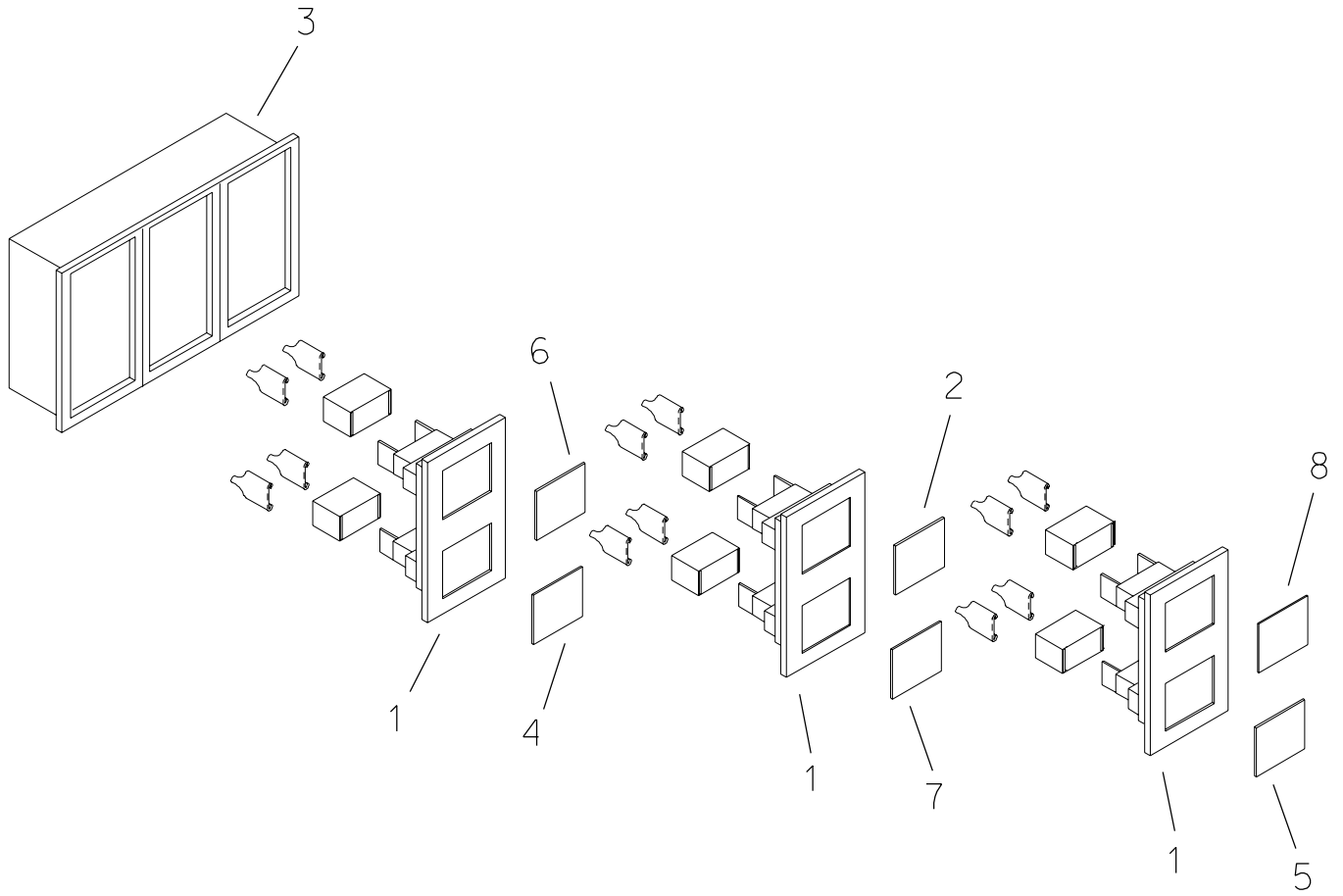
8020JD

REF NO.	PART NUMBER	QTY	DESCRIPTION	REF NO.	PART NUMBER	QTY	DESCRIPTION
1.	217-714	1	ROCKER SWITCH	22.	217-020	5	PILOT LIGHT
	217-028		INSERT-BLANK		217-046		BULB (REPLACEMENT)
2.	217-708	1	ROCKER SWITCH		217-712	2	MOUNT BEZEL (3-WAY)
	110-330	1	DUST BOOT		217-713	1	BLANK COVER
	105-214	4	FLANGE SCREW (#10-24 X 1/2")		217-021	1	INSERT-ENGINE OIL PRESS
	110-397	4	SLEEVE CAP		217-027	1	INSERT-HYD OIL HI TEMP
3.	215-765	1	REAR STEER HARNESS		217-028	1	INSERT-BLANK
	215-931	1	REAR STEER HARNESS		217-029	1	INSERT-PARK BRAKE
4.	217-513	1	WATER TEMP SENDER		217-030	1	INSERT-ATTACH DRIVE
5.	214-378	1	(3) TACHOMETER		217-035	1	INSERT-SEAT
	215-415	1	LIGHT KIT (OPTIONAL)		217-036	1	INSERT-HYD OIL PRESS
6.	215-040	1	BUTTON SWITCH		217-037	1	INSERT-GROUND DRIVE
7.	306-603	1	AUDIO ALARM		217-051	1	INSERT-ENGINE TEMP
8.	215-087	2	ROLLER LEVER SWITCH		217-061	1	INSERT-ALTERNATOR
	106-315	4	SCREW (#4-40 X 1")	23.	215-763	1	JOYSTICK HARNESS
9.	215-173	1	ALTERNATOR	24.	217-706	1	ROCKER SWITCH
	106-005	1	BOLT (M8-1.25 X 16MM)	25.	217-527	1	FUEL SENDER
10.	158-555	1	SOLENOID HI-LOW SHIFT VAL, OBS		165-704		GASKET (REPLACEMENT)
	150-4087	1	(4) SOLENOID HI-LOW SHIFT VAL		105-214	6	FLANGE SCREW
11.	158-574	1	SOLENOID BFB VALVE	26.	215-046	1	(1) ROLLER LEVER SWITCH
12.	215-874	1	FRAME HARNESS		215-087	1	(1) ROLLER PLUNGER BRACKET
					215-047	1	(2) ACTUATOR BRACKET, OBSOLETE (INCL BOLTS AND NUTS)
HARNESS HARDWARE:					105-216	2	BOLT (#6-32 X 1-1/4")
	110-366	AR	VELCRO STRIP (25")		105-215	2	NUT (#6-32)
	110-431	AR	VELCRO STRIP, PLAIN (25")	27.	215-081	4	PLUNGER SWITCH
	110-259	3	CLAMP (5/8")	28.	217-039	1	PILOT LIGHT (RED)
	105-836	2	FLANGE LOCK BOLT	29.	158-569	1	SOLENOID DIVERSION VALVE
	105-832	2	FLANGE NUT (1/4-NC)	30.	215-762	1	SEAT HARNESS
	110-332	1	CLAMP (1-5/8")	31.	215-083	2	SLIDE SWITCH
	105-873	1	FLANGE LOCK BOLT	32.	216-521	4	DIODE BLOCK
	105-003	1	FLANGE NUT (5/16")		363-118	1	MOUNT BRACKET
13.	215-885	1	CONSOLE HARNESS		105-820	1	FLANGE LOCK BOLT
14.	215-133	1	FUEL GAUGE		105-832	1	FLANGE LOCKNUT
	215-415	1	LIGHT KIT (OPTIONAL)	33.	217-705	1	PLUNGER SWITCH
15.	217-531	1	WATER TEMP GAUGE		105-214	2	SCREW
	215-415	1	LIGHT KIT (OPTIONAL)	34.	215-338	1	BATTERY CABLE (70" 2/0 GA)
16.	217-707	3	ROCKER SWITCH	35.	215-346	1	BATTERY CABLE (106" 2/0 GA)
	217-028		INSERT-BLANK	36.	217-704	1	PLUNGER SWITCH
17.	217-701	2	POWER RELAY (SPDT)	37.	215-148	-	TEMPERATURE SWITCH, OBSOLETE
	105-820	2	FLANGE LOCK BOLT		214-819	2	TEMPERATURE SWITCH
	105-832	2	FLANGE LOCKNUT	38.	215-266	1	BATTERY
18.	215-051	1	IGNITION SWITCH (INCL KEYS AND NUT)	39.	158-575	1	SOLENOID REAR STEER VALVE
	215-052		KEYS (PAIR)	40.	217-716	1	BUTTON SWITCH
	105-909		JAM NUT		215-872	2	FMC TERMINAL
	216-008	1	JAM NUT (NYLON)		215-753	1	FMC INSULATOR (2-TERMINAL)
	216-009	1	COVER (NYLON)	41.	214-281	1	GROUND JUMPER WIRE
19.	217-736	1	ENGINE OIL PRESS SWITCH	42.	215-309	1	BAT CABLE (4 GA X 20", BLK)
20.	217-710	5	RELAY (SPDT)				
	110-253	5	POP RIVET				
	106-205	5	WASHER				
21.	215-065	1	CIRCUIT BREAKER				
	110-253	2	POP RIVET				
	110-397	2	SLEEVE CAP				

FOOTNOTES:

1. BEGINS WITH S/N
2. ENDS WITH S/N
3. CALIBRATION NEEDED
4. USE REPLACEMENT COIL 217-948

WARNING SYSTEM LIGHT



CLICK HERE TO **DOWNLOAD** THE COMPLETE MANUAL

- Thank you very much for reading the preview of the manual.
- You can download the complete manual from: www.heydownloads.com by clicking the link below



- Please note: If there is no response to CLICKING the link, please download this PDF first and then click on it.

CLICK HERE TO **DOWNLOAD** THE COMPLETE MANUAL