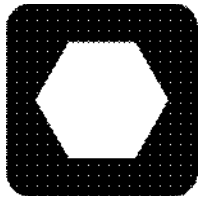


7610

Parts Manual



CLICK HERE TO **DOWNLOAD** THE COMPLETE MANUAL

- Thank you very much for reading the preview of the manual.
- You can download the complete manual from: www.heydownloads.com by clicking the link below

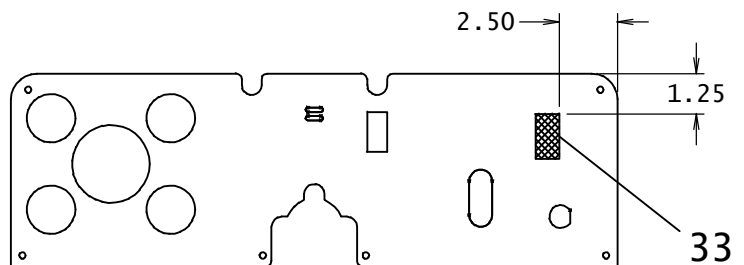
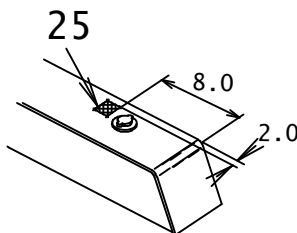
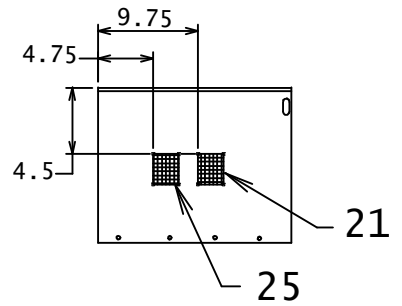
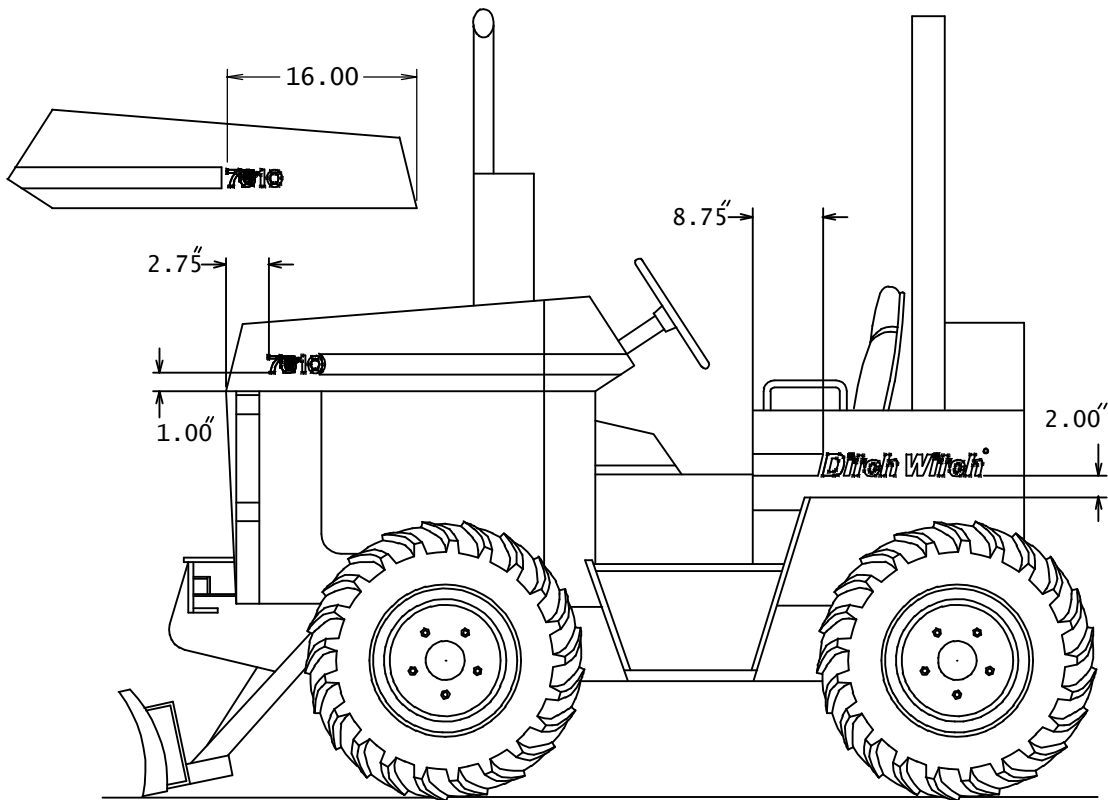


- Please note: If there is no response to CLICKING the link, please download this PDF first and then click on it.

CLICK HERE TO **DOWNLOAD** THE COMPLETE MANUAL

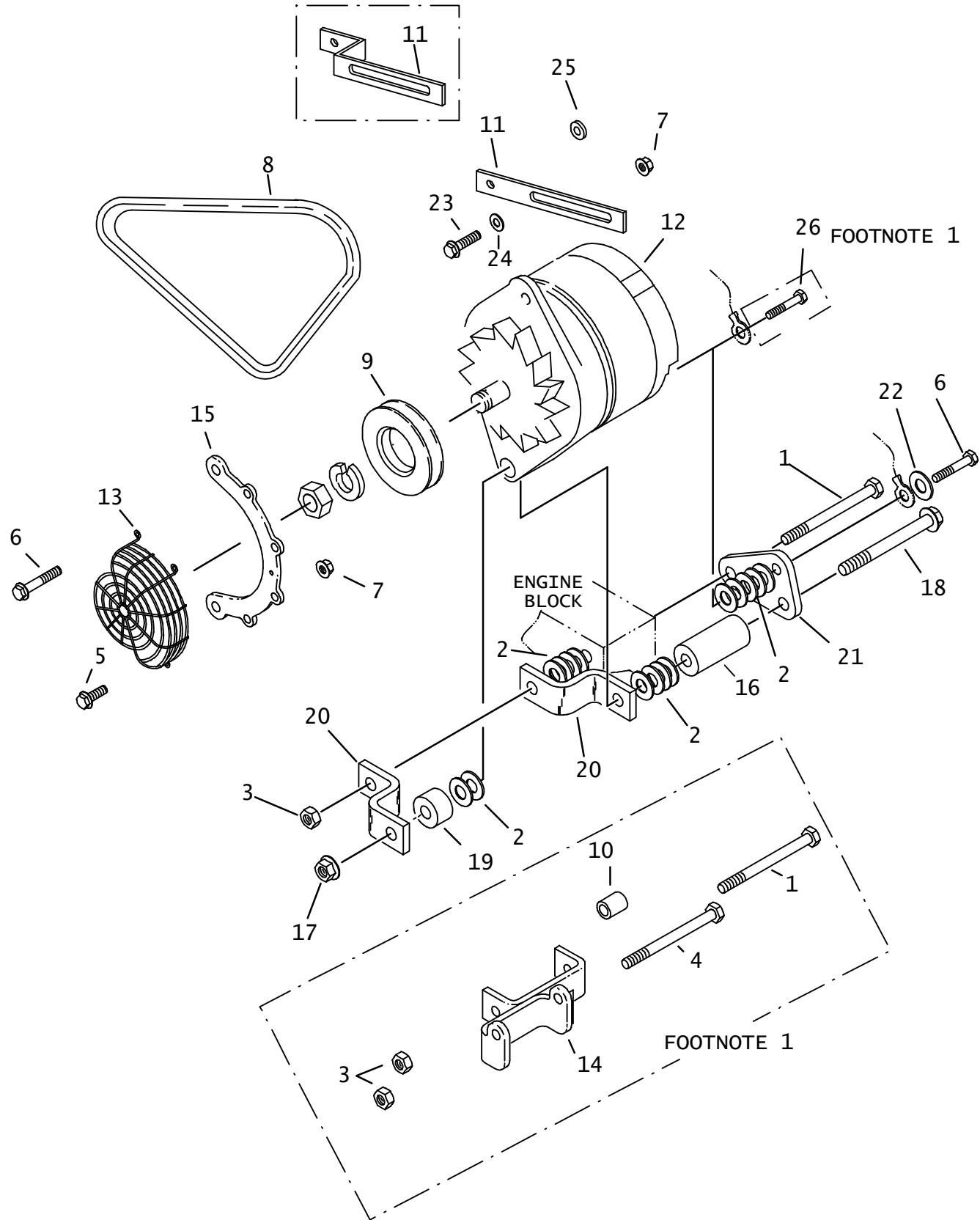
DECAL LOCATION DIAGRAM

7610



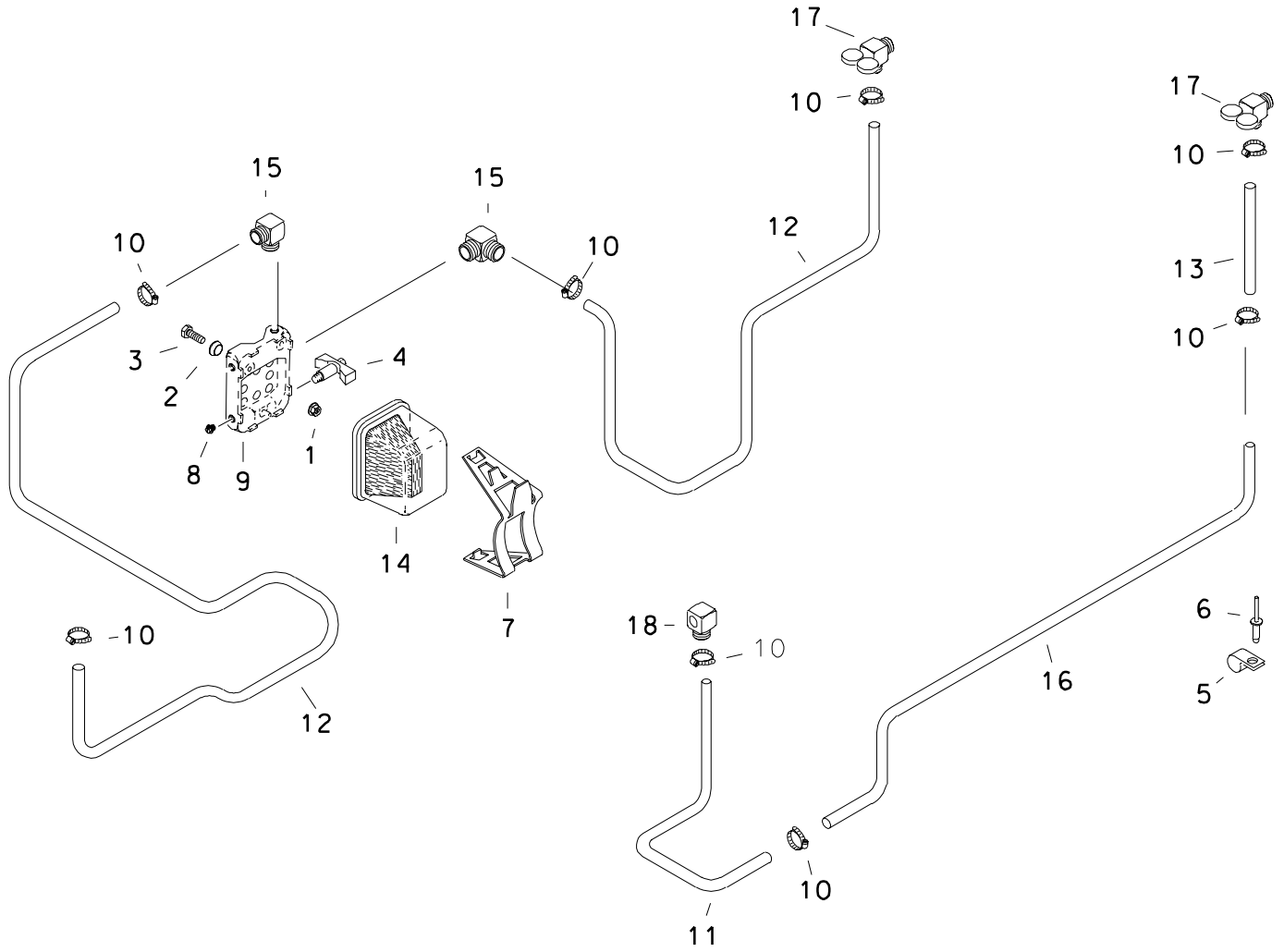
ALTERNATOR

5110, 5020, 7520, 7610, 4010
5010, 6510, 7510, R40, R65



TRACTORS

7610 FUEL LINES



TRANSMISSION

5110/7610

REF NO.	PART NUMBER	QTY	DESCRIPTION	REMARKS
46.	501-454	2	REVERSE IDLER THRUST WASHER	
47.	501-455	1	REVERSE IDLER ROLLER SHIM	
48.	501-456	1	REVERSE IDLER GEAR SNAP RING	
49.	501-457	1	COUNTERSHAFT	
50.	501-458	1	REVERSE IDLER SHAFT	
51.	501-459	7	BEARING SPACER SHIM	
52.	501-460	1	EXTERNAL SNAP RING	4 PER SET
53.	501-466	1	TRANSMISSION CAP GASKET	
54.	501-467	1	SHIFTING SHOE RETAINING RING	
55.	501-468	1	REVERSE SHIFTING SHOE	
56.	501-469	1	REVERSE SHIFTING ARM	
57.	501-470	1	SHIFTING ARM PIVOT	
58.	501-471	1	SHIFTING PIVOT	
59.	501-472	1	BREATHER	
60.	501-473	1	OUTPUT SHAFT	
61.	501-477	1	SYNCHRONIZER UNIT	3/16" WITH SHIFT PLATES
62.	501-478	1	MAIN SHAFT THIRD SPEED GEAR	28T
63.	501-479	2	SYNCHRONIZER BLOCKING RING	27T 3/16" WITH GROOVE
64.	501-480	1	MAIN SHAFT SECOND SPEED GEAR	36T
65.	501-481	1	CLUSTER GEARS	37T, 32T, 24T, 16T

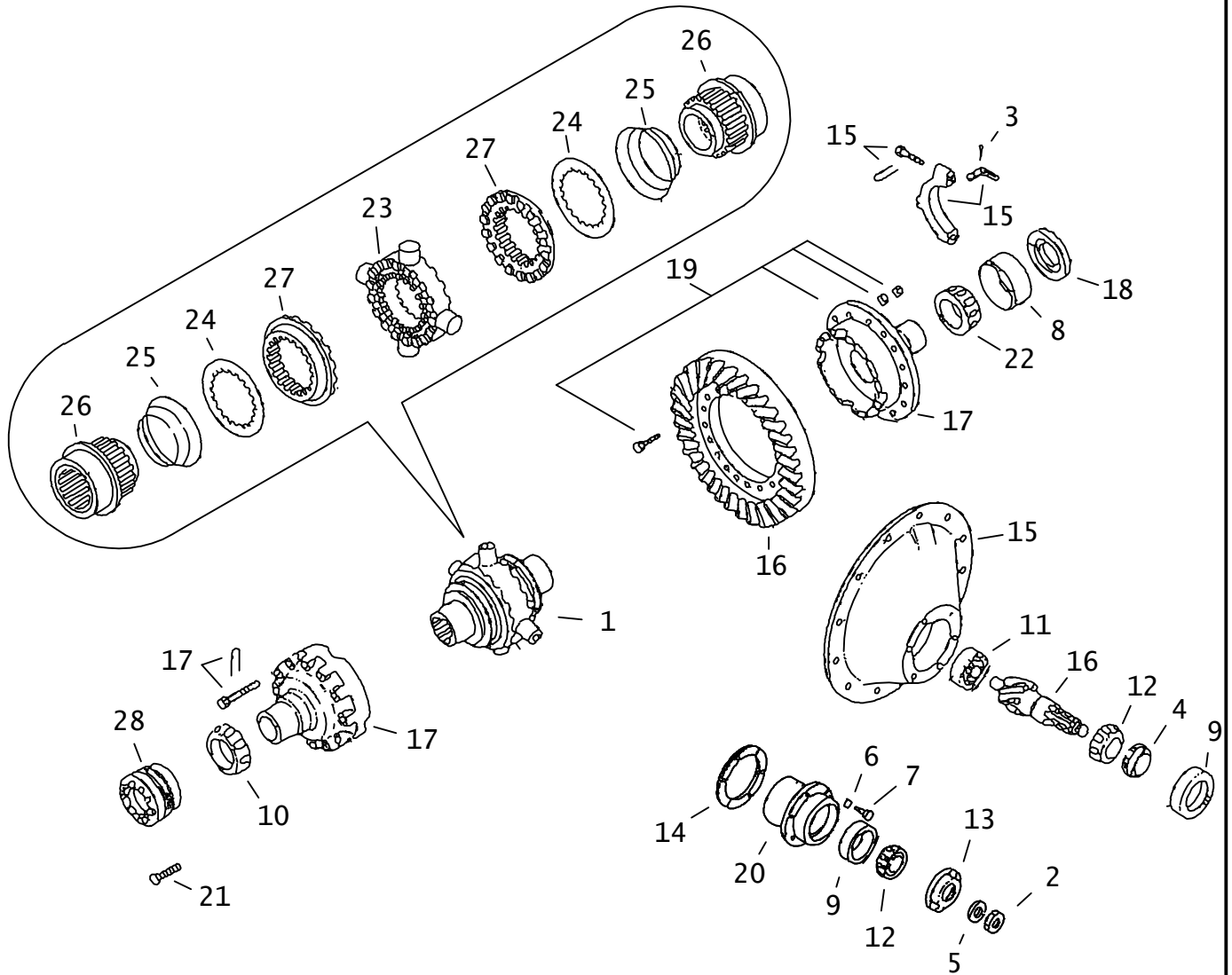
NOT SHOWN:

1 SELECT THICKNESS SNAP RING SET THAT WILL FIT.

FOOTNOTES:

NOTE:

DIFFERENTIAL COMPONENTS EATON



GEARBOX UPPER DRIVE 7610

REF NO.	PART NUMBER	QTY	DESCRIPTION	REMARKS
39.	105-858	1	BOLT (1/2-NC X 1-1/4")	
40.	155-878	2	INTERNAL SEAL	
41.	126-068	1	NEEDLE ROLLER BEARING	
42.	106-514	4	CAPSCREW (3/8-NC X 1", LT HAND)	
43.	105-223	4	WASHER (3/8")	
44.	117-033	2	DETENT SPRING	SEE FOOTNOTE 1
45.	125-043	1	BALL BEARING	
46.	126-067	1	BEARING RACE	
47.	501-302	2	SHIM (.003)	
48.	501-303	2	SHIM (.005)	
49.	105-970	3	FLANGE BOLT (5/8-NC X 1-3/4")	
50.	157-595	2	INTERNAL SEAL	
51.	125-024	1	BALL BEARING	
52.	115-525	1	INTERNAL SNAP RING	
53.	311-830	1	MOTOR MOUNT	

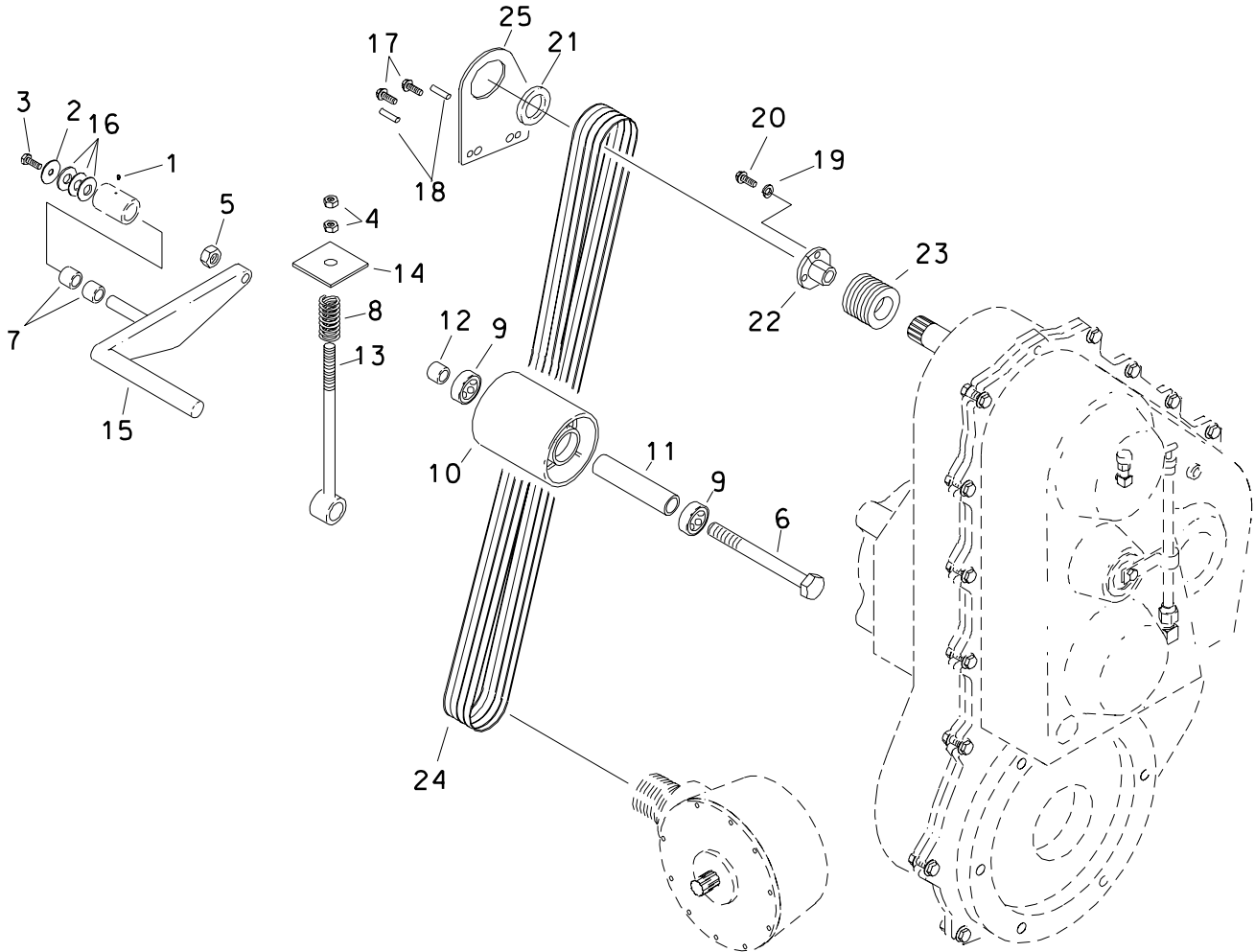
FOOTNOTES

1. SPRING INSTALLATION TOOL 259-331 REQUIRED.
2. FOR 10 BOLT DIFFERENTIAL MOUNT FLANGE.
3. FOR 12 BOLT DIFFERENTIAL MOUNT FLANGE.

NOTE:

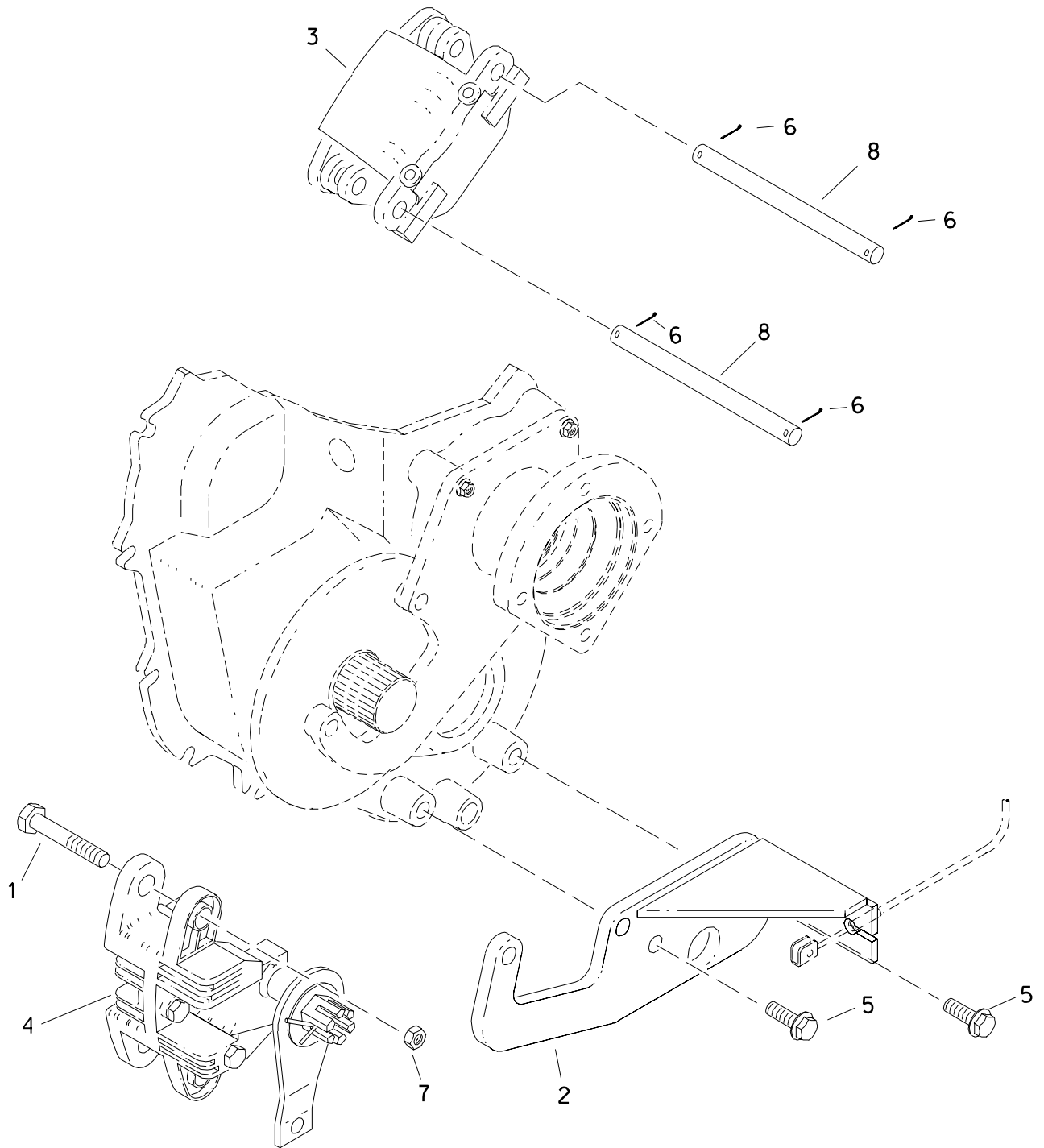
REFER TO REPAIR GUIDE 055-471 WHEN REPAIRING GEARBOX.

BELT DRIVE

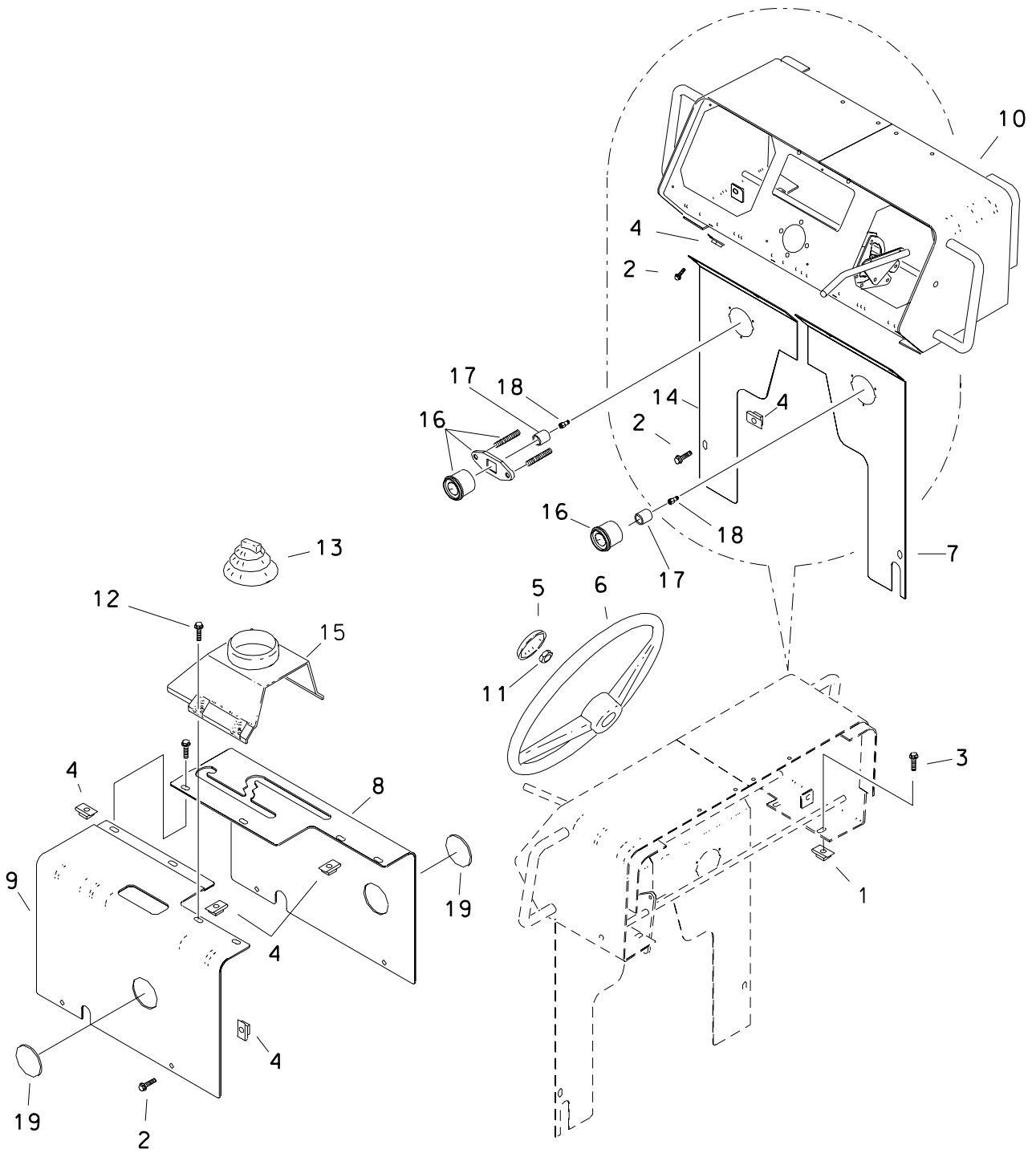


BRAKES

7610



TUNNEL AND CONSOLE



CLICK HERE TO **DOWNLOAD** THE COMPLETE MANUAL

- Thank you very much for reading the preview of the manual.
- You can download the complete manual from: www.heydownloads.com by clicking the link below

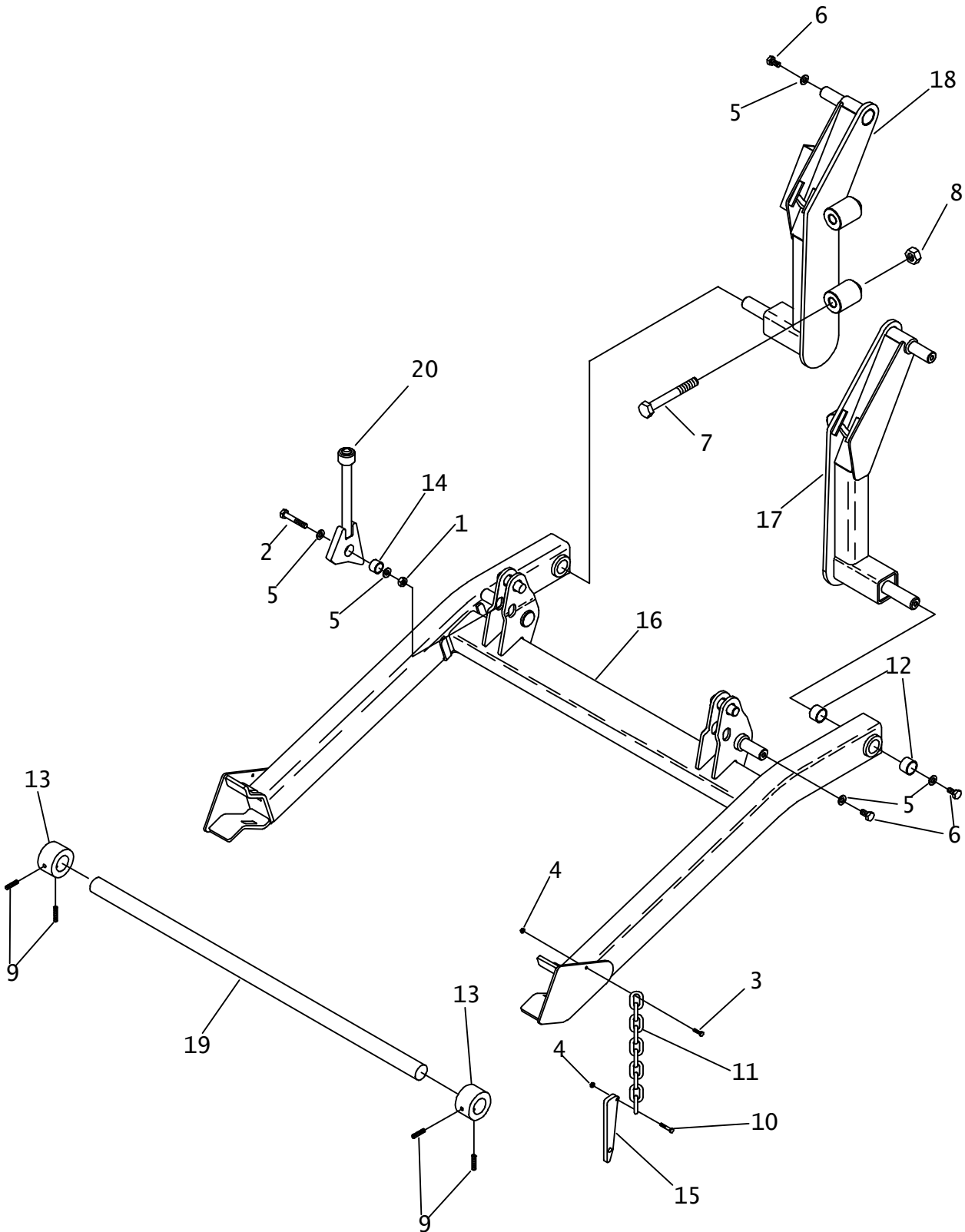


- Please note: If there is no response to CLICKING the link, please download this PDF first and then click on it.

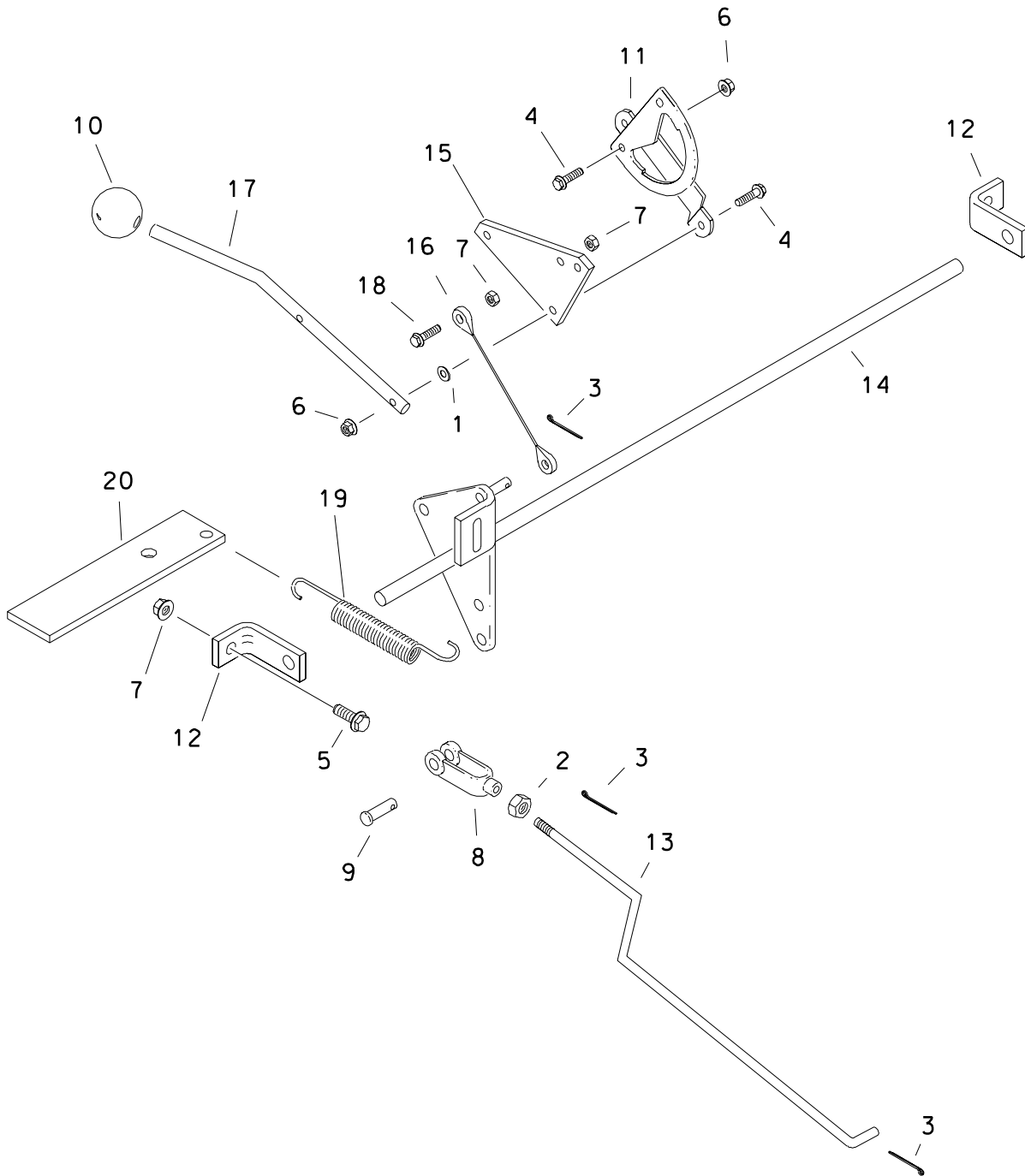
CLICK HERE TO **DOWNLOAD** THE COMPLETE MANUAL

REEL CARRIER FRAME

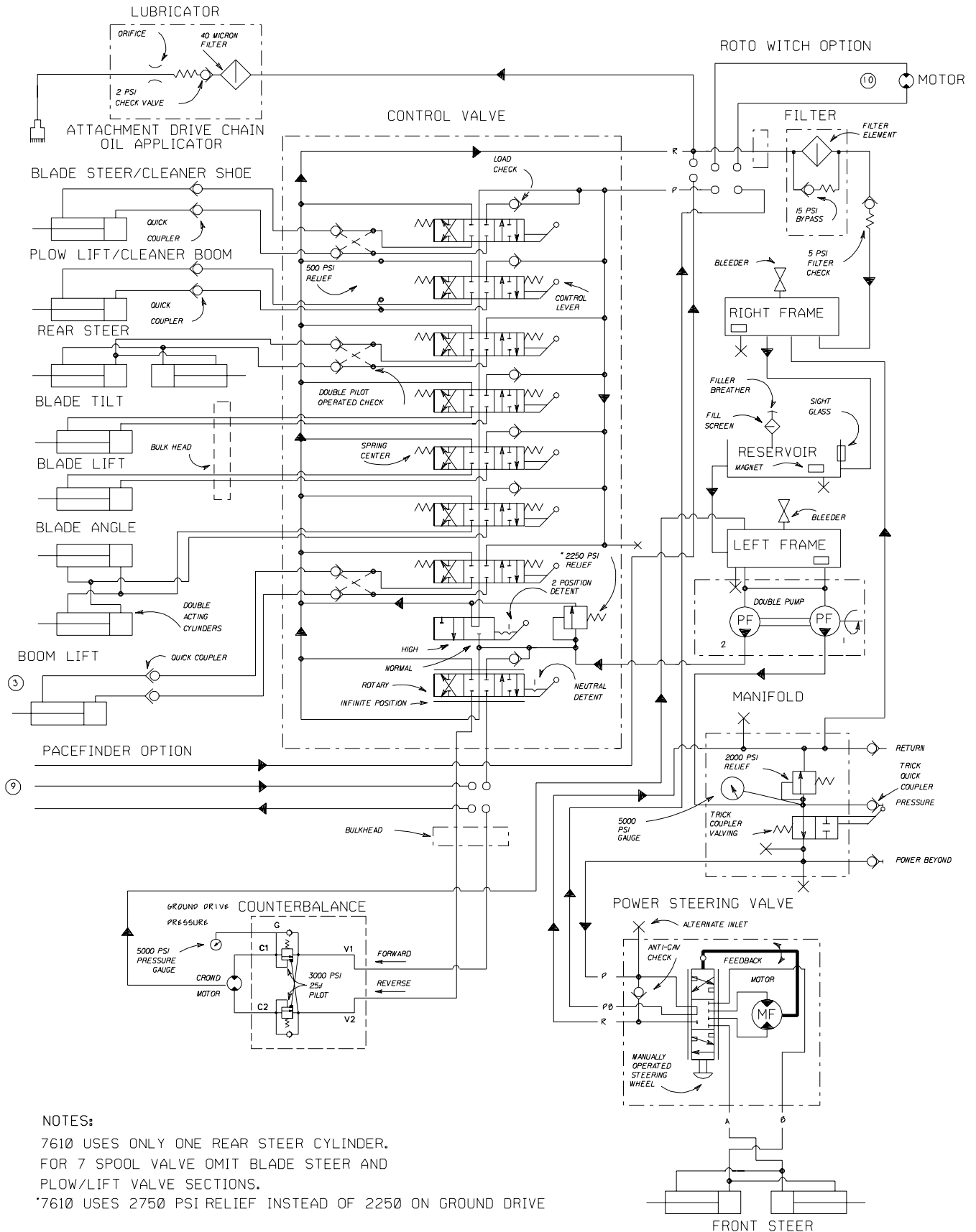
RLCR75, RLCR65



HAND THROTTLE

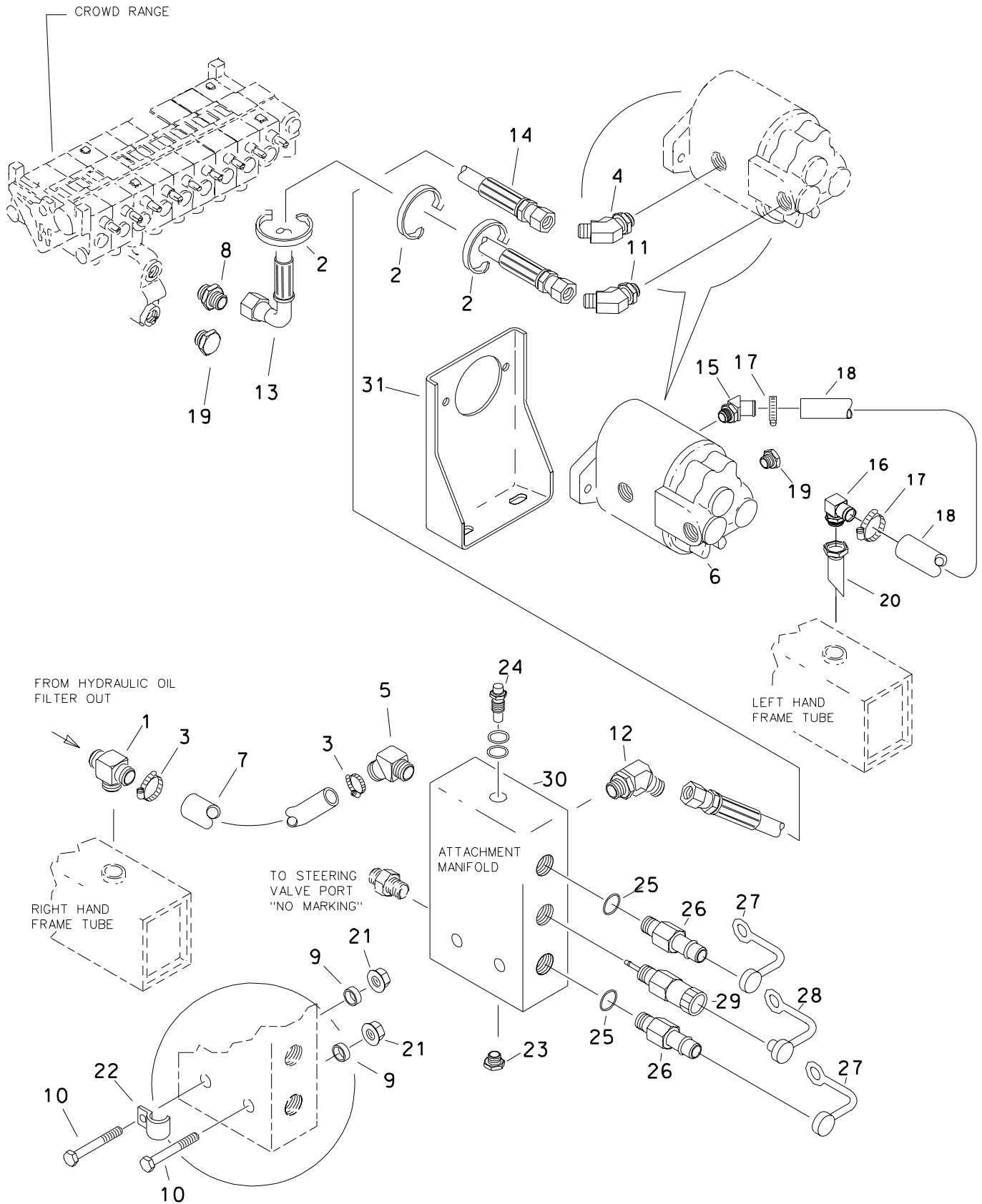


HYDRAULIC SCHEMATIC FOR MODELS 6510, 7510 and 7610



NOTES:
 7610 USES ONLY ONE REAR STEER CYLINDER.
 FOR 7 SPOOL VALVE OMIT BLADE STEER AND
 PLOW/LIFT VALVE SECTIONS.
 *7610 USES 2750 PSI RELIEF INSTEAD OF 2250 ON GROUND DRIVE

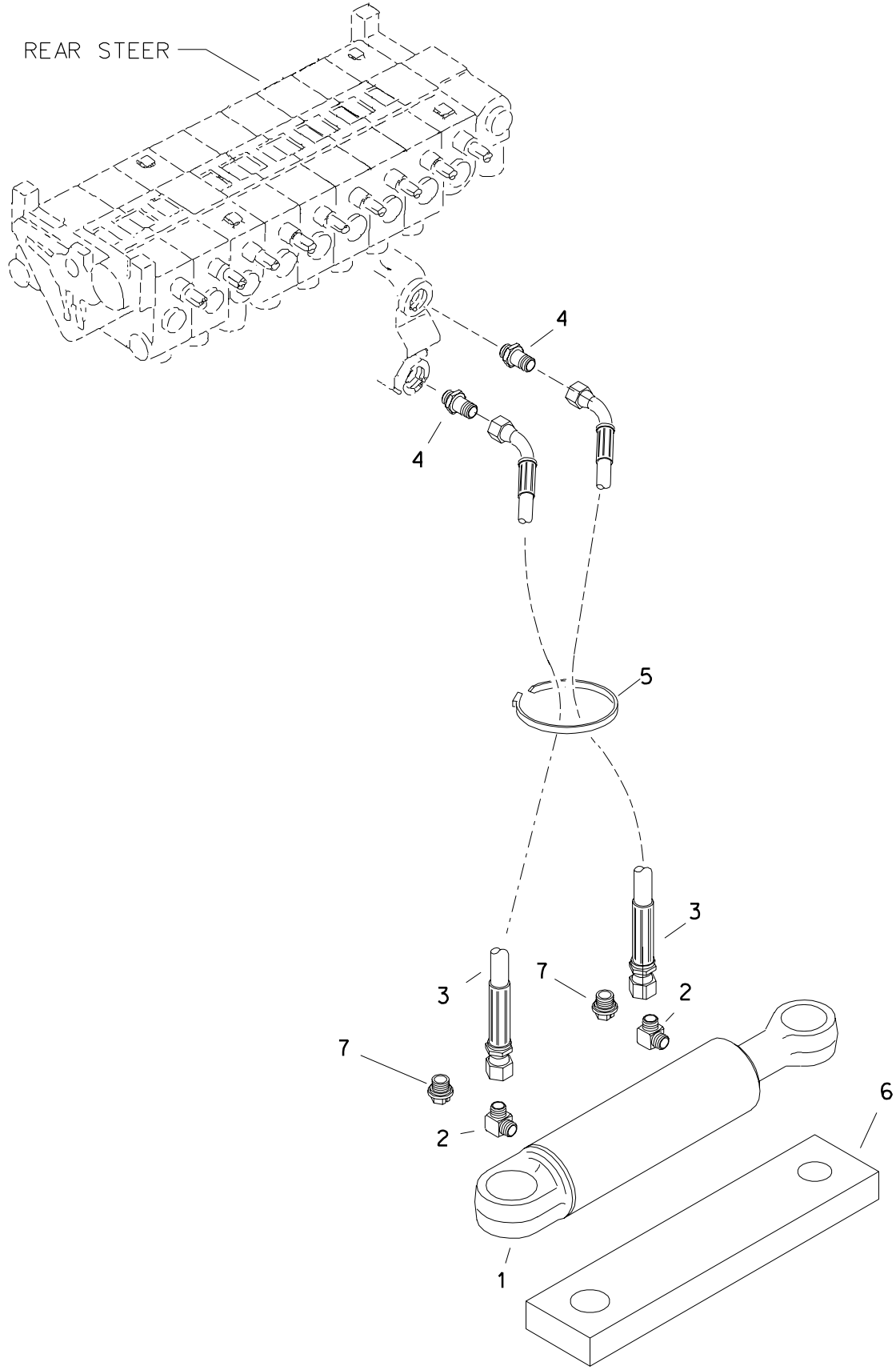
PUMP AND ATTACHMENT MANIFOLD HYDRAULICS



G

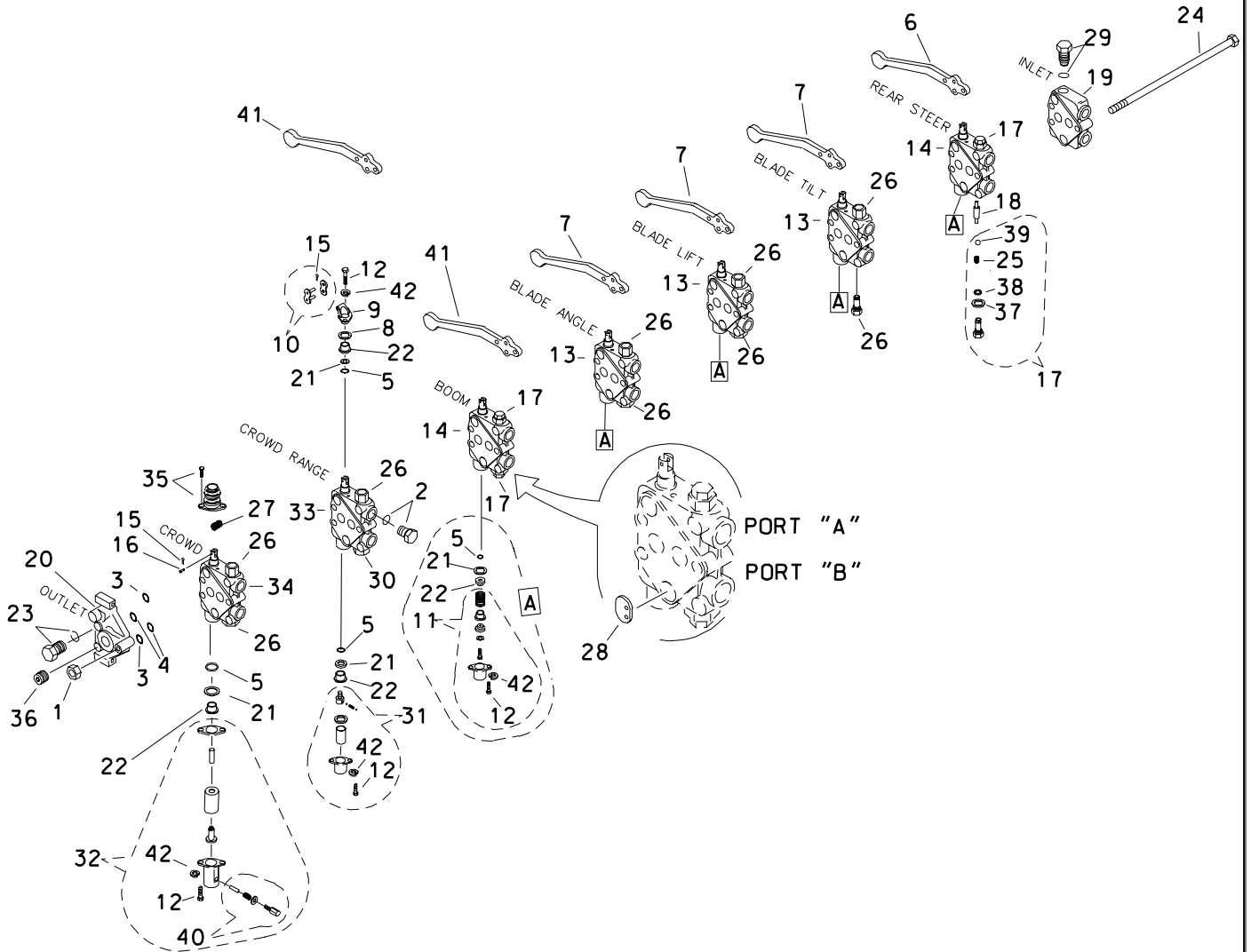
HYDRAULIC REAR STEERING

7610

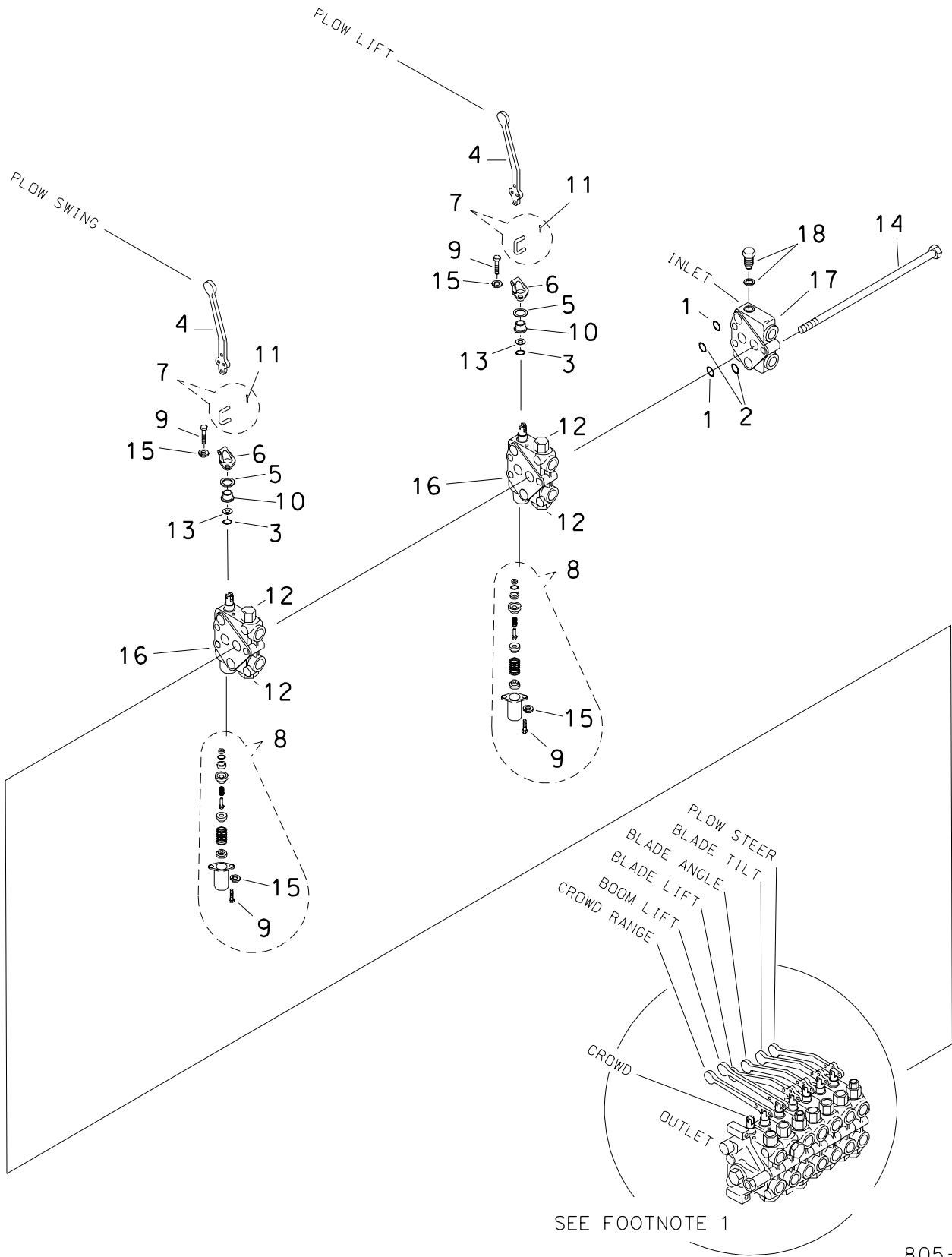


HYDRAULIC CONTROL VALVE

7 SPOOL 6510/7510/7610



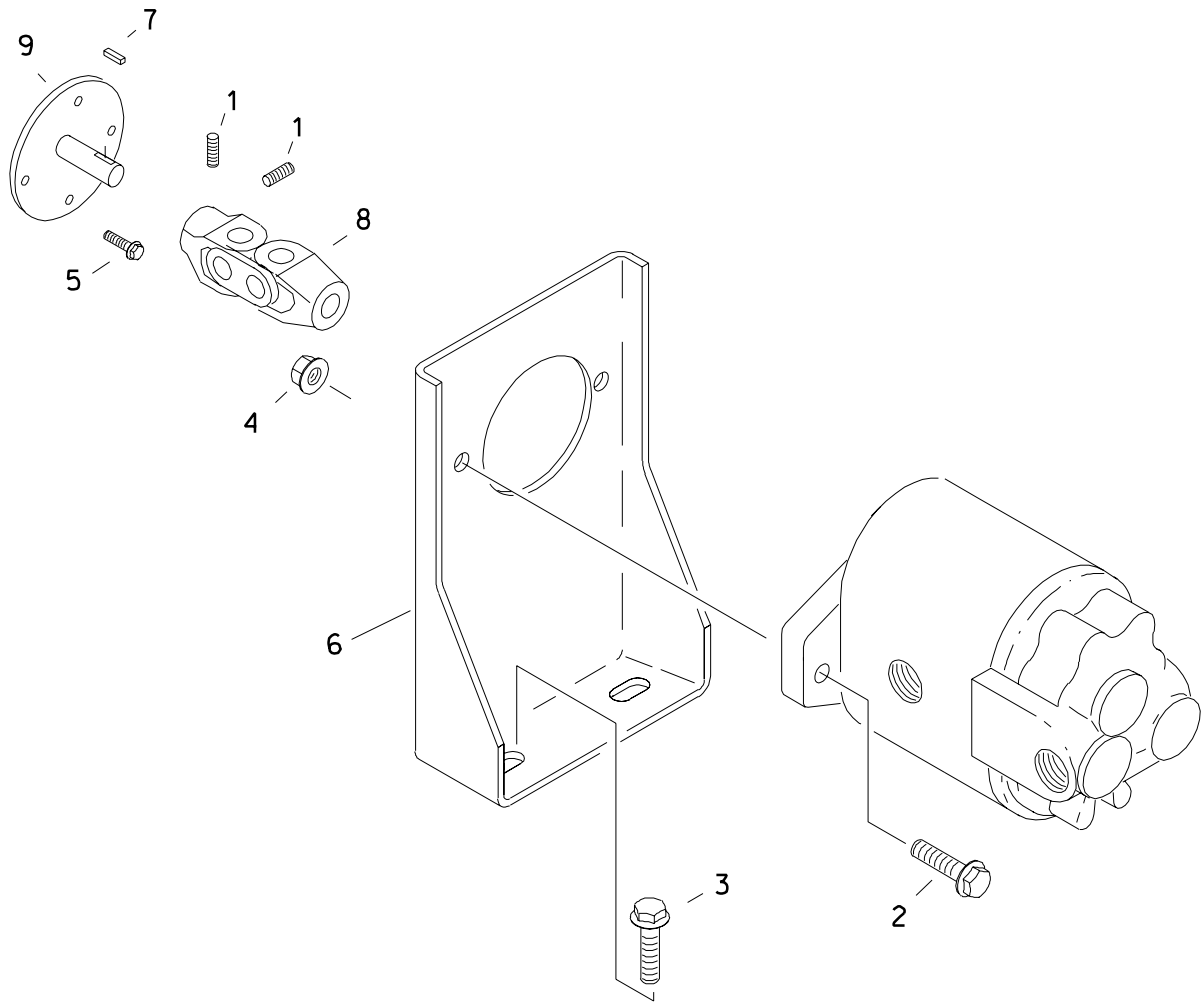
HYDRAULIC CONTROL VALVE 9-SPOOL 7610 M730/M750



D

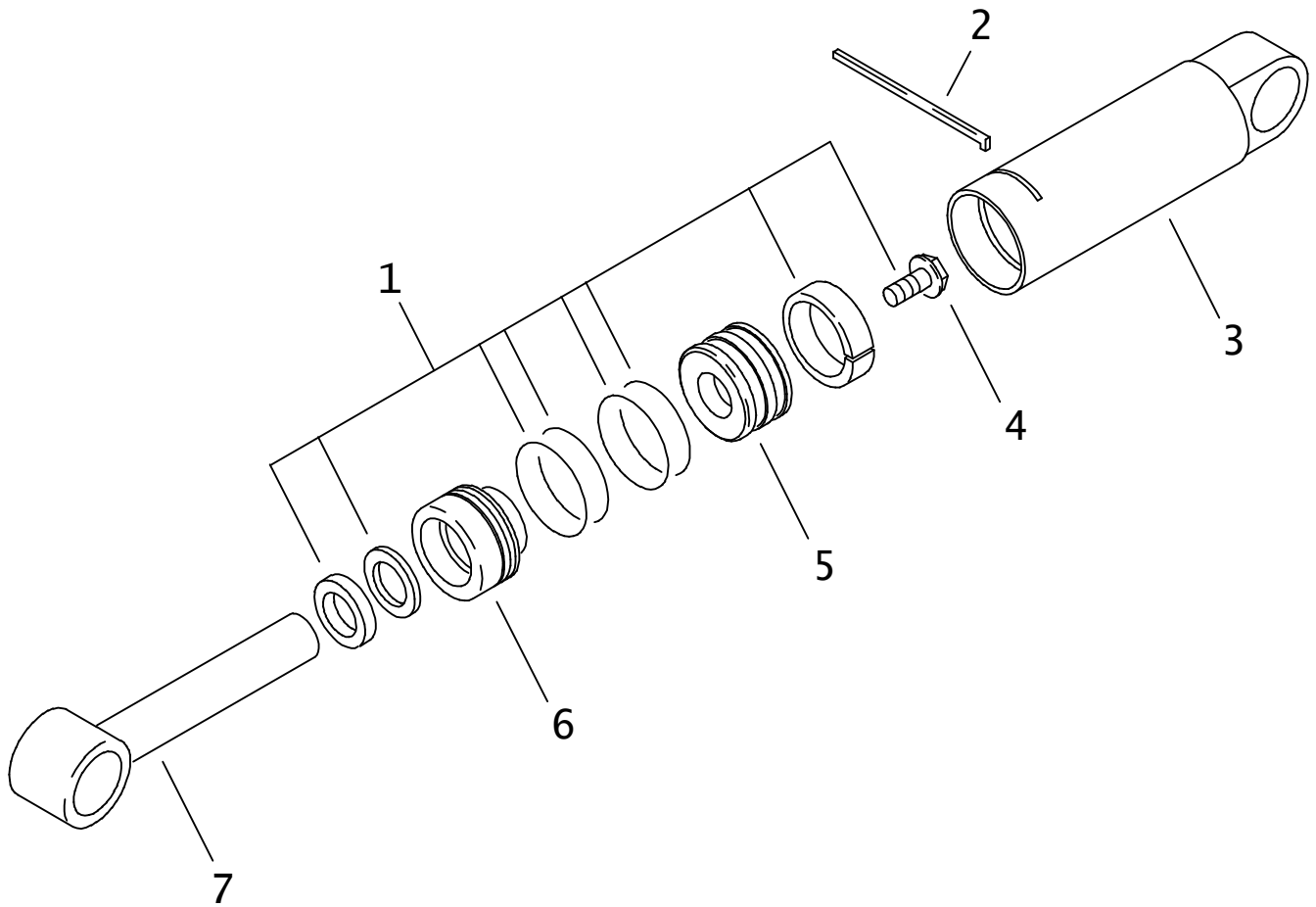
HYDRAULIC PUMP INSTALLATION

7610



HYDRAULIC CYLINDER

3.0" ID BARREL X 1.50" OD ROD X 4.0" STROKE



ELECTRICAL DIAGRAM

7610

REF NO.	PART NUMBER	QTY	DESCRIPTION	REMARKS
14.	215-887	1	CONSOLE HARNESS	
15.	215-083	1	SEAT SWITCH	
	115-355	1	GROMMET (1-3/8")	
16.	215-139	1	FUEL SENDER	
17.	215-087	1	ROLLER LEVER SWITCH	
	106-169	1	SPEED NUT (#6-32)	
	105-216	2	BOLT (#6-32 X 1-1/4", BUT SOC)	
18.	214-852	1	IGNITION SWITCH	
	214-961		KEY, PAIR	
	214-962		SWITCH MOUNTING NUT	
19.	214-378	1	TACHOMETER	CALIBRATION NEEDED
20.	215-065	1	CIRCUIT BREAKER	
	110-527	2	POP RIVET (3/16" X 1/2")	
	110-397	2	CAP (3/16")	
21.	215-129	1	VOLT METER	
	215-415	1	LIGHT KIT	OPTION
22.	215-133	1	FUEL GAUGE	
	215-415	1	LIGHT KIT	OPTION
23.	215-131	1	ENGINE OIL PRESS GAUGE	
	215-415	1	LIGHT KIT	OPTION
24.	215-266	1	BATTERY	
	215-275	1	BATTERY	
	215-244	1	BATTERY	
25.	215-323	1	BATTERY CABLE (4GA, 40")	
26.	215-321	1	BATTERY CABLE (1GA, 60")	
	116-193	1	TERMINAL COVER (RED)	
	115-732	1	ABRASION SLEEVE (2" X 300")	USE 1 @ 11"
27.	216-521	1	DIODE BLOCK	
28.	214-427	1	SEAT JUMPER HARNESS	

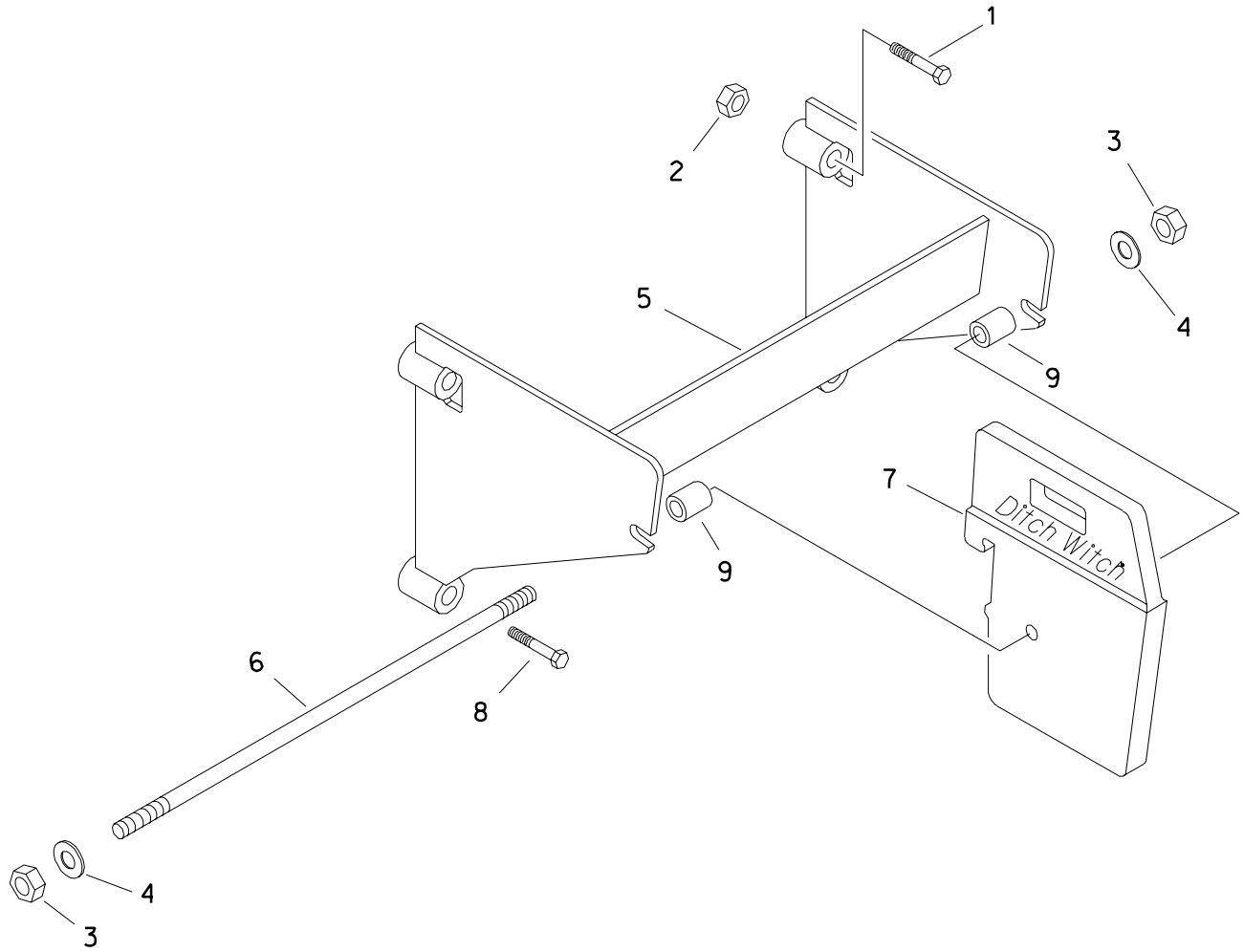
NOT SHOWN:

FOOTNOTES:

1. BEGINS WITH S/N
2. IF REPLACING 217-711 WITH 217-876, ADAPTER HARNESS 214-145 WILL BE REQUIRED

NOTE:

WEIGHT RACK EXTENSION



CLICK HERE TO **DOWNLOAD** THE COMPLETE MANUAL

- Thank you very much for reading the preview of the manual.
- You can download the complete manual from: www.heydownloads.com by clicking the link below



- Please note: If there is no response to CLICKING the link, please download this PDF first and then click on it.

CLICK HERE TO **DOWNLOAD** THE COMPLETE MANUAL