

TOPLINER 4060 DAL/FROM/AB 8646

TOOLS AND ACCESSORIES

TOOLS AND ACCESSORIES

IMPLEMENT AND CHAIN LINKS.....4U.35.1

ACCESSORY.....4U.35.2

CHOPPER

CHOPPER BLADE W.....4U.36.1

CLICK HERE TO **DOWNLOAD** THE COMPLETE MANUAL

- Thank you very much for reading the preview of the manual.
- You can download the complete manual from: www.heydownloads.com by clicking the link below



- Please note: If there is no response to CLICKING the link, please download this PDF first and then click on it.

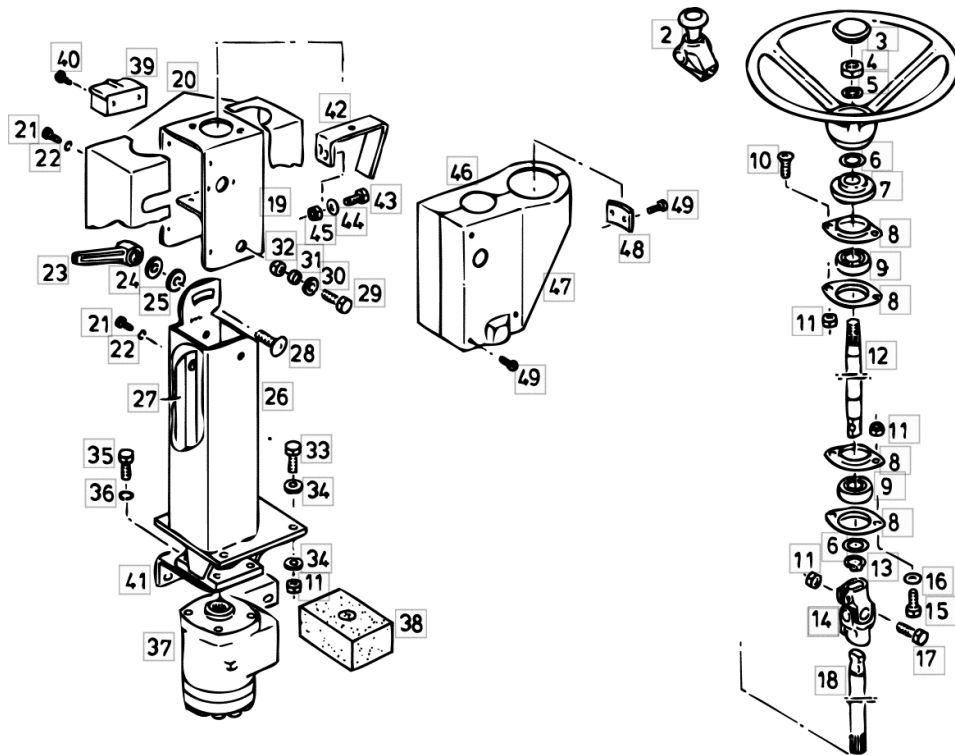
CLICK HERE TO **DOWNLOAD** THE COMPLETE MANUAL

STEERING COLUMN, STANDARD VERSION

Fig.	Code	QTY	Name
------	------	-----	------

Notes:

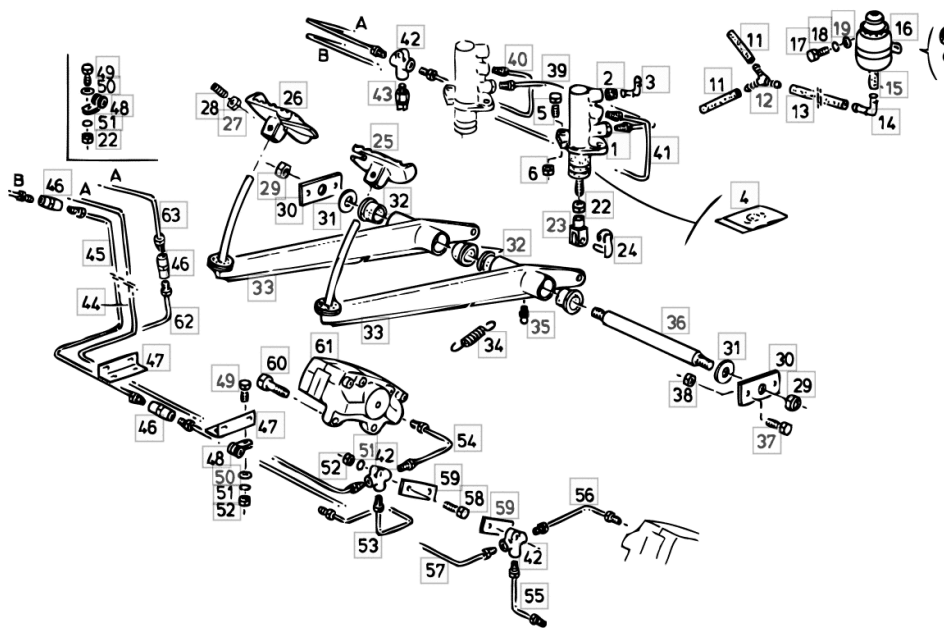
POS.NR. 42 - 49 ON REQUEST THROUGHOUT MONITOR -----



1	16052078	1	steering wheel
2	06256102	1	grip - 9930
3	04372644	1	cap
4	01138932	1	nut m 18 p.1.5
5	01102804	1	spring washer a18 d128
6	06214475	0	shim 25x35x0,3
6.1	06214477	0	washer 25 x 35 x 1.0
6.2	06214588	0	washer 25x35x2
7	16003909	1	ring
8	06215801	4	flange eb 25
9	01145513	2	bearing 25
10	01179541	2	screw
11	01104944	10	nut m 8, d985
12	16003916	1	mandrel
13	01107737	1	ring 25 x 1,2 d471
14	06261071	1	universal joint
15	01112322	2	screw m 8 p.1.25 x 20
16	01107163	2	washer 9, d126
17	01112350	2	screw m 8 x 35
18	16003917	1	shaft
19	16007360	1	valve
20	16006937	1	panel
21	01173052	4	screw m 4 x 10
22	01102795	4	ring 4.3
23	06544838	1	lever
24	06214206	1	washer 13.2
25	06214229	1	washer 21 x 32 x 2.0
26	16021712	1	steering column
27	16025809	1	rail
28	06207554	1	screw m 12 x 25
29	01112412	1	screw m 10 x 22, d933
30	01107165	2	washer 10.5
31	06283060	2	bushing
32	06209768	2	nut m 10, d985
33	01112333	4	screw m 8 x 25, d933
34	06214192	8	washer 8.4
35	01112317	4	screw
36	01102799	4	washer 8, d128
37	16020944	1	hydrosteering B D41

HYDRAULIC BRAKING SYSTEM

Fig.	Code	QTY	Name
45.1	16027222	1	tube W / BALANCE
46	06255060	2	pipe fitting
47	16004773	2	angular
48	06216395	16	clamp 5 x 15
49	01112264	0	screw m 6 x 20, d933
50	06214189	0	washer 6.4
51	01102797	0	washer 6, d128
52	01114357	0	nut m 6, d985
53	16003235	1	flange
54	16003229	1	tube
55	16003232	1	brake disc
56	16003226	1	tube
57	16004770	1	tube
57.1	16027224	1	tube W / BALANCE
58	01127031	2	screw m 6 x 30, d933
59	16003223	2	small plate
60	01145076	8	screw m 14 p.1.5 x 55
61	16031132	1	fixed yoke R / B B17 ABOVE
61.1	16031133	1	fixed yoke R / B B17 U N T E N
61.2	16031130	1	fixed yoke L / B B17 ABOVE
61.3	16031131	1	fixed yoke L / B B17 U N T E N
62	16027226	1	tube W / BALANCE
63	16027220	1	tube W / BALANCE



DRIVER'S CAB ROOF

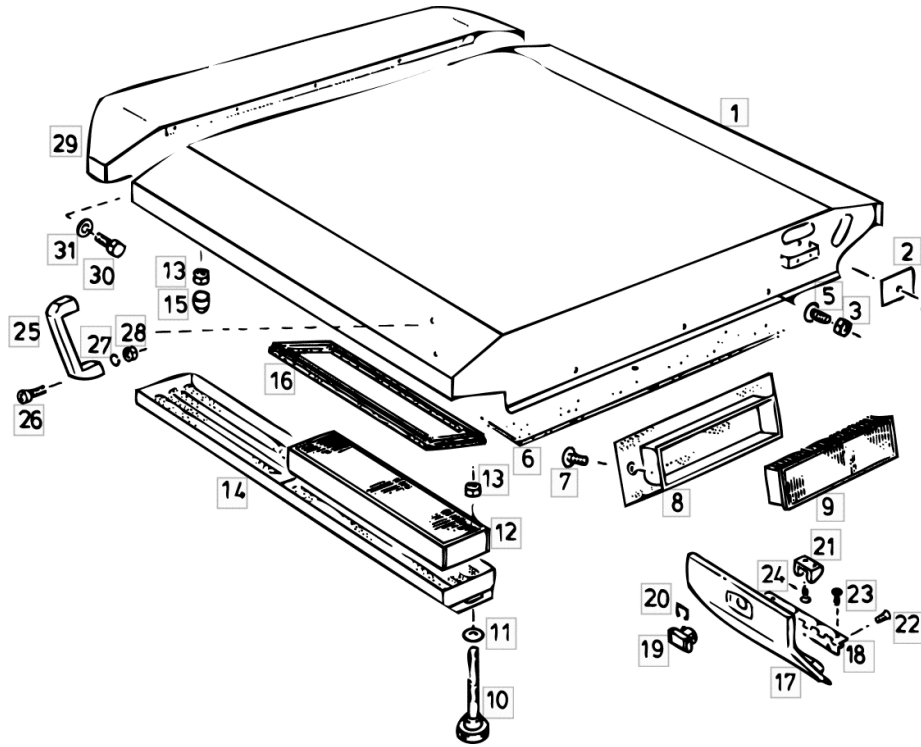


Fig.	Code	QTY	Name
1	16039228	1	roof
2	06302909	1	lamination
3	01114357	4	nut m 6, d985
4	01112240	1	screw m 6 x 12
5	06214131	3	screw m 6 x 12
6	16007925	1	lining
6.1	16007926	1	lining L
6.2	16007927	1	lining R
7	06214132	2	screw m 6 x 15, d921
8	06533646	1	panel
9	04336385	1	air filter element
10	06543016	4	washer
11	06214197	4	washer 10.5
12	06543590	4	filter
13	01104944	10	nut m 8, d985
14	06543008	1	filter casing
15	01174042	6	cap
16	06543063	4	gasket
17	16010227	1	cover
18	16010252	1	hinge
19	16010229	1	lock
20	16010230	1	small spring
21	16010231	1	small plate
22	01145177	3	screw m 5 x 8, d965
23	01145179	4	screw
24	01123045	2	washer b4,8x16 d7981
25	01141954	1	handle PVC
26	01126918	2	screw m 8 p.1.25 x 20
27	01102799	2	washer 8, d128
28	01112824	2	nut m 8, d934
29	16034690	1	support
30	01112322	10	screw m 8 p.1.25 x 20
31	01107163	10	washer 9, d126

TOPLINER 4060 DAL/FROM/AB 8646

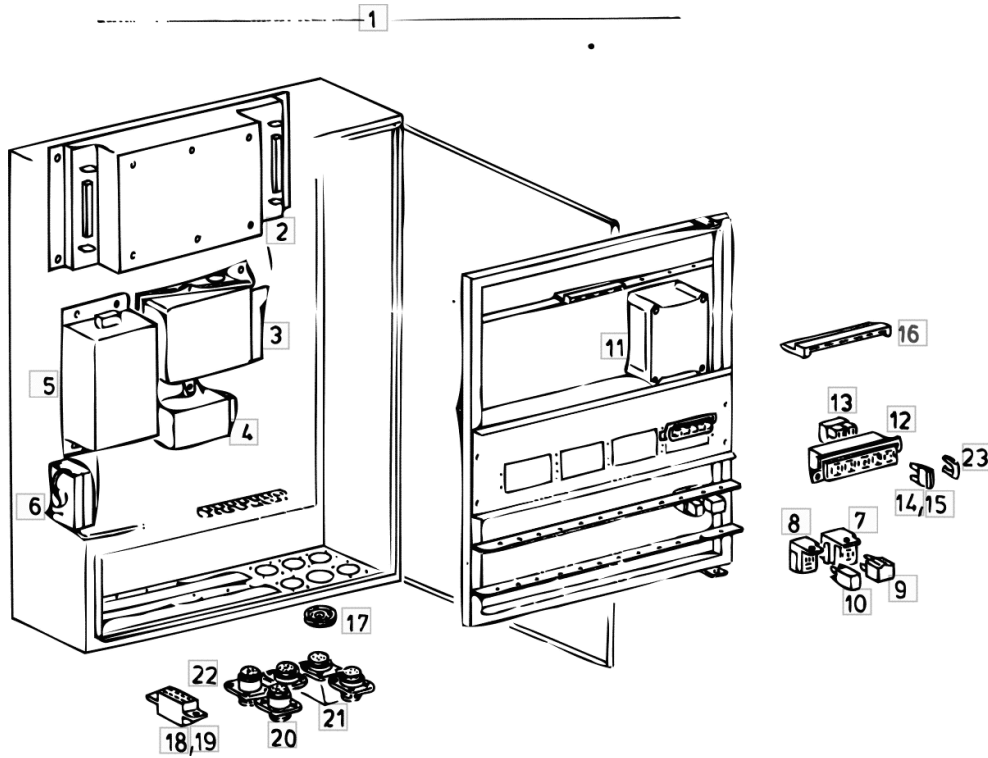
CUTTING TABLE AND FEEDING ELEVATOR

CUTTING TABLE

HIGH PERFORMANCE CUTTER BARS.....4P.31.1

CENTRAL ELECTRICS TERIS / TCS / W

Fig.	Code	QTY	Name
19.4	01178220	0	plug
19.5	01173037	0	plug
19.6	01178217	0	distributor
19.7	01178218	0	distributor
20	16048647	1	pin
21	16048646	3	pin
22	16048648	1	pin
23	01178266	0	axle



ELECTRIC CLUTCH CONTROL DEVICE STANDARD VERSION

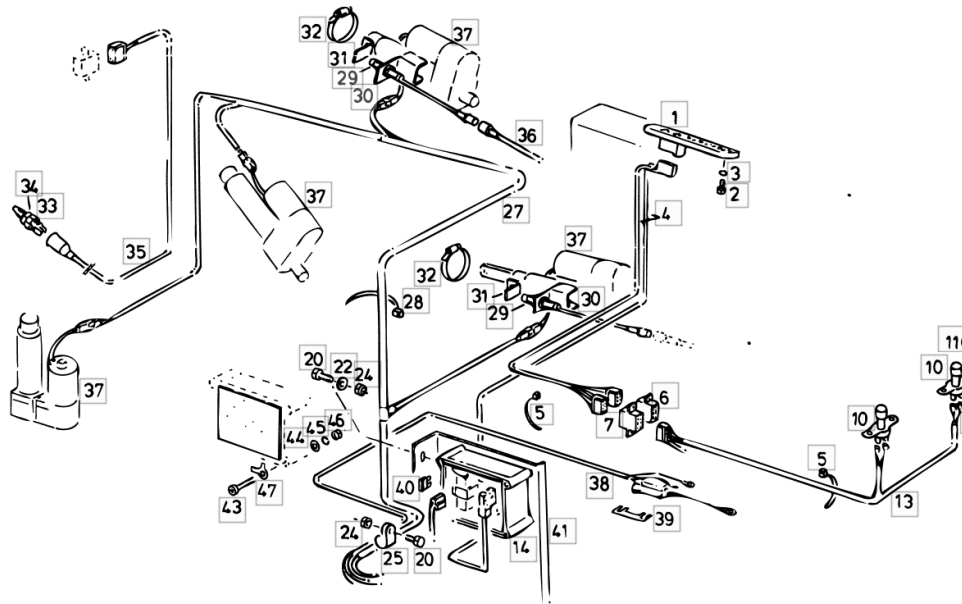
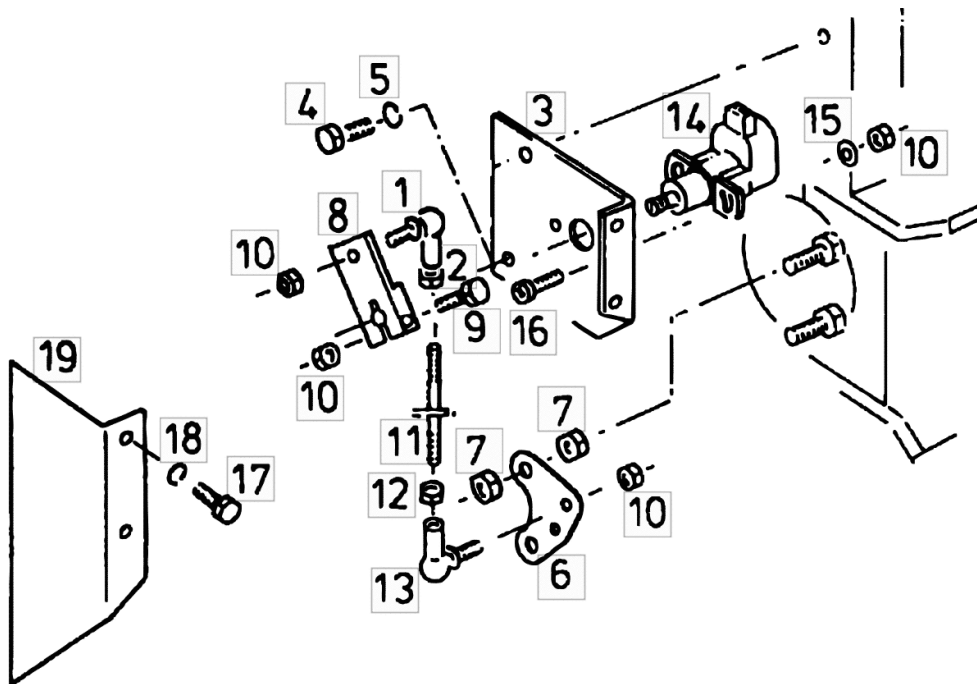


Fig.	Code	QTY	Name
1	16025745	1	hydraulic controles
2	01112228	3	screw m 6x8 d933
3	01102797	3	washer 6, d128
4	16037029	1	cable
5	01172065	0	clamp 4.6 x 146
6	01178221	1	distributor
7	01178225	1	plug
10	06535498	2	support
11	01112240	4	screw m 6 x 12
12	01114357	4	nut m 6, d985
13	16017198	1	cable
14	16027466	1	central device CCP2
20	01112307	3	screw m 8 p.1.25 x 15, d933
22	01107163	3	washer 9, d126
24	01104944	4	nut m 8, d985
25	04325384	1	clamp 19 x 23
27	16037027	1	cable
28	06216482	0	clamp 3.4 x 208
29	01145048	2	position sensor
30	16024827	2	console
31	16024828	2	square
32	01173941	2	stop b50-70/13 h3461
33	04191001	1	push-button W
34	01138932	1	nut m 18 p.1.5 W
35	16025403	1	cable W STRAW CHOPPER
36	16017185	1	insulated braid
37	16027276	3	electric motor
37.1	16027276	1	electric motor W
38	16037031	1	cable
39	16039248	0	fuse -a 60
40	01145787	0	fuse -a 30
41	16037035	1	lamination
43	01145777	4	screw m 5 x 60
44	06214189	4	washer 6.4
45	01102796	4	ring 5
46	01112803	4	nut m 5, d934
47	01145734	4	washer 5.3

ELECTRICAL SYSTEM FOR ROTATION ANGLE SENSOR, STANDARD VERSION

Fig.	Code	QTY	Name
1	01137531	1	joint as 8
2	01112803	1	nut m 5, d934
3	16017049	1	cover
4	01112299	1	screw m 8 x 12, d933
5	01102799	1	washer 8, d128
6	16017147	1	link
7	01102659	4	nut m 10, d934
8	16013959	1	lever
9	01123747	1	screw m 5 p.0.8 x 25
10	06209765	3	nut m 5, d985
11	16013960	1	rod L = mm 138 / m 5
12	01144462	1	nut m 5, d934
13	01144169	1	pipe fitting as 8 li
14	16037056	1	position sensor
15	01140498	2	washer 5.3
16	01124043	2	screw m 5 x 20
17	01112240	2	screw m 6 x 12
18	01102797	2	washer 6, d128
19	16017048	1	cover



LIGHTING V / AUSTRIA

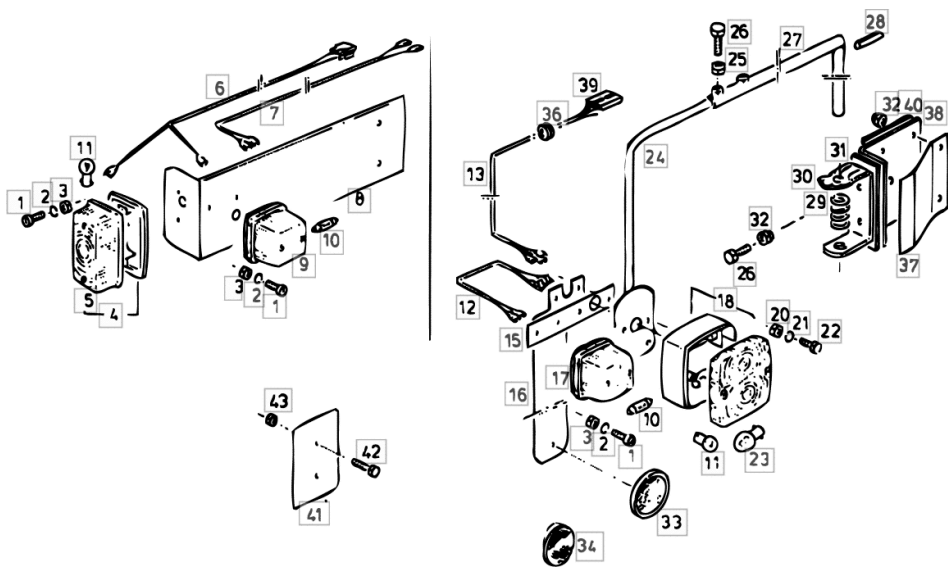
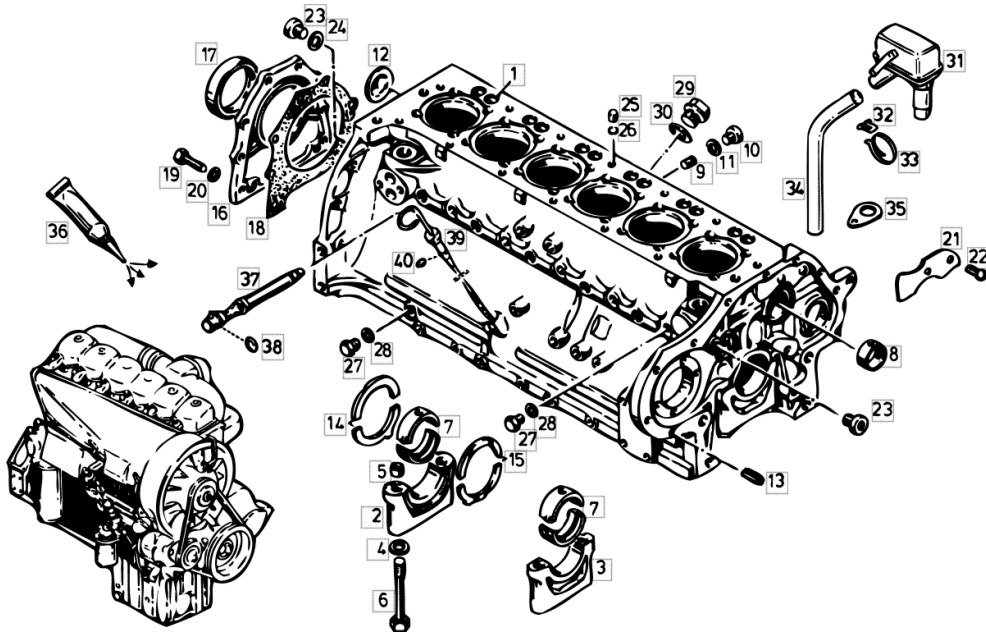


Fig.	Code	QTY	Name
29	06215382	2	spring
30	06303187	2	bracket
31	06520277	2	link
32	01104944	12	nut m 8, d985
33	06214034	2	reflector
34	06520316	2	reflector
34.1	06214039	2	reflector Ø 80
36	06257558	2	rubber ring 14x18x3
37	06544790	2	lamination
38	06544791	1	plate L
38.1	06544792	1	plate R
39	06213973	4	cup 2pol. d72586
40	06544789	2	link
41	16005957	2	shield
42	01102534	4	screw m 5x40 d931
43	01112803	4	nut m 5, d934

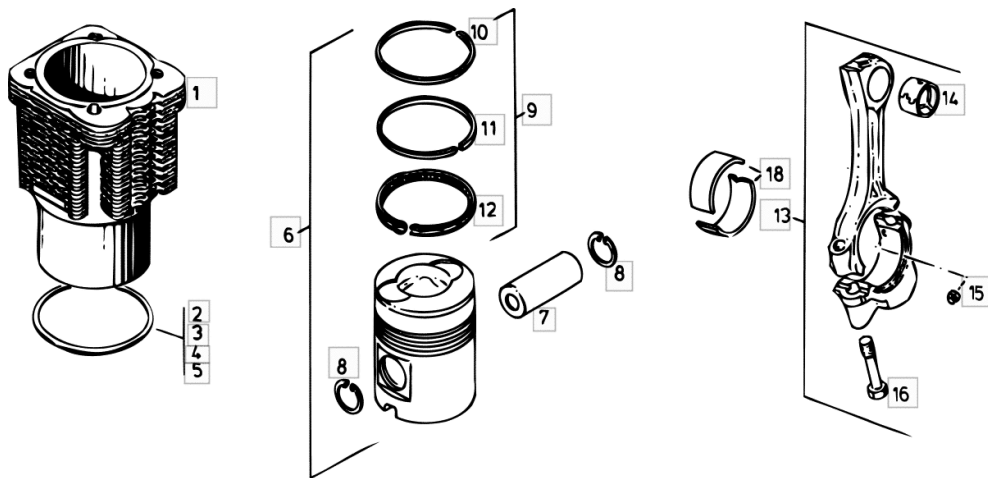
ENGINE CRANKCASE 125 KW / 170 HP

Fig.	Code	QTY	Name
33	01166345	1	band
34	01400708	1	flexible hose 19x27x450
35	02138266	1	rotor blade
36	01016120	0	compound
37	04231147	6	injector
38	01173838	6	'o' ring
39	01176376	1	dipstick G 39,40
39.1	01167269	1	sleeve
40	01165975	1	'o' ring 5x2



ENGINE CYLINDER / PISTON

Fig.	Code	QTY	Name
18.2	04232681	0	65,75 MM conrod.bearing 65,50 MM



ENGINE INJECTION PUMP PIPES

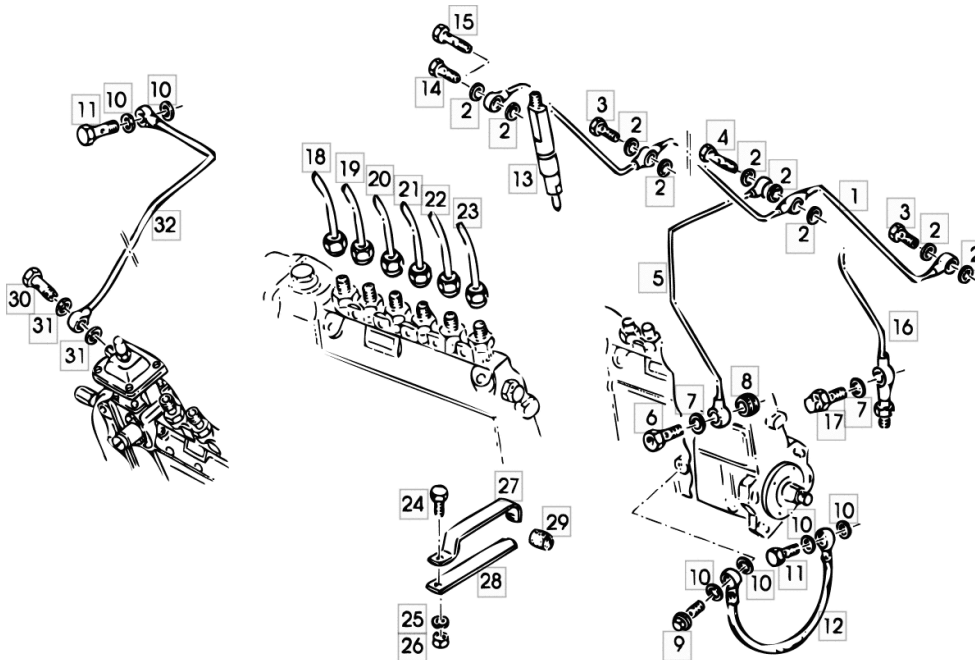


Fig.	Code	QTY	Name
1	02137534	1	tube
2	01118647	13	'o' ring 8x11,5 d7603
3	01119231	4	screw m 8 x 1
4	01178622	1	pipe union m 8 x 1
5	NE	0	lamination
6	NE	0	lamination
7	01118693	2	gasket 14x20
8	NE	0	lamination
9	02231136	1	screw
10	01118659	0	'o' ring
11	01119237	0	pipe union
12	01179228	1	tube
13	04150926	6	injector
13.1	04230460	6	125 KW / B A27
13.2	04232066	6	injector
13.3	04232717	6	150 KW / B A28
14	01119231	1	nozzle
15	01178622	1	- 12.97 / 176 KW / B A28
16	04157330	6	injector
16.1	04152956	1	+ 01.98 / 176 KW / B A28
17	03476293	1	screw m 8 x 1
18	04154354	1	125 KW
18.1	04154360	1	pipe union m 8 x 1
18.2	04230570	1	150 KW / 176 KW
19	04154355	1	tube
19.1	04154361	1	125 KW
19.2	04230571	1	tube
20	04154356	1	150 KW
			176 KW
			176 KW
			pipng
			CYLINDER 1
			CYLINDER 2
			tube

OIL DRAINE PIPE BREATHER LINE

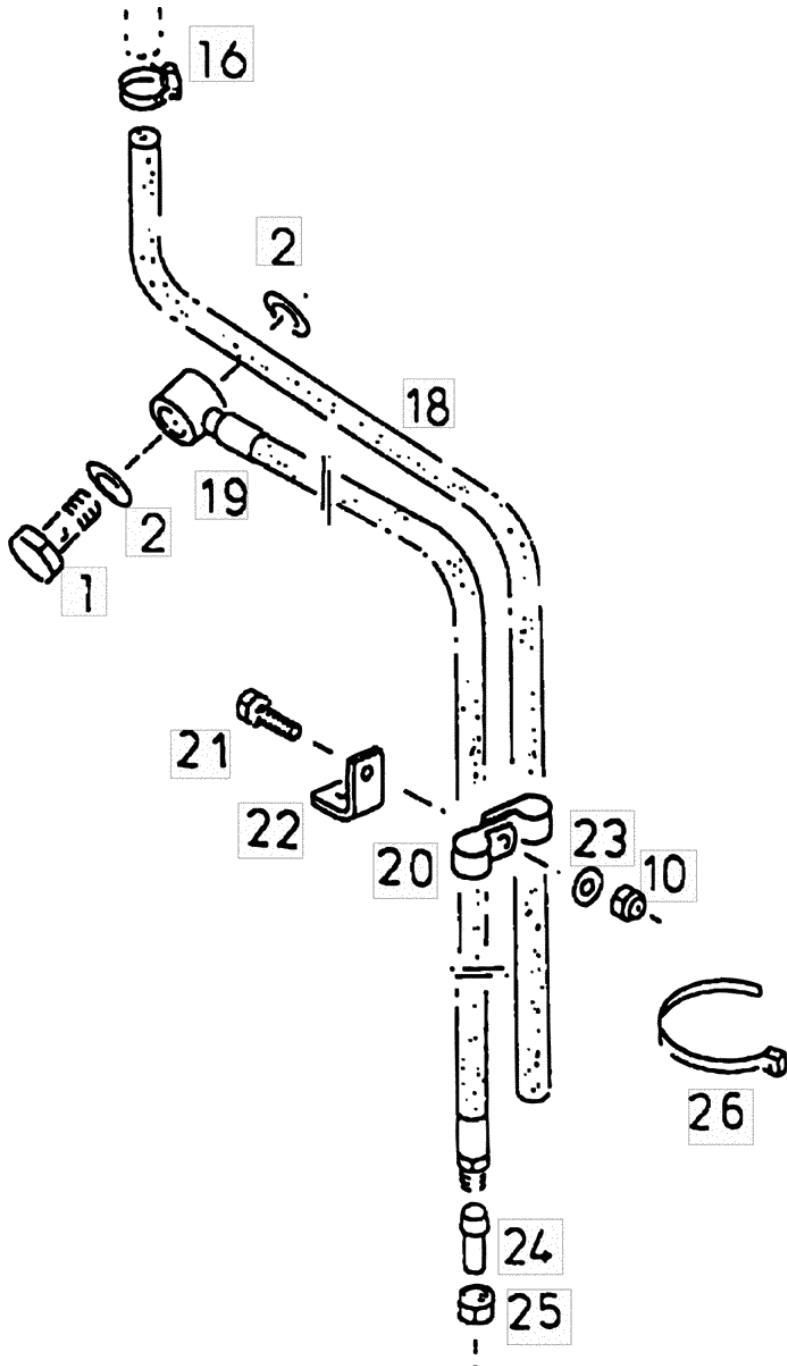


Fig.	Code	QTY	Name
1	01139203	1	pipe union m 30 x 1,5
2	01118784	2	'o' ring 30x36x2 d7603
16	01133514	1	clamp Ø 20/32
18	16024826	1	tube
			125 KW
18.1	16022141	1	tube
			150KW/176KW B A54
19	16020988	1	tube
20	01145232	4	clamp Ø 22
21	01112341	2	screw m 8 x 30, d933
22	16006188	1	angular
23	01107101	2	washer 8.4
24	01179135	1	plug L 18-V1
25	01127347	1	nut CL 18
26	06216480	4	clamp 4,8 x 360

FEEDER CHANNEL

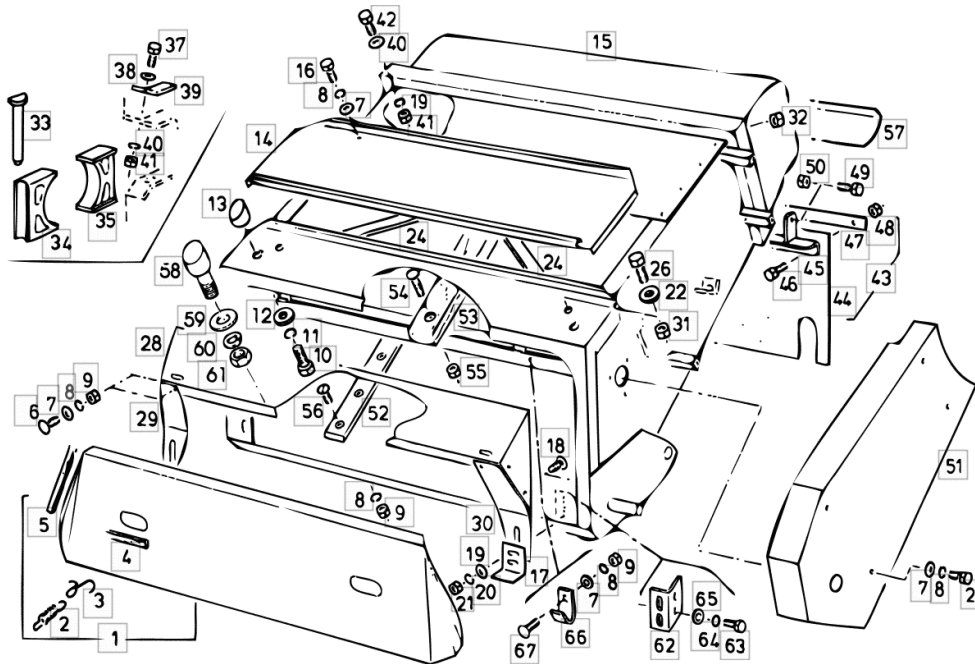


Fig.	Code	QTY	Name
40	01102800	10	washer 10.2
41	01102659	10	nut m 10, d934
42	01112418	8	screw m 10 x 25, d933
43	06521167	1	cloth/tarpaulin? W EQUIPMENT MAIZE
44	06521181	1	cloth/tarpaulin? W
45	06521163	1	square W
46	01112333	9	screw m 8 x 25, d933
47	06287364	1	rail W
48	01104944	9	nut m 8, d985
49	01112529	2	screw m 12 x 30, d933
50	06209769	2	nut m 12, d985
51	16032402	1	guard
52	06549757	4	rail L = mm 730 (PVC)
53	16024646	1	rail dx/rh/re R
53.1	16024647	1	rail sx/lh/li L
53.2	16024648	1	rail
54	01138805	6	screw m 10 x 50
55	06209768	6	nut m 10, d985
56	06207534	20	screw m 8 p.1.25 x 20
57	06546090	1	crosspiece
58	16012520	2	pin m 24
59	06296718	2	disc 25 x 55 x 10
60	01102807	2	washer 24.5
61	01112943	2	nut m 24 p.1.5
62	16035022	1	square sx/lh/li L
62.1	16035023	1	square dx/rh/re R
63	01112418	4	screw m 10 x 25, d933
64	01107165	4	washer 10.5
65	01102800	4	washer 10.2
66	16035025	2	clevis

CUTTER BAR DRIVE FEEDER CHANNEL

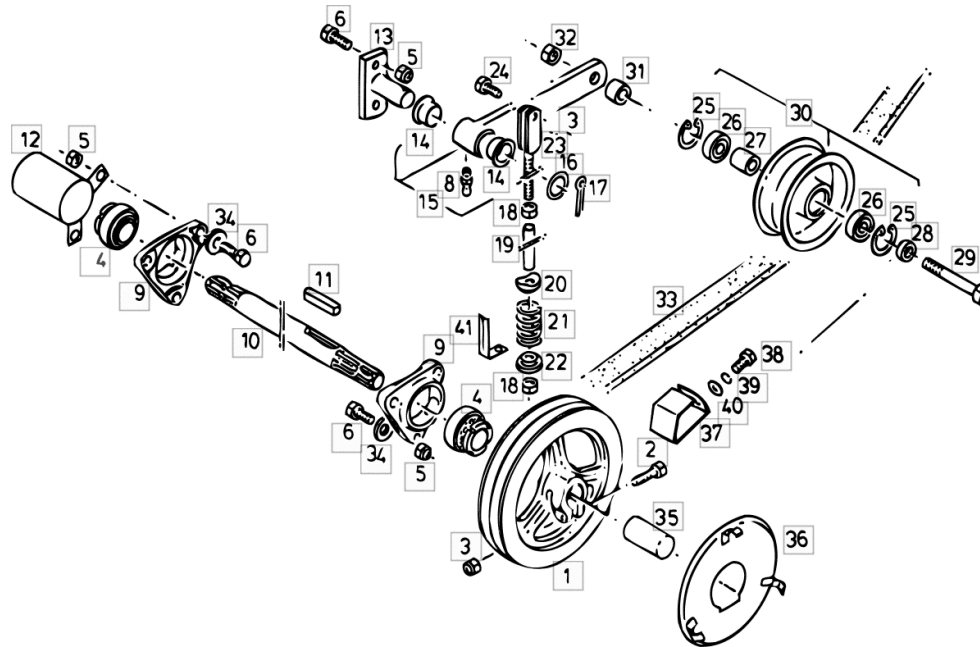


Fig.	Code	QTY	Name
1	16015807	1	pulley 2/22 x 324
2	01111313	1	screw m 10 x 55
3	06209768	2	nut m 10, d985
4	01141975	2	ring 35
5	06209769	8	nut m 12, d985
6	01112547	4	screw m 12 x 40, d933
6.1	01112560	2	screw m 12 x 50
8	01120693	1	lubricator am 8 x 1
9	06263693	2	bearing block d35
10	06539229	1	shaft L = mm 1696
11	06212461	1	dowel 10 x 8.0 x 63
12	06539267	1	sleeve
13	06261208	1	support
14	06260680	2	sleeve 30 x 45 x 20
15	06505701	1	arm
16	06214234	1	disc 31 x 45 x 2
17	01132649	1	split pin 6.3
18	01112858	2	nut m 12, d934
19	06260689	1	tube
20	06519261	1	disc
21	06215418	1	spring
22	06515117	1	disc
23	06501950	1	stay m 12
24	01112429	1	screw m 10 x 30, d933
25	01107834	2	circlip 47 x 1.75
26	01109115	2	ball bearing 6303 2rs
27	06502152	1	bushing
28	06257433	1	washer 17.2
29	01111930	1	screw m 16 h6 x 100
30	06500622	1	bearing 64/220
31	06256380	1	spacer
32	01127856	1	nut m 16, d985
33	01143412	1	belt 2/22 x 4275
33.1	01145025	1	STANDARD EQUIPMENT belt 2hcx4270La W EQUIPMENT MAIZE
34	01133726	6	washer 13
35	02329248	1	guard PVC
36	NE	0	lamination
37	16005788	1	bracket
38	01112307	2	screw m 8 p.1.25 x 15, d933
39	01102799	2	washer 8, d128
40	01174909	2	disc 8,5 x 22 x 2,5

TOPLINER 4060 DAL/FROM/AB 8646

FRAME

LETTERING

COLOUR LABEL.....	4F.09.1
ADHESIVE CE LABEL.....	4F.09.2

FRAME

CHASSIS.....	4F.10.1
CHASSIS.....	4F.10.2

COVERING

L.H. LINING.....	4F.11.1
COVERING AT THE LEFT SIEVE CARRIER.....	4F.11.2
R.H. LINING.....	4F.11.3

STRAW HOOD

STRAW BOX.....	4F.12.1
SERVICE PLATFORM.....	4F.12.2

R.H. LINING

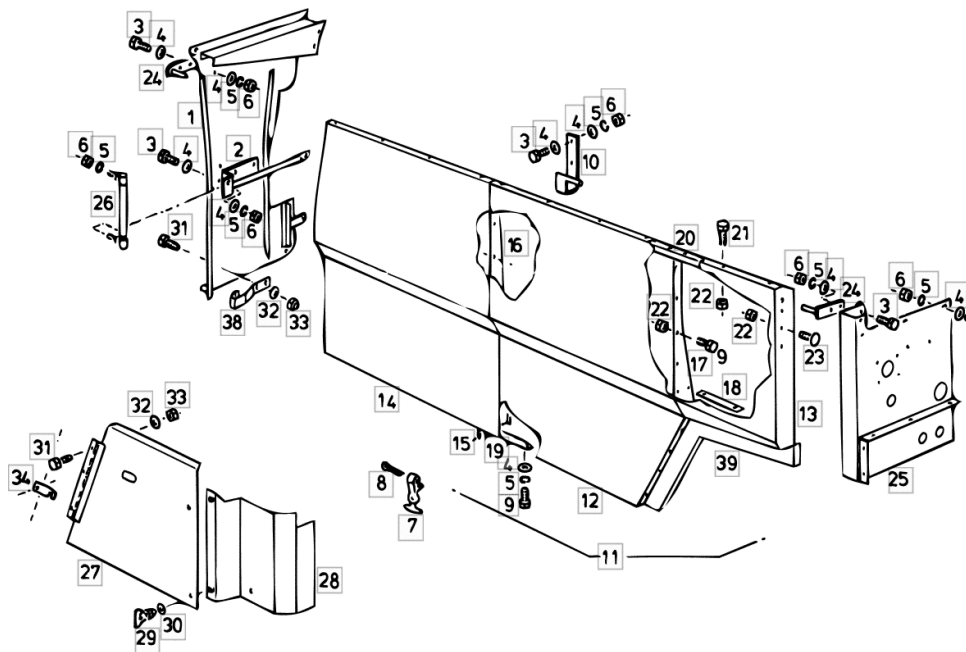


Fig.	Code	QTY	Name
1	16005748	1	rear panel
2	16005246	1	plate
3	01112322	0	screw m 8 p.1.25 x 20
4	01107163	0	washer 9, d126
5	01102799	0	washer 8, d128
6	01112824	0	nut m 8, d934
7	06519313	1	rubber
8	01106474	1	split pin 5 x 5 x 50
9	01112322	0	screw m 8 p.1.25 x 20
10	16007142	1	bracket
11	16027639	1	shutter WITHOUT POS.NR. 39
12	16027651	1	cap
13	16027642	1	cap
14	16005254	1	cap
15	06334236	2	guard
16	16041801	1	brace - 9535
16.1	16006499	1	brace + 9536
17	16004585	1	brace
18	16027654	1	brace
19	16004544	1	brace
20	16005218	1	tube
21	01137744	10	screw m 8 x 40
22	01104944	0	nut m 8, d985
23	01108524	6	screw m 8 p.1.25 x 20
24	16005221	2	bracket
25	16004171	1	division - 9005
25.1	16046214	1	lining dx/rh/re + 9006
25.2	16046212	1	plate + 9006
26	16005716	2	shoch.absorber 600 N
27	16029060	1	lamination
28	16029065	1	lamination
29	06212242	2	interlock
30	06571317	2	washer
31	01103316	6	screw m 6 p.1.0 x 16
32	06214189	5	washer 6.4
33	01114357	6	nut m 6, d985
34	16005020	1	support
36	01110645	1	screw m 10 x 16, d912

CLICK HERE TO **DOWNLOAD** THE COMPLETE MANUAL

- Thank you very much for reading the preview of the manual.
- You can download the complete manual from: www.heydownloads.com by clicking the link below

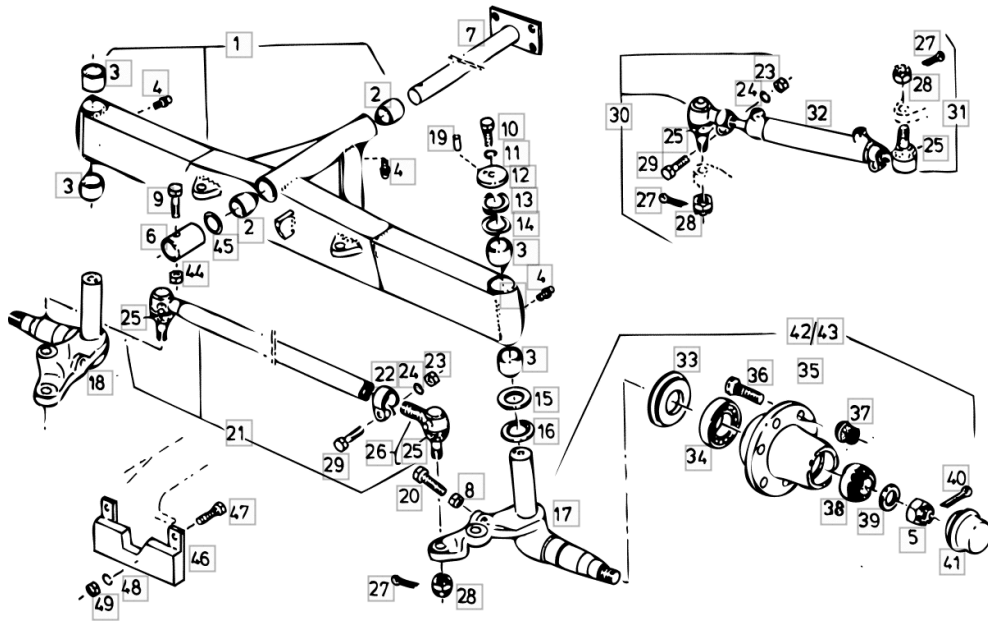


- Please note: If there is no response to CLICKING the link, please download this PDF first and then click on it.

CLICK HERE TO **DOWNLOAD** THE COMPLETE MANUAL

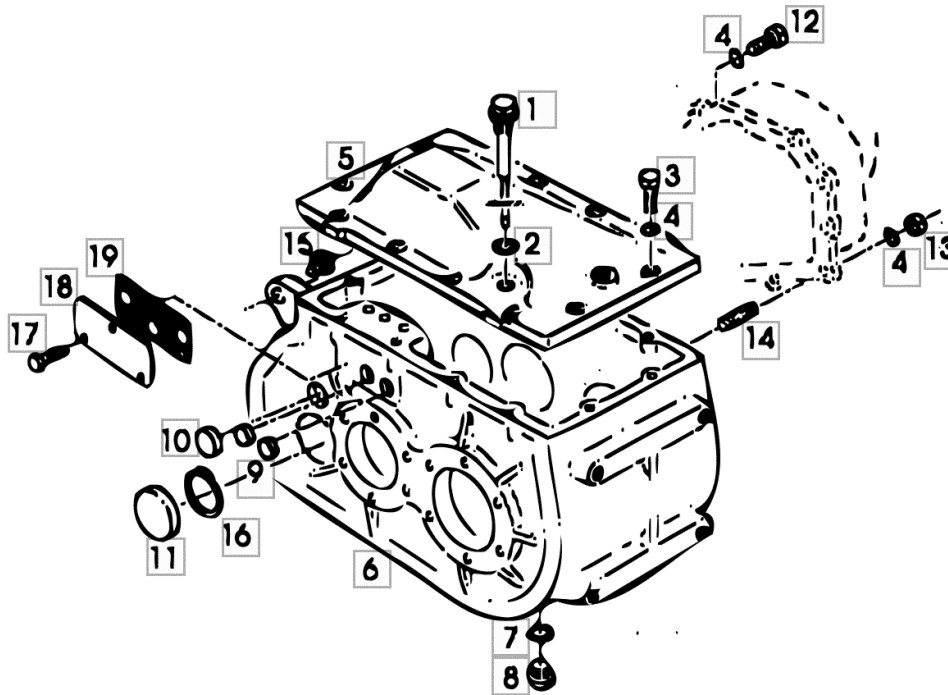
STEERING AXLE STANDARD EQUIPMENT

Fig.	Code	QTY	Name
38	01109957	2	bearing 30207
39	06214372	2	washer 30
40	01143009	2	split pin 6.3 x 50
41	06514957	2	small cover
42	16001676	1	wheel spindle kpl. (sx/lh/li) L
43	06537857	1	wheel spindle kpl. (dx/rh/re) R
44	06209769	1	nut m 12, d985
45	06214493	3	shim 40x50x1,0
46	16025794	1	contact surface
47	01112447	2	screw m 10 x 40
48	01102800	2	washer 10.2
49	01102659	2	nut m 10, d934



TRANSMISSION GEARBOX - 10175

Fig.	Code	QTY	Name
1	16031110	1	dipstick
2	01118737	1	'o' ring 22 x 27
3	01124832	12	screw m10x35 d933-10
4	01107286	23	washer b10 d137
5	16000248	1	cover
6	16000559	1	gear box
7	16000250	1	gasket
8	04383066	1	plug
9	16000251	0	plug
10	16000252	1	cover 40x7
11	16000253	1	cover 80x12
12	01100235	9	screw m10x25 10.9
13	01102659	3	nut m 10, d934
14	01113480	3	small column m 10 x 40
15	06564092	1	sleeve
16	01107855	1	circlip 80 x 2.5
17	01112240	3	screw m 6 x 12
18	16019066	1	cover
19	16019067	1	gasket



TRANSMISSION DIFFERENTIAL - 10175

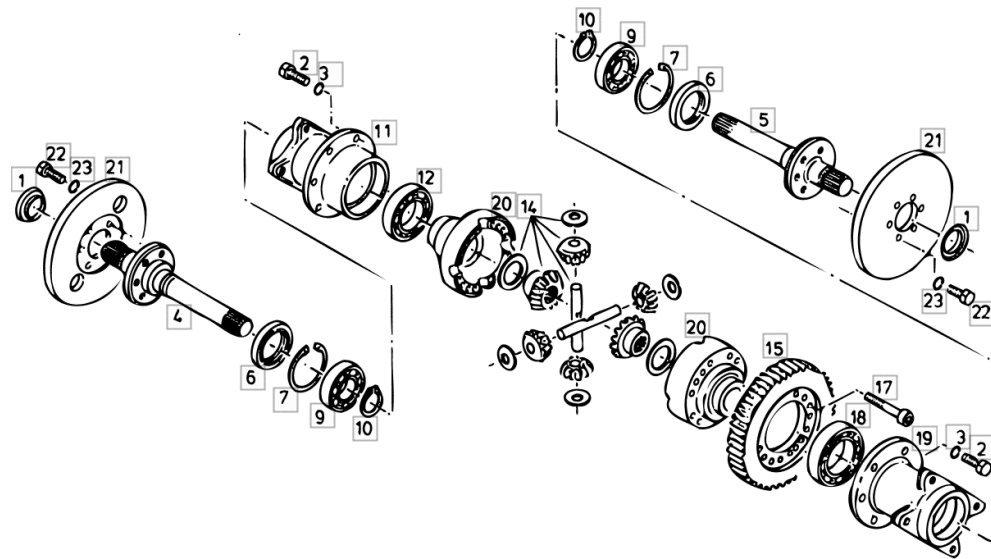


Fig.	Code	QTY	Name
1	16000281	2	lamination
2	01100235	12	screw m10x25 10.9
3	01107286	12	washer b10 d137
4	16000291	1	shaft
5	16000292	1	shaft
6	16000283	2	ring 70x90x10
7	01107788	2	circlip
9	01109132	2	ball bearing
10	01107755	2	ring 40 x 1,75, d471
11	16000293	1	carrier
12	01109078	1	ball bearing
14	16000286	1	planet gear z-10/16
15	16000287	1	gear z-62
17	01152831	16	screw m 10x110
18	01109091	1	ball bearing
19	16000295	1	carrier
20	16000296	1	differential carrier
21	16000297	2	brake disc
22	01124832	12	screw m10x35 d933-10
23	01102800	12	washer 10.2

TOPLINER 4060 DAL/FROM/AB 8646

GRAIN TRANSPORT ELEMENTS

GRAIN TANK CLUTCH

GRAIN TANK CONTROL..... 4M.27.1

LIFT

ELEVATOR SCREW..... 4M.28.1

GRAIN ELEVATOR..... 4M.28.2

GRAIN TANK

GRAIN TANK..... 4M.29.1

ELEVATOR HEAD..... 4M.29.1

GRAIN TANK UNLOADER..... 4M.29.1

GRAIN TANK..... 4M.29.2

ELEVATOR HEAD WITH AUGER W I T H O U T GRAIN TANK TOP..... 4M.29.2

GRAIN TANK EMPTYING ANGLE DRIVE BELOW..... 4M.29.2

GRAIN TANK TOP W..... 4M.29.3

ELEVATOR HEAD WITH AUGER FOR GRAIN TANK TOP / W..... 4M.29.3

GRAIN TANK UNLOADING SCREWS..... 4M.29.3

GRAIN SAMPLING DEVICE..... 4M.29.4

MEASUREMENT OF ELEVATOR THROUGHPUT AND GRAIN HUMIDITY / TCS / W..... 4M.29.4

GRAIN TANK EMPTYING ANGLE DRIVE ABOVE..... 4M.29.4

GRAIN TANK COVER..... 4M.29.5

GRAIN TANK UNLOADING PIPE..... 4M.29.5

GRAIN TANK UNLOADING PIPE BLOCK..... 4M.29.6

GRAIN TANK

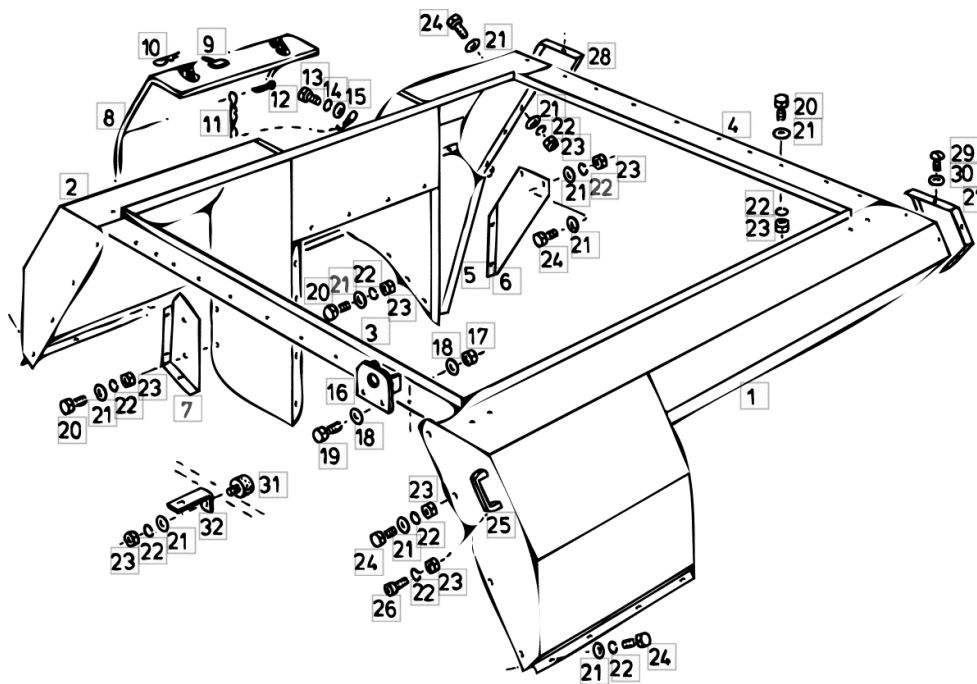


Fig.	Code	QTY	Name
1	16001418	1	lift hand side panel
2	16001344	1	right h.side panel dx/rh/re
3	16001425	1	lamination
4	16001436	1	lamination
5	16004145	1	lamination
6	16004601	1	lamination
7	16004502	1	lamination
8	16001462	1	cover
9	06253194	2	clevis
10	06264206	2	roll pin
11	01141756	1	chain 2,0 x 1092 - A3C, d5686
12	01138904	1	split pin 5 x 36
13	01103316	1	screw m 6 p.1.0 x 16
14	01102797	1	washer 6, d128
15	01107158	1	washer 6.6, d125
16	16005725	2	supporting piece
17	06209769	8	nut m 12, d985
18	01123616	12	washer 13.5
19	01112547	8	screw m 12 x 40, d933
20	01112307	0	screw m 8 p.1.25 x 15, d933
21	06214193	0	washer 8.4
22	01102799	0	washer 8, d128
23	01112824	0	nut m 8, d934
24	01112322	0	screw m 8 p.1.25 x 20
25	01141954	1	handle PVC
26	01126918	2	screw m 8 p.1.25 x 20
27	16005805	1	shield
28	16005807	1	shield
29	06214131	7	screw m 6 x 12
30	01107158	7	washer 6.6, d125
31	06285953	0	silent-block
32	06539697	1	square 149 mm lg.
32.1	16017912	4	contact surface W

MEASUREMENT OF ELEVATOR THROUGHPUT AND GRAIN HUMIDITY / TCS / W

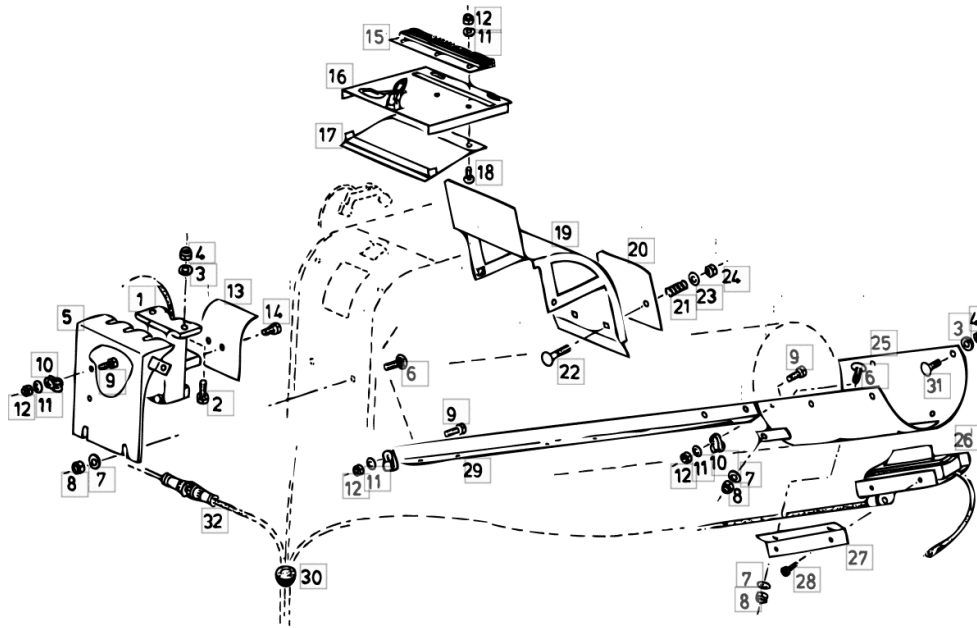


Fig.	Code	QTY	Name
1	16027126	1	front-wheel drive G 1,13,14
2	01112429	0	screw m 10 x 30, d933
3	06214197	6	washer 10.5
4	06209768	6	nut m 10, d985
5	16034585	1	support
6	01137624	8	screw m 8 x 25
7	06214193	8	washer 8.4
8	01104944	8	nut m 8, d985
9	01112264	4	screw m 6 x 20, d933
10	06216402	2	clamp 15,9 ne
11	06214189	4	washer 6.4
12	01114357	4	nut m 6, d985
13	16047108	1	plate
14	01145882	2	screw
15	16034581	1	brush
16	16027504	1	cap
17	16034578	1	lamination
18	01138836	3	screw m 6 x 20, d603
19	16034572	1	lamination
20	16034580	1	plate
21	06215302	1	spring 2 x 12 x 20
22	01138838	2	screw m 8 x 50, d603
23	06214192	1	washer 8.4
24	01104944	1	nut m 8, d985
25	16034590	1	lamination
26	16027128	1	position sensor
27	16034574	2	square
28	01127683	4	screw m 4.2x13
29	16034587	1	rail
30	06543583	1	grommet Ø 28.8
31	01138843	4	screw m 10 x 30
32	16027548	1	cable harness

WORKING HYDRAULIC SYSTEM + 9490

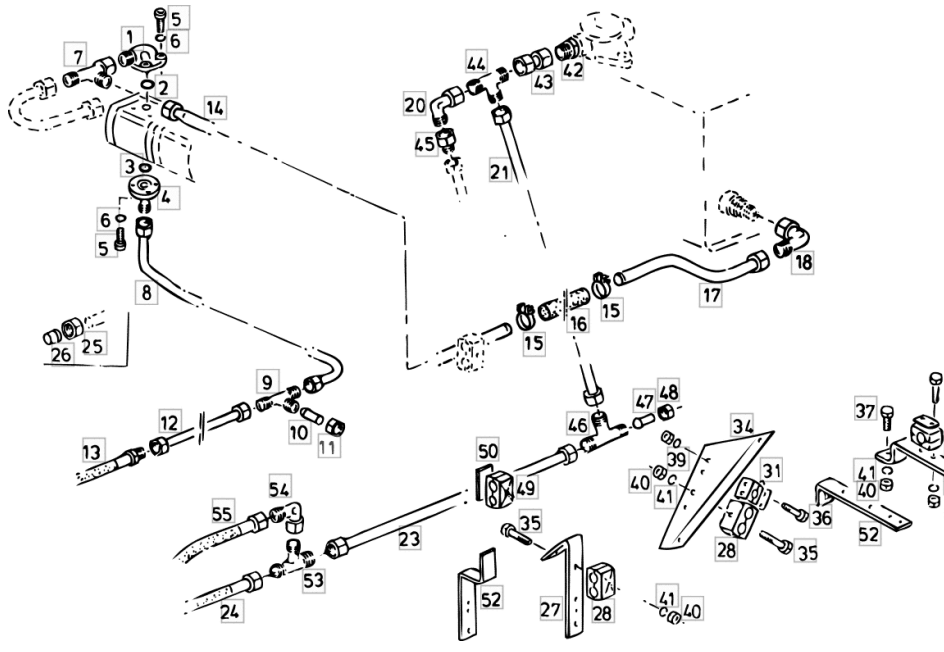


Fig.	Code	QTY	Name
1	16033596	1	flange Ø 22 / m 30 p.2
2	04355526	1	'o' ring Ø 24 x 2,5
3	06214809	1	'o' ring 18x2,5
4	04303499	1	flange
5	01110515	8	screw m 6 x 20
6	01102797	8	washer 6, d128
7	01173335	1	tongue
8	06258572	1	tube
9	01138562	1	pipe fitting dl 18 h 3131
10	01179135	1	plug L 18-V1
11	01127347	1	nut CL 18
12	16001985	1	tube
13	16003266	1	flexible hose dn 16x2300
14	16025268	1	lamination
15	01166378	2	hose clip Ø15/38
16	06261568	1	flexible hose Ø 28.6 / L = mm 200
17	16023765	1	lamination
18	16022066	1	screw ew 28l
19	16018307	1	tube
20	16022066	1	screw ew 28l
21	16042823	1	tube
22	01116713	1	tongue g 22 l
23	16047373	1	tube
24	16044597	1	flexible hose dn 20x2400
25	01116654	0	nut m18-l
25.1	01116655	0	nut cl 22
25.2	01116657	0	nut cl 28
26	01116628	0	ring
26.1	01116629	0	ring
26.2	01116632	0	ring
27	06514682	1	bracket
28	16040287	2	hose clip 28/28
31	06272796	3	bracket PVC, Ø 28
33	16026717	1	bracket
34	16006094	1	saddle
35	01111179	2	screw m 8 x 70, d931
36	01126974	4	screw m 6 x 65, d931
37	01112322	1	screw m 8 p.1.25 x 20
38	01112813	4	nut m 6
39	01102797	4	washer 6, d128
40	01112824	3	nut m 8, d934
41	01102799	3	washer 8, d128
42	16040208	1	threaded joint
43	16042820	1	tube

Section: HYDRAULIC SYSTEM
MAIN HYDRAULIC STEERING

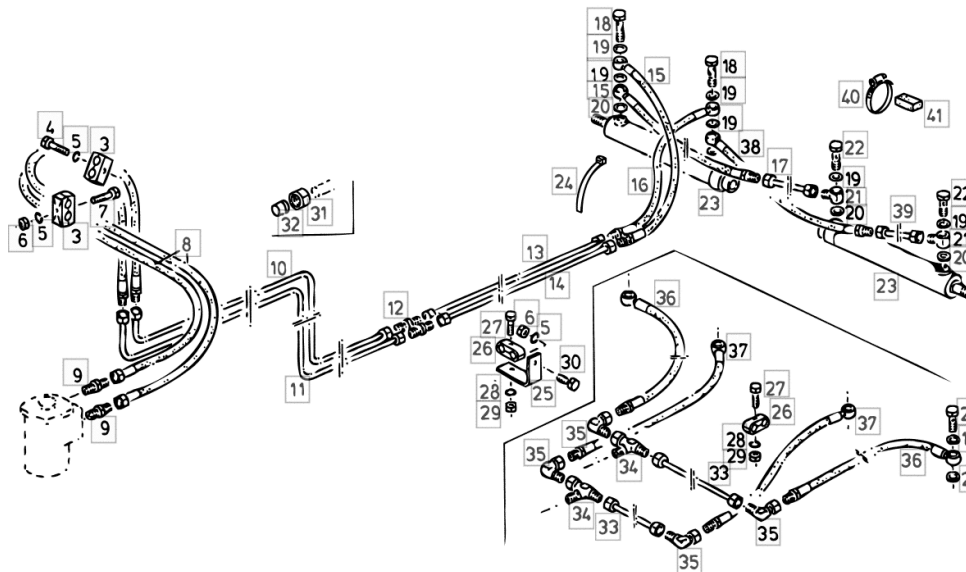


Fig.	Code	QTY	Name
------	------	-----	------

Notes:

POS.NR. 33 - 37 ON REQUEST ADJUSTABLE -----

3	06272953	0	terminal Ø 18
4	01122441	3	screw m 8 p.1.25 x 50
5	01102799	6	washer 8, d128
6	01112824	6	nut m 8, d934
7	01112356	2	screw m 8 x 40
8	16003265	2	flexible hose
9	01143419	2	power control s12b d3901
10	16004052	1	tube
11	16004055	1	tube
12	01116708	2	tongue g 12 l
13	16004064	1	tube
14	16004061	1	tube
15	06546466	2	tube Ø 10 / L = mm 1000
16	06544368	1	tube Ø 10 / L = mm 700
17	16004040	1	tube
18	01178628	2	pipe union
19	01172949	6	'o' ring 16.7
20	16034317	4	ring dka 16
21	16034306	2	pipe fitting 12-LM
22	16034312	2	pipe union m 16 p.1.5
23	06540120	2	cylinder Ø 45 B D42 06540120
24	01172065	6	clamp 4.6 x 146
25	16004097	1	bracket
26	01141605	0	terminal Ø 12/12
27	01112279	0	screw m 6 p.1 x 40
28	01102797	0	washer 6, d128
29	01112813	0	nut m 6
30	01112322	1	screw m 8 p.1.25 x 20
31	01179539	0	nut CL 12 H310
31.1	01116662	0	nut m12-s
32	01116637	0	ring
33	16006133	2	tube W
34	01179538	2	pipe fitting CL 12 S W
35	01179537	4	pipe fitting BL 12 H W
36	06546466	2	tube Ø 10 / L = mm 1000 W

WORKING HYDR. SYSTEM FOR GRAIN TANK TOP / W

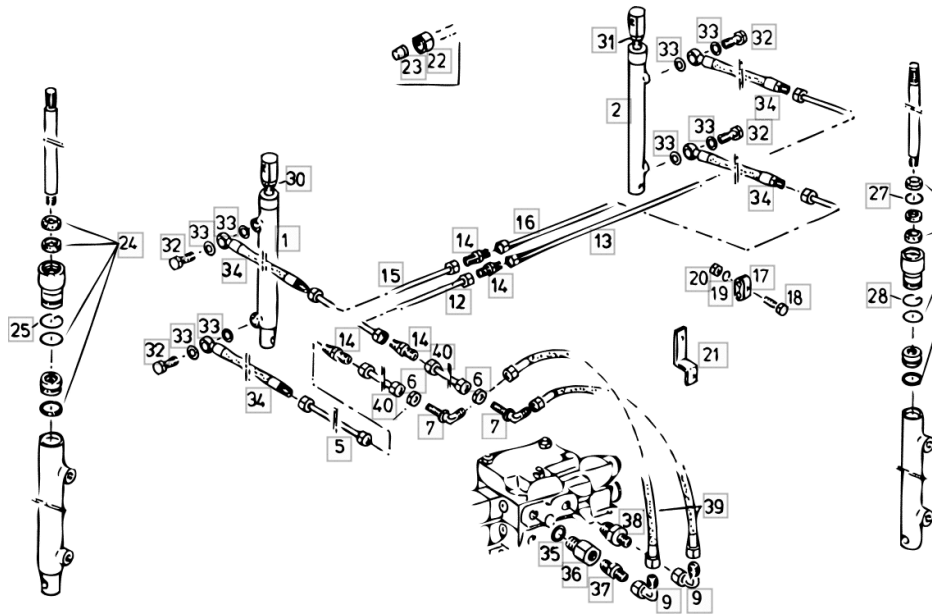
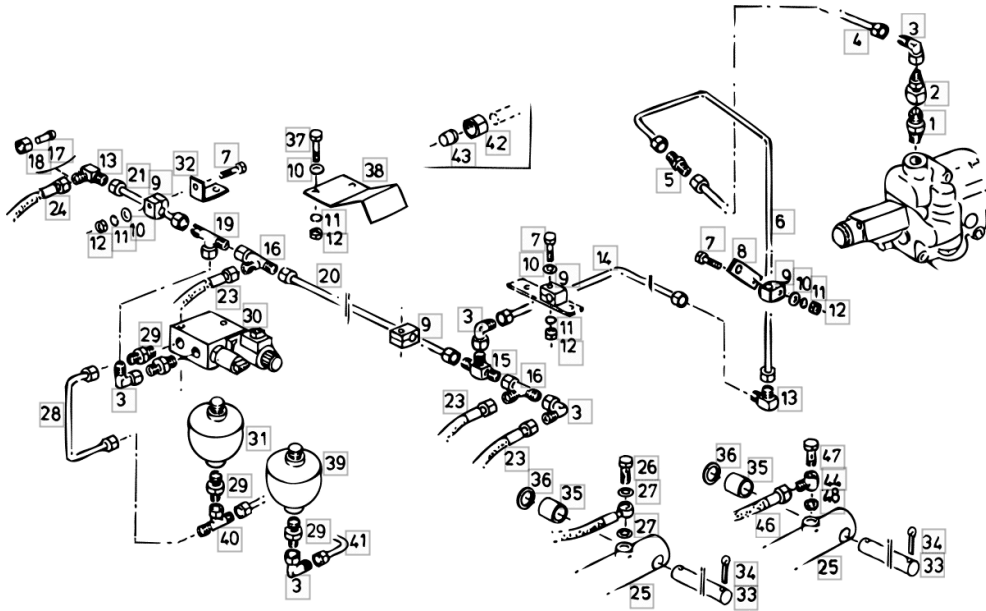


Fig.	Code	QTY	Name
1	16011620	1	roller Ø 32 ☞ 16011620
2	16011622	1	roller Ø 25 ☞ 16011622
5	16025238	1	tube L = mm 1831
6	01121824	2	nut m 14 p.1.5
7	01141652	2	pipe fitting H 3126 Al 8
12	16017903	1	tube L = mm 1937
13	16020884	1	tube L = mm 1909
14	01127359	4	pipe fitting L8, d3902
15	16020878	1	tube L = mm 1793
16	16020881	1	tube L = mm 1625
17	01141548	9	clamp Ø 8/8
18	01127031	9	screw m 6 x 30, d933
19	01102799	9	washer 8, d128
20	01112824	9	nut m 8, d934
21	16010148	1	bracket
22	01127346	0	nut
23	01116635	0	ring
24	16012240	0	seal ring kit
25	06242613	0	ring
26	16012241	0	gasket set
27	06242612	1	ring 28x2.5
28	06242614	1	ring
29	06547571	1	throttle
30	01138932	1	nut m 18 p.1.5
31	01138930	1	nut
32	01119241	4	pipe union m 12 p.1.5
33	01118675	8	ring 12 x 16
34	16020853	4	flexible hose
35	01118718	1	ring 18 x 24
36	16025315	1	reduction m 12 p.1.5/ m 18 p.1.5
37	01143418	1	tongue L8 BM
38	01178305	1	tongue am18x1,5 h3132
39	16025318	2	flexible hose
40	16025241	2	tube L = mm 132
41	01178975	2	tongue

OPERATING HYDRAULICS FOR BALANCES / W

Fig.	Code	QTY	Name
41	16026667	1	tube
42	01179539	0	nut CL 12 H310
43	01116637	0	ring
46	16033329	3	flexible hose + 10176
47	16034312	3	pipe union m 16 p.1.5 + 10176
48	16034317	3	ring dka 16 + 10176



CONTROL BLOCK S 2

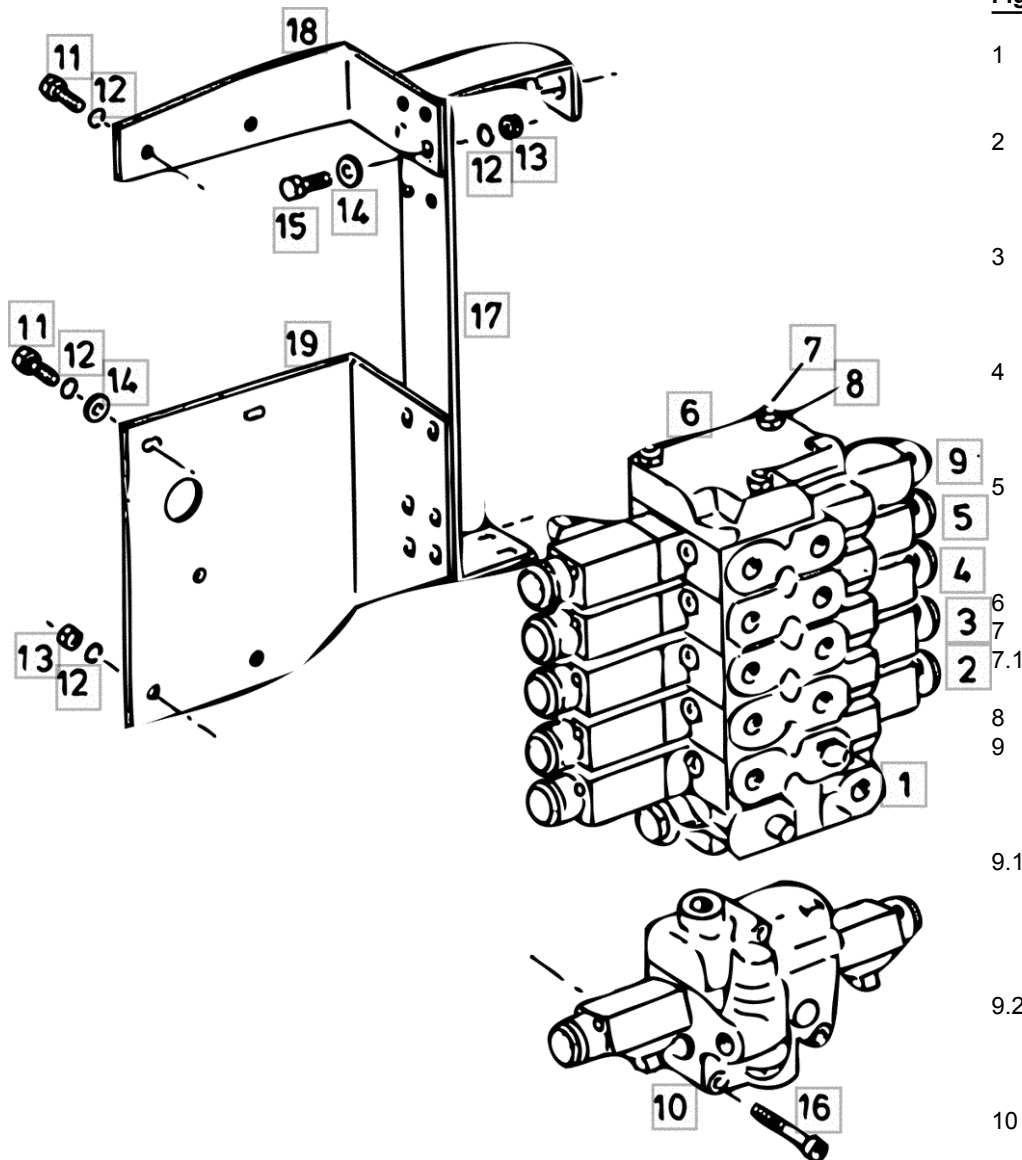
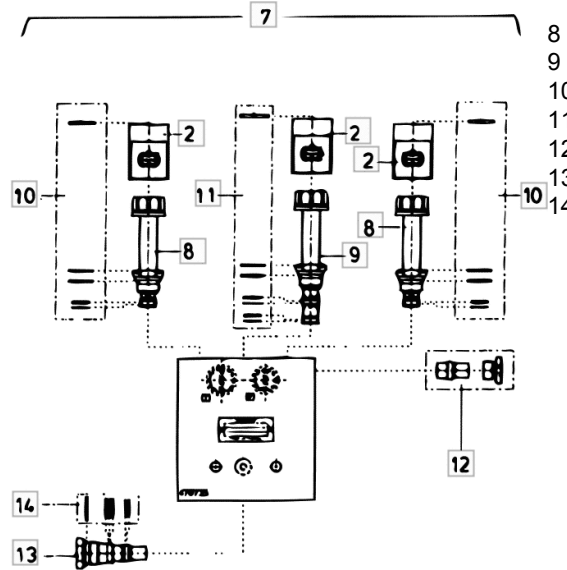
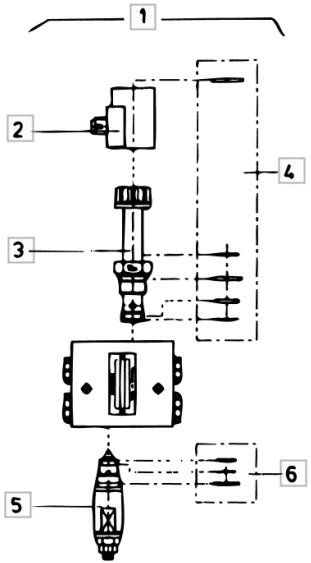


Fig.	Code	QTY	Name
1	16019122	1	valve B D30
2	16039225	1	electro valve B D31 REEL VERTICAL
3	16039226	1	electro valve B D33 GRAIN TANK EMPTYING
4	16033531	1	electro valve B D32 REEL HORIZONTAL
5	16033529	0	electro valve B D33 GRAIN TANK SUPPORT
6	16019128	1	tip
7	16025322	3	rod m 8 x 275
7.1	16029356	0	rod m 8 x 315 W
8	01112824	3	nut m 8, d934
9	16033533	1	electro valve B D34 / W FIELD TRACKER
9.1	16033531	1	electro valve B D32 / W CUTTING ANGLE CONTROL
9.2	16033413	1	electro valve B D35 / W FOLDING CUTTING TABLE
10	16033541	1	regulator - 9885 / B D36 CUTTING TABLE
11	01112322	0	screw m 8 p.1.25 x 20
12	01102799	0	washer 8, d128
13	01112824	0	nut m 8, d934
14	06214192	0	washer 8.4

CONTROL BLOCK INCLINATION HYDRAUL. SYSTEM BALANCE / W

Fig.	Code	QTY	Name
1	16025283	1	small block (EV) ☞ 16025283
2	04423803	7	magneto
3	16055721	1	valve
4	16055722	0	gasket set
5	16055723	1	valve
6	16055724	0	gasket set
7	16048002	2	small block (EV) ☞ 16048002
8	04423808	4	valve
9	16055714	2	valve
10	04423807	0	gasket set
11	16055717	0	gasket set
12	16055718	2	valve
13	16055719	2	valve
14	16055720	0	gasket set



TRAVELING HYDRAULIC EQUIPMENT

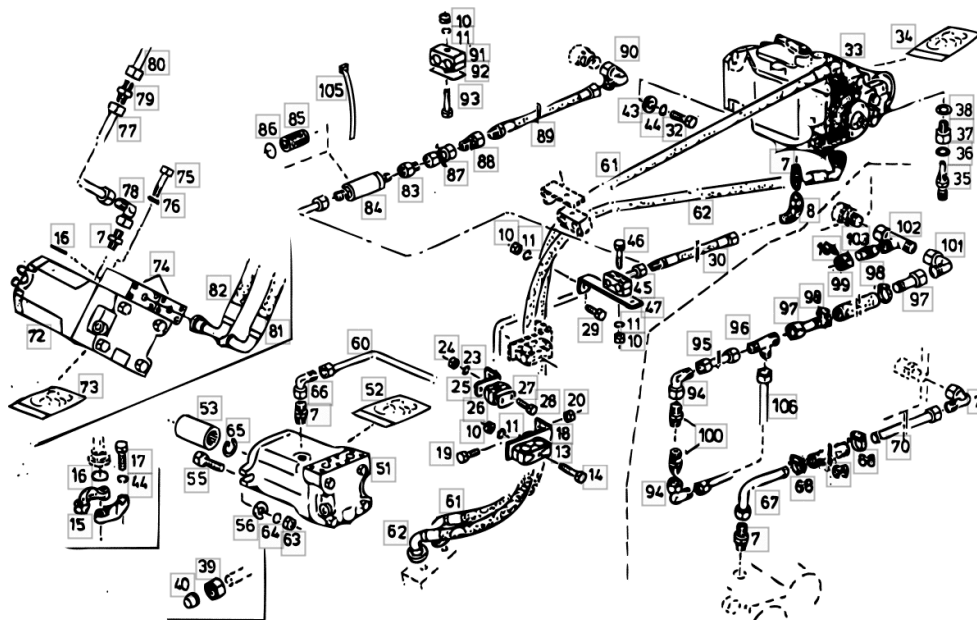
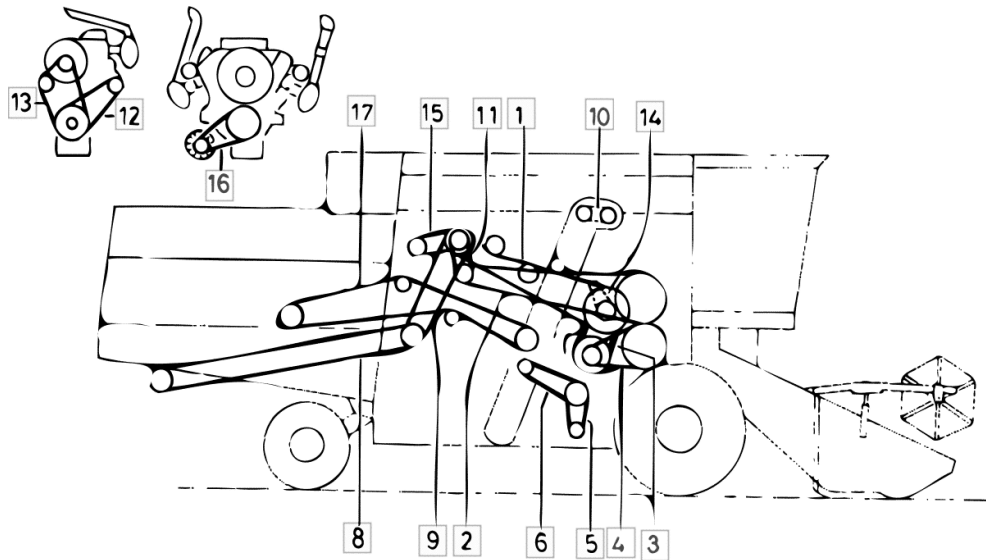


Fig.	Code	QTY	Name
45	06261605	1	hose clip Ø 18/22
46	01127046	1	screw m 8 x 60
47	16004016	1	bracket
51	16012842	1	hydraulic motor hmf 75-02
51.1	16012844	1	hydraulic motor HMF 105-02 W ☞ 16012844
52	16015333	0	gasket set hmf 75-02
52.1	16015334	0	gasket set HMF 105-02 W
53	16013076	1	sleeve
53.1	16013077	1	sleeve W
55	01124846	2	screw m 16 x 60
56	01174740	2	washer 16.5
60	16012887	1	tube
61	16012901	1	flexible hose dn 25x3530 STANDARD EQUIPMENT
62	16012900	1	flexible hose dn 25x3620 STANDARD EQUIPMENT
63	01112886	2	nut m 16
64	01102803	2	washer 16
65	01107748	1	ring 35 x 1.5, d471
66	01172993	1	pipe fitting BL 18
67	16025286	1	lamination
68	01173968	2	clamp Ø 25/40
69	16006123	1	flexible hose
70	16023771	1	lamination
71	01172995	1	tongue
72	16012844	1	hydraulic motor HMF 105-02 W ☞ 16012844
73	16015334	1	gasket set HMF 105-02 W
74	16023894	2	flange W
75	01111524	8	screw W
76	01102801	8	washer 12 W
77	16026684	1	tube W
78	06217066	1	tongue evw18l W

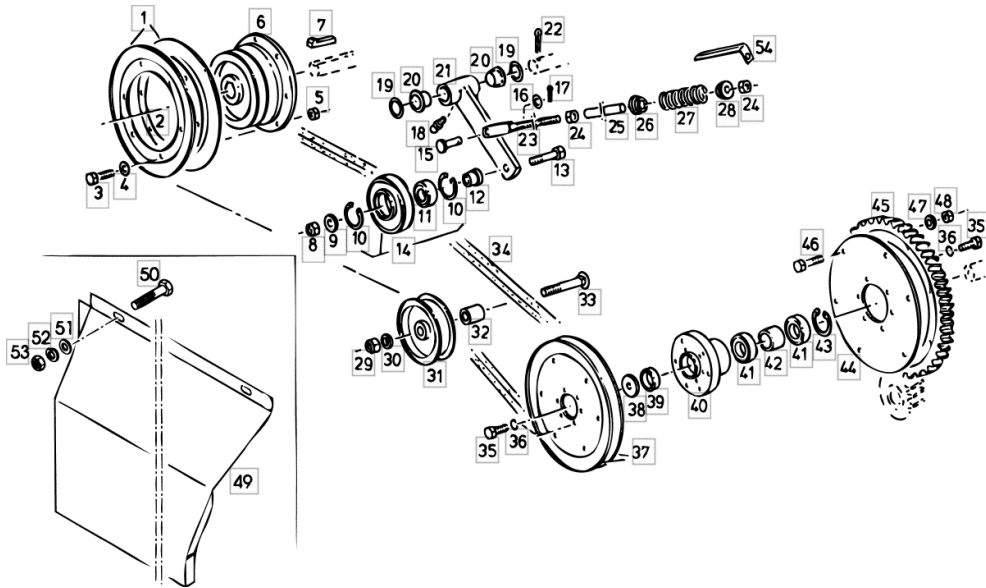
B-BELT AND R.H. CHAINS

Fig.	Code	QTY	Name
16	NE	0	COMPRESSOR-TYPE COOLING PLANT lamination
17	01145053	1	belt 17x6630 li STRAW WALKER CONTROL



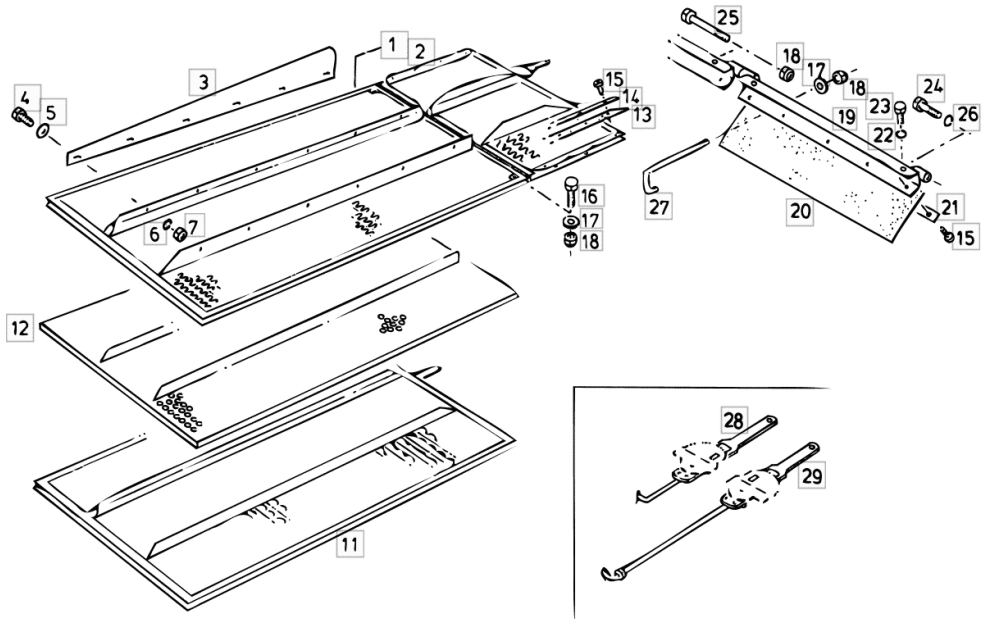
STRAW WALKER CONTROL

Fig.	Code	QTY	Name
45	06282526	1	gear Z = 60 STANDARD EQUIPMENT
45.1	06255346	1	crown wheel W RICE EQUIPMENT
46	01112451	6	screw m 10 p.1.5 x 45
47	01127538	6	washer 10.5
48	06209768	6	nut m 10, d985
49	16013254	1	lamination
50	01112240	6	screw m 6 x 12
50.1	01103316	3	screw m 6 p.1.0 x 16
51	01107158	0	washer 6.6, d125
52	01102797	9	washer 6, d128
53	01112813	9	nut m 6
54	16045899	1	lamination + 9536



STANDARD SCREEN EQUIPMENT

Fig.	Code	QTY	Name
27	16042522	2	rod m 10
28	16031485	0	lever
29	16031486	0	lever



GRAIN PAN AIR GUIDE PARTS + 9490

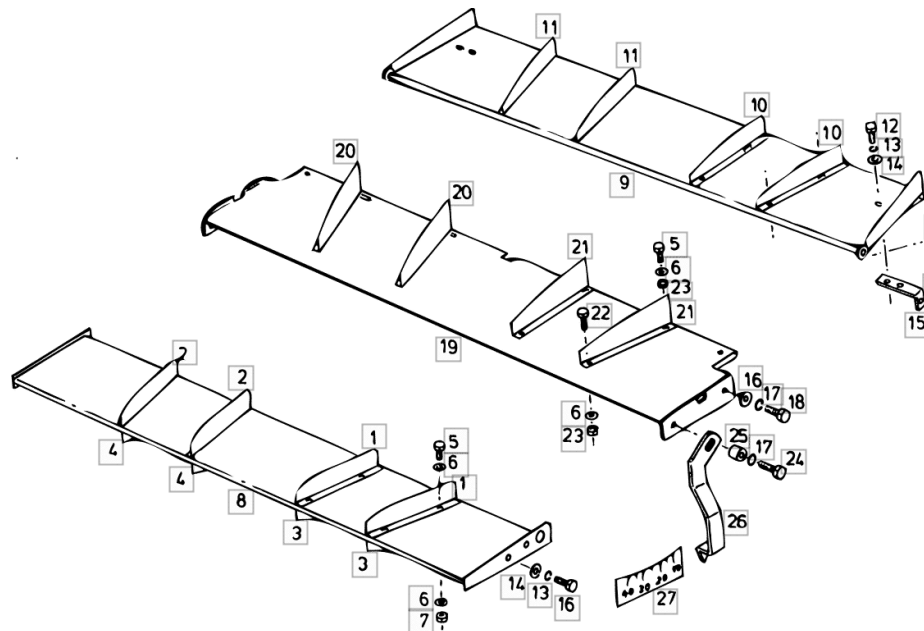
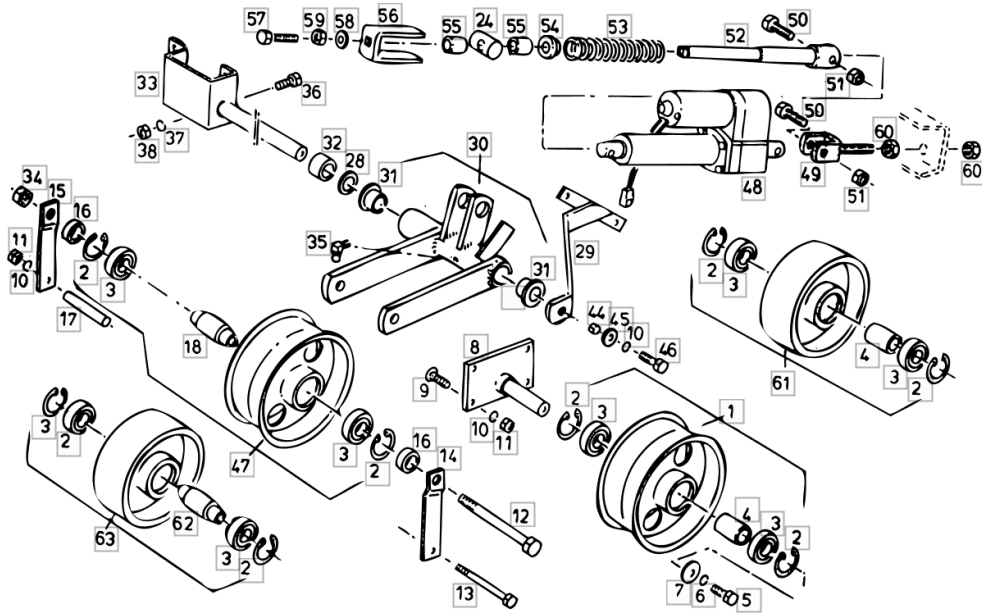


Fig.	Code	QTY	Name
1	16048416	2	lamination sx/lh/li L
2	16048417	2	lamination dx/rh/re R
3	16025510	2	lamination sx/lh/li L
4	16025511	2	lamination dx/rh/re R
5	01112266	4	screw m 6 x 22
6	01107158	0	washer 6.6, d125
7	01114357	8	nut m 6, d985
8	16022891	1	air duct
9	16047632	1	lamination - 9885
10	16047584	2	lamination sx/lh/li - 9885
11	16047583	2	lamination dx/rh/re - 9885
12	01112322	6	screw m 8 p.1.25 x 20
13	01102799	6	washer 8, d128
14	01107163	0	washer 9, d126
15	16047515	2	square - 9885
16	06214197	4	washer 10.5
17	01102800	4	washer 10.2
18	01112418	4	screw m 10 x 25, d933
19	16053735	1	baffle + 9886 / G 19-21
20	16053734	2	lamination dx/rh/re + 9886 / R
21	16053733	2	lamination sx/lh/li + 9886 / L
22	01127031	4	screw m 6 x 30, d933 + 9886
23	01114357	8	nut m 6, d985 + 9886
24	01112445	2	screw m10x40 d933 + 9886
25	06250003	2	spacer Ø 11 / Ø 20 x 16 + 9886
26	16053745	1	lever sx/lh/li + 9886 / L
27.1	01145965	1	stickers dx/rh/re + 9886

BEATER ASSEMBLY DRIVE TENSIONER ROLLERS

Fig.	Code	QTY	Name
58	06214197	1	washer 10.5
59	01102659	1	nut m 10, d934
60	01112886	2	nut m 16
61	NE	0	lamination
62	NE	0	lamination
63	NE	0	lamination



RICE EQUIPMENT COUNTER-BEATER W

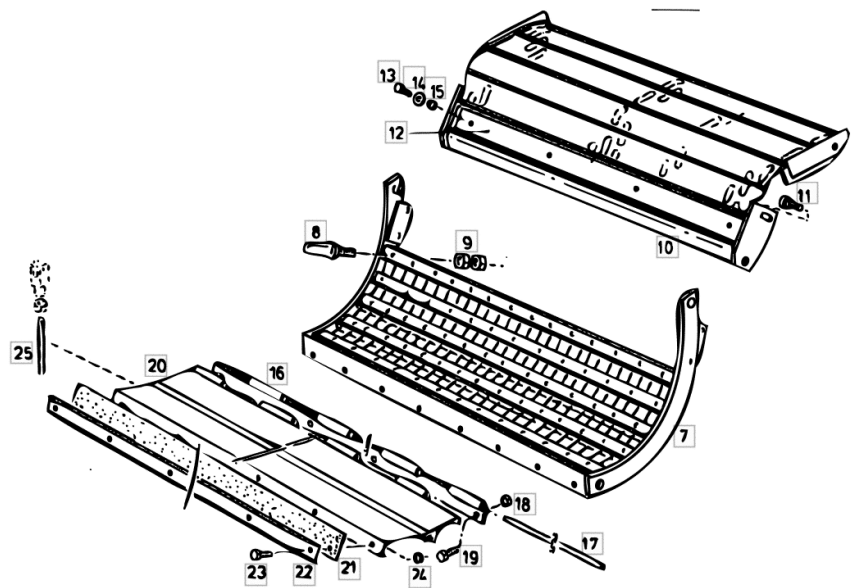


Fig.	Code	QTY	Name
7	16019772	1	grille
8	06241591	75	tooth m 16
9	01112886	150	nut m 16
10	16027266	1	lamination
11	16029032	4	screw m 16 x 80
12	16035073	1	grille
13	01103316	4	screw m 6 p.1.0 x 16
14	06214386	4	disc
15	01114357	4	nut m 6, d985
16	16005292	1	hinge
17	16005294	1	pin Ø 11 / L = mm 1252
18	06209768	8	nut m 10, d985
19	01112429	4	screw m 10 x 30, d933
20	16040590	1	lamination
21	16040594	1	guard
22	16040593	1	lamination
23	01112322	7	screw m 8 p.1.25 x 20
24	01104944	7	nut m 8, d985
25	16040595	2	stud bolt m 12 / L = mm 200

CLICK HERE TO **DOWNLOAD** THE COMPLETE MANUAL

- Thank you very much for reading the preview of the manual.
- You can download the complete manual from: www.heydownloads.com by clicking the link below



- Please note: If there is no response to CLICKING the link, please download this PDF first and then click on it.

CLICK HERE TO **DOWNLOAD** THE COMPLETE MANUAL