

RAPS RSM

CUTTING TABLE AND FEEDING ELEVATOR

CUTTING TABLE

GEAR BOX KNIFE DRIVE YEAR OF CONTRUCTION 1992.....	4P.31.1
ADDITIONAL CUTTING TABLE / CUTTER BAR +A 1992.....	4P.31.1
GEAR BOX KNIFE DRIVE +A 1993 -A 1995 5,40 M - 7,20 M.....	4P.31.2
GEAR BOX KNIFE DRIVE +A 1996 5,40 M - 7,20 M.....	4P.31.3

DIVIDER

SIDE CUTTER BAR RIGHT-HAND.....	4P.32.1
ADDITIONAL CUTTING TABLE CUTTER BAR.....	4P.32.1
ADDITIONAL CUTTING TABLE SIDE KNIFE.....	4P.32.1
SIDE CUTTER BAR RIGHT-HAND ACCESSOIRES.....	4P.32.2
ADDITIONAL CUTTING TABLE GUARDS / -A 1986.....	4P.32.2
SIDE CUTTER BAR RIGHT-HAND HYDRAULIK SYSTEM.....	4P.32.3
ADDITIONAL CUTTING TABLE GUARDS / +A 1987.....	4P.32.3
SIDE CUTTER BAR RIGHT-HAND OIL RESERVOIR.....	4P.32.4
ADDITIONAL CUTTING TABLE ACCESSOIRES.....	4P.32.4
SIDE CUTTER BAR RIGHT-HAND HYDR. PUMP DRIVE.....	4P.32.5
ADDIT.CUTTING TABLE HYDRAULIC SYSTEM R.H. / -A 1986.....	4P.32.5
SIDE CUTTER BAR RIGHT-HAND HYDRAULIC PUMP.....	4P.32.6
ADDIT.CUTTING TABLE HYDRAULIC SYSTEM R.H. / +A 1987.....	4P.32.6
ADDITIONAL CUTTING TABLE SIDE MEMBER R.H.....	4P.32.7
ADDIT.CUTTING TABLE HYDRAULIC SYSTEM L.H. / W / -A 1986.....	4P.32.7
ADDITIONAL CUTTING TABLE SIDE MEMBER L.H.....	4P.32.8
ADDIT.CUTTING TABLE HYDR. SYSTEM L.H. W / +A 1987 -A 1991.....	4P.32.8
ADDIT.CUTTING TABLE HYDR. SYSTEM L.H. W / +A 1992.....	4P.32.9
ADDITIONAL CUTTING TABLE KNIFE DRIVE.....	4P.32.10
ADDIT.CUTTING TABLE ELEKTR. EQUIPMENT SIDE KNIFE L.H.....	4P.32.10
ADDITIONAL CUTTING TABLE GEARBOX KNIFE DRIVE.....	4P.32.11
ADDIT.CUTTING TABLE OIL RESERVOIR -A 1986.....	4P.32.11
ADDIT.CUTTING TABLE OIL RESERVOIR +A 1987.....	4P.32.12
ADDIT.CUTTING TABLE HYDR. PUMP DRIVE -A 1986.....	4P.32.13
ADDIT.CUTTING TABLE HYDR. PUMP DRIVE +A 1987.....	4P.32.14
ADDIT.CUTTING TABLE HYDRAULIC PUMP -A 1986.....	4P.32.15
ADDIT.CUTTING TABLE HYDRAULIC PUMP +A 1987.....	4P.32.16

CLICK HERE TO **DOWNLOAD** THE COMPLETE MANUAL

- Thank you very much for reading the preview of the manual.
- You can download the complete manual from: www.heydownloads.com by clicking the link below



- Please note: If there is no response to CLICKING the link, please download this PDF first and then click on it.

CLICK HERE TO **DOWNLOAD** THE COMPLETE MANUAL

ADDITIONAL CUTTING TABLE CUTTER BAR

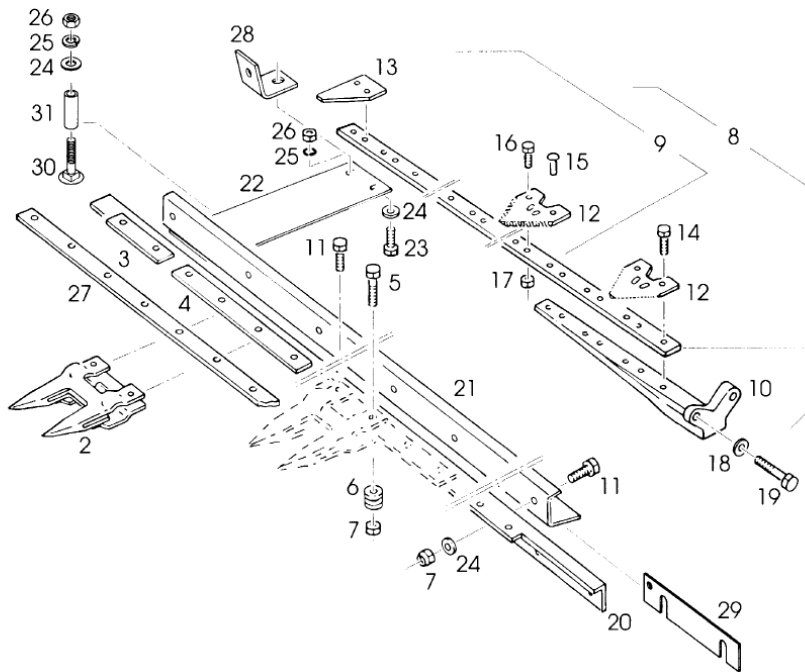
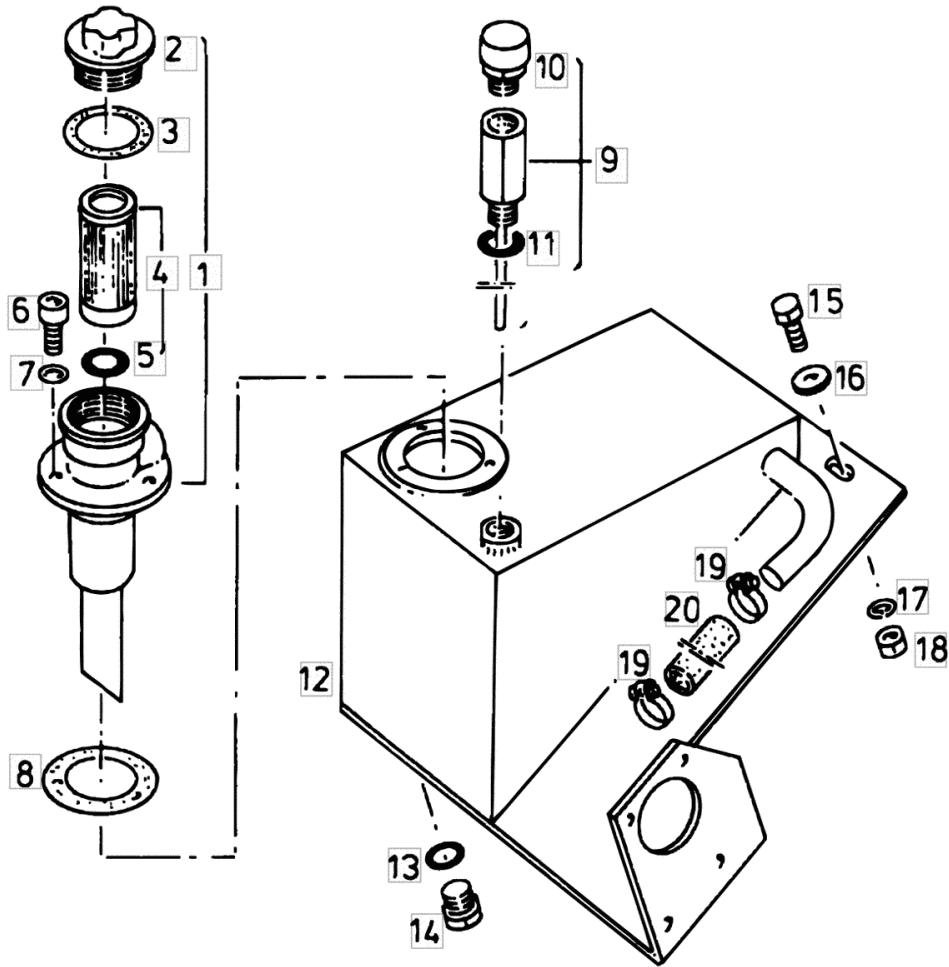


Fig.	Code	QTY	Name
12.6	16007763	160	5,60 M knife blade
13	06503569	2	6,00 M -A 1991 knife blade
14	01124824	10	nut m6x16 d933-10
15	01109647	0	rivet 6x16 d660
16	16006819	0	screw
17	01114357	0	nut m 6, d985
18	01127538	2	washer 10.5
19	01111343	2	screw
20	06508125	1	finger bar 3,00 M
20.1	06508123	1	finger bar 3,60 M
20.2	06508122	1	finger bar 4,20 M
20.3	06508121	1	finger bar 4,80 M
20.4	06536543	1	finger bar 5,40 M -A 1991
20.5	06508127	1	finger bar 5,60 M
20.6	06536544	1	finger bar 6,00 M -A 1991
21	06515245	1	frame 3,00 M
21.1	06237460	1	frame 3,60 M
21.2	06255137	1	frame 4,20 M
21.3	06255152	1	frame 4,80 M
21.4	06536513	1	frame 5,40 M -A 1991
21.5	06256182	1	frame 5,60 M
21.6	06536514	1	frame 6,00 M -A 1991
22	06272907	0	plate -A 1986
22.1	06538868	0	link +A 1987 / HMW 1124
22.2	16026540	0	link HMW 1132/1133

SIDE CUTTER BAR RIGHT-HAND OIL RESERVOIR

Fig.	Code	QTY	Name
1	06501389	1	filter G 1,8
2	06238180	1	cover
3	06238179	1	gasket
4	06503790	1	filter
5	06214701	1	'o' ring 20x3
6	01110650	3	screw
7	01118659	3	'o' ring
8	06241025	1	gasket
9	06501377	1	dipstick
10	06261689	1	air filter
11	06214814	1	'o' ring 19,2x3
12	06500655	1	oil pan
13	01118737	1	'o' ring 22 x 27
14	01118979	1	plug m22x1,5 d7604
15	01112429	3	screw m 10 x 30, d933
16	06214197	3	washer 10.5
17	01102800	3	washer 10.2
18	01102659	3	nut m 10, d934
19	06216440	2	hose clip Ø 25/40
20	06237987	1	flexible hose Ø 22.2 / L = mm 220



RAPS RSM

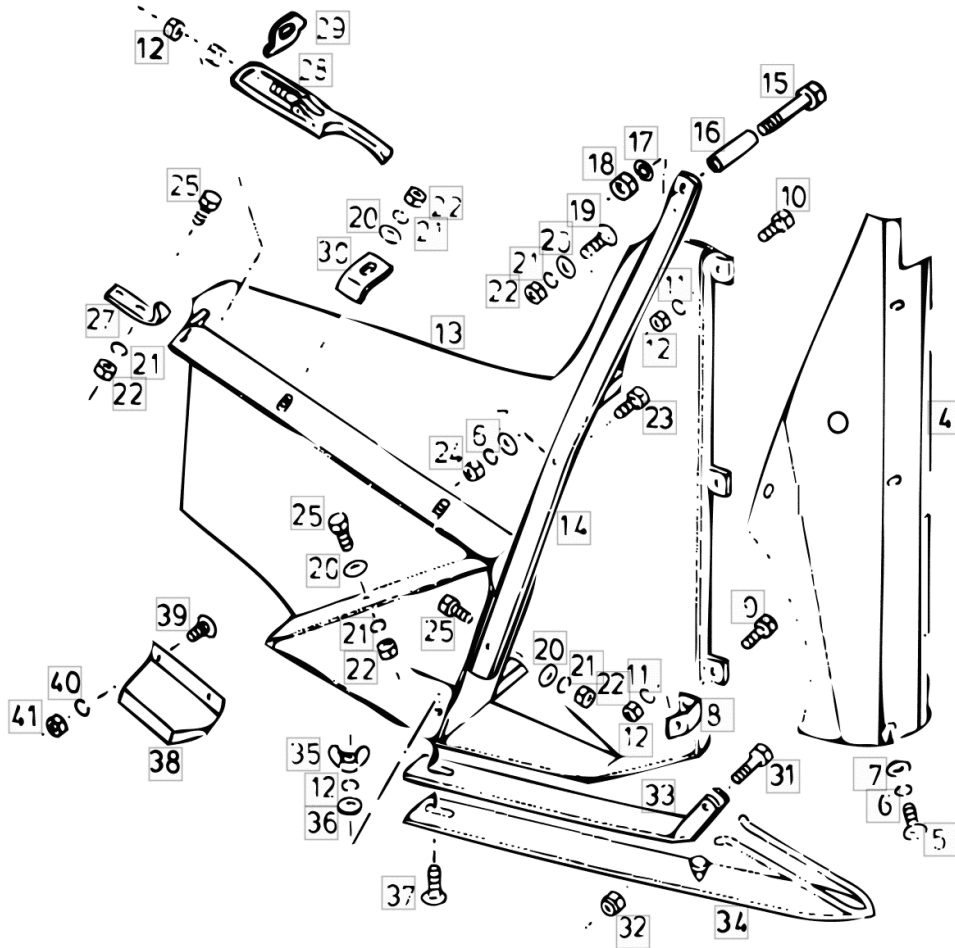
Section: CUTTING TABLE AND FEEDING ELEVATOR

Ref.: 4P.32.7

ADDITIONAL CUTTING TABLE SIDE MEMBER R.H.

Fig.	Code	QTY	Name
------	------	-----	------

39	06214131	2	+A 1992 -A 1992 5,40 M - 6,60 M screw m 6 x 12
40	01102797	2	washer 6, d128
41	01112813	2	nut m 6



ADDITIONAL CUTTING TABLE KNIFE DRIVE

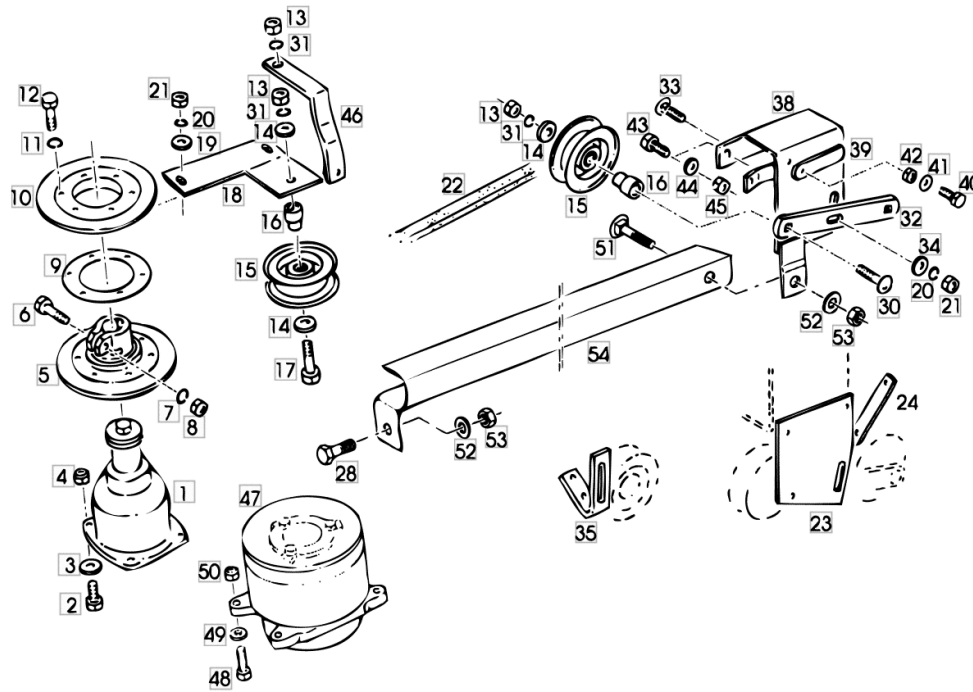


Fig.	Code	QTY	Name
31	01102801	4	washer 12
32.1	16021124	1	rocker +A 1996 HMW 1131-1133
33	01138843	1	screw m 10 x 30
34	01107165	1	washer 10.5
35	06520858	1	bracket -A 1986
38	06536889	1	console +A 1987 -A 1995
39	06537938	1	support +A 1987
40	01112333	1	screw m 8 x 25, d933 +A 1987
41	01116028	1	spring +A 1987
42	01112824	1	nut m 8, d934 +A 1987
43	01112429	3	screw m 10 x 30, d933 +A 1987
44	06214197	3	washer 10.5 +A 1987
45	06209768	3	nut m 10, d985 +A 1987
46	16002344	1	console +A 1990

POS.NR. 1 - 12 5,40 M / 6,00 M -A 1991			

46.1	16007193	1	bracket +A 1993 / 5,4-6,6 M
47	16007091	1	counter-cutter +A 1992 -A 1992 B P13
47.1	16013104	1	transmission kpl. +A 1993 -A 1995 B P14
47.2	16015852	1	transmission kpl. +A 1996 B P15
48	01112560	1	5,40 M - 7,20 M screw m 12 x 50 5,40 M - 7,20 M

CLICK HERE TO **DOWNLOAD** THE COMPLETE MANUAL

- Thank you very much for reading the preview of the manual.
- You can download the complete manual from: www.heydownloads.com by clicking the link below



- Please note: If there is no response to CLICKING the link, please download this PDF first and then click on it.

CLICK HERE TO **DOWNLOAD** THE COMPLETE MANUAL