

FARMLINER 3370

TOOLS AND ACCESSORIES

TOOLS AND ACCESSORIES

IMPLEMENT AND CHAIN LINKS.....4U.35.1

ACCESSORY.....4U.35.2

CHOPPER

BISO-STRAW CHOPPER KNIVES W.....4U.36.1

CLICK HERE TO **DOWNLOAD** THE COMPLETE MANUAL

- Thank you very much for reading the preview of the manual.
- You can download the complete manual from: www.heydownloads.com by clicking the link below

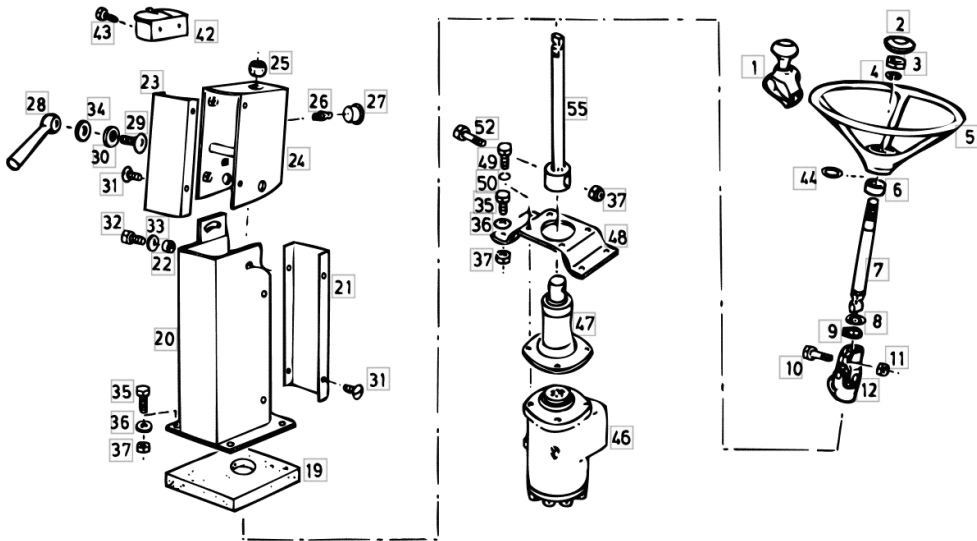


- Please note: If there is no response to CLICKING the link, please download this PDF first and then click on it.

CLICK HERE TO **DOWNLOAD** THE COMPLETE MANUAL

Section: CAB
STEERING COLUMN

Fig.	Code	QTY	Name
55	06528431	1	shaft



CLUTCH CONTROL ASSEMBLY

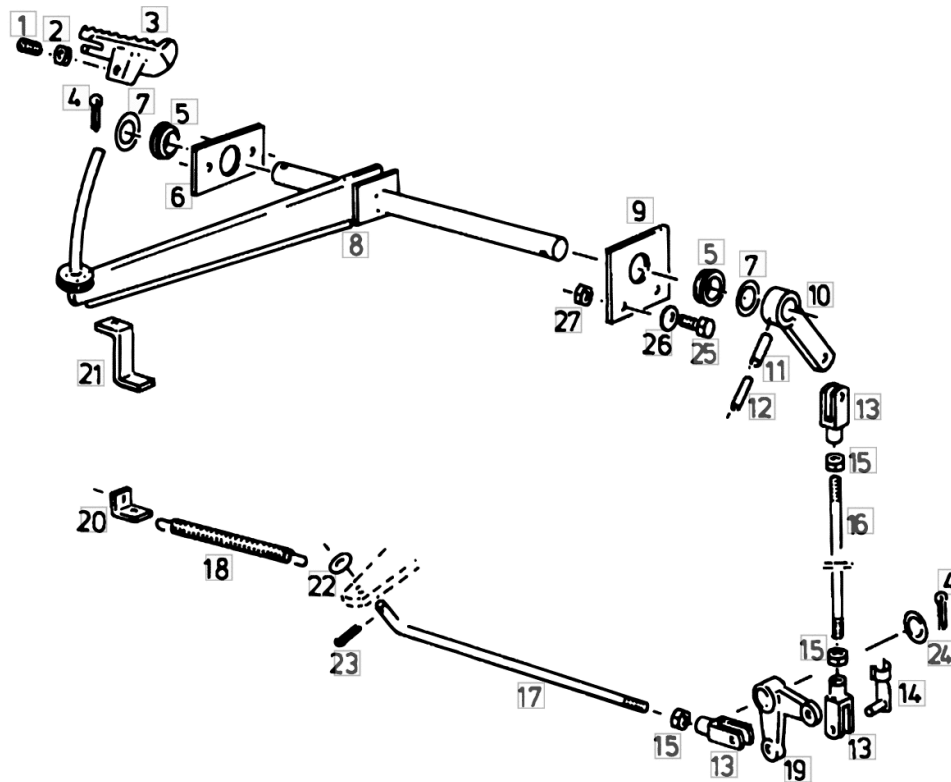


Fig.	Code	QTY	Name
1	06208998	1	pin m10x16-45h
2	01126749	1	nut m 10
3	06296733	1	pedal sx/lh/li
4	01106471	2	split pin 5 x 40
5	06237223	2	sleeve 25,3x35x13
6	06534756	1	plate
7	06214231	4	washer 26 x 40 x 2,0
8	06534752	1	clutch lever
9	06536647	1	plate
10	06535417	1	lever
11	01115476	1	pin 8 x 45, d1481
12	01157336	1	pin 5 x 45
13	01120915	3	ball joint 10 x 40
14	01174057	3	pin 10 x 40
15	01102659	3	nut m 10, d934
16	06536959	1	rod
17	06535419	1	rod
18	06215520	1	spring l-194
19	06235857	1	lever
20	06539988	1	square
21	06536648	1	contact surface
22	01107165	1	washer 10.5
23	01132625	1	split pin 3.2 x 20
24	01107124	4	washer 21x37x3 d125
25	01112418	4	screw m 10 x 25, d933
26	01107165	4	washer 10.5
27	06209768	4	nut m 10, d985

COMPRESSION COOLING SYSTEM W

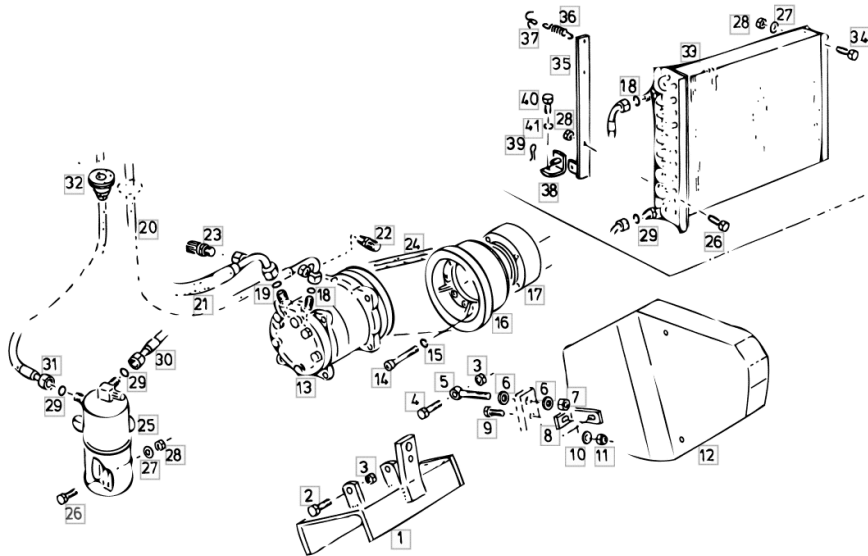


Fig.	Code	QTY	Name
1	16035309	1	support
2	01112439	2	screw m 10 x 35, d933
3	06209768	3	nut m 10, d985
4	01111308	1	screw m 10 x 50
5	01138952	1	screw
6	01123616	2	washer 13.5
7	01112858	2	nut m 12, d934
8	16035333	1	link
9	01112326	1	screw m 8 x 22
10	01107163	1	washer 9, d126
11	01104944	1	nut m 8, d985
12	16035331	1	sump
13	16011376	1	gear compressor
			- 0901 / B I02
13.1	16045127	1	gear compressor TYP C
			+ 0902 / B I03
			☞ 16045127
14	01110622	4	screw m 8x81
15	01102799	4	washer 8, d128
16	06538587	1	belt
17	16035324	1	shim
18	06214679	2	ring 3/4 "
19	04322183	1	rubber plug 7/8 "
20	16019682	1	flexible hose Ø 13.7 / L = mm 2150
			G 20,22
			COMPRESSOR -
			CONDENSATOR
21	16021572	1	tube
			G 21,23 / B I04
			EVAPORATOR -
			COMPRESSOR
22	16011396	1	pipe fitting m 13 x 1
23	16011397	1	pipe fitting m 15 x 1
24	01139224	1	belt
25	16011386	1	filter 0.80 dm³ / 1.0 kg
26	01103316	6	screw m 6 p.1.0 x 16
27	06214189	0	washer 6.4
28	01114357	8	nut m 6, d985
29	04322184	3	rubber plug 5/8"
30	16021571	1	tube
			B I04
			LIQUID TANK
			- EVAPORATOR
31	16021570	1	tube 5/8" / L = mm 3520

CUTTING TABLE INTAKE AUGER

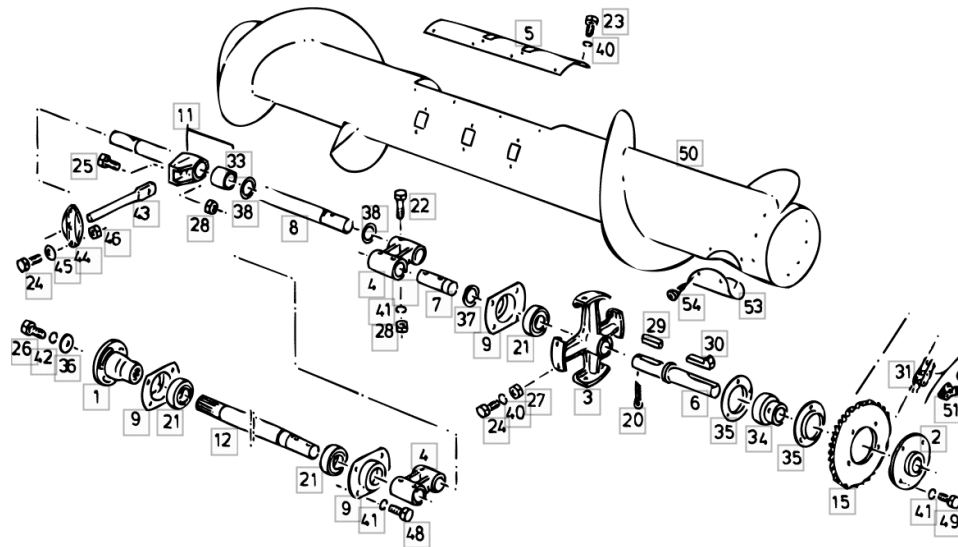


Fig.	Code	QTY	Name
1	06519973	1	hub
2	06519972	1	hub
3	06519733	1	washer
4	06519974	2	bearing
5	06277622	1	cover
6	06277623	1	transmission shaft
7	06277624	1	tube
8	06277625	1	tube
9	06232957	3	ring
11	06237391	10	hub
12	06279499	1	shaft 2,70 M
12.1	06234296	1	shaft 3,00 M
15	06535745	1	chain wheel
20	01106500	1	split pin
21	01136763	3	ball bearing 6206 2rs
22	01111156	6	screw
23	01112232	10	screw m 6 p.1 x 10
24	01103316	28	screw m 6 p.1.0 x 16
25	01112322	10	screw m 8 p.1.25 x 20
26	01112515	1	screw m 12 x 25
27	01112813	0	nut m 6
28	01112824	0	nut m 8, d934
29	06568336	1	spring washer a8x7x56
30	01118262	1	dowel 8x7x40 d6887
31	06213261	1	chain
33	06215711	10	sleeve 30x34x30
34	06215741	1	bearing yb 30
35	06215783	2	flange rb 30
36	06214274	1	washer 13
37	06214317	2	washer 30,5x35x3
38	06214320	11	washer 30.5
40	01102797	0	washer 6, d128
41	01102799	0	washer 8, d128
42	01102801	0	washer 12
43	06287883	10	tooth
44	16024716	10	guide
45	01107158	20	washer 6.6, d125
46	01114357	20	nut m 6, d985
48	01112307	12	screw m 8 p.1.25 x 15, d933
49	01112322	4	screw m 8 p.1.25 x 20
50	06234290	1	screw conveyor 2,70 M

CUTTER BAR

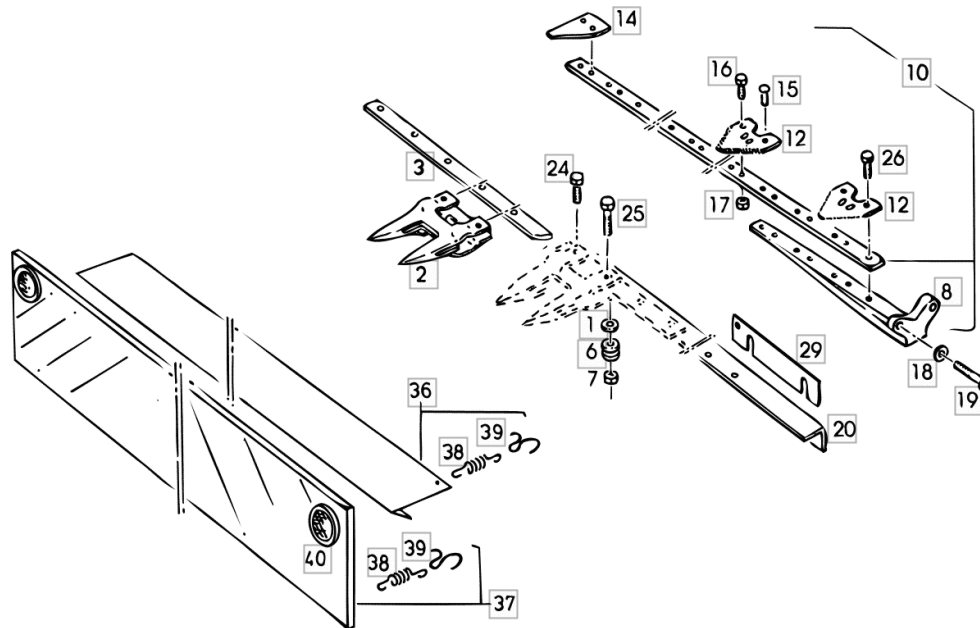


Fig.	Code	QTY	Name
1	01127538	8	washer 10.5
2	06503514	18	double finger 2,70 M
2.1	06503514	20	double finger 3,00 M
3	16022804	1	guide 2,70 M
3.1	16032114	1	guide rail 3,00 M
6	06503517	8	coil 2,70 M
6.1	06503517	9	coil 3,00 M
7	06209768	36	nut m 10, d985
8	06503531	2	knife head
10	16021783	2	attachments 2,70 M
10.1	16026259	2	attachments 3,00 M
12	16007763	72	knife blade 2,70 M
12.1	16007763	80	knife blade 3,00 M
14	06503569	2	knife blade
15	01109647	0	rivet 6x16 d660
16	16006819	0	screw
17	01114357	0	nut m 6, d985
18	01127538	2	washer 10.5
19	01111343	2	screw
20	16022803	1	finger bar 2,70 M
20.1	16053062	1	finger bar 3,00 M
24	01112439	28	screw m 10 x 35, d933
25	01112461	8	screw m 10 x 55, d933
29	16015829	1	shim
36	06310149	1	lamination 2,70 M
36.1	06236415	1	lamination 3,00 M
37	06334540	1	frame 2,70 M / V (S,SF
37.1	06334290	1	frame 2,70 M / V (DK,N

FARMLINER 3370

Section: CUTTING TABLE AND FEEDING ELEVATOR

Ref.: 4P.33.4

REEL

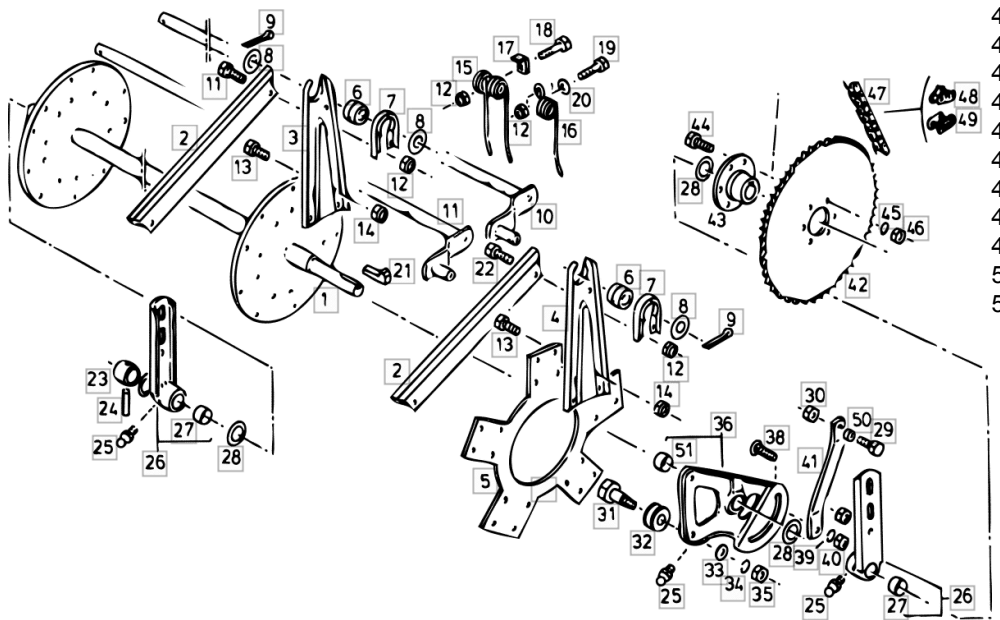


Fig.	Code	QTY	Name
32	06233045	2	pulley
33	01107110	2	washer 13.5
34	01102801	2	washer 12
35	01112858	2	nut m 12, d934
36	06279584	1	arm
38	01138843	1	screw m 10 x 30
39	01102800	1	washer 10.2
40	01102659	1	nut m 10, d934
41	06535747	1	carrier
42	06277676	1	chain wheel
43	06233047	1	hub
44	01112322	6	screw m 8 p.1.25 x 20
45	01102799	6	washer 8, d128
46	01112824	6	nut m 8, d934
47	06213201	1	chain
48	01139295	0	link
49	06213144	0	chain link 085 1e
50	06535748	2	bushing
51	06235995	2	bearing 25 x 28 x 15

FARMLINER 3370

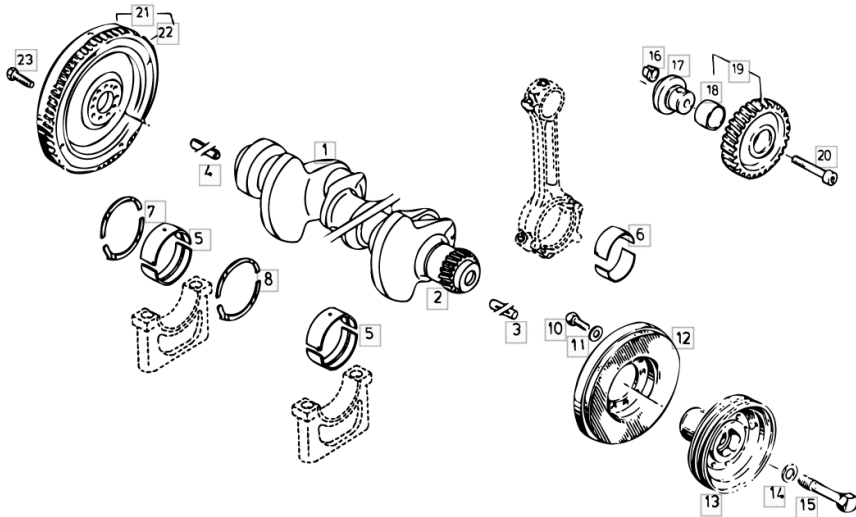
ENGINE

GENERAL

ENGINE ASSEMBLY PARTS.....	4A.00.1
ENGINE BEARING.....	4A.00.2
ENGINE OIL PAN.....	4A.00.3
ENGINE FRONT COVER.....	4A.00.4
ENGINE COVER WITH IDLER PULLEY.....	4A.00.5
ENGINE STOP-SWITCH MOUNTING.....	4A.00.6
ENGINE OIL PUMP.....	4A.00.7
ENGINE CRANKSHAFT.....	4A.00.8
ENGINE CYLINDER / PISTON.....	4A.00.9
ENGINE CYLINDER HEAD.....	4A.00.10
ENGINE TIMING GEARS.....	4A.00.11
ENGINE CAMSHAFT.....	4A.00.12
ENGINE LUBE OIL COOLER.....	4A.00.13
ENGINE OIL FILTER FUEL FILTER.....	4A.00.14
ENGINE INJECTION PUMP.....	4A.00.15
ENGINE FUEL PUMP.....	4A.00.16
ENGINE INJECTION PIPES F/BF 8L 513.....	4A.00.17
ENGINE OIL LINES AND FUEL LINES.....	4A.00.18
ENGINE INJECTOR.....	4A.00.19
ENGINE AIR INTAKE PIPE.....	4A.00.20
ENGINE AIR BLOWER.....	4A.00.21
ENGINE AIR GUIDE.....	4A.00.22
ENGINE EXHAUST MANIFOLD.....	4A.00.23
ENGINE GENERATOR.....	4A.00.24
ALTERNATOR MOTOR INDIVIDUAL COMPONENTS.....	4A.00.25
ENGINE STARTER MOTOR.....	4A.00.26
ENGINE HYDRAULIC PUMP.....	4A.00.27
ENGINE SEALING SET.....	4A.00.28
FUEL TANK.....	4A.00.29
AIR DUCT DRY AIR CLEANER.....	4A.00.30
ENGINE ROTARY RADIATOR FILTER ASSEMBLY PARTS.....	4A.00.31
EXHAUST SYSTEM - 0876.....	4A.00.32
EXHAUST SYSTEM + 0877.....	4A.00.33
ENGINE SPEED CONTROL DEVICE F/BF 8L 513.....	4A.00.34

Section: ENGINE
ENGINE CRANKSHAFT

Fig.	Code	QTY	Name
1	02929340	1	crank shaft -A 03.98 / G 2-8
1.1	02931048	1	crank shaft +A 04.98 / G 2-8
2	04156890	1	gear
3	01137239	1	pin
4	01157357	1	grain
5	03362379	5	bearing 70,00 MM
5.1	03362380	0	bearing 69,75 MM
5.2	03362381	0	bearing 69,50 MM
6	02137750	4	conrod.bearing 60,00 MM
6.1	04231896	0	bearing 59,75 MM
6.2	02137758	0	conrod.bearing 59,50 MM
7	04232786	1	shim 2,94 MM
7.1	04232788	1	disc 3,14 MM
8	04232787	1	shim 2,94 MM
8.1	04232789	1	disc 3,14 MM
10	01112307	8	screw m 8 p.1.25 x 15, d933
11	01172303	8	washer
12	03362699	1	shoch.absorber
13	02230774	1	pulley
14	01216128	1	washer
15	01166951	1	screw
16	02101007	1	bushing
17	02234172	1	pin
18	03362538	1	bushing
19	04153996	1	gear wheel
20	01110688	1	screw
21	02160759	1	flywheel
22	02131081	1	crown wheel
23	01104845	10	screw m10x1x35 10.9



Section: ENGINE
ENGINE INJECTION PUMP

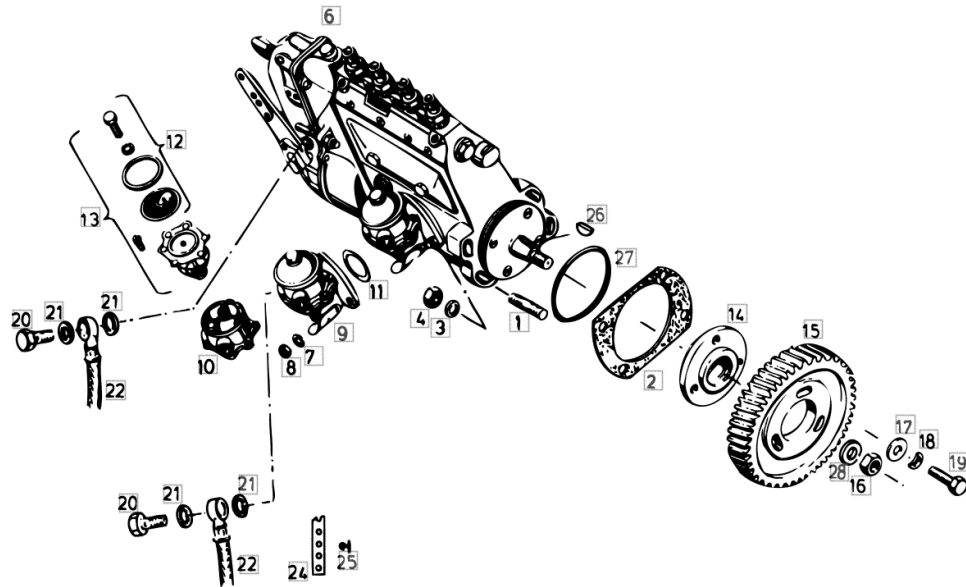


Fig.	Code	QTY	Name
1	01174190	4	screw
2	NE	0	lamination
3	01107105	4	washer 10.5
4	01102659	4	nut m 10, d934
6	02232476	1	injector pump -A 05.96
6.1	04231583	1	injector pump +A 06.96 - -A 07.96
6.2	04232239	1	injector pump +A 08.96
7	01102797	3	washer 6, d128
8	01112813	3	nut m 6
9	04231021	1	feed pump B A16
10	NL	0	not serviceable
11	01174706	1	'o' ring 38x3
12	RS	0	parts set B A16
13	RS	0	parts set B A16
14	02235117	1	hub
15	02139287	1	gear
16	01100169	1	nut
17	02132685	3	washer
18	01107283	3	washer 8.2
19	01103478	3	screw
20	01119246	2	pipe union H 3102 -D10 M
21	01118693	4	gasket 14x20
22	01173697	2	tube
24	01169359	1	band
25	01169360	1	stop
26	01118326	1	key
27	01166103	1	'o' ring
28	02235118	1	washer

CLICK HERE TO **DOWNLOAD** THE COMPLETE MANUAL

- Thank you very much for reading the preview of the manual.
- You can download the complete manual from: www.heydownloads.com by clicking the link below

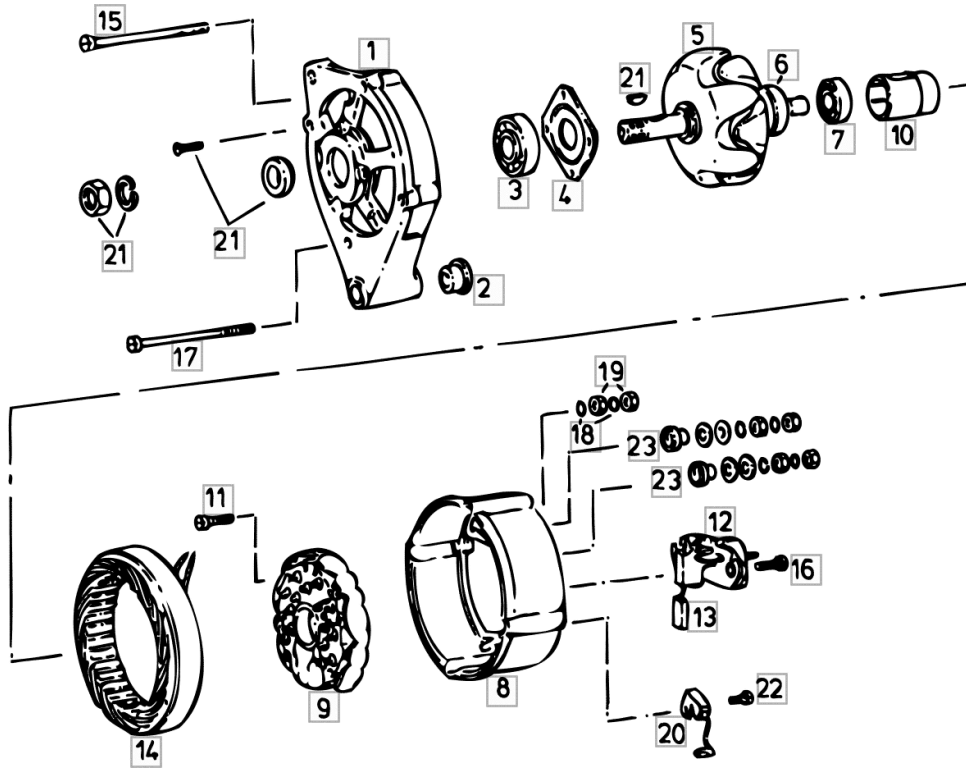


- Please note: If there is no response to CLICKING the link, please download this PDF first and then click on it.

CLICK HERE TO **DOWNLOAD** THE COMPLETE MANUAL

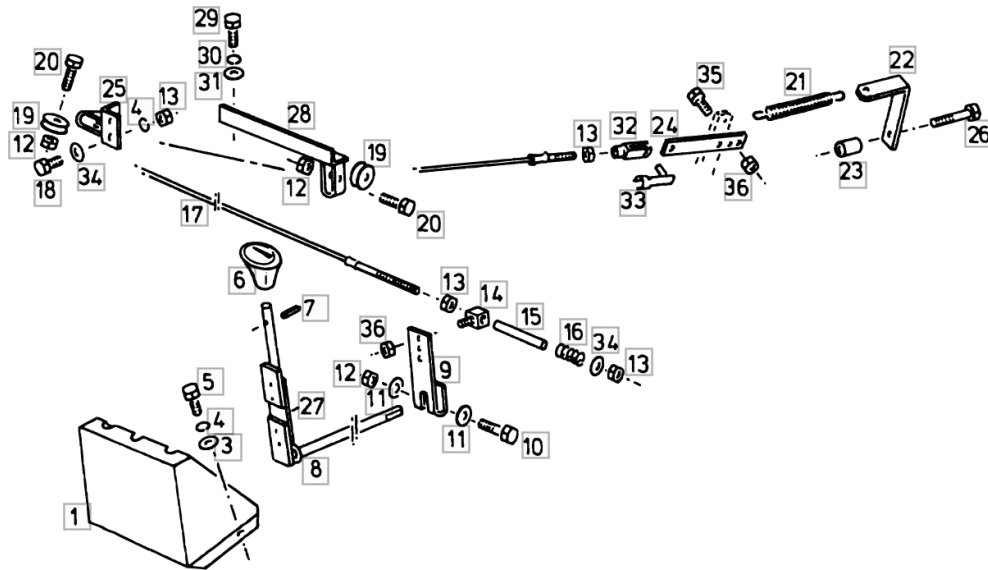
ALTERNATOR MOTOR INDIVIDUAL COMPONENTS

Fig.	Code	QTY	Name
1	01320414	1	bearing
2	01321067	1	bushing
3	01318680	1	ball bearing
4	01321476	1	plate
5	01318758	1	impeller
6	01318759	1	ring
7	01318569	1	ball bearing
8	01318761	1	bearing
9	01318762	1	rectifier
10	01321068	1	pin
11	01320991	1	screw
12	01177145	1	regulator
13	01318683	1	plug
14	01308785	1	u bolt
15	01321477	3	screw
16	01318549	2	screw
17	01307178	1	screw
18	01318550	2	spring disc
19	01321485	2	nut
20	02985186	1	suppressor capacitor
21	01307188	1	parts set
22	01321484	1	screw
23	01321072	1	parts set



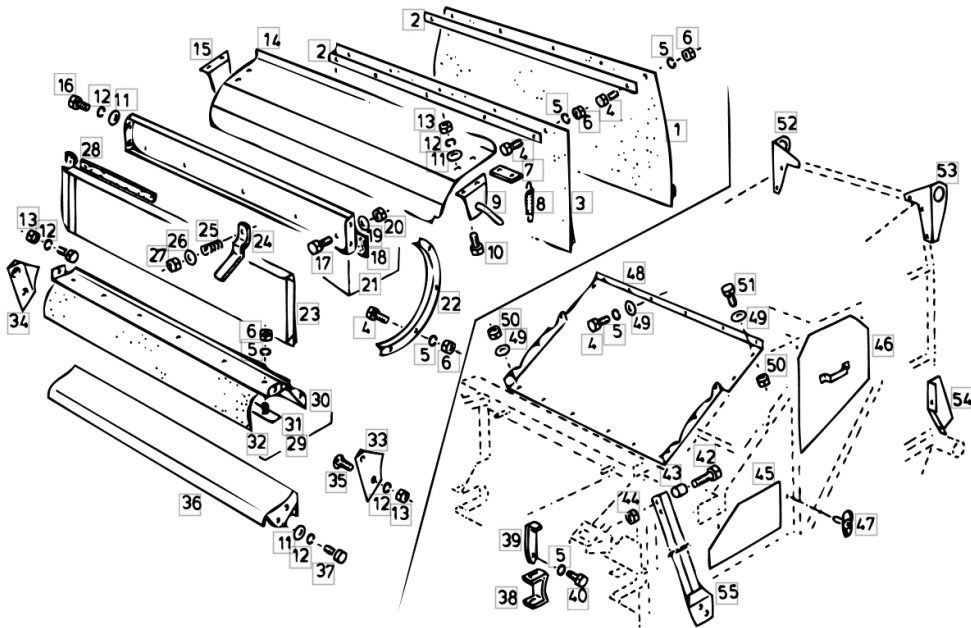
ENGINE SPEED CONTROL DEVICE F/BF 8L 513

Fig.	Code	QTY	Name
1	06542662	1	locking segment
3	01107158	2	washer 6.6, d125
4	01102797	4	washer 6, d128
5	01112240	2	screw m 6 x 12
6	06539952	1	knob
7	01157322	1	grain
8	06541294	1	lever G 8,27
9	06541209	1	lever
10	01122441	1	screw m 8 p.1.25 x 50
11	06214192	2	washer 8.4
12	01104944	3	nut m 8, d985
13	01112813	4	nut m 6
14	06542665	1	ball joint
15	06542668	1	tube
16	06215330	1	spring
17	06542666	1	crate 2400lg
18	01112264	2	screw m 6 x 20, d933
19	06581493	2	roller
20	01112333	2	screw m 8 x 25, d933
21	06215520	1	spring l-194
22	06526693	1	support
23	06509505	1	tube
24	06541684	1	link
25	06536082	1	support
26	01111207	1	screw m 8 x 100
27	06239218	1	ring
28	06541680	1	bracket
29	01112407	2	screw m 10 x 20, d933
30	01102800	2	washer 10.2
31	01107165	2	washer 10.5
32	01120904	1	ball joint
33	01171901	1	pin 6 x 24
34	06214189	2	washer 6.4
35	01112264	1	screw m 6 x 20, d933
36	01114357	2	nut m 6, d985



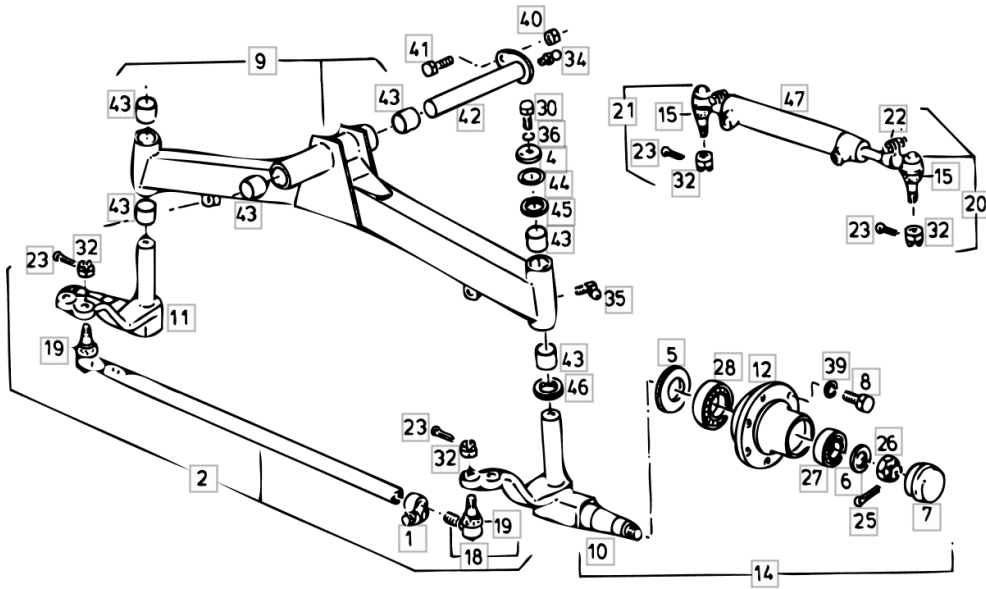
Section: FRAME
CHASSIS

Fig.	Code	QTY	Name
46	06539756	1	cover
47	06280501	0	stop
48	06534429	1	lamination
49	01107158	0	washer 6.6, d125
50	01114357	0	nut m 6, d985
51	01112264	6	screw m 6 x 20, d933
52	06540378	1	bracket sx/lh/li
53	06540377	1	bracket sx/lh/li
54	06281975	1	sump
			L
54.1	06281976	1	sump
			R
55	06543364	1	bracket



Section: FRONT AXEL
STEERING AXLE

Fig.	Code	QTY	Name
41	01112529	1	screw m 12 x 30, d933
42	06279465	1	pin
43	06215731	6	bushing 40 x 44 x 40
44	06214492	0	shim 40x50x0,5
45	06508994	2	shim
46	06215011	4	washer 40x60x1
47	06501366	1	jack B D17



FARMLINER 3370

GRAIN TRANSPORT ELEMENTS

LIFT

GRAIN ELEVATOR.....4M.28.1

GRAIN TANK

GRAIN TANK.....4M.29.1

ELEVATOR HEAD DISTRIBUTOR AUGER.....4M.29.1

GRAIN TANK CONTROL.....4M.29.2

GRAIN TANK UNLOADER.....4M.29.3

GRAIN TANK UNLOADING PIPE.....4M.29.4

Section: GRAIN TRANSPORT ELEMENTS
GRAIN TANK UNLOADING PIPE

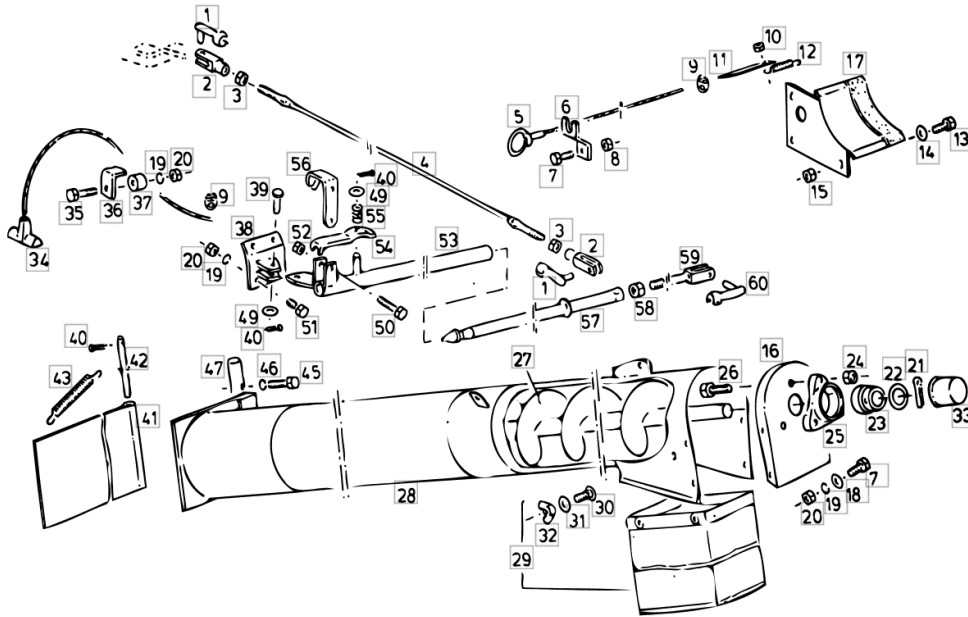
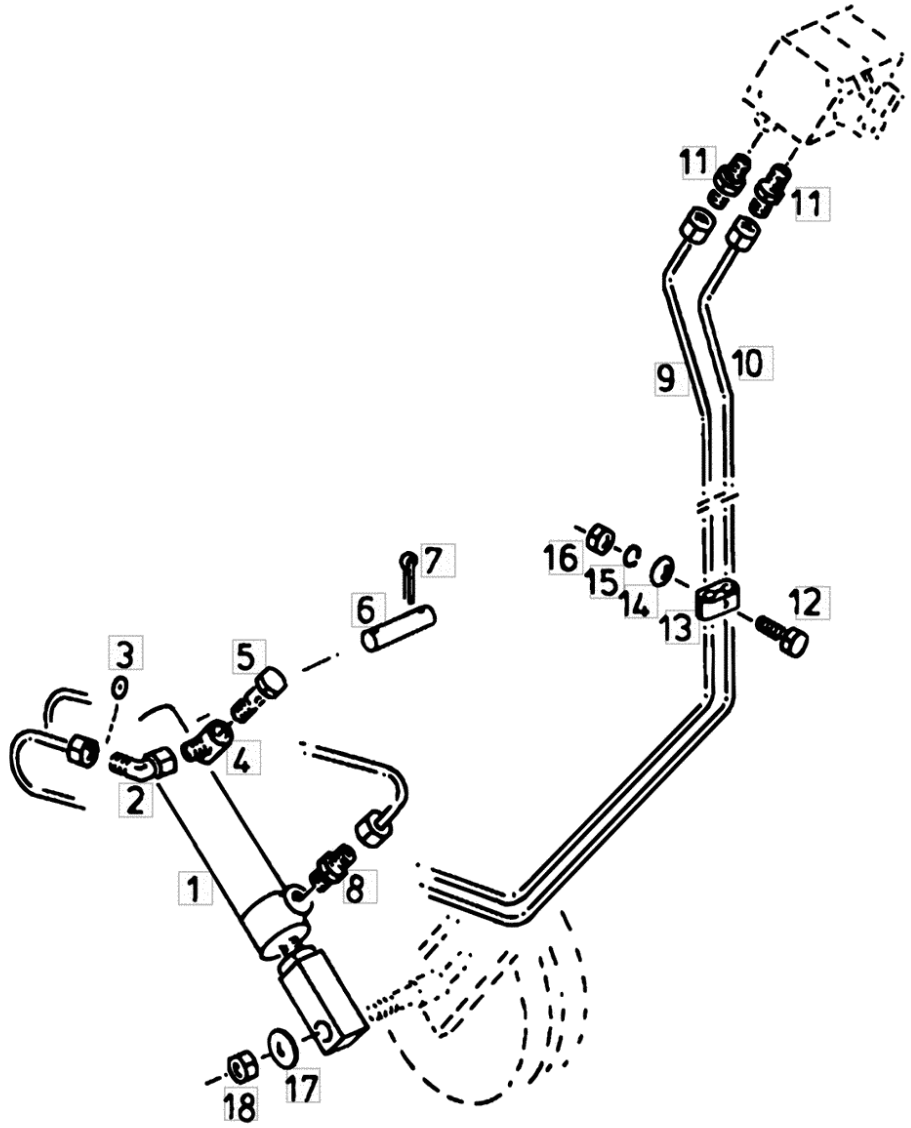


Fig.	Code	QTY	Name
1	06215265	2	smau pin 12 x 48
2	01120923	2	fork head
3	01112858	3	nut m 12, d934
4	06537583	1	crate I-2450
5	06518154	1	crate 2x2570
6	06505376	1	bracket
7	01112307	5	screw m 8 p.1.25 x 15, d933
8	01104944	1	nut m 8, d985
9	01101414	2	clamp 3mm d741
10	01112813	2	nut m 6
11	06284555	1	link
12	06215494	1	spring
13	01112418	3	screw m 10 x 25, d933
14	06214197	3	washer 10.5
15	06209768	3	nut m 10, d985
16	06544263	1	lamination
17	06535851	1	plate
18	01174941	4	disc 8,4x18x1,5
19	01102799	9	washer 8, d128
20	01112824	9	nut m 8, d934
21	01106500	1	split pin
22	06214329	1	disc 36 x 51 x 3.0
23	06215743	1	bearing ge 35 krrb
24	06209769	3	nut m 12, d985
25	06515174	1	bearing housing Ø 35
26	01112529	3	screw m 12 x 30, d933
27	06544265	1	screw conveyor
28	16020559	1	tube
29	06238284	1	tube
30	01108503	4	screw
31	06214189	4	washer 6.4
32	01107356	4	wing nut
33	06261841	1	cover PVC
34	06534689	1	belt
35	01124457	1	screw m 8 x 45
36	06261834	1	support
37	06261833	1	spacer
38	06506266	1	plate
39	06210009	1	smau pin 10 x 28 x 24
40	01132625	0	split pin 3.2 x 20
41	06238261	1	shutter
42	06209961	1	pin
43	06215550	1	spring 3.5 x 18.5 x 174
44	06209768	1	nut m 10, d985

HYDR. ADJUSTING DEV. TRAVEL SPEED VARIAT.

Fig.	Code	QTY	Name
1	06536302	1	jack B D14
2	06272709	1	tongue evw 6l
3	06520042	1	reduction Ø 0.6
4	06216938	1	threaded joint
5	01173816	1	pipe union hs m10x1
6	06277545	1	pin
7	01143005	2	split pin 4 x 45 d94
8	01143424	1	tongue L6 B-M
9	06537024	1	tube 6x1600
10	06537027	1	tube 6x1876
11	01101188	2	tongue ge 6 sm
12	01127031	1	screw m 6 x 30, d933
13	01141550	1	clamp Ø 6/6
14	06214189	1	washer 6.4
15	01102797	1	washer 6, d128
16	01112813	1	nut m 6
17	06214274	1	washer 13
18	01112858	2	nut m 12, d934



Section: HYDRAULIC SYSTEM
HYDROSTATIC STEERING S 3

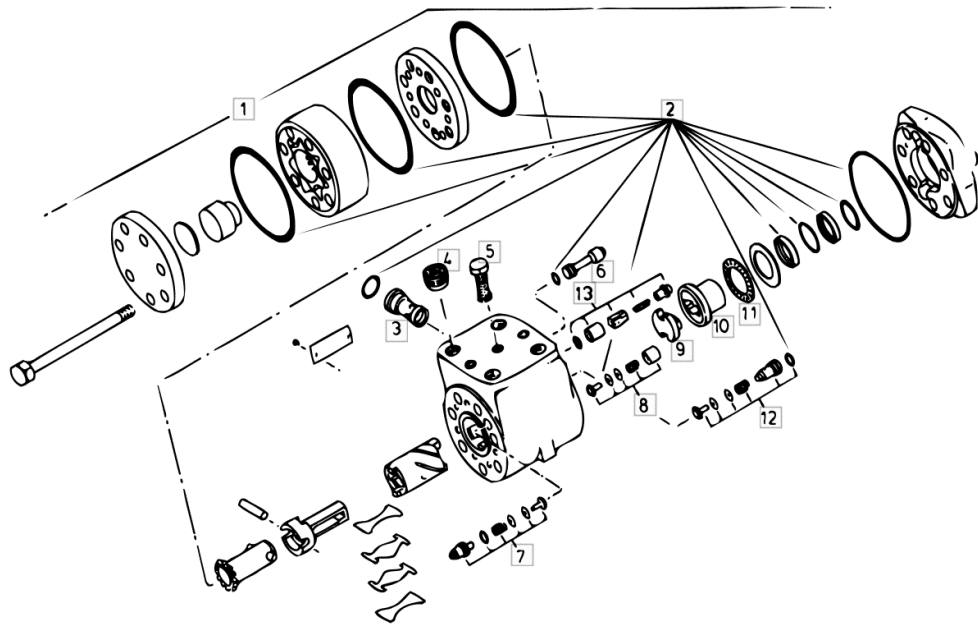


Fig.	Code	QTY	Name
1	06538663	1	hydrosteering
2	06543274	0	seal ring kit
3	06238171	1	insert
4	04345987	1	insert
5	04345988	1	screw
6	04345977	1	plug
7	06507805	1	valve
8	06507806	1	inlet valve
9	06507801	1	none
10	06543291	1	pin
11	06507803	1	bearing
12	06507807	1	inlet valve
13	04354971	1	valve

Section: STRAW WALKERS
SIEVE BOX

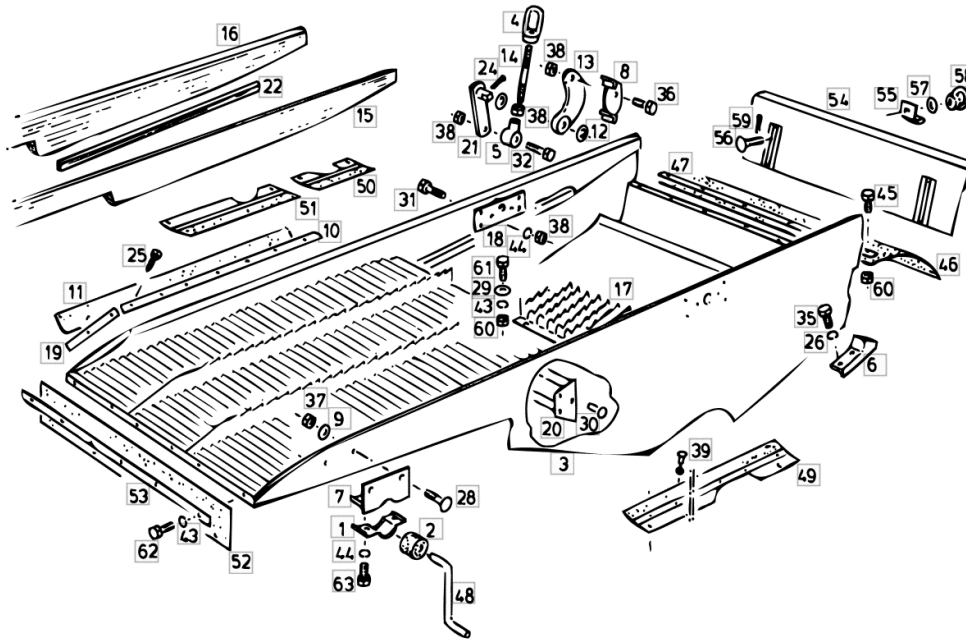
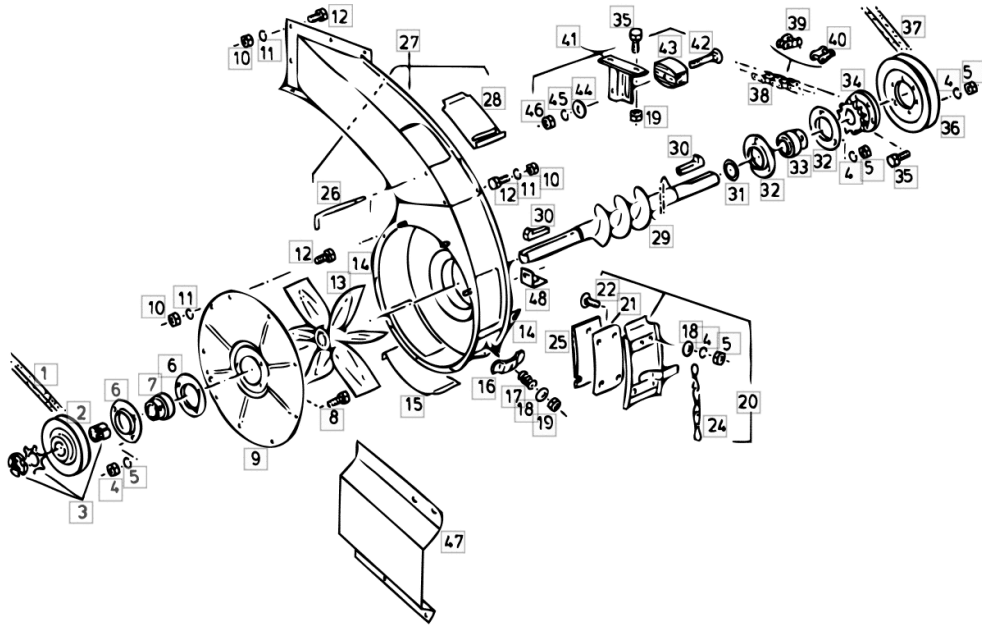


Fig.	Code	QTY	Name
1	06233237	4	con.rod half bushing
2	06233251	4	rubber mount
3	06507775	1	sieving box G 3-38
4	06295826	2	nut
5	06295827	2	sleeve
6	06515177	1	plate L
6.1	06515178	1	plate r
7	06233279	2	con.rod half bushing
8	06234528	2	tooth
9	01107163	0	washer 9, d126
10	06234531	2	rail
11	06296960	2	rubber
12	06214295	4	washer 17.5
13	06308925	2	link
14	06234575	2	screw
15	06510561	1	rail L
16	06510560	1	rail R
17	06234577	1	frame
18	06517205	2	plate
19	06233254	2	rail
20	06517204	1	chassis frame
21	06234604	1	lever R
21.1	06234605	1	lever L
22	06302979	2	metal strap
24	01143005	2	split pin 4 x 45 d94
25	01138908	82	screw 4 x 20
26	01102799	0	washer 8, d128
28	01138996	8	screw
28.1	01137628	2	screw m 8 x 30
29	06214189	0	washer 6.4
30	01109604	4	rivet 4x12 d660
31	01112356	10	screw m 8 x 40
32	01111156	2	screw
35	01112307	4	screw m 8 p.1.25 x 15, d933
36	01112333	2	screw m 8 x 25, d933
37	01104944	0	nut m 8, d985
38	01112824	0	nut m 8, d934

Section: STRAW WALKERS
RECOVERY ELEVATOR

Fig.	Code	QTY	Name
46	01102659	1	nut m 10, d934
47	06284503	1	lamination
48	06277749	1	square



CLICK HERE TO **DOWNLOAD** THE COMPLETE MANUAL

- Thank you very much for reading the preview of the manual.
- You can download the complete manual from: www.heydownloads.com by clicking the link below



- Please note: If there is no response to CLICKING the link, please download this PDF first and then click on it.

CLICK HERE TO **DOWNLOAD** THE COMPLETE MANUAL