

DXbis 110

BRAKE

Control assy./servise brake, Parking brake

OPERATION - P.T.O. SHAFT - REAR.....	13.29.2
HAND BRAKE.....	13.29.4

Service brake, Contral assy./service brake

CYLINDER PARTS.....	13.30.4
SERVICE BRAKE - DISC BRAKE.....	13.30.5
CYLINDER PARTS.....	13.30.15
OPERATION - SERVICE BRAKE - LINES.....	13.30.16
OPERATION - SERVICE BRAKE - LINES.....	13.30.17
OPERATION - SERVICE BRAKE - LINES.....	13.30.24
OPERATION - SERVICE BRAKE - LINES.....	13.30.25
VALVE PARTS.....	13.30.27

Pneumatic system

COMPRESSED-AIR UNIT.....	13.55.4
COMPRESSED-AIR UNIT.....	13.55.9
COMPRESSED-AIR UNIT.....	13.55.11
COMPRESSED-AIR UNIT.....	13.55.29
COMPRESSED-AIR UNIT.....	13.55.30
COMPRESSED-AIR UNIT.....	13.55.31

Hydr. brake for trailer

HYDR. BRAKE.....	13.56.1
------------------	---------

CLICK HERE TO **DOWNLOAD** THE COMPLETE MANUAL

- Thank you very much for reading the preview of the manual.
- You can download the complete manual from: www.heydownloads.com by clicking the link below



- Please note: If there is no response to CLICKING the link, please download this PDF first and then click on it.

CLICK HERE TO **DOWNLOAD** THE COMPLETE MANUAL

Section: BRAKE

OPERATION - SERVICE BRAKE - LINES

Fig.	Code	QTY	Name
------	------	-----	------

PART NUMBERS LISTING SHEET

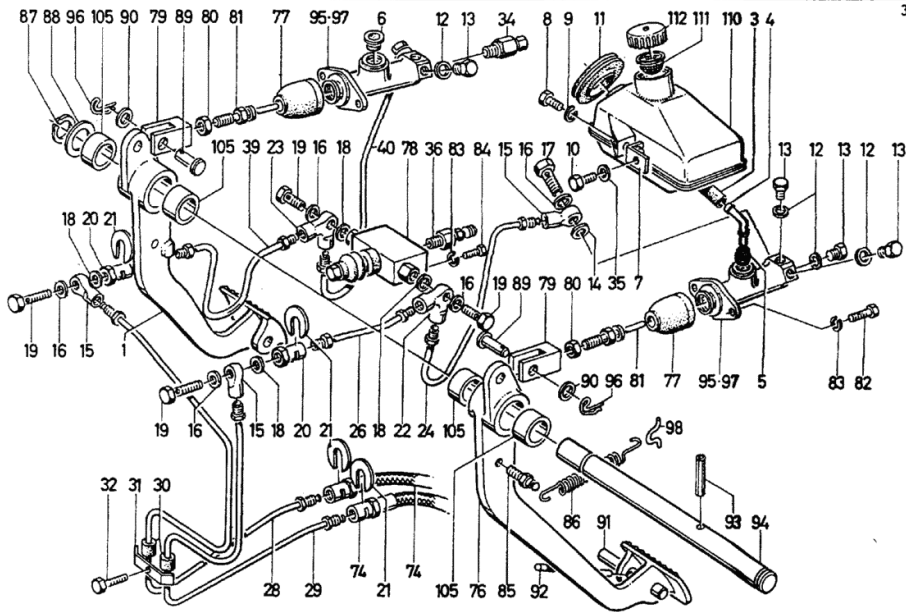
1024-30 503 0334

B355,WAHLWEISE POS.95

98	04321200	2	bracket
105	04302955	2	bushing
110	04314055	1	container
111	02962960	1	small mesh
112	04311138	1	screw

DEUTZ FAHR
 BREMSBETÄTIGUNG
 BRAKE CONTROL HYDR.
 COMMANDE DE FREIN HYDR.
 ACCMTO. FRENO HIDR.

➤
 1024-30 503 0335



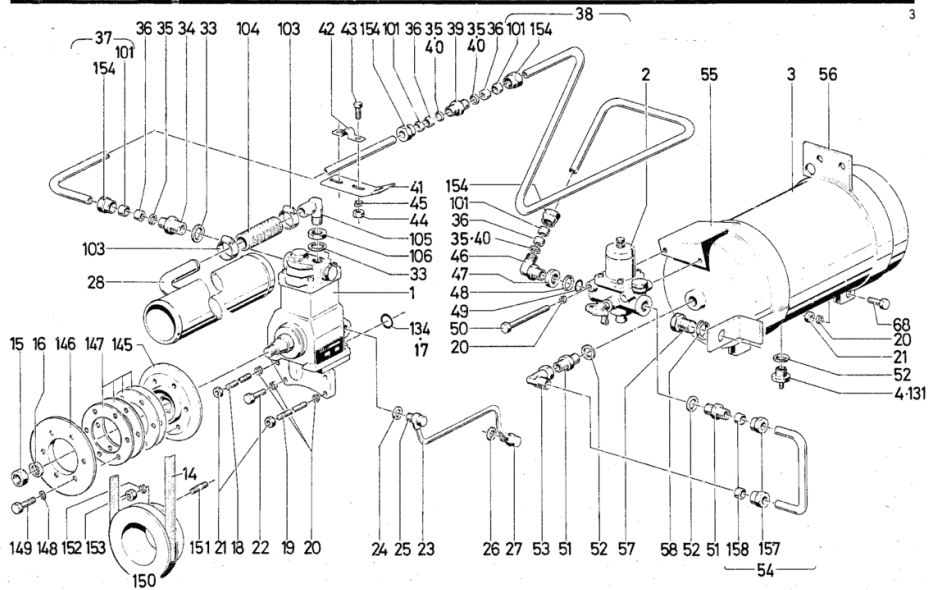
Section: BRAKE
COMPRESSED-AIR UNIT

Fig.	Code	QTY	Name
131	01263151	1	DIN 074305-M26X1,5-A4C valve AUTOMAT.
134	01166007	1	'o' ring 16x4 H 002927- 16 X 4 -NBR-1-60
145	04304121	1	pulley
146	04335486	1	pulley
147	03363622	6	snoulder
148	01107283	6	washer 8.2 DIN 000137-B 8-FST-A4C
149	01112333	6	screw m 8 x 25, d933 ISO 004017-M 8 X 25 - 8.8-A4C
150	02165606	1	pulley
151	01113386	4	screw DIN 000939-M 8 X 22 - 8.8-A4C
152	01107101	4	washer 8.4 DIN 000125-A 8,4-140HV-A4C
153	01112824	4	nut m 8, d934 ISO 004032-M 8 - 8-A4C
154	01121705	4	nut DIN 074297-AM22X1,5-A4C
157	01179539	4	nut CL 12 H310 H 003105- CL12 -STF55 -A3C GE WACHST
158	01116637	4	ring H 003107-F S12-ST

**DEUTZ
FAHR**

 DRUCKLUFTANLAGE
 PNEUMATIC SYSTEM
 SYST. D'AIR COMPR.
 SISTEMA AIRE COMPR.

 KOMB 1-2 - LEITUNG
 COMB OF 1-2 - LINE
 COMBINE A1-2-CONDUITS
 COMB DE CONDUCTO 1-2 - CONDUCTOS

 7616/2491, 7617/2434
 7618/1934, 7619/2429
 7620/1355, 7621/3459
 1905-55502 7769


Section: BRAKE
COMPRESSED-AIR UNIT

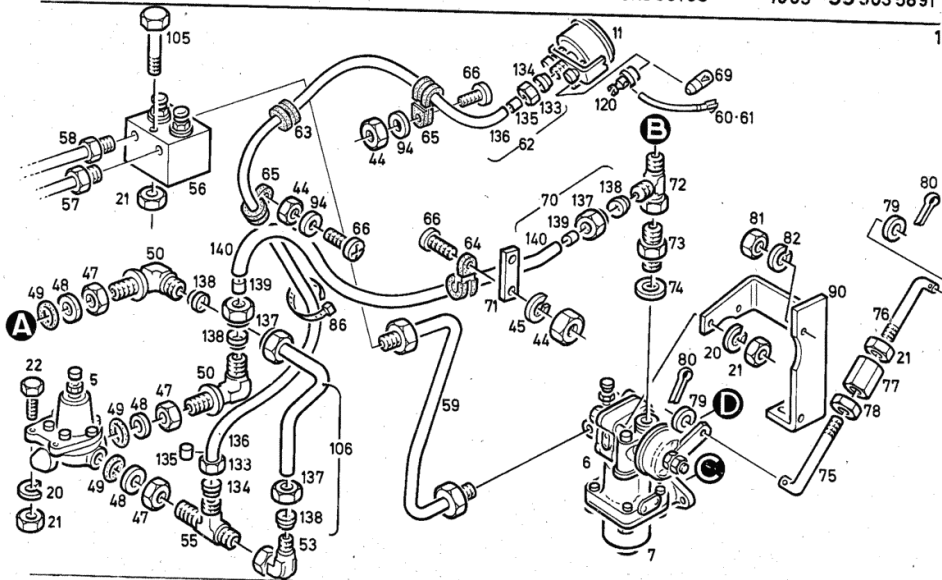
Fig.	Code	QTY	Name
70	04317943	1	tube
71	04333328	1	rotor blade
72	01173028	1	pipe fitting AL 12 H 003127-AL12-ST-A4C
73	01122822	2	pipe fitting I 12 a d3901 DIN 003901-L 12A-M-ST-A4C
74	01118700	4	'o' ring Ø 16 x 20 DIN 007603-A 16 X 20 -CU
75	04303472	1	rod
76	04303473	1	rod
77	01115360	1	nut DIN 001479-SP M 8- 6-A4C
78	01112831	1	nut m 8 ISO 004032-M 8 LH - 8-A4C
79	01107548	2	washer 8.4 DIN 000433- 8,4-140HV-A4C
80	01106407	2	split pin DIN 000094- 2 X 14-ST-A4C
81	01102659	2	nut m 10, d934 DIN 000934-M10 - 8-A4C
82	01102800	2	washer 10.2 DIN 000128-A 10 -FST -A4C
86	01172065	10	clamp 4.6 x 146 H 007672-G 146X 4,6
90	04333466	1	filter casing
94	01119810	1	washer 6.4 DIN 009021- 6,4-100HV-A4C
105	01111174	2	screw m 8x65 d931 ISO 004014- M 8 X 65 - 8.8-A4 C
106	04333817	1	tube
120	01214679	1	socket
133	01179283	2	nut H 003105- CL 6-STF55 -A3C GEW ACHST
134	01179285	2	ring H 003107-F S 6-ST
135	01173768	2	stop H 003111-B 5X 3 -MS
136	01393582	0	tube DIN 073378- 6 X 1,5 -PA11PL-S W 1800 MM
137	01179539	2	nut CL 12 H310



KOMB 1-2-LEITUNGS-DRUCKLUFTANLAGE
 COM OF 1-2-LINE COMPRESSED AIR SYSTEM
 SYSTEME DE AIR COMP. COMBINE A1-2 CONDUITES
 SISTEMA DE AIRE COMP. COMB. DE CONDUCTO 1-2 - CONDUCTOS

7620/1356
7621/3460

1905 -55 503 5891



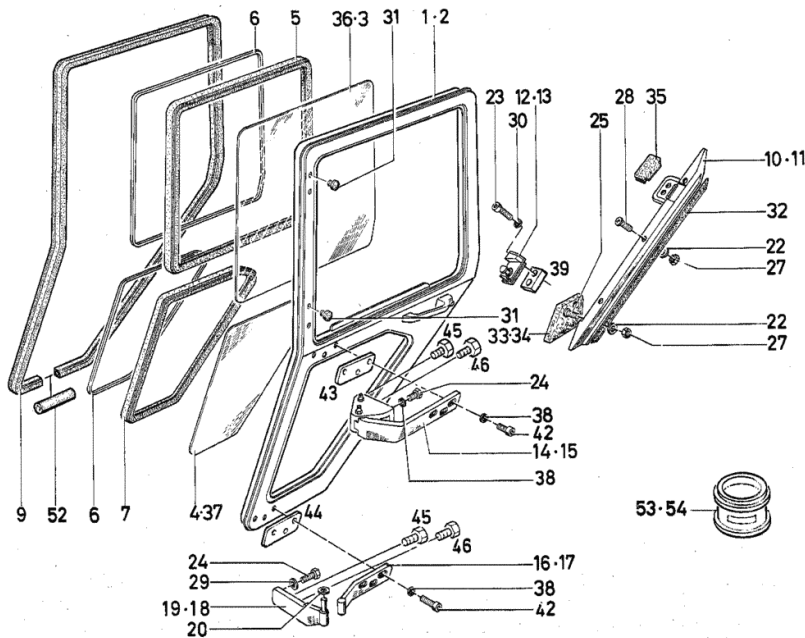
CAB DOOR

Fig.	Code	QTY	Name
1	04309519	0	chassis frame LEFT 1905-37 502 4223
2	04309520	1	chassis frame RIGHTS 1905-37 502 4223
3	04309526	1	glass
4	04309514	1	glass
5	04312066	1	chassis frame
6	01393150	0	lance filler H 007560- D 7,5 X 9,5 1940 MM
7	04312065	1	chassis frame
9	01395475	0	gasket H 846471-21-PN 1 -EPDM 3925 MM
10	04309523	1	contact surface LEFT
11	04309522	1	contact surface RIGHTS
12	04303591	1	heelpiece 195,LINKS
13	04303592	1	heelpiece RIGHTS
14	04327422	0	hinge LEFT B313,TEILENUMMERN-LISTENBLATT 1905-37 502 7782
15	04327423	0	hinge RIGHTS B313,TEILENUMMERN-LISTENBLATT 1905-37 502 7782
16	04308737	1	hinge 195,LINKS
17	04308739	1	hinge RIGHTS
18	04308758	1	hinge LEFT
19	04308757	1	hinge RIGHTS
20	01107105	2	washer 10.5 DIN 000125-A10,5-140HV-A4C
22	01119810	4	washer 6.4 DIN 009021- 6,4-100HV-A4C



FAHRERHAUSTÜR
CAB DOOR
PORTIERE DE CABINE
PUERTA CABINA

1905-37 502 4178



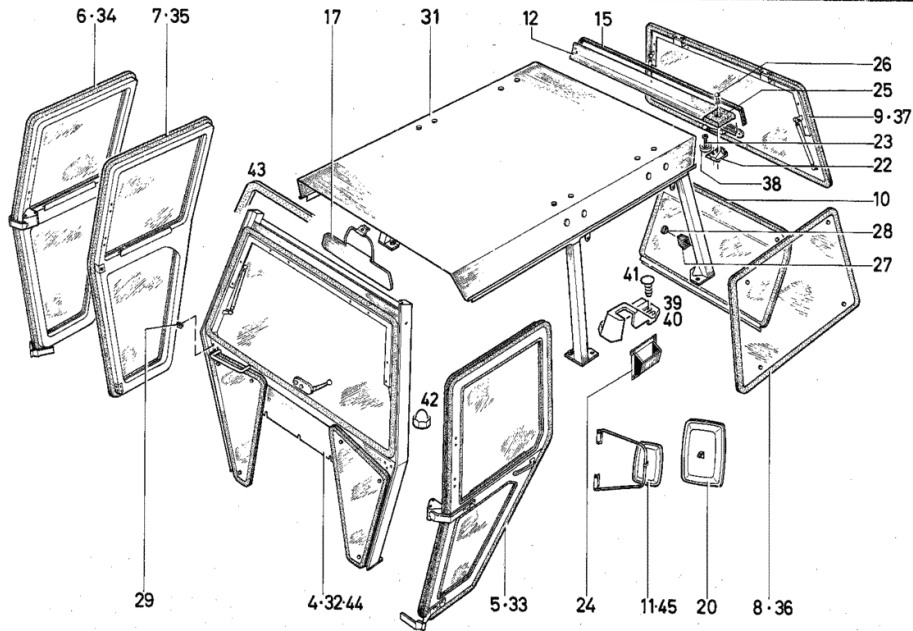
Section: BUILT-ON ACCESSORIES
CAB

Fig.	Code	QTY	Name
4	00000000	0	not serviceable PART NUMBERS LISTING SHEET 1905-37 502 4177
5	00000000	0	not serviceable PART NUMBERS LISTING SHEET 1905-37 502 4178
6	00000000	0	not serviceable PART NUMBERS LISTING SHEET 1905-37 502 4178
7	00000000	0	not serviceable PART NUMBERS LISTING SHEET 1905-37 502 4179
8	04312655	0	glass PART NUMBERS LISTING SHEET 1905-37 502 4180
9	00000000	0	not serviceable PART NUMBERS LISTING SHEET 1905-37 502 4181
10	00000000	0	not serviceable PART NUMBERS LISTING SHEET 1905-37 502 4182
11	00000000	0	not serviceable PART NUMBERS LISTING SHEET 1024-67 502 4034
12	04308787	1	spring
15	04312726	1	profile
17	00000000	0	not serviceable PART NUMBERS LISTING SHEET 1905-37 502 4184
20	00000000	0	not serviceable PART NUMBERS LISTING SHEET 1024-67 502 4035
21	01119817	6	washer DIN 009021- 6,4-140HV-A4C
22	04307794	1	stop
23	01137494	2	screw DIN 000912- M 6 X 25SB- 8.8-A 4C
24	04314165	1	ash-try
25	04312096	1	cap
26	04304484	1	rivet
27	04312025	2	cap
28	01167323	2	bottom H 002873-A 19 X 16,3X 9,5-PE

1905 - 37 502 4216

DEUTZ
FAHR

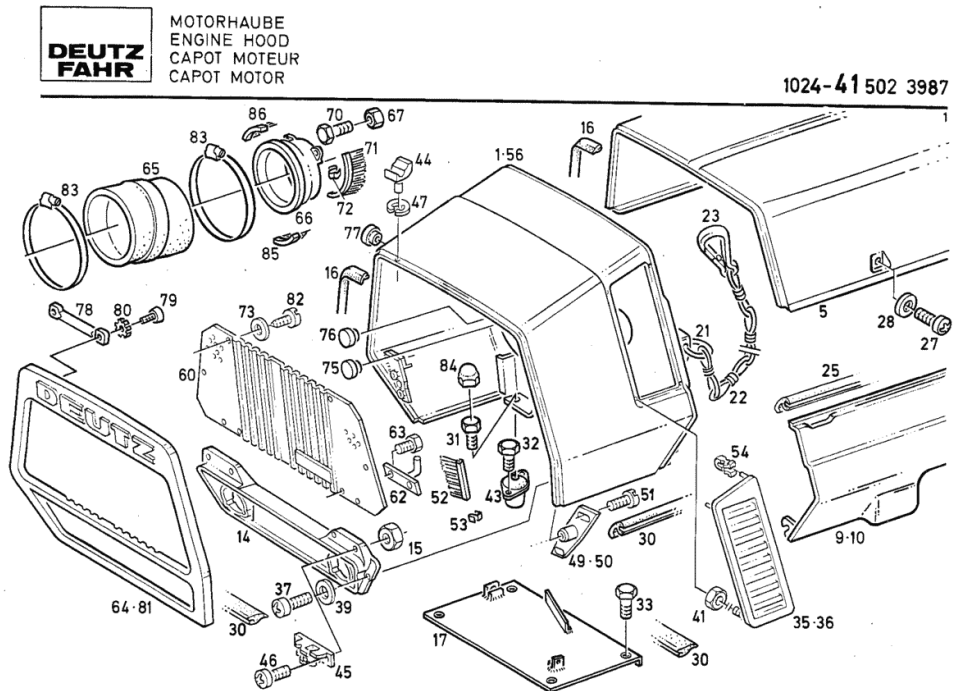
FAHRERKABINE
DRIVER'S CAB.
CABINE DE CONDUCT
CAB. D. CONDUCTOR



Section: BUILT-ON ACCESSORIES
HOOD

Ref.: 16.41.2

Fig.	Code	QTY	Name
77	01169034	2	BLACK bottom H 002873-P 12 X 7 X 6 -GN
78	04325558	2	bracket
79	01119634	4	screw 6x10 d7985 ISO 007045-M 6X 10 - 4.8-H -A 4C
80	01117888	4	lock washer DIN 006797-J 6,4-A4C
81	04326845	1	grille USA
82	01137533	6	screw ISO 007049-ST5,5X13 -C-H-A4C
83	04326773	4	clamp
84	01174043	2	tube H 002870-K 17 -PE SOFT-SW
85	04336913	1	brush
86	04337311	1	brush



Section: BUILT-ON ACCESSORIES
WING FRONT

KOTFLÜGEL, VORN
FRONT MUDGUARD
GARDE-BOUE AV
GUARDABARROS DELANT.

GUMMI
RUBBER
CAOUT
GOMA

FÜR BEREIFUNG
FOR TYRES
POUR PNEUMATIQUES
PARA NEUMATICOS

11,2-24
12,4-24
14,9-24
13,6-24
12,4-28

1024-52 502 7783

PORTAL 2000

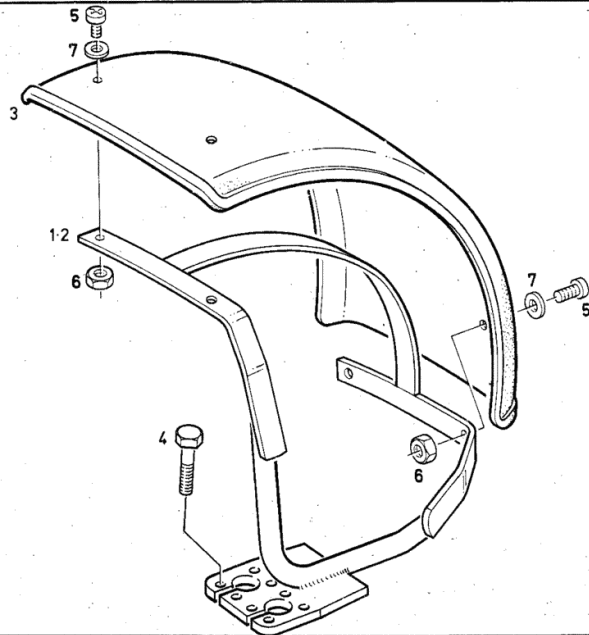


Fig.	Code	QTY	Name
1	04325336	1	support RIGHTS
2	04325337	1	support LEFT
3	04314711	1	fender 410 MM
4	01111497	4	screw m 12 x 55 DIN 000931- M12 X 55 - 8.8-A4 C
5	01133503	4	screw ISO 007045-M 8X 25 - 4.8-H -A 4C
6	01136452	4	nut vm 8 d980 DIN 000980-VM 8 - 8-A4C GEWAC
7	02312618	4	HST washer

Section: BUILT-ON ACCESSORIES

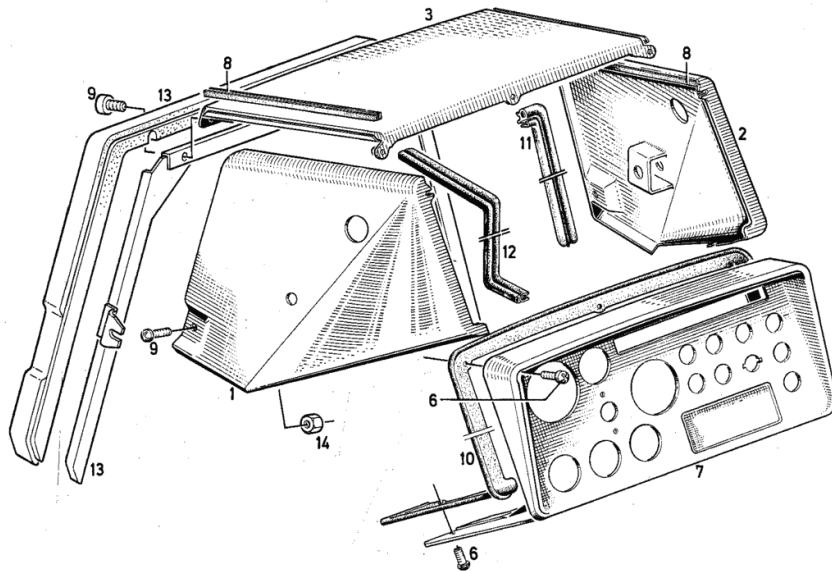
DASHBOARD BOX

Fig.	Code	QTY	Name
1	04303583	1	support LEFT
2	04307127	1	support RIGHTS
3	04303584	1	valve WITHOUT CAB
6	01173590	6	screw H 002093- 7985-M 6X 20 SB -4. 8 -H
7	04351023	1	dashboard
8	01388706	0	gasket H 007560- A 2 345,MM.
9	01137503	5	screw DIN 007985-M 6X 16SB- 8.8-H - A4C
10	04303606	1	gasket
11	01393205	0	gasket H 846471-14-PN 1 250,MM.
12	01390699	0	gasket H 846471-03-PN 1 405 MM.
13	04322103	1	gasket
14	01112824	2	nut m 8, d934 ISO 004032-M 8 - 8-A4C

**DEUTZ
FAHR**

INSTRUMENTENKASTEN
BOARD - PANEL - BOX
TABLEAU DE BORD
CAJA INSTRUMENTOS

1024 - 55 502 3920



Section: BUILT-ON ACCESSORIES
SUPPORT

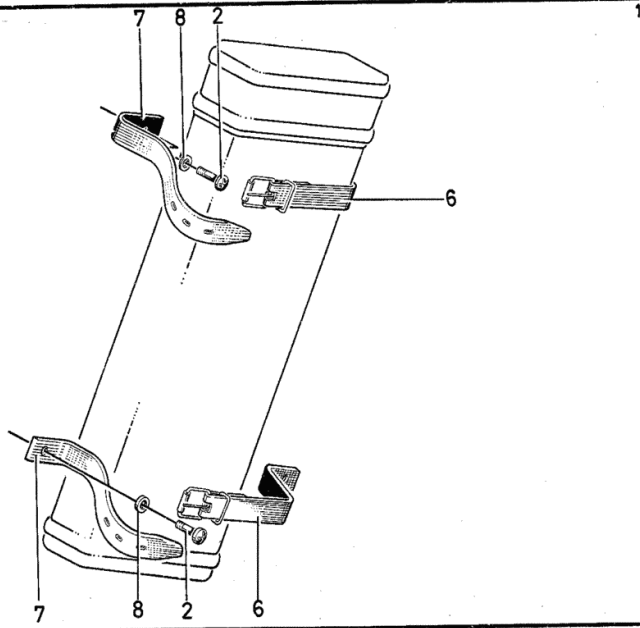
Ref.: 16.70.1

Fig.	Code	QTY	Name
2	01171734	4	screw H 002093- 7985-M 6X 16 -4.8 - H
6	04314754	2	belt
7	04314755	2	belt
8	01136363	4	washer 8.4 DIN 009021- 8,4-140HV-A4C

**DEUTZ
FAHR**

HALTER FUER WARNDREIECK
RETAINER FOR WARNING TRIANGLE
SUPPORT POUR TRIANGLE DE PANNE
SOPORTE PARA TRIANGULO AVISO

1024 -70 502 4030



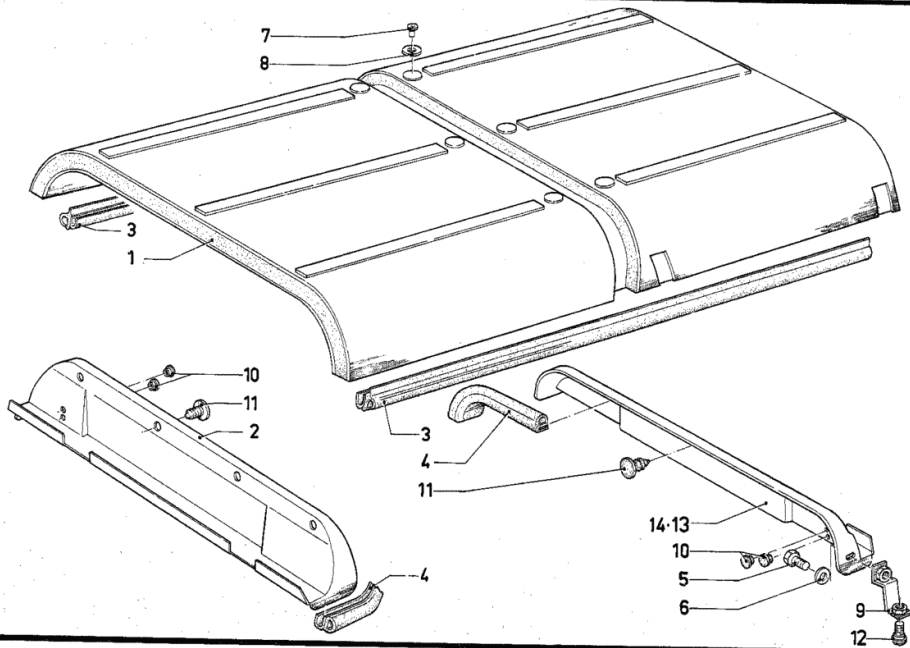
ROOF COVERING

Fig.	Code	QTY	Name
1	04307635	1	lining
2	04307636	1	diaphragm
3	01395029	0	gasket H 846471-06-PN 1 1350 MM.
4	01395475	0	gasket H 846471-21-PN 1 -EPDM 1280,0 MM.
5	01171732	4	screw H 002093- 933-M 8 X 16- 8.8
6	01171740	4	washer 8,4x17x1,6 d125 H 002398- 125-A 8,4-ST
7	01172572	6	rivet A4 - h2416 H 002416-A4 X 9,5-AL
8	04307637	6	stop
9	04309757	4	consolle
10	04312803	4	plug
11	04307610	8	plug
12	01172644	4	screw H 002093- 923-M 8 X 4
13	04319379	1	cover
14	04317189	1	diaphragm BEI BEIFAHRERSITZ



DACHVERKLEIDUNG - ECONOMIC KABINE
 ROOF PANELLING - ECONOMIC CAB
 REVETEMT DE TOIT - ECONOMIC CABINE
 CUBIERTA TECHO - ECONOMIC CABINA

1024-86 502 4048

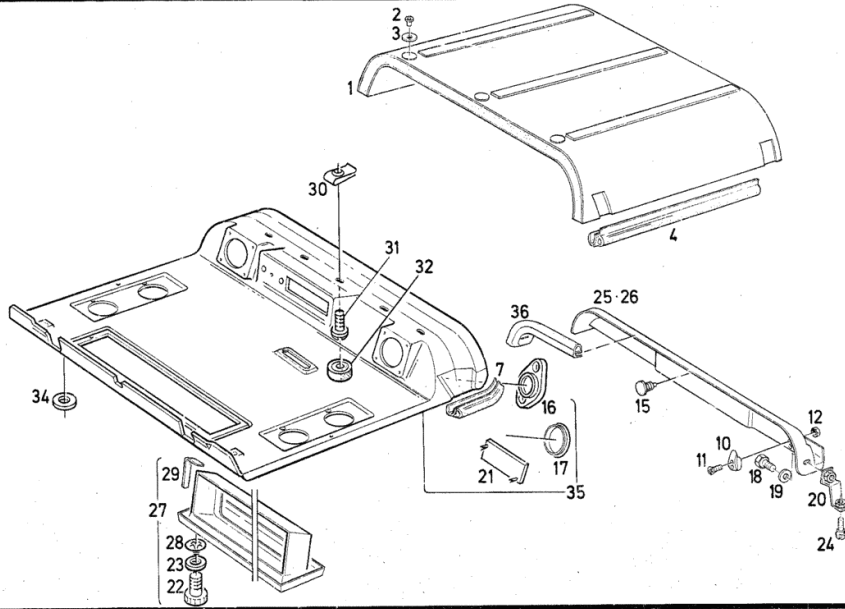


ROOF COVERING

Fig.	Code	QTY	Name
1	04309759	1	lining
2	01172572	3	rivet A4 - h2416 H 002416-A4 X 9,5-AL
3	04307637	3	stop
4	01395029	0	gasket H 846471-06-PN 1 650 MM
10	04307647	1	clevis
11	01119630	2	screw m 4 x 16 ISO 007045-M 4X 16 - 4.8-H -A 4C
12	01112796	2	stop m4 d934 ISO 004032-M 4 - 8-A4C
15	04307610	4	plug
16	04320188	4	distributor
17	04320186	2	cover
18	01171732	2	screw H 002093- 933-M 8 X 16- 8.8
19	01171740	2	washer 8,4x17x1,6 d125 H 002398- 125-A 8,4-ST
20	04309757	2	console
21	04320187	1	cover
22	04323745	2	screw
23	01171740	2	washer 8,4x17x1,6 d125 H 002398- 125-A 8,4-ST
24	01172644	2	screw H 002093- 923-M 8 X 4
25	04317190	1	diaphragm BEI BEIFAHRERSITZ
26	04319380	1	cover
27	04320172	1	filter casing
28	04325378	1	nut
29	01393351	0	gasket H 843180-01- 5X 10 -EP 1200 MM
30	02304481	9	nut
31	01101957	8	screw ISO 007049-ST5,5X19 -C-H-A4C
32	01173074	7	tube H 002870-DM 6 -BLACK
34	04322209	8	flat washer
35	04325850	1	body
36	01395475	0	gasket H 846471-21-PN 1 -EPDM

DEUTZ FAHR DACHVERKLEIDUNG - KOMFORT KABINE MIT KLIMAAANLAGE
 ROOF PANELLING - COMFORT CAB WITH AIR CONDITIONING
 REVETEMENT DE TOIT - CONFORT CABINE ET CLIMATISATEUR
 CUBIERTA TECHO - CABINA CONFORT SIST. AIRE ACONDIC.

1024-86 503 5989



Section: ELECTRIC AL SYSTEM
ELECTRICAL EQUIPMENT FRONT

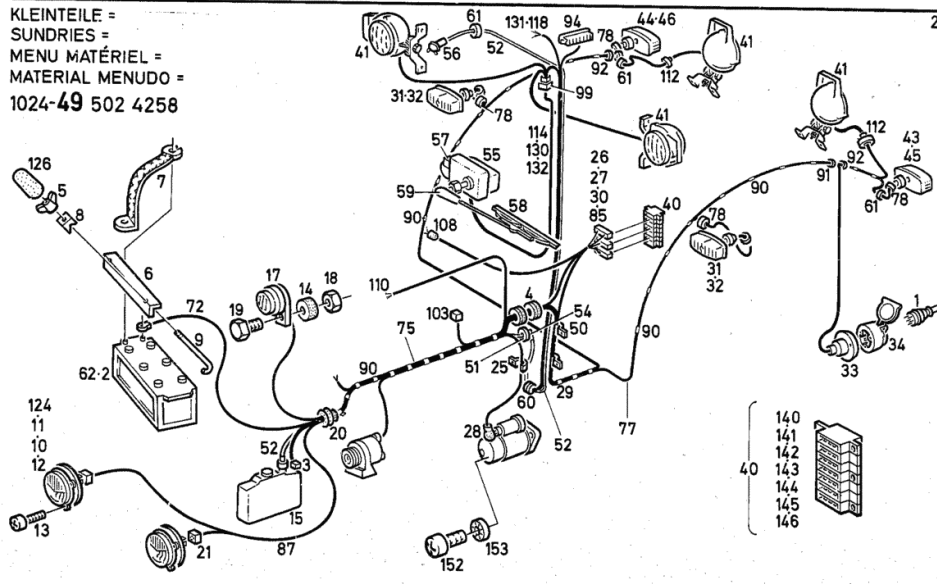
Fig.	Code	QTY	Name
124	04319344	2	131 headlight PART NUMBERS LISTING SHEET SEALED BEAM 1024-49 503 5725
126	04322624	2	plug
130	04335877	1	cable FOR CAB
131	04322672	1	cable
132	04322675	1	cable FOR WORKING SPOTLIGHT
140	01173037	1	plug H 007642-PS 6,3-8 -HELLROT RED
141	01173038	1	plug H 007642-PS 6.3-8 -YELLOW YELLOW
142	01173040	1	distributor H 007642-PS 6,3-8 -DUNKELGRUE N GREEN
143	01173039	1	plug H 007642-PS 6.3-8 -LIGHT BLUE BLUE
144	01173034	1	plug H 007642-PES 6,3-8 -WEISS
145	01173035	1	plug H 007642-PS 6,3-8 -SCHWARZ BLACK
146	01173036	1	distributor H 007642-PS 6,3-8 -HELLGRAU GREY
152	01119627	1	screw ISO 007045-M 4X 8 - 4.8-H -A4 C
153	01125679	1	washer 4.2 DIN 006797-A 4,3-A4C



ELEKTRISCHE AUSRÜSTUNG
ELECTRICAL EQUIPMENT
EQUIPEMENT ELECTRIQUE
EQUIPO ELECTRICO

1024-49 502 4229

KLEINTEILE =
SUNDRIES =
MENU MATÉRIEL =
MATERIAL MENUDO =
1024-49 502 4258



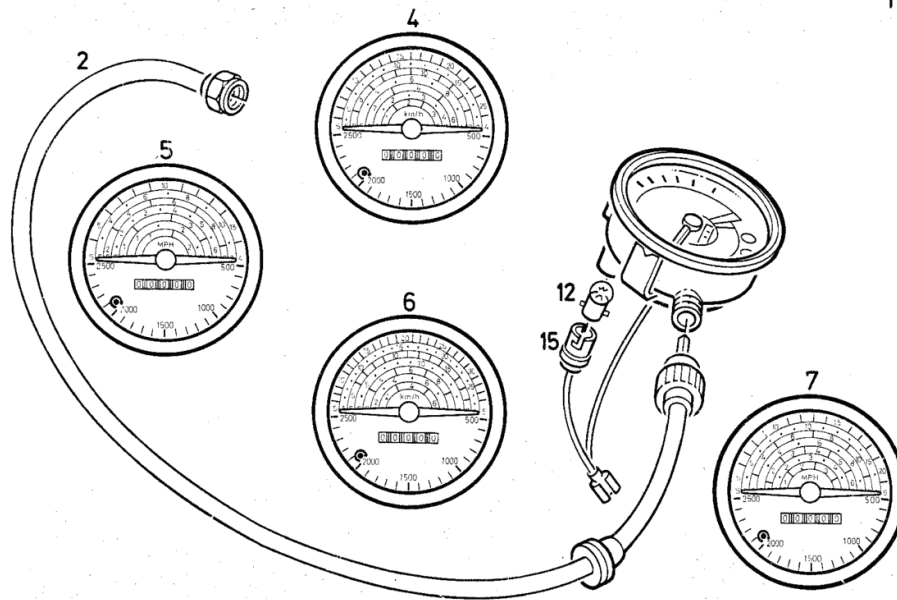
TRACTOR METER

Fig.	Code	QTY	Name
2	04304166	1	transmission
4	04306369	1	multimeter GEAR KM/H
5	04306371	1	multimeter GEAR MP/H
6	04349078	1	multimeter GEAR KM/H
7	04349068	1	multimeter GEAR MP/H
12	01121418	1	lamp DIN 072601-H 12V 2 W
15	01210197	1	socket

**DEUTZ
FAHR**

TRAKTORMETER
TRAC TORMETER
TRACTORMETRE
TRACTORMETRO

1024- 56 502 4014



Section: ENGINE

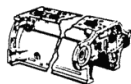
NOZZLE

Fig.	Code	QTY	Name
1	02239584	1	nozzle
2	01119611	1	ring DIN 007980- 8-FST-A4C

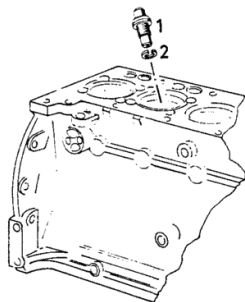


Spritzdüse
Spray nozzle
Pulvérisateur
Tobera de dispersión

Stück / Zyl.-Einheit
Pieces / cyl. unit
Qté / cylindre
Cantid./unid. cilind.



0150-01-500 33 29



Section: ENGINE
CYLINDER

Fig.	Code	QTY	Name
1	04157756	1	engine cylinder 100,00MM RD (3.9370IN.)
2	02137256	3	shim mm 0.20 0,2 MM DICK (0,0079 IN)
3	02232963	0	shim mm 0.50 0,5 MM DICK (0,0197 IN)
4	04150264	0	shim 0,8 MM DICK (0,0315 IN)
5	02239331	0	shim 1,0 MM DICK (0,0394 IN)

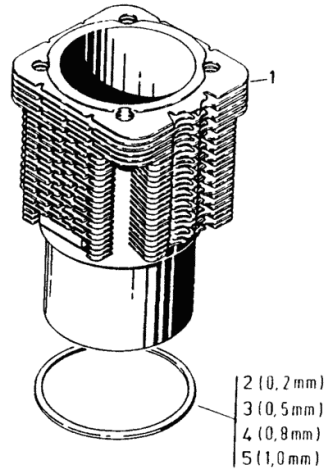


Zylinder
Cylinder
Cylindre
Cilindro

Stück / Zyl.- Einheit
Pieces / cyl. unit
Qté / cylindre
Cantid. / unid. cilind.

0150-04-500 3353

1



Section: ENGINE
CYLINDER HEAD

Fig.	Code	QTY	Name
951	02233021	2	1. OVERSIZE 15,25MM RD (0.6004IN.) valve guide
952	02137307	1	2.OVERSIZE STEP 15.50MM RD(0.6102IN.) screw mm 40.26 EXHAUST VALVE 1. OVERSIZE
953	02137308	1	40.36MM RD (1.5850IN.) ring mm 40.36 EXHAUST VALVE 1. OVERSIZE
954	02137309	1	40.36MM RD (1.5890IN.) ring mm 40.46 EXHAUST VALVE 2. OVERSIZE
955	02137303	1	40.46MM RD (1.5929IN.) ring INTAKE VALVE 1. OVERSIZE
956	02137304	1	45.76MM RD(1,8015IN.) ring INTAKE VALVE 2. OVERSIZE
957	02137305	1	45,86 MM RD (1.8055 IN.) ring 3. OVERSIZE 45.96MM RD(1,8094IN.)

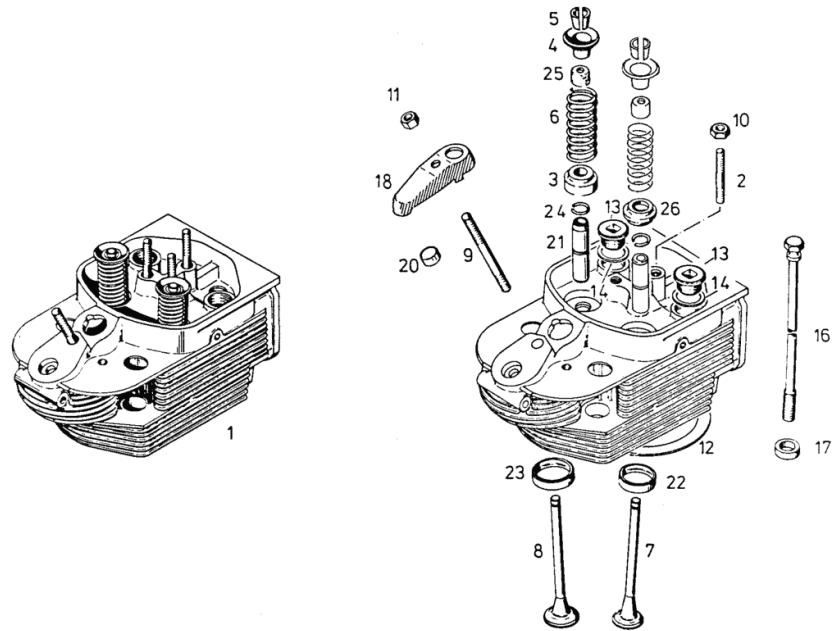


Zylinderkopf
Cylinder head
Culasse
Culata

Stück/Zyl.-Einheit
Pieces / cyl. unit
Qté / cylindre
Cantid./unid. cilind.



0150-08 -502 2898



Section: ENGINE

FILTER CARTRIDGE

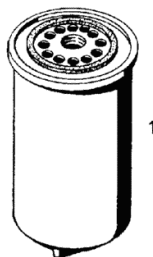
Fig.	Code	QTY	Name
1	01174421	1	oil filter H 004123- AD1,5R-2-II-212-1



Filterpatrone
Filter cartridge
Cartouche de filtre
Cartucho de filtro



0148- 15 -503 2122



Section: ENGINE

INJECTION PUMP COMPONENT PARTS

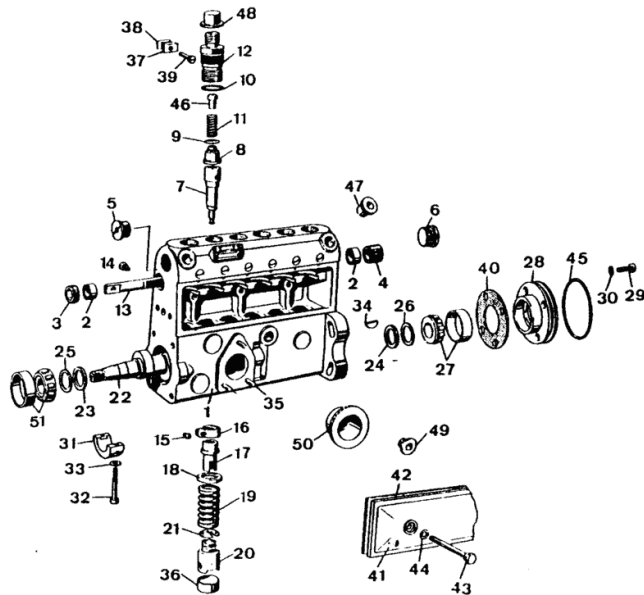
Fig.	Code	QTY	Name
1	01308579	1	pump casing
2	01288043	2	ring
3	01288143	1	ring
4	01288074	1	tappet casing
5	01288773	1	plug
6	01308386	1	screw
7	04153087	6	pump
8	02138223	6	valve
9	02138224	6	washer
10	03455813	6	ring
11	02103045	6	spring
12	01301995	6	support
13	01288285	1	rod
14	01288162	1	screw
15	01288164	6	screw
16	01288318	0	crown wheel mm 22.85 TIP CIRCLE D. 22.85 MM S.POS.950
17	01288072	6	pin
18	01288023	6	cup
19	01308524	6	spring
20	01309919	6	cap
21	01288025	6	cup
22	01304582	1	camshaft
23	01288037	1	ring
24	01288034	1	ring
25	01287997	0	washer mm 0.10 0,10 MM S.POS.951-957
26	01288005	0	washer mm 0.10 0,10 MM S.POS.958-964
27	01100641	1	roller bearing DIN 000720-302 04-J2
28	01310130	1	cover
29	01136955	4	screw DIN 000084- M 6 X 15- 8.8- A4 C
30	01119609	4	spring washer DIN 007980- 6-FST-A4C
31	01288277	1	bearing
32	01299050	2	screw
33	01118637	2	'o' ring DIN 007603-A 5 X 9 -CU



Einzelteile zur Einspritzpumpe
Single parts for injection pump
Pièces détachées de pompe d'injection
Partes para bomba de inyección



0150-17 502 7047 9



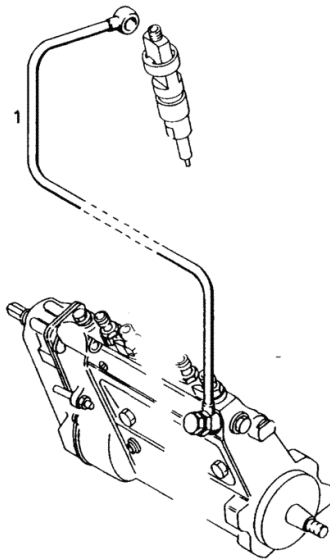
Section: ENGINE
OVERFLOW LINE

Fig.	Code	QTY	Name
1	04154919	1	pipng



Überströmleitung
 Overflow pipe
 Conduit de décharge
 Tubería de rebosamiento

0150-21-502 2842



Section: ENGINE

EXHAUST THERMOSTAT

Fig.	Code	QTY	Name
1	02235711	1	thermostat VOLLST.

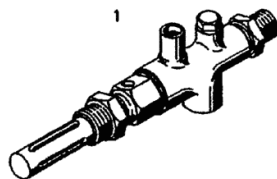


Abgasthermostat
Exhaust thermostat
Thermostat echappement
Termostato escape

Referenznr.: 05013376

0150 -39- 0503 2426

000



Section: ENGINE
AIR DUCTING LOWER PART

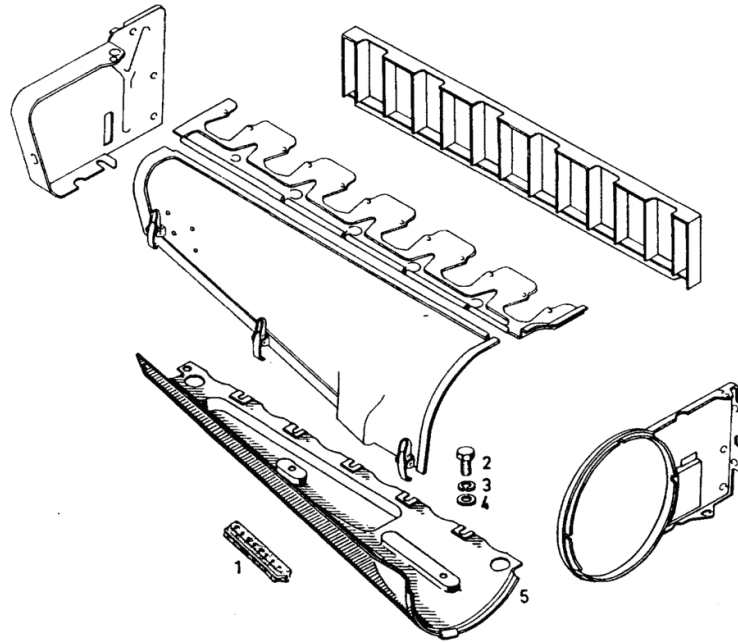
Fig.	Code	QTY	Name
1	02101802	1	rubber
2	01112299	3	screw m 8 x 12, d933 ISO 004017-M 8 X 12 - 8.8-A4C
3	01102799	3	washer 8, d128 DIN 000128-A 8 -FST -A4C
4	01107101	3	washer 8.4 DIN 000125-A 8,4-140HV-A4C
5	02232975	1	air duct



Lufführungsunterteil
 Air cowling base
 Partie inférieure hotte guidage d'air
 Parte inferior de guia de aire



0150-40-502 2865



Section: ENGINE
COOLING AIR BAFFLE

Fig.	Code	QTY	Name
1	02236963	1	lamination

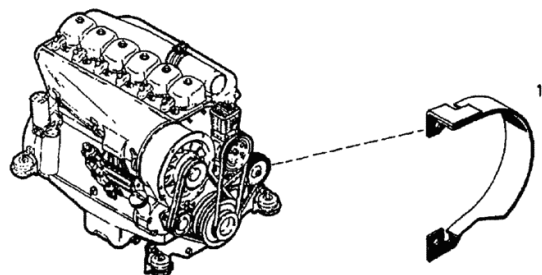


Abschirmblech
Cooling air baffle
Panneau de sortie d'air
Chapa protectora

Referenznr.: 05032364

0150 -44- 0502 7729

000



DXbis 110

FRONT AXLE, STEERING ASSEMBLY

Joint shaft

CARDAN SHAFT..... 15.21.2

Driven steering axle

SERVICE BRAKE..... 15.28.1

SERVICE BRAKE..... 15.28.2

SERVICE BRAKE..... 15.28.3

SERVICE BRAKE..... 15.28.4

SERVICE BRAKE..... 15.28.5

SERVICE BRAKE..... 15.28.6

SERVICE BRAKE..... 15.28.7

SERVICE BRAKE..... 15.28.8

SERVICE BRAKE..... 15.28.9

SERVICE BRAKE..... 15.28.10

SERVICE BRAKE..... 15.28.11

SERVICE BRAKE..... 15.28.12

DRIVEN FRONT AXLE..... 15.28.50

DRIVEN FRONT AXLE..... 15.28.51

Hydr. Cylinder

CYLINDER..... 15.30.2

CYLINDER..... 15.30.3

CYLINDER..... 15.30.4

Front axle bracket

BEARING BLOCK..... 15.32.1

Telescopic Axle

SERVICE BRAKE..... 15.33.1

SERVICE BRAKE..... 15.33.3

Steering mech. hydr. Block

STEERING CONTROL..... 15.37.1

TRACK ROD TELESCOPIC AXLE..... 15.37.4

HYDROSTAT. STEERING..... 15.37.6

Hydrostatic steering

CYLINDER PARTS..... 15.89.8

CONTROL PUMP - ZF..... 15.89.16

CONTROL PUMP - ZF..... 15.89.23

CLICK HERE TO **DOWNLOAD** THE COMPLETE MANUAL

- Thank you very much for reading the preview of the manual.
- You can download the complete manual from: www.heydownloads.com by clicking the link below



- Please note: If there is no response to CLICKING the link, please download this PDF first and then click on it.

CLICK HERE TO **DOWNLOAD** THE COMPLETE MANUAL

SERVICE BRAKE

Fig.	Code	QTY	Name
245	04312514	1	shim
246	04312513	1	hub

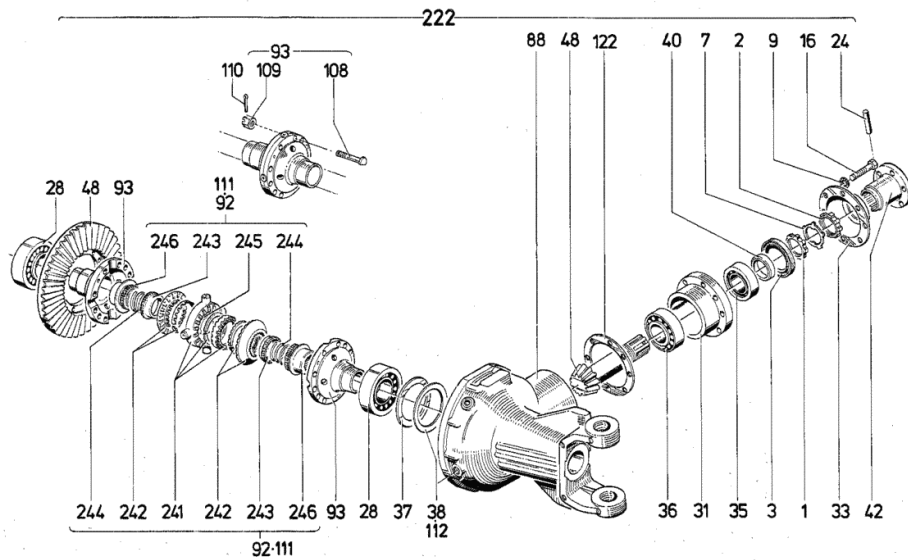


GETR. LENKACHSE
DRIVEN AXLE
ESSIEU DIRECTEUR
EJE MOTRIZ

KEGELRADSATZ
BEVEL DRIVE
COUPLE CONIQUE
JGO. RDAS. CONICAS

OPTITRAC PORTAL 2000

1024-28 502 4279



SERVICE BRAKE

Fig.	Code	QTY	Name
3	01118754	1	gasket DIN 007603-A 24 X 32 -CU
6	02339175	1	'o' ring H 002927- 18,64X 3,53 -NBR 70
7	02339192	2	'o' ring H 002927- 72,39X 5,34 -NBR 70
14	01117872	14	lock washer DIN 006797-A13 -A4C
15	01117877	4	lock washer DIN 006797-A17 -A4C
18	01111870	4	screw m 6 x 60, d931 DIN 000931- M16 X 60 - 8.8-A4 C
19	01112538	30	screw m 12 x 35, d933 DIN 000933-M12 X 35 - 8.8-A4C
27	01136462	10	nut m 14 x 1,5 DIN 000980-VM14X1,5 - 8-A4C G EWACHST
29	04343461	1	valve
30	01168226	2	lubricator H 003360-SA10
31	01168228	2	pipe fitting H 003360-SB10
34	01152640	4	screw m20x1,5 d906 DIN 000906-M20X1,5-ST-A4C
36	02370718	2	roller bearing
37	02370717	4	bearing
38	02339184	2	ring
56	02339331	2	pin
57	02339183	2	pin
63	02339185	2	washer
64	04304644	4	glass
71	04311563	1	box WITH ITEM
72	04311564	1	box
73	04311548	2	support
74	04311549	1	steering lever
75	04311550	1	lever
76	04311551	1	rod
77	04311552	2	ball joint WITH ITEM
91	01113212	2	nut DIN 000936-M30X1,5 -22H-A-A4C
92	01111514	8	screw

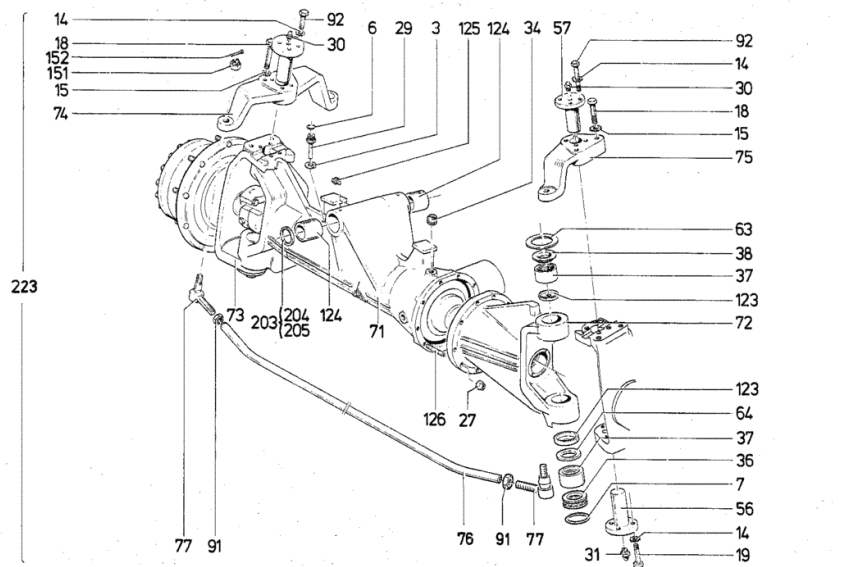


GETR. LENKACHSE
DRIVEN AXLE
ESSIEU DIRECKEUR
EJE MOTRIZ

ACHSBRÜCKE
AXLE BRACKET
PONT ESSIEU
PUENTE EJE

OPTITRAC SIGE 5300

1024-28 502 4284



223

CYLINDER

Fig.	Code	QTY	Name
1	04337134	1	cylinder
2	04329056	1	engine cylinder
3	04329057	1	piston
4	04329058	1	'o' ring
5	04329059	1	ring

**DEUTZ
FAHR**

ZYLINDER
CYLINDER
CYLINDRE
CILINDRO

∅ = 65mm

1805-30 502 7790

1

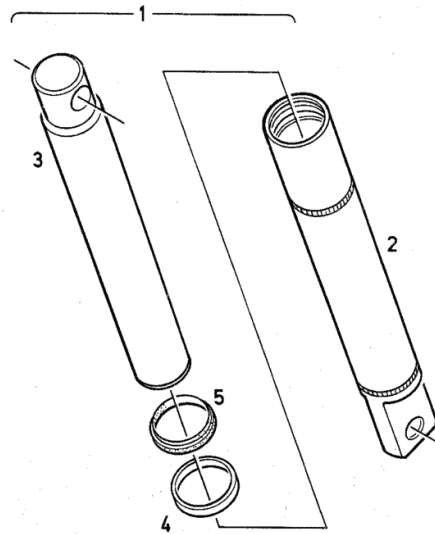
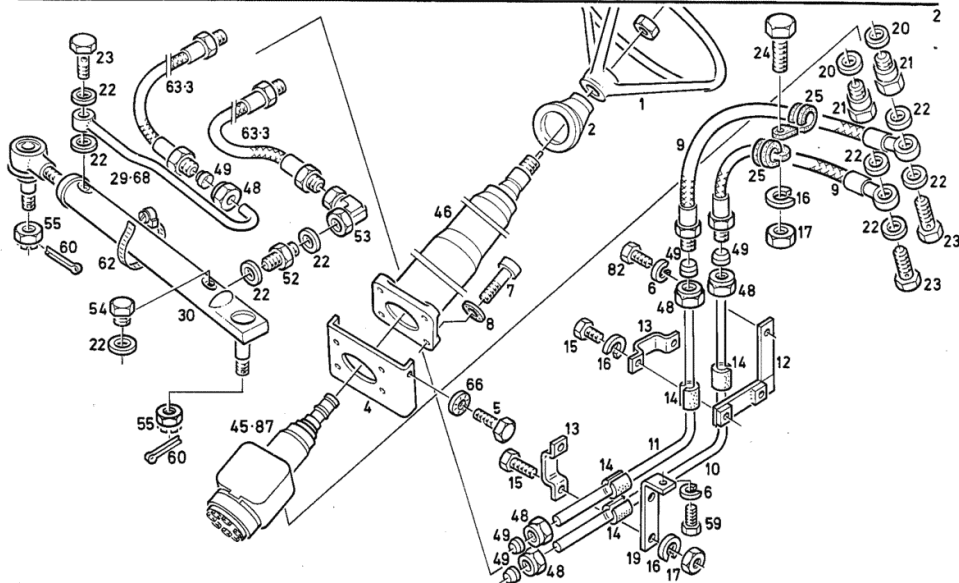


Fig.	Code	QTY	Name
------	------	-----	------

1805-89 503 5960

DEUTZ FAHR
 HYDROSTATISCHE LENKUNG
 HYDRO-STEERING
 DIRECTION HYDROST.
 DIRECTION HYDROSTATICA

1805-89 502 4226



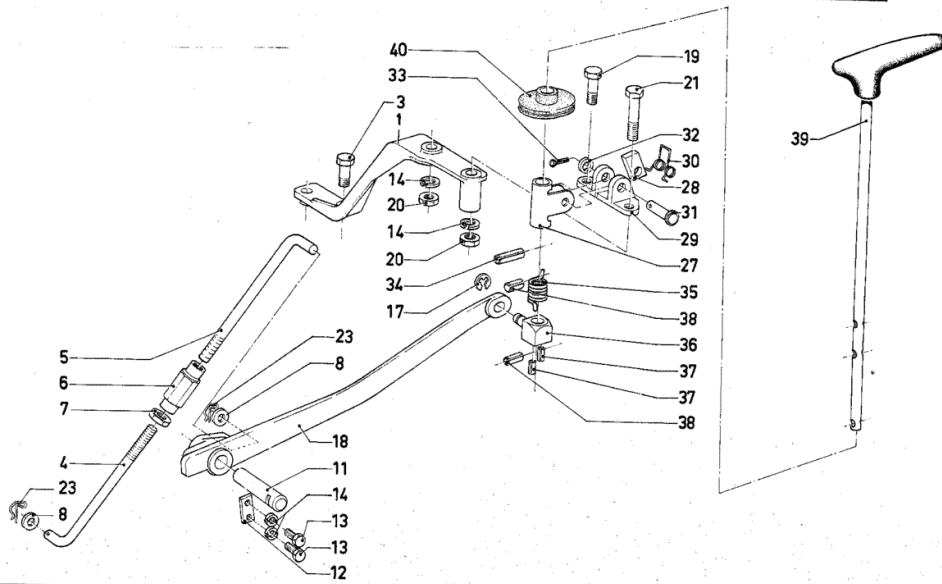
Section: GEARBOX, CLUTCH
P.T.O. SHAFT COUPLING

Fig.	Code	QTY	Name
1	04305819	1	bracket
3	01112429	2	screw m 10 x 30, d933 DIN 000933-M10 X 30 - 8.8-A4C
4	02386832	1	rod
5	02386833	1	rod
6	01115363	1	nut DIN 001479-SP M12- 6-A4C
7	01112858	1	nut m 12, d934 DIN 000934-M12 - 8-A4C
8	01107110	2	washer 13.5 DIN 000125-A13 -140HV-A4C
11	04307395	1	pin
12	04302971	1	support
13	01112307	2	screw m 8 p.1.25 x 15, d933 ISO 004017-M 8 X 16 - 8.8-A4C
14	01107101	4	washer 8.4 DIN 000125-A 8,4-140HV-A4C
17	01117930	1	washer DIN 006799- 9
18	04307393	1	lever
19	01124457	1	screw m 8 x 45 ISO 004017-M 8 X 45 - 8.8-A4C
20	01112824	2	nut m 8, d934 ISO 004032-M 8 - 8-A4C
21	01111174	1	screw m 8x65 d931 ISO 004014- M 8 X 65 - 8.8-A4 C
23	03387776	2	pin
27	02320978	1	support
28	02320980	1	ratchet
29	04305347	1	console
30	02320979	1	spring
31	01104443	1	pin DIN 001434- 8F 8X 45X 42 -ST5 0-2-A4C
32	01107548	1	washer 8.4 DIN 000433- 8,4-140HV-A4C
33	01106404	1	split pin DIN 000094- 2 X 12-ST-A4C
34	01115435	2	pin ISO 008752- 5 X 24
35	02320982	1	spring
36	02320981	1	pin
37	01115416	2	pin



BETÄTIGUNG ZAPFWELLENKUPPLUNG
CONTROL ASSEMBLY-PTO CLUTCH
CDE D'ACTIONNEM-EMBRAYAGE PDF
ACCIONAMIENTO-EMBRAG. TOMAFUERZA

1026 04 502 4039



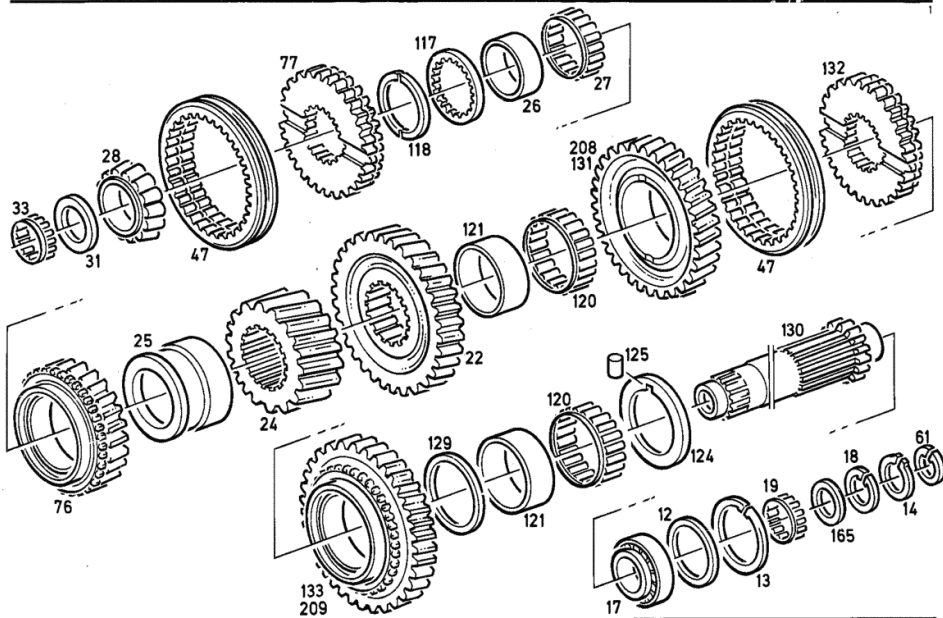
Section: GEARBOX, CLUTCH
TRANSMISSION SHAFT

Fig.	Code	QTY	Name
12	02387545	0	shim OPTION ITEM... A=0,5MM
13	01107855	2	circlip 80 x 2.5 DIN 000472- 80X2,5
14	01162916	1	circlip H 002258- 28X1,5
17	04337905	1	roller bearing
18	01167225	1	circlip H 002259- 33X1,5
19	01168736	1	crown wheel H 004455-NK 28 X 33X17
22	04300520	1	gear Z=34
24	04300524	1	gear Z=22
25	04300660	1	sleeve
26	02383323	2	ring
27	01169940	3	workshop tool H 004455-NK 55 X 60X30
28	04303274	1	roller bearing
31	01167496	1	'o' ring H 002940-A 30X 40 X 7 -NI
33	01172509	1	pin H 004455-NH 30 X 37X20 -2RS
47	04324148	2	sleeve
61	01107740	1	circlip DIN 000471- 28X1,5
76	04300525	1	gear Z=29
77	04301061	1	support
117	04302043	1	bearing
118	04302045	0	bearing OPTION ITEM... A=3,8MM
120	01171588	2	workshop tool H 004455-NK 60 X 65X30
121	04303982	2	ring
124	04303984	1	washer
125	01105068	1	cylindrical plug ISO 002338- 3 M 6X 8-ST
129	04303983	1	shim
130	04335379	1	shaft Z=14

**DEUTZ
FAHR**

VORGELEGEWELLE KLAUE
LAYSHAFT DOG
ARBRE DE RENVOI GRIFFE
EJE TRANSMISION GARRA

1405- 11 502 7757



Section: GEARBOX, CLUTCH

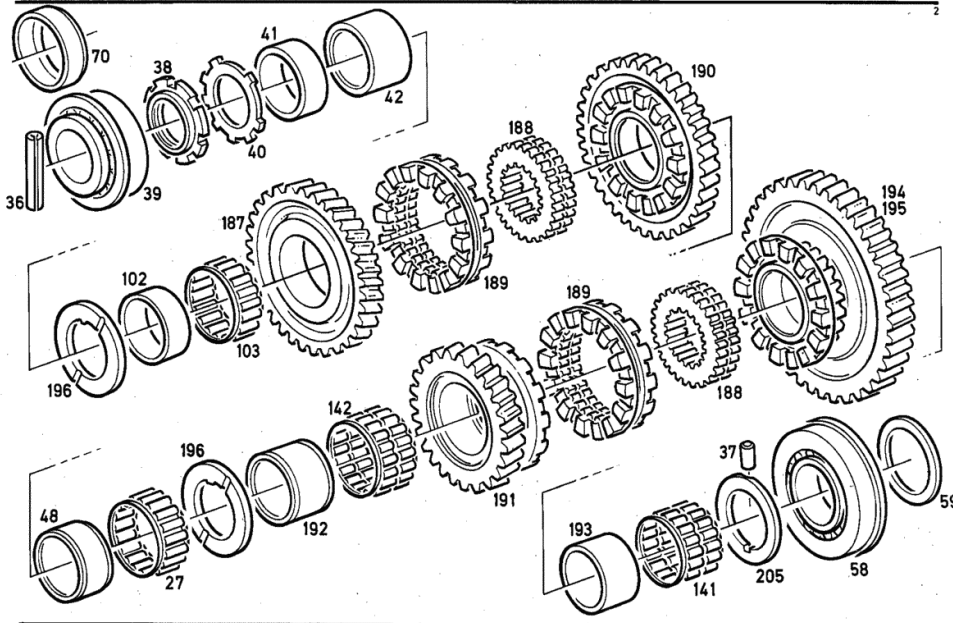
MAIN SHAFT

Fig.	Code	QTY	Name
27	01169940	3	workshop tool H 004455-NK 55 X 60X30
36	01115462	1	pin ISO 008752- 6 X 60
37	01105082	1	cylindrical plug ISO 002338- 4 M 6X 8
38	04300663	1	nut
39	02383613	1	roller bearing
40	04300745	1	lamination
41	04351642	1	spacer
42	04301139	1	spacer
48	04300740	1	ring
58	04300597	1	roller bearing
59	04300627	0	shim OPTION ITEM... A=1,0 MM
70	01165843	1	stop H 000711-B75
102	02383355	1	ring
103	01172517	1	workshop tool H 004455-NK 55 X 60X27
141	01177127	1	workshop tool H 004455-NK2 55 X 60X40 -TN/P A66-GF-W
142	01171649	1	workshop tool H 004455-NK2 55 X 60X37
187	04326688	1	gear
188	04326149	1	support
189	04335212	1	sleeve
190	04326686	1	gear
191	04326693	1	gear Z=28
192	04322381	1	ring
193	04322380	1	ring
194	04326690	1	gear wheel Z=22/49
195	04326692	1	gear wheel Z=49
196	04391136	2	shim
205	04330198	1	ring
950	04300628	0	shim A=1,1 MM
951	04300629	0	shim A=1,2 MM

DEUTZ FAHR
 HAUPTWELLE KLAUE
 MAIN SHAFT DOG
 ARBRE PRINCIPAL GRIFFE
 EJE PRINCIPAL GARRA

7620/0977
 7621/2555

1405 - 11 503 5658



UNDERDRIVE

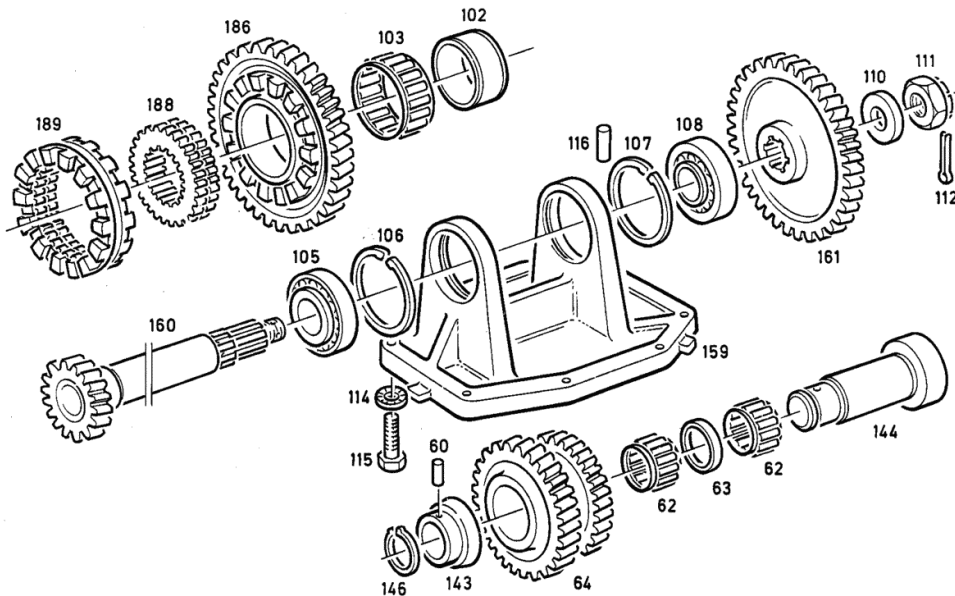
Fig.	Code	QTY	Name
60	01115454	1	pin 6 x 28 ISO 008752- 6 X 28
62	01172041	2	workshop tool H 004455-NK 37 X 45X26
63	02383476	1	ring
64	04300548	1	gear wheel Z=23/26
102	02383355	1	ring
103	01172517	1	workshop tool H 004455-NK 55 X 60X27
105	01136509	1	roller bearing DIN 000720-320 32-X
106	01172512	1	circlip H 002272- 58X2
107	01167248	1	circlip H 002272- 55X2
108	01136507	1	roller bearing DIN 000720-320 06-X
110	04300743	1	washer
111	01113267	1	castellated nut DIN 000937-M18X1,5 -22H-A -ZN PHRF
112	01115426	1	pin ISO 008752- 4 X 28
114	01107286	9	washer b10 d137 DIN 000137-B10-FST-A4C
115	01112418	9	screw m 10 x 25, d933 DIN 000933-M10 X 25 - 8.8-A4C
116	01105194	2	cylindrical plug 12x20 d7 ISO 002338-12 M 6X 20
143	04305691	1	bushing
144	04305692	1	pin
146	01107742	1	circlip 30x1.5 DIN 000471- 30X1,5
159	04305693	1	cover
160	04306666	1	shaft
161	04306670	1	gear Z=40
186	04327311	1	gear Z=47
188	04326149	1	support
189	04335212	1	sleeve



KRIECHGANGGETRIEBE RUECKWÄRTSGANG
 CREEP GEAR REVERSE GEAR
 RED. VIT RAMPANTE MARCHE ARRIERE
 CAMBIO MRCH. ULTRAL MARCHA ATRAS



1405-11503 5665



Section: GEARBOX, CLUTCH

GEAR SHIFTING

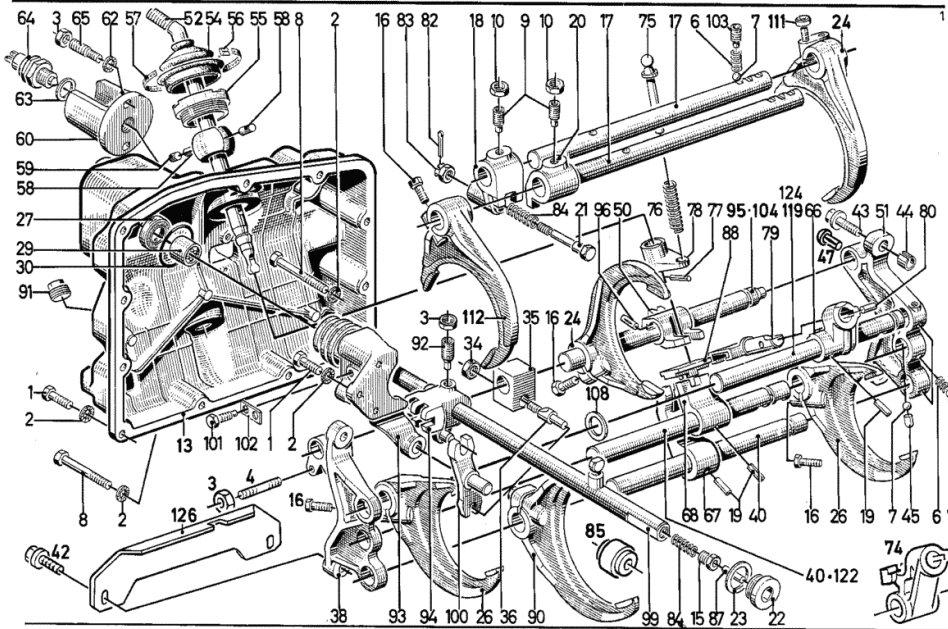
Fig.	Code	QTY	Name
35	04365236	1	controle panel GEAR
36	02383362	1	screw
38	02383230	1	guide
40	04324135	1	rod R-Z B042,BEI ERSTMALIGEM ERSATZ UP TO CHASSIS NO. TN 432 4148 MITLIEFERN.
42	01164990	2	screw H 002009-AM10X 35-12.9
43	01171278	2	screw H 002009-AM10X 40-12.9
44	01167269	1	sleeve H 002341-B13X14
45	02384089	1	pin
47	01127292	1	none ISO 008746- 8 X20-ST
50	04344620	1	controle panel
51	04336211	1	guide
52	04302035	1	lever
54	04303301	1	bellows
55	04303302	1	screw
56	01166346	1	clamp H 000735-C
57	01166347	0	band DIN 032620-BAND-5-W1
59	01107611	1	cover DIN 000443- 10
60	02389955	1	flange
62	01107283	2	washer 8.2 DIN 000137-B 8-FST-A4C
63	02388144	1	shim A=1,5 MM.
64	01262510	1	switch
65	01110168	2	screw DIN 000835-M 8 SN4X 16 - 8.8- A4C
66	04303292	1	controle panel K
67	04335452	1	driver R-Z
68	04303285	1	controle panel S-L

GETRIEBESCHALTUNG
GEARSHIFT ASSY.
CHANGEM BOITE VIT.
MANDO TRANSMISION

SYNCHRON
SYNCHRON
SYNCHRON
SINCHRON

7620/1335
7621/3381

1405-12 503 5941



Section: GEARBOX, CLUTCH

GEAR SHIFTING

Fig.	Code	QTY	Name
26	01112824	4	nut m 8, d934 ISO 004032-M 8 - 8-A4C
28	01107286	13	washer b10 d137 DIN 000137-B10-FST-A4C
30	02387741	1	fork GEAR
31	04371804	2	rod GEAR
33	01171278	4	screw H 002009-AM10X 40-12.9
34	04359238	1	guide
35	01100645	1	pin DIN 000915-M 8 X 40-45H
36	04332250	1	rod
39	04332249	1	rod R-Z, S-L
41	01102659	2	nut m 10, d934 DIN 000934-M10 - 8-A4C
43	02387741	1	fork GEAR
44	01116956	4	ball DIN 005401- 8 MM-III
45	03386770	4	spring
46	01110920	2	pin DIN 000913-M10 X 20-10.9
62	02383430	1	screw
63	01151578	1	nut DIN 000936-M12 -04
64	04331745	1	shaft
65	02337994	1	sleeve
66	04332151	1	bearing
68	04332231	1	throttle slide
69	04332214	1	latch
71	01163285	2	screw H 002009-AM10X 16-12.9
72	04332227	1	controle panel R-Z
73	04303285	1	controle panel S-L
74	01115471	1	pin ISO 008752- 8 X 36
75	01173101	2	screw H 002091- 912-M 8 X 30- 10.9- A4C-MK-1,5D-BL

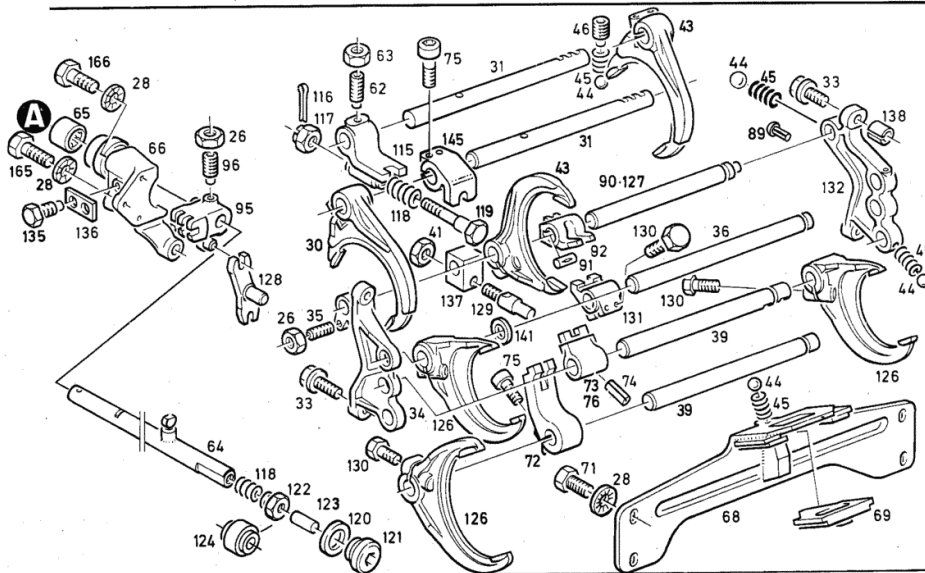


GETRIEBESCHALTUNG
GEARSHIFT ASSY.
CHANGEM BOITE VIT
MANDO TRANSMISION

KLAUE
DOG
GRIFFE
GARRA

7620/1336
7621/3382

1426-12 503 5944

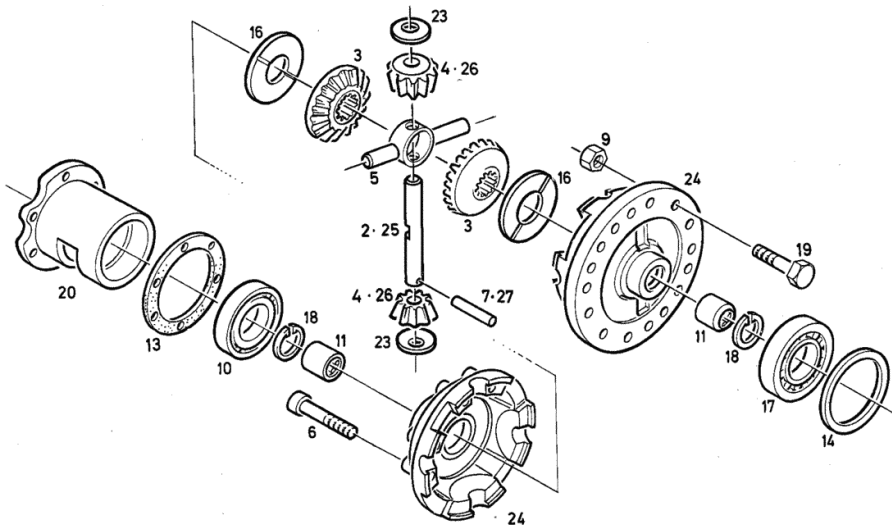


DIFFERENTIAL

Fig.	Code	QTY	Name
2	02383382	1	none UP TO CHASSIS-NO. FROM CHASSIS-FRAME NO....ITEM ...
3	04301640	2	planet gear Z=16
4	02339271	4	planet gear UP TO CHASSIS-NO. FROM CHASSIS-FRAME NO....ITEM ...
5	02383381	1	none
6	01110688	8	screw DIN 000912- M10 X 60 -10.9-A4 C
7	01115454	1	pin 6 x 28 ISO 008752- 6 X 28
9	01112877	16	nut DIN 000934-M14 -10-OELGESCHW
10	01214887	1	roller bearing
11	02384119	2	bushing
13	04330894	0	shim OPTION ITEM... A=2,2 MM. A=2,2 MM. 950-965+986+987
14	04301596	0	shim OPTION ITEM... A=0,5 MM A=0,5 MM 966-985
16	04301649	2	shim
17	01126121	1	roller bearing DIN 000720-302 16-J2
18	01171497	2	circlip H 002259- 52X1,5
19	01164067	16	screw H 002009-BM14X 45-100
20	04330891	1	bushing
23	04335908	4	shim FROM FIRST REPLACEMENT UNTIL CHASSIS-AXLE-GEARBOX- SUPPLY WITH NO.ITEM.. 24-26
24	04336029	1	differential carrier

**DEUTZ
FAHR** AUSGLEICHGETRIEBE
DIFF GEAR
DIFFERENTIEL
DIFERENCIAL

1405-24 502 7768



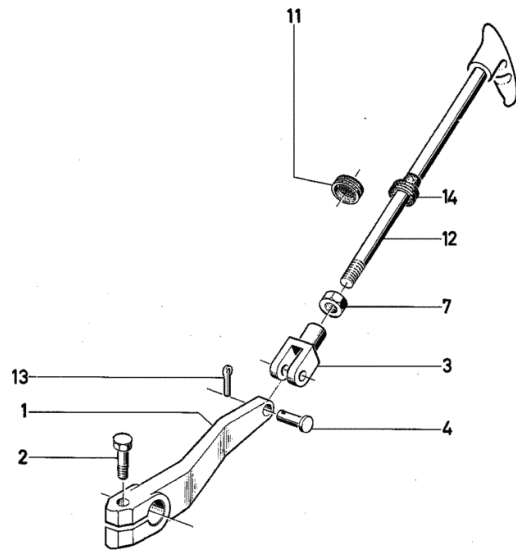
Section: GEARBOX, CLUTCH
GEAR SHIFTING

Fig.	Code	QTY	Name
1	04304374	1	lever
2	01112350	1	screw m 8 x 35 ISO 004017-M 8 X 35 - 8.8-A4C
3	01120923	1	fork head DIN 071752- G12X48 -A4C
4	01122614	1	pin DIN 001434-12F 8X 35X 28 -ST5 0-2-A4C
7	01112858	1	nut m 12, d934 DIN 000934-M12 - 8-A4C
11	04304665	1	plug
12	04324344	1	lever
13	03387776	1	pin
14	04314132	1	guide

1026 - 27 502 4169



SCHALTUNG FÜR VORDERRADANTRIEB
FRONT WHEEL DRIVE CONTROL ASSEMBLY
COMMANDE DU PONT-MOTEUR AV
CONEXION PARA TRACCION DELANTERA



DXbis 110

HEATING, AIR CONDITIONING SYSTEM

Air-to-air heating, Ventilation, Oil-to-air heating, Aux. heating, Air conditioning

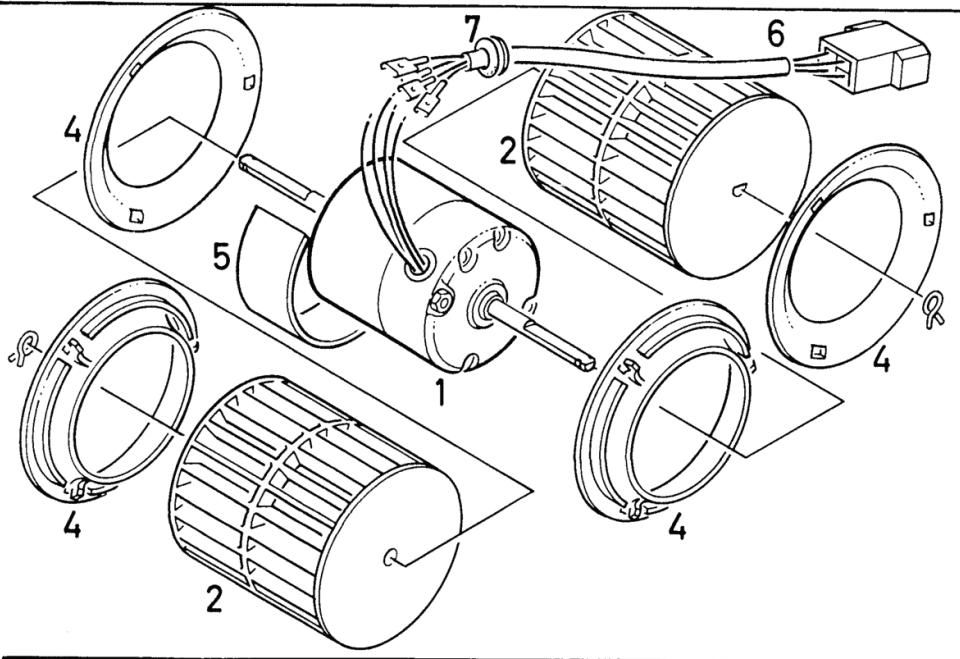
OIL HEATING.....	19.85.1
HEATING.....	19.85.2
CONDENSER.....	19.85.10
COMPRESSOR.....	19.85.11
AUXILIARY HEATING.....	19.85.14
BLOWER.....	19.85.16
OIL HEATING.....	19.85.17
AUXILIARY HEATING.....	19.85.27
CLIMATE CONTROL SYSTEM.....	19.85.28
CLIMATE CONTROL SYSTEM.....	19.85.29
CLIMATE CONTROL SYSTEM.....	19.85.30
CLIMATE CONTROL SYSTEM.....	19.85.31
CLIMATE CONTROL SYSTEM.....	19.85.32

BLOWER

Fig.	Code	QTY	Name
1	04339305	1	electropump
2	04334010	2	fan
4	04317580	4	ring
5	04317581	1	support
6	04317582	1	cable
7	04317583	1	rubber ring

**DEUTZ
FAHR**
 MOTOR MIT GEBLÄSE
 MOTOR WITH BLOWER
 MOTEUR · SOUFFLANTE
 MOTOR · SOPLANTE / VENTILAD.

1024-85 503 0344



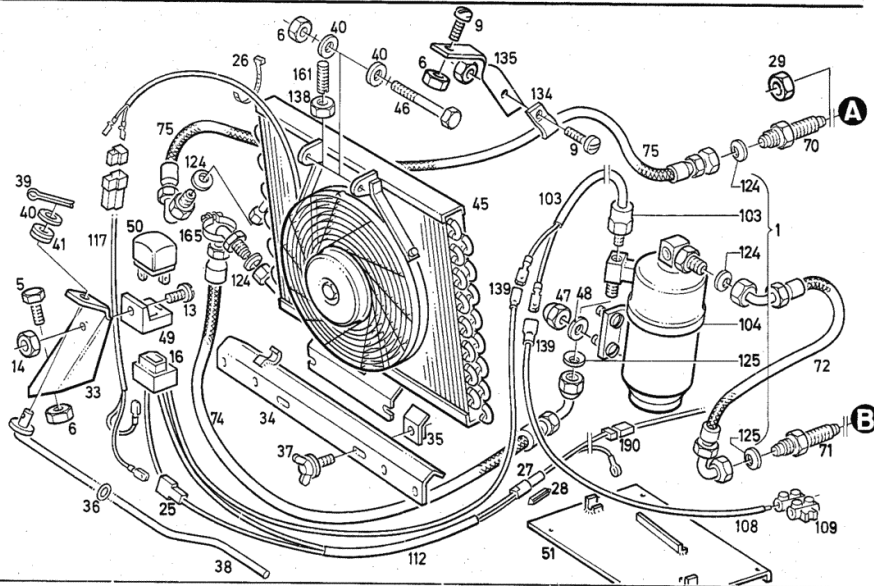
CLIMATE CONTROL SYSTEM

Fig.	Code	QTY	Name
1	04322156	0	air condition.system PART NUMBERS LISTING SHEET 1024-85 503 5862 + 5876 + 5879 POS.1
5	01112299	22	screw m 8 x 12, d933 ISO 004017-M 8 X 12 - 8.8-A4C
6	01112824	17	nut m 8, d934 ISO 004032-M 8 - 8-A4C
9	01104643	10	screw ISO 007045-M 8X 16 - 4.8-H -A 4C
13	01100595	3	screw m 5x8 ISO 007045-M 5X 8 - 4.8-H -A4 C
14	01112803	1	nut m 5, d934 ISO 004032-M 5 - 8-A4C
16	01164650	1	base H 007642- L 1
25	01162414	1	connection H 007677-G 6,3
26	01172065	4	clamp 4.6 x 146 H 007672-G 146X 4,6
27	01169435	1	tube H 007677-E
28	01121332	1	hose clip 25a d72581 DIN 072581-A 25-E-CU
29	04313016	1	nut
33	04321419	1	consolle
34	04322177	1	support
35	04321401	2	lamination
36	01162412	2	'o' ring H 002927- 8 X 2 -FPM-1-70
37	04323710	2	screw
38	04321405	1	rod
39	01106407	1	split pin DIN 000094- 2 X 14-ST-A4C
40	01107548	6	washer 8.4 DIN 000433- 8,4-140HV-A4C
41	01167421	1	rubber bushing H 002928-D 8 X11 X 2 -GI DEUT Z 1
45	04322186	0	condenser

**DEUTZ
FAHR**

KLIMAANLAGE	KONDENSATOR
AIR CONDITIONING	CONDENS.
CONDITION D'AIR	CONDENSATEUR
ACONDIC. DE AIRE	CONDENSADOR

1024-85 503 5878



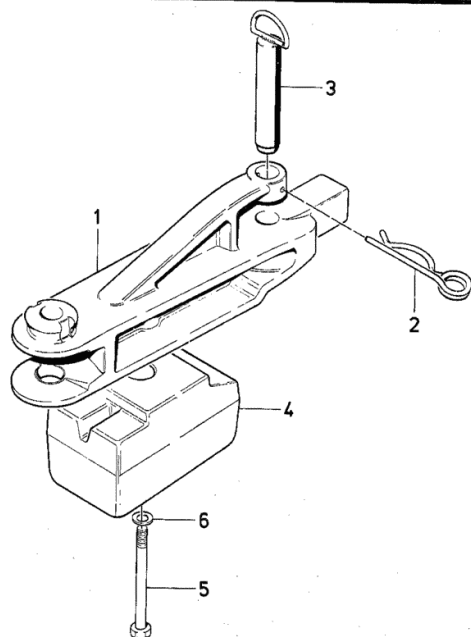
Section: HITCH
FRONT DRAWBAR COUPLING

Fig.	Code	QTY	Name
1	04312459	1	clutch assy
2	03401452	1	split pin
3	02325649	1	pin
4	04389226	1	ballast 20 Kg
5	01124803	1	screw m 10 x 130 DIN 000931- M10 X130 - 8.8-A- A4C
6	01169694	1	washer 10 H 002203- 10



RANGIERKUPPLUNG
TOWING CLEVIS
MANILLE DE REFOULM
ACOPLE MANIOBRAS

1024-32 502 4086



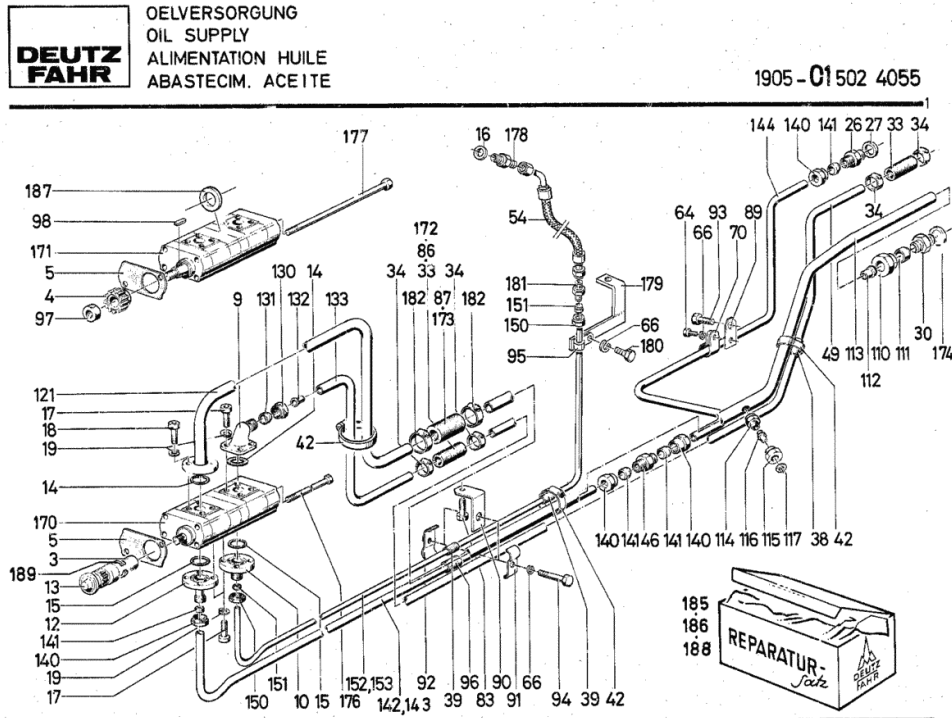
Section: HYDRAULIC SYSTEM
HYDRAULIC PUMP

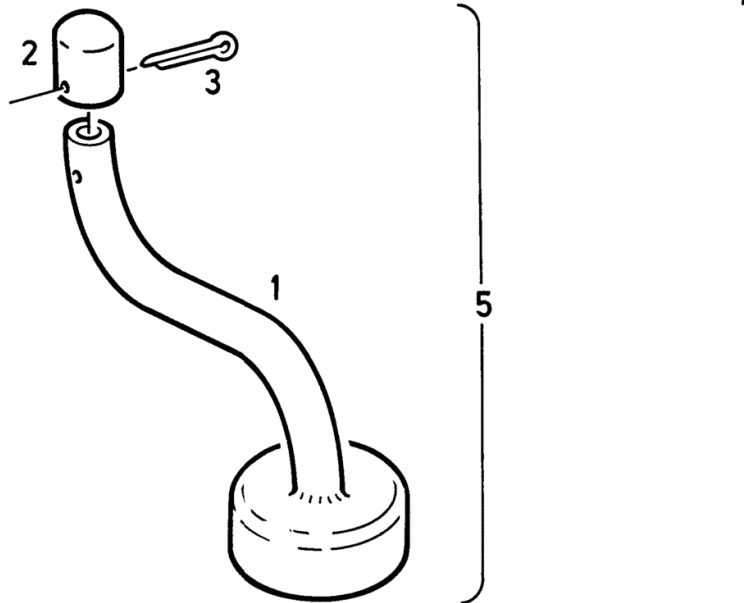
Fig.	Code	QTY	Name
			H 003132-AM18X1,5X15-A4C
179	04334637	1	consolle
180	01112240	1	screw m 6 x 12
			ISO 004017-M 6 X 12 - 8.8-A4C
181	01116711	1	tongue L 15
182	01166378	1	DIN 003902-L 15-A4C
			hose clip Ø15/38
185	01263180	0	H 000735-S 38 X 15
			gasket set
			TO ITEM...
			170
186	01263181	0	gasket set
			TO ITEM...
			171+172
187	01300154	2	'o' ring 17x30x7/8
188	01263256	1	gasket set
			TO ITEM...
			171
189	01107803	1	circlip
			DIN 000472- 14X1

BLEEDING TUBE

Fig.	Code	QTY	Name
1	04369176	1	tube
2	03400021	1	valve
3	01106398	1	split pin DIN 000094- 1,6X 28-ST
5	02306597	1	tube

**DEUTZ
FAHR** ENTLEFTUNGSROHR
BREATHER PIPE
TUBE DE DESAERAGE
TUBO PRG. AIRE

1952-08502 3976



Section: HYDRAULIC SYSTEM
 OPERATION - P.T.O. SHAFT - REAR

Fig.	Code	QTY	Name
1	04317763	1	rod
2	01107401	1	push-button DIN 000319-E40 FS/ST
3	01112813	2	nut m 6 DIN 000934-M 6 - 8-A4C
4	01102797	2	washer 6, d128 DIN 000128-A 6 -FST -A4C
5	01163282	1	hose clip H 003202- 1X 8-FE/ZN12CC
6	01103316	2	screw m 6 p.1.0 x 16 ISO 004017-M 6 X 16 - 8.8-A4C
7	04320921	1	plate
8	01151184	1	washer DIN 000433-10,5-200HV
9	01132628	1	split pin 3.2 x 25 DIN 000094- 3,2X 25-ST-A4C
10	04320922	1	sleeve
11	04320928	1	square
12	01112824	2	nut m 8, d934 ISO 004032-M 8 - 8-A4C
13	01107101	2	washer 8.4 DIN 000125-A 8,4-140HV-A4C
14	04320925	1	plate

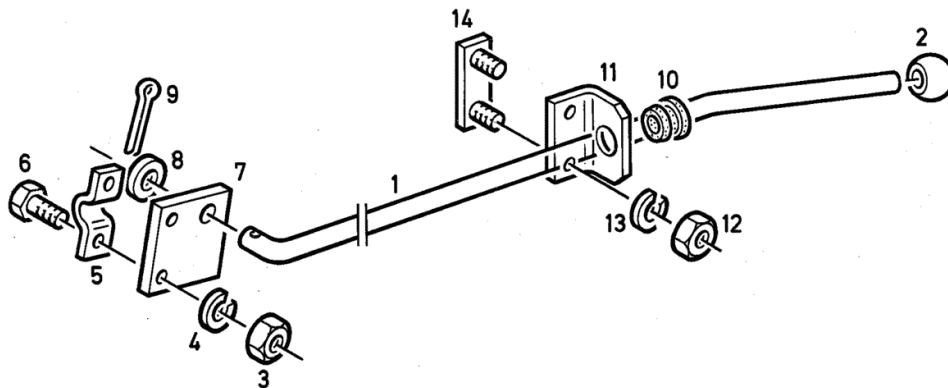


BETÄTIGUNG
CONTROL ASSEMBLY
CDE D'ACTIONNEM.
ACCIONAMIENT

KRAFTHEBERANLAGE
LIFT SYSTEM
SYST RELEVAGE HYDR.
SYST ELEVAD. HIDR.

HECK
REAR
AR
ATRAS

1905-08 503 5811



POWER LIFT

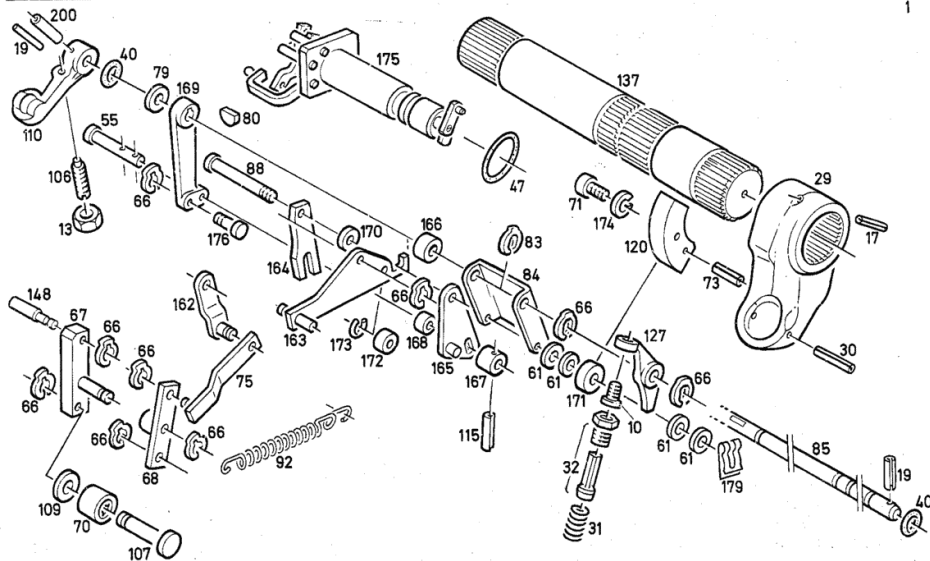
Fig.	Code	QTY	Name
110	04309271	2	lever
115	01115409	2	pin ISO 008752- 3 X 20
120	04308167	1	locking segment
127	04309364	1	rocker
137	04313312	1	shaft
148	02386934	1	pin
162	04328745	1	rod
163	04329512	1	rod
164	04323599	1	crosspiece
165	04328740	1	lamination
166	04328836	1	bushing
167	04328838	1	sleeve
168	04328837	1	bushing
169	04341079	1	lever
170	04328754	1	roller
171	03401379	0	roller OPTION ITEM... A=24,5 MM.
172	04328753	1	roller
173	01161373	1	circlip H 002258- 8X1
174	01107101	15	washer 8.4 DIN 000125-A 8,4-140HV-A4C
175	00000000	0	not serviceable PART NUMBERS LISTING SHEET 1905-08 503 5713
176	04328750	1	pin
179	01211098	1	key-pin
200	01124482	2	pin ISO 008752- 3 X 32
950	03401422	0	ring A=1,0 MM.
951	01107558	0	washer DIN 000433-17 -140HV-A4C
952	03401423	0	ring A=3,0 MM.
953	03401424	0	ring A=4,0 MM.
954	03401425	0	ring A=5,0 MM.
955	02309888	0	ring A=0,5 MM.
956	03401380	0	roller



KRAFTHEBER
HYDRAULIC LIFT
VERIN HYDRAULIQUE
ELEVADOR HIDRAUL.

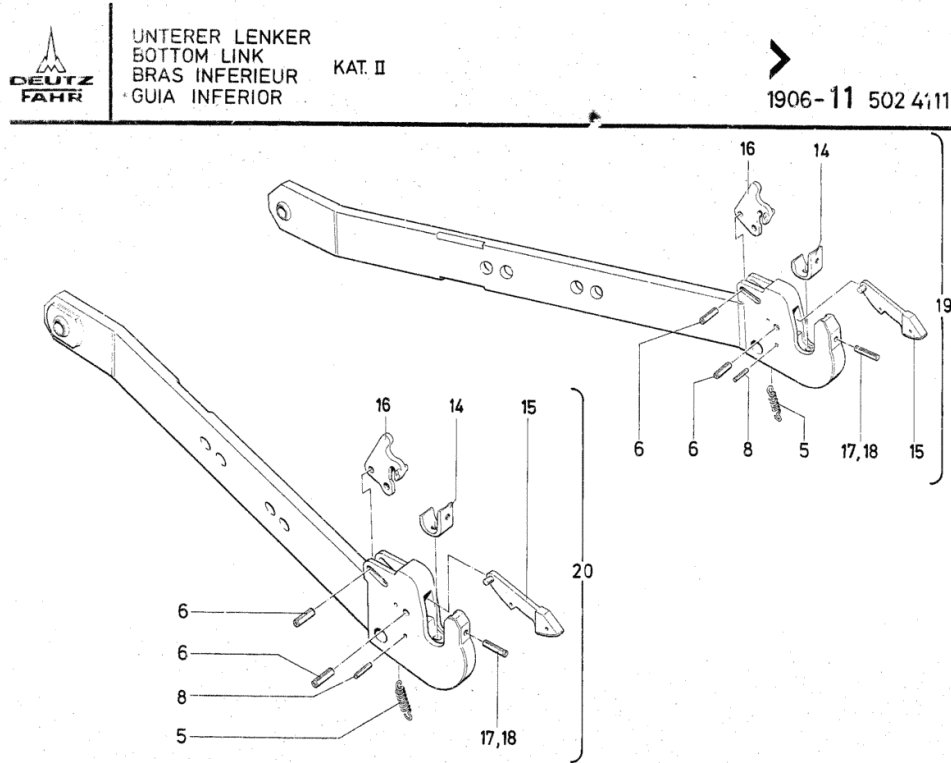
MISCHREGELUNG
MIXTURE CONTROL
MODULATION
REGULAC. MIXTA.

1905 -08 503 6007



LOWER LINK

Fig.	Code	QTY	Name
5	04309989	1	spring
6	01115502	2	pin ISO 008752-13 X 36
8	01115456	1	pin ISO 008752- 6 X 36
14	04318903	1	joint
15	04308179	1	ratchet
16	04309988	1	lever
17	01115473	1	pin 8 x 40, d1481 ISO 008752- 8 X 40
18	01115443	1	pin ISO 008752- 5 X 40
19	04311092	1	valve RIGHTS
20	04311093	1	valve LEFT



LOWER LINK

Fig.	Code	QTY	Name
1	04357114	1	valve RIGHTS
2	04357115	1	arm LEFT
5	04328949	1	lever
8	04328947	1	terminal
10	04318899	2	roll pin
11	04323257	1	spring
13	04323253	1	ring 6 x 28
14	04323227	1	bracket

**DEUTZ
FAHR**

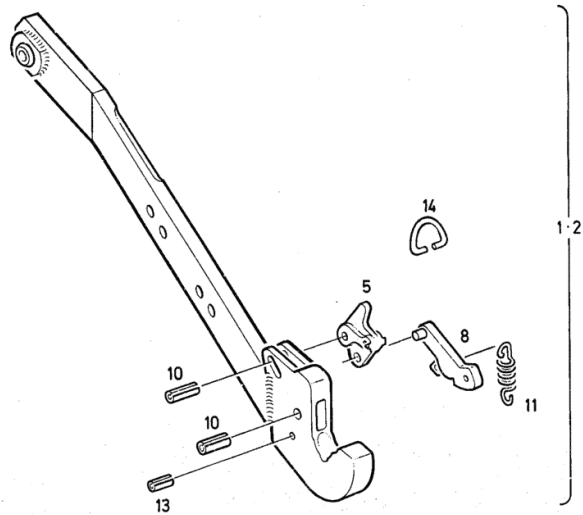
UNTERER-LENKER
BOTTOM LINK
BRAS INFERIEUR
GUIA INFERIOR

KAT. II

SCHNELLKUPPLER
QUICK COUPLER
CHAPE D ATTELAGE RAPIDE
ACOPLE RAPIDO

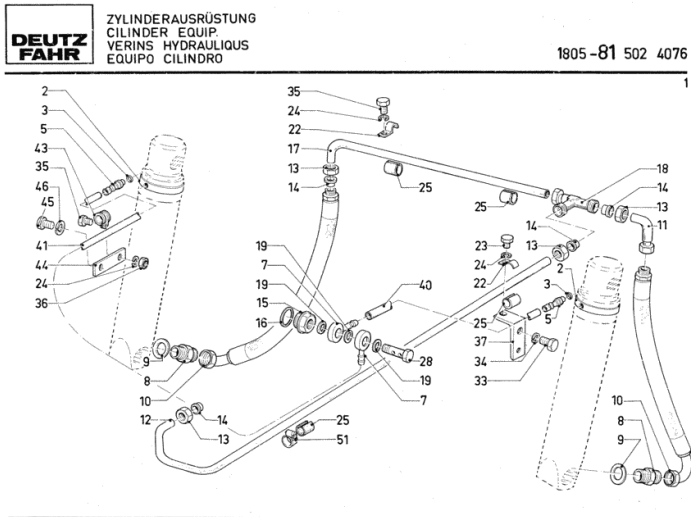
1905-11 502 7806

2



Section: HYDRAULIC SYSTEM
CYLINDER EQUIPMENT

Fig.	Code	QTY	Name
2	04304193	2	clamp
3	01171242	2	'o' ring H 002927- 6 X 3,15 -NBR-1-80
5	04304194	2	tongue
7	04304185	2	ring
8	01122822	2	pipe fitting I 12 a d3901 DIN 003901-L 12A-M-ST-A4C
9	01118700	2	'o' ring Ø 16 x 20 DIN 007603-A 16 X 20 -CU
10	04304186	2	tube
11	01172991	1	socket H 003130-BL12-ST -A4C
12	04323188	1	pipng
13	01179539	4	nut CL 12 H310 H 003105- CL12 -STF55 -A3C GE WACHST
14	01116637	4	ring H 003107-F S12-ST
15	02378272	1	screw
16	01118760	1	gasket 26x31 DIN 007603-A 26 X 31 -CU
17	04323189	1	pipng
18	01173028	1	pipe fitting AL 12 H 003127-AL12-ST-A4C
19	01118659	3	'o' ring DIN 007603-A 10 X 13,5-CU
22	01163162	2	hose clip H 003202-B 19-FE/ZN12CC
23	01112228	1	screw m 6x8 d933 ISO 004017-M 6 X 8 - 8.8-A4C
24	01102797	3	washer 6, d128 DIN 000128-A 6 -FST -A4C
25	02382224	4	sleeve 12
28	03315353	1	pipe union
33	01112308	1	screw ISO 004017-M 8 X 18 - 8.8-GES CHW.
34	01107101	1	washer 8.4 DIN 000125-A 8,4-140HV-A4C
35	01103316	2	screw m 6 p.1.0 x 16 ISO 004017-M 6 X 16 - 8.8-A4C
36	01112813	1	nut m 6 DIN 000934-M 6 - 8-A4C
37	04304531	1	square



END PLATE

DEUTZ - STEUERGERAET - KOMBI ENDPLATTE
 DEUTZ - CONTROL UNIT COMB. TERMINAL PLATE
 DEUTZ - ASS. DISTRIBUTEURS OBTURATEUR
 DEUTZ - IGO. APARATOS MANDO PLACA FINAL

1805 - 88 503 03134

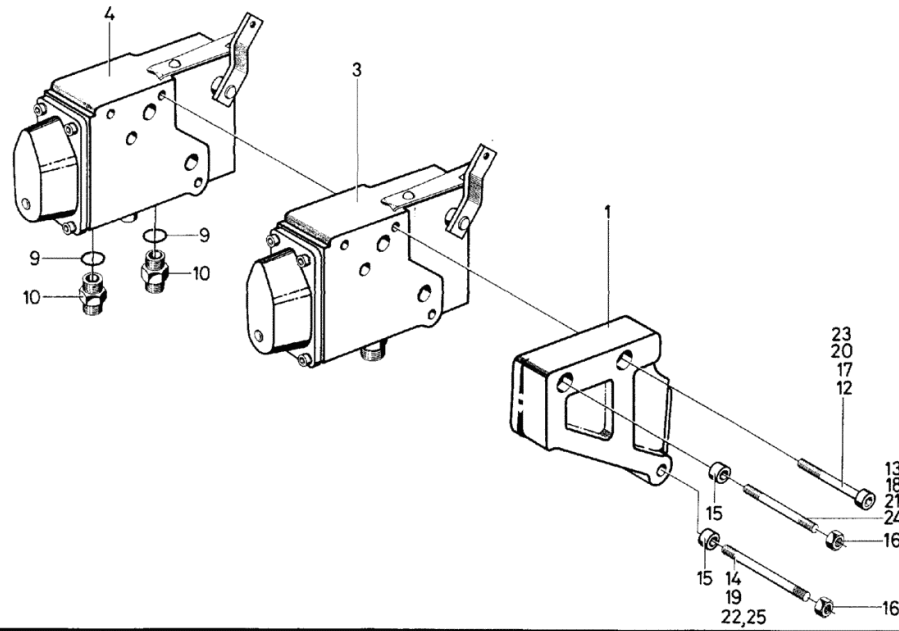


Fig.	Code	QTY	Name
1	02317431	0	tip PART NUMBERS LISTING SHEET 1804-40 503 0315
3	04300357	0	distributor PART NUMBERS LISTING SHEET 1804-40 503 0317
	04304155	0	distributor PART NUMBERS LISTING SHEET 1804-40 503 0318
9	01118713	2	washer 18.5 DIN 007603-A 18 X 22 -CU
10	01164671	2	pipe fitting H 003132-AM18X1,5X12-A4C
12	01110591	1	screw m 8 x 40 DIN 000912- M 8 X 40 -10.9-A4 C
13	01125606	1	stud bolt m 8 p.1.25 DIN 000939-M 8 X 45 - 8.8-A4C
14	01153349	1	screw DIN 000939-M 8 X 55 - 8.8
15	04308831	2	bushing
16	01112824	2	nut m 8, d934 ISO 004032-M 8 - 8-A4C
17	01144739	1	screw m8x80 d912-10 DIN 000912- M 8 X 80 -10.9-OE LGESCHW
18	01137086	1	screw DIN 000939-M 8 X 85 -10.9-A4C
19	01102526	1	screw DIN 000939-M 8 X 95 -10.9-A4C
20	01124771	1	screw DIN 000912- M 8 X120 -10.9-A4 C
21	01137087	1	screw DIN 000939-M 8 X130 -10.9-A4C
22	01137088	1	screw DIN 000939-M 8 X140 -10.9-A4C
23	01137090	1	screw DIN 000912- M 8 X160 -10.9-A4 C
24	01137089	1	screw DIN 000939-M 8 X170 -10.9-A4C
25	01102556	1	screw DIN 000939-M 8 X180 -10.9-A4C

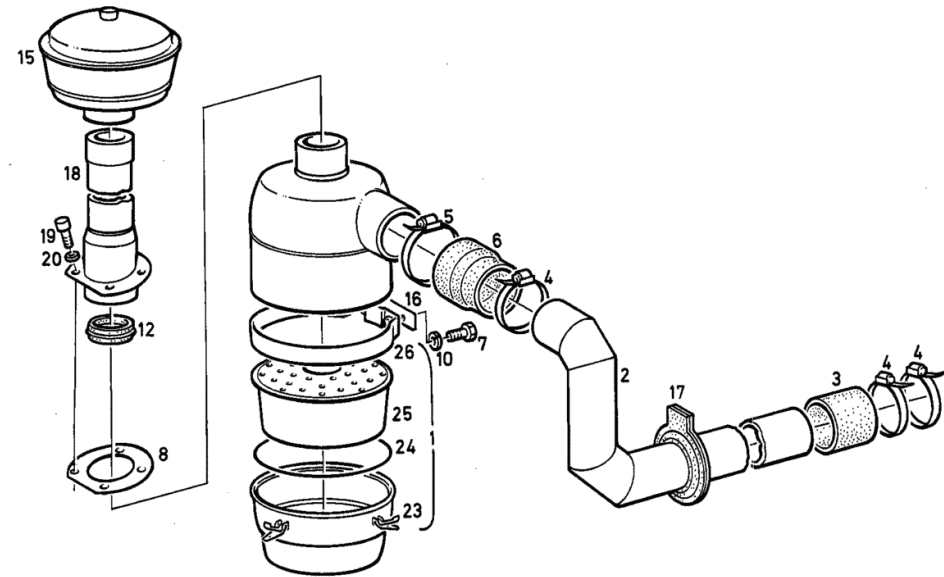
Section: MOTOR SUPPLY
OILBATH AIR FILTER

Fig.	Code	QTY	Name
1	02102537	1	oil filter
2	04301238	1	tube
3	01165397	1	rubber sleeve
4	01166417	3	hose clip H 000650-A 70X 80X 65
5	01166425	1	hose clip H 000735-S 80 X 15
6	02338246	1	hose clip H 000735-S 90 X 15
7	01112322	2	rubber sleeve
8	04303773	1	screw m 8 p.1.25 x 20
10	01107101	2	ISO 004017-M 8 X 20 - 8.8-A4C washer 8.4
12	04301219	1	DIN 000125-A 8,4-140HV-A4C 'o' ring
15	04318399	0	precleaner
16	02370852	1	PART NUMBERS LISTING SHEET 1026-43 5025728 shim
17	04306635	1	'o' ring
18	04320999	1	tube
19	01171789	4	screw H 002093- 7985-M 8X 20 -4.8 - H
20	01171740	4	washer 8,4x17x1,6 d125 H 002398- 125-A 8,4-ST
23	02102539	1	oil pan
24	02102540	1	gasket
25	02102541	1	insert
26	02102542	1	consolle

**DEUTZ
FAHR**

 ÖLBADLUFFFILTER MIT ANSAUGUNG VON OBEN
 OIL BATH CLEANER WITH INTAKE STACK
 EPURATEUR D AIR A BAIN D HUILE A ASPIRATION D EN HAUT
 FILTRO DE AIRE EN BANO DE ACEITE, ADMISION DESDE ARRIBA

1026-43 502 3990



CLICK HERE TO **DOWNLOAD** THE COMPLETE MANUAL

- Thank you very much for reading the preview of the manual.
- You can download the complete manual from: www.heydownloads.com by clicking the link below



- Please note: If there is no response to CLICKING the link, please download this PDF first and then click on it.

CLICK HERE TO **DOWNLOAD** THE COMPLETE MANUAL