

DX 6 .50

BRAKE

Control assy./service brake, Parking brake

OPERATION - PARKING BRAKE..... 13.29.3

Service brake, Contral assy./service brake

SERVICE BRAKE DISC BRAKE..... 13.30.2

SERVICE BRAKE DISC BRAKE ON CARDAN SHAFT..... 13.30.4

OPERATION SERVICE BRAKE MAIN CYLINDER..... 13.30.11

OPERATION SUSTAINED-ACTION SERVICE BRAKE LINES..... 13.30.12

OPERATION SUSTAINED-ACTION SERVICE BRAKE LINES..... 13.30.13

BRAKE OPERATION SUSTAINED-ACTION SERVICE BRAKE LINES..... 13.30.14

OPERATION SUSTAINED-ACTION SERVICE BRAKE LINES..... 13.30.15

Pneumatic system

COMPRESSED-AIR UNIT..... 13.55.20

COMPRESSED-AIR UNIT..... 13.55.21

COMPRESSED-AIR UNIT..... 13.55.22

COMPRESSED-AIR UNIT SUSTAINED-ACTION BRAKE..... 13.55.23

COMPRESSED-AIR UNIT..... 13.55.24

COMPRESSED-AIR UNIT..... 13.55.25

COMPRESSED-AIR UNIT..... 13.55.26

COMPRESSED-AIR UNIT..... 13.55.27

Hydr. brake for trailer

HYDRAULIC BRAKE FOR TRAILER..... 13.56.3

CLICK HERE TO **DOWNLOAD** THE COMPLETE MANUAL

- Thank you very much for reading the preview of the manual.
- You can download the complete manual from: www.heydownloads.com by clicking the link below



- Please note: If there is no response to CLICKING the link, please download this PDF first and then click on it.

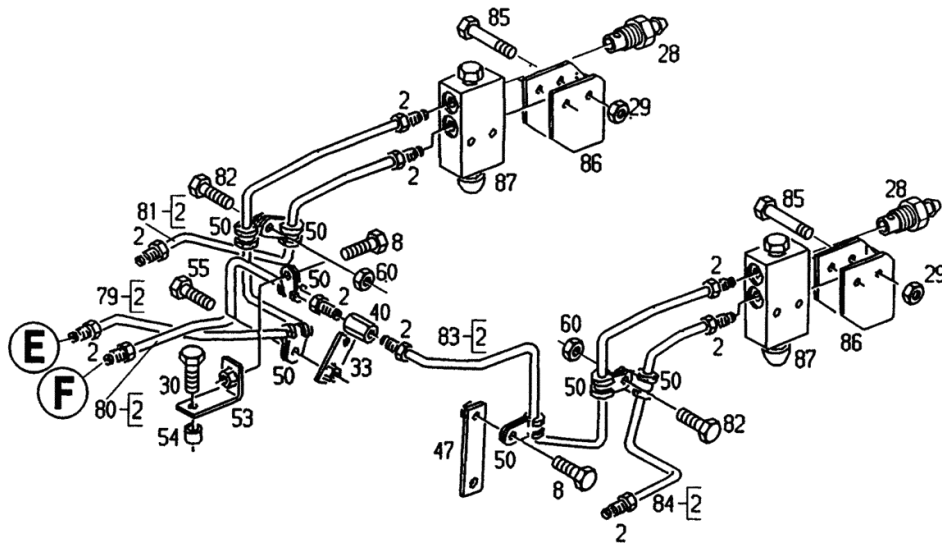
CLICK HERE TO **DOWNLOAD** THE COMPLETE MANUAL

BRAKE OPERATION SUSTAINED-ACTION SERVICE BRAKE LINES

Fig.	Code	QTY	Name
2	01100769	2	screw DIN 074233-ESM 12X1 -A4C
8	01129104	3	screw m 6 p.1.0 x 16 DIN 000933-M 6 X 16 SB- 8.8-A 4C
28	02381565.4	2	valve Ø 5 / m 12 p.1
29	01112824	7	nut m 8, d934 ISO 004032-M 8 - 8-A4C
30	01112429	2	screw m 10 x 30, d933 DIN 000933-M10 X 30 - 8.8-A4C
33	04311530	1	console
40	04378300	4	shim
47	04343947	1	console
50	01171262	9	hose clip b 6x15 h3223 H 003223-B 6X15-W1/CR70-10
53	04343950	1	square
54	04344469	1	ring
55	01112201	1	screw m 5 x 12 ISO 004017-M 5 X 12 - 8.8-A4C
60	01112813	4	nut m 6 DIN 000934-M 6 - 8-A4C
79	04363193	1	tube
80	04362960	1	tube
81	04363190	1	tube
82	01112264	2	screw m 6 x 20, d933 ISO 004017-M 6 X 20 - 8.8-A4C
83	04363164	1	tube
84	04363167	1	tube
85	01127046	4	screw m 8 x 60 ISO 004017-M 8 X 60 - 8.8-A4C
86	04367848	2	console
87	04356894	2	valve

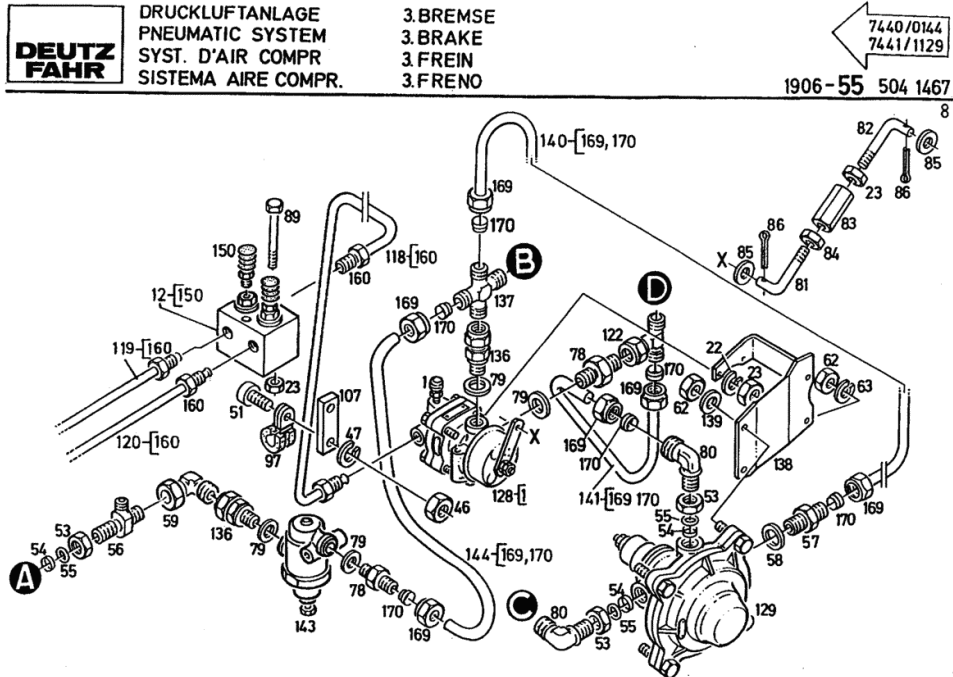
**DEUTZ
FAHR**BETAETIGUNG
CONTROL ASSEMBLY
CDE D'ACTIONNEM.
ACCIONAMIENTO3. BETRIEBSBREMSE
3. OPERATING BRAKE
3. FREIN DE ROUTE
3. FRENO DE RODADURALEITUNGEN
LINES
CONDUITES
TUBERIA

1029-30 0504 4416



Section: BRAKE
COMPRESSED-AIR UNIT SUSTAINED-ACTION BRAKE

Fig.	Code	QTY	Name
86	01106407	2	split pin DIN 000094- 2 X 14-ST-A4C
89	01111174	2	screw m 8x65 d931 ISO 004014- M 8 X 65 - 8.8-A4 C
97	01213265	3	clamp H 003223-B12X15-W1/CR70-10
107	04333328	1	rotor blade
118	04342585	1	tube
119	04342570	1	tube
120	04342567	1	tube
122	01179538	1	pipe fitting CL 12 S H 003131-CL12-ST-A4C
128	04347045	1	valve
129	02382049.4	1	valve 02382049.4
136	01172624	1	insert H 003119-BL 12M -A4C
137	01179453	1	tongue H 003128-AL 12-ST-A4C
138	04346868	1	console
139	01107105	2	washer 10.5 DIN 000125-A10,5-140HV-A4C
140	04389758	1	tube
141	04390996	1	tube
143	04347830	1	valve
144	04348816	1	tube
150	01269851	1	valve
160	01100769	2	screw DIN 074233-ESM 12X1 -A4C
169	01179539	2	nut CL 12 H310 H 003105- CL12 -STF55 -A3C GE WAXED
170	01116637	2	ring H 003107-F S12-ST



DX 6 .50

BUILT-ON ACCESSORIES

Cab

PROTECTIVE FRAME WITHOUT CAB.....	16.37.1
ROPS.....	16.37.2
HOOP GUARD FRONT.....	16.37.3
HOOP GUARD FRONT.....	16.37.4
FRONT WALL.....	16.37.5
FRONT WALL.....	16.37.6
KNOCKOUT WINDOW.....	16.37.7
WINDOW FRONT/FIXED.....	16.37.8
KNOCKOUT WINDOW REAR.....	16.37.9
WINDSCREEN.....	16.37.10
SIDE PANEL RIGHT/FIXED.....	16.37.11
SIDE PANEL FIXED.....	16.37.12
KNOCKOUT WINDOW SIDE.....	16.37.13
CAB DOOR.....	16.37.14
TAILGATE.....	16.37.15
TAILGATE.....	16.37.16

Engine hood, Battery Carrier

HOOD.....	16.41.5
BATTERY CARRIER.....	16.41.8

Speed control device

SPEED ADJUSTMENT.....	16.46.1
SPEED ADJUSTMENT FINLAND.....	16.46.2

Shut-down device

STOP DEVICE.....	16.47.2
STOP DEVICE.....	16.47.4

Rear mudguards, Rear panelling

WING REAR.....	16.51.1
WING REAR.....	16.51.2
WING REAR - ELECTRONIC - LIFTING GEAR CONTROL.....	16.51.3

Front mudguards

RUBBER WING - TELESCOPIC AXLE.....	16.52.1
RUBBER WING - DRIVEN STEERING AXLE.....	16.52.3
RUBBER WING - DRIVEN STEERING AXLE.....	16.52.4
RUBBER WING - FRONT POWER LIFT.....	16.52.5

Instrument box, Floor

FLOOR.....	16.53.2
------------	---------

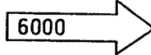
Driver's seat

DRIVER'S SEAT.....	16.54.1
DRIVER'S SEAT.....	16.54.2
DRIVER'S SEAT.....	16.54.3

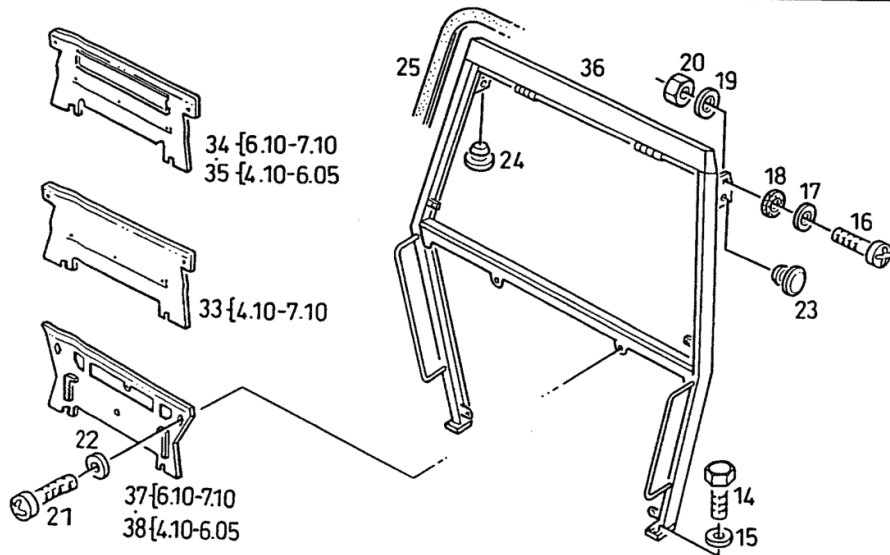
FRONT WALL

Fig.	Code	QTY	Name
14	01129112	4	screw DIN 000933-M 8 X 25 SB- 8.8-A 4C
15	01107101	4	washer 8.4 DIN 000125-A 8,4-140HV-A4C
16	01139631	2	screw DIN 007985-M10X 40 - 8.8-H -A 4C
17	01107105	2	washer 10.5 DIN 000125-A10,5-140HV-A4C
18	01136319	2	nut DIN 000934-M12 X2 -10
19	01127538	2	washer 10.5 DIN 007349-10,5-ST-A4C
20	01102659	2	nut m 10, d934 DIN 000934-M10 - 8-A4C
21	01177455	7	screw H 002093- 7516-AM 8 X20-ST
22	01171741	5	washer H 002398- 9021-A 8,4-ST
23	01172794	1	plug 18X12.5X5 H 002873-N 18 X 12,5X 5 -DEUT Z GRUEN 74
24	01167308	1	plug 7.2x5.2x9 H 002873-A 7,2X 5,2X 9 -PE WE ICH-SW
25	01388719	0	gasket H 842081-A20X 20 -PUR-1-GR GI T 1420 MM
33	04376258	1	lamination WITHOUT VENTILATION-OIL HEATING+ AIR CONDITIONING SYSTEM
34	04376183	1	lamination WITH VENTILATION+OIL HEATING WITHOUT AIR-CONDITIONING
35	04376182	1	lamination WITH VENTILATION+OIL HEATING WITHOUT AIR-CONDITIONING
36	04376293	1	chassis frame
37	04376111	1	lamination WITH VENTILATION-OIL HEATING+ AIR CONDITIONING SYSTEM
38	04376112	1	lamination

**DEUTZ
FAHR** FRONTWAND
FRONT WALL
PAROI AVANT
TABIQUE FRONTAL



1905-37 504 5515



Section: BUILT-ON ACCESSORIES
SIDE PANEL RIGHT/FIXED

Fig.	Code	QTY	Name
31	01388794	0	3875,0 MM parting 9x4,5 H 846482-02-PN 1
32	01396990	0	80,0 MM gasket H 846471-32-PN 1 3923 MM

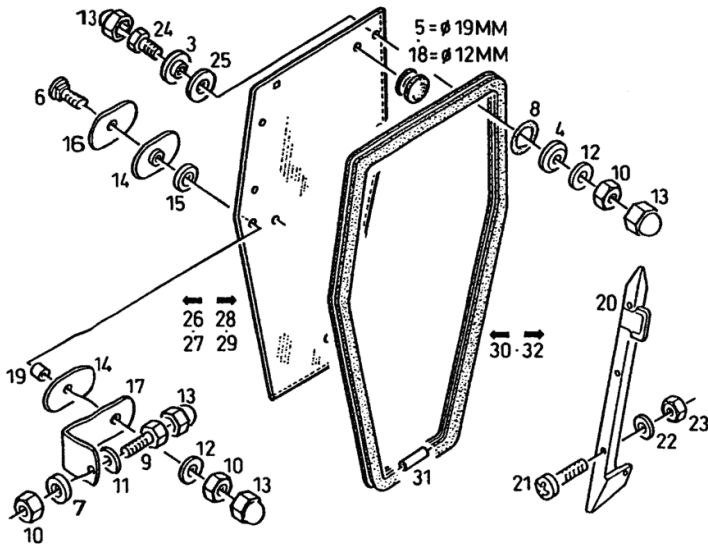


SEITENWAND
 SIDE PANE
 VITRE PAROI LAT.
 CRISTAL PARD. LATER

RECHTS/FEST
 RIGHT HAND/FASTEND
 DROITE/FERME
 DERECHA/ACOPLADA

1905-37 504 1662

6



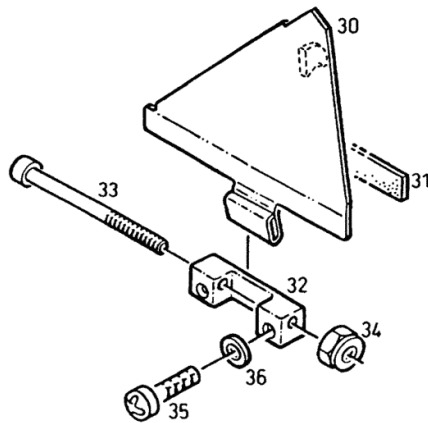
4.10	7444/0138 7445/0513
4.30	7430/0338 7431/1097
4.50	7432/0262 7433/1543
4.70	7434/0559 7435/1970
6.05	7448/0000 7449/0000
6.10	7436/0230 7437/1043
6.30	7438/0262 7439/1744
6.50	7440/0136 7441/0826
7.10	7642/0132 7643/0571

TAILGATE

Fig.	Code	QTY	Name
30	04367402	1	shutter
31	01395781	1	gasket H 843582-A 2,5X15
32	04364119	1	consolle
33	01177034	1	screw H 002093- 912-M 6 X120 - 8.8
34	01174849	1	nut H 002198- 980-VM 6-8-WAXED
35	01171734	2	screw H 002093- 7985-M 6X 16 -4.8 - H
36	01171739	2	washer H 002398- 125-A 6,4-ST

**DEUTZ
FAHR** Klappe HECK
FLAP REAR
CLAPET ARRIERE
TRAMPILLO ATRAS

1905-37 504 5518



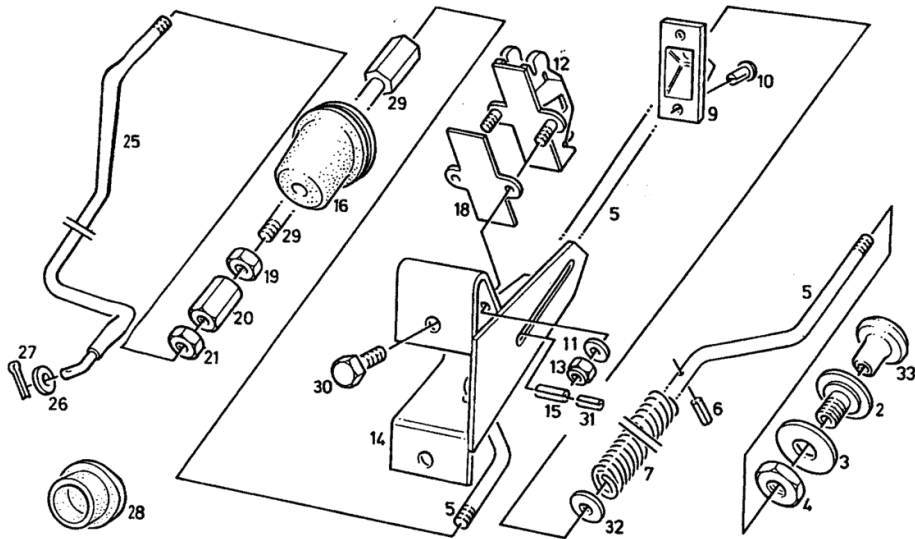
Section: BUILT-ON ACCESSORIES
STOP DEVICE

Fig.	Code	QTY	Name
32	03386275	1	washer
33	04348687	1	button

**DEUTZ
FAHR** ABSTELLVORRICHTUNG
 SHUTDOWN DEVICE
 DISPOSITIF ARRET
 DISPOS. PARADA

1023-47 504 1623

2



RUBBER WING - DRIVEN STEERING AXLE

**DEUTZ
FAHR**

GUMMIKOTFLÜGEL
MUDGUARD
GARDE-BOUE CAOUCHE
GUARDABARROS CAUCH

GETR. LENKACHSE
DRIVEN AXLE
ESSIEU DIRECTEUR
EJE MOTRIZ

1026-52 504 1632

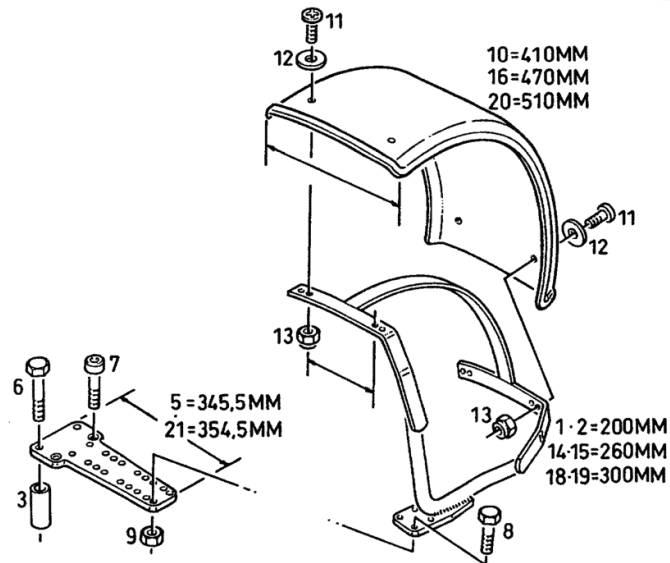


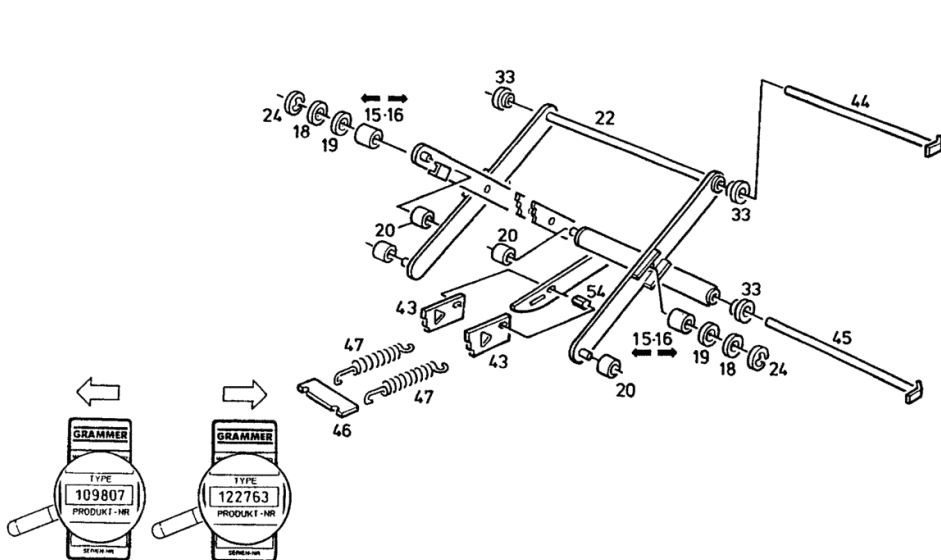
Fig.	Code	QTY	Name
1	04346760	1	support RIGHTS ZF APL 345 410 MM
2	04346761	1	support LEFT ZF APL 345 410 MM
3	04351080	4	tube
5	04346755	1	plate
6	01111924	2	screw m 16 x 95 ISO 004014- M16 X 95 - 8.8-A4 C
7	01110857	2	screw DIN 000912- M16 X 80 - 8.8-A4 C
8	01112560	4	screw m 12 x 50 DIN 000933-M12 X 50 - 8.8-A4C
9	01112858	4	nut m 12, d934 DIN 000934-M12 - 8-A4C
10	04314711	1	fender
11	01137000	4	screw m 8 x 30 ISO 007045-M 8X 30 - 4.8-H -A 4C
12	02312618	4	washer
13	01136452	4	nut vm 8 d980 DIN 000980-VM 8 - 8-A4C GEWAC HST
14	04346628	1	support RIGHTS ZF APL 345 470 MM
15	04346627	1	support LEFT ZF APL 345 470 MM
16	04314713	1	fender
18	04379375	1	support RIGHTS ZF APL 350 510 MM
19	04379376	1	support LEFT ZF APL 350 510 MM
20	04325338	1	fender
21	04349327	1	plate

Section: BUILT-ON ACCESSORIES
DRIVER'S SEAT

Fig.	Code	QTY	Name
15	04311713	2	bushing
16	04311716	2	roller
18	01107552	2	washer DIN 000433-13 -140HV-A4C MWM-NR. 01107552
19	04311714	2	washer
20	04311716	2	roller
22	04350894.4	1	arm
24	01117930	2	washer DIN 006799- 9 MWM-NR. 6.0305.08.0.0900
33	04350896	4	bushing
43	04311719	2	clutch.pres plate
44	04350898	1	pin
45	04350897	1	pin
46	04311718	1	plate
47	04311717	2	spring
54	04311720	1	pin

**DEUTZ
FAHR** FAHRERSITZ
 DRIVER'S SEAT
 SIEGE DE CONDUCT
 ASIENTO CONDUCTOR

1024-54 504 5504

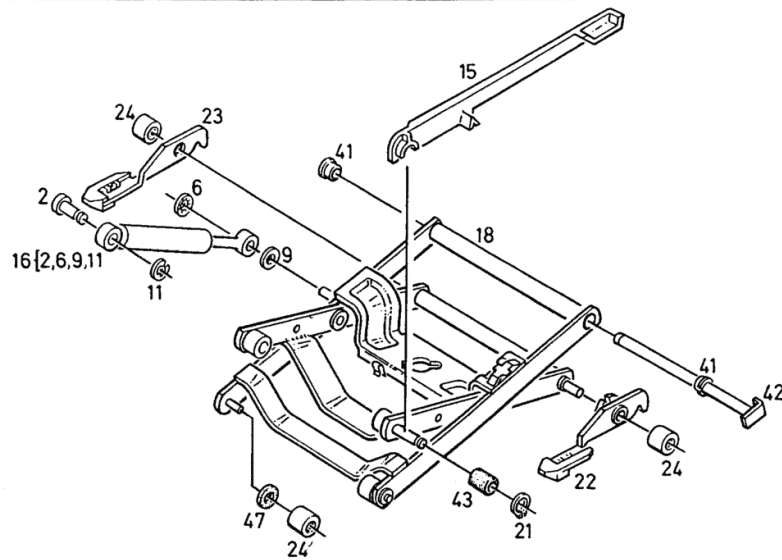


DRIVER'S SEAT - PNEUMATIC SPRINGING - LUXUS-GRAMMER

Fig.	Code	QTY	Name
2	04311762	1	pin
6	04362456	1	ring
9	01107101	2	washer 8.4 DIN 000125-A 8,4-140HV-A4C
11	01131021	1	washer 5 d6799 DIN 006799- 5
15	04362241	1	throttle slide
16	04367558	1	shoch.absorber
18	04362440	1	arm
21	01107719	1	circlip DIN 000471- 12X1
22	04353376	1	stop
23	04353377	1	stop
24	04362443	2	bearing
41	04350896	2	bushing
42	04350898	1	pin
43	04353926	1	shoch.absorber
47	04354955	4	felt band

DEUTZ FAHR FAHRERSITZ LUFTFEDERUNG LUXUS-GRAMMER
 DRIVER'S SEAT AIR SUSPENSION
 SIEGE DE CONDUCT SUSP. PNEUMATIQUE
 ASIENTO CONDUCTOR SUSPENS. NEUMATICA

1023-54 504 4513



Section: BUILT-ON ACCESSORIES
REAR-VIEW MIRROR CAB**DEUTZ
FAHR**RÜCKSPIEGEL
DRIVING MIRROR
RETROVISEUR
ESPEJO RETROVISFAHRERKABINE
DRIVER'S CAB
CABINE DE CONDUCT
CABINA CONDUCTOR

1023-67 504 1665

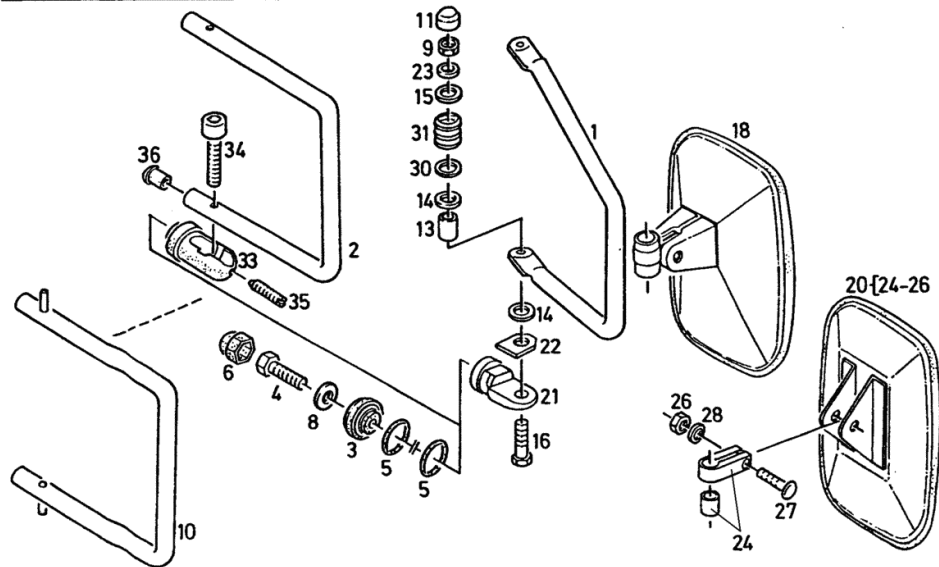


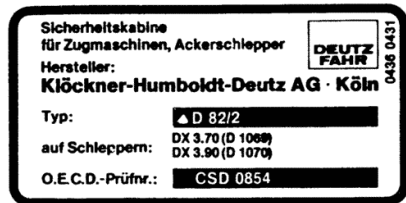
Fig.	Code	QTY	Name
1	04358475	1	consolle
2	04365765	1	consolle
3	04388672	2	disc
4	01112341	2	screw m 8 x 30, d933
5	01167374	4	ISO 004017-M 8 X 30 - 8.8-A4C 'o' ring
6	01174042	4	H 002927- 25 X 3 -NBR-1-60 cap
8	01171741	2	H 002870-K 13 -PE SOFT-SW washer
9	01136452	2	H 002398- 9021-A 8,4-ST nut vm 8 d980
10	04380521	1	DIN 000980-VM 8 - 8-A4C GEWAC HST support
11	01174049	2	tube H 002870-K 24 -PE SOFT-SW
13	04357606	2	tube
14	04372536	4	brake disc
15	01103827	2	washer DIN 000125-A13 -200HV-A4
16	01112356	2	screw m 8 x 40 ISO 004017-M 8 X 40 - 8.8-A4C
18	04327533	1	mirror
20	04358888	1	rear view mirror
21	04336965	2	consolle ON FIRST REPLACEMENT SUPPLY WITH ITEM.... 2X11,13-16+22-25
22	04359935	2	lamination
23	01136363	2	washer 8.4 DIN 009021- 8,4-140HV-A4C
24	0.900.0025.2	1	support
26	01176005	1	nut H 002198- 934-M 6- 8
27	01171755	1	screw H 002093- 603-M 6 X 35
28	01171739	1	washer H 002398- 125-A 6,4-ST
30	04359934	2	washer
31	01144146	12	spring DIN 002093-B 25 -A4C
33	04365764	2	consolle
34	01123699	2	screw m 8 x 30

Section: BUILT-ON ACCESSORIES
SIGN SET

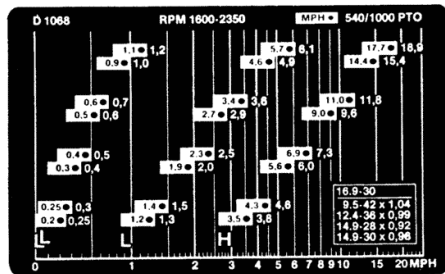
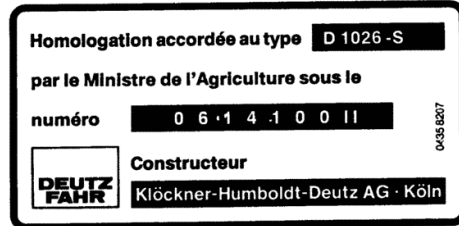
Fig.	Code	QTY	Name
1	04358376	1	plate
2	04358377	1	plate
3	04358201	1	plate
4	04358202	1	plate
5	04358203	1	plate
6	04358204	1	plate
7	04383412	1	number plate
8	04383413	1	number plate
9	04358207	1	plate
10	04358208	1	plate
11	04358209	1	plate
12	04358210	1	plate
13	04360431	1	plate
14	04363782	1	plate
15	04363783	1	plate



1036-71 0504 7011



13 (D 1038-S)



14 (D 1028-AS, DX7.10)
15 (D 1029-AS, DX80-160)

1	(D 1039 - S)	DX 4.10
2	(D 1039 - AS)	
3	(D 1036 - S)	DX 4.30
4	(D 1036 - AS)	
5	(1037 - S)	DX 4.50
6	(1037 - AS)	
7	(D 1040 - S)	DX 4.70
8	(D 1040 - AS)	
9	(D 1026 - S)	DX 6.10
10	(D 1026 - AS)	
11	(D 1023 - S)	DX 6.30
12	(D 1023 - AS)	

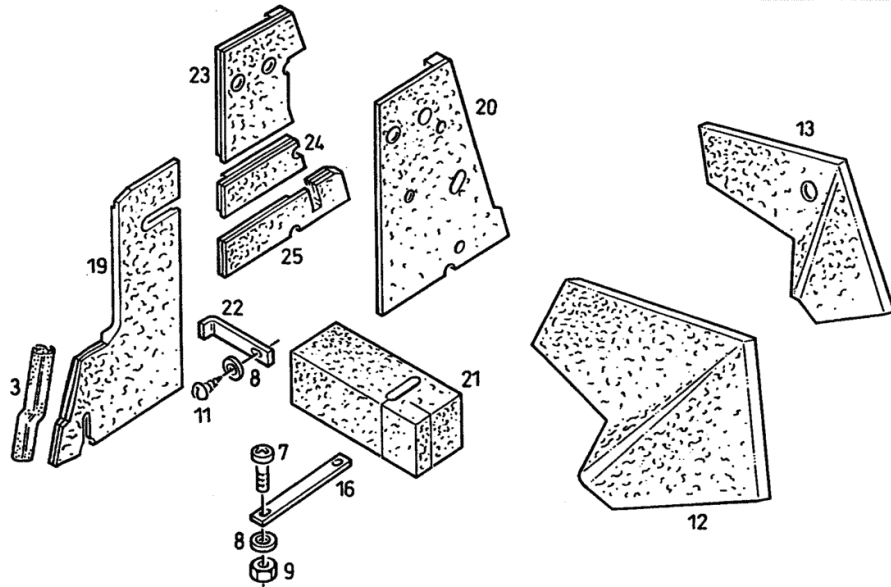
Section: BUILT-ON ACCESSORIES
SOUND-ABSORBING PARTS



SCHALLDÄMMTEILE
 SOUND ABSORB. PARTS
 ELEMENTS INSONOR.
 PZAS. INSONORIZAC

1024-86 504 1651

Fig.	Code	QTY	Name
3	01388697	0	gasket H 846471-11-PN 1 245,0 MM
7	01119635	2	screw ISO 007045-M 6X 16 - 4.8-H -A 4C
8	01107095	4	washer 6.4 DIN 000125-A 6,4-140HV-A4C
9	01112813	2	nut m 6 DIN 000934-M 6 - 8-A4C
11	01138324	2	screw ISO 007049-ST5,5X13 -F-H-A4C
12	04327456	1	small carpet
13	04327455	1	small carpet
16	04333635	1	link
19	04341633	1	lining
20	04368166	1	lining
21	04346260	1	packaging material
22	04347548	2	square
23	04348135	1	lining RIGHTS
24	04348145	1	lining RIGHTS
25	04348146	1	lining RIGHTS



Section: ELECTRIC AL SYSTEM
 HEATING FOR ENGINE OIL

DEUTZ FAHR
 HEIZUNG FÜR MOTORÖL
 HEATING SYSTEM FOR ENGINE OIL
 CHAUFFAGE POUR HUILE
 CALEFACCION PARA ACEITE

1024-49 504 4175

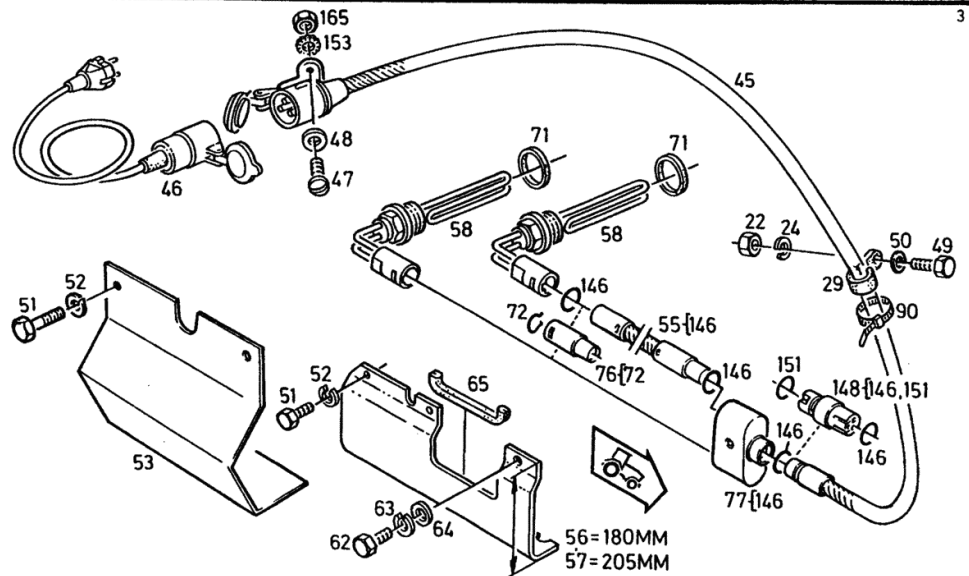


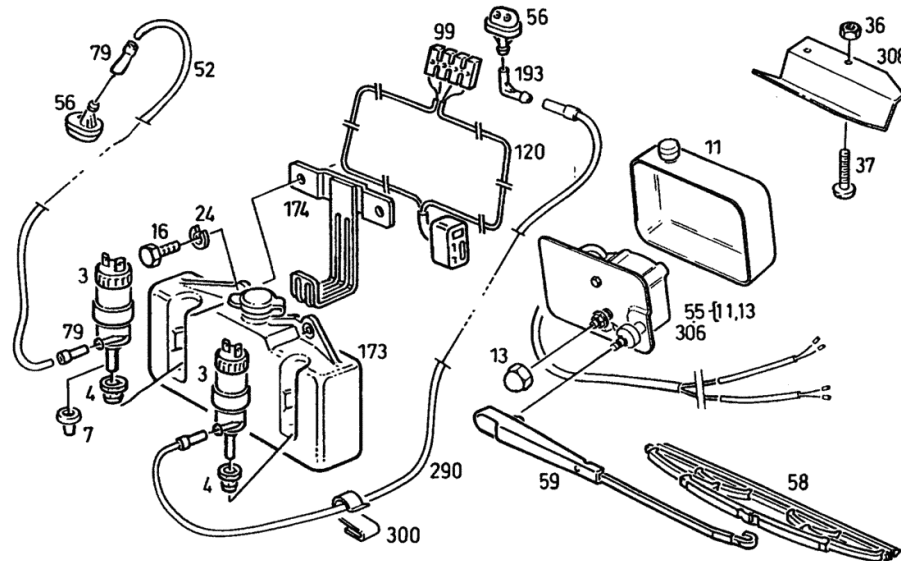
Fig.	Code	QTY	Name
22	01112813	2	nut m 6 DIN 000934-M 6 - 8-A4C
24	01102797	2	washer 6, d128 DIN 000128-A 6 -FST -A4C
29	01211882	2	collar H 003223-B15X15-W1/CR70-10
45	04376716	1	cable SUPPLY ITEM 148 WITH
46	04376717	1	cable
47	01119630	2	screw m 4 x 16 ISO 007045-M 4X 16 - 4.8-H -A 4C
48	01119806	2	washer 4,3x12x1 d9021 DIN 009021- 4,3-100HV-A4C
49	01112264	2	screw m 6 x 20, d933 ISO 004017-M 6 X 20 - 8.8-A4C
50	01119810	2	washer 6.4 DIN 009021- 6,4-100HV-A4C
51	01112299	2	screw m 8 x 12, d933 ISO 004017-M 8 X 12 - 8.8-A4C
52	01102799	2	washer 8, d128 DIN 000128-A 8 -FST -A4C
53	04353026	1	lamination
55	04376713	1	cable SUPPLY ITEM 76,77+2X148 WITH
56	04354249	1	lamination
57	04354247	1	lamination DX 6.50+7.10
58	04191224	2	none 220 V OIL HEATING COMPL. CONSISTING OF POS.45,46,55,58+77
62	01112490	1	screw m 12 x 16 DIN 000933-M12 X 16 - 8.8-A4C
63	01102801	1	washer 12 DIN 000128-A 12 -FST -A4C
64	01107110	2	washer 13.5 DIN 000125-A13 -140HV-A4C
65	01390702	0	gasket PVC H 846471-01-PN 1 210 MM
71	01176288	2	'o' ring H 002905-U 48,7X59 X3 -W4
72	04354248	3	spring

Section: ELECTRIC AL SYSTEM
SCREEN WIPER

Fig.	Code	QTY	Name
3	01175804	1	pump
4	01263252	1	gasket
7	01175805	1	bottom
11	04363247	1	tube
13	04363244	1	tube
16	01112232	2	screw m 6 p.1 x 10 ISO 004017-M 6 X 10 - 8.8-A4C
24	01102797	2	washer 6, d128 DIN 000128-A 6 -FST -A4C
36	01136451	2	nut 5 DIN 000980-VM 5 - 8-A4C GEWAC HST
37	01119633	2	screw m 5 x 16 ISO 007045-M 5X 16 - 4.8-H -A 4C
52	01400656	1	flexible hose H 007760-A 4 X 6 X2550
55	04363241	1	wiper motor - FRONT
56	01261734	1	nozzle
58	01262246	1	wiper blade
59	01263065	1	arm
79	01396853	0	flexible hose H 847380-08- 4,6X1,5 -PVC-GLA CLEAR
99	01169437	1	connection H 007677-F 6,3-4X48
120	04346818	1	cable
173	01178568	1	cup
174	01231489	1	consolle
193	04348632	1	square
290	04365027	1	pipng
300	01174393	3	cab.terminals H 007638-D 3,5 - 4,5 / 2
306	01175799	1	wiper motor - REAR
308	04365448	1	lamination

**DEUTZ
FAHR**
 SCHEIBENWISCHER
 WINDSCREEN WIPER
 ESSUIE GLASE
 LIMPIAPABRISAS

1024-49 504 1930 36



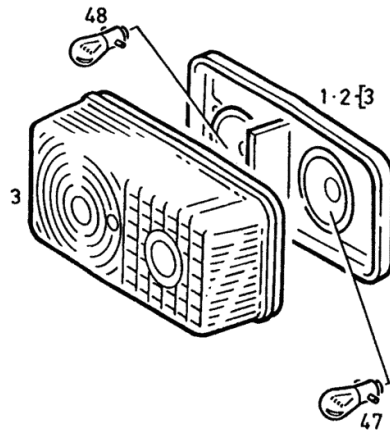
LIGHTS FRONT

Fig.	Code	QTY	Name
1	04363318	1	light LEFT
2	04363319	1	light RIGHTS
3	04356959	1	glass
47	01121407	2	lamp 12v 5w r19/5 DIN 072601-R19/ 5-12V 5 W
48	01102550	6	lamp r121w d72601 DIN 072601-P25-1- 12V 21 W

DEUTZ FAHR LEUCHTEN VORN
LIGHTS FRONT
LAMPES AV
LAMPARAS DELANTE

1024-49 504 1899

5



CONTROL PARTS PIECE/CYL.-UNIT.....	11.11.3
CONDUIT.....	11.11.4
Lube oil pump	
LUBRICAT. OIL PUMP.....	11.14.3
Oil cooler, Lube oil filter	
LUBRIC. OIL COOLER.....	11.15.6
OIL COOLER.....	11.15.8
OIL COOLER.....	11.15.9
CHANGEOVER SWITCH.....	11.15.12
FILTER CARTRIDGE.....	11.15.14
Oil pipes	
PRESSURE OIL LINE.....	11.16.2
LUBRICATING OIL INTAKE LINE.....	11.16.4
OIL SUCTION PIPE.....	11.16.7
SHORT-CIRCUIT LEAD.....	11.16.8
Injection pump	
INJECTION PUMP COMPONENT PARTS.....	11.17.6
CONTROLLER COMPONENT PARTS.....	11.17.7
PIPING.....	11.17.8
OIL LUBRICATION PIPE.....	11.17.9
OVERFLOW VALVE.....	11.17.11
Injection pump drive	
INJECTION PUMP DRIVE.....	11.18.1
Injector	
INJECTION VALVE PIECE/CYL.-UNIT.....	11.19.2
INJECTION VALVE COMPONENT PARTS.....	11.19.3
Fuel pipes	
INJECTION LINES.....	11.21.2
OVERFLOW LINE.....	11.21.7
OVERFLOW OIL LINE.....	11.21.9
Air intake, Air cleaner	
INTAKE TUBE.....	11.22.3
Air compressor	
BLANKING PARTS.....	11.33.1
Cooling air blower	
HYDR. COOLING BLOWER.....	11.39.4
HYDR. COOLING BLOWER WITH AIR CONDITIONING SYSTEM.....	11.39.5
NARROW V-BELT SET.....	11.39.6
PIPING.....	11.39.17
PIPING.....	11.39.18
EXHAUST THERMOSTAT.....	11.39.19
SOLENOID VALVE.....	11.39.21
Cooling air ducting	
AIR DUCTING RAIL.....	11.40.4

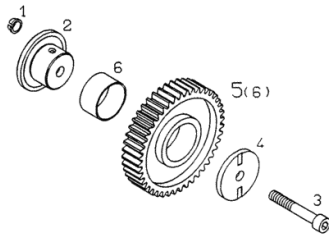
Section: ENGINE
IDLER BEARING

Fig.	Code	QTY	Name
1	04156283	1	sleeve
2	04156285	1	journal
3	02234177	1	screw
4	04154593	1	washer
5	04154591	1	gear wheel WITH ITEM
6	04154590	1	6, bushing



ZWISCHENRADLAGERUNG
 IDLER GEAR BEARING
 TOURILLON DE PIGNON INTERMEDIAIRE
 SOPORTE PARA RUEDA INTERMEDIA

0150 -01- 0506 4563



Section: ENGINE

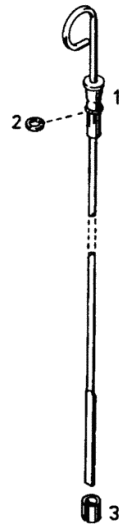
DIPSTICK

Fig.	Code	QTY	Name
1	01172336	1	dipstick H 003535-A - 295- 250X 30- 38
2	01165975	1	'o' ring 5x2 H 002927- 5 X 2 -NBR-1-60
3	01167269	1	sleeve H 002341-B13X14



Ölmeßstab
Oil dipstick
Jauge de niveau d'huile
Varilla de sondeo para nivel de aceite

0150—01—504 2041



Section: ENGINE

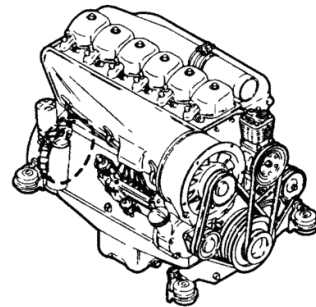
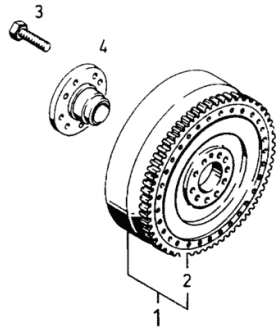
FLYWHEEL

Fig.	Code	QTY	Name
1	02245226	1	crosspiece
2	02131081	1	crown wheel
3	01138413	10	screw DIN 000961-M10X1 X 40 - 10.9
4	02247484	1	flange



Schwungrad
Flywheel
Volant
Volante

0150-05-504 2045



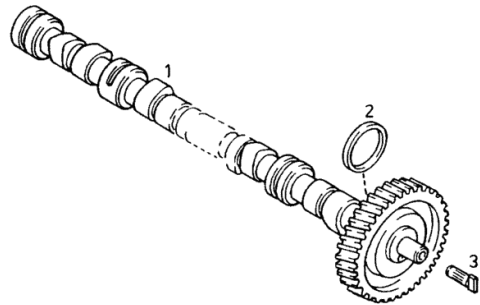
CAMSHAFT Motor No. >> 7 630 788

Fig.	Code	QTY	Name
1	04157793	1	camshaft
2	03367789	1	washer
3	02137015	1	pin



Nockenwelle
Camshaft
Arbre à cames
Árbol de levas

0150 - 10 - 0506 4483



Section: ENGINE
CHANGEOVER SWITCH

Fig.	Code	QTY	Name
------	------	-----	------

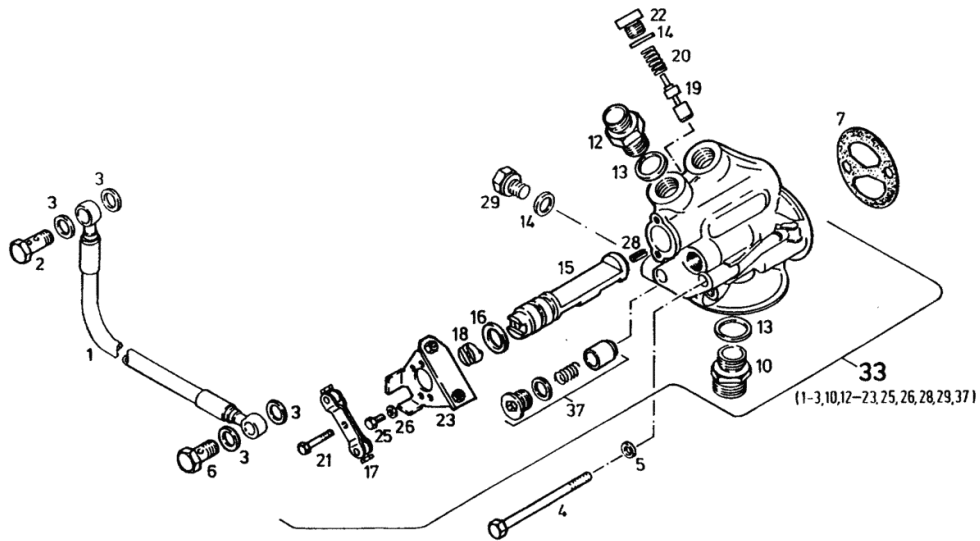
UP TO MOTOR NO. (A)
 FROM ENGINE NO. SEE ITEM (B)
 037



Umschalter
 Change-over cock
 Sélecteur
 Conmutador de cambio

0150-15-503 2480

3



Section: ENGINE

CONTROLLER COMPONENT PARTS

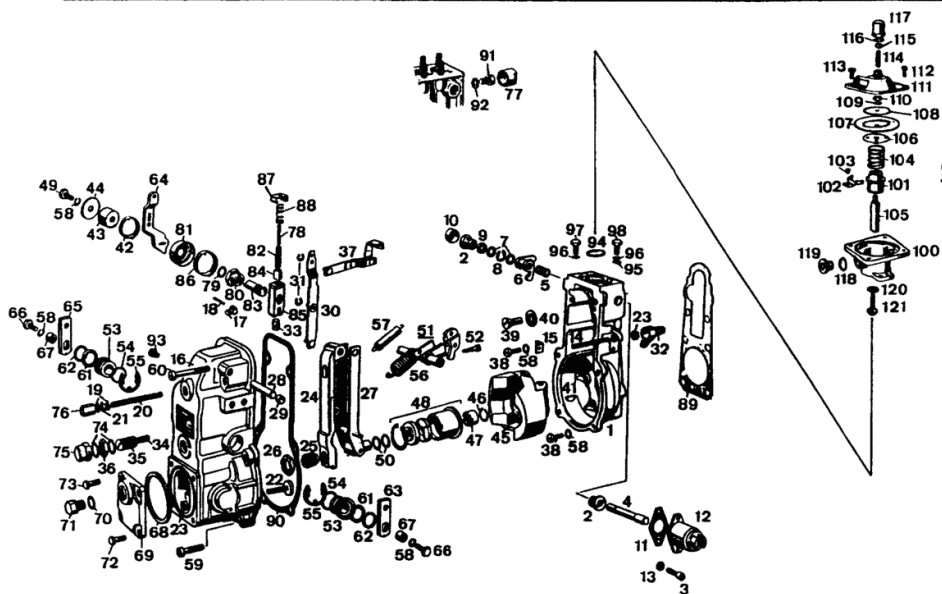
Fig.	Code	QTY	Name
36	01288733	1	nut
37	01307827	1	pipe fitting
38	01136955	6	screw DIN 000084- M 6 X 15- 8.8- A4 C
39	01105348	1	screw DIN 000063-AM 8 X15- 4.8-A4C
40	01308554	1	flat washer
41	01118324	1	key DIN 006888- 3 X 6,5
42	01304560	1	spring
43	01304659	1	bushing
44	01307697	1	washer
45	01320369	1	eccentric
46	01288534	1	spring washer
47	01288742	1	nut
48	01288564	1	bearing
49	01127031	1	screw m 6 x 30, d933 ISO 004017-M 6 X 30 - 8.8-A4C 0,2 MM S. POS. 951-953
50	01289574	0	shim 0,20 MM 0,2 MM S. POS. 951-953
51	01310191	1	lever
52	01320926	1	register
53	01288569	2	sleeve
54	01289778	2	'o' ring
55	01100808	2	washer DIN 006799-15-CUSN8F70
56	01288882	1	spring
57	01302070	1	spring
58	01102797	9	washer 6, d128 DIN 000128-A 6 -FST -A4C
59	01101875	4	screw ISO 001207- M 6 X 25- 4.8- A4 C
60	01126445	2	screw ISO 001207- M 6 X 40- 4.8- A4 C
61	01288545	2	'o' ring
62	01288486	0	washer mm 1.00 1,0 MM S. POS. 954
63	03509578	1	lever
64	01304558	1	lever



Einzelteile zum Regler
Single parts for governor
Pièces détachées de régulateur
Partes para regulador



0150-17 502 7084



Section: ENGINE

INJECTION VALVE COMPONENT PARTS

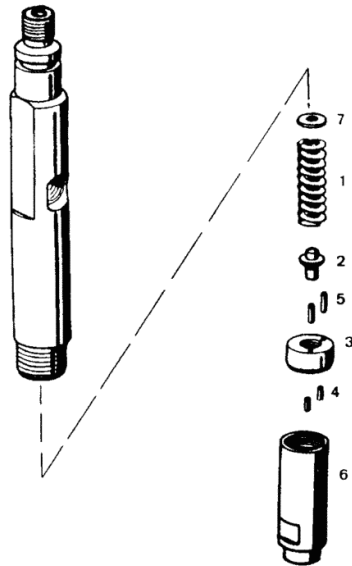
Fig.	Code	QTY	Name
959	12028266	0	7, 1,24 MM shim OPTION ITEM...
960	01290458	0	7, 1,30 MM washer OPTION ITEM...
961	01290459	0	7, 1,34 MM shim OPTION ITEM...
962	01290461	0	7, 1,40 MM stop OPTION ITEM...
963	01290462	0	7, 1,44 MM shim OPTION ITEM...
964	01290463	0	7, 1,50 MM washer OPTION ITEM...
965	01290464	0	7, 1,54 MM washer OPTION ITEM...
966	01290466	0	7, 1,60 MM shim OPTION ITEM...
967	01290467	0	7, 1,64 MM shim OPTION ITEM...
968	01290468	0	7, 1,70 MM shim OPTION ITEM...
969	01290470	0	7, 1,74 MM shim OPTION ITEM...



Einzelteile zum Einspritzventil
Single parts for injector
Pièces détachées de injecteur
Partes para inyector

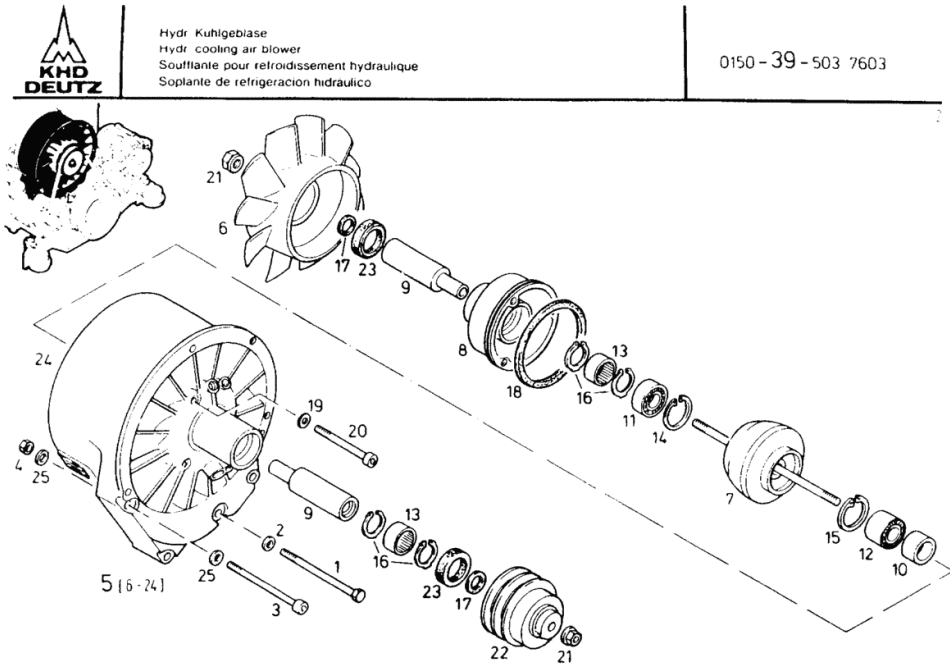


0150-19-502 9023



HYDR. COOLING BLOWER WITH AIR CONDITIONING SYSTEM

Fig.	Code	QTY	Name
25	01107548	2	washer 8.4 DIN 000433- 8,4-140HV-A4C



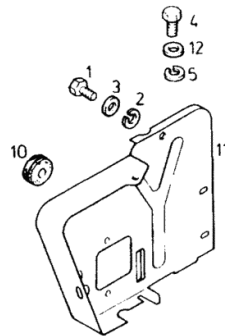
Section: ENGINE
AIR DUCT WALL

Fig.	Code	QTY	Name
1	01112240	1	screw m 6 x 12 ISO 004017-M 6 X 12 - 8.8-A4C
2	01102797	1	washer 6, d128 DIN 000128-A 6 -FST -A4C
3	01215850	1	washer
4	01112307	1	screw m 8 p.1.25 x 15, d933 ISO 004017-M 8 X 16 - 8.8-A4C
5	01102799	1	washer 8, d128 DIN 000128-A 8 -FST -A4C PART ON REQUEST
10	01167425	1	rubber bushing H 002928-D13,5 X17 X 1,5-GI D DEUTZ 1
11	04151588	1	lamination
12	01107101	1	washer 8.4 DIN 000125-A 8,4-140HV-A4C



Standblech
Stay plate
Tôle verticale
Chapa vertical

0150 - 40 - 505 0310



Section: ENGINE
TURBOCHARGER

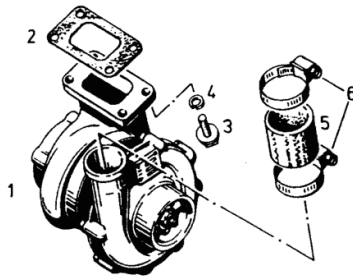
Fig.	Code	QTY	Name
1	02232104	1	turbo charger COMPONENT PARTS SEE PARTS NUMBER LIST 0150-43 502 9156
2	02137909	1	gasket CONTAINS ASBESTOS ASBESTOS-FREE SEE ITEM 950
3	03470246	4	screw
4	01107550	4	washer DIN 000433-10,5-140HV-A4C
5	01173634	1	rubber sleeve H 003407-B 51X 58X 45
6	01173626	2	hose clip H 003461-B14 C 53- 63-W5
950	04182521	1	gasket ASBESTOS-FREE ASBESTOS CONTENT SEE ITEM 001



Abgasturbolader
Turbocharger
Turbo-compresseur de suralimentation
Turbo-sobrealimentador



0150-43-502 3348



Section: ENGINE
NARROW V-BELT

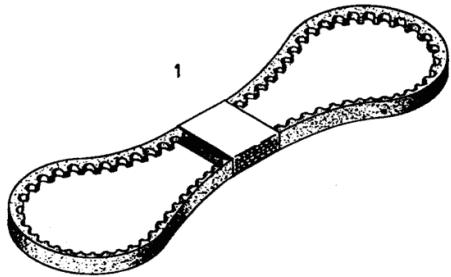
Fig.	Code	QTY	Name
1	02235181	1	small belt AV 10x1175 mm H 003710-AVX 10X1175LA 10X1175LA



Schmalkeilriemen
Narrow V-belt
Courroie trapézoïdale étroite
Correa trapecial estrecha



0150-44-503 1809



TEMPERATURE SENSOR WITH CONTACTS Motor-Nr. 7 054 776 <<

Fig.	Code	QTY	Name
1	02405960	1	probe



Temperaturkontaktgeber
Temp. contact maker
Transmetteur de contact de température
Transmisor de contacto de temperatura



0147-51-501 3456



Section: ENGINE
BLANKING PARTS

Fig.	Code	QTY	Name
1	01167311	1	bottom 9x7.4x9.5 H 002873-A 9 X 7,4X 9,5-PE WE ICH-SW
2	01163970	1	bottom H 002873-A 50,5X 48,3X24 -PE WEICH-SW

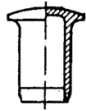


Verschlussstelle

0150-83-0502 9465



1



2

DRIVEN FRONT AXLE

Fig.	Code	QTY	Name
952	04348597	1	1,1 MM washer mm 1.15
953	04348598	1	1,15 MM washer mm 1.20
961	04349933	1	1,2 MM washer mm 1.6
962	04349935	1	1,6 MM flat washer mm 0,95
963	04349934	1	0,95 MM washer mm 0,9 0,9 MM

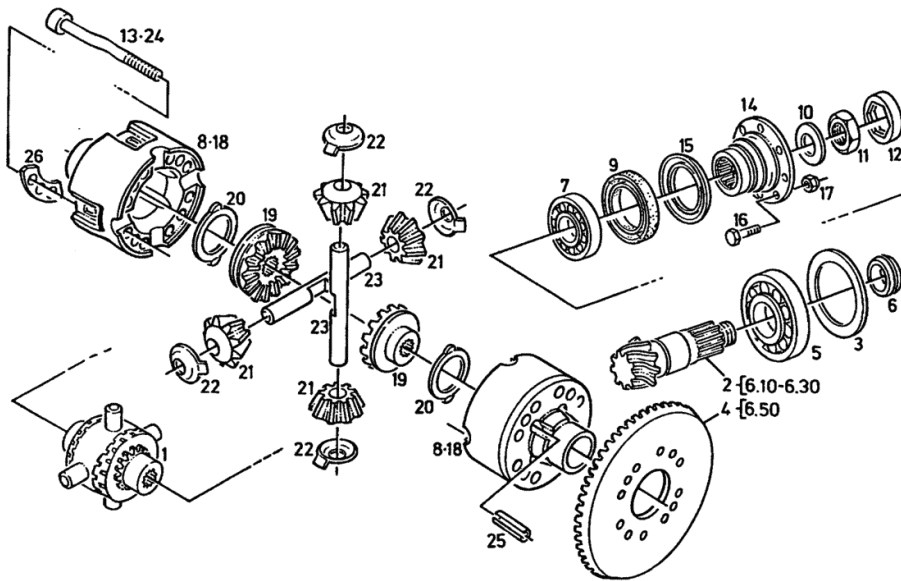


GETR. LENKACHSE
DRIVEN AXLE
ESSIEU DIRECTEUR
EJE MOTRIZ



1026-28 504 1969

4



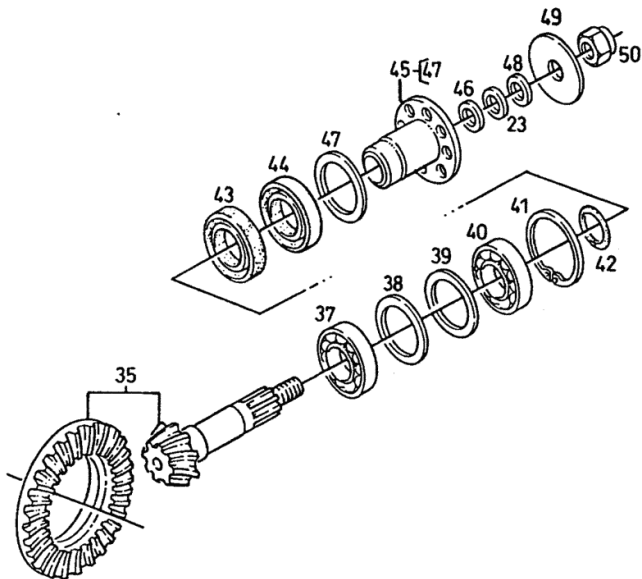
DRIVEN STEERING AXLE - SIGE

Fig.	Code	QTY	Name
23	04358252	2	shim 0,50 MM
35	04383081	1	bevel gear
37	01178735	2	roller bearing H 004465-KR 49,212X104,775X36 ,512
38	04383042	2	shim 0,50 MM
39	04383070	2	shim 0,20 MM
40	01178793	1	roller bearing H 004465-KR 41,275X 88,900X30 ,162
41	01107858	1	circlip 90 DIN 000472- 90X3 MWM-NR. 6.0305.02.0.0090
42	04383020	1	'o' ring H 002927- 40,94X 2,62 -NBR 70
43	04357913	1	'o' ring
44	04383069	1	ring
45	04383006	1	flange
46	04358251	2	shim 0,20 MM
47	00000000	0	not serviceable
48	04358253	2	shim 0,15 MM
49	04383008	1	washer
50	01178742	1	nut

**DEUTZ
FAHR** GETR. LENKACHSE
DRIVEN AXLE
ESSIEU DIRECTEUR
EJE MOTRIZ

SIGE

1026-28 504 5452



CLICK HERE TO **DOWNLOAD** THE COMPLETE MANUAL

- Thank you very much for reading the preview of the manual.
- You can download the complete manual from: www.heydownloads.com by clicking the link below



- Please note: If there is no response to CLICKING the link, please download this PDF first and then click on it.

CLICK HERE TO **DOWNLOAD** THE COMPLETE MANUAL

HYDROSTAT.STEERING - ADJUSTABLE STEERING COLUMN

DEUTZ FAHR HYDROSTAT. LENKUNG VERSTELLBARE LENKSÄULE
 HYDRO-STEERING ADJUST. STEERING COLUMN
 DIRECTION HYDROST. REGLABLE COLONNE DIRECTION
 DIREC. HIDROSTATICA COLUMNA DIRECCION GRADUABLE

1805-89 504 4492

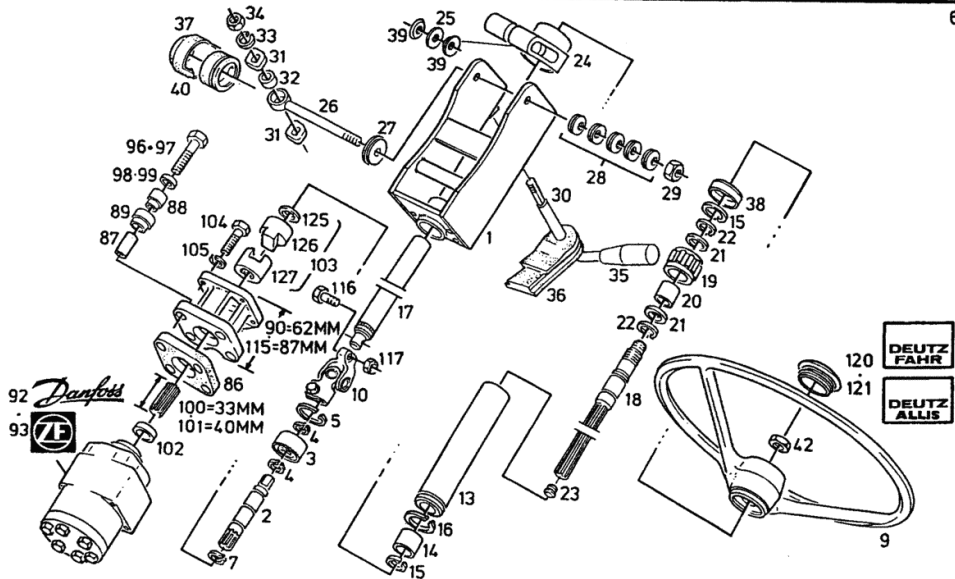


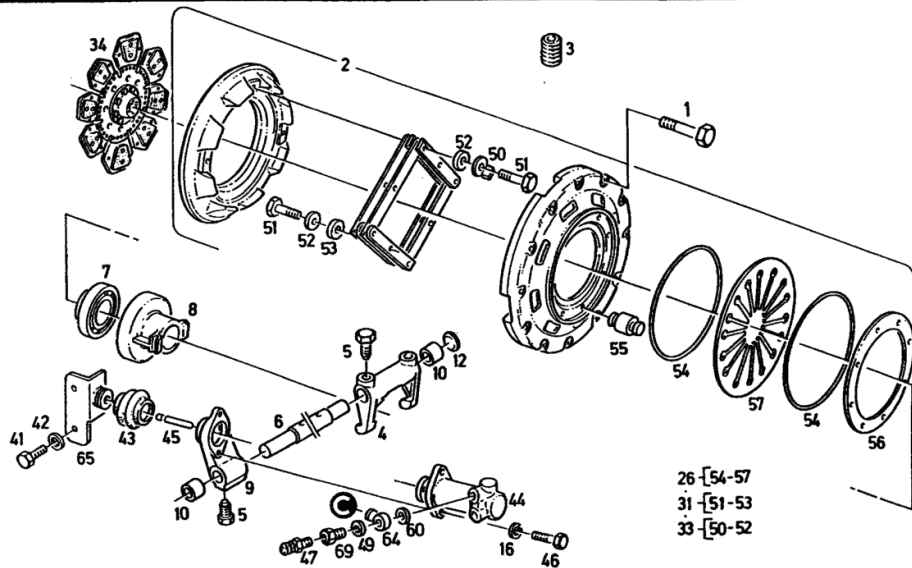
Fig.	Code	QTY	Name
37	04365394	1	cover
38	04365395	1	tube
39	01161305	2	spring H 004625- 12,2X 28 X 1
40	04365397	1	ring
42	01131116	1	nut m 18 x 1.5 ISO 008675- M18X1,5 -05-A4C
86	04355546	1	plate
87	04365072	3	bushing
88	04355682	3	spacer
89	04355695	3	spacer
90	04363619	1	u bolt
92	00000000	0	not serviceable 1805-89 504 1681
93	00000000	0	not serviceable 1805-89 504 4052
96	01111308	3	screw m 10 x 50 DIN 000931- M10 X 50 - 8.8-A4 C
97	01111145	3	screw m 8 x 40 DIN 000931- M 8 X 40 - 8.8-A4 C
98	01127538	3	washer 10.5 DIN 007349-10,5-ST-A4C
99	01136363	3	washer 8.4 DIN 009021- 8,4-140HV-A4C
100	04364944	1	shaft
101	04364945	1	shaft
102	04364928	1	washer TO ITEM... 94 92
103	04364946	1	flex coupling
104	01112418	4	screw m 10 x 25, d933 DIN 000933-M10 X 25 - 8.8-A4C
105	01102800	4	washer 10.2 DIN 000128-A 10 -FST -A4C
115	04379000	1	u bolt
116	01100233	1	screw ISO 004017-M 8 X 35 - 10.9-A4 C
117	01139776	1	nut DIN 000980-VM 8 -10-A4C GEWAC HST

Section: GEARBOX, CLUTCH
SINGLE COUPLING WITHOUT POWER SHIFT

DEUTZ FAHR	EINFACHKUPPLUNG	OHNE LASTSCHALTUNG
	SINGLE CLUTCH	WITH OUT LOAD SWITCH
	EMBRAYAGE UN EFFET	SANS COMMUTEN CHARGE
	EMBRAGUE SIMPLE	SIN CONEXION BAJO CARGO

1026-02 504 1243

Fig.	Code	QTY	Name
1	01111174	12	screw m 8x65 d931 ISO 004014- M 8 X 65 - 8.8-A4 C
2	04360390	1	clutch assy
3	01110926	1	pin DIN 000913-M12 X 16-45H
4	04344434	1	fork
5	04373448	4	screw
6	04345690	1	clutch shaft
7	04330107	1	bearing
8	04345691	1	box
9	04344376	1	lever
10	01137234	2	bushing DIN 001494- 25B 28X 20-P1
12	01138121	1	cover DIN 000443- 28-A4C
16	01102799	2	washer 8, d128 DIN 000128-A 8 -FST -A4C
26	04362475	1	sub-assy parts
31	04345325	1	sub-assy parts
33	04320423	1	sub-assy parts
34	04359392	1	clutch disc
41	01114316	2	screw m20x2x30 d961 ISO 008676-M20X2 X 30 - 8.8-G BLACKENED
42	01107124	4	washer 21x37x3 d125 DIN 000125-A21 -140HV-A4C
43	04330568	1	bellows
44	00000000	0	not serviceable 1029-02 504 1258
45	04330598	1	rod
46	01112333	2	screw m 8 x 25, d933 ISO 004017-M 8 X 25 - 8.8-A4C
47	01269851	1	valve
49	01118688	1	ring 14x17 DIN 007603-A 14 X 18 -CU
50	00000000	0	not serviceable
51	00000000	0	not serviceable
52	00000000	0	not serviceable
53	00000000	0	not serviceable
54	00000000	0	not serviceable
55	00000000	0	not serviceable
56	00000000	0	not serviceable
57	00000000	0	not serviceable

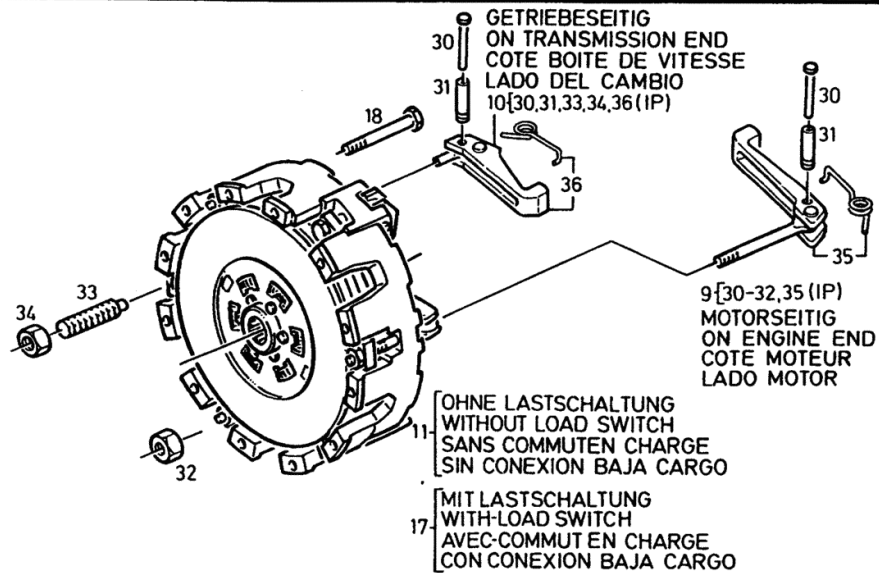


Section: GEARBOX, CLUTCH
MULTI-PLATE CLUTCH CERAMIC

Fig.	Code	QTY	Name
9	04358593	1	gasket set
10	04358594	1	sub-assy parts
11	04385904	1	clutch assy WITHOUT ITEM... 18 18 18
17	04385897	1	clutch assy WITHOUT ITEM... WITHOUT ITEM 18
18	01126979	12	screw m8x95 d931 ISO 004014- M 8 X 95 - 8.8-A4 C
30	00000000	0	not serviceable
31	00000000	0	not serviceable
32	00000000	0	not serviceable
33	00000000	0	not serviceable
34	01107602	3	nut DIN 000439-BM10 -05
35	00000000	0	not serviceable
36	00000000	0	not serviceable

DEUTZ FAHR MEHRSCHEIBENKUPPLUNG KERAMISCH
 MULTI DISC CLUTCH CERAMICS
 EMBR.-MULTI DISQUES CERAMIQUE
 EMBRAG.-MULTIDISCO CERAMICO

1029-02 504 5695



OPERATION - P.T.O. SHAFT COUPLING - REAR - HYDR.

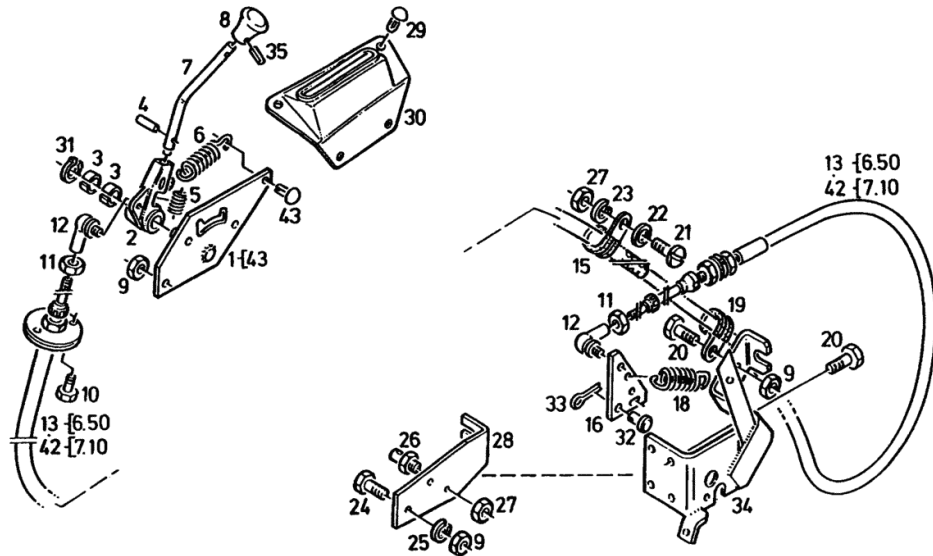
Fig.	Code	QTY	Name
29	01174567	4	rivet H 002415-A8 X 4 - 7-PA66-SW
30	04345917	1	cover
31	01137320	1	circlip DIN 000471- 16X1,5
32	04371083	1	pin
33	01175743	2	split pin H 002470-A 6X2 -FE/ZN12CC
34	04334893	1	console
35	01136928	1	pin ISO 008742- 4 X 16-ST
42	04365235	1	lever
43	01115337	1	none ISO 008746- 6 X15-ST -A4C



BETÄTIGUNG ZAPFWELLENKUPPLUNG
CONTROL ASSEMBLY PTO CLUTCH
CDE D'ACTIONNEM. EMBRAYAGE PDF
ACCIONAMIENTO EMBRAG. TOMAFUERZA

HECK REAR AR ATRAS
HYDR. HYDR. HYDR. HIDR.

1028-04 504 1250



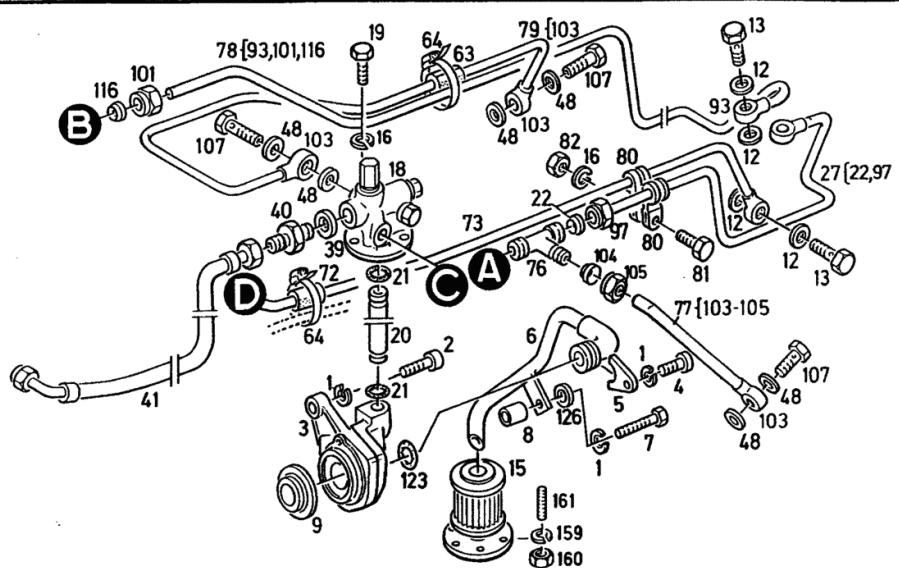
Section: GEARBOX, CLUTCH
PRESSURE-OIL SUPPLY

Fig.	Code	QTY	Name
64	01173966	3	hose clip 12-20 H 003461-B 9 C 12- 20-W1
72	02067483	1	sleeve
73	04344350	1	pipng
76	01173640	1	tongue H 003131-AL 8X 6X 8-ST
77	04332182	1	pipng
78	04355420	1	tube
79	04344306	1	pipng
80	01172129	3	terminal B8X15 H 003223-B 8X15-W1/CR70-10
81	01112264	2	screw m 6 x 20, d933 ISO 004017-M 6 X 20 - 8.8-A4C
82	01112813	3	nut m 6 DIN 000934-M 6 - 8-A4C
93	01179512	1	ring H 003101-D10-ST
97	01127346	1	nut H 003105- CL 8 -ST-A3C WAXED ST
101	01102749	1	nut H 003105- CL10 -ST-A4C
103	01179505	2	ring H 003101-D 6-ST
104	01179285	1	ring H 003107-F S 6-ST
105	01179283	1	nut H 003105- CL 6-STF55 -A3C GEW ACHST
107	04332177	3	screw
116	01116623	1	ring H 003107-F L10-ST
123	01167374	1	'o' ring H 002927- 25 X 3 -NBR-1-60
126	01107101	1	washer 8.4 DIN 000125-A 8,4-140HV-A4C
159	01126726	6	spring disc b6 d137 DIN 000137-B 6-FST-A4C
160	01112813	6	nut m 6 DIN 000934-M 6 - 8-A4C
161	01113345	6	screw DIN 000939-M 6 X 12 - 8.8-A4C

**DEUTZ
FAHR** DRUCKÖLVERSORG.
OIL SUPPLY
ALIM HUILE PRESS.
ABAST. ACEITE

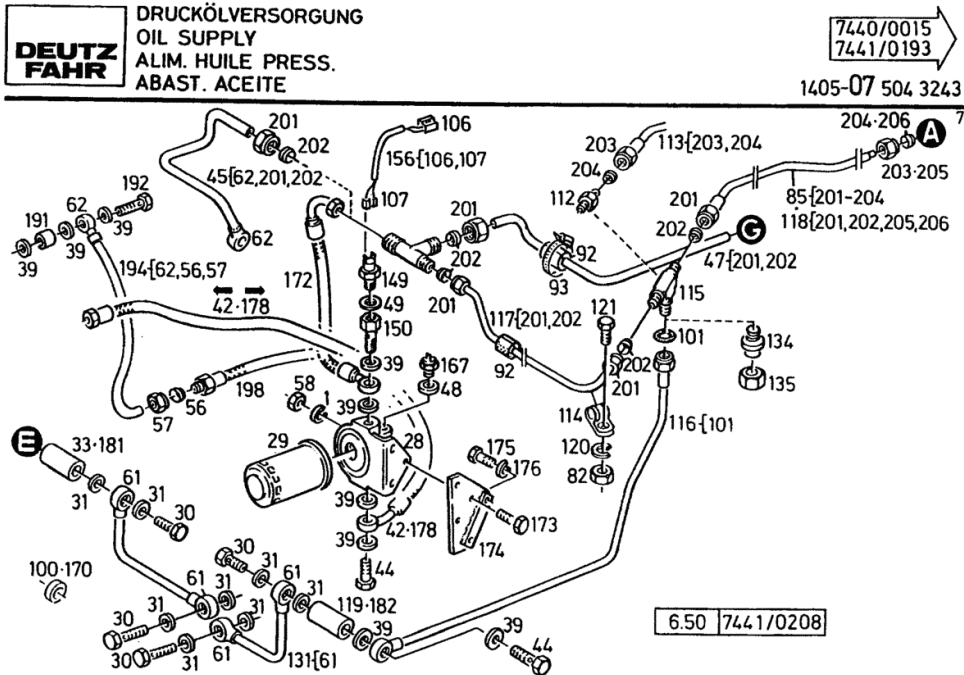
7440/0014
7441/0192

1405-07 504 1352



Section: GEARBOX, CLUTCH
PRESSURE-OIL SUPPLY

Fig.	Code	QTY	Name
1	01102799	1	washer 8, d128 DIN 000128-A 8 -FST -A4C
28	04344609	1	filter
29	04399525	1	filter
30	01119241	7	pipe union m 12 p.1.5 H 003102-D 8 M-ST-A4C
31	01118681	14	'o' ring a 12x18 d7603 DIN 007603-A 12 X 18 -CU
33	04326155	1	connection ROUND 28 MM
39	01118718	2	ring 18 x 24 DIN 007603-A 18 X 24 -CU
42	04332748	1	tube
44	01119252	1	screw H 003102-D15 M-ST-A4C
45	04344344	1	pipng
47	04344305	1	pipng
48	01118659	12	'o' ring DIN 007603-A 10 X 13,5-CU
49	01118688	5	ring 14x17 DIN 007603-A 14 X 18 -CU
56	01116623	1	ring H 003107-F L10-ST
57	01102749	1	nut H 003105- CL10 -ST-A4C
58	01112824	2	nut m 8, d934 ISO 004032-M 8 - 8-A4C
61	01179509	2	ring H 003101-D 8-ST
62	01179517	1	ring H 003101-D15-ST
82	01112813	3	nut m 6 DIN 000934-M 6 - 8-A4C
85	04362762	1	pipng NORMAL+ALL-WHEEL
92	04308848	2	stop
93	01173969	1	clamp 32-50 H 003461-B13 C 32- 50-W1
100	01138121	2	cover DIN 000443- 28-A4C
101	01162327	1	ring H 002927- 13 X 2 -FPM-1-70
106	01163204	1	box

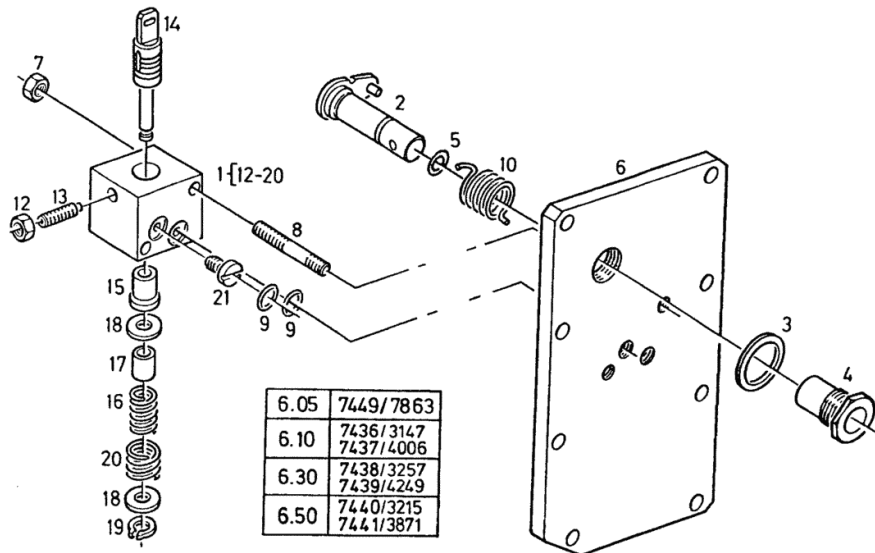


Section: GEARBOX, CLUTCH
ADJUSTER INSTRUMENT

Fig.	Code	QTY	Name
1	04363941	1	valve
2	04363361	1	lever
3	01118727	1	'o' ring DIN 007603-A 20 X 24 -CU
4	04363358	1	bushing
5	01210161	1	'o' ring H 002927- 10 X 2,5 -ACM-1-70
6	04363352	1	cover
7	01112824	2	nut m 8, d934 ISO 004032-M 8 - 8-A4C
8	01126209	2	screw DIN 000939-M 8 X 50 - 8.8-A4C
9	01210163	2	'o' ring H 002927- 12 X 2 -ACM-1-70
10	04365239	1	spring
12	01131132	1	nut ISO 004035- M 8 -06-A4C
13	01110960	1	pin DIN 000915-M 8 X 25-10.9
14	04363306	1	light body
15	04310944	1	spacer
16	04364996	1	spring
17	04364999	1	spacer
18	04364998	2	washer
19	01107713	1	circlip DIN 000471- 8X0,8
20	04364997	1	spring
21	04387674	1	nozzle

DEUTZ FAHR
 STEUERGERÄT
 CONTROL UNIT
 DISTRIBUTEUR
 APARATO MANDO

←
 1405-09 504 4438



Section: GEARBOX, CLUTCH

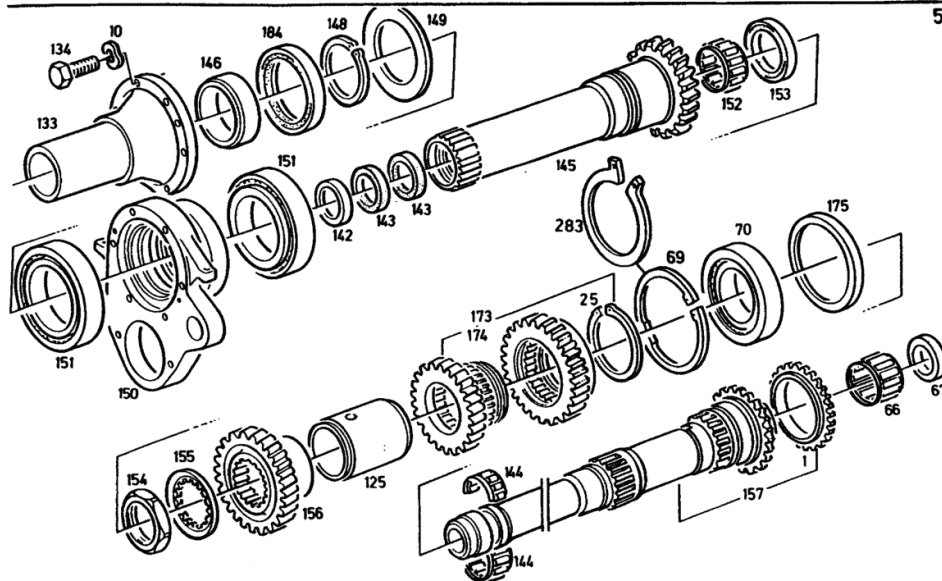
HOLLOW DRIVE SHAFT POWER SHIFT GEAR

Fig.	Code	QTY	Name
1	04361199	1	ring
10	01107283	6	washer 8.2 DIN 000137-B 8-FST-A4C
25	01107785	1	circlip DIN 000471- 82X2,5
66	01172509	1	pin
67	01167496	1	'o' ring H 004455-NH 30 X 37X20 -2RS
69	04300678	1	ring H 002940-A 30X 40 X 7 -NI
70	01221928	1	roller bearing
125	04336725	1	ring
133	04327394	1	bushing
134	01112364	6	screw m 8 x 55, d933 ISO 004017-M 8 X 55 - 8.8-A4C
142	04319159	1	ring
143	04330822	2	'o' ring
144	01173388	1	workshop tool H 004455-NK 43 X 50X18 -D
145	04319173	1	shaft
146	04341717	1	ring
148	01101513	1	ring
149	04320013	1	DIN 000471- 75X4 shim OPTION ITEM... 1,3 MM 950-958
150	04319174	1	cover
151	01173390	2	roller bearing
152	01173387	1	bearing H 004455-NH 50 X 58X25
153	01161264	1	'o' ring H 002940-A 55X 68 X 8 -NI
154	04319156	1	nut
155	04318209	1	washer
156	04316910	1	gear Z=28
157	04336216	1	shaft
173	04373243	1	gear wheel Z=24/28
174	04373244	1	gear wheel Z=30/28
175	04322754	1	washer
184	01162917	1	ring

ANTRIEBSHOHLWELLE LASTSCHALTGETRIEBE
 DRIVE QUILL POWERSHIFT TRANSMISSION
 ARBRE CREUX REDUCTEUR OPERABLE EN CHARGE
 EJE MOTRIZ HUECO CAMBIO OPERABLE BAJA CARGA



1405-11 504 1402



Section: GEARBOX, CLUTCH

MAIN SHAFT WITH POWER SHIFT GEAR 6 SPEED

DEUTZ FAHR HAUPTWELLE MIT LASTSCHALTGETRIEBE 6GANG
 MAIN SHAFT WITH POWERSHIFT TRANSMISSION 6 SPEED
 ARBRE PRINCIPAL AVEC REDUC.OPERABLE EN CHARGE 6 RAPPORTS 1405 - 11 504 4612
 EJE PRINCIPAL CON CAMBIO OPERABLE BAJA CARGA 6 MARCHA 8

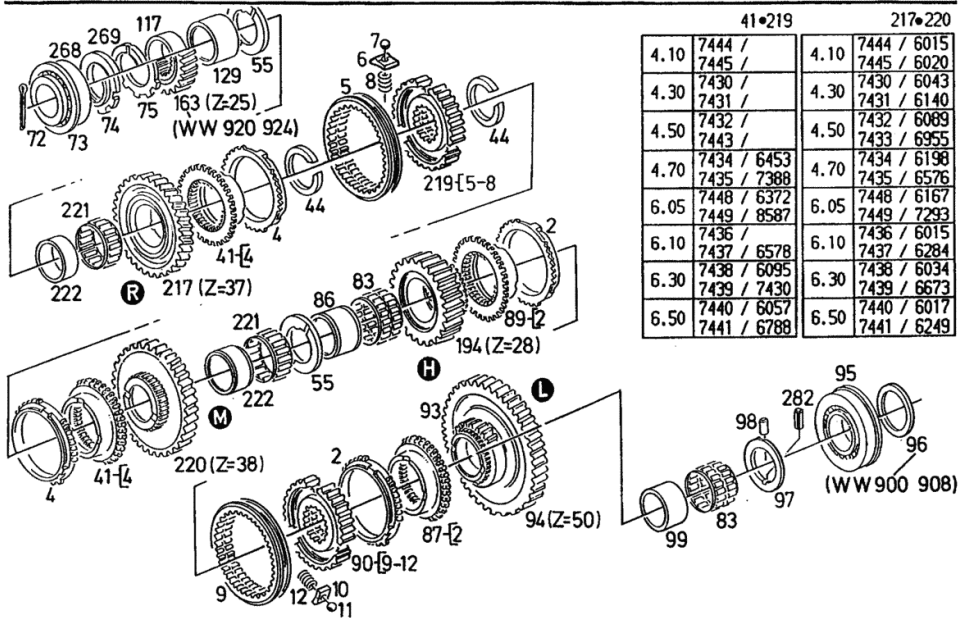
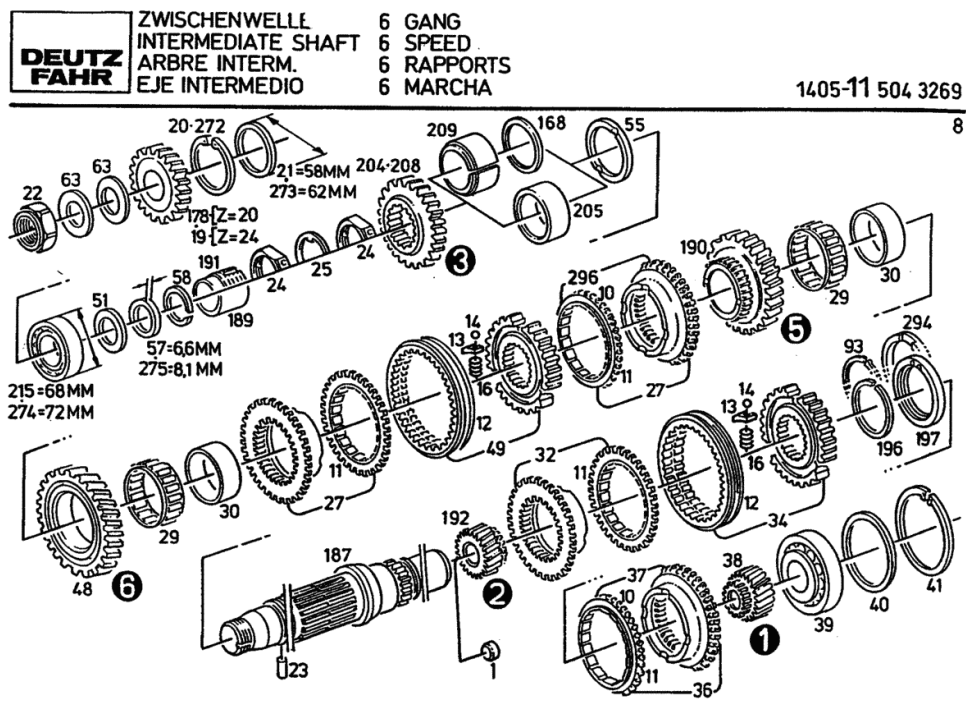


Fig.	Code	QTY	Name
2	04361275	1	ring
4	04382259	1	ring
5	04382316	1	sleeve
6	04348735	3	controle panel
7	01116955	3	ball DIN 005401- 7 MM-III
8	04348736	3	spring
9	04390276	1	support
10	04314898	3	controle panel
11	01116954	3	ball DIN 005401- 6,500MM-III
12	02385999	3	spring
41	04387321	1	clutch body ON FIRST REPLACEMENT SUPPLY WITH ITEM.... 219
44	01178523	2	circlip H 002259- 76X2
55	04391136	3	shim
72	01132654	1	split pin DIN 000094- 6,3X 71-ST-A4C
73	02383613	1	roller bearing
74	04300663	1	nut
75	04300745	1	lamination
83	01177127	2	workshop tool H 004455-NK2 55 X 60X40 -TN/P A66-GF-W
86	04322381	1	ring
87	04361336	1	clutch body
89	04361337	1	clutch body
90	04390276	1	support
93	04383371	1	gear wheel CREEP SPEED
94	04383372	1	gear
95	04300597	1	roller bearing
96	04300627	1	shim 1.0 MM 900-908
97	04330198	1	ring
98	01105082	1	cylindrical plug ISO 002338- 4 M 6X 8
99	04322380	1	ring
117	04351642	1	spacer
129	04301139	1	spacer

Section: GEARBOX, CLUTCH
INTERMEDIATE SHAFT 6 SPEED

Fig.	Code	QTY	Name
			DIN 000472- 80X2,5
48	04357075	1	gear Z=31
49	04390274	1	support
51	04343423	1	washer
55	04391136	1	shim
57	04343418	1	ring
58	04311358	1	circlip
63	04337015	2	spring
93	04370159	1	circlip
168	04303983	1	shim
178	04401333	1	gear
187	04383376	1	shaft
189	04351602	1	spacer
			OPTION ITEM... 33,0 MM 950-951
190	04357076	1	gear Z=27
191	04370156	1	spacer
192	04383375	1	gear Z=18
196	04346880	1	circlip
197	04346881	1	ring
204	04383368	1	gear Z=20
205	04347964	1	spacer
208	04383369	1	gear Z=24
209	04347967	1	spacer
215	04351472	1	roller bearing
272	01137535	1	circlip
			DIN 000472- 72X3
273	04305215	1	shim
			OPTION ITEM... 0,5 MM 930-940
274	04353209	1	roller bearing
275	04356836	1	ring
294	04373702	1	ring
296	04368961	1	clutch body
930	04305216	1	shim 0,6 MM
931	04305217	1	shim

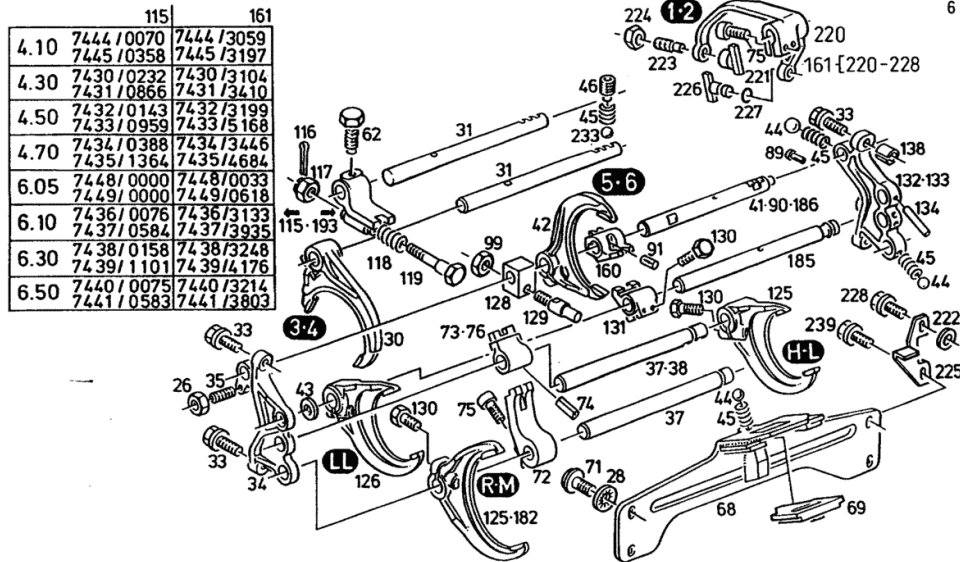


Section: GEARBOX, CLUTCH
GEAR SHIFTING

Fig.	Code	QTY	Name
			GEAR
			4
			4
91	04306701	1	pin
99	01102659	2	nut m 10, d934 DIN 000934-M10 - 8-A4C
115	04330935	1	controle panel
116	01106393	1	split pin DIN 000094- 1,6X 14-ST
117	01113026	1	castellated nut DIN 000935-M 6 - 8 -A4C
118	04377956	1	spring
119	04301664	1	screw
125	04343882	1	fork
126	04343883	1	fork
128	04365236	1	controle panel
129	02383362	1	screw
130	01173102	2	screw H 002091- 933-M 8 X 35- 10.9- A4C-MK-1,5D-BL
131	04401830	1	controle panel
132	04391483	1	guide
133	04389176	1	guide WITH LOCKING
134	04311897	1	pin
138	01167269	1	sleeve H 002341-B13X14
160	04344620	1	controle panel
161	04366011	0	lever FROM FIRST REPLACEMENT UNTIL CHASSIS-AXLE-GEARBOX- SUPPLY WITH NO.ITEM.. SUPPLY SET
182	04344497	1	fork ONLY FOR LASTSCHALTBARE MODEL.
185	04372981	1	rod
186	04372980	1	rod WITH LOCKING
193	04355011	1	controle panel
220	04365808	1	fork
221	04389145	1	shoe
222	01216120	2	washer

DEUTZ FAHR GETRIEBESCHALTUNG
 GEARSHIFT ASSY.
 CHANGEM BOITE VIT
 MANDO TRANSMISION

1405-12 504 4176



Section: GEARBOX, CLUTCH
OPERATION - P.T.O. SHAFT REAR



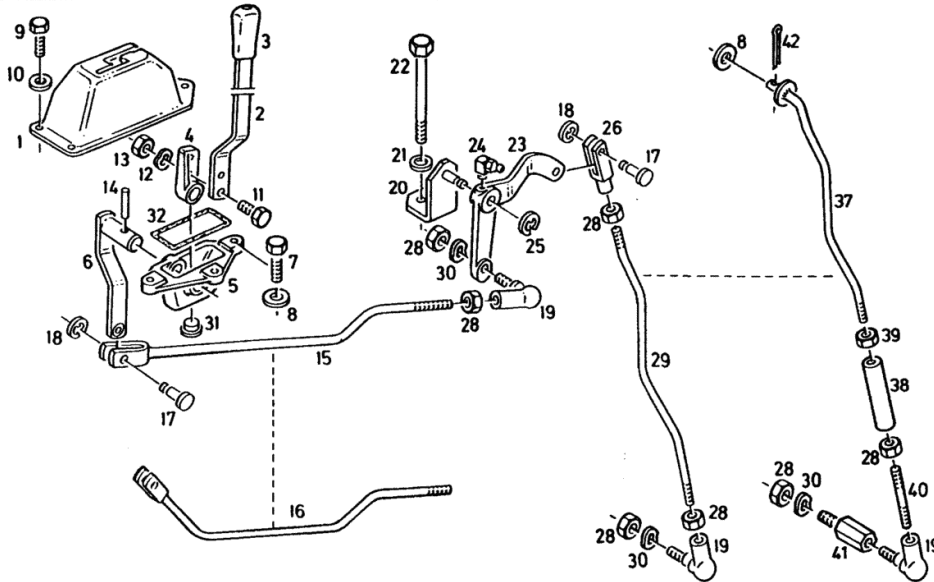
BETÄTIGUNG
 CONTROL ASSEMBLY
 CDE D ACTIONNEM
 ACCIONAMIENTO

ZAPFWELLE
 STANDARD PTO SHAFT
 PRISE DE FORCE
 ARBOL TOMA DE FUERZA

HECK
 REAR
 ARRIERE
 ATRAS

1036-14 504 4403

Fig.	Code	QTY	Name
1	04361900	1	throttle slide
2	04361087	1	gear lever
3	04400715	1	knob
4	04360964	1	lever
5	04361401	1	bonnet
6	04361317	1	lever
7	01112307	3	screw m 8 p.1.25 x 15, d933
8	01107101	3	ISO 004017-M 8 X 16 - 8.8-A4C
9	01129104	3	washer 8.4
10	01107095	3	DIN 000125-A 8,4-140HV-A4C
11	01103316	2	screw m 6 p.1.0 x 16
12	01126727	2	ISO 004017-M 6 X 16 - 8.8-A4C
13	01112813	2	spring disc
14	01101524	1	DIN 000137-B14-FST-A4C
15	04372770	1	nut m 6
16	04365684	1	DIN 000934-M 6 - 8-A4C
17	01176289	2	pin
18	01176237	2	DIN 001481- 6 X 32-A4C
19	01176290	2	rod
20	04361021	1	rod
21	01174740	1	pin
22	01143162	1	H 002707-A 8X16-ST-A4C
23	04370714	1	guard
24	01168229	1	H 002205-L 8 -FE/ZN12CC
25	01139125	1	joint
26	01100355	1	H 003603-CDKS 13
		1	square
		1	washer 16.5
		1	H 000995-16,5X31X 7- 8.8 -A4C
		1	screw
		1	ISO 004014- M16 X135 - 10.9-G
		1	BLACKENED
		1	lever
		1	pipe fitting
		1	H 003360-SC 8
		1	washer
		1	DIN 006799-12-A4A
		1	fork
		1	DIN 071752- G 8X32 -A4C



Section: GEARBOX, CLUTCH
DIFFERENTIAL GEAR LOCK

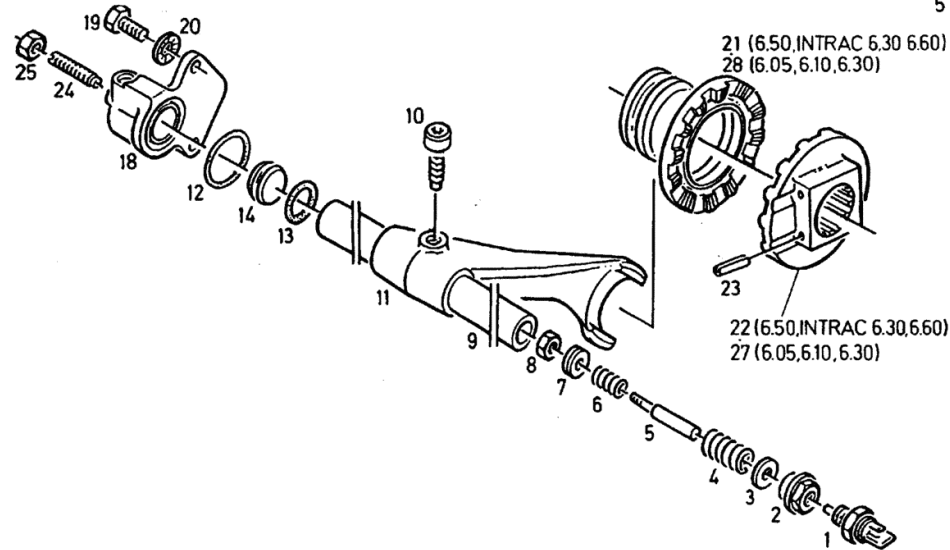
Fig.	Code	QTY	Name
1	01171676	1	workshop tool
2	04304776	1	plug
3	01221519	2	shim DIN 000988- 26X 37X0,5
4	02313626	1	spring
5	04304771	1	contact surface
6	03386770	1	spring
7	04304777	1	washer
8	01112796	1	stop m4 d934 ISO 004032-M 4 - 8-A4C
9	02383844	1	rod
10	02315042	1	screw
11	04354550	1	fork
12	01166059	1	'o' ring 40x3 H 002927- 40 X 3 -NBR-1-60
13	01166042	1	ring H 002927- 30 X 3 -NBR-1-60
14	04322353	1	piston
18	04322350	1	engine cylinder
19	01112418	2	screw m 10 x 25, d933 DIN 000933-M10 X 25 - 8.8-A4C
20	01107286	2	washer b10 d137 DIN 000137-B10-FST-A4C
21	04308459	1	sleeve
22	04308462	1	sleeve
23	01115480	2	pin ISO 008752- 8 X 60
24	01107457	1	screw ISO 007435-M 8 X 35-14H
25	01112824	1	nut m 8, d934 ISO 004032-M 8 - 8-A4C
27	04308460	1	sleeve
28	04308457	1	sleeve



AUSGLEICHGETRIEBESPERRE
DIFF. LOCK
BLOPAGE DU DIFF
BLOQUEO DIFERENC.

LASTSCHALTGETRIEBE
POWERSHIFT TRANSMISSION
REDUCTEUR OPERABLE EN CHARGE
CAMBIO OPERABLE BAJA CARGA

1426-25 504 1332



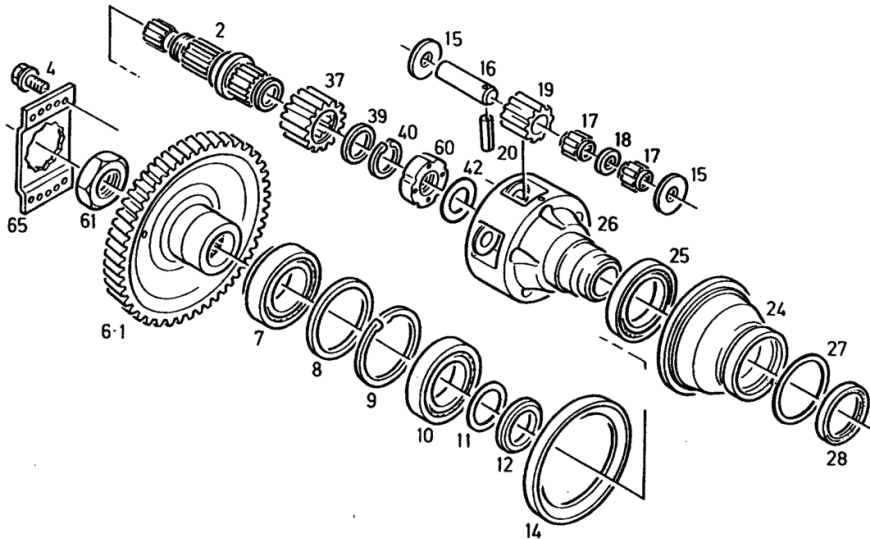
Section: GEARBOX, CLUTCH
REAR AXLE PLANETARY GEAR

Fig.	Code	QTY	Name
1	04380547	1	gear LEFT Z=68
2	04319216	2	half-shaft
4	01164059	2	screw H 002009-BM10X 20-100
6	04380546	1	gear RIGHTS Z=68
7	01102509	2	roller bearing DIN 000720-320 20-X
8	04307195	2	ring
9	01107870	2	circlip DIN 000472-150X4
10	01109007	2	ball bearing DIN 000625- 6020
11	04326180	1	shim OPTION ITEM... 1,0 MM 950-951
12	04321629	2	ring
14	04350045	2	ring
15	04330869	20	washer
16	04319219	10	piston pin 110X30/31
17	04330885	20	bearing
18	04322331	10	spacer
19	04380161	10	planet gear Z=14
20	01143185	10	pin ISO 008750- 6 X 28-ST
24	04357805	2	bushing
25	04326165	2	roller bearing
26	04367372	2	spider
27	01172585	2	ring H 002927-115 X 3 -NBR-1-60
28	01172424	2	'o' ring H 002940-RL100X120 X12 -NI
37	04380160	2	gear Z=21
39	04326605	2	ring
40	01107772	2	circlip DIN 000471- 58X2

DEUTZ FAHR HINTERACHSE REAR AXLE ESSIEU ARRIERE EJE TRASERO PLANETENGETRIEBE PLANETARY DRIVE ENGRANAGE PLANET ENGRAN. PLANETARIO

1426-27504 1361

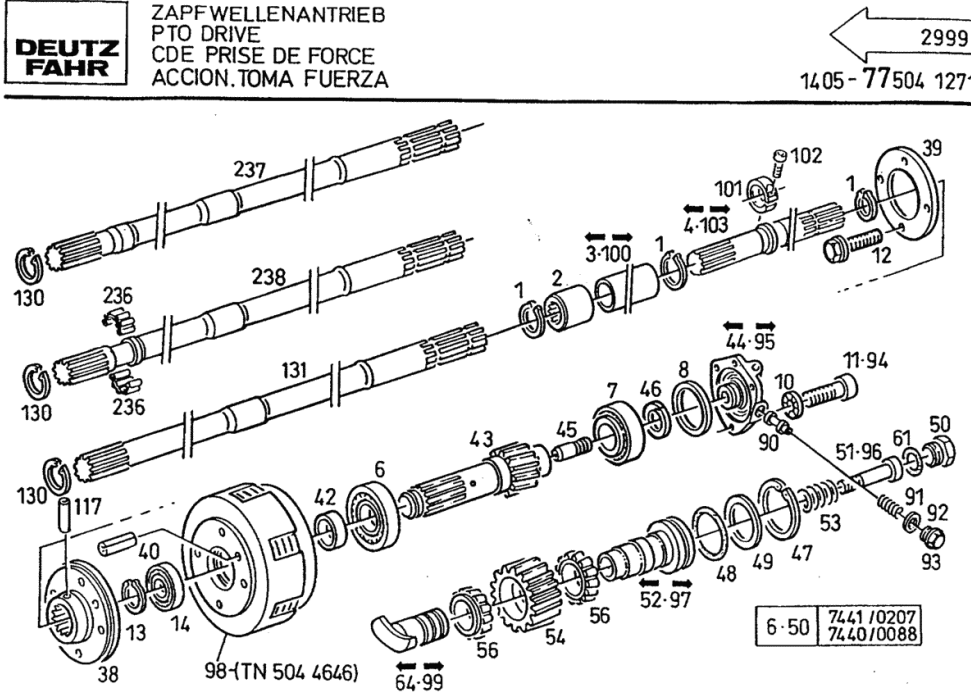
2



Section: GEARBOX, CLUTCH
P.T.O. SHAFT DRIVE

Fig.	Code	QTY	Name
236	01174858	1	workshop tool H 004455-NK 28 X 33X17 D
237	04357787	1	transmission shaft ONLY FOR LASTSCHALTBARE MODEL. FG.NR.7440/0017 æ7441/0296
238	04346450	1	transmission shaft
950	04305216	0	shim 0,6 MM
951	04305217	0	shim 0,7 MM
952	04305218	0	shim 0,8 MM
953	04305219	0	shim 0,9 MM
989	02387730	0	shim 0,70 MM
990	02387731	0	shim 0,80 MM
991	02387732	0	shim 0,90 MM
992	02387733	0	shim 1,00 MM
993	02387734	0	shim 1,10 MM

**DEUTZ
FAHR**
ZAPFWELLENANTRIEB
PTO DRIVE
CDE PRISE DE FORCE
ACCION.TOMA FUERZA



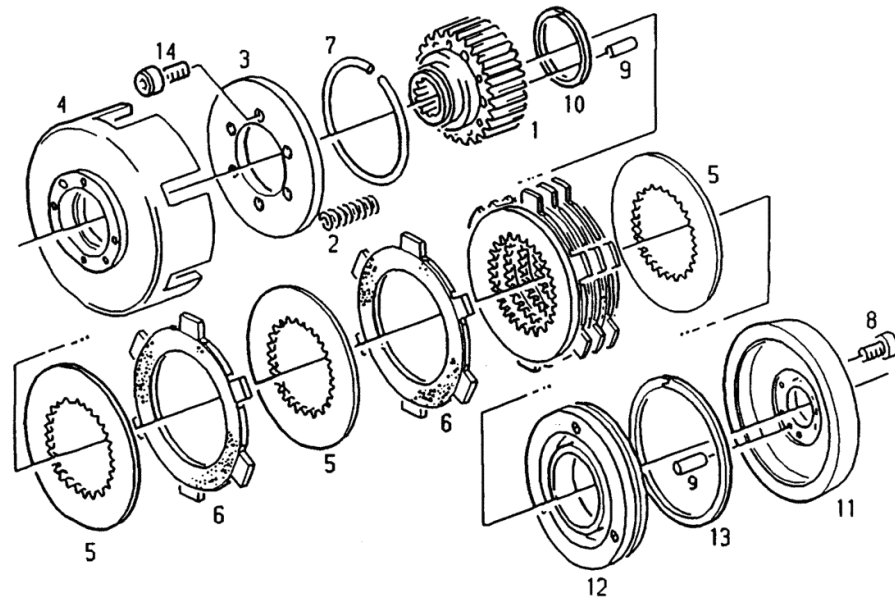
Section: GEARBOX, CLUTCH
MULTI-PLATE CLUTCH

Fig.	Code	QTY	Name
1	04331594	1	support
2	04331598	6	spring
3	04331595	1	washer
4	04331443	1	box
5	04350768	6	thin plate
6	04364528	5	thin plate
7	04364529	5	ring
8	01110496	6	screw m6x12 d912-10 DIN 000912- M 6 X 12 -10.9-A4 C
9	01105107	2	cylindrical plug ISO 002338- 5 M 6X 16
10	04331446	1	ring
11	04351476	1	engine cylinder
12	04364530	1	piston
13	04331571	1	ring
14	01138720	6	screw DIN 070910-125 X114,6X3 -FPT DIN 006912-M 6 X 16-10.9

**DEUTZ
FAHR** LAMELLENKUPPLUNG
MULTI-DISC CLUTCH
EMBR A DISQUES
ACOP LAM LAMINAS

ORTLINGHAUS

1405-77 0504 4645

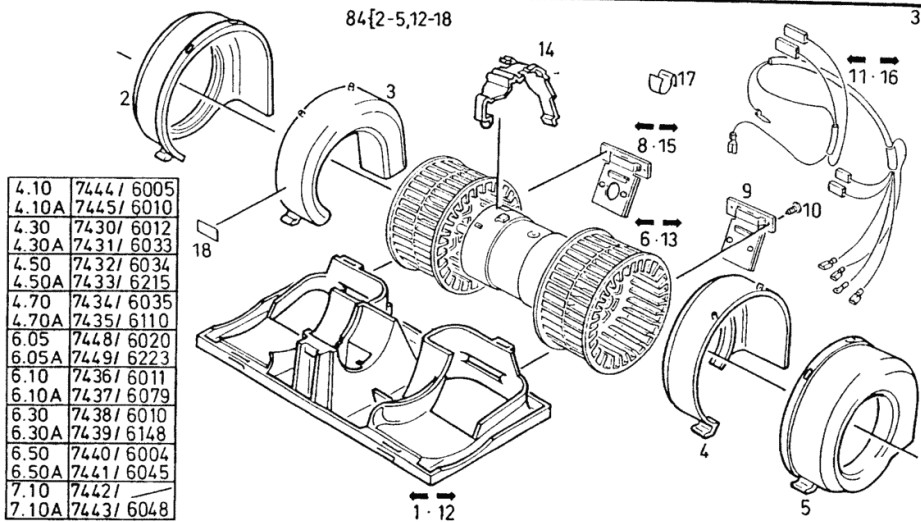


BLOWER

Fig.	Code	QTY	Name
1	00000000	0	not serviceable
2	00000000	0	not serviceable
3	00000000	0	not serviceable
4	00000000	0	not serviceable
5	00000000	0	not serviceable
6	04348005	1	rotor blade
8	04348007	1	resistance
9	04348008	1	resistance
10	01103807	4	screw
11	04348009	1	ISO 001481-ST 2,9X 9,5-C-A4C cable
12	00000000	0	not serviceable
13	04378971	1	rotor blade
14	00000000	0	not serviceable
15	04378973	1	resistance
16	04378974	1	cable harness
17	04378975	1	cab.terminals
18	04378976	1	plate support
84	04397994	1	

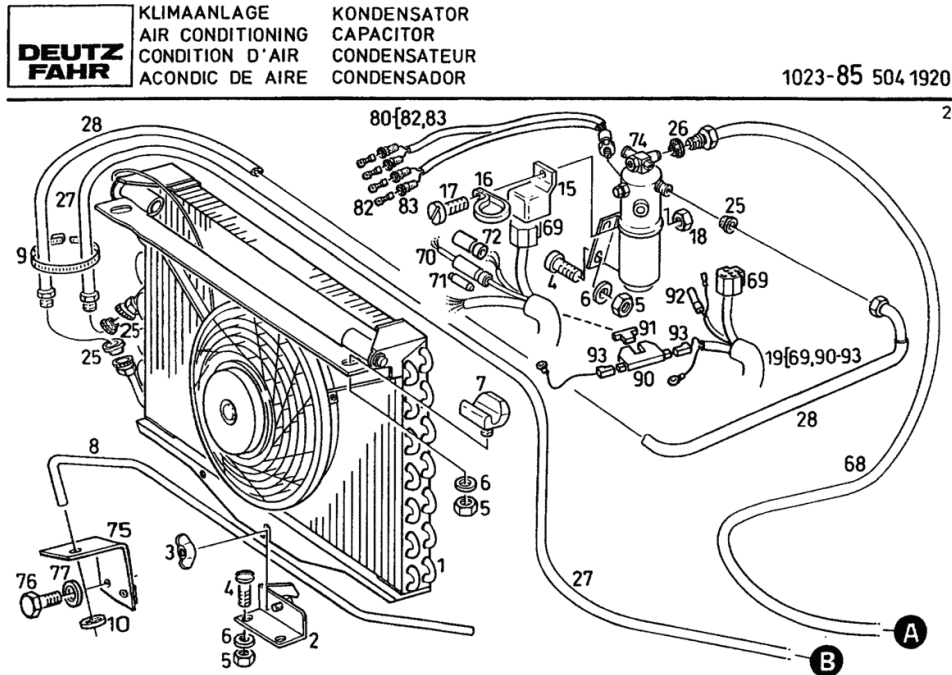
DEUTZ FAHR
 GEBLÄSE
 BLOWER
 SOUFFLANTE
 SOPLANTE

1023-85 504 1837



AIR CONDITIONING UNIT CONDENSER

Fig.	Code	QTY	Name
1	05041923	0	condenser PART NUMBERS LISTING SHEET 1024-85 504 1923 ☞ 19.85.17
2	04337284	1	square
3	01138390	1	wing nut m 10 DIN 000315-M10-GT-C-A4C
4	01104643	4	screw ISO 007045-M 8X 16 - 4.8-H -A 4C
5	01112824	4	nut m 8, d934 ISO 004032-M 8 - 8-A4C
6	01107101	4	washer 8.4 DIN 000125-A 8,4-140HV-A4C
7	04338211	2	console
8	04337404	1	rod
9	01137413	1	hose clip Ø 32/50 DIN 003017AL 32- 50 -W1
10	04338289	1	nut
15	01164015	1	relay H 821735-KS-12V-F
16	01171694	1	clamp 172X4.6 H 007672-J 5,1-172X 4,6
17	01119632	1	screw m 5 p.1x10 ISO 007045-M 5X 10 - 4.8-H -A 4C
18	01112803	1	nut m 5, d934 ISO 004032-M 5 - 8-A4C
19	04372074	1	cable
25	04323735	2	gasket
26	04322184	2	rubber plug 5/8"
27	04338041	1	tube
28	04338040	1	manifold
68	04341369	1	tube
69	01164019	1	socket H 007642- K 5
70	01169435	1	tube H 007677-E
71	01121332	1	hose clip 25a d72581 DIN 072581-A 25-E-CU
72	01169436	1	connection H 007677-F 6,3-1X48
74	04346256	1	tank
75	04346262	1	console



Section: HITCH
BRACKET

**DEUTZ
FAHR** TRAGBÜGEL
BRACKET
SUPPORT
ESTRIBO SOPORTE

1905-14 504 1834

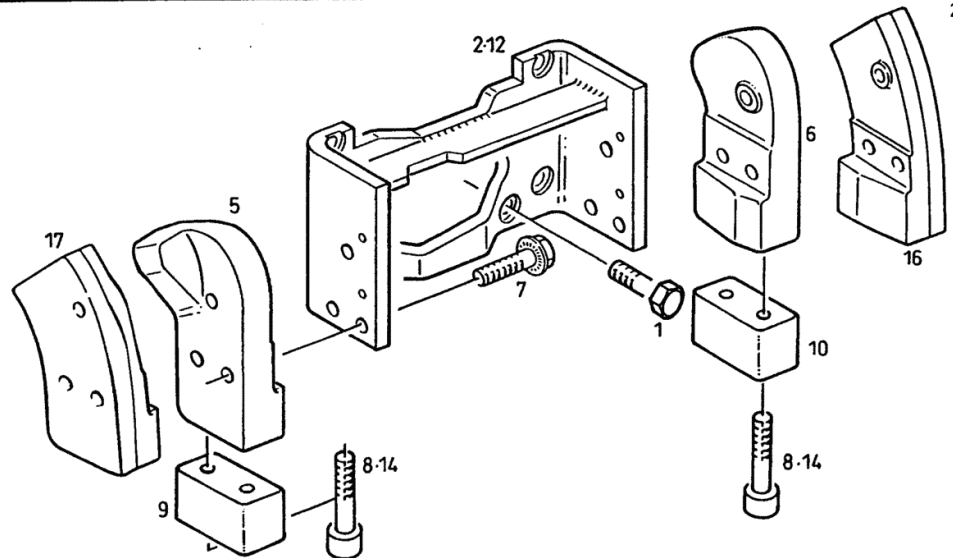


Fig.	Code	QTY	Name
1	01170181	6	screw H 002009-AM16X 40-12.9
2	02387834	1	bracket FOR TWIN STUB P.T.O. SHAFT
5	04310421	1	baffle LEFT
6	04310419	1	baffle RIGHTS
7	01162607	6	screw H 002009-AM16X 45-12.9
8	01110856	4	screw DIN 000912- M16 X 80 -10.9-A4 C
9	04372136	1	contact surface LEFT
10	04372137	1	contact surface RIGHTS
12	04372769	1	bracket FOR SINGLE STUB P.T.O. SHAFT
14	01152317	6	screw DIN 000912- M16 X110 -10.9
16	04377434	1	plate RIGHTS
17	04377435	1	plate LEFT

Section: HITCH

DRAWBAR COUPLING AUTOM. 10to

**DEUTZ
FAHR** ANHAENGEKUPPLUNG AUTOM.
TRAILER HITCH AUTOM.
CHAPE D'ATTELAGE AUTOM.
ACOPLAM. DE ENGANCH AUTOM.

1036-62 0504 5587

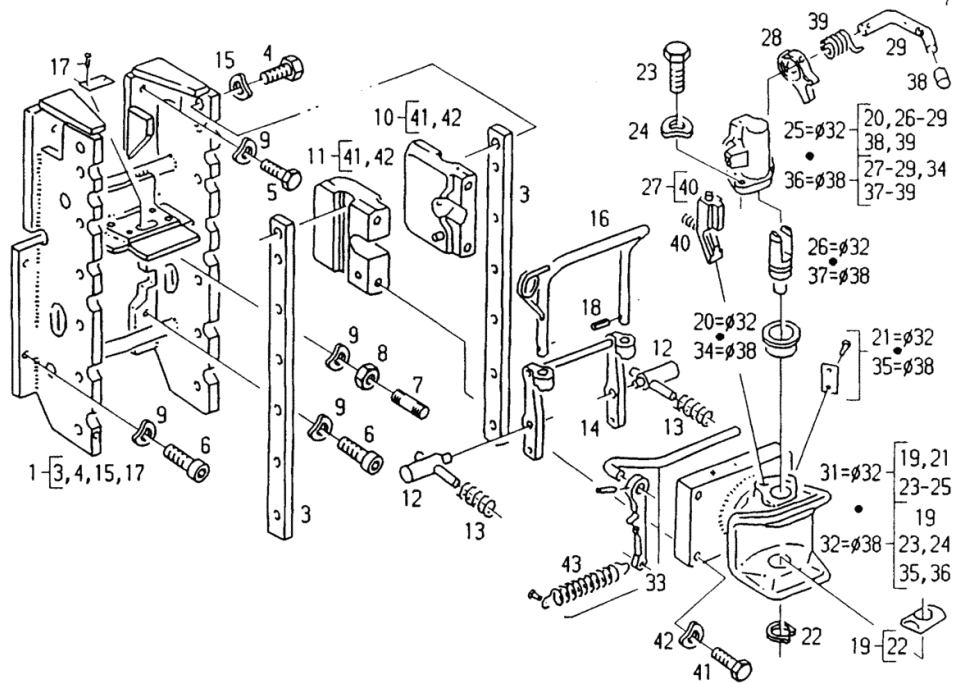


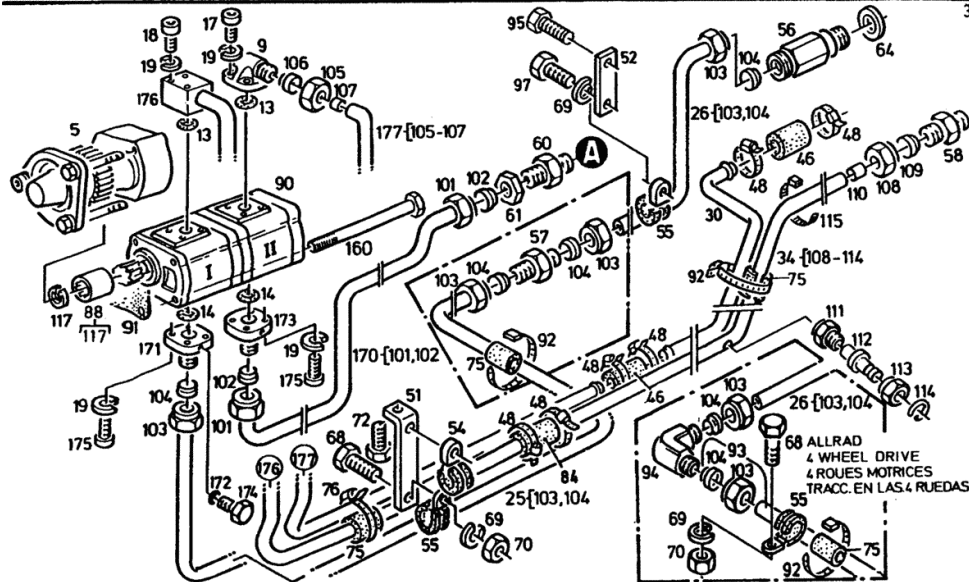
Fig.	Code	QTY	Name
1	04383734	1	chassis frame
3	04383101	2	guide
4	01112674	18	screw ISO 004017-M16 X 35 - 10.9-GE BLACK
5	01143074	2	screw ISO 004017-M16 X 45 - 10.9-OE LGESCHW.
6	01152318	10	screw DIN 000912- M16 X 45 -10.9-OE LGESCHW.
7	01113654	2	screw DIN 000939-M16 X 40 -10.9
8	01127090	2	nut m 16 ISO 004032-M16 -10-A4C
9	01103952	14	spring disc DIN 000137-B16-FST-A4C
10	04381175	1	shoe
11	04381176	1	shoe
12	04381177	2	pin
13	04373140	2	spring
14	04381179	1	lever
15	01103953	18	spring disc DIN 000137-B18-FST-A4C
16	04381180	1	lever
17	04383739	1	plate
18	01115433	2	stop ISO 008752- 5 X 16
19	04355111	1	spacer
20	04355112	1	spacer
21	04383742	1	plate
22	01137321	1	ring 40 x 2.5, d471 DIN 000471- 40X2,5
23	01112418	2	screw m 10 x 25, d933 DIN 000933-M10 X 25 - 8.8-A4C
24	01107286	1	washer b10 d137 DIN 000137-B10-FST-A4C
25	04383522	1	socket
26	04383524	1	pin
27	04383526	1	spacer M.BEF.STIFT+SICH.SCHRAUBEN
28	04383527	1	none
29	04383528	1	lever
31	04383740	1	tow hook

Section: HYDRAULIC SYSTEM
OIL SUPPLY HYDRAULIC PUMP

Fig.	Code	QTY	Name
68	01112264	2	screw m 6 x 20, d933 ISO 004017-M 6 X 20 - 8.8-A4C
69	01102797	3	washer 6, d128 DIN 000128-A 6 -FST -A4C
70	01112813	2	nut m 6 DIN 000934-M 6 - 8-A4C
72	01123701	1	screw m8x40 d912 DIN 000912- M 8 X 40 - 8.8-A4 C
75	02382225	3	sleeve
76	01173969	2	clamp 32-50 H 003461-B13 C 32- 50-W1
84	04309312	1	rubber sleeve
88	02420301	1	sleeve
90	01176451	1	pump PART NUMBERS LISTING SHEET 1906-01 504 4166
91	02239230	1	gasket
92	01172065	1	clamp 4.6 x 146 H 007672-G 146X 4,6
93	04348837	1	tube
94	01127366	1	pipe fitting I 18 d3905 DIN 003905-L 18-A4C
95	01112429	1	screw m 10 x 30, d933 DIN 000933-M10 X 30 - 8.8-A4C
97	01103316	1	screw m 6 p.1.0 x 16 ISO 004017-M 6 X 16 - 8.8-A4C
101	01116653	2	nut H 003105- CL15 -ST-A4C
102	01116626	2	ring H 003107-F L15-ST
103	01127347	2	nut CL 18 H 003105- CL18 -ST-A3C WAXED ST
104	01178706	2	ring H 003107-G L18-ST
105	01116656	1	pipe fitting m 30 p.2 H 003105- CL22 -ST-A3C WAXED ST
106	01116629	1	ring H 003107-F L22-ST
107	01160074	1	pin H 003111-C20-ST
108	01102372	1	pipe fitting

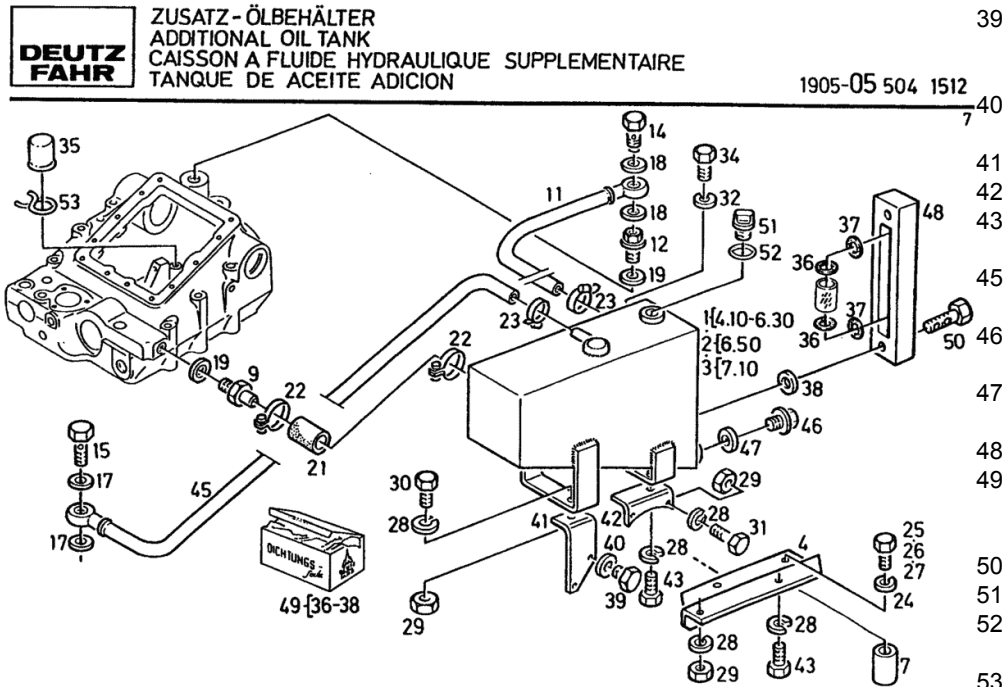
**DEUTZ
FAHR**ÖLVERSORGUNG
OIL SUPPLY
ALIMENTATION HUILE
ABASTECIM. ACEITEHYDRAULIKPUMPE
HYDRAULIC PUMP
POMPE HYDRAULIQUE
BOMBA HIDRAULICA7440/3000
7441/3000

1906-01.504 4455



Section: HYDRAULIC SYSTEM
ADDITIONAL OIL TANK

Fig.	Code	QTY	Name
35	04362866	1	sleeve TOGETHER WITH ITEM... EXCHANGE 53
36	00000000	0	not serviceable
37	00000000	0	not serviceable
38	00000000	0	not serviceable
39	01101808	2	screw m12x150 d931 DIN 000931- M12 X150 - 8.8-A- A4C
40	01174738	2	flat washer 12.5x26x6 H 000995-12,5X26X 6- 8.8 -A4C
41	04340238	1	console
42	04340239	1	console
43	01112502	1	screw m 12 x 20 DIN 000933-M12 X 20 - 8.8-A4C
45	04371104	1	tube 1150 MM
46	01125789	1	screw m20x1,5 d910 DIN 000910- M20X1,5 -ST
47	01118727	1	'o' ring DIN 007603-A 20 X 24 -CU
48	01174581	1	warning light
49	01309866	1	gasket set TO ITEM... 48
50	01309867	2	screw
51	04338016	1	screw
52	01170587	1	'o' ring H 002927- 28 X 3,5 -NBR-1-60
53	01164688	2	clamp H 000735-SK 17 TOGETHER WITH ITEM... EXCHANGE 35



Section: HYDRAULIC SYSTEM
POWER LIFT

**DEUTZ
FAHR** KRAFTHEBER
HYDRAULIC LIFT
VERIN HYDRAULIQUE
ELEVADOR HIDRAUL.

1905-08 504 1737

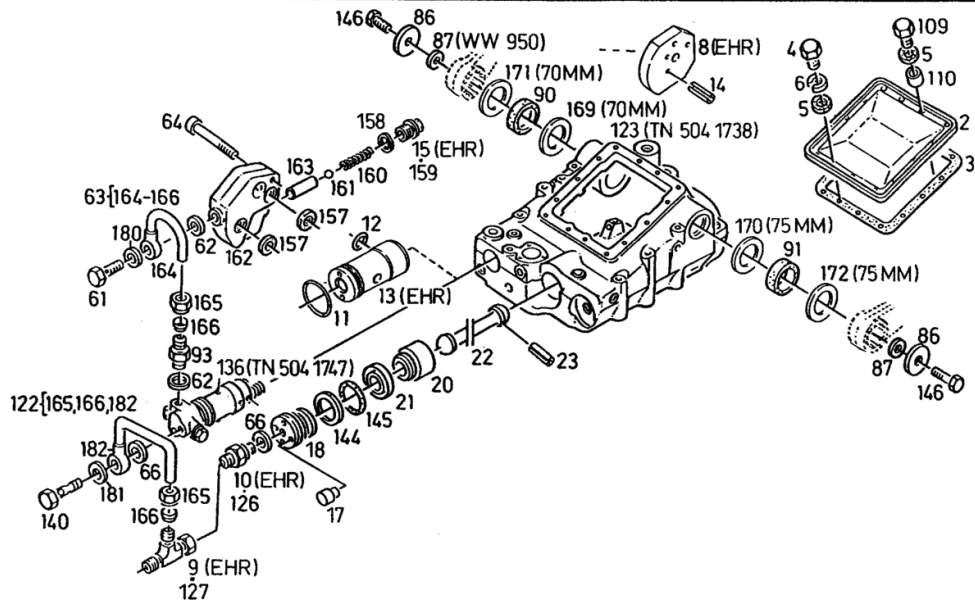


Fig.	Code	QTY	Name
87	02319402	1	washer 0,50 MM
90	01173041	1	'o' ring H 002940-W 70X 85 X10 -NI
91	01173042	1	'o' ring H 002940-G 75X 90 X10 -NI
93	01122822	1	pipe fitting I 12 a d3901 DIN 003901-L 12A-M-ST-A4C
109	01112333	2	screw m 8 x 25, d933 ISO 004017-M 8 X 25 - 8.8-A4C
110	04305926	2	spacer
122	04337265	1	tube
123	05041738	0	hydraulics housing 14.08.9
126	01164671	1	pipe fitting H 003132-AM18X1,5X12-A4C
127	01173028	1	pipe fitting AL 12 H 003127-AL12-ST-A4C
136	05041747	0	distributor 14.06.2
140	01119252	1	screw H 003102-D15 M-ST-A4C
144	04353150	1	ring
145	04353152	1	'o' ring
146	06277504	2	screw H 002091- 933-M12 X 30-8.8-A4 C-MK-1,5D-BL
157	04308375	3	'o' ring
158	01118727	1	'o' ring DIN 007603-A 20 X 24 -CU
159	04328810	1	screw
160	04335342	1	spring
161	01116962	1	ball DIN 005401-12 MM-III
162	04320692	1	plate
163	04328809	1	valve seat
164	04320885	1	ring
165	01179539	1	nut CL 12 H310 H 003105- CL12 -STF55 -A3C GE WAXED
166	01116637	1	ring H 003107-F S12-ST
169	04377752	1	ring 70 MM

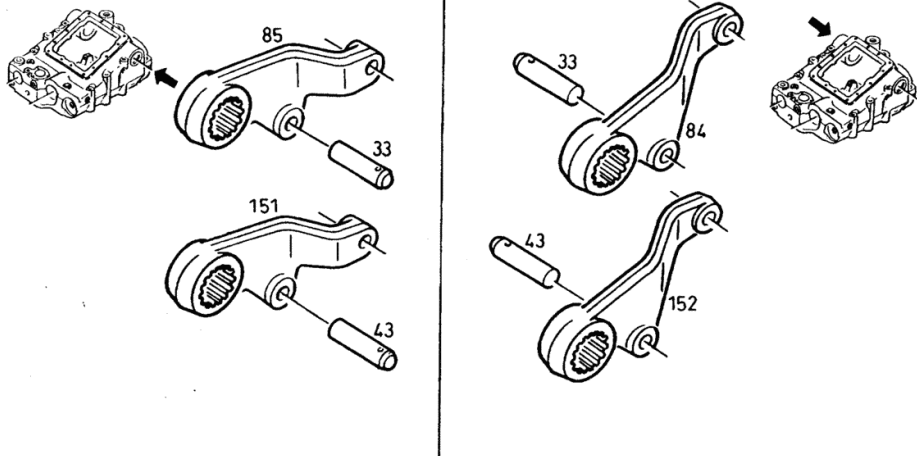
LIFTING ARM

Fig.	Code	QTY	Name
33	04306796	1	pin 32 MM
43	04361971	1	pin 36 MM
84	04305928	1	arm WITH ADD.CYL.55+65 MM
85	04305922	1	arm WITH ADD.CYL.55+65 MM
151	04355266	1	arm WITH ADD.CYL.80 MM
152	04362209	1	arm WITH ADD.CYL.80 MM

**DEUTZ
FAHR** HEBEARM
LIFT ARM
BRAS DE LEVAGE
BRAZO ELEVAC.

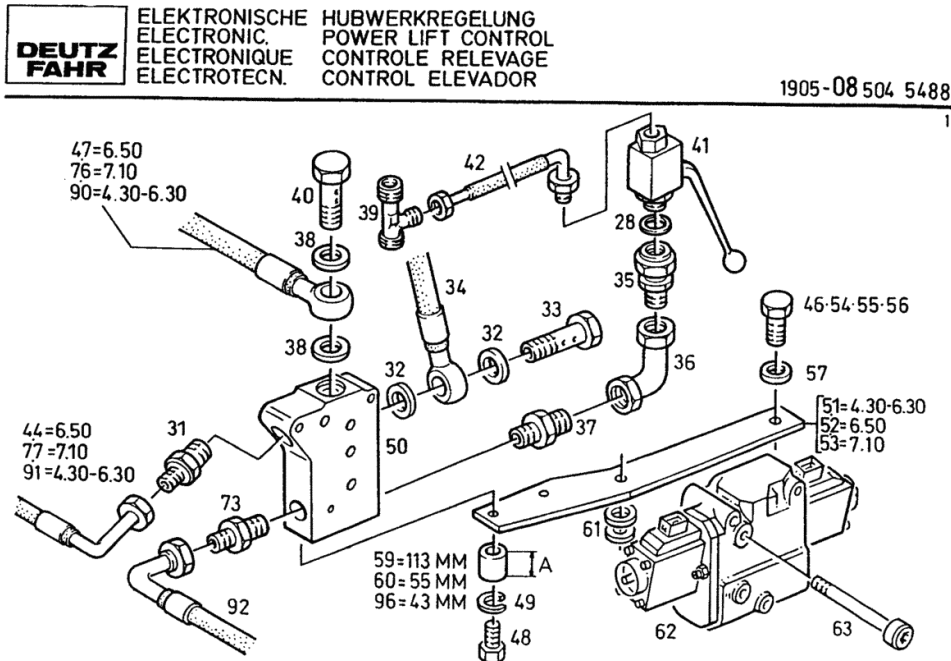
1905-08 504 4502

2



Section: HYDRAULIC SYSTEM
ELECTRONIC - LIFTING GEAR CONTROL

Fig.	Code	QTY	Name
28	01118700	1	'o' ring Ø 16 x 20 DIN 007603-A 16 X 20 -CU
31	01177450	2	pipe fitting m 22 p.1.5x18 H 003132-EM22X1,5X18-FPM -A4C
32	01171518	4	'o' ring H 002905-U 18,7X26 X1,5 -W1
33	01119252	2	screw H 003102-D15 M-ST-A4C
34	04376452	1	tube
35	01172624	1	insert H 003119-BL 12M -A4C
36	01179537	1	pipe fitting BL 12 H H 003130-BL12-ST -A4C
37	01178350	1	pipe fitting m 18 p.1.5x12 H 003132-EM18X1,5X12-FPM -A4C
38	01173526	2	ring 22.7 x 30 x 2 H 002905-U 22,7X30 X2 -W1
39	01173233	1	pipe fitting H 003127-AL15-ST-A4C
40	01137278	1	screw H 003102-D18 M-ST-A4C
41	04350581	1	cock or tap
42	04377732	1	tube
44	04376446	1	tube
46	01123740	3	screw m 16 x 80 d931 ISO 004014- M16 X 80 - 8.8-A4 C
47	04376444	1	tube
48	01100235	2	screw m10x25 10.9 DIN 000933-M10 X 25 - 10.9-A4 C
49	01102800	8	washer 10.2 DIN 000128-A 10 -FST -A4C
50	04376413	1	plate
51	04374082	1	support
52	04374083	1	support
53	04374081	1	support
54	01112679	3	screw m 16 x 35 ISO 004017-M16 X 35 - 8.8-A4C
55	01111960	2	screw m 16 x 160 ISO 004014- M16 X160 - 8.8-A4 C
56	01124846	2	screw m 16 x 60 ISO 004017-M16 X 60 - 8.8-A4C

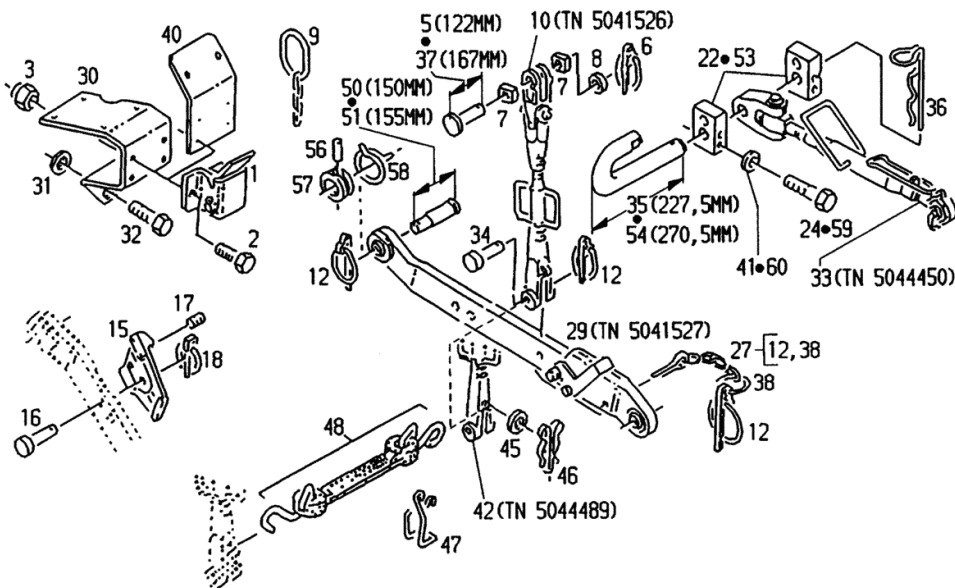


Section: HYDRAULIC SYSTEM
THREE-POINT COUPLING

Fig.	Code	QTY	Name
1	04331964	1	support
2	01112333	2	screw m 8 x 25, d933
3	01136452	2	ISO 004017-M 8 X 25 - 8.8-A4C nut vm 8 d980 DIN 000980-VM 8 - 8-A4C GEWAC HST
5	04315932	2	pin
6	04315540	2	pin
7	02376336	4	disc
8	01107130	2	washer DIN 000125-B25 -140HV-A4C
9	02385151	1	chain
10	05041526	0	rod 14.11.20
12	04311054	5	pin
15	04311057	2	shoe
16	02387780	2	pin
17	01110971	4	pin DIN 000915-M20 X 30-45H
18	01101084	2	pin DIN 011023- 8 X42-FE/ZN12CC
22	04331906	2	support WITH ITEM 24 M14 USE
24	01111766	4	screw m14x100 10.9 DIN 000931- M14 X100 - 10.9
27	04321940	2	pin
29	05041527	0	arm 14.11.31
30	04341347	1	console
31	01174740	1	washer 16.5 H 000995-16,5X31X 7- 8.8 -A4C
32	01112670	1	screw m16x30 d933 ISO 004017-M16 X 30 - 8.8-A4C
33	05044450	0	3 point hitch 14.11.13
34	04339635	2	pin
35	04343084	1	pin TO ITEM... 22
36	04343083	1	roll pin
37	04347452	2	pin
38	04305741	1	ring
40	04362750	1	console
41	01174739	4	washer


 DREI PUNKT KUPPLUNG
 ENGLISCH
 FRANZÖSISCH
 SPANISCH

1905-11 0504 1521



Section: HYDRAULIC SYSTEM
CONNECTING ROD

DEUTZ FAHR VERBINDUNGSSTANGE
 ENGLISCH
 FRANZÖSISCH
 SPANISCH

1905-11 0504 1526

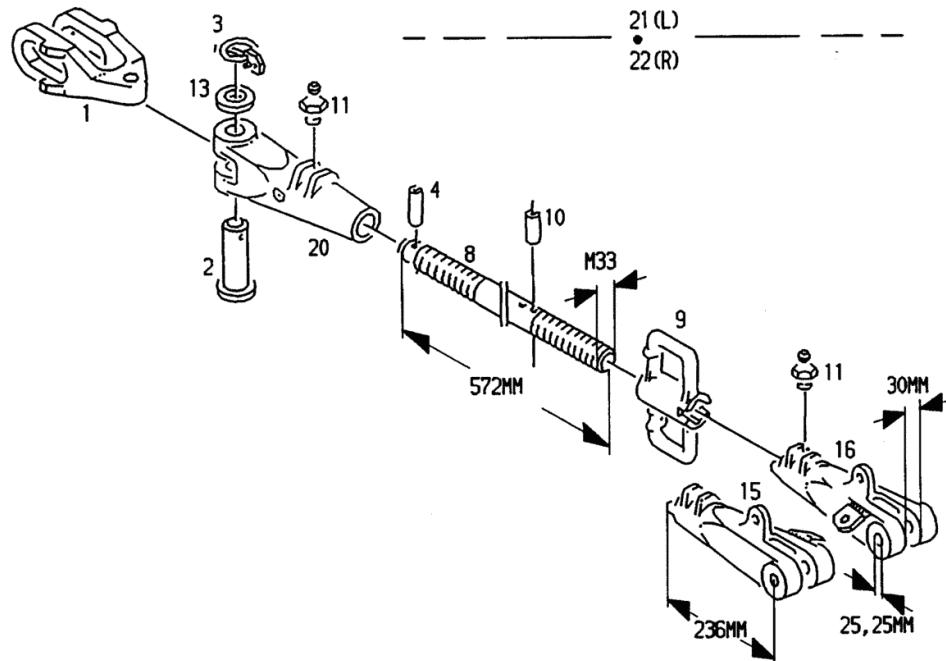


Fig.	Code	QTY	Name
1	02331826	1	fork
2	04339635	1	pin
3	01163838	1	pin
4	01115456	1	pin H 007381-12 KURZ
8	04308247	1	rod
9	04311073	1	crank
10	01115458	2	pin 6 x 40, d1481 ISO 008752- 6 X 40
11	01168224	2	lubricator m 6 H 003360-SA 6
13	01115024	1	washer DIN 001440-26-ST50-A4C
15	04309887	1	ball joint
16	04309883	1	ball joint
20	04336740	1	ball joint
21	04330611	1	rod
22	04330612	1	rod

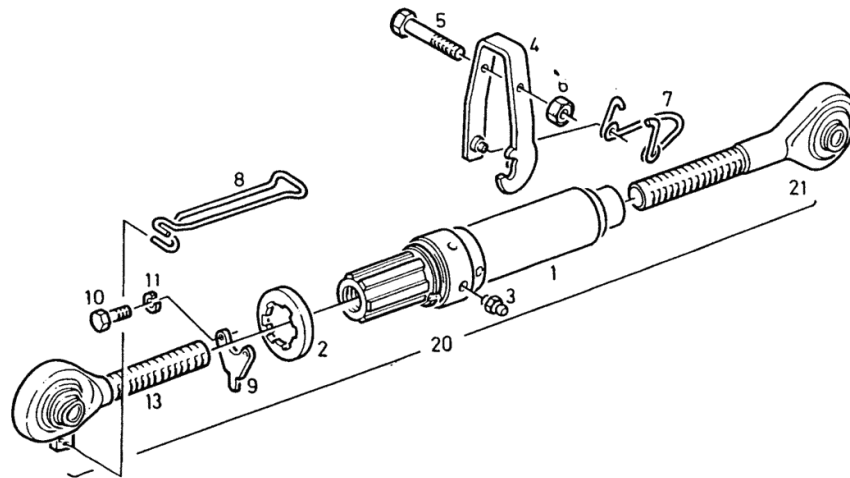
Section: HYDRAULIC SYSTEM
TELESCOPIC-UPPER LINK CAT II

Fig.	Code	QTY	Name
1	02378617	1	tensioner
2	02378618	1	tube
3	01168224	1	lubricator m 6 H 003360-SA 6
4	02378273	1	lever
5	01111096	1	screw m6x90 d933 ISO 004014- M 6 X 90 - 8.8-GE BLACK
6	01133500	1	nut vm 6 d980 DIN 000980-VM 6 - 8-A4C GEWAC HST
7	02378235	1	spring
8	04397645.4	1	spring
9	02378619	1	plate
10	01103999	2	screw m5x16 d933 ISO 004017-M 5 X 16 - 8.8-A4C
11	01102796	2	ring 5 DIN 000128-A 5 -FST -A4C
13	04313752	1	ferrule LEFT-HAND THREAD
20	04343783	1	3 point hitch
21	04343784	1	ferrule



TELESKOP - OBERLENKER
 TOP LINK, TELESCOPIC
 BRAS SUPERIEUR, TELESCOPIQUE
 GUIA SUPERIOR, TELESCOPICA

KAT. II

 1904-17 504 3717
 3


Section: MOTOR SUPPLY
SCREENING OIL COOLER

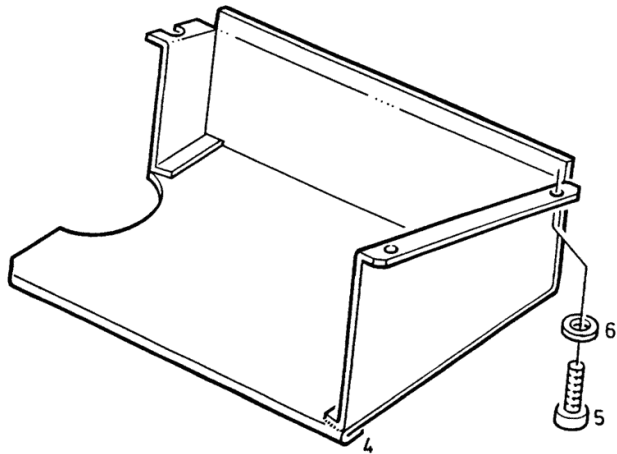
Fig.	Code	QTY	Name
4	04347558	1	division
5	01110496	3	screw m6x12 d912-10 DIN 000912- M 6 X 12 -10.9-A4 C
6	01107095	3	washer 6.4 DIN 000125-A 6,4-140HV-A4C

**DEUTZ
FAHR**

 ABSCHIRMUNG ÖLKÜHLER
 SHIELD OIL COOLER
 PROTECTION REFRIGERANT D'HUIL
 PROTECCION REFRIGERAD. ACEITE

1027-01 504 1578

1



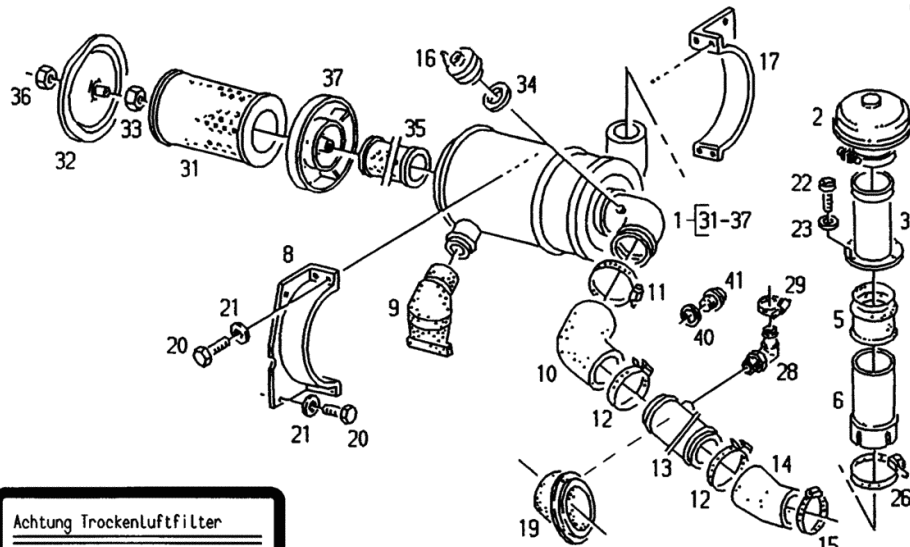
Section: MOTOR SUPPLY

DRY AIR FILTER INTAKE FROM ABOVE

DEUTZ FAHR TROCKENLUFTFILTER ANSAUGUNG VON OBEN
 FILTER AIR INTAKE FROM ABOVE
 FILTRE SEC ASPIRATION PAR L'HAUT
 FILTRO D.AIRE SECO ASPIRACION POR ARRIBA

1029-43 0504 1870

Fig.	Code	QTY	Name
1	04330333	1	air filter
2	03373963	1	tube
3	04330344	1	tube
5	02387941	1	boot
6	04330343	1	spacer
8	04303842	1	bracket
9	02241290	1	valve
10	04301254	1	manifold
11	01173964	1	hose clip
12	01173939	2	H 003461-B13 C100-120-W1 clamp Ø 80/100
13	04352574	1	H 003461-B13 C 80-100-W1 piping ON FIRST REPLACEMENT SUPPLY WITH ITEM.... 40+41
14	04301221	1	piping
15	01173940	1	clamp Ø 70/90 H 003461-B13 C 70- 90-W1
16	02427063	1	switch
17	04307419	1	bracket
18	04308606	1	plate
19	04313450	1	ring
20	01112307	8	screw m 8 p.1.25 x 15, d933
21	01107101	8	ISO 004017-M 8 X 16 - 8.8-A4C washer 8.4
22	01173329	4	DIN 000125-A 8,4-140HV-A4C screw H 002093- 7985-M 8X 16 SB -4. 8 -H
23	01171740	4	washer 8,4x17x1,6 d125 H 002398- 125-A 8,4-ST
26	01166441	1	hose clip H 000735-S 105 X 25
28	04150290	1	tongue
29	01173962	1	clamp Ø 20/32 H 003461-B13 C 20- 32-W1
31	02165049	1	air filter element
32	04303809	1	shoe
33	01172481	1	nut m8 h2160 H 002160-M 8- 8,5
34	03363577	1	ring
35	02241329	1	air filter element
36	01131115	1	nut



Achtung Trockenluftfilter
 Attention Dry-Type Air Cleaner
 Attention Filtre sec
 Atencion Filtro d.aire seco

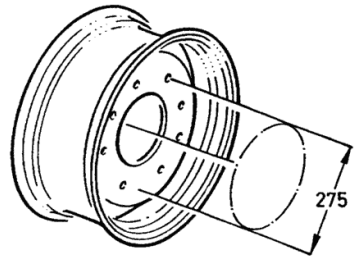
18

Section: WHEELS, BALLAST
8 HOLE - DISK WHEEL FRONT

Fig.	Code	QTY	Name
1	04338083	1	disc
2	04347781	1	disc
3	04338084	1	disc
4	04344641	1	rim
5	04344640	1	disc
6	04344642	1	disc
7	04345342	1	disc
8	04329541	1	disc

DEUTZ FAHR **8** LOCH HOLE CIRCLE CERCLE DES TROUS CIRCULO DE AGUJEROS
 -SCHEIBENRAD -VORN
 -DISC WHEELS -FRONT
 -ROUE A DISQUE -AVANT
 -RUEDA DE PLATO -DELANTE 1001-58 504 5511

2



- 1 = W 10 X 24 - 275 X 8 X 20 X 45
- 2 = W 10 X 28 - 275 X 8 X 20 X 45
- 3 = W 12 X 24 - 275 X 8 X 20 X 45
- 4 = W 12 X 28 - 275 X 8 X 20 X 15
- 5 = DW 14 X 26 - 275 X 8 X 20 X 45
- 6 = W 14 L X 28 - 275 X 8 X 20 X 10
- 7 = DW 16 X 26 - 275 X 8 X 20 X 20
- 8 = W 10 X 24 - 275 X 8 X 20 X 70

FÜR BEREIFUNG FOR TYRES POUR PNEUMATIQUES PARA NEUMATICOS				
Pos			Pos	
1	12,4 - 24 R-1 6 PR	5	16,9 - 26 R-1 6 PR	
	12,4 R24 R-1 6 PR		16,9 R26 R-1 6 PR	
	12,4 - 24 R-1 8 PR		6	16,9 - 28 R-1 6 PR
	12,4 R24 R-1 8 PR			16,9 R28 R-1 6 PR
2	12,4 - 28 R-1 6 PR	7	18,4 - 26 R-1 8 PR	
	12,4 R28 R-1 6 PR		18,4 R26 R-1 8 PR	
3	13,6 - 24 R-1 8 PR	8	12,4 - 24 R-1 6 PR	
	13,6 R24 R-1 8 PR			
	14,9 - 24 R-1 6 PR			
	14,9 R24 R-1 6 PR			
4	13,6 - 28 R-1 6 PR			
	13,6 R28 R-1 6 PR			
	14,9 - 28 R-1 6 PR			
	14,9 R28 R-1 6 PR			

CLICK HERE TO **DOWNLOAD** THE COMPLETE MANUAL

- Thank you very much for reading the preview of the manual.
- You can download the complete manual from: www.heydownloads.com by clicking the link below



- Please note: If there is no response to CLICKING the link, please download this PDF first and then click on it.

CLICK HERE TO **DOWNLOAD** THE COMPLETE MANUAL