

D07 4007

BRAKE

Control assy./service brake, Parking brake

OPERATION - PARKING BRAKE.....	13.29.1
HAND BRAKE.....	13.29.2

Service brake, Contral assy./service brake

OPERATION - SERVICE BRAKE - LINES.....	13.30.1
OPERATION - SERVICE BRAKE - LINES.....	13.30.5
SERVICE BRAKE.....	13.30.7
SERVICE BRAKE.....	13.30.24
DISC BRAKE.....	13.30.26

CLICK HERE TO **DOWNLOAD** THE COMPLETE MANUAL

- Thank you very much for reading the preview of the manual.
- You can download the complete manual from: www.heydownloads.com by clicking the link below



- Please note: If there is no response to CLICKING the link, please download this PDF first and then click on it.

CLICK HERE TO **DOWNLOAD** THE COMPLETE MANUAL

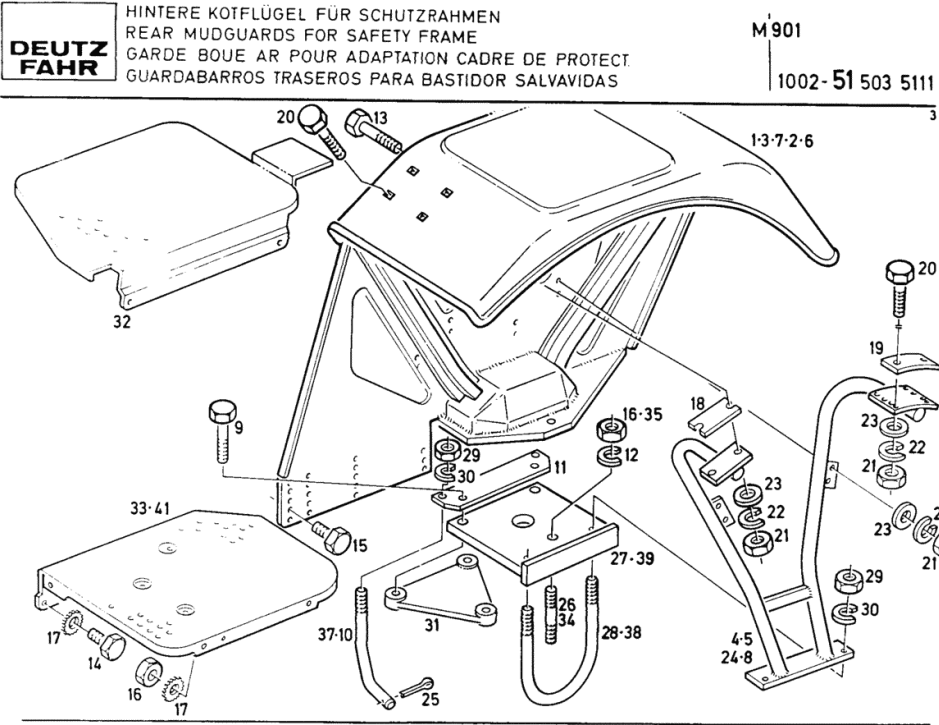
D07 4007

BUILT-ON ACCESSORIES

Partition	
PARTITION.....	16.38.1
Engine hood, Battery Carrier	
HOOD.....	16.41.1
Speed control device	
SPEED ADJUSTMENT.....	16.46.1
Shut-down device	
STOP DEVICE.....	16.47.1
Rear mudguards, Rear panelling	
WING REAR LEFT/RIGHT.....	16.51.1
WING REAR LEFT/RIGHT.....	16.51.2
WING REAR LEFT/RIGHT.....	16.51.6
WING REAR LEFT/RIGHT.....	16.51.14
Front mudguards	
WING FRONT.....	16.52.1
WING FRONT.....	16.52.8
Driver's seat	
DRIVER'S SEAT.....	16.54.1
SAFETY BELT.....	16.54.2
COMFORT SEAT.....	16.54.3
COMFORT SEAT.....	16.54.4
DRIVER'S SEAT.....	16.54.5
DRIVER'S SEAT.....	16.54.6
Tank panelling, Instrument box, Front panelling	
CASING - CONTROL CONSOLE.....	16.55.1
Screw plug	
PLUG.....	16.57.1
Toolbox	
METAL TOOLBOX.....	16.60.1
Safety frame	
ROPS.....	16.61.1
ROPS.....	16.61.2
Driving mirror	
REARVIEW MIRROR.....	16.67.1
Rear reflector	
RETROREFLECTOR.....	16.68.1
Bracket	
SUPPORT.....	16.70.1
Number plate bracket, Plates	
SIGN SET.....	16.71.1
SIGN SET.....	16.71.2

Section: BUILT-ON ACCESSORIES
WING REAR LEFT/RIGHT

Fig.	Code	QTY	Name
39	02304962	2	plate WING-REAR 452 MM
41	02330305	1	lamination LEFT, ALL-WHEEL MODEL



Section: BUILT-ON ACCESSORIES
COMFORT SEAT

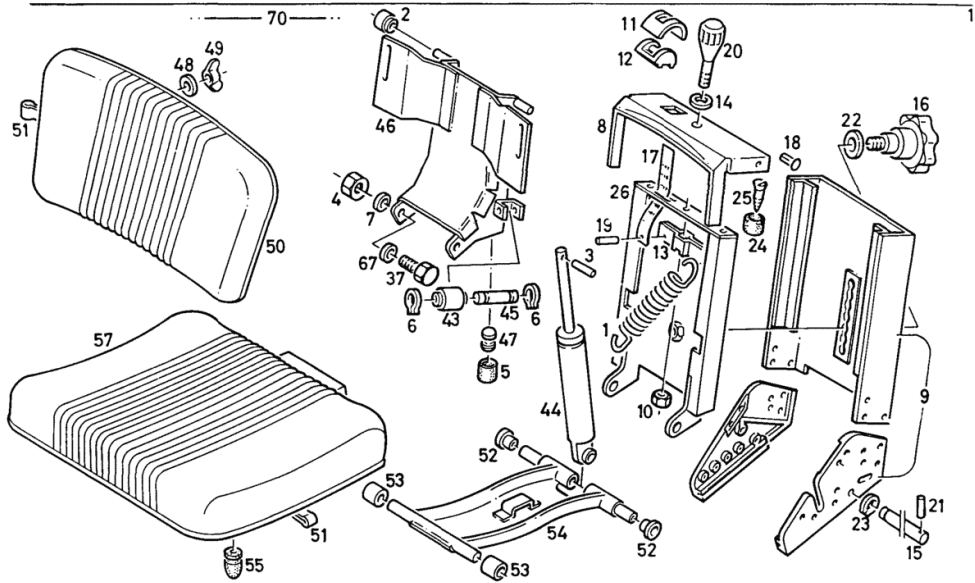
Fig.	Code	QTY	Name
46	02386974	1	controle panel
47	01175734	2	rivet
48	01136363	2	washer 8.4 DIN 009021- 8,4-140HV-A4C
49	01107359	2	wing nut DIN 000315-M 8-GT-C-A4C
50	02386973	1	backrest
51	02386710	6	brace
	1001-54 503 9747 52	4	bushing
		2	roller
		1	arm
		1	shoch.absorber
		1	padding
		2	washer 13.5 DIN 000125-A13 -140HV-A4C
		1	seat



FAHRERSITZ
 DRIVER'S SEAT
 SIEGE DE CONDUCT
 ASIENTO CONDUCTOR

HÖHENVERSTELLBAR
 HEIGHT ADJUSTMENT
 REGLAGE EN HAUTEUR
 GRADUAC. ALTURA

1001-54 503 9747 52

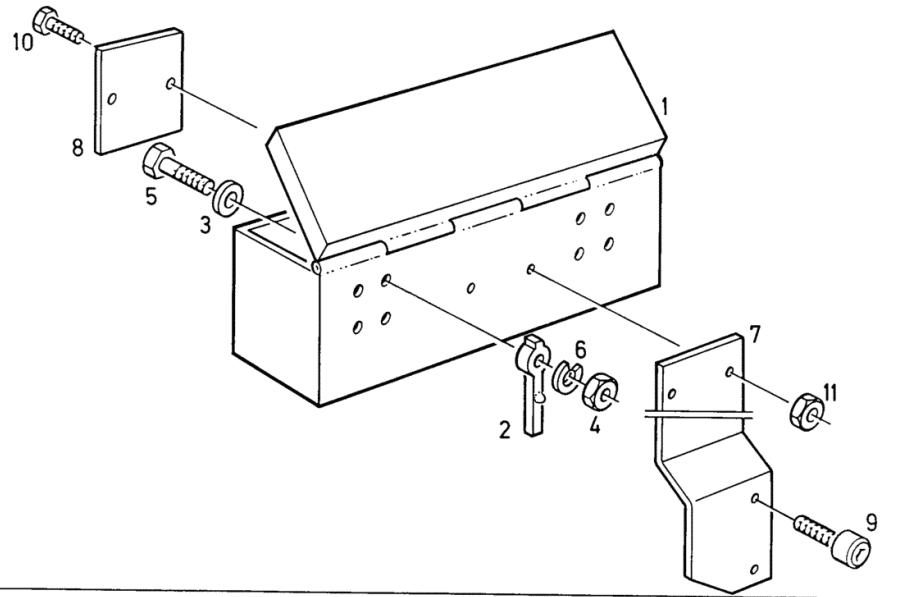


METAL TOOLBOX

Fig.	Code	QTY	Name
1	04393279	1	metal toolbox
2	02306797	2	shim UP TO CHASSIS-NO. FROM CHASSIS- FRAME NO....ITEM ... < ... > 7+8
3	02308040	2	washer
4	01102659	2	nut m 10, d934 DIN 000934-M10 - 8-A4C
5	01112423	2	screw m 10x28 DIN 000933-M10 X 28 - 8.8-A4C
6	01102800	2	washer 10.2 DIN 000128-A 10 -FST -A4C
7	04335937	1	consolle
8	04335938	1	plate
9	01110762	2	screw m 12 x 35 DIN 000912- M12 X 35 - 8.8-A4 C
10	01112333	2	screw m 8 x 25, d933 ISO 004017-M 8 X 25 - 8.8-A4C
11	01112824	2	nut m 8, d934 ISO 004032-M 8 - 8-A4C

**DEUTZ
FAHR**
 WERKZEUGKASTEN
 TOOLBOX
 COFFRET A OUTILS
 CAJA DE HERRAMIENTAS

1001-60 503 5209

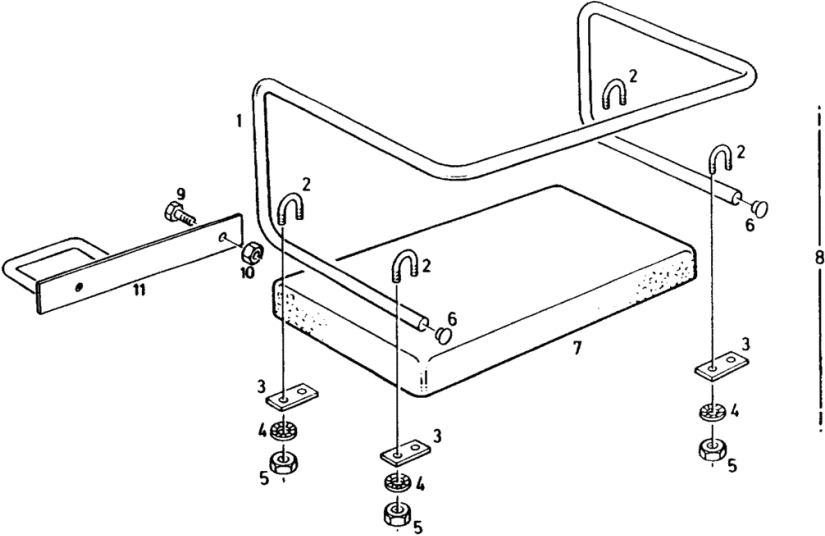


Section: BUILT-ON ACCESSORIES
SEAT FOR 2ND OPERATOR

Fig.	Code	QTY	Name
1	02306322	1	backrest
2	03387158	4	screw
3	03387157	4	plate
4	01167194	8	washer H 002203- 6
5	01112813	8	nut m 6 DIN 000934-M 6 - 8-A4C
6	02306798	2	plug
7	04317464	1	seat
8	02306792	1	passenger seat WITHOUT ITEM... 7,+9-11
9	01112407	2	screw m 10 x 20, d933 DIN 000933-M10 X 20 - 8.8-A4C
10	01102659	2	nut m 10, d934 DIN 000934-M10 - 8-A4C
11	04335189	1	tongue

DEUTZ FAHR
BEIFÄHRERSITZ
PASSENGER SEAT
SIEGE DE CONVOYEUR
ASIENTO PARA ACOMPAÑANTE

1001-76 503 9961



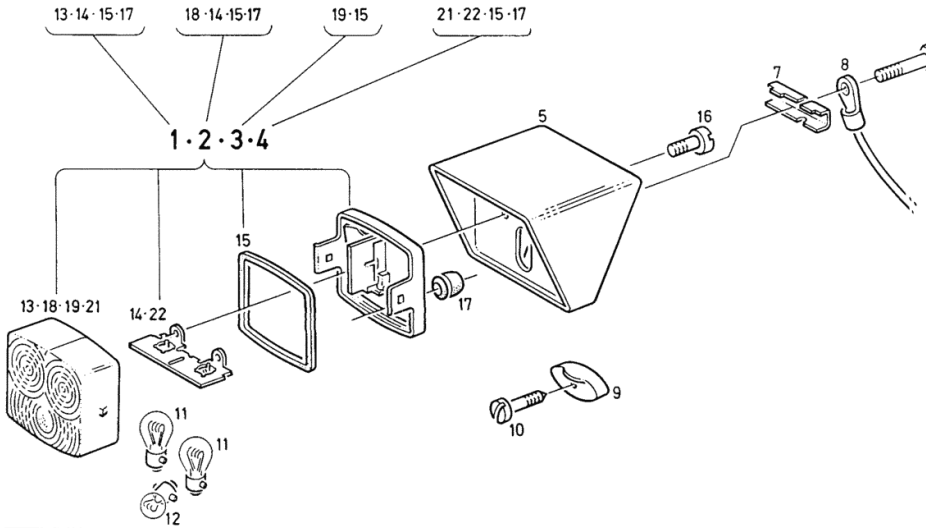
Section: ELECTRIC AL SYSTEM
LIGHTS FRONT

Fig.	Code	QTY	Name
1	04389588	1	light BEI AUSFUEHRUNG MIT BLINK- LICHT
2	04389594	1	light BEI AUSFUEHRUNG MIT BLINK- LICHT
3	02377135	1	side lamp OHNE BLINKLICHT
4	02377133	1	side lamp OHNE BLINKLICHT
5	02389528	1	shim
6	01111087	1	screw m 6x70 d931 ISO 004014- M 6 X 70 - 8.8-GE SCHW.
7	02306342	1	bracket
8	02377453	1	tube
9	02306341	1	plate
10	01101505	1	screw ISO 007049-ST4,8X32 -C-H-A4C
11	01102550	2	lamp r121w d72601 DIN 072601-P25-1- 12V 21 W P 25-1-12V 21W DIN 72601
12	01121409	1	lamp g/10w d72601 DIN 072601-R19/10-12V 10 W
13	02381663	1	glass
14	02377137	1	light
15	02381654	1	gasket
16	01124043	2	screw m 5 x 20 ISO 007045-M 5X 20 - 4.8-H -A 4C
17	02371927	1	sleeve
18	02381665	1	glass
19	02381661	1	glass
21	02381657	1	glass
22	02381652	1	socket

**DEUTZ
FAHR**

LEUCHTEN HINTEN
LIGHTS REAR
FEUX ARRIERE
LAMPARAS TRASERAS

1001-49 503 5094

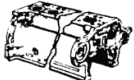


Section: ENGINE
LOCK

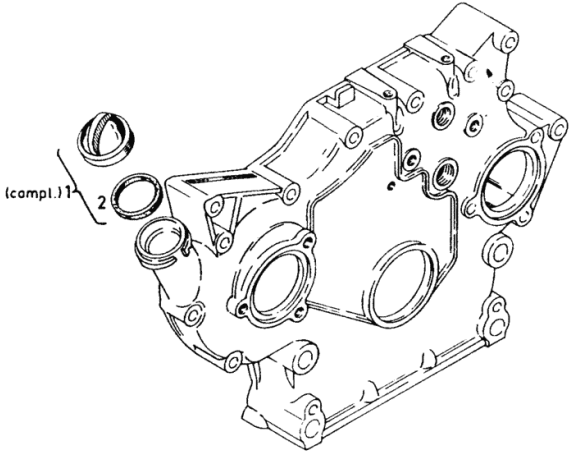
Fig.	Code	QTY	Name
1	01236291	1	plug
2	01236290	1	'o' ring



Öleinfüllverschluss
 Oil filler cap
 Couverture de cheminée de remplissage d'huile
 Tapon de llenado de aceite



0150-01-500 3320



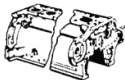
Section: ENGINE
BLANKING PARTS

Fig.	Code	QTY	Name
1	02130507	1	bottom
2	01119611	1	ring DIN 007980- 8-FST-A4C

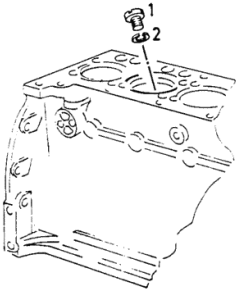


Verschluss-teile
Locking parts
Pièces de fermeture
Partes de cierre

Stück / Zyl.- Einheit
Pieces / cyl. unit
Qté / cylindre
Cantid. / unid. cilind.



0150-01-500 6781



Section: ENGINE
PISTON

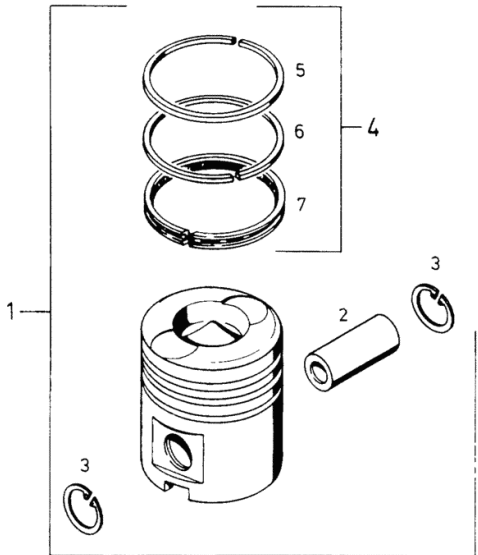
Fig.	Code	QTY	Name
954	04153954	1	piston ring set 1. OVERSIZE 100.50 MM (3.9567 IN) (3RING)
955	02233074	1	piston ring set NORMAL 100.00 MM RD (3.9370 IN.)
956	02233077	1	piston ring set 1. OVERSIZE 100.50 MM (3.9567 IN) (4RING)
957	01161089	1	ring H 002984-SF 100 X 90,9X 5 -CR OPTIONALLY PICTURE ITEM 7



Kolben
Piston
Piston
Embolo

Stück / Zyl. - Einheit
Pieces / cyl. unit
Qté / cylindre
Cantidad / unid. cilind.

0150-07 -503 4461



Section: ENGINE
LUBRICAT. OIL PUMP

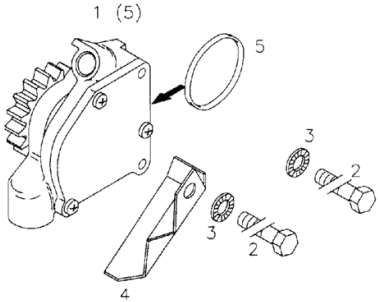
Fig.	Code	QTY	Name
1	04231307	1	oil pump WITH ITEM (5)
2	01122398	2	screw m 8x60 d931 ISO 004014- M 8 X 60 - 10.9-A 4C
3	01169689	2	washer H 002203- 8
4	04159697	1	division
5	03477881	1	'o' ring



Schmierölpumpe
Lubricating oil pump
Pompe de lubrification
Bomba de aceite de lubricación

Referenznr.:
0150 -14- 0500 4431

001

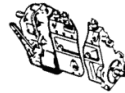


CONTROLLER COMPONENT PARTS

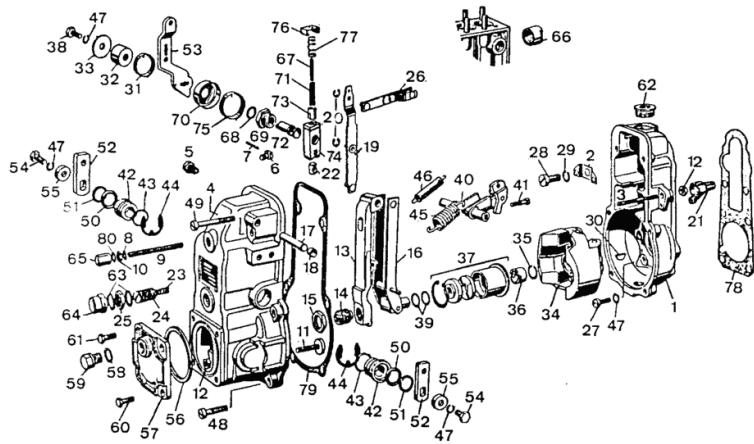
Fig.	Code	QTY	Name
1	01288895	1	body
2	01304532	1	rotor blade
3	01307831	1	pin
4	01310223	1	cover
5	01310208	4	plug
6	01298779	1	pin
7	01137555	1	cylindrical plug ISO 002338- 2,5H 8X 12-ST
8	01118641	1	ring a 6x10 d7603 DIN 007603-A 6 X 10 -CU
9	01286474	1	pin
10	01126747	1	nut ISO 004035- M 6 -04-A4C
11	01288758	1	register
12	01112813	2	nut m 6 DIN 000934-M 6 - 8-A4C
13	01288693	1	lever
14	03469624	1	bushing
15	01301113	1	nut
16	01310184	1	lever
17	01288711	1	screw
18	01288603	2	plug
19	01288662	1	lever
20	01117927	2	washer DIN 006799- 4
21	01301337	1	tube
22	01306960	1	slider
23	01306668	1	spring
24	01288751	1	brace
25	01288733	1	nut
26	01321214	1	link
27	01136955	6	screw DIN 000084- M 6 X 15- 8.8- A4 C
28	01126448	1	screw ISO 001207- M 8 X 20- 4.8- A4 C
29	01102799	1	washer 8, d128 DIN 000128-A 8 -FST -A4C
30	01118324	1	key DIN 006888- 3 X 6,5
31	01304560	1	spring
32	01304659	1	bushing
33	01307697	1	washer



Einzelteile zum Regler
Single parts for governor
Pièces détachées de régulateur
Partes para regulador



0150 - 17 502 890 99



Section: ENGINE
OVERFLOW OIL LINE

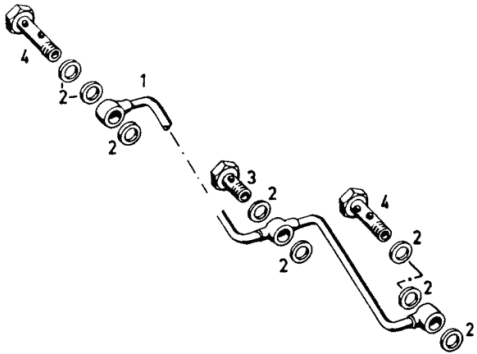
Fig.	Code	QTY	Name
1	02137996	1	tube
2	01118647	8	'o' ring 8x11,5 d7603 DIN 007603-A 8 X 11,5-CU
3	01119231	1	screw m 8 x 1 H 003102-D 4/5M-ST-A4C
4	01178622	2	pipe union m 8 x 1 H 003103-A 4M



Leckolleitung
Backleakage pipe
Conduit de récupération des égouttures
Tuberia de combustible sobrante



0150-21-500 6861



Section: ENGINE
AIR DUCTING UPPER PART

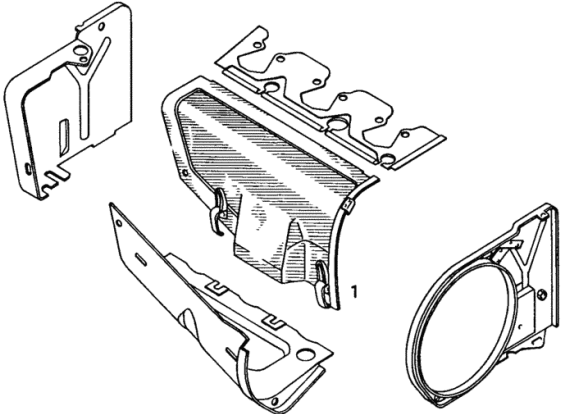
Fig.	Code	QTY	Name
1	02101702	1	air duct



Luftführungs-Oberteil
Air guide upper part
Part sup cart vent
Parte sup. guia de adre



0150-40-500 6780



CLICK HERE TO **DOWNLOAD** THE COMPLETE MANUAL

- Thank you very much for reading the preview of the manual.
- You can download the complete manual from: www.heydownloads.com by clicking the link below



- Please note: If there is no response to CLICKING the link, please download this PDF first and then click on it.

CLICK HERE TO **DOWNLOAD** THE COMPLETE MANUAL

Section: ENGINE

FASTENINGS

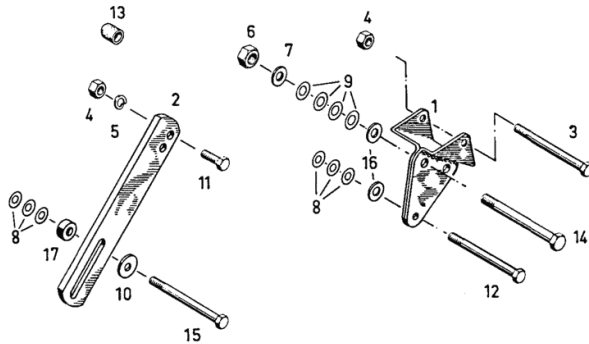
Fig.	Code	QTY	Name
1	02166129	1	console
2	02166516	1	link
3	01111190	1	screw m 6x75 ISO 004014- M 8 X 80 - 10.9-A 4C
4	01122477	2	nut m 8 p.1.25 ISO 004032-M 8 -10-A4C
5	01102799	1	washer 8, d128 DIN 000128-A 8 -FST -A4C
6	01102659	1	nut m 10, d934 DIN 000934-M10 - 8-A4C
7	01107105	1	washer 10.5 DIN 000125-A10,5-140HV-A4C
8	01215748	6	washer
9	01215749	4	washer
10	01216127	1	washer
11	01137624	1	screw m 8 x 25 DIN 000603-M 8 X 25 -8.8-A4C
12	01111200	1	screw m8x90 d931 ISO 004014- M 8 X 90 - 8.8-A4 C
14	01111345	1	screw m 10 x 90 DIN 000931- M10 X 90 - 8.8-A4 C
15	01126979	1	screw m8x95 d931 ISO 004014- M 8 X 95 - 8.8-A4 C
16	01216110	4	washer
17	03363977	1	bushing



Befestigungsteile
Fastening parts
Pièces de fixation
Partes de fijación



0150-44-500 6917

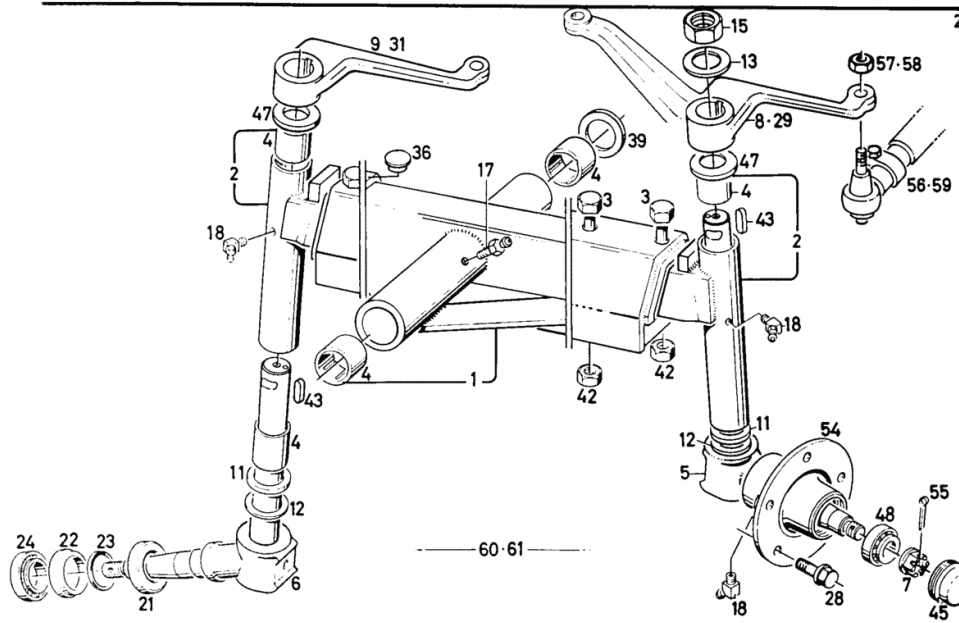


SERVICE BRAKE

Fig.	Code	QTY	Name
1	03389326	1	axle
2	03389328	2	arm
3	01113964	4	screw ISO 008765- M16X1,5 X 90 - 8.
4	04312526	6	8_GESCHW. bushing
5	03389319	1	steering lever LEFT
6	03389320	1	steering lever RIGHTS
7	01113285	2	castellated nut DIN 000937-M24X1,5 -22H-A -ZN PHRF
8	03389321	1	steering lever MECHANICAL STEERING
9	03389323	1	steering lever MECHANICAL STEERING
11	03389303	2	pressure plate
12	03389306	2	washer
13	03388449	2	lamination
15	01113206	2	nut DIN 000936-M27X1,5 -22H-A-ZNP HRF
17	01168225	1	lubricator m 8 x 1 H 003360-SA 8
18	01168227	4	pipe fitting H 003360-SB 8
21	03390472	2	'o' ring
22	03390470	2	'o' ring
23	03389309	2	'o' ring
24	01109957	2	bearing 30207 H 004465-302 07
28	03387372	10	pin
29	03389333	1	steering lever FUER HYDROLENKUNG
31	03389335	1	steering lever FUER HYDROLENKUNG
36	02314169	2	plug
39	02330834	0	washer INDIVIDUAL PARTS SEE ITEM... 950-951
42	01215993	4	nut
43	02376233	2	spring washer
45	02381373	2	tube

DEUTZ FAHR
TELESKOPACHSE
TELECOPIC AXLE
ESSIEU TELESCOP
EJE TELESCOPICO

1006-33 503 5044

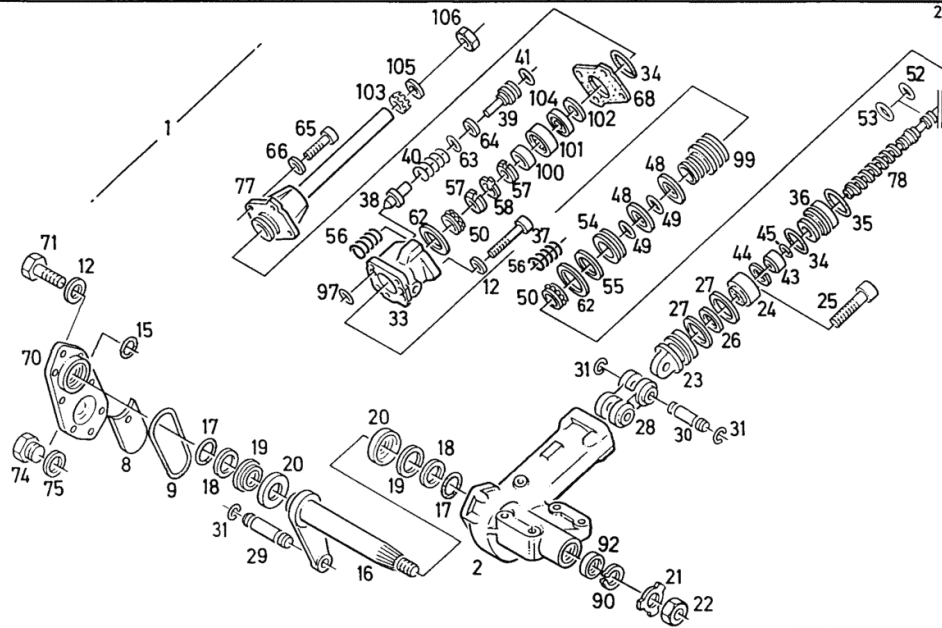


MECH. STEERING


DEUTZ FAHR HYDROLENKUNG POWER STEERING DIRECT. HYDRO-ASSIS SERVODIRECC. HIDR. LENKSTOCK COLUMN. ASSY. COMMANDE DIRECTION BLOQUE DIRECCION

1006-37 503 5430

Fig.	Code	QTY	Name
45	06214822	1	DIN 000472- 40X1,75 'o' ring
48	02315164	2	H 002927- 30 X 2 -NBR-1-70 'o' ring
49	02315165	2	ring
50	01109888	2	ball bearing
52	01166013	1	DIN 000711-51106 'o' ring
53	02309784	1	H 002927- 17 X 1,5 -NBR-1-60 'o' ring
54	02309785	1	clutch.pres plate
55	02309786	1	'o' ring
56	02314603	2	spring
57	02315168	2	nut
58	01124659	1	lamination
62	02311262	2	washer
63	02318190	1	DIN 000462-25 'o' ring
64	02309790	0	H 002927- 3,7 X 1,78 -NBR-1-7 0 ring OPTION ITEM...
65	01110576	4	950-952 screw
66	02315174	4	DIN 000912- M 8 X 25 - 8.8 washer
68	02315176	2	snoulder
70	02309746	1	cover
71	01112426	9	screw m10x30 d933-10 DIN 000933-M10 X 30 - 10.9-OE LGESCHW.
74	01110422	1	screw DIN 000908-M12X1,5-ST
75	01213282	1	gasket H 002905-U 12,7X18 X1,5 -W1
77	02334615	1	tube
78	02334613	1	steering column
90	01107841	1	ring DIN 000472- 56X2
92	03390829	1	'o' ring
97	04342930	4	ring
99	00000000	0	not serviceable
100	02315169	1	pin
101	02315169	1	pin



Section: GEARBOX, CLUTCH
GEARBOX


 GETRIEBEGEHÄUSE
 TRANSMISSION CASE
 CARTER DE TRANSMISSION
 CAJA DEL TREN DE ENGRANAJES

1445-08 503 528110

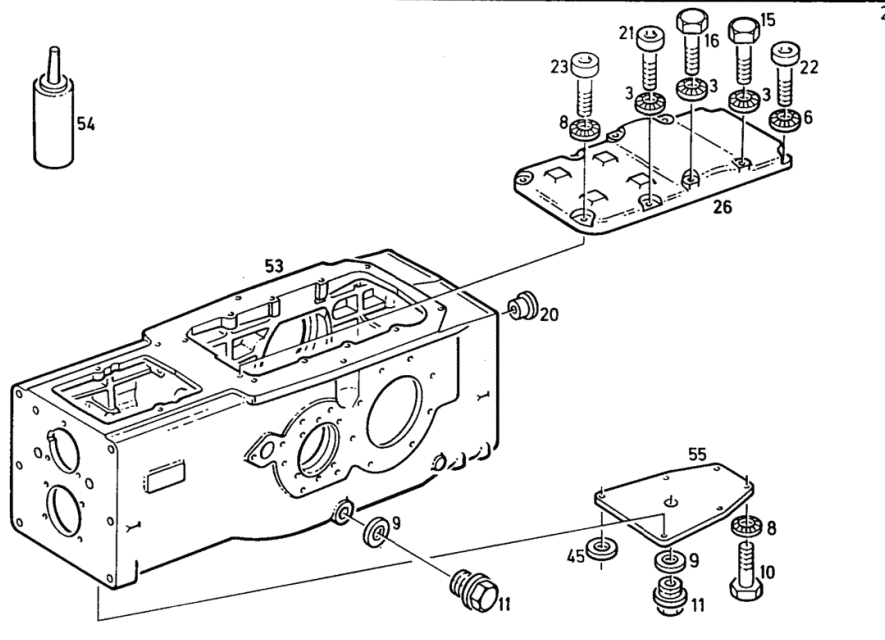


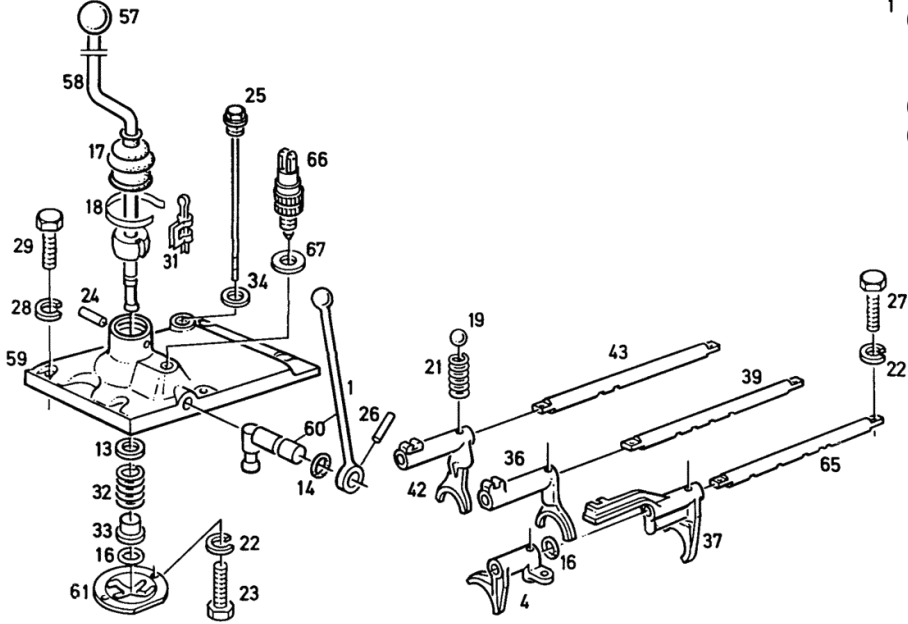
Fig.	Code	QTY	Name
3	01169694	6	washer 10 H 002203- 10
6	01169696	2	washer H 002203- 14
8	01169695	2	washer H 002203- 12
9	01118737	2	'o' ring 22 x 27 DIN 007603-A 22 X 27 -CU
11	01112502	6	screw m 12 x 20 DIN 000933-M12 X 20 - 8.8-A4C
11	01118979	1	plug m22x1,5 d7604 DIN 007604-AM22X1,5 -ST-ZNPHR F
15	01112451	2	screw m 10 p.1.5 x 45 DIN 000933-M10 X 45 - 8.8-A4C
16	01112461	2	screw m 10 x 55, d933 DIN 000933-M10 X 55 - 8.8-A4C
20	01167325	1	bottom H 002873-A 20,7X 17,7X 9,5-PE WEICH-SW
21	01110671	2	screw DIN 000912- M10 X 35 - 8.8-OE LGESCH
22	01110806	2	screw DIN 000912- M14 X 30 - 8.8-A4 C
23	01110757	2	screw DIN 000912- M12 X 30 - 8.8-A4 C
26	02329617	1	cover
45	01118681	2	'o' ring a 12x18 d7603 DIN 007603-A 12 X 18 -CU
53	04364021	1	gear box
54	01016120	0	compound H 000699-DEUTZ DW 47- 310 ML
55	04316282	1	cover

Section: GEARBOX, CLUTCH
GEAR SHIFTING

DEUTZ FAHR SCHALTUNG ZUM WECHSELGETRIEBE
GEAR-SHIFT ASSEMBLY
COMMANDE DE BOITE DE VITESSES
MANDO PARA CAMBIO

1445-12 503 5412

Fig.	Code	QTY	Name
42	04338360	1	fork R
43	03391926	1	rod R
57	01163642	1	push-button DIN 000319-L40X14FS-M
58	02329513	1	gear lever
59	02325870	1	cover
60	02332751	1	shaft
61	02332741	1	cap
65	02339263	1	rod GEAR 3+4
66	01262510	1	switch
67	02388144	1	shim



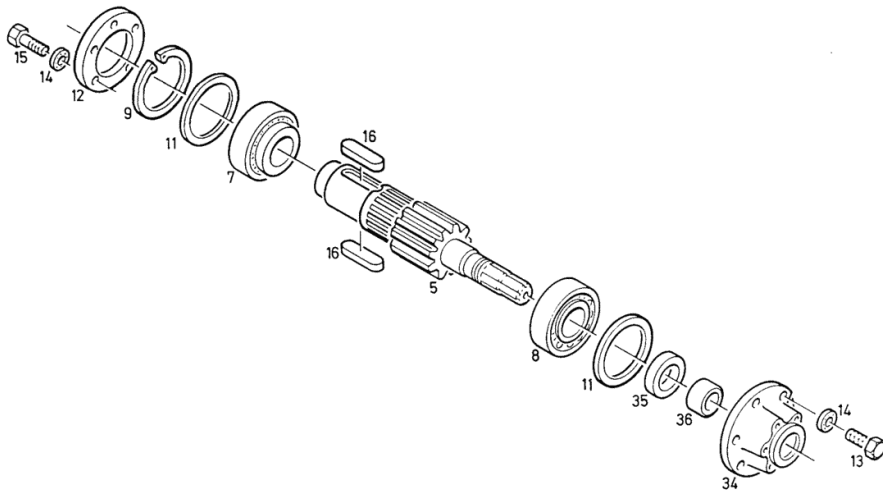
Section: GEARBOX, CLUTCH
INTERMEDIATE SHAFT

Fig.	Code	QTY	Name
5	03392356	1	shaft LONG Z=58/16 TW 35,1
7	01101386	1	bearing DIN 000720-303 10-A
8	01101339	1	roller bearing DIN 000720-323 10-A
9	01107863	1	circlip DIN 000472-110X4
11	03392503	0	shim OPTION ITEM... A=2,0MM 950-955
12	03392494	1	cover
13	01112326	6	screw m 8 x 22 ISO 004017-M 8 X 22 - 8.8-A4C
14	01169689	11	washer H 002203- 8
15	01112299	5	screw m 8 x 12, d933 ISO 004017-M 8 X 12 - 8.8-A4C
16	01118157	2	spring washer DIN 006885-A16X10 X 60
34	04313137	1	support
35	01173817	1	'o' ring H 002940-AS 50X 72 X12 -NI
36	04336088	1	ring
950	03392504	0	shim A=2,1 MM
951	03392505	0	shim A=2,2 MM
952	03392508	0	shim A=2,5 MM
953	03392511	0	shim A=2,8 MM
954	03392513	0	shim A=3,0 MM
955	03392522	0	shim A=5,5 MM

**DEUTZ
FAHR** ZWISCHENWELLE
INTERMEDIATE SHAFT
ARBRE INTERM.
EJE INTERMEDIO

1435-23 503 5219

2



Section: GEARBOX, CLUTCH
P.T.O. SHAFT

**DEUTZ
FAHR** ZAPFWELLE
STANDARD PTO SHAFT
PRICE DE FORCE
ARBOL TOMA DE FUERZA

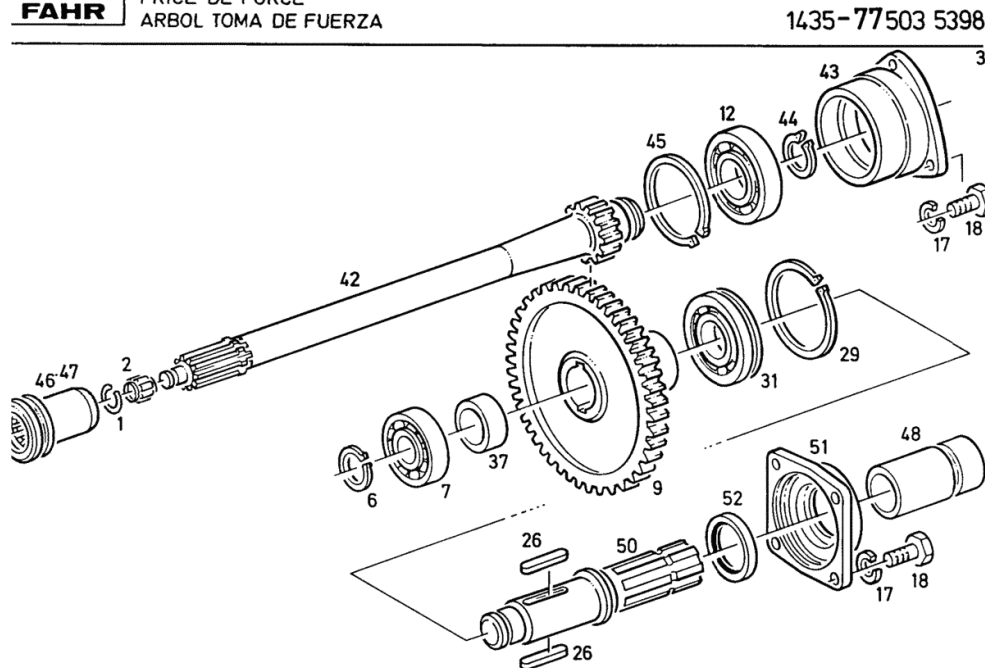


Fig.	Code	QTY	Name
1	01167214	1	circlip H 002258- 10X1
2	01168715	1	workshop tool H 004455-NK 10 X 13X13
6	01107742	1	circlip 30x1.5 DIN 000471- 30X1,5
7	01109050	1	bearing 6206 d625 DIN 000625- 6206
9	03392149	1	gear
12	01109057	1	ball bearing DIN 000625- 6207
17	01107101	3	washer 8.4 DIN 000125-A 8,4-140HV-A4C
18	01112322	7	screw m 8 p.1.25 x 20 ISO 004017-M 8 X 20 - 8.8-A4C
26	01118083	2	dowel 10 x 8 x 56 d6885 DIN 006885-A10X 8 X 56
29	01117455	1	circlip DIN 005417-SP 72
31	01109059	1	ball bearing DIN 000625- 6207-N
37	02307567	1	ring
42	02311295	1	transmission shaft Z=13
43	02311292	1	cover
44	01107748	1	ring 35 x 1.5, d471 DIN 000471- 35X1,5
45	01169740	1	circlip H 002272- 72X2,5
46	02313803	1	sleeve FUER GETRIEBEZAPFWELLE
47	02312698	1	sleeve
48	02329248	1	guard PVC
50	04337921	1	p.t.o.shaft
51	02384203	1	cover
52	01172223	1	'o' ring H 002940-S 38X 52 X 7 -NI

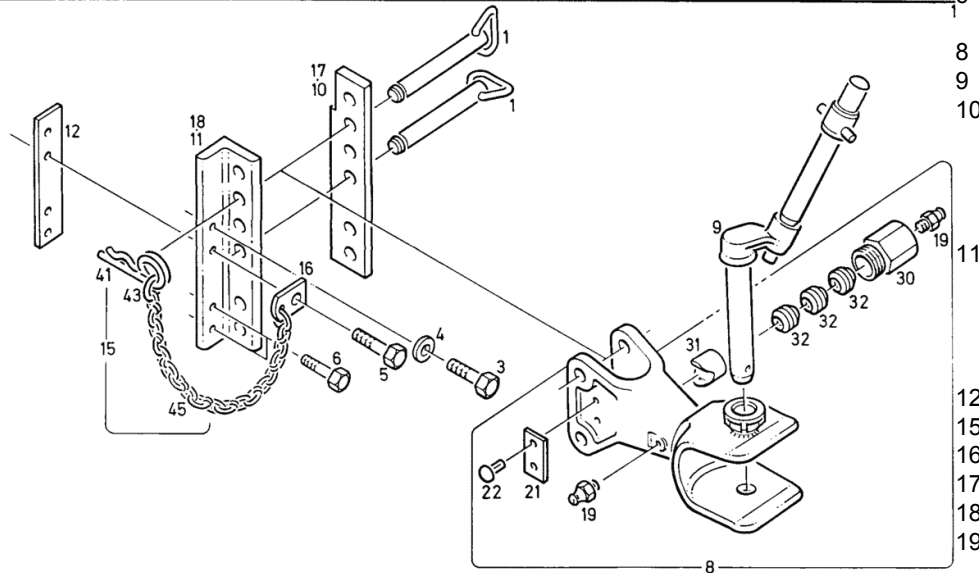
Section: HITCH
DRAWBAR COUPLING AUTOM.

**DEUTZ
FAHR**
 MECH. ANHÄNGEKUPPLUNG
 MECH. TRAILER HITCH
 CHAPE ATTELAGE MEC.
 ACOUPLE ENGANCHE MEC.

FRANKREICH

1003-63 503 6194

Fig.	Code	QTY	Name
1	04307332	2	pin
3	01137257	2	screw ISO 004017-M18 X 45 - 10.9-GE SCHW.
4	01174741	2	washer H 000995-18,5X36X 5- 8.8 -A4C
5	01137258	2	screw ISO 004017-M18 X 35 - 10.9-GE SCHW.
6	01112679	2	screw m 16 x 35 ISO 004017-M16 X 35 - 8.8-A4C
8	02371202	1	tow hook
9	04392077	1	pin
10	04341758	1	guide UP TO CHASSIS-NO. FROM CHASSIS- FRAME NO....ITEM ... <.... > 17
11	04341757	1	guide UP TO CHASSIS-NO. FROM CHASSIS- FRAME NO....ITEM ... <... > 18
12	04370173	2	support
15	04333760	2	key-pin
16	04318852	1	support
17	04357306	1	guide
18	04357307	1	guide
19	01168225	2	lubricator m 8 x 1 H 003360-SA 8
21	01210310	1	number plate
22	01115308	2	rivet ISO 008746- 3 X 6-ST -A4C
30	02335413	1	tube
31	02335414	1	guide
32	01104633	22	spring DIN 002093-A 18 GR2
41	01100906	1	roll pin DIN 011024- 5 -FE/ZN12CC
43	04305741	2	ring
45	01401523	1	chain DIN 005685-G3 X26 X 260 -TZN1 00



Section: HYDRAULIC SYSTEM
HYDRAULIC PUMP

Fig.	Code	QTY	Name
1	01262635	1	nut
2	01122365	2	screw M 10X110 DIN 000912- M10 X110 -10.9-A4 C
3	01107286	2	washer b10 d137 DIN 000137-B10-FST-A4C
4	01175995	1	pump
5	01263246	0	seal ring kit
6	01118324	1	key DIN 006888- 3 X 6,5
10	01263247	1	circlip
11	00000000	0	not serviceable
12	00000000	0	not serviceable
13	00000000	0	not serviceable
14	01263248	1	'o' ring

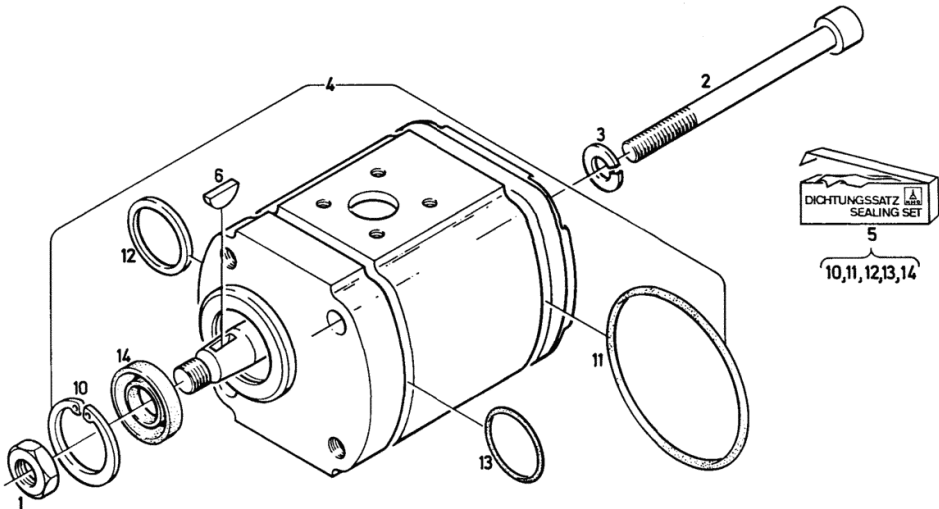


HYDRAULIKPUMPE
HYDRAULIC PUMP
POMPE HYDRAULIQUE
BOMBA HIDRAULICA

14,5 CCM / U (SUNDSTRAND)

1952-01504 1575

3

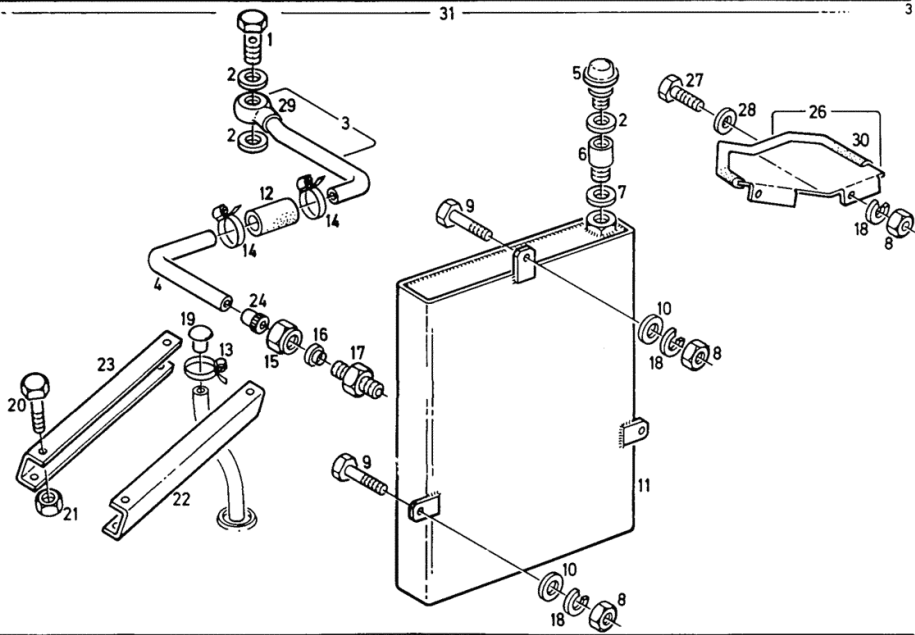


Section: HYDRAULIC SYSTEM
ADDITIONAL OIL TANK

Fig.	Code	QTY	Name
28	01103990	2	DIN 000933-M10 X 25 - 8.8-A4C washer
29	01179523	1	DIN 000440-R11 -100HV-A4C ring
30	01390702	0	H 003101-D28-ST gasket PVC H 846471-01-PN 1 705,0 MM
	04331347	1	oil pan

DEUTZ FAHR
 ZUSATZ-ÖLBEHÄLTER
 AUXILIARY OIL TANK
 CAISSON A FLUIDE HYDRAULIQUE
 TANQUE DE ACEITE

1952- 05 503 5060 31



D07 4007

Section: HYDRAULIC SYSTEM
POWER LIFT

Ref.: 14.08.3

Fig.	Code	QTY	Name
958	03401381	0	roller A=27,5 MM.
959	03401382	0	roller A=29,0 MM.
960	03401383	0	roller A=30,5 MM

KRAFTHEBERANLAGE
 HYDRAULIC SYSTEM
 RELAVAGE HYDRAULIQUE DTS
 SISTEMA DE ELEVADOR HIDRAULICO

K 45

1952-08 503 5052

3/3


Section: HYDRAULIC SYSTEM
FRONT HYDRAULIC POWER-LIFT



Fig.	Code	QTY	Name
1	02377754	1	triangle SCHWER
2	02377753	1	connection BOTTOM LEFT
3	02377751	1	connection BOTTOM RIGHT
4	02377757	1	connection TOP
5	02377756	1	plate
6	02377512	1	nut
7	02377514	1	pin
8	02377511	4	cone
9	01178367	4	washer 20.5 HM 060216.01-VSK20-VERZINKT G ELB
10	01112057	4	screw ISO 004014- M20 X 70 S - 10.9 -SPEED
11	01107124	4	washer 21x37x3 d125 DIN 000125-A21 -140HV-A4C
12	01112572	1	screw m 12 x 60 DIN 000933-M12 X 60 - 8.8-A4C
13	01104567	1	screw m12x35 d7991 DIN 007991-M12 X 35- 8.8 -A4C
14	01132647	2	split pin 6.3 x 40 DIN 000094- 6,3X 40-ST-A4C
15	01132679	1	bushing DIN 001498-EG 25/ 32X 45
16	01108066	1	nut DIN 000555-M12-5
17	02378645	1	spring NUR FUER AUFSATTELPFLUG
18	02377754	1	triangle

Section: HYDRAULIC SYSTEM

INTERMEDIATE DEVICE I - VALVE SEALED


 ZWISCHENGERÄT
 INTERMEDIATE UNIT
 DISTRIBUTEUR INT.
 APTO. MANDO INTERM.

DEUTZ
 EINFACHWIRKEND
 SINGEL-ACTING
 A SIMPLE EFFET
 DE SIMLE EFECTO

1805-40 503 5269

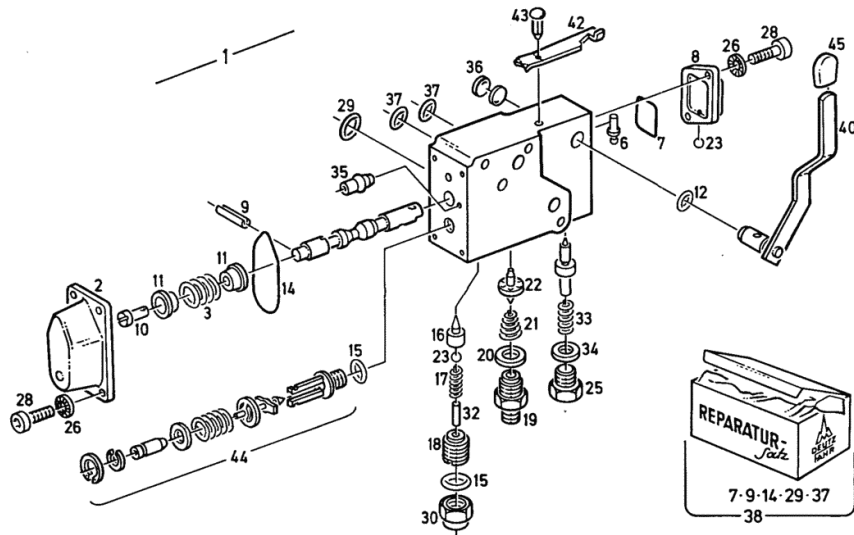


Fig.	Code	QTY	Name
1	04308866	1	distributor
2	03401348	1	cover
3	03401343	1	spring
6	02311920	1	pin
7	03401351	1	gasket
8	03401349	1	cover
9	01115405	1	pin
10	03401340	1	pin
11	03401345	2	cup
12	01169761	1	'o' ring H 002927- 10 X 2 -NBR-1-70
14	03401350	1	gasket
15	01118688	2	ring 14x17 DIN 007603-A 14 X 18 -CU
16	03401358	1	valve
17	03401360	1	spring
18	03401359	1	pin
19	04300354	1	tongue
20	01122947	1	'o' ring DIN 007603-A 27 X 32 -CU
21	03401356	1	spring
22	04308356	1	head
23	01123958	2	ball DIN 005401- 4,500MM-III
25	01152105	1	screw DIN 007604-AM12X1,5 -5.8
26	01167193	6	ring H 002203- 5
28	01152810	6	screw DIN 000912- M 5 X 16 -10.9
29	04303433	1	'o' ring
30	01102346	1	nut H 002159- M14X1,5-8-A4C
32	01101402	1	cylindrical plug ISO 008734- 4 X 14-A-ST
33	03401344	1	spring
34	01118673	1	'o' ring DIN 007603-A 12 X 15,5-CU
35	04309895	1	throttle
36	01102347	2	washer DIN 000470- 14-ST-A4C
37	04305924	2	'o' ring
38	04306985	0	sub-assy parts

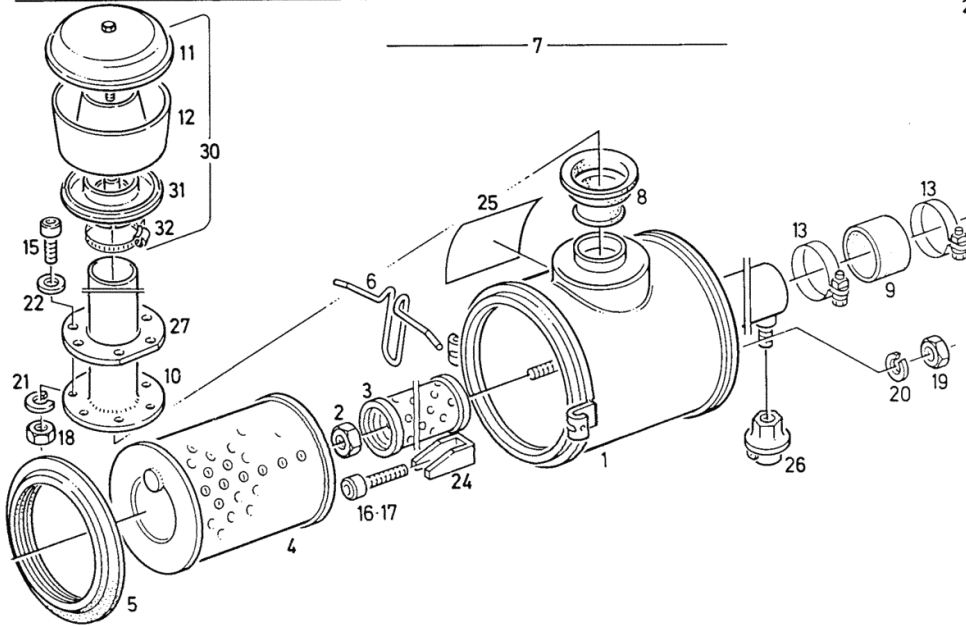
Section: MOTOR SUPPLY
DRY AIR FILTER

Fig.	Code	QTY	Name
1	02374903	1	filter casing
2	01136452	1	nut vm 8 d980 DIN 000980-VM 8 - 8-A4C GEWAC HST
3	04308634	1	air filter element
4	02339813	1	air filter element
5	02372778	1	'o' ring
6	02374896	1	brace
7	02375057	1	air filter WITHOUT ITEM... 2+3
8	02374909	1	boot
9	01165397	1	rubber sleeve H 000650-A 70X 80X 65
10	02379157	1	tube
11	02315447	1	cover
12	02315448	1	body
13	01166417	2	hose clip H 000735-S 80 X 15
15	01105537	6	screw am6x16 d84 ISO 001207- M 6 X 16- 4.8- A4 C
16	01151498	2	screw DIN 000912- M 8 X 16 -10.9
17	01123699	1	screw m 8 x 30 DIN 000912- M 8 X 30 - 8.8-A4 C
18	01112813	6	nut m 6 DIN 000934-M 6 - 8-A4C
19	01112824	3	nut m 8, d934 ISO 004032-M 8 - 8-A4C
20	01107101	3	washer 8.4 DIN 000125-A 8,4-140HV-A4C
21	01102797	6	washer 6, d128 DIN 000128-A 6 -FST -A4C
22	01107095	12	washer 6.4 DIN 000125-A 6,4-140HV-A4C
24	02386503	3	support
25	04308606	1	plate
26	01180698	1	sensor H 004137- WS 50 SCHLIE~ER
27	04306655	1	flange
30	04345068	1	precleaner
31	04345198	1	tongue



TROCKENLUFTFILTER MIT ANSAUGUNG VON OBEN
DRY -TYPE AIR CLEANER WITH INTAKE STACK
EPURATEUR D'AIR DU TYPE SEC A ASPIRATION D'EN HAUT
FILTRO DE AIRE EN SECO, ADMISION DESDE ARRIBA

1003-43 503 5068



CLICK HERE TO **DOWNLOAD** THE COMPLETE MANUAL

- Thank you very much for reading the preview of the manual.
- You can download the complete manual from: www.heydownloads.com by clicking the link below



- Please note: If there is no response to CLICKING the link, please download this PDF first and then click on it.

CLICK HERE TO **DOWNLOAD** THE COMPLETE MANUAL