

AGROPLUS 420 F -> 5001

V0 - BALLAST, TOWING HITCHES

FRONT HITCHES

FRONT TOWING HITCH..... V0.01.0 (1)

REAR HITCHES

SUPPORTS..... V0.02.2 (1)

PIN FOR REAR TOW HOOK..... V0.02.3 (1)

REAR TOWING HITCH..... V0.02.4 (1)

REAR SWINGING TOWING-HITCH..... V0.02.5 (1)

REAR TOWING HITCH BRACKET..... V0.02.7 (1)

DRAWBAR COUPLING CUNA - cat. C..... V0.02.9 (1)

DRAWBAR COUPLING CEE Ø 31..... V0.02.10 (1)

DRAWBAR COUPLING CUNA - cat. D2..... V0.02.13 (1)

DRAWBAR COUPLING CEE..... V0.02.14 (1)

AUTOMATIC DRAWBAR COUPLING CEE Ø 31..... V0.02.16 (1)

DRAWBAR COUPLING CEE..... 0.017.0233.3.A

AUTOMATIC DRAWBAR COUPLING CEE Ø 31..... 0.017.0234.3.A

DRAWBAR COUPLING CUNA - cat. D2..... 0.017.0235.3.A

DRAWBAR COUPLING CUNA - cat. C..... 0.017.0236.3.A

FRONT BALLAST WEIGHTS

FRONT WEIGHT CARRIER..... V0.03.1 (1)

FRONT BALLAST..... V0.03.4 (1)

FRONT BALLAST KG. 70..... V0.03.5 (1)

FRONT BALLAST KG. 250..... V0.03.6 (1)

BALLAST LOCK BAR mm 30x780..... V0.03.7 (1)

CLICK HERE TO **DOWNLOAD** THE COMPLETE MANUAL

- Thank you very much for reading the preview of the manual.
- You can download the complete manual from: www.heydownloads.com by clicking the link below



- Please note: If there is no response to CLICKING the link, please download this PDF first and then click on it.

CLICK HERE TO **DOWNLOAD** THE COMPLETE MANUAL

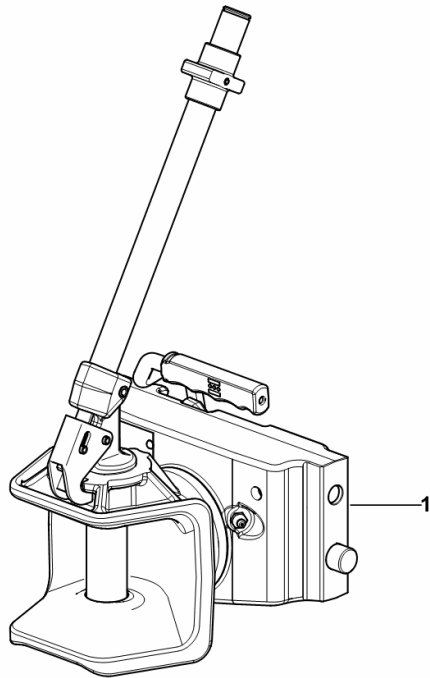
DRAWBAR COUPLING CEE

Fig.	Code	QTY	Name
------	------	-----	------

Notes:

[AGROPLUS 420 F -> ZKDP3202W0TD05001]

1	0.017.0233.3	1	clevis CBM - CEE ☞ 0.017.0233.3
---	--------------	---	------------------------------------



9_P2531_65_0-A-001

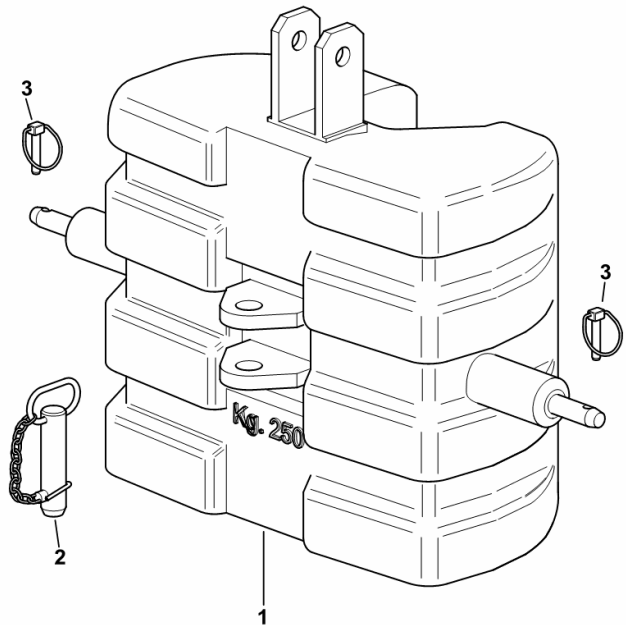
FRONT BALLAST KG. 250

Fig.	Code	QTY	Name
------	------	-----	------

Notes:

[AGROPLUS 420 F -> ZKDP3202W0TD05001]

1	0.010.4553.3/10	1	ballast KG. 250
2	0.96309.51.3	1	pin Ø 32
3	0.010.9322.4	2	pin Ø 11



9_64852_60_0-A-001

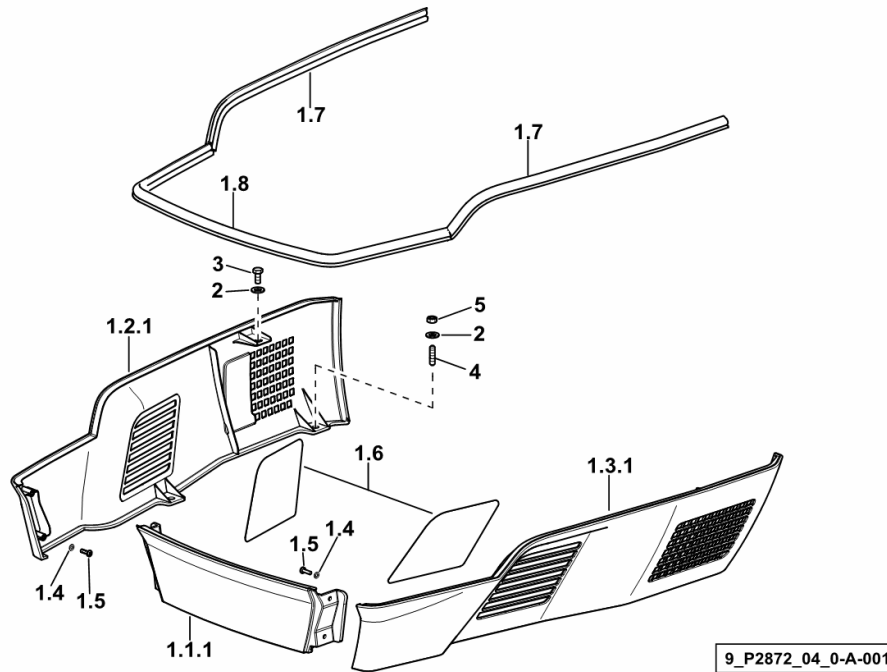
BONNET - FRONT PORTION

Fig.	Code	QTY	Name
------	------	-----	------

Notes:

[AGROPLUS 420 F -> ZKDP3202W0TD05001]

1.1.1	0.016.0409.0/10	1	headband and
1.2.1	0.016.0411.3/10	1	hose clip dx/rh/re
1.3.1	0.016.0410.3/10	1	hose clip sx/lh/li
1.4	2.1310.001.2	4	flat washer 5.3
1.5	2.0332.306.2	4	screw m 5x0.8x16
1.6	0.016.0412.0	2	grille
1.7	0.010.7094.0	2	gasket
1.8	0.010.7094.0	1	gasket
2	2.1310.006.2	8	flat washer 10.5
3	2.0112.206.2	2	screw m 8 p.1.25 x 18
4	2.0432.003.7	6	stud bolt m 8 p.1.25 / p.1 x 20
5	2.1011.405.2	6	nut m 8 p.1

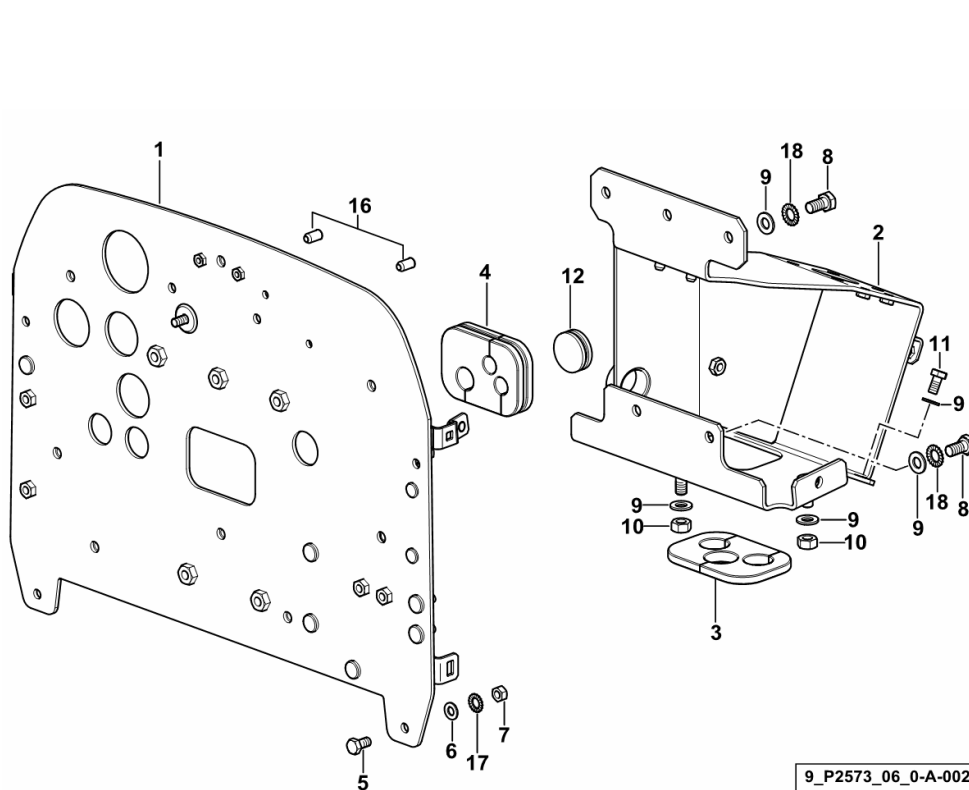


PEDAL SUPPORT

Fig.	Code	QTY	Name
------	------	-----	------

Notes:

[AGROPLUS 420 F -> ZKDP3202W0TD05001]



1	0.016.1340.3/20	1	division
2	0.016.3306.3/20	1	support
3	0.016.1940.0/20	1	wire guide
4	0.016.1984.0	1	wire guide
5	2.0112.205.2	2	screw m 8 p.1.25 x 16
6	2.1310.004.2	2	flat washer 8.5
7	2.1011.105.2	2	nut m 8 p.1.25
8	2.0112.307.2	5	screw m 10 p.1.5 x 20
9	2.1310.006.2	10	flat washer 10.5
10	2.1011.421.2	3	nut m 10 p.1.25
11	2.0112.305.2	2	screw m 10 p.1.5 x 16
12	2.3199.115.0	1	plug 38x12
16	2.1142.010.2	2	insert m 6
17	2.1470.004.2	2	washer 8
18	2.1470.006.2	5	lock washer 10

9_P2573_06_0-A-002

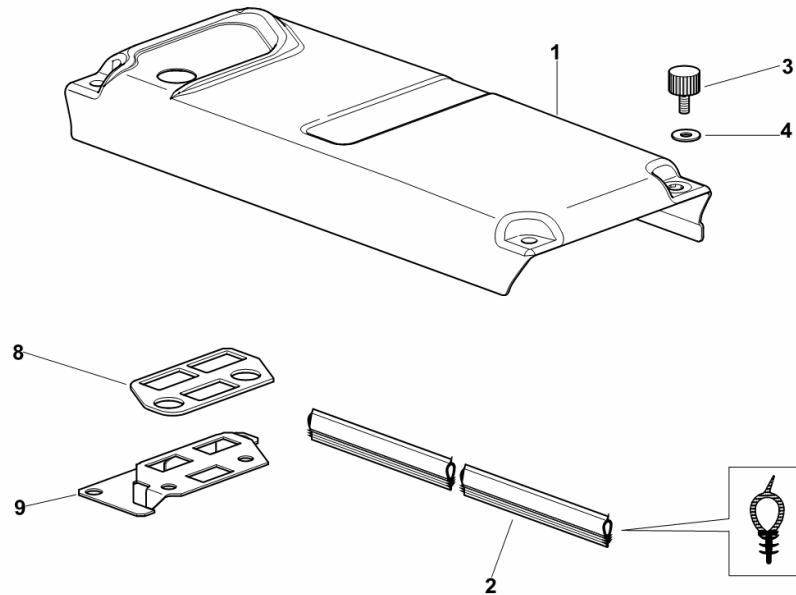
BATTERY COVER

Fig.	Code	QTY	Name
------	------	-----	------

Notes:

- FOR TYPES WITH MECHANICAL 3-POINT LINKAGE [AGROPLUS 420 F -> ZKDP3202W0TD05001]

1	0.013.0024.0/30	1	cover
2	0.010.8105.0	1	gasket mm 900
3	0.009.0133.3/10	4	knob
4	2.1312.004.3	4	washer 8,4x24x2
8	0.016.6975.0	1	gasket (-> 5001)
9	0.016.6977.2	1	support (-> 5001)



9_70573_05_0-A-001

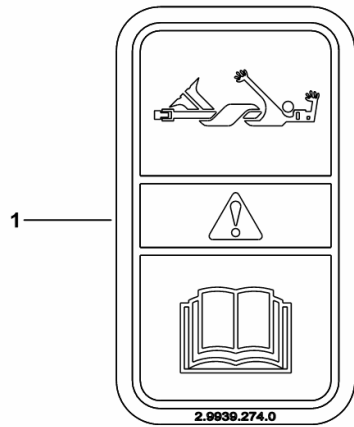
P.T.O. WARNING PLATE FRONT

Fig.	Code	QTY	Name
------	------	-----	------

Notes:
[AGROPLUS 420 F -> ZKDP3202W0TD05001]

1	2.9939.274.0	1	plate
---	--------------	---	-------

9_F1988_36_0-A-001



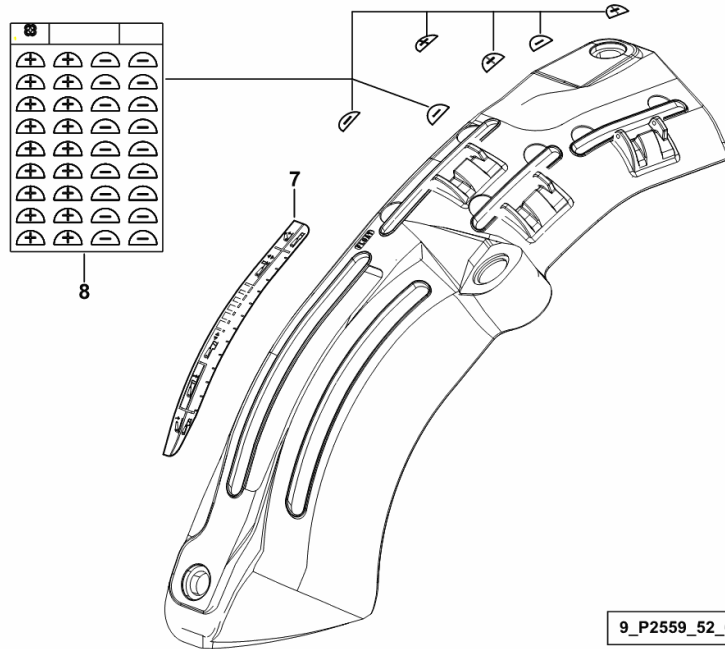
RH CONSOLE IDENTIFICATION PLATES

Fig.	Code	QTY	Name
------	------	-----	------

Notes:

- FOR TYPES W/ MECHANICAL REAR LIFT AND TYRES 420/85R24"(16.9R24") - 340/85R28"(13.6R28") - 380/70R28" - 380/85R28"(14.9R28") - 420/70R28" - [AGROPLUS 420 F -> ZKDP3202W0TD05001] -> 5013 - FOR TYPES W/ MECHANICAL REAR LIFT AND TYRES 380/70R20" - 360/70R24" - 380/70R24" - 380/85R24"(14.9R24") - 420/70R24" [AGROPLUS 420 F -> ZKDP3202W0TD05001] -> 5013 - 5017 <- - FOR TYPES WITH CAB AND MECHANICAL LIFT [AGROPLUS 420 F -> ZKDP3202W0TD05001] -> 5013

7	0.010.7140.0	1	plate
8	0.017.3323.0	1	plate



9_P2559_52_0-C-002

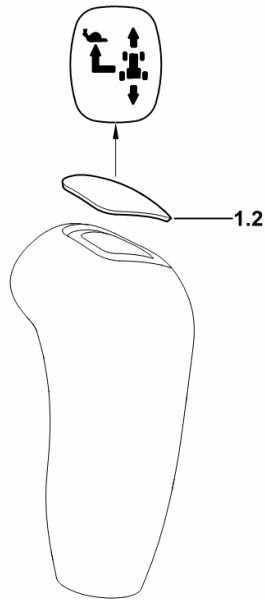
SHUTTLE LEVER CAP FOR TYPES WITH UNDERDRIVE

Fig.	Code	QTY	Name
------	------	-----	------

Notes:

[AGROPLUS 420 F -> ZKDP3202W0TD05001]

1.2	0.015.2580.3	1	cap
-----	--------------	---	-----



9_I7564_08_0-B-001

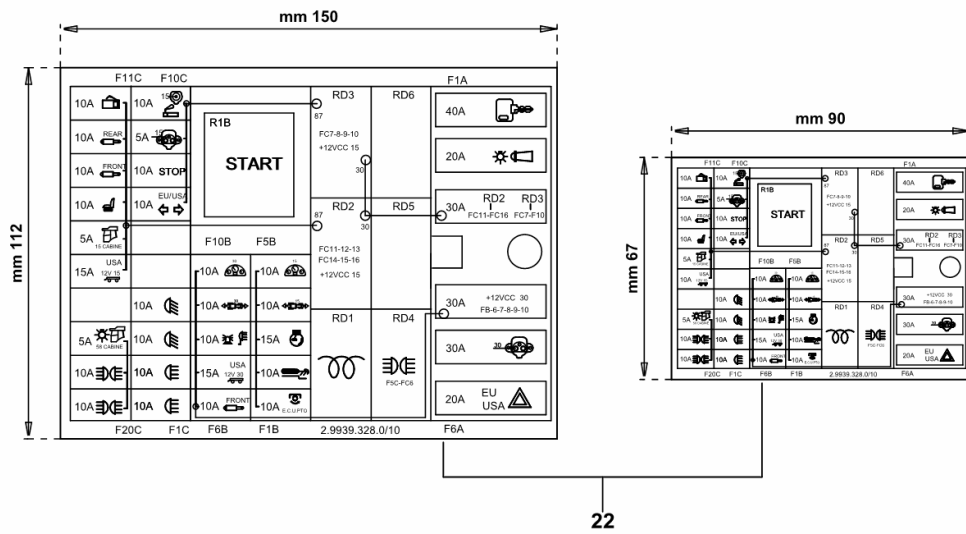
Section: G0 - BODYWORK - CAB
PRINTING FOR FUSE BOX

Fig.	Code	QTY	Name
------	------	-----	------

Notes:

[AGROPLUS 420 F -> ZKDP3202W0TD05001] -> 5013

22	2.9939.328.0/10	1	adhesive
----	-----------------	---	----------



9_P2584_06_0-D-002

AGROPLUS 420 F -> 5001

Section: G0 - BODYWORK - CAB

Ref.: G0.02.61 (1)

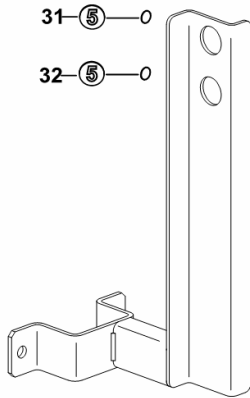
PLATES FOR MID-MOUNT HYDRAULIC COUPLERS - SX/LH/LI

Fig.	Code	QTY	Name
------	------	-----	------

Notes:

- FOR TYPES WITHOUT SAFETY FRAME WITH MECHANICAL 4-WAY FRONT CONTROL VALVE [AGROPLUS 420 F -> ZKDP3202W0TD05001]

31	2.9929.743.0	1	plate 5 - RED COLOUR
32	2.9929.746.0	1	plate 5 - YELLOW COLOUR



9_P2688_08_0-C-001

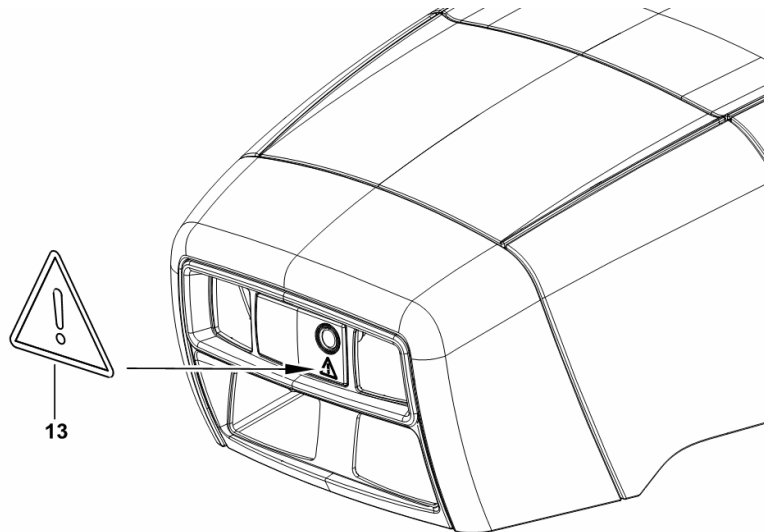
WARNING PLATE

Fig.	Code	QTY	Name
------	------	-----	------

Notes:

[AGROPLUS 420 F -> ZKDP3202W0TD05001]

13	2.9939.465.0	1	plate
----	--------------	---	-------



9_P2872_01_0-B-001

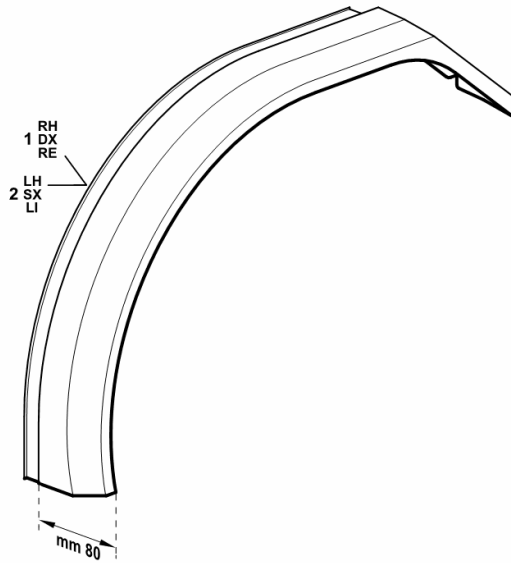
MUDGUARDS EXTENSIONS mm 80

Fig.	Code	QTY	Name
------	------	-----	------

Notes:

[AGROPLUS 420 F -> ZKDP3202W0TD05001]

1	0.479.7663.0/40	1	extension dx/rh/re
2	0.479.7664.0/40	1	extension sx/lh/li



9_70576_25_0-A-001

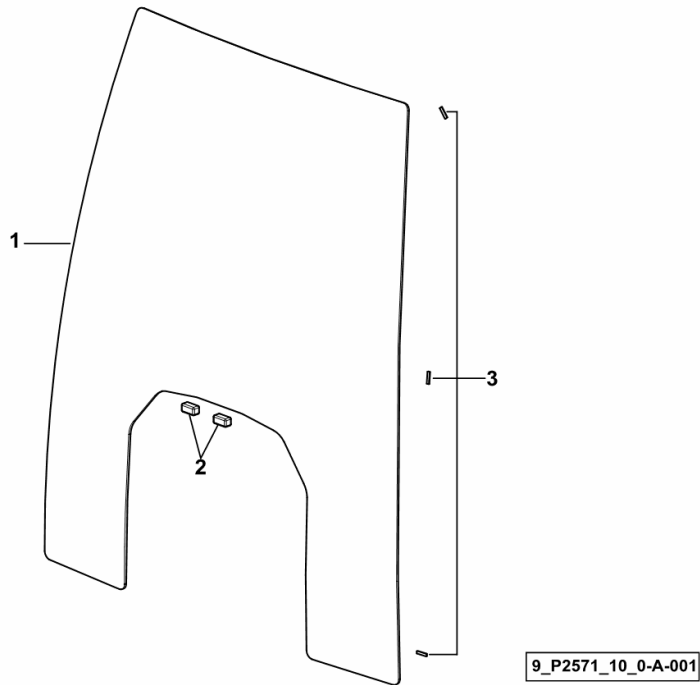
FRONT CAB GLASS SHIELD

Fig.	Code	QTY	Name
------	------	-----	------

Notes:

[AGROPLUS 420 F -> ZKDP3202W0TD05001]

1	0.016.2105.0/10	1	windshield
2	0.016.5380.0	2	rubber plug
3	0.015.0489.0	7	spacer



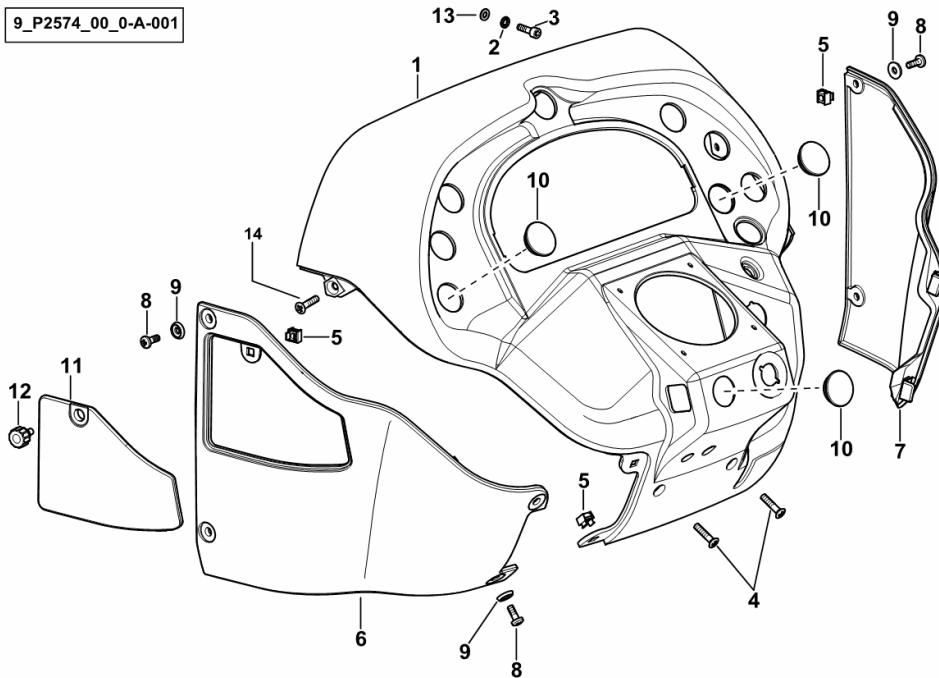
DASHBOARD

Fig.	Code	QTY	Name
------	------	-----	------

Notes:

[AGROPLUS 420 F -> ZKDP3202W0TD05001]

9_P2574_00_0-A-001



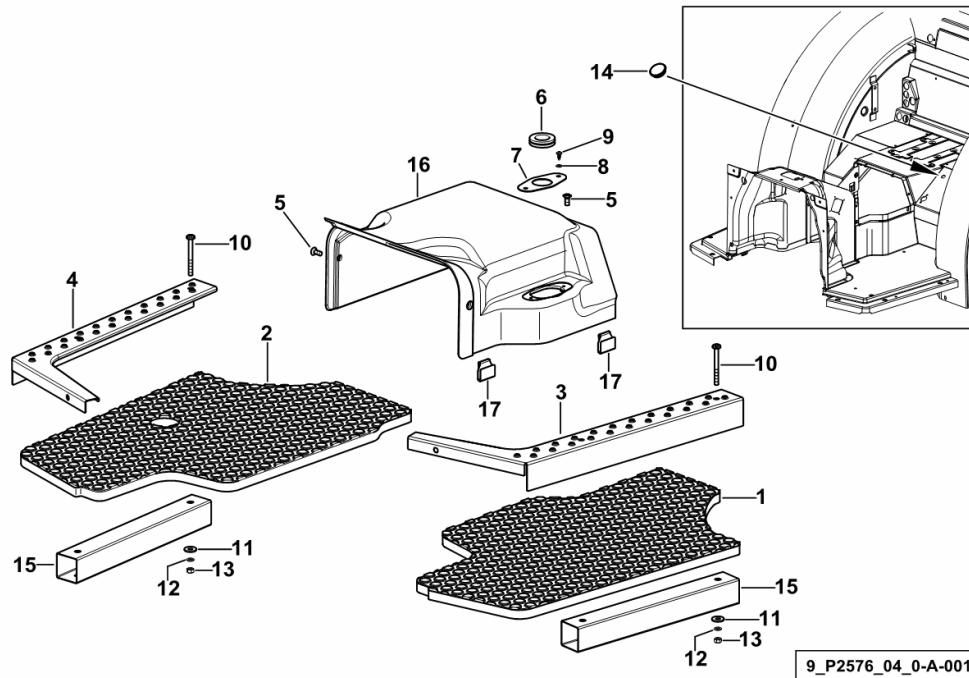
1	0.016.3901.0	1	dashboard
2	2.1472.003.2	2	washer 6, d128
3	2.0312.106.2	2	screw m 6 p.1 x 20
4	2.0322.408.6	2	screw m 6 x 25
5	2.6999.024.2	7	special nut m 6
6	0.016.1485.0	1	shield sx/lh/li
7	0.016.3900.0	1	shield dx/rh/re
8	2.0332.406.3	6	screw m 6 p.1.0 x 16
9	0.9125.662.0	6	washer 6.4 x 12.5
10	0.015.0457.0/10	3	plug
11	0.016.3899.0	1	shield
12	0.014.8187.0	1	knob
13	2.1310.002.2	2	washer 6.6, d125
14	2.0322.407.6	2	screw m 6 x 20

INTERIOR TRIM

Fig.	Code	QTY	Name
------	------	-----	------

Notes:

- FOR MODELS WITH PLATFORM [AGROPLUS 420 F -> ZKDP3202W0TD05001]



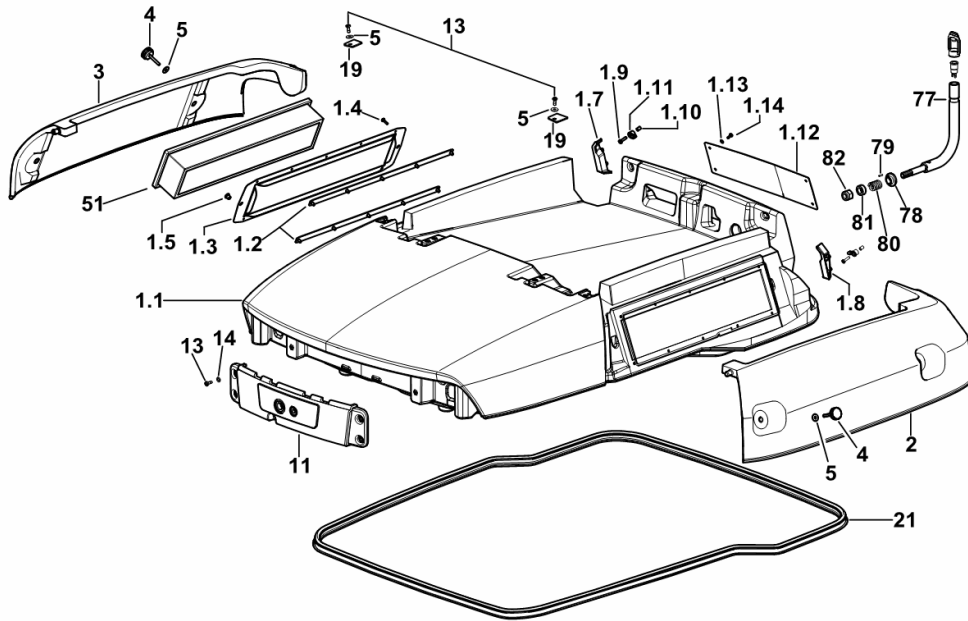
1	0.014.9991.0	1	small carpet sx/lh/li
2	0.016.4562.0	1	small carpet dx/rh/re
3	0.014.9968.0	1	stop sx/lh/li
4	0.015.0152.0	1	stop dx/rh/re
5	2.0322.404.3	4	screw m 6 p.1 x 12
6	2.6560.016.0	1	wire guide Ø 22
7	0.015.3591.0	1	small plate
8	2.1310.028.3	2	washer 4
9	2.0350.453.6	2	screw m 4.3 x 9.5
10	2.0332.414.2	4	screw m 6 x 60
11	2.1312.003.2	4	washer 6
12	2.1470.002.2	4	washer 6, d128
13	2.1011.103.2	1	nut m 6 p.1
14	0.9200.178.0	1	plug Ø 17
15	0.014.9986.0	2	profile
16	0.015.3584.0	1	cover
17	0.012.5968.0/10	4	stop

ROOF

Fig.	Code	QTY	Name
------	------	-----	------

Notes:

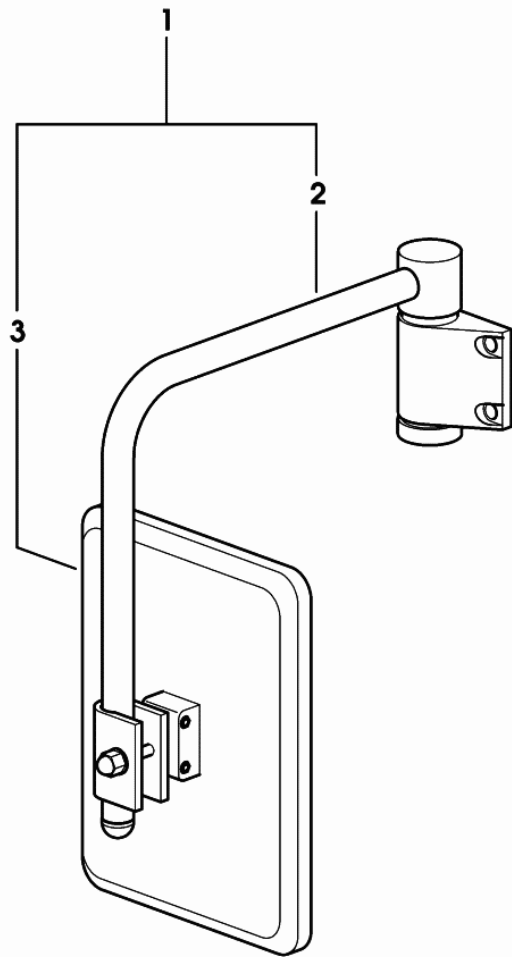
- FOR TRACTORS WITH AIR HEATING [AGROPLUS 420 F -> ZKDP3202W0TD05001] 5017 <-



1.1	0.016.6821.2/30	1	roof
1.2	0.017.1832.3	4	small plate
1.3	0.012.1345.0/10	2	chassis frame
1.4	2.0330.206.2	20	screw m4x16 d933
1.5	2.1140.018.2	4	nut m 6 p.1, d934
1.7	0.017.3617.0	1	block dx/rh/re
1.8	0.017.3618.0	1	block sx/lh/li
1.9	2.0330.307.2	2	screw m 5 x 20
1.10	0.016.6515.0	2	bushing
1.11	0.016.5470.0	2	catch
1.12	0.017.6838.0	1	threshing basket
1.13	2.1310.028.2	4	flat washer 4
1.14	2.0330.204.2	4	screw m 4.0 x 12
2	0.015.9884.0	1	shield sx/lh/li
3	0.015.9885.0	1	shield dx/rh/re
4	0.012.2463.2/20	4	knob
5	2.1312.003.2	7	washer 6
11	0.016.6798.2/10	1	front grille
13	2.0330.406.2	15	screw m 6 p.1.0 x 16
14	2.1310.002.2	18	washer 6.6, d125
19	0.012.2490.0	2	small plate
21	0.012.7029.0	3.7	gasket
51	0.012.0313.2	2	air filter
77	0.012.1622.2	1	support
78	0.012.1627.0	1	bushing
79	2.1631.205.2	1	pin 3x12
80	2.4019.664.2	1	spring
81	2.1549.512.2	1	spacer 14.2 x 24.8 x 10
82	2.1120.008.2	1	selflock nut m 14 p.1.75

REARVIEW MIRROR

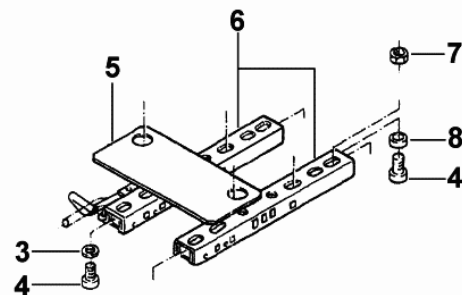
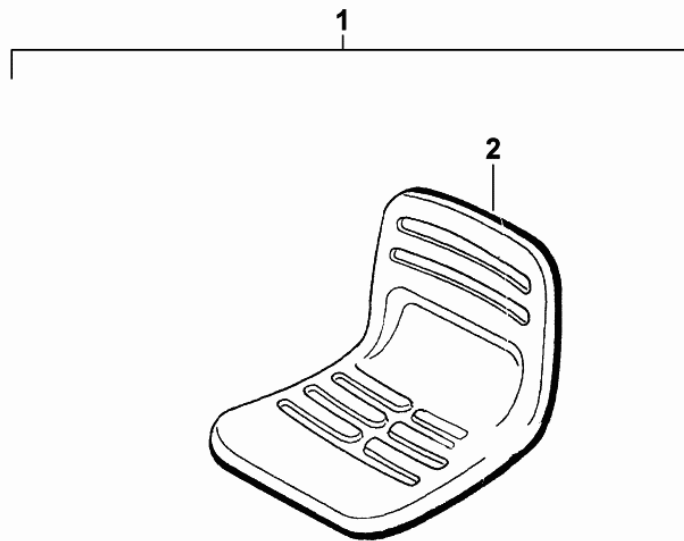
Fig.	Code	QTY	Name
1	0.011.4205.4/20	1	rear view mirror sx/lh/li
2	0.010.3096.0	1	rod
3	0.9233.183.3	1	rear view mirror



0.011.4205.4/20

SEAT-COMPONENTS

Fig.	Code	QTY	Name
1	0.000.0000.1	0	not serviceable
2	0.010.2968.0	1	seat
3	0.000.0000.1	0	not serviceable
4	0.010.2405.0	5	pin m 8 x 16
5	0.010.2961.2	1	plate
6	0.010.2962.0	1	seat guide
7	0.010.2401.0	1	nut m 8
8	0.010.2962.1	1	bushing



0_010_8721_4_20_A

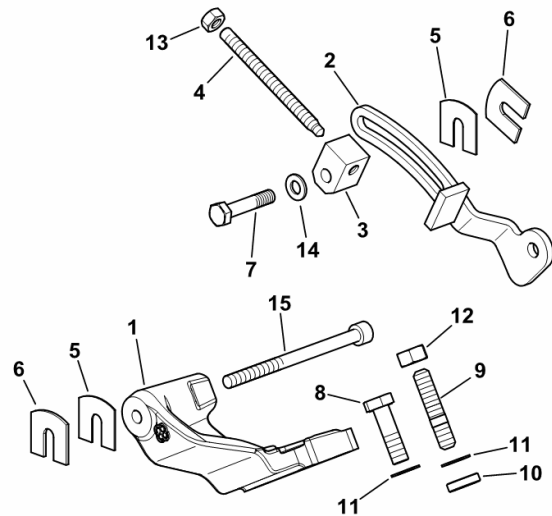
COMPRESSOR SUPPORTS

Fig.	Code	QTY	Name
------	------	-----	------

Notes:

[AGROPLUS 420 F -> ZKDP3202W0TD05001] 5004 <-

1	0.013.7604.0	1	support
2	0.013.6683.2	1	bracket
3	0.010.7207.0	1	small block Ø 8
4	2.0399.221.2	1	screw m 8 p.1.25 x 95
5	0.009.7981.0	2	shim mm 1.00
6	0.009.7982.0	2	shim mm 2.00
7	2.0112.215.2	1	screw m 8 p.1.25 x 40
8	2.0112.313.2	1	screw m 10 p.1.5 x 35
9	2.0432.159.7	2	stud bolt m 10 p.1.5 / p.1.25 x 35
10	2.1579.901.2	2	spacer 12x20x5
11	2.1470.006.2	3	lock washer 10
12	2.1011.421.2	2	nut m 10 p.1.25
13	2.1011.105.2	1	nut m 8 p.1.25
14	2.1310.004.2	1	flat washer 8.5
15	2.0112.229.2	1	screw m 8 p.1.25 x 100



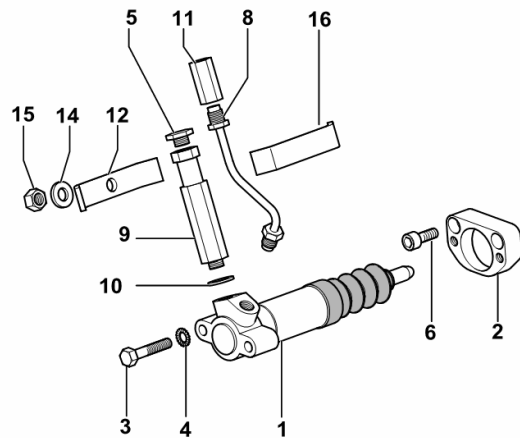
9_B6184_08_0-A-001

CLUTCH CONTROL

Fig.	Code	QTY	Name
------	------	-----	------

Notes:

[AGROPLUS 420 F -> ZKDP3202W0TD05001]



1	0.007.1961.4/20	1	cylinder ☞ 0.007.1961.4/20
2	0.009.7023.0	1	flange
3	2.0112.215.2	2	screw m 8 p.1.25 x 40
4	2.1470.004.2	2	washer 8
5	2.3199.039.0	1	plug 6.50 x 7.25
6	2.0312.204.2	2	screw m 8 p.1.25 x 16
8	0.010.9029.3	1	tube
9	2.3339.796.2	1	extension
10	2.1560.008.0	1	gasket 12.2 x 18
11	2.3339.658.2/20	1	pipe fitting m 12 p.1.25
12	0.010.8193.0	1	bracket
14	2.1310.004.2	1	flat washer 8.5
15	2.1011.105.2	1	nut m 8 p.1.25
16	0.011.3339.2	1	small plate

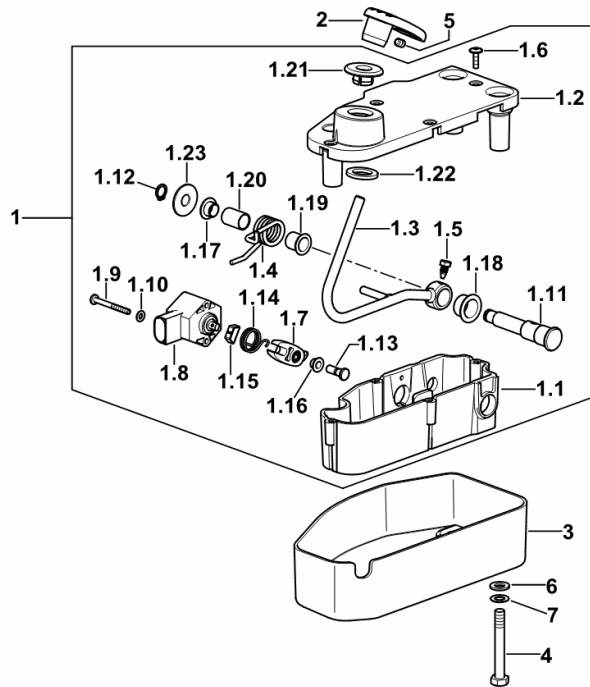
9_70565_02_0-A-001

CONTROL PEDAL FOR ELECTRONIC THROTTLE

Fig.	Code	QTY	Name
------	------	-----	------

Notes:

[AGROPLUS 420 F -> ZKDP3202W0TD05001]



1	0.012.6571.4/50	1	accel. pedal
1.1	0.010.8694.2/30	1	box
1.2	0.012.6572.0	1	cover
1.3	0.010.8699.2/30	1	lever
1.4	2.4099.115.2/30	1	spring
1.5	2.0399.272.2	1	screw m 5
1.6	2.0363.105.2	4	screw m 4
1.7	0.011.6578.0	1	lever
1.8	04429390/10	1	sensor
1.9	2.0332.211.3	2	screw m 4 x 40
1.10	2.1310.028.2	2	flat washer 4
1.11	0.011.6028.0/10	1	pin
1.12	2.1410.001.1	1	circlip 10
1.13	2.1699.492.2/20	1	pin
1.14	2.4099.134.2	1	spring
1.15	0.011.3791.0	1	small spring
1.16	2.2841.010.0	1	bushing 6x8x6
1.17	2.2841.034.0	1	bushing 10x12x7
1.18	2.2841.071.0	1	bushing 16x18x12
1.19	2.2841.043.0	1	bushing 12 x 14 x 15
1.20	2.2840.042.0	1	bushing 12x14x20
1.21	0.011.9149.0	1	plug
1.22	0.011.8709.0	1	washer
1.23	2.1599.044.2	1	snoulder 10.5x25.5x1.5
2	0.016.4133.2/10	1	pedal
3	0.016.4011.0	1	cover
4	2.0112.221.2	3	screw m 8 p.1.25 x 60
5	2.0512.102.7	1	screw m 6 p.1 x 8
6	2.1310.004.2	3	flat washer 8.5
7	2.1470.004.2	3	washer 8

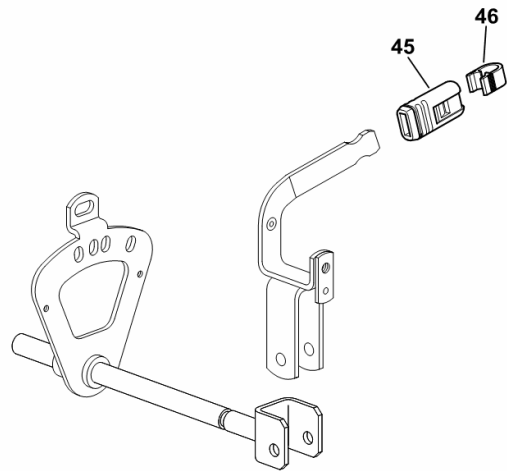
P.T.O. - EXTERNAL CONTROLS 540/N

Fig.	Code	QTY	Name
------	------	-----	------

Notes:

- EXPORT U.S.A. [AGROPLUS 420 F -> ZKDP3202W0TD05001]

45	0.008.8388.0	1	knob
46	0.008.8383.0	1	coupling - YELLOW COLOUR



9_C5936_05_0-A-001

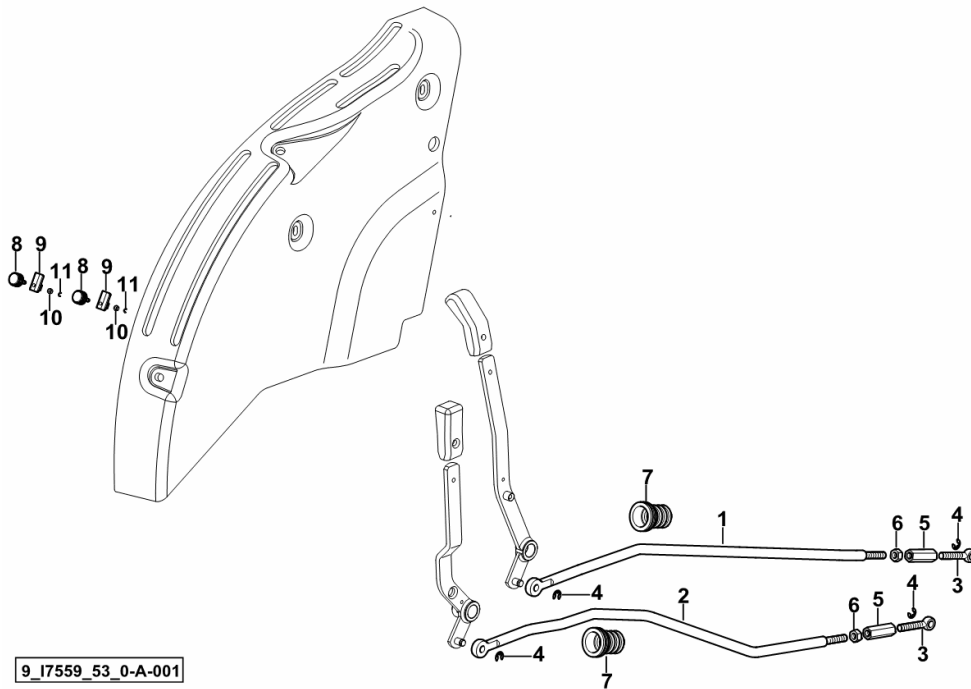
TIE RODS FOR LIFT CONTROL LEVERS

Fig.	Code	QTY	Name
------	------	-----	------

Notes:

- FOR TYPES WITH PLATFORM WITH TYRES 380/70R20" - 360/70R24" - 380/70R24" - 380/85R24"(14.9R24)" - 420/70R24" [AGROPLUS 420 F -> ZKDP3202W0TD05001] -> 5023

1	0.015.3331.0/20	1	rod
2	0.015.3330.0/20	1	rod
3	0.010.4186.0	2	tip m 8
4	2.1430.007.7	4	circlip 6, d128
5	2.1099.139.2/10	2	nut m 8
6	2.1019.127.2	2	nut m 8 p.1.25 x 6.8, sx/lh/li
7	0.013.3229.0	2	bellows
8	0.007.6770.3/10	2	knob
9	0.014.8194.0	2	slider
10	2.1011.103.2	2	nut m 6 p.1
11	2.1430.005.7	2	circlip 4



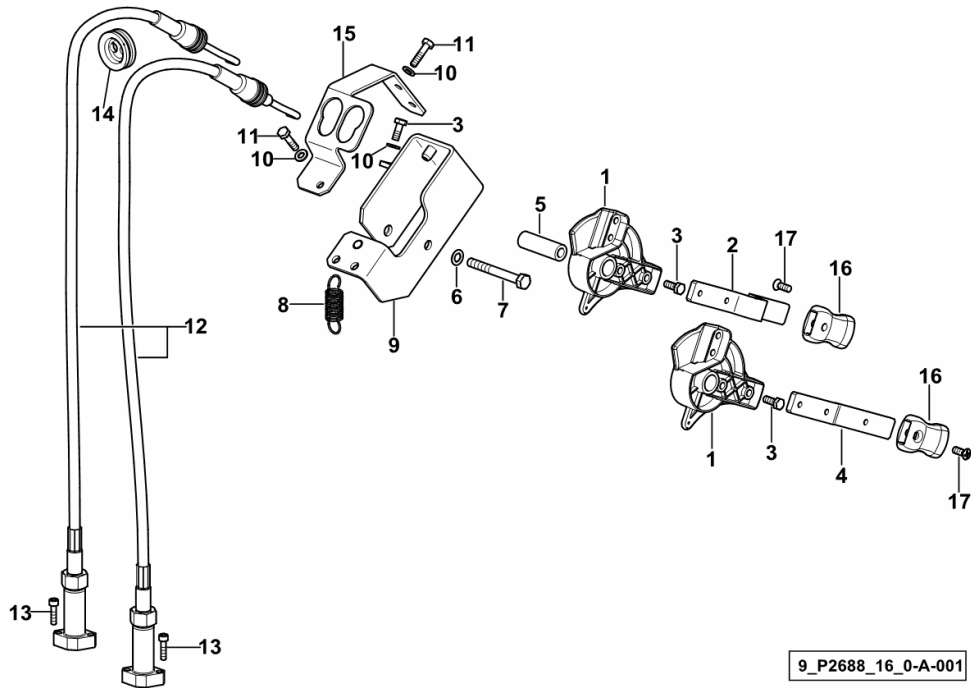
9_17559_53_0-A-001

CONTROLS FOR 4-WAY FRONT AUXILIARY SERVICES CONTROL VALVE

Fig.	Code	QTY	Name
------	------	-----	------

Notes:

- MECHANICAL [AGROPLUS 420 F -> ZKDP3202W0TD05001]



1	0.009.1749.0/20	2	controller
2	0.016.1423.0	1	lever
3	2.0112.005.2	6	screw m 6 p.1 x 16
4	0.016.1422.0	1	lever
5	2.1549.327.2	1	spacer 9X16X50
6	2.1470.004.2	1	washer 8
7	2.0112.223.2	1	screw m 8 p.1.25x70
8	2.4049.160.2	2	spring
9	0.016.1424.3	1	support
10	2.1310.002.2	5	washer 6.6, d125
11	2.0112.009.2	3	screw m 6 p.1 x 25
12	0.016.4079.3/10	2	rod
13	2.0312.006.2	4	screw m 5 p.0.8 x 20
14	2.6569.054.0	1	rubber plug
15	0.016.2158.0	1	support
16	0.010.5315.0	2	knob
17	2.0322.406.6	2	screw m 6 p.1.0 x 16

PLATFORM GROUND CABLE.....	L0.02.31 (1)
POWER SUPPLY ELECTRICAL SYSTEM.....	L0.02.33 (1)
POWER SUPPLY ELECTRICAL SYSTEM.....	L0.02.35 (1)
ELECTRICAL CABLE FOR OIL CONTROL VALVES HOUSING PRESSURE SWITCH.....	L0.02.36 (1)
FRONT P.T.O. SOLENOID VALVE ELECTRICAL CABLE.....	L0.02.37 (1)
PRESSURE SWITCH WIRING FOR HYDRAULIC BRAKING SYSTEM ITALY.....	L0.02.40 (1)
PREARRANGEMENT FOR WARNING BEACON - FOR MODELS WITH CAB.....	L0.02.41 (1)
PREARRANGEMENT FOR WARNING BEACON - FOR MODELS WITH CAB.....	L0.02.42 (1)
PREARRANGEMENT FOR WARNING BEACON.....	L0.02.43 (1)
ELECTRICAL EQUIPMENT ROTARY WARN. LAMP.....	L0.02.45 (1)
ELECTRIC CABLE FOR WORK LIGHT.....	L0.02.46 (1)
BATTERY LEADS.....	0.010.6708.3/20.A
ELECTRICAL SYSTEM.....	0.011.2025.4/40.A
FLASHING LIGHT SUPPORT.....	0.011.7840.4.A
ELECTRICAL SYSTEM.....	0.012.0101.4.A
ELECTRICAL SYSTEM.....	0.013.6326.4.A
CENTRAL WIRING LOOM.....	0.016.0551.4.A
CENTRAL WIRING LOOM.....	0.016.0551.4/10.A
CENTRAL WIRING LOOM.....	0.016.0551.4/20.A
ELECTRICAL EQUIPMENT FRONT.....	0.016.0553.4.A
CENTRAL WIRING LOOM.....	0.016.0556.4.A
CENTRAL WIRING LOOM.....	0.016.0556.4/10.A
CENTRAL WIRING LOOM.....	0.016.0556.4/20.A
POWER SUPPLY ELECTRICAL SYSTEM.....	0.016.0569.4.A
POWER SUPPLY ELECTRICAL SYSTEM.....	0.016.0571.4.A
ELECTRICAL SYSTEM - ROOF.....	0.016.0766.4/20.A
ELECTRICAL SYSTEM - ROOF.....	0.016.0767.4.A
ELECTRICAL SYSTEM - ROOF.....	0.016.0768.4/10.A
WIRING FOR CAB FRONT LIGHTS.....	0.016.0771.4.A
WIRING FOR CAB FRONT LIGHTS.....	0.016.0772.4.A

ECUs

ELECTRONICS BOX.....	L0.03.0 (1)
ELECTRICAL SYSTEM FOR REAR ELECTRONIC LIFT.....	L0.03.1 (1)
CONTROL UNIT FOR 4-WAY FRONT AUXILIARY CONTROL VALVE.....	L0.03.2 (1)
CONTROL UNIT - P.T.O. SHAFT.....	L0.03.4 (1)
CONTROL UNIT - P.T.O. SHAFT.....	L0.03.6 (1)

SENSORS - POTENTIOMETERS - ENABLING SWITCHES

COOLING SYSTEM MANIFOLD SENSORS.....	L0.04.1 (1)
AIR CLEANER AND ENGINE OIL FILTER CLOGGING PRESSURE SWITCH.....	L0.04.2 (1)
ENGINE OIL PRESSURE SWITCH.....	L0.04.5 (1)
START ENABLE SWITCH.....	L0.04.9 (1)
START ENABLE SWITCH PROTECTION.....	L0.04.10 (1)
SPEED SENSOR.....	L0.04.12 (1)
SPEED SENSOR.....	L0.04.13 (1)

ALTERNATOR PARTS

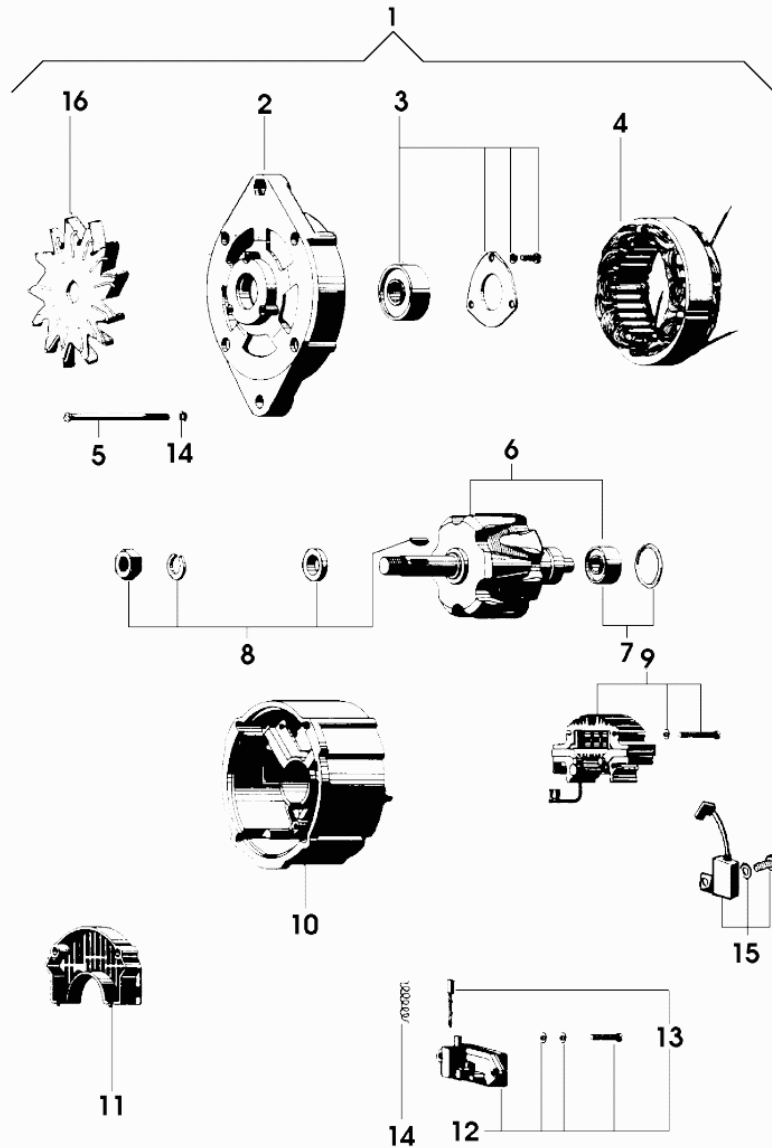


Fig.	Code	QTY	Name
1	2.9439.420.0/10	1	alternator 14V - 65A - ISKRA
2	0.009.4331.1	1	cover
3	0.010.2066.1	1	bearing
4	0.010.2066.2	1	field winding
5	0.010.2231.0	4	screw
6	0.010.2084.0	1	armature
7	0.010.2067.2	1	bearing
8	0.010.2068.0	1	repair seal set
9	0.009.4881.0	1	rectifier
10	0.010.2068.1	1	cover
11	0.010.2231.1	1	guard
12	0.009.4335.0	1	regulator
13	0.009.4335.1	2	brush set
14	0.000.0000.1	0	not serviceable
15	0.010.2068.2	1	condenser
16	0.009.4331.0	1	rotor blade

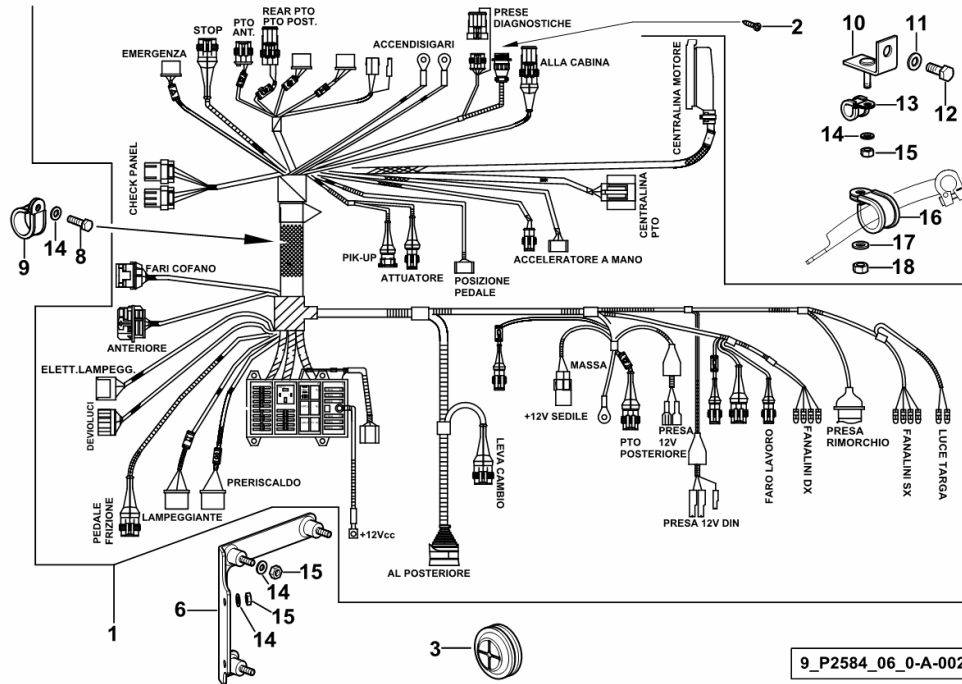
2_9439_420_0_10

CENTRAL WIRING LOOM

Fig.	Code	QTY	Name
------	------	-----	------

Notes:

[AGROPLUS 420 F -> ZKDP3202W0TD05001] -> 5009 - 5023 <-



1	0.016.0551.4/10	1	electrical system ☞ 0.016.0551.4/10
2	2.0350.403.6	4	screw m 4.2x9.5B
3	2.6569.026.0	1	grommet 42.5x52x19
6	0.016.1213.2	1	support
8	2.0112.007.2	2	screw m 6 p.1 x 20
9	2.6839.065.0	2	clamp 40
10	0.010.1395.2	1	square
11	2.1310.004.2	1	flat washer 8.5
12	2.0112.205.2	1	screw m 8 p.1.25 x 16
13	2.6839.059.0	1	clamp Ø 12 / 15
14	2.1312.003.2	8	washer 6
15	2.1011.103.2	6	nut m 6 p.1
16	2.6839.054.0	1	clamp Ø 20/25
17	2.1310.004.2	1	flat washer 8.5
18	2.1011.105.2	1	nut m 8 p.1.25

9_P2584_06_0-A-002

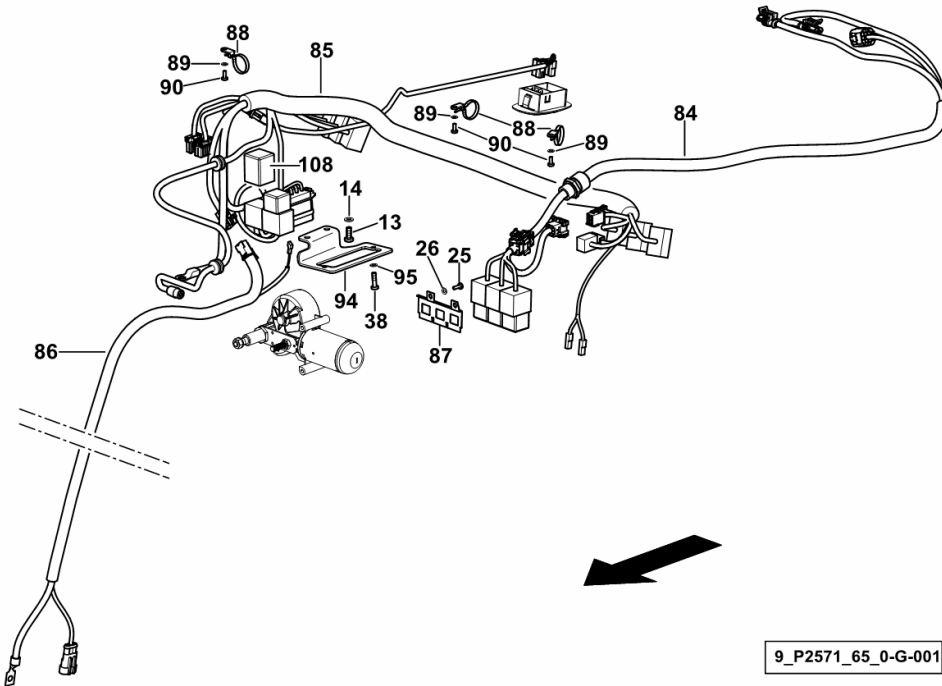
ELECTRICAL SYSTEM - ROOF

Fig.	Code	QTY	Name
------	------	-----	------

Notes:

- FOR TYPES WITH HEATING AND AIR CONDITIONING [AGROPLUS 420 F -> ZKDP3202W0TD05001]

13	2.0330.406.2	19	screw m 6 p.1.0 x 16
14	2.1310.002.2	18	washer 6.6, d125
25	2.0330.204.2	12	screw m 4.0 x 12
26	2.1310.028.3	10	washer 4
38	2.0330.307.2	2	screw m 5 x 20
84	0.016.0767.4	1	electrical system
			☞ 0.016.0767.4
85	0.016.0766.4/20	1	electrical system
			☞ 0.016.0766.4/20
86	0.016.0769.4	1	electrical system
87	0.012.5981.0	1	small plate
88	01171694	8	clamp 172X4.6
89	2.1310.028.2	8	flat washer 4
90	2.0330.203.2	8	screw m 4 x 10
94	0.016.6519.0	1	bracket
95	2.1310.001.2	2	flat washer 5.3
108	2.8639.008.0	1	intermitent switch HG4121, 12V
			- FOR WINDSCREEN WIPER



9_P2571_65_0-G-001

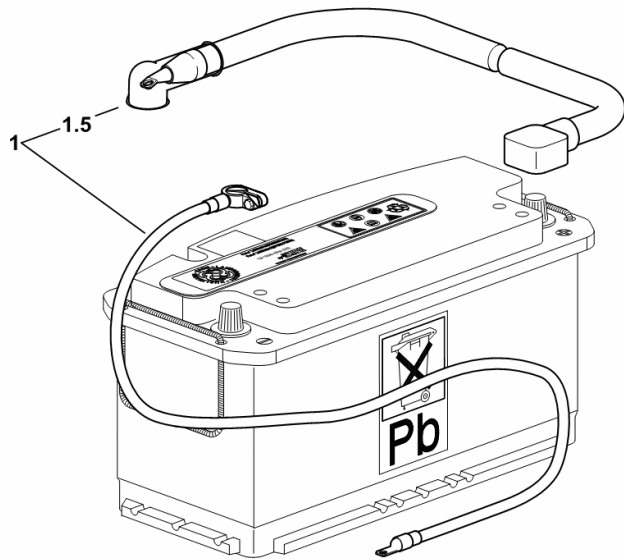
BATTERY LEADS

Fig.	Code	QTY	Name
------	------	-----	------

Notes:

[AGROPLUS 420 F -> ZKDP3202W0TD05001]

1	0.010.6708.3/20	1	wire SET = 2 PARTS ☞ 0.010.6708.3/20
1.5	2.6519.033.0	1	cap



9_F2084_07_0-A-001

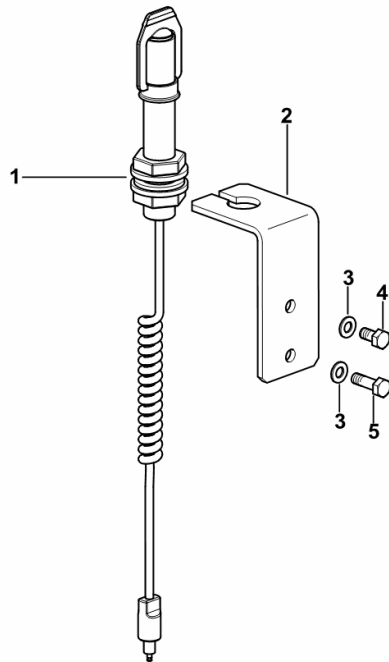
PREARRANGEMENT FOR WARNING BEACON

Fig.	Code	QTY	Name
------	------	-----	------

Notes:

- FOR TYPES WITH SAFETY FRAME [AGROPLUS 420 F -> ZKDP3202W0TD05001]

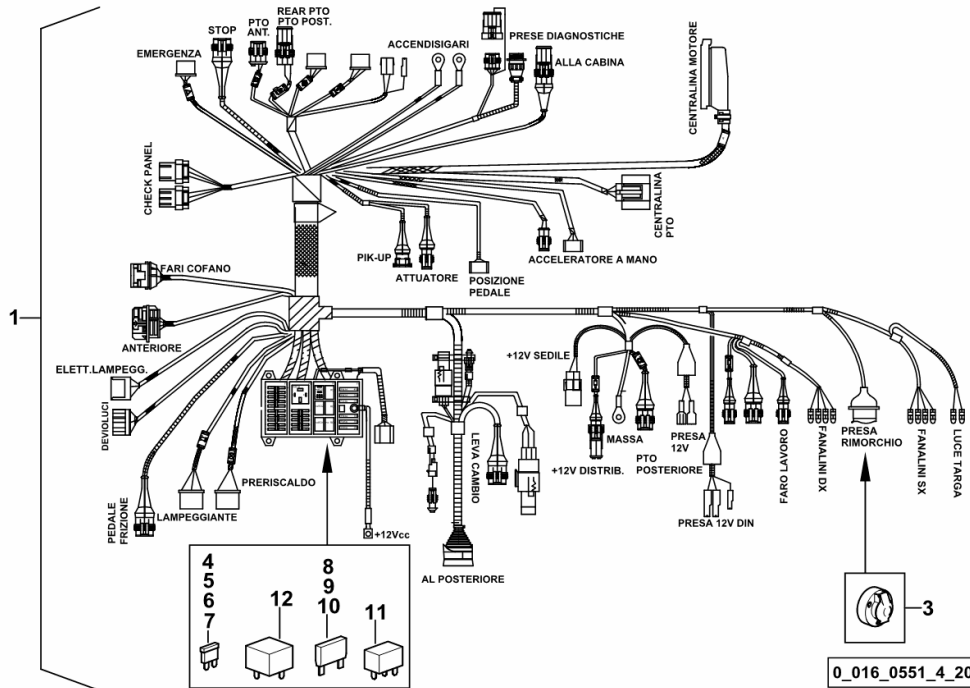
1	0.011.7840.4	1	wire ☞ 0.011.7840.4
2	0.016.3066.0	1	bracket
3	2.1310.004.2	2	flat washer 8.5
4	2.0112.205.2	1	screw m 8 p.1.25 x 16
5	2.0112.209.2	1	screw m 8 p 1.25 x 25



9_P2578_02_0-A-001

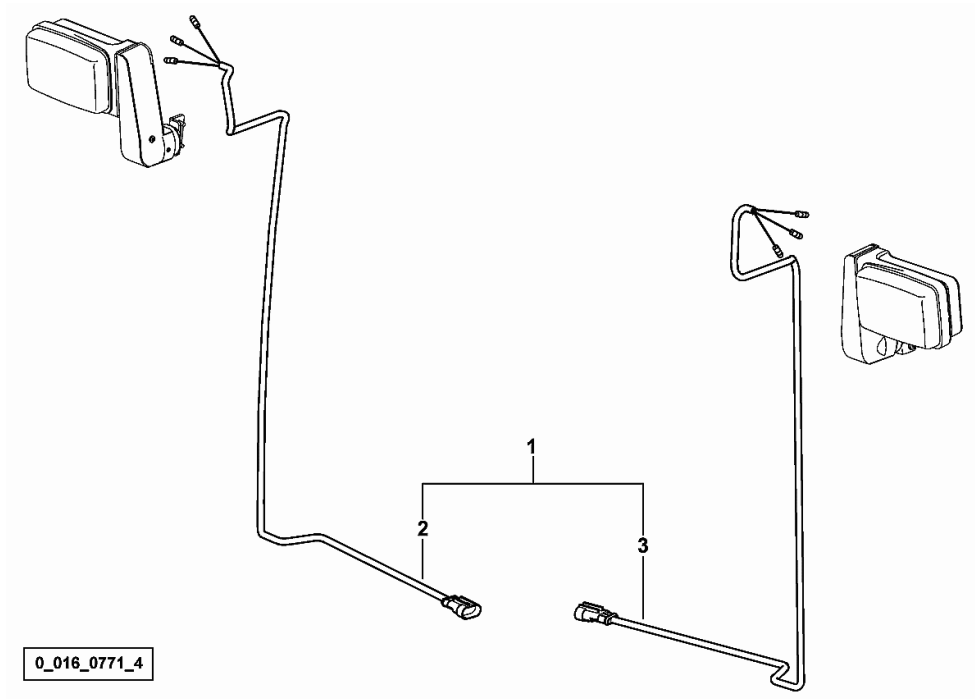
CENTRAL WIRING LOOM

Fig.	Code	QTY	Name
1	0.016.0551.4/20	1	electrical system
3	0.900.0017.0	1	socket
4	0.900.1194.2	4	fuse 5 A minival
5	0.900.1194.3	25	fuse 10 A minival
6	0.900.1194.4	3	fuse 15 A minival
7	0.900.1194.5	1	fuse 7.5 A minival
8	0.010.3901.0	2	fuse 20 A maxival
9	0.010.3901.1	3	fuse 30 A maxival
10	0.010.2089.1	1	fuse 40 A maxival
11	0.900.0525.5	4	relay 12 V 30A
12	0.900.1194.6	1	relay 12 V 70A



WIRING FOR CAB FRONT LIGHTS

Fig.	Code	QTY	Name
1	0.016.0771.4	1	electrical system
2	0.900.1199.7	1	wire dx/rh/re
3	0.900.1199.8	1	wire sx/lh/li



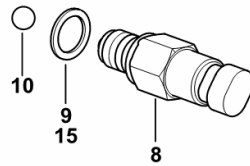
START ENABLE SWITCH

Fig.	Code	QTY	Name
------	------	-----	------

Notes:

[AGROPLUS 420 F -> ZKDP3202W0TD05001]

8	2.7659.343.0	1	switch
9	2.1560.012.0	1	gasket 16.2 x 22 x 1.5
10	2.2999.156.0	1	ball Ø 10
15	2.1569.227.0	1	gasket 16.2 x 22 x 2



9_I7433_00_0-B-001

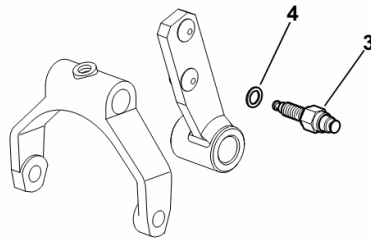
P.T.O. SWITCH

Fig.	Code	QTY	Name
------	------	-----	------

Notes:

- FOR 540/N EXPORT U.S.A. [AGROPLUS 420 F -> ZKDP3202W0TD05001]

3	2.7659.131.0	1	switch
4	2.1560.003.0	1	gasket 8.2 x 12



9_17436_02_0-B-001

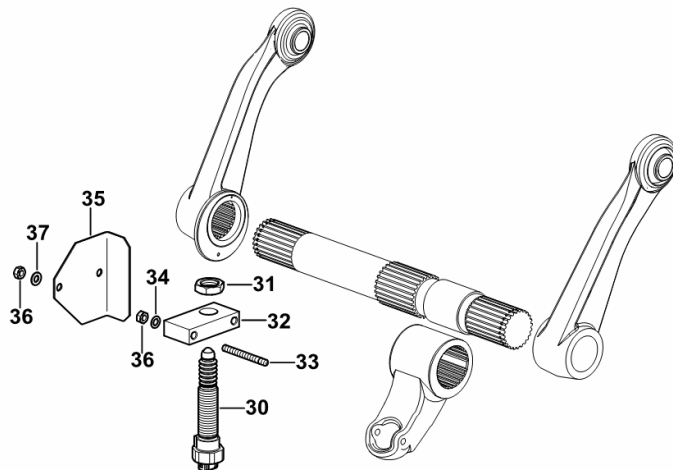
REAR LIFT POSITION SENSOR

Fig.	Code	QTY	Name
------	------	-----	------

Notes:

- FOR TYPES WITH ELECTRONIC LIFTER [AGROPLUS 420 F -> ZKDP3202W0TD05001]

30	0.009.2194.4/20	1	sensor
31	2.1019.106.1	1	nut m 24 p.1.5 x 10
32	0.011.2293.0	1	support
33	2.0432.018.7	2	stud bolt m 8 p.1.25 / p.1 x 65
34	2.1470.004.2	2	washer 8
35	0.011.4864.0/10	1	bracket
36	2.1011.405.2	4	nut m 8 p.1
37	2.1310.004.2	2	flat washer 8.5



W9_F1759_21_0-B-001

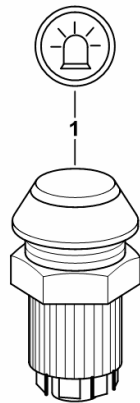
SWITCH FOR ROTATING BEACON

Fig.	Code	QTY	Name
------	------	-----	------

Notes:

- FOR MODELS WITH PLATFORM [AGROPLUS 420 F -> ZKDP3202W0TD05001]

1	2.7659.118.0	1	push-button
---	--------------	---	-------------



9_F2084_01_0-A-001

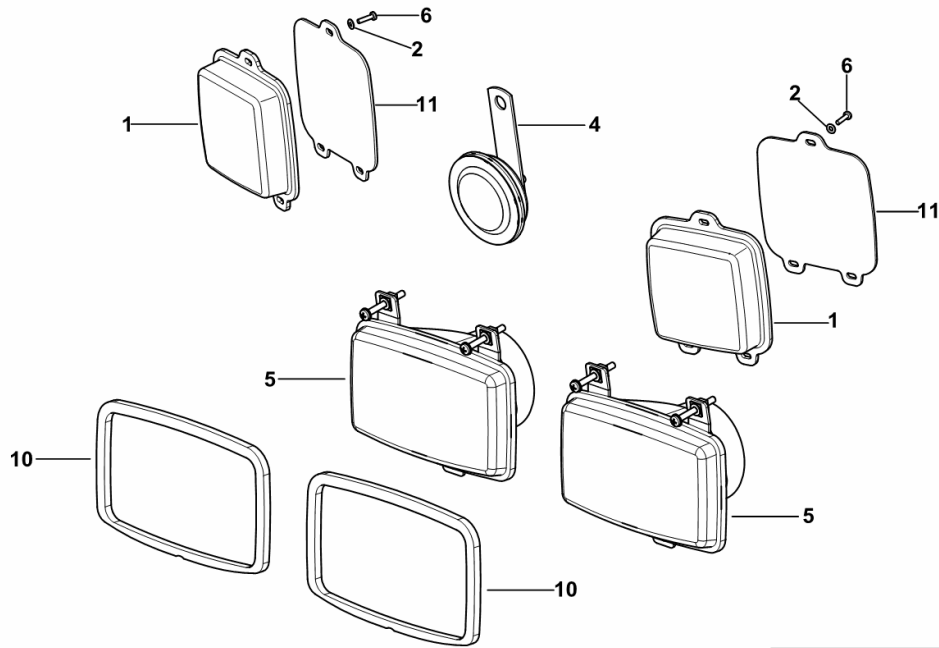
HEADLIGHTS \ HORN

Fig.	Code	QTY	Name
------	------	-----	------

Notes:

- FOR LEFT-HAND DRIVE [AGROPLUS 420 F -> ZKDP3202W0TD05001]

1	0.015.7056.0	2	cover
2	2.1310.029.2	6	washer
4	2.8419.007.0	1	horn
5	2.8039.250.0	2	headlight
			☞ 2.8039.250.0
6	2.0332.104.3	6	screw m 3x12
10	0.013.0097.0	2	gasket
11	0.016.8687.0	2	cover



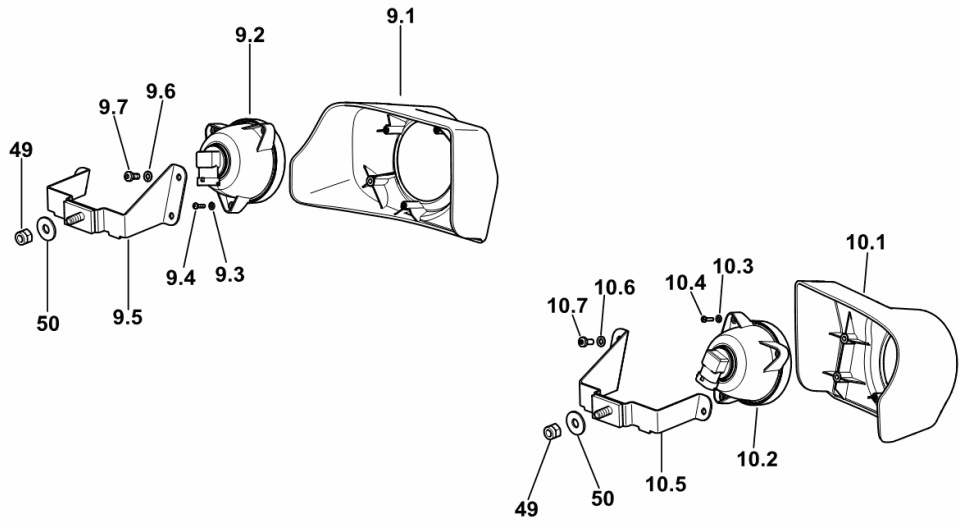
9_L6485_02_0-A-002

REAR WORKLIGHTS FOR CAB ROOF

Fig.	Code	QTY	Name
------	------	-----	------

Notes:

- FOR TYPES WITH HEATING AND AIR CONDITIONING [AGROPLUS 420 F -> ZKDP3202W0TD05001]

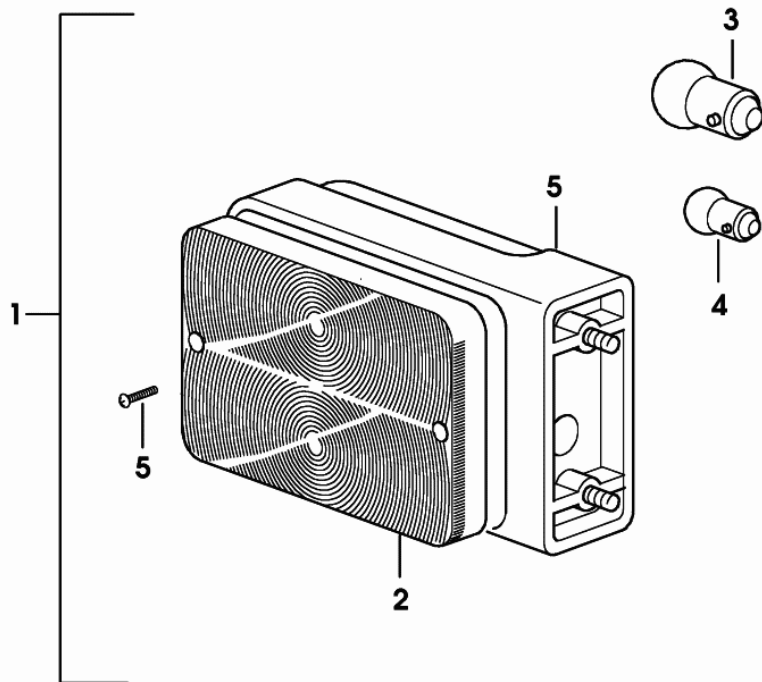


9.1	0.016.6804.2	1	shield dx/rh/re
9.2	2.8039.017.0	1	headlight ☞ 2.8039.017.0
9.3	2.1310.029.2	3	washer
9.4	2.0332.104.3	3	screw m 3x12
9.5	0.016.6806.3/10	1	bracket dx/rh/re
9.6	2.1310.001.2	3	flat washer 5.3
9.7	2.0330.304.2	3	screw m 5 x 12
10.1	0.016.6805.2	1	shield sx/lh/li
10.2	2.8039.017.0	1	headlight ☞ 2.8039.017.0
10.3	2.1310.029.2	3	washer
10.4	2.0332.104.3	3	screw m 3x12
10.5	0.016.6807.3/10	1	bracket sx/lh/li
10.6	2.1310.001.2	3	flat washer 5.3
10.7	2.0330.304.2	3	screw m 5 x 12
49	2.1120.005.2	4	nut m 8 p.1.25
50	2.1312.004.2	2	washer 8.4

9_P2571_65_0-E-001

HEADLAMP COMPONENTS

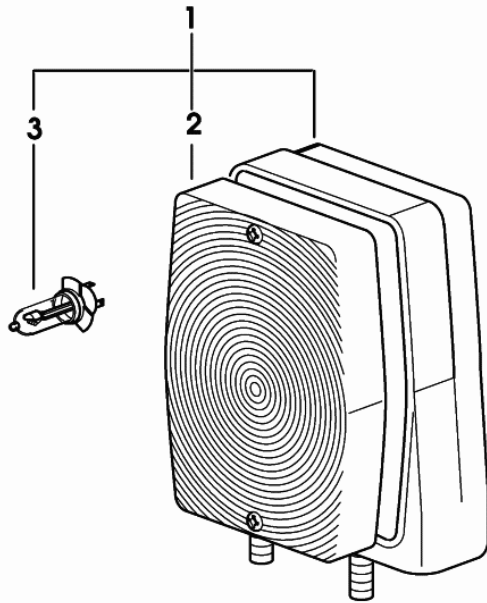
Fig.	Code	QTY	Name
1	2.8019.970.0	1	side lamp dx/rh/re
2	2.8019.200.1	1	light body dx/rh/re
3	2.8313.001.0	1	lamp 12V 21W
4	2.8311.005.0	1	lamp 12 V, 5 W
5	0.000.0000.1	0	not serviceable



2_8019_970_0

HEADLAMP COMPONENTS

Fig.	Code	QTY	Name
1	2.8059.460.0	1	side lamp sx/lh/li
2	0.010.3486.2	1	guard
3	0.010.3487.0	1	lamp 12V - 21W



2_8059_460_0

CLICK HERE TO **DOWNLOAD** THE COMPLETE MANUAL

- Thank you very much for reading the preview of the manual.
- You can download the complete manual from: www.heydownloads.com by clicking the link below



- Please note: If there is no response to CLICKING the link, please download this PDF first and then click on it.

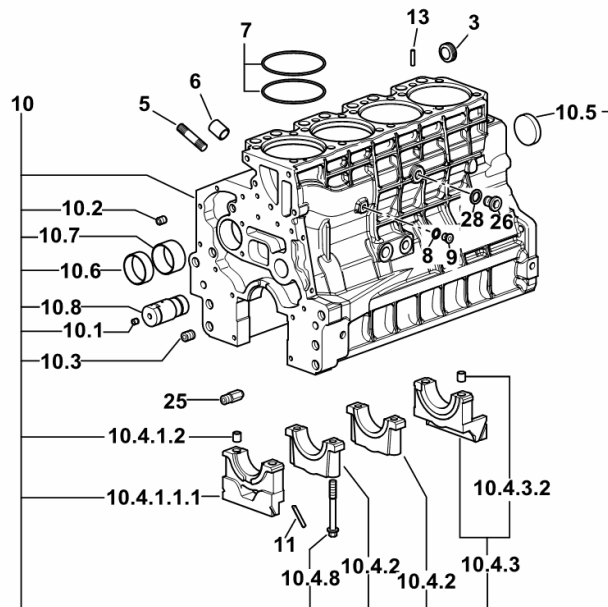
CLICK HERE TO **DOWNLOAD** THE COMPLETE MANUAL

CRANKCASE

Fig.	Code	QTY	Name
------	------	-----	------

Notes:

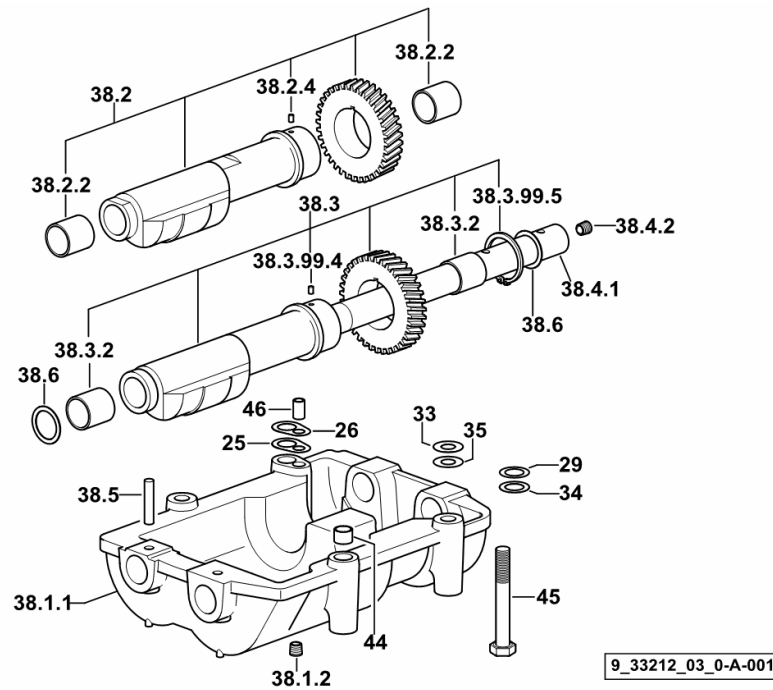
[AGROPLUS 420 F -> ZKDP3202W0TD05001]



3	2.3199.312.2/20	1	plug m 35x1.5x9.5
5	2.0439.279.7	8	stud bolt m 8 p.1 x 25
6	2.1559.188.2	4	sleeve 11.4 x 14 x16
7	2.1539.259.0	8	'o' ring 107.62x2.62
8	2.1560.010.0	1	gasket 14.2 x 20 x 1.5
9	2.3199.292.0	1	plug 1/4" gas
10	0.014.9655.4/30	1	crankcase
10.1	2.3130.001.1	14	plug 1/8" gas
10.2	2.3130.002.1	4	plug 1/4" gas
10.3	2.3130.003.1	6	plug 3/8" gas
10.4.1.1.1	0.065.1112.7/10	1	support
10.4.1.2	2.1699.165.0	1	sleeve 12.3x15x16
10.4.2	0.065.1114.0/10	3	support
10.4.3	0.065.1116.3	1	support
10.4.3.2	2.1699.165.0	1	sleeve 12.3x15x16
10.4.8	0.065.1117.0	10	screw m 12 x 100
10.5	2.3179.012.0	1	plug 60
10.6	0.065.1140.0	4	bushing 59X55X20
10.7	0.065.1141.0	1	bushing 59X55X30
10.8	0.014.1340.0/10	1	pin
11	0.066.1152.0/10	4	gasket
13	2.1549.154.2	4	sleeve 4.8x5.8x16
25	0.013.4946.0/10	1	cooling nozze
26	2.3120.101.0	1	plug m 18 p.1.5
28	2.1560.014.0	1	gasket 18.2 x 24 x 1.5

9_O1011_00_0-A-001

Section: B0 - ENGINE
COUNTERWEIGHTS



9_33212_03_0-A-001

Fig.	Code	QTY	Name
------	------	-----	------

Notes:

[AGROPLUS 420 F -> ZKDP3202W0TD05001]

25	2.1589.139.0	1	snoulder mm 0.3
26	2.1589.140.0	3	snoulder mm 0.1
29	2.1579.628.0	3	spacer 16.5x26x0.1
33	2.1579.629.0	6	spacer 12.5x26x0.1
34	2.1589.048.0	1	snoulder 16.5x26x0.3
35	2.1589.049.0	1	snoulder 12.5x26x0.3
38.1.1	0.086.1231.0/10	1	box
38.1.2	2.3130.001.1	4	plug 1/8" gas
38.2	0.086.1233.3/30	1	mass sx/lh/li
38.2.2	2.1559.115.0	2	bushing 26x30x30
38.2.4	2.1651.302.0	1	roll pin 4x6
38.3	0.065.1233.3/30	1	mass dx/rh/re
38.3.2	2.1559.115.0	2	bushing 26x30x30
38.3.99.4	2.1651.302.0	1	roll pin 4x6
38.3.99.5	2.1410.018.7	1	circlip 45
38.4.1	0.065.1234.0/10	1	shaft
38.4.2	2.3130.001.1	1	plug 1/8" gas
38.5	2.1631.717.0	2	roll pin 8 x 40
38.6	2.1589.185.0	4	snoulder 26.1x34x1
44	2.1579.626.0	2	spacer 13.2x16x11
45	2.0139.028.2	4	screw m 12
46	2.1699.191.0	1	sleeve 7x10x16

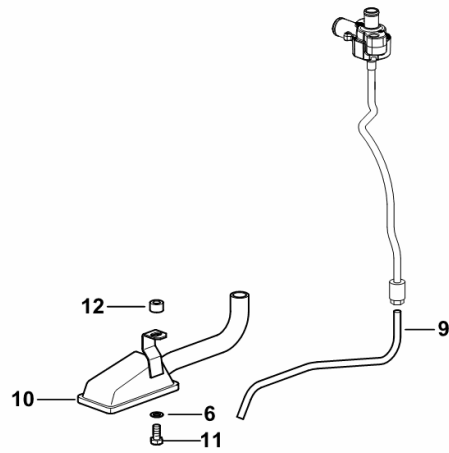
LUBRICANT OIL SUCTION PIPE

Fig.	Code	QTY	Name
------	------	-----	------

Notes:

[AGROPLUS 420 F -> ZKDP3202W0TD05001]

6	2.1470.004.2	27	washer 8
9	0.008.9960.0	1	tube
10	0.008.9959.3/10	1	tube
11	2.0112.209.2	1	screw m 8 p 1.25 x 25
12	2.1579.766.2	1	spacer 8.5x16x10



9_37315_10_0-B-001

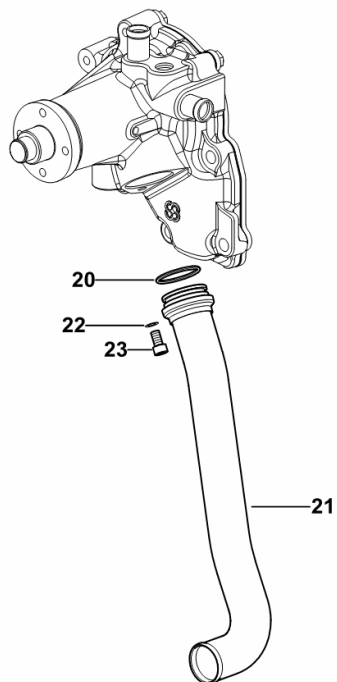
COOLANT PIPE

Fig.	Code	QTY	Name
------	------	-----	------

Notes:

[AGROPLUS 420 F -> ZKDP3202W0TD05001]

20	2.1539.140.0	1	'o' ring 34.5 x 2.62
21	0.015.6057.3	1	tube
22	2.1480.014.1	1	washer 8
23	2.0312.208.2	1	screw m 8 p.1.25 x 25



9_O6319_10_0-A-001

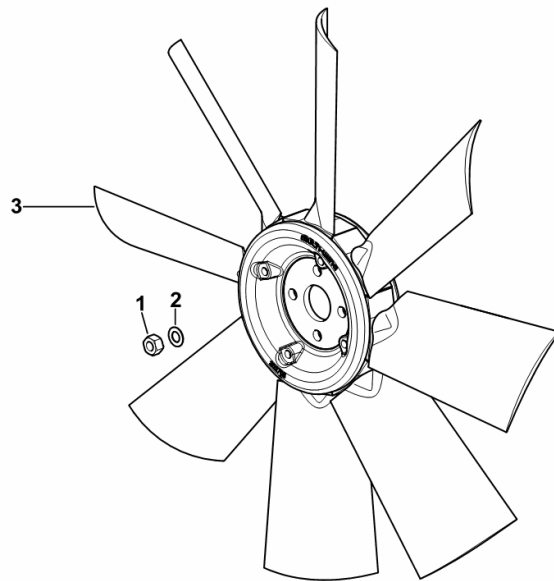
BLOWER

Fig.	Code	QTY	Name
------	------	-----	------

Notes:

[AGROPLUS 420 F -> ZKDP3202W0TD05001]

1	2.1011.305.2	4	nut m 8 p.1 x 8
2	2.1470.004.2	4	washer 8
3	0.015.7992.0	1	rotor blade mm 450 - 8 - 40°



9_O6319_10_0-C-001

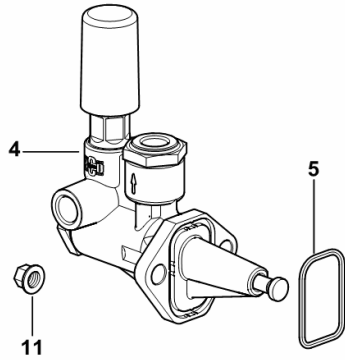
FUEL FEED PUMP

Fig.	Code	QTY	Name
------	------	-----	------

Notes:

[AGROPLUS 420 F -> ZKDP3202W0TD05001]

4	2.4519.330.0/50	1	feed pump ☞ 2.4519.330.0/50
5	2.1539.045.0	1	'o' ring 37.77x2.62
11	2.1099.159.2/10	2	nut m 8



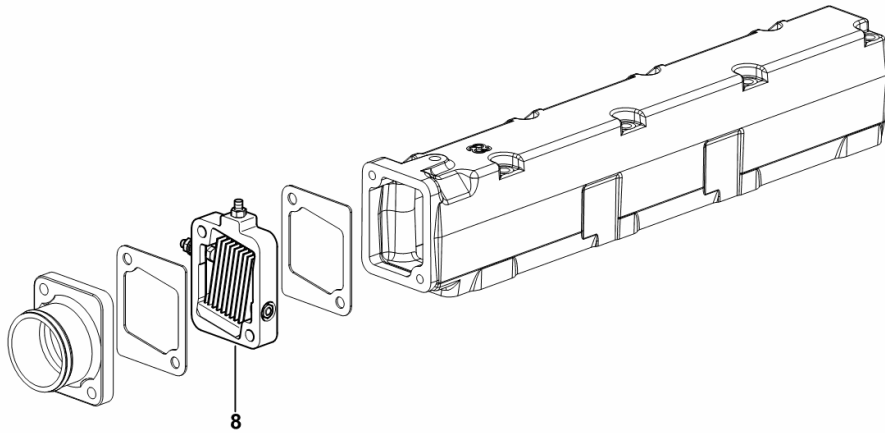
9_O1016_00_0-A-001

HEATING ELEMENT

Fig.	Code	QTY	Name
------	------	-----	------

Notes:
[AGROPLUS 420 F -> ZKDP3202W0TD05001]

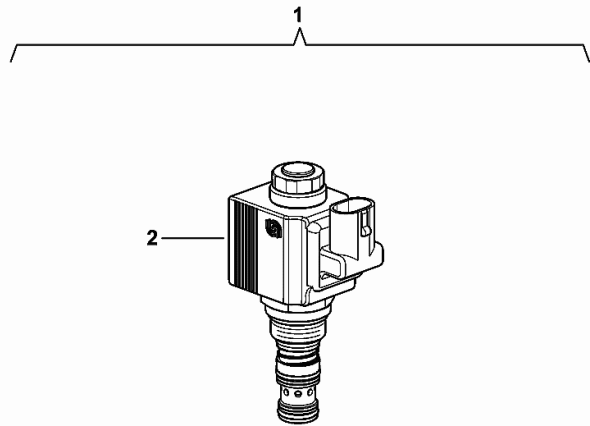
8	0.013.3450.4/10	1	resistance 12V
---	-----------------	---	----------------



9_O6418_01_0-C-001

SOLENOID VALVE 13 V - 20 W, ON/OFF 3/2

Fig.	Code	QTY	Name
1	2.3729.697.0/20	1	electro valve 13V - 20W
2	0.900.1130.7	1	coil



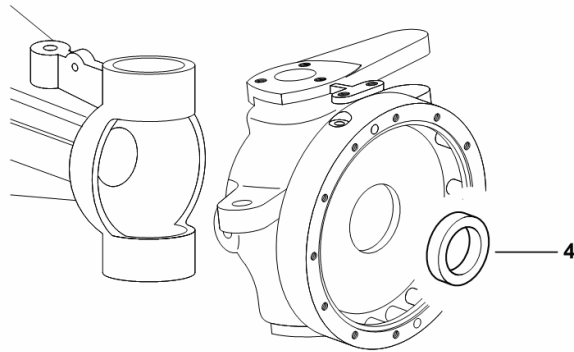
2.3729.697.0_20

Section: F0 - FRONT AXLE
4WD - STANDARD SEALING

Fig.	Code	QTY	Name
------	------	-----	------

Notes:
 [AGROPLUS 420 F -> ZKDP3202W0TD05001]

4	2.1529.130.0	2	'o' ring 50 x 72 x 16.5
---	--------------	---	-------------------------



9_58946_06_0-A-001

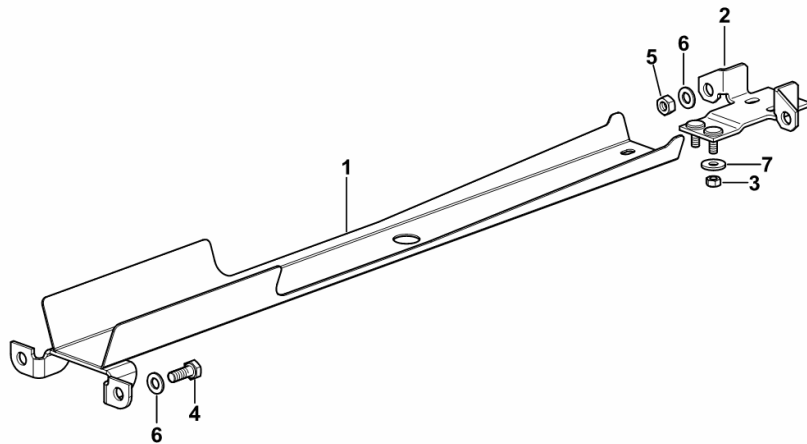
4WD - PROPELLER SHAFT - GUARDS

Fig.	Code	QTY	Name
------	------	-----	------

Notes:

[AGROPLUS 420 F -> ZKDP3202W0TD05001]

1	0.016.3807.2/10	1	guard
2	0.015.7439.3	1	support
3	2.1011.103.2	2	nut m 6 p.1
4	2.0112.207.2	2	screw m 8 p 1.25 x 20
5	2.1011.105.2	2	nut m 8 p.1.25
6	2.1310.004.2	4	flat washer 8.5
7	2.1312.003.2	2	washer 6



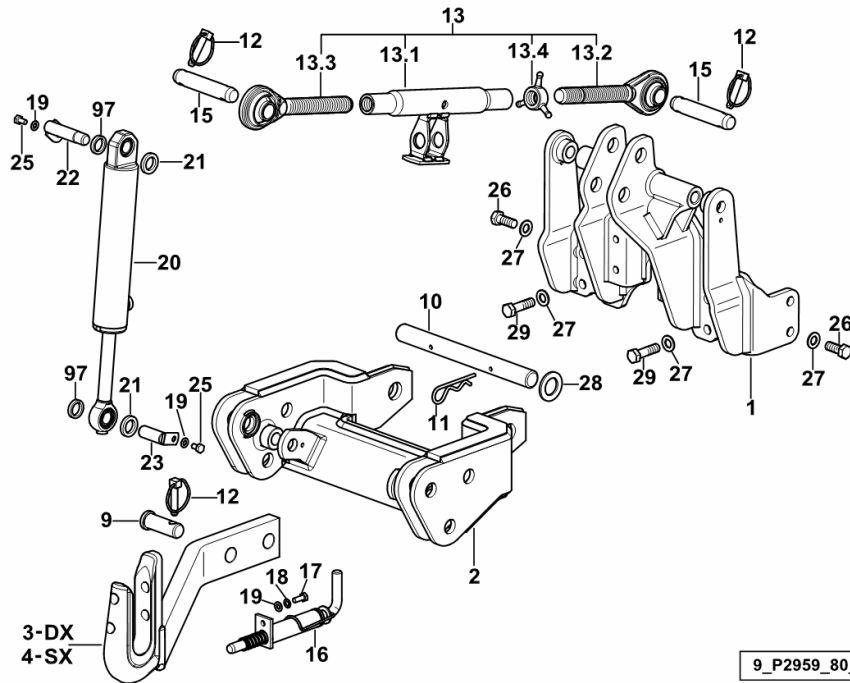
9_P2926_02_0-A-001

FRONT HYDRAULIC POWER-LIFT

Fig.	Code	QTY	Name
------	------	-----	------

Notes:

[AGROPLUS 420 F -> ZKDP3202W0TD05001] 5008 <-



1	0.016.7034.2/10	1	support
2	0.014.9796.2	1	support
3	0.014.9940.3	1	right hand arm dx/rh/re
4	0.014.9939.3	1	left hand arm sx/lh/li
9	2.1679.110.2	4	pin
10	0.010.0986.0/10	1	pin
11	2.1699.084.2	2	pin Ø 27
12	0.010.9322.4	8	pin Ø 11
13	0.015.0372.4/20	1	top link
13.1	0.015.0372.3/10	1	sleeve
13.2	0.96044.14.3/20	1	rod dx/rh/re
13.3	0.760.3515.3/10	1	rod sx/lh/li
13.4	0.96014.57.0/10	1	locknut m 27 p.3
15	2.1669.024.2	2	pin 25.4 x 133
16	0.009.8357.3/20	2	clevis
17	2.0112.207.2	2	screw m 8 p 1.25 x 20
18	2.1470.004.2	2	washer 8
19	2.1310.004.2	6	flat washer 8.5
20	2.3749.007.0	2	jack
21	2.1569.125.0	4	gasket 23x35x6
22	0.007.3704.2	2	pin
23	0.007.3705.2/10	2	pin
25	2.0112.204.2	4	screw m 8 p.1.25x14
26	2.0112.513.2	4	screw m 14 p.2 x 35
27	2.1475.005.7	12	washer 14
28	2.1599.124.0	4	snoulder 30.5x50x4
29	2.0112.519.2	8	screw m 14 p.2x50
97	2.1549.517.0	4	ring 23x31x6

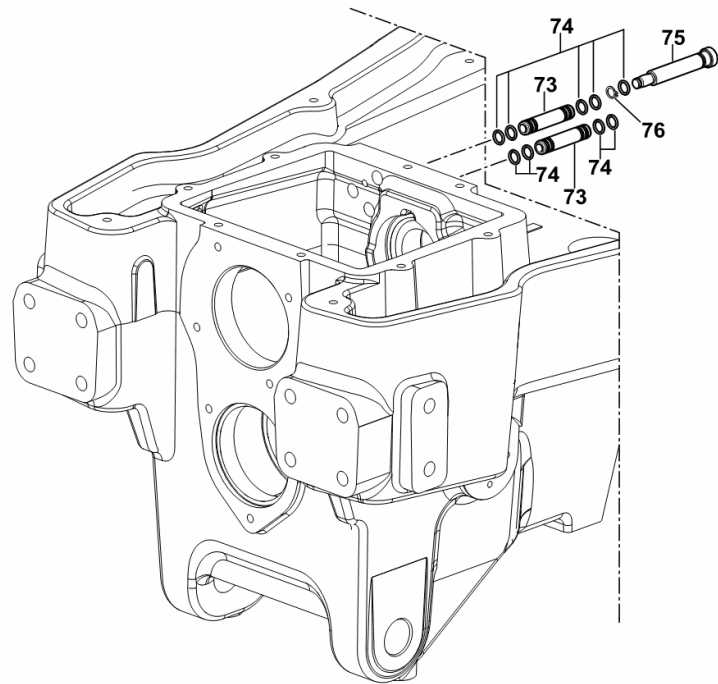
Section: M0 - FRONT PTO
FRONT PTO PACKAGE

Fig.	Code	QTY	Name
------	------	-----	------

Notes:

[AGROPLUS 420 F -> ZKDP3202W0TD05001]

73	0.016.3004.0	2	pin
74	2.1531.016.0	9	ring 8.74 x 1.78
75	0.016.2971.0	1	pin
76	2.1410.063.2	1	circlip 8



9_P2559_85_0-E-001

FRONT REMOTE VALVE SYSTEM WITH MID-MOUNT COUPLERS.....	H0.01.42 (1)
FRONT ELECTRO-HYDRAULIC CONTROL VALVE SYSTEM WITH MID-MOUNT COUPLERS.....	H0.01.43 (1)
FRONT ELECTRO-HYDRAULIC CONTROL VALVE SYSTEM WITH MID-MOUNT COUPLERS.....	H0.01.43 (2)
FRONT REMOTE VALVE SYSTEM WITH MID-MOUNT COUPLERS.....	H0.01.44 (1)
REAR LIFT CYLINDER BARREL.....	H0.01.45 (1)
REAR LIFT CYLINDER BARREL.....	H0.01.46 (1)
4WD - FRONT DIFFERENTIAL LOCK.....	H0.01.47 (1)
FRONT DIFFERENTIAL LOCK PIPE.....	H0.01.48 (1)
FRONT DIFFERENTIAL LOCK PIPE.....	H0.01.50 (1)
DETAILS OF OIL FILTER.....	2.4419.792.0.A
HYDRAULIC PUMP PARTS.....	2.4529.950.0.A
HYDRAULIC PUMP PARTS.....	2.4529.960.0.A
HYDRAULIC PUMP PARTS.....	2.4539.620.0/10.A
STEERING SYSTEM	
HYDROSTATIC STEERING CONTROL VALVE.....	H0.02.0 (1)
PIPES FOR HYDROSTATIC STEERING.....	H0.02.1 (1)
PIPES FOR HYDROSTATIC STEERING - 4WD.....	H0.02.3 (1)
HYDRAULIC STEERING GEAR.....	2.4569.007.0.A
TRANSMISSION - PTO COOLERS	
GEARBOX OIL COOLER.....	H0.03.0 (1)
FRONT LIFT	
FRONT LIFT - HYDRAULIC SYSTEM.....	H0.05.0 (1)
FRONT LIFT - HYDRAULIC SYSTEM.....	H0.05.0 (2)
FRONT LIFT - HYDRAULIC SYSTEM.....	H0.05.1 (2)
FRONT LIFT - HYDRAULIC SYSTEM.....	H0.05.1 (3)
FRONT LIFT - HYDRAULIC SYSTEM.....	H0.05.2 (2)
FRONT LIFT - HYDRAULIC SYSTEM.....	H0.05.2 (3)
FRONT LIFT - HYDRAULIC SYSTEM.....	H0.05.3 (1)
FRONT LIFT - HYDRAULIC SYSTEM.....	H0.05.3 (2)
FRONT LIFT - HYDRAULIC SYSTEM.....	H0.05.5 (1)
PRESSURE CONTROL VALVE.....	0.009.2038.4/10.A
FRONT REMOTE CONTROL VALVES	
2+1 MID-MOUNT HYDRAULIC COUPLERS - REAR.....	H0.06.0 (1)
4+1 MID-MOUNT HYDRAULIC COUPLERS - REAR.....	H0.06.1 (1)
MID-MOUNT HYDRAULIC COUPLERS - REAR.....	H0.06.2 (1)
MID-MOUNT HYDRAULIC COUPLERS - REAR.....	H0.06.3 (1)
2+1 MID-MOUNT HYDRAULIC COUPLERS - REAR.....	H0.06.4 (1)
4+1 MID-MOUNT HYDRAULIC COUPLERS - REAR.....	H0.06.5 (1)
MID-MOUNT HYDRAULIC COUPLERS - FRONT.....	H0.06.6 (1)
MID-MOUNT HYDRAULIC COUPLERS - FRONT.....	H0.06.7 (1)
4-WAY AUXILIARY DISTRIBUTOR - BUCHER.....	H0.06.8 (1)
AUXILIARY FRONT HYDRAULIC DISTRIBUTOR WITH 4 OIL WAYS - SAUER -.....	H0.06.9 (1)
AUXILIARY FRONT HYDRAULIC DISTRIBUTOR WITH 4 OIL WAYS - SAUER -.....	H0.06.9 (2)
MID-MOUNT HYDRAULIC COUPLERS - FRONT - SX/LH/LI.....	H0.06.10 (1)

AGROPLUS 420 F -> 5001

Section: H0 - HYDRAULIC AND PNEUMATIC SYSTEM|

Ref.: H0.01.10 (1)

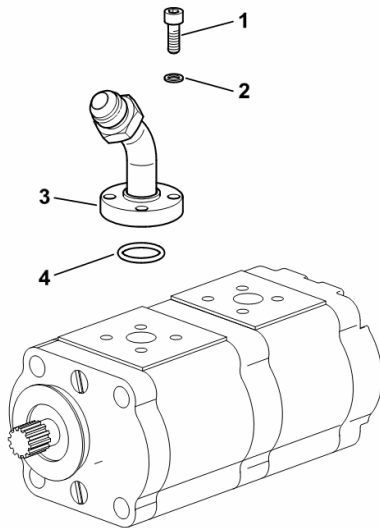
COMPLETING THE HYDRAULIC PUMP 14 + 11 cm³

Fig.	Code	QTY	Name
------	------	-----	------

Notes:

[AGROPLUS 420 F -> ZKDP3202W0TD05001]

1	2.0312.105.2	4	screw m 6 p.1 x 18
2	2.1480.012.2	4	washer 6, d128
3	0.014.5728.3	1	tube
4	2.1531.052.0	1	'o' ring 20.29 x 2.62



9_F2082_03_0-A-001

AGROPLUS 420 F -> 5001

Section: H0 - HYDRAULIC AND PNEUMATIC SYSTEM|

Ref.: H0.01.20 (1)

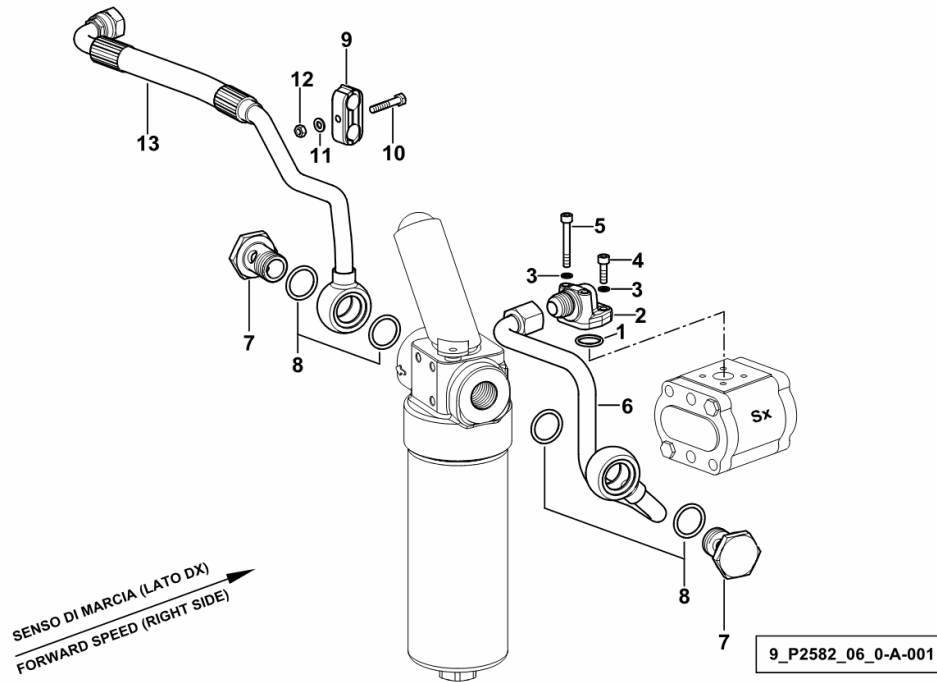
POWER STEERING OIL FEED HYDRAULIC SYSTEM

Fig.	Code	QTY	Name
------	------	-----	------

Notes:

[AGROPLUS 420 F -> ZKDP3202W0TD05001]

1	2.1531.052.0	1	'o' ring 20.29 x 2.62
2	0.016.3445.0	1	flange
3	2.1480.012.2	4	washer 6, d128
4	2.0312.106.2	2	screw m 6 p.1 x 20
5	2.0312.115.2	2	screw m 6 p.1x45
6	0.016.4312.3	1	tube
7	2.3249.315.2/10	2	pipe union 3/4" x 36
8	2.1531.079.0	4	'o' ring 29.82 x 2.62
9	2.3321.020.0	1	collar Ø 16
10	2.0112.013.2	1	screw m 6 p.1 x 35
11	2.1310.002.2	1	washer 6.6, d125
12	2.1011.103.2	1	nut m 6 p.1
13	0.016.4310.3	1	tube



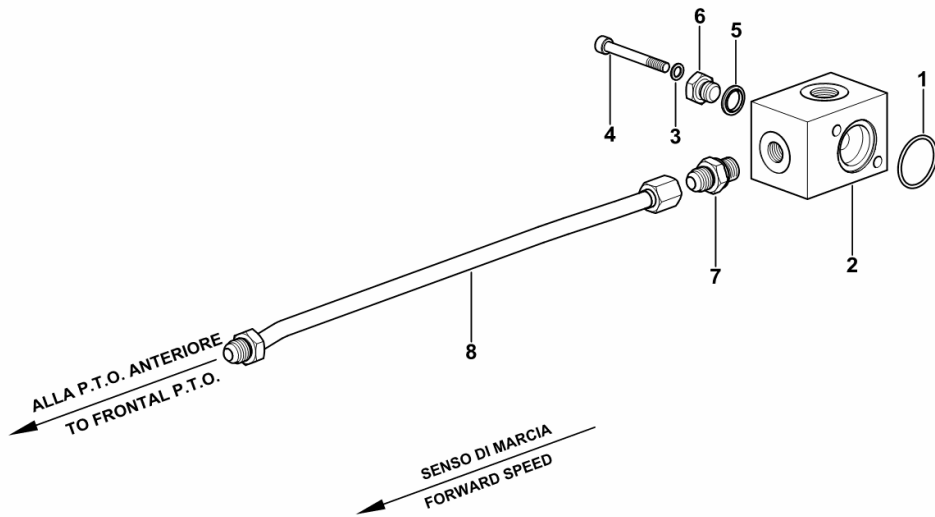
LUBRICATION WITH FRONT PTO

Fig.	Code	QTY	Name
------	------	-----	------

Notes:

- FOR TYPES WITH H-M-L- (POWERSHIFT) [AGROPLUS 420 F -> ZKDP3202W0TD05001]

1	2.1532.075.0	1	ring
2	0.016.4400.0	1	small block
3	2.1480.012.2	2	washer 6, d128
4	2.0312.116.2	2	screw m 6 p.1 x 50
5	2.1561.006.0	1	'o' ring 12
6	2.3110.402.2	1	plug m 12 p.1.5
7	2.3249.159.2	1	pipe fitting M/M 9/16JIC-M14
8	0.016.4401.3	1	tube



9_P2559_89_0-A-001

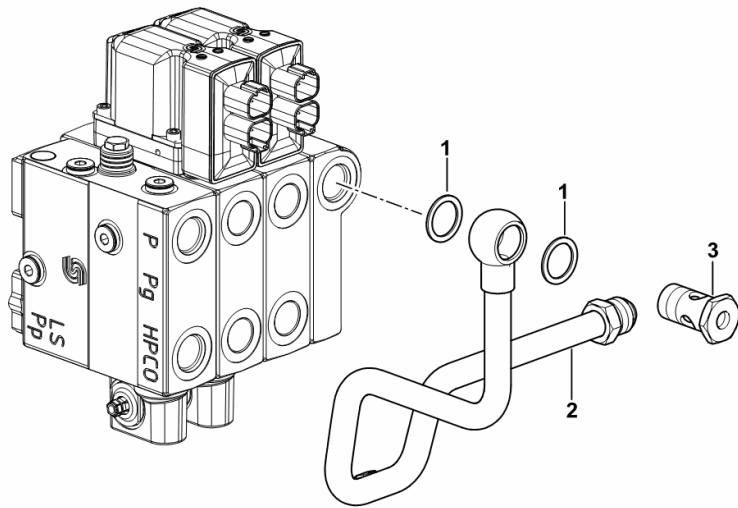
DRAIN LINE OF FRONT REMOTE VALVE

Fig.	Code	QTY	Name
------	------	-----	------

Notes:

- FOR TYPES WITH FRONT LIFT AND ELECTRO-HYDRAULIC FRONT CONTROL VALVE [AGROPLUS 420 F -> ZKDP3202W0TD05001]

1	2.1560.018.0	2	gasket 22.2 x 29
2	0.016.9938.3	1	tube
3	2.3335.009.2	1	pipe union m 22 p.1.5 x 39



9_P2888_11_0-A-001

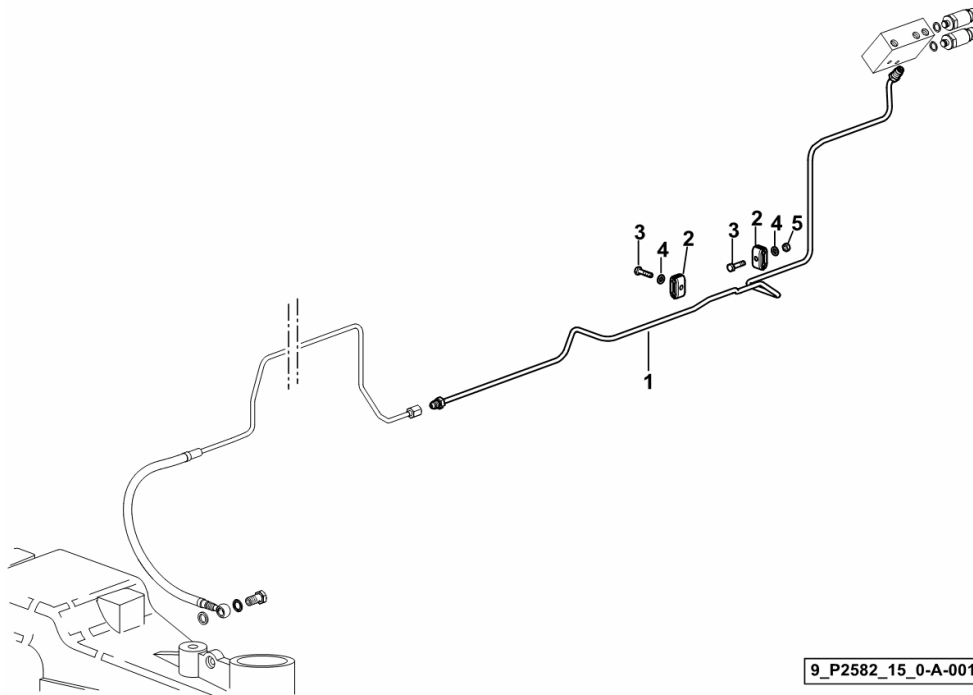
FRONT DIFFERENTIAL LOCK PIPE

Fig.	Code	QTY	Name
------	------	-----	------

Notes:

[AGROPLUS 420 F -> ZKDP3202W0TD05001]

1	0.016.4285.3	1	tube
2	2.3321.002.0	2	terminal Ø 6.35 / 6.35
3	2.0112.009.2	2	screw m 6 p.1 x 25
4	2.1310.002.2	2	washer 6.6, d125
5	2.1011.103.2	1	nut m 6 p.1



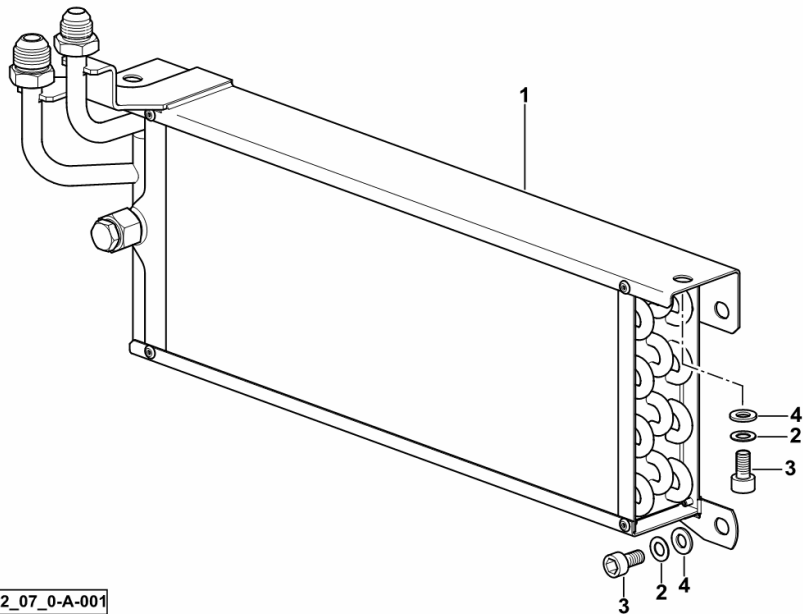
GEARBOX OIL COOLER

Fig.	Code	QTY	Name
------	------	-----	------

Notes:

[AGROPLUS 420 F -> ZKDP3202W0TD05001]

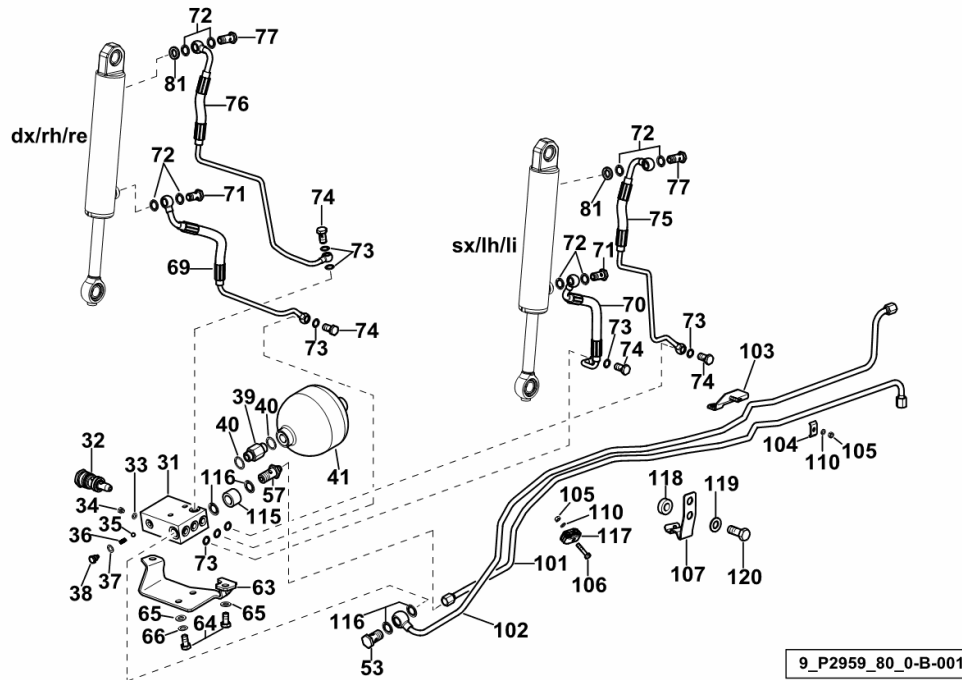
1	0.016.2324.3	1	oil cooler
2	2.1480.014.2	6	washer 8
3	2.0312.204.2	6	screw m 8 p.1.25 x 16
4	2.1310.004.2	6	flat washer 8.5



9_P2582_07_0-A-001

FRONT LIFT - HYDRAULIC SYSTEM

Fig.	Code	QTY	Name
119	2.1310.009.2	2	- FOR TYPES WITHOUT FRONT MUDGUARDS flat washer 14
120	2.0112.513.2	2	- FOR TYPES WITHOUT FRONT MUDGUARDS screw m 14 p.2 x 35 - FOR TYPES WITHOUT FRONT MUDGUARDS



AGROPLUS 420 F -> 5001

Section: H0 - HYDRAULIC AND PNEUMATIC SYSTEM|

Ref.: H0.06.8 (1)

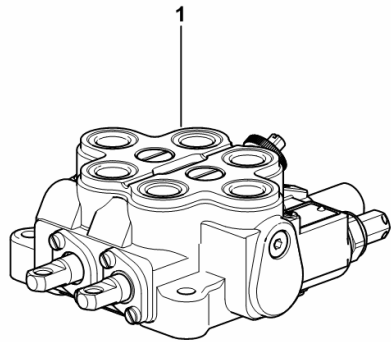
4-WAY AUXILIARY DISTRIBUTOR - BUCHER

Fig.	Code	QTY	Name
------	------	-----	------

Notes:

- MECHANICAL [AGROPLUS 420 F -> ZKDP3202W0TD05001]

1	2.3729.687.0	1	distributor - BUCHER ☞ 2.3729.687.0
---	--------------	---	--



9_G2788_15_0-A-001

AGROPLUS 420 F -> 5001

Section: H0 - HYDRAULIC AND PNEUMATIC SYSTEM|

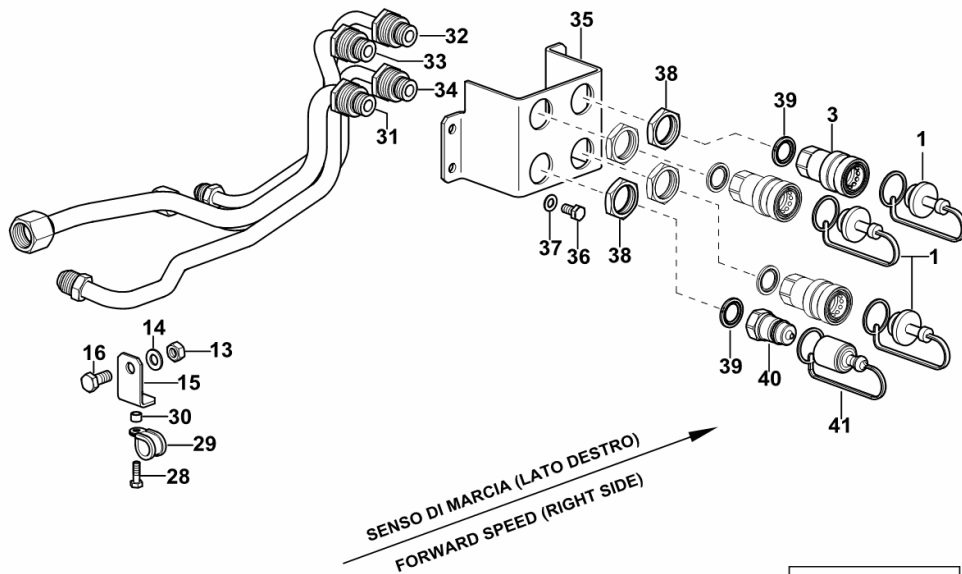
Ref.: H0.06.13 (2)

MID-MOUNT HYDRAULIC COUPLERS - FRONT - DX/RH/RE

Fig.	Code	QTY	Name
------	------	-----	------

Notes:

- FOR TYPES WITH ROLL BAR [AGROPLUS 420 F -> ZKDP3202W0TD05001] - WITH 4-WAY FRONT CONTROL VALVE [AGROPLUS 420 F -> ZKDP3202W0TD05001]

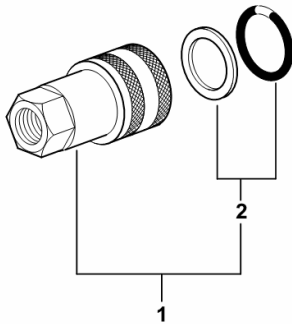


1	0.013.7997.0	5	plug - BLACK
3	0.98308.50.3/10	5	coupling ☞ 0.98308.50.3/10
13	2.1011.106.2	2	nut m 10 p.1.5
14	2.1310.006.2	2	flat washer 10.5
15	0.014.7573.3	2	bracket
16	2.0112.308.2	2	screw m 10 p.1.5x22
28	2.0112.007.2	1	screw m 6 p.1 x 20
29	2.6839.066.0/10	1	clamp 16
30	2.1549.598.2	1	spacer 10x7x6.5
31	0.016.4369.3	1	tube
32	0.016.4368.3	1	thermostat
33	0.016.4370.3	1	tube
34	0.016.4367.3	1	tube
35	0.016.4361.2	1	bracket
36	2.0112.205.2	4	screw m 8 p.1.25 x 16
37	2.1475.002.2	4	conical washer 8
38	2.1019.091.2	4	special nut m 30 p.1.5x8
39	2.1569.206.0	4	gasket
40	0.98309.51.3/10	1	coupling 1/2
41	0.009.3149.0	1	plug - BLUE COLOUR

9_P2788_05_0-B-002

ENGAGEMENT

Fig.	Code	QTY	Name
1	0.98308.50.3/10	1	coupling
2	04438079	1	seal ring kit



0_98308_50_3_10

AGROPLUS 420 F -> 5001

Section: H0 - HYDRAULIC AND PNEUMATIC SYSTEM|

Ref.: H0.07.5 (1)

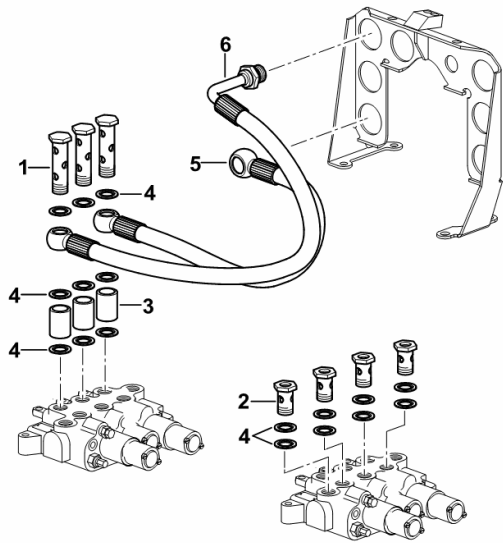
HYDRAULIC SYSTEM - FOR 6-WAY CONTROL VALVE

Fig.	Code	QTY	Name
------	------	-----	------

Notes:

- FOR TYPES WITHOUT FRONT HYDRAULIC CONTROL VALVE / COUPLERS [AGROPLUS 420 F -> ZKDP3202W0TD05001]

1	2.3339.820.2/10	3	pipe union m 18 p.1.5 x 68
2	2.3335.008.2	4	pipe union m 18 p.1.5 x 32
3	2.1549.548.2	3	spacer 19 x 25 x 34
4	2.1561.110.0	17	'o' ring Ø 18 -B-
5	0.010.9302.3	1	tube mm 575
6	0.010.9306.3	1	tube mm 630



9_F2088_28_0-A-001

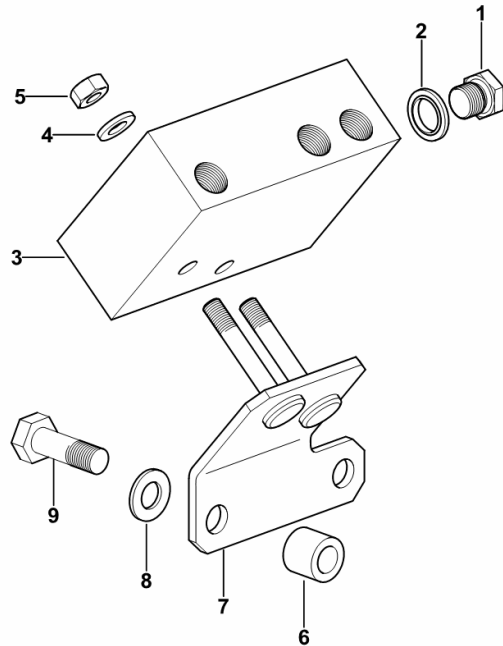
BRAKES CONTROL VALVE

Fig.	Code	QTY	Name
------	------	-----	------

Notes:

- FOR TYPES WITHOUT TRAILER BRAKING SYSTEM [AGROPLUS 420 F -> ZKDP3202W0TD05001]

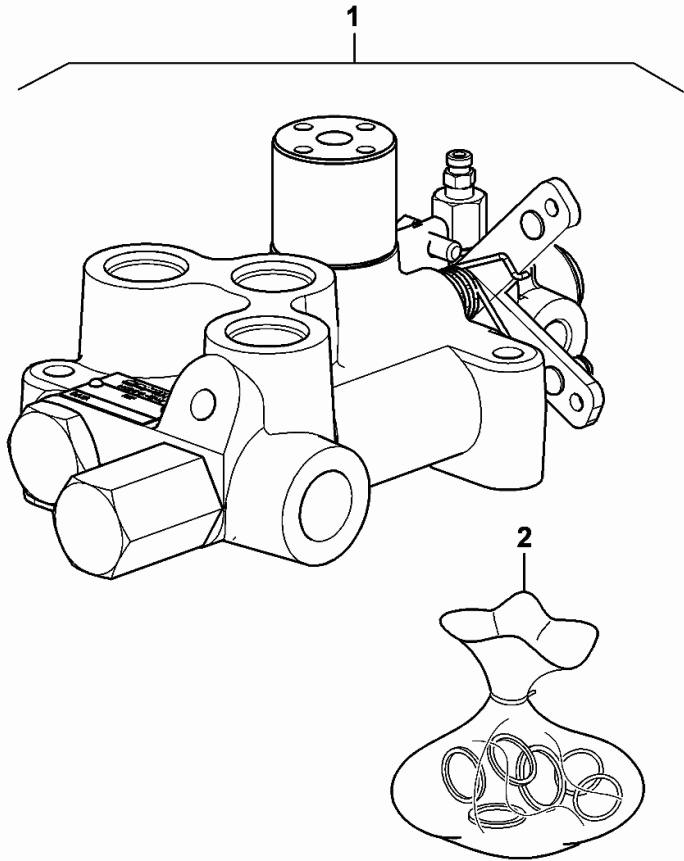
1	2.3110.401.1	2	plug m 10 p.1x8
2	2.1561.005.0	2	washer typ A
3	0.014.5668.3/10	1	small block
4	2.1310.002.2	2	washer 6.6, d125
5	2.1011.103.2	2	nut m 6 p.1
6	2.1579.450.2	2	spacer 8.5 x 14 x 12
7	0.014.5671.3	1	bracket
8	2.1475.002.2	2	conical washer 8
9	2.0112.209.2	2	screw m 8 p 1.25 x 25



9_I7566_05_0-A-001

TRAILER BRAKE VALVE

Fig.	Code	QTY	Name
1	2.3729.708.0/10	1	valve
2	0.900.0783.2	1	gasket set



2_3729_708_0_10

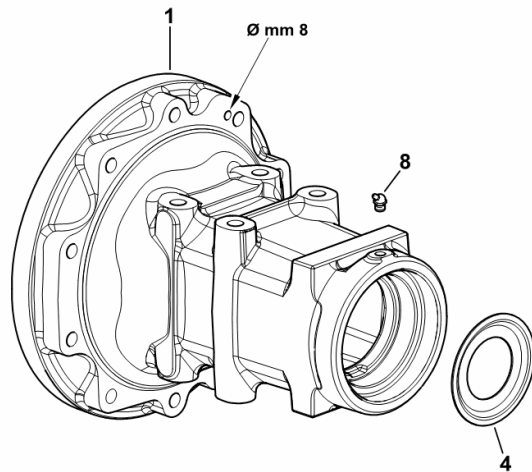
REAR AXLE

Fig.	Code	QTY	Name
------	------	-----	------

Notes:

[AGROPLUS 420 F -> ZKDP3202W0TD05001]

1	0.467.4410.0/50	2	wheel support
4	0.255.4451.0	2	cup
8	2.3821.103.2	2	lubricator m 10 p.1



9_70544_10_0-A-002

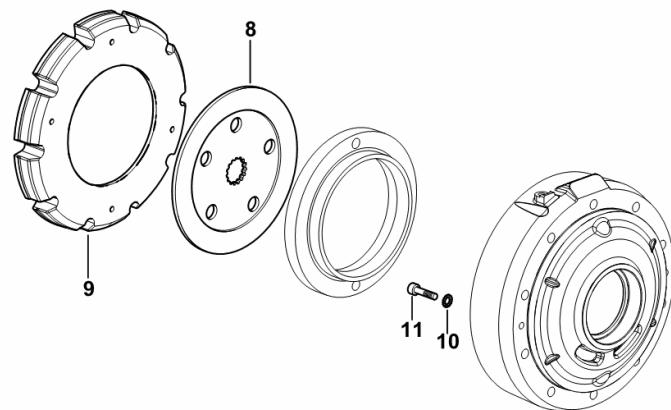
REAR BRAKES

Fig.	Code	QTY	Name
------	------	-----	------

Notes:

[AGROPLUS 420 F -> ZKDP3202W0TD05001]

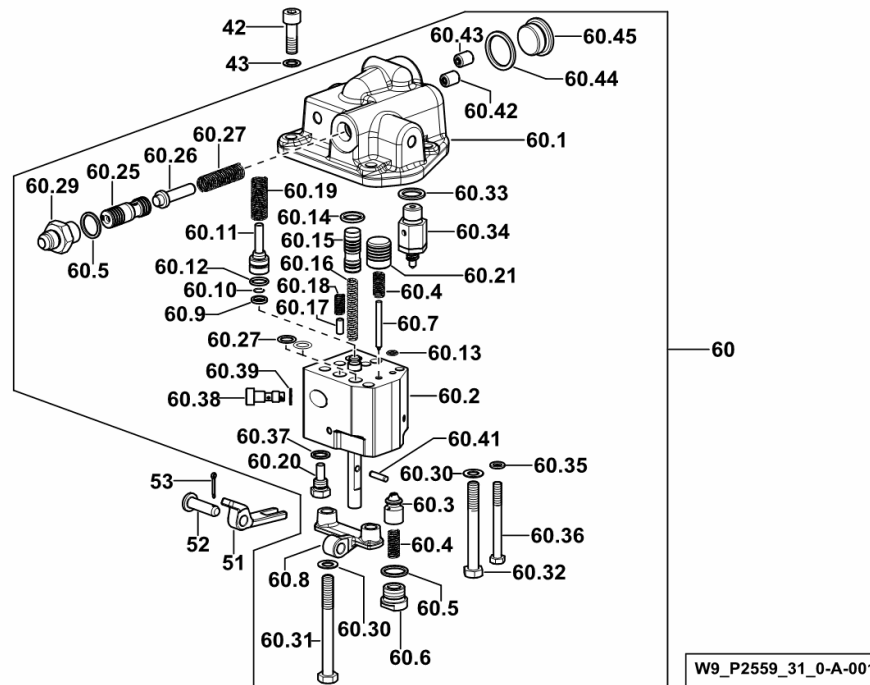
8	0.015.4482.2	2	brake disc
9	0.008.5159.0/30	2	disc
10	2.1480.014.1	4	washer 8
11	2.0312.212.2	4	screw m 8 p.1.25 x 35



9_64854_00_0-A-001

FLOW CONTROL VALVE WITH MECHANICAL CONTROL

Fig.	Code	QTY	Name
60.41	2.1631.307.0	1	roll pin 4x16
60.42	0.9123.450.3/10	1	grain
60.43	0.9123.454.3/10	1	grain
60.44	2.1560.019.0	1	gasket 24.3x30
60.45	2.3199.118.2	1	plug m 24 p.1.5



Section: R0 - REAR LIFT
THREE-POINT COUPLING

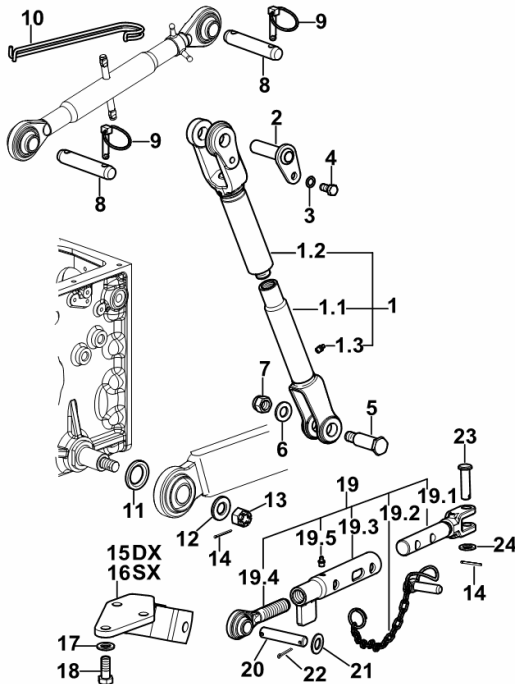


Fig.	Code	QTY	Name
Notes:			
[AGROPLUS 420 F -> ZKDP3202W0TD05001]			
1	0.014.5281.4/10	1	adjustable tensioner
1.1	0.014.5281.3	1	rod
1.2	0.009.8008.3/20	1	rod
1.3	2.3820.105.2	1	lubricator m 10 p.1 x 7
2	0.008.8469.2/10	2	pin
3	2.1470.007.2	2	lock washer 12
4	2.0112.409.2	2	screw m 12 p.1.75 x 25
5	0.479.5868.0/10	2	pin mm 24
6	2.1475.007.7	2	washer 18
7	2.1120.210.2	2	selflock nut m 18 p.1.5
8	2.1669.024.2	2	pin 25.4 x 133
9	0.010.9322.4	4	pin Ø 11
10	0.010.9018.0	1	spring
11	0.96001.64.0/10	2	snoulder 35 x 55 x 6.0
12	0.96001.65.0/10	2	snoulder 21x45x6
13	2.1021.209.2	2	castellated nut m 20 p.1.5
14	2.1690.413.2	4	split pin 4 x 36
15	0.014.0715.2/10	1	bracket
16	0.014.0716.2/10	1	bracket
17	2.1475.006.2	6	washer 16
18	2.0112.615.2	6	screw m 16 p.2 x 40
19	0.014.5595.4	2	stabiliser
19.1	0.010.6073.3/10	1	rod
19.2	0.010.6245.4	1	chain
19.3	0.014.5595.2	1	tube
19.4	0.010.5224.3	1	rod
19.5	2.3820.105.2	1	lubricator m 10 p.1 x 7
20	2.1669.053.2	2	pin 19x95x83
21	2.1310.013.2	4	flat washer 21x37
22	2.1690.513.2	4	split pin 5 x 36
23	2.1671.716.2	2	pin 16x55x51
24	2.1310.010.2	2	flat washer 16

GEARBOX UPPER COVER.....	D0.09.10 (1)
COVER AND PLUG FOR GEARBOX WITH H-M-L.....	D0.09.12 (1)
GEARBOX UPPER COVER.....	D0.09.13 (1)
GEARBOX UPPER COVER.....	D0.09.14 (1)
PLUGS FOR GEARBOX.....	D0.09.15 (1)
REAR GEARBOX PLUG.....	D0.09.16 (1)
REAR GEARBOX PLUG.....	D0.09.17 (1)
PLUG FOR TYPES WITH ELECTROHYDRAULIC 4WD ENGAGEMENT.....	D0.09.18 (1)
REAR GEARBOX PLUG.....	D0.09.19 (1)
SENSOR BRACKET.....	D0.09.20 (1)
INTERNAL AND EXTERNAL GEARBOX CONTROLS	
INTERNAL CONTROLS OF 5-SPEED GEARBOX WITH UNDERDRIVE.....	D0.10.2 (2)
5-SPEED GEARBOX INTERNAL CONTROLS.....	D0.10.3 (2)
GEARSHIFT AND REVERSE SHUTTLE CONTROL.....	D0.10.5 (1)
GEARSHIFT AND REVERSE SHUTTLE CONTROL.....	D0.10.6 (1)
PARTS SET - 5-SPEED GEARBOX.....	D0.10.8 (1)
PARTS SET - 5-SPEED WITH UNDERDRIVE.....	D0.10.9 (1)
REDUCTION GEAR CONTROL.....	D0.10.11 (1)
SPEED RANGE REDUCTION GEAR UNIT.....	D0.10.13 (1)
CONTROL FOR 3-RANGE GEARBOX.....	D0.10.14 (1)
LOW SPEED RANGES	
BEVEL WHEEL GEAR Z = 10 / Z = 34.....	D0.11.0 (1)
BEVEL DRIVE PINION BEARING.....	D0.11.1 (1)
SPEED RANGE REDUCTION GEAR SHAFT.....	D0.11.2 (1)
SPEED RANGE REDUCTION GEAR UNIT.....	D0.11.3 (1)
3-RANGE BOX - 40 Km/h.....	D0.11.4 (1)
PHONIC WHEEL FOR TYPES WITH ELECTROHYDRAULIC 4WD ENGAGEMENT.....	D0.11.5 (1)
HYDRAULIC REAR PTO CLUTCH	
P.T.O. - HYDRAULIC CLUTCH.....	D0.12.0 (2)
P.T.O. - HYDRAULIC CLUTCH.....	0.011.9686.4/40.A
P.T.O. - HYDRAULIC CLUTCH.....	0.011.9686.4/40.B
HYDRAULIC PUMP DRIVE	
P.T.O. - PUMP CONTROL.....	D0.13.0 (2)
PTO/GROUNDPSPEED DRIVE	
P.T.O. - 2 SPEED TYPE 540-750.....	D0.14.0 (1)
BEARINGS OF - 2-SPEED P.T.O.....	D0.14.1 (1)
P.T.O. - 540/N - WITH INSERTED END SHAFTS.....	D0.14.2 (1)
P.T.O. - 540/N - WITH INSERTED END SHAFTS.....	D0.14.3 (1)
P.T.O. - 540/N - WITH FIXED OUTPUT SHAFT.....	D0.14.4 (1)
P.T.O. - 540/N - WITH FIXED OUTPUT SHAFT.....	D0.14.4 (2)
CONTROL LEVER P.T.O.....	D0.14.5 (1)
2-SPEED - PTO WITH FIXED OUTPUT SHAFT 540-750.....	D0.14.6 (1)
2-SPEED - PTO WITH FIXED OUTPUT SHAFT 540-750.....	D0.14.6 (2)
PTO - 2-SPEED WITH INSERTED END SHAFT 540-750.....	D0.14.7 (1)

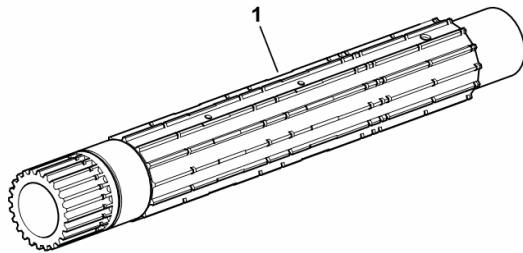
SHUTTLE SHAFT

Fig.	Code	QTY	Name
------	------	-----	------

Notes:

- FOR TYPES WITH H-M-L- (POWERSHIFT) [AGROPLUS 420 F -> ZKDP3202W0TD05001]

1	0.013.1654.0	1	shaft
---	--------------	---	-------



9_D0533_05_0-A-001

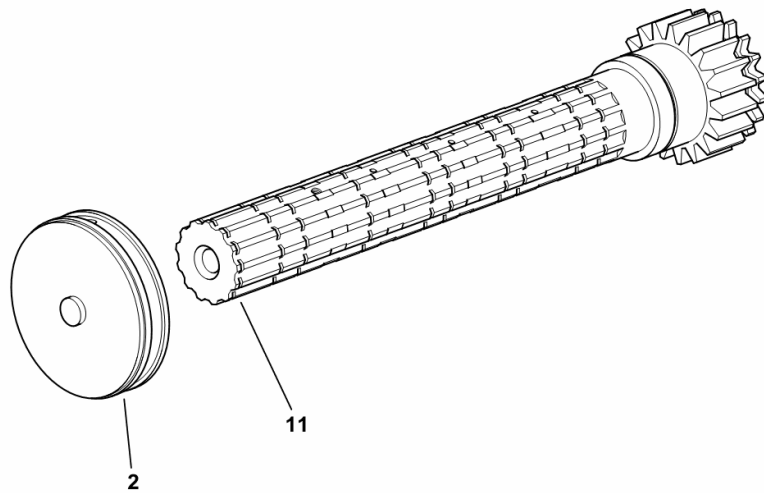
TRANSMISSION SHAFT - FOR TYPES WITHOUT H-M-L (POWERSHIFT)

Fig.	Code	QTY	Name
------	------	-----	------

Notes:

(GEARSHIFT) [AGROPLUS 420 F -> ZKDP3202W0TD05001]

2	0.008.5724.0/20	1	flange
11	0.008.5155.0/50	1	countershaft



9_58933_05_0-A-001

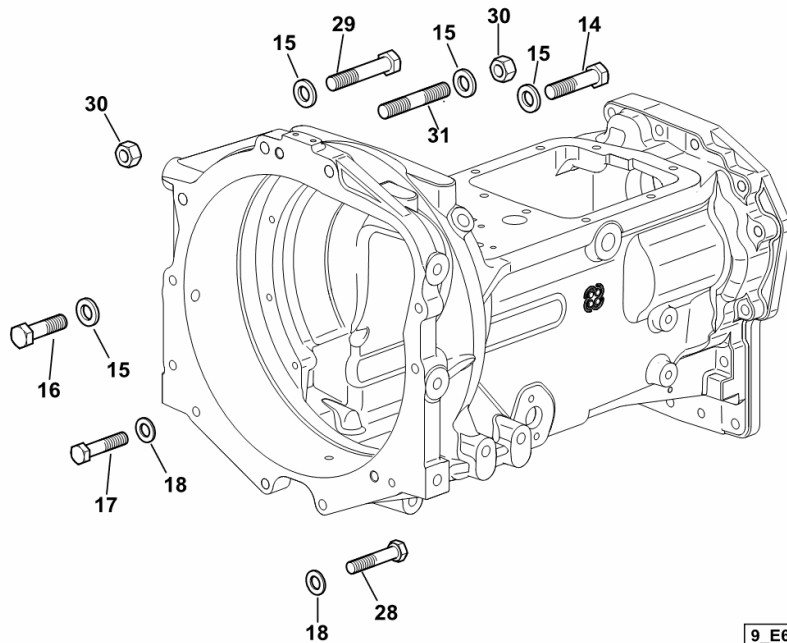
Section: D0 - TRANSMISSION
GEARBOX FRONT- FIXINGS

Fig.	Code	QTY	Name
------	------	-----	------

Notes:

[AGROPLUS 420 F -> ZKDP3202W0TD05001]

14	2.0112.521.2	1	screw m 14 p.2 x 60
15	2.1475.205.7	7	washer 15x35
16	2.0112.513.2	4	screw m 14 p.2 x 35
17	2.0112.419.2	2	screw m 12 p.1.75 x 50
18	2.1475.004.7	4	washer 13 x 24
28	2.0112.421.2	2	screw m 12 p.1.75 x 60
29	2.0112.523.2	1	screw m 14 p.2x70
30	2.1011.108.2	2	nut m 14 p.2
31	2.0422.520.2	1	stud bolt m 14x75



9_E6631_02_0-A-001

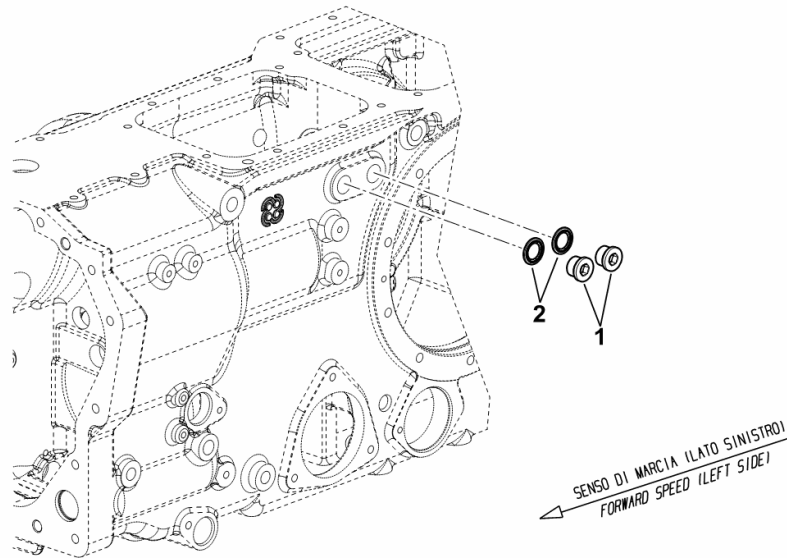
Section: D0 - TRANSMISSION
PLUGS FOR GEARBOX

Fig.	Code	QTY	Name
------	------	-----	------

Notes:

- WITHOUT FRONT CONTROL VALVE - WITHOUT CENTRAL SOCKETS [AGROPLUS 420 F -> ZKDP3202W0TD05001]

1	2.3120.002.4	2	plug m 22 x 1.5
2	2.1561.112.0	2	gasket Ø 22 -B-



9_F2082_39_0-A-001

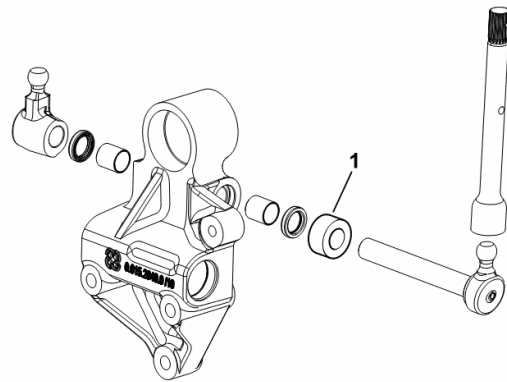
PARTS SET - 5-SPEED GEARBOX

Fig.	Code	QTY	Name
------	------	-----	------

Notes:

- FOR TYPES WITH H-M-L- (POWERSHIFT) [AGROPLUS 420 F -> ZKDP3202W0TD05001]

1	2.1559.391.0/10	1	bushing 16 x 30 x 15
---	-----------------	---	----------------------



9_D0533_04_0-A-001

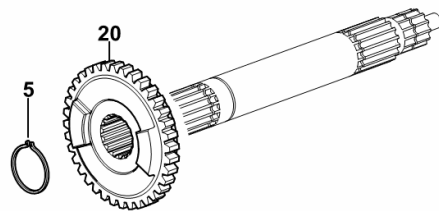
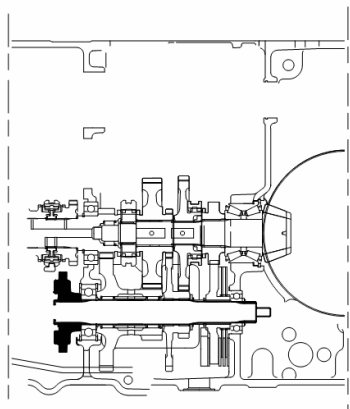
PHONIC WHEEL FOR TYPES WITH ELECTROHYDRAULIC 4WD ENGAGEMENT

Fig.	Code	QTY	Name
------	------	-----	------

Notes:

[AGROPLUS 420 F -> ZKDP3202W0TD05001]

5	2.1419.128.7	3	circlip 35
20	0.014.1994.0	1	gear Z = 36



9_C1238_00_0-B-001

P.T.O. - 540/N - WITH FIXED OUTPUT SHAFT

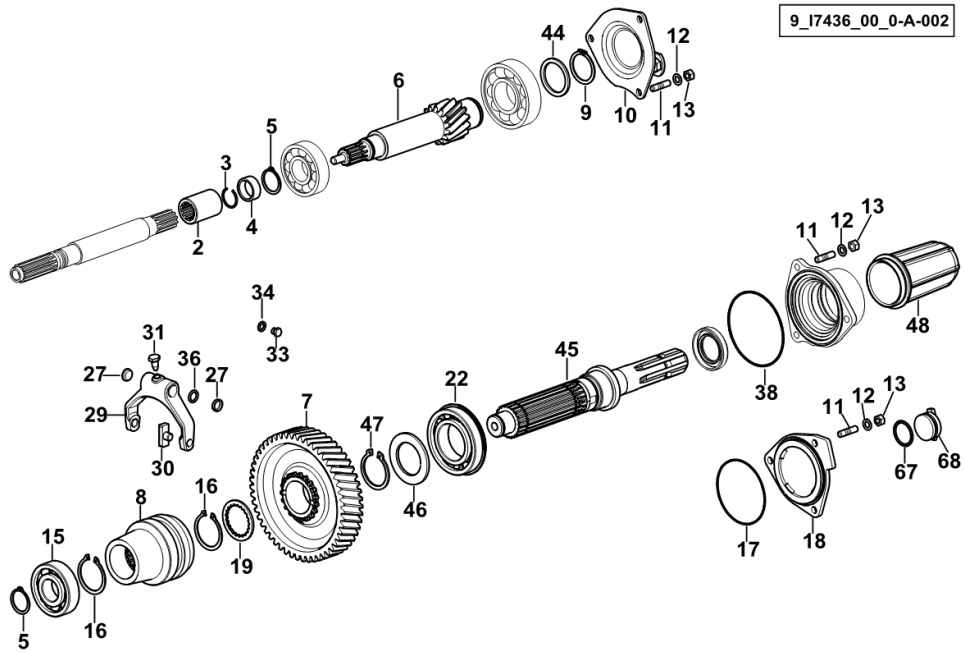


Fig.	Code	QTY	Name
------	------	-----	------

Notes:

- EXPORT U.S.A. [AGROPLUS 420 F -> ZKDP3202W0TD05001]

2	0.010.7696.0	1	sleeve Z = 11
3	2.1421.010.7	1	circlip 25
4	2.1549.172.0	1	spacer 24.7 x 31 x 12
5	2.1410.012.1	2	circlip 30
6	0.015.1013.0	1	shaft
7	0.014.3839.0	1	gear Z = 51
8	0.015.1046.0	1	sleeve
9	2.1410.016.1	1	circlip 40
10	0.008.5181.3/30	1	complete cover
11	2.0422.203.7	9	stud bolt m 8 p.1.25 x 20
12	2.1470.004.2	9	washer 8
13	2.1011.105.2	9	nut m 8 p.1.25
15	2.2060.009.0	1	ball bearing 30 x 72 x 19
16	2.1410.018.7	2	circlip 45
17	2.1539.025.0/10	1	'o' ring 88.57 x 2.62
18	0.008.4984.2/30	1	cover
19	2.1599.828.0/10	1	thrust plate 41 x 55 x 3
22	2.2999.204.0	1	bearing 50 x 90 x 20
27	2.3171.006.4	5	plug Ø 16
29	0.010.0468.0	1	fork
30	0.255.6463.0	2	shoe
31	2.0399.019.1	1	screw m 8 p.1 x 16
33	2.3110.428.1	3	plug m 8 p.1 x 10
34	2.1560.003.0	3	gasket 8.2 x 12
36	2.1530.028.0	1	'o' ring 11.91 x 2.62
38	2.1532.500.0	1	'o' ring
44	2.1599.414.0	1	snoulder 40 x 50 x 3.0
45	0.014.3979.0/10	1	p.t.o.shaft
46	2.1599.891.0	1	snoulder 45 x 70 x 4
47	2.1412.017.7	1	circlip 45
48	0.154.3655.0/10	1	guard
67	2.1530.079.0	1	'o' ring 29.82 x 2.62
68	0.014.1957.0	1	plug

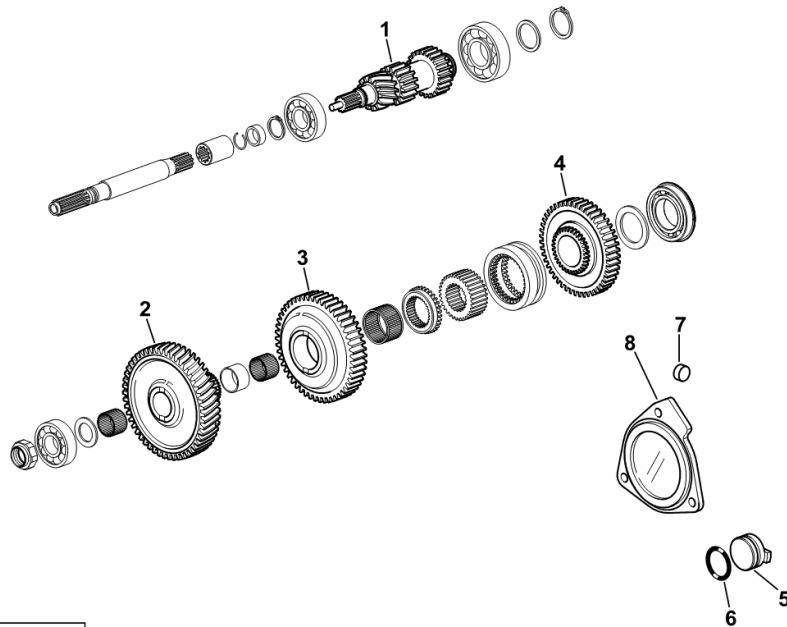
3-SPEED P.T.O. WITH FIXED OUTPUT SHAFT 540-750-1000

Fig.	Code	QTY	Name
------	------	-----	------

Notes:

[AGROPLUS 420 F -> ZKDP3202W0TD05001]

1	0.013.3587.0	1	p.t.o.shaft Z = 11 / 14 / 18 / 23
2	0.011.9934.0	1	gear Z = 51
3	0.011.9938.0	1	gear Z = 52
4	0.014.3922.0	1	gear Z = 47 / Z = 32
5	0.014.1957.0	1	plug
6	2.1530.079.0	1	'o' ring 29.82 x 2.62
7	2.3171.006.4	1	plug Ø 16
8	0.008.4984.2/30	1	cover



9_17536_02_0-A-001

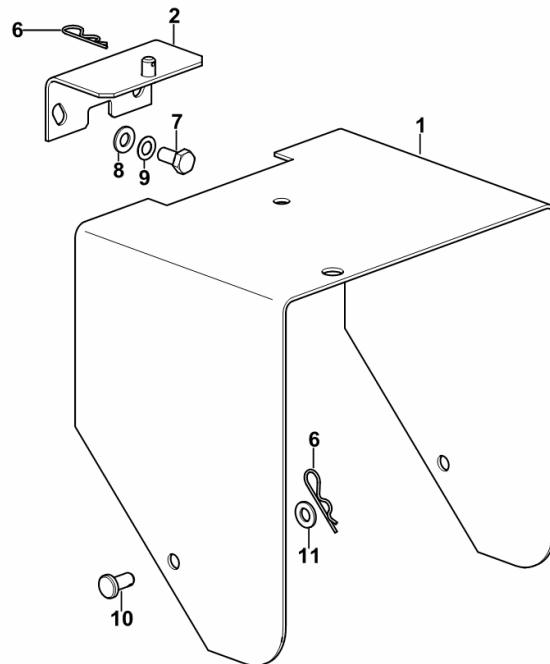
GUARD PLATE P.T.O.

Fig.	Code	QTY	Name
------	------	-----	------

Notes:

- EXPORT GB [AGROPLUS 420 F -> ZKDP3202W0TD05001]

1	0.015.6045.0	1	sump
2	0.255.3668.2/30	1	square
6	2.1699.180.2	3	pin
7	2.0112.307.2	2	screw m 10 p.1.5 x 20
8	2.1310.006.2	2	flat washer 10.5
9	2.1470.006.2	2	lock washer 10
10	2.1671.405.2	2	pin
11	2.1310.006.2	2	flat washer 10.5



9_F1436_22_0-A-001

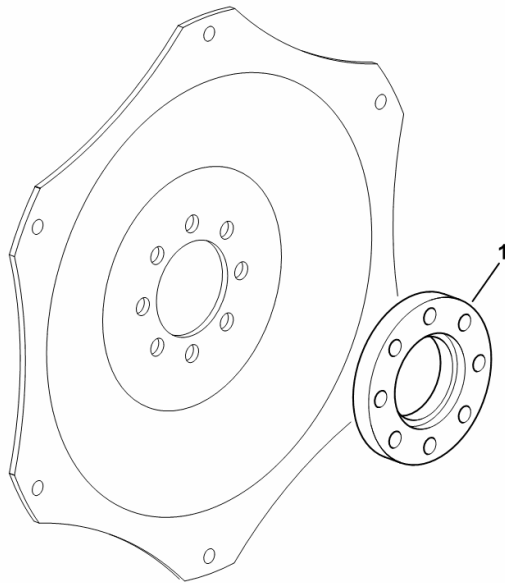
SPACER FOR REAR WHEEL RIMS

Fig.	Code	QTY	Name
------	------	-----	------

Notes:

[AGROPLUS 420 F -> ZKDP3202W0TD05001]

1	0.009.8710.0/10	2	spacer
---	-----------------	---	--------



9_56655_03_0-A-001

CLICK HERE TO **DOWNLOAD** THE COMPLETE MANUAL

- Thank you very much for reading the preview of the manual.
- You can download the complete manual from: www.heydownloads.com by clicking the link below



- Please note: If there is no response to CLICKING the link, please download this PDF first and then click on it.

CLICK HERE TO **DOWNLOAD** THE COMPLETE MANUAL