

## Agrolux F 57

### V0 - BALLAST, TOWING HITCHES

#### FRONT HITCHES

FRONT TOWING HITCH..... V0.01.0 (1)

#### REAR HITCHES

REAR TOWING HITCH..... V0.02.0 (1)

FRAME HOOK HOLDER..... V0.02.1 (1)

FRAME HOOK HOLDER..... V0.02.2 (1)

REAR TOWING HITCH BRACKET..... V0.02.3 (1)

REAR TOWING HITCH (GRASSI) CAT. " C "..... V0.02.4 (1)

REAR TOWING HITCH (GRASSI) CEE..... V0.02.5 (1)

REAR TOWING HITCH BRACKET..... V0.02.6 (1)

REAR TOWING HITCH BRACKET..... V0.02.6 (2)

REAR TOWING HITCH BRACKET..... V0.02.7 (1)

REAR TOWING HITCH CAT. " C "..... V0.02.8 (1)

REAR TOWING HITCH CAT. " C "..... V0.02.8 (2)

REAR TOWING HITCH - CATEGORY"D" GRASSI..... V0.02.9 (1)

REAR TOWING HITCH CAT. " D "..... V0.02.10 (1)

REAR TOWING HITCH CAT. " D "..... V0.02.10 (2)

REAR TOWING HITCH - CATEGORY "D2" GRASSI..... V0.02.11 (1)

REAR TOWING HITCH CAT. " D2 "..... V0.02.12 (1)

REAR TOWING HITCH CAT. " D2 "..... V0.02.12 (2)

REAR TOWING HITCH CAT. " D2 "..... V0.02.13 (1)

REAR TOWING HITCH CAT. " D2 "..... V0.02.14 (1)

REAR TOWING HITCH..... V0.02.15 (1)

REAR TOWING HITCH CEE..... V0.02.16 (1)

REAR TOWING HITCH CEE..... V0.02.17 (1)

AUTOMATIC REAR TOWING HITCH CEE Ø 31..... V0.02.18 (1)

AUTOMATIC REAR TOWING HITCH CEE Ø 31..... V0.02.18 (2)

PIN FOR REAR TOW HOOK..... V0.02.19 (1)

SUPPORTS..... V0.02.20 (1)

SUPPORTS..... V0.02.21 (1)

SUPPORTS..... V0.02.22 (1)

SPACER FOR TYPES WITH P.T.O. - 540/N - WITH INSERTED END SHAFTS..... V0.02.23 (1)

SPACER FOR TYPES WITH 2-SPEED P.T.O. WITH INSERTED END SHAFTS 540-750..... V0.02.24 (1)

SPACER FOR TYPES WITH PTO WITH INTERCHANGEABLE OUTPUT SHAFTS - 2 -SPEED + GROUNDSP. AND 3- SPEED..... V0.02.25 (1)

SEPARATOR - PTO - 3-SPEED WITH INSERTED END SHAFT..... V0.02.26 (1)

SPACERS FOR P.T.O. - 540 - 750 - WITH INSERTED END SHAFTS..... V0.02.27 (1)

REAR OSCILLATING HITCH..... V0.02.28 (1)

REAR SWINGING TOWING-HITCH..... V0.02.29 (1)

REAR TOWING HITCH CAT: "C"..... 0.011.2196.4/10.A

DRAWBAR COUPLING CAT: "D2"..... 0.011.3191.4.A

REAR TOWING HITCH CAT: "D" GRASSI..... 0.011.3193.4/10.A

CLICK HERE TO **DOWNLOAD** THE COMPLETE MANUAL

- Thank you very much for reading the preview of the manual.
- You can download the complete manual from: [www.heydownloads.com](http://www.heydownloads.com) by clicking the link below




- Please note: If there is no response to CLICKING the link, please download this PDF first and then click on it.

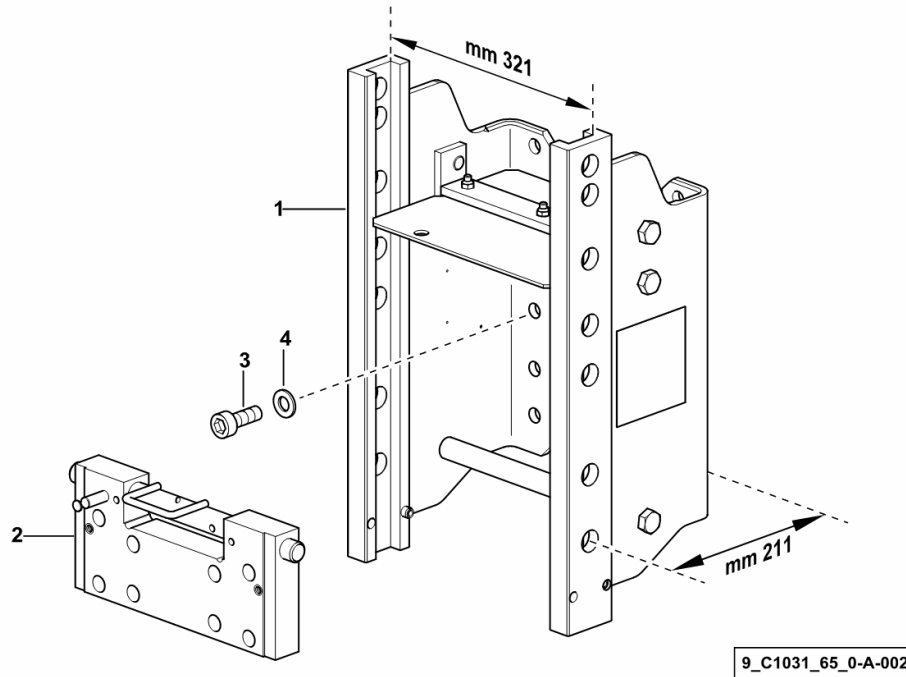
CLICK HERE TO **DOWNLOAD** THE COMPLETE MANUAL

Section: V0 - BALLAST, TOWING HITCHES  
**REAR TOWING HITCH BRACKET**

Fig.	Code	QTY	Name
------	------	-----	------

Notes:  
 [Agrolux F 57]

1	0.015.5752.3	1	chassis frame V.ORLANDI CAT. " D2 "
2	0.014.4485.3	1	plate - V.ORLANDI -  0.014.4485.3
3	2.0314.614.2	12	screw m 16 p.2 x 40
4	2.1475.006.2	12	washer 16

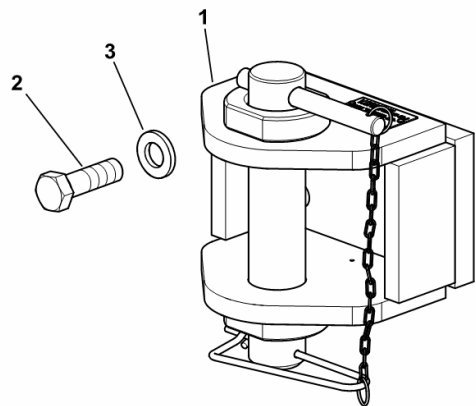


**REAR TOWING HITCH CAT. " D2 "**

Fig.	Code	QTY	Name
------	------	-----	------

Notes:  
[Agrolux F 57]

1	0.014.4452.3/10	1	tow hook V.ORLANDI CAT. " D2 " ☞ 0.014.4452.3/10
2	2.0113.721.2	4	screw m 18x60
3	2.1475.107.6	4	washer 18



9\_D8531\_41\_0-A-001

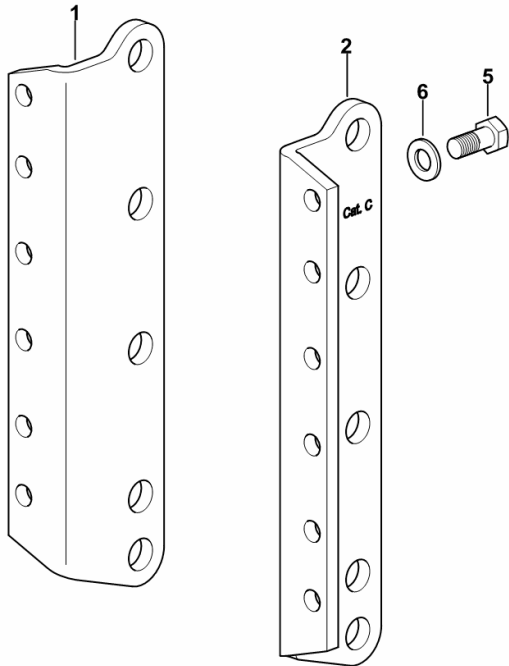
**SUPPORTS**

Fig.	Code	QTY	Name
------	------	-----	------

**Notes:**

[Agrolux F 57] -> 1066

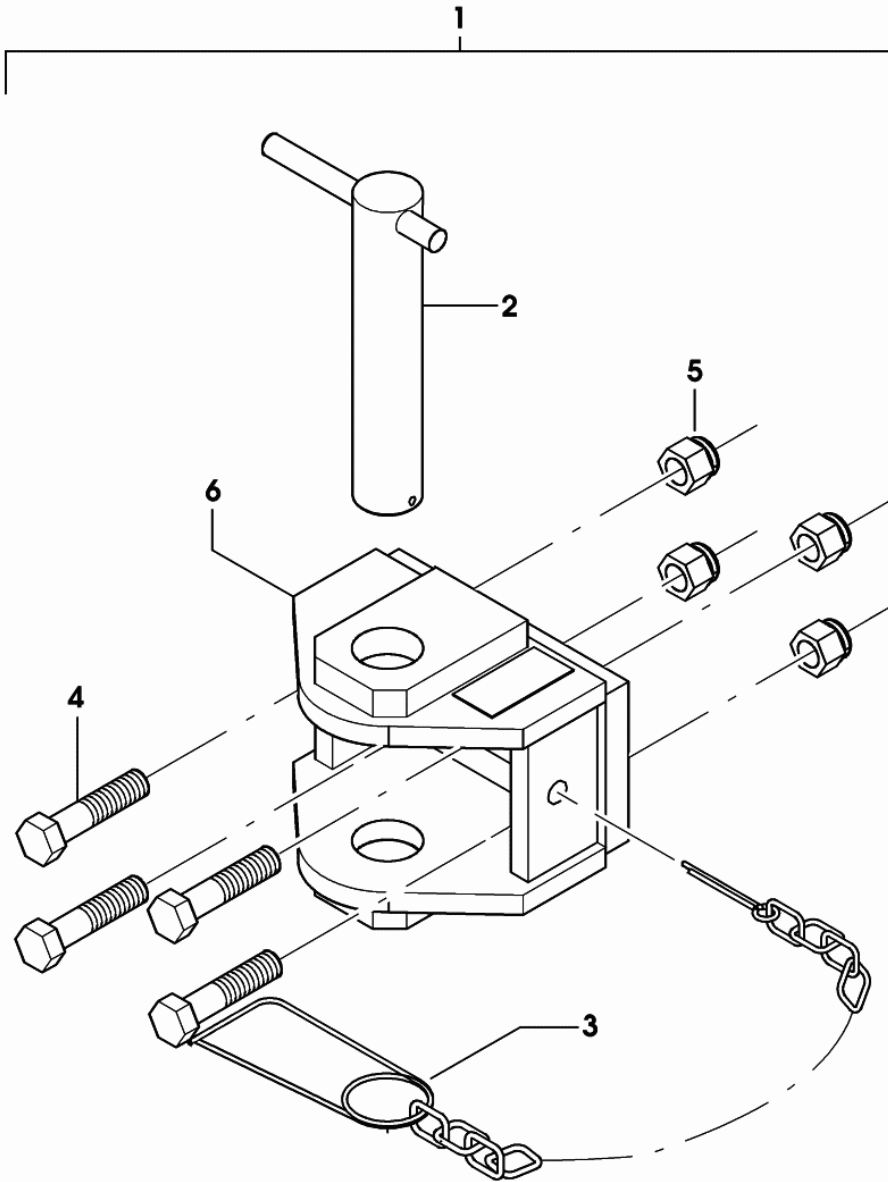
1	0.015.5887.0	1	bracket dx/rh/re
2	0.015.5886.0	1	bracket sx/lh/li
5	2.0112.613.2	12	screw m 16 p.2x35
6	2.1475.006.2	12	washer 16



9\_F1431\_50\_0-A-001

**REAR TOWING HITCH CAT: "D" GRASSI**

Fig.	Code	QTY	Name
1	0.011.3193.4/10	1	tow hook GRASSI CAT. " D "
2	0.010.2986.0	1	pin
3	0.010.2985.1	1	piston pin
4	0.010.2842.0	4	screw m 18x80
5	0.010.2842.1	4	nut m 18
6	0.010.2986.1	1	clevis



011\_3193\_4\_10

**DRAWBAR COUPLING CAT: "D2"**

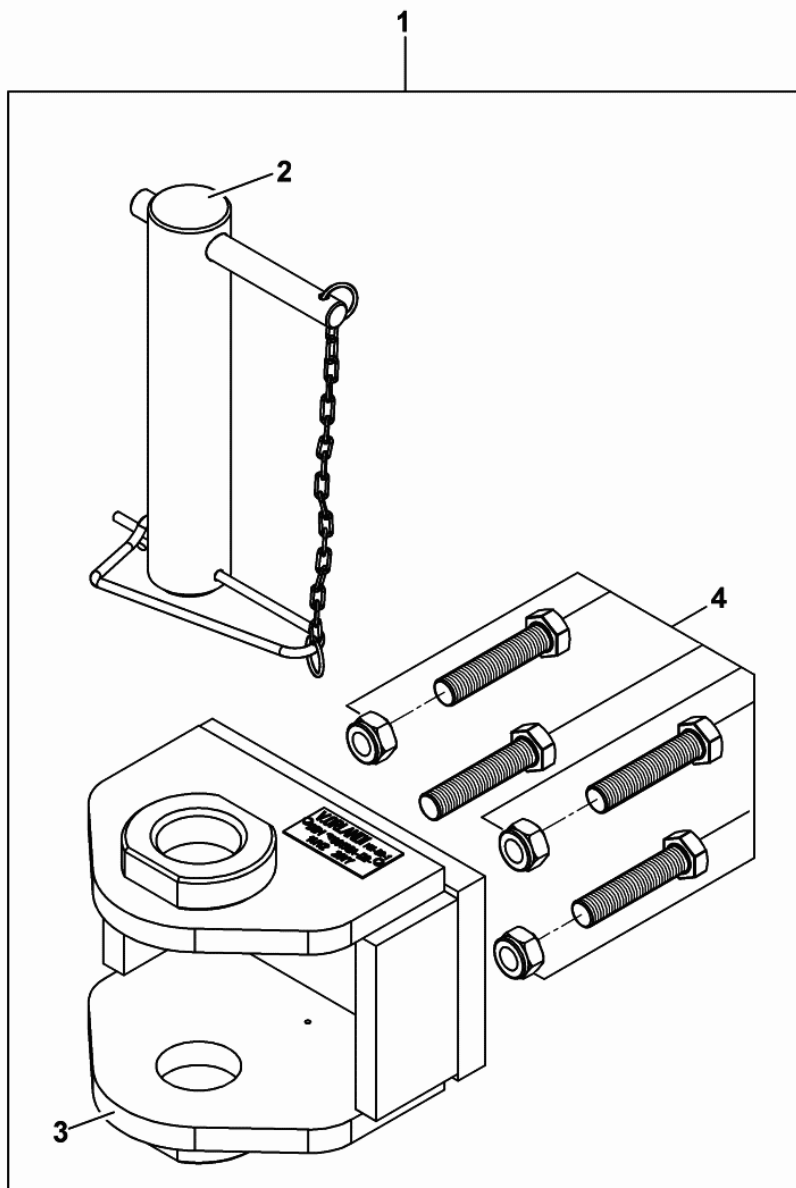


Fig.	Code	QTY	Name
1	0.014.4452.3/10	1	tow hook V.ORLANDI CAT. " D2 "
2	0.900.0458.2	1	pin
3	0.000.0000.1	0	not serviceable
4	0.900.0458.0	1	screw m 18, kit

0\_014\_4452\_3\_10

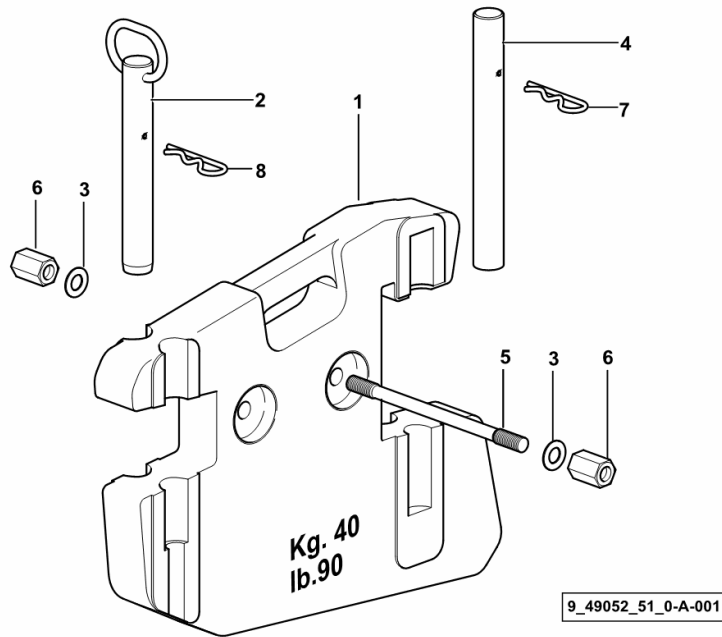
**FRONT BALLAST Kg 160**

Fig.	Code	QTY	Name
------	------	-----	------

**Notes:**

[Agrolux F 57]

1	0.96929.40.0/20	4	ballast kg 40 / lb 90
2	0.96928.51.2	1	pin
3	2.1310.009.2	4	flat washer 14
4	0.96930.50.0	1	pin mm 28x250
5	0.96930.51.0/10	2	rod m 14x220
6	2.1099.065.1	4	special nut m 14
7	2.1699.084.2	1	pin Ø 27
8	2.1699.084.2	1	pin Ø 27

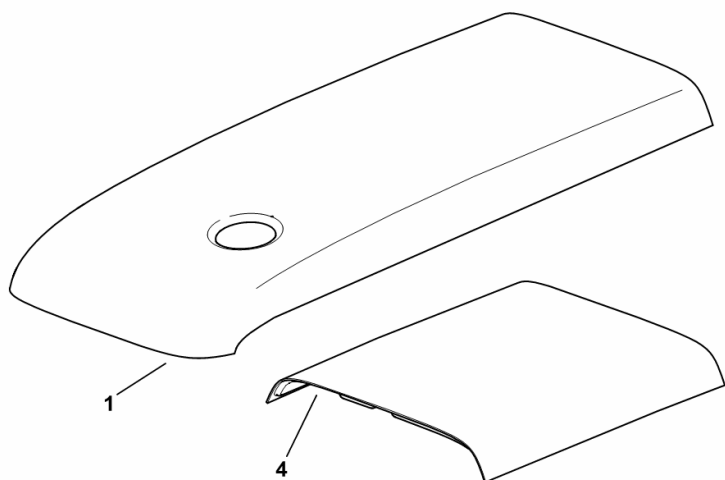


**HOOD UPPER PART**

Fig.	Code	QTY	Name
------	------	-----	------

Notes:  
[Agrolux F 57]

1	0.010.9786.5	1	bonnet
4	0.013.8651.0/10	1	panel



9\_E1272\_02\_0-A-001

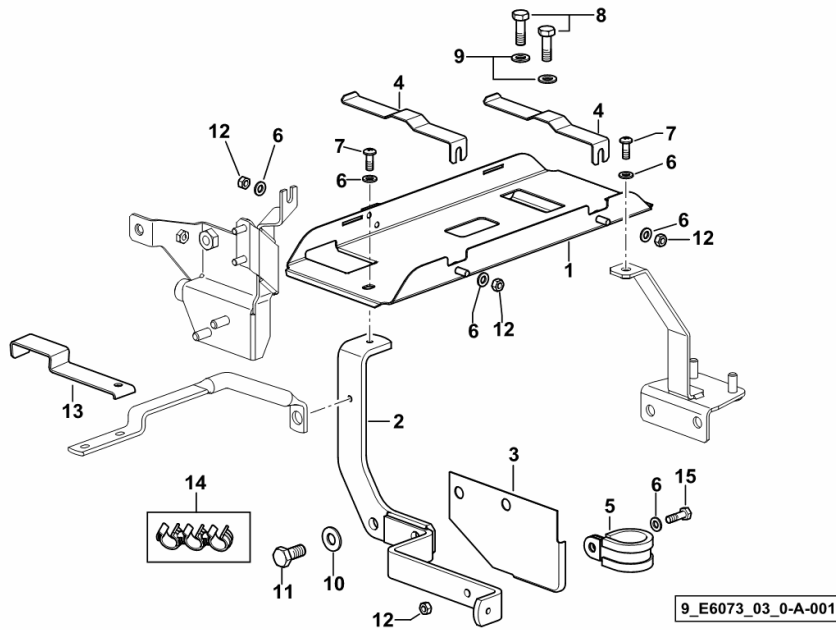
**CABLE CONDUIT**

Fig.	Code	QTY	Name
------	------	-----	------

**Notes:**

[Agrolux F 57]

1	0.014.0458.3/10	1	channel
2	0.014.0485.2/10	1	bracket
3	0.010.9700.0/20	1	plate
4	0.014.0736.0	2	bracket
5	2.6839.052.0	1	clamp 30/20
6	2.1310.002.2	8	washer 6.6, d125
7	2.0332.406.2	3	screw m 6 p.1.0 x 16
8	2.0112.209.2	2	screw m 8 p 1.25 x 25
9	2.1310.004.2	2	flat washer 8.5
10	2.1310.006.2	2	flat washer 10.5
11	2.0112.308.2	2	screw m 10 p.1.5x22
12	2.1011.103.2	4	nut m 6 p.1
13	0.014.0495.0	1	bracket
14	0.014.0506.4	1	small spring
15	2.0112.007.2	1	screw m 6 p.1 x 20

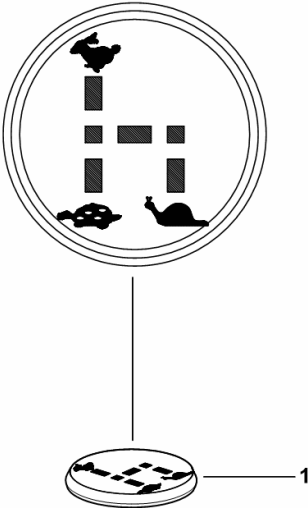


**CREEPER COVER**

Fig.	Code	QTY	Name
------	------	-----	------

Notes:  
[Agrolux F 57]

1	0.014.1602.0	1	cap
---	--------------	---	-----



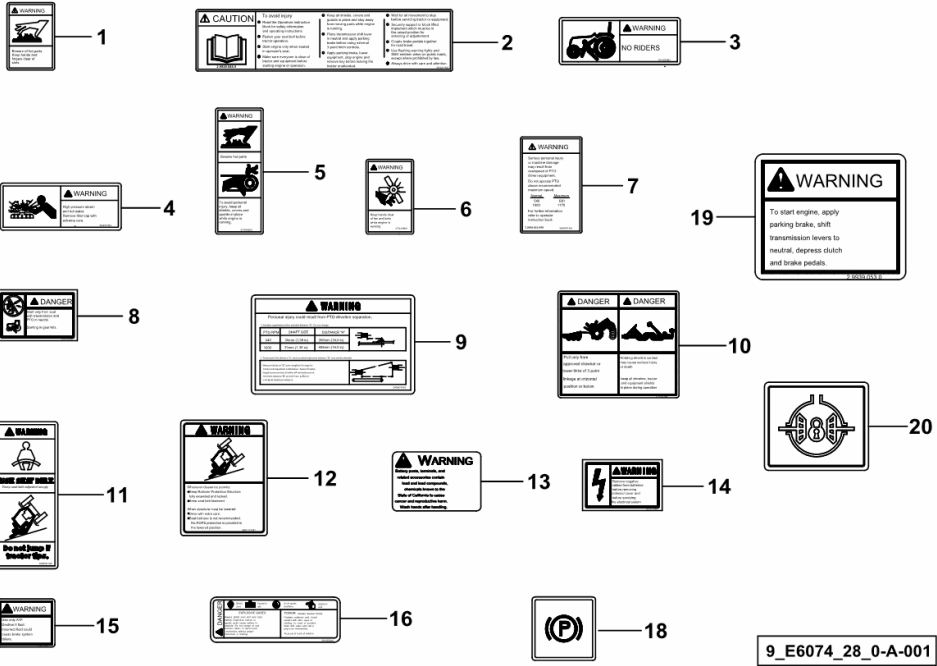
9\_E6164\_04\_0-A-001

**WARNING PLATES**

Fig.	Code	QTY	Name
------	------	-----	------

Notes:  
- EXPORT U.S.A. [Agrolux F 57]

1	2.9929.847.0	1	plate
2	2.9929.848.0/10	1	plate
3	2.9929.793.0	1	plate
4	2.9929.792.0	1	plate
5	2.9929.791.0	2	plate
6	2.9929.794.0	2	plate
7	2.9929.853.0/10	1	plate
8	2.9929.854.0	1	plate
9	2.9929.855.0/20	1	plate
10	2.9929.856.0	1	plate
11	2.9929.857.0	1	plate
12	2.9929.858.0	1	plate
13	2.9929.754.0	1	plate
14	2.9929.860.0	1	plate
15	2.9929.861.0	1	plate
16	2.9929.862.0	1	plate
18	2.9929.702.0/10	1	plate
19	2.9939.053.0/20	1	plate
20	0.007.7370.0/10	1	plate



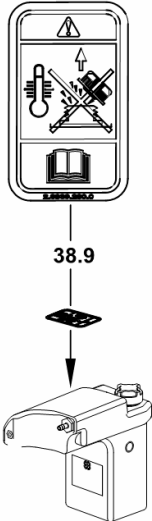
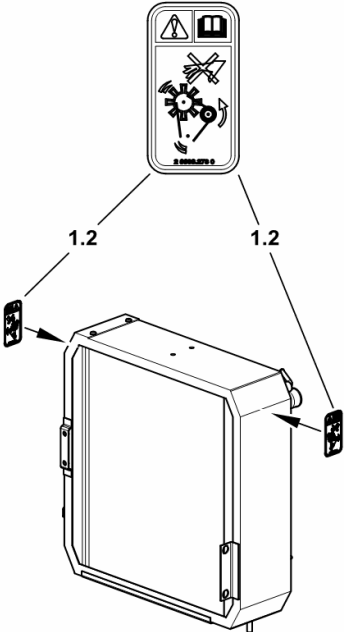
9\_E6074\_28\_0-A-001

**WARNING PLATES**

Fig.	Code	QTY	Name
------	------	-----	------

Notes:  
[Agrolux F 57]

1.2	2.9939.273.0	2	plate
38.9	2.9939.280.0	1	plate



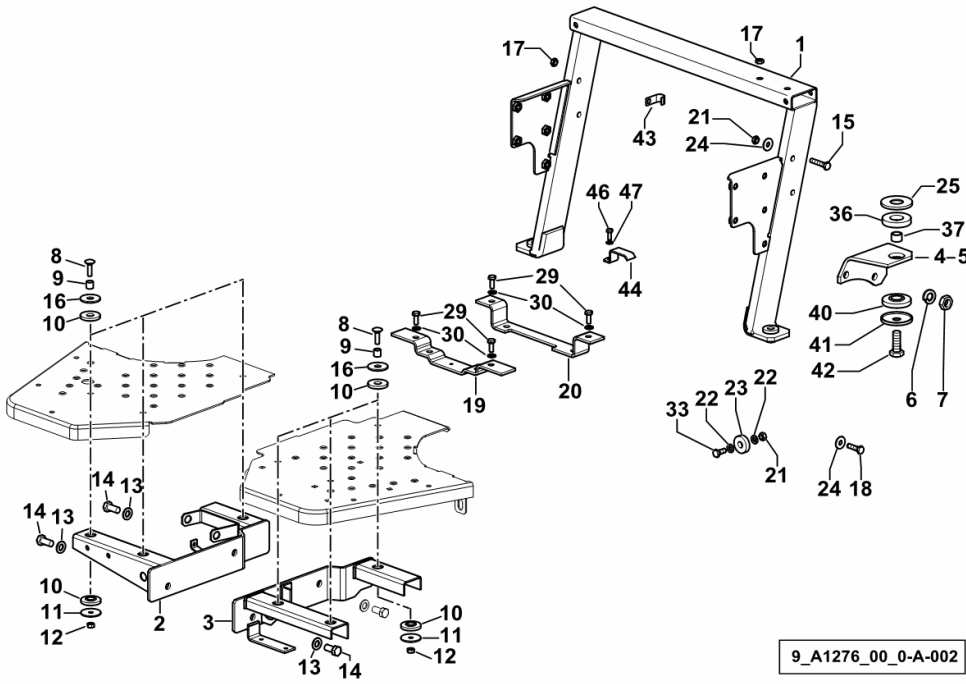
9\_E6083\_00\_0-C-001

**FOOTSTEP AND FENDER SUPPORTS**

Fig.	Code	QTY	Name
------	------	-----	------

**Notes:**

[Agrolux F 57] -> 1024



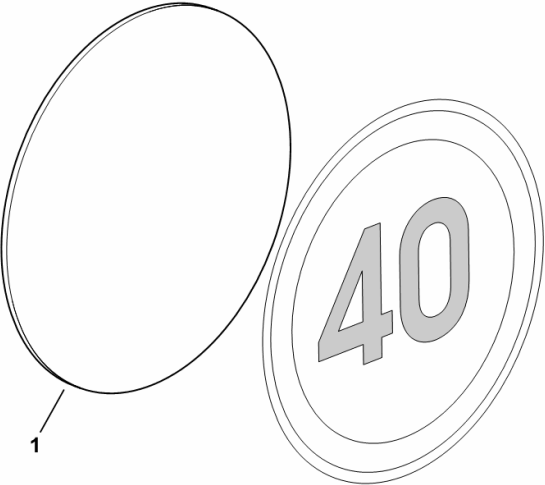
1	0.013.1601.3	1	chassis frame
2	0.012.5630.2	1	support dx/rh/re
3	0.012.5629.2/20	1	support sx/lh/li
4	0.011.9217.0	1	bracket dx/rh/re
5	0.011.9218.0	1	bracket sx/lh/li
6	2.1475.004.7	4	washer 13 x 24
7	2.1011.422.2	4	nut m 12 p.1.25
8	2.0020.207.2	6	screw m 8 p.1.25 x 30
9	2.1549.062.2	6	spacer 11x14x13
10	0.008.7443.0	12	block
11	2.1599.616.2	6	washer
12	2.1011.105.2	6	nut m 8 p.1.25
13	2.1310.007.2	4	flat washer 13.5
14	2.0112.409.2	4	screw m 12 p.1.75 x 25
15	2.0112.213.2	2	screw m 8 p.1.25 x 35
16	2.1599.244.2	6	snoulder 12.5x40x3
17	2.1142.011.2	2	insert m 8
18	2.0364.307.2	12	screw m 8 p.1.25 x 20
19	0.011.9240.3/30	1	support
20	0.011.9241.3/10	1	support
21	2.1011.105.2	8	nut m 8 p.1.25
22	2.1312.004.2	12	washer 8.4
23	2.6569.028.0	6	rubber plug 12 x 34 x 9.0
24	2.1312.004.2	18	washer 8.4
25	0.011.0225.0	2	cup
29	2.0112.206.2	4	screw m 8 p.1.25 x 18
30	2.1310.004.2	4	flat washer 8.5
33	2.0112.207.2	6	screw m 8 p.1.25 x 20
36	0.012.6493.0	2	block
37	2.1579.611.2	2	spacer 15x20x13
40	0.467.7680.0	2	block
41	0.010.1947.0	2	cup
42	2.0112.515.2	2	screw m 14 p.2 x 40
43	2.6819.004.2	2	clamp Ø 17
44	0.012.8633.0	1	bracket
46	2.0112.005.2	1	screw m 6 p.1 x 16
47	2.1310.002.2	1	washer 6.6, d125

**BRACKET - SPEED LABEL**

Fig.	Code	QTY	Name
------	------	-----	------

Notes:  
- EXPORT D [Agrolux F 57] - ITALY [Agrolux F 57]

1	0.011.0006.2/20	1	support
---	-----------------	---	---------



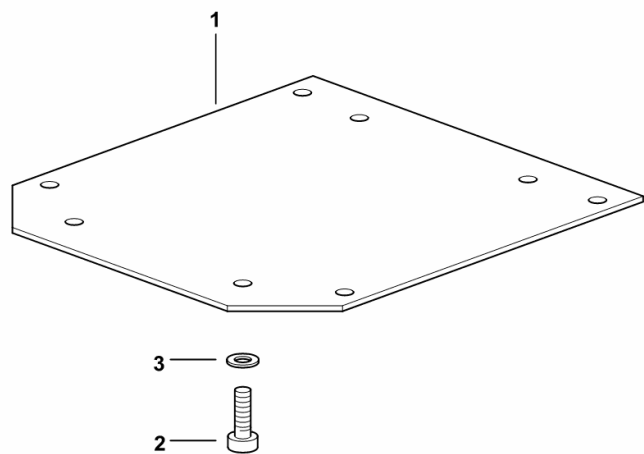
9\_70576\_05\_0-A-001

Section: G0 - BODYWORK - CAB  
**SEAT SUPPORT PLATE KAB XH2**

Fig.	Code	QTY	Name
------	------	-----	------

Notes:  
 [Agrolux F 57]

1	0.009.9050.0	1	plate
2	2.0312.208.2	4	screw m 8 p.1.25 x 25
3	2.1310.004.2	4	flat washer 8.5



9\_58975\_01\_0-A-001

**SEAT-COMPONENTS**

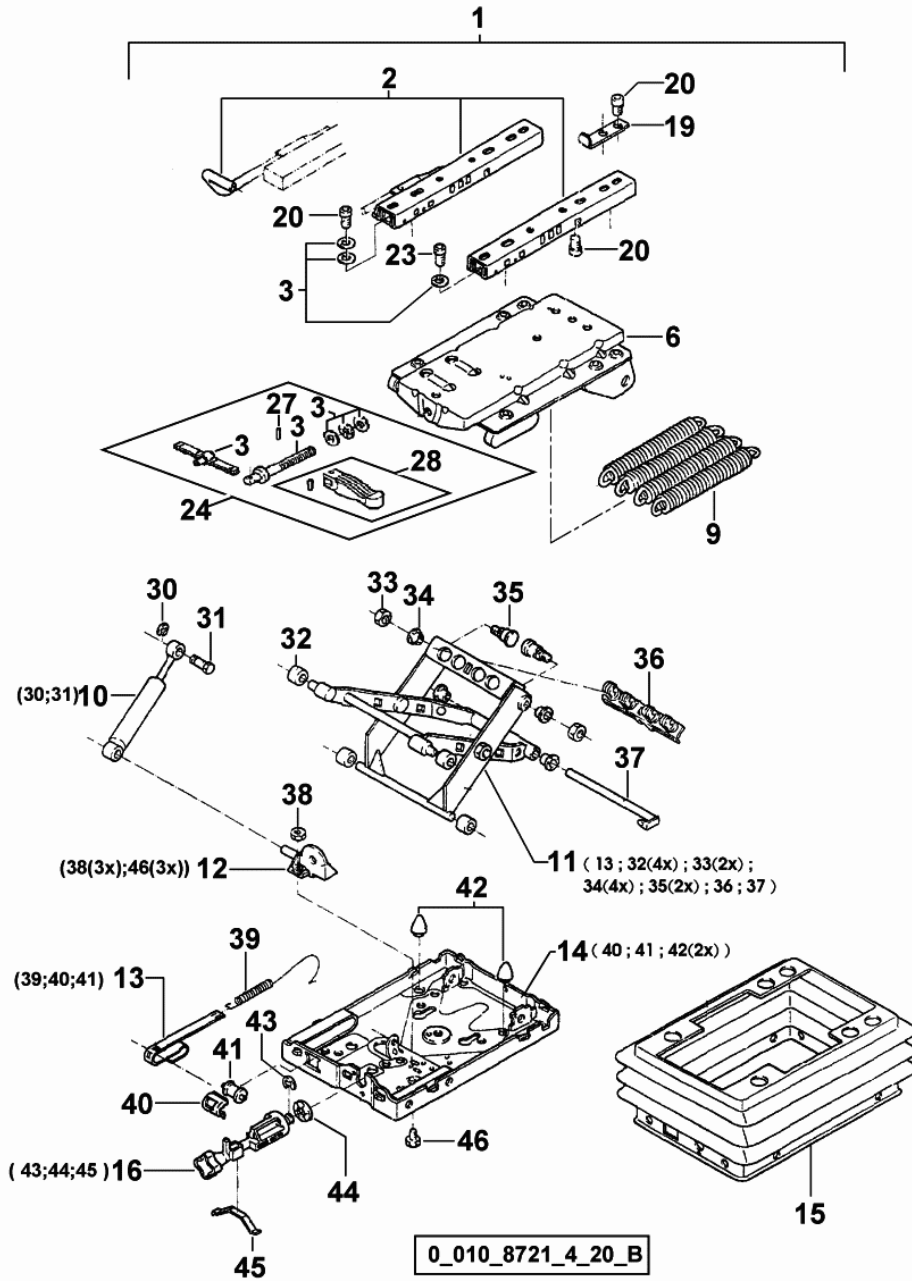


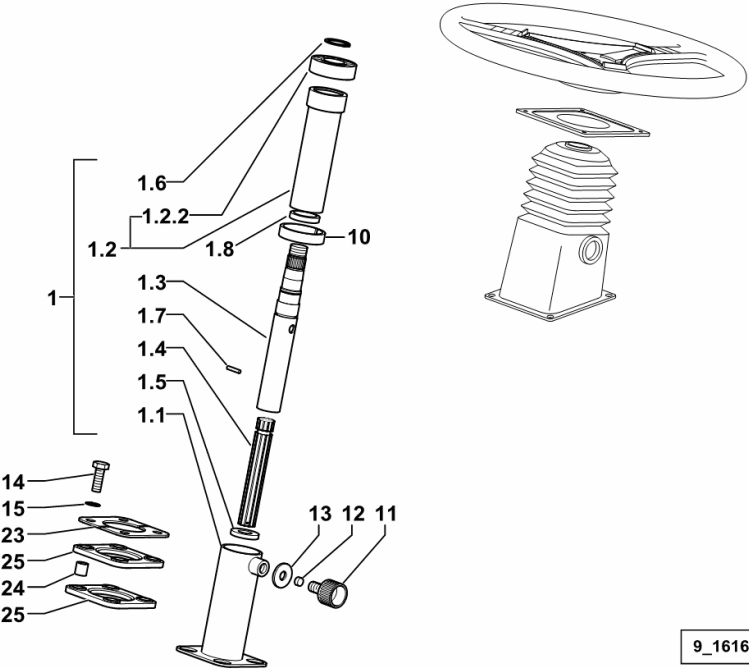
Fig.	Code	QTY	Name
1	0.010.2963.1	1	seat springs
2	0.010.2962.0	1	seat guide
6	0.010.2963.2	1	plate
9	0.009.4494.2	4	spring
10	0.009.4494.1	1	shoch.absorber
11	0.010.2964.1	1	seat springs
12	0.010.2964.2	1	stop
13	0.010.2965.0	1	register
14	0.010.2965.1	1	plate
15	0.010.2965.2	1	guard
16	0.009.4495.2	1	regulator
19	0.010.2966.0	1	small plate
20	0.010.2405.0	2	pin m 8 x 16
23	0.010.2966.1	3	screw m 8 x 12
24	0.010.2964.0	1	register
27	0.010.3874.0	1	pin 3x12
28	0.010.2074.2	1	fork
30	0.000.0000.1	0	not serviceable
31	0.010.2966.2	1	screw
32	0.009.4726.1	4	roller
33	0.010.2948.1	2	nut m 8
34	0.009.4715.1	4	spacer
35	0.010.2967.0	2	pin
36	0.010.2967.1	1	clevis
37	0.010.2967.2	1	pin m 10
38	0.009.4377.0	3	nut
39	0.009.4498.2	1	spring
40	0.009.4496.0	1	bracket
41	0.009.4496.1	1	roller
42	0.010.2275.1	2	stop
43	0.000.0000.1	0	not serviceable
44	0.000.0000.1	0	not serviceable
45	0.000.0000.1	0	not serviceable
46	0.000.0000.1	0	not serviceable

**STEERING COLUMN**

Fig.	Code	QTY	Name
------	------	-----	------

Notes:  
[Agrolux F 57]

1	0.009.9652.4/40	1	steering column
1.1	0.009.9652.2/10	1	steering column
1.2	0.007.3752.3/10	1	steering column
1.2.2	2.2021.009.0	1	ball bearing 25 x 47 x 12
1.3	0.009.6942.3/20	1	shaft
1.4	0.007.3756.0	1	shaft
1.5	2.1599.566.2	2	thrust plate 16.5 x 34 x 5
1.6	2.1410.010.1	1	circlip 25
1.7	2.1630.410.0	1	roll pin 4 x 20
1.8	2.1549.326.0	1	spacer 26 x 38 x 10
10	2.1549.178.2	1	spacer 44x46x12
11	0.012.1930.3	1	knob
12	2.1579.883.0	1	spacer 10x5
13	2.1312.005.2	1	washer 10.2
14	2.0112.313.2	4	screw m 10 p.1.5 x 35
15	2.1470.006.2	4	lock washer 10
23	0.009.9647.0/10	2	shim
24	2.1549.205.2	4	shim 10.5x14x14
25	0.009.9625.0	2	gasket



9\_16163\_06\_0\_0

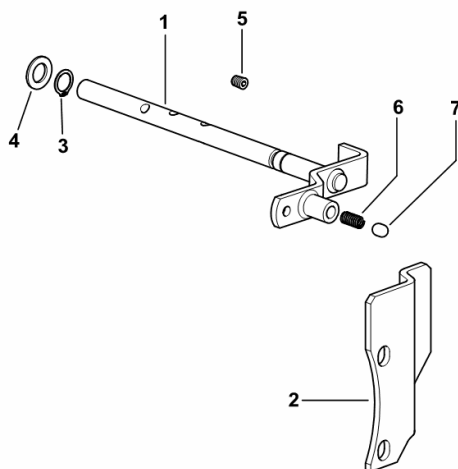
**CONTROL LEVER P.T.O.**

Fig.	Code	QTY	Name
------	------	-----	------

**Notes:**

[Agrolux F 57]

1	0.010.1079.2/20	1	lever
2	0.010.5451.0/10	1	plate
3	2.1410.004.2	1	circlip 16
4	2.1311.010.2	1	flat washer 16
5	2.3131.050.2	1	bracket m 8 p.1 x 8
6	2.4019.622.1	1	spring 6.3 x 9.5 x 1.6 x 22.4
7	2.1699.159.0	1	cap 10 x 14.1



9\_E6036\_02\_0-A-001

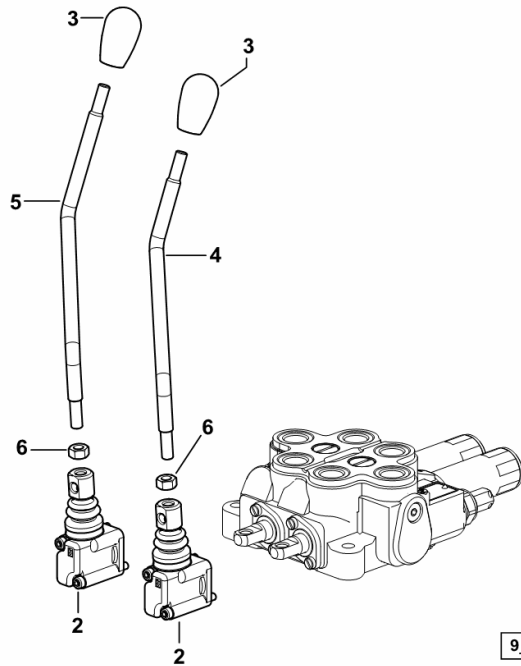
**CONTROLS FOR 4-WAY AUXILIARY SERVICES CONTROL VALVE**

Fig.	Code	QTY	Name
------	------	-----	------

**Notes:**

- EXPORT U.S.A. [Agrolux F 57]

2	0.013.1989.4	2	transmission ☞ 0.013.1989.4
3	0.013.2865.0/10	2	knob - BLUE COLOUR
4	0.016.7039.0	1	lever
5	0.016.7042.0	1	lever
6	2.1011.105.2	2	nut m 8 p.1.25



9\_P1388\_15\_0-B-001

## Agrolux F 57

### L0 - ELECTRIC AL SYSTEM

#### BATTERY - ALTERNATOR

BATTERY 12V 100Ah 450A.....	L0.01.0 (1)
ALTERNATOR 65 A.....	L0.01.1 (1)
ALTERNATOR AND PULLEY SUPPORTS.....	L0.01.2 (1)
ALTERNATOR PARTS.....	2.9439.420.0/10.A

#### WIRING LOOMS

CABLES FOR ROTATING BEACONS ON ROPS.....	L0.02.0 (1)
CABLES FOR ROTATING BEACONS ON ROPS.....	L0.02.1 (1)
ELECTRICAL EQUIPMENT FRONT - BATTERY LEADS.....	L0.02.2 (1)
ELECTRICAL EQUIPMENT FRONT - BATTERY LEADS.....	L0.02.3 (1)
ELECTRICAL EQUIPMENT FRONT - BATTERY LEADS.....	L0.02.6 (1)
CENTRAL ELECTRICAL SYSTEM - LIGHT FLASHER RELAY.....	L0.02.7 (1)
CENTRAL ELECTRICAL SYSTEM - LIGHT FLASHER RELAY.....	L0.02.8 (1)
CENTRAL ELECTRICAL SYSTEM - LIGHT FLASHER RELAY.....	L0.02.11 (1)
ELECTRICAL EQUIPMENT REAR.....	L0.02.12 (1)
ELECTRICAL EQUIPMENT REAR.....	L0.02.13 (1)
PREHEATER RELAY BASEPLATE.....	L0.02.14 (1)
ELECTRICAL EQUIPMENT ROTARY WARN. LAMP.....	L0.02.15 (1)
ELECTRICAL EQUIPMENT ROTARY WARN. LAMP.....	L0.02.16 (1)
TRAILER SOCKET-OUTLET.....	L0.02.17 (1)
TRAILER SOCKET-OUTLET.....	L0.02.18 (1)
ELECTRICAL LEAD.....	L0.02.19 (1)
ELECTRICAL LEAD.....	L0.02.20 (1)
PRESSURE SWITCH WIRING FOR TRAILER HYDRAULIC BRAKING SYSTEM - ITALY.....	L0.02.21 (1)
FLASHING LIGHT SUPPORT.....	0.011.7840.4.A
BATTERY LEADS.....	0.012.6292.4.A
BATTERY LEADS.....	0.012.6295.4.A
BATTERY LEADS.....	0.012.6295.4/10.A
ELECTRICAL SYSTEM.....	0.013.6326.4.A
ELECTRICAL SYSTEM.....	0.014.0160.4/10.A
ELECTRICAL SYSTEM.....	0.014.0161.4/20.A
ELECTRICAL SYSTEM.....	0.015.1001.4.A
ELECTRICAL EQUIPMENT FRONT.....	0.015.1002.4.A
ELECTRICAL SYSTEM.....	0.015.1003.4.A
ELECTRICAL EQUIPMENT FRONT.....	0.015.1008.4.A
ELECTRICAL SYSTEM.....	0.015.1010.4.A

#### ECUs

PREHEATING CONTROL UNIT.....	L0.03.0 (1)
PREHEATING CONTROL UNIT.....	L0.03.1 (1)
PREHEATING CONTROL UNIT.....	L0.03.4 (1)

#### SENSORS - POTENTIOMETERS - ENABLING SWITCHES

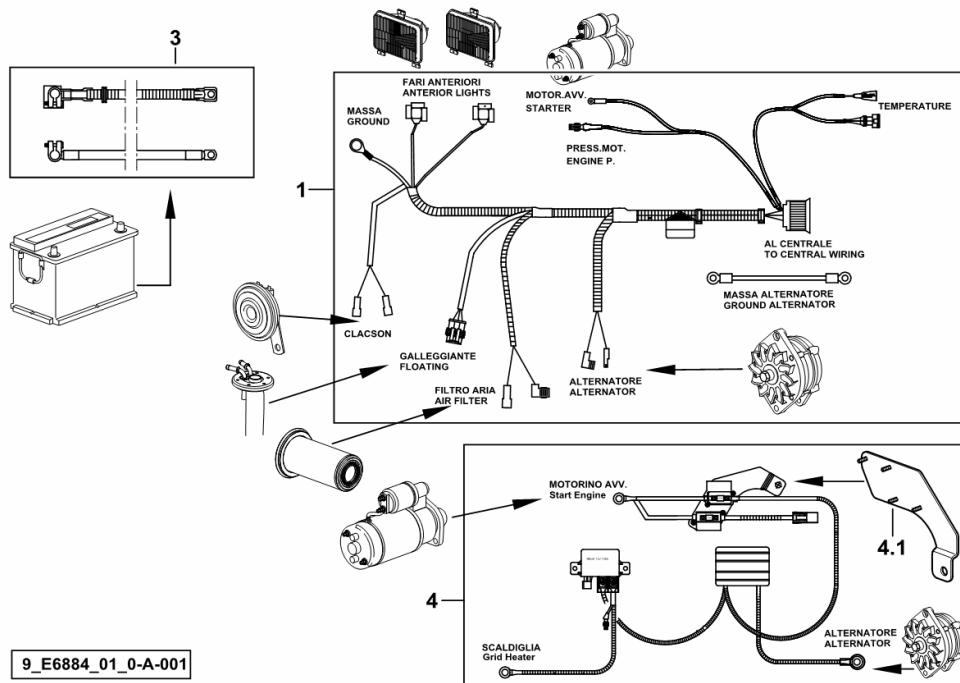
**ELECTRICAL EQUIPMENT FRONT - BATTERY LEADS**

Fig.	Code	QTY	Name
------	------	-----	------

**Notes:**

[Agrolux F 57] -> 1029

1	0.015.1002.4	1	electrical system ☞ 0.015.1002.4
3	0.012.6295.4/10	1	wire ☞ 0.012.6295.4/10
4	0.015.1003.4	1	wire ☞ 0.015.1003.4
4.1	0.014.0739.3	1	support

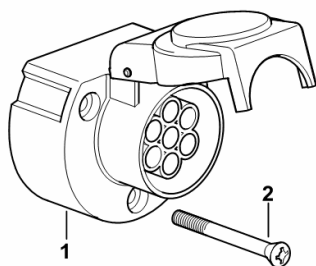


**TRAILER SOCKET-OUTLET**

Fig.	Code	QTY	Name
------	------	-----	------

Notes:  
[Agrolux F 57]

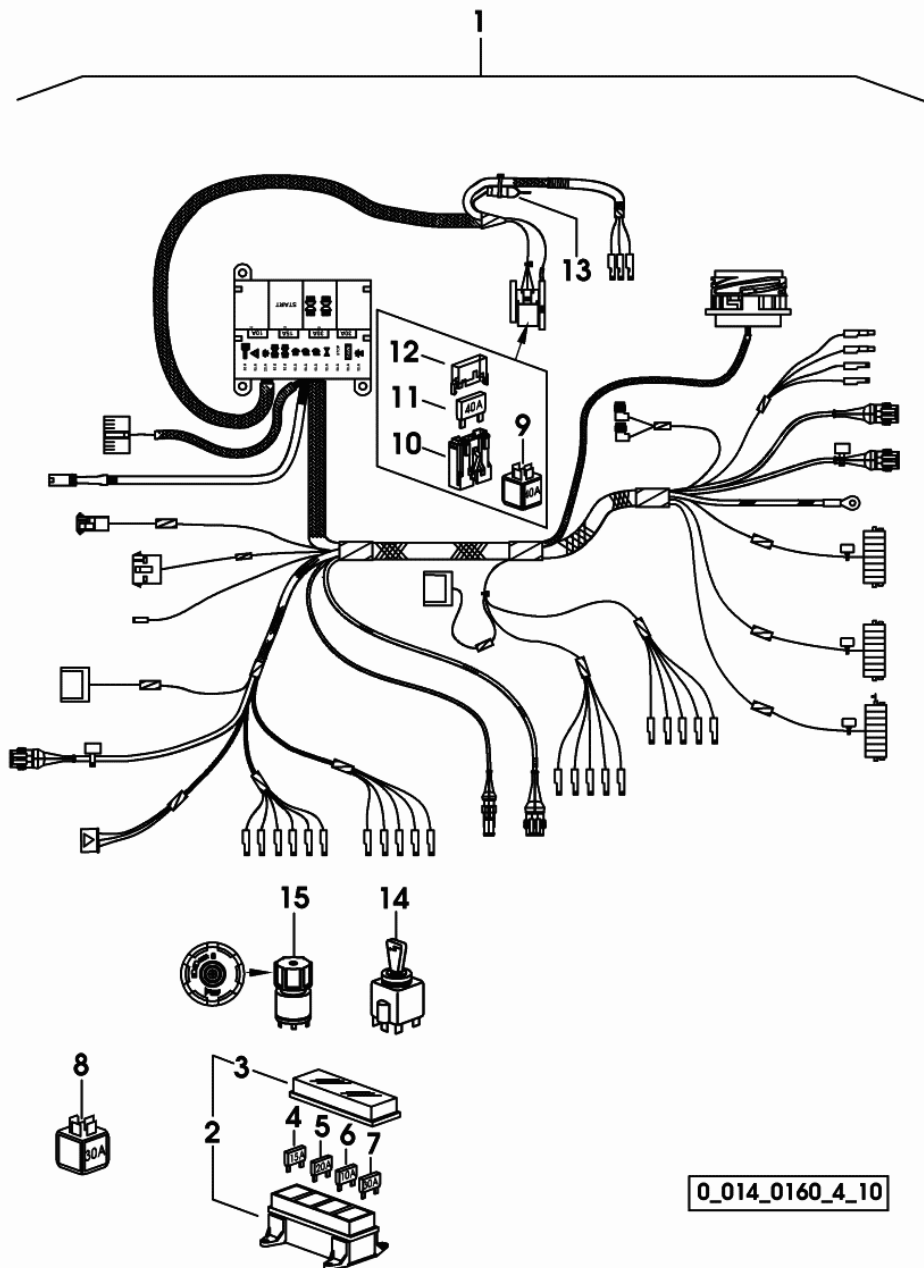
1	2.6030.011.0	1	socket 7-POLES
2	2.0312.015.2	3	screw m 5 p.0.8x45



9\_62084\_40\_0-A-001

**ELECTRICAL SYSTEM**

Fig.	Code	QTY	Name
1	0.014.0160.4/10	1	electrical system
2	0.000.0000.1	1	not serviceable
3	0.010.2754.0	1	cover
4	0.010.3999.2	3	fuse 15 A unival
5	0.900.0000.1	1	fuse 20 A unival
6	0.010.3998.0	9	fuse 10 A unival
7	0.900.0000.0	3	fuse 30 A unival
8	0.010.2089.2	3	relay 12V-30A
9	2.7659.101.0	1	relay 12V-30A
10	0.009.4450.1	1	fuse-holder
11	0.009.4479.0	1	fuse 40 A maxival
12	0.009.4450.2	1	cover
13	0.900.0072.0	1	connection
14	2.7659.052.0	1	switch
15	2.7409.060.0/10	1	switch



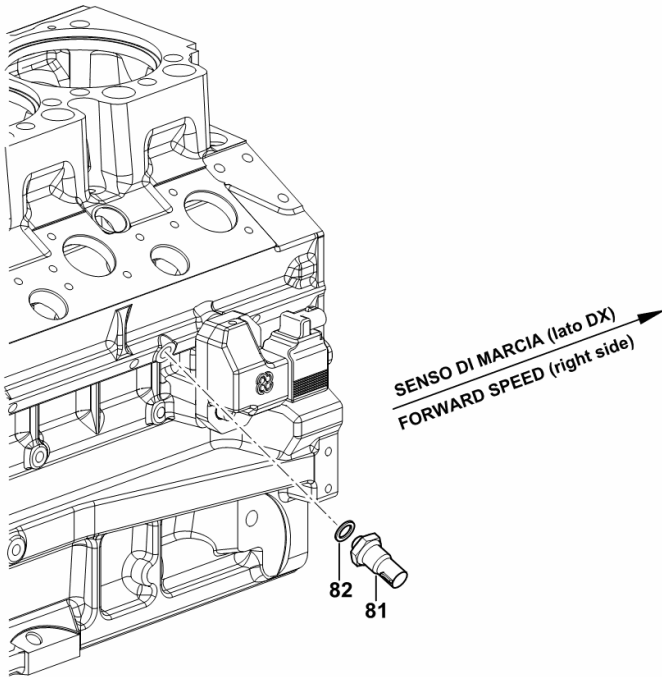
Section: L0 - ELECTRIC AL SYSTEM  
**ENGINE OIL PRESSURE SWITCH**

Fig.	Code	QTY	Name
------	------	-----	------

**Notes:**

- EXPORT U.S.A. [Agrolux F 57]

81	2.7099.987.0/10	1	pressure switch 2.5 BAR
82	2.1560.008.0	1	gasket 12.2 x 18



9\_O0115\_00\_0-D-001

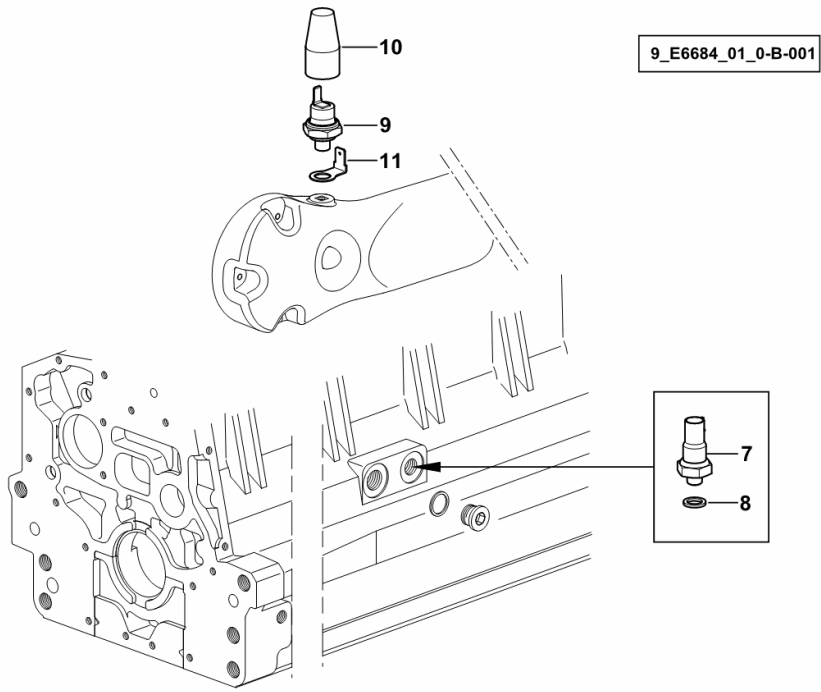
**AIR CLEANER AND ENGINE OIL FILTER CLOGGING PRESSURE SWITCH**

Fig.	Code	QTY	Name
------	------	-----	------

**Notes:**

[Agrolux F 57] 1028 <-

7	2.7099.940.0	1	pressure switch 0.4 - 0.7 BAR
8	2.1560.008.0	1	gasket 12.2 x 18
9	2.7099.320.0/10	1	pressure switch
10	2.6519.029.0	1	cap
11	0.164.8450.0	1	terminal



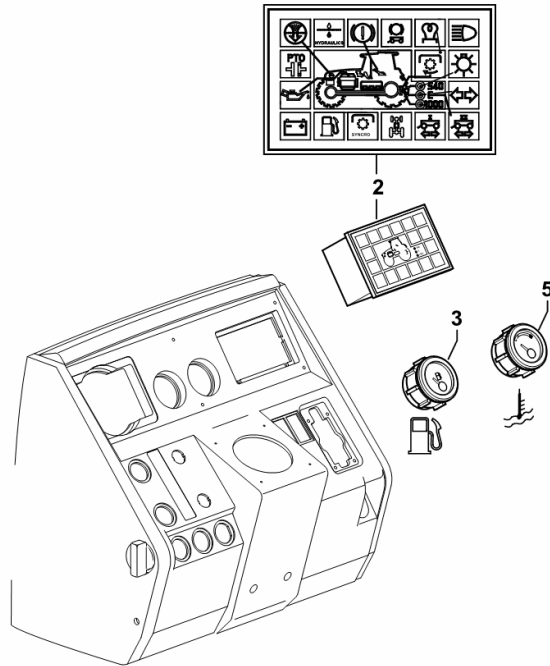
**CHECK-PANEL/FUEL GAUGE/WATER TEMPERATURE GAUGE**

Fig.	Code	QTY	Name
------	------	-----	------

**Notes:**

[Agrolux F 57] 1028 <-

2	2.8339.017.0	1	warning light
3	0.008.1305.0	1	level indicator ☞ 0.008.1305.0
5	0.008.1309.0	1	tempe guage ☞ 0.008.1309.0



9\_E6684\_00\_0-B-001

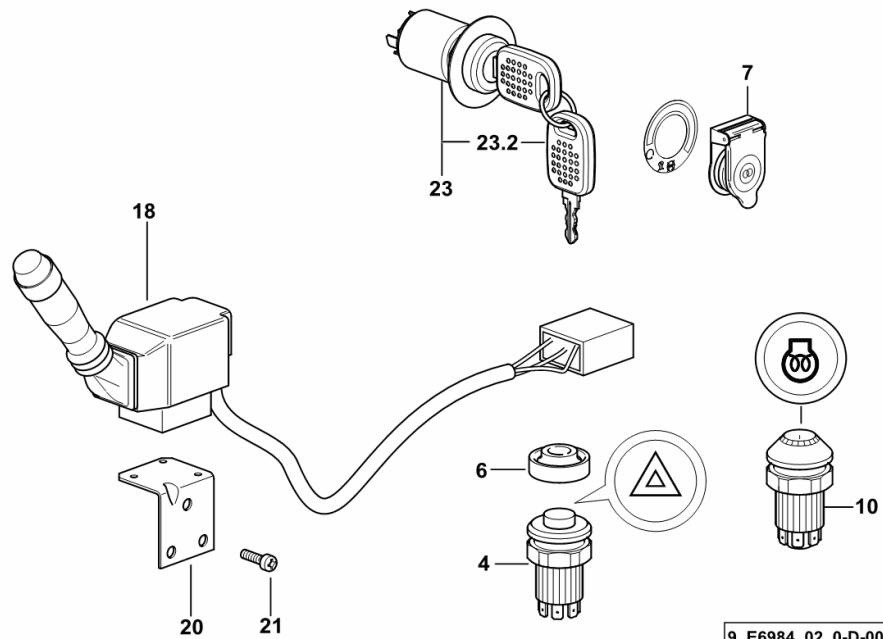
**KEYSWITCH BLOCK - STEERING COLUMN SWITCH UNIT - INSTRUMENT PANEL  
BUTTONS**

Fig.	Code	QTY	Name
------	------	-----	------

**Notes:**

- EXPORT U.S.A. [Agrolux F 57]

4	2.8819.070.0	1	switch
6	2.6519.015.0	1	cap
7	0.012.2056.2	1	small cover
10	2.7659.250.0/10	1	push-button
18	0.012.6054.4	1	switch
20	0.012.6075.3	1	square
21	2.0322.307.6	3	screw m 5 x 20
23	0.015.0485.4	1	start device
23.2	2.7439.023.0	2	key



9\_E6984\_02\_0-D-002

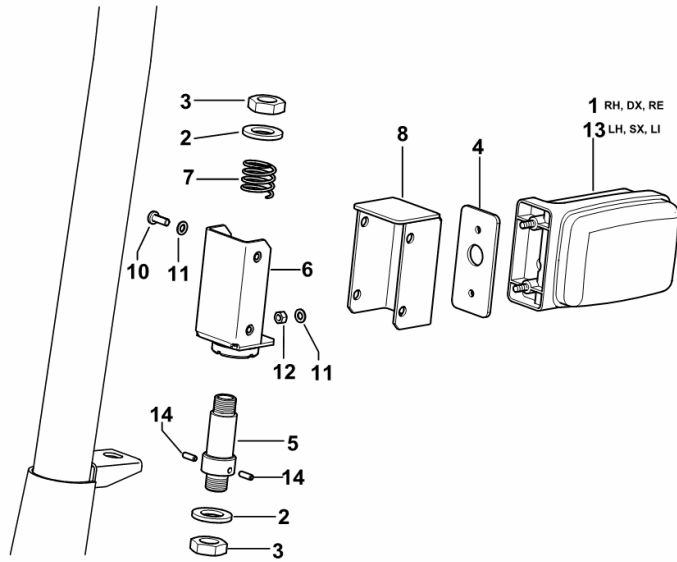
Section: L0 - ELECTRIC AL SYSTEM  
**ROTATING BEACONS ON ROPS**

Fig.	Code	QTY	Name
------	------	-----	------

**Notes:**

- EXPORT U.S.A. [Agrolux F 57]

1	2.8059.490.0	1	side lamp dx/rh/re ☞ 2.8059.490.0
2	2.1310.010.2	4	flat washer 16
3	2.1011.509.2	4	nut m 16 p.1.5
4	0.467.8550.0	2	gasket
7	2.4019.732.2/10	2	spring
8	0.013.8740.0/10	2	lamp support
10	2.0332.305.2	8	screw m 5 p.0.8 x 14
11	2.1310.001.2	12	flat washer 5.3
12	2.1011.102.2	4	nut m 5 p.0.7
13	2.8059.460.0	1	side lamp sx/lh/li ☞ 2.8059.460.0
14	2.1630.406.0	4	roll pin 4 x 12

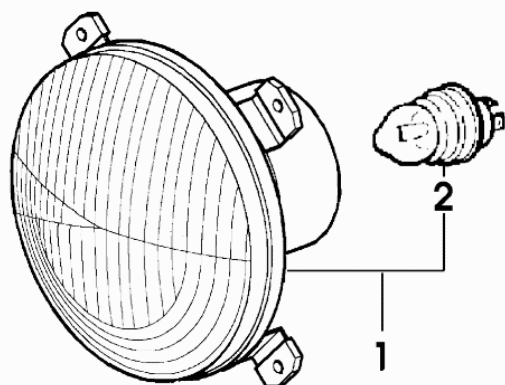


9\_E6685\_10\_0-A-001

**ELECTRIC LIGHTING SYSTEM**

Fig.	Code	QTY	Name
1	2.8029.830.0/20	1	lamp
2	0.010.2251.0	1	lamp 60/55W - HALOGEN -

2\_8029\_830\_0\_20

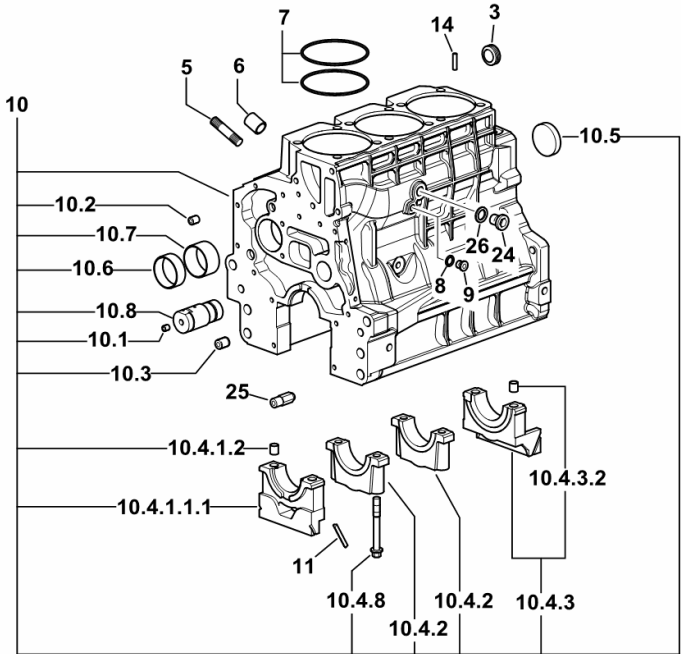


Section: B0 - ENGINE  
**CRANKCASE**

Fig.	Code	QTY	Name
------	------	-----	------

Notes:  
 - EXPORT U.S.A. [Agrolux F 57]

3	2.3199.312.2/20	1	plug m 35x1.5x9.5
5	2.0439.279.7	6	stud bolt m 8 p.1 x 25
6	2.1559.188.2	3	sleeve 11.4 x 14 x16
7	2.1539.259.0	6	'o' ring 107.62x2.62
8	2.1560.010.0	1	gasket 14.2 x 20 x 1.5
9	2.3199.292.0	1	plug 1/4" gas
10	0.014.9911.4/30	1	crankcase
10.1	2.3130.001.1	12	plug 1/8" gas
10.2	2.3130.002.1	4	plug 1/4" gas
10.3	2.3130.003.1	2	plug 3/8" gas
10.4.1.1.1	0.065.1112.7/10	1	support
10.4.1.2	2.1699.165.0	1	sleeve 12.3x15x16
10.4.2	0.065.1114.0/10	2	support
10.4.3	0.065.1116.3	1	support
10.4.3.2	2.1699.165.0	1	sleeve 12.3x15x16
10.4.8	0.065.1117.0	8	screw m 12 x 100
10.5	2.3179.012.0	1	plug 60
10.6	0.065.1140.0	3	bushing 59X55X20
10.7	0.065.1141.0	1	bushing 59X55X30
10.8	0.014.1340.0/10	1	pin
11	0.066.1152.0/10	4	gasket
14	2.1549.154.2	3	sleeve 4.8x5.8x16
24	2.3120.101.0	1	plug m 18 p.1.5
25	0.013.4946.0/10	1	cooling nozze
26	2.1560.014.0	1	gasket 18.2 x 24 x 1.5



CLICK HERE TO **DOWNLOAD** THE COMPLETE MANUAL

- Thank you very much for reading the preview of the manual.
- You can download the complete manual from: [www.heydownloads.com](http://www.heydownloads.com) by clicking the link below



- Please note: If there is no response to CLICKING the link, please download this PDF first and then click on it.

CLICK HERE TO **DOWNLOAD** THE COMPLETE MANUAL

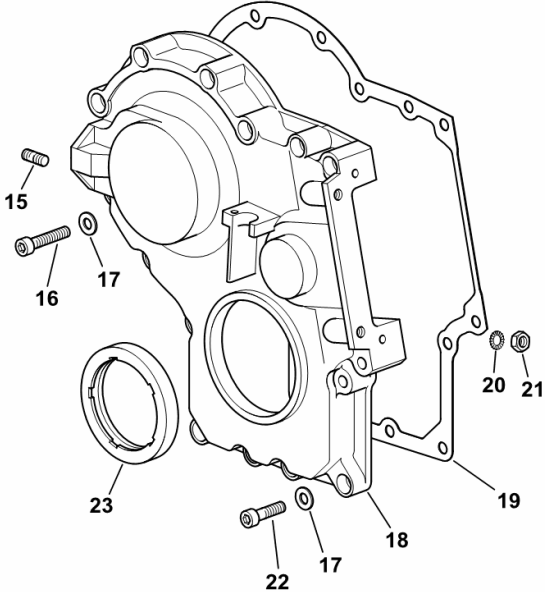
Section: B0 - ENGINE  
**TIMING CASE**

Fig.	Code	QTY	Name
------	------	-----	------

Notes:  
- EXPORT U.S.A. [Agrolux F 57]

15	2.0432.003.7	2	stud bolt m 8 p.1.25 / p.1 x 20
16	2.0312.214.2	7	screw m 8 p.1.25 x 40
17	2.1480.014.1	15	washer 8
18	0.013.4981.0	1	sump
19	0.065.1150.0/30	1	gasket
20	2.1470.004.2	4	washer 8
21	2.1011.405.2	2	nut m 8 p.1
22	2.0312.208.2	8	screw m 8 p.1.25 x 25
23	2.1529.167.0	1	'o' ring

9\_O0811\_00\_0-B-001

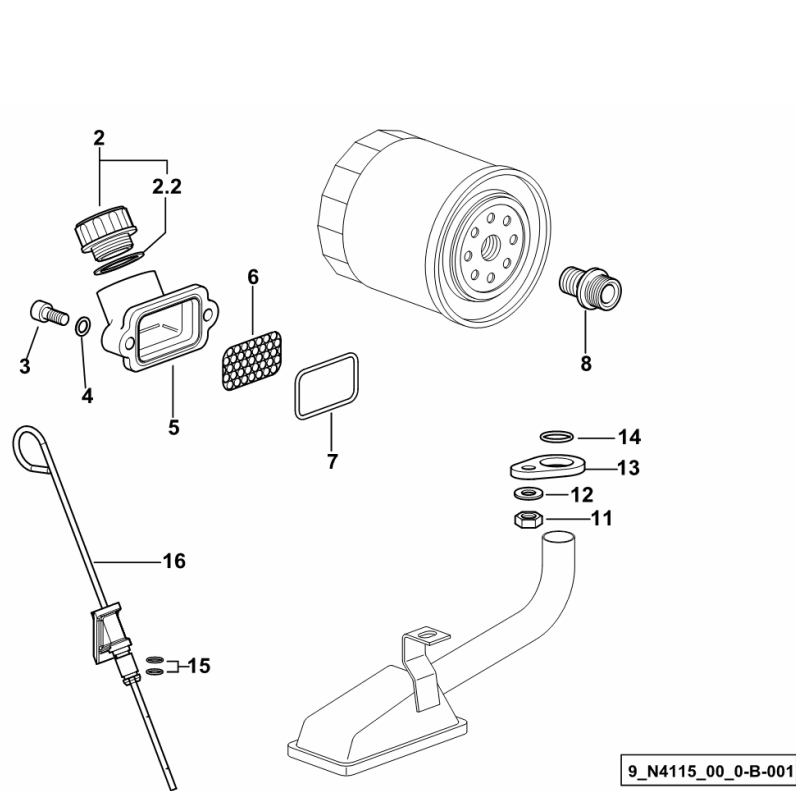


**LUBRICATION**

Fig.	Code	QTY	Name
------	------	-----	------

**Notes:**

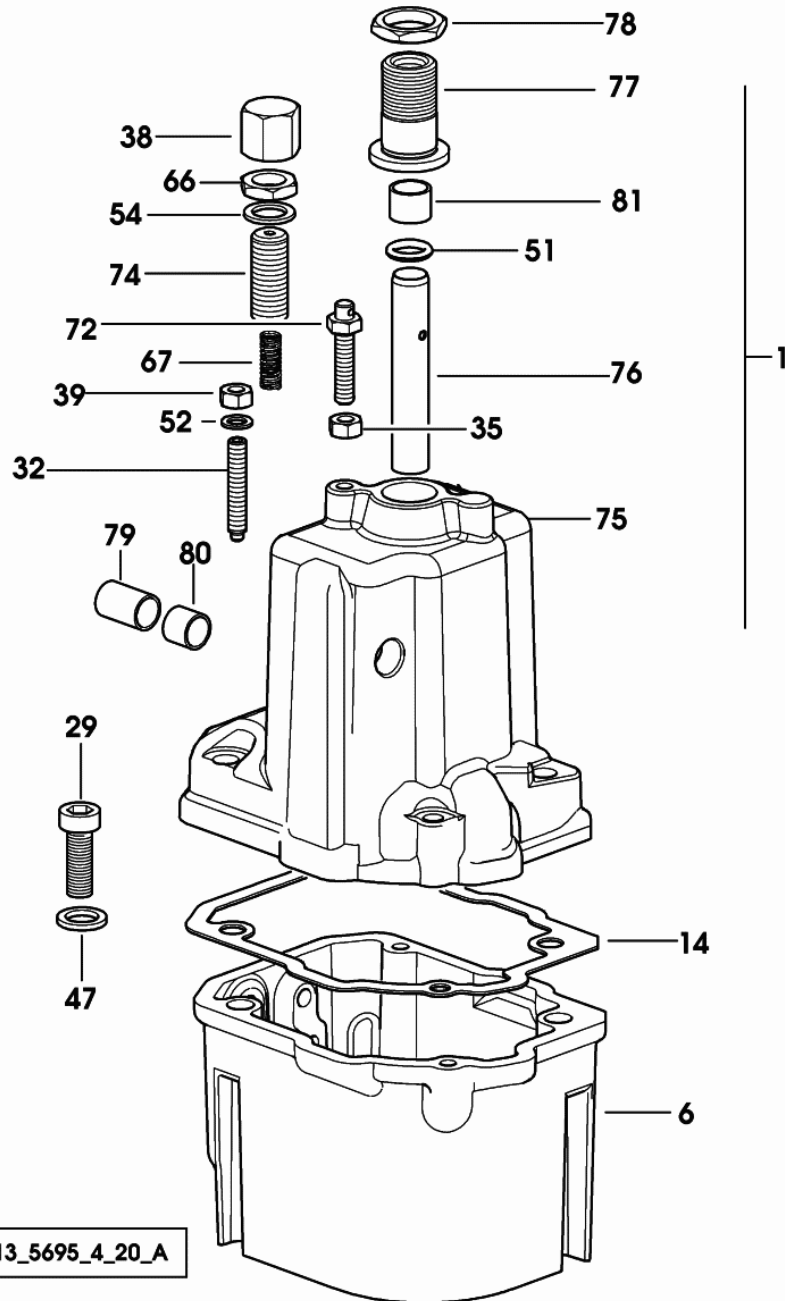
[Agrolux F 57]



2	0.041.1135.4	1	plug 1" gas
2.2	2.1569.072.0	1	gasket 32 x 39.5 x 2
3	2.0312.205.2	2	screw m 8 p.1.25 x 18
4	2.1480.014.1	2	washer 8
5	0.013.0942.0/10	1	pipe union
6	0.013.1387.0	1	small mesh
7	2.1532.515.0	1	rubber ring 1.78 x 53.70
8	2.3339.307.0	1	pipe fitting m 22 p.1.5-3/4"
11	2.1011.105.2	1	nut m 8 p.1.25
12	2.1470.004.2	1	washer 8
13	0.065.1538.0	1	flange
14	2.1539.040.0	1	'o' ring 21.82 x 3.53
15	2.1539.065.0	2	'o' ring 8.73 x 1.78
16	0.007.1624.2	1	dipstick

9\_N4115\_00\_0-B-001

Section: B0 - ENGINE  
**GOVERNOR PARTS**



0\_013\_5695\_4\_20\_A

Fig.	Code	QTY	Name
1	0.013.5695.4/20	1	regulator
6	0.065.1652.0/10	1	governor housing
14	0.065.1673.0/20	1	gasket
29	2.0312.112.2	2	screw m 6 p.1 x 35
32	2.0599.063.1	1	screw m 6 p.1 x 35
35	2.1011.103.2	1	nut m 6 p.1
38	2.1099.105.2	1	cap nut m 12 p.1.25
39	2.1120.103.2	1	nut m 6
47	2.1480.012.1	2	washer 6, d128
51	2.1530.022.0	1	'o' ring 9.92x2.62
52	2.1560.001.0	2	gasket 6.2x10
54	2.1560.008.0	2	gasket 12.2 x 18
66	2.1019.086.2	1	nut m 12 p.1.25
67	2.4019.367.7	1	spring 6.8x18.5x0.8
72	2.0399.111.2	1	screw m 6x26
74	0.066.1665.0	1	screw
75	0.065.1651.0	1	cover
76	0.065.1678.0/10	1	tube
77	0.065.1677.0/10	1	pipe fitting
78	2.1099.096.2	1	nut m 18 p.1.5
79	2.1579.729.7	1	sleeve 10x12x18
80	2.1579.728.7	1	sleeve 10x12x10
81	2.1555.005.0	1	bushing 10x12x10

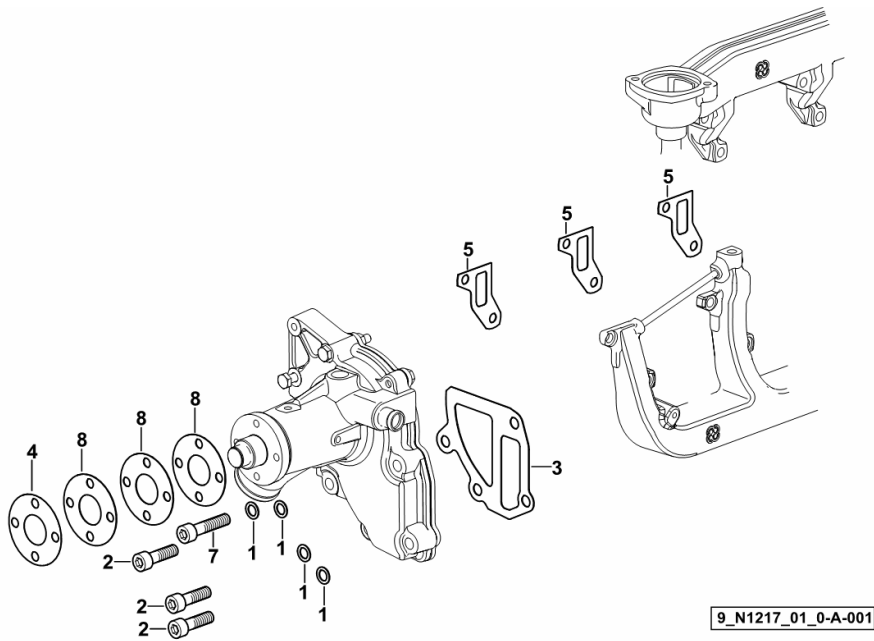
Section: B0 - ENGINE  
**WATER COOLING -SEALING**

Fig.	Code	QTY	Name
------	------	-----	------

**Notes:**

[Agrolux F 57]

1	2.1480.015.1	4	washer 10
2	2.0313.312.7	3	screw m 10 p 1.5x35
3	0.066.1753.0/30	1	gasket
4	2.1589.130.0	1	snoulder 29 x 68 x 0.5
5	0.066.1759.0/40	3	gasket
7	2.0313.315.7	1	screw m 10 p.1.5 x 45
8	2.1589.131.0	3	snoulder 29 x 68 x 1.0



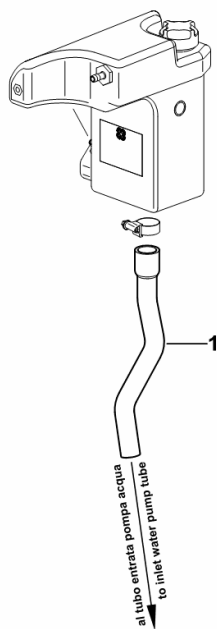
**COOLANT PIPE**

Fig.	Code	QTY	Name
------	------	-----	------

**Notes:**

- EXPORT U.S.A. [Agrolux F 57]

1	0.015.5339.0	1	tube
---	--------------	---	------



9\_E6083\_02\_0-A-001

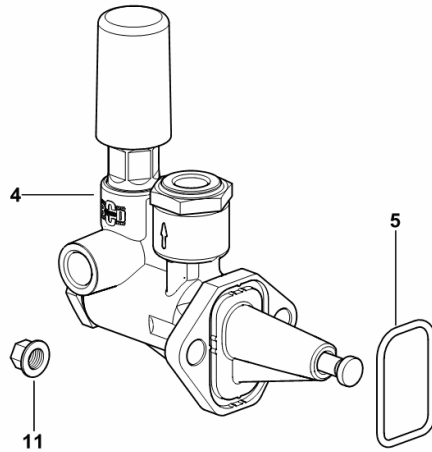
**FUEL FEED PUMP**

Fig.	Code	QTY	Name
------	------	-----	------

**Notes:**

[Agrolux F 57]

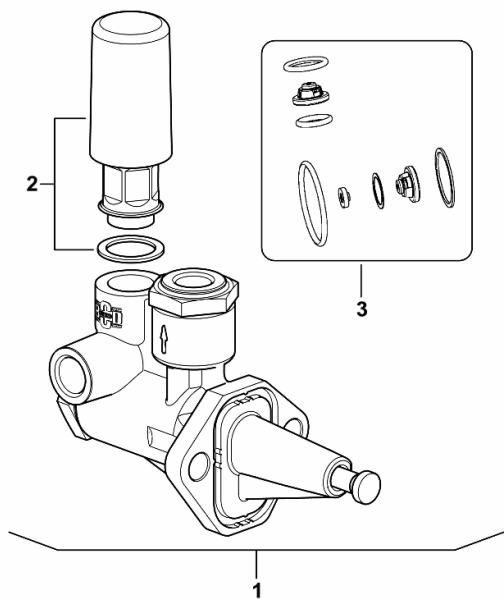
4	2.4519.330.0/50	1	feed pump ☞ 2.4519.330.0/50
5	2.1539.045.0	1	'o' ring 37.77x2.62
11	2.1099.159.2/10	2	nut m 8



9\_M6516\_00\_0-A-001

**FUEL FEED PUMP**

Fig.	Code	QTY	Name
1	2.4519.330.0/50	1	feed pump
2	0.010.3888.0	1	primer
3	0.010.3888.1	1	accessories



2\_4519\_330\_0\_50

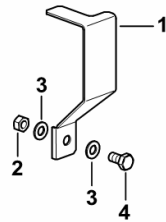
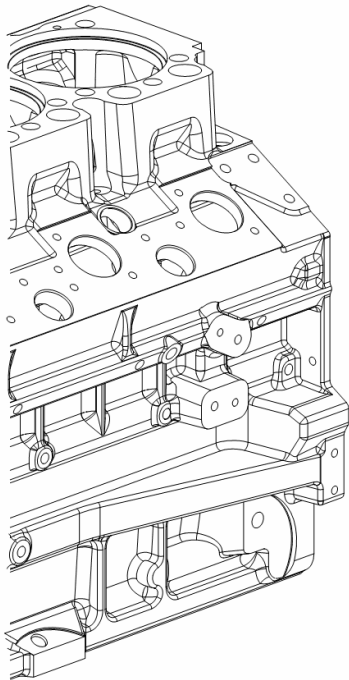
Section: C0 - ENGINE ACCESSORIES  
**SOLENOID VALVE PROTECTION**

Fig.	Code	QTY	Name
------	------	-----	------

**Notes:**

- EXPORT U.S.A. [Agrolux F 57]

1	0.015.5598.0	1	shield
2	2.1011.105.2	1	nut m 8 p.1.25
3	2.1310.004.2	2	flat washer 8.5
4	2.0112.205.2	1	screw m 8 p.1.25 x 16



SENSO DI MARCIA (lato DX)  
 FORWARD SPEED (right side)

9\_O0115\_01\_0-A-001

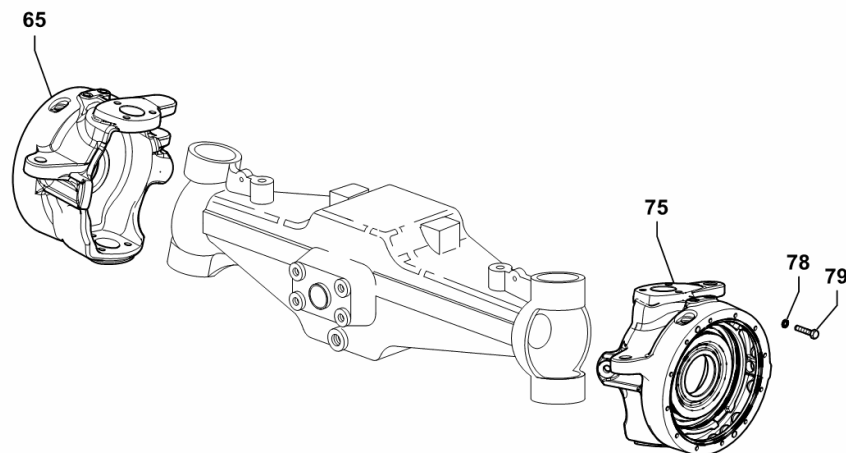
**4WD - FRONT AXLE FORKS FOR TYPES WITH BRAKES**

Fig.	Code	QTY	Name
------	------	-----	------

**Notes:**

[Agrolux F 57]

65	0.014.3664.0/20	1	fork dx/rh/re
75	0.013.6040.0/50	1	fork sx/lh/li
78	2.1475.202.2	24	spring washer 8.4 x 16
79	2.0112.215.2	24	screw m 8 p.1.25 x 40



9\_58943\_02\_0-B-001

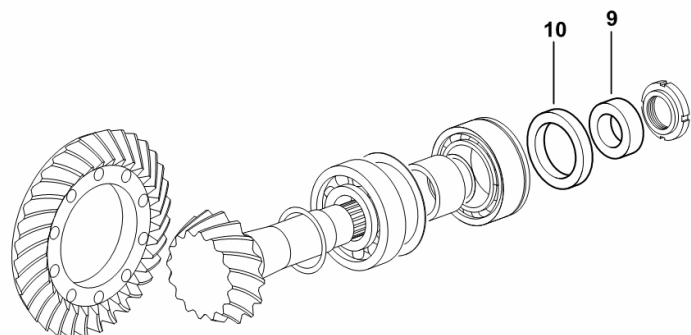
**4WD - FRONT DIFFERENTIAL LOCK- STANDARD SEALING**

Fig.	Code	QTY	Name
------	------	-----	------

**Notes:**

- FOR TYPES WITH FRONT BRAKES [Agrolux F 57]

9	0.255.4650.0	1	spacer 35 x 58 x 19
10	2.1529.007.0/10	1	'o' ring 58 x 80 x 13



9\_58946\_06\_0-B-001

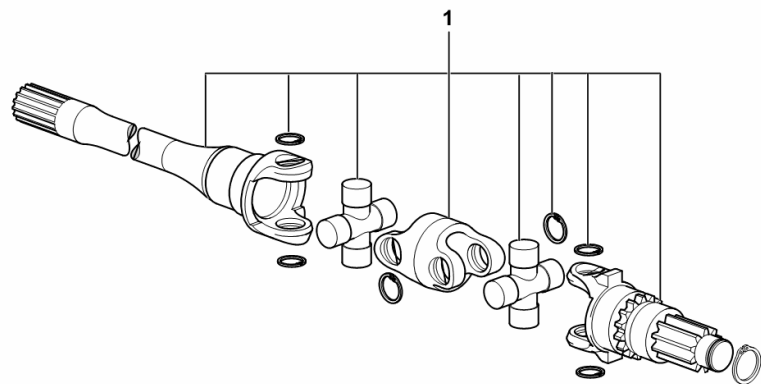
**4WD - AXLESHAFTS**

Fig.	Code	QTY	Name
------	------	-----	------

**Notes:**

- FOR TYPES WITH FRONT BRAKES [Agrolux F 57]

1	0.011.9971.4	2	joint 0.011.9971.4
---	--------------	---	-----------------------



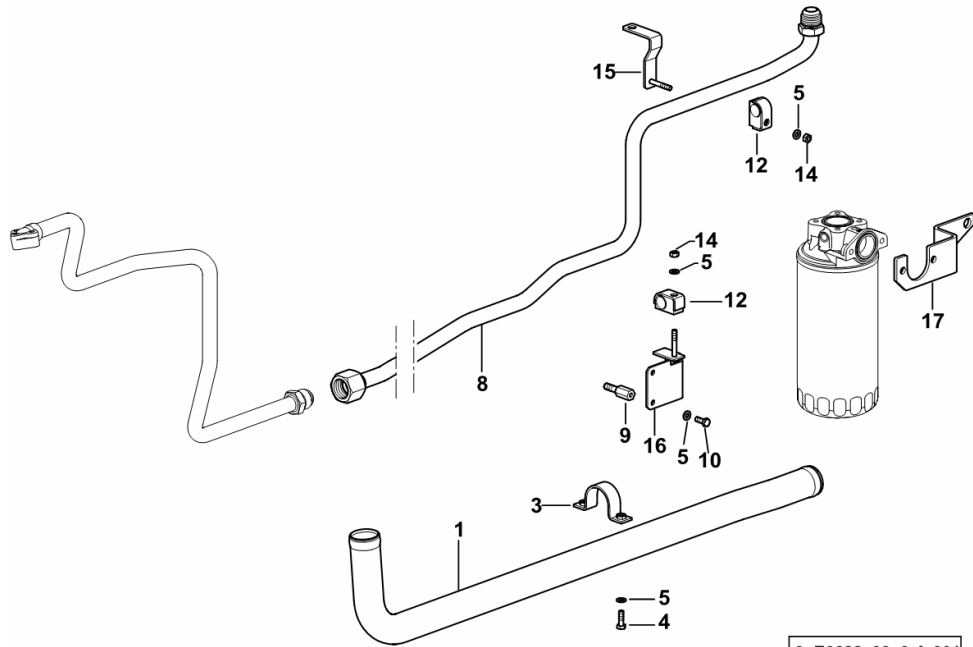
9\_16146\_02\_0-A-001

**HYDRAULIC SYSTEM**

Fig.	Code	QTY	Name
------	------	-----	------

**Notes:**

[Agrolux F 57]



1	0.014.1119.0	1	tube
3	0.009.9382.2	1	clamp
4	2.0112.007.2	2	screw m 6 p.1 x 20
5	2.1310.002.2	6	washer 6.6, d125
8	0.014.1042.3/20	1	tube
9	0.014.1121.0/10	2	pin
10	2.0112.005.2	2	screw m 6 p.1 x 16
12	2.3320.111.0	2	terminal
14	2.1011.003.2	2	nut m 6 p.1, d934
15	0.014.1129.3	1	bracket
16	0.014.1122.3	1	bracket
17	0.014.2439.0	1	bracket ( -> 1001 )

9\_E6682\_03\_0-A-001

**Agrolux F 57**

Section: H0 - HYDRAULIC AND PNEUMATIC SYSTEM|

Ref.: H0.01.10 (2)

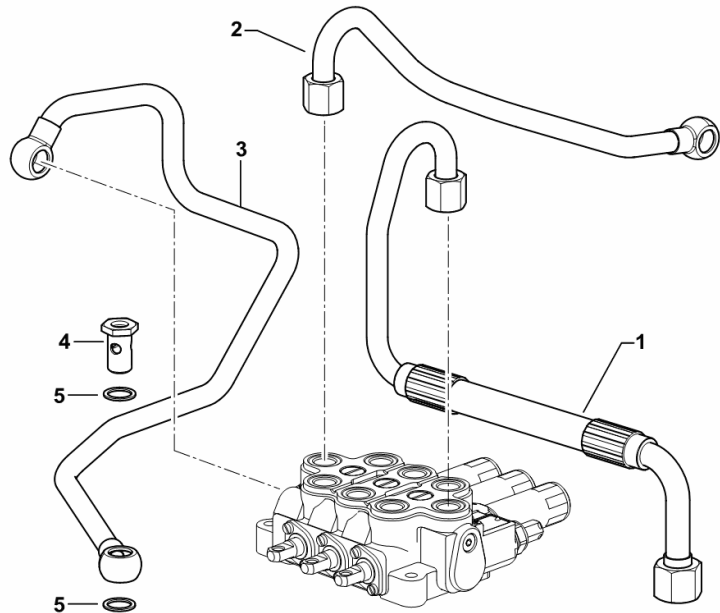
**6-WAY DISTRIBUTOR EQUIPMENT**

Fig.	Code	QTY	Name
------	------	-----	------

**Notes:**

- FOR TYPES WITHOUT HYDRAULIC TRAILER BRAKING [Agrolux F 57] -> 1145

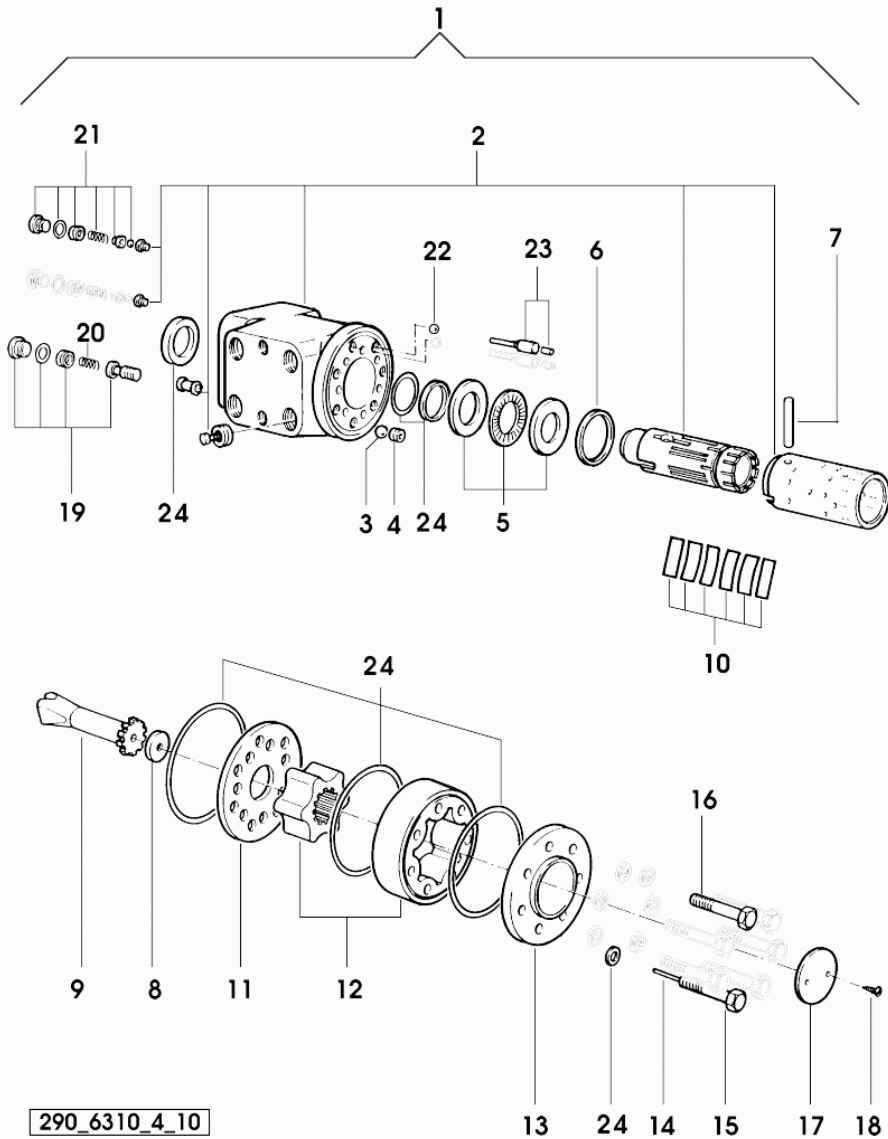
1	0.014.1260.3	1	tube
2	0.014.1249.3	1	tube
3	0.015.9504.3	1	tube
4	2.3335.008.2	1	pipe union m 18 p.1.5 x 32
5	2.1560.014.0	2	gasket 18.2 x 24 x 1.5



9\_E6688\_02\_0-A-002

**HYDR. STEERING DISTRIBUTOR PARTS**

Fig.	Code	QTY	Name
1	0.290.6310.4/10	1	hydrosteering DANFOSS - 80 CC
2	0.000.0000.1	0	not serviceable
3	0.009.4012.1	1	ball mm 8.5
4	0.009.4014.1	1	plug
5	0.193.6378.0	1	bearing
6	0.009.4015.1	1	ring
7	0.009.4016.1	1	pin
8	0.009.4017.1	1	spacer
9	0.000.0000.1	0	not serviceable
10	0.009.4021.1	1	repair seal set
11	0.009.4022.1	1	plate
12	0.009.4872.0	1	rotor w = 10.4
13	0.009.4024.1	1	cover
14	0.009.4025.1	1	pin
15	0.009.4026.1	1	screw L = 63
16	0.009.4027.1	6	screw L = 35
17	0.009.4028.1	1	small disc
18	0.009.4029.1	2	screw
19	0.009.4030.1	1	valve
20	0.290.6374.1	1	spring 110-155 bar
21	0.193.6380.4	2	valve
22	0.009.4019.1	2	ball mm 3.00
23	0.009.4020.1	2	pin
24	0.003.5059.3	1	seal ring kit



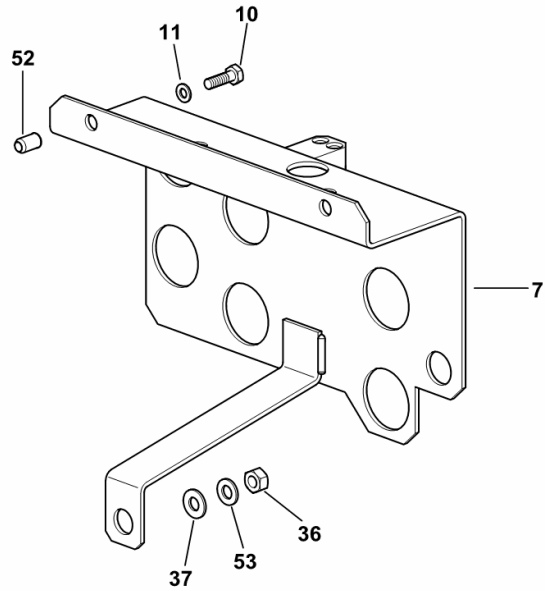
290\_6310\_4\_10

**PLATE FOR QUICK-ACTION COUPLERS**

Fig.	Code	QTY	Name
------	------	-----	------

Notes:  
[Agrolux F 57]

7	0.011.9249.3/10	1	plate
10	2.0112.209.2	2	screw m 8 p 1.25 x 25
11	2.1310.003.2	2	flat washer 7.4x14
36	2.1011.105.2	1	nut m 8 p.1.25
37	2.1310.004.2	1	flat washer 8.5
52	2.1142.011.2	2	insert m 8
53	2.1470.004.2	1	washer 8



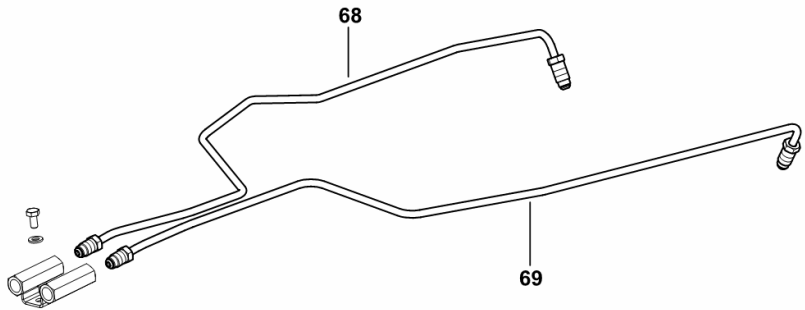
9\_E6673\_00\_0-B-001

**BRAKING SYSTEM**

Fig.	Code	QTY	Name
------	------	-----	------

Notes:  
[Agrolux F 57]

68	0.014.1372.3	1	tube dx/rh/re
69	0.014.1373.3	1	tube sx/lh/li



9\_E6066\_01\_0-A-001

# Agrolux F 57

## E0 - REAR AXLE

### REAR AXLE

REAR AXLE.....	E0.01.0 (1)
REAR AXLE.....	E0.01.0 (2)
REAR AXLE CROWN WHEEL.....	E0.01.1 (1)
REAR AXLE - MOUNTINGS.....	E0.01.2 (1)
PARTS SET FOR REAR AXLE - STANDARD SEAL.....	E0.01.3 (1)

### REAR DIFFERENTIAL / HALF-SHAFTS

DIFFERENTIAL.....	E0.02.0 (1)
DIFFERENTIAL LOCK CONTROL - MECHANICAL.....	E0.02.1 (1)
REAR REDUCTION GEARS AND AXLE SHAFTS.....	E0.02.2 (1)
HALF AXLES.....	E0.02.3 (1)

### REAR BRAKES

REAR BRAKES.....	E0.03.0 (1)
REAR BRAKES.....	E0.03.0 (2)
REAR BRAKES.....	E0.03.1 (1)

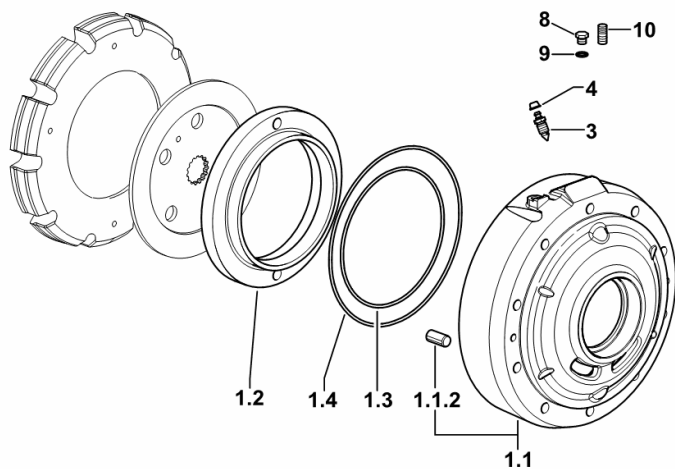
**REAR BRAKES**

Fig.	Code	QTY	Name
------	------	-----	------

**Notes:**

[Agrolux F 57]

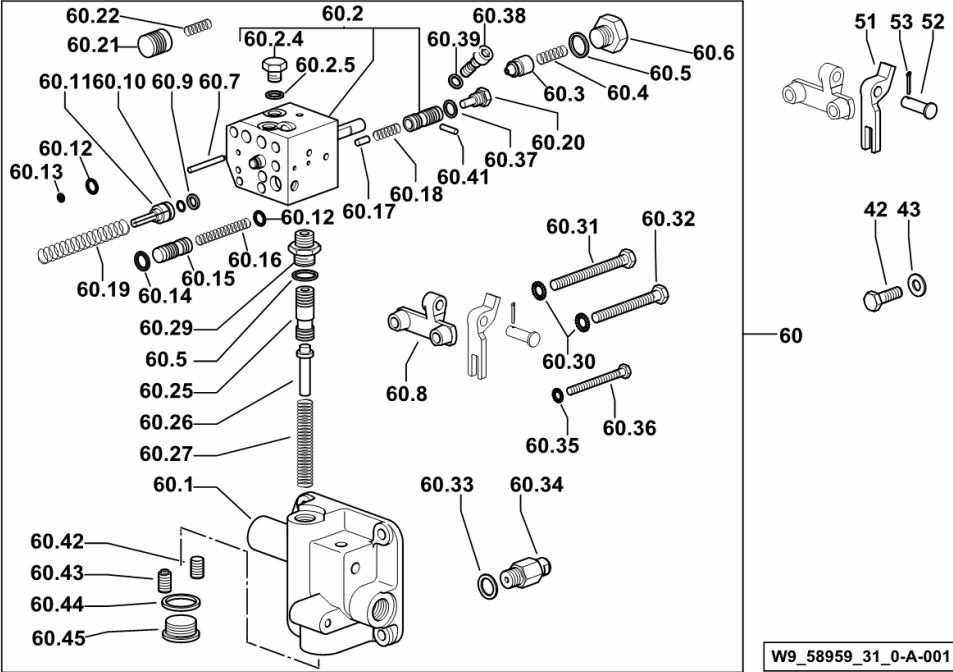
1.1	0.008.5162.3/70	1	box
1.1.2	2.1699.470.0	2	pin 14x32
1.2	0.008.5272.0/10	1	piston
1.3	2.1539.177.0	1	'o' ring Ø 171.04 x 3.53
1.4	2.1539.118.0	1	'o' ring Ø 221.84 x 3.53
3	0.170.5455.0	2	valve
4	2.3199.039.0	2	plug 6.50 x 7.25
8	2.3110.301.1	1	plug m 10 p.1.5x8
9	2.1560.005.0	1	gasket 10.2 x 14
10	2.0439.222.7	1	stud bolt m 10 x 22, d933



9\_64854\_10\_0-A-001

**FLOW CONTROL VALVE WITH MECHANICAL CONTROL**

Fig.	Code	QTY	Name
60.37	2.1569.095.0	1	gasket 10.4x14x1.2
60.38	0.009.3363.3	1	screw
60.39	2.1560.003.0	1	gasket 8.2 x 12
60.41	2.1631.307.0	1	roll pin 4x16
60.42	0.9123.450.3/10	1	grain
60.43	0.9123.454.3/10	1	grain
60.44	2.1560.019.0	1	gasket 24.3x30
60.45	2.3199.118.2	1	plug m 24 p.1.5

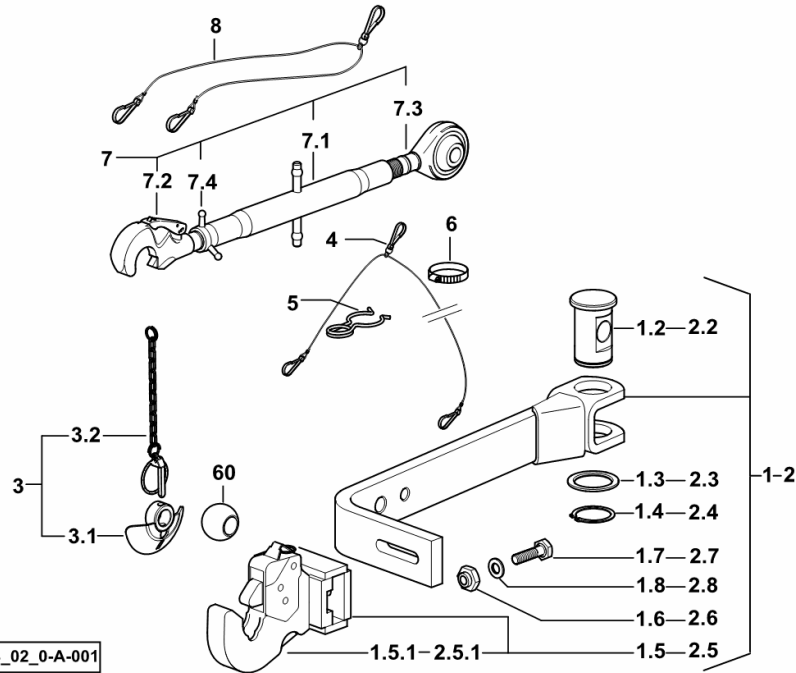


**THREE-POINT COUPLING - TOP/LOWER LINK - AUTOM.**

Fig.	Code	QTY	Name
------	------	-----	------

**Notes:**

[Agrolux F 57]



1	0.012.1460.4/10	1	right hand arm dx/rh/re
1.2	0.010.7747.0	1	pin
1.3	2.1599.521.0/10	1	snoulder 60.5 x 82 x 3.5
1.4	2.1410.024.1	1	circlip Ø 60 mm
1.5	0.011.5406.3	1	automatic hook
1.5.1	0.010.1702.3	1	automatic hook 2 cat.- WALTERSCHEID ☞ 0.010.1702.3
1.6	2.1019.142.2	1	nut
1.7	2.0112.621.2	1	screw m 16 p.2 x 60
1.8	2.1475.006.2	1	washer 16
2	0.012.1461.4/10	1	left hand arm sx/lh/li
2.2	0.010.7747.0	1	pin
2.3	2.1599.521.0/10	1	snoulder 60.5 x 82 x 3.5
2.4	2.1410.024.1	1	circlip Ø 60 mm
2.5	0.011.5406.3	1	automatic hook
2.5.1	0.010.1702.3	1	automatic hook 2 cat.- WALTERSCHEID ☞ 0.010.1702.3
2.6	2.1019.142.2	1	nut
2.7	2.0112.621.2	1	screw m 16 p.2 x 60
2.8	2.1475.006.2	1	washer 16
3	0.760.5951.3	2	pin 2 cat.
3.1	0.011.6899.3	1	sleeve Ø 28.4
3.2	0.012.4860.3	1	contact surface
4	0.760.2258.3	1	cable
5	0.009.9410.0	2	spring
6	2.6851.005.0	2	clamp Ø 40/60
7	0.011.3994.4	1	3 point hitch
7.1	0.011.3994.3	1	sleeve
7.2	0.011.3988.3	1	rod 2 cat.- WALTERSCHEID ☞ 0.011.3988.3
7.3	0.760.3515.3	1	rod sx/lh/li
7.4	0.96014.57.0	1	wing nut m 27 p.3
8	0.009.3534.0	1	cable
60	0.760.5952.0	2	cap Ø 56

9\_16158\_02\_0-A-001

# Agrolux F 57

## D0 - TRANSMISSION

### MAIN CLUTCH

CLUTCH.....	D0.01.0 (1)
DOUBLE COUPLING.....	D0.01.1 (1)
CLUTCH CONTROL.....	D0.01.2 (1)
DOUBLE COUPLING - LUK.....	0.012.2564.4.A
DOUBLE COUPLING - LUK.....	0.012.2570.4.A

### GEARBOX INPUT SHAFT

GEARBOX INPUT SHAFT.....	D0.05.0 (1)
SHUTTLE FOR 5-SPEED TRANSMISSION W/ UNDERDRIVE.....	D0.05.2 (1)
SYNCHRONISERS.....	D0.05.3 (1)
SYNCHRONIZER PARTS.....	0.007.7620.4/10.A
SYNCHRONIZER PARTS.....	0.009.6826.4.A

### PTO INPUT SHAFT

P.T.O. - CLUTCH TRANSMISSION SHAFT.....	D0.06.0 (1)
---	-------------

### MAIN SHAFT

5-SPEED GEARBOX PRIMARY SHAFT WITH UNDERDRIVE.....	D0.07.1 (1)
--	-------------

### SECONDARY SHAFT

TRANSMISSION SHAFT - FOR TYPES WITHOUT H-M-L (POWERSHIFT).....	D0.08.0 (1)
5-SPEED GEARBOX SECONDARY SHAFT WITH UNDERDRIVE.....	D0.08.2 (1)
SYNCHRONISERS.....	D0.08.5 (1)
SYNCHRONIZER PARTS.....	0.009.6825.4.A
SYNCHRONIZER PARTS.....	0.009.6826.4.A

### GEARBOX

GEARBOX FRONT.....	D0.09.0 (1)
GEARBOX FRONT- FIXINGS.....	D0.09.1 (1)
FRONT GEARBOX COVER PLUG.....	D0.09.2 (1)
REAR GEARBOX CASE.....	D0.09.3 (1)
REAR GEARBOX CASE.....	D0.09.3 (2)
REAR GEARBOX CASE.....	D0.09.4 (1)
GEARBOX UPPER COVER.....	D0.09.5 (1)
GEARBOX UPPER COVER.....	D0.09.6 (1)
GEARBOX UPPER COVER.....	D0.09.7 (1)

### INTERNAL AND EXTERNAL GEARBOX CONTROLS

TRANSMISSION CONTROL LEVERS.....	D0.10.0 (1)
INTERNAL CONTROLS OF 5-SPEED GEARBOX WITH UNDERDRIVE.....	D0.10.2 (1)
INTERNAL CONTROLS OF 5-SPEED GEARBOX WITH UNDERDRIVE.....	D0.10.2 (2)
GEARBOX CONTROL ROD.....	D0.10.3 (1)
PARTS SET - 5-SPEED WITH UNDERDRIVE.....	D0.10.5 (1)
SPEED RANGE REDUCTION GEAR UNIT.....	D0.10.6 (1)
2-RANGE BOX.....	D0.10.7 (1)
3-RANGE BOX.....	D0.10.8 (1)

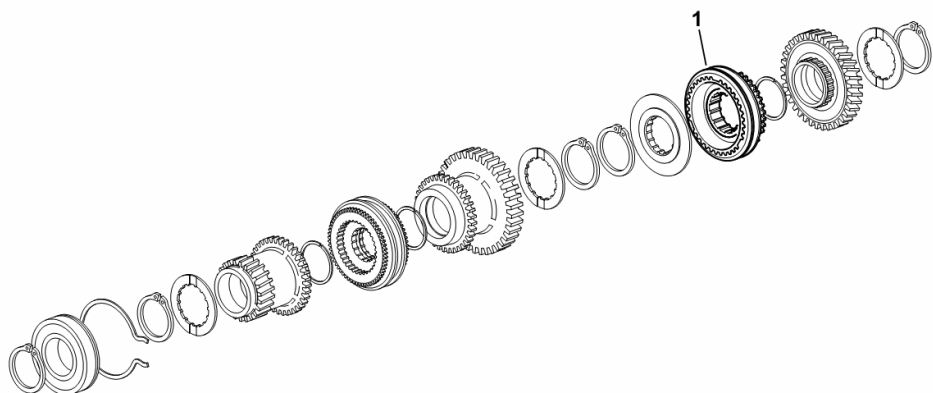
**SYNCHRONISERS**

Fig.	Code	QTY	Name
------	------	-----	------

**Notes:**

- FOR TYPES WITH MINREDUCTION [Agrolux F 57]

1	0.009.6826.4	2	lock synchronizer 62 ☞ 0.009.6826.4
---	--------------	---	--



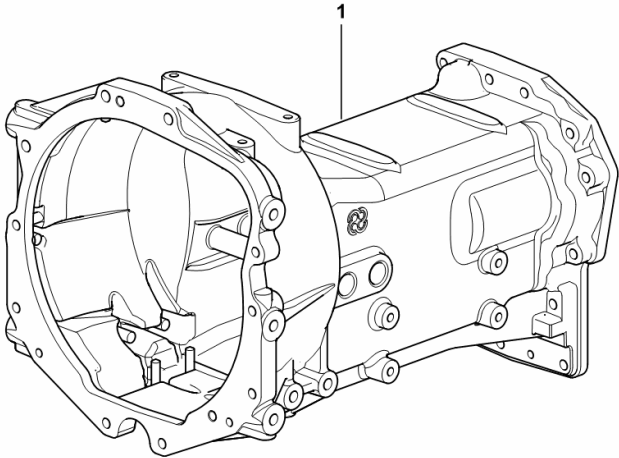
9\_C1033\_02\_0-A-001

Section: D0 - TRANSMISSION  
**GEARBOX FRONT**

Fig.	Code	QTY	Name
------	------	-----	------

Notes:  
[Agrolux F 57]

1	0.008.5412.0/90	1	gear box
---	-----------------	---	----------



9\_58931\_01\_0-A-001

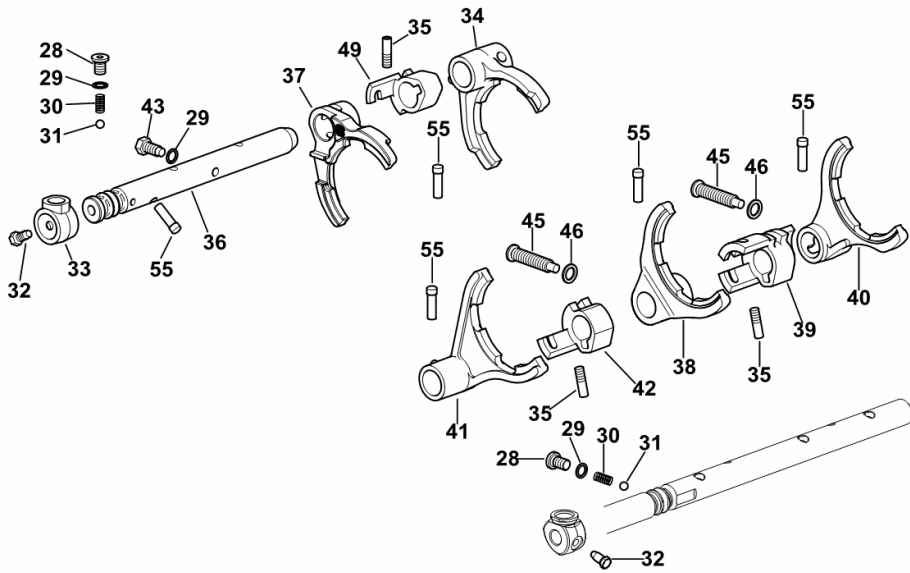
**INTERNAL CONTROLS OF 5-SPEED GEARBOX WITH UNDERDRIVE**

Fig.	Code	QTY	Name
------	------	-----	------

**Notes:**

[Agrolux F 57]

28	2.3199.238.2	2	plug m 10
29	2.1560.005.0	3	gasket 10.2 x 14
30	2.4019.670.1	2	spring 5 x 8 x 1.5 x 22.5
31	2.2810.004.0	2	ball 5/16"
32	2.0399.019.1	2	screw m 8 p.1 x 16
33	0.008.5226.0/20	1	hub
34	0.013.1661.0/10	1	fork
			UNDERDRIVE
35	2.0599.086.0/40	3	grain m 8 p.1.25 x 28
36	0.010.0543.0/20	1	rod
37	0.013.2469.0/20	1	fork
			REVERSING GEAR UNIT
38	0.009.6750.0	1	fork # 2 / # 3
39	0.008.5152.0/50	1	hub
40	0.009.7080.0	1	fork # 4 / # 5
41	0.009.6749.0	1	fork # 1
42	0.008.5198.0/40	1	hub
43	2.0119.180.2	1	screw m 10x24
45	2.0399.206.2	2	screw m 12 p.1.75 x 56.5
46	2.1560.008.0	2	gasket 12.2 x 18
49	0.013.1619.0	1	sleeve
55	0.008.5994.0/10	5	pin



9\_C1133\_00\_0-D-001

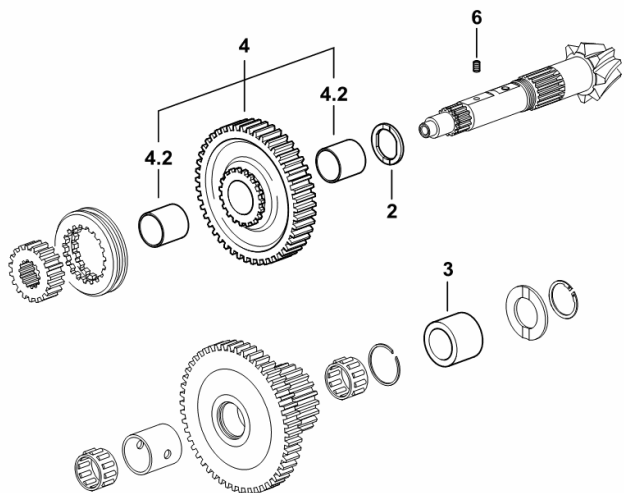
**2-RANGE BOX**

Fig.	Code	QTY	Name
------	------	-----	------

**Notes:**

[Agrolux F 57]

2	2.1599.611.0	1	shoulder 34 x 45 x 3.5
3	2.1549.053.0/10	1	spacer 35 x 50 x 39
4	0.010.5211.3/10	1	gear Z = 45
4.2	2.1559.426.0	2	bushing 34.50 x 38 x 37.5
6	2.0512.201.7	1	grain m 8 p.1.25 x 6



9\_64834\_05\_0-A-001

Section: D0 - TRANSMISSION  
**P.T.O. - 2 SPEED TYPE 540 - 750**

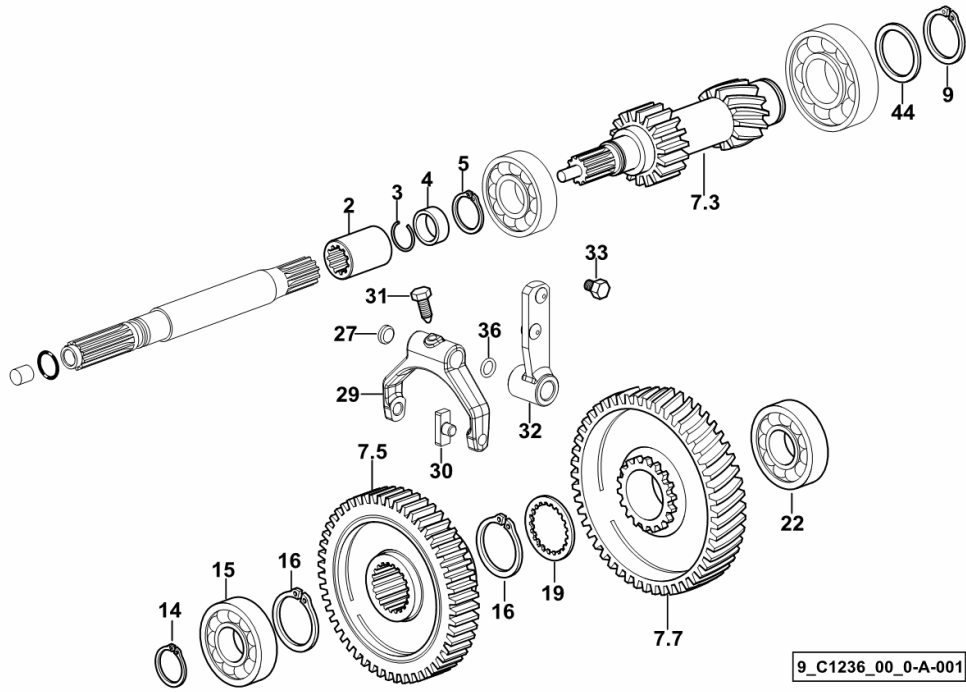


Fig.	Code	QTY	Name
------	------	-----	------

Notes:  
 [Agrolux F 57] 1065 <- [Agrolux F 57]

2	0.010.7696.0	1	sleeve Z = 11
3	2.1421.010.7	1	circlip 25
4	2.1549.172.0	1	spacer 24.7 x 31 x 12
5	2.1410.012.1	1	circlip 30
7.3	0.011.9829.0/10	1	shaft Z = 11 / Z = 18 / Z = 14
7.5	0.012.0103.0	1	gear Z = 52
7.7	0.012.0074.0	1	gear Z = 51
9	2.1410.016.1	1	circlip 40
14	2.1410.012.1	1	circlip 30
15	2.2060.009.0	1	ball bearing 30 x 72 x 19
16	2.1410.018.7	2	circlip 45
19	2.1599.828.0	1	thrust plate 41x55x3
22	2.2999.235.0	1	bearing 35 x 80 x 21
27	2.3171.006.4	5	plug Ø 16
29	0.010.0468.0	1	fork
30	0.255.6463.0	2	shoe
31	2.0399.019.1	2	screw m 8 p.1 x 16
32	0.012.0107.3	1	lever
33	2.3110.428.1	1	plug m 8 p.1 x 10
36	2.1530.028.0	1	'o' ring 11.91 x 2.62
44	2.1599.414.0	1	shoulder 40 x 50 x 3.0

9\_C1236\_00\_0-A-001

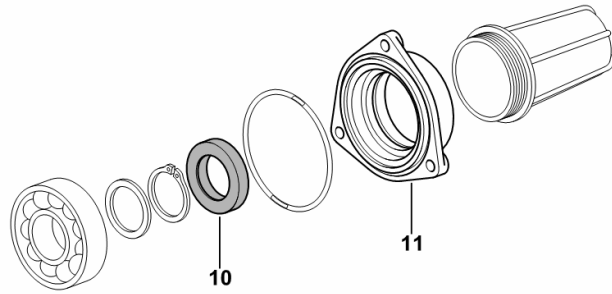
**PTO - PARTS SET WITH STANDARD SEALS**

Fig.	Code	QTY	Name
------	------	-----	------

**Notes:**

[Agrolux F 57]

10	2.1520.117.0	1	oil seal 35 x 58 x 10
11	0.008.5180.0/30	1	flange



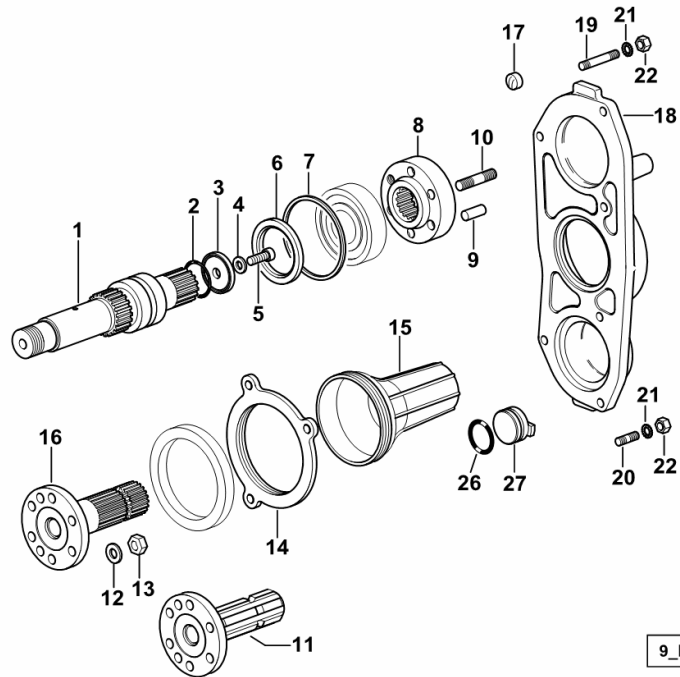
9\_58936\_07\_0-A-001

**PTO - 3-SPEED WITH INSERTED END SHAFT**

Fig.	Code	QTY	Name
------	------	-----	------

**Notes:**

[Agrolux F 57]



9\_B6136\_06\_0-A-001

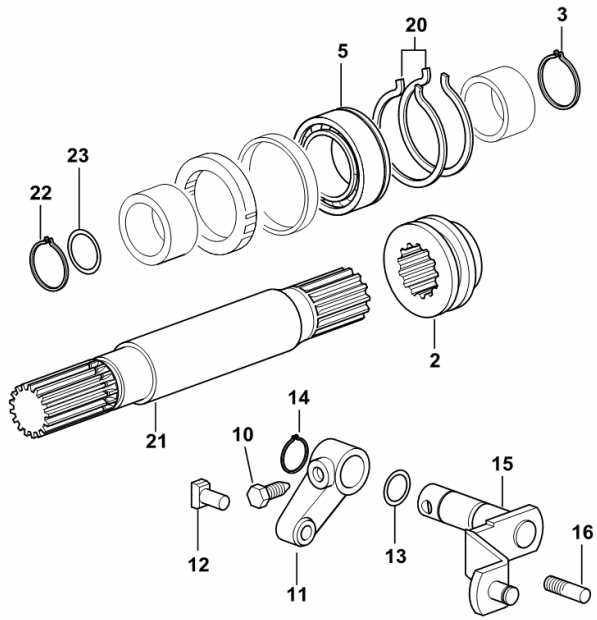
1	0.011.9956.0	1	p.t.o.shaft
2	2.1531.091.0	1	'o' ring 34.60 x 2.62
3	0.011.6415.0	1	thrust plate
4	2.1475.203.7	1	washer 10.5
5	2.0313.308.2	1	screw m 10 x 25
6	2.1599.827.0	1	snoulder
7	2.1549.430.0	1	spacer 80x87x3
8	0.011.3229.0	1	flange
9	2.1651.811.0	2	cylindrical plug 10x24
10	2.0432.155.7	6	stud bolt m 10 p.1.5 / p. 1.25 x 25
11	0.011.3221.0	1	p.t.o.shaft Z = 6
12	2.1470.006.2	6	lock washer 10
13	2.1011.421.2	6	nut m 10 p.1.25
14	0.011.3274.0	1	cover
15	0.008.0757.0	1	guard
16	0.011.3227.0	1	p.t.o.shaft Z = 21
17	2.3171.006.4	1	plug Ø 16
18	0.011.3261.0/20	1	cover
19	2.0422.215.7	2	stud bolt m 8 p.1.25 x 50
20	2.0422.203.7	5	stud bolt m 8 p.1.25 x 20
21	2.1470.004.2	7	washer 8
22	2.1011.105.2	7	nut m 8 p.1.25
26	2.1530.079.0	1	'o' ring 29.82 x 2.62
27	0.014.1957.0	1	plug (-> 1056 )

Section: D0 - TRANSMISSION  
**4WD - ENGAGEMENT CONTROL**

Fig.	Code	QTY	Name
------	------	-----	------

Notes:  
 [Agrolux F 57]

2	0.008.5192.0/10	1	sleeve Z = 13, sx/lh/li
3	2.1410.012.1	1	circlip 30
5	2.2044.003.0	1	ball bearing 30x55x13
10	2.0399.019.1	1	screw m 8 p.1 x 16
11	0.008.5231.0/20	1	clutch lever
12	0.150.6833.0/10	1	shoe
13	2.1530.034.0	1	'o' ring 13.95x2.62
14	2.1410.005.1	1	circlip 18
15	0.008.5232.2/30	1	gear lever
16	2.0439.002.1	2	stud bolt m 8 p.1.25 x 20
20	2.1499.125.1	2	circlip 49.8x1.1
21	0.010.7329.0	1	shaft
22	2.1410.011.7	1	circlip 28
23	2.1530.060.0	1	'o' ring 23.40x3.53



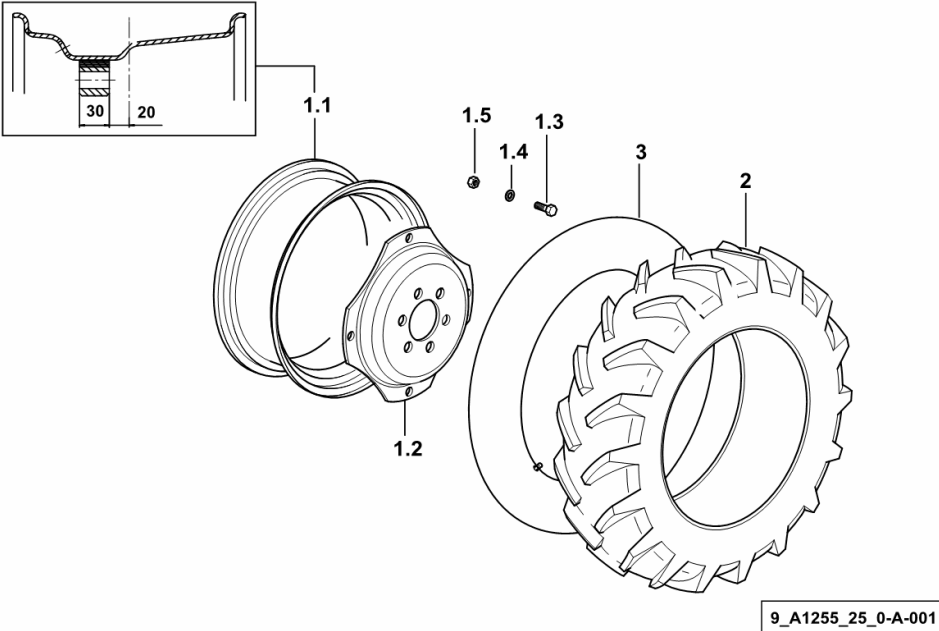
9\_58938\_00\_0-A-001

Section: S0 - WHEELS  
**WHEELS 9.0/75x16"**

Fig.	Code	QTY	Name
------	------	-----	------

Notes:  
[Agrolux F 57]

1.1	0.012.7263.3	1	rim 8Kx16" C/BL
1.2	0.008.1551.0	1	rim center flange
1.3	2.0122.621.6	4	screw m 16 p.1.5 x 60
1.4	2.1499.019.6	4	washer 16.3 x 31.5
1.5	2.1019.059.6	4	nut m 16 p.1.5 x 16
2	2.4819.076.0	2	tyre 9.0/75x16"
3	2.4820.017.0	2	air chamber x 7.50-16

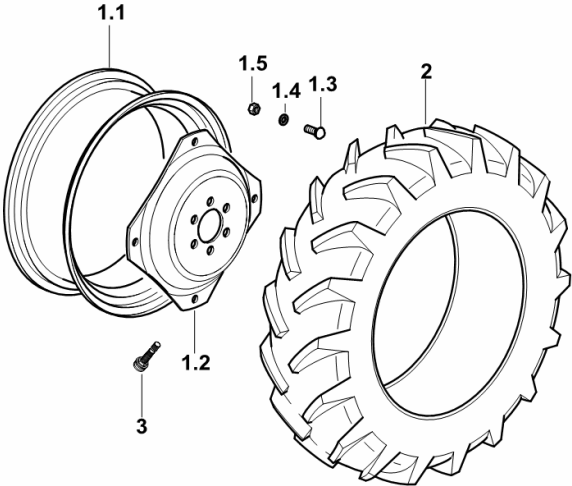


Section: S0 - WHEELS  
WHEELS 7.50 x 20" pr 6

Fig.	Code	QTY	Name
------	------	-----	------

Notes:  
[Agrolux F 57]

1.1	0.012.3064.3	1	rim 5.50F x 20" C/ST
1.2	0.009.8956.0	1	rim center flange
1.3	2.0099.005.6	4	screw m 16 p.1.5 x 38
1.4	2.1499.019.6	4	washer 16.3 x 31.5
1.5	2.1019.059.6	4	nut m 16 p.1.5 x 16
2	2.4811.239.0	2	tyre 7.50 x 20" pr 6
3	0.012.6364.0	2	valve



9\_56655\_22\_0-A-001

CLICK HERE TO **DOWNLOAD** THE COMPLETE MANUAL

- Thank you very much for reading the preview of the manual.
- You can download the complete manual from: [www.heydownloads.com](http://www.heydownloads.com) by clicking the link below



- Please note: If there is no response to CLICKING the link, please download this PDF first and then click on it.

CLICK HERE TO **DOWNLOAD** THE COMPLETE MANUAL