

Agrolux 57

V0 - BALLAST, TOWING HITCHES

FRONT HITCHES

FRONT TOWING HITCH..... V0.01.0 (1)

REAR HITCHES

REAR TOWING HITCH..... V0.02.0 (1)

REAR TOWING HITCH - EXPORT CH..... V0.02.1 (1)

REAR TOWING HITCH - EXPORT CH..... V0.02.1 (2)

REAR TOWING HITCH..... V0.02.2 (1)

REAR TOWING HITCH BRACKET..... V0.02.3 (1)

REAR TOWING HITCH BRACKET..... V0.02.5 (1)

REAR TOWING HITCH BRACKET..... V0.02.5 (2)

REAR TOWING HITCH BRACKET..... V0.02.6 (1)

FRAME HOOK HOLDER - FOR TYPES WITH PITON-FIX..... V0.02.7 (1)

FRAME HOOK HOLDER - FOR TYPES WITH PITON-FIX..... V0.02.7 (2)

FRAME HOOK HOLDER - FOR TYPES WITH PITON-FIX..... V0.02.7 (3)

FRAME HOOK HOLDER - FOR TYPES WITH PITON-FIX..... V0.02.8 (1)

REAR TOWING HITCH CAT. " D "..... V0.02.9 (1)

REAR TOWING HITCH CAT. " D "..... V0.02.9 (2)

REAR TOWING HITCH CAT. " D2 "..... V0.02.11 (1)

REAR TOWING HITCH CAT. " C "..... V0.02.13 (1)

REAR TOWING HITCH CAT. " C "..... V0.02.13 (2)

REAR TOWING HITCH..... V0.02.14 (1)

REAR TOWING HITCH CEE..... V0.02.14 (2)

REAR TOWING HITCH..... V0.02.15 (1)

DRAWBAR COUPLING AUTOM. Ø 38..... V0.02.15 (2)

AUTOMATIC REAR TOWING HITCH CEE Ø 31..... V0.02.16 (1)

REAR TOWING HITCH CEE..... V0.02.17 (1)

REAR TOWING HITCH CEE..... V0.02.18 (1)

PIN FOR REAR TOW HOOK..... V0.02.19 (1)

SUPPORTS..... V0.02.20 (1)

SUPPORTS..... V0.02.21 (1)

SPACERS FOR P.T.O. - 540 - 750 - WITH INSERTED END SHAFTS..... V0.02.22 (1)

SPACER FOR TYPES WITH P.T.O. - 540/N - WITH INSERTED END SHAFTS..... V0.02.23 (1)

SPACER FOR TYPES WITH 2-SPEED P.T.O. WITH INSERTED END SHAFTS 540-750..... V0.02.24 (1)

SPACERS FOR P.T.O. - 540 - 750 - WITH INSERTED END SHAFTS + SYNCRO..... V0.02.25 (1)

SEPARATOR - PTO - 3-SPEED WITH INSERTED END SHAFT..... V0.02.26 (1)

SPACER FOR TYPES WITH PTO WITH INTERCHANGEABLE OUTPUT SHAFTS - 2 -SPEED + GROUNDSP. AND 3- SPEED..... V0.02.27 (1)

SPACERS FOR P.T.O. - 540 - 750 - WITH INSERTED END SHAFTS..... V0.02.28 (1)

REAR SWINGING TOWING-HITCH..... V0.02.29 (1)

REAR SWINGING TOWING-HITCH..... V0.02.30 (1)

REAR SWINGING TOWING-HITCH..... V0.02.31 (1)

DRAWBAR COUPLING - MM 32 (CRAMER)..... 0.010.4738.4.A

CLICK HERE TO **DOWNLOAD** THE COMPLETE MANUAL

- Thank you very much for reading the preview of the manual.
- You can download the complete manual from: www.heydownloads.com by clicking the link below



- Please note: If there is no response to CLICKING the link, please download this PDF first and then click on it.

CLICK HERE TO **DOWNLOAD** THE COMPLETE MANUAL

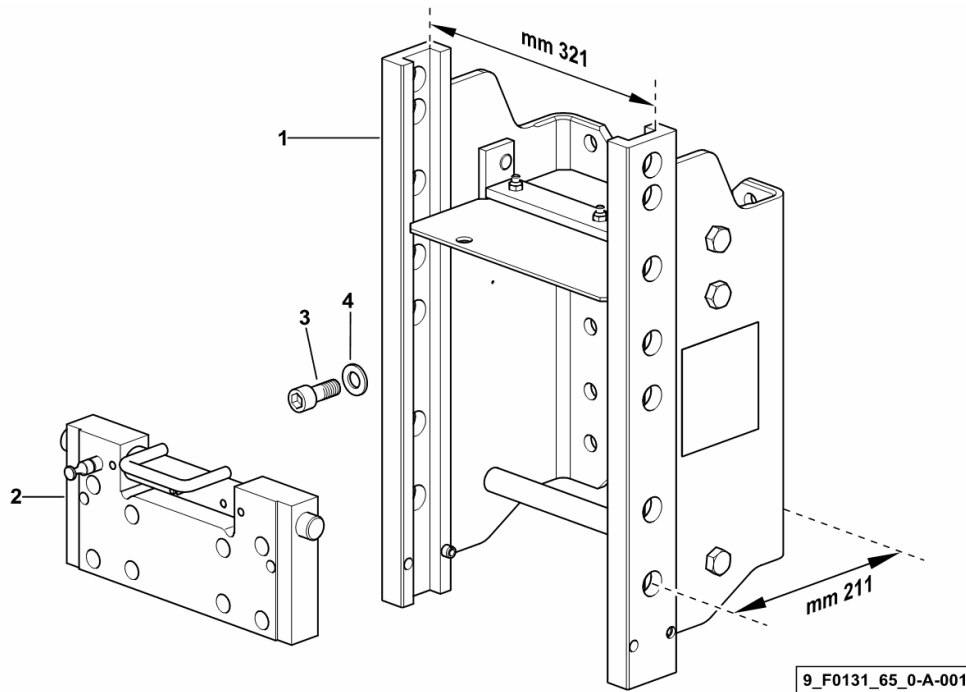
REAR TOWING HITCH BRACKET

Fig.	Code	QTY	Name
------	------	-----	------

Notes:

[Agrolux 57] [Agrolux 57] -> 1343

1	0.015.5752.3	1	chassis frame V.ORLANDI CAT. " D2 "
2	0.014.4485.3	1	plate - V.ORLANDI - ☞ 0.014.4485.3
3	2.0314.614.2	12	screw m 16 p.2 x 40
4	2.1475.006.2	12	washer 16

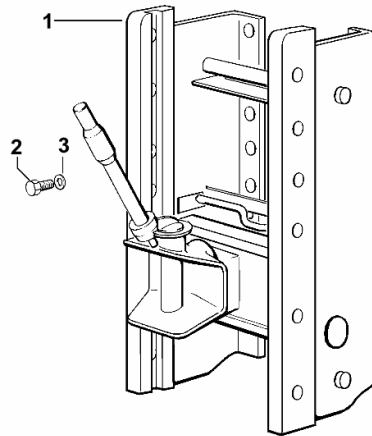


REAR TOWING HITCH

Fig.	Code	QTY	Name
------	------	-----	------

Notes:
[Agrolux 57]

1	0.012.6876.4	1	clevis CRAMER ☞ 0.012.6876.4
2	2.0112.615.2	12	screw m 16 p.2 x 40
3	2.1475.206.2	12	washer 16



9_21631_65_0-A-001

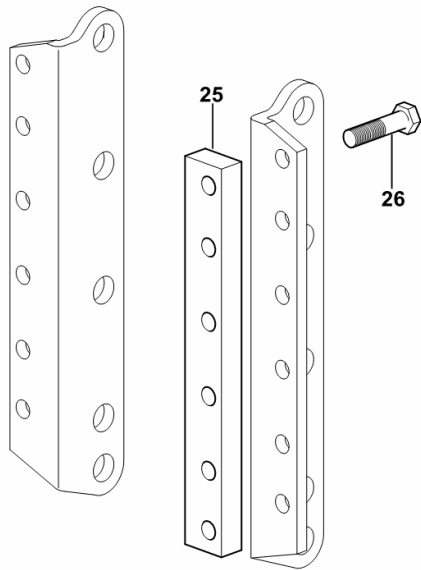
SPACERS FOR P.T.O. - 540 - 750 - WITH INSERTED END SHAFTS

Fig.	Code	QTY	Name
------	------	-----	------

Notes:

- EXPORT U.S.A. [Agrolux 57]

25	0.011.3480.0	2	spacer 45 x 365 x 25
26	2.0112.623.2	12	screw m 16 p.2 x 70



9_C1236_05_0-B-001

DRAWBAR COUPLING - MM 32 (CRAMER)

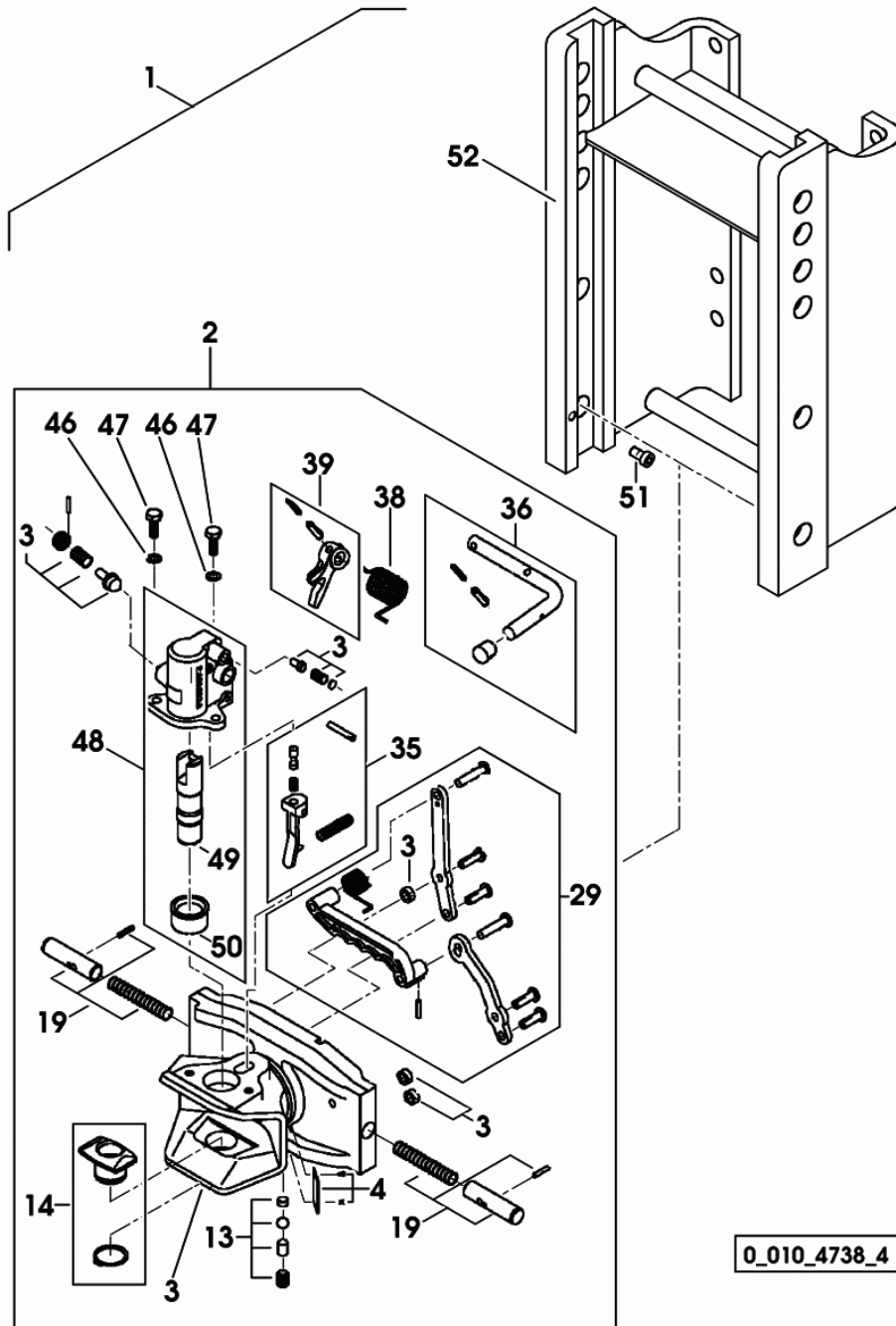
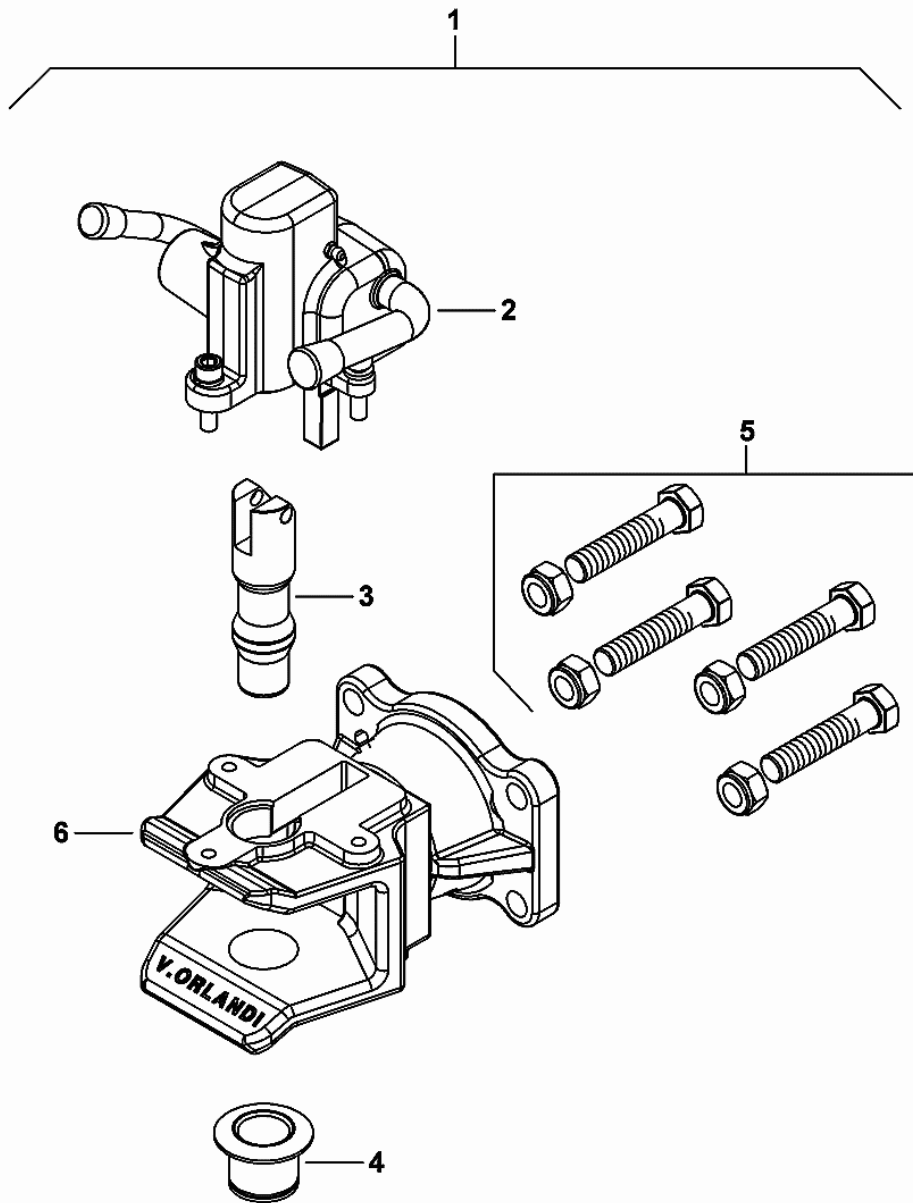


Fig.	Code	QTY	Name
1	0.010.4738.4	1	clevis CRAMER
2	0.900.0076.3	1	clevis mm 32
3	0.000.0000.1	0	not serviceable
4	0.900.0076.4	1	plate
13	0.900.0076.5	1	accessories
14	0.900.0077.2	1	pin
19	04432938.4	1	parts set
29	0.900.0076.7	1	lever
35	04383526	1	spacer
36	0.900.0076.8	1	lever
38	0.900.0076.9	1	small spring
39	0.900.0077.0	1	spring
46	01107286	2	washer b10 d137
47	01112416	2	screw m 10 x 25
48	0.900.0077.1	1	sub-assy parts
49	04401644	1	pin
50	04355112	1	spacer
51	01110746	1	screw m 12 x 20
52	0.900.0137.6	1	chassis frame

0_010_4738_4

DRAWBAR COUPLING

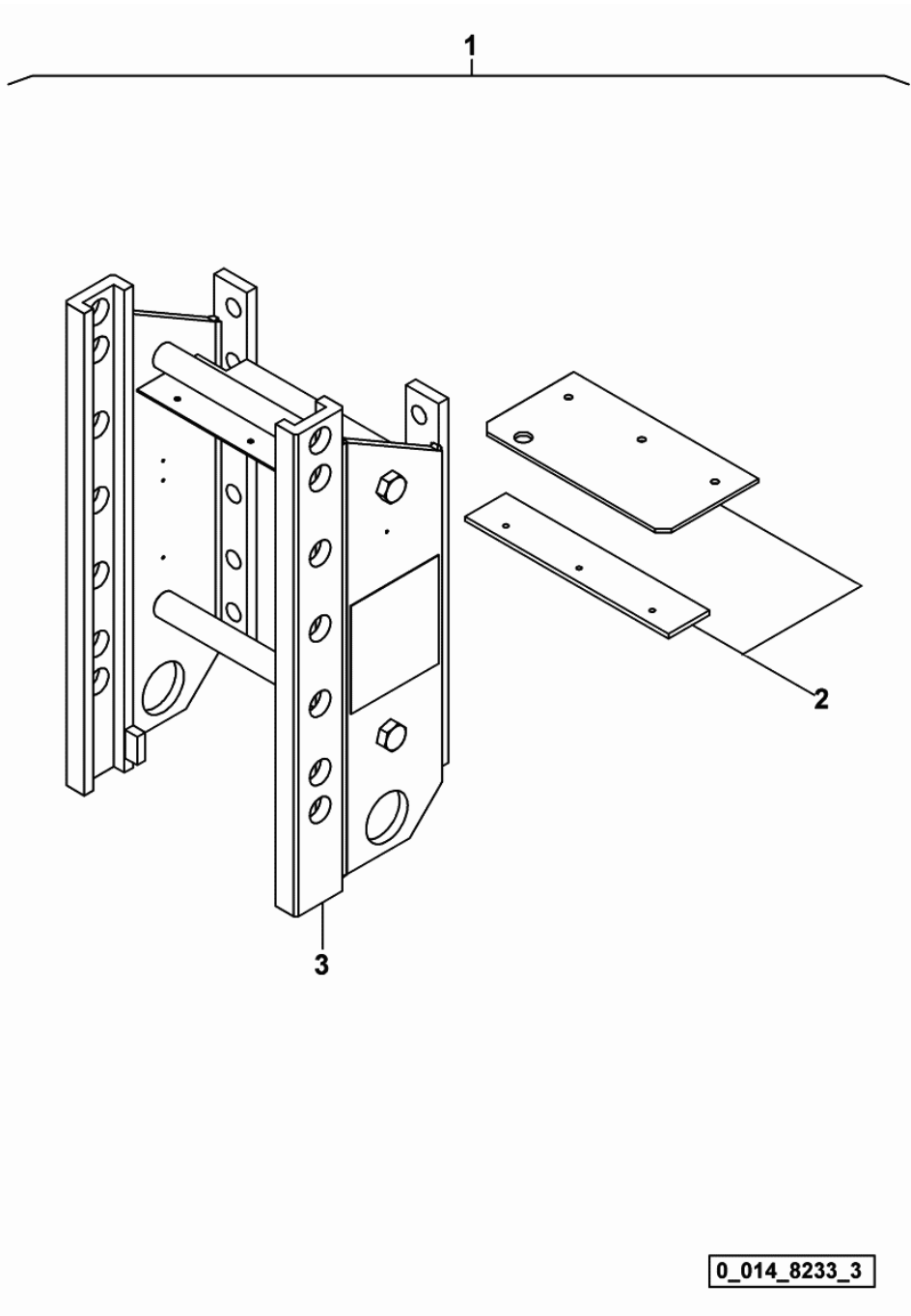
Fig.	Code	QTY	Name
1	0.014.4454.3/20	1	automatic hook V.ORLANDI - CEE Ø 38
2	0.900.0307.3	1	accessories
3	0.900.0307.4	1	pin mm 38
4	0.900.0307.5	1	sleeve
5	0.900.0306.5	1	screw m 18
6	0.000.0000.1	0	not serviceable



0_014_4454_3_20

CHASSIS

Fig.	Code	QTY	Name
1	0.014.8233.3	1	chassis frame V.ORLANDI CAT. " D2 "
2	0.900.0784.7	1	shield
3	0.000.0000.1	0	not serviceable



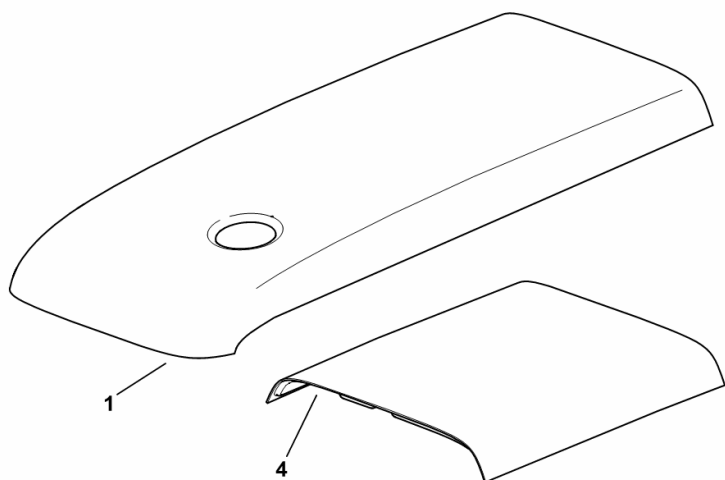
0_014_8233_3

HOOD UPPER PART

Fig.	Code	QTY	Name
------	------	-----	------

Notes:
[Agrolux 57]

1	0.010.9786.5	1	bonnet
4	0.013.8651.0/10	1	panel



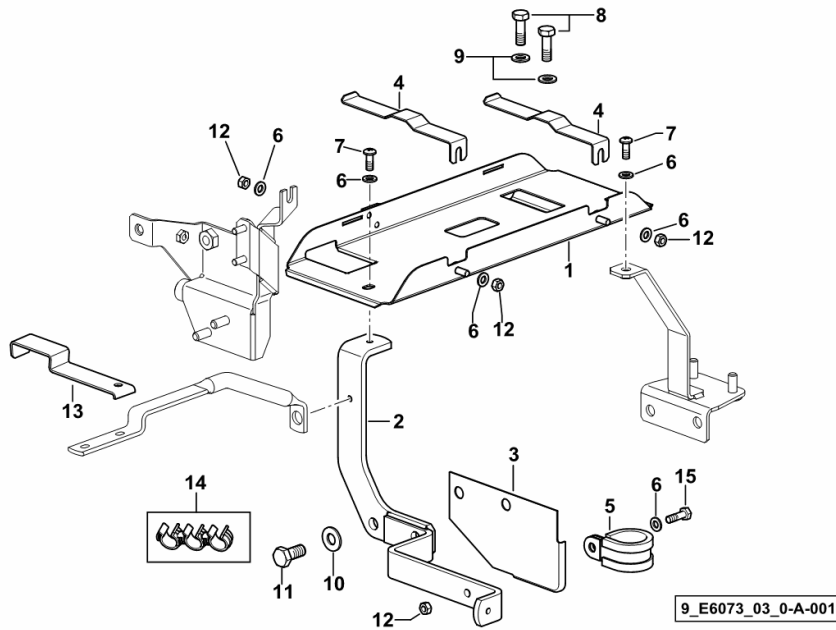
9_E1272_02_0-A-001

CABLE CONDUIT

Fig.	Code	QTY	Name
------	------	-----	------

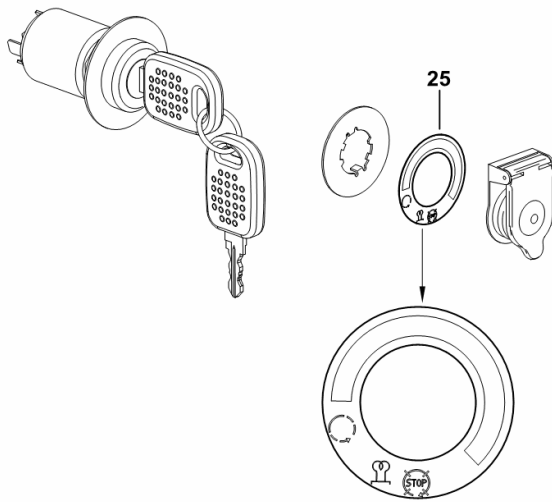
Notes:
[Agrolux 57]

1	0.014.0458.3/10	1	channel
2	0.014.0485.2/10	1	bracket
3	0.010.9700.0/20	1	plate
4	0.014.0736.0	2	bracket
5	2.6839.052.0	1	clamp 30/20
6	2.1310.002.2	8	washer 6.6, d125
7	2.0332.406.2	3	screw m 6 p.1.0 x 16
8	2.0112.209.2	2	screw m 8 p 1.25 x 25
9	2.1310.004.2	2	flat washer 8.5
10	2.1310.006.2	2	flat washer 10.5
11	2.0112.308.2	2	screw m 10 p.1.5x22
12	2.1011.103.2	4	nut m 6 p.1
13	0.014.0495.0	1	bracket
14	0.014.0506.4	1	small spring
15	2.0112.007.2	1	screw m 6 p.1 x 20



Section: G0 - BODYWORK - CAB
START ENABLE PLATE

Fig.	Code	QTY	Name
Notes:			
- EXPORT U.S.A. [Agrolux 57] -> 1242			
25	0.010.0492.0/20	1	plate



9_E6384_02_0-E-001

Section: G0 - BODYWORK - CAB
SPEED DATA PLATES MPH

Fig.	Code	QTY	Name
------	------	-----	------

Notes:
 [Agrolux 57]

100.12	2.9939.057.0/10	1	plate 5 x 3, 18.2 MPH 15+15
100.14	2.9939.080.0/10	1	plate 5 x MINI x 2, 24.1 MPH 20+10
100.15	2.9939.082.0/10	1	plate 5 x MINI x 3, 24.1 MPH 30+15
100.28	2.9939.066.0/10	1	plate 5 x 3, 18.3 MPH 15+15
100.30	2.9939.073.0/10	1	plate 5 x MINI x 2, 24.3 MPH 20+10
100.31	2.9939.070.0/10	1	plate 5 x MINI x 3, 24.3 MPH 30+15
100.34	2.9939.157.0	1	plate 5 x 2, 18.2 MPH 10+10
100.36	2.9939.159.0	1	plate 5 x 2, 18.3 MPH 10+10

rpm	1400	1800	1967	2200	rpm
1 MPH	3.68	5.11	5.12	5.13	S
2 MPH	5.12	6.92	6.97	6.98	P
3 MPH	6.97	9.34	9.37	9.38	E
4 MPH	9.34	12.36	12.38	12.39	D
5 MPH	12.36	16.38	16.42	16.43	C
6 MPH	16.42	21.84	21.88	21.89	mph
7 MPH	21.88	28.80	28.84	28.85	mph
8 MPH	28.84	37.76	37.80	37.81	mph
9 MPH	37.80	48.24	48.28	48.29	mph
10 MPH	48.28	60.00	60.04	60.05	mph
11 MPH	60.04	73.20	73.24	73.25	mph
12 MPH	73.24	87.36	87.40	87.41	mph
13 MPH	87.40	102.00	102.04	102.05	mph
14 MPH	102.04	117.60	117.64	117.65	mph
15 MPH	117.64	133.60	133.64	133.65	mph
P	384	494	540	604	rpm
T	485	623	681	762	rpm
O	685	881	963	1077	rpm

100.12

rpm	1400	1800	1967	2200	rpm		
1 MPH	3.68	5.79	5.74	5.88	5.81	5.16	S
2 MPH	5.16	7.00	7.00	7.40	7.30	7.27	P
3 MPH	7.27	9.34	9.34	9.90	9.75	9.72	E
4 MPH	9.72	12.36	12.36	13.10	12.85	12.82	D
5 MPH	12.82	16.42	16.42	17.40	17.10	17.07	C
6 MPH	17.07	21.84	21.84	23.10	22.70	22.67	mph
7 MPH	22.67	28.80	28.80	30.30	29.90	29.87	mph
8 MPH	29.87	37.76	37.76	39.50	38.90	38.87	mph
9 MPH	38.87	48.24	48.24	50.30	49.50	49.47	mph
10 MPH	49.47	60.00	60.00	62.40	61.50	61.47	mph
11 MPH	61.47	73.20	73.20	75.90	74.90	74.87	mph
12 MPH	74.87	87.36	87.36	90.30	89.20	89.17	mph
13 MPH	89.17	102.00	102.00	105.20	104.00	103.97	mph
14 MPH	103.97	117.60	117.60	121.20	120.00	119.97	mph
15 MPH	119.97	133.60	133.60	137.60	136.40	136.37	mph
P	384	494	540	604	rpm		
T	485	623	681	762	rpm		
O	685	881	963	1077	rpm		

100.14

rpm	1400	1800	1967	2200	rpm	
1 MPH	3.68	5.11	5.12	5.13	5.14	S
2 MPH	5.13	6.92	6.97	6.98	6.99	P
3 MPH	6.98	9.34	9.37	9.38	9.39	E
4 MPH	9.38	12.36	12.38	12.39	12.40	D
5 MPH	12.39	16.38	16.42	16.43	16.44	C
6 MPH	16.43	21.84	21.88	21.89	21.90	mph
7 MPH	21.89	28.80	28.84	28.85	28.86	mph
8 MPH	28.85	37.76	37.80	37.81	37.82	mph
9 MPH	37.81	48.24	48.28	48.29	48.30	mph
10 MPH	48.29	60.00	60.04	60.05	60.06	mph
11 MPH	60.05	73.20	73.24	73.25	73.26	mph
12 MPH	73.25	87.36	87.40	87.41	87.42	mph
13 MPH	87.41	102.00	102.04	102.05	102.06	mph
14 MPH	102.05	117.60	117.64	117.65	117.66	mph
15 MPH	117.65	133.60	133.64	133.65	133.66	mph
P	384	494	540	604	rpm	
T	485	623	681	762	rpm	
O	685	881	963	1077	rpm	

100.15

rpm	1400	1800	1967	2200	rpm	
1 MPH	3.68	5.11	5.12	5.13	5.14	S
2 MPH	5.14	6.92	6.97	6.98	6.99	P
3 MPH	6.99	9.34	9.37	9.38	9.39	E
4 MPH	9.39	12.36	12.38	12.39	12.40	D
5 MPH	12.40	16.38	16.42	16.43	16.44	C
6 MPH	16.44	21.84	21.88	21.89	21.90	mph
7 MPH	21.90	28.80	28.84	28.85	28.86	mph
8 MPH	28.86	37.76	37.80	37.81	37.82	mph
9 MPH	37.82	48.24	48.28	48.29	48.30	mph
10 MPH	48.30	60.00	60.04	60.05	60.06	mph
11 MPH	60.05	73.20	73.24	73.25	73.26	mph
12 MPH	73.25	87.36	87.40	87.41	87.42	mph
13 MPH	87.41	102.00	102.04	102.05	102.06	mph
14 MPH	102.05	117.60	117.64	117.65	117.66	mph
15 MPH	117.65	133.60	133.64	133.65	133.66	mph
P	384	494	540	604	rpm	
T	485	623	681	762	rpm	
O	685	881	963	1077	rpm	

100.34

rpm	1400	1800	1967	2200	rpm	
1 MPH	3.68	5.11	5.12	5.13	5.14	S
2 MPH	5.14	6.92	6.97	6.98	6.99	P
3 MPH	6.99	9.34	9.37	9.38	9.39	E
4 MPH	9.39	12.36	12.38	12.39	12.40	D
5 MPH	12.40	16.38	16.42	16.43	16.44	C
6 MPH	16.44	21.84	21.88	21.89	21.90	mph
7 MPH	21.90	28.80	28.84	28.85	28.86	mph
8 MPH	28.86	37.76	37.80	37.81	37.82	mph
9 MPH	37.82	48.24	48.28	48.29	48.30	mph
10 MPH	48.30	60.00	60.04	60.05	60.06	mph
11 MPH	60.05	73.20	73.24	73.25	73.26	mph
12 MPH	73.25	87.36	87.40	87.41	87.42	mph
13 MPH	87.41	102.00	102.04	102.05	102.06	mph
14 MPH	102.05	117.60	117.64	117.65	117.66	mph
15 MPH	117.65	133.60	133.64	133.65	133.66	mph
P	384	494	540	604	rpm	
T	485	623	681	762	rpm	
O	685	881	963	1077	rpm	

100.28

rpm	1400	1800	1967	2200	rpm		
1 MPH	3.68	5.79	5.74	5.88	5.81	5.11	S
2 MPH	5.11	7.00	7.00	7.40	7.30	7.27	P
3 MPH	7.27	9.34	9.34	9.90	9.75	9.72	E
4 MPH	9.72	12.36	12.36	13.10	12.85	12.82	D
5 MPH	12.82	16.42	16.42	17.40	17.10	17.07	C
6 MPH	17.07	21.84	21.84	23.10	22.70	22.67	mph
7 MPH	22.67	28.80	28.80	30.30	29.90	29.87	mph
8 MPH	29.87	37.76	37.76	39.50	38.90	38.87	mph
9 MPH	38.87	48.24	48.24	50.30	49.50	49.47	mph
10 MPH	49.47	60.00	60.00	62.40	61.50	61.47	mph
11 MPH	61.47	73.20	73.20	75.90	74.90	74.87	mph
12 MPH	74.87	87.36	87.36	90.30	89.20	89.17	mph
13 MPH	89.17	102.00	102.00	105.20	104.00	103.97	mph
14 MPH	103.97	117.60	117.60	121.20	120.00	119.97	mph
15 MPH	119.97	133.60	133.60	137.60	136.40	136.37	mph
P	384	494	540	604	rpm		
T	485	623	681	762	rpm		
O	685	881	963	1077	rpm		

100.30

rpm	1400	1800	1967	2200	rpm	
1 MPH	3.68	5.11	5.12	5.13	5.14	S
2 MPH	5.14	6.92	6.97	6.98	6.99	P
3 MPH	6.99	9.34	9.37	9.38	9.39	E
4 MPH	9.39	12.36	12.38	12.39	12.40	D
5 MPH	12.40	16.38	16.42	16.43	16.44	C
6 MPH	16.44	21.84	21.88	21.89	21.90	mph
7 MPH	21.90	28.80	28.84	28.85	28.86	mph
8 MPH	28.86	37.76	37.80	37.81	37.82	mph
9 MPH	37.82	48.24	48.28	48.29	48.30	mph
10 MPH	48.30	60.00	60.04	60.05	60.06	mph
11 MPH	60.05	73.20	73.24	73.25	73.26	mph
12 MPH	73.25	87.36	87.40	87.41	87.42	mph
13 MPH	87.41	102.00	102.04	102.05	102.06	mph
14 MPH	102.05	117.60	117.64	117.65	117.66	mph
15 MPH	117.65	133.60	133.64	133.65	133.66	mph
P	384	494	540	604	rpm	
T	485	623	681	762	rpm	
O	685	881	963	1077	rpm	

100.31

rpm	1400	1800	1967	2200	rpm	
1 MPH	3.68	5.11	5.12	5.13	5.14	S
2 MPH	5.14	6.92	6.97	6.98	6.99	P
3 MPH	6.99	9.34	9.37	9.38	9.39	E
4 MPH	9.39	12.36	12.38	12.39	12.40	D
5 MPH	12.40	16.38	16.42	16.43	16.44	C
6 MPH	16.44	21.84	21.88	21.89	21.90	mph
7 MPH	21.90	28.80	28.84	28.85	28.86	mph
8 MPH	28.86	37.76	37.80	37.81	37.82	mph
9 MPH	37.82	48.24	48.28	48.29	48.30	mph
10 MPH	48.30	60.00	60.04	60.05	60.06	mph
11 MPH	60.05	73.20	73.24	73.25	73.26	mph

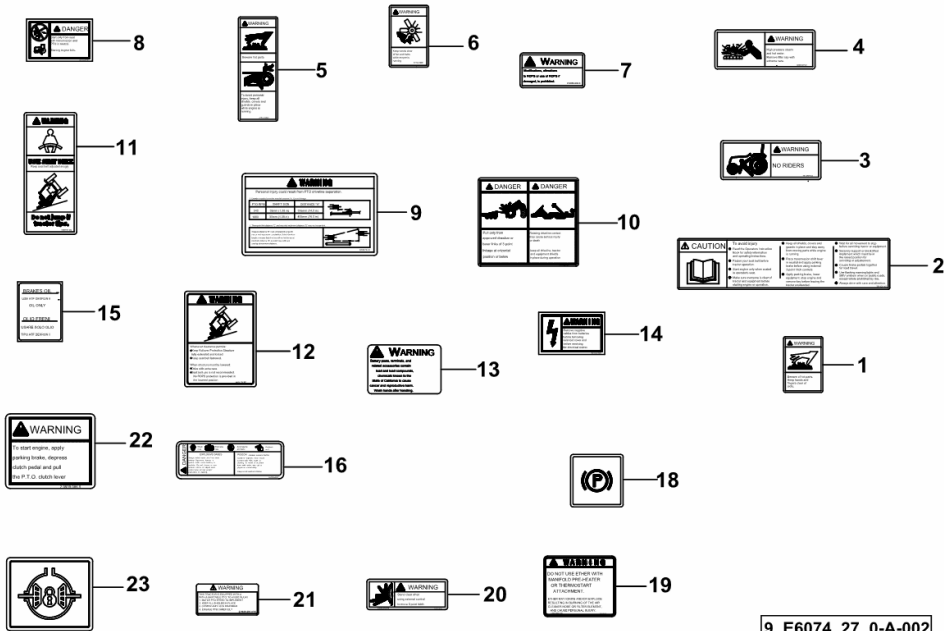
WARNING PLATES

Fig.	Code	QTY	Name
------	------	-----	------

Notes:

[Agrolux 57] -> 1184 - 1279 <-

1	2.9929.847.0	1	plate
2	2.9929.848.0/10	1	plate
3	2.9929.793.0	1	plate
4	2.9929.792.0	1	plate
5	2.9929.791.0	2	plate
6	2.9929.794.0	2	plate
7	2.9929.699.0/10	2	plate
8	2.9929.854.0	1	plate
9	2.9929.855.0/20	1	plate
10	2.9929.856.0	1	plate
11	2.9929.857.0	1	plate
12	2.9929.858.0	1	plate
13	2.9929.754.0	1	plate
14	2.9929.860.0	1	plate
15	2.9929.684.0	1	plate
16	2.9929.862.0	1	plate
18	2.9929.702.0/10	1	plate
19	2.9929.544.0/10	1	plate
20	2.9929.282.0/20	1	plate
21	2.9929.281.0/10	1	plate
22	2.9939.086.0	1	plate
23	0.007.7370.0	1	plate



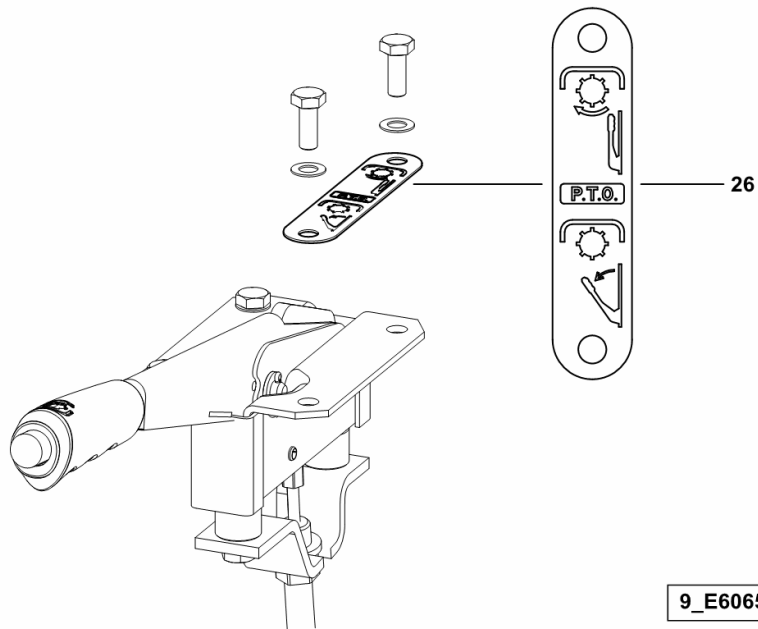
9_E6074_27_0-A-002

PTO DATA PLATE

Fig.	Code	QTY	Name
------	------	-----	------

Notes:
[Agrolux 57]

26	2.9929.437.0/10	1	plate P.T.O.
----	-----------------	---	--------------

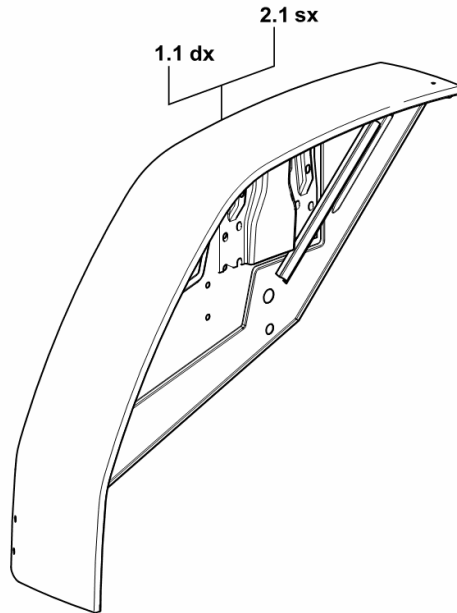


REAR MUDGUARDS

Fig.	Code	QTY	Name
------	------	-----	------

Notes:
[Agrolux 57]

1.1	0.007.5617.3/90	1	fender dx/rh/re
2.1	0.007.5618.3/80	1	fender sx/lh/li



9_19276_01_0-A-001

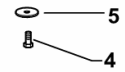
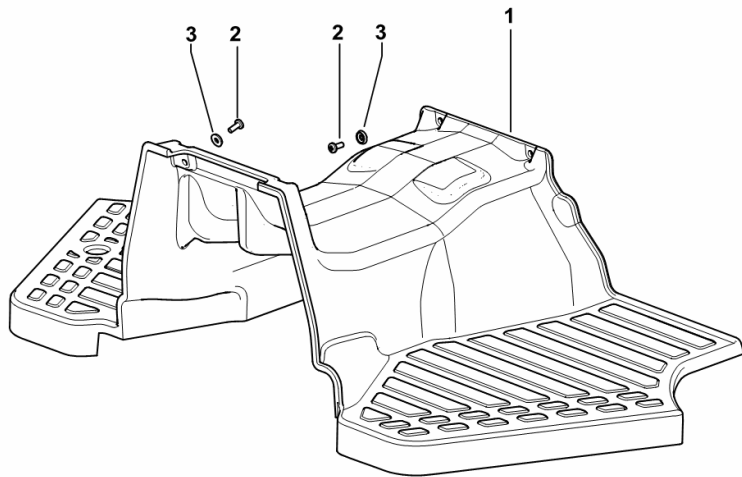
CONVEYOR

Fig.	Code	QTY	Name
------	------	-----	------

Notes:

[Agrolux 57] 1001 <-

1	0.014.1483.2/20	1	lining
2	2.0332.406.6	4	screw m 6 p.1.0 x 16
3	0.9125.662.0	4	washer 6.4 x 12.5
4	2.0112.004.2	6	screw m 6 p.1 x 14
5	2.1599.545.2	6	washer 6.5x28x2



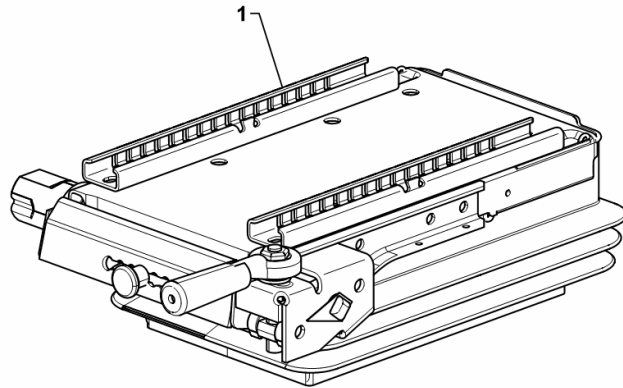
9_E6076_03_0-A-001

Section: G0 - BODYWORK - CAB
SEAT SPRINGING KAB XH2

Fig.	Code	QTY	Name
------	------	-----	------

Notes:
 [Agrolux 57]

1	0.010.5356.4	1	seat springs KAB XH2  0.010.5356.4
---	--------------	---	--



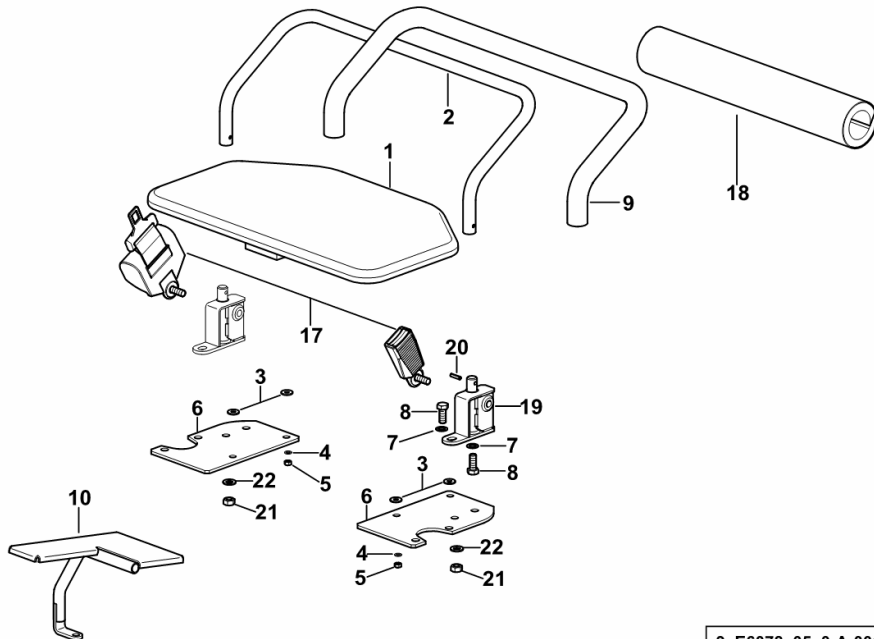
9_50875_02_0-A-001

SEAT FOR 2ND OPERATOR - FOR TYPES WITH SAFETY FRAME

Fig.	Code	QTY	Name
------	------	-----	------

Notes:
[Agrolux 57]

1	0.009.9189.3	1	seat
2	0.014.2901.0	1	backrest
3	2.1312.003.2	4	washer 6
4	2.1470.002.2	4	washer 6, d128
5	2.1011.103.2	4	nut m 6 p.1
6	0.014.2905.0	2	plate
7	2.1470.006.2	4	lock washer 10
8	2.0112.309.2	4	screw m 10 p.1.5 x 25
9	0.014.2903.0/10	1	guard mm 1000
10	0.014.2806.2	1	foot board
17	0.013.9989.4	1	safety belt
18	0.014.2962.0	1	shield mm 460
19	0.014.2921.2/10	2	support
20	2.1630.510.0	2	roll pin 5 x 20
21	2.1011.106.2	2	nut m 10 p.1.5
22	2.1310.006.2	2	flat washer 10.5



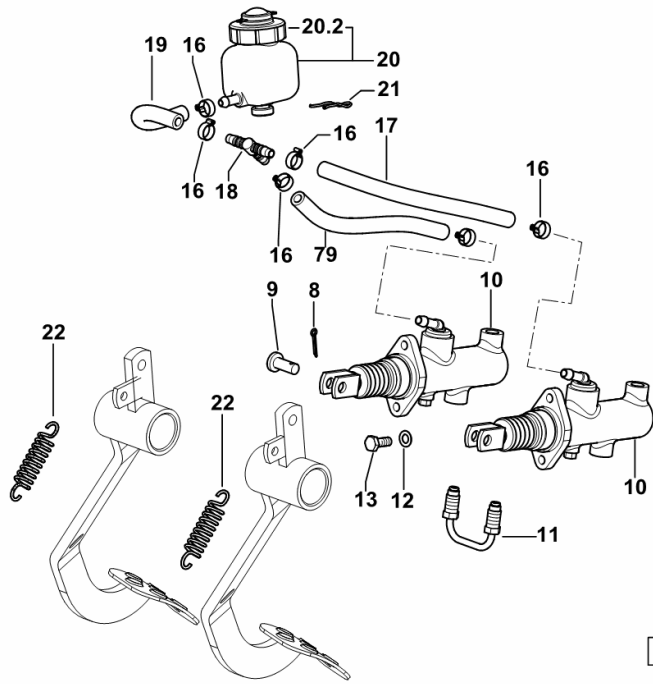
9_E6078_05_0-A-001

BRAKE CONTROLS

Fig.	Code	QTY	Name
------	------	-----	------

Notes:
[Agrolux 57]

8	2.1690.308.2	2	split pin 3.2 x 20
9	2.1671.406.2	2	pin
10	0.009.9234.4	2	brake cylinder
11	0.255.6660.3/10	1	tube
12	2.1470.004.2	4	washer 8
13	2.0112.207.2	4	screw m 8 p 1.25 x 20
16	2.6857.019.0	6	clamp 14
17	0.012.6343.0	0.11	tube
18	0.009.8380.0	1	pipe fitting T
19	0.012.6343.0	0.5	tube
20	0.009.8379.3/20	1	tank
20.2	0.009.8379.2	1	plug
21	0.171.6656.0	1	small spring
22	2.4049.190.2/10	2	spring
79	0.012.6343.0	0.15	tube



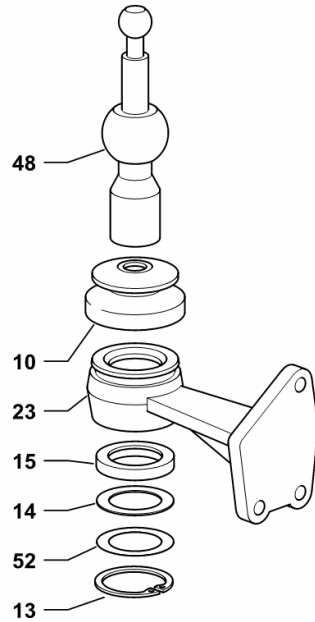
9_E6066_01_0-C-001

GEAR SHIFTING

Fig.	Code	QTY	Name
------	------	-----	------

Notes:
[Agrolux 57]

10	0.008.5961.0	1	guard (1335 <-)
10	0.255.6451.0/10	1	bellows (-> 1336)
13	2.1499.122.0	1	circlip 47
14	2.1589.251.0	1	snoulder 32x46.5x0.2
15	0.008.5395.0/10	1	ring
23	0.008.5411.0/20	1	support
48	0.009.9656.0	1	lever
52	2.1589.302.0	1	snoulder 32x46.5x1



9_58964_11_0-A-001

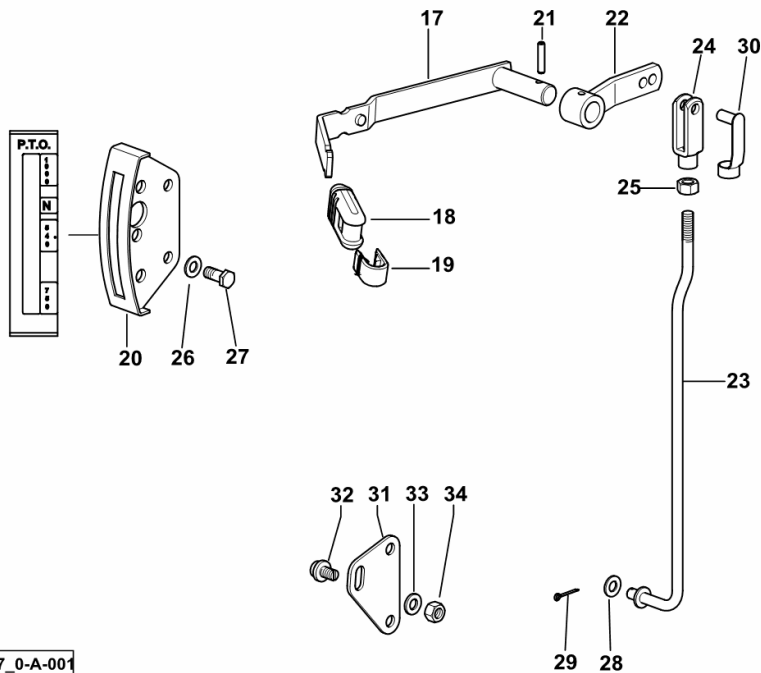
PTO CONTROL - 3 SPEED 540 - 750 - 1000

Fig.	Code	QTY	Name
------	------	-----	------

Notes:

[Agrolux 57]

17	0.009.3993.3/10	1	lever
18	0.008.8388.0	1	knob
19	0.008.8383.0	1	coupling
20	0.014.0064.3	1	plate
21	2.1630.511.0	1	roll pin 5x24
22	0.009.6537.2	1	lever 540-750-1000
23	0.009.6538.2/20	1	rod
24	2.3510.014.2	1	fork
25	2.1011.105.2	1	nut m 8 p.1.25
26	2.1310.004.2	2	flat washer 8.5
27	2.0112.207.2	2	screw m 8 p 1.25 x 20
28	2.1310.004.2	1	flat washer 8.5
29	2.1690.106.2	1	split pin 1.6x16
30	2.1673.007.2	1	pin
31	0.010.0382.0	1	small plate 540-750-1000
32	0.009.6625.0	1	screw
33	2.1310.004.2	1	flat washer 8.5
34	2.1011.105.2	1	nut m 8 p.1.25



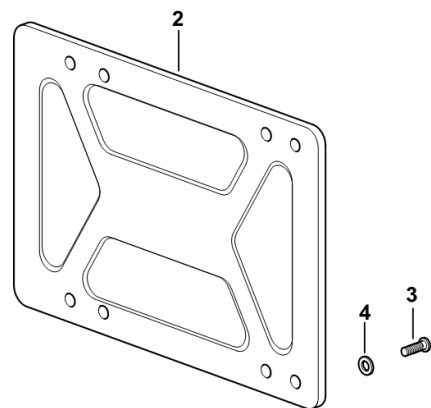
9_E6036_07_0-A-001

LICENCE PLATE HOLDER

Fig.	Code	QTY	Name
------	------	-----	------

Notes:
[Agrolux 57]

2	0.467.7696.3	1	plate holder
3	2.0332.304.2	4	screw m 5 p.0.8 x 12
4	2.1310.001.2	4	flat washer 5.3

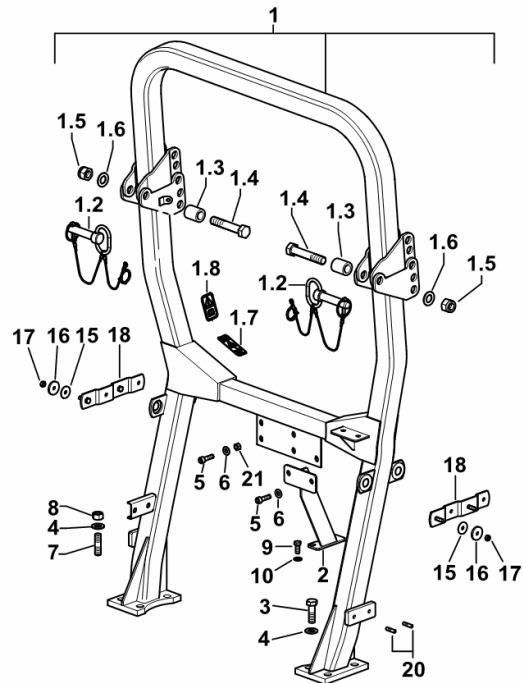


9_49076_60_0-A-001

SAFETY ARCH FOLDING

Fig.	Code	QTY	Name
------	------	-----	------

Notes:
[Agrolux 57]



1	0.014.1167.4/40	1	safety frame
1.2	0.010.4049.4	1	pin
1.3	2.1549.332.2/10	2	spacer 20.8x35x42.5
1.4	2.0119.216.2	2	screw m 20 p.2.5 x 110
1.5	2.1120.011.2	2	nut m 20 p.2.5
1.6	2.1310.013.2	2	flat washer 21x37
1.7	2.9939.276.0	1	plate
1.8	2.9939.272.0	1	plate
2	0.007.6935.3/10	1	bracket
3	2.0119.210.2	6	screw
4	2.1475.006.2	8	washer 16
5	2.0313.312.7	3	screw m 10 p 1.5x35
6	2.1310.006.2	3	flat washer 10.5
7	2.0422.609.2	2	stud bolt m 16 p.2x35
8	2.1011.109.2	2	nut m 16 p.2
9	2.0119.209.2	2	screw
10	2.1475.003.2	2	washer 10
15	2.1579.905.2	4	spacer 8.5x27x5
16	2.1599.245.0	4	snoulder 8.5 x 32 x 2.0
17	2.1011.105.2	4	nut m 8 p.1.25
18	0.009.9250.2	2	bracket
20	2.0422.203.7	2	stud bolt m 8 p.1.25 x 20
21	2.1011.106.2	1	nut m 10 p.1.5

9_E6078_02_0-A-001

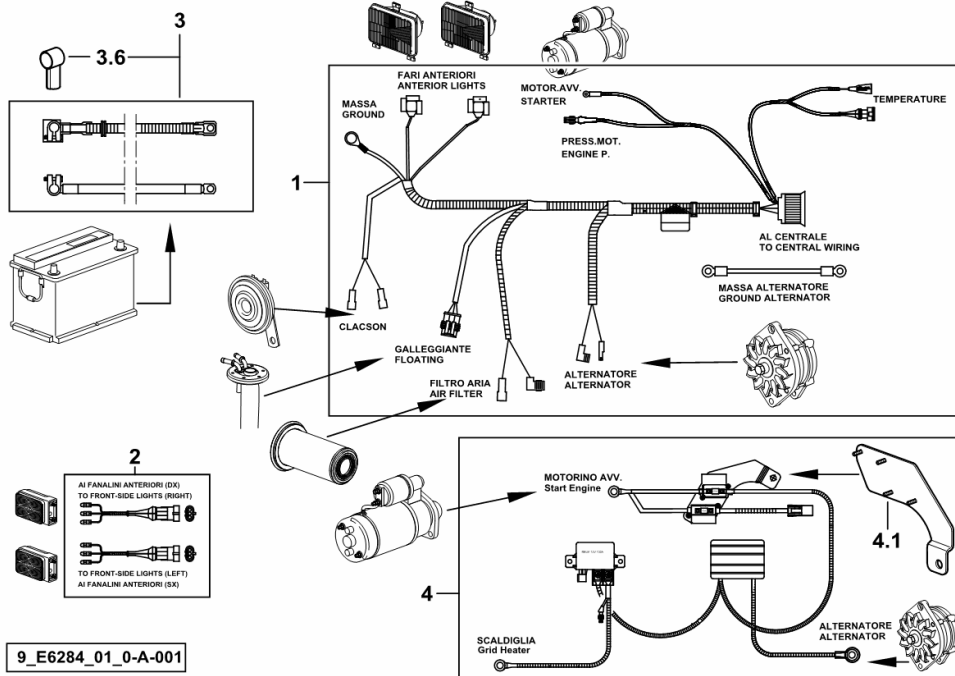
ELECTRICAL EQUIPMENT FRONT - BATTERY LEADS

Fig.	Code	QTY	Name
------	------	-----	------

Notes:

[Agrolux 57] -> 1184

1	0.015.1002.4	1	electrical system ☞ 0.015.1002.4
2	0.010.9057.3	1	wire ☞ 0.010.9057.3
3	0.012.6292.4	1	wire ☞ 0.012.6292.4
3.6	2.6519.033.0	1	cap
4	0.015.1003.4	1	wire ☞ 0.015.1003.4
4.1	0.014.0739.3	1	support



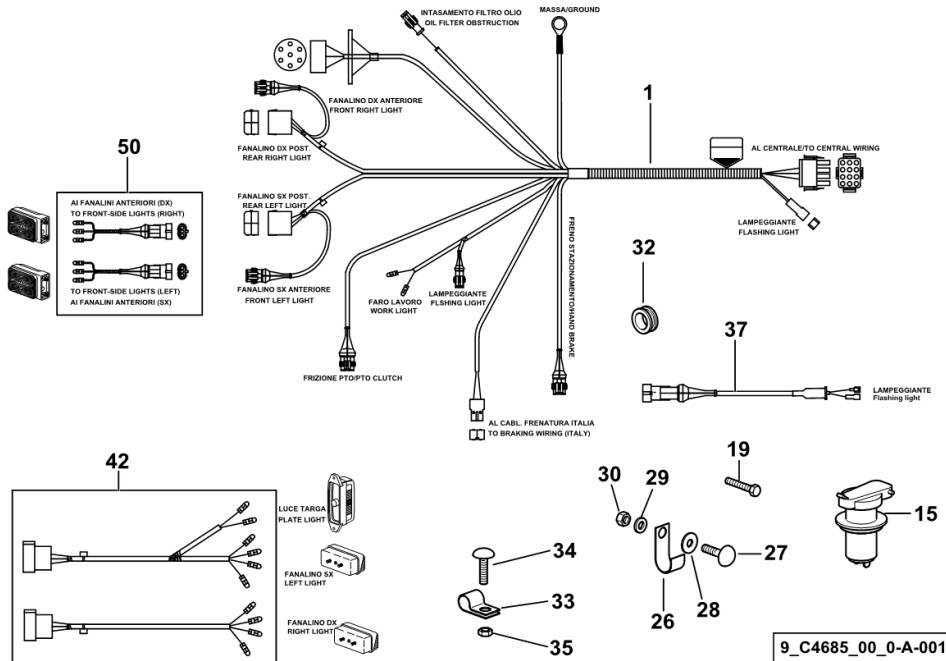
REAR LIGHTS ELECTRICAL SYSTEM - SINGLE POLE SOCKET

Fig.	Code	QTY	Name
------	------	-----	------

Notes:

- WITH FOLD-DOWN ROPS [Agrolux 57]

1	0.014.0170.4	1	electrical system
15	0.008.1550.0	1	socket
19	2.0332.309.6	3	screw m 5 x 30
26	2.6819.004.2	2	clamp Ø 17
27	2.0099.014.0/20	2	screw m 6 x 25
28	2.1569.140.0	2	gasket 6.4x17x1.5
29	2.1310.002.2	2	washer 6.6, d125
30	2.1011.103.2	2	nut m 6 p.1
32	2.6560.011.0	2	wire guide 16x2.5
33	2.6839.024.2	2	clamp
34	2.0099.014.0/20	2	screw m 6 x 25
35	2.1011.103.2	2	nut m 6 p.1
37	0.012.6084.4	1	wire
42	0.008.1474.3/10	1	wire
50	0.010.9058.3/10	1	wire

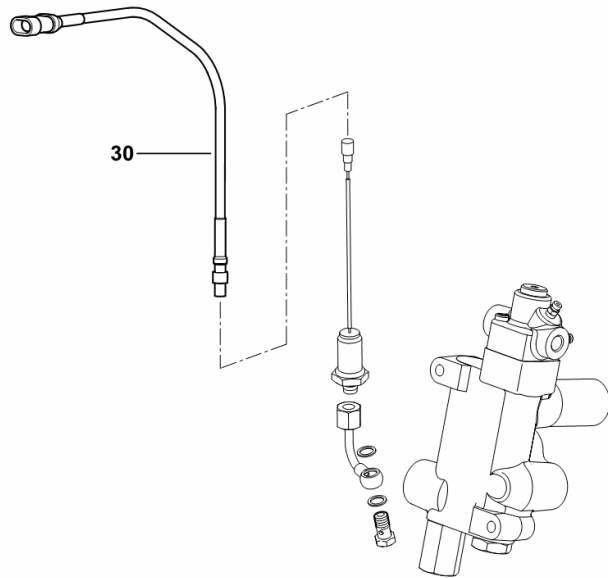


PRESSURE SWITCH WIRING FOR TRAILER HYDRAULIC BRAKING SYSTEM - ITALY

Fig.	Code	QTY	Name
------	------	-----	------

Notes:
[Agrolux 57]

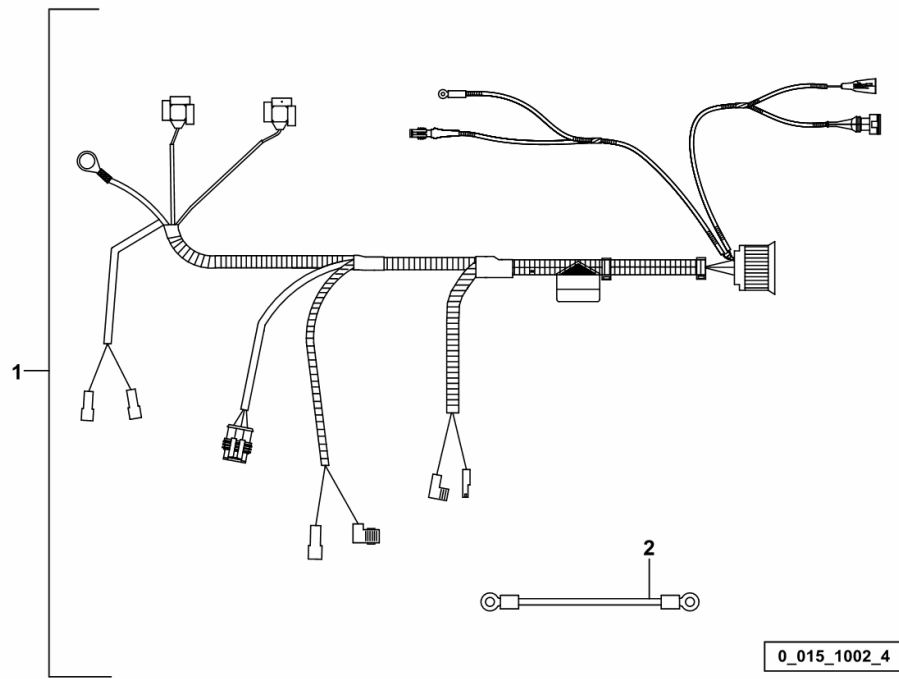
30	0.012.2103.3	1	wire L = mm 800
----	--------------	---	-----------------



9_E6089_10_0-C-001

Section: L0 - ELECTRIC AL SYSTEM
ELECTRICAL EQUIPMENT FRONT

Fig.	Code	QTY	Name
1	0.015.1002.4	1	electrical system
2	0.900.0077.9	1	wire

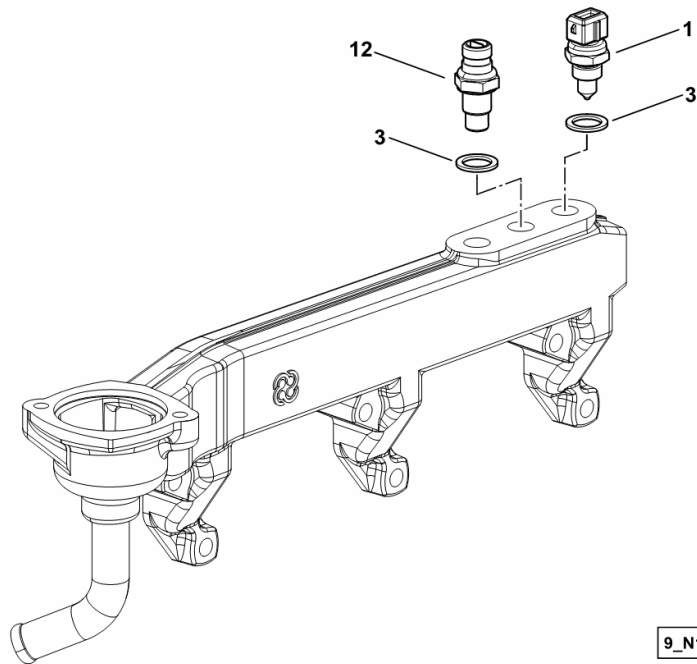


COOLING SYSTEM MANIFOLD SENSORS

Fig.	Code	QTY	Name
------	------	-----	------

Notes:
[Agrolux 57]

1	2.7099.640.0/10	1	tempe guage
3	2.1560.010.0	3	gasket 14.2 x 20 x 1.5
12	2.7099.800.0	1	sensor



9_N1117_00_0-B-001

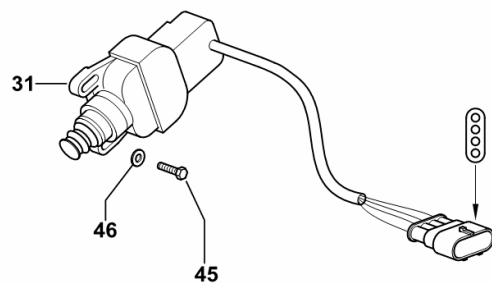
SEALED SWITCHES 4 vie

Fig.	Code	QTY	Name
------	------	-----	------

Notes:

- FOR TYPES WITH ROLL BAR [Agrolux 57]

31	2.7659.202.0	1	switch
45	2.0119.070.6	2	screw m 4 p.0.7 x 16
46	2.1310.028.2	2	flat washer 4



9_C4785_00_0-C-001

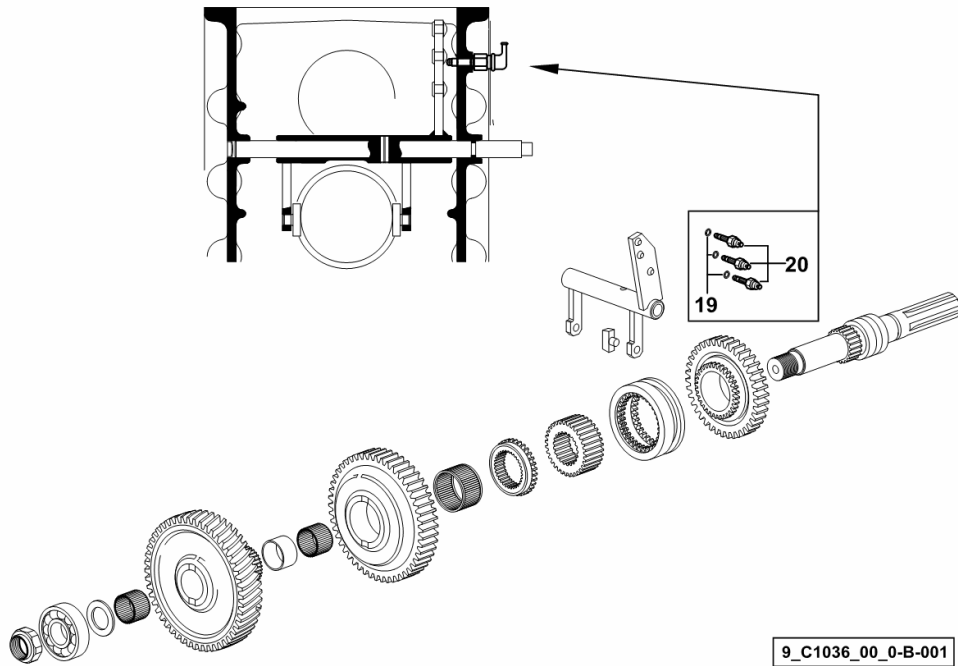
SWITCHES FOR 2-SPEED P.T.O. 540 - 750 + SYNCRO

Fig.	Code	QTY	Name
------	------	-----	------

Notes:

[Agrolux 57] 1208 <-

19	2.1560.003.0	3	gasket 8.2 x 12
20	2.7659.131.0	3	switch



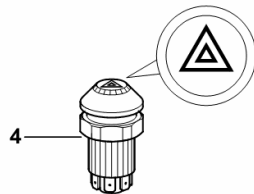
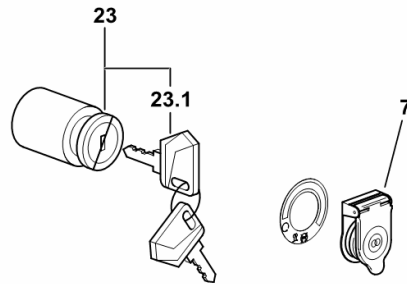
IGNITION BLOCK AND CONSOLE BUTTONS

Fig.	Code	QTY	Name
------	------	-----	------

Notes:

[Agrolux 57] 1070 <-

4	2.7659.110.0	1	push-button
7	0.012.2056.2	1	small cover
23	04411512.4	1	start device
23.1	04418435	1.000	key



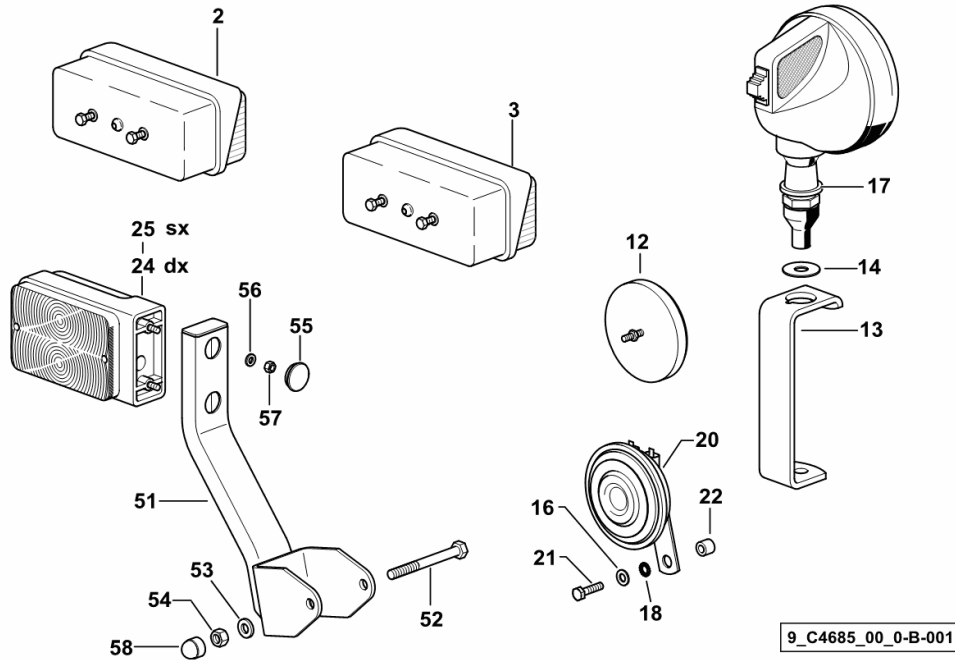
9_E6084_00_0-D-002

SIDE LIGHTS / HORN AND REFLECTOR

Fig.	Code	QTY	Name
------	------	-----	------

Notes:

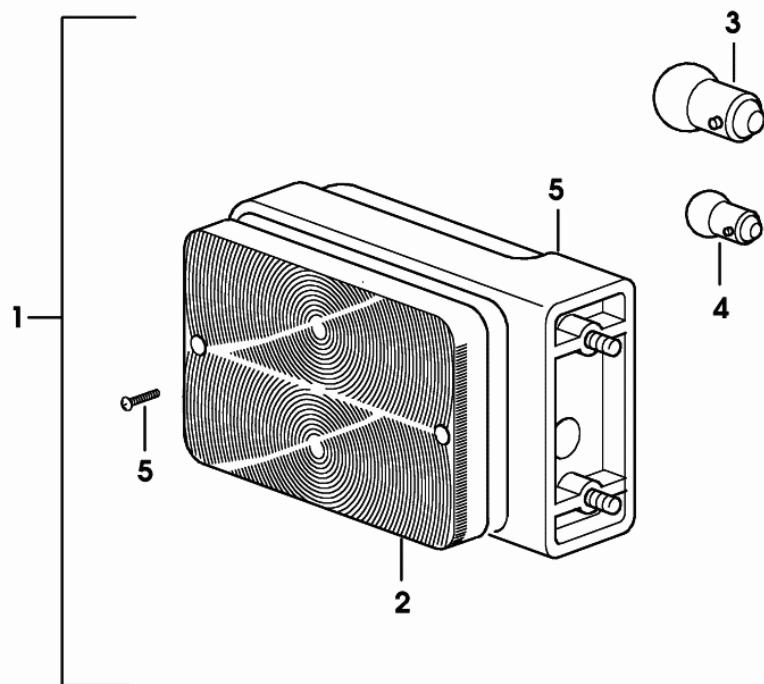
- WITH FOLD-DOWN ROPS [Agrolux 57]



2	2.8059.524.0	1	lamp dx/rh/re ☞ 2.8059.524.0
3	2.8059.523.0	1	lamp sx/lh/li ☞ 2.8059.523.0
12	2.8349.002.2/30	2	reflector Ø 86 mm
13	0.010.4730.0	1	lamp support
14	2.1312.005.2	1	washer 10.2
16	2.1312.003.2	1	washer 6
17	2.8029.300.0	1	headlight ☞ 2.8029.300.0
18	2.1470.002.2	1	washer 6, d128
20	2.8419.006.0	1	horn
21	2.0112.009.2	1	screw m 6 p.1 x 25
22	2.1549.004.2	1	spacer 6.4x12x10
24	2.8019.970.0	1	side lamp dx/rh/re ☞ 2.8019.970.0
25	2.8019.960.0	1	side lamp sx/lh/li ☞ 2.8019.960.0
51	0.011.8458.2	2	lamp support
52	2.0112.225.2	2	screw m 8 p.1.25 x 80
53	2.1310.004.2	2	flat washer 8.5
54	2.1011.105.2	2	nut m 8 p.1.25
55	0.9200.178.0	4	plug Ø 17
56	2.1310.001.2	4	flat washer 5.3
57	2.1011.102.2	4	nut m 5 p.0.7
58	0.163.7856.0	4	cap

HEADLAMP COMPONENTS

Fig.	Code	QTY	Name
1	2.8019.960.0	1	side lamp sx/lh/li
2	2.8019.200.1	1	light body dx/rh/re
3	2.8313.001.0	1	lamp 12V 21W
4	2.8311.005.0	1	lamp 12 V, 5 W
5	0.000.0000.1	0	not serviceable



2_8019_960_0

CLICK HERE TO **DOWNLOAD** THE COMPLETE MANUAL

- Thank you very much for reading the preview of the manual.
- You can download the complete manual from: www.heydownloads.com by clicking the link below

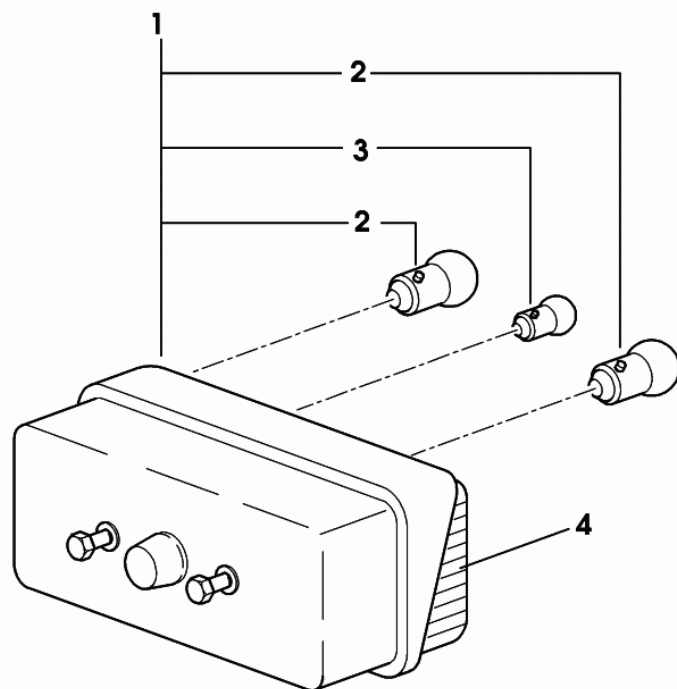


- Please note: If there is no response to CLICKING the link, please download this PDF first and then click on it.

CLICK HERE TO **DOWNLOAD** THE COMPLETE MANUAL

HEADLAMP COMPONENTS

Fig.	Code	QTY	Name
1	2.8059.524.0	1	lamp dx/rh/re
2	0.010.3487.0	2	lamp 12V - 21W
3	0.900.0049.6	1	lamp 12 V, 5 W
4	2.8019.860.1	1	light body sx/lh/li



2_8059_524_0

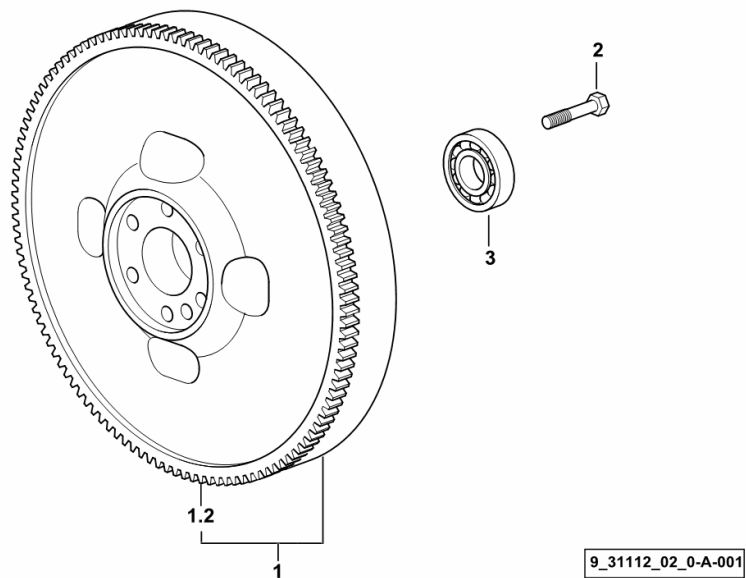
Section: B0 - ENGINE
ENGINE FLYWHEEL

Fig.	Code	QTY	Name
------	------	-----	------

Notes:

- EXPORT U.S.A. [Agrolux 57]

1	0.007.1617.3/30	1	flywheel
1.2	0.069.1242.0	1	crown wheel Z = 121
2	2.0119.174.0/10	6	screw m 12 p.1.25x45
3	2.2041.008.0	1	ball bearing 20x47x14

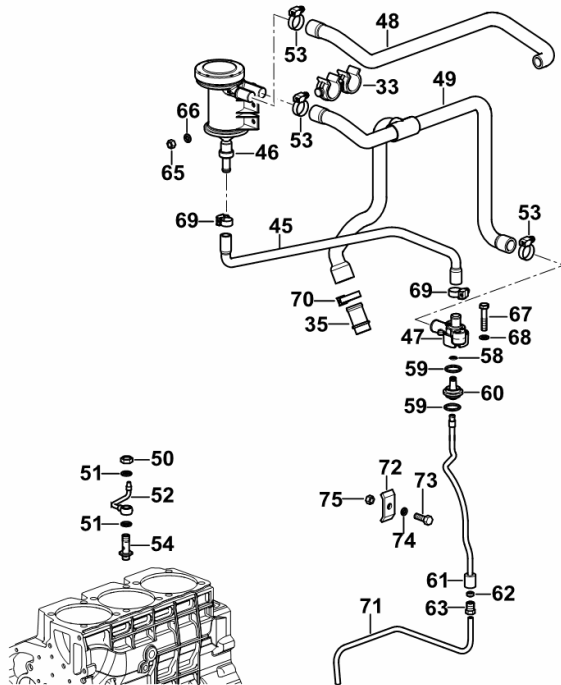


Section: B0 - ENGINE
LUBRICATION

Fig.	Code	QTY	Name
------	------	-----	------

Notes:

- EXPORT U.S.A. [Agrolux 57] -> 1244



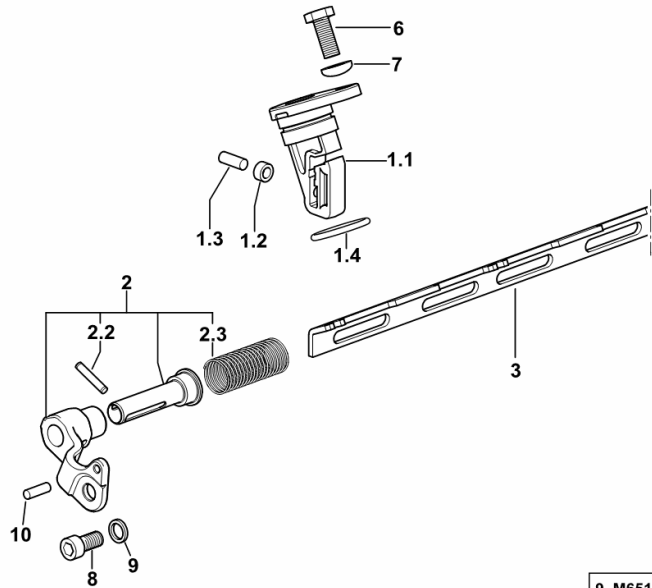
33	0.013.6978.4	2	small spring
35	0.011.5918.0/10	1	tube
45	0.013.7012.0	1	tube
46	0.013.5023.0	1	sediment bowl
47	0.013.5291.0	1	flange
48	0.013.7326.0	1	tube
49	0.013.7640.0	1	tube
50	2.1099.108.2	3	special nut m 10 p.1
51	2.1560.006.0	12	gasket 10.2 x 16
52	0.086.1550.2	3	cooling nozzle
53	2.6851.002.0	3	clamp Ø 20/32
54	0.065.1160.3/20	3	valve
58	2.1532.012.0	1	'o' ring 6.75 x 1.78
59	2.1539.072.0	2	'o' ring 23.52 x 1.78
60	0.066.1558.0	1	sleeve
61	0.066.1557.2	1	tube
62	2.3350.003.1	1	nosepiece 8
63	2.3339.418.1	1	pipe fitting m 12 p.1
65	2.1120.103.2	2	nut m 6
66	2.1310.003.2	2	flat washer 7.4x14
67	2.0112.215.2	2	screw m 8 p.1.25 x 40
68	2.1474.009.2	2	spring washer 8
69	2.6851.001.0	3	clamp Ø 16/25
70	2.6851.003.0	1	clamp Ø 25/40
71	0.007.1427.0	1	tube
72	0.002.8816.0	1	small plate
73	2.0112.007.2	1	screw m 6 p.1 x 20
74	2.1470.002.2	1	washer 6, d128
75	2.1011.103.2	1	nut m 6 p.1

Section: B0 - ENGINE
INJECTION PUMP DRIVE

Fig.	Code	QTY	Name
------	------	-----	------

Notes:
 [Agrolux 57]

1.1	0.012.5618.0/20	1	support
1.2	0.065.1660.0	1	roller
1.3	2.1651.507.0	1	pin 6 x 16
1.4	2.1530.072.0	1	'o' ring 26.70x1.78
2	0.013.4057.4	1	bracket
2.2	2.1631.310.0	1	pin 4x22
2.3	2.4019.761.1	1	spring
3	0.014.9284.3	1	rod
6	2.0112.207.2	2	screw m 8 p 1.25 x 20
7	2.1310.004.2	2	flat washer 8.5
8	2.0312.204.2	1	screw m 8 p.1.25 x 16
9	2.1475.202.2	1	spring washer 8.4 x 16
10	2.1631.305.0	1	roll pin 4 x 12



9_M6516_00_0-B-001

Section: B0 - ENGINE
ENGINE COOLING WATER PUMP

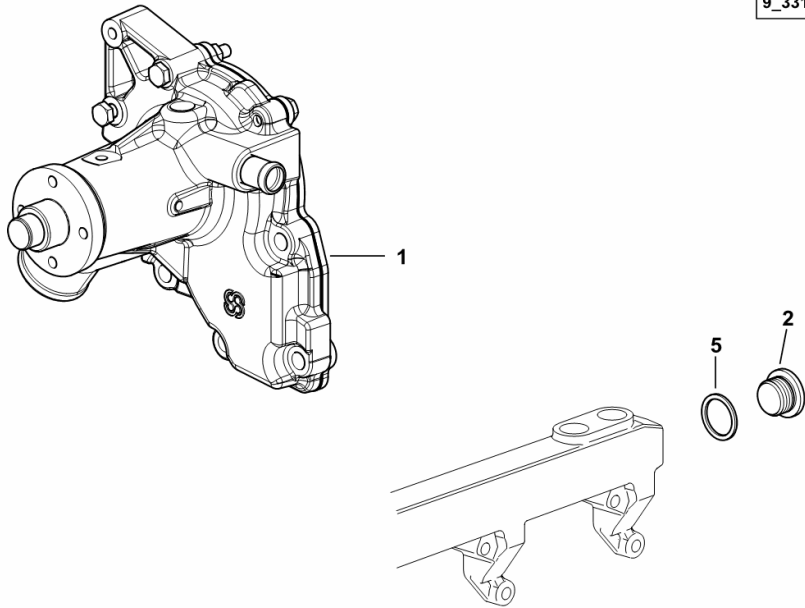
Fig.	Code	QTY	Name
------	------	-----	------

Notes:

[Agrolux 57] -> 1372

1	0.014.3346.4	1	water pump ☞ 0.014.3346.4
2	2.3199.001.2	1	plug 1/2" gas
5	2.1560.054.0	1	gasket 21 x 26

9_33117_03_0-A-002



ELECTRICAL ACCESSORIES

SOLENOID VALVE.....C0.08.0 (1)
SOLENOID VALVE PROTECTION.....C0.08.2 (1)
SOLENOID VALVE 13 V - 20 W, ON/OFF 3/2.....2.3729.697.0/20.A

SEALING SET

GASKET SET FOR ENGINE ASSEMBLY..... C0.09.0 (1)

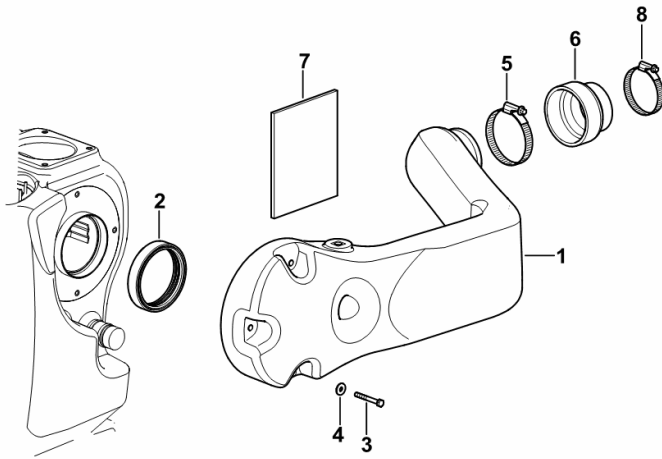
AIR CLEANER HOSE

Fig.	Code	QTY	Name
------	------	-----	------

Notes:

[Agrolux 57] -> 1172

1	0.013.9923.2	1	sleeve
2	0.014.0311.0	1	ring
3	2.0112.020.2	4	screw m 6 p.1 x 55
4	2.1312.003.2	4	washer 6
5	2.6851.008.0	1	clamp Ø 70/90
6	0.013.4960.0	1	tube
7	0.013.5198.0	1	panel
8	2.6851.007.0	1	clamp Ø 60/80



9_F2081_00_0-A-001

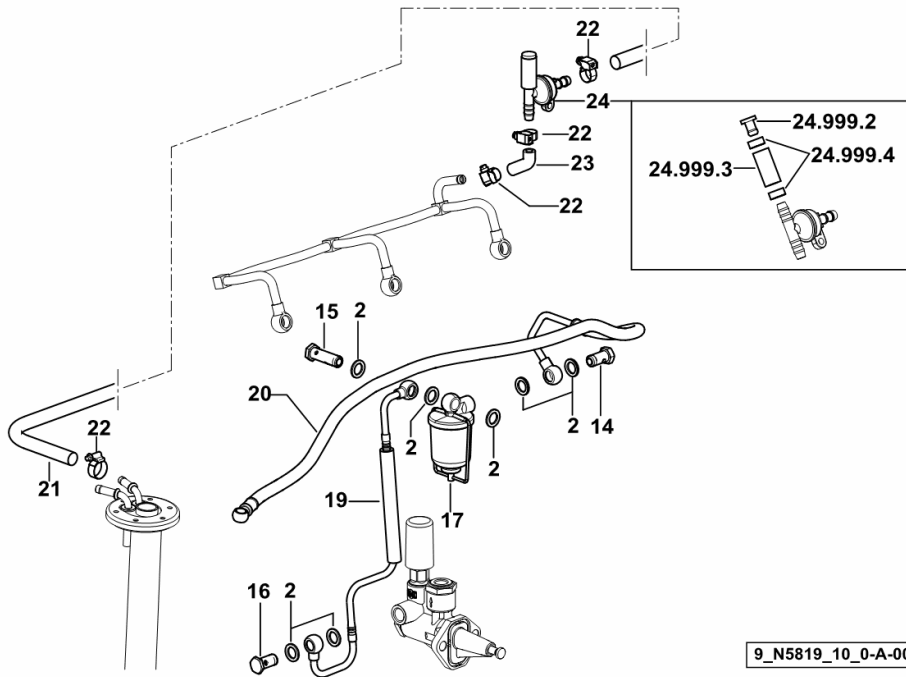
Section: C0 - ENGINE ACCESSORIES
FUEL FEED PIPES AND PREFILTER

Fig.	Code	QTY	Name
------	------	-----	------

Notes:

[Agrolux 57] -> 1056

2	2.1561.007.0	7	gasket 14,8x22.2
14	2.3332.004.1	1	pipe union m 14 p.1.5 x 27
15	2.3249.095.2	1	pipe union m 14 p.1.5x45
16	2.3339.357.2/10	1	pipe union m 14 p.1.5x28
17	2.4319.220.0	1	precleaner ☞ 2.4319.220.0
19	0.013.6569.3/10	1	tube
20	0.014.0877.3	1	tube
21	0.012.6451.0	1.57	tube Ø mm 8/15
22	2.6851.019.0	3	clamp Ø 13/20
23	0.012.6451.0	0.06	tube Ø mm 8/15
24	0.014.7800.4	1	valve (-> 1056)
24.999.2	0.014.7706.0	1	plug
24.999.3	0.014.7705.0	1	tube
24.999.4	2.6857.017.0	2	clamp 13



9_N5819_10_0-A-002

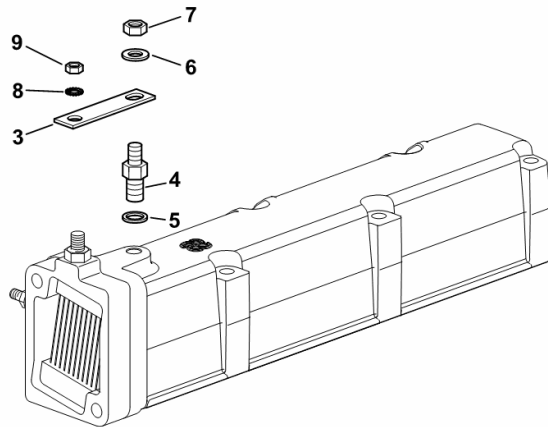
HEATING ELEMENT EARTH

Fig.	Code	QTY	Name
------	------	-----	------

Notes:

[Agrolux 57] -> 1172

3	0.013.4451.0	1	bracket
4	0.013.4450.0	1	stud bolt m 8 / m 10
5	2.1560.006.0	1	gasket 10.2 x 16
6	2.1475.002.2	1	conical washer 8
7	2.1011.105.2	1	nut m 8 p.1.25
8	2.1470.002.2	1	washer 6, d128
9	2.1011.103.2	1	nut m 6 p.1



9_B6784_21_0-A-001

Agrolux 57

F0 - FRONT AXLE

FRONT SUPPORT

FRONT SUPPORT.....	F0.01.1 (1)
4WD - FRONT SUPPORT.....	F0.01.3 (1)
COVER.....	F0.01.4 (1)

4WD FRONT AXLE

4WD - FRONT DRIVE AXLE.....	F0.03.0 (1)
4WD - FRONT AXLE YOKES.....	F0.03.1 (1)
4WD - FRONT AXLE FORKS FOR TYPES WITH BRAKES.....	F0.03.2 (1)
4WD - FRONT AXLE YOKES.....	F0.03.3 (1)
4WD - FRONT AXLE YOKES.....	F0.03.4 (1)
4WD - STANDARD SEALING.....	F0.03.5 (1)
STEERING ROD - MECH. STEERING - TELESCOPIC AXLE.....	0.010.0488.4/10.A

FRONT DIFFERENTIAL

4WD - FRONT DIFFERENTIAL.....	F0.04.0 (1)
4WD - DIFFERENTIAL LOCK CONTROL-MECHANICAL.....	F0.04.1 (1)
4WD - BEVEL WHEEL GEAR Z = 15 / Z = 33.....	F0.04.2 (1)
DIFFERENTIAL BEVEL GEAR PAIR.....	F0.04.3 (1)
4WD - FRONT DIFFERENTIAL LOCK- STANDARD SEALING.....	F0.04.4 (1)
4WD - FLANGE.....	F0.04.5 (1)
4WD - FLANGE.....	F0.04.6 (1)
4WD - PROPELLER SHAFT.....	F0.04.7 (1)

STEERING CYLINDER

4WD - POWER STEERING CYLINDER.....	F0.05.2 (1)
4WD - POWER STEERING CYLINDER.....	F0.05.3 (1)
CYLINDER PARTS.....	0.009.9892.4/10.A

FINAL DRIVE REDUCTION UNITS AND HALF-SHAFTS

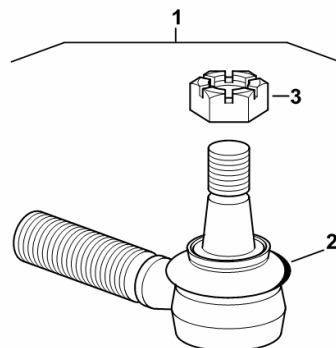
4WD - FRONT REDUCTION GEARBOX.....	F0.06.0 (1)
4WD - FRONT REDUCTION GEARBOX.....	F0.06.0 (2)
4WD - AXLESHAFTS.....	F0.06.1 (1)
4WD - AXLESHAFTS.....	F0.06.2 (1)
FRONT WHEEL HUB COVER.....	F0.06.3 (1)
4WD - AXLESHAFTS.....	0.009.6694.4/30.B

FRONT BRAKES

4WD - FRONT BRAKES.....	F0.07.0 (1)
-------------------------	-------------

STEERING ROD - MECH. STEERING - TELESCOPIC AXLE

Fig.	Code	QTY	Name
1	0.010.0488.4/10	1	joint
2	0.900.0025.7	1	guard
3	0.900.0025.8	1	nut




0_010_0488_4_10

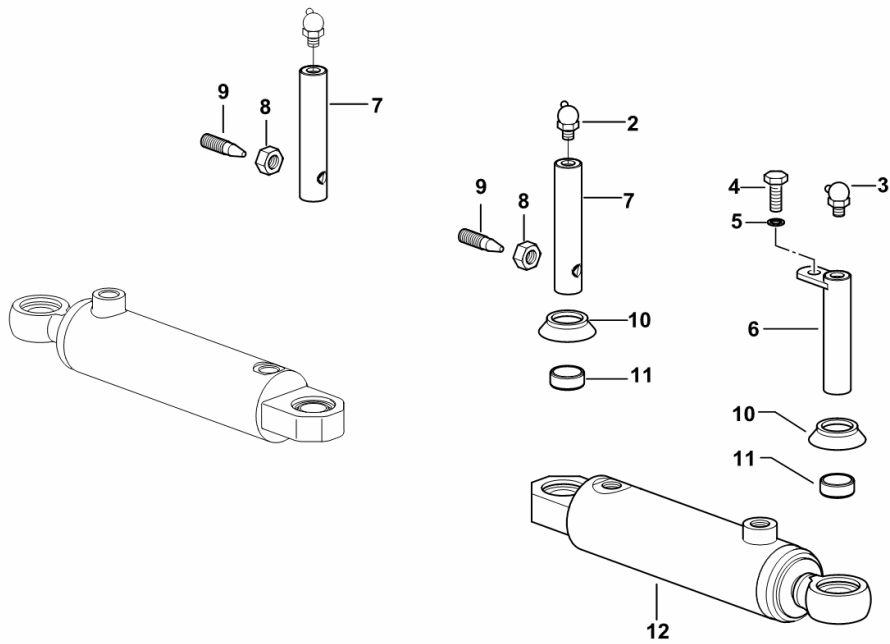
Section: F0 - FRONT AXLE
4WD - POWER STEERING CYLINDER

Fig.	Code	QTY	Name
------	------	-----	------

Notes:

[Agrolux 57] 1019 <-

2	2.3821.103.2	1	lubricator m 10 p.1
3	2.3821.303.2	1	lubricator m 10 p.1
4	2.0112.207.2	1	screw m 8 p 1.25 x 20
5	2.1470.004.2	1	washer 8
6	0.016.1031.2	1	piston pin
7	0.016.1025.0	2	piston pin
8	2.1011.406.2	2	nut m 10 p.1
9	2.0399.050.2	2	screw m 10 p.1 x 30
10	0.270.6351.0	4	guard
11	2.1579.739.0	4	spacer 21x25x10
12	0.009.9892.4/10	1	cylinder  0.009.9892.4/10



9_68443_08_0-A-001

Agrolux 57

H0 - HYDRAULIC AND PNEUMATIC SYSTEM|

HYDRAULIC SYSTEM

HYDRAULIC SYSTEM.....	H0.01.0 (1)
HYDRAULIC SYSTEM.....	H0.01.3 (1)
HYDRAULIC SYSTEM 19 cc.....	H0.01.8 (2)
HYDRAULIC SYSTEM 19 cc.....	H0.01.8 (3)
4-WAY AUXILIARY DISTRIBUTOR.....	H0.01.9 (1)
4-WAY AUXILIARY DISTRIBUTOR.....	H0.01.9 (2)
6-WAY AUXILIARY DISTRIBUTOR.....	H0.01.10 (1)
6-WAY AUXILIARY DISTRIBUTOR.....	H0.01.10 (2)
4-WAY DISTRIBUTOR EQUIPMENT - WITH BREAKING FOR TRAILER.....	H0.01.12 (1)
4-WAY DISTRIBUTOR EQUIPMENT - WITH BREAKING FOR TRAILER.....	H0.01.12 (2)
6-WAY DISTRIBUTOR EQUIPMENT - WITH BREAKING FOR TRAILER.....	H0.01.14 (1)
6-WAY DISTRIBUTOR EQUIPMENT - WITH BREAKING FOR TRAILER.....	H0.01.14 (2)
REAR LIFT CYLINDER BARREL.....	H0.01.16 (1)
HYDRAULIC PUMP PARTS.....	2.4539.050.0.A
HYDRAULIC PUMP PARTS.....	2.4539.060.0.A
PUMP-COMPONENTS.....	2.4539.180.0.A
HYDRAULIC PUMP PARTS.....	2.4539.190.0.A

STEERING SYSTEM

4WD - POWER STEERING.....	H0.02.1 (1)
HYDROSTATIC STEERING CONTROL VALVE.....	H0.02.2 (1)
4WD - POWER STEERING.....	H0.02.7 (1)
4WD - POWER STEERING.....	H0.02.7 (2)
4WD - POWER STEERING.....	H0.02.8 (1)
POWER STEERING.....	H0.02.9 (1)
HYDR. STEERING DISTRIBUTOR PARTS.....	0.290.6310.4/10.A
HYDRAULIC STEERING GEAR.....	2.4569.004.0.A

REAR REMOTE CONTROL VALVES

4-WAY AUXILIARY DISTRIBUTOR.....	H0.07.0 (1)
4-WAY AUXILIARY DISTRIBUTOR.....	H0.07.1 (1)
6-WAY AUXILIARY DISTRIBUTOR.....	H0.07.2 (1)
6-WAY AUXILIARY DISTRIBUTOR.....	H0.07.3 (1)
4 - 6 - WAY DISTRIBUTOR EQUIPMENT.....	H0.07.4 (1)
4 - 6 - WAY DISTRIBUTOR EQUIPMENT.....	H0.07.4 (2)
PLATE FOR QUICK-ACTION COUPLERS.....	H0.07.5 (1)
ENGAGEMENT.....	0.98309.50.3/10.A
DISTRIBUTOR.....	2.3729.687.0.A
DISTRIBUTOR.....	2.3729.688.0.A
DISTRIBUTOR.....	2.3729.693.0.A
DISTRIBUTOR.....	2.3729.694.0.A

BRAKING SYSTEM AND PNEUMATIC SYSTEM|

Agrolux 57

Section: H0 - HYDRAULIC AND PNEUMATIC SYSTEM|

Ref.: H0.01.12 (1)

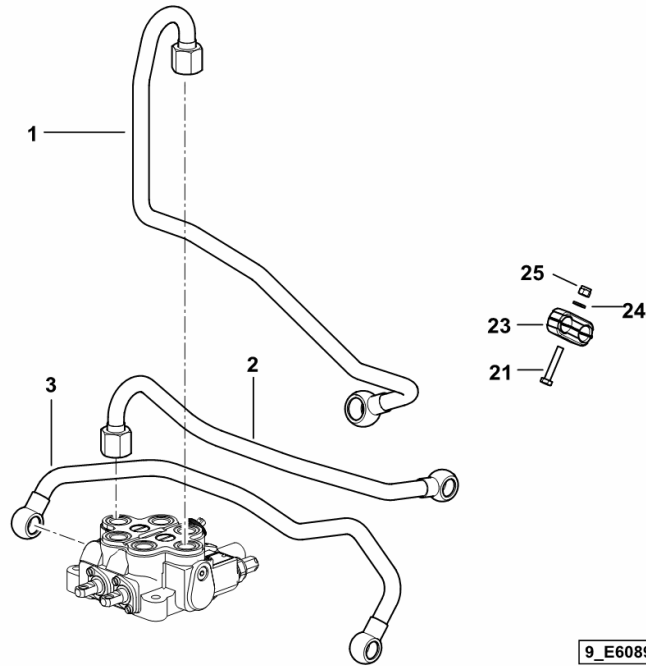
4-WAY DISTRIBUTOR EQUIPMENT - WITH BREAKING FOR TRAILER

Fig.	Code	QTY	Name
------	------	-----	------

Notes:

[Agrolux 57] 1342 <-

1	0.014.1240.3	1	tube
2	0.014.1157.3	1	tube
3	0.014.1158.3	1	tube
21	2.0112.013.2	1	screw m 6 p.1 x 35
23	2.3321.020.0	1	collar Ø 16
24	2.1310.002.2	1	washer 6.6, d125
25	2.1120.003.2	1	nut m 6



9_E6089_01_0-A-001

Agrolux 57

Section: H0 - HYDRAULIC AND PNEUMATIC SYSTEM|

Ref.: H0.02.2 (1)

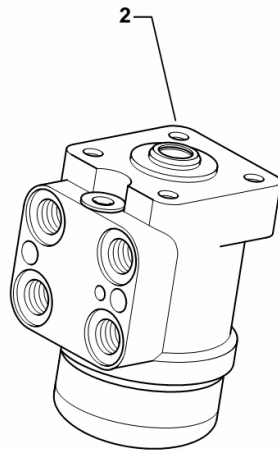
HYDROSTATIC STEERING CONTROL VALVE

Fig.	Code	QTY	Name
------	------	-----	------

Notes:

[Agrolux 57] -> 1231

2	2.4569.004.0	1	hydrosteering OGNIBENE - 80 CC ☞ 2.4569.004.0
---	--------------	---	--



9_E6163_00_0-A-001

Agrolux 57

Section: H0 - HYDRAULIC AND PNEUMATIC SYSTEM|

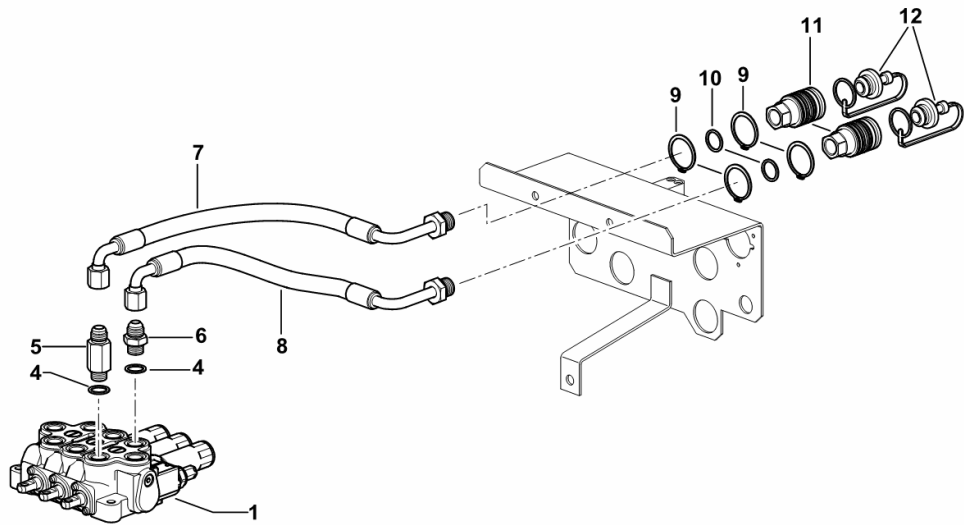
Ref.: H0.07.3 (1)

6-WAY AUXILIARY DISTRIBUTOR

Fig.	Code	QTY	Name
------	------	-----	------

Notes:

- EXPORT U.S.A. [Agrolux 57]



1	2.3729.694.0	1	distributor - BUCHER ☞ 2.3729.694.0
4	2.1560.014.0	2	gasket 18.2 x 24 x 1.5
5	2.3339.346.2/10	1	pipe fitting m 18 p.1.5-3/4"
6	2.3261.009.2	1	pipe fitting m 18 p.1.5-3/4"
7	0.009.9286.3/20	1	tube
8	0.013.0323.3	1	tube
9	2.1410.015.1	4	circlip 38
10	2.1560.054.0	2	gasket 21 x 26
11	0.98309.50.3/10	2	coupling ☞ 0.98309.50.3/10
12	0.013.7997.0	2	plug

9_E6088_25_0-A-001

Agrolux 57

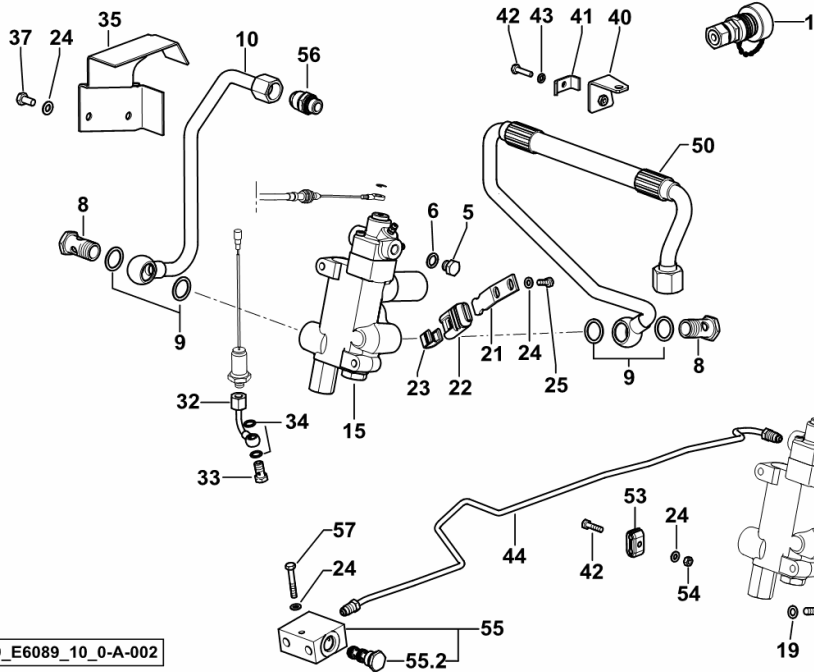
Section: H0 - HYDRAULIC AND PNEUMATIC SYSTEM|
HYDRAULIC BREAKING FOR TRAILER - ITALY -

Ref.: H0.09.0 (2)

Fig.	Code	QTY	Name
------	------	-----	------

Notes:
 [Agrolux 57]

1	0.97112.68.4/10	1	coupling m 20
5	2.3110.422.1	1	plug m 12 p.1.25 x 10
6	2.1560.008.0	1	gasket 12.2 x 18
7	2.3319.062.2/20	1	pipe union m 22 p.1.5x32
8	2.3335.009.2	3	pipe union m 22 p.1.5 x 39
9	2.1560.018.0	7	gasket 22.2 x 29
10	0.014.1203.3/20	1	tube
15	2.3719.810.0/20	1	valve
17	2.0112.213.2	1	🔩 2.3719.810.0/20 screw m 8 p.1.25 x 35
18	2.0112.219.2	1	screw m 8 p.1.25x50
19	2.1470.004.2	2	washer 8
21	0.009.8859.0/10	1	lever
22	0.007.5561.0	1	knob
23	0.007.5562.0	1	coupling
24	2.1310.002.2	6	washer 6.6, d125
25	2.0112.005.2	2	screw m 6 p.1 x 16
32	0.011.3498.3	1	tube
33	2.3335.004.2	1	pipe union m 10 p.1
34	2.1560.005.0	2	gasket 10.2 x 14
35	0.011.3487.0/10	1	sump
37	2.0112.205.2	2	screw m 8 p.1.25 x 16
40	0.012.6045.3	1	bracket
41	0.176.6359.0	1	clamp
42	2.0112.009.2	2	screw m 6 p.1 x 25
43	2.1470.002.2	1	washer 6, d128
44	0.014.1371.3	1	tube
50	0.014.1204.3/10	1	tube
53	2.3321.002.0	1	terminal Ø 6.35 / 6.35
54	2.1011.103.2	1	nut m 6 p.1
55	0.007.6244.4/10	1	valve
55.2	2.3719.760.0/20	1	valve
56	2.3249.141.2	1	pipe fitting 7/8 JIC-M18
57	2.0112.015.2	1	screw m 6 p.1x40



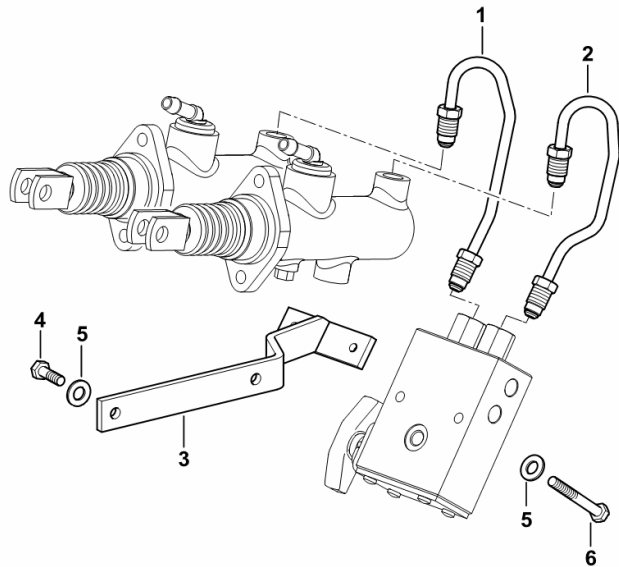
9_E6089_10_0-A-002

BRAKE PIPES

Fig.	Code	QTY	Name
------	------	-----	------

Notes:
[Agrolux 57]

1	0.014.1402.3	1	tube dx/rh/re
2	0.014.1403.3	1	tube sx/lh/li
3	0.009.9384.2/10	1	bracket
4	2.0112.007.2	2	screw m 6 p.1 x 20
5	2.1310.004.2	2	flat washer 8.5
6	2.0112.019.2	2	screw m 6 p.1 x 50



9_E6066_04_0-A-001

REAR REDUCTION GEARS AND AXLE SHAFTS

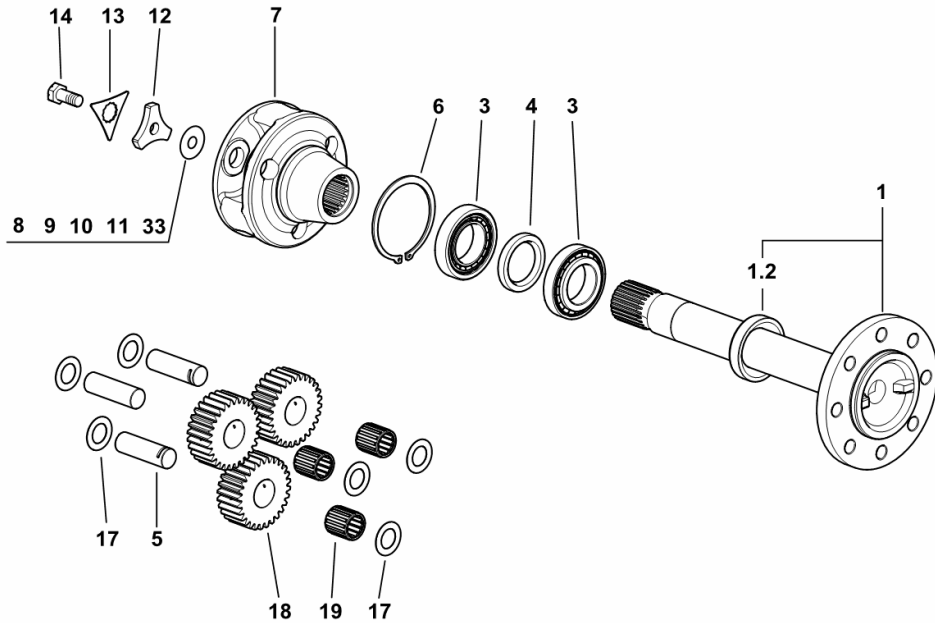
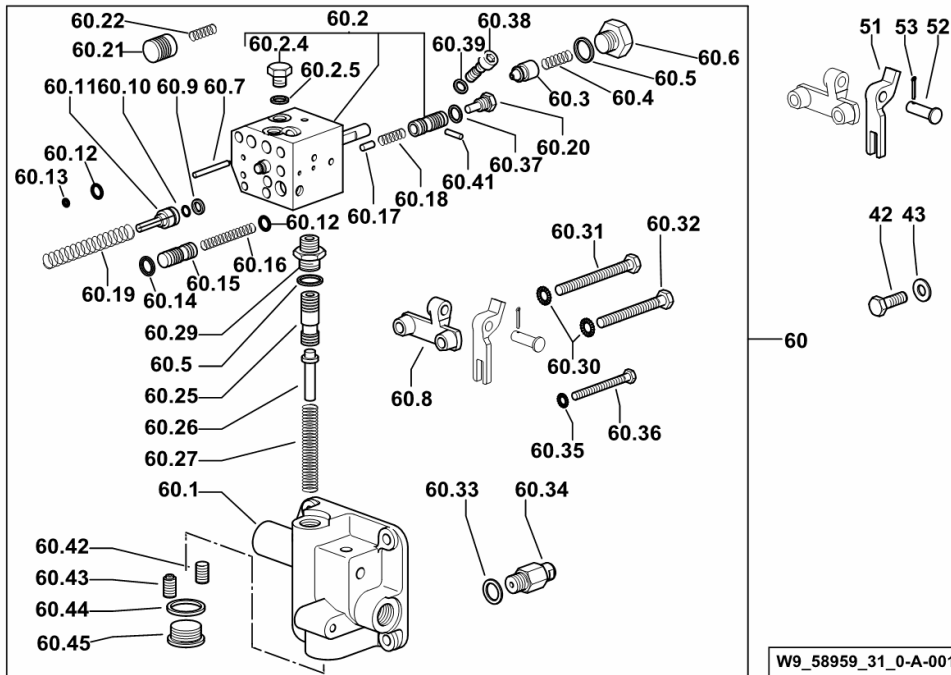


Fig.	Code	QTY	Name
Notes:			
[Agrolux 57]			
1	0.008.5300.3/10	2	half-shaft
1.2	0.008.5301.0	1	spacer
3	2.2520.011.0	4	roller bearing 50x90x21.75
4	2.1510.426.0	2	oil seal 50x72x10
5	0.008.5282.0	6	pin
6	2.1410.038.1	2	circlip 95
7	0.008.5273.0	2	differential carrier
8	2.1589.106.0	6	snoulder 14.5 x 41 x 1.0
9	2.1589.107.0	2	snoulder 14.5 x 41 x 0.5
10	2.1589.108.0	2	snoulder 14.5 x 41 x 0.2
11	2.1589.109.0	2	snoulder 14.5 x 41 x 0.1
12	0.008.5268.0	2	spacer
13	0.008.5271.0	2	small plate
14	2.0139.041.1	2	screw m 14 p.1.5 x 33
17	2.2685.006.0	12	thrust plate 25 x 42 x 1.0
18	0.008.5283.0	6	planet gear
19	2.2999.260.0	6	roller cage
33	2.1589.246.0	2	snoulder 14.5 x 41 x 0.15

9_58947_10_0-A-001

FLOW CONTROL VALVE WITH MECHANICAL CONTROL

Fig.	Code	QTY	Name
60.37	2.1569.095.0	1	gasket 10.4x14x1.2
60.38	0.009.3363.3	1	screw
60.39	2.1560.003.0	1	gasket 8.2 x 12
60.41	2.1631.307.0	1	roll pin 4x16
60.42	0.9123.450.3/10	1	grain
60.43	0.9123.454.3/10	1	grain
60.44	2.1560.019.0	1	gasket 24.3x30
60.45	2.3199.118.2	1	plug m 24 p.1.5



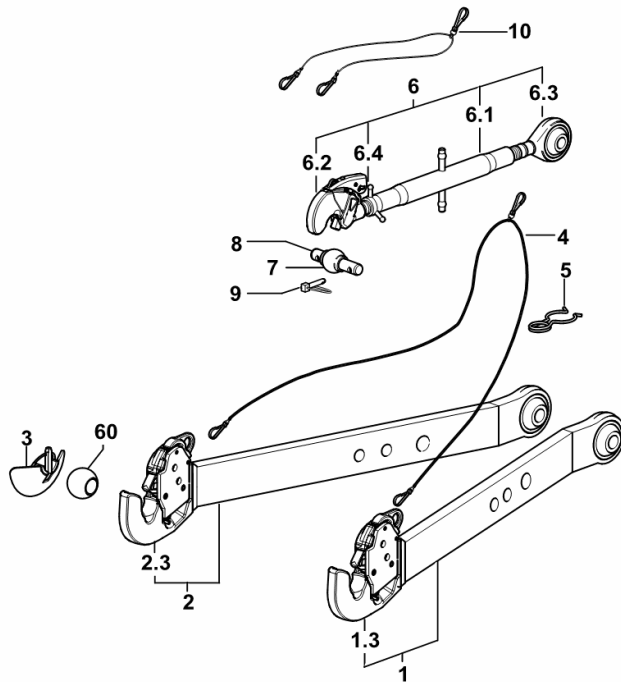
Section: R0 - REAR LIFT

3-POINT LINKAGE WITH AUTOMATIC COUPLERS

Fig.	Code	QTY	Name
------	------	-----	------

Notes:

[Agrolux 57] -> 1022



1	0.014.1435.3	1	right hand arm dx/rh/re
1.3	0.014.1420.3	1	automatic hook 2 cat.-CBM- ☞ 0.014.1420.3
2	0.014.1434.3	1	left hand arm sx/lh/li
2.3	0.014.1420.3	1	automatic hook 2 cat.-CBM- ☞ 0.014.1420.3
3	0.016.7833.3	2	pin 2 cat.
4	0.760.2258.3	1	cable
5	0.760.2262.0	2	spring
6	0.014.1413.4/30	1	top link
6.1	0.96018.13.3	1	sleeve
6.2	0.014.1412.3	1	rod 2 cat.-CBM- ☞ 0.014.1412.3
6.3	0.760.3515.3/10	1	rod sx/lh/li
6.4	0.96014.57.0/10	1	locknut m 27 p.3
7	0.96001.17.0	1	cap Ø 50
8	2.1669.024.2	1	pin 25.4 x 133
9	0.010.9322.4	2	pin Ø 11
10	0.009.3534.0	1	cable
60	0.760.5952.0	2	cap Ø 56

9_59258_03_0-A-002

PARTS SET - 5-SPEED GEARBOX.....	D0.10.4 (1)
PARTS SET - 5-SPEED WITH UNDERDRIVE.....	D0.10.5 (1)
SPEED RANGE REDUCTION GEAR UNIT.....	D0.10.6 (1)
2-RANGE BOX.....	D0.10.7 (1)
3-RANGE BOX.....	D0.10.8 (1)
LOW SPEED RANGES	
BEVEL WHEEL GEAR Z=8 / Z=36.....	D0.11.0 (1)
BEVEL WHEEL GEAR Z=10 / Z=34.....	D0.11.2 (1)
BEVEL DRIVE PINION BEARING.....	D0.11.4 (1)
SPEED RANGE REDUCTION GEAR UNIT.....	D0.11.6 (1)
2-RANGE BOX.....	D0.11.7 (1)
2-RANGE BOX - 30 Km/h.....	D0.11.8 (1)
2-RANGE BOX - 40 Km/h.....	D0.11.9 (1)
3-RANGE BOX - 30 Km/h.....	D0.11.12 (1)
3-RANGE BOX - 40 Km/h.....	D0.11.13 (1)
HYDRAULIC PUMP DRIVE	
HYDRAULIC PUMP POWER TAKEOFF.....	D0.13.0 (1)
PLUG.....	D0.13.1 (1)
PTO/GROUNDSPPEED DRIVE	
P.T.O. - 540/N - WITH INSERTED END SHAFTS.....	D0.14.0 (1)
P.T.O. - 540/N - WITH INSERTED END SHAFTS.....	D0.14.1 (1)
P.T.O. - 540/N - WITH FIXED OUTPUT SHAFT.....	D0.14.2 (1)
P.T.O. - 540/N - WITH FIXED OUTPUT SHAFT.....	D0.14.2 (2)
P.T.O. - 2 SPEED TYPE 540 - 750.....	D0.14.3 (1)
PTO - 2-SPEED WITH INSERTED END SHAFT 540-750.....	D0.14.4 (1)
2-SPEED - PTO WITH FIXED OUTPUT SHAFT 540-750.....	D0.14.5 (1)
2-SPEED - PTO WITH FIXED OUTPUT SHAFT 540-750.....	D0.14.5 (2)
P.T.O. - 2 SPEED TYPE 540-750.....	D0.14.6 (1)
P.T.O. SHAFT 540 - 750 + SYNCRO.....	D0.14.7 (1)
P.T.O. SHAFT 540 - 750 + SYNCRO.....	D0.14.8 (1)
P.T.O. SHAFT 540 - 750 + SYNCRO.....	D0.14.9 (1)
PTO - 2-SPEED WITH INSERTED END SHAFT 540 - 750.....	D0.14.11 (1)
P.T.O. - 540-750 - WITH INSERTED END SHAFTS.....	D0.14.12 (1)
PTO - 2-SPEED WITH INSERTED END SHAFT 540-750.....	D0.14.13 (1)
P.T.O. - WITH INSERTED END SHAFTS 540 - 750 + SYNCRO.....	D0.14.14 (1)
P.T.O. - 2 SPEED TYPE + SINCRO - FIXED END SHAFT.....	D0.14.15 (1)
P.T.O. - 2 SPEED TYPE - FIXED END SHAFT.....	D0.14.16 (1)
BEARINGS OF - 2-SPEED P.T.O.....	D0.14.17 (1)
P.T.O. WITH INSERTED END SHAFTS - 2 -SPEED + GROUNDSP. AND 3- SPEED.....	D0.14.18 (1)
P.T.O. WITH FIXED OUTPUT SHAFT - 2 SPEEDS + SINCRO AND 3 SPEEDS.....	D0.14.19 (1)
P.T.O. WITH FIXED OUTPUT SHAFT - 2 SPEEDS + SINCRO AND 3 SPEEDS.....	D0.14.19 (2)
P.T.O. - 2 SPEED TYPE + SINCRO.....	D0.14.20 (1)
P.T.O. - 3 SPEED TYPE 540-750-1000.....	D0.14.21 (1)
PTO - 3-SPEED WITH INSERTED END SHAFT 540-750-1000.....	D0.14.22 (1)

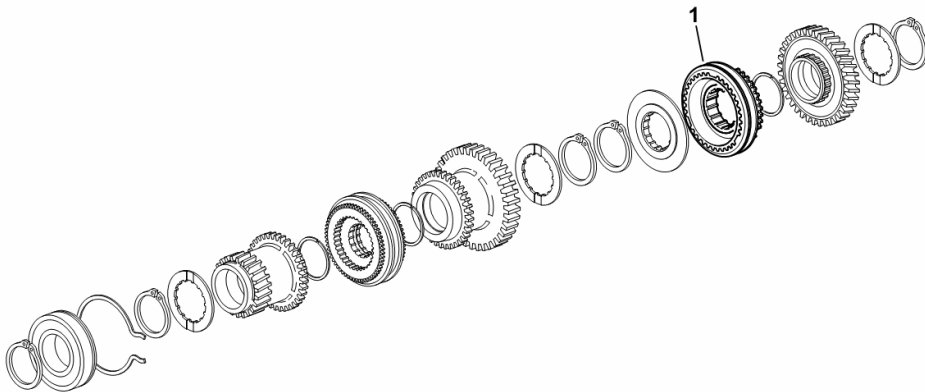
Section: D0 - TRANSMISSION
SYNCHRONISERS

Fig.	Code	QTY	Name
------	------	-----	------

Notes:

- FOR TYPES WITH MINREDUCTION [Agrolux 57]

1	0.009.6826.4	2	lock synchronizer 62  0.009.6826.4
---	--------------	---	--



9_C1033_02_0-A-001

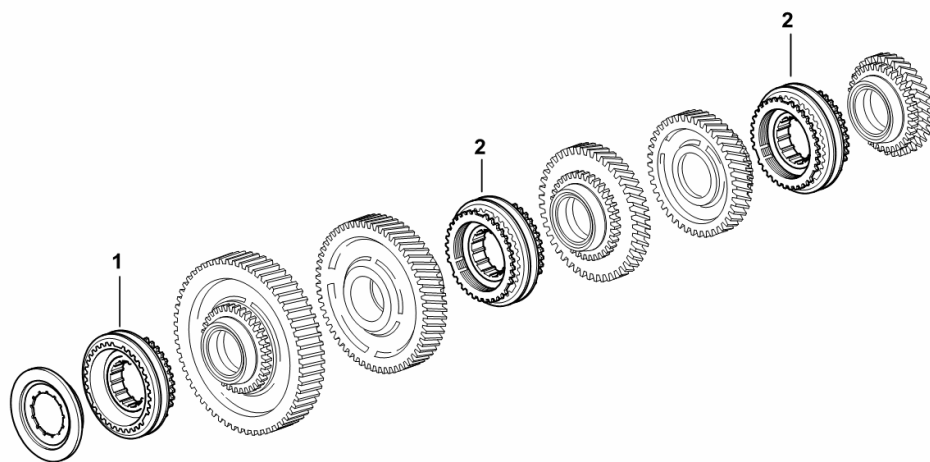
SYNCHRONISERS

Fig.	Code	QTY	Name
------	------	-----	------

Notes:

- FOR TYPES WITH MINREDUCTION [Agrolux 57]

1	0.009.6826.4	2	lock synchronizer 62 ☞ 0.009.6826.4
2	0.009.6825.4	2	lock synchronizer 62 ☞ 0.009.6825.4



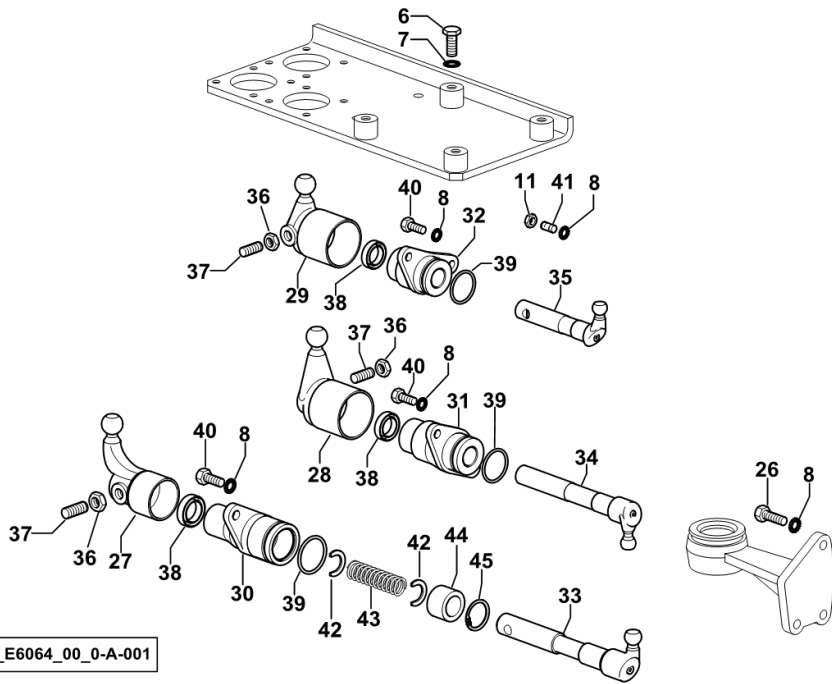
9_C1033_02_0-B-001

TRANSMISSION CONTROL LEVERS

Fig.	Code	QTY	Name
------	------	-----	------

Notes:
[Agrolux 57]

6	2.0312.308.2	4	screw m 10 p.1.5 x 25
7	2.1470.006.2	4	lock washer 10
8	2.1475.002.2	9	conical washer 8
11	2.1011.405.2	1	nut m 8 p.1
26	2.0112.209.2	3	screw m 8 p 1.25 x 25
27	0.008.5958.3/10	1	lever
28	0.008.5199.3/10	1	lever
29	0.008.4997.3	1	RUDUCING TRANSMISS. lever
30	0.008.5407.0/10	1	FOR SHUTTLE support
31	0.008.5413.0/10	1	support
32	0.008.5414.0/10	1	support
33	0.008.5408.0/10	1	gear lever
34	0.008.5416.0/10	1	lever
35	0.009.7237.0/10	1	RUDUCING TRANSMISS. lever
36	2.1011.406.2	3	FOR SHUTTLE nut m 10 p.1
37	2.0399.050.2	3	screw m 10 p.1 x 30
38	2.1520.006.0	3	oil seal 20 x 30 x 7
39	2.1530.091.0	3	'o' ring 34.60 x 2.62
40	2.0112.207.2	5	screw m 8 p 1.25 x 20
41	2.0432.003.7	1	stud bolt m 8 p.1.25 / p.1 x 20
42	0.008.5405.0	2	ring
43	2.4019.565.1/10	1	spring
44	2.1559.311.0	1	bushing 20x30x20
45	2.1419.073.0	1	circlip 30x1.2



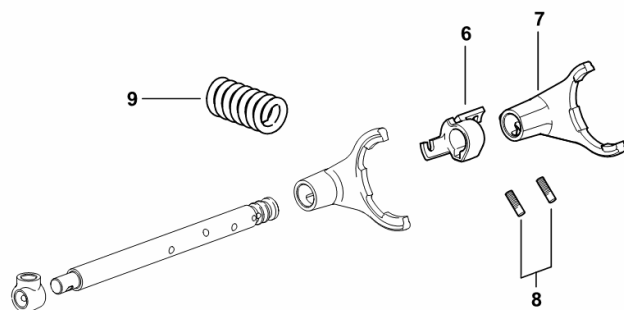
9_E6064_00_0-A-001

3-RANGE BOX

Fig.	Code	QTY	Name
------	------	-----	------

Notes:
[Agrolux 57]

6	0.008.5381.0/30	1	sleeve
7	0.008.0243.0	1	fork
8	2.0599.086.0/40	2	grain m 8 p.1.25 x 28
9	2.4019.566.1/10	1	spring



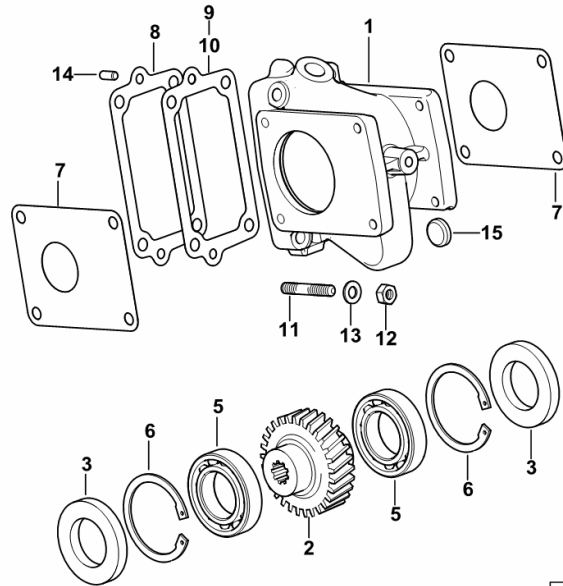
9_64834_06_0-A-001

HYDRAULIC PUMP POWER TAKEOFF

Fig.	Code	QTY	Name
------	------	-----	------

Notes:

[Agrolux 57]



1	0.007.0810.0	1	support
2	0.007.0811.0/10	1	gear
3	0.007.0813.0	2	shaft
5	2.2030.008.0	2	ball bearing 35x62x14
6	2.1411.025.1	2	circlip 62
7	0.163.6350.0	2	gasket
8	0.065.1966.0	8	gasket mm 0.1
9	0.065.1967.0	4	shim mm 0.1
10	0.065.1968.0	1	shim mm 0.50
11	2.0432.011.7	4	stud bolt m 8 p.1.25 / p.1 x 40
12	2.1011.405.2	4	nut m 8 p.1
13	2.1310.004.2	4	flat washer 8.5
14	2.1651.506.0	2	cylindrical plug 6 x 14
15	2.3171.008.4	1	plug 20

9_31019_00_0-A-001

2-SPEED - PTO WITH FIXED OUTPUT SHAFT 540-750

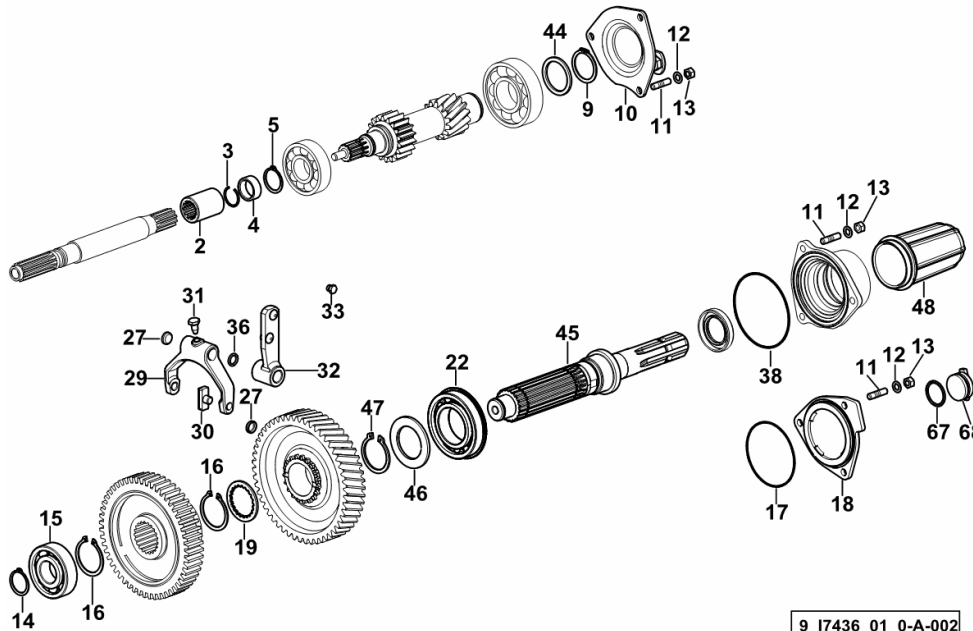


Fig.	Code	QTY	Name
Notes:			
[Agrolux 57] -> 1439			
2	0.010.7696.0	1	sleeve Z = 11
3	2.1421.010.7	1	circlip 25
4	2.1549.172.0	1	spacer 24.7 x 31 x 12
5	2.1410.012.1	1	circlip 30
9	2.1410.016.1	1	circlip 40
10	0.008.5181.3/30	1	complete cover
11	2.0422.203.7	9	stud bolt m 8 p.1.25 x 20
12	2.1470.004.2	9	washer 8
13	2.1011.105.2	9	nut m 8 p.1.25
14	2.1410.012.1	1	circlip 30
15	2.2060.009.0	1	ball bearing 30 x 72 x 19
16	2.1410.018.7	2	circlip 45
17	2.1539.025.0/10	1	'o' ring 88.57 x 2.62
18	0.008.4984.2/30	1	cover
19	2.1599.828.0/10	1	thrust plate 41 x 55 x 3
22	2.2999.204.0	1	bearing 50 x 90 x 20
27	2.3171.006.4	5	plug Ø 16
29	0.010.0468.0	1	fork
30	0.255.6463.0	2	shoe
31	2.0399.019.1	2	screw m 8 p.1 x 16
32	0.012.0107.3	1	lever
33	2.3110.428.1	1	plug m 8 p.1 x 10
36	2.1530.028.0	1	'o' ring 11.91 x 2.62
38	2.1532.500.0	1	'o' ring
44	2.1599.414.0	1	snoulder 40 x 50 x 3.0
45	0.014.3979.0/10	1	p.t.o.shaft
46	2.1599.891.0	1	snoulder 45 x 70 x 4
47	2.1412.017.7	1	circlip 45
48	0.154.3655.0/10	1	guard
67	2.1530.079.0	1	'o' ring 29.82 x 2.62
68	0.014.1957.0	1	plug

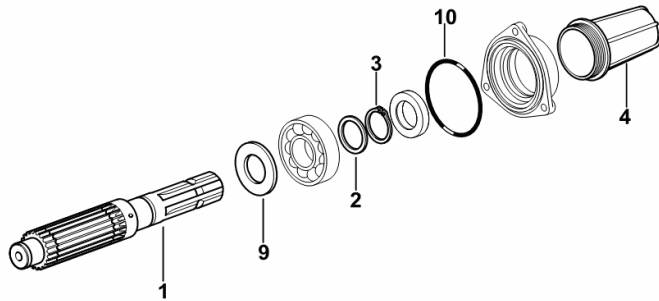
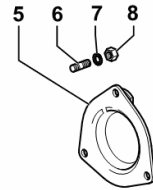
P.T.O. - 2 SPEED TYPE - FIXED END SHAFT

Fig.	Code	QTY	Name
------	------	-----	------

Notes:

[Agrolux 57] -> 1184 - 1310 <- [Agrolux 57] 1070 <-

1	0.012.0098.0/30	1	shaft
2	2.1599.874.0	1	washer 35 x 45 x 3.0
3	2.1412.013.7	1	ring Ø 35
4	0.154.3655.0/10	1	guard
5	0.008.5181.3/30	1	complete cover
6	2.0422.203.7	9	stud bolt m 8 p.1.25 x 20
7	2.1470.004.2	9	washer 8
8	2.1011.105.2	9	nut m 8 p.1.25
9	2.1599.792.0	1	shoulder
10	2.1539.025.0/10	1	'o' ring 88.57 x 2.62



9_C1236_04_0-A-001

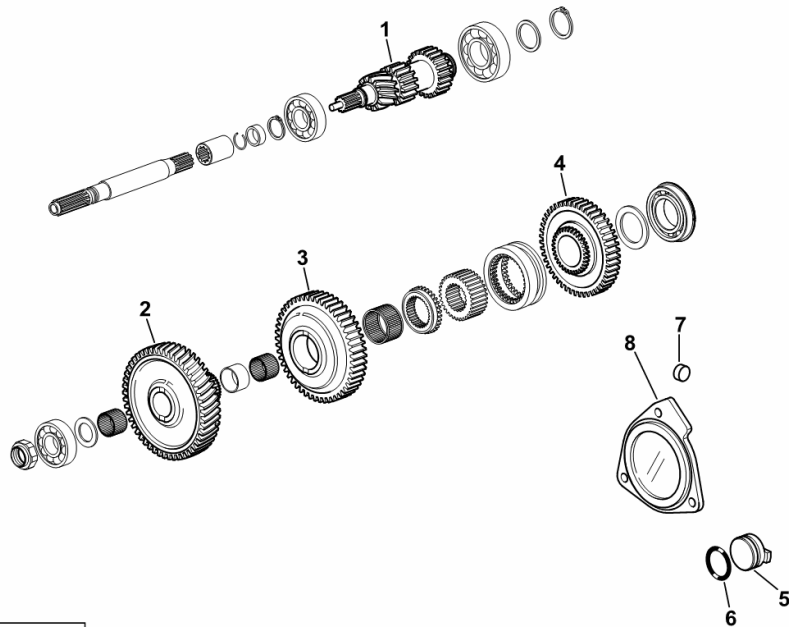
3-SPEED P.T.O. WITH FIXED OUTPUT SHAFT 540-750-1000

Fig.	Code	QTY	Name
------	------	-----	------

Notes:

[Agrolux 57] -> 1312

1	0.013.3587.0	1	p.t.o.shaft Z = 11 / 14 / 18 / 23
2	0.011.9934.0	1	gear Z = 51
3	0.011.9938.0	1	gear Z = 52
4	0.014.3922.0	1	gear Z = 47 / Z = 32
5	0.014.1957.0	1	plug
6	2.1530.079.0	1	'o' ring 29.82 x 2.62
7	2.3171.006.4	1	plug Ø 16
8	0.008.4984.2/30	1	cover



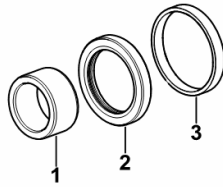
9_17536_02_0-A-001

4WD - ENGAGEMENT CONTROL - STANDARD SEALS

Fig.	Code	QTY	Name
------	------	-----	------

Notes:
[Agrolux 57]

1	2.1549.309.0	1	spacer 30x40x20.5
2	2.1520.120.0	1	oil seal 40 x 55 x 8.0
3	2.1589.363.0	1	thrust plate 50x55x7.5



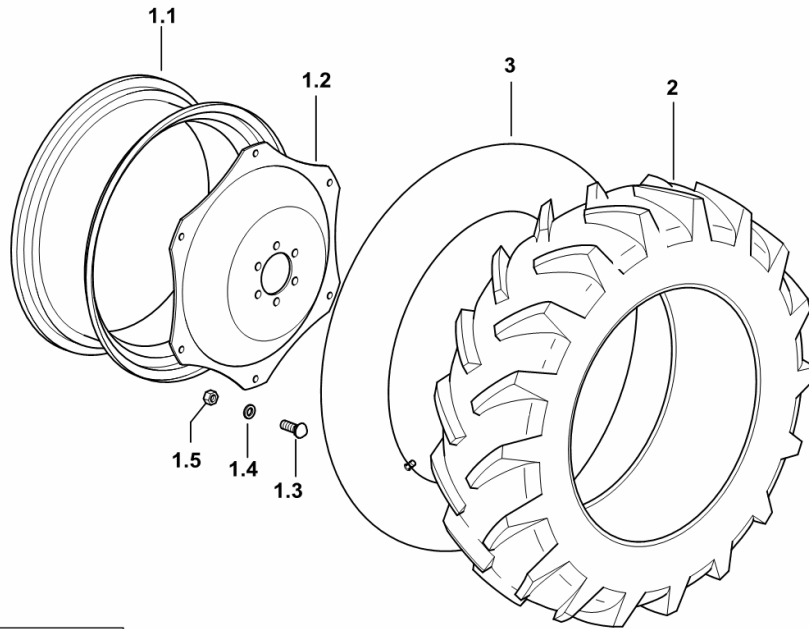
9_70538_01_0-A-001

Section: S0 - WHEELS
WHEELS 250/85R20"(9.5R20")

Fig.	Code	QTY	Name
------	------	-----	------

Notes:
 [Agrolux 57]

1.1	0.012.2835.3	1	rim W 8x20" C/ST
1.2	0.010.4301.0	1	rim center flange
1.3	2.0099.005.6	6	screw m 16 p.1.5 x 38
1.4	2.1499.019.6	6	washer 16.3 x 31.5
1.5	2.1019.059.6	6	nut m 16 p.1.5 x 16
2	2.4811.068.0	2	tyre 250/85R20"(9.5R20")
3	2.4820.023.0	2	air chamber



9_58955_23_0-A-001

CLICK HERE TO **DOWNLOAD** THE COMPLETE MANUAL

- Thank you very much for reading the preview of the manual.
- You can download the complete manual from: www.heydownloads.com by clicking the link below



- Please note: If there is no response to CLICKING the link, please download this PDF first and then click on it.

CLICK HERE TO **DOWNLOAD** THE COMPLETE MANUAL