

Agrocompact F75 (24"-28")

ACCESSORIES

GENERAL

AUXILIARY FRONT HYDRAULIC DISTRIBUTOR WITH 4 OIL WAYS - FOR MODELS WITHOUT CAB.....	0E.00.1
PIPES FOR 6-WAY FRONT CONTROL VALVE - FOR MODELS WITH CAB.....	0E.00.3
4-WAY AUXILIARY DISTRIBUTOR.....	0E.00.4
CONTROLS FOR 4-WAY FRONT AUXILIARY SERVICES CONTROL VALVE.....	0E.00.5
KNOBS FOR 4-WAY AUXILIARY SERVICES CONTROL VALVE.....	0E.00.6
6-WAY AUXILIARY DISTRIBUTOR.....	0E.00.7
6-WAY AUXILIARY DISTRIBUTOR.....	0E.00.8
6-WAY AUXILIARY DISTRIBUTOR.....	0E.00.9
BRACKETS FOR 6-WAY AUXILIARY SERVICES CONTROL VALVE.....	0E.00.10
4-WAY AUXILIARY DISTRIBUTOR.....	0E.00.11
6-WAY AUXILIARY DISTRIBUTOR.....	0E.00.12
6-WAY AUXILIARY DISTRIBUTOR.....	0E.00.13
4 - 6 - WAY DISTRIBUTOR EQUIPMENT.....	0E.00.14
4 - 6 - WAY DISTRIBUTOR EQUIPMENT.....	0E.00.15
CONTROLS FOR 4-WAY AUXILIARY SERVICES CONTROL VALVE.....	0E.00.17
CONTROLS FOR 4-WAY AUXILIARY SERVICES CONTROL VALVE.....	0E.00.18
CONTROLS FOR 4-WAY AUXILIARY SERVICES CONTROL VALVE.....	0E.00.19
CONTROLS FOR 6-WAY AUXILIARY SERVICES CONTROL VALVE.....	0E.00.22
CONTROLS FOR 6-WAY AUXILIARY SERVICES CONTROL VALVE.....	0E.00.23
CONTROLS FOR 6-WAY AUXILIARY SERVICES CONTROL VALVE.....	0E.00.24
6-WAY AUXILIARY DISTRIBUTOR WITH ELECTRONIC LIFT.....	0E.00.25
6-WAY AUXILIARY DISTRIBUTOR WITH ELECTRONIC LIFT.....	0E.00.26
6-WAY AUXILIARY DISTRIBUTOR WITH ELECTRONIC LIFT.....	0E.00.27
THREE-POINT COUPLING - TOP/LOWER LINK.....	0E.00.28
THREE-POINT COUPLING - TOP/LOWER LINK - AUTOM.....	0E.00.29
THREE-POINT COUPLING - TOP/LOWER LINK - AUTOM. - FOR NARROW CRAMER TOW HOOK.....	0E.00.30
3 POINT HITCH.....	0E.00.31
3-POINT HITCH - ADJUSTABLE RH RODS.....	0E.00.32
3-POINT HITCH - ADJUSTABLE RH RODS - FOR NARROW CRAMER TOW HOOK.....	0E.00.33
3-POINT HITCH WITH HYDRAULIC LIFT ROD.....	0E.00.34
3-POINT HITCH WITH ELECTRO-HYDRAULIC ADJUSTMENT.....	0E.00.35
3-POINT HITCH WITH ELECTRO-HYDRAULIC ADJUSTMENT.....	0E.00.36
3-POINT HITCH WITH ELECTRO-HYDRAULIC ADJUSTMENT.....	0E.00.37
3-POINT HITCH WITH ELECTRO-HYDRAULIC ADJUSTMENT - FOR NARROW CRAMER TOW HOOK.....	0E.00.38
TOWING BAR 2 cat.....	0E.00.39
REAR OSCILLATING HITCH.....	0E.00.40
REAR TOWING HITCH CAT: "C".....	0E.00.41
FRAME HOOK HOLDER.....	0E.00.42
FRAME HOOK HOLDER GRASSI.....	0E.00.43
REAR TOWING HITCH.....	0E.00.45

CLICK HERE TO **DOWNLOAD** THE COMPLETE MANUAL

- Thank you very much for reading the preview of the manual.
- You can download the complete manual from: www.heydownloads.com by clicking the link below



- Please note: If there is no response to CLICKING the link, please download this PDF first and then click on it.

CLICK HERE TO **DOWNLOAD** THE COMPLETE MANUAL

6-WAY AUXILIARY DISTRIBUTOR

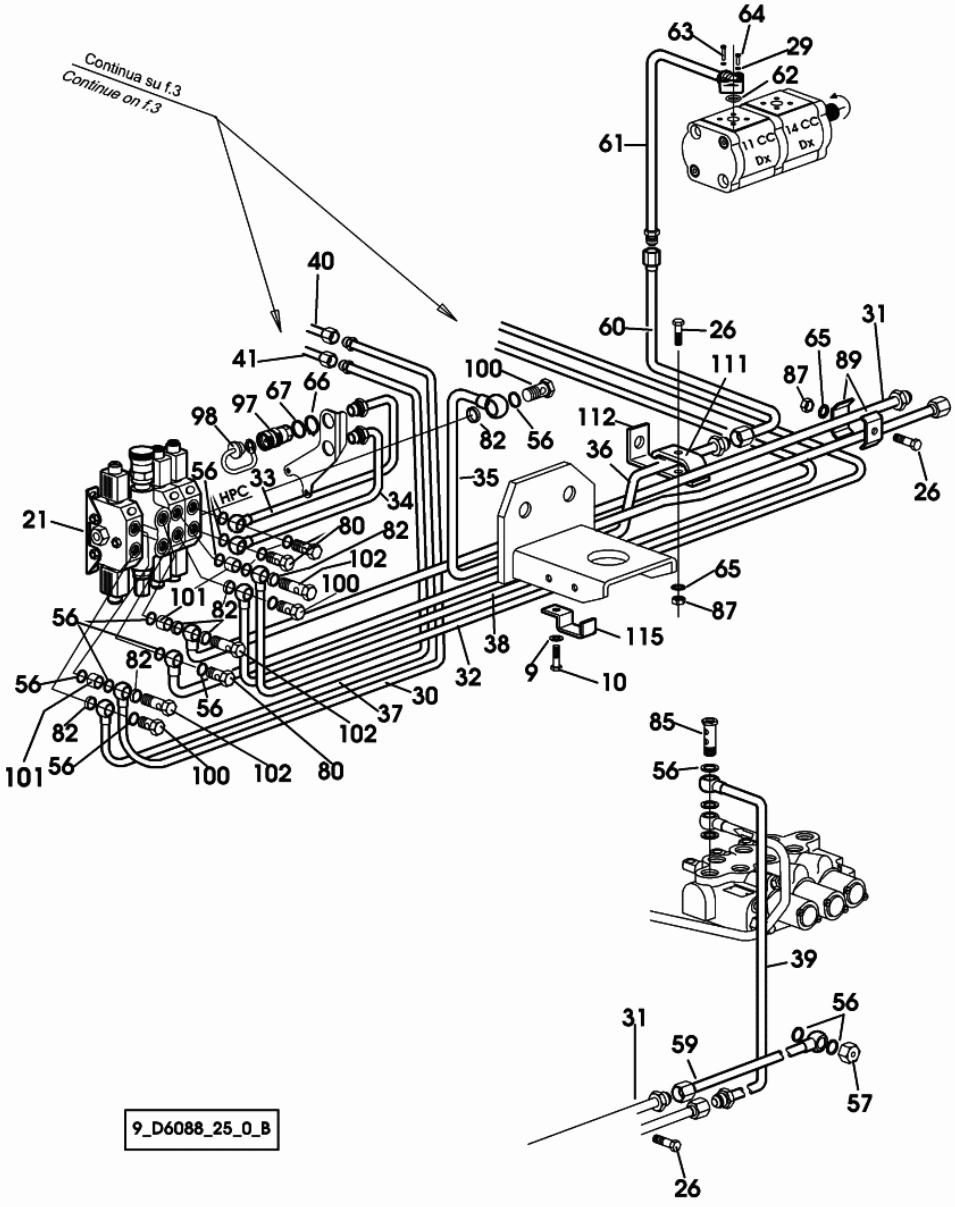


Fig.	Code	QTY	Name
9	2.1310.004.2	7	flat washer 8.5
10	2.0112.210.2	4	screw m 8 p.1.25 x 28
21	2.3729.500.0	1	distributor
			COMPONENT PARTS SEE COMPONENTS LIST
			☞ 2.3729.500.0
			☞ 0E.00.94
26	2.0112.011.2	10	screw m 6 p.1x30
29	2.1480.012.2	4	washer 6, d128
30	0.012.0109.3/10	1	tube
31	0.012.0110.3	1	tube
32	0.012.0111.3/20	1	tube
33	0.012.0112.3/10	1	tube
34	0.012.0113.3/10	1	tube
35	0.014.0450.3/10	1	tube
36	0.012.0115.3	1	tube
37	0.012.0116.3/10	1	tube
38	0.012.0117.3/20	1	tube
39	0.012.0118.3	1	tube
40	0.012.0119.3/20	1	tube
41	0.012.0120.3/20	1	tube
56	2.1560.014.0	27	gasket 18.2 x 24 x 1.5
57	2.1099.145.2/10	2	special nut m 18 p.1.5
59	0.010.9467.3	1	tube
60	0.010.9464.3	1	tube
61	0.010.9463.3	1	tube
62	2.1531.048.0	1	'o' ring 18.72x2.62
63	2.0312.112.2	2	screw m 6 p.1 x 35
64	2.0312.104.2	2	screw m 6 p.1 x 16
65	2.1470.002.2	15	washer 6, d128
66	2.1410.011.7	10	circlip 28
67	2.1560.054.0	10	gasket 21 x 26
80	2.3335.008.2	3	pipe union m 18 p.1.5 x 32
82	2.1569.160.0	8	gasket 18.2x22x3.5
85	2.3339.485.2/10	1	pipe union m 18 p.1.5x55
87	2.1011.103.2	13	nut m 6 p.1
89	0.154.6377.0	9	terminal
97	0.98308.50.3/10	9	coupling
			COMPONENT PARTS SEE COMPONENTS LIST
			☞ 0.98308.50.3/10
			☞ 0E.00.95
98	0.013.7997.0	9	plug
100	2.3339.295.2/10	3	pipe union m 18 p.1.5 x 35

4 - 6 - WAY DISTRIBUTOR EQUIPMENT

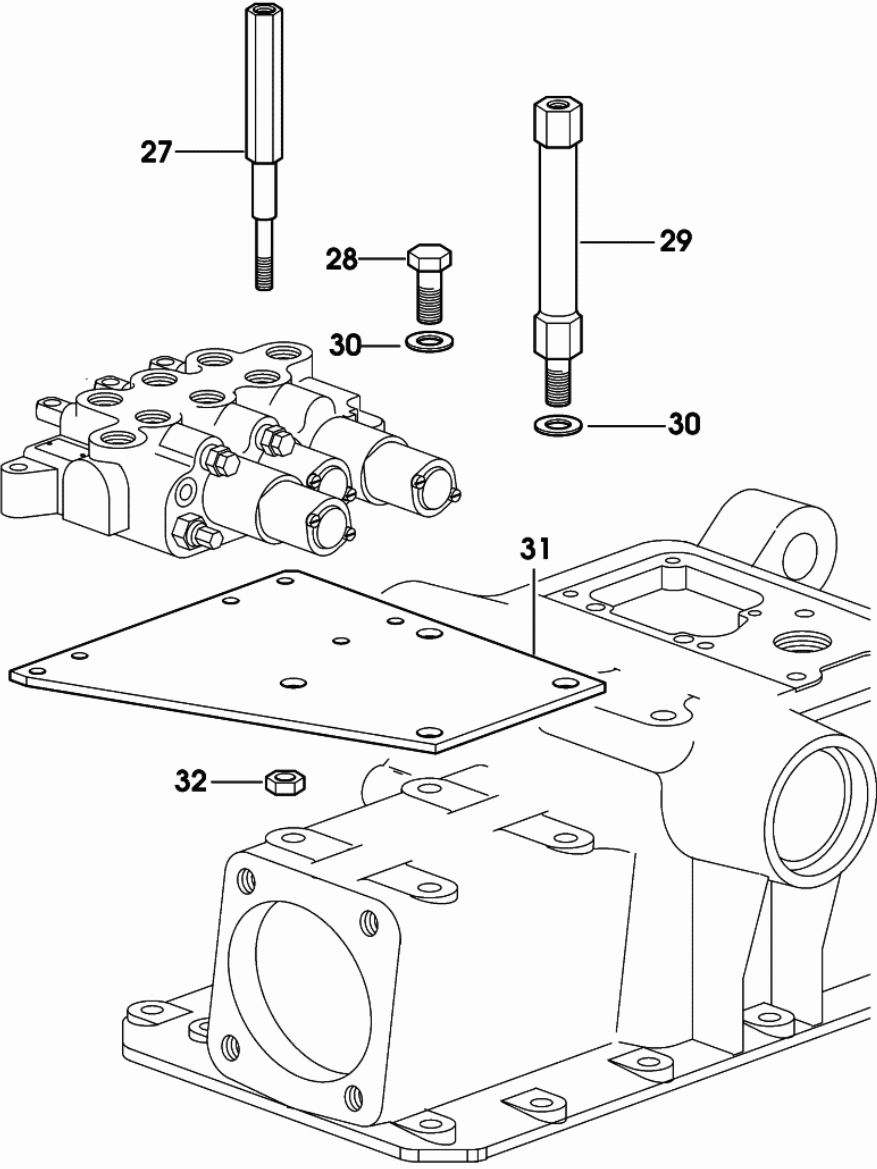


Fig.	Code	QTY	Name
27	0.010.8248.0	1	small column
28	2.0112.411.2	1	screw m 12 p.1.75 x 30
29	0.010.8250.0	2	small column
30	2.1310.007.2	3	flat washer 13.5
31	0.010.8247.3	1	plate
32	2.1011.105.2	1	nut m 8 p.1.25

9_B6188_00_0_B

THREE-POINT COUPLING - TOP/LOWER LINK

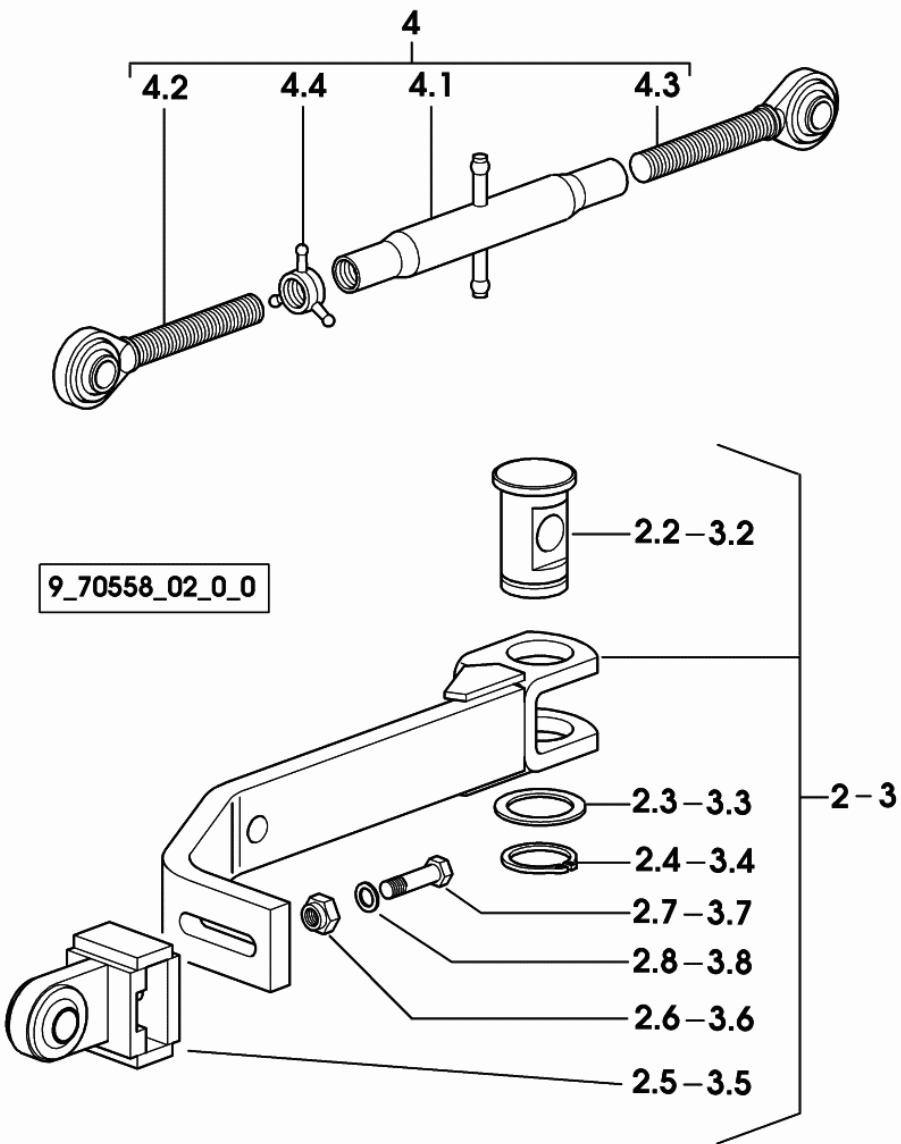


Fig.	Code	QTY	Name
2	0.011.5781.4	1	right hand arm dx/rh/re
2.2	0.010.7747.0	1	pin
2.3	2.1599.521.0/10	1	snoulder 60.5 x 82 x 3.5
2.4	2.1410.024.1	1	circlip Ø 60 mm
2.5	0.011.5780.3	1	terminal
2.6	2.1019.142.2	1	nut
2.7	2.0112.621.2	1	screw m 16 p.2 x 60
2.8	2.1475.006.2	1	washer 16
3	0.011.5782.4	1	left hand arm sx/lh/li
3.2	0.010.7747.0	1	pin
3.3	2.1599.521.0/10	1	snoulder 60.5 x 82 x 3.5
3.4	2.1410.024.1	1	circlip Ø 60 mm
3.5	0.011.5780.3	1	terminal
3.6	2.1019.142.2	1	nut
3.7	2.0112.621.2	1	screw m 16 p.2 x 60
3.8	2.1475.006.2	1	washer 16
4	0.96079.13.4/20	1	top link
4.1	0.96018.13.3	1	sleeve
4.2	0.96044.14.3/10	1	rod dx/rh/re
4.3	0.760.3515.3	1	rod sx/lh/li
4.4	0.96014.57.0	1	wing nut m 27 p.3

3-POINT HITCH WITH HYDRAULIC LIFT ROD

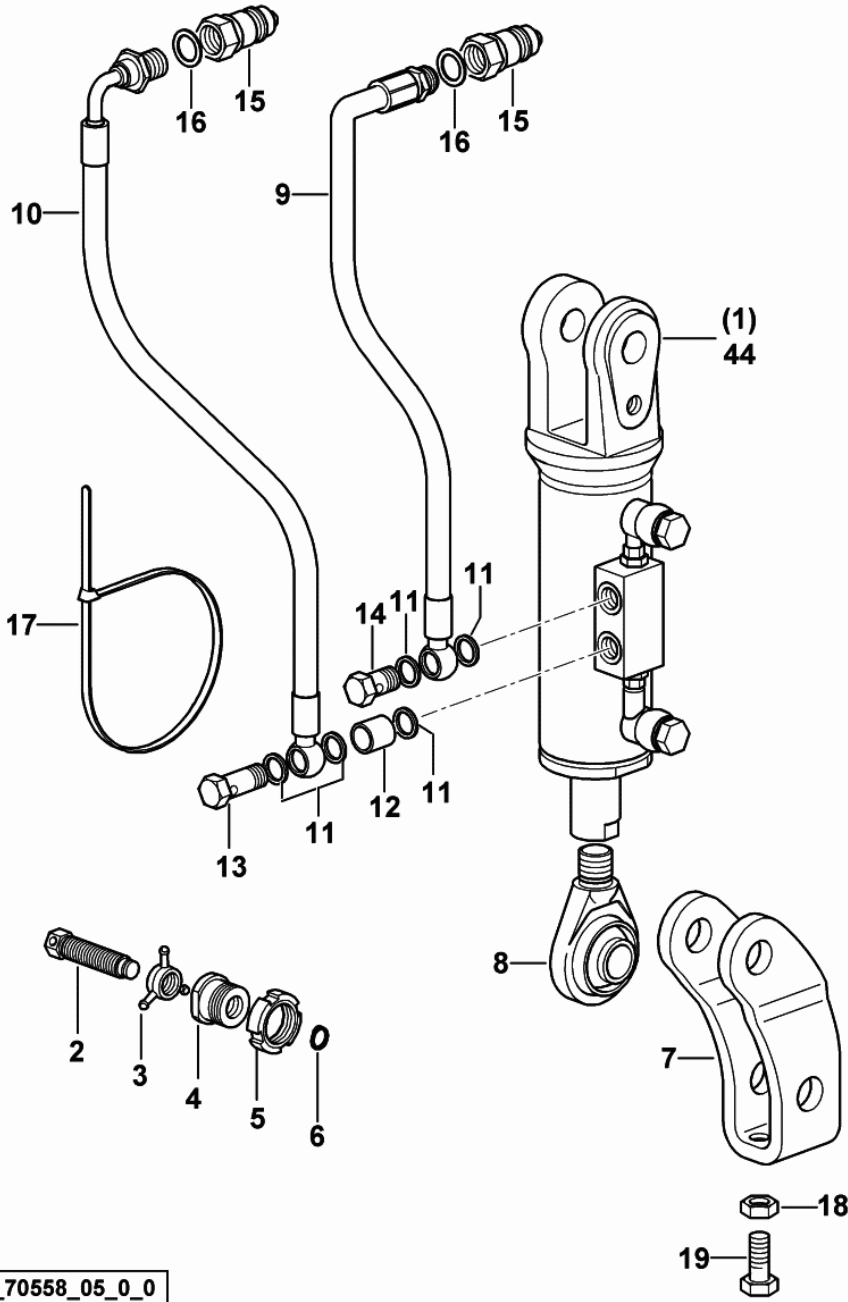


Fig.	Code	QTY	Name
1	0.011.3468.4/10	1	roller 65x40x165 3054 <- X Agrocompact 70F3 (24"-28") 5016 <- X Agrocompact 70F3 (20") 3003 <- X Agrocompact F75 (2 ☞ 0.011.3468.4/10 ☞ 0E.00.102
2	2.0399.244.2/10	2	screw m 27 p.3 x 130
3	0.014.0827.0	2	wing nut
4	0.010.4966.0/10	2	bushing
5	2.1220.011.2	2	ring nut m 50 p.1.5
6	2.1410.008.1	2	circlip Ø 22
7	0.011.3271.0/20	2	bracket
8	0.011.0261.3	1	head
9	0.011.7526.3	1	tube L = mm 710
10	0.011.7527.3	1	tube L = mm 800
11	2.1560.012.0	5	gasket 16.2 x 22 x 1.5
12	2.1549.417.2	1	spacer 16,3x24x25
13	2.3339.701.2/10	1	pipe union m 16 p.1.5
14	2.3335.007.2	1	pipe union m 16 p.1.5
15	0.98309.51.3/10	2	coupling 1/2
16	2.1560.054.0	2	gasket 21 x 26
17	2.6852.203.0	3	clamp 292 x 4.8
18	2.1011.108.2	4	nut m 14 p.2
19	2.0112.511.2	4	screw m 14 p.2 x 30
44	2.3749.003.0	1	cylinder 63 x 36 x 165 -> 3055 X Agrocompact 70F3(24"-28") -> 5017 X Agrocompact 70F3(20") -> 3004 X Agrocompact F75(24"- ☞ 2.3749.003.0 ☞ 0E.00.103

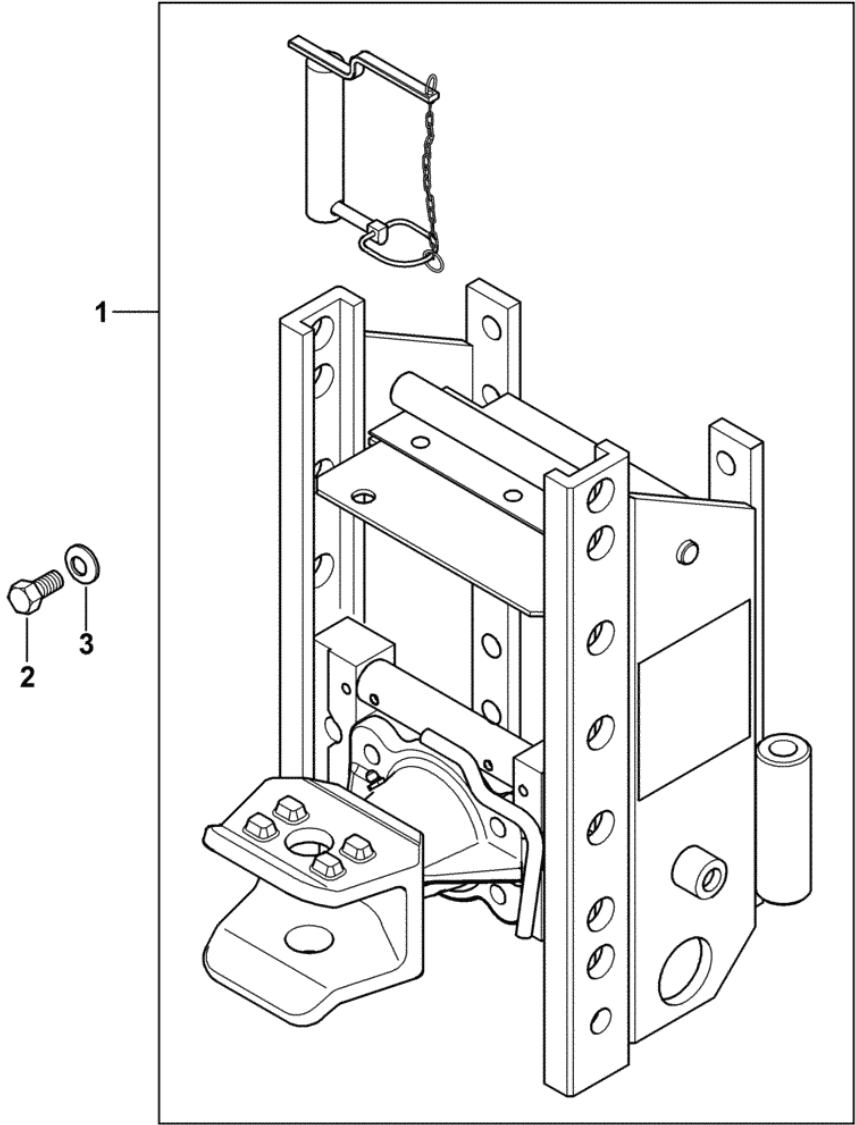
9_70558_05_0_0

Section: ACCESSORIES
REAR TOWING HITCH

Fig.	Code	QTY	Name
------	------	-----	------

Notes:
 -> 3039 - 3081 <- X Agrocompact 70F3 (24"-28") 5051 <- X Agrocompact 70F3 (20") 3021 <- X Agrocompact F75 (24"-28") 5016 <- X Agrocompact F75 (20") -> 3086 - 3144 <- X Agrocompact F90 (24"-28") 5024 <- X Agrocompact F90 (20") -> 1070 - 1115 <- X Agr

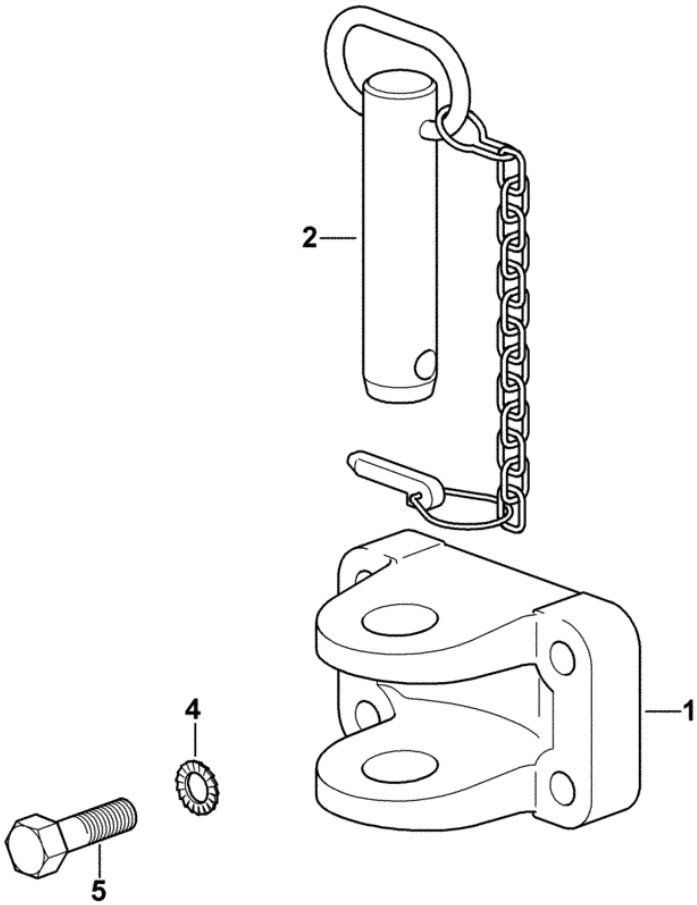
1	0.014.4470.4	1	tow hook COMPONENT PARTS SEE COMPONENTS LIST ☞ 0.014.4453.3 ☞ 0.014.8203.3/10 ☞ 0.014.8232.3 ☞ 0.014.4470.4 ☞ 0E.00.109
2	2.0112.613.2	12	screw m 16 p.2x35
3	2.1475.006.2	12	washer 16



9_78531_65_0_A

Section: ACCESSORIES
FRONT TOWING HITCH

Fig.	Code	QTY	Name
1	0.96309.20.0/20	1	tow hook
2	0.96309.51.3	1	pin Ø 32
4	2.1470.008.2	4	lock washer 14
5	2.0112.520.2	4	screw m 14 p.2 x 55



9_50052_31_0_0

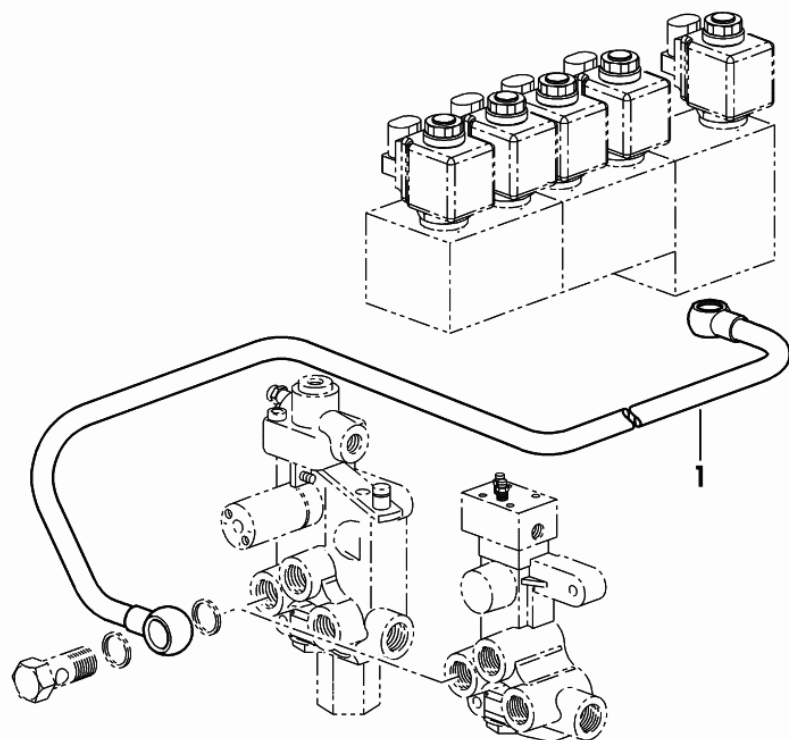
HYDRAULIC BREAKING FOR TRAILER

Fig.	Code	QTY	Name
------	------	-----	------

Notes:

- WITH ELECTRO-HYDRAULIC 3-POINT HITCH

1	0.012.4012.3	1	tube
---	--------------	---	------

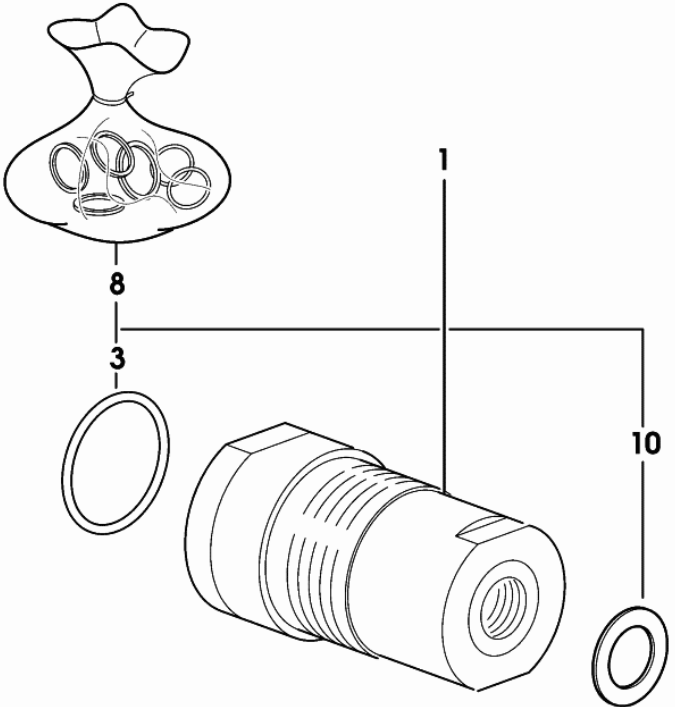


Senso di marcia (Lato DX)
Forward speed (right side)

9_21058_07_0_0

Section: ACCESSORIES
CYLINDER PARTS

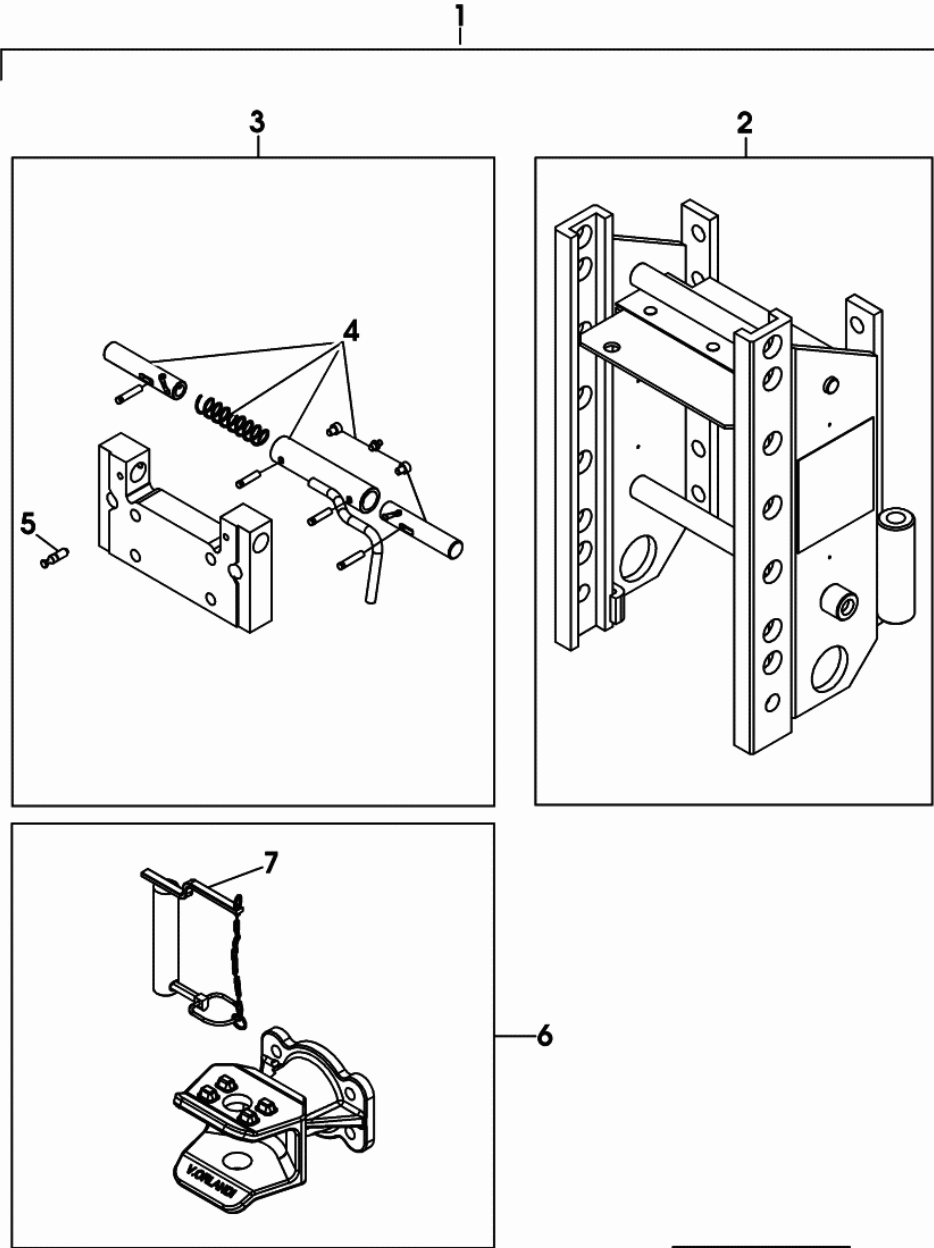
Fig.	Code	QTY	Name
1	0.011.4904.4	1	cylinder A = mm 108.5
3	0.010.3488.0	1	ring
8	0.010.3488.1	1	gasket set
10	0.010.3488.2	1	washer



0_011_4904_4

Section: ACCESSORIES
DRAWBAR COUPLING

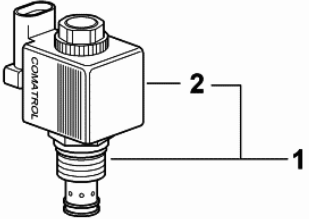
Fig.	Code	QTY	Name
1	0.014.4470.4	1	tow hook
2	0.014.8232.3	1	chassis frame SL21C - V.ORLANDI -
3	0.014.8203.3/10	1	support mm 260
4	0.900.0522.1	1	sub-assy parts
5	0.900.0457.1	1	smau pin
6	0.014.4453.3	1	tow hook - V.ORLANDI -
7	0.900.0458.3	1	pin



0_014_4470_4

Section: ACCESSORIES
SOLENOID VALVE

Fig.	Code	QTY	Name
1	2.3729.330.0/40	1	electro valve
2	0.010.2831.1	1	coil 13V - 20W



2_3729_330_0_40

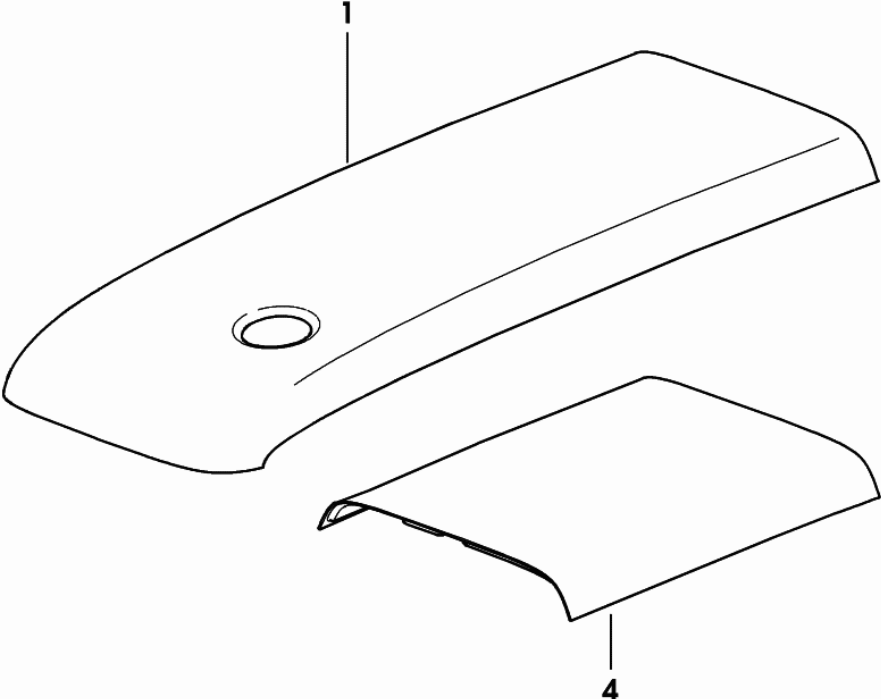
Section: BODY WORK
HOOD UPPER PART

Fig.	Code	QTY	Name
------	------	-----	------

Notes:

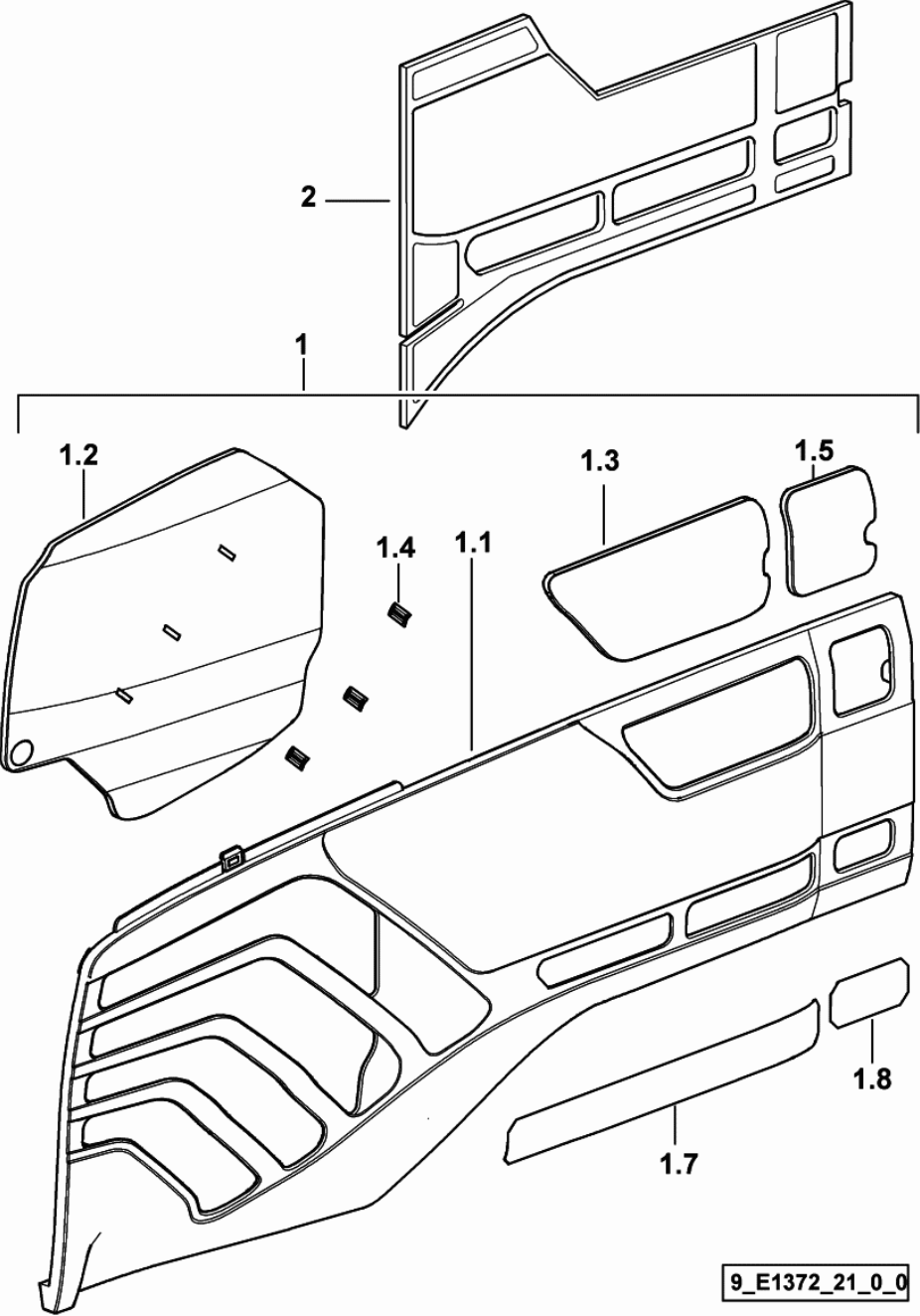
3115 <- X Agrocompact F90 (24"-28") 5016 <- X Agrocompact F90 (20")

1	0.011.0345.4/20	1	bonnet
4	0.013.8655.0/10	1	sound deadening



9_E1372_02_0_0

Section: BODY WORK
HOOD - LEFT SIDE PANEL



9_E1372_21_0_0

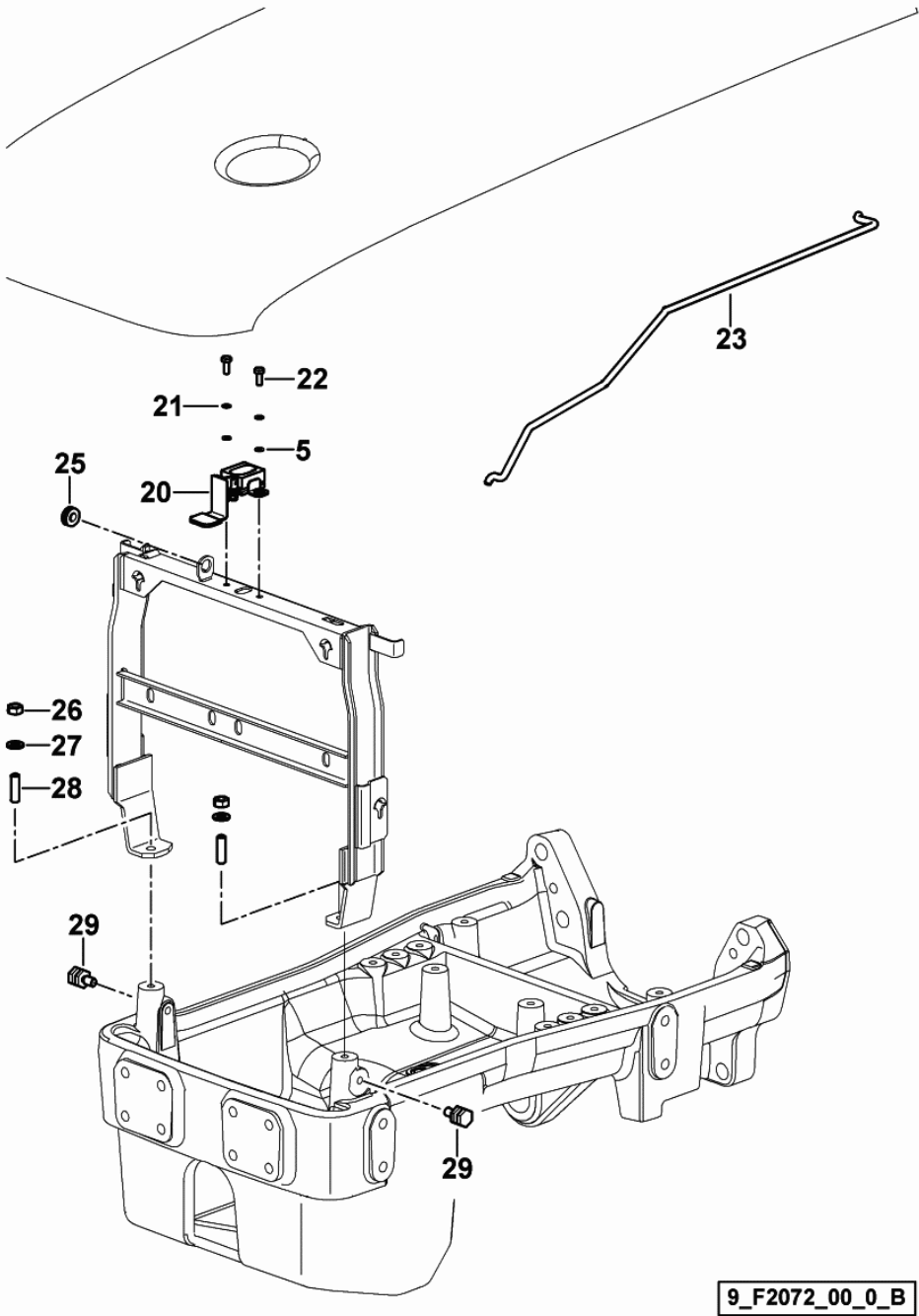
Fig.	Code	QTY	Name
1	0.013.8126.4/10	1	lift hand side panel
1.1	0.000.0000.1	0	not serviceable
1.2	0.013.8118.0	1	grille sx/lh/li
1.3	0.013.8120.0	1	grille sx/lh/li
1.4	0.012.1492.0	3	small spring
1.5	0.013.8122.0	1	grille sx/lh/li
1.7	0.014.3960.0	1	grille -> 1033 X Agrocompact F75(24"-28") -> 1015 X Agrocompact F75(20") -> 3069 X Agrocompact F90(24"-28") -> 3021 X Agrocompact F90(20") -> 1060 X Agrocompact F100(24"-28") -> 1016 X Agrocompact F100(20")
1.8	0.014.3975.0	1	grille -> 1033 X Agrocompact F75(24"-28") -> 1015 X Agrocompact F75(20") -> 3069 X Agrocompact F90(24"-28") -> 3021 X Agrocompact F90(20") -> 1060 X Agrocompact F100(24"-28") -> 1016 X Agrocompact F100(20")
2	0.014.0805.0/10	1	panel

Section: BODY WORK
HOOD - SUPPORTS

Fig.	Code	QTY	Name
------	------	-----	------

Notes:
 -> 3064 X Agrocompact 70F3(24"-28") -> 5026 X Agrocompact 70F3(20") -> 3012 X Agrocompact F75(24"-28") ->
 5011 X Agrocompact F75(20") -> 3116 X Agrocompact F90(24"-28") -> 5017 X Agrocompact F90(20") -> 1097 X
 Agrocompact F100(24"-28") -> 3015 X Ag

5	2.1310.002.2	4	washer 6.6, d125
20	0.014.0544.4/20	1	small block
21	2.1470.002.2	2	washer 6, d128
22	2.0112.005.2	2	screw m 6 p.1 x 16
23	0.014.0519.0	1	top link
25	2.6560.004.0	1	wire guide 10x2.5
26	2.1011.106.2	4	nut m 10 p.1.5
27	2.1310.006.2	4	flat washer 10.5
28	2.0422.303.2	2	stud bolt m 10 p.1.5 x 20
29	0.010.1383.0	2	screw m 10



9_F2072_00_0_B

Section: BODY WORK
COOLING - EXPANSION TANK

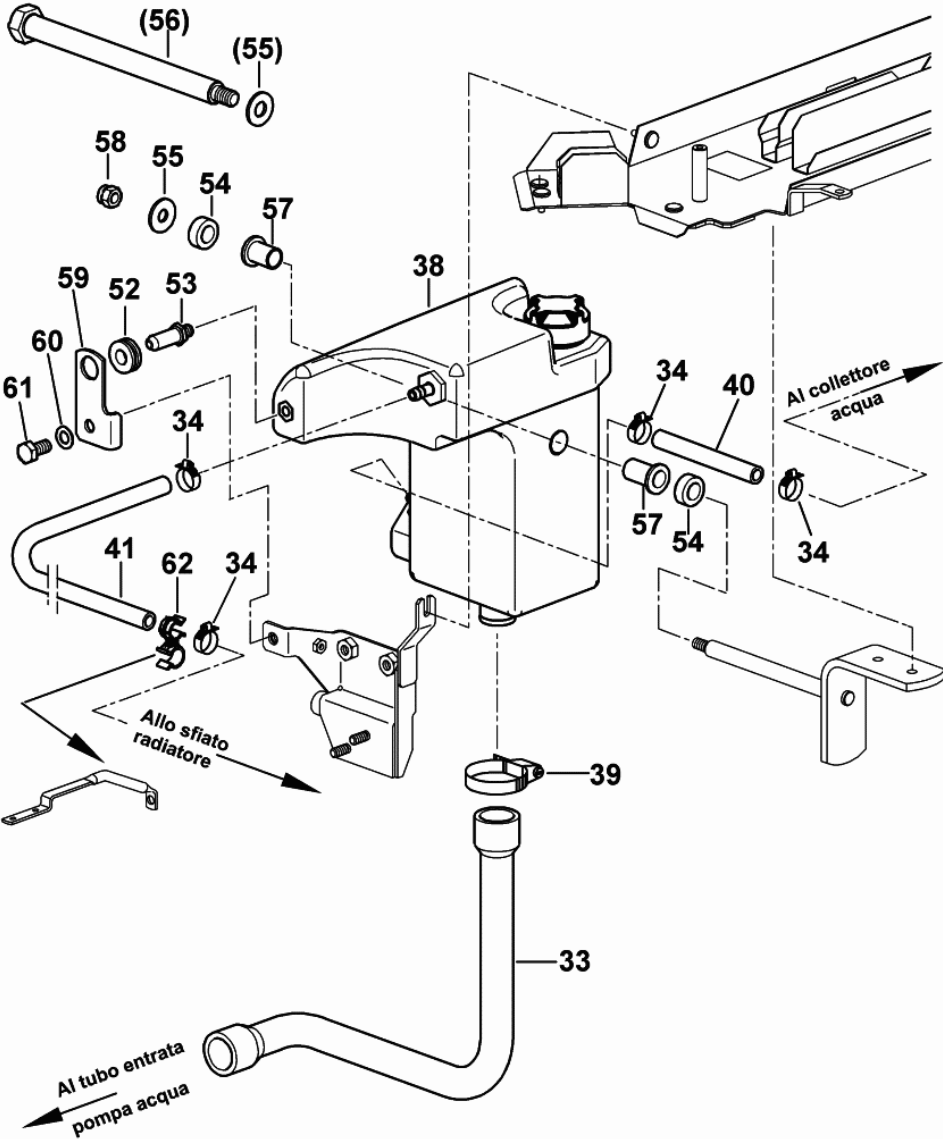


Fig.	Code	QTY	Name
------	------	-----	------

Notes:

3011 <- X Agrocompact F75 (24"-28") 5010 <- X Agrocompact F75 (20")

33	0.013.6882.0	1	tube
34	2.6851.018.0	6	clamp 11/17
38	0.013.6322.4/20	1	cup COMPONENT PARTS SEE COMPONENTS LIST ☞ 0.013.6322.4/20 ☞ 07.00.37
39	2.6851.003.0	1	clamp Ø 25/40
40	0.012.6457.0	0	tube
41	0.012.6457.0	0	tube
52	2.6560.004.0	1	wire guide 10x2.5
53	0.013.8280.0	1	pin
54	0.136.7387.0	2	rubber plug 15x27x5
55	2.1312.004.2	1	washer 8.4
57	2.1559.243.0	2	bushing 12x16x15
58	2.1120.005.2	1	nut m 8 p.1.25
59	0.013.8314.0	1	bracket
60	2.1470.004.2	1	washer 8
61	2.0112.205.2	1	screw m 8 p.1.25 x 16
62	0.013.8506.4	1	small spring

9_B6483_00_0_B

Section: BODY WORK
PLATES

Fig.	Code	QTY	Name
100	0.000.0000.1	0	not serviceable
100.1	2.9929.944.0	1	plate 30 Km/h
100.2	2.9929.945.0	1	plate 30 Km/h
100.3	2.9929.946.0	1	plate 30 Km/h 30+15
100.4	2.9929.947.0	1	plate 30 Km/h
100.5	2.9929.948.0	1	plate 40 KM/H
100.6	2.9929.949.0	1	plate 40 Km/h 20+10
100.7	2.9929.950.0	1	plate 40 Km/h 30+15
100.8	2.9929.951.0	1	plate 40 KM/H
100.9	2.9929.952.0	1	plate 40 Km/h 45+45 ECO

100.1

MOTORS	1400	1800	1987	2200	rpm
L	0.88	0.82	0.87	1.00	0.80
SL	1.07	1.00	1.05	1.20	1.00
EL	1.78	2.07	2.10	2.50	2.00
KL	2.30	2.37	2.47	3.21	3.70
AL	3.78	4.06	4.70	6.00	6.00
VL	5.81	7.17	7.00	8.00	10.1
VL	14.8	16.0	16.1	16.6	16.0
VL	14.8	16.0	16.1	16.6	16.0
P	304	404	540	604	
T	485	623	691	762	
O	695	891	953	1077	

4xMINIx2 (30Km/h)

100.2

MOTORS	1400	1800	1987	2200	rpm
L	0.88	0.82	0.87	1.00	0.80
SL	1.07	1.17	1.20	1.20	1.00
EL	1.88	1.80	1.78	1.80	1.80
KL	2.30	2.30	2.30	2.70	2.30
AL	3.78	3.77	3.67	4.21	4.20
VL	5.78	4.98	4.78	5.00	5.00
VL	5.78	4.98	4.78	5.00	5.00
VL	14.8	16.0	16.1	16.6	16.0
VL	14.8	16.0	16.1	16.6	16.0
P	304	404	540	604	
T	485	623	691	762	
O	695	891	953	1077	

5xMINIx2 (30Km/h)

100.3

MOTORS	1400	1800	1987	2200	rpm
L	0.88	0.82	0.87	1.00	0.80
SL	1.07	1.17	1.20	1.20	1.00
EL	1.88	1.80	1.78	1.80	1.80
KL	2.30	2.30	2.30	2.70	2.30
AL	3.78	3.77	3.67	4.21	4.20
VL	5.78	4.98	4.78	5.00	5.00
VL	5.78	4.98	4.78	5.00	5.00
VL	14.8	16.0	16.1	16.6	16.0
VL	14.8	16.0	16.1	16.6	16.0
P	304	404	540	604	
T	485	623	691	762	
O	695	891	953	1077	

5xHMLx3 (30Km/h)

100.4

MOTORS	1400	1800	1987	2200	rpm
L	0.88	0.82	0.87	1.00	0.80
SL	1.07	1.00	1.05	1.20	1.00
EL	1.78	2.07	2.10	2.50	2.00
KL	2.30	2.37	2.47	3.21	3.70
AL	3.78	4.06	4.70	6.00	6.00
VL	5.81	7.17	7.00	8.00	10.1
VL	14.8	16.0	16.1	16.6	16.0
VL	14.8	16.0	16.1	16.6	16.0
P	304	404	540	604	
T	485	623	691	762	
O	695	891	953	1077	

5xMINIx3 (30Km/h)

100.6

MOTORS	1400	1800	1987	2200	rpm
L	0.88	1.00	1.10	1.20	1.00
SL	1.20	1.20	1.20	1.20	1.20
EL	1.88	1.80	1.80	1.80	1.80
KL	2.30	2.30	2.30	2.70	2.30
AL	3.78	4.00	4.00	4.20	4.00
VL	4.80	5.00	5.00	5.00	5.00
VL	4.80	5.00	5.00	5.00	5.00
VL	14.8	16.0	16.1	16.6	16.0
VL	14.8	16.0	16.1	16.6	16.0
P	304	404	540	604	
T	485	623	691	762	
O	695	891	953	1077	

5xMINIx2 (40Km/h)

100.7

MOTORS	1400	1800	1987	2200	rpm
L	0.88	0.82	0.87	1.00	0.80
SL	1.07	1.00	1.05	1.20	1.00
EL	1.78	2.07	2.10	2.50	2.00
KL	2.30	2.37	2.47	3.21	3.70
AL	3.78	4.06	4.70	6.00	6.00
VL	5.81	7.17	7.00	8.00	10.1
VL	14.8	16.0	16.1	16.6	16.0
VL	14.8	16.0	16.1	16.6	16.0
P	304	404	540	604	
T	485	623	691	762	
O	695	891	953	1077	

5xMINIx3 (40Km/h)

100.5

MOTORS	1400	1800	1987	2200	rpm
L	0.88	1.00	1.10	1.20	1.00
SL	1.42	1.20	1.20	1.20	1.20
EL	2.20	2.20	2.20	2.20	2.20
KL	2.30	2.30	2.30	2.70	2.30
AL	3.78	4.00	4.00	4.20	4.00
VL	4.80	5.00	5.00	5.00	5.00
VL	4.80	5.00	5.00	5.00	5.00
VL	14.8	16.0	16.1	16.6	16.0
VL	14.8	16.0	16.1	16.6	16.0
P	304	404	540	604	
T	485	623	691	762	
O	695	891	953	1077	

4xMINIx2 (40Km/h)

100.9

MOTORS	1400	1800	1987	2200	rpm
L	0.88	0.82	0.87	1.00	0.80
SL	1.07	1.17	1.20	1.20	1.00
EL	1.88	1.80	1.78	1.80	1.80
KL	2.30	2.30	2.30	2.70	2.30
AL	3.78	3.77	3.67	4.21	4.20
VL	5.78	4.98	4.78	5.00	5.00
VL	5.78	4.98	4.78	5.00	5.00
VL	14.8	16.0	16.1	16.6	16.0
VL	14.8	16.0	16.1	16.6	16.0
P	304	404	540	604	
T	485	623	691	762	
O	695	891	953	1077	

5xHMLx3 (40Km/h ECO)

100.8

MOTORS	1400	1800	1987	2200	rpm
L	0.88	0.82	0.87	1.00	0.80
SL	1.07	1.00	1.05	1.20	1.00
EL	1.78	2.07	2.10	2.50	2.00
KL	2.30	2.37	2.47	3.21	3.70
AL	3.78	4.06	4.70	6.00	6.00
VL	5.81	7.17	7.00	8.00	10.1
VL	14.8	16.0	16.1	16.6	16.0
VL	14.8	16.0	16.1	16.6	16.0
P	304	404	540	604	
T	485	623	691	762	
O	695	891	953	1077	

5xHMLx3 (40Km/h)

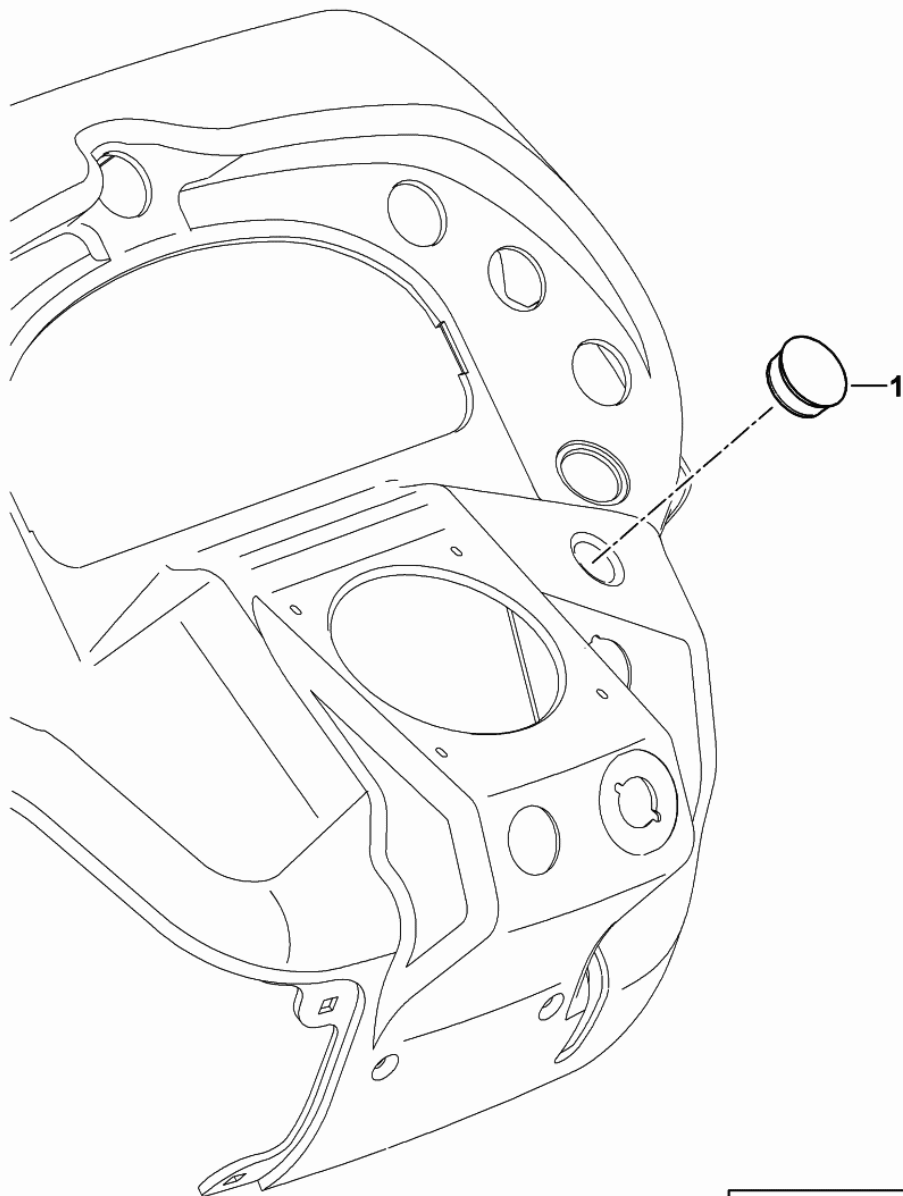
100

9_D6074_00_0_B

Section: BODY WORK

PLUG FOR VERSION WITHOUT CIGAR LIGHTER

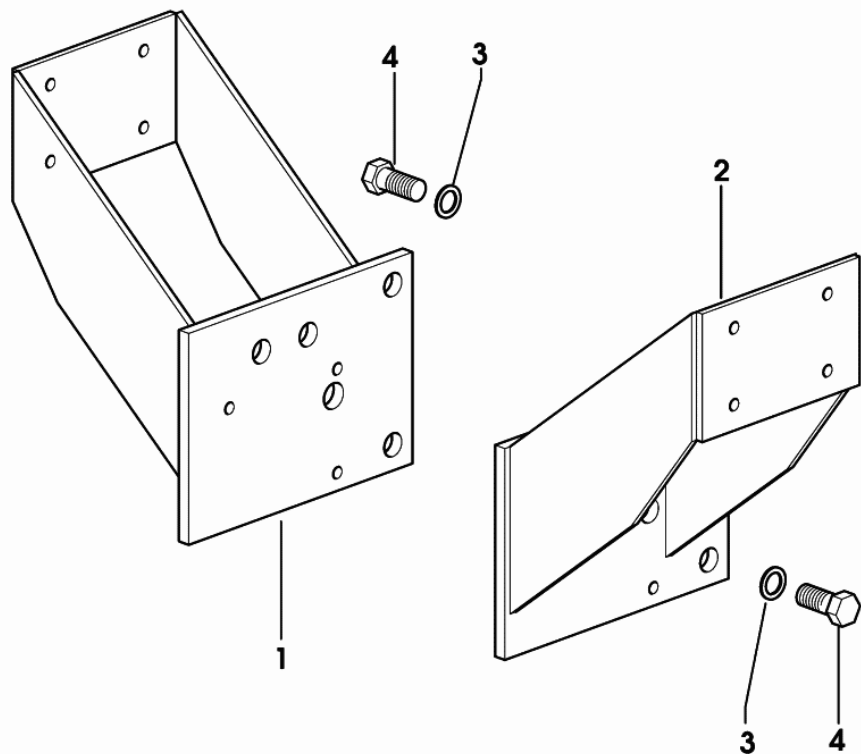
Fig.	Code	QTY	Name
1	0.011.6915.0	1	plug 27.8-28.6/30.9



9_70574_03_0_0

FRONT MUDGUARD SUPPORTS - WITHOUT ROPS

Fig.	Code	QTY	Name
1	0.010.9750.2/20	1	support dx/rh/re
2	0.010.9749.2/10	1	support sx/lh/li
3	2.1475.006.2	4	washer 16
4	2.0112.613.2	4	screw m 16 p.2x35

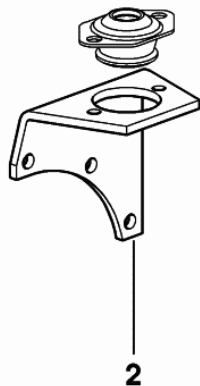
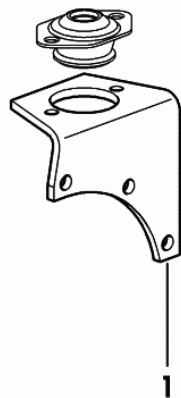


9_70578_03_0_0

Section: BODY WORK

PLATTFORM: SUPPORTS

Fig.	Code	QTY	Name
1	0.013.9728.0	1	support dx/rh/re
2	0.013.9730.0	1	support sx/lh/li



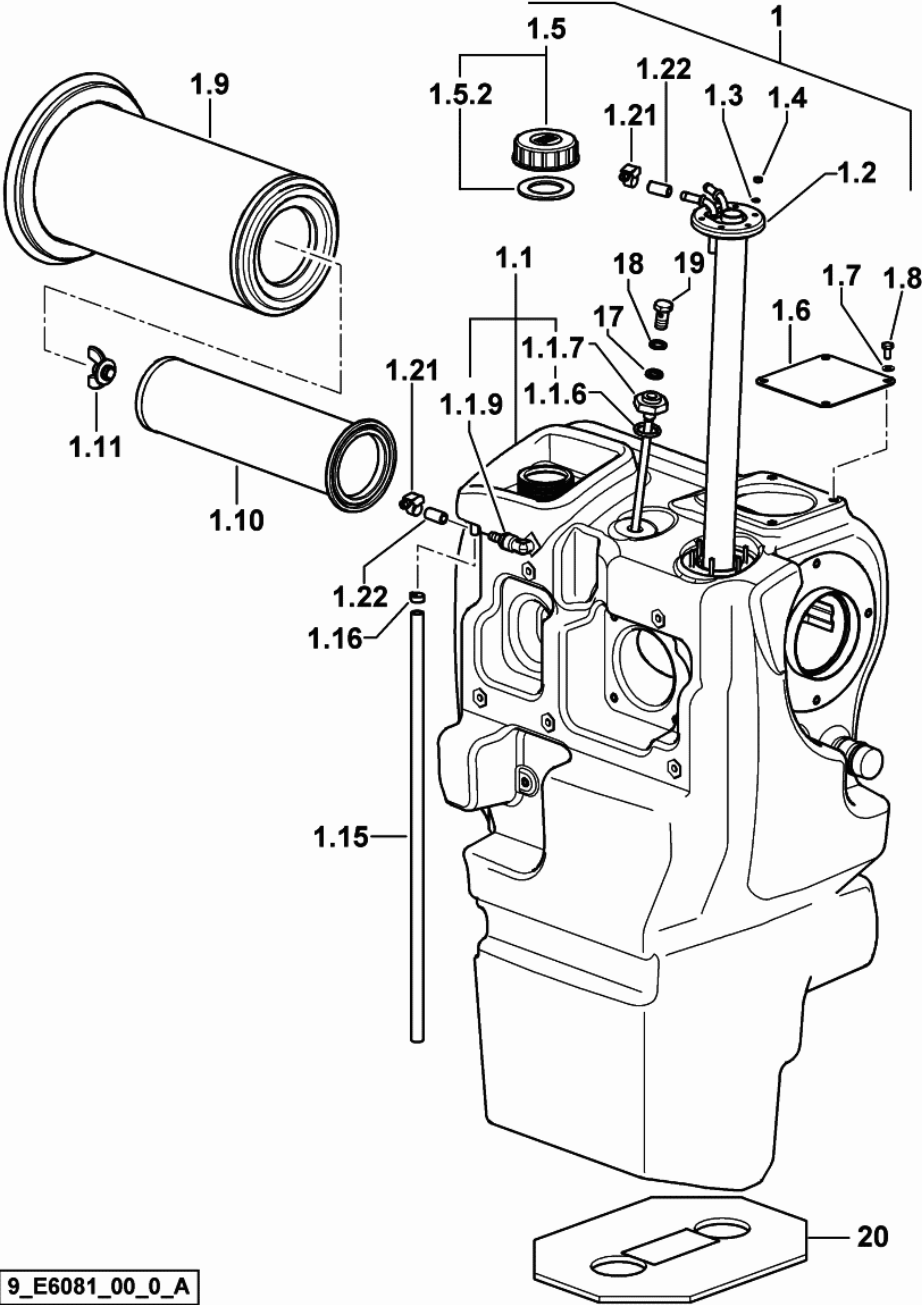
9_D6076_06_0_0

Section: BODY WORK
FUEL TANK

Fig.	Code	QTY	Name
------	------	-----	------

Notes:
 -> 3064 X Agrocompact 70F3(24"-28") -> 5026 X Agrocompact 70F3(20") -> 3012 X Agrocompact F75(24"-28") ->
 5011 X Agrocompact F75(20") -> 3116 X Agrocompact F90(24"-28") -> 5017 X Agrocompact F90(20") -> 1097 X
 Agrocompact F100(24"-28") -> 3015 X Ag

1	0.000.0000.1	0	not serviceable
1.1	0.013.9922.3/20	1	fuel tank
1.1.6	2.1530.056.0	1	'o' ring 21.82 x 3.53
1.1.7	0.012.1709.3/20	1	tube
1.1.9	0.010.0749.0	1	breather
1.2	2.7059.987.0/10	1	float level
1.3	2.1311.002.2	6	flat washer 4
1.4	2.1011.101.2	6	nut m 4 p.0.7
1.5	0.012.3914.3	1	plug
1.5.2	2.1569.157.0	1	gasket 37.8x59.8x3
1.6	0.013.9921.0	1	cover
1.7	2.1310.002.2	4	washer 6.6, d125
1.8	2.0114.003.2	4	screw m 6 p.1 x 12
1.9	0.013.9979.0	1	air filter element
1.10	0.013.9980.0	1	air filter element
1.11	0.013.9978.0	1	nut
1.15	0.012.6457.0	0	tube
1.16	2.6857.017.0	1	clamp 13
1.21	2.6851.018.0	2	clamp 11/17
1.22	0.012.5852.0	2	cap
17	2.1569.118.0	1	gasket 12.5x18x2.5
18	2.1560.008.0	1	gasket 12.2 x 18
19	2.3332.003.2	1	pipe union m 12 p.1.25 x 23
20	0.467.8152.2/10	1	guard



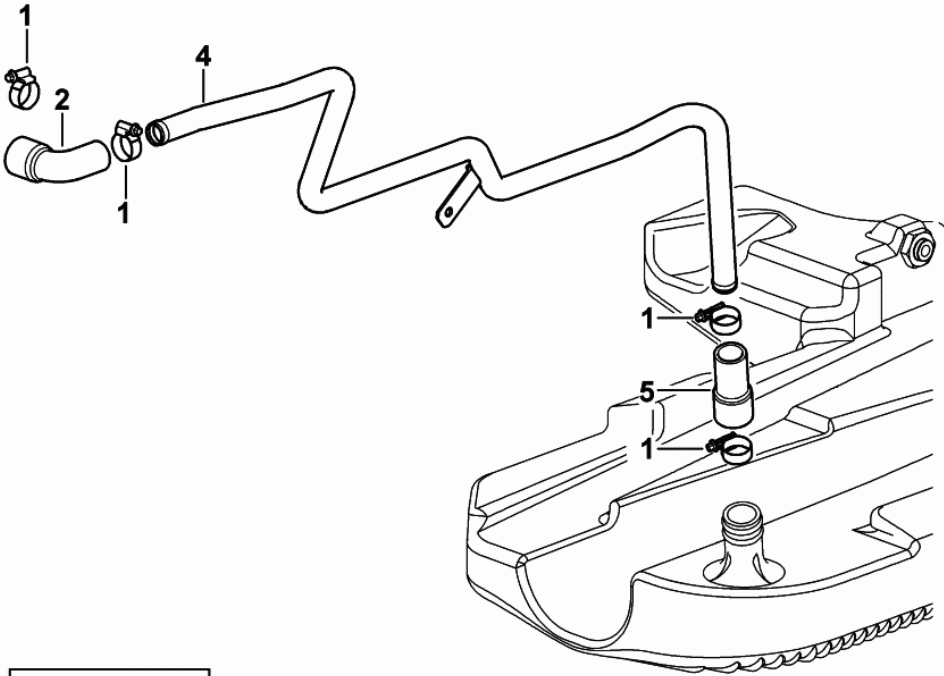
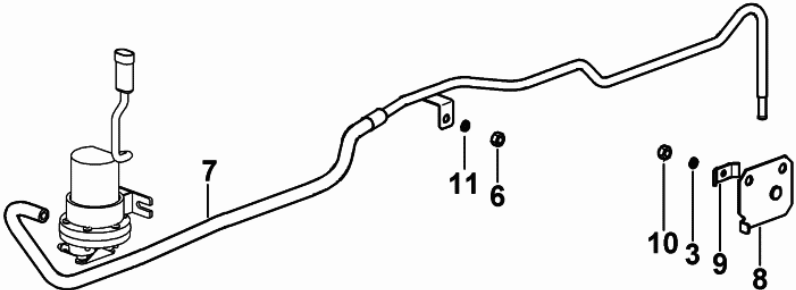
9_E6081_00_0_A

Section: BODY WORK
AUXILIARY TANK

Fig.	Code	QTY	Name
------	------	-----	------

Notes:
 3011 <- X Agrocompact F75 (24"-28") 5010 <- X Agrocompact F75 (20") 3115 <- X Agrocompact F90 (24"-28")
 5016 <- X Agrocompact F90 (20") 1096 <- X Agrocompact F100 (24"-28") 3014 <- X Agrocompact F100 (20")

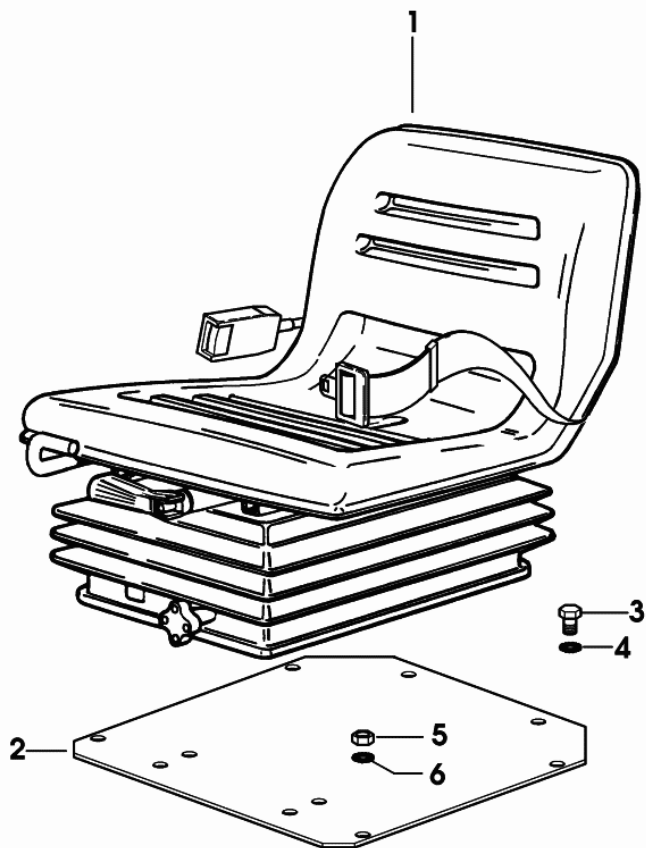
1	2.6851.003.0	4	clamp Ø 25/40
2	0.011.8222.0/30	1	sleeve
3	2.1470.002.2	1	washer 6, d128
4	0.013.9221.2/10	1	tube
5	0.011.8450.0/10	1	sleeve
6	2.1011.105.2	1	nut m 8 p.1.25
7	0.014.0093.3/20	1	tube
8	0.013.9462.3	1	small plate
9	0.154.6377.0	1	terminal
10	2.1011.103.2	1	nut m 6 p.1
11	2.1310.004.2	1	flat washer 8.5



9_D6081_14_0_0

DRIVER'S SEAT - IN GREY MATERIAL GRAMMER MSG83/8

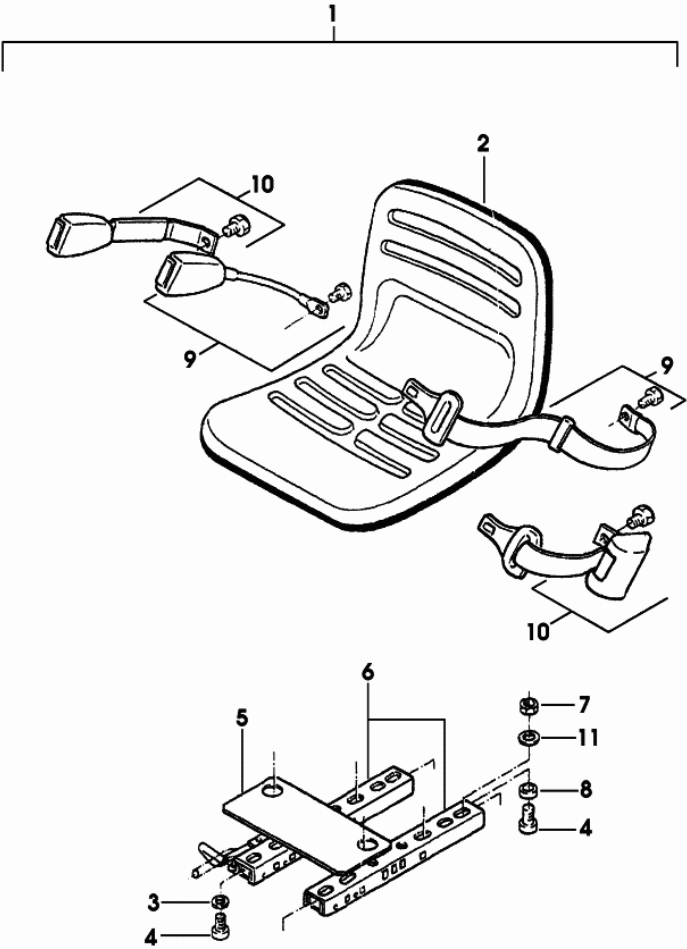
Fig.	Code	QTY	Name
1	0.010.8687.4/10	1	seat COMPONENT PARTS SEE COMPONENTS LIST ☞ 0.010.8687.4/10 ☞ 0.010.8687.4/10 ☞ 07.00.47 ☞ 07.00.46
2	0.010.9410.0	1	plate
3	2.0112.203.2	4	screw m 8 p.1.25 x 12
4	2.1470.004.2	4	washer 8
5	2.1011.105.2	4	nut m 8 p.1.25
6	2.1470.004.2	4	washer 8



9_70575_01_0_0

Section: BODY WORK
SEAT-COMPONENTS

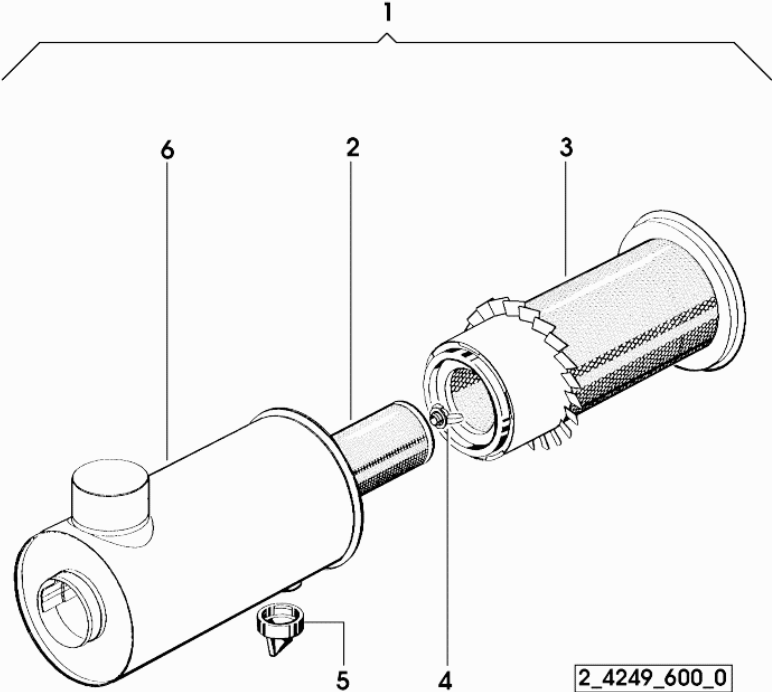
Fig.	Code	QTY	Name
1	0.000.0000.1	0	not serviceable
2	0.010.2961.1	1	seat
3	0.000.0000.1	0	not serviceable
4	0.010.2405.0	5	pin m 8 x 16
5	0.010.2961.2	1	plate
6	0.010.2962.0	1	seat guide
7	0.010.2401.0	1	nut m 8
8	0.010.2962.1	1	bushing
9	0.010.2962.2	1	safety belt
10	0.010.2963.0	1	safety belt
11	0.000.0000.1	0	not serviceable



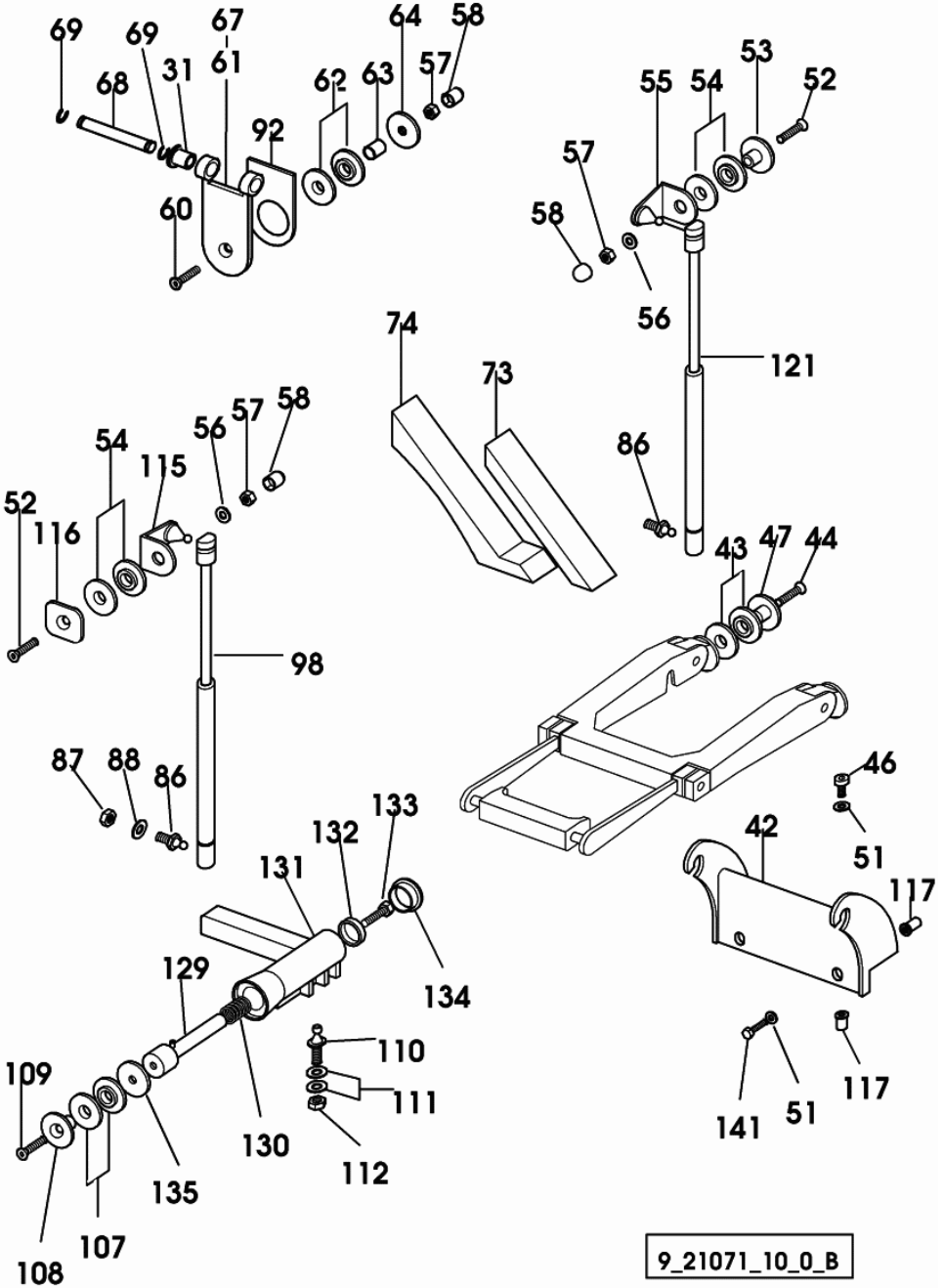
0_010_8687_4_10_A

Section: BODY WORK
AIR FILTER PARTS

Fig.	Code	QTY	Name
1	2.4249.600.0	1	air filter 8 "
2	2.4249.130.7	1	internal air filter element
3	2.4249.131.0	1	external air filter element
4	2.4249.320.1	1	wing nut
5	0.009.4109.0	1	valve
6	0.000.0000.1	0	not serviceable



Section: CAB
GLASSES AND SEALS

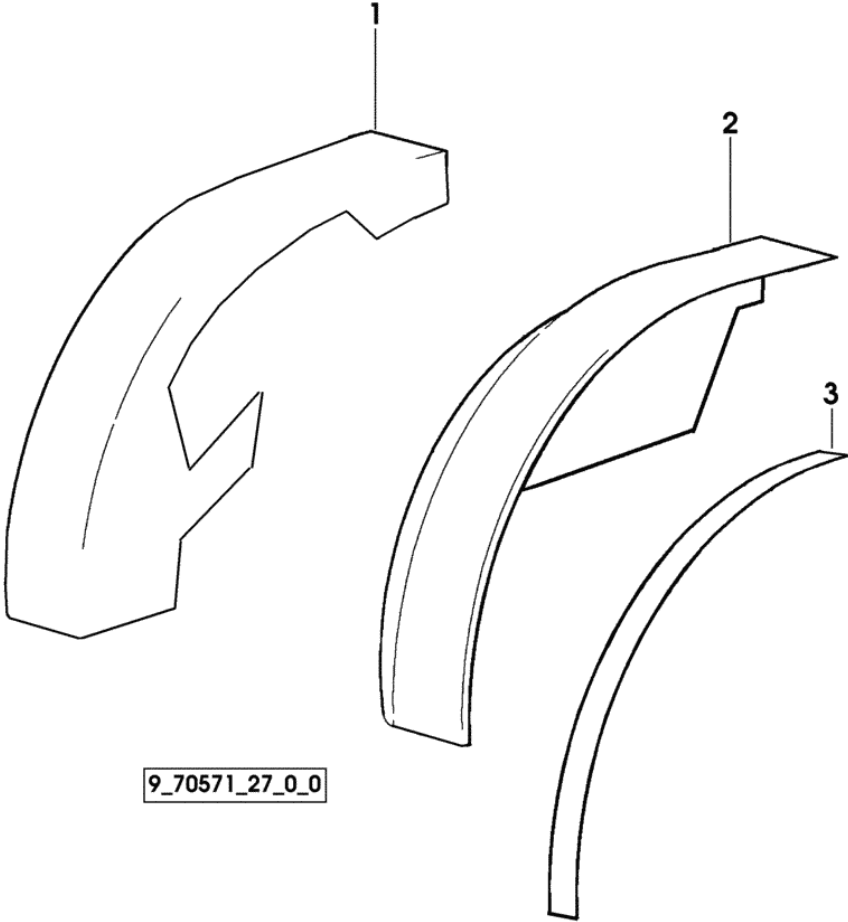


9_21071_10_0_B

Fig.	Code	QTY	Name
31	2.1559.147.0	16	bushing 10 x 28 x 18
42	0.011.9268.0	1	small block
43	0.009.0422.0	4	gasket
44	2.0342.308.3	2	screw m 8 p.1.25 x 30
46	2.0332.406.2	2	screw m 6 p.1.0 x 16
47	2.1499.093.0/10	6	washer 8.5
51	2.1310.002.3	2	flat washer 6.4 x 12 x 1.6
52	2.0342.308.3	5	screw m 8 p.1.25 x 30
53	2.1499.093.0/10	3	washer 8.5
54	0.009.0422.0	10	gasket
55	0.010.6270.2	1	bracket dx/rh/re
56	2.1310.004.2	5	flat washer 8.5
57	2.1011.105.2	5	nut m 8 p.1.25
58	0.163.7856.0	9	cap
60	2.0342.308.3	4	screw m 8 p.1.25 x 30
61	0.012.5716.2/10	1	hinge sx/lh/li
62	0.009.0422.0	8	gasket
63	2.1579.450.2	4	spacer 8.5 x 14 x 12
64	2.1599.495.2	4	washer 8.5
67	0.012.5717.2/10	1	hinge dx/rh/re
68	2.1699.327.2/10	4	pin
69	2.1410.001.1	8	circlip 10
73	0.010.7087.0	1	small plate
74	0.010.7088.0	1	small plate
86	04399070	5	ball joint
87	2.1011.105.2	2	nut m 8 p.1.25
88	2.1310.004.2	2	flat washer 8.5
92	0.012.5731.0/10	4	gasket
98	0.012.2518.0	2	shoch.absorber
107	0.009.0422.0	2	gasket
108	2.1499.093.0/10	1	washer 8.5
109	2.0342.308.3	1	screw m 8 p.1.25 x 30
110	0.011.6004.0	1	pin
111	2.1310.004.2	2	flat washer 8.5
112	2.1011.105.2	1	nut m 8 p.1.25
115	0.010.7458.0/10	2	bracket
116	2.1499.093.0/10	2	washer 8.5
117	2.1140.018.2	4	nut m 6 p.1, d934
121	0.009.8629.2	1	shoch.absorber mm 405.5
129	0.011.5986.4	1	pin
130	2.4019.517.1	1	spring
131	0.011.6170.2/20	1	handle
132	0.011.5989.0	1	block
133	2.0112.207.2	1	screw m 8 p 1.25 x 20

Section: CAB
INTERIOR TRIM

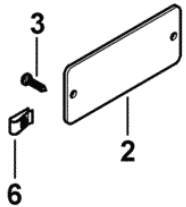
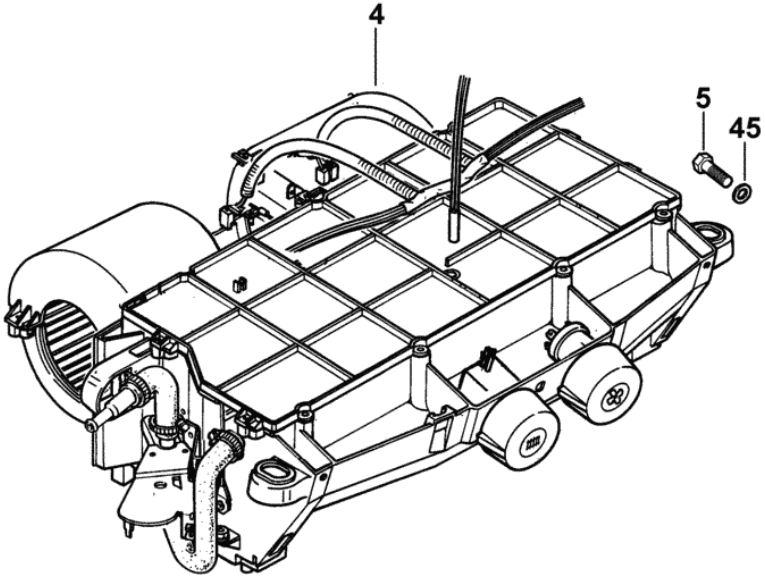
Fig.	Code	QTY	Name
1	0.010.9513.0/20	1	lining dx/rh/re
2	0.010.9514.0/20	1	lining sx/lh/li
3	0.010.1198.0	2	adhesive mm 4500



9_70571_27_0_0

Section: CAB
VENTILATION - HEATING

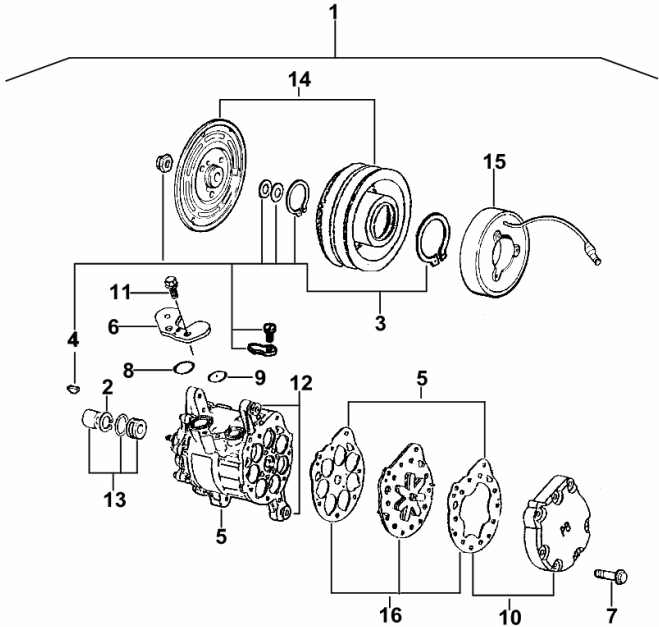
Fig.	Code	QTY	Name
2	0.007.7317.0	1	plug 50x116x3
3	2.0350.456.3	2	screw m 4.2 x 19 -AB-
4	0.010.8108.4/10	1	cab heating COMPONENT PARTS SEE COMPONENTS LIST ☞ 0.010.8108.4/10 ☞ 0B.00.83
5	2.0112.213.2	4	screw m 8 p.1.25 x 35
6	2.6999.061.0	2	small spring 4.2
45	2.1579.837.2	4	spacer 8 x 25 x 3



9_70671_60_0_D

COMPRESSOR-PARTS

Fig.	Code	QTY	Name
1	0.007.7197.4	1	gear compressor R 134a
2	0.010.2232.0	1	circlip
3	0.010.2232.1	1	accessories
4	0.009.4865.0	1	key
5	0.000.0000.1	0	not serviceable
6	0.010.2232.2	1	small plate
7	0.010.2233.0	7	screw
8	0.010.2233.1	1	'o' ring
9	0.010.2233.2	1	'o' ring
10	0.010.2234.0	1	flange
11	0.010.2234.1	2	screw
12	0.010.2234.2	2	bushing
13	0.010.2235.0	1	gasket set
14	0.010.2235.1	1	pulley
15	0.010.2235.2	1	electromagnet
16	0.010.2236.0	1	valve



007_7197_4

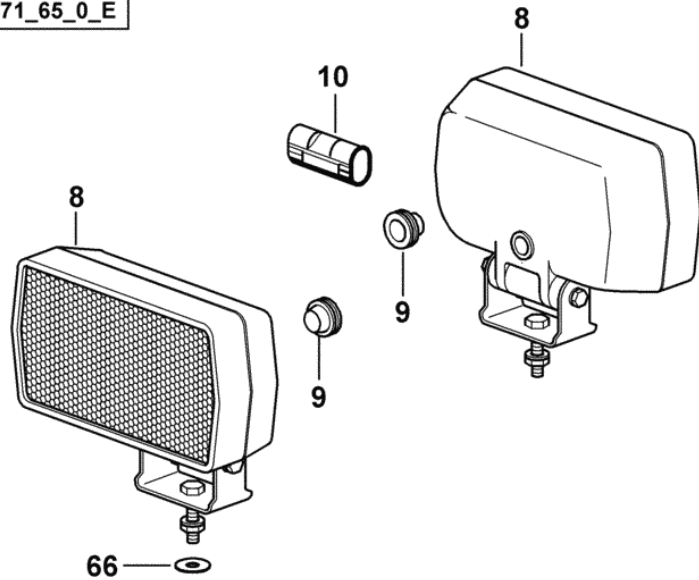
Agrocompact F75 (24"-28")

ELECTRIC AL SYSTEM

GENERAL

HEADLAMP FOR RIGHT-HAND DRIVE.....	08.00.1
HEADLAMP FOR LEFT-HAND DRIVE.....	08.00.2
FRONT LIGHTS.....	08.00.3
ELECTRIC LIGHTING SYSTEM - WITH CAB.....	08.00.4
REAR LIGHT.....	08.00.5
WORKING SPOTLIGHT REAR.....	08.00.6
CAB WORKLIGHTS - FOR TRACTORS WITH AIR HEATING.....	08.00.7
CAB WORKLIGHTS - FOR TYPES WITH HEATING AND AIR CONDITIONING.....	08.00.8
LICENCE PLATE LIGHT.....	08.00.9
WARNING BEACON.....	08.00.10
PREARRANGEMENT FOR WARNING BEACON.....	08.00.11
PREARRANGEMENT FOR WARNING BEACON - FOR MODELS WITH CAB.....	08.00.12
ELECTRIC STARTING SYSTEM.....	08.00.13
STARTER.....	08.00.15
ALTERNATOR 65 A.....	08.00.16
ALTERNATOR - FOR TRACTORS WITH AIR CONDITIONING 85 A.....	08.00.17
ALTERNATOR MOUNTINGS - FOR TRACTORS WITHOUT AIR CONDITIONING.....	08.00.18
ALTERNATOR MOUNTINGS - FOR TRACTORS WITH AIR CONDITIONING.....	08.00.19
COMPRESSOR AND ALTERNATOR SUPPORTS - FOR TRACTORS WITH AIR CONDITIONING.....	08.00.20
BATTERY 12V 100Ah 500A.....	08.00.21
BATTERY 12V 100Ah 650A.....	08.00.22
BATTERY LEADS.....	08.00.23
ELECTRICAL SYSTEM.....	08.00.24
DIGITAL INSTRUMENT PANEL.....	08.00.25
ANALOGUE INSTRUMENT PANEL.....	08.00.26
ELECTRONIC CONTROL UNIT - ENGINE.....	08.00.27
PREHEATING ELECTRONIC CONTROL UNIT.....	08.00.28
CONTROL UNIT - GEARS H-M-L (GEARSHIFT).....	08.00.29
CONTROL UNIT - P.T.O. SHAFT.....	08.00.30
DIFFERENTIAL LOCK CONTROL - ELECTROHYDRAUDLIC.....	08.00.31
4WD - ENGAGEMENT CONTROL.....	08.00.32
SWITCH - FOR P.T.O. FRONT.....	08.00.33
SPEED SENSOR.....	08.00.34
SPEED SENSOR.....	08.00.35
CIGAR LIGHTER.....	08.00.36
ELECTRICAL EQUIPMENT FRONT.....	08.00.38
CENTRAL WIRING - FOR MODELS WITH MECHANICAL ENGINE GOVERNOR.....	08.00.39
CENTRAL WIRING - FOR MODELS WITH ELECTRONIC ENGINE GOVERNOR.....	08.00.40
PLATFORM POWER CABLE.....	08.00.42
CAB POWER WIRE.....	08.00.44

9_70671_65_0_E

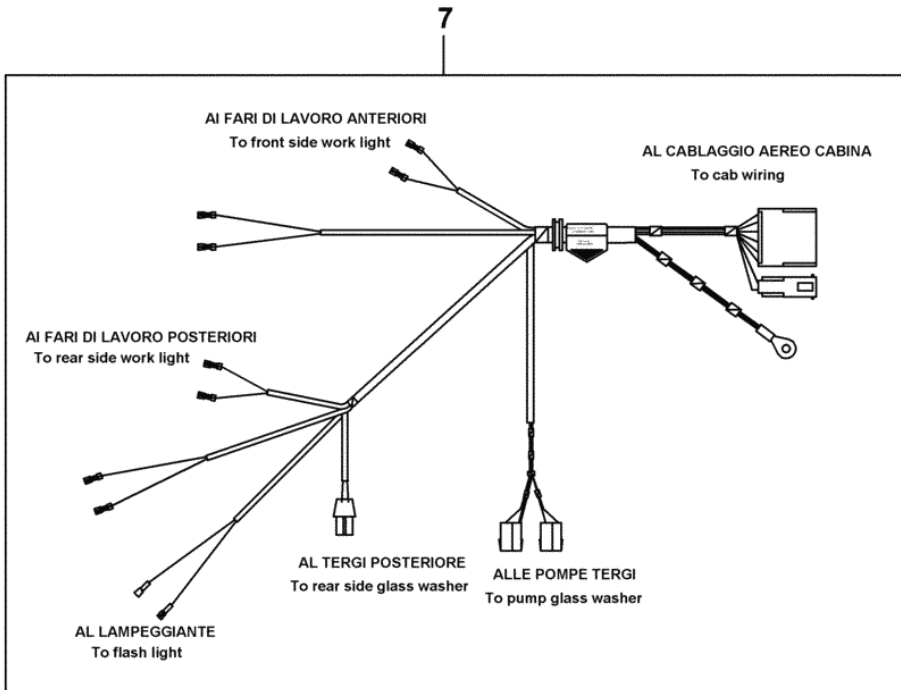


Agrocompact F75 (24"-28") Ref.: 08.00.8

Section: ELECTRIC AL SYSTEM

CAB WORKLIGHTS - FOR TYPES WITH HEATING AND AIR CONDITIONING

Fig.	Code	QTY	Name
7	0.010.7263.4/20	1	electrical system
8	2.8029.730.0	4	headlight
			COMPONENT PARTS SEE COMPONENTS LIST
			☞ 2.8029.730.0
			☞ 08.00.60
9	2.6569.018.0	7	wire guide 20 x 8 x 15
10	2.6039.010.0	4	guard
66	2.1312.005.2	2	washer 10.2



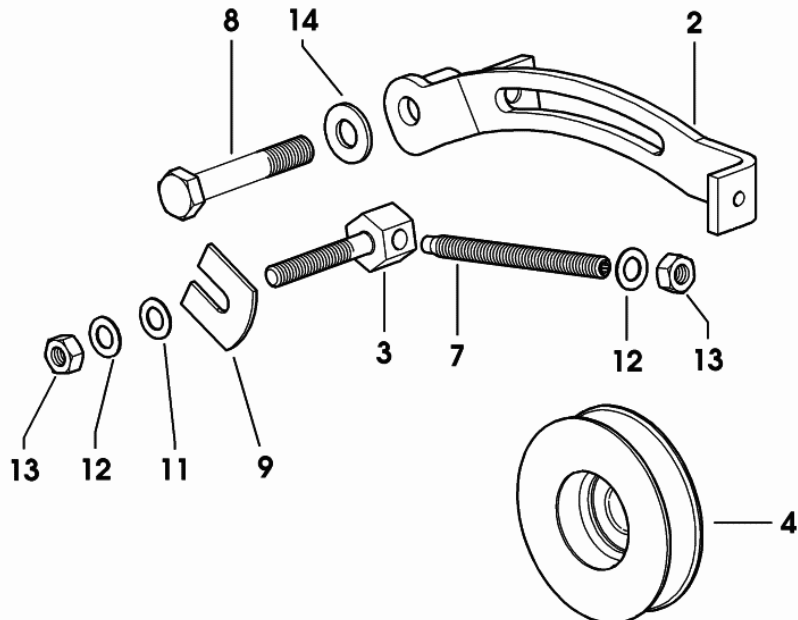
Agrocompact F75 (24"-28")

Section: ELECTRIC AL SYSTEM

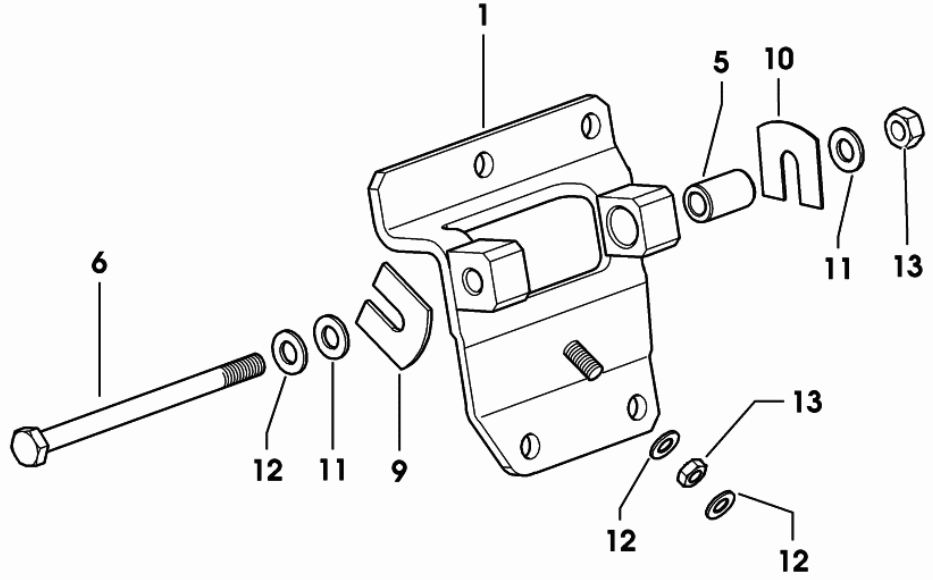
Ref.: 08.00.19

ALTERNATOR MOUNTINGS - FOR TRACTORS WITH AIR CONDITIONING

Fig.	Code	QTY	Name
1	0.013.6416.2	1	support 3032 <- X Agrocompact 70F3 (24"-28") 3033 <- X Agrocompact 70F3 (20") 1033 <- X Agrocompact F75 (24"-28") 1014 <- X Agrocompact F75 (20") 3068 <- X Agrocompact F90 (24"-28") 3021 <- X Agrocompact F90 (20") 1059 <- X Agrocompact F100 (24"-28") 1015
1	0.013.6416.3	1	support -> 3033 X Agrocompact 70F3(24"-28") -> 3034 X Agrocompact 70F3(20") -> 1034 X Agrocompact F75(24"-28") -> 1015 X Agrocompact F75(20") -> 3069 X Agrocompact F90(24"-28") -> 3022 X Agrocompact F90(20") -> 1060 X Agrocompact F100(24"-28") -> 1016 X Ag
2	0.013.6673.2	1	bracket
3	0.007.7716.0	1	pin
4	0.013.7603.0	1	pulley
5	2.1559.358.2/10	1	bushing 8.1 x 14 x 23
6	2.0113.232.2	1	screw m 8 p.1.25x115
7	2.0399.221.2	1	screw m 8 p.1.25 x 95
8	2.0112.321.2	1	screw m 10 p.1.5 x 60
9	0.009.7982.0	2	shim mm 2.00
10	0.009.7981.0	1	shim mm 1.00
11	2.1310.004.2	3	flat washer 8.5
12	2.1470.004.2	2	washer 8 3032 <- X Agrocompact 70F3 (24"-28") 3033 <- X Agrocompact 70F3 (20") 1033 <- X Agrocompact F75 (24"-28") 1014 <- X Agrocompact F75 (20") 3068 <- X Agrocompact F90 (24"-28") 3021 <- X Agrocompact F90 (20") 1059 <- X Agrocompact F100 (24"-28") 1015
12	2.1470.004.2	4	washer 8 -> 3033 X Agrocompact 70F3(24"-28") -> 3034 X Agrocompact 70F3(20") -> 1034 X Agrocompact F75(24"-28") -> 1015 X Agrocompact F75(20") -> 3069 X Agrocompact F90(24"-28") -> 3022 X Agrocompact F90(20")



9_B6184_02_0_0

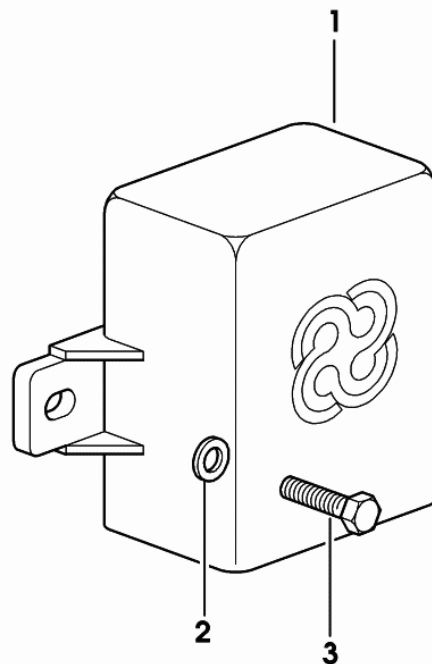


PREHEATING ELECTRONIC CONTROL UNIT

Fig.	Code	QTY	Name
------	------	-----	------

Notes:

3071 <- X Agrocompact 70F3 (24"-28") 3016 <- X Agrocompact F75 (24"-28") 3132 <- X Agrocompact F90 (24"-28") 1109 <- X Agrocompact F100 (24"-28") 5039 <- X Agrocompact 70F3 (20") 5014 <- X Agrocompact F75 (20") 5021 <- X Agrocompact F90 (20") 3018



1	2.8519.023.0/30	1	central device
2	2.1310.002.2	2	washer 6.6, d125
3	2.0112.003.2	1	screw m 6 p.1 x 12

9_B6184_30_0_0

Agrocompact F75 (24"-28")

Section: ELECTRIC AL SYSTEM

Ref.: 08.00.39

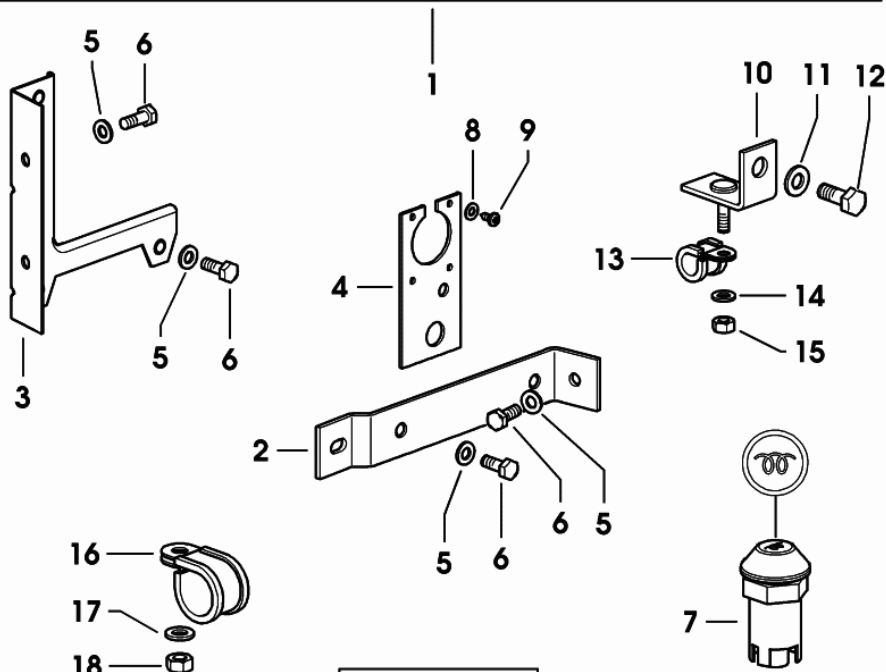
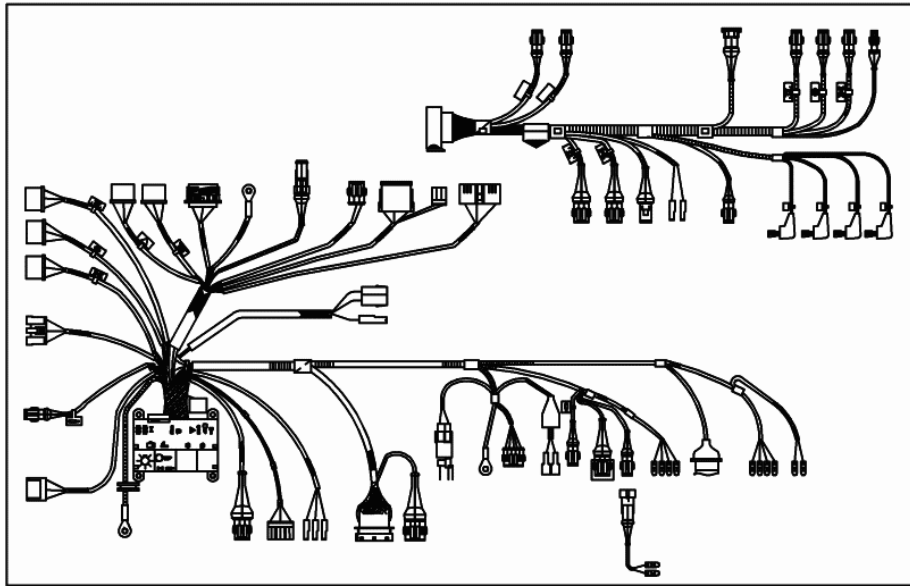
CENTRAL WIRING - FOR MODELS WITH MECHANICAL ENGINE GOVERNOR

Fig.	Code	QTY	Name
------	------	-----	------

Notes:

3071 <- X Agrocompact 70F3 (24"-28") 3016 <- X Agrocompact F75 (24"-28") 3132 <- X Agrocompact F90 (24"-28") 1109 <- X Agrocompact F100 (24"-28") 5039 <- X Agrocompact 70F3 (20") 5014 <- X Agrocompact F75 (20") 5021 <- X Agrocompact F90 (20") 3018

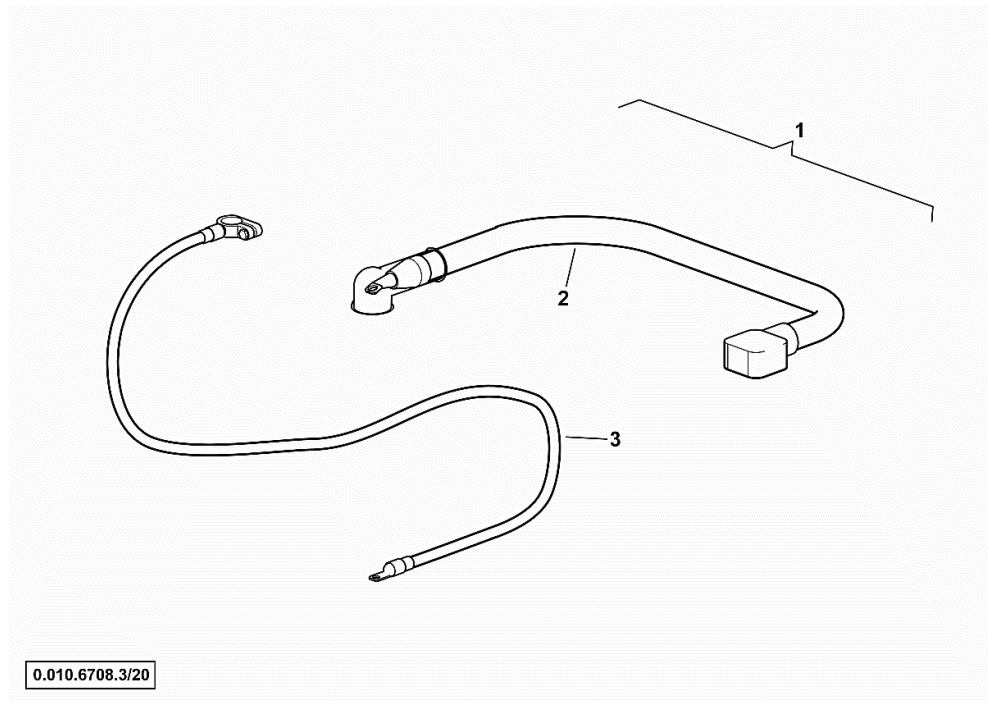
1	0.013.8396.4/10	1	electrical system COMPONENT PARTS SEE COMPONENTS LIST ☞ 0.013.8396.4/10 ☞ 08.00.69
2	0.010.1160.3	1	bracket
3	0.011.6212.3	1	bracket
4	0.010.4307.0/10	1	small plate
5	2.1310.002.2	7	washer 6.6, d125
6	2.0112.005.2	7	screw m 6 p.1 x 16
7	2.7659.250.0/10	1	push-button
8	2.1310.028.2	4	flat washer 4
9	2.0350.253.6	4	screw m 3.5 x 9.5
10	0.010.1395.2	1	square
11	2.1310.004.2	1	flat washer 8.5
12	2.0112.205.2	1	screw m 8 p.1.25 x 16
13	2.6839.059.0	1	clamp Ø 12 / 15
14	2.1310.002.2	1	washer 6.6, d125
15	2.1011.103.2	1	nut m 6 p.1
16	2.6839.054.0	1	clamp Ø 20/25
17	2.1310.004.2	1	flat washer 8.5
18	2.1011.105.2	1	nut m 8 p.1.25



9_D6084_04_0_0

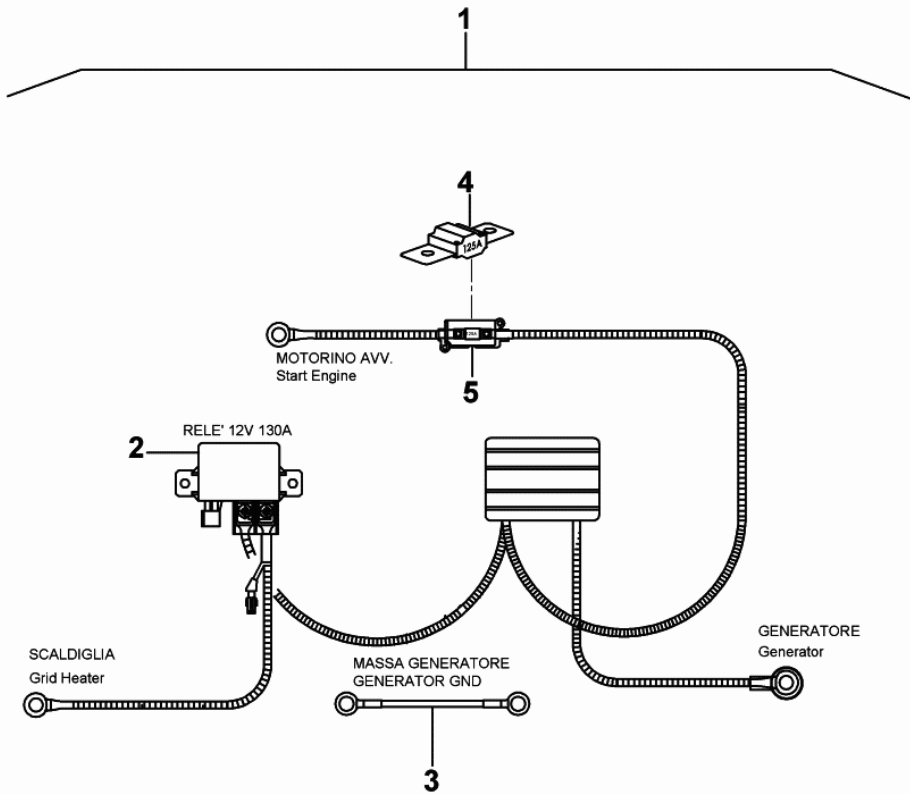
BATTERY LEADS

Fig.	Code	QTY	Name
1	0.010.6708.3/20	1	wire
2	0.900.0017.2	1	wire +
3	0.900.0017.3	1	wire -



ELECTRICAL SYSTEM

Fig.	Code	QTY	Name
1	0.013.8401.4	1	electrical system
2	2.7659.240.0/10	1	relay 12 V 130A
3	0.900.0379.9	1	wire
4	0.900.0452.2	1	fuse 125 A midival
5	0.900.0391.1	1	box



0_013_8401_4

CLICK HERE TO **DOWNLOAD** THE COMPLETE MANUAL

- Thank you very much for reading the preview of the manual.
- You can download the complete manual from: www.heydownloads.com by clicking the link below

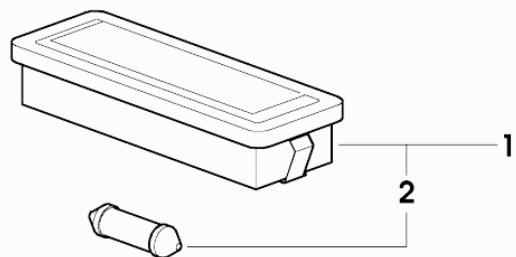


- Please note: If there is no response to CLICKING the link, please download this PDF first and then click on it.

CLICK HERE TO **DOWNLOAD** THE COMPLETE MANUAL

INTERIOR LIGHT

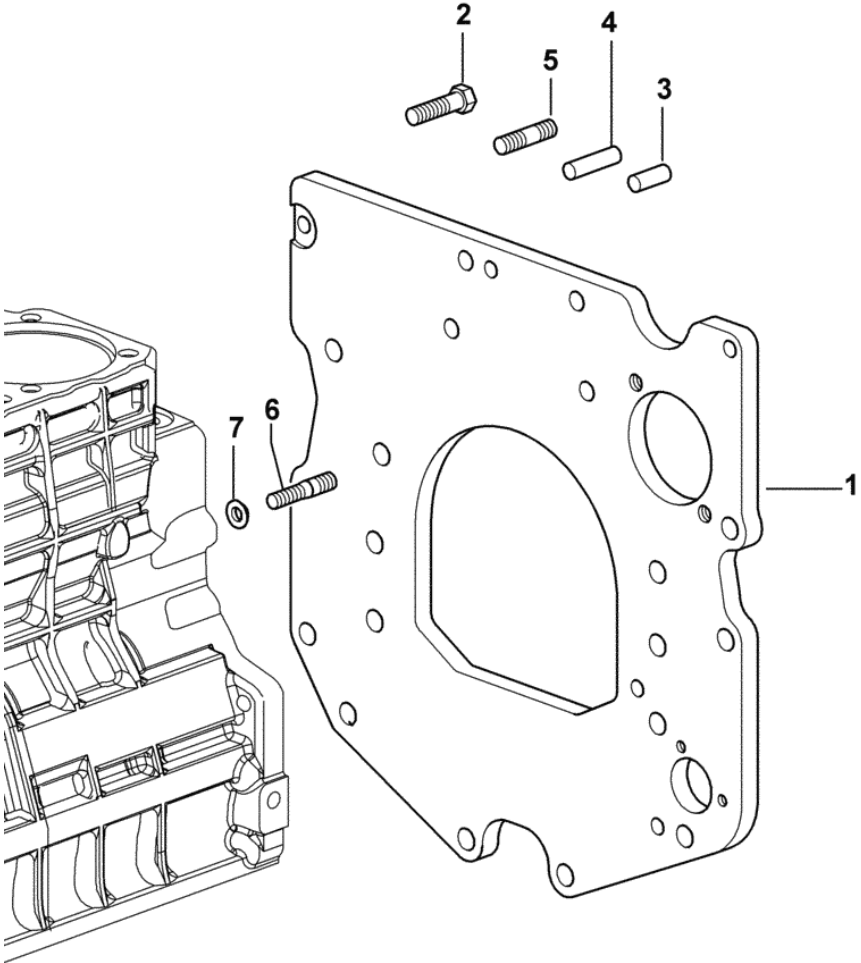
Fig.	Code	QTY	Name
1	2.8339.032.0	1	interior light
2	2.8320.008.0	1	lamp



2_8339_032_0

MONOBLOC ENGINE-GEARBOX CONNECTING FLANGE

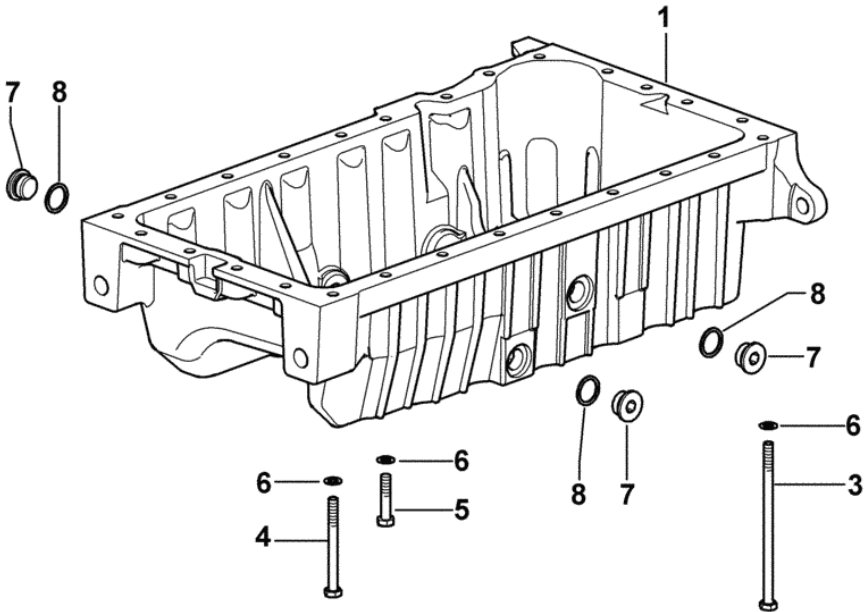
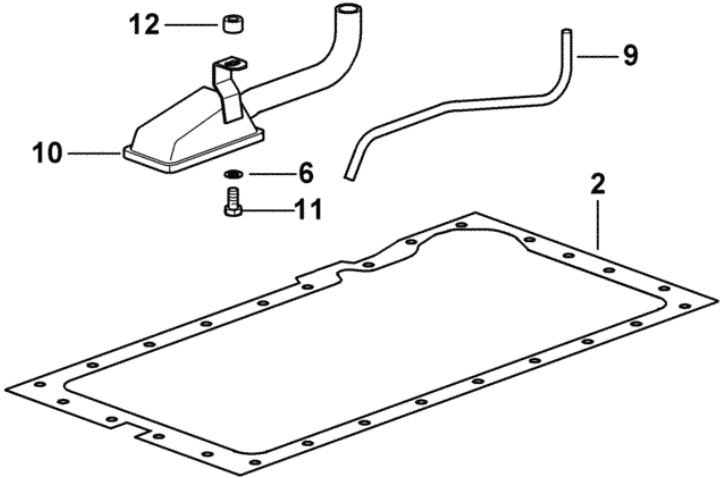
Fig.	Code	QTY	Name
1	0.007.1882.0/50	1	flange
2	2.0112.511.2	8	screw m 14 p.2 x 30
3	2.1651.912.0	2	cylindrical plug 12x28
4	2.1651.917.0	1	cylindrical plug 12x40
5	2.0432.257.7	1	stud bolt m 12 p.1.75 - 1.25 x 30
6	2.0439.250.7	1	stud bolt m 12 / m 10 x 30
7	0.011.9294.0/10	1	sleeve



9_38611_01_0_0

Section: ENGINE
OIL PAN

Fig.	Code	QTY	Name
1	0.010.0910.0/10	1	oil pan
2	0.065.1550.0/10	1	gasket
3	2.0112.239.2	2	screw m 8 p.1.25 x 150
4	2.0112.226.2	7	screw m 8 p.1.25 x 85
5	2.0112.215.2	17	screw m 8 p.1.25 x 40
6	2.1470.004.2	27	washer 8
7	2.3199.001.2	3	plug 1/2" gas
8	2.1560.054.0	3	gasket 21 x 26
9	0.008.9960.0	1	tube
10	0.008.9959.3/10	1	tube
11	2.0112.209.2	1	screw m 8 p 1.25 x 25
12	2.1579.766.2	1	spacer 8.5x16x10

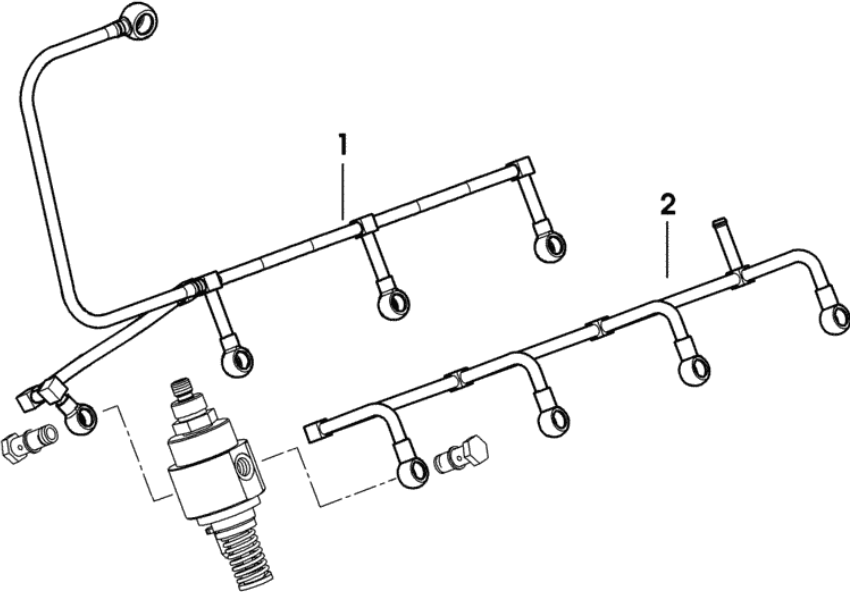


9_38715_01_0_0

Section: ENGINE

FUEL PIPES

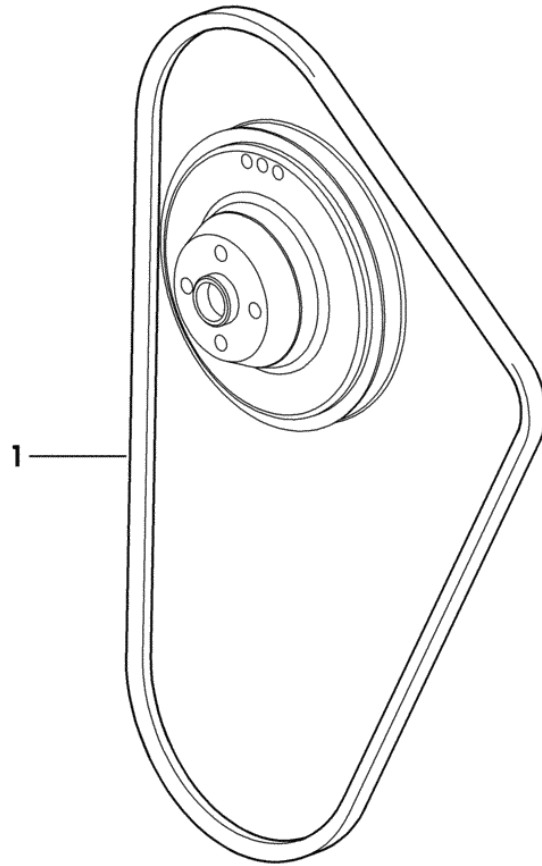
Fig.	Code	QTY	Name
1	0.013.6551.4	1	tube
2	0.013.1491.3	1	tube



9_M8216_02_0_0

COOLANT PUMP DRIVEBELT

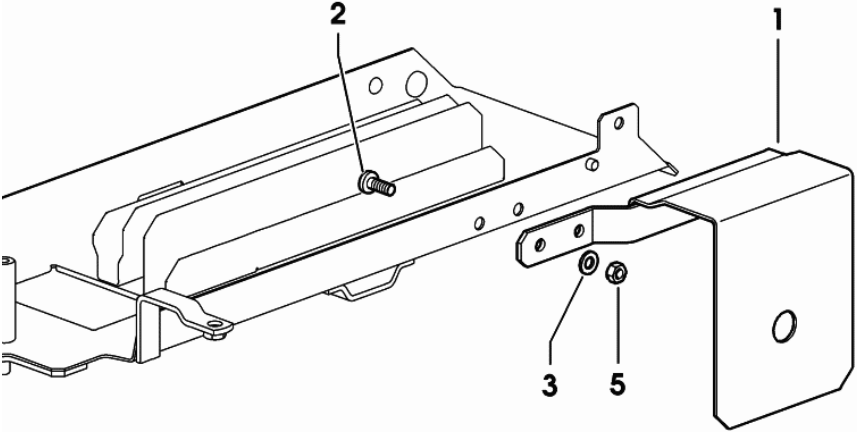
Fig.	Code	QTY	Name
1	2.4119.177.0	1	belt AV 12.7x1285 mm



9_N4817_02_0_0

Section: ENGINE
HEAT SHIELD

Fig.	Code	QTY	Name
1	0.013.9384.2	1	shield
2	2.0114.005.2	2	screw m 6 p.1.0 x 16
3	2.1310.002.2	2	washer 6.6, d125
5	2.1011.103.2	2	nut m 6 p.1



9_D6056_02_0_0

Agrocompact F75 (24"-28")

FRONT AND REAR P.T.O.

GENERAL

P.T.O. FRONT.....	05.00.1
P.T.O. FRONT.....	05.00.2
P.T.O. FRONT.....	05.00.3
P.T.O. FRONT.....	05.00.4
P.T.O. FRONT.....	05.00.5
P.T.O. - CLUTCH TRANSMISSION SHAFT.....	05.00.6
P.T.O. - PUMP CONTROL.....	05.00.7
P.T.O. - HYDRAULIC CLUTCH.....	05.00.8
P.T.O. - 540/N - WITH INSERTED END SHAFTS EXPORT U.S.A.....	05.00.9
P.T.O. - WITH N' 540 - 750.....	05.00.10
P.T.O. - WITH N' 540 - 750 + SINCRO.....	05.00.11
P.T.O. - 540-750 - WITH INSERTED END SHAFTS EXPORT U.S.A.....	05.00.12
P.T.O. - 540-750 - WITH INSERTED END SHAFTS + SINCRO.....	05.00.13
P.T.O. - WITH N' 540 - 1000.....	05.00.14
P.T.O. - WITH N' 540 - 1000 + SINCRO.....	05.00.15
P.T.O. - 540/N - WITH INSERTED END SHAFTS EXPORT U.S.A.....	05.00.16
P.T.O. - 540 -1000 WITH INSERTED END SHAFTS.....	05.00.17
P.T.O. - 540-1000 - WITH INSERTED END SHAFTS.....	05.00.18
P.T.O. - 540-1000 - WITH INSERTED END SHAFTS + SINCRO.....	05.00.19
P.T.O. - 540 -1000 WITH INSERTED END SHAFTS EXPORT U.S.A. + SINCRO.....	05.00.20
P.T.O. - 2 SPEED TYPE.....	05.00.22
P.T.O. - 540-750 - WITH INSERTED END SHAFTS.....	05.00.23
P.T.O. - 2 SPEED TYPE - FIXED END SHAFT.....	05.00.24
P.T.O. - WITH INSERTED END SHAFTS 540 - 750 + SINCRO.....	05.00.25
P.T.O. - 2 SPEED TYPE + SINCRO - FIXED END SHAFT.....	05.00.26
P.T.O. - 3 SPEED TYPE.....	05.00.27
PTO - 3-SPEED WITH INSERTED END SHAFT.....	05.00.28
PTO - 3-SPEED WITH INSERTED END SHAFT.....	05.00.29
P.T.O. - 3 SPEED TYPE - FIXED END SHAFT.....	05.00.30
PTO - PARTS SET WITH WATER PROOF SEALS.....	05.00.31
PTO - PARTS SET WITH STANDARD SEALS.....	05.00.32
PTO - SEAL RING FOR INSERTED END SHAFT - WATER PROOF VERSION.....	05.00.33
PTO - SEAL RING FOR INSERTED END SHAFT - STANDARD VERSION.....	05.00.34
P.T.O. SHAFT DRIVE.....	05.00.35
P.T.O. - 2 SPEED TYPE.....	05.00.36
P.T.O. - 2 SPEED TYPE + SINCRO - AND 3-SPEED.....	05.00.37
P.T.O. - 2 SPEED TYPE + SINCRO.....	05.00.38
P.T.O. - EXTERNAL CONTROLS 540/N.....	05.00.39
P.T.O. - EXTERNAL CONTROLS 540 - 750.....	05.00.40
P.T.O. - EXTERNAL CONTROLS 540 - 750 + SINCRO.....	05.00.41

Agrocompact F75 (24"-28")

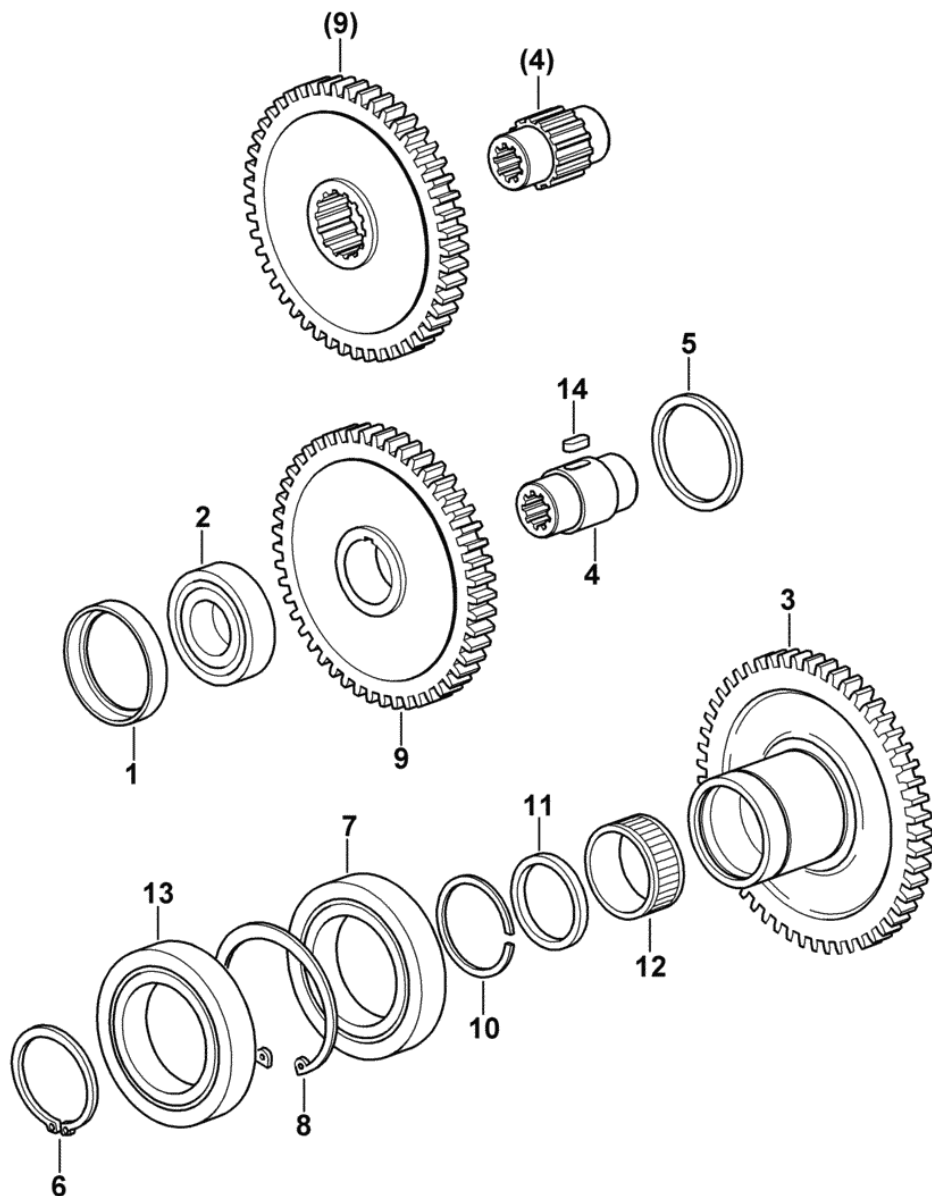
Section: FRONT AND REAR P.T.O.

Ref.: 05.00.7

P.T.O. - PUMP CONTROL

Fig.	Code	QTY	Name
------	------	-----	------

11	2.1549.372.0	1	spacer 42.5x35.15x5
12	2.2999.357.0	1	roller cage 42x35x17.8
13	2.2999.465.0	1	bearing 50 x 80 x 16
14	2.1710.203.0	1	key 8x7x16
			-> 3028 X Agrocompact 70F3(24"-28")
			-> 3026 X Agrocompact 70F3(20")
			-> 1028 X Agrocompact F75(24"-28")
			-> 1010 X Agrocompact F75(20")
			-> 3050 X Agrocompact F90(24"-28")
			-> 3015 X Agrocompact F90(20")
			-> 1041 X Agrocompact F100(24"-28")
			-> 1014 X Ag



9_C1239_00_0_0

Agrocompact F75 (24"-28")

Section: FRONT AND REAR P.T.O.

Ref.: 05.00.15

P.T.O. - WITH N° 540 - 1000 + SINCRO

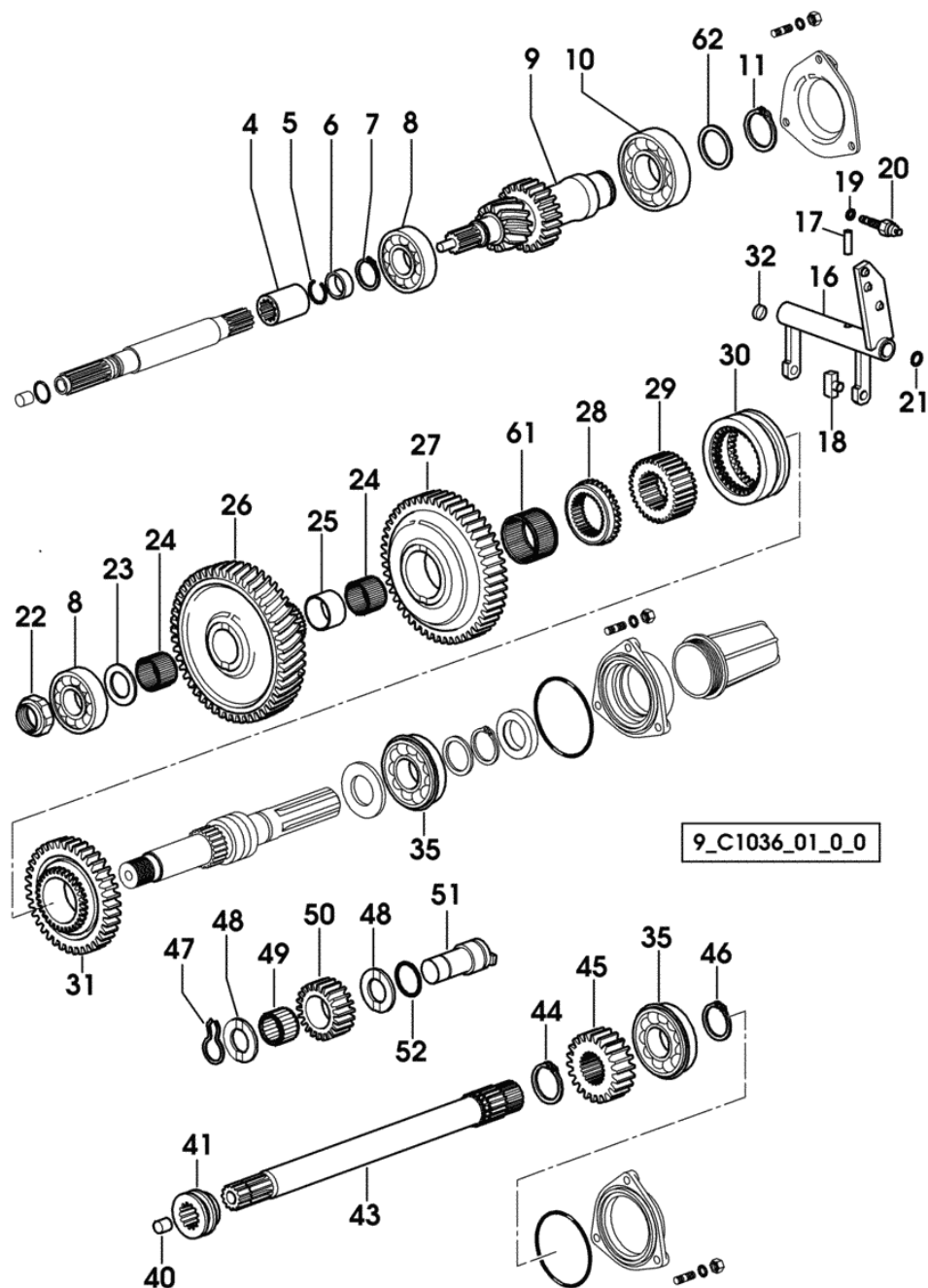


Fig.	Code	QTY	Name
4	0.010.7696.0	1	sleeve Z = 11
5	2.1421.010.7	1	circlip 25
6	2.1549.172.0	1	spacer 24.7 x 31 x 12
7	2.1410.012.1	1	circlip 30
8	2.2999.300.0	2	bearing 30 x 72 x 19
9	0.012.0316.0/10	1	shaft Z = 14 / 23 / 11
10	2.2062.012.0	1	ball bearing 40 x 90 x 23
11	2.1410.016.1	1	circlip 40
16	0.010.7710.3	1	fork
17	2.1631.712.0	1	pin 8x26
18	0.255.6463.0	2	shoe
19	2.1560.003.0	3	gasket 8.2 x 12
20	2.7659.131.0	3	switch
21	2.1530.028.0	1	'o' ring 11.91 x 2.62
22	2.1219.038.0/40	1	ring nut m 30 p.1.5
23	2.1589.321.0	1	snoulder 30x47x3
24	2.2770.062.0	2	roller cage 35x40x27
25	0.010.7712.0	1	spacer
26	0.011.9934.0	1	gear Z = 51
27	0.012.0318.0	1	gear z=47 z=32
28	0.009.3830.3/10	1	gear Z = 32
29	0.010.7701.0	1	hub z=32 z=21
30	0.009.3822.0/20	1	sleeve Z = 32
31	0.013.3442.0/10	1	gear Z = 36 / Z = 32
32	2.3171.006.4	5	plug Ø 16
35	2.2999.235.0	2	bearing 35 x 80 x 21
40	2.1555.206.0	1	bushing 12 x 14 x 15
41	0.008.5192.0/10	1	sleeve Z = 13, sx/lh/li
43	0.010.7697.0/10	1	p.t.o.shaft
44	2.1410.015.1	1	circlip 38
45	0.013.3441.0	1	gear Z = 23 / 18
45	0.013.8505.0	1	3003 <- X Agrocompact 70F3 (20") 3007 <- X Agrocompact F90 (24"-28") (...) <- X Agrocompact F100 (20") gear Z = 23 / 18 X Agrocompact 70F3(24"-28") -> 3004 X Agrocompact 70F3(20") X Agrocompact F75(24"-28") X Agrocompact F75(20") -> 3008 X Agrocompact F90(24"-28") X Agrocompact F90(20") X Agrocompact F100(24"-28") -> (...) X Agrocompact F100(20")
46	2.1410.014.1	1	circlip 35

Agrocompact F75 (24"-28")

Section: FRONT AND REAR P.T.O.

Ref.: 05.00.23

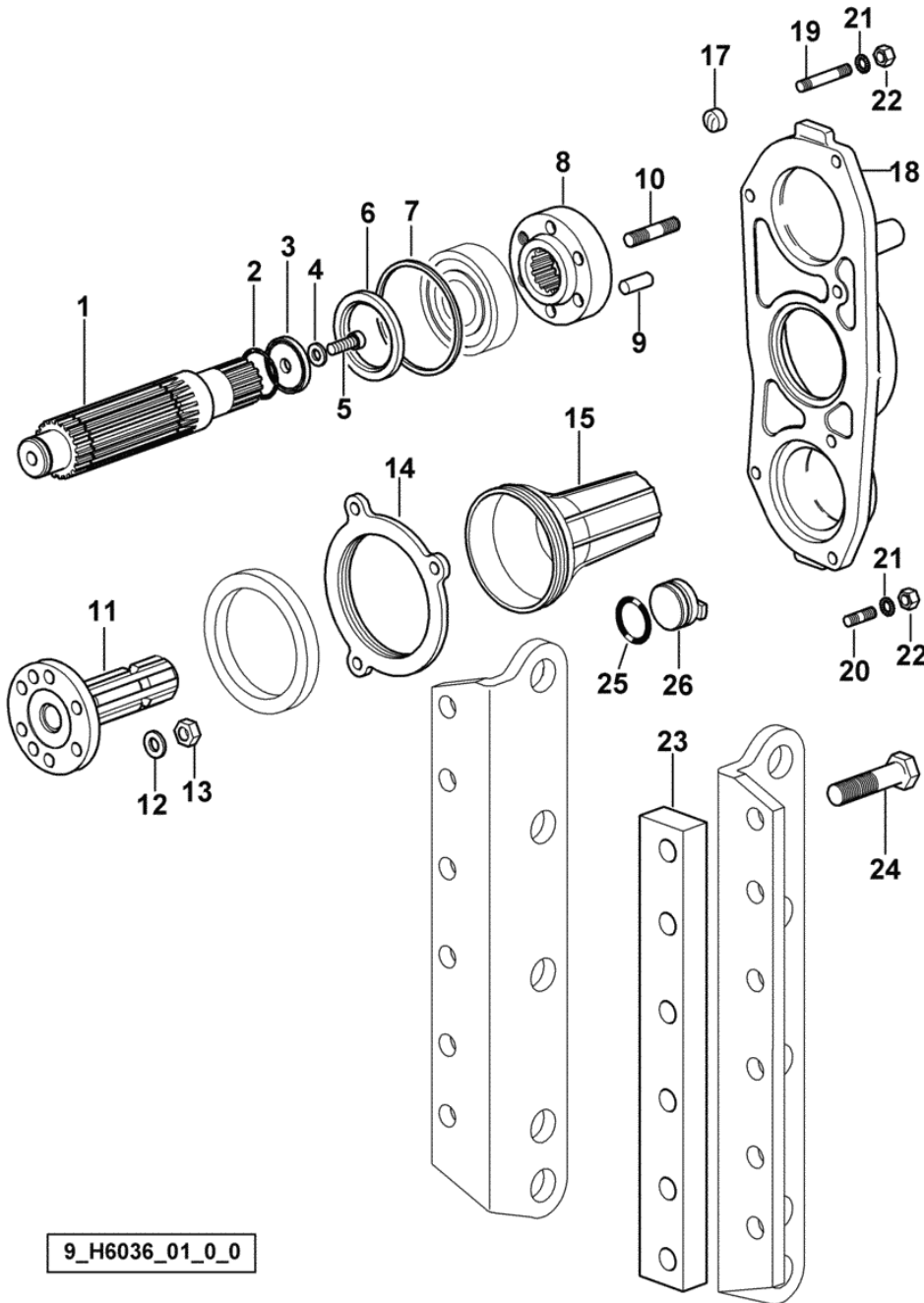
P.T.O. - 540-750 - WITH INSERTED END SHAFTS

Fig.	Code	QTY	Name
------	------	-----	------

Notes:

3074 <- X Agrocompact 70F3 (24"-28") 5049 <- X Agrocompact 70F3 (20") 3021 <- X Agrocompact F75 (24"-28")
 5015 <- X Agrocompact F75 (20") 3135 <- X Agrocompact F90 (24"-28") 5021 <- X Agrocompact F90 (20") 1113
 <- X Agrocompact F100 (24"-28") 3018

1	0.012.0100.0/10	1	shaft
2	2.1531.091.0	1	'o' ring 34.60 x 2.62
3	0.011.6415.0	1	thrust plate
4	2.1475.203.7	1	washer 10.5
5	2.0313.308.2	1	screw m 10 x 25
6	2.1599.827.0	1	snoulder
7	2.1549.430.0	1	spacer 80x87x3
8	0.011.3229.0	1	flange
9	2.1651.811.0	2	cylindrical plug 10x24
10	2.0432.155.7	6	stud bolt m 10 p.1.5 / p. 1.25 x 25
11	0.011.3221.0	1	p.t.o.shaft Z = 6
12	2.1470.006.2	6	lock washer 10
13	2.1011.421.2	6	nut m 10 p.1.25
14	0.011.3274.0	1	cover
15	0.008.0757.0	1	guard
17	2.3171.006.4	1	plug Ø 16
18	0.011.3261.0/20	1	cover
19	2.0422.215.7	2	stud bolt m 8 p.1.25 x 50
20	2.0422.203.7	5	stud bolt m 8 p.1.25 x 20
21	2.1470.004.2	7	washer 8
22	2.1011.105.2	7	nut m 8 p.1.25
23	0.011.3480.0	2	spacer 45 x 365 x 25
24	2.0112.623.2	12	screw m 16 p.2 x 70
25	2.1530.079.0	1	'o' ring 29.82 x 2.62
26	0.014.1957.0	1	plug



9_H6036_01_0_0

Agrocompact F75 (24"-28")

Section: FRONT AND REAR P.T.O.

Ref.: 05.00.31

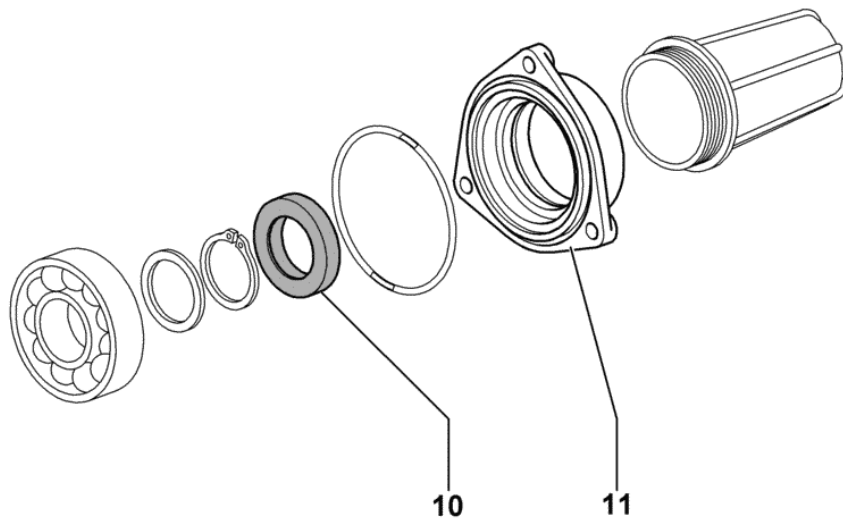
PTO - PARTS SET WITH WATER PROOF SEALS

Fig.	Code	QTY	Name
------	------	-----	------

Notes:

3020 <- X Agrocompact 70F3 (24"-28") 1026 <- X Agrocompact F75 (24"-28") 3032 <- X Agrocompact F90 (24"-28") 1029 <- X Agrocompact F100 (24"-28")

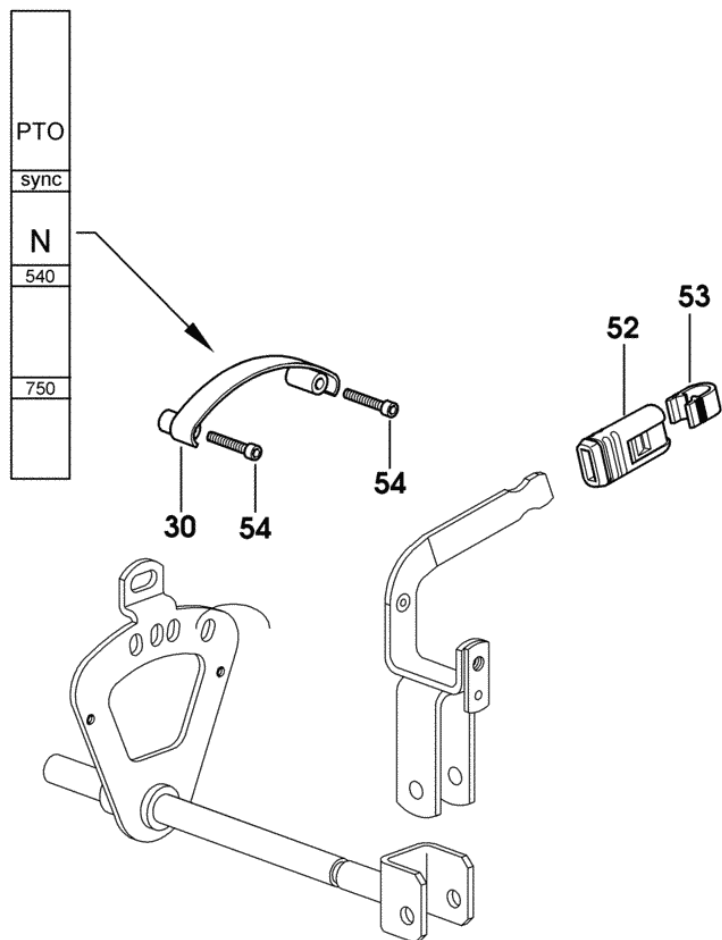
10	2.1529.115.0	1	'o' ring 35x60x13
11	0.009.9926.0	1	cover



9_58936_08_0_0

P.T.O. - EXTERNAL CONTROLS 540 - 750 + SINCRO

Fig.	Code	QTY	Name
30	0.010.7788.3/20	1	sector
52	0.008.8388.0	1	knob
53	0.008.8383.0	1	coupling
54	2.0332.309.6	2	screw m 5 x 30



9_70536_12_0_0

FRONT SUPPORT - WITH FRONT PTO AND LIFT

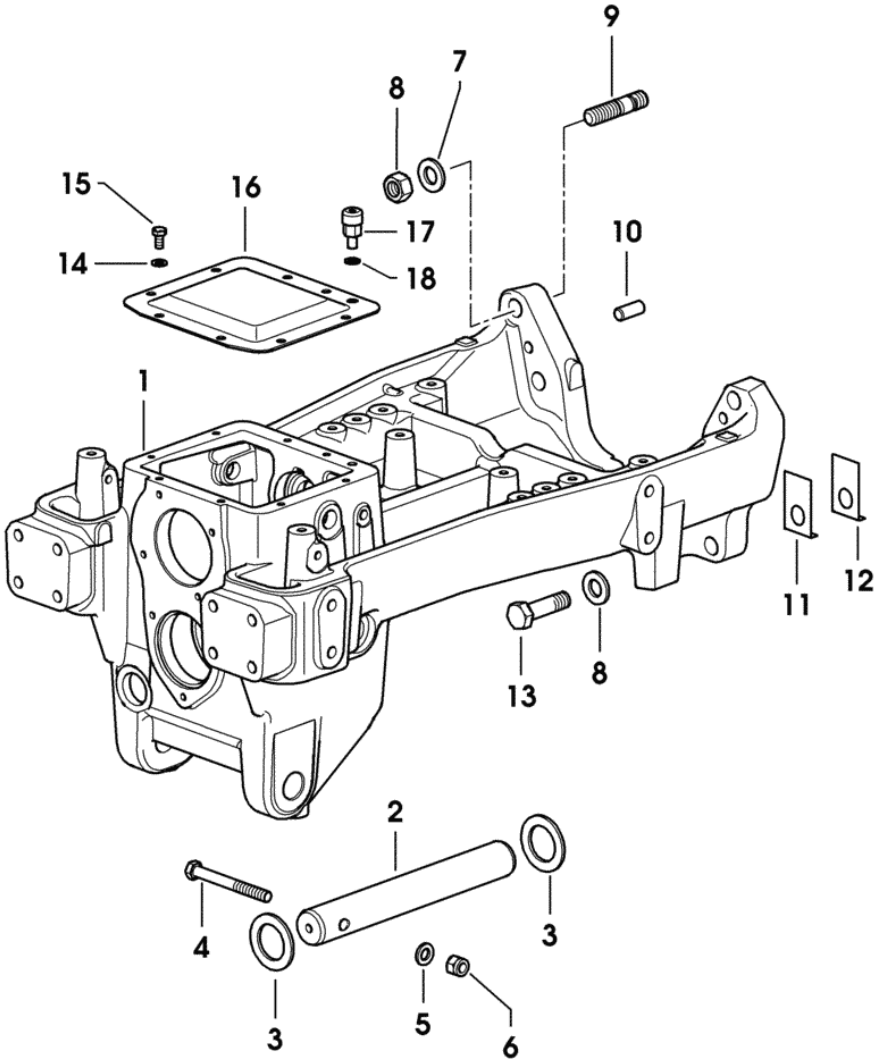
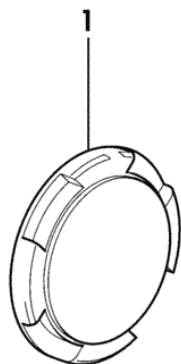


Fig.	Code	QTY	Name
1	0.013.7814.0/20	1	front support
2	0.013.5972.0	1	pin
3	2.1599.010.0/10	2	snoulder 41 x 63 x 4.0
4	2.0112.431.2	1	screw m 12 p.1.75 x 110
5	2.1120.007.2	1	nut m 12 p.1.75
6	2.1475.204.2	1	washer 12
7	2.1011.410.2	4	nut m 18 p.1.5
8	2.1475.007.7	6	washer 18
9	2.0432.517.7	4	stud bolt 18 p.1.5 x 60
10	2.1699.035.0	2	cylindrical plug 14 x 35
11	0.255.5251.0	4	shim mm 0.20
12	0.255.5252.0	4	shim mm 0.50
13	2.0112.722.2	2	screw m 18 p.2.5 x 65
14	2.1310.004.2	8	flat washer 8.5
15	2.0112.205.2	8	screw m 8 p.1.25 x 16
16	0.010.1332.0	1	cover
17	0.001.6590.3	1	breather m 12x15
18	2.1560.006.0	1	gasket 10.2 x 16

9_D6052_01_0_0

FRONT WHEEL HUB COVER

Fig.	Code	QTY	Name
1	0.012.7065.0	2	small cover



9_70546_10_0_0

Section: FRONT AXEL

FRONT DIFFERENTIAL LOCK CONTROL LINES

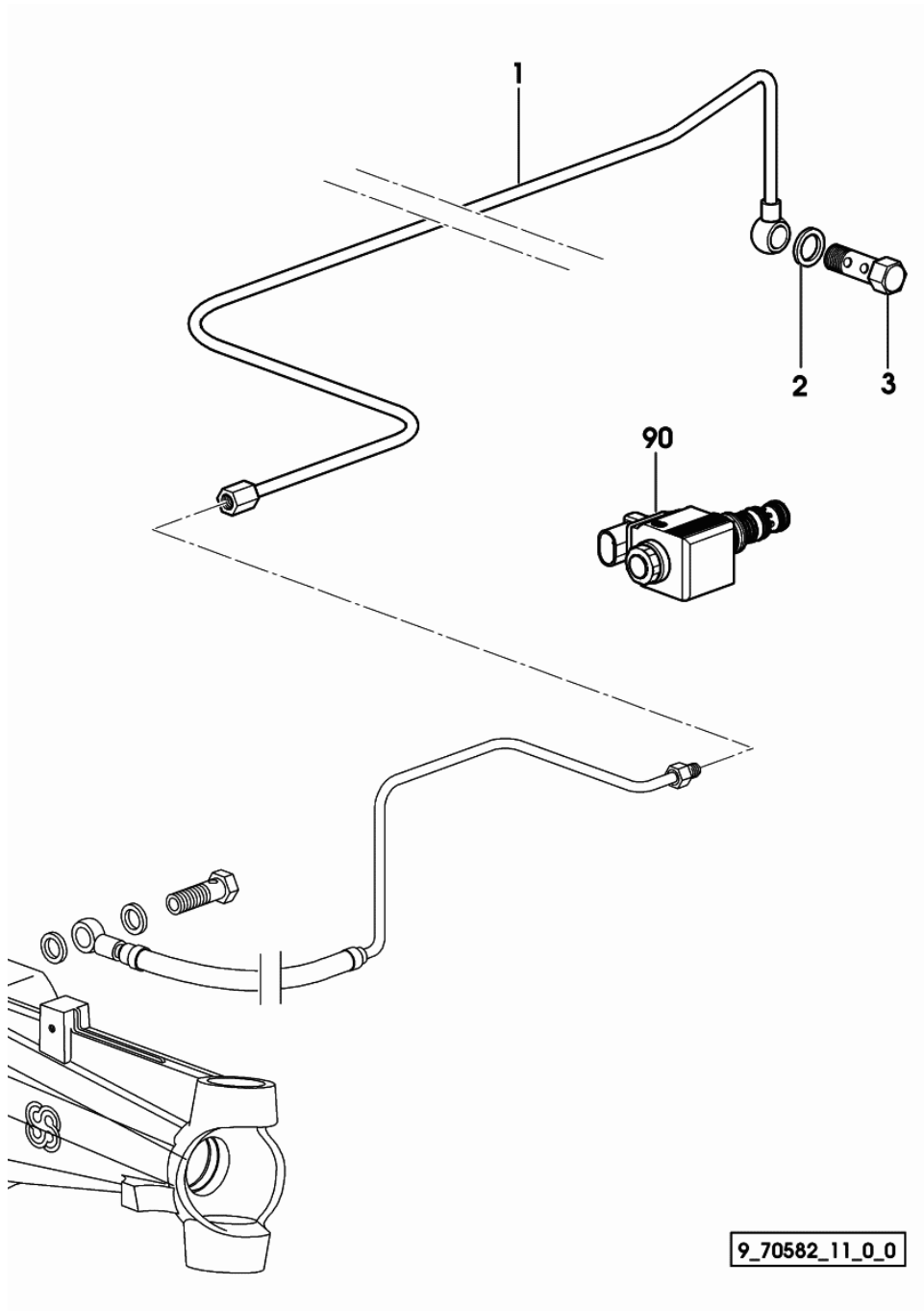
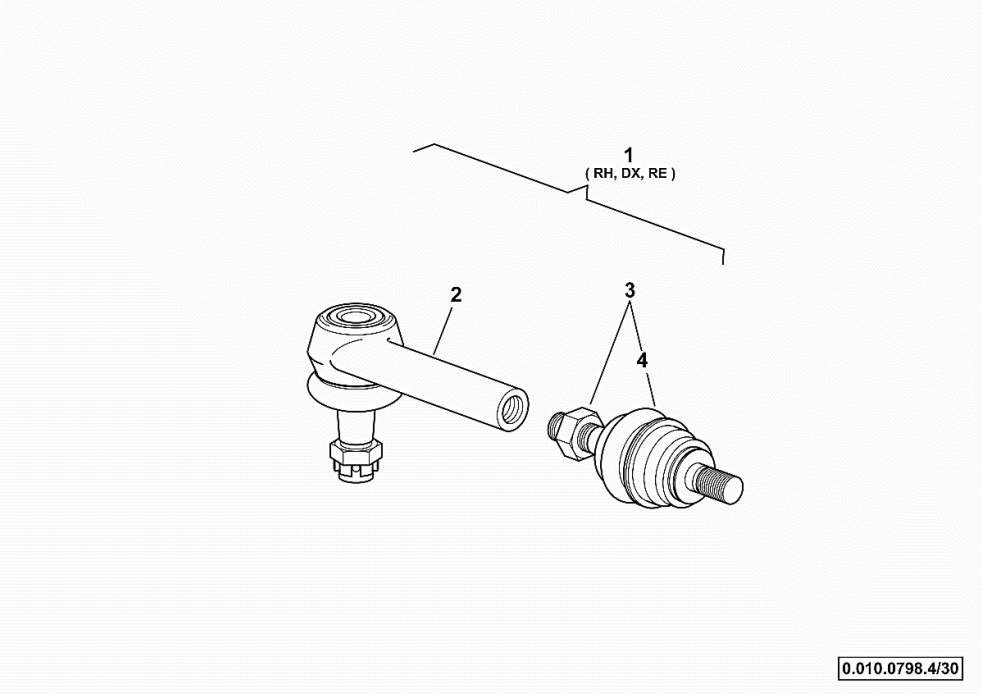


Fig.	Code	QTY	Name
1	0.010.9310.3	1	tube
2	2.1560.010.0	1	gasket 14.2 x 20 x 1.5
3	2.3339.280.2	1	pipe union m 14 p.1.5X42
90	2.3729.697.0	1	electro valve 13V - 20W COMPONENT PARTS SEE COMPONENTS LIST ☞ 2.3729.697.0 ☞ 04.00.22

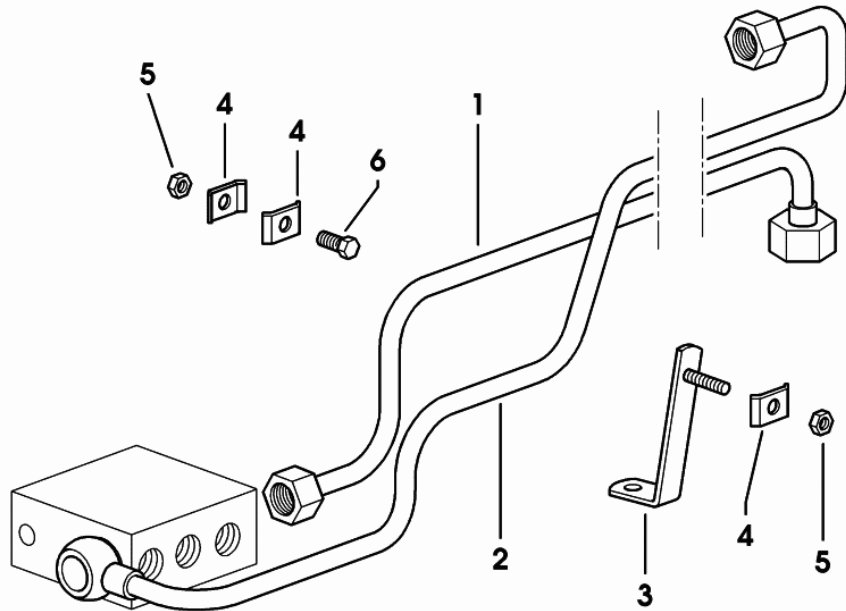
ADJUSTABLE LIFT ROD PARTS

Fig.	Code	QTY	Name
1	0.010.0798.4/30	1	adjustable tensioner dx/rh/re
2	0.010.3009.1	1	rod
3	0.010.2460.0	1	joint A = 125
4	0.010.2457.0	1	guard



FRONT POWER LIFT - LEADS

Fig.	Code	QTY	Name
1	0.014.1116.3	1	tube
2	0.014.1115.3	1	tube
3	0.010.8621.3	1	square
4	0.200.8152.0	3	small plate
5	2.1011.103.2	2	nut m 6 p.1
6	2.0112.009.2	1	screw m 6 p.1 x 25



9_D6059_81_0_A

Section: GEAR

5 SPEED GEARBOX WITH MINI REDUCTION GEAR

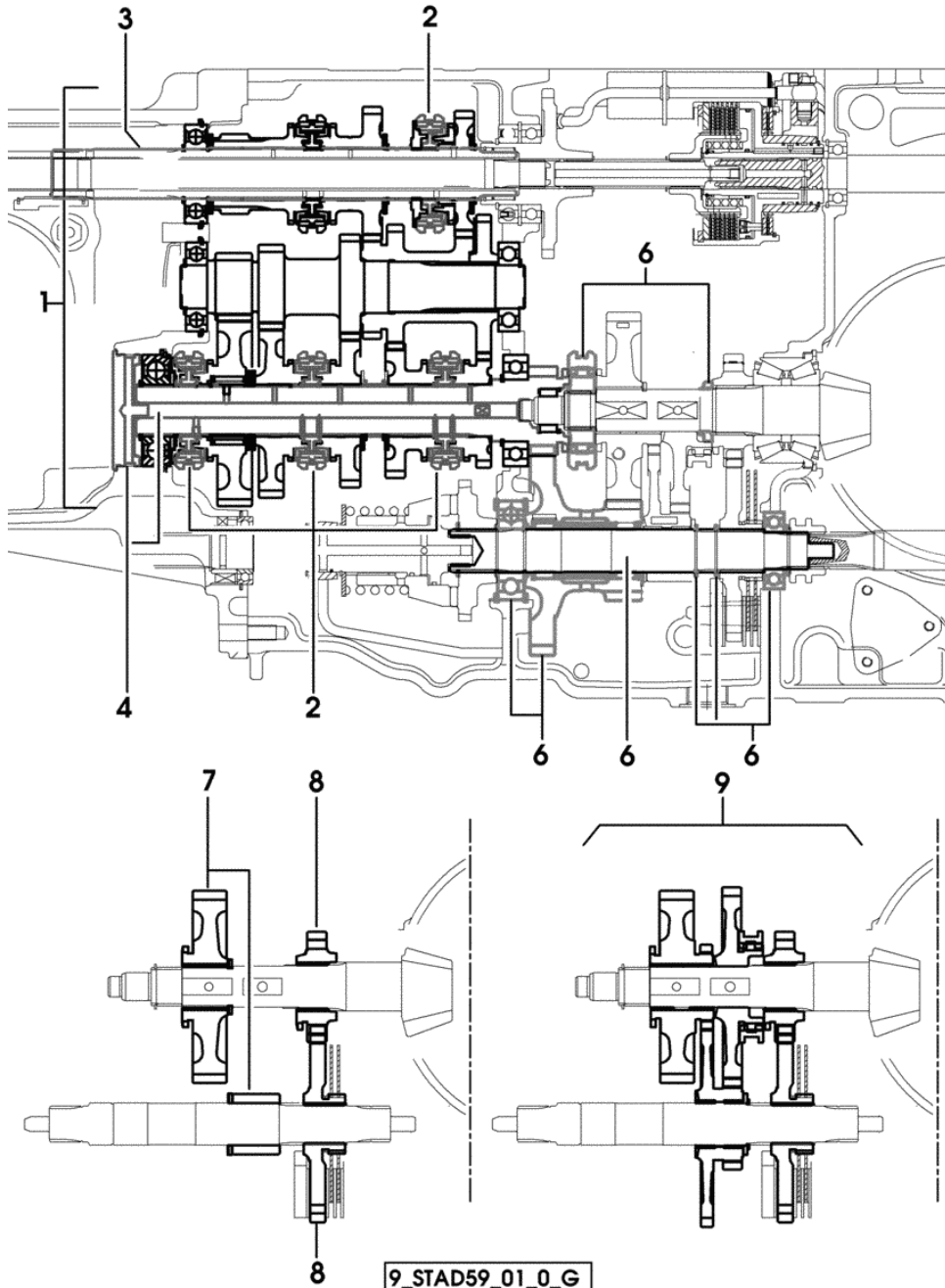


Fig.	Code	QTY	Name
------	------	-----	------

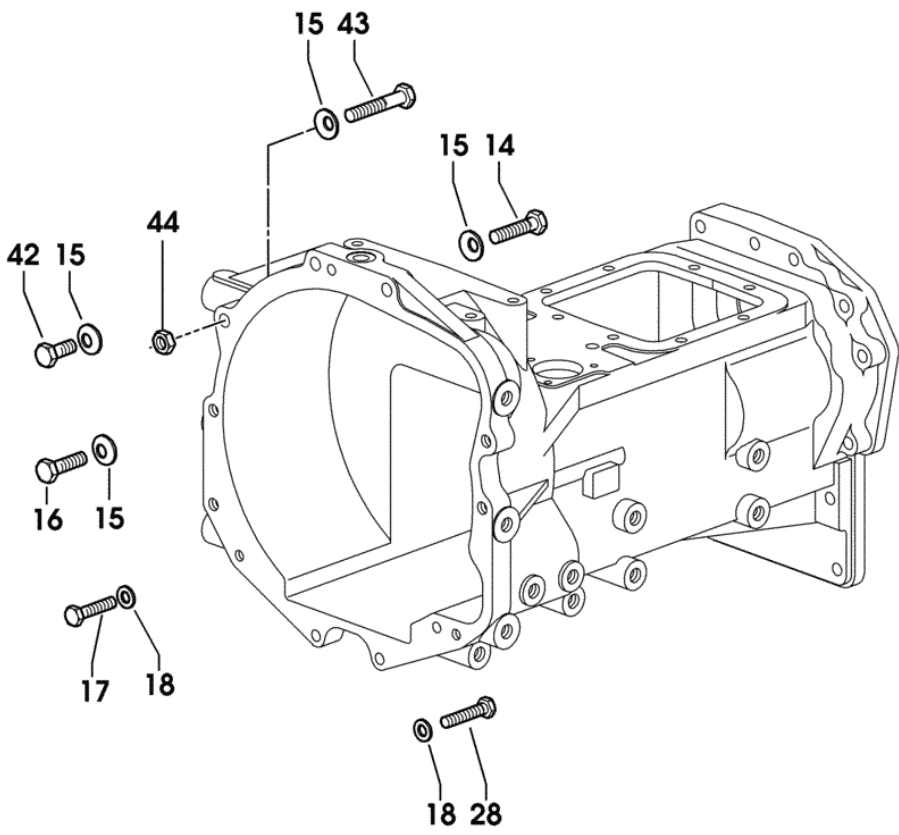
COMPONENT PARTS SEE
COMPONENTS LIST
- 40 Km/h
COMPONENT PARTS SEE
COMPONENTS LIST

- ☞ 02.00.44
- ☞ 02.00.43
- ☞ 02.00.42

9_STAD59_01_0_G

Section: GEAR
GEARBOXFIXINGS

Fig.	Code	QTY	Name
14	2.0112.521.2	2	screw m 14 p.2 x 60
15	2.1475.005.7	8	washer 14
16	2.0112.519.2	2	screw m 14 p.2x50
17	2.0112.420.2	2	screw m 12 p.1.75x55
18	2.1475.004.7	4	washer 13 x 24
28	2.0112.421.2	2	screw m 12 p.1.75 x 60
42	2.0112.513.2	2	screw m 14 p.2 x 35
43	2.0112.525.2	1	screw m 14 p.2x80
44	2.1011.108.2	1	nut m 14 p.2



9_D6031_02_0_0

Section: GEAR

4 SPEED GEARBOX WITH MINI REDUCTION GEAR

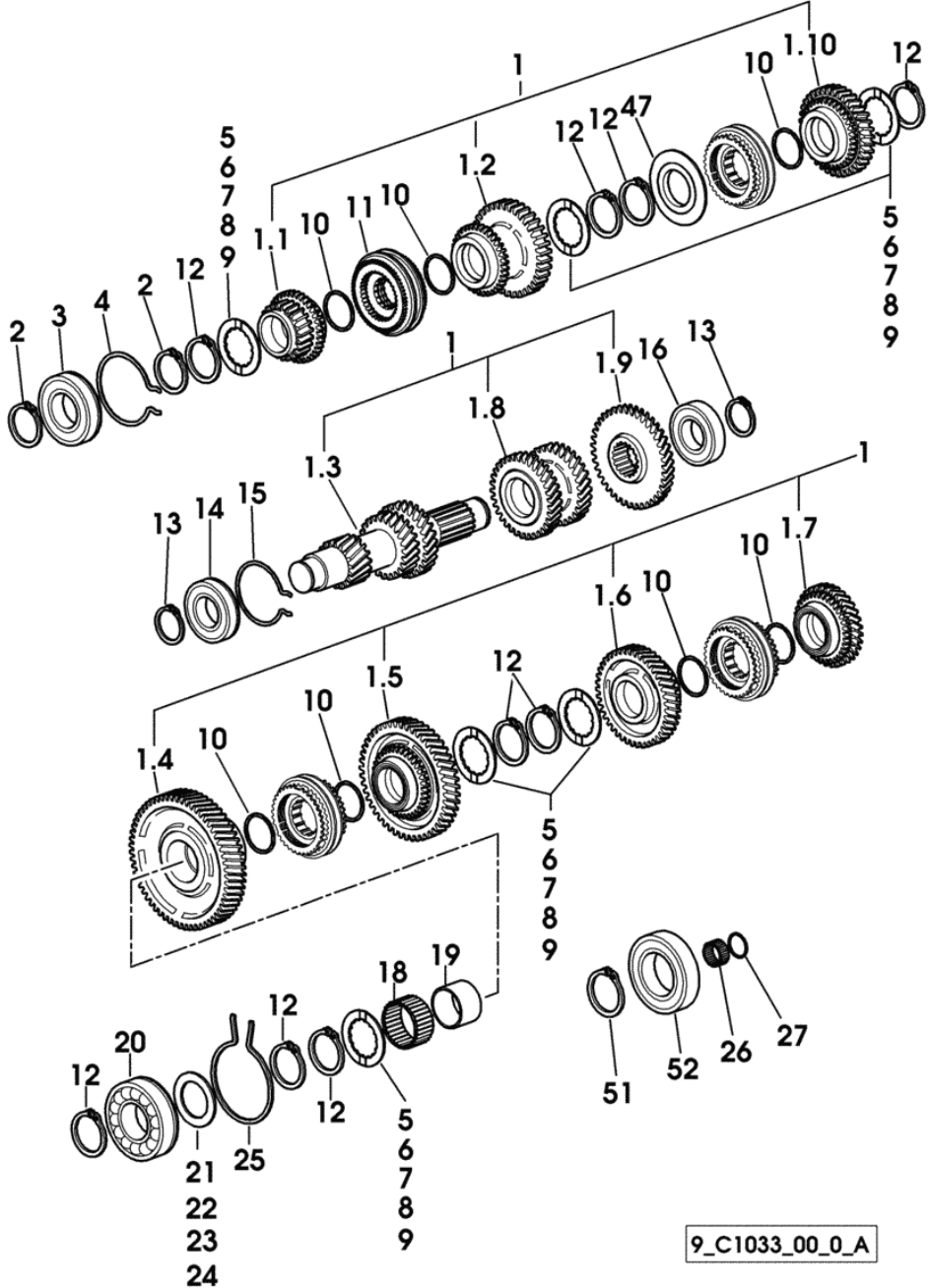


Fig.	Code	QTY	Name
27	2.1423.026.7	1	circlip 35 x 1.5
47	0.008.5501.0/40	1	ring
51	2.1410.020.1	1	circlip 50
52	2.2043.014.0	1	ball bearing 50 x 90 x 20

9_C1033_00_0_A

Section: GEAR
5 SPEED GEARBOX - WITH HML POWERSHIFT - "OVER SPEED"

9_B6133_00_0_A

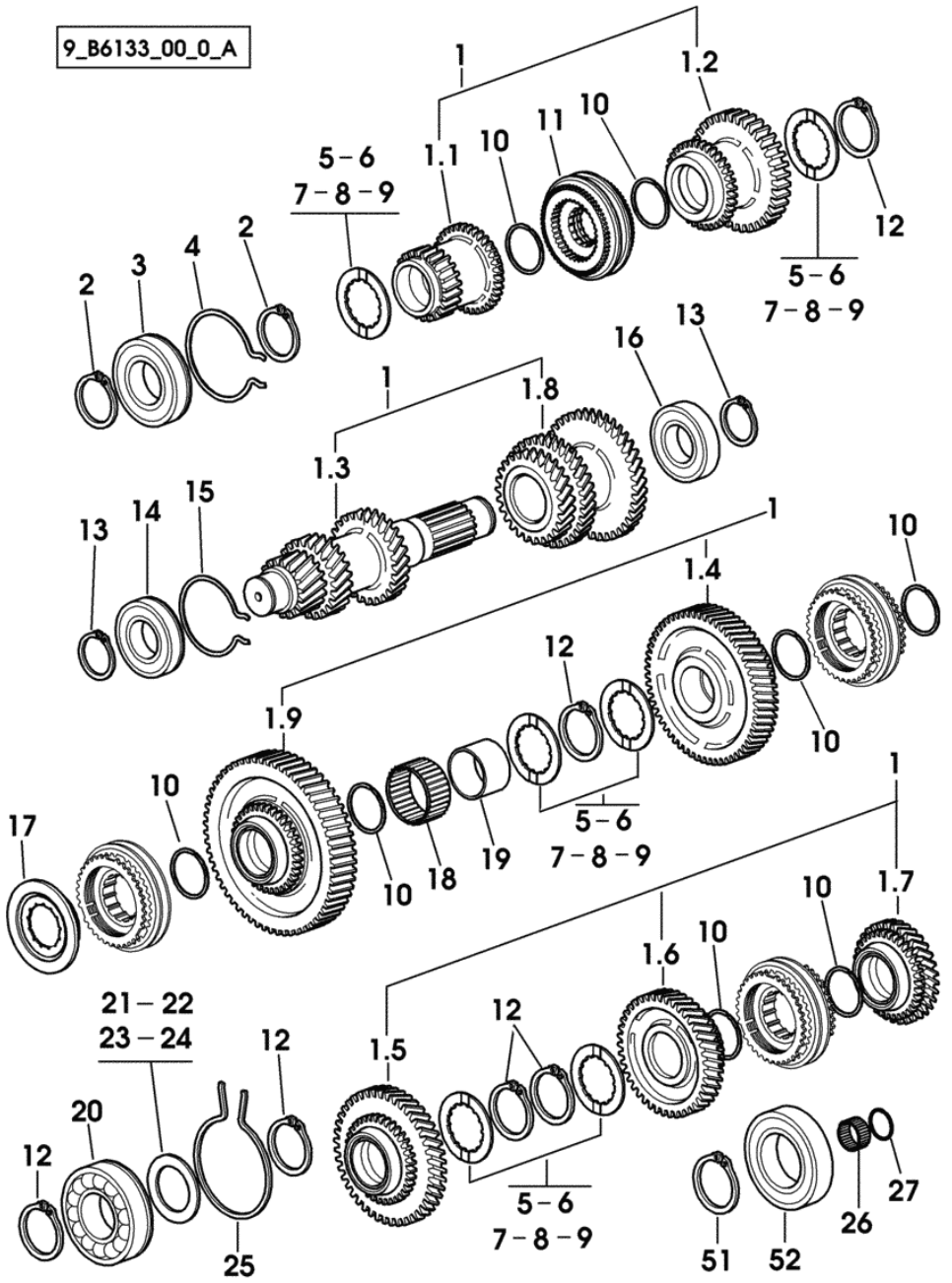
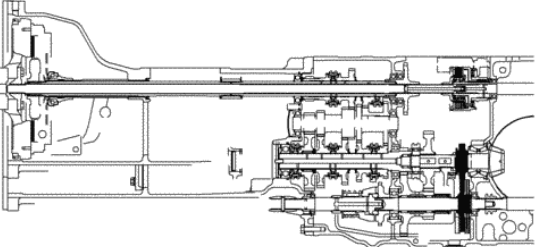
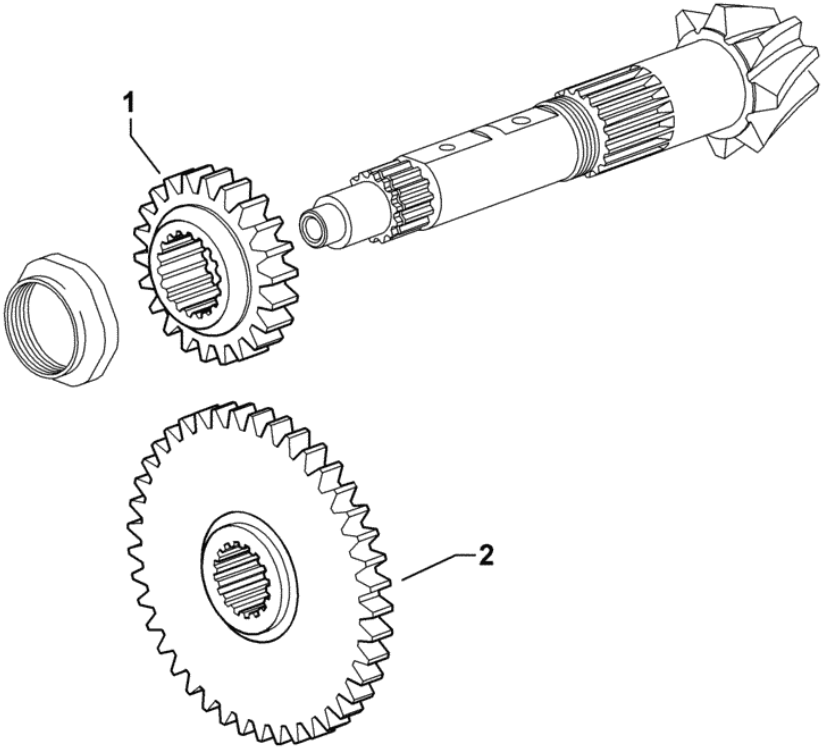


Fig.	Code	QTY	Name
27	2.1423.026.7	1	circlip 35 x 1.5
51	2.1410.020.1	1	circlip 50
52	2.2043.014.0	1	ball bearing 50 x 90 x 20

Section: GEAR
2-RANGE BOX 40 Km/h

Fig.	Code	QTY	Name
1	0.008.5560.0/10	1	gear Z = 29
2	0.008.5562.0/10	1	gear Z = 45



9_58934_05_0_0

Section: GEAR
GEAR SHIFTING

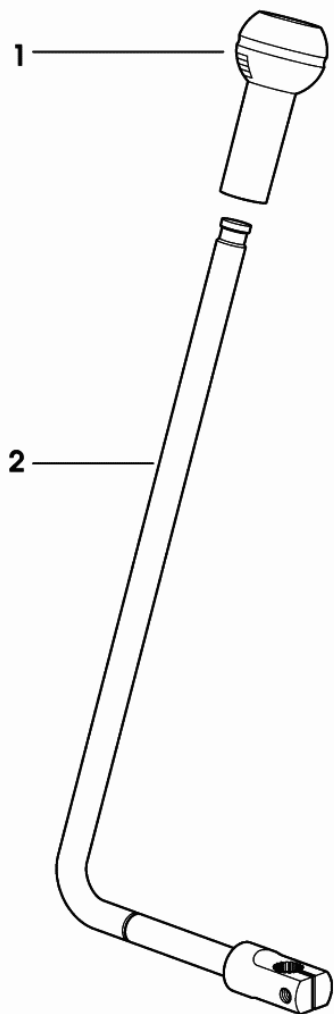
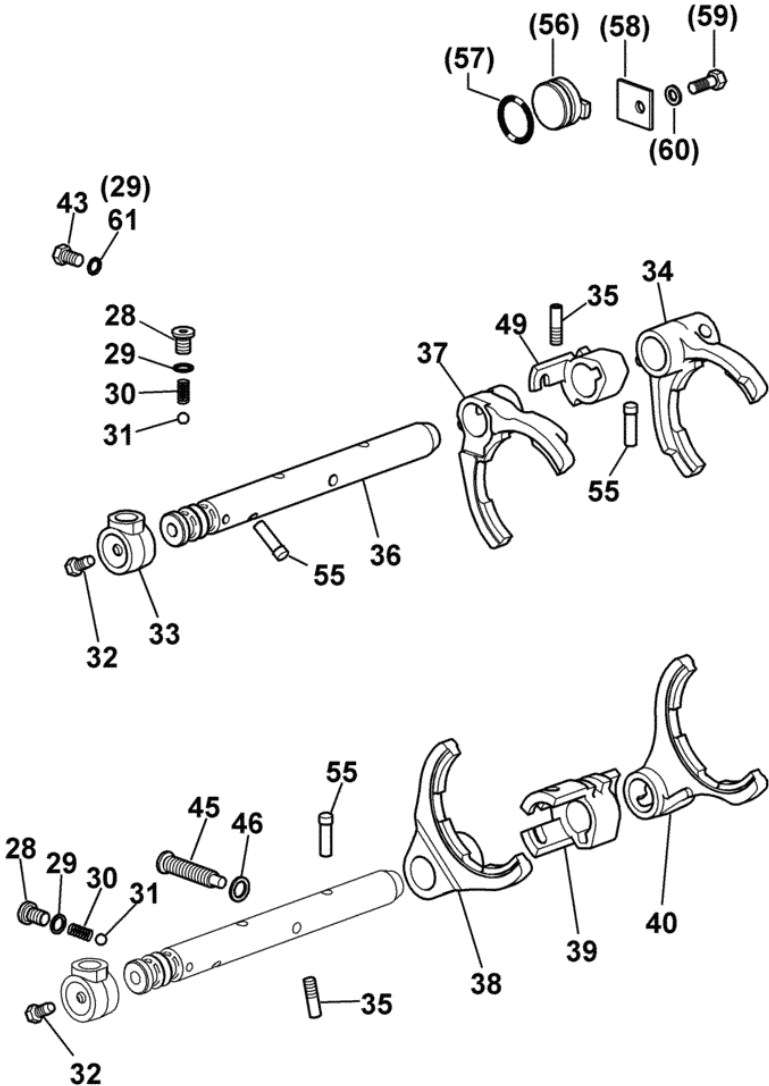


Fig.	Code	QTY	Name
1	0.467.6413.0	1	knob
2	0.010.4535.3/30	1	lever

9_70564_02_0_0

Section: GEAR
4 SPEED GEARBOX WITH MINI REDUCTION GEAR



9_C1033_00_0_B

Fig.	Code	QTY	Name
	Notes:		
	(...) <- X Agrocompact 70F3 (24"-28") (...) <- X Agrocompact 70F3 (20") (...) <- X Agrocompact F75 (24"-28")		
	(...) <- X Agrocompact F75 (20") (...) <- X Agrocompact F90 (24"-28") (...) <- X Agrocompact F90 (20") (...) <- X Agrocompact F100 (24"-28")		
28	2.3199.238.2	2	plug m 10
29	2.1560.005.0	3	gasket 10.2 x 14
			3038 <- X Agrocompact 70F3 (24"-28")
			3082 <- X Agrocompact F90 (24"-28")
			1070 <- X Agrocompact F100 (24"-28")
29	2.1560.005.0	2	gasket 10.2 x 14
			-> 3039 X Agrocompact 70F3(24"-28")
			X Agrocompact 70F3(20")
			X Agrocompact F75(24"-28")
			X Agrocompact F75(20")
			-> 3083 X Agrocompact F90(24"-28")
			X Agrocompact F90(20")
			-> 1071 X Agrocompact F100(24"-28")
			X Agrocompact F100(20")
30	2.4019.670.1	2	spring 5 x 8 x 1.5 x 22.5
31	2.2810.004.0	2	ball 5/16"
32	2.0399.019.1	2	screw m 8 p.1 x 16
33	0.008.5226.0/20	1	hub
34	0.013.1661.0/10	1	fork
35	2.0599.086.0/40	2	grain m 8 p.1.25 x 28
36	0.010.0543.0/20	1	rod
37	0.013.2469.0/10	1	fork
38	0.009.6750.0	1	fork # 2 / # 3
39	0.008.5152.0/40	1	hub
40	0.009.7080.0	1	fork # 4 / # 5
43	2.0119.180.2	1	screw m 10x24
			3038 <- X Agrocompact 70F3 (24"-28")
			3082 <- X Agrocompact F90 (24"-28")
			1070 <- X Agrocompact F100 (24"-28")
43	2.0122.209.2	1	screw m 8 p.1 x 25
			-> 3039 X Agrocompact 70F3(24"-28")
			X Agrocompact 70F3(20")
			X Agrocompact F75(24"-28")
			X Agrocompact F75(20")
			-> 3083 X Agrocompact F90(24"-28")
			X Agrocompact F90(20")
			-> 1071 X Agrocompact F100(24"-28")
			X Agrocompact F100(20")
45	2.0399.206.2	2	screw m 12 p.1.75 x 56.5

Agrocompact F75 (24"-28")

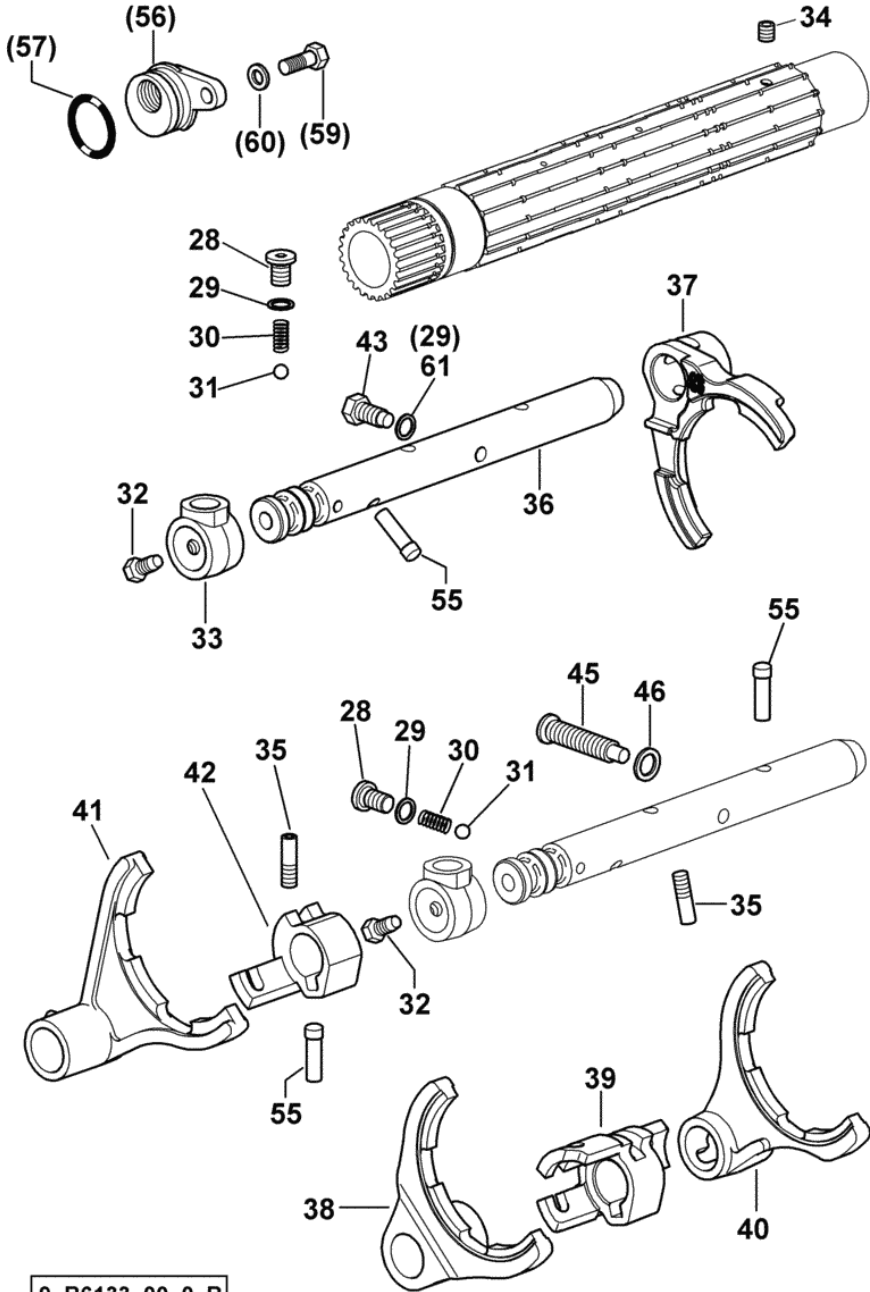
Ref.: 02.00.66

Section: GEAR
5 SPEED GEARBOX - WITH HML POWERSHIFT - "OVER SPEED"

Fig.	Code	QTY	Name
------	------	-----	------

Notes:
 -> 3014 X Agrocompact 70F3(24"-28") -> 3015 X Agrocompact 70F3(20") -> 1026 X Agrocompact F75(24"-28") -> 1006 X Agrocompact F75(20") -> 3032 X Agrocompact F90(24"-28") -> 3007 X Agrocompact F90(20") -> 1028 X Agrocompact F100(24"-28") -> 1007 X Ag

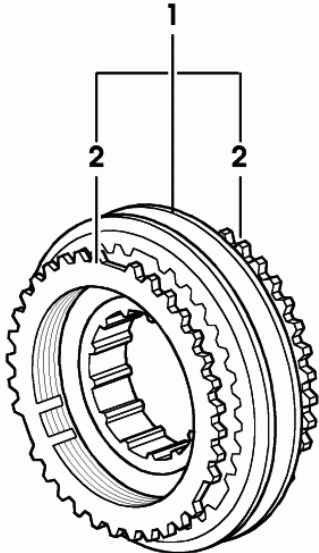
28	2.3199.238.2	2	plug m 10
29	2.1560.005.0	3	gasket 10.2 x 14
			3038 <- X Agrocompact 70F3 (24"-28")
			3082 <- X Agrocompact F90 (24"-28")
			1070 <- X Agrocompact F100 (24"-28")
29	2.1560.005.0	2	gasket 10.2 x 14
			-> 3039 X Agrocompact 70F3(24"-28")
			X Agrocompact 70F3(20")
			X Agrocompact F75(24"-28")
			X Agrocompact F75(20")
			-> 3083 X Agrocompact F90(24"-28")
			X Agrocompact F90(20")
			-> 1071 X Agrocompact F100(24"-28")
			X Agrocompact F100(20")
30	2.4019.670.1	2	spring 5 x 8 x 1.5 x 22.5
31	2.2810.004.0	2	ball 5/16"
32	2.0399.019.1	2	screw m 8 p.1 x 16
33	0.008.5226.0/20	1	hub
34	2.0599.089.7	2	grain m 5 p.0.8 x 50
35	2.0599.086.0/40	2	grain m 8 p.1.25 x 28
36	0.010.0543.0/20	1	rod
37	0.013.2469.0/20	1	fork
38	0.009.6750.0	1	fork # 2 / # 3
39	0.008.5152.0/50	1	hub
40	0.009.7080.0	1	fork # 4 / # 5
41	0.009.6749.0	1	fork # 1
42	0.008.5198.0/40	1	hub
43	2.0119.180.2	1	screw m 10x24
			3038 <- X Agrocompact 70F3 (24"-28")
			3082 <- X Agrocompact F90 (24"-28")
			1070 <- X Agrocompact F100 (24"-28")
43	2.0122.209.2	1	screw m 8 p.1 x 25
			-> 3039 X Agrocompact 70F3(24"-28")
			X Agrocompact 70F3(20")
			X Agrocompact F75(24"-28")
			X Agrocompact F75(20")
			-> 3083 X Agrocompact F90(24"-28")
			X Agrocompact F90(20")
			-> 1071 X Agrocompact F100(24"-28") ^{1/3}



9_B6133_00_0_B

Section: GEAR
SYNCHRONIZER PARTS

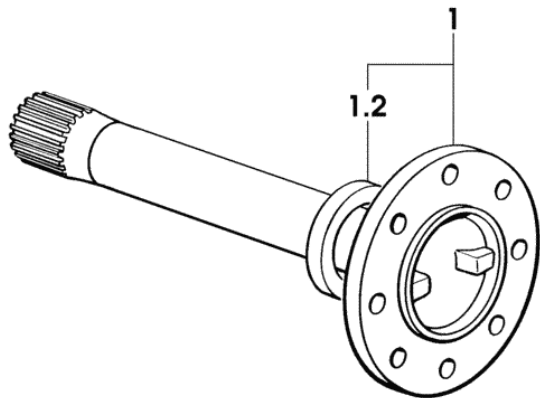
Fig.	Code	QTY	Name
1	0.007.7620.4/10	1	lock synchronizer 62
2	0.010.2136.0	2	ring



007_7620_4_10

HALF AXLES - STANDARD TYPE

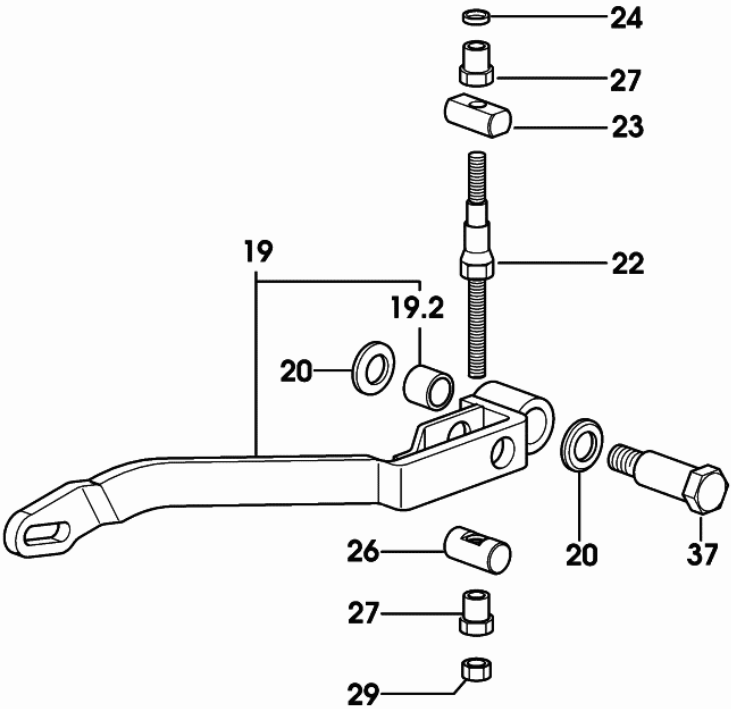
Fig.	Code	QTY	Name
1	0.467.4734.3/20	2	half-shaft
1.2	0.270.4751.0	1	spacer



9_70547_00_0_0

HAND BRAKE

Fig.	Code	QTY	Name
19	0.010.4451.3/20	1	lever
19.2	2.1555.311.0	2	bushing 20x23x20
20	2.1311.012.2	2	flat washer 20
22	0.010.4464.0/10	1	rod
23	0.010.6407.0	1	pin
24	2.1579.007.2	1	spacer 10x14x3.5
26	0.010.4579.0/10	1	pin
27	2.1099.140.2/10	2	nut m 10
29	2.1011.206.2	1	nut m 10 p.1.5
37	0.010.6095.0/20	1	pin



9_70566_21_0_0

Section: S.A.C.

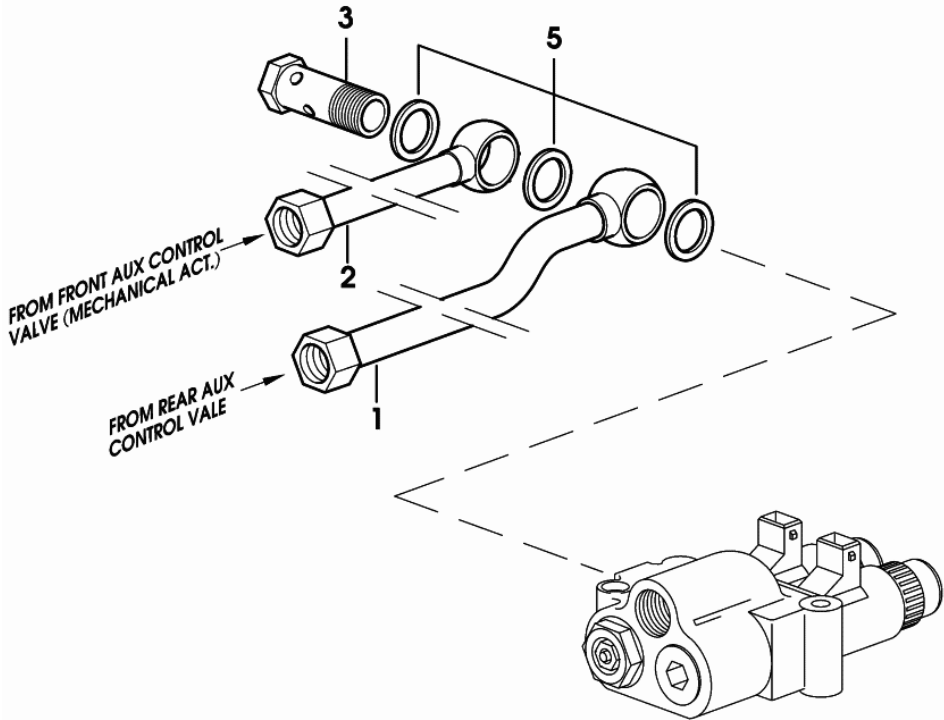
REGULATING DISTRIBUTOR WITH ELECTRONIC CONTROL

Fig.	Code	QTY	Name
------	------	-----	------

Notes:

- WITH MECHANICALLY CONTROLLED FRONT AUXILIARY CONTROL VALVE

1	0.011.2373.3/10	1	tube
2	0.011.9570.3	1	tube
3	2.3339.828.2/10	1	pipe union m 22 p.1.5x56
5	2.1560.018.0	3	gasket 22.2 x 29



9_21059_32_0_0

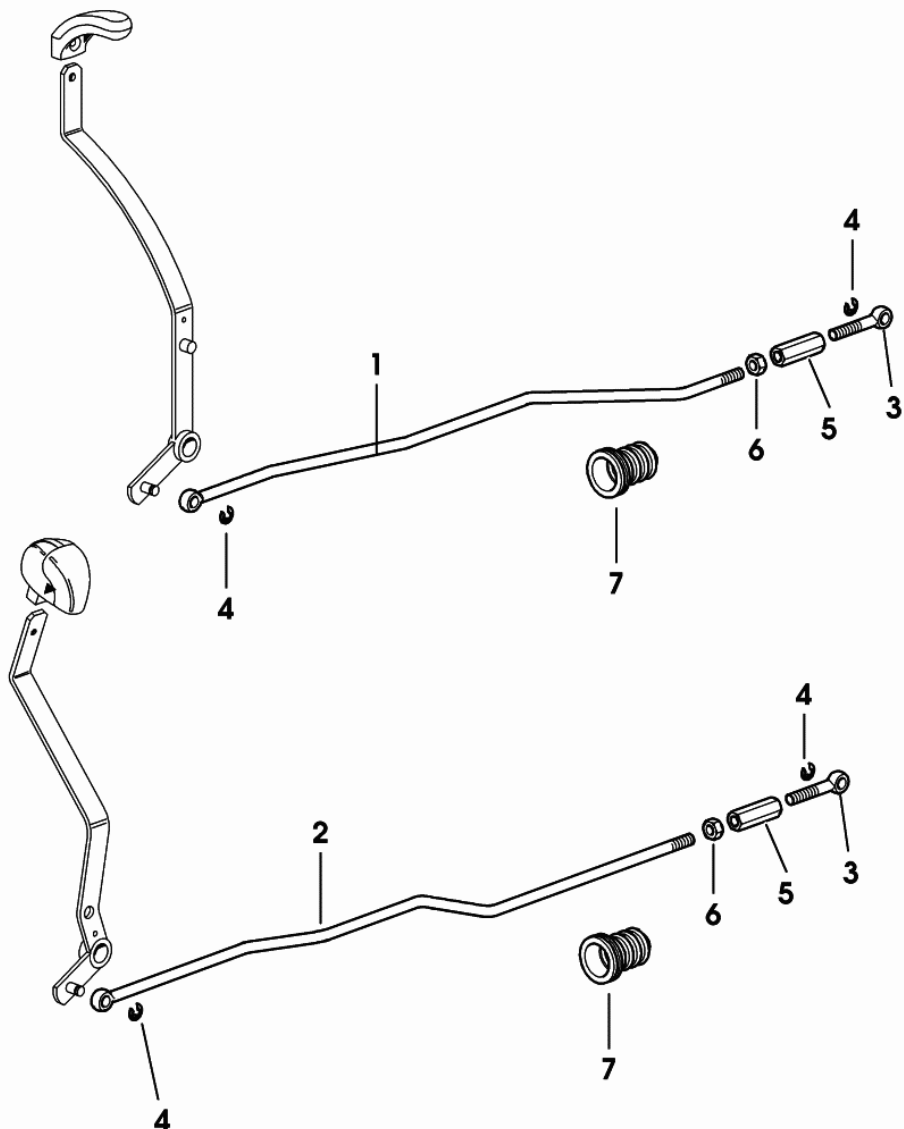
CONTROL TIE RODS AND LEVERS - FOR 28" PLATFORM

Fig.	Code	QTY	Name
------	------	-----	------

Notes:

- FOR TYPES WITH MECHANICAL LIFTER

1	0.013.8450.0	1	rod
2	0.013.8448.0	1	rod
3	0.010.4186.0	2	tip m 8
4	2.1430.007.2	4	circlip 6, d128
5	2.1099.139.2/10	2	nut m 8
6	2.1019.127.2	2	nut m 8 p.1.25 x 6.8, sx/lh/li
7	0.013.3229.0	2	bellows



9_D6059_53_0_0

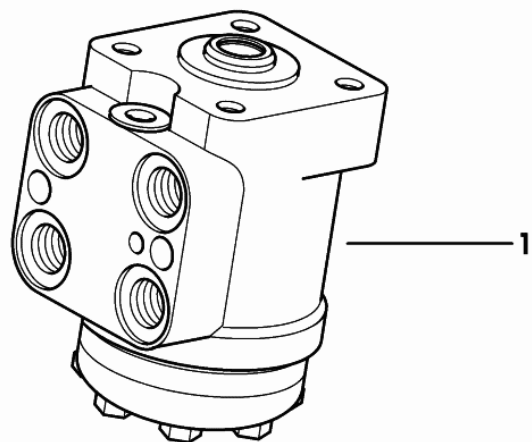
Agrocompact F75 (24"-28")

Section: POWER STEERING - HYDRAULIC SYSTEM

Ref.: 06.00.5

4WD - POWER STEERING DANFOSS - 80

Fig.	Code	QTY	Name
1	0.290.6310.4/10	1	hydrosteering DANFOSS - 80 CC COMPONENT PARTS SEE COMPONENTS LIST ☞ 0.290.6310.4/10 ☞ 06.00.28



9_64863_09_0_0

Agrocompact F75 (24"-28")

Section: POWER STEERING - HYDRAULIC SYSTEM

Ref.: 06.00.22

COMMON HYDRAULIC SYSTEM

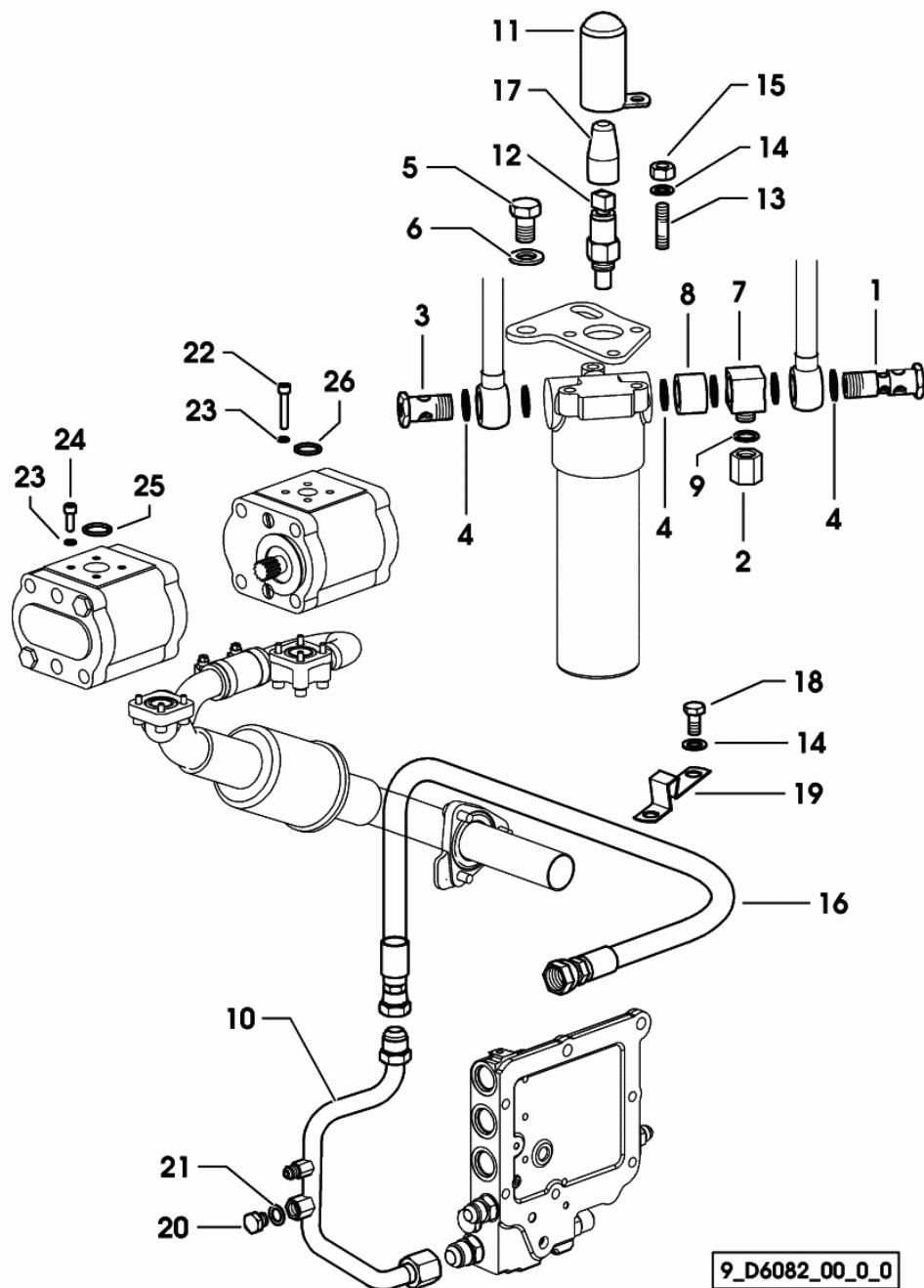
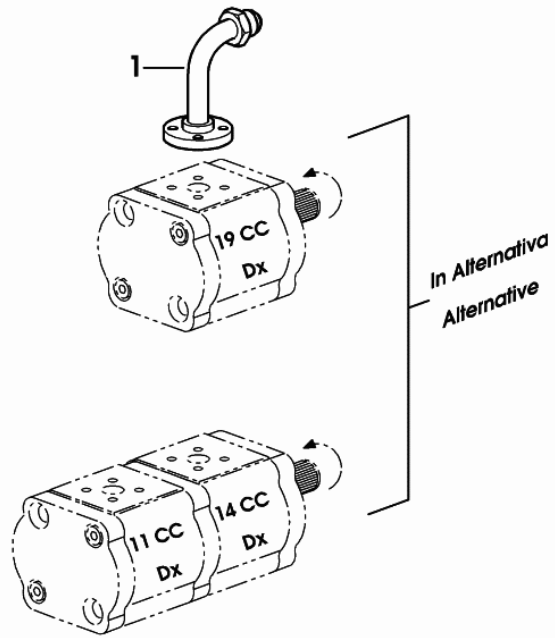


Fig.	Code	QTY	Name
1	2.3339.918.2/10	1	pipe union M 22x1.5x92
2	2.3199.299.2	1	plug
3	2.3335.009.2	1	pipe union m 22 p.1.5 x 39
4	2.1560.017.0	6	gasket 22.2 x 27
5	2.0112.609.2	2	screw m 16 p.2 x 25
6	2.1310.010.2	2	flat washer 16
7	2.3339.919.2	1	pipe fitting m 16
8	2.1579.941.2/10	1	spacer 23x35x23
9	2.1560.012.0	1	gasket 16.2 x 22 x 1.5
10	0.010.9186.3	1	tube
11	0.011.0481.2/20	1	guard
12	2.7099.700.0	1	pressure switch
13	2.0432.153.7	3	stud bolt m 10 p.1.5 / p.1.25 x 20
14	2.1470.006.2	5	lock washer 10
15	2.1011.421.2	4	nut m 10 p.1.25
16	0.013.8996.3	1	tube
17	2.6519.029.0	1	cap
18	2.0112.305.2	2	screw m 10 p.1.5 x 16
19	0.011.8415.0/10	1	bracket
20	2.3110.422.2	1	plug m 12
21	2.1560.008.0	1	gasket 12.2 x 18
22	2.0312.112.2	4	screw m 6 p.1 x 35
23	2.1480.012.2	8	washer 6, d128
24	2.0312.105.2	4	screw m 6 p.1 x 18
25	2.1531.052.0	1	'o' ring 20.29 x 2.62
26	2.1531.048.0	1	'o' ring 18.72x2.62

9_D6082_00_0_0

STANDARD 14+11/19CC PUMP PARTS KIT

Fig.	Code	QTY	Name
1	0.012.8925.3	1	tube 14



9_21082_04_0_0

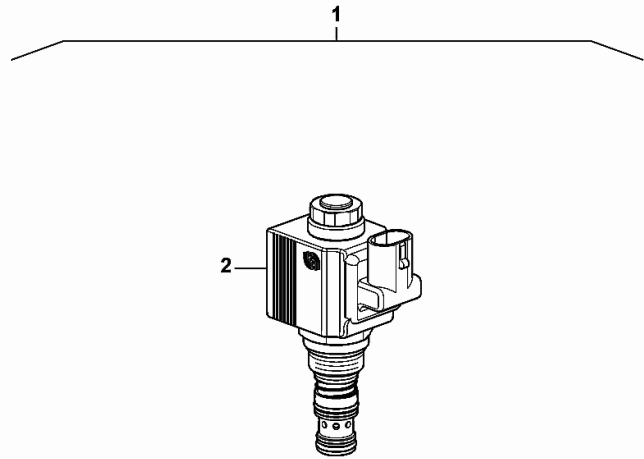
Agrocompact F75 (24"-28")

Section: POWER STEERING - HYDRAULIC SYSTEM

Ref.: 2.3729.697.0/10.A

SOLENOID VALVE 13 V - 20 W, ON/OFF 3/2

Fig.	Code	QTY	Name
1	2.3729.697.0/10	1	electro valve 13V - 20W
2	0.010.2831.1	1	coil 13V - 20W

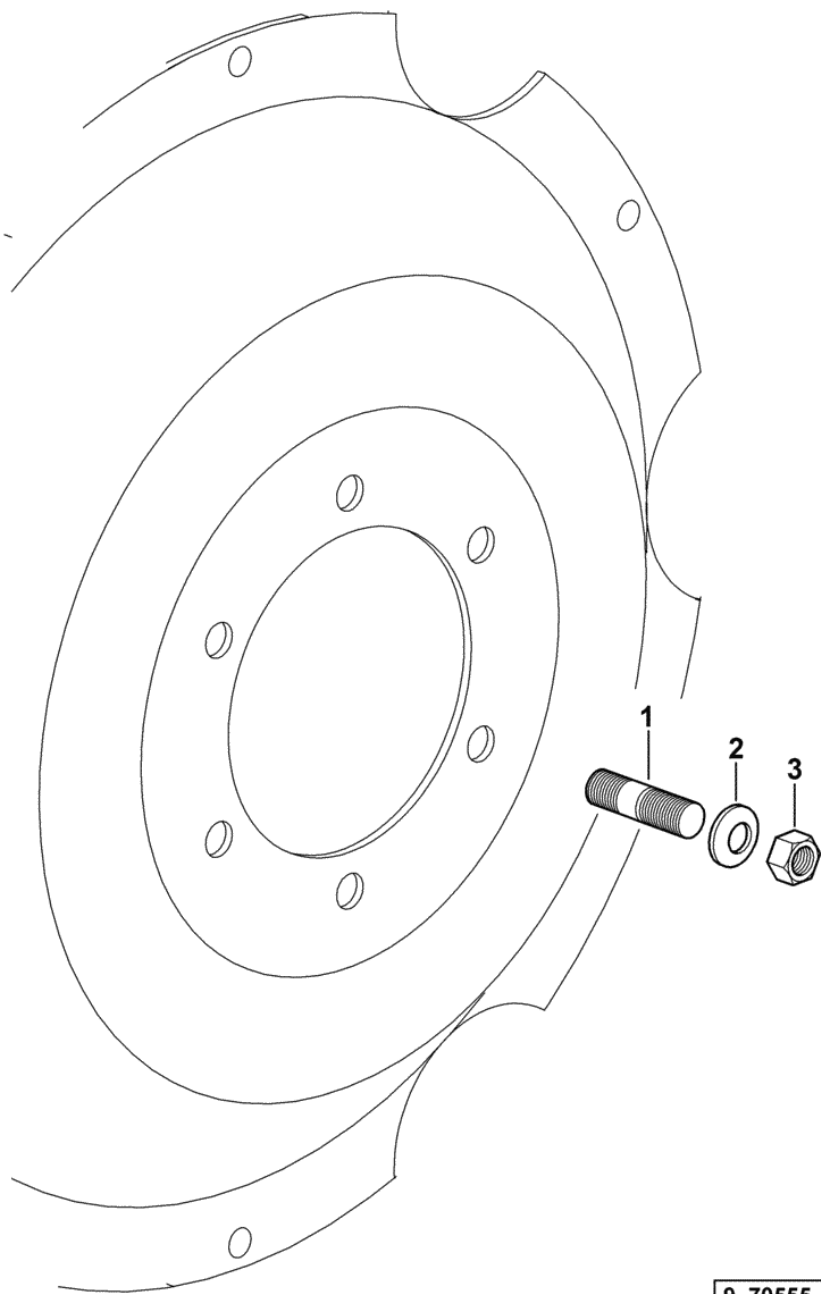


2.3729.697.0_10

Section: WHEELS

4WD - FRONT WHEEL MOUNTING

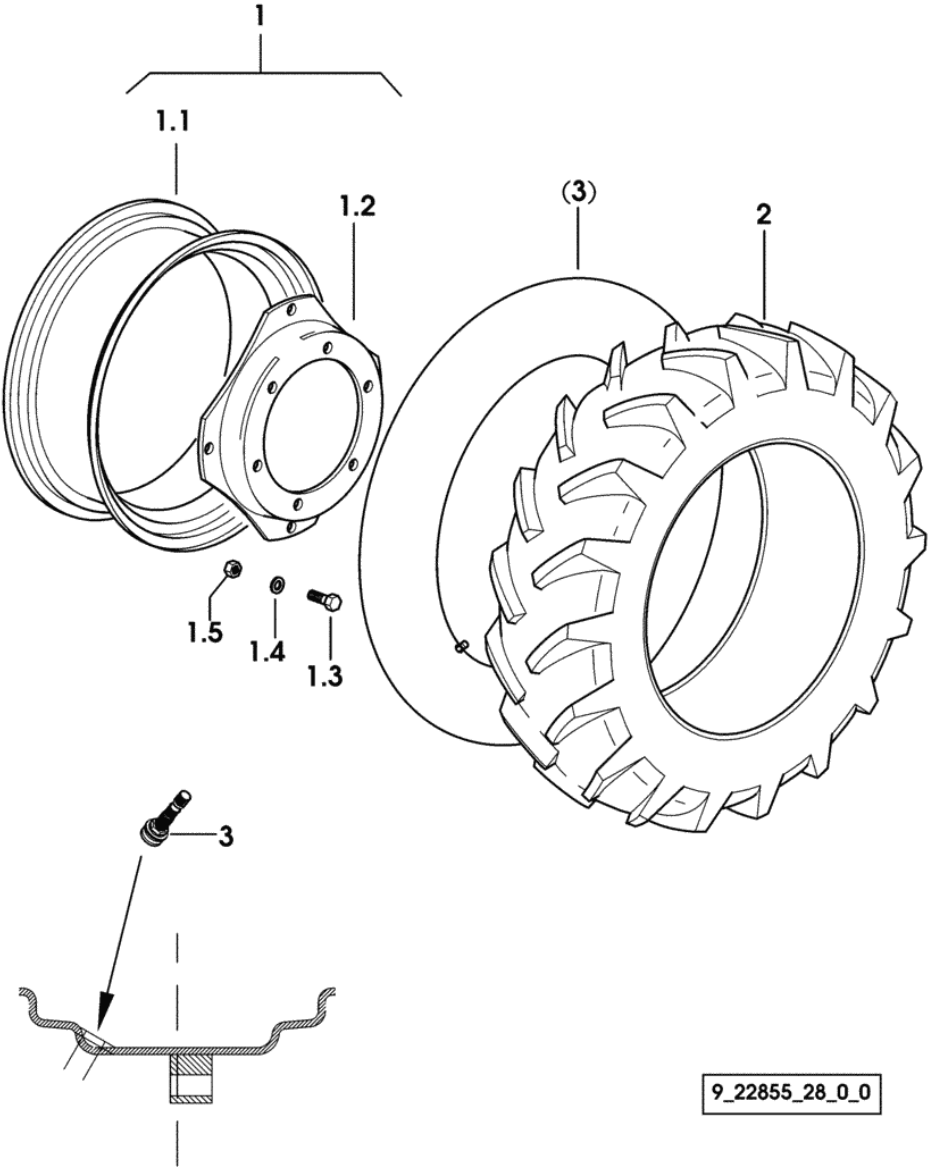
Fig.	Code	QTY	Name
1	2.0439.206.6	12	stud bolt m 14 p.1.5 x 50
2	2.1475.105.6	12	conical washer 15 x 27
3	2.1011.308.6	12	nut m 14 p.1.5



9_70555_02_0_0

Section: WHEELS
WHEELS 240/70 R16"

Fig.	Code	QTY	Name
1	0.000.0000.1	0	not serviceable
1.1	0.012.3878.3	1	rim W 8x16" C/BL
1.2	0.010.7432.0/10	1	rim center flange
1.3	2.0122.521.6	4	screw m 14 p.1.5 x 60
1.4	2.1475.105.6	4	conical washer 15 x 27
1.5	2.1011.308.6	4	nut m 14 p.1.5
2	2.4811.120.0	2	tyre 240/70 R16"
3	0.012.6364.0	2	valve



CLICK HERE TO **DOWNLOAD** THE COMPLETE MANUAL

- Thank you very much for reading the preview of the manual.
- You can download the complete manual from: www.heydownloads.com by clicking the link below



- Please note: If there is no response to CLICKING the link, please download this PDF first and then click on it.

CLICK HERE TO **DOWNLOAD** THE COMPLETE MANUAL