

## 5665 HTS COM 3 ->13500

### HU - ATTACHMENTS AND ACCESSORIES

#### CHAFF SPREADER

CHAFF SPREADER.....	HU.01.0 (1)
CHAFF SPREADER.....	16055056.A

#### STRAW CHOPPER

STRAW CHOPPER KPAB, SRX.....	HU.02.0 (1)
SHREDDER STD.....	16064265.A
BELTS AND GUIDES.....	16064265.B
REAR COVERS.....	16064265.C
ELECTRIC MOTOR.....	16064265.D
SHAFT WITH BLADES.....	16064265.E
COUNTER-BLADE.....	16064265.F
OPERATION - HAND LEVER.....	16064265.G
STRAW DEFLECTORS.....	16064265.H

#### REAR HITCHES

DRAWBAR COUPLING.....	HU.03.0 (1)
DRAWBAR COUPLING 6000 KG.....	HU.03.1 (1)
DRAWBAR COUPLING.....	HU.03.2 (1)
DRAWBAR COUPLING.....	06500047.A

#### REAR BALLAST WEIGHTS

REAR BALLAST 380 Kg.....	HU.04.0 (1)
--------------------------	-------------

CLICK HERE TO **DOWNLOAD** THE COMPLETE MANUAL

- Thank you very much for reading the preview of the manual.
- You can download the complete manual from: [www.heydownloads.com](http://www.heydownloads.com) by clicking the link below

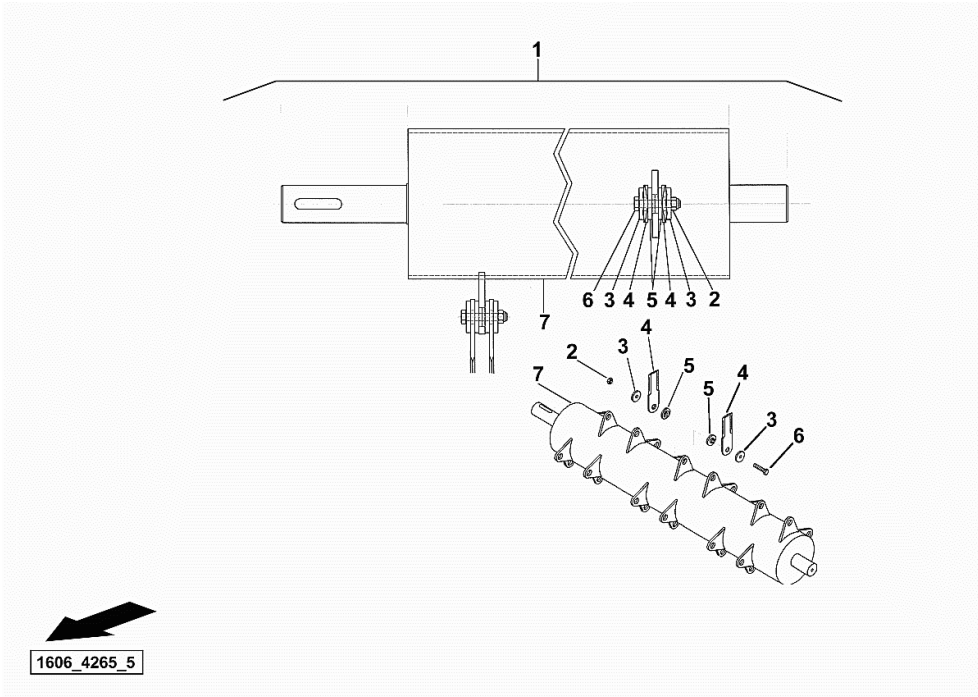


- Please note: If there is no response to CLICKING the link, please download this PDF first and then click on it.

CLICK HERE TO **DOWNLOAD** THE COMPLETE MANUAL

**SHAFT WITH BLADES**

Fig.	Code	QTY	Name
1	16062180	1	rotor 4 R, kpl.
2	06209777	24	nut m 10
3	16055785	48	cutter mm 5.00
4	16055785	48	cutter mm 5.00
5	16055786	48	sleeve
6	01111311	24	screw m 10
7	16063004	1	drum



## 5665 HTS COM 3 ->13500

### HB - AXLES

#### FRONT AXLE

FRONT AXLE.....	HB.01.1 (1)
ADAPTER.....	HB.01.4 (1)
FRONT AXLE.....	HB.01.7 (1)
HUB GEAR.....	HB.01.11 (1)
SENSORS COVER.....	HB.01.15 (1)
SENSOR BRACKET.....	HB.01.18 (1)
SENSOR BRACKET.....	HB.01.19 (1)
REDUCTION GEAR UNIT (STD).....	16040897.A
REDUCTION GEAR UNIT (BAL).....	16041806.A

#### TRANSMISSION

TRANSMISSION.....	HB.02.1 (1)
TRANSMISSION.....	HB.02.4 (1)
GEARBOX.....	16040895/20.A
DRIVE FOR GEAR CHANGE BOX.....	16040895/20.B
DRIVE SHAFT TRANSMISSION.....	16040895/20.C
INTERMEDIATE SHAFT TRANSMISSION.....	16040895/20.D
TRANSMISSION DIFFERENTIAL.....	16040895/20.E
PARKING BRAKE.....	16040895/20.F

#### INTERNAL-EXTERNAL TRANSMISSION CONTROLS

GEAR SHIFTING.....	HB.03.0 (1)
GEAR SHIFTING.....	HB.03.1 (1)

#### REAR AXLE

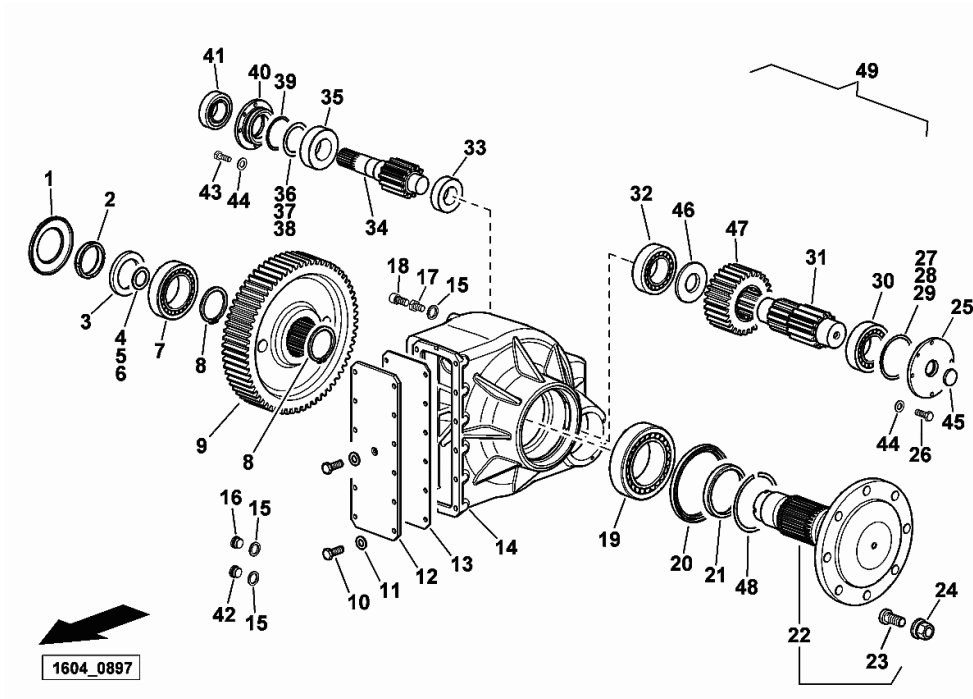
REAR AXLE.....	HB.05.2 (1)
PIN.....	HB.05.3 (1)
WHEEL HUB FASTENING.....	HB.05.6 (1)
WHEEL HUB.....	HB.05.7 (1)
STOP.....	HB.05.8 (1)
STEERING CYLINDER.....	HB.05.9 (1)
CYLINDER PARTS Ø 45.....	06540120.A

#### TYRES

WHEEL BOLT.....	HB.06.0 (1)
FRONT WHEELS 620/75 R30" 168A8.....	HB.06.1 (1)
FRONT WHEELS 710/75 R32" 171A8.....	HB.06.2 (1)
FRONT WHEELS 800/65 R32" 178A8 TR.....	HB.06.3 (1)
FRONT WHEELS 800/65 R32" 178A8 TB.....	HB.06.4 (1)
FRONT WHEELS 620/75 R34" 170A8.....	HB.06.5 (1)
FRONT WHEELS 800/65 R32" 172A8 GY.....	HB.06.6 (1)
FRONT WHEELS 800/65 R32" 172A8 GY.....	HB.06.7 (1)
FRONT WHEELS 650/75 R32" 172A8.....	HB.06.8 (1)
FRONT WHEELS 800/65 R32" 172A8 GY.....	HB.06.9 (1)

**REDUCTION GEAR UNIT (STD)**

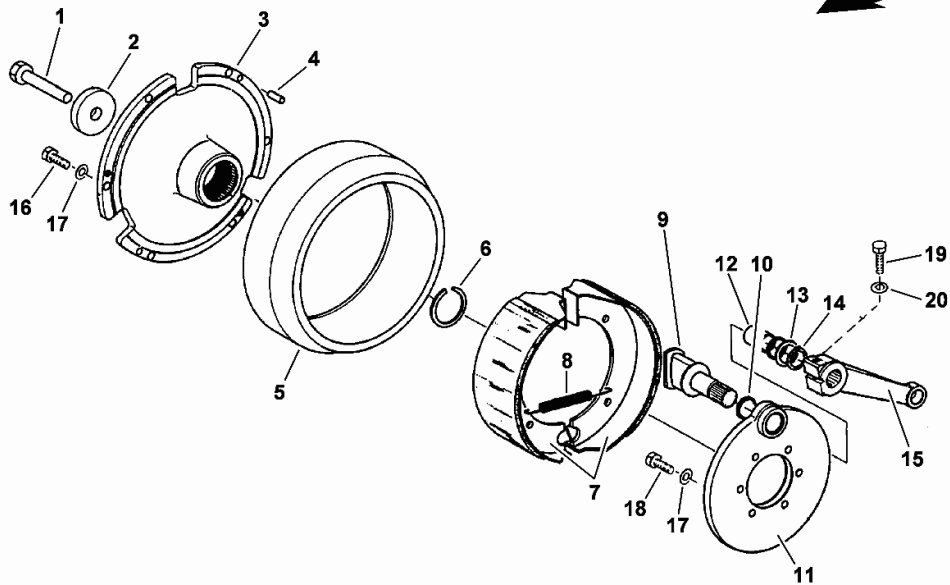
Fig.	Code	QTY	Name
43	01153251	8	screw
44	01107283	16	washer 8.2
45	16053024	2	cover
46	16053026	2	snoulder
47	16053025	2	gear
48	16053046	2	gasket Ø91 / Ø103 x 2.94
49	16040897	1	side gear (STD)



Section: HB - AXLES  
**PARKING BRAKE**

Fig.	Code	QTY	Name
1	01136993	1	screw m 12 x 70
2	16053002	1	pressure plate
3	16053003	1	brake drum
4	01157358	2	grain
5	16056325	1	brake drum 180 x 60
6	16053005	1	circlip
7	16031487	2	brake shoe
8	06260257	2	spring
9	16000316	1	shaft
10	16000314	2	'o' ring 22x2
11	04318614	1	flange
12	16053010	1	bushing
13	16000313	1	washer 20.5 x 28 x 2
14	01107730	1	ring 20 x 1.2, d471
15	16053012	1	brake lever
16	01139584	6	screw
17	01107283	12	washer 8.2
18	01112330	6	screw m 8 x 25
19	06209433	1	screw m 10 x 40
20	01107105	1	washer 10.5

1604\_0895\_20\_5



Section: HB - AXLES


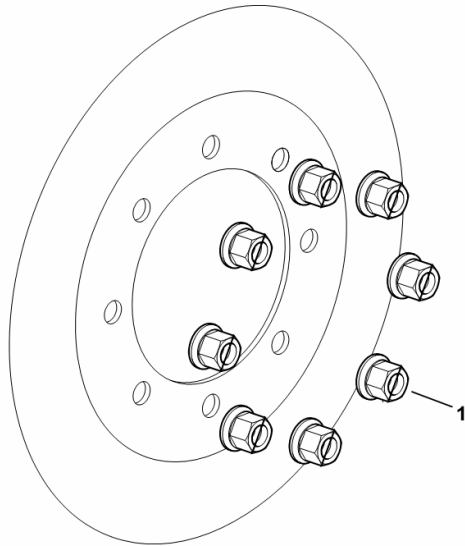
**WHEEL BOLT**

Fig.	Code	QTY	Name
------	------	-----	------

**Notes:**

[5665 HTS COM 3 -&gt;13500]

1	06214100	16	wheel stud m 22 p.1.5
---	----------	----	-----------------------

  
H9\_06214\_10\_0-A-001

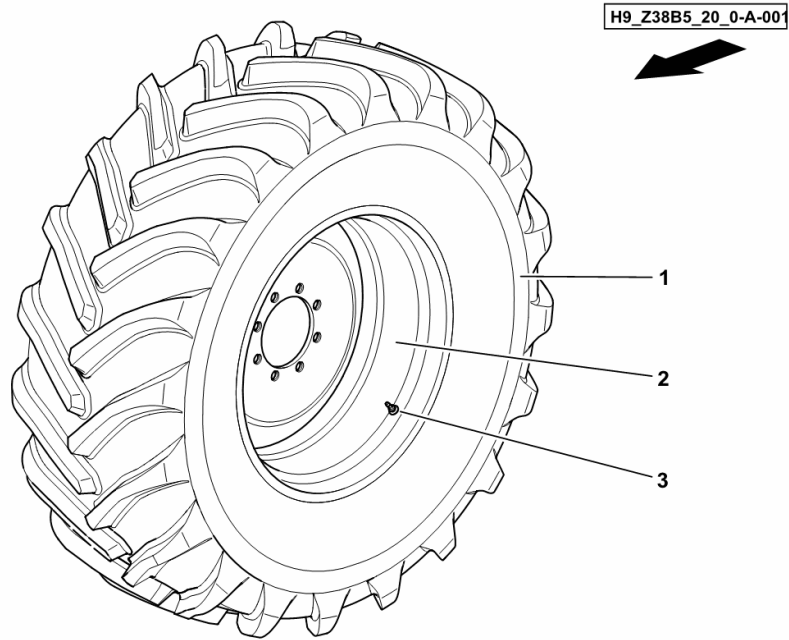
**FRONT WHEELS 800/65 R32" 178A8 TB**

Fig.	Code	QTY	Name
------	------	-----	------

**Notes:**

- WITHOUT BALANCE/AUTOCONTROL [5665 HTS COM 3 ->13500] ET+25 L, ET+25 R [5665 HTS COM 3 ->13500]

1	2.4811.214.0	2	tyre 800/65 R32"
2	01145815	2	rim DWW 27Ax32"
3	06212941	2	valve 50 msw



**LUBRICATION DEVICE**

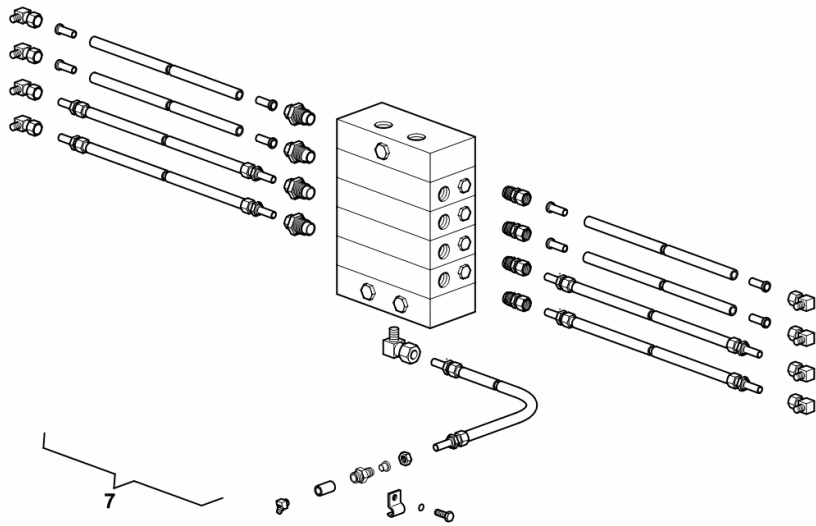
Fig.	Code	QTY	Name
------	------	-----	------

**Notes:**

BALANCE/AUTOCONTROL [5665 HTS COM 3 ->13500]

7	16054741	1	lubricator (BAL) ☞ 16054741
---	----------	---	--------------------------------

H9\_Z3837\_20\_0-H-001



**CHASSIS FRAME COMPLETIONS**

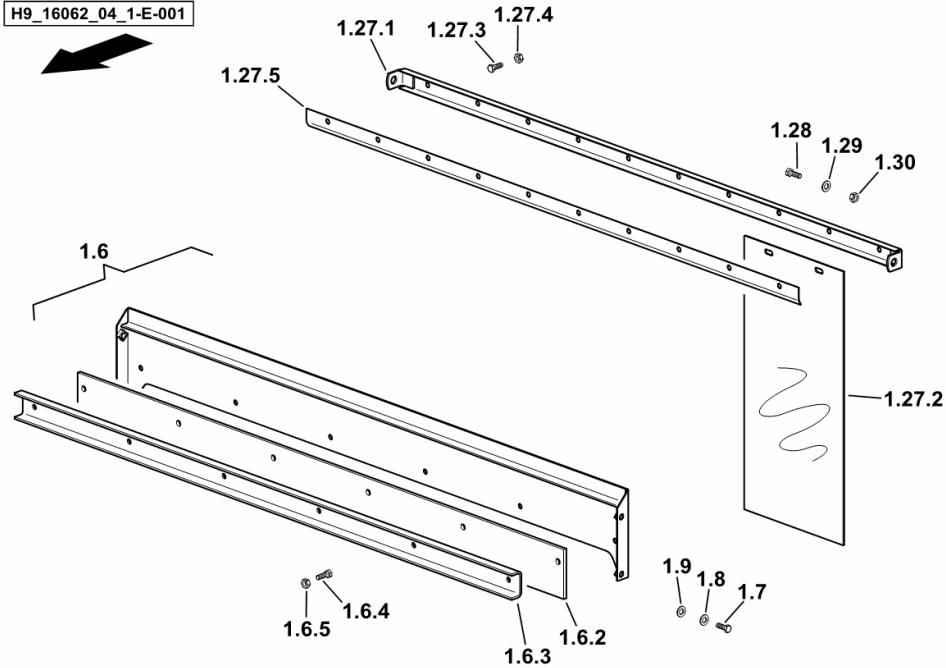
Fig.	Code	QTY	Name
------	------	-----	------

**Notes:**

[5665 HTS COM 3 ->13500] 13712 <-

1.6	16000036	1	lamination
1.6.2	16000032	1	rubber
1.6.3	16000031	1	rail
1.6.4	01112333	6	screw m 8 x 25, d933
1.6.5	01104944	6	nut m 8, d985
1.7	01112307	4	screw m 8 p.1.25 x 15, d933
1.8	01102799	4	washer 8, d128
1.9	01107163	4	washer 9, d126
1.27.1	06284026	1	lamination
1.27.2	06534695	9	guard
1.27.3	01112333	10	screw m 8 x 25, d933
1.27.4	01104944	10	nut m 8, d985
1.27.5	06258250	1	lamination
1.28	01112529	2	screw m 12 x 30, d933
1.29	01133726	2	washer 13
1.30	06209769	2	nut m 12, d985

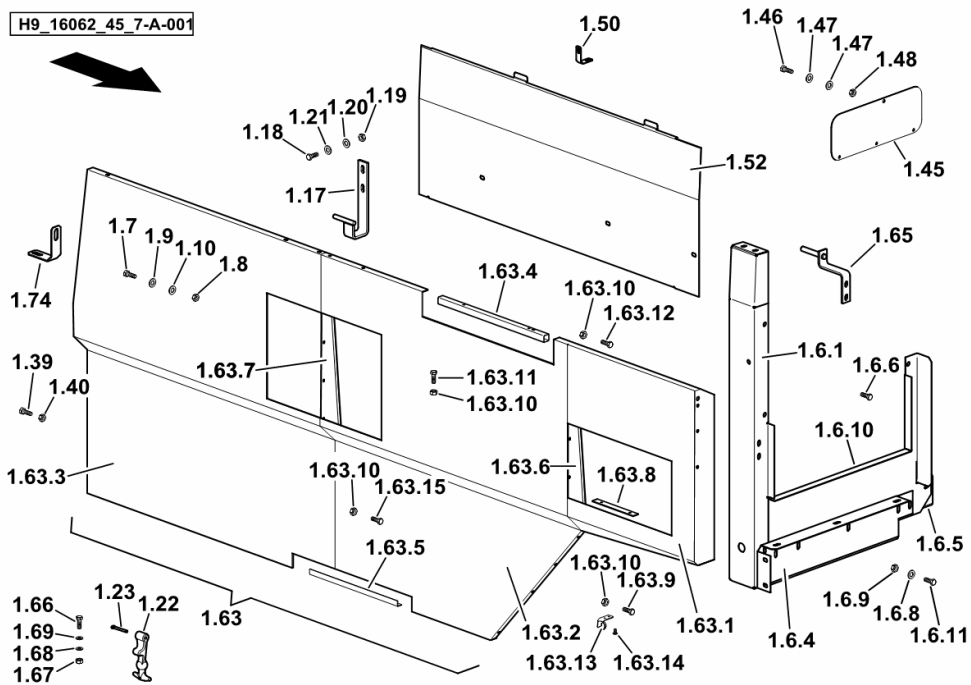
H9\_16062\_04\_1-E-001



**R.H. LINING**

Fig.	Code	QTY	Name
1.63.14	06214980	2	rivet
1.63.15	01102193	1	screw m 8 x 16
1.65	16055502	1	bracket
1.66	01112322	4	screw m 8 p.1.25 x 20
1.67	01112824	4	nut m 8, d934
1.68	01102799	4	washer 8, d128
1.69	01107163	4	washer 9, d126
1.74	16064261	1	bracket

H9\_16062\_45\_7-A-001



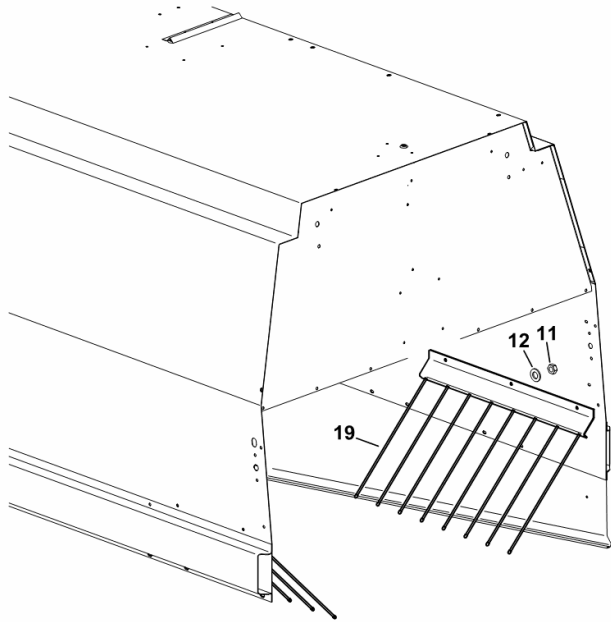
**STRAW RAKE**

Fig.	Code	QTY	Name
------	------	-----	------

**Notes:**

[5665 HTS COM 3 ->13500]

11	01112824	17	nut m 8, d934
12	01102799	35	washer 8, d128
19	06282211	2	rake



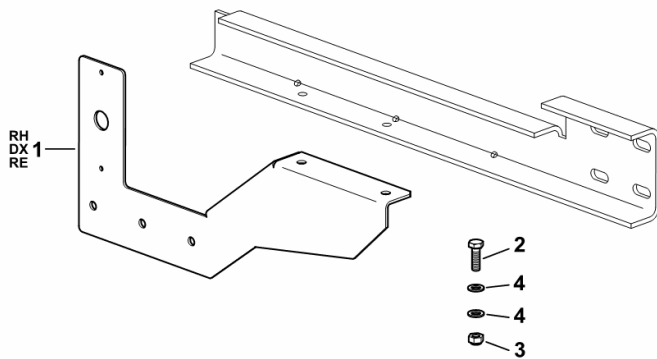
**FRONT LIGHTS SUPPORT - DX/RH/RE**


Fig.	Code	QTY	Name
------	------	-----	------

**Notes:**

-> (...) [5665 HTS COM 3 ->13500]

1	0.016.2936.0	1	support dx/rh/re
2	01112333	2	screw m 8 x 25, d933
3	01104944	2	nut m 8, d985
4	01107163	4	washer 9, d126



  
H9\_Z57H2\_37\_0-A-001

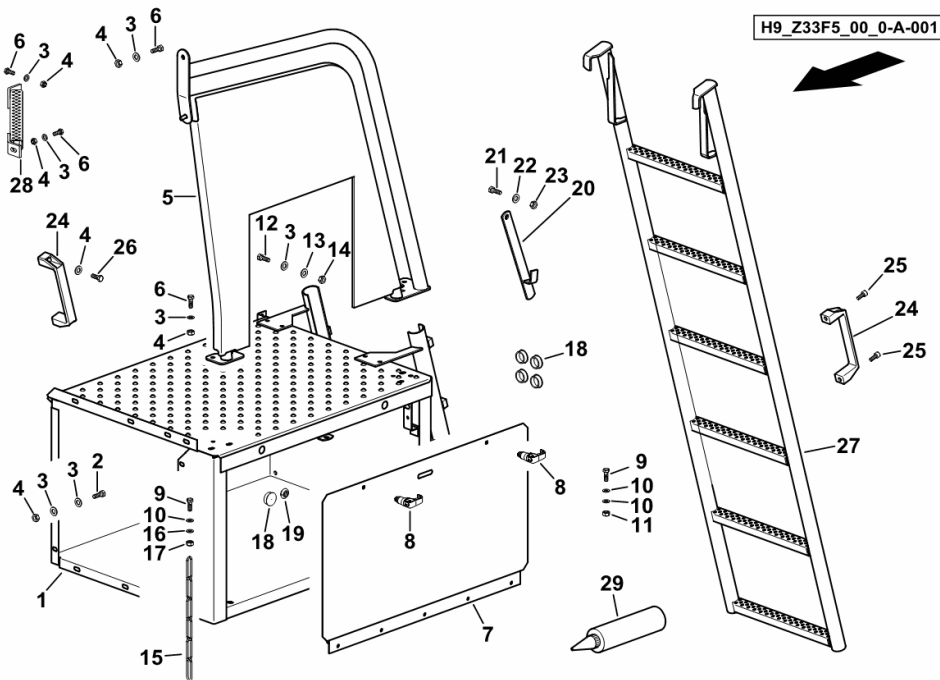
**SERVICE PLATFORM SX/LH/LI**

Fig.	Code	QTY	Name
------	------	-----	------

**Notes:**

[5665 HTS COM 3 ->13500]

1	0.015.2700.3/40	1	platform
2	01112307	12	screw m 8 p.1.25 x 15, d933
3	01107163	39	washer 9, d126
4	01104944	26	nut m 8, d985
5	0.015.2698.3	1	handrail
6	01112322	11	screw m 8 p.1.25 x 20
7	0.015.3198.3	1	cover
8	0.015.2655.2	2	interlock
9	01103316	5	screw m 6 p.1.0 x 16
10	06214189	8	washer 6.4
11	2.1120.003.2	3	nut m 6
12	01108524	3	screw m 8 p.1.25 x 20
13	01102799	3	washer 8, d128
14	01112824	3	nut m 8, d934
15	16061636	1	small chain fi 2,8, d5686
16	2.1474.007.2	2	washer 6, d128
17	01112813	2	nut m 6
18	04320590	1	plug Ø 33
19	06262128	1	grommet Ø 21
20	16062071	1	support
21	01112418	1	screw m 10 x 25, d933
22	01107165	1	washer 10.5
23	06209768	1	nut m 10, d985
24	01141954	3	handle PVC
25	01126918	4	screw m 8 p.1.25 x 20
26	01110577	2	screw m 8 x 25
27	0.015.4275.3	1	climbing steps
28	16042429	3	support
29	01141007	1	sealing compound



**WARNING PLATES**

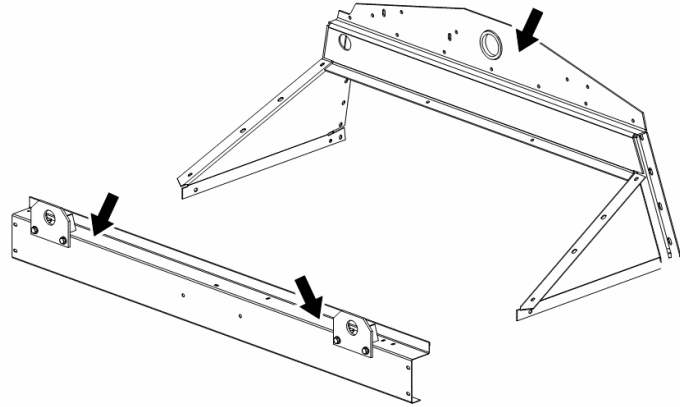
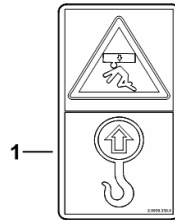
Fig.	Code	QTY	Name
------	------	-----	------

**Notes:**

[5665 HTS COM 3 ->13500] -> 13588

1	2.9939.330.0	3	stickers
---	--------------	---	----------

H9\_Z33F7\_05\_0-A-001

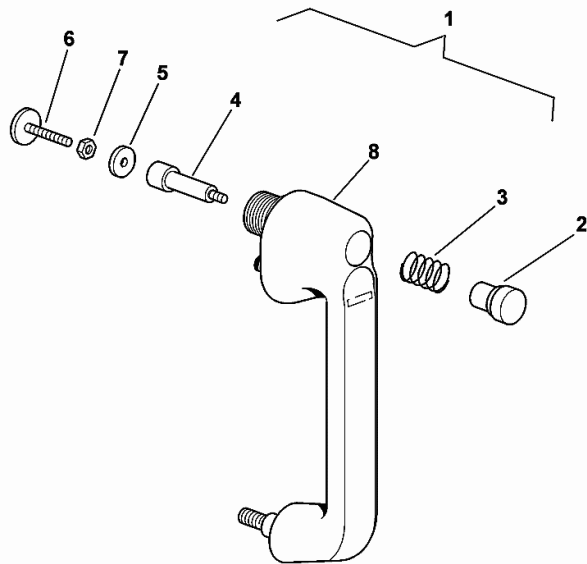


AIR CONDITIONING SYSTEM.....	HG.06.2 (1)
HEATING.....	HG.06.3 (1)
COMPRESSOR TYP C.....	HG.06.4 (1)
CONDENSER - AIR CONDITIONING UNIT.....	HG.06.5 (1)
RECEIVER-DRIER.....	HG.06.6 (1)
AIR COMPRESSOR.....	16045127.A
VALVE AND PIPES.....	HG.06.20000 (1)
HOSE PIPE.....	HG.06.20000 (1)
<b>BRAKE CONTROLS</b>	
BRAKE CONTROLS.....	HG.07.0 (1)
BRAKE CYLINDER.....	HG.07.1 (1)
BRAKE FLUID RESERVOIR.....	HG.07.2 (1)
HANDBRAKE LEVER.....	HG.07.3 (1)
COLLECTION TANK.....	06255073.A
LINKAGE.....	16055625.A
<b>STEERING CONTROLS</b>	
STEERING COLUMN.....	HG.08.0 (1)
STEERING COLUMN.....	HG.08.1 (1)
<b>MECHANICAL GEARSHIFT CONTROLS</b>	
GEAR SHIFTING.....	HG.09.0 (1)
<b>ACCESSORIES</b>	
VARIOUS ACCESSORIES.....	HG.10.0 (1)
FIRE EXTINGUISHER.....	HG.10.2 (1)
<b>PEDAL CONTROLS</b>	
GUARDS.....	HG.11.0 (1)
PEDAL CONTROL FIXINGS.....	HG.11.1 (1)

Section: HG - CAB

**DOOR HANDLE - CAB DOOR RIGHT/LEFT**

Fig.	Code	QTY	Name
1	0.013.0217.4	1	handle
2	04413578	1	push-button
3	04414619	1	spring
4	04414618	1	stop
5	04413596	1	washer
6	04413597	1	latch m 8
7	01112831	1	nut m 8
8	0.000.0000.1	1	not serviceable



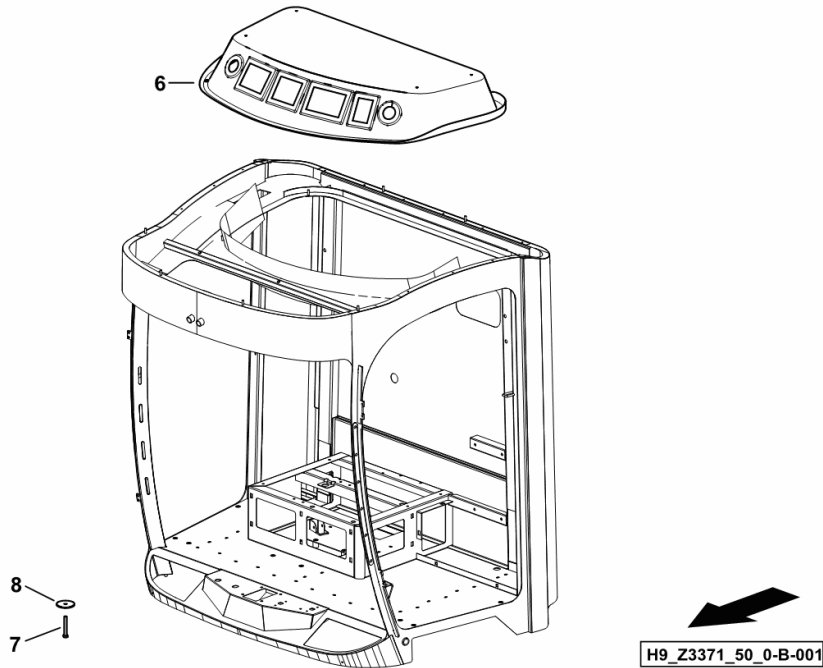
0\_013\_0217\_4

Section: HG - CAB  
**CAB ROOF LINING**

Fig.	Code	QTY	Name
------	------	-----	------

Notes:  
 [5665 HTS COM 3 ->13500]

6	16055664	1	inner cab roof panel
7	2.0112.427.2	4	screw m 12 p.1.75 x 90
8	16054249	4	washer 12.5



Section: HG - CAB  
**SEAT FOR 2ND OPERATOR**

H9\_Z3378\_06\_0-A-001

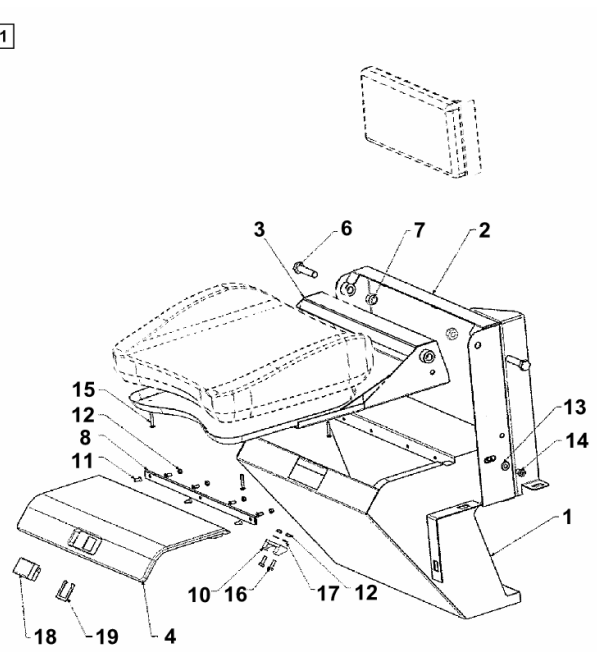


Fig.	Code	QTY	Name
------	------	-----	------

Notes:  
 [5665 HTS COM 3 ->13500]

1	16054190	1	container
2	16055608	1	support
3	16055609	1	support
4	16010227	1	cover
6	2.0112.419.2	2	screw m 12 p.1.75 x 50
7	2.1120.007.2	2	nut m 12 p.1.75
8	16010252	1	hinge
10	16010231	1	small plate
11	2.0322.304.2	7	screw m 5 x 12
12	2.1120.002.2	6	selflock nut m 5
13	2.1310.004.2	2	flat washer 8.5
14	2.0312.202.2	2	screw m 8 p.1.25 x 12
15	01146036	4	pin 4.2 x 30
16	2.0114.105.2	2	screw m 5 x 16
17	2.1310.001.2	2	flat washer 5.3
18	16010229	1	lock
19	16010230	1	small spring

Section: HG - CAB

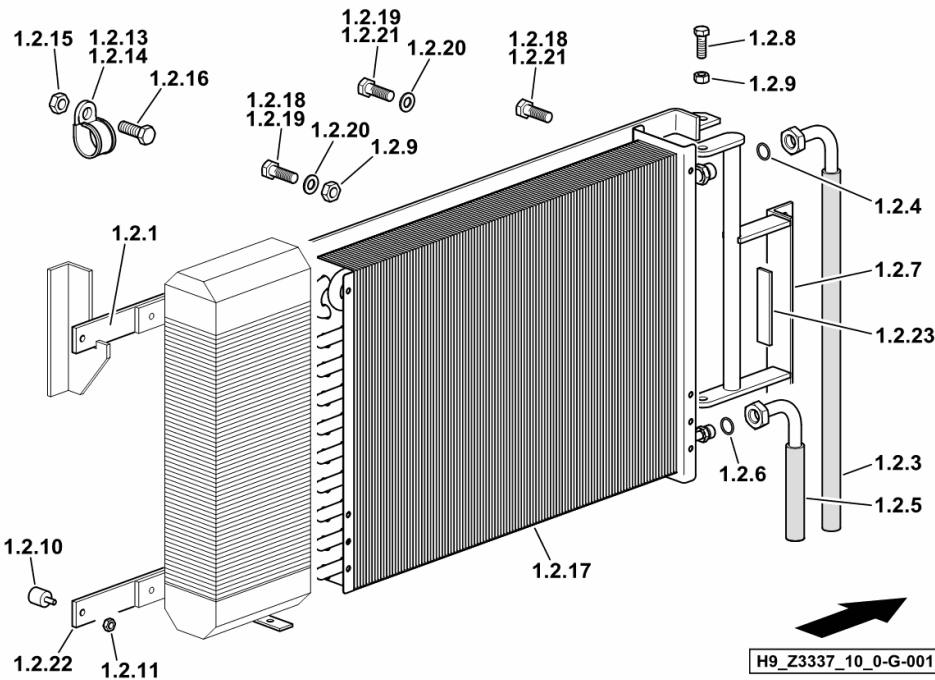
**CONDENSER - AIR CONDITIONING UNIT**

Fig.	Code	QTY	Name
------	------	-----	------

**Notes:**

[5665 HTS COM 3 ->13500]

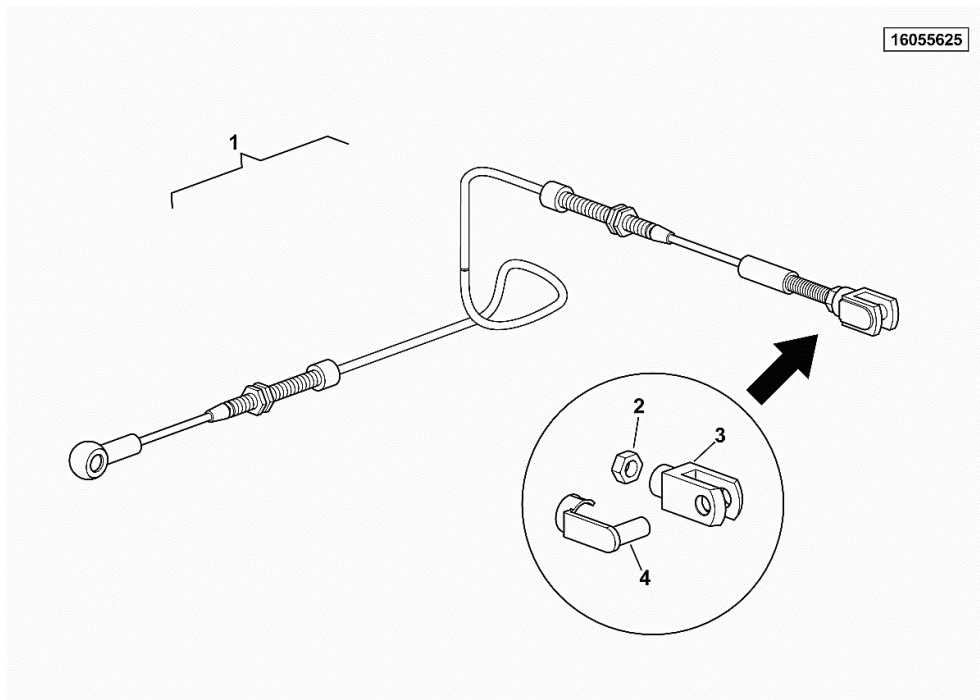
1.2.1	16061770	1	support
1.2.3	16019682	1	flexible hose Ø 13.7 / L = mm 2150
1.2.4	06214679	1	ring 3/4 "
1.2.5	16021570	1	tube 5/8" / L = mm 3520
1.2.6	04322184	1	rubber plug 5/8"
1.2.7	16048397	1	support
1.2.8	01112418	2	screw m 10 x 25, d933
1.2.9	06209768	2	nut m 10, d985
1.2.10	06253864	1	silent-block
1.2.11	01114357	6	nut m 6, d985
1.2.13	04325384	1	clamp 19 x 23
1.2.14	06216402	1	clamp 15,9 ne
1.2.15	01112322	2	screw m 8 p.1.25 x 20
1.2.16	01104944	2	nut m 8, d985
1.2.17	16055624	1	condenser
1.2.18	01103316	1	screw m 6 p.1.0 x 16
1.2.19	01123749	1	screw m 6 x 25
1.2.20	06214189	17	washer 6.4
1.2.21	01127031	2	screw m 6 x 30, d933
1.2.22	16061767	1	support
1.2.23	16064219	1	shim



Section: HG - CAB

**LINKAGE**

Fig.	Code	QTY	Name
1	16055625	1	rod kpl.
2	01112858	1	nut m 12, d934
3	01120923	1	fork head
4	06215265	1	smau pin 12 x 48



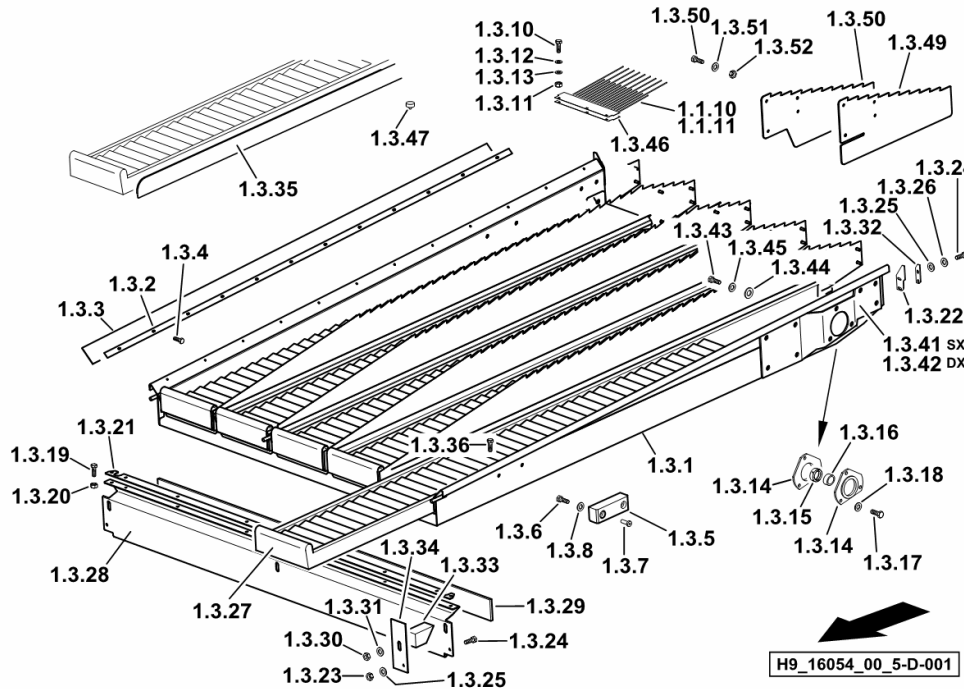


Section: HL - CLEANER UNIT  
**PREPARATION FLOOR**

Fig.	Code	QTY	Name
------	------	-----	------

**Notes:**

[5665 HTS COM 3 ->13500]



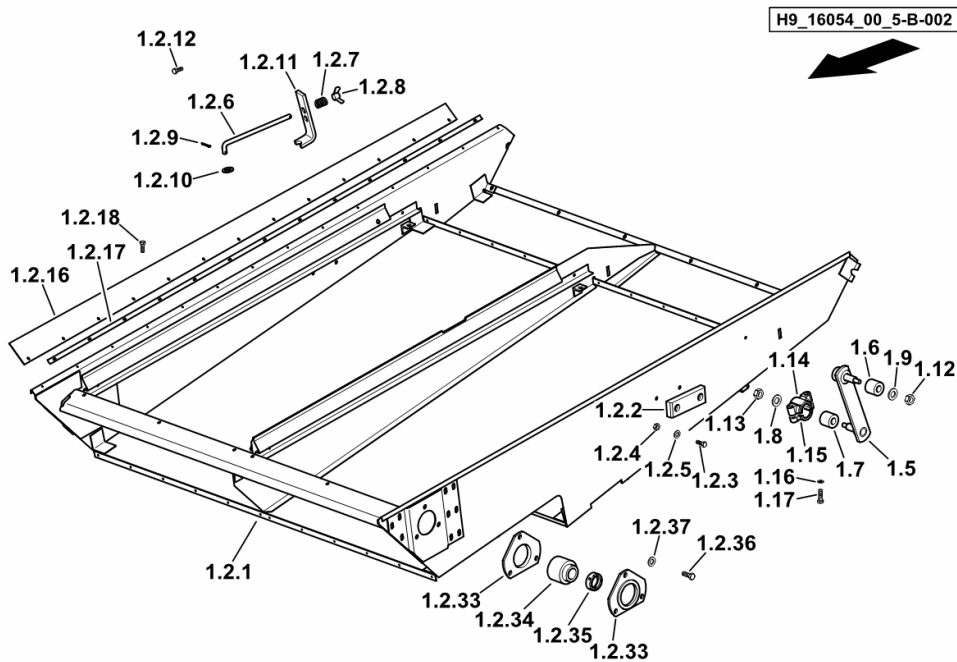
1.1.10	16026427	2	rake L = mm 390
1.1.11	16041438	2	rake L = mm 210
1.3.1	16040911	1	chassis
1.3.2	16025102	2	metal strap
1.3.3	16025101	2	gasket
1.3.4	01100550	24	screw m 4.2 x 16
1.3.5	16028915	2	spacer block
1.3.6	01145584	4	screw m 8 x 30
1.3.7	01145586	4	nut vz 8x15
1.3.9	16026427	3	rake L = mm 390
1.3.10	01103316	12	screw m 6 p.1.0 x 16
1.3.11	01112813	12	nut m 6
1.3.12	01102797	12	washer 6, d128
1.3.13	06214189	24	washer 6.4
1.3.14	16004347	4	bearing housing
1.3.15	06273886	2	bearing 30 mm
1.3.16	06302299	2	ring
1.3.17	01112429	6	screw m 10 x 30, d933
1.3.18	01102800	6	washer 10.2
1.3.19	01112264	7	screw m 6 x 20, d933
1.3.20	01112813	7	nut m 6
1.3.21	06539496	1	metal strap
1.3.22	16040929	2	guard
1.3.23	01112813	2	nut m 6
1.3.24	01112264	6	screw m 6 x 20, d933
1.3.25	01102797	6	washer 6, d128
1.3.26	06214189	4	washer 6.4
1.3.27	16050636	5	element
1.3.28	16028903	1	cover
1.3.29	16025593	1	gasket
1.3.30	06209768	2	nut m 10, d985
1.3.31	06214197	2	washer 10.5
1.3.32	16040930	2	lamination
1.3.33	16028932	2	gasket
1.3.34	16028909	2	plate
1.3.35	16028921	10	gasket L = mm 1875
1.3.36	01145585	4	screw m 10 x 65
1.3.41	16061178	1	plate sx/lh/li
1.3.42	16061179	1	plate dx/rh/re
1.3.43	01112407	14	screw m 10 x 20, d933
1.3.44	01102800	14	washer 10.2

**BOTTOM SIEVE BOX**

Fig.	Code	QTY	Name
------	------	-----	------

**Notes:**

[5665 HTS COM 3 ->13500]



1.2.1	16054013	1	large box
1.2.2	06256696	2	spacer
1.2.3	01137624	4	screw m 8 x 25
1.2.4	01112824	4	nut m 8, d934
1.2.5	01102799	4	washer 8, d128
1.2.6	06508208	4	screw
1.2.7	06215373	4	spring 4x16x25
1.2.8	01138390	4	wing nut m 10
1.2.9	01132621	8	split pin 3.2 x 16
1.2.10	01107165	4	washer 10.5
1.2.11	16004587	4	link
1.2.12	01111136	4	screw m 8 x 35
1.2.16	16003879	2	hood
1.2.17	16043770	2	rail
1.2.18	01127683	26	screw m 4.2x13
1.2.33	16004347	4	bearing housing
1.2.34	06273886	2	bearing 30 mm
1.2.35	06302299	2	ring
1.2.36	01112423	6	screw m 10x28
1.2.37	01102800	6	washer 10.2
1.5	16050563	2	arm
1.6	06542877	2	rubber mount
1.7	06542877	2	rubber mount
1.8	06214206	2	washer 13.2
1.9	06214206	2	washer 13.2
1.12	01112858	2	nut m 12, d934
1.13	01112858	2	nut m 12, d934
1.14	06256687	2	bearing housing ABOVE
1.15	06256684	2	bearing housing BOTTOM
1.16	01102800	4	washer 10.2
1.17	01111319	4	screw m 10 x 60

**SPECIAL SIEVE BOX**

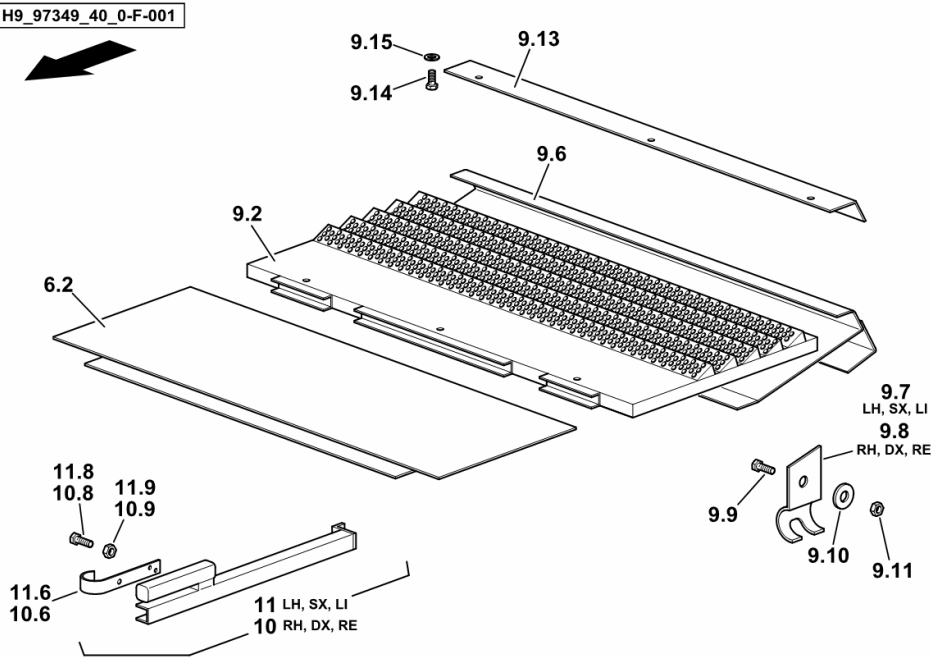
Fig.	Code	QTY	Name
------	------	-----	------

**Notes:**

- C.C.M. EQUIPMENT [5665 HTS COM 3 ->13500]

6.2	16014972	2	lamination
9.2	16015028	2	element K15 SL
9.6	16014996	1	lamination
9.7	16014983	1	support sx/lh/li
9.8	16014984	1	support dx/rh/re
9.9	01112439	2	screw m 10 x 35, d933
9.10	06214197	2	washer 10.5
9.11	06209768	2	nut m 10, d985
9.13	16015007	2	rail
9.14	01112240	4	screw m 6 x 12
9.15	01102797	4	washer 6, d128
10	16015052	2	support dx/rh/re
10.6	06258381	1	spring
10.8	01112264	1	screw m 6 x 20, d933
10.9	01112813	1	nut m 6
11	16015050	2	support sx/lh/li
11.6	06258381	1	spring
11.8	01112264	1	screw m 6 x 20, d933
11.9	01112813	1	nut m 6

H9\_97349\_40\_0-F-001



**REINFORCEMENT**

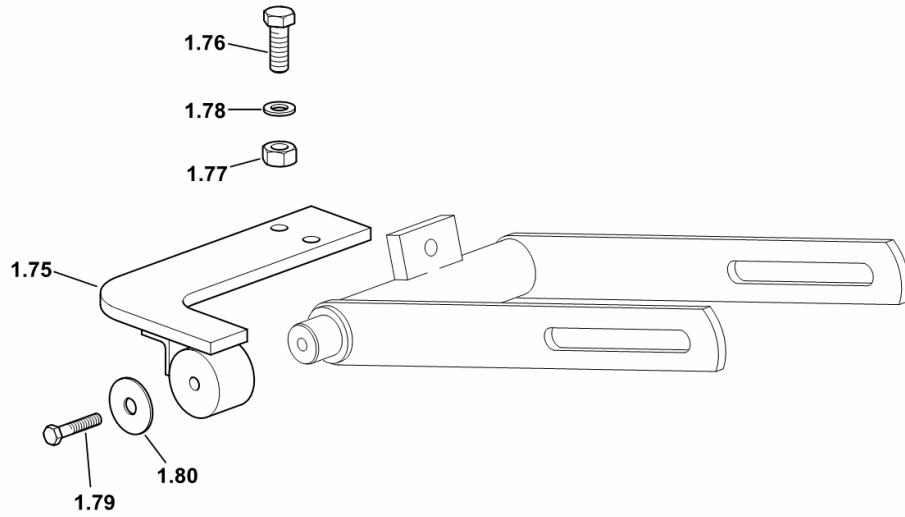
Fig.	Code	QTY	Name
------	------	-----	------

**Notes:**

[5665 HTS COM 3 ->13500]

1.75	16063420/10	1	brace
1.76	01112529	2	screw m 12 x 30, d933
1.77	06209769	2	nut m 12, d985
1.78	06205230	2	washer 13 x 24 x 2.5
1.79	01112451	1	screw m 10 p.1.5 x 45
1.80	01102801	1	washer 12

H9\_16019\_68\_7-D-001



**FEED SCREW**

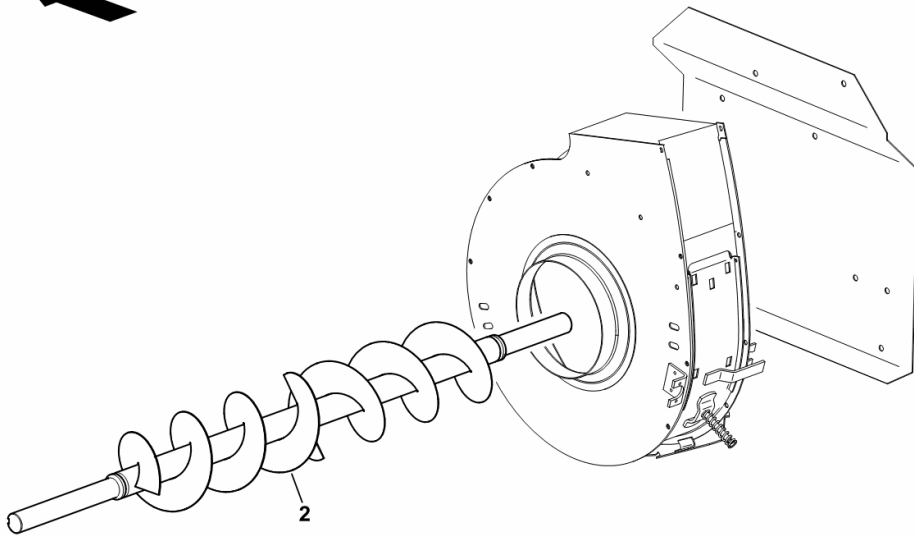
Fig.	Code	QTY	Name
------	------	-----	------

**Notes:**

- RICE EQUIPMENT [5665 HTS COM 3 ->13500]

2	06515340/10	1	screw conveyor L = mm 1759 COMPLETE
---	-------------	---	--

H9\_97357\_30\_0-B-001

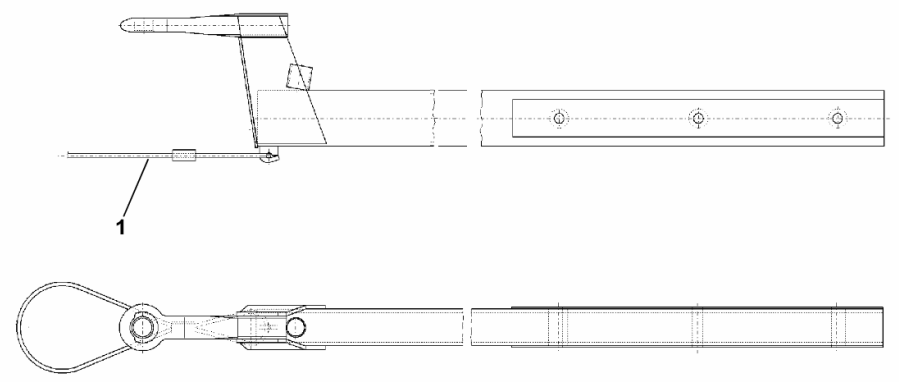


Section: HP - CUTTER BAR  
**SAFETY CABLE**

Fig.	Code	QTY	Name
------	------	-----	------

Notes:  
- EXPORT PL [5665 HTS COM 3 ->13500]

1	16057618	1	crate
---	----------	---	-------



H9\_97523\_20\_0-A-001

**SUPPORTS FOR SEPARATORS - MT. 6,3**

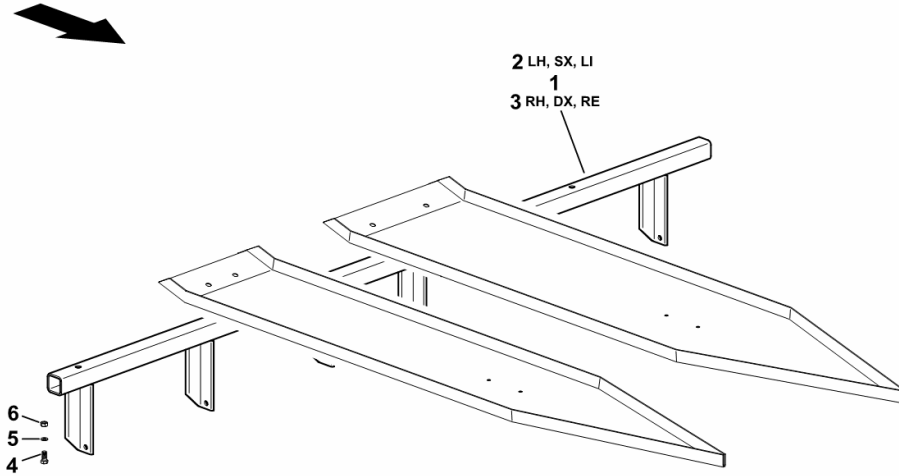
Fig.	Code	QTY	Name
------	------	-----	------

**Notes:**

- SUNFLOWER EQUIPMENT [5665 HTS COM 3 ->13500]

1	16064057	1	carrier L = mm 2700 - CENTRAL
2	16064061	1	carrier L = mm 1400 LEFT-HAND SIDE
3	16064060	1	carrier L = mm 1400 RIGHT-HAND SIDE
4	01123727	14	screw m 10 x 70
5	01140501	14	washer 10.5
6	06209768	14	nut m 10, d985

H9\_Z33P7\_16\_0-A-001



**SHAFT WITH BLADES SX/LH/LI ( MT. 6,3 )**

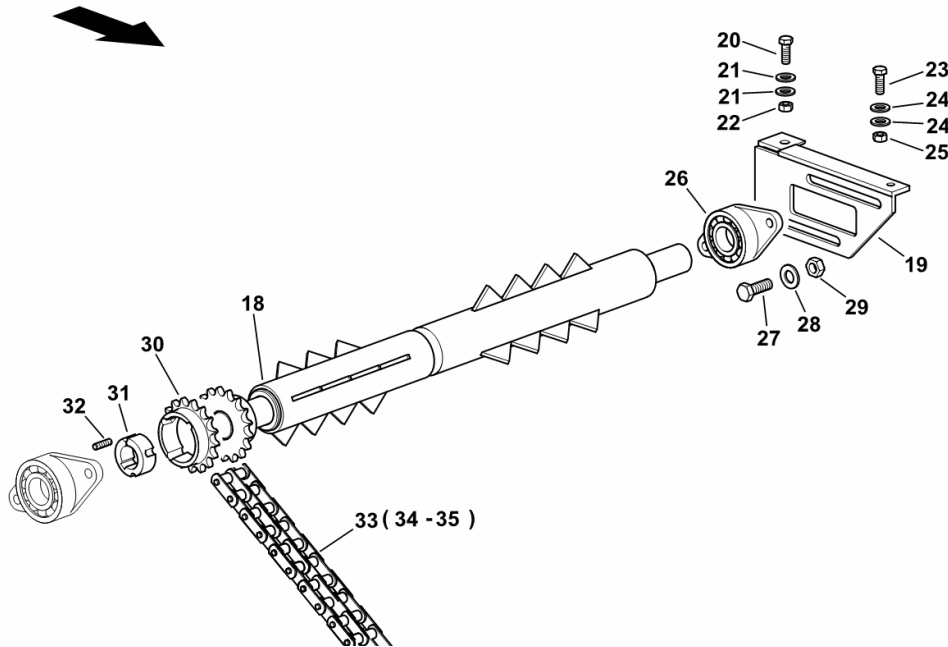
Fig.	Code	QTY	Name
------	------	-----	------

**Notes:**

- SUNFLOWER EQUIPMENT [5665 HTS COM 3 ->13500]

18	16064112	1	shaft L = mm 3109 LEFT-HAND SIDE
19	16064103	1	support sx/lh/li
20	01112429	1	screw m 10 x 30, d933
21	01107165	2	washer 10.5
22	06209768	1	nut m 10, d985
23	01112333	1	screw m 8 x 25, d933
24	01107163	1	washer 9, d126
25	01104944	1	nut m 8, d985
26	16004242	1	bearing UCFL 207
27	01112547	2	screw m 12 x 40, d933
28	06214269	2	washer 12.5
29	06209769	2	nut m 12, d985
30	16004292	1	chain wheel Z = 17
31	16004294	1	sleeve
32	16004306	2	grain 3/8" - 1/2"
33	16004296	1	chain 10 B-2 x 17
34	06213164	2	chain link
35	06213162	2	chain link

H9\_Z33P7\_26\_0-B-001



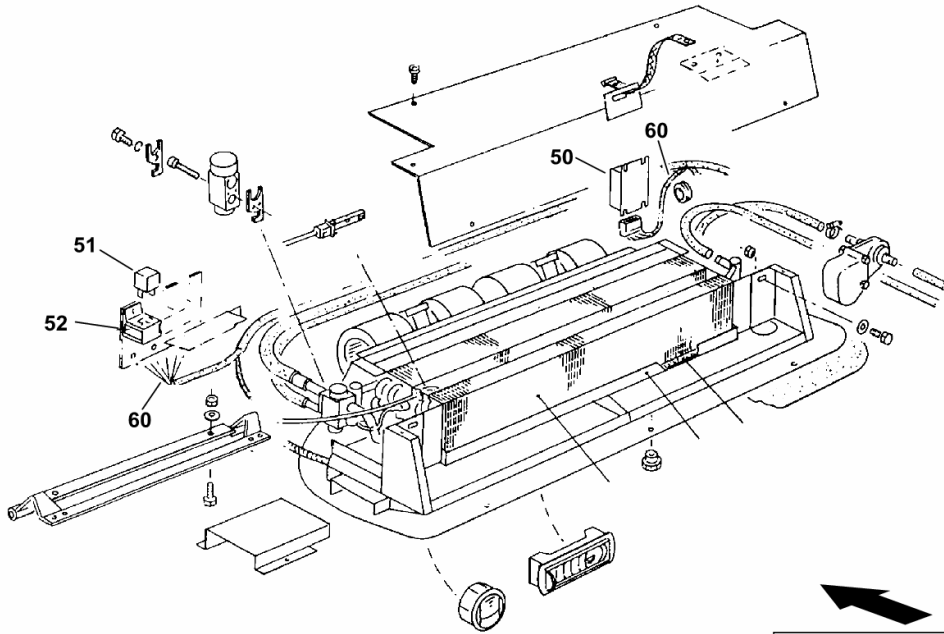
**AIR-CONDITIONER UNIT ELECTRICAL SYSTEM**

Fig.	Code	QTY	Name
------	------	-----	------

**Notes:**

[5665 HTS COM 3 ->13500]

50	16058728	1	thermostat
51	01178519	4	relay
52	01164650	4	base
60	16058810	1	electrical system



H9\_Z3386\_20\_0-C-001

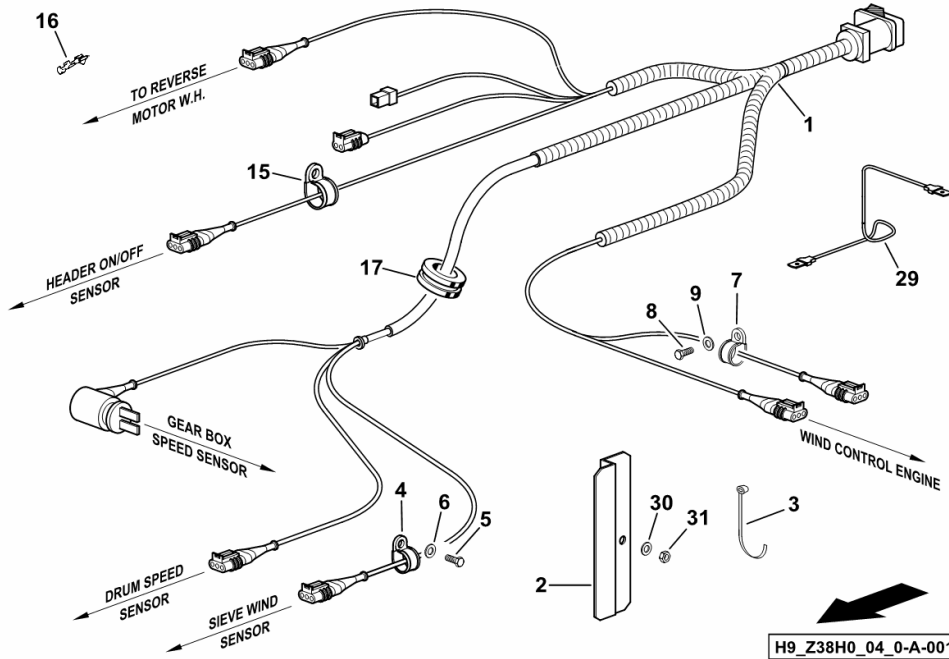
Section: HH - ELECTRICAL SYSTEM  
**ELECTRICAL EQUIPMENT CHASSIS**

Fig.	Code	QTY	Name
------	------	-----	------

**Notes:**

[5665 HTS COM 3 ->13500]

1	0.015.5474.4/10	1	electrical system E3
2	16050255	1	lamination
3	01172065	22	clamp 4.6 x 146
4	16050269	4	clamp 10
5	01112240	4	screw m 6 x 12
6	01117863	4	washer 7.5
7	16050265	2	clamp 6, d128
8	01112240	2	screw m 6 x 12
9	01117863	2	washer 7.5
15	16050265	1	clamp 6, d128
16	06241450	4	interlock
17	06543583	2	grommet Ø 28.8
29	16062623	1	electrical system
30	01101492	4	washer 8.2
31	01104944	2	nut m 8, d985



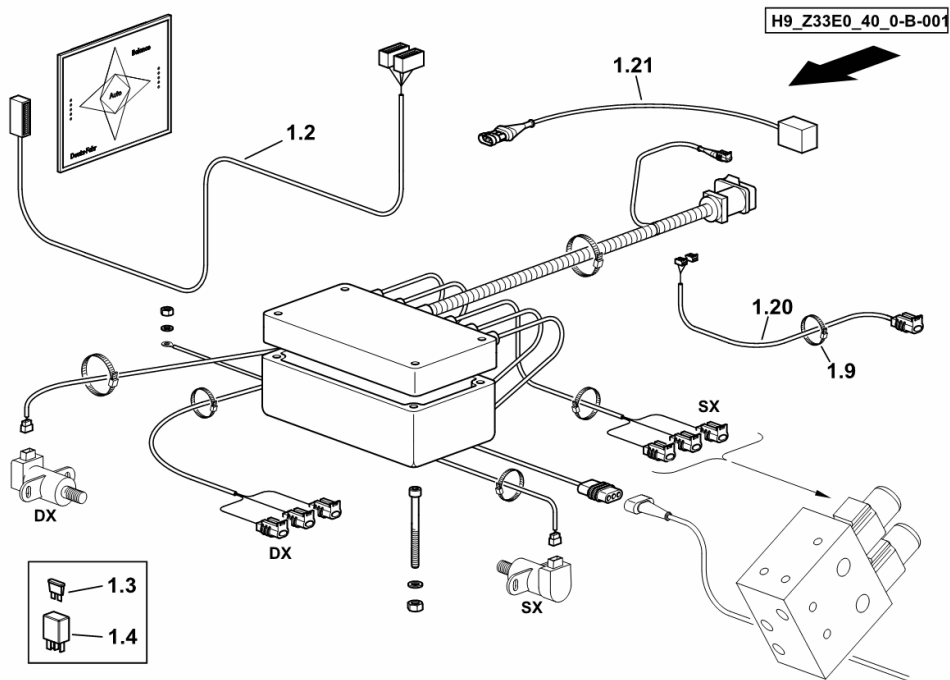
**ELECTRICAL SYSTEM**

Fig.	Code	QTY	Name
------	------	-----	------

**Notes:**

BALANCE/AUTOCONTROL [5665 HTS COM 3 ->13500]

1.2	16040668	1	electrical system
1.3	04372302	1	fuse 15 A
1.4	01145036	2	relay 10/20 A
1.9	01172065	10	clamp 4.6 x 146
1.20	16046147	1	electrical system
1.21	0.016.1616.4	1	electrical system



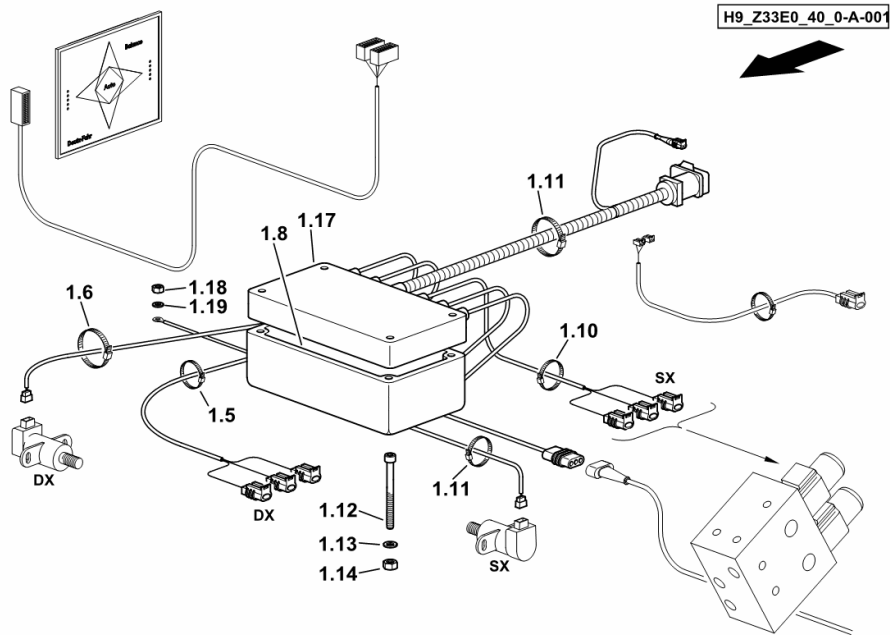
**CENTRAL ELECTRICS**

Fig.	Code	QTY	Name
------	------	-----	------

**Notes:**

BALANCE/AUTOCONTROL [5665 HTS COM 3 ->13500]

1.5	06216480	1	clamp 4,8 x 360
1.6	01172065	7	clamp 4.6 x 146
1.8	16062496/20	1	central device BALANCE
1.10	06216480	1	clamp 4,8 x 360
1.11	01172065	7	clamp 4.6 x 146
1.12	01123048	4	screw m 5 x 35
1.13	01117860	4	washer 5.3
1.14	01112803	4	nut m 5, d934
1.17	0.015.5467.4/20	1	electrical system BALANCE ( 13591 <- )
1.17	0.015.5467.4/30	1	electrical system BALANCE
1.18	01104944	1	nut m 8, d985
1.19	01107163	1	washer 9, d126



**GRAIN TANK SENSOR**

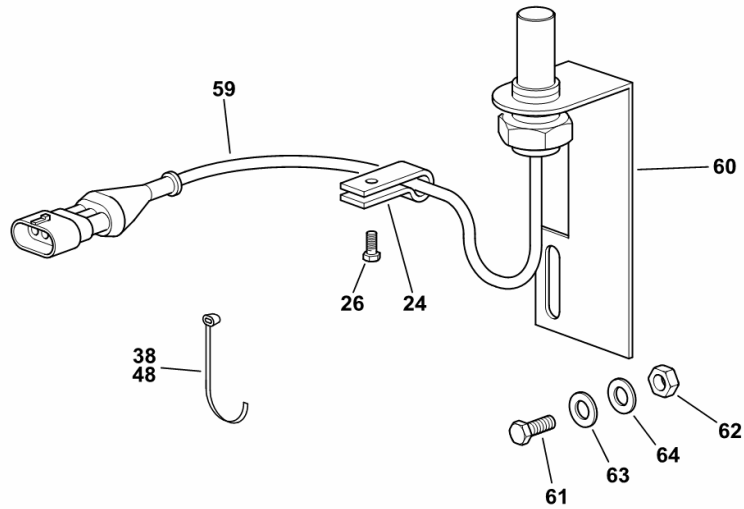
Fig.	Code	QTY	Name
------	------	-----	------

**Notes:**

[5665 HTS COM 3 ->13500]

24	01179999/60	2	clamp Ø 13
26	01112264	3	screw m 6 x 20, d933
38	01172065	12	clamp 4.6 x 146
48	01172065	2	clamp 4.6 x 146
59	16050180	1	sensor m 18 p.1
60	16057590	1	bracket
61	01112322	3	screw m 8 p.1.25 x 20
62	01104944	3	nut m 8, d985
63	01107163	3	washer 9, d126
64	01102799	3	washer 8, d128

H9\_Z38H0\_06\_0-G-001



**OIL TEMPERATURE SENSOR**

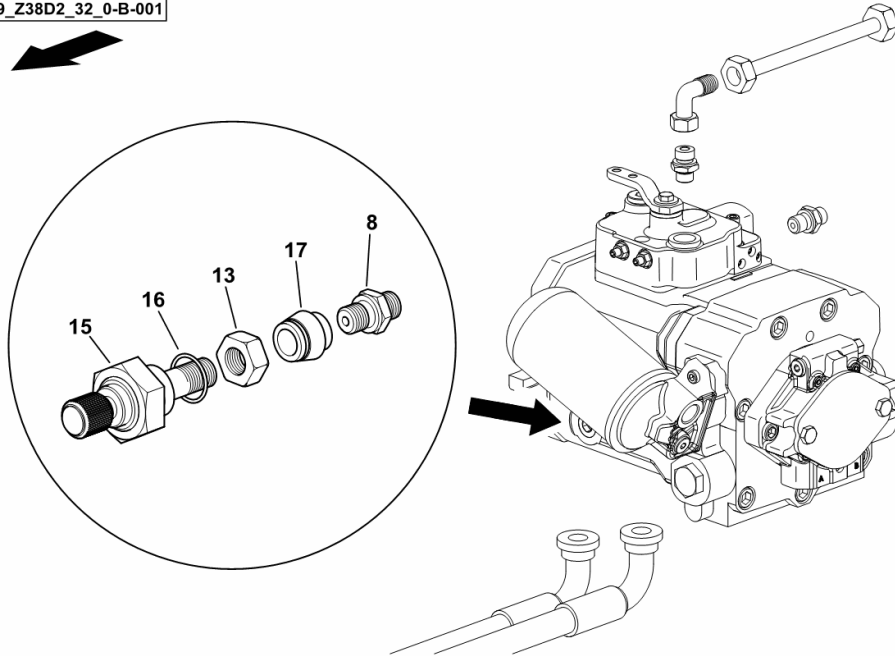
Fig.	Code	QTY	Name
------	------	-----	------

**Notes:**

[5665 HTS COM 3 ->13500]

8	16033362	3	pipe fitting geo 22-l
13	01116656	2	pipe fitting m 30 p.2
15	06253949	1	tempe guage
16	01118707	1	ring 16
17	16040213	1	pipe fitting

H9\_Z38D2\_32\_0-B-001



**SENSOR - SPEED**

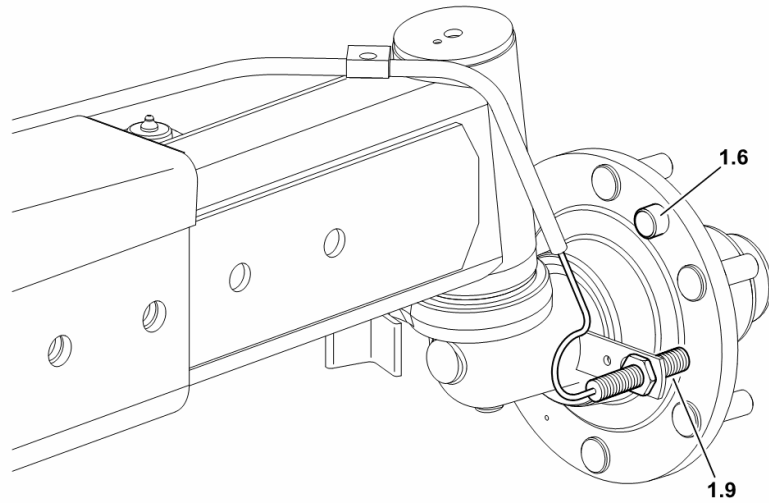
Fig.	Code	QTY	Name
------	------	-----	------

**Notes:**

[5665 HTS COM 3 ->13500]

1.6	16000334	1	magneto
1.9	16000333	1	sensor L = mm 5000

H9\_Z38H5\_00\_0-F-001



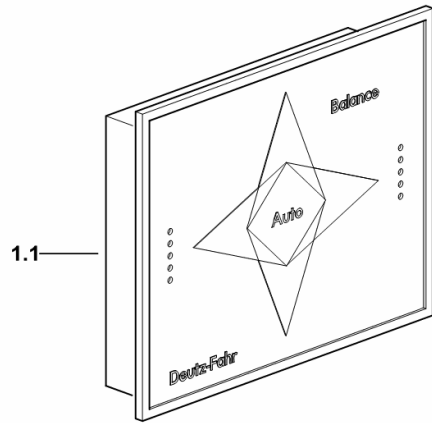
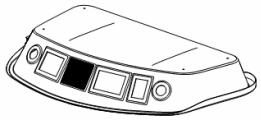
**WORKING COMPUTER BALANCE**

Fig.	Code	QTY	Name
------	------	-----	------

**Notes:**

BALANCE/AUTOCONTROL [5665 HTS COM 3 ->13500]

1.1	16025444/10	1	operator panel BALANCE
-----	-------------	---	------------------------



H9\_Z33E0\_40\_0-C-001

**ELECTRIC MOTOR**

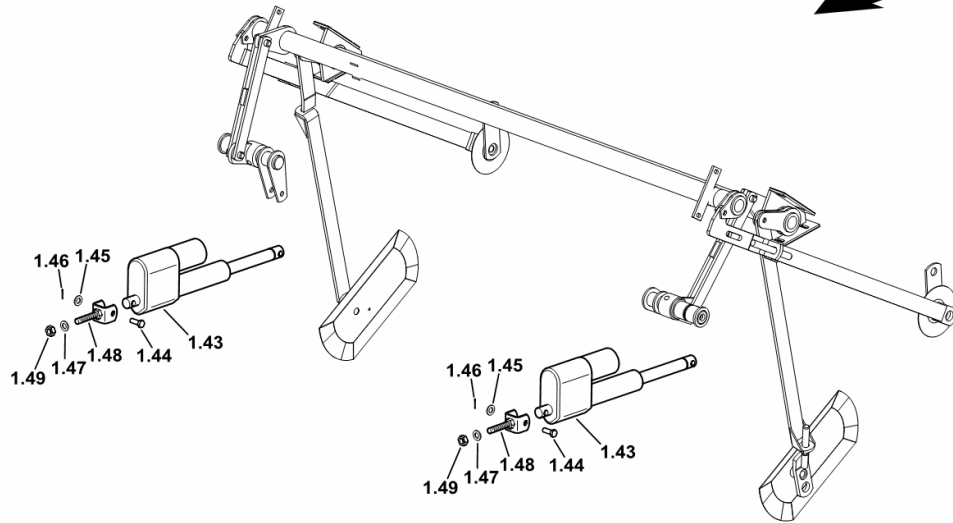
Fig.	Code	QTY	Name
------	------	-----	------

**Notes:**

[5665 HTS COM 3 ->13500]

1.43	16062307	2	electric motor
1.44	06210020	4	smau pin 11 x 5
1.45	01107110	4	washer 13.5
1.46	01106447	4	split pin 4 x 20
1.47	06214206	2	washer 13.2
1.48	16044087/10	2	rod m 16
1.49	01112886	4	nut m 16

H9\_16062\_40\_6-C-001



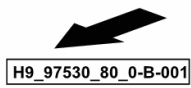
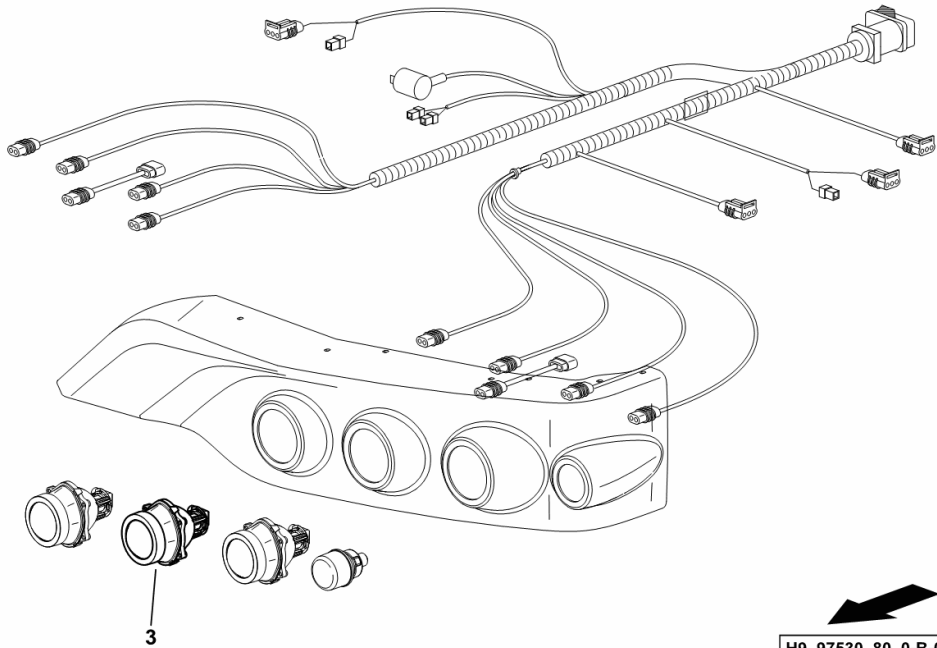
**FRONT LIGHTS**

Fig.	Code	QTY	Name
------	------	-----	------

**Notes:**

- EXPORT GB [5665 HTS COM 3 ->13500]

3	2.8039.008.0	2	headlight - LOW BEAM HEADLIGHTS ☞ 2.8039.008.0
---	--------------	---	--



H9\_97530\_80\_0-B-001

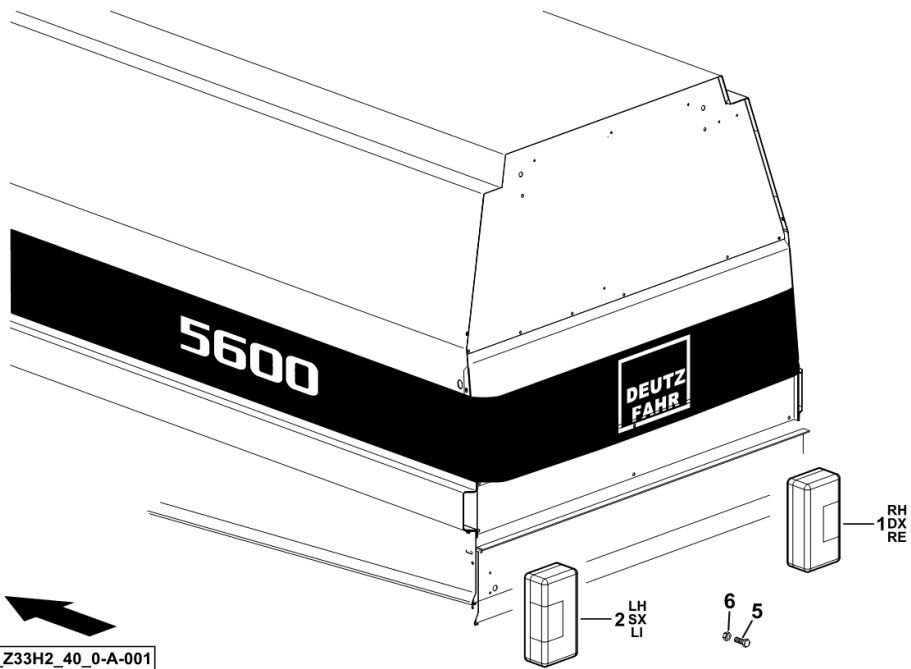
**REAR LIGHTING**

Fig.	Code	QTY	Name
------	------	-----	------

**Notes:**

[5665 HTS COM 3 ->13500]

1	2.8059.009.0	1	lamp dx/rh/re ☞ 2.8059.009.0
2	2.8059.028.0	1	light sx/lh/li ☞ 2.8059.028.0
5	01112240	4	screw m 6 x 12
6	01114357	4	nut m 6, d985



H9\_Z33H2\_40\_0-A-001

CLICK HERE TO **DOWNLOAD** THE COMPLETE MANUAL

- Thank you very much for reading the preview of the manual.
- You can download the complete manual from: [www.heydownloads.com](http://www.heydownloads.com) by clicking the link below



- Please note: If there is no response to CLICKING the link, please download this PDF first and then click on it.

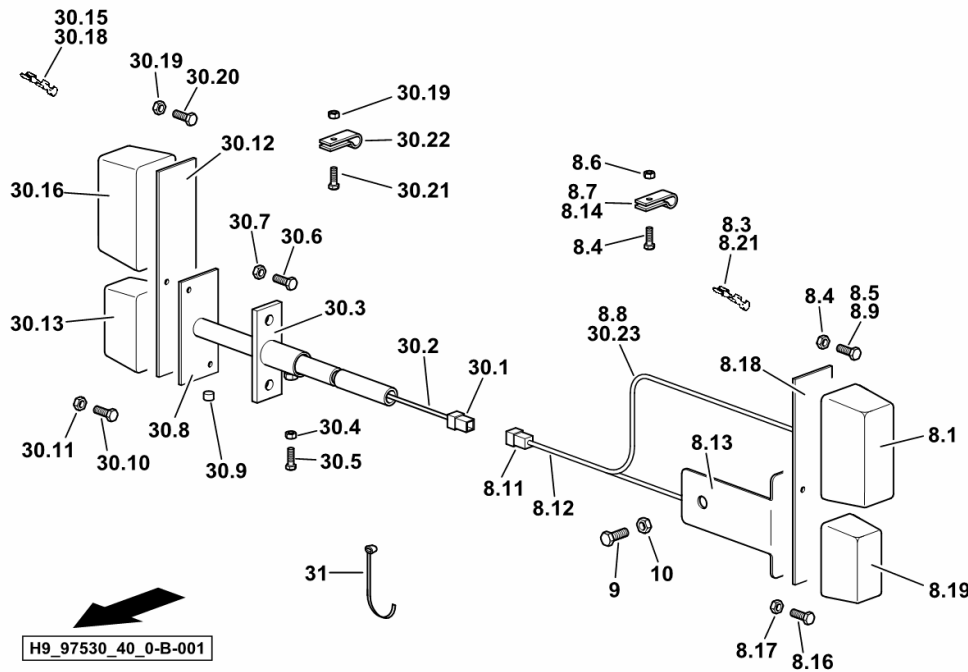
CLICK HERE TO **DOWNLOAD** THE COMPLETE MANUAL

**LIGHTING**

Fig.	Code	QTY	Name
------	------	-----	------

**Notes:**

- ITALY [5665 HTS COM 3 ->13500]



8.1	01145200	1	side lamp
8.3	06213723	2	terminal
8.4	06209765	2	nut m 5, d985
8.5	01124044	1	screw m 5 p.0.8 x 25
8.6	01119633	1	screw m 5 x 16
8.7	01121249	1	clamp 6.0 x 10 x 1.0
8.8	01403944	1	guard 5 x 0.6 x 200
8.9	01119632	1	screw m 5 p.1x10
8.11	06214004	1	sleeve
8.12	16056731/10	1	electrical system
8.13	16056727	1	support
8.14	01121255	1	clamp
8.16	01119630	2	screw m 4 x 16
8.17	06209764	2	nut m 4
8.18	16046090	1	support
8.19	16006018	1	stop
8.21	06213723	2	terminal
9	01112384	1	screw
10	01102800	1	washer 10.2
30.1	06214004	1	sleeve
30.2	16056731/10	1	electrical system
30.3	16006012	1	support
30.4	01112824	1	nut m 8, d934
30.5	01112326	1	screw m 8 x 22
30.6	01112333	2	screw m 8 x 25, d933
30.7	01112824	2	nut m 8, d934
30.8	16006014/10	1	extension
30.9	06257987	1	rubber plug 8 x 12
30.10	01119630	2	screw m 4 x 16
30.11	06209764	2	nut m 4
30.12	16046090	1	support
30.13	16006018	1	stop
30.15	06213723	2	terminal
30.16	01145200	1	side lamp
30.18	06213723	2	terminal
30.19	06209765	2	nut m 5, d985
30.20	01124044	1	screw m 5 p.0.8 x 25
30.21	01119633	1	screw m 5 x 16
30.22	01121249	1	clamp 6.0 x 10 x 1.0
30.23	01403944	1	guard 5 x 0.6 x 200
31	01172065	4	clamp 4.6 x 146

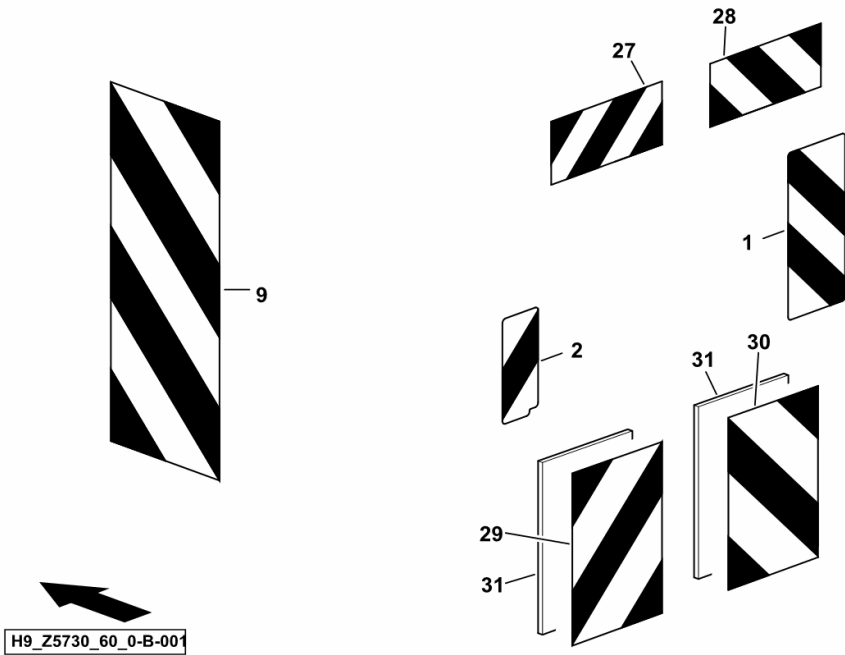
**WARNING PLATES**

Fig.	Code	QTY	Name
------	------	-----	------

**Notes:**

- EXPORT F [5665 HTS COM 3 ->13500]

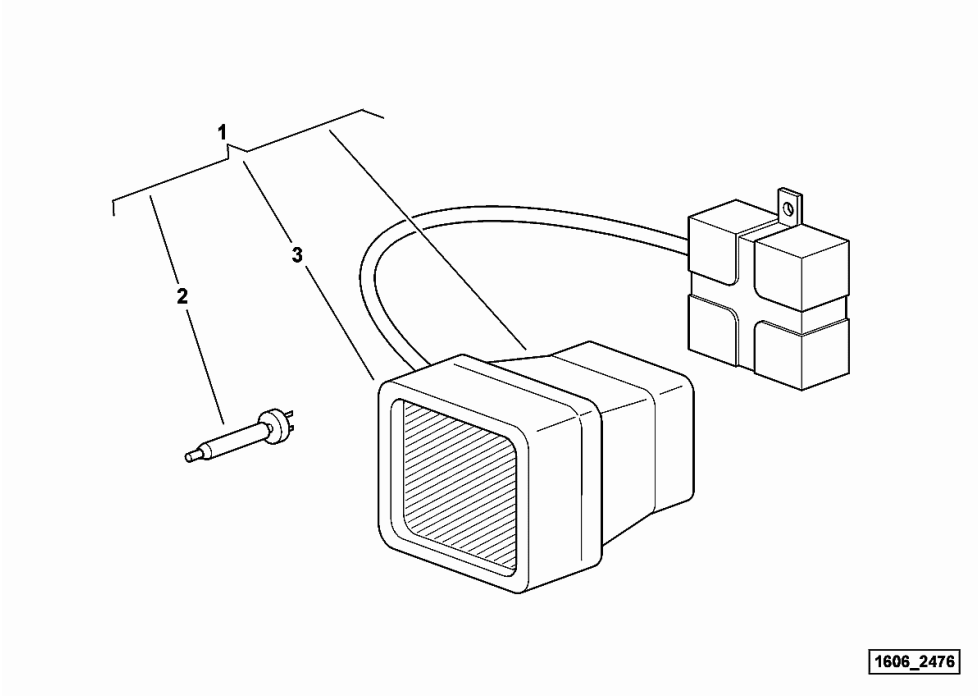
1	01145164	1	reflector dx/rh/re
2	01145165/10	1	reflector sx/lh/li
9	01145729	1	reflector sx/lh/li
27	01145194	1	reflector sx/lh/li
28	01145195	1	reflector dx/rh/re
29	16064178	2	reflector sx/lh/li
30	16064177	2	reflector dx/rh/re
31	16064179/10	4	support



H9\_Z5730\_60\_0-B-001

**HEADLAMP COMPONENTS XENON**

Fig.	Code	QTY	Name
1	16062476	1	headlight XENON
2	0.900.0880.7	1	lamp D2S
3	0.900.0880.8	1	glass



**CIGAR LIGHTER**

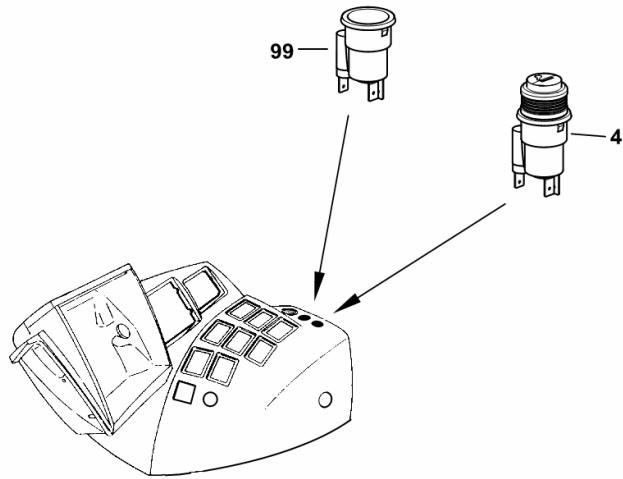
Fig.	Code	QTY	Name
------	------	-----	------

**Notes:**

[5665 HTS COM 3 ->13500]

4	2.7099.770.0	1	cigar lighter
99	16055916	1	socket

H9\_Z3384\_02\_0-G-001



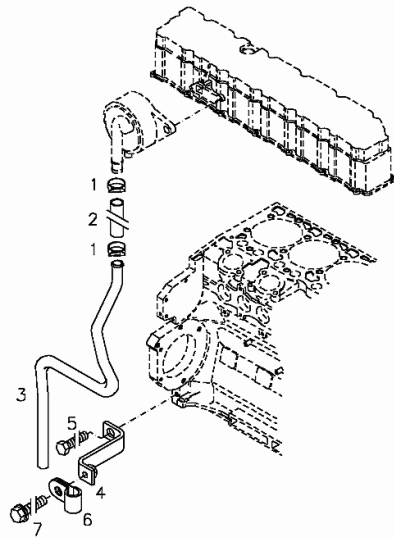
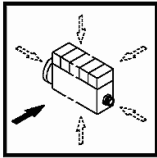
Section: B0 - ENGINE  
**BLEEDING TUBE**

Fig.	Code	QTY	Name
------	------	-----	------

Engine Serial Numbers:

10425646 10425647 10547565

1	01178750	2	clamp DIN 3021 -A-29X15
2	01178053	1	rubber tube H 3407 -22X29X65
3	04903157	1	tube
4	04903847	1	support
5	01127056	1	screw DIN 933 -M12X20-10.9-A4C
6	01176230	1	hose clip H 3223 -C22X15-ST/MVQ-1-70
7	01181439	1	screw EN 1662 -F-M6X16-10.9-ZNAL-A



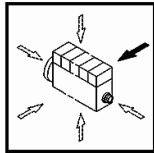
**CLOSING COMPONENTS**

Fig.	Code	QTY	Name
------	------	-----	------

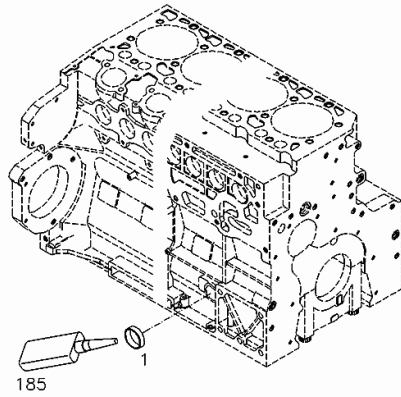
**Engine Serial Numbers:**

10425646 10425647 10547565 10567965 10621392 10621394 10629952

1	01152711	1	cover DIN 443 -30-X6CRMO17
185	01016125	1	guard H 0699 -DEUTZDW72-250ML

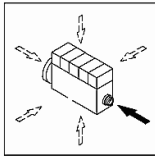


000 ©

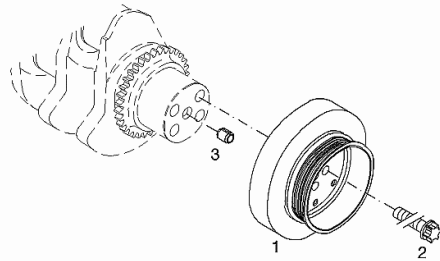


Section: B0 - ENGINE  
**V-GROOVED PULLEY**

Fig.	Code	QTY	Name
1	04908323	1	pulley
2	04908053	4	none
3	01181404	1	sleeve H 2341 -B18X24-FE/ZN12C*



000 ©



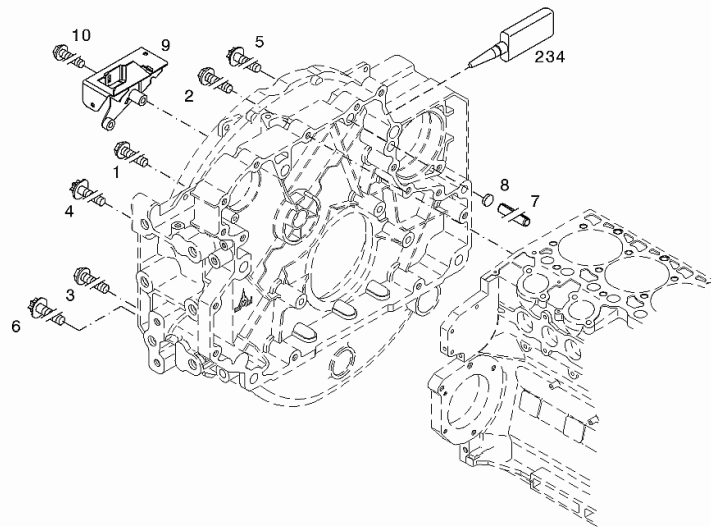
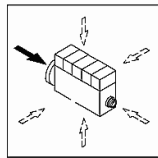
**FASTENINGS**

Fig.	Code	QTY	Name
------	------	-----	------

**Engine Serial Numbers:**

10425646 10425647 10547565

1	01181438	11	screw EN 1662 -F-M8X55-10.9-ZNAL-A
2	01181440	5	screw EN 1662 -F-M8X40-10.9-ZNAL-A
3	01181117	1	screw EN 1662 -F-M8X160-10.9-GESCHW
4	01148562	1	screw H 2069 -34800-Z24-FST-BM12X180-10.9-Z
5	01148563	1	screw H 2069 -34800-Z24-FST-BM12X100-10.9-Z
6	01148548	4	screw H 2069 -34800-Z20-FST-BM16X90-10.9-ZN
7	01148551	1	screw ISO 8750 -16X32-ST*
8	01182877	1	washer H 2871 -B16X5OL-ACM-1-70
9	04905298	1	support
10	01181441	2	screw EN 1662 -F-M8X65-10.9-ZNAL-A
234	01016024	1	gasket H 0699 -DEUTZDW67-50ML



000 ©

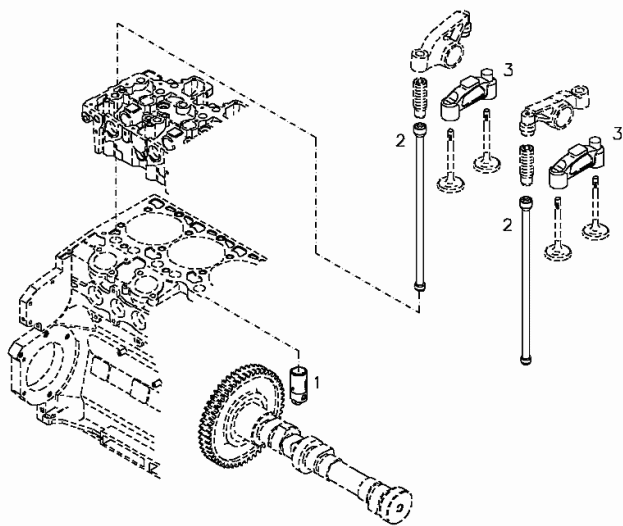
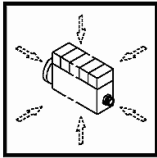
**ROCKER ARM BRACKET**

Fig.	Code	QTY	Name
------	------	-----	------

**Engine Serial Numbers:**

10425646 10425647 10547565 10567965 10621392 10621394 10629952

1	04903647	12	spring rockerarm
2	04902837	12	rod
3	04903344	12	lever



000 ©

Section: B0 - ENGINE  
CYLINDER HEAD

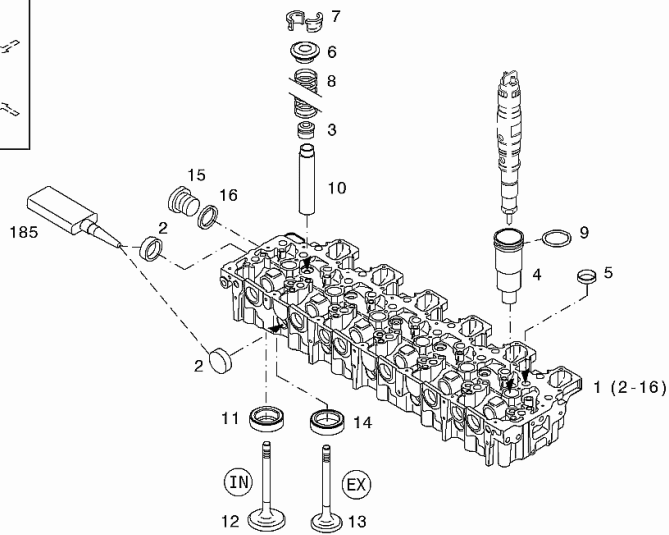
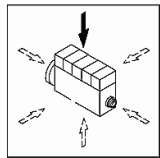
Fig.	Code	QTY	Name
------	------	-----	------

Engine Serial Numbers:

10425646 10425647 10547565 10567965 10621392 10621394 10629952

1	04905686	1	engine head WITH POS.... (2-16)
2	01165830	6	plug H 711 -B25
3	04153728	24	gasket
4	04904885	6	bushing
5	01107619	6	cover DIN 443 -18
6	04250029	24	cup
7	02108102	48	half shell H 7020 -MK8
8	04902197	24	spring
9	01182790	6	circlip H 2927 -23,6X2,0-FPM-1-70
10	04250074	24	rod
11	04900631	12	ring
12	04903005	12	inlet valve
13	04903006	12	exhaust valve
14	04900636	12	ring
15	01110422	1	screw DIN 908 -M12X1,5-ST
16	01118673	1	'o' ring DIN 7603 -A12X15,5-CU
185	01016125	10	guard H 0699 -DEUTZDW72-250ML

000 ©



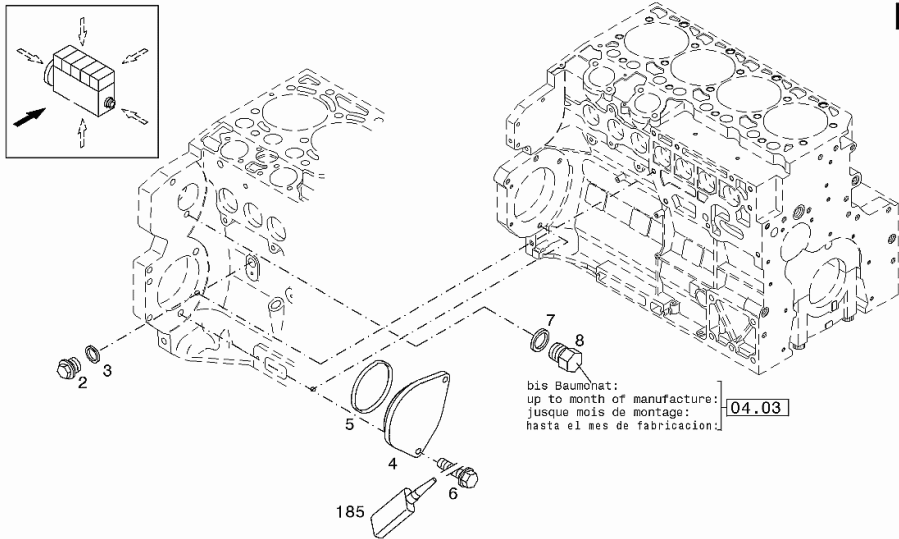
Section: B0 - ENGINE  
**CLOSING COMPONENTS**

Fig.	Code	QTY	Name
------	------	-----	------

**Engine Serial Numbers:**

10425646 10425647 10547565 10567965 10621392 10621394 10629952

2	01100940	1	screw 34 Nm DIN 7604 -AM14X1,5-ST-A4C
3	01118688	1	ring 14x17 DIN 7603 -A14X18-CU
4	04283180	1	cover
5	01180803	1	gasket H 2927 -96X4-NBR-1-70
6	01181393	2	screw 42 Nm EN 1662 -F-M10X20-10.9-A4C
7	01118659	1	'o' ring UP TO THE MONTH OF ASSEMBLY A = UP TO 04/2003 DIN 7603 -A10X13,5-CU
8	01181401	1	screw UP TO THE MONTH OF ASSEMBLY A = UP TO 04/2003
185	01016127	1	sealing compound ml. 50 H 0699 -DEUTZDW72-50ML



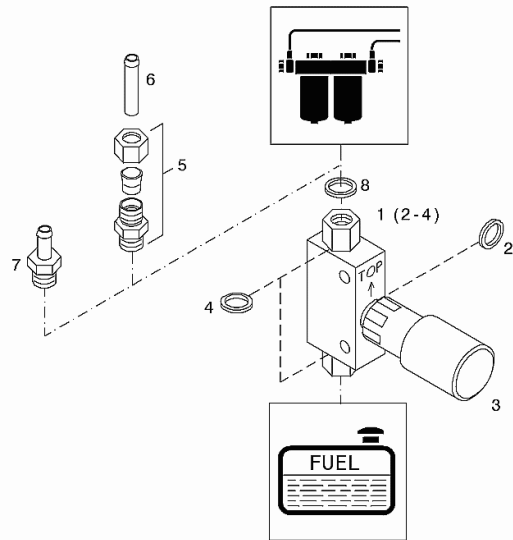
Section: B0 - ENGINE  
**FUEL FEED PUMP**

Fig.	Code	QTY	Name
------	------	-----	------

**Engine Serial Numbers:**

10547565 10567965 10621392 10621394 10629952

1	02111961	1	pump WITH POS.... (2-4)
2	01148356	1	'o' ring DIN 7603 -A16X20-ST
3	02111897	1	feed pump
4	01118727	2	'o' ring DIN 7603 -A20X24-CU
5	01319640	1	tongue
6	01319641	1	pipe fitting
7	01319642	1	tongue
8	01118713	1	washer 18.5 DIN 7603 -A18X22-CU



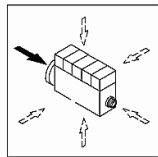
003 ©

Section: B0 - ENGINE  
**FUEL SUPPLY PUMP**

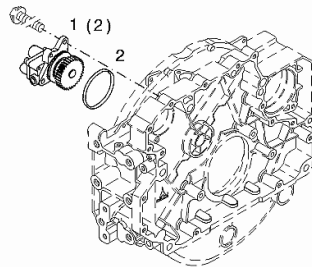
Fig.	Code	QTY	Name
------	------	-----	------

Engine Serial Numbers:  
 10425646 10425647

1	04904427	1	feed pump WITH POS.... (2)
2	01181918	1	ring H 2927 -55X2,5-FPM-1-70



000 ©



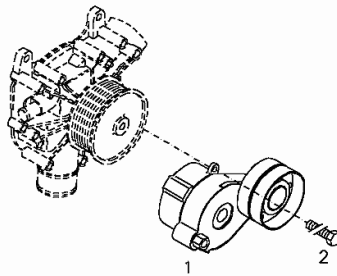
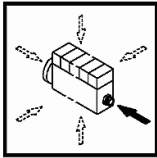
Section: B0 - ENGINE  
**BELT STRETCHER**

Fig.	Code	QTY	Name
------	------	-----	------

**Engine Serial Numbers:**

10425646 10425647 10547565 10567965 10621392 10621394 10629952

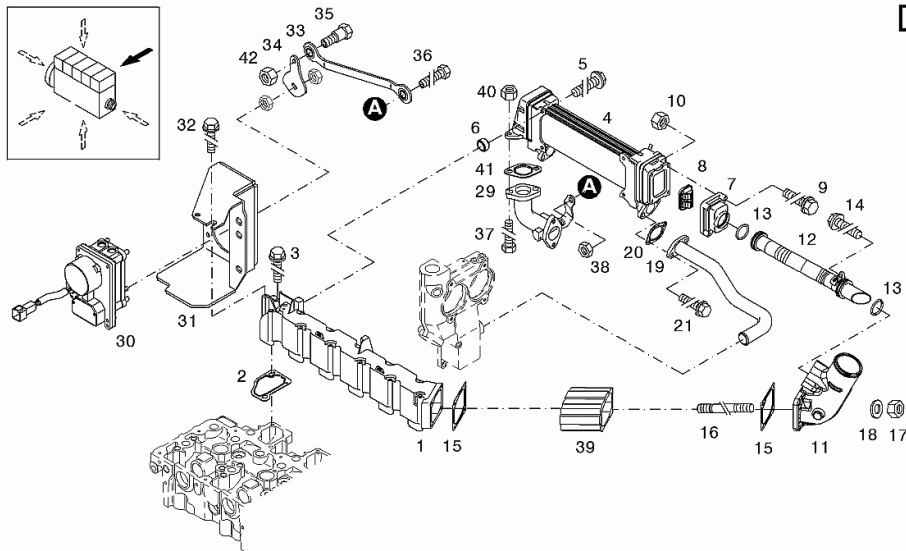
1	04904948	1	tensioner
2	01148622	1	screw EN 1662 -F-M10X80-10.9-ZNAL-A



000 ©

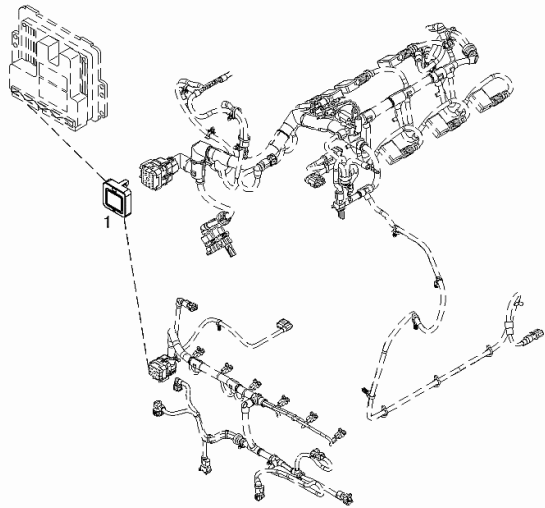
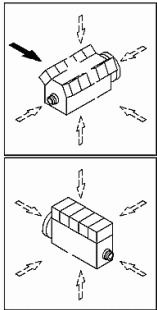
Section: B0 - ENGINE  
**RADIATOR**

Fig.	Code	QTY	Name
38	01103274	3	ISO 4017 -M8X28-21CRM0V5-7 nut
39	04258703	1	DIN 936 -M10-17H-A4C flange
40	01138774	2	nut m 8 ISO 4032 -M8-24CRMO5V
41	04903239	1	gasket
42	01127079	1	nut m 6 ISO 4032 -M6-10-A4C
49	04213838	1	sensor
50	01148201	1	screw ISO 4017 -M6X16-8.8-ZNAL-A
242	01016105	1	sealing compound



Section: B0 - ENGINE  
**COVER PLATE**

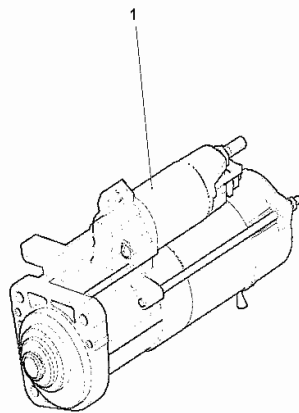
Fig.	Code	QTY	Name
1	04214601	1	cover



001 ©

**STARTER**

Fig.	Code	QTY	Name
1	01183284	1	starter motor H 821970- VM8R12VX4,7KWMELDRUCKGUSS/RIT



000

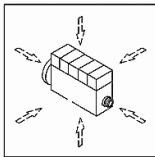
Section: B0 - ENGINE  
**ELECTRICAL LEAD**

Fig.	Code	QTY	Name
------	------	-----	------

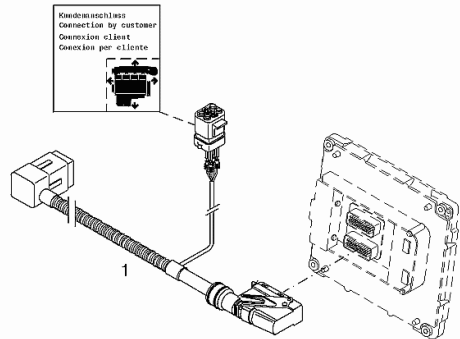
**Engine Serial Numbers:**

10547565 10567965 10621392 10621394 10629952

1	04215317	1	wire
---	----------	---	------



000 ©



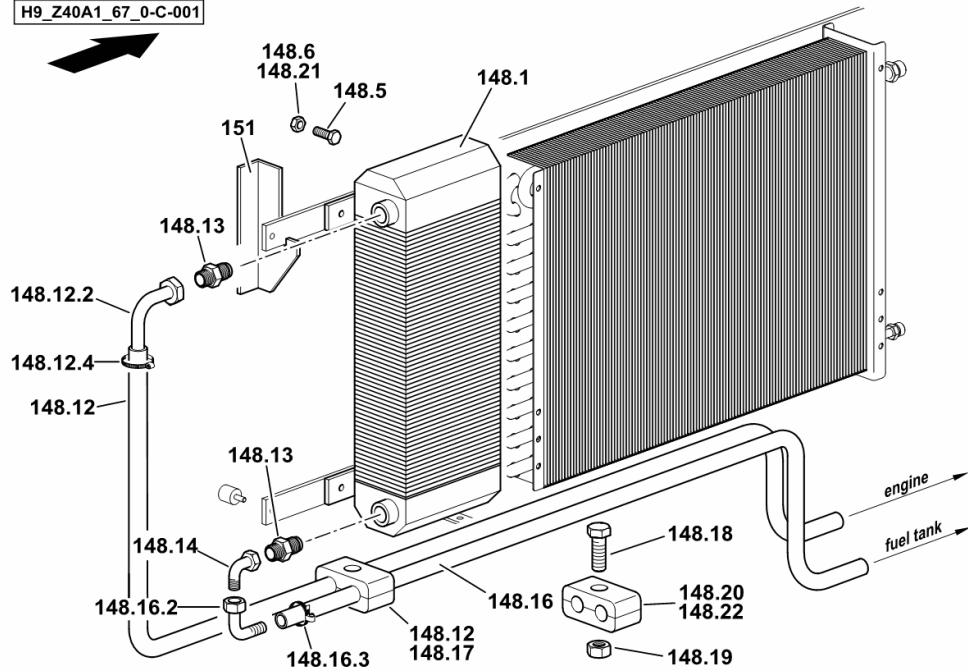
**FUEL COOLER**

Fig.	Code	QTY	Name
------	------	-----	------

**Notes:**

[5665 HTS COM 3 ->13500]

H9\_Z40A1\_67\_0-C-001



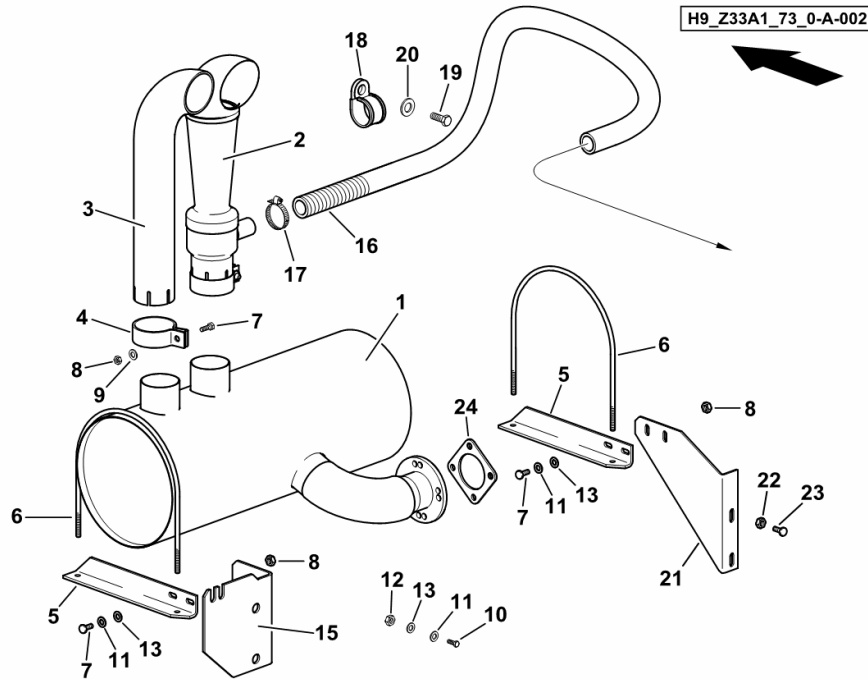
148.1	16056974	1	radiator
148.5	01112264	4	screw m 6 x 20, d933
148.6	01114357	4	nut m 6, d985
148.12	16056981	1	flexible hose L = mm 4700
148.12.2	16056913	2	tongue Ø 10 / m 22 p.1.5
148.12.4	01145570	2	clamp Ø 12/22
148.13	16048122	2	pipe fitting GE 15 PL
148.14	16022057	1	pipe fitting ew 15-l
148.16	16056985	1	flexible hose L = mm 5300
148.16.2	16056913	2	tongue Ø 10 / m 22 p.1.5
148.16.3	01145570	2	clamp Ø 12/22
148.17	06272953	2	terminal Ø 18
148.18	01100101	2	screw m 6 x 45
148.19	01114357	2	nut m 6, d985
148.20	16018347	3	hose clip Ø 15/15
148.21	01114357	6	nut m 6, d985
148.22	01145570	10	clamp Ø 12/22
151	16058139/10	1	support

**EXHAUST PIPE**

Fig.	Code	QTY	Name
------	------	-----	------

**Notes:**

[5665 HTS COM 3 ->13500] -> 13590



1	16062826	1	exhaust manifold
2	06513395	1	tube
3	16029496/10	1	tube
4	01120895	1	hose clip Ø 75
5	16064297	2	support
6	16022128/20	2	u bolt
7	01137624	4	screw m 8 x 25
8	01104944	2	nut m 8, d985
9	01102799	2	washer 8, d128
10	01112354	2	screw m 8 x 40
11	01107163	8	washer 9, d126
12	01104944	4	nut m 8, d985
13	01102799	6	washer 8, d128
15	16062822/30	1	support
16	16055270	1	flexible hose Ø 32 / L = mm 3700
17	01173968	2	clamp Ø 25/40
18	2.6839.060.0	2	clamp 40/25
19	01127043	2	screw m 8 x 25
20	04422645	2	washer 8.4
21	16064299	1	support
22	01112824	6	nut m 8, d934
23	01112322	2	screw m 8 p.1.25 x 20
24	04157260	1	gasket

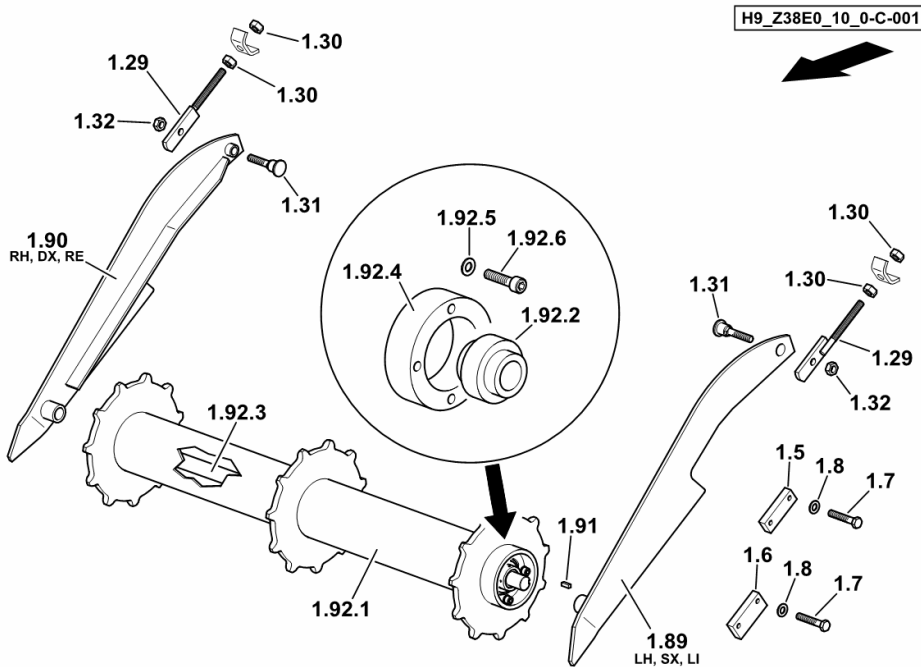
Section: HE - FEED ELEVATOR  
**LOADING ROLLER**

Fig.	Code	QTY	Name
------	------	-----	------


**Notes:**

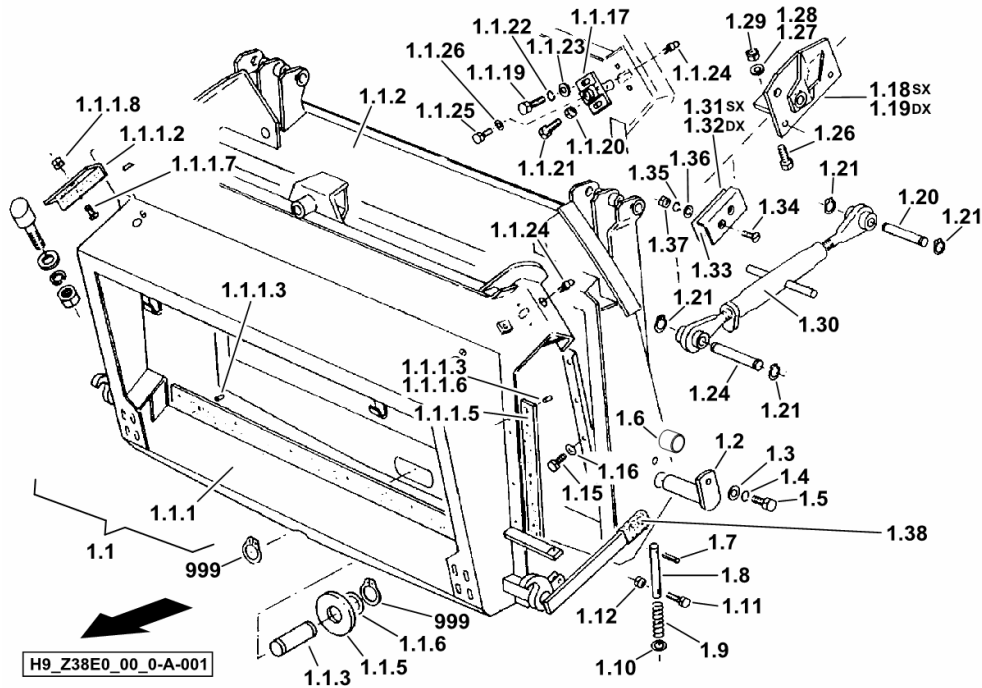
[5665 HTS COM 3 ->13500] 13712 <-

1.5	06548815	2	small plate
1.6	16031117	2	small plate mm 55
1.7	01112502	8	screw m 12 x 20
1.8	01102801	8	washer 12
1.29	16062577	2	rod m 16
1.30	01112886	4	nut m 16
1.31	16025727	2	smau pin m 16
1.32	01127856	2	nut m 16, d985
1.89	16029056	1	support sx/lh/li
1.90	16029054	1	support dx/rh/re
1.91	01118030	1	dowel 8.0 x 7.0 x 22
1.92.1	0.015.6718.3	1	roller
1.92.2	01145564	2	bearing GYE40 - KRR - B
1.92.3	0.015.6723.0	1	shaft L = mm 1225
1.92.4	16057681	2	bearing housing
1.92.5	01102800	8	washer 10.2
1.92.6	01110682	8	screw m 10 p.1.5 x 45



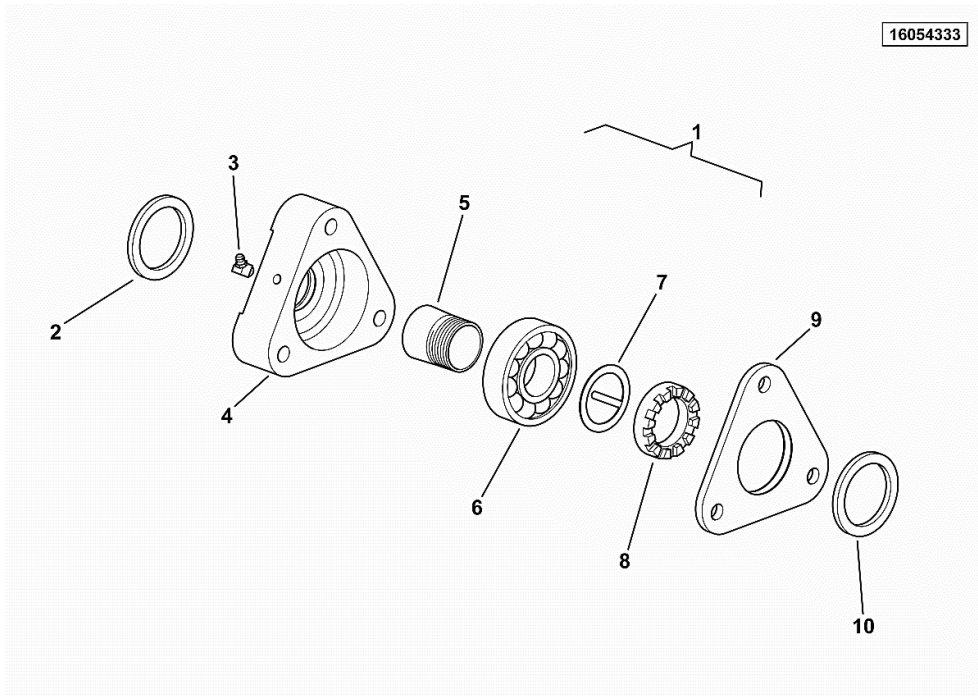
Section: HE - FEED ELEVATOR  
**OSCILLATING FRAME**

Fig.	Code	QTY	Name
1.28	01102801	8	washer 12
1.29	06209769	8	nut m 12, d985
1.30	16034179	2	adjustable tensioner  16034179
1.31	16038737	1	lamination sx/lh/li
1.32	16038738	1	lamination dx/rh/re
1.33	16038740	4	small plate
1.34	01143320	4	screw m 10 x 25
1.35	06214197	4	washer 10.5
1.36	01102800	4	washer 10.2
1.37	01102659	4	nut m 10, d934
1.38	06568995	1	rubber
999	01137321	2	ring 40 x 2.5, d471



**BEARING**

Fig.	Code	QTY	Name
1	16054333	1	bearing kpl.
2	01122873	1	felt band 35 x 47 x 5,0
3	01120697	1	lubricator bm 8 x 1
4	16054319	1	bearing housing
5	06512511	1	conical plug 35 h308
6	01175822	1	bearing 22208 E1-K
7	06512512	1	circlip 53 x 40.5
8	06512510	1	ring nut m 40 p.1.5
9	06512491	1	small cover
10	01139494	1	felt band 8 x 74 x 6,5



**COVER**

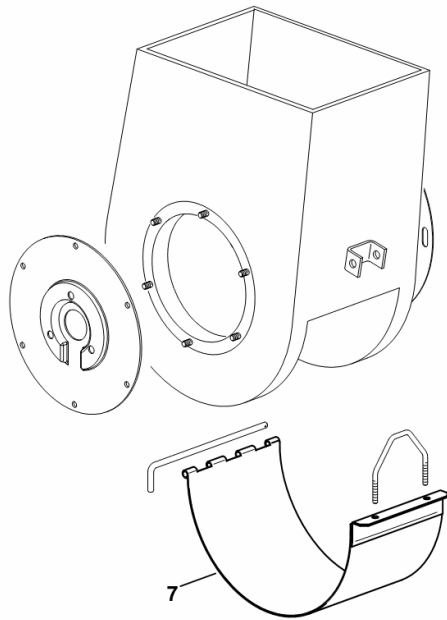
Fig.	Code	QTY	Name
------	------	-----	------

**Notes:**

- RICE EQUIPMENT [5665 HTS COM 3 ->13500]

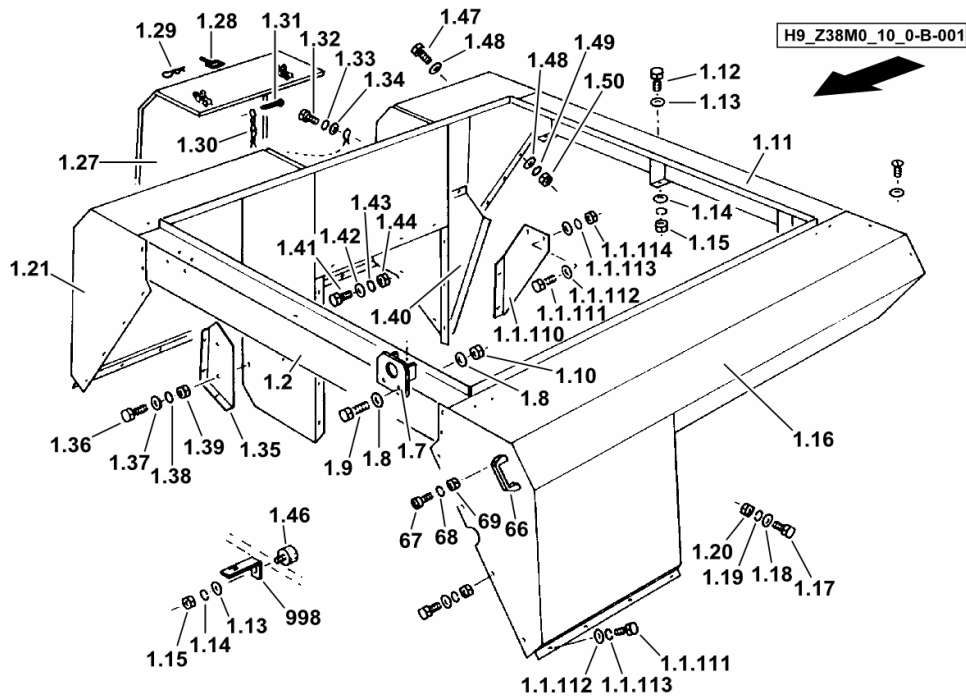
7	06519810	1	cover
---	----------	---	-------

H9\_97357\_30\_0-F-001



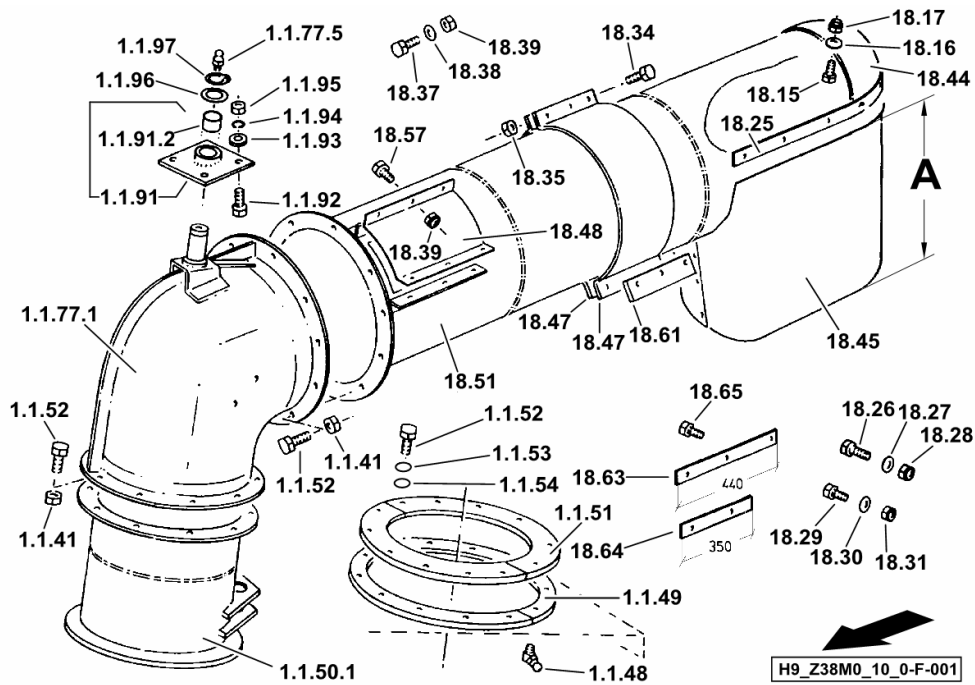
**GRAIN TANK TOP SECTION**

Fig.	Code	QTY	Name
1.48	06214192	3	washer 8.4
1.49	01102799	1	washer 8, d128
1.50	01112824	1	nut m 8, d934
66	01141954	1	handle PVC
67	01126918	2	screw m 8 p.1.25 x 20
68	01102799	2	washer 8, d128
69	01112824	2	nut m 8, d934
998	16017912	1	contact surface



**EXHAUST PIPE - MT. 5,0**

Fig.	Code	QTY	Name
18.64	16063159	1	rail L = mm 350
18.65	01112299	6	screw m 8 x 12, d933



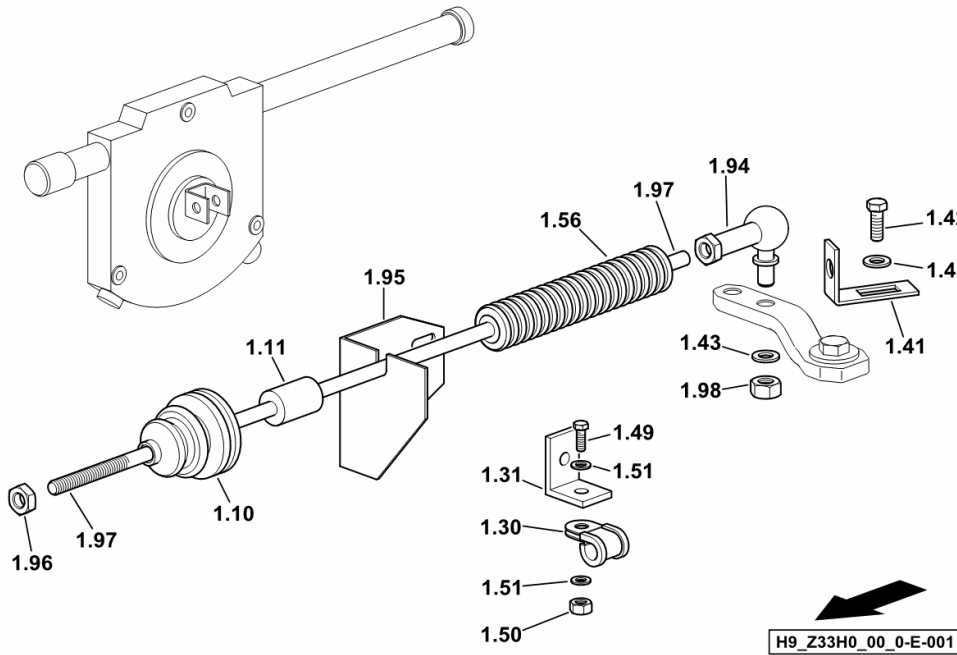
CUTTER BAR HYDRAULIC SYSTEM.....	HD.01.87 (1)
OPERATING HYDRAULICS FOR CUTTER BAR.....	HD.01.88 (1)
MULTIPLE CUTTER BAR ATTACHMENT.....	HD.01.91 (1)
ENGINE OIL DRAIN PIPE.....	HD.01.94 (1)
CYLINDER PARTS Ø 50.....	0.016.2178.4.A
CYLINDER PARTS Ø 45.....	0.016.2179.4.A
CYLINDER PARTS Ø 45.....	0.016.2180.4.A
CYLINDER PARTS Ø 110.....	0.016.4068.4.A
CYLINDER PARTS Ø 45.....	06503194.A
CYLINDER PARTS Ø 50.....	06548411.A
HYDRAULIC PUMP HPV 135.....	16025316.A
HYDRAULIC MOTOR HPV 135.....	16026718.A
CYLINDER PARTS Ø 45.....	16029257.A
CYLINDER PARTS Ø 60 mm.....	16029352.A
CYLINDER PARTS Ø 110 x 60 x 450 HUB.....	16029398.A
HYDRAULIC PUMP 19 cm <sup>3</sup> .....	16033384.A
MOWER BAR CONTROL.....	16040386.A
HYDRAULIC PUMP PARTS 3 - 16/8/8 cm <sup>3</sup> .....	16048014.A
OIL TANK - LT. 70.....	16050862.A
SPIN-ON FILTER.....	16054940.A
SPIN-ON FILTER 210 lt./min.....	16062419.A
<b>STEERING SYSTEM</b>	
MAIN HYDRAULIC STEERING.....	HD.02.0 (1)
MAIN HYDRAULIC STEERING.....	HD.02.1 (1)
STEERING HYDRAULIC.....	HD.02.4 (1)
HYDRAULIC STEERING GEAR.....	16020942.A
<b>TRANSMISSION COOLERS</b>	
LUBRIC. OIL COOLER.....	HD.03.1 (1)
LUBRIC. OIL COOLER.....	HD.03.4 (1)
<b>BRAKING SYSTEM</b>	
BRAKING SYSTEM.....	HD.04.0 (1)
BRAKING SYSTEM.....	HD.04.1 (1)
BRAKING SYSTEM.....	HD.04.4 (1)
BRAKING SYSTEM.....	HD.04.7 (1)
BRAKES sx/lh/li.....	16049747.A
BRAKES sx/lh/li.....	16049748.A
BRAKES dx/rh/re.....	16049749.A
BRAKES dx/rh/re.....	16049750.A
<b>ELECTROHYDRAULICS</b>	
SOLENOID VALVE ASSEMBLY.....	HD.05.0 (1)
SOLENOID VALVE.....	HD.05.2 (1)
SOLENOID VALVE ASSEMBLY.....	HD.05.5 (1)
SOLENOID VALVE ASSEMBLY.....	HD.05.9 (1)
SOLENOID VALVE ASSEMBLY.....	HD.05.13 (1)

Section: HD - HYDRAULIC SYSTEM  
**TIE ROD FOR HYDRAULIC PUMP**

Fig.	Code	QTY	Name
------	------	-----	------

Notes:  
 [5665 HTS COM 3 ->13500]

1.10	06547602	1	bellows
1.11	06547559	2	disc
1.30	06216402	1	clamp 15,9 ne
1.31	16006188	1	angular
1.41	16007362	1	contact surface
1.42	01101504	1	screw m 10 p.1.5 x 45
1.43	01127538	3	washer 10.5
1.49	01112341	1	screw m 8 x 30, d933
1.50	01104944	1	nut m 8, d985
1.51	01102799	1	washer 8, d128
1.56	16056714	1	bellows
1.94	01145145	1	joint 13/m6
1.95	16054408	1	support
1.96	01112813	1	nut m 6
1.97	16007302	1	stay m 6 / L = mm 4174
1.98	01112824	1	nut m 8, d934



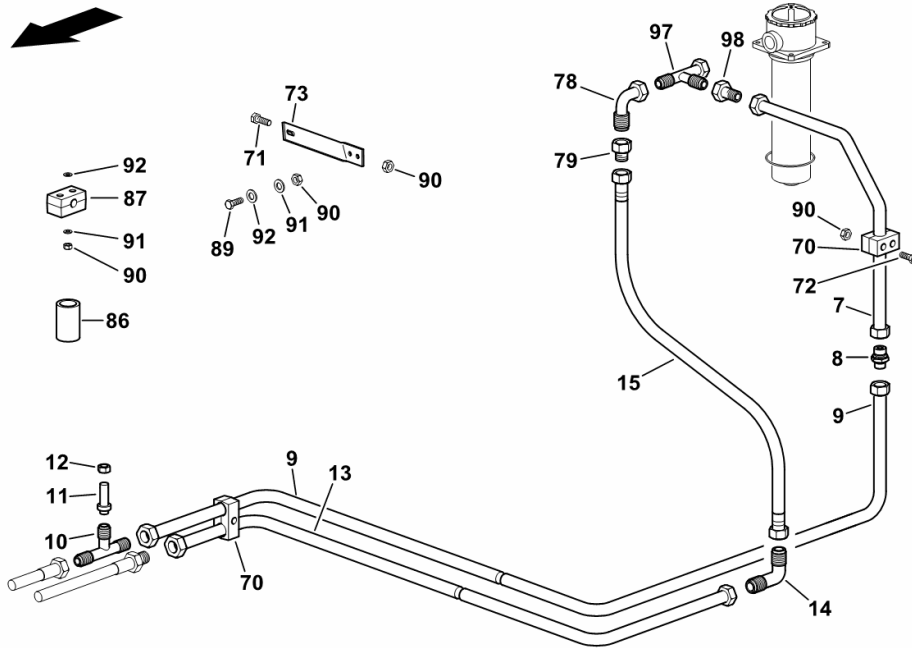
**WORKING HYDR.SYST.**

Fig.	Code	QTY	Name
------	------	-----	------

**Notes:**

[5665 HTS COM 3 ->13500]

H9\_Z40D2\_08\_0-G-001



7	16056006	1	tube
8	01116715	1	tongue L 28
9	16056004	1	tube
10	16048016	1	pipe fitting TR 28/18/28
11	01179135	1	plug L 18-V1
12	01127347	1	nut CL 18
13	16056014	1	tube L = mm 1050
14	01143306	1	pipe fitting L 22
15	16062453	1	flexible hose L = mm 1450
70	06261603	2	terminal Ø 28/22
71	01124458	2	screw m 8 x 100, d933
72	01112322	2	screw m 8 p.1.25 x 20
73	16055379	1	bracket
78	16025353	1	pipe fitting ew 35pl
79	16055309	1	reduction 35/22 L
86	06527092	1	distance bar Ø 22
87	06262780	4	hose clip Ø 22/22
89	01111179	1	screw m 8 x 70, d931
90	01112824	3	nut m 8, d934
91	01102799	3	washer 8, d128
92	06214193	1	washer 8.4
97	16055308	1	pipe fitting T
98	16055310	1	reduction 35/28 L

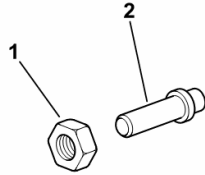
**PLUGS**

Fig.	Code	QTY	Name
------	------	-----	------

Notes:  
[5665 HTS COM 3 ->13500]

1	01179539	1	nut CL 12 H310
2	01179141	1	plug

H9\_Z33D2\_24\_0-A-001

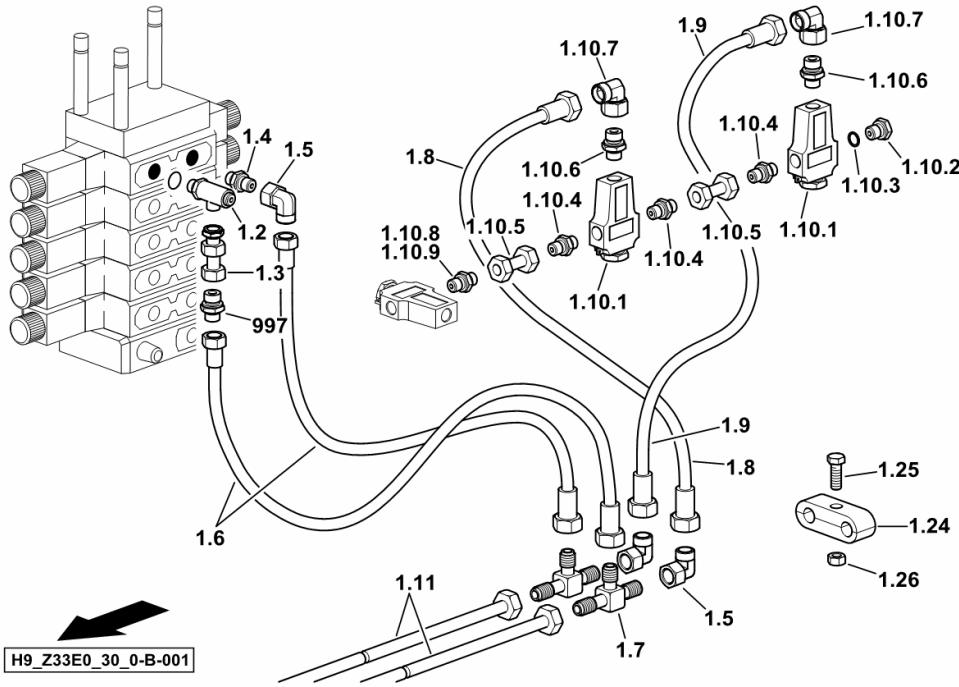


Section: HD - HYDRAULIC SYSTEM  
**FIXED FRAME HYDRAULIC SYSTEM**

Fig.	Code	QTY	Name
------	------	-----	------

**Notes:**

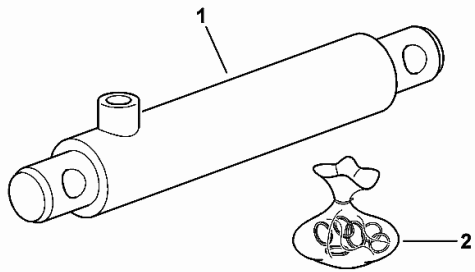
BALANCE/AUTOCONTROL [5665 HTS COM 3 ->13500]



1.2	16020974	1	valve 35 b
1.3	16042934	1	reduction
1.4	16048019	1	pipe fitting m 18 p.1.5
1.5	16040269	4	shaped part 90°
1.6	16020850	2	flexible hose L = MM 820 M14 X 1.5, Ø4
1.7	01127371	2	pipe fitting DL 8
1.8	16025318	1	flexible hose L = MM 420 M14 X 1.5, Ø4
1.9	16044568	1	flexible hose L = MM 550 M14 X 1.5, Ø4
1.10.1	06259866	2	valve
1.10.2	01118970	1	plug m 18 p.1.5
1.10.3	01118718	1	ring 18 x 24
1.10.4	06216829	3	tongue 18 LM 1
1.10.5	06544283	2	tube
1.10.6	16048019	2	pipe fitting m 18 p.1.5
1.10.7	16040269	2	shaped part 90°
1.10.8	06216829	1	tongue 18 LM 1
1.10.9	16048019	2	pipe fitting m 18 p.1.5
1.11	16048859	2	tube
1.24	16042903	1	hose clip 13,5/13,5
1.25	01111158	1	screw m 8 p.1.25 x 50
1.26	01112824	1	nut m 8, d934
997	01127359	1	pipe fitting L8, d3902

**CYLINDER PARTS Ø 45**

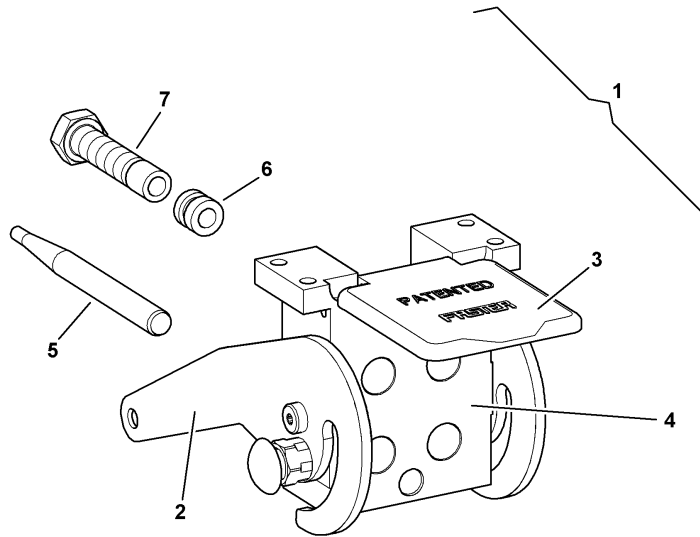
Fig.	Code	QTY	Name
1	0.016.2180.4	1	roller Ø 45 BONDIOLI & PAVESI Ø 45, MM 435 ÷ 655 M12 X 1.5, Ø 16.5
2	0.900.1366.2	1	gasket set



0.016.2180.4

**MOWER BAR CONTROL**

Fig.	Code	QTY	Name
1	16040386	1	connection
2	0.000.0000.1	0	not serviceable
3	16048668	1	cover PVC - BLACK
4	0.000.0000.1	0	not serviceable
5	16048665	2	pin
6	16053072	3	gasket
7	16048666	3	sleeve



1604\_0386

**LUBRIC. OIL COOLER**

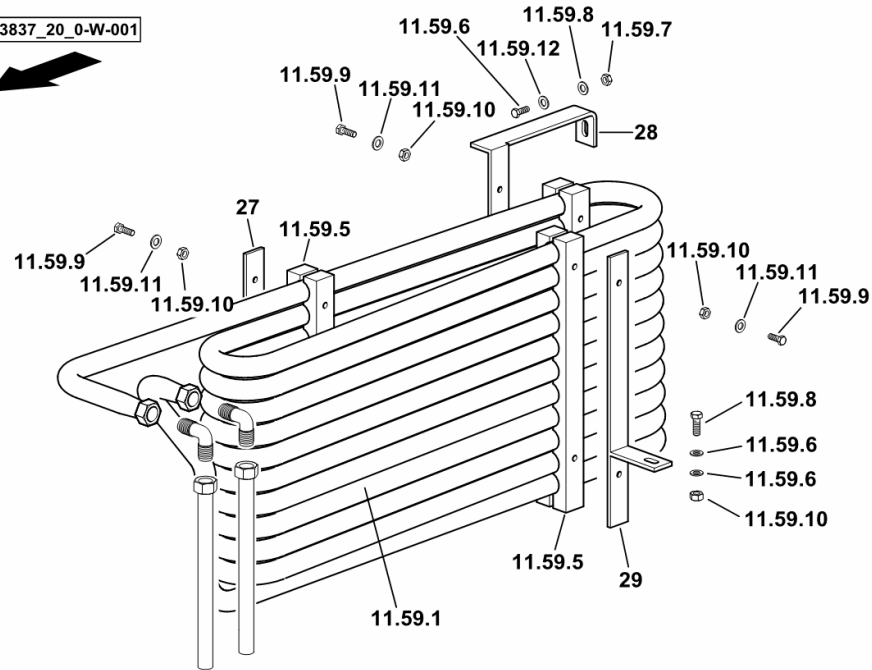
Fig.	Code	QTY	Name
------	------	-----	------

**Notes:**

BALANCE/AUTOCONTROL [5665 HTS COM 3 ->13500]

11.59.1	06257261	1	oil cooler
11.59.5	06258654	6	terminal
11.59.6	01112333	3	screw m 8 x 25, d933
11.59.7	01112824	3	nut m 8, d934
11.59.8	01102799	3	washer 8, d128
11.59.9	01126975	6	screw m 6 x 70, d931
11.59.10	01114357	6	nut m 6, d985
11.59.11	06214189	12	washer 6.4
11.59.12	06214355	3	washer 8.4
27	16062648	1	support
28	16062649	1	support
29	16062650	1	support

H9\_Z3837\_20\_0-W-001



**SOLENOID VALVE**

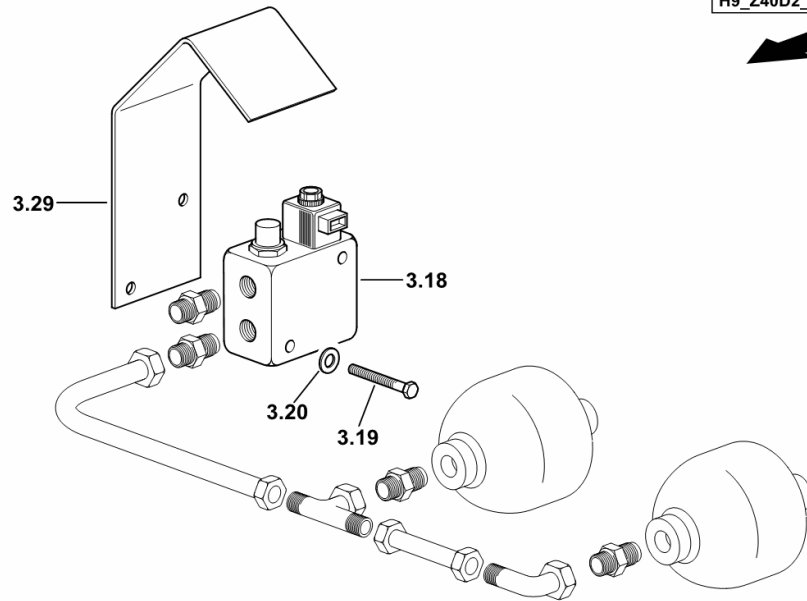
Fig.	Code	QTY	Name
------	------	-----	------

**Notes:**

[5665 HTS COM 3 ->13500]

3.18	16012861	1	small block ( EV ) ☞ 16012861
3.19	01126975	2	screw m 6 x 70, d931
3.20	01102797	2	washer 6, d128
3.29	16061881	1	small sump

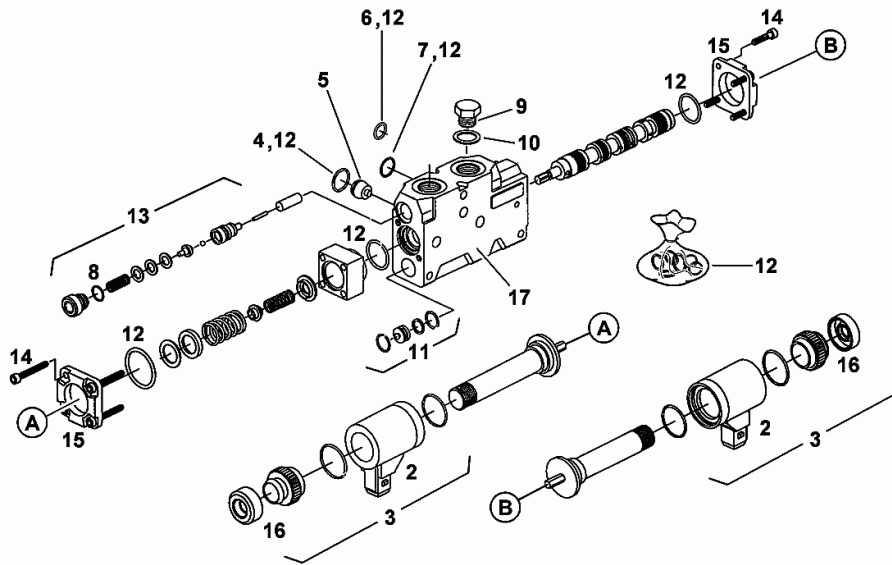
H9\_Z40D2\_08\_0-D-001



**SOLENOID VALVE**

Fig.	Code	QTY	Name
2	16039213	2	magneto
3	16039247	2	parts set
4	04386278	1	ring 18x2,5
5	04418197	1	valve
6	16020331	1	ring 9x2,5
7	16020332	4	ring 17x2,5
8	16020346	2	ring 13x2,5
9	0.000.0000.1	0	not serviceable
10	0.000.0000.1	0	not serviceable
11	16039216	1	parts set
12	16039215	1	gasket set
13	16039217	1	parts set
14	01126909	8	screw m 4 x 8
15	04438454	2	flange
16	04438443	2	rubber
17	0.000.0000.1	0	not serviceable

1603\_3531



**STONE TRAP**

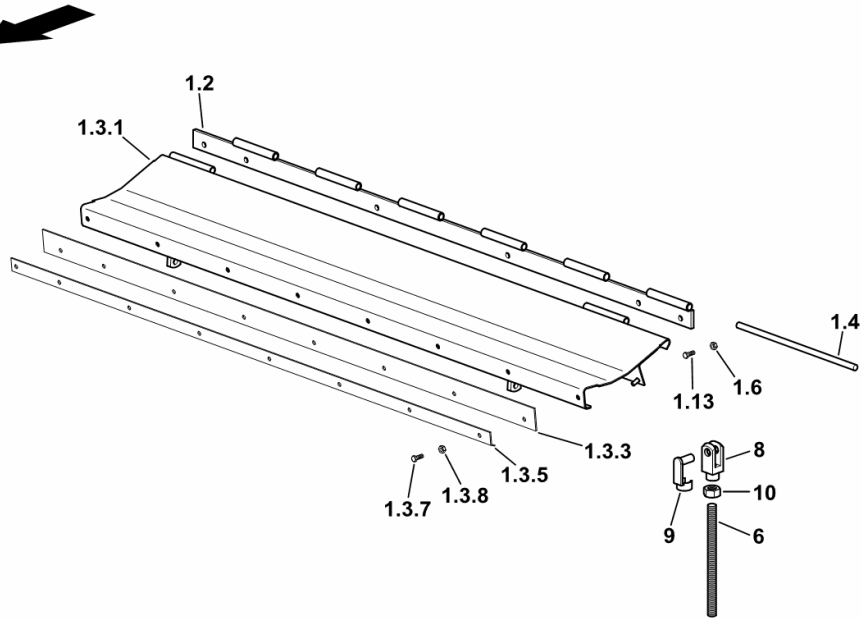
Fig.	Code	QTY	Name
------	------	-----	------

**Notes:**

- MAIZE EQUIPMENT [5665 HTS COM 3 ->13500]

1.2	16005292	1	hinge
1.3.1	16048489	1	lamination
1.3.3	16040594	1	guard
1.3.5	16040593	1	lamination
1.3.7	01112322	7	screw m 8 p.1.25 x 20
1.3.8	01104944	7	nut m 8, d985
1.4	16005294	1	pin Ø 11 / L = mm 1252
1.6	06209768	8	nut m 10, d985
1.13	01112439	4	screw m 10 x 35, d933
6	16040595	2	stud bolt m 12 / L = mm 200
8	01120919	4	fork head
9	01164624	4	smau pin 12 x 24
10	01112858	4	nut m 12, d934

H9\_97497\_50\_0-B-001



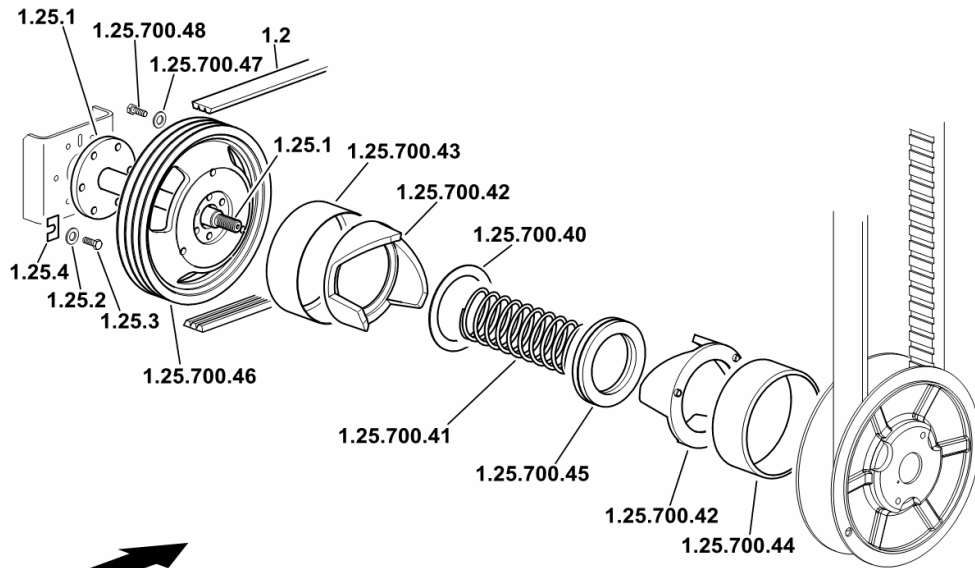
**THRESHING DRUM SPEED VARIATOR**

Fig.	Code	QTY	Name
------	------	-----	------

**Notes:**

[5665 HTS COM 3 ->13500]

1.2	01145049	1	belt 3/17 x 2650Li
1.25.1	06546227	1	shaft JH
1.25.2	01102801	6	washer 12
1.25.3	01112538	6	screw m 12 x 35, d933
1.25.4	06545831	5	shim S = 1.00
1.25.700.40	16000192	3	disc
1.25.700.41	01145046	1	spring 13 x 144 x 174
1.25.700.42	16002271	2	disc
1.25.700.43	16000179	1	cover
1.25.700.44	16000180	1	cover
1.25.700.45	01179373	1	bearing
1.25.700.46	16002297	1	pulley 3/17 x 355
1.25.700.47	01102801	6	washer 12
1.25.700.48	01112547	6	screw m 12 x 40, d933



H9\_16000\_21\_4-F-001

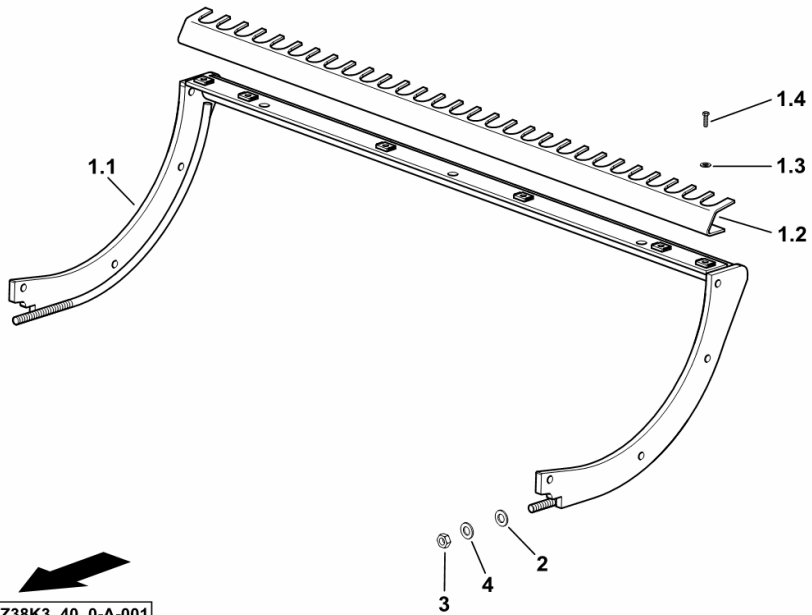
**CONCAVE FRAME**

Fig.	Code	QTY	Name
------	------	-----	------

**Notes:**

[5665 HTS COM 3 ->13500]

1.1	0.015.8474.3/20	1	chassis frame
1.2	0.015.5654.3/20	1	lamination
1.3	01107163	6	washer 9, d126
1.4	2.0330.507.2	6	screw m 8 p.1.25 x 20
2	01124633	2	washer 18.5
3	01127856	2	nut m 16, d985
4	01102803	2	washer 16



H9\_Z38K3\_40\_0-A-001

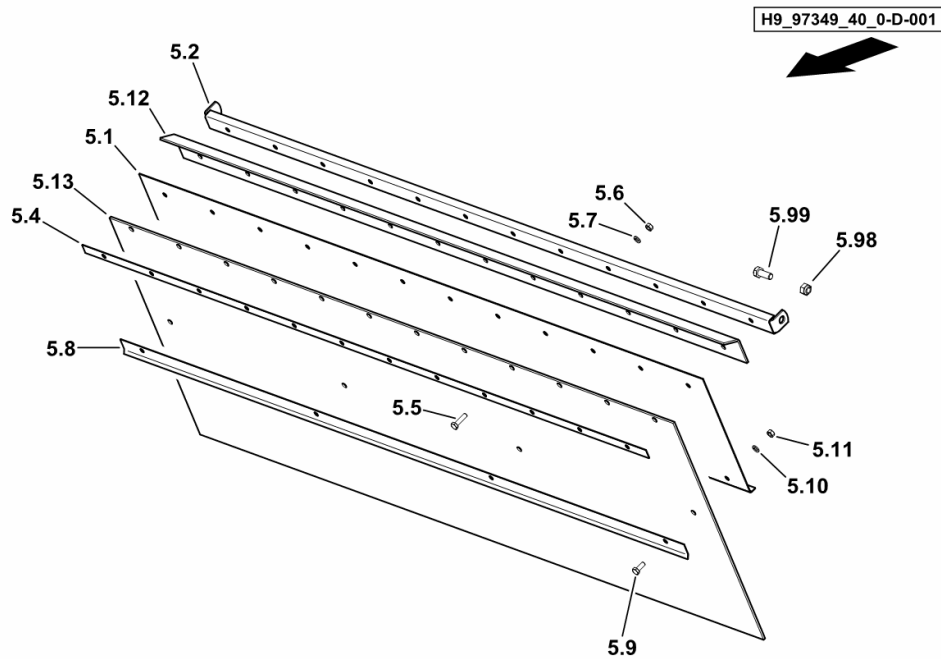
**SHIELD**

Fig.	Code	QTY	Name
------	------	-----	------

**Notes:**

- C.C.M. EQUIPMENT [5665 HTS COM 3 ->13500]

5.1	06284031	1	lamination
5.2	06284026	1	lamination
5.4	06258260	1	lamination
5.5	01112341	10	screw m 8 x 30, d933
5.6	01102799	10	washer 8, d128
5.7	01112824	10	nut m 8, d934
5.8	06258261	1	lamination
5.9	01112322	4	screw m 8 p.1.25 x 20
5.10	01102799	4	washer 8, d128
5.11	01112824	4	nut m 8, d934
5.12	06284032	1	lamination
5.13	06542047	1	cloth/tarpaulin?
5.98	06209769	2	nut m 12, d985
5.99	01112529	2	screw m 12 x 30, d933



**V-GROOVED PULLEY**

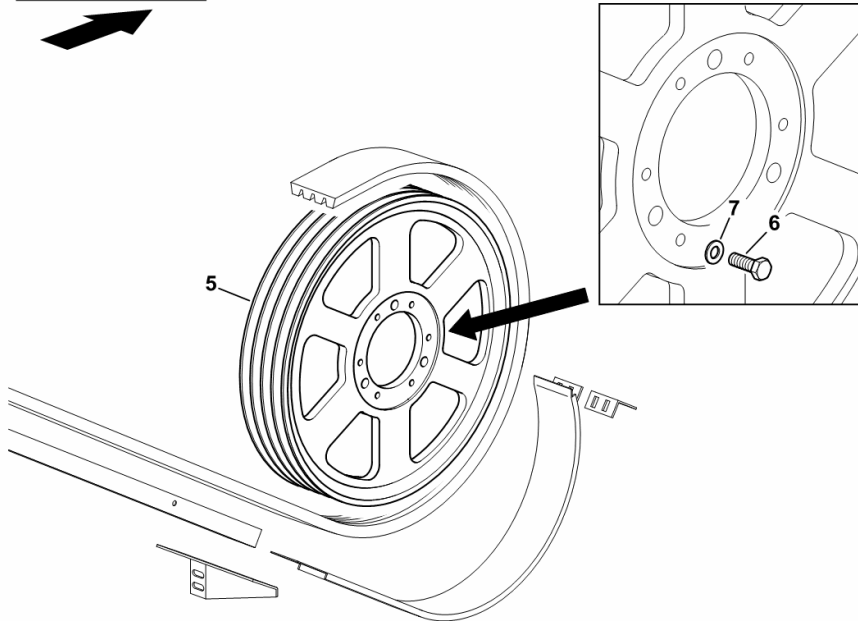
Fig.	Code	QTY	Name
------	------	-----	------

**Notes:**

[5665 HTS COM 3 -&gt;13500] -&gt; 13589

5	16002299/10	1	pulley 4/17 x 526 Ø 16.5 x 3 / Ø 10.5 x 6
6	01112429	6	screw m 10 x 30, d933
7	01102800	6	washer 10.2

H9\_Z37K0\_02\_0-D-002



CLICK HERE TO **DOWNLOAD** THE COMPLETE MANUAL

- Thank you very much for reading the preview of the manual.
- You can download the complete manual from: [www.heydownloads.com](http://www.heydownloads.com) by clicking the link below



- Please note: If there is no response to CLICKING the link, please download this PDF first and then click on it.

CLICK HERE TO **DOWNLOAD** THE COMPLETE MANUAL