

## TOOLS AND ACCESSORIES

## CHOPPER

KNIVES.....	4U.36.1
V-BELT.....	4U.36.2
BISO-STRAW CHOPPER BASIS FRAME.....	4U.36.51
BISO-STRAW CHOPPER FLAIL DRUM WITH BEARING.....	4U.36.52
BISO-STRAW CHOPPER DISTRIBUTOR BOX.....	4U.36.53
BISO-STRAW CHOPPER DISTRIBUTOR BOX REGULATION ELECTRIC.....	4U.36.55
BISO-STRAW CHOPPER MOUNTING FRAME - 6170.....	4U.36.56
BISO-STRAW CHOPPER MOUNTING FRAME.....	4U.36.57
BISO-STRAW CHOPPER DEFLECTOR SHEETS.....	4U.36.58
BISO-STRAW CHOPPER GUARDS HOOD CROSS-STRUTS - 6170.....	4U.36.59
BISO-STRAW CHOPPER GUARDS HOOD CROSS-STRUTS.....	4U.36.60
BISO-STRAW CHOPPER LAYSHAFT SUPPORT - 7070.....	4U.36.61
BISO-STRAW CHOPPER LAYSHAFT SUPPORT + 7071.....	4U.36.62
BISO-STRAW CHOPPER LAYSHAFT / CLUTCH - 7070.....	4U.36.63
BISO-STRAW CHOPPER LAYSHAFT + 7071.....	4U.36.64
BISO-STRAW CHOPPER EL.MAGNET CLUTCH "W"-VERSION - 7070.....	4U.36.65
BISO-STRAW CHOPPER EL.MAGNET CLUTCH "S"-VERSION - 7070.....	4U.36.66
BISO-STRAW CHOPPER VEE BELT CLUTCH + 7071.....	4U.36.67
BISO-STRAW CHOPPER STRAW WARNING SYSTEM.....	4U.36.68
BISO-STRAW CHOPPER ELECTRICAL EQUIPMENT.....	4U.36.69
CONVERSION KIT CHOPPER VEE BELT CLUTCH BISO-STRAW CHOPPER.....	4U.36.70
CONVERSION KIT CHOPPER VEE BELT CLUTCH BISO-STRAW CHOPPER.....	4U.36.71
CONVERSION KIT CHOPPER VEE BELT CLUTCH BISO-STRAW CHOPPER.....	4U.36.72
BISO-STRAW CHOPPER CHAFF SPREADER W.....	4U.36.73
BISO-STRAW CHOPPER CHAFF SPREADER W.....	4U.36.74
BISO-STRAW CHOPPER CHAFF SPREADER - 6170 / W.....	4U.36.75
BISO-STRAW CHOPPER CHAFF SPREADER W.....	4U.36.76
KPAB-STRAW CHOPPER BASIS FRAME -Y 05147.....	4U.36.77
KPAB-STRAW CHOPPER BASIS FRAME +Y 05148.....	4U.36.78
KPAB-STRAW CHOPPER DISTRIBUTOR BOX -Y 05147.....	4U.36.79
KPAB-STRAW CHOPPER DISTRIBUTOR BOX +Y 05148.....	4U.36.80
KPAB-STRAW CHOPPER DISTRIBUTOR BOX REGULATION ELECTRIC / W.....	4U.36.81
KPAB-STRAW CHOPPER MOUNTING FRAME.....	4U.36.82
KPAB-STRAW CHOPPER MOUNTING FRAME TENSION ROLLER +Y 005542 -Y 06439.....	4U.36.83
KPAB-STRAW CHOPPER GUIDE ROLLERS +Y 06440.....	4U.36.84
KPAB-STRAW CHOPPER DEFLECTOR SHEETS.....	4U.36.85
KPAB-STRAW CHOPPER LAYSHAFT -Y 05541.....	4U.36.86
KPAB-STRAW CHOPPER LAYSHAFT SUPPORT +Y 05542 -Y 06439.....	4U.36.88
KPAB-STRAW CHOPPER LAYSHAFT SUPPORT +Y 05542 -Y 06439.....	4U.36.89
KPAB-STRAW CHOPPER VEE BELT CLUTCH +Y 05542 -Y 06439.....	4U.36.90

CLICK HERE TO **DOWNLOAD** THE COMPLETE MANUAL

- Thank you very much for reading the preview of the manual.
- You can download the complete manual from: [www.heydownloads.com](http://www.heydownloads.com) by clicking the link below

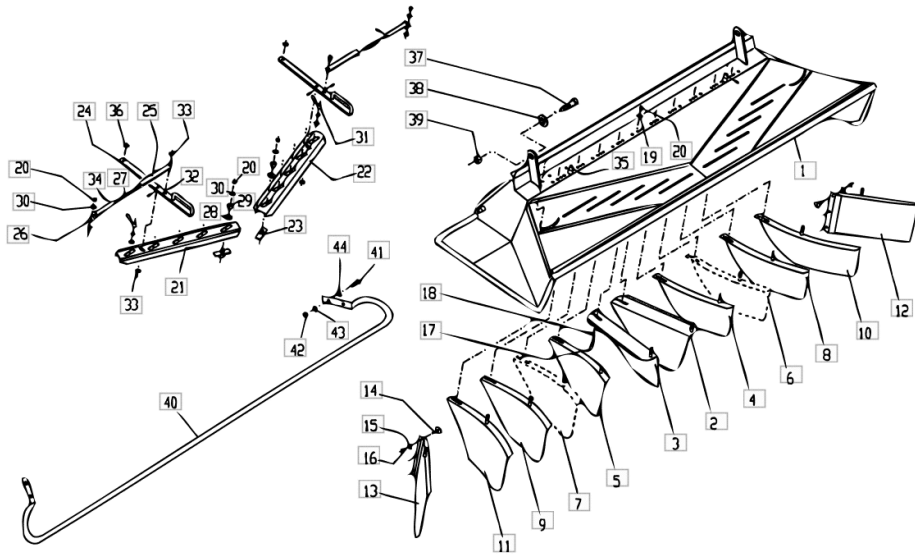


- Please note: If there is no response to CLICKING the link, please download this PDF first and then click on it.

CLICK HERE TO **DOWNLOAD** THE COMPLETE MANUAL

**BISO-STRAW CHOPPER DISTRIBUTOR BOX**

Fig.	Code	QTY	Name
22.1	16018646	1	valve I-495 R/G 20,22-34,36
23	16018753	0	screw
24	16018755	2	lever
25	16018757	2	rod
26	16018758	2	tube
27	06215315	2	spring
28	01107117	0	washer 17
29	01138938	0	nut m 16 p.1.5
30	06214192	0	washer 8.4
31	16018759	2	knob
32	01132621	4	split pin 3.2 x 16
33	01107105	6	washer 10.5
34	01132634	2	split pin 3,2x 32 d94
35	01106451	2	split pin 4 x 25
36	06214280	2	washer 13 x 24 x 2.5
37	01112693	2	screw m 16 x 45, d933
38	16015388	2	sleeve
39	01127856	2	nut m 16, d985
40	16018663	1	bracket
41	06214135	4	screw m 8 x 20
42	01112824	4	nut m 8, d934
43	01102799	4	washer 8, d128
44	01107101	4	washer 8.4



**BISO-STRAW CHOPPER GUARDS HOOD CROSS-STRUTS - 6170**

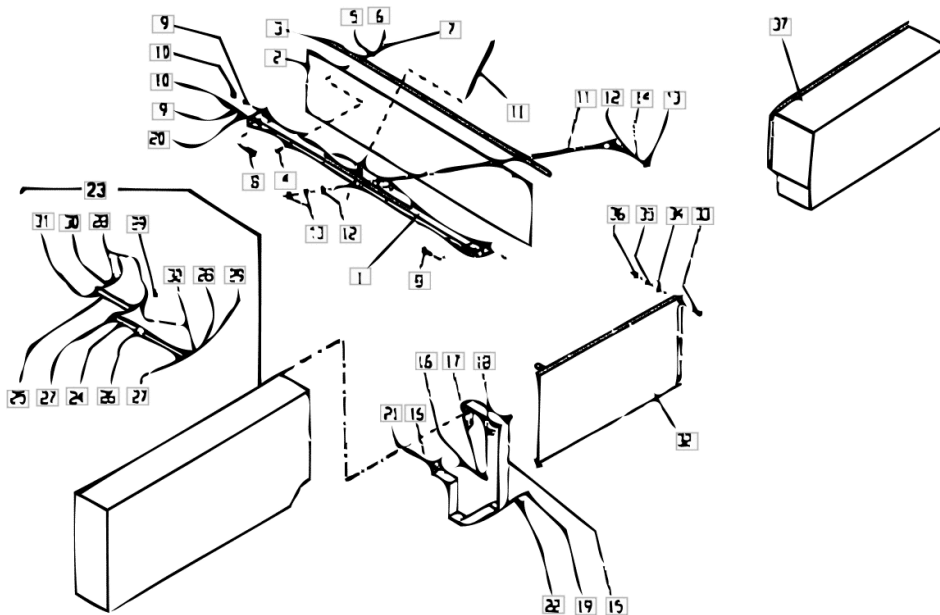
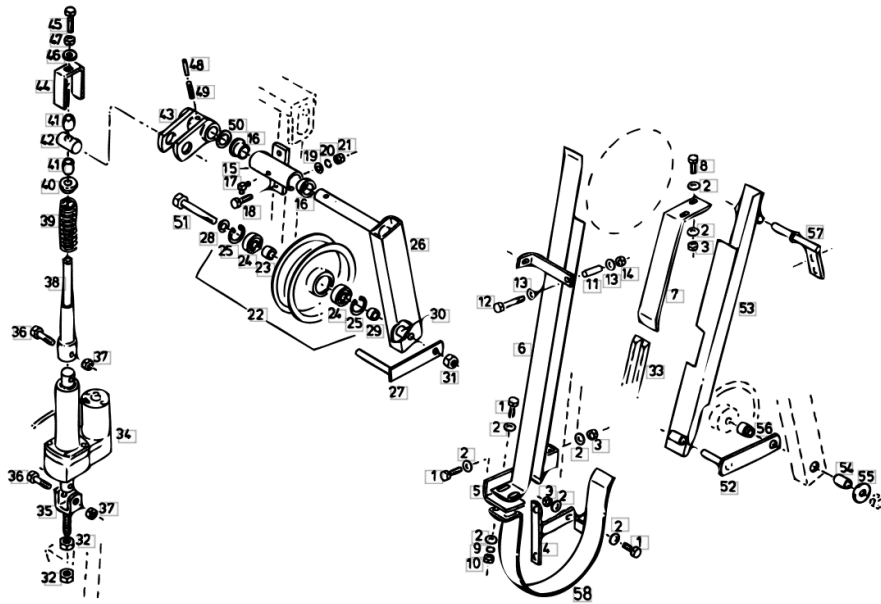


Fig.	Code	QTY	Name
1	16018791	1	spacer 4060/4065
1.1	16018790	1	spacer 4070/4075
2	16018675	1	cloth/tarpaulin? 4060/4065
2.1	16018674	1	cloth/tarpaulin? 4070/4075
3	16018793	1	frame 4060/4065
3.1	16018792	1	frame 4070/4075
4	01112264	8	screw m 6 x 20, d933
5	06214189	8	washer 6.4
6	01102797	8	washer 6, d128
7	01112813	8	nut m 6
8	01112418	4	screw m 10 x 25, d933
9	01102800	4	washer 10.2
10	01102659	4	nut m 10, d934
11	16018794	2	rod 4060/4065
11.1	16018795	2	rod 4070/4075
12	06214280	4	washer 13 x 24 x 2.5
13	01112858	6	nut m 12, d934
14	01102801	2	washer 12
15	16018796	1	support
16	06214192	8	washer 8.4
17	01102799	4	washer 8, d128
18	01112824	4	nut m 8, d934
19	01140002	2	split pin 5 x 45 d94
20	01127717	2	washer 10.5
21	01112333	4	screw m 8 x 25, d933
22	06519312	2	stop
23	16018660	1	guard
24	16018798	1	joint
25	16018799	1	joint
26	16019000	1	tube
27	01112333	2	screw m 8 x 25, d933
28	01112824	4	nut m 8, d934
29	01126748	2	nut bm8 d439
30	01107101	3	washer 8.4
31	01112341	1	screw m 8 x 30, d933
32	16019001	1	guard

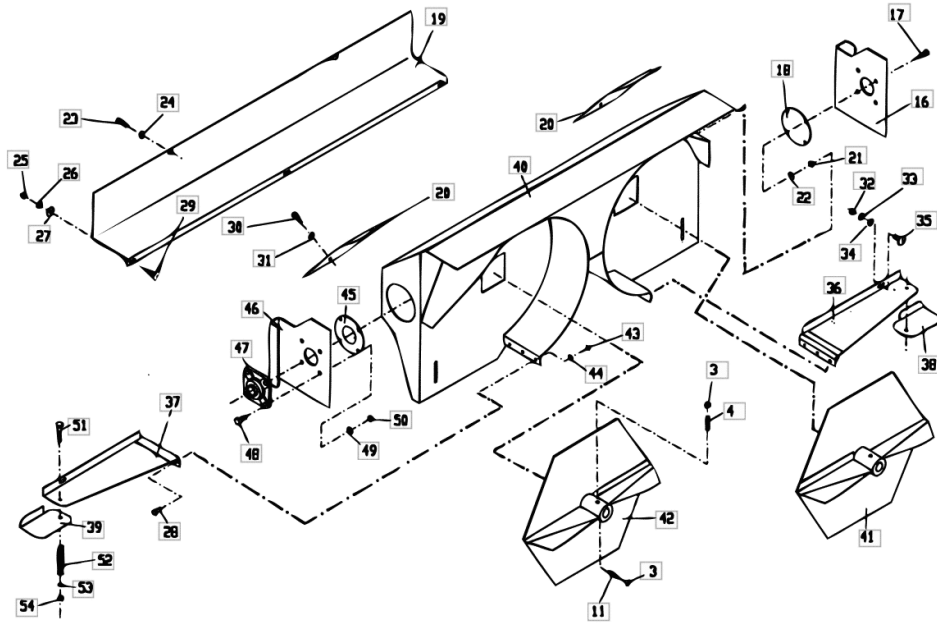
**BISO-STRAW CHOPPER VEE BELT CLUTCH + 7071**

Fig.	Code	QTY	Name
1	01112333	3	screw m 8 x 25, d933
2	01107163	16	washer 9, d126
3	01104944	6	nut m 8, d985
4	16024802	1	console
5	16024617	1	console
6	16024637	1	guide
7	16022198	1	guide
8	01112341	2	screw m 8 x 30, d933
9	01102799	2	washer 8, d128
10	01112824	2	nut m 8, d934
11	06241150	1	spacer
12	01101846	1	screw m 10 x 70, d933
13	01107165	2	washer 10.5
14	06209768	1	nut m 10, d985
15	16021676	1	support
16	06262701	2	bushing
17	01120697	1	lubricator bm 8 x 1
18	01112429	2	screw m 10 x 30, d933
19	01107165	2	washer 10.5
20	01102800	2	washer 10.2
21	01102659	2	nut m 10, d934
22	06500622	1	bearing 64/220
23	06502152	1	bushing
24	01109115	2	ball bearing 6303 2rs
25	01107834	2	circlip 47 x 1.75
26	16024806	1	support
27	16021682	1	support
28	06257433	1	washer 17.2
29	16003740	1	bushing
30	06332559	1	bushing
31	01127856	1	nut m 16, d985
32	01112886	2	nut m 16
33	01145479	1	belt 2hc x 3270
34	16027276	1	electric motor
35	16006207	1	fork m 16
36	01122455	2	screw m 12 x 55
37	06209769	2	nut m 12, d985
38	16021661	1	top link
39	06272836	1	spring 6 x 35
40	06515118	1	disc
41	06233233	2	bushing 25 x 19 x 31
42	06302215	1	pin
43	16021672	1	lever
44	16021662	1	support



**BISO-STRAW CHOPPER CHAFF SPREADER W**

Fig.	Code	QTY	Name
3	01112824	4	nut m 8, d934
11	01145525	4	pin m8x25 12.9
16	16023598	1	lamination L
17	01112407	0	screw m 10 x 20, d933
18	16023599	1	plate
19	16026200	1	sump
19.1	16026201	1	sump 4060-4068
20	16026202	2	cap 4070-4090
21	06209768	4	nut m 10, d985
22	01127717	4	washer 10.5
23	01112322	2	screw m 8 p.1.25 x 20
24	01102799	2	washer 8, d128
25	01112824	3	nut m 8, d934
26	01102799	3	washer 8, d128
27	06214192	3	washer 8.4
28	01103316	6	screw m 6 p.1.0 x 16
29	06214135	3	screw m 8 x 20
30	01112307	2	screw m 8 p.1.25 x 15, d933
31	01102799	2	washer 8, d128
32	01112824	2	nut m 8, d934
33	01102799	2	washer 8, d128
34	06214192	2	washer 8.4
35	06214135	2	screw m 8 x 20
36	16026203	1	lamination sx/lh/li 4060-4068 / L
36.1	16026204	1	lamination sx/lh/li 4070-4090 / L
37	16026205	1	lamination dx/rh/re 4060-4068 / R
37.1	16026206	1	tube dx/rh/re 4070-4090 / R
38	16026207	1	extension sx/lh/li L
39	16026208	1	extension dx/rh/re R
40	16026209	1	tube 4060-4068
40.1	16026210	1	chassis 4070-4090
41	16026211	1	cleaning fan sx/lh/li 4060-4068 / L



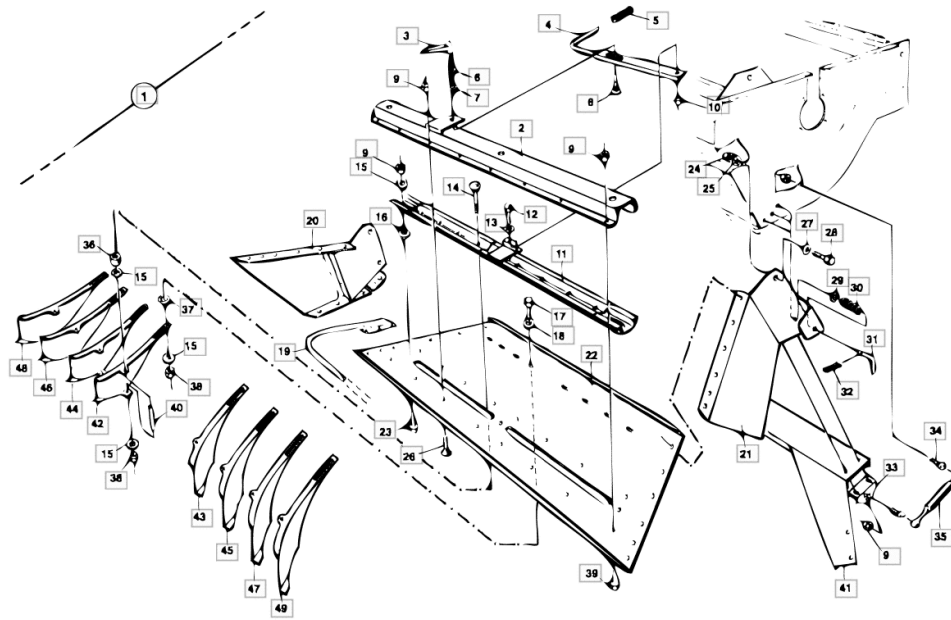
**KPAB-STRAW CHOPPER DISTRIBUTOR BOX -Y 05147**

Fig.	Code	QTY	Name
1	16020252	1	distr. box 4060/4065
1.1	16020253	1	distr. box 4075-4090
2	16023152	1	guide 4060/4065
2.1	16023170	1	guide 4075-4090
3	16023153	1	knob
4	16023154	1	lever
5	16023060	1	handle
6	01102799	1	washer 8, d128
7	16023425	1	washer 8.4
8	01108524	1	screw m 8 p.1.25 x 20
9	01104944	40	nut m 8, d985
10	06209768	1	nut m 10, d985
11	16023155	1	light body 4060/4065
11.1	16023171	1	light body 4075-4090
12	01112407	1	screw m 10 x 20, d933
13	16023426	1	washer 10,5 x 26
14	16023431	8	screw
15	16023428	35	washer 9x28
16	16023156	3	snoulder
17	01112322	24	screw m 8 p.1.25 x 20
18	16023425	8	washer 8.4
19	16020250	1	bracket 4060/4065
19.1	16020251	1	bracket 4075-4090
20	16023145	1	lift hand side panel L
21	16023144	1	right h.side panel dx/rh/re R
22	16023157	1	valve 4060/4065
22.1	16023172	1	valve 4075-4090
23	01112333	7	screw m 8 x 25, d933
24	06209769	2	nut m 12, d985
25	16023427	2	washer 12,5 x 35
26	16023432	10	screw m 8 x 16
27	16023149	2	bushing

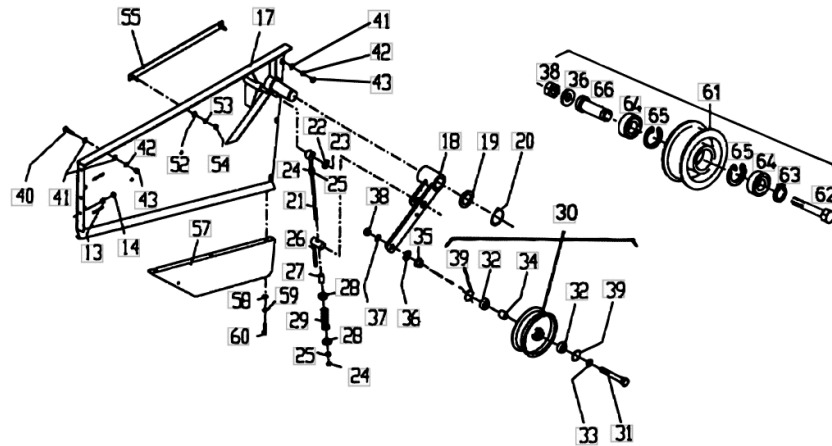
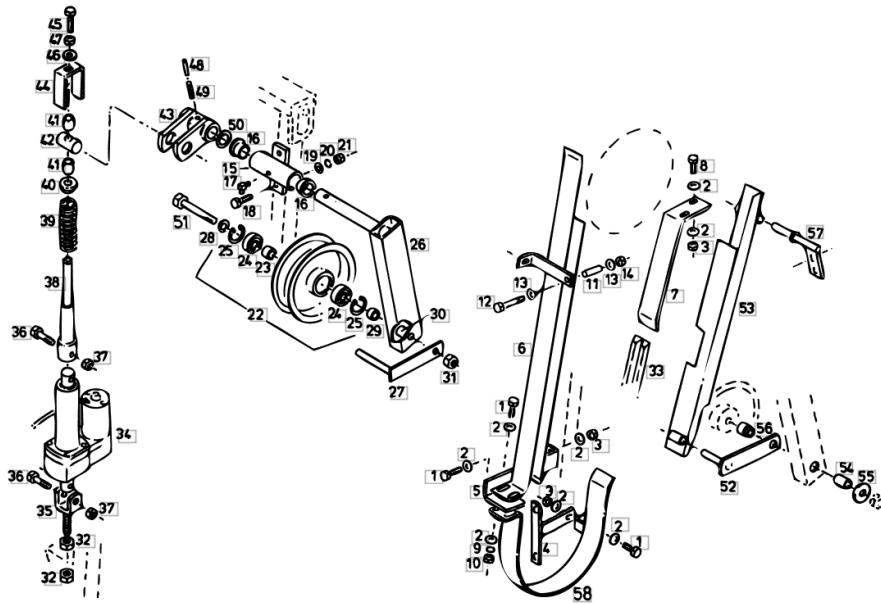
**KPAB-STRAW CHOPPER MOUNTING FRAME TENSION ROLLER +Y 005542 -Y 06439**


Fig.	Code	QTY	Name
17	16018773	1	pipe fitting
18	16018666	1	support
19	06214493	1	shim 40x50x1,0
20	01137321	1	ring 40 x 2.5, d471
21	16018669	1	top link
22	01107110	2	washer 13.5
23	01106447	1	split pin 4 x 20
24	01137252	2	nut bm12 d439
25	01112858	2	nut m 12, d934
26	16018623	1	bearing
27	16018766	1	spacer
28	06515118	2	disc
29	06215418	1	spring
30	06255610	1	tensioner 64/180
31	01138863	1	screw m 16 h6 x 100
32	01128197	2	bearing 2 RS
33	16015393	1	pressure plate
34	06256379	1	spacer
35	16015389	1	sleeve
36	01107117	3	washer 17
37	01102803	1	washer 16
38	01112886	1	nut m 16
39	01107827	2	circlip 40 x 1.75
40	01112333	1	screw m 8 x 25, d933
41	01107101	5	washer 8.4
42	01102799	4	washer 8, d128
43	01112824	4	nut m 8, d934
52	01107101	2	washer 8.4
53	01102799	2	washer 8, d128
54	01112824	2	nut m 8, d934
55	16018776	1	support
57	16018777	1	small sump
58	01107095	3	washer 6.4
59	01102797	3	washer 6, d128
60	01103316	3	screw m 6 p.1.0 x 16
61	16031480	1	tensioner 54/170

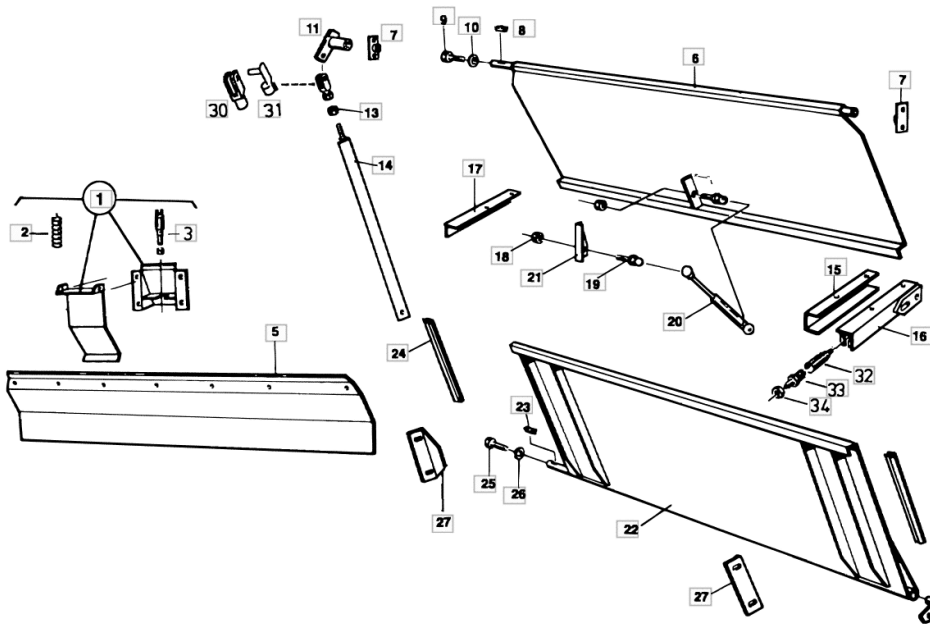
**KPAB-STRAW CHOPPER VEE BELT CLUTCH +Y 05542 -Y 06439**

Fig.	Code	QTY	Name
45	01112456	1	screw m 10 x 50
46	06214197	1	washer 10.5
47	01102659	1	nut m 10, d934
48	01157336	1	pin 5 x 45
49	01115476	1	pin 8 x 45, d1481
50	06214234	2	disc 31 x 45 x 2
51	01111942	1	screw
52	16027283	1	link
53	16027290	1	guide
54	16029023	1	bushing
55	06214296	1	washer 17.2
56	16027287	1	sleeve
57	16029008	1	console
58	16024812	1	guide



**KPAB-STRAW CHOPPER DEFLECTOR SHEETS FOR TYPE SRX ONLY**

Fig.	Code	QTY	Name
1	16023101	1	straw warning system
2	16023129	1	spring
3	01175755	1	switch
5.1	16055758	1	lamination 4075 - 4090
6.1	16055759	1	shutter 4075 - 4090
7	16055760	2	bearing
8	01117993	1	spring washer
9	01112429	1	screw m 10 x 30, d933
10	01102800	1	washer 10.2
11	16055761	1	lever
13	01102659	1	nut m 10, d934
14	16055762	1	rod
15	16023120	1	panel
16	16055763	1	contact surface R
17	16055764	1	contact surface L
18	01104944	2	nut m 8, d985
19	16023108	2	screw m 8, 4610
20	16055765	1	shoch.absorber 240 N
21	16055766	1	support
22	16055985	1	lamination 4060 - 4068
23	01118033	1	spring washer
24	16055768	1	rubber band
25	01112429	1	screw m 10 x 30, d933
26	01102800	1	washer 10.2
27	16023125	2	contact surface
29	16023126	1	smau pin
30	01120915	1	ball joint 10 x 40
31	01174057	1	pin 10 x 40
32	06532387	1	rubber ring
33	04191001	1	push-button
34	01101294	1	nut



CLICK HERE TO **DOWNLOAD** THE COMPLETE MANUAL

- Thank you very much for reading the preview of the manual.
- You can download the complete manual from: [www.heydownloads.com](http://www.heydownloads.com) by clicking the link below



- Please note: If there is no response to CLICKING the link, please download this PDF first and then click on it.

CLICK HERE TO **DOWNLOAD** THE COMPLETE MANUAL