



Doosan Infracore

M200-V

Serial Number 3001 and Up

Parts Manual

021-00053CEF
April 1, 2010

(THIS PARTS BOOK IS FOR REFERENCE ONLY.
PART NUMBERS AND SERIAL NUMBERS MAY BE
OUTDATED. ALWAYS USE THE ONLINE PARTS SYSTEM)

CLICK HERE TO **DOWNLOAD** THE COMPLETE MANUAL

- Thank you very much for reading the preview of the manual.
- You can download the complete manual from: www.heydownloads.com by clicking the link below



- Please note: If there is no response to CLICKING the link, please download this PDF first and then click on it.

CLICK HERE TO **DOWNLOAD** THE COMPLETE MANUAL

(THIS PARTS BOOK IS FOR REFERENCE ONLY.
PART NUMBERS AND SERIAL NUMBERS MAY BE
OUTDATED. ALWAYS USE THE ONLINE PARTS SYSTEM)

DATE	AUG. 28, 2009
3rd EDITION	

**Fig. 004 CRANK SHAFT
VILEBREQUIN**

Serial No. ;

Key No.	Part No.	Description	Description	Q'ty	S.C	Serial No.	ICA	Replaceable part	
								Part No.	Q'ty
004 -101	65.02101-6018A	CRANK SHAFT ASS'Y	ENSEMBLE VILEBREQUIN	1					
103	65.02101-0045A	SHAFT;CRANK	VILEBREQUIN	1					
105	06.22022-3212	PIN;PARALLEL	GOUPILLE	1					
104	65.02115-0009	GEAR;CRANK SHAFT	PIGNON DE VILEBREQUIN	1					
106	65.93020-0015	BUSH;TAPER	COUSSINET	1					
108	65.02120-0002	RING;OIL THROWER	BAGUE	1					
109	65.90501-0006	NUT	ECROU	1					
110	65.91501-0006	KEY;SLIDING	KEY	1					
201	65.02301-5055	FLYWHEEL ASS'Y	ENSEMBLE VOLANT	1					
202	65.02310-0006	GEAR;RING	ENGRENAGE	1					
204	65.02301-0203	FLY WHEEL	VOLANT	1					
207	06.01494-4506	BOLT M16X1.5X35	BOULON A 6 PANS	6					
208	06.16731-2111	WASHER;SPRING	RONDELLE	6					
301	65.02401-6021	CONNECTING ROD ASS'Y	BIELLE	6					
305	65.02411-0006A	BOLT	BOULON A 6 PANS	2					
308	65.02401-0163D	ROD;CONNECTING	TIGE	1	D				
309	65.02405-0006	BUSH	AMPOULE	1	B				
310	65.02410-6083B	METAL;CON-ROD STD	PALIER	6					
	65.02410-6124B	METAL;CON-ROD 0.125mm	PALIER	6	US				
	65.02410-6125B	METAL;CON-ROD 0.25mm	PALIER	6	US				
401	65.02501-0416	PISTON(ALTV.)	PIISTON	6	D	-050707			
	65.02501-0440	PISTON(ALTV.)	PIISTON	6	D	050708-			
402	65.02501-0417	PISTON-1;A GRADE	PIISTON	6		-050707			
	65.02501-0444	PISTON-2;A GRADE	PIISTON	6		050708-			
403	65.02501-0418	PISTON-1;B GRADE	PIISTON	6		-050707			
	65.02501-0445	PISTON-2;B GRADE	PIISTON	6		050708-			
404	65.02503-0099	RING;TOP	SEGMENT COUP DE FEU	6		-060519	Y	65.02503-0137	6
	65.02503-0137	RING;TOP	SEGMENT COUP DE FEU	6		060520-			
405	65.02503-0116	RING;SECOND	SEGMENT DE COMPRESSI	6		-060519	Y	65.02503-0138	6
	65.02503-0138	RING;SECOND	SEGMENT DE COMPRESSI	6		060520-			
406	65.02503-0114	RING;OIL	BAGUE	6					
412	65.02502-0082A	PIN;PISTON	AXE DE PISTON	6					
413	65.90815-0007	RING;RETAINING	BAGUE	12					
501	65.02601-5019	PULLEY;DAMPER	POULIE	1					
503	65.02122-0001	COVER;DUST	PARE-POUSSIERES	1					

(THIS PARTS BOOK IS FOR REFERENCE ONLY.
PART NUMBERS AND SERIAL NUMBERS MAY BE

DATE	AUG. 28, 2009
3rd EDITION	

**Fig. 008 OIL FILTER
FILTRE A HUILE**

Serial No. ;

Key No.	Part No.	Description	Description	Q'ty	S.C	Serial No.	ICA	Replaceable part	
								Part No.	Q'ty
008 -10	65.05501-7079	OIL FILTER ASS'Y	FILRE A HUILE	1		-050714	Y	65.05501-7069A	1
	65.05501-7069A	OIL FILTER ASS'Y	FILRE A HUILE	1		-061212	Y	65.05501-7069B	1
	65.05501-7069B	OIL FILTER ASS'Y	ENSEMBLE FILTRE A HUILE	1		061213-			
15	65.05510-5028	ELEMENT;OIL FILTER	ELEMENT	1		-050714			
	65.05510-5021B	ELEMENT;OIL FILTER	ELEMENT	1		050715-			
20	65.05503-5045	HEAD;OIL FILTER	TETE DE VERIN	1		-061212	Y	65.05503-5045A	1
	65.05503-5045A	HEAD;OIL FILTER	TETE DE VERIN	1		061213-			
30	06.31641-0222	BALL;STEEL	BILLE	1					
31	06.08092-0202	SCREW PLUG M10X1.25	VIS	1					
32	65.97601-0045	SPRING;COMPRESS	RESSORT	1					
33	06.56180-0714	RING;SEAL	BAGUE D'ETANCHEITE	1					
40	65.90310-0036A	PLUG;SCREW	VIS	1					
50	06.56190-0709	SEAL;RING	BAGUE D'ETANCHEITE	1					
60	06.01953-3234	BOLT ASS'Y M10X1.25X130	BOULON A 6 PANS	3					
70	65.90001-6012	BOLT ASS'Y	BOULON A 6 PANS	1					
80	65.05901C0004	GASKET;OIL FILTER	JOINT	1					

(THIS PARTS BOOK IS FOR REFERENCE ONLY.
PART NUMBERS AND SERIAL NUMBERS MAY BE

DATE	AUG. 28, 2009
3rd EDITION	

**Fig. 013 INTAKE & EXHAUST MANIFOLD
D'ADMISSION ET D'ECHAPPEMENT**

Serial No. ;

Key No.	Part No.	Description	Description	Q'ty	S.C	Serial No.	ICA	Replaceable part	
								Part No.	Q'ty
013 -101	65.08100-6069	MANIFOLD;EXHAUST	COLLECTEUR ECHAPPEM	1		-061215	Y	65.08100-6069A	1
	65.08100-6069A	MANIFOLD;EXHAUST	COLLECTEUR ECHAPPEM	1		-070605	I	65.08100-6069B	1
	65.08100-6069B	MANIFOLD;EXHAUST	COLLECTEUR ECHAPPEM	1		070606-			
102	65.08101-0206	MANIFOLD;EXHAUST(R.H)	COLLECTEUR ECHAPPEM	1		-070605	T	65.08101-0206A	1
	65.08101-0206A	MANIFOLD;EXHAUST(R.H)	COLLECTEUR ECHAPPEM	1		070606-			
103	65.08101-0200	MANIFOLD;EXHAUST(L.H)	COLLECTEUR ECHAPPEM	1		-070605	T	65.08101-0200A	1
	65.08101-0200A	MANIFOLD;EXHAUST(L.H)	COLLECTEUR ECHAPPEM	1		070606-			
104	65.08101-0205	MANIFOLD;EXHAUST(M)	COLLECTEUR ECHAPPEM	1		-070605	I	65.08101-0205A	1
	65.08101-0205A	MANIFOLD;EXHAUST(M)	COLLECTEUR ECHAPPEM	1		070606-			
105	65.96507-0013	RING;SEAL	BAGUE D'ETANCHEITE	6		-061215	I	65.96507-0059	6
	65.96507-0059	RING;SEAL	BAGUE D'ETANCHEITE	6		-070605			
	65.96507-0059A	RING;SEAL	BAGUE D'ETANCHEITE	8		070606-			
106	65.08901-0028	GASKET;EXHAUST MANIFOLD	JOINT	3					
107	06.16731-2107	WASHER	RONDELLE ELASTIQUE	12					
108	06.15010-2311	WASHER	RONDELLE	12					
109	06.11063-8214	NUT	ECROU 6 PANS	12					
110	06.06175-8208	BOLT;STUD M10X1.25X30	GOUJON	4					
201	65.08201-5058	MANIFOLD;INTAKE	COLLECTEUR	1					
212	06.01923-3115	BOLT ASS'Y M8X25	BOULON A 6 PANS	7		-070625	I	65.90020-0142	7
	65.90020-0142	BOLT ASS'Y	BOULON A 6 PANS	7		070626-			
213	06.01013-9127	BOLT M8X120	BOULON A 6 PANS	1					
214	06.11063-8214	NUT	ECROU 6 PANS	3		-070828	I	65.90535-0003	3
	65.90535-0003	NUT	ECROU	3		070829-			
215	06.16731-2107	WASHER	RONDELLE ELASTIQUE	3		-070828			
216	06.15010-2311	WASHER	RONDELLE	3		-070828			
219	65.08902A0004	GASKET;INTAKE MANIFOLD	JOINT	1		-070625	I	65.08902-0034	1
	65.08902-0034	GASKET;INTAKE MANIFOLD	JOINT	1		070626-			
220	65.08120-0026	HEAT;SCREEN	LA CHALEUR D'ECRAN	1					
221	06.01913-3111	BOLT ASS'Y M8X16	BOULON A 6 PANS	3					
222	65.91701-0029	SPACER	ENTRETOISE	1					
230	65.08202-0140	PIPE;INLET	CONDUITES	1					
231	65.96301-0279	HOSE;RUBBER	TUYAU FLEXIBLE	1					
232	06.67020-0109	CLAMP;HOSE	COLLIER	2					
233	06.01913-3115	BOLT ASS'Y M8X25	BOULON A 6 PANS	4					
235	65.09904-0008	GASKET;AIR HEATER	JOINT	1					
401	65.09501-7002	INTER COOLER ASS'Y	REFREGERATOR	1					
402	06.01923-3122	BOLT ASS'Y M8X55	BOULON A 6 PANS	17					
403	06.01923-3123	BOLT ASS'Y M8X60	BOULON A 6 PANS	1					

(THIS PARTS BOOK IS FOR REFERENCE ONLY.
PART NUMBERS AND SERIAL NUMBERS MAY BE

DATE	AUG. 28, 2009
3rd EDITION	

**Fig. 016 FUEL FILTER
FILTRE A GAZOLE**

Serial No. ;

Key No.	Part No.	Description	Description	Q'ty	S.C	Serial No.	ICA	Replaceable part	
								Part No.	Q'ty
016 -101	65.12501-7023	FUEL FILTER ASSY	FILTRE A GAZOLE	1		-050522	Y	65.12501-7023A	1
	65.12501-7023A	FUEL FILTER ASSY	FILTRE A GAZOLE	1		-070405	Y	65.12501-7023B	1
	65.12501-7023B	FUEL FILTER ASSY	FILTRE A GAZOLE	1		070406-			
102	65.12504-5013A	HEAD;FUEL FILTER	COUVERCLE	1		-050522	Y	65.12504-5013B	1
	65.12504-5013B	HEAD;FUEL FILTER	COUVERCLE	1		050523-			
103	65.12503-5016	FILTER;FUEL	ELEMENT FILTRE	1		-050522	Y	65.12503-5016A	1
	65.12503-5016A	FILTER;FUEL	ELEMENT FILTRE	1		-070405	Y	65.12503-5016B	1
	65.12503-5016B	FILTER;FUEL	ELEMENT FILTRE	1		070406-			
104	65.90310-0143	SCREW;PLUG	VIS	1					
105	06.56180-0716	RING;SEAL	BAGUE D'ETANCHEITE	1					
106	65.12540-0041	BRACKET;FUEL FILTER	SUPPORT	1					
107	06.01953-3318	BOLT ASS`Y M12X1.5X35	BOULON A 6 PANS	2					
108	06.01913-3215	BOLT ASS`Y M10X25	BOULON A 6 PANS	2					

(THIS PARTS BOOK IS FOR REFERENCE ONLY.
PART NUMBERS AND SERIAL NUMBERS MAY BE

DATE	AUG. 28, 2009
3rd EDITION	

**Fig. 020 OVER HAUL GASKET KIT-ALL
PIECES DE RECHANGE**

Serial No. ;

Key No.	Part No.	Description	Description	Q'ty	S.C	Serial No.	ICA	Replaceable part	
								Part No.	Q'ty
020 -	65.96601-0067	GASKET;T/C OIL RETURN	JOINT	1		060631-			
36	65.09905-0006	GASKET;INTER COOLER	JOINT	2					

(THIS PARTS BOOK IS FOR REFERENCE ONLY.
PART NUMBERS AND SERIAL NUMBERS MAY BE

DATE	AUG. 28, 2009
3rd EDITION	

**Fig. 1110 ENGINE MOUNTING
MOTEUR**

Serial No. ;

Key No.	Part No.	Description	Description	Q'ty	S.C	Serial No.	ICA	Replaceable part	
								Part No.	Q'ty
1110 -65	K1001107	BRACKET	SUPPORT	1		3023-			
66	S5110603	WASHER;SPRING	RONDELLE ELASTIQUE	3		3035-			

(THIS PARTS BOOK IS FOR REFERENCE ONLY.
PART NUMBERS AND SERIAL NUMBERS MAY BE

DATE	AUG. 28, 2009
3rd EDITION	

**Fig. 1140 AXLE & DRIVE SHAFT
PONTS ET ARBRES DE TRANSMISSION**

Serial No. ;

Key No.	Part No.	Description	Description	Q'ty	S.C	Serial No.	ICA	Replaceable part	
								Part No.	Q'ty
1140 --	211-00149	AXLE & DRIVE SHAFT ASS'Y	ENSEMBLE DE AXE ET ARE	-	D				
1	211-00067	AXLE;FRONT	AXE	1					
2	211-00147	AXLE;REAR	AXE	1					
3	260-00039	DRIVE SHAFT;FRONT	ARBRE D'ENTRANEMENT	1					
3A	103-83UNF	. BOLT	. BOULON A 6PANS	4					
3B	1100-6C	. BEARING;JOURNAL	. PALIER	1					
3C	700-UCF211	. BEARING;FLANGE	. PALIER	1					
3D	110-M27	. NUT;LOCK	. ECROU	1					
3E	20C-6C90L	. FLANGE;COM	. BRIDE	1					
4	260-00012	DRIVE SHAFT;CENTER	ARBRE D'ENTRANEMENT	1					
4A	103-83UNF	. BOLT	. BOULON A 6PANS	8					
4B	1100-6C	. BEARING;JOURNAL	. PALIER	2					
4C	910-5206	. VALVE;AIR-RELIEF	. VANNE	1					
5	260-00041	DRIVE SHAFT;REAR	ARBRE D'ENTRANEMENT	1					
5A	103-83UNF	. BOLT	. BOULON A 6PANS	8					
5B	1100-6C	. BEARING;JOURNAL	. PALIER	1					
5C	910-5206	. VALVE;AIR-RELIEF	. VANNE	1					
5D	1100-5C	. BEARING;JOURNAL	. PALIER	1					
6	195-02518	BRACKET	SUPPORT	1					
7	195-02519	BRACKET	SUPPORT	1					
8	123-00264	PIN;DOWEL	GOUPILLE D'AJUSTAGE	2		3001-3034	I	123-00264A	2
	123-00264A	PIN;DOWEL	GOUPILLE	2		3035-			
9	S0571661	BOLT M20X2.5X150	BOULON A 6 PANS	8		3001-3034	I	S0571666	8
	S0571666	BOLT M20X2.5X150	BOULON A 6 PANS	8		3035-			
10	4114-4116	WASHER;HARD M20	RONDELLE	16		3001-3034	I	DS0401181	16
	DS0401181	WASHER	RONDELLE	16		3035-			
11	S4013133	NUT	ECROU	8					
12	4120-4054	BOLT M22X2.5X290	BOULON A 6 PANS	8		3001-3034	I	4120-4054A	8
	4120-4054A	BOLT M22X2.5X290	BOULON A 6PANS	8		3035-			
13	4114-4117	WASHER;HARD M22	RONDELLE	16		3001-3034	I	4114-4117A	16
	4114-4117A	WASHER	RONDELLE	16		3035-			
14	S4013233	NUT M22X2.5	ECROU	8					
15	4222-1013A	PLATE	PLAQUE	2					
18	4114-1930	WASHER;THRUST	RONDELLE	2					
19	4120-4016	BOLT	BOULON A 6 PANS	20					
20	S5110603	WASHER;SPRING	RONDELLE ELASTIQUE	20					
21	S0565053	BOLT M16X2.0X40	BOULON A 6PANS	2		3001-3034	I	S0565066	2
	S0565066	BOLT	BOULON A 6 PANS	2		3035-			

DATE	AUG. 28, 2009
3rd EDITION	

Fig. 1160 MAIN PIPING
CIRCUIT HYDRAULIQUE PRINCIPAL

Serial No. ;

Key No.	Part No.	Description	Description	Q'ty	S.C	Serial No.	ICA	Replaceable part	
								Part No.	Q'ty
1160 -70	DS2013453	HOSE	TUYAU FLEXIBLE	1		3001-3034			
	DS2011381	HOSE 1600L	TUYAU FLEXIBLE	2		3035-			
71	DS2304009	ELBOW	COUDE	1					
72	2185-1002D123	HOSE;RUBBER	TUYAU FLEXIBLE	1		3001-3034	I	DS2087047	1
	DS2087047	HOSE	TUYAU FLEXIBLE	1		3035-			
73	DS2415008	ADAPTER	ADAPTEUR	2		3035-			
74	121-00010D5	NUT	ECROU	2		3035-			

(THIS PARTS BOOK IS FOR REFERENCE ONLY.
PART NUMBERS AND SERIAL NUMBERS MAY BE

DATE	AUG. 28, 2009
3rd EDITION	

**Fig. 1191 PILOT PIPING
CONDUITES DE PILOTE**

Serial No. ; 3008 ~

Key No.	Part No.	Description	Description	Q'ty	S.C	Serial No.	ICA	Replaceable part	
								Part No.	Q'ty
1191 --	400-01677	PILOT PIPING	CONDUITES DE PILOTE	-	D	3008-			
1	421-00012A	REMOCON VALVE-3SPOOL	VANNE	1					
2	S2204866	BOLT;SOCKET	BOULON A 6 PANS CREUX	4					
3	S5110303	WASHER;SPRING	RONDELLE ELASTIQUE	4					
4	DS2232106	ADAPTER	ADAPTEUR	6					
5	S8040041	O-RING	JOINT TORIQUE	8					
6	DS2232105	ADAPTER	ADAPTEUR	2					
7	124-00369	CLAMP;RUBBER	COLLIER	1					
8	4114-1717	SPACER;TUBE	BAGUE D'ECARTEMENT	2					
9	2160-1004D57	GROMMET	MANCHON CAOUTCHOUC	1					
10	195-01072	BRACKET	SUPPORT	1					
11	S0556853	BOLT M8X1.25X75	BOULON A 6 PANS	2					
12	S5102503	WASHER	RONDELLE ELASTIQUE	2					
13	195-03416	BRACKET	SUPPORT	1		3008-3034	I	K1002642	1
	K1002642	BRACKET	SUPPORT	1		3035-			
14	S0515053	BOLT M12X1.75X25	BOULON A 6 PANS	2					
15	S5102703	WASHER;SPRING	RONDELLE ELASTIQUE	2					
16	S5010713	WASHER;PLAIN	RONDELLE	2					
17	DS2415002	ADAPTER	ADAPTEUR	3					
18	DS2415009	ADAPTER	ADAPTEUR	3					
19	DS0301032	NUT	ECROU	6					
20	DS2304052	ELBOW	COUDE	5		3008-3064			
	DS2304052	ELBOW	COUDE	4		3065-			
21	DS2232067	ADAPTER	ADAPTEUR	1					
22	S8030061	O-RING	JOINT TORIQUE	27					
23	S8000141	O-RING	JOINT TORIQUE	1					
24	S8040061	O-RING	JOINT TORIQUE	6					
25	DS2013462	HOSE	TUYAU FLEXIBLE	1					
26	DS2023171	HOSE	TUYAU FLEXIBLE	1					
27	DS2011377	HOSE	TUYAU FLEXIBLE	3					
28	DS2011358	HOSE	TUYAU FLEXIBLE	3					
29	621-01458	PLATE	PLAQUE	1		3008-3034	I	621-01458A	1
	621-01458A	PLATE	PLAQUE	1		3035-			
30	181-00121D4	TEE	TE	1					
31	DS2013457	HOSE	TUYAU FLEXIBLE	1					
32	DS2013458	HOSE(ST-90) 1130L	TUYAU FLEXIBLE	1					
33	DS2013459	HOSE(ST-90) 1100L	TUYAU FLEXIBLE	1					
34	DS2023154	HOSE	TUYAU FLEXIBLE	1					

DATE	AUG. 28, 2009
3rd EDITION	

**Fig. 1210 FRONT LUBRICATION PIPING
CONDUITES DE FRONTALES**

Serial No. ;

Key No.	Part No.	Description	Description	Q'ty	S.C	Serial No.	ICA	Replaceable part	
								Part No.	Q'ty
1210 --	400-00684	FRONT GREASE PIPING	CONDUITES DE FRONTALES	-	D				
1	S6710041	NIPPLE;GREASE	GRAISSEUR	3					
2	181-00366	REDUCER	REDUCTEUR	3					
3	S4032833	NUT	ECROU	3					
4	2181-1919D9	ADAPTER	RACCORD	2					
5	140-00830B	PIPE	CONDUITE	1					
6	140-00831B	PIPE	CONDUITE	1					
7	140-00832B	PIPE	CONDUITE	1					
8	2124-1625	CLAMP;PIPE	ATTACHE DE TUYAU	2					
9	S0511853	BOLT M10X1.5X20	BOULON A 6 PANS	4					
10	S5102603	WASHER	RONDELLE ELASTIQUE	4					
11	2181-1918D7	ELBOW	COUDE	1					
12	2160-1004D41	BUSHING;RUBBER	MANCHON CAOUTCHOUC	2					

(THIS PARTS BOOK IS FOR REFERENCE ONLY.
PART NUMBERS AND SERIAL NUMBERS MAY BE

DATE	AUG. 28, 2009
3rd EDITION	

**Fig. 1240 EMERGENCY STEER PIPING
DIRECTION DE SECOURS**

Serial No. ;

Key No.	Part No.	Description	Description	Q'ty	S.C	Serial No.	ICA	Replaceable part	
								Part No.	Q'ty
1240 --	400-01290	EMERGENCY STEER PIPING	DIRECTION DE SECOURS	-	D				
1	401-00129A	EMERGENCY DC MOTOR	POMPE DE DIRECTION	1					
2	S0512263	BOLT M10X1.5X30	BOULON A 6 PANS	4					
3	S5102603	WASHER	RONDELLE ELASTIQUE	4					
4	S8030085	O-RING	JONT TORIQUE	2					
5	DS2023157	HOSE UNF1 3/16-2000L	TUYAU FLEXIBLE	1					
6	DS2013468	HOSE UNF13/16-820L	TUYAU FLEXIBLE	1					
7	S8000245	O-RING	JOINT TORIQUE	2					
8	2181-2566D4	ADAPTER	ADAPTEUR	1					
9	S8030125	O-RING	JONT TORIQUE	4					
10	2181-2627D1	ADAPTER	ADAPTEUR	1					
11	2181-2294D2	ELBOW	COUDE	1					
12	420-00128	VALVE;CHECK	VANNE	1					
13	2549-1135D11	SWITCH;PRESSURE 3bar	INTERRUPTEUR	1					
14	S8180221	RING;SEAL	RONDELLE D'ETANCHEITE	1					
15	2181-1938D14	ADAPTER	ADAPTEUR	1					
16	S8000185	O-RING	JOINT TORIQUE	3					
17	DS2232043	ADAPTER	ADAPTEUR	1					
18	S8040121	O-RING	JOINT TORIQUE	1					
19	DS2232100	ADAPTER	RACCORD ADAPTATEUR	1					
20	2420-9466A	VALVE;CHECK	CLAPET DE RETENUE	1					
21	2181-4133D12	ADAPTER	ADAPTEUR	1					
22	S8000295	O-RING	JONT TORIQUE	1					
23	S0515253	BOLT M12X1.75X30	BOULON A 6 PANS	4					
24	S5102703	WASHER;SPRING	RONDELLE ELASTIQUE	4					
25	S5010713	WASHER;PLAIN	RONDELLE	4					
26	195-01845	BRACKET	SUPPORT	1					
27	2181-4133D3	ADAPTER	ADAPTEUR	1					
28	S8040105	O-RING	JONT TORIQUE	1					
29	S8000235	O-RING	JONT TORIQUE	1					

(THIS PARTS BOOK IS FOR REFERENCE ONLY.
PART NUMBERS AND SERIAL NUMBERS MAY BE

DATE	AUG. 28, 2009
3rd EDITION	

**Fig. 1270 CABIN(2)
CABINE**

Serial No. ;

Key No.	Part No.	Description	Description	Q'ty	S.C	Serial No.	ICA	Replaceable part	
								Part No.	Q'ty
1270-4-2	4171-1111A	. HINGE	. CHARNIRE	2					
4-3	2120-2166D2	. BOLT	. BOULON A 6 PANS	6					
4-4	2125-9056	. CATCH;AUTO LOCK	. VERROU	1					
4-5	2120-2166D25	. BOLT M8X1.25X16	. BOULON A 6 PANS	2					
4-6	2114-1898D2	. WASHER	. RONDELLE	2					
4-7	2114-1898D1	. WASHER	. RONDELLE	6					
4-8	2161-1246	. RUBBER;STOPPER	. TAQUET D'ARRET	2					
4-9	4903-1235A	. GLASS	. VERRE	1					
4-10	2198-1013	. RUBBER;H	. CAOUTCHOUC	1					
4-11	621-01386	. COVER;CATCH	. COUVERCLE	1					
4-12	2120-2166D18	. SCREW	. VIS	2					
4-13	2114-1898D4	. WASHER	. RONDELLE	2					
11	4627-1537J	COVER ASS'Y	COUVERCLE	1					
11-1	4627-1538H	. COVER	. COUVERCLE	1					
11-1A	2125-9053	.. LOCK	.. ENSEMBLE VERROU	1					
11-6	4172-1125A	. RUBBER;CUSHION	. CAOUTCHOUC	1					
12	2120-2166D19	BOLT M6X1.0X12	BOULON A 6 PANS	4					
16	705-00009	PIN	GOUPILLE	1		3001-3007			
	705-00009A	PIN	GOUPILLE	1		3008-			
17	S6540900	RING;RETAINER	BAGUE	1					
29	2120-2166D4	BOLT	BOULON A 6 PANS	2		3001-3017			
	2120-2166D4	BOLT	BOULON A 6 PANS	10		3018-			
30	2125-9060A	CATCH;BACK LOCK	LOQUET	1					
31	4133-2102	LEVER	LEVIER	1					
35	4123-2414	PIN	GOUJON	1					
39	4133-2100	GUIDE;LEVER	GUIDE	1					
40	S0512053	BOLT	BOULON A 6 PANS	12					
43	S3450953	SCREW	VIS	2					
44	2142-9002	STRIKER	FRAPPER	1					
45	2120-2131	SCREW M8X1.25	VIS	2					
47	4129-1481	SPRING	RESSORT	1					
48	2120-2166D16	BOLT M8X1.25X25	BOULON A 6 PANS	4					
53	2120-2166D5	BOLT	BOULON A 6 PANS	2					
54	2114-1898D2	WASHER	RONDELLE	8					
57	4627-1543A	COVER;LEVER	COUVERCLE	1					
62	S5102303	WASHER;SPRING	RONDELLE ELASTIQUE	1					
63	2114-1898D3	WASHER;PLAIN	RONDELLE	6					
67	2114-1898D1	WASHER	RONDELLE	14		3001-3017			

DATE	AUG. 28, 2009
3rd EDITION	

**Fig. 1300 CONTROL STAND ASS'Y
CONSOLE DE COMMANDE**

Serial No. ;

Key No.	Part No.	Description	Description	Q'ty	S.C	Serial No.	ICA	Replaceable part	
								Part No.	Q'ty
1300-42	2120-2166D12	BOLT;HEX	BOULON A 6 PANS	4					
43	2114-1898D2	WASHER	RONDELLE	4					
44	621-00056B	PANEL;REAR(R.H.)	PANNEAU	1					
45	621-00059C	PANEL;REAR(L.H.)	MODULE DE COMMANDE	1					
46	621-01385	COVER	COUVERCLE	1					
47	2415-9008	NOZZLE;AIRCON	INJECTEUR	4					
50	621-00277A	COVER	COUVERCLE	1					
51	S0503153	BOLT M5X0.8X16	BOULON A 6 PANS	2					
52	S5000213	WASHER;PLAIN M5	RONDELLE	2					
53	S4012233	NUT M5X0.8	ECROU	2					
54	4916-9006	WASHER;WINDOW	RESERVOIR	1					
55	4161-2476C	MAT;FLOOR	LA T.A.O. DE PLANCHER	1					
58	621-01462C	PLATE;FLOOR	PLAQUE	1					

(THIS PARTS BOOK IS FOR REFERENCE ONLY.
PART NUMBERS AND SERIAL NUMBERS MAY BE

DATE	AUG. 28, 2009
3rd EDITION	

**Fig. 1330 ENGINE CONTROL ASS'Y
COMMANDE REGIME MOTEUR**

Serial No. ;

Key No.	Part No.	Description	Description	Q'ty	S.C	Serial No.	ICA	Replaceable part	
								Part No.	Q'ty
1330 --	201-00078A	ENGINE CONTROL ASS'Y	COMMANDE REGIME MOT	-	D				
1	134-00028	PEDAL ASS'Y	PEDALE ASS'Y	1					
2	S0504853	BOLT M6X1.0X20	BOULON A 6 PANS	3					
3	S5102303	WASHER;SPRING	RONDELLE ELASTIQUE	6					
4	S5010313	WASHER	RONDELLE	4					
5	4139-6058D7	CABLE;CONTROL 2270L	CABLE DE COMMANDE	1					
6	2523-9016	MOTOR;E/G STOP	MOTEUR	1					
7	S0508453	BOLT M8X1.25X12	BOULON A 6 PANS	1					
8	S5010513	WASHER	RONDELLE	2					
9	S0508853	BOLT	BOULON A 6 PANS	2					
10	4195-3804B	BRACKET	SUPPORT	1					
11	S0711953	BOLT M10X1.25X22	BOULON A 6 PANS	2					
12	S5102603	WASHER	RONDELLE ELASTIQUE	2					
13	2195-3805	BRACKET	SUPPORT	1		3001-3070	I	K1015745	1
	K1015745	BRACKET	SUPPORT	1		3071-			
14	S0504453	BOLT	BOULON A 6 PANS	3					
15	2138-9006B	JOINT;BALL	JOINT SPHERIQUE	1					
16	S5100203	WASHER;SPRING	RONDELLE ELASTIQUE	1					
17	S4012233	NUT M5X0.8	ECROU	1					
18	S0509853	BOLT M8X1.25X60	BOULON A 6 PANS	1					
19	2124-1353D2	CLIP	CLIP	1					
20	S5020213	WASHER;PLAIN M5	RONDELLE ELASTIQUE	1					

(THIS PARTS BOOK IS FOR REFERENCE ONLY.
PART NUMBERS AND SERIAL NUMBERS MAY BE

DATE	AUG. 28, 2009
3rd EDITION	

Fig. 1350 ENGINE COVER
COUVERTURE DE MOTEUR

Serial No. ;

Key No.	Part No.	Description	Description	Q'ty	S.C	Serial No.	ICA	Replaceable part	
								Part No.	Q'ty
1350 -79	621-02615	COVER	COUVERCLE	1					
80	621-01962C	COVER	COUVERCLE	1					
81	621-01963A	COVER	COUVERCLE	1					
82	621-01964C	COVER	COUVERCLE	1					
83	621-01966B	COVER	COUVERCLE	1					
84	621-01967B	COVER	COUVERCLE	1					
85	191-02728A	PLATE	PLAQUE	1		3001-3064	I	191-02728B	1
	191-02728B	PLATE	PLAQUE	1		3065-			
86	S0515053	BOLT M12X1.75X25	BOULON A 6 PANS	2					
87	2120-2196D1	BOLT;SET M10X1.5X20	BOULON A 6 PANS	18					
88	161-00249	FOAM	EPONGE	1					
89	161-00421	FOAM	EPONGE	1					
90	161-00422	FOAM	EPONGE	1					
91	161-00423	FOAM	EPONGE	1					
92	161-00424	FOAM	EPONGE	1					
93	464-00074	FOAM;TOP	EPONGE	1					
94	464-00059A	BAFFLE;R.H	EPONGE	1					
95	464-00060A	BAFFLE;L.H	EPONGE	1					
96	621-02042B	COVER	COUVERCLE	1					
97	S4012633	NUT	ECROU	1					
98	S5010513	WASHER	RONDELLE	8					
99	195-02524	BRACKET	SUPPORT	1		3001-3022			
100	2903-6005	MIRROR;UNDER	RETROVISEUR	1		3001-3022			
101	K1001090	COVER;UNDER	COUVERCLE	1		3023-			
102	2120-2196D15	BOLT;SET M10X1.5X35	BOULON	1		3023-			

(THIS PARTS BOOK IS FOR REFERENCE ONLY.
PART NUMBERS AND SERIAL NUMBERS MAY BE

DATE	AUG. 28, 2009
3rd EDITION	

**Fig. 1380 ELECTRIC BOX ASS'Y(2)-PARTS
EQUIPMENT ELECTRIQUE**

Serial No. ;

Key No.	Part No.	Description	Description	Q'ty	S.C	Serial No.	ICA	Replaceable part	
								Part No.	Q'ty
1380 -37	S3450823	SCREW	VIS	9					
38	S5100203	WASHER;SPRING	RONDELLE ELASTIQUE	9					
39	2190-2037D6	PLATE;NAME(RELAY)	PLAQUE SIGNALETIQUES	1					
40	2190-2037D36	PLATE;NAME(RELAY)	PLAQUE D'IDENTIFICATION	1					
41	2190-2037D42	PLATE;NAME(RELAY)	PLAQUE D'IDENTIFICATION	1					
42	2190-2037D68	PLATE;NAME (RELAY)	PLAQUE D'IDENTIFICATION	1					
43	543-00020	CONTROLLER;T/M	COMMANDE DEMARREUR	1					
44	S3450853	SCREW	VIS	4					
45	S5100203	WASHER;SPRING	RONDELLE ELASTIQUE	2					
46	S5100213	WASHER;SPRING	RONDELLE ELASTIQUE	4					
47	530-00368	HARNESSELECTRIC BOX	HARNAIS	1		3001-3007			
	530-00368A	HARNESSELECTRIC BOX	HARNAIS	1		3008-3070			
	530-00368B	HARNESSELECTRIC BOX	HARNAIS	1		3071-			
48	124-00208D2	CLIP	AGRAFE	2					
49	124-00208D3	CLIP	ATTACHE	3					
50	124-00208D4	CLIP	ATTACHE	1					
51	S0508653	BOLT	BOULON A 6 PANS	6					
52	S5102503	WASHER	RONDELLE ELASTIQUE	6					
53	2121-1305	NUT	ECROU	1					
54	2544-9033	RELAY	RELAIS AVERTISSEUR	1		3001-3007			
55	537-00039A	TIMER;EMG STEERING	TIMER	1		3001-3070			
	537-00039B	TIMER;EMG STEERING	TIMER	1		3071-			
56	S3450973	SCREW M6X1.0X16	VIS	2					
57	S5102303	WASHER;SPRING	RONDELLE ELASTIQUE	2					

(THIS PARTS BOOK IS FOR REFERENCE ONLY.
PART NUMBERS AND SERIAL NUMBERS MAY BE

DATE	AUG. 28, 2009
3rd EDITION	

**Fig. 1430 ELECTRIC PARTS(5)-ENGINE
EQUIPMENT ELECTRIQUE**

Serial No. ;

Key No.	Part No.	Description	Description	Q'ty	S.C	Serial No.	ICA	Replaceable part	
								Part No.	Q'ty
1430 --	500-00231	ELECTRIC PARTS	EQUIPMENT ELECTRIQUE	-	D				
44	2547-6028	SENSOR;WATER TEMP	TRANSMETTEUR GAZOLE	1					
45	502-00003A	ALTERNATOR 24V 80A	ALTERNATEUR	1					
46	S0760853	BOLT	BOULON A 6 PANS	1					
47	S5102703	WASHER;SPRING	RONDELLE ELASTIQUE	1					
48	2114-1058D54	WASHER	RONDELLE	1					
49	S0562653	BOLT M12X1.75X160	BOULON A 6 PANS	1					
50	S5102703	WASHER;SPRING	RONDELLE ELASTIQUE	1					
51	S5010713	WASHER;PLAIN	RONDELLE	2					
52	S4012733	NUT	ECROU	1					

(THIS PARTS BOOK IS FOR REFERENCE ONLY.
PART NUMBERS AND SERIAL NUMBERS MAY BE

DATE	AUG. 28, 2009
3rd EDITION	

**Fig. 1480 ELECTRIC WIRING(3)-FRONT FRAME
EQUIPMENT ELECTRIQUE**

Serial No. ;

Key No.	Part No.	Description	Description	Q'ty	S.C	Serial No.	ICA	Replaceable part	
								Part No.	Q'ty
1480 --	500-00232	ELECTRIC PARTS	EQUIPMENT ELECTRIQUE	-	D				
4	530-00366	HARNESS;FRONT FRAME	HARNAIS	1		3001-3022	I	530-00366A	1
	530-00366A	HARNESS;FRONT FRAME	HARNAIS	1		3023-			
23	2195-3500	BRACKET	SUPPORT	3					
24	S0504453	BOLT	BOULON A 6 PANS	4					
25	S5102303	WASHER;SPRING	RONDELLE ELASTIQUE	4					
27	2197-1661	BRACKET	SUPPORT	4					
30	2124-1509D1	CLIP	ATTACHE	11					
31	124-00208D2	CLIP	AGRAFE	3					
32	124-00208D3	CLIP	ATTACHE	3					
35	2121-1305	NUT	ECROU	14					
36	120-00276	BOLT M8X1.25X12	BOULON A 6 PANS	4					

(THIS PARTS BOOK IS FOR REFERENCE ONLY.
PART NUMBERS AND SERIAL NUMBERS MAY BE

CLICK HERE TO **DOWNLOAD** THE COMPLETE MANUAL

- Thank you very much for reading the preview of the manual.
- You can download the complete manual from: www.heydownloads.com by clicking the link below



- Please note: If there is no response to CLICKING the link, please download this PDF first and then click on it.

CLICK HERE TO **DOWNLOAD** THE COMPLETE MANUAL

DATE	AUG. 28, 2009
3rd EDITION	

**Fig. 1520 AIRCONDITIONER(3)-AIRCON UNIT
CLIMATISATION**

Serial No. ;

Key No.	Part No.	Description	Description	Q'ty	S.C	Serial No.	ICA	Replaceable part	
								Part No.	Q'ty
1520 --	4920-9050A	UNIT;AIRCON	UNITE DE CLIGNOTANTS	1		3001-3099	I	4920-9050B	1
	4920-9050B	UNIT;AIRCON	UNITE DE CLIGNOTANTS	1		3100-			
1	2538-6015	MOTOR;BLOWER 24V	MOTEUR	1		3001-3099	I	K1040112	1
	K1040112	MOTOR;BLOWER	MOTEUR	1		3100-			
2	545-00003	RESISTOR;BLOWER	RESISTOR	1					
3	2544-6023	RELAY 10A	RELAIS DEMARREUR	2					
4	2544-6024	RELAY 20A	RELAIS DEMARREUR	1					
5	2538-6016	MOTOR;INTAKE 24V	MOTEUR	1					
6	2538-6017	MOTOR;MIX 12V	MOTEUR	1					
7	2471-6050	FILTER;AIRCON GSB-30NA	FILTRE	1					
8	2426-6048	VALVE;STEM	VANNE	1					
9	2547-6033	SENSOR;TEMPERATURE	CAPTEUR REGIME	1					
10	2530-6005	HARNES;AIRCON UNIT	FAISCEAU	1					
11	2920-6111	EVAPORATOR	CHAUFFAGE	1					
12	2920-6112	HEATER CORE	CHAUFFAGE	1					
13	431-00001	LEVER;MAIN	LEVIER	1					
14	431-00002	LEVER;SUB	LEVIER	3					
15	538-00002	MOTOR;MODE 12V	MOTEUR	1					

(THIS PARTS BOOK IS FOR REFERENCE ONLY.
PART NUMBERS AND SERIAL NUMBERS MAY BE

DATE	AUG. 28, 2009
3rd EDITION	

**Fig. 2130 ARM FLOAT KICK OUT
CAPTEUR DE POSITION**

Serial No. ;

Key No.	Part No.	Description	Description	Q'ty	S.C	Serial No.	ICA	Replaceable part	
								Part No.	Q'ty
2130 --	4715-4010A	ARM FLOAT KICK OUT ASS'Y	BALANCIER	-	D				
1	195-02348	BRACKET	SUPPORT	1		3001-3022	I	195-02348A	1
	195-02348A	BRACKET	SUPPORT	1		3023-			
2	S0558953	BOLT M10X1.5X70	BOULON A 6 PANS	1					
3	S4012633	NUT	ECROU	1					
4	S5102603	WASHER	RONDELLE ELASTIQUE	3					
5	4549-1148	SWITCH;PROXIMITY	INTERRUPTEUR	1		3001-3070	I	K1027017	1
	K1027017	SWITCH;PROXIMITY	INTERRUPTEUR	1		3071-			
6	191-02638	PLATE	PLAQUE	1					
7	S0511853	BOLT M10X1.5X20	BOULON A 6 PANS	2					

(THIS PARTS BOOK IS FOR REFERENCE ONLY.
PART NUMBERS AND SERIAL NUMBERS MAY BE

DATE	AUG. 28, 2009
3rd EDITION	

**Fig. 3130 COUPLING K1-T/MISSION(4)
COUPLAGE**

Serial No. ;

Key No.	Part No.	Description	Description	Q'ty	S.C	Serial No.	ICA	Replaceable part	
								Part No.	Q'ty
3130 --	4656 171 013	COUPLING K1	ACCOUPLLEMENT	1					
10	4656 371 030	SHAFT	ARBRE	1					
20	0636 607 039	STUD	GOUJON	1					
30	0501 212 258	COUPLING	ACCOUPLLEMENT	1					
150	0635 290 114	DISC;RUNNING	DISQUE ROULEMT.	2					
160	0735 368 076	CAGE;AX.NEEDLE	CAMP D'CAIGUILLE	2					
170	0635 290 012	WASHER	RONDELLE	2					
180	0735 321 508	CAGE;NEEDLE	CAGE A AIG.	1					
190	4656 371 026	IDLER	PIGNON FOU	1					
200	0501 316 378	RING;RETAINING	JONC D'ARRET	1					
210	0735 371 723	BEARING;ROLLER	ROULEMENT ROULEAUX	1					
220	0735 371 723	BEARING;ROLLER	ROULEMENT ROULEAUX	1					
230	0734 401 267	RING;PISTON	SEGMENT DE PIST	2					

(THIS PARTS BOOK IS FOR REFERENCE ONLY.
PART NUMBERS AND SERIAL NUMBERS MAY BE

DATE	AUG. 28, 2009
3rd EDITION	

**Fig. 3180 COUPLING KR-T/MISSION(9)
COUPLAGE**

Serial No. ;

Key No.	Part No.	Description	Description	Q'ty	S.C	Serial No.	ICA	Replaceable part	
								Part No.	Q'ty
3180 --	4656 176 011	COUPLING KR	ACCOUPLLEMENT	1					
10	4656 376 004	SHAFT	ARBRE	1					
20	0636 607 039	STUD	GOUJON	1					
30	4656 375 016	IDLER	PIGNON FOU	1					
40	0735 321 408	CAGE;NEEDLE	CAGE A AIG.	1					
50	0750 116 380	BEARING;BALL	ROULEMENT A BILLEX	1					
60	0630 502 042	RING;RETAINING	JONC D'ARRET	1					
70	0630 501 038	RING;RETAINING	JONC D'ARRET	1					
80	0501 212 261	COUPLING	ACCOUPLLEMENT	1					
200	0735 371 723	BEARING;ROLLER	ROULEMENT ROULEAUX	1					
210	0735 371 723	BEARING;ROLLER	ROULEMENT ROULEAUX	1					
220	0734 401 267	RING;PISTON	SEGMENT DE PIST	2					

(THIS PARTS BOOK IS FOR REFERENCE ONLY.
PART NUMBERS AND SERIAL NUMBERS MAY BE

DATE	AUG. 28, 2009
3rd EDITION	

Fig. 3220 GEAR SHIFT SYSTEM(2)-T/MISSION(12-2)
SYSTEME DE BOITE ETAGEE

Serial No. ;

Key No.	Part No.	Description	Description	Q'ty	S.C	Serial No.	ICA	Replaceable part	
								Part No.	Q'ty
3220 -380	4656 306 128	PLATE;DUCT	PLAQUE CANIVEAU	1					
390	0736 101 259	SCREW	VIS	18					

(THIS PARTS BOOK IS FOR REFERENCE ONLY.
PART NUMBERS AND SERIAL NUMBERS MAY BE

DATE	AUG. 28, 2009
3rd EDITION	

**Fig. 3270 TEMPERATURE SENSOR-T/MISSION(17)
TEMPERATURE CAPTEUR**

Serial No. ;

Key No.	Part No.	Description	Description	Q'ty	S.C	Serial No.	ICA	Replaceable part	
								Part No.	Q'ty
3270 -54	0501 308 844	SENSOR;TEMP.	CAPTEUR TEMPER.	1					
56	0634 313 366	O-RING	JOINT TORIQUE	1					

(THIS PARTS BOOK IS FOR REFERENCE ONLY.
PART NUMBERS AND SERIAL NUMBERS MAY BE

DATE	AUG. 28, 2009
3rd EDITION	

**Fig. 3320 DIFFERENTIAL HOUSING-FRONT AXLE
CARTER DE DIFFERENCIEL**

Serial No. ;

Key No.	Part No.	Description	Description	Q'ty	S.C	Serial No.	ICA	Replaceable part	
								Part No.	Q'ty
3320 -1	176.07.029.01	O-RING	JOINT TORIQUE	2					
2	176.01.003.19	COVER;INTERMEDIATE	COUVERCLE	1					
3	176.01.025.05	HOUSING	CARTER	1					
4	808.01.017.01	PLUG	BOUCHON	4					
7	016.14.2739	BOLT	BOULON A 6 PANS	2					
8	176.01.035.04	PLUG	BOUCHON	1					
9	002.02.1429	RING;SNAP	BAGUE D'ARRET	1					
10	819.01.610.01	PLUG;MAGNET	BOUCHON MAGNETIQUE	3					
11	176.01.002.16	COVER;INTERMEDIATE	COUVERCLE	1					
15	016.14.1138	PLUG	BOUCHON	1					
17	702.01.003.01	VENT	RENIFLARD	1					
21	176.07.029.02	O-RING	JOINT TORIQUE	2					

(THIS PARTS BOOK IS FOR REFERENCE ONLY.
PART NUMBERS AND SERIAL NUMBERS MAY BE

DATE	AUG. 28, 2009
3rd EDITION	

**Fig. 3350 BRAKE-FRONT AXLE
FREIN DE AXE**

Serial No. ;

Key No.	Part No.	Description	Description	Q'ty	S.C	Serial No.	ICA	Replaceable part	
								Part No.	Q'ty
3350 -39	011.05.0232	WASHER;LOCK	RONDELLE	4					

(THIS PARTS BOOK IS FOR REFERENCE ONLY.
PART NUMBERS AND SERIAL NUMBERS MAY BE

DATE	AUG. 28, 2009
3rd EDITION	

**Fig. 3390 BRAKE-REAR AXLE
FREIN DE AXE**

Serial No. ;

Key No.	Part No.	Description	Description	Q'ty	S.C	Serial No.	ICA	Replaceable part	
								Part No.	Q'ty
3390 -1	176.07.005.02	BOLT;ADJUSTING	VIS DE REGLAGE	6					
2	176.07.006.01	SPRING	RESSORT	6					
3	001.05.1353	O-RING	JOINT TORIQUE	6					
4	006.04.1430	NUT	ECROU	6					
5	112.07.610.02	DISC;BRAKE	DISQUE DE FREIN	8					
6	734.07.004.02	DISC;BRAKE	DISQUE DE FREIN	8					
7	176.07.010.01	RING;BACK UP	BAGUE ANTIEXTRUSION	6					
8	176.07.015.01	O-RING	JOINT TORIQUE	6					
9	176.07.004.02	PISTON	PISTON	6					
10	176.07.003.01	DISC	DISQUE	1					
11	176.07.002.01	DISC	DISQUE	1					
12	734.07.015.01	PLUG	BOUCHON	2					
13	734.07.014.01	BOLT;BLEEDING	VIS DE PURGE	2					

(THIS PARTS BOOK IS FOR REFERENCE ONLY.
PART NUMBERS AND SERIAL NUMBERS MAY BE

DATE	AUG. 28, 2009
3rd EDITION	

**Fig. 3430 RESTRICTION BLOCK
BLOC DE RESTRICTION**

Serial No. ;

Key No.	Part No.	Description	Description	Q'ty	S.C	Serial No.	ICA	Replaceable part	
								Part No.	Q'ty
3430 --	420-00411	VALVE;RESTRICTION	BLOC	1					
1	-	BODY	CARTER	1	D				
2	-	PLUG	BOUCHON	2	D				
3	-	O-RING	RONDELLE DE RETENUE	2	D				

(THIS PARTS BOOK IS FOR REFERENCE ONLY.
PART NUMBERS AND SERIAL NUMBERS MAY BE

DATE	AUG. 28, 2009
3rd EDITION	

Fig. 3460 BRAKE FOOT VALVE
SOUPAPE D'ASPIRATION DE FREIN

Serial No. ;

Key No.	Part No.	Description	Description	Q'ty	S.C	Serial No.	ICA	Replaceable part	
								Part No.	Q'ty
3460 --	420-00241A	VALVE;BRAKE PEDAL	VANNE	1					
1	-	BODY;LOWER	CARTER	1	D				
2	-	BODY;UPPER	CARTER	1	D				
3	-	SPOOL	BOBINE	2	D				
4	-	PLUG	BOUCHON	1	D				
5	-	HOLDER;REAR	POSSESSEUR	1	D				
6	-	SPRING;LOWER	RESSORT	1	D				
7	-	SPRING;UPPER	RESSORT	1	D				
8	-	SPRING;MAIN	RESSORT	1	D				
9	-	RETAINER;SPRING	ARRETOIR	1	D				
10	-	O-RING	RONDELLE DE RETENUE	1	K				
11	-	O-RING	RONDELLE DE RETENUE	1	K				
12	-	SEAL;OIL	JOINT D'HUILE	1	K				
13	-	GUIDE;SPRING	GUIDE	1	D				
14	-	RING;SNAP	BAGUE	2	D				
15	-	DD-BUSH	COUSSINET	1	D				
16	-	PLATE;PEDAL	PLAQUE	1	D				
17	134-00008	PEDAL;BRAKE	PEDALE	1					
17-1	-	. PEDAL	. PEDALE	1	D				
17-2	-	. PLATE;LOCK	. PLAQUE	1	D				
17-3	-	. BOLT M8X20	. BOULON A 6 PANS	1	D				
17-4	-	. WASHER	. VIS	1	D				
18	-	RUBBER;PEDAL	CAOUTCHOUC	1	D				
19	-	COVER	COUVERCLE	1	D				
20	-	PIN;LOCK	GOUPILLE DE BLOCAGE	1	D				
21	8840320	SPRING;TORSION	RESSORT	1					
22	-	RING;SNAP	BAGUE	1	D				
23	-	BOLT M8X25	BOULON A 6 PANS	2	D				
24	-	NUT M8	ECROU	2	D				
25	-	BOLT;SOCKET M8X20	BOULON A 6 PANS CREUX	2	D				
26	-	WASHER;SPRING	RONDELLE ELASTIQUE	4	D				
27	-	CAP;PLASTIC	CHAPEAU	8	D				
30	-	WASHER	VIS	1	D				
31	-	RING;SNAP	BAGUE	1	D				
32	-	BOLT;SOCKET	BOULON A 6 PANS CREUX	2	D				
*	420-00073K	SEAL KIT	KIT DE REPARATION	1					

(THIS PARTS BOOK IS FOR REFERENCE ONLY.
PART NUMBERS AND SERIAL NUMBERS MAY BE

DATE	AUG. 28, 2009
3rd EDITION	

**Fig. 3510 STEERING CYLINDER
VERIN DE DIRECTION**

Serial No. ;

Key No.	Part No.	Description	Description	Q'ty	S.C	Serial No.	ICA	Replaceable part	
								Part No.	Q'ty
3510 --	440-00252	CYLINDER;STEERING	VERIN DE DIRECTION	2					
1	60P356-0	TUBE ASS'Y	TUYAU	1					
2	60P275-2	BUSH;STEEL	COUSSINET ACIER	1					
3	60P358-0	ROD ASS'Y	TIGE	1					
4	60P275-2	BUSH;STEEL	COUSSINET ACIER	1					
5	60P363-0	COVER;ROD	COUVERCLE	1					
6	E8410126	DU-BUSH	DOUILLE DU	1					
7	E5330080	U-PACKING	ARRET B	1	K				
8	E6500620	RING;BACK-UP	BAGUE DE SOUTIEN	1	K				
9	E6010080	WIPER;DUST	PARE-POUSSIERE	1	K				
10	E6311301	O-RING	JOINT TORIQUE	1	K				
11	E6641300	RING;BACK-UP	ANNEAU DE SOUTIEN	1	K				
12	E6311341	O-RING	JOINT TORIQUE	1	K				
13	03U787-0	WASHER	RONDELLE	1					
14	60P364-0	PISTON	PISTON	1					
15	E5150300	RING;GLYD	BAGUE	1	K				
16	00W218-0	RING;WEAR	SEGMENT D'USURE	1	K				
17	00S463-0	RING;DUST	BAGUE	1	K				
18	E6310781	O-RING 1BG35	JOINT TORIQUE	1	K				
19	60P293-0	NUT;PISTON	ECROU	1					
20	03A237-1	RING;LOCK	BAGUE	1					
21	80S547-0	PLUNGER;CUSHION	PLONGEURR DE SOUPAPE	1					
22	80S548-0	RING;STOP	BAGUE	1					
23	86D697-0	VALVE;CHECK	CLAPET DE RETENUE	1					
24	04S480-0	SPRING	RESSORT	1					
25	60P281-0	PLUG	BOUCHON	1					
26	E6300461	O-RING	JOINT TORIQUE	1					
27	E8841022	NIPPLE;GREASE	GRAISSEUR	3					
*	4440-6265K	SEAL KIT;STEERING CYL.	KIT D'ETANCHEITE	1					

(THIS PARTS BOOK IS FOR REFERENCE ONLY.
PART NUMBERS AND SERIAL NUMBERS MAY BE

DATE	AUG. 28, 2009
3rd EDITION	

Fig. 4100 TOOLS OUTILLAGE

Serial No. ;

Key No.	Part No.	Description	Description	Q'ty	S.C	Serial No.	ICA	Replaceable part	
								Part No.	Q'ty
4100 -1-51	T6510025	. SPANNER	. CLE PLATE	1					
1-52	T6510027	. SPANNER	. CLE PLATE	1					
1-55	T6600183	. SOCKET M6	. CLE A DOUILLE	1					
1-56	T6600189	. SOCKET M8	. CLE A DOUILLE	1					
1-57	T6600197	. SOCKET;WRENCH	. CLE A DOUILLE	1					
1-58	T6600201	. SOCKET;WRENCH	. CLE A DOUILLE	1					
1-59	T6600211	. SOCKET;WRENCH	. CLE A DOUILLE	1					
1-60	T6600223	. SOCKET;WRENCH	. CLE A DOUILLE	1					
1-61	T6600227	. SOCKET 32	. CLE A DOUILLE	1					
1-62	2199-9017	. CHISEL	. CHASSE-GOUPILLE	1					
1-71	199-00002	. WRENCH	. CLE A MOLETTE	1					
2	2199-9008	GREASE GUN	PISTOLET DE GRAISSAGE	1					
3	2184-9005	HOSE	TUYAU FLEXIBLE	1					
4	2199-1006	FUNNEL	ENTONNOIR	1					
5	4199-9055	BOX	BOITE	1					
6	2199-9056	FUNNEL	FUNNEEL	1					

(THIS PARTS BOOK IS FOR REFERENCE ONLY.
PART NUMBERS AND SERIAL NUMBERS MAY BE

Part No.	Fig No.	Key No.	Part No.	Fig No.	Key No.	Part No.	Fig No.	Key No.
0635 290 079	3150	150	0735 321 408	3180	40	1.115-00233	3520	20
	3160	70	0735 321 410	3140	180	1.115-00235	3530	20
0635 290 114	3130	150		3150	180	1.121-00052	3520	19
0636 010 593	3100	20		3160	80	1.121-00053	3530	19
0636 015 225	3250	50	0735 321 508	3130	180	1.124-00147	3530	26
	3290	30	0735 368 076	3130	160	1.124-00148	3520	29
0636 015 416	3190	60	0735 368 077	3140	160	1.140-00076	3520	21
0636 016 221	3100	100		3150	160	1.140-00095	3520	25
	3200	114		3160	60	1.161-00013	1305	5
0636 101 120	3240	21	0735 371 722	3110	160	1.161-00018	1510	16C
0636 101 644	3120	780		3110	170	1.161-00019	1510	17C
	3120	80		3150	220	1.180-00189	3530	8
0636 101 680	3260	30		3190	20	1.180-00237	3520	8
0636 101 708	3120	212		3190	30	1.180-00295	3530	9
	3120	50	0735 371 723	3130	210	1.180-00323	3520	17
0636 115 004	3120	55		3130	220	1.180-00324	3530	17
0636 302 034	3120	291		3140	210	1.180-00341	3520	15
0636 302 053	3220	12		3140	220	1.180-00342	3530	15
0636 302 065	3210	781		3150	210	1.180-00387	3520	16
0636 302 067	3260	41		3160	230	1.180-00390	3530	16
0636 607 039	3130	20		3160	240	1.180-00481	3530	10
	3140	20		3170	200	1.180-00665	3520	7
	3150	20		3170	210	1.193-00011	3530	22
	3160	20		3180	200	1.409-00017	3520	14
	3170	20		3180	210	1.409-00018	3530	14
	3180	20	0736 101 094	3220	200	1.428-00032	3530	3
0636 611 273	3120	240		3220	260	1.430-00084	3520	4
	3210	50	0736 101 257	3220	170	1.430-00085	3530	5
0637 025 005	3120	260		3220	230	1.441-00028	3520	1
	3210	70		3220	300	1.441-00299	3530	1
0730 002 713	3190	50		3220	340	1.444-00009	3520	3
0730 105 318	3100	110	0736 101 259	3220	390	1.901-00002	1305	20
0730 260 704	3250	60	0736 101 312	3120	160	103-83UNF	1140	3A
0730 361 070	3220	20		3210	40		1140	4A
0730 749 184	3190	70		3250	40		1140	5A
0732 042 538	3220	40	0736 101 334	3120	190	1043 326 045	3220	190
0732 042 539	3220	60	0736 101 335	3120	200		3220	250
0732 042 631	3220	80		3280	50	105220-6490	015	301A
0732 042 719	3220	110	0736 305 052	3120	451	1058 327 026	3220	330
0732 042 761	3210	798	0750 111 307	3190	40	110-00085	3530	2
0732 042 767	3230	70	0750 116 008	3200	30	110-00234	1320	59
0734 313 134	3220	181	0750 116 380	3170	50	110-M27	1140	3D
	3220	241		3180	50	1100-5C	1140	5D
0734 401 267	3130	230	0750 131 027	3120	120	1100-6C	1140	3B
	3140	230	0899 321 145	3210	200		1140	4B
	3150	230	1.110-00076	3520	5		1140	5B
	3160	250	1.110-00077	3530	6	111-00029	1100	5
	3170	220	1.110-00106	3520	2	111-00030	1100	36
	3180	220	1.110-00107	3530	4	112.06.022.01	3340	25
0735 321 408	3170	40	1.114-00260	3520	13		3380	25

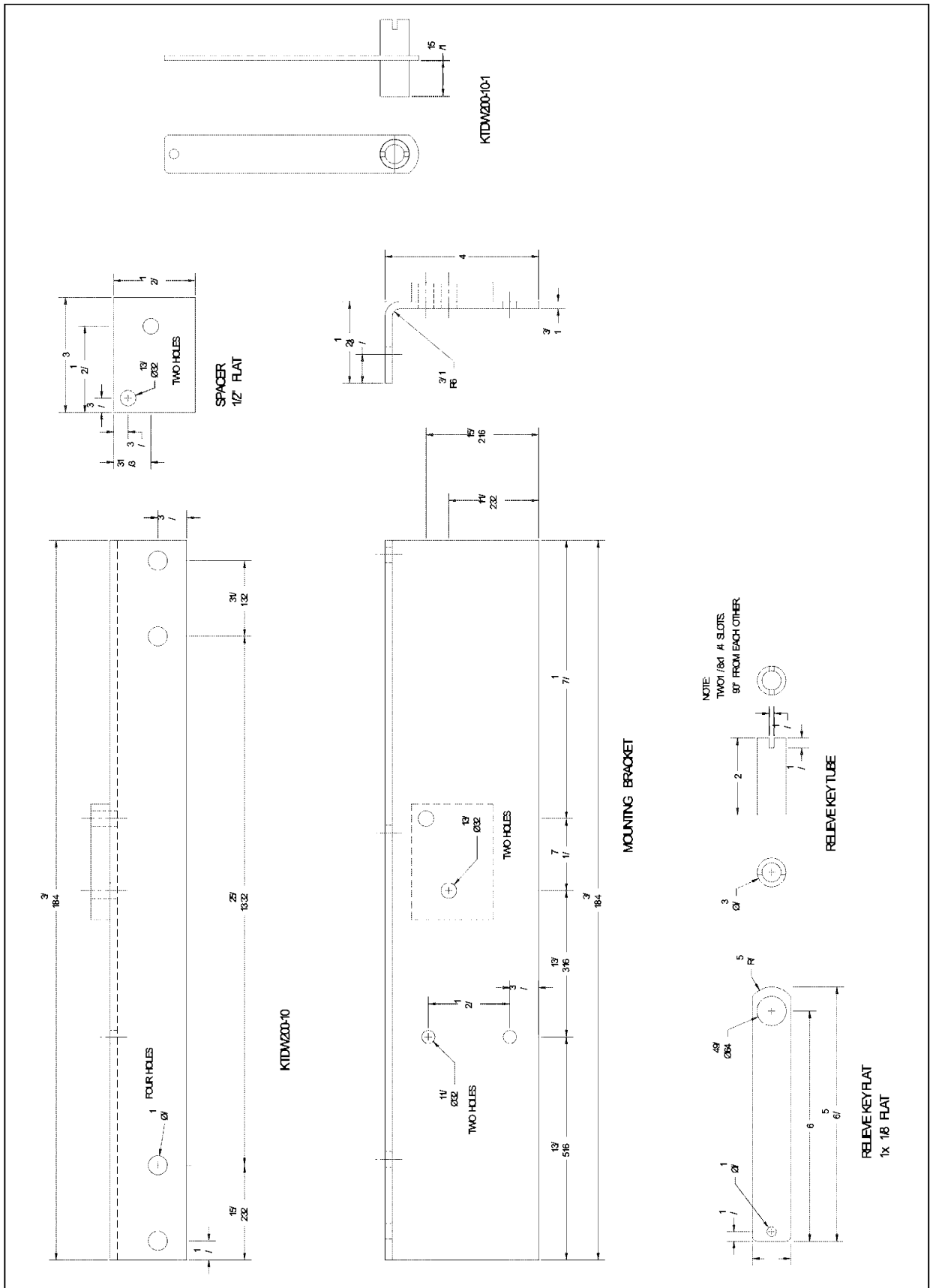
(THIS PARTS BOOK IS FOR REFERENCE ONLY.
PART NUMBERS AND SERIAL NUMBERS MAY BE
OUTDATED. ALWAYS USE THE ONLINE PARTS SYSTEM)

Part No.	Fig No.	Key No.	Part No.	Fig No.	Key No.	Part No.	Fig No.	Key No.
530-00364	1490	7	57126	3441	1-11	621-01462C	1300	58
530-00364A	1490	7	57351-SS	3441	1-5	621-01962C	1350	80
530-00365	1360	7-6	57355-SS	3441	1-4	621-01963A	1350	81
	1360	8-6	57385	3441	1-3	621-01964C	1350	82
530-00365A	1360	7-6	57406	3441	1-10	621-01966B	1350	83
	1360	8-6	57452	3441	1-9	621-01967B	1350	84
530-00366	1480	4	59669	3470	*	621-02041B	1350	61
530-00366A	1480	4	599-00063B	1490	1	621-02042B	1350	96
530-00367A	1490	2	600-00160	1340	-	621-02598	1360	3
530-00367B	1490	2	600-00163	1100	-	621-02598A	1360	3
530-00367C	1490	2	600-00163A	1100	-	621-02599	1360	4
530-00368	1380	47	6001-D111	3470	1	621-02599A	1360	4
530-00368A	1380	47	6002-K174	3470	4	621-02602	1360	1
530-00368B	1380	47	6002-V76	3470	2	621-02602A	1360	1
530-00369	1410	58		3470	3	621-02602B	1360	1
530-00370	1390	19	6003-E1	3470	5	621-02602C	1360	1
530-00371	1490	6	606-00078A	1100	1	621-02603	1360	2
530-00371A	1490	6	606-00078B	1100	1	621-02603A	1360	2
530-00372	1390	18	606-00078C	1100	1	621-02603B	1360	2
530-00373	1390	17	606-00080A	1100	2	621-02603C	1360	2
530-00374	1400	42	606-00080C	1100	2	621-02606	1360	-
530-00374B	1400	42	606-00080E	1100	2	621-02609	1190	29
530-00375A	1470	3	606-00080G	1100	2	621-02610	1350	-
530-00375B	1470	3	60P275-2	3510	2	621-02611B	1360	3
530-00375C	1470	3		3510	4	621-02611C	1360	3
530-00376	1260	58	60P281-0	3510	25	621-02612B	1360	4
530-00376A	1260	58	60P293-0	3510	19	621-02612C	1360	4
530-00377	1390	20	60P356-0	3510	1	621-02615	1350	79
530-00378	1490	44	60P358-0	3510	3	621-02616	1350	78
530-00378A	1490	44	60P363-0	3510	5	621-02617	1350	77
530-00397	3441	12	60P364-0	3510	14	621-02620	1180	9
534-00062	1410	56	621-00051	1290	13	621-02622	1350	10
537-00039A	1380	55	621-00052C	1300	38	621-03063	1100	46
537-00039B	1380	55	621-00053B	1300	28	621-03067A	1350	8-11
5375-F	3470	11	621-00054A	1300	36	621-03067B	1350	8-11
538-00002	1520	15	621-00056B	1300	44	621-03072	1350	5
539-00028B	1390	1	621-00059C	1300	45	621-03073	1350	7
539-00061	1390	1	621-00076E	1300	39	621-03077	1250	-
541-00013	1260	13	621-00076G	1300	39	621-03078	1250	11
543-00001	1380	11	621-00268	1290	10	621-03079	1250	12
543-00020	1380	43	621-00275A	1290	8	621-03080	1250	13
544-00007	1420	19	621-00276C	1300	40	621-03081	1250	14
545-00001	1400	33	621-00277A	1300	50	621-03082	1250	15
545-00003	1520	2	621-00326	1300	14	621-03083	1100	41
547-00019A	1450	41	621-00829	1260	79	621-03085	1130	20
549-00010	1200	24	621-01385	1300	46	621-03085A	1130	20
549-00039	1200	59	621-01386	1270	4-11	621-03087	1340	6
549-00085	1390	12	621-01402	1270	82	621-03165	1350	8-2
55321	3470	10	621-01458	1191	29	621-03610	1350	58
570-00002	1410	37	621-01458A	1191	29	622-00319A	1260	-

(THIS PARTS BOOK IS FOR REFERENCE ONLY.
PART NUMBERS AND SERIAL NUMBERS MAY BE
OUTDATED. ALWAYS USE THE ONLINE PARTS SYSTEM)

APPENDIX A - KEEN TRANSPORT

This supplier has provided the following supplemental pages.



REV#	DESCRIPTION	DATE	APPROVED

DRILL Ø0.8750

**WELD IN PLACE
3/8" PFE CONNECTOR
AEROCUP 500010606**

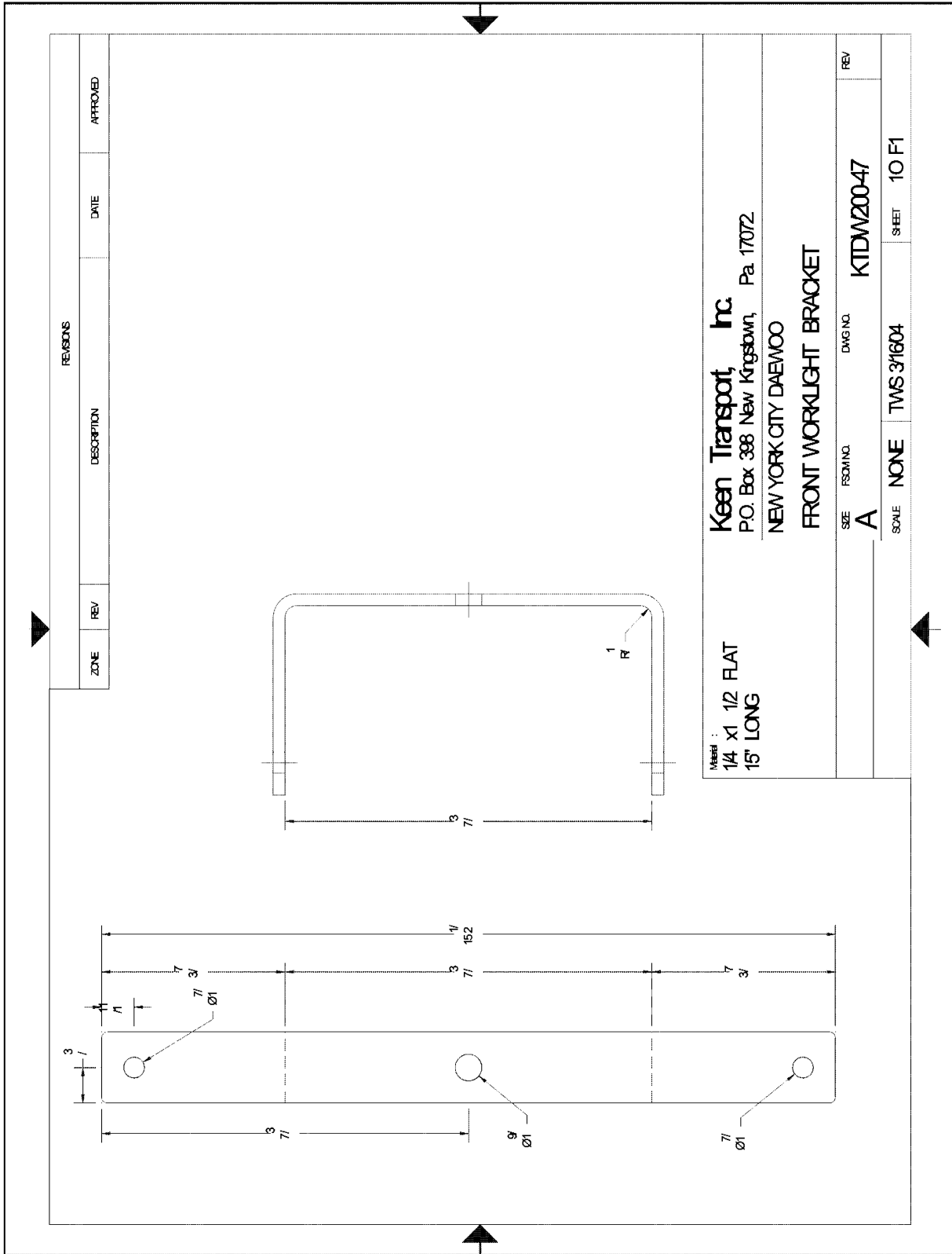
**DAEWOO PART NO.
2181-170ZD11
ELBOW PFO1FF1**

Keen Transport, Inc.
P.O. Box 398 New-Kingsham Pa. 17072

**DAEWOO MEGA200V
FITTING MODIFICATIO N**

SIZE	FORM NO.	DWG NO.	REV
A		KTDW200-31-	1

SCALE	NONE	DSM 0310804	SHEET
-------	------	-------------	-------



CLICK HERE TO **DOWNLOAD** THE COMPLETE MANUAL

- Thank you very much for reading the preview of the manual.
- You can download the complete manual from: www.heydownloads.com by clicking the link below



- Please note: If there is no response to CLICKING the link, please download this PDF first and then click on it.

CLICK HERE TO **DOWNLOAD** THE COMPLETE MANUAL