

# ***DOOSAN***

MX529740  
August 2014

ADT

# **Parts Manual**

## **DA30 - T2/T4i/STAGE 3B**

**T2 - Serial Number 720503 and Up**

**T4i/Stage 3B - Serial Number 740502 and Up**

CLICK HERE TO **DOWNLOAD** THE COMPLETE MANUAL

- Thank you very much for reading the preview of the manual.
- You can download the complete manual from: [www.heydownloads.com](http://www.heydownloads.com) by clicking the link below

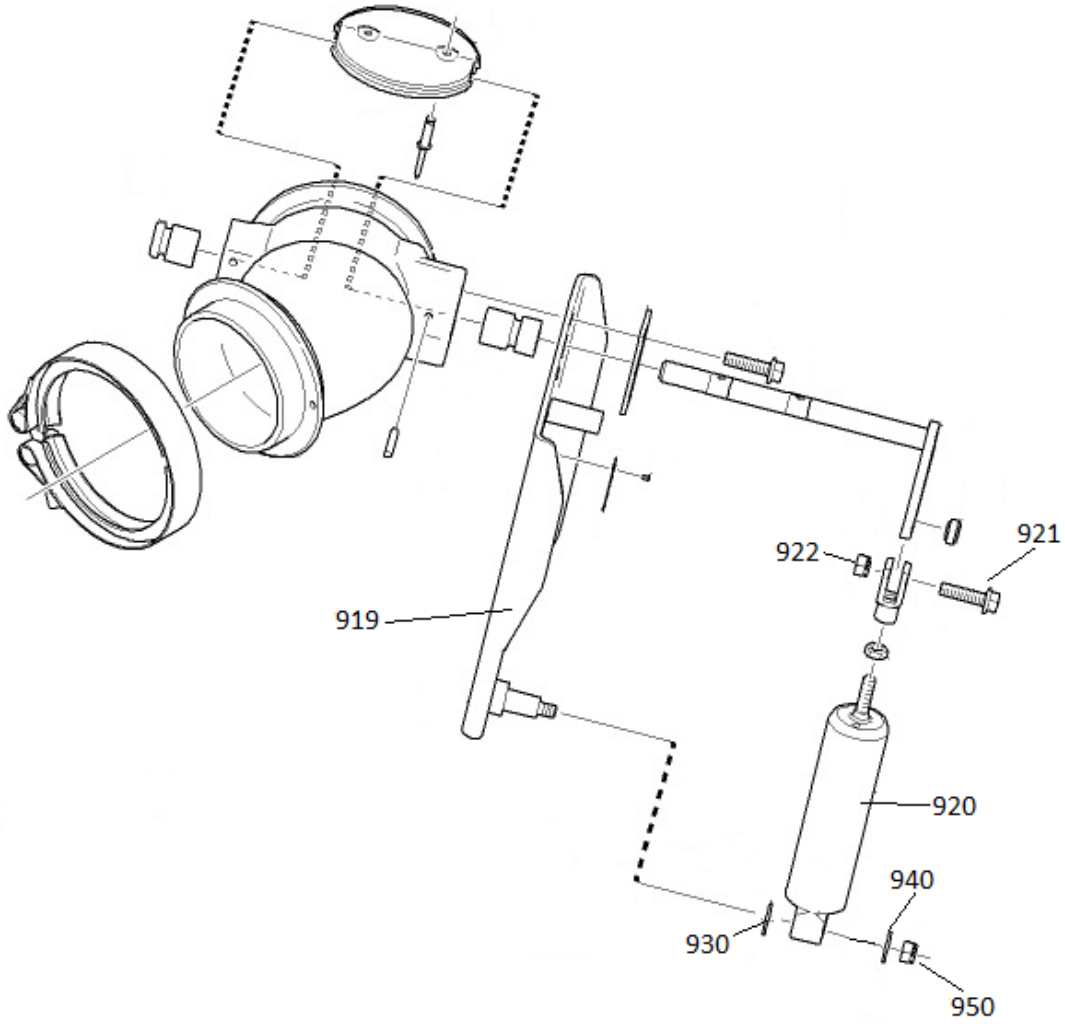


- Please note: If there is no response to **CLICKING** the link, please download this PDF first and then click on it.

CLICK HERE TO **DOWNLOAD** THE COMPLETE MANUAL

| <u>Main group description</u> | <u>Page/ group no.</u> |
|-------------------------------|------------------------|
| Engine                        | G010                   |
| Inlet system                  | G030                   |
| Cooling system                | G040                   |
| Exhaust system                | G050                   |
| Fuel oil tank                 | G060                   |
| Transmission                  | G070                   |
| Rear axle                     | G090                   |
| Wheel                         | G100                   |
| Intermediate shaft rear       | G110                   |
| Coupling, engine-transmission | G120                   |
| Parking brake                 | G130                   |
| Hydraulic system              | G190                   |
| Hydraulic tank w/filter       | G200                   |
| El.system front vagon         | G210                   |
| El.system rear vagon          | G220                   |
| El.system,cab                 | G230                   |
| Front frame                   | G240                   |
| Front axle                    | G250                   |
| Articulation bearing          | G260                   |
| Articulation hinge            | G270                   |
| Fender                        | G280                   |
| Mudguard                      | G290                   |
| Bonnet                        | G300                   |
| Cab, equipment outside        | G310                   |
| Cab, equipment inside         | G320                   |
| Windows in cabin              | G330                   |
| Cabin door                    | G340                   |
| Panels in cabin               | G350                   |
| Mirrors                       | G360                   |
| Air condition                 | G380                   |
| Rear frame                    | G390                   |
| Steering cyl. mounting        | G400                   |
| Protection steering cyl.      | G410                   |
| Body                          | G420                   |
| Tilting bearing mounting      | G430                   |
| Tilting cylinder mounting     | G440                   |
| Equipment                     | G460                   |
| Safety equipment              | G470                   |
| Sticker                       | G480                   |
| Lubrication system            | G490                   |
| Option                        | G500                   |

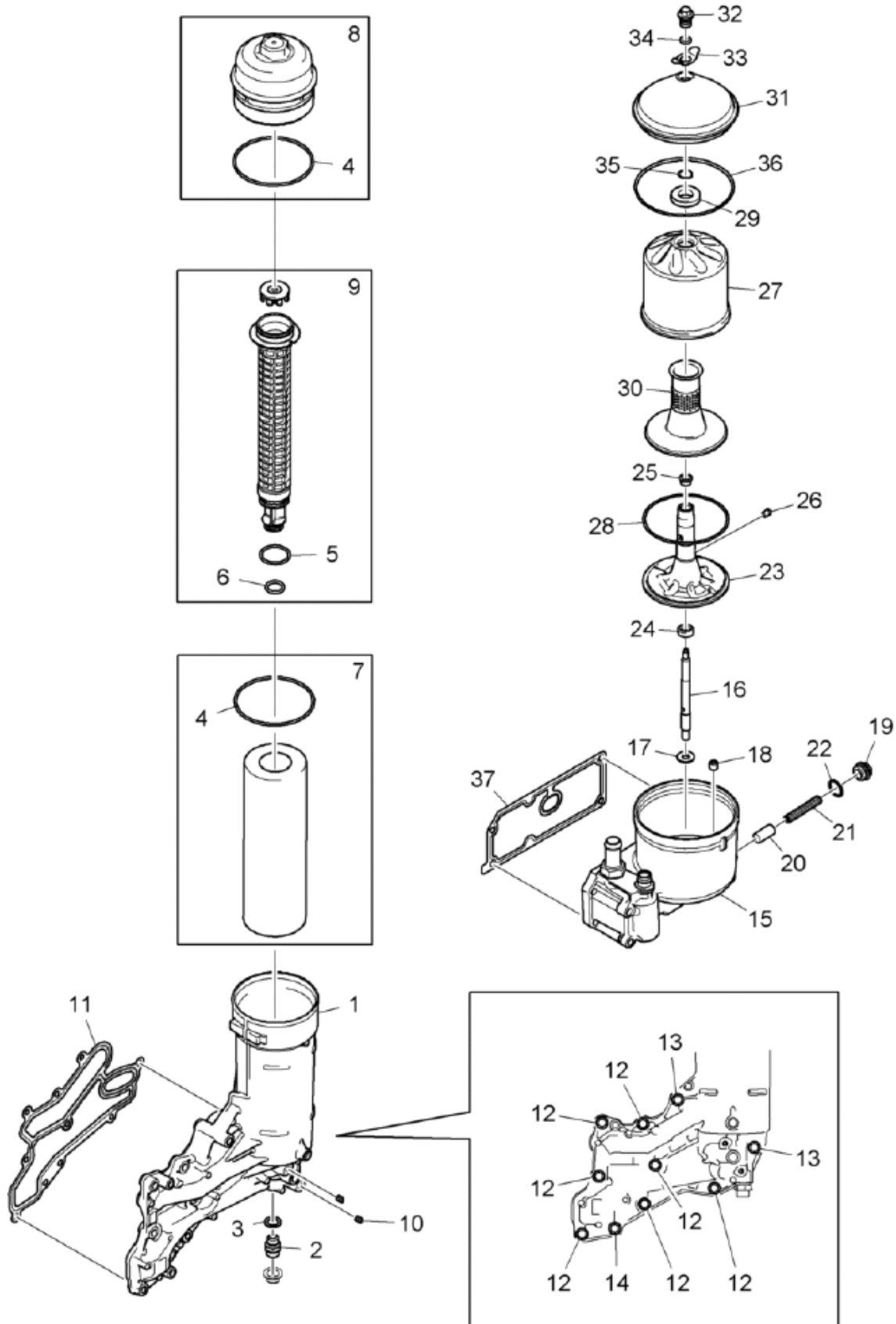
Cylinder exhaust mounting



| DA30 |         |      |                   | Date       | Page    |
|------|---------|------|-------------------|------------|---------|
|      |         |      |                   | 05.2012    | G010-25 |
| Pos. | Part.nr | Qt'y | Description       | Serial No. | Notes   |
| 1    | 529255  | 1    | Flywheel housing  |            |         |
| 2    | 451803  | 2    | Plug              |            |         |
| 3    | 529256  | 1    | Seal              |            |         |
| 4    | 529257  | 9    | Screw             |            |         |
| 5    | 451255  | 9    | Washer            |            |         |
| 6    | 351694  | 12   | Screw             |            |         |
| 7    | 508890  | rq   | Screw             |            |         |
| 8    | 451035  | 6    | Screw             |            |         |
| 9    | 451278  | 1    | Screw             |            |         |
| 10   | 529258  | 1    | Cover             |            |         |
| 11   | 509135  | 1    | •O-ring           |            |         |
| 12   | 451035  | 2    | Screw             |            |         |
| 13   | 251506  | 1    | Cover             |            |         |
| 14   | 529259  | 1    | Cover             |            |         |
| 15   | 351894  | 4    | Screw             |            |         |
| 16   | 529260  | 1    | Timing gear plate |            |         |
|      | 451259  | rq   | Screw             |            |         |
|      | 531360  | rq   | Gasket            |            |         |
|      | 351953  | rq   | Screw             |            |         |
|      | 351943  | rq   | Gasket            |            |         |
| 17   | 151802  | 2    | Pin               |            |         |
| 18   | 451532  | 6    | Screw             |            |         |
| 19   | 515906  | 1    | Plug              |            |         |
|      | 529261  | 2    | Plug              |            |         |
| 20   | 351894  | 1    | Screw             |            |         |
| 21   | 529262  | 1    | Washer            |            |         |
| 22   | 451527  | 2    | Lifting ear       |            |         |
| 23   | 051750  | 12   | Stud              |            |         |
| 24   | 512872  | 12   | Nut               |            |         |
| 24   | 451080  | 12   | Lock nut          |            |         |
| 25   | 451035  | 4    | Screw             |            |         |
|      | 509146  | 1    | Plug              |            |         |
|      | 509145  | 1    | O-ring            |            |         |
|      | 351810  | 1    | Screw             |            |         |

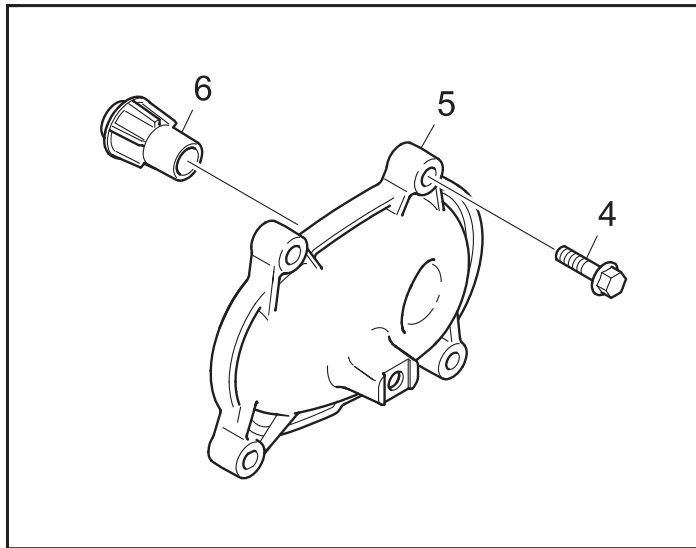
alt

Centrifugal oil cleaner, oil filter



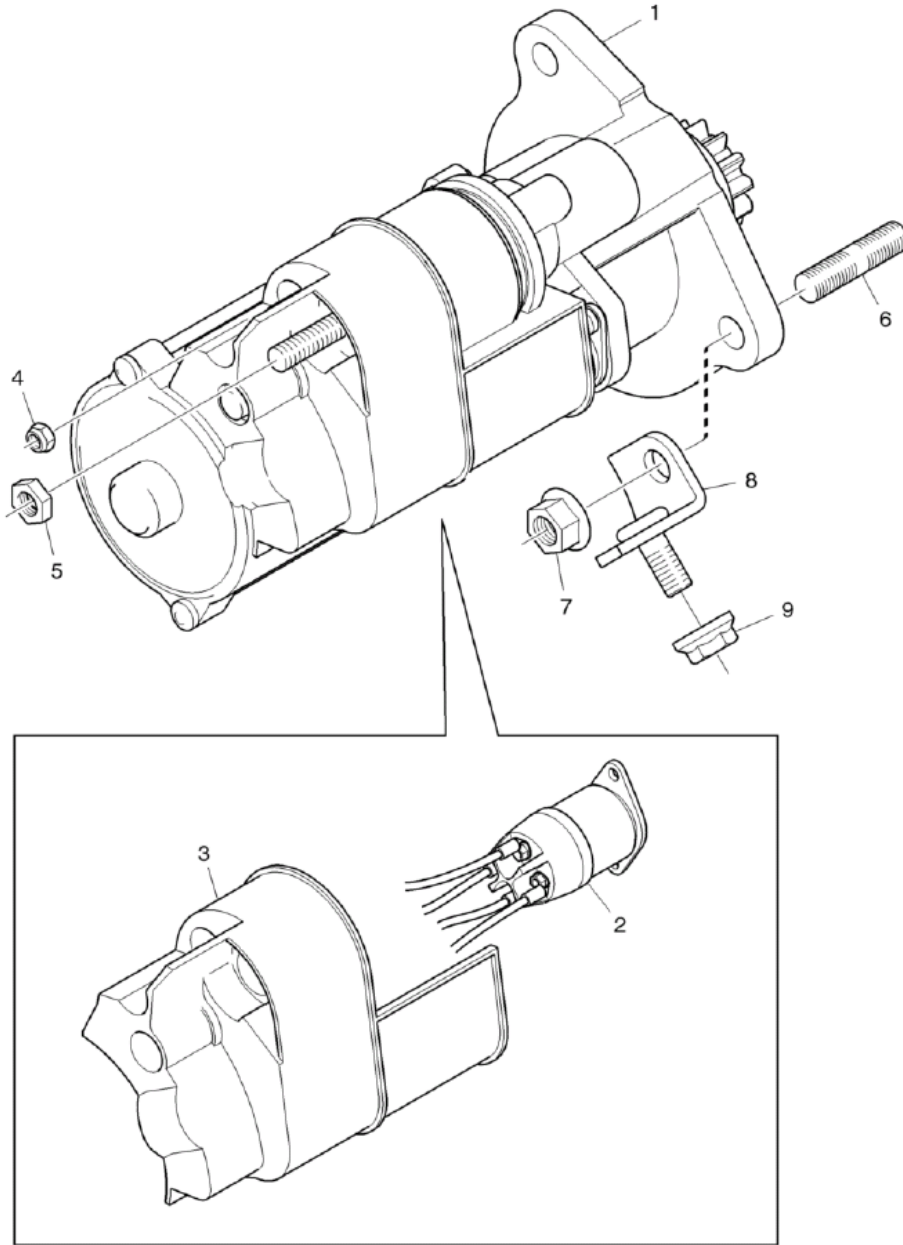
| <b>DA30</b> |         |      |                 | Date           | Page           |
|-------------|---------|------|-----------------|----------------|----------------|
|             |         |      |                 | <b>05.2012</b> | <b>G010-51</b> |
| Pos.        | Part.nr | Qt'y | Description     | Serial No.     | Notes          |
| 1           | 531301  | 1    | Intake manifold |                |                |
|             | 512989  | rq   | •Screw          |                |                |
|             | 529349  | rq   | •Silicone       |                |                |
| 2           | 529220  | 5    | Gasket          |                |                |
| 3           | 351994  | 20   | Screw           |                |                |
| 4           | 512524  | 1    | Seal            |                |                |

Thermostat housing



| DA30 |         |      |               | Date       | Page    |
|------|---------|------|---------------|------------|---------|
|      |         |      |               | 05.2012    | G010-77 |
| Pos. | Part.nr | Qt'y | Description   | Serial No. | Notes   |
| 1    | 516476  | 5    | Unit injector |            |         |
|      | 516477  | 1    | •Nozzle       |            |         |
| 2    | 451188  | 5    | Gasket        |            |         |
| 3    | 516478  | 5    | Holder        |            |         |
| 4    | 451321  | 5    | Screw         |            |         |

Starter motor

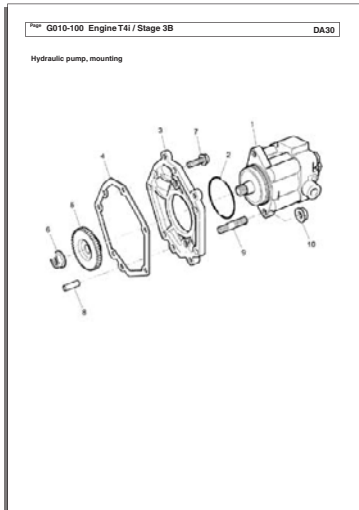


| DA30  |         |      |                        | Date       | 05.2012 | Page  | G010-103 |
|-------|---------|------|------------------------|------------|---------|-------|----------|
| Pos.  | Part.nr | Qt'y | Description            | Serial No. |         | Notes |          |
|       | 529963  | 1    | Cylinder exhaust brake |            |         |       |          |
| 10    | 531551  | 1    | •Tube                  |            |         |       |          |
| 10-10 | 527853  | 1    | ••Bearing              |            |         |       |          |
| 20    | 531552  | 1    | •Piston Rod            |            |         |       |          |
| 50    |         | 1    | •O-ring                |            |         |       | S        |
| 55    | 063101  | 1    | •Nut                   |            |         |       |          |
| 65    | 524369  | 1    | •Clevis                |            |         |       |          |
| 70    |         | 1    | •Seal                  |            |         |       | S        |
| 80    |         | 1    | •Wiper                 |            |         |       | S        |
|       | 527856  | 1    | •Seal kit              |            |         |       |          |

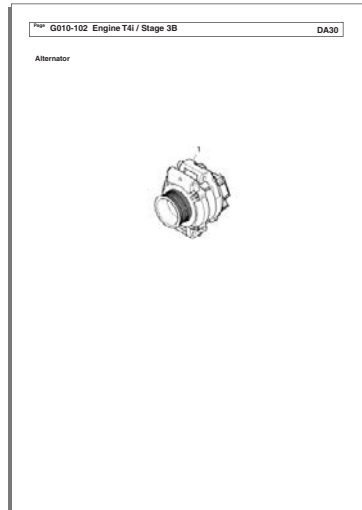
**Engine**

**G010 Picture index**

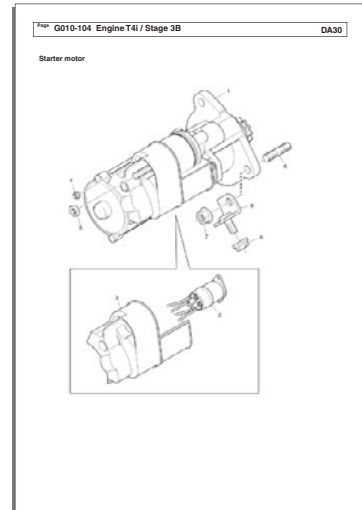
G010-100



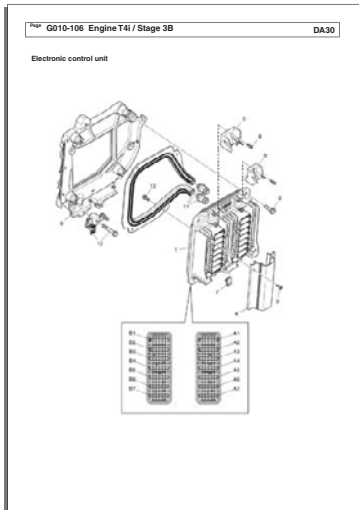
G010-102



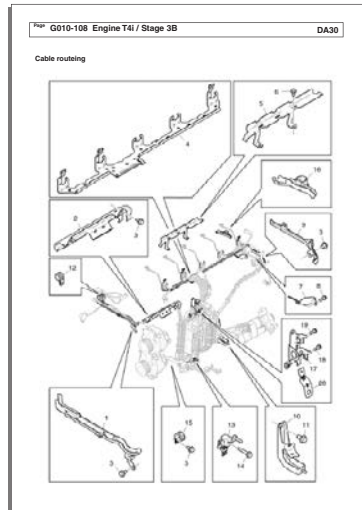
G010-104



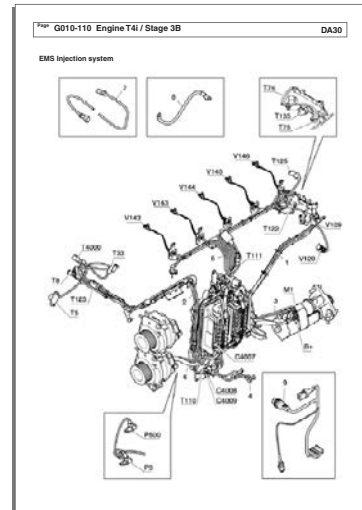
G010-106



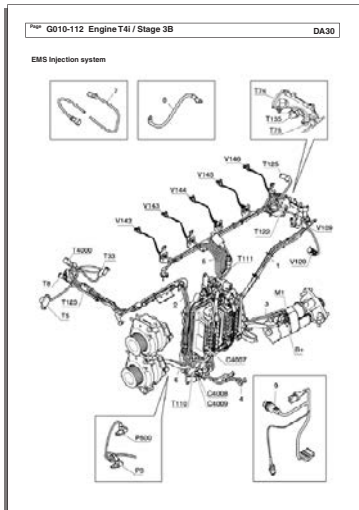
G010-108



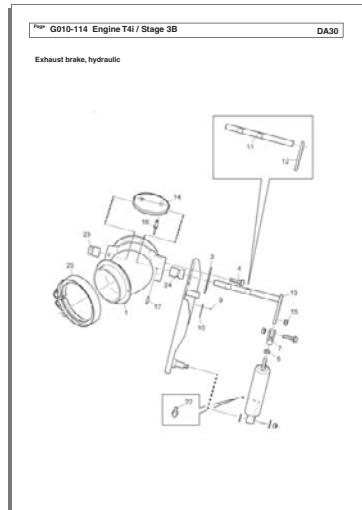
G010-110



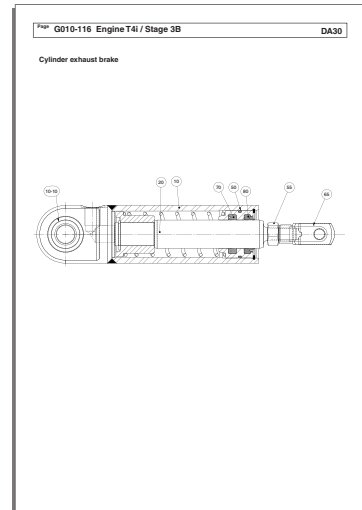
G010-112



G010-114



G010-116

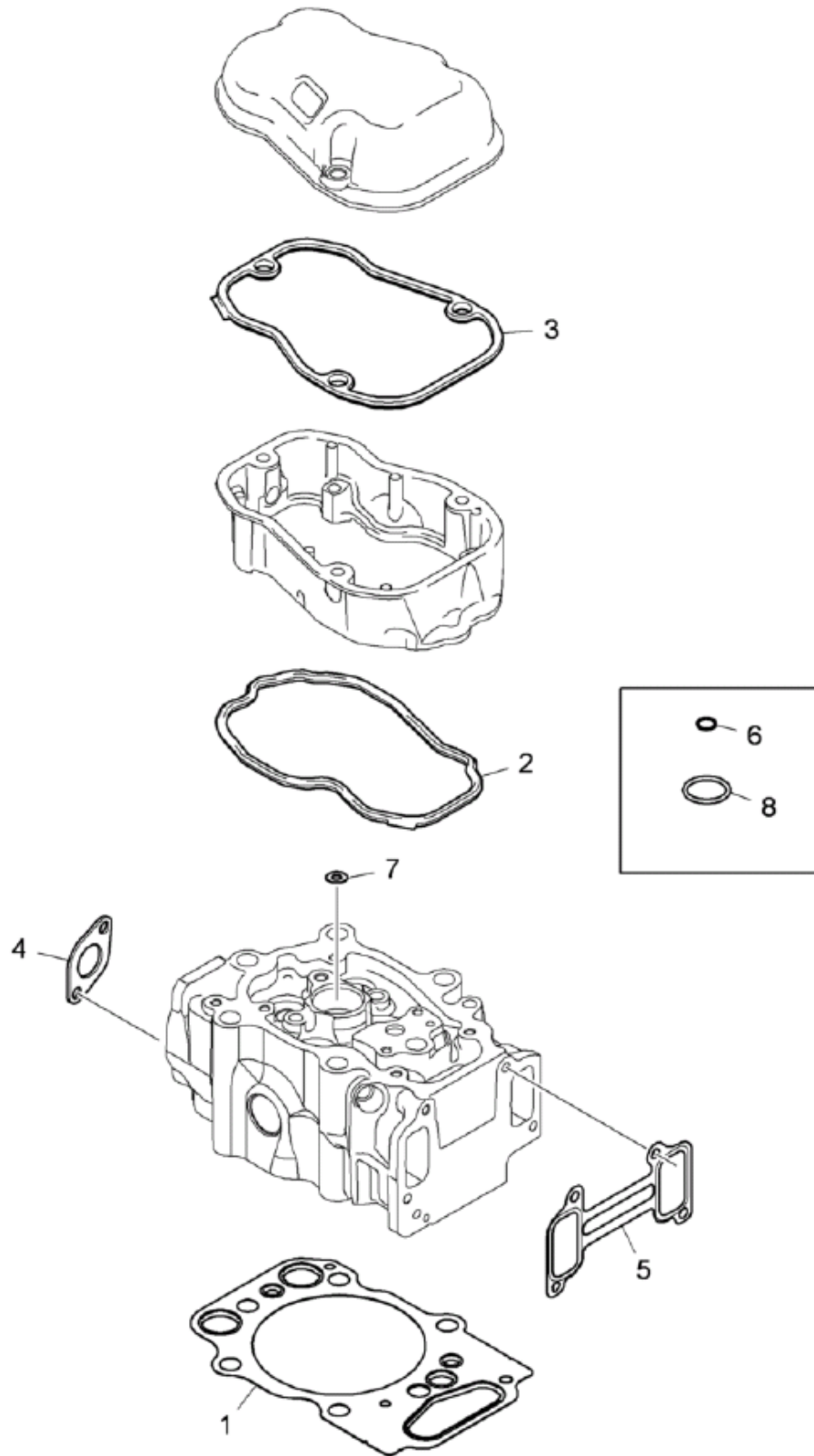


| <b>DA30</b> |         |      |             | Date           | Page           |
|-------------|---------|------|-------------|----------------|----------------|
|             |         |      |             | <b>05.2012</b> | <b>G010-21</b> |
| Pos.        | Part.nr | Qt'y | Description | Serial No.     | Notes          |
| 1           | 529443  | rq   | Cover       |                |                |
| 2           | 529444  | rq   | Cover       |                |                |
| 3           | 529445  | rq   | Cover       |                |                |
| 4           | 529446  | 1    | Cover       |                |                |
| 5           | 529447  | 1    | Cover       |                |                |
| 6           | 529439  | rq   | Gasket      |                |                |
| 7           | 512960  | rq   | Screw       |                |                |
| 8           | 529440  | rq   | Gasket      |                |                |
| 9           | 451633  | rq   | Screw       |                |                |



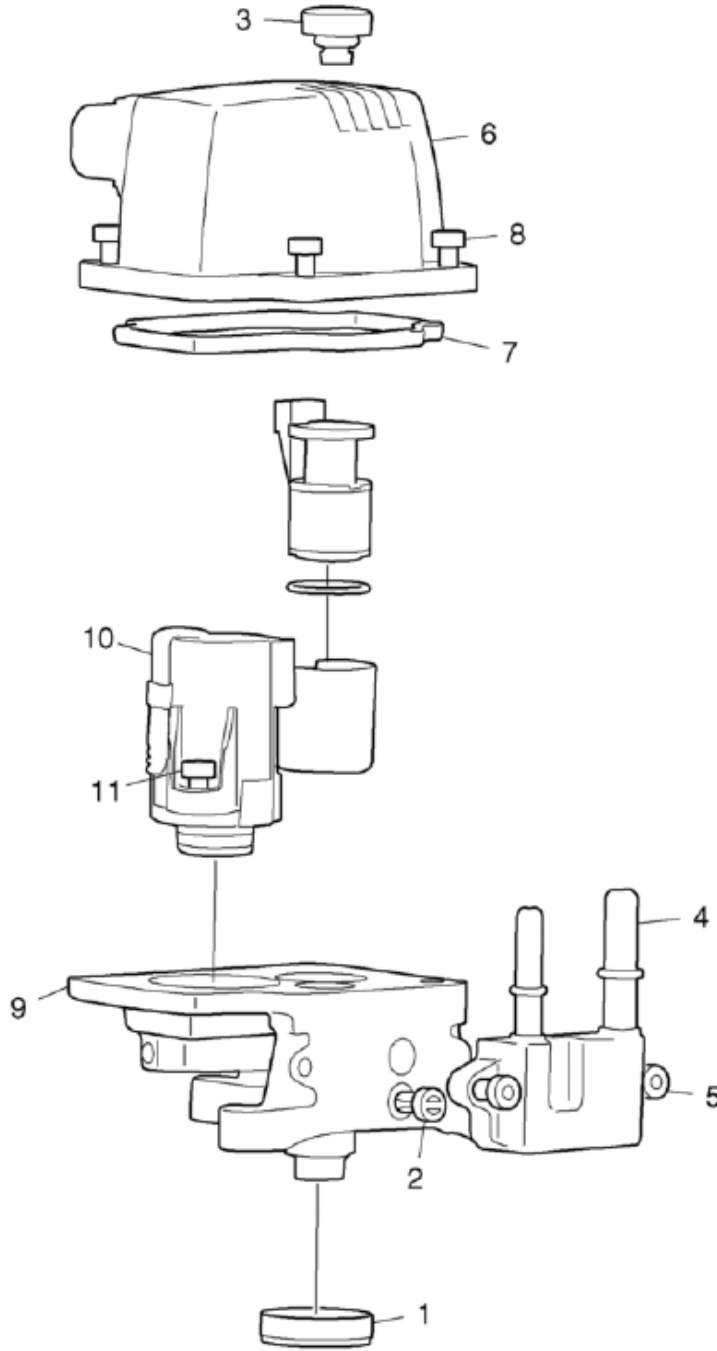
| DA30 |         |      |                  | Date       | Page             |
|------|---------|------|------------------|------------|------------------|
|      |         |      |                  | 05.2012    | G010-47          |
| Pos. | Part.nr | Qt'y | Description      | Serial No. | Notes            |
| 1    | 531295  | 1    | Exhaust manifold |            |                  |
| 2    | 531296  | 1    | Exhaust manifold |            |                  |
| 3    | 531297  | 8    | •Seal ring       |            |                  |
| 4    | 531298  | 1    | Exhaust manifold |            |                  |
| 5    | 529343  | 2    | •Seal ring       |            |                  |
| 6    | 529219  | 5    | Gasket           |            |                  |
| 7    | 529345  | 10   | Screw            |            |                  |
| 8    | 451604  | 1    | •Spacing sleeve  |            |                  |
| 9    | 351954  | 1    | Gasket           |            |                  |
| 10   | 509211  | 3    | Screw            |            |                  |
| 11   | 509212  | 3    | Spacing sleeve   |            |                  |
| 12   | 506615  | 1    | Stud screw       |            |                  |
| 13   | 451340  | 1    | Nut              |            |                  |
| 14   |         | 1    | Turbocharger     |            | See page G010-49 |

Gasket kit, cylinder head



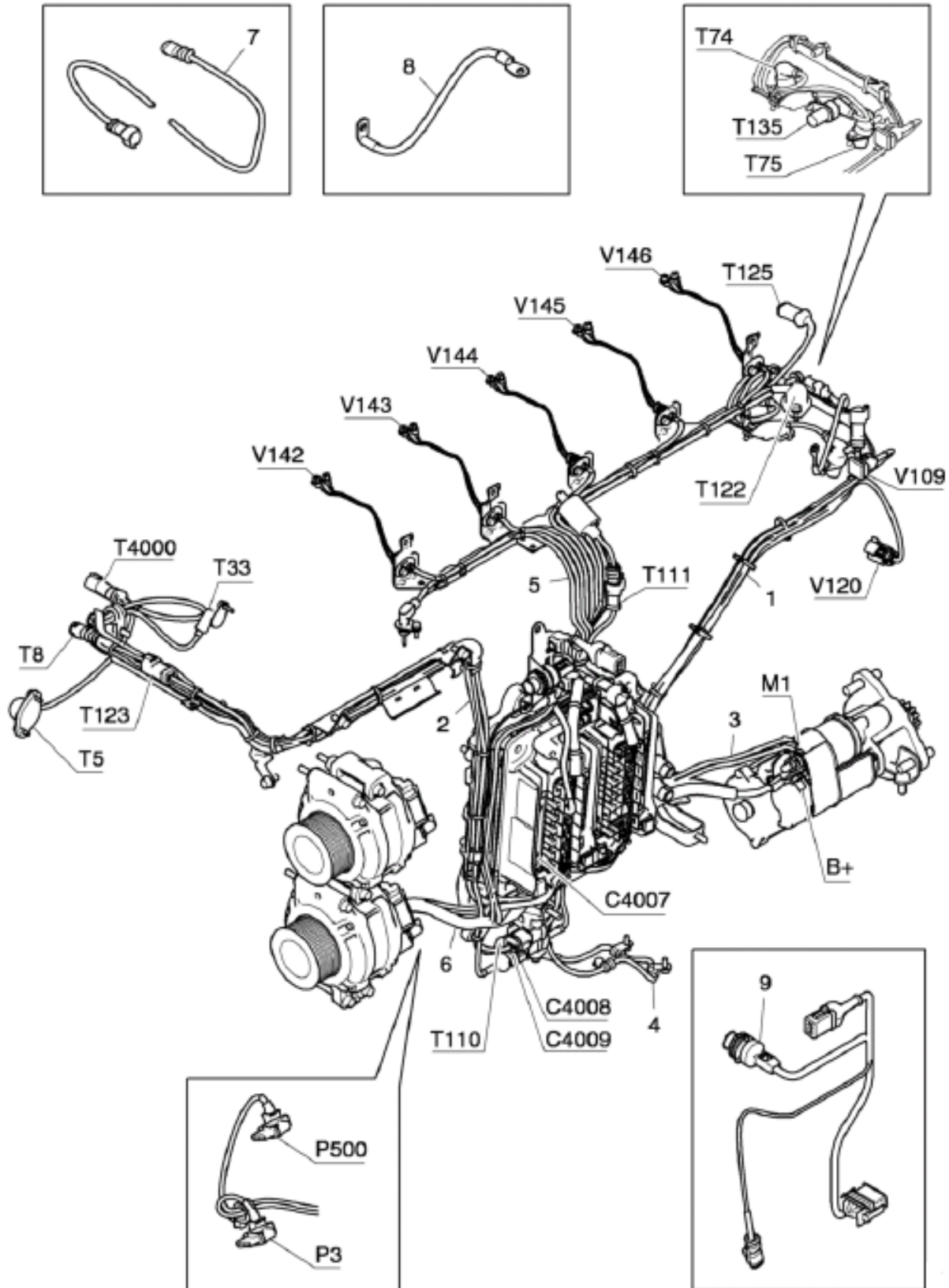
| DA30 |         |      |             | Date       | 05.2012 | Page  | G010-73    |
|------|---------|------|-------------|------------|---------|-------|------------|
| Pos. | Part.nr | Qt'y | Description | Serial No. |         | Notes |            |
| 1    | 529377  | 1    | Flange      |            |         |       |            |
| 2    | 529378  | 1    | •Plug       |            |         |       |            |
| 3    | 451692  | 1    | •O-ring     |            |         |       |            |
| 4    | 251221  | 1    | •Screw      |            |         |       |            |
| 5    | 529379  | 1    | •Connector  |            |         |       |            |
| 6    | 529466  | 1    | •Bracket    |            |         |       |            |
| 7    | 529381  | 1    | •O-ring     |            |         |       |            |
| 8    | 351894  | 1    | •Screw      |            |         |       |            |
| 9    | 451514  | 1    | •Seal       |            |         |       |            |
| 10   | 151789  | 1    | •Plug       |            |         |       |            |
| 11   | 529382  | 1    | Connector   |            |         |       | Cab heater |
|      | 529383  | 2    | Plug        |            |         |       | Cab heater |
|      | 251635  | 1    | Hose clamp  |            |         |       |            |
| 12   | 529384  | 1    | Gasket      |            |         |       |            |
| 13   | 531313  | 1    | Flange      |            |         |       |            |
| 14   | 529233  | 1    | Gasket      |            |         |       |            |
| 15   | 529385  | 1    | Hose        |            |         |       |            |
| 16   | 508501  | 2    | Hose clamp  |            |         |       |            |
| 17   | 529389  | 1    | Pipe ass'y  |            |         |       |            |
| 18   | 451498  | 4    | Screw       |            |         |       |            |
| 19   | 151593  | 2    | Plug        |            |         |       |            |
| 20   | 451429  | 2    | Gasket      |            |         |       |            |
| 21   | 451633  | 3    | Screw       |            |         |       |            |
| 22   | 051918  | 1    | Hose union  |            |         |       | Cab heater |

Exhaust system, Reducant doser, SCR



| DA30 |         |      |                      | Date       | Page            |
|------|---------|------|----------------------|------------|-----------------|
|      |         |      |                      | 05.2012    | G010-99         |
| Pos. | Part.nr | Qt'y | Description          | Serial No. | Notes           |
| 1    | 530176  | 1    | Control unit         |            | ( El pos. 211 ) |
| 2    | 530348  | 1    | Cable set            |            |                 |
|      |         | 1    | •Contact housing     |            | E67/A           |
|      |         | 1    | •Contact housing     |            | E67/B           |
|      |         | 1    | •Contact housing     |            | C7              |
|      |         | 1    | •Contact housing     |            | C316            |
|      |         | 1    | •Contact housing     |            | C4011           |
|      |         | 1    | •Contact housing     |            | C4012           |
|      |         | 1    | •Contact housing     |            | H25             |
|      |         | 1    | •Contact housing     |            | H26             |
|      |         | 1    | •Contact housing     |            | V118            |
|      |         | 1    | •Contact housing     |            | V183            |
|      |         | 1    | •Contact housing     |            | T116            |
| 3    | 530349  | 1    | Cable set            |            |                 |
|      |         | 1    | •Contact housing     |            | C316            |
|      |         | 1    | •Contact housing     |            | V117            |
| 4    | 530350  | 1    | Cable set            |            |                 |
|      |         | 1    | •Contact housing     |            | C7              |
|      |         | 1    | •Contact housing     |            | C4022           |
| 5    | 530351  | 1    | Cable set            |            |                 |
|      |         | 1    | •Contact housing     |            | C4011           |
|      |         | 1    | •Contact housing     |            | T115            |
| 6    | 530175  | 1    | Sensor               |            |                 |
| 7    | 530352  | 1    | Cable set            |            |                 |
|      |         | 1    | •Contact housing     |            | C4012           |
|      |         | 1    | •Contact housing     |            | T113            |
| 8    | 530167  | 1    | Sensor               |            |                 |
| 9    | 530353  | 1    | Cable set            |            |                 |
|      |         | 1    | •Contact housing     |            | E44.B4          |
|      |         | 1    | •Contact housing     |            | C4002           |
|      |         | 1    | •Contact housing     |            | C4008           |
|      |         | 1    | •Contact housing     |            | C4022           |
|      | 530354  | 1    | •Fuseholder          |            | F4000           |
|      | 530355  | 1    | •Fuse                |            |                 |
|      |         | 1    | •Cable terminal ring |            | G4000           |
|      |         | 1    | •Cable terminal ring |            | M1              |

EMS Injection system

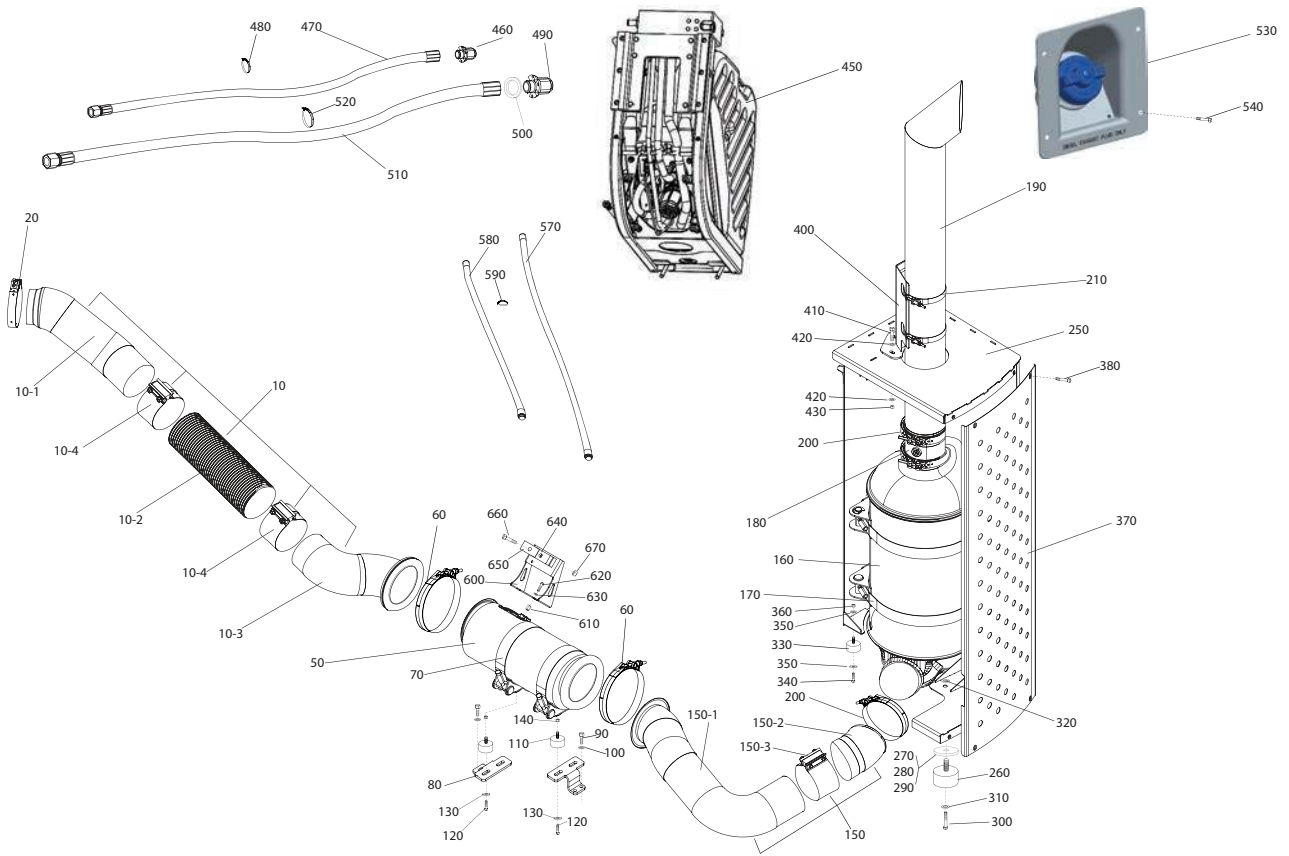






| DA30    |         |      |             | Date       | Page    |
|---------|---------|------|-------------|------------|---------|
|         |         |      |             | 03.2012    | G040-13 |
| Pos.    | Part.nr | Qt'y | Description | Serial No. | Notes   |
| 1200    | 527461  | 1    | Fan beam    |            |         |
| 1210    | 509228  | 16   | Screw       |            |         |
| 1220    | 509227  | 32   | Washer      |            |         |
| 1230    | 502759  | 16   | Nut         |            |         |
| 1240    | 501399  | 1    | Motor       |            |         |
| 1250    | 061464  | 8    | Screw       |            |         |
| 1260    | 063036  | 8    | Nut         |            |         |
| 1270    | 508829  | 1    | Fan ass'y   |            |         |
| 1270-10 | 508828  | 1    | •Fan        |            |         |
| 1270-20 | 507934  | 1    | •Hub        |            |         |
| 1270-30 | 160435  | 6    | •Screw      |            |         |
| 1270-40 | 508833  | 6    | •Nut        |            |         |
| 1280    | 514198  | 1    | Nut         |            |         |
| 1285    | 504309  | 1    | Washer      |            |         |
| 1290    | 501981  | 1    | Cotter pin  |            |         |

### Exhaust system







| DA30 |         |        |                        | Date       | Page            |
|------|---------|--------|------------------------|------------|-----------------|
|      |         |        |                        | 03.2012    | G090-13         |
| Pos. | Part.nr | Qt'y   | Description            | Serial No. | Notes           |
| 1    | 152895  | 6      | Screw                  |            |                 |
| 2    | 524404  | 1      | Cover                  |            |                 |
| 3    | 524169  | 1      | O-ring                 |            |                 |
| 4    | 524405  | 1      | Stud                   |            |                 |
| 5    | 161497  | 4      | Screw                  |            |                 |
| 6    | 524148  | 1      | Gear housing           |            |                 |
| 7    | 524182  | 2      | Plug                   |            |                 |
| 8    | 524188  | 2      | Sealing ring           |            |                 |
| 9    | 524191  | 1      | Shaft                  |            |                 |
| 10   | 524149  | 8      | Tab washer             |            |                 |
| 11   | 524150  | 4      | Planet gear            |            |                 |
| 12   | 528140  | 4      | Reoller bearing        |            |                 |
| 13   | 524152  | 4      | Planetary pin          |            |                 |
| 14   | 524170  | 1      | O-ring                 |            |                 |
| 15   | 524406  | 1      | Gear housing           |            |                 |
| 16   | 524153  | 4      | Shear pin              |            |                 |
| 17   | 524269  | 4      | Washer                 |            |                 |
| 18   | 524162  | 4      | Screw                  |            |                 |
| 19   | 524195  | 4      | Main nut               |            |                 |
| 20   | 524221  | 1      | Adjusting kit          |            | S = 1,375 ~ 2,5 |
| 20   | 524155  | as req | Washer                 |            | S = 2,5         |
| 20   | 524197  | as req | Washer                 |            | S = 2,375       |
| 20   | 524198  | as req | Washer                 |            | S = 2,25        |
| 20   | 524199  | as req | Washer                 |            | S = 2,125       |
| 20   | 524200  | as req | Washer                 |            | S = 2           |
| 20   | 524201  | as req | Washer                 |            | S = 1,875       |
| 20   | 524202  | as req | Washer                 |            | S = 1,75        |
| 20   | 524203  | as req | Washer                 |            | S = 1,625       |
| 20   | 524204  | as req | Washer                 |            | S = 1,5         |
| 20   | 524205  | as req | Washer                 |            | S = 1,375       |
| 21   | 524206  | 1      | Gear                   |            | Z = 66          |
| 22   | 524207  | 1      | Ring gear carrier      |            | Z = 66          |
| 23   | 524208  | 1      | Snap ring              |            |                 |
| 24   | 524209  | 1      | Tapered roller bearing |            |                 |
| 25   | 524210  | 12     | Wheel bolt             |            |                 |
| 26   | 524212  | 1      | Wheel hub              |            |                 |
| 27   | 524213  | 1      | Cylinder               |            |                 |
| 28   | 524214  | 1      | Piston seal            |            |                 |
| 29   | 524433  | 1      | Piston                 |            |                 |
| 30   | 524216  | 1      | Piston seal            |            |                 |
| 31   | 524217  | 27     | Spring                 |            |                 |
| 32   | 524407  | 1      | Thrust washer          |            |                 |
| 33   | 524218  | 1      | Snap ring              |            |                 |
| 34   | 524169  | 1      | O-ring                 |            |                 |
| 35   | 524408  | 5      | Stud                   |            |                 |
| 36   | 524219  | 7      | Steel disc             |            |                 |
| 36a  | 524351  | 1      | Steel disc             |            |                 |
| 37   | 524220  | 7      | Inner disc             |            |                 |
| 37a  | 524352  | 2      | Inner disc             |            |                 |
| 38   | 524172  | 1      | O-ring                 |            |                 |
| 39   | 524192  | 1      | Oil seal               |            |                 |
| 40   | 524173  | 1      | O-ring                 |            |                 |
| 41   | 524409  | 1      | Wheel hub              |            |                 |
| 42   | 524269  | 12     | Washer                 |            |                 |
| 43   | 524163  | 12     | Hexagon bolt           |            |                 |
| 44   | 524188  | 1      | Seal ring              |            |                 |
| 45   | 524182  | 1      | Plug                   |            |                 |

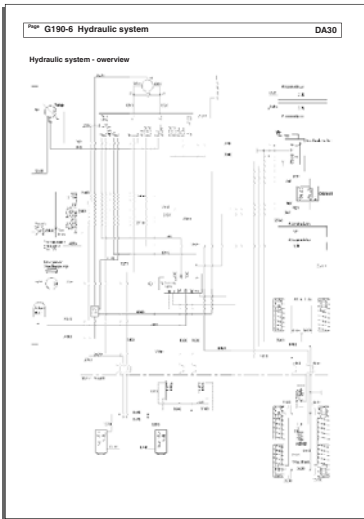


| <b>DA30</b> |         |      |                        | Date           | Page            |
|-------------|---------|------|------------------------|----------------|-----------------|
|             |         |      |                        | <b>03.2012</b> | <b>G120-5</b>   |
| Pos.        | Part.nr | Qt'y | Description            | Serial No.     | Notes           |
| 10          |         | 1    | Rubber coupling ass'y* |                | See page G120-7 |
| 20          | 061257  | 8    | Screw                  |                |                 |
| 30          | 528878  | 1    | Shaft, ass'y           |                |                 |
| 40          | 053474  | 4    | Screw                  |                |                 |
| 50          | 504316  | 4    | Washer                 |                |                 |
| 60          | 053474  | 4    | Screw                  |                |                 |
| 70          | 504316  | 4    | Washer                 |                |                 |

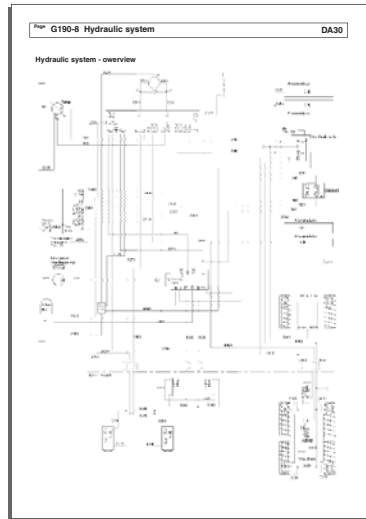
# Hydraulic system

# G190 Picture index

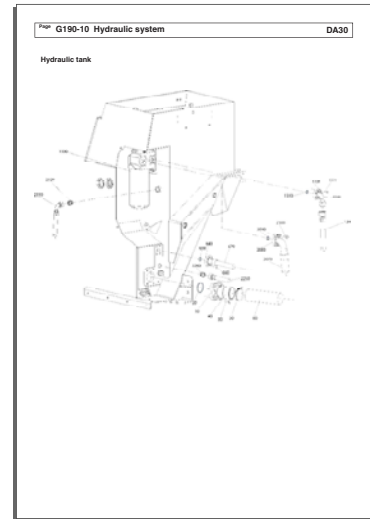
G190-6



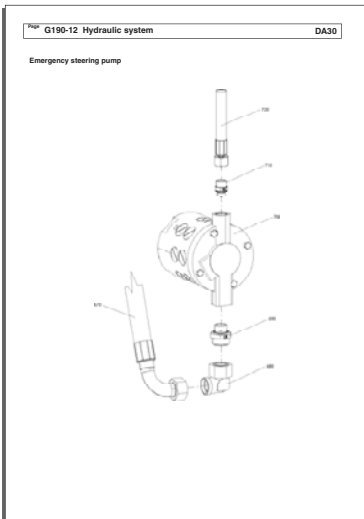
G190-8



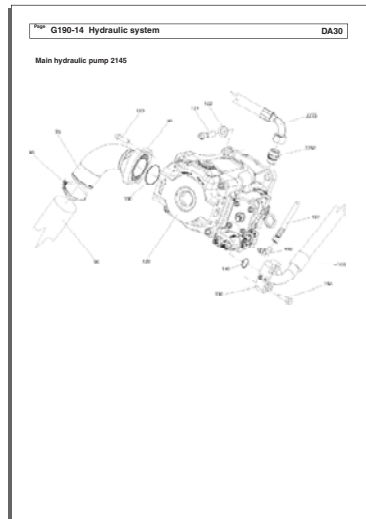
G190-10



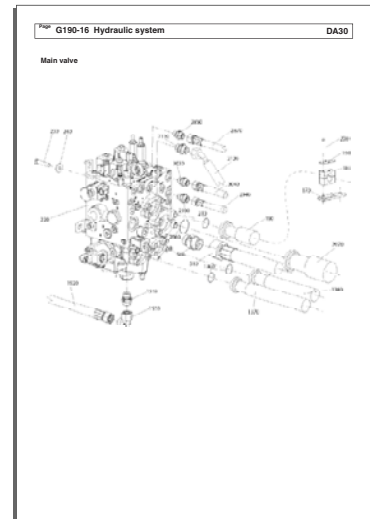
G190-12



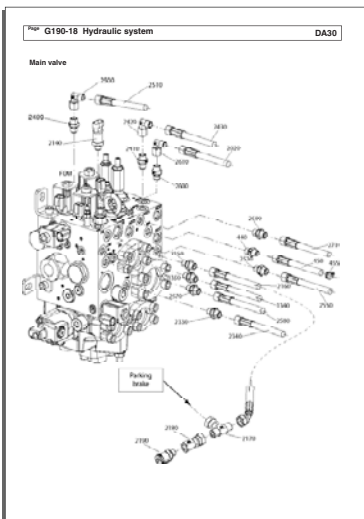
G190-14



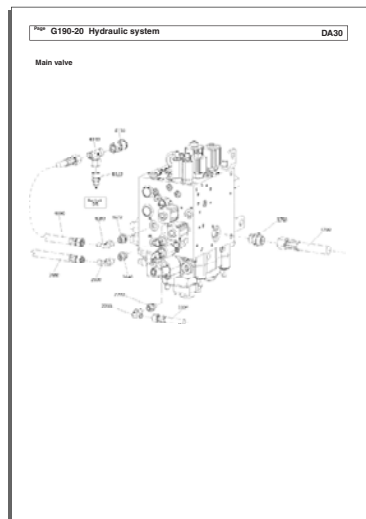
G190-16



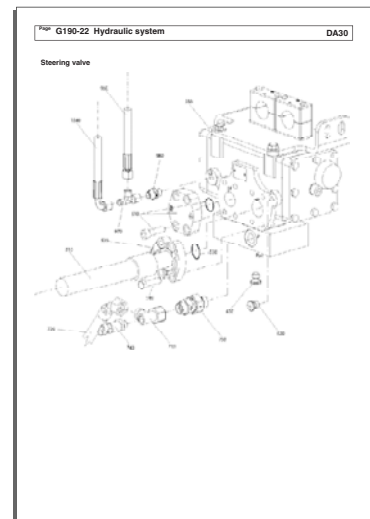
G190-18



G190-20

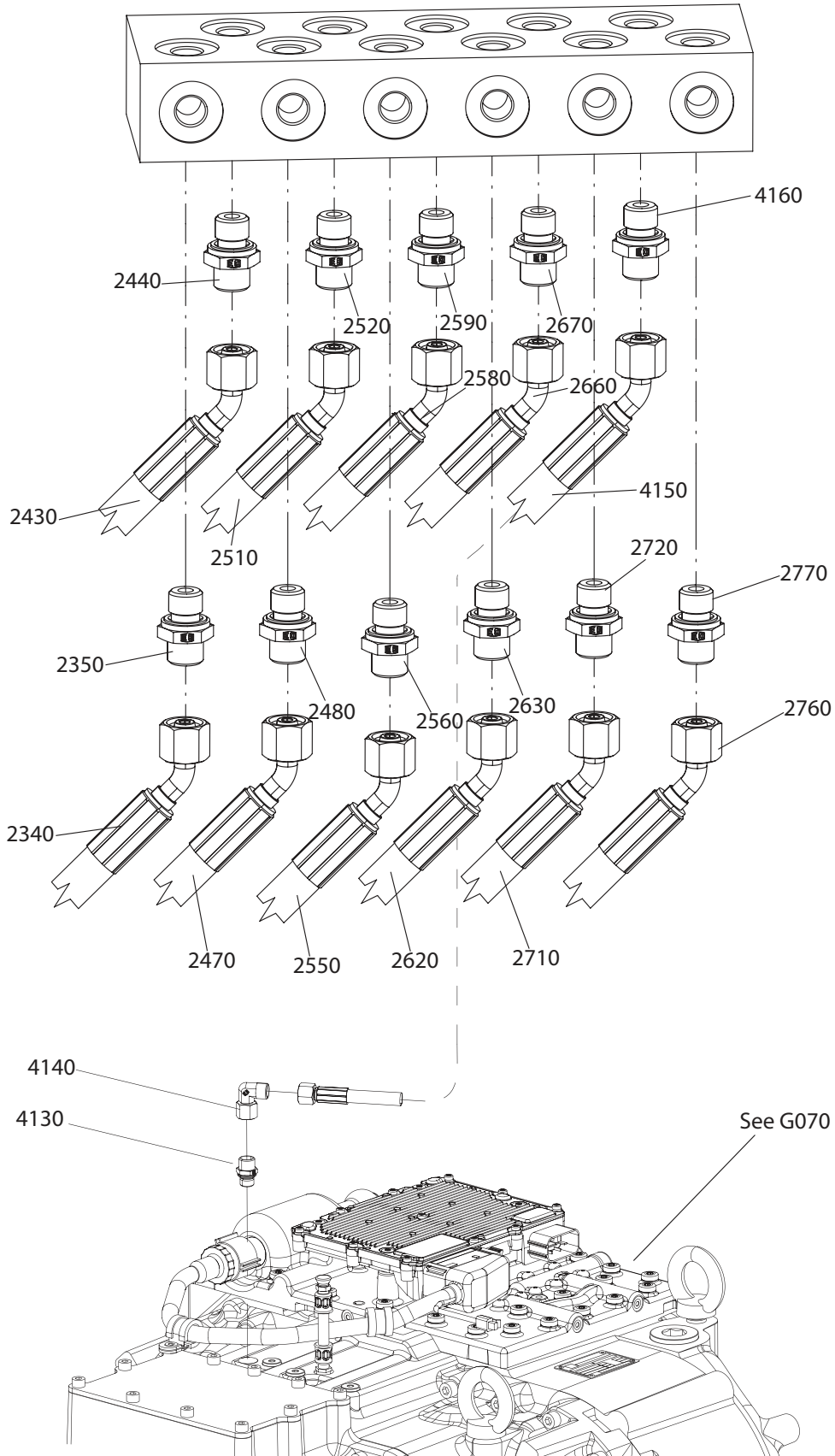


G190-22



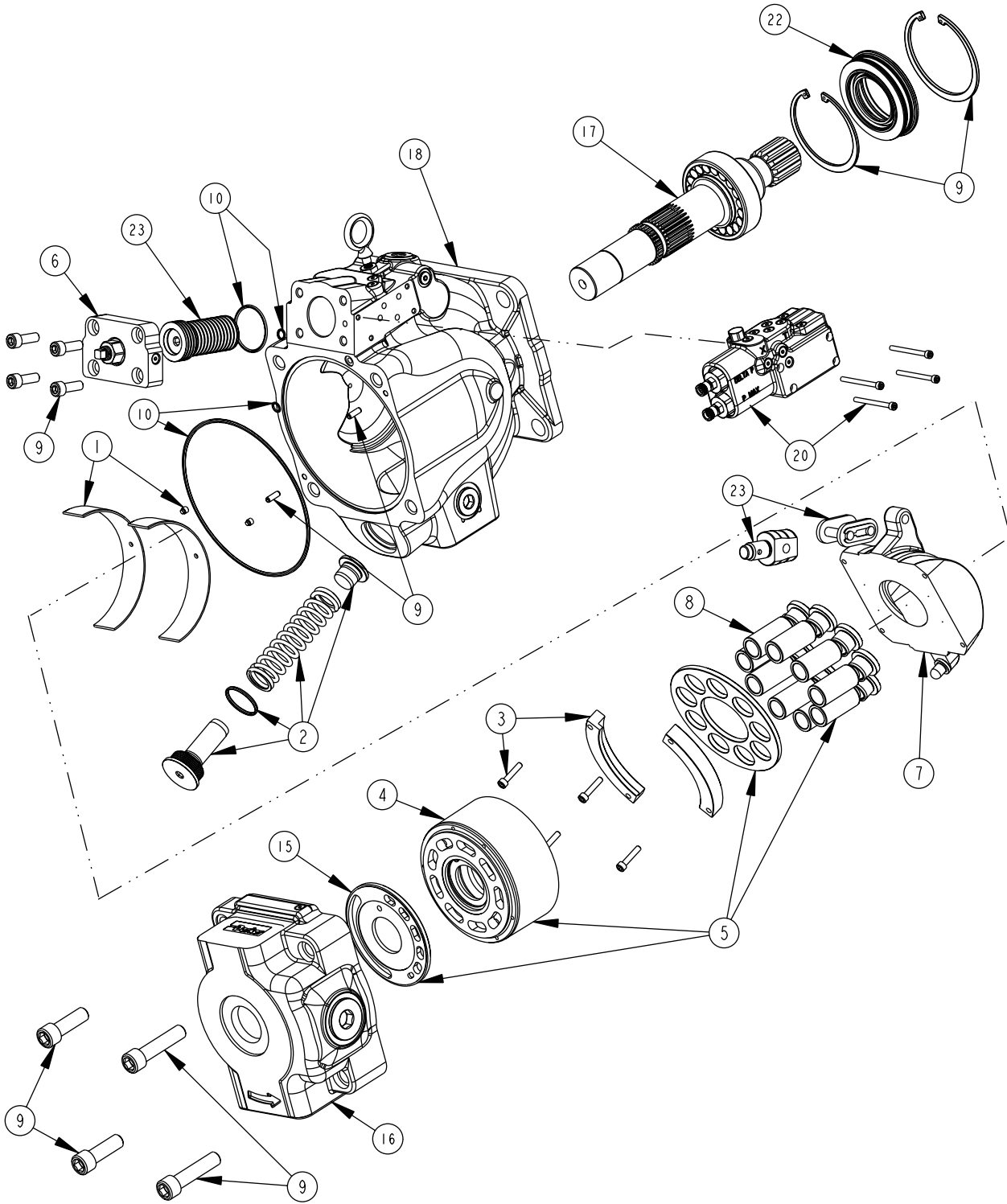
| <b>DA30</b> |                |             |                    | Date              | Page           |
|-------------|----------------|-------------|--------------------|-------------------|----------------|
|             |                |             |                    | <b>03.2012</b>    | <b>G190-15</b> |
| <b>Pos.</b> | <b>Part.nr</b> | <b>Qt'y</b> | <b>Description</b> | <b>Serial No.</b> | <b>Notes</b>   |
| 60          | 528154         | 1           | Hose               |                   |                |
| 70          | 528021         | 1           | Pipe               |                   |                |
| 80          | 055796         | 1           | Clamp              |                   |                |
| 90          | 055726         | 2           | Flange half        |                   |                |
| 100         | 055727         | 1           | O-ring             |                   |                |
| 110         | 053415         | 4           | Screw              |                   |                |
| 120         | 525589         | 1           | Pump               |                   |                |
| 121         | 061322         | 4           | Screw              |                   |                |
| 122         | 517104         | 4           | Washer             |                   |                |
| 130         | 509326         | 2           | Flange half        |                   |                |
| 140         | 064414         | 1           | O-ring             |                   |                |
| 150         | 509356         | 4           | Screw              |                   |                |
| 160         | 528186         | 1           | Hose               |                   |                |
| 450         | 528181         | 1           | Hose               |                   |                |
| 460         | 527939         | 1           | Connector          |                   |                |
| 2250        | 527902         | 1           | Connector          |                   |                |
| 2255        | 528209         | 1           | Hose               |                   |                |

Test block



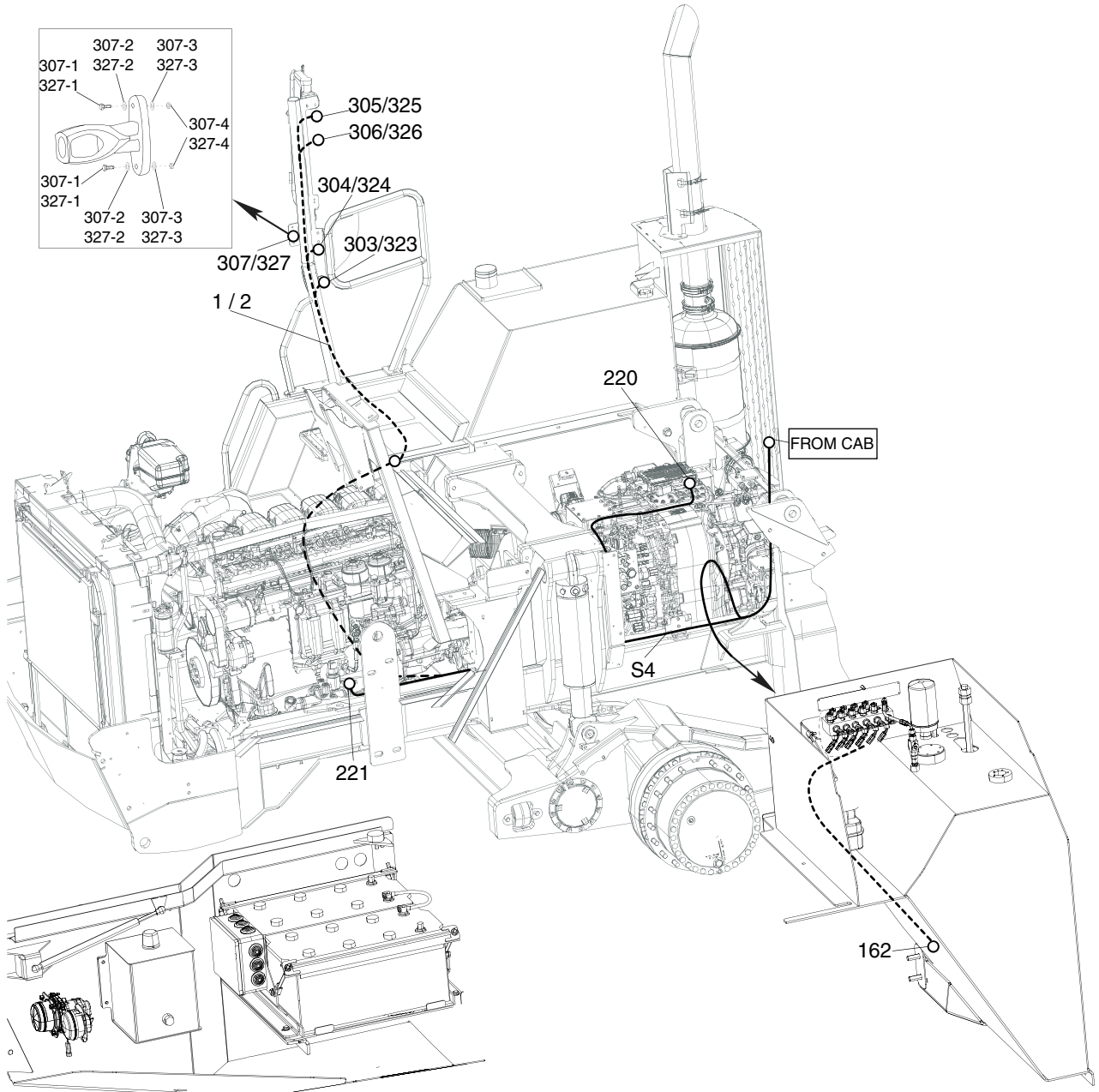
| DA30 |         |      |             | Date       | 03.2012 | Page  | G190-41 |
|------|---------|------|-------------|------------|---------|-------|---------|
| Pos. | Part.nr | Qt'y | Description | Serial No. |         | Notes |         |
| 2220 | 529300  | 1    | Hose        |            |         |       |         |
| 2221 | 033536  | 1    | Bracket     |            |         |       |         |
| 2222 | 052539  | 1    | Screw       |            |         |       |         |
| 2223 | 509227  | 1    | Washer      |            |         |       |         |
| 2224 | 065005  | 1    | Clamp       |            |         |       |         |
| 2225 | 061459  | 1    | Screw       |            |         |       |         |
| 2226 | 063036  | 1    | Nut         |            |         |       |         |
| 2227 | 065005  | 1    | Clamp       |            |         |       |         |
| 2228 | 061459  | 1    | Screw       |            |         |       |         |
| 2229 | 063036  | 1    | Nut         |            |         |       |         |
| 2230 | 033536  | 1    | Bracket     |            |         |       |         |
| 2231 | 161485  | 1    | Screw       |            |         |       |         |
| 2232 | 504308  | 1    | Washer      |            |         |       |         |
| 2233 | 065005  | 1    | Clamp       |            |         |       |         |
| 2234 | 061459  | 1    | Screw       |            |         |       |         |
| 2235 | 063036  | 1    | Nut         |            |         |       |         |
| 2236 | 033536  | 1    | Bracket     |            |         |       |         |
| 2237 | 065005  | 1    | Clamp       |            |         |       |         |
| 2238 | 061459  | 1    | Screw       |            |         |       |         |
| 2239 | 063036  | 1    | Nut         |            |         |       |         |
| 2240 | 033536  | 1    | Bracket     |            |         |       |         |
| 2241 | 512360  | 1    | Screw       |            |         |       |         |
| 2242 | 504308  | 1    | Washer      |            |         |       |         |
| 2243 | 065005  | 1    | Clamp       |            |         |       |         |
| 2244 | 061459  | 1    | Screw       |            |         |       |         |
| 2245 | 063036  | 1    | Nut         |            |         |       |         |
| 2248 | 516603  | 1    | Connector   |            |         |       |         |

Main hydr. pump P2145, exploded



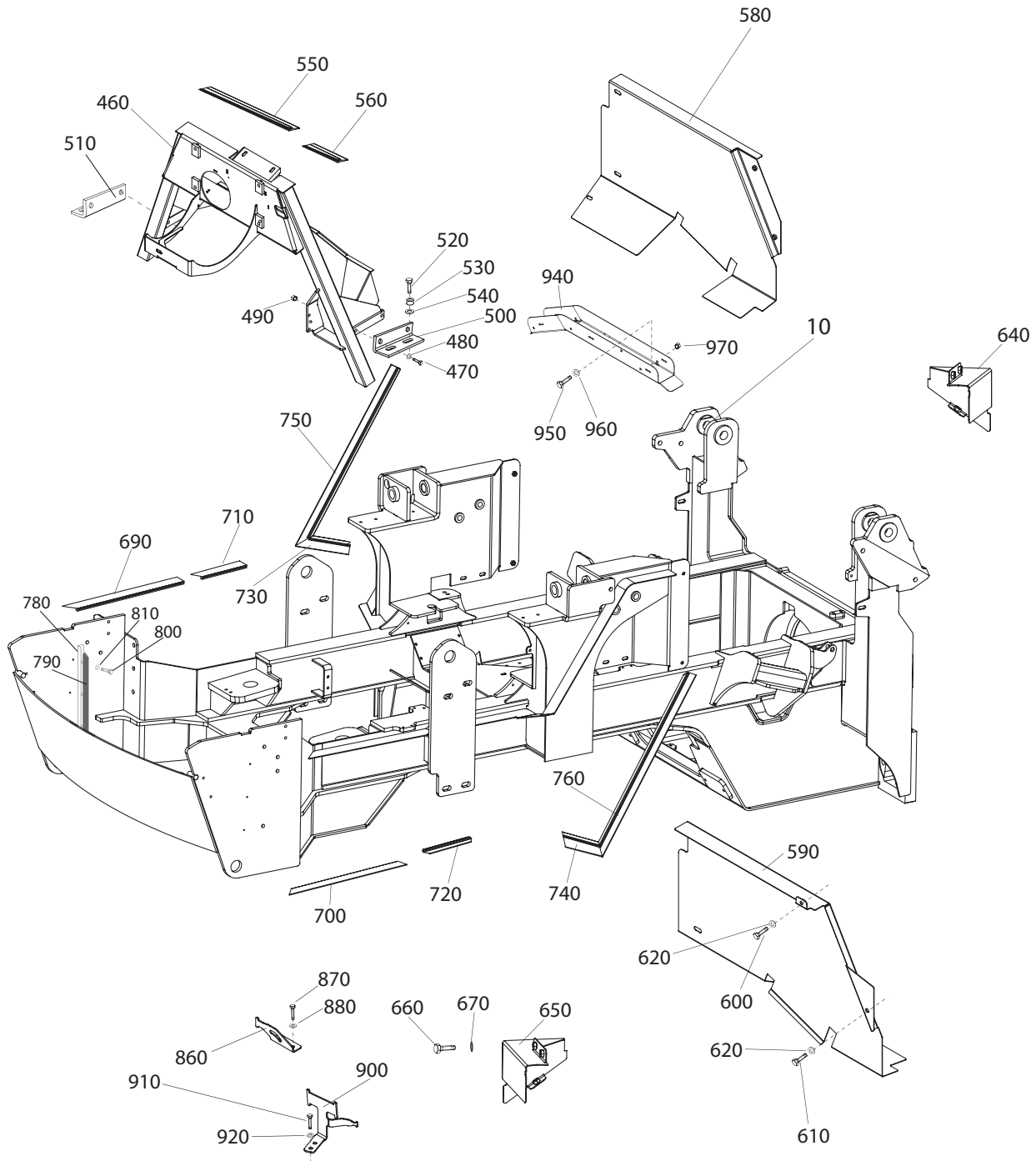
| DA30   |         |       |                | Date       | Page            |
|--------|---------|-------|----------------|------------|-----------------|
|        |         |       |                | 03.2012    | G200-5          |
| Pos.   | Part.nr | Qt'y  | Description    | Serial No. | Notes           |
| 10     | 528770  | 1     | Hydraulic tank |            |                 |
| 20     | 160517  | 2     | Screw          |            |                 |
| 30     | 501847  | 2     | Spacer         |            |                 |
| 40     | 160513  | 2     | Screw          |            |                 |
| 50     | 509269  | 2     | Washer         |            |                 |
| 60     | 509992  | rq    | Shim           |            | 1,25mm          |
| 70     | 509993  | rq    | Shim           |            | 3mm             |
| 80     | 509994  | rq    | Shim           |            | 5mm             |
| 90     | 502782  | 1     | Cover          |            |                 |
| 100    | 045920  | 1     | Gasket         |            |                 |
| 110    | 061448  | 6     | Screw          |            |                 |
| 120    | 063343  | 6     | Washer         |            |                 |
| 130    | 055398  | 1     | Filter         |            |                 |
| 130-10 | 527416  | 1     | •O-ring        |            |                 |
| 140    | 066870  | 1     | Seal ring      |            |                 |
| 150    | 065761  | 1     | Connector      |            |                 |
| 160    | 503197  | 1     | Bracket        |            |                 |
| 170    | 046291  | 1     | Hose           |            |                 |
| 180    | 065025  | 1     | Hose clamp     |            |                 |
| 190    | 503024  | 2     | Level gauge    |            |                 |
| 200    | 055729  | 2     | Discharge cock |            |                 |
| 210    | 052839  | 2     | Ring           |            |                 |
| 220    | 528780  | 1     | Hatch          |            |                 |
| 230    | 509228  | 2     | Screw          |            |                 |
| 240    | 513451  | 2     | Screw          |            |                 |
| 250    | 509227  | 4     | Washer         |            |                 |
| 260    | 057665  | 1     | Gas-spring     |            |                 |
| 270    | 509329  | 1     | Nut            |            |                 |
| 280    | 508029  | 1     | Door handle    |            |                 |
| 290    | 061457  | 3     | Screw          |            |                 |
| 300    | 509272  | 3     | Washer         |            |                 |
| 310    | 503216  | 1     | Bracket        |            |                 |
| 320    | 052528  | 2     | Screw          |            |                 |
| 330    | 509266  | 4     | Washer         |            |                 |
| 340    | 502759  | 2     | Nut            |            |                 |
| 350    | 503196  | 1     | Door lock      |            |                 |
| 360    | 062656  | 2     | Screw          |            |                 |
| 370    | 509227  | 2     | Washer         |            |                 |
| 380    | 502759  | 2     | Nut            |            |                 |
| 390    |         | 1     | Filter ass'y*  |            | See page G200-7 |
| 400    | 057565  | 2,76m | Rubber list    |            |                 |
| 410    | 528509  | 1     | Protection     |            |                 |
| 420    | 053429  | 3     | Screw          |            |                 |
| 430    | 504308  | 4     | Washer         |            |                 |
| 440    | 053428  | 1     | Nut            |            |                 |
| 490    | 512675  | 1     | Magnetic plug  |            |                 |
| 500    | 055612  | 1     | Seal ring      |            |                 |

Electrical system front wagon S4





Front frame



| DA30 |         |        |                         | Date       | 03.2012 | Page | G250-11 |
|------|---------|--------|-------------------------|------------|---------|------|---------|
| Pos. | Part.nr | Qt'y   | Description             | Serial No. | Notes   |      |         |
|      | 524491  | 2      | Wheel hub               |            |         |      |         |
| 1    | 524181  | 6      | •Allen screw            |            |         |      |         |
| 2    | 524404  | 1      | •Cover                  |            |         |      |         |
| 3    | 524169  | 1      | •O-Ring                 |            |         |      |         |
| 5    | 524424  | 4      | •Hexagon bolt           |            |         |      |         |
| 6    | 524425  | 1      | •Gear housing           |            |         |      |         |
| 7    | 524182  | 2      | •Screw plug             |            |         |      |         |
| 8    | 524188  | 2      | •Seal ring              |            |         |      |         |
| 9    | 524426  | 1      | •Sun gear shaft         |            |         |      |         |
| 10   | 524149  | 8      | •Tab washer             |            |         |      |         |
| 11   | 524427  | 4      | •Planet gear            |            |         |      |         |
| 12   | 524151  | 4      | •Needle bearing         |            |         |      |         |
| 13   | 524152  | 4      | •Planetary pin          |            |         |      |         |
| 14   | 524170  | 1      | •O-Ring                 |            |         |      |         |
| 15   | 524428  | 1      | •Planet carrier         |            |         |      |         |
| 16   | 524153  | 4      | •Shear pin              |            |         |      |         |
| 17   | 524269  | 4      | •Washer                 |            |         |      |         |
| 18   | 524162  | 4      | •Hexagon bolt           |            |         |      |         |
| 19   | 524195  | 1      | •Nut                    |            |         |      |         |
| 20   | 524221  | 1      | •Adjusting kit          |            |         |      |         |
| 20   | 524155  | as req | ••Adjusting washer      |            |         |      |         |
| 20   | 524197  | as req | ••Adjusting washer      |            |         |      |         |
| 20   | 524198  | as req | ••Adjusting washer      |            |         |      |         |
| 20   | 524199  | as req | ••Adjusting washer      |            |         |      |         |
| 20   | 524200  | as req | ••Adjusting washer      |            |         |      |         |
| 20   | 524201  | as req | ••Adjusting washer      |            |         |      |         |
| 20   | 524202  | as req | ••Adjusting washer      |            |         |      |         |
| 20   | 524203  | as req | ••Adjusting washer      |            |         |      |         |
| 20   | 524204  | as req | ••Adjusting washer      |            |         |      |         |
| 20   | 524205  | as req | ••Adjusting washer      |            |         |      |         |
| 21   | 524429  | 1      | •Ring gear              |            |         |      |         |
| 22   | 524430  | 1      | •Ring gear carrier      |            |         |      |         |
| 23   | 524208  | 1      | •Snap ring              |            |         |      |         |
| 24   | 524209  | 1      | •Tapered roller bearing |            |         |      |         |
| 25   | 524431  | 12     | •Wheel bolt             |            |         |      |         |
| 26   | 524432  | 1      | •Wheel hub              |            |         |      |         |
| 27   | 524213  | 1      | •Cylinder               |            |         |      |         |
| 28   | 524214  | 1      | •Turcon-Glyd ring       |            |         |      |         |
| 29   | 524433  | 1      | •Piston                 |            |         |      |         |
| 30   | 524216  | 1      | •Turcon-Glyd ring       |            |         |      |         |
| 31   | 524217  | 27     | •Pressure spring        |            |         |      |         |
| 32   | 524407  | 1      | •Thrust washer          |            |         |      |         |
| 33   | 524218  | 1      | •Snap ring              |            |         |      |         |
| 34   | 524169  | 1      | •O-Ring                 |            |         |      |         |
| 35   | 524408  | 5      | •Stud                   |            |         |      |         |
| 36   | 524219  | 6      | •Steel disc             |            |         |      |         |
| 36a  | 524351  | 2      | •Steel disc             |            |         |      |         |
| 37   | 524220  | 7      | •Inner disc             |            |         |      |         |
| 37a  | 524352  | 2      | Inner disc              |            |         |      |         |
| 38   | 524434  | 1      | O-Ring                  |            |         |      |         |
| 39   | 524192  | 1      | Seal ring               |            |         |      |         |
| 40   | 524173  | 1      | O-Ring                  |            |         |      |         |



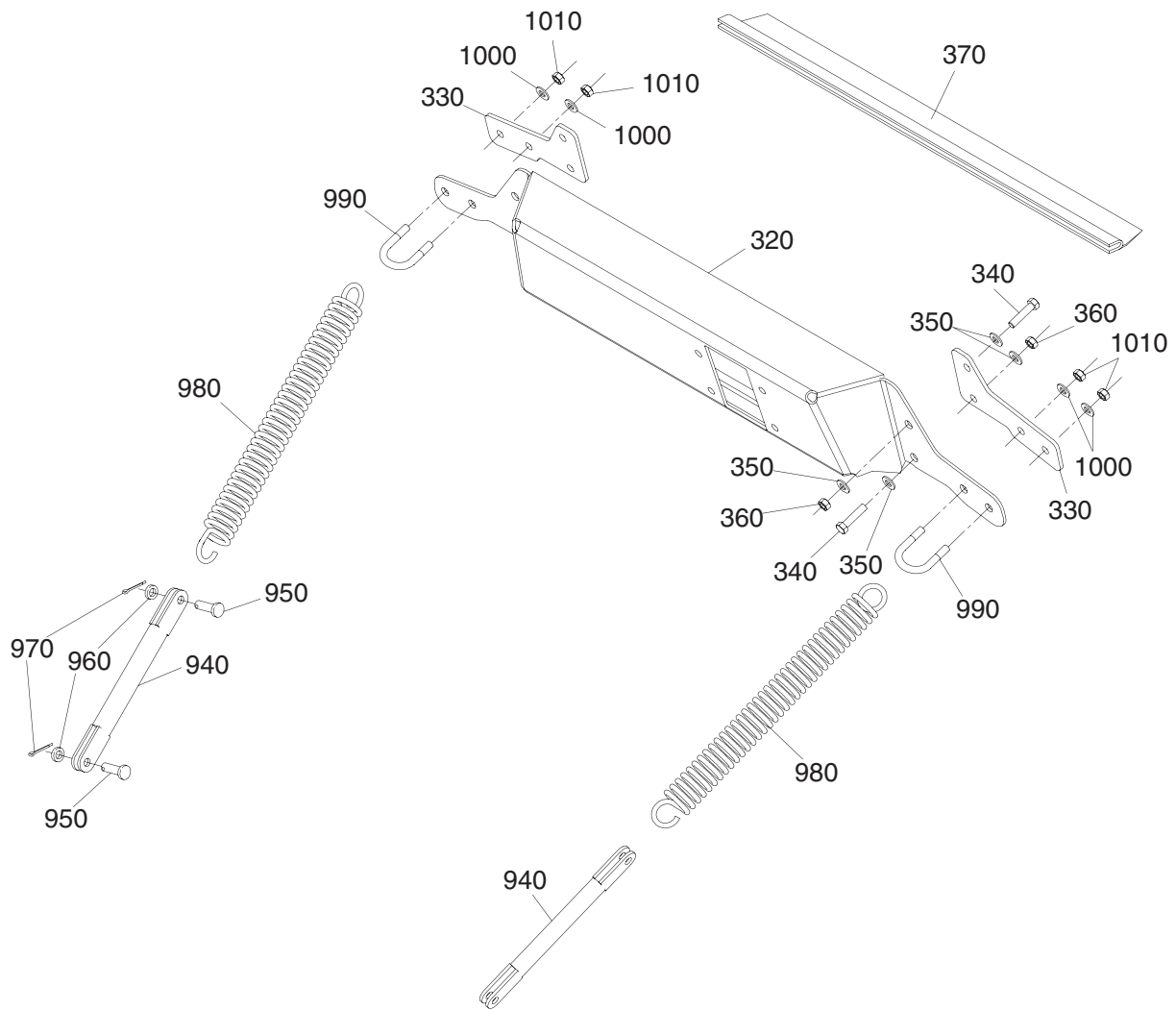
**Mudguard  
Description**

**G290 Index**

**Page**

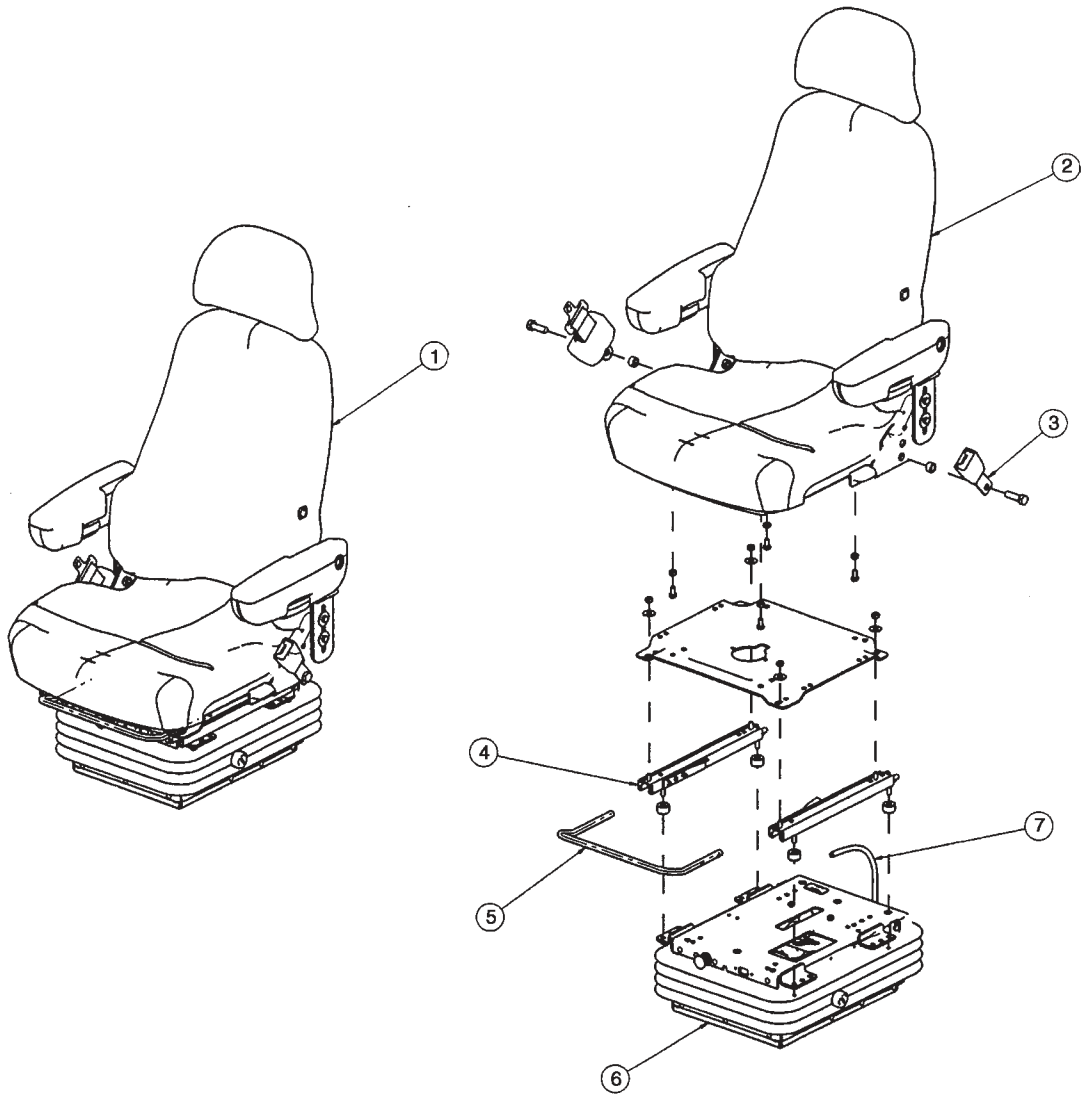
Mudguard..... G290-4

Bonnet, spring stop



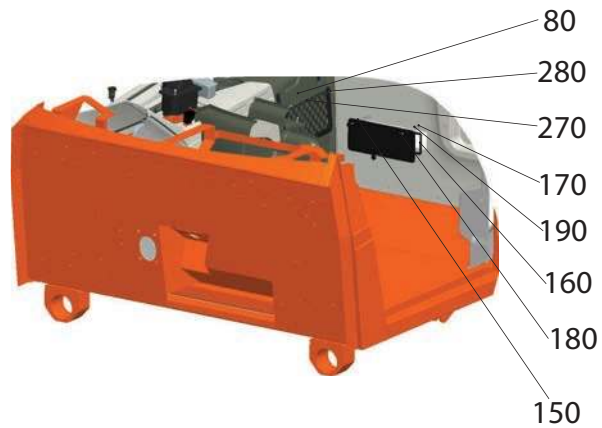
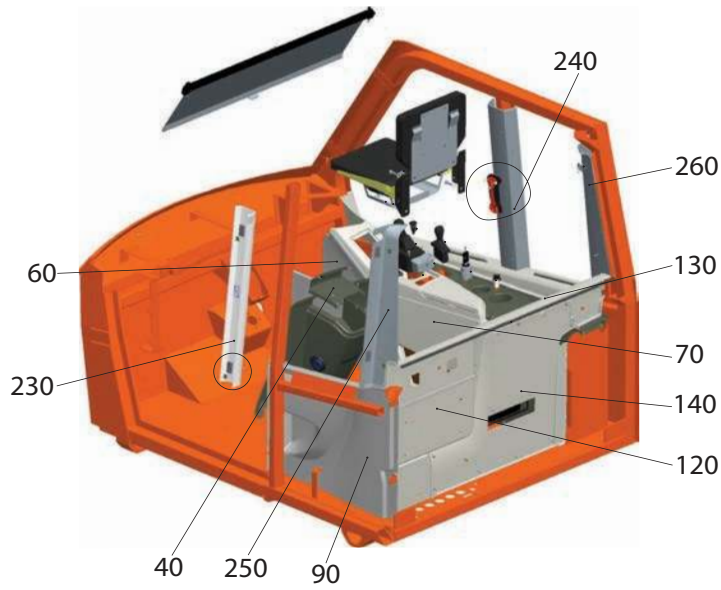
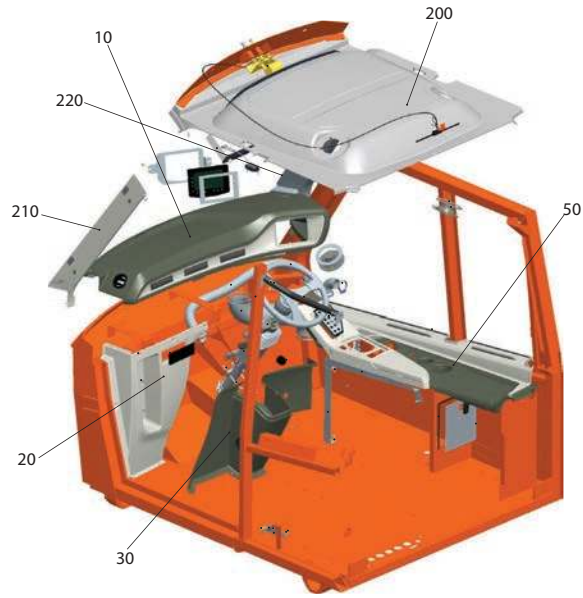
| <b>DA30</b> |                |             |                    | Date              | Page           |
|-------------|----------------|-------------|--------------------|-------------------|----------------|
|             |                |             |                    | <b>03.2012</b>    | <b>G310-11</b> |
| <b>Pos.</b> | <b>Part.nr</b> | <b>Qt'y</b> | <b>Description</b> | <b>Serial No.</b> | <b>Notes</b>   |
| 970         | 057881         | 1           | Hydraulic cylinder |                   |                |
| 980         | 160515         | 2           | Screw              |                   |                |
| 990         | 512392         | 2           | Nut                |                   |                |
| 1000        | 531148         | 2           | Hose               |                   |                |
| 1010        | 503446         | 2           | Connector          |                   |                |
| 1020        | 057880         | 1           | Hand pump          |                   |                |
| 1030        | 161485         | 2           | Screw              |                   |                |
| 1040        | 513900         | 1           | Lever              |                   |                |

Driver's seat





Panels in Cabin



| DA30   |         |      |                   | Date       | Page                              |
|--------|---------|------|-------------------|------------|-----------------------------------|
|        |         |      |                   | 03.2012    | G380-5                            |
| Pos.   | Part.nr | Qt'y | Description       | Serial No. | Notes                             |
| 10     |         | 1    | Air heating unit* |            | See page G380-7<br>( El pos. 81 ) |
| 20     | 528795  | 1    | Instrument panel  |            |                                   |
| 30     | 530690  | 2    | Hose clamp        |            |                                   |
| 40     | 530679  | 3    | Screw             |            |                                   |
| 50     | 529942  | 1    | Pipe              |            |                                   |
| 60     | 529943  | 1    | Pipe              |            |                                   |
| 70     | 055821  | 4    | Nut               |            |                                   |
| 80     | 055819  | 2    | Connector         |            |                                   |
| 90     | 502676  | 2    | Pipe              |            |                                   |
| 100    | 528469  | 2    | Clamp             |            |                                   |
| 110    | 058193  | 2    | Screw             |            |                                   |
| 120    | 066319  | 2    | Rubber passage    |            |                                   |
| 130    | 529759  | 1    | Pipe ass'y        |            |                                   |
|        | 057771  | 1    | •O-ring           |            |                                   |
| 130-20 | 529738  | 1    | •Sensor           |            |                                   |
| 140    | 529760  | 1    | Pipe ass'y        |            |                                   |
|        | 451788  | 1    | •O-ring           |            |                                   |
| 140-20 | 529738  | 1    | •Sensor           |            |                                   |
| 150    | 529761  | 2    | Clamp             |            |                                   |
| 160    | 529762  | 2    | Clamp             |            |                                   |
| 170    | 063035  | 2    | Nut               |            |                                   |
| 180    | 152892  | 2    | Screw             |            |                                   |
| 200    | 529732  | 1    | Hose              |            |                                   |
| 210    | 529734  | 2    | Cable tie         |            |                                   |
| 220    | 529733  | 1    | Hose              |            |                                   |
| 230    | 529735  | 4    | Clamp             |            |                                   |
| 240    | 529736  | 1    | Hose              |            |                                   |



| DA30 |         |      |                | Date       | Page   |
|------|---------|------|----------------|------------|--------|
|      |         |      |                | 03.2012    | G410-5 |
| Pos. | Part.nr | Qt'y | Description    | Serial No. | Notes  |
| 10   | 526288  | 1    | Protection LH  |            |        |
| 20   | 053470  | 5    | Screw          |            |        |
| 30   | 509267  | 5    | Washer         |            |        |
| 40   | 504308  | 5    | Washer         |            |        |
| 50   | 053428  | 5    | Nut            |            |        |
| 60   | 503852  | 1    | Protection, RH |            |        |
| 70   | 053470  | 5    | Screw          |            |        |
| 80   | 509267  | 5    | Washer         |            |        |
| 90   | 504308  | 5    | Washer         |            |        |
| 100  | 053428  | 5    | Nut            |            |        |
| 110  | 503822  | 1    | Protection, LH |            |        |
| 120  | 503826  | 1    | Protection, RH |            |        |
| 130  | 504014  | 2    | Steering rod   |            |        |
| 140  | 058228  | 2    | Screw          |            |        |
| 150  | 504411  | 2    | Washer         |            |        |
| 160  | 504410  | 2    | Distance piece |            |        |
| 170  | 504412  | 2    | Thrust washer  |            |        |
| 180  | 053265  | 2    | Nut            |            |        |



| <b>DA30</b> |         |      |                                | Date           | Page          |
|-------------|---------|------|--------------------------------|----------------|---------------|
|             |         |      |                                | <b>03.2012</b> | <b>G460-5</b> |
| Pos.        | Part.nr | Qt'y | Description                    | Serial No.     | Notes         |
| 10          | 530076  | 1    | Operating & Maintenance Manual |                | English       |
| 20          | 531399  | 1    | Operating & Maintenance Manual |                | Polish        |
| 30          | 531413  | 1    | Operating & Maintenance Manual |                | German        |
| 130         | 525728  | 1    | CD                             |                |               |
| 140         | 529015  | 1    | Transport guide                |                |               |
| 150         | 506248  | 1    | Safety guide tilting           |                |               |
| 160         | 055769  | 1    | Draining hose                  |                |               |
| 180         | 527588  | 1    | User manual                    |                |               |

CLICK HERE TO **DOWNLOAD** THE COMPLETE MANUAL

- Thank you very much for reading the preview of the manual.
- You can download the complete manual from: [www.heydownloads.com](http://www.heydownloads.com) by clicking the link below



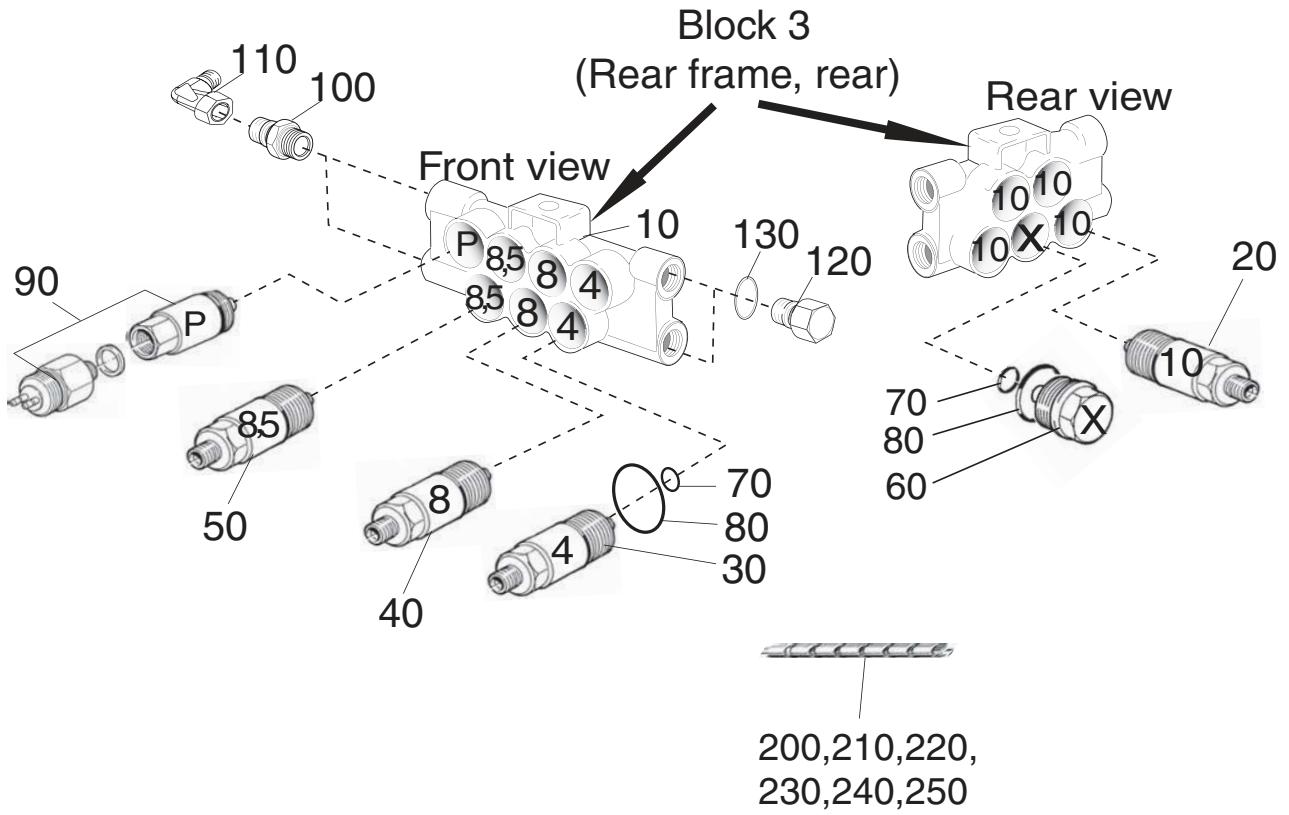
- Please note: If there is no response to **CLICKING** the link, please download this PDF first and then click on it.

CLICK HERE TO **DOWNLOAD** THE COMPLETE MANUAL



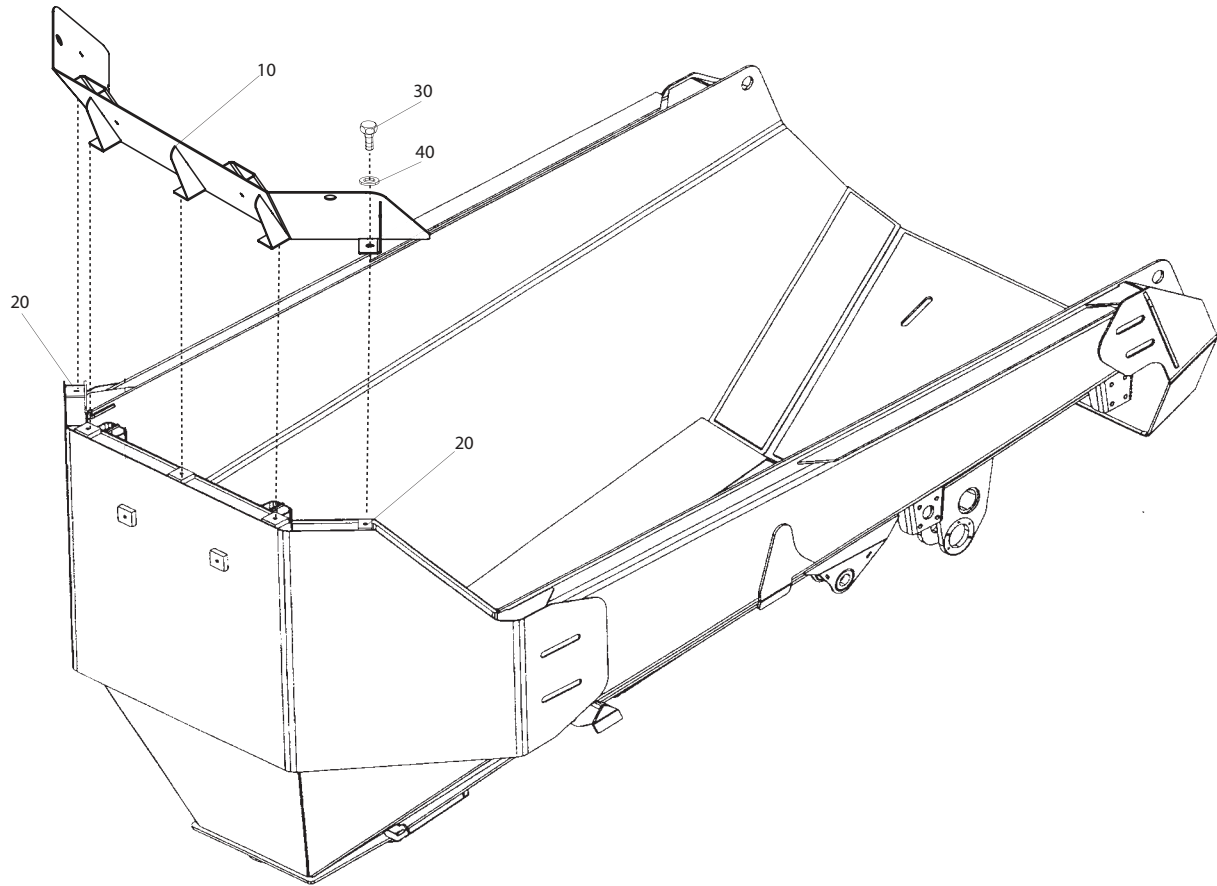
| DA30    |         |      |                                     | Date       | 03.2012 | Page             | G490-5 |
|---------|---------|------|-------------------------------------|------------|---------|------------------|--------|
| Pos.    | Part.nr | Qt'y | Description                         | Serial No. |         | Notes            |        |
| 10      |         | 1    | Groeneveld central lubrication kit* |            |         | See page G490-7  |        |
| 10-10   |         | 1    | •Pump                               |            |         | See page G490-13 |        |
| 10-100  | 505812  | 2    | •Hose                               |            |         |                  |        |
| 10-200  |         | 1    | •Lubricating block 1                |            |         | See page G490-15 |        |
| 10-500  | 528400  | 2    | •Hose                               |            |         |                  |        |
| 10-600  |         | 1    | •Lubricating block 2                |            |         | See page G490-17 |        |
| 10-950  | 528403  | 2    | •Hose                               |            |         |                  |        |
| 10-1000 |         | 1    | •Lubricating block 3                |            |         | See page G490-19 |        |
| 20      | 527983  | 1    | Kit                                 |            |         | Refil kit        |        |
| 20-10   | 527982  | 1    | •Filling pump                       |            |         |                  |        |
| 20-20   | 527981  | 1    | •Connector                          |            |         |                  |        |
| 30      | 529895  | 1    | Cable                               |            |         |                  |        |
| 200     | 530531  | 1    | Tool case                           |            |         |                  |        |
| 210     | 057724  | 2    | Washer                              |            |         |                  |        |
| 220     | 502759  | 2    | Nut                                 |            |         |                  |        |
| 230     | 530437  | 2    | Clip                                |            |         |                  |        |
| 240     | 513611  | 2    | Screw                               |            |         |                  |        |
| 250     | 508833  | 2    | Nut                                 |            |         |                  |        |

Central lubrication, Groeneveld ,block 3



| DA30 |         |      |                         | Date       | Page    |
|------|---------|------|-------------------------|------------|---------|
|      |         |      |                         | 03.2012    | G500-11 |
| Pos. | Part.nr | Qt'y | Description             | Serial No. | Notes   |
|      | 501851  | 1    | Mud flap kit rear wagon |            |         |
| 10   | 501856  | 2    | •Mudflap                |            |         |
| 20   | 501855  | 2    | •Attachment bar         |            |         |
| 30   | 501854  | 2    | •Bracket                |            |         |
| 40   | 500630  | 2    | •Attachment bar         |            |         |
| 50   | 509356  | 4    | •Screw                  |            |         |
| 60   | 504316  | 4    | •Washer                 |            |         |
| 70   | 509268  | 4    | •Washer                 |            |         |
| 80   | 053264  | 4    | •Nut                    |            |         |
| 90   | 053470  | 10   | •Screw                  |            |         |
| 100  | 504308  | 18   | •Washer                 |            |         |
| 110  | 509267  | 2    | •Washer                 |            |         |
| 120  | 053428  | 10   | •Nut                    |            |         |

Protection front body



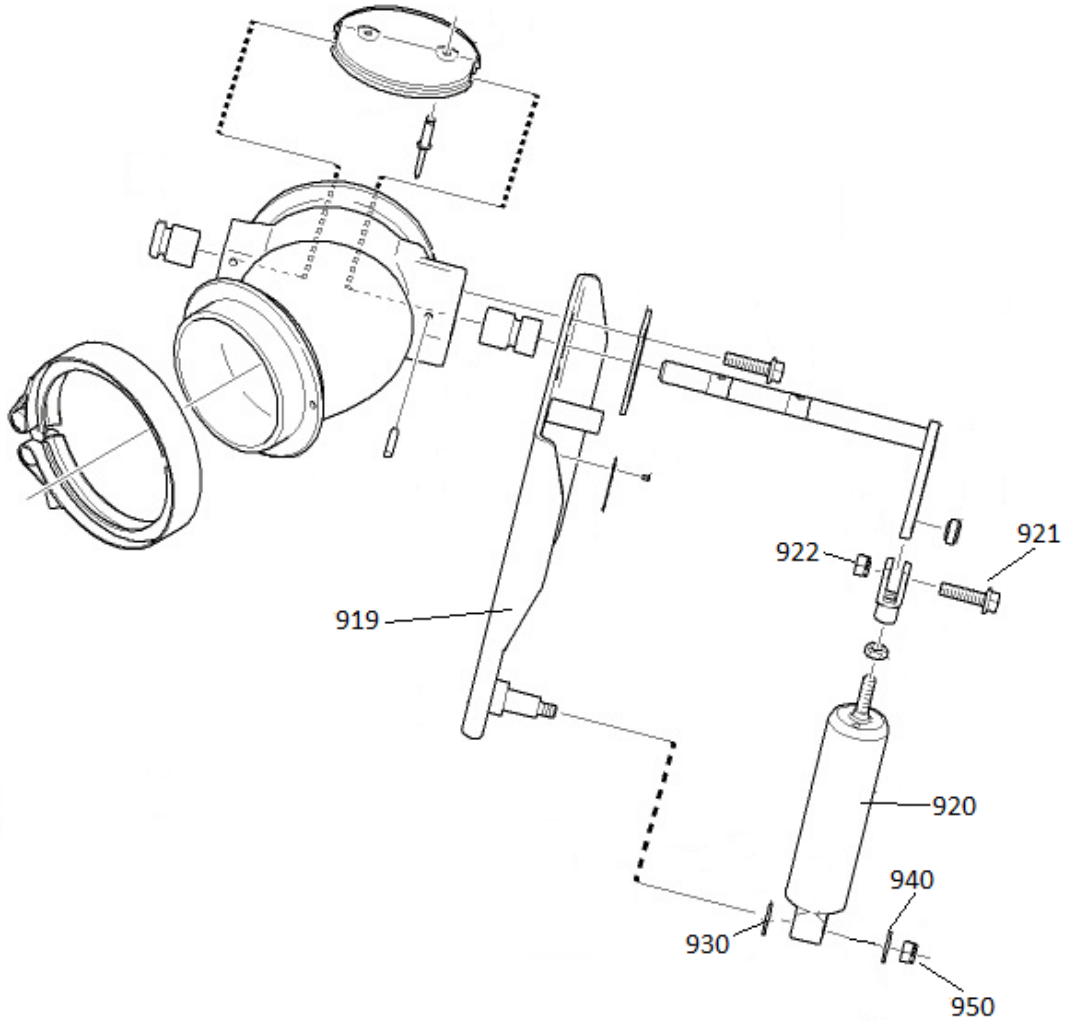
| DA30 |         |      |                 | Date       | Page    |
|------|---------|------|-----------------|------------|---------|
| Pos. | Part.nr | Qt'y | Description     | 03.2012    | G500-37 |
|      |         |      |                 | Serial No. | Notes   |
| 10   | 529740  | 1    | Parts Catalogue |            |         |

## **HOW TO ORDER PARTS:**

The following information is required to ensure the correct part to be delivered:

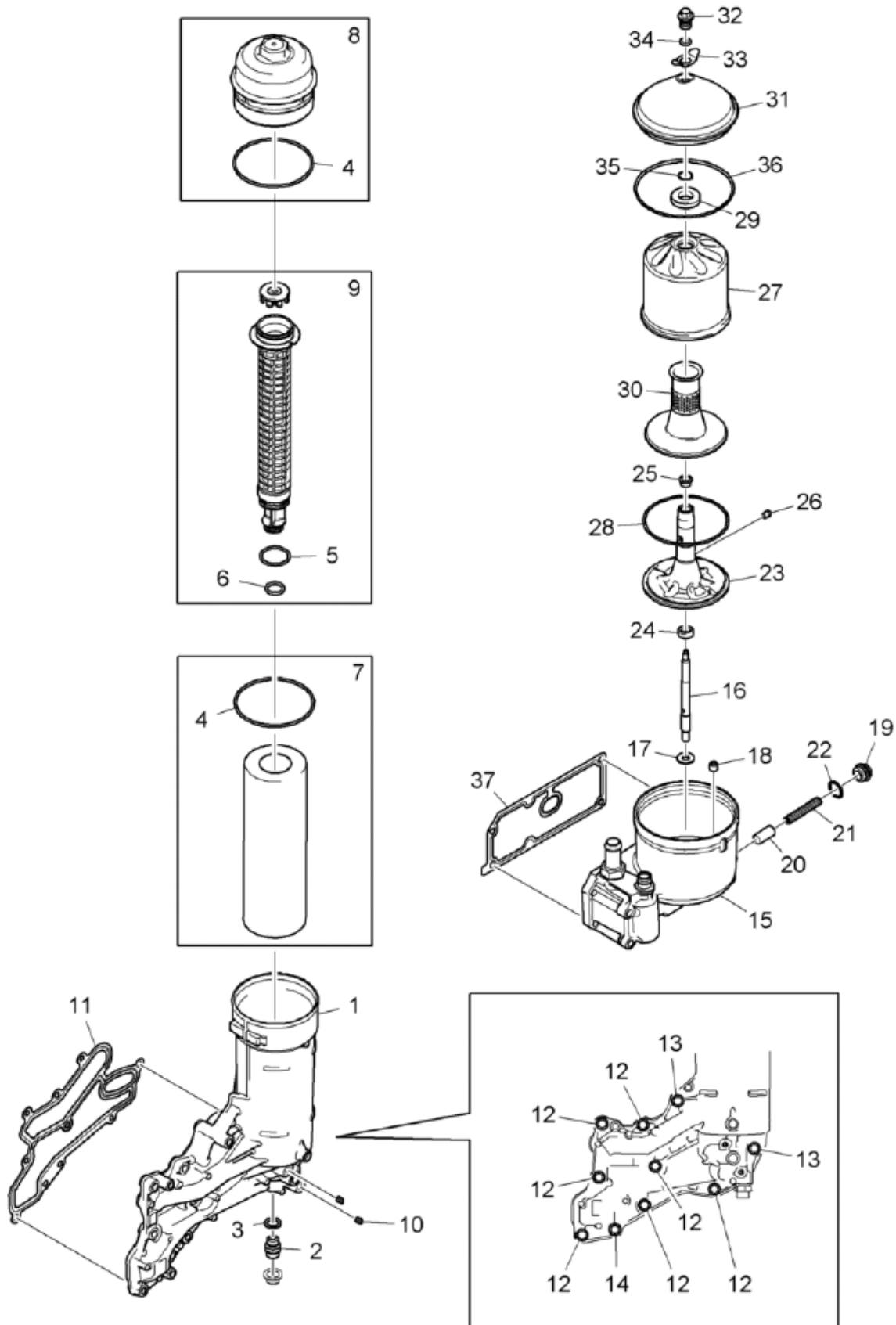
1. Model
2. Year of building
3. Chassis number and gear box number
4. Page in catalogue ( four digits )
5. Pos.no. and partno.
6. Part name
7. Quantity required
8. Means of transportation
9. Adress

Cylinder exhaust mounting



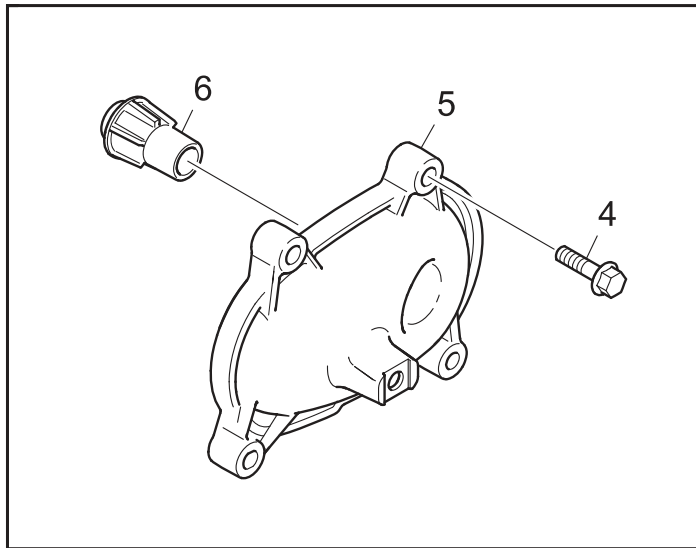
| DA30 |         |      |                   | Date       | Page    |
|------|---------|------|-------------------|------------|---------|
|      |         |      |                   | 05.2012    | G010-25 |
| Pos. | Part.nr | Qt'y | Description       | Serial No. | Notes   |
| 1    | 529255  | 1    | Flywheel housing  |            |         |
| 2    | 451803  | 2    | Plug              |            |         |
| 3    | 529256  | 1    | Seal              |            |         |
| 4    | 529257  | 9    | Screw             |            |         |
| 5    | 451255  | 9    | Washer            |            |         |
| 6    | 351694  | 12   | Screw             |            |         |
| 7    | 508890  | rq   | Screw             |            |         |
| 8    | 451035  | 6    | Screw             |            |         |
| 9    | 451278  | 1    | Screw             |            |         |
| 10   | 529258  | 1    | Cover             |            |         |
| 11   | 509135  | 1    | •O-ring           |            |         |
| 12   | 451035  | 2    | Screw             |            |         |
| 13   | 251506  | 1    | Cover             |            |         |
| 14   | 529259  | 1    | Cover             |            |         |
| 15   | 351894  | 4    | Screw             |            |         |
| 16   | 529260  | 1    | Timing gear plate |            |         |
|      | 451259  | rq   | Screw             |            |         |
|      | 531360  | rq   | Gasket            |            |         |
|      | 351953  | rq   | Screw             |            |         |
|      | 351943  | rq   | Gasket            |            |         |
| 17   | 151802  | 2    | Pin               |            |         |
| 18   | 451532  | 6    | Screw             |            |         |
| 19   | 515906  | 1    | Plug              |            |         |
|      | 529261  | 2    | Plug              |            |         |
| 20   | 351894  | 1    | Screw             |            |         |
| 21   | 529262  | 1    | Washer            |            |         |
| 22   | 451527  | 2    | Lifting ear       |            |         |
| 23   | 051750  | 12   | Stud              |            |         |
| 24   | 512872  | 12   | Nut               |            |         |
| 24   | 451080  | 12   | Lock nut          |            | alt     |
| 25   | 451035  | 4    | Screw             |            |         |
|      | 509146  | 1    | Plug              |            |         |
|      | 509145  | 1    | O-ring            |            |         |
|      | 351810  | 1    | Screw             |            |         |

Centrifugal oil cleaner, oil filter



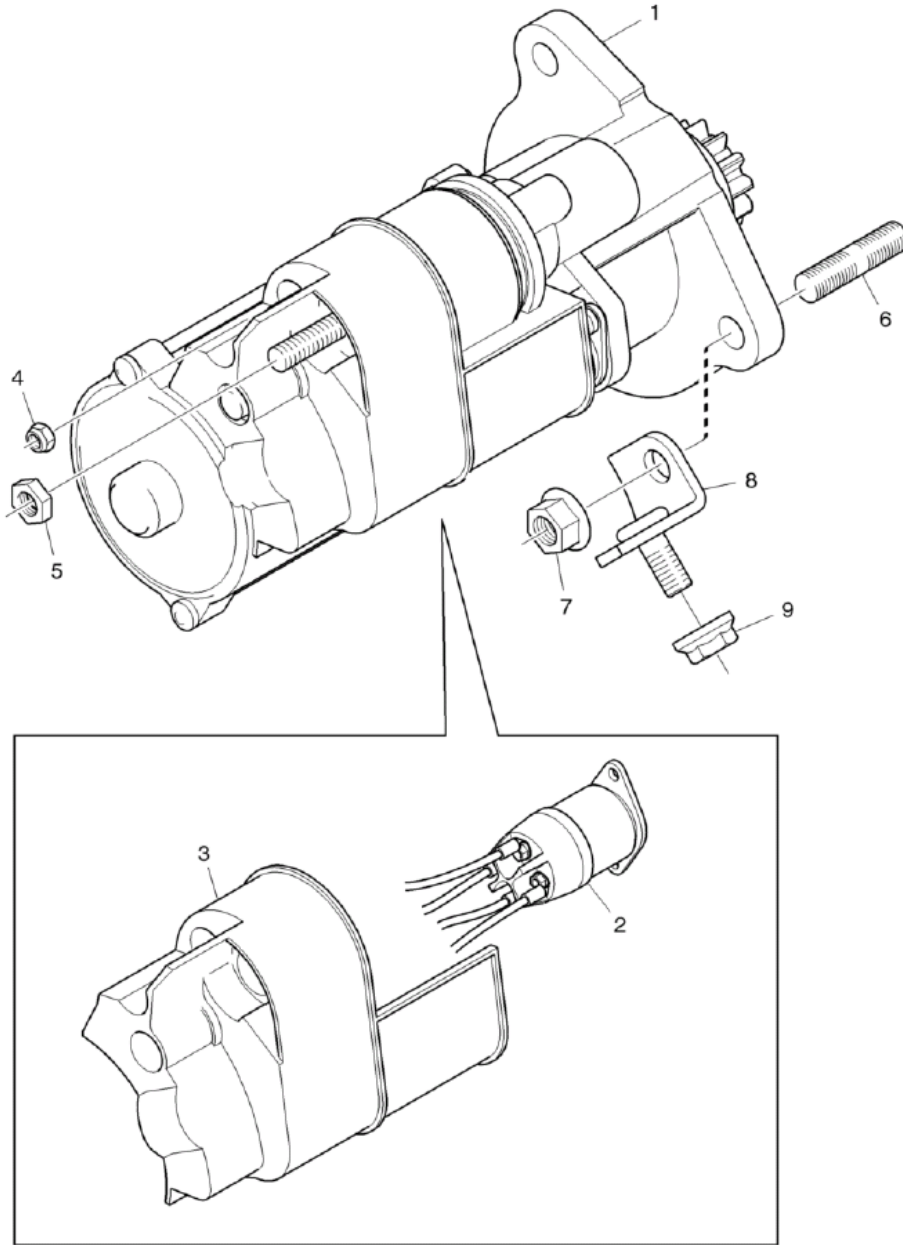
| DA30 |         |      |                 | Date       | Page    |
|------|---------|------|-----------------|------------|---------|
|      |         |      |                 | 05.2012    | G010-51 |
| Pos. | Part.nr | Qt'y | Description     | Serial No. | Notes   |
| 1    | 531301  | 1    | Intake manifold |            |         |
|      | 512989  | rq   | •Screw          |            |         |
|      | 529349  | rq   | •Silicone       |            |         |
| 2    | 529220  | 5    | Gasket          |            |         |
| 3    | 351994  | 20   | Screw           |            |         |
| 4    | 512524  | 1    | Seal            |            |         |

Thermostat housing



| <b>DA30</b> |         |      |               | Date           | Page           |
|-------------|---------|------|---------------|----------------|----------------|
|             |         |      |               | <b>05.2012</b> | <b>G010-77</b> |
| Pos.        | Part.nr | Qt'y | Description   | Serial No.     | Notes          |
| 1           | 516476  | 5    | Unit injector |                |                |
|             | 516477  | 1    | •Nozzle       |                |                |
| 2           | 451188  | 5    | Gasket        |                |                |
| 3           | 516478  | 5    | Holder        |                |                |
| 4           | 451321  | 5    | Screw         |                |                |

Starter motor

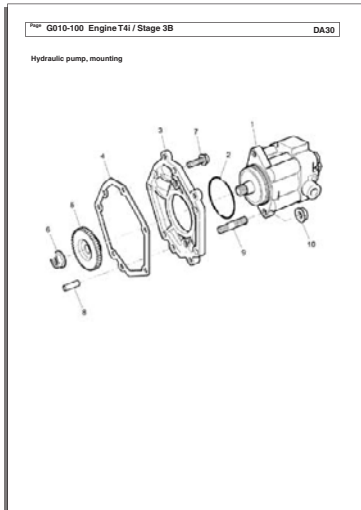


| DA30  |         |      |                        | Date       | Page     |
|-------|---------|------|------------------------|------------|----------|
|       |         |      |                        | 05.2012    | G010-103 |
| Pos.  | Part.nr | Qt'y | Description            | Serial No. | Notes    |
|       | 529963  | 1    | Cylinder exhaust brake |            |          |
| 10    | 531551  | 1    | •Tube                  |            |          |
| 10-10 | 527853  | 1    | ••Bearing              |            |          |
| 20    | 531552  | 1    | •Piston Rod            |            |          |
| 50    |         | 1    | •O-ring                |            | S        |
| 55    | 063101  | 1    | •Nut                   |            |          |
| 65    | 524369  | 1    | •Clevis                |            |          |
| 70    |         | 1    | •Seal                  |            | S        |
| 80    |         | 1    | •Wiper                 |            | S        |
|       | 527856  | 1    | •Seal kit              |            |          |

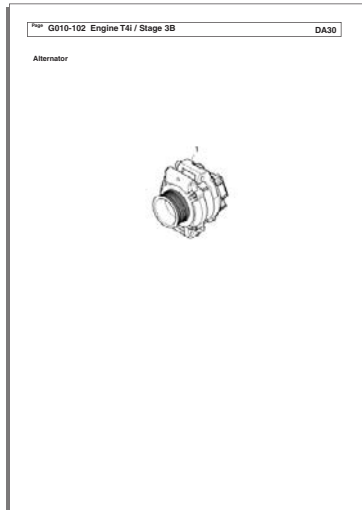
**Engine**

**G010 Picture index**

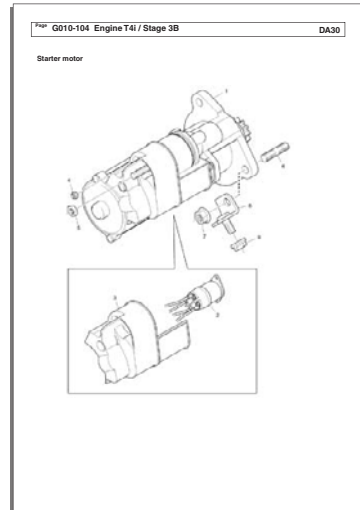
G010-100



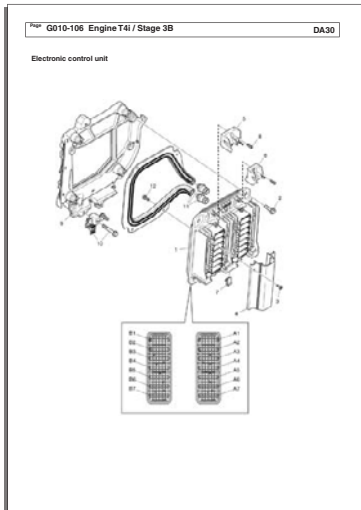
G010-102



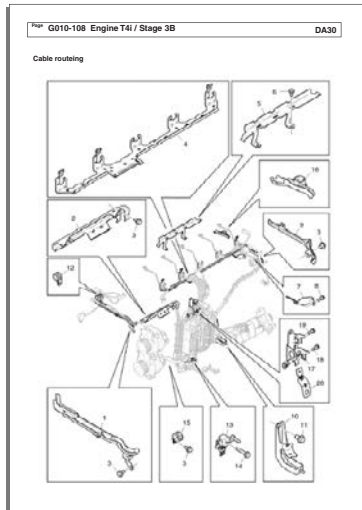
G010-104



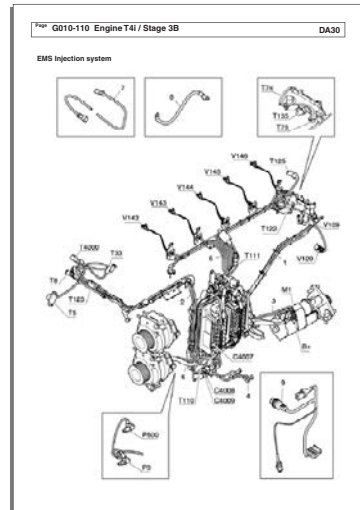
G010-106



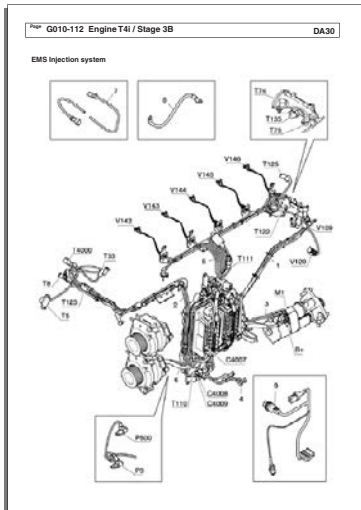
G010-108



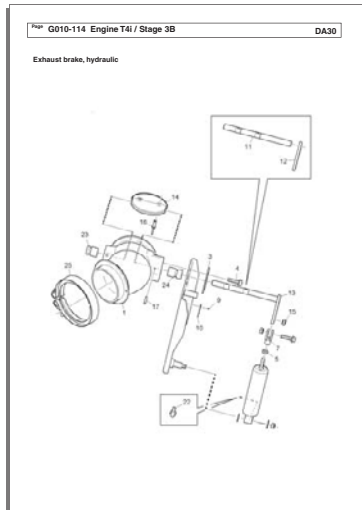
G010-110



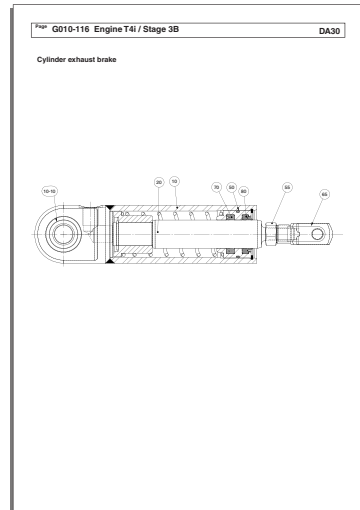
G010-112



G010-114

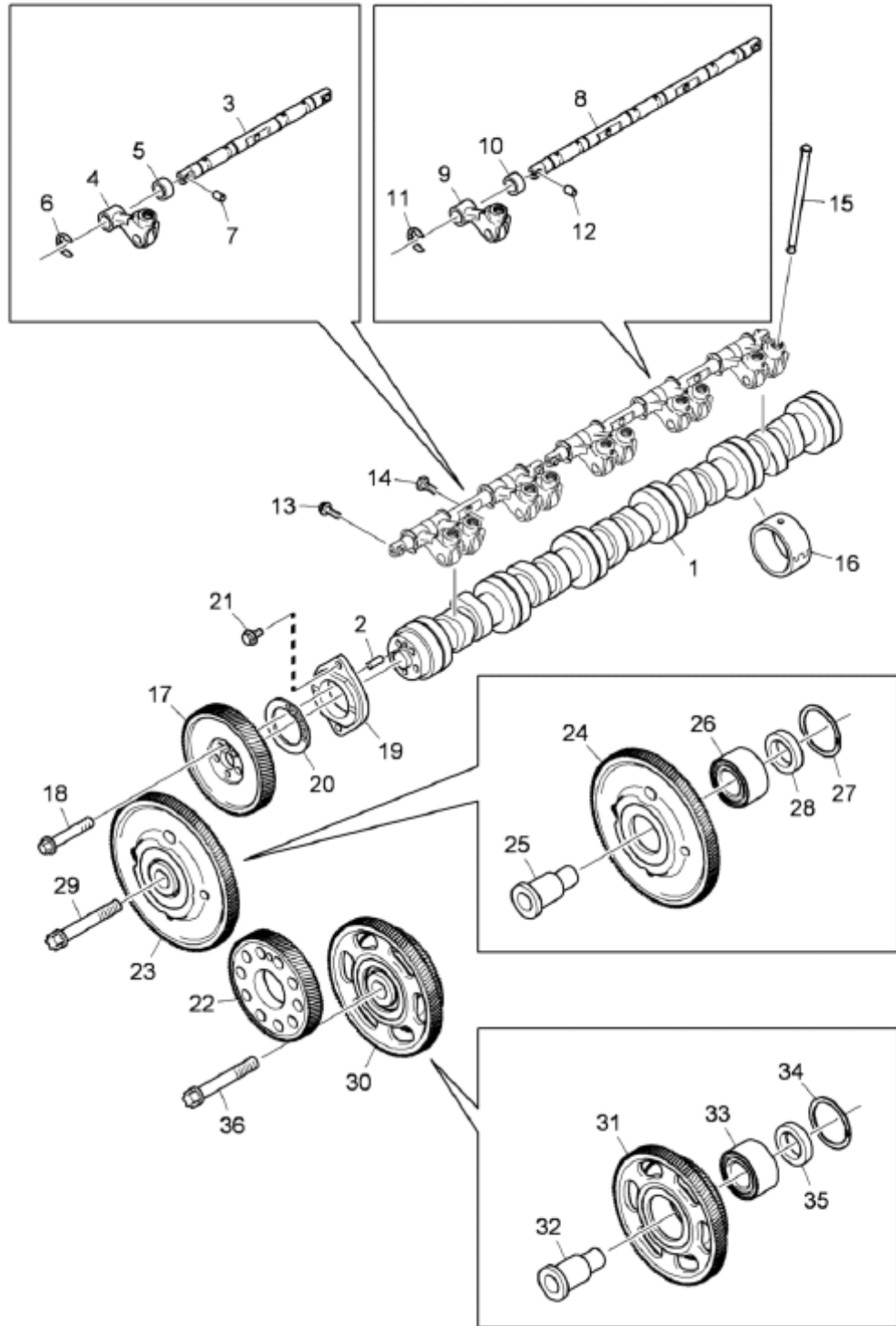


G010-116



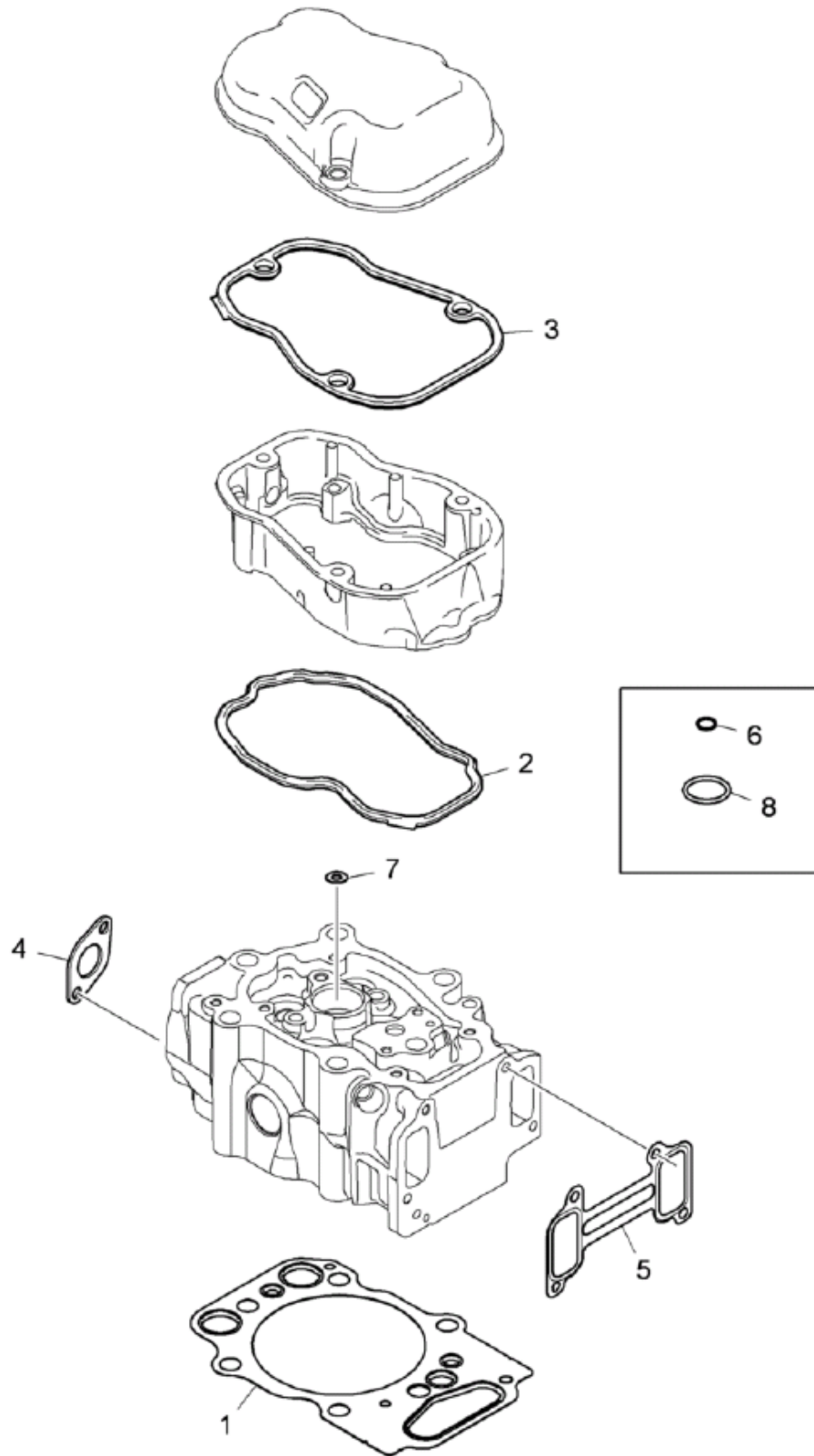
| <b>DA30</b> |         |      |             | Date           | Page           |
|-------------|---------|------|-------------|----------------|----------------|
|             |         |      |             | <b>05.2012</b> | <b>G010-21</b> |
| Pos.        | Part.nr | Qt'y | Description | Serial No.     | Notes          |
| 1           | 529443  | rq   | Cover       |                |                |
| 2           | 529444  | rq   | Cover       |                |                |
| 3           | 529445  | rq   | Cover       |                |                |
| 4           | 529446  | 1    | Cover       |                |                |
| 5           | 529447  | 1    | Cover       |                |                |
| 6           | 529439  | rq   | Gasket      |                |                |
| 7           | 512960  | rq   | Screw       |                |                |
| 8           | 529440  | rq   | Gasket      |                |                |
| 9           | 451633  | rq   | Screw       |                |                |

Timing gear



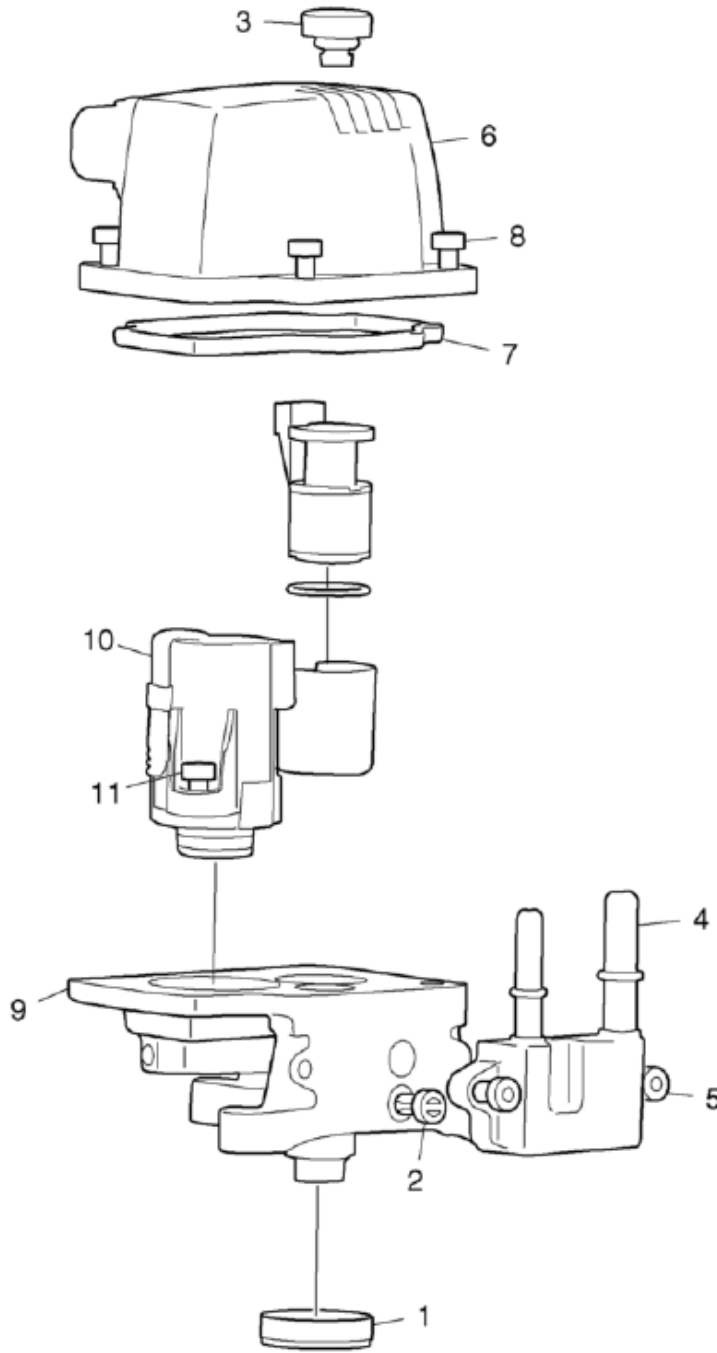
| DA30 |         |      |                  | Date       | Page             |
|------|---------|------|------------------|------------|------------------|
|      |         |      |                  | 05.2012    | G010-47          |
| Pos. | Part.nr | Qt'y | Description      | Serial No. | Notes            |
| 1    | 531295  | 1    | Exhaust manifold |            |                  |
| 2    | 531296  | 1    | Exhaust manifold |            |                  |
| 3    | 531297  | 8    | •Seal ring       |            |                  |
| 4    | 531298  | 1    | Exhaust manifold |            |                  |
| 5    | 529343  | 2    | •Seal ring       |            |                  |
| 6    | 529219  | 5    | Gasket           |            |                  |
| 7    | 529345  | 10   | Screw            |            |                  |
| 8    | 451604  | 1    | •Spacing sleeve  |            |                  |
| 9    | 351954  | 1    | Gasket           |            |                  |
| 10   | 509211  | 3    | Screw            |            |                  |
| 11   | 509212  | 3    | Spacing sleeve   |            |                  |
| 12   | 506615  | 1    | Stud screw       |            |                  |
| 13   | 451340  | 1    | Nut              |            |                  |
| 14   |         | 1    | Turbocharger     |            | See page G010-49 |

Gasket kit, cylinder head



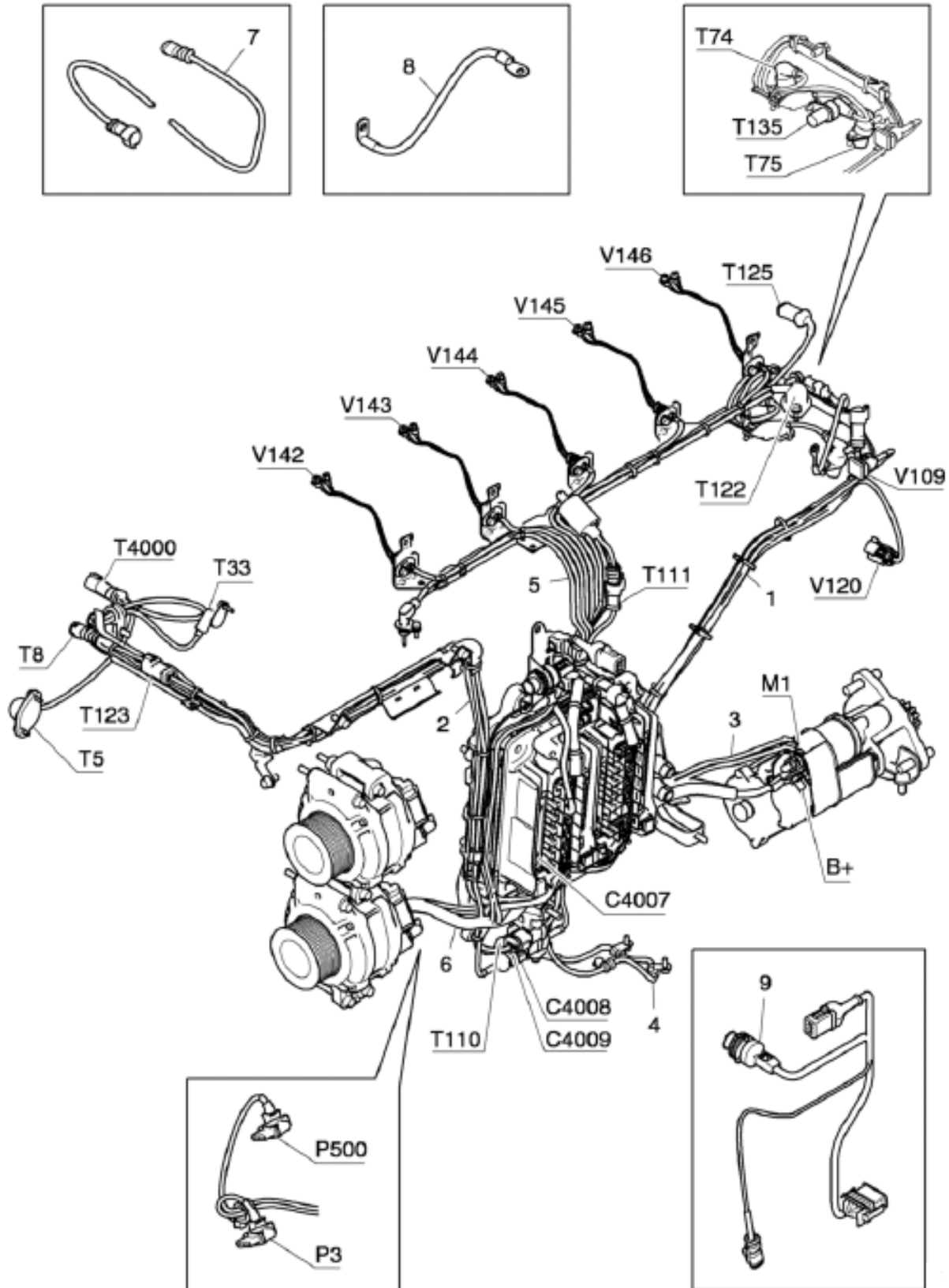
| DA30 |         |      |             | Date       | Page       |
|------|---------|------|-------------|------------|------------|
|      |         |      |             | 05.2012    | G010-73    |
| Pos. | Part.nr | Qt'y | Description | Serial No. | Notes      |
| 1    | 529377  | 1    | Flange      |            |            |
| 2    | 529378  | 1    | •Plug       |            |            |
| 3    | 451692  | 1    | •O-ring     |            |            |
| 4    | 251221  | 1    | •Screw      |            |            |
| 5    | 529379  | 1    | •Connector  |            |            |
| 6    | 529466  | 1    | •Bracket    |            |            |
| 7    | 529381  | 1    | •O-ring     |            |            |
| 8    | 351894  | 1    | •Screw      |            |            |
| 9    | 451514  | 1    | •Seal       |            |            |
| 10   | 151789  | 1    | •Plug       |            |            |
| 11   | 529382  | 1    | Connector   |            | Cab heater |
|      | 529383  | 2    | Plug        |            | Cab heater |
|      | 251635  | 1    | Hose clamp  |            |            |
| 12   | 529384  | 1    | Gasket      |            |            |
| 13   | 531313  | 1    | Flange      |            |            |
| 14   | 529233  | 1    | Gasket      |            |            |
| 15   | 529385  | 1    | Hose        |            |            |
| 16   | 508501  | 2    | Hose clamp  |            |            |
| 17   | 529389  | 1    | Pipe ass'y  |            |            |
| 18   | 451498  | 4    | Screw       |            |            |
| 19   | 151593  | 2    | Plug        |            |            |
| 20   | 451429  | 2    | Gasket      |            |            |
| 21   | 451633  | 3    | Screw       |            |            |
| 22   | 051918  | 1    | Hose union  |            | Cab heater |

Exhaust system, Reducant doser, SCR

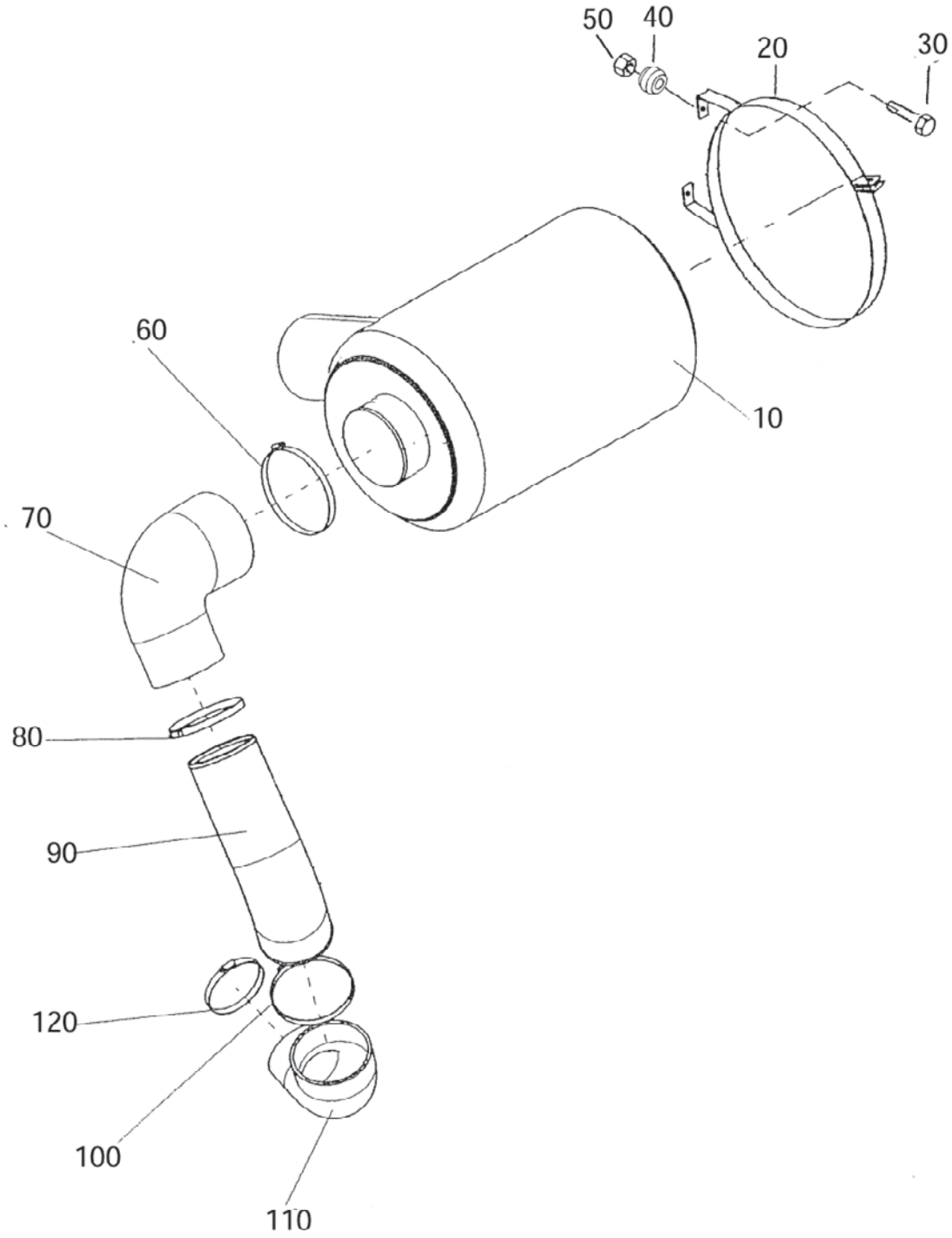


| DA30 |         |      |                      | Date       | Page            |
|------|---------|------|----------------------|------------|-----------------|
|      |         |      |                      | 05.2012    | G010-99         |
| Pos. | Part.nr | Qt'y | Description          | Serial No. | Notes           |
| 1    | 530176  | 1    | Control unit         |            | ( El pos. 211 ) |
| 2    | 530348  | 1    | Cable set            |            |                 |
|      |         | 1    | •Contact housing     |            | E67/A           |
|      |         | 1    | •Contact housing     |            | E67/B           |
|      |         | 1    | •Contact housing     |            | C7              |
|      |         | 1    | •Contact housing     |            | C316            |
|      |         | 1    | •Contact housing     |            | C4011           |
|      |         | 1    | •Contact housing     |            | C4012           |
|      |         | 1    | •Contact housing     |            | H25             |
|      |         | 1    | •Contact housing     |            | H26             |
|      |         | 1    | •Contact housing     |            | V118            |
|      |         | 1    | •Contact housing     |            | V183            |
|      |         | 1    | •Contact housing     |            | T116            |
| 3    | 530349  | 1    | Cable set            |            |                 |
|      |         | 1    | •Contact housing     |            | C316            |
|      |         | 1    | •Contact housing     |            | V117            |
| 4    | 530350  | 1    | Cable set            |            |                 |
|      |         | 1    | •Contact housing     |            | C7              |
|      |         | 1    | •Contact housing     |            | C4022           |
| 5    | 530351  | 1    | Cable set            |            |                 |
|      |         | 1    | •Contact housing     |            | C4011           |
|      |         | 1    | •Contact housing     |            | T115            |
| 6    | 530175  | 1    | Sensor               |            |                 |
| 7    | 530352  | 1    | Cable set            |            |                 |
|      |         | 1    | •Contact housing     |            | C4012           |
|      |         | 1    | •Contact housing     |            | T113            |
| 8    | 530167  | 1    | Sensor               |            |                 |
| 9    | 530353  | 1    | Cable set            |            |                 |
|      |         | 1    | •Contact housing     |            | E44.B4          |
|      |         | 1    | •Contact housing     |            | C4002           |
|      |         | 1    | •Contact housing     |            | C4008           |
|      |         | 1    | •Contact housing     |            | C4022           |
|      | 530354  | 1    | •Fuseholder          |            | F4000           |
|      | 530355  | 1    | •Fuse                |            |                 |
|      |         | 1    | •Cable terminal ring |            | G4000           |
|      |         | 1    | •Cable terminal ring |            | M1              |

EMS Injection system



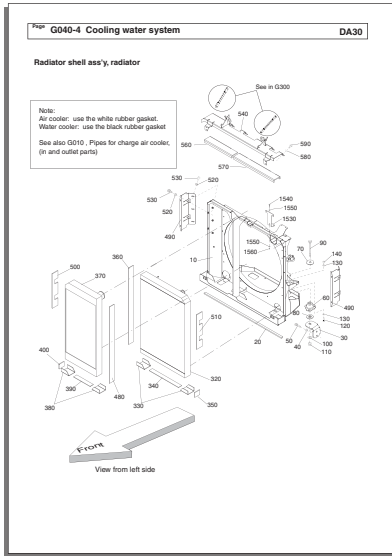
Inlet system



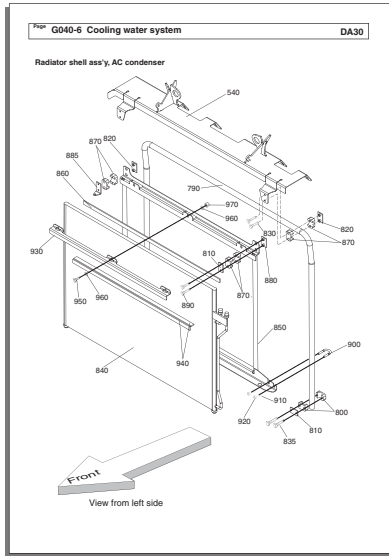
**Cooling water system**

**G040 Picture index**

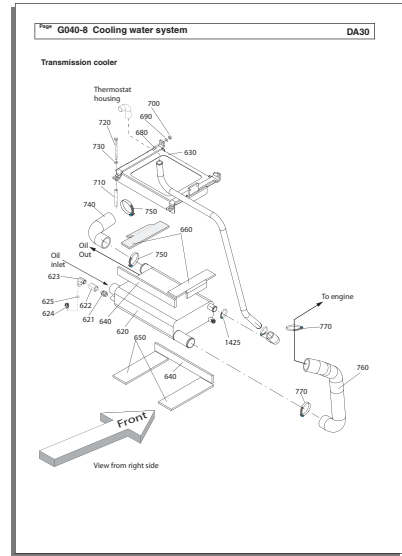
G040-4



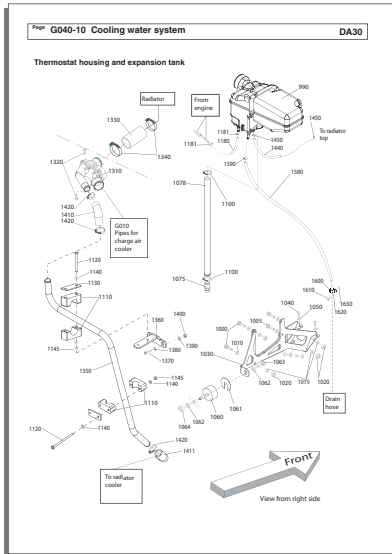
G040-6



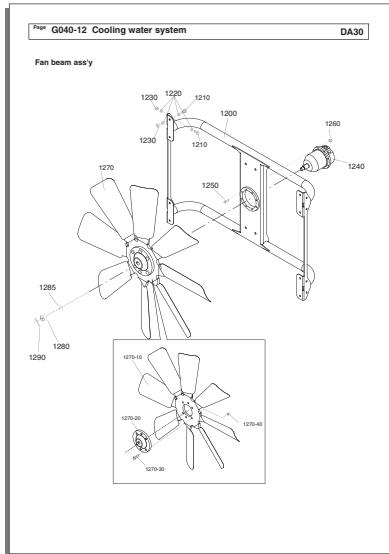
G040-8



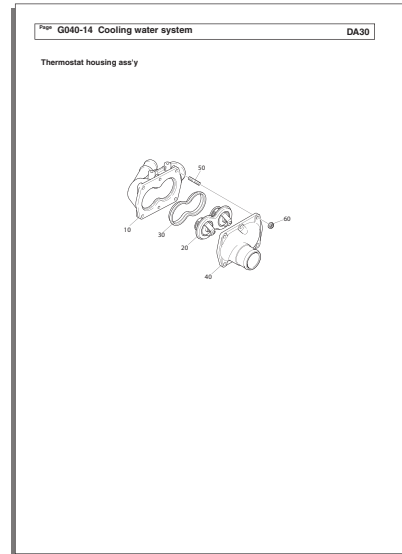
G040-10



G040-12



G040-14





**Fuel oil tank T2  
Description**

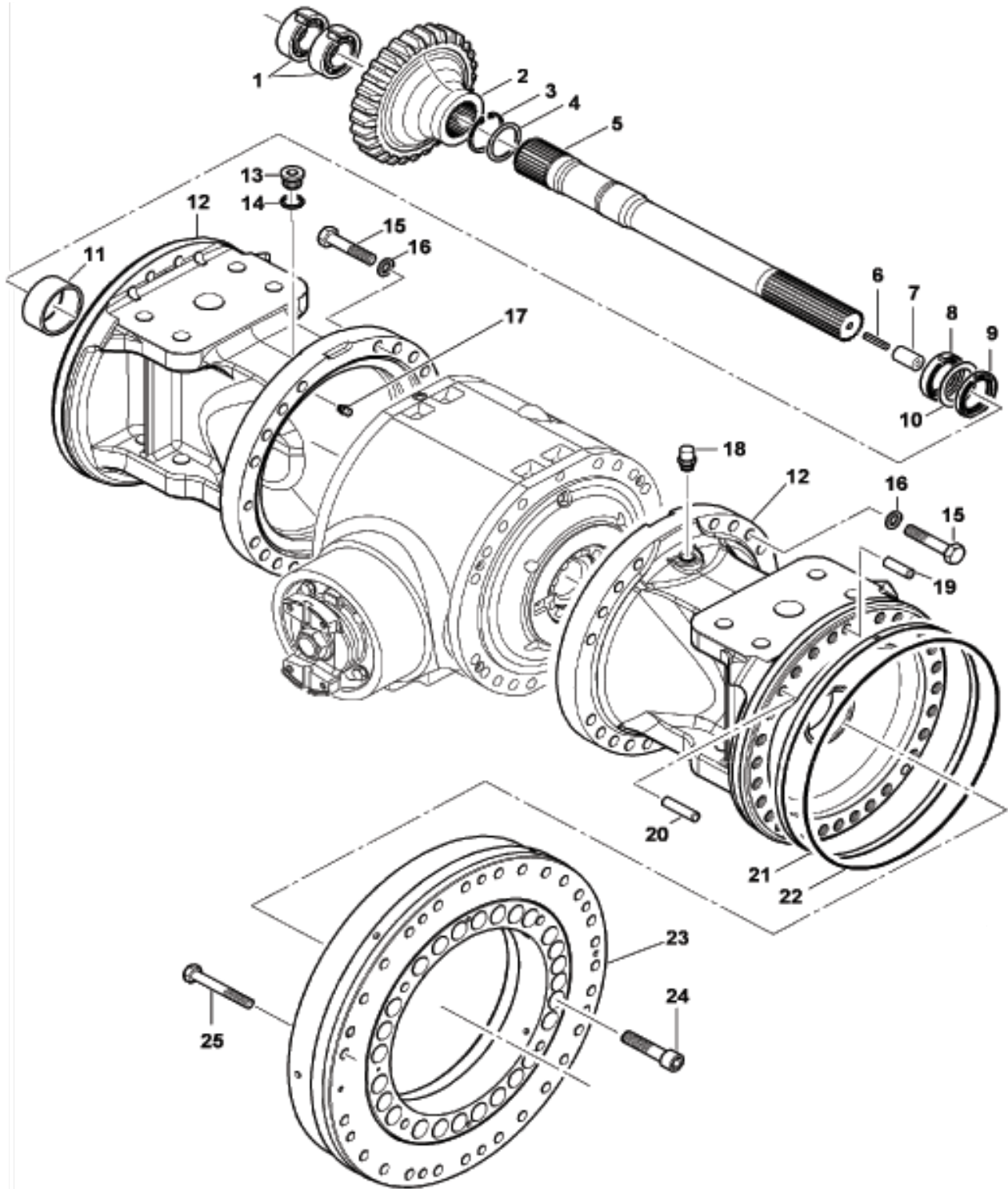
**G060 Index**

**Page**

Fuel oil tank ..... G060-4

| <b>DA30</b> |         |      |                   | Date           | Page          |
|-------------|---------|------|-------------------|----------------|---------------|
|             |         |      |                   | <b>03.2012</b> | <b>G070-5</b> |
| Pos.        | Part.nr | Qt'y | Description       | Serial No.     | Notes         |
| 10          | 529781  | 1    | Transmission      |                |               |
| 30          | 252027  | 1    | O-ring            |                |               |
| 40          | 528794  | 1    | Adapter           |                |               |
| 50          | 055699  | 2    | Plug              |                |               |
| 60          | 528707  | 1    | Magnetic plug     |                |               |
| 70          | 528517  | 1    | Discharge cock    |                |               |
| 80          | 055546  | 1    | Washer            |                |               |
| 250         | 527692  | 2    | Bracket           |                |               |
| 260         | 053704  | 8    | Screw             |                |               |
| 270         | 063400  | 8    | Lock washer       |                |               |
| 280         | 525441  | 4    | Rubber suspension |                |               |
| 290         | 515653  | 4    | Washer            |                |               |
| 300         | 530359  | 2    | Screw             |                |               |
| 310         | 509270  | 4    | Washer            |                |               |
| 320         | 053265  | 2    | Nut               |                |               |
| 330         | 502327  | 1    | Shim              |                |               |
| 340         | 502328  | 1    | Shim              |                |               |
| 440         | 527816  | 1    | Bracket           |                |               |
| 450         | 160513  | 4    | Screw             |                |               |
| 460         | 501847  | 4    | Spacer            |                |               |
| 470         | 515661  | 2    | Rubber suspension |                |               |
| 480         | 515653  | 2    | Washer            |                |               |
| 490         | 515704  | 1    | Screw             |                |               |
| 500         | 509270  | 2    | Washer            |                |               |
| 510         | 053265  | 2    | Nut               |                |               |
| 520         | 502327  | 1    | Shim              |                |               |
| 530         | 502328  | 1    | Shim              |                |               |
| 550         | 528543  | 2    | Flange half       |                |               |
| 560         | 509356  | 4    | Screw             |                |               |
| 570         | 504316  | 4    | Washer            |                |               |
| 580         | 053264  | 4    | Nut               |                |               |
| 620         | 047265  | 1    | Connector         |                |               |
| 625         | 055616  | 1    | Seal ring         |                |               |
| 630         | 530470  | 1    | Connector         |                |               |
| 640         | 530472  | 1    | Hose              |                |               |
| 645         | 530471  | 1    | Connector         |                |               |
| 650         | 263514  | 1    | Nut               |                |               |
| 660         | 049836  | 1    | Pipe              |                |               |
| 670         | 452017  | 1    | Clamp             |                |               |
| 680         | 509227  | 2    | Washer            |                |               |
| 690         | 502759  | 2    | Nut               |                |               |
| 700         | 528291  | 1    | Bracket           |                |               |
| 710         | 062869  | 2    | Screw             |                |               |
| 720         | 509227  | 2    | Washer            |                |               |
| 730         | 502759  | 2    | Nut               |                |               |
| 740         | 352991  | 1    | Handle            |                |               |

Axle beam ass'y DA30



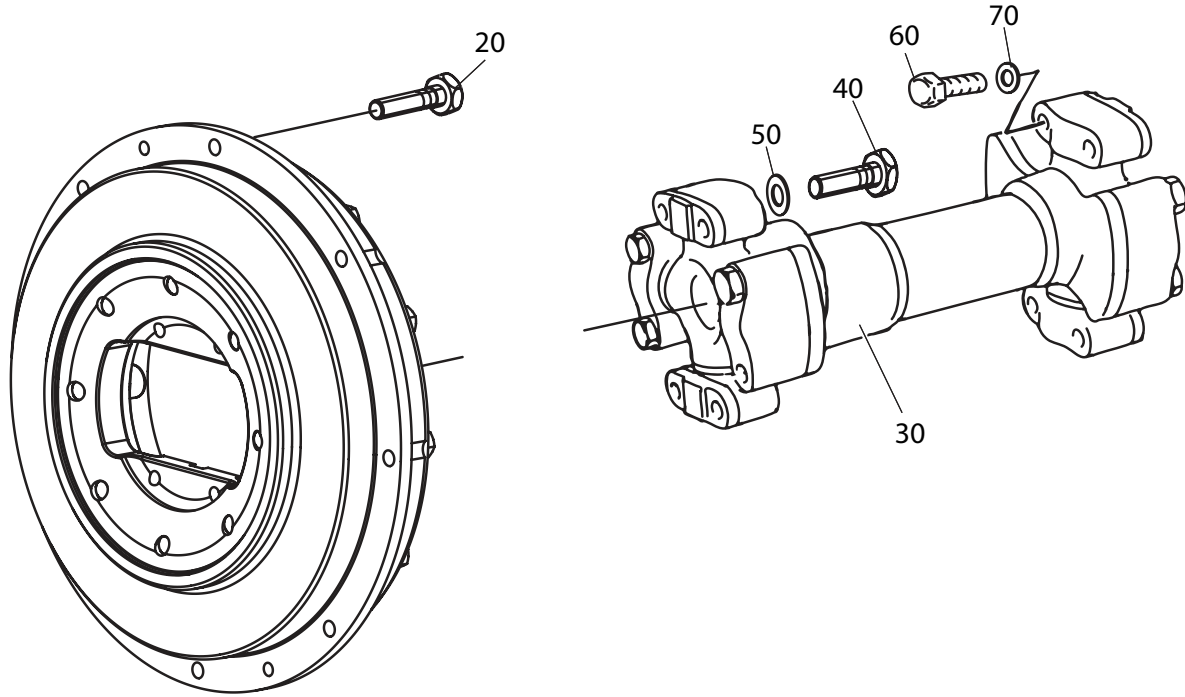
**Wheel  
Description**

**G100 Index**

**Page**

Tyres and rims.....G100-4

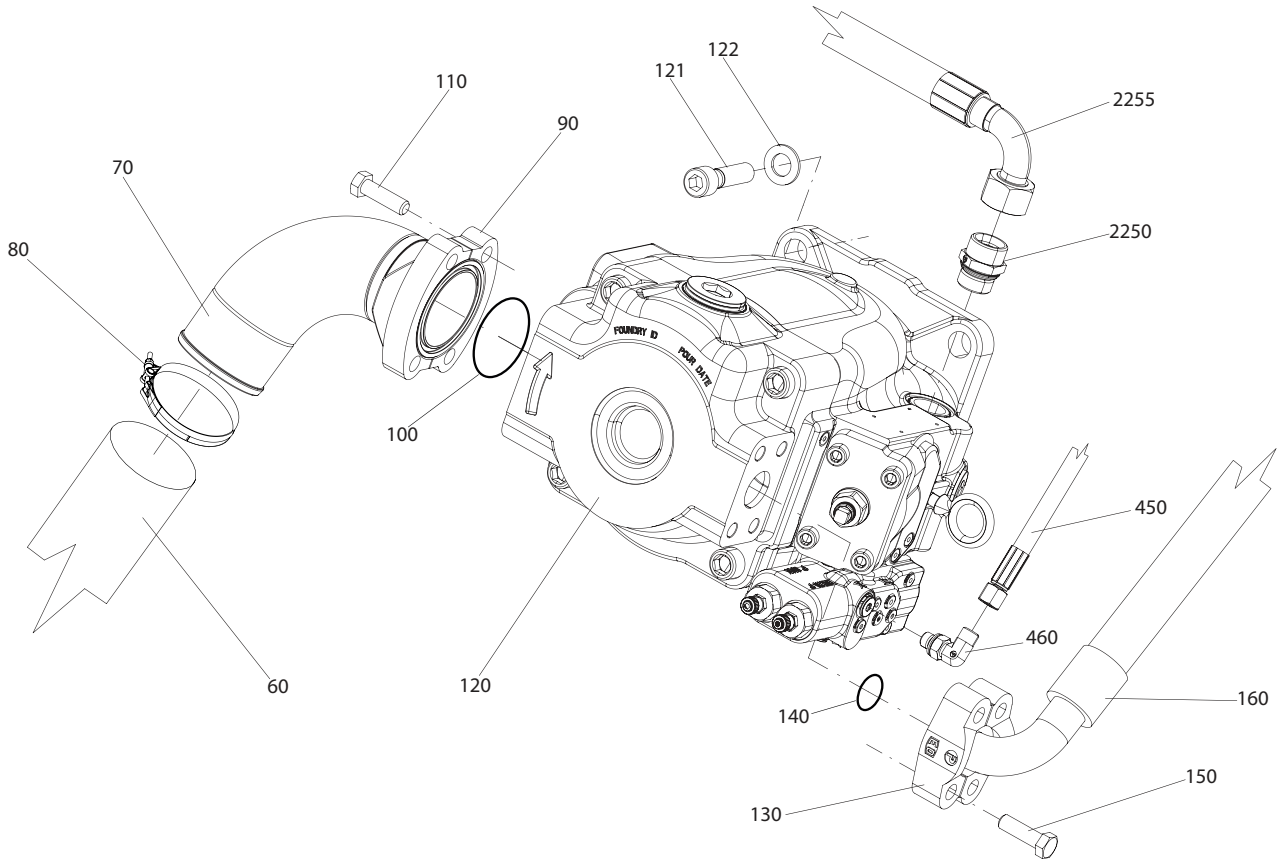
Cardan shaft, engine - transmission



**Hydraulic system  
Description****G190 Index****Page**

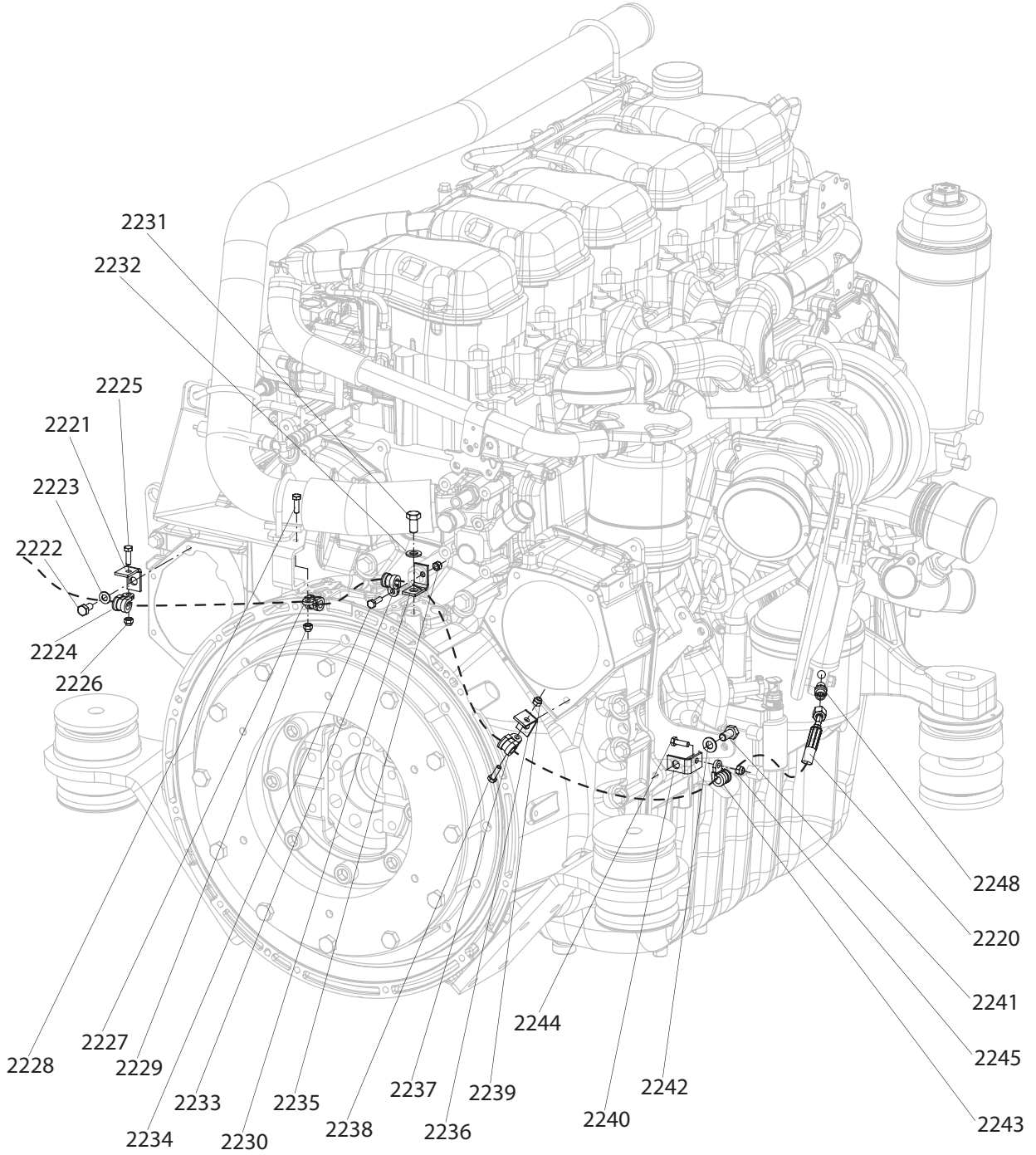
|                                      |         |
|--------------------------------------|---------|
| Accumulators .....                   | G190-44 |
| Brake system, front axle .....       | G190-46 |
| Brake system, rear tandem.....       | G190-48 |
| Brake system, rear tandem.....       | G190-50 |
| Emergency steering pump.....         | G190-12 |
| Exhaust brake .....                  | G190-40 |
| Fan drive unit .....                 | G190-38 |
| Footbrake valve.....                 | G190-42 |
| Hydraulic system - overview .....    | G190-6  |
| Hydraulic system - overview .....    | G190-8  |
| Hydraulic tank .....                 | G190-10 |
| Main hydraulic pump 2145.....        | G190-14 |
| Main hydr. pump P2145, exploded..... | G190-54 |
| Main valve.....                      | G190-16 |
| Main valve.....                      | G190-18 |
| Main valve.....                      | G190-20 |
| Main valve, exploded .....           | G190-52 |
| Orbitrol exploded.....               | G190-60 |
| Return block.....                    | G190-30 |
| Steering priority valve .....        | G190-58 |
| Steering servo valve .....           | G190-32 |
| Steering system .....                | G190-34 |
| Steering valve .....                 | G190-22 |
| Steering valve .....                 | G190-24 |
| Steering valve, exploded.....        | G190-56 |
| Test block .....                     | G190-26 |
| Test block .....                     | G190-28 |
| Tilting system.....                  | G190-36 |

Main hydraulic pump 2145



| <b>DA30</b> |                |             |                    | Date              | Page           |
|-------------|----------------|-------------|--------------------|-------------------|----------------|
|             |                |             |                    | <b>03.2012</b>    | <b>G190-27</b> |
| <b>Pos.</b> | <b>Part.nr</b> | <b>Qt'y</b> | <b>Description</b> | <b>Serial No.</b> | <b>Notes</b>   |
| 2360        | 527584         | 1           | Block              |                   |                |
| 2370        | 053429         | 2           | Screw              |                   |                |
| 2380        | 504308         | 4           | Washer             |                   |                |
| 2390        | 055687         | 10          | Measuring tap      |                   |                |
| 2400        | 527182         | 6           | Sensor             |                   |                |
| 2780        | 502683         | 1           | Connector          |                   |                |
| 2790        | 263803         | 1           | Connector          |                   |                |
| 2800        | 528168         | 1           | Hose               |                   |                |
| 2810        | 502683         | 1           | Connector          |                   |                |
| 2820        | 527951         | 1           | Ball valve         |                   |                |
| 2830        | 527863         | 1           | Connector          |                   |                |
| 2840        | 502683         | 1           | Connector          |                   |                |

Exhaust brake

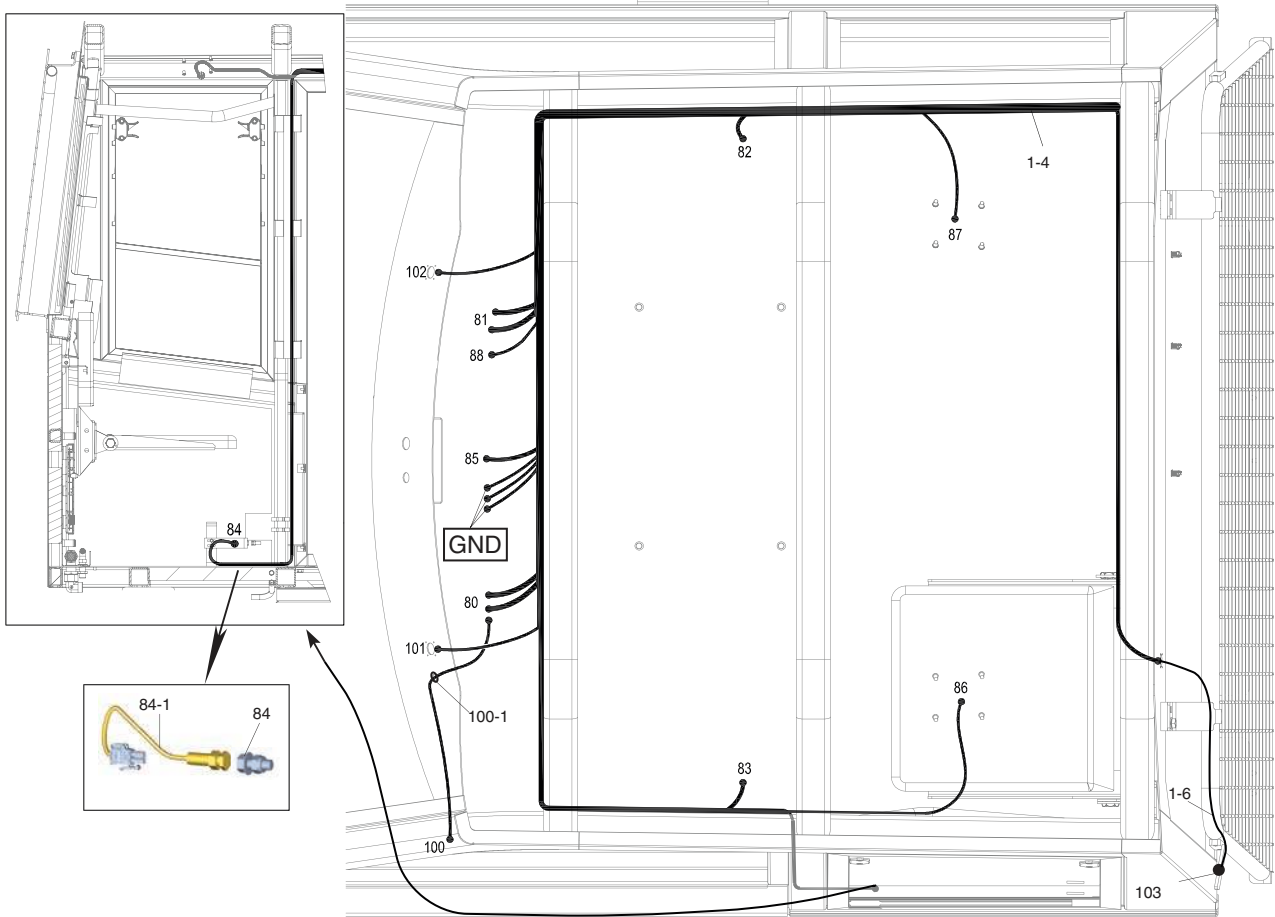
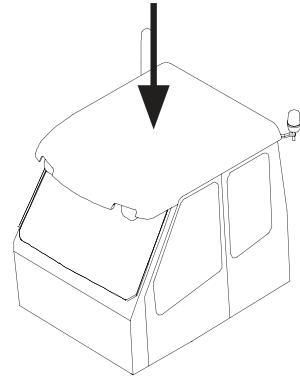


| DA30 |         |      |                          | Date       | 03.2012 | Page  | G190-53 |
|------|---------|------|--------------------------|------------|---------|-------|---------|
| Pos. | Part.nr | Qt'y | Description              | Serial No. |         | Notes |         |
| 1    | 528831  | 1    | Valve block              |            |         |       |         |
|      | 524484  | 1    | •Valve                   |            |         |       |         |
|      | 530049  | 1    | •Coil                    |            |         |       |         |
| 8    | 531062  | 1    | •Pressure reducing valve |            |         |       |         |
| 11   | 524484  | 1    | •Valve                   |            |         |       |         |
|      | 530049  | 1    | •Coil                    |            |         |       |         |
| 17   | 530066  | 1    | •Valve                   |            |         |       |         |
|      | 530065  | 1    | •Coil                    |            |         |       |         |
| 19   | 531084  | 1    | •Pressure reducing valve |            |         |       |         |
| 21   | 530757  | 1    | •Valve                   |            |         |       |         |
|      | 530049  | 1    | •Coil                    |            |         |       |         |
| 22   | 526886  | 1    | •Pressure reducing valve |            |         |       |         |
| 23   | 531087  | 1    | •Pressure reducing valve |            |         |       |         |
| 24   | 530068  | 1    | •Valve                   |            |         |       |         |
|      | 530065  | 1    | •Coil                    |            |         |       |         |
| 25   | 526886  | 2    | •Pressure reducing valve |            |         |       |         |
| 29   | 531085  | 1    | •Solenoid valve          |            |         |       |         |
|      | 531086  | 1    | •Blende                  |            |         |       |         |
| 30   | 530051  | 1    | •Valve                   |            |         |       |         |
|      | 530049  | 1    | •Coil                    |            |         |       |         |
| 33   | 530063  | 1    | •Valve                   |            |         |       |         |
|      | 530049  | 1    | •Coil                    |            |         |       |         |
| 34   | 531085  | 1    | •Solenoid valve          |            |         |       |         |
|      | 531086  | 1    | •Blende                  |            |         |       |         |
| 44   | 064405  | 2    | •Flange half             |            |         |       |         |
| 46   | 064404  | 2    | •Flange half             |            |         |       |         |
| 47   | 061233  | 16   | •Screw                   |            |         |       |         |
| 55   | 064403  | 4    | •Flange half             |            |         |       |         |
| 60   | 053266  | 4    | •Screw                   |            |         |       |         |

| DA30   |         |       |                | Date       | Page            |
|--------|---------|-------|----------------|------------|-----------------|
|        |         |       |                | 03.2012    | G200-5          |
| Pos.   | Part.nr | Qt'y  | Description    | Serial No. | Notes           |
| 10     | 528770  | 1     | Hydraulic tank |            |                 |
| 20     | 160517  | 2     | Screw          |            |                 |
| 30     | 501847  | 2     | Spacer         |            |                 |
| 40     | 160513  | 2     | Screw          |            |                 |
| 50     | 509269  | 2     | Washer         |            |                 |
| 60     | 509992  | rq    | Shim           |            | 1,25mm          |
| 70     | 509993  | rq    | Shim           |            | 3mm             |
| 80     | 509994  | rq    | Shim           |            | 5mm             |
| 90     | 502782  | 1     | Cover          |            |                 |
| 100    | 045920  | 1     | Gasket         |            |                 |
| 110    | 061448  | 6     | Screw          |            |                 |
| 120    | 063343  | 6     | Washer         |            |                 |
| 130    | 055398  | 1     | Filter         |            |                 |
| 130-10 | 527416  | 1     | •O-ring        |            |                 |
| 140    | 066870  | 1     | Seal ring      |            |                 |
| 150    | 065761  | 1     | Connector      |            |                 |
| 160    | 503197  | 1     | Bracket        |            |                 |
| 170    | 046291  | 1     | Hose           |            |                 |
| 180    | 065025  | 1     | Hose clamp     |            |                 |
| 190    | 503024  | 2     | Level gauge    |            |                 |
| 200    | 055729  | 2     | Discharge cock |            |                 |
| 210    | 052839  | 2     | Ring           |            |                 |
| 220    | 528780  | 1     | Hatch          |            |                 |
| 230    | 509228  | 2     | Screw          |            |                 |
| 240    | 513451  | 2     | Screw          |            |                 |
| 250    | 509227  | 4     | Washer         |            |                 |
| 260    | 057665  | 1     | Gas-spring     |            |                 |
| 270    | 509329  | 1     | Nut            |            |                 |
| 280    | 508029  | 1     | Door handle    |            |                 |
| 290    | 061457  | 3     | Screw          |            |                 |
| 300    | 509272  | 3     | Washer         |            |                 |
| 310    | 503216  | 1     | Bracket        |            |                 |
| 320    | 052528  | 2     | Screw          |            |                 |
| 330    | 509266  | 4     | Washer         |            |                 |
| 340    | 502759  | 2     | Nut            |            |                 |
| 350    | 503196  | 1     | Door lock      |            |                 |
| 360    | 062656  | 2     | Screw          |            |                 |
| 370    | 509227  | 2     | Washer         |            |                 |
| 380    | 502759  | 2     | Nut            |            |                 |
| 390    |         | 1     | Filter ass'y*  |            | See page G200-7 |
| 400    | 057565  | 2,76m | Rubber list    |            |                 |
| 410    | 528509  | 1     | Protection     |            |                 |
| 420    | 053429  | 3     | Screw          |            |                 |
| 430    | 504308  | 4     | Washer         |            |                 |
| 440    | 053428  | 1     | Nut            |            |                 |
| 490    | 512675  | 1     | Magnetic plug  |            |                 |
| 500    | 055612  | 1     | Seal ring      |            |                 |

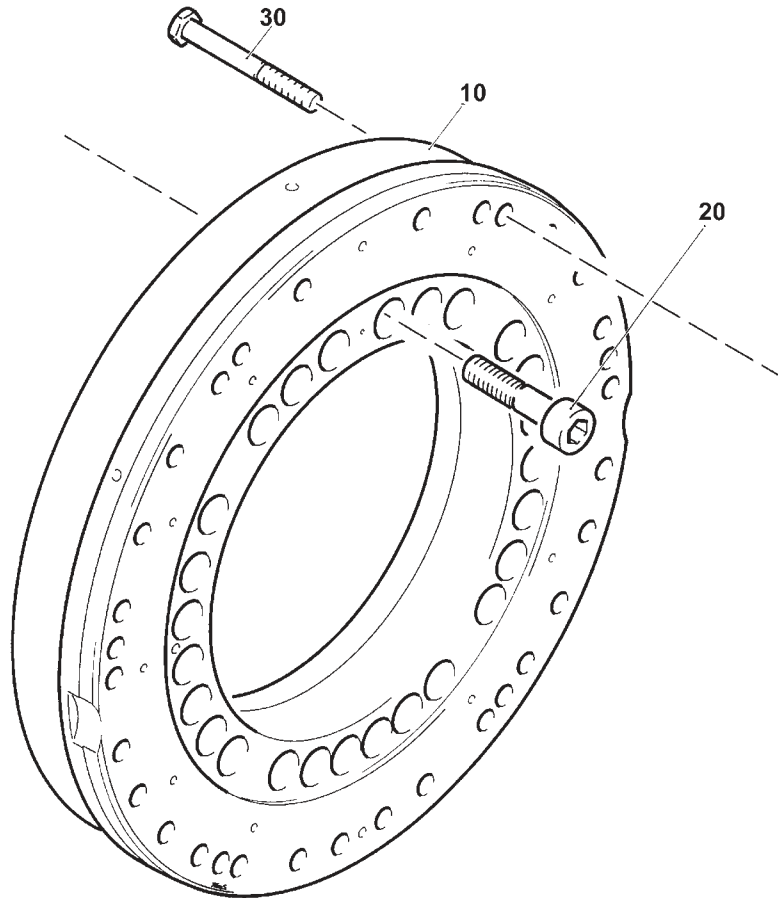
| DA30 |         |      |                              | Date       | 03.2013 | Page                 | G210-11 |
|------|---------|------|------------------------------|------------|---------|----------------------|---------|
| Pos. | Part.nr | Qt'y | Description                  | Serial No. |         | Notes                |         |
| S4   | 528332  | 1    | Cable set                    |            |         |                      |         |
| 1    | 528491  | 1    | Cable set                    |            |         | Mirror arm harnes Rh |         |
| 2    | 528491  | 1    | Cable set                    |            |         | Mirror arm harnes Lh |         |
| 162  | 528513  | 1    | Sensor, temp                 |            |         |                      |         |
| 220  |         | 1    | Control unit , transmission* |            |         | See G070             |         |
| 221  |         | 1    | Sensor*                      |            |         | See G070             |         |
| 303  |         | 1    | Work light*                  |            |         | See G500             |         |
| 304  |         | 1    | Work light*                  |            |         | See G500             |         |
| 305  |         | 1    | Heated mirror*               |            |         | See G360             |         |
| 306  |         | 1    | Heated mirror*               |            |         | See G360             |         |
| 307  | 530007  | 1    | Light                        |            |         | LH                   |         |
| 323  |         | 1    | Work light*                  |            |         | See G500             |         |
| 324  |         | 1    | Work light*                  |            |         | See G500             |         |
| 325  |         | 1    | Heated mirror*               |            |         | See G360             |         |
| 326  |         | 1    | Heated mirror*               |            |         | See G360             |         |
| 327  | 530007  | 1    | Light                        |            |         | Rh                   |         |

El system cab, roof cable set



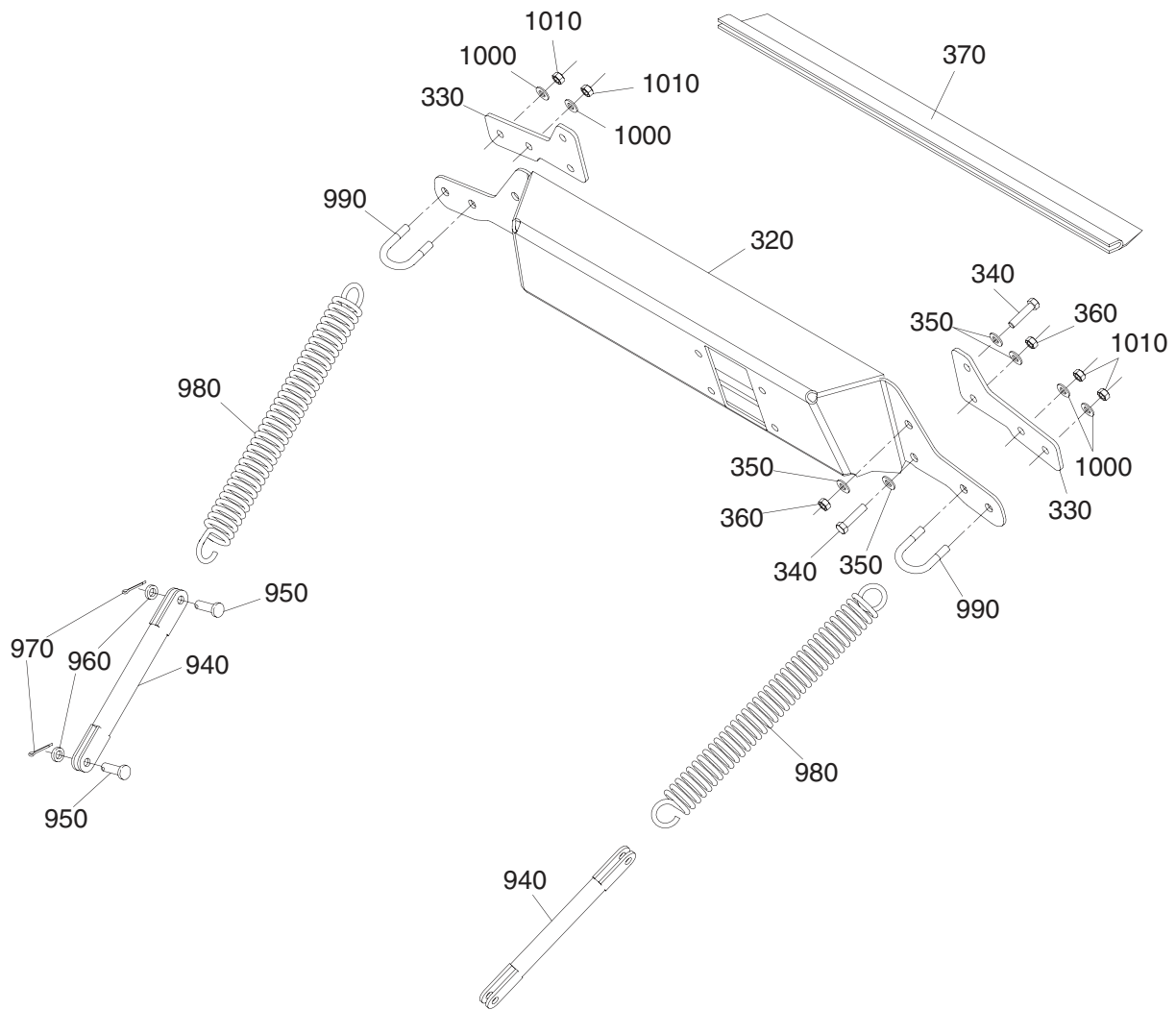


Articulation bearing ass'y

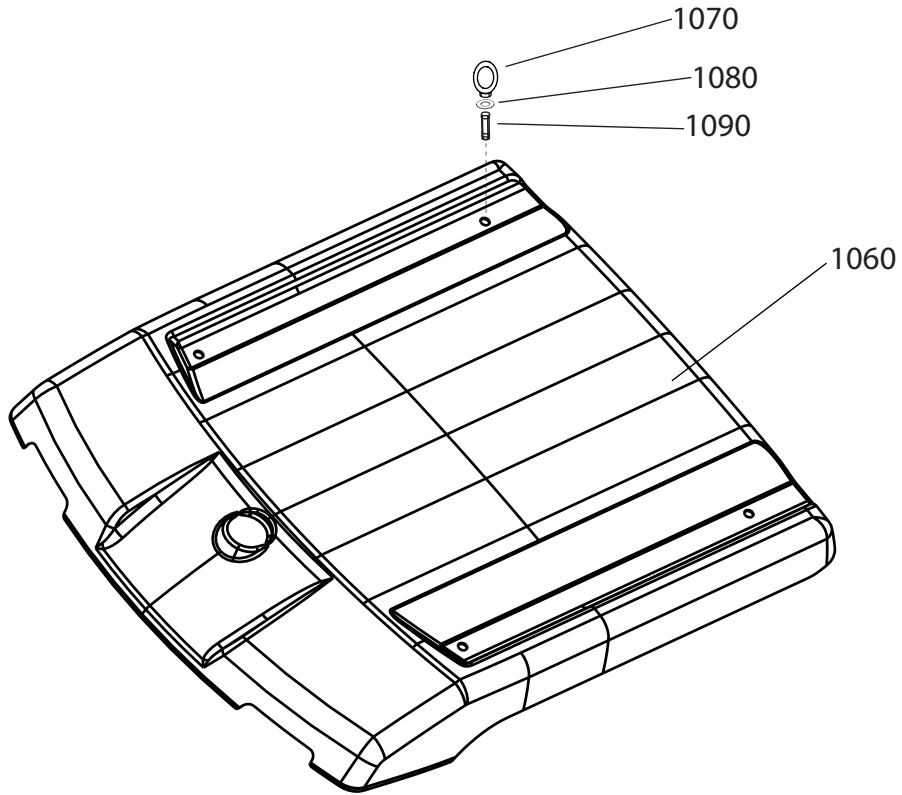


| DA30 |         |      |                 | Date       | Page   |
|------|---------|------|-----------------|------------|--------|
|      |         |      |                 | 03.2012    | G280-7 |
| Pos. | Part.nr | Qt'y | Description     | Serial No. | Notes  |
| 400  | 528980  | 1    | Fender rh       |            |        |
| 410  | 160513  | 4    | Screw           |            |        |
| 420  | 508965  | 4    | Spacer          |            |        |
| 440  | 057565  | 2    | Rubber list     |            |        |
| 450  | 528982  | 1    | Hatch           |            |        |
| 460  | 052539  | 4    | Screw           |            |        |
| 470  | 509227  | 4    | Washer          |            |        |
| 480  | 507063  | 1    | Gas-spring      |            |        |
| 490  | 504308  | 2    | Washer          |            |        |
| 500  | 053428  | 2    | Nut             |            |        |
| 510  | 528695  | 1    | Holder ass'y    |            |        |
| 520  | 513784  | 4    | Screw           |            |        |
| 530  | 509227  | 4    | Washer          |            |        |
| 540  | 528988  | 1    | Cover           |            |        |
| 550  | 527837  | 5    | Washer          |            |        |
| 560  | 527838  | 5    | Screw           |            |        |
| 570  | 066426  | 1    | Rubber passage  |            |        |
| 580  | 504502  | 1    | Antiskid tape   |            |        |
| 590  | 504503  | 1    | Antiskid tape   |            |        |
| 600  | 528728  | 1    | Antiskid tape   |            |        |
| 610  | 503660  | 2    | Rubber damper   |            |        |
| 620  | 512361  | 2    | Nut             |            |        |
| 700  | 504888  | 4    | Plate           |            |        |
| 710  | 053429  | 8    | Screw           |            |        |
| 720  | 504308  | 16   | Washer          |            |        |
| 730  | 501336  | 4    | Step            |            |        |
| 740  | 507794  | 4    | Plate, flexible |            |        |
| 750  | 501870  | 8    | Clamping plate  |            |        |
| 760  | 503846  | 16   | Screw           |            |        |
| 770  | 507938  | 8    | Screw           |            |        |
| 780  | 509227  | 24   | Washer          |            |        |
| 790  | 502759  | 24   | Nut             |            |        |
| 800  | 502090  | 2    | Handle          |            |        |
| 810  | 161487  | 8    | Screw           |            |        |
| 820  | 504308  | 8    | Washer          |            |        |
| 830  | 057200  | 2    | Ball            |            |        |
| 840  | 057201  | 2    | Split bushing   |            |        |

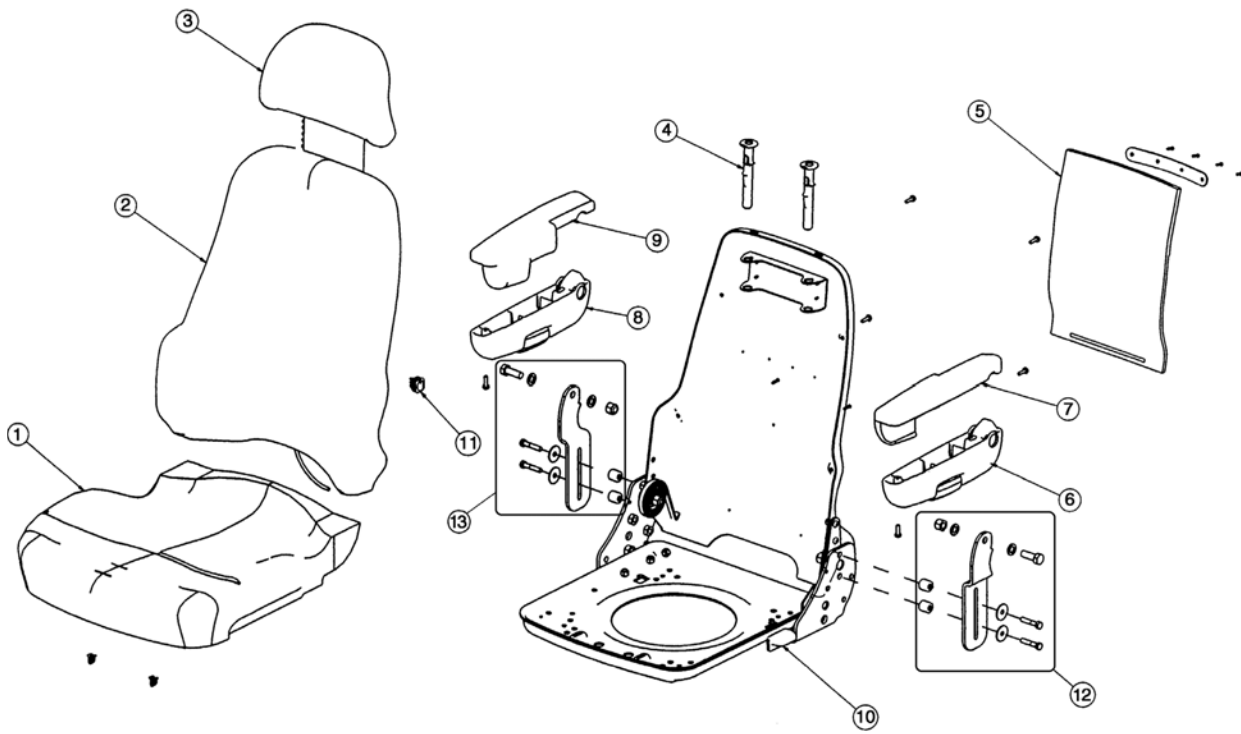
Bonnet, spring stop



Top hat

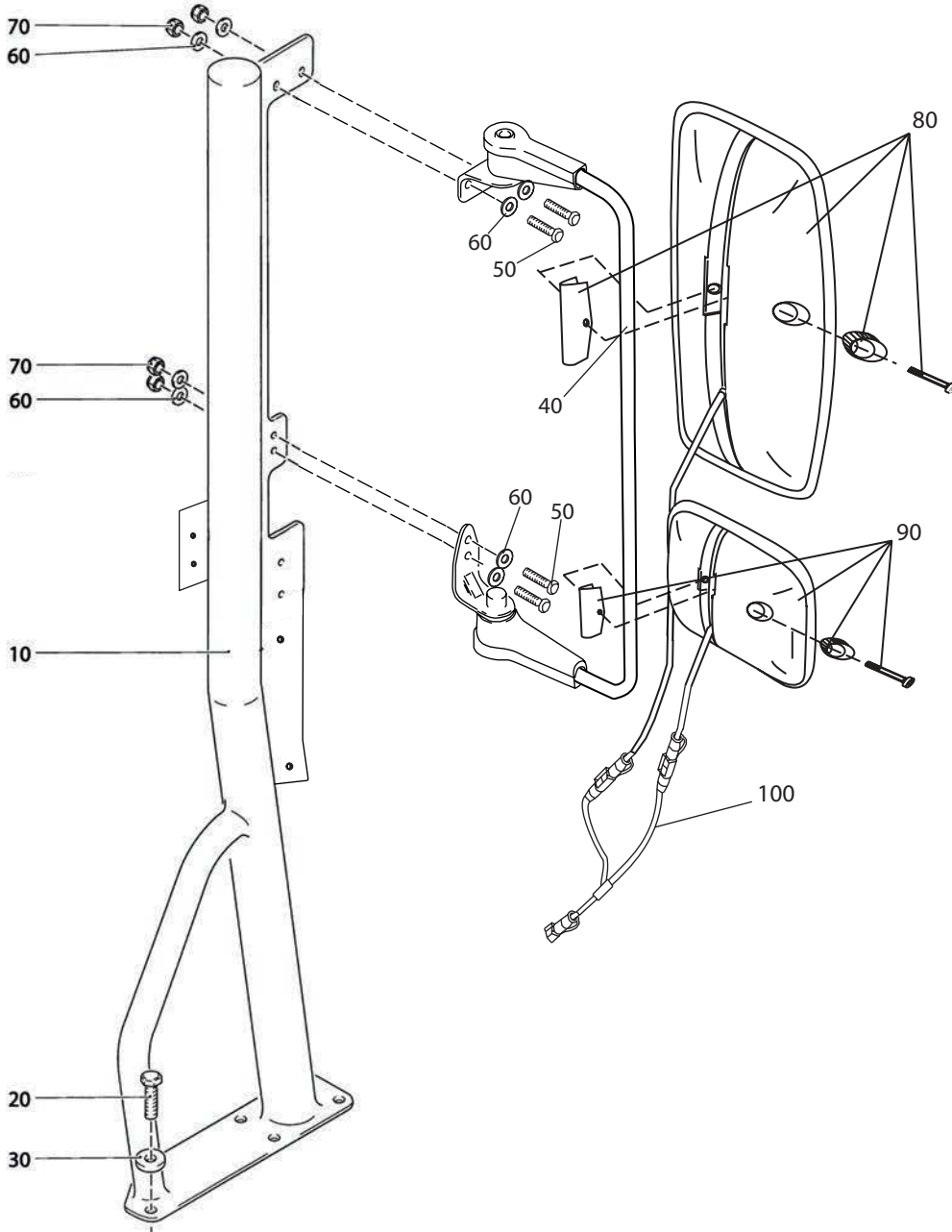


Driver's seat





Mirror





**Protection, steering cylinder  
Description**

**G410 Index**

**Page**

Protection, steering cylinder..... G410-4

CLICK HERE TO **DOWNLOAD** THE COMPLETE MANUAL

- Thank you very much for reading the preview of the manual.
- You can download the complete manual from: [www.heydownloads.com](http://www.heydownloads.com) by clicking the link below



- Please note: If there is no response to **CLICKING** the link, please download this PDF first and then click on it.

CLICK HERE TO **DOWNLOAD** THE COMPLETE MANUAL