

**TR 3600**



CLICK HERE TO **DOWNLOAD** THE COMPLETE MANUAL

- Thank you very much for reading the preview of the manual.
- You can download the complete manual from: [www.heydownloads.com](http://www.heydownloads.com) by clicking the link below



- Please note: If there is no response to CLICKING the link, please download this PDF first and then click on it.

CLICK HERE TO **DOWNLOAD** THE COMPLETE MANUAL

## Drive Unit-Top

---

- [5] - PC 3500, PR 3000, TR 3520
- [6] - TR 3540/3560/3600, PE 4000, PC 3600, PE 3500 w/High Speed Option
- [7] - PC 3500/3600, PE 3500/4000, TR 3500/3600
- [8] - PR 3000
- [9] - PC 3500, PE 3500, PR 3000, TR 3520
- [10] - TR 3540/3560, TR 3600, PE 4000, PC 3600, PE 3500 w/High Speed Option

## Electrical Components

---

INDEX	PART NUMBER	PART NAME	NUMBER REQ
1		Power Unit	1
2	060016-004	SCREW 5/16"	2
3	060015-107	SCREW .250	3
4	065173-001	BUMPER PE SELF ADHESIVE	1
5	060015-121	SCREW 1/4"	4
6	137150	BRACKET HORN	1
7	131243	ASM ALARM PE4000	1
8	060012-076	SCREW #6	2
9	128939	ASM DIODE	1
10	060080-010	HEX FLANGE NUT	2
11	147631-001	HORN	1
12	060080-006	HEX FLANGE NUT	7

## Control Pod

INDEX	PART NUMBER	PART NAME	NUMBER REQ
1	123041	YOKE MACHINING	1
2	092224	BUSHING SPLIT	4
3	118701	EXTENSION GRIP	2
4	060000-108	PIN ROLL	4
5	126941	HAND GRIP ASM	2
6	114003	INSULATOR	1
7	087144	COVER	1
8	060032-037	SCREW SELF-TAPPING	2
9	093904-002	BUTTON-CAP	1
10	089324-002	BUTTON-BODY	1
11	088975	SWITCH BELLOW	1
12	093068	RETAINER	1
13	060032-035	SCREW SELF-TAPPING	4
14	060032-032	SCREW SELF-TAPPING	1
15	060030-163	FLATWASHER	2
16	089510	BUSHING MOLD	2
17	118777	BAR	1
18	089317	POD MACHINING	1
19	060012-023	SCREW #6	2
	061004-026	ADHESIVE THREAD LOCKING	1
20	060017-010	SCREW 3/8"	3
21	060005-009	LOCKWASHER	3
22	118749	STOP	1
23	088611-002	COLLAR	2
24	108531	SPRING TORSION	1
25	118753	PLATE	1
26	089548	SPACER	1
27	118755	CAM	1
28	060030-190	FLATWASHER	AR
29	133457	ASM POTENIOMETER ACCELERATOR	1
30	060014-006	SCREW #10	4
31	060005-005	LOCKWASHER	4
32	089532	BRACKET	1
33	060030-044	FLATWASHER	2
34	060021-005	NUT	2

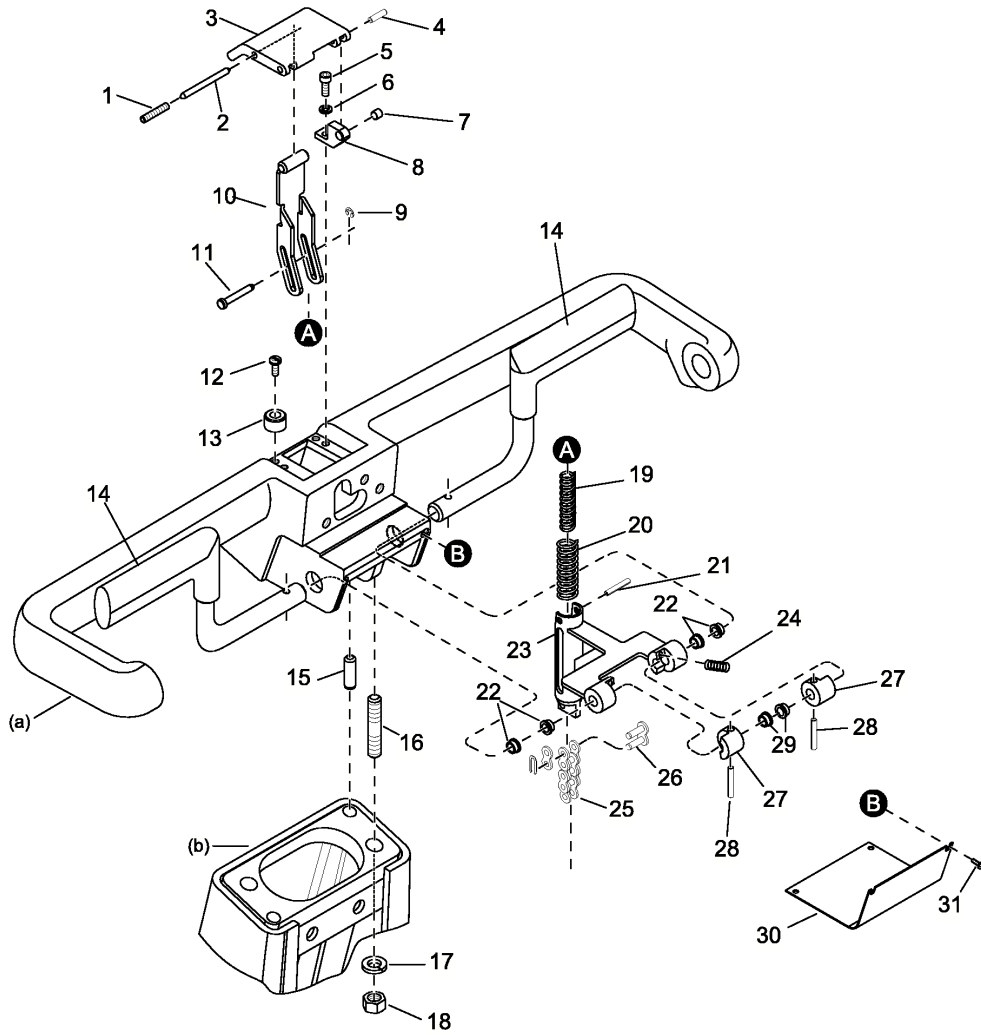
## Control Pod

INDEX	PART NUMBER	PART NAME	NUMBER REQ
40	089336	BRACKET SWITCH	1
41	060014-006	SCREW #10	3
42	060005-005	LOCKWASHER	3
43	060011-021	SCREW #4	4
44	089298-001	ROD	1
45	118901	SWITCH	2
46	089342	SPACER	2
47	060005-049	LOCKWASHER	4
48	060021-023	NUT #4	4
49	090787	LEVER ASM	2
50	060031-020	NUT SPEED	1
51	060021-001	NUT	4
52	060005-001	LOCKWASHER	4
53	093492-002	BRACKET	1
54	060010-003	SCREW #2	4
55	062033-013	RESISTOR 10W 120 OHM	2
	065003-086	SLEEVING	4
56	078879	SWITCH	2
[1] 57	075585	SEAL SWITCH	4
[2]	075585	SEAL SWITCH	2
[2] 58	077635	ADAPTER	4
[2]	077635	ADAPTER	2
59	101589	SWITCH	2
60	102525-002	COVER MACHINING	1
61	060012-038	SCREW #6	4
[3] 62	102525-004	COVER MACHINING	1

## PART NOTES:

- [1] - TR 3600  
PC 3600
- [2] - PC 3600  
TR 3600
- [3] - TR 3600

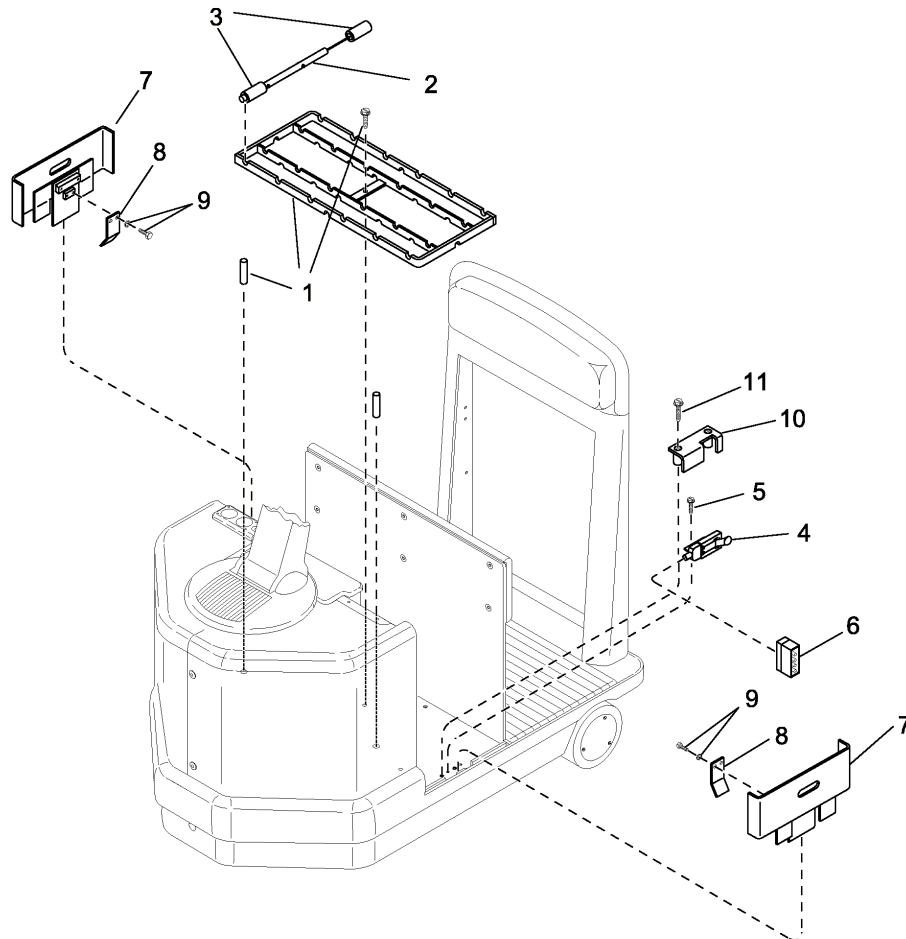
Brake System



- (a) See Chapter 4
- (b) Part of Knuckle

Figure 12987-01

**LIFTING MECHANISM PARTS**  
 Battery Rollers and Retainer Switches



07.7-9235-102  
 01 Rev. 1/11  
 82

Crown 2001 PF13146-1 Rev. 1/11

CLICK HERE TO **DOWNLOAD** THE COMPLETE MANUAL

- Thank you very much for reading the preview of the manual.
- You can download the complete manual from: [www.heydownloads.com](http://www.heydownloads.com) by clicking the link below



- Please note: If there is no response to CLICKING the link, please download this PDF first and then click on it.

CLICK HERE TO **DOWNLOAD** THE COMPLETE MANUAL