

CROWN



Parts Manual

RT3010 Series

CLICK HERE TO **DOWNLOAD** THE COMPLETE MANUAL

- Thank you very much for reading the preview of the manual.
- You can download the complete manual from: www.heydownloads.com by clicking the link below



- Please note: If there is no response to CLICKING the link, please download this PDF first and then click on it.

CLICK HERE TO **DOWNLOAD** THE COMPLETE MANUAL

General

The present manual is designed for Customer Service engineers who wish to familiarise themselves with the maintenance work required for the various truck components.

It also contains troubleshooting sections which can be used to identify and remedy truck faults.

INFORMATION



This book is not an operating manual. It is designed solely for specialist personnel who have been trained and authorised to carry out the work described in the manual.

This manual therefore contains fewer and less detailed warnings than the Operator's Manual, as the latter is aimed at persons who have very little or no prior experience at all.

Operating Instructions

This manual contains no operating instructions. An operating instructions manual is supplied with the vehicle. Additional copies can be ordered as required.

With the help of this manual you and your personnel will be able to ensure the long service life, operational safety and error free functioning of your CROWN vehicle.

Service Training

CROWN offers the appropriate vehicle related training for service personnel. Details on this training can be obtained from CROWN on request.

Ordering Spare Parts

Spare parts can be ordered by quoting:

- The truck specification number
- The truck model number
- The truck serial number

This information can be found on the truck's data plate. Only if this information is provided can the order be processed quickly, correctly and reliably.

Please refer to the Technical Specifications Sheet for the utilisable loads, technical data and dimensions for this series. Brochures can be obtained from your CROWN dealer or from the following address:

CROWN Gabelstapler GmbH
Moosacher Str. 52
80809 Munich
GERMANY
Tel.: +49 (0)89 / 93 002 -0
Fax: +49 (0)89 / 93 002 -175 oder 133

Page intentionally left blank

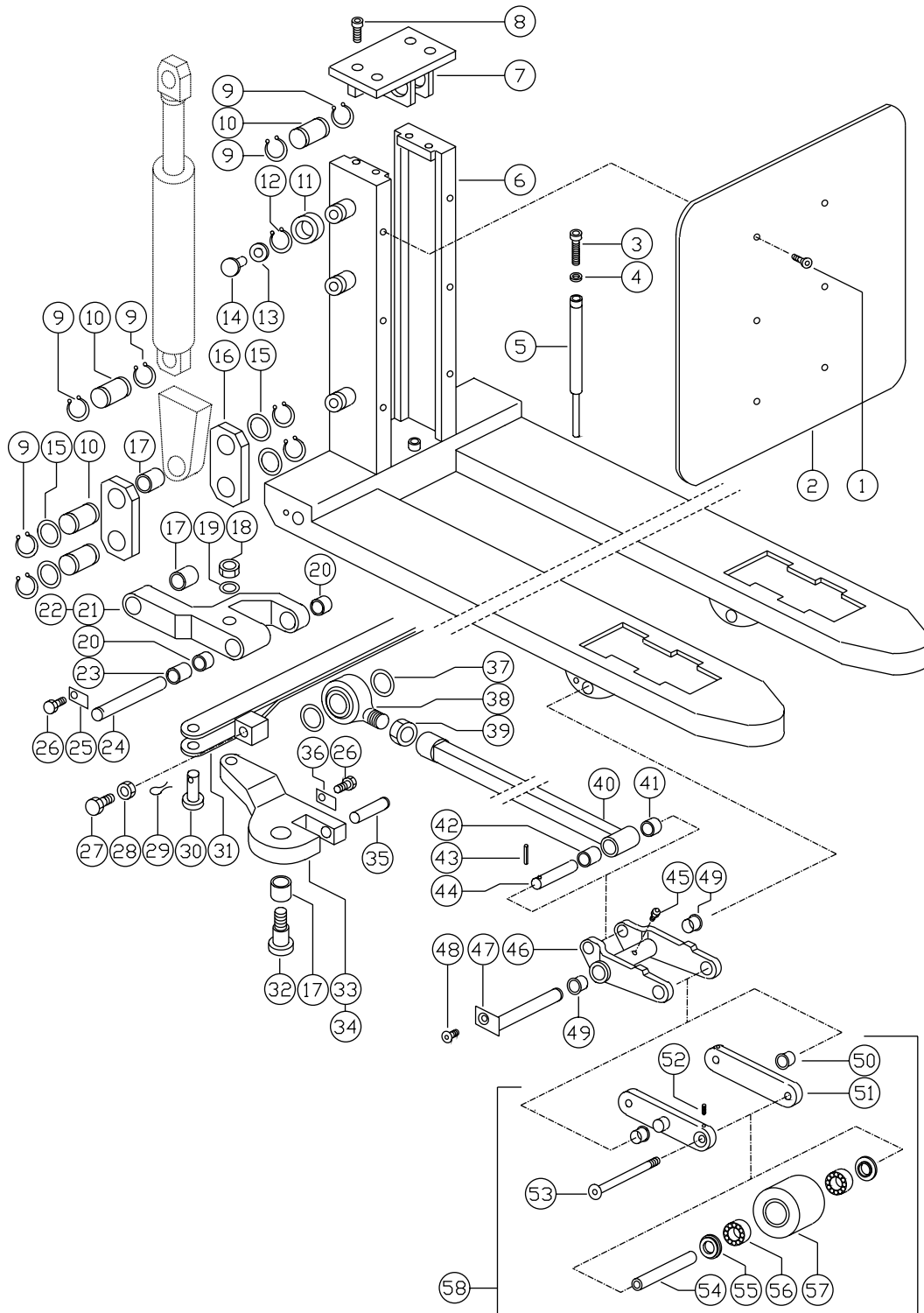
CROWN

SECTION 2

Page intentionally left blank

INDEX	PART NUMBER	PART NAME	NUMBER REQUIRED
1	809433-001	Cable	1
2	809433-001	Cable	1
3	809433-001	Cable	1
4	809433-001	Cable	1
5	809433-001	Cable	1
6	809433-001	Cable	1
7	809433-002	Cable	1
8	809433-002	Cable	1
9	809433-002	Cable	1
10	809433-002	Cable	1
11	809433-002	Cable	1
12	809433-002	Cable	1
13	809433-003	Cable	1

Always Specify Model & Serial Number



M1769

CLICK HERE TO **DOWNLOAD** THE COMPLETE MANUAL

- Thank you very much for reading the preview of the manual.
- You can download the complete manual from: www.heydownloads.com by clicking the link below



- Please note: If there is no response to CLICKING the link, please download this PDF first and then click on it.

CLICK HERE TO **DOWNLOAD** THE COMPLETE MANUAL