

RMD 6000 Series



CLICK HERE TO **DOWNLOAD** THE COMPLETE MANUAL

- Thank you very much for reading the preview of the manual.
- You can download the complete manual from: www.heydownloads.com by clicking the link below



- Please note: If there is no response to CLICKING the link, please download this PDF first and then click on it.

CLICK HERE TO **DOWNLOAD** THE COMPLETE MANUAL

Power Unit

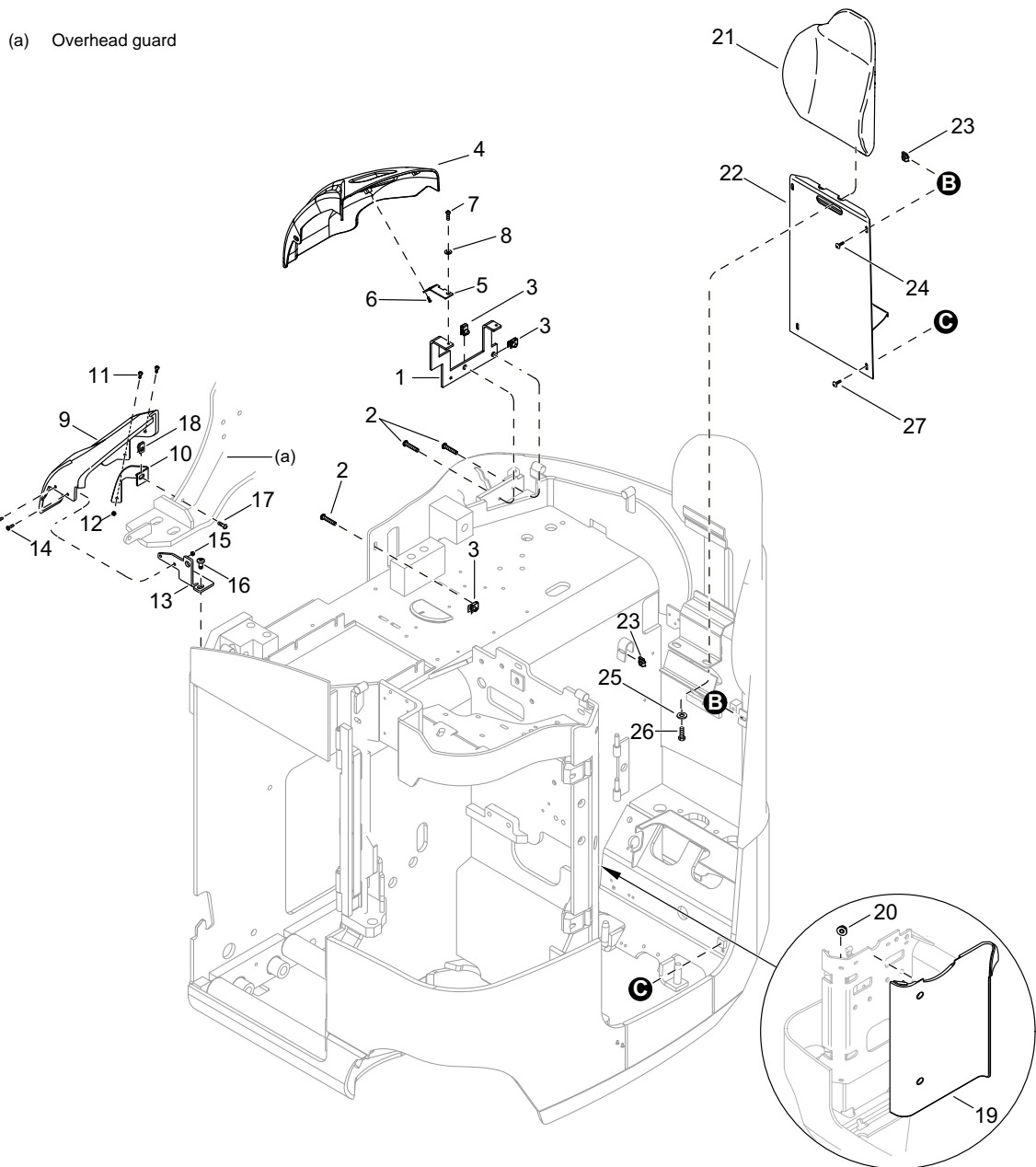
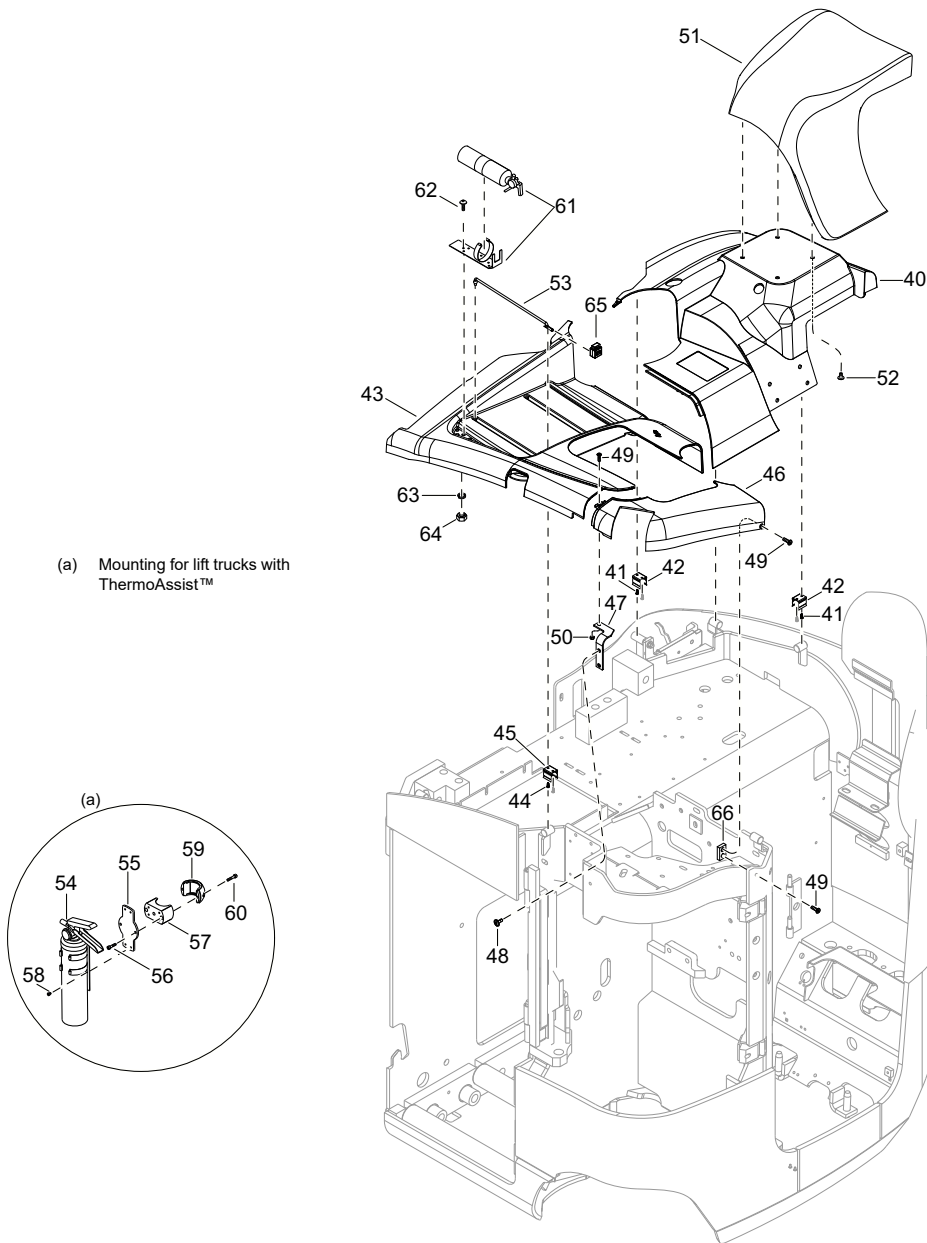


Figure 25766-01

Power Unit

POWER UNIT PARTS
Power Unit



(a) Mounting for lift trucks with ThermoAssist™

Figure 34757

01.0-1460-011

Crown 2020 PF28356

722

Undercarriage Articulation

POWER UNIT PARTS Undercarriage Articulation

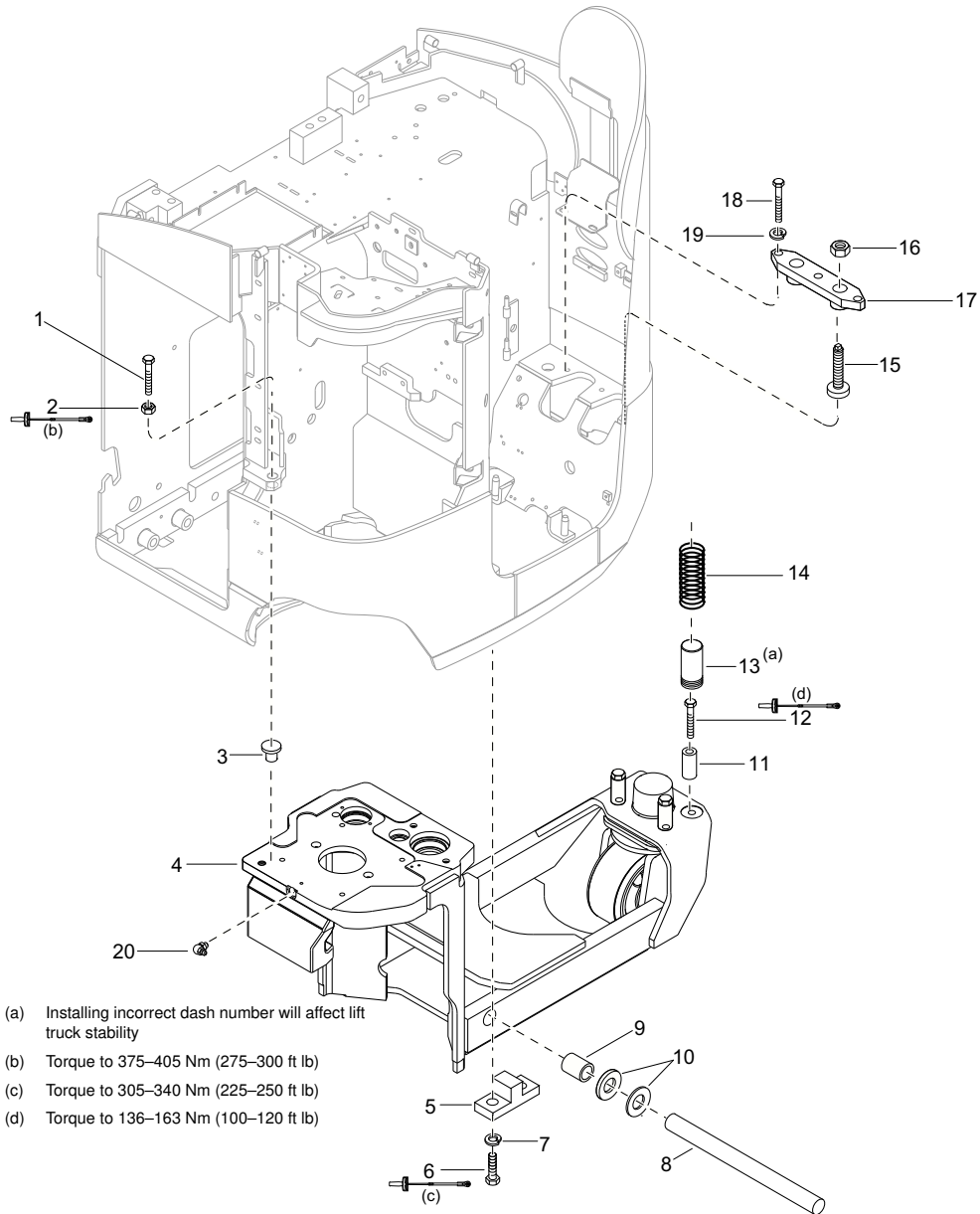


Figure 25555

01.0-1460-100
03 Rev. 11/16
726

Crown 2011 PF25315 Rev. 11/16

Battery Connectors, Retainers and Spacers



POWER UNIT PARTS Battery Connector, Retainers, and Spacers

| 36 V Code Numbers | | | | | | | | |
|---------------------|--------------------------|-----------------------|------------------------|----------------|----------------|-------|---------|-------|
| Battery Code Number | Battery Compartment Size | Maximum Battery Size | | Amp Hour Range | Battery Weight | | | |
| | | mm (+0.00/-6.0 mm) | in (+0.00/-0.25 in) | | Minimum | | Maximum | |
| | | | | | kg | lb | kg | lb |
| 14 | C | 405x975x785 | 15.88x38.38x31.00 | 600-660 | 850 | 1,880 | 1,175 | 2,585 |
| 15 | C | 400x975x785 | 15.62x38.38x31.00 | 660-720 | 850 | 1,880 | 1,130 | 2,490 |
| 24 | D | 455x980x785 | 18.00x38.68x31.00 | 700-1,000 | 950 | 2,120 | 1,350 | 2,980 |
| 25 | D | 450x980x785 | 17.75x38.69x31.00 | 770-875 | 960 | 2,120 | 1,270 | 2,800 |
| 26 | D | 455x975x785 | 18.00x38.44x31.00 | 770-1,085 | 960 | 2,120 | 1,350 | 2,980 |
| 27 | D | 450x975x785 | 17.75x38.44x31.00 | 770-875 | 960 | 2,120 | 1,270 | 2,800 |
| 28 | E | 525x980x785 | 20.75x38.69x31.00 | 880-1,120 | 1,090 | 2,400 | 1,395 | 3,070 |
| 29 | E | 520x980x785 | 20.50x38.69x31.00 | 840-1,120 | 1,090 | 2,400 | 1,395 | 3,070 |
| 30 | E | 515x980x785 | 20.25x38.69x31.00 | 800-1,000 | 1,090 | 2,400 | 1,395 | 3,070 |
| 31 | E | 520x975x785 | 20.50x38.44x31.00 | 880-1,000 | 1,090 | 2,400 | 1,395 | 3,070 |
| 32 | E | 515x975x785 | 20.25x38.44x31.00 | 880-1,000 | 1,090 | 2,400 | 1,395 | 3,070 |

Battery Retainers and Spacers - V Force® Lithium-ion

V Force® Lithium-ion

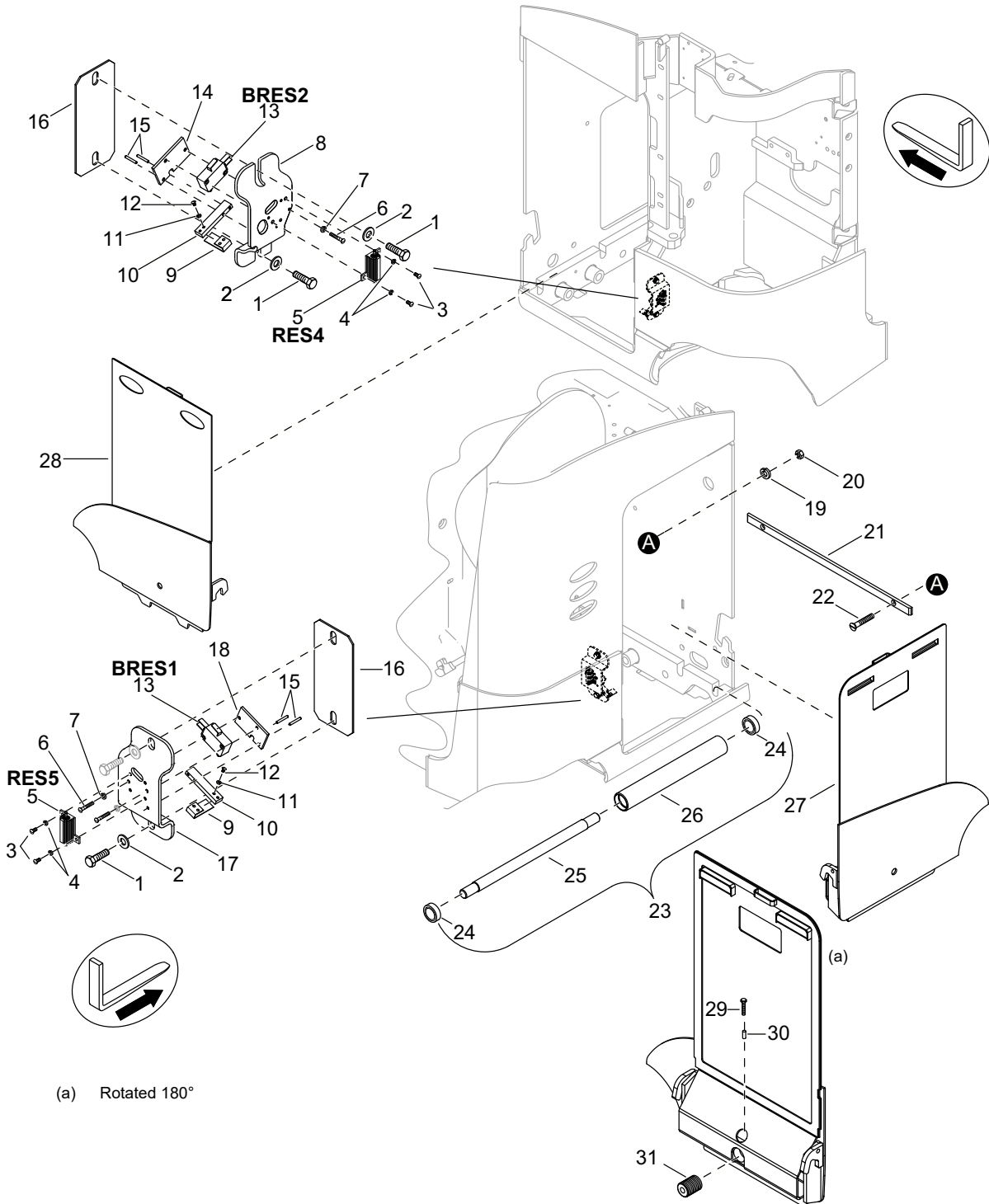


Figure 34131

Overhead Guard - Standard


POWER UNIT PARTS
Overhead Guard - Standard

| Flat Overhead Guard Chart | | | | |
|---------------------------|-----------|-----------------------|-----|--------------------------|
| Index 1 | Wire Mesh | Overhead Guard Height | | Battery Compartment Size |
| | | mm | in | |
| 147417-001 | No | 2,260 | 89 | C |
| 147417-001 | No | 2,415 | 95 | C |
| 147417-001 | No | 2,720 | 107 | C |
| 147417-002 | No | 2,260 | 89 | D |
| 147417-002 | No | 2,415 | 95 | D |
| 147417-002 | No | 2,720 | 107 | D |
| 147417-003 | No | 2,260 | 89 | E |
| 147417-003 | No | 2,415 | 95 | E |
| 147417-003 | No | 2,720 | 107 | E |
| 147417-011 | Yes | 2,260 | 89 | C |
| 147417-011 | Yes | 2,415 | 95 | C |
| 147417-011 | Yes | 2,720 | 107 | C |
| 147417-012 | Yes | 2,260 | 89 | D |
| 147417-012 | Yes | 2,415 | 95 | D |
| 147417-012 | Yes | 2,720 | 107 | D |
| 147417-013 | Yes | 2,260 | 89 | E |
| 147417-013 | Yes | 2,415 | 95 | E |
| 147417-013 | Yes | 2,720 | 107 | E |

Power Unit Hydraulics

- (a) Hoist Manifold
- (b) Accessory Manifold
- (c) Hydraulic Reservoir - Check Valve
- (d) Hydraulic Reservoir
- (e) To Lift Tube and Secondary Cylinder Line on Mast Hydraulics page
- (f) To Accessory Tubes on Mast Hydraulics page
- (g) Accessory Motor (M5)
- (h) Accessory Pump (P2)

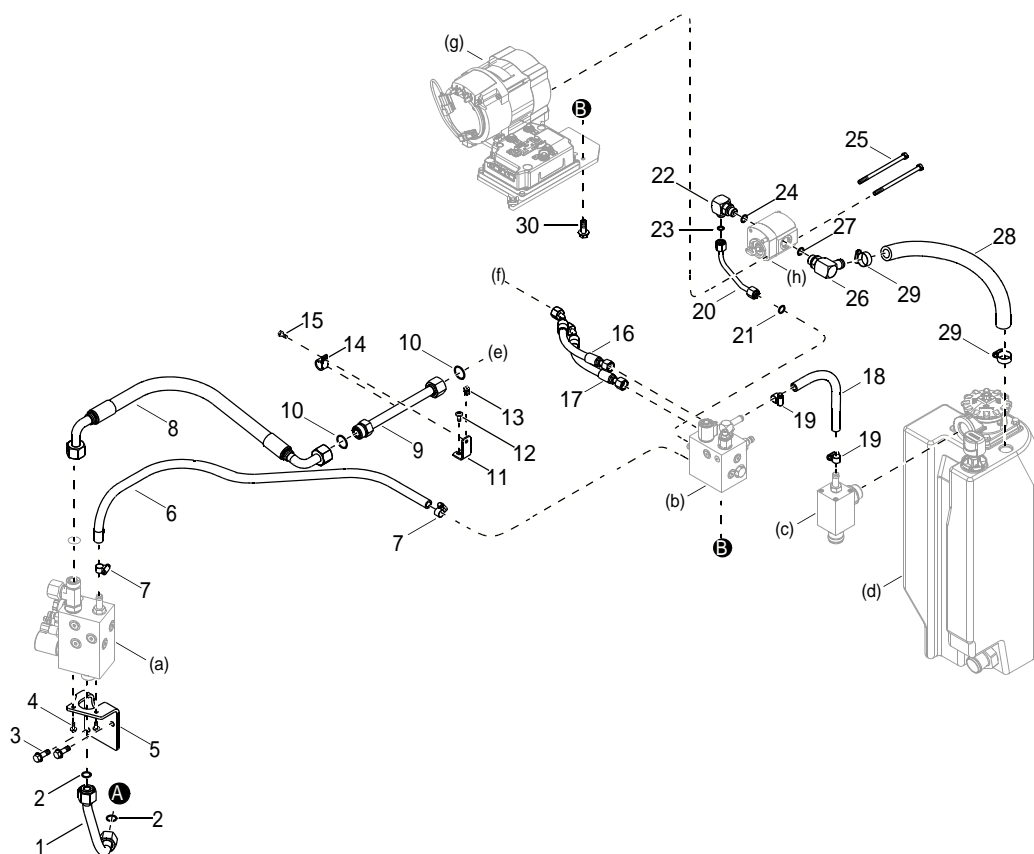


Figure 25952

REACH HYDRAULICS - RMD

- (a) Reach Cylinder - RMD
- (b) Reach Manifold
- (c) Tilt/Sideshift Manifold
- (d) Tilt & Sideshift Assembly
- (e) Sideshift Cylinder

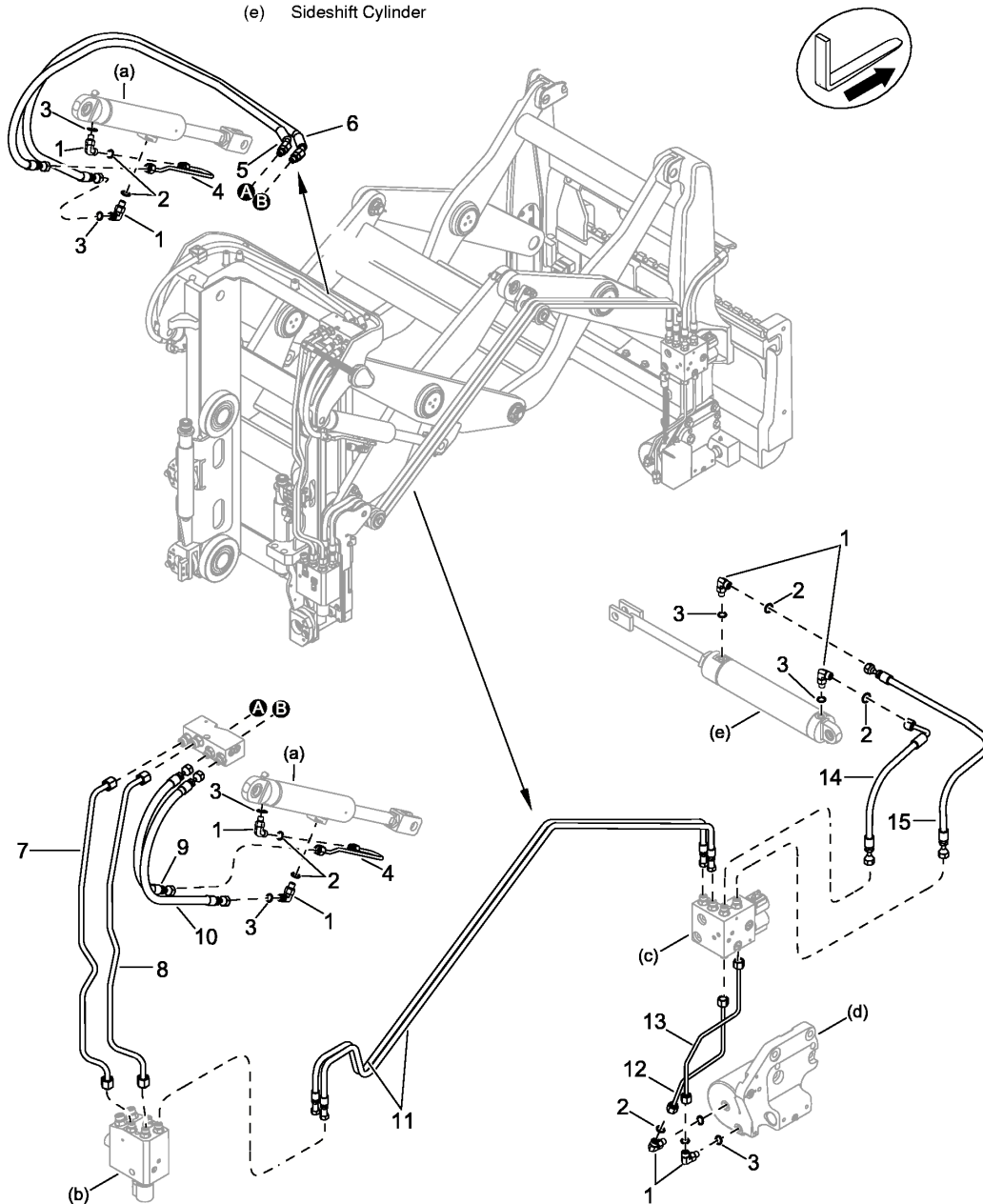


Figure 23802

Hydraulic Reservoir - Regen Lower

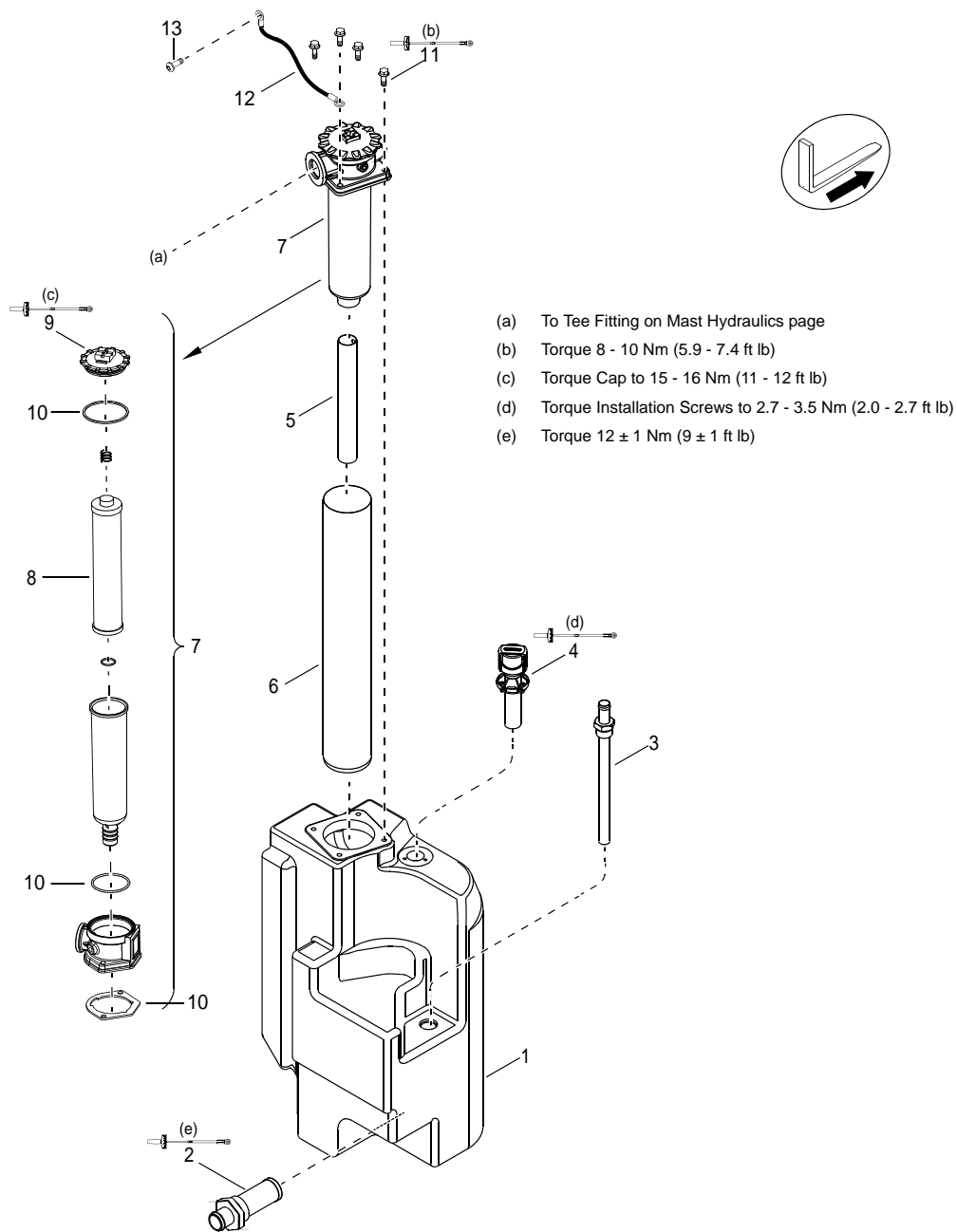


Figure 24015

Lift Pump Motor - M2

HYDRAULIC PARTS
Lift Pump Motor - M2



- (a) Power Unit
- (b) Torque to 25–30 Nm (18–22 ft lb)
- (c) Torque to 38–41 Nm (28–30 ft lb)

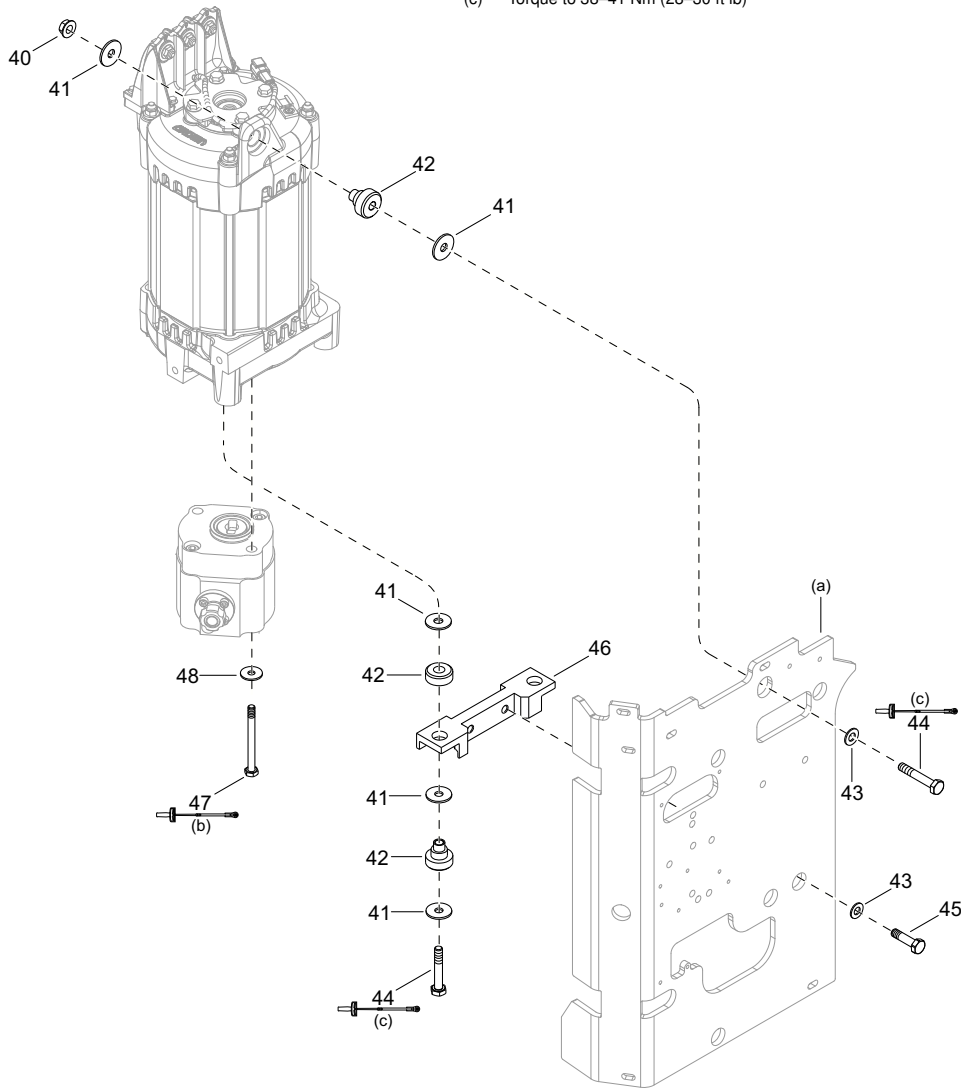


Figure 31848

02.2-1460-007

Crown 2017 PF27782

770

EE Lift Pump Motor - M2

HYDRAULIC PARTS
Lift Pump Motor - M2 EE

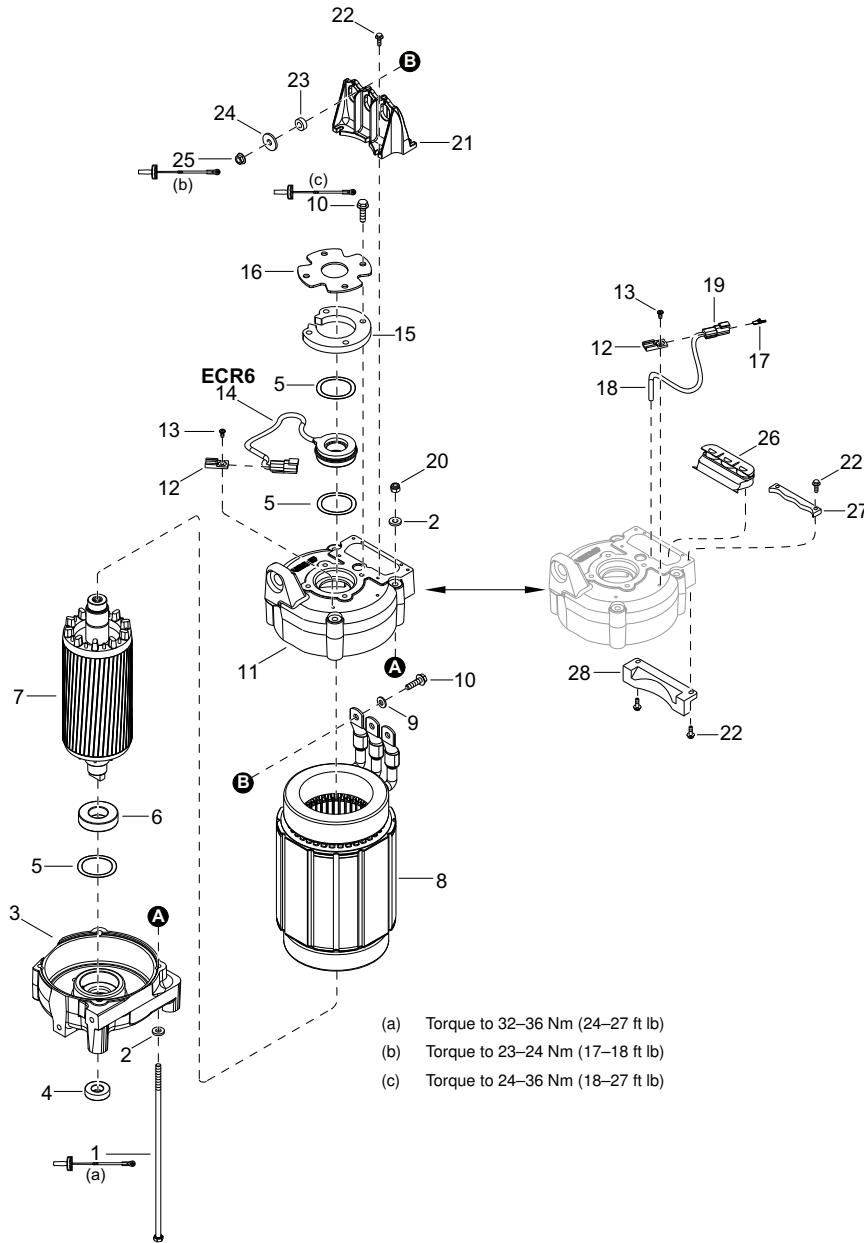


Figure 31855

02.2-1460-054

Crown 2017 PF27783

768

Accessory Manifold Block

HYDRAULIC PARTS Accessory Manifold Block



- (a) Torque to 27 N m (20 ft lb); torque the coil nut to 7 N m (5 ft lb)
- (b) Torque to 41–43 N m (30–32 ft lb)
- (c) Torque to 23–24 N m (17–18 ft lb)
- (d) Torque to 14–15 N m (10–11 ft lb)

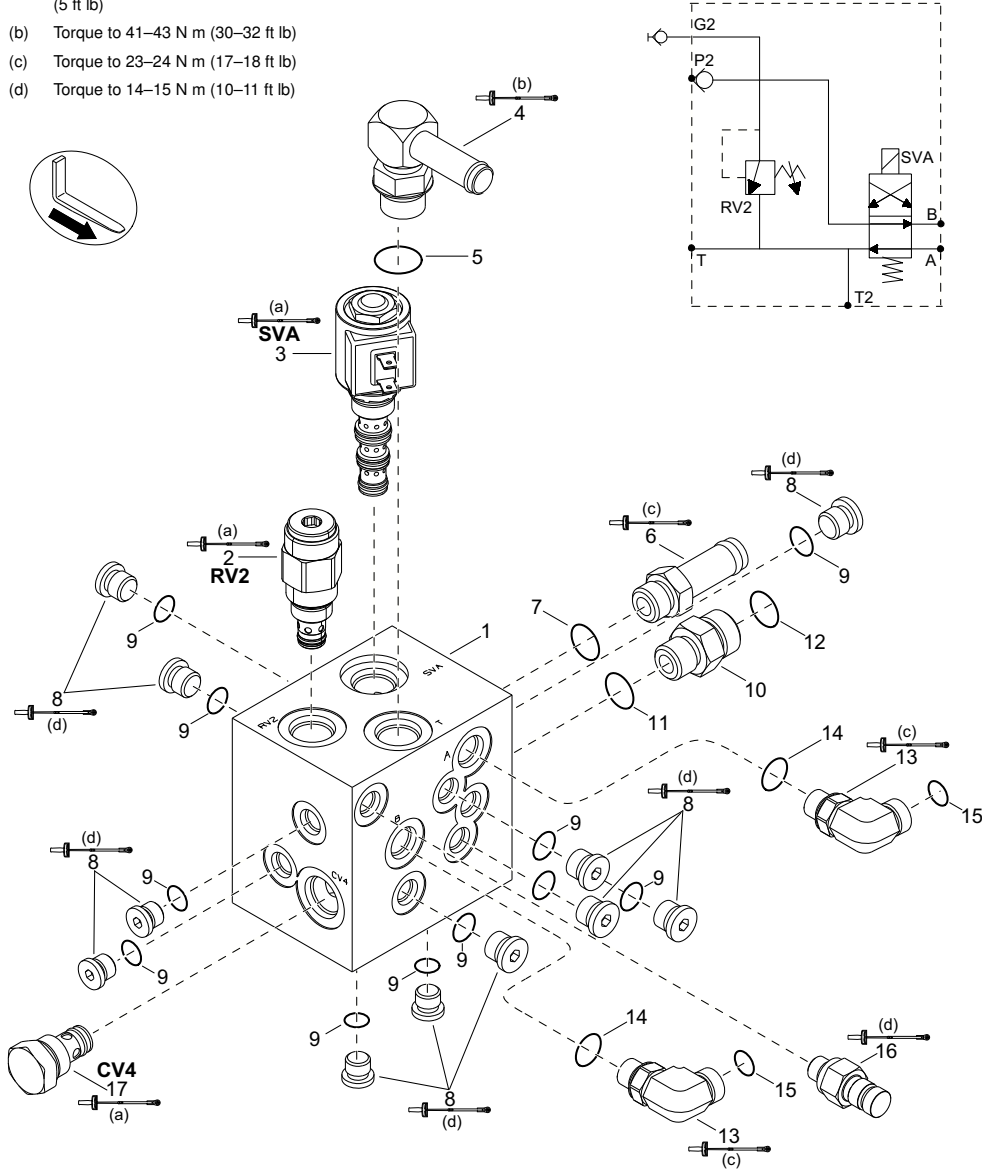


Figure 25969-01

02.4-1460-001
01 Rev. 2/18
782

Crown 2011 PF25460 Rev. 2/18

TILT & SIDESHIFT ASSEMBLY

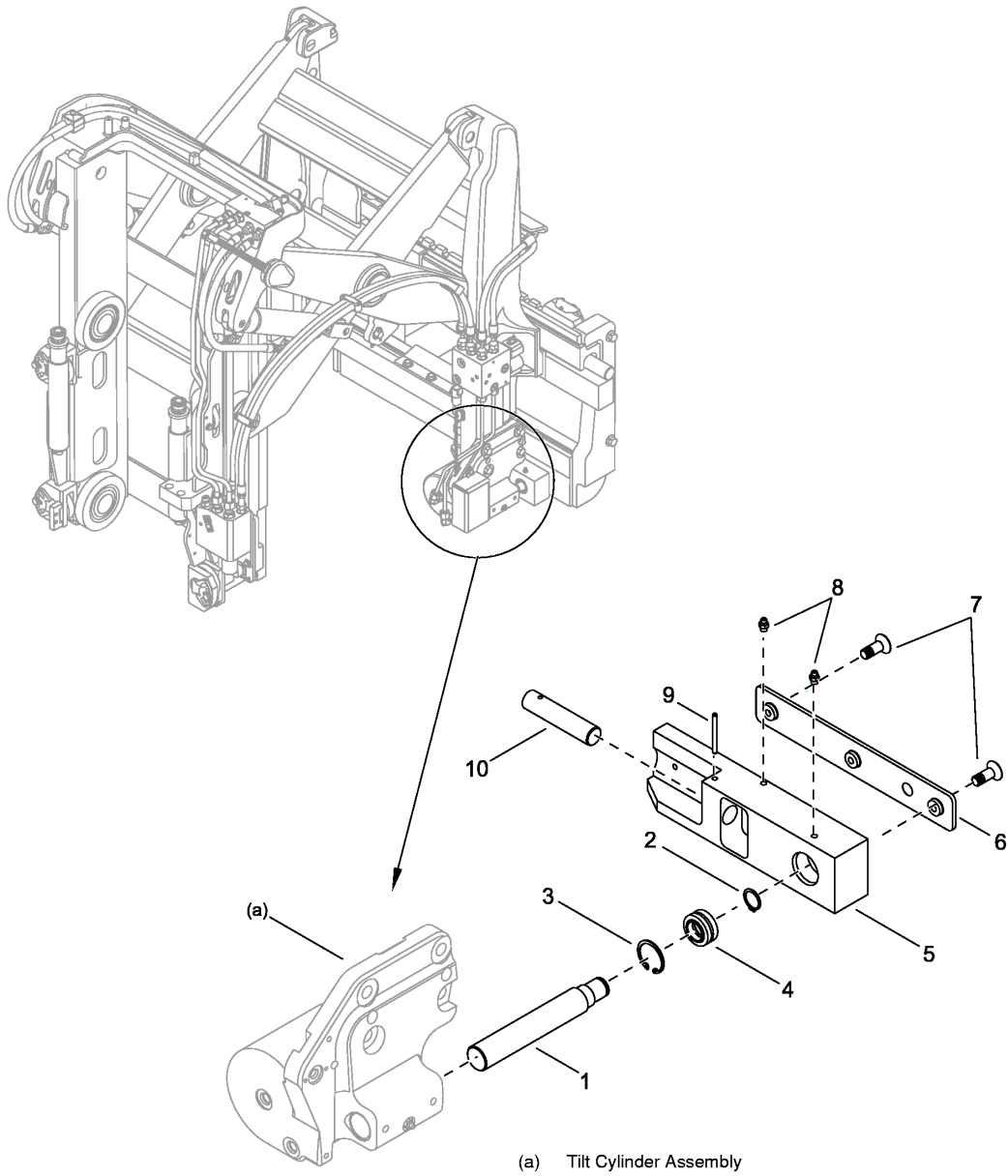


Figure 24091

DRIVE UNIT

DRIVE UNIT PARTS
Drive Unit

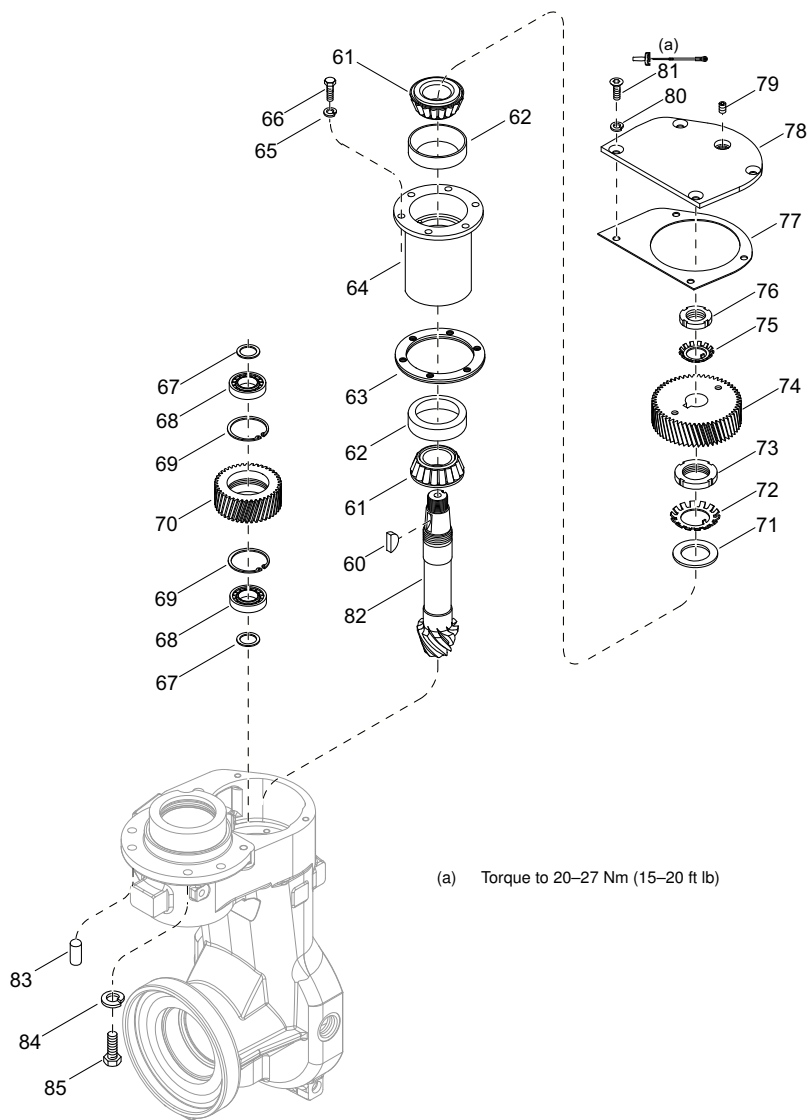


Figure 23877-02

03.0-1452-009
06 Rev. 10/16
786

Crown 2007 PF17161 Rev. 10/16

Traction Tire



DRIVE UNIT PARTS Traction Tire

| INDEX | PART NUMBER | PART NAME | NUMBER REQUIRED |
|--------|-------------|--------------------------------|-----------------|
| 1..... | | Hub ⁽¹⁾ | 1 |
| 2..... | | Poly tire ⁽¹⁾ | 1 |

The quantities listed are for one traction tire.

⁽¹⁾ See the Hub and Tire Part Numbers table

| Hub and Tire Part Numbers | | | |
|---|--|--------------------|-------------------|
| Hub Index 1 | Tire Index 2 | Size | |
| | | mm | in |
| 121502 | 121501-341-01 ⁽¹⁾ ⁽³⁾ | 330 x 140 x 240 mm | 13 x 5.5 x 9.5 in |
| 121502 | 121501-342-01 | 330 x 140 x 240 mm | 13 x 5.5 x 9.5 in |
| 121502 | 121501-342-02 | 330 x 140 x 240 mm | 13 x 5.5 x 9.5 in |
| 121502 | 121501-342-03 | 330 x 140 x 240 mm | 13 x 5.5 x 9.5 in |
| 121502 | 121501-342-04 | 330 x 140 x 240 mm | 13 x 5.5 x 9.5 in |
| 121502 | 121501-352-01 | 330 x 140 x 240 mm | 13 x 5.5 x 9.5 in |
| 121502 | 121501-243-04 | 330 x 140 x 240 mm | 13 x 5.5 x 9.5 in |
| 121502 | 121501-351-01 ⁽²⁾ | 330 x 140 x 240 mm | 13 x 5.5 x 9.5 in |
| 121502 | 121501-243-06 | 330 x 140 x 240 mm | 13 x 5.5 x 9.5 in |
| 121502 | 121501-341-06 | 330 x 140 x 24 mm | 13 x 5.5 x 9.5 in |
| 121502 | 121501-341-91 | 330 x 140 x 240 mm | 13 x 5.5 x 9.5 in |
| 121502 | 121501-341-92 | 330 x 140 x 240 mm | 13 x 5.5 x 9.5 in |
| 121502 | 121501-342-06 | 330 x 140 x 240 mm | 13 x 5.5 x 9.5 in |
| 121502 | 121501-351-06 | 330 x 140 x 240 mm | 13 x 5.5 x 9.5 in |
| 121502 | 121501-352-06 | 330 x 140 x 240 mm | 13 x 5.5 x 9.5 in |
| 121502 | 121501-442-01 ⁽¹⁾ ⁽²⁾ ⁽³⁾ | 330 x 140 x 240 mm | 13 x 5.5 x 9.5 in |
| <p>The second dash number of the traction tire equals the compound number. The third dash number equals the tread type. See the Tire Applications table</p> <p>⁽¹⁾ The RR 5700 and RD 5700S models are restricted to a lift height of 8,153 mm (321 in) or higher</p> <p>⁽²⁾ The RM 6000 and RMD 6000 models are restricted to a lift height of 6,858 mm (270 in) or higher</p> <p>⁽³⁾ Standard option</p> | | | |

Always give the Model, Data and Serial Number

Electrical Components

ELECTRICAL PARTS
Electrical Components

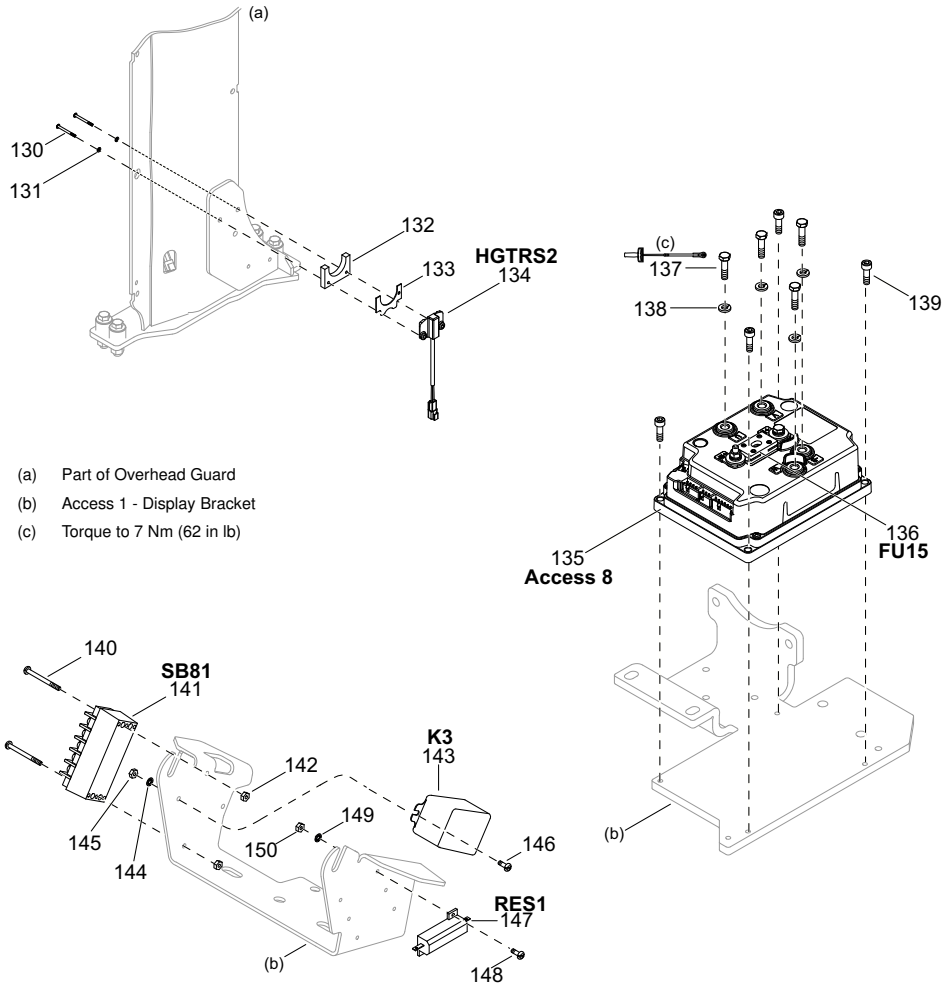


Figure 26029-01

04.0-1460-007
01 Rev. 11/13
814

Crown 2011 PF25498-7 Rev. 11/13

Electrical Components

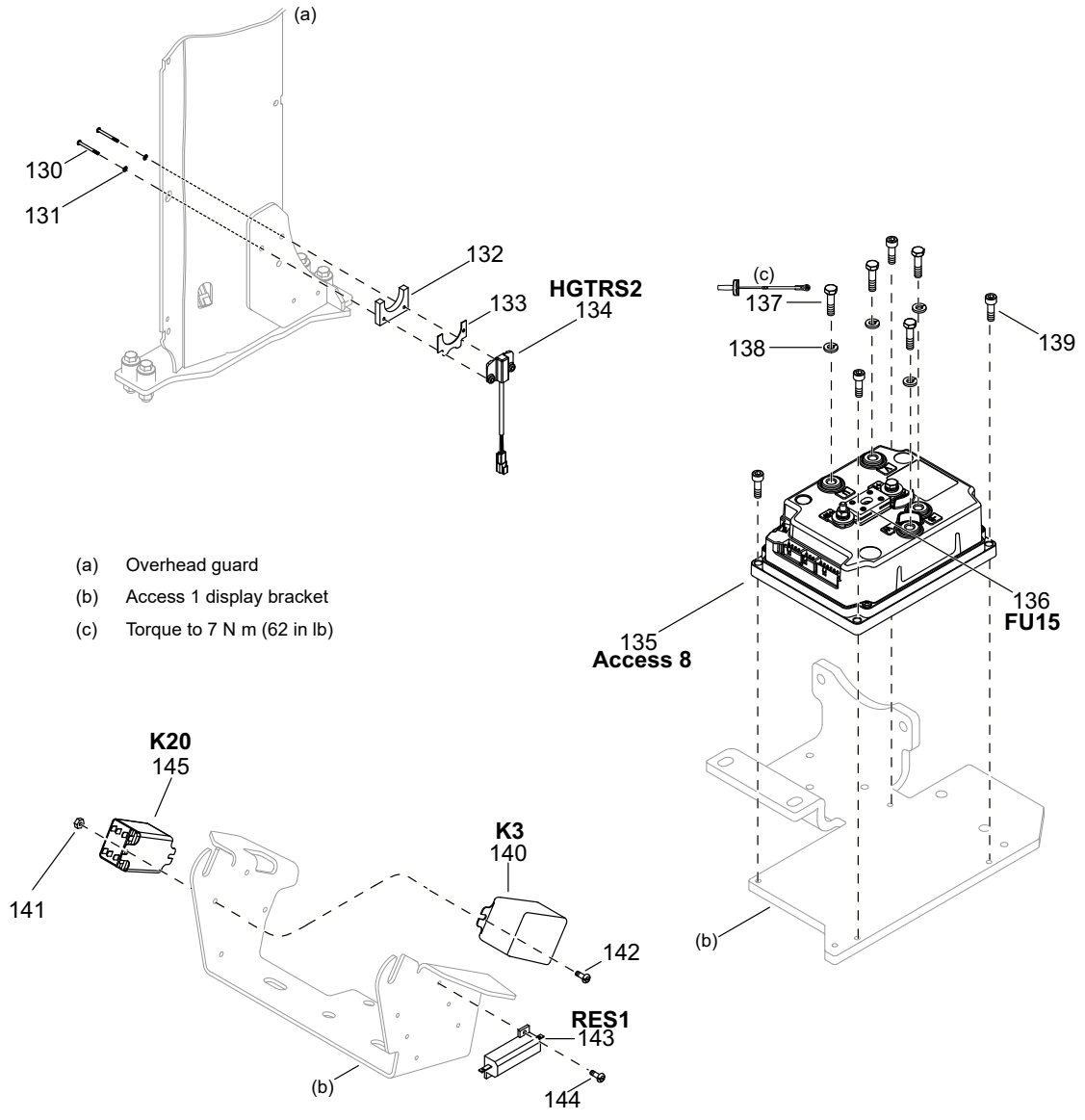


Figure 31254-01

Electrical Components

ELECTRICAL PARTS
Electrical Components

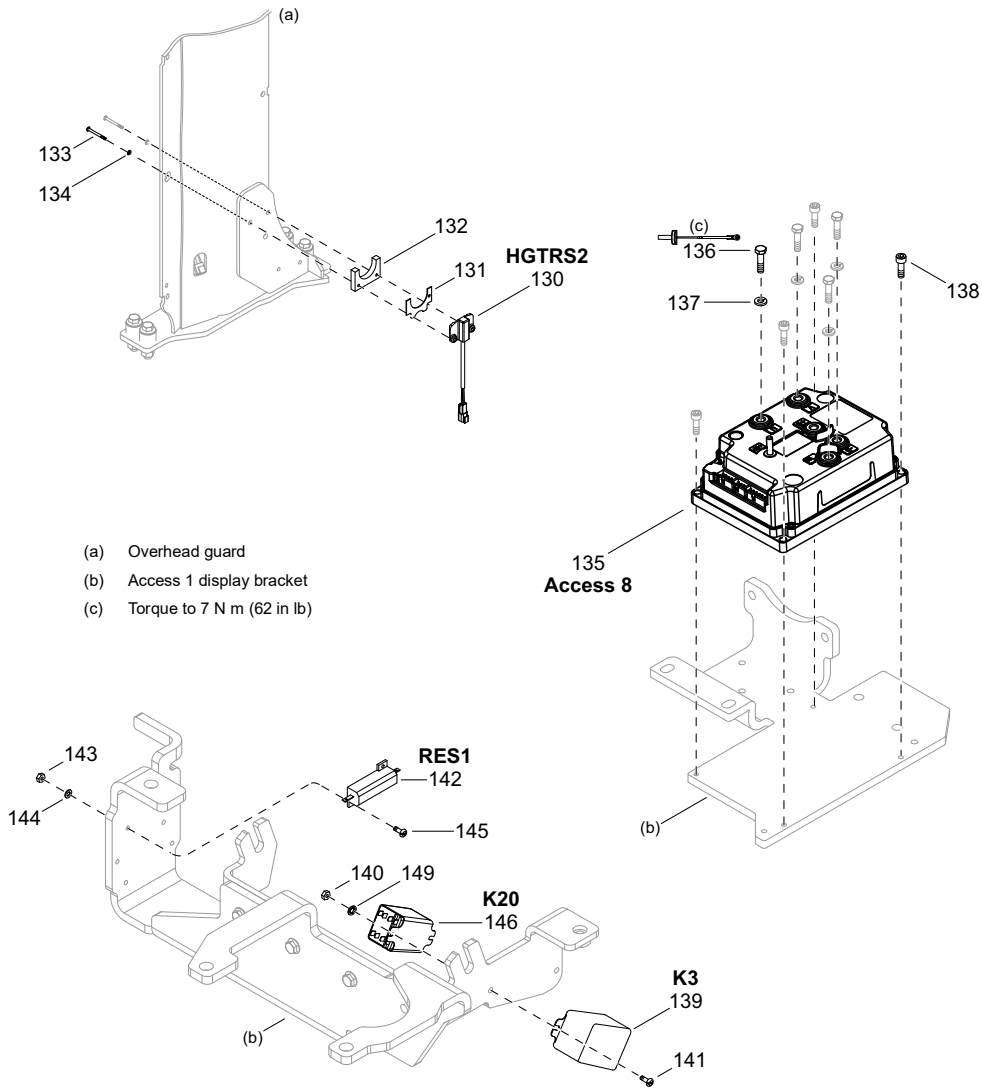


Figure 35536

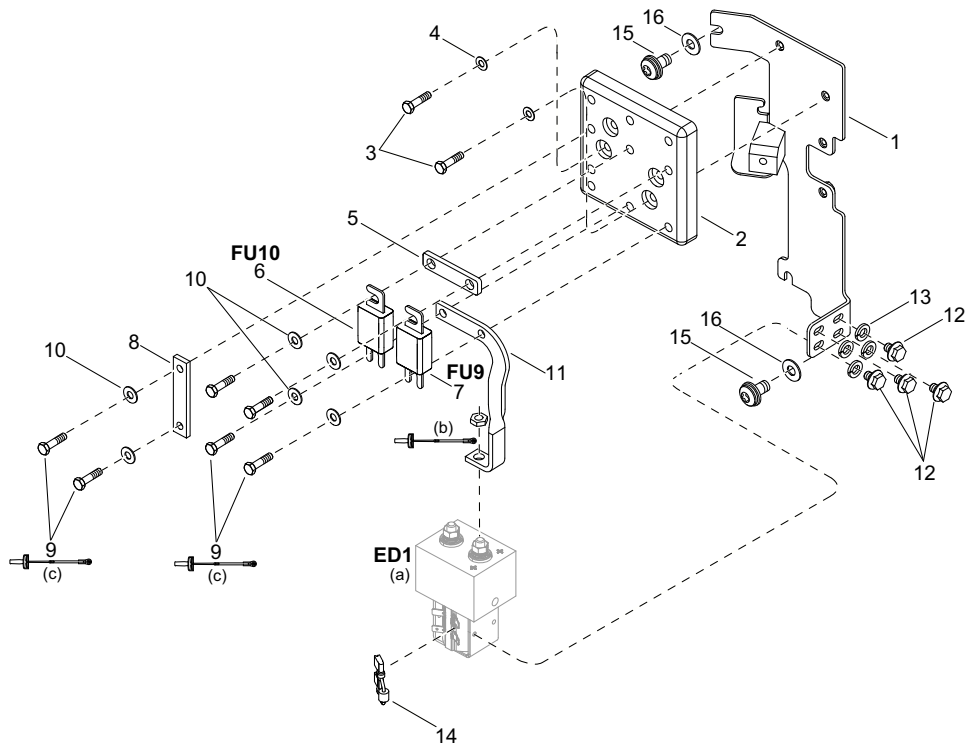
04.0-1460-027

Crown 2021 PF28555

838

Contactors and Fuses - EE

ELECTRICAL PARTS
Contactors and Fuses - EE



- (a) See CONTACTOR
- (b) Hold the bottom of the nut while you tighten the upper nut.
Torque all four nuts on the contactor to 14 Nm (10 ft lb)
- (c) Torque to 3 Nm (26 in lb)

Figure 26144-01

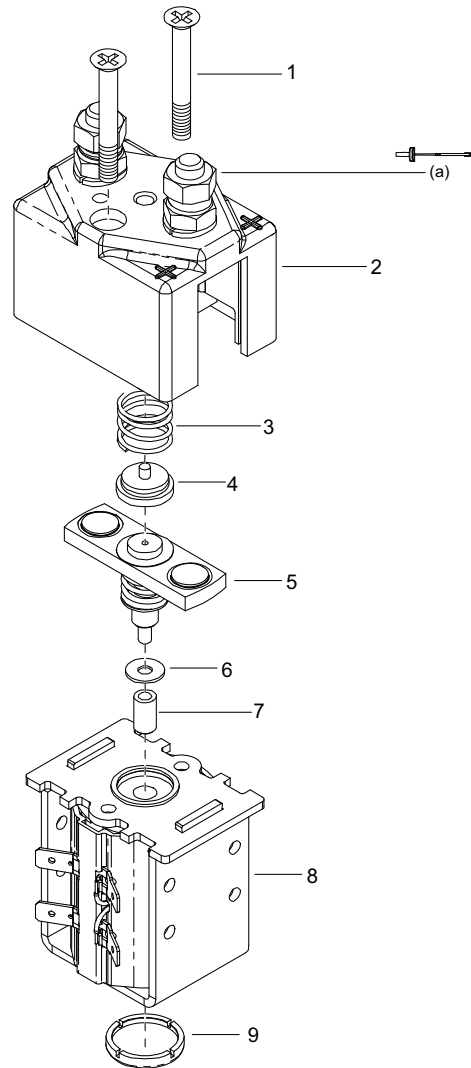
Contactor

ELECTRICAL PARTS
Contactor



| Model | Function |
|---------------|----------|
| *RR/RD 5700 | ED1, ED2 |
| *RR/RD 5700S | ED1, ED2 |
| *RM/RMD 6000 | ED1, ED2 |
| *RM/RMD 6000S | ED1, ED2 |

* Regardless of truck battery voltage, the Access 1 2 3[®] system powers contactors with 24 V



(a) Torque to 14 Nm (10.3 ft lb)

Figure 22047-01

04.4-1457-001
03 Rev. 10/13
1270

Crown 2009 PF17463-1 Rev. 10/13

Multi-Task Control Handle

ELECTRICAL PARTS Multi-Task Control Handle

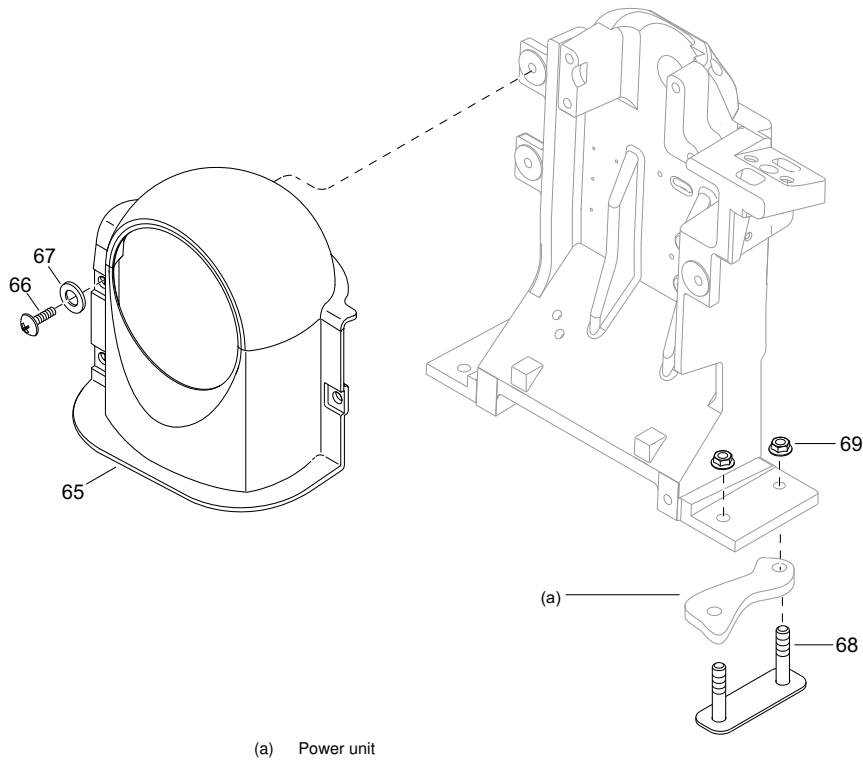


Figure 20938-02

04.6-1457-005
05 Rev. 7/15
1256

Crown 2008 PF17464-5 Rev. 7/15

Access 1 - Enhanced / CDM Display

ELECTRICAL PARTS
Access 1 - Enhanced / CDM Display

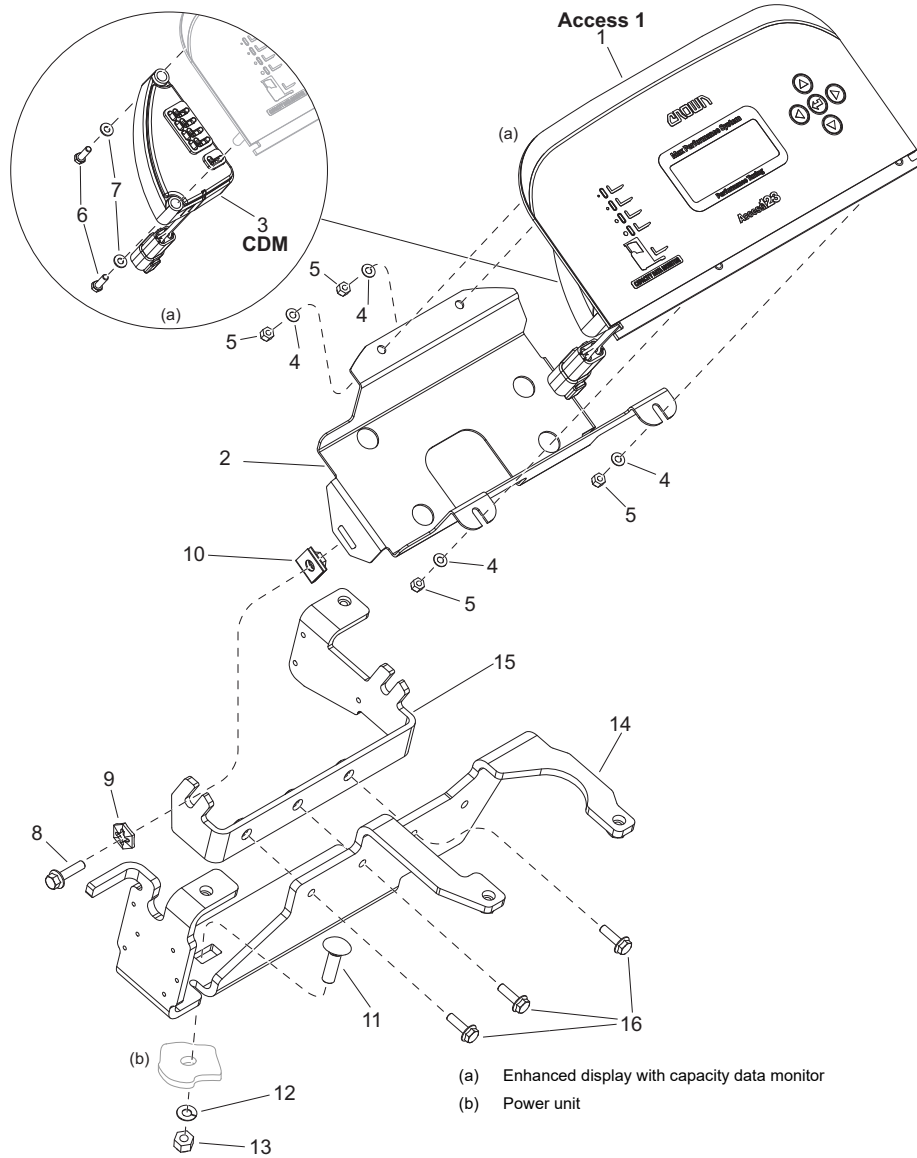


Figure 34788

Control Cable

| INDEX | PART NUMBER | PART NAME | NUMBER REQ |
|-------|-------------|--------------------------------|------------|
| 9 | 143959-006 | ASM CABLE MAST 8 CONDUCTOR | 1 |
| | 143959-007 | ASM CABLE MAST 8 CONDUCTOR | 1 |
| | 143959-008 | ASM CABLE MAST 8 CONDUCTOR | 1 |
| | 143959-009 | ASM CABLE MAST 8 CONDUCTOR | 1 |
| | 143959-010 | ASM CABLE MAST 8 CONDUCTOR | 1 |
| | 143959-011 | ASM CABLE MAST 8 CONDUCTOR | 1 |
| | 143959-012 | ASM CABLE MAST 8 CONDUCTOR | 1 |
| | 143959-013 | ASM CABLE MAST 8 CONDUCTOR | 1 |
| | 143959-014 | ASM CABLE MAST 8 CONDUCTOR | 1 |
| | 143959-015 | ASM CABLE MAST 8 CONDUCTOR | 1 |
| | 143959-016 | ASM CABLE MAST 8 CONDUCTOR | 1 |
| | 151300-006 | MAST FREEZER CABLE 8 CONDUCTOR | 1 |
| | 151300-007 | MAST FREEZER CABLE 8 CONDUCTOR | 1 |
| | 151300-008 | MAST FREEZER CABLE 8 CONDUCTOR | 1 |
| | 151300-009 | MAST FREEZER CABLE 8 CONDUCTOR | 1 |
| | 151300-010 | MAST FREEZER CABLE 8 CONDUCTOR | 1 |
| | 151300-011 | MAST FREEZER CABLE 8 CONDUCTOR | 1 |
| | 151300-012 | MAST FREEZER CABLE 8 CONDUCTOR | 1 |
| | 151300-013 | MAST FREEZER CABLE 8 CONDUCTOR | 1 |
| | 151300-014 | MAST FREEZER CABLE 8 CONDUCTOR | 1 |
| | 151300-015 | MAST FREEZER CABLE 8 CONDUCTOR | 1 |
| | 151300-016 | MAST FREEZER CABLE 8 CONDUCTOR | 1 |

Connectors

| INDEX | PART NUMBER | PART NAME | NUMBER REQ |
|-------|-------------|-----------------------------------|------------|
| 1 | 062701-001 | CONNECTOR PLUG DEUTSCH DT | AR |
| 1 | 062701-007 | CONNECTOR PLUG DEUTSCH DT 8PIN | AR |
| 1 | 062755-002 | CONNECTOR PLUG DEUTSCH DTM 03 | AR |
| 1 | 062755-003 | CONNECTOR PLUG DEUTSCH DTM 04 | AR |
| 2 | 062702-003 | CONNECTOR CAP DEUTSCH DT 4 PIN | AR |
| 2 | 062702-004 | CONNECTOR CAP DEUTSCH DT 6 PIN | AR |
| 2 | 062702-005 | CONNECTOR CAP DEUTSCH DT 8 PIN | AR |
| 5 | 062037-020 | CONNECTOR MATE-N-LOCK PLUG-08 | AR |
| 5 | 062535-002 | CONNECTOR PLUG AMP MMNL 06 | AR |
| 1 | 062704-004 | CONTACT SOCKET DEUTSCH 16-18 S | AR |
| 1 | 062797-004 | CONTACT SOCKET DEUTSCH DTM NI | AR |
| 2 | 062704-003 | CONTACT PIN DEUTSCH 16-18 S-F | AR |
| 5 | 062036-004 | CONTACT | AR |
| 5 | 062536-001 | CONTACT SOCKET MINI MNL 20-16 AWG | AR |
| 1 | 062703-002 | CONNECTOR INSERT DEUTSCH 2P PL | AR |
| 1 | 062703-010 | CONNECTOR INSERT DEUTSCH 8P PL | AR |
| 1 | 062798-004 | CONNECTOR INSERT DEUTSCH DTM P | AR |
| 1 | 062798-006 | CONNECTOR INSERT DEUTSCH DTM P | AR |
| 2 | 062703-007 | CONNECTOR INSERT DEUTSCH 6P CA | AR |
| 2 | 062703-009 | CONNECTOR INSERT DEUTSCH 8P CA | AR |

OVERHEAD GUARD ACCESSORIES

| INDEX | PART NUMBER | PART NAME | NUMBER REQ | |
|-------|-------------|------------|-----------------------|---|
| | 1 | 060063-088 | SCREW M8 X 35 | 2 |
| | 2 | 148403 | BRACKET LIGHT WORK | 1 |
| | 3 | 060063-081 | SCREW M8 | 1 |
| | 4 | 060059-028 | NUT M8 HEX FLANGE | 3 |
| [1] | 5 | 104296-004 | SPOTLIGHT (ONLY) 36V | 1 |
| [1] | | 145982-003 | WORKLIGHT LED ROUND | 1 |
| [2] | | 125018-003 | DUCT CABLE | 1 |
| | 6 | 060063-034 | SCREW M8 | 2 |
| | 7 | 060030-017 | FLATWASHER | 2 |
| | 8 | 086609 | CLIP | 1 |
| | 9 | 148518 | STROBE LIGHT WELDMENT | 1 |
| | | 087245-093 | ASM LEAD 2 CONDUCTOR | 1 |
| | | 061003-002 | *TIE CABLE | 1 |
| [3] | | 125018-013 | DUCT CABLE | 1 |
| | 10 | 123683 | DOME LIGHT | 1 |
| [4] | | 087245-092 | ASM LEAD 2 CONDUCTOR | 1 |
| | 11 | 123783 | LENS - BLACK | 1 |
| | 12 | 123781 | LENS - CLEAR | 1 |
| | 13 | 116364 | BULB | 1 |
| | 14 | 060062-027 | SCREW M6 | 2 |
| | 15 | 060061-038 | SCREW M5 X 16 | 2 |
| | 16 | 139555 | PLATE DOME LIGHT | 1 |
| | 17 | 060030-010 | FLATWASHER | 2 |
| | 18 | 060059-034 | NUT METRIC M6 | 2 |
| | 19 | 128362 | CLAMP UPPER MACHINING | 1 |
| | 20 | 127697 | CLAMP LOWER CASTING | 1 |
| | 21 | 060062-060 | SCREW M6X30 | 2 |

PART NOTES:

- [1] - OHG Mounted
- [2] - Worklight
- [3] - Strobe Light
- [4] - Includes Index 11 - 13

CLICK HERE TO **DOWNLOAD** THE COMPLETE MANUAL

- Thank you very much for reading the preview of the manual.
- You can download the complete manual from: www.heydownloads.com by clicking the link below



- Please note: If there is no response to CLICKING the link, please download this PDF first and then click on it.

CLICK HERE TO **DOWNLOAD** THE COMPLETE MANUAL

BRAKE

| INDEX | PART NUMBER | PART NAME | NUMBER REQ |
|-------|-------------|-----------------------------------|------------|
| 0 | 127633-00S | BRAKE SINGLE FACE | 1 |
| 1 | 125807 | MAGNET & COIL BODY | 1 |
| | 062037-012 | CONNECTOR MATE-N-LOCK CAP-04 | 1 |
| | 062036-003 | CONTACT | 4 |
| | 105606-609 | LABEL JC | 1 |
| 2 | 119042 | SPRING COMPRESSION | 15 |
| 3 | 119044 | ARMATURE INNER | 1 |
| 4 | 119043 | ARMATURE OUTER | 1 |
| 5 | 119046 | BRAKE PAD ASM | 1 |
| 6 | | Rivet | 12 |
| 7 | | Brake lining | 6 |
| 8 | 125808 | FRICTION ROTOR | 1 |
| 9 | 118167 | ADJUSTER | 1 |
| 10 | 060016-058 | Screw 5/16 | 3 |
| | 061004-026 | ADHESIVE THREAD LOCKING | AR |
| 11 | 119677 | SPRING COMPRESSION | 1 |
| 12 | 118166-001 | NUT | 1 |
| 13 | 118166-002 | NUT | 1 |
| 14 | 060030-082 | FLATWASHER | AR |
| | 060030-067 | FLATWASHER | AR |
| 15 | 060009-153 | RING RETAINING | 1 |
| 1000 | 127373 | BRAKE RELEASE SERVICE TOOL RR5000 | 1 |
| | 129694 | HARNESS RR5000 BRAKE ADAPTER | 1 |
| | 127689-00S | Traction brake kit | 1 |

ELECTRONIC POWER STEERING MOTOR

| INDEX | PART NUMBER | PART NAME | NUMBER REQ |
|-------|-------------|-------------|------------|
| 1 | 143912 | MOTOR STEER | 1 |

Mono Mast

| INDEX | PART NUMBER | PART NAME | NUMBER REQ | |
|------------|-------------|------------------|------------------|---|
| 67 | 142583-004 | 2nd Stage Column | 1 | |
| | 142583-005 | 2nd Stage Column | 1 | |
| | 142583-006 | 2nd Stage Column | 1 | |
| | 142583-007 | 2nd Stage Column | 1 | |
| | 142583-008 | 2nd Stage Column | 1 | |
| | 142583-009 | 2nd Stage Column | 1 | |
| | 142583-010 | 2nd Stage Column | 1 | |
| | 142583-011 | 2nd Stage Column | 1 | |
| | 142583-012 | 2nd Stage Column | 1 | |
| | 142583-013 | 2nd Stage Column | 1 | |
| | 142583-014 | 2nd Stage Column | 1 | |
| | 142583-015 | 2nd Stage Column | 1 | |
| | 142583-016 | 2nd Stage Column | 1 | |
| | 92 | 142627-004 | 3rd Stage Column | 1 |
| | | 142627-005 | 3rd Stage Column | 1 |
| | | 142627-006 | 3rd Stage Column | 1 |
| 142627-007 | | 3rd Stage Column | 1 | |
| 142627-008 | | 3rd Stage Column | 1 | |
| 142627-009 | | 3rd Stage Column | 1 | |
| 142627-010 | | 3rd Stage Column | 1 | |
| 142627-011 | | 3rd Stage Column | 1 | |
| 142627-012 | | 3rd Stage Column | 1 | |
| 142627-013 | | 3rd Stage Column | 1 | |
| 142627-014 | | 3rd Stage Column | 1 | |
| 142627-015 | | 3rd Stage Column | 1 | |
| 142627-016 | | 3rd Stage Column | 1 | |

Mono Mast

| INDEX | PART NUMBER | PART NAME | NUMBER REQ |
|-------|-------------|--------------------------------|------------|
| 1 | | Mainframe, consult the factory | 1 |
| 2 | 060009-188 | RING RETAINING | 2 |
| 3 | 143102 | ROLLER COLUMN 126.6 MM | 2 |
| 4 | 060150 | STUD WHEEL | 4 |
| 5 | 144425-001 | SPACER | AR |
| | 144425-002 | SPACER | AR |
| | 144425-003 | SPACER | AR |
| | 144425-004 | SPACER | AR |
| | 144425-005 | SPACER | AR |
| | 144425-006 | SPACER | AR |
| 6 | 143861 | ROLLER THRUST | 2 |
| 7 | 060059-060 | NUT M8 | 4 |
| 8 | 142539 | BLOCK STOP | 2 |
| 9 | 060115-022 | SCREW M12 | 4 |
| | 061004-006 | ADHESIVE THREAD LOCKING | AR |
| 10 | 107563-001 | BRACKET | 2 |
| 11 | 092747-001 | POLY STOP | 2 |
| 12 | 060062-034 | SCREW M6 | 2 |
| | 061004-006 | ADHESIVE THREAD LOCKING | AR |
| 13 | 060117-033 | SCREW M16 | 2 |
| | 065102-002 | SECURITY SEALANT | AR |
| 14 | 060030-392 | WASHER FLAT | 2 |
| 15 | 060023-009 | SCREW.750 | 4 |
| 16 | 060030-280 | FLATWASHER | 4 |
| 17 | 060080-009 | HEX FLANGE NUT | 4 |
| 18 | 142540-002 | SHIM | AR |
| 19 | 060059-044 | NUT M16 HEX | 2 |
| 20 | 060020-054 | SCREW 0.625 | 4 |
| 21 | 142541-002 | SHIM | 1 |
| | 142541-002 | SHIM | AR |
| 22 | 061134-001 | PIN DOWEL SPECIAL | 2 |
| 23 | 060021-107 | NUT | 4 |
| 24 | 060030-392 | WASHER FLAT | 8 |

Mono Mast

| INDEX | PART NUMBER | PART NAME | NUMBER REQ |
|-------|-------------|--------------------------------|------------|
| 100 | | Chain | 2 |
| 101 | 060000-055 | PIN ROLL | 8 |
| 102 | 146570 | PIN CHAIN | 8 |
| 103 | 075385-004 | CHAIN ANCHOR ASM | 2 |
| | 078882 | TECTYL | AR |
| 104 | 060038-003 | PIN COTTER | 8 |
| 105 | 060075-083 | M10 -1.5 X 110 HEX HEAD CAP SC | 2 |
| 106 | 060030-026 | FLATWASHER | 2 |
| 107 | 060059-024 | NUT METRIC | 2 |
| 108 | 060021-028 | NUT | 16 |
| 109 | 060102-002 | U-NUT | 1 |
| 110 | 144731 | GUIDE HOSE UPPER | 1 |
| 111 | 060062-041 | SCREW M6 | 1 |
| 112 | 062749-002 | CLIP ATTACHMENT DEUTSCH | 1 |
| 113 | 060061-032 | SCREW M5 X 10 SPECIAL LOW HEAD | 4 |
| 114 | 062749-001 | CLIP ATTACHMENT DEUTSCH | 3 |
| 115 | 060062-085 | SCREW M6 | 2 |
| 116 | 147739 | CLAMP CABLE | 1 |
| 117 | 145032 | CLAMP HOSE | 1 |
| 118 | 144921 | GUIDE HOSE LOWER | 1 |
| 119 | 060062-066 | SCREW M6 | 3 |
| 120 | 075385-007 | CHAIN ANCHOR ASSEMBLY | 4 |
| | 078882 | TECTYL | AR |
| 121 | 061011-017 | PIN DOWEL | 1 |
| 122 | 060062-034 | SCREW M6 | 2 |
| 123 | 060115-012 | SCREW M12 | 4 |
| 124 | 060115-008 | SCREW M12 | 2 |
| 125 | 060115-023 | SCREW M12 | 1 |
| 126 | 060030-260 | FLATWASHER | 1 |
| 127 | 060117-036 | SCREW M16 | 1 |
| | 061004-006 | ADHESIVE THREAD LOCKING | AR |
| 128 | | Chain | 2 |
| 129 | 075385-001 | CHAIN ANCHOR ASM | 2 |
| | 078882 | TECTYL | AR |

Removeable Outrigger Ends

| INDEX | PART NUMBER | PART NAME | NUMBER REQ |
|-------|-------------|---------------------------|------------|
| 1 | 123425-001 | SIDE PLATE WLDT W/TIP 4X2 | 2 |
| | 123425-002 | SIDE PLATE WLDT W/TIP 5X2 | 2 |
| | 123415-002 | SIDE PLATE WLDT 5X2 | 2 |
| | 150200 | OUTRIGGER WELDMENT | 2 |
| 2 | 115003-002 | PIN LOCATION | 4 |
| 3 | 060009-059 | RING RETAINING | 4 |
| 4 | 060020-041 | SCREW 5/8" | 4 |
| 5 | 060030-279 | FLATWASHER | 4 |
| 6 | 060021-092 | NUT | 4 |

Removeable Outrigger Ends

| INDEX | PART NUMBER | PART NAME | NUMBER REQ |
|-------|-------------|--------------------|------------|
| 1 | 115004-001 | PIN LOCATION | 4 |
| 2 | 060009-011 | RING RETAINING | 8 |
| 3 | 060020-039 | SCREW 5/8" | 4 |
| 4 | 060030-279 | FLATWASHER | 4 |
| 5 | 060021-092 | NUT | 4 |
| 6 | 151407 | PLATE SIDE LH WLDT | 1 |
| 7 | 151412 | PLATE SIDE LH WLDT | 1 |
| 8 | 161874-001 | PLATE SIDE WLDT | 1 |
| 9 | 151414 | PLATE SIDE RH WLDT | 1 |
| 10 | 151410 | PLATE SIDE RH WLDT | 1 |
| 11 | 161874-002 | PLATE SIDE WLDT | 1 |

Load Wheel

| INDEX | PART NUMBER | PART NAME | NUMBER REQ |
|-------|-------------|-----------------------------|------------|
| 25 | 073962-006 | AXLE | 4 |
| | 073962-003 | AXLE | 4 |
| 26 | 060030-127 | FLATWASHER | 8 |
| 27 | 060030-278 | FLATWASHER | 8 |
| 28 | 060030-093 | FLATWASHER | 8 |
| 29 | 060030-289 | FLATWASHER | AR |
| 30 | 115819 | Load Wheel Assembly | 4 |
| | 115820 | Load Wheel Assembly | 4 |
| 31 | 115032 | Polyurethane Wheels by Size | 1 |
| | 115033 | Polyurethane Wheels by Size | 1 |
| 32 | 065081-057 | BEARING BALL | 2 |
| 33 | 060000-030 | PIN ROLL | 4 |
| 34 | 121786-002 | PIVOT PLATE ASM SLOTTED | 2 |
| 35 | 121788-001 | PLATE PIVOT | 1 |
| 36 | 065084-015 | BEARING | 1 |
| 37 | 111858-002 | SLEEVE | 4 |
| | 061004-027 | ADHESIVE THREAD LOCKING | AR |
| 38 | 121786-001 | PIVOT PLATE ASM | 2 |
| 39 | 121787-001 | PLATE PIVOT | 1 |
| 40 | 065084-015 | BEARING | 1 |
| 41 | 076048-001 | FITTING LUBRICATION | 4 |

SECONDARY YOKE

| INDEX | PART NUMBER | PART NAME | NUMBER REQ |
|--------------|------------------------|-----------------------------|-----------------------|
| 1 | 142588 | YOKE WELDMENT AND MACHINING | 1 |
| 2 | 060009-018 | RING RETAINING | 2 |
| 3 | 060030-085 | FLATWASHER | 2 |
| 4 | 147409 | PULLEY ASM | 1 |
| 5 | 065081-027 | BEARING BALL | 2 |
| 6 | 142592 | PULLEY CHAIN | 1 |
| 7 | 142589 | SHAFT | 1 |

FORK

| INDEX | PART NUMBER | PART NAME | NUMBER REQ |
|-------|-------------|------------------------------|------------|
| 1000 | 075324-001 | FORK 30 ASM | 1 |
| | 075324-002 | FORK 36 ASM | 1 |
| | 075324-003 | FORK 42" ASM | 1 |
| | 075324-004 | FORK 48 ASM | 1 |
| | 075324-005 | FORK 45 ASM | 1 |
| | 075324-006 | FORK 39 ASM | 1 |
| | 075324-007 | FORK ASM 54 | 1 |
| | 075324-008 | FORK ASM 60 | 1 |
| 1001 | 094182-001 | FORK ASM 30 | 1 |
| | 094182-002 | FORK ASM 36 | 1 |
| | 094182-003 | FORK ASM 42 | 1 |
| | 094182-004 | FORK ASM 48 | 1 |
| | 094182-005 | FORK ASM 45 | 1 |
| | 094182-006 | FORK ASM 39 | 1 |
| | 094182-007 | FORK ASM 54 | 1 |
| | 094182-008 | FORK ASM 60 | 1 |
| 1002 | 088228-001 | FORK 30 ASM | 1 |
| | 088228-002 | FORK 36 ASM | 1 |
| | 088228-003 | FORK 42 ASM POLISH \TAPPERED | 1 |
| | 088228-004 | FORK 48 ASM | 1 |
| | 088228-005 | FORK ASM 45" | 1 |
| | 088228-006 | FORK ASM 39" | 1 |
| | 088228-007 | FORK ASM 54 | 1 |
| | 088228-008 | FORK ASM 60 | 1 |

Primary Lift Cylinder

CYLINDER PARTS Primary Lift Cylinder

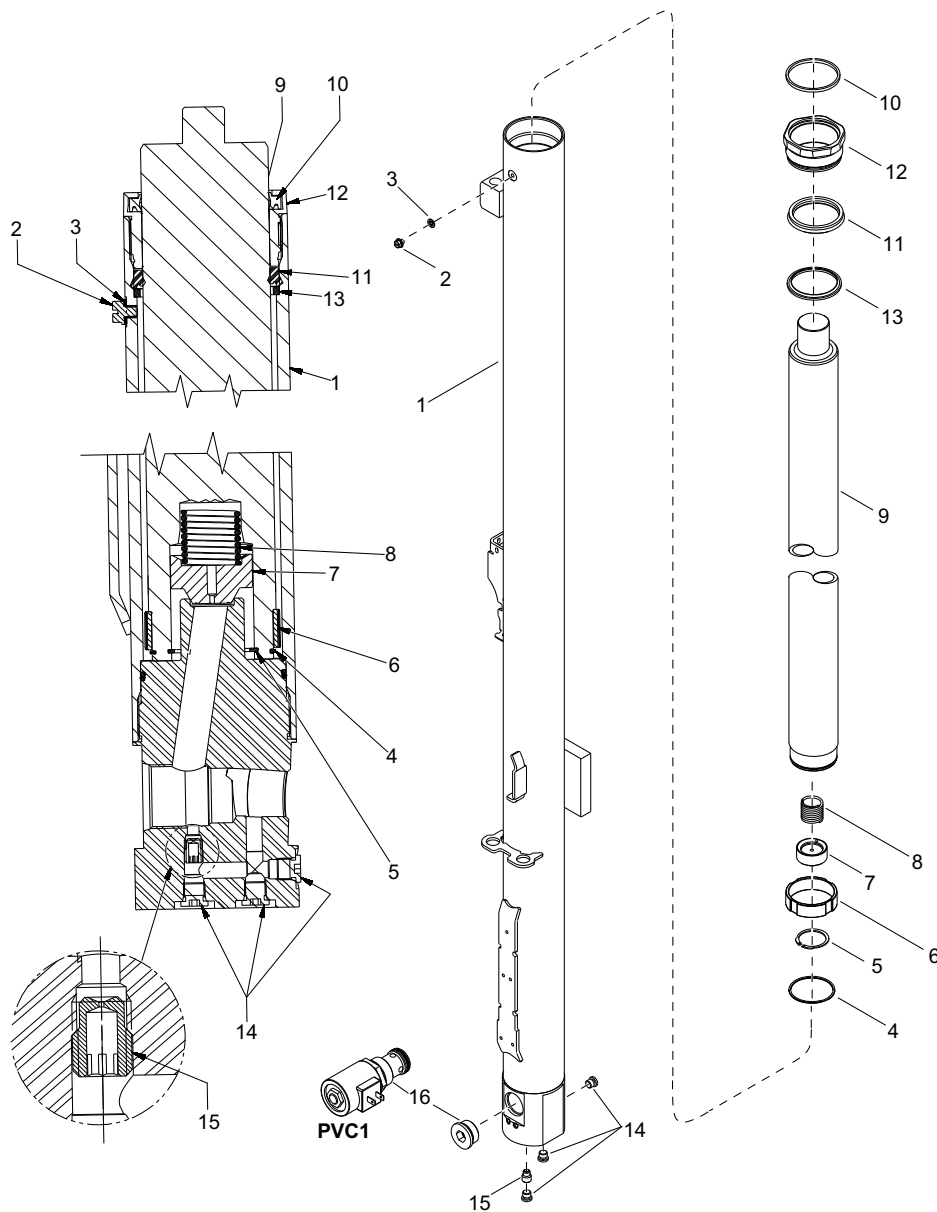


Figure 23055-03

08.2-1460-005
02 Rev. 6/16
1186

Crown 2012 PF25737 Rev. 6/16

Secondary Lift Cylinder



CYLINDER PARTS Secondary Lift Cylinder

| Secondary Cylinder | | | | | | |
|--------------------|-----|-------------|-----|------------------------------|--------------------------|----------------|
| Collapsed Height | | Lift Height | | Index 0 Cylinder Assembly | Index 1 Cylinder Tube | Index 9 Ram |
| mm | in | mm | in | | | |
| 2,260 | 89 | 4,875 | 192 | 142643-004-01 | 142641-004-01 | 142642-004 |
| 2,415 | 95 | 5,335 | 210 | 142643-005-01 | 142641-005-01 | 142642-005 |
| 2,720 | 107 | 6,095 | 240 | 142643-006-01 | 142641-006-01 | 142642-006 |
| 3,025 | 119 | 6,860 | 270 | 142643-007-01 | 142641-007-01 | 142642-007 |
| 3,325 | 131 | 7,620 | 300 | 142643-008-01 | 142641-008-01 | 142642-008 |
| 3,555 | 140 | 8,155 | 321 | 142643-009-01 | 142641-009-01 | 142642-009 |
| 3,785 | 149 | 8,660 | 341 | 142643-010-01 | 142641-010-01 | 142642-010 |
| 4,065 | 160 | 9,295 | 366 | 142643-011-01 | 142641-011-01 | 142642-011 |
| 4,370 | 172 | 10,160 | 400 | 142643-012-01 | 142641-012-01 | 142642-012 |
| 4,520 | 178 | 10,695 | 421 | 142643-013-01 | 142641-013-01 | 142642-013 |
| 4,825 | 190 | 11,225 | 442 | 142643-014-01 | 142641-014-01 | 142642-014 |
| 5,130 | 202 | 12,065 | 475 | 142643-015-01 | 142641-015-01 | 142642-015 |
| 5,435 | 214 | 12,825 | 505 | 142643-016-01 | 142641-016-01 | 142642-016 |

TILT CYLINDER

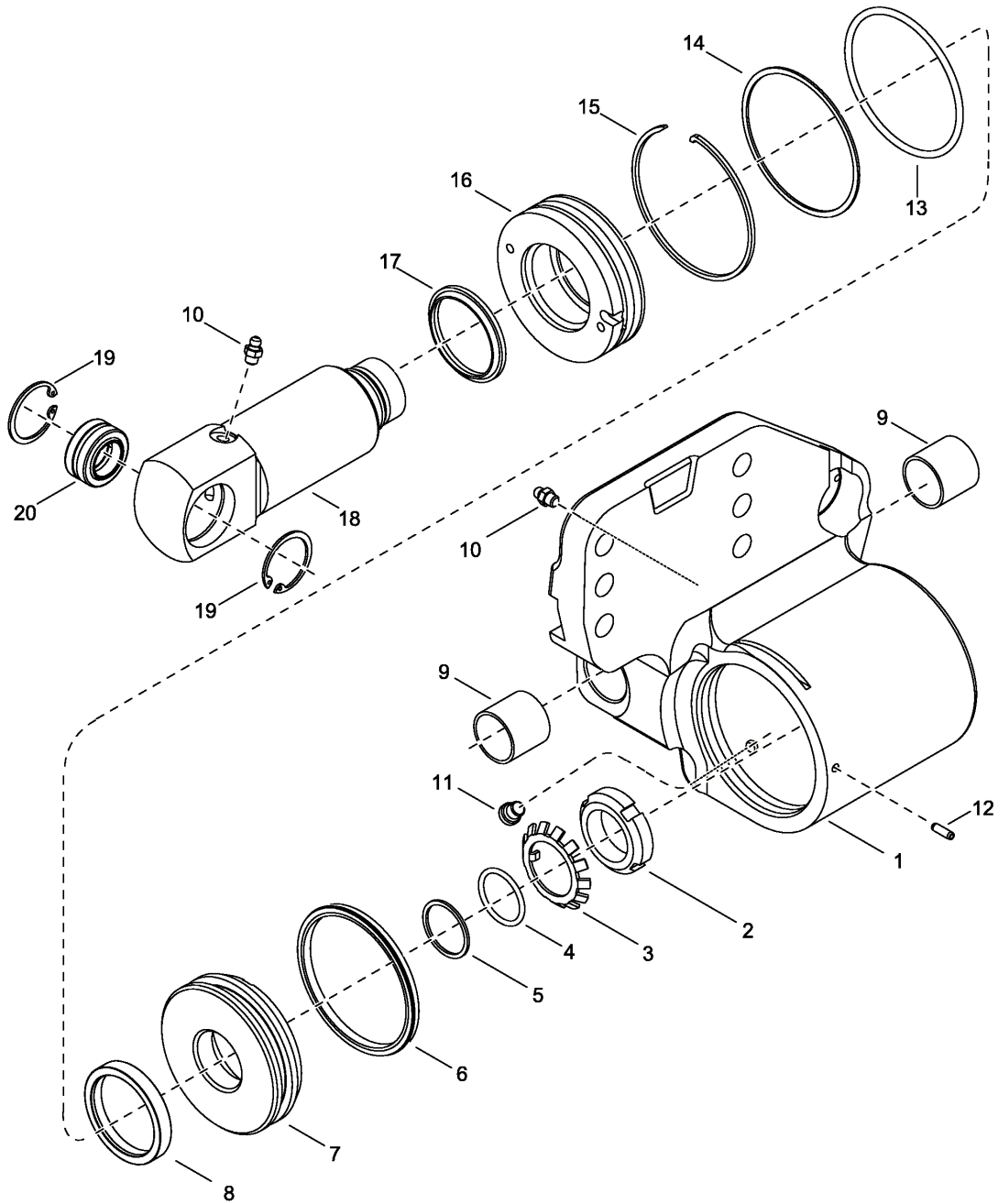
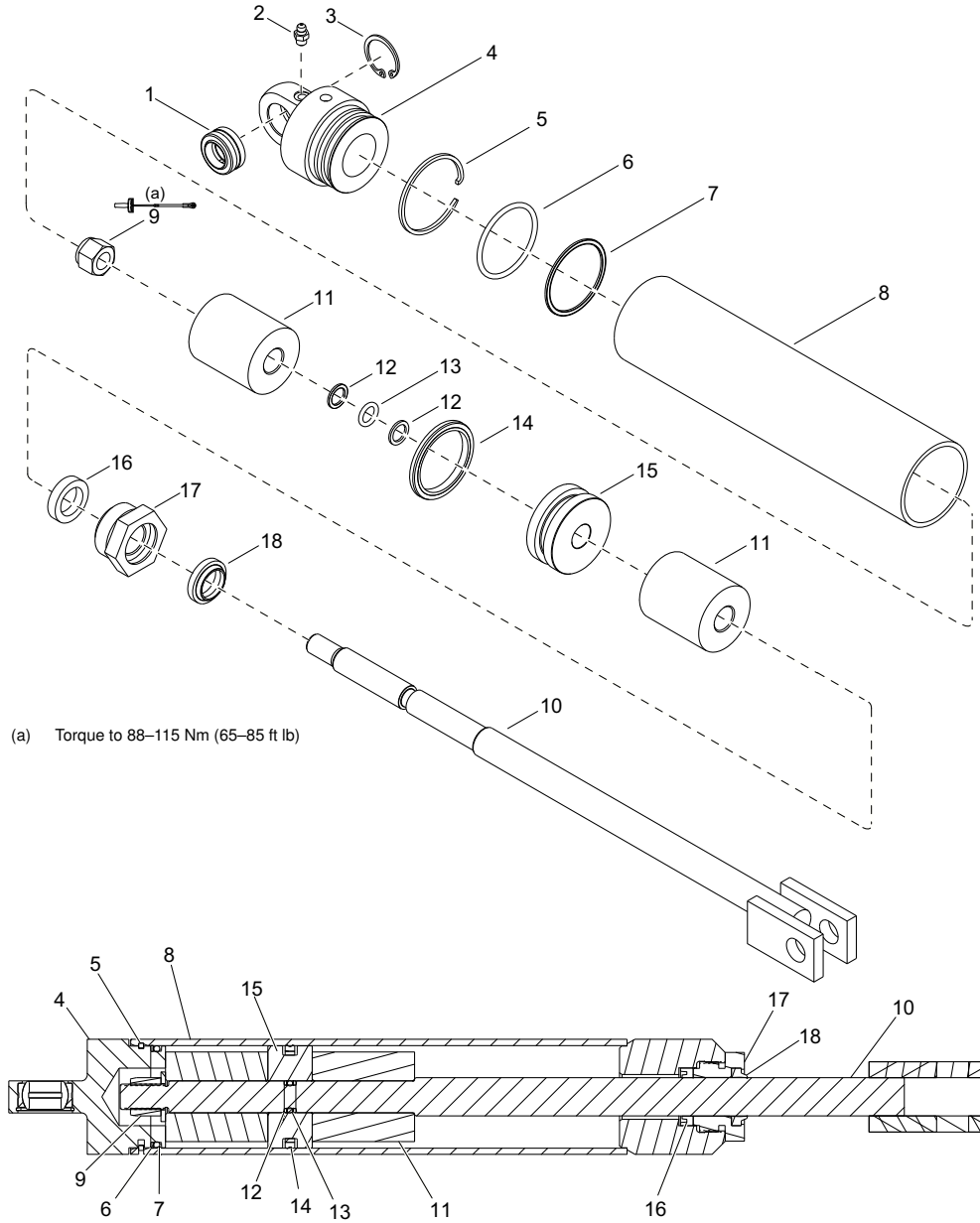


Figure 23058

Sideshifter Cylinder

CYLINDER PARTS
Sideshift Cylinder



(a) Torque to 88-115 Nm (65-85 ft lb)

Figure 29718

08.7-1460-003

Crown 2015 PF27140-1

REACH ASSEMBLY - RM

REACH AND ATTACHMENTS
Reach Assembly - RM

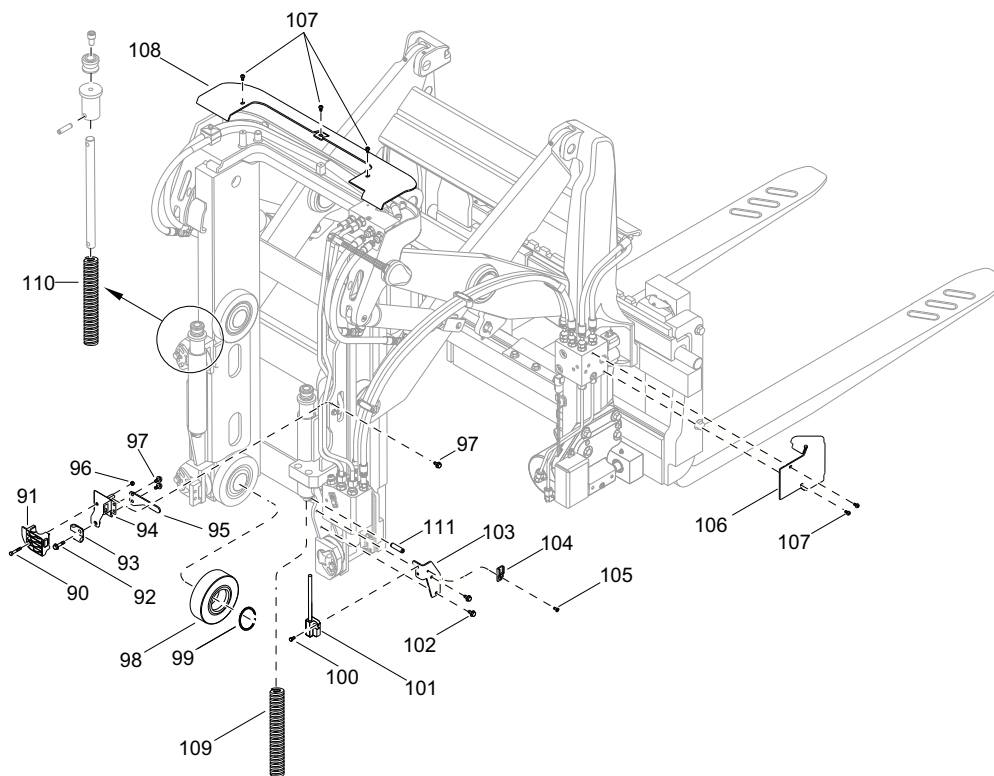


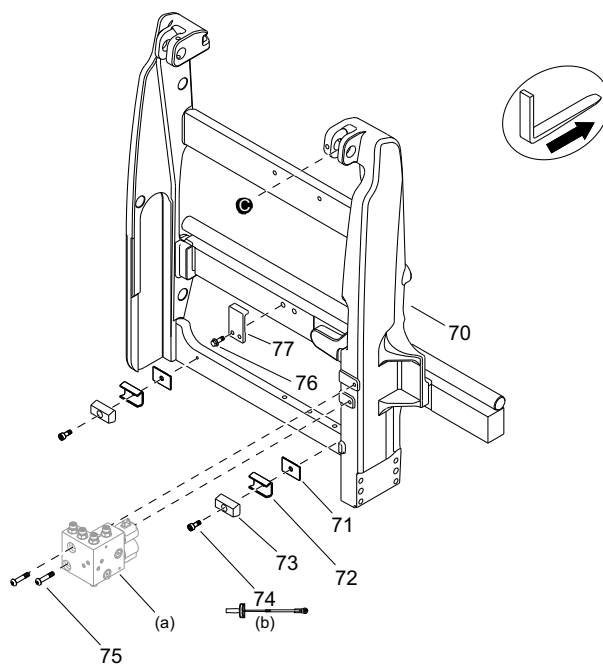
Figure 23482

09.0-1460-007
01 Rev. 1/13
1198

Crown 2010 PF17858-7 Rev. 1/13

Reach Assembly - RM

REACH AND ATTACHMENTS
Reach Assembly - RM



- (a) Accessory Manifold Block (Tilt/Sideshift)
- (b) Torque to 10 Nm (96 in lb)

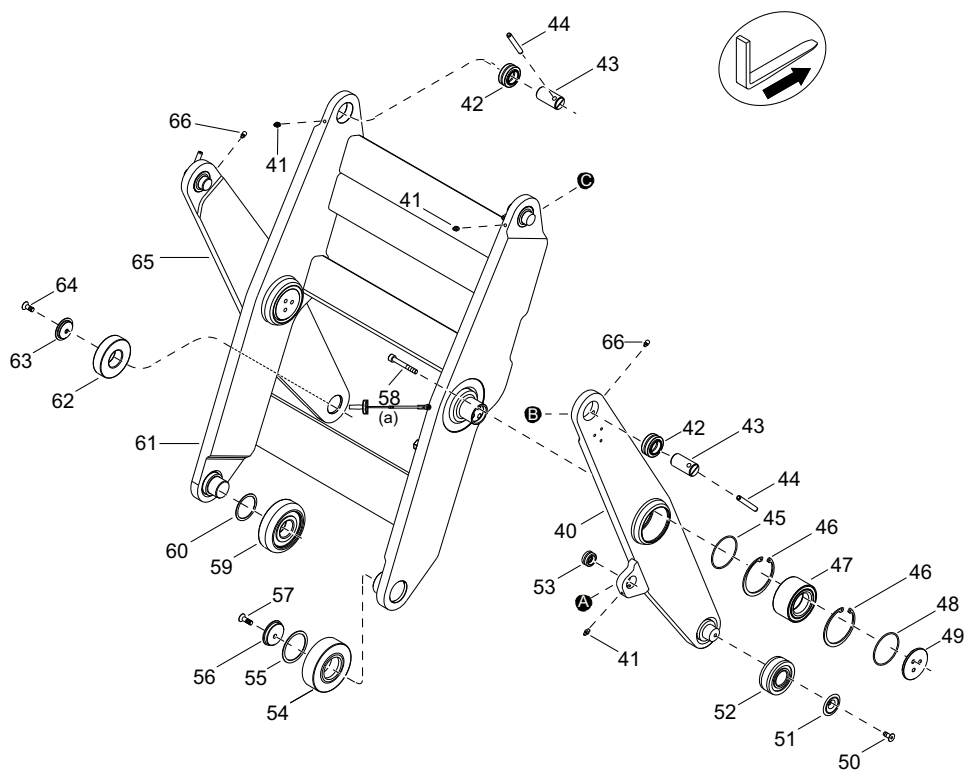
Figure 23478-01

09.0-1460-017
05 Rev. 9/13
1238

Crown 2010 PF25090-5 Rev. 9/13

Reach Assembly-RM

REACH AND ATTACHMENTS
Reach Assembly - RM



(a) Torque to 32.5–35.25 Nm (24–26 ft lb)

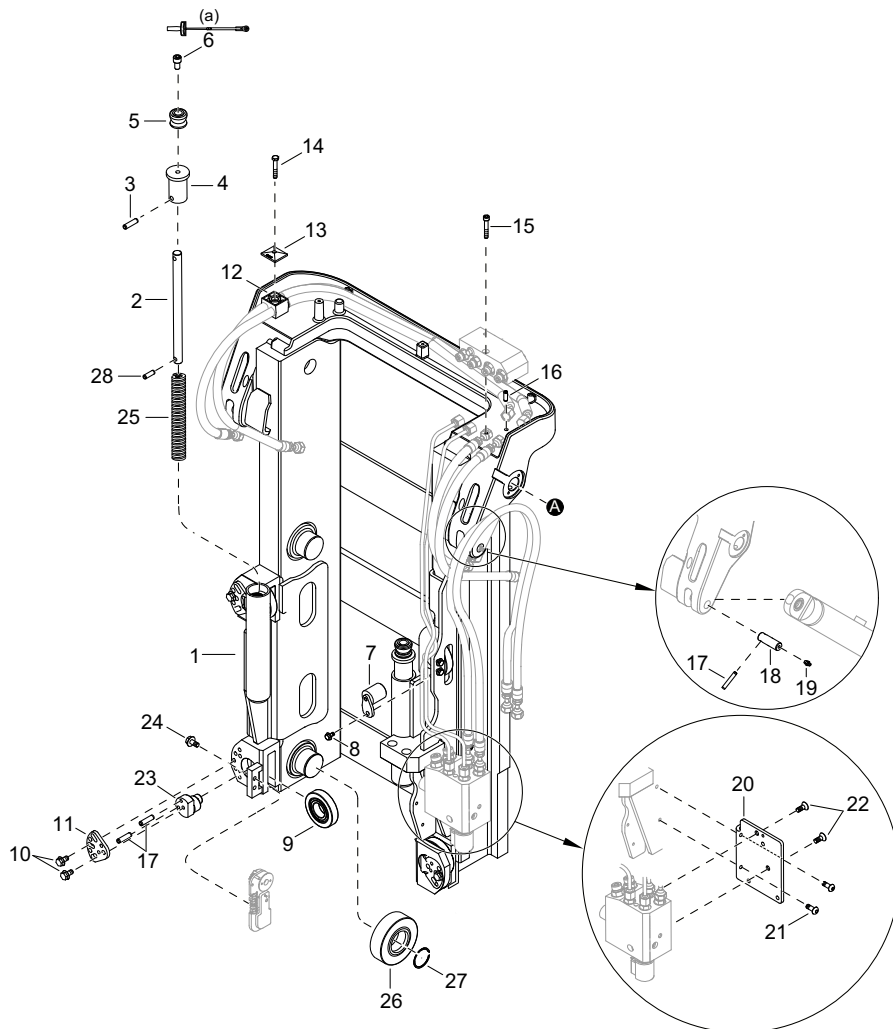
Figure 23477-01

09.0-1460-027
02 Rev. 9/13
948

Crown 2012 PF25631-3 Rev. 9/13

Reach Mechanism - RM

REACH AND ATTACHMENTS
Reach Mechanism - RM



(a) Torque to 4 N m (35 in lb)

Figure 32112

09.0-1460-037
01 Rev. 2/18
954

Crown 2017 PF27769 Rev. 2/18

Reach Mechanism - RM

REACH AND ATTACHMENTS
Reach Mechanism - RM

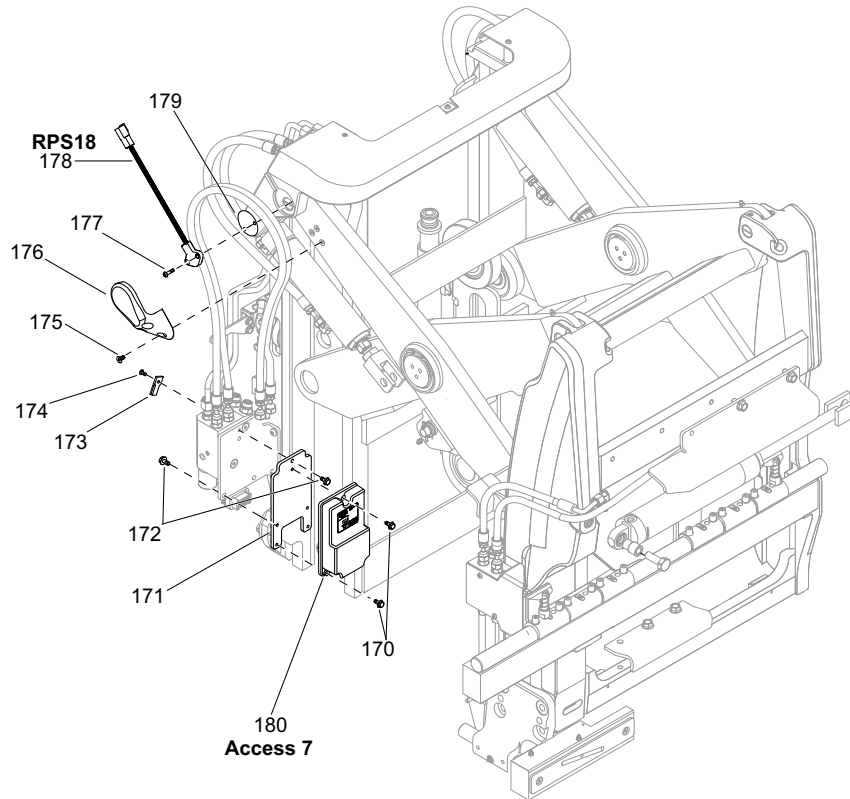


Figure 31724

09.0-1460-047
01 Rev. 2/18
964

Crown 2017 PF27769 Rev. 2/18



REACH & ATTACHMENT PARTS Reach Assembly - RMD

| INDEX | PART NUMBER | PART NAME | NUMBER REQUIRED |
|-------|-------------|-----------------------------------|-----------------|
| 120 | 060061-021 | Screw | 3 |
| 121 | 146026 | Top Cover | 1 |
| 122 | 060061-001 | Screw | 1 |
| 123 | 143766 | Hose Guide | 1 |
| 124 | 060062-038 | Screw | 1 |
| 125 | 061002-014 | Harness Clamp | 2 |
| 126 | 146156 | Hose Guide | 1 |
| 127 | 060059-019 | Nut | 1 |
| 128 | 122398 | Compression Spring Refer to Chart | 1 |
| 129 | 060061-006 | Screw | 1 |
| 130 | 062874 | Proximity Sensor | 1 |
| 131 | 060062-042 | Screw | 2 |
| 132 | 060061-032 | Screw | 1 |
| 133 | 062749-001 | Clip | 1 |
| 134 | 144927 | Sensor Bracket | 1 |
| 135 | 060062-042 | Screw | 2 |
| 136 | 060009-188 | Retaining Ring | 4 |
| 137 | 143102 | Column Roller | 4 |
| 138 | 060061-021 | Screw | 2 |
| 139 | 143684 | Manifold Guard | 1 |
| 140 | 060000-120 | Roll Pin | 2 |

| INDEX 128 - Compression Spring | | | | | | | |
|--------------------------------|-----|------------------|-----|-------------------|--------|-----------|--------|
| Lift Height* | | Collapsed Height | | One Each Required | | | |
| mm | in | mm | in | RH Spring | | LH Spring | |
| 5030 | 198 | 2260 | 89 | 122398 | Red | 122398 | Red |
| 5335 | 210 | 2415 | 95 | 122398 | Red | 122398 | Red |
| 6100 | 240 | 2720 | 107 | 122398 | Red | 122421 | Bronze |
| 6860 | 270 | 3025 | 119 | 122398 | Red | 122421 | Bronze |
| 7620 | 300 | 3325 | 131 | 122398 | Red | 122421 | Bronze |
| 8155 | 321 | 3555 | 140 | 122421 | Bronze | 122421 | Bronze |
| 8660 | 341 | 3785 | 149 | 122421 | Bronze | 122421 | Bronze |
| 9300 | 366 | 4065 | 160 | 122421 | Bronze | 122421 | Bronze |
| 10160 | 400 | 4370 | 172 | 122421 | Bronze | 122421 | Bronze |
| 10695 | 421 | 4520 | 178 | 122421 | Bronze | 122421 | Bronze |
| 11225 | 442 | 4825 | 190 | 122421 | Bronze | 122421 | Bronze |
| 12065 | 475 | 5130 | 202 | 122421 | Bronze | 122421 | Bronze |
| 12826 | 505 | 5435 | 214 | 122421 | Bronze | 122421 | Bronze |

Always Specify Model, Data & Serial Number

Reach Assembly - RMD

REACH & ATTACHMENT PARTS
Reach Assembly - RMD

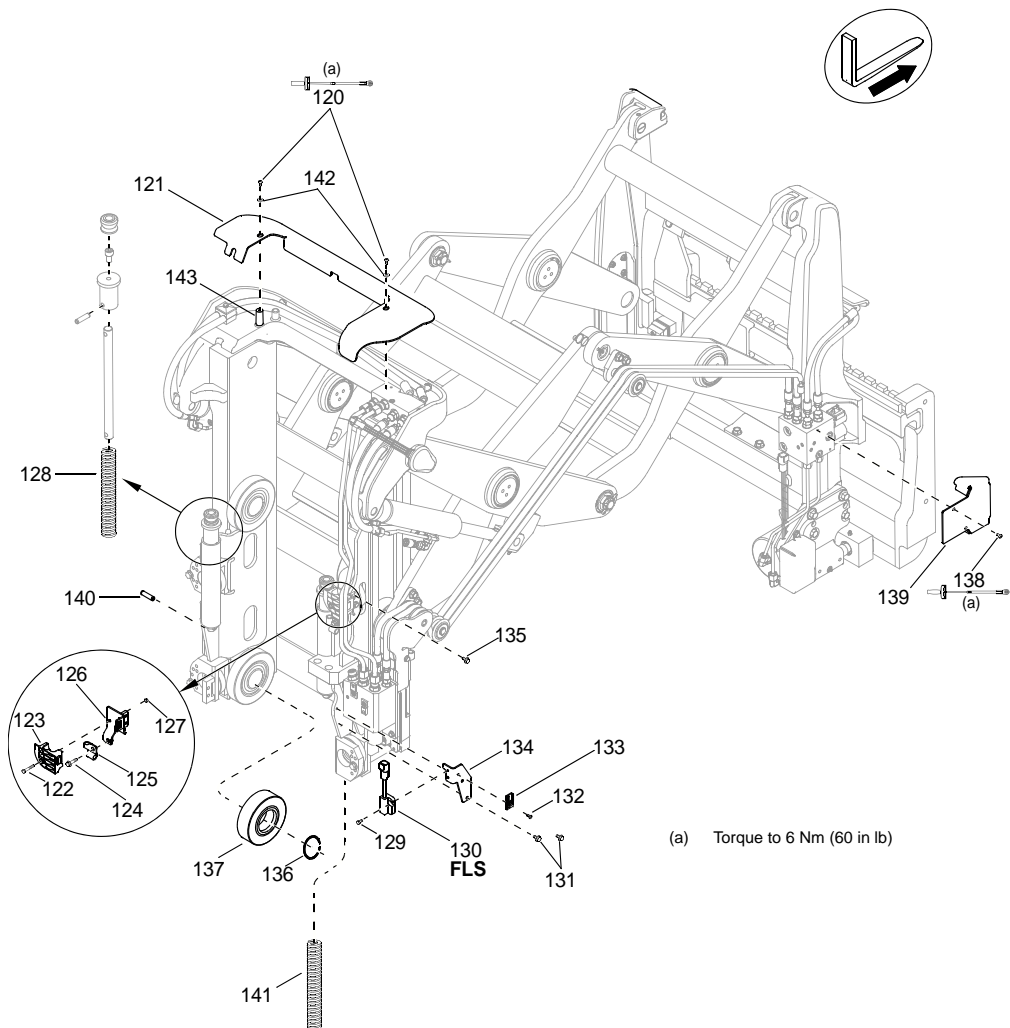


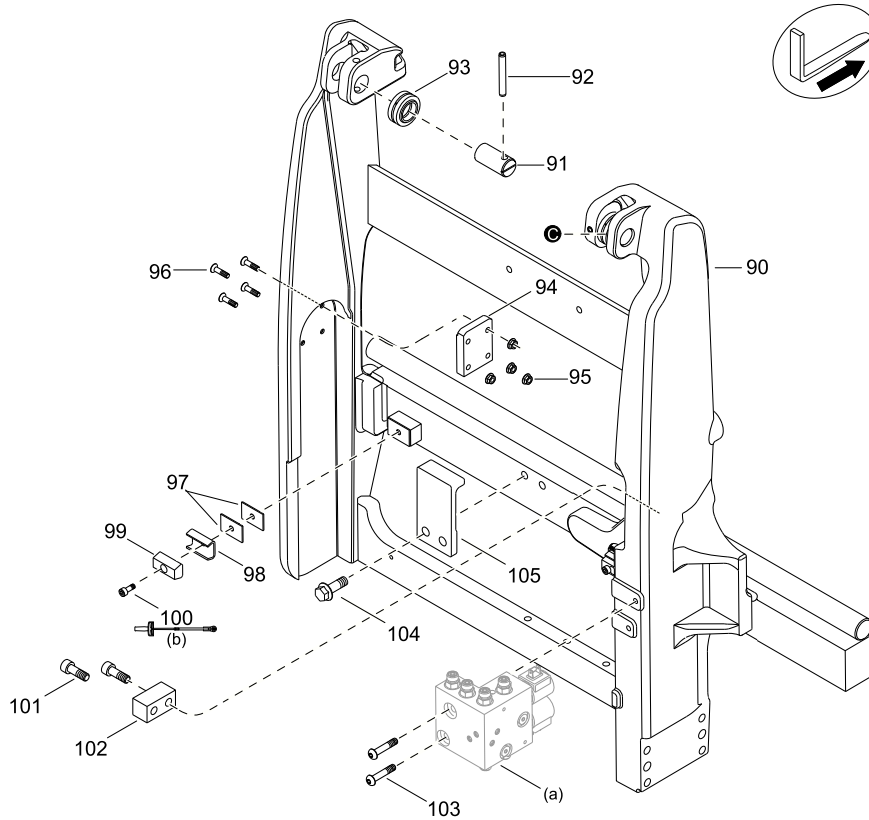
Figure 23531-02

09.0-1460-118
02 Rev. 1/12
946

Crown 2010 PF25089-7 Rev. 1/12

Reach Assembly - RMD

REACH AND ATTACHMENTS
Reach Assembly - RMD



- (a) Accessory Manifold Block (Tilt/Sideshift)
- (b) Torque to 10 Nm (96 in lb)

Figure 23530-01

Reach Mechanism - RMD

REACH AND ATTACHMENTS
Reach Mechanism - RMD

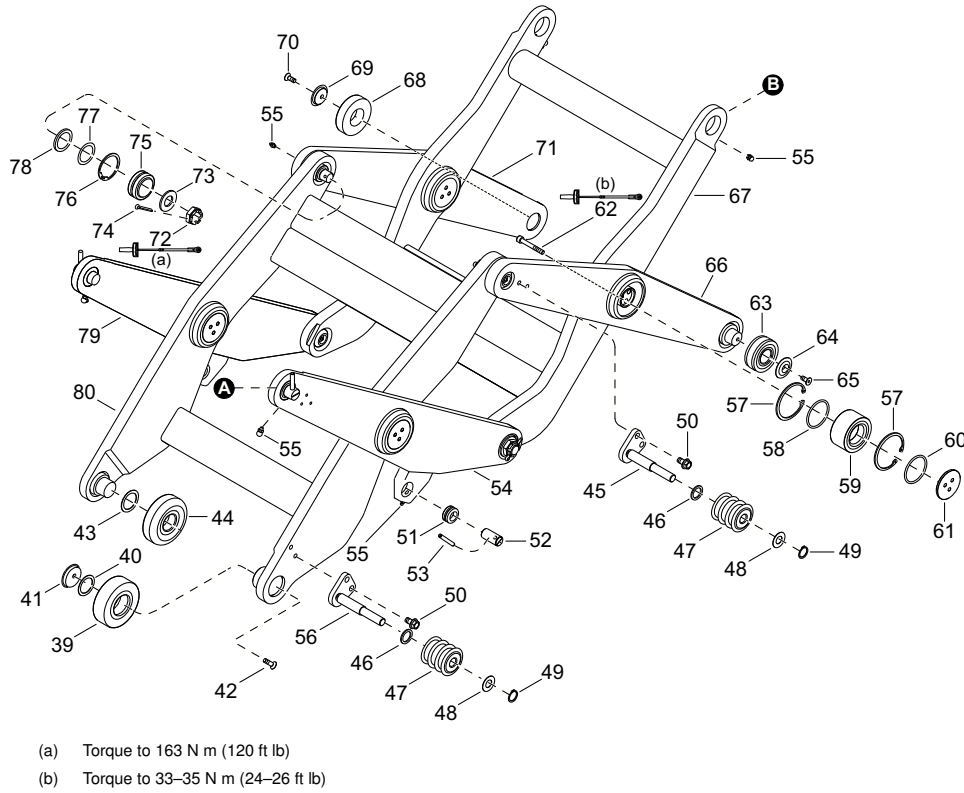


Figure 32104-01

09.0-1460-138
01 Rev. 2/18
968

Crown 2017 PF27770 Rev. 2/18

InfoLink Accessories

- (a) Part of Overhead Guard
- (b) Top of Power Unit
- (c) Trucks with 1065 mm (42 in) Power Unit
- (d) Trucks with 1220 mm (48 in) Power Unit

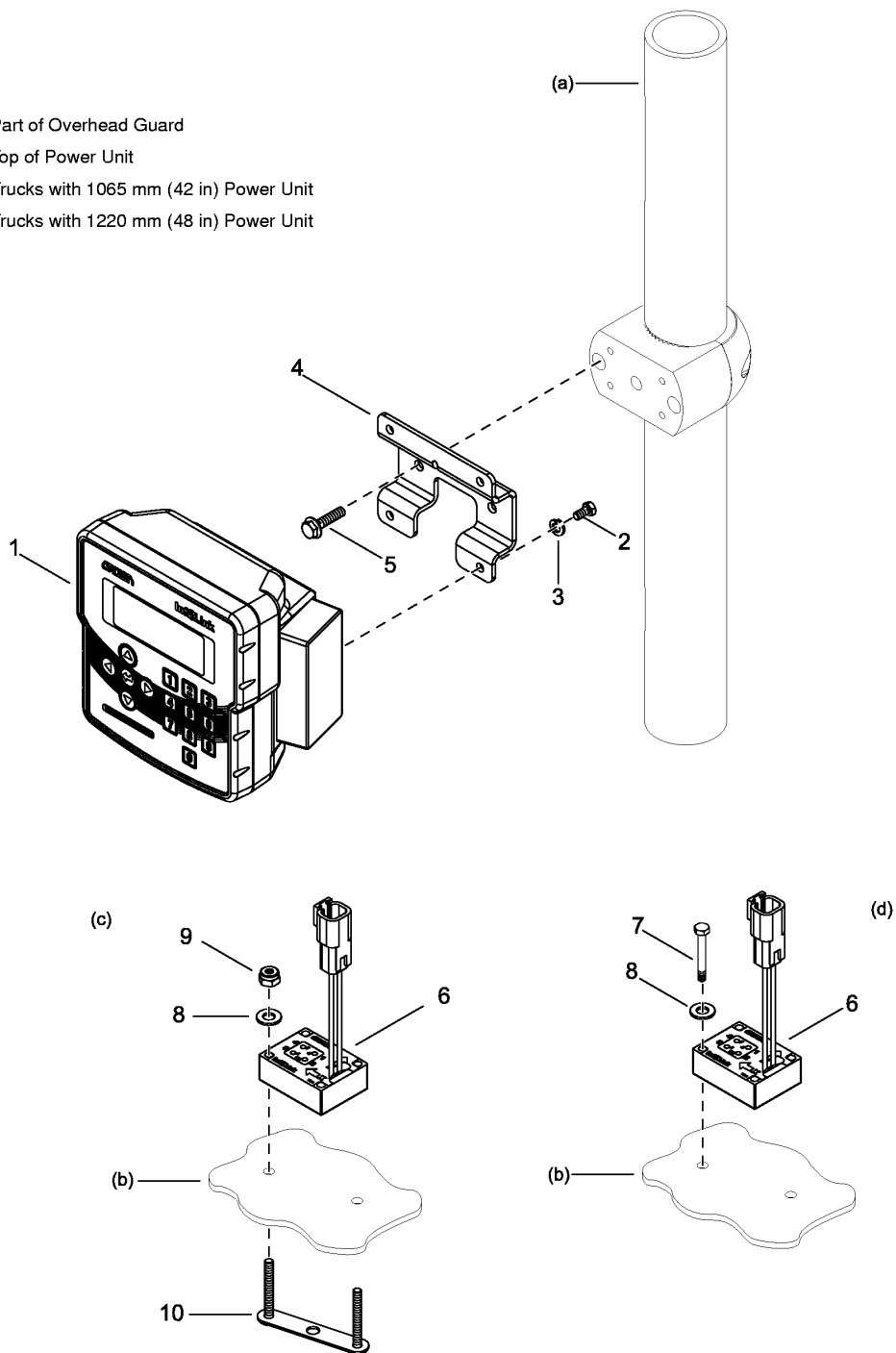


Figure 24900

ACCESSORIES
Camera

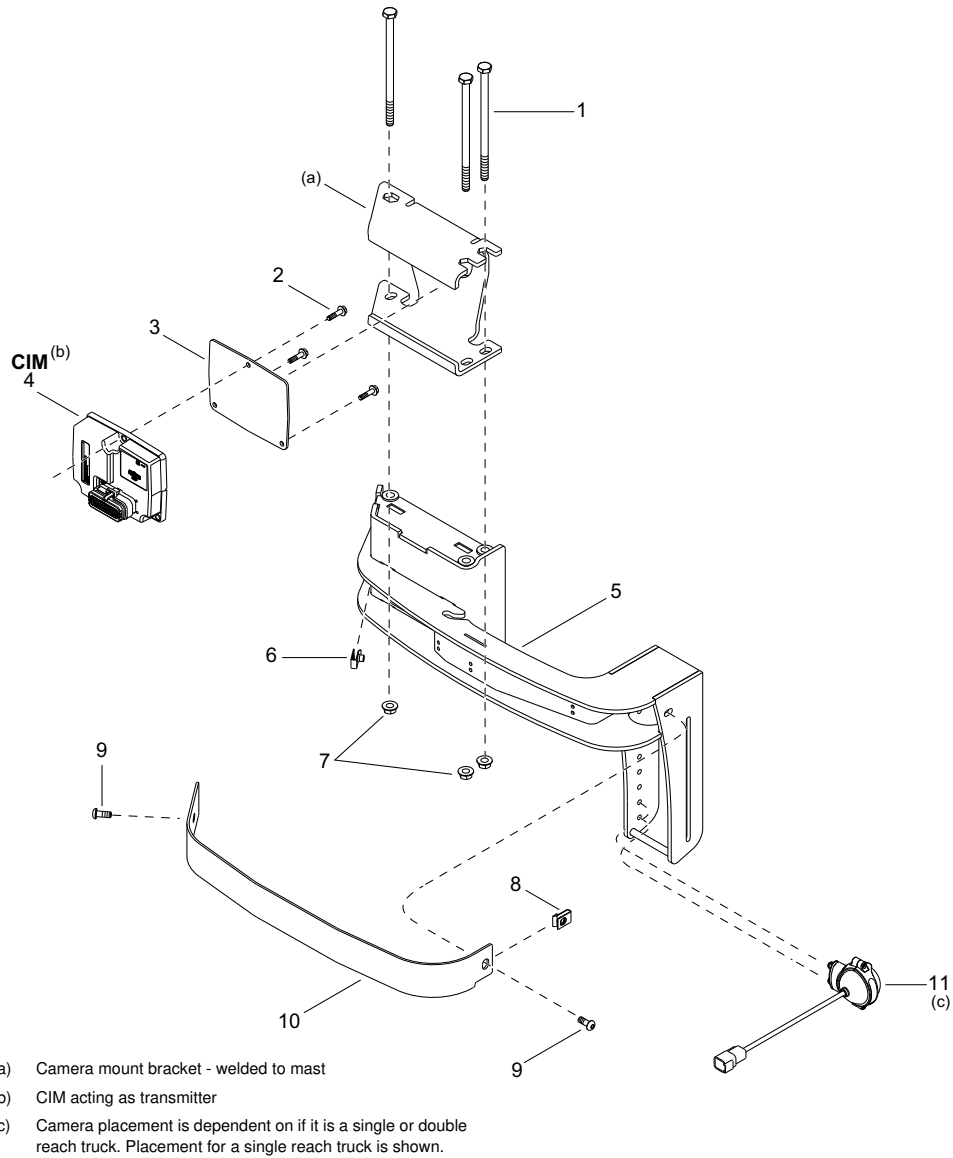


Figure 24229-01

10.0-1460-100
 03 Rev. 2/15
 1282

Crown 2010 PF17958-1 Rev. 2/15

Labels and Decals

LABELS AND DECALS
Labels and Decals

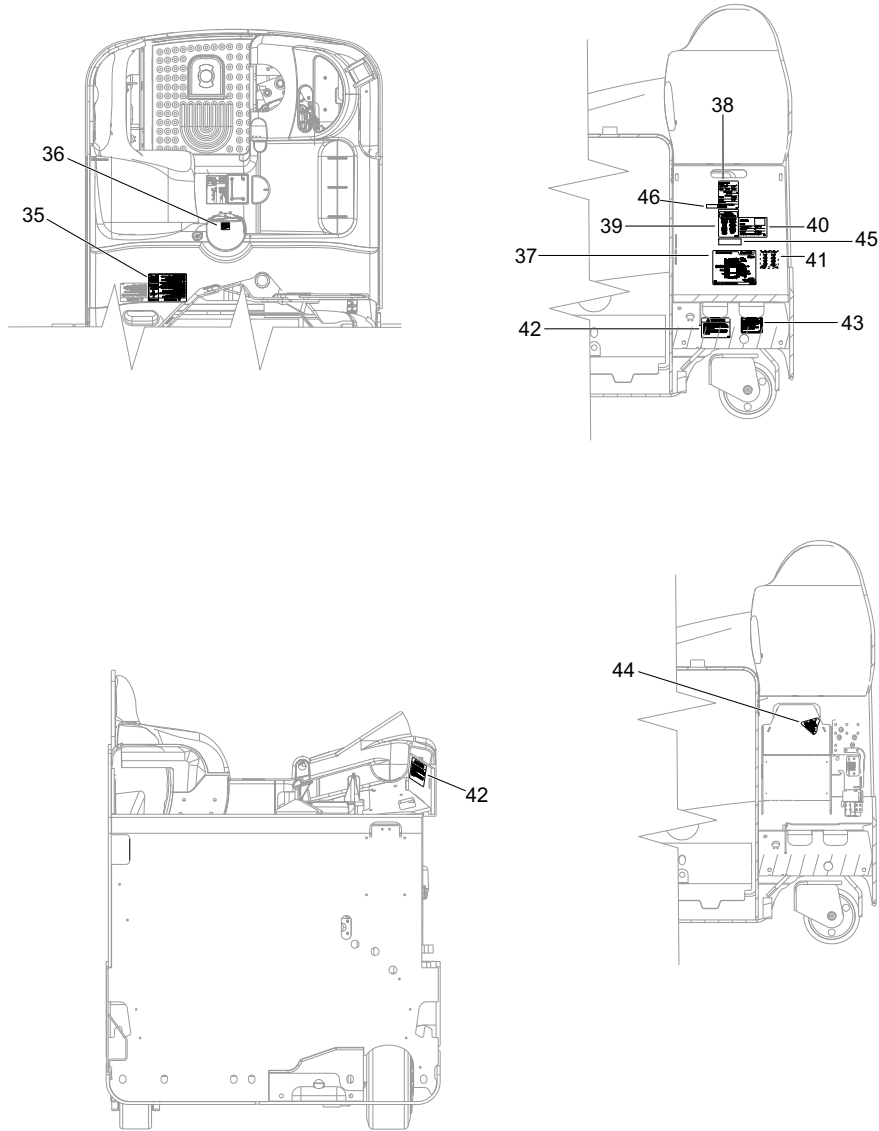


Figure 30936-03

10.9-1460-104
07 Rev. 2/20
1014

Crown 2011 PF17985 Rev. 2/20

LABELS AND DECALS
Labels and Decals

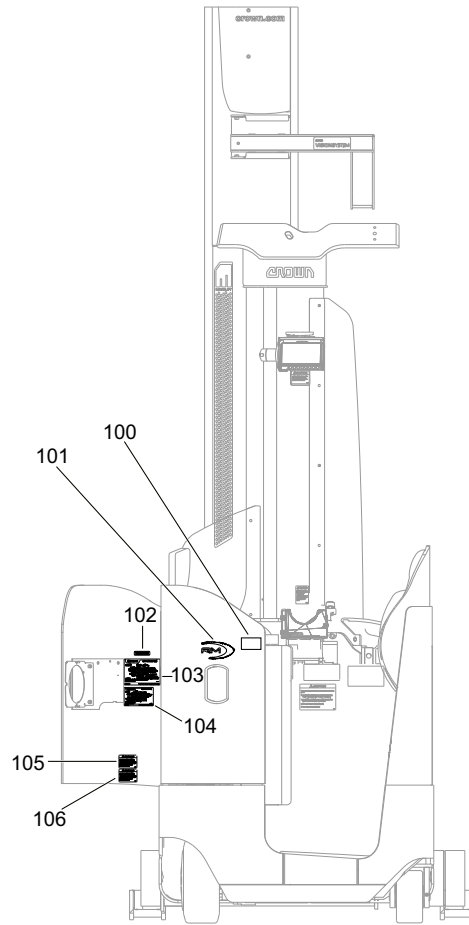


Figure 30937-03

10.9-1460-114
07 Rev. 2/20
1024

Crown 2011 PF17985 Rev. 2/20

CLICK HERE TO **DOWNLOAD** THE COMPLETE MANUAL

- Thank you very much for reading the preview of the manual.
- You can download the complete manual from: www.heydownloads.com by clicking the link below



- Please note: If there is no response to CLICKING the link, please download this PDF first and then click on it.

CLICK HERE TO **DOWNLOAD** THE COMPLETE MANUAL