

PR 3000



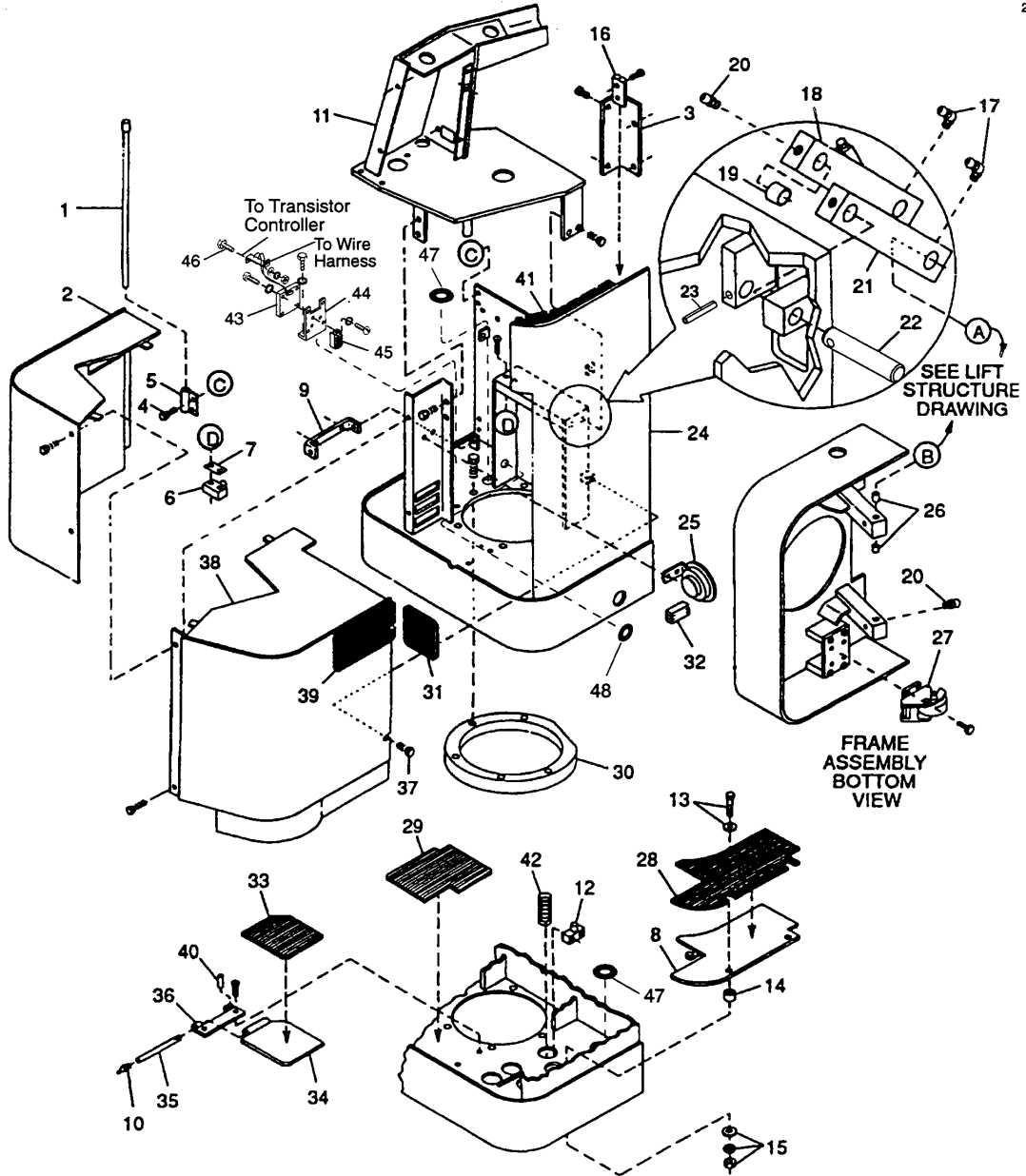
CLICK HERE TO **DOWNLOAD** THE COMPLETE MANUAL

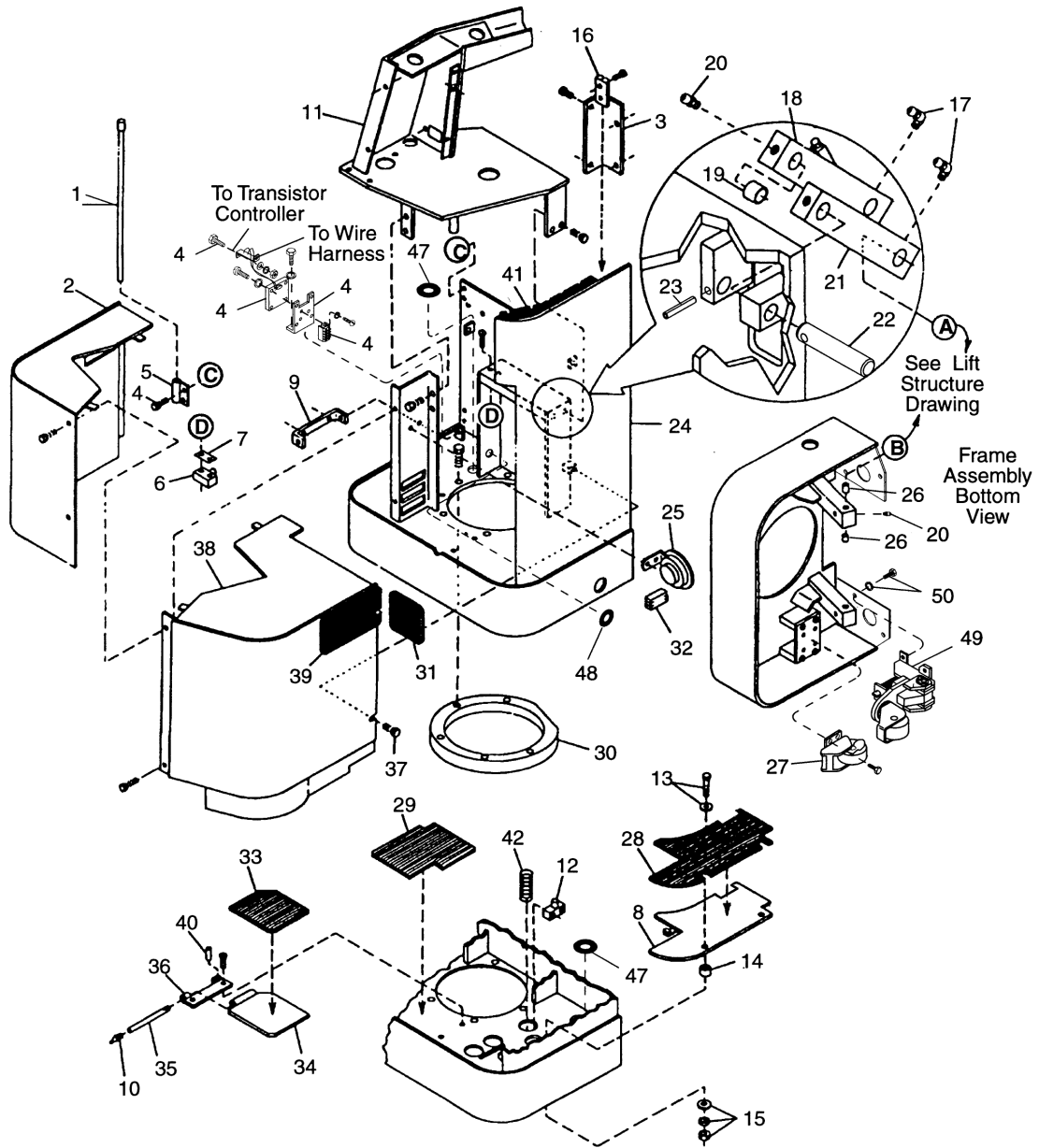
- Thank you very much for reading the preview of the manual.
- You can download the complete manual from: www.heydownloads.com by clicking the link below



- Please note: If there is no response to CLICKING the link, please download this PDF first and then click on it.

CLICK HERE TO **DOWNLOAD** THE COMPLETE MANUAL

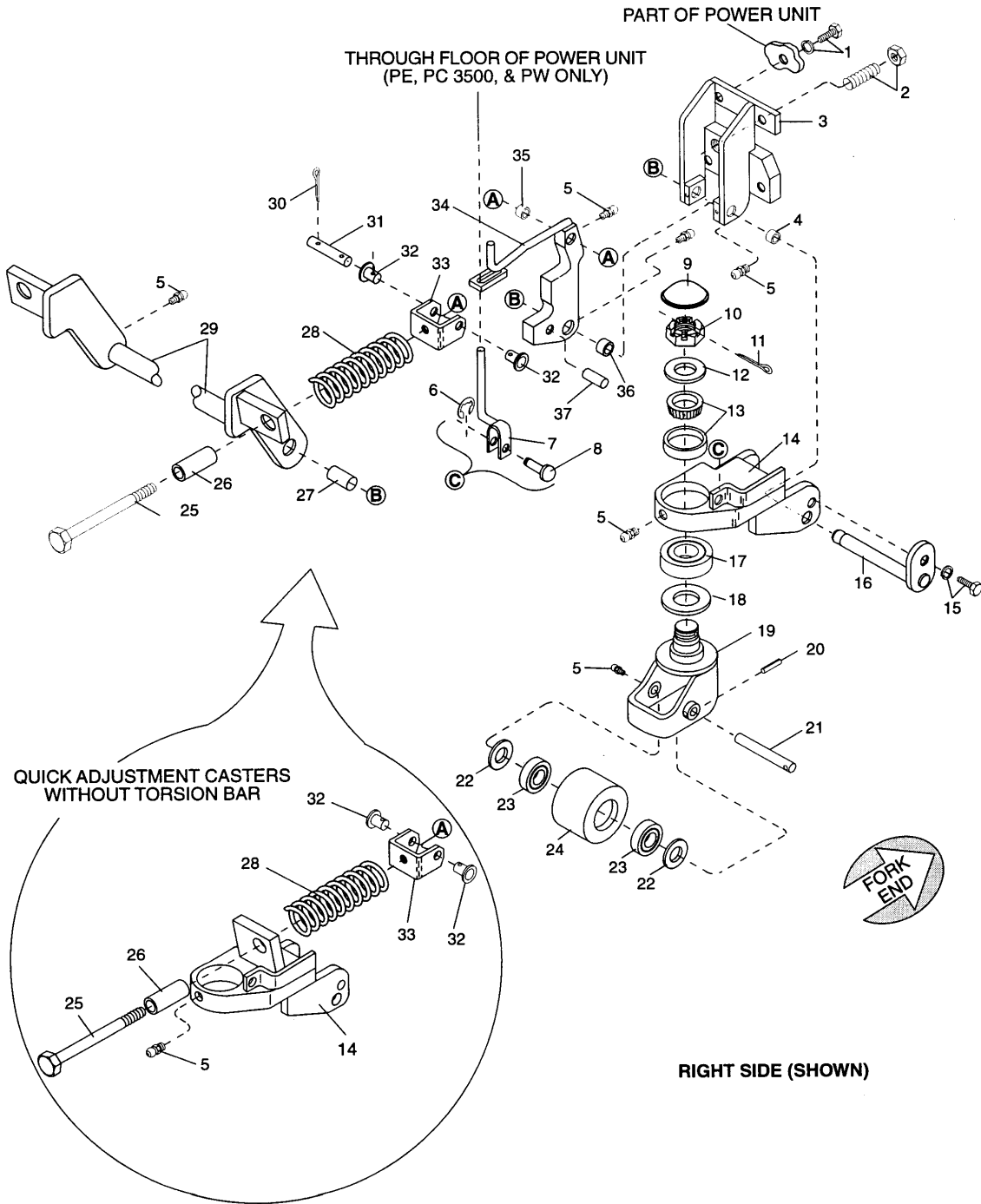




Caster Quick Adjustment and Torsion Bar (PR 3000 60, 80)

2236-02

QUICK ADJUSTMENT



STANDARD

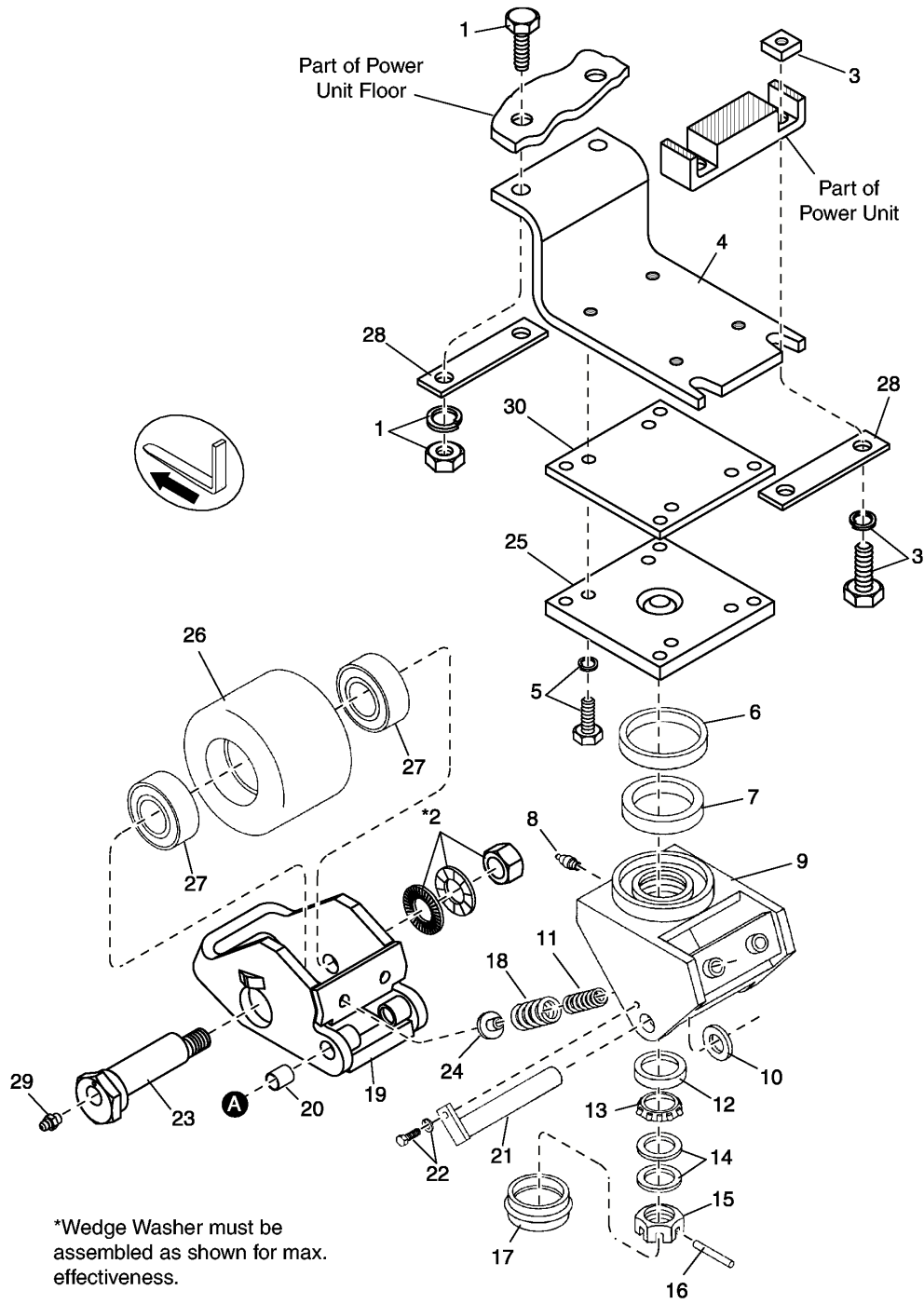


Figure 2273S-05

- [10] - Field Coil Includes Index 67
- [11] - Armature Includes Index 55
- [12] - Cover Commutator End, Includes Bearing
- [13] - Includes Index 55, 56, 59 and 61 Thru 76

DRIVE UNIT PARTS
Drive Unit - Top



Rider Pallet Trucks

- (a) See BRAKE PARTS / Brake System
- (b) See DRIVE UNIT PARTS / Traction Motor
- (c) See BRAKE PARTS / Brake Assembly
- (d) To the bottom drive unit housing
- (e) Torque to 203–271 N m (150–200 ft lb)
- (f) Torque to 34–41 N m (25–30 ft lb)
- (g) Torque to 18–31 N m (13–23 ft lb)

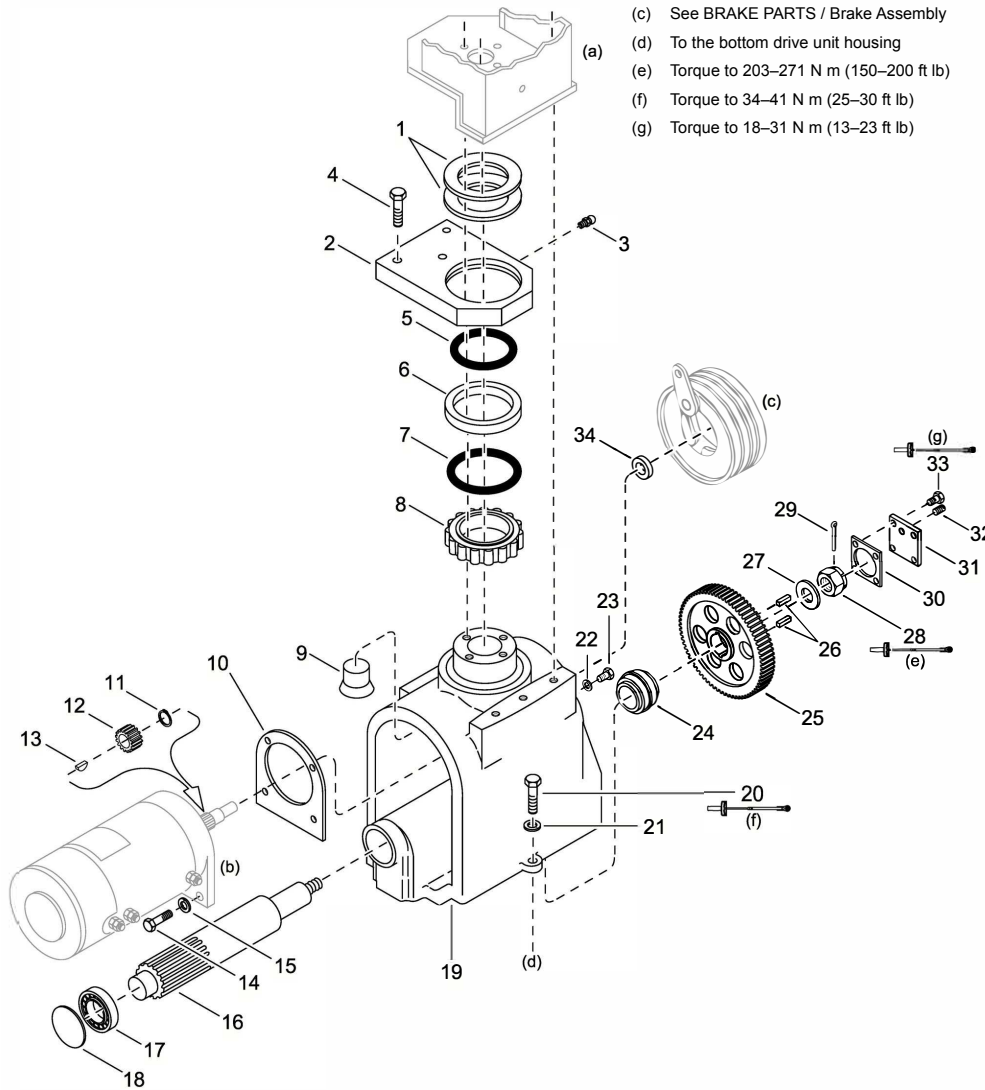


Figure 32695

03.0-12.0-050
03 Rev. 2/18
22

Crown 1996 PF10925 Rev. 2/18

INDEX	PART NUMBER	PART NAME	NUMBER REQ	
[1]	020168	MOTOR 24V DRIVE	1	
[2]	1	078499	SEAL DE	1
	2	020157	DRIVE END HEAD MACHINED	1
		060078-005	SCREW THREAD FORMING.250	3
[3]	3	065081-052	BEARING BALL	1
	4	060009-144	RING RETAINING	1
[4]	5	020167	ARMATURE ASM	1
		020159	FAN MACHINED	1
	6	113327	KIT TERMINAL STUD	1
	7	020165	FRAME AND FIELD ASM	1
	8	060078-003	SCREW THREAD FORMING.312	8
[5]	9	113328	KIT BRUSH	1
		060078-002	SCREW THREAD #8 060078-011	4
[6]	10	113329	KIT SPRING BRUSH	1
[7]	11	020018	BRUSH BOX ASM	1
		060032-033	SCREW SELF-TAPPING	4
[3]	12	065081-051	BEARING BALL	1
	13	060046-016	WASHER SPRING	1
	14	020004	COMMUTATOR END HEAD MACHINED	1
		060078-004	SCREW THREAD FORMING.250	2
[8]	15	020427-001	HEADBAND ASM	1
		020427-002	HEADBAND ASM	1
		020427-003	HEADBAND ASM	1

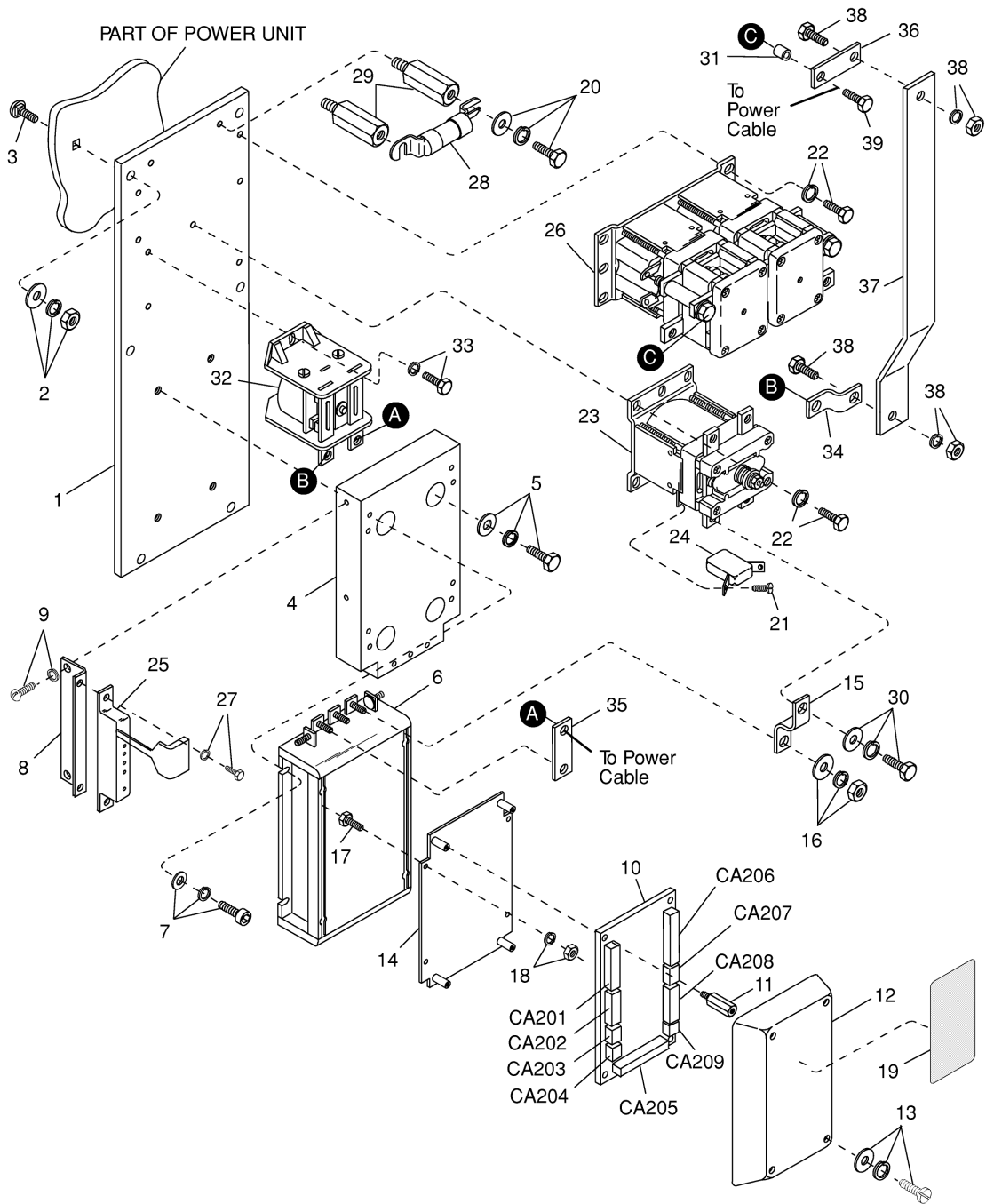
PART NOTES:

- [1] - Does Not Include Index 15
- [2] - Seal Oil
- [3] - Bearing D.E.
- [4] - Includes Fan
- [5] - Kit Brush Includes 4 Brushes
- [6] - Kit Spring Brush Includes 4 Springs
- [7] - Includes Index 10
- [8] - Open

INDEX	PART NUMBER	PART NAME	NUMBER REQ	
[1]	118014	CONTACTOR SEVCON ASM	1	
[2]	118015-001	PANEL ASSEMBLY	1	
[3]	117837	CONTACTOR PANEL ASM SEVCON	1	
[4]	118015-003	PANEL ASSEMBLY	1	
	118016	PANEL ASSEMBLY (PR) EEC	1	
1	110726	PLATE BASE	1	
2	060030-026	FLATWASHER	6	
	060005-009	LOCKWASHER	6	
	060021-011	NUT	6	
3	060017-079	SCREW 3/8"	6	
4	110634	PLATE MTG	1	
	063002-033	GE SILICONE COMPOUND,LUBRICANT	1	
5	060017-049	SCREW .375	4	
	061004-019	ADHESIVE THREAD LOCKING	1	
	060030-026	FLATWASHER	4	
	060005-009	LOCKWASHER	4	
	060021-011	NUT	4	
6	121824	CONTROLLER SEVCON EEC	1	
	063002-033	GE SILICONE COMPOUND,LUBRICANT	1	
7	060015-064	SCREW 1/4"	4	
	060030-010	FLATWASHER	4	
	060005-007	LOCKWASHER	4	
[5]	8	112190	MOUNTING PLATE	1
	9	060015-087	SCREW 1/4"	2
		060005-007	LOCKWASHER	2
		060030-068	FLATWASHER	2
	10	117499-001	PCB ASM DIST PNL	1
		111526-001	CABLE	1
		111526-002	CABLE	1
		065003-175	SLEEVING	AR
	11	104401-010	SPACER	4
	12	113515	COVER ASM	1
[6]		110739	COVER	1
	13	060013-020	SCREW #8	4
		060030-045	FLATWASHER	4
		060005-004	LOCKWASHER	4
	14	110742	PLATE ASM	1
	15	110702	BAR BUSS	1
	16	060059-001	NUT METRIC	5
		060030-026	FLATWASHER	5
		060005-009	LOCKWASHER	5
	17	060014-059	SCREW #10	4
	18	060005-005	LOCKWASHER	4
		060021-005	NUT	4
	19	069030	LABEL TRACTION SEVCON	1
	20	060015-087	SCREW 1/4"	2
		060030-060	FLATWASHER	2
		060005-007	LOCKWASHER	2
	21	060065-004	SCREW M4	6

SEVCON

4195



INDEX	PART NUMBER	PART NAME	NUMBER REQ	
	1	112168-001	COLUMN ASM WELDMENT	1
[1]		112168-002	COLUMN ASM,WELDMENT	1
[2]	2	115083	DISCHARGE METER	1
		060012-033	SCREW #6	4
[3]		130997	INDICATOR BDI/INT UNIGAGE 803	1
[4]	3	113773-004	METER HOUR LCD	1
		060012-027	SCREW #6	2
	4	107914	WELDMENT COVER	1
		060016-038	SCREW 5/16"	2
		060016-039	SCREW 5/16"	2
		060005-008	LOCKWASHER	4
[5]	5	083282	COVER	1
		060012-027	SCREW #6	2
		060005-003	LOCKWASHER	2
	6	083017-001	VINYL, PANEL	1
[6]	7	108066	SWITCH KEY ASM	1
		107151-002	KEY MOLDED	1
		107763	RING KEY	1
	8	065004-014	GROMMET	1
	9	077633	SWITCH TOGGLE	1
	10	060030-290	FLATWASHER	1
	11	117637	WASHER STEPPED	1
	12	117209	BRACKET	1
[7]	13	115565	ALARM BACK-UP	1
	14	060015-073	SCREW 1/4"	2
		060005-007	LOCKWASHER	2
		060021-006	NUT	2
[8]	15	113773-001	METER HOUR LCD	1
	16		Gearbox See Section 6.0	1
	17	060016-012	SCREW 5/16"	3
		060030-017	FLATWASHER	3
		060005-008	LOCKWASHER	3
		060021-009	NUT	3

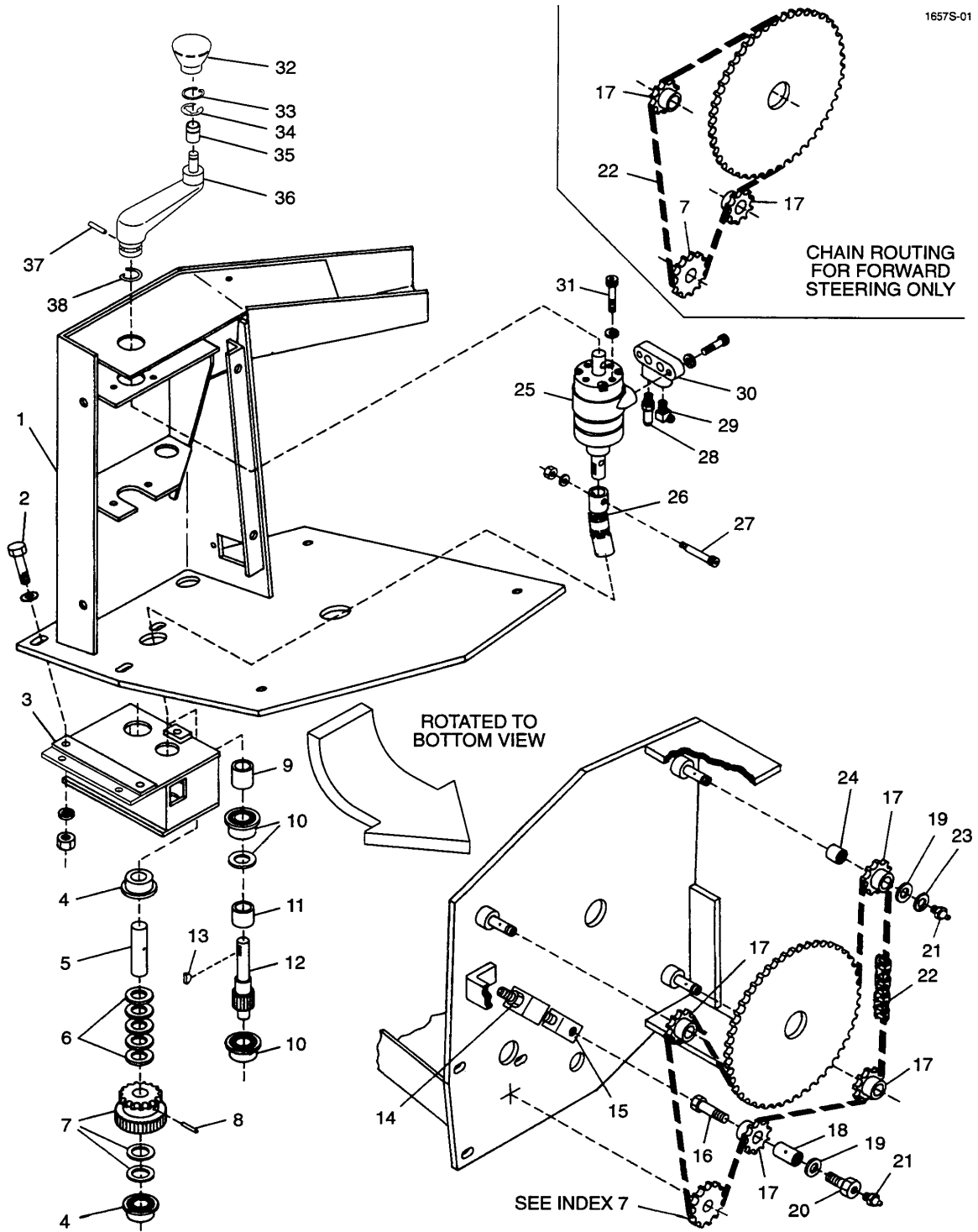
PART NOTES:

- [1] - Used With Optional Discharge Meter or Battery Interrupt
- [2] - Meter Discharge Optional V
- [3] - BDI/INT Unigage 803 Indicator
- [4] - Meter Hour Optional TT1
- [5] - Used When Optional Hour Meter is Not Used
- [6] - KYS
Includes Switch, Two Keys and Ring
- [7] - Alarm Travel HN2
- [8] - LCD TT2

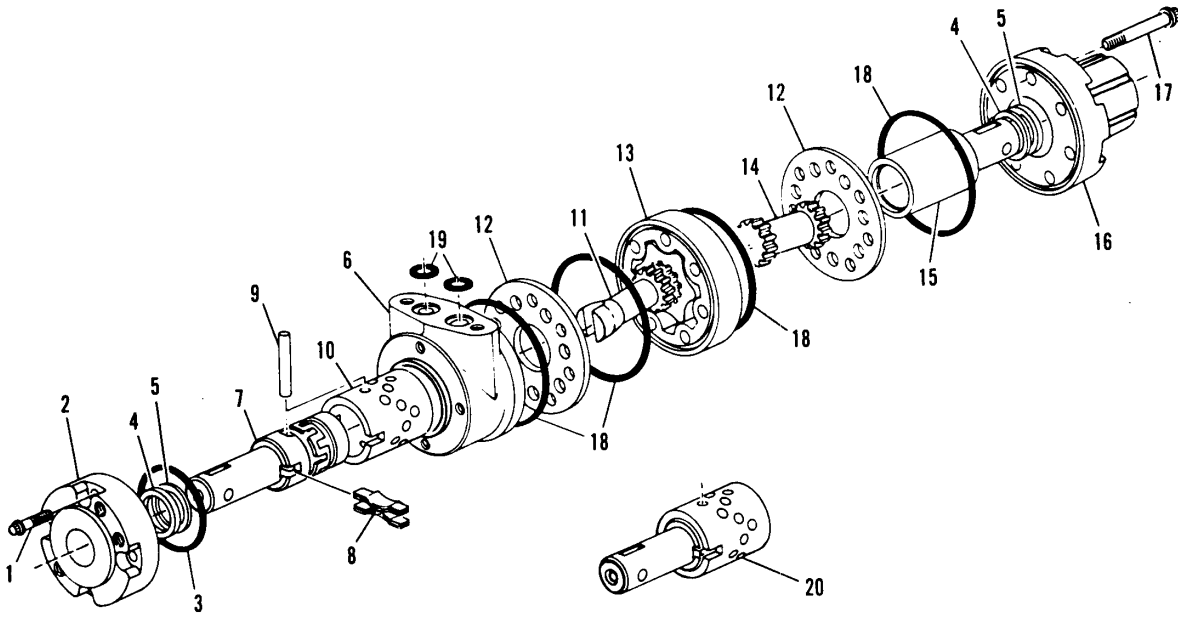
Brake System - Part 2 (PR 3000- 60, 80)

INDEX	PART NUMBER	PART NAME	NUMBER REQ
1	060015-039	SCREW 1/4"	2
	060005-006	LOCKWASHER	2
2	086543	INDICATOR DIRECTION	1
3	086236	WELDMENT, RETAINING PLATE	1
4	060016-015	SCREW 5/16"	4
5	074475	GROMMET	1
6	104983	WELDMENT, SPROCKET AND SUPPORT	1
7	060013-010	SCREW #8	1
	060005-004	LOCKWASHER	1
8	060000-039	PIN, ROLL	1
9	075171	CLAMP, TUBE, KMC # CW-0507	1
10	060017-006	SCREW 3/8"	3
	060005-009	LOCKWASHER	3
	060030-026	FLATWASHER	3
11	065004-004	GROMMET	1
12	060016-042	SCREW 5/16"	4
	060005-008	LOCKWASHER	4
13	082559	BRACKET, BRAKE	1
	060016-010	SCREW 5/16	2
	060005-037	LOCKWASHER	2
14	083313	WASHER, SPECIAL	1
15	090215	SPRING COMPRESSION	1
16	082925	SPRING, COMPRESSION	1
17	075154	WELDMENT, BUSHING	1
18	081972	ROD, PUSH	1
19	060021-009	NUT	2
	060005-008	LOCKWASHER	1
20	060030-017	FLATWASHER	1
21	060038-006	PIN COTTER	1
22	060030-041	FLATWASHER	1
23	060038-005	PIN COTTER	1
24	060000-009	PIN ROLL	2
25	079420	CRANK, BELL	1
26	074790	YOKE	1
27	085033	ROD BRAKE WELDMENT	1
28	060021-009	NUT	2
29	081974	BLOCK PIVOT	1
30	077657-002	PIN BRAKE	1
31	060009-038	RING RETAINING	2
32	073823	BEARING SLEEVE	1
33	082551	WELDMENT, BRACKET, CRANK	1
	060016-003	SCREW 5/16"	2
	060005-008	LOCKWASHER	2
34	078879	SWITCH	1
	060005-010	LOCKWASHER	1
	060021-010	NUT	1
35	060016-003	SCREW 5/16"	2
	060005-008	LOCKWASHER	2
	060021-009	NUT	2

Steering System Power (PR 3000- 60, 80)



Torque Generator (PR 3000- 60, 80)



92642 TORQUE GENERATOR

Load Wheel - Single Axle - 180mm (7 in) Fork

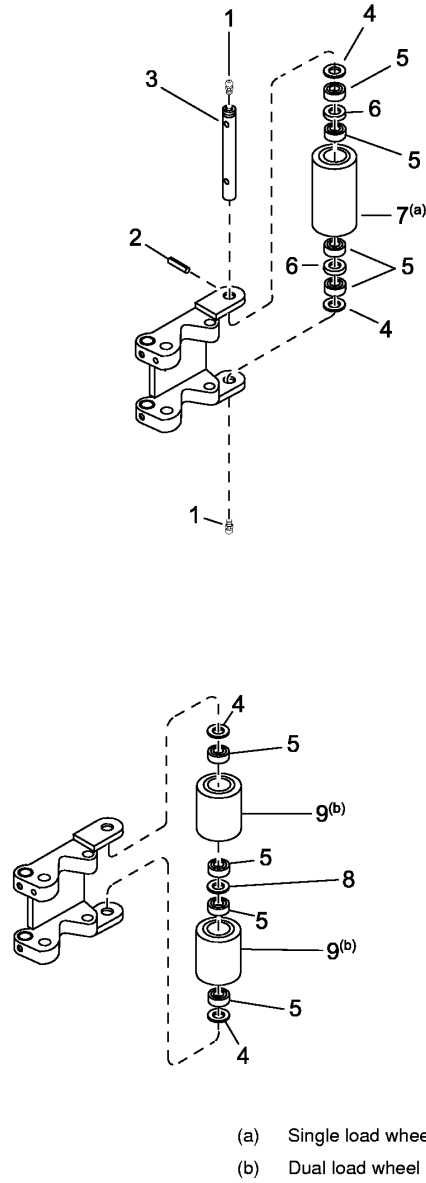
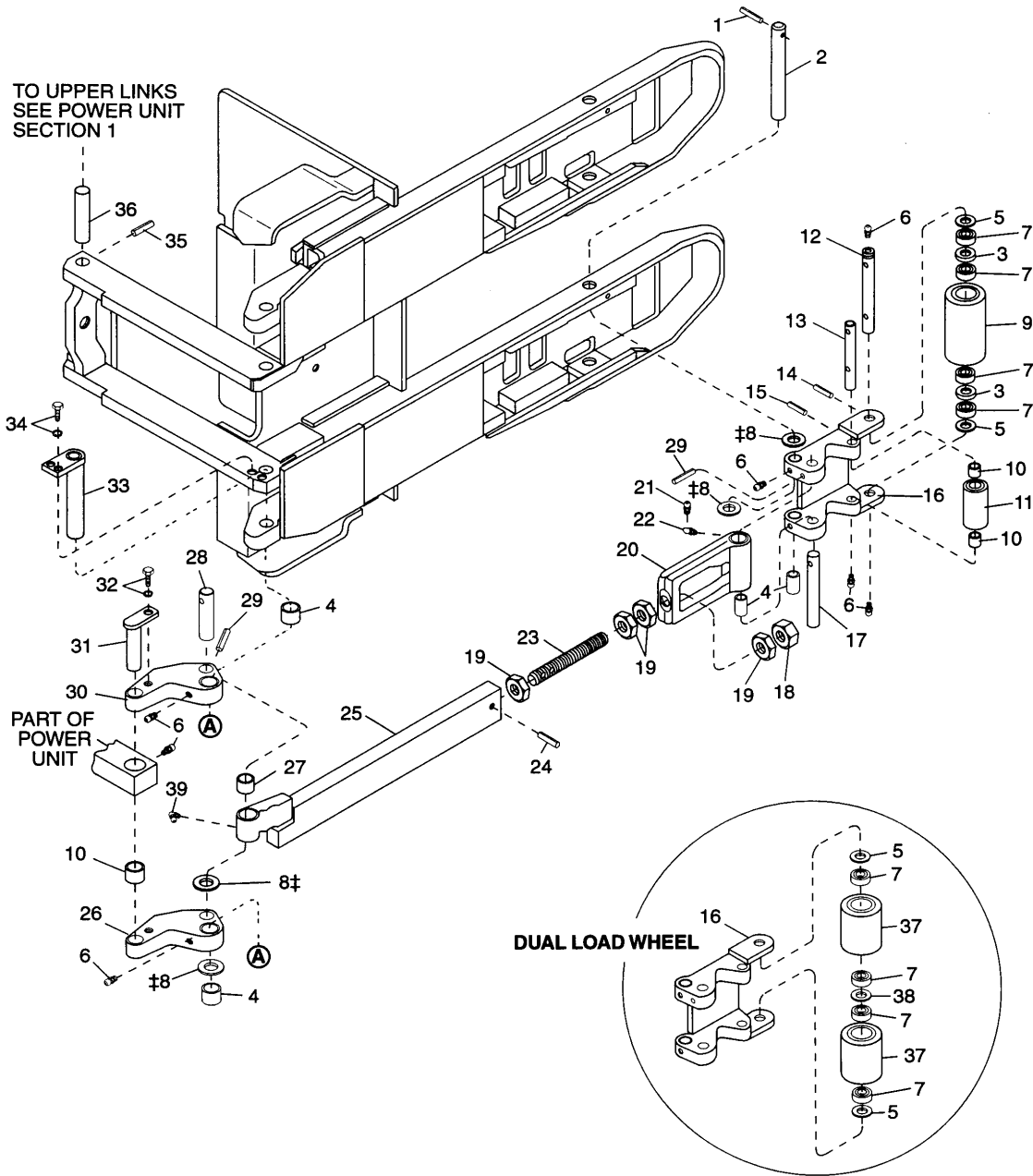


Figure 22599

Lift Linkage - Fork - Single Axle (PR 3000- 60, 80)

SINGLE AXLE 9 in. & 10 in. (230 mm & 255 mm) FORK

2257-03



CLICK HERE TO **DOWNLOAD** THE COMPLETE MANUAL

- Thank you very much for reading the preview of the manual.
- You can download the complete manual from: www.heydownloads.com by clicking the link below



- Please note: If there is no response to CLICKING the link, please download this PDF first and then click on it.

CLICK HERE TO **DOWNLOAD** THE COMPLETE MANUAL

Lift Linkage - Fork - Single Axle (PR 3000- 60, 80)

INDEX	PART NUMBER	PART NAME	NUMBER REQ
1	060000-104	PIN ROLL	2
2	115510	AXLE	2
3	100463	SPACER	4
4	065117-001	BUSHING HTX	12
5	060030-050	FLATWASHER	6
6	100779	FITTING LUBRICATION	16
7	065081-021	BEARING BALL	8
8	060030-050	FLATWASHER	8
9	100462	WHEEL	2
	100462	WHEEL	2
10	065117-003	BUSHING HTX	8
11	115508	ROLLER EXIT	2
12	116802	AXLE LOAD WHEEL	2
13	115509	AXLE	2
14	060000-081	PIN ROLL	2
15	060000-036	PIN ROLL	2
[1]	115491	RISER ASSY	2
	115496	AXLE	2
	060021-096	NUT	2
	061004-025	ADHESIVE THREAD LOCKING	1
	060021-095	NUT	8
	061004-025	ADHESIVE THREAD LOCKING	1
[2]	115497	END TENSION BAR ASM	2
	089297	FITTING LUBE BODY	4
	089296	FITTING LUBE TIP	4
	115883	Bar Threaded	2
	060000-067	PIN ROLL	2
		Bar Tension Includes Index 27	2
[3]	115517	LINK OUTBOARD ASM	2
[3]	115517	LINK OUTBOARD ASM	2
	065117-002	BUSHING HTX	4
	115515	AXLE	2
	060000-109	ROLL PIN	4
[4]	115516	LINK INBOARD ASM	2
	115521	SHAFT WELDMENT	2
	060017-007	SCREW 3/8"	2
	060005-009	LOCKWASHER	2
	115518	AXLE WELDMENT	2
	060017-007	SCREW 3/8"	4
	060005-009	LOCKWASHER	4
	060000-036	PIN ROLL	2
	116801	PIN	2
[5]	092537	WHEEL & BEARING ASSY	2
[6]	077084	WHEEL LOAD POLY-CROSSES TO-302	2
	060030-050	FLATWASHER	AR
	080573	FITTING LUBRICATION	2

PART NOTES:

- [1] - Riser Includes Bushings
 [2] - End Torsion Bar Includes Bushings

INDEX	PART NUMBER	PART NAME	NUMBER REQ	
1	060000-104	PIN ROLL	2	
2	115510	AXLE	2	
3	116801	PIN	2	
4	060000-036	PIN ROLL	2	
5	060017-007	SCREW 3/8"	4	
6	060005-009	LOCKWASHER	4	
7	115518	AXLE WELDMENT	2	
8	060017-007	SCREW 3/8"	2	
9	127349	CLIP RETAINER	2	
	061004-026	ADHESIVE THREAD LOCKING	1	
10	115515	AXLE	2	
11	060000-109	ROLL PIN	2	
12	065117-001	BUSHING HTX	6	
13	115521	SHAFT WELDMENT	2	
[1]	14	115516	LINK INBOARD ASM	2
	15	100779	FITTING LUBRICATION	6
	16	080573	FITTING LUBRICATION	2
	17	065117-003	BUSHING HTX	4
[2]	18	115517	LINK OUTBOARD ASM	2
	19	060030-050	FLATWASHER	4
	20	065117-002	BUSHING HTX	4
[3]	21	Tension Bar Kit	2	
	22	060000-080	PIN ROLL	2
	23	060021-095	NUT	8
		061004-019	ADHESIVE THREAD LOCKING	1
[4]	24	125266-001	KIT TENON LARGE BATTERY	2
[5]		125266-002	KIT TENON SMALL BATTERY	2
	25	060021-096	NUT	2
		061004-019	ADHESIVE THREAD LOCKING	1

PART NOTES:

- [1] - Includes 12
- [2] - Includes 53
- [3] - Before ordering Tension Bar Kit, fork spread, tension bar length, tension bar type and battery compartment size must be known. See following charts.
Includes Index 20
- [4] - 335 mm (13.19 in) Battery Compartment
Includes Index 22, 23 & 25.
- [5] - Includes Index 22, 23 & 25.
170 & 200 mm (6.69 & 7.94 in) Battery Compartment(2)

INDEX	PART NUMBER	PART NAME	NUMBER REQ
[1] 21	125237-007	BAR TENSION ASM	2
[1]	125237-008	BAR TENSION ASM	2
[1]	125237-009	BAR TENSION ASM	2
[1]	125237-010	BAR TENSION ASM	2
[1]	125237-011	BAR TENSION ASM	2
[1]	125237-012	BAR TENSION ASM	2
[1]	125237-013	BAR TENSION ASM	2
[1]	125237-014	BAR TENSION ASM	2
[1]	125237-015	BAR TENSION ASM	2
[1]	125237-016	BAR TENSION ASM	2
[1]	125237-017	BAR TENSION ASM	2
[1]	125237-018	BAR TENSION ASM	2
[1]	125237-019	BAR TENSION ASM	2
[1]	125237-020	BAR TENSION ASM	2
[1]	125237-021	BAR TENSION ASM	2
[1]	125237-022	BAR TENSION ASM	2
[1]	125237-023	BAR TENSION ASM	2
[1]	125237-024	BAR TENSION ASM	2
[1]	125237-025	BAR TENSION ASM	2
[1]	125237-026	BAR TENSION ASM	2
[1]	125237-027	BAR TENSION ASM	2
[1]	125237-028	BAR TENSION ASM	2
[1]	125237-029	BAR TENSION ASM	2
[1]	125237-030	BAR TENSION ASM	2
[1]	125237-031	BAR TENSION ASM	2
[1]	125237-032	BAR TENSION ASM	2
[1]	125237-033	BAR TENSION ASM	2
[1]	125237-034	BAR TENSION ASM	2
[1]	125237-035	BAR TENSION ASM	2
[1]	125237-036	BAR TENSION ASM	2
[1]	125237-061	BAR TENSION ASM	2
[1]	125237-062	BAR TENSION ASM	2
[1]	125237-063	BAR TENSION ASM	2
[1]	125237-064	BAR TENSION ASM	2
[1]	125237-065	BAR TENSION ASM	2
[1]	125237-066	BAR TENSION ASM	2

PART NOTES:

- [1] - 335 mm (13.19 in) - Standard Tip Fork - 24 Volt

INDEX	PART NUMBER	PART NAME	NUMBER REQ
1	060000-104	PIN ROLL	2
2	115510	AXLE	2
3	116801	PIN	2
4	060000-036	PIN ROLL	2
5	060017-007	SCREW 3/8"	4
6	060005-009	LOCKWASHER	4
7	115518	AXLE WELDMENT	2
8	060017-007	SCREW 3/8"	2
9	127349	CLIP RETAINER	2
	061004-026	ADHESIVE THREAD LOCKING	1
10	115515	AXLE	2
11	060000-109	ROLL PIN	2
12	065117-001	BUSHING HTX	6
13	115521	SHAFT WELDMENT	2
14	115516	LINK INBOARD ASM	2
15	100779	FITTING LUBRICATION	6
16	080573	FITTING LUBRICATION	2
17	065117-003	BUSHING HTX	4
18	115517	LINK OUTBOARD ASM	2
19	060030-050	FLATWASHER	4
20	065117-002	BUSHING HTX	4
21		Tension bar kit includes index 20	2
22	060000-080	PIN ROLL	2
23	060021-095	NUT	8
	061004-019	ADHESIVE THREAD LOCKING	1
24	125266-001	KIT TENON LARGE BATTERY	2
	125266-002	KIT TENON SMALL BATTERY	2
25	060021-096	NUT	2
	061004-019	ADHESIVE THREAD LOCKING	1

INDEX	PART NUMBER	PART NAME	NUMBER REQ
21	125237-007	BAR TENSION ASM	1
	125237-013	BAR TENSION ASM	1
	125237-019	BAR TENSION ASM	1
	125237-025	BAR TENSION ASM	1
	125237-031	BAR TENSION ASM	1
	125237-061	BAR TENSION ASM	1
	125237-009	BAR TENSION ASM	1
	125237-015	BAR TENSION ASM	1
	125237-021	BAR TENSION ASM	1
	125237-027	BAR TENSION ASM	1
	125237-033	BAR TENSION ASM	1
	125237-063	BAR TENSION ASM	1
	125237-011	BAR TENSION ASM	1
	125237-017	BAR TENSION ASM	1
	125237-023	BAR TENSION ASM	1
	125237-029	BAR TENSION ASM	1
	125237-035	BAR TENSION ASM	1
	125237-065	BAR TENSION ASM	1
	125237-008	BAR TENSION ASM	1
	125237-014	BAR TENSION ASM	1
	125237-020	BAR TENSION ASM	1
	125237-026	BAR TENSION ASM	1
	125237-032	BAR TENSION ASM	1
	125237-062	BAR TENSION ASM	1
	125237-010	BAR TENSION ASM	1
	125237-016	BAR TENSION ASM	1
	125237-022	BAR TENSION ASM	1
	125237-028	BAR TENSION ASM	1
	125237-034	BAR TENSION ASM	1
	125237-064	BAR TENSION ASM	1
	125237-012	BAR TENSION ASM	1
	125237-018	BAR TENSION ASM	1
	125237-024	BAR TENSION ASM	1
	125237-030	BAR TENSION ASM	1
	125237-036	BAR TENSION ASM	1
	125237-066	BAR TENSION ASM	1

Lift Linkage - Fork - Tandem Axle (PR 3000- 60, 80)

INDEX	PART NUMBER	PART NAME	NUMBER REQ	
	1	060000-104	PIN ROLL	6
	2	115510	AXLE	2
	3	116804	AXLE	4
	4	065117-001	BUSHING HTX	12
[1]	5	101697	PLATE SIDE ASM	4
		100570	PLATE SIDE	4
	6	100779	FITTING LUBRICATION	18
	7	065081-021	BEARING BALL	8
	8	060030-050	FLATWASHER	8
	9	093656-010	WHEEL ASM 3.25x5.00x2.047x0.59	2
		077086-010	LOAD WHEEL	4
	10	065117-003	BUSHING HTX	6
	11	100568	BEARING RACE	4
	12	060030-050	FLATWASHER	8
[2]	13	116793	RISER ASM	2
		116792	Riser	2
	14	115496	AXLE	2
	15	060021-096	NUT	2
		061004-025	ADHESIVE THREAD LOCKING	1
	16	060021-095	NUT	8
		061004-025	ADHESIVE THREAD LOCKING	1
	17	089297	FITTING LUBE BODY	4
	18	089296	FITTING LUBE TIP	4
[3]	19	115497	END TENSION BAR ASM	2
		115873	END TENSION FORGING	2
	20	115883	Bar Threaded	2
	21	060000-067	PIN ROLL	2
	22		Bar Tension - Includes Bushing	2
[4]	23	115517	LINK OUTBOARD ASM	2
[5]		116928	LINK OUTBOARD ASM	2
	24	065117-002	BUSHING HTX	2
	25	115515	AXLE	4
	26	060000-109	ROLL PIN	2
[6]	27	115516	LINK INBOARD ASM	2
[7]		116927	LINK INBOARD ASM	2
	28	115521	SHAFT WELDMENT	2
	29	060017-007	SCREW 3/8"	2
		060005-009	LOCKWASHER	2
	30	115518	AXLE WELDMENT	2
	31	060017-007	SCREW 3/8"	4
		060005-009	LOCKWASHER	4
	32	060000-036	PIN ROLL	2
	33	116801	PIN	2
	34	080573	FITTING LUBRICATION	2

PART NOTES:

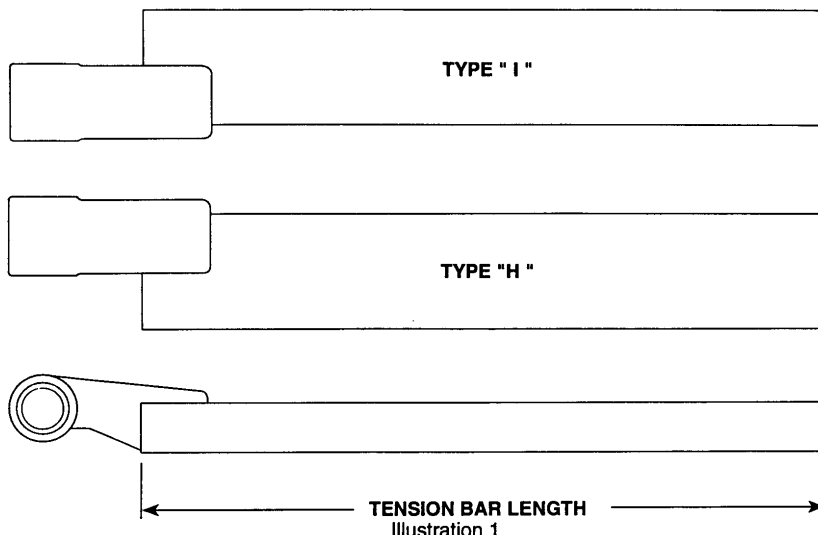
- [1] - Includes Bushings
- [2] - Riser - Includes Index 4
- [3] - End Tension Bar Includes Bushing
- [4] - Link Outboard - PE, PW, PR - Shown Includes Bushing



LIFT LINKAGE

TENSION BARS

2263



TANDEM AXLE

INDEX 22 - TENSION BAR PART NO. 115882- (See Tension Bar Type Below for Dash No.)

PE, PW Battery Compartment Width - 6.69 in. (170mm) - Standard Tip Fork - 24 Volt

Fork Spread		Fork Length		*Tension Bar Type		Tension Bar Reference Length	
in.	mm	in.	mm	H	I	in.	mm
22.12 or 27.12	562 or 690	36	915	-127	-128	16.06	408
22.12 or 27.12	562 or 690	42	1065	-133	-134	22.06	560
22.12 or 27.12	562 or 690	48	1220	-139	-140	28.06	712
22.12 or 27.12	562 or 690	54	1370	-145	-146	34.06	865
22.12 or 27.12	562 or 690	60	1524	-151	-152	40.06	1017
22.12 or 27.12	562 or 690	96	2440	-181	-182	76.06	1932
23.12 or 26.12	587 or 663	36	915	-129	-130	16.06	408
23.12 or 26.12	587 or 663	42	1065	-135	-136	22.06	560
23.12 or 26.12	587 or 663	48	1220	-141	-142	28.06	712
23.12 or 26.12	587 or 663	54	1370	-147	-148	34.06	865
23.12 or 26.12	587 or 663	60	1524	-153	-154	40.06	1017
23.12 or 26.12	587 or 663	96	2440	-183	-184	76.06	1932
24.12 or 25.12	613 or 638	36	915	-131	-132	16.06	408
24.12 or 25.12	613 or 638	42	1065	-137	-138	22.06	560
24.12 or 25.12	613 or 638	48	1220	-143	-144	28.06	712
24.12 or 25.12	613 or 638	54	1370	-149	-150	34.06	865
24.12 or 25.12	613 or 638	60	1524	-155	-156	40.06	1017
24.12 or 25.12	613 or 638	96	2440	-185	-186	76.06	1932

* Refer to Illustration 1 for tension bar type

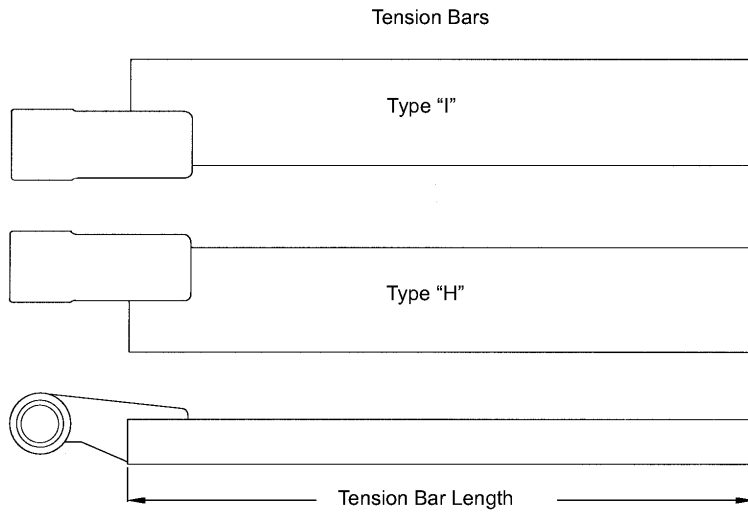
Crown 1995 PF-10578

Printed in U.S.A.

07.6-6435-102-SUP-1

07.6-6435-102-SUP-1

LIFTING MECHANISM
Lift Linkage - Tandem Axle



Index 18 - Tension Bar Kit Part No. 123237-XXX.
See Tension Bar Kit Type in Following Charts for Dash Number.

Figure 2263-01

INDEX	PART NUMBER	PART NAME	NUMBER REQ
[1] 18	125237-199	BAR TENSION ASM	1
[1]	125237-200	BAR TENSION ASM	1
[1]	125237-201	BAR TENSION ASM	1
[1]	125237-202	BAR TENSION ASM	1
[1]	125237-203	BAR TENSION ASM	1
[1]	125237-204	BAR TENSION ASM	1
[2]	125237-205	BAR TENSION ASM	1
[2]	125237-206	BAR TENSION ASM	1
[2]	125237-207	BAR TENSION ASM	1
[2]	125237-208	BAR TENSION ASM	1
[2]	125237-209	BAR TENSION ASM	1
[2]	125237-210	BAR TENSION ASM	1

PART NOTES:

- [1] - 170 mm (6.69 in) - Extended Tip Fork
- [2] - 335 mm (13.19 in) Extended Tip Fork

INDEX	PART NUMBER	PART NAME	NUMBER REQ
-------	----------------	-----------	---------------

Battery and Retainers (PR 3000- 60, 80)

INDEX	PART NUMBER	PART NAME	NUMBER REQ
1		Battery	1
2		Retainer RH	1
		Retainer LH	1
[1] 3	117006	LATCH	2
	117007	Latch w/o Load Backrest	2
	060030-156	FLATWASHER	4
	060009-136	RING RETAINING	2
4	116723	SPRING	2
	060014-042	SCREW #10	4
5	116724	BLOCK TAPPED	2
6		Spacer	2
		Screw 5/16"	4
	060030-040	FLATWASHER	4
	060005-008	LOCKWASHER	4

PART NOTES:

[1] - Latch w/Load Backrest

Battery and Retainers (PR 3000- 60, 80)

INDEX	PART NUMBER	PART NAME	NUMBER REQ
	119114	BATTERY SPACER WELDMENT	
	119124	BATTERY RETAINER WELDMENT LH	
	119104	BATTERY RETAINER WELDMENT LH	
	119120	BATTERY RETAINER WELDMENT LH	
	119100	BATTERY RETAINER WELDMENT LH	
	119123	BATTERY RETAINER WELDMENT RH	
	119103	BATTERY RETAINER WELDMENT RH	
	119119	BATTERY RETAINER WELDMENT RH	
	119099	BATTERY RETAINER WELDMENT RH	
	119122	BATTERY RETAINER WELDMENT LH	
	119102	BATTERY RETAINER WELDMENT LH	
	119121	BATTERY RETAINER WELDMENT RH	
	119101	BATTERY RETAINER WELDMENT RH	
	119118	BATTERY SPACER WELDMENT	
	118774	BATTERY RETAINER WELDMENT	
	118773	BATTERY RETAINER WELDMENT	
	117398-001	BATTERY 24 VOLT	
	117392-001	BATTERY 12 VOLT	
	117393-001	BATTERY 12 VOLT	
	117394-001	BATTERY 24 VOLT	
	117395-001	BATTERY 24 VOLT	
	117396-001	BATTERY 24 VOLT	
	117397-001	BATTERY 24 VOLT	
	117399-001	BATTERY 24 VOLT	
	117400-001	BATTERY 24 VOLT	
	117400-002	BATTERY 24 VOLT	
	117401-001	BATTERY 24 VOLT	
1		Battery	1
2		Spacer	2
3		Retainer Battery L.H.	1

Load Backrest - Hinged (PR 3000- 60, 80)

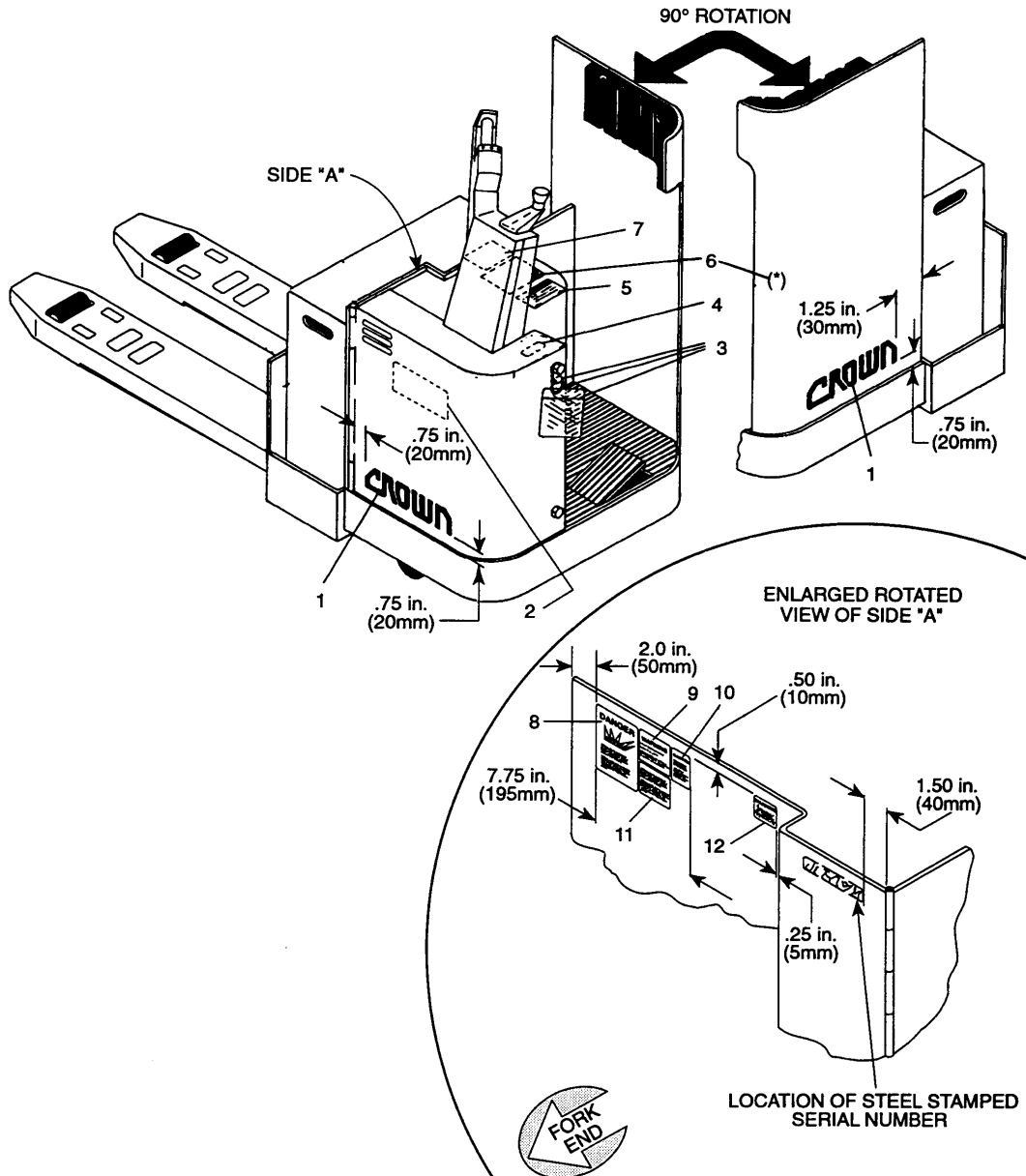
INDEX	PART NUMBER	PART NAME	NUMBER REQ
[1]	115489-001	LOAD BACKREST ASSEMBLY 48"	1
[2]	115489-002	LOAD BACKREST ASSEMBLY 60"	1
[3]	115489-005	LOAD BACKREST ASSEMBLY 72"	1
[4]	115489-003	LOAD BACKREST ASSEMBLY 48"	1
[5]	115489-004	KIT HINGED LBR 60	1
[6]	115489-006	LOAD BACKREST ASSEMBLY 72"	1
[7]	115489-007	BACKREST LOAD	1
[8]	115489-008	BACKREST LOAD	1
[9]	115489-009	BACKREST LOAD (115489S009)	1
[10] 1	115488	BACKREST LOAD WLDT 48"	1
[11]	115415	BACKREST LOAD WLDT 60"	1
[12]	117206	BACKREST LOAD WELDMENT 72"	1
[13]	115416	BACKREST LOAD WLDT 48"	1
[14]	115417	BACKREST LOAD WLDT 60in HINGE	1
[15]	117208	BACKREST LOAD WELDMENT 72"	1
[16]	118549	Backrest Load - 1220 mm (48 in.)	1
[16]	118550	Backrest Load - 1525 mm (60 in.)	1
[17]	118551	BACKREST LOAD RE-OP 72"	1
2	115840	ROD	2
3	115841	GUIDE	1
4	115842	GUIDE	1
5	115857	BUTTON	1
6	115832	SPRING COMPRESSION	1
7	115830	SPRING COMPRESSION	4
8	115839	LATCH	1
9	060030-274	FLATWASHER	2
10	060000-074	PIN ROLL	8
11	115451	HANDLE MACHINING	1
12	060000-100	PIN ROLL	6
13	115463	WELDMENT LBR MTG RH	1
	115464	WELDMENT LBR MTG LH	1
14	115484	WELDMENT LINKAGE	2
15	115483	PIN	2
16	082639	SPRING COMPRESSION	2
17	115856	WELDMENT SPRING STOP	2
18	060021-047	NUT	2
19	060017-047	SCREW 3/8"	4
20	115460	LATCH	1
21	060016-030	SCREW 5/16"	2
22	115915	ROD	2

PART NOTES:

- [1] - 48 in./1220 mm tall
Used on: 7.94 in. (200 mm) or larger Battery Compartment
- [2] - 60 in./1525 mm tall
Used on: 7.94 in. (200 mm) or larger Battery Compartment
- [3] - 72 in./1829 mm tall
Used on: 7.94 in. (200 mm) or larger Battery Compartment
- [4] - 48 in./1220 mm tall
Used on: 6.69 in. (170 mm) Battery Compartment
- [5] - 60 in./1525 mm tall
Used on: 6.69 in. (170 mm) Battery Compartment

INDEX	PART NUMBER	PART NAME	NUMBER REQ
	115251-028-03	FORK WELDMENT	
	115251-027-05	FORK WELDMENT	
	115264-027-03	FORK WELDMENT	
	115265-028-05	FORK WELDMENT	

INDEX	PART NUMBER	PART NAME	NUMBER REQ
	119157-027-06	FORK WELDMENT	
	119158-022-03	FORK WELDMENT	
	119158-027-08	FORK WELDMENT	



100462 Wheel 3.25 x 6.50 x 2.047 x 1.44 inch Single
 077084 Wheel 3.25 x 3.25 x 2.047 x 0.59 inch Dual
 077086 Wheel 3.25 x 5.00 x 2.047 x 0.59 inch Tandem
 083179 Wheel 4.00 x 2.50 x 2.047 x 0.59 inch Caster

	Compound Number	Shore A Hardness	Composition	Application Types			
				Wet/Freezer Resistance to Poor Traction	Dock Boards Rough Floors Floor Debris Resistance to Chunking	Heavy Loads Long Runs Resistance to Extreme Heat	Floor Debris Resistance to Flat Spotting
100 Series Light Duty	100 Series Light Duty wheel compounds are best suited for light loads and intermittent use						
	101	93A	polyether				
	102	95A	polyether				
200 Series Mid-Range	200 Series Mid-Range wheels are designed for light to medium loads and short to medium runs						
	201	83A	polyester	•	•		
	202	83A	polyester	•	•		
	203	83A	polyester	•	•		
	204	85A	polyester	•	•		
300 Series High Capacity	300 Series High Capacity are for the typical demands of most applications. High capacity wheel compounds designed for high capacities and long runs.						
	301	95A	polyether	•	•	•	•
	302	95A	polyester	•	•	•	•
	303	95A	polyester	•	•	•	•
	304	95A	polyester	•	•	•	•
	305	95A	polyether	•	•	•	•
400 Series Heavy Duty	400 Series Heavy Duty wheels are designed for maximum capacities and extreme runs.						
	401	93A	vulkollan	When your application consists of heavy loads, long runs and extreme heat, beyond the capabilities of the 300 Series High Capacity wheels, the premium 400 Series Heavy Duty compounds are designed for maximum performance.			
	402	99A	polyether				

Fig. 1

Polyester - provides greater cut and tear resistance and overall durability

Polyether - provides greater load bearing capacity and heat resistance

Shore A Hardness Scale

0 - 100 range

30 is comparable to a rubber band. Typically more cut and tear resistant and provides a smoother ride.

60 is comparable to a car tire. Typically provide improved travel speeds, due to less rolling resistance, and generates less heat.

PF25775

CLICK HERE TO **DOWNLOAD** THE COMPLETE MANUAL

- Thank you very much for reading the preview of the manual.
- You can download the complete manual from: www.heydownloads.com by clicking the link below



- Please note: If there is no response to CLICKING the link, please download this PDF first and then click on it.

CLICK HERE TO **DOWNLOAD** THE COMPLETE MANUAL