

ILLUSTRATED PARTS MANUAL  
FOR  
SELF-PROPELLED CONDOR  
MODELS 48, 50, 56, 58, 68 AND 76  
(Starting with Serial No. 4801)



Note: Additional copies of this Manual (Part No. 92201) may be obtained through the Parts Department at Calavar Corporation.

**92201**

CLICK HERE TO **DOWNLOAD** THE COMPLETE MANUAL

- Thank you very much for reading the preview of the manual.
- You can download the complete manual from: [www.heydownloads.com](http://www.heydownloads.com) by clicking the link below



- Please note: If there is no response to CLICKING the link, please download this PDF first and then click on it.

CLICK HERE TO **DOWNLOAD** THE COMPLETE MANUAL

FIGURE 1C SELF - PROPELLED CONDOR SAFETY DECALS & PLACARDS

**1**

CALAVAR CONDOR

CAUTION

DO NOT OPERATE THE AERIAL LIFT WITH THE VEHICLE ON SLOPES IN EXCESS OF 5 DEGREES IN COMPLIANCE WITH ANSI BULLETIN A92.2 - 1969.

TRAVEL CONFIGURATION

NORMAL TRAVEL POSITION THE BOOM SHALL BE RETRACTED, POSITIONED OVER THE DRIVING AXLE AND ELEVATED TO PROVIDE ADEQUATE GROUND CLEARANCE FOR THE PLATFORM.

WARNING

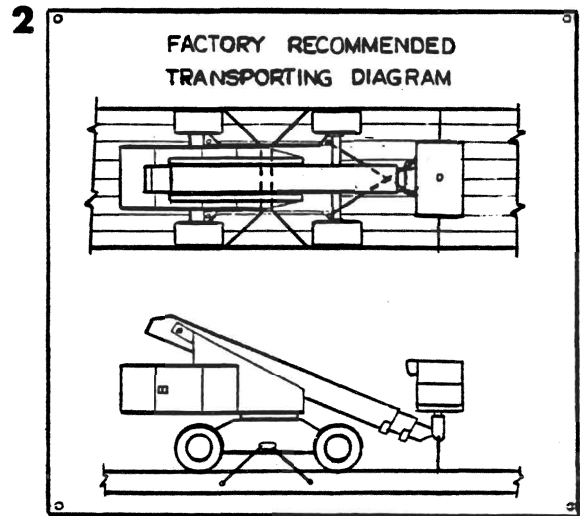
SEVERE DAMAGE TO BOOM CABLE ASSEMBLIES WILL BE CAUSED BY-

- A) DRIVING EXTENDED BOOM INTO STATIONARY OBJECTS.
- B) DRIVING OBJECTS INTO STATIONARY BOOM.

VISUAL INSPECTION OF BOOM EXTENSION CABLES MUST BE ACCOMPLISHED PERIODICALLY TO DETERMINE ANY DAMAGE. DAMAGED CABLES MUST BE REPLACED IMMEDIATELY. FAILURE TO DO SO WILL RESULT IN A DANGEROUS CONDITION TO OPERATOR AND EQUIPMENT.

21416

21416



40783

2- Also located opposite side and on rear of carriage.

**3**

**DO NOT LIFT WHEELS  
WITH BOOM**

21971-2

21971-2

3- Also located on opposite side and inside of both doors.

**4**

21769

ON

○

OFF

**115 VAC** BEFORE ENERGIZING 115 VAC,  
ALLOW A 2 MINUTE DELAY AFTER ENGINE  
SHUT OFF.

DO NOT ATTEMPT TO START ENGINE WITH  
THIS SWITCH ON.

4- Option 21647

21769

**5**

**CAUTION**

THIS SELF-PROPELLED CONDOR IS EQUIPPED WITH SLOPE SENSORS AND INDICATOR LIGHT.

WHEN BOOM IS ABOVE HORIZONTAL AND THE MACHINE IS BEING DRIVEN UP, DOWN, OR ON A SIDE GRADE AT 5° OUT OF LEVEL, THE INDICATOR LIGHT WILL COME ON AND ALL BOOM FUNCTIONS WILL BE INOPERABLE.

TO CORRECT CONDITION---(DO NOT LOWER BOOM WITH EMERGENCY LOWERING). REVERSE DIRECTION OF GROUND TRAVEL UNTIL LIGHT GOES OUT INDICATING THE CONDOR IS AGAIN LESS THAN 5° OUT OF LEVEL AND THE BOOM FUNCTIONS ARE AGAIN OPERABLE.

21880

**6**

DANGER

YOU MUST NOT OPERATE THIS DEVICE UNLESS:

1. YOU HAVE BEEN TRAINED IN THE SAFE OPERATION OF THIS DEVICE, AND
2. YOU KNOW AND FOLLOW THE SAFETY AND OPERATING RECOMMENDATIONS CONTAINED IN THE MANUFACTURER'S MANUALS, YOUR EMPLOYER'S WORK RULES AND APPLICABLE GOVERNMENTAL REGULATIONS.

AN UNTRAINED OPERATOR SUBJECTS HIMSELF AND OTHERS TO  
DEATH OR SERIOUS INJURY.

5771012-A

21882-3

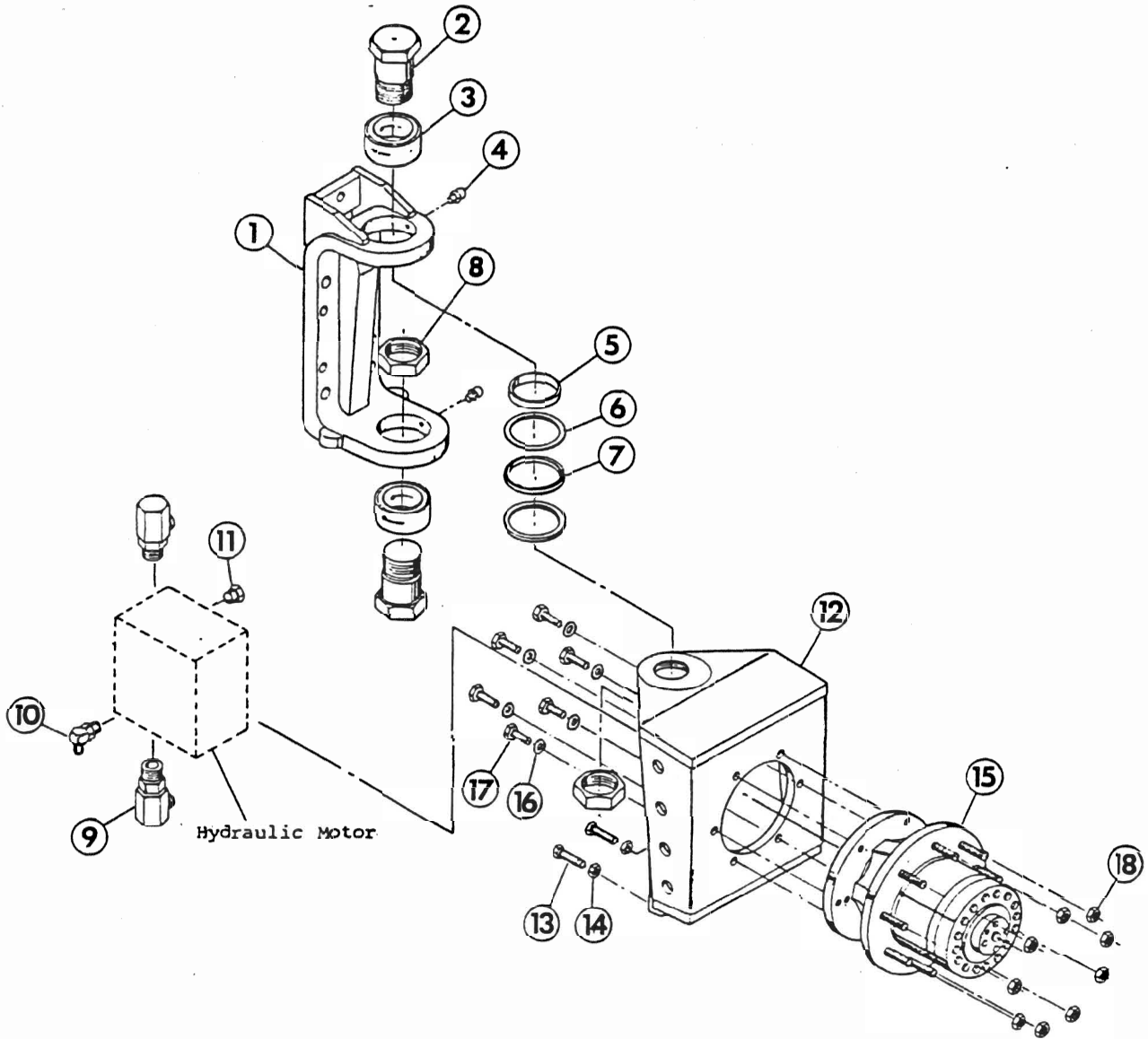
FIGURE 1 - FINAL ASSEMBLY (50, 56)

REF	DESCRIPTION	PART NUMBER	QTY
-32	Nameplate, Platform Capacity	40811 (50), 58022 (56) (Ref. Fig. 1C #7)	1
-33	Decal, "FWD"	21873-2	1
-34	Decal, "Tire Pressure 70 PSI"	21971-6 (Ref. Fig. 1C #19)	2
-35	Pin, Half, Boom Pivot	68177	2
-36	Decal, Positraction	21971-004	1
-37	End Plate, Boom Pin	32148	2
-38	Pin Master Leveling	21847	1
-39	Decal, "FWD"	21873-1	1
-40	Decal, "Calavar Corporation"	15430	1
-41	Nameplate, Serial Number (Farside)	15843 (Ref. Fig. 1C #21)	1
-42	Decal, "Battery Replacement"	21399 (Ref. Fig. 1C #20)	1
-43	Decal, "Operation And Safety Manual" (on holder inside compartment)	21384	1
-44	Safety Belt Assembly	21280	1
-45	Pin, Skirt to Boom	32634	1
-46	Pin, Main Level to Skirt	21126	1
-47	Decal, "Caution & Warning"	32200 (Ref. Fig. 1C #9)	1
-48	Decal, "5° Slope"	21880 (Ref. Fig. 1C #5)	1
-49	Decal, "Turret Lock Pin"	40191 (Ref. Fig. 1C #16)	3
-50	Decal, "50"	40791-10	1
	Decal, "56"	40791-004	4
-51	Decal, "Travel Speed"	40130 (Ref. Fig. 1C #14)	1
-52	Pin, Topping Cylinder	68241	1
-53	Valve Cable Harness	68340	1
-54	Decal, 110 Volts	15376-024	1
-55	Cover Turret (Farside)	68230	1
-56	Slave Leveling Cylinder Assembly	40790	1
-57	Harness, Engine Cable	68338	1
-58	Tie Down Strap	32164	1

FIGURE 2 - CARRIAGE WELDMENT (ALL MODELS)

REF	DESCRIPTION	PART NUMBER	QTY
2-	Carriage Weldment	50 - 21632 58 - 40831 68 - 40831 48 - 40778	1 1 1 1

REF	DESCRIPTION	PART NUMBER	QTY
1	C-Frame Assembly	500272-M1	1
2	Pivot Pin	101302-M1	2
3	Spherical Bearing	101119-P1	2
4	Grease Fitting	101127-P1	2
5	Spacer	101298-M1	1
6	Thrust Washer	101332-P1	2
7	Thrust Washer - Nylatron	101301-P1	1
8	1 5/8 Jam Nut	100901-M1	2
9	90° Elbow (High Pressure Swivel)	200071-P1	2
10	90° Elbow (08 ORB-M X 06 JIC-M)	200078-P1	1
11	Plug (08 ORB-M)	208000-P1	1
12	Box Frame Assembly	500273-M1	1
13	5/8 X 2 UNC Gr. 8 Hex Head Bolt	100275-P1	2
14	5/8 Jam Nut	100276-P1	2
15	Planetary Gear Box	100871-P1	1
16	5/8 Flat Washer	100073-P1	6
17	5/8 X 1 1/2 UNC Gr. 8 Hex Head Bolt	100075-P1	6
18	5/8 UNF Wheel Lug Nut	100321-P1	9



8  
 FIGURE 5 - HUB, SPINDLE, KNUCKLE AND STUB AXLE ASSEMBLY  
 (50, 58, 68) SERIES 8

REF	DESCRIPTION	PART NUMBER	QTY
-19	End Cover	Part of 21485          6	4
-20	Lockwasher	No. 10	8
-21	Hex Head Capscrew	No. 10-24UNC X .50	8

FIGURE 7 - STEERING ASSEMBLY (PRIOR TO SERIAL NO. 5029)

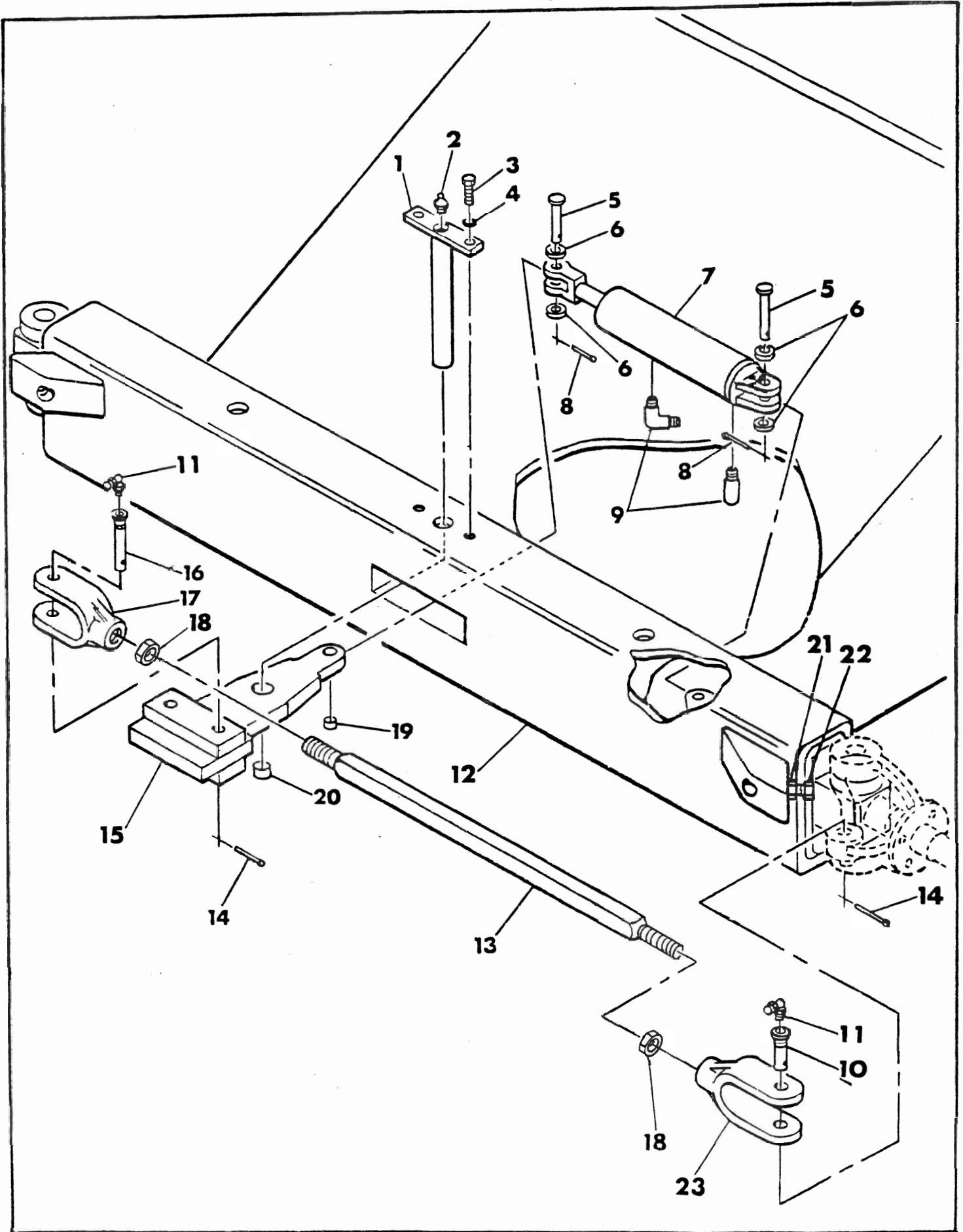




FIGURE 11 TURRETT PROPORTIONAL VALVE SYSTEM INSTALLATION

REF	DESCRIPTION	PART NUMBER	QTY
1	Adapter, STR -Male	2404-6-6*	1
2	Tube Assembly	68352	1
3	Filter	50148	1
4	Coupling, Male Pipe	5404-6-6*	1
5	Hose Assembly	40180-90	1
6	Adapter, STR- Male	2404-12-12	1
7	Service Tee	5602-12-12-12*	2
8	Check Valve	21368	1
9	Strap Clamp	5924 (Ideal Wrap-Lock)	1
10	Elbow, 90° M. Tube - F. Swvl.	6500-4-4	2
11	Hose Assembly	40180-49	1
12	Adapter, STR-Male	2404-12-6*	1
13	Hose Assembly	40180-59	1
14	Hose Assembly	40180-01	1
15	Hose Assembly	40180-89	1
16	Elbow, 90° Adj	6801-NWO-4-4*	1
17	Hose Assembly	40180-48	1
18	Tube Assembly	68353	1
19	Control Valve (HPI)	32560	1
20	Elbow, 90° Male	2501-6-6*	2
21	Solenoid Valve (2-speed)	21491	1
22	Adapter, STR-Male	2404-4-6*	1
23	Adapter, STR-Male	2404-8-8*	2
24	Connector, F. Pipe M. O-Ring	6405-8-4*	2
25	Hose Assembly	40180-69	3
26	Connector, STR	6400-6-8*	2
27	Hose Assembly	40180-54	1
28	P.O. Check Valve	21480	1
29	Hose Assembly	40180-88	1
30	Hose Assembly	40180-57	1
31	Connector, STR	6400-4-8*	4
32	Solenoid Valve Pack (Racine)	40078	1
33	Adapter (Modified)	32774	1
34	Tube Assembly	68351	1
35	Hose Assembly	40180-53	2
36	Mounting Base Weldment	68231	1
37	Hose Assembly	40180-44	2
38	Elbow, 90° Adj. F. Pipe	6805-NWO-LL-8-10	2
39	Hose Assembly	40180-46	2
40	Elbow, 45°	2061-4-4	1
41	Hose Assembly	40180-79	1
42	Hose Assembly	40180-45	2
43	Connector, STR	6400-6-10	2
44	Elbow, L 90° - Male	2501-L-12-12*	1
45	Elbow, 90° Adj.	6801-NWO-12-10*	1

FIGURE 15 - HYDRAULIC TANK ASSEMBLY (ALL MODELS)

REF	DESCRIPTION	PART NUMBER	QTY
	Hydraulic Tank Assembly	21742	1
1	Hydraulic Tank Weldment	21237	1
2	Gasket	Part of 21237	1
3	No. 12 Tupe1C, Self Tapping Screw x 1/2" Lg.	Part of 21237	18
4	Cover	Part of 21237	1
5	Filler Breather Unit	40964	1
6	Dip Stick	21192	1
7	Sump Strainer	21473	1
8	Close Pipe Nipple	1-1/2" NPT	1
9	Capscrew, Hex Hd.	1/4"-20 UNC x 5/8"	2
10	Tube Assembly	21799-7	1
11	Elbow, 90°	2024-16-12	1
12	Elbow, 90°	2501-20-20	1
13	Close Pipe Nipple, 1-1/2 NPT		1
14	Gate Valve, Bronze	67489-004	1
15	Pipe Reducer Bushing	5406-24-20	1
16	Adapter, STR	2021-16-16	1
17	Filter	32522	1
18	Quick Disconnect Coupling	67051	1
19	Lockwasher, 1/4"		2
20	Elbow, 90°- #16 JIC x 1" - 11 1/2 MP	2024-16-16	1
21	Cover, Quick Disconnect	67053	1
22	Elbow, Street 1-1/2"		1
23	Tee, Run	2605-8-8-8	1
24	Adapter, STR	6400-8-8	1
25	Element, Filter	67408	1

CLICK HERE TO **DOWNLOAD** THE COMPLETE MANUAL

- Thank you very much for reading the preview of the manual.
- You can download the complete manual from: [www.heydownloads.com](http://www.heydownloads.com) by clicking the link below



- Please note: If there is no response to CLICKING the link, please download this PDF first and then click on it.

CLICK HERE TO **DOWNLOAD** THE COMPLETE MANUAL

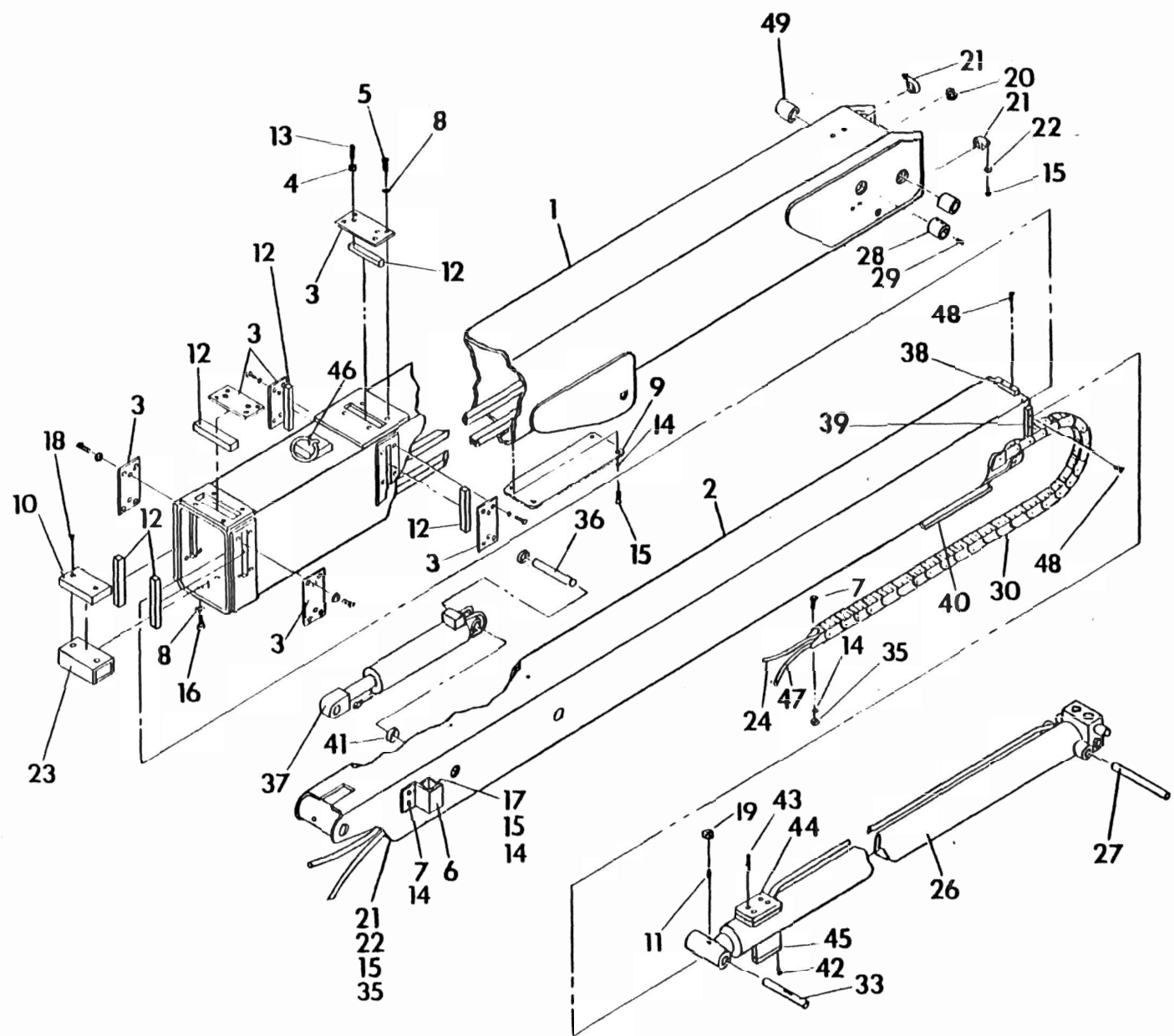


FIGURE 21A. BOOM ASSEMBLY (48)

FIGURE 21B BOOM ASSEMBLY (50 - Two Cable System) Beginning with Ser. #4820

REF	DESCRIPTION	PART NUMBER	QTY
91	Eccentric	21809 (50)	2
92	Socket Head Cap Screw	3/8 - 24 UNC x 1	3
93	Support Grip	022-01-1467	1
94	Master Leveling Pin	21847 (50)	1
95	Elbow, 90° - #4 JIC x 7/16" - 20 O-Ring		2
96	Master Leveling Cylinder (See Fig. 24)	40003 (50)	1
97	Topping Cylinder Boom Pin	21845 (50)	1
98	Topping Cylinder Assembly	(See Fig. 27)	1
99	Elbow, 90° 1 #6 JIC x 9/16" - 18 O-Ring		2
100	Hose Assembly	FG1012-GGG-0217	2
101	Adapter, Bulkhead - #6 JIC		2
102	Hose Assembly -To Turret Solenoid Control Valve Pack	FG1005-GGG-0430	2
103	Hose Assembly -To Turret Solenoid Control Valve Pack	FA7229-GGG-0730	2
104	Hose Assembly -To Turret Holding Valve	FG101-GGG-0610	2
105	Hose Assembly	FC120-EBE-0660	2
106	Hose Assembly -To Turret Proportional Control Valve Pack	FG1011-HHH-0660	2
107	Elbow, Bulkhead - 90° - #8 JIC		2
108	Hose Assembly	FG1011-HHJ-0350	2
109	Limit Switch**	40207 (50)	1
110	Boom To Turret Pivot Pin	21791 (50)	1
111	Lube Fitting	1/8 NPT	3
112	Lockwasher	3/8	3
113	Hex Head Cap Screw	3/8-24 UNC x 1/2	3
114	Master Leveling Cylinder Pin	21131 (50)	1
115	Topping Cylinder Pin	21645 (50)	1
116	Lockwasher	5/16	2
117	Hex Head Cap Screw	5/16-18 UNC x 3/4	2
118	Tube End Reducer		4
119	Capscrew, Hex Hd. 3/8" - 16 UNC x 5/8" Lg.		4
120	Wear Pad	40717	1
121	Plate, Wear Pad	40718	1
122	Flat Head Socket Screw, 3/8" - 16 UNC x 3/4" Lg.		1
123	Spirol Pin, 1/8" x 3/4" Lg.		1

\*\* Part of Automatic Shift to low gear system - (See Figure 4A)

FIGURE 21 BOOM ASSEMBLY (58,68) Beginning with Serial # 4934

REF	DESCRIPTION	PART NUMBER	QTY
46	Jam Nut, 1/2"- 20 UNF		10
47	Nut, Tee - 4 prong	68276	12
48	Nut, 3/8" - 16 UNC		4
49	Nut, 1/4" - 20 UNC		14
50	Nut, 3/4" - 10 UNC		8
51	Washer, 1-1/4" SAE		3
52	Cotter Pin, Steel 3/16" x 2-1/2"		1
53	"E" Ring	68275	4
54	Evener Support, Mounting Plate	68264	1
55	Bracket, Mounting - LH	68265	1
56	Bracket, Mounting - RH	68269	1
57	Pin Weldment, Main Pivot	68267	1
58	Evener Brkt., Trunnion Weldment	68268	1
59	Wear Pad, Side	68273	2
60	Pin, Cable End	68189	4
61	Pin, Trunnion	68270	2
62	Fender Washer (Bowman #32570)		10
65	Movable Bracket, LH	68199	1
66	Movable Bracket, RH	68200	1
67	Stationary Bracket, LH	68201	1
68	Stationary Bracket, RH	68202	1
69	Wear Pad, Top	68271	2
70	Jam Nut, 3/8" - 11 UNC		12
71	Capscrew, Hex Hd. 1/2 - 20 UNF x 1" Lg. GR8		6
72	Capscrew, Hex Hd. 1/2 - 20 UNF x 1-1/4" Lg. GR8		2
73	Setscrew, Socket Hd. Cup pt. 5/8 - 11 UNC x 1" Lg.		2
74	Setscrew, Socket Hd. Cup pt. 5/8 - 11 UNC x 2" Lg.		4
75	Washer, 3/8"		4
76	Guide Bracket Assembly	68245	1
77	Capscrew, Flat Hd. Socket 1/4" - 20 UNC x 3/4" Lg.		2
78	Nut, Hex 1/4" - 20 UNC (Bowma - Grip)	68413-000	4
79	Wear Pad	68248	2
80	Capscrew, Flat Hd. Socket 1/4" - 20 UNC x 1-1/4"		2
81	Wear Pad	68412	1
82	Back up Plate	68036	1
83	Wear Pad, Top	68182	1
84	Capscrew, Flat Hd. Socket 3/8" - 16 UNC x 1" Lg.		4
85	Wear Pad, Top	68349	1
86	Wear Pad, Side	68272	2
87	Flat Head Socket Screw 1/4"-20 UNC x 1/2" Lg.		8
88	Capscrew, Flat Hd. Socket 1/4" - 20 UNC x 1" Lg.		4
89	Nut, Hex 1/4" - 20 UNC (Bowma - Grip)	68413-000	4
90	Capscrew, Flat Hd. Socket 3/8"-16 UNC x 1-1/4"		2

FIGURE 21D BOOM ASSEMBLY (76) Beginning with Serial #5076

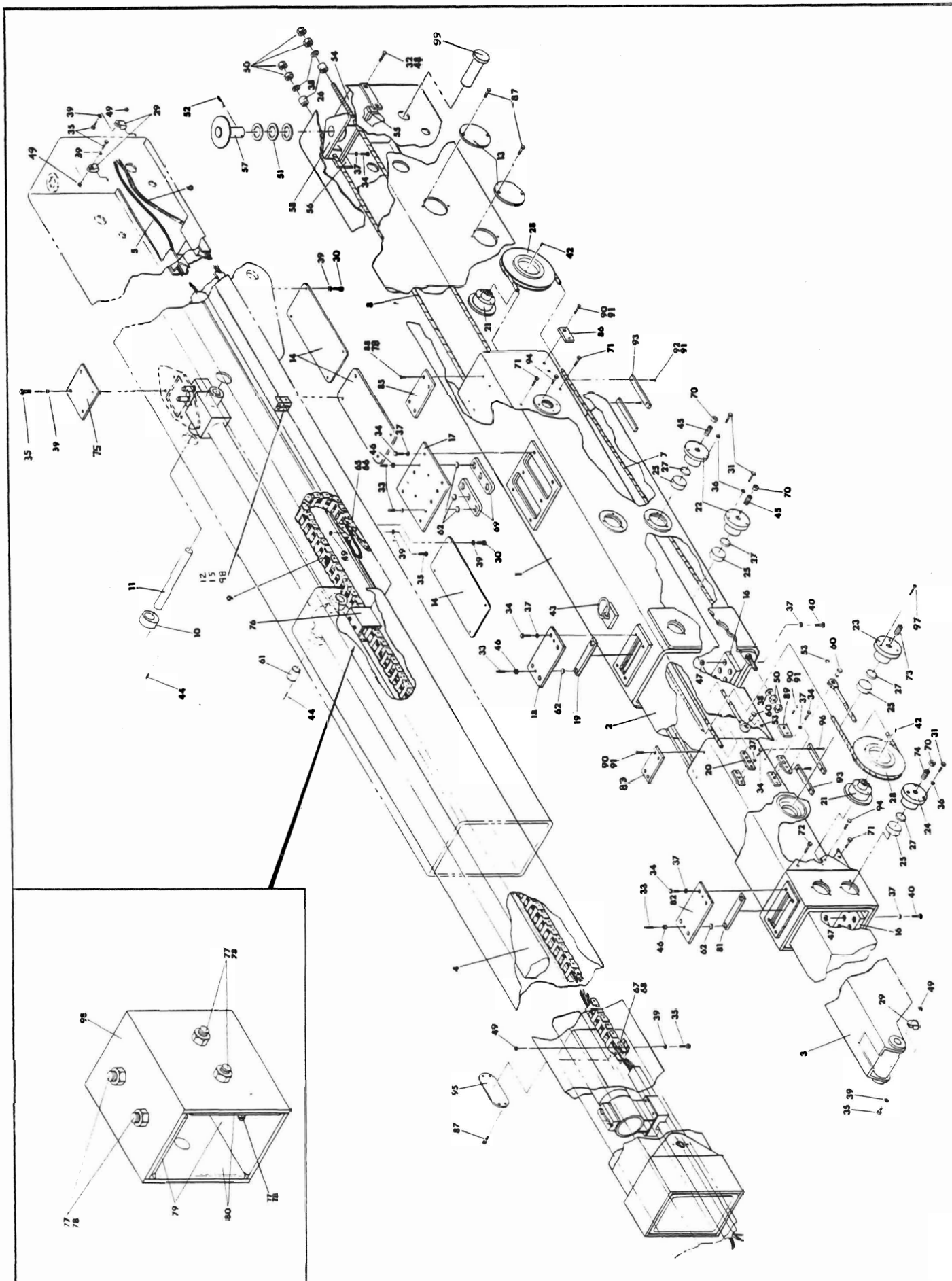


FIGURE 25A - BOOM EXTENSION CYLINDER (50)

REF	DESCRIPTION	PART NUMBER	QTY
25A	Boom Extension Cylinder	40771	1
1	Rod Assembly	92058	1
2	Barrel	92059	1
3	Head	92060	1
4	Piston	92051	1
5	Stop Tube	92052	1
6	Dual CounterBalance Valve	40817	1
7	Holding Valve Cartridge	32585	2
8	Piston-Rod Static O-Ring	*	1
9	Head Static O-Ring	*	1
10	Head Back Up Ring	*	1
11	Piston Seal	*	2
12	Head Rod Seal	*	1
13	Std. Rod Wiper	*	1
14	Relief Valve Cartridge	32586	1
*	Seal Kit (Contains Items 8-13)	40883	1

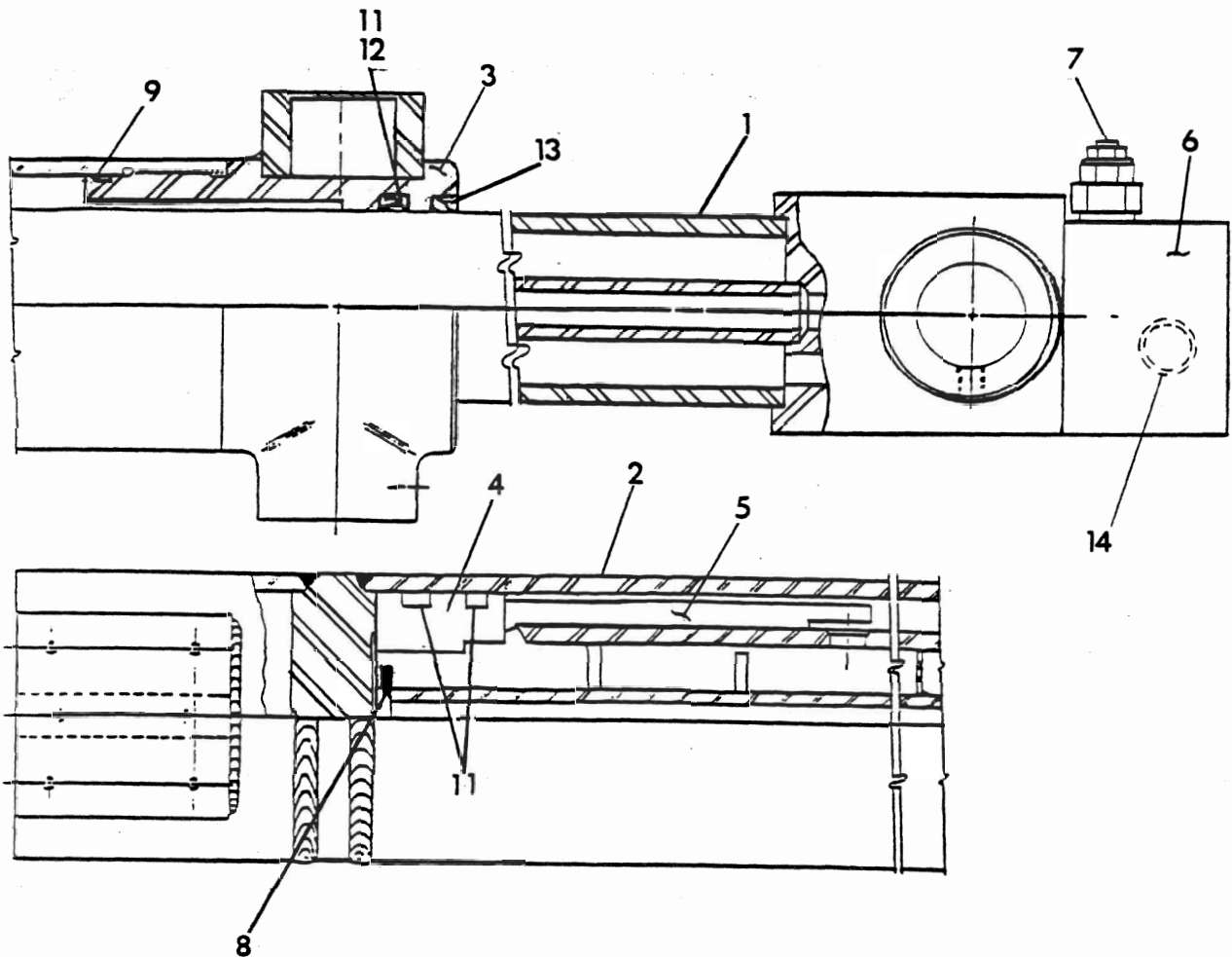


FIGURE 28 B TOPPING CYLINDER, PARTS BREAKDOWN (58, 68, 76)

REF	DESCRIPTION	PART NUMBER	QTY
	Topping Cylinder	40612	1
1	Manifold Assembly	92000	1
2	Bronze Bushing	92001	4
3	Piston	92018	1
4	Spacer	92020	1
5	Gland	92019	1
6	Rod Assembly	92022	1
7	Single C'Balance Valve Assembly	40707	1
8	Barrel Assembly	92021	1
9	Hex Nut	92007	1
10	Holding Valve Cartridge	32585	1
11	Bolt	92009	2
12	Washer	92010	2
13	Lockwasher	92011	2
14	Set Screw w/Nylon Insert	92012	1
15*	Rod Seal	*	1
16*	Rod Wiper	*	1
17*	Gland Static Seal	*	1
18*	Piston Seal	*	2
19*	Rod Static Seal	*	1
*	Seal Kit (Contains Items 15-19)	40689	1

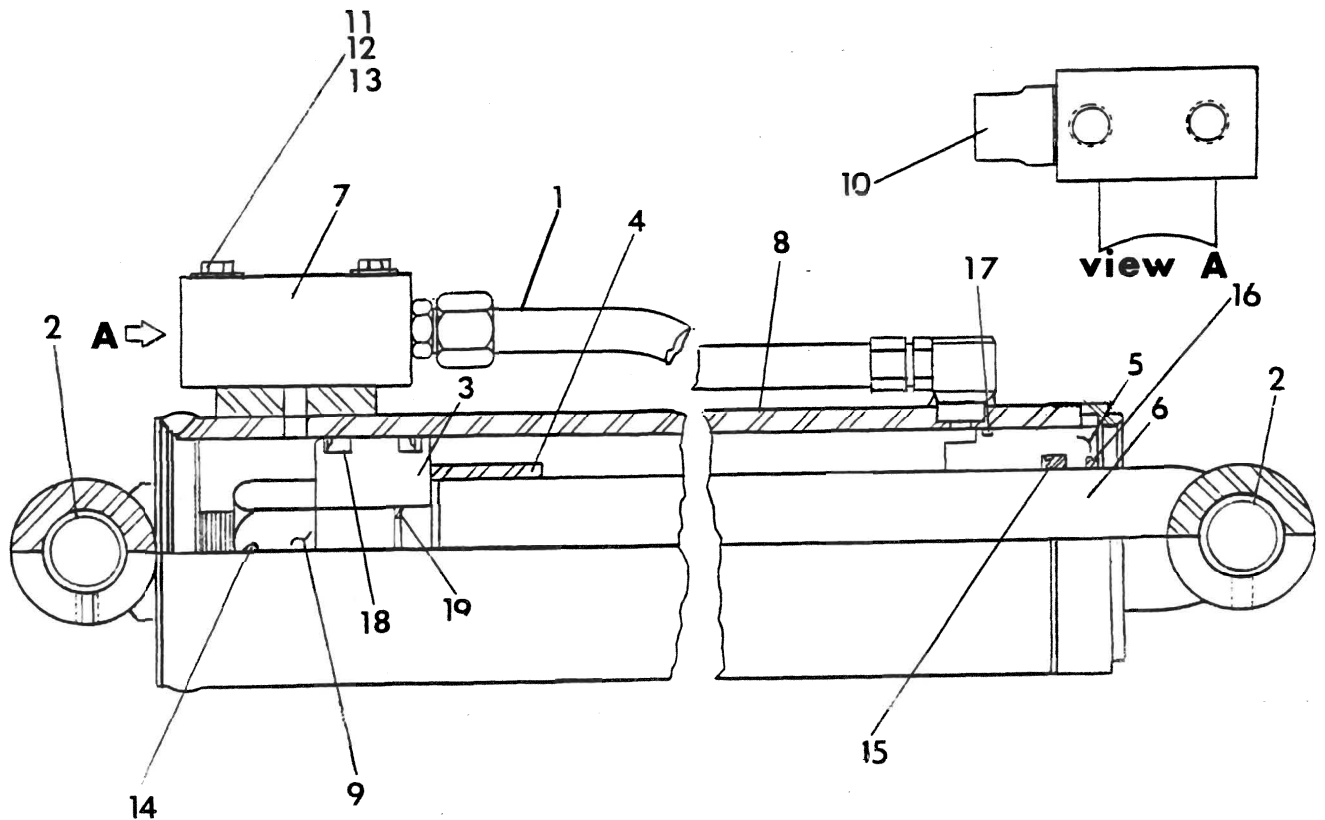
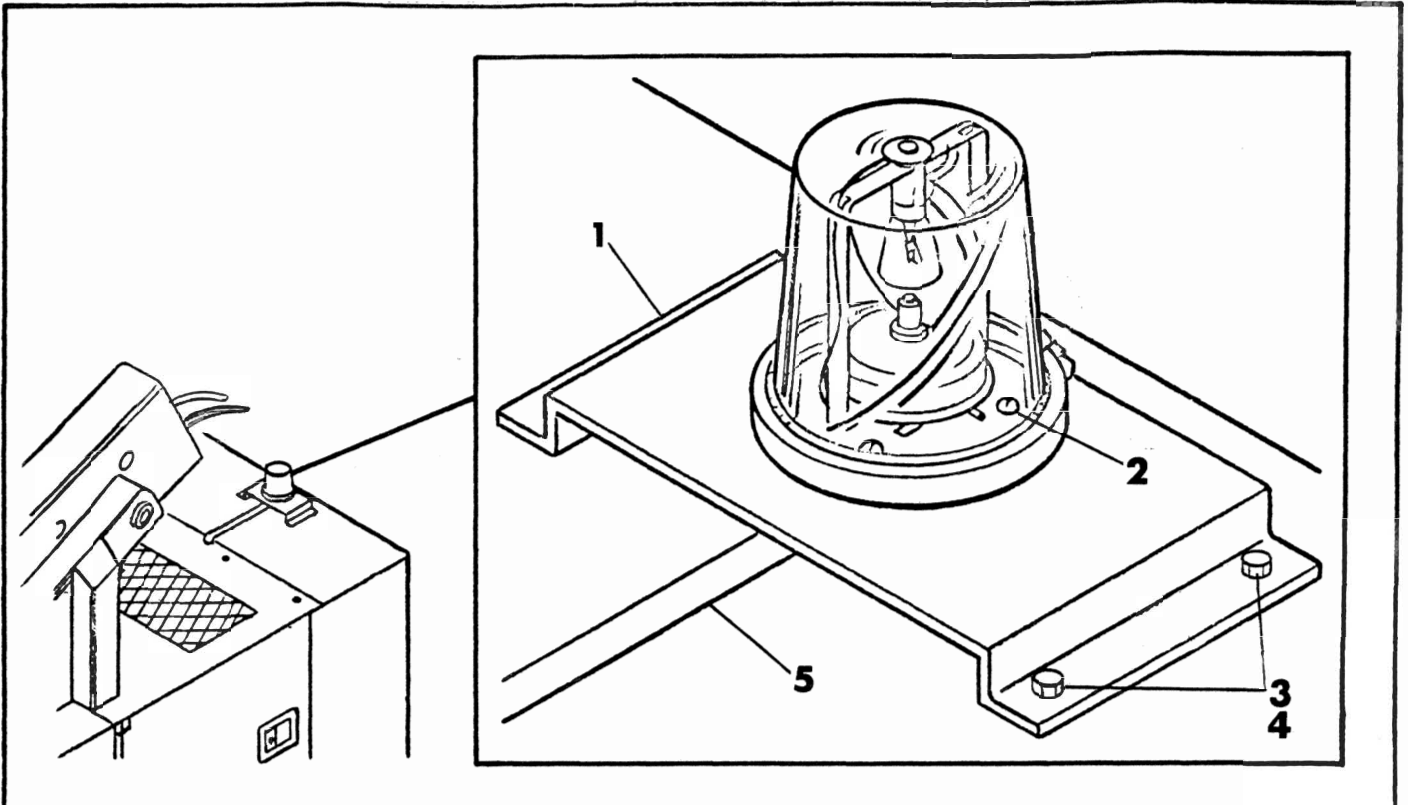


FIGURE 35X PLATFORM ROTATION ASSEMBLY (Actuator with hollow pinion)

REF	DESCRIPTION	PART NUMBER	QTY
1	Spacer	68418-9	4
2	Capscrew, 1/2" - 13 UNC x 1-1/4" Lg.	Gr. 8	4
3	Flatwasher, 1/2"		4
4	Stepped Washer	32775	1
5	Key, 1/2" SQ.		2
6	Mount Platform	68418	1
7	180° Rotary Actuator	68425	1
8	90° Elbow	2024TA 6-16	2
9	Locknut, 1/2" - 13 UNC (Bowma-Grip)	Gr. 5	4
10	Bulkhead Adapter	2041TA 6-6	2
11	Needle Valve	21479	2
12	Locknut, 3/8" - 16 UNC		1
13	Hose Assembly	32749	1
14	Pin, Main Leveling Skirt	21126	1
15	Skirt	(*)	1
16	Pin, Boom to Skirt	32634	1
17	Capscrew, 3/8" - 16 UNC x 3-1/2" Lg.		1
18	Adapter, STR	2021-6-6	2
19	Capscrew, Hex Hd. 1/4" - 20 NC x 1-3/4" Lg.		2
20	Double Check Valve	21480	1
21	90° Elbow	2024-6-6	4
22	Lube Fitting (Zerk) 1/8" NPT		2
23	Lockwasher, 1/4"		2
24	Hose Assembly	32749-1	1
25	Capscrew, Hex Hd. 1/4" - 20 UNC x 1/2" Lg.		1
26	Lockwasher, 1/4"		1
27	Hose Assembly	32749-2	1
28	Hose Assembly	32749-4	1
29	Tie Down Ring	32536	2
30	Shaft, Actuator	58036	1
31	Flathead Screw 1/2" - 13 UNC x 4" Lg.	Gr. 8	1
32	Bushing	68418-8	1
33	Grease Fitting (Zerk) 1/4" - 28 UNF		1
34	Capscrew, Hex Hd. 1/2" - 13 UNC x 1-1/2" Lg.	Gr. 5	4
35	Spacer	40976	1
36	Lockwasher, 7/8"		1
37	Capscrew, Hex Hd. 7/8" - 9 UNC x 2-1/2" Lg.	Gr. 8	1
	(*) For Industrial Condor Models 36N, 46N: Skirt	32771	
	For Construction Condor Models 48, 50, 56, 58, 68, 76: Skirt	32711	

FIGURE 38 - ROTATING BEACON (OPTION 21059)



REF	DESCRIPTION	PART NUMBER	QTY
	Rotating Beacon	21344	1
- 1	Mounting Bracket	21642	1
- 2	Sheet Metal Screw	Part of 21344	3
- 3	Hex Head Capscrew	1/2-20 UNC X 3/4	4
- 4	Lockwasher	1/4	4
- 5	Wire Tube	(Reference)	1

FIGURE 44 WISCONSIN ENGINE WITH LP GAS (OPTION 21069)

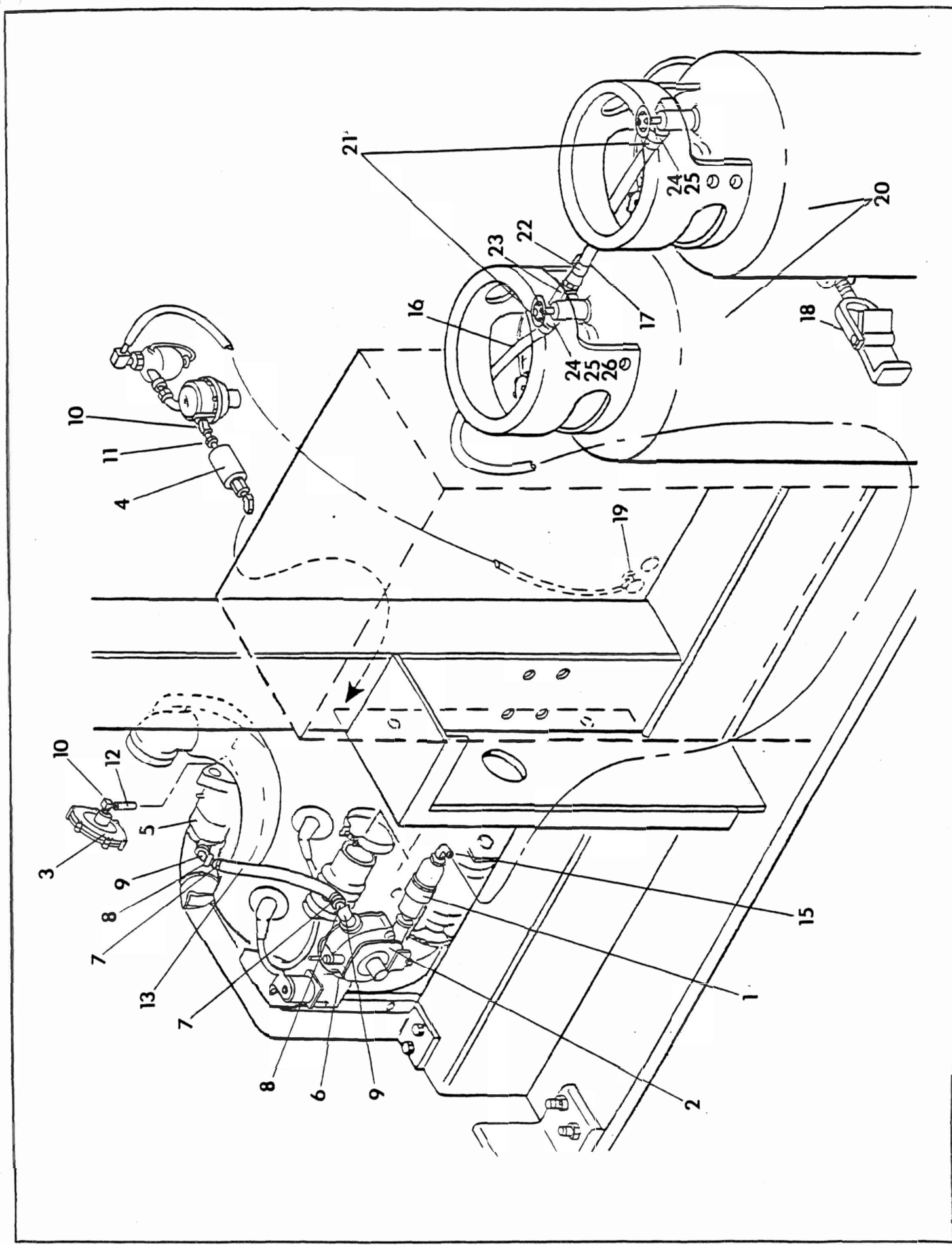


FIGURE 49 - AUXILIARY HYDRAULIC POWER PACK INSTALLATION (OPTION 21648 &amp; 21650)

REF	DESCRIPTION	PART NUMBER	QTY
49-	Auxiliary Hydraulic Power Pack Installation	21648 (Gas) or 21650 (Diesel)	1 1
- 1	Gas Engine	21377	1
- 1A	Diesel Engine	21618	1
- 2	Cover	18788	1
- 3	Piston Pump Drive Line Assembly	21782	1
- 4	End Yoke	2-4-453	1
- 5	Journal Assembly	5-153	2
- 6	Kit	6-73-316	1
- 7	Flange Yoke	2-2-329	1
- 8	Companion Flange	2-1-293 *	1
- 9	Companion Flange	2-2-329	1
-10	Companion Flange	2-2-389	1
-11	Hose Assembly - Suction	FG 1060-KKK	1
-12	Hose Assembly - Pressure	FG 1059-KKK	1
-13	Swivel Elbow	3903-12-12	1
-14	Adapter	0503-8-12	1
-15	Pump	21345	1
-16	Case Drain Hose Assembly	(J.D. Furnished)	1
-17	90° Degree Elbow	(J.D. Furnished)	1
-18	Engine Base	21392	1
-19	Engine Mount	RMD-520	4
-20	Hex Head Capscrew	½-13 UNC X 1-½	4
-21	Lockwasher	1/2	12
-22	Hex Head Capscrew	1/2-13 UNC X 1	8
-23	Engine Support Bracket	21391	2
-24	Pump Bracket	21393	1
-25	Tube Assembly	3/4	1
-26	90° Elbow	2103-12-12	2
-27	O-Ring Adapter	0502-12-12	2
-28	Adapter	0103-12-12	1
-29	Adapter	0101-12-12	1
-30	Female Tee	02J02-12	1
-31	Relay	1116969	1
-32	O-Ring Adapter	202702-8-4	1
-33	O-Ring Adapter	202702-6-4	1
-34	90° Swivel Elbow	2071-4-4	2
-35	Tube Assembly	1/4	1
-36	Tube Assembly	1/4	1
-37	Solenoid Valve (FPS)	5-06AA-2A	1
-38	Solenoid Valve (FC)	7W31-16T-12	1
-39	Adapter (for FPS)	0103-4-4	2
-40	Adapter (for FC)	0503-4-4	2
-41	Fuel Filter (Cartridge C-1110PB)	Model FBM 1110-PBM	1
-42	Filter Mounting Bracket	25219	1
-43	Hex Head Capscrew	(Furnished w/fuel filter)	2
-44	Socket Head Capscrew	(Furnished w/diesel engine)	2

CLICK HERE TO **DOWNLOAD** THE COMPLETE MANUAL

- Thank you very much for reading the preview of the manual.
- You can download the complete manual from: [www.heydownloads.com](http://www.heydownloads.com) by clicking the link below



- Please note: If there is no response to CLICKING the link, please download this PDF first and then click on it.

CLICK HERE TO **DOWNLOAD** THE COMPLETE MANUAL