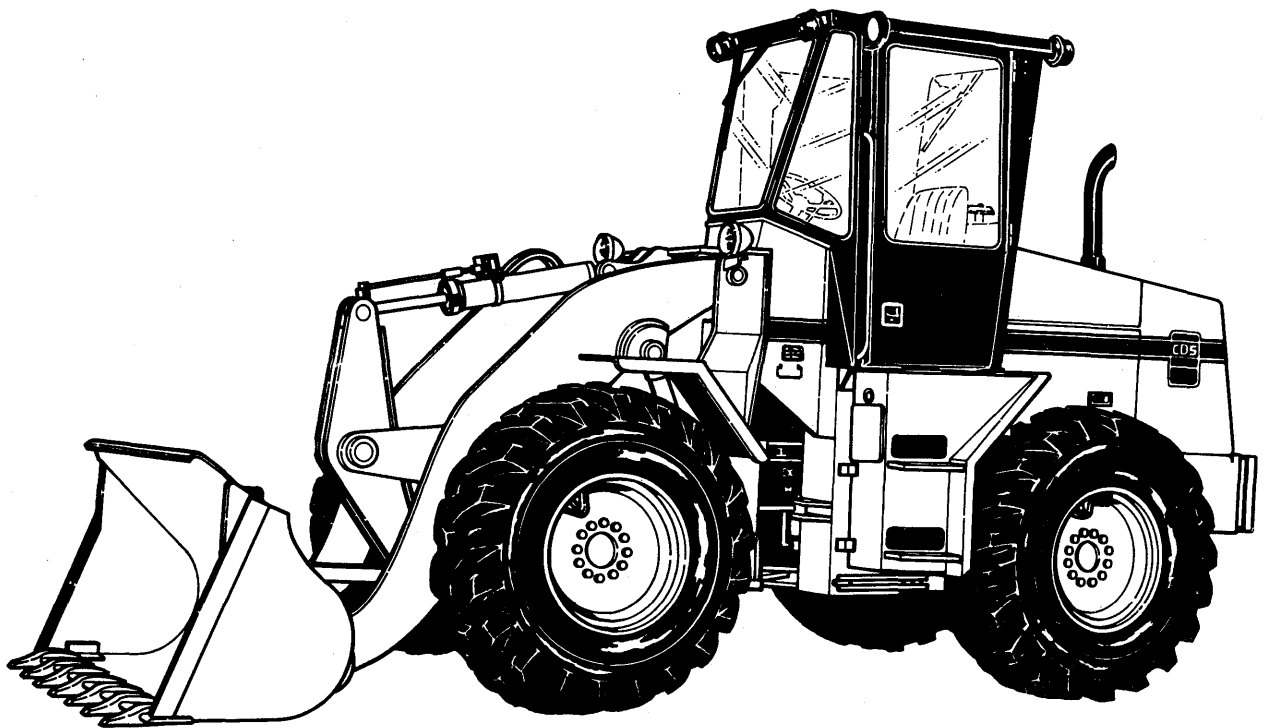




# PARTS CATALOG



MODEL 840D WHEEL LOADER  
MODEL 844D FORKLIFT

PART NO. 6800253

CLICK HERE TO **DOWNLOAD** THE COMPLETE MANUAL

- Thank you very much for reading the preview of the manual.
- You can download the complete manual from: [www.heydownloads.com](http://www.heydownloads.com) by clicking the link below



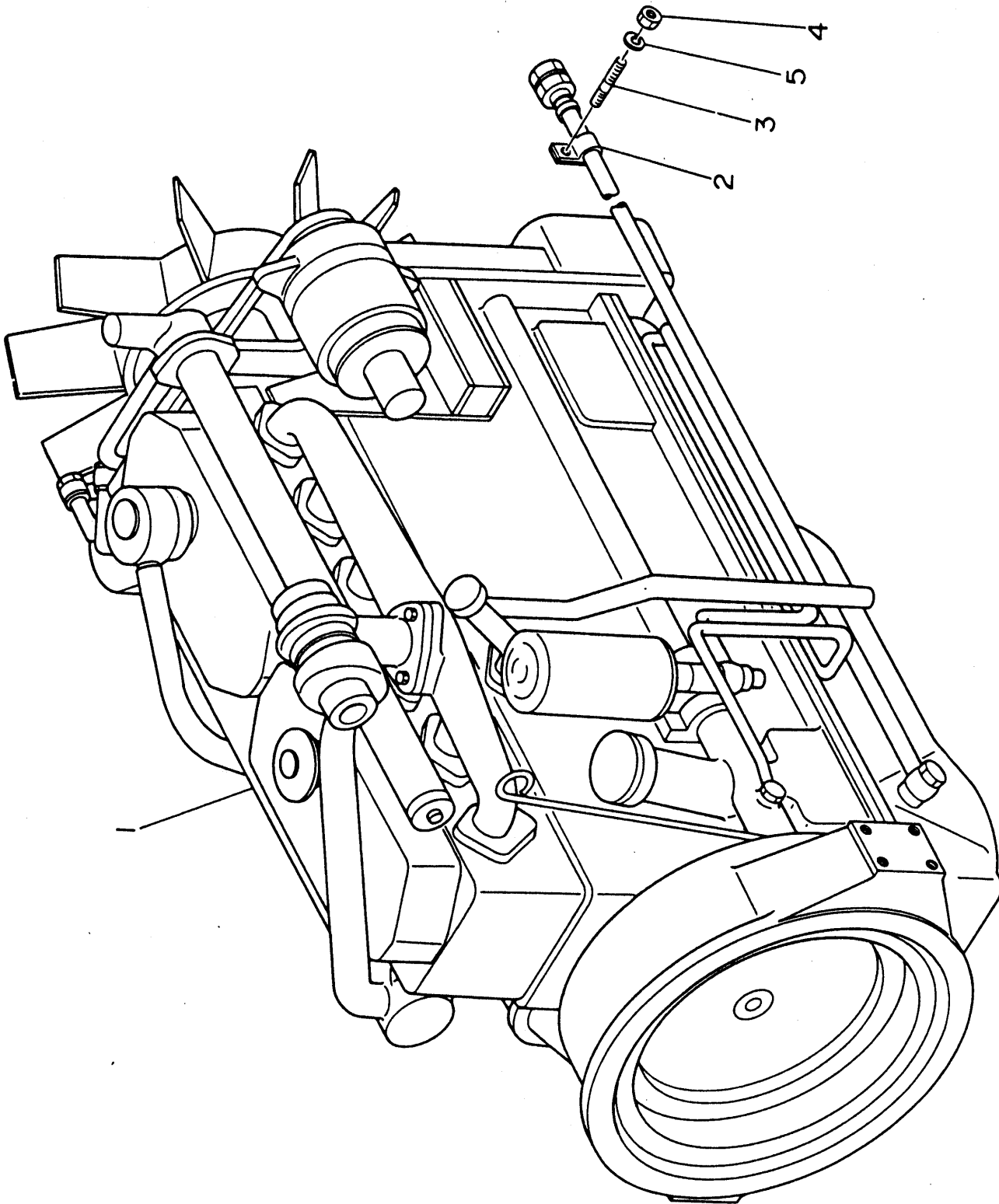
- Please note: If there is no response to CLICKING the link, please download this PDF first and then click on it.

CLICK HERE TO **DOWNLOAD** THE COMPLETE MANUAL

840D WHEEL LOADER

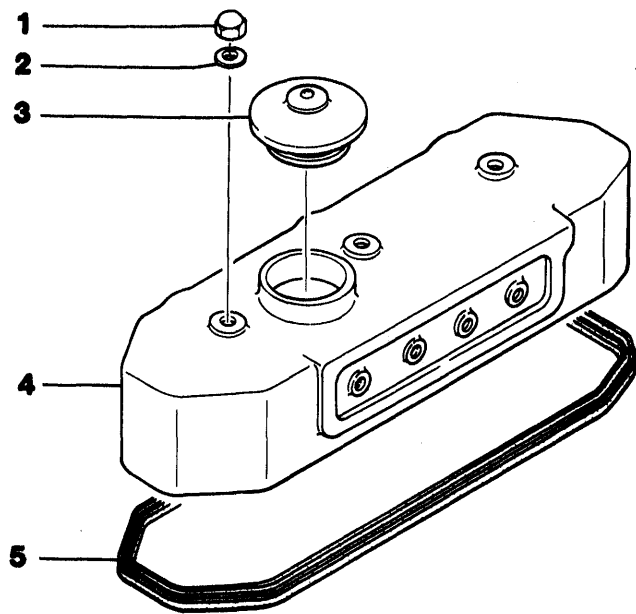
ENGINE

ENGINE W/TURBO

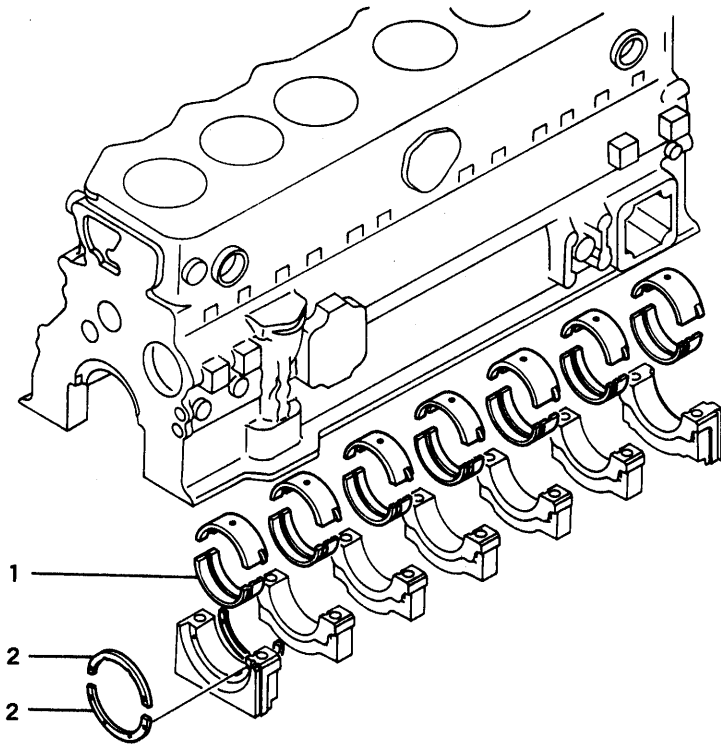


840D WHEEL LOADER  
ENGINE

ROCKER COVER

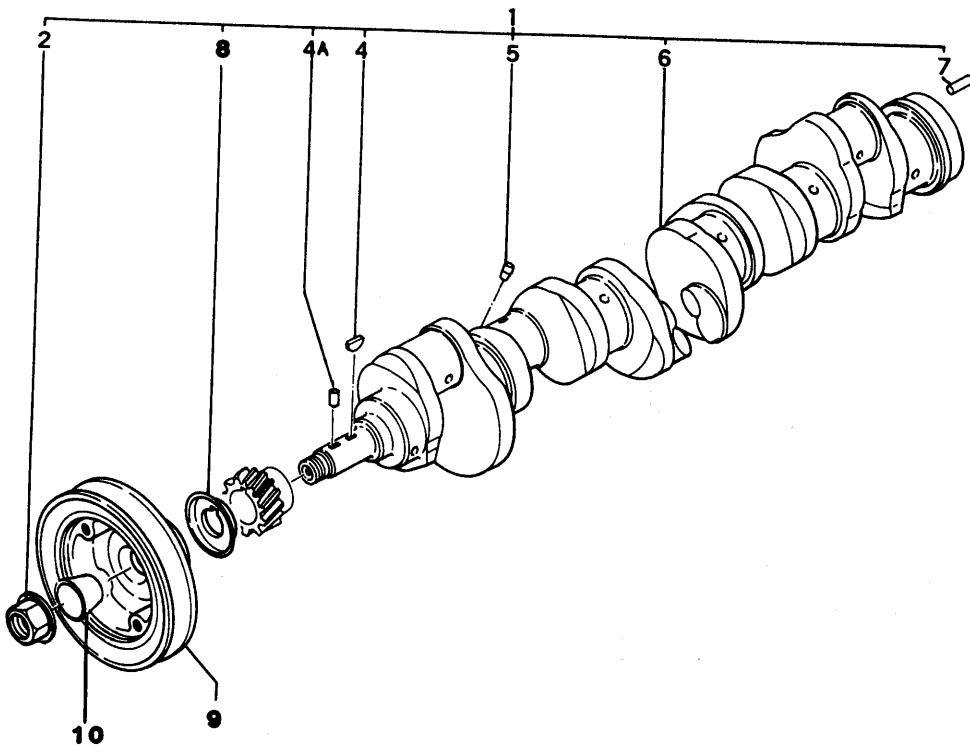


MAIN BEARING



840D WHEEL LOADER  
ENGINE

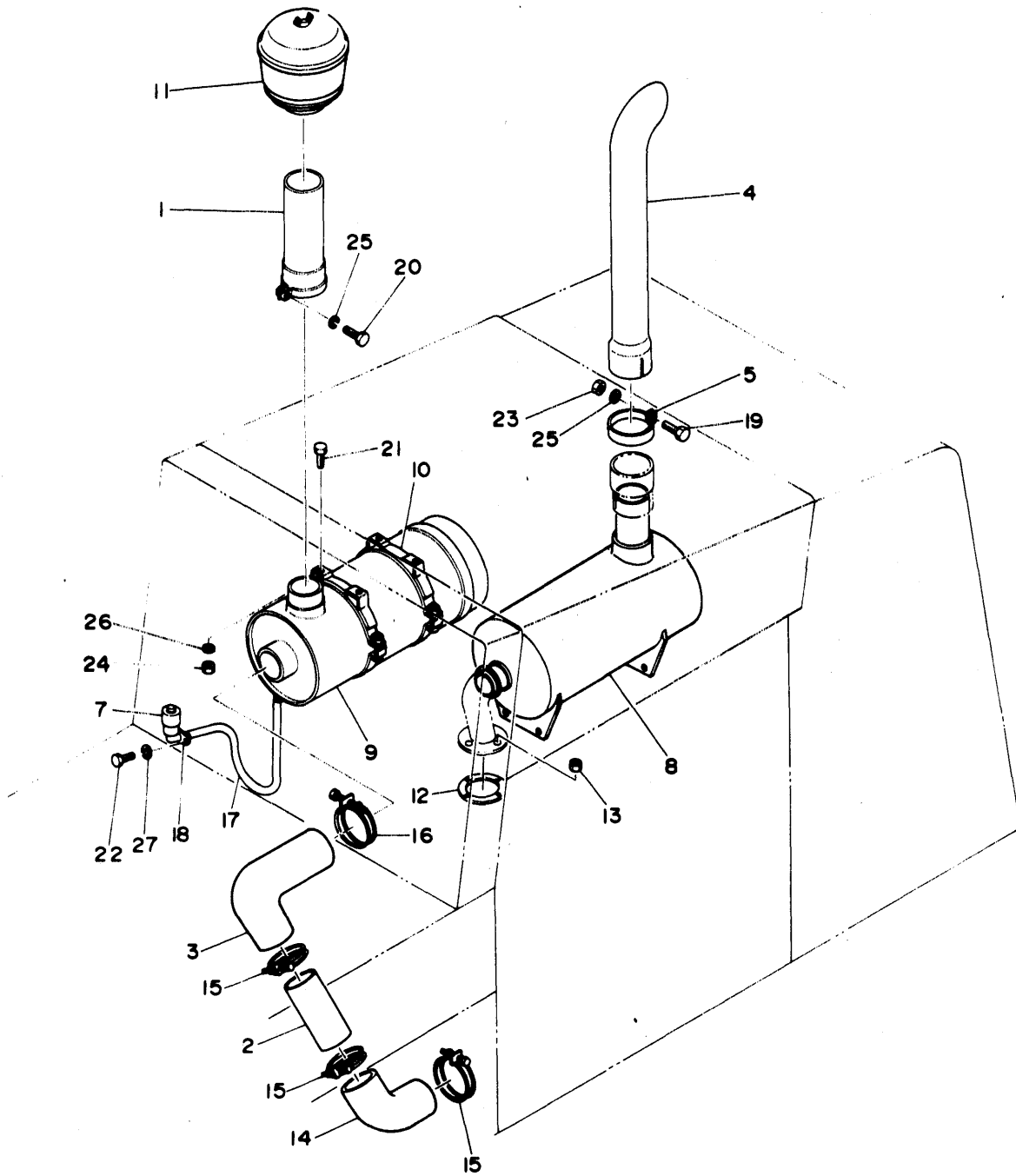
CRANKSHAFT



ENGINE

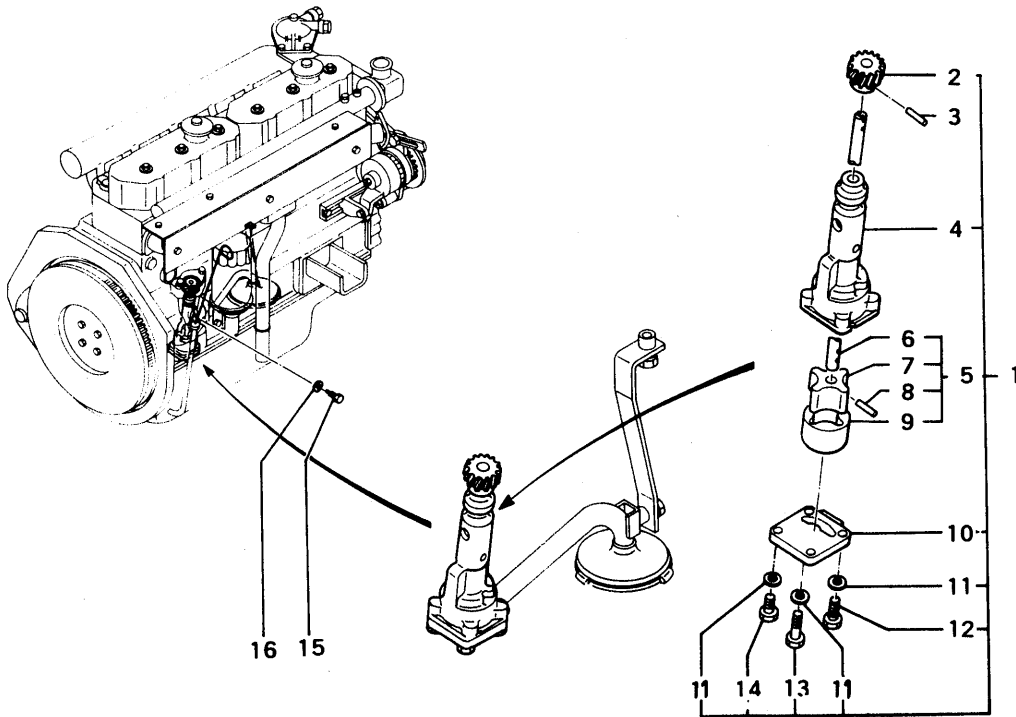
INTAKE & EXHAUST

S/N 63 & BEYOND

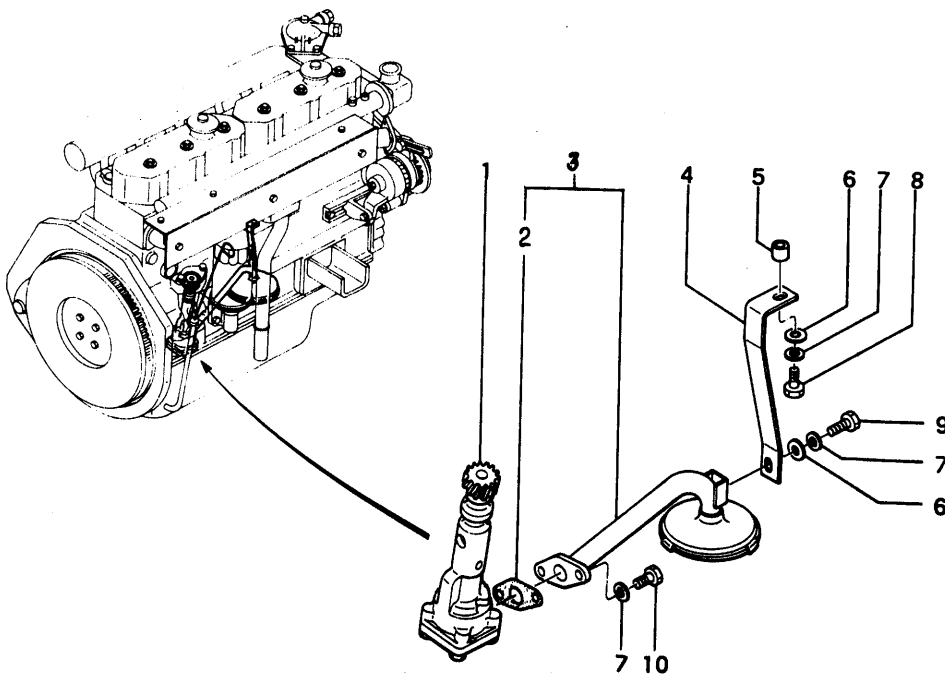


ENGINE

OIL PUMP ASSEMBLY

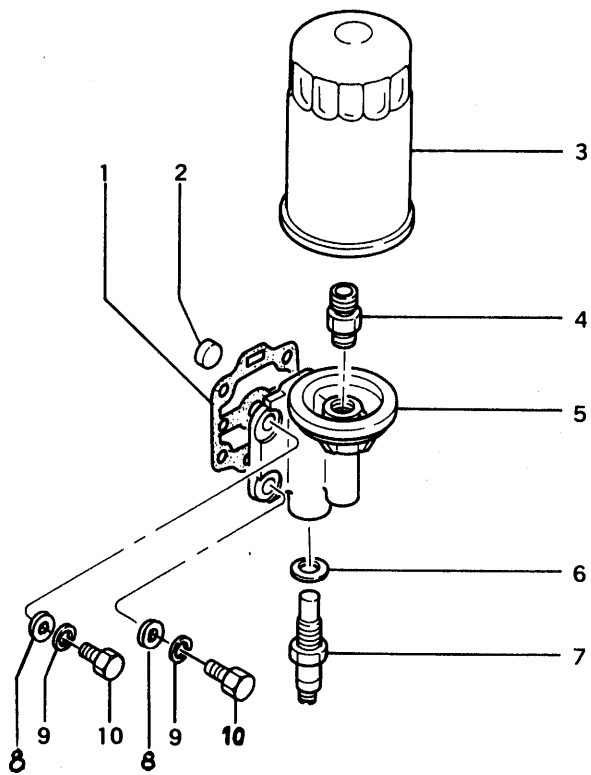
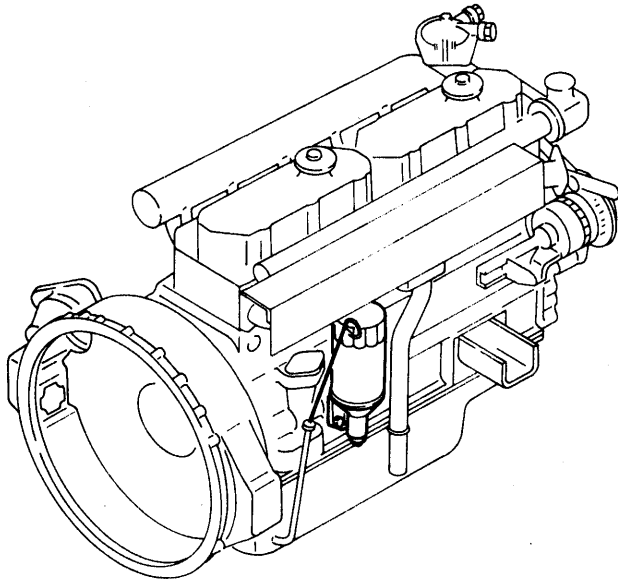


OIL STRAINER ASSEMBLY



ENGINE

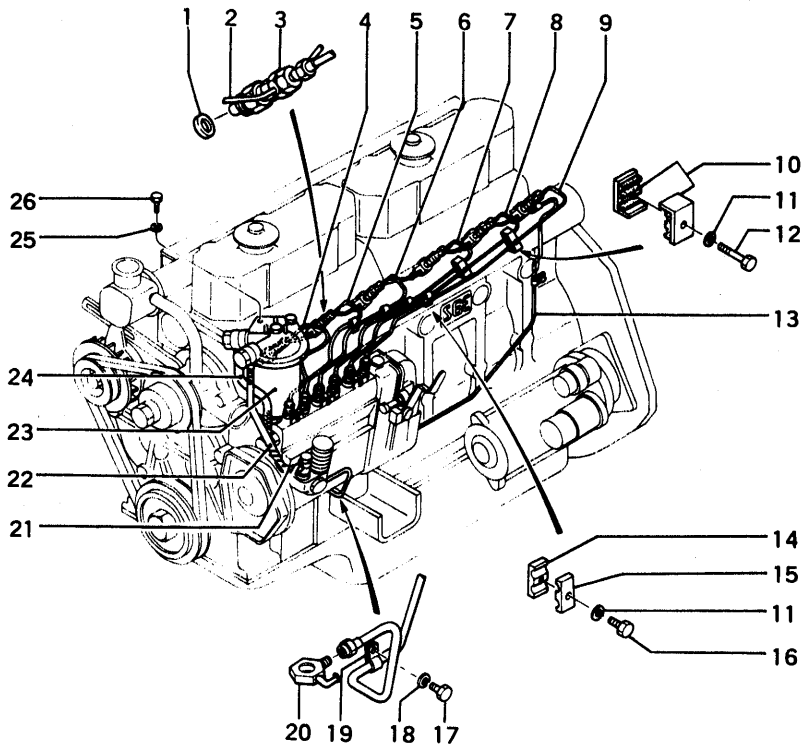
OIL FILTER





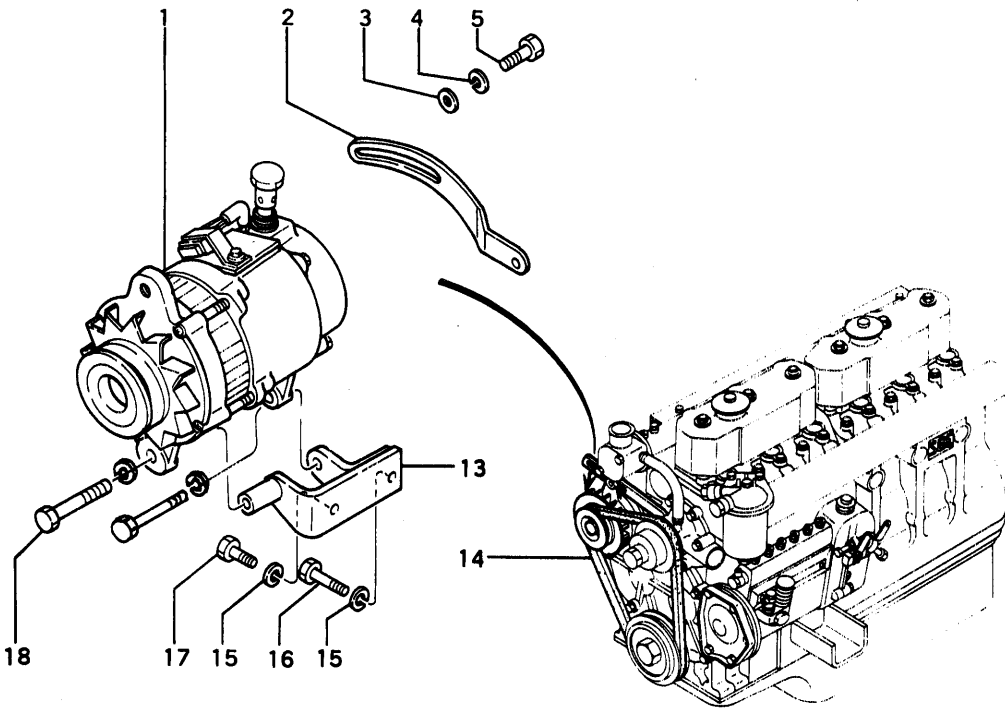
ENGINE

FUEL SYSTEM



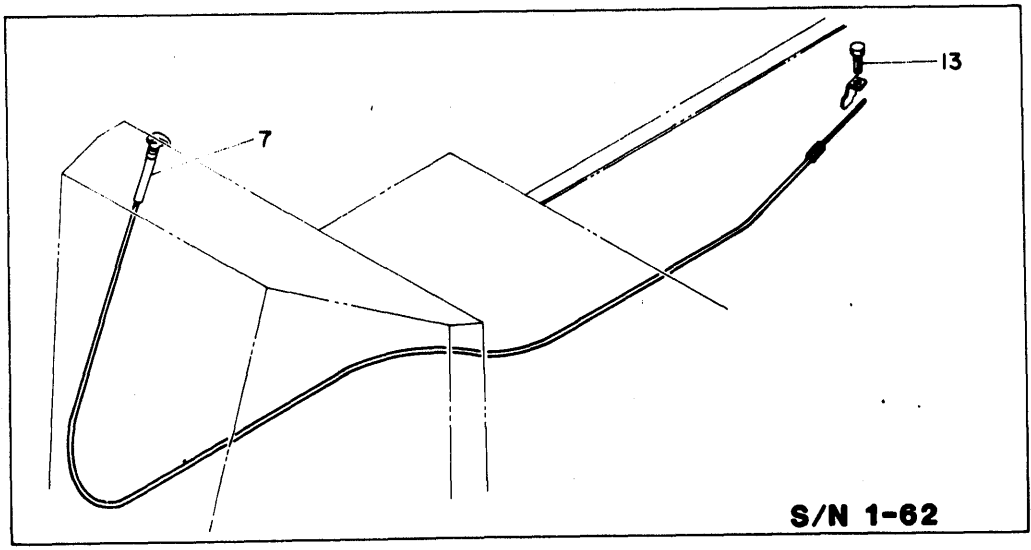
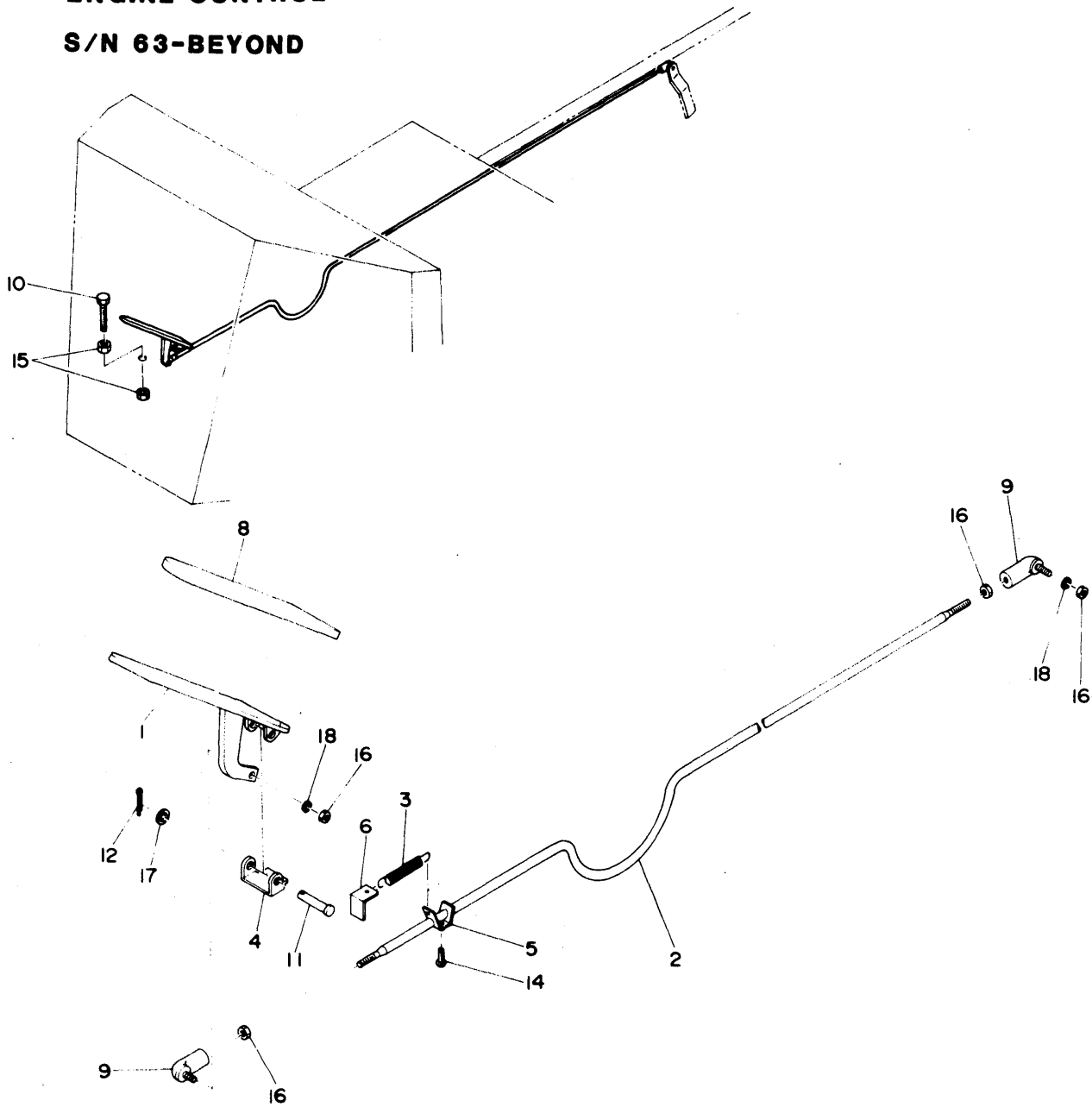
ENGINE

ALTERNATOR GENERAL ASSEMBLY



840D WHEEL LOADER  
LOADER-GENERAL ARRANGEMENT

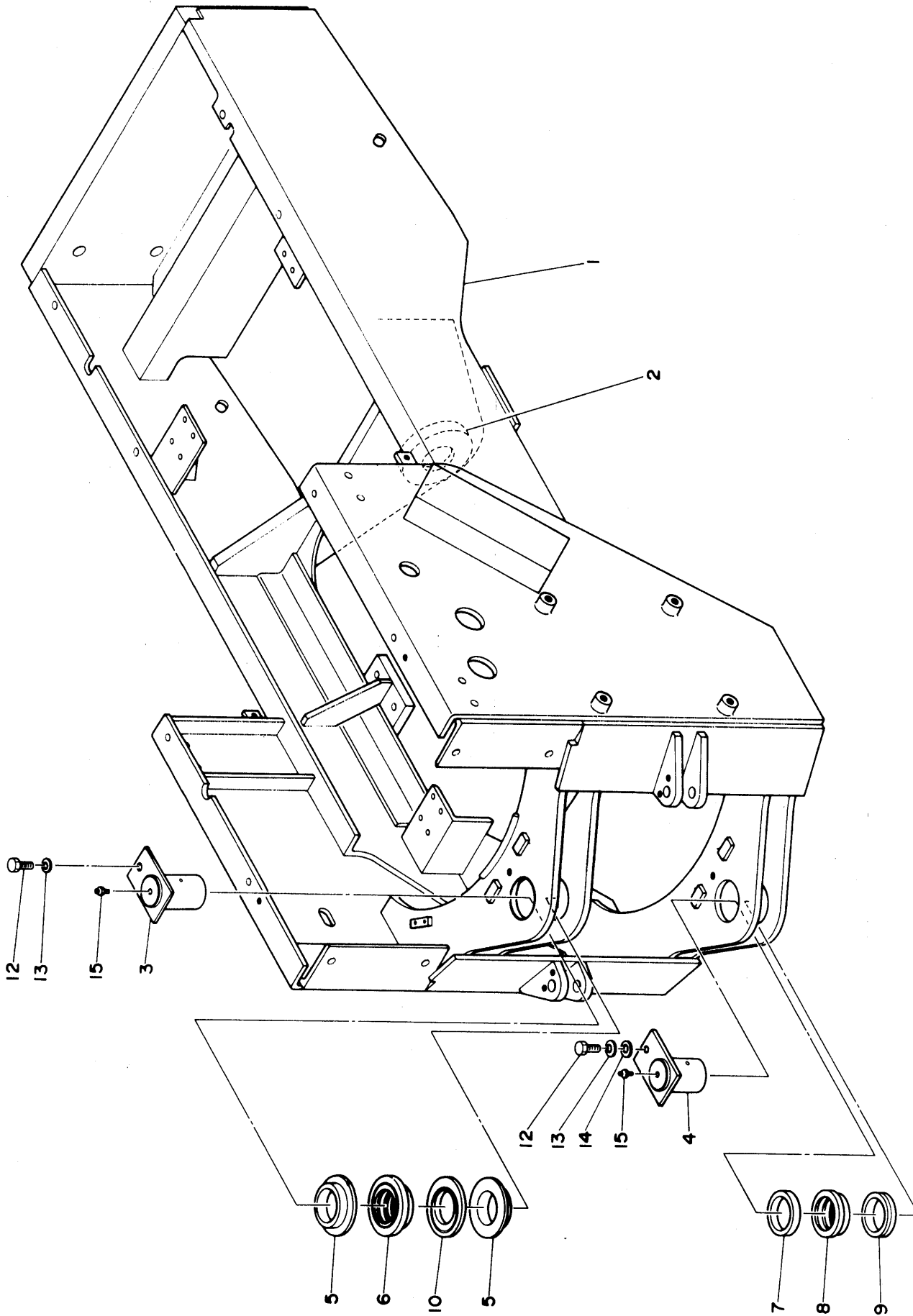
ENGINE CONTROL  
S/N 63-BEYOND



S/N 1-62

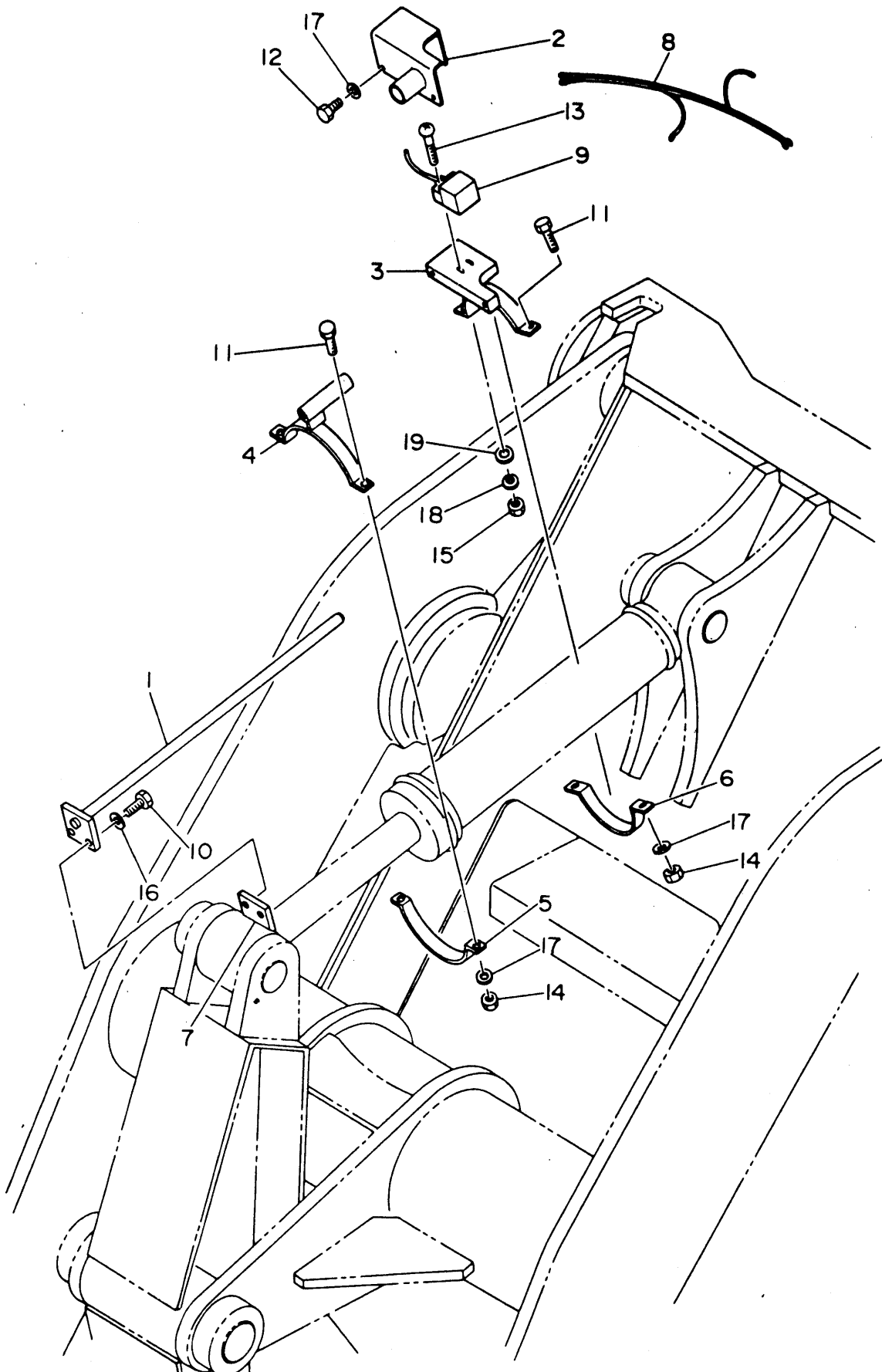
LOADER-GENERAL ARRANGEMENT

REAR FRAME



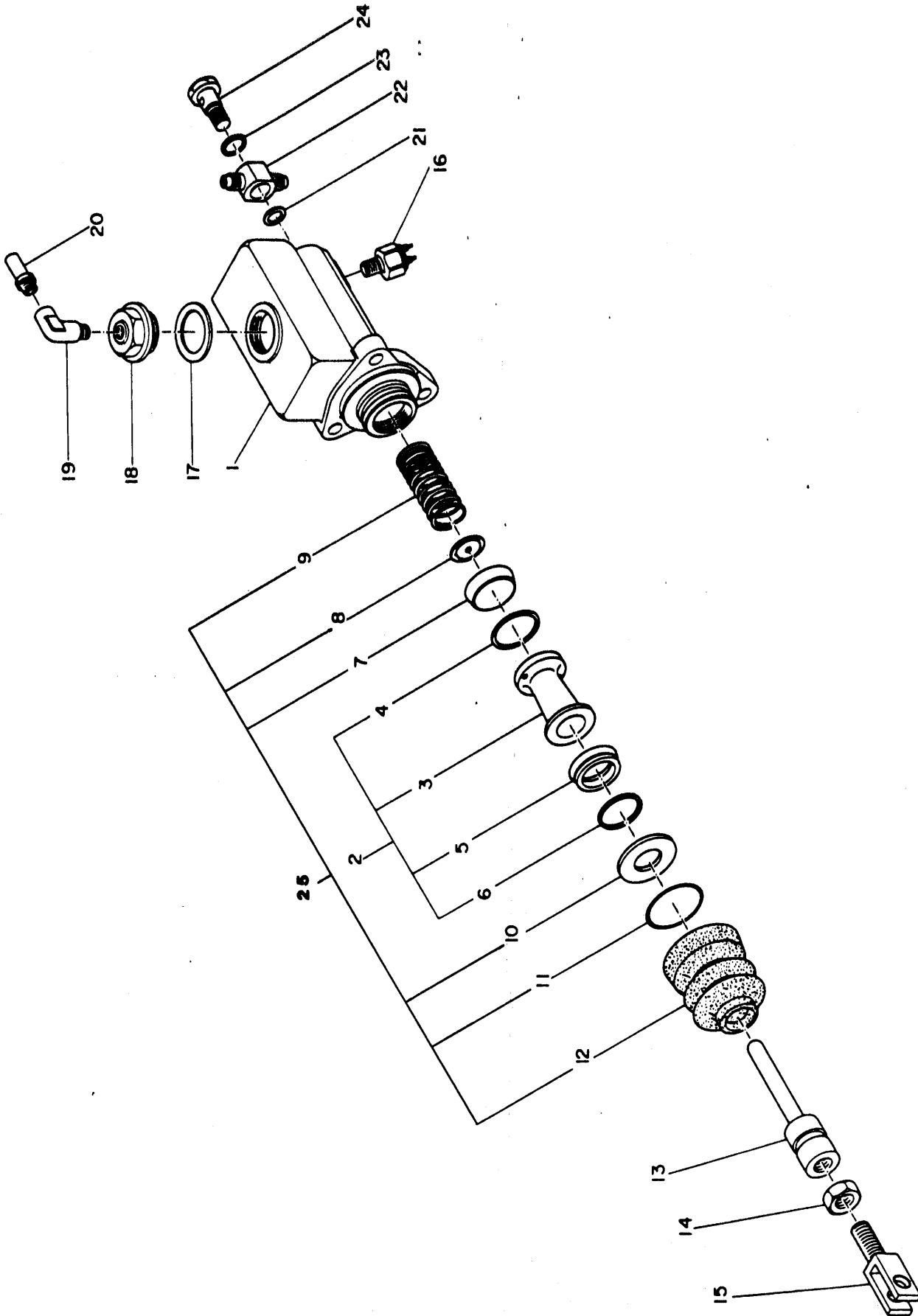
840D WHEEL LOADER  
LOADER-GENERAL ARRANGEMENT

POSITIONER



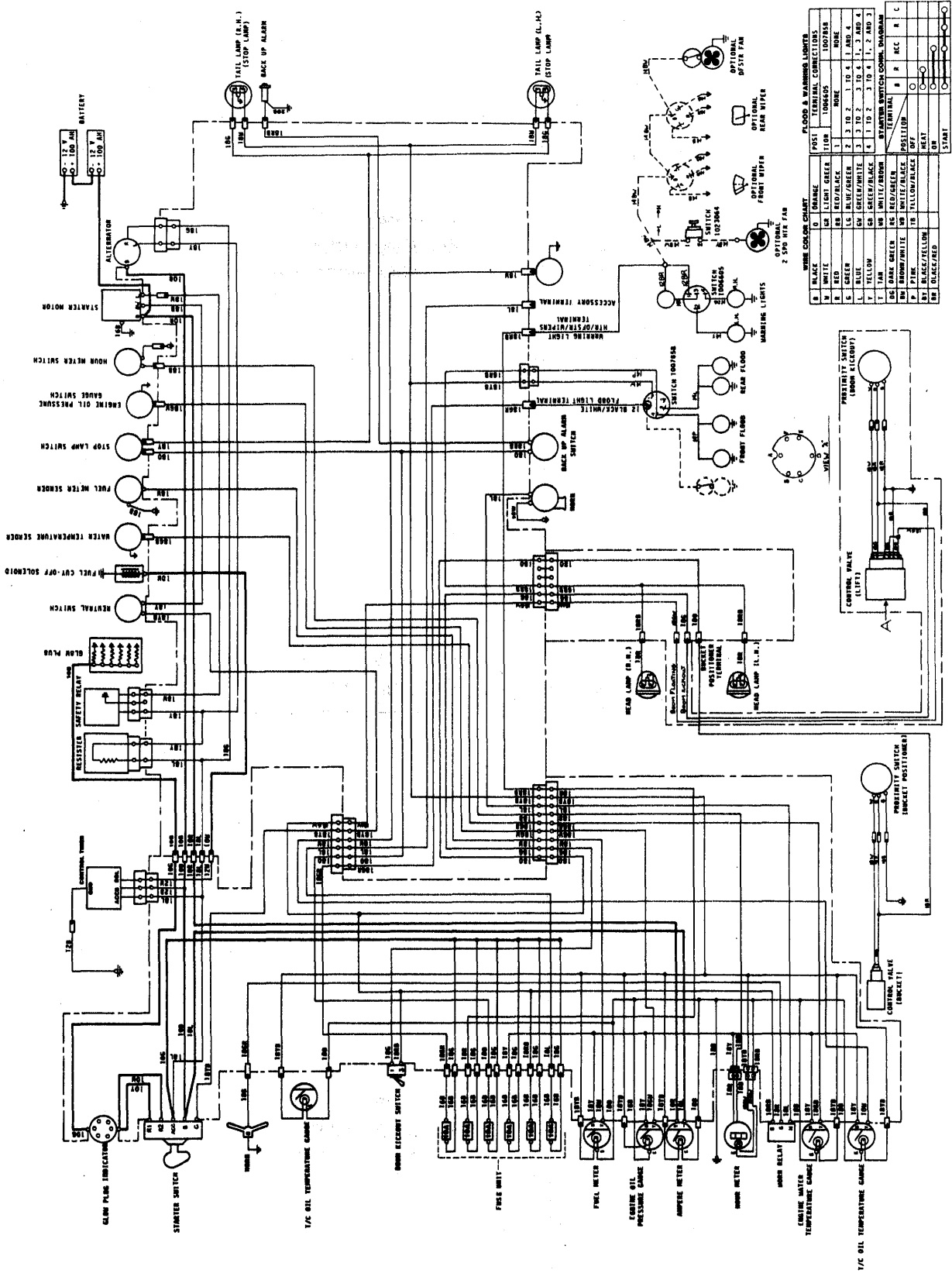
LOADER-GENERAL ARRANGEMENT

FOOT BRAKE MASTER CYLINDER



ELECTRICAL

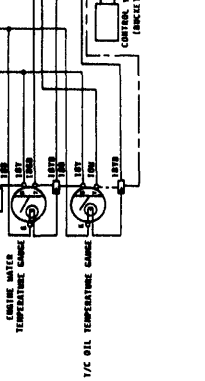
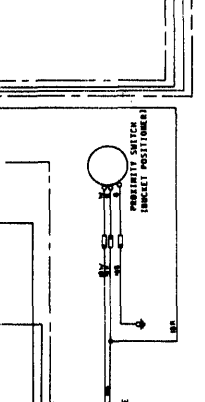
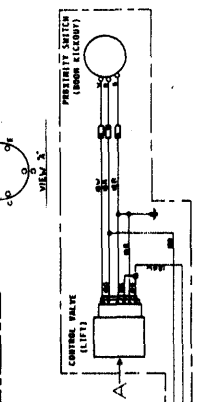
ELECTRICAL DIAGRAM  
S/N 63-BEYOND



WIRE COLOR CHART	POST	TERMINAL CORRECTIONS
B BLACK	10	10078S
W WHITE	11	10084S
R RED	12	10085S
G GREEN	13	10086S
BK BLUE	14	10087S
Y YELLOW	15	10088S
PK PINK	16	10089S
DR DARK GREEN	17	10090S
BR BROWN/WHITE	18	10091S
PI PINK	19	10092S
BLK/YEL BLACK/YELLOW	20	10093S
BLK/RED BLACK/RED	21	10094S

FLOOD & WARNING LIGHTS	POST	TERMINAL CORRECTIONS
10	10078S	10078S
11	10084S	10084S
12	10085S	10085S
13	10086S	10086S
14	10087S	10087S
15	10088S	10088S
16	10089S	10089S
17	10090S	10090S
18	10091S	10091S
19	10092S	10092S
20	10093S	10093S



CLICK HERE TO **DOWNLOAD** THE COMPLETE MANUAL

- Thank you very much for reading the preview of the manual.
- You can download the complete manual from: [www.heydownloads.com](http://www.heydownloads.com) by clicking the link below



- Please note: If there is no response to CLICKING the link, please download this PDF first and then click on it.

CLICK HERE TO **DOWNLOAD** THE COMPLETE MANUAL

**155**

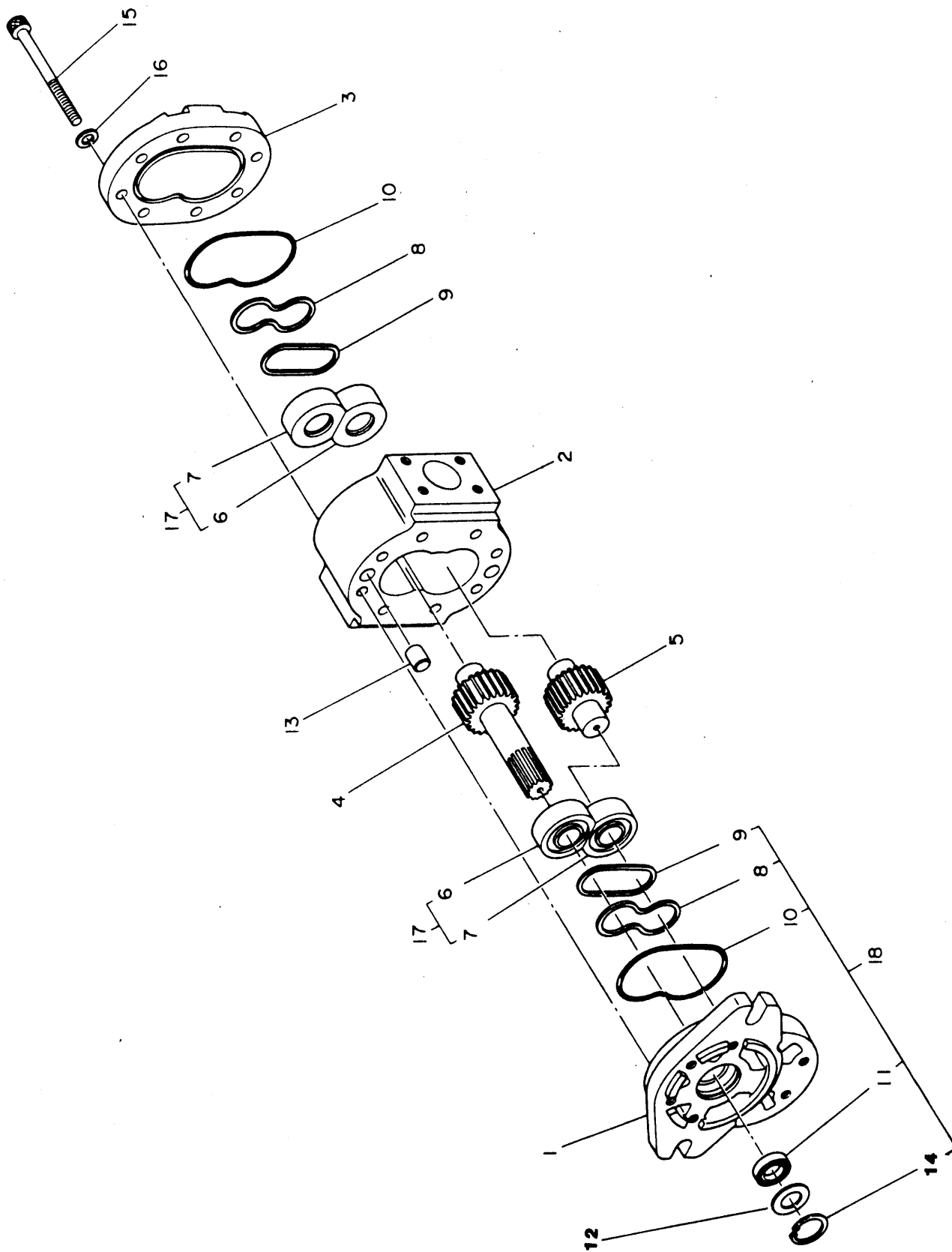
**840D WHEEL LOADER**

**ELECTRICAL**

**NOTES**

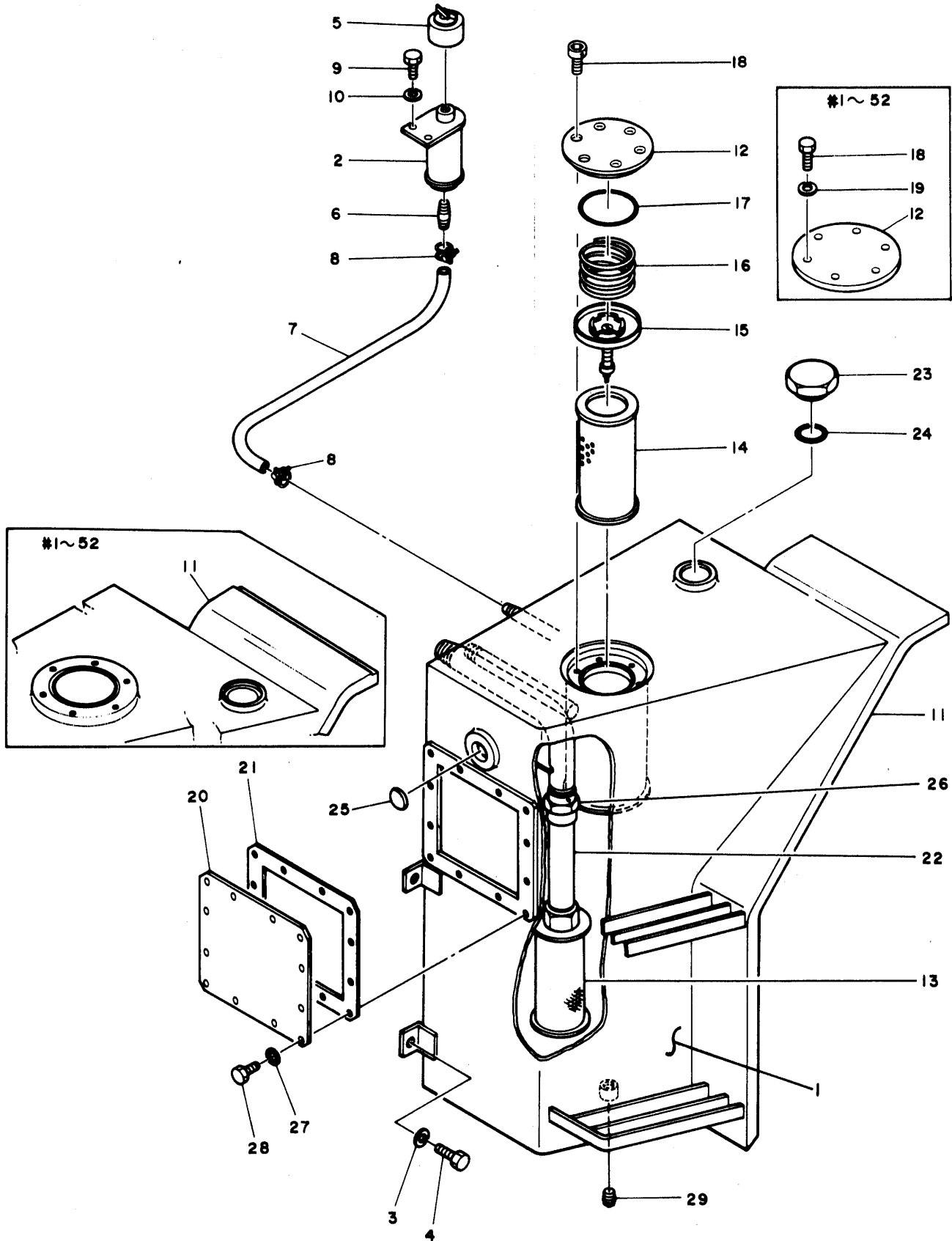
HYDRAULICS

GEAR PUMP



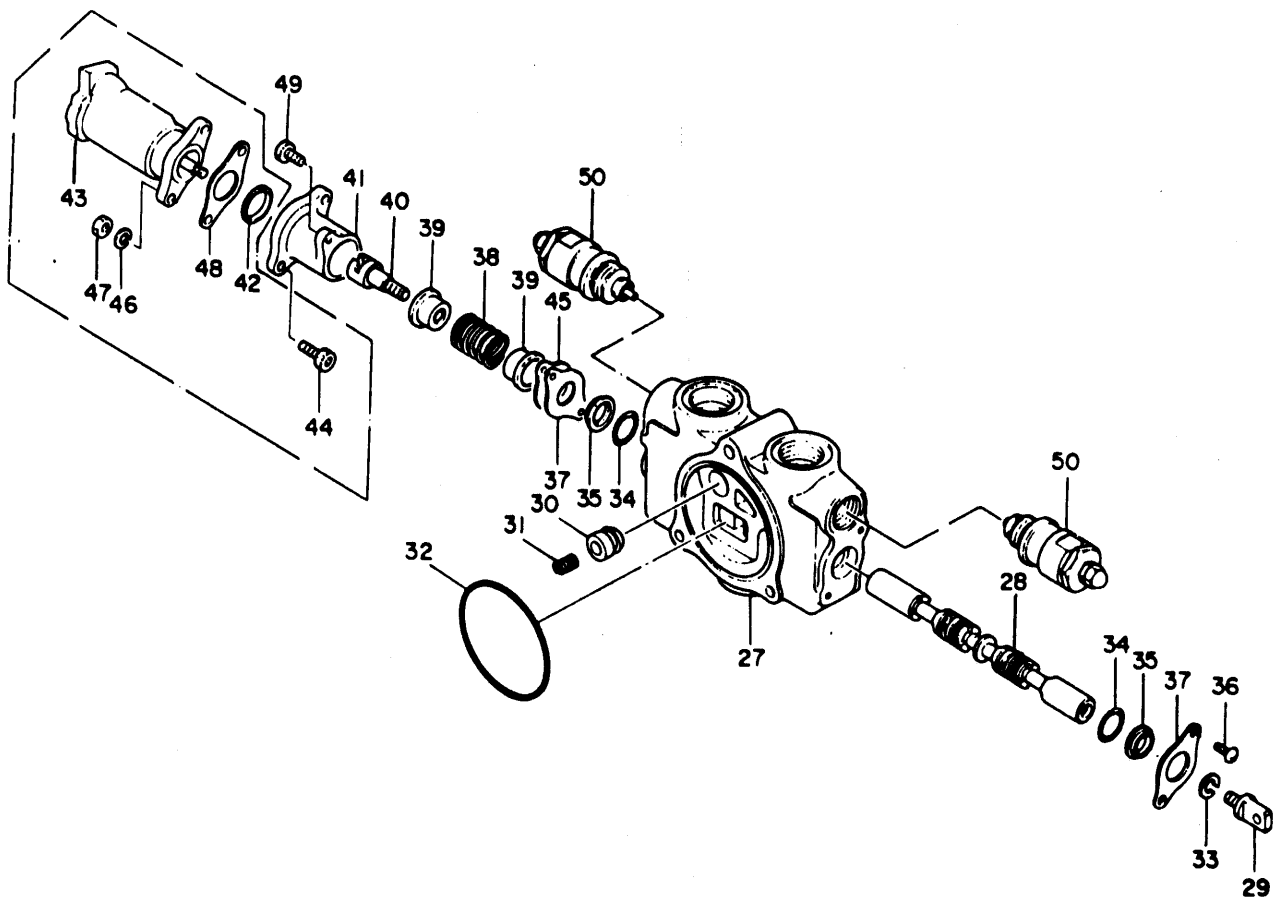
HYDRAULICS

HYDRAULIC TANK



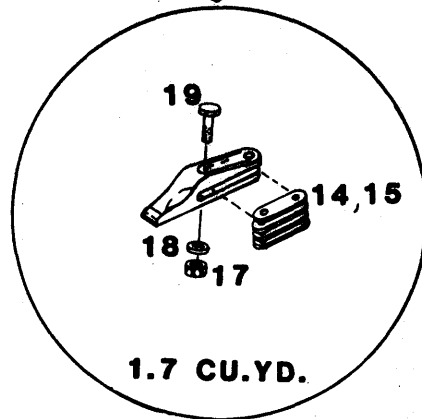
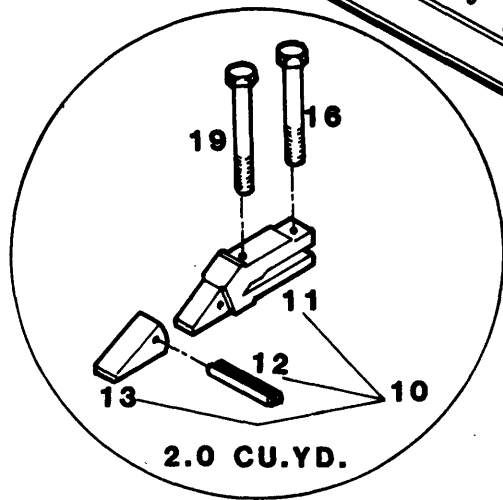
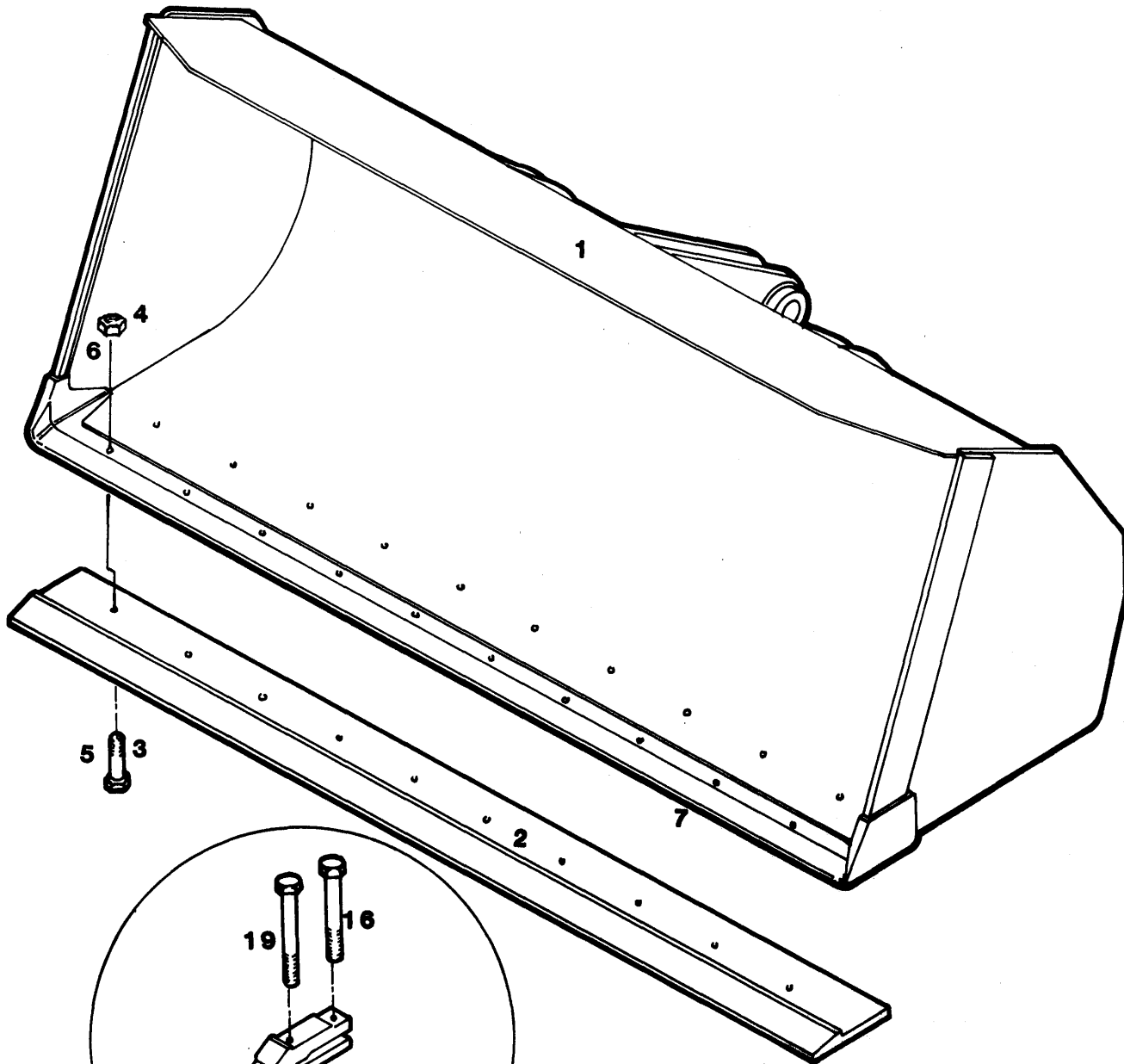
HYDRAULICS

CONTROL VALVE ASSEMBLY



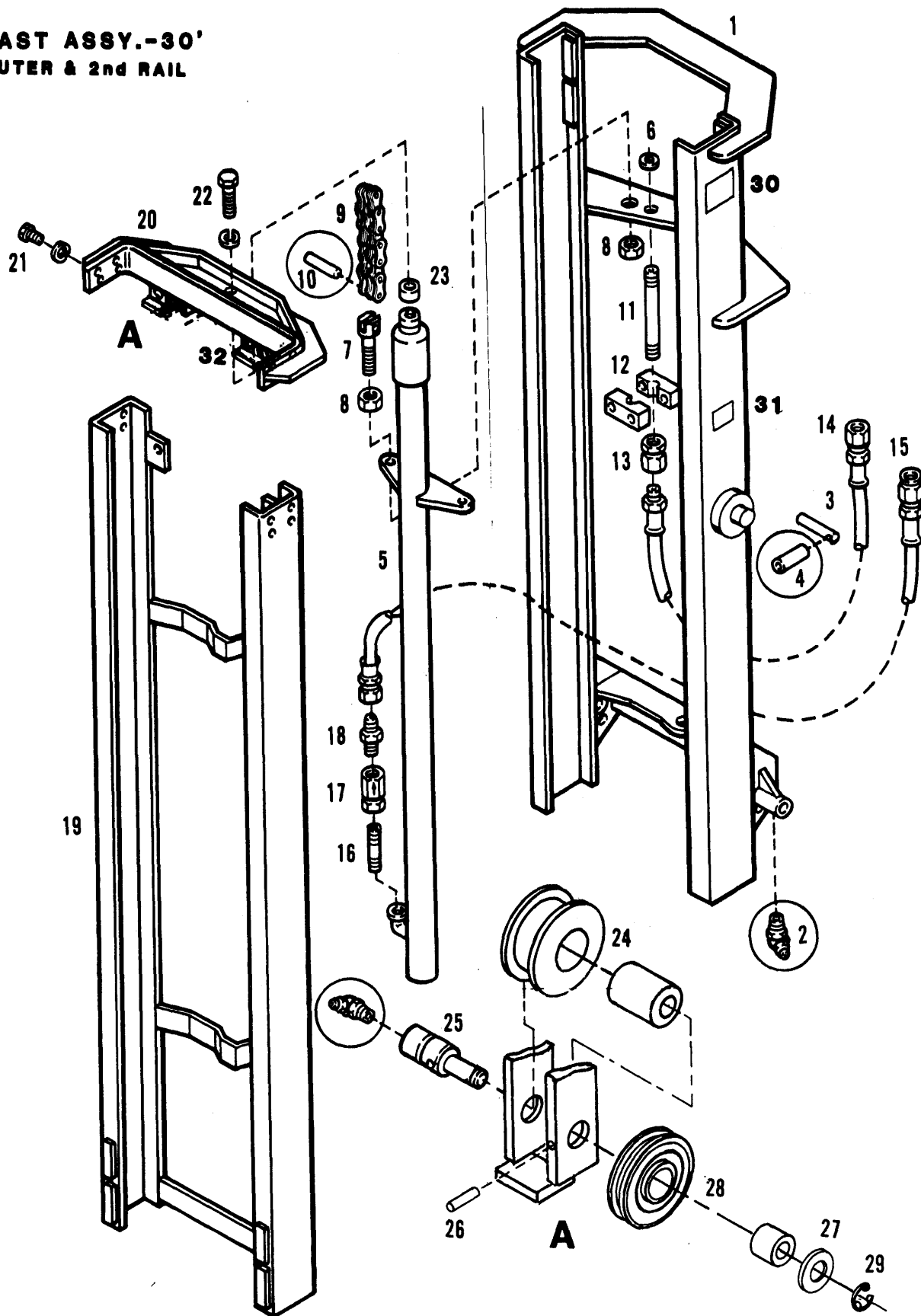
ATTACHMENTS

BUCKETS



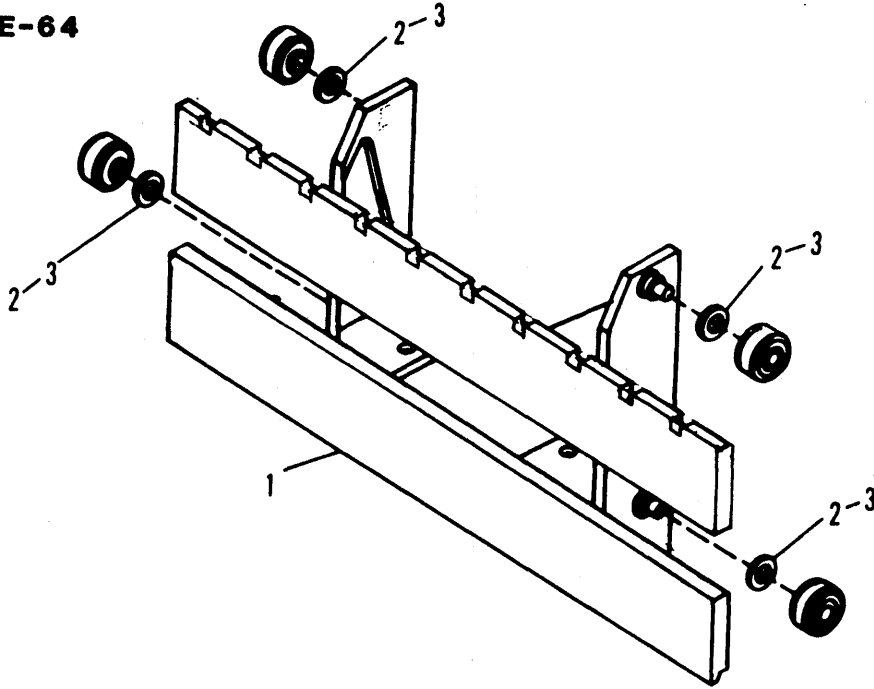
ATTACHMENTS

MAST ASSY.-30'  
OUTER & 2nd RAIL

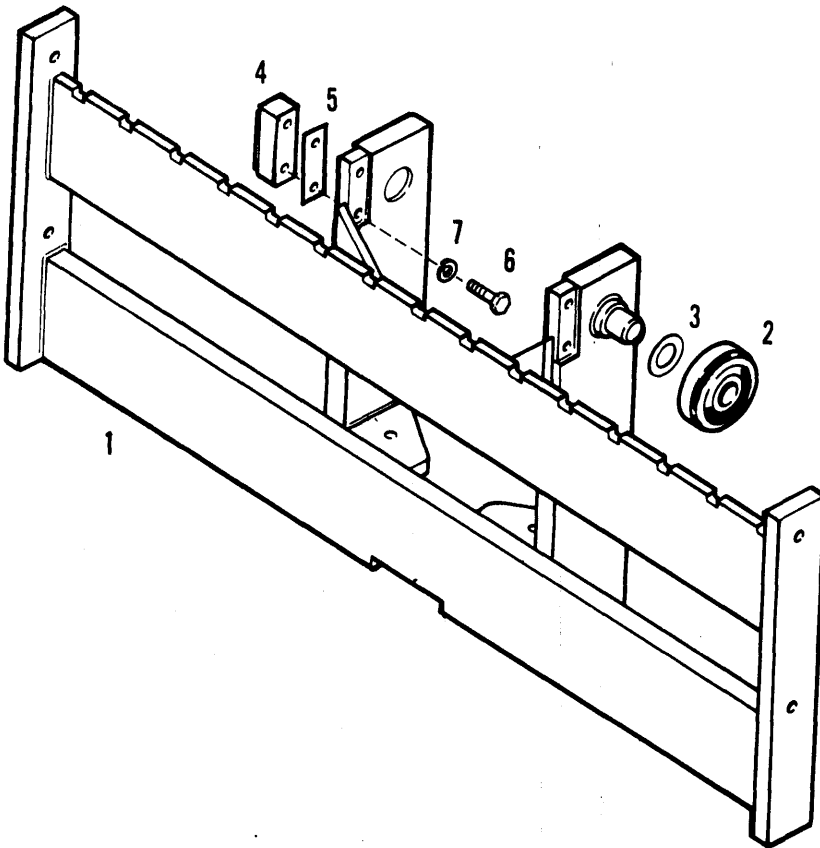


ATTACHMENTS

CARRIAGE-64  
HOOK MT.

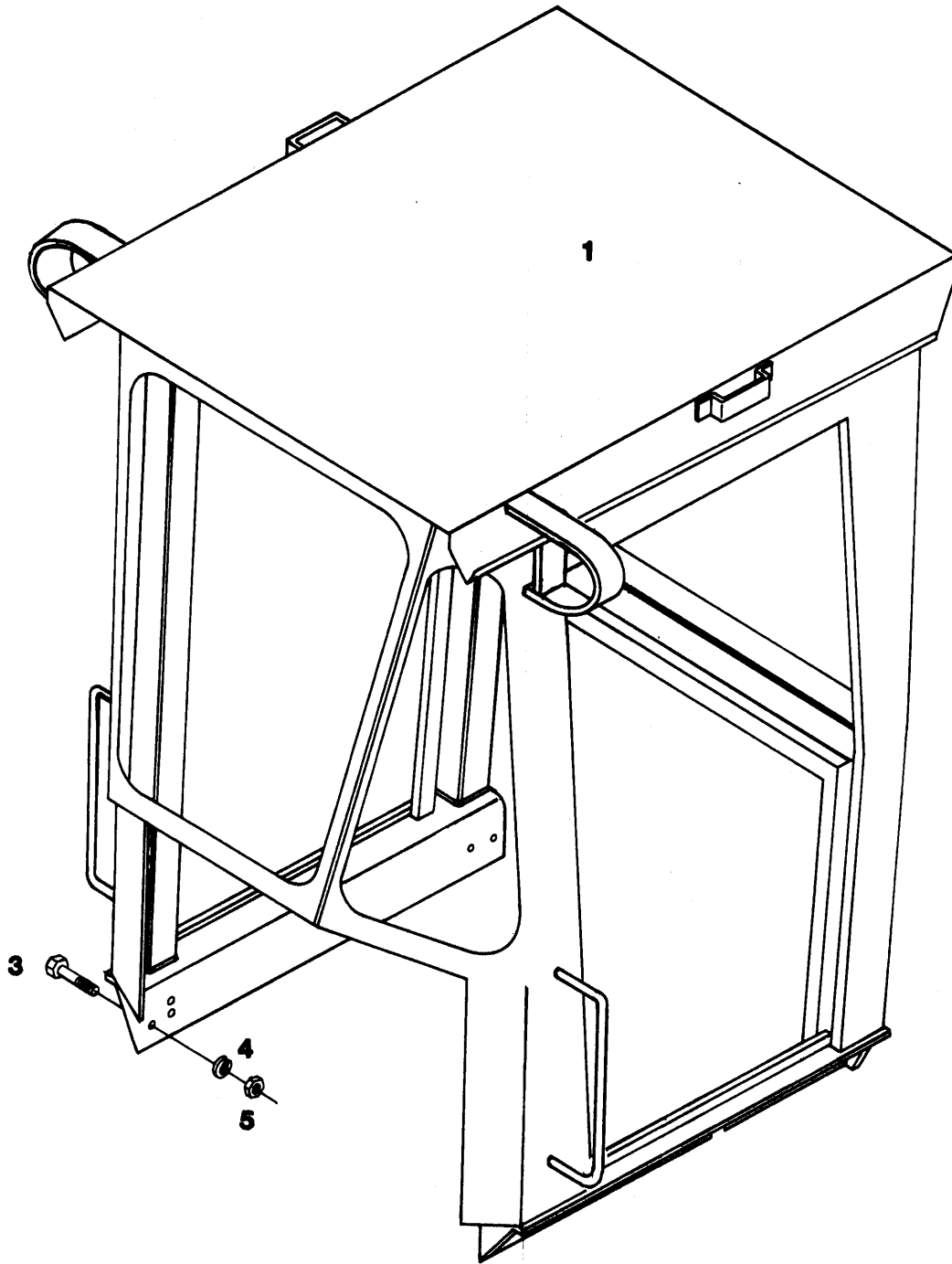


CARRIAGE-60  
HOOK MT.



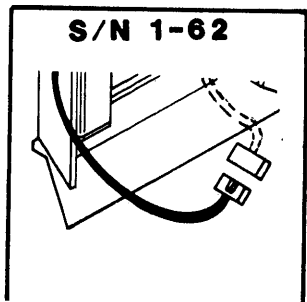
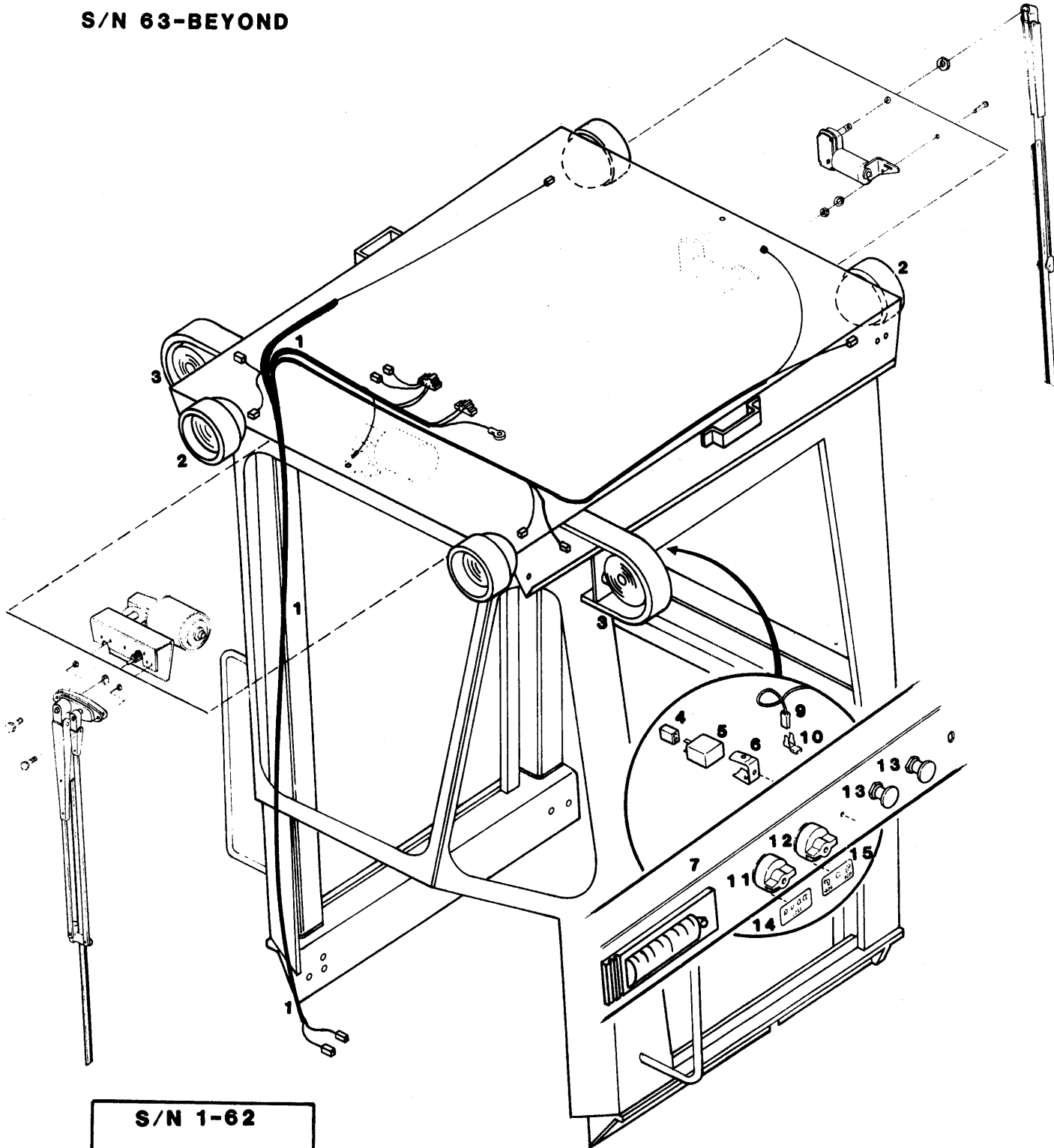
OPTIONS

CAB GENERAL ARRANGEMENT



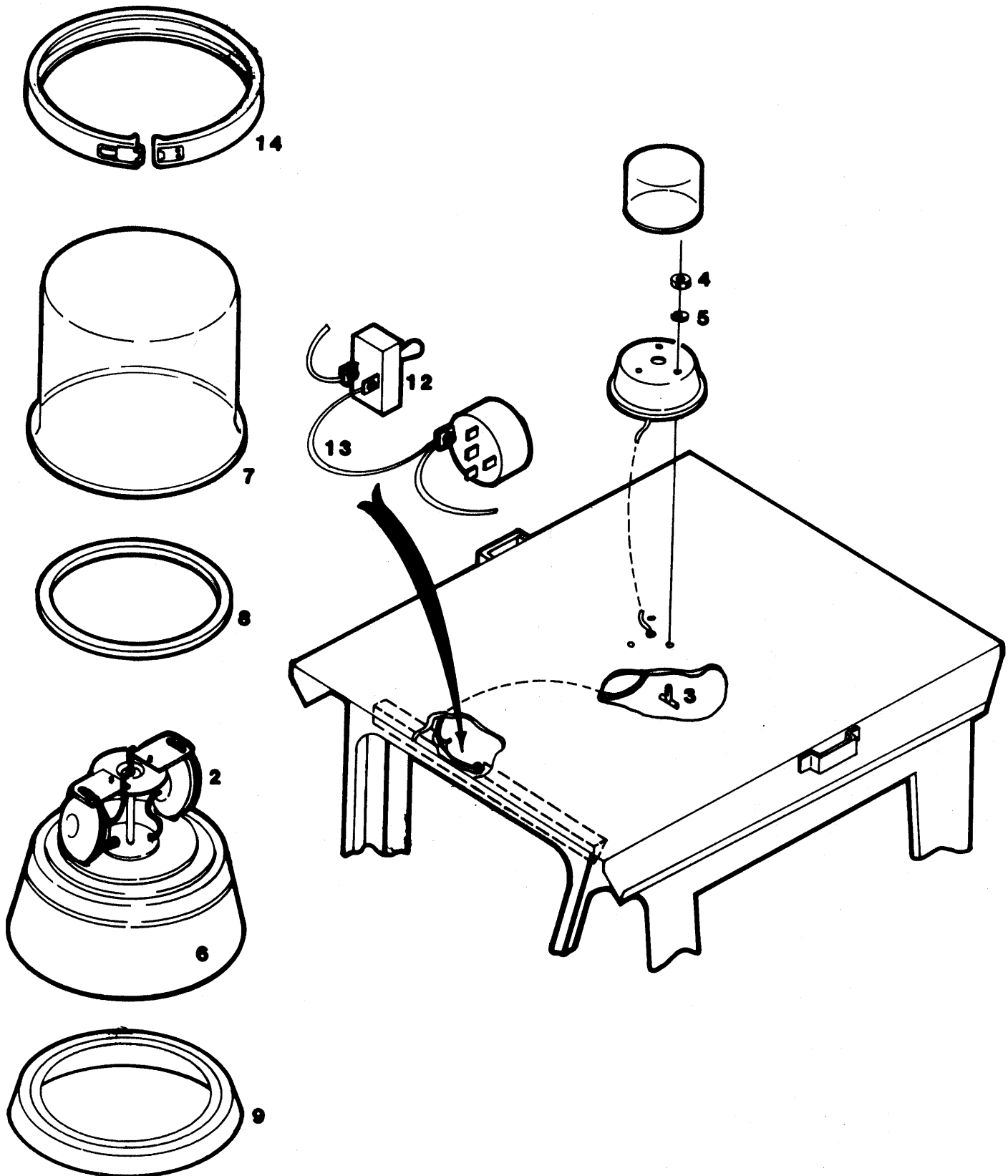
CAB WIRING

S/N 63-BEYOND



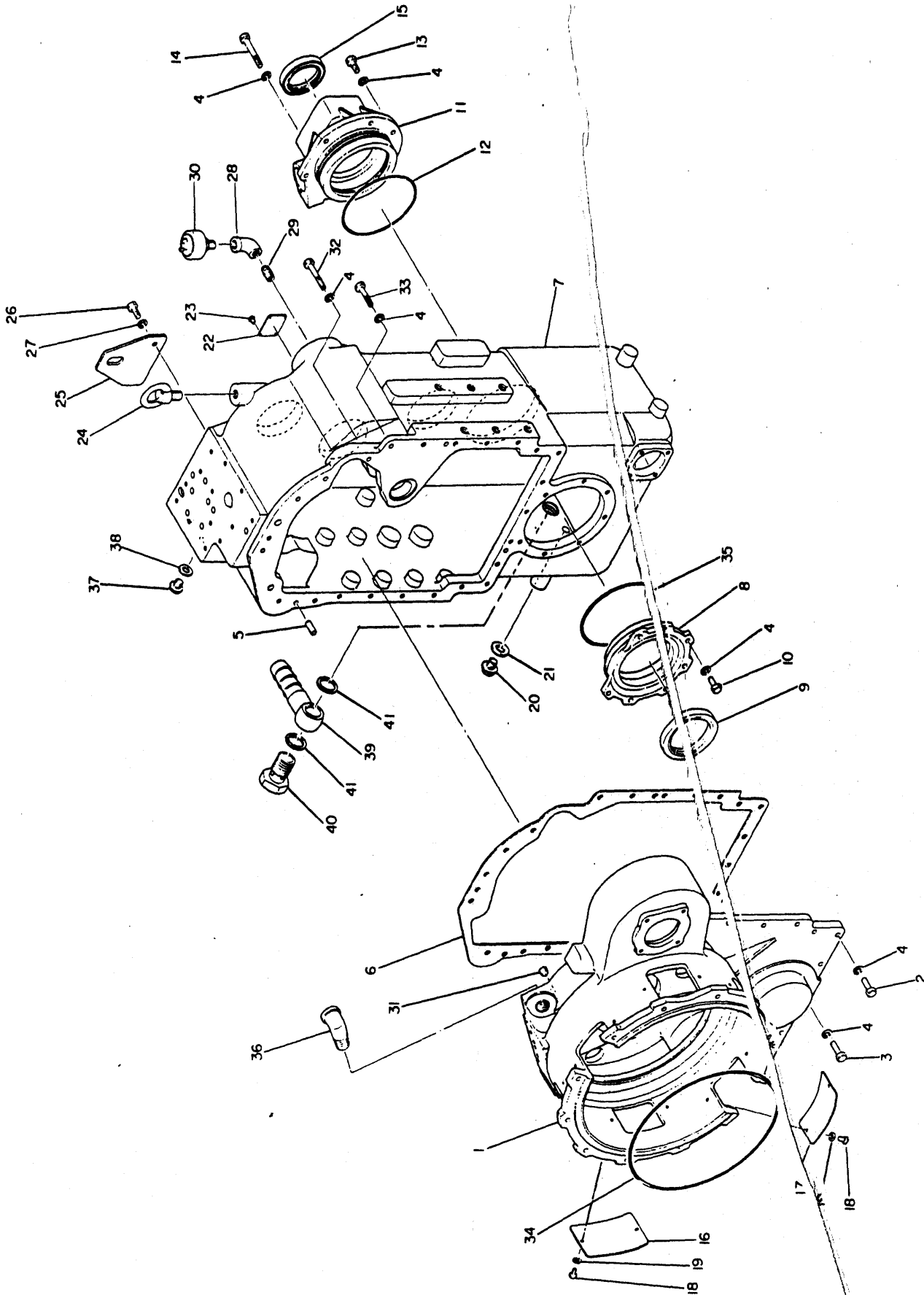
OPTIONS

ROTATING BEACON



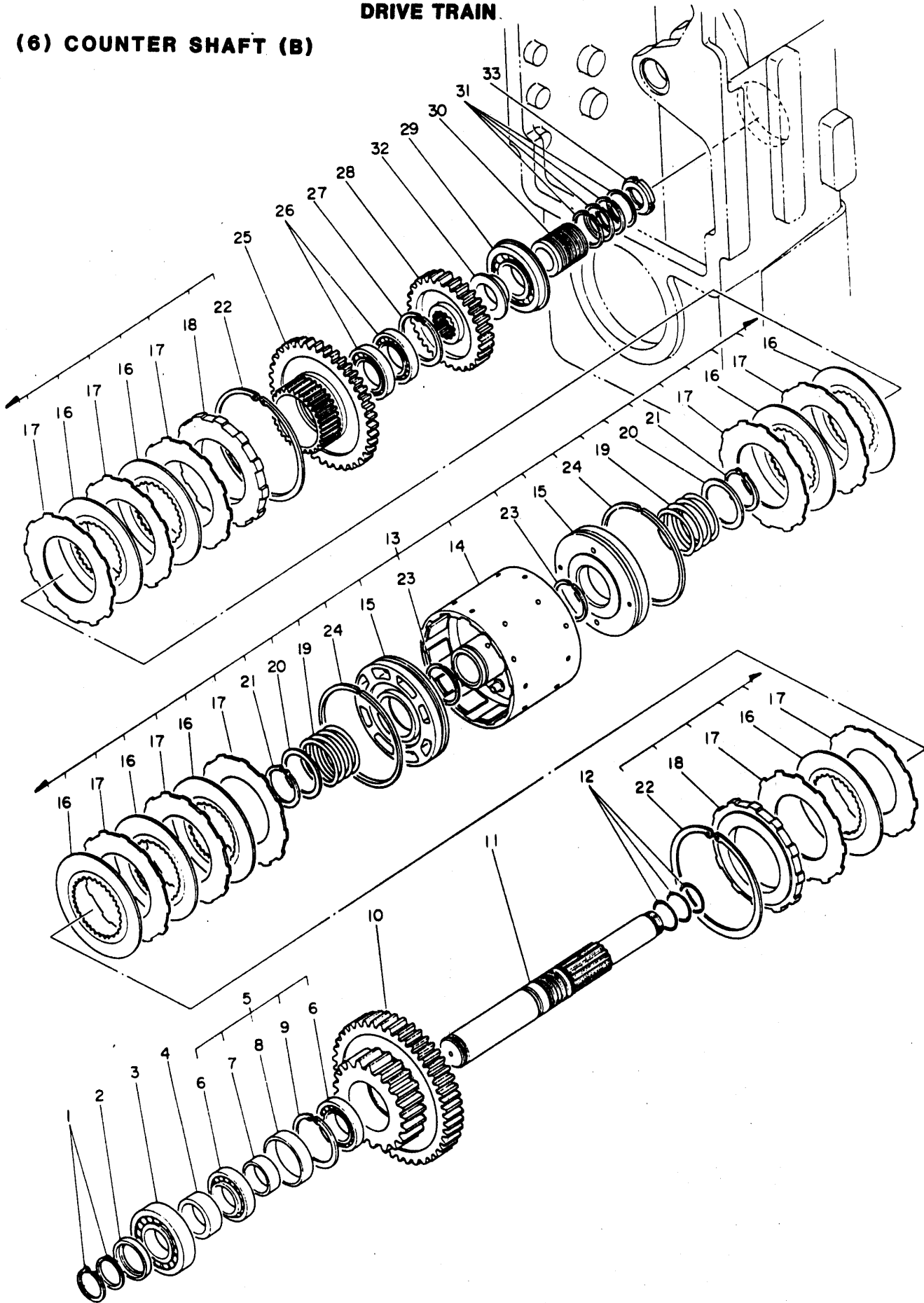
DRIVE TRAIN

(1) TORQUE CONVERTER & TRANSMISSION CASE



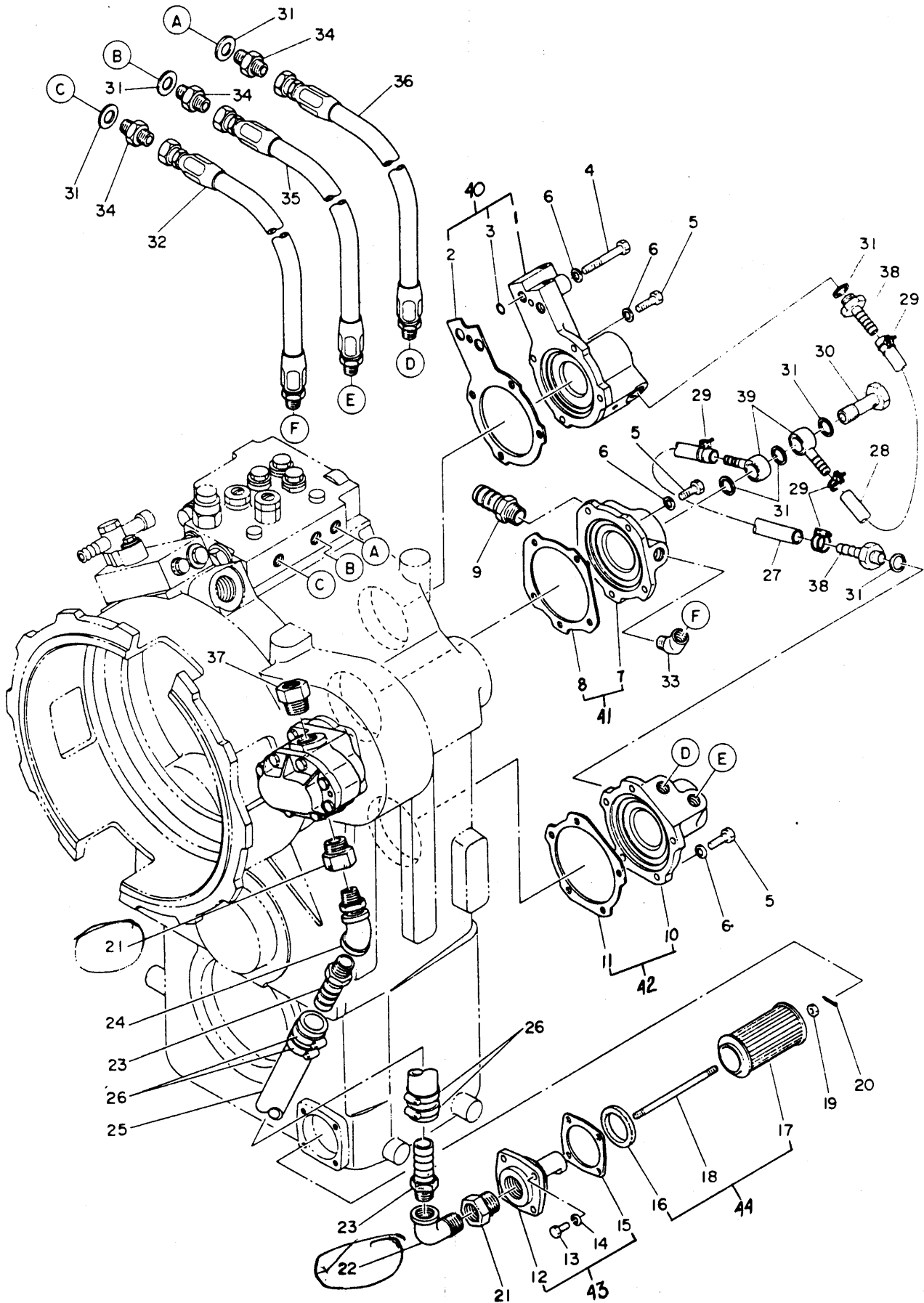
DRIVE TRAIN

(6) COUNTER SHAFT (B)



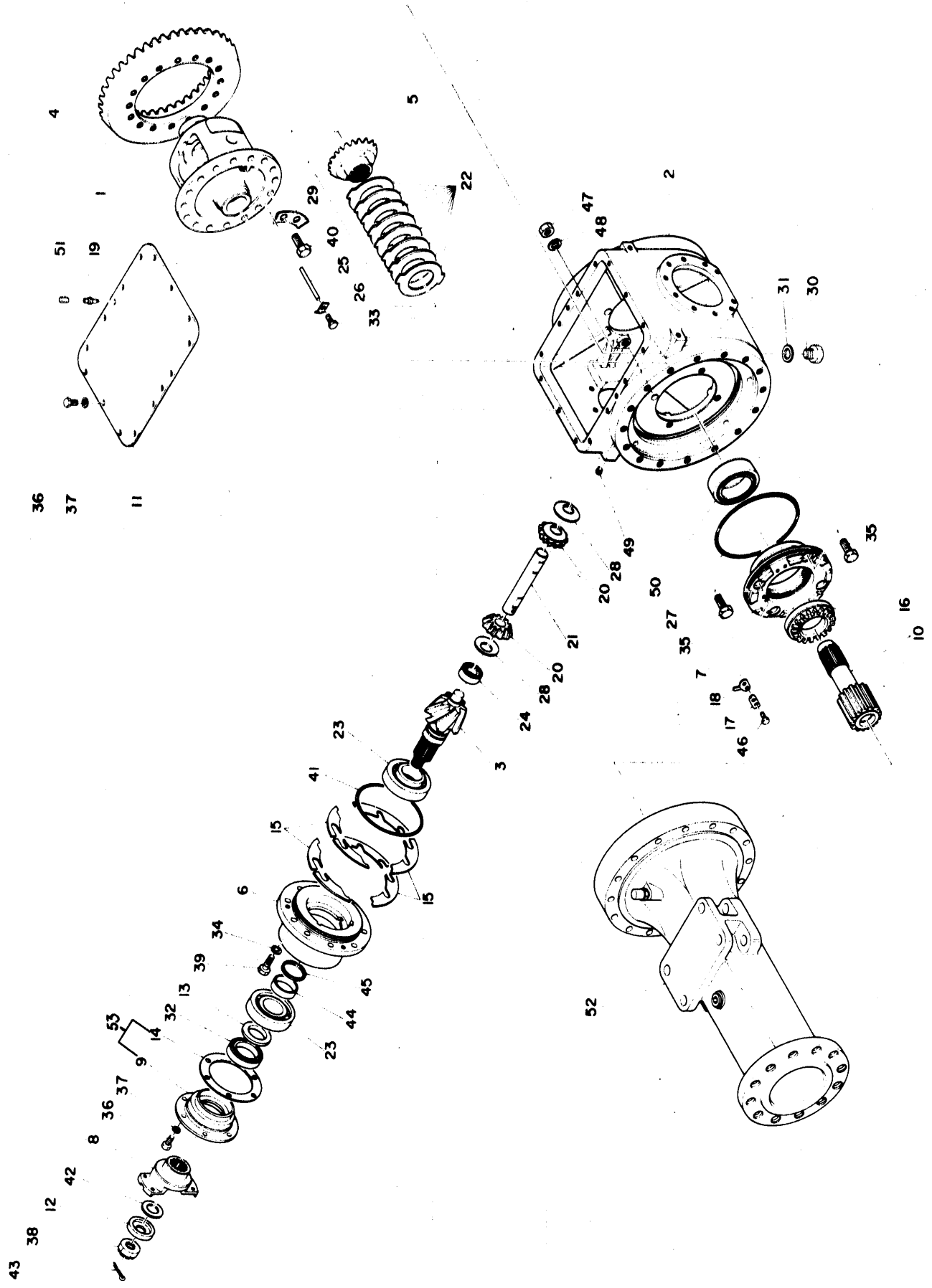
DRIVE TRAIN

(11) OIL SCREEN & PIPING



DRIVE TRAIN

REAR AXLE ASSY.



**299**

**840D WHEEL LOADER**

**DRIVE TRAIN**

**NOTES**

METRIC INFORMATION

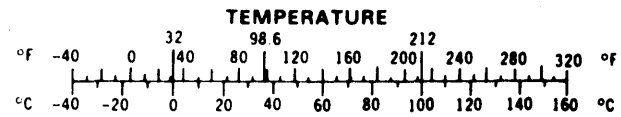
In this manual measurements in U.S. customary units are followed by the metric equivalent in parentheses. For example: 5 inches (127 mm), 10 bushels (0.3524 m<sup>3</sup>) and 100 horsepower (74.6 kW).

These metric equivalents are provided for your convenience as an aid in converting to the metric system. A chart showing metric terms, examples, and abbreviations used in this manual is provided below.

METRIC/U.S. CUSTOMARY UNIT EQUIVALENTS

	Multiply:	by:	to get:	Multiply:	by:	to get:
LINEAR	inches	x 25.4	= millimetres (mm)	x 0.03937	= inches	
	feet	x 0.3048	= metres (m)	x 1.0936	= feet	
	yards	x 0.9144	= metres (m)	x 1.0936	= yards	
	miles	x 1.6093	= kilometres (km)	x 0.6214	= miles	
	inches	x 2.54	= centimetres (cm)	x 0.3937	= inches	
	microinches	x 0.0254	= micrometres (um)	x 39.37	= microinches	
AREA	inches <sup>2</sup>	x 645.16	= millimetres <sup>2</sup> (mm <sup>2</sup> )	x 0.00155	= inches <sup>2</sup>	
	inches <sup>2</sup>	x 6.4516	= centimetres <sup>2</sup> (cm <sup>2</sup> )	x 0.155	= inches <sup>2</sup>	
	feet <sup>2</sup>	x 0.0929	= metres <sup>2</sup> (m <sup>2</sup> )	x 10.764	= feet <sup>2</sup>	
	yards <sup>2</sup>	x 0.8361	= metres <sup>2</sup> (m <sup>2</sup> )	x 1.196	= yards <sup>2</sup>	
	acres	x 0.4047	= hectometres <sup>2</sup> (hm <sup>2</sup> ) hectares (ha)	x 2.471	= acres	
VOLUME	inches <sup>3</sup>	x 16387	= millimetres <sup>3</sup> (mm <sup>3</sup> )	x 0.000061	= inches <sup>3</sup>	
	inches <sup>3</sup>	x 16.387	= centimetres <sup>3</sup> (cm <sup>3</sup> )	x 0.06102	= inches <sup>3</sup>	
	inches <sup>3</sup>	x 0.01639	= litres	x 61.024	= inches <sup>3</sup>	
	quarts	x 0.94635	= litres	x 1.0567	= quarts	
	gallons	x 3.7854	= litres	x 0.2642	= gallons	
	feet <sup>3</sup>	x 28.317	= litres	x 0.03531	= feet <sup>3</sup>	
	feet <sup>3</sup>	x 0.02832	= metres <sup>3</sup> (m <sup>3</sup> )	x 35.315	= feet <sup>3</sup>	
	fluid oz	x 29.57	= millilitres (ml)	x 0.03381	= fluid oz.	
	yards <sup>3</sup>	x 0.7646	= metres <sup>3</sup> (m <sup>3</sup> )	x 1.3080	= yards <sup>3</sup>	
	teaspoons	x 4.929	= millilitres (ml)	x 0.2029	= teaspoons	
	cups	x 0.2366	= litres	x 4.227	= cups	
	bushel	x 35.239	= litres	x 0.02838	= bushels	
	bushel	x 0.03524	= metres <sup>3</sup> (m <sup>3</sup> )	x 28.378	= bushels	
	MASS	ounces (av)	x 28.35	= grams (g)	x 0.03527	= ounces (av)
pounds (av)		x 0.4536	= kilograms (kg)	x 2.2046	= pounds (av)	
tons (2000 lbs.)		x 907.18	= kilograms (kg)	x 0.001102	= tons (2000 lbs.)	
tons (2000 lbs.)		x 0.90718	= metric tons (t)	x 1.1023	= tons (2000 lbs.)	
tons (long) (2240 lbs.)		x 1016.05	= kilograms (kg)	x .000984	= tons (long) (2240 lbs.)	
FORCE	ounces - f (av)	x 0.278	= newtons (N)	x 3.597	= ounces - f (av)	
	pounds - f (av)	x 4.488	= newtons (N)	x 0.2248	= pounds - f (av)	
	kilograms - f	x 9.807	= newtons (N)	x 0.10197	= kilograms - f	
PRESSURE OR STRESS	pounds/sq. in.	x 6.895	= kilopascals (kPa)	x 0.145	= pounds/sq. in.	
POWER	horsepower	x 0.746	= kilowatts (kW)	x 1.34	= horsepower	
	ft-lbf/min.	x 0.0226	= watts (W)	x 44.25	= ft-lbf/min.	
TORQUE	pound-inches	x 0.11298	= newton-metres (N·m)	x 8.851	= pound-inches	
	pound-feet	x 1.3558	= newton-metres (N·m)	x 0.7376	= pound-feet	
VELOCITY	miles/hour	x 1.6093	= kilometres/hour (km/h)	x 0.6214	= miles/hour	
	feet/sec.	x 0.3048	= metres/sec. (m/s)	x 3.281	= feet/sec.	
	kilometres/hr.	x 0.27778	= metres/sec. (m/s)	x 3.600	= kilometres/hr.	
	miles/hour	x 0.4470	= metres/sec. (m/s)	x 2.237	= miles/hour	

TEMPERATURE



°Celsius = 0.556 (°F - 32)      °Fahrenheit = (1.8° C) + 32

CLICK HERE TO **DOWNLOAD** THE COMPLETE MANUAL

- Thank you very much for reading the preview of the manual.
- You can download the complete manual from: [www.heydownloads.com](http://www.heydownloads.com) by clicking the link below



- Please note: If there is no response to CLICKING the link, please download this PDF first and then click on it.

CLICK HERE TO **DOWNLOAD** THE COMPLETE MANUAL