

Parts Manual



See "General Information"
for New Parts Manual
Features.

938G II Wheel Loader

CRD1-Up (Machine)
5GG1-Up (Engine)
FWS1-Up (Transmission)
WNF1-Up (Transmission)
TCC1-Up (Torque Converter)
TCT1-Up (Torque Converter)

Powered By 3126B Engine
This Parts Manual is also available in .PDF Format on Compact
Disc(CD-ROM)-Caterpillar Form SEBP3498

CLICK HERE TO **DOWNLOAD** THE COMPLETE MANUAL

- Thank you very much for reading the preview of the manual.
- You can download the complete manual from: www.heydownloads.com by clicking the link below



- Please note: If there is no response to CLICKING the link, please download this PDF first and then click on it.

CLICK HERE TO **DOWNLOAD** THE COMPLETE MANUAL

TABLE OF CONTENTS

Name	Page	Name	Page
COUNTERWEIGHT GP	476	ROTATING GP-PUMP	590
COUNTERWEIGHT GP-REAR	477	STEERING AR-SECONDARY	591
DOOR GP-BATTERY	478	STEERING COLUMN GP	592
EXTENSION GP-FENDER	480	VALVE GP-PUMP CONTROL	593
FENDER GP	481	VALVE GP-RELIEF	595
FENDER GP-ROADING	483	VALVE GP-SECONDARY STEERING	596
FRAME AS-FRONT	485	VALVE GP-STEERING	597
FRAME AS-LOADER	488		
FRAME AS-REAR	490	HYDRAULIC SYSTEM	600
GRILL GP-RADIATOR	497	ACCUMULATOR GP-RIDE CONTROL	600
GUARD GP-ARTICULATION	501	BODY GP-PILOT VALVE	603
GUARD GP-AXLE OIL COOLER	503	CARTRIDGE GP-VANE PUMP	606
GUARD GP-AXLE SEAL	504	CONTROL GP-HANDLE	607
GUARD GP-BOTTOM	505	CONTROL GP-PILOT OPERATED	
GUARD GP-DRIVE SHAFT	513	HYD	609
GUARD GP-HITCH & STEERING	514	COVER GP-HYDRAULIC TANK CAP	621
GUARD GP-LIGHTING	515	CYLINDER & SEAL GP-LIFT	622
GUARD GP-POWER TRAIN	518	CYLINDER & SEAL GP-TILT	623
HINGE GP-ROADING FENDER	520	CYLINDER GP-COUPLER	624
HITCH GP-ARTICULATING	522	CYLINDER GP-LIFT	626
HOOD & GUARD GP	524	CYLINDER GP-TILT	627
LADDER GP	527	HANDLE GP-MODULAR	635
LINES GP-GREASE	528	HYDRAULIC AR	636
LINK GP-STEERING FRAME LOCK	532	HYDRAULIC AR-3 VALVE	636
SHIELD GP-ENGINE COMPARTMENT	533	HYDRAULIC AR-4 VALVE	637
SUPPORT GP-AIR INLET	534	KICKOUT & POSITIONER GP	641
TILT GP-HOOD	535	LINES GP-COUPLER	645
		LINES GP-FRONT	659
BRAKING SYSTEM	539	LINES GP-HYDRAULIC	667
ACCUMULATOR GP-BRAKE	539	LINES GP-HYDRAULIC OIL COOLER	669
BASE GP-FOOT BRAKE	542	LINES GP-LIFT CYLINDER	678
BRAKE GP-PARKING	545	LINES GP-PILOT	682
CONTROL AR-TRACTION	546	LINES GP-RIDE CONTROL	687
CONTROL GP-FOOT BRAKE	547	LINES GP-TILT CYLINDER	702
CONTROL GP-PARKING BRAKE	549	MOTOR GP-GEAR	708
CONTROL GP-SERVICE BRAKE	555	PIVOT GP-PILOT VALVE	709
CONVERSION AR-TRACTION		PLATE GP-PILOT VALVE	712
CONTROL	564	PUMP & MTG GP-HYDRAULIC	720
MANIFOLD GP-BRAKE		PUMP & MTG GP-HYDRAULIC FAN	721
PROPORTIONAL	565	PUMP GP-PISTON	723
PUMP GP-VANE	566	PUMP GP-PISTON & VANE	725
VALVE GP-SOLENOID	567	ROTATING GP-PUMP	726
		TANK & FILTER GP-HYDRAULIC	727
STEERING SYSTEM	569	TANK & MTG GP-HYDRAULIC	732
CONTROL GP-STEERING	569	VALVE & MTG GP-MAIN CONTROL	734
CYLINDER & MTG GP-STEERING	573	VALVE GP-CHECK	736
CYLINDER & SEAL GP-STEERING	575	VALVE GP-CONTROL	738
CYLINDER GP-STEERING	576	VALVE GP-DEMAND FAN	741
LINES GP-SECONDARY STEERING	578	VALVE GP-DIVERTER	742
LINES GP-STEERING	580	VALVE GP-MAIN CONTROL	745
PUMP & MOTOR GP-SEC STEERING	584	VALVE GP-MANUAL	751
PUMP & MTG GP-SECONDARY		VALVE GP-PILOT	752
STEER	585	VALVE GP-PILOT CARTRIDGE	768
PUMP GP-METERING	586	VALVE GP-PUMP CONTROL	774
PUMP GP-PISTON	588	VALVE GP-RELIEF	776

CONTENIDO

Nombre	Página	Nombre	Página
CABLES DE LA MÁQUINA (GR)	348	MONTAJE DE ARO	430
GRUPO DE CABLES, PROTECTOR DE FUENTE	356	TREN DE FUERZA (CONFIG)	430
CABLES DE LA DIRECCIÓN SECUNDARIA	358	BOMBA DEL ENFRIADOR DE ACEITE DEL EJE Y MONTAJE (GR)	431
CABLES DE SENSOR (GR)	366	BOMBA DE LA TRANSMISIÓN (GR)	432
GRUPO DE CABLES, ARRANQUE ASISTIDO	368	LLANTA (CONFIG)	434
CABLES DEL CONTROL DE TRACCIÓN (GR)	369	ARO DESMONTABLE (GR)	435
TREN DE FUERZA	374	EJE DE MANDO (GR)	439
EJE FIJO (CONFIG)	374	JUNTA DESLIZANTE (GR)	441
EJE OSCILANTE (CONFIG)	375	ARO Y RUEDA	442
FRENO Y PLANETARIOS (GR)	377	CONVERTIDOR DE PAR (GR)	453
CAJA Y PIEZAS DE LOS PLANETARIOS	379	TRANSMISION (CONFIG)	455
EMBRAGUE (GR)	382	JUNTA UNIVERSAL (GR)	457
CONTROL DE LA TRANSMISIÓN (GR)	388	DERIVACIÓN - VÁLVULA DE (GR)	459
GRUPO DE MONTAJE Y ENFRIAMIENTO DE LA TRANSMISIÓN	390	VÁLVULA DE MODULACIÓN (GR)	460
ENFRIADOR DEL ACEITE DEL EJE (CONFIG)	391	VÁLVULA DE ALIVIO (GR)	461
TAPAS PROTECTORAS DE EMBARQUE (GR)	392	VÁLVULA DE CONTROL DE LA TRANSMISIÓN (GR)	463
CUBIERTA (GR)-TAPA DE LLENADO DE ACEITE DE LA TRANSMISIÓN	393	BASTIDOR Y CAJA	467
DIFERENCIAL (GR)	394	ACCIONADOR DEL PROTECTOR DEL TREN DE FUERZA (CONFIG)	467
DIFERENCIAL DE DESLIZAMIENTO LIMITADO (GR)	395	ACCIONADOR DE INCLINACIÓN DEL CAPO (GR)	468
DIFERENCIAL NOSPIN (GR)	396	ACCIONADOR DEL PROTECTOR (GR)	472
DRENAJE DE SEGURIDAD ECOLÓGICA (GR)	398	ACCIONADOR DEL PROTECTOR DEL TREN DE FUERZA (GR)	473
TUBO DE LLENADO DE ACEITE DE LA TRANSMISIÓN (GR)	399	DEFLECTOR (GR)	475
FILTRO DE ACEITE (GR)	400	CONTRAPESO (GR)	476
CORONA (GR)	402	CONTRAPESO TRASERO (GR)	477
*GEAR GP-BEVEL & PINION	404	TAPA DE LA BATERÍA (GR)	478
ENGRANAJE DE TRANSFERENCIA DE SALIDA	406	EXTENSIÓN DEL GUARDABARROS (GR)	480
CAJA DEL EJE OSCILANTE (GR)	408	GUARDABARROS (GR)	481
CAJA DE EJE OSCILANTE (GR)	412	GUARDABARROS PARA DESPLAZAMIENTO EN CARRETERA (GR)	483
ENTRADA - SERVOTRANSMISIÓN (GR)	416	BASTIDOR DELANTERO (CONJ)	485
TUBERÍAS DEL ENFRIADOR DE ACEITE DEL EJE (GR)	417	BASTIDOR DEL CARGADOR (CONJ)	488
TUBERÍAS DEL FILTRO DEL TREN DE FUERZA (GR)	421	BASTIDOR TRASERO (CONJ)	490
TUBERIAS DEL ENFRIADOR DEL CONVERTIDOR DE PAR	425	REJILLA DEL RADIADOR (GR)	497
EJE - GRUPO DE MONTAJE	427	PROTECTOR DE ARTICULACION (GR)	501
MONTAJE DE ENFRIADOR DE ACEITE DE EJE (GR)	428	PROTECTOR DEL ENFRIADOR DE ACEITE DEL EJE (GR)	503
		PROTECTOR DE SELLO DEL EJE (GR)	504
		PROTECTOR INFERIOR (GR)	505
		PROTECTOR DEL EJE IMPULSOR (GR)	513
		GRUPO DE PROTECTOR DE ENGANCHE Y DIRECCION	514
		PROTECTOR DE LAS LUCES (GR)	515

* NO HAY TRADUCCION DISPONIBLE EN EL MOMENTO DE LA IMPRESION

INHALTSVERZEICHNIS

Bezeichnung	Seite	Bezeichnung	Seite
ELEKTRISCHE ANLAGE U. STARTSYSTEM		KIPPSCHALTER	278
STEM	159	SCHEIBENWISCHERSCHALTER	279
WARNVORRICHTUNG	159	ÄTHERSTARTVENTIL	280
DREHSTROMGENERATOR	161	RÜCKFAHRWARNHORN	281
BATTERIE UND VERDRAHTUNG	172	ACHSÜBERWACHUNGSSYSTEM -	
KLEMMLEISTE	175	VERDRAHTUNG	282
ÜBERTRAGUNGSSTEUERUNG U.		KLIMAAANLAGENVERDRAHTUNG	283
BEFESTIGUNG	176	ACHSENÜBERWACHUNG - VERDRAHTUNG	284
STEUERUNGSEINHEIT, ELEKTRON. FÜR		FAHRERHAUSVERDRAHTUNG	286
MOTOR UND BEFEST.	178	ÜBERTRAGUNGSVERDRAHTUNG	313
MOTORSTEUERUNG, ELEKTRON.	181	SCHNELLWECHSELEINRICHTUNG -	
HUBENDAUSCHALTE-REGELUNG	186	VERDRAHTUNG	315
STELLUNGSSTEUERUNG	188	VERDRAHTUNG - ELEKTR.	
STEUERUNG - NICHT PROGRAMMIERT	189	KUPPLUNG	316
ELEKTR. ANLAGE	192	MOTORVERDRAHTUNG	317
ELEKTRONIK - MASCHINE	193	VERDRAHTUNG, VORNE	335
KRAFTÜBERTRAGUNGSELEKTRONIK	194	BELEUCHTUNGSVERDRAHTUNG	344
UMLAUFKÜHLWASSERHEIZUNG	195	MASCHINENVERDRAHTUNG	348
ÜBERTRAGUNGSEINBAUSATZ	199	STROMSCHUTZVERDRAHTUNG	356
SICHERHEITSEINBAUSATZ	199	NOTLENKUNGSVERDRAHTUNG	358
ARBEITSLEUCHTEN	201	SENSORVERDRAHTUNG	366
SCHEINWERFER U. RICHTUNGSLEUCHTE	205	STARTHILFE - VERDRAHTUNG	368
BLINKLEUCHE	209	VERDRAHTUNG - RADSCHLUPFBEGRENZUNG	369
RUNDUM-KENNLEUCHE	212		
ZUSATZBELEUCHTUNG	213	KRAFTÜBERTRAGUNG	374
BELEUCHTUNGSANLAGE (STRASSENAUSRÜSTUNG)	213	STARRACHSE	374
BLINKERLEUCHTEN	214	PENDELACHSE	375
ARBEITSLEUCHTEN	214	BREMSE UND PLANETENGETRIEBE	377
ARBEITS- U. SIGNALLEUCHE	219	PLANETENANTRIEBSGEHÄUSE U. TEILE	379
BELEUCHTUNGSANLAGE (STRASSENAUSRÜSTUNG)	223	KUPPLUNG	382
BLINKERLEUCHTEN	224	GETRIEBESTEUERUNG	388
RUNDUM-KENNLEUCHE	225	GETRIEBEKÜHLER U. BEFESTIGUNG	390
UNTERBRECHER - INSTRUMENTENTAFEL	228	ACHSÖLKÜHLER	391
MOTORSENSOR	235	VERSANDDECKEL	392
STELLUNGSSENSOR	237	GETRIEBEÖLEINFÜLLKAPPE	393
DRUCKSENSOR	241	DIFFERENTIAL	394
DREHZAHLSENSOR	250	DIFFERENTIAL (BEGRENZTER SCHLUPF)	395
TEMPERATURSENSOR	253	NOSPIN-DIFFERENTIAL	396
SERVICE MASCHINE	260	ABLASS (UMWELTFREUNDLICH)	398
STARTHILFE	261	GETRIEBEÖLFÜLLSTUTZEN	399
ÄTHERSTARTHILFE	263	ÖLFILTER	400
STARTERMOTOR	264	TELLERRAD	402
TRENNSCHALTER	267	*GEAR GP-BEVEL & PINION	404
MAGNETSCHALTER	268	VERTEILERGETRIEBEANTRIEB	406
SCHNELLWECHSELEINRICHTUNG - SCHALTER	276	GEHÄUSE - STARRACHSE	408
RICHTUNGSSIGNALSCHALTER	277	GEHÄUSE - PENDELACHSE	412
		GETRIEBEANTRIEBSWELLE	416
		ACHSENÖLKÜHLERLEITUNGEN	417

* ÜBERSETZUNG ZUM ZEITPUNKT DER DRUCKLEGUNG NICHT VORHANDEN

FRAME AND BODY

221-7057 ACTUATOR GP-POWER GUARD

S/N: CRD1-UP

PART OF 227-4777 ACTUATOR AR-POWER GUARD
AN ATTACHMENT

SMCS-1427, 7153

i02010931

NOTE	REF NO	GRAPHIC REF	PART NUMBER	QTY	PART NAME						SEE PAGE
					1	2	3	4	5	6 (PRODUCT LEVEL)	
	1	1	2Q-4178	1	BRACKET AS						
Y	2		2Q-4181	1	ACTUATOR GP-POWER (REAR)						472
Y	3	1	2Q-4181	1	ACTUATOR GP-POWER (MIDDLE)						472
	4	1	222-6730	1	PLATE						
	5	1	229-2903	1	GUARD AS						
		1	7T-1099	1	LINK						
M		1	8T-3490	4	NUT-WELD (M10X1.5-THD)						
	6	1	3B-4617	3	PIN-COTTER						
	7	1	3B-4628	2	PIN-COTTER						
	8	1	3W-9226	1	PIN						
		1	2V-6034	1	RING						
	9	1	7V-9797	3	PIN						
	10	1	8T-4121	4	WASHER-HARD (11X21X2.5-MM THK)						
M	11	1	8T-4133	4	NUT (M10X1.5-THD)						
M	12	1	8T-4137	4	BOLT (M10X1.5X20-MM)						
M	13	1	8T-4139	4	BOLT (M12X1.75X30-MM)						
	14	1	8T-4223	8	WASHER-HARD (13.5X25.5X3-MM THK)						

M-METRIC PART

Y-SEPARATE ILLUSTRATION

FRAME AND BODY

231-3728 FENDER GP-ROADING

S/N: CRD1-UP
AN ATTACHMENT

SMCS-7252

i01908998

NOTE	REF NO	GRAPHIC REF	PART NUMBER	QTY	PART NAME						SEE PAGE
					1	2	3	4	5	6 (PRODUCT LEVEL)	
	1	1	1B-0676	2	PIN						
	2	1	2Q-7980	1	FENDER AS (RH)						
	3	1	2Q-7981	1	FENDER AS-LH						
	4	1	3B-2062	2	PIN (3/8-IN OD)						
	5	1	3B-4615	4	PIN-COTTER						
	6	1	4E-1384	2	BUMPER-CONICAL						
	7	1	6W-5817	2	SPRING						
	8	1	3E-3826	2	END-YOKE ROD						
	9	1	132-1915	1	EXTENSION-LH						
	10	1	132-1916	1	EXTENSION-RH						
	11	1	132-1924	1	SUPPORT AS-FENDER LATCH (RH)						
		1	9V-0334	1	ANGLE						
	12	1	132-1925	2	LATCH						
	13	1	132-1929	1	SUPPORT AS-FENDER LATCH (LH)						
		1	9V-0334	1	ANGLE						
	14	1	132-1931	2	ROD AS						
	15	1	141-3869	1	FENDER AS (RH)						
M		1	8T-3490	8	NUT-WELD (M10X1.5-THD)						
	16	1	141-3870	1	FENDER AS (LH)						
M		1	8T-3490	8	NUT-WELD (M10X1.5-THD)						
Y	17	1	141-3871	1	HINGE GP-ROADING FENDER (LH)						520
Y	18	1	141-3872	1	HINGE GP-ROADING FENDER (RH)						521
	19	1	141-3873	1	SUPPORT AS (RH)						
		1	6N-8863	1	WASHER (10.2X32X2.5-MM THK)						
M		1	8T-3490	2	NUT-WELD (M10X1.5-THD)						
M		1	8T-3612	1	NUT-WELD (M8X1.25-THD)						
	20	1	141-3874	2	GUIDE AS						
	21	1	141-3875	1	COVER (LH)						
	22	1	141-3876	1	COVER (RH)						
	23	1	141-3878	1	SUPPORT AS (LH)						
		1	6N-8863	1	WASHER (10.2X32X2.5-MM THK)						
M		1	8T-3490	2	NUT-WELD (M10X1.5-THD)						
M		1	8T-3612	1	NUT-WELD (M8X1.25-THD)						
	24	1	141-3880	1	CHANNEL AS (RH)						
	25	1	141-3881	1	CHANNEL AS (LH)						
	26	1	189-8319	2	BLOCK						
M	27	1	5C-7261	2	NUT (M8X1.25-THD)						
	28	1	7X-0608	4	WASHER-HARD (10.2X16X2-MM THK)						
	29	1	7X-0618	4	WASHER-HARD (13.5X40X5-MM THK)						
	30	1	7X-7729	6	WASHER (11X25X3-MM THK)						
M	31	1	7Y-9099	12	SCREW-TRUSS HEAD						
	32	1	8T-4121	26	WASHER-HARD (11X21X2.5-MM THK)						
M	33	1	8T-4133	2	NUT (M10X1.5-THD)						
M	34	1	8T-4136	10	BOLT (M10X1.5X25-MM)						
M	35	1	8T-4139	4	BOLT (M12X1.75X30-MM)						
M	36	1	8T-4186	12	BOLT (M10X1.5X40-MM)						
M	37	1	8T-4195	4	BOLT (M10X1.5X30-MM)						
M	38	1	9X-2041	6	SCREW-TRUSS HEAD						

M-METRIC PART
Y-SEPARATE ILLUSTRATION

FRAME AND BODY

203-8464 FRAME AS-REAR

S/N: CRD1-UP

PART OF 201-8909 CONTROL AR-TRACTION, 201-8906 COOLER AR-AXLE OIL, 204-0835
STEERING AR-SECONDARY
AN ATTACHMENT

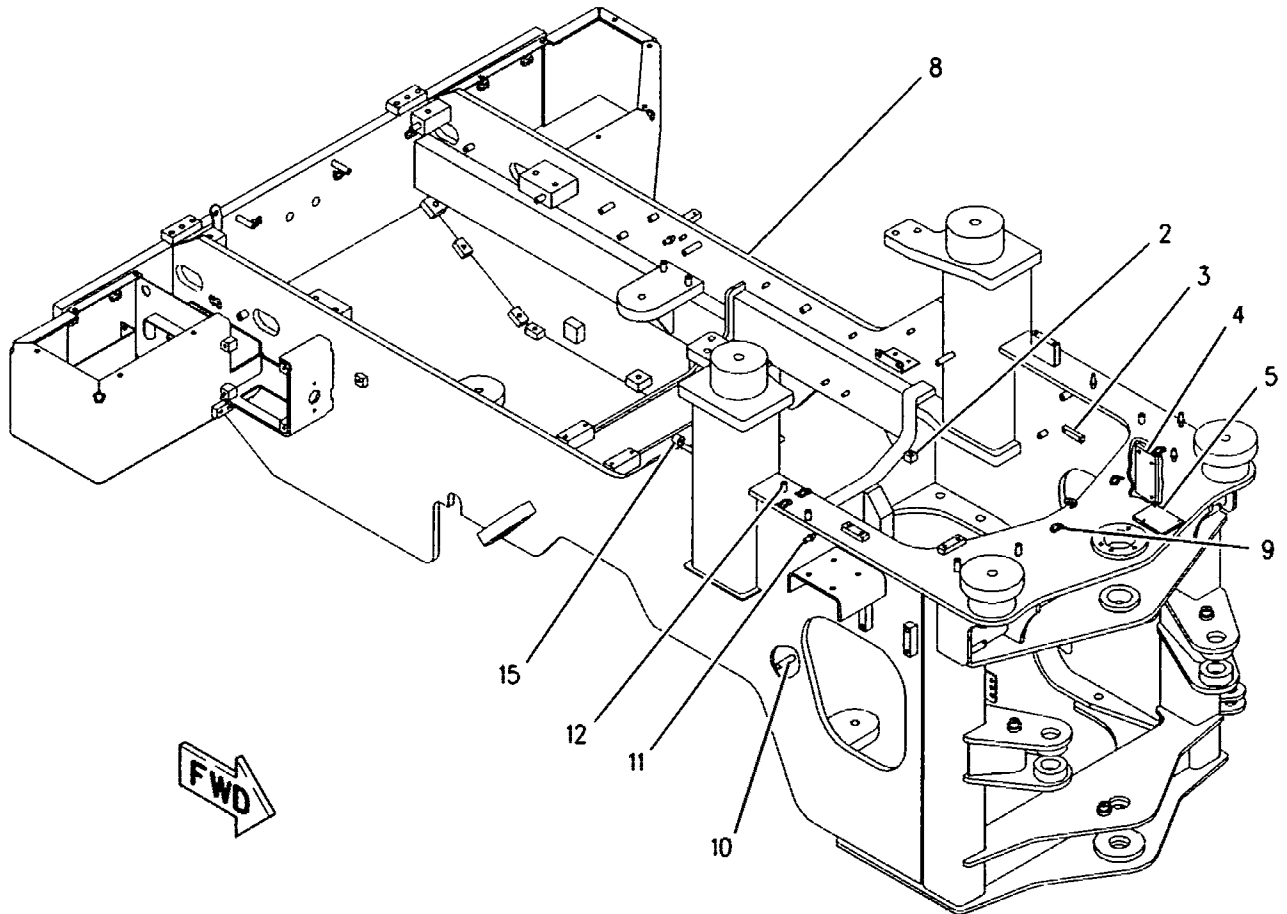
SMCS-7051

101906626

NOTE	REF NO	GRAPHIC REF	PART NUMBER	QTY	PART NAME						SEE PAGE
					1	2	3	4	5	6 (PRODUCT LEVEL)	
	2	1	090-8247	1	BLOCK						
	3	1	109-5150	1	BLOCK						
	4	1	109-5151	1	PLATE						
	5	1	112-7511	1	PLATE						
Y	8	1	199-3809	1	FRAME AS-REAR						490
	9	1	7T-1099	6	LINK						
M	10	1	7X-0752	2	BOSS-WELD (M10X1.5 X 65MM OAL)						
M	11	1	8T-3635	1	STUD-WELD (M12X1.75X34.93MM OAL)						
M	12	1	8T-3851	3	BOSS-WELD (M10X1.5MM)						
	15	1	9R-2060	1	BOSS (M10X1.5X21MM OAL)						

M-METRIC PART

Y-SEPARATE ILLUSTRATION



GRAPHIC #1

<END>

g00993068

FRAME AND BODY

168-2040 GUARD GP-AXLE OIL COOLER

S/N: CRD1-UP

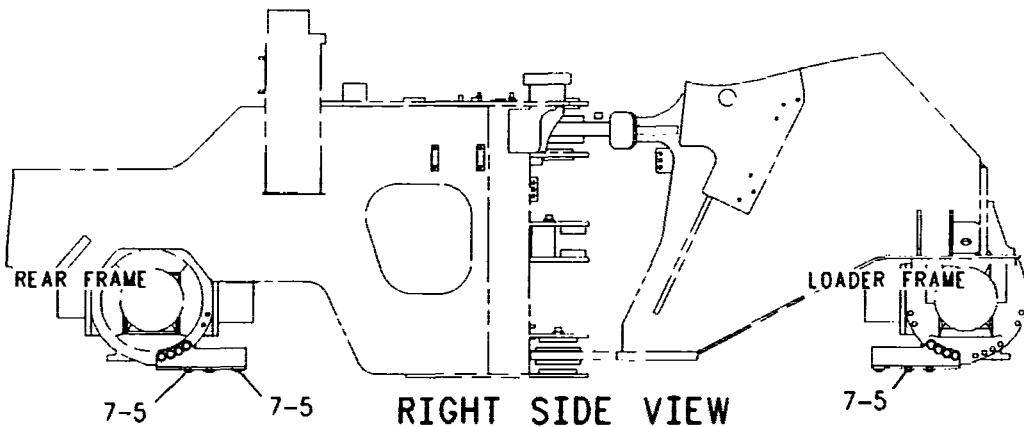
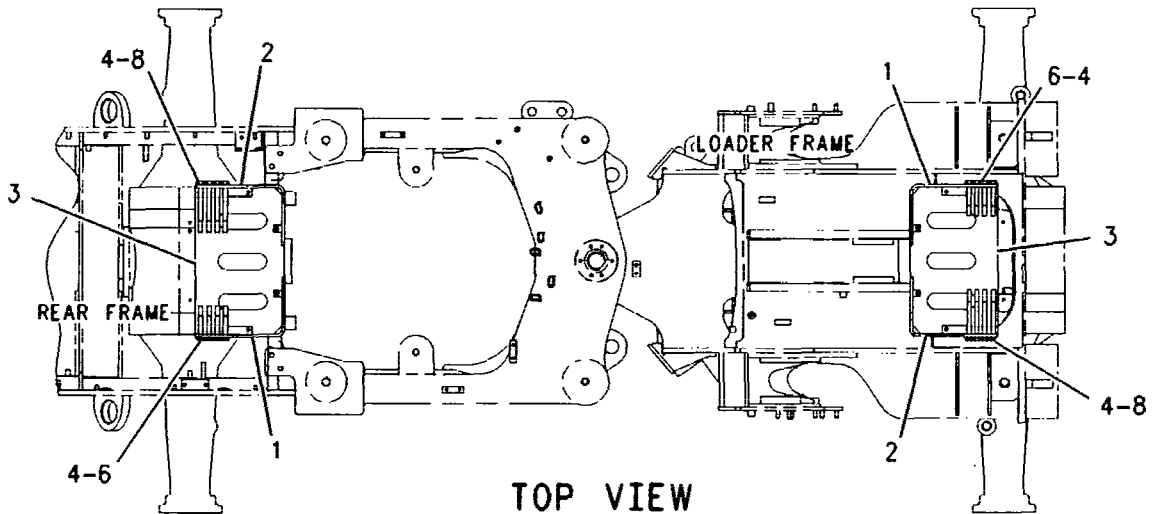
PART OF 201-8906 COOLER AR-AXLE OIL
AN ATTACHMENT

SMCS-7150

i01117950

NOTE	REF NO	GRAPHIC REF	PART NUMBER	QTY	PART NAME						SEE PAGE
					1	2	3	4	5	6 (PRODUCT LEVEL)	
	1	1	167-7756	2	PLATE AS						
	2	1	167-7757	2	PLATE AS						
	3	1	167-7758	2	PLATE						
	4	1	5P-8247	16	WASHER-HARD (3.5MM THK)						
	5	1	7X-0618	12	WASHER-HARD (5.0MM THK)						
M	6	1	8T-0282	8	BOLT (M16X2.0X120MM)						
M	7	1	8T-4956	12	BOLT (M12X1.75X35MM)						
M	8	1	8T-5002	8	BOLT (M16X180MM)						

M-METRIC PART



GRAPHIC #1

<END>

g00603914

FRAME AND BODY

202-0318 GUARD GP-LIGHTING

S/N: CRD1-UP

PART OF 224-5588 SCRAP HANDLING AR, 221-8128, 240-2031, 240-2032 WASTE
HANDLING AR
AN ATTACHMENT

SMCS-7150

i02221567

NOTE	REF NO	GRAPHIC REF	PART NUMBER	QTY	PART NAME						SEE PAGE
					1	2	3	4	5	6 (PRODUCT LEVEL)	
	1	1	070-0259	2	GUARD AS						
	2	1	131-1901	2	COVER AS						
					(EACH INCLUDES)						
M		1	8T-4130	2	STUD (M6X1X18-MM)						
	3	1	189-8080	2	GUARD AS						
	4	1	201-9785	1	BRACKET AS						
	5	1	206-1350	2	PLATE						
	6	1	208-6561	1	BRACKET AS						
	7	1	233-6577	2	PLATE-COVER						
M	8	1	5C-2890	4	NUT (M6X1-THD)						
M	9	1	5C-9553	8	BOLT (M6X1X16-MM)						
	10	1	8T-4121	8	WASHER-HARD (11X21X2.5-MM THK)						
M	11	1	8T-4133	4	NUT (M10X1.5-THD)						
M	12	1	8T-4139	4	BOLT (M12X1.75X30-MM)						
M	13	1	8T-4191	4	BOLT (M10X1.5X16-MM)						
M	14	1	8T-4195	4	BOLT (M10X1.5X30-MM)						
	15	1	9D-3769	2	GROMMET						
	16	1	9X-8256	12	WASHER (6.6X12X2-MM THK)						

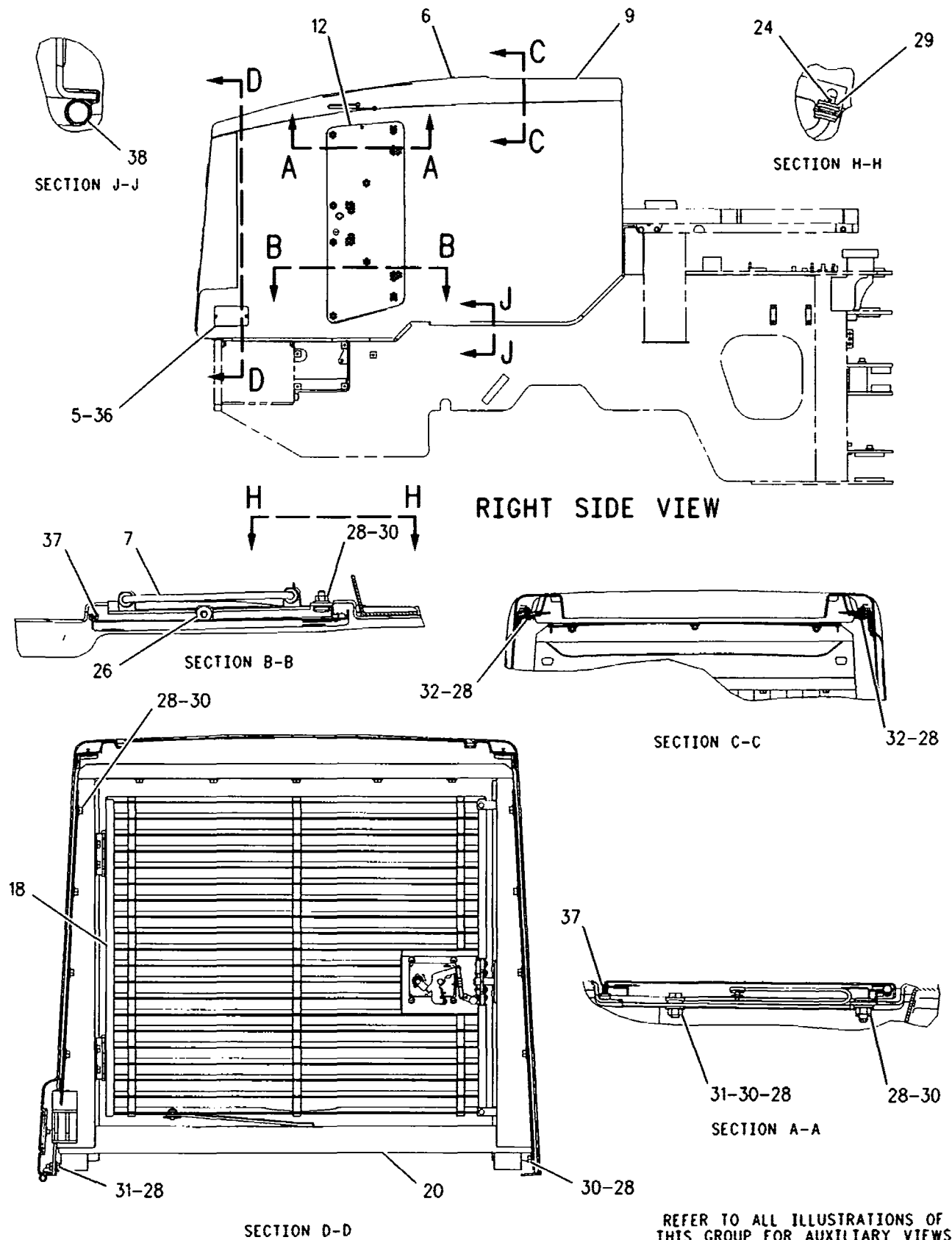
M-METRIC PART

0

FRAME AND BODY

199-3853 HOOD & GUARD GP (contd.)

i02281711



GRAPHIC #1

g00952748

FRAME AND BODY

215-2467 TILT GP-HOOD

S/N: CRD1-UP

PART OF 199-2817 ELECTRICAL AR

TYPE 1

SMCS-1427, 7251

i01673505

NOTE	REF NO	GRAPHIC REF	PART NUMBER	QTY	PART NAME						SEE PAGE
					1	2	3	4	5	6 (PRODUCT LEVEL)	
	1	1	6S-6646	1	PIN-COTTER						
	2	1	7V-9791	1	PIN						
	3	1	116-6509	1	HINGE AS						
	4	1	123-4980	1	COVER						
	5	1	124-4230	1	PIN AS (RH)						
	6	1	124-4231	1	PIN AS (LH)						
	7	1	138-9487	3	SPACER (17.5X35X27-MM THK)						
Y	8	1	210-2613	1	ACTUATOR GP-HOOD TILT (LH)						468
	9	1	215-2451	1	PLATE						
	10	1	215-2452	1	PLATE						
M	11	1	5C-9553	1	BOLT (M6X1X16-MM)						
	12	1	7X-7729	15	WASHER (11X25X3-MM THK)						
M	13	1	8T-4133	8	NUT (M10X1.5-THD)						
M	14	1	8T-4137	5	BOLT (M10X1.5X20-MM)						
M	15	1	8T-4140	3	BOLT (M16X2X60-MM)						
M	16	1	8T-4191	2	BOLT (M10X1.5X16-MM)						
M	17	1	8T-4779	2	BOLT (M16X2X35-MM)						
	18	1	9X-8256	1	WASHER (6.6X12X2-MM THK)						
	19	1	9X-8257	5	WASHER (17.5X30X3.5-MM THK)						

M-METRIC PART

Y-SEPARATE ILLUSTRATION

BRAKING SYSTEM

200-1315 BRAKE GP-PARKING

S/N: WNF1-UP

PART OF 170-1857 GEAR GP-OUTPUT TRANSFER

SMCS-4267

i01536979

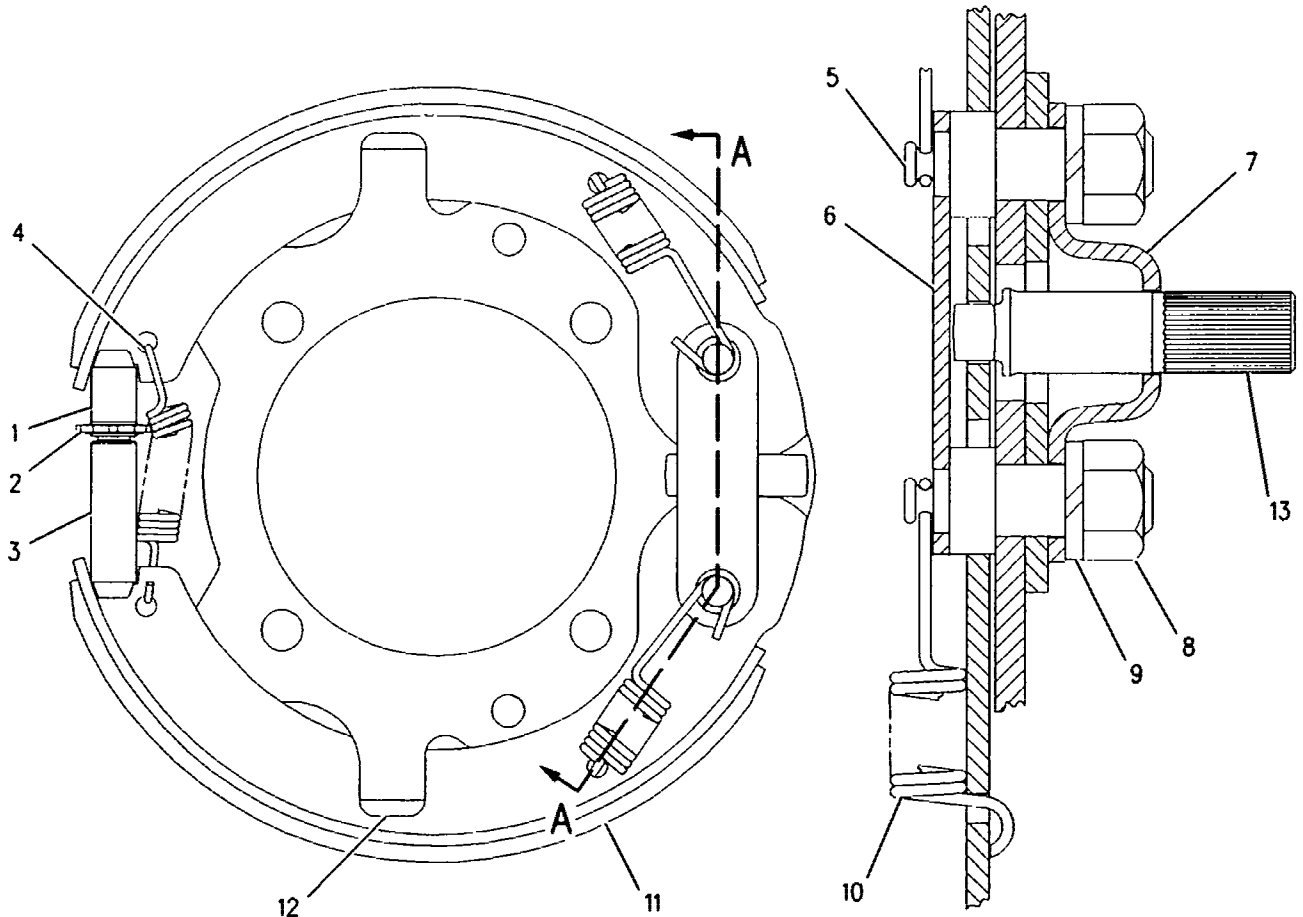
NOTE	REF NO	GRAPHIC REF	PART NUMBER	QTY	PART NAME						SEE PAGE
					1	2	3	4	5	6 (PRODUCT LEVEL)	
	1	1	7F-9579	1	SOCKET						
	2	1	7F-9571	1	SCREW-ADJUSTMENT						
	3	1	7F-9572	1	NUT						
	4	1	7F-9578	1	SPRING						
	5	1	9M-5138	2	PIN-ANCHOR						
	6	1	9M-5137	1	BRACE-ANCHOR PIN						
	7	1	5D-1242	1	BRACKET						
	8	1	6V-8182	2	NUT (3/4-10 THD)						
	9	1	3B-4512	2	LOCKWASHER						
	10	1	9M-5139	2	SPRING						
	11	1	8W-8673	2	SHOE AS-BRAKE						
	12	1	9M-5140	1	PLATE AS						
	13	1	200-1316	1	CAMSHAFT						

AVAILABLE REPAIR KIT(S):

8W-8674

KIT BRAKE LINING

(CONSISTS OF A COMPLETE SET OF LININGS AND RIVETS FOR ONE BRAKE)



GRAPHIC #1

<END>

g00391420

BRAKING SYSTEM

199-2830 CONTROL GP-SERVICE BRAKE

S/N: CRD1-UP

PART OF 199-2816 CHASSIS AR

TYPE 1

SMCS-4257, 4258, 4263, 4265, 4269, 4280

101821997

NOTE	REF NO	GRAPHIC REF	PART NUMBER	QTY	PART NAME						SEE PAGE
					1	2	3	4	5	6 (PRODUCT LEVEL)	
	1	2	3E-7410	2	TEE-O-RING						
I	2	2	152-5260	1	HOSE AS						
	3	2	6D-8305	2	CLAMP						
	4	2	6V-0852	3	CAP-DUST						
I	5	2	7I-5422	1	HOSE AS						
	6	2	7K-1181	2	STRAP-CABLE						
	7	2	7X-2459	2	TEE-O-RING						
I	8	1	9U-2966	1	HOSE AS						
	9	1	105-1540	4	TUBE AS						
	10	1	105-1541	1	TUBE AS						
	11	2	105-1553	1	ANGLE						
	12	2	105-7704	1	TEE						
	13	2	134-5106	1	VALVE GP-ACCUMULATOR CHARGING (BRAKE)						
I	14	2	136-2522	1	HOSE AS						
I	15	1	136-2584	1	HOSE AS						
I	16	2	136-2622	1	HOSE AS						
I	17	2	136-2623	1	HOSE AS						
	18	2	136-8342	1	PLATE AS						
		2	7T-1099	1	LINK						
	19	2	137-2104	2	ANGLE AS						
					(EACH INCLUDES)						
M		2	8T-3490	1	NUT-WELD (M10X1.5-THD)						
I	20	2	139-0689	2	HOSE AS						
Y	21	2	213-8773	2	ACCUMULATOR GP-BRAKE (CHARGED)						539
	22	2	175-3244	1	SWITCH AS-PRESSURE (SERVICE BRAKE OIL)						
		2	102-8803	1	KIT-RECEPTACLE (3-PIN)						
		2	3E-3371	1	WEDGE-RECEPTACLE LOCK (3-PIN)						
		2	8T-8729	3	PIN-CONNECTOR						
	23	2	180-3044	1	TUBE AS						
	24	2	180-3045	1	TUBE AS						
	25	2	215-3687	1	VALVE GP-BRAKE CONTROL (SERVICE)						
	26	1,2	3J-1907	19	SEAL-O-RING						
	27	1	3J-7354	4	SEAL-O-RING						
	28	2	3K-0360	2	SEAL-O-RING						
	29	2	4J-5477	2	SEAL-O-RING						
	30	1,2	5P-9297	3	CLIP						
	31	2	6V-3965	3	FITTING AS (QUICK DISCONNECT)						
	32	1,2	6V-8397	29	SEAL-O-RING						
	33	1,2	6V-8636	4	CONNECTOR						
	34	2	6V-8641	2	CONNECTOR						
	35	1	6V-8716	1	CONNECTOR						
	36	2	6V-8723	1	ELBOW						
	37	2	6V-8724	1	ELBOW						
	38	2	6V-8781	2	TEE-FACE SEAL						
	39	1	6V-8788	2	TEE						
	40	2	6V-9001	2	ELBOW						
	41	2	6V-9182	1	ELBOW						
	42	1	6V-9200	4	ELBOW						
	43	2	6V-9746	2	SEAL-O-RING						
	44	2	6V-9828	2	CAP AS						
	45	1	6V-9850	1	ELBOW						
	46	1,2	7M-8485	2	SEAL-O-RING						
	47	1,2	8M-2773	3	CLIP						
	48	1,2	8T-4121	15	WASHER-HARD (11X21X2.5-MM THK)						
M	49	2	8T-4133	2	NUT (M10X1.5-THD)						

BRAKING SYSTEM

224-5717 MANIFOLD GP-BRAKE PROPORTIONAL

S/N: CRD1-UP

TRACTION CONTROL SYSTEM

PART OF 216-4972 CONTROL GP-SERVICE BRAKE

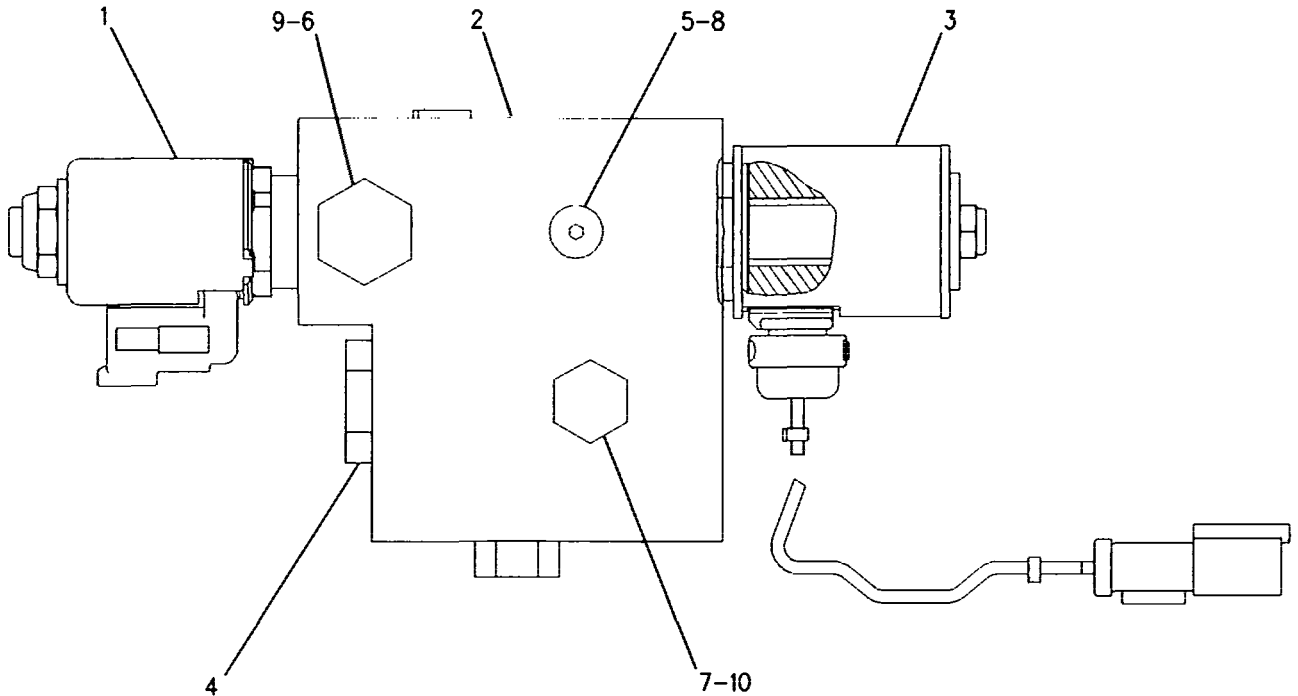
FIELD REPLACEMENT FOR 123-9043 MANIFOLD GP-BRAKE PROPORTIONAL
AN ATTACHMENT

SMCS-4804, 5264

i01853774

NOTE	REF NO	GRAPHIC REF	PART NUMBER	QTY	PART NAME						SEE PAGE
					1	2	3	4	5	6 (PRODUCT LEVEL)	
CY	1	1	207-6809	4	VALVE GP-SOLENOID (BRAKE PROPORTIONING)						568
	2	1	107-9404	1	MANIFOLD						
Y	3	1	152-8385	1	VALVE GP-SOLENOID (24-VOLT) (TRACTION CONTROL ON/OFF)						567
	4	1	112-5352	4	VALVE-SHUTTLE						
	5	1	9S-8007	5	PLUG						
	6	1	9S-4187	1	PLUG						
	7	1	9S-4191	7	PLUG						
	8	1	5P-7813	5	SEAL-O-RING						
	9	1	8L-2786	1	SEAL-O-RING						
	10	1	6V-5049	7	SEAL-O-RING						

C-CHANGE FROM PREVIOUS TYPE
Y-SEPARATE ILLUSTRATION



GRAPHIC #1

<END>

g00930711

STEERING SYSTEM

152-3503 CYLINDER & SEAL GP-STEERING

S/N: CRD1-UP

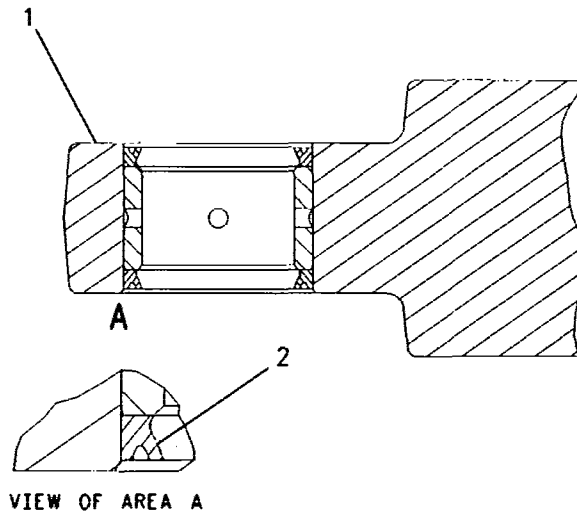
PART OF 149-7393 CYLINDER & MTG GP-STEERING

SMCS-4303

i00734341

NOTE	REF NO	GRAPHIC REF	PART NUMBER	QTY	PART NAME						SEE PAGE
					1	2	3	4	5	6 (PRODUCT LEVEL)	
Y	1	1	139-3312	1	CYLINDER GP-STEERING						576
	2	1	7K-9203	4	SEAL-LIP						

Y-SEPARATE ILLUSTRATION



GRAPHIC #1

<END>

g00319234

STEERING SYSTEM

216-9559 PUMP & MTG GP-SECONDARY STEER

S/N: CRD1-UP

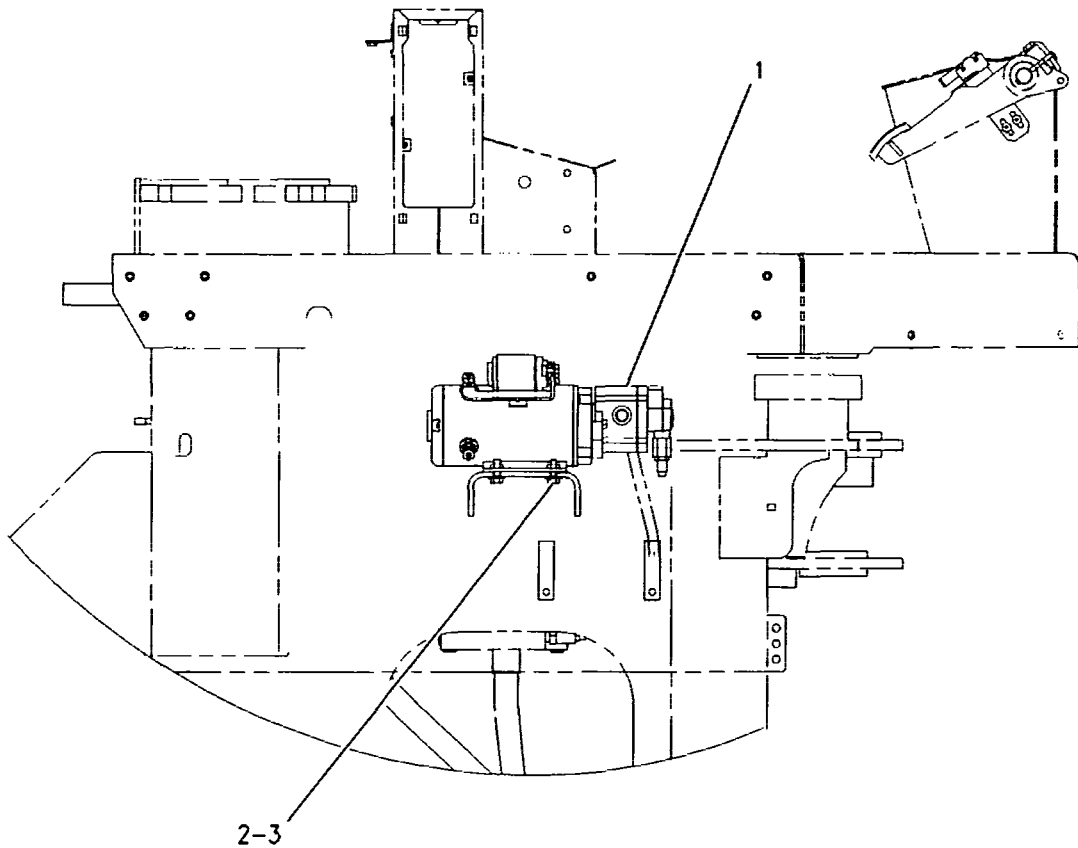
PART OF 204-0835 STEERING AR-SECONDARY
AN ATTACHMENT

SMCS-4324

i02165963

NOTE	REF NO	GRAPHIC REF	PART NUMBER	QTY	PART NAME						SEE PAGE
					1	2	3	4	5	6 (PRODUCT LEVEL)	
Y	1	1	241-0501	1	PUMP & MOTOR GP-SEC STEERING						584
	2	1	7X-7729	4	WASHER (11X25X3-MM THK)						
M	3	1	8T-4195	4	BOLT (M10X1.5X30-MM)						

M-METRIC PART
Y-SEPARATE ILLUSTRATION



RIGHT SIDE VIEW

GRAPHIC #1

<END>

g00868816

STEERING SYSTEM

6E-3447 VALVE GP-RELIEF-PUMP BACKUP

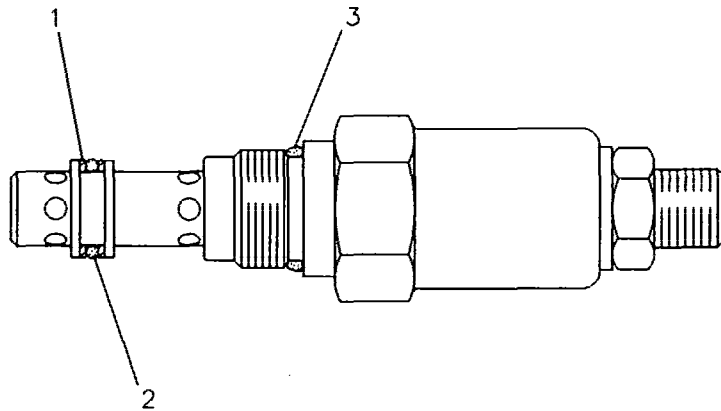
S/N: CRD1-UP

PART OF 9T-7420 VALVE GP-STEERING

SMCS-4322, 5069, 7428

i00178278

NOTE	REF NO	GRAPHIC REF	PART NUMBER	QTY	PART NAME						SEE PAGE
					1	2	3	4	5	6 (PRODUCT LEVEL)	
	1	1	7X-4776	2	RING-BACKUP						
	2	1	BC-3097	1	SEAL-O-RING						
	3	1	3K-0360	1	SEAL-O-RING						



GRAPHIC #1

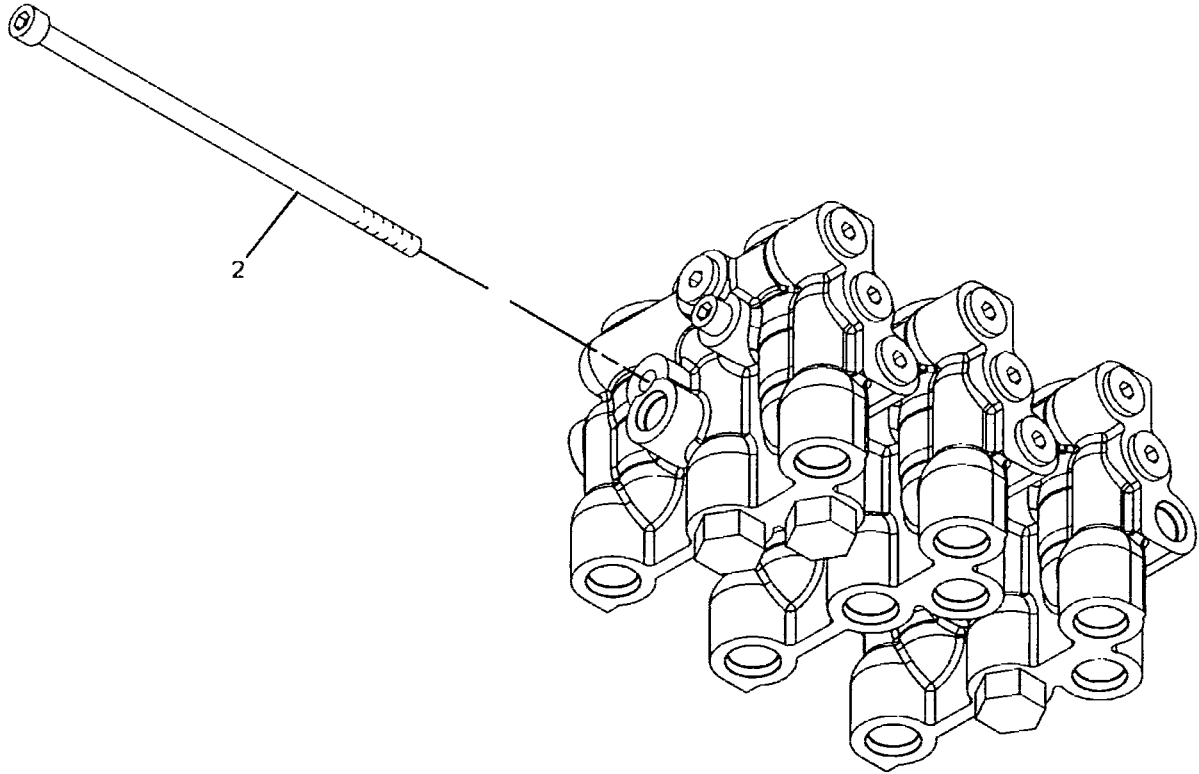
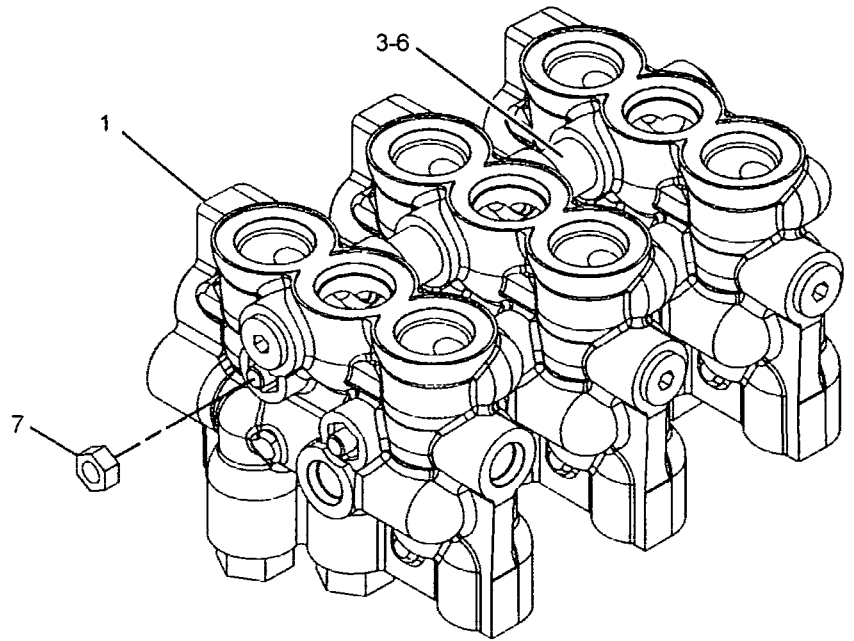
<END>

g00119003

HYDRAULIC SYSTEM

168-1880 BODY GP-PILOT VALVE (contd.)

102145888



GRAPHIC #1

<END>

g01098938

HYDRAULIC SYSTEM

199-3446 CONTROL GP-PILOT OPERATED HYD

S/N: CRD756-UP

3 FUNCTION

PART OF 201-4049 HYDRAULIC AR-3 VALVE
AN ATTACHMENT

SMCS-5063

102029886

NOTE	REF NO	GRAPHIC REF	PART NUMBER	QTY	PART NAME						SEE PAGE
					1	2	3	4	5	6 (PRODUCT LEVEL)	
	1	1	4E-1062	1	CUSHION AS-ARMREST						
	3	1	8T-8737	4	PLUG-SEAL						
	4	1	9R-1948	2	RIVET						
	5	1	107-6050	1	SUPPORT AS						
	6	1	111-7875	1	PLATE						
	7	1	4J-6555	1	SPRING						
	8	1	114-3937	1	ROD						
	9	1	114-3940	1	ROD						
	10	1	187-2082	1	LEVER-CONTROL						
	11	1	124-4401	2	KNOB						
	12	1	141-9188	1	FILM-INSTRUMENT (HYDRAULIC LOCKOUT)						
	13	1	141-9192	1	PLATE-INSTRUMENT						
	14	1	156-9811	2	ROD						
I	15	1	146-9047	1	HOSE AS						
Y	16	1	148-9562	1	CONTROL GP-HANDLE						607
Y	17	1	154-8595	1	VALVE GP-SHUTOFF (HYDRAULIC LOCKOUT)						781
	18	1	159-3777	1	SUPPORT AS						
CY	19	1	240-3249	1	VALVE GP-PILOT (3-FUNCTION) (3-FUNCTION)						764
	20	1	164-4885	1	COVER AS						
	21	1	187-1878	1	WASHER-PIVOT (8.1X19X3.2-MM THK)						
	22	1	196-0109	1	ROD						
	23	1	205-7266	1	COVER						
	24	1	205-7662	1	LOCK AS						
	25	1	205-7808	1	TAB						
	26	1	103-2006	4	SCREW-PAN HEAD (6-19X0.37-IN)						
M	27	1	150-1293	2	SCREW-BUTTON HEAD (M4X0.7X12-MM)						
	28	1	102-8805	1	KIT-RECEPTACLE (6-PIN) (INCLUDES RECEPTACLE AS AND WEDGE)						
	29	1	3E-3383	1	WEDGE-RECEPTACLE LOCK (6-PIN)						
	30	1	3J-1907	3	SEAL-O-RING						
M	31	1	5C-7261	4	NUT (M8X1.25-THD)						
M	32	1	6V-5683	2	BOLT (M6X1X16-MM)						
	33	1	6V-8397	2	SEAL-O-RING						
	34	1	6V-8636	1	CONNECTOR						
	35	1	6V-8724	1	ELBOW						
	36	1	8T-4121	4	WASHER-HARD (11X21X2.5-MM THK)						
M	37	1	8T-4137	4	BOLT (M10X1.5X20-MM)						
M	38	1	8T-4138	2	BOLT (M6X1X20-MM)						
	39	1	8T-4205	2	WASHER-HARD (7.2X14.5X2-MM THK)						
	40	1	8T-4224	4	WASHER-HARD (8.8X16X2-MM THK)						
M	41	1	8T-4244	3	NUT (M12X1.75-THD)						
M	42	1	9X-2041	2	SCREW-TRUSS HEAD (M10X1.5X20-MM)						
M	43	1	9X-2042	6	SCREW-TRUSS HEAD (M6X1X12-MM)						
M	44	1	9X-2045	2	SCREW-TRUSS HEAD (M6X1X20-MM)						
	45	1	9X-8256	3	WASHER (6.6X12X2-MM THK)						
BD	46	1	5P-5639		SEAL						

B-USE AS REQUIRED
 C-CHANGE FROM PREVIOUS TYPE
 D-ORDER BY THE METER
 I-REFER TO HYDRAULIC INFORMATION SYSTEM
 M-METRIC PART
 Y-SEPARATE ILLUSTRATION

HYDRAULIC SYSTEM

237-0946 CYLINDER GP-COUPLER

S/N: CRD1-UP

50.8MM (2 IN) BORE X 69.85MM (2.75 IN) STROKE

PART OF 222-4992 FRAME GP-QUICK COUPLER

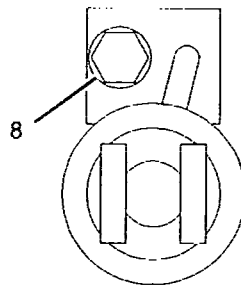
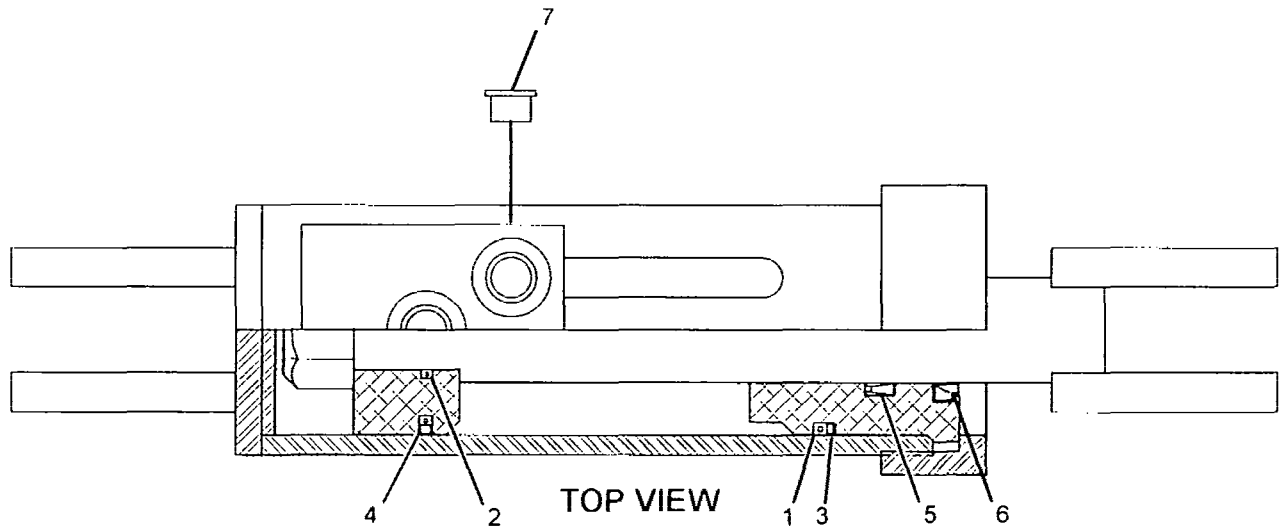
FIELD REPLACEMENT FOR 208-0828-PAGE 624

AN ATTACHMENT

SMCS-5133

i01919780

NOTE	REF NO	GRAPHIC REF	PART NUMBER	QTY	PART NAME						SEE PAGE
					1	2	3	4	5	6 (PRODUCT LEVEL)	
	1	1	1H-9696	1	SEAL-O-RING						
	2	1	7F-8607	1	SEAL-O-RING						
	3	1	1S-0670	1	RING-BACKUP						
	4	1	3E-4250	1	SEAL-PISTON RING						
	5	1	6J-1889	1	SEAL-U-CUP						
	6	1	6J-1890	1	WIPER-ROD						
	7	1	9S-8002	2	PLUG						
	8	1	237-0947	1	VALVE GP-CHECK						
		1	213-8433	1	KIT-SEAL						



<END>

GRAPHIC #1

g01013533

HYDRAULIC SYSTEM

208-6097 HANDLE GP-MODULAR-DIRECTION, DOWNSHIFT

S/N: CRD1-UP

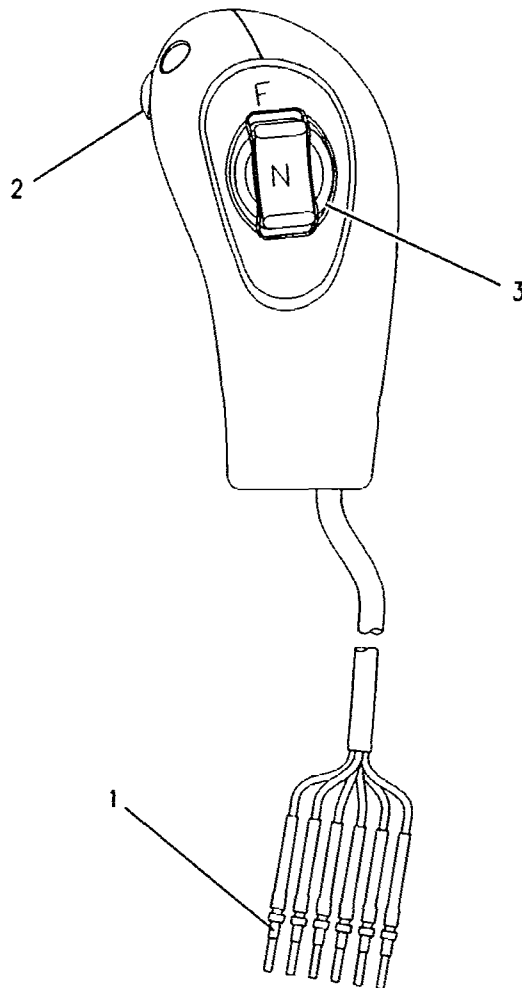
PART OF 206-8917 CONTROL GP-HANDLE
AN ATTACHMENT

SMCS-5063, 5702, 5705

i02162777

NOTE	REF NO	GRAPHIC REF	PART NUMBER	QTY	PART NAME						SEE PAGE
					1	2	3	4	5	6 (PRODUCT LEVEL)	
	1	1	186-3735	6	PIN-CONNECTOR (16-GA TO 18-GA)						
Z	2	1		1	SWITCH (DOWNSHIFT)						
Z	3	1		1	SWITCH (F-N-R)						

Z - NOT SERVICED SEPARATELY



GRAPHIC #1

<END>

g00950371

HYDRAULIC SYSTEM

183-7556 LINES GP-COUPLER

S/N: CRD1-UP

PART OF 206-4049 CONTROL AR-QUICK COUPLER
AN ATTACHMENT

SMCS-5057, 5133

i01706776

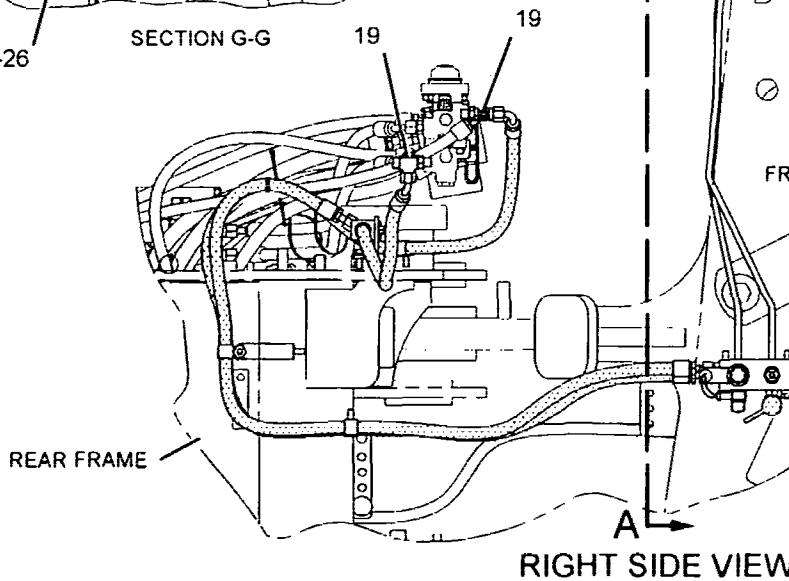
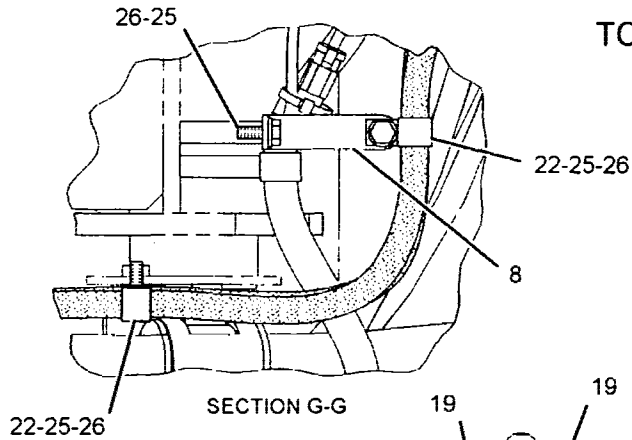
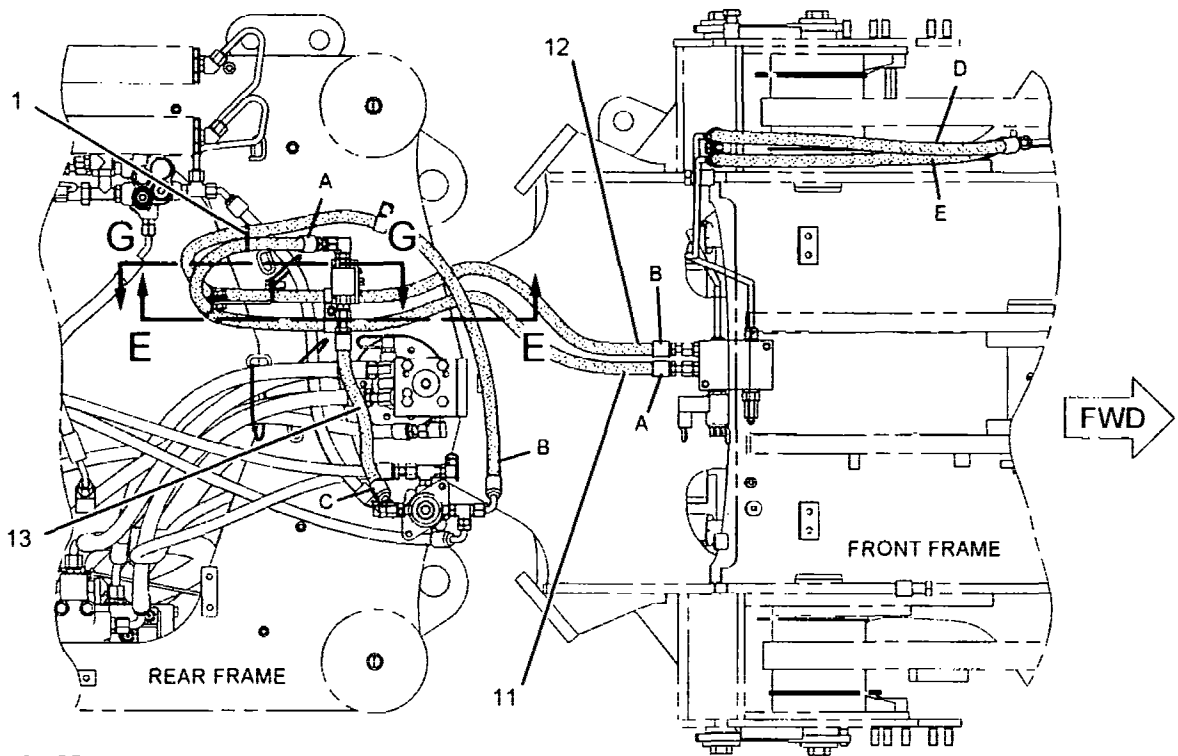
NOTE	REF NO	GRAPHIC REF	PART NUMBER	QTY	PART NAME						SEE PAGE
					1	2	3	4	5	6 (PRODUCT LEVEL)	
	1	1,2	7K-1181	4	STRAP-CABLE						
	2	1	7T-1099	1	LINK						
	3	1	9V-9116	2	SPACER (16.5-MM THK)						
	4	2	106-8704	2	SUPPRESSOR AS-ARC						
					(EACH INCLUDES)						
		2	102-8802	1	KIT-RECEPTACLE (2-PIN)						
		2	3E-3365	1	WEDGE-RECEPTACLE LOCK (2-PIN)						
		2	8T-8729	2	PIN-CONNECTOR						
I	5	2	155-8154	2	HOSE AS						
	6	1	171-1512	1	SWITCH GP-HYDRAULIC LOCKOUT						
		1	111-7899	1	GASKET						
	7	1	183-7557	2	TUBE AS						
	8	1	183-7559	1	TUBE AS						
	9	1	183-7560	1	TUBE AS						
Y	10	2	185-2270	1	VALVE GP-DIVERTER (QUICK COUPLER)						743
	11	2	185-4043	1	PLATE AS						
	12	1	185-4139	1	GUARD						
CI	13	2	210-6286	1	HOSE AS						
I	14	2	185-5883	1	HOSE AS						
	15	2	186-0192	1	HARNESS AS-WORK TOOL (QUICK COUPLER)						
	16	2	130-5300	1	CLIP						
M	17	2	8T-5005	2	BOLT (M10X1.5X70-MM)						
	18	1	2B-2404	10	CLIP						
	19	2	3J-1907	4	SEAL-O-RING						
	20	2	4D-6988	1	CLIP						
	21	1,2	4J-5477	10	SEAL-O-RING						
	22	2	6V-8627	1	ELBOW						
	23	2	6V-8641	3	CONNECTOR						
	24	2	6V-9828	2	CAP AS						
	25	1,2	8T-4121	9	WASHER-HARD (11X21X2.5-MM THK)						
M	26	1	8T-4136	3	BOLT (M10X1.5X25-MM)						
M	27	2	8T-4137	2	BOLT (M10X1.5X20-MM)						
M	28	1	8T-4186	2	BOLT (M10X1.5X40-MM)						
	29	1	9C-6809	1	BLOCK						
	30	1	9R-2060	1	BOSS (M10X1.5X21-MM)						

C-CHANGE FROM PREVIOUS TYPE
I-REFER TO HYDRAULIC INFORMATION SYSTEM
M-METRIC PART
Y-SEPARATE ILLUSTRATION

HYDRAULIC SYSTEM

241-7725 LINES GP-COUPLER (contd.)

102154656



REFER TO ALL ILLUSTRATIONS OF THIS GROUP FOR AUXILIARY VIEWS

GRAPHIC #1

g01109493

HYDRAULIC SYSTEM

248-6318 LINES GP-FRONT-HIGH LIFT MACHINES, 3-VALVE

S/N: CRD1006-UP

PART OF 220-3967 LIFT AR

AN ATTACHMENT

SMCS-5057

i02153748

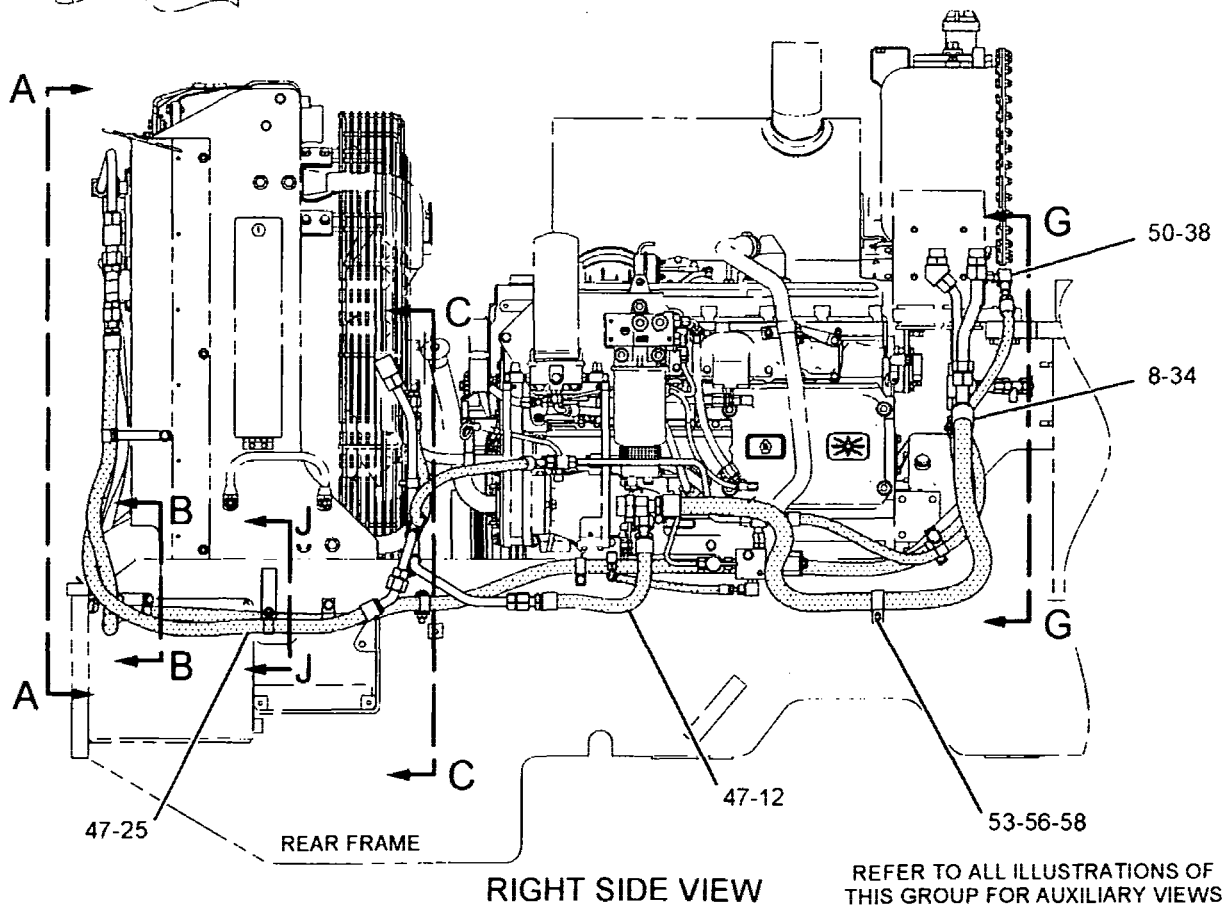
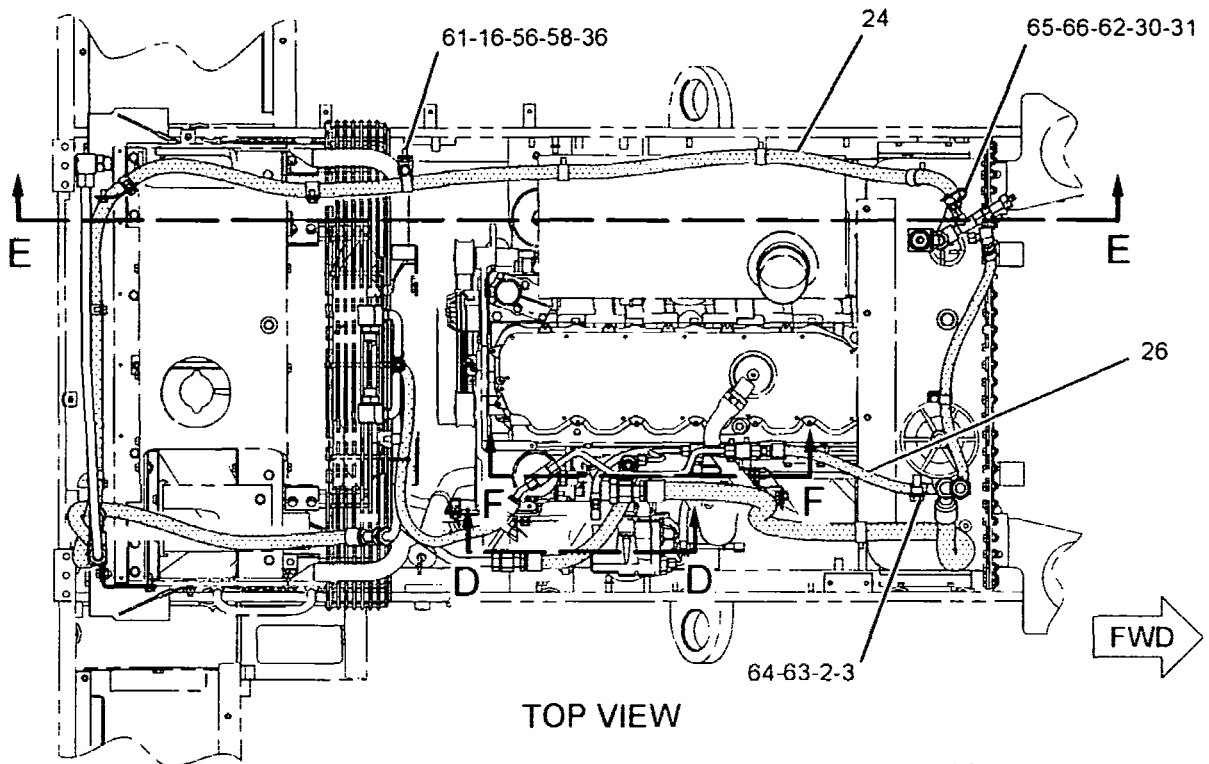
NOTE	REF NO	GRAPHIC REF	PART NUMBER	QTY	PART NAME						SEE PAGE
					1	2	3	4	5	6 (PRODUCT LEVEL)	
I	1	1	20-7875	2	HOSE AS						
	2	1	139-1598	1	TUBE AS						
	3	1	139-1599	1	TUBE AS						
	4	1	139-3553	2	BRACKET AS						
					(EACH INCLUDES)						
M		1	8T-3490	2	NUT-WELD (M10X1.5-THD)						
	5	1	209-1525	1	TUBE AS-RH						
	6	1	209-1526	1	TUBE AS-LH						
	7	1	238-4770	1	PLATE						
	8	1	4J-0520	6	SEAL-O-RING						
	9	1	5H-4019	2	COVER						
	10	1	5K-0806	2	CLAMP						
	11	1	5K-9090	2	SEAL-O-RING						
	12	1	6V-8635	2	CONNECTOR						
	13	1	7M-8485	2	SEAL-O-RING						
	14	1	8C-3206	12	FLANGE-HALF						
	15	1	8T-1889	4	CLIP (SLOT)						
	16	1	8T-1890	4	CLIP (TAB)						
	17	1	8T-4121	36	WASHER-HARD (11X21X2.5-MM THK)						
M	18	1	8T-4137	6	BOLT (M10X1.5X20-MM)						
M	19	1	8T-4186	24	BOLT (M10X1.5X40-MM)						
M	20	1	8T-4195	6	BOLT (M10X1.5X30-MM)						

I-REFER TO HYDRAULIC INFORMATION SYSTEM
M-METRIC PART

HYDRAULIC SYSTEM

198-2750 LINES GP-HYDRAULIC OIL COOLER (contd.)

i02172262



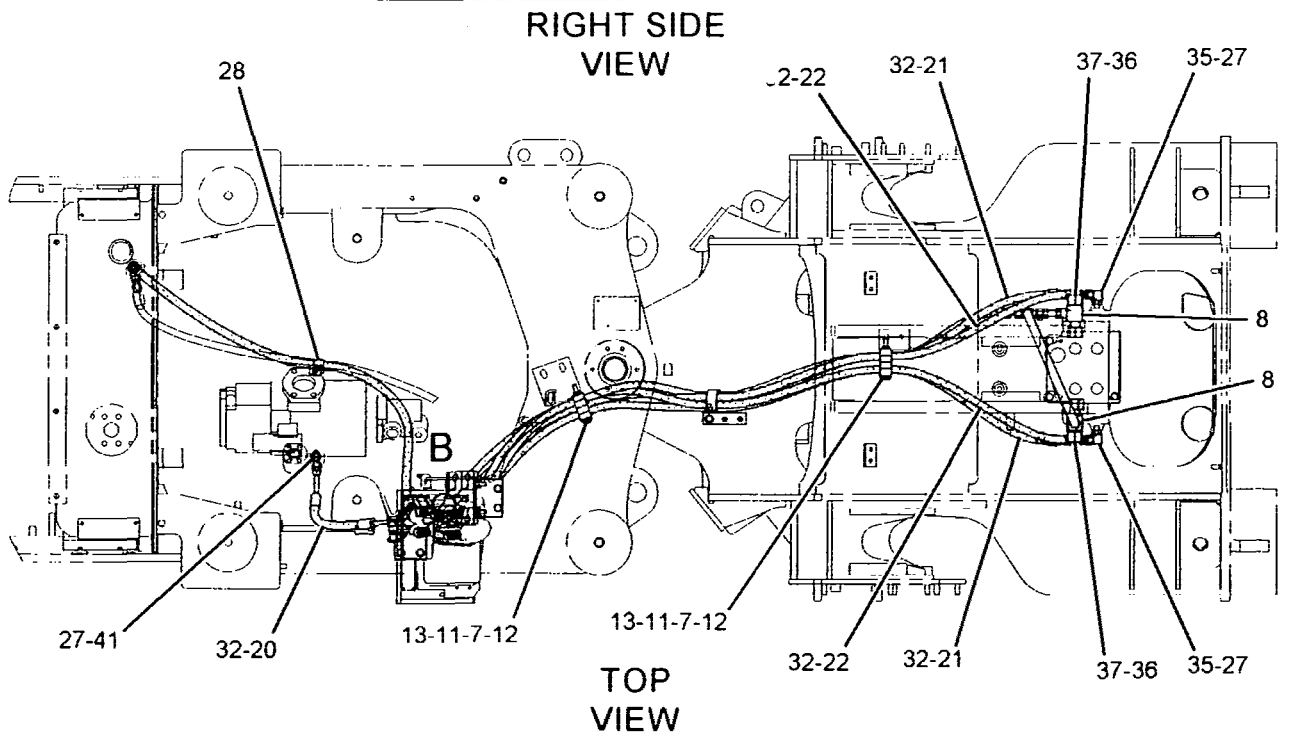
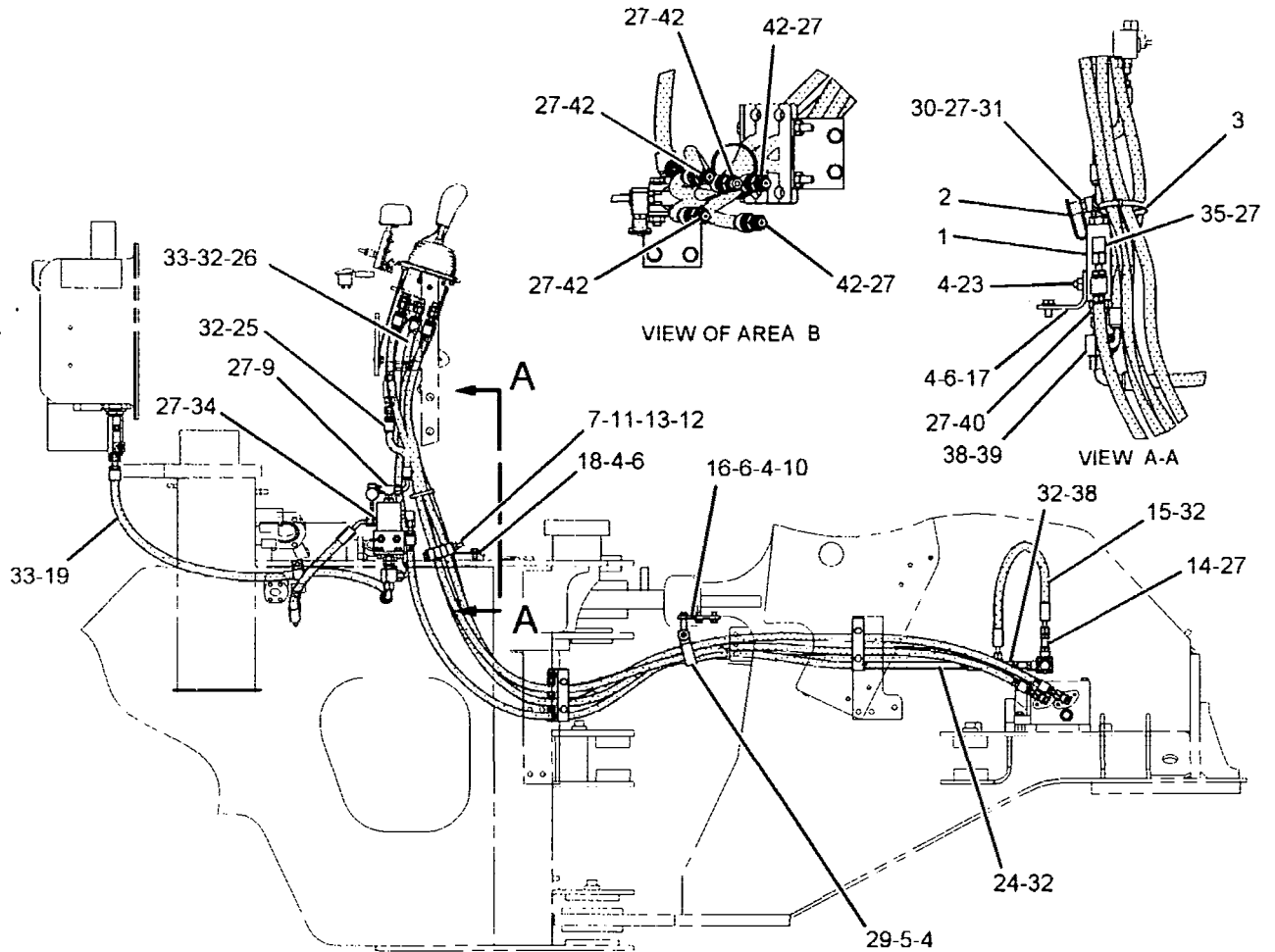
GRAPHIC #1

g01102118

HYDRAULIC SYSTEM

199-2833 LINES GP-PILOT (contd.)

i01979975



GRAPHIC #1

<END>

g01060619

HYDRAULIC SYSTEM

216-2415 LINES GP-RIDE CONTROL (contd.)

i02180678

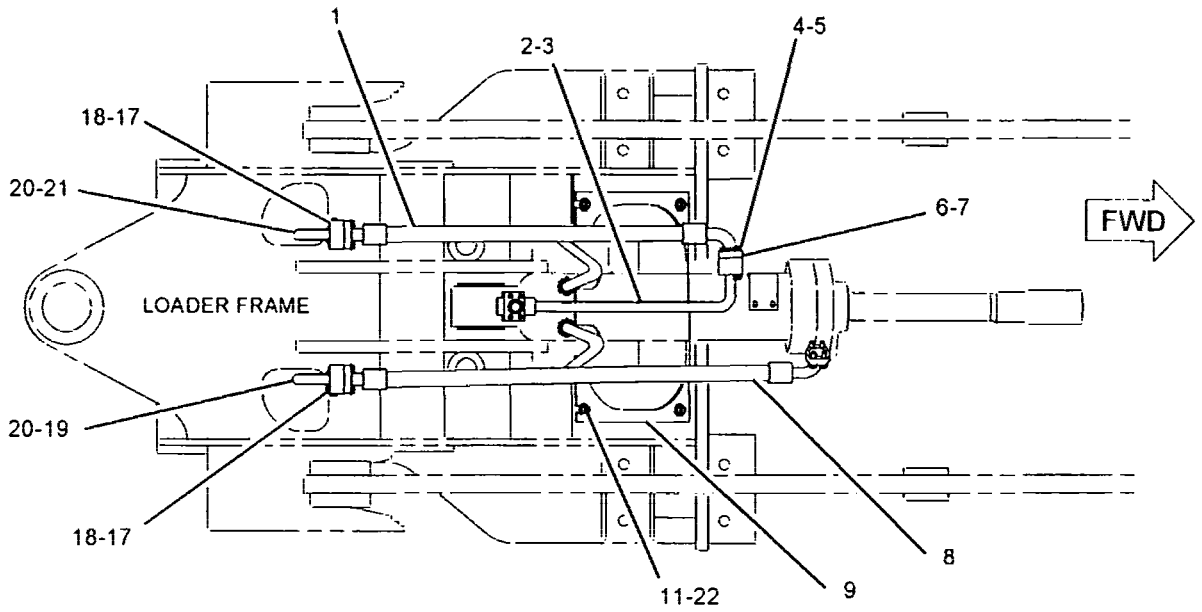
NOTE	REF NO	GRAPHIC REF	PART NUMBER	QTY	PART NAME						SEE PAGE
					1	2	3	4	5	6 (PRODUCT LEVEL)	
	52	1	7I-8310	1	COUPLING AS						
	53	1,2	7J-9108	6	SEAL-O-RING						
C	54	1,2	7M-8485	1	SEAL-O-RING						
M	55	2	7X-2534	2	BOLT (M6X1X50-MM)						
	56	2	8T-4121	9	WASHER-HARD (11X21X2.5-MM THK)						
M	57	2	8T-4133	1	NUT (M10X1.5-THD)						
M	58	2	8T-4136	1	BOLT (M10X1.5X25-MM)						
M	59	2	8T-4137	3	BOLT (M10X1.5X20-MM)						
M	60	2	8T-4185	2	BOLT (M10X1.5X50-MM)						
M	61	2	8T-5005	1	BOLT (M10X1.5X70-MM)						
M	62	2	8T-6466	2	BOLT (M10X1.5X60-MM)						
	63	2	9X-8256	2	WASHER (6.6X12X2-MM THK)						

C-CHANGE FROM PREVIOUS TYPE
 I-REFER TO HYDRAULIC INFORMATION SYSTEM
 M-METRIC PART
 Y-SEPARATE ILLUSTRATION

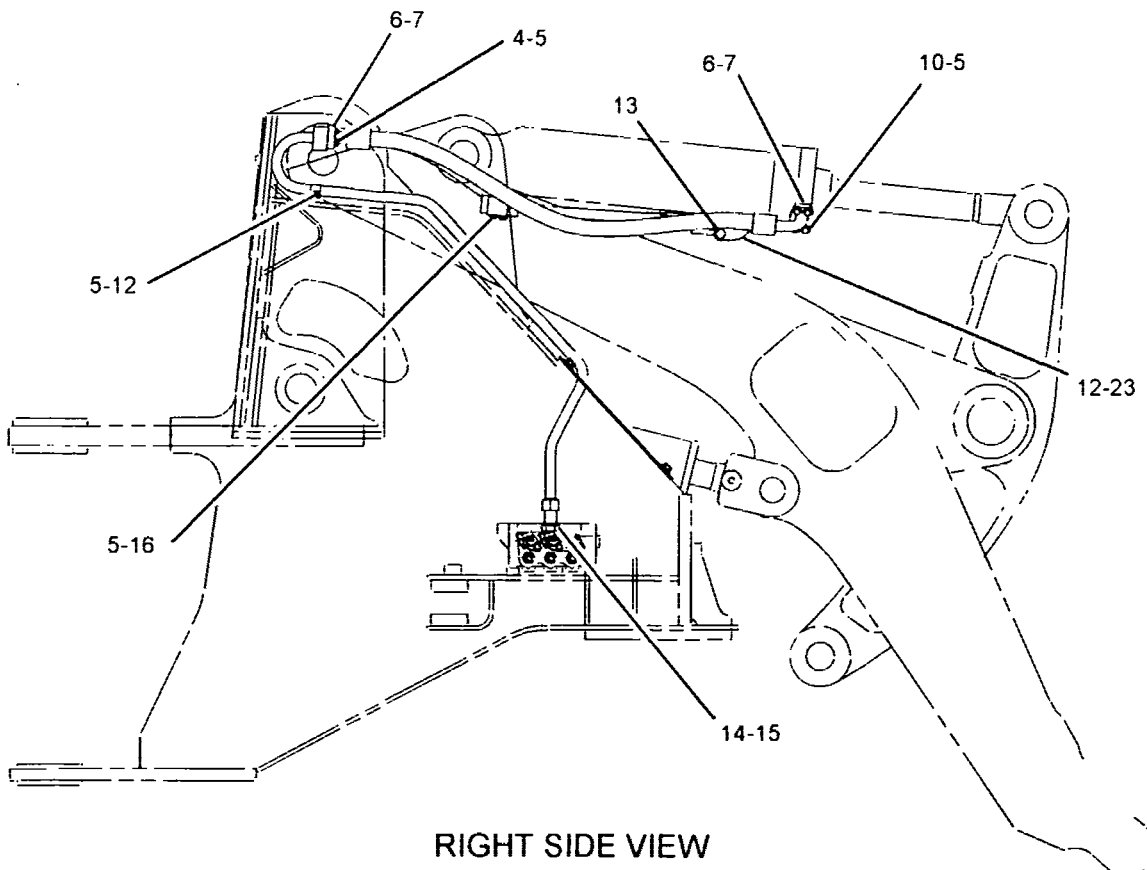
HYDRAULIC SYSTEM

103-5788 LINES GP-TILT CYLINDER (contd.)

102021894



TOP VIEW



RIGHT SIDE VIEW

GRAPHIC #1

<END>

g01079443

HYDRAULIC SYSTEM

206-2749 PLATE GP-PILOT VALVE

S/N: CRD1-UP

PART OF 164-2800, 240-3249 VALVE GP-PILOT
AN ATTACHMENT

SMCS-5059

i01877203

NOTE	REF NO	GRAPHIC REF	PART NUMBER	QTY	PART NAME						SEE PAGE
					1	2	3	4	5	6 (PRODUCT LEVEL)	
	1	1	141-1556	3	RETAINER						
	2	1	141-2032	3	PLATE						
	3	1	145-2334	3	ADAPTER						
	4	1	148-7922	3	PLATE						
	5	1	144-7850	1	PLATE AS						
	6	1	163-5512	7	GROMMET						
	7	1	145-8428	4	COIL AS-DETENT						
					(EACH INCLUDES)						
		1	8T-8729	2	PIN-CONNECTOR						
M	8	1	191-8920	12	BOLT-SOCKET HEAD (M6X1X12-MM)						
	9	1	8L-2786	3	SEAL-O-RING						

M-METRIC PART

HYDRAULIC SYSTEM

105-2140 PUMP GP-PISTON & VANE- STEERING, IMPLEMENT, BRAKE

S/N: CRD1-UP

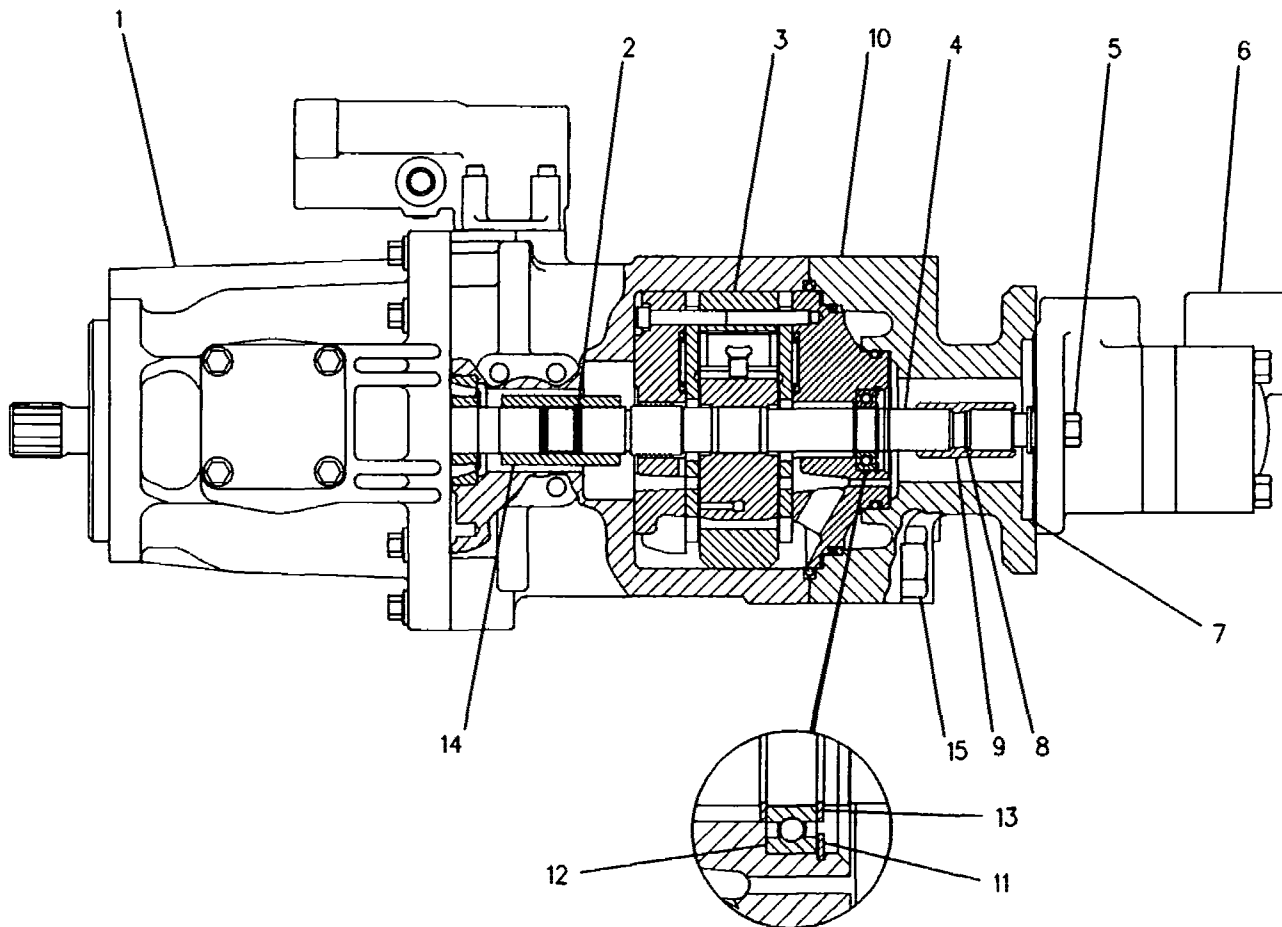
PART OF 103-5790 PUMP & MTG GP-HYDRAULIC

SMCS-5055, 5070

i01177266

NOTE	REF NO	GRAPHIC REF	PART NUMBER	QTY	PART NAME						SEE PAGE
					1	2	3	4	5	6 (PRODUCT LEVEL)	
YR	1	1	107-9532	1	PUMP GP-PISTON (STEERING)						588
	2	1	2M-8191	2	RING-SNAP						
YR	3	1	6E-6477	1	CARTRIDGE GP-VANE PUMP (IMPLEMENT)						606
	4	1	6E-6479	1	SHAFT						
	5	1	0S-1594	2	BOLT (3/8-16X1-IN)						
Y	6	1	100-3414	1	PUMP GP-VANE (BRAKING)						566
	7	1	6V-5778	1	SEAL-O-RING						
	8	1	3D-8317	1	RING-RETAINING						
	9	1	4T-9369	1	COUPLING						
	10	1	6E-6513	1	COVER						
	11	1	2H-1142	1	RING-RETAINING						
	12	1	6E-6480	1	BEARING						
	13	1	6J-7854	2	RING-SNAP						
	14	1	6E-6473	1	COUPLING						
	15	1	9X-8887	4	BOLT (3/4-10X3-IN)						

R-REMFG PART MAY BE AVAILABLE
Y-SEPARATE ILLUSTRATION



GRAPHIC #1

<END>

g00120563

CLICK HERE TO **DOWNLOAD** THE COMPLETE MANUAL

- Thank you very much for reading the preview of the manual.
- You can download the complete manual from: www.heydownloads.com by clicking the link below



- Please note: If there is no response to CLICKING the link, please download this PDF first and then click on it.

CLICK HERE TO **DOWNLOAD** THE COMPLETE MANUAL

HYDRAULIC SYSTEM

137-5946 VALVE & MTG GP-MAIN CONTROL

S/N: CRD1-UP

3 FUNCTION

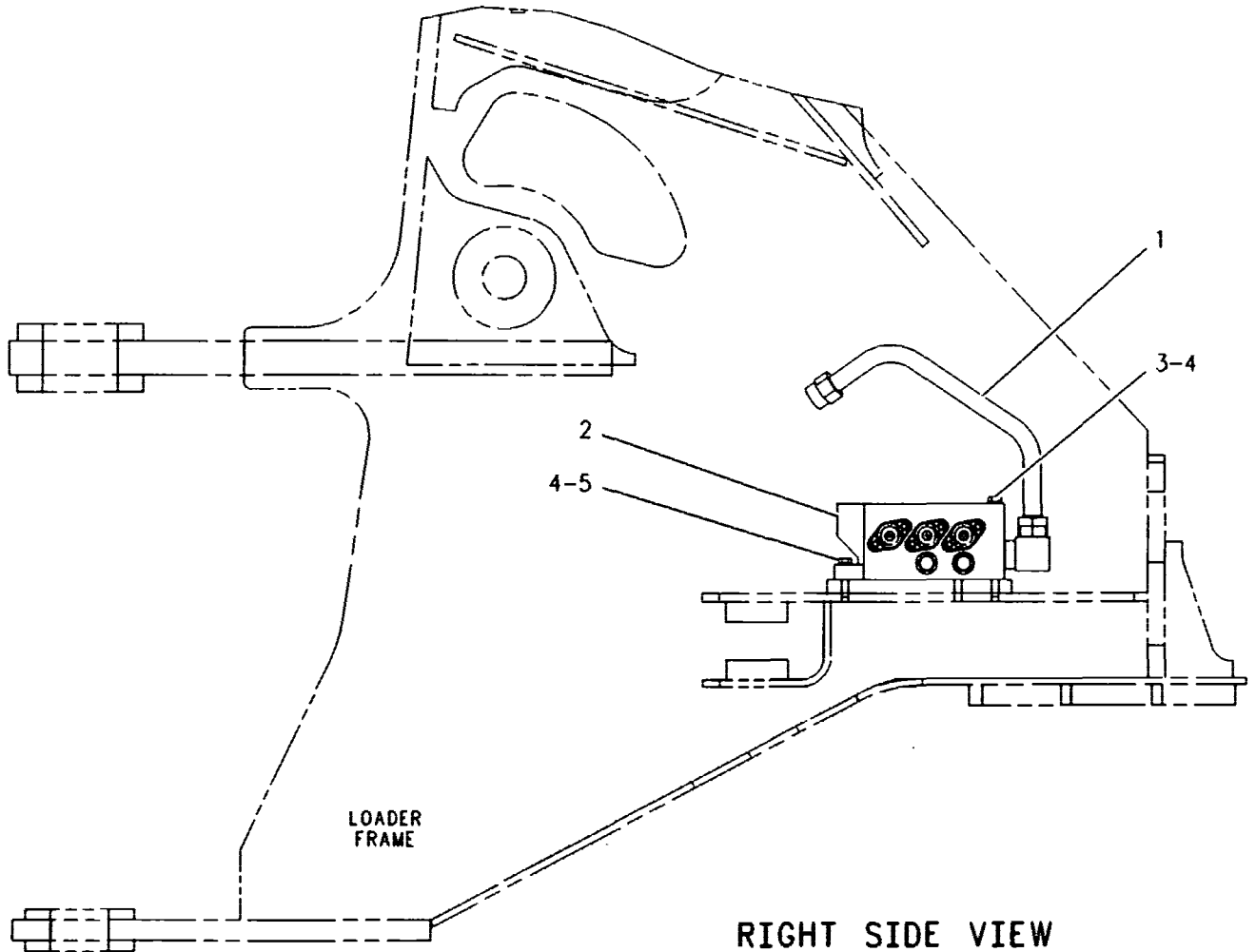
PART OF 201-4049 HYDRAULIC AR-3 VALVE
AN ATTACHMENT

SMCS-5051

i01707663

NOTE	REF NO	GRAPHIC REF	PART NUMBER	QTY	PART NAME						SEE PAGE
					1	2	3	4	5	6 (PRODUCT LEVEL)	
	1	1	111-7855	1	TUBE AS						
Y	2	1	133-4239	1	VALVE GP-MAIN CONTROL (3-FUNCTION)						747
M	3	1	7X-2544	1	BOLT (M10X1.5X104-MM)						
	4	1	8T-4121	3	WASHER-HARD (11X21X2.5-MM THK)						
M	5	1	8T-4185	2	BOLT (M10X1.5X50-MM)						

M-METRIC PART
Y-SEPARATE ILLUSTRATION



GRAPHIC #1

<END>

g00267256

HYDRAULIC SYSTEM

133-4238 VALVE GP-MAIN CONTROL

S/N: CRD1-UP

2 FUNCTION

PART OF 127-3273 VALVE & MTG GP-MAIN CONTROL

SMCS-5051

i01474821

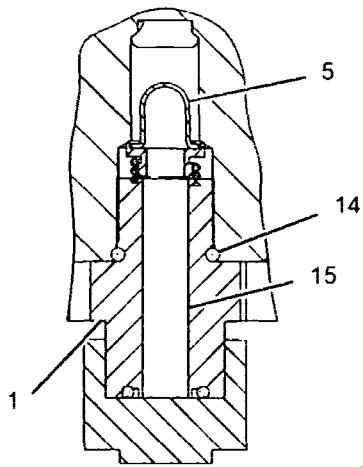
NOTE	REF NO	GRAPHIC REF	PART NUMBER	QTY	PART NAME						SEE PAGE
					1	2	3	4	5	6 (PRODUCT LEVEL)	
Z	1	1		1	BODY-VALVE						
	2	1	6E-5434	4	HOUSING-PILOT						
M	3	1	8T-6870	8	BOLT (M8X1.25X70-MM)						
	4	1	8T-4224	8	WASHER-HARD (8.8X16X2-MM THK)						
Y	5	1	108-6428	1	VALVE GP-RELIEF (MAIN)						776
	6	1	9S-4190	1	PLUG						
	7	1	2M-9780	1	SEAL-O-RING						
Y	8	1	9T-7634	1	VALVE GP-CHECK (MAKEUP)						737
CY	9	1	185-7712	1	VALVE GP-RELIEF (LINE,TILT CYL HEAD END PORT)						777
	10	1	6E-5457	2	PLUG						
	11	1	6E-5643	2	VALVE (LOAD CHECK)						
	12	1	4T-3148	2	SPRING						
	13	1	3D-2824	2	SEAL-O-RING						
Y	14	1	186-0908	1	VALVE GP-RELIEF (LINE,TILT CYL ROD END PORT)						779
	15	1	6E-5437	2	SPRING						
	16	1	6E-5438	2	SPRING						
	17	1	6E-5439	2	SPRING						
	18	1	6E-5440	2	SPRING						
	19	1	6E-5436	4	RETAINER-SPRING						
	20	1	8F-0212	4	SEAL-O-RING						
B	21	1	6E-5431	10	SHIM (0.5-MM THK)						

B-USE AS REQUIRED
 C-CHANGE FROM PREVIOUS TYPE
 M-METRIC PART
 Y-SEPARATE ILLUSTRATION
 Z-NOT SERVICED SEPARATELY

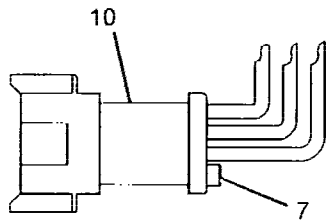
HYDRAULIC SYSTEM

164-2797 VALVE GP-PILOT (contd.)

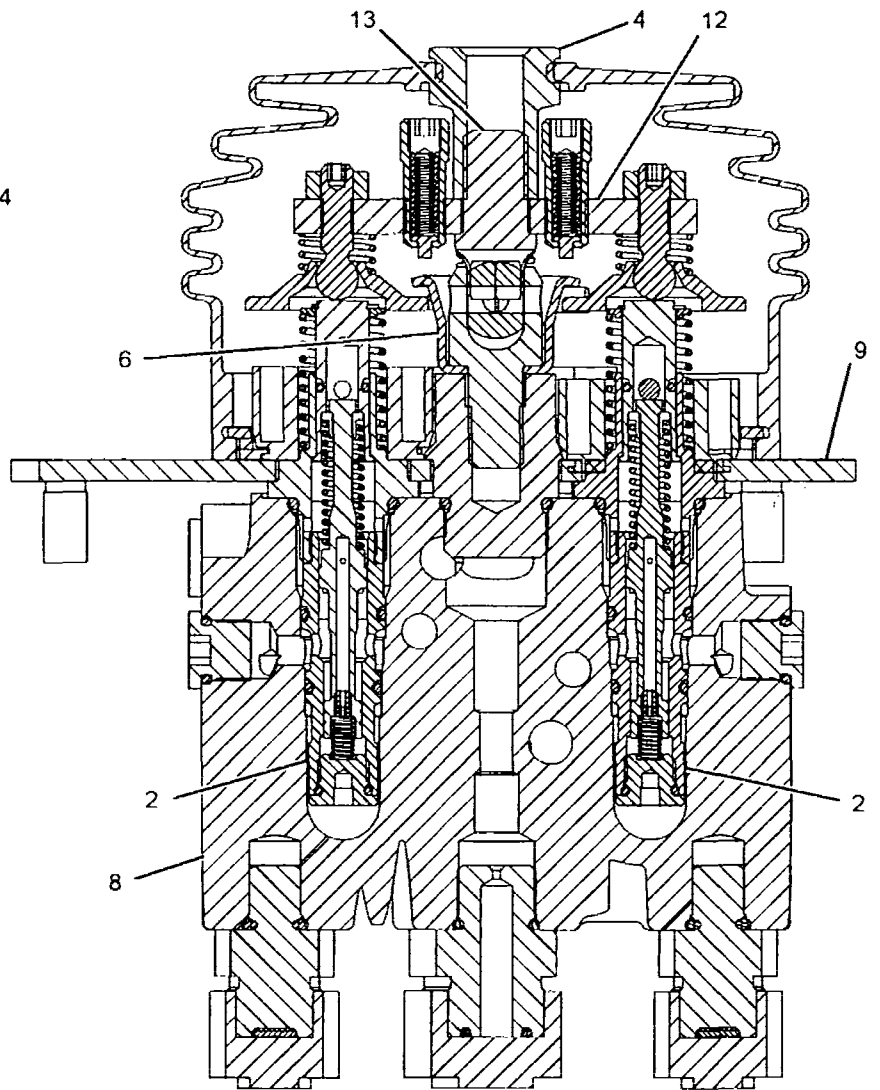
i02012421



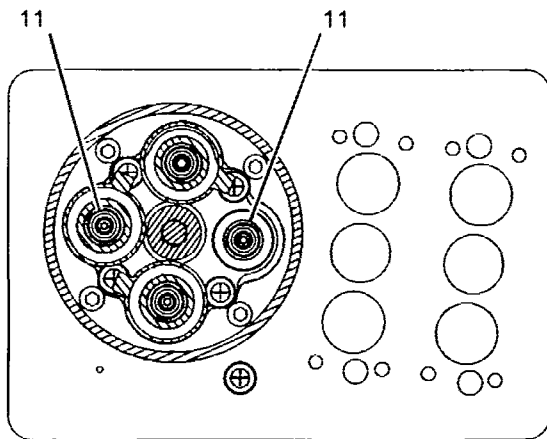
SECTION C-C



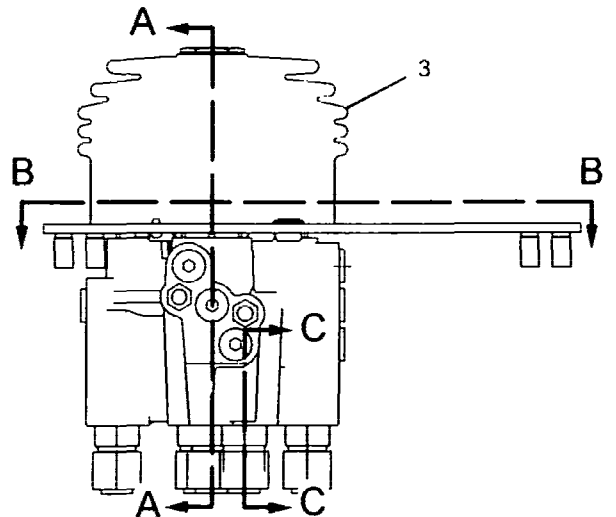
PLUG DETAIL



SECTION A-A



SECTION B-B



GRAPHIC #1

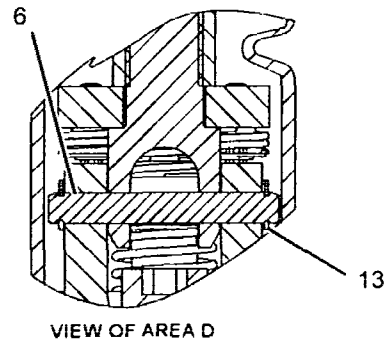
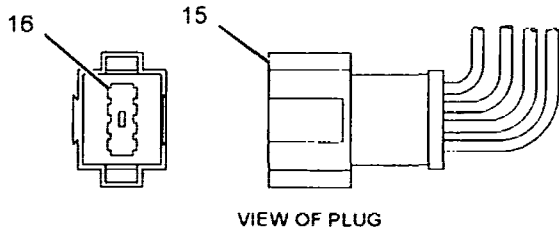
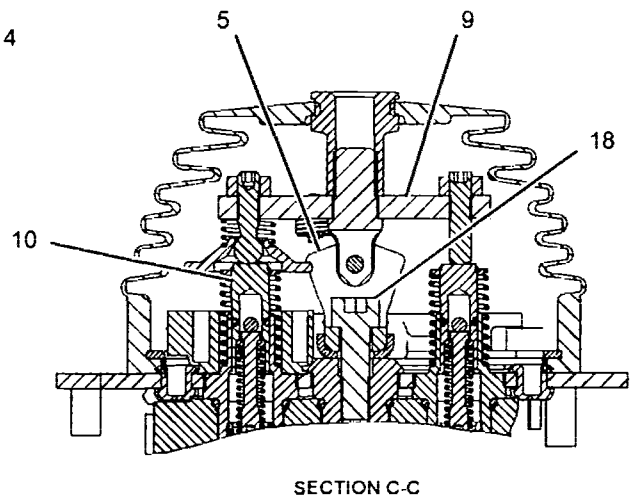
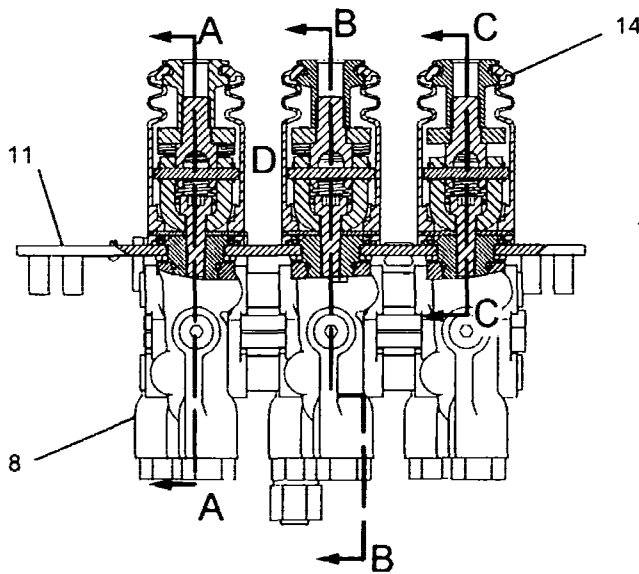
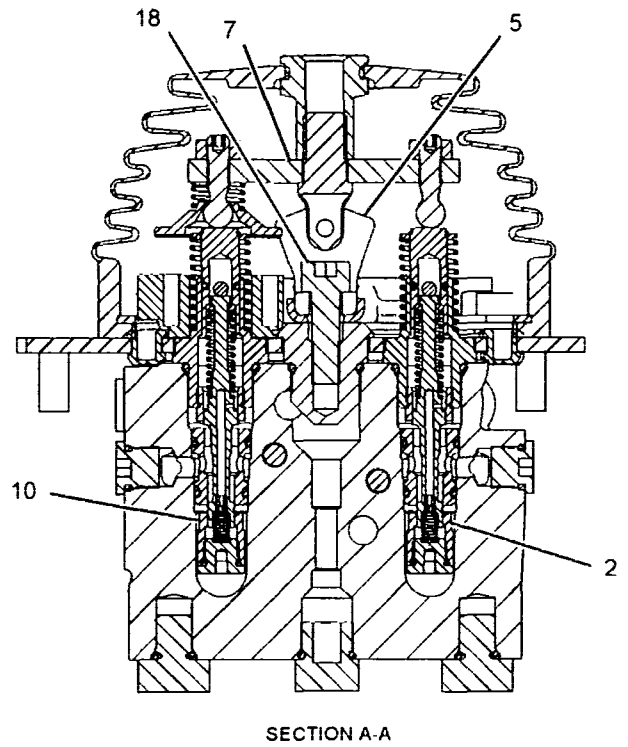
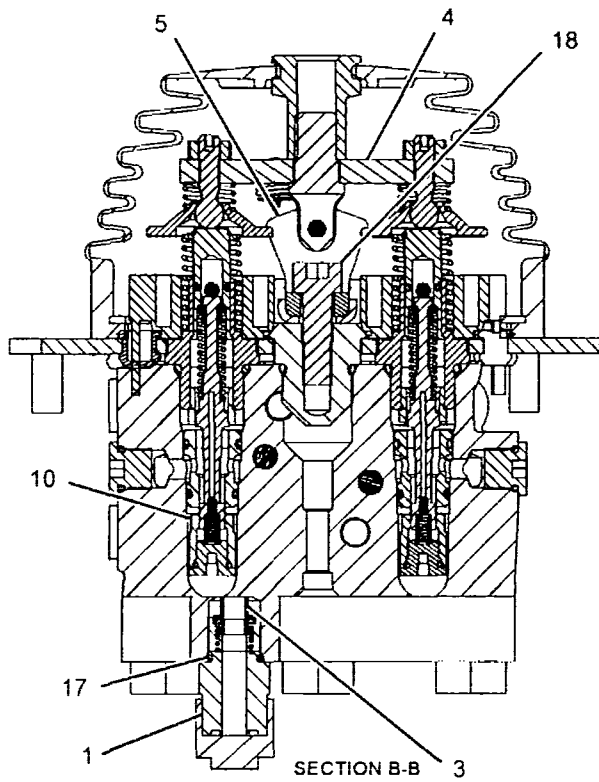
<END>

g01071719

HYDRAULIC SYSTEM

240-3249 VALVE GP-PILOT (contd.)

i02029891



GRAPHIC #1

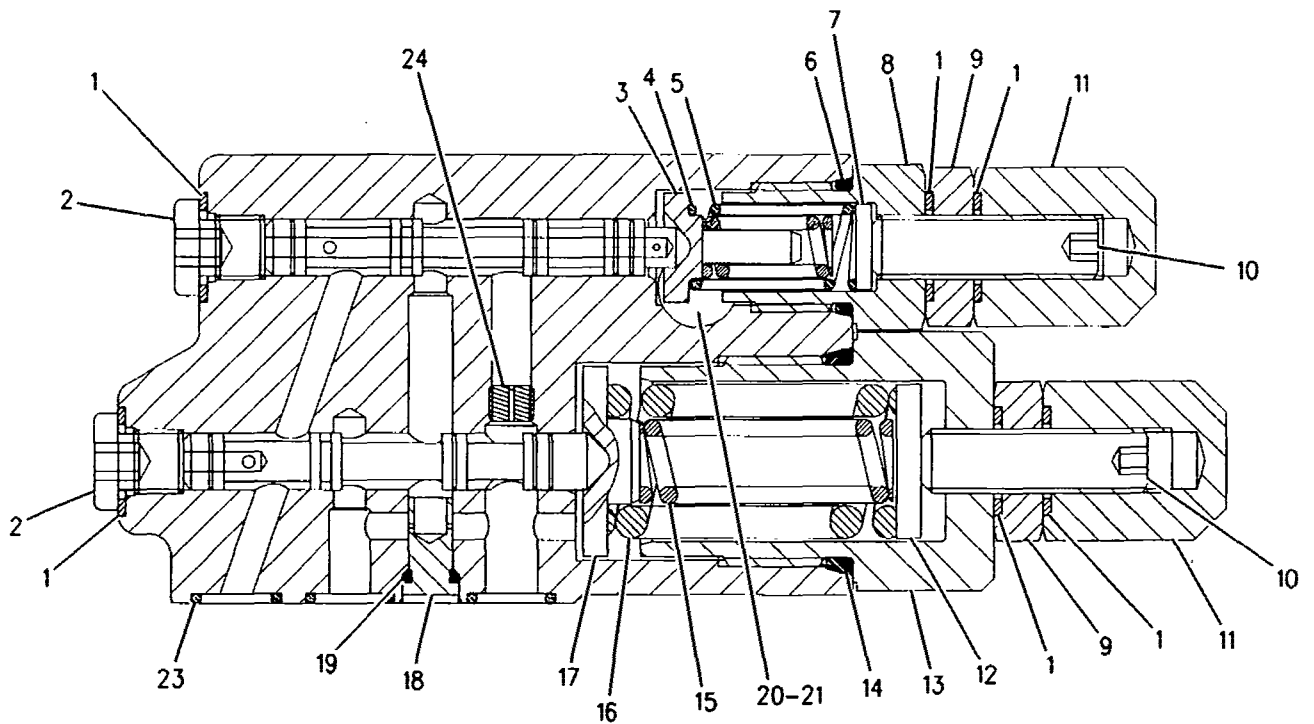
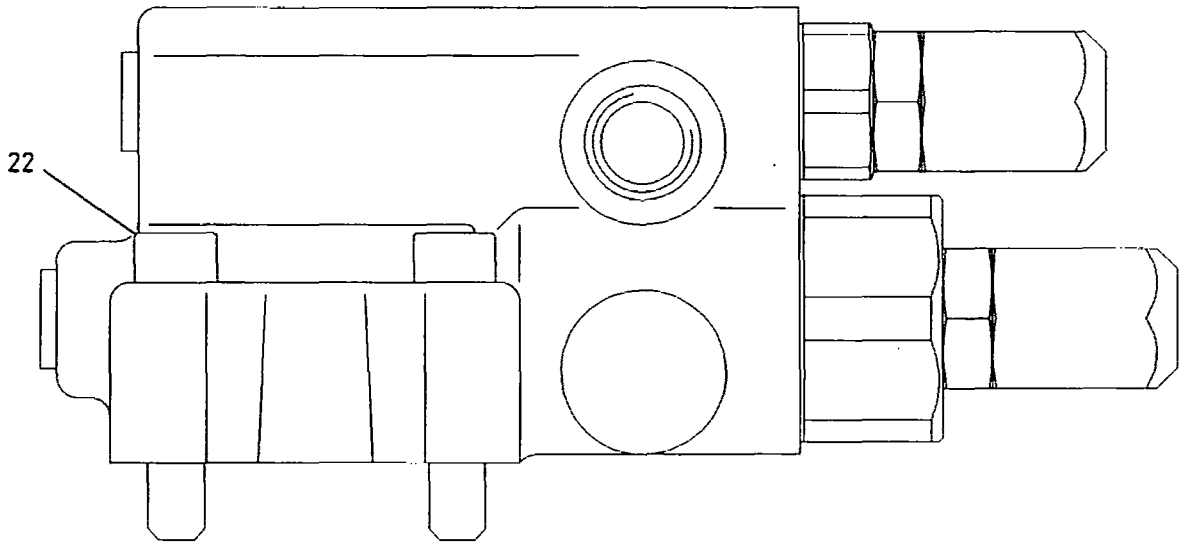
<END>

g01077314

HYDRAULIC SYSTEM

207-0697 VALVE GP-PUMP CONTROL (contd.)

i01592887



GRAPHIC #1

<END>

g00826611

HYDRAULIC SYSTEM

3E-8575 VALVE GP-SOLENOID-QUICK COUPLER

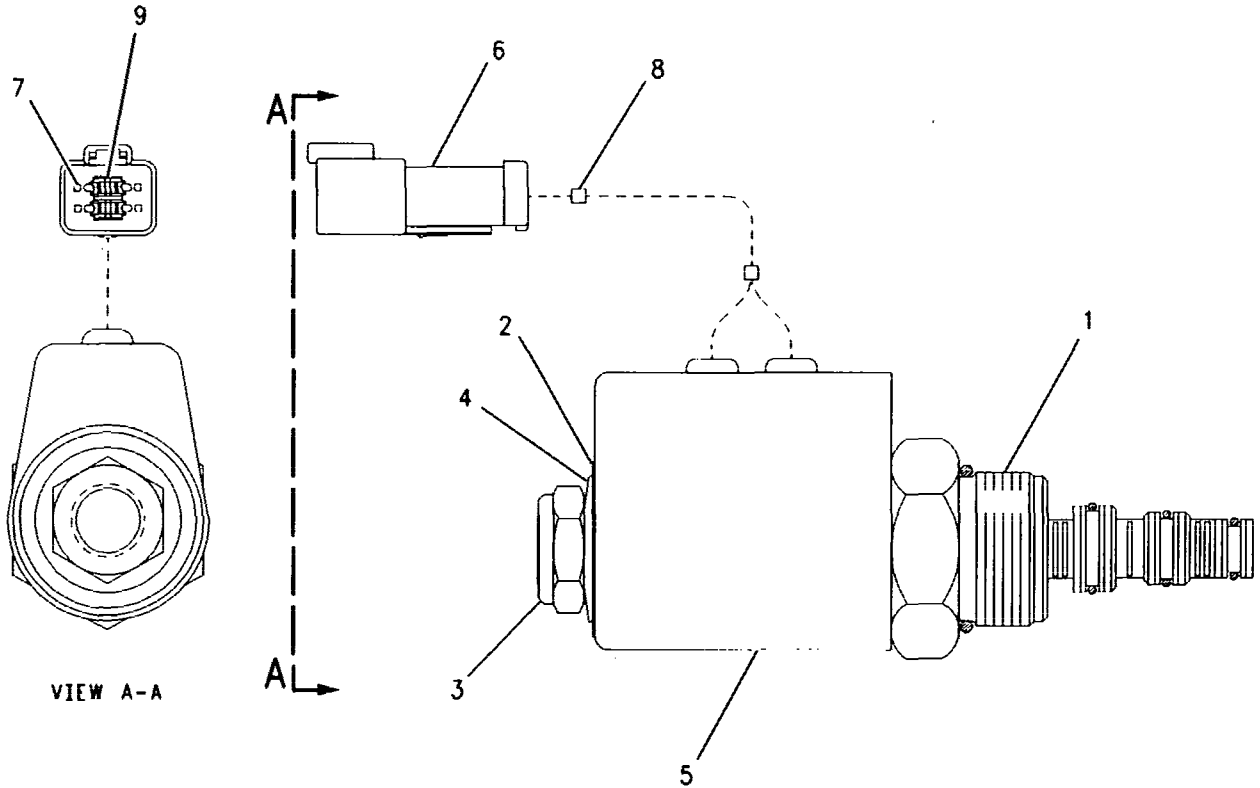
S/N: CRD1-UP

PART OF 185-2270 VALVE GP-DIVERTER
AN ATTACHMENT

SMCS-5132, 5479

i01896778

NOTE	REF NO	GRAPHIC REF	PART NUMBER	QTY	PART NAME						SEE PAGE
					1	2	3	4	5	6 (PRODUCT LEVEL)	
	1	1	6T-3382	1	CARTRIDGE AS						
	2	1	160-5843	1	WASHER (16.8X38.1X.5-MM THK)						
	3	1	157-2284	1	LOCKNUT-SPECIAL (5/8-18-THD)						
	4	1	160-5844	1	WASHER-SPRING (16.3X31.5X1.85-MM THK)						
	5	1	3E-8581	1	COIL AS						
	6	1	102-8804	1	KIT-RECEPTACLE (4-PIN) (INCLUDES RECEPTACLE AS & WEDGE)						
	7	1	8T-8729	4	PIN-CONNECTOR						
	8	1	1S-9593	2	STRAP-CABLE						
	9	1	3E-3377	1	WEDGE-RECEPTACLE LOCK (4-PIN)						
					AVAILABLE REPAIR KIT(S):						
			126-5948	1	KIT-SEAL (SOLENOID VALVE) (INCLUDES SEAL-O-RINGS & RING-BACKUPS)						



VIEW A-A

GRAPHIC #1

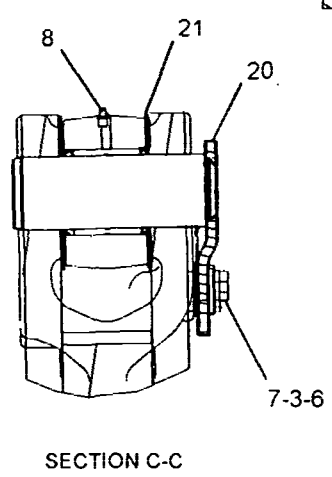
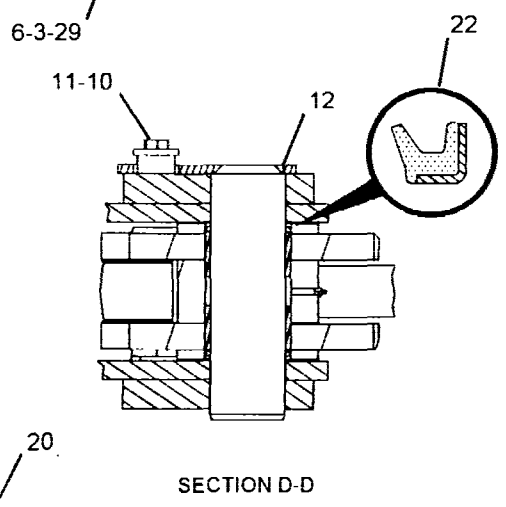
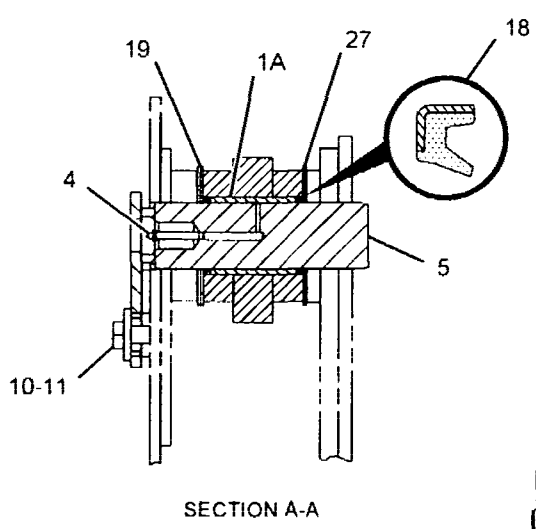
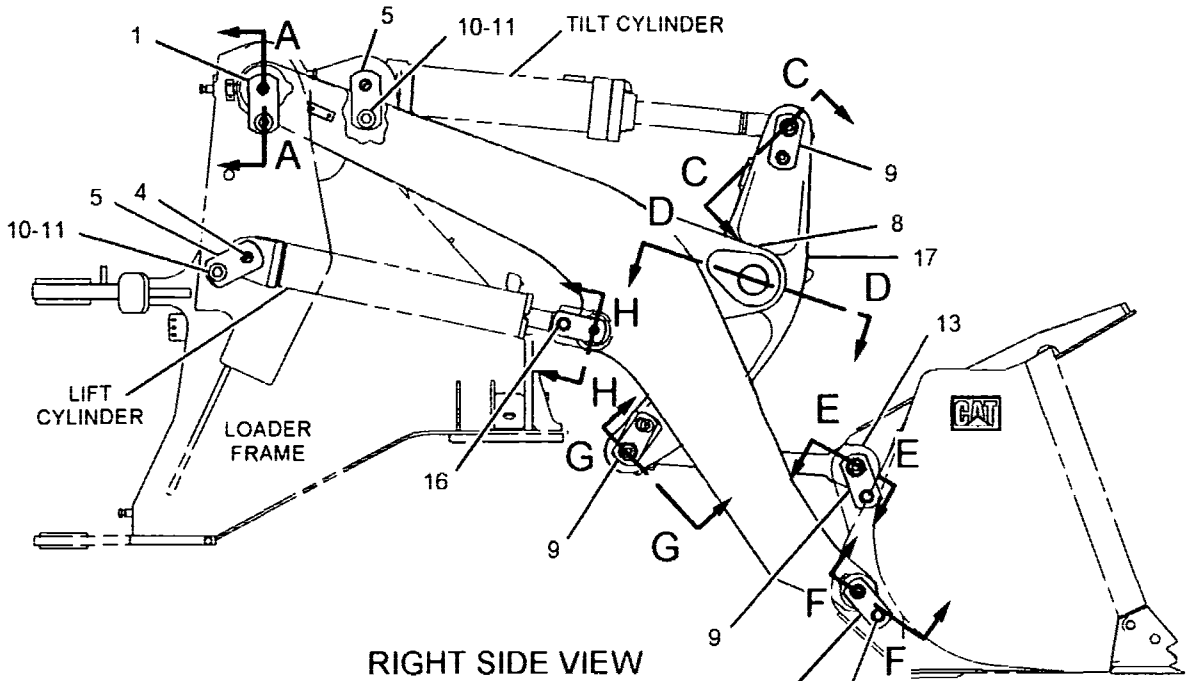
<END>

g00623320

IMPLEMENTS

153-9772 CONTROL GP-BUCKET (contd.)

i02046486



REFER TO ALL ILLUSTRATIONS OF THIS GROUP FOR AUXILIARY VIEWS

g01050483

GRAPHIC #1

WORK TOOLS

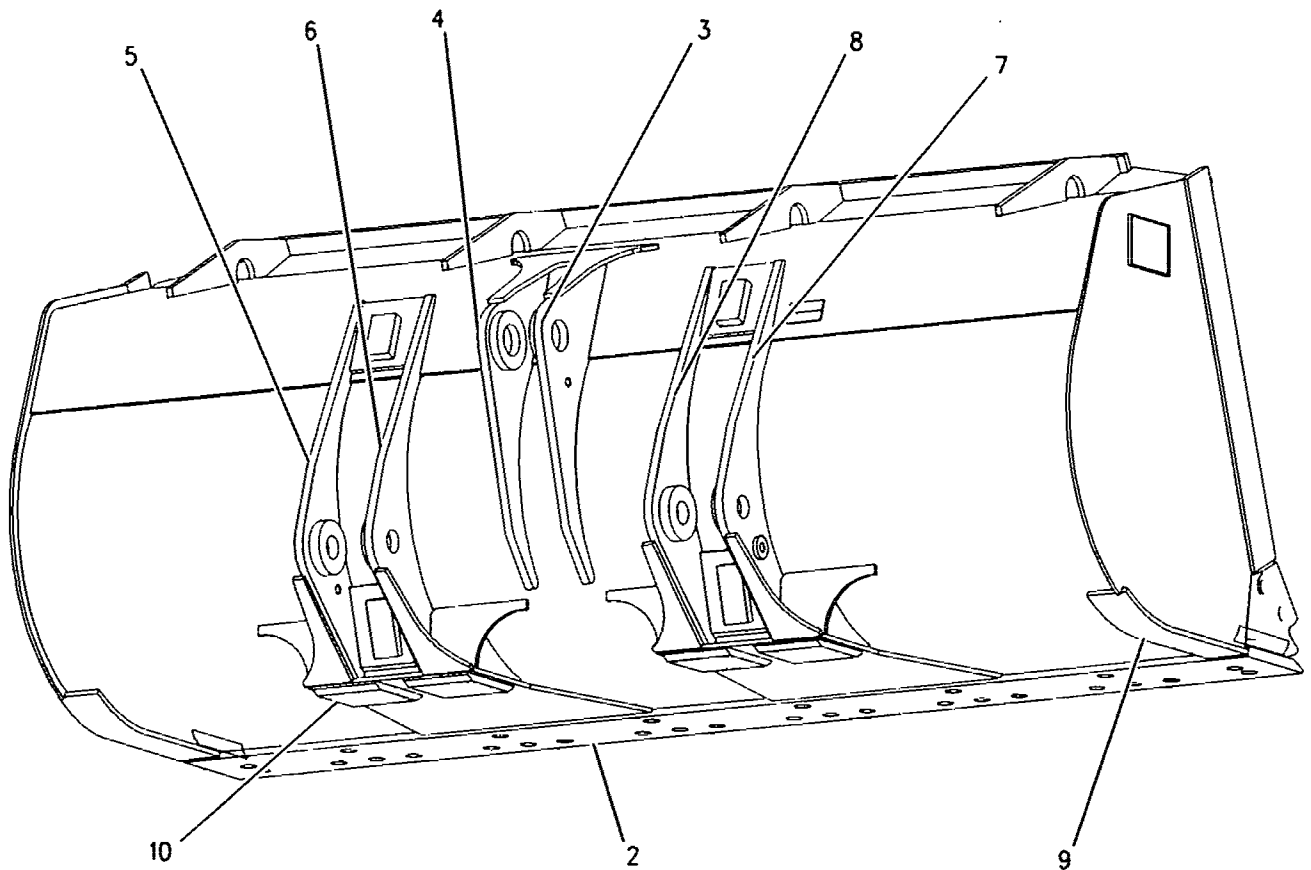
149-7443 BUCKET AS-MATERIAL HANDLING

S/N: CRD1-UP
2.3 CU M (3.0 CU YD)
AN ATTACHMENT

SMCS-6101

i01617086

NOTE	REF NO	GRAPHIC REF	PART NUMBER	QTY	PART NAME						SEE PAGE
					1	2	3	4	5	6 (PRODUCT LEVEL)	
	2	1	105-2345	1	EDGE-CUTTING						
	3	1	149-7485	1	HINGE AS (TILT-RH)						
	4	1	149-7486	1	HINGE AS (TILT-LH)						
	5	1	149-7489	1	HINGE AS (LIFT-LH-OUTER)						
	6	1	149-7490	1	HINGE AS (LIFT-LH-INNER)						
	7	1	149-7491	1	HINGE AS (LIFT-RH-OUTER)						
	8	1	149-7492	1	HINGE AS (LIFT-RH-INNER)						
	9	1	150-0359	2	PLATE-WEAR						
	10	1	9V-4484	4	PLATE						



GRAPHIC #1

<END>

g00837035

WORK TOOLS

217-1512 CONTROL AR-QUICK COUPLER

S/N: CRD1-UP
AN ATTACHMENT

SMCS-6129

i02126148

NOTE	PART NUMBER	QTY	PART NAME						SEE PAGE
			1	2	3	4	5	6 (PRODUCT LEVEL)	
Y	217-1513	1	CONTROL AR-QUICK COUPLER						815
Y	186-3408	1	COUPLER GP-QUICK						818
			-OR-						
Y	222-5002	1	COUPLER GP-QUICK						819

Y-SEPARATE ILLUSTRATION

<END>

217-1513 CONTROL AR-QUICK COUPLER

S/N: CRD1-UP
PART OF 217-1512 CONTROL AR-QUICK COUPLER
AN ATTACHMENT

SMCS-6129

i01674242

NOTE	PART NUMBER	QTY	PART NAME						SEE PAGE
			1	2	3	4	5	6 (PRODUCT LEVEL)	
Y	206-4316	1	ARM AS-LIFT						791
Y	217-1511	1	LINES GP-COUPLER						648

Y-SEPARATE ILLUSTRATION

<END>

233-4465 COUPLER AR-QUICK

S/N: CRD1-UP
AN ATTACHMENT

SMCS-6129

i01966672

NOTE	PART NUMBER	QTY	PART NAME						SEE PAGE
			1	2	3	4	5	6 (PRODUCT LEVEL)	
Y	222-5002	1	COUPLER GP-QUICK						819
I	189-7558	2	HOSE AS						
Y	233-4467	1	LINES GP-COUPLER (HIGH LIFT)						651
	230-8123	1	LINK AS						
	4V-2883	2	BEARING-SLEEVE						

I-REFER TO HYDRAULIC INFORMATION SYSTEM

Y-SEPARATE ILLUSTRATION

<END>

WORK TOOLS

202-7656 FRAME GP-QUICK COUPLER

S/N: CRD1-UP

1096.5MM (43.2IN) WIDE

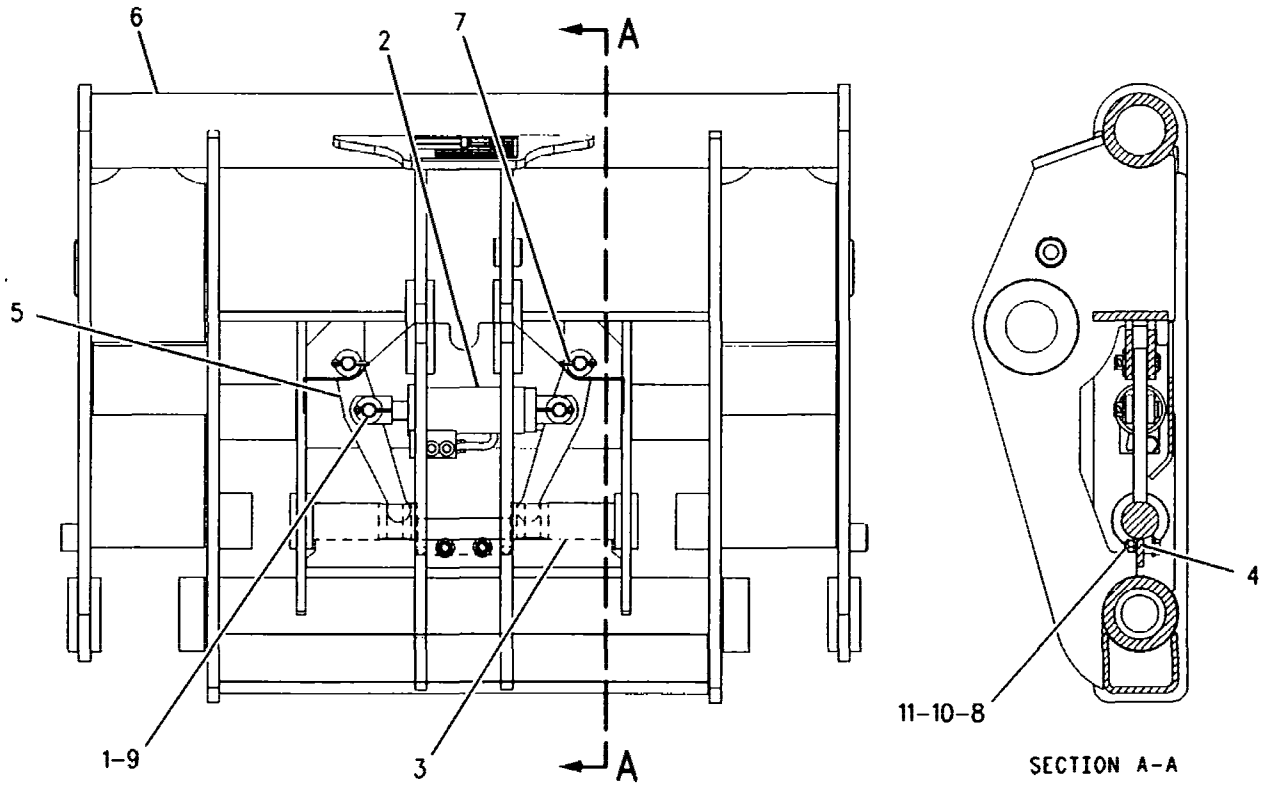
PART OF 186-3408 COUPLER GP-QUICK
AN ATTACHMENT

SMCS-6129

101706689

NOTE	REF NO	GRAPHIC REF	PART NUMBER	QTY	PART NAME						SEE PAGE
					1	2	3	4	5	6 (PRODUCT LEVEL)	
	1	1	8T-4994	4	WASHER-HARD (20X36.5X3.5-MM THK)						
CY	2	1	208-0828	1	CYLINDER GP-COUPLER						624
	3	1	177-6845	2	PIN						
	4	1	185-1948	1	PLATE-STOP						
	5	1	200-1734	2	PLATE						
	6	1	200-1735	1	FRAME AS-COUPLER						
		1	147-7633	3	BOSS-TAPPED						
	7	1	3B-4629	4	PIN-COTTER						
	8	1	5P-8245	4	WASHER-HARD (13.5X25.5X3-MM THK)						
	9	1	5S-7598	4	PIN						
M	10	1	6V-7687	2	LOCKNUT (M12X1.75-THD)						
M	11	1	6V-8197	2	BOLT (M12X1.75X40-MM)						

C-CHANGE FROM PREVIOUS TYPE
M-METRIC PART
Y-SEPARATE ILLUSTRATION



GRAPHIC #1

<END>

g00859687

OPERATOR STATION

199-2842 AIR CONDITIONER AR

S/N: CRD1-UP
AN ATTACHMENT

SMCS-7320

i02330158

NOTE	PART NUMBER	QTY	PART NAME						SEE PAGE
			1	2	3	4	5	6 (PRODUCT LEVEL)	
Y	190-4605	1	AIR CONDITIONER & MOUNTING GP (WITH CABLE CONTROL)						833
			S/N: CRD1-1440						
Y	263-6708	1	AIR CONDITIONER & MOUNTING GP (WITH CABLE CONTROL)						834
			S/N: CRD1441-UP						
Y	216-9818	1	COMPRESSOR GP-REFRIGERANT						851
Y	185-1560	1	CONDENSER & MTG GP-REFRIGERANT						852
			-OR-						
Y	209-5806	1	CONDENSER & MTG GP-REFRIGERANT						853
Y	198-2769	1	LINES GP-AIR CONDITIONER						904
	110-6393	1	PLATE-INSTRUCTION (AIR CONDITIONER)						
Y	200-2725	1	WIRING GP-AIR CONDITIONER						283
Y-SEPARATE ILLUSTRATION									

<END>

OPERATOR STATION

204-0177 CAB GP

S/N: CRD1-UP

PART OF 204-0176 ROPS GP-ENCLOSED, 205-7387 ROPS GP-OPEN

ALSO AN ATTACHMENT

SMCS-7301

i01707664

NOTE	REF NO	GRAPHIC REF	PART NUMBER	QTY	PART NAME						SEE PAGE
					1	2	3	4	5	6 (PRODUCT LEVEL)	
	1	1	8Y-6377	2	STRIKER						
	2	1	107-6144	1	GLASS-FRONT (LH)						
	3	1	107-6145	1	GLASS-FRONT						
	4	1	107-6146	1	GLASS-REAR (LH)						
	5	1	107-6147	1	GLASS (REAR)						
	6	1	108-4311	2	SCREW-MACHINE						
	7	1	111-0177	1	GLASS-FRONT (RH)						
	8	1	111-0178	1	GLASS-REAR (RH)						
	9	1	111-0204	1	PLATE AS						
	10	1	111-0209	1	PLATE AS						
	11	1	161-9645	2	STRIKER AS						
	12	1	198-3393	4	INSERT						
	13	1	204-0178	1	CAB AS						
		1	7T-1099	28	LINK						
M		1	8T-3734	12	BOSS-WELD (M10X1.5X40-MM)						
	14	1	5P-4116	4	WASHER-HARD (8.8X20.5X2-MM THK)						
	15	1	8T-4121	8	WASHER-HARD (11X21X2.5-MM THK)						
M	16	1	8T-4137	4	BOLT (M10X1.5X20-MM)						
M	17	1	8T-4189	16	BOLT (M8X1.25X20-MM)						
	18	1	8T-4224	12	WASHER-HARD (8.8X16X2-MM THK)						
M	19	1	9X-2041	8	SCREW-TRUSS HEAD (M10X1.5X20-MM)						

M-METRIC PART

OPERATOR STATION

118-0809 DASH GP

S/N: CRD1-UP

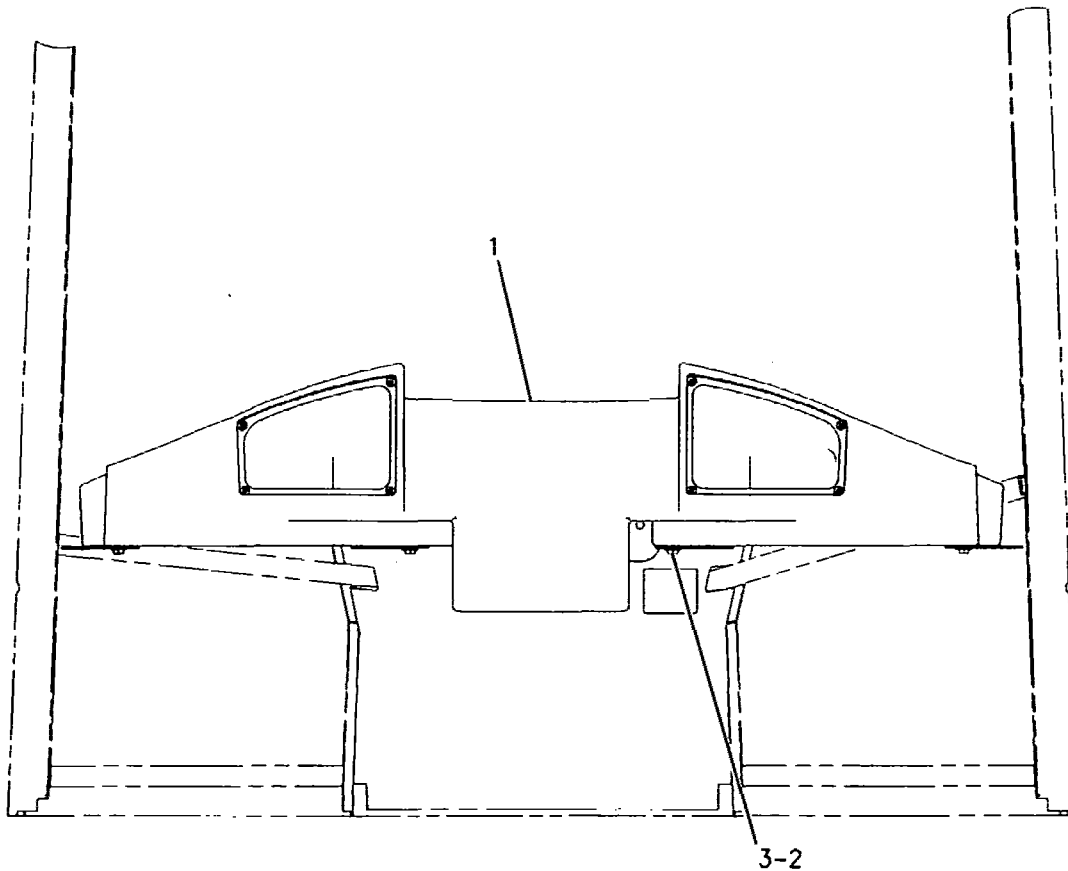
PART OF 200-2150 CANOPY AR-OPEN ROPS
AN ATTACHMENT

SMCS-7314

i01388596

NOTE	REF NO	GRAPHIC REF	PART NUMBER	QTY	PART NAME						SEE PAGE
					1	2	3	4	5	6 (PRODUCT LEVEL)	
C	1	1	166-9287	1	DASH AS						
	2	1	5P-4116	4	WASHER-HARD (8.8X20.5X2MM THK)						
M	3	1	8T-4908	4	BOLT (M8X1.25X25MM)						

C- CHANGE FROM PREVIOUS TYPE
M- METRIC PART



GRAPHIC #1

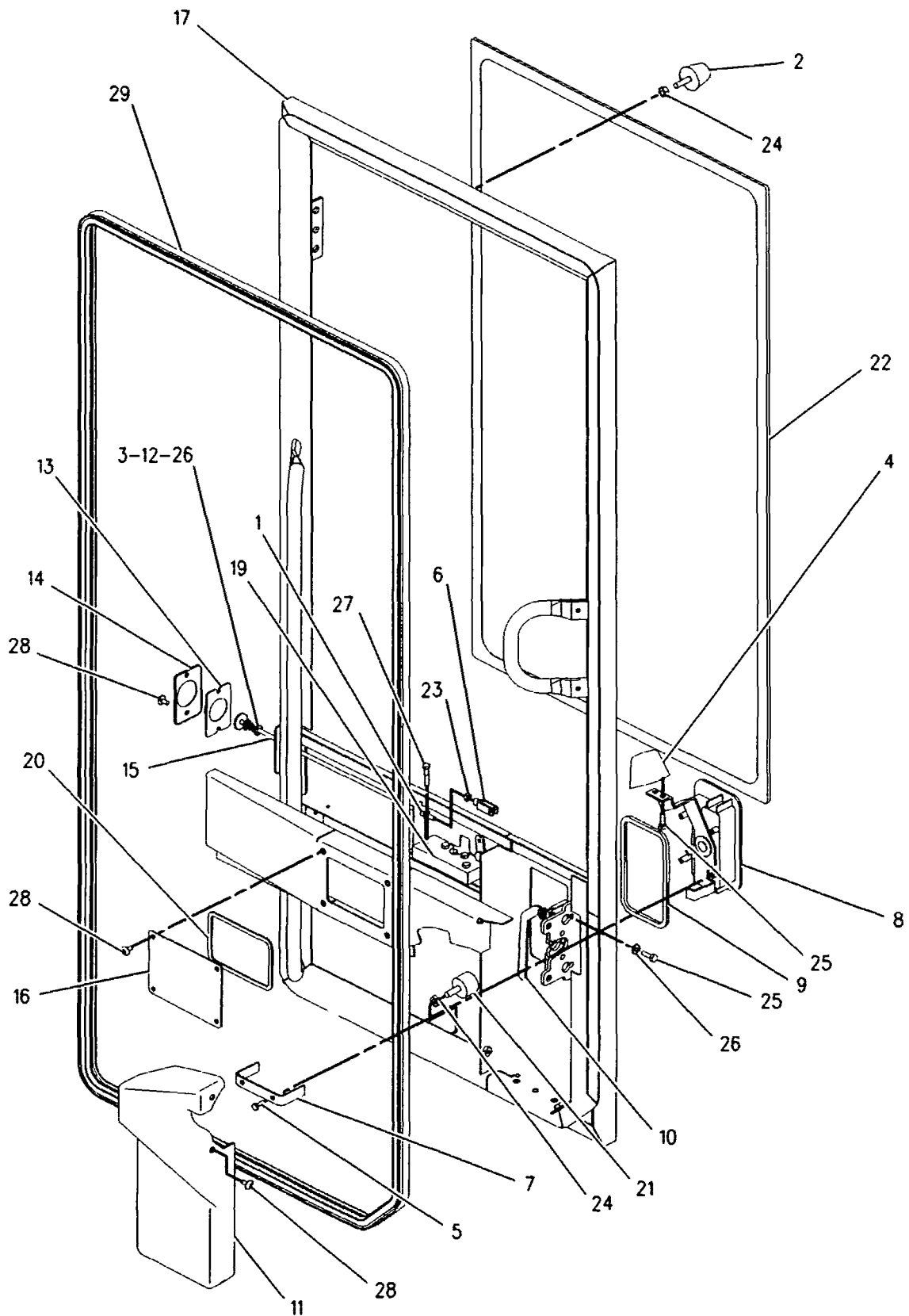
<END>

g00729083

OPERATOR STATION

185-5770 DOOR GP-CAB (contd.)

i01914760



GRAPHIC #1

<END>

g01003729

OPERATOR STATION

231-0320 DOOR GP-CAB-FIXED WINDOW, RH

S/N: CRD1-UP

PART OF 137-7602 DOOR GP-CAB

SMCS-7308

i01965249

NOTE	REF NO	GRAPHIC REF	PART NUMBER	QTY	PART NAME						SEE PAGE
					1	2	3	4	5	6 (PRODUCT LEVEL)	
	1	2	3T-5201	1	BEARING						
	2	1	4E-1384	1	BUMPER-CONICAL						
	3	2	7W-2108	1	SPRING-BYPASS VALVE						
	4	1	7X-2497	1	HANDLE-DOOR						
M	5	2	8T-4180	4	SCREW-MACHINE (M5X0.8X20-MM)						
	6	2	8T-4742	1	END-YOKE ROD						
	7	2	8T-4747	2	BRACKET						
	8	1	8Y-6386	1	SEAL -HANDLE						
	9	2	9G-2759	1	LATCH AS-DOOR						
	10	2	111-0202	1	COVER						
	11	1	112-1528	1	HANDLE AS						
		1	8Y-4501	1	SPRING-HANDLE						
	12	2	141-8580	1	RING-RETAINING						
	13	2	161-9640	1	COVER						
	14	2	161-9641	1	PLATE						
	15	2	161-9642	1	ROD AS						
	16	2	161-9647	1	PLATE						
	17	1	162-2189	1	GLASS-CAB (DOOR)						
Y	18	1	231-0318	1	DOOR GP-CAB						872
	20	2	168-2458	1	LATCH AS						
	21	2	169-3995	1	SEAL						
M	22	2	5C-2890	1	NUT (M6X1-THD)						
M	23	1	5C-7261	2	NUT (M8X1.25-THD)						
M	24	1,2	8T-4181	5	BOLT (M6X1X20-MM)						
	25	2	8T-4205	6	WASHER-HARD (7.2X14.5X2-MM THK)						
M	26	2	8T-4971	4	BOLT (M6X1X30-MM)						
M	27	2	9X-2042	11	SCREW-TRUSS HEAD (M6X1X12-MM)						
E	28	2	3E-3805		SEAL (420CM)						
	29	1	178-2593	1	BUMPER						

E-ORDER BY THE CENTIMETER
M-METRIC PART
Y-SEPARATE ILLUSTRATION

OPERATOR STATION

215-1132 GUARD GP-VANDALISM

S/N: CRD1-UP
AN ATTACHMENT

SMCS-7315

i02271012

NOTE	REF NO	GRAPHIC REF	PART NUMBER	QTY	PART NAME						SEE PAGE
					1	2	3	4	5	6 (PRODUCT LEVEL)	
	1	1	246-2641	4	PADLOCK GP						
					(EACH INCLUDES)						
		1	5P-8500	1	KEY						
					(WITH PLASTIC OVERMOLD)						
					-OR-						
		1	199-6309	1	KEY						
					(OPTIONAL SERVICE REPLACEMENT) (PLAIN KEY WITHOUT PLASTIC OVERMOLD)						
	2	1	136-6980	1	PLATE AS						
	3	1	136-6982	1	PLATE						
	4	1	136-6984	1	PLATE						
	5	1	145-1135	2	PLATE						
	6	1	145-1136	1	PLATE						
	7	1	145-1140	1	PLATE						
	8	1	145-5607	1	PLATE AS						
	9	1	218-5003	1	PLATE						
	10	1	218-5004	1	PLATE AS						
	11	1	218-5005	1	PLATE AS						
M	12	1	123-0708	4	SCREW-HEX SOCKET (M4X0.7X30-MM)						
M-METRIC PART											

OPERATOR STATION

199-3461 INSTALLATION GP-RADIO

S/N: CRD1-UP

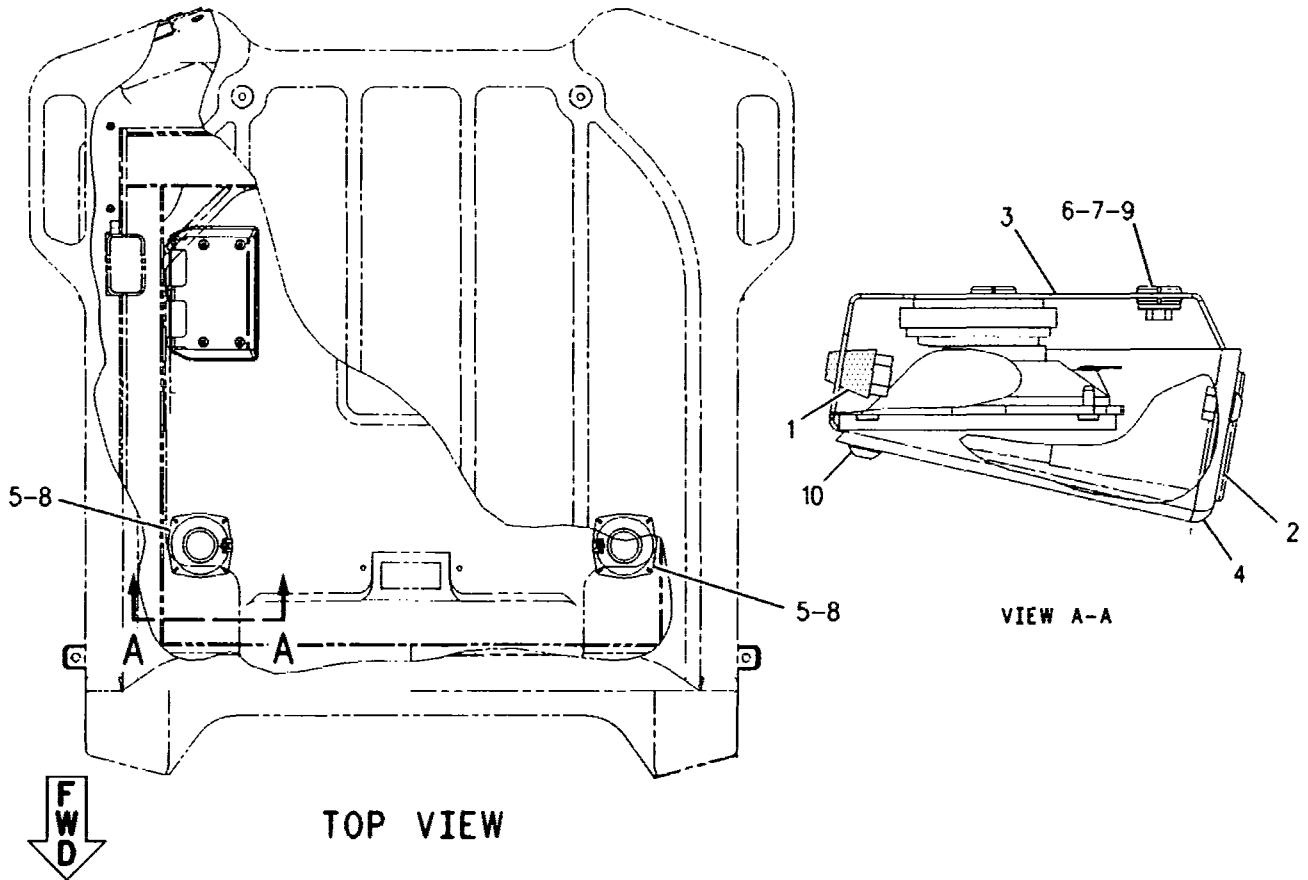
PART OF 199-3459, 230-1258 CAB AR
ALSO AN ATTACHMENT

SMCS-7338

i01674795

NOTE	REF NO	GRAPHIC REF	PART NUMBER	QTY	PART NAME						SEE PAGE
					1	2	3	4	5	6 (PRODUCT LEVEL)	
	1	1	4E-1411	1	BUSHING-TERMINAL						
	2	1	9U-8263	1	COVER						
	3	1	114-3953	1	BRACKET AS						
M		1	6V-9632	4	NUT-WELD (M6X1 THD)						
	4	1	114-3954	1	COVER						
	5	1	168-8772	2	SPEAKER AS-RADIO						
	6	1	5P-4115	4	WASHER-HARD (7.2X19X2-MM THK)						
	7	1	5P-8524	4	GROMMET						
	8	1	8C-6440	8	SCREW-PAN HEAD (10-16X0.5-IN)						
M	9	1	8T-4134	4	NUT (M6X1-THD)						
M	10	1	9X-2042	4	SCREW-TRUSS HEAD (M6X1X12-MM)						

M-METRIC PART



GRAPHIC #1

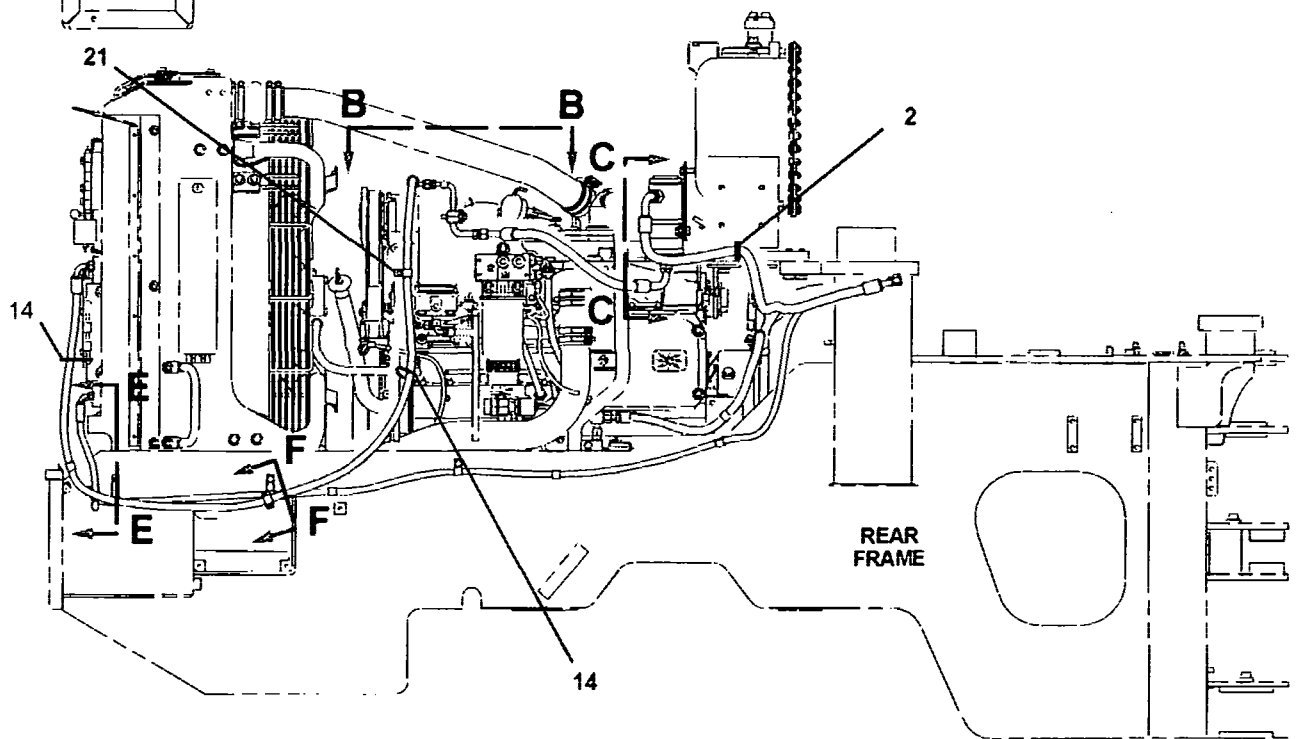
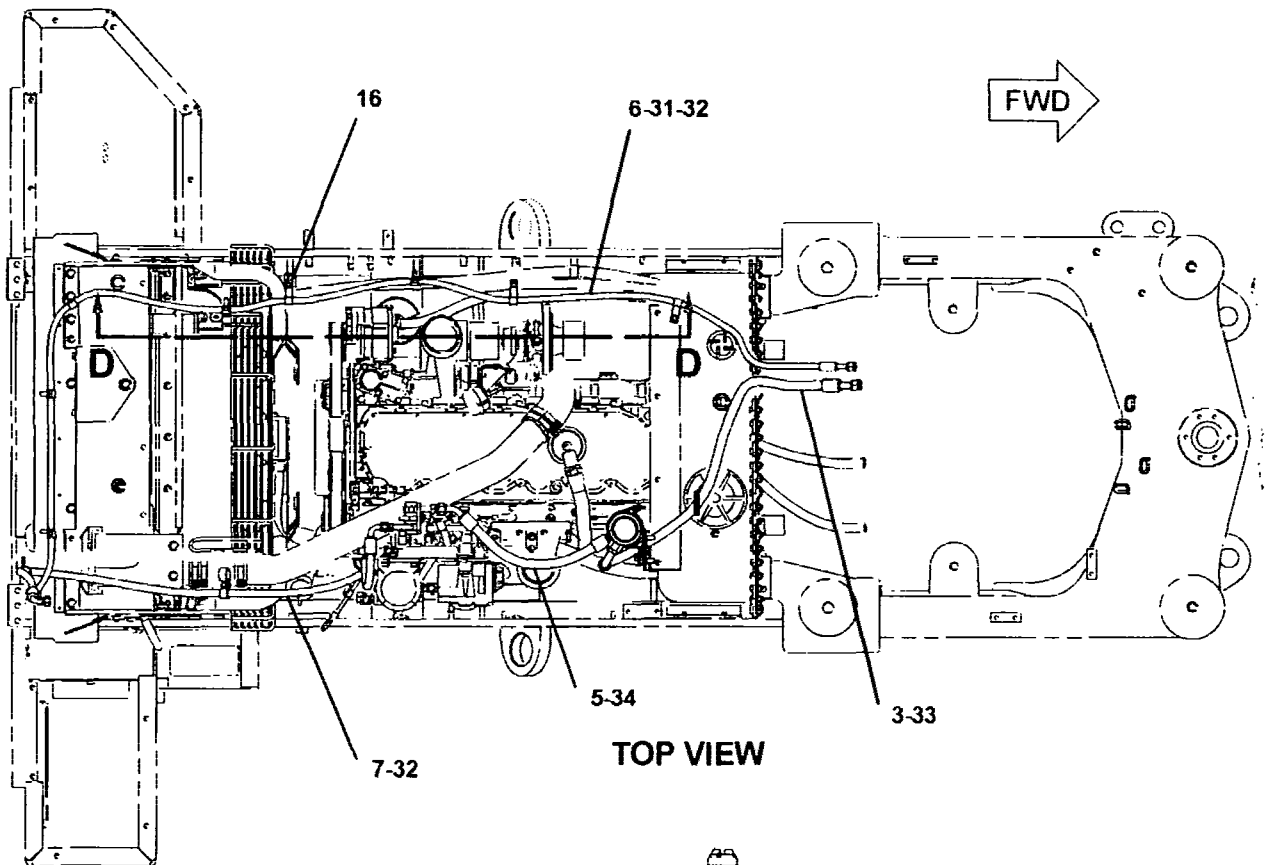
<END>

g00868142

OPERATOR STATION

198-2769 LINES GP-AIR CONDITIONER (contd.)

i01974684



REFER TO ALL ILLUSTRATIONS OF THIS GROUP FOR AUXILIARY VIEWS

GRAPHIC #1

g01081307

OPERATOR STATION

107-4642 MIRROR GP-REAR VIEW-CAB

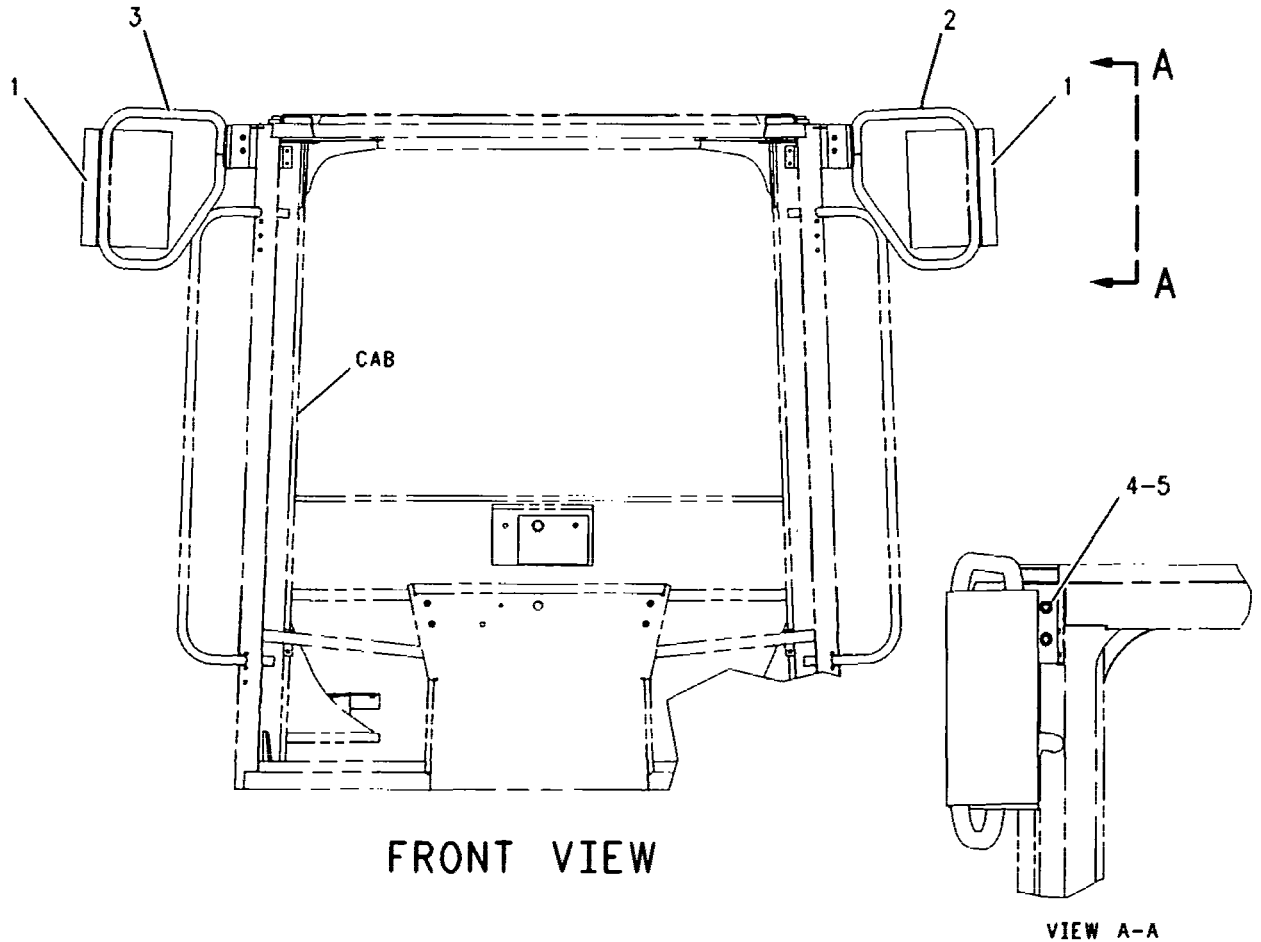
S/N: CRD1-UP
AN ATTACHMENT

SMCS-7319

101165039

NOTE	REF NO	GRAPHIC REF	PART NUMBER	QTY	PART NAME						SEE PAGE
					1	2	3	4	5	6 (PRODUCT LEVEL)	
	1	1	150-6582	2	MIRROR AS						
	2	1	123-6621	1	BRACKET AS (LH)						
	3	1	123-6622	1	BRACKET AS (RH)						
M	4	1	8T-4189	4	BOLT (M8X1.25X20-MM)						
	5	1	8T-4224	4	WASHER-HARD (8.8X16X2-MM THK)						

M-METRIC PART



GRAPHIC #1

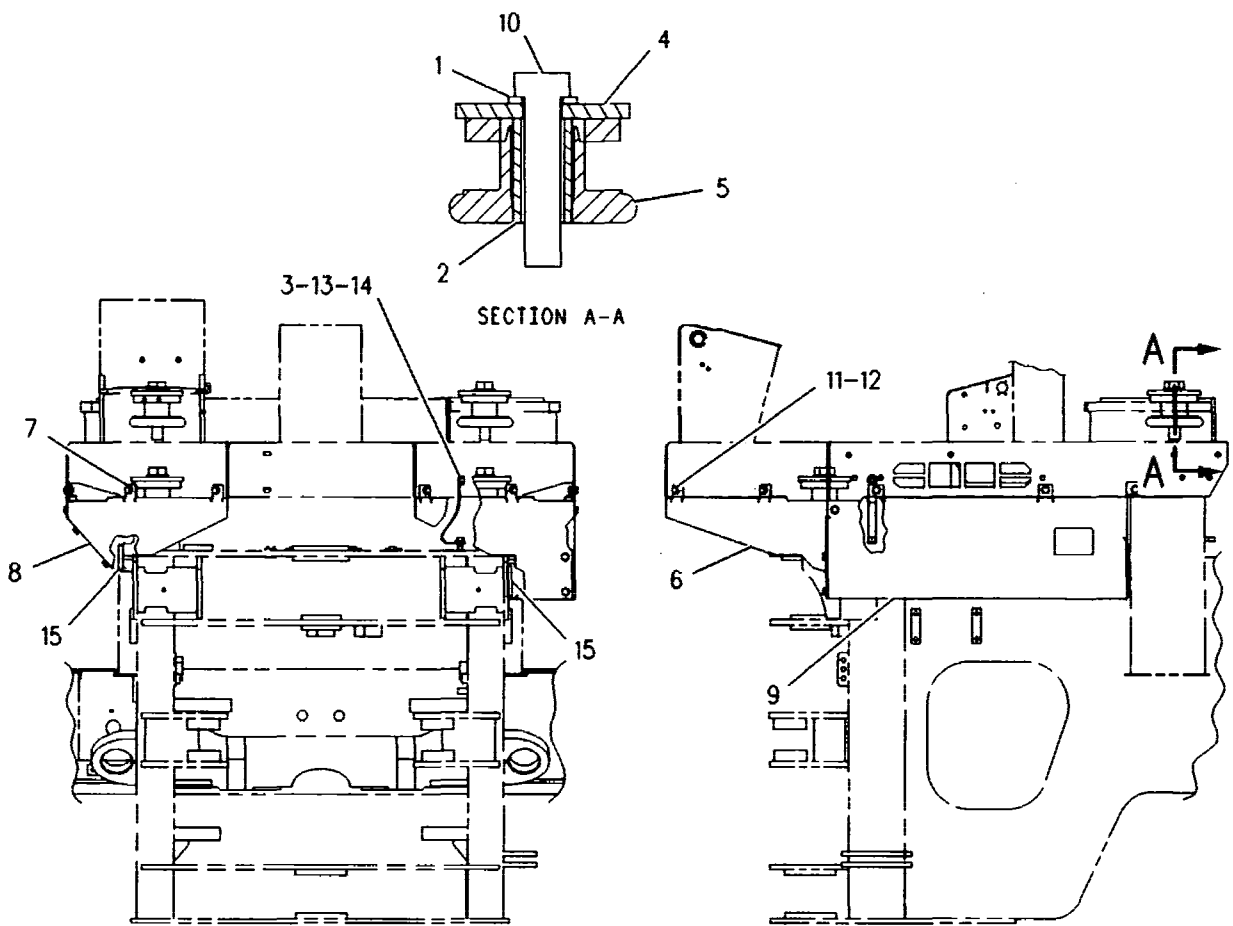
<END>

g00621208

OPERATOR STATION

152-6497 MOUNTING GP-CAB (contd.)

i01625239



GRAPHIC #1

<END>

g00330604

OPERATOR STATION

199-3463 PANEL GP-INSTRUMENT

S/N: CRD1-1175

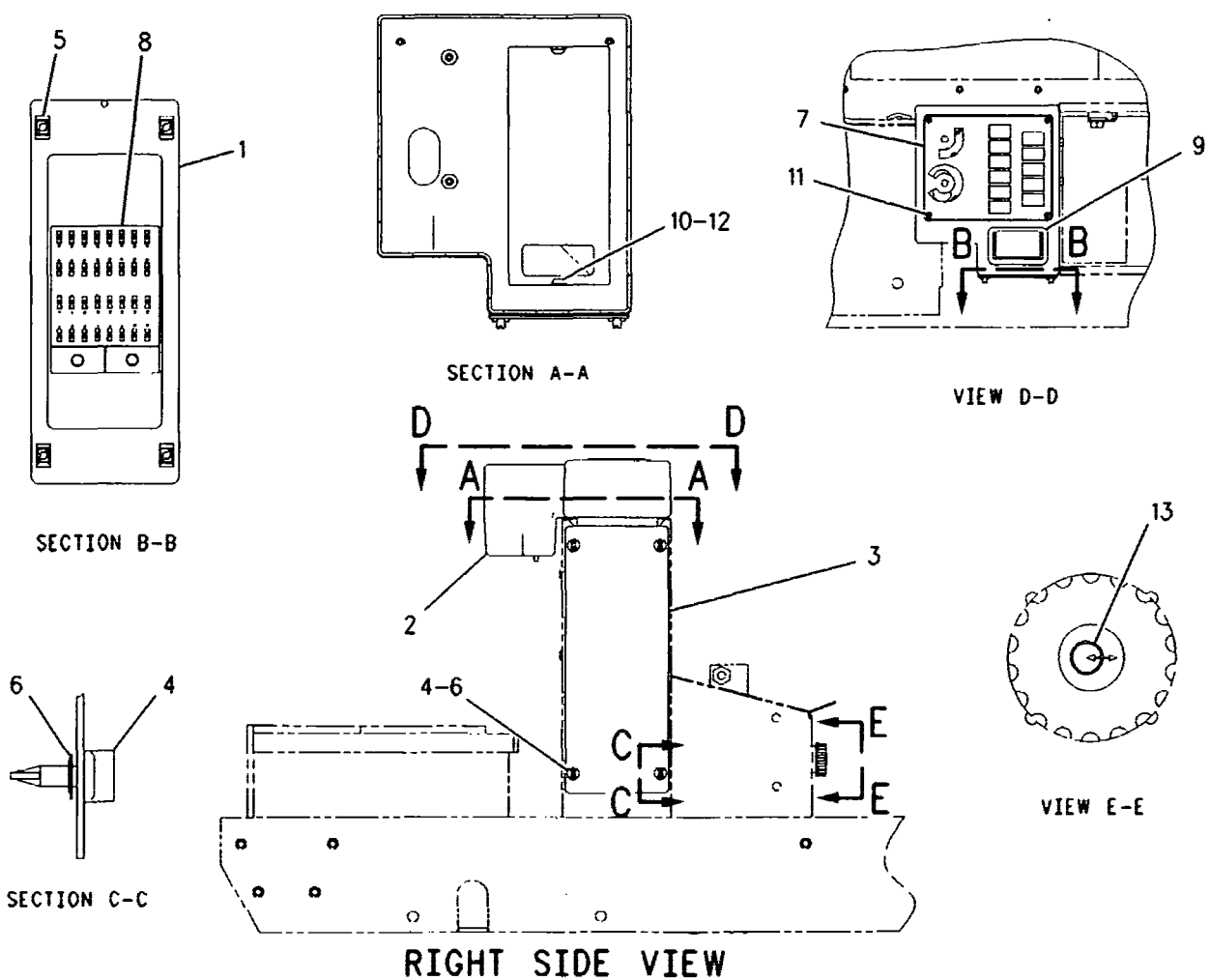
PART OF 199-3459 CAB AR, 200-2150 CANOPY AR-OPEN ROPS
ALSO AN ATTACHMENT

SMCS-7451

i01877106

NOTE	REF NO	GRAPHIC REF	PART NUMBER	QTY	PART NAME						SEE PAGE
					1	2	3	4	5	6 (PRODUCT LEVEL)	
	1	1	107-6013	1	SEAL						
	2	1	107-6021	1	HOUSING AS						
	3	1	107-6072	1	PLATE						
	4	1	117-3787	4	KNOB						
	5	1	117-3788	4	RECEPTACLE						
	6	1	117-3789	4	RETAINER						
	7	1	134-4096	1	PLATE AS						
	8	1	207-9828	1	FILM-FUSE PANEL						
	9	1	154-5629	1	ASHTRAY AS						
	10	1	8T-4205	4	WASHER-HARD (7.2X14.5X2-MM THK)						
M	11	1	9X-1046	4	SCREW (M4X0.7X18-MM)						
M	12	1	9X-2042	4	SCREW-TRUSS HEAD						
	13	1	201-2733	1	FILM-INPUT/OUTPUT						

M-METRIC PART



GRAPHIC #1

<END>

g00955146

OPERATOR STATION

230-1257 ROPS GP-ENCLOSED

S/N: CRD1-UP

PART OF 230-1258 CAB AR
AN ATTACHMENT

SMCS-7301

i02169492

NOTE	REF NO	GRAPHIC REF	PART NUMBER	QTY	PART NAME						SEE PAGE
					1	2	3	4	5	6 (PRODUCT LEVEL)	
	1	1	091-0079	3	PLUG						
Y	2	1	185-5502	1	DOOR GP-CAB (SLIDING WINDOW)						861
Y	3	1	207-7937	1	LIGHTING GP-FLOOD (2-LAMP, CAB)						216
Y	4	1	230-1256	1	CAB GP-ENCLOSED ROPS						847

Y-SEPARATE ILLUSTRATION

OPERATOR STATION

156-1148 SEAT BELT GP-RETRACTABLE

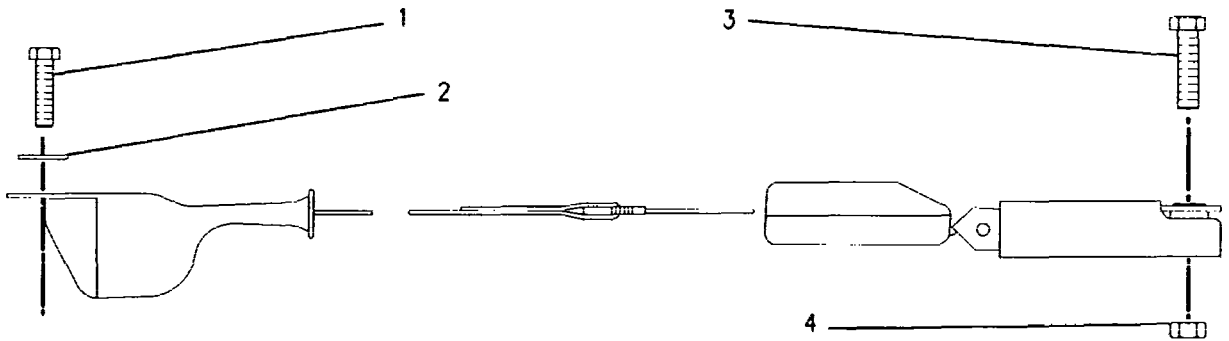
S/N: CRD1-UP

PART OF 119-7128 SEAT GP
AN ATTACHMENT

SMCS-7327

i01674134

NOTE	REF NO	GRAPHIC REF	PART NUMBER	QTY	PART NAME						SEE PAGE
					1	2	3	4	5	6 (PRODUCT LEVEL)	
	1	1	1L-9080	1	BOLT (7/16-20X1.5 IN)						
	2	1	8T-5360	1	WASHER (12X22.5X2.5MM THK)						
	3	1	1A-4350	1	BOLT (7/16-20X1.75 IN)						
	4	1	4D-6432	1	LOCKNUT (7/16-20 THD)						



GRAPHIC #1

<END>

g00760019

OPERATOR STATION

251-6636 SEAT GP

S/N: CRD1-UP
AN ATTACHMENT

SMCS-7312

102164880

NOTE	PART NUMBER	QTY	PART NAME						SEE PAGE
			1	2	3	4	5	6 (PRODUCT LEVEL)	
Y	236-7019	1	SEAT BELT GP						956
Y	248-6194	1	SEAT GP-SUSPENSION (HEATED, 24-VOLT)						971
	0T-0244	1	BOLT (7/16-20X1.25-IN)						
M	113-9232	2	BOLT (8X1.25X30-MM)						
	205-6388	1	BOLT (7/16-20X44.45-MM)						
M	9X-2125	4	BOLT-LOCKING (M10X1.5X25-MM)						
	3T-2662	1	CIRCUIT BREAKER AS (15-AMPERE) (AIR SUSPENSION SEAT)						
	6V-8376	2	SCREW-MACHINE (8-32X0.25-IN)						
	9B-7233	2	LOCKWASHER						
	068-4209	2	SCREW (8-32X0.75-IN)						
	177-4937	1	SPACER (11.7X19.8X20.3-MM THK)						
	8T-4121	4	WASHER-HARD (11X21X2.5-MM THK)						

M-METRIC PART
Y-SEPARATE ILLUSTRATION

<END>

OPERATOR STATION

150-7718 SUSPENSION GP-SEAT-AIR

S/N: CRD1-UP

PART OF 118-0819 SEAT & MOUNTING GP
AN ATTACHMENT

SMCS-7324

i01395810

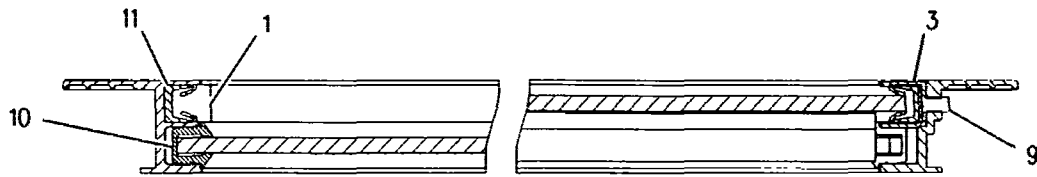
NOTE	REF NO	GRAPHIC REF	PART NUMBER	QTY	PART NAME						SEE PAGE
					1	2	3	4	5	6 (PRODUCT LEVEL)	
	1	1	4V-7884	2	BEARING						
C	2	1	166-7223	1	HOUSING AS						
	3	1	4V-8556	1	BOLT (3/8-16X2.20-IN)						
	5	1	5P-8167	1	BOLT (3/8-16X0.625-IN)						
	6	1	8Y-6917	1	BOOT						
	7	1	102-6317	2	BUMPER						
	8	1	124-7128	1	BUSHING-RELIEF						
	9	1	9M-0164	1	CLAMP-HOSE						
	10	1	145-0326	1	FILM-INSTRUCTION (SEAT ADJUSTMENT)						
	11	1	147-4549	1	FITTING-ELBOW						
	12	1	149-2400	1	FITTING						
	13	1	149-2399	1	FITTING						
	14	1	8Y-6922	1	HOUSING AS						
C	15	1	2K-4973	1	LOCKNUT (3/8-16-THD)						
	16	1	3J-4818	4	LOCKWASHER						
	17	1	1B-4430	4	NUT-JAM (1/2-20-THD)						
	18	1	124-7126	1	SCISSORS AS						
	19	1	8M-3267	1	SCREW-HEX SOCKET (3/8-16X0.75-IN)						
	20	1	123-8157	2	SHAFT						
	21	1	123-9131	1	ABSORBER AS-SHOCK						
	22	1	147-6522	1	SPRING						
	23	1	6K-0806	1	STRAP-CABLE						
	24	1	8L-8413	4	STRAP-CABLE						
	25	1	149-2403	1	VALVE AS						
E	27	1	147-6541		TUBE (29CM)						
E	28	1	147-6541		TUBE (9CM)						
B	29	1	160-7765	1	WASHER (16.26X22.23X1.97-MM THK)						
B	30	1	160-7766	6	WASHER (16.26X22.23X0.51-MM THK)						
B	31	1	160-7767	6	WASHER (3.68X12.57X0.51-MM THK)						
	32	1	102-8802	1	KIT-RECEPTACLE (2-PIN)						
					(INCLUDES RECEPTACLE AS & WEDGE)						
					AVAILABLE REPAIR KIT(S):						
			8Y-6928	1	KIT-FASTENER						
					(INCLUDES RATCHET CLIPS)						
			123-9128	1	KIT-ROLLER						
					(INCLUDES FLANGED BEARINGS, ROLLERS, & TIE WRAP)						
			128-0613	1	KIT-TETHER						
			149-2398	1	KIT-AIR COMPRESSOR						
					(INCLUDES COMPRESSOR AS & SLEEVE)						

B-USE AS REQUIRED
C-CHANGE FROM PREVIOUS TYPE
E-ORDER BY THE CENTIMETER

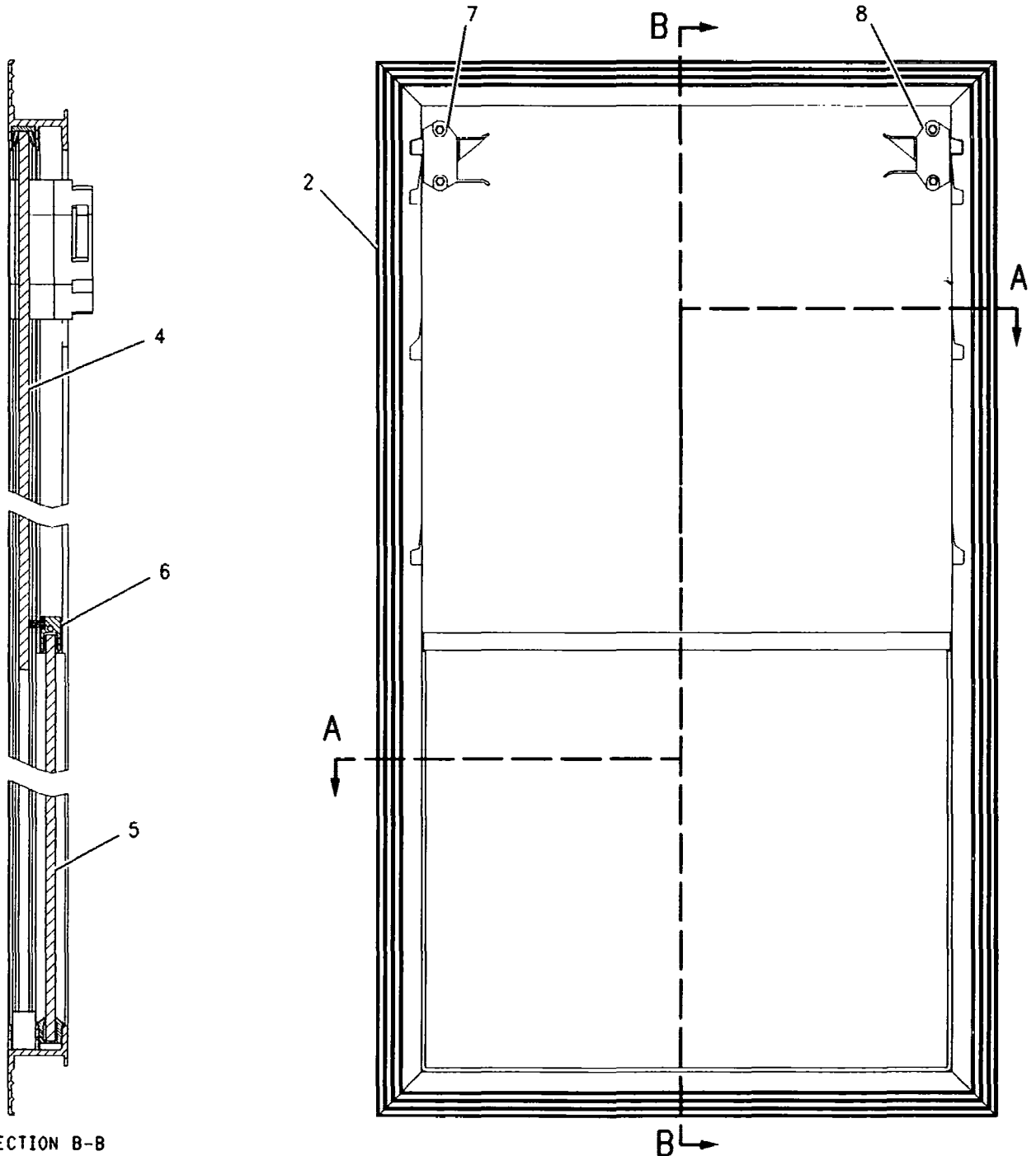
OPERATOR STATION

180-3871 WINDOW GP-DOOR (contd.)

i01437667



SECTION A-A



SECTION B-B

GRAPHIC #1

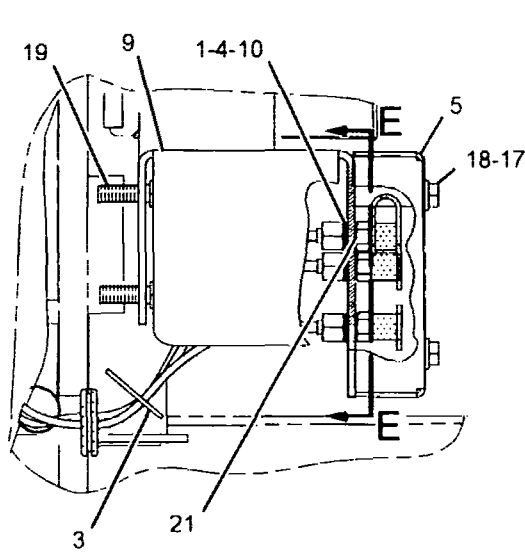
<END>

g00758887

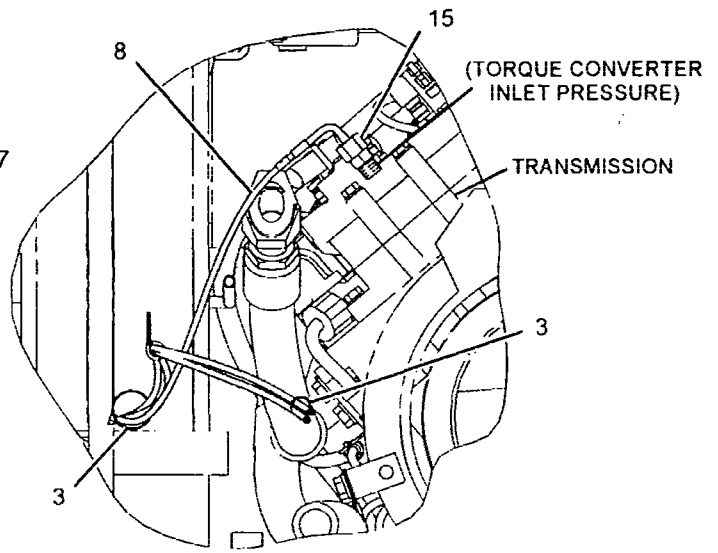
SERVICE EQUIPMENT AND SUPPLIES

241-9820 LINES GP-DIAGNOSTIC (contd.)

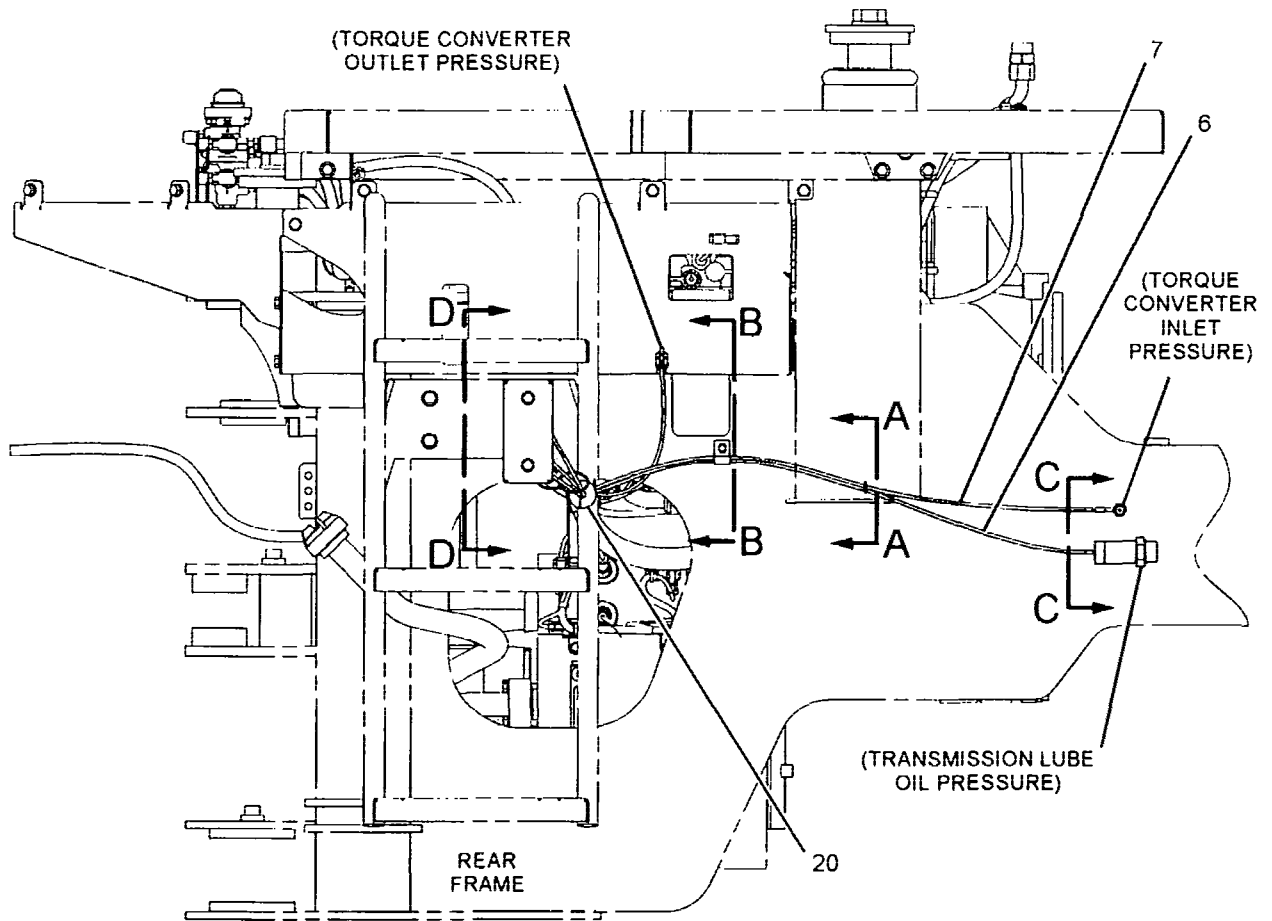
102272865



SECTION D-D



SECTION A-A



LEFT SIDE VIEW

REFER TO ALL ILLUSTRATIONS OF THIS GROUP FOR AUXILIARY VIEWS

GRAPHIC #1

g01138741

PART NUMBER INDEX

Part	Page	Part	Page	Part	Page	Part	Page
0							
			593	1S-1015	319		37
			600		323	2B-2404	528
0A-2926	109	1K-3113	319		327		530
0S-0175	888		323		332		645
0S-1570	228		327	1S-2563	73		648
	229		332		74	2B-2695	958
	231	1K-6872	839	1S-3399	1001	2D-0094	392
	457		841	1S-3847	1002	2D-0388	369
0S-1594	725		842	1S-6595	379	2D-2443	438
	839		843	1S-7251	172	2D-2507	435
	841	1L-4349	727		264	2D-2508	435
0T-0244	952		729		358		438
	956	1L-5072	393		362	2D-2509	435
	965		621	1S-7252	172		438
	972	1L-9080	955		264	2D-2511	435
0T-0573	566	1M-6718	768		358		438
			770		362	2D-4202	727
			771	1S-9593	567		729
		1N-4403	111		785	2D-4867	792
		1N-5999	22		786		794
			25		787		797
1A-4350	955		33		788	2D-6642	50
1B-0676	483		35	1T-1621	453	2F-7306	928
1B-4430	975		38	1T-1639	379	2G-1133	918
1B-8705	7		172	1U-0257	800	2G-5298	286
	14	1P-1010	402	1U-0465	727		293
1C-0569	958	1P-2694	404		729		302
1G-8878	400		402	1U-0466	727	2G-9524	887
	401	1P-2695	404		729		888
1H-1023	586		678	1U-0601	814	2H-1142	725
1H-3244	162	1P-3703	680	1U-3251	829	2H-3088	402
	164		702	1U-3252	828		406
	228		704	1U-3505	566	2H-3429	366
	229		706	1U-3506	566		369
	231		578	1U-3507	566		768
1H-3338	269	1P-3704	667	1U-3508	566		770
	271	1P-3706	379	1U-3867	566		771
	272	1P-3707	399	1U-8846	9		772
	497		90		47		773
1H-4393	277	1P-4278	92		48	2H-3920	279
	933		578		65		286
1H-6227	720	1P-4577	580		114		288
1H-8296	977		596		115		294
	979		727		379		304
1H-8306	155	1P-4578	729		408		833
1H-9696	625		904		410		834
	727	1P-6356	908		412		890
	729		836		414	2H-3922	267
1J-2303	627	1P-6522	891	1U-9053	287		836
	631		727	1V-2647	485	2H-3923	836
	633	1R-0722	729		488	2H-6184	379
1J-5353	727		133	1V-3113	263	2H-9247	627
	729	1R-0762	135	1V-6688	533		629
1J-5607	820		137	1W-2715	31		631
	821		139		37		633
1J-6298	954		142	1W-8407	16	2H-9524	370
	957		127			2J-3507	800
1J-9671	22	1R-0770	71				814
	25	1R-1807	625				820
	35	1S-0670	348				821
	95	1S-0994	351				433
	96		358	2A-1162	47	2J-7550	393
	379		363	2A-2677	72	2J-7761	621
	539		669		359		412
	540		673		363	2K-0715	412
	541			2A-4429	31		414

2

PART NUMBER INDEX

Part	Page	Part	Page	Part	Page	Part	Page
	687		687	6Y-4615	432		667
	691		691	6Y-4618	433		670
	694		694	6Y-4619	432		674
	836		699	6Y-4620	432	7D-7469	437
	862	6V-9853	417	6Y-4621	432	7E-0519	4
	866		428	6Y-4859	453		▶44
	891		687	6Y-4873	406	7E-1397	121
	895		691	6Y-5010	432	7E-2968	17
	899		694	6Y-5632	382	7E-3509	6
	918		699	6Y-7922	382		▶121
	933	6V-9854	667		384	7E-3870	120
	981	6V-9872	580		386	7E-6794	50
6V-9673	162	6V-9873	670	6Y-7932	382	7E-7779	31
	288		674	6Y-8262	416		37
	295		682	6Y-8265	382	7F-0560	175
	304		684		384	7F-2050	836
6V-9746	417		691		386	7F-2060	836
	428		694	6Y-8266	384	7F-8267	586
	555	6V-9874	578		386	7F-8268	379
	558		637	6Y-8275	382		392
	578	6V-9875	667		386	7F-8607	625
	580		670	6Y-8278	386	7F-9223	99
	637		674	6Y-8285	382		103
	669	6V-9876	687		384		524
	673		691		386		897
	678		694	6Y-8286	382		899
	680		699	6Y-8288	382	7F-9571	545
	682	6W-1638	402	6Y-8289	382	7F-9572	545
	684		404	6Y-8293	406	7F-9578	545
	687	6W-2523	499	6Y-8506	379	7F-9579	545
	691	6W-2888	637	6Y-8508	379	7G-2132	392
	694	6W-2890	637	6Y-8512	382	7G-3832	580
	698	6W-3288	637		384	7G-3833	580
6V-9804	153	6W-4126	441		386	7G-3834	581
	180		458	6Y-8514	382	7G-5984	580
6V-9828	555	6W-5817	483		384		667
	558		499		386	7G-5985	580
	645	6W-6005	172				667
	648	6W-8246	522			7G-5986	581
	652	6Y-0373	382				667
	657	6Y-0570	566			7G-7053	335
6V-9832	682	6Y-0809	379	7B-7525	958		338
	684	6Y-0869	379	7C-0111	57		341
6V-9836	682	6Y-1031	408		59		501
	684		410	7C-1493	71	7G-7917	319
6V-9837	562		412	7C-1770	4		323
	682		414		▶65		327
	684	6Y-1032	408	7C-2475	4		332
6V-9838	637		410		▶75		348
	687		412	7C-5403	75		351
	691		414	7C-6670	126	7G-7918	319
	694	6Y-1085	453	7C-6672	126		323
	698	6Y-1087	453	7C-6976	57		327
6V-9839	669	6Y-1093	453		59		332
	673	6Y-1758	382	7C-6977	57		348
6V-9840	637	6Y-2082	377		59		351
6V-9844	669	6Y-2539	402	7C-7431	125	7G-7919	287
	673		404	7C-7980	14		294
6V-9850	555	6Y-2540	402	7D-5252	435		303
	562		404		438		348
	637	6Y-3149	453	7D-6922	551		351
	669	6Y-3151	453		552	7G-7920	287
	673	6Y-4045	562	7D-7233	11		294
6V-9852	578	6Y-4614	▶432		417		303
	637		433		580		348

7

PART NUMBER INDEX

Part	Page	Part	Page	Part	Page	Part	Page
	611		133		412		729
	613		135		414	9T-6014	727
	615		137		564		729
9R-2060	428		139		723	9T-6015	727
	485		142	9S-8006	18		729
	488		153		22	9T-6858	593
	493		379		25	9T-7062	593
	494		459		33	9T-7220	597
	645		565		35	9T-7266	777
	648		603		38	9T-7419	597
	791		708		95	9T-7420	580
9R-2596	986		756		96		►597
9R-2613	490		758		147	9T-7421	597
	494		760		599		►599
9R-2630	727		766	9S-8007	565	9T-7634	►737
	729	9S-4693	228		588		745
9R-2672	137		229	9S-8008	60		747
	139		231		95		749
	142	9S-6130	379		96	9T-7818	627
9R-2821	228	9S-6154	597	9S-9334	20		629
	231	9S-7712	528		22		631
	233		530		24		633
9R-3203	981	9S-8002	16		25	9T-7822	627
9R-3204	981		22		33		629
9R-3205	981		25		35		631
9R-3854	674		33		38		633
9R-5383	142		35		155	9T-7823	627
	369		38		408		629
9R-6247	991		593		410		631
	994		597		412		633
9R-7941	216		599		414	9T-8248	588
	218		603	9T-1636	588		►590
9R-7942	212		625	9T-1710	588	9T-8249	590
9R-7958	212		754	9T-1752	588	9T-8250	590
9R-7980	216		758	9T-2000	588	9T-8251	588
9R-8151	107		762	9T-2001	588	9T-8270	727
	108		766	9T-2002	588		729
9R-9110	551		774	9T-2003	588	9T-8560	586
	552	9S-8003	22	9T-2168	588	9T-8672	599
9R-9111	551		25	9T-2171	588	9U-0512	922
	552		35	9T-2172	588		924
9S-2396	166		95	9T-2173	588	9U-0710	549
	168		96	9T-3096	682		554
9S-4167	133		593		684	9U-1912	402
	135	9S-8004	22		►736		404
	137		25	9T-3809	593	9U-1913	402
	139		33	9T-3810	593		404
	142		35	9T-3812	593	9U-2966	555
9S-4181	408		38	9T-3813	593	9U-4145	562
	410		115	9T-3814	593	9U-8263	895
	412		133	9T-3815	593	9U-8669	461
	414		135	9T-3816	593	9U-9018	453
9S-4182	47		137	9T-3857	590	9U-9322	382
9S-4183	47		139	9T-3858	590	9V-0247	527
	597		142	9T-3859	590	9V-0334	483
9S-4185	9	9S-8005	22	9T-3860	590		499
	418		25	9T-3861	590	9V-0453	499
	597		35	9T-3862	590	9V-1777	524
9S-4187	565		61	9T-3864	590	9V-1820	524
9S-4190	588		86	9T-3867	588	9V-2412	440
	738		88	9T-4788	576	9V-2429	402
	745		95	9T-5042	606	9V-4484	805
	747		96	9T-5087	606		806
9S-4191	35		408	9T-5112	606		807
	112		410	9T-5952	727		810

PART NUMBER INDEX

Part	Page	Part	Page	Part	Page	Part	Page
	762		691		348	157-0670	86
	766		694		351		90
153-8952	713		698		369		92
	717		799		389	157-1356	356
153-9772	1		918		648	157-1364	356
	▶794	155-2261	228	155-2274	277	157-2152	768
	▶797		256		287		772
154-0273	417	155-2262	389		288	157-2153	770
154-5629	935	155-2265	287		294		771
	936		293		303		773
	937		294		335	157-2284	785
154-8025	20		303		341		786
	24		369		344	157-5537	600
154-8595	609		389		345	158-0851	90
	611	155-2267	188		348		92
	613	155-2269	356		351	158-6072	126
	615	155-2270	147		356	158-6314	2
	▶781		199	155-2276	188		3
154-9023	90		228		245		▶501
	92		256	155-4791	356	158-6479	402
154-9025	86		270	155-5779	986	158-6482	404
155-0576	200		274	155-5781	986	158-6634	348
155-0639	899		275	155-5783	▶920		351
155-2105	277		277		986	158-7479	▶810
155-2255	199		283	155-5784	▶921	158-7480	▶811
	287		284		986	158-7481	▶812
	293		287	155-7327	366	158-7864	1000
	294		288	155-8154	645	159-0288	149
	303		294		648	159-0303	4
	317		303	155-8998	316		▶60
	348		315	155-8999	284	159-0861	810
	351		316	155-9112	726		811
	354		317	155-9115	726		812
155-2256	287		319	155-9116	726	159-0862	810
	293		323	155-9117	726		811
	303		327	155-9125	723		812
155-2257	287		332	155-9127	723	159-0863	810
	293		335	155-9132	723		811
	303		338	155-9133	723		812
155-2259	389		341	155-9136	726	159-0864	810
155-2260	147		346	155-9504	20		811
	242		348	156-1148	▶955		812
	244		351		961	159-0865	810
	245		354	156-3673	478		811
	287		358	156-3849	1000		812
	293		362	156-4449	833	159-0866	810
	294		368		834		811
	303		369		890		812
	315		392	156-5545	831	159-1846	404
	317		463	156-5726	781	159-3204	▶808
	319		542	156-6155	200		814
	323		648		260	159-3205	▶814
	327		687	156-6175	283	159-3777	609
	332		691		288		611
	335		694		294		613
	338		698		304		615
	341		836		316	159-3781	709
	348	155-2271	277		317		710
	351		284		319		711
	358		287		323		712
	362		294		327	159-7646	▶601
	369		303		332		687
	463		335	156-6819	891		691
	648		338	156-9811	613		694
	687		341		615	159-8036	801

CLICK HERE TO **DOWNLOAD** THE COMPLETE MANUAL

- Thank you very much for reading the preview of the manual.
- You can download the complete manual from: www.heydownloads.com by clicking the link below



- Please note: If there is no response to CLICKING the link, please download this PDF first and then click on it.

CLICK HERE TO **DOWNLOAD** THE COMPLETE MANUAL