

Parts Manual

305SR Mini Hydraulic Excavator

Powered by K4N Engine

SERIAL NUMBERS:

DCR00001-Up [Vehicle]



CLICK HERE TO **DOWNLOAD** THE COMPLETE MANUAL

- Thank you very much for reading the preview of the manual.
- You can download the complete manual from: www.heydownloads.com by clicking the link below



- Please note: If there is no response to CLICKING the link, please download this PDF first and then click on it.

CLICK HERE TO **DOWNLOAD** THE COMPLETE MANUAL

MODEL VIEW

CONSISTS OF :

			PAGE
1	205-3776	FUEL TANK	35
2	205-3778	HYDRAULIC TANK	165
3	205-4420	COUNTERWEIGHT	145
4	155-6917	OIL COOLER AND RADIATOR	20
5	204-9972	ENGINE	6
6	205-4991	ENGINE HOOD	129
7	205-1403	AIR CLEANER	29
8	155-6923	EXHAUST MUFFLER	30
9	205-0486	PUMP	168
10	205-4468	CAB	268
11	191-3826	SEAT	289
12	205-3281	BOOM	248
13	205-0476	OFFSET CYLINDER	238
14	205-0474	STICK CYLINDER	236
15	205-0475	BUCKET CYLINDER	235
16	205-3332	STICK	250
17	205-3350	BUCKET LINKAGE	244
18	205-0421	BUCKET	258
19	205-4459	PILOT LINES	174
20	205-0473	BOOM CYLINDER	234
21	205-4451	SWING DRIVE	115
22	205-0471	CONTROL VALVE	196
23	205-4450	FINAL DRIVE	114
24	191-3832	TRACK ROLLER AND CARRIER ROLLER	154
25	155-6844	TRACK	160
26	205-4484	BATTERY	50
27	155-6790	FRONT IDLER	151
28	191-7516	SWIVEL	230
29	155-6798	BEARING AND GEAR	148
30	205-0477	BLADE CYLINDER	237
31	205-4441	STRAIGHT BLADE	261
32	205-4462	CANOPY	267

J155444 X01

MODEL VIEW

ENGINE ARRANGEMENT

CONSISTS OF :

PAGE

LUBRICATION SYSTEM

1 196-8315 OIL PUMP GROUP 18

COOLING SYSTEM

1 206-0643 WATER PUMP GROUP 24

AIR INTAKE AND EXHAUST SYSTEM

1 205-4345 INLET MANIFOLD GROUP 27

FUEL SYSTEM

1 196-8319 FUEL INJECTION PUMP GROUP 41

1 205-4351 FUEL LINES GROUP 37

1 205-4352 GOVERNOR GROUP 44

ELECTRICAL AND STARTING SYSTEM

1 196-8322 ELECTRIC STARTING MOTOR GROUP 46

1 196-8323 GLOW PLUG GROUP 111

1 206-0658 CHARGING ALTERNATOR GROUP 48

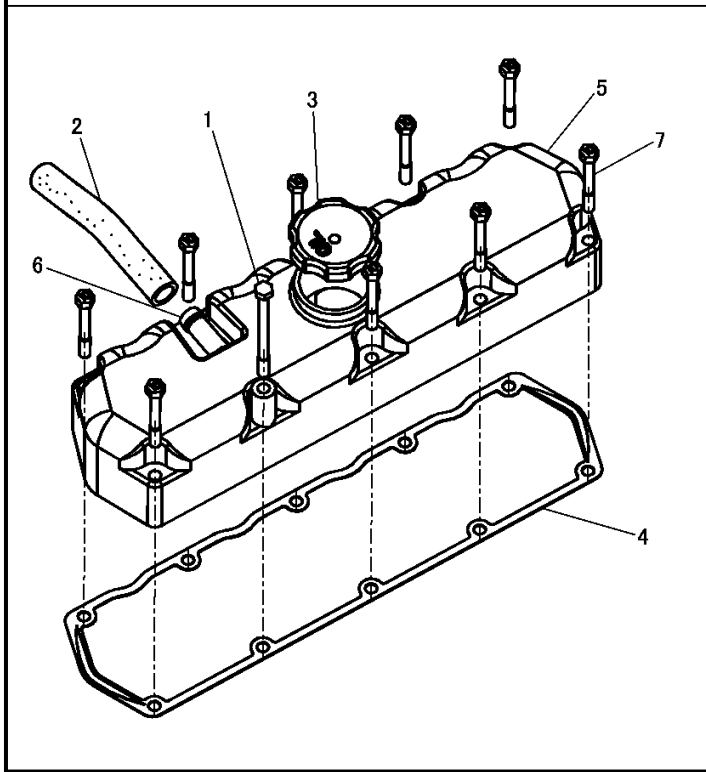
ACCESSORY

1 205-4353 SUCTION FAN GROUP 26

J115113 X01

204-9972 ENGINE ARRANGEMENT -PART 2 OF 2
PART OF 191-0357-Page 1

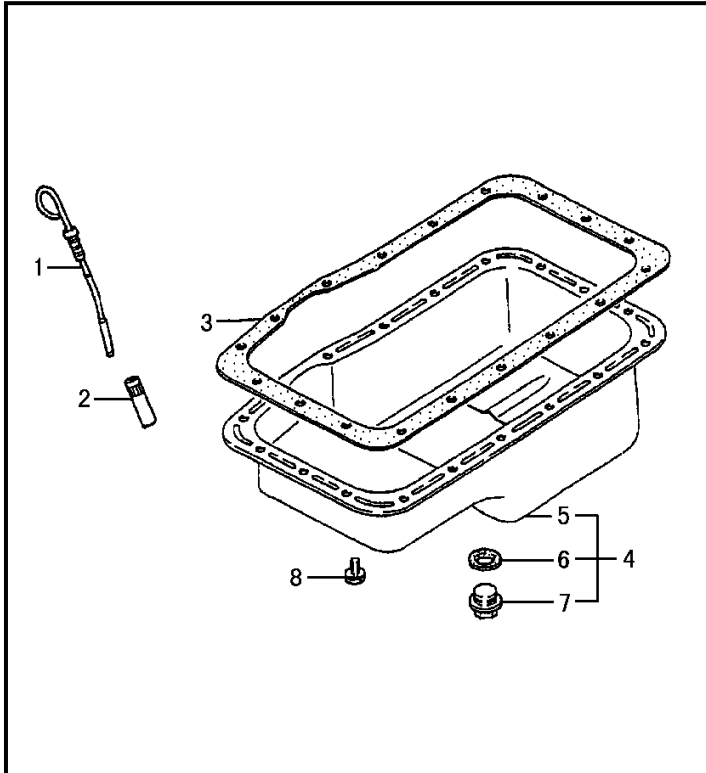
BASIC ENGINE



NOTE	No.	PART NO.	QTY	PART NAME
	1	178-6577	1	BOLT(M8×1.25)
	2	195-8290	1	HOSE
	3	199-2182	1	CAP
	4	259-2256	1	GASKET
	5	195-8284	1	COVER AS
	6	195-8285	1	NIPPLE
	7	51-5010	9	BOLT(M8×1.25)

J145287 X04

VALVE MECHANISM COVER GROUP (196-8309 N/S)
PART OF 204-9972-Page 6

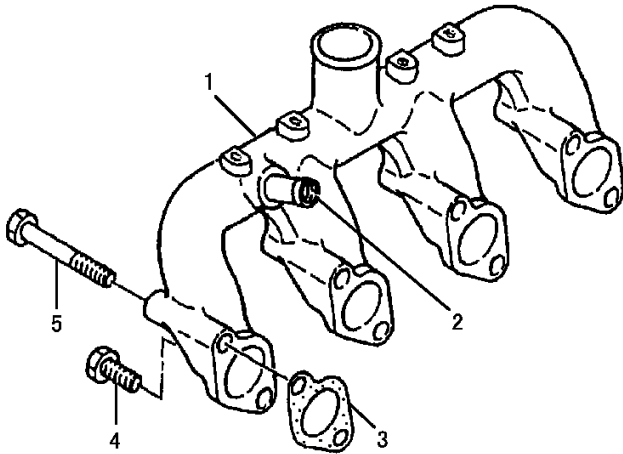


NOTE	No.	PART NO.	QTY	PART NAME
	1	195-8245	1	GAUGE
	2	195-8207	1	TUBE
	3	195-8269	1	GASKET
	4	195-8265	1	PAN AS
	5	195-8268	1	PAN
	6	094-7036	1	GASKET
	7	195-8267	1	PLUG
	8	8T-4200	18	BOLT(M8×1.25)
		3B-4505	18	LOCKWASHER

J115212 X01

OIL PAN GROUP (196-8314 N/S)
PART OF 204-9972-Page 6

AIR INLET AND EXHAUST SYSTEM



NOTE	No.	PART NO.	QTY	PART NAME
	1	206-0651	1	MANIFOLD AS
	2	195-8285	1	NIPPLE
	3	195-8482	4	GASKET
	4	195-8483	4	BOLT(M10×1.25)
	5	5I-4969	4	BOLT(M10×1.25)

J115210 X01

INLET MANIFOLD GROUP (205-4345 N/S)
PART OF 204-9972-Page 7

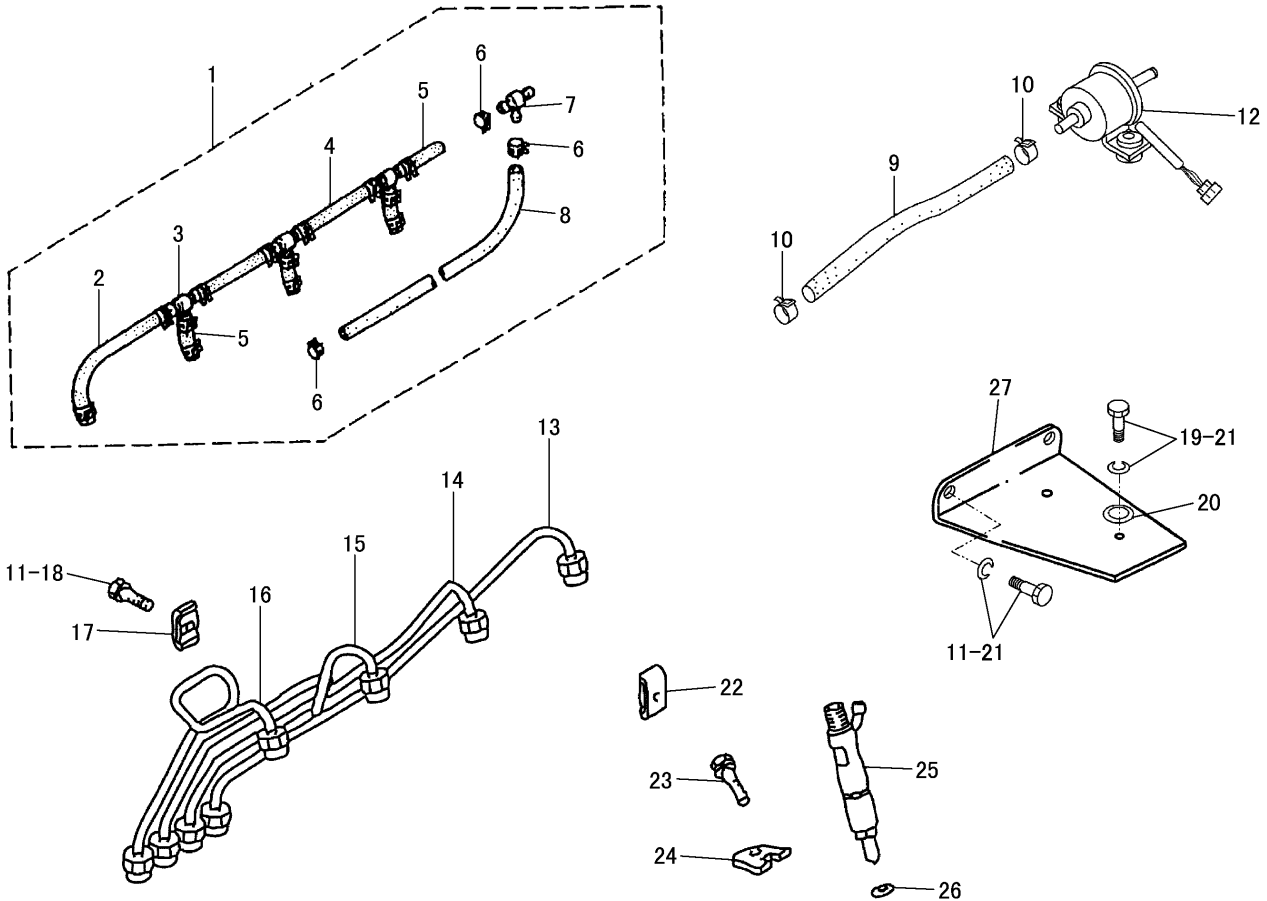
CONSISTS OF :

			PAGE
1	174-7321	EXHAUST MUFFLER GROUP	31
1	206-7583	FIREWALL GROUP	140

J108401 X00

MODIFICATION ARRANGEMENT (206-7582 N/S) -UPPER EXHAUST
AN ATTACHMENT

FUEL SYSTEM



NOTE	No.	PART NO.	QTY	PART NAME	NOTE	No.	PART NO.	QTY	PART NAME
	1	1 9 5-8 3 6 5	1	PIPE AS		20	1 9 6-8 3 6 2	2	WASHER
	2	1 9 5-8 3 7 0	1	HOSE		21	0 9 6-2 5 0 0	4	WASHER
	3	1 9 5-8 3 6 9	3	JOINT		22	1 2 2-8 9 4 9	3	CLAMP
	4	1 9 5-8 3 6 7	2	HOSE		23	1 9 5-8 3 5 6	4	BOLT
	5	1 9 5-8 3 6 8	4	HOSE		24	1 1 3-0 3 6 3	4	SUPPORT
	6	1 9 5-8 3 7 2	16	CLIP		25	2 1 0-9 9 9 4	4	NOZZLE AS
	7	1 9 5-8 3 6 6	1	JOINT		26	1 R-6 5 7 3	4	GASKET
	8	1 9 5-8 3 7 1	1	HOSE		27	1 9 6-8 3 6 0	1	BRACKET
	9	2 1 5-5 0 6 6	1	HOSE					
	10	0 9 6-0 1 7 4	2	CLIP					
	11	0 9 5-7 9 1 3	5	BOLT(M6×1)					
	12	2 1 1-0 8 0 4	1	PUMP AS					
	13	1 9 5-8 3 6 1	1	TUBE AS					
	14	1 9 5-8 3 6 0	1	TUBE AS					
	15	1 9 5-8 3 5 9	1	TUBE AS					
	16	1 9 5-8 3 5 8	1	TUBE AS					
	17	1 2 2-8 9 4 8	3	CLAMP					
	18	9 X-8 2 5 6	3	WASHER					
		0 9 5-0 8 1 4	3	LOCKWASHER					
	19	2 8 2-0 9 9 2	2	BOLT(M6×1)					

J139559 X03

FUEL LINES GROUP (205-4351 N/S)
PART OF 204-9972-Page 7

ELECTRICAL AND STARTING SYSTEM

NOTE	No.	PART NO.	QTY	PART NAME	NOTE	No.	PART NO.	QTY	PART NAME
	1	195-8486	1	MOTOR AS					
	2	196-8378	1	PINION SET					
	3	196-8379	1	STOPPER SET					
	4	196-8369	1	SCREW SET					
	5	196-8370	1	BRACKET AS					
	6	196-8371	1	LEVER AS					
	7	196-8372	1	SWITCH AS					
	8	127-5948	1	BALL					
	9	127-5949	1	PACKING SET					
	10	196-8375	1	ARMATURE SET					
	11	095-0410	1	BEARING					
	12	196-8377	1	BOLT SET					
	13	196-8390	1	BRACKET AS					
	14	196-8388	1	HOLDER AS					
	15	196-8389	2	SPRING					
	16	196-8387	2	BRUSH					
	17	196-8386	1	YOKE AS					
	18	196-8380	1	SHAFT AS					
	19	196-8385	3	GEAR AS					
	20	196-8384	1	SHAFT AS					
	21	196-8383	1	WASHER SET					
	22	196-8382	1	GEAR AS					
	23	196-8381	1	CLUTCH					
	24	140-5217	1	BOLT(M10×1.25)					
		7X-0796	1	WASHER					
	25	195-8488	1	BOLT(M10×1.25)					
	26	7X-0796	1	WASHER					
	27	6V-8231	1	NUT(M10×1.25)					

J115211 X01

ELECTRIC STARTING MOTOR GROUP (196-8322 N/S)
PART OF 204-9972-Page 7

ELECTRICAL AND STARTING SYSTEM

NOTE	No.	PART NO.	QTY	PART NAME	NOTE	No.	PART NO.	QTY	PART NAME
	1	140-4769	7	STRAP					
	2	3S-2093	3	STRAP					
Y	3	191-6226	1	GAGE GROUP					
Y	4	194-7808	1	HEAT START SWITCH GROUP					
	5	195-2670	1	SWITCH AS					
		186-3735	4	PIN					
		102-8804	1	RECEPTACLE KIT(4P)					
6		143-1632	2	PLUG					
7		154-2275	1	COVER AS					
8		7X-2619	7	BOLT(M6×1)					
9		9X-8256	19	WASHER					
10		195-3204	1	SWITCH AS					
		102-8802	1	RECEPTACLE KIT(2P)					
		186-3735	2	PIN					
11		154-2276	1	COVER AS					
12		7K-1181	3	STRAP					
13		5P-5148	1	STRAP					
Y	14	205-6871	1	HARNESS AS					
15		155-7567	1	SWITCH AS					
16		8T-4138	2	BOLT(M6×1)					
17		8T-4137	2	BOLT(M10×1.5)					
18		8T-4133	1	NUT(M10×1.5)					
19		8T-4121	4	WASHER					
20		205-7501	1	ANGLE					
21		8T-4136	1	BOLT(M10×1.5)					
22		116-0118	4	CLIP					
23		4P-7581	1	CLIP					
24		5C-2890	9	NUT(M6×1)					
25		155-7582	1	SWITCH AS					
26		6T-7337	1	SERVICE METER					
27		115-1615	3	RELAY AS					
28		155-7585	1	RESISTOR AS					
29		095-0735	6	SCREW(M5×0.8)					
30		1S-1014	6	GROMMET					
31		5C-9553	1	BOLT(M6×1)					

Y-SEPARATE ILLUSTRATION

J127395 X02

CONSOLE WIRING GROUP (205-4486 N/S)
EFFECTIVE WITH SERIAL NO. DCR00001-DCR00570
PART OF 205-4432-Page 265

REFERENCE:191-6226-Page 100 194-7808-Page 101 205-6871-Page 84~87

ELECTRICAL AND STARTING SYSTEM

NOTE	No.	PART NO.	QTY	PART NAME	NOTE	No.	PART NO.	QTY	PART NAME
	1	140-4769	7	STRAP					
	2	3S-2093	3	STRAP					
Y	3	248-3862	1	CAGE GROUP					
Y	4	9G-7641	1	SWITCH GROUP					
	5	195-2670	1	SWITCH AS					
		186-3735	4	PIN					
		102-8804	1	RECEPTACLE KIT(4P)					
	6	143-1632	2	PLUG					
	7	154-2275	1	COVER AS					
	8	7X-2619	7	BOLT(M6×1)					
	9	9X-8256	19	WASHER					
	10	195-3204	1	SWITCH AS					
		102-8802	1	RECEPTACLE KIT(2P)					
		186-3735	2	PIN					
	11	154-2276	1	COVER AS					
	12	7K-1181	3	STRAP					
	13	5P-5148	1	STRAP					
Y	14	263-6303	1	HARNESS AS					
	15	155-7567	1	SWITCH AS					
	16	8T-4138	2	BOLT(M6×1)					
	17	8T-4121	5	WASHER					
	18	8T-4133	1	NUT(M10×1.5)					
	19	8T-4137	2	BOLT(M10×1.5)					
	20	205-7501	1	ANGLE					
	21	8T-4136	2	BOLT(M10×1.5)					
	22	116-0118	4	CLIP					
	23	4P-7581	1	CLIP					
	24	155-7582	1	SWITCH AS					
	25	5C-2890	9	NUT(M6×1)					
	26	6T-7337	1	SERVICE METER					
	27	5C-9553	1	BOLT(M6×1)					
	28	115-1615	3	RELAY AS					
	29	155-7585	1	RESISTOR AS					
	30	095-0735	6	SCREW(M5×0.8)					
	31	1S-1014	2	GROMMET					
	32	207-0782	4	SCREW(M4×0.7)					
C	33	306-9028	1	COVER AS					

C-CHANGE FROM PREVIOUS TYPE
Y-SEPARATE ILLUSTRATION

J154849 X07

CONSOLE WIRING GROUP (205-4486 N/S)

EFFECTIVE WITH SERIAL NO. DCR01704-
PART OF 205-4432-Page 265

REFERENCE:248-3862-Page 100 9G-7641-Page 102 263-6303-Page 88~91

ELECTRICAL AND STARTING SYSTEM

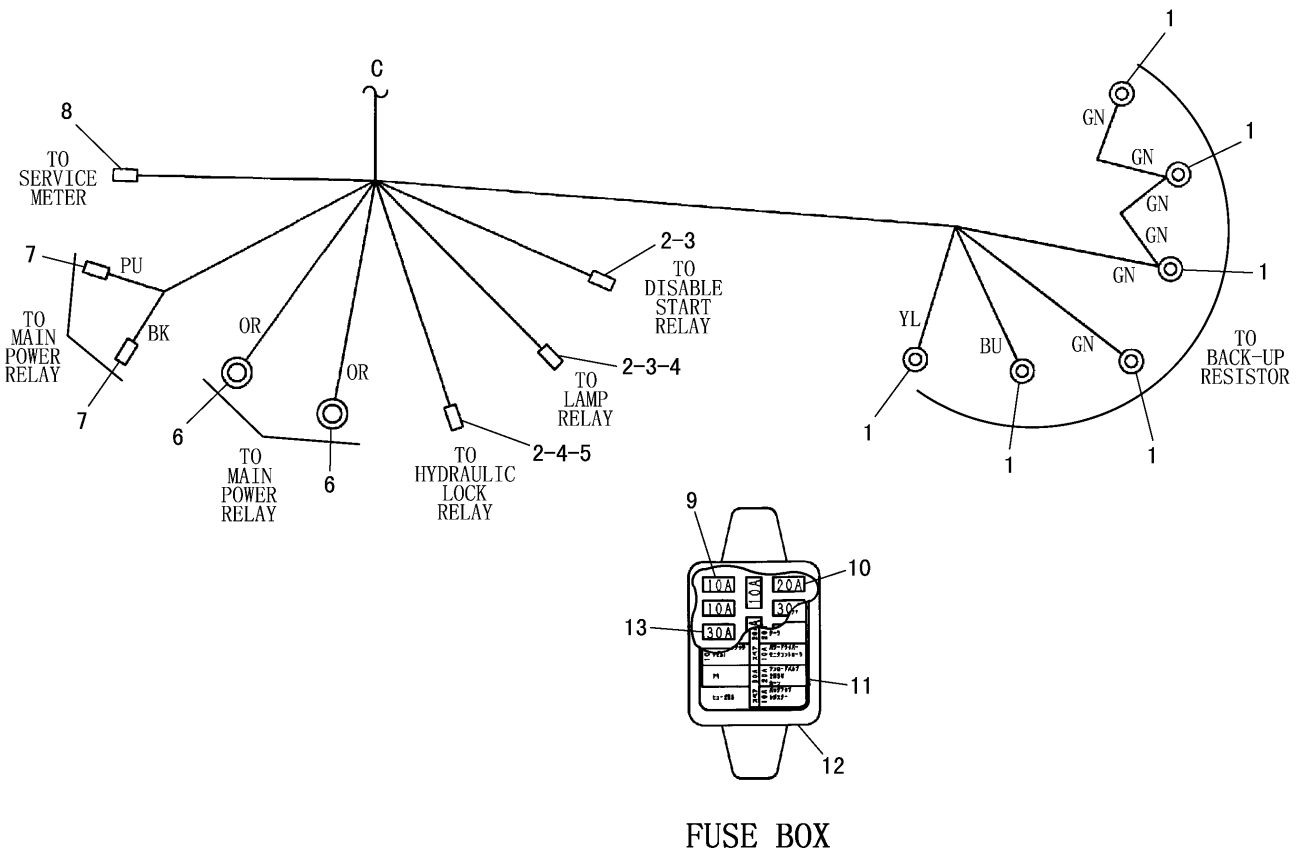
NOTE	No.	PART NO.	QTY	PART NAME	NOTE	No.	PART NO.	QTY	PART NAME
Y	1	115-1615	2	RELAY AS					
	2	161-2539	1	BACKUP ALARM					
	3	199-2428	1	SWITCH AS					
		102-8804	1	RECEPTACLE KIT(4P)					
		186-3735	4	PIN					
	4	205-6874	1	HARNESS AS					
	5	208-0183	2	BRACKET AS					
		6V-9632	2	NUT(M6×1)(WELD)					
	6	208-0184	2	PLATE					
	7	209-7526	1	BRACKET					
	8	210-9672	2	PLATE					
	9	3S-2093	10	STRAP					
	10	5C-2890	2	NUT(M6×1)					
	11	5C-9553	6	BOLT(M6×1)					
	12	5H-6555	4	LOCKWASHER					
	13	6T-5925	2	SWITCH AS					
		6V-8376	3	SCREW(No.8-32)					
		9B-7233	3	LOCKWASHER					
	14	6V-9505	4	SCREW(M3×0.5)					
	15	7K-1181	3	STRAP					
16	8T-4121	2	WASHER						
17	8T-4137	2	BOLT(M10×1.5)						
18	8T-4171	8	BOLT(M6×1)						
19	8T-4205	10	WASHER						
20	9X-8256	6	WASHER						

Y-SEPARATE ILLUSTRATION

J127495 X02

TRAVEL ALARM GROUP (205-6060 N/S)
 REFERENCE:205-6874-Page 96
 AN ATTACHMENT

ELECTRICAL AND STARTING SYSTEM

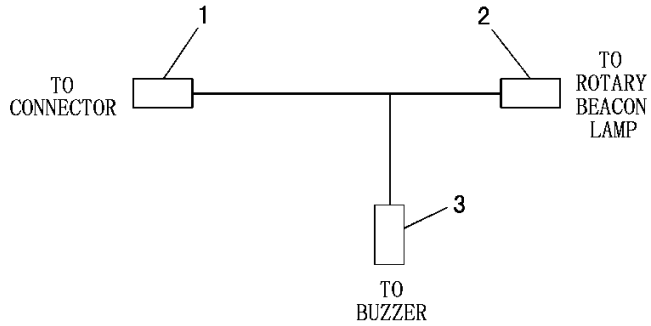


NOTE	No.	PART NO.	QTY	PART NAME	NOTE	No.	PART NO.	QTY	PART NAME
	1	2 L-8 0 7 7	6	TERMINAL					
	2	9 X-1 0 5 6	8	TERMINAL					
	3	9 X-1 0 5 4	2	PLUG AS					
	4	1 0 0-5 0 4 1	4	TERMINAL					
	5	3 E-5 5 1 9	1	PLUG AS					
		7 G-7 9 1 8	1	PLUG					
	6	2 L-8 0 5 0	2	TERMINAL					
	7	7 Y-3 9 9 6	2	TERMINAL					
	8	7 Y-3 9 5 1	2	TERMINAL					
		7 Y-3 9 5 2	1	CONNECTOR					
	9	9 W-1 4 4 2	6	FUSE(10A)					
	10	9 W-1 4 4 6	4	FUSE(20A)					
	11	1 7 0-8 9 4 1	1	FILM					
	12	5 I-9 8 8 5	1	BASE					
		0 9 6-6 1 4 5	1	TOOL					
		0 9 6-6 1 4 2	1	COVER					
13		1 5 5-7 5 7 7	3	FUSE(30A)					

J128889 X03

205-6871 HARNESS ASSEMBLY -PANEL RELAY-PART 4 OF 4
EFFECTIVE WITH SERIAL NO. DCR00001-DCR01145
PART OF 205-4486-Page 57, 59, 61, 63

ELECTRICAL AND STARTING SYSTEM

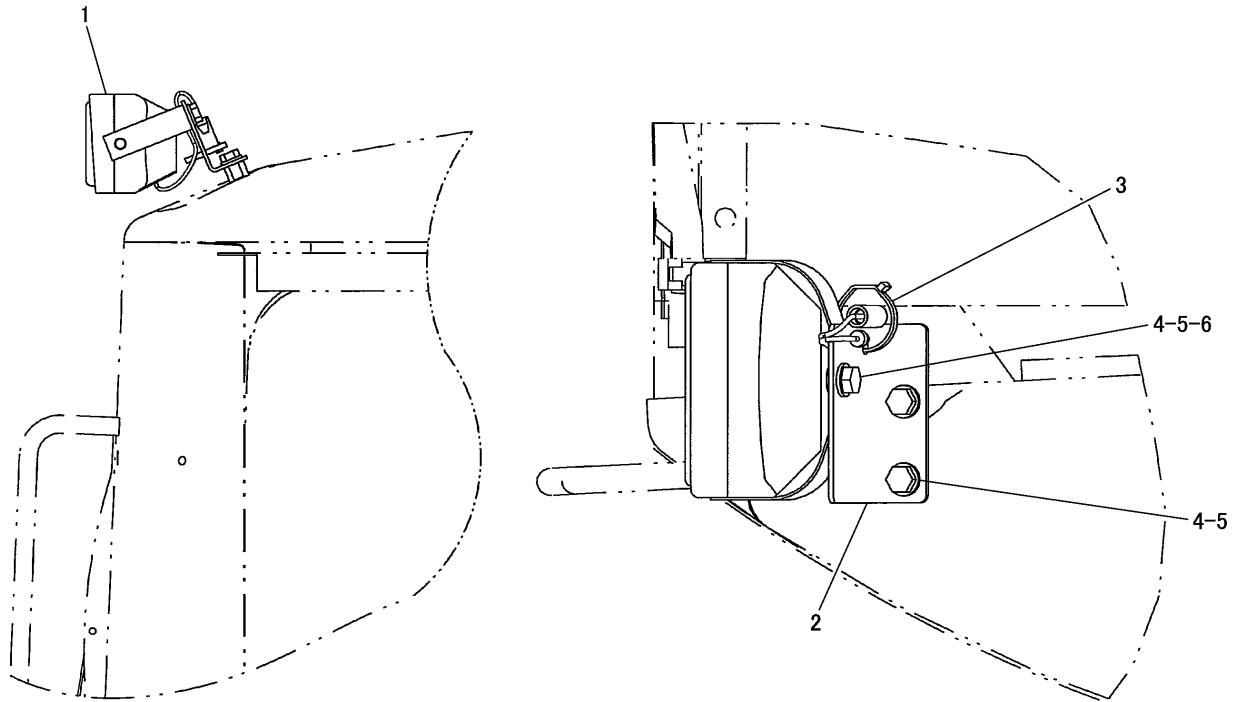


NOTE	No.	PART NO.	QTY	PART NAME
	1	1 0 2-8 8 0 4	1	RECEPTACLE KIT(4P)
		1 8 6-3 7 3 5	4	PIN
	2	1 8 7-6 4 1 7	1	CONNECTOR
		1 8 7-6 4 2 1	2	TERMINAL
		1 1 7-1 8 7 8	2	SEAL
	3	2 0 7-7 1 5 4	1	CONNECTOR
		2 0 7-7 1 5 6	2	TERMINAL
		2 0 7-7 1 5 7	2	SEAL

J113093 X01

206-7657 HARNESS ASSEMBLY
 PART OF 213-7591-Page 69, 213-7608-Page 71
 AN ATTACHMENT

ELECTRICAL AND STARTING SYSTEM



TOP VIEW

NOTE	No.	PART NO.	QTY	PART NAME	NOTE	No.	PART NO.	QTY	PART NAME
Y	1	198-0852	1	LAMP GROUP					
	2	198-0853	1	ANGLE					
	3	3S-2093	1	STRAP					
	4	8T-4137	3	BOLT(M10×1.5)					
	5	8T-4121	4	WASHER					
	6	8T-4133	1	NUT(M10×1.5)					

Y-SEPARATE ILLUSTRATION

J145268 X02

CAB LIGHTING GROUP (198-0851 N/S)
 EFFECTIVE WITH SERIAL NO. DCR00750-
 REFERENCE: 198-0852-Page 111
 AN ATTACHMENT

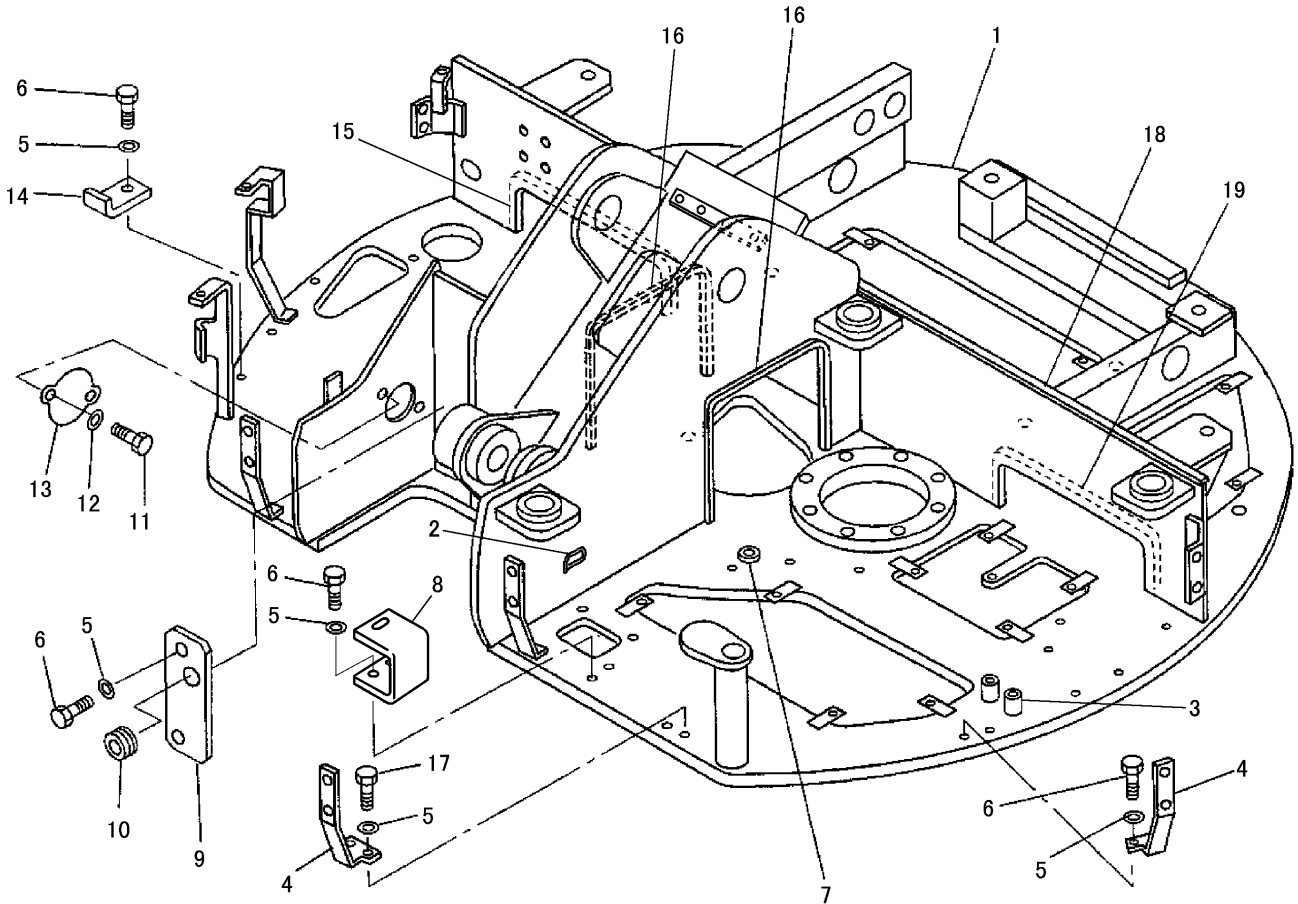
POWER TRAIN

NOTE	No.	PART NO.	QTY	PART NAME	NOTE	No.	PART NO.	QTY	PART NAME
N	1	095-0936	1	RING	PS	54	154-1536	2	SPRING
J	2	198-5009	2	BOLT(M16×2)	PS	55	169-1186	3	PLUG
N	3	198-5032	2	PIN					
NUQ	4	154-1537	1	SEAL					AVAILABLE REPAIR PARTS:
J	5	198-5010	1	GEAR AS		210-2757		1	GEAR GROUP (INCLUDES PARTS MARKED J)
PS	6	179-9758	1	PLUG		210-2758		1	MOTOR GROUP (INCLUDES PARTS MARKED N)
PS	7	198-5041	1	BALL					
J	8	198-5022	2	PLUG		207-0771		1	VALE GROUP (INCLUDES PARTS MARKED P)
J	9	6V-8754	4	RING					
PS	10	198-5038	2	STOPPER		210-2759		1	SEAL KIT (INCLUDES PARTS MARKED Q)
J	11	154-7892	1	RING					
J	12	198-5016	1	COVER		210-2760		1	SEAL KIT (INCLUDES PARTS MARKED U)
JQU	13	095-1582	3	SEAL					
J	14	198-5018	2	BEARING		198-5034		1	FLANGE AS (INCLUDES PARTS MARKED S)
N	15	198-5023	1	SHAFT					
JQ	16	198-5020	1	SEAL KIT					
N	17	322-9522	1	PISTON KIT					
		279-1340	1	SEAL					
		198-5031	1	SHOE					
		322-9853	1	PISTON					
J	18	198-5006	1	SPINDLE KIT					
PS	19	198-5044	5	ORIFICE					
PS	20	198-5039	2	SPRING					
N	21	154-1528	2	WASHER					
PS	22	208-8913	1	FLANGE KIT					
N	23	154-7851	1	BEARING					
PS	24	154-1520	3	PLUG					
PS	25	154-7855	1	STOPPER					
N	26	198-5028	1	PLATE					
N	27	154-1523	1	BLOCK					
N	28	154-1526	1	BALL					
N	29	154-7858	2	PIVOT					
QPSU	30	095-1590	2	SEAL					
J	31	198-5017	28	PIN					
PS	32	198-5037	2	PLUG					
JQU	33	095-1689	1	SEAL					
PS	34	169-1188	1	PLUG					
QPSU	35	3J-1907	1	SEAL					
J	36	198-5014	1	GEAR KIT					
J	37	198-5013	1	GEAR					
J	38	171-9342	1	PLUG					
J	39	198-5005	1	HUB					
N	40	198-5033	1	SPRING					
N	41	210-2756	1	SWASHPLATE					
N	42	198-5025	1	PISTON KIT					
JQU	43	095-1575	1	SEAL					
JQU	44	5F-3999	1	SEAL					
P	45	099-3095	2	DOWEL					
J	46	154-7860	2	PIN					
PS	47	154-7854	1	VALVE					
PS	48	154-1534	2	VALVE					
PS	49	154-7856	1	RING					
P	50	8T-1158	6	BOLT(M8×1.25)					
N	51	154-1525	1	PLATE					
PS	52	154-1533	2	PLUG					
QPSU	53	095-1580	2	SEAL					

J154829 X04

205-0470 TRAVEL MOTOR GROUP
PART OF 205-4450-Page 114

FRAME AND BODY



NOTE	No.	PART NO.	QTY	PART NAME	NOTE	No.	PART NO.	QTY	PART NAME
	1	205-4361	1	FRAME AS	C	17	8T-4195	2	BOLT(M10×1.5)
		8R-2185	2	BOSS(M10×1.5)		18	156-8761	1	SEAL
		8T-3490	2	NUT(M10×1.5)(WELD)	E	19	107-1678		GUARD---56cm
		121-1029	6	CLIP					
		9R-5271	2	BOSS(M10×1.5)(WELD)					
	2	7T-1099	10	LINK					
	3	4E-0019	8	BOSS(M10×1.5)					
	4	205-4363	2	ANGLE					
	5	8T-4121	9	WASHER					
C	6	8T-4137	7	BOLT(M10×1.5)					
	7	096-6095	1	PLUG					
C	8	251-5406	1	PLATE					
	9	205-4365	1	COVER					
	10	5P-6264	1	GROMMET					
	11	8T-4199	2	BOLT(M8×1.25)					
	12	8T-4224	2	WASHER					
	13	205-4364	1	COVER					
	14	205-4362	1	ANGLE					
E	15	107-1678		GUARD---45cm					
E	16	107-1678		GUARD---78cm(×2)					

C-CHANGE FROM PREVIOUS TYPE
E-ORDER BY THE cm

J133368 X02

UPPER FRAME GROUP (205-4359 N/S)
EFFECTIVE WITH SERIAL NO. DCR01048-
PART OF 205-4358-Page 125

FRAME AND BODY

NOTE	No.	PART NO.	QTY	PART NAME	NOTE	No.	PART NO.	QTY	PART NAME
	1	8 T-4 1 3 6	2	BOLT(M10×1.5)					
	2	8 T-4 1 2 1	10	WASHER					
	3	2 0 5-6 0 7 7	1	BRACKET AS					
	4	8 T-4 1 9 5	2	BOLT(M10×1.5)					
	5	2 0 5-6 0 7 1	1	BRACKET AS					
		8 T-3 6 1 2	6	NUT(M8×1.25)(WELD)					
	6	7 T-1 0 9 9	1	LINK					
	7	8 T-4 1 8 6	3	BOLT(M10×1.5)					
	8	6 V-7 3 5 7	6	BOLT(M6×1)					
	9	8 C-3 1 1 1	6	ROD END					
	10	0 9 9-0 4 9 2	6	NUT(M6×1)					
	11	5 C-2 8 9 0	6	NUT(M6×1)					
	12	1 2 0-8 8 1 4	2	ROD					
	13	1 5 4-2 2 6 0	1	SHAFT					
	14	2 0 5-6 0 7 3	1	LINK AS					
		5 H-3 8 9 5	2	BUSHING					
B	15	1 2 4-9 1 4 8	2	WASHER(0.5mm THICK)					
B	16	1 2 4-9 1 4 9	2	WASHER(1mm THICK)					
	17	2 0 5-6 0 7 2	1	LINK AS					
		5 H-3 8 9 5	2	BUSHING					
	18	8 T-7 5 4 7	2	BOLT(M8×1.25)					
	19	8 T-4 2 2 4	2	WASHER					
	20	2 0 5-6 0 7 5	1	PLATE					
	21	2 0 5-6 0 7 4	1	LINK AS					
		5 H-3 8 9 5	2	BUSHING					
	22	1 5 4-2 2 6 3	1	ROD					
	23	1 2 0-8 8 1 5	2	ROD END AS					
	24	5 C-2 8 7 4	2	NUT(M5×0.8)					
	25	1 5 4-2 2 6 4	1	CABLE					
	26	8 T-6 4 6 6	2	BOLT(M10×1.5)					
	27	8 T-2 9 9 7	2	SETSCREW(M8×1.25)					
	28	2 0 5-6 0 7 8	1	PLATE					
	29	8 T-4 1 3 7	1	BOLT(M10×1.5)					

B-USE AS REQUIRED

J117326 X00

VALVE AND MOUNTING GROUP (205-4431 N/S)
PART OF 205-0405-Page 123

UNDERCARRIAGE

CONSISTS OF :

		PAGE
1	205-0431 UNDERCARRIAGE FRAME GROUP	150
1	155-6798 BEARING AND GEAR GROUP	148
1	191-3832 TRACK ROLLER AND CARRIER ROLLER GROUP	154
1	155-6790 FRONT IDLER GROUP	151

J108454 X00

UNDERCARRIAGE ARRANGEMENT (205-0406 N/S)
PART OF 191-0357-Page 1

UNDERCARRIAGE

CONSISTS OF :

		PAGE
1	155-6844 TRACK GROUP	160
1	155-6845 TRACK GUIDING GUARD GROUP	162

J108528 X00

TRACK GROUP (203-3644 N/S) -400mm TRIPLE GROUSER SHOE
AN ATTACHMENT

CONSISTS OF :

		PAGE
2	155-6845 TRACK GUIDING GUARD GROUP	162
1	212-5126 TRACK GROUP(LH)	158
1	212-5127 TRACK GROUP(RH)	158

J126055 X01

TRACK ARRANGEMENT (212-5125 N/S) -400mm RUBBER PAD
EFFECTIVE WITH SERIAL NO. DCRO0553-
AN ATTACHMENT

HYDRAULIC SYSTEM

NOTE	No.	PART NO.	QTY	PART NAME	NOTE	No.	PART NO.	QTY	PART NAME
	1	205-3877	1	TANK AS					
	2	205-3878	1	COVER					
	3	095-1723	1	SEAL					
	4	205-3879	1	COVER AS					
	5	095-1725	1	SEAL					
	6	8T-4121	13	WASHER					
	7	8T-4137	12	BOLT(M10×1.5)					
	8	1P-4278	1	CLAMP					
	9	120-8755	1	SCREEN AS					
	10	120-8757	1	FILTER AS					
	11	120-8758	1	VALVE					
	12	220-4014	1	SPRING					
E	13	7Y-1976		HOSE---118cm					
	14	9T-1956	2	PLUG					
	15	6I-2424	3	PLUG					
	16	158-4747	1	FILM					
	17	9U-8611	1	PLUG					
	18	6V-2201	1	GROMMET					
	19	3J-1907	2	SEAL					
	20	3K-0360	3	SEAL					
	21	2M-9780	1	SEAL					
	22	4I-3745	1	CAP					
	23	8M-2770	2	CLIP					
	24	7X-2621	1	BOLT(M10×1.5)					
	25	227-0620	1	GAUGE AS					
		236-3257	1	PIPE					
		095-1519	4	SEAL					
		6F-4855	4	SEAL					
	26	236-3258	2	BLOCK					
	27	236-3259	2	BOLT(M10×1.5)					

E-ORDER BY THE cm

J139609 X02

HYDRAULIC TANK AND FILTER GROUP (205-3779 N/S)
PART OF 205-3778-Page 165

CLICK HERE TO **DOWNLOAD** THE COMPLETE MANUAL

- Thank you very much for reading the preview of the manual.
- You can download the complete manual from: www.heydownloads.com by clicking the link below



- Please note: If there is no response to CLICKING the link, please download this PDF first and then click on it.

CLICK HERE TO **DOWNLOAD** THE COMPLETE MANUAL

HYDRAULIC SYSTEM

NOTE	No.	PART NO.	QTY	PART NAME	NOTE	No.	PART NO.	QTY	PART NAME
	1	155-7626	1	HOSE AS					
	2	155-7627	1	HOSE AS					
	3	156-8872	1	HOSE AS					
	4	4S-1936	1	CLIP					
	5	156-8877	1	HOSE AS					
	6	158-4882	1	HOSE AS					
	7	158-4883	1	HOSE AS					
	8	8T-6466	2	BOLT(M10×1.5)					
	9	158-4888	2	HOSE AS					
	10	158-4889	1	HOSE AS					
	11	158-4890	1	HOSE AS					
	12	158-4891	1	HOSE AS					
	13	160-8926	1	HOSE AS					
Y	14	205-7452	1	VALVE GROUP					
	15	8T-4195	3	BOLT(M10×1.5)					
	16	8T-4121	9	WASHER					
	17	163-9857	1	FILTER AS					
		140-4614	1	ELEMENT					
		140-4615	1	CASE					
		6V-7658	1	SEAL					
	18	8T-4198	2	BOLT(M10×1.5)					
	19	205-7472	1	BEACKET AS					
		8T-3490	2	NUT(M10×1.5) (WELD)					
	20	8T-4136	2	BOLT(M10×1.5)					
	21	7J-4026	1	ELBOW					
	22	052-0572	1	TEE					
	23	8T-8902	1	TEE					
	24	6V-3965	1	NIPPLE AS					
	25	6V-0852	1	CAP					
	26	3J-1907	5	SEAL					
	27	156-8846	2	ELBOW					
	28	3K-0360	2	SEAL					
	29	6V-8397	8	SEAL					
	30	2M-9780	2	SEAL					
	31	6V-8723	2	ELBOW					
	32	171-0508	1	HOSE AS					
	33	171-0507	1	HOSE AS					
	34	205-7473	1	MANIFOLD					
	35	9S-4191	1	PLUG					
	36	6V-8636	2	CONNECTOR					
	37	208-0178	1	HOSE AS					
	38	6V-8724	1	ELBOW					

Y-SEPARATE ILLUSTRATION

J127522 X03

PILOT LINES GROUP (205-4460 N/S)
 PART OF 205-0412-Page 163
 REFERENCE: 205-7452-Page 209

HYDRAULIC SYSTEM

NOTE	No.	PART NO.	QTY	PART NAME	NOTE	No.	PART NO.	QTY	PART NAME
	1	2 D-0 3 8 8	3	GROMMET					
	2	1 9 9-0 5 5 3	1	HOSE AS					
	3	1 9 9-0 5 5 5	1	HOSE AS					
	4	0 5 2-0 5 7 2	3	TEE					
	5	7 K-1 1 8 1	13	STRAP					
	6	5 P-5 0 0 7	2	REDUCER					
	7	1 9 9-0 5 5 4	1	HOSE AS					
	8	7 J-4 0 2 6	1	ELBOW					
		3 J-1 9 0 7	1	SEAL					
	9	1 5 1-1 8 9 2	1	HOSE AS					
	10	2 0 7-7 1 3 5	1	COVER					
	11	1 9 9-0 5 4 9	1	CONNECTOR					
	12	0 9 5-1 5 7 9	2	SEAL					
	13	7 K-9 1 9 7	2	ELBOW					
	14	1 9 9-0 5 4 8	1	ELBOW					
	15	1 9 9-5 1 9 0	1	SENSOR AS					

J115296 X01

FRONT LINES GROUP (207-7134 N/S) -LOWERING
 PART OF 206-7643-Page 4, 213-7587-Page 2, 213-7599-Page 5, 213-7606-Page 3
 AN ATTACHMENT

HYDRAULIC SYSTEM

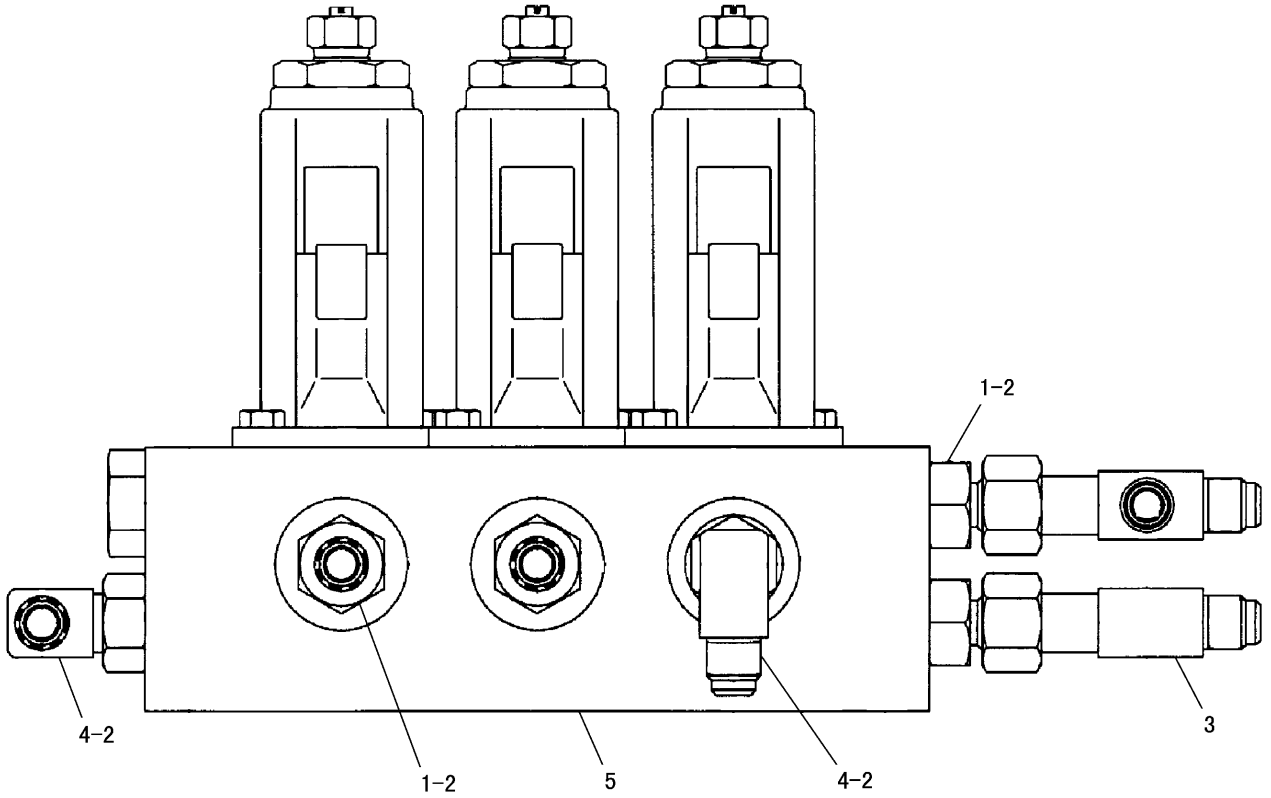
NOTE	No.	PART NO.	QTY	PART NAME	NOTE	No.	PART NO.	QTY	PART NAME
Y	1	170-8896	1	BLOCK AS					
	2	170-8895	1	BLOCK AS					
	3	222-2061	1	VALVE AS					
	4	170-8894	1	BLOCK AS					
	5	150-6352	4	VALVE AS					
	6	274-1156	1	BLOCK AS					
	7	246-0816	1	BLOCK AS					
	8	201-0480	1	BLOCK AS					
	9	170-8890	1	BLOCK AS					
	10	201-0484	4	PLUG					
	11	170-8889	1	BLOCK AS					
	12	204-5951	2	PLUG					
	13	185-0555	2	VALVE GROUP					
	14	170-8888	1	BLOCK AS					
	15	150-6351	4	VALVE AS					
	16	170-8887	1	BLOCK AS					
	17	170-8886	1	BLOCK AS					
	18	201-0483	2	VALVE AS					
	19	170-8885	1	BLOCK AS					
	20	170-8884	1	BLOCK AS					
	21	170-8883	1	BLOCK AS					
	22	170-8882	1	BLOCK AS					
	23	150-6348	6	NUT					
	24	170-8897	3	BOLT					

Y-SEPARATE ILLUSTRATION

J135730 X04

205-0471 CONTROL VALVE GROUP
 PART OF 205-4452-Page 195
 REFERENCE: 170-8894-Page 198

HYDRAULIC SYSTEM



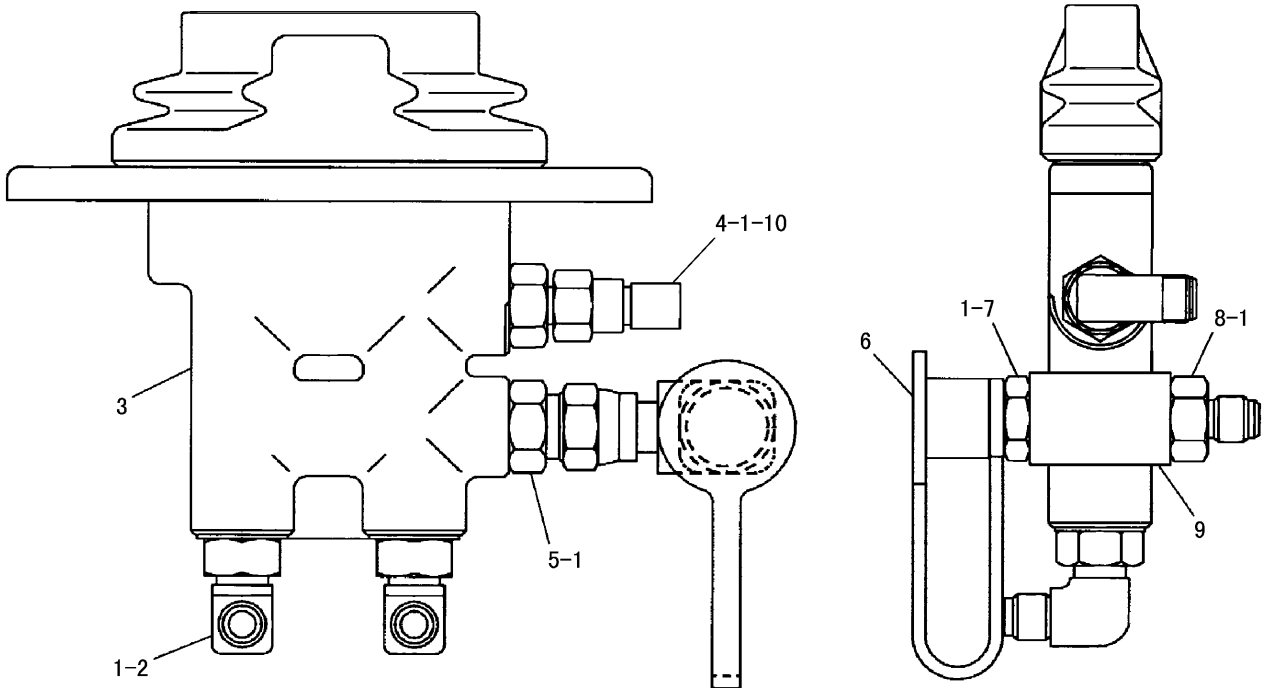
NOTE	No.	PART NO.	QTY	PART NAME	NOTE	No.	PART NO.	QTY	PART NAME
Y	1	2 P-1 3 1 4	4	CONNECTOR					
	2	3 J-1 9 0 7	6	SEAL					
	3	0 5 2-0 5 7 2	2	TEE					
	4	7 J-4 0 2 6	2	ELBOW					
	5	2 0 5-5 5 2 7	1	MANIFOLD VALVE GROUP					

Y-SEPARATE ILLUSTRATION

J108572 X00

205-7964 PILOT VALVE GROUP -4 WAYS
 PART OF 205-4488-Page 181
 REFERENCE: 205-5527-Page 208
 AN ATTACHMENT

HYDRAULIC SYSTEM



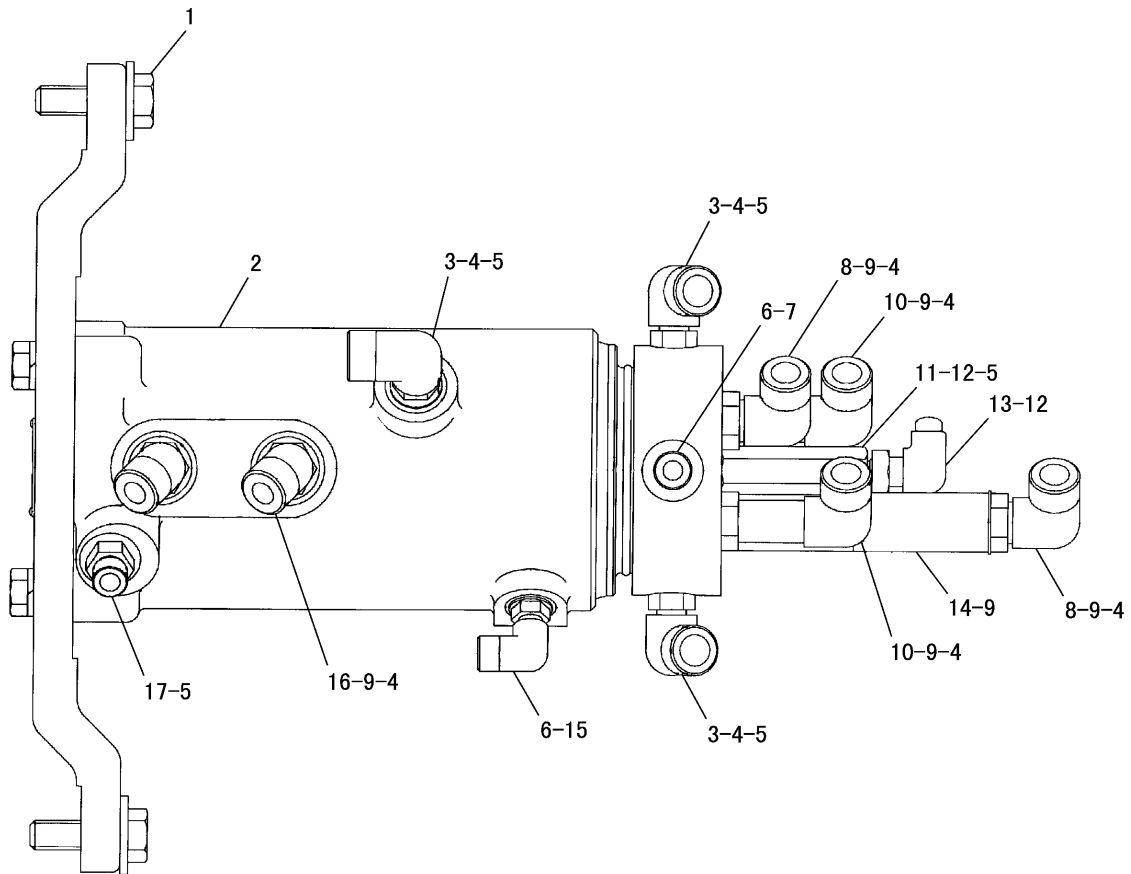
NOTE	No.	PART NO.	QTY	PART NAME	NOTE	No.	PART NO.	QTY	PART NAME
Y	1	3 J-1 9 0 7	6	SEAL					
	2	7 J-4 0 2 6	2	ELBOW					
	3	1 6 2-4 5 7 8	1	VALVE GROUP					
	4	2 P-1 3 1 4	1	CONNECTOR					
	5	6 V-8 6 3 6	1	CONNECTOR					
			6 V-8 3 9 7	1	SEAL				
	6	6 V-0 8 5 2	1	CAP					
	7	6 V-3 9 6 5	1	NIPPLE AS					
	8	1 0 7-6 9 1 0	1	CONNECTOR					
	9	1 2 3-2 5 1 1	1	TEE					
10	7 K-9 1 9 7	1	ELBOW						

Y-SEPARATE ILLUSTRATION

J115220 X01

PILOT VALVE GROUP (208-0176 N/S)
 PART OF 205-4459-Page 175
 REFERENCE:162-4578-Page 218

HYDRAULIC SYSTEM



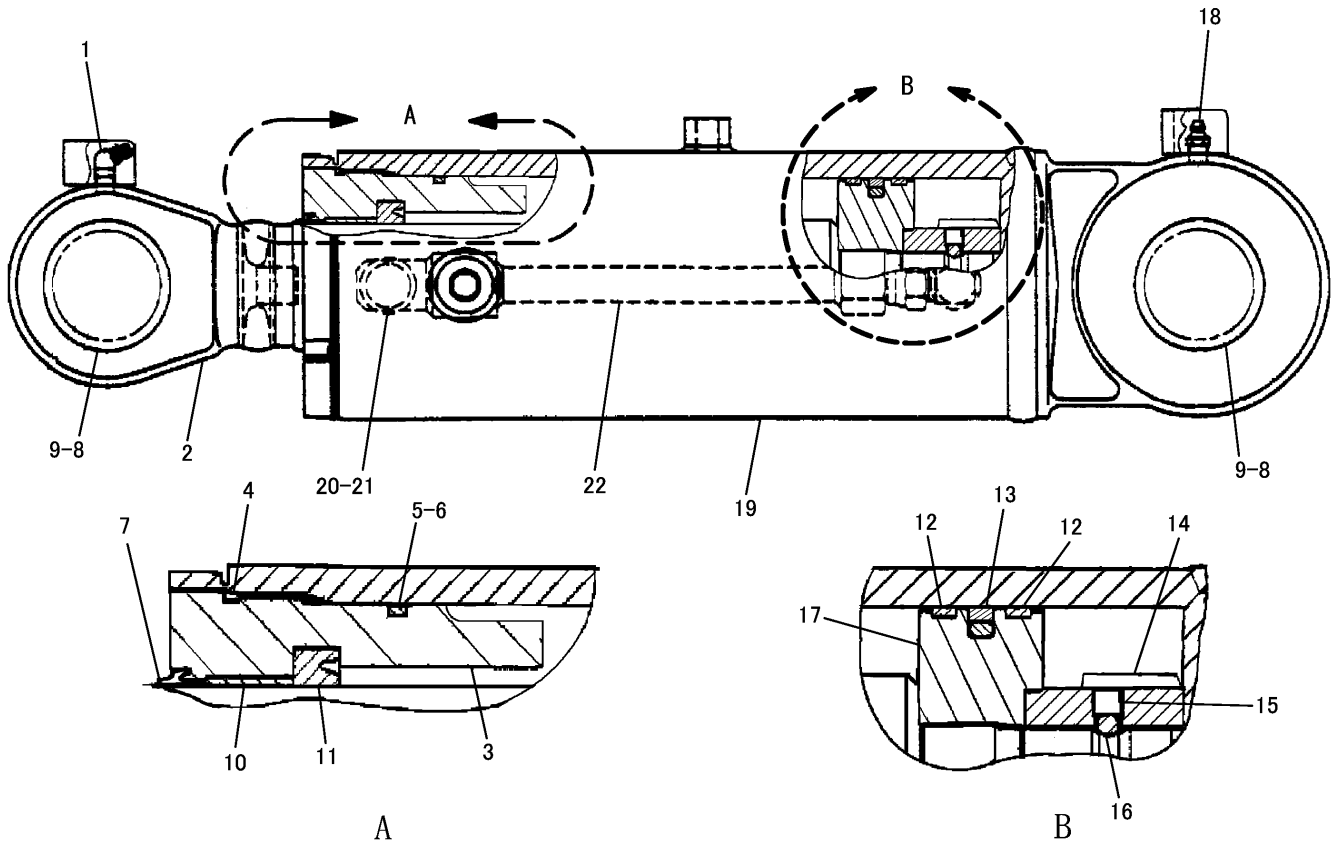
NOTE	No.	PART NO.	QTY	PART NAME	NOTE	No.	PART NO.	QTY	PART NAME
	1	8 T-4 1 8 3	4	BOLT(M12×1.75)					
		8 T-4 2 2 3	4	WASHER					
CY	2	2 0 5-3 8 8 8	1	SWIVEL GROUP					
	3	8 T-6 8 7 6	4	ELBOW					
C	4	6 V-8 3 9 8	12	SEAL					
	5	3 J-1 9 0 7	7	SEAL					
	6	3 J-7 3 5 4	3	SEAL					
	7	3 J-7 3 5 2	1	CONNECTOR					
	8	6 V-8 6 2 5	2	ELBOW					
	9	3 K-0 3 6 0	10	SEAL					
	10	8 T-1 6 8 6	2	ELBOW					
	11	1 6 6-3 0 3 2	1	CONNECTOR					
C	12	6 V-8 3 9 7	2	SEAL					
	13	6 V-9 8 5 0	1	ELBOW					
	14	0 9 9-3 5 6 3	2	CONNECTOR					
	15	0 3 0-7 9 4 6	2	ELBOW					
	16	6 V-9 0 0 2	4	ELBOW					
	17	2 P-1 3 1 4	2	CONNECTOR					

C-CHANGE FROM PREVIOUS TYPE
Y-SEPARATE ILLUSTRATION

J130963 X02

SWIVEL GROUP (205-4453 N/S)
EFFECTIVE WITH SERIAL NO. DCR00990-DCR01064
PART OF 205-0412-Page 163
REFERENCE:205-3888-Page 230

HYDRAULIC SYSTEM

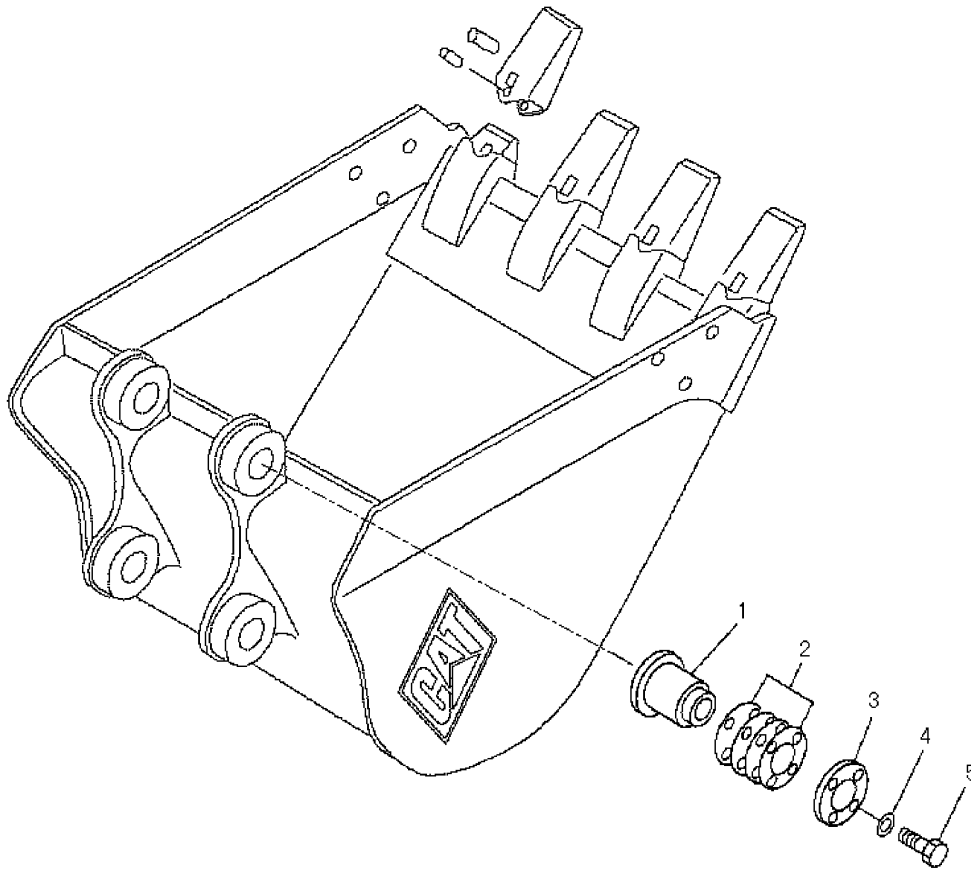


NOTE	No.	PART NO.	QTY	PART NAME	NOTE	No.	PART NO.	QTY	PART NAME
	1	170-8838	1	FITTING	21	164-5172	1	BOLT(M10×1.5)	
	2	208-1760	1	ROD AS	22	170-8863	1	TUBE AS	
	3	170-8846	1	HEAD				AVAILABLE REPAIR KIT(S):	
J	4	170-8852	1	RING		170-8864		SEAL KIT	
J	5	170-8850	1	RING				(INCLUDES PARTS MARKED J)	
J	6	170-8851	1	RING					
J	7	170-8849	1	RING					
	8	170-8860	4	RING					
	9	195-5590	2	BUSHING					
	10	170-8847	1	BUSHING					
J	11	170-8848	1	RING					
J	12	170-8855	2	RING					
J	13	096-3893	1	SEAL AS					
	14	170-8856	1	NUT					
	15	170-8857	1	SCREW(M10×1.5)					
	16	170-8858	1	BALL					
	17	170-8853	1	PISTON					
	18	170-8861	1	FITTING					
	19	208-1759	1	CYLINDER AS					
	20	164-5173	1	WASHER					

J128822 X03

205-0477 CYLINDER GROUP -BLADE-110mm BORE × 175mm STROKE
PART OF 205-0410-Page 241, 222-3810-Page 241

IMPLEMENTS



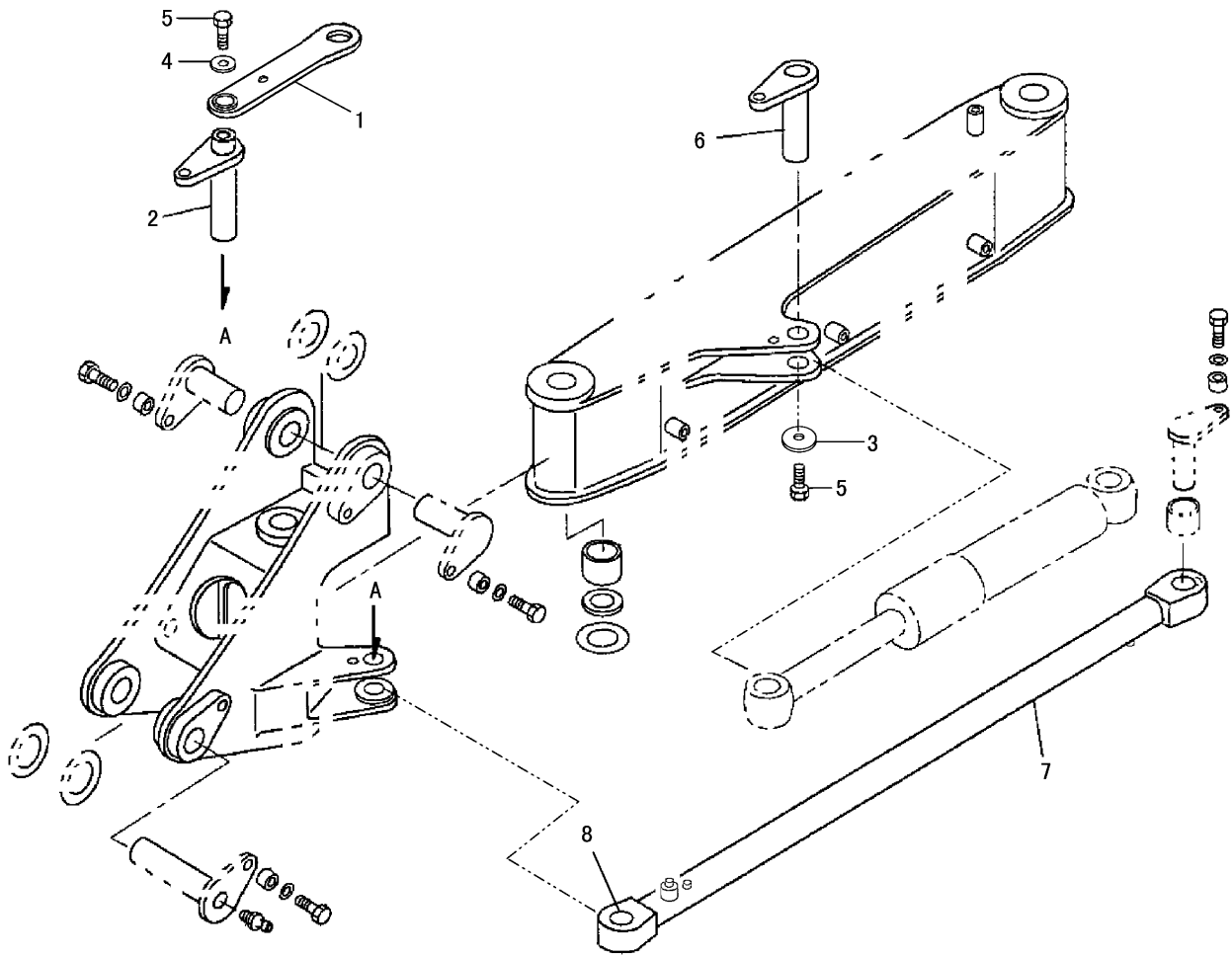
NOTE	No.	PART NO.	QTY	PART NAME	NOTE	No.	PART NO.	QTY	PART NAME
B	1	119-9934	1	BUSHING					
	2	119-9935	5	SHIM(1.0mm THICK)					
	3	119-9936	1	SPACER					
	4	8T-4121	4	WASHER					
	5	8T-4186	4	BOLT(M10×1.5)					

B-USE AS REQUIRED

J128881 X01

BUCKET ADJUSTER GROUP (158-4753 N/S)
 PART OF 205-0418-Page 242, 205-0419-Page 243, 205-0420-Page 243

IMPLEMENTS

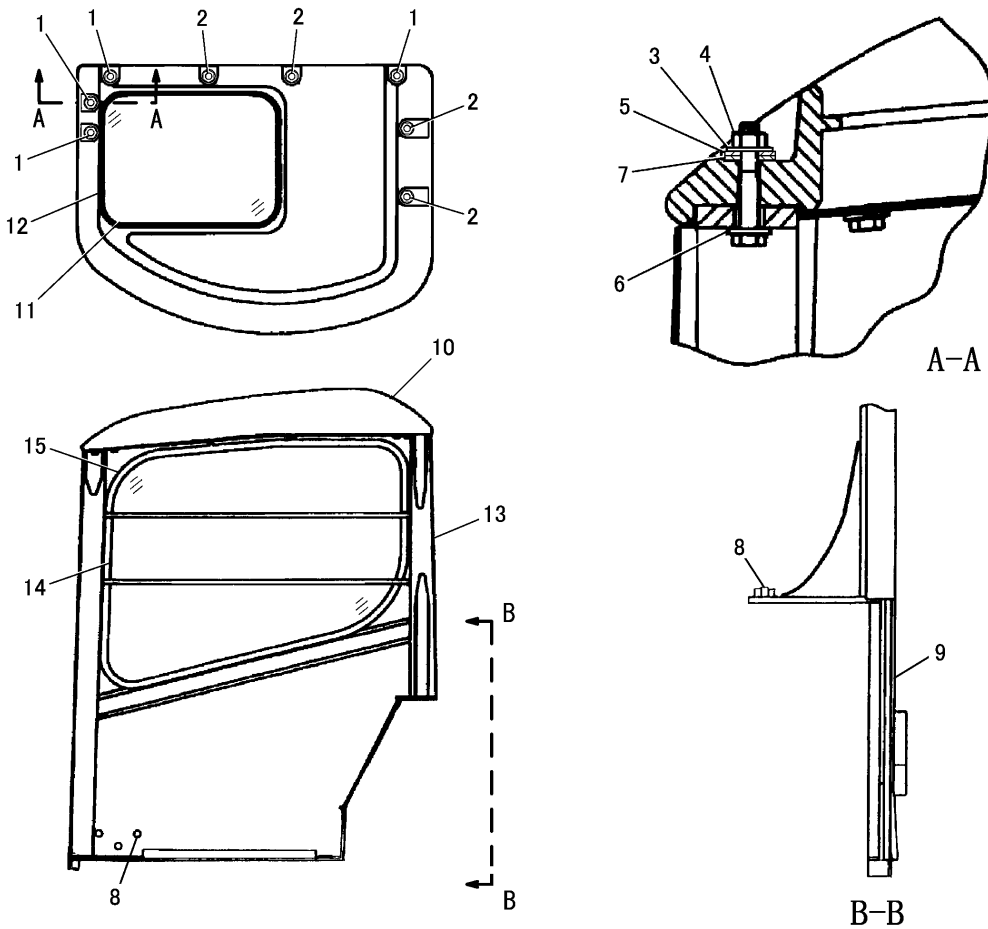


NOTE	No.	PART NO.	QTY	PART NAME	NOTE	No.	PART NO.	QTY	PART NAME
	1	206-7649	1	PLATE AS					
	2	206-7652	1	PIN AS					
	3	206-7658	1	WASHER					
	4	201-9168	1	WASHER					
	5	8T-4179	2	BOLT(M12×1.75)					
	6	206-7654	1	PIN AS					
	7	206-7650	1	BAR AS					
	8	205-3365	2	BEARING					

J128883 X01

OFFSET LOCK GROUP (206-7646 N/S)
 PART OF 206-7643-Page 4, 213-7587-Page 2, 213-7599-Page 5, 213-7606-Page 3
 AN ATTACHMENT

OPERATOR STATION



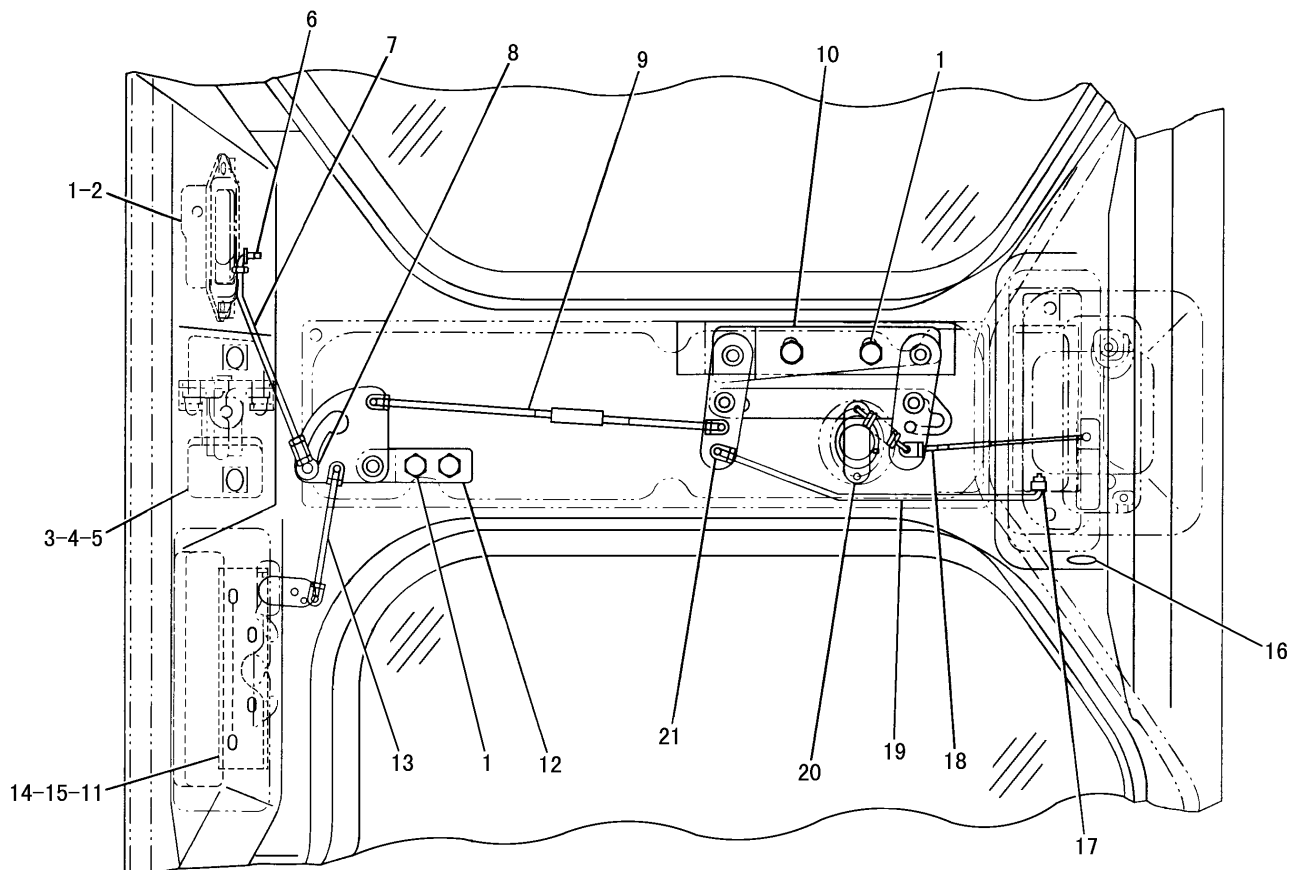
NOTE	No.	PART NO.	QTY	PART NAME	NOTE	No.	PART NO.	QTY	PART NAME
	1	8 T-6 4 6 6	4	BOLT(M10×1.5)					
	2	8 T-4 1 8 5	4	BOLT(M10×1.5)					
	3	1 3 9-4 4 1 0	8	WASHER					
	4	8 T-4 1 3 3	8	NUT(M10×1.5)					
	5	1 4 0-3 3 5 4	8	SPACER					
	6	7 X-7 7 2 9	8	WASHER					
	7	1 4 0-3 3 5 5	8	SPACER					
	8	5 P-1 0 7 6	6	WASHER					
		8 T-4 9 5 6	6	BOLT(M12×1.75)					
	9	1 5 4-2 2 2 6	1	SEAL					
	10	2 0 6-0 1 0 8	1	CANOPY AS					
	11	1 2 6-2 5 4 0	1	GLASS					
	12	1 4 6-8 2 3 3	1	SEAL					
	13	2 0 6-0 1 0 9	1	CANOPY AS					
	14	1 2 6-2 5 4 2	1	GLASS					
D	15	1 2 5-5 3 0 6		SEAL---3.3m					

D-ORDER BY THE m

J127534 X00

CANOPY GROUP (205-4462 N/S)
PART OF 205-4461-Page 266

OPERATOR STATION



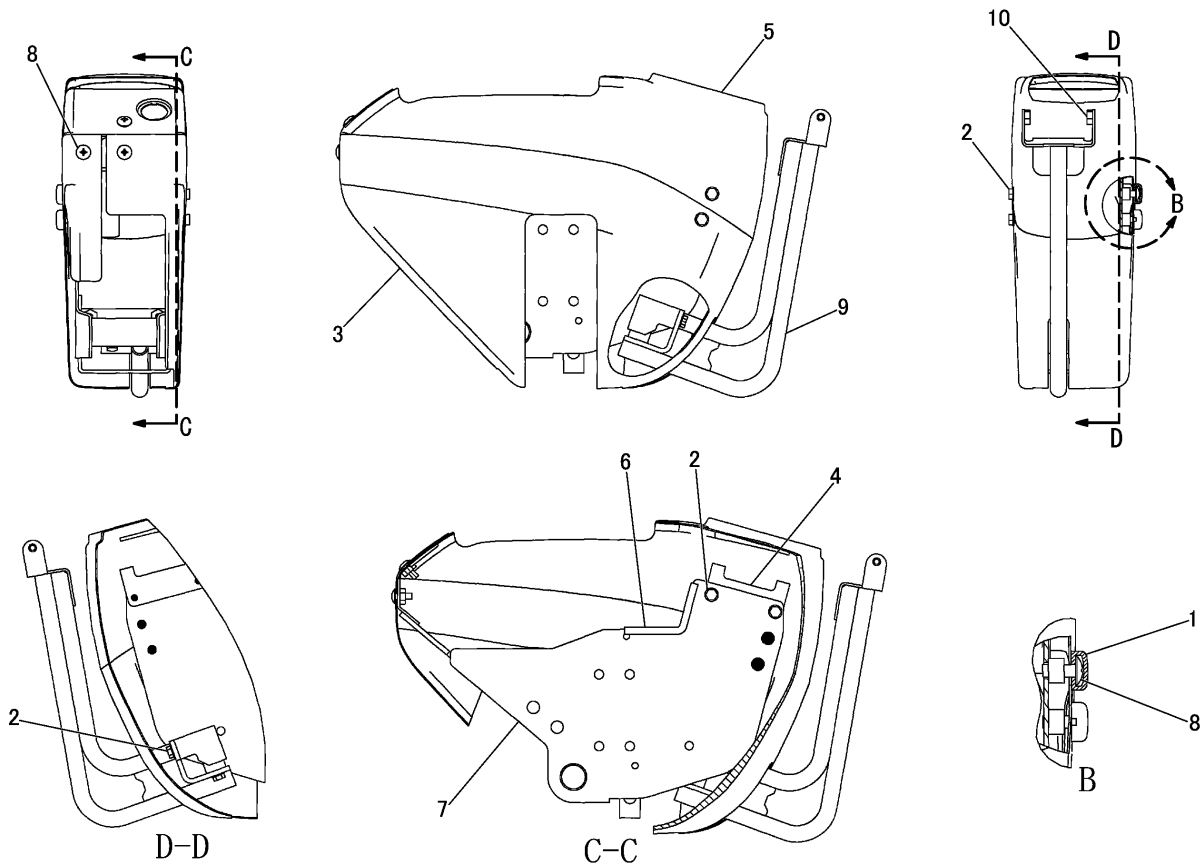
D-D

NOTE	No.	PART NO.	QTY	PART NAME	NOTE	No.	PART NO.	QTY	PART NAME
	1	8 T-4 1 7 1	6	BOLT(M6×1)		21	1 2 7 - 3 9 9 1	5	SNAP
	2	1 3 2 - 7 6 2 5	1	LOCK AS					
	3	1 2 7 - 3 9 6 2	1	ROLLER AS					
	4	8 T-4 2 0 0	2	BOLT(M8×1.25)					
	5	8 T-4 2 2 4	2	WASHER					
	6	1 2 7 - 4 0 0 1	1	SNAP					
	7	1 3 6 - 0 2 3 4	1	ROD					
	8	1 3 6 - 0 2 3 5	1	HOLDER					
	9	1 3 6 - 0 2 3 8	1	ROD					
	10	1 3 6 - 0 2 3 0	1	REMOTE CONTROL AS					
	11	1 2 7 - 3 9 9 0	1	LOCK					
	12	1 3 6 - 0 2 3 2	1	LINK AS					
	13	1 6 2 - 4 6 6 6	1	ROD					
	14	9 X-8 2 5 6	4	WASHER					
	15	7 X-2 5 3 3	4	BOLT(M6×1)					
	16	1 2 7 - 4 0 0 3	1	GROMMET					
	17	1 3 6 - 0 2 5 9	1	SNAP					
	18	1 3 6 - 0 2 3 3	1	CABLE AS					
	19	1 3 6 - 0 2 3 7	1	ROD					
	20	1 3 6 - 0 2 3 1	1	PLATE AS					

J139060 X02

203-4449 CAB DOOR GROUP -PART 2 OF 2
PART OF 205-4468-Page 269, 273
AN ATTACHMENT

OPERATOR STATION



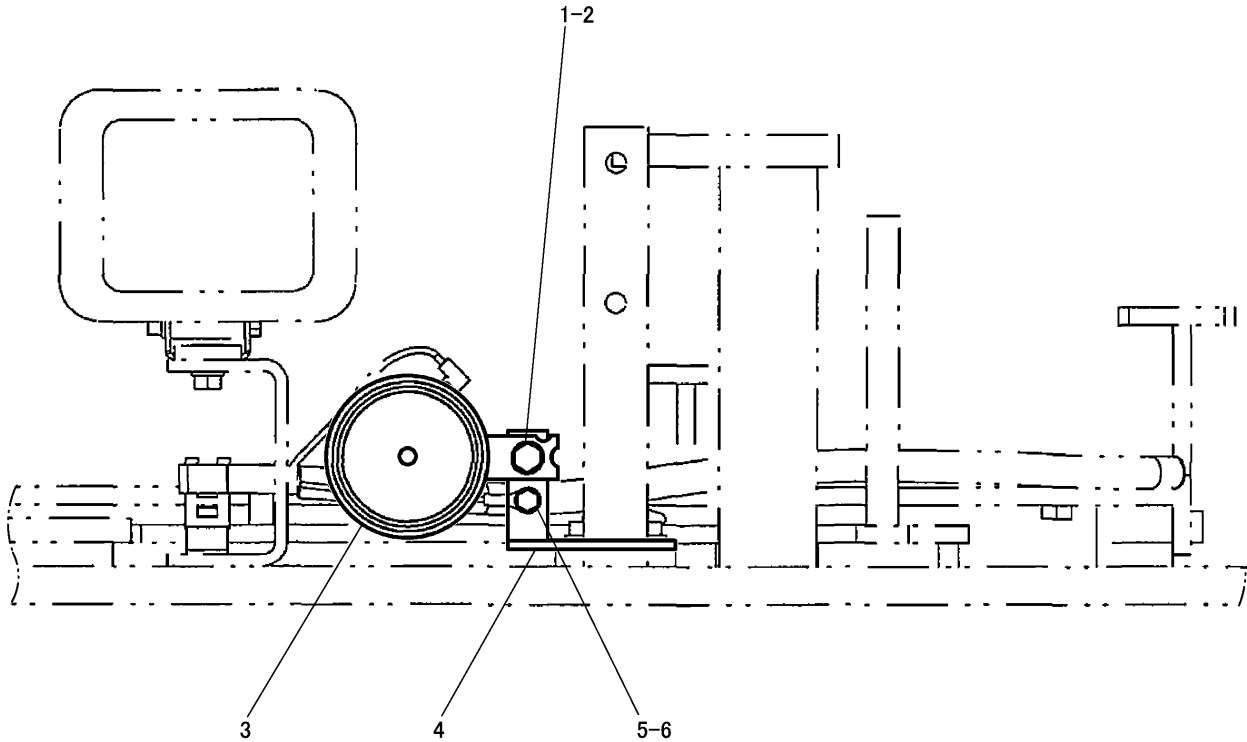
NOTE	No.	PART NO.	QTY	PART NAME	NOTE	No.	PART NO.	QTY	PART NAME
	1	202-1795	2	CAP					
C	2	207-0790	9	BOLT AS(M6×1)					
		222-0668	1	WASHER					
	3	210-9309	1	COVER					
	4	210-9311	2	BRACKET					
C	5	233-9575	1	COVER					
	6	222-0666	2	SEAL					
C	7	275-8099	1	FRAME AS					
		6V-9632	3	NUT(M6×1)(WELD)					
		210-9310	1	FRAME AS					
	8	158-4781	5	SCREW(M6×1)					
C	9	275-8098	1	BRACKET AS					
	10	6V-9632	2	NUT(M6×1)(WELD)					

C-CHANGE FROM PREVIOUS TYPE

J139036 X07

206-0676 CONSOLE GROUP -RH
EFFECTIVE WITH SERIAL NO. DCR01146-
PART OF 205-4434-Page 285

OPERATOR STATION



NOTE	No.	PART NO.	QTY	PART NAME	NOTE	No.	PART NO.	QTY	PART NAME
C	1	8 T-4 2 0 0	1	BOLT(M8×1.25)					
C	2	8 T-4 2 2 4	1	WASHER					
C	3	2 4 5-9 3 9 8	1	HORN AS					
C	4	2 3 9-6 7 5 0	1	BRACKET AS					
C	5	5 C-9 5 5 3	1	BOLT(M6×1)					
C	6	9 X-8 2 5 6	1	WASHER					

C-CHANGE FROM PREVIOUS TYPE

J133369 X05

ELECTRIC HORN GROUP (155-6866 N/S)
EFFECTIVE WITH SERIAL NO. DCR01048-
PART OF 205-0405-Page 123

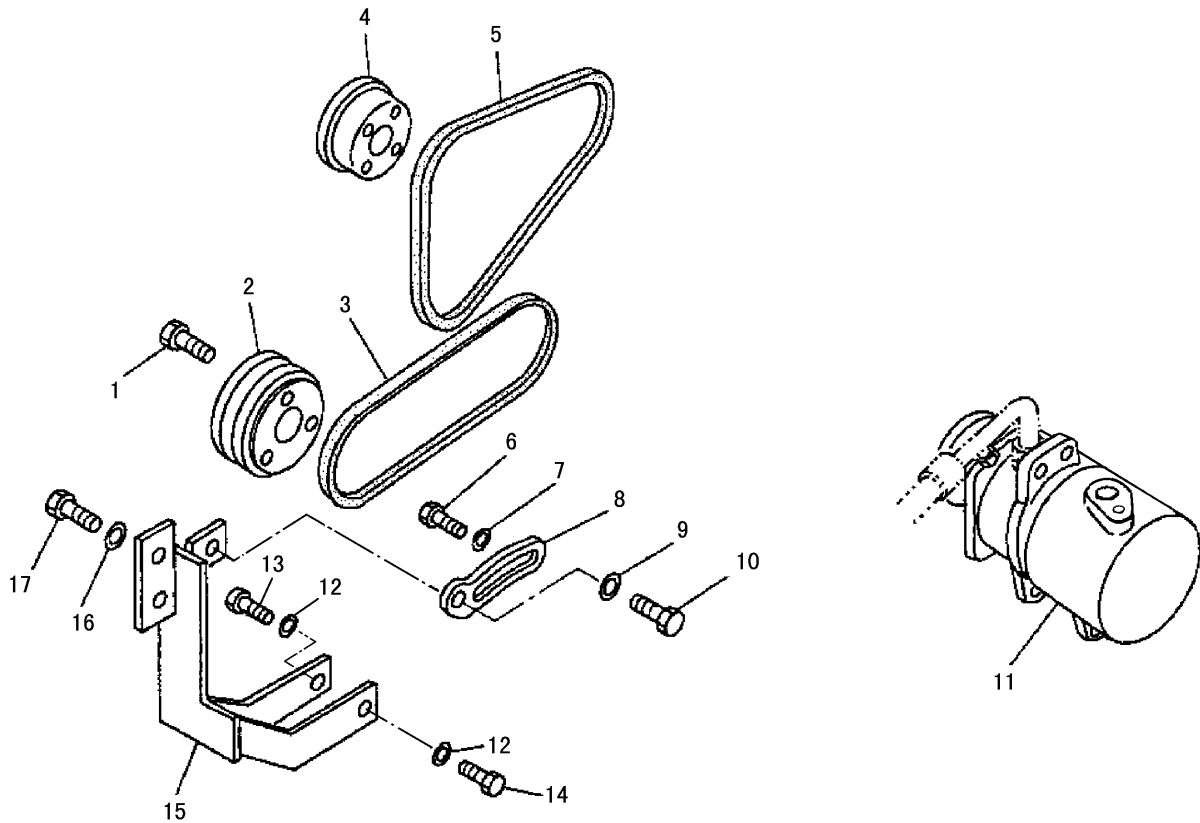
OPERATOR STATION

NOTE	No.	PART NO.	QTY	PART NAME	NOTE	No.	PART NO.	QTY	PART NAME
	1	207-7146	1	COVER AS					
		121-1029	1	CLIP					
		5C-2890	2	NUT(M6×1)					
	2	7K-1181	1	STRAP					
	3	213-7612	1	MONITOR					
	4	213-7614	1	MONITOR					
	5	200-4592	1	STAY					
	6	207-7145	1	FLOORMAT					
	7	5C-9553	2	BOLT(M6×1)					
	8	9X-8256	2	WASHER					
	9	199-5196	1	SUPPORT AS					
	10	199-5198	1	CLIP					
	11	095-0728	1	SCREW(M4×0.7)					
	12	096-6166	1	WASHER					
	13	207-7149	1	SUPPORT AS					
	14	121-1029	2	CLIP					
	15	207-7153	1	SUPPORT AS					
	16	5C-7261	4	NUT(M8×1.25)					
	17	8T-4224	4	WASHER					
	18	183-7676	1	COVER AS					
	19	183-7669	1	BRACKET AS					
		5C-9553	7	BOLT(M6×1)					
		4Y-6748	4	STUD(M8×1.25)(WELD)					
		6V-9632	1	NUT(M6×1)(WELD)					
	20	199-5191	1	CONTROL AS					

J127474 X00

MONITOR GROUP (213-7615 N/S) -CAB/LONG STICK
 PART OF 213-7599-Page 5
 AN ATTACHMENT

OPERATOR STATION



NOTE	No.	PART NO.	QTY	PART NAME	NOTE	No.	PART NO.	QTY	PART NAME
	1	1 6 3-9 8 5 1	3	BOLT(M10×1.25)					
	2	1 6 3-9 8 5 4	1	PULLEY					
	3	1 6 3-9 8 5 3	1	V-BELT					
	4	1 6 3-9 8 6 3	1	PULLEY					
	5	1 6 3-9 8 6 4	1	V-BELT					
	6	8 T-4 1 8 9	1	BOLT(M8×1.25)					
	7	5 P-4 1 1 6	1	WASHER					
	8	1 2 6-4 5 7 0	1	PLATE					
	9	8 T-4 1 2 1	1	WASHER					
	10	8 T-4 1 3 7	1	BOLT(M10×1.5)					
	11	1 6 3-9 8 5 2	1	COMPRESSOR AS					
	12	8 T-4 2 2 4	2	WASHER					
	13	8 T-4 1 9 7	1	BOLT(M8×1.25)					
	14	8 T-4 9 0 8	1	BOLT(M8×1.25)					
	15	1 6 3-9 8 2 4	1	BRACKET AS					
	16	1 9 6-5 8 6 7	2	WASHER					
	17	1 2 6-4 5 7 3	2	BOLT(M14×1.5)					

J108546 X03

REFRIGERANT COMPRESSOR GROUP (155-6839 N/S)
PART OF 205-4465-Page 311
AN ATTACHMENT

SERVICE EQUIPMENT AND SUPPLIES

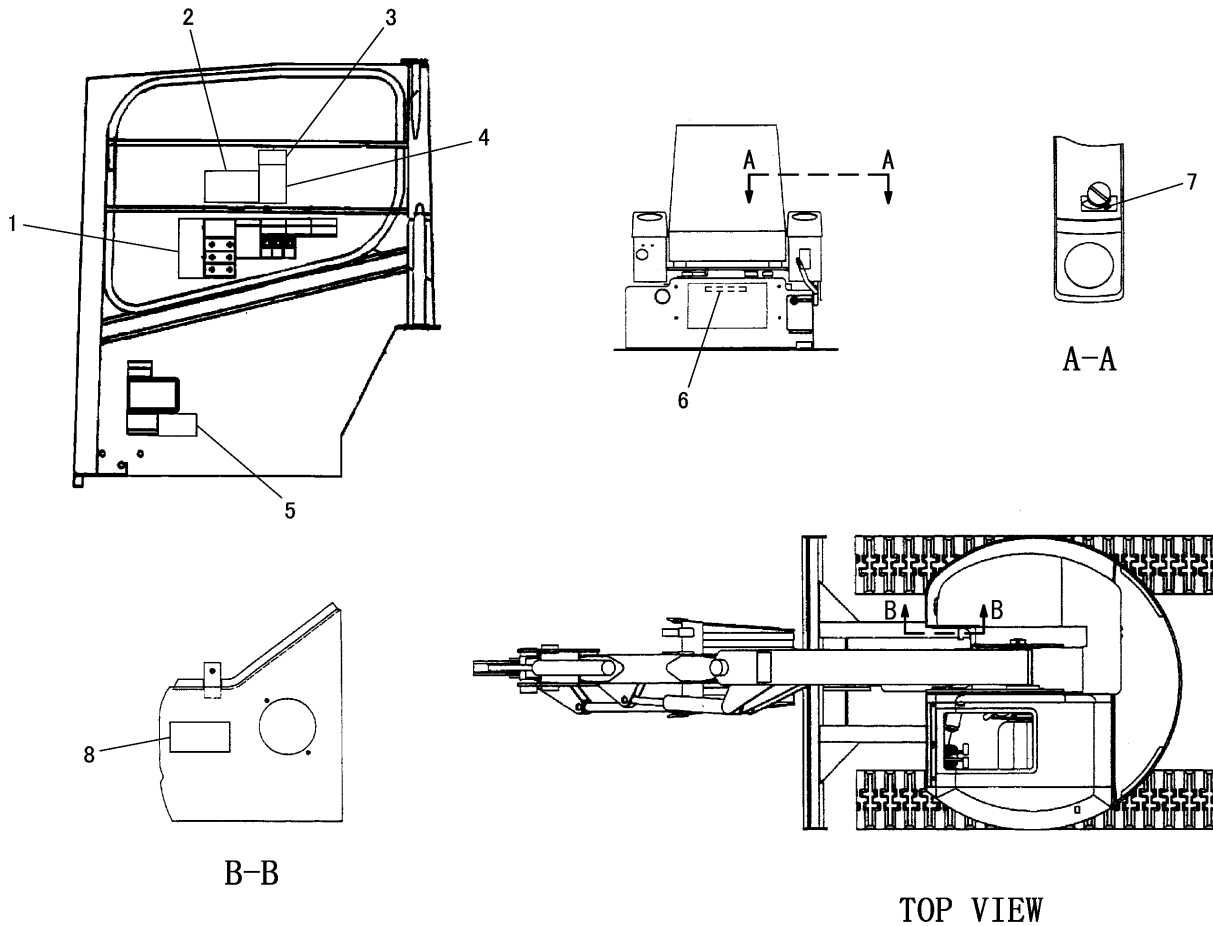
NOTE	No.	PART NO.	QTY	PART NAME	NOTE	No.	PART NO.	QTY	PART NAME
E	1	1 0 1-2 4 7 3		FILM(STRIPE)---200cm					
	2	1 9 1-0 3 6 3	1	FILM(CAT)					
	3	1 6 0-6 8 5 8	1	FILM(WARNING)(DO NOT APPROACH)					
	4	1 9 0-5 3 8 6	2	FILM(RED REFLECTIVE MATERIAL)					
	5	7 X-7 6 4 4	1	FILM(TIE DOWN)					
	6	2 0 7-0 3 1 3	1	FILM(WARNING)(SCALD)					
Z	7		1	PLATE(PIN)					
	8	1 3 4-7 2 5 8	1	FILM(EXTENDED LIFE COOLANT)					
	9	1 7 2-0 4 2 8	1	FILM(GREASE POINTS)					
	10	7 X-3 2 2 9	2	FILM(LIFT AND TIE DOWN)					
	11	1 6 0-6 8 2 7	1	FILM(WARNING)(SCALD)					
	12	1 2 0-5 0 5 6	1	FILM(WARNING)(HIGH PRESSURE TANK)					
	13	1 6 0-6 8 3 8	1	FILM(WARNING)(FAN)					
	14	1 6 0-6 8 4 1	1	FILM(WARNING)(BELT)					
	15	1 6 0-6 8 2 2	2	FILM(WARNING)(SCALD)					
	16	1 6 0-6 8 3 4	1	FILM(WARNING)(ELECTRIC SHOCK)					
	17	1 5 8-7 8 6 4	1	FILM(HYD OIL)					
	18	2 9 1-9 3 3 4	1	FILM(DIESEL FUEL)					
	19	1 9 5-3 2 0 7	1	FILM(KEY SW)					
	20	1 9 1-0 3 6 6	1	FILM(SW)					
	21	1 2 6-2 8 8 7	1	FILM(WARNING)(SW)					
		参考:							
		2 8 3-8 8 2 7	1	FILM(WARNING)(FIRE PREVENTION)					

E-ORDER BY THE cm
Z-NOT SERVICED SEPARATELY

J154864 X10

FILM GROUP (205-4446 N/S) -PART 2 OF 2
EFFECTIVE WITH SERIAL NO. DCR00001-DCR01545
PART OF 205-0405-Page 123

SERVICE EQUIPMENT AND SUPPLIES



NOTE	No.	PART NO.	QTY	PART NAME	NOTE	No.	PART NO.	QTY	PART NAME
	1	200-4596	1	FILM(WARNING)					
	2	213-7609	1	FILM(LIFTING CAPACITY)					
	3	201-9144	1	FILM(WARNING)					
	4	200-4597	1	FILM(WARNING)					
	5	213-7611	1	FILM(REGISTRATION) (OLD COMPANY NAME)					
				-OR-					
		330-7103	1	FILM(REGISTRATION) (NEW COMPANY NAME)					
	6	213-7610	1	PLATE(LIFTING CAPACITY) (OLD COMPANY NAME)					
				-OR-					
		330-7104	1	PLATE(LIFTING CAPACITY) (NEW COMPANY NAME)					
	7	200-4601	1	FILM					
	8	271-3390	1	PLATE(OLD COMPANY NAME)					
				-OR-					
		330-7026	1	PLATE(NEW COMPANY NAME)					

J139072 X01

FILM GROUP (213-7607 N/S) -SHOVEL CRANE-CANOPY/LONG STICK
PART OF 213-7606-Page 3
AN ATTACHMENT

PART NUMBER INDEX

Part No.	Page	Part No.	Page	Part No.	Page
5P-5007	223	6I-2424	166	6V-8202	218
5P-5148	31		167	6V-8231	46
	50	6I-5342	270		47
	51		271	6V-8362	102
	56		274	6V-8376	76
	57		275		77
	58	6I-5447	279	6V-8397	115
	59	6I-6923	203		176
	60	6K-8178	38		177
	61		39		178
	62		50		179
	63		51		182
	64	6K-8180	314		183
	65	6N-6984	319		184
	66		321		185
	67	6P-0699	282		190
	180	6P-4467	314		191
	181	6T-5925	76		193
	184		77		195
	185	6T-7337	56		199
	224		57		200
5P-5635	38		58		201
	39		59		205
5P-5901	142		60		209
	143		61		217
	256		62		224
	280		63		227
	281		64		228
	282		65		229
	320		66	6V-8398	114
	321		67		190
5P-6011	148	6V-0852	176		191
	149		177		195
5P-6264	126		188		211
	127		204		221
5P-7814	38		205		222
	39		217		224
5P-7958	341	6V-2201	166		227
5P-7970	113		167		228
5P-8309	129	6V-3965	176		229
	130		177		232
	131		188		233
5P-9135	314		204	6V-8625	115
5P-9205	290		205		195
	291		217		226
5P-9212	280	6V-5163	142		227
	281		143		228
	282	6V-5192	195		229
		6V-5698	290	6V-8634	195
			291		224
		6V-7357	41	6V-8636	115
			48		176
			49		177
			136		182
			137		183
			312		188
			313		193
		6V-7644	119		199
		6V-7658	176		200
			177		201
		6V-8187	52		205
			53		217
		6V-8202	203	6V-8639	114

6

6D-3479	50
	51
6D-4636	190
	191
6D-5729	138
	139
	140
	141
6F-4855	166
	167
6G-2263	190
	191

▲ PRIMARY REFERENCE

PART NUMBER INDEX

Part No.	Page	Part No.	Page	Part No.	Page
117-1878	99	121-1029	70	124-9156	281
118-4085	216		71		282
118-8118	40		72	125-1907	206
118-8119	40		73	125-1908	206
119-9868	29		74	125-1909	206
119-9869	33		75	125-4021	258
119-9870	28		126		259
119-9878	144		127	125-5213	68
119-9880	144		282		69
119-9889	168		300		70
	169		301		71
119-9890	168		302	125-5276	22
	169		303		23
119-9895	52		304	125-5292	68
	53		305		69
119-9896	52		306		70
	53		307		71
119-9934	247	121-3661	29	125-5294	52
119-9935	247	121-3691	261		53
119-9936	247		262	125-5298	68
119-9937	258		264		69
	259	121-3707	250		70
	260		251		71
119-9939	258		252	125-5299	312
	259	121-3708	250		313
	260		251	125-5300	52
119-9940	258		252		53
	259	121-3709	250	125-5306	267
	260		251	125-7358	194
120-0613	125		252	126-1767	316
120-0614	125	121-3736	188	126-1768	81
120-0664	18	121-3776	290	126-2538	144
120-0665	111		291	126-2540	267
120-4636	151	121-4480	40	126-2542	267
120-4652	151	122-8948	37	126-2565	148
120-4653	151	122-8949	37		149
120-4654	151	123-2511	205	126-2570	145
120-4660	152		217	126-2575	320
	153	124-1574	20	126-2585	20
120-4663	152		21		21
	153	124-9108	50	126-2881	332
120-4664	152		51		333
	153	124-9116	134	126-2886	332
120-5056	326		135		333
	327	124-9117	134	126-2887	326
120-6285	▲342		135		327
120-7724	82	124-9118	134		330
120-8755	166		135		331
	167	124-9119	134	126-2888	332
120-8757	166		135		333
	167	124-9121	134	126-2890	332
120-8758	166		135		333
	167	124-9122	134	126-2892	332
120-8782	134		135		333
	135	124-9127	128	126-2897	324
120-8814	136	124-9141	134		325
	137		135		330
120-8815	136	124-9148	136		331
	137		137	126-2899	334
120-8838	36	124-9149	136	126-2900	324
120-8840	219		137		325
121-1029	68	124-9156	194		330
	69		280		331

▲ PRIMARY REFERENCE

PART NUMBER INDEX

Part No.	Page	Part No.	Page	Part No.	Page
195-8294	10	195-8380	41	195-8457	24
195-8295	10	195-8381	41		25
195-8296	10	195-8382	41	195-8458	24
195-8297	10	195-8383	41		25
195-8298	10	195-8384	41	195-8459	24
195-8299	10	195-8386	44		25
195-8300	10		45	195-8460	24
195-8301	10	195-8387	44		25
195-8303	10		45	195-8461	24
195-8307	10	195-8388	44		25
195-8308	12		45	195-8464	24
195-8309	13	195-8389	44		25
195-8310	12		45	195-8465	24
195-8312	13	195-8394	44		25
195-8315	14		45	195-8468	24
195-8317	14	195-8395	44		25
195-8319	16		45	195-8473	24
195-8320	16	195-8396	44		25
195-8321	16		45	195-8474	24
195-8324	16	195-8397	44		25
195-8326	16		45	195-8476	24
195-8327	16	195-8398	44		25
195-8328	16		45	195-8477	24
195-8329	16	195-8399	44		25
195-8330	16		45	195-8478	24
195-8332	16	195-8400	44		25
195-8333	16		45	195-8482	27
195-8337	16	195-8403	44	195-8483	27
195-8338	16		45	195-8486	46
195-8339	16	195-8407	44		47
195-8340	16		45	195-8488	46
195-8341	16	195-8409	44		47
195-8342	16		45	195-8492	111
195-8343	13	195-8410	44	195-8494	48
195-8344	13		45		49
195-8345	12	195-8411	44	195-8495	48
	13		45		49
195-8346	41	195-8412	44	195-8496	48
195-8347	41		45		49
195-8348	41	195-8413	44	195-8502	48
195-8349	13		45		49
195-8350	41	195-8414	44	196-0983	258
195-8352	41		45		259
195-8356	37	195-8415	44		260
195-8358	37		45	196-4283	30
195-8359	37	195-8426	44		31
195-8360	37		45	196-4304	182
195-8361	37	195-8434	19		183
195-8365	37	195-8435	18	196-5867	317
195-8366	37		▲19	196-6655	190
195-8367	37	195-8437	19		191
195-8368	37	195-8441	19	196-8227	24
195-8369	37	195-8442	19		25
195-8370	37	195-8443	19	196-8303	6
195-8371	37	195-8444	19		▲9
195-8372	37	195-8445	19	196-8304	6
195-8373	41	195-8447	18		▲10
195-8374	41	195-8450	18	196-8305	6
195-8375	41	195-8451	18		▲12
195-8376	41	195-8452	18	196-8306	6
195-8377	41	195-8453	18		▲13
195-8378	41	195-8455	24	196-8307	6
195-8379	41		25		▲13

▲ PRIMARY REFERENCE

CLICK HERE TO **DOWNLOAD** THE COMPLETE MANUAL

- Thank you very much for reading the preview of the manual.
- You can download the complete manual from: www.heydownloads.com by clicking the link below



- Please note: If there is no response to CLICKING the link, please download this PDF first and then click on it.

CLICK HERE TO **DOWNLOAD** THE COMPLETE MANUAL