



Parts Catalog

CLICK HERE TO **DOWNLOAD** THE COMPLETE MANUAL

- Thank you very much for reading the preview of the manual.
- You can download the complete manual from: www.heydownloads.com by clicking the link below



- Please note: If there is no response to CLICKING the link, please download this PDF first and then click on it.

CLICK HERE TO **DOWNLOAD** THE COMPLETE MANUAL

2 62-867

03/25/98

1.00

44

03/25/98

.00

1.00 NONE

MODEL RB2-88 ROOF BOLTER cu#

EACH MODEL RB2-88 ROOF BOLTER IS TO INCLUDE THE FOLLOWING:

- ✓(2) (0021082018) BOOM ARM ASSEMBLY
- ✓(2) (017156) OCTAGONAL ROOF SUPPORT MOD.
- ✓(2) (7021785100) WHISP-AIRE BLOWERS
- ✓(1) (016002X1) FRONT WHEEL UNIT INSTALLATION
- ✓(1) (8022003006) BOLSTER ASSEMBLY W3 HUB
- ✓(1) (016579X3) STARTER ENCLOSURE
- ✓(2) (1526412020) PUMP AND MOTOR ASSEMBLY
- ✓(1) (470813X1) TRAM CANOPY
- ✓(1) (8022003000) 4' KINGPIN FRAME
- ✓(1) (492232) ELECTRICAL PARTS
- ✓(1) (1236000029) PAINT, LUBE AND TAG PLACEMENT
- ✓(2) (1239000018) OCTAGONAL ROOF SUPPORT
- ✓(1) (017160) CABLE REEL INSTALLATION
- ✓(2) (013761X2) DRILL BOX CARRIER, 12" SUMP
- ✓(1) (1239004007) FIRE SUPPRESSION
- ✓(1) (1239008008) RIGHT HAND CRADLE PARTS
- ✓(1) (1239008009) LEFT HAND CRADLE PARTS
- ✓(1) (4000090256) JET FILL PUMP
- ✓(1) (015935) MCI FLOURESCENT LIGHTING SYSTEM
- ✓(1) (7021853002) HI-TRAM LOCKOUT
- ✓(2) (4000090386) DRY/DEEP DRILL CHUCK
- ✓(1) (8021883007) MECHANICAL DRIVEN BLOWER KIT
- ✓(2) (013889X2) LONG-AIRDOX DRILL BOX
- ✓(1) (017161) MECHANICAL PARTS
- ✓(4) (4010294392) 10:00 X 15 TIRE/WHEEL ASSEMBLIES
- ✓(2) (470143X1) CHUCK REINFORCEMENT RING
- ✓(1) (470146) START/STOP SWITCH
- ✓(1) (8022003004) JIC HYDRAULIC PARTS
- ✓(1) (1239006006) EXTENSION, DRILL STATION CANOPY INSTALLATION, RIGHT HAND
- ✓(1) (1239006007) EXTENSION, DRILL STATION CANOPY INSTALLATION, LEFT HAND
- ✓(2) (410839) SCHROEDER FILTER
- ✓(1) (1239002000) DRY DUST SYSTEM
- ✓(1) (4000090146) DONALDSON DUST TANKS
- ✓(2) (470860) SUPPORT ARM REWORK
- ✓(2) (470860X1) OCTAGONAL RING COUNTERWEIGHT
- ✓(2) (470860X2) OCTAGONAL RING STOP
- ✓(2) (470860X3) CRADLE REWORK
- ✓(1) (470860X6) CHASSIS REWORK
- ✓(1) (470786X2) GREASE ZONE LUBRICATION KIT
- ✓(1) (470865) TRAM STATION WALL "VENTED"
- ✓(1) (008213075) "Y" STRAINER
- ✓(1) (470863) CABLE REEL PULL OUT INSTALLATION
- ✓(1) (470864) RB2-88 COVER INSTALLATION
- ✓(1) (470855) AUTO DUMP BOX GUARD
- ✓(1) (470872) SWING CYLINDER COVER INSTALLATION
- ✓(1) (1239002000) DRY DUST SYSTEM
- ✓(1) (4000090146) DONALDSON DUST TANKS
- ✓(2) (4010018022) HIGH SPEED ROTATION MOTOR
- ✓(1) (015584X3) OIL LEVEL SWITCH INSTALLATION
- ✓(1) (016815) SCHROEDER TEST BLOCK INSTALLATION
- ✓(1) (470104X4) PRE-DUSTERS OPTION
- ✓(1) (470886) CANOPY COVER LEFT HAND
- ✓(1) (470886X1) CANOPY COVER RIGHT HAND
- ✓(1) (016815) SCHROEDER TEST BLOCK INSTALLATION



Long-AirDox Company
Virginia Tech Corporate Research Center
1750 Kraft Drive, Suite 1000
Blacksburg, VA 24060
(540) 552-5555
Fax (540) 552-5525

Subject: Fail Safe Braking System
Machine: Long-AirDox Roof Bolters
Attention: Mine Superintendent

Long-AirDox Roof Bolters are equipped with fail safe brakes located on the front wheel assemblies. Prior to each shift, Long-AirDox Company suggests that the Roof Bolter operator check the Fail Safe Braking System. This can be accomplished by:

- A: Start the machine
- B: Begin tramming forward or reverse
- C: Release tram handle / brakes should be activated or engaged.

If the Fail Safe Braking System is found not working properly, remove machine from service and notify a qualified maintenance person.

Long-AirDox Roof Bolters are also equipped with a motion control valve located on the rear wheel assemblies. This control valve is to prevent run-away, if normal braking system fails.



Long-AirDox Company
Virginia Tech Corporate Research Center
1750 Kraft Drive, Suite 1000
Blacksburg, VA 24060
(540) 552-5555
Fax (540) 552-5525

December 19, 1991

Subject: Certification of Support Arm 4-600303-034 and Drill Station Canopy 4-600263-047

TO WHOM IT MAY CONCERN:

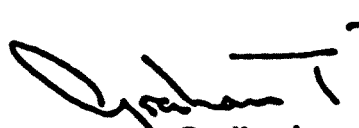
I certify that Drill Station Canopy 4-600263-047 and Support Arm 4-600303-034 will support 15 psi times the canopy top surface area, applied downwards at the canopy centroid.

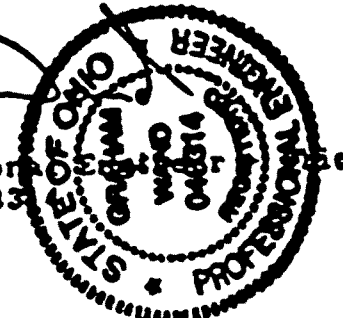
This certification is based on previous certification of the Support Arm 4-600303-005, based on Test Report =79/126 dated December 11, 1979; and testing performed on the Drill Station Canopy 4-600263-035 and documented on Test Report =B0001 dated August 15, 1985.

These tests were performed in accordance with MSHA test procedure IR1002 of 1974 and meet the requirements of Section 75.1710.1 of the Health and Safety Law of 1985.

If the support arm or canopy should become deformed or altered, its capacity may be affected and this certification would no longer be valid.

Sincerely,

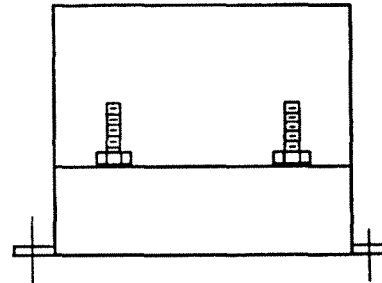
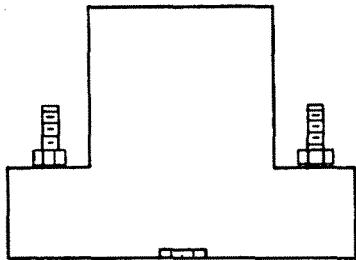
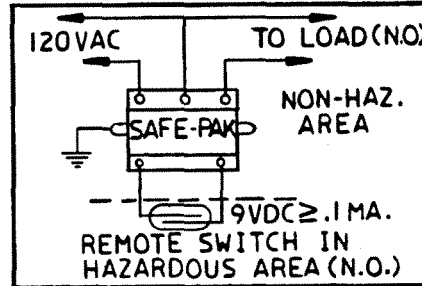
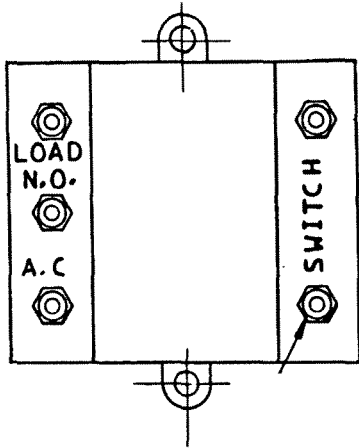

Graham T. Wand
Registered Professional Engineer
License Number E-0483



GTW:aah


PC #	QTY	PART NUMBER	DESCRIPTION
2	1	013461	WARNING TAG
3	1	A9005-045	TRAM CANOPY WARNING PLATE
4	1	A9005-054	WARN.PL.OPER.COMPARTMT
5	1	A9005-057	WARNING PLATE-
6	1	0005970195	NAMEPLATE
7	1	0005970235	NAME TAG-MOTOR ROTATION
8	1	0007220041	PLATE,DUST APPROVAL MSHA
9	1	0007220042	PLATE,ELECTRICAL APPROVAL
10	2	0017108005	LABEL
11	2	0017108006	LABEL
12	1	0017108007	NAME PLATE
13	1	0017108008	LABEL
14	2	0017108009	LABEL
15	1	0017108010	LABEL
16	2	0017108011	LABEL
17	2	0017108012	LABEL
18	1	0017108015	LABEL
19	2	0017108033	LABEL
20	1	0018487300	OPERATORS MANUAL
21	1	0018617000	DUPLEX FERRULE
22	2	002324800	RUBBER SEAT PADDING
23	4	4010520000	REDUCER REFLECTOR
24	4	4010804003	STOP
25	2	4010868021	NAME TAG
26	2	4010868022	NAME TAG
27	2	4010868024	NAME TAG
28	2	4011013001	TAG, CRADLE SWING
29	2	4011013002	TAG, SUPPORT ARM
30	2	4011013003	TAG, BOOM LIFT
31	2	4011013004	TAG, ROTATION
32	2	4011013007	TAG, CRADLE LIFT
33	1	4011013008	TAG, FORWARD TRAM
34	1	4011013009	TAG, CABLE REEL
35	2	4011013012	TAG, DRILL SUMP
36	1	4011013063	TAG, STEERING
37	1	4600512000	MOUNTING PLATE
38	152	9171006025	SCREW, DRIVE
39	1	9410000231	L/A DECAL
40	2	9410000034	LABEL, WARNING RO/DRILL STEEL
41	2	9410000036	LABEL, WARNING-TRAILING CABLE
42	2	9410000132	TAG, FAST FEED
43	220	9750500000	OIL, HYDRAULIC
44	110	9750500010	RI TAPE
45	1	9410000180	LABEL, WARNING
46	1	9410000181	LABEL, WARNING-MACHINE MODIF.
47	2	0017108013	WARNING TAG-FIRE SUPP.
48	1	470645	NAME PLATE, GAUGE

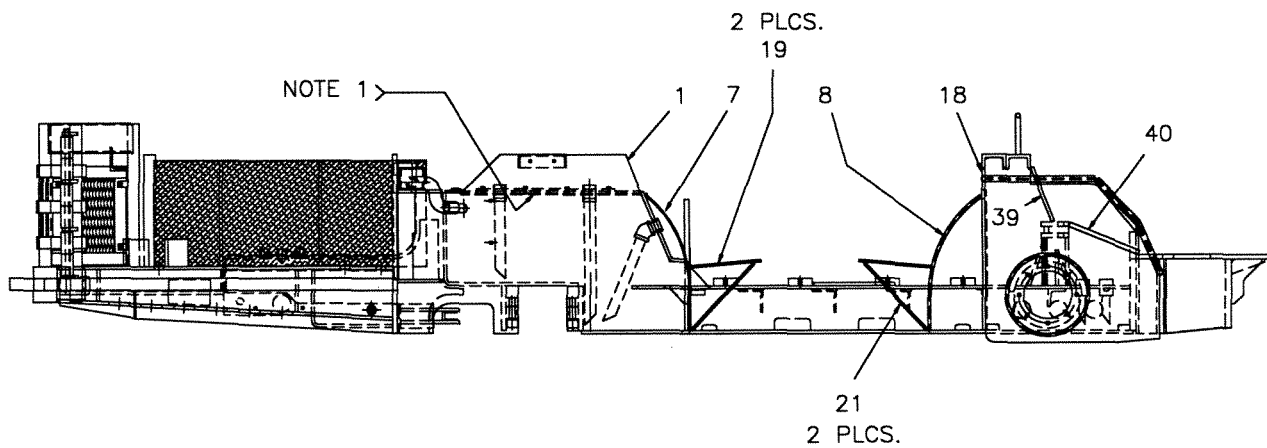
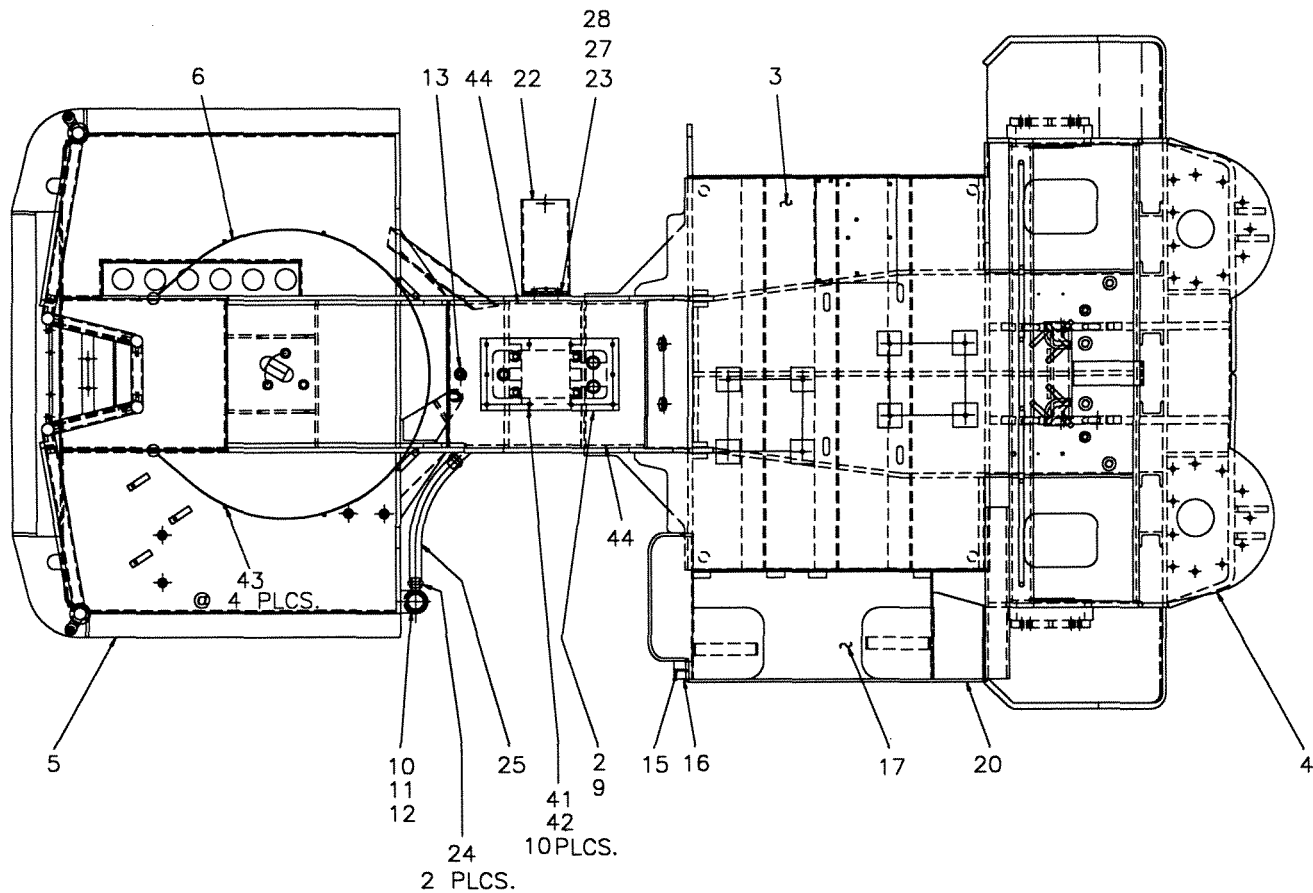
REV	A	SHT 5	OF 5
 LONG-AIRDOX			
PAINT, LUBE, & TAG PLACEMENT			
10/96	1-236000-029		



NOTES:

1. MAX. R.M.S. LOAD CURRENT IS 5 AMPS.
2. MAX. ON VOLTAGE DROP IS 2 VOLTS.
3. OPERATING VOLTAGE 95 VAC - 135 VAC, 50 OR 60 HZ.
4. SWITCH OPERATION IS NORMALLY OPEN, SPST, 9VDC \geq .1 MA.

REV. 10-80 42010	SHT. 1 OF 1
 LONG-AIRDOX	
INTRINSIC SAFE-PAK	
10-96	0-018926-000



P/N 8022003000

REV	F	SHT 1 OF 2
-----	---	------------

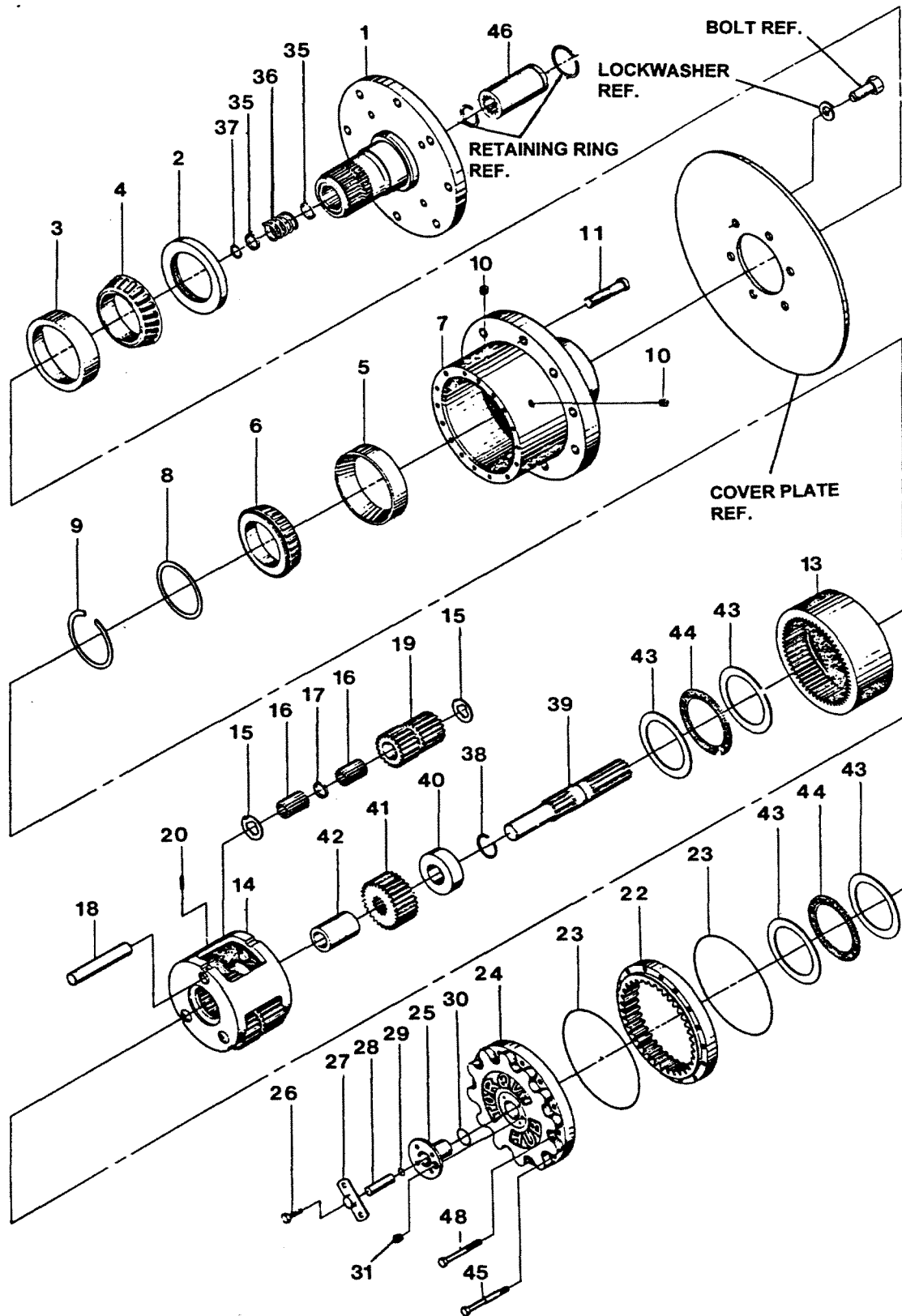



LONG-AIRDOX

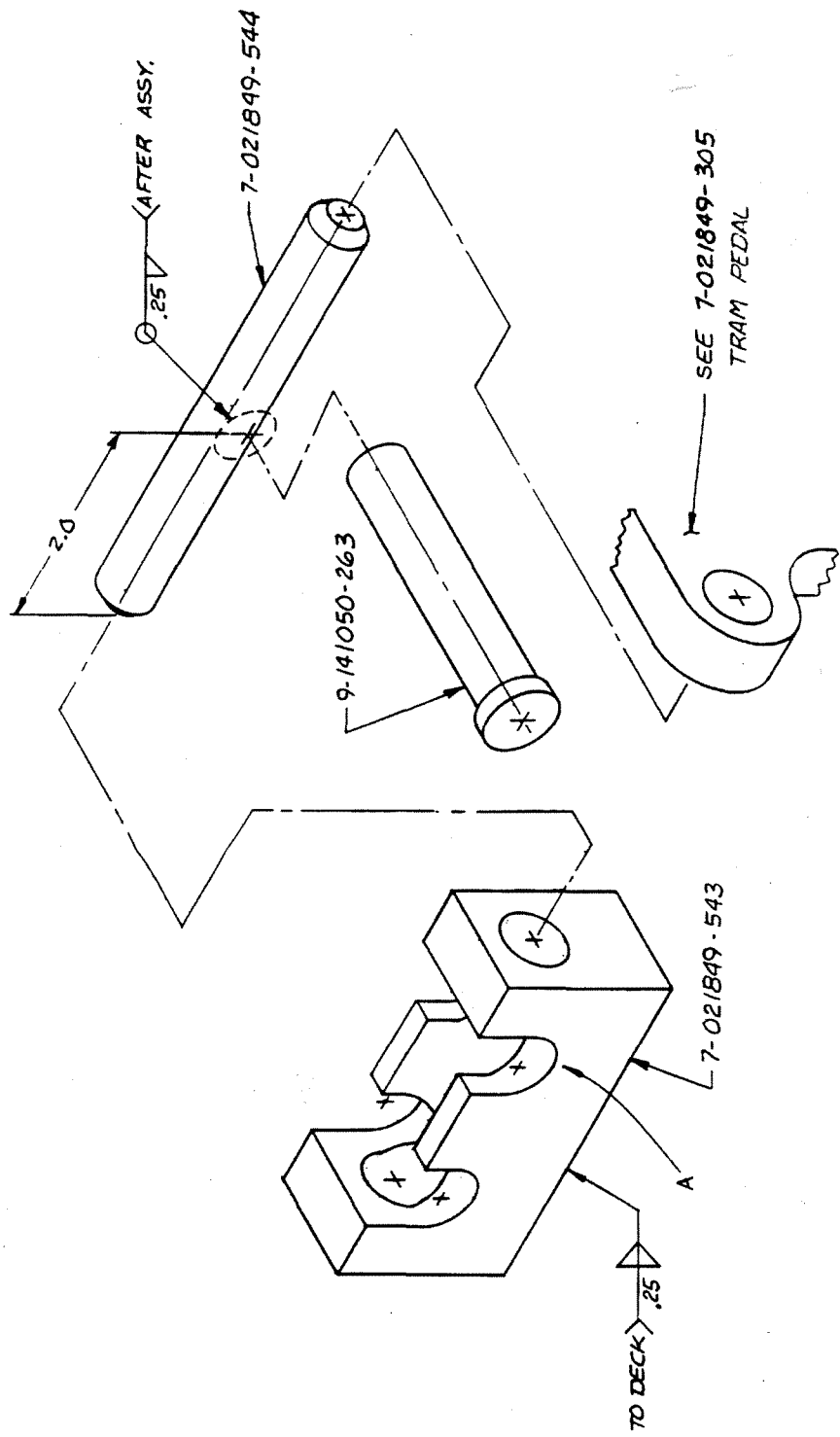
CHASSIS FRAME RB2-88
4' KING PIN CENTERS

5-98


8-022003-000

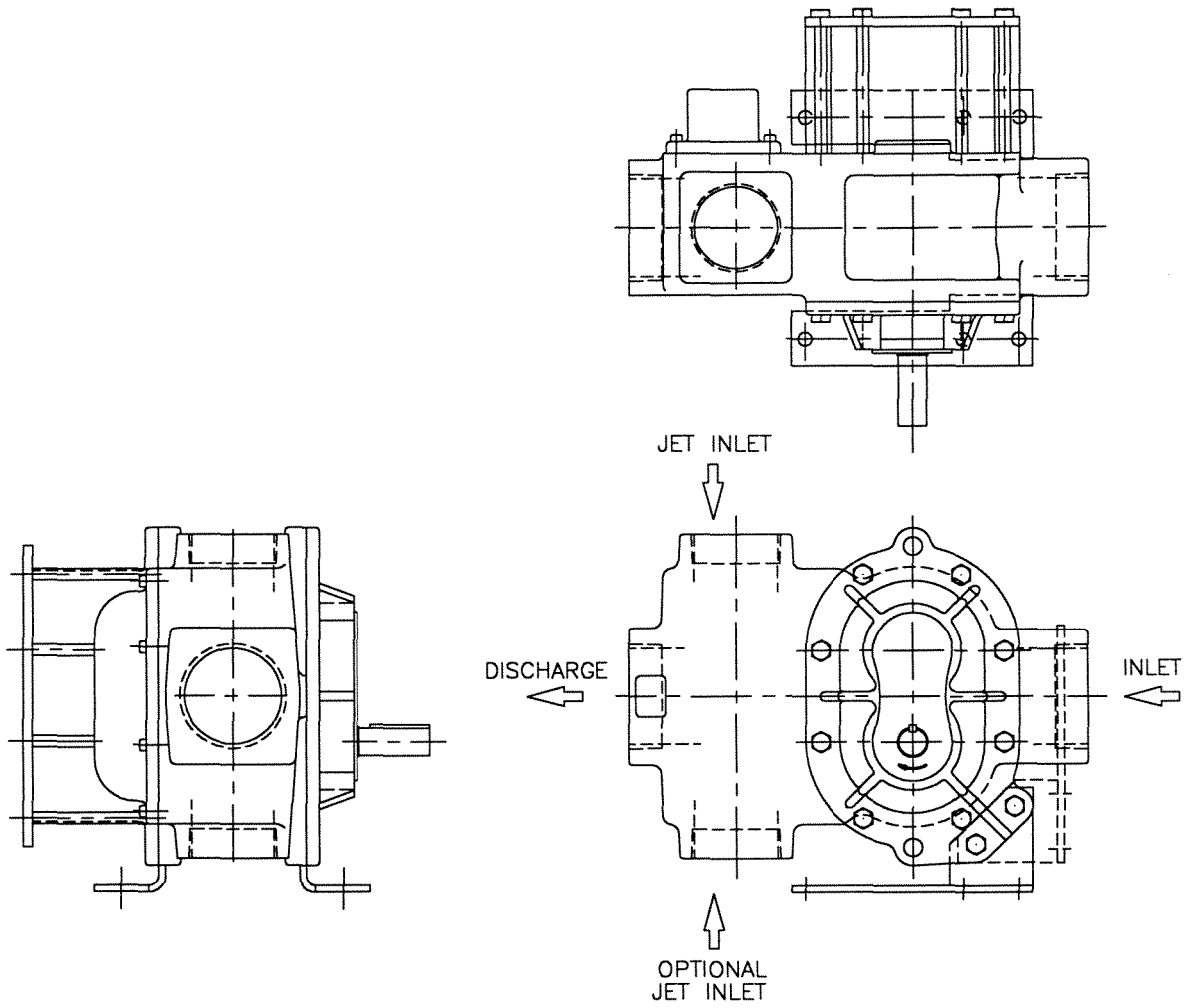



REV. 1/81 42693	SHT. 1 OF 2
 LONG-AIRDOX	
WHEEL DRIVE ASSEMBLY	
6-95	0-019216-000



NOTE:
 PIN #544 SHPULD ENGAGE HOLE IN
 #305 EAR WHEN #263 HANDLE IS IN SLOT "A".

REV. 7-85	SHT. 2 OF 2
	
HIGH TRAM LOCKOUT	
10-96	7-021853-002



REV	B	SHT 1	OF 1
 LONG-AIRDOX			
WHISPAIR BLOWER			
6/95	7-021785-100		

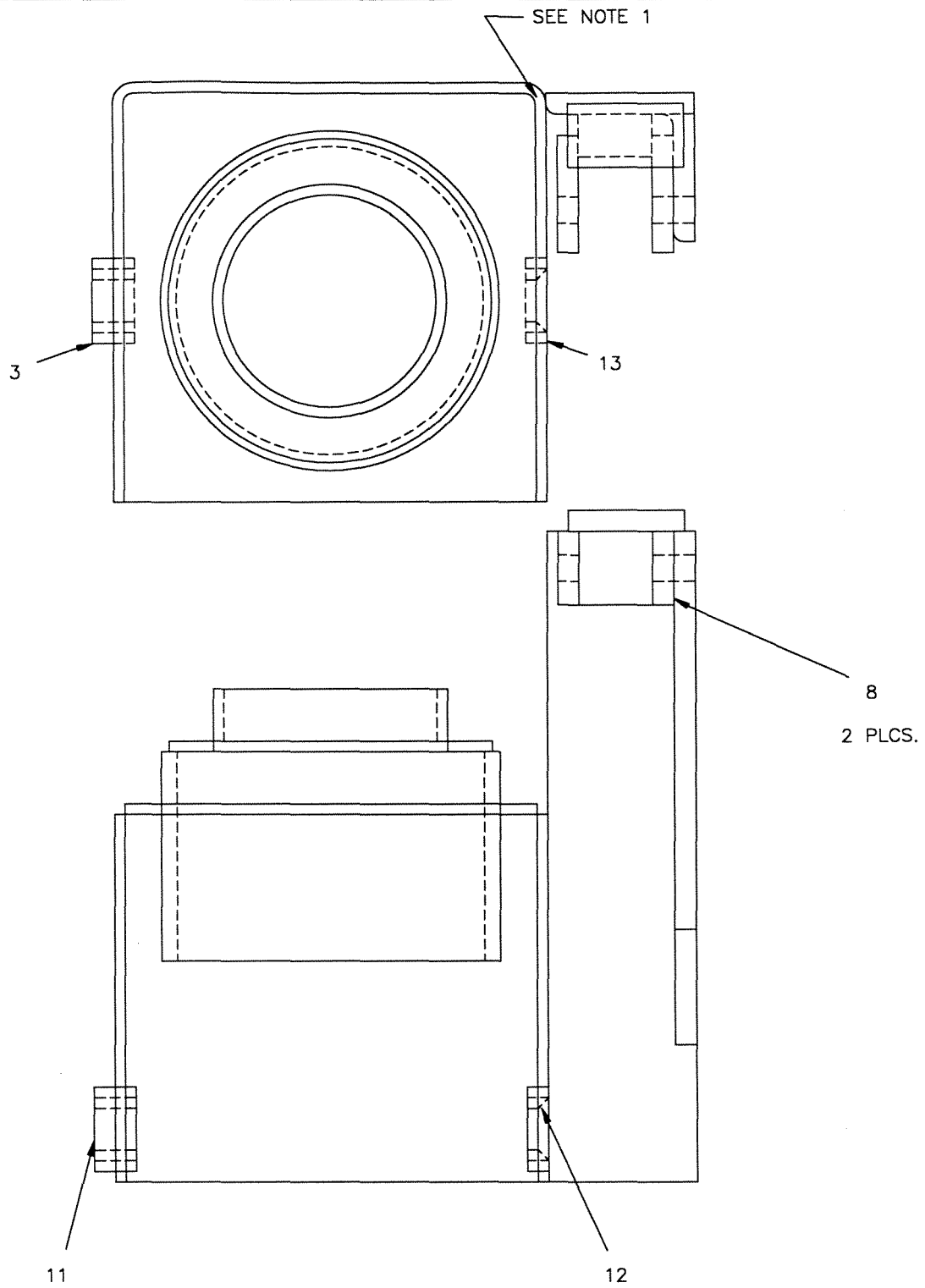
CLICK HERE TO **DOWNLOAD** THE COMPLETE MANUAL

- Thank you very much for reading the preview of the manual.
- You can download the complete manual from: www.heydownloads.com by clicking the link below



- Please note: If there is no response to CLICKING the link, please download this PDF first and then click on it.

CLICK HERE TO **DOWNLOAD** THE COMPLETE MANUAL



REF.	QUANTITY	PART NUMBER	DESCRIPTION
11	1	4007003002	BUSHING
12	1	470107-11	BUSHING

P/N 470108

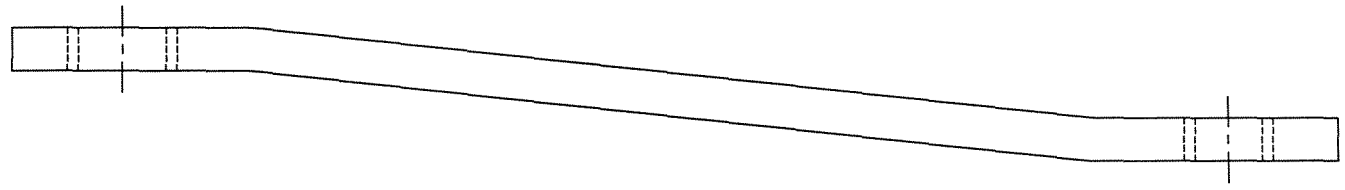
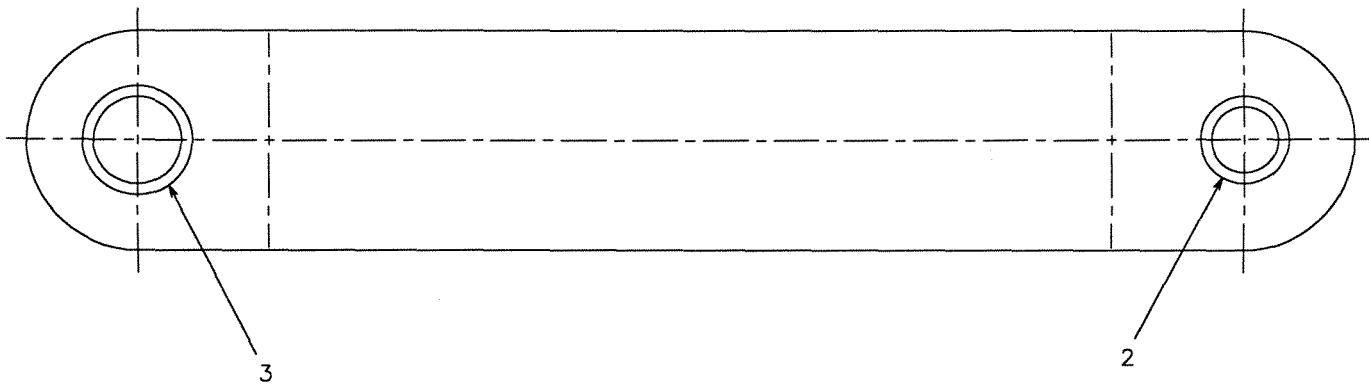
REV	H	SHT 1	OF 1
-----	---	-------	------




PRE-DUSTER WELDMENT
R.H.

5-98

470108




REF	QTY	PART NUMBER	DESCRIPTION
2	1	4-007003-000	BUSHING
3	1	4-007003-001	BUSHING

REV	A	SHT 1	OF 1
 LONG-AIRDOX			
RADIUS ARM ASSEMBLY			
10/96	4-007012-000		

REF.	QUANTITY	PART NUMBER	DESCRIPTION
1	1	013889X2-2	MAIN CASE
2	1	013889X2-1	BEARING CARRIER
3	1	013889X2-3	CARRIER TOP
4	1	470852	GEAR/STRAIGHT/BEVEL
5	1	013889-5	BEVEL GEAR
6	1	013889-6	BEVEL GEAR HUB
7	1	013889-7	SEAL CARRIER
8	1	013889-8	SEAL CARRIER
9	1	013889-9	COVER PLATE
10	1	013889X2-8	ALUMINUM SHIM PACK
11			
12			
13			
14	1	013889-14	SHIM
15	1	013889-15	SEAL SLEEVE
16	1	013889-16	DOWEL PIN
17	2	A4157-64	BEARING CONE
18	2	013889-18	BEARING CUP
19	1	013889-19	BEARING CONE
20	1	013889-20	BEARING CUP
21	1	013889-21	BEARING CONE
22	1	013889-22	BEARING CUP
23	1	013889-23	FACE SEAL
24	1	013889-24	LIP SEAL
25	1	013889-25	LIP SEAL
26	1	470853	NUT/STAKE/1.506-18
27	1		
28	1	013889-28	RELIEF FIT.
29	1	013889-29	PIPE PLUG
30	2	013889-30	PIPE PLUG
31	6	013889-31	BOLT
32	4	013889-32	BOLT
33	3	013889-33	BOLT
34	8	013889-34	BOLT
35	22	013889-35	LOCKWASHER
36	4	013889-36	LOCKWASHER
37	1	013889-37	O-RING
38	1	013889-38	O-RING
39	1	9-165000-254	O-RING SEAL
40	2	9-165000-262	O-RING SEAL
41	1	9-410000-051	NAMEPLATE
42	4	013889-39	DRIVE SCREW
43	1	470854	RETAINER/PLATE
44	11	013889-41	BOLT
45	1	013889-42	V-RING SEAL
46	1	013889-43	GREASE FITTING
47	1	111007X20	PIPE PLUG

P/N 470698X2

REV	#	SHT 2	OF 2
			
DRILL BOX			
3-98	470698-3		

CASE DRAIN
LOC. C

CASE DRAIN
LOC. B

ALT PORT "B"


☉ SHAFT

☉ PORTS

CASE DRAIN
LOC. A

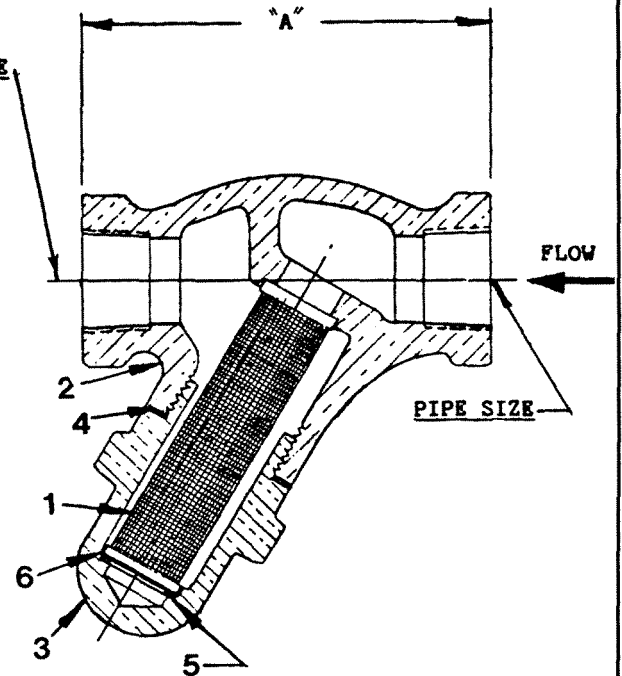
PORT "A"
TYP. FAR SIDE

DRAIN LOC.	DRAIN	PORT "B"	PORT "A"	PART NO.
B & C	.25 NPT	NONE	.75 NPT	4-010018-022
A	.25 NPT	NONE	.75 NPT	4-010018-021
A	.25 NPT	NONE	1.25 NPT	4-010018-020
B & C	.25 NPT	NONE	.75 NPT	4-010018-019
B & C	.25 NPT	NONE	.75 NPT	4-010018-016
A	.25 NPT	.75 NPT	NONE	4-010018-015
A	.25 NPT	.75 NPT	NONE	4-010018-013
NONE	NONE	.75 NPT	NONE	4-010018-010

REV	B	SHT 1	OF 1
 LONG-AIRDOX			
HYDRAULIC MOTOR W/4 BOLT MTG FLANGE			
6/95	4-010018-XXX		

SCREEN MESH	"A"	REMARKS	PIPE SIZE	PART NO.
325 MESH .0017" MONEL	2 5/8"	MANG. BRONZE BODY	3/8"	0-008213-000
60 MESH .007" MONEL WIRE SCREEN		MANG. BRONZE BODY	1"	0-008213-110
		MANG. BRONZE BODY	3/4"	0-008213-175
		MANG. BRONZE BODY	1/2"	0-008213-150
	2 5/8"	MANG. BRONZE BODY	3/8"	0-008213-137
	3 7/8"	BRASS BODY	1"	0-008213-100
	3 5/16"	BRASS BODY	3/4"	0-008213-075
	2 7/8"	BRASS BODY	1/2"	0-008213-050
	2 5/8"	BRASS BODY	3/8"	0-008213-037

PIPE SIZE



0-008213-037

REFERENCE	QUANTITY	PART NUMBER	DESCRIPTION
1.....	1.....	0-008213-531.....	SCREEN
2.....	1.....	0-008213-532.....	BODY
3.....	1.....	0-008213-533.....	CAP
4.....	1.....	0-008213-534.....	GASKET

0-008213-050

REFERENCE	QUANTITY	PART NUMBER	DESCRIPTION
1.....	1.....	0-008213-551.....	SCREEN
2.....	1.....	0-008213-552.....	BODY
3.....	1.....	0-008213-553.....	CAP
4.....	1.....	0-008213-554.....	GASKET
5.....	1.....	0-008213-555.....	SPRING

0-008213-075

REFERENCE	QUANTITY	PART NUMBER	DESCRIPTION
1.....	1.....	0-008213-571.....	SCREEN
2.....	1.....	0-008213-572.....	BODY
3.....	1.....	0-008213-573.....	CAP
4.....	1.....	0-008213-574.....	GASKET
5.....	1.....	0-008213-575.....	SPRING
6.....	1.....	0-008213-576.....	RETAINER

0-008213-100

REFERENCE	QUANTITY	PART NUMBER	DESCRIPTION
1.....	1.....	0-008213-501.....	SCREEN
2.....	1.....	0-008213-502.....	BODY
3.....	1.....	0-008213-503.....	CAP
4.....	1.....	0-008213-504.....	GASKET
5.....	1.....	0-008213-505.....	SPRING
6.....	2.....	0-008213-506.....	RETAINER

0-008213-137

REFERENCE	QUANTITY	PART NUMBER	DESCRIPTION
1.....	1.....	0-008213-531.....	SCREEN
2.....	1.....	0-008213-632.....	BODY
3.....	1.....	0-008213-533.....	CAP
4.....	1.....	0-008213-534.....	GASKET

REV. 11-69 23630 SHT. 1 OF 1




"Y" STRAINER

9-95

0-008213-XXX

EXTREME PRESSURE MOTOR BEARING GREASE AND HAND GREASE

	<u>LIMIT</u>	<u>TYPE</u>
NLG1 GRADE NUMBER 2		2
WORKED PENETRATION ASTM D-217	265/295	280
DROPPING POINT ASTM D-566	MIN. 350°F. (177°C)	373. (350°F. MIN.)
BOMB OXIDATION ASTM D-942	NOT MORE THAN 10 PSI DROP.	2.5
RUST INHIBITORS	REQUIRED	YES
WHEEL BEARING TEST ASTM D-1263 (6 HOURS @ 235°F.)	NOT MORE THAN 5% LOSS.	
WATER WASHOUT ASTM D-1264	LOSS NOT MORE THAN 5% @ 100°F. LOSS NOT MORE THAN 15% @ 175°F.	4.25 4.00
GREASE MOBILITY	NOT LESS THAN 0.1 GRAM FLOW PER SECOND @0°F.	
TIMKEN OK LOAD ASTM D-2509	NOT LESS THAN 50 LBS.	(50 LBS.)
FOUR BALL EP TEST ASTM D-2569	-LOAD WEAR INDEX NOT LESS THAN 30.0 -WELD POINT NOT LESS THAN 200 KG. MIN.	31 200
FOUR BALL WEAR TEST ASTM D-2266 (20KG., 1800 RPM, 130°F., ONE HOUR)	NOT MORE THAN 0.60 MM. SCAR DIAMETER.	0.44

REV	A	SHT 1 OF 2
 LONG-AIRDOX		
EXTREME PRESSURE MOTOR BEARING GREASE & HAND GREASE		
5/95	SPEC 100-3	

J.I.C.

HOSE ASSY.	SIZE	HOSE PART NO.	COUPLING P/N	QTY.	THREAD SIZE	W.P.
106***X9/16	3/8	105000X6	108000X6X4	2	9/16-18	4000
107***X2-3/4	1/2	105000X8	108000X8X8	2	3/4-16	3500
105***X7/16-1	1/4	105000X4	108000X2X4	2	7/16-20	5000
103***X2	3/16	124000X2	108000X1X4 OR 122000X2	2	3/8-24	-

HOSE ASSY.	SIZE	HOSE PART NO.	COUPLING P/N	QTY.	THREAD SIZE	W.P.
108***X2	3/4	105000X12	108000X12-2	2	1 1/16-12 UNF	2250
109***X2	1	105000X16	108000X16-2	2	1 5/16-12 UNF	2000
110***X2	1 1/4	105000X20	108000X20	2	1 5/8-12UNF	1625


HOSE ASSY.	SIZE	HOSE PART NO.	COUPLING P/N	QTY.	THREAD SIZE	W.P.
141***X12-1	3/4	105000X12-1	108000X12-2	2	1 1/16-12 UNF	4000
141***X16-1	1	105000X16-1	108000X16-2	2	1 5/16-12 UNF	4000
141***X20-1	1 1/4	105000X20-1	108000X20-1	2	1 5/8-12UNF	3000
141***X24-1	1 1/2	105000X24-1	108000X24-1	2	1 7/8-12UNF	2500
141***X32-1	2	105000X32-1	108000X32-1	2	2 1/2-12 UNF	2500

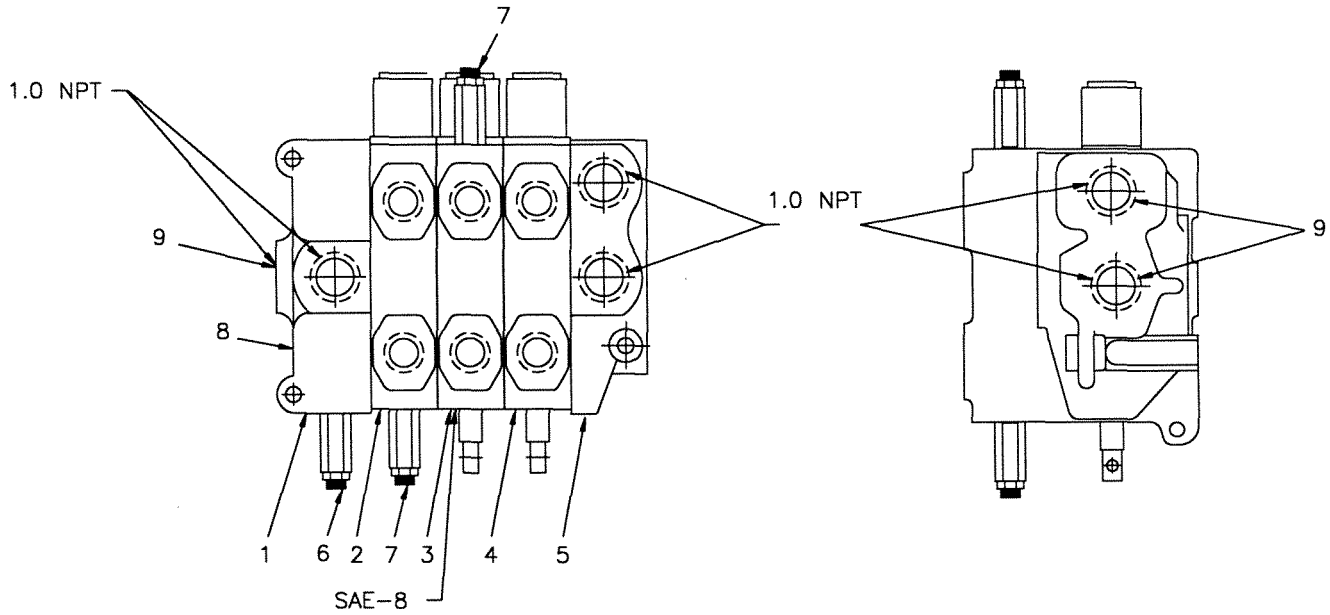
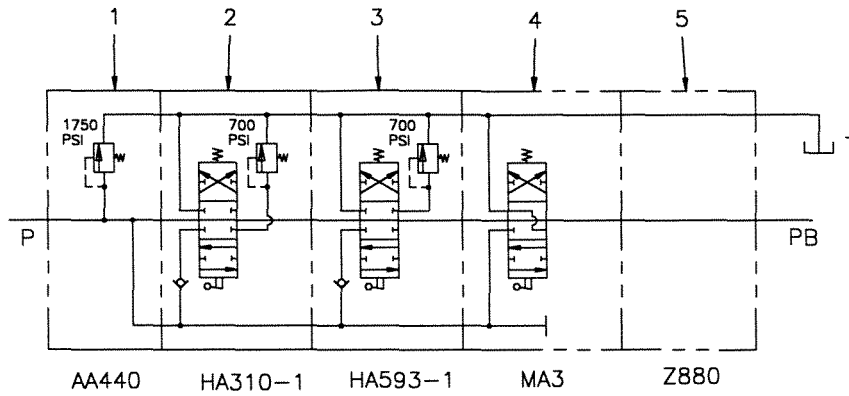
HOSE ASSY.	SIZE	HOSE PART NO.	COUPLING P/N	QTY.	THREAD SIZE	W.P.
141***X12-2	3/4	105000X12-5	108000X12-2	2	1 1/16-12 UNF	5000
141***X16-2	1	105000X16-5	108000X16-2	2	1 5/16-12 UNF	5000
141***X20-2	1 1/4	105000X20-5	108000X20-2	2	1 5/8-12UNF	5000
141***X24-2	1 1/2	105000X24-2	108000X24-2	2	1 7/8-12UNF	5000
141***X32-2	2	105000X32-2	108000X32-2	2	2 1/2-12 UNF	5000

PIPE

HOSE ASSY.	SIZE	HOSE PART NO.	COUPLING P/N	QTY.	THREAD SIZE	W.P.
105***X1	1/4	105000X4	109000X4	2	1/4" NPT	5000
106***X1	3/8	105000X6	109000X6	2	3/8" NPT	4000
107***X1	1/2	105000X8	109000X8	2	1/2" NPT	3500
108***X1	3/4	105000X12	109000X12-1	2	3/4" NPT	2250
109***X1	1"	105000X16	109000C16-1	2	1" NPT	2000
110***X1	1 1/4	105000X20	109000X20	2	1 1/4" NPT	1625

HOSE ASSY.	SIZE	HOSE PART NO.	COUPLING P/N	QTY.	THREAD SIZE	W.P.
138***X8-1	1/2	105000X8-1	109000X8-1	2	1/2" NPT	4000
138***X12-1	3/4	105000X12-1	109000X12-1	2	3/4" NPT	4000
138***X16-1	1	105000X16-1	109000X16-1	2	1" NPT	4000
138***X20-1	1 1/4	105000X20-1	109000X20-1	2	1 1/4" NPT	3000
138***X24-1	1 1/2	105000X24-1	109000X24-1	2	1 1/2" NPT	2500
138***X32-1	2	105000X32-1	109000X32-1	2	2" NPT	2500

REV	#	SHT 1 OF 1
 LONG-AIRDOX		
COMMON HOSE ASSEMBLIES		
2/96	FORM NO. H-001	



REF.	QUANTITY	PART NUMBER	DESCRIPTION
1	1	4-010014-378	INLET
2	1	4-010014-371	WORKING SECTION
3	1	9-510026-300	WORKING SECTION
4	1	9-510010-300	WORKING SECTION
5	1	H640X20-3	OUTLET
6	1	32006X5	MAIN RELIEF
7	2	9-510005-500	PORT RELIEF
8	4	0-022831-382	STUD ASSEMBLY
9	3	111007X16	PIPE PLUG

VALVE	OPERATION
1	INLET
2	SUPPORT ARM
3	CRADLE LIFT
4	SWING
5	OUTLET

ALL PORTS .75-NPT
UNLESS OTHERWISE
NOTED.

P/N 410863X1

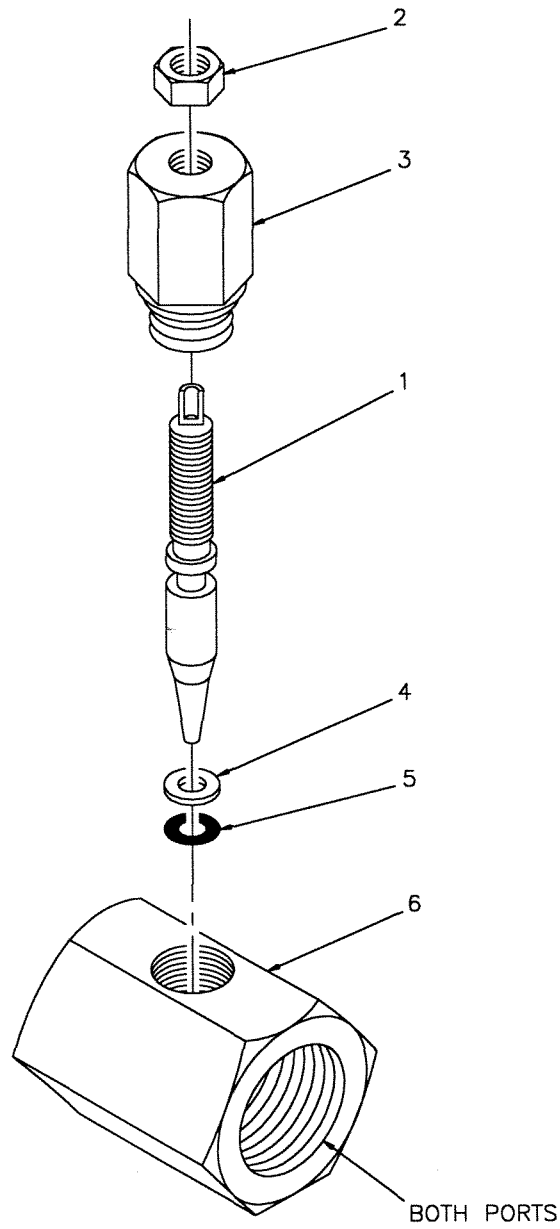
REV	A	SHT 1	OF 1
-----	---	-------	------




VALVE BANK (LH)

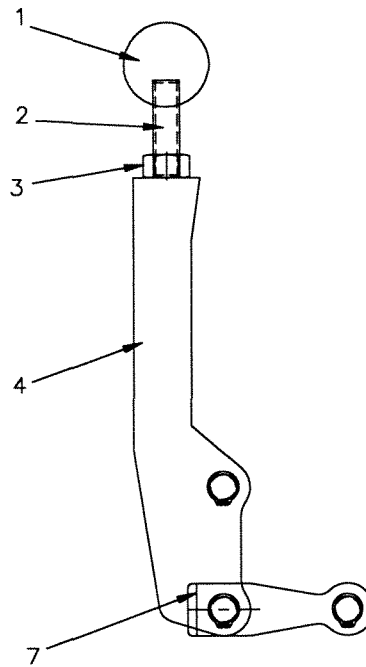
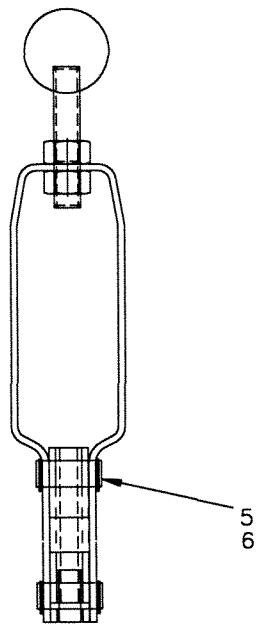
6-98

410863-1




REF	QTY	PART NUMBER	DESCRIPTION
1	1	0-011444-515	NEEDLE
2	1	0-011444-516	LOCKNUT
3	1	0-011444-517	HOUSING
4	1	0-011444-518	BACK-UP WASHER
5	1	9-165000-008	O-RING
6	1	0-011445-510	BODY

CAT	#	SHT 1	OF 1
 LONG-AIRDOX			
NEEDLE VALVE			
7/96	0-011445-025		



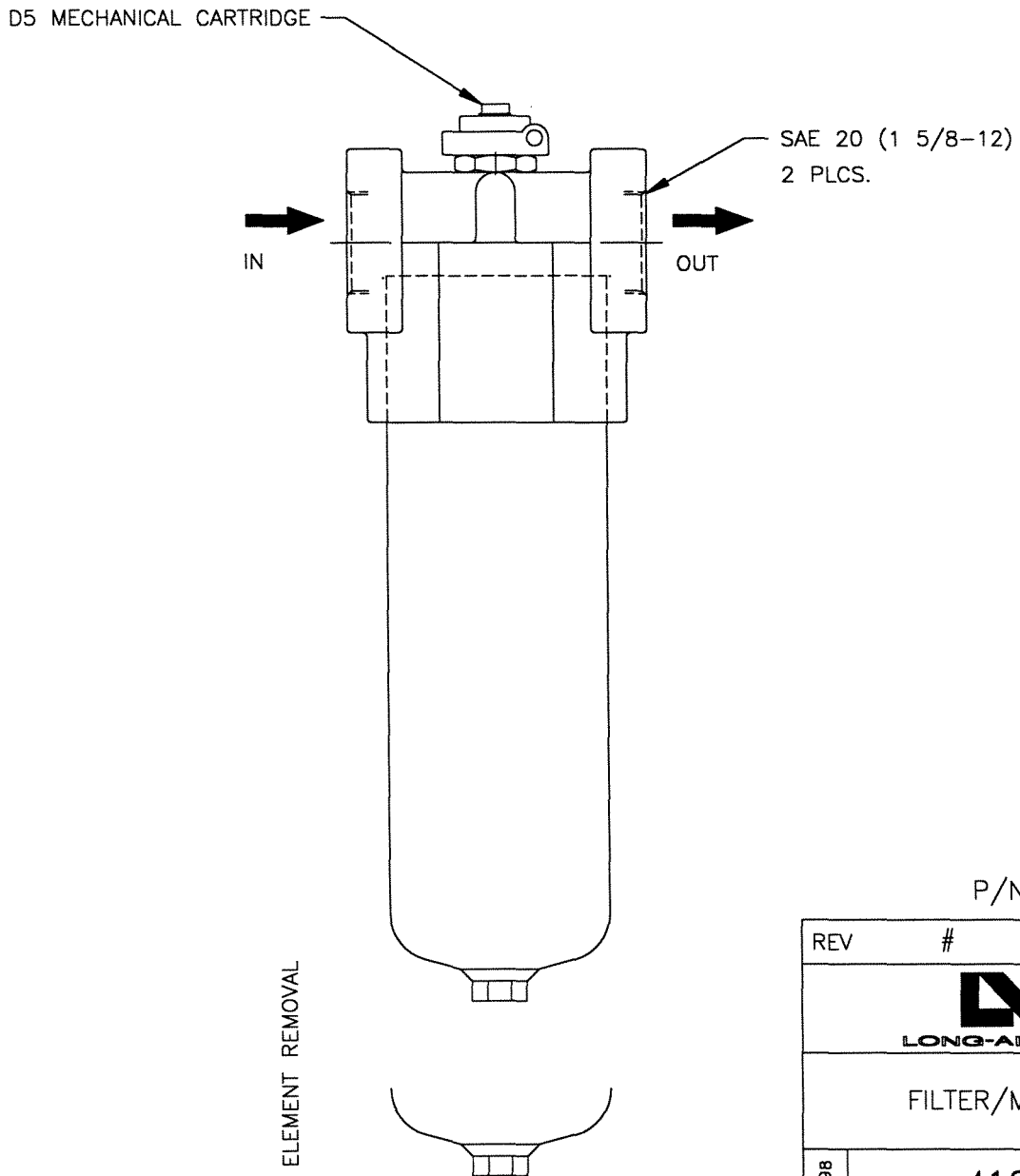
REFERENCE	QUANTITY	PART NUMBER	DESCRIPTION
1	REF.	4010093504	KNOB
2	REF.		.38-24 UNF x 2.00
3	REF.	S9-6	NUT, 3/8-24UNF
4	REF.	4010093516	BASE, HANDLE
5	REF.		PIN
6	REF.		RETAINER
7	REF.	4-010093-300	LINKAGE KIT

REV	C	SHT 1	OF 1
 LONG-AIRDOX			
VALVE HANDLE			
7/97	4-010093-014		


FILTER
 MEDIUM PRESSURE-7 MICRON

SPECIFICATIONS:

1. FLOW RATING: 70 GPM FOR SIZE 20 PORT HOUSING
2. PRESSURE RATING: 800 P.S.I. MAX. OPERATING PRESSURE
3. BYPASS VALVE SETTING: FOR SIZE 20 PORT HOUSING
 CRACKING 30 PSI, FULL FLOW 45 P.S.I.
4. COMPATIBILITY: ALL PETROLEUM BASED HYDRAULIC FLUID.
 CONTACT FACTORY FOR USE WLITH OTHER FLUIDS.
5. MINIMUM WEIGHT: 6.25 LBS. (2.8 Kg.)



P/N 410839

REV	#	SHT 1	OF 1
			
FILTER/MEDIUM			
5-98	410839		

CLICK HERE TO **DOWNLOAD** THE COMPLETE MANUAL

- Thank you very much for reading the preview of the manual.
- You can download the complete manual from: www.heydownloads.com by clicking the link below



- Please note: If there is no response to CLICKING the link, please download this PDF first and then click on it.

CLICK HERE TO **DOWNLOAD** THE COMPLETE MANUAL