



Parts Catalog

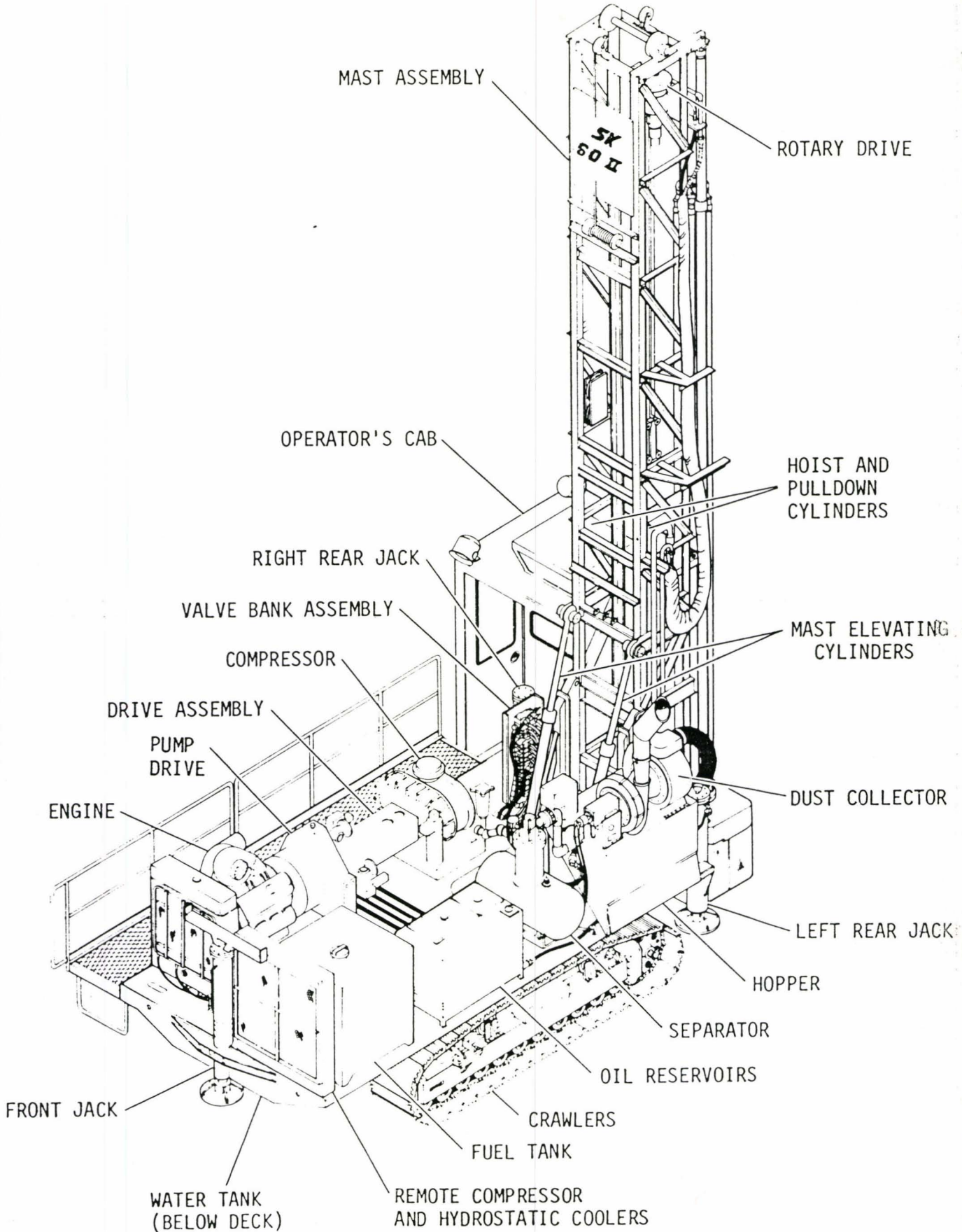
CLICK HERE TO **DOWNLOAD** THE COMPLETE MANUAL

- Thank you very much for reading the preview of the manual.
- You can download the complete manual from: www.heydownloads.com by clicking the link below



- Please note: If there is no response to CLICKING the link, please download this PDF first and then click on it.

CLICK HERE TO **DOWNLOAD** THE COMPLETE MANUAL



D) Heavy Duty Multi-Purpose Gear Lube - Synthetic (Continued)

Flash Point ⁰F 450⁰F
SAE 75 @ 0⁰F
SAE 90 @ 210⁰F
Oils approved for use:
Mobil SHC626

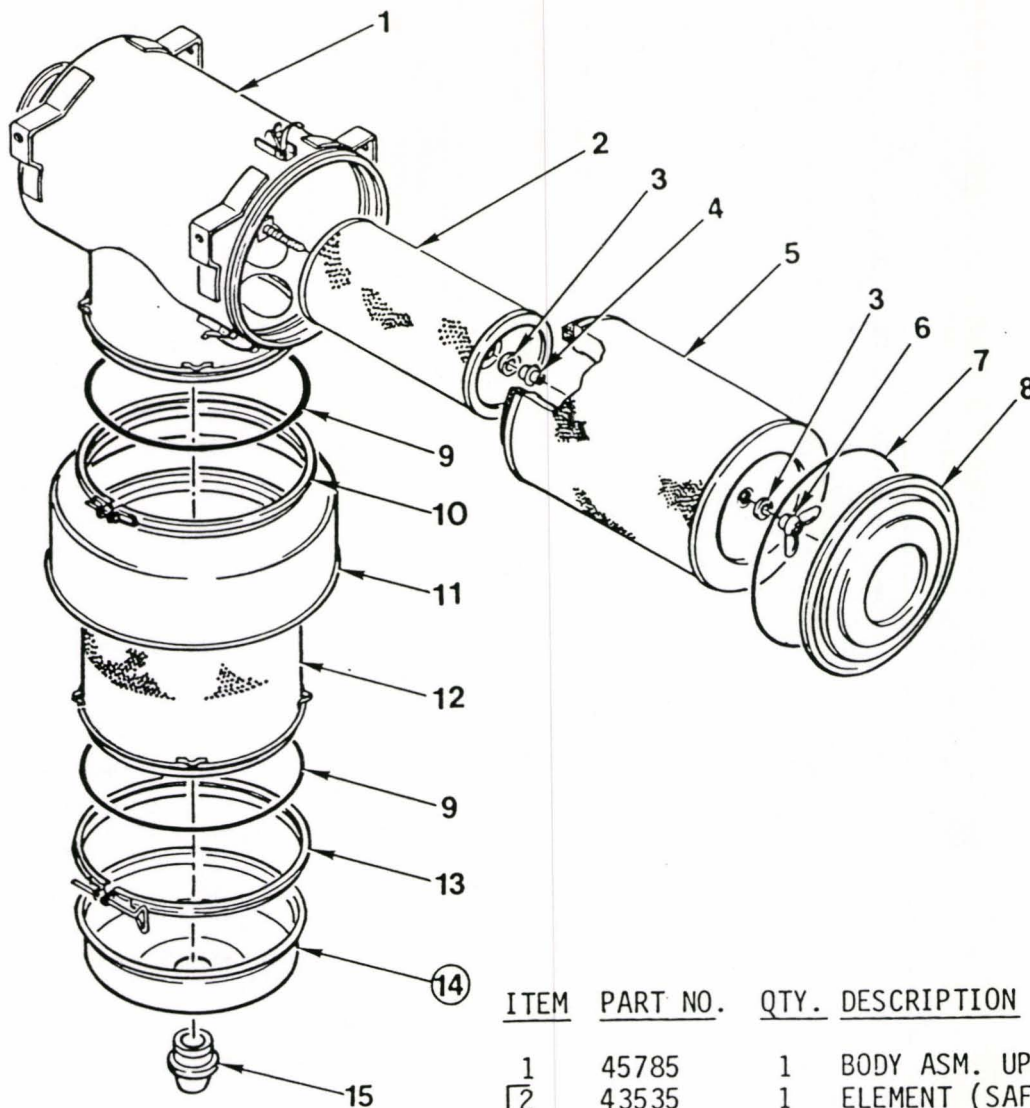
Lubricating Grease - Use SAE designation MPGM which contains 3 - 5% Molybdenum Disulfide conforming to MIL-M-7866 and a suitable corrosion inhibitor.

NLGI Grade No. 2 is suitable for most temperatures. Use NLGI No. 1 or 0 for extremely low temperatures.

Gear Lube - Use any oil which meets EP gear lubricant Spec. MIL-L-2105C or API-GL-5 of SAE J308C.

Ambient Temperature:	Grade
-10 ⁰ F to 100 ⁰ F	80 to 90
Above 100 ⁰ F	140

ASSEMBLY - 45167 HORIZONTAL
VERTICAL



ITEM	PART NO.	QTY.	DESCRIPTION
1	45785	1	BODY ASM. UPPER
2	43535	1	ELEMENT (SAFETY)
3	45786	2	GASKET
*4	45787	1	NUT
5	43534	1	ELEMENT (PRIMARY)
6	45788	1	NUT-WING
7	45789	1	O-RING (COVER)
8	45790	1	COVER ASSEMBLY
9	45791	2	O-RING
10	45794	1	CLAMP ASSEMBLY
11	44478	1	SHROUD ASSEMBLY
12	45792	1	BODY ASSEMBLY - LOWER
13	45793	1	CLAMP ASSEMBLY-DUST CUP
(14)	44479	1	DUST CUP-HORIZONTAL
	45450	1	DUST CUP-VERTICAL
15	43622	1	VALVE-VACUATOR

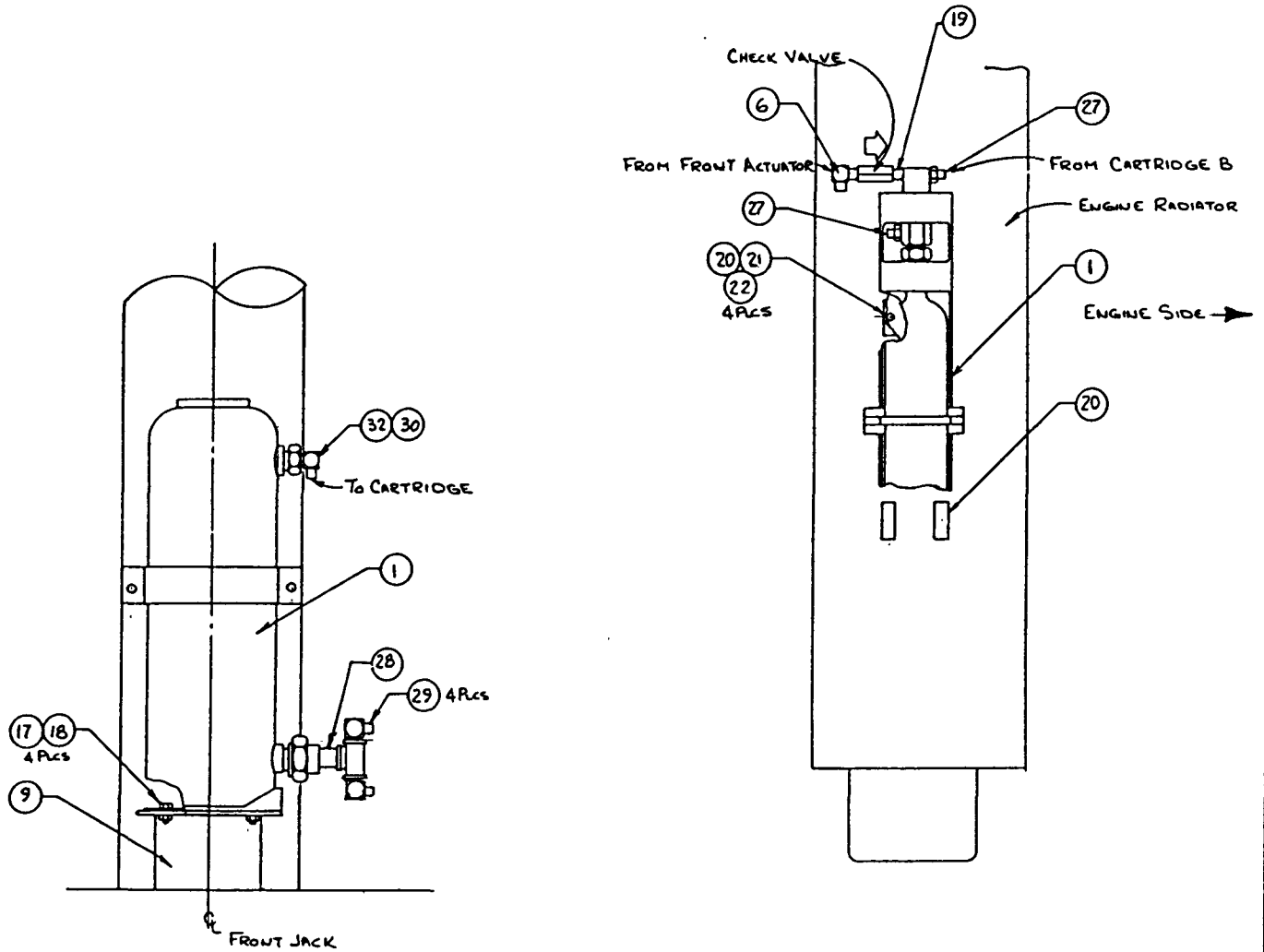
*22085-FILTER KIT

ASSEMBLY 64690 REV A

EFFECTIVE S/N: 1066119

<u>ITEM</u>	<u>PART NO.</u>	<u>QTY.</u>	<u>DESCRIPTION</u>
1	64689	1	INSTRUMENT PANEL (LESS ATTACHMENTS)
2	-----		
3	33986	3	PRESSURE GAUGE - 0 - 3000
4	33985	1	PRESSURE GAUGE - 0 - 7500
5	40392	2	PRESSURE GAUGE - 0 - 160
6	16900	2	HOURLY METER GAUGE
7	32403	1	FUEL GAUGE
8	61289	1	VOLTMETER GAUGE
**9	*59270	2	TEMPERATURE GAUGE
***10	*59271	1	OIL PRESSURE GAUGE
11	59274	2	TEMPERATURE GAUGE
12	64699	1	FILTER INDICATOR
13	57797	2	WARNING LAMP
14	57493	REF.	DIGITAL TACHOMETER (OPTIONAL) - <i>Drilling Tach</i>
15	*	1	TACHOMETER - <i>Engine Tach</i>
16	42259	2	PUSH BUTTON SWITCH
17	65226	1	TOGGLE SWITCH
18	16864	1	IGNITION SWITCH
19	64790	1	DECAL - INSTRUMENT PANEL
20	37816	6	ADAPTER - 90°
21	31804	2	ADAPTER - 90°

* SEE "WIRING DIAGRAM" SECTION 9 - *pg 3 item 45*
 ** 59272 - GAUGE WITH SENDER
 *** 59273 - GAUGE WITH SENDER



DETAIL-N

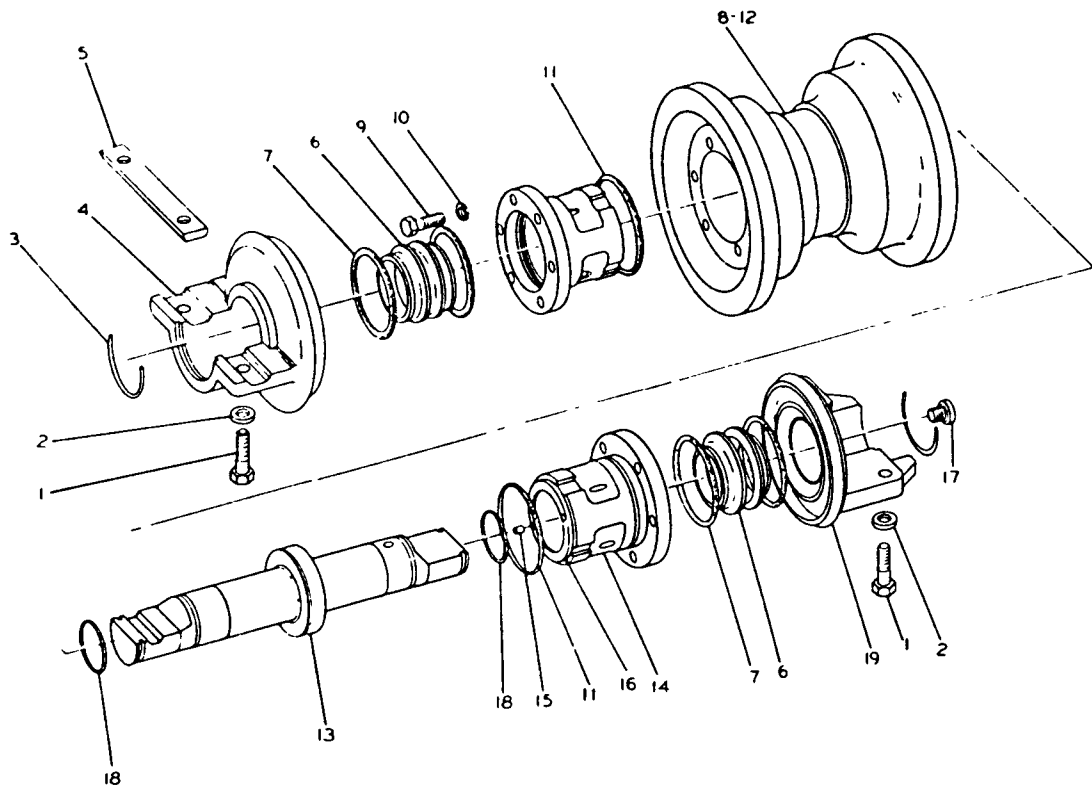
REF 61565

NOTE: QUANTITIES OF ITEMS 1 THRU 49 ARE FOR ONE CRAWLER ASSEMBLY.

ITEM	PART NO.	QTY.	DESCRIPTION
*1	55336	1	TRACK ASSEMBLY - 54 SECTION W/30 IN SHOE AND CONNECTORS
2	55750	1	TRACK ADJUSTER IDLER YOKE
3	64248	1	TRACK DRIVE SPROCKET
4	55936	1	TRACK RELEASE MECHANISM (REF THIS SEC)
5	**	1	TRACK GEARBOX (REF THIS SEC)
6	42751	16	CAPSCREW
7	35799	16	CAPSCREW
8	56004	4	NUT-HEX
9	55932	8	WASHER
****10	55338	13	TRACK ROLLER ASSY (REF THIS SEC)
11	55998	2	CAPSCREW
12	56000	52	WASHER
13	56008	26	NUT-HEX
14	56009	26	WASHER
15	55994	13	THREADED BAR
16	55996	13	TUBING
17	42737	26	CAPSCREW
18	49149	30	WASHER
19	55975	1	RIGHT REAR GUIDE (WELDMENT)
20	55976	1	LEFT REAR GUIDE (WELDMENT)
21	55980	2	REAR WEAR BAR
22	55337	1	MOUNTING IDLER
23	***	1	TRACK FRAME
24	55981	4	MIDDLE WEAR BAR
25	55978	2	MIDDLE RIGHT GUIDE (WELDMENT)
26	55977	2	MIDDLE LEFT GUIDE (WELDMENT)
27	56007	48	CAPSCREW
28	55185	48	WASHER
29	55785	50	HARDENED WASHER
30	55973	1	FRONT LEFT GUIDE (WELDMENT)
31	55974	1	FRONT RIGHT GUIDE (WELDMENT)
32	55979	2	FRONT WEAR BAR
33	63928	2	TRACK TAPPED BAR
34	63929	2	TRACK TAPPED BAR
35	56513	4	CAPSCREW
36	42743	4	CAPSCREW
37	55624	1	BRAKE (REF THIS SEC)
38	-----		
39	63915	1	SPRING GUIDE BAR
40	63914	1	RETAINER SPRING BLOCK
41	36214	2	CAPSCREW
42	5975	2	WASHER-LOCK-CUT
43	63930	2	TRACK TAPPED BAR
44	5929	1	GREASE FITTING

30 IN. SHOE - REF. 64240 -L.H./ 64239 - R.H.

ASSEMBLY 55338



ITEM	PART NO.	QTY.	DESCRIPTION
1	-----	4	BOLT
2	-----	4	WASHER
3	58461	2	RING
4	58462	1	COLLAR
5	58463	1	LOCK
6	58442	2	SEAL GROUP
7	58443	2	RING (INCLUDED IN ITEM 6)
8	58464	1	RIM
9	-----	12	BOLT
10	-----	12	LOCKWASHER
11	58465	2	SEAL
12	-----	2	PLUG
13	58466	1	SHAFT
14	58467	2	BUSHING ASSEMBLY
15	58468	2	PIN (INCLUDED IN ITEM 14)
16	58469	1	BEARING (INCLUDED IN ITEM 14)
17	-----	1	PLUG
	58449	1	SEAL
18	58470	2	SEAL
19	58471	1	COLLAR

ASSEMBLY 64144

EFFECTIVE S/N: 1066119

<u>ITEM</u>	<u>PART NO.</u>	<u>QTY.</u>	<u>DESCRIPTION</u>
*** 1	-----	1	OIL SEAL
*** 2	-----	1	RETAINING RING
*** 3	-----	1	RETAINING RING
*** 4	-----	1	BALL BEARING
5	-----	1	BLEEDER SCREW
6	-----	1	POWER PLATE
7	-----	1	BEARING CARRIER
8	-----	4	SPRING PIN
** 9	-----	6	ROTATING LINED DISC
**10	-----	5	ROTATING UNLINED DISC
***11	-----	8	DISC SPRING
**12	-----	4	COMPRESSION SPRING
13	-----	1	DRIVE CUP HUB
***14	-----	2	BALL BEARING
15	-----	3	PIPE PLUG
16	-----	1	HOUSING
17	-----	2	LOCKWASHER
18	-----	2	BOLT - HEX HEAD
***19	-----	1	BALL BEARING
20	-----	1	SPLINED SHAFT
***21	-----	1	ROLLER BEARING
**22	-----	4	COMPRESSION SPRING
**23	-----	4	RETAINING RING
24	-----	4	PIN
25	-----	1	PISTON THRUST PLATE
*26	-----	1	O-RING
*27	-----	1	O-RING
28	-----	1	PISTON
*29	-----	6	O-RING
*30	-----	1	O-RING
31	-----	1	PROTECTIVE PLUG
****32	-----	2	GASKET

*22208 - "O" RING KIT CONSISTS OF ITEMS 26,27,29,30

**22209 - STACK KIT CONSISTS OF ITEMS 9, 10, 12, 22, 23

***22210 - BEARING KIT CONSISTS OF ITEMS 1, 2, 3, 4, 11, 14, 19, 21

****22211 - GASKET KIT CONSISTS OF ITEMS 32

META DATA FILE: BI010 2 6 7 -00

****INSERT 11X17 DRAWING(S)****

BI010 2 6 7 -00 2B

Pages 5

EFFECTIVE S/N: 1066119

<u>ITEM</u>	<u>PART NO.</u>	<u>QTY.</u>	<u>DESCRIPTION</u>
1	63701	6	WALKWAY SUPPORT
2	64044	1	WALKWAY SUPPORT
3	64039	1	RIGHT HANDRAIL
4	63693	1	ANGLE
5	64060	1	ANGLE
6	63694	1	ANGLE
7	63696	4	ANGLE
8	63695	2	ANGLE
9	65408	1	WALKWAY SUPPORT
10	63697	9	BAR
11	63698	1	GRATING
12	63699	1	GRATING
13	62647	1	GRATING
14	64061	1	GRATING
15	64058	1	TOE BOARD ANGLE
16	49038	1	HAND GRAB RAIL
17	54295	8	TUBING
18	63704	17	ANCHOR
19	5994	17	CAPSCREW
20	5975	17	WASHER - CUT LOCK
21	5973	17	NUT - HEX
22	7799	8	CAPSCREW - HEX HD
23	5984	8	WASHER - CUT LOCK
24	42629	8	WASHER - FLAT
25	42630	8	WASHER - FLAT
26	5978	8	NUT - HEX
27	19750	1	CHAIN-32 LINKS
28	19733	1	CHAIN SNAP (DOUBLE)
29	31743	1	U BOLT
30	6293	4	NUT - ELASTIC STOP
31	65407	1	WALKWAY SUPPORT BLOCK

REF 65049 REV A

ASSEMBLY 61389

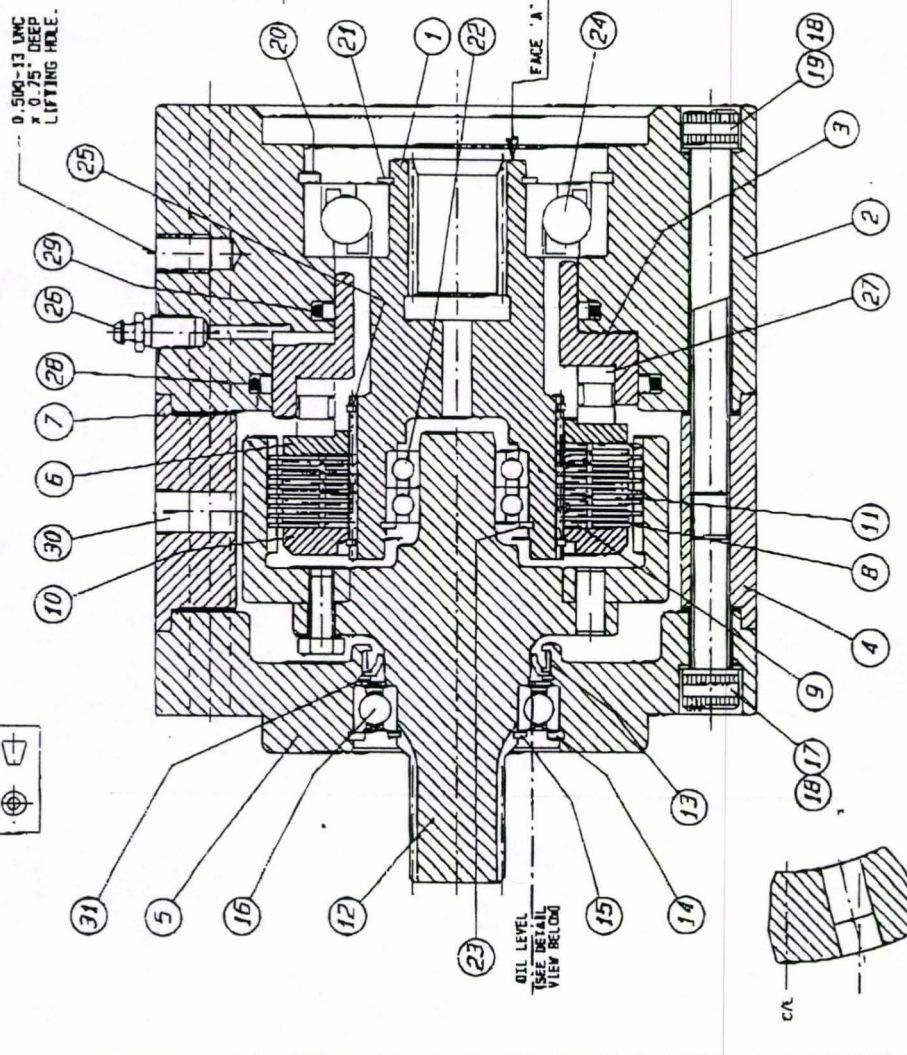
<u>ITEM</u>	<u>PART NO.</u>	<u>QTY.</u>	<u>DESCRIPTION</u>
1	61366	1	FUEL TANK WELDMENT
2	61392	1	SIPHON ADAPTER
3	61423	1	FUEL SENDER
4	-----		
5	-----		
6	34856	1	ADAPTER - 90°
7	6719	2	PLUG - SQ HD - 3/4 IN
8	8296	2	PLUG - SQHD - 2 IN
9	8333	1	REDUCER - 3/4 X 3/8
*10	44037	1	FUEL TANK CAP

*PART OF FUEL TANK WELDMENT ITEM 1

EFFECTIVE S/N: 1066119

<u>ITEM</u>	<u>PART NO.</u>	<u>QTY.</u>	<u>DESCRIPTION</u>
22	56969	1	DRIVE SHAFT LEFT COVER
23	51428	2	SUPPORT COVER BAR
24	56985	2	DRIVE SHAFT SAFETY RETAINER
25	33336	1	ADAPTER - 90°
26	33341	2	ADAPTER - STR
27	56991	1	HEATER HOSE - 72 IN
28	16890	2	HOSE CLAMP
29	17783	1	SHUT OFF VALVE
30	56989	2	FUEL HOSE
31	16888	2	HOSE CLAMP
32	58714	1	HOSE ASSEMBLY - 173 IN.
33	35493	1	ADAPTER - STR
34	8314	1	STREET ELBOW - 90°
35	47907	1	HOSE ASSEMBLY
36	34847	1	ADAPTER - STR
37	61135	6	ISOLATION MOUNT
38	11141	6	CAPSCREW - HX HD
39	55785	6	WASHER - FLAT - HARDENED
40	63240	6	NUT - HEX
41	61136	6	MOUNT SNUBBING WASHER
42	42737	12	CAPSCREW - HX HD
43	58357	12	NUT - HEX
44	49149	12	WASHER - FLAT - HARDENED

REF 64564




ITEM	DESCRIPTION	PART NUMBER	QTY
1	INPUT SHAFT		1
2	CYLINDER		1
3	PISTON		1
4	SPACER - HOUSING		1
5	END PLATE		1
6	THRUST PLATE		1
7	GASKET (MODIFIED)	VO11054	2
8	OUTER PLATE	VO11055	8
9	RELEASE DISC SPRING	VO11056	8
10	END FLANGE		1
11	INNER PLATE	VO11057	7
12	Hub / DRIVE RING (SUB-ASSY)	VO11058	1
13	ROTARY SEAL		1
14	INTERNAL CIRCLIP 68mm		1
15	EXTERNAL CIRCLIP 38mm		1
16	DEEP GROOVE BALL BEARING	VO11059	1
17	SEC HOUS CAP SCREW 1/2" UNC x 1.50" L.		4
18	SAFETY WASHER 1/2"	VO11060	4
19	SEC HOUS CAP SCREW 1/2" UNC x 1.50" L.		4
20	INTERNAL CIRCLIP 100mm		1
21	EXTERNAL CIRCLIP 45mm		1
22	DEEP GROOVE BALL BEARING	VO11061	2
23	INTERNAL CIRCLIP 47mm		1
24	ANGULAR CONTACT BEARING	VO11062	1
25	EXTERNAL SNAP RING 68mm		2
26	BLEED NIPPLE 7/16" UNF	VO11063	1
27	AXIAL ROLLER BEARING	VO11064	1
28	ROD SEAL		1
29	ROD SEAL	VO11065	1
30	PIPE PLUG 1/4 NPTF		4
31	RETAINING RING		1
32	GASKET	VO11066	2
33	O-RING	VO11067	2

ITEMS 32 & 33 SUPPLIED AS LOOSE ITEMS FOR INSTALLATION.

① DENOTES RECOMMENDED SPARE

Clutch Assembly # VO11024

Replaces 64144



REEDRILL™
 P.O. Box 998
 Sherman, TX 75091-0998

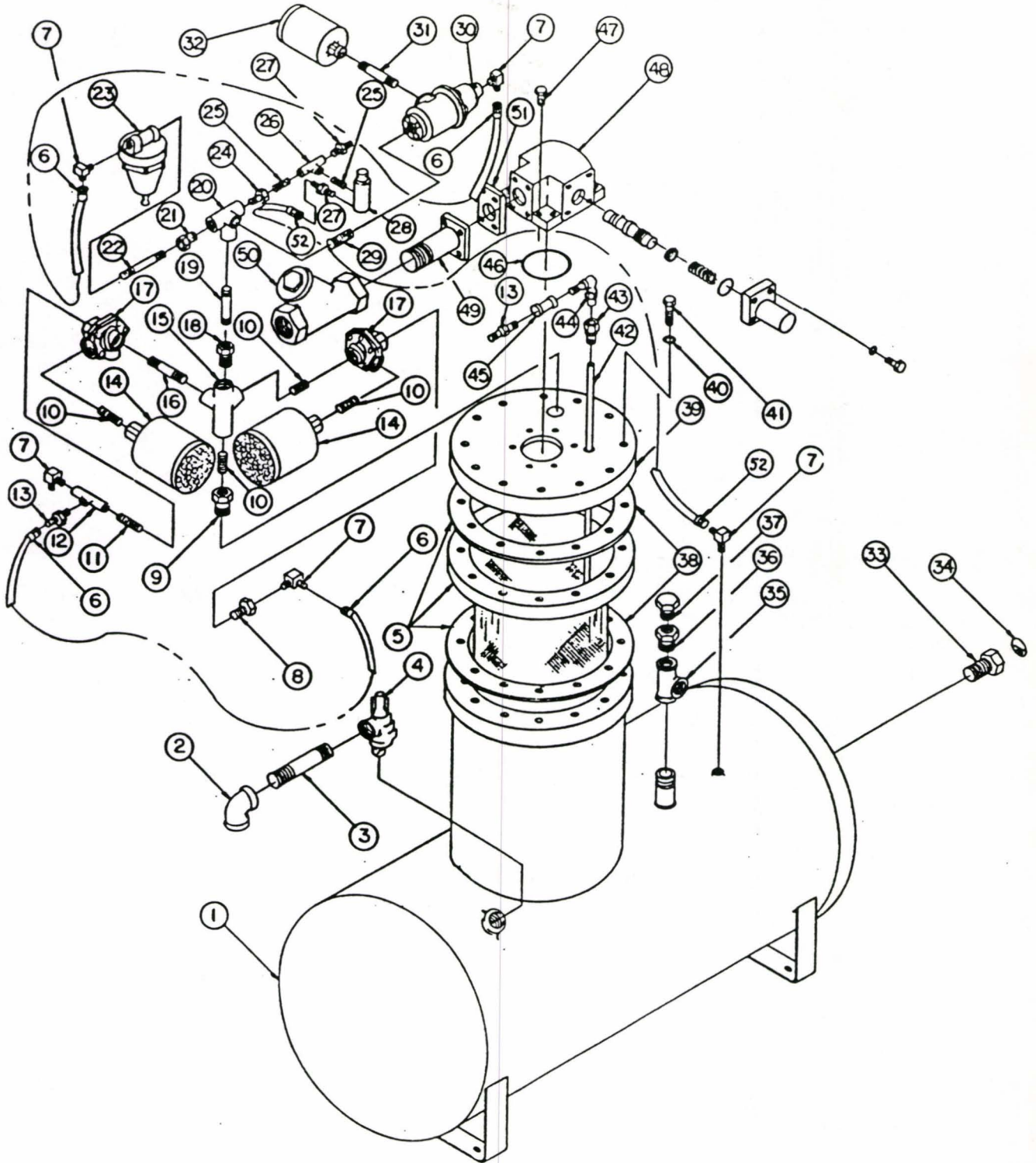
SECTION 5

SEPARATOR ASSY W/ATTACHMENTS - 45000(SHOWN)

EFFECTIVE S/N: 1066119

COMPRESSOR ASSY W/ATTACHMENTS - 64849

OIL COOLER ASSY ~~W/FAN~~ LESS MOTOR - 45144*



5

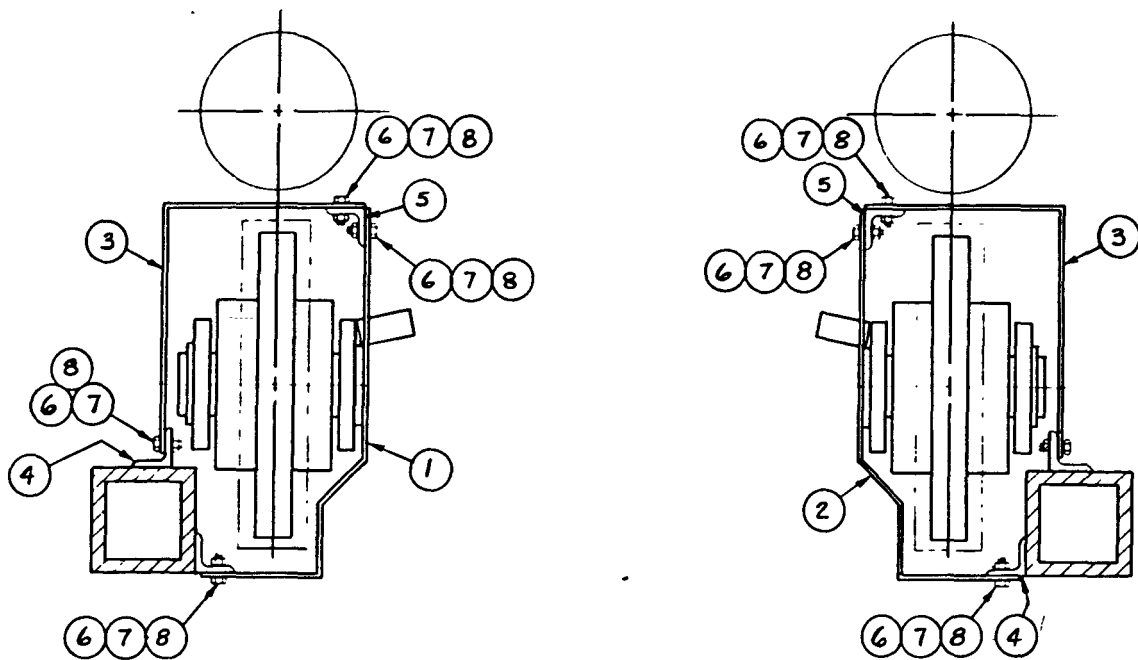
CLICK HERE TO **DOWNLOAD** THE COMPLETE MANUAL

- Thank you very much for reading the preview of the manual.
- You can download the complete manual from: www.heydownloads.com by clicking the link below



- Please note: If there is no response to CLICKING the link, please download this PDF first and then click on it.

CLICK HERE TO **DOWNLOAD** THE COMPLETE MANUAL



<u>ITEM</u>	<u>PART NO.</u>	<u>QTY.</u>	<u>DESCRIPTION</u>
1	49397	1	LEFT FRONT GUARD
2	49398	1	RIGHT FRONT GUARD
3	49396	2	REAR GUARD
4	49395	4	MOUNT ANGLE
5	49394	2	REAR MOUNT ANGLE
6	6096	8	CAPSCREW HEX HD 5/16 IN NC X 1 IN
7	6002	8	CUT LOCK WASHER 5/16 IN
8	6001	8	HEX NUT 5/16 IN NC

REF 49399

ASSEMBLY 63780

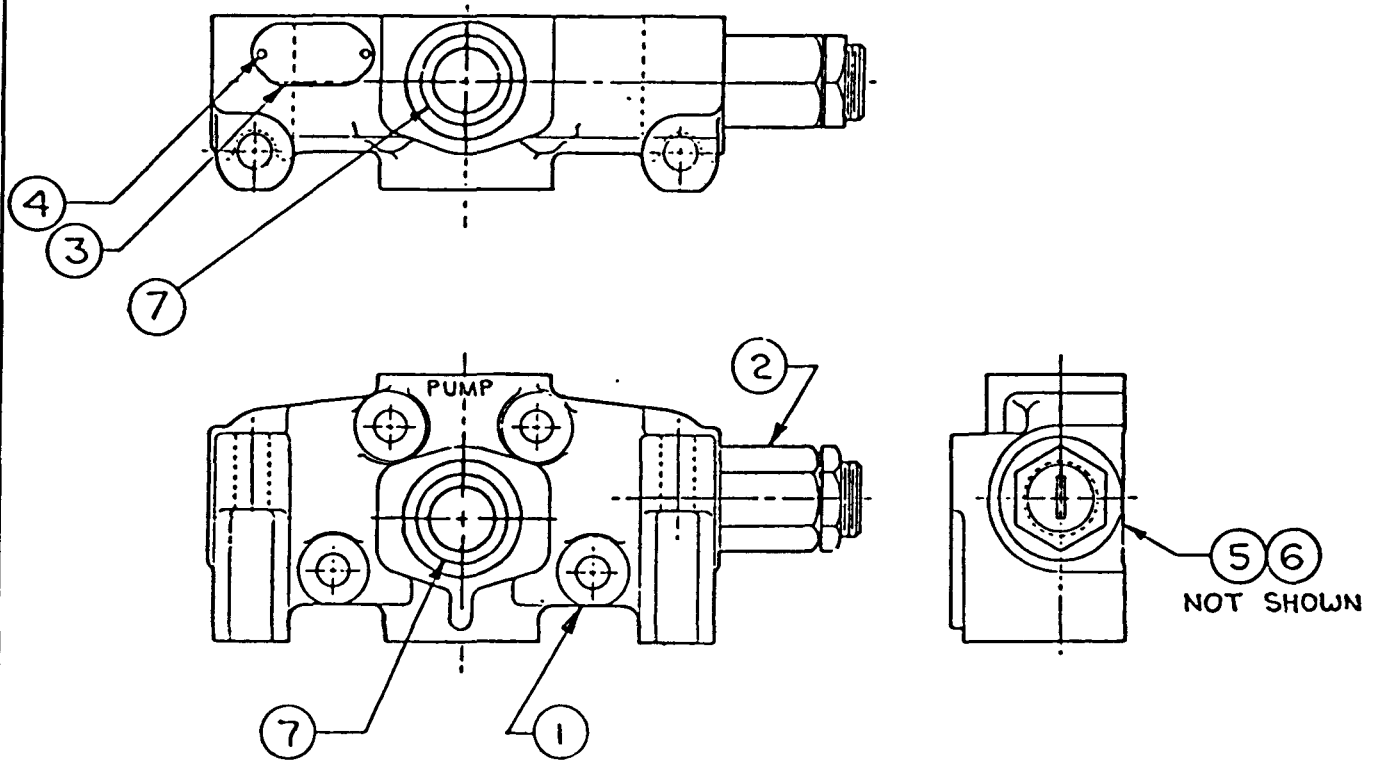
EFFECTIVE S/N: 1066118

<u>ITEM</u>	<u>PART NO.</u>	<u>QTY.</u>	<u>DESCRIPTION</u>
52	64538	2	SMALL COVER GASKET
53	5664	1	PIPE PLUG
54	64539	8	SOCKET HD BOLT
55	6002	8	LOCK WASHER
56	64540	1	INPUT SHAFT
57	5973	12	HEX NUT
58	5975	12	LOCK WASHER
59	5972	12	HEX HD BOLT
60	64541	2	BASE ANGLE
61	-----	4	"U" TYPE RIVET
62	-----	1	WINCH I.D. PLATE

- * 22202 - SEAL KIT
- ** 22200 - COUNTER BALANCE CARTRIDGE
- ** 22201 - COUNTER BALANCE CARTRIDGE SEAL KIT

SECTION 8

ASSEMBLY 49812



ITEM	PART NO.	QTY.	DESCRIPTION
1	-----	1	INLET HOUSING
2	33972	1	K/V CARTRIDGE ASSEMBLY
3	-----	1	NAME PLATE
4	-----	2	DRIVE SCREW
5	16238	1	SEAL "O" RING (2 O.D. X 1 13/16 I.D.)
6	16237	3	SEAL "O" RING (1 3/4 O.D. X 1 9/16 I.D.)

8

SERVICE KIT 64286 INCLUDES ITEMS 1 THRU 20

<u>ITEM</u>	<u>PART NO.</u>	<u>QTY.</u>	<u>DESCRIPTION</u>
1	57858	1	HOSE ASSEMBLY - 48 3/4 IN
2	57857	1	HOSE ASSEMBLY - 43 IN
3	64298	1	HOSE ASSEMBLY - 117 IN
4	64299	1	HOSE ASSEMBLY - 129 IN
5	64300	1	HOSE ASSEMBLY - 155 IN
6	64294	2	HOSE ASSEMBLY - 23 IN
7	64295	1	HOSE ASSEMBLY - 28 IN
8	64296	1	HOSE ASSEMBLY - 99 IN
9	18571	3	ADAPTER - STR
10	39694	3	ADAPTER - STR
11	38690	8	ADAPTER - 90°
12	36387	3	ADAPTER
13	47035	3	ADAPTER - REDUCER
14	38682	2	ADAPTER
15	38690	2	ADAPTER - 90°
16	54494	4	TUBE
17	42635	3	TUBE CLAMP
18	64297	1	HOSE ASSEMBLY - 104 IN
19	64301	1	HOSE ASSEMBLY - 164 IN
20	39479	2	ADAPTER

EFFECTIVE S/N: 1066118

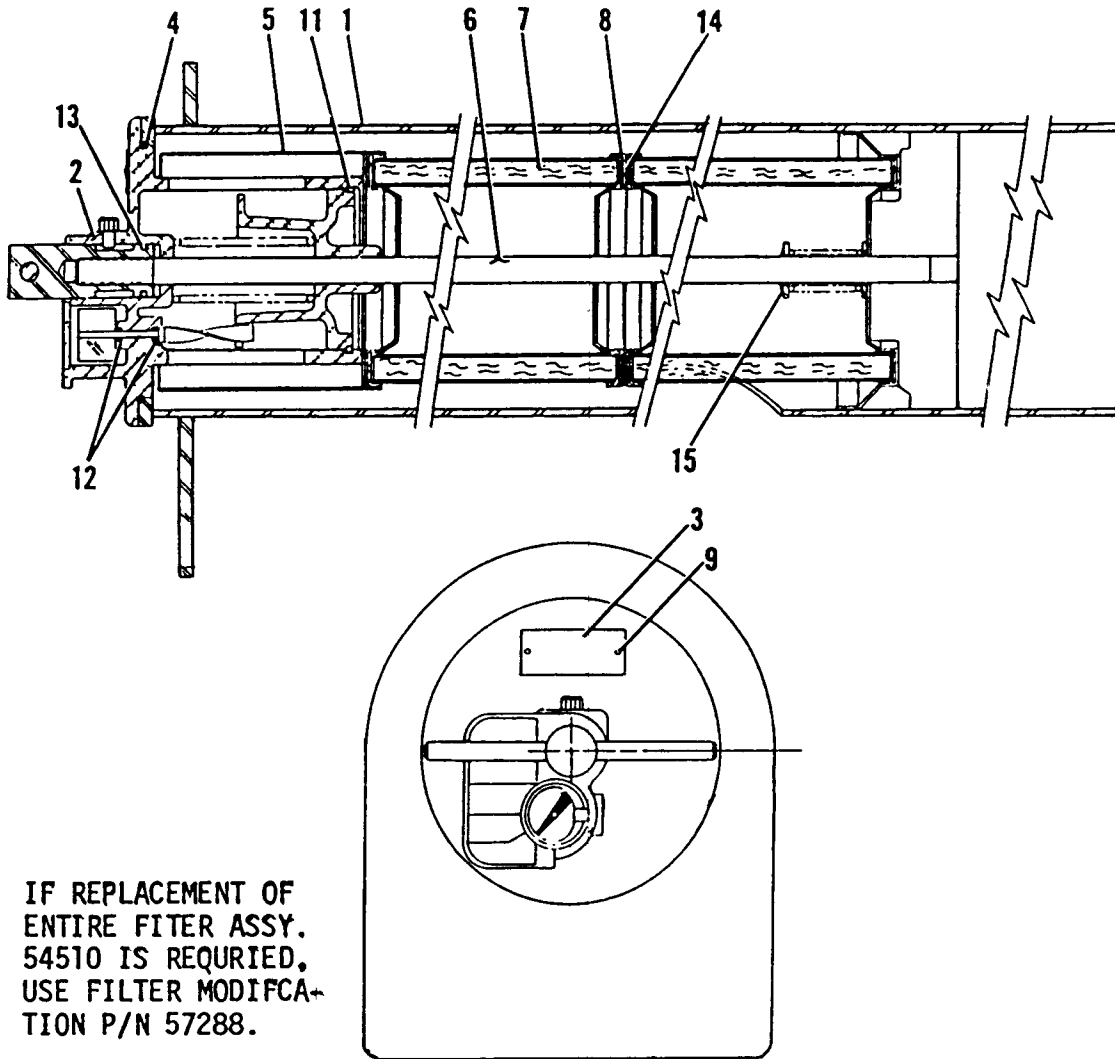
<u>ITEM</u>	<u>PART NO.</u>	<u>QTY.</u>	<u>DESCRIPTION</u>
1	64407	1	FRONT SECTION PRESSURE HEATER TUBE
2	64408	1	REAR SECTION PRESSURE HEATER TUBE
3	64409	1	FRONT SECTION RETURN HEATER TUBE
4	64410	1	REAR SECTION RETURN HEATER TUBE
5	64411	1	FRONT SECTION OUTSIDE FRONT JACK TUBE
6	64412	1	REAR SECTION OUTSIDE FRONT JACK TUBE
7	64413	1	FRONT SECTION INSIDE FRONT JACK TUBE
8	64414	1	REAR SECTION INSIDE FRONT JACK TUBE
9	64415	1	HIGH SPEED HOIST TUBE
10	64428	4	ADAPTER - COUPLING
11	42635	10	TWIN TUBING CLAMP
12	41675	2	SINGLE TUBING CLAMP

REF 64417

<u>ITEM</u>	<u>PART NO.</u>	<u>QTY.</u>	<u>DESCRIPTION</u>
1	57482	1	HOSE ASSY - 70 1/4 IN.
2	61709	1	HOSE ASSY - 41 IN.
3	56799	1	HOSE ASSY - 82 1/2 IN.
4	56927	1	HOSE ASSY - 41 1/4 IN.
5	56923	1	HOSE ASSY - 30 IN.
6	56848	1	HOSE ASSY - 24 1/2 IN.
7	56857	1	HOSE ASSY - 92 IN.
8	56854	2	HOSE ASSY - 28 3/4 IN.
9	56859	2	HOSE ASSY - 29 1/2 IN.
10	56893	1	HOSE ASSY - 32 1/2 IN.
11	56894	1	HOSE ASSY - 48 IN.
12	56897	1	HOSE ASSY - 37 1/2 IN.
13	56890	2	HOSE ASSY - 156 IN.
14	56896	1	HOSE ASSY - 34 IN.
15	56904	1	HOSE ASSY - 19 3/4 IN.
16	56895	2	HOSE ASSY - 17 3/4 IN.
17	65517	2	HOSE ASSY - 90° /STR - 169 IN
18	56906	1	HOSE ASSY - 34 3/4 IN.
19	56907	1	HOSE ASSY - 43 IN.
20	56903	1	HOSE ASSY - 12 1/2 IN.
21	64382	1	HOSE ASSY - 149 IN.
22	56883	1	HOSE ASSY - 13 3/8 IN.
23	56884	1	HOSE ASSY - 20 3/8 IN.
24	56831	1	HOSE ASSY - 198 IN.
25	33496	2	ADAPTER
26	51829	1	MANIFOLD INSTALLATION (REF THIS SECTION)
27	38685	1	ADAPTER - 45°
28	36750	1	ADAPTER - 90°
29	36382	1	ADAPTER - 90°
30	37689	1	ADAPTER
31	18571	2	ADAPTER
32	47026	2	ADAPTER - REDUCER
33	36374	2	ADAPTER - 90°
34	30077	3	ADAPTER - 45°
35	30841	1	ADAPTER - 90°
36	31371	1	ADAPTER
37	31397	1	ADAPTER
38	61466	4	ADAPTER
39	39694	4	ADAPTER
40	31804	7	ADAPTER - 90°
41	31829	2	ADAPTER - 90°
42	41004	3	ADAPTER - BULKHEAD
43	46136	2	ADAPTER - BULKHEAD TEE
44	31395	1	ADAPTER
45	37827	5	ADAPTER
46	5950	1	ADAPTER
47	34847	2	ADAPTER
48	44352	1	ADAPTER - BULKHEAD TEE
*49	56180	1	VALVE
50	56236	1	BRACKET

REF 64670

10 MICRON FILTER
ASSEMBLY 54510

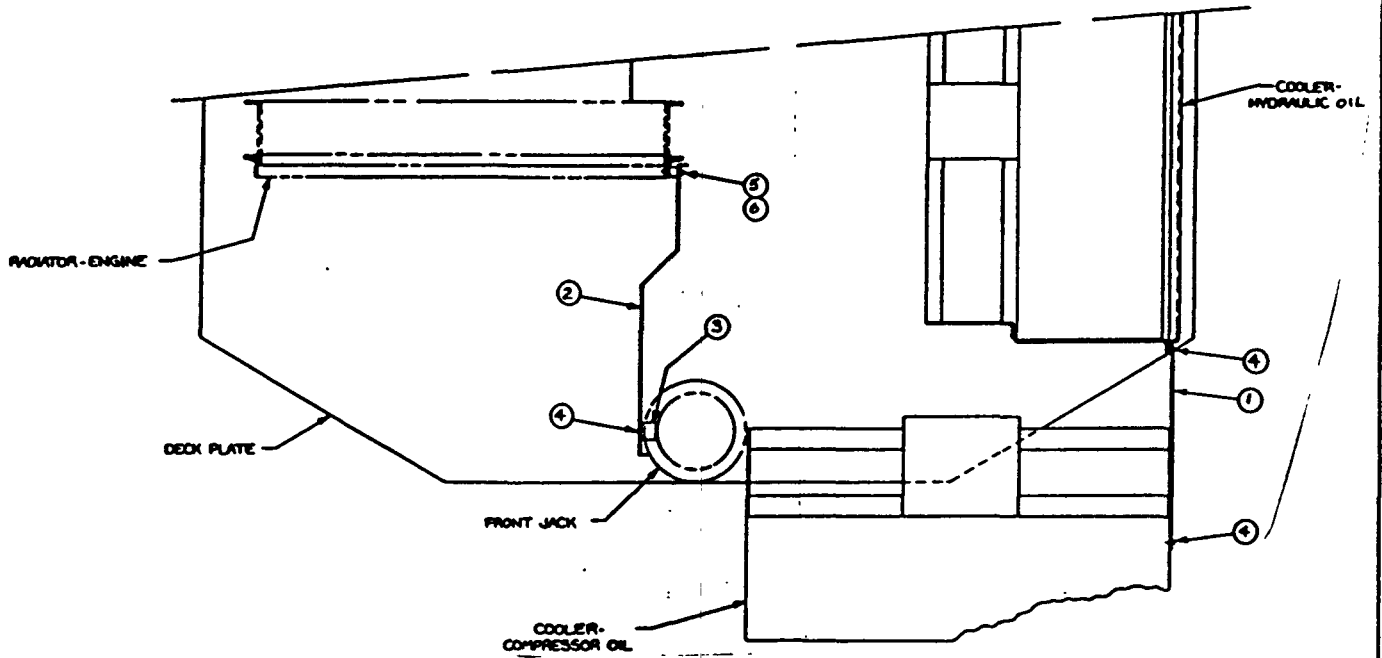


NOTE: IF REPLACEMENT OF ENTIRE FILTER ASSY. 54510 IS REQUIRED, USE FILTER MODIFICATION P/N 57288.

ITEM	PART NO.	QTY.	DESCRIPTION
1	31695	1	HOUSING ASSEMBLY
2	30943	1	COVER ASSEMBLY
3	-----	1	NAMEPLATE
4	30169	1	O RING-COVER
5	30947	1	UPPER SUPPORT CYLINDER ASSEMBLY
6	30177	1	TIE ROD ASSEMBLY
7	30343	2	10-C ELEMENT ASSEMBLY
8	30182	1	CONNECTOR ASSEMBLY
9	-----	2	DRIVE SCREW
10	-----		
11	*	1	RETAINING RING
12	*	2	O RING
13	*	1	O RING
14	*	4	SEAL-ELEMENT
15	*	1	RETAINING RING
16	*	1	O RING

*22072 - SEAL KIT

8



TOP VIEW

<u>ITEM</u>	<u>PART NO.</u>	<u>QTY.</u>	<u>DESCRIPTION</u>
1	65806	1	HYDRAULIC OIL COOLER/COMPRESSOR OIL COOLER AIR DEFLECTOR
2	65807	1	ENGINE RADIATOR AIR DEFLECTOR
3	65809	2	AIR DEFLECTOR ANCHOR
4	65085	12	SELF TAPPING SCREW
5	40436	5	RUBBER MOUNT
6	6001	10	NUT - HEX

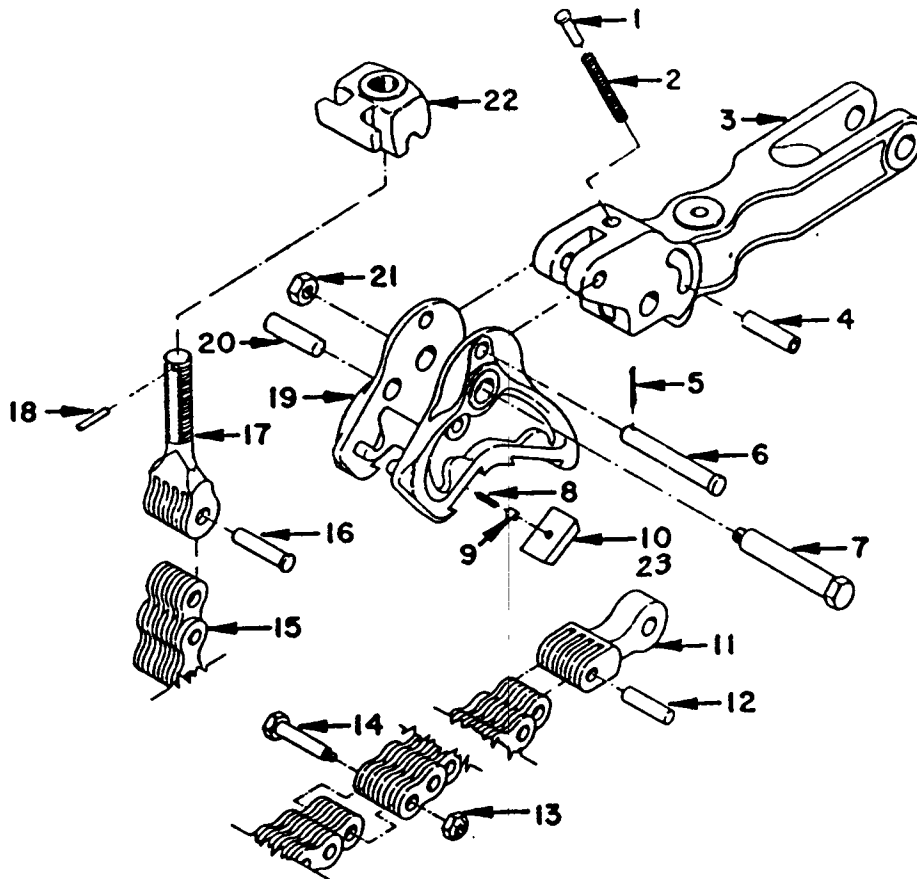
REF 65808

FROM	TO	GAUGE	STRAND	COLOR	LENGTH	REMARKS
TIME DELAY RELAY (TERM D)	OIL TEMP. SWITCH (ENGINE)	16		GRAY		JUMPER
TIME DELAY RELAY (TERM A)	FUEL SWITCH	16		RED		CIRCUIT 34
FUEL SWITCH	OIL TEMP. SWITCH	16		WHITE		CIRCUIT 33
OIL TEMP. SWITCH	WATER TEMP. SWITCH	16		WHITE		CIRCUIT 33 (GROUND WATER TEMP. SWITCH)
FUEL SWITCH	AIR SHUT-DOWN SOLENOID	16		YELLOW		CIRCUIT 32
KEY SWITCH	TB-23A	16		BLACK		CIRCUIT 23
TB-23B	AIR PRESSURE SW. (COMPRESSOR)	16	2	BLACK		CIRCUIT 23
AIR PRESSURE SW. (COMPRESSOR)	TB-22B	16	3	WHITE		CIRCUIT 22
TB-22A	DRILL HOURMETER	16		WHITE		CIRCUIT 22
KEY SWITCH	COMPRESSOR TEMP. GAUGE	16		GREEN		CIRCUIT 31 (RESISTOR IN LINE)
COMPRESSOR TEMP. GAUGE	OPEN LOOP TEMP. GAUGE	16		GREEN		CIRCUIT 31 (RESISTOR IN LINE)
OPEN LOOP TEMP. GAUGE	CLOSED LOOP TEMP. GAUGE	16		GREEN		CIRCUIT 31 (RESISTOR IN LINE)
CLOSED LOOP TEMP. GAUGE	TB-18A	16		GRAY		CIRCUIT 18
TB-18B	CLOSED LOOP SENDER	16		GRAY		CIRCUIT 18
OPEN LOOP TEMP. GAUGE	TB-17A	16		ORANGE		CIRCUIT 17
TB-17B	OPEN LOOP SENDER	16		ORANGE		CIRCUIT 17
COMPRESSOR TEMP. GAUGE	TB-19A	16		RED		CIRCUIT 19
TB-19B	COMPRESSOR TEMP. SENDER	16		RED		CIRCUIT 19

SECTION 10

(REF ONLY 64350) W/O HANDLE MODIFICATION
WHEN ORDERING WRENCH ASSEMBLY USE P/N 64351

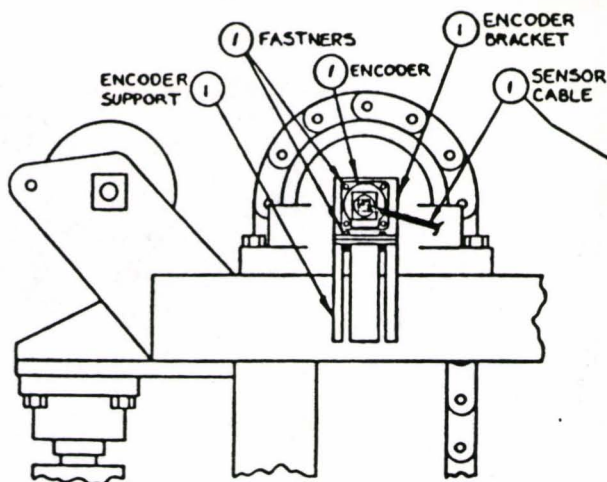
EFFECTIVE S/N:
1066119



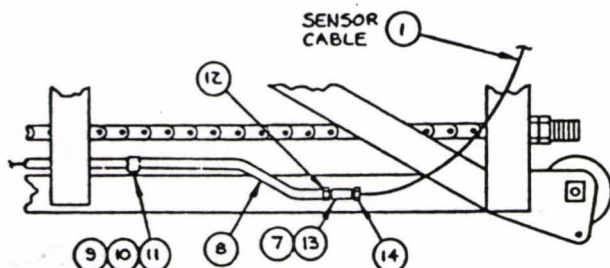
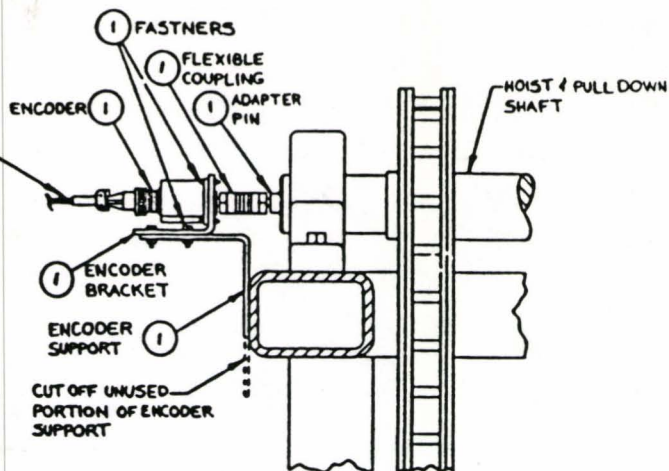
ITEM	PART NO.	QTY.	DESCRIPTION
1	61027	1	SPRING GUIDE
2	61028	1	SPRING
*3	61029	1	HANDLE
4	58652	1	SPRING PIN BUSHING
5	-----	1	(REF ITEM 6)
6	58653	1	SPRING PIN (INCLUDES ITEM 5 - COTTER)
7	58654	1	JAW BOLT (INCLUDES ITEM 21 - NUT)
8	58655	4	TEETH INSERT KEY SPRING
9	58656	4	TEETH INSERT KEY
10	58657	2	DIAMOND POINT INSERT
11	58658	1	MASTER LINK
12	58664	1	MASTER LINK CHAIN PIN
13	-----	1	(REF ITEM 14)
14	-----	1	SPLICE BOLT AND NUT (INCLUDES ITEM 13 - NUT)
15	58546	1	CHAIN ASSEMBLY-15 LINKS W/END FASTENERS
16	58660	1	CHAIN SCREW PIN
17	58543	1	CHAIN SCREW
18	68661	1	CHAIN SCREW ROLL PIN
19	61030	1	JAW
20	58663	1	MASTER LINK HANDLE PIN
21	-----	1	(REF ITEM 7)
22	58544	1	CHAIN SCREW NUT
23	58670	2	BLANK INSERT

*TO BE MODIFIED PER DRAWING 64351

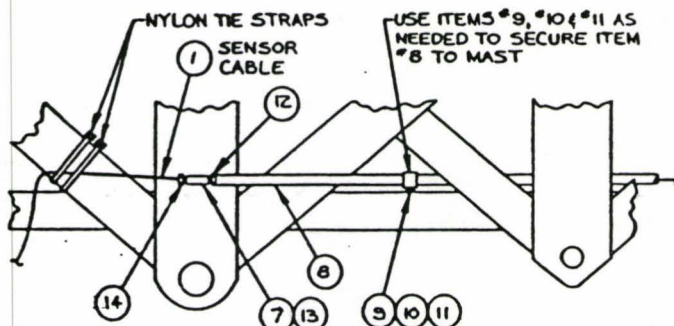
10



VIEW 'B'
ROTATED 90° CCW



VIEW 'C'



VIEW 'D'

ITEM	PART NO.	QTY.	DESCRIPTION
1	64147	1	DRILL EFFICIENCY INDICATOR-ENGLISH (REF THIS SECTION)
	-----	1	DRILL EFFICIENCY INDICATOR - METRIC (REF THIS SECTION)
2	64917	1	MOUNT
3	58423	1	CONNECTORS
4	42538	4	CAPSCREW - HEX HD
5	5968	4	NUT - HEX
6	5970	4	WASHER - CUT LOCK
7	8304	2	COUPLING
8	54430	50 FT	CONDUIT
9	37167	8	HOSE SUPPORT CLAMP
10	7972	8	NUT - ELASTIC STOP
11	42570	8	CAPSCREW - HEX HD
12	56719	2	CONDUIT CONNECTOR
13	60667	2	FLAT BAR
14	60666	3	ELECTRIC CONNECTOR

10

EFFECTIVE S/N: 1066119

<u>ITEM</u>	<u>PART NO.</u>	<u>QTY.</u>	<u>DESCRIPTION</u>
1	64555	1	JIB CRANE
2	64556	1	TROLLEY (1 TON)
3	64557	1	HOIST (1 TON)
4	64549	1	JIB CRANE ANCHOR
5	64558	1	TUBE
6	64559	1	SHEET
7	64560	2	BAR
8	64561	1	HOIST SUPPORT ANCHOR
9	6008	1	PLUG
10	46643	1	CONDUIT T
11	46645	1	GASKET
12	46644	1	COVER
13	54430	40 FT	CONDUIT
14	65309	50 FT	WIRE
15	56719	1	CONNECTOR - STR

REF 64554 REV A

ITEM	PART NO.	QTY	DESCRIPTION
1	64239	1	RIGHT HAND CRAWLER ASSEMBLY (REF THIS SECTION)
2	64240	1	LEFT HAND CRAWLER ASSEMBLY (REF THIS SECTION)
3	63653	1	MAINFRAME - WELDMENT
4	63640	1	FRONT AXLE
5	-----		
6	63690	2	TUBING
7	-----		
8	-----		
9	55932	2	WASHER
10	63999	1	CENTER FRONT AXLE PIN
11	64004	1	FRONT AXLE RETAINER
12	7807	2	CAPSCREW - HEX HD
13	64001	2	FRONT AXLE PIN (WELDMENT)
14	63998	4	TUBE
15	64003	2	AXLE PIN CAP
16	5977	6	CAPSCREW - HEX HD
17	55185	6	WASHER
18	63598	2	BEARING
19	5929	9	GREASE FITTING
20	37946	4	TIE WIRE
21	64054	3	REAR AXLE SHIM - .005
22	64055	2	REAR AXLE SHIM - .010

ITEM	PART NO.	QTY.	DESCRIPTION
1	64241	1	FRONT DECK EXTENSION
2	60809	2	EXPANDED METAL SHEET
3	59033	2	BAR
4	60736	2	BAR
5	64251	1	HANDRAIL
6	64254	2	HANDRAIL
7	64257	2	HANDRAIL
8	19750	5 FT	CHAIN
9	19733	4	SNAP
10	65174	2	WALKWAY STEP
11	65180	4	WALKWAY STEP STRAP
12	65181	4	WALKWAY STEP ANCHOR
13	65178	8	WALKWAY STEP BRACKET
14	42540	24	CAPSCREW - HX HD
15	6293	24	NUT - ELASTIC STOP

CLICK HERE TO **DOWNLOAD** THE COMPLETE MANUAL

- Thank you very much for reading the preview of the manual.
- You can download the complete manual from: www.heydownloads.com by clicking the link below



- Please note: If there is no response to CLICKING the link, please download this PDF first and then click on it.

CLICK HERE TO **DOWNLOAD** THE COMPLETE MANUAL