

---

# **315C Track-Type Excavator**

---

**Powered by 3046 Engine**

**SERIAL NUMBER**

**BTL1-Up(Vehicle)**

**MHK00202-Up(Engine)**

CLICK HERE TO **DOWNLOAD** THE COMPLETE MANUAL

- Thank you very much for reading the preview of the manual.
- You can download the complete manual from: [www.heydownloads.com](http://www.heydownloads.com) by clicking the link below



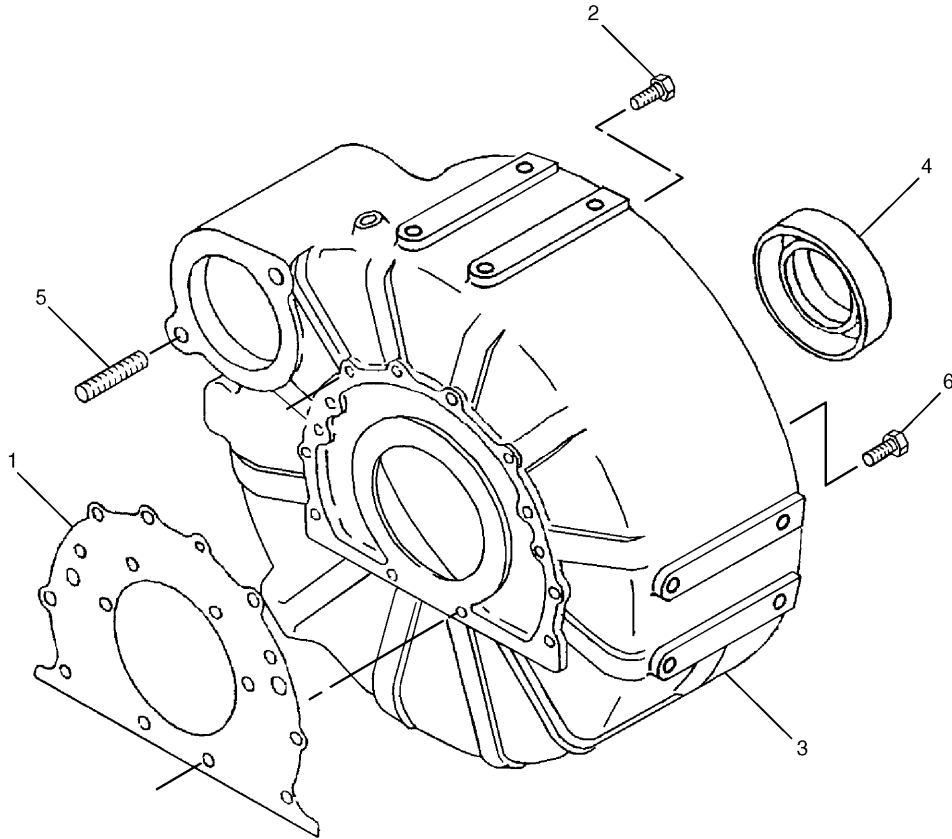
- Please note: If there is no response to CLICKING the link, please download this PDF first and then click on it.

CLICK HERE TO **DOWNLOAD** THE COMPLETE MANUAL

# INDEX

Name	Page	Name	Page
LINES GP - BOOM CYLINDER.....	282	<b>P</b>	
LINES GP - BUCKET CYLINDER.....	287	PAN GP - OIL.....	27
LINES GP - COOLING .....	43	PANEL GP - CIRCUIT BREAKER .....	92
LINES GP - DRAIN.....	59	PISTON & ROD GP .....	20
	314	PLATE & FILM GP .....	600
	372	PLATFORM GP - OPERATOR .....	528
LINES GP - FRONT.....	352	PULLEY GP - CRANKSHAFT .....	26
LINES GP - FUEL.....	70	PULLEY GP - FAN & ALT DRIVE .....	26
LINES GP - FUEL FILTER .....	62	PUMP & MOUNTING GP .....	249
LINES GP - FUEL INJECTION.....	61	PUMP GP - ENGINE OIL.....	31
LINES GP - GREASE .....	585	PUMP GP - FUEL INJECTION .....	60
LINES GP - HEATER.....	564	PUMP GP - MAIN HYDRAULIC .....	252
LINES GP - OIL DRAIN .....	34	PUMP GP - WATER.....	45
LINES GP - PILOT.....	330	<b>R</b>	
LINES GP - PUMP.....	322	RADIATOR & HYD OIL COOLER GP .....	38
LINES GP - RETURN & FILTER .....	378	RADIO GP - AM/FM.....	516
LINES GP - STICK .....	293	ROLLER AR - TRACK & CARRIER .....	231
LINES GP - STICK CYLINDER.....	285	ROLLER GP - TRACK CARRIER .....	232
LINES GP - SWING MOTOR.....	380	ROLLER GP - TRACK - SINGLE FLANGE .....	233
LINES GP - TRAVEL MOTOR .....	320	<b>S</b>	
LINES GP - WATER.....	44	SCREEN GP.....	248
LINK AS.....	534	SEAT BELT GP .....	544
LINK AS - TRACK.....	237	SEAT GP.....	536
LINKAGE AR - BUCKET.....	571	SIDECUTTER GP .....	593
LINKAGE GP - BUCKET .....	586	SPROCKET GP - NONSEGMENTED.....	181
LITERATURE GP .....	547	STARTING MOTOR GP - ELECTRIC .....	157
<b>M</b>		STICK AR - HOE.....	568
MANIFOLD GP - EXHAUST .....	53	STICK GP .....	577
MANIFOLD GP - INLET.....	52		580
MIRROR GP - REAR VIEW.....	527		583
MONITOR & MTG GP - OPERATOR .....	507	STICK GP - HOE .....	576
MONITOR GP - OPERATOR.....	508		579
MOTOR & MTG GP - TRAVEL .....	391		582
MOTOR AS - WINDOW WIPER .....	502	SUPPORT GP - SEAT.....	535
MOTOR GP - SWING.....	388	SUSPENSION GP - SEAT .....	541
MOTOR GP - TRAVEL.....	392	SWITCH AS .....	112.01
MOUNTING GP - ENGINE.....	29		178
MOUNTING GP - GREASE GUN.....	201	SWITCH AS - DISCONNECT .....	108
MOUNTING GP - VALVE.....	408	SWITCH AS - MAGNETIC .....	110
MUFFLER GP.....	57		

# BASIC ENGINE

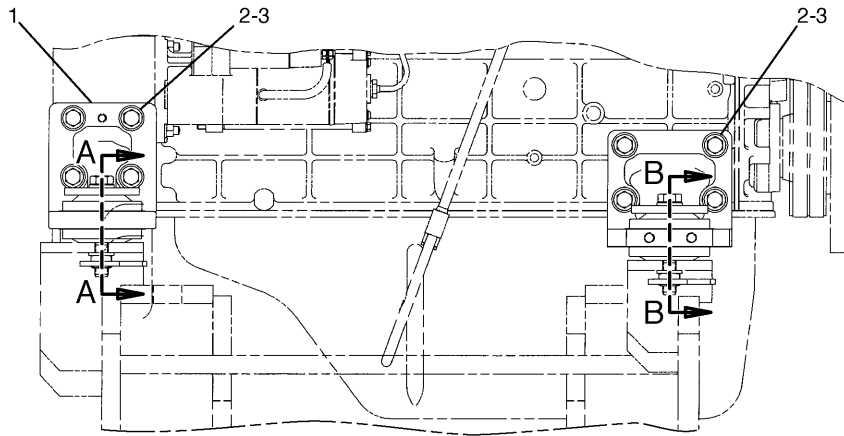


NOTE	No.	PART No.	QTY	PART NAME	NOTE	No.	PART No.	QTY	PART NAME
	1	103-9280	1	GASKET					
	2	127-4839	10	BOLT (L=25mm)					
	3	117-5016	1	HOUSING					
	4	117-5015	1	SEAL AS					
	5	094-2524	2	STUD					
	6	104-1199	2	BOLT (L=30mm)					

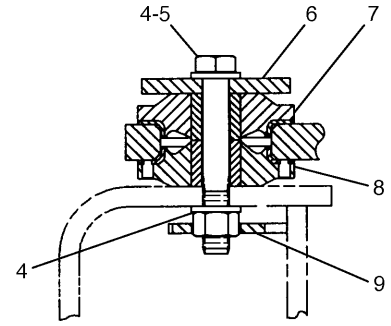
H72990E 01

**116-6718 HOUSING GP-FLYWHEEL**  
Part of 198-1442-Page12

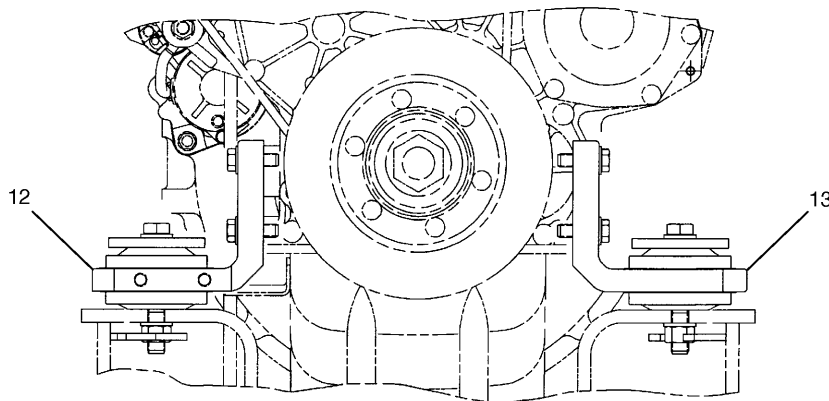
# BASIC ENGINE



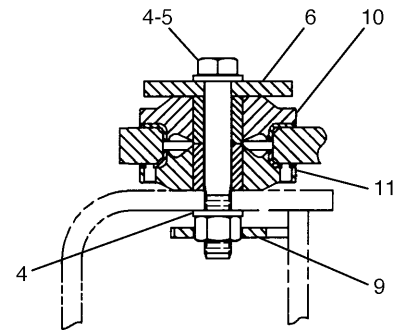
RIGHT SIDE VIEW OF ENGINE



A - A



FRONT VIEW OF ENGINE



B - B

NOTE	No.	PART No.	QTY	PART NAME	NOTE	No.	PART No.	QTY	PART NAME
	1	131-9014	2	BRACKET					
	2	8T-4183	16	BOLT (L=40mm)					
	3	8T-4223	16	WASHER					
	4	9X-8257	8	WASHER					
	5	8T-4173	4	BOLT (L=110mm)					
	6	099-4707	4	WASHER					
	7	118-9935	2	MOUNT					
	8	118-9936	2	MOUNT					
	9	139-8802	4	SUPPORT AS					
	10	193-2743	2	MOUNT					
	11	193-2744	2	MOUNT					
	12	193-2892	1	BRACKET					
	13	131-9012	1	BRACKET					

H72646E 00

## 193-2891 MOUNTING GP-ENGINE

# COOLING SYSTEM

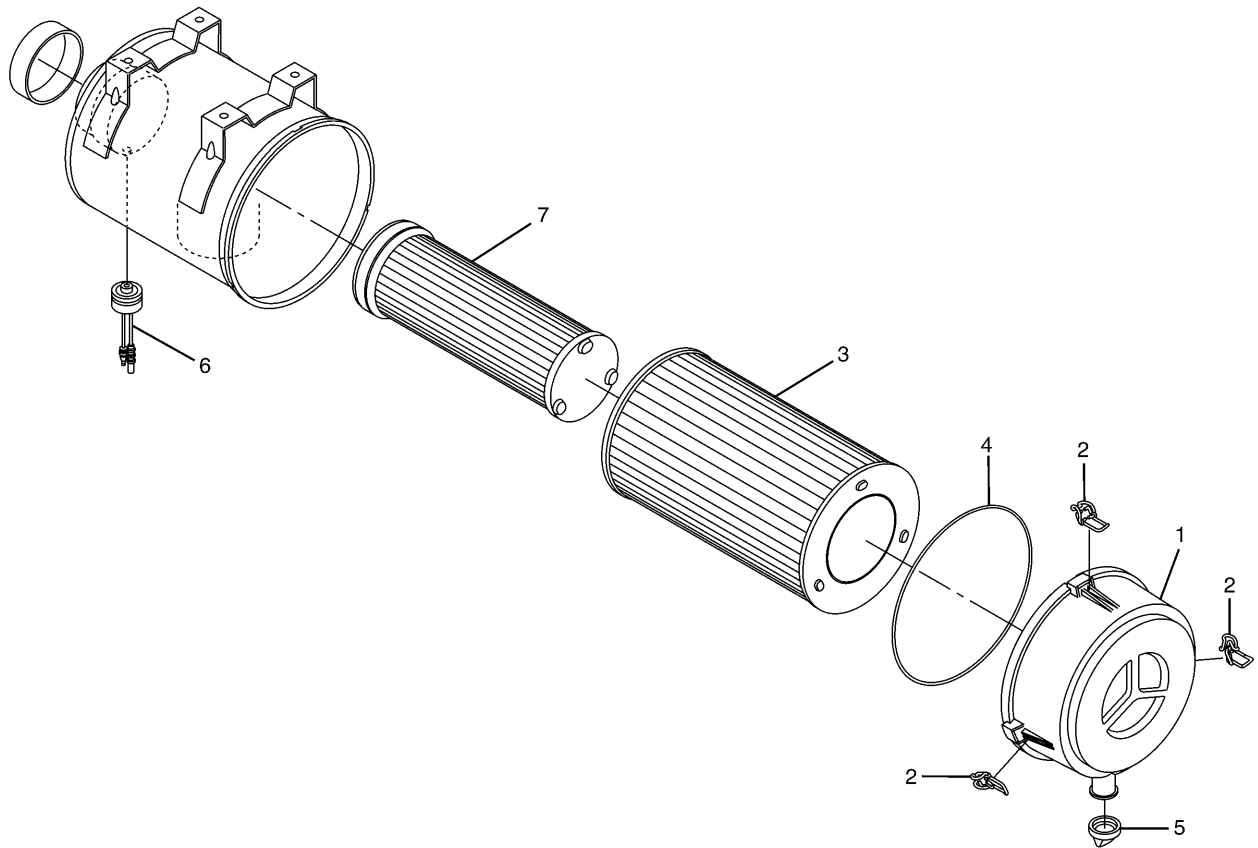
NOTE	No.	PART No.	QTY	PART NAME	NOTE	No.	PART No.	QTY	PART NAME
	1	3S-2093	3	STRAP					
	2	7K-1181	2	STRAP					
	3	8T-6703	4	CLAMP					
	4	096-0744	1	TANK AS					
		171-3369	1	CAP AS					
	5	096-4035	1	CLIP					
	6	135-5785	1	GUARD AS					
Y	7	210-7970	1	RADIATOR GP					
	8	210-7980	1	HOSE					
	9	210-8109	1	HOSE					
	10	210-8110	1	GUARD AS					
	11	210-8123	1	LINER					
	12	099-6607	1	BAND					
	13	6V-3378	1	CLIP					
	14	7X-2553	4	BOLT (L=40mm)					
	15	7X-7729	9	WASHER					
	16	8T-4121	1	WASHER					
	17	8T-4137	8	BOLT (L=20mm)					
	18	8T-4191	2	BOLT (L=16mm)					
	19	8T-4200	2	BOLT (L=16mm)					
	20	8T-4224	2	WASHER					
	21	9X-8257	4	WASHER					
E	22	7Y-1976		HOSE...(42cm)					
D	23	5P-9909		SEAL...(0.8m)					

D—ORDER BY THE METER  
 E—ORDER BY THE CENTIMETER  
 Y—SEE SEPARATE ILLUSTRATION

H84063E 03

**210-7969 RADIATOR & HYD OIL COOLER GP**  
 S/N BTL 1-00185  
 210-7970-Page40

# AIR INLET AND EXHAUST SYSTEM

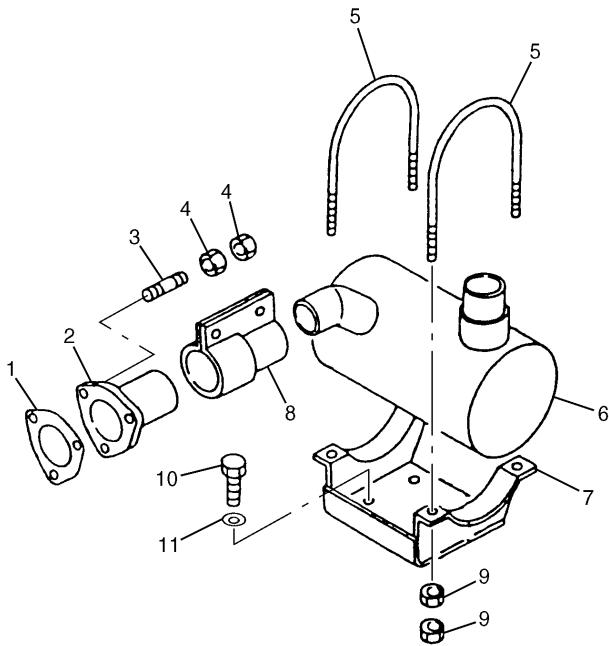


NOTE	No.	PART No.	QTY	PART NAME	NOTE	No.	PART No.	QTY	PART NAME
	1	135-5784	1	COVER AS					
	2	135-5700	3	LATCH					
	3	135-5788	1	ELEMENT AS					
	4	135-5786	1	SEAL					
	5	096-4177	1	VALVE					
	6	255-2966	1	INDICATOR AS					
	7	135-5787	1	ELEMENT AS					

H91091E 02

**212-8642 AIR CLEANER GP**  
Part of 131-8974-Page46

# AIR INLET AND EXHAUST SYSTEM

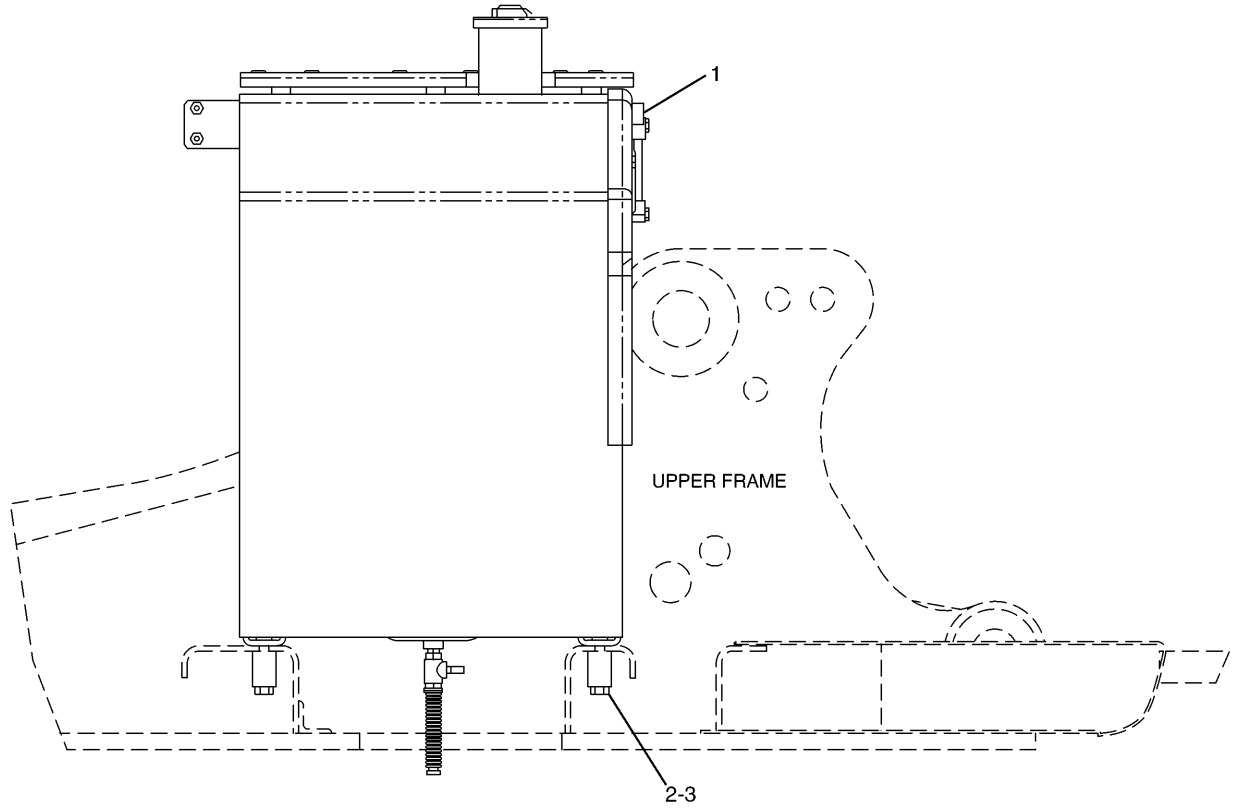


NOTE	No.	PART No.	QTY	PART NAME
	1	51-7679	1	GASKET
	2	51-7854	1	PIPE
	3	51-6024	3	STUD
	4	51-7633	6	NUT
	5	51-7680	2	U-BOLT
	6	194-9846	1	MUFFLER
	7	51-8156	1	BRACKET
	8	51-7639	1	CLAMP AS
	9	6V-8231	8	NUT
	10	8T-4137	4	BOLT (L=20mm)
	11	7X-0796	4	LOCKWASHER

H80013E 01

**51-8151 MUFFLER GP**  
Part of 222-8278-Page11

# FUEL SYSTEM



RIGHT SIDE VIEW

NOTE	No.	PART No.	QTY	PART NAME	NOTE	No.	PART No.	QTY	PART NAME
Y	1	203-5017	1	TANK GP					
	2	177-5987	4	SPACER					
	3	8T-4175	4	BOLT (L=90mm)					

Y-SEE SEPARATE ILLUSTRATION

H85048E 04

**175-0852 TANK & MTG GP-FUEL**  
 S/N BTL 1-00180  
 203-5017-Page68

# FUEL SYSTEM

NOTE	No.	PART No.	QTY	PART NAME	NOTE	No.	PART No.	QTY	PART NAME
	1	6W-7293	1	GROMMET					
	2	6Y-9571	1	SPACER					
	3	7Y-8167	1	GROMMET					
	4	095-1386	7	CLAMP					
	5	096-0061	1	STRAP					
	6	134-3299	1	GROMMET					
	7	8T-4192	4	BOLT (L=25mm)					
	8	170-2901	1	GROMMET					
	9	171-9161	1	SEPARATOR					
		6V-7659	1	SEAL-O-RING (ID=74.40mm)					
		095-1511	1	SEAL-O-RING (ID=6.80mm)					
		095-1517	4	SEAL-O-RING (ID=13.80mm)					
	10	214-8406	1	SHEET AS					
	11	5K-8451	9	CLIP					
	12	7Y-8170	1	GROMMET					
	13	8T-4121	14	WASHER					
	14	8T-4133	2	NUT					
	15	8T-4137	9	BOLT (L=20mm)					
	16	8T-4185	1	BOLT (L=50mm)					
	17	8T-4196	2	BOLT (L=35mm)					
	18	9M-8406	3	CLIP					
E	19	5P-1420		HOSE...(35cm)					
E	20	5P-1442		HOSE...(365cm x 2)					
	21	5P-1076	4	WASHER					
E	22	5P-1442		HOSE...(340cm)					

E-ORDER BY THE CENTIMETER

H81826E 00

**214-8118 LINES GP-FUEL**  
S/N BTL 1-00180

# ELECTRICAL AND STARTING SYSTEM

NOTE	No.	PART No.	QTY	PART NAME	NOTE	No.	PART No.	QTY	PART NAME
Y	1	170-9482	1	CABLE AS					
Y	2	213-0893	1	CABLE AS					
	3	3S-2093	5	STRAP					
Y	4	213-0892	1	HARNESS AS					
	5	134-3299	1	GROMMET					
	6	111-4836	15	CLIP					
	7	8T-4137	14	BOLT (L=20mm)					
	8	8T-4121	32	WASHER					
	9	7Y-8167	1	GROMMET					
	10	213-0894	1	BRACKET AS					
	11	8T-4224	1	WASHER					
	12	8T-4200	1	BOLT (L=16mm)					
	13	111-4837	2	CLIP					
	14	8T-4223	1	WASHER					
	15	7X-2548	1	BOLT (L=16mm)					
	16	183-1025	1	STRAP AS					
	17	111-4838	3	CLIP					
	18	111-4839	3	STRAP					
	19	5I-9368	1	SPACER					
	20	8J-1256	1	CLIP					
	21	204-1673	1	STRAP					
	22	7X-2621	7	BOLT (L=12mm)					
	23	116-0118	15	CLIP					
Y	24	213-0897	1	HARNESS AS					
	25	8T-4191	2	BOLT (L=16mm)					
	26	7G-1060	1	STRAP AS					
	27	7Y-5456	2	GROMMET					
	28	186-4574	1	PLUG AS					
		9G-3695	2	PLUG					
		155-2270	1	PLUG KIT					
	29	5P-4115	1	WASHER					
	30	7X-2533	1	BOLT (L=35mm)					
	31	9X-8256	1	WASHER					
	32	8T-4133	2	NUT					
	33	7X-2619	1	BOLT (L=10mm)					
	34	8T-0328	1	WASHER					
	35	7Y-5226	1	NUT					
	36	8T-4136	4	BOLT (L=25mm)					
	37	8T-4195	2	BOLT (L=30mm)					
	38	8T-4185	1	BOLT (L=50mm)					
	39	6G-2263	1	SPACER					

Y-SEE SEPARATE ILLUSTRATION

H86157E 02

## 213-0602 BATTERY & WIRING GP (3/3)

S/N BTL 1-00180

213-0897-Page82,213-0892-Page84,170-9482,213-0893-Page88

# ELECTRICAL AND STARTING SYSTEM

NOTE	No.	PART No.	QTY	PART NAME	NOTE	No.	PART No.	QTY	PART NAME
	1	8T-4198	1	BOLT (L=100mm)					
	2	102-7886	2	SLEEVE					
	3	3S-2093	10	STRAP					
	4	7X-2544	1	BOLT (L=140mm)					
	5	8T-4195	2	BOLT (L=30mm)					
	6	111-4836	10	CLIP					
	7	8T-4137	12	BOLT (L=20mm)					
	8	8T-4121	21	WASHER					
	9	118-9901	1	SPACER					
Y	10	183-1001	1	HARNESS AS					
	11	4P-7581	1	CLIP					
	12	8D-0482	1	GROMMET					
	13	111-4837	6	CLIP					
	14	193-3473	1	BRACKET AS					
	15	6G-2263	2	SPACER					
	16	2G-8767	4	WASHER					
	17	111-4838	2	CLIP					
	18	111-4839	2	STRAP					
	19	6G-2256	2	CLAMP					
	20	8T-4182	1	BOLT (L=45mm)					
	21	7K-1181	2	STRAP					
	22	7X-2621	1	BOLT (L=12mm)					
	23	8T-4191	3	BOLT (L=16mm)					

Y-SEE SEPARATE ILLUSTRATION

H88246E 04

**213-0602 BATTERY & WIRING GP (2/3)**  
 S/N BTL 00186-Up  
 183-1001-Page87

# ELECTRICAL AND STARTING SYSTEM

NOTE	No.	PART No.	QTY	PART NAME	NOTE	No.	PART No.	QTY	PART NAME
	1	3T-4696	3	TERMINAL					
	2	9W-0844	30	SOCKET					
	3	155-2260	2	PLUG KIT					
	4	126-1768	23	SOCKET					
	5	8T-8737	36	PLUG					
	6	102-8802	4	RECEPTACLE KIT					
	7	155-2270	6	PLUG KIT					
	8	155-2261	6	WEDGE					
	9	155-2271	1	PLUG KIT					
	10	102-8804	2	RECEPTACLE KIT					
	11	186-3736	17	SOCKET					
	12	155-2255	4	PLUG KIT					
	13	155-2258	4	WEDGE					
	14	102-8801	5	RECEPTACLE KIT					
	15	186-3735	16	PIN					
	16	9W-0852	14	PIN					
	17	9X-3401	19	PIN					
	18	102-8803	1	RECEPTACLE KIT					
	19	3S-2093	14	STRAP					
	20	155-2274	1	PLUG KIT					
	21	155-2263	1	WEDGE					
	22	102-7964	1	CONNECTOR					
	23	125-4841	1	WEDGE					
	24	102-7965	14	TERMINAL					
	25	163-6699	1	CONNECTOR					
	26	163-6790	9	TERMINAL					
	27	125-4785	16	TERMINAL					
	28	163-6659	1	CONNECTOR					
	29	2L-8079	1	TERMINAL					

H86158E 00

**238-1538 HARNESS AS**  
 S/N BTL 00181-Up  
 Part of 213-0602-Page78.05

# MEMORANDA

# ELECTRICAL AND STARTING SYSTEM

NOTE	No.	PART No.	QTY	PART NAME	NOTE	No.	PART No.	QTY	PART NAME
	1	213-0870	1	BRACKET AS					
		121-1029	6	CLIP					
	2	8T-4191	4	BOLT (L=16mm)					
	3	8T-4121	4	WASHER					
	4	170-6933	1	COVER					
	5	238-2526	1	COVER					
	6	8T-6411	6	SCREW					
	7	9X-8256	12	WASHER					
	8	171-2208	1	BREAKER AS					
		6V-8187	2	NUT					
		1H-3244	2	LOCKWASHER					
		8T-4205	2	WASHER					
	9	6V-5645	2	SCREW					
Y	10	7N-0718	1	SWITCH AS (DISCONNECT)					
	11	3E-8320	1	PLATE (INSTRUCTION)					
	12	8C-7581	4	SCREW					
	13	096-6166	4	WASHER					
	14	5C-9553	2	BOLT (L=16mm)					
	15	7X-2619	4	BOLT (L=10mm)					
	16	161-3128	6	RELAY					
	17	113-8491	9	FUSE (15A)					
	18	141-2759	10	FUSE (5A)					
	19	113-8490	19	FUSE (10A)					
	20	170-6888	1	TOOL					
	21	149-5051	2	CONNECTOR					
	22	094-2080	1	RELAY					
	23	102-8016	1	RESISTOR AS					
Y	24	138-5190	1	CONTROL GP					

Y-SEE SEPARATE ILLUSTRATION

H87000E 06

## 197-4341 PANEL GP-CIRCUIT BREAKER (1/2)

S/N BTL 00178-00190

Part of 213-0602-Page73

7N-0718-Page108,138-5190-Page113

# ELECTRICAL AND STARTING SYSTEM

NOTE	No.	PART No.	QTY	PART NAME	NOTE	No.	PART No.	QTY	PART NAME
	1	170-9409	1	WIRE AS					
		2L-8050	2	TERMINAL					
	2	163-6758	1	WIRE AS					
		102-8802	1	RECEPTACLE KIT					
		186-3735	2	PIN					
Y	3	259-5274	1	SWITCH AS (START RELAY)					
	4	197-4330	1	CONTROLLER					
	5	121-1023	1	BLOCK					
	6	8T-6411	2	SCREW					
	7	9X-8256	19	WASHER					
	8	111-4829	1	WIRE AS					
		2L-8050	2	TERMINAL					
	9	163-6757	1	WIRE AS					
		2L-8050	2	TERMINAL					
	10	213-0871	1	WIRE AS					
		2L-8050	2	TERMINAL					
	11	193-3529	1	CABLE AS					
		9G-4343	2	TERMINAL					
	12	8C-7581	5	SCREW					
	13	096-6166	5	WASHER					
	14	3E-8048	4	SCREW					
	15	096-5962	4	WASHER					
	16	136-4055	1	STRIP					
	17	170-6935	1	WIRE AS					
		2L-8050	2	TERMINAL					
Y	18	163-6703	1	TIMER AS					
	19	105-9980	1	CLIP					
	20	7X-2619	9	BOLT (L=10mm)					
	21	193-3528	1	CABLE AS					
		9G-4343	2	TERMINAL					
	22	3S-2093	6	STRAP					
	23	105-9982	1	CLIP					
	24	111-4719	1	CLIP					
	25	167-3593	1	STRAP					
	26	105-9986	1	CLIP					
Y	27	267-7633	1	HARNESS AS					
	28	105-9983	1	CLIP					
	29	5C-2890	2	NUT					
	30	116-0114	1	SWITCH AS (HEATER RELAY)					
		102-8802	1	RECEPTACLE KIT					
		8T-8729	2	PIN					
	31	213-0873	1	WIRE AS					
		2L-8050	2	TERMINAL					
	32	213-0872	1	WIRE AS					
		2L-8050	2	TERMINAL					
	33	213-0772	1	SWITCH AS					
	34	095-0742	4	SCREW					
	35	8T-4127	2	SCREW					
	36	8T-0328	2	WASHER					
	37	193-3520	1	BRACKET AS					
Y	38	267-7596	1	HARNESS AS					
	39	8C-8451	2	BOLT (L=40mm)					
	40	085-7329	2	SPACER					

Y-SEE SEPARATE ILLUSTRATION

H91087E 09

## 197-4341 PANEL GP-CIRCUIT BREAKER (2/2)

S/N BTL 00193-Up

Part of 213-0602-Page78.07

267-7633-Page103.09,267-7596-Page103.13,259-5274-Page112.01,163-6703-Page113

# ELECTRICAL AND STARTING SYSTEM

NOTE	No.	PART No.	QTY	PART NAME	NOTE	No.	PART No.	QTY	PART NAME
	1	183-1000	1	BASE AS					
		9X-8256	2	WASHER					
		095-0742	2	SCREW					
		170-9394	32	TERMINAL					
	2	149-5051	6	CONNECTOR					
	3	3S-2093	8	STRAP					
	4	7Y-3951	10	TERMINAL					
	5	121-1022	3	DIODE					
	6	7Y-3952	3	CONNECTOR					
	7	9W-0844	2	SOCKET					
	8	186-3736	2	SOCKET					
	9	155-2271	1	PLUG KIT					
	10	170-6890	2	TERMINAL					
	11	170-6891	15	TERMINAL					
	12	7Y-3958	1	CONNECTOR					
	13	149-5069	6	TERMINAL					
	14	149-5070	12	TERMINAL					
	15	7Y-3963	3	TERMINAL					
		7Y-3965	3	TUBE					
	16	149-5071	6	TERMINAL					

H86614E 00

**238-2071 HARNESS AS (1/2)**  
 S/N BTL 00178-00190  
 Part of 197-4341-Page95.04

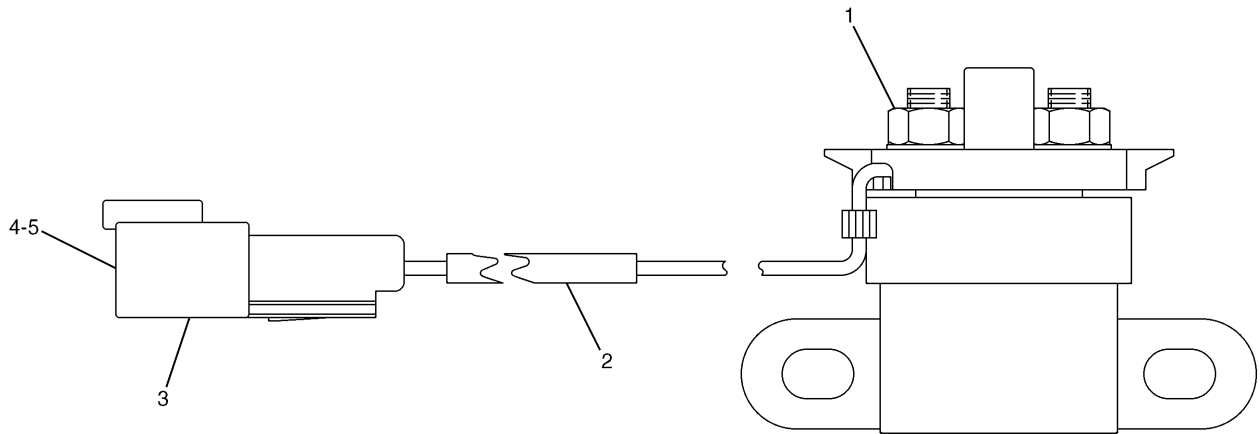
# ELECTRICAL AND STARTING SYSTEM

NOTE	No.	PART No.	QTY	PART NAME	NOTE	No.	PART No.	QTY	PART NAME
	1	153-2602	2	CONNECTOR					
	2	153-2631	2	TERMINAL					
	3	3S-2093	26	STRAP					
	4	104-6573	1	PLUG					
	5	7Y-3951	10	TERMINAL					
	6	121-1022	2	DIODE					
	7	7Y-3952	3	CONNECTOR					
	8	155-2260	2	PLUG KIT					
	9	102-8803	2	RECEPTACLE KIT					
	10	8T-8737	14	PLUG					
	11	9W-0844	28	SOCKET					
	12	186-3736	11	SOCKET					
	13	155-2270	2	PLUG KIT					
	14	155-2261	3	WEDGE					
	15	102-8805	1	RECEPTACLE KIT					
	16	9W-0852	10	PIN					
	17	9X-3401	8	PIN					
	18	186-3735	3	PIN					
	19	126-1768	3	SOCKET					
	20	155-2255	2	PLUG KIT					
	21	155-2258	2	WEDGE					
	22	155-2271	2	PLUG KIT					
	23	102-8801	1	RECEPTACLE KIT					
	24	2L-8067	3	TERMINAL					
	25	9W-1951	1	RECEPTACLE					
	26	8C-6354	1	CAP					
	27	170-6890	3	TERMINAL					
	28	170-6891	8	TERMINAL					
	29	2L-8075	1	TERMINAL					
	30	2L-8065	2	TERMINAL					
	31	7Y-3963	1	TERMINAL					
		7Y-3965	1	TUBE					
	32	7Y-3953	1	CONNECTOR					

H91089E 00

**267-7633 HARNESS AS (2/2)**  
 S/N BTL 00193-Up  
 Part of 197-4341-Page95.12

# ELECTRICAL AND STARTING SYSTEM



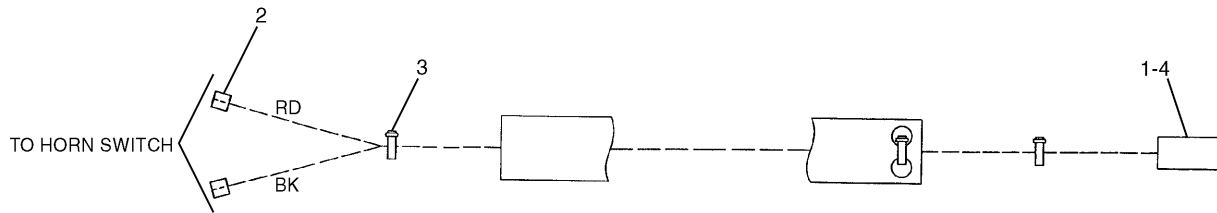
NOTE	No.	PART No.	QTY	PART NAME	NOTE	No.	PART No.	QTY	PART NAME
E	1	5C-2890	2	NUT					
	2	9X-1813		SLEEVE···(15.5cm)					
	3	102-8802	1	RECEPTACLE KIT					
	4	186-3735	2	PIN					
	5	3E-3365	1	WEDGE					

E-ORDER BY THE CENTIMETER

H68413E 00

**175-2313 SWITCH AS-MAGNETIC**  
Part of 125-1302-Page110

# ELECTRICAL AND STARTING SYSTEM



NOTE	No.	PART No.	QTY	PART NAME	NOTE	No.	PART No.	QTY	PART NAME
	1	102-8802	1	RECEPTACLE KIT					
	2	7Y-3963	2	TERMINAL					
		7Y-3965	2	TUBE					
	3	3S-2093	3	STRAP					
	4	186-3735	2	PIN					

H84025E 05

**163-6764 HARNESS AS-CONSOLE**  
Part of 163-6763-Page118

# ELECTRICAL AND STARTING SYSTEM

NOTE	No.	PART No.	QTY	PART NAME	NOTE	No.	PART No.	QTY	PART NAME
	1	259-4883	1	ANTENNA AS					
		259-5081	1	ROD					
		259-5082	1	CABLE AS					
	2	251-0637	1	INSULATION					
	3	167-7023	1	BRACKET					
	4	163-6795	12	STRAP					
Y	5	163-6787	1	HARNESS AS					
	6	7K-1181	2	STRAP					
Y	7	163-6810	1	HARNESS AS					
E	8	101-2846		GUARD···(9.5cm)					
	9	8T-6693	2	SCREW					
	10	8T-0328	2	WASHER					
	11	163-6701	1	PANEL AS					
	12	5C-8312	2	NUT					
	13	8C-7581	2	SCREW					
	14	3S-2093	3	STRAP					
	15	6V-9669	2	SCREW					
	16	3C-6969	2	NUT					
	17	9W-1494	1	METER KIT					
	18	9W-0335	1	LIGHTER AS					
Y	19	132-1829	1	ALARM GP					
	20	9X-2042	1	SCREW					
	21	9X-2044	2	SCREW					
	22	6V-9672	2	SCREW					
	23	096-6166	2	WASHER					

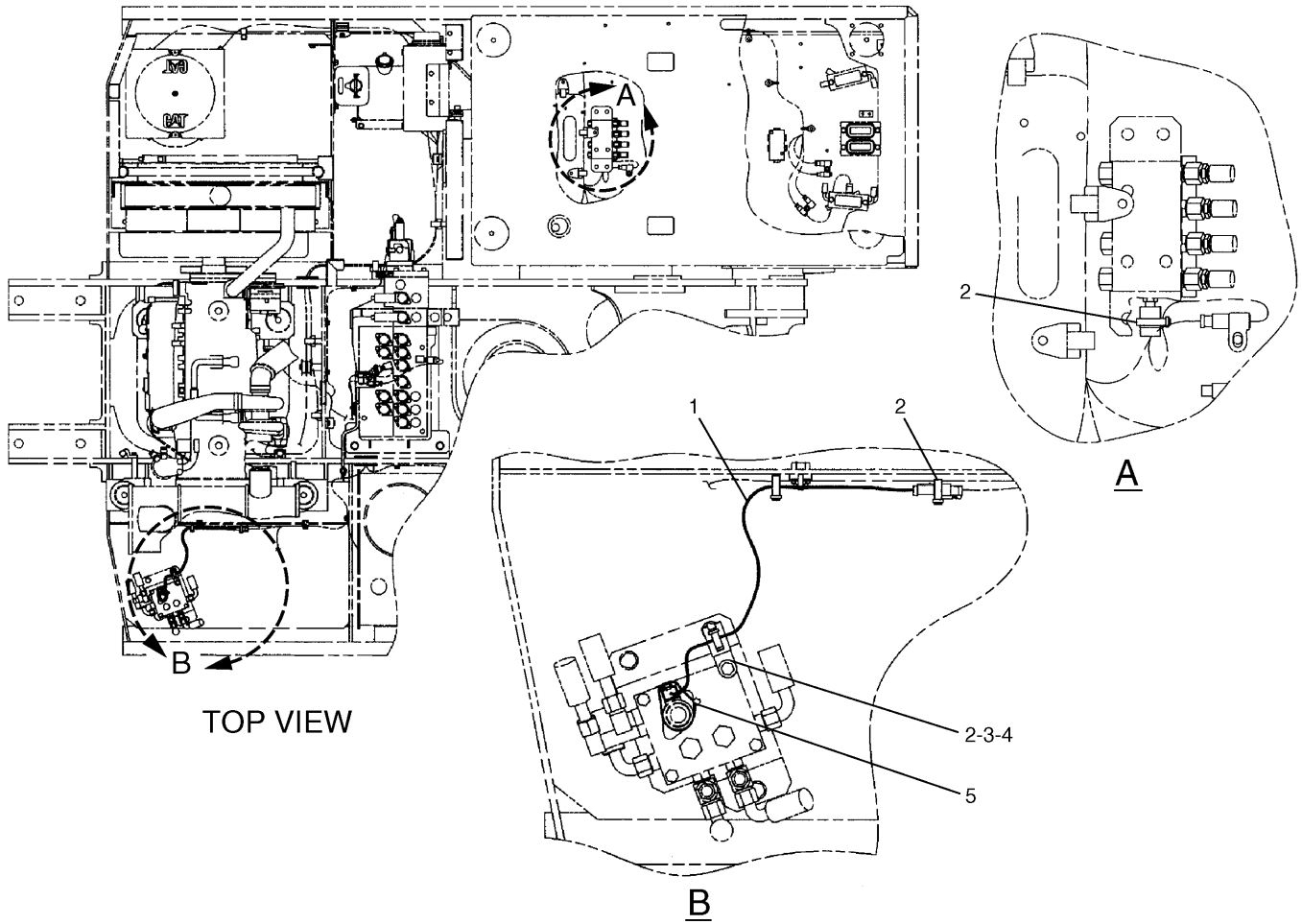
E—ORDER BY THE CENTIMETER  
 Y—SEE SEPARATE ILLUSTRATION

H88757E 10

**163-6623 WIRING GP-CAB**  
 Part of 189-3442,189-3445-Page469  
 132-1829-Page130,163-6787-Page131,163-6810-Page136

# MEMORANDA

# ELECTRICAL AND STARTING SYSTEM



NOTE	No.	PART No.	QTY	PART NAME	NOTE	No.	PART No.	QTY	PART NAME
Y	1	186-4603	1	HARNES AS					
	2	3S-2093	4	STRAP					
	3	4P-7581	1	CLIP					
	4	5P-4116	1	WASHER					
	5	7K-1181	1	STRAP					

Y-SEE SEPARATE ILLUSTRATION

H72700E 00

**193-3425 WIRING GP**  
 Part of 165-0984, 165-0985-Page324  
 186-4603-Page152  
 An Attachment

## ELECTRICAL AND STARTING SYSTEM

NOTE	No.	PART No.	QTY	PART NAME	NOTE	No.	PART No.	QTY	PART NAME
	1	134-7024	1	BRACKET AS					
	2	127-5937	1	BEARING AS					
	3	127-5938	1	SHAFT AS					
	4	127-5939	1	SHAFT AS					
	5	127-5940	1	WASHER AS					
	6	127-5941	1	GEAR AS					
	7	127-5942	1	CLUTCH					
	8	127-5943	4	GEAR AS					
	9	127-5944	1	LEVER AS					
	10	127-5945	1	PINION AS					
	11	094-9950	1	STOPPER SET					
	12	135-2364	1	SWITCH AS					
	13	127-5947	1	SETSCREW					
	14	127-5948	1	BALL					
	15	127-5949	1	PACKING AS					
	16	127-5950	1	ARMATURE AS					
	17	095-0410	1	BEARING					
	18	127-5952	1	YOKE AS					
	19	127-5953	2	BRUSH					
	20	094-9980	2	GASKET					
	21	127-5955	1	HOLDER AS					
	22	127-5956	4	SPRING					
	23	127-5957	1	BRACKET AS					
	24	095-0085	1	BOLT SET					

H65366E 01

**134-7023 STARTING MOTOR GP-ELECTRIC**  
Part of 127-5819-Page157

## ELECTRICAL AND STARTING SYSTEM

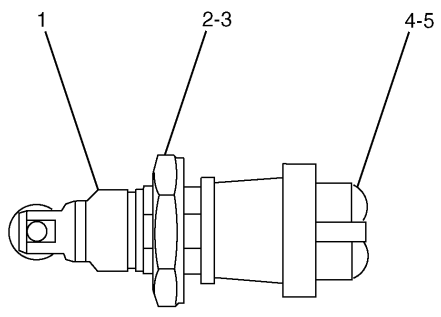
NOTE	No.	PART No.	QTY	PART NAME	NOTE	No.	PART No.	QTY	PART NAME
Y	1	183-1035	2	LAMP GP					
	2	163-6795	2	STRAP					
	3	8T-4133	2	NUT					
	4	8T-4121	4	WASHER					
	5	8T-4137	2	BOLT (L=20mm)					
Y	6	170-9295	2	HARNESS AS					
	7	8T-4970	2	BOLT (L=14mm)					
	8	9X-8256	2	WASHER					
Y	9	163-6704	1	TIMER AS					

Y-SEE SEPARATE ILLUSTRATION

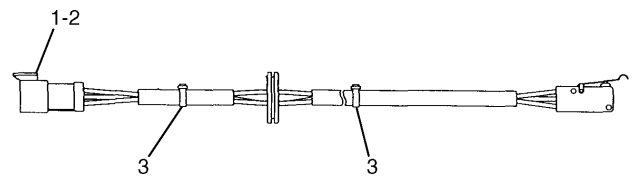
H78593E 00

**204-1810 LIGHTING GP-CAB**  
 163-6704-Page176,170-9295,183-1035-Page180  
 An Attachment

# ELECTRICAL AND STARTING SYSTEM

	NOTE	No.	PART No.	QTY	PART NAME
		1	9X-0199	1	BOOT
		2	6V-8370	1	NUT
		3	2H-3922	1	LOCKWASHER
		4	6V-8363	2	SCREW
		5	8F-1434	2	LOCKWASHER
					H74275E 01

**129-6466 SWITCH AS-ROLLER**  
 Part of 176-1904-Page511  
 An Attachment

	NOTE	No.	PART No.	QTY	PART NAME
		1	186-3735	3	PIN
		2	102-8803	1	RECEPTACLE KIT
		3	3S-2093	2	STRAP
					H68392E 02

**163-6785 SWITCH AS**  
 Limit  
 Part of 167-7080-Page530

# FRAME AND BODY

NOTE	No.	PART No.	QTY	PART NAME	NOTE	No.	PART No.	QTY	PART NAME
	1	41-0232	1	STRIKER					
	2	41-8019	1	SUPPORT					
	3	61-6033	3	STOPPER					
	4	5P-1076	14	WASHER					
	5	087-3908	1	SHIM (T=1.00mm)					
	6	087-3909	1	SHIM (T=2.00mm)					
	7	122-4120	1	ROD					
	8	8T-4192	10	BOLT (L=25mm)					
	9	8T-4139	4	BOLT (L=30mm)					
	10	9X-8256	2	WASHER					
	11	8T-4223	1	WASHER					
	12	8T-4171	2	BOLT (L=12mm)					
	13	177-6295	1	ANGLE					
	14	177-6296	1	ANGLE					
	15	8T-4138	2	BOLT (L=20mm)					
	16	8T-4121	1	WASHER					
	17	5P-4115	4	WASHER					
Y	18	177-6406	1	DOOR GP					
	19	105-3487	2	BOLT (L=20mm)					
	20	184-8833	1	ROD AS					
	21	3B-4618	2	COTTER					
Y	22	218-7610	1	DOOR GP					
	23	199-0246	1	SUPPORT AS					
	24	214-8312	1	PIPE					
	25	214-8311	1	SPRING					
	26	9X-2045	4	SCREW					

Y-SEE SEPARATE ILLUSTRATION

H86617E 03

## 214-8116 HOOD & GUARD GP (1/3)

S/N BTL 1-00185

177-6406-Page197,218-7610-Page198

# FRAME AND BODY

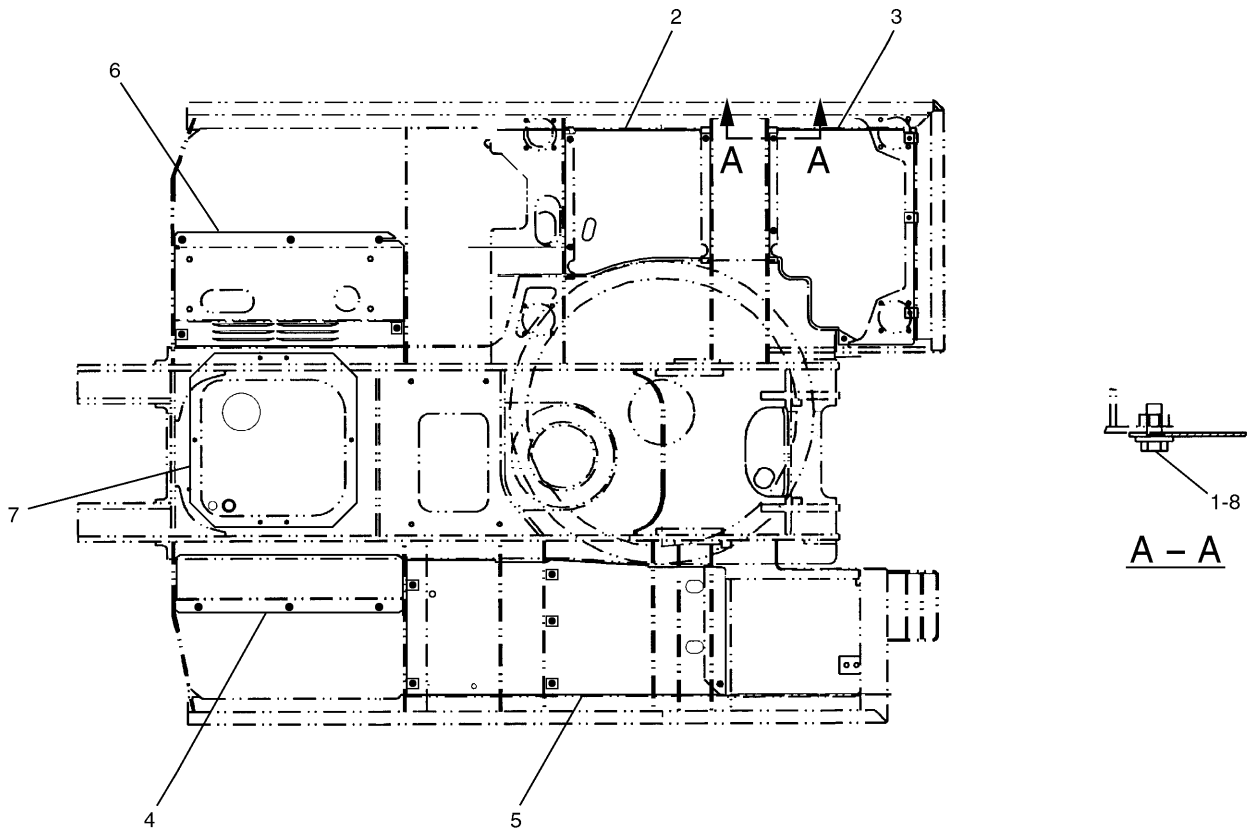
NOTE	No.	PART No.	QTY	PART NAME	NOTE	No.	PART No.	QTY	PART NAME
	1	41-0232	1	STRIKER					
	2	9X-8256	2	WASHER					
	3	61-6033	1	STOPPER					
	4	71-1418	1	SUPPORT AS					
	5	087-3908	1	SHIM (T=1.00mm)					
	6	087-3909	1	SHIM (T=2.00mm)					
	7	8T-4138	4	BOLT (L=20mm)					
	8	8T-4192	32	BOLT (L=25mm)					
	9	5P-1076	47	WASHER					
	10	170-3014	2	BUMPER					
	11	8T-4137	2	BOLT (L=20mm)					
	12	177-5982	1	SHEET AS					
	13	8T-4136	2	BOLT (L=25mm)					
	14	8T-4121	4	WASHER					
	15	5P-4115	4	WASHER					
	16	177-6357	1	SUPPORT AS					
	17	105-3487	2	BOLT (L=20mm)					
	18	218-7602	1	SHEET AS					
	19	218-7875	1	SHEET AS					
		214-8202	1	LINER					
		218-8060	1	LINER					
D		5P-8309		SEAL... (0.2m)					
	20	218-7802	1	SUPPORT AS					
	21	214-8293	1	SUPPORT AS					
	22	273-7736	1	SUPPORT AS					
		218-7878	1	LINER					
	23	214-8254	1	ANGLE					
	24	199-0377	1	PLATE					
	25	208-3960	1	SUPPORT AS					
	26	214-8150	1	SUPPORT AS					
	27	214-8166	1	SHEET AS					
		190-6817	1	LINER					
D	28	214-8182	1	SHEET AS					
		5P-8309		SEAL... (0.2m)					
	29	214-8188	1	SHEET AS					
	30	8T-4139	15	BOLT (L=30mm)					
	31	214-8250	1	SUPPORT AS					
	32	214-8248	1	SUPPORT AS					
	33	218-7887	1	LINER					
	34	218-7888	1	LINER					
D	35	5P-8309		SEAL... (0.2m)					

D—ORDER BY THE METER

H91225E 05

**214-8116 HOOD & GUARD GP (3/3)**  
S/N BTL 00186-Up

# FRAME AND BODY



NOTE	No.	PART No.	QTY	PART NAME	NOTE	No.	PART No.	QTY	PART NAME
	1	8C-8992	28	BOLT (L=30mm)					
	2	184-8145	1	SHEET					
	3	184-8146	1	SHEET					
	4	184-8214	1	SHEET					
	5	239-1647	1	SHEET AS					
	6	214-8157	1	SHEET					
	7	223-2753	1	SHEET AS					
	8	5P-1076	28	WASHER					

H86159E 00

**239-1645 GUARD GP-BOTTOM**  
S/N BTL 00181-Up

# MEMORANDA

# FRAME AND BODY

NOTE	No.	PART No.	QTY	PART NAME	NOTE	No.	PART No.	QTY	PART NAME
	1	8T-4137	2	BOLT (L=20mm)					
	2	6V-3532	30	BOLT (L=60mm)					
	3	8T-4121	14	WASHER					
	4	8T-4136	12	BOLT (L=25mm)					
	5	171-9464	62	SPACER					
	6	8T-0362	32	BOLT (L=110mm)					
	7	4I-7326	1	STRIP					
	8	148-4704	1	GASKET					
	9	148-4703	1	COVER					
	10	5K-9243	2	ELBOW					
	11	4I-7446	1	GASKET					
B	12	1U-8846		GASKET MAKER... (273ml)					
	13	102-6449	1	TUBE AS					
	14	4I-7512	1	CLAMP					
	15	4I-7444	1	BOOT					
	16	4I-7511	1	RETAINER					
	17	095-7993	1	DOWEL					
	18	4N-9170	2	CLIP					
	19	8T-4199	2	BOLT (L=12mm)					
	20	3B-8489	1	FITTING					
	21	2Y-5503	1	CORK					
	22	229-1080	1	GEAR GP					
	23	229-1078	1	SEAL					
E	24	148-4685		SEAL... (335cm)					
	25	3B-8489	1	FITTING					

B—USE AS REQUIRED  
 E—ORDER BY THE CENTIMETER

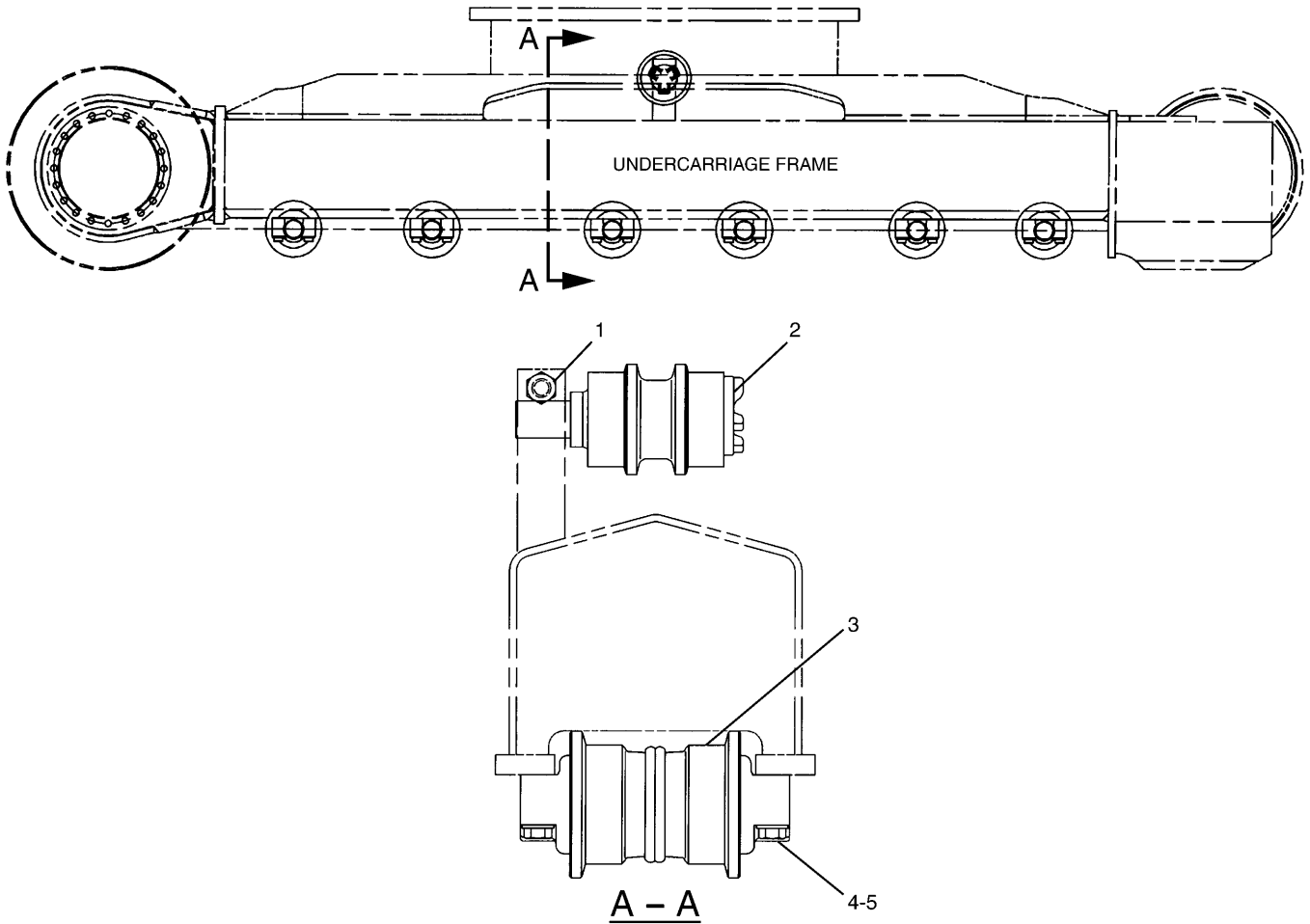
H86161E 03

## 171-9381 GEAR & BEARING GP-SWING

# MEMORANDA

# MEMORANDA

# FRAME AND BODY



NOTE	No.	PART No.	QTY	PART NAME	NOTE	No.	PART No.	QTY	PART NAME
	1	8T-5878	2	BOLT (L=80mm)					
Y	2	8E-5600	2	ROLLER GP					
Y	3	163-4143	12	ROLLER GP					
	4	7X-2565	48	BOLT (L=100mm)					
	5	8T-4123	48	WASHER					

Y-SEE SEPARATE ILLUSTRATION

H72705E 03

# HYDRAULIC SYSTEM

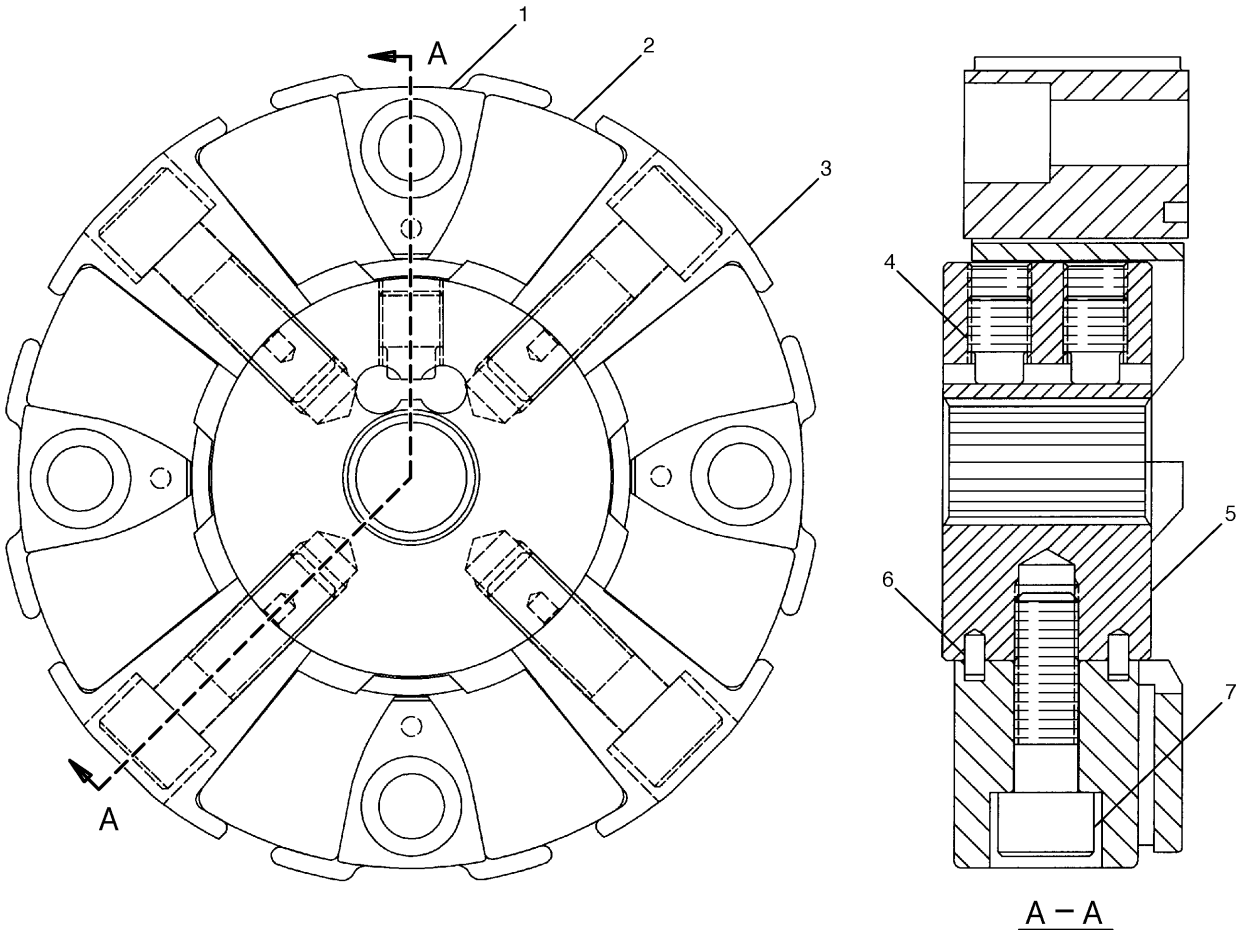
NOTE	No.	PART No.	QTY	PART NAME	NOTE	No.	PART No.	QTY	PART NAME
	1	213-0677	1	SWITCH AS					
		102-8802	1	RECEPTACLE KIT					
		9X-3401	2	PIN					
	2	8T-4136	4	BOLT (L=25mm)					
	3	8T-4121	6	WASHER					
E	4	7Y-1976		HOSE...(110cm)					
Y	5	158-8987	1	FILTER GP					
Y	6	170-9826	1	SCREEN GP					
	7	3D-2824	1	SEAL-O-RING (ID=23.47mm)					
	8	8M-2770	2	CLIP					
	9	8T-4133	2	NUT					
Y	10	170-9419	1	SWITCH AS					
	11	129-3400	1	GUARD					
	12	8T-0273	4	BOLT (L=40mm)					
	13	2B-0858	1	PLUG					
	14	4B-7739	1	PLUG					
	15	8H-9819	1	ADAPTER					
	16	4J-5267	1	SEAL-O-RING (ID=24.99mm)					
	17	4I-5394	1	SENDER					
		4I-5490	2	SCREW					
		095-0826	2	LOCKWASHER					
	18	3K-0360	1	SEAL-O-RING (ID=16.36mm)					
	19	179-7541	1	PIPE AS					
	20	1J-2859	1	SEAL-O-RING (ID=104.14mm)					
	21	8T-0267	2	BOLT (L=12mm)					
	22	227-0620	1	GAUGE AS					
	23	236-3258	2	BLOCK					
	24	236-3259	2	BOLT					
	25	095-1519	4	SEAL-O-RING (ID=15.80mm)					
	26	6F-4855	4	SEAL-O-RING (ID=13.94mm)					
	27	236-3257	1	PIPE					

E-ORDER BY THE CENTIMETER  
Y-SEE SEPARATE ILLUSTRATION

H85066E 04

**176-4350 TANK & FILTER GP-HYDRAULIC (1/2)**  
Capacity 185 Liters  
S/N BTL 1-00185  
Part of 176-4349-Page238  
170-9419-Page178,170-9826-Page248,158-8987-Page263

# HYDRAULIC SYSTEM



A - A

NOTE	No.	PART No.	QTY	PART NAME	NOTE	No.	PART No.	QTY	PART NAME
	1	7Y-1900	4	INSERT					
	2	7Y-1901	1	ELEMENT					
	3	7Y-1902	4	INSERT					
	4	7Y-0466	2	SETSCREW					
	5	255-2942	1	HUB					
	6	7Y-0468	8	PIN					
	7	7Y-1904	4	BOLT (L=50mm)					

H91018E 00

**255-2941 COUPLING GP-FLEXIBLE**  
Part of 183-8121-Page250

# HYDRAULIC SYSTEM

NOTE	No.	PART No.	QTY	PART NAME	NOTE	No.	PART No.	QTY	PART NAME
	1	190-7674	2	SEAL-O-RING (ID=23.70mm)					
	2	173-3389	2	STOPPER					
	3	192-2376	1	PIN AS					
		192-0573	1	PIN					
	4	185-0347	2	RING					
	5	192-2374	1	LEVER AS					
		094-1875	1	DOWEL					
	6	174-7213	1	PISTON					
	7	174-7220	2	COVER					
	8	8T-4132	2	NUT					
	9	200-3254	1	NUT					
	10	200-3255	1	NUT					
	11	225-0417	1	SETSCREW					
	12	173-3387	1	ADJUSTER					
	13	174-7222	1	COVER					
	14	176-8133	1	GUIDE					
	15	174-7221	1	COVER					
	16	176-0578	1	SPOOL AS					
	17	185-0172	1	RETAINER					
	18	8T-4183	8	BOLT (L=40mm)					
	19	8T-4192	2	BOLT (L=25mm)					
	20	3D-2891	1	BALL					
	21	190-4896	2	PLUG					
	22	9S-8001	7	PLUG					
	23	4J-7533	7	SEAL-O-RING (ID=6.07mm)					
	24	176-0577	1	PIN					
	25	3J-1907	1	SEAL-O-RING (ID=11.89mm)					
	26	094-1881	1	PLATE					
	27	095-1527	1	SEAL-O-RING (ID=24.70mm)					
	28	6V-5391	1	SEAL-O-RING (ID=37.77mm)					
B	29	099-6109	2	SHIM (T=1.05mm)					
B		099-6110	2	SHIM (T=1.10mm)					
B		099-6113	2	SHIM (T=1.25mm)					
B		099-6115	2	SHIM (T=1.30mm)					
B		099-6111	2	SHIM (T=1.15mm)					
B		099-6112	2	SHIM (T=1.20mm)					
B		099-3669	2	SHIM (T=1.00mm)					
	30	099-3671	1	SPRING					
	31	225-0225	1	SETSCREW					
	32	095-1538	1	SEAL-O-RING (ID=38.70mm)					
	33	180-4990	1	SPRING					
	34	180-4989	1	SPRING					
	35	184-2567	1	SPRING					
	36	095-1519	1	SEAL-O-RING (ID=15.80mm)					
	37	225-0224	1	SETSCREW					

B-USE AS REQUIRED

H84073E 15

**180-4985 HEAD GP-PUMP CONTROL**  
Part of 176-3963-Page253,201-6037-Page257

# HYDRAULIC SYSTEM

Consists of :

		Page
1	173-3481 CYLINDER & SEAL GP-BOOM .....	273
1	179-7645 LINES GP-BOOM CYLINDER .....	283

H72747E 01

**173-3483 CYLINDER & LINES GP-BOOM**  
Part of 169-7570-Page568  
An Attachment

Consists of :

		Page
1	173-3485 CYLINDER & SEAL GP-STICK.....	274
1	179-7646 LINES GP-STICK CYLINDER .....	285

H72748E 01

**173-3484 CYLINDER & LINES GP-STICK**  
Part of 169-7570-Page568  
An Attachment

# HYDRAULIC SYSTEM

NOTE	No.	PART No.	QTY	PART NAME	NOTE	No.	PART No.	QTY	PART NAME
	1	179-9635	1	CYLINDER AS					
	2	229-1012	1	BEARING					
J	3	143-8024	1	RING					
J	4	9X-7298	1	SEAL AS					
J	5	143-8033	1	RING					
J	6	143-8025	1	RING					
	7	158-8924	1	PISTON					
J	8	095-1714	1	SEAL-O-RING (ID=99.40mm)					
J	9	133-6716	1	RING					
	10	133-6677	1	HEAD					
	11	099-5400	1	RING					
	12	114-0753	1	BEARING					
J	13	170-9841	1	SEAL					
J	14	170-9857	1	SEAL					
J	15	093-1519	1	RING					
J	16	165-9283	1	SEAL					
	17	200-3428	1	ROD AS					
	18	240-2913	1	BEARING					
	19	133-6686	1	LOCKNUT					
	20	7Y-5216	8	BOLT (L=80mm)					
				THE FOLLOWING REPAIR KIT IS AVAILABLE:					
		179-9638	1	SEAL KIT (INCLUDES PARTS MARKED J)					

H88258E 03

**173-3490 CYLINDER GP-BUCKET**  
Part of 173-3489-Page275  
An Attachment

CLICK HERE TO **DOWNLOAD** THE COMPLETE MANUAL

- Thank you very much for reading the preview of the manual.
- You can download the complete manual from: [www.heydownloads.com](http://www.heydownloads.com) by clicking the link below



- Please note: If there is no response to CLICKING the link, please download this PDF first and then click on it.

CLICK HERE TO **DOWNLOAD** THE COMPLETE MANUAL

# MEMORANDA

# HYDRAULIC SYSTEM

NOTE	No.	PART No.	QTY	PART NAME	NOTE	No.	PART No.	QTY	PART NAME
	1	226-3047	1	TUBE GP					
	2	226-3045	1	TUBE GP					
	3	093-1292	1	CLAMP					
	4	093-1293	1	CLAMP					
	5	197-2295	1	HOSE AS					
	6	197-2299	1	HOSE AS					
	7	41-8889	2	SEAL					
	8	41-8891	2	SEAL					
	9	7Y-3732	12	CLIP					
	10	7Y-4868	12	CLIP					
	11	8T-4139	24	BOLT (L=30mm)					
	12	8T-4223	26	WASHER					
	13	8T-4910	1	BOLT (L=60mm)					
	14	8T-4648	1	BOLT (L=70mm)					

H84074E 02

**197-2151 LINES GP-AUXILIARY HYDRAULIC**  
 S/N BTL (T02.12)-Up  
 Part of 173-8009-Page296  
 An Attachment

# HYDRAULIC SYSTEM

NOTE	No.	PART No.	QTY	PART NAME	NOTE	No.	PART No.	QTY	PART NAME
	1	197-2319	1	TUBE AS					
	2	197-2321	1	TUBE AS					
	3	197-2320	1	TUBE AS					
	4	197-2317	1	PLATE AS					
	5	193-6605	1	PLATE					
	6	193-6606	1	PLATE					
	7	153-8867	2	CLIP					
	8	179-5260	8	CLIP					
	9	149-1738	8	CLIP					
	10	8T-4139	14	BOLT (L=30mm)					
	11	8T-4223	26	WASHER					
	12	8T-4956	4	BOLT (L=35mm)					
	13	8T-4194	4	BOLT (L=50mm)					
	14	8T-4244	8	NUT					
	15	7J-9108	2	SEAL-O-RING (OD=19.28mm)					
	16	6V-8398	4	SEAL-O-RING (OD=16.03mm)					
	17	8T-4648	4	BOLT (L=70mm)					
	18	197-2377	2	PLATE AS					
	19	3V-9744	2	SPACER					
	20	179-5262	2	PLATE AS					
	21	197-2318	1	PLATE AS					
	22	197-6605	1	PLATE					
	23	193-6606	1	PLATE					
	24	187-9904	1	TUBE AS					

H84075E 05

**173-8014 LINES GP-AUXILIARY HYDRAULIC**  
 S/N BTL (T03.04)-Up  
 An Attachment

# HYDRAULIC SYSTEM

NOTE	No.	PART No.	QTY	PART NAME	NOTE	No.	PART No.	QTY	PART NAME
	1	197-2322	1	TUBE AS					
	2	197-2323	1	TUBE AS					
	3	153-8867	2	CLIP					
	4	173-7895	4	CLIP					
	5	179-5260	6	CLIP					
	6	149-1738	2	CLIP					
	7	179-5261	1	PLATE					
	8	8T-4139	12	BOLT (L=30mm)					
	9	8T-4223	14	WASHER					
	10	8T-4244	10	NUT					
	11	7X-2549	2	BOLT (L=100mm)					
	12	7J-9108	1	SEAL-O-RING (OD=19.28mm)					
	13	6V-8398	2	SEAL-O-RING (OD=16.03mm)					

H84076E 03

**173-8016 LINES GP-DRAIN**  
 S/N BTL (T03.04)-Up  
 An Attachment

# HYDRAULIC SYSTEM

Consists of :

			Page
1	170-9365	WIRING GP .....	150
1	197-0203	VALVE & MOUNTING GP .....	409
1	176-4421	LINES GP-FRONT .....	360
1	176-4422	LINES GP-PILOT .....	342
1	176-4423	LINES GP-PILOT .....	344
1	179-4598	CONTROL GP-HYDRAULIC.....	406
1	167-7263	FILM GP .....	607

H81904E 03

**173-8003 CONTROL AR-AUXILIARY**  
An Attachment

# HYDRAULIC SYSTEM

NOTE	No.	PART No.	QTY	PART NAME	NOTE	No.	PART No.	QTY	PART NAME
	1	6V-8637	2	CONNECTOR		51	8T-4137	2	BOLT (L=20mm)
	2	6V-8636	3	CONNECTOR		52	6D-1641	1	CLIP
	3	107-6631	1	CONNECTOR		53	131-9453	1	HOSE AS (NOM 08, L=600mm)
	4	6V-8639	4	CONNECTOR		54	8T-0077	1	CONNECTOR
	5	6V-9873	3	CONNECTOR	Y	55	158-8251	1	VALVE GP
	6	6V-9007	2	ELBOW		56	4I-9527	4	BAND (R3, GREEN)
	7	3D-2824	4	SEAL-O-RING (ID=23.47mm)		57	204-8350	1	HOSE AS (NOM 08, L=500mm)
	8	6V-9746	5	SEAL-O-RING (OD=22.50mm)		58	6V-9002	1	ELBOW
	9	6V-8625	2	ELBOW		59	6V-9877	1	ELBOW
	10	3J-1907	23	SEAL-O-RING (ID=11.89mm)		60	4I-9521	4	BAND (L1, RED)
	11	6V-8721	1	ELBOW		61	4I-9523	2	BAND (L3, BLUE)
	12	6V-8724	1	ELBOW					
	13	8T-1905	4	ELBOW					
	14	6V-8638	1	CONNECTOR					
	15	6V-8397	10	SEAL-O-RING (OD=12.83mm)					
	16	3K-0360	11	SEAL-O-RING (ID=16.36mm)					
	17	6V-9837	1	TEE					
	18	6V-8398	15	SEAL-O-RING (OD=16.03mm)					
	19	2M-9780	2	SEAL-O-RING (ID=19.18mm)					
	20	4I-9528	2	BAND (R4, PURPLE)					
Y	21	164-6981	1	ACCUMULATOR GP					
	22	9S-4191	5	PLUG					
	23	9S-4185	2	PLUG					
	24	176-4469	1	BLOCK					
	25	6K-8178	1	CLIP					
	26	199-1956	1	SUPPORT AS					
	27	199-2013	1	HOSE AS (NOM 06, L=960mm)					
E		7I-7439		GUARD... (98cm)					
	28	8T-6663	1	ADAPTER					
	29	5I-8825	1	HOSE AS (NOM 06, L=750mm)					
	30	087-5772	1	HOSE AS (NOM 06, L=1000mm)					
	31	8T-4179	1	BOLT (L=20mm)					
	32	6V-0852	4	CAP					
	33	6V-3965	4	NIPPLE AS					
	34	129-5940	1	HOSE AS (NOM 08, L=2800mm)					
	35	115-3780	1	HOSE AS (NOM 08, L=1600mm)					
	36	157-3182	2	SENSOR AS					
		3K-0360	1	SEAL-O-RING (ID=16.36mm)					
		9X-3401	3	PIN					
	37	202-3617	1	HOSE AS (NOM 06, L=950mm)					
	38	202-3593	1	HOSE AS (NOM 06, L=1850mm)					
	39	113-6394	1	HOSE AS (NOM 12, L=750mm)					
	40	108-7354	1	HOSE AS (NOM 08, L=650mm)					
	41	113-6752	1	HOSE AS (NOM 08, L=1050mm)					
	42	7K-1181	2	STRAP					
	43	128-9166	1	HOSE AS (NOM 12, L=540mm)					
	44	4I-0788	1	HOSE AS (NOM 08, L=535mm)					
	45	8T-4223	3	WASHER					
	46	131-9869	1	HOSE AS (NOM 12, L=480mm)					
	47	8T-4956	2	BOLT (L=35mm)					
	48	8T-4121	6	WASHER					
	49	8T-4136	4	BOLT (L=25mm)					
	50	085-7356	2	FITTING					

E—ORDER BY THE CENTIMETER  
Y—SEE SEPARATE ILLUSTRATION

H85092E 05

**176-4358 LINES GP-PILOT (2/2)**  
S/N BTL 1-00180  
164-6981-Page270, 158-8251-Page448

# HYDRAULIC SYSTEM

NOTE	No.	PART No.	QTY	PART NAME	NOTE	No.	PART No.	QTY	PART NAME
	1	8 T-4137	3	BOLT (L=20mm)					
	2	6 V-8724	2	ELBOW					
	3	6 V-8636	3	CONNECTOR					
	4	107-6631	1	CONNECTOR					
	5	6 V-8781	1	TEE					
	6	9 S-4191	1	PLUG					
	7	104-8821	1	HOSE AS (NOM 06, L=860mm)					
	8	087-4531	1	HOSE AS (NOM 06, L=600mm)					
	9	087-4402	2	HOSE AS (NOM 06, L=480mm)					
	10	4 I-1631	1	HOSE AS (NOM 06, L=2850mm)					
	11	087-6585	1	HOSE AS (NOM 06, L=350mm)					
	12	6 V-8774	1	TEE					
	13	167-3466	2	SWITCH AS (PRESSURE)					
		102-8802	1	RECEPTACLE KIT					
		9 X-3401	2	PIN					
	14	108-7516	1	FITTING					
	15	7 K-1181	5	STRAP					
	16	8 T-4121	3	WASHER					
Y	17	185-0462	1	VALVE GP					
	18	133-5813	2	BAND (PGRAY)					
	19	4 I-9527	4	BAND (R3, GREEN)					
	20	3 J-1907	10	SEAL-O-RING (ID=11.89mm)					
	21	6 V-8397	10	SEAL-O-RING (OD=12.83mm)					

Y-SEE SEPARATE ILLUSTRATION

H72834E 00

**176-4430 LINES GP-PILOT**  
 Part of 165-0984-Page324  
 185-0462-Page465  
 An Attachment

# HYDRAULIC SYSTEM

NOTE	No.	PART No.	QTY	PART NAME	NOTE	No.	PART No.	QTY	PART NAME
	1	087-5759	3	HOSE AS (NOM 06, L=800mm)					
	2	7Y-8478	1	HOSE AS (NOM 06, L=2100mm)					
	3	4I-1783	1	HOSE AS (NOM 06, L=1500mm)					
	4	7Y-8333	1	HOSE AS (NOM 06, L=1080mm)					
	5	087-4503	1	HOSE AS (NOM 06, L=850mm)					
Y	6	165-9470	1	VALVE GP					
	7	4I-1037	1	HOSE AS (NOM 06, L=1400mm)					
	8	087-5770	1	HOSE AS (NOM 06, L=880mm)					
	9	192-6775	1	HOSE AS (NOM 08, L=1400mm)					
	10	6V-9001	7	ELBOW					
	11	087-5774	2	HOSE AS (NOM 06, L=1060mm)					
	12	108-7313	1	HOSE AS (NOM 06, L=1900mm)					
	13	104-8976	1	HOSE AS (NOM 06, L=1900mm)					
	14	4I-9521	4	BAND (L1,RED)					
	15	4I-9522	4	BAND (L2,YELLOW)					
	16	4I-9523	4	BAND (L3,BLUE)					
	17	4I-9524	4	BAND (L4,BROWN)					
	18	4I-9525	4	BAND (R1,ORANGE)					
	19	4I-9526	4	BAND (R2,WHITE)					
	20	4I-9527	4	BAND (R3,GREEN)					
	21	4I-9528	4	BAND (R4,PURPLE)					
	22	8T-4191	4	BOLT (L=16mm)					
	23	8T-4192	4	BOLT (L=25mm)					
	24	8T-4121	4	WASHER					
	25	8T-4223	4	WASHER					
	26	184-9551	1	SUPPORT					
	27	7K-1181	9	STRAP					
	28	6V-8636	8	CONNECTOR					
	29	087-5772	1	HOSE AS (NOM 06, L=1000mm)					
	30	3J-1907	16	SEAL-O-RING (ID=11.89mm)					
	31	6V-8397	16	SEAL-O-RING (OD=12.83mm)					
	32	6V-8724	1	ELBOW					
	33	087-5777	1	HOSE AS (NOM 06, L=1600mm)					

Y-SEE SEPARATE ILLUSTRATION

H89001E 02

**212-5460 LINES GP-PILOT**  
 4 Way Valve  
 Part of 215-4862-Page327  
 165-9470-Page460  
 An Attachment

# HYDRAULIC SYSTEM

NOTE	No.	PART No.	QTY	PART NAME	NOTE	No.	PART No.	QTY	PART NAME
	1	165-3219	1	HOSE AS					
	2	184-9508	1	HOSE AS					
	3	184-9477	1	HOSE AS					
	4	173-4868	1	HOSE AS					
	5	128-7471	2	HOSE AS					
	6	199-1947	1	PLATE					
	7	6V-8716	1	CONNECTOR					
	8	6V-9746	4	SEAL-O-RING (OD=22.50mm)					
	9	7M-8485	2	SEAL-O-RING (ID=29.74mm)					
	10	8T-6466	4	BOLT (L=60mm)					
	11	4J-0520	1	SEAL-O-RING (ID=32.92mm)					
	12	187-6913	1	FLANGE					
	13	199-1992	1	SUPPORT AS					
	14	099-8232	1	SEAL-O-RING (ID=28.24mm)					
	15	8T-4176	4	BOLT (L=90mm)					
	16	5K-9090	1	SEAL-O-RING (OD=27.22mm)					
Y	17	177-2653	1	VALVE GP					
	18	8T-1685	1	TEE					
	19	6V-9853	1	ELBOW					
	20	8T-4196	2	BOLT (L=35mm)					
	21	8T-4136	4	BOLT (L=25mm)					
	22	204-1611	1	STRAP					
	23	8T-4121	6	WASHER					

Y-SEE SEPARATE ILLUSTRATION

H91118E 03

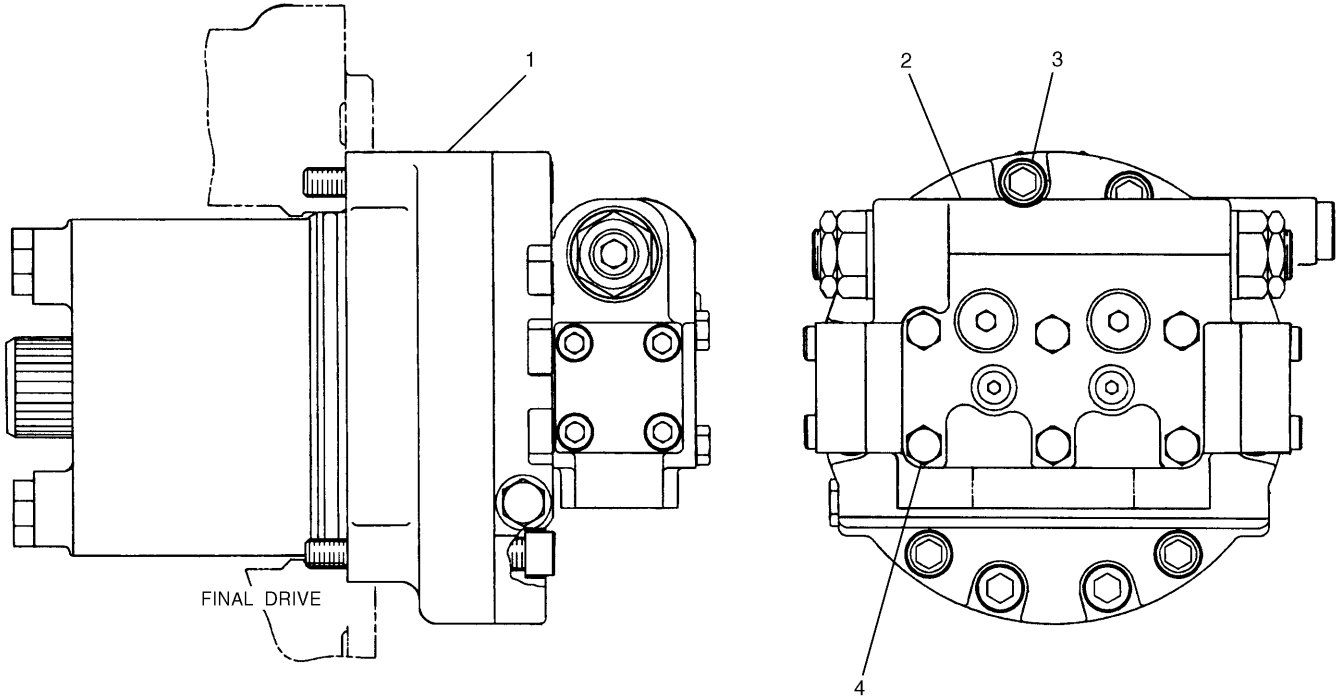
## 176-4421 LINES GP-FRONT (1/2)

Part of 173-8003-Page325  
177-2653-Page443  
An Attachment

# MEMORANDA

# MEMORANDA

# HYDRAULIC SYSTEM



NOTE	No.	PART No.	QTY	PART NAME	NOTE	No.	PART No.	QTY	PART NAME
Y	1	185-6953	1	MOTOR GP					
Y	2	199-0504	1	VALVE GP					
	3	095-0707	3	BOLT (L=120mm)					
	4	8T-4176	6	BOLT (L=90mm)					

Y-SEE SEPARATE ILLUSTRATION

H72913E 02

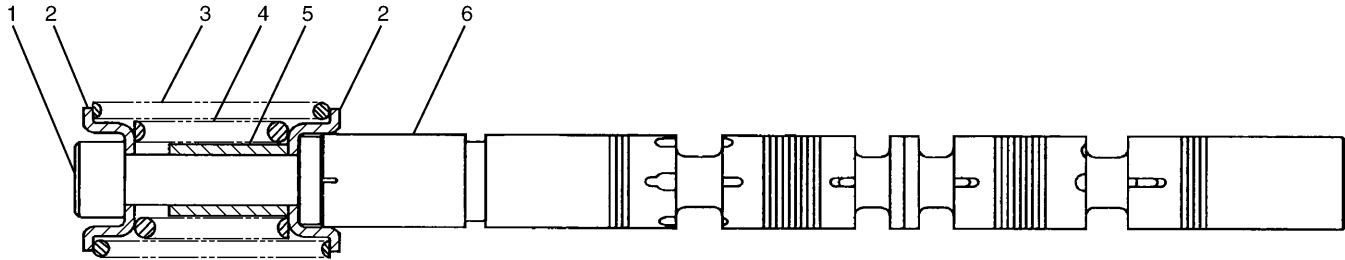
**185-6952 MOTOR & MTG GP-TRAVEL**  
 Part of 165-5777-Page183  
 185-6953-Page392,199-0504-Page439

# MEMORANDA

# MEMORANDA



# HYDRAULIC SYSTEM

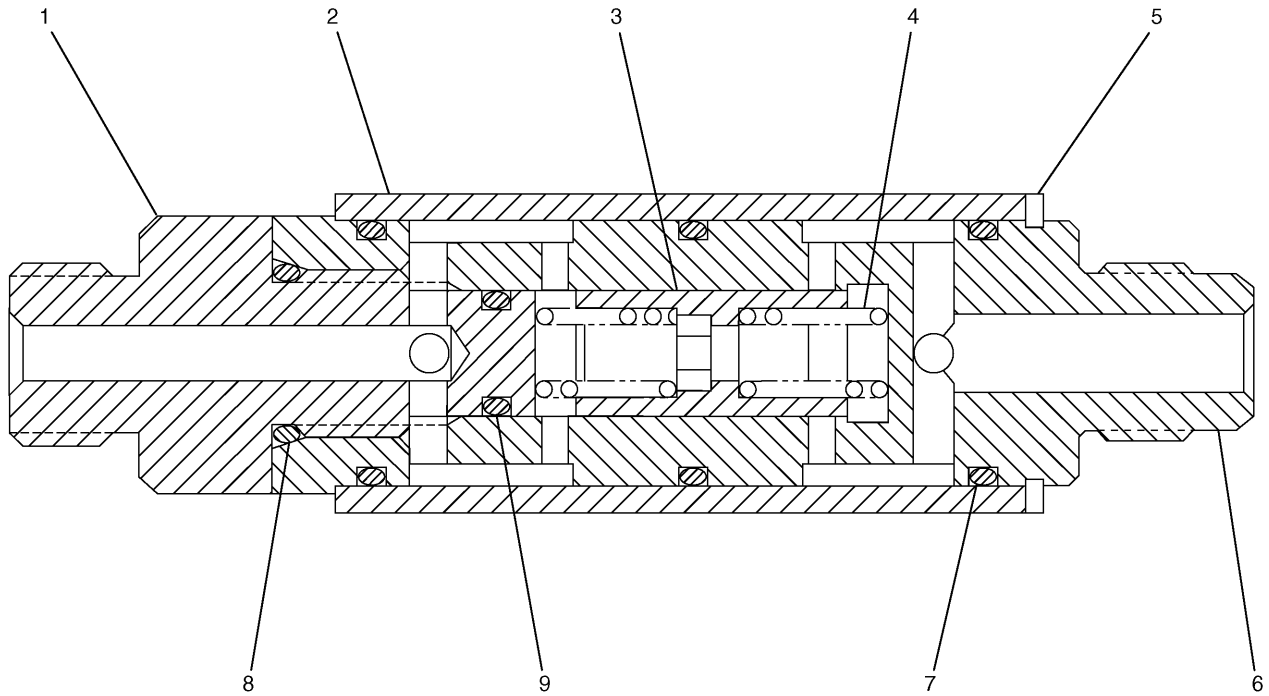


NOTE	No.	PART No.	QTY	PART NAME	NOTE	No.	PART No.	QTY	PART NAME
	1	197-0148	1	BOLT					
	2	71-7203	2	SEAT					
	3	197-0152	1	SPRING					
	4	197-0150	1	SPRING					
	5	197-0149	1	STOPPER					
	6	201-9273	1	SPOOL					

H78496E 00

**201-9272 VALVE GP-CONTROL**  
Part of 171-0140-Page417

# HYDRAULIC SYSTEM



NOTE	No.	PART No.	QTY	PART NAME	NOTE	No.	PART No.	QTY	PART NAME
	1	177-2659	1	CONNECTOR					
	2	177-2660	1	SLEEVE					
	3	177-2663	1	PLUNGER AS					
	4	177-2661	2	SPRING					
	5	095-0919	1	RING					
	6	177-2662	1	BODY					
	7	112-0034	3	SEAL-O-RING					
	8	095-1579	1	SEAL-O-RING (ID=10.80mm)					
	9	177-2645	1	SEAL-O-RING					

H70688E 00

**171-0189 VALVE GP-FLOW CONTROL**  
Part of 176-4357-Page331

# HYDRAULIC SYSTEM

NOTE	No.	PART No.	QTY	PART NAME	NOTE	No.	PART No.	QTY	PART NAME
	1	9S-8005	4	PLUG					
	2	197-0273	1	SPRING					
	3	197-0199	1	SPRING					
Y	4	121-1491	3	VALVE GP					
	5	3K-0360	4	SEAL-O-RING (ID=16.36mm)					
	6	71-2272	6	BOLT (L=12mm)					
	7	9S-8004	1	PLUG					
	8	197-0196	1	VALVE					
	9	9S-8001	6	PLUG					
	10	4B-4158	2	SCREW					
	11	3J-1907	1	SEAL-O-RING (ID=11.89mm)					
	12	4J-7533	6	SEAL-O-RING (ID=6.07mm)					

Y-SEE SEPARATE ILLUSTRATION

H84756E 01

**215-5037 VALVE GP-SELECTOR**  
 S/N BTL 00181-Up  
 Part of 176-4358-Page335.04  
 121-1491-Page451

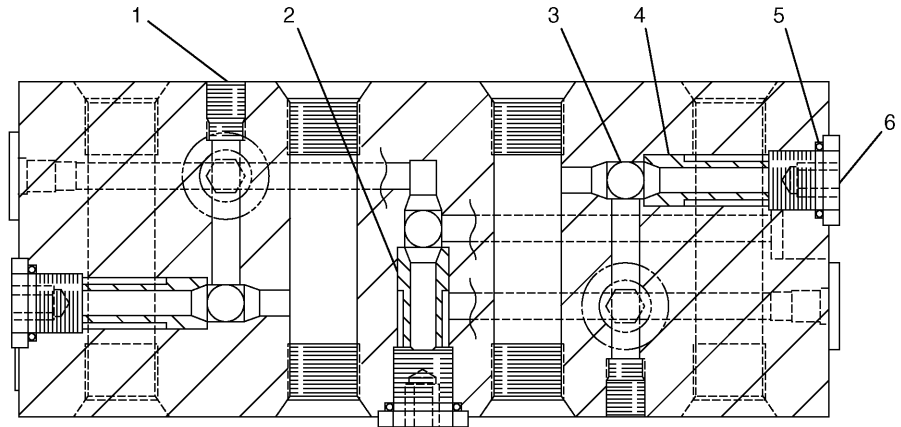
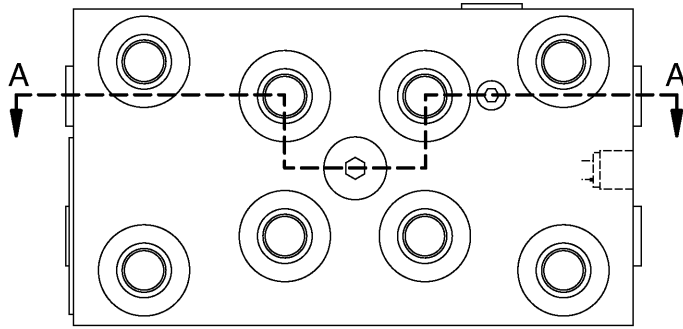
## HYDRAULIC SYSTEM

NOTE	No.	PART No.	QTY	PART NAME	NOTE	No.	PART No.	QTY	PART NAME
	1	087-4707	4	SPRING					
	2	131-5818	4	SPRING					
	3	095-0936	4	RING					
	4	126-1865	4	SPRING					
	5	126-1866	4	SPRING					
	6	147-4221	4	PISTON					
	7	6V-8400	4	SEAL-O-RING (ID=30.01mm)					
	8	165-9463	2	COVER					
	9	165-9554	4	PLUG					
	10	119-5389	4	PACKING					
	11	165-9552	4	PUSHROD					
	12	8T-4133	4	NUT					
	13	087-4710	4	SETSCREW					
	14	147-4131	2	BELLOW					
	15	087-5708	2	PEDAL					
	16	8T-0343	2	BOLT (L=55mm)					
	17	119-5388	4	CAP					
	18	165-9553	1	COVER					
	19	119-5391	4	SEAT					
	20	153-5223	12	BALL					
	21	119-5392	4	BUSHING					
	22	165-9551	4	SEAT					
	23	8T-6759	2	PLUG					
	24	099-6137	4	WASHER					
	25	099-6141	4	WASHER					
	26	099-6145	2	CAMSHAFT					
	27	099-6144	4	BUSHING					
	28	095-1260	2	SETSCREW					
	29	8T-1158	2	BOLT (L=20mm)					

H75233E 02

**165-9522 VALVE GP-PILOT**  
Part of 176-4357-Page331

# HYDRAULIC SYSTEM



A - A

NOTE	No.	PART No.	QTY	PART NAME	NOTE	No.	PART No.	QTY	PART NAME
	1	71-8084	4	PLUG					
	2	185-0463	1	SEAT					
	3	4B-9880	7	BALL					
	4	165-9464	6	SEAT					
	5	095-1578	7	SEAL-O-RING (ID=9.80mm)					
	6	107-6479	7	PLUG					

H77601E 01

## 185-0462 VALVE GP-SHUTTLE

Part of 196-0466-Page337, 176-4430-Page341, 176-4422-Page343, 196-0468-Page347  
An Attachment

# OPERATOR STATION

NOTE	No.	PART No.	QTY	PART NAME	NOTE	No.	PART No.	QTY	PART NAME
Y	1	139-7099	1	HATCH GP					
Y	2	189-2768	1	DOOR GP					
Y	3	156-6582	1	WINDOW GP					
	4	185-8187	6	WASHER					
Y	5	171-7408	1	WIPER GP					
Y	6	176-1958	1	WINDOW GP					
Y	7	185-8277	1	CAB GP					
Y	8	176-1969	1	CAB GP					
Y	9	185-8279	1	WINDOW GP					
	10	185-8182	6	BOLT (L=20mm)					
	11	128-2122	1	HANDLE					

Y-SEE SEPARATE ILLUSTRATION

H90974E 03

## 164-0556 CAB GP (BASIC)

Part of 164-0555-Page468,189-3445-Page469  
 176-1969-Page478,185-8277-Page482,189-2768-Page485,139-7099-Page490,156-6582-Page494,185-8279-Page499  
 ,176-1958-Page500,171-7408-Page501  
 An Attachment

# OPERATOR STATION

NOTE	No.	PART No.	QTY	PART NAME	NOTE	No.	PART No.	QTY	PART NAME
	1	1R-5998	2	LOCKWASHER		54	085-6452	2	WASHER
	2	3B-4510	1	LOCKWASHER		55	164-0664	1	BRACKET
	3	4B-4278	3	WASHER		56	176-1941	1	PIN
	4	4I-1205	2	BUMPER		57	185-8280	1	WASHER
	5	4I-1206	2	GUIDE		58	185-8281	1	SPRING
	6	185-8196	1	GROMMET		59	178-5570	2	GROMMET
	7	4I-3063	1	SPRING		60	262-9384	4	SEAL
	8	4I-3144	2	WASHER					
	9	4I-4270	1	HOLDER					
	10	4I-4392	3	CLIP					
	11	5C-7793	1	HOOK					
E	12	6I-5470		SEAL... (150cm)					
	13	6V-7636	4	PIN AS					
	14	189-3396	5	NUT					
	15	099-0823	3	SCREW					
	16	095-0755	2	SCREW					
	17	8T-4200	3	BOLT (L=16mm)					
	18	127-0580	2	SCREW					
	19	139-7126	1	HOLDER					
	20	139-7127	1	HOLDER					
	21	196-1675	1	HANDLE AS					
	22	156-6599	1	STRIKER					
	23	156-6617	1	MIRROR					
	24	156-6618	1	SUPPORT AS					
	25	201-4530	1	BRACKET AS					
	26	161-3685	1	ROD					
	27	161-3690	1	HANDLE AS					
	28	161-3697	1	GUARD					
	29	164-0523	1	LEVER AS					
	30	164-0527	1	ROD					
	31	156-6642	1	LEVER AS					
	32	167-7042	2	SEAL					
	33	171-7396	1	COVER AS					
	34	171-7426	1	CABLE AS					
	35	176-1938	1	LEVER					
	36	176-1942	1	COVER					
	37	205-6295	1	LATCH AS					
	38	189-2864	2	SCREW					
	39	176-1986	1	LIGHT					
	40	201-4417	1	BULB					
	41	133-8016	1	PACKING					
	42	3E-8020	6	SCREW					
	43	8T-4137	2	BOLT (L=20mm)					
	44	7X-0578	2	WASHER					
	45	8T-4193	1	BOLT (L=50mm)					
	46	9X-2041	3	SCREW					
	47	9X-2042	5	SCREW					
	48	9X-2044	6	SCREW					
	49	9X-2045	2	SCREW					
	50	210-5808	1	SEAL					
	51	9X-8257	1	WASHER					
	52	8T-4224	3	WASHER					
	53	176-1937	1	BRACKET AS					

E—ORDER BY THE CENTIMETER

H90978E 05

**185-8277 CAB GP-EXTERIOR**  
 Part of 139-7092-Page471,164-0556-Page473  
 An Attachment

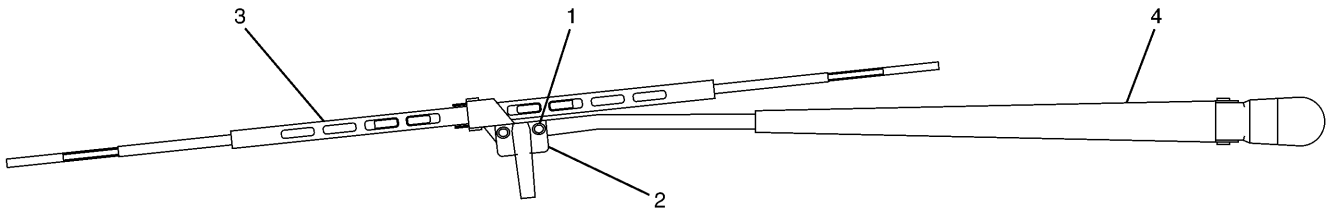
# OPERATOR STATION

NOTE	No.	PART No.	QTY	PART NAME	NOTE	No.	PART No.	QTY	PART NAME
	1	117-6306	1	SWITCH					
	2	151-6703	1	HANDLE					
	3	151-6704	2	CAP					
	4	095-0827	2	LOCKWASHER					
	5	151-6785	1	BRACKET AS					
	6	151-6813	1	BRACKET AS					
	7	151-6815	1	BRACKET AS					
	8	151-6818	1	LINK AS					
	9	151-6819	1	LINK AS					
	10	151-6831	1	LOCK AS					
	11	151-6832	1	LEVER AS					
	12	151-6844	1	COVER					
	13	151-9557	2	STOPPER					
	14	156-6472	1	GLASS					
	15	156-6554	1	CABLE AS					
	16	156-6555	1	STRIKER AS					
	17	156-6562	1	BRACKET					
	18	156-6563	1	CATCH AS					
	19	156-6579	1	STOPPER					
	20	156-6601	1	SEAL AS					
	21	156-6627	1	STOPPER AS					
	22	161-3684	2	STOPPER					
	23	161-3698	1	SEAL					
	24	164-0648	1	BRACKET AS					
	25	170-9722	1	CUSHION					
	26	099-0823	2	SCREW					
	27	8T-6412	2	SCREW					
	28	151-9576	4	ROLLER					
	29	185-8197	1	NUT					
	30	185-8181	2	SCREW					
	31	185-8183	1	NUT					
	32	185-8187	4	WASHER					
	33	185-8182	4	BOLT (L=20mm)					
	34	9X-2042	18	SCREW					
	35	9X-2044	5	SCREW					
	36	9X-2045	4	SCREW					
	37	185-8221	1	STOPPER					
	38	41-0420	1	STRIP					
	39	7X-0578	1	WASHER					
	40	9X-8256	2	WASHER					
	41	178-5576	1	STOPPER					

H87019E 03

**139-7101 WINDOW GP**  
Part of 139-7092-Page471  
An Attachment

# OPERATOR STATION

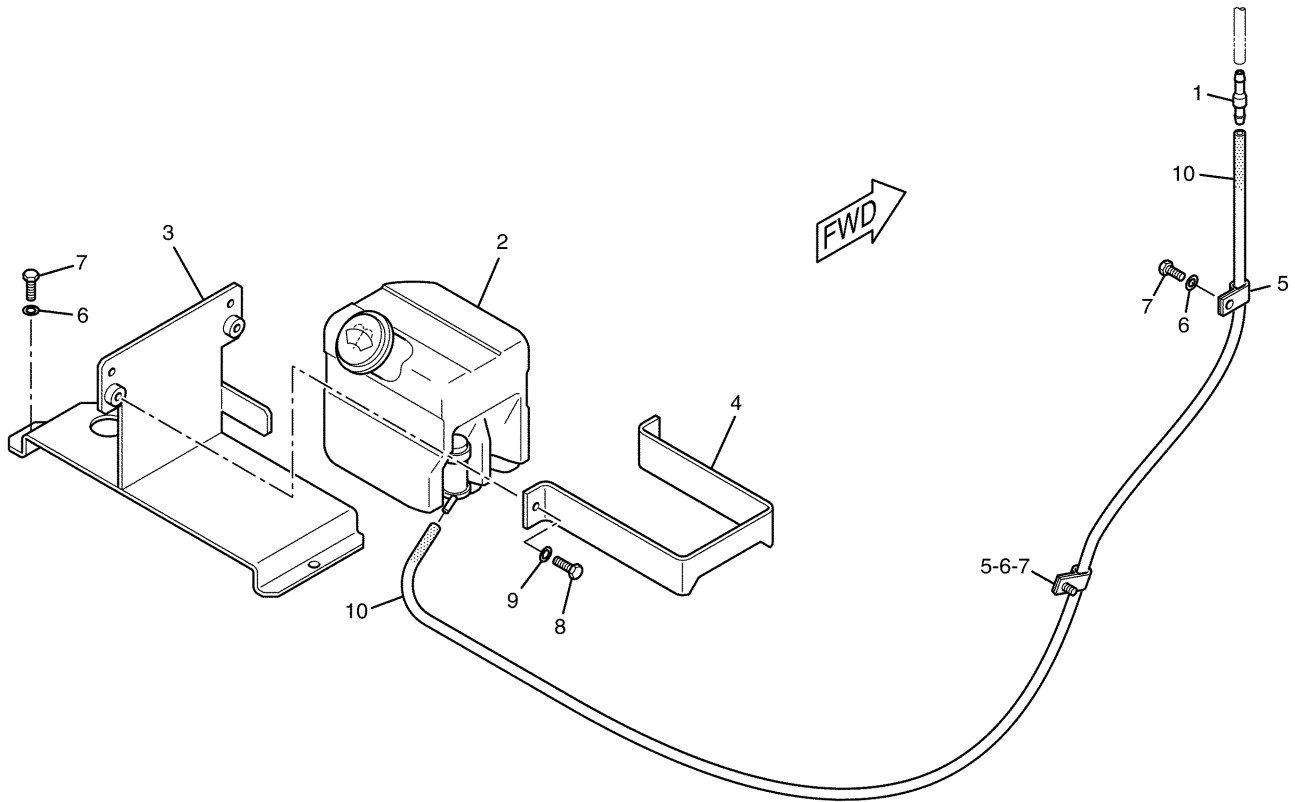


NOTE	No.	PART No.	QTY	PART NAME	NOTE	No.	PART No.	QTY	PART NAME
	1	185-8290	1	SCREW KIT					
	2	161-3669	1	GUIDE					
	3	161-3670	1	BLADE AS					
	4	161-3671	1	ARM AS					

H77606E 02

**161-3668 ARM AS-WIPER**  
 Part of 171-7408-Page501  
 An Attachment

# OPERATOR STATION



NOTE	No.	PART No.	QTY	PART NAME	NOTE	No.	PART No.	QTY	PART NAME
Y	1	7Y-3474	1	VALVE AS					
	2	176-1931	1	TANK AS					
	3	214-1303	1	SUPPORT AS					
	4	214-1306	1	SUPPORT AS					
	5	6V-3265	2	CLIP					
	6	8T-4121	4	WASHER					
	7	8T-4137	4	BOLT (L=20mm)					
E	8	8T-4171	2	BOLT (L=12mm)					
	9	9X-8256	2	WASHER					
	10	144-0195		HOSE...(140cm)					

E—ORDER BY THE CENTIMETER  
 Y—SEE SEPARATE ILLUSTRATION

H81792E 01

**214-1243 WASHER GP-WINDOW**  
 176-1931-Page514

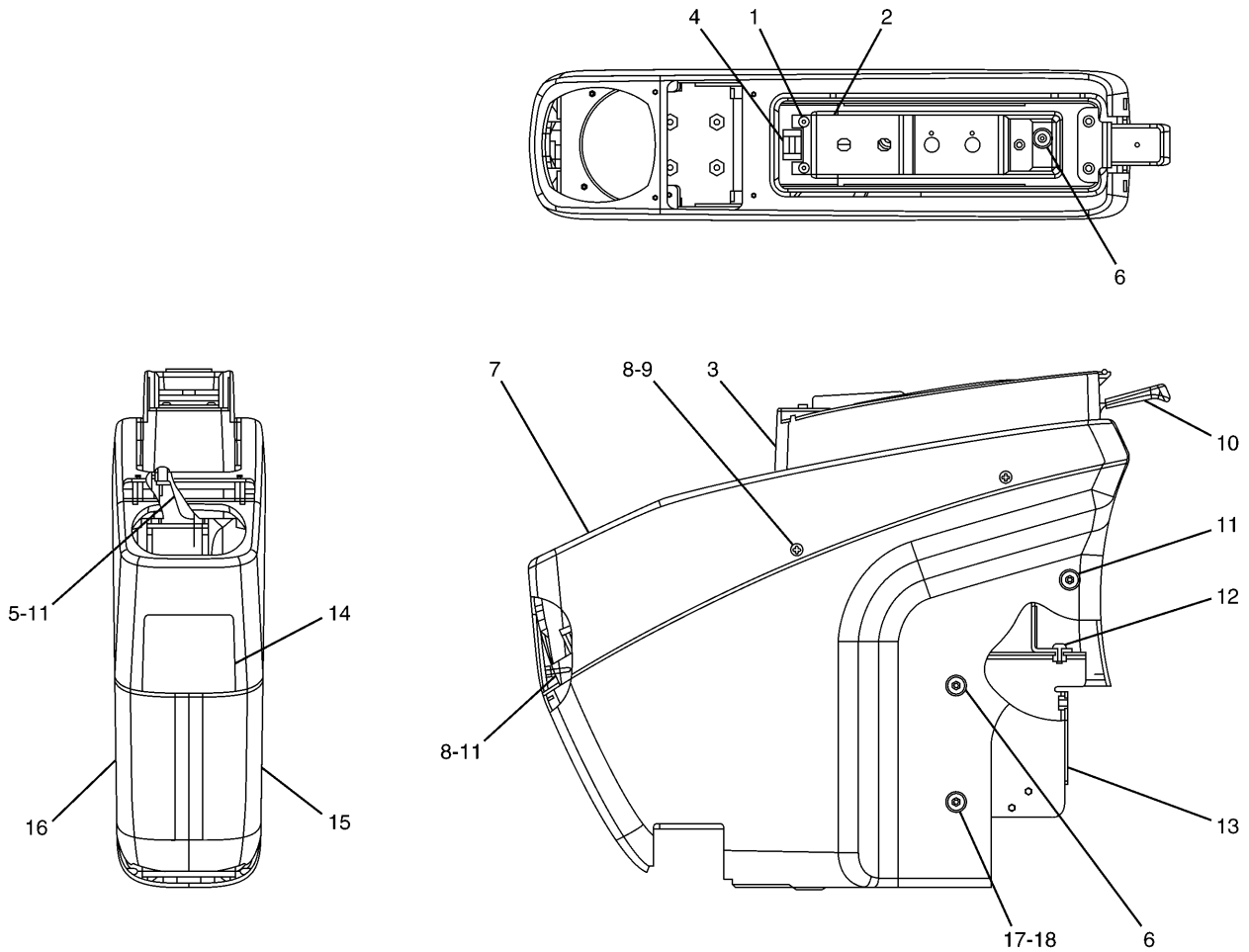
# OPERATOR STATION

NOTE	No.	PART No.	QTY	PART NAME	NOTE	No.	PART No.	QTY	PART NAME
	1	196-1571	1	SUPPORT AS					
	2	196-1599	1	FRAME AS					
	3	196-1569	1	SUPPORT AS					
	4	8T-4139	6	BOLT (L=30mm)					
	5	8T-4223	8	WASHER					
	6	7X-2553	2	BOLT (L=40mm)					
	7	9X-8257	4	WASHER					
	8	201-4534	2	PIN					
	9	176-1928	2	BRACKET AS					
	10	5D-4822	4	RING					
	11	207-0216	2	SPRING AS					
	12	196-1572	2	LATCH AS					
	13	258-0330	2	BRACKET AS					
	14	6C-8382	2	SPRING					
	15	4I-6602	8	BOSS					
	16	8T-4192	2	BOLT (L=25mm)					
	17	201-4535	2	PIN					
	18	096-4882	2	NUT					
	19	7Y-0623	2	NUT					
	20	8T-4224	4	WASHER					

H88095E 06

**164-0534 GUARD GP-FRONT WINDOW**  
An Attachment

# OPERATOR STATION



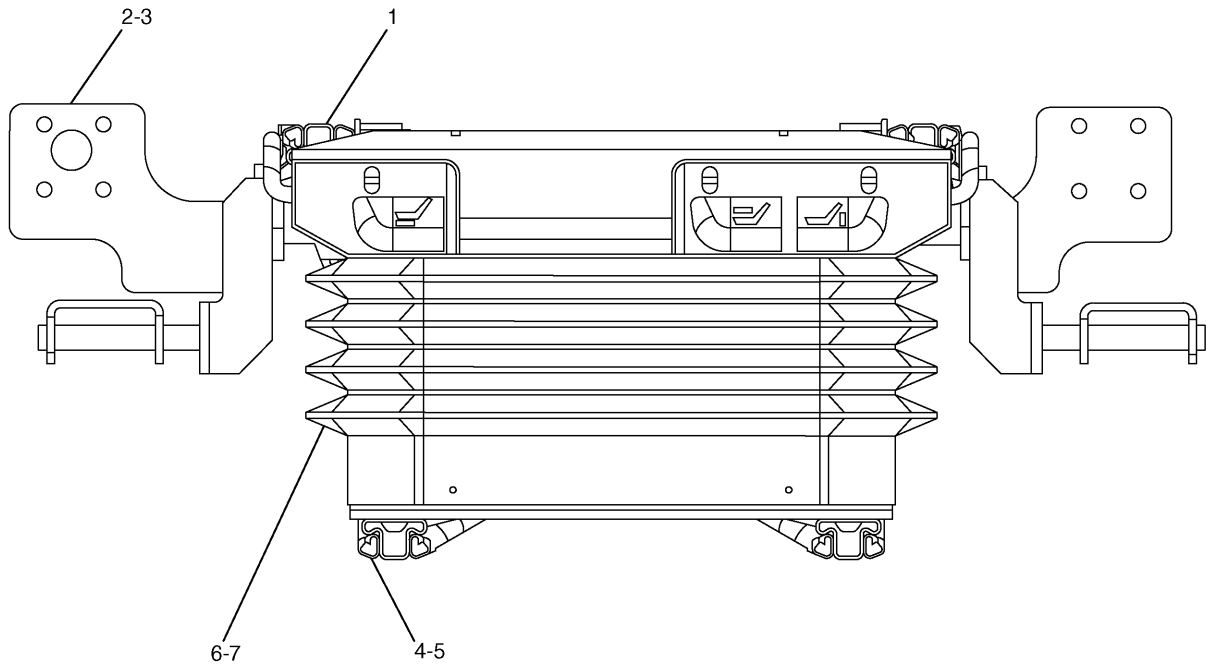
NOTE	No.	PART No.	QTY	PART NAME	NOTE	No.	PART No.	QTY	PART NAME
	1	185-8163	3	SCREW					
	2	178-5632	1	BRACKET					
	3	178-5533	1	CASE					
	4	178-5629	1	LATCH					
	5	196-1565	1	BRACKET					
	6	128-2135	6	SCREW					
	7	178-5548	1	COVER					
	8	155-7099	10	NUT					
	9	178-5426	8	SCREW					
Y	10	178-5524	1	LINK AS					
	11	119-5026	5	SCREW					
	12	9X-2042	4	SCREW					
	13	178-5400	1	SUPPORT AS					
	14	178-5522	1	COVER					
	15	178-5529	1	COVER					
	16	178-5519	1	COVER					
	17	7Y-9096	2	SCREW					
	18	2Y-5687	2	WASHER					

Y-SEE SEPARATE ILLUSTRATION

H85631E 06

**161-3760 CONSOLE GP**  
 Right Hand  
 Part of 161-3758-Page531  
 178-5524-Page534

# OPERATOR STATION



NOTE	No.	PART No.	QTY	PART NAME	NOTE	No.	PART No.	QTY	PART NAME
	1	178-5655	1	ADJUSTER KIT					
	2	185-8122	1	SUPPORT KIT					
		178-5658	1	HANDLE KIT					
	3	185-8125	1	RISER KIT (HEIGHT)					
	4	178-5661	1	CABLE KIT					
	5	178-5662	1	ADJUSTER KIT					
	6	185-8127	1	SUPPORT KIT					
	7	185-8143	1	COVER KIT					
		178-5647	14	CLIP					
		178-5648	4	STRAP					

H71338E 09

**164-0479 SUSPENSION GP-SEAT**  
 Part of 178-5624-Page539,171-7352-Page540  
 An Attachment

# OPERATOR STATION

NOTE	No.	PART No.	QTY	PART NAME	NOTE	No.	PART No.	QTY	PART NAME
	1	164-0592	1	DUCT AS					
		61-5331	4	RIVET					
		189-3415	2	INSULATOR					
	2	164-0631	1	DUCT AS					
		189-3415	1	INSULATOR					
	3	164-0630	1	DUCT AS					
		189-3415	1	INSULATOR					
	4	164-0628	1	DUCT AS					
		189-3427	1	RUBBER					
Y	5	164-0590	1	DUCT AS					
	6	095-0742	5	SCREW					
	7	164-0632	1	DUCT AS					
		189-3455	1	INSULATOR					
	8	41-1278	1	FILTER					
	9	176-1996	2	CLIP					
	10	9X-8256	1	WASHER					
	11	8T-4171	1	BOLT (L=12mm)					
	12	095-0827	5	LOCKWASHER					

Y-SEE SEPARATE ILLUSTRATION

H67365E 01

**161-3764 DUCT GP-AIR**  
 Part of 161-3762-Page547  
 164-0590-Page554

# OPERATOR STATION

NOTE	No.	PART No.	QTY	PART NAME	NOTE	No.	PART No.	QTY	PART NAME
	1	185-8108	4	FUSE (3A)					
	2	178-5470	1	COVER					
	3	178-5477	1	CORE AS					
	4	178-5484	1	MOTOR AS					
	5	178-5485	1	FAN					
	6	178-5488	4	BUSHING					
	7	178-5478	1	DAMPER AS					
	8	133-7937	1	SENSOR					
	9	178-5483	1	SENSOR					
	10	130-0288	1	GROMMET					
	11	178-5486	1	CONTROL AS					
	12	178-5480	1	MOTOR AS					
	13	178-5492	6	SCREW					
	14	178-5481	1	MOTOR AS					
	15	178-5482	1	MOTOR AS					
	16	178-5491	1	BOLT AS					
	17	178-5489	13	CLIP					
	18	71-0392	2	CLIP					
	19	130-0319	1	CLIP					
	20	178-5493	2	WASHER					
	21	178-5474	1	BOX AS					
	22	178-5475	1	DAMPER					
	23	178-5476	1	LEVER					
	24	178-5489	5	CLIP					
	25	178-5471	1	COVER					
	26	178-5479	1	FILTER					
	27	178-5490	5	SCREW AS					
	28	161-3756	5	SCREW					
	29	178-5494	7	SCREW					
	30	71-6626	6	SCREW					
	31	178-5487	1	RELAY					
	32	189-3479	1	CAP					
	33	273-5323	1	DAMPER AS					
	34	273-5324	1	DAMPER AS					
	35	273-5325	1	DAMPER AS					
	36	273-5326	1	LEVER					
	37	273-5327	3	LEVER					
	38	273-5328	1	LEVER					
	39	273-5329	1	LEVER AS					
	40	273-5332	1	HARNESS AS					

H91143E 04

**164-0486 HEATER GP-CAB**  
 Part of 164-0485-Page561  
 An Attachment

# IMPLEMENTS

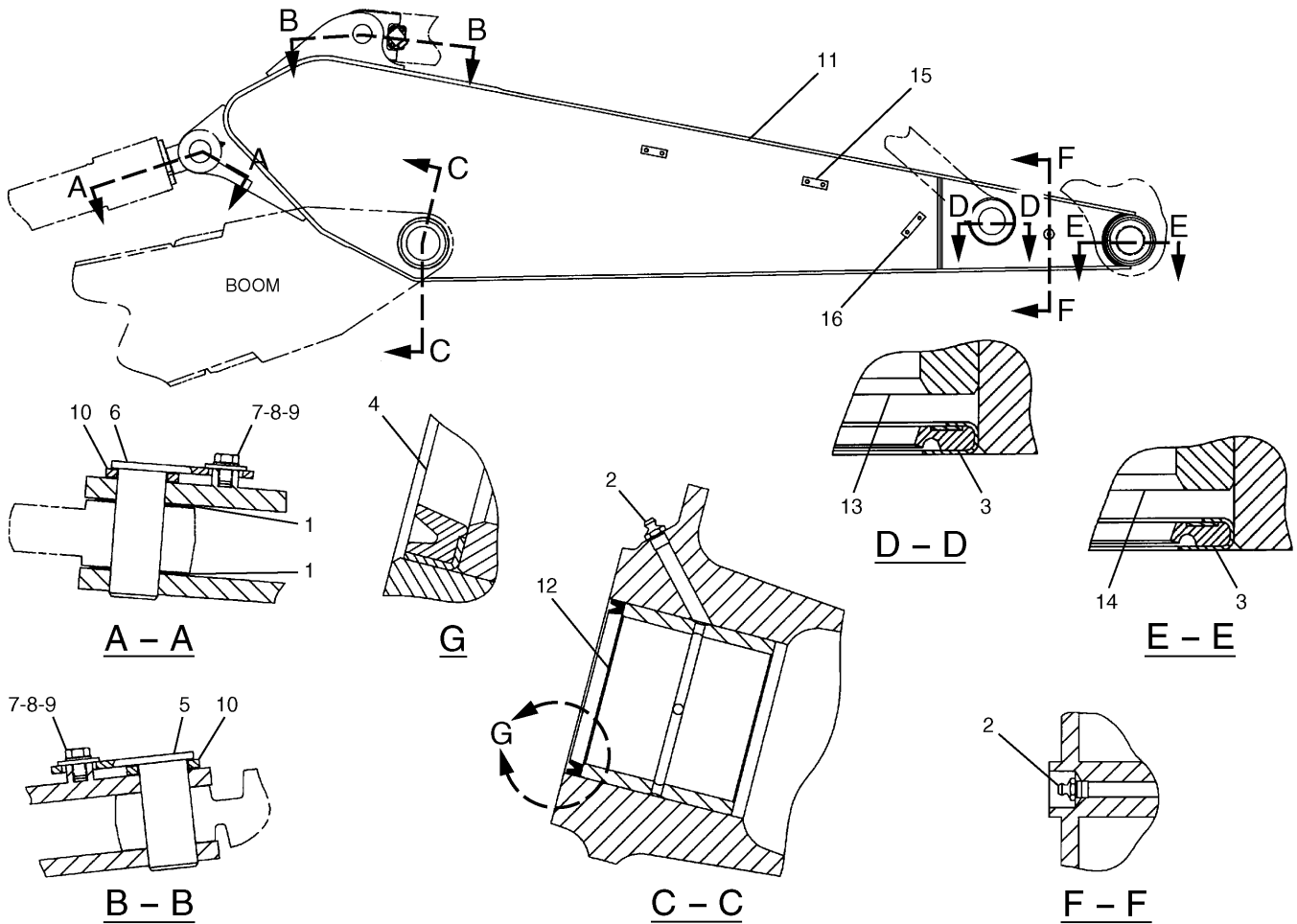
NOTE	No.	PART No.	QTY	PART NAME	NOTE	No.	PART No.	QTY	PART NAME
	1	166-1486	2	SHIM (T=2.00mm)					
	2	166-1495	2	SEAL					
	3	180-7755	1	PIN					
	4	41-3308	2	PLATE					
	5	8T-4956	6	BOLT (L=35mm)					
	6	8T-4223	6	WASHER					
	7	8T-4780	2	BOLT (L=30mm)					
	8	093-0349	2	WASHER					
	9	41-4811	1	PIN AS					
	10	107-9737	1	PIN AS					
	11	8T-4123	2	WASHER					
	12	118-5982	1	SPACER					
	13	41-3309	2	SPACER					
	14	166-1487	2	SHIM (T=2.00mm)					
B	15	093-0084	1	SHIM (T=1.00mm)					
B		113-2127	2	SHIM (T=0.50mm)					
	16	093-0366	1	SPACER					
	17	180-7615	1	BOOM AS					
	18	163-3744	2	BEARING					
	19	113-2276	1	MANIFOLD					
	20	7Y-4171	4	PLATE					
	21	087-5841	3	PLATE					
	22	7Y-2579	2	BAR					

B-USE AS REQUIRED

H72874E 01

**174-8528 BOOM GP**  
Part of 169-7570-Page568  
An Attachment

# IMPLEMENTS

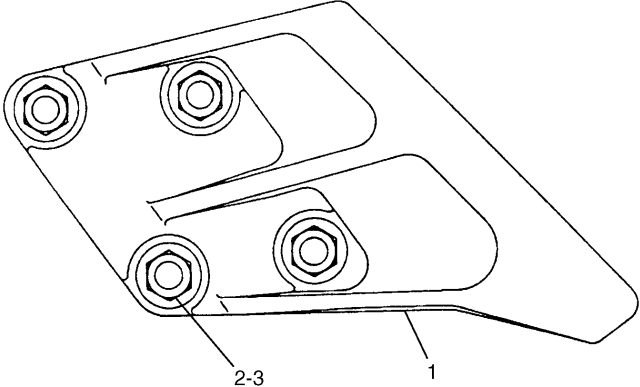


NOTE	No.	PART No.	QTY	PART NAME	NOTE	No.	PART No.	QTY	PART NAME
	1	166-1482	2	SHIM (T=2.00mm)					
	2	3B-8489	3	FITTING					
	3	093-1434	4	SEAL					
	4	166-1495	2	SEAL					
	5	107-9852	1	PIN AS					
	6	41-4811	1	PIN AS					
	7	8T-4780	2	BOLT (L=30mm)					
	8	093-0349	2	WASHER					
	9	8T-4123	2	WASHER					
	10	118-5982	2	SPACER					
	11	193-6601	1	STICK AS					
	12	163-3744	2	BEARING					
	13	229-1096	2	BEARING					
	14	228-5614	2	BEARING					
	15	173-8026	4	PLATE					
	16	179-5247	2	PLATE					

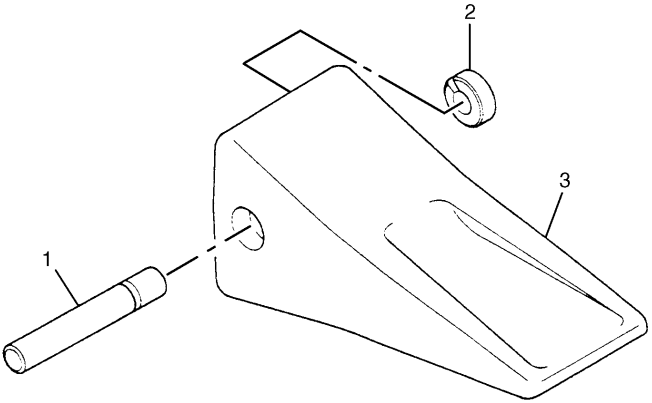
H87022E 00

**173-8021 STICK GP**  
Part of 173-8012-Page297  
An Attachment

# IMPLEMENTS

	NOTE	No.	PART No.	QTY	PART NAME
		1	096-4747	1	SIDECUTTER (LH)
			096-4748	1	SIDECUTTER (RH)
		2	8T-0380	8	BOLT (L=60mm)
		3	7X-0851	8	NUT
H53299E 04					

**7Y-0729 SIDECUTTER GP**  
 B Family  
 Part of 177-8332,177-8351-Page587,177-8339-Page588  
 An Attachment

	NOTE	No.	PART No.	QTY	PART NAME
		1	107-3308	1	PIN
		2	8E-6259	1	RETAINER AS
		3	1U-3302	1	TIP
H79788E 10					

**9J-3167 TIP GP-LONG**  
 Adapter Size J300  
 Part of 177-8332,177-8351-Page587,177-8339-Page588  
 An Attachment

## SERVICE EQUIPMENT AND SUPPLIES

NOTE	No.	PART No.	QTY	PART NAME	NOTE	No.	PART No.	QTY	PART NAME
E	1	160-6853	2	FILM (DANGER)					
	2	132-4100	1	FILM (CAT)					
	3	186-1147	2	FILM (REGA)					
	4	134-6146		FILM (STRIPE)···(540cm)					
	5	105-7545	2	FILM (CAT)					
	6	194-8871	2	FILM (315C)					
	7	1P-2807	4	FILM (LIFT)					
	8	160-6832	2	FILM (WARNING)					
	9	258-0342	1	FILM (CAT)					
	10	150-8108	1	FILM (CAT)					
Z	11	160-6884	1	FILM (DANGER)					
	12	190-5386	2	FILM (SAFETY)					
	13		1	PLATE (PIN)					
	14	4P-6422	1	FILM (WARNING)					
	15	132-4099	1	FILM (CAT)					
	16	160-6822	1	FILM (WARNING)					
	17	120-5107	1	FILM (INSTRUCTION)					
	18	160-6841	1	FILM (WARNING)					
	19	144-9126	1	FILM (INSTRUCTION)					
	20	7X-7644	2	FILM (TIE DOWN)					

E-ORDER BY THE CENTIMETER  
Z-NOT SERVICED

H91125E 04

**211-6330 PLATE & FILM GP (2/3)**

## PART NUMBER INDEX

Part.No	Page	Part.No	Page	Part.No	Page
	369		84		512
	373		85		530
	389		86		549
	419		86.01		557
	439		86.02		561
	449.02		86.03		566
	464		95	3S-6049 . . . . .	88
3J-7354 . . . . .	37		95.04		90
	243		95.08	3S-6050 . . . . .	88
	247		95.10		89
	323		95.12	3T-4692 . . . . .	85
	333		99		86.02
	335.02		101	3T-4696 . . . . .	83
3K-0360 . . . . .	241		103		83.02
	245		103.02		85
	270		103.04		86
	321		103.06		86.02
	333		103.08		86.03
	335		103.10	3T-5760 . . . . .	73
	335.02		103.12		78.01
	335.04		105		78.07
	339		107		81
	345		115	3T-7528 . . . . .	266
	367		116		267
	369		119	3V-9744 . . . . .	307
	383		120		307.02
	393		122	3W-6399 . . . . .	514
	394		123	3W-6485 . . . . .	65
	449		129	3Y-7597 . . . . .	599
	449.02		132	3Y-8905 . . . . .	601
3P-1896 . . . . .	17		133		
3S-2093 . . . . .	39		134		
	39.02		135		
	73		137		
	75		142	4B-4158 . . . . .	224
	77		143		224.01
	78.01		145		225
	78.03		146		225.01
	78.05		147		449
	78.07		149		449.02
	78.09		151		519
	78.11		171		521
	83		173		590
	83.02		179		591

## PART NUMBER INDEX

Part.No	Page	Part.No	Page	Part.No	Page
7Y-3732 . . . . .	299		105		105
	299.02		107		107
	301		122		119
	303		123		120
	305		132		122
7Y-3820 . . . . .	85		134		123
	86.02		142		132
7Y-3821 . . . . .	85	7Y-3953 . . . . .	103.08		133
	86.02		103.12		134
7Y-3919 . . . . .	526		103.13		135
7Y-3920 . . . . .	526	7Y-3958 . . . . .	101		142
7Y-3950 . . . . .	103.13		103.02		143
	125		103.06		177
	133		103.10		180
	135		105	7Y-3964 . . . . .	84
	143		132		85
7Y-3951 . . . . .	85		134		86.01
	101		142		86.02
	103	7Y-3962 . . . . .	84		87
	103.02		85		132
	103.04		86.01		133
	103.06		86.02		134
	103.08		87		135
	103.10		132		142
	103.12		133		143
	103.13		134		177
	105		135		180
	107		142	7Y-3965 . . . . .	84
	122		143		85
	123		177		86.01
	132		180		86.02
	134	7Y-3963 . . . . .	84		87
	142		85		101
	516		86.01		103
	517		86.02		103.02
7Y-3952 . . . . .	101		87		103.04
	103		101		103.06
	103.02		103		103.08
	103.04		103.02		103.10
	103.06		103.04		103.12
	103.08		103.06		105
	103.10		103.08		107
	103.12		103.10		119
	103.13		103.12		120



## PART NUMBER INDEX

Part.No	Page	Part.No	Page	Part.No	Page
124-4009	399		247		533
	400		262	128-2136	467
124-4010	397	126-2076	262		468
	398	126-2081	266		477
124-4835	44	126-5061	235		481
124-7346	467	126-5062	235	128-2155	495
	468	126-5063	236		498
124-8758	521	126-9993	461	128-2173	405
125-1302	95	127-0580	483		407
	95.04	127-3735	479	128-2955	20
	95.08	127-4839	19	128-2956	20
	99	127-5251	606	128-2958	20
	110	127-5272	605	128-3811	15
125-2968	27	127-5295	605	128-4411	69
	163	127-5819	157		69.02
125-4785	83	127-5924	11		69.04
	83.02		56	128-7471	355
	132	127-5925	56		357
	134	127-5937	159		361
	137	127-5938	159		365
	142	127-5939	159	128-7747	63
125-4840	132	127-5940	159	128-9166	335
	134	127-5941	159		335.04
	142	127-5942	159	129-3400	241
125-4841	83	127-5943	159		245
	83.02	127-5944	159	129-5940	335
126-1768	83	127-5945	159		335.04
	83.02	127-5947	159	129-6466	179
	84	127-5948	159		511
	85	127-5949	159	129-7932	439
	86	127-5950	159	129-8030	439
	86.01	127-5952	159		440
	86.02	127-5953	159	129-8031	440
	86.03	127-5955	159	129-8068	277
	103	127-5956	159	130-0288	551
	103.04	127-5957	159		563
	103.08	127-6859	303	130-0319	551
	103.12	128-2122	473		563
	122	128-2129	496	130-3279	49
	123	128-2135	467	130-7596	26
	331		468	131-5767	419
126-1865	459		477		421
126-1866	459		481	131-5768	419
126-2075	243		532		421

## PART NUMBER INDEX

Part.No	Page	Part.No	Page	Part.No	Page
	412	171-7414 . . . . .	488	173-3482 . . . . .	273
	414	171-7415 . . . . .	477		276
	416		481	173-3483 . . . . .	271
	418	171-7418 . . . . .	477		568
	420		481	173-3484 . . . . .	271
171-0183 . . . . .	461	171-7420 . . . . .	475		568
171-0184 . . . . .	461		479	173-3485 . . . . .	271
171-0185 . . . . .	461	171-7423 . . . . .	477		274
171-0188 . . . . .	339		481	173-3486 . . . . .	274
	345	171-7426 . . . . .	483		278
	462	171-7432 . . . . .	567	173-3487 . . . . .	272
171-0189 . . . . .	331	171-7477 . . . . .	491		571
	441	171-7478 . . . . .	540	173-3489 . . . . .	272
171-0198 . . . . .	462	171-7485 . . . . .	518		275
171-2208 . . . . .	93		520	173-3490 . . . . .	275
	95.02	171-7486 . . . . .	521		280
	95.06	171-7495 . . . . .	566	173-3508 . . . . .	266
	95.10	171-7496 . . . . .	566	173-3510 . . . . .	264
	97	171-7499 . . . . .	559		265
171-2627 . . . . .	154		564	173-3511 . . . . .	264
171-3369 . . . . .	39	171-7503 . . . . .	497		266
	39.02	171-9073 . . . . .	59	173-3513 . . . . .	266
171-7323 . . . . .	475	171-9081 . . . . .	249		267
	477	171-9087 . . . . .	59	173-3515 . . . . .	266
	479	171-9088 . . . . .	34		267
	481	171-9120 . . . . .	566	173-3516 . . . . .	266
171-7325 . . . . .	477	171-9161 . . . . .	71		267
	481		71.02	173-3517 . . . . .	266
171-7336 . . . . .	467		71.04		267
	468	171-9292 . . . . .	182	173-3529 . . . . .	266
171-7339 . . . . .	506	171-9295 . . . . .	186		267
171-7352 . . . . .	540	171-9381 . . . . .	214	173-4664 . . . . .	355
171-7377 . . . . .	477	171-9464 . . . . .	215		359
	481	173-1203 . . . . .	253		363
171-7387 . . . . .	479		257		365
171-7396 . . . . .	483	173-3387 . . . . .	261	173-4868 . . . . .	361
171-7400 . . . . .	477	173-3389 . . . . .	261		365
	481	173-3434 . . . . .	243	173-7895 . . . . .	315
171-7406 . . . . .	477		264		315.02
	481	173-3480 . . . . .	270	173-8003 . . . . .	325
171-7408 . . . . .	471		568	173-8009 . . . . .	296
	473	173-3481 . . . . .	270	173-8010 . . . . .	296
	501		271	173-8011 . . . . .	297
171-7413 . . . . .	488		273	173-8012 . . . . .	297

CLICK HERE TO **DOWNLOAD** THE COMPLETE MANUAL

- Thank you very much for reading the preview of the manual.
- You can download the complete manual from: [www.heydownloads.com](http://www.heydownloads.com) by clicking the link below



- Please note: If there is no response to CLICKING the link, please download this PDF first and then click on it.

CLICK HERE TO **DOWNLOAD** THE COMPLETE MANUAL